

Catalogue no. 65-001-X

Canadian International Merchandise Trade

November 2010



Statistics
Canada

Statistique
Canada

Canada

How to obtain more information

For information about this product or the wide range of services and data available from Statistics Canada, visit our website at www.statcan.gc.ca, e-mail us at infostats@statcan.gc.ca, or telephone us, Monday to Friday from 8:30 a.m. to 4:30 p.m., at the following numbers:

Statistics Canada's National Contact Centre

Toll-free telephone (Canada and the United States):

Inquiries line	1-800-263-1136
National telecommunications device for the hearing impaired	1-800-363-7629
Fax line	1-877-287-4369

Local or international calls:

Inquiries line	1-613-951-8116
Fax line	1-613-951-0581

Depository Services Program

Inquiries line	1-800-635-7943
Fax line	1-800-565-7757

To access this product

This product, Catalogue no. 65-001-X, is available free in electronic format. To obtain a single issue, visit our website at www.statcan.gc.ca and browse by "Key resource" > "Publications."

Standards of service to the public

Statistics Canada is committed to serving its clients in a prompt, reliable and courteous manner. To this end, Statistics Canada has developed *standards of service* that its employees observe. To obtain a copy of these service standards, please contact Statistics Canada toll-free at 1-800-263-1136. The service standards are also published on www.statcan.gc.ca under "About us" > "The agency" > "Providing services to Canadians."

Statistics Canada
International Trade Division

Canadian International Merchandise Trade

November 2010

Published by authority of the Minister responsible for Statistics Canada

© Minister of Industry, 2011

All rights reserved. The content of this electronic publication may be reproduced, in whole or in part, and by any means, without further permission from Statistics Canada, subject to the following conditions: that it be done solely for the purposes of private study, research, criticism, review or newspaper summary, and/or for non-commercial purposes; and that Statistics Canada be fully acknowledged as follows: Source (or "Adapted from", if appropriate): Statistics Canada, year of publication, name of product, catalogue number, volume and issue numbers, reference period and page(s). Otherwise, no part of this publication may be reproduced, stored in a retrieval system or transmitted in any form, by any means—electronic, mechanical or photocopy—or for any purposes without prior written permission of Licensing Services, Client Services Division, Statistics Canada, Ottawa, Ontario, Canada K1A 0T6.

January 2011

Catalogue no. 65-001-X, vol. 64, no. 11

ISSN 1480-8781

Frequency: Monthly

Ottawa

Cette publication est également disponible en français.

Note of appreciation

Canada owes the success of its statistical system to a long-standing partnership between Statistics Canada, the citizens of Canada, its businesses, governments and other institutions. Accurate and timely statistical information could not be produced without their continued cooperation and goodwill.

User information

Symbols

The following standard symbols are used in Statistics Canada publications:

- . not available for any reference period
- .. not available for a specific reference period
- ... not applicable
- 0 true zero or a value rounded to zero
- 0^s value rounded to 0 (zero) where there is a meaningful distinction between true zero and the value that was rounded
- p preliminary
- r revised
- x suppressed to meet the confidentiality requirements of the *Statistics Act*
- E use with caution
- F too unreliable to be published

Note to users

All totals are calculated from full figures and rounded independently; consequently, totals may not equal the sum of their components.

The data is based on commodity groups (sector, subsector and major group).

Table of contents

Highlights	5
Analysis	7
Related products	11
Statistical tables	
1 Merchandise trade of Canada, balance of payments basis, seasonally adjusted	15
1-1 Current dollars	15
1-2 Constant dollars, 2002	16
1-3 Price indices (Laspeyres)	17
2 Exports by commodity groupings, balance of payments basis, seasonally adjusted	18
2-1 Current dollars	18
2-2 Constant dollars, 2002	20
3 Domestic exports to selected countries, customs basis, not seasonally adjusted	22
3-1 November	22
3-2 Year to date, January to November	23
4 Domestic exports by country, customs basis, not seasonally adjusted	24
5 Exports by province of origin, customs basis, not seasonally adjusted	28
5-1 November	28
5-2 Year to date, January to November	29
6 Imports by commodity groupings, balance of payments basis, seasonally adjusted	30
6-1 Current dollars	30
6-2 Constant dollars, 2002	32
7 Imports from selected countries, customs basis, not seasonally adjusted	34
7-1 November	34
7-2 Year to date, January to November	35
8 Imports by country, customs basis, not seasonally adjusted	36

Table of contents – continued

9	Imports by province of clearance, customs basis, not seasonally adjusted	40
9-1	November	40
9-2	Year to date, January to November	41

Data quality, concepts and methodology

	Technical notes	42
--	-----------------	----

Highlights

Canada's merchandise imports declined 3.2% to \$34.4 billion in November, led by a 15.1% fall in volumes of energy products. Overall, import volumes fell 2.4% and prices, down 0.8%, decreased for a fourth consecutive month.

Energy products and machinery and equipment were the main factors behind the decrease in the value of imports. Conversely, imports of industrial goods and materials rose, as a result of solid gains in imports of precious metals.

Exports increased 0.8% to \$34.3 billion, as prices, up 2.8%, rose in most sectors. Prices of industrial goods and materials increased 3.9% and led the growth in overall exports.

Export volumes fell 2.0%, with volumes of automotive products declining 10.0% as some plants closed temporarily in November.

As a result, Canada's trade deficit with the world narrowed to \$81 million in November from \$1.5 billion in October.

Exports to the United States increased 0.6% while imports fell 5.1%, reflecting a drop in imports of automotive products. Consequently, Canada's trade surplus with the United States rose to \$3.0 billion in November from \$1.7 billion in October.

Exports to countries other than the United States grew 1.1%, a fifth consecutive month of increase, while imports remained virtually unchanged. As a result, Canada's trade deficit with countries other than the United States declined from \$3.2 billion in October to \$3.1 billion in November.

Note to readers

Merchandise trade is one component of Canada's international balance of payments, which also includes trade in services, investment income, current transfers as well as capital and financial flows.

International merchandise trade data by country are available on both a balance of payments and a customs basis for the United States, Japan and the United Kingdom. Trade data for all other individual countries are available on a customs basis only. Balance of payments data are derived from customs data by making adjustments for characteristics such as valuation, coverage, timing and residency. These adjustments are made to conform to the concepts and definitions of the Canadian System of National Accounts.

Data in this release are on a balance of payments basis, seasonally adjusted in current dollars. Constant dollars are calculated using the Laspeyres volume formula.

Revisions

In general, merchandise trade data are revised on an ongoing basis for each month of the current year. Current year revisions are reflected in both the customs and balance of payments based data. Revisions to customs based data for the previous year are released on a quarterly basis. Revisions to balance of payments based data for the three previous years are released annually in June.

Factors influencing revisions include late receipt of import and export documentation, incorrect information on customs forms, replacement of estimates with actual figures, changes in classification of merchandise based on more current information, and changes to seasonal adjustment factors.

Revised data are available in the appropriate CANSIM tables.

Analysis

Widespread declines in imports

Following a solid gain in October, imports of energy products fell 15.2% to \$3.1 billion in November. Lower imports of petroleum and coal products, such as motor gasoline, were the main factor behind the decrease. Imports of crude petroleum, down 11.7%, were at their lowest level since May 2009.

After nine consecutive months of growth, imports of machinery and equipment declined 5.1% to \$9.6 billion, with volumes falling 3.3%. Other transportation equipment decreased in November, reflecting lower imports of ships and boats. This followed a strong gain in the previous month as new tariff relief measures on ships and boats came in effect in October. Imports of engines, turbines and motors, more specifically wind turbines, dropped 26.0%.

Automotive products imports decreased 4.4% to \$5.3 billion, mainly due to lower volumes. Imports of trucks and other motor vehicles fell 11.5%, as a result of declining imports of full size pick-up trucks. Imports of motor vehicle parts declined 6.3%, due to some plant shutdowns, in preparation for 2011 model changeovers.

Imports of industrial goods and materials increased 2.3% to \$7.6 billion, as prices rose 3.3%. Imports of precious metals, namely silver, climbed 24.3% to \$1.3 billion, a record high. Other chemicals and related products which include inorganic chemicals and fertilizers also contributed to the gain in the sector. Imports of metals in ores fell during the month.

Precious metals lead the gain in exports

Exports of industrial goods and materials rose 6.6% to \$9.5 billion, as prices and volumes increased. Metals and alloys increased 21.7% to \$4.2 billion, led by exports of precious metals. In contrast, metal ores declined 17.7% to \$1.3 billion. Record high exports of iron ores were not sufficient to overcome the large declines in exports of nickel ores and copper ores.

Energy products exports increased 3.2% to \$6.9 billion, as prices were up 3.6%. Exports of crude petroleum rose 12.5%, largely accounting for the increase in the sector. Exports of natural gas, down 17.1%, decreased for a fourth consecutive month.

Other consumer goods exports grew 11.5% to \$1.3 billion, largely on the strength of medicinal and pharmaceutical products.

Exports of automotive products, trending downward since May 2010, fell 10.4% to \$4.4 billion. The decrease was the result of a 10.0% decline in volumes. Passenger autos, down 13.0%, accounted for over three-quarters of the drop in the sector. Exports of motor vehicle parts as well as trucks and other motor vehicles decreased in November.

Exports of machinery and equipment decreased 2.4% to \$6.4 billion, as volumes fell. Widespread declines in the sector were led by lower exports of industrial machinery. A gain in exports of aircrafts, engines and parts moderated the overall decrease.

Chart 1
Imports of energy products, seasonally adjusted, on a balance of payments basis

billions of dollars

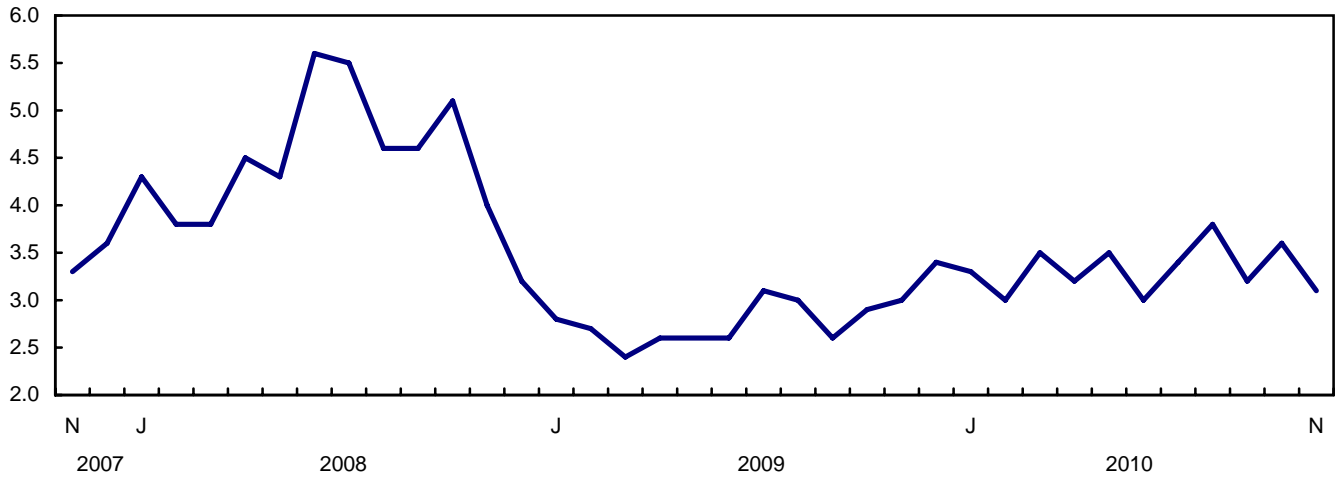


Chart 2
Imports of machinery and equipment, seasonally adjusted, on a balance of payments basis

billions of dollars

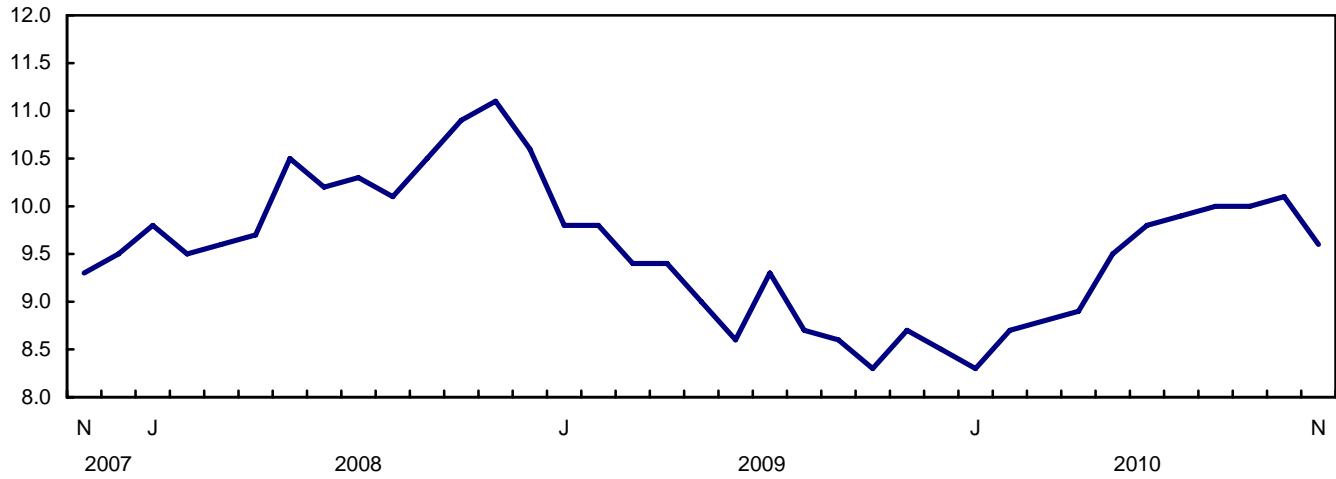


Chart 3
Exports of industrial goods and materials, seasonally adjusted, on a balance of payments basis

billions of dollars

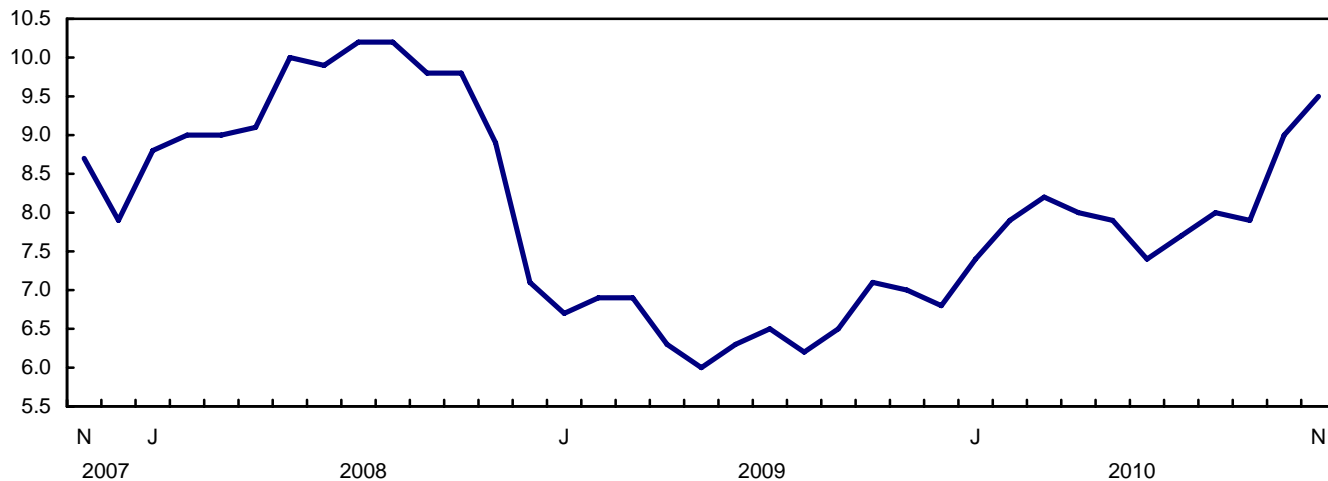
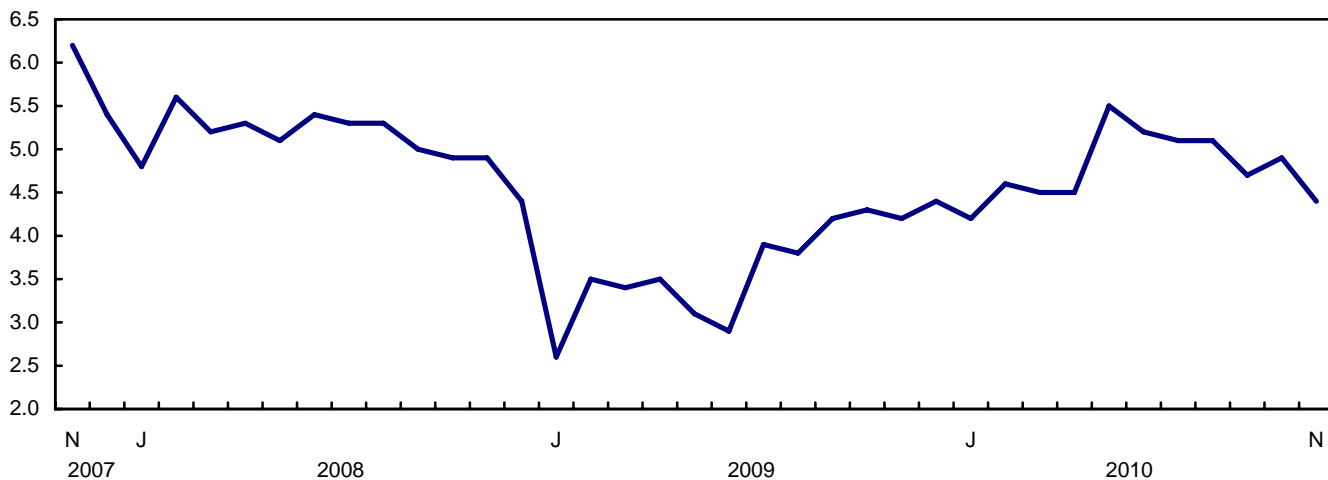


Chart 4
Exports of automotive products, seasonally adjusted, on a balance of payments basis

billions of dollars



Text table 1
Merchandise trade by principal trading area, balance of payments basis, seasonally adjusted

	October 2010	November 2010	Change	Year to date			November 2010/ November 2009		
				2009		Change			
				2009	2010				
	millions of dollars		percent		millions of dollars		percent		
Export to									
United States	23,854	23,999	144	0.6	246,357	269,562	23,205	9.4	3.8
Japan	909	855	-54	-6.0	8,176	8,690	515	6.3	24.3
European Union ¹	3,559	4,031	472	13.3	29,577	33,365	3,788	12.8	35.0
Other Organisation for Economic Co-operation and Development ²	1,688	1,300	-388	-23.0	15,351	16,565	1,214	7.9	-9.1
Other countries	4,028	4,115	87	2.2	37,283	39,477	2,194	5.9	27.3
Total	34,038	34,299	261	0.8	336,744	367,661	30,917	9.2	9.0
Imports from									
United States	22,141	21,003	-1,138	-5.1	216,022	237,769	21,747	10.1	5.9
Japan	850	807	-43	-5.1	8,486	9,098	612	7.2	3.4
European Union ¹	3,412	3,584	172	5.0	35,268	36,604	1,336	3.8	4.9
Other Organisation for Economic Co-operation and Development ²	2,596	2,425	-172	-6.6	23,443	26,536	3,093	13.2	9.4
Other countries	6,514	6,561	47	0.7	58,263	67,286	9,023	15.5	22.3
Total	35,513	34,380	-1,134	-3.2	341,482	377,293	35,812	10.5	8.7
Balance									
United States	1,714	2,996	1,282	...	30,335	31,793	1,458
Japan	59	48	-11	...	-310	-408	-98
European Union ¹	147	447	300	...	-5,691	-3,239	2,452
Other Organisation for Economic Co-operation and Development ²	-908	-1,124	-217	...	-8,092	-9,971	-1,879
Other countries	-2,487	-2,447	40	...	-20,980	-27,809	-6,829
Total	-1,475	-80	1,395	...	-4,738	-9,633	-4,895

1. European Union includes: Austria, Belgium, Bulgaria, Cyprus, Czech Republic, Denmark, Estonia, Finland, France, Germany, Greece, Hungary, Ireland, Italy, Latvia, Lithuania, Luxembourg, Malta, Netherlands, Poland, Portugal, Romania, Slovakia, Slovenia, Spain, Sweden and United Kingdom.
2. Other Organisation for Economic Co-operation and Development includes: Australia, Canada, Iceland, Mexico, New Zealand, Norway, South Korea, Switzerland and Turkey.

Text table 2
Reconciliation of customs and balance of payments trade data, not seasonally adjusted

	2010						2009
	November	October	September	August	July	June	Annual
	millions of dollars						
Exports							
Customs basis	34,198	34,038	33,317	33,283	31,046	34,355	360,043
Balance of payments adjustments	1,084	872	-35	323	803	-16	9,486
Valuation and residency							
Inland freight	546	576	581	541	546	558	6,214
Other valuation and residency	-647	-870	-854	-830	-754	-1,043	-7,783
Timing	38	62	-2	0	-34	6	-163
Coverage	1,147	1,104	240	612	1,045	463	11,218
Balance of payments basis	35,282	34,910	33,282	33,606	31,849	34,339	369,529
Imports							
Customs basis	34,571	35,993	35,841	35,026	33,166	35,455	365,136
Balance of payments adjustments	847	897	568	1,144	864	895	8,960
Valuation and residency							
Inland freight	742	759	758	756	733	772	7,728
Other valuation and residency	-11	15	-19	-21	-17	38	225
Timing	0	0	0	0	0	0	0
Coverage	116	123	-171	409	148	85	1,007
Balance of payments basis	35,419	36,890	36,409	36,170	34,031	36,350	374,097

Related products

Selected publications from Statistics Canada

65-208-X	International Merchandise Trade Annual Review
65-506-X	A Profile of Canadian Exporters
65F0013X	Canadian International Merchandise Trade Database
65F0019X	A Database for Analysis of International Markets
65F0020X	Data Integration - International Trade Data and Manufacturing Shipments Data

Selected CANSIM tables from Statistics Canada

228-0001	Merchandise imports and exports, by major groups and principal trading areas for all countries, monthly
228-0002	Merchandise imports and exports, by major groups and principal trading areas for all countries, quarterly
228-0003	Merchandise imports and exports, by major groups and principal trading areas for all countries, annual
228-0033	Imports, customs-based, by province of clearance, monthly
228-0034	Domestic exports, customs-based, by province of origin, monthly
228-0041	Merchandise imports and exports by sector and sub-sector, customs and balance of payments basis, for all countries, monthly
228-0042	Merchandise imports and exports by sector and sub-sector, customs and balance of payments basis, for all countries, quarterly
228-0043	Merchandise imports and exports by sector and sub-sector, customs and balance of payments basis, for all countries, annual
228-0047	Merchandise imports and exports balance of payments and customs-based price and volume indexes for all countries, monthly
228-0048	Merchandise imports and exports balance of payments and customs-based price and volume indexes for all countries, quarterly
228-0049	Merchandise imports and exports balance of payments and customs-based price and volume indexes for all countries, annual

228-0050	Merchandise imports and exports customs-based price indexes, Canada and United States trade, and Standard International Trade Classification (SITC revision 3) price indexes for all countries and United States, monthly
228-0051	Merchandise imports and exports customs-based price indexes, Canada and United States trade, and Standard International Trade Classification (SITC revision 3) price indexes for all countries and United States, quarterly
228-0052	Merchandise imports and exports customs-based price indexes, Canada and United States trade, and Standard International Trade Classification (SITC revision 3) price indexes for all countries and United States, annual
228-0053	Merchandise import and export price and volume indexes by sector and sub-sector, customs and balance of payments basis, for all countries, monthly
228-0054	Merchandise import and export price and volume indexes by sector and sub-sector, customs and balance of payments basis, for all countries, quarterly
228-0055	Merchandise import and export price and volume indexes by sector and sub-sector, customs and balance of payments basis, for all countries, annual
228-0056	Merchandise imports and exports by sector, balance of payments basis, for all countries, seasonally adjusted, Fisher formula, monthly
228-0057	Merchandise imports and exports by sector, balance of payments basis, for all countries, seasonally adjusted, Fisher formula, quarterly

Selected surveys from Statistics Canada

2201	Canadian International Merchandise Trade (Customs Basis)
2202	Canadian International Merchandise Trade (Balance of Payments Basis)
2203	International Trade Price Indexes

Selected summary tables from Statistics Canada

- *Canada: Economic and financial data*
- *Imports, exports and trade balance of goods on a balance-of-payments basis, by country or country grouping*
- *Exports of goods on a balance-of-payments basis*

- *Imports of goods on a balance-of-payments basis*
- *Merchandise trade of Canada (monthly)*
- *Economic indicators, by province and territory (monthly and quarterly)*
- *Latest statistics (monthly)*

Statistical tables

Table 1-1
Merchandise trade of Canada, balance of payments basis, seasonally adjusted — Current dollars

	Exports	Imports	Trade balance	Period to period change		
				Exports	Imports	Balance
				millions of dollars	percent	millions of dollars
2006	453,952	404,345	49,606	0.0	0.0	0
2007	463,120	415,683	47,437	2.0	2.8	-2,169
2008	489,995	443,752	46,244	5.8	6.8	-1,194
2009	369,529	374,097	-4,568	-24.6	-15.7	-50,812
2008						
First quarter	117,294	104,743	12,551	6.0	3.2	3,321
Second quarter	127,735	111,640	16,095	8.9	6.6	3,544
Third quarter	129,499	115,116	14,383	1.4	3.1	-1,712
Fourth quarter	115,468	112,252	3,215	-10.8	-2.5	-11,168
2009						
First quarter	95,769	95,366	403	-17.1	-15.0	-2,812
Second quarter	88,008	90,028	-2,019	-8.1	-5.6	-2,422
Third quarter	90,377	93,765	-3,388	2.7	4.2	-1,369
Fourth quarter	95,375	94,939	436	5.5	1.3	3,824
2010						
First quarter	99,474	98,572	902	4.3	3.8	465
Second quarter	100,405	102,755	-2,350	0.9	4.2	-3,252
Third quarter	99,444	106,073	-6,629	-1.0	3.2	-4,279
2009						
January	30,921	32,192	-1,272	-10.5	-8.9	-483
February	32,599	32,133	466	5.4	-0.2	1,737
March	32,249	31,040	1,209	-1.1	-3.4	743
April	30,231	30,774	-543	-6.3	-0.9	-1,752
May	28,424	29,797	-1,373	-6.0	-3.2	-830
June	29,353	29,456	-104	3.3	-1.1	1,269
July	31,048	31,952	-904	5.8	8.5	-800
August	29,419	31,099	-1,680	-5.2	-2.7	-777
September	29,910	30,714	-804	1.7	-1.2	876
October	31,128	30,708	420	4.1	0.0	1,224
November	31,462	31,616	-154	1.1	3.0	-573
December	32,785	32,615	170	4.2	3.2	324
2010						
January	32,946	32,162	784	0.5	-1.4	614
February	33,364	32,754	610	1.3	1.8	-174
March	33,164	33,656	-492	-0.6	2.8	-1,102
April	32,921	32,871	51	-0.7	-2.3	543
May	34,315	34,963	-648	4.2	6.4	-699
June	33,168	34,921	-1,753	-3.3	-0.1	-1,105
July	33,048	35,491	-2,444	-0.4	1.6	-691
August	33,602	35,560	-1,958	1.7	0.2	486
September	32,794	35,021	-2,228	-2.4	-1.5	-270
October	34,038	35,513	-1,475	3.8	1.4	753
November	34,299	34,380	-80	0.8	-3.2	1,395

Note(s): Because of rounding, monthly data may not add up to quarterly data and quarterly data may not add up to annual data.

Table 1-2
Merchandise trade of Canada, balance of payments basis, seasonally adjusted — Constant dollars, 2002

	Exports	Imports	Trade balance	Period to period change	
				Exports	Imports
	millions of dollars			percent	
2006	442,729	457,196	-14,466	0.0	0.0
2007	449,015	484,005	-34,990	1.4	5.9
2008	415,119	485,902	-70,783	-7.5	0.4
2009	345,911	405,261	-59,350	-16.7	-16.6
2008					
First quarter	107,071	123,094	-16,023	-2.6	-1.2
Second quarter	106,872	125,669	-18,797	-0.2	2.1
Third quarter	104,062	123,918	-19,856	-2.6	-1.4
Fourth quarter	97,114	113,221	-16,107	-6.7	-8.6
2009					
First quarter	87,218	97,521	-10,303	-10.2	-13.9
Second quarter	83,055	96,718	-13,663	-4.8	-0.8
Third quarter	86,329	104,265	-17,935	3.9	7.8
Fourth quarter	89,308	106,757	-17,449	3.5	2.4
2010					
First quarter	91,532	110,759	-19,227	2.5	3.7
Second quarter	94,554	117,004	-22,451	3.3	5.6
Third quarter	93,692	120,035	-26,342	-0.9	2.6
2009					
January	27,994	33,229	-5,235	-9.4	-7.4
February	29,778	32,701	-2,923	6.4	-1.6
March	29,446	31,592	-2,145	-1.1	-3.4
April	28,359	31,963	-3,604	-3.7	1.2
May	27,195	32,360	-5,165	-4.1	1.2
June	27,502	32,395	-4,893	1.1	0.1
July	29,630	35,032	-5,402	7.7	8.1
August	28,012	34,860	-6,847	-5.5	-0.5
September	28,687	34,373	-5,686	2.4	-1.4
October	29,629	34,757	-5,128	3.3	1.1
November	29,376	35,625	-6,249	-0.9	2.5
December	30,304	36,375	-6,071	3.2	2.1
2010					
January	30,287	36,258	-5,971	-0.1	-0.3
February	30,462	36,791	-6,328	0.6	1.5
March	30,783	37,710	-6,927	1.1	2.5
April	31,185	37,790	-6,605	1.3	0.2
May	32,085	39,469	-7,384	2.9	4.4
June	31,283	39,745	-8,462	-2.5	0.7
July	31,067	40,068	-9,001	-0.7	0.8
August	31,714	40,270	-8,556	2.1	0.5
September	30,912	39,697	-8,786	-2.5	-1.4
October	31,847	40,355	-8,508	3.0	1.7
November	31,219	39,397	-8,178	-2.0	-2.4

Note(s): Because of rounding, monthly data may not add up to quarterly data and quarterly data may not add up to annual data.

Table 1-3
Merchandise trade of Canada, balance of payments basis, seasonally adjusted — Price indices (Laspeyres)

	2002=100			Period to period change		
	Exports	Imports	Terms of trade	Exports	Imports	Terms of trade
	price indices (Laspeyres)			percent		
2006	105.1	92.5	113.6	0.0	0.0	0.0
2007	107.1	91.4	117.1	1.9	-1.2	3.1
2008	116.3	97.5	119.3	8.6	6.6	2.0
2009	105.4	97.1	108.6	-9.4	-0.4	-9.0
2008						
First quarter	111.2	90.1	123.4	5.6	3.1	2.5
Second quarter	118.5	94.7	125.1	6.6	5.1	1.5
Third quarter	122.1	100.9	121.0	3.1	6.6	-3.5
Fourth quarter	113.7	104.1	109.2	-6.9	3.2	-10.1
2009						
First quarter	109.5	101.5	107.8	-3.7	-2.5	-1.2
Second quarter	104.6	97.9	106.8	-4.5	-3.6	-0.9
Third quarter	102.6	95.2	107.8	-1.9	-2.7	0.9
Fourth quarter	105.7	93.8	112.7	3.0	-1.5	4.5
2010						
First quarter	107.2	94.3	113.7	1.4	0.6	0.8
Second quarter	106.2	94.2	112.8	-0.9	-0.2	-0.8
Third quarter	106.3	95.3	111.6	0.1	1.2	-1.1
2009						
January	109.0	100.4	108.5	-1.7	-2.1	0.4
February	109.1	101.4	107.6	0.1	0.9	-0.8
March	109.1	102.8	106.1	-0.1	1.4	-1.4
April	106.4	100.8	105.6	-2.4	-1.9	-0.5
May	104.0	97.0	107.2	-2.3	-3.8	1.5
June	103.5	95.9	107.9	-0.4	-1.1	0.7
July	103.5	96.3	107.5	0.0	0.4	-0.4
August	103.3	94.8	109.0	-0.2	-1.6	1.3
September	103.4	94.5	109.5	0.1	-0.3	0.4
October	104.3	93.2	111.9	0.8	-1.4	2.2
November	105.6	93.9	112.5	1.3	0.8	0.6
December	106.3	94.2	112.9	0.6	0.3	0.3
2010						
January	106.9	93.8	113.9	0.5	-0.4	0.9
February	107.9	95.0	113.5	0.9	1.3	-0.4
March	106.3	94.1	112.9	-1.5	-1.0	-0.5
April	105.3	92.9	113.4	-0.9	-1.4	0.4
May	106.7	94.8	112.5	1.3	2.1	-0.8
June	106.3	94.8	112.1	-0.3	0.0	-0.4
July	105.8	95.3	111.0	-0.5	0.5	-1.0
August	106.4	95.6	111.3	0.6	0.3	0.3
September	106.8	94.9	112.5	0.3	-0.8	1.1
October	106.6	94.9	112.3	-0.2	0.0	-0.2
November	107.6	95.2	112.9	0.9	0.3	0.6

Note(s): Because of rounding, monthly data may not add up to quarterly data and quarterly data may not add up to annual data.

Table 2-1
Exports by commodity groupings, balance of payments basis, seasonally adjusted — Current dollars

	October	November	Change		Year to date			November 2010/ November 2009	
	2010	2010			2009	2010	Change		
	millions of dollars		percent		millions of dollars		percent		
Total	34,038	34,299	261	0.8	336,744	367,661	30,917	9.2	9.0
Agricultural and fishing products	3,199	3,189	-10	-0.3	34,347	33,273	-1,073	-3.1	10.0
Wheat	383	393	10	2.7	5,441	3,986	-1,455	-26.7	3.8
Other agricultural and fishing products	2,817	2,796	-20	-0.7	28,906	29,288	382	1.3	10.9
Live animals	127	107	-20	-16.1	1,528	1,611	84	5.5	-3.6
Fish and fish preparations	348	335	-12	-3.5	3,599	3,765	166	4.6	3.4
Barley	25	57	32	127.2	421	296	-125	-29.6	77.7
Wheat flour	7	7	0	2.9	79	74	-5	-6.3	-1.5
Other cereals unmilled	54	93	39	71.7	483	481	-3	-0.6	228.0
Other cereal preparations	232	237	5	2.3	2,724	2,543	-181	-6.6	3.5
Meat and meat preparations	403	384	-19	-4.8	4,016	4,301	285	7.1	7.9
Alcoholic beverages	60	60	0	-0.4	678	682	3	0.5	-3.7
Other food, feed, beverages and tobacco	952	941	-11	-1.2	10,088	10,273	185	1.8	5.4
Rapeseed	303	325	21	7.0	3,234	2,978	-256	-7.9	16.0
Other crude vegetable products	305	250	-55	-17.9	2,056	2,285	229	11.1	25.6
Energy products	6,699	6,914	216	3.2	71,249	80,681	9,432	13.2	-7.7
Crude petroleum	3,571	4,019	447	12.5	37,298	43,539	6,241	16.7	-10.3
Natural gas	1,159	960	-199	-17.1	14,325	14,712	387	2.7	-25.4
Other energy products	1,969	1,935	-33	-1.7	19,626	22,431	2,805	14.3	12.0
Coal and other bituminous substances	458	369	-89	-19.4	3,970	4,623	653	16.4	11.3
Petroleum and coal products	1,394	1,430	35	2.5	13,485	16,038	2,552	18.9	20.7
Electricity	117	137	20	17.5	2,171	1,770	-401	-18.5	-35.1
Forestry products	1,837	1,813	-24	-1.3	17,877	19,775	1,898	10.6	13.1
Lumber and sawmill products	678	699	22	3.2	6,161	7,302	1,142	18.5	19.0
Other crude wood products	53	59	6	10.7	482	601	119	24.7	19.7
Lumber	435	444	9	2.1	3,529	4,498	969	27.5	26.5
Other wood fabricated materials	189	196	7	3.7	2,150	2,203	54	2.5	4.6
Wood pulp and other wood products	548	514	-34	-6.2	4,167	5,682	1,515	36.4	27.7
Newsprint and other paper and paperboard	611	599	-12	-1.9	7,550	6,791	-759	-10.0	-2.2
Newsprint paper	310	314	5	1.5	3,893	3,426	-467	-12.0	3.1
Other paper and paperboard	301	285	-16	-5.4	3,657	3,365	-292	-8.0	-7.3
Industrial goods and materials	8,954	9,543	590	6.6	72,370	88,776	16,407	22.7	36.7
Metal ores	1,521	1,252	-269	-17.7	9,416	11,407	1,991	21.1	43.8
Iron ores, concentrates and scrap	419	530	110	26.4	4,089	4,092	4	0.1	73.8
Copper ores, concentrates and scrap	352	240	-112	-31.8	1,617	2,176	560	34.6	17.4
Nickel ores, concentrates and scrap	405	182	-223	-55.1	1,473	2,530	1,057	71.7	-1.7
Zinc ores, concentrates and scrap	20	7	-13	-65.6	225	237	12	5.5	-34.9
Other ores, concentrates and scrap	325	294	-32	-9.7	2,014	2,372	358	17.8	77.3
Chemicals, plastics and fertilizers	2,495	2,580	85	3.4	23,424	27,260	3,836	16.4	16.5
Inorganic chemicals	381	431	50	13.1	3,734	4,062	328	8.8	35.8
Organic chemicals	498	518	20	3.9	4,361	5,699	1,338	30.7	15.9
Fertilizers and fertilizer materials	499	508	10	1.9	4,206	5,364	1,158	27.5	21.7
Synthetic rubber and plastics	861	865	4	0.4	8,518	9,268	750	8.8	12.0
Other chemical products	256	259	3	1.0	2,605	2,867	262	10.1	-1.3

Table 2-1 – continued

Exports by commodity groupings, balance of payments basis, seasonally adjusted — Current dollars

	October	November	Change		Year to date			November 2010/ November 2009	
	2010	2010			2009		2010		
	millions of dollars		percent		millions of dollars		percent		
Metals and alloys	3,417	4,158	741	21.7	25,400	34,250	8,850	34.8	59.9
Primary iron and steel	70	90	19	27.7	484	1,127	643	133.0	7.1
Steel bars, rods, plates, sheets	286	301	15	5.2	2,614	3,255	641	24.5	19.0
Other iron and steel and alloys	206	218	12	5.6	2,098	2,432	334	15.9	24.1
Aluminum including alloys	607	757	150	24.7	5,437	6,818	1,381	25.4	33.2
Copper and alloys	175	195	21	11.9	1,994	2,453	460	23.0	-6.5
Nickel and alloys	283	312	29	10.2	1,752	1,977	225	12.8	139.4
Precious metals and alloys	1,586	2,112	526	33.2	9,203	14,013	4,809	52.3	116.9
Zinc and alloys	113	87	-26	-23.1	984	1,204	220	22.3	-23.7
Other non-ferrous metals and alloys	91	87	-4	-4.6	835	972	137	16.4	-8.2
Other industrial goods and materials	1,521	1,553	32	2.1	14,130	15,860	1,730	12.2	20.0
Asbestos unmanufactured	5	5	0	2.1	64	52	-12	-19.1	-13.5
Other crude animal products	73	70	-4	-5.0	583	833	250	42.9	54.5
Other crude non-metallic minerals	334	345	11	3.4	2,530	3,362	832	32.9	24.1
Other crude materials, inedible	61	62	1	2.2	521	651	129	24.7	23.7
Metal fabricated basic products	350	342	-8	-2.2	3,745	3,801	56	1.5	6.9
Textile fabricated materials	181	186	5	2.5	1,899	1,979	80	4.2	8.3
Non-metallic mineral basic products	151	144	-7	-4.9	1,792	1,704	-88	-4.9	-15.0
Other fabricated materials	366	400	34	9.2	2,996	3,480	483	16.1	57.3
Machinery and equipment	6,535	6,378	-157	-2.4	74,352	69,070	-5,282	-7.1	7.4
Industrial and agricultural machinery	1,603	1,522	-80	-5.0	17,773	16,392	-1,381	-7.8	13.0
Industrial machinery	1,445	1,360	-85	-5.8	15,865	14,678	-1,187	-7.5	13.4
Agricultural machinery includ. tractors	158	162	4	2.5	1,908	1,713	-194	-10.2	9.4
Aircraft and other transportation equipment	1,369	1,428	59	4.3	18,019	15,967	-2,052	-11.4	-1.7
Aircraft, engines, parts	1,006	1,082	76	7.6	14,273	12,399	-1,874	-13.1	-4.3
Other transportation equipment	363	346	-17	-4.7	3,745	3,568	-177	-4.7	7.1
Other machinery and equipment	3,563	3,427	-136	-3.8	38,560	36,711	-1,850	-4.8	9.1
Television, telecommunication equipment	695	675	-20	-2.9	8,044	7,115	-929	-11.5	6.1
Office machines and equipment	365	355	-10	-2.7	4,374	3,876	-498	-11.4	4.4
Other equipment and tools	1,614	1,561	-53	-3.3	17,414	16,882	-532	-3.1	8.9
Other end products, inedible	890	837	-53	-6.0	8,728	8,837	109	1.2	14.4
Automotive products	4,880	4,373	-507	-10.4	39,379	52,607	13,229	33.6	4.3
Passenger autos and chassis	3,228	2,809	-419	-13.0	23,341	35,050	11,709	50.2	2.2
Trucks and other motor vehicles	241	203	-38	-15.8	3,549	2,062	-1,488	-41.9	-0.4
Motor vehicle parts	1,411	1,362	-49	-3.5	12,489	15,496	3,007	24.1	9.8
Other consumer goods	1,201	1,339	138	11.5	16,557	15,050	-1,507	-9.1	-7.9
Special transactions trade	295	303	8	2.8	5,899	3,539	-2,360	-40.0	-37.5
Unallocated balance of payments adjustments	440	447	7	1.6	4,713	4,888	175	3.7	8.9

Table 2-2
Exports by commodity groupings, balance of payments basis, seasonally adjusted — Constant dollars, 2002

	October	November	Change		Year to date			November 2010/ November 2009	
	2010	2010			2009		2010		
	millions of dollars		percent		millions of dollars		percent		
Total	31,847	31,219	-628	-2.0	315,607	342,844	27,237	8.6	6.3
Agricultural and fishing products	3,144	3,110	-33	-1.1	33,081	34,331	1,250	3.8	3.9
Wheat	337	361	25	7.4	4,580	4,149	-431	-9.4	-1.2
Other agricultural and fishing products	2,807	2,749	-58	-2.1	28,501	30,182	1,681	5.9	4.6
Live animals	138	115	-24	-17.1	1,749	1,813	64	3.6	-18.9
Fish and fish preparations	432	414	-17	-4.0	4,248	4,700	453	10.7	3.8
Barley	26	51	25	96.8	345	282	-63	-18.2	46.0
Wheat flour	7	7	0	2.9	72	70	-2	-2.3	-1.5
Other cereals unmilled	45	77	31	69.6	466	506	40	8.5	168.5
Other cereal preparations	206	211	5	2.5	2,218	2,272	54	2.4	9.0
Meat and meat preparations	445	410	-35	-7.8	4,542	4,790	248	5.5	-3.4
Alcoholic beverages	113	114	1	0.8	1,183	1,296	113	9.5	-3.2
Other food, feed, beverages and tobacco	874	886	12	1.3	9,068	9,700	632	7.0	4.1
Rapeseed	271	263	-8	-2.9	2,887	2,733	-154	-5.3	5.4
Other crude vegetable products	249	200	-49	-19.8	1,722	2,018	296	17.2	10.9
Energy products	4,473	4,458	-15	-0.3	49,162	49,330	168	0.3	-2.5
Crude petroleum	2,022	2,244	222	11.0	21,591	21,123	-469	-2.2	5.5
Natural gas	1,438	1,135	-303	-21.1	14,819	15,377	557	3.8	-11.7
Other energy products	1,014	1,079	65	6.4	12,751	12,831	79	0.6	-6.8
Coal and other bituminous substances	133	111	-22	-16.5	1,301	1,620	319	24.5	-28.8
Petroleum and coal products	758	760	2	0.3	8,697	9,121	424	4.9	9.8
Electricity	123	207	85	69.2	2,753	2,089	-664	-24.1	-32.9
Forestry products	2,257	2,206	-51	-2.2	22,272	24,051	1,780	8.0	4.8
Lumber and sawmill products	906	903	-3	-0.3	8,557	9,379	822	9.6	8.2
Other crude wood products	79	63	-16	-20.0	645	763	118	18.3	3.9
Lumber	607	610	4	0.6	5,463	6,226	762	14.0	10.5
Other wood fabricated materials	221	230	9	4.1	2,449	2,390	-59	-2.4	3.9
Wood pulp and other wood products	660	626	-35	-5.3	5,867	6,782	914	15.6	15.3
Newsprint and other paper and paperboard	690	677	-13	-1.8	7,847	7,891	43	0.6	-7.1
Newsprint paper	356	360	3	1.0	3,952	4,073	120	3.0	-2.0
Other paper and paperboard	334	318	-16	-4.8	3,895	3,818	-77	-2.0	-12.2
Industrial goods and materials	5,775	5,923	149	2.6	54,828	60,356	5,528	10.1	15.9
Metal ores	699	523	-176	-25.2	5,276	5,469	193	3.7	7.4
Iron ores, concentrates and scrap	174	192	18	10.1	1,724	1,763	39	2.3	17.3
Copper ores, concentrates and scrap	116	79	-37	-32.1	715	746	31	4.3	5.1
Nickel ores, concentrates and scrap	170	76	-94	-55.0	995	1,149	154	15.5	-28.1
Zinc ores, concentrates and scrap	10	4	-7	-64.6	149	129	-20	-13.6	-34.3
Other ores, concentrates and scrap	229	173	-56	-24.6	1,694	1,683	-11	-0.7	26.2
Chemicals, plastics and fertilizers	1,818	1,823	5	0.3	18,022	19,780	1,758	9.8	6.0
Inorganic chemicals	188	191	3	1.7	1,929	2,028	99	5.2	18.3
Organic chemicals	302	302	0	-0.1	3,433	3,386	-47	-1.4	-4.8
Fertilizers and fertilizer materials	219	213	-6	-2.9	1,484	2,347	863	58.1	31.9
Synthetic rubber and plastics	802	811	9	1.1	8,127	8,578	452	5.6	6.5
Other chemical products	306	306	0	0.1	3,049	3,440	391	12.8	-3.7

Table 2-2 – continued

Exports by commodity groupings, balance of payments basis, seasonally adjusted — Constant dollars, 2002

	October	November	Change	Year to date			November 2010/ November 2009		
	2010	2010		2009		2010		Change	
	millions of dollars			percent		millions of dollars		percent	
Metals and alloys	1,885	2,214	329	17.4	17,967	20,696	2,729	15.2	30.7
Primary iron and steel	46	58	12	25.8	346	762	416	120.4	-11.7
Steel bars, rods, plates, sheets	237	256	19	8.0	2,076	2,705	629	30.3	19.6
Other iron and steel and alloys	170	183	14	8.0	1,810	2,032	222	12.3	14.0
Aluminum including alloys	590	717	128	21.7	6,380	6,956	576	9.0	16.4
Copper and alloys	53	57	5	9.2	929	795	-133	-14.4	-22.5
Nickel and alloys	132	142	10	7.8	1,230	972	-258	-21.0	98.4
Precious metals and alloys	553	713	159	28.8	3,999	5,331	1,332	33.3	84.4
Zinc and alloys	64	48	-16	-24.7	752	699	-54	-7.1	-27.3
Other non-ferrous metals and alloys	42	39	-3	-6.2	446	443	-2	-0.5	0.1
Other industrial goods and materials	1,372	1,363	-9	-0.7	13,564	14,411	847	6.2	12.5
Asbestos unmanufactured	5	5	0	-4.2	66	51	-14	-21.8	-18.7
Other crude animal products	73	71	-2	-3.2	796	861	65	8.2	16.2
Other crude non-metallic minerals	332	323	-10	-2.9	3,336	3,332	-4	-0.1	11.8
Other crude materials, inedible	52	55	3	5.5	508	595	87	17.1	12.4
Metal fabricated basic products	284	275	-9	-3.1	2,958	3,071	113	3.8	6.4
Textile fabricated materials	194	195	1	0.7	1,875	2,106	232	12.4	4.7
Non-metallic mineral basic products	122	117	-5	-4.1	1,455	1,402	-53	-3.6	-16.3
Other fabricated materials	311	323	12	3.9	2,570	2,991	421	16.4	45.1
Machinery and equipment	7,303	7,089	-215	-2.9	79,870	77,056	-2,814	-3.5	8.3
Industrial and agricultural machinery	1,511	1,423	-88	-5.9	16,220	15,260	-960	-5.9	14.3
Industrial machinery	1,363	1,273	-90	-6.6	14,498	13,680	-818	-5.6	14.9
Agricultural machinery includ. tractors	149	150	1	0.7	1,722	1,580	-143	-8.3	9.5
Aircraft and other transportation equipment	1,688	1,762	74	4.4	21,210	19,725	-1,486	-7.0	-0.7
Aircraft, engines, parts	1,326	1,427	101	7.6	17,554	16,202	-1,352	-7.7	-2.7
Other transportation equipment	362	335	-27	-7.5	3,657	3,522	-134	-3.7	9.0
Other machinery and equipment	4,104	3,904	-200	-4.9	42,439	42,071	-368	-0.9	10.6
Television, telecommunication equipment	893	863	-30	-3.3	9,518	9,027	-492	-5.2	8.3
Office machines and equipment	931	924	-6	-0.7	9,609	9,702	94	1.0	14.0
Other equipment and tools	1,525	1,484	-42	-2.7	16,069	15,983	-86	-0.5	10.3
Other end products, inedible	756	633	-123	-16.2	7,243	7,359	116	1.6	9.8
Automotive products	6,469	5,823	-645	-10.0	48,080	69,959	21,878	45.5	6.9
Passenger autos and chassis	4,609	4,059	-549	-11.9	30,804	50,384	19,580	63.6	5.6
Trucks and other motor vehicles	295	253	-43	-14.4	4,007	2,506	-1,501	-37.5	4.1
Motor vehicle parts	1,565	1,511	-53	-3.4	13,270	17,069	3,799	28.6	11.3
Other consumer goods	1,162	1,287	125	10.7	15,893	14,449	-1,444	-9.1	-7.9
Special transactions trade	268	266	-1	-0.5	5,444	3,209	-2,234	-41.0	-41.5
Unallocated balance of payments adjustments	996	1,056	59	6.0	6,978	10,103	3,125	44.8	41.3

**Table 3-1
Domestic exports to selected countries, customs basis, not seasonally adjusted — November**

	Agricultural and fishing products	Energy products	Forestry products	Industrial goods	Machinery and equipment	Automotive products	Consumer goods	Special transactions trade	Total
millions of dollars									
United States									
2009	1,405.4	6,428.5	1,033.2	3,879.6	3,163.9	3,861.0	933.2	474.5	21,179.4
2010	1,526.1	6,446.4	1,102.9	5,017.7	3,326.8	4,163.9	745.9	276.1	22,605.9
Mexico									
2009	106.9	0.6	9.1	73.6	96.4	77.4	3.1	0.2	367.3
2010	99.1	0.4	13.5	85.5	76.3	55.3	5.5	0.7	336.2
Japan									
2009	271.5	120.4	98.0	146.5	45.6	6.5	19.4	0.7	708.6
2010	295.5	166.6	98.9	188.8	76.3	6.2	19.0	1.9	853.3
European Union									
Germany									
2009	31.0	0.1	10.4	109.5	101.1	3.2	13.0	1.4	269.7
2010	49.9	39.5	6.2	149.9	117.0	3.2	16.0	0.7	382.4
France									
2009	13.2	15.4	16.4	36.5	76.9	2.2	28.1	1.9	190.5
2010	24.9	0.0	10.5	42.8	70.0	4.0	52.5	1.6	206.5
United Kingdom									
2009	41.2	35.3	21.7	897.7	156.5	3.6	19.8	2.9	1,178.6
2010	28.9	11.9	15.9	1,396.5	231.4	5.0	15.2	5.7	1,710.4
Italy									
2009	32.4	6.9	25.3	6.1	27.6	1.0	5.7	0.1	105.0
2010	72.4	10.8	24.0	47.1	26.2	0.6	8.0	0.2	189.2
Other European Union									
2009	178.0	50.3	29.3	255.9	226.8	14.1	80.9	3.5	838.7
2010	201.9	58.3	21.3	248.1	221.0	17.8	40.9	2.5	811.8
Total									
2009	295.8	108.0	103.0	1,305.7	588.8	24.1	147.4	9.8	2,582.5
2010	377.9	120.6	77.9	1,884.4	665.5	30.6	132.6	10.7	3,300.2
Newly industrialized countries									
South Korea									
2009	20.8	37.3	34.7	74.8	31.7	7.1	2.9	0.3	209.7
2010	28.1	62.8	24.7	84.0	30.2	3.1	5.0	0.6	238.5
Hong Kong									
2009	37.9	0.0	7.7	34.8	14.0	0.7	4.5	1.8	101.5
2010	40.6	0.0	7.7	63.3	25.8	0.7	8.2	0.6	146.9
Taiwan									
2009	14.7	19.7	16.6	23.1	8.9	0.1	1.5	0.1	84.7
2010	14.9	0.1	22.9	70.6	10.7	0.1	1.9	0.1	121.3
Singapore									
2009	5.5	0.1	1.7	12.2	24.8	1.1	2.7	0.0	48.1
2010	3.8	0.4	1.4	10.7	26.1	0.5	2.3	0.3	45.4
Total									
2009	79.0	57.2	60.7	144.9	79.5	9.0	11.6	2.3	444.0
2010	87.5	63.2	56.8	228.5	92.8	4.4	17.3	1.5	552.1
Other countries									
2009	934.2	150.4	313.9	927.4	728.6	78.2	73.9	25.4	3,232.0
2010	1,080.6	152.9	490.6	1,348.8	764.1	61.1	134.7	23.6	4,056.5
Total									
2009	3,092.7	6,865.1	1,617.9	6,477.7	4,702.8	4,056.2	1,188.6	513.0	28,514.0
2010	3,466.7	6,950.1	1,840.6	8,753.8	5,001.9	4,321.5	1,055.0	314.5	31,704.2

Table 3-2
Domestic exports to selected countries, customs basis, not seasonally adjusted — Year to date, January to November

	Agricultural and fishing products	Energy products	Forestry products	Industrial goods	Machinery and equipment	Automotive products	Consumer goods	Special transactions trade	Total
millions of dollars									
United States									
2009	17,334.8	66,267.2	12,358.1	41,831.0	40,417.9	34,836.3	10,277.9	5,191.2	228,514.5
2010	17,122.1	77,958.6	12,630.3	50,253.4	37,231.1	47,849.3	8,775.4	2,932.8	254,753.0
Mexico									
2009	1,089.2	80.6	90.8	693.5	866.4	645.6	44.6	9.1	3,519.8
2010	1,219.8	87.9	123.1	935.5	700.7	762.2	67.2	4.3	3,900.7
Japan									
2009	2,914.5	1,692.0	985.0	1,129.8	585.3	43.7	137.2	6.0	7,493.5
2010	2,966.2	1,722.4	1,227.7	1,581.5	569.8	63.7	129.6	8.9	8,269.9
European Union									
Germany									
2009	186.9	167.0	116.8	751.9	1,667.2	39.0	144.7	15.4	3,088.8
2010	200.8	224.4	86.5	1,232.7	1,282.2	32.7	190.1	13.4	3,262.8
France									
2009	144.0	116.1	141.0	521.1	1,005.2	30.9	270.0	22.8	2,251.1
2010	147.9	30.5	127.6	440.4	820.8	33.9	243.1	15.9	1,860.2
United Kingdom									
2009	379.9	166.3	266.7	7,610.1	1,955.7	36.9	264.2	41.5	10,721.4
2010	319.6	92.2	196.4	10,879.7	1,830.9	48.3	187.7	45.4	13,600.2
Italy									
2009	405.7	124.7	250.0	220.1	451.7	8.3	63.3	7.3	1,531.2
2010	318.3	174.3	300.1	351.6	366.4	7.5	158.3	5.0	1,681.4
Other European Union									
2009	961.2	917.6	312.1	2,463.9	2,395.2	133.6	744.6	42.6	7,970.9
2010	1,101.7	706.8	285.5	3,059.6	2,262.9	157.5	533.6	35.3	8,143.0
Total									
2009	2,077.8	1,491.8	1,086.6	11,567.1	7,474.9	248.7	1,486.9	129.7	25,563.4
2010	2,088.3	1,228.2	996.1	15,964.0	6,563.2	280.0	1,312.8	114.9	28,547.6
Newly industrialized countries									
South Korea									
2009	292.8	943.5	315.6	939.3	469.4	46.1	43.5	8.7	3,058.9
2010	401.5	992.0	421.1	958.8	399.2	56.3	46.0	8.1	3,282.9
Hong Kong									
2009	334.1	0.3	81.9	437.5	280.8	7.9	53.1	11.3	1,207.0
2010	365.9	0.5	98.8	674.0	281.0	8.1	71.4	12.0	1,511.8
Taiwan									
2009	171.6	179.6	177.0	288.5	100.4	1.5	30.5	1.3	950.3
2010	154.7	142.1	226.2	446.9	124.6	2.5	38.5	1.2	1,136.7
Singapore									
2009	46.1	44.8	28.4	307.3	296.1	29.2	31.7	4.8	788.3
2010	53.7	5.4	16.6	160.7	303.4	18.5	38.8	3.1	600.1
Total									
2009	844.5	1,168.2	602.8	1,972.6	1,146.8	84.7	158.8	26.1	6,004.6
2010	975.8	1,140.0	762.7	2,240.3	1,108.2	85.3	194.7	24.4	6,531.4
Other countries									
2009	9,374.7	1,621.0	3,151.2	10,274.4	7,797.0	686.8	1,073.7	253.0	34,231.8
2010	8,318.5	1,949.5	4,597.0	12,429.7	7,683.0	624.9	1,313.8	186.8	37,103.2
Total									
2009	33,635.5	72,320.8	18,274.5	67,468.3	58,288.7	36,545.9	13,179.8	5,615.1	305,328.6
2010	32,690.8	84,086.6	20,336.8	83,404.5	53,856.4	49,665.3	11,793.6	3,272.1	339,106.3

Table 4
Domestic exports by country, customs basis, not seasonally adjusted

	November		January to November		Change January to November 2010/ January to November 2009
	2009	2010	2009	2010	
	millions of dollars				percent
North America					
Greenland	0.9	0.4	13.5	8.6	-36.0
Mexico	367.3	336.2	3,519.8	3,900.7	10.8
Saint Pierre and Miquelon	1.4	1.1	13.8	13.3	-3.6
United States	21,179.4	22,605.9	228,514.5	254,753.0	11.5
Total	21,549.1	22,943.7	232,061.7	258,675.6	11.5
Western Europe					
Andorra	0.0	0.0	0.1	0.1	7.2
Austria	39.3	34.2	340.9	338.0	-0.8
Belgium	140.0	100.8	1,666.4	1,767.0	6.0
Denmark	16.7	32.0	567.4	254.3	-55.2
Faeroe Islands	0.0	0.1	1.0	0.5	-51.5
Finland	24.3	28.2	273.7	349.6	27.7
France	190.5	206.5	2,251.1	1,860.2	-17.4
Germany	269.7	382.4	3,088.8	3,262.8	5.6
Gibraltar	0.0	0.0	17.1	25.1	46.7
Greece	7.9	7.5	95.1	100.4	5.6
Iceland	3.3	3.4	72.5	102.8	41.8
Italy	105.0	189.2	1,531.2	1,681.4	9.8
Luxembourg	3.4	5.8	35.1	49.6	41.5
Malta	0.8	1.3	44.8	107.8	140.5
Netherlands	228.0	320.8	2,325.5	2,798.1	20.3
Norway	247.4	152.5	1,629.1	2,234.8	37.2
Portugal	14.4	28.6	149.5	256.8	71.8
Republic of Ireland (Eire)	53.6	17.1	486.8	292.0	-40.0
Spain	196.2	74.6	983.6	686.6	-30.2
Sweden	54.1	57.2	320.4	372.7	16.3
Switzerland	55.1	93.2	1,061.4	1,268.3	19.5
United Kingdom	1,178.6	1,710.4	10,721.4	13,600.2	26.9
Total	2,828.2	3,445.6	27,662.7	31,409.1	13.5
Other Europe					
Albania	2.7	1.6	14.1	23.3	64.5
Armenia	0.8	1.4	7.5	9.7	30.7
Azerbaijan	0.9	2.6	9.9	14.6	47.7
Belarus	0.4	0.3	1.3	1.4	10.7
Bosnia and Herzegovina	0.1	0.6	2.6	4.3	65.3
Bulgaria	10.8	19.1	67.1	113.7	69.4
Croatia	1.9	3.7	97.2	87.2	-10.3
Czech Republic	10.2	11.1	120.2	101.4	-15.6
Estonia	2.0	2.1	23.7	19.6	-17.3
Georgia	4.6	3.0	14.0	15.5	11.2
Hungary	5.3	6.8	79.6	91.8	15.3
Kazakhstan	6.9	4.7	124.4	116.3	-6.5
Kyrgyzstan	0.2	1.0	3.3	4.6	38.7
Latvia	0.6	1.0	22.3	83.7	275.4
Lithuania	2.7	4.4	36.1	30.1	-16.6
Macedonia (Former Yugoslav Republic of Macedonia)	1.7	0.9	14.1	8.9	-36.9
Montenegro	0.2	0.2	1.9	1.6	-19.2
Poland	14.3	14.4	166.9	137.3	-17.7
Republic of Moldova	0.0	0.1	1.8	2.2	18.4
Romania	10.3	3.3	79.2	88.2	11.4
Russian Federation	81.5	120.4	726.3	920.6	26.8
Serbia	0.6	0.8	16.4	6.8	-58.7
Slovakia	1.3	2.4	23.0	25.9	12.4
Slovenia	1.7	0.5	53.5	31.6	-41.0
Tajikistan	0.5	0.0	2.7	4.9	79.6
Turkmenistan	0.5	0.3	5.6	4.3	-23.2
Ukraine	10.9	8.2	90.7	117.3	29.4
Uzbekistan	0.0	0.3	12.6	5.3	-57.8
Total	173.8	215.2	1,818.2	2,072.3	14.0

Table 4 – continued

Domestic exports by country, customs basis, not seasonally adjusted

	November		January to November		Change
	2009	2010	2009	2010	January to November 2010/ January to November 2009
	millions of dollars				percent
Middle East					
Bahrain	1.9	1.2	34.1	59.6	74.6
Cyprus	1.0	38.8	9.9	46.6	369.5
Egypt	46.8	87.0	573.3	567.5	-1.0
Eritrea	0.3	0.1	2.2	2.2	4.3
Ethiopia	0.1	5.7	7.5	150.7	...
Iran	12.5	16.6	333.8	99.9	-70.1
Iraq	9.3	1.6	472.2	218.3	-53.8
Israel	31.5	23.4	272.8	313.8	15.1
Jordan	5.3	3.1	54.2	52.6	-3.0
Kuwait	11.9	7.8	76.3	78.8	3.3
Lebanon	6.3	3.5	85.8	56.8	-33.8
Libya	4.7	19.6	223.5	126.2	-43.5
Oman	6.1	5.6	103.8	86.5	-16.7
Qatar	4.2	4.8	202.5	74.2	-63.4
Saudi Arabia	103.7	103.8	1,031.0	752.6	-27.0
Somalia	0.0	0.0	2.9	2.3	-20.9
Sudan	2.2	2.0	90.6	97.0	7.0
Syria	5.1	21.0	42.6	52.5	23.3
Turkey	81.2	95.2	729.4	765.8	5.0
United Arab Emirates	104.6	142.5	1,078.7	927.2	-14.1
Yemen	1.2	0.9	23.9	16.7	-30.0
Total	440.0	584.1	5,451.0	4,547.9	-16.6
Other Africa					
Algeria	26.9	10.2	282.8	276.8	-2.1
Angola	4.4	33.7	64.2	184.2	186.8
Antarctica	0.8	0.0	1.3	0.2	-84.8
Benin	0.6	1.1	7.0	11.4	63.9
Botswana	0.7	0.5	5.0	3.9	-21.7
Burkina Faso	6.9	1.7	25.8	18.7	-27.4
Burundi	0.1	0.1	1.0	0.9	-12.3
Cameroon	6.9	0.9	31.7	21.7	-31.7
Cape Verde	0.3	0.0	1.3	1.0	-27.0
Central African Republic	0.0	0.0	0.7	0.1	-84.0
Chad	2.2	0.4	11.3	6.0	-46.7
Comoros	0.0	0.0	3.1	0.1	-97.2
Congo	3.1	0.6	21.9	14.9	-31.8
Democratic Republic of the Congo	2.1	1.3	14.3	11.8	-17.9
Djibouti	0.2	0.6	2.5	4.7	89.6
Equatorial Guinea	0.3	0.2	4.1	4.2	3.7
French Southern Territories	0.0	0.0	0.3	0.0	-81.7
Gabon	1.2	0.9	23.9	15.8	-33.9
Gambia	0.1	0.1	0.6	0.7	9.4
Ghana	9.8	15.9	144.1	151.6	5.2
Guinea	0.8	0.6	13.0	7.2	-44.9
Guinea-Bissau	0.0	0.0	0.0	0.0	-0.2
Ivory Coast	0.4	0.7	22.3	16.8	-24.9
Kenya	5.8	5.2	66.8	70.3	5.2
Lesotho	0.2	0.0	0.2	0.1	-60.1
Liberia	1.0	0.8	3.9	10.9	178.9
Madagascar	2.0	0.5	48.9	41.7	-14.7
Malawi	0.3	0.2	3.9	3.3	-16.2
Mali	1.0	0.4	5.3	7.1	34.4
Mauritania	0.0	0.4	2.1	3.6	67.2
Mauritius	0.3	0.2	4.8	4.1	-13.3
Morocco	27.8	23.1	326.1	147.5	-54.8
Mozambique	0.9	0.5	5.6	11.1	97.9
Namibia	2.2	1.4	5.0	11.0	118.3
Niger	0.2	0.3	2.7	2.2	-19.8
Nigeria	18.7	15.7	189.7	186.6	-1.6
Rwanda	0.1	0.0	3.2	0.9	-71.1
Saint Helena	0.0	0.0	0.1	0.0	-96.6
Sao Tome and Principe	0.0	0.0	0.1	0.0	-54.3
Senegal	0.8	2.2	32.9	23.3	-29.2
Seychelles	0.1	0.1	1.0	1.0	-2.9

Table 4 – continued

Domestic exports by country, customs basis, not seasonally adjusted

	November		January to November		Change
	2009	2010	2009	2010	January to November 2010/ January to November 2009
	millions of dollars				percent
Sierra Leone	0.6	0.5	4.1	9.1	119.7
South Africa	30.0	30.8	387.1	407.0	5.2
Swaziland	1.3	0.1	10.9	1.4	-87.6
Togo	2.2	0.5	17.1	9.3	-45.5
Tunisia	6.8	17.8	84.8	69.1	-18.5
Uganda	0.6	0.9	12.0	8.8	-26.8
United Republic of Tanzania	4.0	3.4	31.5	35.0	11.1
Western Sahara	0.0	0.0	0.1	0.0	-91.8
Zambia	0.7	1.0	8.5	25.1	195.7
Zimbabwe	0.7	0.2	7.9	4.8	-39.6
Total	176.2	176.0	1,948.7	1,847.0	-5.2
Other Asia					
Afghanistan	3.1	7.7	46.0	52.0	13.1
Bangladesh	49.8	44.9	592.3	567.4	-4.2
Bhutan	0.0	0.0	0.2	1.6	876.8
British Indian Ocean Territory	0.1	0.1	0.3	2.2	529.0
Brunei Darussalam	0.1	0.1	3.6	10.1	181.6
Cambodia	0.5	0.5	6.6	3.1	-53.0
China	822.4	1,457.0	10,104.6	11,132.8	10.2
Hong Kong	101.5	146.9	1,207.0	1,511.8	25.3
India	245.6	221.6	1,898.1	1,864.1	-1.8
Indonesia	74.8	124.4	862.5	910.7	5.6
Japan	708.6	853.3	7,493.5	8,269.9	10.4
Laos	0.1	0.6	2.3	2.2	-6.8
Macao	0.4	0.1	13.5	2.0	-85.0
Malaysia	78.2	40.3	512.4	649.1	26.7
Maldives	2.9	0.6	10.9	4.3	-60.3
Mongolia	0.1	11.9	4.2	23.6	461.3
Myanmar	0.0	0.0	0.0	2.7	...
Nepal	0.2	0.3	3.2	5.3	67.9
North Korea	1.8	0.7	23.7	9.7	-59.0
Pakistan	10.8	109.5	382.4	468.1	22.4
Philippines	82.4	57.1	466.0	597.2	28.2
Singapore	48.1	45.4	788.3	600.1	-23.9
South Korea	209.7	238.5	3,058.9	3,282.9	7.3
Sri Lanka	6.7	30.2	304.6	290.2	-4.7
Taiwan	84.7	121.3	950.3	1,136.7	19.6
Thailand	61.8	40.7	463.5	577.2	24.5
Timor-Leste	0.0	0.0	0.0	0.0	-77.3
Viet Nam	25.0	22.9	189.9	228.7	20.4
Total	2,619.5	3,576.5	29,388.8	32,205.7	9.6
Oceania					
American Samoa	0.3	0.1	0.9	1.3	37.5
Australia	155.5	115.3	1,472.0	1,470.2	-0.1
Christmas Island	0.0	0.1	0.3	0.9	238.8
Cocos (Keeling) Islands	0.0	0.0	0.2	0.1	-23.1
Cook Islands	0.0	0.0	0.5	0.4	-17.2
Fiji	0.0	0.4	5.6	3.2	-42.2
French Polynesia	1.4	0.9	9.8	11.0	12.7
Guam	0.1	0.2	1.7	1.6	-8.9
Heard Island and McDonald Islands	0.0	0.0	0.1	0.0	-98.2
Kiribati	0.1	0.0	0.1	0.1	-15.8
Nauru	0.0	0.0	0.1	1.3	...
New Caledonia	0.3	10.0	9.4	42.2	351.5
New Zealand	16.3	29.4	242.2	281.9	16.4
Norfolk Island	0.0	0.0	0.3	0.1	-82.7
Papua New Guinea	3.7	0.4	27.5	40.3	46.6
Pitcairn	0.0	0.0	0.1	0.1	-36.7
Samoa	0.1	0.0	0.4	0.3	-15.8
Solomon Islands	0.6	0.0	0.7	0.1	-90.5
Tonga	0.0	0.1	0.2	4.5	...
United States Minor Outlying Islands	1.0	1.3	11.4	13.9	21.8
Vanuatu	0.1	0.1	1.9	1.5	-21.0
Wallis and Futuna	0.0	0.0	0.0	0.0	-100.0
Total	179.6	158.5	1,785.2	1,874.9	5.0

Table 4 – continued

Domestic exports by country, customs basis, not seasonally adjusted

	November		January to November		Change January to November 2010/ January to November 2009
	2009	2010	2009	2010	
	millions of dollars				percent
South America					
Argentina	8.8	22.1	145.2	241.6	66.4
Bolivia	1.0	1.1	9.9	39.9	302.7
Brazil	200.0	160.1	1,336.3	2,263.8	69.4
Chile	54.1	39.9	554.8	466.0	-16.0
Colombia	38.8	66.3	537.8	564.5	5.0
Ecuador	9.5	15.3	210.3	238.9	13.6
Falkland Islands (Malvinas)	0.0	0.0	0.0	0.1	829.9
Guyana	1.0	4.3	25.2	26.1	3.8
Paraguay	0.4	0.7	10.1	14.3	41.5
Peru	37.2	50.2	372.1	413.7	11.2
Suriname	0.5	0.4	10.2	8.7	-15.1
Uruguay	1.3	2.5	18.3	106.1	479.1
Venezuela	67.1	65.7	565.7	487.8	-13.8
Total	419.7	428.5	3,796.0	4,871.5	28.3
Central America Antilles					
Anguilla	0.2	0.1	1.8	0.8	-55.2
Antigua and Barbuda	1.8	1.5	16.6	18.2	10.1
Aruba	0.9	0.5	5.6	25.8	357.7
Bahamas	17.2	27.2	144.6	123.5	-14.6
Barbados	3.9	3.5	51.4	33.8	-34.3
Belize	0.3	1.0	5.0	5.3	6.8
Bermuda	4.9	3.4	53.8	35.0	-35.0
British Virgin Islands	0.2	0.9	2.9	22.0	663.9
Cayman Islands	0.6	0.3	6.1	5.9	-2.9
Costa Rica	6.3	8.5	70.0	85.1	21.6
Cuba	15.1	26.1	241.3	289.1	19.8
Dominica	0.4	0.2	4.2	4.2	1.1
Dominican Republic	10.7	10.6	122.2	165.3	35.2
El Salvador	1.8	2.6	42.7	31.2	-26.8
Grenada	0.7	0.6	5.3	4.8	-10.9
Guatemala	7.5	6.4	85.1	76.9	-9.6
Haiti	2.9	5.4	37.0	43.3	17.1
Honduras	1.6	6.5	27.7	33.7	21.6
Jamaica	7.6	7.8	107.9	118.5	9.9
Montserrat	0.0	0.0	0.3	0.2	-22.6
Netherlands Antilles	2.0	26.7	46.9	44.0	-6.1
Nicaragua	3.3	6.6	15.5	32.5	109.7
Panama	5.7	6.0	74.5	112.6	51.0
Saint Kitts and Nevis	0.9	0.9	6.0	5.9	-2.5
Saint Lucia	0.8	1.5	9.2	7.2	-22.1
Saint Vincent and the Grenadines	2.6	2.2	10.6	10.2	-3.5
Trinidad and Tobago	26.9	19.0	216.6	263.4	21.6
Turks and Caicos Islands	0.9	0.2	5.7	3.8	-33.6
Total	127.9	176.2	1,416.3	1,602.2	13.1
All countries	28,514.0	31,704.2	305,328.6	339,106.3	11.1

Table 5-1
Exports by province of origin, customs basis, not seasonally adjusted — November

	Agricultural and fishing products	Energy products	Forestry products	Industrial goods	Machinery and equipment	Automotive products	Consumer goods	Special transactions trade	Total
millions of dollars									
Domestic exports									
Newfoundland and Labrador									
2009	55.2	392.9	4.3	154.6	2.8	0.6	0.0	4.3	614.6
2010	42.6	394.0	15.1	326.4	4.1	0.3	0.1	2.4	785.1
Prince Edward Island									
2009	44.2	0.3	0.1	2.1	17.6	0.0	2.3	4.3	70.9
2010	42.7	0.0	0.0	1.2	10.7	0.5	2.3	4.9	62.4
Nova Scotia									
2009	57.3	59.6	78.5	44.3	107.1	4.7	5.4	6.2	363.1
2010	65.4	31.2	73.0	48.5	121.1	5.3	4.6	3.3	352.3
New Brunswick									
2009	103.5	470.7	89.5	48.1	28.8	1.5	20.3	6.9	769.3
2010	103.4	553.4	114.5	79.0	25.0	2.9	13.5	3.9	895.6
Quebec									
2009	446.7	177.9	481.9	1,440.7	1,504.7	168.5	394.4	123.3	4,738.1
2010	558.8	238.9	519.5	1,879.5	1,434.5	172.1	289.8	68.8	5,161.9
Ontario									
2009	752.5	182.3	207.8	2,885.1	2,360.1	3,785.0	682.0	261.2	11,116.0
2010	911.8	221.5	229.5	4,252.2	2,613.0	4,028.6	654.2	160.9	13,071.6
Manitoba									
2009	312.4	96.0	13.0	172.6	137.0	37.3	25.1	29.7	823.1
2010	341.2	70.8	16.4	252.4	159.3	46.0	33.2	15.9	935.2
Saskatchewan									
2009	635.0	697.5	16.8	434.5	55.7	5.2	0.6	7.7	1,853.1
2010	647.2	693.0	6.2	606.0	45.4	4.9	0.7	4.3	2,007.8
Alberta									
2009	521.5	4,297.4	164.6	681.0	251.6	37.1	11.2	37.2	6,001.7
2010	571.6	4,186.8	167.6	780.7	312.8	38.8	9.2	24.7	6,092.2
British Columbia									
2009	164.2	490.4	561.4	455.0	237.1	16.3	47.2	32.2	2,003.9
2010	181.8	560.5	698.8	524.2	275.0	22.0	47.4	25.4	2,335.2
Yukon, Northwest Territories and Nunavut ¹									
2009	0.1	0.0	0.0	159.7	0.3	0.1	0.0	0.0	160.2
2010	0.1	0.0	0.0	3.7	1.0	0.1	0.1	0.0	5.0
Total									
2009	3,092.7	6,865.1	1,617.9	6,477.7	4,702.8	4,056.2	1,188.6	513.0	28,514.0
2010	3,466.7	6,950.1	1,840.6	8,753.8	5,001.9	4,321.5	1,055.0	314.5	31,704.2
Re-exports									
2009	56.2	68.0	6.1	189.9	917.3	81.1	187.1	523.8	2,029.5
2010	77.2	12.8	5.7	407.4	1,044.5	96.1	218.8	631.4	2,493.9
Total exports									
2009	3,149.0	6,933.1	1,623.9	6,667.6	5,620.1	4,137.3	1,375.7	1,036.7	30,543.4
2010	3,543.9	6,962.9	1,846.3	9,161.2	6,046.5	4,417.6	1,273.8	946.0	34,198.2

1. Data for the current month do not include some exports from the Harmonized System, Chapter 71, "Natural/cultured pearls, precious stones and metals, coins, etc." for reasons relating to timing.

Table 5-2
Exports by province of origin, customs basis, not seasonally adjusted — Year to date, January to November

	Agricultural and fishing products	Energy products	Forestry products	Industrial goods	Machinery and equipment	Automotive products	Consumer goods	Special transactions trade	Total
millions of dollars									
Domestic exports									
Newfoundland and Labrador									
2009	678.8	5,154.9	159.2	1,718.2	50.5	3.5	0.9	50.1	7,816.3
2010	743.5	5,299.4	107.6	1,919.5	40.5	1.9	1.4	25.2	8,138.9
Prince Edward Island									
2009	453.4	1.6	0.9	20.1	191.2	1.4	31.3	72.5	772.4
2010	429.2	1.1	6.5	22.8	146.3	3.5	34.9	46.8	691.1
Nova Scotia									
2009	869.1	625.2	664.1	466.0	1,065.4	68.4	67.8	66.3	3,892.4
2010	840.9	456.9	786.0	467.2	1,283.0	50.9	53.8	35.1	3,973.9
New Brunswick									
2009	1,088.7	5,629.3	1,023.0	685.1	286.4	22.4	147.3	79.9	8,962.0
2010	1,128.4	7,490.1	1,249.2	1,000.7	267.0	23.8	205.2	40.5	11,404.9
Quebec									
2009	4,030.4	2,551.5	5,454.6	15,002.8	18,293.5	1,556.3	3,301.5	1,270.1	51,460.6
2010	4,355.7	2,464.0	5,566.4	17,921.4	15,946.1	1,525.9	3,709.0	813.7	52,302.2
Ontario									
2009	7,387.0	2,486.6	2,434.3	28,751.2	29,067.7	33,648.6	8,572.5	2,754.6	115,102.4
2010	7,779.0	2,285.4	2,532.8	37,519.2	27,656.0	46,904.2	6,821.8	1,513.1	133,011.5
Manitoba									
2009	3,602.4	759.6	241.1	2,041.9	1,854.1	551.6	409.1	343.7	9,803.5
2010	3,367.1	770.5	192.8	2,171.2	1,743.7	419.2	325.9	259.7	9,250.0
Saskatchewan									
2009	6,984.4	6,526.2	225.5	5,073.9	757.1	39.6	10.7	84.3	19,701.8
2010	6,032.0	8,499.2	191.6	6,099.0	629.4	40.2	10.1	42.5	21,543.9
Alberta									
2009	6,388.6	42,537.4	1,585.7	7,754.1	3,929.2	460.8	144.0	484.7	63,284.4
2010	5,803.9	49,716.6	1,928.0	9,314.0	3,360.6	455.3	115.5	266.8	70,960.7
British Columbia									
2009	2,150.6	6,048.5	6,486.1	4,341.6	2,789.0	192.8	493.5	408.0	22,910.0
2010	2,209.5	7,103.4	7,775.5	5,250.4	2,773.0	240.0	515.5	228.3	26,095.5
Yukon, Northwest Territories and Nunavut ¹									
2009	2.0	0.0	0.2	1,613.6	4.6	0.4	1.1	0.9	1,622.7
2010	1.7	0.2	0.4	1,719.2	10.7	0.5	0.4	0.7	1,733.7
Total									
2009	33,635.5	72,320.8	18,274.5	67,468.3	58,288.7	36,545.9	13,179.8	5,615.1	305,328.6
2010	32,690.8	84,086.6	20,336.8	83,404.5	53,856.4	49,665.3	11,793.6	3,272.1	339,106.3
Re-exports									
2009	484.2	516.7	69.0	2,093.6	10,375.6	916.7	2,045.3	7,115.2	23,616.2
2010	565.2	318.4	71.4	2,735.0	9,730.4	1,011.9	1,983.3	6,715.5	23,131.0
Total exports									
2009	34,119.7	72,837.5	18,343.5	69,561.9	68,664.3	37,462.6	15,225.1	12,730.2	328,944.8
2010	33,256.0	84,405.1	20,408.2	86,139.5	63,586.7	50,677.2	13,777.0	9,987.6	362,237.3

1. Data for the current month do not include some exports from the Harmonized System Chapter 71, "Natural/cultured pearls, precious stones and metals, coins, etc." for reasons relating to timing.

Table 6-1
Imports by commodity groupings, balance of payments basis, seasonally adjusted — Current dollars

	October	November	Change		Year to date			November 2010/	
	2010	2010			2009		2010	Change	November 2009
	millions of dollars		percent		millions of dollars		percent		
Total	35,513	34,380	-1,134	-3.2	341,482	377,293	35,812	10.5	8.7
Agricultural and fishing products	2,484	2,476	-8	-0.3	26,948	26,901	-47	-0.2	2.5
Fruits and vegetables	701	702	1	0.1	7,583	7,609	25	0.3	1.9
Fresh fruits and berries	250	258	8	3.1	2,686	2,716	30	1.1	-1.3
Dried fruits, fruits and fruit preparations	120	119	-1	-0.8	1,389	1,253	-135	-9.7	5.5
Fresh vegetables	184	179	-5	-2.5	1,961	2,032	71	3.6	-2.4
Other vegetables and vegetable preparations	148	146	-2	-1.1	1,548	1,607	59	3.8	11.2
Other agricultural and fishing products	1,782	1,774	-9	-0.5	19,365	19,292	-72	-0.4	2.8
Live animals	16	17	1	5.9	179	180	1	0.4	5.7
Meat and meat preparations	185	180	-5	-2.8	1,954	1,947	-7	-0.4	7.5
Fish and marine animals	173	165	-8	-4.7	1,855	1,802	-53	-2.9	5.9
Cocoa, coffee, tea and other food preparations	423	395	-28	-6.6	4,518	4,534	17	0.4	-1.5
Dairy produce, eggs and honey	50	49	0	-0.9	528	538	10	1.8	-3.2
Corn (maize) shelled	24	23	-1	-5.6	455	386	-69	-15.2	-43.7
Other cereals and cereal preparations	182	181	-1	-0.5	2,080	1,934	-147	-7.1	1.6
Sugar and sugar preparations	144	186	43	29.8	1,517	1,627	110	7.2	39.6
Fodder, feed, excluding unmilled cereal	115	118	4	3.1	1,372	1,270	-102	-7.4	-1.3
Beverages	301	304	3	1.1	3,323	3,355	31	0.9	4.3
Tobacco	43	40	-3	-7.8	342	391	49	14.3	13.1
Crude vegetable products	125	113	-11	-9.2	1,232	1,319	87	7.1	-15.5
Cotton	1	1	0	-26.8	9	11	2	23.4	-13.8
Energy products	3,622	3,073	-549	-15.2	30,545	36,534	5,989	19.6	2.1
Crude petroleum	1,827	1,613	-214	-11.7	18,592	21,563	2,971	16.0	-7.3
Other energy products	1,795	1,459	-335	-18.7	11,954	14,971	3,017	25.2	15.1
Coal and other related products	425	500	76	17.8	4,291	4,816	526	12.3	0.4
Petroleum and coal products	1,370	959	-411	-30.0	7,663	10,154	2,492	32.5	24.6
Forestry products	215	208	-8	-3.5	2,184	2,435	251	11.5	4.0
Forestry products	215	208	-8	-3.5	2,184	2,435	251	11.5	4.0
Crude wood products	38	29	-9	-24.1	418	395	-23	-5.4	-19.0
Wood fabricated materials	177	178	2	0.9	1,766	2,039	273	15.5	9.1
Industrial goods and materials	7,399	7,572	173	2.3	68,627	79,204	10,577	15.4	22.0
Metals and metal ores	2,887	3,063	176	6.1	22,334	29,911	7,577	33.9	38.3
Metals in ores, concentrates and scrap	664	548	-116	-17.5	5,360	6,304	944	17.6	-0.3
Steel bars, rods, plates, sheets	479	499	20	4.2	4,285	5,879	1,594	37.2	19.1
Other iron and steel products	374	386	12	3.1	3,247	4,052	804	24.8	48.4
Precious metals including alloys	1,037	1,289	252	24.3	6,246	9,778	3,532	56.5	100.0
Other non-ferrous metals and alloys	333	342	8	2.5	3,195	3,898	703	22.0	-0.3
Chemicals and plastics	2,381	2,427	46	1.9	24,983	26,590	1,606	6.4	12.5
Organic chemicals	552	535	-16	-3.0	5,962	6,305	342	5.7	13.5
Plastic materials	845	834	-11	-1.3	8,097	9,222	1,125	13.9	10.7
Other chemicals and related products	984	1,057	73	7.5	10,924	11,063	139	1.3	13.6
Other industrial goods and materials	2,131	2,081	-50	-2.3	21,310	22,703	1,393	6.5	13.4
Crude animal products	20	23	3	12.3	217	238	20	9.3	20.0
Wool and man-made fibres	19	19	0	-0.6	192	224	32	16.8	8.3
Crude non-metallic minerals	66	60	-6	-9.2	671	750	79	11.8	12.6
Textile fabricated materials	198	201	3	1.3	2,056	2,153	97	4.7	13.5
Metal fabricated basic products	861	831	-30	-3.5	8,247	8,910	663	8.0	16.6
Rubber fabricated materials	85	85	1	0.9	856	913	56	6.5	9.8
Oils, fats, animal and vegetable	112	112	0	0.0	1,145	1,129	-16	-1.4	13.9
Non-metallic minerals	304	286	-18	-6.0	2,987	3,286	299	10.0	9.9
Other fabricated materials	465	464	-1	-0.2	4,938	5,101	162	3.3	10.5

Table 6-1 – continued

Imports by commodity groupings, balance of payments basis, seasonally adjusted — Current dollars

	October	November	Change		Year to date			November 2010/ November 2009	
	2010	2010			2009	2010	Change		
	millions of dollars		percent		millions of dollars			percent	
Machinery and equipment	10,080	9,569	-511	-5.1	99,451	103,604	4,154	4.2	10.3
Industrial and agricultural machinery	2,645	2,441	-205	-7.7	25,664	27,294	1,630	6.4	14.6
Engines, turbines and electric motors	394	292	-102	-26.0	3,682	3,913	231	6.3	7.0
Drilling mining machinery	162	155	-8	-4.7	1,391	1,626	235	16.9	39.6
Excavating machinery	246	221	-24	-9.9	1,851	2,441	590	31.9	40.4
Metal working machinery	161	171	11	6.6	1,463	1,515	52	3.6	34.6
Other industrial machinery	1,336	1,296	-40	-3.0	13,587	13,885	298	2.2	13.5
Agricultural machinery including tractors	347	306	-41	-11.8	3,691	3,915	224	6.1	-4.1
Aircraft and other transportation equipment	1,477	1,292	-186	-12.6	14,675	13,373	-1,302	-8.9	0.1
Aircraft, engines, parts	842	823	-19	-2.3	9,351	8,134	-1,217	-13.0	-3.0
Other transportation equipment and parts	635	469	-166	-26.2	5,325	5,239	-86	-1.6	6.1
Office machines and equipment	1,142	1,168	26	2.2	11,317	12,197	880	7.8	13.8
Other machinery and equipment	4,816	4,669	-147	-3.0	47,794	50,740	2,945	6.2	10.4
Other communication and related equipment	1,774	1,706	-68	-3.9	16,805	18,524	1,719	10.2	13.6
Other equipment and tools	3,042	2,963	-78	-2.6	30,989	32,216	1,227	4.0	8.6
Automotive products	5,548	5,302	-246	-4.4	49,591	63,202	13,612	27.4	-1.4
Passenger autos and chassis	1,768	1,831	64	3.6	16,795	20,457	3,662	21.8	-3.1
Trucks and other motor vehicles	1,352	1,196	-156	-11.5	11,483	15,751	4,268	37.2	-8.5
Motor vehicle parts	2,428	2,274	-154	-6.3	21,313	26,994	5,681	26.7	4.3
Other consumer goods	4,975	4,979	4	0.1	52,639	52,761	122	0.2	6.3
Apparel and footwear	1,049	1,017	-32	-3.0	10,336	10,164	-172	-1.7	17.4
Apparel and apparel accessories	841	827	-14	-1.7	8,603	8,377	-227	-2.6	14.7
Footwear	208	191	-18	-8.4	1,733	1,787	54	3.1	30.6
Miscellaneous consumer goods	3,926	3,962	36	0.9	42,303	42,597	294	0.7	3.8
Television, radios, phonographs	135	132	-3	-2.2	1,276	1,457	181	14.1	7.6
Printed matter	281	324	43	15.1	3,278	3,192	-86	-2.6	16.5
Watches, sporting goods and toys	519	496	-23	-4.3	5,519	5,541	22	0.4	6.6
House furnishings	747	722	-24	-3.2	7,948	8,039	91	1.1	3.0
Photographic goods	241	270	28	11.8	2,342	2,395	53	2.3	35.8
Miscellaneous end products	2,003	2,017	14	0.7	21,941	21,975	34	0.2	-1.5
Special transactions trade	456	504	48	10.4	4,346	4,617	271	6.2	33.4
Unallocated balance of payments adjustments	733	698	-35	-4.8	7,151	8,036	885	12.4	3.8

Table 6-2
Imports by commodity groupings, balance of payments basis, seasonally adjusted — Constant dollars, 2002

	October	November	Change		Year to date			November 2010/ November 2009	
	2010	2010			2009	2010	Change		
	millions of dollars		percent		millions of dollars			percent	
Total	40,355	39,397	-958	-2.4	368,886	427,551	58,665	15.9	10.6
Agricultural and fishing products	2,571	2,601	29	1.1	25,665	27,191	1,526	5.9	5.9
Fruits and vegetables	783	751	-32	-4.1	7,430	7,728	297	4.0	10.7
Fresh fruits and berries	285	266	-19	-6.8	2,743	2,833	90	3.3	0.0
Dried fruits, fruits and fruit preparations	123	122	0	-0.3	1,357	1,266	-91	-6.7	0.9
Fresh vegetables	224	221	-4	-1.6	1,931	2,054	123	6.4	36.0
Other vegetables and vegetable preparations	151	142	-9	-5.9	1,399	1,574	175	12.5	10.1
Other agricultural and fishing products	1,789	1,850	62	3.4	18,235	19,463	1,228	6.7	4.0
Live animals	16	18	2	12.3	182	176	-5	-3.0	-4.6
Meat and meat preparations	180	190	10	5.6	1,969	1,893	-76	-3.9	-1.0
Fish and marine animals	228	225	-3	-1.3	2,551	2,529	-22	-0.9	-10.4
Cocoa, coffee, tea and other food preparations	433	448	15	3.4	3,717	4,609	892	24.0	22.1
Dairy produce, eggs and honey	54	49	-5	-9.2	508	589	81	15.9	-0.9
Corn (maize) shelled	18	18	1	3.2	383	363	-21	-5.4	-48.3
Other cereals and cereal preparations	162	157	-4	-2.8	1,771	1,639	-132	-7.4	-7.3
Sugar and sugar preparations	139	182	43	30.9	1,475	1,575	100	6.8	42.3
Fodder, feed, excluding unmilled cereal	95	102	7	7.3	1,021	1,082	61	6.0	1.5
Beverages	282	295	13	4.5	2,970	3,147	178	6.0	3.5
Tobacco	53	49	-4	-7.9	395	472	77	19.5	12.8
Crude vegetable products	129	117	-12	-9.1	1,280	1,373	94	7.3	-15.5
Cotton	1	1	0	-30.9	12	15	3	21.0	-27.2
Energy products	1,965	1,670	-296	-15.1	19,163	19,722	559	2.9	-4.6
Crude petroleum	871	731	-140	-16.1	10,461	9,844	-618	-5.9	-8.4
Other energy products	1,094	938	-156	-14.2	8,702	9,878	1,176	13.5	-1.5
Coal and other related products	354	441	88	24.8	3,660	4,236	576	15.7	-7.9
Petroleum and coal products	741	497	-244	-32.9	5,042	5,642	600	11.9	4.9
Forestry products	278	273	-4	-1.6	2,764	3,173	408	14.8	0.6
Forestry products	278	273	-4	-1.6	2,764	3,173	408	14.8	0.6
Crude wood products	53	42	-11	-21.4	531	573	42	7.9	-19.6
Wood fabricated materials	225	232	7	3.1	2,233	2,600	367	16.4	5.4
Industrial goods and materials	6,518	6,458	-60	-0.9	61,633	71,526	9,893	16.1	12.1
Metals and metal ores	1,864	1,865	2	0.1	16,057	20,553	4,496	28.0	16.5
Metals in ores, concentrates and scrap	356	264	-92	-25.8	3,947	3,475	-471	-11.9	-20.4
Steel bars, rods, plates, sheets	388	404	16	4.0	3,465	4,842	1,377	39.8	10.7
Other iron and steel products	265	271	6	2.4	2,318	2,922	604	26.1	30.3
Precious metals including alloys	529	599	70	13.2	3,027	5,299	2,272	75.1	83.4
Other non-ferrous metals and alloys	326	327	1	0.4	3,301	4,014	714	21.6	-11.5
Chemicals and plastics	2,223	2,192	-31	-1.4	23,252	25,308	2,056	8.8	4.0
Organic chemicals	424	386	-38	-8.9	4,753	4,642	-111	-2.3	0.6
Plastic materials	891	877	-14	-1.5	8,463	9,784	1,321	15.6	3.4
Other chemicals and related products	909	930	21	2.3	10,036	10,882	846	8.4	6.1
Other industrial goods and materials	2,431	2,400	-31	-1.3	22,324	25,665	3,341	15.0	17.1
Crude animal products	21	23	2	8.4	328	254	-74	-22.5	-19.1
Wool and man-made fibres	24	24	0	1.9	241	290	49	20.3	11.1
Crude non-metallic minerals	52	48	-4	-6.9	587	622	35	6.0	6.0
Textile fabricated materials	266	273	7	2.6	2,533	2,877	343	13.5	14.4
Metal fabricated basic products	923	891	-32	-3.5	8,087	9,508	1,421	17.6	18.9
Rubber fabricated materials	103	105	2	1.8	964	1,112	148	15.4	11.8
Oils, fats, animal and vegetable	103	102	-1	-1.4	997	1,091	94	9.4	8.7
Non-metallic minerals	368	361	-8	-2.0	3,362	3,987	625	18.6	13.8
Other fabricated materials	571	573	3	0.5	5,226	5,925	699	13.4	24.2

Table 6-2 – continued

Imports by commodity groupings, balance of payments basis, seasonally adjusted — Constant dollars, 2002

	October	November	Change		Year to date			November 2010/ November 2009	
	2010	2010			2009	2010	Change		
	millions of dollars		percent		millions of dollars			percent	
Machinery and equipment	14,790	14,305	-485	-3.3	129,198	150,377	21,179	16.4	18.8
Industrial and agricultural machinery	3,272	3,023	-249	-7.6	28,431	33,513	5,081	17.9	18.6
Engines, turbines and electric motors	495	371	-124	-25.1	4,125	4,861	736	17.8	12.1
Drilling mining machinery	183	176	-7	-3.9	1,390	1,822	432	31.1	45.7
Excavating machinery	308	282	-26	-8.6	2,021	3,055	1,034	51.2	50.6
Metal working machinery	210	220	10	4.8	1,700	1,947	247	14.6	38.8
Other industrial machinery	1,631	1,584	-47	-2.9	14,901	16,830	1,929	12.9	16.8
Agricultural machinery including tractors	445	390	-55	-12.3	4,294	4,997	702	16.4	-1.6
Aircraft and other transportation equipment	1,716	1,507	-208	-12.2	15,764	15,637	-127	-0.8	1.5
Aircraft, engines, parts	1,023	1,005	-19	-1.8	10,279	9,897	-382	-3.7	-0.3
Other transportation equipment and parts	692	503	-190	-27.4	5,485	5,740	256	4.7	5.3
Office machines and equipment	2,736	2,938	202	7.4	22,642	27,697	5,055	22.3	39.3
Other machinery and equipment	7,066	6,836	-229	-3.2	62,361	73,531	11,169	17.9	16.0
Other communication and related equipment	3,017	2,864	-153	-5.1	25,547	31,247	5,700	22.3	18.3
Other equipment and tools	4,049	3,972	-76	-1.9	36,814	42,283	5,469	14.9	14.4
Automotive products	6,787	6,528	-259	-3.8	57,691	76,952	19,261	33.4	0.0
Passenger autos and chassis	2,012	2,078	66	3.3	19,542	23,482	3,940	20.2	-6.6
Trucks and other motor vehicles	1,538	1,396	-143	-9.3	12,306	17,756	5,450	44.3	-4.2
Motor vehicle parts	3,236	3,055	-182	-5.6	25,843	35,714	9,871	38.2	7.4
Other consumer goods	6,518	6,569	50	0.8	62,582	68,330	5,748	9.2	10.5
Apparel and footwear	1,493	1,457	-36	-2.4	13,161	14,398	1,237	9.4	23.3
Apparel and apparel accessories	1,203	1,191	-12	-1.0	10,980	11,920	940	8.6	20.9
Footwear	290	266	-24	-8.2	2,181	2,478	297	13.6	35.2
Miscellaneous consumer goods	5,025	5,111	86	1.7	49,421	53,931	4,510	9.1	7.4
Television, radios, phonographs	234	227	-7	-2.8	1,970	2,481	511	25.9	4.9
Printed matter	349	409	60	17.1	3,888	3,955	66	1.7	20.2
Watches, sporting goods and toys	705	675	-30	-4.3	7,093	7,667	575	8.1	7.5
House furnishings	976	942	-34	-3.5	9,303	10,317	1,014	10.9	5.1
Photographic goods	489	561	72	14.8	3,791	4,632	842	22.2	59.9
Miscellaneous end products	2,273	2,298	25	1.1	23,376	24,879	1,503	6.4	-1.4
Special transactions trade	531	592	61	11.5	4,760	5,300	540	11.3	35.0
Unallocated balance of payments adjustments	397	403	6	1.5	5,429	4,980	-448	-8.3	-9.5

Table 7-1
Imports from selected countries, customs basis, not seasonally adjusted — November

	Agricultural and fishing products	Energy products	Forestry products	Industrial goods	Machinery and equipment	Automotive products	Consumer goods	Special transactions trade	Total
millions of dollars									
United States									
2009	1,410.3	883.1	137.1	3,497.9	3,807.9	3,734.9	1,839.2	359.9	15,670.4
2010	1,414.5	873.1	144.5	4,068.5	3,968.5	3,540.6	1,919.8	527.4	16,456.9
Mexico									
2009	100.8	47.5	0.3	97.6	757.5	618.5	87.7	4.1	1,714.0
2010	115.2	55.4	0.4	184.4	876.0	702.0	101.4	3.8	2,038.5
Japan									
2009	9.2	0.5	0.1	69.3	343.7	519.6	82.8	0.2	1,025.3
2010	9.0	9.5	0.1	100.0	407.6	504.5	109.0	0.2	1,140.0
European Union									
Germany									
2009	24.0	1.4	1.3	144.9	333.4	216.4	143.3	0.4	865.0
2010	34.0	11.2	0.9	163.8	336.9	268.8	154.4	1.7	971.8
France									
2009	82.2	9.0	0.2	44.6	102.5	11.8	185.3	0.3	436.0
2010	84.6	5.8	0.1	62.9	247.7	8.9	135.8	1.1	546.8
United Kingdom									
2009	38.9	262.1	0.1	113.5	250.3	34.2	115.7	6.2	820.9
2010	40.2	167.2	0.1	257.8	279.5	43.4	117.1	1.8	907.1
Italy									
2009	80.9	6.9	1.3	81.6	122.2	9.2	92.7	0.2	394.9
2010	85.7	31.7	1.1	84.7	114.9	18.9	97.0	0.9	434.9
Other European Union									
2009	118.3	353.7	3.6	187.6	296.3	92.1	369.4	3.1	1,424.0
2010	117.0	175.2	3.2	348.4	359.3	83.1	348.2	0.4	1,434.7
Total									
2009	344.3	633.0	6.4	572.2	1,104.6	363.6	906.4	10.3	3,940.8
2010	361.4	391.1	5.4	917.7	1,338.4	423.0	852.5	5.9	4,295.3
Newly industrialized countries									
South Korea									
2009	5.2	3.2	0.0	53.1	213.0	199.0	17.9	0.1	491.6
2010	7.7	85.1	0.0	67.1	280.2	115.6	20.8	0.1	576.6
Hong Kong									
2009	3.4	0.0	0.1	1.5	14.0	0.4	11.9	0.0	31.3
2010	2.5	0.0	0.2	3.0	16.7	0.1	13.6	0.0	36.2
Taiwan									
2009	5.9	0.0	0.6	51.9	169.0	12.0	35.4	0.1	274.7
2010	6.9	0.0	0.2	116.8	238.5	12.7	32.3	0.1	407.5
Singapore									
2009	4.0	0.0	0.0	17.1	32.6	0.5	15.5	0.2	70.0
2010	4.6	29.4	0.0	3.0	45.7	0.6	23.6	0.0	106.9
Total									
2009	18.5	3.2	0.7	123.6	428.7	211.8	80.7	0.4	867.6
2010	21.6	114.6	0.5	189.9	581.1	129.0	90.4	0.2	1,127.2
Other countries									
2009	676.0	1,448.2	44.4	1,533.8	2,519.5	152.5	1,691.8	25.3	8,091.5
2010	765.2	1,554.0	48.0	1,955.7	2,919.3	178.5	2,081.6	10.6	9,512.8
Total									
2009	2,559.3	3,015.5	189.0	5,894.2	8,962.0	5,601.1	4,688.6	400.2	31,309.9
2010	2,687.4	2,997.6	198.8	7,416.1	10,091.0	5,477.6	5,154.7	548.1	34,571.4

Table 7-2
Imports from selected countries, customs basis, not seasonally adjusted — Year to date, January to November

	Agricultural and fishing products	Energy products	Forestry products	Industrial goods	Machinery and equipment	Automotive products	Consumer goods	Special transactions trade	Total
millions of dollars									
United States									
2009	15,853.3	9,596.9	1,637.4	40,911.3	45,296.9	33,096.4	21,161.5	3,688.1	171,241.8
2010	15,323.4	11,040.1	1,766.3	46,430.1	45,646.7	41,801.8	20,903.7	4,032.1	186,944.2
Mexico									
2009	1,193.8	454.3	5.1	1,179.6	6,374.6	4,770.1	935.7	38.6	14,951.8
2010	1,324.0	793.7	4.9	1,654.5	7,617.1	7,717.0	1,056.4	53.3	20,220.9
Japan									
2009	64.3	34.9	1.8	996.2	4,379.2	4,894.3	908.4	3.5	11,282.6
2010	63.8	131.8	1.0	1,101.4	4,476.0	5,539.7	1,009.6	3.5	12,326.8
European Union									
Germany									
2009	250.4	30.7	12.3	1,664.7	3,859.6	2,326.7	1,660.8	7.3	9,812.6
2010	269.5	60.1	12.1	1,766.6	3,613.8	2,991.0	1,591.2	20.0	10,324.5
France									
2009	678.6	194.8	2.4	982.7	1,689.8	99.2	1,588.4	9.8	5,245.7
2010	681.6	89.0	1.9	768.3	1,822.0	90.9	1,453.8	8.6	4,916.1
United Kingdom									
2009	399.2	2,208.7	1.2	1,170.8	3,115.9	314.9	1,233.0	38.5	8,482.1
2010	395.4	3,325.7	0.7	1,790.9	2,674.5	409.3	1,189.4	39.2	9,825.0
Italy									
2009	620.5	79.3	13.4	858.7	1,361.2	174.0	995.6	6.5	4,109.3
2010	626.8	190.8	12.1	868.3	1,320.8	215.6	1,008.1	4.7	4,247.1
Other European Union									
2009	1,086.5	1,724.0	39.5	2,503.3	3,862.2	677.2	3,852.3	44.7	13,789.8
2010	1,076.0	2,075.2	38.3	2,906.9	4,227.5	747.0	3,464.8	23.0	14,558.7
Total									
2009	3,035.3	4,237.5	68.9	7,180.3	13,888.7	3,591.9	9,330.0	106.8	41,439.5
2010	3,049.3	5,740.7	65.2	8,101.0	13,658.6	4,453.7	8,707.3	95.5	43,871.3
Newly industrialized countries									
South Korea									
2009	45.8	297.8	0.2	706.8	2,440.9	1,751.9	206.1	0.8	5,450.2
2010	55.3	346.8	0.2	727.0	2,521.3	1,883.0	192.2	0.9	5,726.7
Hong Kong									
2009	27.3	0.0	0.7	25.3	148.1	3.9	132.1	0.6	338.0
2010	25.4	0.1	0.8	25.4	146.7	4.4	138.4	0.4	341.6
Taiwan									
2009	60.5	0.3	8.7	638.4	1,833.2	153.4	373.8	1.0	3,069.2
2010	69.7	19.9	6.5	832.1	2,096.7	147.0	376.0	1.3	3,549.3
Singapore									
2009	31.2	70.0	0.6	283.8	448.9	4.4	196.6	1.4	1,037.0
2010	34.9	111.6	0.2	151.7	552.8	4.1	187.0	1.3	1,043.7
Total									
2009	164.8	368.1	10.1	1,654.3	4,871.1	1,913.7	908.5	3.8	9,894.4
2010	185.4	478.3	7.7	1,736.3	5,317.5	2,038.4	893.6	3.9	10,661.2
Other countries									
2009	6,641.0	16,265.8	485.5	15,816.8	24,592.7	1,644.9	19,709.4	316.1	85,472.2
2010	7,054.7	18,591.9	608.5	19,270.7	27,443.5	1,979.9	20,622.0	308.4	95,879.5
Total									
2009	26,954.3	30,957.6	2,208.9	67,738.6	99,403.3	49,911.2	52,953.6	4,156.9	334,284.3
2010	27,005.3	36,776.5	2,453.5	78,294.1	104,159.5	63,530.7	53,192.8	4,496.7	369,909.1

Table 8
Imports by country, customs basis, not seasonally adjusted

	November		January to November		Change January to November 2010/ January to November 2009
	2009	2010	2009	2010	
	millions of dollars				percent
North America					
Canada	341.6	305.1	2,987.6	3,644.9	22.0
Greenland	0.3	0.0	17.3	0.5	-97.3
Mexico	1,714.0	2,038.5	14,951.8	20,220.9	35.2
Saint Pierre and Miquelon	0.0	0.0	0.2	1.5	628.2
United States	15,670.4	16,456.9	171,241.8	186,944.2	9.2
Total	17,726.3	18,800.7	189,198.6	210,812.0	11.4
Western Europe					
Andorra	0.0	0.0	0.1	0.3	163.2
Austria	114.6	103.0	1,078.3	1,094.4	1.5
Belgium	126.4	148.3	1,302.6	1,512.5	16.1
Denmark	244.0	83.8	1,398.1	1,825.8	30.6
Faeroe Islands	0.2	0.5	2.0	4.9	151.4
Finland	118.1	151.2	870.6	934.5	7.3
France	436.0	546.8	5,245.7	4,916.1	-6.3
Germany	865.0	971.8	9,812.6	10,324.5	5.2
Gibraltar	0.0	0.0	0.0	2.2	...
Greece	13.9	14.8	128.4	130.5	1.7
Iceland	3.7	2.8	30.2	31.0	2.5
Italy	394.9	434.9	4,109.3	4,247.1	3.4
Luxembourg	7.2	14.7	132.3	90.9	-31.3
Malta	1.3	1.8	18.6	16.3	-12.1
Netherlands	159.2	114.3	1,753.5	1,553.4	-11.4
Norway	275.5	145.5	3,131.3	2,468.5	-21.2
Portugal	27.7	20.3	302.4	290.2	-4.0
Republic of Ireland (Eire)	178.9	103.1	2,022.3	1,407.5	-30.4
Spain	113.7	126.1	1,215.2	1,337.2	10.0
Sweden	153.0	220.9	1,670.6	1,915.5	14.7
Switzerland	336.0	262.4	3,195.5	2,710.7	-15.2
United Kingdom	820.9	907.1	8,482.1	9,825.0	15.8
Total	4,390.3	4,374.2	45,901.7	46,639.0	1.6
Other Europe					
Albania	0.3	0.5	3.8	4.3	13.6
Armenia	3.0	3.5	30.9	25.8	-16.6
Azerbaijan	86.7	0.0	998.9	385.6	-61.4
Belarus	0.5	12.7	35.0	54.8	56.8
Bosnia and Herzegovina	0.4	0.6	7.8	7.1	-9.3
Bulgaria	6.1	5.5	114.1	61.5	-46.1
Croatia	2.1	9.9	23.8	64.5	171.3
Czech Republic	17.2	60.0	249.0	298.7	20.0
Estonia	1.3	8.2	19.6	35.1	78.6
Georgia	9.9	13.3	122.3	116.6	-4.7
Hungary	26.1	29.1	323.7	314.7	-2.8
Kazakhstan	178.2	234.7	1,409.8	1,923.6	36.4
Kyrgyzstan	0.0	0.4	0.5	0.5	2.7
Latvia	0.8	1.2	16.4	9.6	-41.6
Lithuania	31.7	15.8	143.6	352.4	145.3
Macedonia (Former Yugoslav Republic of Macedonia)	0.6	0.6	8.2	7.2	-11.5
Montenegro	0.0	0.0	0.3	0.4	39.6
Poland	57.0	150.1	697.7	913.0	30.9
Republic of Moldova	0.1	0.1	1.7	5.0	185.4
Romania	9.0	43.0	112.6	206.1	83.1
Russian Federation	97.9	113.9	1,533.7	1,751.5	14.2
Serbia	1.0	0.6	10.0	11.6	16.8
Slovakia	11.8	13.0	148.9	164.6	10.6
Slovenia	5.1	6.2	69.0	91.7	32.9
Tajikistan	0.0	0.0	0.0	0.0	181.8
Turkmenistan	0.0	0.0	0.4	0.7	70.5
Ukraine	9.2	8.5	85.0	90.6	6.6
Uzbekistan	0.0	0.0	11.8	1.4	-88.4
Total	556.0	731.4	6,178.5	6,898.4	11.7

Table 8 – continued

Imports by country, customs basis, not seasonally adjusted

	November		January to November		Change
	2009	2010	2009	2010	January to November 2010/ January to November 2009
	millions of dollars				percent
Middle East					
Bahrain	0.3	0.3	4.6	2.8	-38.9
Cyprus	0.0	0.4	2.2	2.7	24.1
Egypt	18.7	37.1	99.6	275.1	176.3
Eritrea	0.0	0.0	0.1	0.3	130.6
Ethiopia	1.6	1.1	16.0	14.2	-11.2
Iran	1.1	2.5	21.9	34.8	59.0
Iraq	152.1	192.8	1,222.8	1,524.0	24.6
Israel	84.1	84.0	850.2	913.5	7.4
Jordan	1.7	1.5	15.3	18.1	18.3
Kuwait	0.0	0.0	37.3	31.5	-15.4
Lebanon	1.6	1.5	14.1	15.5	10.0
Libya	0.0	2.4	0.2	22.3	...
Oman	0.6	1.4	5.9	17.8	201.5
Qatar	4.6	1.6	17.6	70.6	301.4
Saudi Arabia	0.6	168.1	1,378.7	1,843.5	33.7
Somalia	0.0	0.0	0.0	0.0	-23.1
Sudan	6.7	3.4	62.1	75.5	21.6
Syria	0.2	10.4	5.0	16.3	227.1
Turkey	54.2	68.0	594.9	632.5	6.3
United Arab Emirates	2.0	15.7	193.0	150.4	-22.1
Yemen	0.0	0.0	0.2	0.1	-34.1
Total	330.1	592.1	4,541.6	5,661.7	24.7
Other Africa					
Algeria	378.9	357.7	3,279.6	3,358.1	2.4
Angola	94.9	267.2	1,320.1	1,542.1	16.8
Antarctica	0.0	0.0	0.0	0.3	...
Benin	0.0	0.0	0.0	0.0	325.9
Botswana	6.9	0.0	28.6	6.9	-75.8
Bouvet Island	0.0	0.0	0.0	0.0	-99.5
Burkina Faso	2.0	1.1	10.1	22.8	126.4
Burundi	0.1	0.0	0.2	0.1	-77.4
Cameroon	0.3	0.5	4.2	5.5	30.6
Cape Verde	0.0	0.0	0.0	0.0	134.7
Central African Republic	0.0	0.0	0.1	0.1	-2.7
Chad	0.0	0.1	0.2	1.0	440.1
Comoros	0.1	0.1	0.1	0.1	34.6
Congo	0.0	42.9	2.0	46.8	...
Democratic Republic of the Congo	0.1	0.0	0.6	0.7	21.6
Djibouti	0.0	0.0	0.0	0.0	-68.4
Equatorial Guinea	0.0	30.8	347.9	593.2	70.5
French Southern Territories	0.0	0.0	0.0	0.0	385.7
Gabon	0.2	0.0	1.8	0.4	-78.9
Gambia	0.0	0.1	0.1	0.2	129.8
Ghana	4.6	0.4	25.5	19.2	-24.8
Guinea	3.4	4.8	57.4	43.2	-24.9
Guinea-Bissau	0.0	0.0	0.0	0.0	-95.3
Ivory Coast	36.9	9.2	215.5	344.9	60.0
Kenya	1.7	1.7	16.0	16.2	1.3
Lesotho	0.7	1.4	7.8	14.9	89.9
Liberia	4.3	0.5	28.0	34.7	23.8
Madagascar	4.8	6.8	41.0	44.6	8.7
Malawi	3.8	0.0	6.6	58.1	777.0
Mali	0.0	0.0	0.3	0.5	61.1
Mauritania	0.1	0.0	0.8	0.2	-77.9
Mauritius	0.7	0.5	8.5	9.1	6.6
Morocco	31.6	34.8	113.1	117.9	4.2
Mozambique	0.0	0.0	0.3	1.4	393.5
Namibia	10.7	30.1	248.2	186.9	-24.7
Niger	0.1	0.0	0.8	0.8	6.0
Nigeria	139.2	95.1	457.5	1,598.1	249.3
Rwanda	0.0	0.0	0.3	0.2	-28.5
Saint Helena	0.0	0.0	0.0	0.0	57.7
Sao Tome and Principe	0.0	0.0	0.0	0.2	...
Senegal	0.2	0.1	1.1	1.1	2.6

Table 8 – continued

Imports by country, customs basis, not seasonally adjusted

	November		January to November		Change
	2009	2010	2009	2010	January to November 2010/ January to November 2009
	millions of dollars				percent
Seychelles	0.1	0.0	0.6	0.2	-64.4
Sierra Leone	0.0	0.2	3.9	1.7	-57.2
South Africa	57.5	65.4	585.1	653.0	11.6
Swaziland	0.1	0.2	1.8	1.6	-13.1
Togo	0.1	0.1	4.3	3.1	-26.9
Tunisia	3.8	3.2	42.9	48.4	12.7
Uganda	0.1	0.4	2.1	3.5	63.0
United Republic of Tanzania	0.8	0.2	4.4	2.7	-37.8
Western Sahara	0.0	0.0	0.0	0.0	-98.1
Zambia	0.1	0.1	0.7	1.3	78.5
Zimbabwe	0.1	0.3	2.5	4.1	59.5
Total	789.0	956.2	6,873.2	8,790.1	27.9
Other Asia					
Afghanistan	0.1	0.1	1.1	1.5	31.2
Bangladesh	41.1	67.8	757.1	770.6	1.8
Bhutan	0.0	0.0	0.0	0.0	148.3
British Indian Ocean Territory	0.0	0.0	0.0	0.0	645.9
Brunei Darussalam	0.0	0.0	1.9	0.0	-98.7
Cambodia	21.4	30.4	269.9	321.5	19.1
China	3,404.5	4,247.1	36,412.3	40,807.0	12.1
Hong Kong	31.3	36.2	338.0	341.6	1.1
India	135.9	195.9	1,862.0	1,910.9	2.6
Indonesia	90.3	103.5	930.7	1,151.1	23.7
Japan	1,025.3	1,140.0	11,282.6	12,326.8	9.3
Laos	0.0	0.3	5.9	7.2	21.0
Macao	0.6	0.5	21.7	8.5	-60.8
Malaysia	190.1	193.7	2,124.2	2,094.4	-1.4
Maldives	0.0	0.0	0.1	0.1	11.2
Mongolia	20.9	59.6	129.8	218.4	68.3
Myanmar	0.0	0.0	0.1	0.0	-75.5
Nepal	1.3	1.4	12.2	14.4	18.2
North Korea	0.0	0.0	0.1	0.1	27.4
Pakistan	19.3	24.9	222.5	250.2	12.4
Philippines	62.0	76.0	664.9	810.6	21.9
Singapore	70.0	106.9	1,037.0	1,043.7	0.6
South Korea	491.6	576.6	5,450.2	5,726.7	5.1
Sri Lanka	9.1	11.4	106.1	115.6	8.9
Taiwan	274.7	407.5	3,069.2	3,549.3	15.6
Thailand	226.3	222.5	2,105.5	2,184.3	3.7
Timor-Leste	0.4	0.1	3.5	1.7	-50.7
Viet Nam	87.4	101.1	970.8	1,069.2	10.1
Total	6,203.6	7,603.3	67,779.7	74,725.5	10.2
Oceania					
American Samoa	0.1	0.0	0.3	0.3	-14.1
Australia	179.5	141.1	1,491.0	1,446.0	-3.0
Christmas Island	0.0	0.0	0.0	0.1	665.8
Cocos (Keeling) Islands	0.0	0.0	0.1	0.0	-85.8
Cook Islands	0.0	0.0	0.0	0.1	177.7
Fiji	0.4	0.2	6.2	4.7	-23.5
French Polynesia	0.1	0.1	0.7	0.9	30.0
Guam	0.0	0.0	0.3	0.1	-62.3
Heard Island and McDonald Islands	0.0	0.0	0.0	0.0	719.0
Kiribati	0.0	0.0	0.1	0.0	-74.8
Nauru	0.0	0.0	0.1	0.1	-52.1
New Caledonia	0.0	0.0	0.3	0.2	-51.2
New Zealand	33.6	34.9	423.2	411.8	-2.7
Niue	0.0	0.0	0.0	0.0	174.2
Norfolk Island	0.0	0.0	0.0	0.0	-54.9
Papua New Guinea	0.4	0.1	1.8	1.5	-18.5
Pitcairn	0.0	0.0	0.0	0.0	-11.0
Samoa	0.0	0.0	0.0	0.3	...
Solomon Islands	0.0	0.0	0.1	0.2	67.2
Tonga	0.0	0.0	0.0	0.0	-59.3

Table 8 – continued

Imports by country, customs basis, not seasonally adjusted

	November		January to November		Change
	2009	2010	2009	2010	January to November 2010/ January to November 2009
	millions of dollars				percent
United States Minor Outlying Islands	0.4	0.3	4.6	3.6	-21.1
Vanuatu	0.0	0.2	0.2	0.8	354.0
Wallis and Futuna	0.0	0.0	0.0	0.0	118.1
Total	214.6	177.0	1,929.2	1,870.8	-3.0
South America					
Argentina	63.8	212.7	649.1	1,351.0	108.1
Bolivia	7.0	16.7	73.4	125.3	70.6
Brazil	218.4	334.1	2,349.9	3,076.0	30.9
Chile	199.6	130.1	1,552.7	1,702.5	9.6
Colombia	49.7	45.8	688.6	670.7	-2.6
Ecuador	13.9	17.3	209.1	193.8	-7.3
Falkland Islands (Malvinas)	0.0	0.0	0.0	0.0	-47.8
Guyana	23.1	30.8	274.9	263.3	-4.2
Paraguay	1.0	1.1	8.6	9.0	4.7
Peru	275.0	301.9	2,573.0	3,248.8	26.3
Suriname	46.0	42.5	497.0	510.9	2.8
Uruguay	2.7	1.5	52.9	50.6	-4.3
Venezuela	2.8	3.5	897.8	754.8	-15.9
Total	903.0	1,138.0	9,827.0	11,956.7	21.7
Central America Antilles					
Anguilla	0.0	0.1	0.3	0.3	10.9
Antigua and Barbuda	0.0	0.0	0.4	0.3	-32.0
Aruba	22.9	0.0	76.3	0.1	-99.8
Bahamas	0.9	5.1	28.5	52.8	85.1
Barbados	0.5	0.8	8.0	7.8	-2.7
Belize	0.4	0.6	6.7	5.4	-19.0
Bermuda	0.1	0.2	10.9	1.3	-87.8
British Virgin Islands	0.0	0.0	0.5	0.6	4.9
Cayman Islands	0.1	0.1	0.6	0.4	-37.8
Costa Rica	29.4	30.7	326.4	399.9	22.5
Cuba	43.0	31.4	448.3	569.6	27.1
Dominica	0.0	0.0	0.4	0.1	-62.9
Dominican Republic	11.4	11.8	134.2	129.2	-3.8
El Salvador	3.1	8.9	62.3	83.4	34.0
Grenada	0.0	0.0	0.4	0.6	56.9
Guatemala	15.3	15.4	247.9	283.0	14.2
Haiti	1.4	2.1	20.2	24.2	19.7
Honduras	10.0	10.0	130.3	139.8	7.3
Jamaica	15.2	19.0	156.0	147.8	-5.2
Montserrat	0.0	0.0	0.1	0.3	366.2
Netherlands Antilles	0.0	0.0	14.6	0.3	-98.1
Nicaragua	3.1	20.1	74.0	184.7	149.7
Panama	2.7	6.1	36.0	76.0	110.9
Saint Kitts and Nevis	1.0	0.8	6.4	7.1	11.0
Saint Lucia	0.0	0.0	2.2	0.2	-91.2
Saint Vincent and the Grenadines	0.0	0.0	0.2	0.2	-27.4
Trinidad and Tobago	36.5	35.3	262.2	439.3	67.6
Turks and Caicos Islands	0.0	0.0	0.3	0.1	-58.0
Total	197.0	198.7	2,054.7	2,555.0	24.3
All countries	31,309.9	34,571.4	334,284.3	369,909.1	10.7

**Table 9-1
Imports by province of clearance, customs basis, not seasonally adjusted — November**

	Agricultural and fishing products	Energy products	Forestry products	Industrial goods	Machinery and equipment	Automotive products	Consumer goods	Special transactions trade	Total
millions of dollars									
Newfoundland and Labrador									
2009	3.2	224.4	0.0	5.0	54.3	0.2	1.0	1.2	289.3
2010	4.2	277.3	0.0	6.1	63.4	0.0	9.9	0.0	361.0
Prince Edward Island									
2009	0.3	0.0	0.0	1.7	0.1	0.0	0.0	0.0	2.1
2010	0.3	0.0	0.0	13.4	0.1	0.0	0.0	0.0	13.8
Nova Scotia									
2009	27.0	156.8	0.8	69.9	73.6	232.5	14.3	2.8	577.6
2010	34.6	165.0	1.4	155.9	83.4	282.3	10.4	2.1	735.0
New Brunswick									
2009	44.8	515.3	8.5	86.0	58.7	27.0	16.1	4.3	760.8
2010	53.7	429.9	9.5	65.4	66.0	25.5	19.0	2.1	671.1
Quebec									
2009	517.9	1,386.4	51.5	1,098.7	1,321.8	213.0	809.1	49.4	5,447.9
2010	513.9	1,072.0	46.0	1,341.1	1,521.5	198.7	853.2	46.3	5,592.6
Ontario									
2009	1,365.7	350.1	68.4	3,512.4	5,239.1	4,512.7	3,021.9	306.2	18,376.5
2010	1,434.9	602.0	75.7	4,377.6	5,886.1	4,401.8	3,377.7	467.3	20,623.2
Manitoba									
2009	67.8	21.3	5.3	204.8	387.4	97.5	121.8	7.4	913.3
2010	72.1	37.0	5.6	247.1	439.4	123.3	129.1	6.1	1,059.9
Saskatchewan									
2009	29.1	70.6	1.2	142.0	211.0	57.4	28.5	1.2	541.1
2010	30.3	56.9	3.9	156.5	288.4	68.4	22.5	0.6	627.5
Alberta									
2009	144.4	136.2	7.8	281.5	622.1	67.4	102.4	10.2	1,371.9
2010	159.0	143.2	7.6	459.3	670.8	94.7	110.8	11.8	1,657.2
British Columbia									
2009	358.4	154.1	45.4	492.1	986.2	393.4	573.5	17.6	3,020.7
2010	383.5	213.9	49.2	593.6	1,069.1	282.7	622.0	11.8	3,225.9
Yukon, Northwest Territories and Nunavut									
2009	0.7	0.3	0.0	0.1	7.7	0.0	0.0	0.0	8.8
2010	0.8	0.4	0.0	0.1	2.8	0.0	0.2	0.0	4.3
Total									
2009	2,559.3	3,015.5	189.0	5,894.2	8,962.0	5,601.1	4,688.6	400.2	31,309.9
2010	2,687.4	2,997.6	198.8	7,416.1	10,091.0	5,477.6	5,154.7	548.1	34,571.4

Table 9-2
Imports by province of clearance, customs basis, not seasonally adjusted — Year to date, January to November

	Agricultural and fishing products	Energy products	Forestry products	Industrial goods	Machinery and equipment	Automotive products	Consumer goods	Special transactions trade	Total
millions of dollars									
Newfoundland and Labrador									
2009	34.7	2,129.7	0.5	150.7	175.9	1.2	4.5	5.7	2,502.9
2010	40.1	2,531.9	0.1	48.7	467.4	0.9	28.3	3.1	3,120.5
Prince Edward Island									
2009	3.3	0.0	0.0	19.5	13.0	0.1	1.7	0.2	37.9
2010	4.1	0.0	0.1	21.3	1.7	0.1	0.2	0.1	27.6
Nova Scotia									
2009	275.5	1,394.5	12.6	777.3	958.0	2,447.3	158.7	28.0	6,052.1
2010	371.4	1,530.1	16.1	1,167.4	975.1	3,080.7	157.4	27.3	7,325.5
New Brunswick									
2009	447.9	5,586.4	93.3	848.1	933.1	273.4	200.1	23.9	8,406.0
2010	530.9	6,620.8	103.5	952.3	869.3	371.9	252.3	21.0	9,722.1
Quebec									
2009	4,297.2	11,566.7	621.3	12,255.2	16,662.7	1,927.6	10,255.1	494.3	58,080.0
2010	4,245.3	14,752.8	643.0	13,696.5	16,001.7	1,994.2	9,761.9	499.6	61,595.0
Ontario									
2009	14,888.9	4,977.9	809.9	38,849.8	55,346.5	39,066.1	33,031.2	3,213.7	190,184.0
2010	14,830.0	5,012.5	899.4	46,042.2	59,845.6	52,257.2	33,764.8	3,566.8	216,218.5
Manitoba									
2009	873.8	265.3	77.3	2,878.7	5,082.5	1,260.9	1,518.8	86.2	12,043.3
2010	814.7	504.8	83.5	3,121.2	5,307.4	1,294.5	1,441.5	79.7	12,647.3
Saskatchewan									
2009	317.4	530.6	23.1	1,900.8	2,952.0	699.9	237.5	25.7	6,687.0
2010	306.1	589.5	24.0	1,983.7	3,373.1	867.9	239.7	18.6	7,402.5
Alberta									
2009	1,693.8	2,267.5	91.1	3,851.8	6,531.2	694.0	1,088.2	124.7	16,342.1
2010	1,711.6	2,266.7	107.0	4,504.1	6,645.1	1,001.3	1,174.0	130.3	17,540.0
British Columbia									
2009	4,071.7	2,204.7	479.8	6,204.9	10,711.5	3,540.2	6,457.5	151.6	33,821.8
2010	4,092.7	2,908.2	576.9	6,755.0	10,617.9	2,661.4	6,372.2	149.6	34,133.9
Yukon, Northwest Territories and Nunavut									
2009	50.2	34.3	0.0	2.0	36.9	0.6	0.3	3.0	127.3
2010	58.3	59.2	0.0	1.8	55.2	0.6	0.5	0.5	176.2
Total									
2009	26,954.3	30,957.6	2,208.9	67,738.6	99,403.3	49,911.2	52,953.6	4,156.9	334,284.3
2010	27,005.3	36,776.5	2,453.5	78,294.1	104,159.5	63,530.7	53,192.8	4,496.7	369,909.1

Technical notes

The Canadian international merchandise trade statistical program

Introduction

The objective of this text is to provide a general overview of the Canadian International Merchandise Trade Statistical Program, with special reference to concepts and definitions. The text is intended for the general user and simplicity is emphasized. More technical details can be obtained from the International Trade Division, Statistics Canada upon request.

Conceptual framework

1. Objectives and coverage: The primary objective of the Canadian International Merchandise Trade Statistical Program is to measure the change in the stock of material resources of Canada resulting from the movement of merchandise into or out of the country. Information on imports and exports are inputs into the System of National Accounts, particularly in the balance of payments and gross domestic product, and are used in the formulation of trade and budgetary policies. Governments, importers, exporters, manufacturers and shipping companies use international merchandise trade statistics to:

- monitor import penetration and export performance,
- monitor commodity price and volume changes,
- examine transport implications.

2. Trade statistics (customs basis / balance of payments basis): Merchandise trade statistics are reported and presented on two different bases: customs basis and balance of payment basis.

When goods are imported into or exported from Canada, declarations must be filed with customs, giving such information as description and value of the goods, origin and port of clearance of commodities and mode of transport. Most of this information is required for the purposes of customs administration. Statistics developed from administrative records of customs are commonly referred to as customs-based trade statistics.

Customs-based trade statistics are more accurate at measuring imports than they are at measuring exports. This is the case because customs are typically more vigilant with respect to goods entering the country than they are with goods leaving the country.

Customs-based export statistics may understate or incorrectly portray the destination of exports. Export statistics are understated when the proper documentation is not filed with Customs. Exports are incorrectly portrayed when the country of final destination is inaccurately reported on the customs documentation. This occurs most frequently when goods are routed through an intermediary country before continuing on to their final destination.

Statistics Canada does not have a measure of undercoverage but periodically conducts reconciliation exercises with its major trading partners, excluding the United States.

On January 1, 1990, Canada entered into a memorandum of understanding with the United States concerning the exchange of import data. As a consequence, each administration is using the other's import data to replace its own export data. Canada's international merchandise trade statistics are, therefore, no longer derived exclusively from the administrative records of the Canada Border Services Agency, but from United States Customs records as well.

Customs-based information is adjusted to conform with the National Accounts concepts and definitions. The adjustments to derive balance of payments-based trade data include adjustments related to trade definition, valuation and timing. The principal difference between the two trade concepts is that customs-based merchandise trade statistics cover the physical movement of goods as they are reflected in customs documents while balance of payments-adjusted data are intended to cover all economic transactions that involve merchandise trade between residents and non-residents. The present document describes the concepts and processes pertaining to the customs-based trade statistics only. (For further information on balance of payments-adjusted data, see the publication *Canada's Balance of International Payments*, Statistics Canada (Catalogue no. 67-001-X).

3. System of trade: Canadian trade statistics are compiled according to the general system of trade, as defined by the United Nations Statistical Office. Under this system, imports include all goods that have crossed Canada's territorial boundary, whether for immediate consumption in Canada or for storage in bonded customs warehouses. Domestic exports include goods grown, extracted or manufactured in Canada, including goods of foreign origin that have been materially transformed in Canada. Re-exports are exports of goods of foreign origin that have not been materially transformed in Canada, including foreign goods withdrawn for export from bonded customs warehouses. Total exports are the sum of domestic exports and re-exports. Thus the general trade system, in principal, presents all goods entering the country (imports) and all goods leaving the country (exports). It differs from the special system of trade in the treatment of imported goods into bonded customs warehouses. Under the 'special' system, these goods are counted only if and when they are withdrawn from customs warehouses for home consumption. They are not counted in export statistics unless they have first cleared customs.

Conceptually, under the general system, the statistical frontier coincides with the geographical boundary, while under the 'special' system, it coincides with the customs boundary.

4. Valuation: For customs purposes, imports are recorded at values established according to the provisions of the Customs Act, which, since January 1, 1985, reflects valuation methods based on the General Agreement on Tariffs and Trade (GATT) Valuation Code System. In general, the value for duty of imported goods must be equivalent to the transaction value or the price actually paid.

To determine the transaction value of imported goods, all transportation and associated costs arising in respect of the goods being appraised prior to and at the place of direct shipment to Canada, are to be added to the price of the goods. Therefore, Canadian imports are valued Free on Board (FOB), place of direct shipment to Canada. It excludes freight and insurance costs in bringing the goods to Canada from the point of direct shipment.

Countries other than the United States, exports are, in principal, valued or recorded at the values declared on export documents, which usually reflect the transaction value, i.e., actual selling price or, in the case of a non-arm's length transaction, the transfer price used for company accounting purposes. Canadian exports to overseas countries are valued at F.O.B. port of exit, including domestic freight charges to that point but net of discounts and allowances. As of January, 1990, Canadian exports to the U.S. are valued F.O.B. point of exit from Canada. Prior to 1990, they were valued F.O.B. place of lading net of freight charges, discounts and allowances.

5. Statistical period: The reference period is the calendar month and the calendar year. The closing of the statistical month for imports and Canadian exports to the United States is defined as the last calendar day of the month, based as closely as practicable on the date of clearance from customs.

The closing of the statistical month for exports, to countries other than the United States, is also defined as the last calendar day of the month. Those export documents that are received too late for incorporation in the current month are assigned to the month the transaction took place. If a monthly summary report from a high volume exporter is not received on time, the data are imputed for the current month and revised with the trade value in the following statistical month.

6. Trading partner attribution (country of origin/destination): Exports are attributed to the country, which is the last known destination of the goods at the time of export. Exports to the United States are attributed to the state of destination.

Imports are attributed to their country of origin, that is, the country in which the goods were grown, extracted or manufactured in accordance to the rules of origin administered by the Canada Border Services Agency. Imports

from the United States are attributed to the state of origin. Prior to 1988, most imports were attributed to the country of export/consignment, with the exception of imports from Central and South America.

7. Principal trading areas: The 'principal trading areas' are country groupings defined as follows:

United States: includes trade with Puerto Rico and the U.S. Virgin Islands

Japan

European Union (EU): Austria, Belgium, Bulgaria, Cyprus, Czech Republic, Denmark, Estonia, Finland, France, Germany, Greece, Hungary, Ireland, Italy, Latvia, Lithuania, Luxembourg, Malta, Netherlands, Poland, Portugal, Romania, Slovakia, Slovenia, Spain, Sweden and United Kingdom

Other Organisation for Economic Co-operation and Development (OECD): Australia, Canada, Iceland, Mexico, New Zealand, Norway, South Korea, Switzerland, and Turkey. (The EU countries, United States, and Japan are also members of OECD)

Other countries: all countries and territories other than the United States, Japan, EU and other OECD

8. Legal framework: Import and export statistics with countries other than the United States are derived from information contained in administrative records collected by the Canada Border Services Agency under the Customs Act. Copies of these documents (or information therefrom) are sent to Statistics Canada in accordance with Section 25 of the Statistics Act. It follows that the disclosure of trade statistics is governed by both the Customs Act and the Statistics Act and is subject to the provisions of Section 17(2)(a) of the latter. Disclosure of export statistics to the United States is now governed by a memorandum of understanding that provides for the exchange of detailed import statistics between Canada and the United States.

Contact information

Questions concerning details of methods not covered by these notes should be addressed to the Marketing and Client Services Section, International Trade Division, Statistics Canada, 170 Tunney's Pasture Driveway, Ottawa, Ontario, K1A 0T6.

Telephone: 1-800-294-5583 or 613-951-9647

Facsimile: 1-800-664-0055 613-951-0117

Internet: trade@statcan.gc.ca