

Catalogue no. 65-001-X

# Canadian International Merchandise Trade

October 2010



Statistics  
Canada

Statistique  
Canada

Canada

## How to obtain more information

For information about this product or the wide range of services and data available from Statistics Canada, visit our website at [www.statcan.gc.ca](http://www.statcan.gc.ca), e-mail us at [infostats@statcan.gc.ca](mailto:infostats@statcan.gc.ca), or telephone us, Monday to Friday from 8:30 a.m. to 4:30 p.m., at the following numbers:

### Statistics Canada's National Contact Centre

Toll-free telephone (Canada and the United States):

Inquiries line	1-800-263-1136
National telecommunications device for the hearing impaired	1-800-363-7629
Fax line	1-877-287-4369

Local or international calls:

Inquiries line	1-613-951-8116
Fax line	1-613-951-0581

### Depository Services Program

Inquiries line	1-800-635-7943
Fax line	1-800-565-7757

## To access this product

This product, Catalogue no. 65-001-X, is available free in electronic format. To obtain a single issue, visit our website at [www.statcan.gc.ca](http://www.statcan.gc.ca) and browse by "Key resource" > "Publications."

## Standards of service to the public

Statistics Canada is committed to serving its clients in a prompt, reliable and courteous manner. To this end, Statistics Canada has developed *standards of service* that its employees observe. To obtain a copy of these service standards, please contact Statistics Canada toll-free at 1-800-263-1136. The service standards are also published on [www.statcan.gc.ca](http://www.statcan.gc.ca) under "About us" > "The agency" > "Providing services to Canadians."

Statistics Canada  
International Trade Division

# Canadian International Merchandise Trade

October 2010

Published by authority of the Minister responsible for Statistics Canada

© Minister of Industry, 2010

All rights reserved. The content of this electronic publication may be reproduced, in whole or in part, and by any means, without further permission from Statistics Canada, subject to the following conditions: that it be done solely for the purposes of private study, research, criticism, review or newspaper summary, and/or for non-commercial purposes; and that Statistics Canada be fully acknowledged as follows: Source (or "Adapted from", if appropriate): Statistics Canada, year of publication, name of product, catalogue number, volume and issue numbers, reference period and page(s). Otherwise, no part of this publication may be reproduced, stored in a retrieval system or transmitted in any form, by any means—electronic, mechanical or photocopy—or for any purposes without prior written permission of Licensing Services, Client Services Division, Statistics Canada, Ottawa, Ontario, Canada K1A 0T6.

December 2010

Catalogue no. 65-001-X, vol. 64, no. 10

ISSN 1480-8781

Frequency: Monthly

Ottawa

Cette publication est également disponible en français.

---

#### **Note of appreciation**

*Canada owes the success of its statistical system to a long-standing partnership between Statistics Canada, the citizens of Canada, its businesses, governments and other institutions. Accurate and timely statistical information could not be produced without their continued cooperation and goodwill.*

# User information

---

## Symbols

The following standard symbols are used in Statistics Canada publications:

- . not available for any reference period
- .. not available for a specific reference period
- ... not applicable
- 0 true zero or a value rounded to zero
- 0<sup>s</sup> value rounded to 0 (zero) where there is a meaningful distinction between true zero and the value that was rounded
- p preliminary
- r revised
- x suppressed to meet the confidentiality requirements of the *Statistics Act*
- E use with caution
- F too unreliable to be published

## Note to users

All totals are calculated from full figures and rounded independently; consequently, totals may not equal the sum of their components.

The data is based on commodity groups (sector, subsector and major group).

# Table of contents

---

<b>Highlights</b>	<b>5</b>
<b>Analysis</b>	<b>7</b>
<b>Related products</b>	<b>11</b>
<b>Statistical tables</b>	
1 Merchandise trade of Canada, balance of payments basis, seasonally adjusted	15
1-1 Current dollars	15
1-2 Constant dollars, 2002	16
1-3 Price indices (Laspeyres)	17
2 Exports by commodity groupings, balance of payments basis, seasonally adjusted	18
2-1 Current dollars	18
2-2 Constant dollars, 2002	20
3 Domestic exports to selected countries, customs basis, not seasonally adjusted	22
3-1 October	22
3-2 Year to date, January to October	23
4 Domestic exports by country, customs basis, not seasonally adjusted	24
5 Exports by province of origin, customs basis, not seasonally adjusted	28
5-1 October	28
5-2 Year to date, January to October	29
6 Imports by commodity groupings, balance of payments basis, seasonally adjusted	30
6-1 Current dollars	30
6-2 Constant dollars, 2002	32
7 Imports from selected countries, customs basis, not seasonally adjusted	34
7-1 October	34
7-2 Year to date, January to October	35
8 Imports by country, customs basis, not seasonally adjusted	36

**Table of contents – continued**

9	Imports by province of clearance, customs basis, not seasonally adjusted	40
9-1	October	40
9-2	Year to date, January to October	41

**Data quality, concepts and methodology**

	Technical notes	42
--	-----------------	----

## Highlights

---

Canada's merchandise exports rose 3.1% to \$33.8 billion in October, on the strength of industrial goods and materials, as exports of precious metals and copper ores reached record highs. Excluding industrial goods and materials, exports declined 0.2%.

Exports of agricultural and fishing products and automotive products also grew in October. In contrast, declines were recorded in exports of machinery and equipment and energy products.

Exports volumes increased 3.0% and prices edged up 0.1% during the month.

Imports increased 1.2% to \$35.5 billion, as import volumes grew 1.7% while prices decreased 0.5%. Import volumes have been on an upward trend since March 2009.

Energy products led the growth in overall imports followed by automotive products and other consumer goods. These gains were moderated by a decline in imports of industrial goods and materials.

As a result, Canada's trade deficit with the world narrowed to \$1.7 billion in October from \$2.3 billion in September.

Exports to the United States increased 0.4% while imports grew 1.7%. Consequently, Canada's trade surplus with the United States declined from \$1.4 billion in September to \$1.1 billion in October, the smallest trade surplus with the United States since September 1992.

Exports to countries other than the United States rose 10.1% to \$10.1 billion, their highest level since November 2008 while imports increased slightly 0.3%. Thus, Canada's trade deficit with countries other than the United States declined from \$3.7 billion in September to \$2.8 billion in October.

### Note to readers

Merchandise trade is one component of Canada's international balance of payments, which also includes trade in services, investment income, current transfers as well as capital and financial flows.

International merchandise trade data by country are available on both a balance of payments and a customs basis for the United States, Japan and the United Kingdom. Trade data for all other individual countries are available on a customs basis only. Balance of payments data are derived from customs data by making adjustments for characteristics such as valuation, coverage, timing and residency. These adjustments are made to conform to the concepts and definitions of the Canadian System of National Accounts.

Data in this release are on a balance of payments basis, seasonally adjusted in current dollars. Constant dollars are calculated using the Laspeyres volume formula.

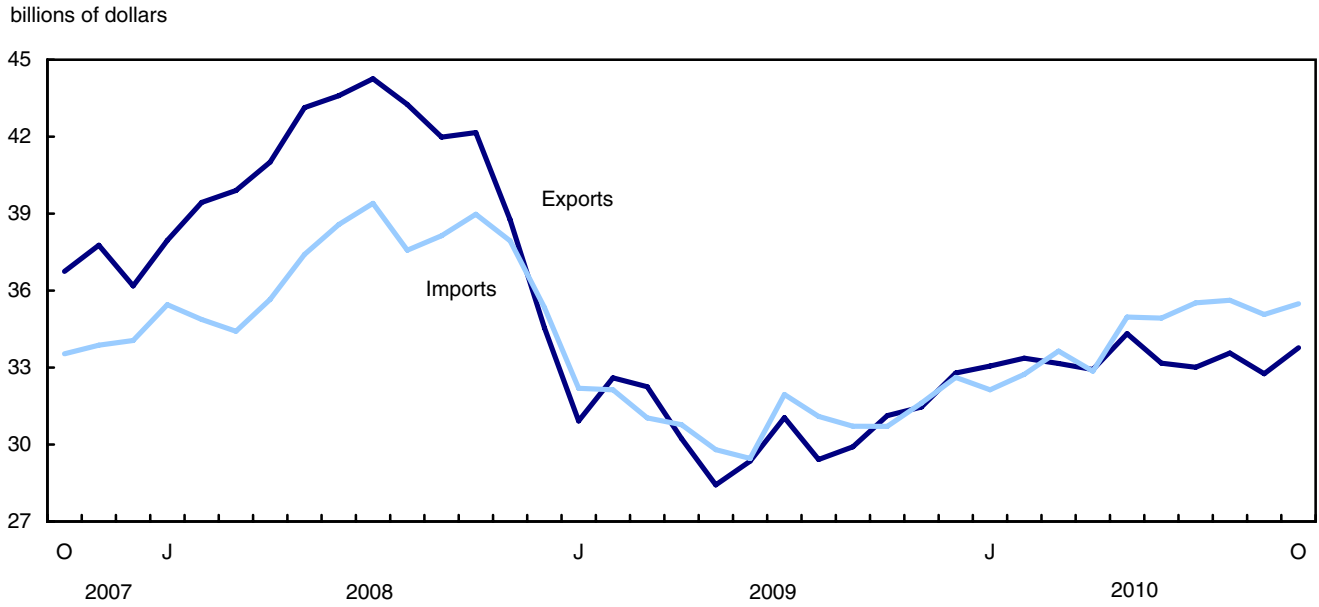
### Revisions

In general, merchandise trade data are revised on an ongoing basis for each month of the current year. Current year revisions are reflected in both the customs and balance of payments based data. Revisions to customs based data for the previous year are released on a quarterly basis. Revisions to balance of payments based data for the three previous years are released annually in June.

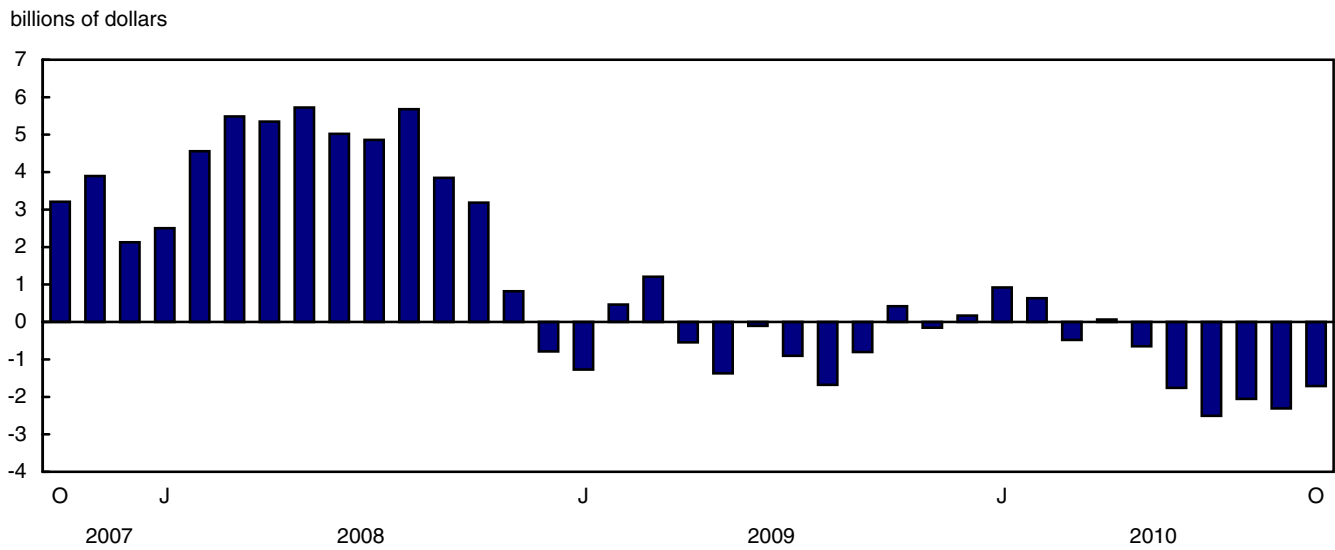
Factors influencing revisions include late receipt of import and export documentation, incorrect information on customs forms, replacement of estimates with actual figures, changes in classification of merchandise based on more current information, and changes to seasonal adjustment factors.

Revised data are available in the appropriate CANSIM tables.

**Chart 1**  
Exports and imports, seasonally adjusted, on a balance of payments basis



**Chart 2**  
Trade balance, seasonally adjusted, on a balance of payments basis





# Analysis

---

## Metals and metals ores lead the growth in exports

Exports of industrial goods and materials rose 13.7% to \$8.9 billion, their highest level since November 2008. Volumes accounted for almost two-thirds of the gain. Metals and alloys increased 17.8% as exports of precious metals reached a record high of \$1.6 billion in October. Metal ores grew 48.9% led by record exports of copper ores. Other ores, namely precious metals in ores, and nickel ores also contributed to the growth in the sector.

Exports of agricultural and fishing products increased 7.5% to \$3.2 billion, their highest level since June 2009. The growth mainly resulted from a 5.8% rise in volumes. Exports of other crude vegetables namely soya beans posted solid gains during the month.

After four months of decline, exports of automotive products increased 3.5% to \$4.9 billion, as a result of higher volumes. Exports of passenger autos rose 2.0%, following a decrease of 11.0% in the previous month. Trucks and other motor vehicles increased, mainly reflecting higher exports of snowmobiles.

In contrast, exports of machinery and equipment fell 2.5% to \$6.6 billion, as volumes decreased. The decline was a result of a 24.2% decrease in exports of aircraft, engines and parts.

Energy products exports decreased 2.6% to \$6.4 billion, as prices fell 8.8% while volumes grew. Lower exports of natural gas were the main factor behind the decline, reflecting a drop in prices. Exports of crude petroleum rose 2.8% and moderated the decrease in the sector.

## Higher volumes of energy products boost imports

Imports of energy products rose 8.3% to \$3.4 billion, as volumes increased 8.5%. Imports of petroleum and coal products accounted for the increase in the sector reflecting higher imports of motor gasoline. Imports of crude petroleum, down 4.7%, declined for a second consecutive month.

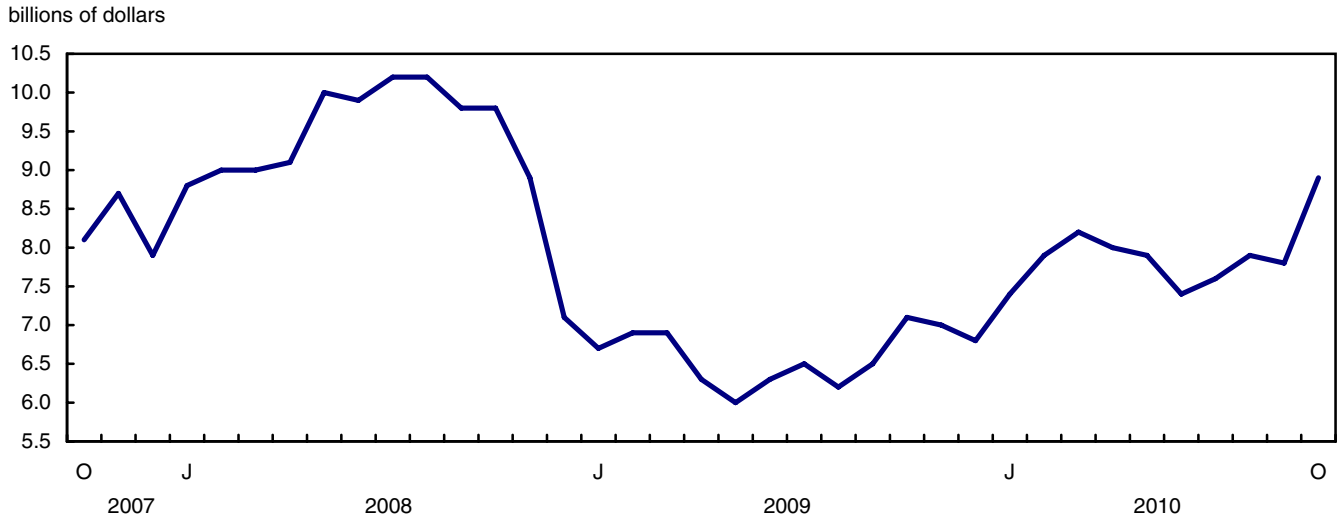
Imports of automotive products grew 1.5% to \$5.6 billion, a result of higher volumes. After four months of decline, imports of motor vehicle parts rose 2.9% and accounted for over three quarters of the gain in the sector. Imports of trucks and other motor vehicles also increased, reflecting the demand for full size pick ups.

Other consumer goods imports increased 1.2% to \$5.0 billion, as volumes grew 2.7%. Imports of miscellaneous consumer goods which includes diverse items such as photographic goods and house furnishings led the gain. Imports of apparel and footwear, up for an eighth consecutive month, also contributed to the gain in October.

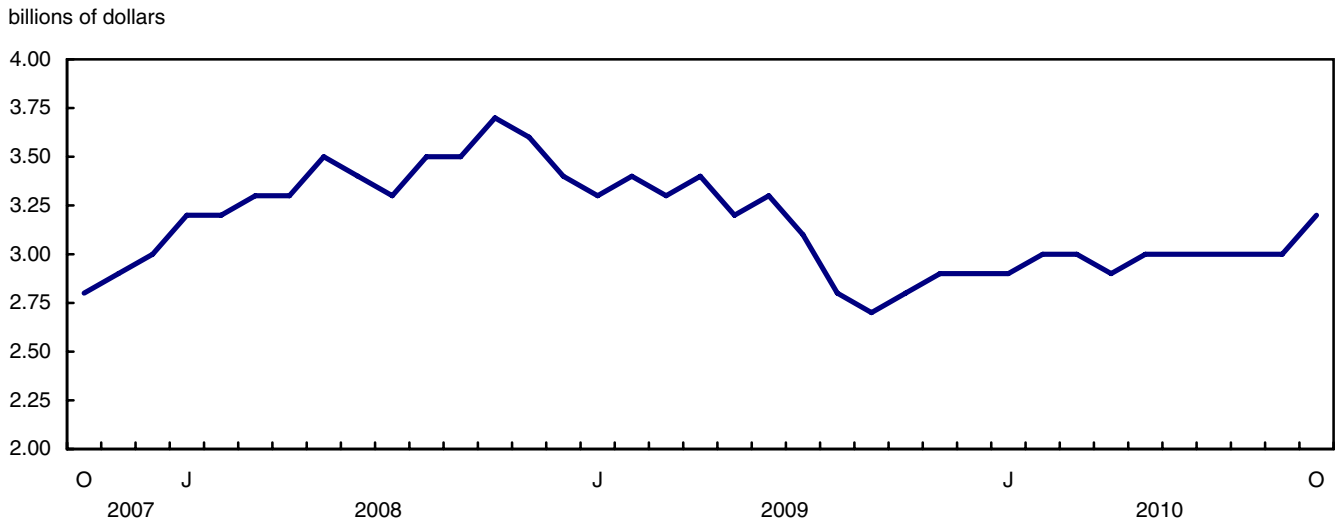
Machinery and equipment imports remained relatively unchanged (+ 0.1%) at \$10.1 billion, although volumes rose 0.5%. Other transportation equipment, namely ships and boats, increased during the month as new tariff relief measures came into effect in October.

Imports of industrial goods and material declined 2.6% to \$7.4 billion, mainly a result of lower volumes. The decrease was led by other iron and steel products specifically casing, tubing and drill pipe used in drilling for oil and gas. Other chemicals and related products and organic chemicals including medicinal ingredients also declined.

**Chart 1**  
**Exports of industrial goods and materials, seasonally adjusted, on a balance of payments basis**

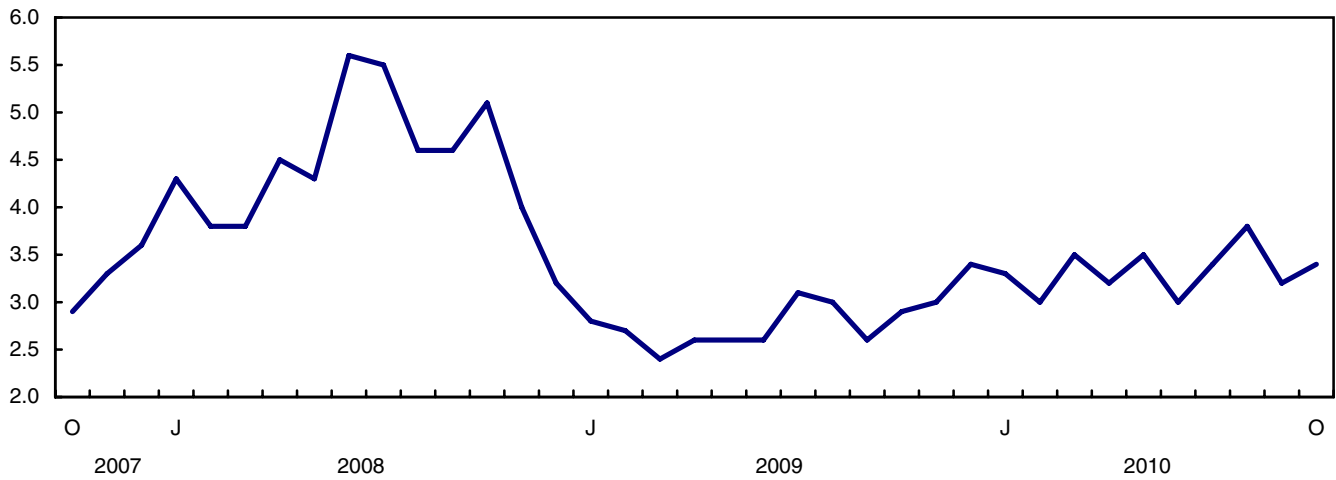


**Chart 2**  
**Exports of agricultural and fishing products, seasonally adjusted, on a balance of payments basis**



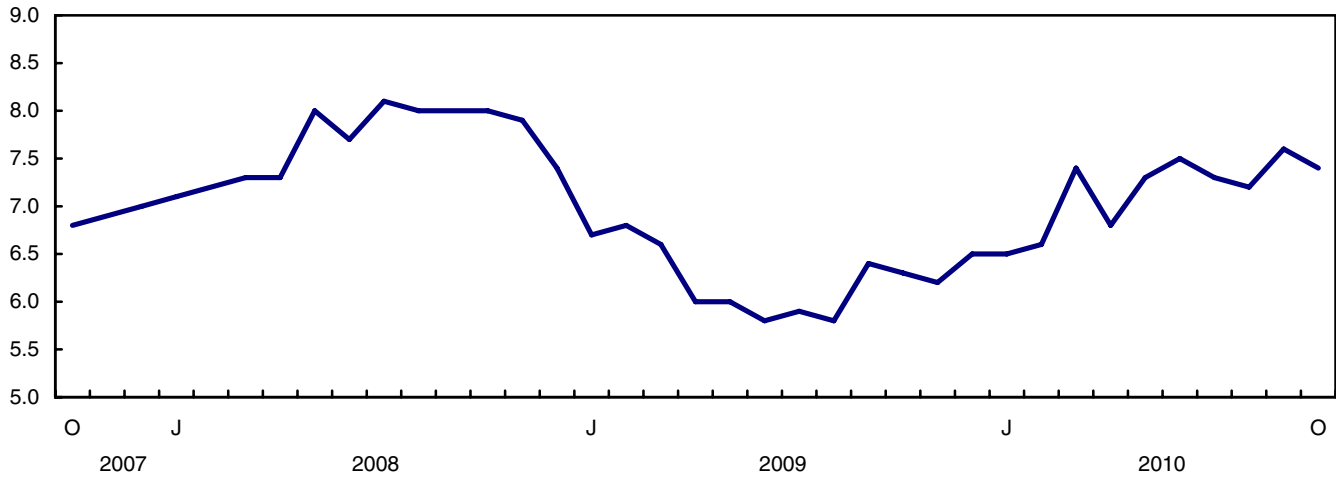
**Chart 3**  
Imports of energy products, seasonally adjusted, on a balance of payments basis

billions of dollars



**Chart 4**  
Imports of industrial goods and materials, seasonally adjusted, on a balance of payments basis

billions of dollars



**Text table 1**  
**Merchandise trade by principal trading area, balance of payments basis, seasonally adjusted**

	September 2010	October 2010	Change	Year to date			October 2010/ October 2009		
				2009		Change			
				2009	2010				
	millions of dollars		percent	millions of dollars		percent			
<b>Export to</b>									
United States	23,550	23,638	89	0.4	223,230	245,390	22,160	9.9	4.3
Japan	770	908	138	17.9	7,488	7,831	343	4.6	9.1
European Union <sup>1</sup>	3,094	3,558	463	15.0	26,590	29,330	2,739	10.3	19.4
Other Organisation for Economic Co-operation and Development <sup>2</sup>	1,661	1,687	26	1.6	13,921	15,273	1,352	9.7	6.8
Other countries	3,683	3,981	299	8.1	34,051	35,282	1,231	3.6	30.0
<b>Total</b>	<b>32,758</b>	<b>33,773</b>	<b>1,015</b>	<b>3.1</b>	<b>305,282</b>	<b>333,106</b>	<b>27,825</b>	<b>9.1</b>	<b>8.5</b>
<b>Imports from</b>									
United States	22,123	22,509	387	1.7	196,186	217,372	21,186	10.8	15.8
Japan	869	846	-23	-2.6	7,705	8,286	581	7.5	14.8
European Union <sup>1</sup>	3,278	3,360	82	2.5	31,850	32,940	1,090	3.4	-0.4
Other Organisation for Economic Co-operation and Development <sup>2</sup>	2,527	2,361	-166	-6.6	21,227	23,763	2,536	11.9	14.0
Other countries	6,269	6,409	140	2.2	52,898	60,598	7,700	14.6	26.1
<b>Total</b>	<b>35,066</b>	<b>35,485</b>	<b>419</b>	<b>1.2</b>	<b>309,866</b>	<b>342,960</b>	<b>33,094</b>	<b>10.7</b>	<b>15.6</b>
<b>Balance</b>									
United States	1,427	1,129	-298	...	27,044	28,017	973	...	...
Japan	-99	62	161	...	-217	-454	-237	...	...
European Union <sup>1</sup>	-184	198	382	...	-5,259	-3,610	1,649	...	...
Other Organisation for Economic Co-operation and Development <sup>2</sup>	-866	-673	192	...	-7,306	-8,490	-1,184	...	...
Other countries	-2,587	-2,428	159	...	-18,847	-25,316	-6,469	...	...
<b>Total</b>	<b>-2,308</b>	<b>-1,712</b>	<b>596</b>	<b>...</b>	<b>-4,584</b>	<b>-9,853</b>	<b>-5,269</b>	<b>...</b>	<b>...</b>

1. European Union includes: Austria, Belgium, Bulgaria, Cyprus, Czech Republic, Denmark, Estonia, Finland, France, Germany, Greece, Hungary, Ireland, Italy, Latvia, Lithuania, Luxembourg, Malta, Netherlands, Poland, Portugal, Romania, Slovakia, Slovenia, Spain, Sweden and United Kingdom.
2. Other Organisation for Economic Co-operation and Development includes: Australia, Canada, Iceland, Mexico, New Zealand, Norway, South Korea, Switzerland and Turkey.

**Text table 2**  
**Reconciliation of customs and balance of payments trade data, not seasonally adjusted**

	2010						2009
	October	September	August	July	June	May	Annual
	millions of dollars						
<b>Exports</b>							
<b>Customs basis</b>	<b>34,141</b>	<b>33,116</b>	<b>33,275</b>	<b>31,035</b>	<b>34,357</b>	<b>33,802</b>	<b>360,043</b>
<b>Balance of payments adjustments</b>	<b>528</b>	<b>128</b>	<b>323</b>	<b>803</b>	<b>-15</b>	<b>727</b>	<b>9,486</b>
Valuation and residency							
Inland freight	575	574	541	545	558	561	6,214
Other valuation and residency	-829	-955	-830	-753	-1,042	-1,400	-7,783
Timing	66	-2	0	-34	6	41	-163
Coverage	716	511	612	1,045	463	1,525	11,218
<b>Balance of payments basis</b>	<b>34,669</b>	<b>33,244</b>	<b>33,598</b>	<b>31,838</b>	<b>34,342</b>	<b>34,529</b>	<b>369,529</b>
<b>Imports</b>							
<b>Customs basis</b>	<b>35,885</b>	<b>35,814</b>	<b>35,023</b>	<b>33,170</b>	<b>35,450</b>	<b>34,022</b>	<b>365,136</b>
<b>Balance of payments adjustments</b>	<b>899</b>	<b>570</b>	<b>1,144</b>	<b>860</b>	<b>893</b>	<b>670</b>	<b>8,961</b>
Valuation and residency							
Inland freight	759	757	755	733	772	753	7,728
Other valuation and residency	18	-18	-21	-17	39	32	226
Timing	0	0	0	0	0	0	0
Coverage	122	-169	410	144	82	-115	1,007
<b>Balance of payments basis</b>	<b>36,784</b>	<b>36,384</b>	<b>36,167</b>	<b>34,030</b>	<b>36,343</b>	<b>34,692</b>	<b>374,097</b>

## Related products

---

### Selected publications from Statistics Canada

---

65-208-X	International Merchandise Trade Annual Review
65-506-X	A Profile of Canadian Exporters
65F0013X	Canadian International Merchandise Trade Database
65F0019X	A Database for Analysis of International Markets
65F0020X	Data Integration - International Trade Data and Manufacturing Shipments Data

---

### Selected CANSIM tables from Statistics Canada

---

228-0001	Merchandise imports and exports, by major groups and principal trading areas for all countries, monthly
228-0002	Merchandise imports and exports, by major groups and principal trading areas for all countries, quarterly
228-0003	Merchandise imports and exports, by major groups and principal trading areas for all countries, annual
228-0033	Imports, customs-based, by province of clearance, monthly
228-0034	Domestic exports, customs-based, by province of origin, monthly
228-0041	Merchandise imports and exports by sector and sub-sector, customs and balance of payments basis, for all countries, monthly
228-0042	Merchandise imports and exports by sector and sub-sector, customs and balance of payments basis, for all countries, quarterly
228-0043	Merchandise imports and exports by sector and sub-sector, customs and balance of payments basis, for all countries, annual
228-0047	Merchandise imports and exports balance of payments and customs-based price and volume indexes for all countries, monthly
228-0048	Merchandise imports and exports balance of payments and customs-based price and volume indexes for all countries, quarterly
228-0049	Merchandise imports and exports balance of payments and customs-based price and volume indexes for all countries, annual

228-0050	Merchandise imports and exports customs-based price indexes, Canada and United States trade, and Standard International Trade Classification (SITC revision 3) price indexes for all countries and United States, monthly
228-0051	Merchandise imports and exports customs-based price indexes, Canada and United States trade, and Standard International Trade Classification (SITC revision 3) price indexes for all countries and United States, quarterly
228-0052	Merchandise imports and exports customs-based price indexes, Canada and United States trade, and Standard International Trade Classification (SITC revision 3) price indexes for all countries and United States, annual
228-0053	Merchandise import and export price and volume indexes by sector and sub-sector, customs and balance of payments basis, for all countries, monthly
228-0054	Merchandise import and export price and volume indexes by sector and sub-sector, customs and balance of payments basis, for all countries, quarterly
228-0055	Merchandise import and export price and volume indexes by sector and sub-sector, customs and balance of payments basis, for all countries, annual
228-0056	Merchandise imports and exports by sector, balance of payments basis, for all countries, seasonally adjusted, Fisher formula, monthly
228-0057	Merchandise imports and exports by sector, balance of payments basis, for all countries, seasonally adjusted, Fisher formula, quarterly

---

### **Selected surveys from Statistics Canada**

---

2201	Canadian International Merchandise Trade (Customs Basis)
2202	Canadian International Merchandise Trade (Balance of Payments Basis)
2203	International Trade Price Indexes

---

### **Selected summary tables from Statistics Canada**

---

- *Canada: Economic and financial data*
- *Imports, exports and trade balance of goods on a balance-of-payments basis, by country or country grouping*
- *Exports of goods on a balance-of-payments basis*
- *Imports of goods on a balance-of-payments basis*

- *Merchandise trade of Canada (monthly)*
- *Economic indicators, by province and territory (monthly and quarterly)*
- *Latest statistics (monthly)*

# Statistical tables

---

---



**Table 1-1**  
**Merchandise trade of Canada, balance of payments basis, seasonally adjusted — Current dollars**

	Exports	Imports	Trade balance	Period to period change		
				Exports	Imports	Balance
				millions of dollars	percent	millions of dollars
2006	453,952	404,345	49,606	0.0	0.0	0
2007	463,120	415,683	47,437	2.0	2.8	-2,169
2008	489,995	443,752	46,244	5.8	6.8	-1,194
2009	369,529	374,097	-4,568	-24.6	-15.7	-50,812
<b>2008</b>						
First quarter	117,294	104,743	12,551	6.0	3.2	3,321
Second quarter	127,735	111,640	16,095	8.9	6.6	3,544
Third quarter	129,499	115,116	14,383	1.4	3.1	-1,712
Fourth quarter	115,468	112,252	3,215	-10.8	-2.5	-11,168
<b>2009</b>						
First quarter	95,769	95,366	403	-17.1	-15.0	-2,812
Second quarter	88,008	90,028	-2,019	-8.1	-5.6	-2,422
Third quarter	90,377	93,765	-3,388	2.7	4.2	-1,369
Fourth quarter	95,375	94,939	436	5.5	1.3	3,824
<b>2010</b>						
First quarter	99,584	98,512	1,072	4.4	3.8	636
Second quarter	100,412	102,755	-2,342	0.8	4.3	-3,414
Third quarter	99,337	106,208	-6,871	-1.1	3.4	-4,528
<b>2009</b>						
January	30,921	32,192	-1,272	-10.5	-8.9	-483
February	32,599	32,133	466	5.4	-0.2	1,737
March	32,249	31,040	1,209	-1.1	-3.4	743
April	30,231	30,774	-543	-6.3	-0.9	-1,752
May	28,424	29,797	-1,373	-6.0	-3.2	-830
June	29,353	29,456	-104	3.3	-1.1	1,269
July	31,048	31,952	-904	5.8	8.5	-800
August	29,419	31,099	-1,680	-5.2	-2.7	-777
September	29,910	30,714	-804	1.7	-1.2	876
October	31,128	30,708	420	4.1	0.0	1,224
November	31,462	31,616	-154	1.1	3.0	-573
December	32,785	32,615	170	4.2	3.2	324
<b>2010</b>						
January	33,057	32,136	921	0.8	-1.5	751
February	33,365	32,731	634	0.9	1.9	-287
March	33,162	33,644	-482	-0.6	2.8	-1,116
April	32,924	32,858	65	-0.7	-2.3	548
May	34,321	34,969	-649	4.2	6.4	-714
June	33,168	34,927	-1,759	-3.4	-0.1	-1,110
July	33,013	35,520	-2,507	-0.5	1.7	-748
August	33,566	35,622	-2,056	1.7	0.3	451
September	32,758	35,066	-2,308	-2.4	-1.6	-251
October	33,773	35,485	-1,712	3.1	1.2	596

**Note(s):** Because of rounding, monthly data may not add up to quarterly data and quarterly data may not add up to annual data.

**Table 1-2**  
**Merchandise trade of Canada, balance of payments basis, seasonally adjusted — Constant dollars, 2002**

	Exports	Imports	Trade balance	Period to period change	
				Exports	Imports
	millions of dollars			percent	
2006	442,729	457,196	-14,466	0.0	0.0
2007	449,015	484,005	-34,990	1.4	5.9
2008	415,119	485,902	-70,783	-7.5	0.4
2009	345,911	405,261	-59,350	-16.7	-16.6
<b>2008</b>					
First quarter	107,071	123,094	-16,023	-2.6	-1.2
Second quarter	106,872	125,669	-18,797	-0.2	2.1
Third quarter	104,062	123,918	-19,856	-2.6	-1.4
Fourth quarter	97,114	113,221	-16,107	-6.7	-8.6
<b>2009</b>					
First quarter	87,218	97,521	-10,303	-10.2	-13.9
Second quarter	83,055	96,718	-13,663	-4.8	-0.8
Third quarter	86,329	104,265	-17,935	3.9	7.8
Fourth quarter	89,308	106,757	-17,449	3.5	2.4
<b>2010</b>					
First quarter	91,631	110,687	-19,056	2.6	3.7
Second quarter	94,529	117,044	-22,515	3.2	5.7
Third quarter	93,626	120,311	-26,686	-1.0	2.8
<b>2009</b>					
January	27,994	33,229	-5,235	-9.4	-7.4
February	29,778	32,701	-2,923	6.4	-1.6
March	29,446	31,592	-2,145	-1.1	-3.4
April	28,359	31,963	-3,604	-3.7	1.2
May	27,195	32,360	-5,165	-4.1	1.2
June	27,502	32,395	-4,893	1.1	0.1
July	29,630	35,032	-5,402	7.7	8.1
August	28,012	34,860	-6,847	-5.5	-0.5
September	28,687	34,373	-5,686	2.4	-1.4
October	29,629	34,757	-5,128	3.3	1.1
November	29,376	35,625	-6,249	-0.9	2.5
December	30,304	36,375	-6,071	3.2	2.1
<b>2010</b>					
January	30,368	36,223	-5,855	0.2	-0.4
February	30,465	36,770	-6,305	0.3	1.5
March	30,798	37,694	-6,896	1.1	2.5
April	31,142	37,783	-6,641	1.1	0.2
May	32,075	39,490	-7,415	3.0	4.5
June	31,313	39,771	-8,458	-2.4	0.7
July	31,036	40,121	-9,085	-0.9	0.9
August	31,711	40,374	-8,663	2.2	0.6
September	30,878	39,816	-8,938	-2.6	-1.4
October	31,790	40,499	-8,709	3.0	1.7

**Note(s):** Because of rounding, monthly data may not add up to quarterly data and quarterly data may not add up to annual data.

**Table 1-3**  
**Merchandise trade of Canada, balance of payments basis, seasonally adjusted — Price indices (Laspeyres)**

	2002=100			Period to period change		
	Exports	Imports	Terms of trade	Exports	Imports	Terms of trade
	price indices (Laspeyres)			percent		
2006	105.1	92.5	113.6	0.0	0.0	0.0
2007	107.1	91.4	117.1	1.9	-1.2	3.1
2008	116.3	97.5	119.3	8.6	6.6	2.0
2009	105.4	97.1	108.6	-9.4	-0.4	-9.0
<b>2008</b>						
First quarter	111.2	90.1	123.4	5.6	3.1	2.5
Second quarter	118.5	94.7	125.1	6.6	5.1	1.5
Third quarter	122.1	100.9	121.0	3.1	6.6	-3.5
Fourth quarter	113.7	104.1	109.2	-6.9	3.2	-10.1
<b>2009</b>						
First quarter	109.5	101.5	107.8	-3.7	-2.5	-1.2
Second quarter	104.6	97.9	106.8	-4.5	-3.6	-0.9
Third quarter	102.6	95.2	107.8	-1.9	-2.7	0.9
Fourth quarter	105.7	93.8	112.7	3.0	-1.5	4.5
<b>2010</b>						
First quarter	107.2	94.3	113.7	1.4	0.6	0.8
Second quarter	106.2	94.1	112.8	-0.9	-0.2	-0.8
Third quarter	106.3	95.2	111.7	0.1	1.1	-1.0
<b>2009</b>						
January	109.0	100.4	108.5	-1.7	-2.1	0.4
February	109.1	101.4	107.6	0.1	0.9	-0.8
March	109.1	102.8	106.1	-0.1	1.4	-1.4
April	106.4	100.8	105.6	-2.4	-1.9	-0.5
May	104.0	97.0	107.2	-2.3	-3.8	1.5
June	103.5	95.9	107.9	-0.4	-1.1	0.7
July	103.5	96.3	107.5	0.0	0.4	-0.4
August	103.3	94.8	109.0	-0.2	-1.6	1.3
September	103.4	94.5	109.5	0.1	-0.3	0.4
October	104.3	93.2	111.9	0.8	-1.4	2.2
November	105.6	93.9	112.5	1.3	0.8	0.6
December	106.3	94.2	112.9	0.6	0.3	0.3
<b>2010</b>						
January	106.9	93.8	114.0	0.6	-0.4	1.0
February	107.9	95.0	113.6	1.0	1.3	-0.4
March	106.3	94.1	112.9	-1.5	-0.9	-0.6
April	105.4	92.8	113.5	-0.9	-1.4	0.5
May	106.7	94.8	112.6	1.3	2.1	-0.8
June	106.3	94.8	112.1	-0.4	0.1	-0.5
July	105.8	95.3	111.0	-0.5	0.5	-1.0
August	106.4	95.6	111.3	0.6	0.3	0.3
September	106.8	94.8	112.7	0.4	-0.8	1.2
October	106.5	94.5	112.6	-0.3	-0.2	-0.1

**Note(s):** Because of rounding, monthly data may not add up to quarterly data and quarterly data may not add up to annual data.

**Table 2-1**  
**Exports by commodity groupings, balance of payments basis, seasonally adjusted — Current dollars**

	September	October	Change		Year to date			October 2010/ October 2009	
	2010	2010			2009		2010		
	millions of dollars		percent		millions of dollars		percent		
<b>Total</b>	<b>32,758</b>	<b>33,773</b>	<b>1,015</b>	<b>3.1</b>	<b>305,282</b>	<b>333,106</b>	<b>27,825</b>	<b>9.1</b>	<b>8.5</b>
<b>Agricultural and fishing products</b>	<b>2,973</b>	<b>3,197</b>	<b>224</b>	<b>7.5</b>	<b>31,447</b>	<b>30,083</b>	<b>-1,364</b>	<b>-4.3</b>	<b>12.6</b>
Wheat	334	373	39	11.8	5,062	3,580	-1,482	-29.3	-4.3
Other agricultural and fishing products	2,639	2,824	184	7.0	26,384	26,503	118	0.4	15.2
Live animals	129	130	1	0.7	1,417	1,511	95	6.7	31.6
Fish and fish preparations	361	348	-13	-3.7	3,275	3,433	159	4.8	10.2
Barley	17	26	9	54.7	389	241	-148	-38.1	-3.3
Wheat flour	6	7	1	13.0	71	66	-5	-6.9	-10.6
Other cereals unmilled	39	54	15	38.1	455	387	-68	-14.9	98.3
Other cereal preparations	235	231	-4	-1.6	2,495	2,305	-190	-7.6	-3.1
Meat and meat preparations	400	406	6	1.6	3,660	3,923	263	7.2	21.3
Alcoholic beverages	62	60	-2	-3.8	616	621	5	0.8	-0.5
Other food, feed, beverages and tobacco	965	956	-9	-0.9	9,195	9,340	144	1.6	8.9
Rapeseed	228	299	71	31.2	2,954	2,648	-306	-10.4	4.9
Other crude vegetable products	197	306	109	55.4	1,857	2,026	170	9.1	73.0
<b>Energy products</b>	<b>6,556</b>	<b>6,388</b>	<b>-168</b>	<b>-2.6</b>	<b>63,754</b>	<b>73,570</b>	<b>9,815</b>	<b>15.4</b>	<b>-6.8</b>
Crude petroleum	3,132	3,221	89	2.8	32,818	39,217	6,399	19.5	-19.8
Natural gas	1,325	1,134	-191	-14.4	13,038	13,785	747	5.7	-1.6
Other energy products	2,098	2,033	-66	-3.1	17,899	20,568	2,669	14.9	20.7
Coal and other bituminous substances	523	459	-64	-12.3	3,639	4,261	623	17.1	58.9
Petroleum and coal products	1,442	1,394	-47	-3.3	12,301	14,608	2,308	18.8	20.3
Electricity	134	180	46	34.3	1,959	1,698	-261	-13.3	-23.9
<b>Forestry products</b>	<b>1,806</b>	<b>1,839</b>	<b>33</b>	<b>1.8</b>	<b>16,274</b>	<b>17,956</b>	<b>1,682</b>	<b>10.3</b>	<b>16.1</b>
Lumber and sawmill products	643	669	27	4.1	5,573	6,589	1,016	18.2	17.1
Other crude wood products	51	52	2	3.1	433	540	107	24.8	12.7
Lumber	410	430	20	5.0	3,178	4,046	868	27.3	26.2
Other wood fabricated materials	182	187	5	2.5	1,962	2,003	41	2.1	1.3
Wood pulp and other wood products	541	548	7	1.3	3,764	5,167	1,403	37.3	41.8
Newsprint and other paper and paperboard	622	622	0	0.0	6,937	6,199	-738	-10.6	-0.7
Newsprint paper	324	317	-7	-2.3	3,588	3,113	-475	-13.2	2.2
Other paper and paperboard	298	305	7	2.4	3,349	3,086	-263	-7.9	-3.5
<b>Industrial goods and materials</b>	<b>7,823</b>	<b>8,892</b>	<b>1,069</b>	<b>13.7</b>	<b>65,389</b>	<b>79,051</b>	<b>13,663</b>	<b>20.9</b>	<b>24.7</b>
Metal ores	1,016	1,512	496	48.9	8,546	10,134	1,588	18.6	63.5
Iron ores, concentrates and scrap	386	410	24	6.2	3,784	3,549	-235	-6.2	1.0
Copper ores, concentrates and scrap	103	352	249	242.6	1,412	1,936	524	37.1	59.6
Nickel ores, concentrates and scrap	300	405	105	34.9	1,288	2,348	1,060	82.3	355.1
Zinc ores, concentrates and scrap	25	20	-5	-19.2	214	223	10	4.5	-1.2
Other ores, concentrates and scrap	202	325	124	61.4	1,848	2,077	229	12.4	71.8
Chemicals, plastics and fertilizers	2,476	2,487	11	0.4	21,208	24,653	3,445	16.2	17.0
Inorganic chemicals	424	378	-46	-10.9	3,416	3,624	207	6.1	0.7
Organic chemicals	492	499	7	1.5	3,914	5,180	1,266	32.4	36.2
Fertilizers and fertilizer materials	462	496	34	7.3	3,789	4,848	1,059	27.9	33.3
Synthetic rubber and plastics	844	859	15	1.8	7,746	8,399	653	8.4	13.1
Other chemical products	254	255	1	0.4	2,343	2,603	260	11.1	1.4

Table 2-1 – continued

## Exports by commodity groupings, balance of payments basis, seasonally adjusted — Current dollars

	September	October	Change		Year to date			October 2010/	
	2010	2010			2009	2010	Change	October 2009	
	millions of dollars		percent		millions of dollars		percent		
<b>Metals and alloys</b>	<b>2,874</b>	<b>3,384</b>	<b>510</b>	<b>17.8</b>	<b>22,799</b>	<b>29,984</b>	<b>7,185</b>	<b>31.5</b>	<b>19.3</b>
Primary iron and steel	113	70	-43	-38.2	400	1,037	637	159.3	-29.9
Steel bars, rods, plates, sheets	285	285	0	-0.2	2,361	2,952	591	25.0	16.3
Other iron and steel and alloys	219	203	-16	-7.2	1,923	2,210	287	14.9	9.1
Aluminum including alloys	560	607	47	8.4	4,868	6,056	1,188	24.4	9.3
Copper and alloys	168	171	4	2.2	1,785	2,255	470	26.3	-13.2
Nickel and alloys	278	288	10	3.6	1,621	1,660	38	2.4	76.2
Precious metals and alloys	1,072	1,557	485	45.2	8,230	11,815	3,585	43.6	28.9
Zinc and alloys	93	113	19	21.0	871	1,117	247	28.3	13.1
Other non-ferrous metals and alloys	85	90	5	5.5	740	882	142	19.2	12.1
<b>Other industrial goods and materials</b>	<b>1,458</b>	<b>1,509</b>	<b>52</b>	<b>3.6</b>	<b>12,836</b>	<b>14,280</b>	<b>1,444</b>	<b>11.3</b>	<b>21.1</b>
Asbestos unmanufactured	6	5	-2	-24.7	58	47	-11	-19.5	-22.5
Other crude animal products	79	74	-5	-6.6	538	765	228	42.3	71.7
Other crude non-metallic minerals	309	325	16	5.2	2,251	2,997	745	33.1	33.3
Other crude materials, inedible	59	60	1	1.8	471	588	117	24.8	28.8
Metal fabricated basic products	345	350	5	1.5	3,425	3,461	36	1.1	10.1
Textile fabricated materials	179	181	1	0.7	1,727	1,790	62	3.6	4.9
Non-metallic mineral basic products	158	153	-5	-3.1	1,623	1,564	-59	-3.6	0.6
Other fabricated materials	322	362	40	12.4	2,742	3,068	326	11.9	37.0
<b>Machinery and equipment</b>	<b>6,742</b>	<b>6,572</b>	<b>-170</b>	<b>-2.5</b>	<b>68,411</b>	<b>62,766</b>	<b>-5,645</b>	<b>-8.3</b>	<b>9.0</b>
Industrial and agricultural machinery	1,535	1,601	65	4.3	16,426	14,896	-1,530	-9.3	13.3
Industrial machinery	1,383	1,443	60	4.4	14,666	13,348	-1,318	-9.0	14.2
Agricultural machinery includ. tractors	152	157	5	3.3	1,759	1,547	-212	-12.1	6.0
Aircraft and other transportation equipment	1,694	1,388	-306	-18.1	16,566	14,559	-2,007	-12.1	-7.2
Aircraft, engines, parts	1,352	1,024	-328	-24.2	13,143	11,340	-1,803	-13.7	-11.9
Other transportation equipment	342	364	22	6.5	3,422	3,218	-204	-6.0	9.2
Other machinery and equipment	3,513	3,583	71	2.0	35,420	33,312	-2,108	-6.0	14.8
Television, telecommunication equipment	746	701	-45	-6.0	7,408	6,450	-959	-12.9	8.0
Office machines and equipment	362	373	11	3.1	4,034	3,523	-511	-12.7	5.6
Other equipment and tools	1,574	1,621	47	3.0	15,981	15,325	-656	-4.1	14.5
Other end products, inedible	831	888	57	6.9	7,997	8,014	17	0.2	26.5
<b>Automotive products</b>	<b>4,774</b>	<b>4,941</b>	<b>167</b>	<b>3.5</b>	<b>35,186</b>	<b>48,323</b>	<b>13,137</b>	<b>37.3</b>	<b>15.1</b>
Passenger autos and chassis	3,201	3,265	64	2.0	20,592	32,305	11,712	56.9	12.1
Trucks and other motor vehicles	181	240	59	32.5	3,346	1,856	-1,489	-44.5	37.3
Motor vehicle parts	1,391	1,436	45	3.2	11,248	14,162	2,914	25.9	19.0
<b>Other consumer goods</b>	<b>1,315</b>	<b>1,220</b>	<b>-95</b>	<b>-7.2</b>	<b>15,103</b>	<b>13,694</b>	<b>-1,409</b>	<b>-9.3</b>	<b>-16.0</b>
<b>Special transactions trade</b>	<b>294</b>	<b>286</b>	<b>-8</b>	<b>-2.7</b>	<b>5,414</b>	<b>3,226</b>	<b>-2,188</b>	<b>-40.4</b>	<b>-44.9</b>
<b>Unallocated balance of payments adjustments</b>	<b>477</b>	<b>438</b>	<b>-39</b>	<b>-8.1</b>	<b>4,303</b>	<b>4,437</b>	<b>134</b>	<b>3.1</b>	<b>3.0</b>

**Table 2-2**  
**Exports by commodity groupings, balance of payments basis, seasonally adjusted — Constant dollars, 2002**

	September	October	Change	Year to date			October 2010/ October 2009		
	2010	2010		2009	2010	Change			
	millions of dollars		percent		millions of dollars		percent		
<b>Total</b>	<b>30,878</b>	<b>31,790</b>	<b>911</b>	<b>3.0</b>	<b>286,232</b>	<b>311,576</b>	<b>25,344</b>	<b>8.9</b>	<b>7.3</b>
<b>Agricultural and fishing products</b>	<b>2,977</b>	<b>3,149</b>	<b>171</b>	<b>5.8</b>	<b>30,086</b>	<b>31,221</b>	<b>1,135</b>	<b>3.8</b>	<b>7.5</b>
Wheat	328	332	5	1.4	4,214	3,778	-436	-10.3	-7.3
Other agricultural and fishing products	2,650	2,816	167	6.3	25,872	27,443	1,571	6.1	9.6
Live animals	142	141	0	-0.3	1,608	1,706	98	6.1	12.4
Fish and fish preparations	430	433	4	0.9	3,849	4,289	440	11.4	11.9
Barley	15	27	12	83.1	309	231	-78	-25.2	-3.9
Wheat flour	6	7	1	13.8	65	63	-2	-2.4	-13.3
Other cereals unmilled	35	44	8	24.0	438	430	-8	-1.9	27.0
Other cereal preparations	208	206	-2	-1.1	2,024	2,060	35	1.7	1.2
Meat and meat preparations	432	449	17	4.0	4,117	4,387	270	6.6	4.6
Alcoholic beverages	121	114	-7	-6.1	1,065	1,180	114	10.7	1.6
Other food, feed, beverages and tobacco	896	873	-23	-2.6	8,217	8,812	595	7.2	4.5
Rapeseed	197	272	75	38.2	2,637	2,473	-165	-6.2	6.5
Other crude vegetable products	168	251	82	48.9	1,542	1,813	271	17.6	65.9
<b>Energy products</b>	<b>4,074</b>	<b>4,354</b>	<b>280</b>	<b>6.9</b>	<b>44,591</b>	<b>44,832</b>	<b>241</b>	<b>0.5</b>	<b>-1.4</b>
Crude petroleum	1,626	1,838	213	13.1	19,464	18,812	-652	-3.4	-6.5
Natural gas	1,340	1,435	95	7.1	13,533	14,198	665	4.9	17.6
Other energy products	1,108	1,080	-28	-2.5	11,594	11,822	228	2.0	-12.1
Coal and other bituminous substances	148	133	-14	-9.5	1,145	1,512	367	32.0	1.7
Petroleum and coal products	815	758	-58	-7.1	8,005	8,360	355	4.4	9.2
Electricity	145	189	44	30.0	2,444	1,950	-494	-20.2	-53.2
<b>Forestry products</b>	<b>2,178</b>	<b>2,258</b>	<b>80</b>	<b>3.7</b>	<b>20,166</b>	<b>21,836</b>	<b>1,670</b>	<b>8.3</b>	<b>8.4</b>
Lumber and sawmill products	832	896	64	7.7	7,723	8,459	736	9.5	9.2
Other crude wood products	54	77	23	41.6	584	698	113	19.4	23.0
Lumber	569	600	31	5.5	4,911	5,605	694	14.1	11.3
Other wood fabricated materials	209	219	10	4.7	2,228	2,156	-71	-3.2	-0.1
Wood pulp and other wood products	651	660	9	1.4	5,325	6,155	831	15.6	24.6
Newsprint and other paper and paperboard	695	702	7	1.0	7,118	7,222	103	1.5	-4.2
Newsprint paper	369	365	-4	-1.0	3,585	3,714	129	3.6	-0.1
Other paper and paperboard	327	337	10	3.2	3,533	3,507	-26	-0.7	-8.3
<b>Industrial goods and materials</b>	<b>5,282</b>	<b>5,735</b>	<b>454</b>	<b>8.6</b>	<b>49,717</b>	<b>54,337</b>	<b>4,620</b>	<b>9.3</b>	<b>9.3</b>
Metal ores	466	679	213	45.8	4,789	4,920	131	2.7	29.4
Iron ores, concentrates and scrap	144	154	9	6.6	1,560	1,549	-11	-0.7	-29.3
Copper ores, concentrates and scrap	35	116	80	226.5	640	667	27	4.2	35.2
Nickel ores, concentrates and scrap	133	170	37	27.4	888	1,073	184	20.7	252.8
Zinc ores, concentrates and scrap	13	10	-3	-22.3	143	121	-22	-15.2	-8.7
Other ores, concentrates and scrap	139	229	90	64.4	1,557	1,510	-47	-3.0	41.4
Chemicals, plastics and fertilizers	1,796	1,813	17	0.9	16,302	17,938	1,636	10.0	13.7
Inorganic chemicals	195	186	-8	-4.4	1,767	1,834	67	3.8	6.8
Organic chemicals	300	303	3	0.9	3,115	3,084	-32	-1.0	30.9
Fertilizers and fertilizer materials	208	218	10	4.6	1,323	2,131	808	61.0	55.1
Synthetic rubber and plastics	789	801	12	1.5	7,365	7,763	398	5.4	7.4
Other chemical products	304	305	1	0.3	2,731	3,126	395	14.5	0.9

Table 2-2 – continued

## Exports by commodity groupings, balance of payments basis, seasonally adjusted — Constant dollars, 2002

	September	October	Change	Year to date			October 2010/ October 2009		
	2010	2010		2009	2010	Change			
	millions of dollars		percent		millions of dollars		percent		
<b>Metals and alloys</b>	<b>1,728</b>	<b>1,877</b>	<b>149</b>	<b>8.6</b>	<b>16,273</b>	<b>18,449</b>	<b>2,176</b>	<b>13.4</b>	<b>0.7</b>
Primary iron and steel	71	46	-25	-35.4	280	704	424	151.3	-41.3
Steel bars, rods, plates, sheets	233	236	3	1.3	1,862	2,448	586	31.5	13.8
Other iron and steel and alloys	183	167	-15	-8.4	1,649	1,845	196	11.9	0.0
Aluminum including alloys	567	592	25	4.4	5,764	6,244	480	8.3	-5.3
Copper and alloys	52	52	-1	-1.1	855	737	-118	-13.8	-28.3
Nickel and alloys	134	135	1	1.1	1,158	831	-328	-28.3	42.3
Precious metals and alloys	390	543	153	39.3	3,613	4,588	975	27.0	4.3
Zinc and alloys	58	64	6	10.5	686	650	-36	-5.2	1.5
Other non-ferrous metals and alloys	41	42	1	2.0	406	403	-4	-1.0	15.9
<b>Other industrial goods and materials</b>	<b>1,292</b>	<b>1,367</b>	<b>75</b>	<b>5.8</b>	<b>12,353</b>	<b>13,031</b>	<b>678</b>	<b>5.5</b>	<b>7.9</b>
Asbestos unmanufactured	6	5	-1	-20.0	60	47	-13	-22.0	-25.2
Other crude animal products	81	74	-7	-8.7	735	791	56	7.6	18.7
Other crude non-metallic minerals	277	329	52	18.9	3,048	3,001	-46	-1.5	-5.1
Other crude materials, inedible	54	52	-2	-4.4	459	540	81	17.6	15.2
Metal fabricated basic products	279	284	5	1.8	2,700	2,799	99	3.7	9.1
Textile fabricated materials	188	193	5	2.5	1,689	1,908	220	13.0	6.3
Non-metallic mineral basic products	127	123	-3	-2.7	1,315	1,286	-29	-2.2	-2.3
Other fabricated materials	280	307	27	9.8	2,348	2,659	311	13.3	29.0
<b>Machinery and equipment</b>	<b>7,561</b>	<b>7,370</b>	<b>-191</b>	<b>-2.5</b>	<b>73,322</b>	<b>70,050</b>	<b>-3,272</b>	<b>-4.5</b>	<b>10.0</b>
Industrial and agricultural machinery	1,435	1,515	80	5.6	14,975	13,865	-1,111	-7.4	17.0
Industrial machinery	1,292	1,367	75	5.8	13,390	12,437	-952	-7.1	17.7
Agricultural machinery includ. tractors	143	148	5	3.4	1,586	1,428	-158	-10.0	10.6
Aircraft and other transportation equipment	2,098	1,714	-384	-18.3	19,437	17,991	-1,446	-7.4	-5.7
Aircraft, engines, parts	1,773	1,351	-422	-23.8	16,087	14,807	-1,280	-8.0	-10.0
Other transportation equipment	325	363	38	11.7	3,350	3,184	-166	-4.9	14.5
Other machinery and equipment	4,027	4,141	113	2.8	38,910	38,194	-716	-1.8	15.5
Television, telecommunication equipment	948	901	-46	-4.9	8,722	8,175	-547	-6.3	10.9
Office machines and equipment	894	954	60	6.7	8,798	8,782	-17	-0.2	14.1
Other equipment and tools	1,491	1,531	41	2.7	14,724	14,502	-222	-1.5	15.9
Other end products, inedible	695	754	59	8.5	6,666	6,735	69	1.0	22.8
<b>Automotive products</b>	<b>6,309</b>	<b>6,540</b>	<b>231</b>	<b>3.7</b>	<b>42,635</b>	<b>64,241</b>	<b>21,606</b>	<b>50.7</b>	<b>17.0</b>
Passenger autos and chassis	4,551	4,654	103	2.3	26,960	46,404	19,445	72.1	15.0
Trucks and other motor vehicles	221	294	73	32.9	3,764	2,249	-1,515	-40.2	38.0
Motor vehicle parts	1,536	1,591	55	3.6	11,911	15,588	3,676	30.9	20.0
<b>Other consumer goods</b>	<b>1,269</b>	<b>1,183</b>	<b>-86</b>	<b>-6.8</b>	<b>14,495</b>	<b>13,147</b>	<b>-1,348</b>	<b>-9.3</b>	<b>-15.1</b>
<b>Special transactions trade</b>	<b>271</b>	<b>260</b>	<b>-11</b>	<b>-3.9</b>	<b>4,988</b>	<b>2,934</b>	<b>-2,053</b>	<b>-41.2</b>	<b>-47.6</b>
<b>Unallocated balance of payments adjustments</b>	<b>959</b>	<b>942</b>	<b>-17</b>	<b>-1.7</b>	<b>6,231</b>	<b>8,977</b>	<b>2,746</b>	<b>44.1</b>	<b>21.4</b>

**Table 3-1**  
**Domestic exports to selected countries, customs basis, not seasonally adjusted — October**

	Agricultural and fishing products	Energy products	Forestry products	Industrial goods	Machinery and equipment	Automotive products	Consumer goods	Special transactions trade	Total
millions of dollars									
<b>United States</b>									
2009	1,479.5	6,266.5	1,064.6	3,996.4	3,329.6	4,296.2	1,007.9	465.7	<b>21,906.3</b>
2010	1,613.2	6,337.6	1,113.8	4,746.6	3,685.4	4,728.2	681.0	251.5	<b>23,157.3</b>
<b>Mexico</b>									
2009	170.3	6.2	9.4	69.5	51.0	80.4	4.6	1.0	<b>392.4</b>
2010	158.1	17.7	8.5	87.1	63.8	74.9	4.1	0.1	<b>414.2</b>
<b>Japan</b>									
2009	275.6	147.5	94.4	150.5	59.7	4.2	8.1	0.6	<b>740.7</b>
2010	349.2	121.0	118.4	228.0	67.6	6.6	9.8	0.6	<b>901.2</b>
<b>European Union</b>									
<b>Germany</b>									
2009	16.8	8.1	13.0	109.4	150.6	2.4	19.8	0.9	<b>320.9</b>
2010	44.0	13.6	8.7	131.8	102.4	2.9	18.1	0.4	<b>321.8</b>
<b>France</b>									
2009	13.2	0.1	10.9	29.0	72.2	2.7	18.8	0.9	<b>147.8</b>
2010	26.9	0.1	7.8	58.3	79.2	2.7	26.2	1.2	<b>202.4</b>
<b>United Kingdom</b>									
2009	31.6	6.6	20.7	846.5	205.5	3.6	21.8	3.4	<b>1,139.7</b>
2010	35.1	0.5	15.8	1,059.6	107.1	5.5	21.9	4.1	<b>1,249.7</b>
<b>Italy</b>									
2009	39.8	8.2	22.0	22.1	33.1	0.9	6.1	0.1	<b>132.4</b>
2010	51.5	26.0	33.9	61.9	27.1	0.8	7.5	0.8	<b>209.5</b>
<b>Other European Union</b>									
2009	116.0	35.2	32.2	294.7	209.7	13.0	92.2	1.8	<b>795.0</b>
2010	270.9	104.2	34.5	256.7	152.7	18.3	46.5	1.8	<b>885.5</b>
<b>Total</b>									
2009	217.5	58.2	98.8	1,301.8	671.2	22.6	158.8	7.0	<b>2,535.9</b>
2010	428.4	144.4	100.7	1,568.3	468.6	30.2	120.1	8.2	<b>2,868.9</b>
<b>Newly industrialized countries</b>									
<b>South Korea</b>									
2009	22.0	45.3	35.0	137.1	45.5	4.7	3.2	2.4	<b>295.1</b>
2010	24.3	113.8	29.4	120.1	27.6	25.7	4.3	0.4	<b>345.7</b>
<b>Hong Kong</b>									
2009	29.1	0.0	5.5	38.7	16.7	0.5	4.7	1.5	<b>96.9</b>
2010	32.2	0.0	8.7	47.9	51.6	0.8	9.3	0.5	<b>151.1</b>
<b>Taiwan</b>									
2009	16.1	0.1	13.8	33.4	7.5	0.2	4.6	0.1	<b>75.8</b>
2010	15.2	16.1	18.8	58.0	8.3	0.4	6.7	0.1	<b>123.7</b>
<b>Singapore</b>									
2009	3.8	0.3	0.5	9.6	24.2	1.1	0.8	2.6	<b>42.9</b>
2010	5.6	0.2	2.4	16.0	26.1	1.1	3.2	0.1	<b>54.7</b>
<b>Total</b>									
2009	71.0	45.7	54.7	218.8	93.9	6.5	13.3	6.7	<b>510.6</b>
2010	77.3	130.2	59.3	242.0	113.6	28.1	23.5	1.2	<b>675.2</b>
<b>Other countries</b>									
2009	835.4	91.4	311.5	943.9	602.8	51.3	138.0	14.4	<b>2,988.7</b>
2010	840.6	256.1	501.3	1,322.5	790.7	63.6	82.3	12.5	<b>3,869.6</b>
<b>Total</b>									
2009	<b>3,049.3</b>	<b>6,615.5</b>	<b>1,633.5</b>	<b>6,681.0</b>	<b>4,808.2</b>	<b>4,461.1</b>	<b>1,330.9</b>	<b>495.3</b>	<b>29,074.8</b>
2010	<b>3,466.8</b>	<b>7,007.0</b>	<b>1,902.0</b>	<b>8,194.5</b>	<b>5,189.8</b>	<b>4,931.5</b>	<b>920.7</b>	<b>274.1</b>	<b>31,886.4</b>



Table 3-2

## Domestic exports to selected countries, customs basis, not seasonally adjusted — Year to date, January to October

	Agricultural and fishing products	Energy products	Forestry products	Industrial goods	Machinery and equipment	Automotive products	Consumer goods	Special transactions trade	Total
millions of dollars									
<b>United States</b>									
2009	15,929.5	59,838.7	11,324.9	37,951.3	37,254.0	30,975.3	9,344.7	4,716.6	<b>207,335.1</b>
2010	15,596.0	71,686.1	11,527.5	45,235.7	33,904.3	43,685.4	8,029.5	2,656.6	<b>232,321.0</b>
<b>Mexico</b>									
2009	982.3	80.0	81.7	619.9	770.0	568.2	41.5	8.9	<b>3,152.5</b>
2010	1,120.0	87.6	109.5	849.3	624.0	706.8	61.8	3.6	<b>3,562.6</b>
<b>Japan</b>									
2009	2,643.0	1,571.6	887.0	983.3	539.7	37.1	117.8	5.3	<b>6,784.8</b>
2010	2,670.2	1,555.8	1,128.7	1,392.6	495.2	57.3	110.6	5.2	<b>7,415.7</b>
<b>European Union</b>									
<b>Germany</b>									
2009	155.9	166.9	106.4	642.4	1,566.1	35.8	131.7	14.1	<b>2,819.1</b>
2010	150.7	185.0	80.2	1,082.4	1,165.5	29.6	174.1	11.7	<b>2,879.2</b>
<b>France</b>									
2009	130.8	100.8	124.6	484.5	928.3	28.7	242.0	20.9	<b>2,060.6</b>
2010	123.1	30.4	117.1	397.2	750.1	29.9	199.3	14.3	<b>1,661.4</b>
<b>United Kingdom</b>									
2009	338.8	131.0	245.1	6,712.4	1,799.2	33.3	244.4	38.5	<b>9,542.7</b>
2010	290.7	80.3	180.5	9,273.9	1,598.8	43.3	172.5	38.6	<b>11,678.6</b>
<b>Italy</b>									
2009	373.4	117.8	224.7	214.1	424.1	7.3	57.7	7.2	<b>1,426.3</b>
2010	245.9	163.5	276.1	304.5	340.0	6.4	150.3	4.8	<b>1,491.5</b>
<b>Other European Union</b>									
2009	783.2	867.4	282.8	2,208.0	2,168.4	119.5	663.7	39.1	<b>7,132.1</b>
2010	899.9	648.4	264.1	2,730.3	2,042.1	139.8	492.6	32.1	<b>7,249.2</b>
<b>Total</b>									
2009	1,782.0	1,383.8	983.6	10,261.4	6,886.1	224.6	1,339.5	119.9	<b>22,980.8</b>
2010	1,710.3	1,107.6	918.1	13,788.4	5,896.5	248.8	1,188.8	101.5	<b>24,960.0</b>
<b>Newly industrialized countries</b>									
<b>South Korea</b>									
2009	272.0	906.2	280.8	864.5	437.7	39.0	40.6	8.4	<b>2,849.2</b>
2010	373.1	929.2	396.4	874.6	346.6	75.5	40.7	7.6	<b>3,043.8</b>
<b>Hong Kong</b>									
2009	296.2	0.3	74.2	402.7	266.8	7.2	48.6	9.5	<b>1,105.5</b>
2010	325.3	0.5	91.1	610.8	255.2	7.4	63.1	11.5	<b>1,364.8</b>
<b>Taiwan</b>									
2009	156.8	159.8	160.4	265.4	91.5	1.4	29.0	1.2	<b>865.6</b>
2010	139.8	142.0	203.3	376.2	113.8	2.4	36.6	1.1	<b>1,015.2</b>
<b>Singapore</b>									
2009	40.6	44.7	26.7	295.1	271.3	28.1	29.0	4.8	<b>740.2</b>
2010	49.9	5.0	15.2	150.0	277.1	17.9	36.6	2.8	<b>554.4</b>
<b>Total</b>									
2009	765.5	1,111.1	542.1	1,827.7	1,067.4	75.8	147.2	23.8	<b>5,560.6</b>
2010	888.1	1,076.8	705.9	2,011.5	992.7	103.3	176.9	22.9	<b>5,978.1</b>
<b>Other countries</b>									
2009	8,440.4	1,470.5	2,837.3	9,347.0	7,068.4	608.7	999.8	227.6	<b>30,999.8</b>
2010	7,236.3	1,796.6	4,106.0	11,072.4	6,920.2	562.8	1,179.1	154.2	<b>33,027.6</b>
<b>Total</b>									
2009	<b>30,542.7</b>	<b>65,455.7</b>	<b>16,656.7</b>	<b>60,990.7</b>	<b>53,585.9</b>	<b>32,489.7</b>	<b>11,991.2</b>	<b>5,102.1</b>	<b>276,814.6</b>
2010	<b>29,220.9</b>	<b>77,310.5</b>	<b>18,495.6</b>	<b>74,349.9</b>	<b>48,833.3</b>	<b>45,364.5</b>	<b>10,746.7</b>	<b>2,944.1</b>	<b>307,265.4</b>

**Table 4**  
**Domestic exports by country, customs basis, not seasonally adjusted**

	October		January to October		Change January to October 2010/ January to October 2009
	2009	2010	2009	2010	
	millions of dollars				percent
<b>North America</b>					
Greenland	0.6	1.7	12.6	8.2	-35.0
Mexico	392.4	414.2	3,152.5	3,562.6	13.0
Saint Pierre and Miquelon	1.2	1.2	12.4	12.2	-2.2
United States	21,906.3	23,157.3	207,335.1	232,321.0	12.1
<b>Total</b>	<b>22,300.6</b>	<b>23,574.4</b>	<b>210,512.6</b>	<b>235,904.0</b>	<b>12.1</b>
<b>Western Europe</b>					
Andorra	0.0	0.0	0.1	0.1	23.0
Austria	11.7	17.3	301.6	303.8	0.7
Belgium	198.5	143.8	1,526.5	1,593.8	4.4
Denmark	84.9	19.9	550.7	222.3	-59.6
Faeroe Islands	0.3	0.2	0.9	0.4	-60.6
Finland	22.2	46.9	249.4	314.9	26.3
France	147.8	202.4	2,060.6	1,661.4	-19.4
Germany	320.9	321.8	2,819.1	2,879.2	2.1
Gibraltar	0.1	24.7	17.1	25.0	46.6
Greece	8.4	9.4	87.2	92.9	6.5
Iceland	2.3	2.8	69.2	99.4	43.8
Italy	132.4	209.5	1,426.3	1,491.5	4.6
Luxembourg	2.3	6.6	31.7	43.8	38.2
Malta	1.4	0.8	44.0	106.5	142.0
Netherlands	195.4	371.5	2,097.5	2,474.7	18.0
Norway	110.0	322.9	1,381.7	2,082.2	50.7
Portugal	13.2	57.5	135.1	228.3	69.0
Republic of Ireland (Eire)	62.4	19.6	433.2	274.9	-36.5
Spain	69.2	66.8	787.4	611.9	-22.3
Sweden	51.5	48.1	266.3	315.3	18.4
Switzerland	160.7	75.4	1,006.3	1,174.8	16.7
United Kingdom	1,139.7	1,249.7	9,542.7	11,678.6	22.4
<b>Total</b>	<b>2,735.4</b>	<b>3,217.4</b>	<b>24,834.5</b>	<b>27,675.8</b>	<b>11.4</b>
<b>Other Europe</b>					
Albania	2.5	1.6	11.4	21.6	89.0
Armenia	0.9	2.2	6.6	8.3	25.5
Azerbaijan	1.5	1.3	8.9	12.0	34.6
Belarus	0.0	0.0	0.9	1.2	31.3
Bosnia and Herzegovina	0.1	0.2	2.5	3.7	47.3
Bulgaria	4.0	17.5	56.3	94.5	67.9
Croatia	1.9	1.6	95.3	83.5	-12.4
Czech Republic	21.9	7.2	110.0	90.3	-17.9
Estonia	7.6	2.2	21.7	17.5	-19.5
Georgia	3.2	3.0	9.3	12.5	34.6
Hungary	6.1	25.8	74.3	85.0	14.5
Kazakhstan	4.5	10.9	117.5	111.5	-5.1
Kyrgyzstan	0.2	0.5	3.2	3.7	16.2
Latvia	2.3	1.0	21.6	82.7	281.9
Lithuania	2.3	2.7	33.5	25.8	-22.9
Macedonia (Former Yugoslav Republic of Macedonia)	2.0	0.7	12.5	8.0	-36.0
Montenegro	0.2	0.4	1.8	1.4	-21.8
Poland	16.8	13.8	152.6	122.9	-19.5
Republic of Moldova	0.1	0.0	1.8	2.1	15.8
Romania	8.6	4.0	68.8	84.9	23.3
Russian Federation	49.9	103.7	644.7	799.4	24.0
Serbia	0.6	0.6	15.8	6.0	-62.3
Slovakia	3.1	1.9	21.8	23.5	8.2
Slovenia	0.3	0.7	51.9	31.1	-40.0
Tajikistan	0.5	0.4	2.3	4.9	115.8
Turkmenistan	0.2	1.5	5.0	4.0	-21.1
Ukraine	14.2	18.4	79.7	109.2	36.9
Uzbekistan	0.5	0.5	12.6	5.0	-60.4
<b>Total</b>	<b>156.0</b>	<b>224.3</b>	<b>1,644.4</b>	<b>1,856.1</b>	<b>12.9</b>

Table 4 – continued

## Domestic exports by country, customs basis, not seasonally adjusted

	October		January to October		Change
	2009	2010	2009	2010	January to October 2010/ January to October 2009
	millions of dollars				percent
<b>Middle East</b>					
Bahrain	2.4	1.4	32.2	58.4	81.5
Cyprus	1.0	0.7	8.9	7.8	-12.7
Egypt	63.6	116.8	526.5	480.6	-8.7
Eritrea	0.9	0.1	1.8	2.1	16.3
Ethiopia	0.1	23.2	7.4	145.0	...
Iran	6.6	5.4	321.4	83.3	-74.1
Iraq	3.7	4.9	462.9	216.7	-53.2
Israel	22.1	22.4	241.3	285.7	18.4
Jordan	5.4	3.3	48.9	49.4	1.0
Kuwait	6.9	4.4	64.4	71.0	10.1
Lebanon	5.3	4.2	79.4	53.3	-32.9
Libya	23.3	12.4	218.8	106.4	-51.4
Oman	15.9	6.7	97.7	80.9	-17.2
Qatar	4.0	5.5	198.3	69.4	-65.0
Saudi Arabia	72.8	119.4	927.4	648.5	-30.1
Somalia	0.0	0.0	2.9	2.3	-21.5
Sudan	2.3	0.2	88.4	95.0	7.4
Syria	2.3	5.6	37.5	31.5	-15.8
Turkey	97.8	96.2	648.2	670.7	3.5
United Arab Emirates	143.8	82.9	974.1	784.5	-19.5
Yemen	2.1	1.5	22.7	15.8	-30.3
<b>Total</b>	<b>482.2</b>	<b>517.4</b>	<b>5,011.1</b>	<b>3,958.3</b>	<b>-21.0</b>
<b>Other Africa</b>					
Algeria	17.8	22.9	255.9	266.7	4.2
Angola	4.1	5.2	59.9	150.5	151.4
Antarctica	0.1	0.2	0.5	0.2	-63.5
Benin	0.8	0.8	6.4	10.3	62.5
Botswana	1.0	0.2	4.3	3.4	-20.6
Burkina Faso	3.4	1.5	18.8	17.1	-9.4
Burundi	0.1	0.1	0.9	0.8	-6.7
Cameroon	0.4	4.7	24.8	20.7	-16.3
Cape Verde	0.0	0.1	1.0	0.9	-3.9
Central African Republic	0.0	0.0	0.7	0.1	-83.4
Chad	0.2	0.5	9.1	5.6	-37.9
Comoros	0.0	0.0	3.1	0.1	-97.2
Congo	3.1	1.5	18.8	14.3	-24.1
Democratic Republic of the Congo	1.5	1.4	12.2	10.5	-14.4
Djibouti	0.2	0.1	2.3	4.1	75.8
Equatorial Guinea	0.2	0.9	3.8	4.0	5.4
French Southern Territories	0.0	0.0	0.2	0.0	-85.1
Gabon	2.9	1.9	22.7	14.8	-34.5
Gambia	0.1	0.0	0.6	0.6	-2.2
Ghana	12.3	21.4	134.3	135.6	1.0
Guinea	1.4	1.4	12.2	6.5	-46.5
Guinea-Bissau	0.0	0.0	0.0	0.0	-0.2
Ivory Coast	2.7	3.4	22.0	16.0	-27.0
Kenya	5.3	6.2	61.0	65.0	6.5
Lesotho	0.0	0.0	0.0	0.1	150.1
Liberia	0.2	0.3	2.9	10.1	250.5
Madagascar	8.7	3.5	46.9	41.2	-12.1
Malawi	0.5	0.2	3.7	3.1	-14.4
Mali	0.1	0.2	4.2	6.7	57.5
Mauritania	0.1	0.5	2.1	3.2	51.8
Mauritius	0.2	0.5	4.5	3.9	-12.9
Morocco	17.4	4.0	298.3	124.4	-58.3
Mozambique	0.6	1.1	4.7	10.6	124.1
Namibia	0.3	0.3	2.8	9.5	238.0
Niger	0.4	0.3	2.5	1.9	-23.8
Nigeria	13.5	17.6	171.0	170.9	-0.1
Rwanda	0.2	0.0	3.1	0.9	-72.0
Saint Helena	0.0	0.0	0.1	0.0	-96.6
Sao Tome and Principe	0.0	0.0	0.1	0.0	-54.3
Senegal	2.7	0.6	32.1	21.1	-34.2
Seychelles	0.0	0.1	0.9	0.9	-8.4

Table 4 – continued

## Domestic exports by country, customs basis, not seasonally adjusted

	October		January to October		Change
	2009	2010	2009	2010	January to October 2010/ January to October 2009
	millions of dollars				percent
Sierra Leone	0.3	1.1	3.5	8.5	141.2
South Africa	30.8	44.5	357.1	375.3	5.1
Swaziland	0.0	0.1	9.6	1.2	-87.0
Togo	0.4	0.8	14.9	8.8	-41.0
Tunisia	2.4	9.7	78.0	51.3	-34.2
Uganda	0.4	0.6	11.4	7.8	-31.4
United Republic of Tanzania	2.6	4.2	27.6	31.6	14.8
Western Sahara	0.0	0.0	0.1	0.0	-91.8
Zambia	0.7	2.3	7.8	24.0	209.2
Zimbabwe	0.0	0.7	7.2	4.6	-35.8
<b>Total</b>	<b>140.0</b>	<b>167.9</b>	<b>1,772.5</b>	<b>1,669.8</b>	<b>-5.8</b>
<b>Other Asia</b>					
Afghanistan	4.0	3.7	42.9	44.3	3.3
Bangladesh	40.2	50.0	542.5	522.5	-3.7
Bhutan	0.0	0.0	0.2	1.6	876.8
British Indian Ocean Territory	0.0	0.1	0.3	2.1	670.0
Brunei Darussalam	0.2	0.4	3.5	10.0	188.0
Cambodia	0.3	0.4	6.1	2.6	-56.7
China	846.8	1,194.0	9,282.2	9,673.3	4.2
Hong Kong	96.9	151.1	1,105.5	1,364.8	23.5
India	265.1	192.0	1,652.5	1,639.8	-0.8
Indonesia	52.2	82.4	787.7	786.4	-0.2
Japan	740.7	901.2	6,784.8	7,415.7	9.3
Laos	0.2	0.1	2.2	1.6	-27.3
Macao	0.3	0.1	13.1	2.0	-85.0
Malaysia	28.8	47.6	434.1	608.7	40.2
Maldives	2.9	0.2	8.0	3.5	-56.3
Mongolia	0.3	0.4	4.1	11.8	189.8
Myanmar	0.0	0.0	0.0	2.7	...
Nepal	0.1	2.7	2.9	5.0	69.0
North Korea	3.0	0.9	21.9	9.0	-58.9
Pakistan	22.6	42.6	371.7	358.5	-3.5
Philippines	47.3	50.5	383.6	540.0	40.8
Singapore	42.9	54.7	740.2	554.4	-25.1
South Korea	295.1	345.7	2,849.2	3,043.8	6.8
Sri Lanka	47.1	27.4	297.9	259.9	-12.8
Taiwan	75.8	123.7	865.6	1,015.2	17.3
Thailand	35.5	41.2	401.7	536.3	33.5
Timor-Leste	0.0	0.0	0.0	0.0	-87.6
Viet Nam	15.7	14.9	164.9	205.7	24.7
<b>Total</b>	<b>2,663.9</b>	<b>3,328.1</b>	<b>26,769.3</b>	<b>28,621.1</b>	<b>6.9</b>
<b>Oceania</b>					
American Samoa	0.1	0.2	0.6	1.1	88.4
Australia	131.8	99.9	1,316.5	1,352.8	2.8
Christmas Island	0.0	0.1	0.3	0.8	197.0
Cocos (Keeling) Islands	0.0	0.0	0.2	0.1	-37.0
Cook Islands	0.0	0.0	0.5	0.4	-17.2
Fiji	0.2	1.0	5.6	2.8	-49.3
French Polynesia	0.5	2.3	8.4	10.1	20.6
Guam	0.1	0.3	1.6	1.4	-14.5
Heard Island and McDonald Islands	0.1	0.0	0.1	0.0	-98.2
Kiribati	0.0	0.0	0.0	0.1	...
Nauru	0.0	0.0	0.1	1.3	...
New Caledonia	0.4	18.3	9.1	32.2	255.0
New Zealand	23.5	33.8	225.9	252.5	11.8
Norfolk Island	0.0	0.0	0.3	0.0	-83.8
Papua New Guinea	0.7	25.7	23.7	39.8	68.0
Pitcairn	0.0	0.0	0.1	0.1	-36.7
Samoa	0.1	0.0	0.3	0.3	-8.8
Solomon Islands	0.0	0.0	0.1	0.1	-13.1
Tonga	0.0	1.0	0.2	4.4	...
United States Minor Outlying Islands	0.9	2.2	10.4	12.5	20.9
Vanuatu	0.1	0.1	1.8	1.4	-23.7
Wallis and Futuna	0.0	0.0	0.0	0.0	-100.0
<b>Total</b>	<b>158.3</b>	<b>184.8</b>	<b>1,605.6</b>	<b>1,714.3</b>	<b>6.8</b>

Table 4 – continued

## Domestic exports by country, customs basis, not seasonally adjusted

	October		January to October		Change
	2009	2010	2009	2010	January to October 2010/ January to October 2009
	millions of dollars				percent
<b>South America</b>					
Argentina	11.9	42.8	136.4	219.3	60.8
Bolivia	0.5	1.2	8.9	38.8	336.8
Brazil	88.2	220.7	1,136.3	2,102.5	85.0
Chile	30.4	40.7	500.7	425.6	-15.0
Colombia	38.5	61.2	499.0	497.8	-0.2
Ecuador	12.1	24.5	200.8	223.6	11.4
Falkland Islands (Malvinas)	0.0	0.0	0.0	0.1	...
Guyana	3.9	3.7	24.2	21.9	-9.5
Paraguay	1.9	0.8	9.7	13.7	40.3
Peru	36.1	28.2	334.9	363.3	8.5
Suriname	0.6	0.8	9.7	8.3	-14.5
Uruguay	1.4	26.7	17.0	103.6	508.1
Venezuela	71.8	68.1	498.6	422.0	-15.4
<b>Total</b>	<b>297.1</b>	<b>519.4</b>	<b>3,376.3</b>	<b>4,440.4</b>	<b>31.5</b>
<b>Central America Antilles</b>					
Anguilla	0.1	0.0	1.6	0.7	-54.4
Antigua and Barbuda	3.3	1.6	14.8	16.7	13.4
Aruba	0.5	0.4	4.7	25.4	436.1
Bahamas	2.4	3.4	127.4	96.2	-24.5
Barbados	3.1	3.7	47.5	30.3	-36.3
Belize	0.3	0.1	4.7	4.3	-9.1
Bermuda	3.9	3.0	49.0	31.6	-35.5
British Virgin Islands	0.2	0.1	2.7	21.1	678.2
Cayman Islands	0.5	0.3	5.5	5.7	3.2
Costa Rica	10.7	8.2	63.7	76.6	20.3
Cuba	11.0	36.6	226.1	263.0	16.3
Dominica	0.4	0.2	3.8	4.0	6.5
Dominican Republic	11.2	21.6	111.5	154.6	38.7
El Salvador	4.7	1.9	40.9	28.7	-29.9
Grenada	0.5	0.4	4.6	4.2	-9.8
Guatemala	15.6	5.3	77.7	70.5	-9.2
Haiti	1.8	4.4	34.1	37.9	11.3
Honduras	3.9	4.0	26.1	27.1	3.9
Jamaica	9.9	8.1	100.3	110.7	10.4
Montserrat	0.0	0.0	0.2	0.2	-11.5
Netherlands Antilles	2.3	1.7	44.8	17.3	-61.4
Nicaragua	2.1	8.5	12.2	26.0	112.9
Panama	6.5	6.4	68.8	106.5	54.8
Saint Kitts and Nevis	0.6	0.2	5.1	5.0	-3.3
Saint Lucia	0.9	0.5	8.3	5.7	-32.2
Saint Vincent and the Grenadines	0.8	1.0	7.9	8.0	0.6
Trinidad and Tobago	43.2	31.0	189.6	244.3	28.8
Turks and Caicos Islands	0.8	0.2	4.8	3.6	-25.2
<b>Total</b>	<b>141.2</b>	<b>152.9</b>	<b>1,288.4</b>	<b>1,425.7</b>	<b>10.7</b>
<b>All countries</b>	<b>29,074.8</b>	<b>31,886.4</b>	<b>276,814.6</b>	<b>307,265.4</b>	<b>11.0</b>

**Table 5-1**  
**Exports by province of origin, customs basis, not seasonally adjusted — October**

	Agricultural and fishing products	Energy products	Forestry products	Industrial goods	Machinery and equipment	Automotive products	Consumer goods	Special transactions trade	<b>Total</b>
millions of dollars									
<b>Domestic exports</b>									
Newfoundland and Labrador									
2009	52.2	466.5	7.6	231.4	3.2	0.5	0.2	3.3	<b>764.9</b>
2010	52.3	546.7	5.8	252.0	2.7	0.2	0.1	1.5	<b>861.2</b>
Prince Edward Island									
2009	47.7	0.3	0.0	0.7	23.1	0.1	6.9	5.8	<b>84.5</b>
2010	46.5	0.0	0.0	1.8	10.8	0.0	4.6	7.6	<b>71.5</b>
Nova Scotia									
2009	68.2	45.6	64.5	41.6	109.7	3.1	5.2	5.9	<b>343.8</b>
2010	77.2	45.7	81.8	43.9	123.9	4.2	5.5	2.8	<b>384.9</b>
New Brunswick									
2009	104.8	381.5	97.0	69.1	23.0	2.1	20.3	7.9	<b>705.8</b>
2010	109.1	558.7	121.5	101.6	25.8	3.3	12.9	3.6	<b>936.4</b>
Quebec									
2009	371.3	225.5	487.3	1,521.1	1,580.8	147.7	290.9	114.7	<b>4,739.2</b>
2010	539.4	122.8	516.8	1,737.1	1,426.0	184.2	304.9	53.5	<b>4,884.7</b>
Ontario									
2009	693.9	227.6	208.7	2,800.5	2,334.7	4,220.0	909.6	243.3	<b>11,638.3</b>
2010	875.8	197.1	223.8	3,876.7	2,761.4	4,578.4	502.2	129.9	<b>13,145.3</b>
Manitoba									
2009	306.4	56.4	14.7	192.3	149.6	34.5	36.7	34.3	<b>825.0</b>
2010	332.7	56.5	15.9	208.2	154.6	48.6	26.6	29.2	<b>872.3</b>
Saskatchewan									
2009	652.6	695.2	16.1	461.2	44.0	3.5	1.2	7.9	<b>1,881.8</b>
2010	615.3	733.4	20.4	550.4	42.9	3.9	0.8	3.6	<b>1,970.7</b>
Alberta									
2009	540.3	4,021.7	160.6	716.2	289.5	32.1	12.2	35.0	<b>5,807.6</b>
2010	575.4	4,092.1	170.1	847.3	374.5	86.3	14.0	24.8	<b>6,184.5</b>
British Columbia									
2009	211.7	495.2	577.0	468.6	250.5	17.6	47.6	37.1	<b>2,105.2</b>
2010	242.9	654.2	745.8	574.9	266.4	22.4	49.1	17.4	<b>2,573.4</b>
Yukon, Northwest Territories and Nunavut <sup>1</sup>									
2009	0.1	0.0	0.0	178.3	0.1	0.0	0.0	0.0	<b>178.6</b>
2010	0.0	0.0	0.0	0.4	0.8	0.0	0.1	0.0	<b>1.4</b>
<b>Total</b>									
2009	<b>3,049.3</b>	<b>6,615.5</b>	<b>1,633.5</b>	<b>6,681.0</b>	<b>4,808.2</b>	<b>4,461.1</b>	<b>1,330.9</b>	<b>495.3</b>	<b>29,074.8</b>
2010	<b>3,466.8</b>	<b>7,007.0</b>	<b>1,902.0</b>	<b>8,194.5</b>	<b>5,189.8</b>	<b>4,931.5</b>	<b>920.7</b>	<b>274.1</b>	<b>31,886.4</b>
<b>Re-exports</b>									
2009	<b>66.5</b>	<b>76.8</b>	<b>5.7</b>	<b>224.0</b>	<b>872.6</b>	<b>94.1</b>	<b>174.2</b>	<b>620.5</b>	<b>2,134.4</b>
2010	<b>56.7</b>	<b>64.6</b>	<b>6.0</b>	<b>201.8</b>	<b>874.5</b>	<b>94.5</b>	<b>220.1</b>	<b>736.6</b>	<b>2,254.7</b>
<b>Total exports</b>									
2009	<b>3,115.8</b>	<b>6,692.2</b>	<b>1,639.1</b>	<b>6,905.1</b>	<b>5,680.8</b>	<b>4,555.2</b>	<b>1,505.1</b>	<b>1,115.8</b>	<b>31,209.2</b>
2010	<b>3,523.5</b>	<b>7,071.6</b>	<b>1,908.0</b>	<b>8,396.3</b>	<b>6,064.3</b>	<b>5,026.0</b>	<b>1,140.8</b>	<b>1,010.6</b>	<b>34,141.1</b>

1. Data for the current month do not include some exports from the Harmonized System, Chapter 71, "Natural/cultured pearls, precious stones and metals, coins, etc." for reasons relating to timing.

**Table 5-2**  
**Exports by province of origin, customs basis, not seasonally adjusted — Year to date, January to October**

	Agricultural and fishing products	Energy products	Forestry products	Industrial goods	Machinery and equipment	Automotive products	Consumer goods	Special transactions trade	Total
millions of dollars									
<b>Domestic exports</b>									
Newfoundland and Labrador									
2009	623.7	4,762.0	155.0	1,563.7	47.7	2.9	0.9	45.9	7,201.6
2010	700.0	4,904.1	92.6	1,335.6	36.4	1.5	1.2	22.8	7,094.2
Prince Edward Island									
2009	409.2	1.3	0.8	17.9	173.6	1.4	29.0	68.3	701.5
2010	386.5	1.1	6.5	21.6	135.6	3.0	32.6	41.9	628.7
Nova Scotia									
2009	811.8	565.6	585.6	421.7	958.4	63.7	62.5	60.1	3,529.3
2010	775.5	431.7	713.0	422.8	1,161.8	45.7	49.2	31.7	3,631.4
New Brunswick									
2009	985.1	5,158.5	933.4	637.0	257.7	20.9	127.0	73.0	8,192.7
2010	1,025.0	6,944.3	1,134.7	915.3	241.9	20.9	191.7	36.6	10,510.4
Quebec									
2009	3,583.7	2,373.6	4,972.6	13,562.1	16,788.8	1,387.8	2,907.1	1,146.8	46,722.5
2010	3,796.6	2,246.2	5,046.7	16,267.1	14,523.6	1,353.8	3,427.6	732.5	47,394.1
Ontario									
2009	6,634.5	2,304.2	2,226.5	25,866.1	26,707.6	29,863.6	7,890.5	2,493.5	103,986.4
2010	6,866.9	2,089.6	2,303.4	33,180.6	25,037.8	42,874.1	6,167.5	1,351.1	119,871.1
Manitoba									
2009	3,290.0	663.7	228.2	1,869.3	1,717.0	514.3	384.0	314.0	8,980.4
2010	3,024.9	608.2	176.4	1,918.7	1,582.3	373.1	292.7	243.7	8,220.2
Saskatchewan									
2009	6,349.4	5,828.6	208.7	4,639.3	701.4	34.5	10.1	76.6	17,848.7
2010	5,384.1	7,853.2	185.3	5,493.0	583.9	35.3	9.4	38.2	19,582.4
Alberta									
2009	5,867.0	38,240.0	1,421.1	7,073.1	3,677.6	423.7	132.7	447.4	57,282.7
2010	5,232.3	45,686.0	1,760.4	8,532.1	3,023.0	438.8	106.2	242.0	65,021.0
British Columbia									
2009	1,986.4	5,558.1	5,924.7	3,886.6	2,551.8	176.5	446.3	375.8	20,906.1
2010	2,027.5	6,546.0	7,076.3	4,748.7	2,497.1	217.8	468.1	202.9	23,784.3
Yukon, Northwest Territories and Nunavut <sup>1</sup>									
2009	1.9	0.0	0.2	1,453.8	4.3	0.3	1.0	0.9	1,462.5
2010	1.6	0.2	0.4	1,514.4	9.6	0.4	0.3	0.7	1,527.6
<b>Total</b>									
2009	30,542.7	65,455.7	16,656.7	60,990.7	53,585.9	32,489.7	11,991.2	5,102.1	276,814.6
2010	29,220.9	77,310.5	18,495.6	74,349.9	48,833.3	45,364.5	10,746.7	2,944.1	307,265.4
<b>Re-exports</b>									
2009	428.0	448.7	62.9	1,903.7	9,458.3	835.7	1,858.2	6,591.4	21,586.8
2010	487.9	305.7	65.7	2,327.1	8,700.6	915.5	1,764.4	6,093.2	20,660.0
<b>Total exports</b>									
2009	30,970.7	65,904.4	16,719.6	62,894.3	63,044.2	33,325.3	13,849.3	11,693.5	298,401.4
2010	29,708.8	77,616.1	18,561.3	76,677.0	57,533.9	46,280.0	12,511.1	9,037.2	327,925.4

1. Data for the current month do not include some exports from the Harmonized System Chapter 71, "Natural/cultured pearls, precious stones and metals, coins, etc." for reasons relating to timing.

**Table 6-1**  
**Imports by commodity groupings, balance of payments basis, seasonally adjusted — Current dollars**

	September 2010	October 2010	Change	Year to date			October 2010/ October 2009		
				2009		Change			
				2009	2010				
	millions of dollars		percent		millions of dollars		percent		
<b>Total</b>	<b>35,066</b>	<b>35,485</b>	<b>419</b>	<b>1.2</b>	<b>309,866</b>	<b>342,960</b>	<b>33,094</b>	<b>10.7</b>	<b>15.6</b>
<b>Agricultural and fishing products</b>	<b>2,506</b>	<b>2,487</b>	<b>-19</b>	<b>-0.8</b>	<b>24,533</b>	<b>24,433</b>	<b>-100</b>	<b>-0.4</b>	<b>5.7</b>
Fruits and vegetables	717	700	-17	-2.4	6,894	6,897	3	0.0	6.3
Fresh fruits and berries	245	247	2	0.8	2,425	2,448	23	0.9	2.6
Dried fruits, fruits and fruit preparations	124	120	-4	-3.2	1,276	1,135	-141	-11.1	5.9
Fresh vegetables	195	184	-11	-5.5	1,777	1,852	75	4.2	6.5
Other vegetables and vegetable preparations	153	149	-5	-3.0	1,416	1,462	46	3.3	13.4
Other agricultural and fishing products	1,789	1,787	-2	-0.1	17,639	17,536	-103	-0.6	5.4
Live animals	16	16	0	0.7	163	162	-1	-0.9	-2.9
Meat and meat preparations	180	186	6	3.2	1,787	1,769	-18	-1.0	10.2
Fish and marine animals	168	174	6	3.7	1,699	1,639	-60	-3.6	13.6
Cocoa, coffee, tea and other food preparations	431	430	-1	-0.2	4,116	4,153	36	0.9	10.3
Dairy produce, eggs and honey	58	50	-8	-14.3	477	488	11	2.3	4.5
Corn (maize) shelled	26	24	-1	-5.2	414	363	-51	-12.4	-41.6
Other cereals and cereal preparations	182	182	0	0.2	1,902	1,753	-149	-7.8	9.2
Sugar and sugar preparations	139	139	0	0.0	1,384	1,436	52	3.8	-10.2
Fodder, feed, excluding unmilled cereal	114	114	0	0.2	1,252	1,149	-103	-8.2	-3.4
Beverages	317	301	-16	-4.9	3,031	3,054	23	0.8	-0.1
Tobacco	37	43	7	17.9	307	351	44	14.4	57.9
Crude vegetable products	122	126	5	3.8	1,098	1,210	113	10.3	17.1
Cotton	1	1	0	78.6	8	10	2	25.7	-13.7
<b>Energy products</b>	<b>3,151</b>	<b>3,413</b>	<b>262</b>	<b>8.3</b>	<b>27,536</b>	<b>33,216</b>	<b>5,680</b>	<b>20.6</b>	<b>17.8</b>
Crude petroleum	1,823	1,737	-86	-4.7	16,851	19,861	3,010	17.9	-5.0
Other energy products	1,328	1,677	348	26.2	10,685	13,356	2,670	25.0	56.5
Coal and other related products	414	395	-18	-4.5	3,793	4,255	462	12.2	24.3
Petroleum and coal products	915	1,281	367	40.1	6,893	9,101	2,208	32.0	70.2
<b>Forestry products</b>	<b>223</b>	<b>214</b>	<b>-9</b>	<b>-4.0</b>	<b>1,984</b>	<b>2,226</b>	<b>241</b>	<b>12.2</b>	<b>10.9</b>
Forestry products	223	214	-9	-4.0	1,984	2,226	241	12.2	10.9
Crude wood products	42	37	-5	-11.6	382	364	-18	-4.7	8.3
Wood fabricated materials	181	177	-4	-2.3	1,603	1,862	259	16.2	11.5
<b>Industrial goods and materials</b>	<b>7,578</b>	<b>7,382</b>	<b>-195</b>	<b>-2.6</b>	<b>62,418</b>	<b>71,643</b>	<b>9,225</b>	<b>14.8</b>	<b>16.5</b>
Metals and metal ores	2,960	2,869	-91	-3.1	20,118	26,851	6,733	33.5	24.8
Metals in ores, concentrates and scrap	642	657	14	2.2	4,811	5,767	957	19.9	26.3
Steel bars, rods, plates, sheets	491	471	-20	-4.1	3,866	5,378	1,512	39.1	9.0
Other iron and steel products	451	373	-77	-17.1	2,987	3,666	678	22.7	40.0
Precious metals including alloys	1,042	1,037	-5	-0.5	5,602	8,488	2,887	51.5	26.4
Other non-ferrous metals and alloys	334	331	-3	-0.8	2,852	3,552	700	24.5	27.3
Chemicals and plastics	2,490	2,376	-113	-4.5	22,826	24,158	1,331	5.8	9.0
Organic chemicals	597	555	-42	-7.0	5,490	5,787	297	5.4	15.3
Plastic materials	855	842	-13	-1.6	7,343	8,383	1,040	14.2	12.8
Other chemicals and related products	1,037	979	-58	-5.6	9,993	9,987	-5	-0.1	2.8
Other industrial goods and materials	2,128	2,137	9	0.4	19,474	20,634	1,160	6.0	15.1
Crude animal products	21	20	-1	-5.8	198	215	17	8.4	-10.9
Wool and man-made fibres	19	19	0	-2.6	175	206	31	17.7	8.9
Crude non-metallic minerals	57	65	8	13.1	618	688	70	11.4	-12.6
Textile fabricated materials	197	198	0	0.2	1,879	1,951	72	3.8	10.0
Metal fabricated basic products	857	859	2	0.3	7,534	8,078	543	7.2	23.5
Rubber fabricated materials	84	84	0	0.2	779	826	48	6.1	9.7
Oils, fats, animal and vegetable	107	112	5	5.2	1,047	1,017	-29	-2.8	17.4
Non-metallic minerals	298	304	6	2.2	2,726	3,001	275	10.1	13.5
Other fabricated materials	489	476	-12	-2.5	4,518	4,652	134	3.0	11.6



Table 6-1 – continued

## Imports by commodity groupings, balance of payments basis, seasonally adjusted — Current dollars

	September	October	Change		Year to date			October 2010/ October 2009	
	2010	2010			2009	2010	Change		
	millions of dollars		percent		millions of dollars			percent	
<b>Machinery and equipment</b>	<b>10,081</b>	<b>10,093</b>	<b>12</b>	<b>0.1</b>	<b>90,775</b>	<b>94,082</b>	<b>3,307</b>	<b>3.6</b>	<b>21.4</b>
Industrial and agricultural machinery	2,803	2,650	-153	-5.5	23,535	24,878	1,343	5.7	30.6
Engines, turbines and electric motors	498	395	-103	-20.8	3,409	3,627	218	6.4	81.3
Drilling mining machinery	170	164	-6	-3.6	1,280	1,474	194	15.1	50.7
Excavating machinery	247	243	-5	-1.8	1,693	2,220	527	31.1	57.4
Metal working machinery	148	157	9	6.0	1,336	1,339	3	0.2	17.5
Other industrial machinery	1,366	1,340	-27	-2.0	12,445	12,600	155	1.2	20.0
Agricultural machinery including tractors	373	352	-22	-5.8	3,372	3,618	246	7.3	17.8
Aircraft and other transportation equipment	1,242	1,478	236	19.0	13,385	12,080	-1,305	-9.8	31.8
Aircraft, engines, parts	806	838	33	4.1	8,503	7,297	-1,206	-14.2	24.0
Other transportation equipment and parts	436	640	203	46.6	4,883	4,783	-100	-2.0	43.8
Office machines and equipment	1,153	1,133	-21	-1.8	10,290	11,017	727	7.1	17.7
Other machinery and equipment	4,882	4,833	-50	-1.0	43,565	46,108	2,543	5.8	15.1
Other communication and related equipment	1,859	1,788	-71	-3.8	15,303	16,850	1,547	10.1	21.2
Other equipment and tools	3,023	3,044	21	0.7	28,262	29,257	996	3.5	11.8
<b>Automotive products</b>	<b>5,500</b>	<b>5,584</b>	<b>83</b>	<b>1.5</b>	<b>44,215</b>	<b>57,991</b>	<b>13,776</b>	<b>31.2</b>	<b>13.0</b>
Passenger autos and chassis	1,758	1,759	1	0.1	14,906	18,597	3,691	24.8	0.8
Trucks and other motor vehicles	1,354	1,366	12	0.9	10,176	14,566	4,391	43.1	31.6
Motor vehicle parts	2,388	2,458	70	2.9	19,133	24,827	5,695	29.8	13.9
<b>Other consumer goods</b>	<b>4,909</b>	<b>4,969</b>	<b>60</b>	<b>1.2</b>	<b>47,957</b>	<b>47,773</b>	<b>-184</b>	<b>-0.4</b>	<b>6.9</b>
Apparel and footwear	1,016	1,044	28	2.7	9,470	9,142	-328	-3.5	23.8
Apparel and apparel accessories	825	838	12	1.5	7,882	7,543	-339	-4.3	19.8
Footwear	191	206	16	8.2	1,587	1,599	11	0.7	43.4
Miscellaneous consumer goods	3,892	3,925	32	0.8	38,488	38,631	143	0.4	3.1
Television, radios, phonographs	128	134	7	5.2	1,153	1,322	169	14.7	4.2
Printed matter	288	282	-6	-2.2	3,000	2,861	-138	-4.6	-0.1
Watches, sporting goods and toys	526	520	-6	-1.1	5,053	5,053	0	0.0	10.0
House furnishings	735	749	15	2.0	7,247	7,327	80	1.1	6.8
Photographic goods	222	239	17	7.6	2,143	2,119	-24	-1.1	16.8
Miscellaneous end products	1,994	2,000	6	0.3	19,892	19,948	56	0.3	-0.8
<b>Special transactions trade</b>	<b>408</b>	<b>608</b>	<b>200</b>	<b>49.1</b>	<b>3,968</b>	<b>4,264</b>	<b>296</b>	<b>7.5</b>	<b>62.5</b>
<b>Unallocated balance of payments adjustments</b>	<b>712</b>	<b>735</b>	<b>24</b>	<b>3.3</b>	<b>6,479</b>	<b>7,331</b>	<b>851</b>	<b>13.1</b>	<b>12.7</b>

**Table 6-2**  
**Imports by commodity groupings, balance of payments basis, seasonally adjusted — Constant dollars, 2002**

	September 2010	October 2010	Change	Year to date			October 2010/ October 2009		
				2009		Change			
				2009	2010				
	millions of dollars	percent	millions of dollars	percent					
<b>Total</b>	<b>39,816</b>	<b>40,499</b>	<b>683</b>	<b>1.7</b>	<b>333,261</b>	<b>388,541</b>	<b>55,281</b>	<b>16.6</b>	<b>16.5</b>
<b>Agricultural and fishing products</b>	<b>2,465</b>	<b>2,562</b>	<b>97</b>	<b>3.9</b>	<b>23,208</b>	<b>24,570</b>	<b>1,362</b>	<b>5.9</b>	<b>5.6</b>
Fruits and vegetables	750	768	18	2.4	6,752	6,940	188	2.8	14.7
Fresh fruits and berries	273	280	8	2.9	2,477	2,563	86	3.5	15.8
Dried fruits, fruits and fruit preparations	127	123	-4	-3.3	1,236	1,144	-91	-7.4	2.3
Fresh vegetables	193	212	20	10.2	1,769	1,799	30	1.7	18.7
Other vegetables and vegetable preparations	157	152	-5	-3.4	1,270	1,434	164	12.9	18.9
Other agricultural and fishing products	1,715	1,794	79	4.6	16,456	17,630	1,174	7.1	2.1
Live animals	15	16	1	8.1	163	157	-6	-3.5	-17.2
Meat and meat preparations	159	181	21	13.5	1,777	1,704	-73	-4.1	-8.9
Fish and marine animals	231	229	-2	-0.9	2,300	2,307	7	0.3	-8.7
Cocoa, coffee, tea and other food preparations	382	439	58	15.2	3,351	4,175	824	24.6	22.0
Dairy produce, eggs and honey	63	54	-9	-14.6	459	540	81	17.7	20.3
Corn (maize) shelled	22	18	-4	-19.3	348	345	-3	-0.8	-51.9
Other cereals and cereal preparations	154	162	8	5.1	1,602	1,482	-119	-7.5	1.0
Sugar and sugar preparations	132	135	2	1.7	1,347	1,389	42	3.1	-13.5
Fodder, feed, excluding unmilled cereal	93	94	1	1.2	921	978	57	6.2	-7.5
Beverages	292	283	-9	-3.2	2,685	2,856	171	6.4	2.6
Tobacco	43	53	9	21.4	352	423	71	20.3	54.1
Crude vegetable products	128	131	2	1.7	1,141	1,260	118	10.4	9.4
Cotton	1	1	1	78.5	11	14	3	24.7	-19.9
<b>Energy products</b>	<b>1,711</b>	<b>1,857</b>	<b>146</b>	<b>8.5</b>	<b>17,412</b>	<b>17,932</b>	<b>520</b>	<b>3.0</b>	<b>4.9</b>
Crude petroleum	875	836	-39	-4.4	9,663	9,096	-567	-5.9	-11.9
Other energy products	836	1,021	184	22.0	7,749	8,837	1,088	14.0	24.4
Coal and other related products	358	325	-33	-9.2	3,181	3,738	557	17.5	2.1
Petroleum and coal products	478	695	217	45.4	4,568	5,099	531	11.6	38.5
<b>Forestry products</b>	<b>287</b>	<b>275</b>	<b>-12</b>	<b>-4.1</b>	<b>2,493</b>	<b>2,897</b>	<b>404</b>	<b>16.2</b>	<b>5.6</b>
Forestry products	287	275	-12	-4.1	2,493	2,897	404	16.2	5.6
Crude wood products	59	51	-8	-14.0	480	528	49	10.2	7.5
Wood fabricated materials	228	225	-4	-1.5	2,013	2,368	355	17.6	5.2
<b>Industrial goods and materials</b>	<b>6,690</b>	<b>6,536</b>	<b>-154</b>	<b>-2.3</b>	<b>55,875</b>	<b>65,214</b>	<b>9,339</b>	<b>16.7</b>	<b>11.2</b>
Metals and metal ores	2,041	1,884	-157	-7.7	14,456	18,816	4,360	30.2	13.5
Metals in ores, concentrates and scrap	363	373	11	2.9	3,615	3,315	-300	-8.3	7.2
Steel bars, rods, plates, sheets	391	381	-10	-2.5	3,100	4,433	1,333	43.0	2.5
Other iron and steel products	312	264	-48	-15.3	2,110	2,651	540	25.6	23.5
Precious metals including alloys	640	544	-96	-15.0	2,700	4,750	2,049	75.9	20.7
Other non-ferrous metals and alloys	336	322	-14	-4.2	2,931	3,668	737	25.1	16.8
Chemicals and plastics	2,256	2,215	-41	-1.8	21,145	23,100	1,955	9.2	4.1
Organic chemicals	435	426	-9	-2.0	4,370	4,269	-101	-2.3	9.4
Plastic materials	893	885	-9	-1.0	7,615	8,896	1,281	16.8	7.2
Other chemicals and related products	927	904	-23	-2.5	9,160	9,934	774	8.4	-0.9
Other industrial goods and materials	2,393	2,437	43	1.8	20,274	23,299	3,024	14.9	16.7
Crude animal products	24	20	-3	-13.7	300	232	-68	-22.7	-33.4
Wool and man-made fibres	24	24	0	-1.9	219	265	46	21.2	10.2
Crude non-metallic minerals	48	51	3	6.7	541	572	31	5.7	-19.0
Textile fabricated materials	266	267	1	0.4	2,295	2,629	334	14.6	11.1
Metal fabricated basic products	907	921	13	1.5	7,337	8,611	1,274	17.4	24.3
Rubber fabricated materials	101	103	2	1.6	870	1,006	136	15.7	9.8
Oils, fats, animal and vegetable	101	103	2	1.7	904	991	87	9.7	17.6
Non-metallic minerals	361	368	7	1.9	3,045	3,627	582	19.1	13.5
Other fabricated materials	560	579	19	3.4	4,764	5,365	601	12.6	19.5

Table 6-2 – continued

## Imports by commodity groupings, balance of payments basis, seasonally adjusted — Constant dollars, 2002

	September 2010	October 2010	Change		Year to date			October 2010/ October 2009	
					2009	2010	Change		
	millions of dollars		percent		millions of dollars			percent	
<b>Machinery and equipment</b>	<b>14,725</b>	<b>14,800</b>	<b>75</b>	<b>0.5</b>	<b>117,162</b>	<b>136,137</b>	<b>18,975</b>	<b>16.2</b>	<b>26.9</b>
Industrial and agricultural machinery	3,429	3,277	-152	-4.4	25,882	30,520	4,638	17.9	34.2
Engines, turbines and electric motors	614	495	-119	-19.4	3,794	4,497	703	18.5	86.2
Drilling mining machinery	190	186	-4	-2.2	1,269	1,648	379	29.9	55.7
Excavating machinery	311	305	-7	-2.2	1,834	2,775	941	51.3	64.9
Metal working machinery	191	206	14	7.4	1,541	1,720	179	11.6	23.5
Other industrial machinery	1,646	1,636	-11	-0.6	13,545	15,261	1,716	12.7	23.0
Agricultural machinery including tractors	476	451	-26	-5.4	3,898	4,619	721	18.5	20.2
Aircraft and other transportation equipment	1,457	1,718	260	17.9	14,279	14,130	-149	-1.0	30.8
Aircraft, engines, parts	987	1,019	33	3.3	9,272	8,876	-396	-4.3	24.1
Other transportation equipment and parts	471	699	228	48.4	5,007	5,254	247	4.9	42.1
Office machines and equipment	2,754	2,715	-39	-1.4	20,533	24,731	4,198	20.4	35.3
Other machinery and equipment	7,085	7,090	6	0.1	56,468	66,756	10,288	18.2	20.1
Other communication and related equipment	3,125	3,040	-85	-2.7	23,127	28,437	5,310	23.0	25.9
Other equipment and tools	3,959	4,050	91	2.3	33,341	38,319	4,978	14.9	16.2
<b>Automotive products</b>	<b>6,683</b>	<b>6,835</b>	<b>152</b>	<b>2.3</b>	<b>51,166</b>	<b>70,546</b>	<b>19,380</b>	<b>37.9</b>	<b>14.1</b>
Passenger autos and chassis	2,018	2,008	-10	-0.5	17,316	21,381	4,065	23.5	-1.3
Trucks and other motor vehicles	1,515	1,549	34	2.2	10,849	16,357	5,508	50.8	34.3
Motor vehicle parts	3,151	3,279	128	4.1	23,000	32,807	9,807	42.6	17.0
<b>Other consumer goods</b>	<b>6,337</b>	<b>6,508</b>	<b>171</b>	<b>2.7</b>	<b>56,640</b>	<b>61,752</b>	<b>5,112</b>	<b>9.0</b>	<b>9.5</b>
Apparel and footwear	1,449	1,485	37	2.5	11,979	12,936	957	8.0	28.4
Apparel and apparel accessories	1,185	1,198	13	1.1	9,995	10,721	726	7.3	24.5
Footwear	263	287	24	9.1	1,985	2,215	230	11.6	47.2
Miscellaneous consumer goods	4,888	5,023	135	2.8	44,661	48,816	4,155	9.3	5.0
Television, radios, phonographs	218	232	14	6.4	1,753	2,250	497	28.3	5.0
Printed matter	356	349	-7	-1.9	3,549	3,538	-10	-0.3	0.5
Watches, sporting goods and toys	709	707	-1	-0.2	6,465	7,005	539	8.3	10.2
House furnishings	935	980	45	4.8	8,407	9,391	984	11.7	7.9
Photographic goods	445	485	40	9.0	3,440	4,062	622	18.1	34.4
Miscellaneous end products	2,225	2,269	43	2.0	21,047	22,570	1,523	7.2	-1.6
<b>Special transactions trade</b>	<b>468</b>	<b>709</b>	<b>242</b>	<b>51.7</b>	<b>4,322</b>	<b>4,887</b>	<b>566</b>	<b>13.1</b>	<b>62.0</b>
<b>Unallocated balance of payments adjustments</b>	<b>450</b>	<b>416</b>	<b>-34</b>	<b>-7.6</b>	<b>4,983</b>	<b>4,607</b>	<b>-377</b>	<b>-7.6</b>	<b>6.0</b>

**Table 7-1  
Imports from selected countries, customs basis, not seasonally adjusted — October**

	Agricultural and fishing products	Energy products	Forestry products	Industrial goods	Machinery and equipment	Automotive products	Consumer goods	Special transactions trade	Total
millions of dollars									
<b>United States</b>									
2009	1,435.9	710.8	148.6	3,965.9	3,911.8	3,541.0	2,022.3	351.6	<b>16,087.9</b>
2010	1,465.6	916.1	157.5	4,481.8	4,298.7	3,838.6	2,018.4	552.3	<b>17,728.9</b>
<b>Mexico</b>									
2009	80.9	0.0	0.2	115.3	649.0	488.5	90.3	4.0	<b>1,428.2</b>
2010	87.3	151.1	0.3	148.1	839.1	764.8	121.0	3.6	<b>2,115.4</b>
<b>Japan</b>									
2009	5.0	2.3	0.2	100.7	366.9	507.9	90.3	0.3	<b>1,073.5</b>
2010	5.1	33.6	0.1	97.0	437.1	535.7	98.7	0.3	<b>1,207.4</b>
<b>European Union</b>									
<b>Germany</b>									
2009		6.2	0.9	139.5	304.0	290.7	172.8	0.5	<b>941.8</b>
2010	31.6	9.4	1.4	154.3	394.5	275.8	137.1	1.2	<b>1,005.3</b>
<b>France</b>									
2009	79.1	0.7	0.2	54.6	122.6	14.7	169.4	0.4	<b>441.8</b>
2010	78.8	1.2	0.2	62.6	345.5	8.3	118.1	0.2	<b>614.8</b>
<b>United Kingdom</b>									
2009	53.4	337.3	0.1	116.7	251.3	32.0	109.5	0.8	<b>901.2</b>
2010	42.5	381.9	0.0	107.4	257.9	34.5	126.4	1.1	<b>951.7</b>
<b>Italy</b>									
2009	69.4	0.2	1.1	68.4	109.3	19.8	91.6	0.2	<b>360.0</b>
2010	77.5	0.1	1.1	84.8	113.1	20.4	93.6	1.1	<b>391.6</b>
<b>Other European Union</b>									
2009	121.9	123.2	3.4	246.2	285.1	99.6	405.4	0.4	<b>1,285.2</b>
2010	121.1	69.8	3.9	238.1	324.3	81.9	285.5	1.7	<b>1,126.4</b>
<b>Total</b>									
2009	351.1	467.5	5.7	625.4	1,072.2	456.9	948.7	2.4	<b>3,930.0</b>
2010	351.5	462.4	6.7	647.2	1,435.3	420.9	760.7	5.2	<b>4,089.8</b>
<b>Newly industrialized countries</b>									
<b>South Korea</b>									
2009	3.6	91.0	0.0	56.3	241.5	138.6	17.8	0.1	<b>548.9</b>
2010	4.8	42.3	0.0	69.4	458.9	178.6	18.7	0.1	<b>772.8</b>
<b>Hong Kong</b>									
2009	2.7	0.0	0.1	2.5	12.5	0.4	16.3	0.0	<b>34.7</b>
2010	2.4	0.0	0.1	1.9	15.6	0.5	13.3	0.0	<b>33.7</b>
<b>Taiwan</b>									
2009	4.7	0.0	0.8	50.7	166.7	12.9	34.5	0.1	<b>270.5</b>
2010	6.9	0.0	0.2	68.1	239.0	13.9	39.0	0.1	<b>367.2</b>
<b>Singapore</b>									
2009	3.6	0.0	0.0	13.7	34.2	0.2	16.9	0.0	<b>68.7</b>
2010	3.7	39.0	0.0	31.7	59.2	0.3	20.3	0.0	<b>154.2</b>
<b>Total</b>									
2009	14.7	91.1	0.9	123.2	455.0	152.1	85.6	0.2	<b>922.7</b>
2010	17.8	81.3	0.4	171.0	772.6	193.3	91.3	0.2	<b>1,327.9</b>
<b>Other countries</b>									
2009	658.9	1,481.8	45.4	1,475.7	2,354.6	177.6	1,904.1	25.9	<b>8,124.1</b>
2010	686.2	1,643.3	50.1	1,800.5	2,786.8	189.0	2,217.2	41.8	<b>9,414.9</b>
<b>Total</b>									
2009	<b>2,546.8</b>	<b>2,753.5</b>	<b>201.0</b>	<b>6,406.3</b>	<b>8,809.5</b>	<b>5,324.0</b>	<b>5,141.3</b>	<b>384.3</b>	<b>31,566.8</b>
2010	<b>2,613.8</b>	<b>3,287.7</b>	<b>215.0</b>	<b>7,345.7</b>	<b>10,569.7</b>	<b>5,942.1</b>	<b>5,307.3</b>	<b>603.5</b>	<b>35,884.8</b>

**Table 7-2**  
**Imports from selected countries, customs basis, not seasonally adjusted — Year to date, January to October**

	Agricultural and fishing products	Energy products	Forestry products	Industrial goods	Machinery and equipment	Automotive products	Consumer goods	Special transactions trade	Total
millions of dollars									
<b>United States</b>									
2009	14,442.9	8,713.8	1,500.3	37,413.4	41,489.0	29,361.5	19,322.4	3,328.2	<b>155,571.4</b>
2010	13,903.9	10,109.9	1,619.9	42,353.1	41,636.5	38,257.1	18,978.1	3,663.1	<b>170,521.6</b>
<b>Mexico</b>									
2009	1,093.0	406.8	4.8	1,082.0	5,617.1	4,151.5	848.0	34.5	<b>13,237.7</b>
2010	1,208.7	738.3	4.5	1,469.5	6,734.6	7,014.2	953.9	46.8	<b>18,170.5</b>
<b>Japan</b>									
2009	55.1	34.5	1.7	927.0	4,035.5	4,374.7	825.6	3.2	<b>10,257.3</b>
2010	54.9	122.3	0.9	1,001.2	4,065.8	5,034.8	900.4	3.3	<b>11,183.4</b>
<b>European Union</b>									
<b>Germany</b>									
2009	226.4	29.3	11.1	1,519.8	3,526.3	2,110.4	1,517.4	6.9	<b>8,947.6</b>
2010	235.5	48.9	11.2	1,602.9	3,275.4	2,721.8	1,436.4	18.5	<b>9,350.6</b>
<b>France</b>									
2009	596.4	185.8	2.2	938.1	1,587.3	87.4	1,403.1	9.4	<b>4,809.7</b>
2010	597.0	83.2	1.8	705.2	1,572.3	82.0	1,317.9	7.4	<b>4,366.8</b>
<b>United Kingdom</b>									
2009	360.3	1,946.6	1.2	1,057.3	2,865.6	280.7	1,117.2	32.3	<b>7,661.2</b>
2010	355.2	3,158.5	0.6	1,533.0	2,394.6	367.7	1,072.1	37.3	<b>8,918.9</b>
<b>Italy</b>									
2009	539.7	72.5	12.1	777.1	1,239.0	164.8	902.9	6.3	<b>3,714.4</b>
2010	541.1	159.1	11.0	783.4	1,205.3	196.9	910.8	3.8	<b>3,811.3</b>
<b>Other European Union</b>									
2009	968.2	1,370.3	35.9	2,315.7	3,565.9	585.1	3,482.9	41.6	<b>12,365.7</b>
2010	958.7	1,862.7	35.1	2,558.2	3,867.8	662.0	3,116.3	22.6	<b>13,083.3</b>
<b>Total</b>									
2009	2,691.0	3,604.5	62.5	6,608.1	12,784.1	3,228.3	8,423.5	96.5	<b>37,498.6</b>
2010	2,687.5	5,312.3	59.7	7,182.6	12,315.4	4,030.4	7,853.4	89.6	<b>39,531.0</b>
<b>Newly industrialized countries</b>									
<b>South Korea</b>									
2009	40.5	294.5	0.1	653.7	2,227.8	1,553.0	188.2	0.7	<b>4,958.6</b>
2010	47.6	265.3	0.2	659.6	2,240.8	1,767.1	171.5	0.8	<b>5,153.0</b>
<b>Hong Kong</b>									
2009	23.9	0.0	0.6	23.9	134.1	3.5	120.2	0.5	<b>306.7</b>
2010	23.0	0.1	0.6	22.4	130.0	4.2	124.9	0.3	<b>305.5</b>
<b>Taiwan</b>									
2009	54.6	0.3	8.1	586.5	1,664.2	141.4	338.4	0.9	<b>2,794.5</b>
2010	62.8	19.9	6.3	715.2	1,858.1	134.3	343.2	1.2	<b>3,140.9</b>
<b>Singapore</b>									
2009	27.2	70.0	0.6	266.6	416.3	3.9	181.1	1.3	<b>967.0</b>
2010	30.4	82.1	0.2	148.7	506.2	3.5	163.5	1.3	<b>935.8</b>
<b>Total</b>									
2009	146.3	364.9	9.5	1,530.7	4,442.4	1,701.8	827.9	3.5	<b>9,026.9</b>
2010	163.8	367.3	7.3	1,545.9	4,735.0	1,909.1	803.1	3.7	<b>9,535.3</b>
<b>Other countries</b>									
2009	5,965.0	14,817.7	441.1	14,283.1	22,073.2	1,492.3	18,017.6	290.7	<b>77,380.6</b>
2010	6,289.0	16,930.9	560.4	17,311.8	24,521.1	1,798.4	18,530.9	295.8	<b>86,238.2</b>
<b>Total</b>									
2009	<b>24,395.0</b>	<b>27,942.1</b>	<b>2,019.9</b>	<b>61,844.4</b>	<b>90,441.3</b>	<b>44,310.1</b>	<b>48,265.0</b>	<b>3,756.6</b>	<b>302,974.4</b>
2010	<b>24,312.1</b>	<b>33,581.1</b>	<b>2,252.6</b>	<b>70,864.2</b>	<b>94,008.6</b>	<b>58,044.0</b>	<b>48,019.8</b>	<b>4,102.3</b>	<b>335,184.7</b>

**Table 8**  
**Imports by country, customs basis, not seasonally adjusted**

	October		January to October		Change January to October 2010/ January to October 2009
	2009	2010	2009	2010	
	millions of dollars				percent
<b>North America</b>					
Canada	305.1	325.8	2,646.0	3,339.1	26.2
Greenland	0.0	0.0	17.0	0.4	-97.5
Mexico	1,428.2	2,115.4	13,237.7	18,170.5	37.3
Saint Pierre and Miquelon	0.0	0.4	0.2	1.5	604.4
United States	16,087.9	17,728.9	155,571.4	170,521.6	9.6
<b>Total</b>	<b>17,821.3</b>	<b>20,170.6</b>	<b>171,472.3</b>	<b>192,033.0</b>	<b>12.0</b>
<b>Western Europe</b>					
Andorra	0.0	0.0	0.1	0.3	200.4
Austria	129.3	98.4	963.7	989.2	2.6
Belgium	109.4	117.5	1,176.2	1,332.7	13.3
Denmark	67.8	69.9	1,154.1	1,741.8	50.9
Faeroe Islands	0.4	0.4	1.7	4.4	155.8
Finland	95.1	99.5	752.4	783.3	4.1
France	441.8	614.8	4,809.7	4,366.8	-9.2
Germany	941.8	1,005.3	8,947.6	9,350.6	4.5
Gibraltar	0.0	0.0	0.0	2.2	...
Greece	12.4	8.1	114.5	115.7	1.0
Iceland	2.5	1.7	26.5	28.2	6.5
Italy	360.0	391.6	3,714.4	3,811.3	2.6
Luxembourg	48.3	8.2	125.0	76.2	-39.1
Malta	1.6	1.8	17.2	14.5	-15.8
Netherlands	140.3	118.5	1,594.3	1,434.5	-10.0
Norway	327.2	215.5	2,855.8	2,321.4	-18.7
Portugal	53.3	24.4	274.7	269.9	-1.7
Republic of Ireland (Eire)	213.2	82.8	1,843.4	1,304.3	-29.2
Spain	107.4	117.2	1,101.5	1,205.1	9.4
Sweden	158.3	174.8	1,517.7	1,695.3	11.7
Switzerland	242.2	225.8	2,859.5	2,447.9	-14.4
United Kingdom	901.2	951.7	7,661.2	8,918.9	16.4
<b>Total</b>	<b>4,353.6</b>	<b>4,327.9</b>	<b>41,511.4</b>	<b>42,214.7</b>	<b>1.7</b>
<b>Other Europe</b>					
Albania	0.3	0.8	3.5	3.8	7.5
Armenia	2.6	2.9	27.9	22.3	-20.2
Azerbaijan	0.4	0.0	912.2	388.0	-57.5
Belarus	6.7	8.3	34.5	42.1	22.3
Bosnia and Herzegovina	1.2	0.6	7.4	6.5	-12.6
Bulgaria	5.2	5.7	108.1	56.0	-48.2
Croatia	2.3	10.3	21.7	35.7	64.4
Czech Republic	18.2	23.1	231.8	238.6	2.9
Estonia	1.6	6.9	18.4	26.9	46.4
Georgia	11.1	12.7	112.3	103.3	-8.1
Hungary	19.7	25.2	297.6	285.3	-4.1
Kazakhstan	223.1	124.5	1,231.6	1,688.9	37.1
Kyrgyzstan	0.0	0.0	0.4	0.1	-82.6
Latvia	0.6	1.0	15.5	8.3	-46.2
Lithuania	2.2	3.7	112.0	340.1	203.8
Macedonia (Former Yugoslav Republic of Macedonia)	0.9	0.3	7.5	6.6	-12.8
Montenegro	0.0	0.0	0.3	0.4	39.4
Poland	59.5	101.7	640.7	763.1	19.1
Republic of Moldova	0.1	0.1	1.6	4.9	201.7
Romania	9.0	12.3	103.6	163.0	57.4
Russian Federation	138.5	515.9	1,435.8	1,638.3	14.1
Serbia	0.7	1.7	9.0	11.0	22.5
Slovakia	21.8	21.6	137.1	151.7	10.6
Slovenia	10.9	4.0	63.9	85.5	33.7
Tajikistan	0.0	0.0	0.0	0.0	228.1
Turkmenistan	0.1	0.0	0.4	0.6	78.5
Ukraine	3.4	8.9	75.8	82.1	8.2
Uzbekistan	0.0	0.1	11.8	1.3	-88.6
<b>Total</b>	<b>540.1</b>	<b>892.2</b>	<b>5,622.6</b>	<b>6,154.5</b>	<b>9.5</b>

Table 8 – continued

## Imports by country, customs basis, not seasonally adjusted

	October		January to October		Change
	2009	2010	2009	2010	January to October 2010/ January to October 2009
	millions of dollars				percent
<b>Middle East</b>					
Bahrain	0.3	0.2	4.3	2.5	-42.8
Cyprus	0.0	0.1	2.2	2.3	5.1
Egypt	15.6	17.4	80.9	238.0	194.2
Eritrea	0.0	0.0	0.1	0.3	128.8
Ethiopia	0.9	1.4	14.4	13.1	-8.9
Iran	1.7	2.4	20.8	32.3	55.4
Iraq	101.3	52.9	1,070.7	1,331.2	24.3
Israel	70.5	73.7	766.1	829.2	8.2
Jordan	1.3	1.5	13.6	16.6	22.0
Kuwait	0.0	0.0	37.3	31.5	-15.4
Lebanon	1.4	1.7	12.4	14.0	12.1
Libya	0.0	0.0	0.2	19.9	...
Oman	0.2	0.2	5.3	16.5	208.1
Qatar	0.2	1.7	13.0	69.1	430.4
Saudi Arabia	171.5	11.1	1,378.1	1,675.4	21.6
Somalia	0.0	0.0	0.0	0.0	-27.6
Sudan	6.8	7.5	55.4	72.1	30.1
Syria	0.5	0.5	4.7	5.9	25.1
Turkey	57.5	70.6	540.7	564.4	4.4
United Arab Emirates	2.7	2.8	191.0	134.7	-29.5
Yemen	0.0	0.0	0.1	0.1	-37.3
<b>Total</b>	<b>432.4</b>	<b>245.7</b>	<b>4,211.4</b>	<b>5,069.1</b>	<b>20.4</b>
<b>Other Africa</b>					
Algeria	284.4	223.2	2,900.7	2,909.7	0.3
Angola	152.1	76.9	1,225.2	1,276.2	4.2
Antarctica	0.0	0.0	0.0	0.3	...
Benin	0.0	0.0	0.0	0.0	348.0
Botswana	0.0	0.0	21.7	6.9	-68.2
Bouvet Island	0.0	0.0	0.0	0.0	-99.5
Burkina Faso	3.1	0.9	8.1	21.7	168.3
Burundi	0.0	0.0	0.2	0.0	-77.9
Cameroon	0.4	0.6	4.0	5.1	27.5
Cape Verde	0.0	0.0	0.0	0.0	119.4
Central African Republic	0.0	0.0	0.1	0.1	14.4
Chad	0.1	0.0	0.2	1.0	453.8
Comoros	0.0	0.0	0.0	0.0	59.7
Congo	0.1	0.1	2.0	3.9	92.5
Democratic Republic of the Congo	0.0	0.0	0.5	0.7	41.5
Djibouti	0.0	0.0	0.0	0.0	-69.3
Equatorial Guinea	0.0	119.6	347.9	562.4	61.6
French Southern Territories	0.0	0.0	0.0	0.0	-100.0
Gabon	0.1	0.0	1.6	0.3	-79.9
Gambia	0.0	0.0	0.1	0.1	-21.1
Ghana	1.7	0.3	20.9	18.8	-10.2
Guinea	2.6	4.1	54.0	38.4	-29.0
Guinea-Bissau	0.0	0.0	0.0	0.0	-95.4
Ivory Coast	12.6	14.3	178.6	335.7	87.9
Kenya	1.1	2.2	14.3	14.5	1.2
Lesotho	1.0	0.6	7.2	13.5	87.7
Liberia	5.6	2.8	23.7	34.2	44.1
Madagascar	5.1	0.9	36.2	37.9	4.6
Malawi	1.3	0.3	2.8	58.1	...
Mali	0.0	0.1	0.3	0.5	74.1
Mauritania	0.1	0.0	0.8	0.2	-75.6
Mauritius	0.4	0.7	7.8	8.6	9.8
Morocco	11.8	11.8	81.5	83.0	1.9
Mozambique	0.0	0.0	0.3	1.3	393.0
Namibia	43.2	0.0	237.5	156.7	-34.0
Niger	0.0	0.2	0.7	0.8	11.5
Nigeria	5.0	194.3	318.3	1,501.3	371.7
Rwanda	0.0	0.0	0.3	0.2	-44.5
Saint Helena	0.0	0.0	0.0	0.0	63.5
Sao Tome and Principe	0.0	0.0	0.0	0.2	...
Senegal	0.0	0.2	0.8	1.0	17.2

Table 8 – continued

## Imports by country, customs basis, not seasonally adjusted

	October		January to October		Change
	2009	2010	2009	2010	January to October 2010/ January to October 2009
	millions of dollars				percent
Seychelles	0.0	0.0	0.5	0.2	-61.3
Sierra Leone	2.5	0.1	3.8	1.5	-60.7
South Africa	49.7	47.1	527.6	587.7	11.4
Swaziland	0.1	0.1	1.7	1.4	-20.0
Togo	0.8	0.3	4.1	3.1	-25.6
Tunisia	3.8	2.8	39.1	45.2	15.6
Uganda	0.0	0.1	2.0	3.1	52.7
United Republic of Tanzania	0.7	0.2	3.6	2.5	-30.1
Western Sahara	0.0	0.0	0.0	0.0	-98.0
Zambia	0.1	0.2	0.6	1.1	75.7
Zimbabwe	0.5	0.2	2.5	3.8	51.9
<b>Total</b>	<b>590.4</b>	<b>705.4</b>	<b>6,084.3</b>	<b>7,742.9</b>	<b>27.3</b>
<b>Other Asia</b>					
Afghanistan	0.1	0.3	1.1	1.4	34.8
Bangladesh	60.9	78.6	716.0	702.0	-2.0
Bhutan	0.0	0.0	0.0	0.0	122.9
British Indian Ocean Territory	0.0	0.0	0.0	0.0	568.8
Brunei Darussalam	0.0	0.0	1.8	0.0	-98.7
Cambodia	25.6	33.4	248.4	291.1	17.2
China	3,544.2	4,261.8	33,007.7	36,546.1	10.7
Hong Kong	34.7	33.7	306.7	305.5	-0.4
India	157.0	200.1	1,726.1	1,715.4	-0.6
Indonesia	77.7	148.6	840.4	1,047.2	24.6
Japan	1,073.5	1,207.4	10,257.3	11,183.4	9.0
Laos	0.2	0.8	5.9	6.9	17.0
Macao	1.2	0.6	21.1	8.0	-62.1
Malaysia	203.0	199.1	1,934.2	1,901.0	-1.7
Maldives	0.0	0.0	0.1	0.1	6.8
Mongolia	17.8	9.8	108.9	158.7	45.8
Myanmar	0.0	0.0	0.1	0.0	-76.6
Nepal	1.0	1.9	10.9	13.0	19.1
North Korea	0.0	0.0	0.1	0.1	25.1
Pakistan	18.7	21.8	203.3	225.5	10.9
Philippines	78.2	78.8	602.9	734.6	21.8
Singapore	68.7	154.2	967.0	935.8	-3.2
South Korea	548.9	772.8	4,958.6	5,153.0	3.9
Sri Lanka	9.8	12.5	97.1	104.1	7.2
Taiwan	270.5	367.2	2,794.5	3,140.9	12.4
Thailand	192.8	211.1	1,879.2	1,959.6	4.3
Timor-Leste	0.2	0.5	3.1	1.7	-47.2
Viet Nam	86.2	113.6	883.5	967.9	9.6
<b>Total</b>	<b>6,471.0</b>	<b>7,908.5</b>	<b>61,576.0</b>	<b>67,103.2</b>	<b>9.0</b>
<b>Oceania</b>					
American Samoa	0.0	0.0	0.2	0.3	25.9
Australia	130.9	82.1	1,311.5	1,302.4	-0.7
Christmas Island	0.0	0.0	0.0	0.1	697.1
Cocos (Keeling) Islands	0.0	0.0	0.1	0.0	-86.0
Cook Islands	0.0	0.0	0.0	0.1	175.8
Fiji	0.6	0.2	5.8	4.5	-21.9
French Polynesia	0.2	0.0	0.6	0.8	38.3
Guam	0.0	0.0	0.3	0.1	-79.7
Heard Island and McDonald Islands	0.0	0.0	0.0	0.0	718.5
Kiribati	0.0	0.0	0.1	0.0	-75.2
Nauru	0.0	0.0	0.1	0.1	-52.7
New Caledonia	0.0	0.0	0.3	0.2	-51.4
New Zealand	34.1	32.7	389.7	377.1	-3.2
Niue	0.0	0.0	0.0	0.0	229.1
Norfolk Island	0.0	0.0	0.0	0.0	-54.9
Papua New Guinea	0.2	0.2	1.4	1.4	-2.5
Pitcairn	0.0	0.0	0.0	0.0	-15.8
Samoa	0.0	0.0	0.0	0.3	...
Solomon Islands	0.0	0.0	0.1	0.1	21.4
Tonga	0.0	0.0	0.0	0.0	-61.2



Table 8 – continued

## Imports by country, customs basis, not seasonally adjusted

	October		January to October		Change
	2009	2010	2009	2010	January to October 2010/ January to October 2009
	millions of dollars				percent
United States Minor Outlying Islands	0.4	0.2	4.1	3.3	-20.8
Vanuatu	0.0	0.1	0.2	0.7	270.6
Wallis and Futuna	0.0	0.0	0.0	0.0	139.4
<b>Total</b>	<b>166.3</b>	<b>115.7</b>	<b>1,714.6</b>	<b>1,691.5</b>	<b>-1.3</b>
<b>South America</b>					
Argentina	72.0	263.4	585.3	1,138.3	94.5
Bolivia	4.9	12.7	66.4	108.5	63.5
Brazil	330.6	323.5	2,131.5	2,741.4	28.6
Chile	74.3	90.2	1,353.1	1,572.3	16.2
Colombia	91.7	60.5	639.0	623.7	-2.4
Ecuador	13.0	18.3	195.2	176.5	-9.6
Falkland Islands (Malvinas)	0.0	0.0	0.0	0.0	-46.8
Guyana	28.6	24.9	251.8	232.5	-7.7
Paraguay	1.4	0.6	7.7	7.9	3.7
Peru	264.1	324.3	2,298.0	2,949.4	28.3
Suriname	52.1	73.2	451.0	468.3	3.8
Uruguay	1.6	1.4	50.1	49.1	-2.0
Venezuela	48.7	81.8	895.0	751.6	-16.0
<b>Total</b>	<b>982.9</b>	<b>1,274.7</b>	<b>8,924.0</b>	<b>10,819.7</b>	<b>21.2</b>
<b>Central America Antilles</b>					
Anguilla	0.0	0.0	0.3	0.2	-16.4
Antigua and Barbuda	0.0	0.1	0.4	0.3	-31.9
Aruba	0.1	0.0	53.5	0.1	-99.7
Bahamas	0.3	0.5	27.7	47.7	72.4
Barbados	0.8	0.5	7.5	7.0	-7.0
Belize	0.4	0.3	6.4	4.8	-24.0
Bermuda	0.3	0.3	10.7	1.2	-89.2
British Virgin Islands	0.0	0.0	0.5	0.5	3.2
Cayman Islands	0.0	0.0	0.5	0.3	-43.2
Costa Rica	28.1	36.2	297.1	369.2	24.3
Cuba	61.1	59.8	405.3	538.1	32.8
Dominica	0.0	0.0	0.4	0.1	-68.9
Dominican Republic	14.5	13.9	122.8	117.3	-4.5
El Salvador	3.2	5.4	59.1	74.5	26.0
Grenada	0.1	0.0	0.4	0.6	57.6
Guatemala	23.8	28.7	232.5	267.5	15.0
Haiti	1.5	1.8	18.9	22.1	17.0
Honduras	11.8	10.7	120.3	129.8	7.9
Jamaica	22.0	11.0	140.8	128.9	-8.5
Montserrat	0.0	0.0	0.1	0.3	388.6
Netherlands Antilles	4.4	0.0	14.6	0.3	-98.2
Nicaragua	4.6	19.5	70.9	164.6	132.2
Panama	3.6	6.4	33.3	69.8	109.4
Saint Kitts and Nevis	0.6	0.8	5.4	6.3	16.8
Saint Lucia	0.0	0.0	2.2	0.2	-91.3
Saint Vincent and the Grenadines	0.0	0.0	0.2	0.2	-10.8
Trinidad and Tobago	27.4	47.8	225.7	404.1	79.0
Turks and Caicos Islands	0.0	0.0	0.3	0.1	-59.1
<b>Total</b>	<b>208.9</b>	<b>244.1</b>	<b>1,857.7</b>	<b>2,356.0</b>	<b>26.8</b>
<b>All countries</b>	<b>31,566.8</b>	<b>35,884.8</b>	<b>302,974.4</b>	<b>335,184.7</b>	<b>10.6</b>

**Table 9-1  
Imports by province of clearance, customs basis, not seasonally adjusted — October**

	Agricultural and fishing products	Energy products	Forestry products	Industrial goods	Machinery and equipment	Automotive products	Consumer goods	Special transactions trade	<b>Total</b>
millions of dollars									
Newfoundland and Labrador									
2009	2.5	245.0	0.0	6.7	13.2	0.1	0.3	0.1	<b>268.0</b>
2010	3.9	256.4	0.0	3.5	217.8	0.1	6.9	0.1	<b>488.6</b>
Prince Edward Island									
2009	0.5	0.0	0.0	0.1	0.0	0.0	0.0	0.0	<b>0.6</b>
2010	0.6	0.0	0.0	2.5	0.1	0.0	0.0	0.0	<b>3.2</b>
Nova Scotia									
2009	29.2	138.4	1.6	85.5	98.6	336.1	12.2	0.4	<b>702.0</b>
2010	35.0	63.8	1.2	115.1	122.1	280.9	14.2	2.6	<b>635.0</b>
New Brunswick									
2009	53.6	512.7	7.8	77.0	70.6	30.0	18.5	2.0	<b>772.2</b>
2010	78.1	401.8	9.4	100.9	63.9	26.0	25.1	1.8	<b>706.9</b>
Quebec									
2009	479.4	1,036.0	52.1	1,164.9	1,396.8	201.4	981.2	46.2	<b>5,357.9</b>
2010	425.1	1,579.7	55.4	1,175.1	1,720.0	199.9	898.4	42.4	<b>6,095.9</b>
Ontario									
2009	1,349.1	400.7	78.1	3,825.3	5,181.7	4,112.4	3,244.0	307.5	<b>18,498.6</b>
2010	1,413.1	450.1	78.1	4,348.5	5,889.3	4,869.5	3,385.8	525.0	<b>20,959.3</b>
Manitoba									
2009	69.6	20.0	6.4	215.5	427.5	140.7	135.0	7.1	<b>1,022.0</b>
2010	80.3	32.3	8.6	263.2	460.2	127.9	126.6	6.0	<b>1,105.1</b>
Saskatchewan									
2009	28.0	65.2	1.3	138.3	206.7	74.1	19.8	1.1	<b>534.5</b>
2010	29.5	38.9	2.1	169.3	330.0	77.3	24.4	0.4	<b>671.9</b>
Alberta									
2009	157.8	115.3	6.1	312.5	490.6	65.2	106.3	8.3	<b>1,262.1</b>
2010	162.6	144.7	9.5	464.6	744.2	102.9	115.9	11.5	<b>1,756.0</b>
British Columbia									
2009	373.1	219.7	47.5	580.3	913.6	364.1	624.1	11.7	<b>3,134.1</b>
2010	381.9	296.5	50.7	702.9	1,017.3	257.6	710.0	13.6	<b>3,430.4</b>
Yukon, Northwest Territories and Nunavut									
2009	4.0	0.5	0.0	0.1	10.2	0.0	0.0	0.0	<b>14.8</b>
2010	3.7	23.6	0.0	0.2	4.7	0.1	0.1	0.0	<b>32.4</b>
<b>Total</b>									
<b>2009</b>	<b>2,546.8</b>	<b>2,753.5</b>	<b>201.0</b>	<b>6,406.3</b>	<b>8,809.5</b>	<b>5,324.0</b>	<b>5,141.3</b>	<b>384.3</b>	<b>31,566.8</b>
<b>2010</b>	<b>2,613.8</b>	<b>3,287.7</b>	<b>215.0</b>	<b>7,345.7</b>	<b>10,569.7</b>	<b>5,942.1</b>	<b>5,307.3</b>	<b>603.5</b>	<b>35,884.8</b>

**Table 9-2**  
**Imports by province of clearance, customs basis, not seasonally adjusted — Year to date, January to October**

	Agricultural and fishing products	Energy products	Forestry products	Industrial goods	Machinery and equipment	Automotive products	Consumer goods	Special transactions trade	Total
millions of dollars									
Newfoundland and Labrador									
2009	31.5	1,905.3	0.5	145.7	121.6	1.0	3.5	4.5	<b>2,213.6</b>
2010	35.9	2,254.6	0.1	42.5	404.0	0.9	18.4	3.0	<b>2,759.5</b>
Prince Edward Island									
2009	3.0	0.0	0.0	17.9	13.0	0.1	1.7	0.2	<b>35.8</b>
2010	3.8	0.0	0.1	7.9	1.6	0.1	0.2	0.1	<b>13.7</b>
Nova Scotia									
2009	248.5	1,237.8	11.8	707.4	884.4	2,214.8	144.4	25.3	<b>5,474.5</b>
2010	336.9	1,365.2	14.7	1,014.1	891.5	2,798.5	147.0	25.1	<b>6,593.0</b>
New Brunswick									
2009	403.1	5,071.1	84.8	762.0	874.4	246.3	184.0	19.5	<b>7,645.3</b>
2010	476.1	6,191.5	93.9	888.0	802.0	346.0	232.8	18.7	<b>9,049.1</b>
Quebec									
2009	3,779.3	10,180.3	569.7	11,156.4	15,340.8	1,714.6	9,446.1	444.8	<b>52,632.1</b>
2010	3,730.7	13,549.0	595.4	12,349.4	14,471.6	1,792.2	8,907.0	449.9	<b>55,845.2</b>
Ontario									
2009	13,523.2	4,627.9	741.5	35,337.3	50,107.4	34,553.5	30,009.3	2,907.5	<b>171,807.5</b>
2010	13,394.1	4,356.6	823.5	41,651.2	53,915.5	47,852.1	30,375.5	3,262.9	<b>195,631.4</b>
Manitoba									
2009	806.0	244.0	72.0	2,673.9	4,695.1	1,163.4	1,396.9	78.8	<b>11,130.0</b>
2010	742.6	467.8	77.9	2,873.5	4,865.9	1,170.6	1,312.2	71.7	<b>11,582.1</b>
Saskatchewan									
2009	288.3	460.0	21.9	1,758.8	2,741.0	642.5	209.0	24.5	<b>6,145.9</b>
2010	275.7	532.5	20.0	1,826.9	3,084.4	799.4	217.1	17.0	<b>6,773.2</b>
Alberta									
2009	1,549.4	2,131.3	83.3	3,570.2	5,909.1	626.6	985.8	114.5	<b>14,970.2</b>
2010	1,552.7	2,123.5	99.4	4,044.0	5,973.4	906.5	1,063.0	117.6	<b>15,880.1</b>
British Columbia									
2009	3,713.3	2,050.5	434.4	5,712.8	9,725.3	3,146.8	5,884.0	134.0	<b>30,801.1</b>
2010	3,706.8	2,681.8	527.6	6,164.9	9,546.3	2,377.1	5,746.3	135.5	<b>30,886.3</b>
Yukon, Northwest Territories and Nunavut									
2009	49.5	34.0	0.0	1.9	29.2	0.6	0.2	3.0	<b>118.4</b>
2010	56.8	58.7	0.0	1.8	52.4	0.6	0.3	0.5	<b>171.1</b>
<b>Total</b>									
<b>2009</b>	<b>24,395.0</b>	<b>27,942.1</b>	<b>2,019.9</b>	<b>61,844.4</b>	<b>90,441.3</b>	<b>44,310.1</b>	<b>48,265.0</b>	<b>3,756.6</b>	<b>302,974.4</b>
<b>2010</b>	<b>24,312.1</b>	<b>33,581.1</b>	<b>2,252.6</b>	<b>70,864.2</b>	<b>94,008.6</b>	<b>58,044.0</b>	<b>48,019.8</b>	<b>4,102.3</b>	<b>335,184.7</b>

# Technical notes

---

## The Canadian international merchandise trade statistical program

### Introduction

The objective of this text is to provide a general overview of the Canadian International Merchandise Trade Statistical Program, with special reference to concepts and definitions. The text is intended for the general user and simplicity is emphasized. More technical details can be obtained from the International Trade Division, Statistics Canada upon request.

### Conceptual framework

**1. Objectives and coverage:** The primary objective of the Canadian International Merchandise Trade Statistical Program is to measure the change in the stock of material resources of Canada resulting from the movement of merchandise into or out of the country. Information on imports and exports are inputs into the System of National Accounts, particularly in the balance of payments and gross domestic product, and are used in the formulation of trade and budgetary policies. Governments, importers, exporters, manufacturers and shipping companies use international merchandise trade statistics to:

- monitor import penetration and export performance,
- monitor commodity price and volume changes,
- examine transport implications.

**2. Trade statistics (customs basis / balance of payments basis):** Merchandise trade statistics are reported and presented on two different bases: customs basis and balance of payment basis.

When goods are imported into or exported from Canada, declarations must be filed with customs, giving such information as description and value of the goods, origin and port of clearance of commodities and mode of transport. Most of this information is required for the purposes of customs administration. Statistics developed from administrative records of customs are commonly referred to as customs-based trade statistics.

Customs-based trade statistics are more accurate at measuring imports than they are at measuring exports. This is the case because customs are typically more vigilant with respect to goods entering the country than they are with goods leaving the country.

Customs-based export statistics may understate or incorrectly portray the destination of exports. Export statistics are understated when the proper documentation is not filed with Customs. Exports are incorrectly portrayed when the country of final destination is inaccurately reported on the customs documentation. This occurs most frequently when goods are routed through an intermediary country before continuing on to their final destination.

Statistics Canada does not have a measure of undercoverage but periodically conducts reconciliation exercises with its major trading partners, excluding the United States.

On January 1, 1990, Canada entered into a memorandum of understanding with the United States concerning the exchange of import data. As a consequence, each administration is using the other's import data to replace its own export data. Canada's international merchandise trade statistics are, therefore, no longer derived exclusively from the administrative records of the Canada Border Services Agency, but from United States Customs records as well.

Customs-based information is adjusted to conform with the National Accounts concepts and definitions. The adjustments to derive balance of payments-based trade data include adjustments related to trade definition, valuation and timing. The principal difference between the two trade concepts is that customs-based merchandise trade statistics cover the physical movement of goods as they are reflected in customs documents while balance of payments-adjusted data are intended to cover all economic transactions that involve merchandise trade between residents and non-residents. The present document describes the concepts and processes pertaining to the customs-based trade statistics only. (For further information on balance of payments-adjusted data, see the publication *Canada's Balance of International Payments*, Statistics Canada (Catalogue no. 67-001-X).

**3. System of trade:** Canadian trade statistics are compiled according to the general system of trade, as defined by the United Nations Statistical Office. Under this system, imports include all goods that have crossed Canada's territorial boundary, whether for immediate consumption in Canada or for storage in bonded customs warehouses. Domestic exports include goods grown, extracted or manufactured in Canada, including goods of foreign origin that have been materially transformed in Canada. Re-exports are exports of goods of foreign origin that have not been materially transformed in Canada, including foreign goods withdrawn for export from bonded customs warehouses. Total exports are the sum of domestic exports and re-exports. Thus the general trade system, in principal, presents all goods entering the country (imports) and all goods leaving the country (exports). It differs from the special system of trade in the treatment of imported goods into bonded customs warehouses. Under the 'special' system, these goods are counted only if and when they are withdrawn from customs warehouses for home consumption. They are not counted in export statistics unless they have first cleared customs.

Conceptually, under the general system, the statistical frontier coincides with the geographical boundary, while under the 'special' system, it coincides with the customs boundary.

**4. Valuation:** For customs purposes, imports are recorded at values established according to the provisions of the Customs Act, which, since January 1, 1985, reflects valuation methods based on the General Agreement on Tariffs and Trade (GATT) Valuation Code System. In general, the value for duty of imported goods must be equivalent to the transaction value or the price actually paid.

To determine the transaction value of imported goods, all transportation and associated costs arising in respect of the goods being appraised prior to and at the place of direct shipment to Canada, are to be added to the price of the goods. Therefore, Canadian imports are valued Free on Board (FOB), place of direct shipment to Canada. It excludes freight and insurance costs in bringing the goods to Canada from the point of direct shipment.

Countries other than the United States, exports are, in principal, valued or recorded at the values declared on export documents, which usually reflect the transaction value, i.e., actual selling price or, in the case of a non-arm's length transaction, the transfer price used for company accounting purposes. Canadian exports to overseas countries are valued at F.O.B. port of exit, including domestic freight charges to that point but net of discounts and allowances. As of January, 1990, Canadian exports to the U.S. are valued F.O.B. point of exit from Canada. Prior to 1990, they were valued F.O.B. place of lading net of freight charges, discounts and allowances.

**5. Statistical period:** The reference period is the calendar month and the calendar year. The closing of the statistical month for imports and Canadian exports to the United States is defined as the last calendar day of the month, based as closely as practicable on the date of clearance from customs.

The closing of the statistical month for exports, to countries other than the United States, is also defined as the last calendar day of the month. Those export documents that are received too late for incorporation in the current month are assigned to the month the transaction took place. If a monthly summary report from a high volume exporter is not received on time, the data are imputed for the current month and revised with the trade value in the following statistical month.

**6. Trading partner attribution (country of origin/destination):** Exports are attributed to the country, which is the last known destination of the goods at the time of export. Exports to the United States are attributed to the state of destination.

Imports are attributed to their country of origin, that is, the country in which the goods were grown, extracted or manufactured in accordance to the rules of origin administered by the Canada Border Services Agency. Imports from the United States are attributed to the state of origin. Prior to 1988, most imports were attributed to the country of export/consignment, with the exception of imports from Central and South America.

**7. Principal trading areas:** The 'principal trading areas' are country groupings defined as follows:

**United States:** includes trade with Puerto Rico and the U.S. Virgin Islands

**Japan**

**European Union (EU):** Austria, Belgium, Bulgaria, Cyprus, Czech Republic, Denmark, Estonia, Finland, France, Germany, Greece, Hungary, Ireland, Italy, Latvia, Lithuania, Luxembourg, Malta, Netherlands, Poland, Portugal, Romania, Slovakia, Slovenia, Spain, Sweden and United Kingdom

**Other Organisation for Economic Co-operation and Development (OECD):** Australia, Canada, Iceland, Mexico, New Zealand, Norway, South Korea, Switzerland, and Turkey. (The EU countries, United States, and Japan are also members of OECD)

**Other countries:** all countries and territories other than the United States, Japan, EU and other OECD

**8. Legal framework:** Import and export statistics with countries other than the United States are derived from information contained in administrative records collected by the Canada Border Services Agency under the Customs Act. Copies of these documents (or information therefrom) are sent to Statistics Canada in accordance with Section 25 of the Statistics Act. It follows that the disclosure of trade statistics is governed by both the Customs Act and the Statistics Act and is subject to the provisions of Section 17(2)(a) of the latter. Disclosure of export statistics to the United States is now governed by a memorandum of understanding that provides for the exchange of detailed import statistics between Canada and the United States.

### Contact information

Questions concerning details of methods not covered by these notes should be addressed to the Marketing and Client Services Section, International Trade Division, Statistics Canada, 170 Tunney's Pasture Driveway, Ottawa, Ontario, K1A 0T6.

**Telephone:** 1-800-294-5583 or 613-951-9647

**Facsimile:** 1-800-664-0055 613-951-0117

**Internet:** [trade@statcan.gc.ca](mailto:trade@statcan.gc.ca)