

Catalogue no. 65-001-X

# Canadian International Merchandise Trade

September 2010



Statistics  
Canada

Statistique  
Canada

Canada

## How to obtain more information

For information about this product or the wide range of services and data available from Statistics Canada, visit our website at [www.statcan.gc.ca](http://www.statcan.gc.ca), e-mail us at [infostats@statcan.gc.ca](mailto:infostats@statcan.gc.ca), or telephone us, Monday to Friday from 8:30 a.m. to 4:30 p.m., at the following numbers:

### Statistics Canada's National Contact Centre

Toll-free telephone (Canada and the United States):

Inquiries line	1-800-263-1136
National telecommunications device for the hearing impaired	1-800-363-7629
Fax line	1-877-287-4369

Local or international calls:

Inquiries line	1-613-951-8116
Fax line	1-613-951-0581

### Depository Services Program

Inquiries line	1-800-635-7943
Fax line	1-800-565-7757

## To access this product

This product, Catalogue no. 65-001-X, is available free in electronic format. To obtain a single issue, visit our website at [www.statcan.gc.ca](http://www.statcan.gc.ca) and browse by "Key resource" > "Publications."

## Standards of service to the public

Statistics Canada is committed to serving its clients in a prompt, reliable and courteous manner. To this end, Statistics Canada has developed *standards of service* that its employees observe. To obtain a copy of these service standards, please contact Statistics Canada toll-free at 1-800-263-1136. The service standards are also published on [www.statcan.gc.ca](http://www.statcan.gc.ca) under "About us" > "The agency" > "Providing services to Canadians."

Statistics Canada  
International Trade Division

# Canadian International Merchandise Trade

September 2010

Published by authority of the Minister responsible for Statistics Canada

© Minister of Industry, 2010

All rights reserved. The content of this electronic publication may be reproduced, in whole or in part, and by any means, without further permission from Statistics Canada, subject to the following conditions: that it be done solely for the purposes of private study, research, criticism, review or newspaper summary, and/or for non-commercial purposes; and that Statistics Canada be fully acknowledged as follows: Source (or "Adapted from", if appropriate): Statistics Canada, year of publication, name of product, catalogue number, volume and issue numbers, reference period and page(s). Otherwise, no part of this publication may be reproduced, stored in a retrieval system or transmitted in any form, by any means—electronic, mechanical or photocopy—or for any purposes without prior written permission of Licensing Services, Client Services Division, Statistics Canada, Ottawa, Ontario, Canada K1A 0T6.

November 2010

Catalogue no. 65-001-X, vol. 64, no. 9

ISSN 1480-8781

Frequency: Monthly

Ottawa

Cette publication est également disponible en français.

---

#### **Note of appreciation**

*Canada owes the success of its statistical system to a long-standing partnership between Statistics Canada, the citizens of Canada, its businesses, governments and other institutions. Accurate and timely statistical information could not be produced without their continued cooperation and goodwill.*

# User information

---

## Symbols

The following standard symbols are used in Statistics Canada publications:

- . not available for any reference period
- .. not available for a specific reference period
- ... not applicable
- 0 true zero or a value rounded to zero
- 0<sup>s</sup> value rounded to 0 (zero) where there is a meaningful distinction between true zero and the value that was rounded
- p preliminary
- r revised
- x suppressed to meet the confidentiality requirements of the *Statistics Act*
- E use with caution
- F too unreliable to be published

## Note to users

All totals are calculated from full figures and rounded independently; consequently, totals may not equal the sum of their components.

The data is based on commodity groups (sector, subsector and major group).

# Table of contents

---

<b>Highlights</b>	<b>5</b>
<b>Analysis</b>	<b>7</b>
<b>Related products</b>	<b>12</b>
<b>Statistical tables</b>	
1 Merchandise trade of Canada, balance of payments basis, seasonally adjusted	16
1-1 Current dollars	16
1-2 Constant dollars, 2002	17
1-3 Price indices (Laspeyres)	18
2 Exports by commodity groupings, balance of payments basis, seasonally adjusted	19
2-1 Current dollars	19
2-2 Constant dollars, 2002	21
3 Domestic exports to selected countries, customs basis, not seasonally adjusted	23
3-1 September	23
3-2 Year to date, January to September	24
4 Domestic exports by country, customs basis, not seasonally adjusted	25
5 Exports by province of origin, customs basis, not seasonally adjusted	29
5-1 September	29
5-2 Year to date, January to September	30
6 Imports by commodity groupings, balance of payments basis, seasonally adjusted	31
6-1 Current dollars	31
6-2 Constant dollars, 2002	33
7 Imports from selected countries, customs basis, not seasonally adjusted	35
7-1 September	35
7-2 Year to date, January to September	36
8 Imports by country, customs basis, not seasonally adjusted	37

**Table of contents – continued**

9	Imports by province of clearance, customs basis, not seasonally adjusted	41
9-1	September	41
9-2	Year to date, January to September	42

**Data quality, concepts and methodology**

	Technical notes	43
--	-----------------	----

## Highlights

---

Canada's merchandise exports declined 1.7% to \$33.1 billion in September, as export volumes fell 2.2% while prices increased 0.5%. The level of exports has remained relatively unchanged since the beginning of 2010.

Automotive products, other consumer goods as well as industrial goods and materials were the main factors behind the decline. Conversely, exports of machinery and equipment increased during the month.

Imports increased 1.2% to \$35.6 billion, the highest level since November 2008, as import prices rose 1.1%.

Industrial goods and materials and machinery and equipment, the two largest import sectors, recorded a gain in September.

Consequently, Canada's trade deficit with the world rose from \$1.5 billion in August to \$2.5 billion in September, approaching the record deficit registered in July.

Exports to the United States fell 3.6% to \$23.9 billion, their lowest level since November 2009. The decrease largely reflected lower exports of passenger autos. In contrast, imports increased 1.6%. As a result, Canada's trade surplus with the United States narrowed to \$1.6 billion in September from \$2.9 billion in August.

Exports to countries other than the United States increased 3.6%, the third consecutive monthly gain, while imports rose 0.5%. Consequently, Canada's trade deficit with countries other than the United States declined to \$4.1 billion in September from \$4.3 billion in August.

### Note to readers

Merchandise trade is one component of Canada's international balance of payments, which also includes trade in services, investment income, current transfers as well as capital and financial flows.

International merchandise trade data by country are available on both a balance of payments and a customs basis for the United States, Japan and the United Kingdom. Trade data for all other individual countries are available on a customs basis only. Balance of payments data are derived from customs data by making adjustments for characteristics such as valuation, coverage, timing and residency. These adjustments are made to conform to the concepts and definitions of the Canadian System of National Accounts.

Data in this release are on a balance of payments basis, seasonally adjusted in current dollars. Constant dollars are calculated using the Laspeyres volume formula.

### Revisions

In general, merchandise trade data are revised on an ongoing basis for each month of the current year. Current year revisions are reflected in both the customs and balance of payments based data. Revisions to customs based data for the previous year are released on a quarterly basis. Revisions to balance of payments based data for the three previous years are released annually in June.

Factors influencing revisions include late receipt of import and export documentation, incorrect information on customs forms, replacement of estimates with actual figures, changes in classification of merchandise based on more current information, and changes to seasonal adjustment factors.

Revised data are available in the appropriate CANSIM tables.





## Analysis

---

### **Exports of automotive products decline for the fourth straight month**

After trending upwards from June 2009 to May 2010, exports of automotive products declined for the fourth consecutive month in September. Automotive products exports fell 6.6% to \$4.8 billion, largely reflecting lower volumes. Exports of passenger autos, down 10.9%, accounted for the drop in the sector.

Following a 27.3% gain in August, exports of other consumer goods fell 15.9% to \$1.4 billion, as volumes declined 15.2%. Lower exports of medicinal and pharmaceutical products were the main source of the decline.

Exports of industrial goods and materials declined 2.3% to \$7.8 billion, as volumes fell 3.0%. Precious metals and copper ores, which led the sector's gain in August, largely contributed to the decrease. Higher exports of nickel and alloys moderated the decline in the sector.

Exports of machinery and equipment increased 3.6% to \$6.7 billion, the fifth increase in six months. Exports of aircraft, up 13.9%, represented over two-thirds of the gain in the sector.

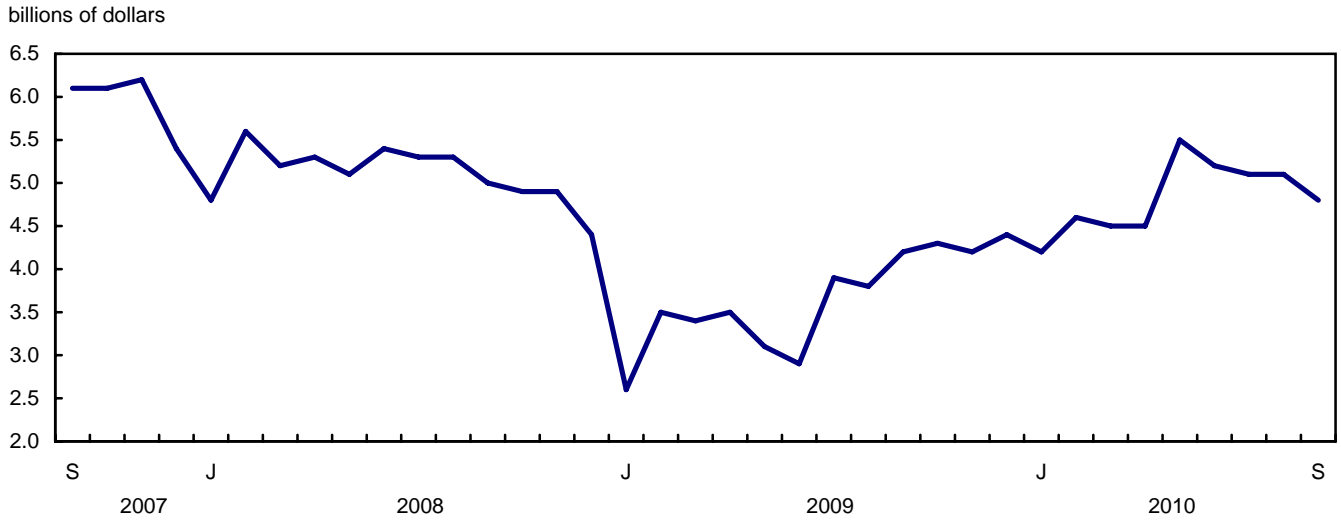
### **Imports of precious metals reach a record high**

Imports of industrial goods and materials rose 5.6% to \$7.6 billion, led by imports of metals and metal ores. Imports of precious metals reached a record high in September, rising 38.6% to \$1.0 billion. Metals in ores also contributed to the sector's growth.

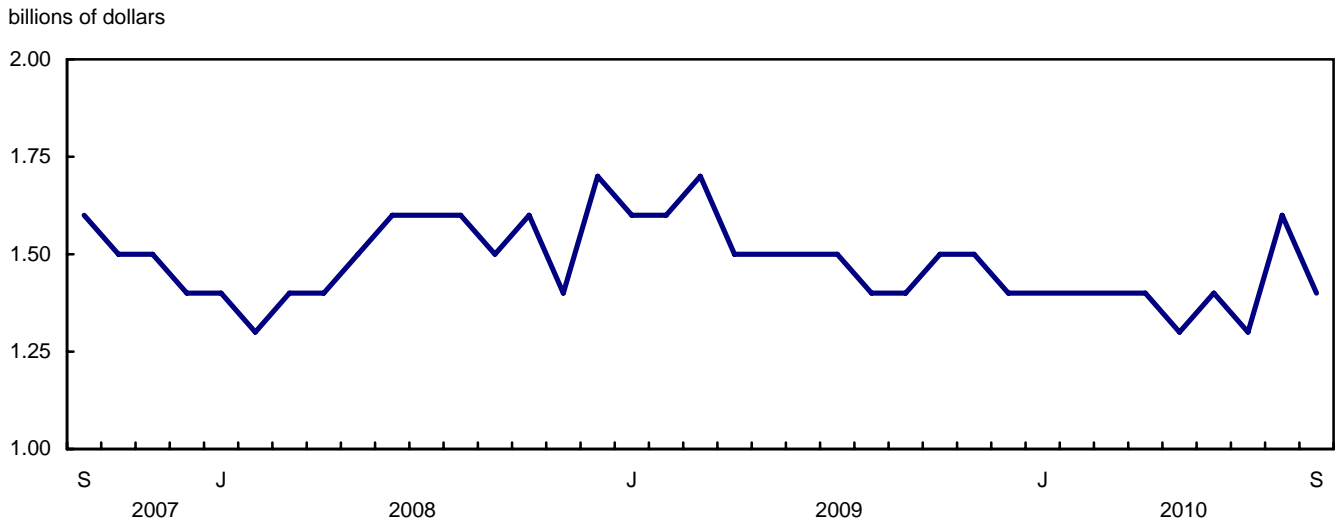
Machinery and equipment imports increased 3.2% to \$10.2 billion, the eighth consecutive monthly gain. Volumes rose 2.3% and have been on an upward trend since January 2010. Aircraft, engines and parts led the growth in September. Engines, turbines and motors also contributed to the gain, reflecting the expansion of wind farm projects in Canada.

Imports of automotive products fell 4.8% to \$5.5 billion. Imports of motor vehicle parts, down for the fourth consecutive month, accounted for almost two-thirds of the decrease. Imports of passenger autos and trucks also declined in September.

**Chart 1**  
**Exports of automotive products, seasonally adjusted, on a balance of payments basis**

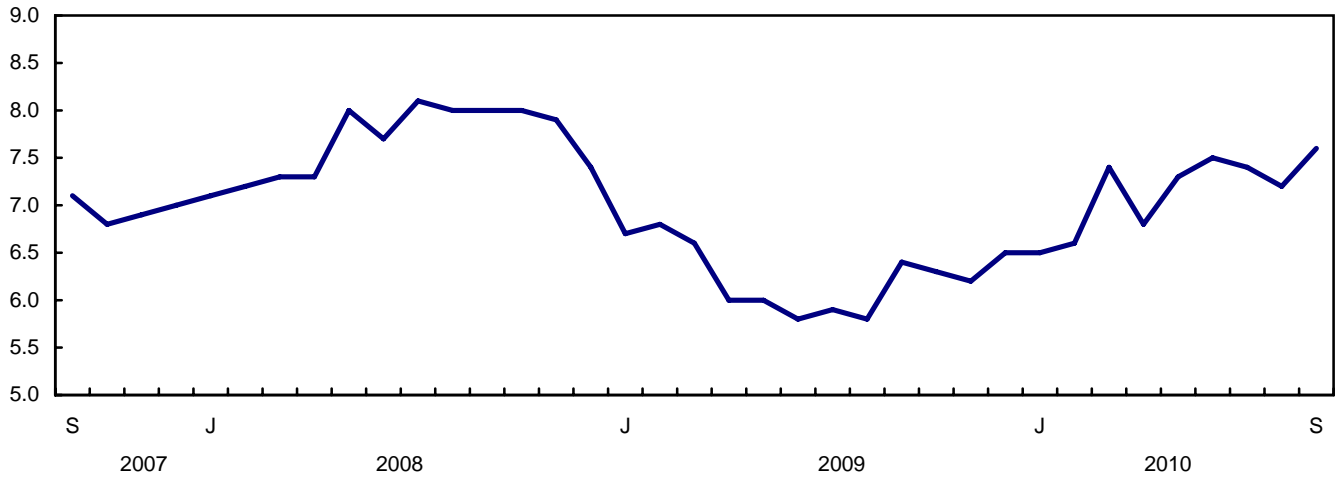


**Chart 2**  
**Exports of other consumer goods, seasonally adjusted, on a balance of payments basis**



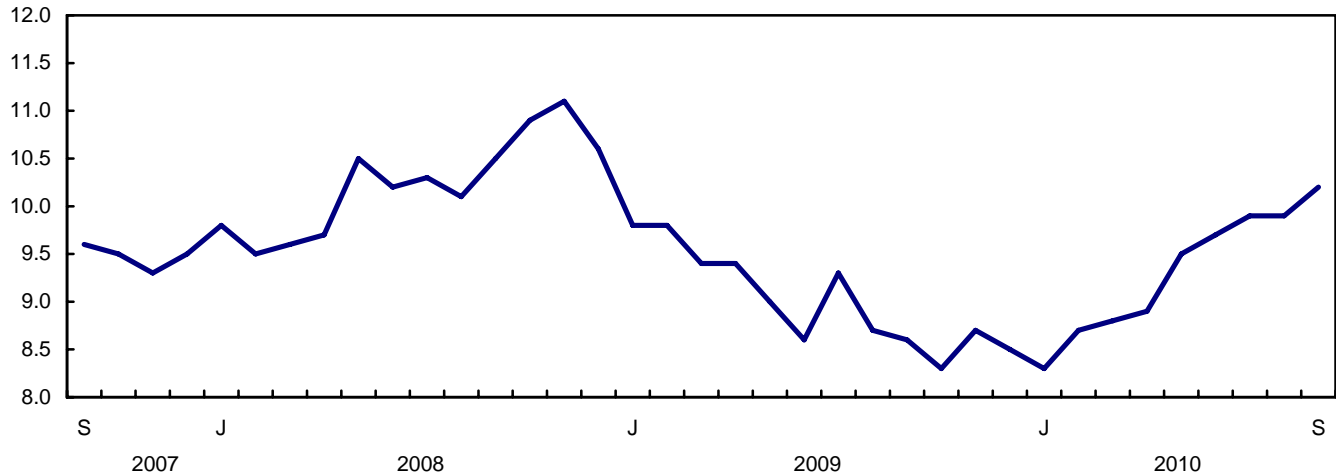
**Chart 3**  
Imports of industrial goods and materials, seasonally adjusted, on a balance of payments basis

billions of dollars



**Chart 4**  
Imports of machinery and equipment, seasonally adjusted, on a balance of payments basis

billions of dollars



**Text table 1**  
**Merchandise trade by principal trading area, balance of payments basis, seasonally adjusted**

	August	September	Change		Year to date			September 2010/ September 2009	
	2010	2010			2009	2010	Change		
	millions of dollars		percent		millions of dollars			percent	
<b>Export to</b>									
United States	24,832	23,932	-900	-3.6	200,556	222,151	21,595	10.8	9.4
Japan	810	764	-45	-5.6	6,656	6,895	239	3.6	19.2
European Union <sup>1</sup>	3,246	3,043	-204	-6.3	23,611	25,807	2,196	9.3	7.7
Other Organisation for Economic Co-operation and Development <sup>2</sup>	1,331	1,689	358	26.9	12,341	13,629	1,288	10.4	12.1
Other countries	3,431	3,637	206	6.0	30,990	31,217	227	0.7	19.1
<b>Total</b>	<b>33,650</b>	<b>33,065</b>	<b>-584</b>	<b>-1.7</b>	<b>274,154</b>	<b>299,699</b>	<b>25,545</b>	<b>9.3</b>	<b>10.6</b>
<b>Imports from</b>									
United States	21,981	22,325	344	1.6	176,742	194,673	17,931	10.1	13.1
Japan	786	860	74	9.4	6,968	7,412	444	6.4	18.1
European Union <sup>1</sup>	3,691	3,449	-243	-6.6	28,477	29,734	1,257	4.4	13.4
Other Organisation for Economic Co-operation and Development <sup>2</sup>	2,349	2,657	308	13.1	19,156	21,739	2,583	13.5	36.2
Other countries	6,335	6,259	-77	-1.2	47,816	53,774	5,958	12.5	19.1
<b>Total</b>	<b>35,144</b>	<b>35,550</b>	<b>407</b>	<b>1.2</b>	<b>279,158</b>	<b>307,331</b>	<b>28,173</b>	<b>10.1</b>	<b>15.7</b>
<b>Balance</b>									
United States	2,850	1,607	-1,243	...	23,814	27,479	3,664	...	...
Japan	24	-96	-120	...	-312	-517	-205	...	...
European Union <sup>1</sup>	-445	-406	39	...	-4,866	-3,927	939	...	...
Other Organisation for Economic Co-operation and Development <sup>2</sup>	-1,019	-968	50	...	-6,814	-8,110	-1,295	...	...
Other countries	-2,904	-2,621	283	...	-16,826	-22,557	-5,731	...	...
<b>Total</b>	<b>-1,494</b>	<b>-2,485</b>	<b>-991</b>	<b>...</b>	<b>-5,004</b>	<b>-7,632</b>	<b>-2,628</b>	<b>...</b>	<b>...</b>

1. European Union includes: Austria, Belgium, Bulgaria, Cyprus, Czech Republic, Denmark, Estonia, Finland, France, Germany, Greece, Hungary, Ireland, Italy, Latvia, Lithuania, Luxembourg, Malta, Netherlands, Poland, Portugal, Romania, Slovakia, Slovenia, Spain, Sweden and United Kingdom.
2. Other Organisation for Economic Co-operation and Development includes: Australia, Canada, Iceland, Mexico, New Zealand, Norway, South Korea, Switzerland and Turkey.

Text table 2

## Reconciliation of customs and balance of payments trade data, not seasonally adjusted

	2010						2009
	September	August	July	June	May	April	Annual
	millions of dollars						
<b>Exports</b>							
<b>Customs basis</b>	<b>33,122</b>	<b>33,020</b>	<b>31,024</b>	<b>34,353</b>	<b>33,799</b>	<b>32,638</b>	<b>360,043</b>
<b>Balance of payments adjustments</b>	<b>656</b>	<b>611</b>	<b>814</b>	<b>-15</b>	<b>732</b>	<b>679</b>	<b>9,486</b>
Valuation and residency							
Inland freight	574	534	544	559	560	532	6,214
Other valuation and residency	-961	-873	-753	-1,043	-1,400	-773	-7,783
Timing	103	39	-22	6	41	-9	-163
Coverage	940	911	1,045	463	1,531	929	11,218
<b>Balance of payments basis</b>	<b>33,778</b>	<b>33,631</b>	<b>31,838</b>	<b>34,338</b>	<b>34,531</b>	<b>33,317</b>	<b>369,529</b>
<b>Imports</b>							
<b>Customs basis</b>	<b>35,898</b>	<b>34,875</b>	<b>33,166</b>	<b>35,373</b>	<b>34,014</b>	<b>32,630</b>	<b>365,136</b>
<b>Balance of payments adjustments</b>	<b>852</b>	<b>851</b>	<b>873</b>	<b>895</b>	<b>669</b>	<b>509</b>	<b>8,961</b>
Valuation and residency							
Inland freight	760	755	733	772	753	725	7,728
Other valuation and residency	-19	-21	-17	39	31	38	226
Timing	0	0	0	0	0	0	0
Coverage	111	117	157	84	-115	-254	1,007
<b>Balance of payments basis</b>	<b>36,750</b>	<b>35,726</b>	<b>34,039</b>	<b>36,268</b>	<b>34,683</b>	<b>33,139</b>	<b>374,097</b>

## Related products

---

### Selected publications from Statistics Canada

---

65-208-X	International Merchandise Trade Annual Review
65-506-X	A Profile of Canadian Exporters
65F0013X	Canadian International Merchandise Trade Database
65F0019X	A Database for Analysis of International Markets
65F0020X	Data Integration - International Trade Data and Manufacturing Shipments Data

---

### Selected CANSIM tables from Statistics Canada

---

228-0001	Merchandise imports and exports, by major groups and principal trading areas for all countries, monthly
228-0002	Merchandise imports and exports, by major groups and principal trading areas for all countries, quarterly
228-0003	Merchandise imports and exports, by major groups and principal trading areas for all countries, annual
228-0033	Imports, customs-based, by province of clearance, monthly
228-0034	Domestic exports, customs-based, by province of origin, monthly
228-0041	Merchandise imports and exports by sector and sub-sector, customs and balance of payments basis, for all countries, monthly
228-0042	Merchandise imports and exports by sector and sub-sector, customs and balance of payments basis, for all countries, quarterly
228-0043	Merchandise imports and exports by sector and sub-sector, customs and balance of payments basis, for all countries, annual
228-0047	Merchandise imports and exports balance of payments and customs-based price and volume indexes for all countries, monthly
228-0048	Merchandise imports and exports balance of payments and customs-based price and volume indexes for all countries, quarterly
228-0049	Merchandise imports and exports balance of payments and customs-based price and volume indexes for all countries, annual

228-0050	Merchandise imports and exports customs-based price indexes, Canada and United States trade, and Standard International Trade Classification (SITC revision 3) price indexes for all countries and United States, monthly
228-0051	Merchandise imports and exports customs-based price indexes, Canada and United States trade, and Standard International Trade Classification (SITC revision 3) price indexes for all countries and United States, quarterly
228-0052	Merchandise imports and exports customs-based price indexes, Canada and United States trade, and Standard International Trade Classification (SITC revision 3) price indexes for all countries and United States, annual
228-0053	Merchandise import and export price and volume indexes by sector and sub-sector, customs and balance of payments basis, for all countries, monthly
228-0054	Merchandise import and export price and volume indexes by sector and sub-sector, customs and balance of payments basis, for all countries, quarterly
228-0055	Merchandise import and export price and volume indexes by sector and sub-sector, customs and balance of payments basis, for all countries, annual
228-0056	Merchandise imports and exports by sector, balance of payments basis, for all countries, seasonally adjusted, Fisher formula, monthly
228-0057	Merchandise imports and exports by sector, balance of payments basis, for all countries, seasonally adjusted, Fisher formula, quarterly

---

### **Selected surveys from Statistics Canada**

---

2201	Canadian International Merchandise Trade (Customs Basis)
2202	Canadian International Merchandise Trade (Balance of Payments Basis)
2203	International Trade Price Indexes

---

### **Selected summary tables from Statistics Canada**

---

- *Canada: Economic and financial data*
- *Imports, exports and trade balance of goods on a balance-of-payments basis, by country or country grouping*
- *Exports of goods on a balance-of-payments basis*
- *Imports of goods on a balance-of-payments basis*

- *Merchandise trade of Canada (monthly)*
- *Economic indicators, by province and territory (monthly and quarterly)*
- *Latest statistics (monthly)*



# Statistical tables

---

---

**Table 1-1**  
**Merchandise trade of Canada, balance of payments basis, seasonally adjusted — Current dollars**

	Exports	Imports	Trade balance	Period to period change		
				Exports	Imports	Balance
				millions of dollars	percent	millions of dollars
2006	453,952	404,345	49,606	0.0	0.0	0
2007	463,120	415,683	47,437	2.0	2.8	-2,169
2008	489,995	443,752	46,244	5.8	6.8	-1,194
2009	369,529	374,097	-4,568	-24.6	-15.7	-50,812
<b>2008</b>						
First quarter	117,294	104,743	12,551	6.0	3.2	3,321
Second quarter	127,735	111,640	16,095	8.9	6.6	3,544
Third quarter	129,499	115,116	14,383	1.4	3.1	-1,712
Fourth quarter	115,468	112,252	3,215	-10.8	-2.5	-11,168
<b>2009</b>						
First quarter	95,769	95,366	403	-17.1	-15.0	-2,812
Second quarter	88,008	90,028	-2,019	-8.1	-5.6	-2,422
Third quarter	90,377	93,765	-3,388	2.7	4.2	-1,369
Fourth quarter	95,375	94,939	436	5.5	1.3	3,824
<b>2010</b>						
First quarter	99,579	98,480	1,099	4.4	3.7	663
Second quarter	100,398	102,639	-2,241	0.8	4.2	-3,339
Third quarter	99,722	106,212	-6,490	-0.7	3.5	-4,250
<b>2009</b>						
January	30,921	32,192	-1,272	-10.5	-8.9	-483
February	32,599	32,133	466	5.4	-0.2	1,737
March	32,249	31,040	1,209	-1.1	-3.4	743
April	30,231	30,774	-543	-6.3	-0.9	-1,752
May	28,424	29,797	-1,373	-6.0	-3.2	-830
June	29,353	29,456	-104	3.3	-1.1	1,269
July	31,048	31,952	-904	5.8	8.5	-800
August	29,419	31,099	-1,680	-5.2	-2.7	-777
September	29,910	30,714	-804	1.7	-1.2	876
October	31,128	30,708	420	4.1	0.0	1,224
November	31,462	31,616	-154	1.1	3.0	-573
December	32,785	32,615	170	4.2	3.2	324
<b>2010</b>						
January	33,062	32,113	949	0.8	-1.5	779
February	33,356	32,729	627	0.9	1.9	-322
March	33,160	33,638	-478	-0.6	2.8	-1,105
April	32,919	32,841	78	-0.7	-2.4	556
May	34,354	34,963	-608	4.4	6.5	-686
June	33,125	34,835	-1,711	-3.6	-0.4	-1,102
July	33,007	35,518	-2,511	-0.4	2.0	-801
August	33,650	35,144	-1,494	1.9	-1.1	1,017
September	33,065	35,550	-2,485	-1.7	1.2	-991

**Note(s):** Because of rounding, monthly data may not add up to quarterly data and quarterly data may not add up to annual data.

**Table 1-2**  
**Merchandise trade of Canada, balance of payments basis, seasonally adjusted — Constant dollars, 2002**

	Exports	Imports	Trade balance	Period to period change	
				Exports	Imports
	millions of dollars			percent	
2006	442,729	457,196	-14,466	0.0	0.0
2007	449,015	484,005	-34,990	1.4	5.9
2008	415,119	485,902	-70,783	-7.5	0.4
2009	345,911	405,261	-59,350	-16.7	-16.6
<b>2008</b>					
First quarter	107,071	123,094	-16,023	-2.6	-1.2
Second quarter	106,872	125,669	-18,797	-0.2	2.1
Third quarter	104,062	123,918	-19,856	-2.6	-1.4
Fourth quarter	97,114	113,221	-16,107	-6.7	-8.6
<b>2009</b>					
First quarter	87,218	97,521	-10,303	-10.2	-13.9
Second quarter	83,055	96,718	-13,663	-4.8	-0.8
Third quarter	86,329	104,265	-17,935	3.9	7.8
Fourth quarter	89,308	106,757	-17,449	3.5	2.4
<b>2010</b>					
First quarter	91,397	110,667	-19,271	2.3	3.7
Second quarter	94,400	116,952	-22,552	3.3	5.7
Third quarter	93,694	120,238	-26,544	-0.7	2.8
<b>2009</b>					
January	27,994	33,229	-5,235	-9.4	-7.4
February	29,778	32,701	-2,923	6.4	-1.6
March	29,446	31,592	-2,145	-1.1	-3.4
April	28,359	31,963	-3,604	-3.7	1.2
May	27,195	32,360	-5,165	-4.1	1.2
June	27,502	32,395	-4,893	1.1	0.1
July	29,630	35,032	-5,402	7.7	8.1
August	28,012	34,860	-6,847	-5.5	-0.5
September	28,687	34,373	-5,686	2.4	-1.4
October	29,629	34,757	-5,128	3.3	1.1
November	29,376	35,625	-6,249	-0.9	2.5
December	30,304	36,375	-6,071	3.2	2.1
<b>2010</b>					
January	30,264	36,224	-5,961	-0.1	-0.4
February	30,371	36,765	-6,394	0.4	1.5
March	30,762	37,678	-6,916	1.3	2.5
April	31,074	37,756	-6,682	1.0	0.2
May	32,073	39,472	-7,400	3.2	4.5
June	31,253	39,724	-8,471	-2.6	0.6
July	30,981	40,135	-9,154	-0.9	1.0
August	31,705	40,035	-8,330	2.3	-0.2
September	31,008	40,068	-9,060	-2.2	0.1

**Note(s):** Because of rounding, monthly data may not add up to quarterly data and quarterly data may not add up to annual data.

**Table 1-3  
Merchandise trade of Canada, balance of payments basis, seasonally adjusted — Price indices (Laspeyres)**

	2002=100			Period to period change		
	Exports	Imports	Terms of trade	Exports	Imports	Terms of trade
	price indices (Laspeyres)			percent		
2006	105.1	92.5	113.6	0.0	0.0	0.0
2007	107.1	91.4	117.1	1.9	-1.2	3.1
2008	116.3	97.5	119.3	8.6	6.6	2.0
2009	105.4	97.1	108.6	-9.4	-0.4	-9.0
<b>2008</b>						
First quarter	111.2	90.1	123.4	5.6	3.1	2.5
Second quarter	118.5	94.7	125.1	6.6	5.1	1.5
Third quarter	122.1	100.9	121.0	3.1	6.6	-3.5
Fourth quarter	113.7	104.1	109.2	-6.9	3.2	-10.1
<b>2009</b>						
First quarter	109.5	101.5	107.8	-3.7	-2.5	-1.2
Second quarter	104.6	97.9	106.8	-4.5	-3.6	-0.9
Third quarter	102.6	95.2	107.8	-1.9	-2.7	0.9
Fourth quarter	105.7	93.8	112.7	3.0	-1.5	4.5
<b>2010</b>						
First quarter	107.3	94.3	113.8	1.5	0.5	0.9
Second quarter	106.2	94.1	112.9	-0.9	-0.2	-0.8
Third quarter	106.3	95.2	111.7	0.1	1.2	-1.1
<b>2009</b>						
January	109.0	100.4	108.5	-1.7	-2.1	0.4
February	109.1	101.4	107.6	0.1	0.9	-0.8
March	109.1	102.8	106.1	-0.1	1.4	-1.4
April	106.4	100.8	105.6	-2.4	-1.9	-0.5
May	104.0	97.0	107.2	-2.3	-3.8	1.5
June	103.5	95.9	107.9	-0.4	-1.1	0.7
July	103.5	96.3	107.5	0.0	0.4	-0.4
August	103.3	94.8	109.0	-0.2	-1.6	1.3
September	103.4	94.5	109.5	0.1	-0.3	0.4
October	104.3	93.2	111.9	0.8	-1.4	2.2
November	105.6	93.9	112.5	1.3	0.8	0.6
December	106.3	94.2	112.9	0.6	0.3	0.3
<b>2010</b>						
January	107.0	93.7	114.2	0.6	-0.6	1.2
February	108.0	95.0	113.7	0.9	1.4	-0.5
March	106.3	94.2	112.9	-1.5	-0.8	-0.6
April	105.5	92.9	113.6	-0.8	-1.4	0.5
May	106.7	94.8	112.6	1.2	2.1	-0.9
June	106.3	94.6	112.4	-0.4	-0.2	-0.1
July	105.9	95.3	111.1	-0.5	0.7	-1.2
August	106.4	95.4	111.5	0.5	0.1	0.4
September	106.7	95.0	112.2	0.3	-0.4	0.6

**Note(s):** Because of rounding, monthly data may not add up to quarterly data and quarterly data may not add up to annual data.

**Table 2-1**  
**Exports by commodity groupings, balance of payments basis, seasonally adjusted — Current dollars**

	August	September	Change		Year to date			September 2010/ September 2009	
	2010	2010			2009	2010	Change		
	millions of dollars		percent		millions of dollars			percent	
<b>Total</b>	<b>33,650</b>	<b>33,065</b>	<b>-584</b>	<b>-1.7</b>	<b>274,154</b>	<b>299,699</b>	<b>25,545</b>	<b>9.3</b>	<b>10.6</b>
<b>Agricultural and fishing products</b>	<b>3,004</b>	<b>2,969</b>	<b>-35</b>	<b>-1.2</b>	<b>28,607</b>	<b>26,865</b>	<b>-1,742</b>	<b>-6.1</b>	<b>8.4</b>
Wheat	328	329	1	0.3	4,673	3,200	-1,473	-31.5	-24.0
Other agricultural and fishing products	2,676	2,640	-36	-1.3	23,934	23,665	-269	-1.1	14.4
Live animals	162	129	-33	-20.2	1,318	1,389	71	5.4	20.5
Fish and fish preparations	353	363	10	2.7	2,959	3,087	128	4.3	18.2
Barley	34	17	-17	-49.9	362	215	-147	-40.7	-30.4
Wheat flour	7	6	0	-5.0	63	59	-4	-6.4	-23.3
Other cereals unmilled	40	37	-3	-7.8	428	331	-97	-22.7	82.5
Other cereal preparations	233	235	2	1.1	2,256	2,073	-183	-8.1	-4.2
Meat and meat preparations	384	400	16	4.1	3,325	3,512	186	5.6	16.0
Alcoholic beverages	63	63	0	-0.4	556	562	6	1.1	4.2
Other food, feed, beverages and tobacco	954	968	14	1.5	8,318	8,388	70	0.8	13.6
Rapeseed	257	230	-27	-10.3	2,669	2,340	-330	-12.4	28.5
Other crude vegetable products	191	192	2	0.8	1,680	1,711	30	1.8	21.2
<b>Energy products</b>	<b>6,812</b>	<b>6,839</b>	<b>27</b>	<b>0.4</b>	<b>56,902</b>	<b>67,532</b>	<b>10,629</b>	<b>18.7</b>	<b>8.1</b>
Crude petroleum	3,385	3,409	24	0.7	28,803	36,379	7,576	26.3	-5.6
Natural gas	1,361	1,325	-36	-2.7	11,884	12,600	715	6.0	16.7
Other energy products	2,066	2,105	39	1.9	16,215	18,554	2,338	14.4	33.4
Coal and other bituminous substances	383	525	143	37.2	3,350	3,810	460	13.7	72.4
Petroleum and coal products	1,546	1,386	-160	-10.3	11,142	13,160	2,018	18.1	27.2
Electricity	138	194	56	40.9	1,723	1,583	-139	-8.1	5.2
<b>Forestry products</b>	<b>1,805</b>	<b>1,810</b>	<b>6</b>	<b>0.3</b>	<b>14,690</b>	<b>16,114</b>	<b>1,423</b>	<b>9.7</b>	<b>15.6</b>
Lumber and sawmill products	599	637	37	6.3	5,001	5,899	897	17.9	12.1
Other crude wood products	52	50	-1	-2.1	386	486	100	25.8	11.0
Lumber	359	405	46	12.9	2,837	3,599	762	26.9	22.2
Other wood fabricated materials	189	181	-8	-4.1	1,778	1,813	35	2.0	-5.2
Wood pulp and other wood products	555	547	-8	-1.4	3,377	4,630	1,253	37.1	45.8
Newsprint and other paper and paperboard	651	627	-24	-3.7	6,311	5,584	-727	-11.5	0.7
Newsprint paper	335	330	-5	-1.6	3,278	2,806	-472	-14.4	10.5
Other paper and paperboard	316	297	-19	-6.0	3,033	2,778	-255	-8.4	-8.3
<b>Industrial goods and materials</b>	<b>8,006</b>	<b>7,818</b>	<b>-188</b>	<b>-2.4</b>	<b>58,257</b>	<b>70,191</b>	<b>11,934</b>	<b>20.5</b>	<b>20.0</b>
Metal ores	1,054	1,006	-48	-4.5	7,621	8,624	1,003	13.2	13.5
Iron ores, concentrates and scrap	292	388	96	32.9	3,378	3,142	-236	-7.0	-4.9
Copper ores, concentrates and scrap	312	90	-222	-71.1	1,192	1,573	381	32.0	-27.7
Nickel ores, concentrates and scrap	241	312	71	29.4	1,199	1,965	766	63.9	91.6
Zinc ores, concentrates and scrap	15	26	11	74.8	193	204	11	5.8	5.8
Other ores, concentrates and scrap	194	190	-4	-2.3	1,659	1,740	81	4.9	14.4
Chemicals, plastics and fertilizers	2,454	2,473	19	0.8	19,084	22,165	3,081	16.1	21.3
Inorganic chemicals	359	425	65	18.2	3,041	3,251	210	6.9	35.7
Organic chemicals	509	493	-16	-3.1	3,548	4,682	1,135	32.0	21.6
Fertilizers and fertilizer materials	490	457	-34	-6.9	3,417	4,347	930	27.2	36.9
Synthetic rubber and plastics	841	842	1	0.2	6,986	7,534	548	7.8	12.6
Other chemical products	254	257	2	0.9	2,091	2,350	259	12.4	7.6

Table 2-1 – continued

## Exports by commodity groupings, balance of payments basis, seasonally adjusted — Current dollars

	August	September	Change		Year to date			September 2010/ September 2009	
	2010	2010			2009	2010	Change		
	millions of dollars		percent		millions of dollars		percent		
<b>Metals and alloys</b>	<b>3,002</b>	<b>2,875</b>	<b>-127</b>	<b>-4.2</b>	<b>19,963</b>	<b>26,572</b>	<b>6,609</b>	<b>33.1</b>	<b>18.5</b>
Primary iron and steel	87	113	27	30.8	300	967	667	222.3	49.9
Steel bars, rods, plates, sheets	318	283	-35	-11.0	2,116	2,671	555	26.2	13.1
Other iron and steel and alloys	228	220	-8	-3.4	1,737	2,011	274	15.8	23.4
Aluminum including alloys	561	562	1	0.2	4,312	5,445	1,133	26.3	8.4
Copper and alloys	158	163	5	3.3	1,587	2,087	499	31.5	-13.1
Nickel and alloys	90	274	184	204.9	1,458	1,365	-93	-6.4	128.3
Precious metals and alloys	1,391	1,081	-310	-22.3	7,022	10,228	3,206	45.7	19.6
Zinc and alloys	91	93	3	2.8	771	1,005	234	30.3	-13.5
Other non-ferrous metals and alloys	79	85	6	7.7	660	794	134	20.3	0.7
<b>Other industrial goods and materials</b>	<b>1,495</b>	<b>1,462</b>	<b>-33</b>	<b>-2.2</b>	<b>11,590</b>	<b>12,831</b>	<b>1,241</b>	<b>10.7</b>	<b>25.6</b>
Asbestos unmanufactured	4	6	3	66.3	52	42	-10	-18.8	-3.8
Other crude animal products	75	81	5	6.9	495	696	201	40.6	85.1
Other crude non-metallic minerals	320	313	-7	-2.2	2,007	2,735	728	36.2	99.9
Other crude materials, inedible	73	61	-13	-17.3	424	531	106	25.0	24.8
Metal fabricated basic products	351	345	-6	-1.7	3,106	3,109	2	0.1	7.4
Textile fabricated materials	183	179	-4	-2.3	1,555	1,607	52	3.3	5.2
Non-metallic mineral basic products	164	159	-6	-3.4	1,471	1,412	-59	-4.0	4.1
Other fabricated materials	324	319	-5	-1.6	2,478	2,699	220	8.9	20.1
<b>Machinery and equipment</b>	<b>6,496</b>	<b>6,732</b>	<b>236</b>	<b>3.6</b>	<b>62,382</b>	<b>56,119</b>	<b>-6,263</b>	<b>-10.0</b>	<b>7.4</b>
Industrial and agricultural machinery	1,527	1,529	2	0.1	15,013	13,270	-1,743	-11.6	-0.5
Industrial machinery	1,364	1,378	14	1.0	13,402	11,879	-1,523	-11.4	0.5
Agricultural machinery includ. tractors	164	151	-12	-7.4	1,611	1,390	-221	-13.7	-8.6
Aircraft and other transportation equipment	1,534	1,703	169	11.0	15,070	13,172	-1,898	-12.6	8.8
Aircraft, engines, parts	1,200	1,367	167	13.9	11,981	10,333	-1,648	-13.8	15.4
Other transportation equipment	334	336	1	0.4	3,089	2,840	-250	-8.1	-11.8
Other machinery and equipment	3,435	3,500	66	1.9	32,299	29,677	-2,622	-8.1	10.5
Television, telecommunication equipment	711	741	31	4.3	6,759	5,753	-1,006	-14.9	16.4
Office machines and equipment	375	362	-13	-3.5	3,681	3,147	-534	-14.5	1.8
Other equipment and tools	1,602	1,572	-30	-1.9	14,564	13,687	-877	-6.0	8.9
Other end products, inedible	747	826	79	10.5	7,295	7,090	-206	-2.8	12.6
<b>Automotive products</b>	<b>5,109</b>	<b>4,771</b>	<b>-339</b>	<b>-6.6</b>	<b>30,892</b>	<b>43,371</b>	<b>12,480</b>	<b>40.4</b>	<b>14.0</b>
Passenger autos and chassis	3,604	3,213	-391	-10.9	17,679	29,055	11,376	64.3	18.3
Trucks and other motor vehicles	134	182	48	35.6	3,171	1,625	-1,546	-48.8	-16.3
Motor vehicle parts	1,371	1,376	5	0.4	10,042	12,692	2,650	26.4	10.0
<b>Other consumer goods</b>	<b>1,611</b>	<b>1,355</b>	<b>-255</b>	<b>-15.9</b>	<b>13,650</b>	<b>12,577</b>	<b>-1,073</b>	<b>-7.9</b>	<b>-2.7</b>
<b>Special transactions trade</b>	<b>348</b>	<b>297</b>	<b>-51</b>	<b>-14.8</b>	<b>4,895</b>	<b>2,938</b>	<b>-1,957</b>	<b>-40.0</b>	<b>-43.5</b>
<b>Unallocated balance of payments adjustments</b>	<b>458</b>	<b>474</b>	<b>16</b>	<b>3.5</b>	<b>3,878</b>	<b>3,992</b>	<b>113</b>	<b>2.9</b>	<b>21.9</b>

**Table 2-2**  
**Exports by commodity groupings, balance of payments basis, seasonally adjusted — Constant dollars, 2002**

	August 2010	September 2010	Change	Year to date			September 2010/ September 2009		
				2009	2010	Change			
	millions of dollars		percent		millions of dollars		percent		
<b>Total</b>	<b>31,705</b>	<b>31,008</b>	<b>-697</b>	<b>-2.2</b>	<b>256,603</b>	<b>279,490</b>	<b>22,887</b>	<b>8.9</b>	<b>8.1</b>
<b>Agricultural and fishing products</b>	<b>3,091</b>	<b>2,988</b>	<b>-102</b>	<b>-3.3</b>	<b>27,158</b>	<b>28,079</b>	<b>921</b>	<b>3.4</b>	<b>7.5</b>
Wheat	344	332	-12	-3.4	3,855	3,455	-400	-10.4	-11.1
Other agricultural and fishing products	2,746	2,656	-90	-3.3	23,303	24,624	1,321	5.7	10.3
Live animals	177	142	-35	-19.8	1,483	1,574	91	6.1	6.9
Fish and fish preparations	419	429	10	2.3	3,461	3,855	393	11.4	14.8
Barley	31	15	-16	-52.0	281	204	-77	-27.3	-39.8
Wheat flour	6	6	0	-5.9	57	57	-1	-1.0	-25.0
Other cereals unmilled	40	33	-7	-16.8	403	384	-19	-4.8	29.8
Other cereal preparations	206	208	2	1.1	1,821	1,854	33	1.8	2.2
Meat and meat preparations	428	432	4	0.8	3,688	3,932	244	6.6	2.9
Alcoholic beverages	116	122	6	5.3	953	1,068	115	12.1	12.8
Other food, feed, beverages and tobacco	924	903	-20	-2.2	7,382	7,948	566	7.7	11.5
Rapeseed	240	200	-40	-16.8	2,382	2,191	-191	-8.0	21.0
Other crude vegetable products	160	166	7	4.2	1,391	1,557	166	11.9	22.3
<b>Energy products</b>	<b>4,222</b>	<b>4,216</b>	<b>-6</b>	<b>-0.1</b>	<b>40,175</b>	<b>40,623</b>	<b>448</b>	<b>1.1</b>	<b>-1.6</b>
Crude petroleum	1,681	1,751	70	4.2	17,497	17,132	-365	-2.1	-2.9
Natural gas	1,364	1,328	-35	-2.6	12,313	12,712	399	3.2	-3.6
Other energy products	1,177	1,136	-41	-3.5	10,365	10,779	414	4.0	3.2
Coal and other bituminous substances	110	148	39	35.3	1,014	1,380	367	36.2	5.2
Petroleum and coal products	908	778	-130	-14.3	7,311	7,567	256	3.5	13.0
Electricity	160	210	50	31.4	2,041	1,832	-209	-10.2	-22.7
<b>Forestry products</b>	<b>2,171</b>	<b>2,183</b>	<b>12</b>	<b>0.6</b>	<b>18,082</b>	<b>19,569</b>	<b>1,487</b>	<b>8.2</b>	<b>8.1</b>
Lumber and sawmill products	798	825	26	3.3	6,902	7,535	633	9.2	4.1
Other crude wood products	69	55	-14	-20.5	522	619	97	18.7	-5.1
Lumber	517	562	44	8.6	4,372	4,982	610	14.0	9.3
Other wood fabricated materials	212	208	-4	-1.9	2,009	1,934	-75	-3.7	-5.8
Wood pulp and other wood products	643	655	12	1.8	4,795	5,505	710	14.8	26.1
Newsprint and other paper and paperboard	730	704	-26	-3.6	6,385	6,530	144	2.3	-0.6
Newsprint paper	383	377	-6	-1.5	3,220	3,363	143	4.4	10.8
Other paper and paperboard	347	327	-20	-5.8	3,165	3,167	2	0.1	-11.2
<b>Industrial goods and materials</b>	<b>5,478</b>	<b>5,316</b>	<b>-162</b>	<b>-3.0</b>	<b>44,468</b>	<b>48,708</b>	<b>4,241</b>	<b>9.5</b>	<b>10.1</b>
Metal ores	483	464	-18	-3.8	4,265	4,245	-20	-0.5	-1.1
Iron ores, concentrates and scrap	113	145	32	28.6	1,343	1,396	54	4.0	-16.7
Copper ores, concentrates and scrap	106	32	-74	-70.2	555	548	-7	-1.2	-36.3
Nickel ores, concentrates and scrap	108	139	31	28.6	840	912	72	8.6	46.3
Zinc ores, concentrates and scrap	8	14	6	67.0	132	112	-20	-15.2	-4.2
Other ores, concentrates and scrap	148	135	-13	-8.7	1,396	1,277	-119	-8.5	-1.2
Chemicals, plastics and fertilizers	1,819	1,806	-13	-0.7	14,708	16,140	1,431	9.7	15.7
Inorganic chemicals	200	199	-1	-0.4	1,593	1,658	65	4.1	20.6
Organic chemicals	324	302	-22	-6.8	2,884	2,782	-102	-3.5	16.5
Fertilizers and fertilizer materials	214	209	-5	-2.4	1,183	1,917	734	62.1	68.8
Synthetic rubber and plastics	780	787	8	1.0	6,620	6,958	338	5.1	7.9
Other chemical products	301	308	7	2.3	2,429	2,825	396	16.3	8.9

Table 2-2 – continued

## Exports by commodity groupings, balance of payments basis, seasonally adjusted — Constant dollars, 2002

	August	September	Change		Year to date			September 2010/ September 2009	
	2010	2010			2009		2010	Change	
	millions of dollars		percent		millions of dollars		percent		
<b>Metals and alloys</b>	<b>1,818</b>	<b>1,733</b>	<b>-86</b>	<b>-4.7</b>	<b>14,408</b>	<b>16,567</b>	<b>2,159</b>	<b>15.0</b>	<b>4.1</b>
Primary iron and steel	57	71	14	24.0	202	658	456	226.0	26.3
Steel bars, rods, plates, sheets	264	231	-33	-12.7	1,655	2,215	561	33.9	7.8
Other iron and steel and alloys	187	183	-4	-2.2	1,482	1,680	199	13.4	18.1
Aluminum including alloys	589	572	-17	-3.0	5,138	5,654	516	10.0	-3.5
Copper and alloys	51	51	-1	-1.4	783	686	-96	-12.3	-25.4
Nickel and alloys	45	132	87	191.7	1,063	691	-372	-35.0	91.6
Precious metals and alloys	524	393	-130	-24.9	3,091	4,031	940	30.4	-0.6
Zinc and alloys	59	59	0	0.7	623	588	-36	-5.7	-19.4
Other non-ferrous metals and alloys	41	41	0	-1.2	371	362	-9	-2.4	3.4
<b>Other industrial goods and materials</b>	<b>1,358</b>	<b>1,313</b>	<b>-45</b>	<b>-3.3</b>	<b>11,087</b>	<b>11,757</b>	<b>671</b>	<b>6.0</b>	<b>15.8</b>
Asbestos unmanufactured	4	6	2	59.2	54	42	-11	-21.1	-8.5
Other crude animal products	78	83	5	6.4	673	721	47	7.1	35.0
Other crude non-metallic minerals	324	298	-26	-8.1	2,701	2,770	69	2.5	38.7
Other crude materials, inedible	65	56	-10	-15.1	414	491	76	18.4	23.4
Metal fabricated basic products	285	279	-6	-2.0	2,439	2,513	74	3.0	6.4
Textile fabricated materials	192	188	-4	-2.3	1,507	1,713	206	13.7	4.1
Non-metallic mineral basic products	132	127	-5	-3.8	1,189	1,164	-25	-2.1	1.6
Other fabricated materials	277	276	-1	-0.4	2,110	2,344	234	11.1	16.1
<b>Machinery and equipment</b>	<b>7,335</b>	<b>7,561</b>	<b>225</b>	<b>3.1</b>	<b>66,625</b>	<b>62,633</b>	<b>-3,992</b>	<b>-6.0</b>	<b>9.7</b>
Industrial and agricultural machinery	1,426	1,423	-3	-0.2	13,681	12,314	-1,366	-10.0	1.8
Industrial machinery	1,273	1,280	7	0.5	12,229	11,035	-1,194	-9.8	2.5
Agricultural machinery includ. tractors	153	143	-10	-6.3	1,452	1,280	-172	-11.9	-4.1
Aircraft and other transportation equipment	1,890	2,113	223	11.8	17,619	16,284	-1,334	-7.6	12.0
Aircraft, engines, parts	1,572	1,794	222	14.1	14,586	13,478	-1,108	-7.6	18.5
Other transportation equipment	317	319	1	0.3	3,033	2,806	-227	-7.5	-14.4
Other machinery and equipment	4,020	4,025	5	0.1	35,326	34,034	-1,292	-3.7	11.5
Television, telecommunication equipment	895	940	45	5.0	7,909	7,278	-631	-8.0	20.9
Office machines and equipment	950	906	-44	-4.6	7,962	7,846	-116	-1.5	8.3
Other equipment and tools	1,501	1,488	-13	-0.9	13,403	12,957	-446	-3.3	10.6
Other end products, inedible	673	690	17	2.5	6,052	5,953	-99	-1.6	6.3
<b>Automotive products</b>	<b>6,726</b>	<b>6,300</b>	<b>-426</b>	<b>-6.3</b>	<b>37,047</b>	<b>57,685</b>	<b>20,637</b>	<b>55.7</b>	<b>18.0</b>
Passenger autos and chassis	5,057	4,558	-499	-9.9	22,911	41,761	18,850	82.3	22.5
Trucks and other motor vehicles	162	221	59	36.4	3,551	1,965	-1,586	-44.7	-14.8
Motor vehicle parts	1,507	1,521	14	0.9	10,586	13,959	3,373	31.9	11.8
<b>Other consumer goods</b>	<b>1,543</b>	<b>1,309</b>	<b>-235</b>	<b>-15.2</b>	<b>13,102</b>	<b>12,066</b>	<b>-1,036</b>	<b>-7.9</b>	<b>-2.3</b>
<b>Special transactions trade</b>	<b>319</b>	<b>274</b>	<b>-45</b>	<b>-14.2</b>	<b>4,491</b>	<b>2,673</b>	<b>-1,818</b>	<b>-40.5</b>	<b>-45.2</b>
<b>Unallocated balance of payments adjustments</b>	<b>820</b>	<b>862</b>	<b>42</b>	<b>5.1</b>	<b>5,455</b>	<b>7,455</b>	<b>2,000</b>	<b>36.7</b>	<b>23.0</b>



**Table 3-1**  
**Domestic exports to selected countries, customs basis, not seasonally adjusted — September**

	Agricultural and fishing products	Energy products	Forestry products	Industrial goods	Machinery and equipment	Automotive products	Consumer goods	Special transactions trade	<b>Total</b>
millions of dollars									
<b>United States</b>									
2009	1,447.6	5,995.8	1,072.2	3,711.6	3,371.9	4,177.0	891.9	468.3	<b>21,136.3</b>
2010	1,606.9	6,841.8	1,135.7	4,364.3	3,591.1	4,818.0	707.4	257.8	<b>23,322.8</b>
<b>Mexico</b>									
2009	79.5	0.5	8.6	67.7	64.9	84.6	3.7	0.7	<b>310.3</b>
2010	112.4	5.8	6.8	100.5	91.4	69.0	4.1	0.4	<b>390.3</b>
<b>Japan</b>									
2009	282.0	95.4	99.5	69.0	38.4	8.1	9.4	0.2	<b>602.1</b>
2010	306.4	141.0	115.9	78.5	41.6	7.0	9.5	1.5	<b>701.3</b>
<b>European Union</b>									
<b>Germany</b>									
2009	10.7	0.0	11.9	116.0	165.2	2.5	10.2	1.7	<b>318.2</b>
2010	16.6	41.3	9.6	66.6	107.2	2.8	24.4	1.9	<b>270.3</b>
<b>France</b>									
2009	14.0	24.1	13.0	38.5	78.9	2.8	19.6	2.1	<b>192.9</b>
2010	9.1	11.5	15.0	48.6	74.9	3.2	16.7	1.1	<b>180.0</b>
<b>United Kingdom</b>									
2009	42.2	3.5	17.7	955.4	123.2	3.5	17.7	7.4	<b>1,170.6</b>
2010	38.3	0.3	17.0	849.5	178.4	4.6	17.7	1.8	<b>1,107.6</b>
<b>Italy</b>									
2009	64.0	49.1	20.9	19.8	64.0	0.4	6.1	0.4	<b>224.8</b>
2010	38.1	13.9	35.1	20.6	35.0	0.8	12.4	0.3	<b>156.2</b>
<b>Other European Union</b>									
2009	55.7	53.6	28.9	208.1	143.5	12.6	47.0	3.2	<b>552.6</b>
2010	92.1	93.4	26.1	223.4	168.7	17.5	55.7	2.2	<b>679.0</b>
<b>Total</b>									
2009	186.8	130.3	92.4	1,337.8	574.7	21.7	100.6	14.8	<b>2,459.1</b>
2010	194.1	160.4	102.7	1,208.6	564.1	29.1	126.9	7.3	<b>2,393.2</b>
<b>Newly industrialized countries</b>									
<b>South Korea</b>									
2009	36.7	141.6	27.8	84.9	56.9	1.3	3.3	0.7	<b>353.1</b>
2010	27.0	164.9	25.4	99.3	39.5	3.4	2.8	0.7	<b>363.0</b>
<b>Hong Kong</b>									
2009	25.5	0.0	6.2	33.6	15.9	0.5	5.3	1.1	<b>88.2</b>
2010	33.2	0.0	7.0	49.5	22.5	0.7	7.5	0.9	<b>121.3</b>
<b>Taiwan</b>									
2009	22.0	27.3	18.8	31.7	10.9	0.2	2.0	0.1	<b>112.8</b>
2010	18.5	32.8	18.3	58.0	15.6	0.0	1.6	0.1	<b>144.8</b>
<b>Singapore</b>									
2009	4.2	0.9	1.3	13.7	27.3	3.8	2.8	0.1	<b>54.1</b>
2010	4.3	0.3	0.9	19.2	37.5	3.3	9.3	0.2	<b>74.9</b>
<b>Total</b>									
2009	88.4	169.8	54.1	163.9	111.0	5.7	13.4	2.0	<b>608.1</b>
2010	83.0	198.0	51.6	226.0	115.1	7.4	21.1	1.8	<b>704.0</b>
<b>Other countries</b>									
2009	636.3	92.7	287.8	876.1	695.7	49.5	70.1	19.0	<b>2,727.2</b>
2010	705.6	177.7	455.0	1,098.7	765.2	52.8	95.4	20.4	<b>3,370.8</b>
<b>Total</b>									
2009	<b>2,720.6</b>	<b>6,484.5</b>	<b>1,614.7</b>	<b>6,226.1</b>	<b>4,856.6</b>	<b>4,346.6</b>	<b>1,089.0</b>	<b>505.1</b>	<b>27,843.1</b>
2010	<b>3,008.4</b>	<b>7,524.6</b>	<b>1,867.6</b>	<b>7,076.5</b>	<b>5,168.4</b>	<b>4,983.2</b>	<b>964.5</b>	<b>289.2</b>	<b>30,882.5</b>

**Table 3-2**  
**Domestic exports to selected countries, customs basis, not seasonally adjusted — Year to date, January to September**

	Agricultural and fishing products	Energy products	Forestry products	Industrial goods	Machinery and equipment	Automotive products	Consumer goods	Special transactions trade	Total
millions of dollars									
<b>United States</b>									
2009	14,450.0	53,572.3	10,260.3	33,954.9	33,924.4	26,679.1	8,336.7	4,251.0	<b>185,428.7</b>
2010	13,982.8	65,416.6	10,413.7	40,489.0	30,221.0	38,957.5	7,348.6	2,405.2	<b>209,234.4</b>
<b>Mexico</b>									
2009	811.9	73.8	72.4	550.4	719.1	487.8	36.9	7.9	<b>2,760.1</b>
2010	961.9	69.9	101.0	762.1	560.1	631.9	57.7	3.5	<b>3,148.1</b>
<b>Japan</b>									
2009	2,367.5	1,424.1	792.5	832.8	480.0	32.9	109.7	4.7	<b>6,044.1</b>
2010	2,320.9	1,434.8	1,010.4	1,164.4	427.6	53.1	100.8	4.6	<b>6,516.5</b>
<b>European Union</b>									
<b>Germany</b>									
2009	139.0	158.8	93.4	533.0	1,415.4	33.4	111.9	13.2	<b>2,498.2</b>
2010	106.7	171.4	71.5	950.4	1,062.8	26.7	156.0	11.3	<b>2,556.8</b>
<b>France</b>									
2009	117.6	100.7	113.7	455.5	856.1	26.0	223.1	20.0	<b>1,912.8</b>
2010	96.2	30.3	109.3	338.8	670.7	27.2	173.1	13.1	<b>1,458.6</b>
<b>United Kingdom</b>									
2009	307.2	124.4	224.3	5,865.9	1,593.7	29.7	222.7	35.2	<b>8,403.0</b>
2010	255.5	79.9	164.7	8,074.5	1,491.2	37.7	150.6	34.5	<b>10,288.5</b>
<b>Italy</b>									
2009	333.5	109.6	202.7	192.0	391.0	6.4	51.5	7.1	<b>1,293.8</b>
2010	194.4	137.4	242.3	242.6	312.7	5.6	142.6	4.1	<b>1,281.7</b>
<b>Other European Union</b>									
2009	667.1	832.1	250.7	1,913.3	1,958.6	106.5	571.5	37.3	<b>6,337.1</b>
2010	635.2	480.1	229.6	2,383.7	1,888.4	121.5	446.0	30.2	<b>6,214.7</b>
<b>Total</b>									
2009	1,564.5	1,325.6	884.8	8,959.6	6,214.9	202.0	1,180.7	112.8	<b>20,444.9</b>
2010	1,287.9	899.1	817.4	11,990.0	5,425.8	218.6	1,068.3	93.1	<b>21,800.3</b>
<b>Newly industrialized countries</b>									
<b>South Korea</b>									
2009	249.9	860.9	245.9	727.5	392.2	34.3	37.4	5.9	<b>2,554.1</b>
2010	348.7	815.3	367.0	754.5	319.0	49.8	36.4	7.1	<b>2,697.8</b>
<b>Hong Kong</b>									
2009	267.1	0.2	68.7	364.0	250.1	6.7	43.9	8.0	<b>1,008.6</b>
2010	293.0	0.5	82.4	562.8	203.6	6.6	53.7	10.8	<b>1,213.4</b>
<b>Taiwan</b>									
2009	140.7	159.8	146.6	232.0	84.0	1.2	24.5	1.0	<b>789.9</b>
2010	124.6	125.9	184.4	318.1	104.9	2.0	29.9	1.0	<b>890.8</b>
<b>Singapore</b>									
2009	36.8	44.4	26.2	285.5	247.2	27.0	28.2	2.2	<b>697.4</b>
2010	44.3	4.9	12.8	134.1	250.9	16.8	33.3	2.6	<b>499.7</b>
<b>Total</b>									
2009	694.5	1,065.3	487.4	1,609.0	973.5	69.3	133.9	17.1	<b>5,050.0</b>
2010	810.7	946.6	646.6	1,769.5	878.4	75.1	153.4	21.5	<b>5,301.8</b>
<b>Other countries</b>									
2009	7,605.0	1,379.1	2,525.8	8,403.0	6,465.7	557.4	861.9	213.2	<b>28,011.1</b>
2010	6,394.8	1,540.5	3,604.1	9,712.9	6,126.4	498.9	1,096.7	141.0	<b>29,115.3</b>
<b>Total</b>									
2009	<b>27,493.4</b>	<b>58,840.3</b>	<b>15,023.2</b>	<b>54,309.6</b>	<b>48,777.7</b>	<b>28,028.6</b>	<b>10,660.3</b>	<b>4,606.8</b>	<b>247,739.8</b>
2010	<b>25,759.1</b>	<b>70,307.5</b>	<b>16,593.0</b>	<b>65,888.1</b>	<b>43,639.4</b>	<b>40,435.4</b>	<b>9,825.5</b>	<b>2,668.9</b>	<b>275,116.8</b>

**Table 4**  
**Domestic exports by country, customs basis, not seasonally adjusted**

	September		January to September		Change January to September 2010/ January to September 2009
	2009	2010	2009	2010	
	millions of dollars				percent
<b>North America</b>					
Greenland	0.5	0.4	12.0	6.5	-45.7
Mexico	310.3	390.3	2,760.1	3,148.1	14.1
Saint Pierre and Miquelon	1.6	1.0	11.2	11.0	-1.9
United States	21,136.3	23,322.8	185,428.7	209,234.4	12.8
<b>Total</b>	<b>21,448.7</b>	<b>23,714.6</b>	<b>188,212.0</b>	<b>212,400.0</b>	<b>12.9</b>
<b>Western Europe</b>					
Andorra	0.0	0.0	0.1	0.1	19.0
Austria	15.7	32.1	290.0	286.5	-1.2
Belgium	86.2	131.8	1,327.9	1,366.5	2.9
Denmark	16.5	19.2	465.8	202.1	-56.6
Faeroe Islands	0.0	0.0	0.7	0.2	-70.1
Finland	16.3	28.8	227.3	268.1	17.9
France	192.9	180.0	1,912.8	1,458.6	-23.7
Germany	318.2	270.3	2,498.2	2,556.8	2.3
Gibraltar	0.1	0.1	17.0	0.3	-98.0
Greece	13.5	6.9	78.8	83.5	5.9
Iceland	5.1	3.2	66.9	96.7	44.6
Italy	224.8	156.2	1,293.8	1,281.7	-0.9
Luxembourg	2.6	4.0	29.4	37.2	26.4
Malta	1.4	0.4	42.6	105.7	148.1
Netherlands	224.9	262.2	1,902.1	2,046.3	7.6
Norway	220.3	236.5	1,271.6	1,759.4	38.4
Portugal	19.1	5.6	121.9	170.7	40.1
Republic of Ireland (Eire)	20.4	19.8	370.7	247.5	-33.2
Spain	58.5	93.4	718.2	545.1	-24.1
Sweden	24.1	29.5	214.9	267.0	24.3
Switzerland	32.8	96.1	845.5	1,099.2	30.0
United Kingdom	1,170.6	1,107.6	8,403.0	10,288.5	22.4
<b>Total</b>	<b>2,664.0</b>	<b>2,683.7</b>	<b>22,099.1</b>	<b>24,167.6</b>	<b>9.4</b>
<b>Other Europe</b>					
Albania	1.8	1.9	9.0	20.0	122.3
Armenia	0.8	1.0	5.7	6.1	6.4
Azerbaijan	0.5	0.5	7.4	10.7	43.4
Belarus	0.1	0.1	0.9	1.2	35.2
Bosnia and Herzegovina	0.1	0.4	2.4	3.4	42.3
Bulgaria	1.9	2.2	52.3	77.0	47.2
Croatia	2.0	1.4	93.3	81.9	-12.3
Czech Republic	8.3	7.7	88.1	83.1	-5.7
Estonia	1.7	1.7	14.2	15.4	8.2
Georgia	1.8	2.5	6.2	9.6	55.3
Hungary	5.2	6.6	68.2	59.3	-13.1
Kazakhstan	4.1	5.7	113.0	100.6	-11.1
Kyrgyzstan	0.2	0.5	2.9	3.2	9.9
Latvia	1.4	1.5	19.3	81.7	323.1
Lithuania	2.2	3.0	31.2	23.1	-26.1
Macedonia (Former Yugoslav Republic of Macedonia)	1.9	0.6	10.4	7.3	-30.1
Montenegro	0.2	0.1	1.5	1.0	-34.2
Poland	18.6	11.8	135.9	109.0	-19.7
Republic of Moldova	0.1	0.3	1.7	2.0	23.2
Romania	10.9	7.2	60.2	80.9	34.4
Russian Federation	42.4	118.2	594.8	696.0	17.0
Serbia	1.1	0.6	15.2	5.3	-64.9
Slovakia	2.4	1.9	18.7	21.7	16.1
Slovenia	0.5	0.9	51.5	30.4	-41.0
Tajikistan	0.2	0.2	1.8	4.5	149.6
Turkmenistan	0.2	0.4	4.9	2.5	-49.0
Ukraine	9.5	12.5	65.5	90.6	38.4
Uzbekistan	0.8	0.2	12.0	4.5	-62.7
<b>Total</b>	<b>120.8</b>	<b>191.4</b>	<b>1,488.4</b>	<b>1,631.9</b>	<b>9.6</b>

Table 4 – continued

## Domestic exports by country, customs basis, not seasonally adjusted

	September		January to September		Change January to September 2010/ January to September 2009
	2009	2010	2009	2010	
	millions of dollars				percent
<b>Middle East</b>					
Bahrain	6.6	1.1	29.7	57.0	91.8
Cyprus	0.5	0.9	7.9	7.1	-10.4
Egypt	95.8	77.0	462.9	363.8	-21.4
Eritrea	0.0	0.0	1.0	2.0	103.2
Ethiopia	0.1	5.4	7.3	121.8	...
Iran	7.7	5.7	314.8	79.0	-74.9
Iraq	64.1	9.8	459.1	211.8	-53.9
Israel	16.7	25.3	219.1	257.8	17.6
Jordan	3.3	6.7	43.6	46.1	5.9
Kuwait	7.3	5.4	57.6	66.5	15.6
Lebanon	3.8	2.8	74.1	49.1	-33.8
Libya	4.1	3.0	195.5	94.0	-51.9
Oman	4.2	4.2	81.8	74.2	-9.4
Qatar	6.9	2.5	194.2	63.9	-67.1
Saudi Arabia	43.1	43.7	854.6	529.0	-38.1
Somalia	2.8	0.0	2.9	2.3	-21.5
Sudan	14.2	1.2	86.1	94.8	10.1
Syria	2.6	3.6	35.2	25.9	-26.5
Turkey	68.2	79.3	550.4	573.4	4.2
United Arab Emirates	56.7	63.8	830.3	700.1	-15.7
Yemen	1.2	1.0	20.6	14.2	-31.0
<b>Total</b>	<b>410.0</b>	<b>342.4</b>	<b>4,528.8</b>	<b>3,433.9</b>	<b>-24.2</b>
<b>Other Africa</b>					
Algeria	9.7	18.6	238.0	243.8	2.4
Angola	2.5	3.2	55.7	145.3	160.7
Antarctica	0.0	0.0	0.5	0.0	-95.9
Benin	0.6	2.5	5.6	9.5	71.4
Botswana	0.1	0.3	3.2	3.2	-0.6
Burkina Faso	1.5	1.5	15.4	15.6	1.0
Burundi	0.2	0.1	0.8	0.7	-11.8
Cameroon	3.5	0.6	24.3	16.0	-34.3
Cape Verde	0.0	0.0	1.0	0.9	-10.8
Central African Republic	0.0	0.0	0.6	0.1	-83.3
Chad	0.3	1.3	8.8	5.1	-42.0
Comoros	0.0	0.0	3.1	0.1	-97.2
Congo	0.6	1.5	15.8	12.8	-19.1
Democratic Republic of the Congo	1.0	1.1	10.7	9.1	-15.1
Djibouti	0.1	0.2	2.1	4.0	88.6
Equatorial Guinea	0.3	0.6	3.7	3.1	-14.3
French Southern Territories	0.0	0.0	0.2	0.0	-85.1
Gabon	0.9	0.8	19.8	13.0	-34.6
Gambia	0.0	0.0	0.5	0.5	11.4
Ghana	16.7	14.5	122.0	114.2	-6.4
Guinea	0.4	0.6	10.8	5.0	-53.4
Guinea-Bissau	0.0	0.0	0.0	0.0	-0.2
Ivory Coast	1.5	1.1	19.2	12.6	-34.2
Kenya	5.5	8.6	55.7	58.7	5.4
Lesotho	0.0	0.0	0.0	0.1	199.8
Liberia	0.2	0.6	2.7	9.8	259.6
Madagascar	0.6	1.1	38.2	37.7	-1.4
Malawi	0.3	0.3	3.2	2.9	-7.8
Mali	0.1	0.5	4.2	6.4	54.8
Mauritania	0.2	0.6	2.0	2.8	35.7
Mauritius	0.1	0.8	4.3	3.4	-20.7
Morocco	24.9	23.8	280.8	120.4	-57.1
Mozambique	1.3	0.8	4.1	9.5	131.9
Namibia	1.4	1.2	2.5	9.1	264.1
Niger	0.4	0.1	2.2	1.6	-26.5
Nigeria	57.8	9.6	157.5	153.3	-2.7
Rwanda	1.8	0.0	3.0	0.8	-71.7
Saint Helena	0.0	0.0	0.1	0.0	-96.6
Sao Tome and Principe	0.0	0.0	0.1	0.0	-38.2
Senegal	15.3	2.2	29.4	20.5	-30.3
Seychelles	0.1	0.0	0.9	0.7	-21.1

Table 4 – continued

## Domestic exports by country, customs basis, not seasonally adjusted

	September		January to September		Change January to September 2010/ January to September 2009
	2009	2010	2009	2010	
	millions of dollars				percent
Sierra Leone	0.5	0.6	3.3	7.4	126.5
South Africa	35.4	38.1	326.3	330.7	1.4
Swaziland	0.1	0.1	9.6	1.2	-87.7
Togo	1.5	0.3	14.6	8.0	-45.2
Tunisia	1.4	9.0	75.6	41.6	-44.9
Uganda	1.1	0.4	11.0	7.3	-34.1
United Republic of Tanzania	3.0	5.0	24.9	27.4	9.8
Western Sahara	0.0	0.0	0.1	0.0	-91.8
Zambia	0.6	1.1	7.1	21.7	205.0
Zimbabwe	0.0	0.0	7.2	3.9	-45.6
<b>Total</b>	<b>193.5</b>	<b>153.4</b>	<b>1,632.4</b>	<b>1,501.7</b>	<b>-8.0</b>
<b>Other Asia</b>					
Afghanistan	2.5	3.7	38.8	40.6	4.4
Bangladesh	35.4	64.3	502.3	472.4	-5.9
Bhutan	0.0	0.0	0.1	1.6	987.2
British Indian Ocean Territory	0.1	0.6	0.3	2.0	617.2
Brunei Darussalam	0.3	0.2	3.3	9.6	191.8
Cambodia	2.8	0.2	5.8	2.2	-61.9
China	672.2	1,001.8	8,435.4	8,478.6	0.5
Hong Kong	88.2	121.3	1,008.6	1,213.4	20.3
India	223.9	195.9	1,387.4	1,443.9	4.1
Indonesia	30.3	61.3	735.5	702.9	-4.4
Japan	602.1	701.3	6,044.1	6,516.5	7.8
Laos	0.6	0.0	2.0	1.5	-25.6
Macao	0.2	0.1	12.8	1.8	-85.7
Malaysia	49.7	36.1	405.3	559.9	38.1
Maldives	0.1	0.3	5.1	3.3	-36.0
Mongolia	0.6	1.4	3.8	11.4	199.0
Myanmar	0.0	0.0	0.0	2.7	...
Nepal	0.2	0.2	2.9	2.3	-19.8
North Korea	2.5	0.8	18.9	8.1	-57.1
Pakistan	13.1	57.3	349.1	316.0	-9.5
Philippines	24.3	69.5	336.3	462.5	37.5
Singapore	54.1	74.9	697.4	499.7	-28.3
South Korea	353.1	363.0	2,554.1	2,697.8	5.6
Sri Lanka	26.0	24.0	250.8	232.5	-7.3
Taiwan	112.8	144.8	789.9	890.8	12.8
Thailand	59.3	50.2	366.1	495.1	35.2
Timor-Leste	0.0	0.0	0.0	0.0	-87.6
Viet Nam	31.2	19.5	149.3	191.3	28.2
<b>Total</b>	<b>2,385.5</b>	<b>2,992.5</b>	<b>24,105.4</b>	<b>25,260.5</b>	<b>4.8</b>
<b>Oceania</b>					
American Samoa	0.1	0.1	0.5	1.0	85.0
Australia	153.8	115.7	1,184.7	1,252.7	5.7
Christmas Island	0.0	0.2	0.3	0.7	177.2
Cocos (Keeling) Islands	0.0	0.0	0.2	0.1	-37.0
Cook Islands	0.0	0.0	0.5	0.4	-17.2
Fiji	1.0	0.1	5.4	1.9	-65.6
French Polynesia	1.8	0.7	7.8	7.7	-1.1
Guam	0.2	0.3	1.5	1.1	-25.9
Heard Island and McDonald Islands	0.0	0.0	0.0	0.0	-100.0
Kiribati	0.0	0.0	0.0	0.1	...
Nauru	0.0	0.0	0.1	1.3	...
New Caledonia	6.0	0.5	8.7	14.0	60.1
New Zealand	30.3	41.8	202.4	218.0	7.7
Norfolk Island	0.0	0.0	0.3	0.0	-92.4
Papua New Guinea	1.8	1.8	23.0	14.2	-38.5
Pitcairn	0.0	0.0	0.1	0.1	-36.7
Samoa	0.0	0.0	0.3	0.3	17.7
Solomon Islands	0.0	0.0	0.1	0.0	-48.8
Tonga	0.0	0.0	0.2	3.4	...
United States Minor Outlying Islands	1.0	1.0	9.5	10.4	9.4
Vanuatu	0.1	0.1	1.7	1.3	-25.3
Wallis and Futuna	0.0	0.0	0.0	0.0	-100.0
<b>Total</b>	<b>196.1</b>	<b>162.4</b>	<b>1,447.2</b>	<b>1,528.6</b>	<b>5.6</b>

Table 4 – continued

## Domestic exports by country, customs basis, not seasonally adjusted

	September		January to September		Change
	2009	2010	2009	2010	January to September 2010/ January to September 2009
	millions of dollars				percent
<b>South America</b>					
Argentina	10.7	36.0	124.6	176.5	41.7
Bolivia	0.4	0.6	8.4	37.6	346.2
Brazil	127.8	190.9	1,048.1	1,881.1	79.5
Chile	39.1	43.3	470.3	384.8	-18.2
Colombia	47.6	66.7	460.6	436.6	-5.2
Ecuador	26.0	37.5	188.7	199.1	5.5
Falkland Islands (Malvinas)	0.0	0.0	0.0	0.1	...
Guyana	1.6	1.6	20.3	18.1	-10.6
Paraguay	0.9	1.2	7.8	12.9	64.1
Peru	19.0	48.0	298.8	335.0	12.1
Suriname	1.8	0.8	9.1	7.5	-17.7
Uruguay	1.1	57.0	15.7	76.8	390.0
Venezuela	41.5	51.7	426.8	353.8	-17.1
<b>Total</b>	<b>317.4</b>	<b>535.3</b>	<b>3,079.2</b>	<b>3,920.0</b>	<b>27.3</b>
<b>Central America Antilles</b>					
Anguilla	0.1	0.0	1.5	0.7	-54.9
Antigua and Barbuda	2.8	3.0	11.4	15.1	32.0
Aruba	0.4	0.3	4.3	25.0	486.7
Bahamas	20.2	3.5	125.1	92.8	-25.8
Barbados	5.4	3.0	44.4	26.5	-40.3
Belize	0.2	0.3	4.4	4.1	-5.2
Bermuda	3.6	2.5	45.0	28.6	-36.6
British Virgin Islands	0.2	0.2	2.5	21.0	728.1
Cayman Islands	0.4	1.0	5.0	5.3	7.4
Costa Rica	8.9	5.8	53.0	68.4	29.2
Cuba	11.3	9.7	215.1	226.4	5.2
Dominica	0.3	0.4	3.4	3.8	11.4
Dominican Republic	6.3	16.7	100.3	133.1	32.7
El Salvador	6.1	1.5	36.2	26.7	-26.2
Grenada	0.5	0.3	4.1	3.8	-8.4
Guatemala	4.4	7.1	62.0	65.3	5.3
Haiti	1.6	5.2	32.3	33.5	3.7
Honduras	3.2	1.0	22.2	23.1	4.1
Jamaica	11.1	6.3	90.4	102.6	13.5
Montserrat	0.0	0.0	0.2	0.2	-6.7
Netherlands Antilles	3.0	1.5	42.6	15.6	-63.3
Nicaragua	1.0	3.5	10.1	17.5	73.4
Panama	4.3	12.4	62.3	100.1	60.7
Saint Kitts and Nevis	0.5	0.9	4.6	4.7	3.3
Saint Lucia	0.9	0.6	7.4	5.2	-30.5
Saint Vincent and the Grenadines	1.0	1.1	7.1	7.0	-2.1
Trinidad and Tobago	8.7	17.9	146.4	213.2	45.6
Turks and Caicos Islands	0.6	1.2	4.0	3.5	-11.5
<b>Total</b>	<b>107.2</b>	<b>107.0</b>	<b>1,147.2</b>	<b>1,272.7</b>	<b>10.9</b>
<b>All countries</b>	<b>27,843.1</b>	<b>30,882.5</b>	<b>247,739.8</b>	<b>275,116.8</b>	<b>11.1</b>

**Table 5-1**  
**Exports by province of origin, customs basis, not seasonally adjusted — September**

	Agricultural and fishing products	Energy products	Forestry products	Industrial goods	Machinery and equipment	Automotive products	Consumer goods	Special transactions trade	Total
millions of dollars									
<b>Domestic exports</b>									
Newfoundland and Labrador									
2009	50.8	428.7	6.6	129.2	3.5	0.7	0.1	4.7	<b>624.3</b>
2010	54.9	574.1	8.3	107.6	3.4	0.2	0.2	2.2	<b>750.8</b>
Prince Edward Island									
2009	41.9	0.3	0.0	0.8	16.5	0.1	1.9	4.2	<b>65.6</b>
2010	38.6	0.0	6.1	1.5	15.9	0.2	2.5	3.7	<b>68.6</b>
Nova Scotia									
2009	81.9	66.1	66.9	40.8	99.5	5.9	5.7	4.9	<b>371.6</b>
2010	74.4	22.0	84.9	41.2	113.7	6.6	4.7	2.6	<b>350.1</b>
New Brunswick									
2009	103.3	350.2	78.2	49.1	24.7	2.0	19.9	7.7	<b>635.1</b>
2010	104.5	579.7	117.3	79.9	22.3	1.7	13.3	3.6	<b>922.4</b>
Quebec									
2009	345.5	188.4	469.6	1,393.7	1,429.0	140.7	306.3	102.5	<b>4,375.8</b>
2010	384.1	181.8	504.7	1,631.6	1,621.6	159.1	329.6	78.5	<b>4,890.9</b>
Ontario									
2009	667.1	205.7	198.9	2,804.4	2,479.8	4,105.3	668.7	246.6	<b>11,376.6</b>
2010	761.5	190.7	223.6	3,284.3	2,556.4	4,719.1	530.0	130.3	<b>12,395.8</b>
Manitoba									
2009	266.4	101.1	20.2	170.3	152.7	43.6	25.1	46.0	<b>825.5</b>
2010	287.5	63.7	17.3	195.1	160.4	43.3	25.4	24.5	<b>817.1</b>
Saskatchewan									
2009	509.5	699.2	20.1	483.4	70.8	3.7	0.5	8.6	<b>1,796.0</b>
2010	569.1	979.4	21.1	493.3	56.4	2.5	0.6	4.1	<b>2,126.6</b>
Alberta									
2009	471.8	3,985.2	151.8	678.1	347.8	27.7	10.9	46.8	<b>5,720.1</b>
2010	477.1	4,229.8	189.1	843.8	349.0	31.1	10.4	20.8	<b>6,151.1</b>
British Columbia									
2009	182.2	459.4	602.3	371.3	232.0	16.8	49.9	32.6	<b>1,946.5</b>
2010	256.6	703.5	695.1	390.9	268.6	19.5	47.9	18.8	<b>2,400.8</b>
Yukon, Northwest Territories and Nunavut <sup>1</sup>									
2009	0.1	0.0	0.0	104.9	0.3	0.0	0.0	0.5	<b>106.0</b>
2010	0.1	0.0	0.0	7.1	0.8	0.0	0.0	0.3	<b>8.3</b>
<b>Total</b>									
2009	<b>2,720.6</b>	<b>6,484.5</b>	<b>1,614.7</b>	<b>6,226.1</b>	<b>4,856.6</b>	<b>4,346.6</b>	<b>1,089.0</b>	<b>505.1</b>	<b>27,843.1</b>
2010	<b>3,008.4</b>	<b>7,524.6</b>	<b>1,867.6</b>	<b>7,076.5</b>	<b>5,168.4</b>	<b>4,983.2</b>	<b>964.5</b>	<b>289.2</b>	<b>30,882.5</b>
<b>Re-exports</b>									
2009	<b>34.9</b>	<b>70.5</b>	<b>5.9</b>	<b>216.7</b>	<b>891.4</b>	<b>96.4</b>	<b>198.6</b>	<b>571.0</b>	<b>2,085.4</b>
2010	<b>50.6</b>	<b>68.2</b>	<b>4.9</b>	<b>225.9</b>	<b>965.3</b>	<b>101.1</b>	<b>226.5</b>	<b>597.0</b>	<b>2,239.4</b>
<b>Total exports</b>									
2009	<b>2,755.6</b>	<b>6,555.0</b>	<b>1,620.5</b>	<b>6,442.7</b>	<b>5,748.1</b>	<b>4,443.0</b>	<b>1,287.5</b>	<b>1,076.1</b>	<b>29,928.5</b>
2010	<b>3,059.0</b>	<b>7,592.8</b>	<b>1,872.5</b>	<b>7,302.3</b>	<b>6,133.7</b>	<b>5,084.3</b>	<b>1,191.0</b>	<b>886.2</b>	<b>33,121.8</b>

1. Data for the current month do not include some exports from the Harmonized System, Chapter 71, "Natural/cultured pearls, precious stones and metals, coins, etc." for reasons relating to timing.

**Table 5-2**  
**Exports by province of origin, customs basis, not seasonally adjusted — Year to date, January to September**

	Agricultural and fishing products	Energy products	Forestry products	Industrial goods	Machinery and equipment	Automotive products	Consumer goods	Special transactions trade	Total
millions of dollars									
<b>Domestic exports</b>									
Newfoundland and Labrador									
2009	571.5	4,295.5	147.4	1,332.3	44.5	2.4	0.7	42.5	<b>6,436.7</b>
2010	647.4	4,357.4	86.8	1,083.6	33.7	1.3	1.2	21.3	<b>6,232.7</b>
Prince Edward Island									
2009	361.5	1.0	0.8	17.3	150.6	1.4	22.1	62.5	<b>617.0</b>
2010	340.0	1.1	6.5	19.7	124.8	2.9	28.0	34.2	<b>557.2</b>
Nova Scotia									
2009	743.6	520.0	521.1	380.0	848.6	60.7	57.3	54.2	<b>3,185.5</b>
2010	697.9	383.5	631.2	379.0	1,037.5	41.5	43.7	28.9	<b>3,243.2</b>
New Brunswick									
2009	880.3	4,777.1	836.5	567.9	234.7	18.8	106.6	65.1	<b>7,486.9</b>
2010	915.9	6,326.3	1,013.2	813.6	216.1	17.6	178.9	33.0	<b>9,514.6</b>
Quebec									
2009	3,212.3	2,148.2	4,485.4	12,041.0	15,208.0	1,240.1	2,616.2	1,032.1	<b>41,983.3</b>
2010	3,257.0	2,157.2	4,529.5	14,529.9	13,097.5	1,169.8	3,122.7	678.3	<b>42,541.8</b>
Ontario									
2009	5,940.6	2,076.7	2,017.8	23,065.6	24,372.9	25,643.6	6,980.9	2,250.1	<b>92,348.1</b>
2010	5,991.0	1,893.5	2,079.6	29,302.9	22,274.0	38,297.9	5,665.0	1,221.2	<b>106,724.9</b>
Manitoba									
2009	2,983.5	607.2	213.5	1,676.9	1,567.4	479.8	347.3	279.7	<b>8,155.4</b>
2010	2,692.2	567.2	160.4	1,710.5	1,427.2	324.6	266.1	214.1	<b>7,362.3</b>
Saskatchewan									
2009	5,696.8	5,133.4	192.6	4,178.1	657.4	30.9	8.9	68.7	<b>15,966.8</b>
2010	4,774.3	7,117.0	165.0	4,942.6	541.0	31.4	8.6	34.6	<b>17,614.4</b>
Alberta									
2009	5,326.7	34,218.3	1,260.5	6,356.9	3,388.1	391.6	120.5	412.4	<b>51,475.1</b>
2010	4,658.1	41,571.5	1,590.3	7,684.5	2,648.1	352.5	92.2	217.1	<b>58,814.3</b>
British Columbia									
2009	1,774.7	5,062.9	5,347.7	3,418.0	2,301.4	159.0	398.7	338.7	<b>18,800.9</b>
2010	1,783.8	5,932.7	6,330.2	4,141.1	2,230.7	195.4	419.0	185.4	<b>21,218.4</b>
Yukon, Northwest Territories and Nunavut <sup>1</sup>									
2009	1.9	0.0	0.1	1,275.6	4.2	0.3	1.0	0.8	<b>1,284.0</b>
2010	1.6	0.2	0.4	1,280.7	8.8	0.3	0.2	0.6	<b>1,292.9</b>
<b>Total</b>									
2009	<b>27,493.4</b>	<b>58,840.3</b>	<b>15,023.2</b>	<b>54,309.6</b>	<b>48,777.7</b>	<b>28,028.6</b>	<b>10,660.3</b>	<b>4,606.8</b>	<b>247,739.8</b>
2010	<b>25,759.1</b>	<b>70,307.5</b>	<b>16,593.0</b>	<b>65,888.1</b>	<b>43,639.4</b>	<b>40,435.4</b>	<b>9,825.5</b>	<b>2,668.9</b>	<b>275,116.8</b>
<b>Re-exports</b>									
2009	<b>361.5</b>	<b>371.9</b>	<b>57.3</b>	<b>1,679.6</b>	<b>8,585.7</b>	<b>741.6</b>	<b>1,683.9</b>	<b>5,970.9</b>	<b>19,452.4</b>
2010	<b>431.2</b>	<b>241.1</b>	<b>59.6</b>	<b>2,125.1</b>	<b>7,822.8</b>	<b>820.9</b>	<b>1,544.1</b>	<b>5,356.6</b>	<b>18,401.4</b>
<b>Total exports</b>									
2009	<b>27,854.9</b>	<b>59,212.2</b>	<b>15,080.5</b>	<b>55,989.3</b>	<b>57,363.4</b>	<b>28,770.1</b>	<b>12,344.2</b>	<b>10,577.7</b>	<b>267,192.2</b>
2010	<b>26,190.3</b>	<b>70,548.5</b>	<b>16,652.6</b>	<b>68,013.1</b>	<b>51,462.2</b>	<b>41,256.3</b>	<b>11,369.7</b>	<b>8,025.5</b>	<b>293,518.2</b>

1. Data for the current month do not include some exports from the Harmonized System Chapter 71, "Natural/cultured pearls, precious stones and metals, coins, etc." for reasons relating to timing.



**Table 6-1**  
**Imports by commodity groupings, balance of payments basis, seasonally adjusted — Current dollars**

	August	September	Change		Year to date			September 2010/ September 2009	
	2010	2010			2009		2010	Change	
	millions of dollars		percent		millions of dollars		percent		
<b>Total</b>	<b>35,144</b>	<b>35,550</b>	<b>407</b>	<b>1.2</b>	<b>279,158</b>	<b>307,331</b>	<b>28,173</b>	<b>10.1</b>	<b>15.7</b>
<b>Agricultural and fishing products</b>	<b>2,516</b>	<b>2,504</b>	<b>-12</b>	<b>-0.5</b>	<b>22,180</b>	<b>21,948</b>	<b>-232</b>	<b>-1.0</b>	<b>6.9</b>
Fruits and vegetables	702	719	17	2.4	6,236	6,199	-37	-0.6	6.6
Fresh fruits and berries	235	245	10	4.0	2,184	2,199	15	0.7	2.6
Dried fruits, fruits and fruit preparations	122	125	3	2.7	1,163	1,016	-147	-12.6	4.5
Fresh vegetables	190	195	5	2.6	1,605	1,669	64	4.0	9.2
Other vegetables and vegetable preparations	155	154	-1	-0.7	1,285	1,315	30	2.3	12.0
Other agricultural and fishing products	1,814	1,785	-29	-1.6	15,944	15,749	-195	-1.2	7.0
Live animals	17	16	-1	-7.7	147	146	-1	-0.9	-1.0
Meat and meat preparations	188	178	-9	-5.0	1,618	1,581	-38	-2.3	1.2
Fish and marine animals	171	167	-4	-2.1	1,546	1,462	-84	-5.4	6.1
Cocoa, coffee, tea and other food preparations	453	432	-21	-4.6	3,727	3,725	-2	0.0	9.9
Dairy produce, eggs and honey	51	58	7	12.5	430	439	9	2.2	14.4
Corn (maize) shelled	24	26	2	5.4	372	339	-33	-9.0	-39.6
Other cereals and cereal preparations	180	182	2	1.3	1,735	1,570	-165	-9.5	-0.9
Sugar and sugar preparations	144	139	-5	-3.3	1,229	1,300	71	5.7	18.4
Fodder, feed, excluding unmilled cereal	110	113	3	3.3	1,134	1,034	-100	-8.8	-9.3
Beverages	318	319	1	0.1	2,730	2,758	28	1.0	14.5
Tobacco	38	36	-2	-5.1	279	307	27	9.8	5.0
Crude vegetable products	120	119	-1	-0.7	990	1,080	90	9.1	28.8
Cotton	1	1	0	-36.6	7	9	2	30.3	-34.0
<b>Energy products</b>	<b>3,440</b>	<b>3,397</b>	<b>-43</b>	<b>-1.2</b>	<b>24,637</b>	<b>29,694</b>	<b>5,056</b>	<b>20.5</b>	<b>29.1</b>
Crude petroleum	2,041	2,113	72	3.5	15,023	18,165	3,142	20.9	26.4
Other energy products	1,399	1,284	-115	-8.2	9,614	11,529	1,914	19.9	33.8
Coal and other related products	494	415	-79	-16.0	3,474	3,790	315	9.1	36.0
Petroleum and coal products	905	869	-36	-4.0	6,140	7,739	1,599	26.0	32.8
<b>Forestry products</b>	<b>223</b>	<b>222</b>	<b>-1</b>	<b>-0.7</b>	<b>1,792</b>	<b>2,010</b>	<b>219</b>	<b>12.2</b>	<b>10.4</b>
Forestry products	223	222	-1	-0.7	1,792	2,010	219	12.2	10.4
Crude wood products	40	41	1	0.6	348	324	-24	-6.9	13.5
Wood fabricated materials	183	181	-2	-0.9	1,444	1,687	243	16.8	9.7
<b>Industrial goods and materials</b>	<b>7,157</b>	<b>7,559</b>	<b>402</b>	<b>5.6</b>	<b>56,084</b>	<b>64,231</b>	<b>8,148</b>	<b>14.5</b>	<b>17.8</b>
Metals and metal ores	2,541	2,954	413	16.3	17,819	23,979	6,160	34.6	28.5
Metals in ores, concentrates and scrap	508	637	128	25.2	4,291	5,093	802	18.7	2.1
Steel bars, rods, plates, sheets	522	492	-30	-5.8	3,434	4,905	1,471	42.8	19.9
Other iron and steel products	404	448	44	10.9	2,721	3,300	579	21.3	71.8
Precious metals including alloys	752	1,042	290	38.6	4,781	7,451	2,670	55.8	54.8
Other non-ferrous metals and alloys	355	336	-19	-5.4	2,592	3,229	637	24.6	1.3
Chemicals and plastics	2,476	2,499	23	0.9	20,646	21,794	1,148	5.6	10.9
Organic chemicals	551	599	48	8.6	5,009	5,241	232	4.6	16.1
Plastic materials	869	848	-20	-2.3	6,597	7,535	938	14.2	16.0
Other chemicals and related products	1,056	1,052	-4	-0.4	9,040	9,019	-21	-0.2	4.5
Other industrial goods and materials	2,140	2,106	-34	-1.6	17,619	18,458	839	4.8	13.1
Crude animal products	22	21	-1	-4.5	177	196	20	11.1	1.2
Wool and man-made fibres	21	18	-3	-16.3	158	187	29	18.3	9.5
Crude non-metallic minerals	59	55	-4	-6.4	544	617	74	13.5	-0.2
Textile fabricated materials	210	196	-14	-6.6	1,699	1,751	52	3.1	9.4
Metal fabricated basic products	847	856	9	1.0	6,839	7,214	376	5.5	19.6
Rubber fabricated materials	86	84	-2	-2.7	702	742	40	5.7	6.7
Oils, fats, animal and vegetable	106	105	-1	-0.7	951	900	-51	-5.3	-1.3
Non-metallic minerals	314	296	-17	-5.5	2,458	2,692	234	9.5	12.9
Other fabricated materials	475	475	0	0.0	4,091	4,157	66	1.6	11.3

Table 6-1 – continued

## Imports by commodity groupings, balance of payments basis, seasonally adjusted — Current dollars

	August	September	Change		Year to date			September 2010/ September 2009	
	2010	2010			2009	2010	Change		
	millions of dollars		percent		millions of dollars			percent	
<b>Machinery and equipment</b>	<b>9,894</b>	<b>10,212</b>	<b>318</b>	<b>3.2</b>	<b>82,464</b>	<b>83,915</b>	<b>1,451</b>	<b>1.8</b>	<b>19.0</b>
Industrial and agricultural machinery	2,652	2,795	143	5.4	21,506	22,209	703	3.3	26.0
Engines, turbines and electric motors	375	492	117	31.2	3,192	3,224	32	1.0	78.0
Drilling mining machinery	162	171	9	5.6	1,171	1,309	139	11.8	29.8
Excavating machinery	261	247	-14	-5.5	1,539	1,975	436	28.3	34.0
Metal working machinery	138	146	8	5.6	1,202	1,174	-28	-2.3	24.9
Other industrial machinery	1,338	1,363	25	1.9	11,329	11,254	-75	-0.7	17.2
Agricultural machinery including tractors	378	376	-2	-0.6	3,073	3,272	199	6.5	8.7
Aircraft and other transportation equipment	1,140	1,401	261	22.9	12,264	10,578	-1,686	-13.7	22.8
Aircraft, engines, parts	658	960	301	45.8	7,826	6,463	-1,363	-17.4	39.1
Other transportation equipment and parts	481	441	-41	-8.4	4,438	4,115	-323	-7.3	-2.2
Office machines and equipment	1,209	1,157	-52	-4.3	9,328	9,892	564	6.0	20.1
Other machinery and equipment	4,892	4,859	-33	-0.7	39,366	41,236	1,870	4.7	14.1
Other communication and related equipment	1,848	1,863	15	0.8	13,827	15,077	1,249	9.0	24.6
Other equipment and tools	3,044	2,996	-49	-1.6	25,539	26,159	620	2.4	8.4
<b>Automotive products</b>	<b>5,775</b>	<b>5,498</b>	<b>-277</b>	<b>-4.8</b>	<b>39,272</b>	<b>52,396</b>	<b>13,124</b>	<b>33.4</b>	<b>12.8</b>
Passenger autos and chassis	1,856	1,776	-80	-4.3	13,161	16,862	3,701	28.1	2.3
Trucks and other motor vehicles	1,368	1,349	-19	-1.4	9,138	13,167	4,029	44.1	36.6
Motor vehicle parts	2,551	2,373	-178	-7.0	16,974	22,367	5,393	31.8	10.3
<b>Other consumer goods</b>	<b>4,989</b>	<b>4,893</b>	<b>-96</b>	<b>-1.9</b>	<b>43,308</b>	<b>42,757</b>	<b>-551</b>	<b>-1.3</b>	<b>5.1</b>
Apparel and footwear	975	1,013	38	3.9	8,627	8,086	-540	-6.3	20.1
Apparel and apparel accessories	802	823	21	2.6	7,183	6,699	-484	-6.7	18.4
Footwear	173	191	17	10.0	1,443	1,387	-56	-3.9	27.9
Miscellaneous consumer goods	4,014	3,879	-135	-3.4	34,682	34,671	-11	0.0	1.7
Television, radios, phonographs	146	123	-23	-15.7	1,024	1,182	157	15.4	-5.8
Printed matter	312	289	-23	-7.3	2,718	2,583	-135	-5.0	-0.5
Watches, sporting goods and toys	507	524	18	3.5	4,580	4,528	-52	-1.1	1.6
House furnishings	753	732	-21	-2.8	6,545	6,571	26	0.4	4.2
Photographic goods	223	218	-5	-2.5	1,938	1,873	-66	-3.4	1.5
Miscellaneous end products	2,073	1,993	-80	-3.8	17,876	17,935	58	0.3	1.8
<b>Special transactions trade</b>	<b>428</b>	<b>551</b>	<b>123</b>	<b>28.7</b>	<b>3,594</b>	<b>3,793</b>	<b>199</b>	<b>5.5</b>	<b>47.5</b>
<b>Unallocated balance of payments adjustments</b>	<b>722</b>	<b>714</b>	<b>-7</b>	<b>-1.0</b>	<b>5,827</b>	<b>6,587</b>	<b>761</b>	<b>13.1</b>	<b>12.1</b>

**Table 6-2**  
**Imports by commodity groupings, balance of payments basis, seasonally adjusted — Constant dollars, 2002**

	August	September	Change		Year to date			September 2010/ September 2009	
	2010	2010			2009		2010	Change	
	millions of dollars		percent		millions of dollars		percent		
<b>Total</b>	<b>40,035</b>	<b>40,068</b>	<b>33</b>	<b>0.1</b>	<b>298,504</b>	<b>347,858</b>	<b>49,354</b>	<b>16.5</b>	<b>16.6</b>
<b>Agricultural and fishing products</b>	<b>2,515</b>	<b>2,456</b>	<b>-60</b>	<b>-2.4</b>	<b>20,781</b>	<b>22,000</b>	<b>1,219</b>	<b>5.9</b>	<b>3.8</b>
Fruits and vegetables	704	744	40	5.7	6,083	6,166	83	1.4	8.8
Fresh fruits and berries	247	274	26	10.6	2,235	2,280	45	2.0	11.9
Dried fruits, fruits and fruit preparations	130	128	-2	-1.5	1,116	1,023	-93	-8.3	6.0
Fresh vegetables	173	185	12	7.1	1,590	1,580	-10	-0.6	-2.5
Other vegetables and vegetable preparations	154	157	4	2.3	1,143	1,284	141	12.3	22.0
Other agricultural and fishing products	1,812	1,712	-100	-5.5	14,698	15,834	1,136	7.7	1.8
Live animals	16	15	-2	-11.3	144	141	-3	-1.9	-19.0
Meat and meat preparations	176	158	-19	-10.5	1,579	1,521	-58	-3.7	-17.2
Fish and marine animals	231	230	0	-0.2	2,049	2,075	26	1.2	-12.7
Cocoa, coffee, tea and other food preparations	461	383	-78	-16.9	2,990	3,738	748	25.0	11.7
Dairy produce, eggs and honey	58	62	5	8.0	415	487	73	17.5	30.4
Corn (maize) shelled	23	23	0	-1.8	311	328	17	5.4	-44.9
Other cereals and cereal preparations	149	154	5	3.4	1,441	1,320	-122	-8.4	-9.3
Sugar and sugar preparations	137	132	-5	-3.4	1,191	1,256	65	5.4	11.5
Fodder, feed, excluding unmilled cereal	90	93	2	2.7	819	883	64	7.8	-3.2
Beverages	311	293	-17	-5.6	2,409	2,578	168	7.0	17.7
Tobacco	45	42	-2	-4.8	318	369	52	16.3	2.0
Crude vegetable products	114	126	12	10.4	1,022	1,125	104	10.1	23.6
Cotton	1	1	0	-37.9	10	12	3	30.3	-37.4
<b>Energy products</b>	<b>1,893</b>	<b>1,816</b>	<b>-76</b>	<b>-4.0</b>	<b>15,642</b>	<b>16,014</b>	<b>372</b>	<b>2.4</b>	<b>15.5</b>
Crude petroleum	949	997	48	5.0	8,714	8,309	-405	-4.6	17.2
Other energy products	944	820	-124	-13.1	6,929	7,705	776	11.2	13.4
Coal and other related products	441	362	-78	-17.7	2,862	3,348	486	17.0	18.3
Petroleum and coal products	503	457	-46	-9.1	4,067	4,357	290	7.1	9.8
<b>Forestry products</b>	<b>281</b>	<b>286</b>	<b>6</b>	<b>2.0</b>	<b>2,232</b>	<b>2,619</b>	<b>387</b>	<b>17.3</b>	<b>7.3</b>
Forestry products	281	286	6	2.0	2,232	2,619	387	17.3	7.3
Crude wood products	57	58	1	2.0	432	474	41	9.6	22.3
Wood fabricated materials	224	229	5	2.1	1,800	2,146	346	19.2	4.1
<b>Industrial goods and materials</b>	<b>6,593</b>	<b>6,668</b>	<b>75</b>	<b>1.1</b>	<b>50,000</b>	<b>58,639</b>	<b>8,639</b>	<b>17.3</b>	<b>14.2</b>
Metals and metal ores	1,837	2,039	202	11.0	12,796	16,944	4,148	32.4	23.8
Metals in ores, concentrates and scrap	312	359	47	15.0	3,267	2,942	-325	-9.9	-16.3
Steel bars, rods, plates, sheets	412	391	-21	-5.1	2,728	4,049	1,321	48.4	10.8
Other iron and steel products	290	310	20	6.9	1,896	2,393	497	26.2	53.0
Precious metals including alloys	450	640	190	42.2	2,250	4,205	1,956	86.9	105.7
Other non-ferrous metals and alloys	372	338	-34	-9.2	2,656	3,355	700	26.3	-3.4
Chemicals and plastics	2,341	2,259	-83	-3.5	19,017	20,872	1,855	9.8	5.4
Organic chemicals	460	436	-24	-5.3	3,981	3,842	-138	-3.5	9.4
Plastic materials	901	884	-16	-1.8	6,790	7,994	1,204	17.7	13.0
Other chemicals and related products	980	938	-42	-4.3	8,247	9,036	789	9.6	-2.5
Other industrial goods and materials	2,415	2,371	-44	-1.8	18,187	20,822	2,636	14.5	15.7
Crude animal products	23	24	1	4.5	269	212	-57	-21.1	-15.0
Wool and man-made fibres	27	23	-5	-17.3	197	241	44	22.1	9.6
Crude non-metallic minerals	51	47	-4	-7.6	478	517	39	8.2	1.0
Textile fabricated materials	282	264	-18	-6.3	2,054	2,358	304	14.8	12.9
Metal fabricated basic products	890	906	16	1.8	6,596	7,686	1,090	16.5	22.1
Rubber fabricated materials	101	101	-1	-0.7	776	902	126	16.3	7.6
Oils, fats, animal and vegetable	103	101	-2	-2.0	816	885	69	8.5	3.5
Non-metallic minerals	373	359	-14	-3.7	2,720	3,253	533	19.6	13.6
Other fabricated materials	565	546	-19	-3.3	4,280	4,767	488	11.4	15.9

Table 6-2 – continued

## Imports by commodity groupings, balance of payments basis, seasonally adjusted — Constant dollars, 2002

	August	September	Change		Year to date			September 2010/ September 2009	
	2010	2010			2009	2010	Change		
	millions of dollars		percent		millions of dollars		percent		
<b>Machinery and equipment</b>	<b>14,457</b>	<b>14,790</b>	<b>333</b>	<b>2.3</b>	<b>105,500</b>	<b>121,184</b>	<b>15,684</b>	<b>14.9</b>	<b>25.4</b>
Industrial and agricultural machinery	3,219	3,417	198	6.1	23,440	27,217	3,777	16.1	31.2
Engines, turbines and electric motors	461	607	146	31.6	3,528	3,991	462	13.1	83.5
Drilling mining machinery	179	190	11	6.2	1,150	1,463	313	27.2	34.0
Excavating machinery	322	309	-13	-4.2	1,649	2,463	814	49.4	44.4
Metal working machinery	176	188	12	6.9	1,375	1,504	130	9.4	30.9
Other industrial machinery	1,599	1,642	42	2.7	12,215	13,619	1,404	11.5	21.6
Agricultural machinery including tractors	480	480	0	-0.1	3,523	4,177	654	18.6	13.4
Aircraft and other transportation equipment	1,325	1,626	301	22.7	12,966	12,384	-582	-4.5	23.8
Aircraft, engines, parts	808	1,151	343	42.4	8,450	7,857	-593	-7.0	40.1
Other transportation equipment and parts	517	475	-42	-8.0	4,516	4,526	11	0.2	-3.3
Office machines and equipment	2,864	2,697	-167	-5.8	18,527	21,968	3,441	18.6	35.5
Other machinery and equipment	7,049	7,050	1	0.0	50,566	59,615	9,049	17.9	19.8
Other communication and related equipment	3,093	3,128	35	1.1	20,711	25,411	4,700	22.7	29.4
Other equipment and tools	3,956	3,922	-34	-0.9	29,855	34,203	4,348	14.6	13.1
<b>Automotive products</b>	<b>7,021</b>	<b>6,678</b>	<b>-342</b>	<b>-4.9</b>	<b>45,176</b>	<b>63,706</b>	<b>18,529</b>	<b>41.0</b>	<b>14.7</b>
Passenger autos and chassis	2,140	2,039	-101	-4.7	15,282	19,401	4,119	27.0	1.8
Trucks and other motor vehicles	1,546	1,506	-40	-2.6	9,697	14,764	5,067	52.3	38.7
Motor vehicle parts	3,334	3,133	-201	-6.0	20,198	29,541	9,343	46.3	14.5
<b>Other consumer goods</b>	<b>6,368</b>	<b>6,309</b>	<b>-59</b>	<b>-0.9</b>	<b>50,698</b>	<b>55,176</b>	<b>4,478</b>	<b>8.8</b>	<b>8.4</b>
Apparel and footwear	1,365	1,444	79	5.8	10,822	11,435	613	5.7	27.3
Apparel and apparel accessories	1,127	1,181	54	4.8	9,032	9,513	481	5.3	26.2
Footwear	238	263	25	10.4	1,789	1,922	132	7.4	32.7
Miscellaneous consumer goods	5,003	4,865	-138	-2.7	39,876	43,741	3,865	9.7	3.9
Television, radios, phonographs	244	211	-33	-13.5	1,532	2,006	475	31.0	-2.3
Printed matter	384	357	-27	-7.1	3,201	3,194	-7	-0.2	0.2
Watches, sporting goods and toys	684	706	22	3.2	5,824	6,290	466	8.0	3.6
House furnishings	956	932	-24	-2.5	7,499	8,403	904	12.1	6.1
Photographic goods	437	436	-2	-0.4	3,079	3,562	482	15.7	15.7
Miscellaneous end products	2,297	2,224	-74	-3.2	18,741	20,287	1,545	8.2	2.2
<b>Special transactions trade</b>	<b>496</b>	<b>631</b>	<b>134</b>	<b>27.1</b>	<b>3,884</b>	<b>4,334</b>	<b>450</b>	<b>11.6</b>	<b>47.7</b>
<b>Unallocated balance of payments adjustments</b>	<b>411</b>	<b>433</b>	<b>22</b>	<b>5.4</b>	<b>4,591</b>	<b>4,186</b>	<b>-405</b>	<b>-8.8</b>	<b>-6.9</b>

**Table 7-1**  
**Imports from selected countries, customs basis, not seasonally adjusted — September**

	Agricultural and fishing products	Energy products	Forestry products	Industrial goods	Machinery and equipment	Automotive products	Consumer goods	Special transactions trade	Total
millions of dollars									
<b>United States</b>									
2009	1,418.7	760.6	151.5	3,850.1	3,851.0	3,529.3	2,013.1	336.7	<b>15,911.0</b>
2010	1,456.8	1,049.4	161.0	4,345.4	4,224.2	3,835.5	2,004.9	531.5	<b>17,608.7</b>
<b>Mexico</b>									
2009	66.6	101.1	0.3	103.5	601.7	487.7	88.3	3.8	<b>1,453.1</b>
2010	71.0	87.3	0.4	184.0	847.1	723.6	105.8	3.6	<b>2,022.9</b>
<b>Japan</b>									
2009	6.0	0.4	0.1	94.1	374.6	455.8	82.9	0.2	<b>1,014.0</b>
2010	5.3	36.5	0.2	100.8	425.8	536.4	105.1	0.3	<b>1,210.4</b>
<b>European Union</b>									
<b>Germany</b>									
2009	29.7	2.2	0.9	136.0	269.2	242.7	136.3	0.2	<b>817.2</b>
2010	33.1	1.2	1.0	154.8	362.1	219.8	145.1	1.2	<b>918.3</b>
<b>France</b>									
2009	62.1	11.8	0.3	129.6	113.6	4.2	138.8	0.3	<b>460.6</b>
2010	70.7	7.0	0.3	105.2	222.3	7.5	135.9	0.3	<b>549.4</b>
<b>United Kingdom</b>									
2009	46.6	96.4	0.1	99.5	259.8	31.9	113.0	7.2	<b>654.4</b>
2010	43.3	292.6	0.0	146.3	244.2	39.5	97.0	1.3	<b>864.2</b>
<b>Italy</b>									
2009	58.4	0.0	0.6	58.5	88.8	13.1	76.0	0.2	<b>295.7</b>
2010	65.5	24.5	1.1	71.1	136.1	21.3	95.7	0.4	<b>415.7</b>
<b>Other European Union</b>									
2009	111.5	235.6	3.5	217.0	309.3	84.2	330.4	5.0	<b>1,296.4</b>
2010	117.7	111.2	3.3	263.5	553.8	72.4	281.2	4.6	<b>1,407.6</b>
<b>Total</b>									
2009	308.3	346.0	5.4	640.5	1,040.6	376.2	794.5	12.8	<b>3,524.2</b>
2010	330.3	436.6	5.7	740.9	1,518.5	360.4	754.9	7.9	<b>4,155.2</b>
<b>Newly industrialized countries</b>									
<b>South Korea</b>									
2009	3.9	57.3	0.0	61.4	267.8	150.1	17.5	0.1	<b>558.1</b>
2010	4.2	46.2	0.0	63.6	246.5	151.1	17.7	0.1	<b>529.4</b>
<b>Hong Kong</b>									
2009	2.2	0.0	0.1	1.8	12.1	0.5	12.6	0.0	<b>29.3</b>
2010	2.5	0.0	0.0	2.3	17.6	0.7	15.0	0.0	<b>38.1</b>
<b>Taiwan</b>									
2009	5.0	0.0	0.9	51.8	149.4	12.2	36.6	0.1	<b>256.0</b>
2010	6.2	0.0	0.4	72.8	232.5	14.1	37.5	0.1	<b>363.6</b>
<b>Singapore</b>									
2009	4.1	0.0	0.0	7.4	42.1	0.3	9.1	0.1	<b>63.1</b>
2010	3.3	43.1	0.1	30.8	56.2	0.4	21.7	0.1	<b>155.7</b>
<b>Total</b>									
2009	15.2	57.3	1.0	122.4	471.3	163.0	75.9	0.3	<b>906.4</b>
2010	16.2	89.3	0.5	169.6	552.8	166.3	91.9	0.3	<b>1,086.8</b>
<b>Other countries</b>									
2009	556.0	1,753.7	47.9	1,426.6	2,324.8	181.7	2,054.1	22.8	<b>8,367.6</b>
2010	662.3	1,798.4	60.1	1,925.9	2,802.2	200.5	2,339.8	23.8	<b>9,812.9</b>
<b>Total</b>									
2009	<b>2,371.1</b>	<b>3,019.1</b>	<b>206.2</b>	<b>6,237.2</b>	<b>8,664.1</b>	<b>5,193.6</b>	<b>5,108.8</b>	<b>376.6</b>	<b>31,176.6</b>
2010	<b>2,542.6</b>	<b>3,497.5</b>	<b>227.8</b>	<b>7,466.5</b>	<b>10,370.7</b>	<b>5,822.7</b>	<b>5,402.4</b>	<b>567.4</b>	<b>35,897.7</b>

**Table 7-2**  
**Imports from selected countries, customs basis, not seasonally adjusted — Year to date, January to September**

	Agricultural and fishing products	Energy products	Forestry products	Industrial goods	Machinery and equipment	Automotive products	Consumer goods	Special transactions trade	<b>Total</b>
millions of dollars									
<b>United States</b>									
2009	13,007.0	8,002.9	1,351.7	33,447.6	37,577.2	25,820.4	17,300.1	2,976.6	<b>139,483.5</b>
2010	12,431.5	9,084.1	1,458.4	37,830.0	37,200.1	34,415.6	16,943.1	3,262.8	<b>152,625.6</b>
<b>Mexico</b>									
2009	1,012.2	406.8	4.6	966.7	4,968.1	3,663.0	757.7	30.5	<b>11,809.5</b>
2010	1,120.4	587.2	4.2	1,320.4	5,889.9	6,245.2	832.5	41.7	<b>16,041.6</b>
<b>Japan</b>									
2009	50.1	32.2	1.6	826.3	3,668.6	3,866.8	735.3	3.0	<b>9,183.8</b>
2010	49.8	88.7	0.8	903.5	3,624.2	4,486.7	800.9	2.9	<b>9,957.6</b>
<b>European Union</b>									
<b>Germany</b>									
2009	199.2	23.1	10.1	1,380.3	3,222.3	1,819.6	1,344.7	6.4	<b>8,005.8</b>
2010	203.9	39.6	9.8	1,448.9	2,878.8	2,446.3	1,298.4	17.3	<b>8,343.1</b>
<b>France</b>									
2009	517.3	185.2	1.9	883.6	1,464.7	72.6	1,233.7	9.0	<b>4,368.0</b>
2010	518.1	82.3	1.6	642.0	1,308.0	75.1	1,200.0	7.2	<b>3,834.4</b>
<b>United Kingdom</b>									
2009	306.9	1,609.3	1.1	940.6	2,614.3	248.6	1,007.7	31.5	<b>6,760.0</b>
2010	312.7	2,776.8	0.5	1,425.3	2,135.6	333.2	945.2	37.1	<b>7,966.4</b>
<b>Italy</b>									
2009	470.2	72.3	11.0	708.7	1,129.7	145.0	811.3	6.1	<b>3,354.4</b>
2010	463.5	158.9	9.9	698.6	1,091.1	176.7	816.2	2.8	<b>3,417.6</b>
<b>Other European Union</b>									
2009	846.3	1,247.2	32.6	2,069.5	3,280.9	485.5	3,077.5	41.2	<b>11,080.5</b>
2010	837.6	1,794.6	31.1	2,319.2	3,542.0	579.6	2,829.9	20.9	<b>11,954.9</b>
<b>Total</b>									
2009	2,340.0	3,137.1	56.7	5,982.7	11,711.9	2,771.4	7,474.8	94.1	<b>33,568.6</b>
2010	2,335.8	4,852.2	53.0	6,534.1	10,955.5	3,610.9	7,089.7	85.3	<b>35,516.4</b>
<b>Newly industrialized countries</b>									
<b>South Korea</b>									
2009	36.9	203.5	0.1	597.4	1,986.4	1,414.3	170.4	0.7	<b>4,409.8</b>
2010	42.9	222.9	0.2	589.8	1,781.3	1,588.4	152.9	0.8	<b>4,379.1</b>
<b>Hong Kong</b>									
2009	21.2	0.0	0.5	21.3	121.6	3.1	103.8	0.5	<b>272.0</b>
2010	20.6	0.1	0.5	20.5	114.4	3.8	111.5	0.3	<b>271.7</b>
<b>Taiwan</b>									
2009	49.9	0.3	7.4	535.8	1,497.4	128.5	303.9	0.9	<b>2,524.0</b>
2010	55.9	19.9	6.1	646.7	1,617.3	120.3	303.9	1.1	<b>2,771.2</b>
<b>Singapore</b>									
2009	23.6	70.0	0.6	252.9	382.1	3.8	164.1	1.2	<b>898.3</b>
2010	26.7	43.1	0.2	117.0	445.5	3.2	143.1	1.3	<b>780.1</b>
<b>Total</b>									
2009	131.6	273.8	8.6	1,407.4	3,987.4	1,549.7	742.3	3.3	<b>8,104.1</b>
2010	146.1	286.0	6.9	1,374.1	3,958.5	1,715.7	711.4	3.4	<b>8,202.0</b>
<b>Other countries</b>									
2009	5,306.0	13,335.8	395.7	12,807.4	19,718.6	1,314.7	16,113.5	264.8	<b>69,256.6</b>
2010	5,602.5	15,296.8	510.2	15,508.7	21,714.9	1,604.8	16,299.3	251.5	<b>76,788.7</b>
<b>Total</b>									
2009	<b>21,848.1</b>	<b>25,188.5</b>	<b>1,818.9</b>	<b>55,438.1</b>	<b>81,631.8</b>	<b>38,986.1</b>	<b>43,123.7</b>	<b>3,372.3</b>	<b>271,407.6</b>
2010	<b>21,689.9</b>	<b>30,195.0</b>	<b>2,033.6</b>	<b>63,470.7</b>	<b>83,343.3</b>	<b>52,078.9</b>	<b>42,677.0</b>	<b>3,647.7</b>	<b>299,136.0</b>

**Table 8**  
**Imports by country, customs basis, not seasonally adjusted**

	September		January to September		Change January to September 2010/ January to September 2009
	2009	2010	2009	2010	
	millions of dollars				percent
<b>North America</b>					
Canada	258.4	322.8	2,340.9	3,003.3	28.3
Greenland	0.0	0.0	17.0	0.4	-97.6
Mexico	1,453.1	2,022.9	11,809.5	16,041.6	35.8
Saint Pierre and Miquelon	0.0	0.2	0.2	1.1	560.9
United States	15,911.0	17,608.7	139,483.5	152,625.6	9.4
<b>Total</b>	<b>17,622.5</b>	<b>19,954.6</b>	<b>153,651.1</b>	<b>171,672.0</b>	<b>11.7</b>
<b>Western Europe</b>					
Andorra	0.0	0.0	0.1	0.2	228.2
Austria	94.9	89.8	834.4	889.8	6.6
Belgium	139.7	148.8	1,066.8	1,214.8	13.9
Denmark	151.1	315.1	1,086.3	1,671.9	53.9
Faeroe Islands	0.3	0.7	1.4	4.0	194.9
Finland	99.9	75.1	657.3	683.5	4.0
France	460.6	549.4	4,368.0	3,834.4	-12.2
Germany	817.2	918.3	8,005.8	8,343.1	4.2
Gibraltar	0.0	0.0	0.0	2.2	...
Greece	9.3	12.8	102.1	107.5	5.3
Iceland	3.0	2.5	24.0	26.5	10.6
Italy	295.7	415.7	3,354.4	3,417.6	1.9
Luxembourg	28.0	11.2	76.7	68.0	-11.3
Malta	1.6	1.4	15.6	12.7	-18.5
Netherlands	149.1	123.4	1,454.1	1,316.8	-9.4
Norway	121.7	295.9	2,528.6	2,174.3	-14.0
Portugal	41.9	24.0	221.4	245.4	10.9
Republic of Ireland (Eire)	143.2	95.9	1,630.2	1,221.4	-25.1
Spain	96.4	120.8	994.1	1,087.3	9.4
Sweden	162.1	148.0	1,359.4	1,520.0	11.8
Switzerland	286.8	258.8	2,617.4	2,224.0	-15.0
United Kingdom	654.4	864.2	6,760.0	7,966.4	17.8
<b>Total</b>	<b>3,756.8</b>	<b>4,471.8</b>	<b>37,157.8</b>	<b>38,032.1</b>	<b>2.4</b>
<b>Other Europe</b>					
Albania	0.3	0.8	3.2	3.0	-6.3
Armenia	1.3	3.7	25.3	19.4	-23.3
Azerbaijan	87.2	0.0	911.8	385.8	-57.7
Belarus	5.3	3.2	27.8	33.8	21.7
Bosnia and Herzegovina	0.7	1.1	6.2	5.9	-6.0
Bulgaria	17.9	8.5	102.9	50.2	-51.2
Croatia	1.9	2.0	19.4	25.4	31.0
Czech Republic	18.6	32.2	213.6	215.4	0.8
Estonia	2.1	6.5	16.7	20.0	19.4
Georgia	13.7	14.8	101.2	90.6	-10.4
Hungary	30.7	25.8	278.0	259.9	-6.5
Kazakhstan	203.3	204.1	1,008.6	1,487.1	47.4
Kyrgyzstan	0.0	0.0	0.4	0.1	-83.2
Latvia	1.0	1.2	14.9	7.3	-50.9
Lithuania	2.9	31.3	109.8	336.2	206.2
Macedonia (Former Yugoslav Republic of Macedonia)	0.5	1.1	6.6	6.3	-5.7
Montenegro	0.0	0.1	0.2	0.3	59.3
Poland	60.4	77.6	581.2	662.2	13.9
Republic of Moldova	0.2	0.3	1.6	4.8	209.8
Romania	13.8	32.7	94.5	150.7	59.4
Russian Federation	257.9	215.3	1,297.2	1,204.1	-7.2
Serbia	0.8	1.2	8.3	9.4	13.1
Slovakia	23.2	17.1	115.3	130.1	12.8
Slovenia	8.7	8.2	53.1	81.5	53.5
Tajikistan	0.0	0.0	0.0	0.0	226.1
Turkmenistan	0.1	0.3	0.3	0.6	115.1
Ukraine	4.0	21.1	72.5	73.2	1.1
Uzbekistan	0.0	0.0	11.8	1.3	-89.4
<b>Total</b>	<b>756.5</b>	<b>710.1</b>	<b>5,082.5</b>	<b>5,264.4</b>	<b>3.6</b>

Table 8 – continued

## Imports by country, customs basis, not seasonally adjusted

	September		January to September		Change
	2009	2010	2009	2010	January to September 2010/ January to September 2009
	millions of dollars				percent
<b>Middle East</b>					
Bahrain	0.2	0.2	4.0	2.2	-44.2
Cyprus	0.1	0.3	2.2	2.2	0.0
Egypt	6.2	26.8	65.3	220.6	237.7
Eritrea	0.0	0.0	0.1	0.2	140.4
Ethiopia	1.8	1.0	13.5	11.6	-13.6
Iran	1.9	3.5	19.1	29.9	56.7
Iraq	129.1	96.5	969.4	1,278.3	31.9
Israel	83.7	82.7	695.6	755.5	8.6
Jordan	1.7	1.7	12.3	15.1	22.3
Kuwait	0.0	0.0	37.3	31.5	-15.4
Lebanon	0.8	1.3	11.0	12.2	11.0
Libya	0.0	3.3	0.2	19.9	...
Oman	0.1	1.6	5.1	16.2	216.1
Qatar	0.2	1.5	12.9	67.4	423.5
Saudi Arabia	145.0	310.3	1,206.5	1,663.3	37.9
Somalia	0.0	0.0	0.0	0.0	-28.4
Sudan	3.3	7.7	48.7	64.7	32.9
Syria	0.6	0.7	4.2	5.4	28.0
Turkey	50.0	56.6	483.2	493.8	2.2
United Arab Emirates	2.3	3.3	188.3	131.8	-30.0
Yemen	0.0	0.0	0.1	0.1	-48.6
<b>Total</b>	<b>426.9</b>	<b>599.0</b>	<b>3,779.0</b>	<b>4,822.1</b>	<b>27.6</b>
<b>Other Africa</b>					
Algeria	370.0	84.7	2,616.3	2,620.1	0.1
Angola	314.3	190.5	1,073.1	1,199.2	11.8
Antarctica	0.0	0.0	0.0	0.3	...
Benin	0.0	0.0	0.0	0.0	287.5
Botswana	6.9	0.0	21.7	6.9	-68.2
Bouvet Island	0.0	0.0	0.0	0.0	-99.7
Burkina Faso	3.1	0.1	5.0	20.8	319.3
Burundi	0.0	0.0	0.2	0.0	-77.4
Cameroon	0.3	0.5	3.6	4.5	24.4
Cape Verde	0.0	0.0	0.0	0.0	88.5
Central African Republic	0.0	0.0	0.1	0.1	74.5
Chad	0.1	0.8	0.1	0.9	712.3
Comoros	0.0	0.0	0.0	0.0	58.8
Congo	0.0	1.1	1.9	3.8	102.0
Democratic Republic of the Congo	0.0	0.0	0.5	0.7	40.8
Djibouti	0.0	0.0	0.0	0.0	-76.2
Equatorial Guinea	79.2	0.0	347.9	442.8	27.3
French Southern Territories	0.0	0.0	0.0	0.0	-100.0
Gabon	0.0	0.0	1.6	0.3	-82.1
Gambia	0.0	0.0	0.1	0.1	-21.4
Ghana	1.2	2.9	19.2	18.4	-4.2
Guinea	7.9	2.4	51.5	34.3	-33.4
Guinea-Bissau	0.0	0.0	0.0	0.0	-40.0
Ivory Coast	7.9	96.5	166.0	321.4	93.6
Kenya	1.3	1.8	13.2	12.2	-7.5
Lesotho	0.6	1.1	6.2	12.8	108.2
Liberia	4.3	0.6	18.1	31.4	73.0
Madagascar	7.9	6.8	31.1	37.0	19.1
Malawi	0.1	8.7	1.5	57.8	...
Mali	0.0	0.0	0.3	0.5	62.7
Mauritania	0.1	0.0	0.7	0.2	-74.3
Mauritius	0.7	0.8	7.5	7.9	5.9
Morocco	4.0	4.3	69.6	71.2	2.3
Mozambique	0.0	0.1	0.2	1.3	461.8
Namibia	0.2	0.1	194.2	156.7	-19.3
Niger	0.0	0.0	0.7	0.6	-10.0
Nigeria	2.0	197.9	313.3	1,308.0	317.6
Rwanda	0.0	0.0	0.3	0.1	-54.7
Saint Helena	0.0	0.0	0.0	0.0	105.0
Sao Tome and Principe	0.0	0.0	0.0	0.2	...
Senegal	0.1	0.1	0.8	0.8	-0.9



Table 8 – continued

## Imports by country, customs basis, not seasonally adjusted

	September		January to September		Change
	2009	2010	2009	2010	January to September 2010/ January to September 2009
	millions of dollars				percent
Seychelles	0.0	0.0	0.5	0.2	-63.6
Sierra Leone	0.1	0.1	1.3	1.4	5.3
South Africa	56.8	72.7	477.9	540.6	13.1
Swaziland	0.4	0.2	1.6	1.2	-21.5
Togo	0.1	1.3	3.3	2.7	-16.6
Tunisia	4.3	4.5	35.3	42.4	20.3
Uganda	0.1	0.1	2.0	3.0	47.6
United Republic of Tanzania	0.4	0.1	2.9	2.4	-18.8
Western Sahara	0.0	0.0	0.0	0.0	-97.8
Zambia	0.1	0.1	0.6	1.0	74.7
Zimbabwe	0.3	0.2	2.0	3.5	77.3
<b>Total</b>	<b>874.9</b>	<b>681.3</b>	<b>5,493.9</b>	<b>6,972.0</b>	<b>26.9</b>
<b>Other Asia</b>					
Afghanistan	0.1	0.0	1.0	1.2	16.6
Bangladesh	65.0	80.0	655.1	622.3	-5.0
Bhutan	0.0	0.0	0.0	0.0	126.6
British Indian Ocean Territory	0.0	0.0	0.0	0.0	544.2
Brunei Darussalam	0.0	0.0	1.8	0.0	-98.9
Cambodia	28.3	41.1	222.8	257.6	15.6
China	3,520.8	4,453.0	29,463.5	32,261.4	9.5
Hong Kong	29.3	38.1	272.0	271.7	-0.1
India	198.8	188.3	1,569.1	1,514.8	-3.5
Indonesia	81.4	104.3	762.7	898.5	17.8
Japan	1,014.0	1,210.4	9,183.8	9,957.6	8.4
Laos	0.3	0.9	5.7	6.1	6.9
Macao	0.7	0.7	19.9	7.5	-62.2
Malaysia	216.4	201.3	1,731.1	1,699.0	-1.9
Maldives	0.0	0.0	0.1	0.1	5.3
Mongolia	13.4	17.5	91.0	149.0	63.6
Myanmar	0.0	0.0	0.1	0.0	-77.3
Nepal	1.6	1.9	9.9	11.1	12.5
North Korea	0.0	0.0	0.1	0.1	30.1
Pakistan	21.7	24.7	184.5	203.6	10.3
Philippines	66.9	81.6	524.8	655.6	24.9
Singapore	63.1	155.7	898.3	780.1	-13.2
South Korea	558.1	529.4	4,409.8	4,379.1	-0.7
Sri Lanka	9.5	11.7	87.2	91.5	4.9
Taiwan	256.0	363.6	2,524.0	2,771.2	9.8
Thailand	194.9	212.6	1,686.4	1,747.9	3.6
Timor-Leste	0.2	0.4	2.9	1.2	-58.9
Viet Nam	101.6	128.2	797.3	853.9	7.1
<b>Total</b>	<b>6,442.2</b>	<b>7,845.4</b>	<b>55,105.1</b>	<b>59,141.9</b>	<b>7.3</b>
<b>Oceania</b>					
American Samoa	0.0	0.0	0.2	0.3	28.1
Australia	117.6	162.6	1,180.6	1,217.3	3.1
Christmas Island	0.0	0.0	0.0	0.1	690.0
Cocos (Keeling) Islands	0.0	0.0	0.1	0.0	-86.4
Cook Islands	0.0	0.1	0.0	0.1	172.7
Fiji	0.8	0.3	5.2	4.3	-16.9
French Polynesia	0.1	0.2	0.4	0.8	83.4
Guam	0.0	0.0	0.3	0.0	-81.0
Heard Island and McDonald Islands	0.0	0.0	0.0	0.0	718.5
Kiribati	0.0	0.0	0.1	0.0	-75.6
Nauru	0.0	0.0	0.1	0.1	-50.2
New Caledonia	0.0	0.0	0.3	0.1	-61.7
New Zealand	33.2	32.2	355.6	344.6	-3.1
Niue	0.0	0.0	0.0	0.0	229.1
Norfolk Island	0.0	0.0	0.0	0.0	-54.4
Papua New Guinea	0.4	0.3	1.2	1.1	-7.8
Pitcairn	0.0	0.0	0.0	0.0	-27.5
Samoa	0.0	0.0	0.0	0.3	...
Solomon Islands	0.0	0.0	0.1	0.1	-15.2
Tonga	0.0	0.0	0.0	0.0	-63.0

Table 8 – continued

## Imports by country, customs basis, not seasonally adjusted

	September		January to September		Change
	2009	2010	2009	2010	January to September 2010/ January to September 2009
	millions of dollars				percent
United States Minor Outlying Islands	0.4	0.2	3.7	3.0	-19.0
Vanuatu	0.0	0.2	0.2	0.5	193.0
Wallis and Futuna	0.0	0.0	0.0	0.0	553.6
<b>Total</b>	<b>152.5</b>	<b>196.2</b>	<b>1,548.3</b>	<b>1,572.9</b>	<b>1.6</b>
<b>South America</b>					
Argentina	47.3	248.6	513.4	874.8	70.4
Bolivia	4.6	8.0	61.5	95.8	55.8
Brazil	206.2	323.9	1,800.9	2,419.0	34.3
Chile	172.5	111.6	1,278.8	1,482.1	15.9
Colombia	48.2	44.0	547.3	563.4	2.9
Ecuador	14.5	16.7	182.2	158.2	-13.2
Falkland Islands (Malvinas)	0.0	0.0	0.0	0.0	-47.5
Guyana	30.1	31.5	223.2	207.6	-7.0
Paraguay	0.8	1.0	6.2	7.3	17.4
Peru	270.1	286.5	2,033.9	2,625.1	29.1
Suriname	48.1	46.9	398.9	395.1	-1.0
Uruguay	1.8	1.2	48.5	47.7	-1.5
Venezuela	88.7	101.4	846.3	670.0	-20.8
<b>Total</b>	<b>933.0</b>	<b>1,221.3</b>	<b>7,941.2</b>	<b>9,546.3</b>	<b>20.2</b>
<b>Central America Antilles</b>					
Anguilla	0.0	0.0	0.3	0.2	-13.9
Antigua and Barbuda	0.1	0.0	0.4	0.2	-56.4
Aruba	0.0	0.0	53.4	0.1	-99.7
Bahamas	0.7	20.2	27.4	47.9	74.9
Barbados	0.8	0.5	6.7	6.5	-3.4
Belize	0.4	0.3	5.9	4.5	-24.3
Bermuda	6.6	0.2	10.5	0.9	-91.6
British Virgin Islands	0.0	0.3	0.5	0.5	0.2
Cayman Islands	0.0	0.0	0.5	0.3	-46.4
Costa Rica	26.3	31.3	269.0	333.2	23.9
Cuba	51.2	30.7	344.2	478.3	39.0
Dominica	0.1	0.0	0.4	0.1	-71.1
Dominican Republic	13.3	11.6	108.3	103.4	-4.5
El Salvador	3.8	4.9	55.9	69.1	23.7
Grenada	0.0	0.2	0.2	0.6	136.4
Guatemala	23.2	23.1	208.7	238.8	14.4
Haiti	1.2	2.5	17.3	20.2	16.6
Honduras	10.0	11.1	108.4	118.9	9.6
Jamaica	20.0	10.9	118.8	117.9	-0.7
Montserrat	0.0	0.1	0.1	0.3	392.8
Netherlands Antilles	0.0	0.1	10.2	0.2	-97.7
Nicaragua	7.8	21.3	66.3	145.1	118.9
Panama	7.7	10.5	29.7	63.3	112.6
Saint Kitts and Nevis	0.7	0.8	4.8	5.5	14.5
Saint Lucia	2.1	0.0	2.2	0.2	-92.2
Saint Vincent and the Grenadines	0.0	0.0	0.2	0.1	-17.3
Trinidad and Tobago	35.4	37.3	198.3	356.3	79.7
Turks and Caicos Islands	0.0	0.0	0.3	0.1	-65.3
<b>Total</b>	<b>211.4</b>	<b>217.9</b>	<b>1,648.8</b>	<b>2,112.6</b>	<b>28.1</b>
<b>All countries</b>	<b>31,176.6</b>	<b>35,897.7</b>	<b>271,407.6</b>	<b>299,136.0</b>	<b>10.2</b>

**Table 9-1  
Imports by province of clearance, customs basis, not seasonally adjusted — September**

	Agricultural and fishing products	Energy products	Forestry products	Industrial goods	Machinery and equipment	Automotive products	Consumer goods	Special transactions trade	<b>Total</b>
millions of dollars									
Newfoundland and Labrador									
2009	3.7	254.2	0.0	6.7	6.7	0.3	0.4	0.0	<b>272.1</b>
2010	3.0	223.7	0.0	4.3	28.8	0.1	7.4	0.0	<b>267.2</b>
Prince Edward Island									
2009	0.3	0.0	0.0	0.1	0.2	0.0	0.0	0.0	<b>0.6</b>
2010	0.3	0.0	0.0	0.0	0.3	0.0	0.0	0.0	<b>0.6</b>
Nova Scotia									
2009	22.6	133.2	1.2	82.6	90.5	274.6	14.2	5.0	<b>623.9</b>
2010	32.4	91.5	1.9	79.7	87.8	242.4	17.2	4.1	<b>557.0</b>
New Brunswick									
2009	60.7	452.6	11.4	72.4	73.3	22.4	15.4	1.5	<b>709.7</b>
2010	62.5	792.5	11.3	85.0	74.5	26.1	21.2	1.9	<b>1,074.9</b>
Quebec									
2009	355.2	1,125.4	52.0	1,171.9	1,335.7	188.4	889.8	54.8	<b>5,173.2</b>
2010	418.0	1,221.4	62.3	1,238.2	1,632.6	170.4	968.3	40.5	<b>5,751.7</b>
Ontario									
2009	1,306.8	565.1	77.1	3,675.1	5,049.5	4,156.2	3,227.1	279.5	<b>18,336.5</b>
2010	1,387.1	630.6	80.4	4,464.1	5,978.7	4,809.5	3,362.3	488.5	<b>21,201.1</b>
Manitoba									
2009	79.0	25.3	7.1	205.6	413.3	115.4	139.0	6.7	<b>991.4</b>
2010	74.9	50.3	6.9	266.9	663.0	141.6	141.3	5.7	<b>1,350.5</b>
Saskatchewan									
2009	31.2	65.1	1.5	137.5	225.5	56.2	20.4	1.4	<b>538.7</b>
2010	31.8	46.9	1.6	176.4	289.4	76.3	22.4	1.4	<b>646.2</b>
Alberta									
2009	153.2	152.9	7.7	286.8	557.1	65.8	101.4	15.3	<b>1,340.3</b>
2010	148.2	141.0	10.1	458.4	598.8	96.5	131.5	12.8	<b>1,597.3</b>
British Columbia									
2009	354.5	241.9	48.1	598.5	911.4	314.2	701.0	11.9	<b>3,181.5</b>
2010	379.4	299.5	53.4	693.2	1,016.2	259.9	730.9	12.4	<b>3,445.0</b>
Yukon, Northwest Territories and Nunavut									
2009	3.8	3.4	0.0	0.1	0.8	0.0	0.0	0.5	<b>8.7</b>
2010	4.9	0.2	0.0	0.4	0.7	0.0	0.0	0.0	<b>6.3</b>
<b>Total</b>									
<b>2009</b>	<b>2,371.1</b>	<b>3,019.1</b>	<b>206.2</b>	<b>6,237.2</b>	<b>8,664.1</b>	<b>5,193.6</b>	<b>5,108.8</b>	<b>376.6</b>	<b>31,176.6</b>
<b>2010</b>	<b>2,542.6</b>	<b>3,497.5</b>	<b>227.8</b>	<b>7,466.5</b>	<b>10,370.7</b>	<b>5,822.7</b>	<b>5,402.4</b>	<b>567.4</b>	<b>35,897.7</b>

**Table 9-2**  
**Imports by province of clearance, customs basis, not seasonally adjusted — Year to date, January to September**

	Agricultural and fishing products	Energy products	Forestry products	Industrial goods	Machinery and equipment	Automotive products	Consumer goods	Special transactions trade	<b>Total</b>
millions of dollars									
<b>Newfoundland and Labrador</b>									
2009	29.0	1,660.3	0.5	139.0	108.4	0.9	3.2	4.4	<b>1,945.6</b>
2010	32.0	1,998.2	0.1	39.1	186.2	0.8	11.6	2.9	<b>2,270.8</b>
<b>Prince Edward Island</b>									
2009	2.5	0.0	0.0	17.8	12.9	0.1	1.7	0.2	<b>35.2</b>
2010	3.2	0.0	0.1	5.4	1.5	0.1	0.2	0.1	<b>10.5</b>
<b>Nova Scotia</b>									
2009	219.3	1,099.4	10.2	621.9	785.8	1,878.7	132.3	24.9	<b>4,772.4</b>
2010	301.9	1,300.9	13.5	897.1	769.4	2,518.1	132.6	22.5	<b>5,955.9</b>
<b>New Brunswick</b>									
2009	349.4	4,558.4	77.0	685.0	803.8	216.3	165.6	17.6	<b>6,873.0</b>
2010	397.9	5,793.4	84.5	786.7	737.7	319.8	207.5	16.8	<b>8,344.4</b>
<b>Quebec</b>									
2009	3,299.9	9,144.3	517.6	9,991.5	13,944.1	1,513.2	8,464.9	398.7	<b>47,274.2</b>
2010	3,305.5	11,945.7	536.5	11,162.5	12,869.7	1,592.1	8,005.1	407.0	<b>49,824.1</b>
<b>Ontario</b>									
2009	12,174.0	4,227.2	663.4	31,512.1	44,925.7	30,441.1	26,765.4	2,600.0	<b>153,308.9</b>
2010	11,978.1	3,866.0	745.1	37,274.0	47,820.3	42,960.8	26,961.8	2,894.7	<b>174,500.9</b>
<b>Manitoba</b>									
2009	736.4	223.9	65.5	2,458.4	4,267.6	1,022.6	1,262.0	71.6	<b>10,108.1</b>
2010	659.5	435.4	69.2	2,609.7	4,403.9	1,042.5	1,184.9	62.5	<b>10,467.7</b>
<b>Saskatchewan</b>									
2009	260.2	394.8	20.6	1,620.5	2,534.3	568.4	189.2	23.5	<b>5,611.5</b>
2010	246.1	493.6	17.9	1,657.7	2,754.0	721.9	192.7	15.6	<b>6,099.5</b>
<b>Alberta</b>									
2009	1,391.6	2,016.0	77.1	3,257.7	5,418.5	561.4	879.5	106.2	<b>13,708.1</b>
2010	1,390.0	1,955.2	89.9	3,580.3	5,227.7	804.1	946.2	105.5	<b>14,098.8</b>
<b>British Columbia</b>									
2009	3,340.2	1,830.8	386.9	5,132.4	8,811.7	2,782.7	5,259.8	122.3	<b>27,667.0</b>
2010	3,322.7	2,371.5	476.8	5,456.7	8,525.2	2,118.3	5,034.1	119.5	<b>27,424.7</b>
<b>Yukon, Northwest Territories and Nunavut</b>									
2009	45.5	33.5	0.0	1.8	19.0	0.6	0.2	3.0	<b>103.6</b>
2010	53.0	35.1	0.0	1.6	47.6	0.5	0.3	0.5	<b>138.7</b>
<b>Total</b>									
<b>2009</b>	<b>21,848.1</b>	<b>25,188.5</b>	<b>1,818.9</b>	<b>55,438.1</b>	<b>81,631.8</b>	<b>38,986.1</b>	<b>43,123.7</b>	<b>3,372.3</b>	<b>271,407.6</b>
<b>2010</b>	<b>21,689.9</b>	<b>30,195.0</b>	<b>2,033.6</b>	<b>63,470.7</b>	<b>83,343.3</b>	<b>52,078.9</b>	<b>42,677.0</b>	<b>3,647.7</b>	<b>299,136.0</b>

# Technical notes

---

## The Canadian international merchandise trade statistical program

### Introduction

The objective of this text is to provide a general overview of the Canadian International Merchandise Trade Statistical Program, with special reference to concepts and definitions. The text is intended for the general user and simplicity is emphasized. More technical details can be obtained from the International Trade Division, Statistics Canada upon request.

### Conceptual framework

**1. Objectives and coverage:** The primary objective of the Canadian International Merchandise Trade Statistical Program is to measure the change in the stock of material resources of Canada resulting from the movement of merchandise into or out of the country. Information on imports and exports are inputs into the System of National Accounts, particularly in the balance of payments and gross domestic product, and are used in the formulation of trade and budgetary policies. Governments, importers, exporters, manufacturers and shipping companies use international merchandise trade statistics to:

- monitor import penetration and export performance,
- monitor commodity price and volume changes,
- examine transport implications.

**2. Trade statistics (customs basis / balance of payments basis):** Merchandise trade statistics are reported and presented on two different bases: customs basis and balance of payment basis.

When goods are imported into or exported from Canada, declarations must be filed with customs, giving such information as description and value of the goods, origin and port of clearance of commodities and mode of transport. Most of this information is required for the purposes of customs administration. Statistics developed from administrative records of customs are commonly referred to as customs-based trade statistics.

Customs-based trade statistics are more accurate at measuring imports than they are at measuring exports. This is the case because customs are typically more vigilant with respect to goods entering the country than they are with goods leaving the country.

Customs-based export statistics may understate or incorrectly portray the destination of exports. Export statistics are understated when the proper documentation is not filed with Customs. Exports are incorrectly portrayed when the country of final destination is inaccurately reported on the customs documentation. This occurs most frequently when goods are routed through an intermediary country before continuing on to their final destination.

Statistics Canada does not have a measure of undercoverage but periodically conducts reconciliation exercises with its major trading partners, excluding the United States.

On January 1, 1990, Canada entered into a memorandum of understanding with the United States concerning the exchange of import data. As a consequence, each administration is using the other's import data to replace its own export data. Canada's international merchandise trade statistics are, therefore, no longer derived exclusively from the administrative records of the Canada Border Services Agency, but from United States Customs records as well.

Customs-based information is adjusted to conform with the National Accounts concepts and definitions. The adjustments to derive balance of payments-based trade data include adjustments related to trade definition, valuation and timing. The principal difference between the two trade concepts is that customs-based merchandise trade statistics cover the physical movement of goods as they are reflected in customs documents while balance of payments-adjusted data are intended to cover all economic transactions that involve merchandise trade between residents and non-residents. The present document describes the concepts and processes pertaining to the customs-based trade statistics only. (For further information on balance of payments-adjusted data, see the publication *Canada's Balance of International Payments*, Statistics Canada (Catalogue no. 67-001-X).

**3. System of trade:** Canadian trade statistics are compiled according to the general system of trade, as defined by the United Nations Statistical Office. Under this system, imports include all goods that have crossed Canada's territorial boundary, whether for immediate consumption in Canada or for storage in bonded customs warehouses. Domestic exports include goods grown, extracted or manufactured in Canada, including goods of foreign origin that have been materially transformed in Canada. Re-exports are exports of goods of foreign origin that have not been materially transformed in Canada, including foreign goods withdrawn for export from bonded customs warehouses. Total exports are the sum of domestic exports and re-exports. Thus the general trade system, in principal, presents all goods entering the country (imports) and all goods leaving the country (exports). It differs from the special system of trade in the treatment of imported goods into bonded customs warehouses. Under the 'special' system, these goods are counted only if and when they are withdrawn from customs warehouses for home consumption. They are not counted in export statistics unless they have first cleared customs.

Conceptually, under the general system, the statistical frontier coincides with the geographical boundary, while under the 'special' system, it coincides with the customs boundary.

**4. Valuation:** For customs purposes, imports are recorded at values established according to the provisions of the Customs Act, which, since January 1, 1985, reflects valuation methods based on the General Agreement on Tariffs and Trade (GATT) Valuation Code System. In general, the value for duty of imported goods must be equivalent to the transaction value or the price actually paid.

To determine the transaction value of imported goods, all transportation and associated costs arising in respect of the goods being appraised prior to and at the place of direct shipment to Canada, are to be added to the price of the goods. Therefore, Canadian imports are valued Free on Board (FOB), place of direct shipment to Canada. It excludes freight and insurance costs in bringing the goods to Canada from the point of direct shipment.

Countries other than the United States, exports are, in principal, valued or recorded at the values declared on export documents, which usually reflect the transaction value, i.e., actual selling price or, in the case of a non-arm's length transaction, the transfer price used for company accounting purposes. Canadian exports to overseas countries are valued at F.O.B. port of exit, including domestic freight charges to that point but net of discounts and allowances. As of January, 1990, Canadian exports to the U.S. are valued F.O.B. point of exit from Canada. Prior to 1990, they were valued F.O.B. place of lading net of freight charges, discounts and allowances.

**5. Statistical period:** The reference period is the calendar month and the calendar year. The closing of the statistical month for imports and Canadian exports to the United States is defined as the last calendar day of the month, based as closely as practicable on the date of clearance from customs.

The closing of the statistical month for exports, to countries other than the United States, is also defined as the last calendar day of the month. Those export documents that are received too late for incorporation in the current month are assigned to the month the transaction took place. If a monthly summary report from a high volume exporter is not received on time, the data are imputed for the current month and revised with the trade value in the following statistical month.

**6. Trading partner attribution (country of origin/destination):** Exports are attributed to the country, which is the last known destination of the goods at the time of export. Exports to the United States are attributed to the state of destination.

Imports are attributed to their country of origin, that is, the country in which the goods were grown, extracted or manufactured in accordance to the rules of origin administered by the Canada Border Services Agency. Imports

from the United States are attributed to the state of origin. Prior to 1988, most imports were attributed to the country of export/consignment, with the exception of imports from Central and South America.

**7. Principal trading areas:** The 'principal trading areas' are country groupings defined as follows:

**United States:** includes trade with Puerto Rico and the U.S. Virgin Islands

**Japan**

**European Union (EU):** Austria, Belgium, Bulgaria, Cyprus, Czech Republic, Denmark, Estonia, Finland, France, Germany, Greece, Hungary, Ireland, Italy, Latvia, Lithuania, Luxembourg, Malta, Netherlands, Poland, Portugal, Romania, Slovakia, Slovenia, Spain, Sweden and United Kingdom

**Other Organisation for Economic Co-operation and Development (OECD):** Australia, Canada, Iceland, Mexico, New Zealand, Norway, South Korea, Switzerland, and Turkey. (The EU countries, United States, and Japan are also members of OECD)

**Other countries:** all countries and territories other than the United States, Japan, EU and other OECD

**8. Legal framework:** Import and export statistics with countries other than the United States are derived from information contained in administrative records collected by the Canada Border Services Agency under the Customs Act. Copies of these documents (or information therefrom) are sent to Statistics Canada in accordance with Section 25 of the Statistics Act. It follows that the disclosure of trade statistics is governed by both the Customs Act and the Statistics Act and is subject to the provisions of Section 17(2)(a) of the latter. Disclosure of export statistics to the United States is now governed by a memorandum of understanding that provides for the exchange of detailed import statistics between Canada and the United States.

### Contact information

Questions concerning details of methods not covered by these notes should be addressed to the Marketing and Client Services Section, International Trade Division, Statistics Canada, 170 Tunney's Pasture Driveway, Ottawa, Ontario, K1A 0T6.

**Telephone:** 1-800-294-5583 or 613-951-9647

**Facsimile:** 1-800-664-0055 613-951-0117

**Internet:** [trade@statcan.gc.ca](mailto:trade@statcan.gc.ca)