

Catalogue no. 65-001-X

Canadian International Merchandise Trade

August 2010



Statistics
Canada

Statistique
Canada

Canada

How to obtain more information

For information about this product or the wide range of services and data available from Statistics Canada, visit our website at www.statcan.gc.ca, e-mail us at infostats@statcan.gc.ca, or telephone us, Monday to Friday from 8:30 a.m. to 4:30 p.m., at the following numbers:

Statistics Canada's National Contact Centre

Toll-free telephone (Canada and the United States):

Inquiries line	1-800-263-1136
National telecommunications device for the hearing impaired	1-800-363-7629
Fax line	1-877-287-4369

Local or international calls:

Inquiries line	1-613-951-8116
Fax line	1-613-951-0581

Depository Services Program

Inquiries line	1-800-635-7943
Fax line	1-800-565-7757

To access this product

This product, Catalogue no. 65-001-X, is available free in electronic format. To obtain a single issue, visit our website at www.statcan.gc.ca and browse by "Key resource" > "Publications."

Standards of service to the public

Statistics Canada is committed to serving its clients in a prompt, reliable and courteous manner. To this end, Statistics Canada has developed *standards of service* that its employees observe. To obtain a copy of these service standards, please contact Statistics Canada toll-free at 1-800-263-1136. The service standards are also published on www.statcan.gc.ca under "About us" > "The agency" > "Providing services to Canadians."

Statistics Canada
International Trade Division

Canadian International Merchandise Trade

August 2010

Published by authority of the Minister responsible for Statistics Canada

© Minister of Industry, 2010

All rights reserved. The content of this electronic publication may be reproduced, in whole or in part, and by any means, without further permission from Statistics Canada, subject to the following conditions: that it be done solely for the purposes of private study, research, criticism, review or newspaper summary, and/or for non-commercial purposes; and that Statistics Canada be fully acknowledged as follows: Source (or "Adapted from", if appropriate): Statistics Canada, year of publication, name of product, catalogue number, volume and issue numbers, reference period and page(s). Otherwise, no part of this publication may be reproduced, stored in a retrieval system or transmitted in any form, by any means—electronic, mechanical or photocopy—or for any purposes without prior written permission of Licensing Services, Client Services Division, Statistics Canada, Ottawa, Ontario, Canada K1A 0T6.

October 2010

Catalogue no. 65-001-X, vol. 64, no. 8

ISSN 1480-8781

Frequency: Monthly

Ottawa

Cette publication est également disponible en français.

Note of appreciation

Canada owes the success of its statistical system to a long-standing partnership between Statistics Canada, the citizens of Canada, its businesses, governments and other institutions. Accurate and timely statistical information could not be produced without their continued cooperation and goodwill.

User information

Symbols

The following standard symbols are used in Statistics Canada publications:

- . not available for any reference period
- .. not available for a specific reference period
- ... not applicable
- 0 true zero or a value rounded to zero
- 0^s value rounded to 0 (zero) where there is a meaningful distinction between true zero and the value that was rounded
- p preliminary
- r revised
- x suppressed to meet the confidentiality requirements of the *Statistics Act*
- E use with caution
- F too unreliable to be published

Note to users

All totals are calculated from full figures and rounded independently; consequently, totals may not equal the sum of their components.

The data is based on commodity groups (sector, subsector and major group).

Table of contents

Highlights	5
Analysis	7
Related products	12
Statistical tables	
1 Merchandise trade of Canada, balance of payments basis, seasonally adjusted	16
1-1 Current dollars	16
1-2 Constant dollars, 2002	17
1-3 Price indices (Laspeyres)	18
2 Exports by commodity groupings, balance of payments basis, seasonally adjusted	19
2-1 Current dollars	19
2-2 Constant dollars, 2002	21
3 Domestic exports to selected countries, customs basis, not seasonally adjusted	23
3-1 August	23
3-2 Year to date, January to August	24
4 Domestic exports by country, customs basis, not seasonally adjusted	25
5 Exports by province of origin, customs basis, not seasonally adjusted	29
5-1 August	29
5-2 Year to date, January to August	30
6 Imports by commodity groupings, balance of payments basis, seasonally adjusted	31
6-1 Current dollars	31
6-2 Constant dollars, 2002	33
7 Imports from selected countries, customs basis, not seasonally adjusted	35
7-1 August	35
7-2 Year to date, January to August	36
8 Imports by country, customs basis, not seasonally adjusted	37

Table of contents – continued

9	Imports by province of clearance, customs basis, not seasonally adjusted	41
9-1	August	41
9-2	Year to date, January to August	42

Data quality, concepts and methodology

	Technical notes	43
--	-----------------	----

Highlights

Canada's merchandise exports rose 3.1% to \$34.0 billion in August, following two months of declines. Industrial goods and materials and other consumer goods accounted for over three-quarters of the growth.

Export volumes rose 2.9% and have been on an upward trend since May 2009.

After a gain in July, imports declined 0.5% to \$35.3 billion, as prices fell 0.8%. Import volumes, which have been on an upward trend since March 2009, increased 0.3% in August.

The main sectors behind the decline in imports were automotive products, followed by industrial goods and materials. These declines were tempered by increases in imports of other consumer goods and energy products.

Canada's trade deficit with the world narrowed to \$1.3 billion in August from \$2.5 billion in July.

Exports to the United States rose by 2.7%, led by higher exports of passenger autos, while imports fell by 3.3%. Consequently, Canada's trade surplus with the United States increased to \$2.9 billion in August from \$1.5 billion in July. This was the first increase in Canada's trade surplus with the United States since December 2009.

Exports to countries other than the United States grew 4.2% while imports rose 4.5%. Both gains were largely the result of increases in trade with the European Union. Canada's trade deficit with countries other than the United States rose to \$4.3 billion in August from \$4.1 billion in July.

Note to readers

Merchandise trade is one component of Canada's international balance of payments, which also includes trade in services, investment income, current transfers as well as capital and financial flows.

International merchandise trade data by country are available on both a balance of payments and a customs basis for the United States, Japan and the United Kingdom. Trade data for all other individual countries are available on a customs basis only. Balance of payments data are derived from customs data by making adjustments for characteristics such as valuation, coverage, timing and residency. These adjustments are made to conform to the concepts and definitions of the Canadian System of National Accounts.

Data in this release are on a balance of payments basis, seasonally adjusted in current dollars. Constant dollars are calculated using the Laspeyres volume formula.

Revisions

In general, merchandise trade data are revised on an ongoing basis for each month of the current year. Current year revisions are reflected in both the customs and balance of payments based data. Revisions to customs based data for the previous year are released on a quarterly basis. Revisions to balance of payments based data for the three previous years are released annually in June.

Factors influencing revisions include late receipt of import and export documentation, incorrect information on customs forms, replacement of estimates with actual figures, changes in classification of merchandise based on more current information, and changes to seasonal adjustment factors.

Revised data are available in the appropriate CANSIM tables.

Chart 1
Exports and imports, seasonally adjusted, on a balance of payments basis

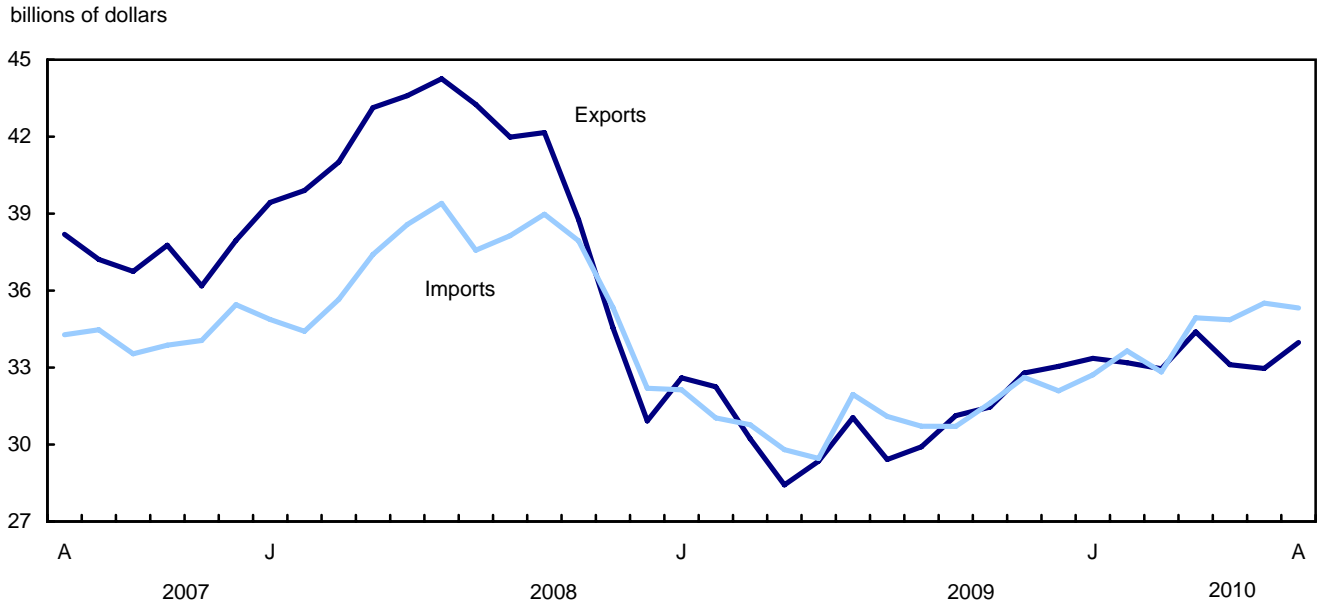
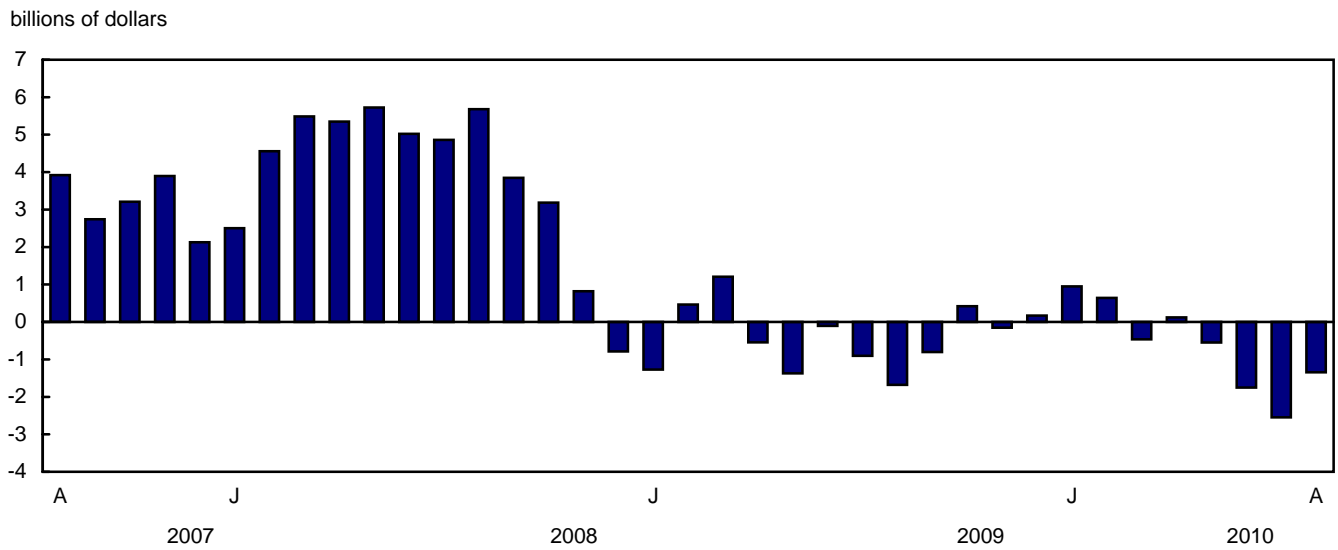


Chart 2
Trade balance, seasonally adjusted, on a balance of payments basis



Analysis

Widespread increases in exports

All export sectors grew in August with the exception of automotive products. Exports of industrial goods and materials grew 5.8% to \$8.0 billion, a second consecutive monthly increase. The growth in the sector was largely the result of a 4.4% increase in prices, mostly reflecting higher prices for gold and metal ores. Precious metals increased 21.9%, followed by copper ores and nickel ores. Fertilizers and fertilizer materials also recorded solid gains.

Exports of other consumer goods rose 26.8% to \$1.6 billion following a 9.2% decline in July. The increase was a result of a 25.9% gain in volumes. Medicinal and pharmaceutical products in dosage largely accounted for the advance in the sector.

In the machinery and equipment sector, exports increased 2.2% to \$6.5 billion, the highest level since July 2009. The increase reflected a 4.8% rise in volumes, as prices fell 2.4%. Prices of machinery and equipment have been on a downward trend since March 2009. Within the sector, the main contributors to the rise in exports were aircrafts, engines and parts, telecommunication equipment and industrial machinery.

Exports of automotive products totalled \$5.2 billion in August, virtually unchanged from July. A strong increase in exports of passenger autos was offset by declines in exports of motor vehicle parts and trucks and other motor vehicles. Export volumes rose 1.3% as prices fell.

Automotive products lead the decline in imports

Imports of automotive products fell 6.5% to \$5.8 billion, as volumes decreased 6.1%. Imports of passenger autos, which declined 12.9%, represented over two-thirds of the decrease in the sector. Lower imports from overseas mainly accounted for the decline in imports of passenger autos. Imports of trucks and motor vehicle parts also fell during the month.

Imports of industrial goods and materials decreased 3.3% to \$7.1 billion, led by a decline in imports of metal in ores, namely nickel ores and zinc ores. Precious metals also contributed to the decrease. Higher imports of other chemicals, such as fertilizers, moderated the decline. Prices of industrial goods and materials fell 3.4% in August.

Imports of other consumer goods rose 2.4% to \$5.0 billion as a result of higher volumes. Increases throughout the sector were led by higher imports of miscellaneous end products such as articles for the Christmas season. Imports of apparel and accessories also grew.

Imports of energy products rose 2.5% in August to \$3.4 billion, on the strength of coal and other related products, notably natural gas. Imports of crude petroleum as well as petroleum and coal products decreased after solid gains in July. Volumes of energy products rose 8.0%, while prices fell 5.1%.

Chart 1
Exports of industrial goods and materials, seasonally adjusted, on a balance of payments basis

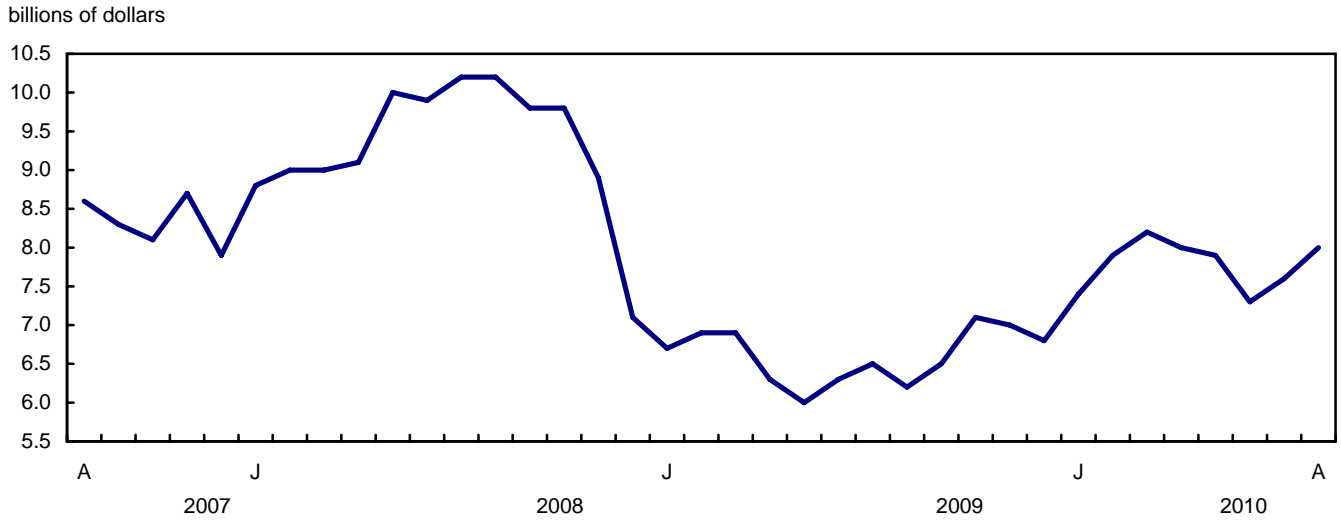


Chart 2
Exports of other consumer goods, seasonally adjusted, on a balance of payments basis

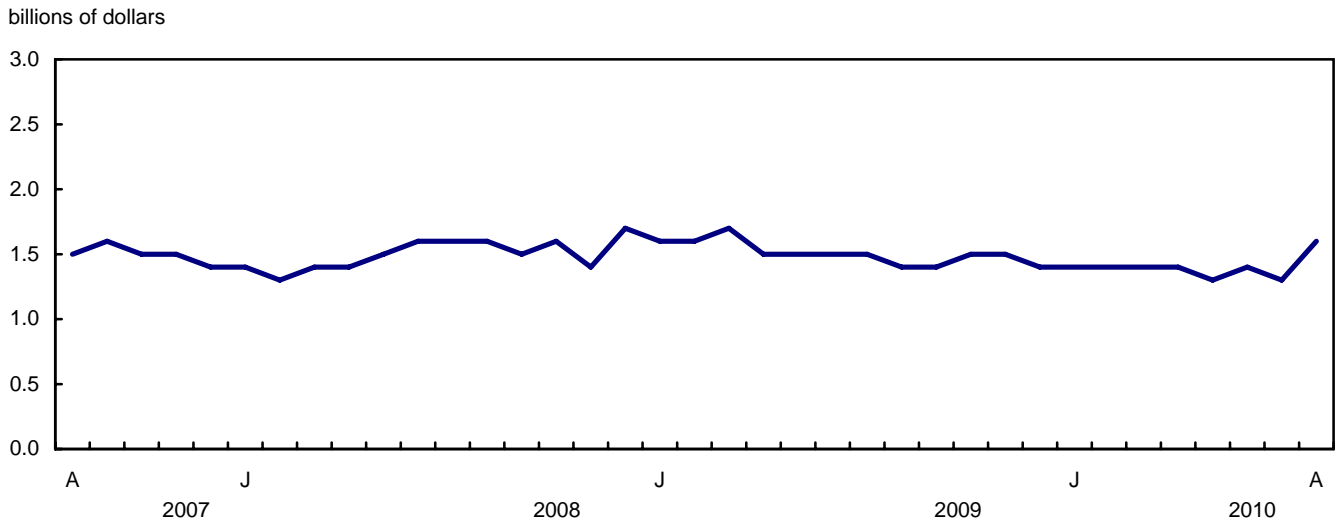


Chart 3
Imports of automotive products, seasonally adjusted, on a balance of payments basis

billions of dollars

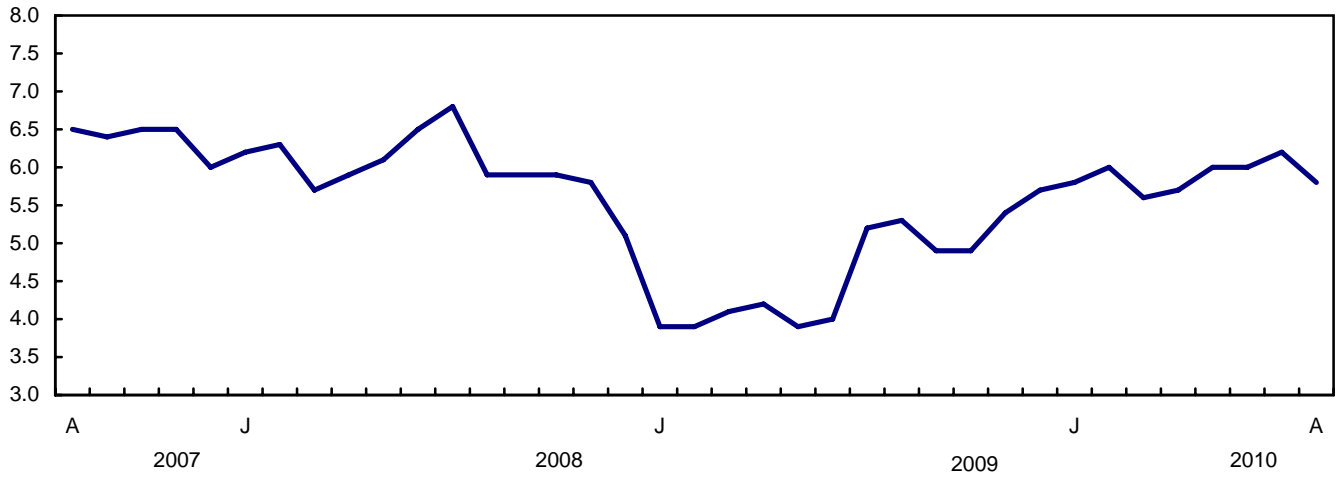
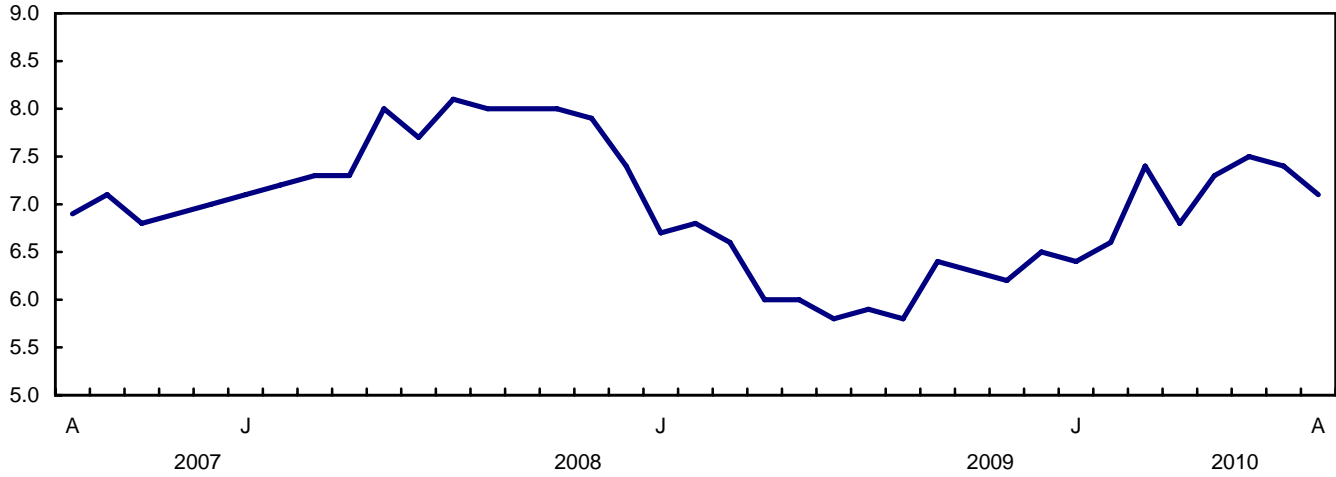


Chart 4
Imports of industrial goods and materials, seasonally adjusted, on a balance of payments basis

billions of dollars



Text table 1
Merchandise trade by principal trading area, balance of payments basis, seasonally adjusted

	July	August	Change	Year to date			August 2010/ August 2009		
	2010	2010		2009	2010	Change			
	millions of dollars		percent		millions of dollars		percent		
Export to									
United States	24,489	25,149	660	2.7	178,675	198,675	20,000	11.2	13.3
Japan	841	828	-13	-1.6	6,014	6,152	138	2.3	29.3
European Union ¹	2,964	3,261	297	10.0	20,785	22,742	1,957	9.4	55.7
Other Organisation for Economic Co-operation and Development ²	1,290	1,340	50	3.9	10,835	11,913	1,078	10.0	1.8
Other countries	3,382	3,402	20	0.6	27,935	27,515	-420	-1.5	7.1
Total	32,967	33,980	1,014	3.1	244,244	266,997	22,753	9.3	15.5
Imports from									
United States	22,958	22,201	-757	-3.3	157,006	172,669	15,663	10.0	12.3
Japan	803	786	-17	-2.1	6,239	6,546	307	4.9	-2.9
European Union ¹	3,183	3,648	466	14.6	25,435	26,175	740	2.9	26.1
Other Organisation for Economic Co-operation and Development ²	2,370	2,307	-63	-2.7	17,204	18,937	1,733	10.1	-12.9
Other countries	6,199	6,384	184	3.0	42,560	47,611	5,051	11.9	28.1
Total	35,512	35,325	-187	-0.5	248,444	271,938	23,493	9.5	13.6
Balance									
United States	1,531	2,948	1,417	...	21,669	26,006	4,337
Japan	39	42	4	...	-225	-394	-169
European Union ¹	-219	-387	-169	...	-4,650	-3,432	1,218
Other Organisation for Economic Co-operation and Development ²	-1,080	-967	113	...	-6,370	-7,024	-654
Other countries	-2,817	-2,981	-165	...	-14,625	-20,096	-5,471
Total	-2,545	-1,345	1,200	...	-4,200	-4,940	-740

1. European Union includes: Austria, Belgium, Bulgaria, Cyprus, Czech Republic, Denmark, Estonia, Finland, France, Germany, Greece, Hungary, Ireland, Italy, Latvia, Lithuania, Luxembourg, Malta, Netherlands, Poland, Portugal, Romania, Slovakia, Slovenia, Spain, Sweden and United Kingdom.
2. Other Organisation for Economic Co-operation and Development includes: Australia, Canada, Iceland, Mexico, New Zealand, Norway, South Korea, Switzerland and Turkey.

Text table 2

Reconciliation of customs and balance of payments trade data, not seasonally adjusted

	2010						2009
	August	July	June	May	April	March	Annual
	millions of dollars						
Exports							
Customs basis	33,043	30,776	34,327	33,798	32,636	34,744	360,035
Balance of payments adjustments	1,014	979	-10	754	693	832	9,494
Valuation and residency							
Inland freight	535	533	554	561	532	546	6,214
Other valuation and residency	-839	-798	-1,036	-1,377	-773	-712	-7,775
Timing	112	-8	12	39	-10	-23	-163
Coverage	1,206	1,252	460	1,531	944	1,021	11,218
Balance of payments basis	34,057	31,755	34,317	34,552	33,329	35,576	369,529
Imports							
Customs basis	34,863	33,153	35,366	34,019	32,630	35,112	365,180
Balance of payments adjustments	854	833	895	661	508	1,275	8,917
Valuation and residency							
Inland freight	759	732	772	753	725	771	7,728
Other valuation and residency	-22	-16	39	31	38	123	182
Timing	0	0	0	0	0	0	0
Coverage	117	117	84	-123	-255	381	1,007
Balance of payments basis	35,717	33,986	36,261	34,680	33,138	36,387	374,097

Related products

Selected publications from Statistics Canada

65-208-X	International Merchandise Trade Annual Review
65-506-X	A Profile of Canadian Exporters
65F0013X	Canadian International Merchandise Trade Database
65F0019X	A Database for Analysis of International Markets
65F0020X	Data Integration - International Trade Data and Manufacturing Shipments Data

Selected CANSIM tables from Statistics Canada

228-0001	Merchandise imports and exports, by major groups and principal trading areas for all countries, monthly
228-0002	Merchandise imports and exports, by major groups and principal trading areas for all countries, quarterly
228-0003	Merchandise imports and exports, by major groups and principal trading areas for all countries, annual
228-0033	Imports, customs-based, by province of clearance, monthly
228-0034	Domestic exports, customs-based, by province of origin, monthly
228-0041	Merchandise imports and exports by sector and sub-sector, customs and balance of payments basis, for all countries, monthly
228-0042	Merchandise imports and exports by sector and sub-sector, customs and balance of payments basis, for all countries, quarterly
228-0043	Merchandise imports and exports by sector and sub-sector, customs and balance of payments basis, for all countries, annual
228-0047	Merchandise imports and exports balance of payments and customs-based price and volume indexes for all countries, monthly
228-0048	Merchandise imports and exports balance of payments and customs-based price and volume indexes for all countries, quarterly
228-0049	Merchandise imports and exports balance of payments and customs-based price and volume indexes for all countries, annual

228-0050	Merchandise imports and exports customs-based price indexes, Canada and United States trade, and Standard International Trade Classification (SITC revision 3) price indexes for all countries and United States, monthly
228-0051	Merchandise imports and exports customs-based price indexes, Canada and United States trade, and Standard International Trade Classification (SITC revision 3) price indexes for all countries and United States, quarterly
228-0052	Merchandise imports and exports customs-based price indexes, Canada and United States trade, and Standard International Trade Classification (SITC revision 3) price indexes for all countries and United States, annual
228-0053	Merchandise import and export price and volume indexes by sector and sub-sector, customs and balance of payments basis, for all countries, monthly
228-0054	Merchandise import and export price and volume indexes by sector and sub-sector, customs and balance of payments basis, for all countries, quarterly
228-0055	Merchandise import and export price and volume indexes by sector and sub-sector, customs and balance of payments basis, for all countries, annual
228-0056	Merchandise imports and exports by sector, balance of payments basis, for all countries, seasonally adjusted, Fisher formula, monthly
228-0057	Merchandise imports and exports by sector, balance of payments basis, for all countries, seasonally adjusted, Fisher formula, quarterly

Selected surveys from Statistics Canada

2201	Canadian International Merchandise Trade (Customs Basis)
2202	Canadian International Merchandise Trade (Balance of Payments Basis)
2203	International Trade Price Indexes

Selected summary tables from Statistics Canada

- *Canada: Economic and financial data*
- *Imports, exports and trade balance of goods on a balance-of-payments basis, by country or country grouping*
- *Exports of goods on a balance-of-payments basis*
- *Imports of goods on a balance-of-payments basis*

- *Merchandise trade of Canada (monthly)*
- *Economic indicators, by province and territory (monthly and quarterly)*
- *Latest statistics (monthly)*

Statistical tables

Table 1-1
Merchandise trade of Canada, balance of payments basis, seasonally adjusted — Current dollars

	Exports	Imports	Trade balance	Period to period change		
				Exports	Imports	Balance
	millions of dollars			percent		millions of dollars
2006	453,952	404,345	49,606	0.0	0.0	0
2007	463,120	415,683	47,437	2.0	2.8	-2,169
2008	489,995	443,752	46,244	5.8	6.8	-1,194
2009	369,529	374,097	-4,568	-24.6	-15.7	-50,812
2008						
First quarter	117,294	104,743	12,551	6.0	3.2	3,321
Second quarter	127,735	111,640	16,095	8.9	6.6	3,544
Third quarter	129,499	115,116	14,383	1.4	3.1	-1,712
Fourth quarter	115,468	112,252	3,215	-10.8	-2.5	-11,168
2009						
First quarter	95,769	95,366	403	-17.1	-15.0	-2,812
Second quarter	88,008	90,028	-2,019	-8.1	-5.6	-2,422
Third quarter	90,377	93,765	-3,388	2.7	4.2	-1,369
Fourth quarter	95,375	94,939	436	5.5	1.3	3,824
2010						
First quarter	99,593	98,463	1,130	4.4	3.7	693
Second quarter	100,458	102,638	-2,180	0.9	4.2	-3,309
2009						
January	30,921	32,192	-1,272	-10.5	-8.9	-483
February	32,599	32,133	466	5.4	-0.2	1,737
March	32,249	31,040	1,209	-1.1	-3.4	743
April	30,231	30,774	-543	-6.3	-0.9	-1,752
May	28,424	29,797	-1,373	-6.0	-3.2	-830
June	29,353	29,456	-104	3.3	-1.1	1,269
July	31,048	31,952	-904	5.8	8.5	-800
August	29,419	31,099	-1,680	-5.2	-2.7	-777
September	29,910	30,714	-804	1.7	-1.2	876
October	31,128	30,708	420	4.1	0.0	1,224
November	31,462	31,616	-154	1.1	3.0	-573
December	32,785	32,615	170	4.2	3.2	324
2010						
January	33,046	32,095	951	0.8	-1.6	781
February	33,359	32,718	641	0.9	1.9	-310
March	33,188	33,650	-462	-0.5	2.8	-1,103
April	32,954	32,832	122	-0.7	-2.4	584
May	34,392	34,940	-549	4.4	6.4	-670
June	33,112	34,865	-1,753	-3.7	-0.2	-1,204
July	32,967	35,512	-2,545	-0.4	1.9	-792
August	33,980	35,325	-1,345	3.1	-0.5	1,200

Note(s): Because of rounding, monthly data may not add up to quarterly data and quarterly data may not add up to annual data.

Table 1-2
Merchandise trade of Canada, balance of payments basis, seasonally adjusted — Constant dollars, 2002

	Exports	Imports	Trade balance	Period to period change	
				Exports	Imports
	millions of dollars			percent	
2006	442,729	457,196	-14,466	0.0	0.0
2007	449,015	484,005	-34,990	1.4	5.9
2008	415,119	485,902	-70,783	-7.5	0.4
2009	345,911	405,261	-59,350	-16.7	-16.6
2008					
First quarter	107,071	123,094	-16,023	-2.6	-1.2
Second quarter	106,872	125,669	-18,797	-0.2	2.1
Third quarter	104,062	123,918	-19,856	-2.6	-1.4
Fourth quarter	97,114	113,221	-16,107	-6.7	-8.6
2009					
First quarter	87,218	97,521	-10,303	-10.2	-13.9
Second quarter	83,055	96,718	-13,663	-4.8	-0.8
Third quarter	86,329	104,265	-17,935	3.9	7.8
Fourth quarter	89,308	106,757	-17,449	3.5	2.4
2010					
First quarter	91,401	110,638	-19,237	2.3	3.6
Second quarter	94,446	117,029	-22,583	3.3	5.8
2009					
January	27,994	33,229	-5,235	-9.4	-7.4
February	29,778	32,701	-2,923	6.4	-1.6
March	29,446	31,592	-2,145	-1.1	-3.4
April	28,359	31,963	-3,604	-3.7	1.2
May	27,195	32,360	-5,165	-4.1	1.2
June	27,502	32,395	-4,893	1.1	0.1
July	29,630	35,032	-5,402	7.7	8.1
August	28,012	34,860	-6,847	-5.5	-0.5
September	28,687	34,373	-5,686	2.4	-1.4
October	29,629	34,757	-5,128	3.3	1.1
November	29,376	35,625	-6,249	-0.9	2.5
December	30,304	36,375	-6,071	3.2	2.1
2010					
January	30,254	36,184	-5,930	-0.2	-0.5
February	30,364	36,748	-6,384	0.4	1.6
March	30,782	37,706	-6,923	1.4	2.6
April	31,083	37,761	-6,678	1.0	0.1
May	32,075	39,482	-7,407	3.2	4.6
June	31,288	39,786	-8,498	-2.5	0.8
July	31,059	40,157	-9,098	-0.7	0.9
August	31,963	40,262	-8,299	2.9	0.3

Note(s): Because of rounding, monthly data may not add up to quarterly data and quarterly data may not add up to annual data.

Table 1-3
Merchandise trade of Canada, balance of payments basis, seasonally adjusted — Price indices (Laspeyres)

	2002=100			Period to period change		
	Exports	Imports	Terms of trade	Exports	Imports	Terms of trade
	price indices (Laspeyres)			percent		
2006	105.1	92.5	113.6	0.0	0.0	0.0
2007	107.1	91.4	117.1	1.9	-1.2	3.1
2008	116.3	97.5	119.3	8.6	6.6	2.0
2009	105.4	97.1	108.6	-9.4	-0.4	-9.0
2008						
First quarter	111.2	90.1	123.4	5.6	3.1	2.5
Second quarter	118.5	94.7	125.1	6.6	5.1	1.5
Third quarter	122.1	100.9	121.0	3.1	6.6	-3.5
Fourth quarter	113.7	104.1	109.2	-6.9	3.2	-10.1
2009						
First quarter	109.5	101.5	107.8	-3.7	-2.5	-1.2
Second quarter	104.6	97.9	106.8	-4.5	-3.6	-0.9
Third quarter	102.6	95.2	107.8	-1.9	-2.7	0.9
Fourth quarter	105.7	93.8	112.7	3.0	-1.5	4.5
2010						
First quarter	107.3	94.2	113.9	1.5	0.5	1.0
Second quarter	106.3	94.0	113.0	-0.9	-0.2	-0.7
2009						
January	109.0	100.4	108.5	-1.7	-2.1	0.4
February	109.1	101.4	107.6	0.1	0.9	-0.8
March	109.1	102.8	106.1	-0.1	1.4	-1.4
April	106.4	100.8	105.6	-2.4	-1.9	-0.5
May	104.0	97.0	107.2	-2.3	-3.8	1.5
June	103.5	95.9	107.9	-0.4	-1.1	0.7
July	103.5	96.3	107.5	0.0	0.4	-0.4
August	103.3	94.8	109.0	-0.2	-1.6	1.3
September	103.4	94.5	109.5	0.1	-0.3	0.4
October	104.3	93.2	111.9	0.8	-1.4	2.2
November	105.6	93.9	112.5	1.3	0.8	0.6
December	106.3	94.2	112.9	0.6	0.3	0.3
2010						
January	107.0	93.7	114.2	0.6	-0.5	1.2
February	108.0	95.0	113.7	1.0	1.4	-0.4
March	106.4	94.1	113.1	-1.5	-1.0	-0.6
April	105.5	92.8	113.7	-0.8	-1.3	0.5
May	106.8	94.8	112.8	1.3	2.1	-0.8
June	106.2	94.5	112.4	-0.6	-0.3	-0.3
July	105.6	95.4	110.7	-0.6	1.0	-1.5
August	106.4	95.0	111.9	0.7	-0.4	1.1

Note(s): Because of rounding, monthly data may not add up to quarterly data and quarterly data may not add up to annual data.

Table 2-1
Exports by commodity groupings, balance of payments basis, seasonally adjusted — Current dollars

	July	August	Change		Year to date			August 2010/ August 2009	
	2010	2010			2009		2010		
	millions of dollars		percent		millions of dollars		percent		
Total	32,967	33,980	1,014	3.1	244,244	266,997	22,753	9.3	15.5
Agricultural and fishing products	3,011	3,013	2	0.1	25,868	23,909	-1,958	-7.6	9.1
Wheat	328	346	18	5.6	4,240	2,894	-1,346	-31.8	-17.5
Other agricultural and fishing products	2,683	2,666	-16	-0.6	21,627	21,016	-612	-2.8	13.9
Live animals	172	163	-9	-5.2	1,211	1,263	53	4.3	46.5
Fish and fish preparations	342	347	5	1.4	2,652	2,712	60	2.3	15.1
Barley	19	27	8	45.0	337	191	-146	-43.4	-36.9
Wheat flour	6	7	1	9.4	55	52	-3	-4.8	-8.9
Other cereals unmilled	33	40	7	22.3	408	294	-113	-27.8	9.8
Other cereal preparations	231	232	2	0.7	2,011	1,837	-174	-8.7	-7.2
Meat and meat preparations	391	384	-8	-2.0	2,981	3,110	129	4.3	12.1
Alcoholic beverages	58	63	5	8.8	496	499	3	0.6	15.9
Other food, feed, beverages and tobacco	953	948	-5	-0.6	7,466	7,417	-49	-0.7	14.4
Rapeseed	276	262	-14	-5.2	2,490	2,117	-373	-15.0	24.9
Other crude vegetable products	202	194	-8	-3.9	1,521	1,525	3	0.2	23.3
Energy products	7,026	7,040	14	0.2	50,577	60,981	10,403	20.6	7.2
Crude petroleum	3,692	3,598	-94	-2.5	25,191	33,270	8,080	32.1	3.9
Natural gas	1,409	1,368	-41	-2.9	10,749	11,285	536	5.0	20.7
Other energy products	1,925	2,074	149	7.7	14,637	16,425	1,788	12.2	5.3
Coal and other bituminous substances	472	382	-90	-19.0	3,045	3,254	208	6.8	9.3
Petroleum and coal products	1,323	1,545	222	16.8	10,053	11,773	1,720	17.1	6.3
Electricity	130	147	17	12.7	1,539	1,399	-140	-9.1	-11.4
Forestry products	1,794	1,819	25	1.4	13,124	14,305	1,181	9.0	18.4
Lumber and sawmill products	615	604	-11	-1.8	4,434	5,248	815	18.4	6.6
Other crude wood products	50	53	3	6.5	341	436	95	28.0	20.7
Lumber	372	361	-11	-2.9	2,506	3,178	672	26.8	9.5
Other wood fabricated materials	194	190	-4	-1.8	1,587	1,634	48	3.0	-1.5
Wood pulp and other wood products	585	559	-26	-4.5	3,002	4,091	1,089	36.3	49.0
Newsprint and other paper and paperboard	594	656	63	10.6	5,689	4,966	-723	-12.7	10.4
Newsprint paper	297	339	42	14.0	2,979	2,481	-498	-16.7	22.4
Other paper and paperboard	296	318	21	7.1	2,710	2,485	-225	-8.3	0.0
Industrial goods and materials	7,576	8,016	440	5.8	51,741	62,401	10,660	20.6	28.6
Metal ores	784	1,060	276	35.2	6,734	7,594	859	12.8	25.7
Iron ores, concentrates and scrap	328	293	-35	-10.7	2,969	2,719	-250	-8.4	-19.1
Copper ores, concentrates and scrap	107	319	211	197.2	1,068	1,490	423	39.6	47.1
Nickel ores, concentrates and scrap	131	237	106	81.1	1,036	1,654	618	59.7	142.3
Zinc ores, concentrates and scrap	26	15	-10	-39.3	168	179	11	6.4	-38.0
Other ores, concentrates and scrap	192	195	4	1.8	1,493	1,551	58	3.9	38.1
Chemicals, plastics and fertilizers	2,407	2,453	46	1.9	17,045	19,688	2,643	15.5	15.8
Inorganic chemicals	359	355	-5	-1.3	2,728	2,817	89	3.2	29.5
Organic chemicals	522	511	-11	-2.1	3,142	4,189	1,047	33.3	21.9
Fertilizers and fertilizer materials	409	498	89	21.7	3,083	3,895	812	26.3	14.1
Synthetic rubber and plastics	856	842	-14	-1.6	6,239	6,692	454	7.3	12.8
Other chemical products	261	247	-14	-5.4	1,853	2,094	241	13.0	2.1

Table 2-1 – continued

Exports by commodity groupings, balance of payments basis, seasonally adjusted — Current dollars

	July	August	Change		Year to date			August 2010/ August 2009	
	2010	2010			2009		2010		
	millions of dollars		percent		millions of dollars		percent		
Metals and alloys	2,891	3,013	121	4.2	17,537	23,751	6,215	35.4	36.4
Primary iron and steel	141	87	-54	-38.4	224	854	629	280.4	349.6
Steel bars, rods, plates, sheets	307	321	13	4.4	1,866	2,391	525	28.1	32.9
Other iron and steel and alloys	219	228	9	4.2	1,558	1,791	233	15.0	37.4
Aluminum including alloys	553	573	20	3.6	3,794	4,887	1,093	28.8	13.3
Copper and alloys	197	157	-40	-20.3	1,400	1,932	533	38.1	-15.8
Nickel and alloys	165	90	-75	-45.5	1,338	1,089	-249	-18.6	-35.3
Precious metals and alloys	1,138	1,387	249	21.9	6,118	9,189	3,071	50.2	78.5
Zinc and alloys	84	91	7	8.3	664	912	248	37.4	-4.6
Other non-ferrous metals and alloys	87	79	-8	-9.1	575	707	132	22.9	0.4
Other industrial goods and materials	1,493	1,491	-3	-0.2	10,425	11,368	943	9.0	40.2
Asbestos unmanufactured	3	4	1	32.9	45	35	-10	-22.0	-38.3
Other crude animal products	85	75	-9	-11.2	451	615	164	36.4	49.7
Other crude non-metallic minerals	316	320	5	1.5	1,851	2,422	571	30.9	566.6
Other crude materials, inedible	61	74	13	21.4	376	474	98	26.0	51.3
Metal fabricated basic products	359	352	-7	-1.9	2,786	2,767	-18	-0.7	8.3
Textile fabricated materials	179	184	5	2.8	1,385	1,428	43	3.1	9.7
Non-metallic mineral basic products	160	165	5	2.8	1,318	1,254	-64	-4.9	5.6
Other fabricated materials	331	316	-15	-4.5	2,213	2,373	161	7.3	21.1
Machinery and equipment	6,366	6,508	142	2.2	56,112	49,319	-6,793	-12.1	5.9
Industrial and agricultural machinery	1,483	1,535	52	3.5	13,477	11,735	-1,742	-12.9	4.6
Industrial machinery	1,327	1,368	41	3.1	12,032	10,490	-1,542	-12.8	4.0
Agricultural machinery includ. tractors	156	167	11	6.8	1,445	1,245	-200	-13.8	9.4
Aircraft and other transportation equipment	1,449	1,518	69	4.8	13,505	11,422	-2,082	-15.4	1.1
Aircraft, engines, parts	1,097	1,186	89	8.1	10,796	8,927	-1,870	-17.3	2.0
Other transportation equipment	353	332	-20	-5.7	2,708	2,496	-213	-7.9	-1.8
Other machinery and equipment	3,434	3,455	21	0.6	29,130	26,161	-2,969	-10.2	8.8
Television, telecommunication equipment	640	709	69	10.7	6,122	4,995	-1,127	-18.4	9.7
Office machines and equipment	352	375	23	6.6	3,326	2,787	-539	-16.2	2.8
Other equipment and tools	1,588	1,612	24	1.5	13,121	12,131	-990	-7.5	11.5
Other end products, inedible	854	759	-95	-11.1	6,562	6,248	-314	-4.8	5.8
Automotive products	5,160	5,158	-3	0.0	26,707	38,665	11,958	44.8	34.5
Passenger autos and chassis	3,333	3,651	317	9.5	14,962	25,899	10,936	73.1	44.7
Trucks and other motor vehicles	249	137	-112	-45.0	2,954	1,445	-1,509	-51.1	-20.5
Motor vehicle parts	1,578	1,370	-208	-13.2	8,791	11,321	2,530	28.8	20.3
Other consumer goods	1,275	1,617	342	26.8	12,256	11,261	-995	-8.1	14.4
Special transactions trade	293	347	54	18.4	4,370	2,642	-1,728	-39.5	-32.3
Unallocated balance of payments adjustments	465	463	-3	-0.6	3,489	3,514	25	0.7	11.2

Table 2-2
Exports by commodity groupings, balance of payments basis, seasonally adjusted — Constant dollars, 2002

	July	August	Change		Year to date			August 2010/ August 2009	
	2010	2010			2009		2010		
	millions of dollars		percent		millions of dollars		percent		
Total	31,059	31,963	904	2.9	227,916	248,869	20,953	9.2	14.1
Agricultural and fishing products	3,115	3,105	-9	-0.3	24,377	25,122	745	3.1	11.1
Wheat	346	366	19	5.5	3,481	3,156	-325	-9.3	1.0
Other agricultural and fishing products	2,768	2,740	-28	-1.0	20,896	21,966	1,071	5.1	12.6
Live animals	192	178	-14	-7.4	1,350	1,436	86	6.4	31.3
Fish and fish preparations	402	411	9	2.1	3,088	3,406	318	10.3	10.0
Barley	17	25	8	49.4	256	183	-73	-28.5	-31.7
Wheat flour	6	6	0	7.3	49	50	1	1.9	-12.2
Other cereals unmilled	37	40	3	8.4	378	352	-25	-6.7	-4.8
Other cereal preparations	208	205	-3	-1.4	1,618	1,644	27	1.7	0.0
Meat and meat preparations	438	428	-10	-2.2	3,268	3,498	229	7.0	1.5
Alcoholic beverages	105	114	9	8.4	845	944	99	11.7	20.3
Other food, feed, beverages and tobacco	922	921	-1	-0.1	6,572	7,050	479	7.3	16.2
Rapeseed	260	248	-12	-4.6	2,216	2,005	-211	-9.5	30.4
Other crude vegetable products	181	163	-18	-9.8	1,255	1,397	142	11.3	22.1
Energy products	4,334	4,324	-10	-0.2	35,891	36,606	715	2.0	-3.6
Crude petroleum	1,810	1,772	-38	-2.1	15,693	15,507	-186	-1.2	-1.5
Natural gas	1,439	1,364	-74	-5.2	10,934	11,456	522	4.8	-2.2
Other energy products	1,086	1,188	102	9.4	9,264	9,642	378	4.1	-8.0
Coal and other bituminous substances	155	110	-46	-29.4	873	1,221	349	40.0	-25.1
Petroleum and coal products	786	907	121	15.4	6,622	6,787	165	2.5	0.8
Electricity	145	171	26	18.1	1,769	1,634	-136	-7.7	-30.4
Forestry products	2,142	2,189	47	2.2	16,062	17,385	1,323	8.2	9.4
Lumber and sawmill products	812	805	-7	-0.9	6,110	6,691	581	9.5	1.2
Other crude wood products	64	71	7	10.8	464	566	102	21.9	5.8
Lumber	541	521	-20	-3.8	3,858	4,398	540	14.0	2.7
Other wood fabricated materials	208	214	6	3.0	1,788	1,727	-61	-3.4	-3.7
Wood pulp and other wood products	650	647	-3	-0.4	4,275	4,859	584	13.7	20.3
Newsprint and other paper and paperboard	679	736	57	8.4	5,677	5,835	158	2.8	10.5
Newsprint paper	349	387	38	11.0	2,880	2,991	111	3.9	24.1
Other paper and paperboard	330	349	19	5.7	2,797	2,844	47	1.7	-1.4
Industrial goods and materials	5,465	5,540	75	1.4	39,640	43,531	3,891	9.8	20.2
Metal ores	425	478	53	12.4	3,795	3,761	-34	-0.9	13.0
Iron ores, concentrates and scrap	152	106	-46	-30.2	1,168	1,227	59	5.0	-31.9
Copper ores, concentrates and scrap	41	108	67	160.9	505	518	13	2.7	26.6
Nickel ores, concentrates and scrap	67	106	40	59.5	745	774	29	3.9	123.4
Zinc ores, concentrates and scrap	15	9	-7	-44.6	118	99	-19	-16.1	-41.2
Other ores, concentrates and scrap	150	149	-1	-0.6	1,259	1,142	-117	-9.3	24.2
Chemicals, plastics and fertilizers	1,811	1,808	-3	-0.1	13,148	14,327	1,179	9.0	8.6
Inorganic chemicals	183	198	15	8.3	1,428	1,454	26	1.8	15.3
Organic chemicals	341	325	-16	-4.8	2,625	2,480	-145	-5.5	7.5
Fertilizers and fertilizer materials	189	217	28	14.6	1,059	1,709	650	61.4	28.4
Synthetic rubber and plastics	778	779	2	0.2	5,890	6,169	279	4.7	7.3
Other chemical products	320	289	-31	-9.6	2,146	2,515	369	17.2	-2.6

Table 2-2 – continued

Exports by commodity groupings, balance of payments basis, seasonally adjusted — Constant dollars, 2002

	July 2010	August 2010	Change	Year to date			August 2010/ August 2009		
				2009	2010	Change			
	millions of dollars		percent		millions of dollars		percent		
Metals and alloys	1,813	1,837	23	1.3	12,744	14,870	2,126	16.7	17.3
Primary iron and steel	93	57	-35	-38.1	145	587	441	303.4	290.0
Steel bars, rods, plates, sheets	245	266	21	8.5	1,441	1,986	545	37.8	27.7
Other iron and steel and alloys	180	187	7	3.7	1,327	1,498	171	12.9	23.4
Aluminum including alloys	608	606	-1	-0.2	4,545	5,097	551	12.1	7.6
Copper and alloys	69	51	-18	-26.4	715	639	-76	-10.7	-30.6
Nickel and alloys	84	46	-38	-45.5	994	560	-434	-43.6	-45.6
Precious metals and alloys	435	522	87	20.1	2,696	3,655	959	35.6	45.5
Zinc and alloys	57	60	3	5.5	550	529	-21	-3.8	-16.2
Other non-ferrous metals and alloys	43	41	-1	-3.1	331	320	-11	-3.3	3.4
Other industrial goods and materials	1,416	1,418	2	0.2	9,953	10,574	621	6.2	48.3
Asbestos unmanufactured	3	4	1	31.7	47	36	-11	-23.8	-39.3
Other crude animal products	82	77	-5	-6.4	612	637	25	4.1	10.6
Other crude non-metallic minerals	387	390	2	0.6	2,486	2,602	116	4.7	806.3
Other crude materials, inedible	56	66	10	18.7	369	438	69	18.7	47.8
Metal fabricated basic products	288	286	-2	-0.7	2,177	2,237	60	2.7	9.2
Textile fabricated materials	185	193	8	4.3	1,327	1,525	198	14.9	10.2
Non-metallic mineral basic products	130	133	3	2.0	1,063	1,037	-26	-2.5	2.1
Other fabricated materials	284	269	-15	-5.2	1,872	2,062	190	10.2	19.6
Machinery and equipment	7,007	7,341	334	4.8	59,732	54,994	-4,738	-7.9	8.8
Industrial and agricultural machinery	1,387	1,434	48	3.4	12,282	10,890	-1,392	-11.3	6.9
Industrial machinery	1,242	1,279	37	3.0	10,979	9,749	-1,231	-11.2	6.2
Agricultural machinery includ. tractors	145	155	11	7.3	1,303	1,142	-161	-12.4	13.1
Aircraft and other transportation equipment	1,782	1,869	87	4.9	15,733	14,112	-1,620	-10.3	4.1
Aircraft, engines, parts	1,430	1,554	123	8.6	13,072	11,633	-1,439	-11.0	5.0
Other transportation equipment	351	315	-36	-10.4	2,661	2,479	-182	-6.8	-0.3
Other machinery and equipment	3,839	4,038	199	5.2	31,717	29,991	-1,725	-5.4	11.9
Television, telecommunication equipment	796	893	97	12.2	7,131	6,318	-813	-11.4	13.4
Office machines and equipment	876	951	75	8.6	7,126	6,941	-185	-2.6	12.7
Other equipment and tools	1,487	1,509	22	1.5	12,057	11,485	-572	-4.7	12.2
Other end products, inedible	680	686	5	0.8	5,403	5,247	-156	-2.9	8.3
Automotive products	6,683	6,771	88	1.3	31,707	51,440	19,733	62.2	40.2
Passenger autos and chassis	4,667	5,101	434	9.3	19,189	37,253	18,063	94.1	50.4
Trucks and other motor vehicles	300	164	-136	-45.3	3,292	1,743	-1,549	-47.1	-18.9
Motor vehicle parts	1,716	1,505	-211	-12.3	9,226	12,445	3,219	34.9	21.7
Other consumer goods	1,230	1,549	319	25.9	11,762	10,795	-967	-8.2	13.5
Special transactions trade	260	318	58	22.4	3,991	2,399	-1,592	-39.9	-33.2
Unallocated balance of payments adjustments	823	825	2	0.2	4,754	6,597	1,842	38.7	17.5

Table 3-1
Domestic exports to selected countries, customs basis, not seasonally adjusted — August

	Agricultural and fishing products	Energy products	Forestry products	Industrial goods	Machinery and equipment	Automotive products	Consumer goods	Special transactions trade	Total
millions of dollars									
United States									
2009	1,464.2	6,750.3	1,089.1	3,628.7	3,130.2	3,364.5	801.6	437.4	20,665.9
2010	1,659.2	7,374.2	1,182.4	4,301.1	3,265.3	4,763.1	984.2	300.8	23,830.4
Mexico									
2009	67.2	35.9	7.1	70.2	64.6	47.5	5.3	0.2	297.9
2010	92.5	0.6	13.9	107.7	65.1	73.5	4.5	0.4	358.2
Japan									
2009	225.7	171.7	82.8	78.3	31.0	3.4	10.4	0.3	603.6
2010	247.3	189.6	112.5	143.7	42.1	5.2	19.6	0.4	760.4
European Union									
Germany									
2009	13.6	9.5	9.5	99.5	138.3	3.4	11.1	2.2	287.2
2010	12.1	66.8	7.7	128.6	89.1	2.8	14.3	1.3	322.7
France									
2009	11.0	0.2	17.6	41.4	57.0	2.2	17.4	2.7	149.4
2010	14.9	0.1	13.6	29.5	69.4	2.7	25.9	1.9	158.0
United Kingdom									
2009	34.3	26.3	26.0	396.7	169.1	4.4	16.6	3.2	676.6
2010	35.6	14.8	20.4	912.8	232.1	5.0	20.7	4.8	1,246.3
Italy									
2009	15.9	0.0	20.2	17.2	26.1	0.3	5.2	0.2	85.0
2010	30.5	0.0	25.8	23.1	29.4	1.4	14.8	0.2	125.2
Other European Union									
2009	73.1	68.7	27.9	200.9	126.3	13.5	63.6	4.9	578.9
2010	81.5	61.2	28.6	218.2	144.9	11.0	40.4	2.9	588.9
Total									
2009	147.9	104.7	101.2	755.8	516.8	23.8	114.0	13.1	1,777.2
2010	174.7	142.8	96.3	1,312.3	564.8	22.8	116.3	11.1	2,441.1
Newly industrialized countries									
South Korea									
2009	30.0	86.1	28.8	62.4	32.0	8.7	6.9	0.5	255.5
2010	19.3	48.2	42.7	56.4	29.2	6.3	4.1	0.9	207.1
Hong Kong									
2009	27.3	0.0	5.1	14.3	12.7	0.5	3.3	1.7	64.9
2010	26.6	0.0	9.8	68.9	26.3	0.7	7.0	1.2	140.7
Taiwan									
2009	21.5	0.0	16.7	28.1	6.2	0.2	2.1	0.3	75.2
2010	20.3	0.2	18.2	26.8	9.3	0.2	2.1	0.1	77.3
Singapore									
2009	4.5	0.4	0.5	12.9	27.3	2.9	5.2	0.2	53.8
2010	4.7	0.4	0.6	9.6	33.4	1.9	3.0	0.3	54.1
Total									
2009	83.3	86.5	51.1	117.6	78.2	12.3	17.5	2.6	449.3
2010	71.0	48.8	71.4	161.7	98.2	9.1	16.2	2.5	479.1
Other countries									
2009	728.2	202.4	289.1	1,096.3	517.3	56.5	74.0	22.1	2,985.9
2010	629.3	109.0	445.9	1,017.1	600.5	52.5	79.6	14.8	2,948.8
Total									
2009	2,716.5	7,351.5	1,620.3	5,746.8	4,338.1	3,508.0	1,022.7	475.7	26,779.7
2010	2,873.9	7,865.1	1,922.4	7,043.8	4,636.1	4,926.2	1,220.5	330.0	30,817.9

Table 3-2
Domestic exports to selected countries, customs basis, not seasonally adjusted — Year to date, January to August

	Agricultural and fishing products	Energy products	Forestry products	Industrial goods	Machinery and equipment	Automotive products	Consumer goods	Special transactions trade	Total
millions of dollars									
United States									
2009	13,002.4	47,576.5	9,188.0	30,243.3	30,552.5	22,504.7	7,444.9	3,782.6	164,295.0
2010	12,376.0	58,631.5	9,278.0	36,124.8	26,629.9	34,139.5	6,641.2	2,147.4	185,968.3
Mexico									
2009	732.4	73.3	63.8	482.7	654.2	403.2	33.2	7.1	2,449.8
2010	849.4	64.1	94.2	661.6	466.6	561.7	53.6	3.1	2,754.4
Japan									
2009	2,085.5	1,328.7	693.0	763.8	441.6	24.7	100.3	4.5	5,442.1
2010	2,014.4	1,293.8	894.5	1,086.0	385.9	46.1	91.1	3.1	5,814.9
European Union									
Germany									
2009	128.4	158.8	81.5	417.0	1,250.2	30.9	101.7	11.5	2,180.0
2010	90.1	130.1	61.9	866.9	955.4	23.9	131.5	9.4	2,269.2
France									
2009	103.5	76.6	100.7	417.0	777.7	23.3	203.6	18.0	1,720.3
2010	87.1	18.8	94.3	289.9	595.6	23.9	156.4	11.9	1,278.0
United Kingdom									
2009	265.0	120.9	206.6	4,910.7	1,470.6	26.1	204.7	27.8	7,232.4
2010	217.1	79.5	147.7	7,062.3	1,314.0	33.1	132.8	32.7	9,019.4
Italy									
2009	269.5	60.4	181.9	172.2	327.0	6.0	45.4	6.7	1,069.1
2010	156.2	123.5	207.1	221.7	277.7	4.8	130.2	3.8	1,125.0
Other European Union									
2009	611.3	778.5	221.8	1,705.1	1,815.2	93.9	524.5	33.9	5,784.2
2010	543.2	386.7	203.5	2,096.0	1,717.7	103.1	390.4	27.9	5,468.5
Total									
2009	1,377.6	1,195.3	792.4	7,622.0	5,640.6	180.2	1,079.9	97.9	17,986.0
2010	1,093.8	738.7	714.6	10,536.7	4,860.5	188.6	941.3	85.8	19,160.1
Newly industrialized countries									
South Korea									
2009	213.2	719.3	218.1	642.6	335.4	33.1	34.2	5.3	2,201.1
2010	321.2	613.8	341.6	655.0	279.4	46.4	33.6	6.4	2,297.5
Hong Kong									
2009	241.6	0.2	62.4	330.4	234.2	6.2	38.5	6.9	920.4
2010	259.7	0.5	75.4	513.2	181.1	5.9	46.2	9.9	1,091.9
Taiwan									
2009	118.7	132.5	127.8	200.3	73.1	1.0	22.5	1.0	677.1
2010	106.2	93.1	166.1	260.1	89.3	1.9	28.2	0.9	745.8
Singapore									
2009	32.6	43.5	24.9	271.8	219.8	23.2	25.4	2.1	643.3
2010	40.0	4.6	11.9	114.9	213.4	13.5	24.1	2.4	424.9
Total									
2009	606.1	895.6	433.3	1,445.1	862.5	63.6	120.5	15.2	4,441.8
2010	727.2	712.0	595.0	1,543.3	763.1	67.7	132.1	19.7	4,560.0
Other countries									
2009	6,968.7	1,286.4	2,238.0	7,526.5	5,769.8	507.2	791.8	193.6	25,282.0
2010	5,686.6	1,362.8	3,148.4	8,600.2	5,351.0	451.2	1,000.4	120.5	25,721.2
Total									
2009	24,772.7	52,355.8	13,408.5	48,083.3	43,921.4	23,683.7	9,571.1	4,101.0	219,897.4
2010	22,747.5	62,802.9	14,724.8	58,552.6	38,457.3	35,454.9	8,859.7	2,379.5	243,979.2

Table 4
Domestic exports by country, customs basis, not seasonally adjusted

	August		January to August		Change January to August 2010 /January to August 2009
	2009	2010	2009	2010	
	millions of dollars				percent
North America					
Greenland	1.2	1.9	11.4	6.1	-46.9
Mexico	297.9	358.2	2,449.8	2,754.4	12.4
Saint Pierre and Miquelon	1.0	1.0	9.6	10.0	3.3
United States	20,665.9	23,830.4	164,295.0	185,968.3	13.2
Total	20,966.0	24,191.5	166,765.8	188,738.7	13.2
Western Europe					
Andorra	0.0	0.0	0.1	0.1	19.0
Austria	6.0	10.0	274.2	254.4	-7.2
Belgium	110.8	76.1	1,241.7	1,169.7	-5.8
Denmark	16.3	22.8	449.3	182.8	-59.3
Faeroe Islands	0.0	0.0	0.7	0.2	-73.0
Finland	21.7	23.6	210.9	239.5	13.6
France	149.4	158.0	1,720.3	1,278.0	-25.7
Germany	287.2	322.7	2,180.0	2,269.2	4.1
Gibraltar	0.0	0.0	16.8	0.3	-98.3
Greece	7.9	6.7	65.3	76.6	17.2
Iceland	2.2	3.9	61.8	93.5	51.3
Italy	85.0	125.2	1,069.1	1,125.0	5.2
Luxembourg	3.5	1.3	26.9	33.2	23.6
Malta	1.2	1.6	41.2	105.3	155.6
Netherlands	187.3	247.7	1,677.2	1,782.5	6.3
Norway	127.5	204.1	1,051.3	1,522.9	44.9
Portugal	10.8	8.0	102.6	165.1	60.9
Republic of Ireland (Eire)	38.2	17.3	350.4	227.6	-35.0
Spain	70.1	40.6	659.7	452.5	-31.4
Sweden	45.8	48.9	190.8	236.5	24.0
Switzerland	118.8	78.8	812.7	1,003.1	23.4
United Kingdom	676.6	1,246.3	7,232.4	9,019.4	24.7
Total	1,966.4	2,643.7	19,435.3	21,237.4	9.3
Other Europe					
Albania	0.7	3.1	7.2	18.0	150.6
Armenia	0.6	0.7	5.0	5.1	2.7
Azerbaijan	0.5	1.9	6.9	10.2	47.3
Belarus	0.0	0.1	0.8	1.1	38.0
Bosnia and Herzegovina	0.1	0.1	2.4	3.1	30.5
Bulgaria	7.5	16.1	50.4	74.8	48.2
Croatia	1.4	1.3	91.3	80.4	-11.9
Czech Republic	9.6	8.7	79.7	75.4	-5.4
Estonia	1.6	1.3	12.5	13.6	9.1
Georgia	0.7	0.9	4.4	7.1	63.4
Hungary	7.7	6.3	63.0	52.5	-16.7
Kazakhstan	2.6	5.4	108.9	94.9	-12.9
Kyrgyzstan	0.2	0.6	2.7	2.7	-1.1
Latvia	2.0	23.4	17.9	80.1	347.6
Lithuania	2.8	2.8	29.0	20.1	-30.8
Macedonia (Former Yugoslav Republic of Macedonia)	0.9	0.5	8.5	6.7	-20.9
Montenegro	0.1	0.0	1.3	0.9	-33.9
Poland	14.0	9.1	117.3	96.9	-17.4
Republic of Moldova	0.1	0.3	1.5	1.8	15.5
Romania	9.6	13.7	49.3	73.7	49.4
Russian Federation	51.9	88.3	552.4	576.9	4.4
Serbia	1.4	1.2	14.1	4.7	-66.3
Slovakia	2.3	1.5	16.3	19.8	21.5
Slovenia	1.1	0.4	51.0	29.5	-42.1
Tajikistan	0.3	0.0	1.6	4.3	167.4
Turkmenistan	0.5	0.7	4.7	2.1	-55.4
Ukraine	8.9	5.0	56.0	78.2	39.6
Uzbekistan	0.7	0.1	11.2	4.3	-61.4
Total	129.6	193.6	1,367.4	1,439.1	5.2

Table 4 – continued

Domestic exports by country, customs basis, not seasonally adjusted

	August		January to August		Change January to August 2010 /January to August 2009
	2009	2010	2009	2010	
	millions of dollars				percent
Middle East					
Bahrain	12.7	1.8	23.2	55.9	141.3
Cyprus	1.1	0.9	7.4	6.2	-16.6
Egypt	16.1	20.2	367.1	286.6	-21.9
Eritrea	0.8	0.2	0.9	2.0	110.1
Ethiopia	0.5	2.4	7.2	116.5	...
Iran	9.0	12.7	307.0	73.3	-76.1
Iraq	134.6	19.3	395.0	202.0	-48.9
Israel	19.7	19.0	202.4	232.5	14.9
Jordan	6.5	4.5	40.2	39.4	-2.0
Kuwait	7.8	5.5	50.2	61.2	21.8
Lebanon	5.5	4.2	70.3	46.3	-34.1
Libya	15.6	3.0	191.4	91.1	-52.4
Oman	4.0	7.9	77.6	70.0	-9.9
Qatar	5.2	3.6	187.3	61.4	-67.2
Saudi Arabia	43.3	58.9	811.5	485.2	-40.2
Somalia	0.0	0.0	0.1	2.2	...
Sudan	1.7	20.4	71.9	93.6	30.1
Syria	2.8	3.3	32.5	22.3	-31.6
Turkey	63.7	30.7	482.2	494.1	2.5
United Arab Emirates	53.6	76.4	773.5	636.0	-17.8
Yemen	2.3	0.8	19.5	13.2	-32.2
Total	406.4	295.7	4,118.7	3,090.8	-25.0
Other Africa					
Algeria	7.8	30.3	228.4	225.2	-1.4
Angola	2.5	33.9	53.2	141.6	166.0
Antarctica	0.4	0.0	0.5	0.0	-95.9
Benin	0.5	0.8	5.0	7.0	40.4
Botswana	0.2	0.5	3.1	2.9	-7.1
Burkina Faso	3.2	1.0	13.9	14.1	1.3
Burundi	0.1	0.1	0.6	0.6	-9.6
Cameroon	0.3	0.6	20.8	15.4	-25.8
Cape Verde	0.0	0.1	0.9	0.8	-11.5
Central African Republic	0.1	0.0	0.6	0.1	-83.3
Chad	0.5	0.3	8.5	3.8	-55.2
Comoros	2.9	0.0	3.1	0.1	-97.2
Congo	2.8	1.1	15.2	11.2	-26.1
Democratic Republic of the Congo	1.4	0.8	9.7	8.0	-17.9
Djibouti	0.3	0.1	2.1	3.8	83.8
Equatorial Guinea	0.2	0.7	3.3	2.6	-22.9
French Southern Territories	0.0	0.0	0.2	0.0	-85.6
Gabon	0.8	1.4	18.9	12.2	-35.3
Gambia	0.0	0.0	0.4	0.5	13.4
Ghana	4.5	7.0	104.8	98.9	-5.6
Guinea	0.4	0.6	10.4	4.5	-57.3
Guinea-Bissau	0.0	0.0	0.0	0.0	-0.2
Ivory Coast	2.7	4.1	17.7	11.6	-34.8
Kenya	7.6	6.6	50.2	50.1	-0.1
Lesotho	0.0	0.1	0.0	0.1	319.7
Liberia	0.2	0.5	2.5	9.2	269.5
Madagascar	9.1	2.4	37.7	36.5	-3.0
Malawi	0.4	0.4	2.9	2.6	-9.6
Mali	0.2	1.3	4.1	5.9	45.5
Mauritania	0.1	0.6	1.8	2.2	20.6
Mauritius	0.1	0.3	4.2	2.6	-38.6
Morocco	14.1	19.5	256.0	96.6	-62.3
Mozambique	0.3	1.2	2.7	8.6	215.9
Namibia	0.1	0.9	1.2	8.0	588.3
Niger	0.1	0.1	1.8	1.5	-17.1
Nigeria	17.3	20.2	99.6	143.6	44.2
Rwanda	0.3	0.0	1.2	0.8	-31.5
Saint Helena	0.0	0.0	0.1	0.0	-96.6
Sao Tome and Principe	0.0	0.0	0.1	0.0	-38.2
Senegal	1.1	0.7	14.1	18.3	29.3
Seychelles	0.1	0.2	0.8	0.7	-13.6

Table 4 – continued

Domestic exports by country, customs basis, not seasonally adjusted

	August		January to August		Change
	2009	2010	2009	2010	January to August 2010 / January to August 2009
	millions of dollars				percent
Sierra Leone	0.2	0.3	2.8	6.9	144.0
South Africa	24.3	24.2	290.8	293.4	0.9
Swaziland	0.1	0.3	9.6	1.1	-88.5
Togo	0.5	0.4	13.1	7.7	-41.1
Tunisia	2.5	1.7	74.2	32.6	-56.1
Uganda	1.7	0.8	9.9	6.9	-30.2
United Republic of Tanzania	2.9	3.0	21.9	22.3	2.0
Western Sahara	0.0	0.0	0.1	0.0	-91.8
Zambia	2.2	0.4	6.5	20.6	214.5
Zimbabwe	0.1	0.0	7.1	3.9	-45.6
Total	117.0	170.0	1,438.2	1,347.6	-6.3
Other Asia					
Afghanistan	2.1	2.4	36.3	36.8	1.6
Bangladesh	30.0	54.6	466.8	408.1	-12.6
Bhutan	0.0	0.0	0.1	1.5	977.8
British Indian Ocean Territory	0.1	0.2	0.2	1.4	548.2
Brunei Darussalam	0.6	1.4	3.0	9.4	213.5
Cambodia	0.1	0.2	3.0	2.0	-34.4
China	878.8	898.7	7,763.3	7,473.8	-3.7
Hong Kong	64.9	140.7	920.4	1,091.9	18.6
India	196.3	138.9	1,163.4	1,244.7	7.0
Indonesia	119.5	78.5	705.2	641.6	-9.0
Japan	603.6	760.4	5,442.1	5,814.9	6.9
Laos	0.1	0.0	1.4	1.5	7.7
Macao	0.3	0.1	12.7	1.7	-86.6
Malaysia	40.7	54.3	355.6	512.7	44.2
Maldives	2.9	0.2	5.0	3.0	-40.4
Mongolia	0.5	0.6	3.2	10.0	214.1
Myanmar	0.0	0.0	0.0	2.7	...
Nepal	0.5	0.3	2.7	2.1	-22.1
North Korea	2.0	0.5	16.4	7.3	-55.3
Pakistan	11.1	23.3	335.5	258.7	-22.9
Philippines	65.8	82.8	312.0	393.0	26.0
Singapore	53.8	54.1	643.3	424.9	-34.0
South Korea	255.5	207.1	2,201.1	2,297.5	4.4
Sri Lanka	25.2	2.6	224.8	208.5	-7.2
Taiwan	75.2	77.3	677.1	745.8	10.2
Thailand	46.7	48.2	306.8	444.8	45.0
Timor-Leste	0.0	0.0	0.0	0.0	-87.6
Viet Nam	12.4	25.7	118.0	170.9	44.8
Total	2,488.4	2,652.8	21,719.3	22,211.2	2.3
Oceania					
American Samoa	0.1	0.1	0.5	0.8	77.3
Australia	125.5	121.7	1,031.0	1,136.6	10.3
Christmas Island	0.0	0.0	0.3	0.6	130.8
Cocos (Keeling) Islands	0.0	0.0	0.2	0.1	-37.0
Cook Islands	0.5	0.4	0.5	0.4	-17.2
Fiji	0.4	0.1	4.4	1.7	-60.9
French Polynesia	0.7	1.0	6.0	7.0	16.8
Guam	0.2	0.1	1.3	0.8	-36.0
Heard Island and McDonald Islands	0.0	0.0	0.0	0.0	-100.0
Kiribati	0.0	0.0	0.0	0.1	...
Nauru	0.0	0.0	0.0	1.3	...
New Caledonia	0.2	1.0	2.8	13.5	389.3
New Zealand	21.6	19.4	172.1	176.2	2.4
Norfolk Island	0.0	0.0	0.3	0.0	-92.4
Papua New Guinea	4.4	1.5	21.2	12.4	-41.7
Pitcairn	0.0	0.0	0.1	0.1	-36.7
Samoa	0.0	0.0	0.3	0.3	9.7
Solomon Islands	0.0	0.0	0.1	0.0	-58.9
Tonga	0.0	0.1	0.2	3.4	...
United States Minor Outlying Islands	0.6	1.3	8.5	9.4	9.8
Vanuatu	0.1	0.1	1.5	1.1	-29.8
Wallis and Futuna	0.0	0.0	0.0	0.0	-100.0
Total	154.3	146.7	1,251.2	1,365.8	9.2

Table 4 – continued

Domestic exports by country, customs basis, not seasonally adjusted

	August		January to August		Change January to August 2010 /January to August 2009
	2009	2010	2009	2010	
	millions of dollars				percent
South America					
Argentina	22.7	17.0	113.9	140.5	23.4
Bolivia	2.1	0.6	8.0	37.0	359.8
Brazil	206.3	213.8	920.4	1,690.0	83.6
Chile	64.6	32.2	431.2	340.9	-20.9
Colombia	58.5	43.4	412.9	369.8	-10.4
Ecuador	7.7	7.8	162.7	161.5	-0.8
Falkland Islands (Malvinas)	0.0	0.0	0.0	0.1	...
Guyana	3.4	0.8	18.7	16.6	-11.3
Paraguay	0.6	7.3	7.0	11.6	67.3
Peru	33.8	18.4	279.7	287.0	2.6
Suriname	1.1	0.3	7.4	6.7	-9.2
Uruguay	1.3	2.9	14.6	19.8	35.7
Venezuela	32.3	20.5	385.3	301.5	-21.7
Total	434.2	365.0	2,761.7	3,382.9	22.5
Central America Antilles					
Anguilla	0.1	0.0	1.4	0.6	-55.6
Antigua and Barbuda	0.8	1.5	8.6	12.1	41.1
Aruba	1.2	0.4	3.8	24.7	548.3
Bahamas	19.0	28.3	104.9	89.3	-14.9
Barbados	3.1	2.6	39.0	23.6	-39.6
Belize	0.3	0.8	4.2	3.9	-7.5
Bermuda	3.2	2.7	41.4	26.1	-37.1
British Virgin Islands	0.1	0.1	2.4	20.8	781.2
Cayman Islands	0.7	0.3	4.5	4.4	-2.7
Costa Rica	7.0	13.8	44.1	62.6	41.9
Cuba	14.6	36.6	203.8	216.7	6.3
Dominica	0.4	0.4	3.2	3.4	6.1
Dominican Republic	9.6	13.6	94.0	116.3	23.7
El Salvador	1.9	3.8	30.1	25.2	-16.2
Grenada	0.3	0.3	3.6	3.4	-4.1
Guatemala	10.0	8.3	57.6	58.2	0.9
Haiti	3.3	5.7	30.7	28.3	-7.6
Honduras	1.1	1.9	19.0	22.1	16.2
Jamaica	12.4	7.0	79.1	96.3	21.8
Montserrat	0.0	0.0	0.1	0.1	-4.4
Netherlands Antilles	1.6	1.7	39.5	14.1	-64.3
Nicaragua	0.5	4.2	9.1	14.0	53.7
Panama	4.4	5.5	58.0	87.7	51.3
Saint Kitts and Nevis	0.4	0.5	4.0	3.8	-5.4
Saint Lucia	0.8	0.6	6.5	4.5	-30.3
Saint Vincent and the Grenadines	0.7	1.0	6.1	5.9	-3.5
Trinidad and Tobago	19.7	17.0	137.7	195.3	41.8
Turks and Caicos Islands	0.4	0.2	3.4	2.3	-33.5
Total	117.5	158.9	1,039.8	1,165.7	12.1
All countries	26,779.7	30,817.9	219,897.4	243,979.2	11.0

Table 5-1
Exports by province of origin, customs basis, not seasonally adjusted — August

	Agricultural and fishing products	Energy products	Forestry products	Industrial goods	Machinery and equipment	Automotive products	Consumer goods	Special transactions trade	Total
millions of dollars									
Domestic exports									
Newfoundland and Labrador									
2009	70.7	700.2	16.9	210.6	2.6	0.0	0.1	5.0	1,006.1
2010	84.4	516.9	13.9	199.3	2.3	0.1	0.1	3.0	820.0
Prince Edward Island									
2009	40.2	0.4	0.0	1.2	15.5	0.4	3.1	5.4	66.2
2010	46.5	0.1	0.0	2.5	16.4	0.4	1.7	1.7	69.3
Nova Scotia									
2009	94.7	29.3	45.6	35.7	87.5	4.0	5.1	5.9	307.6
2010	104.1	25.0	97.0	42.4	122.8	4.0	5.0	4.1	404.3
New Brunswick									
2009	88.1	639.9	78.4	72.7	20.2	1.5	15.6	8.6	924.9
2010	113.0	685.6	127.3	56.3	21.2	1.6	21.4	5.1	1,031.6
Quebec									
2009	304.5	239.3	477.8	1,338.3	1,171.9	123.7	251.8	103.6	4,010.8
2010	372.7	241.4	528.6	1,561.9	1,272.7	115.6	337.3	73.5	4,503.7
Ontario									
2009	627.2	208.9	202.0	2,351.1	2,344.7	3,291.0	668.5	235.2	9,928.6
2010	696.3	211.6	237.8	3,239.8	2,448.4	4,710.3	775.2	151.8	12,471.1
Manitoba									
2009	288.4	96.1	20.5	172.9	137.3	28.7	25.6	26.4	795.8
2010	267.3	68.5	19.5	124.6	151.5	32.2	25.4	27.9	717.0
Saskatchewan									
2009	448.8	736.8	19.5	441.8	53.0	3.4	0.5	7.2	1,711.0
2010	450.3	641.2	20.8	465.1	64.4	1.8	0.8	4.4	1,648.9
Alberta									
2009	528.5	4,170.8	152.3	680.9	266.7	41.2	9.4	39.6	5,889.5
2010	484.2	4,827.7	180.8	837.1	285.9	38.0	9.3	32.0	6,694.9
British Columbia									
2009	225.4	529.8	607.4	424.3	238.5	14.1	43.2	38.8	2,121.6
2010	254.8	646.9	696.8	502.1	249.5	22.2	44.2	26.3	2,442.9
Yukon, Northwest Territories and Nunavut ¹									
2009	0.1	0.0	0.0	17.2	0.2	0.1	0.1	0.0	17.7
2010	0.1	0.2	0.0	12.6	1.1	0.0	0.0	0.0	14.1
Total									
2009	2,716.5	7,351.5	1,620.3	5,746.8	4,338.1	3,508.0	1,022.7	475.7	26,779.7
2010	2,873.9	7,865.1	1,922.4	7,043.8	4,636.1	4,926.2	1,220.5	330.0	30,817.9
Re-exports									
2009	28.8	22.7	5.4	161.0	781.9	79.4	183.0	586.5	1,848.7
2010	54.8	34.7	6.6	279.7	924.3	95.8	202.7	626.4	2,225.1
Total exports									
2009	2,745.3	7,374.3	1,625.7	5,907.8	5,120.0	3,587.4	1,205.7	1,062.2	28,628.4
2010	2,928.7	7,899.8	1,929.0	7,323.5	5,560.4	5,022.0	1,423.1	956.4	33,043.0

1. Data for the current month do not include some exports from the Harmonized System, Chapter 71, "Natural/cultured pearls, precious stones and metals, coins, etc." for reasons relating to timing.

Table 5-2
Exports by province of origin, customs basis, not seasonally adjusted — Year to date, January to August

	Agricultural and fishing products	Energy products	Forestry products	Industrial goods	Machinery and equipment	Automotive products	Consumer goods	Special transactions trade	Total
millions of dollars									
Domestic exports									
Newfoundland and Labrador									
2009	520.7	3,865.8	140.7	1,203.1	41.0	1.6	0.6	37.8	5,811.5
2010	590.0	3,782.8	78.5	959.1	30.3	1.1	1.0	19.1	5,462.1
Prince Edward Island									
2009	319.6	0.7	0.8	16.5	134.1	1.3	20.2	58.3	551.4
2010	301.3	1.0	0.4	18.2	108.9	2.8	25.4	30.6	488.6
Nova Scotia									
2009	661.7	454.8	454.2	339.3	749.1	54.8	51.6	49.3	2,814.8
2010	623.5	358.2	546.3	337.7	923.8	35.0	39.0	26.3	2,889.8
New Brunswick									
2009	777.0	4,426.8	758.3	518.8	210.0	16.8	86.8	57.4	6,851.9
2010	811.3	5,750.8	895.9	733.7	193.7	15.9	165.6	29.4	8,596.3
Quebec									
2009	2,866.9	1,959.7	4,015.7	10,647.3	13,779.0	1,101.9	2,309.9	929.6	37,610.1
2010	2,872.9	1,993.4	4,024.2	12,886.7	11,473.4	1,010.8	2,793.1	599.8	37,654.2
Ontario									
2009	5,273.3	1,871.0	1,818.9	20,260.9	21,893.3	21,537.5	6,312.0	2,002.8	80,969.6
2010	5,229.4	1,714.9	1,856.0	26,016.9	19,713.7	33,576.5	5,134.2	1,090.9	94,332.4
Manitoba									
2009	2,717.1	509.6	193.3	1,506.6	1,414.7	436.2	322.2	233.7	7,333.4
2010	2,404.8	496.0	143.1	1,515.1	1,266.8	281.3	240.6	189.6	6,537.3
Saskatchewan									
2009	5,187.2	4,430.7	172.5	3,694.7	586.6	27.2	8.4	60.1	14,167.3
2010	4,205.1	5,249.0	143.8	4,449.2	484.5	28.9	8.1	30.5	14,599.2
Alberta									
2009	4,854.9	30,233.1	1,108.7	5,678.8	3,040.3	363.9	109.6	365.6	45,754.9
2010	4,180.5	38,232.4	1,401.2	6,841.6	2,292.7	326.5	81.8	196.4	53,553.0
British Columbia									
2009	1,592.5	4,603.5	4,745.3	3,046.7	2,069.4	142.2	348.7	306.1	16,854.4
2010	1,527.2	5,224.2	5,635.1	3,749.5	1,961.4	175.9	370.7	166.6	18,810.6
Yukon, Northwest Territories and Nunavut ¹									
2009	1.7	0.0	0.1	1,170.6	3.9	0.3	1.0	0.3	1,178.0
2010	1.5	0.2	0.4	1,044.8	8.0	0.3	0.2	0.4	1,055.8
Total									
2009	24,772.7	52,355.8	13,408.5	48,083.3	43,921.4	23,683.7	9,571.1	4,101.0	219,897.4
2010	22,747.5	62,802.9	14,724.8	58,552.6	38,457.3	35,454.9	8,859.7	2,379.5	243,979.2
Re-exports									
2009	326.6	301.4	51.4	1,463.0	7,694.2	642.6	1,485.4	5,399.9	17,364.4
2010	380.6	172.9	54.7	1,898.3	6,855.9	721.5	1,317.6	4,759.6	16,161.1
Total exports									
2009	25,099.3	52,657.1	13,459.9	49,546.3	51,615.6	24,326.3	11,056.5	9,500.8	237,261.8
2010	23,128.1	62,975.8	14,779.5	60,450.9	45,313.2	36,176.4	10,177.3	7,139.2	260,140.3

1. Data for the current month do not include some exports from the Harmonized System Chapter 71, "Natural/cultured pearls, precious stones and metals, coins, etc." for reasons relating to timing.

Table 6-1
Imports by commodity groupings, balance of payments basis, seasonally adjusted — Current dollars

	July 2010	August 2010	Change	Year to date			August 2010/ August 2009		
				2009		Change			
				2009	2010				
	millions of dollars		percent		millions of dollars		percent		
Total	35,512	35,325	-187	-0.5	248,444	271,938	23,493	9.5	13.6
Agricultural and fishing products	2,460	2,514	54	2.2	19,838	19,452	-386	-1.9	3.8
Fruits and vegetables	688	699	11	1.6	5,562	5,474	-88	-1.6	1.9
Fresh fruits and berries	241	234	-7	-2.8	1,946	1,953	8	0.4	-2.4
Dried fruits, fruits and fruit preparations	116	121	4	3.8	1,043	889	-154	-14.8	-1.9
Fresh vegetables	180	188	9	4.8	1,426	1,470	44	3.1	8.5
Other vegetables and vegetable preparations	151	155	5	3.1	1,148	1,161	14	1.2	4.4
Other agricultural and fishing products	1,772	1,815	43	2.4	14,276	13,979	-298	-2.1	4.5
Live animals	16	17	1	4.3	131	131	0	-0.3	7.3
Meat and meat preparations	183	187	4	2.4	1,442	1,408	-34	-2.3	12.0
Fish and marine animals	178	171	-7	-3.8	1,389	1,296	-92	-6.7	9.3
Cocoa, coffee, tea and other food preparations	426	455	28	6.7	3,333	3,303	-31	-0.9	11.2
Dairy produce, eggs and honey	51	51	-1	-1.7	379	380	0	0.1	0.2
Corn (maize) shelled	35	25	-10	-29.7	330	314	-16	-4.8	-50.0
Other cereals and cereal preparations	173	179	5	3.2	1,551	1,386	-165	-10.6	-2.5
Sugar and sugar preparations	138	145	7	4.7	1,112	1,163	51	4.6	1.0
Fodder, feed, excluding unmilled cereal	121	110	-11	-9.3	1,009	919	-89	-8.9	-16.0
Beverages	291	316	25	8.4	2,452	2,435	-16	-0.7	2.6
Tobacco	34	38	4	12.0	245	270	25	10.4	8.7
Crude vegetable products	123	122	-2	-1.4	897	964	67	7.5	38.4
Cotton	1	1	0	2.4	6	9	2	38.6	-19.1
Energy products	3,319	3,402	84	2.5	22,006	26,230	4,224	19.2	11.9
Crude petroleum	2,107	2,041	-66	-3.1	13,352	16,004	2,652	19.9	-2.5
Other energy products	1,212	1,361	150	12.3	8,655	10,227	1,572	18.2	43.9
Coal and other related products	282	484	202	71.7	3,169	3,390	221	7.0	57.9
Petroleum and coal products	930	877	-53	-5.7	5,486	6,836	1,351	24.6	37.1
Forestry products	234	223	-11	-4.7	1,591	1,789	198	12.5	14.8
Forestry products	234	223	-11	-4.7	1,591	1,789	198	12.5	14.8
Crude wood products	41	40	-1	-2.7	312	283	-29	-9.3	18.3
Wood fabricated materials	192	183	-10	-5.1	1,279	1,506	227	17.8	14.1
Industrial goods and materials	7,350	7,111	-240	-3.3	49,669	56,607	6,937	14.0	21.7
Metals and metal ores	2,815	2,539	-275	-9.8	15,520	21,011	5,491	35.4	34.5
Metals in ores, concentrates and scrap	642	506	-136	-21.2	3,667	4,443	776	21.2	8.0
Steel bars, rods, plates, sheets	522	524	2	0.4	3,023	4,420	1,396	46.2	50.6
Other iron and steel products	417	403	-14	-3.3	2,460	2,843	383	15.6	65.7
Precious metals including alloys	880	750	-130	-14.8	4,108	6,407	2,299	55.9	37.1
Other non-ferrous metals and alloys	354	357	3	0.7	2,261	2,898	637	28.2	27.0
Chemicals and plastics	2,394	2,443	48	2.0	18,393	19,256	864	4.7	14.3
Organic chemicals	546	537	-9	-1.7	4,493	4,621	128	2.8	7.1
Plastic materials	864	864	0	0.0	5,866	6,686	820	14.0	18.0
Other chemicals and related products	984	1,042	58	5.9	8,034	7,950	-84	-1.0	15.2
Other industrial goods and materials	2,141	2,128	-13	-0.6	15,757	16,340	583	3.7	17.0
Crude animal products	21	22	1	4.6	156	175	19	12.3	42.2
Wool and man-made fibres	22	21	0	-2.2	142	169	28	19.5	23.7
Crude non-metallic minerals	69	59	-11	-15.5	488	563	75	15.4	3.6
Textile fabricated materials	206	208	2	0.9	1,521	1,558	38	2.5	15.2
Metal fabricated basic products	851	844	-7	-0.9	6,123	6,350	227	3.7	24.7
Rubber fabricated materials	85	86	1	1.6	624	659	35	5.6	12.9
Oils, fats, animal and vegetable	112	106	-7	-5.9	844	794	-50	-6.0	-2.1
Non-metallic minerals	308	315	7	2.3	2,196	2,397	202	9.2	22.4
Other fabricated materials	467	469	1	0.3	3,664	3,674	10	0.3	8.5

Table 6-1 – continued

Imports by commodity groupings, balance of payments basis, seasonally adjusted — Current dollars

	July	August	Change		Year to date			August 2010/	
	2010	2010			2009	2010	Change	August 2009	
	millions of dollars		percent		millions of dollars		percent		
Machinery and equipment	9,863	9,894	32	0.3	73,882	73,650	-233	-0.3	14.0
Industrial and agricultural machinery	2,612	2,631	19	0.7	19,288	19,373	85	0.4	20.1
Engines, turbines and electric motors	351	369	18	5.3	2,915	2,725	-190	-6.5	21.1
Drilling mining machinery	155	160	4	2.8	1,039	1,134	95	9.1	33.2
Excavating machinery	260	261	1	0.5	1,355	1,729	375	27.6	95.1
Metal working machinery	135	135	1	0.4	1,085	1,026	-60	-5.5	20.2
Other industrial machinery	1,312	1,327	15	1.1	10,166	9,864	-302	-3.0	11.2
Agricultural machinery including tractors	400	379	-21	-5.2	2,728	2,895	167	6.1	15.8
Aircraft and other transportation equipment	1,215	1,177	-38	-3.2	11,123	9,182	-1,942	-17.5	-2.4
Aircraft, engines, parts	716	676	-40	-5.5	7,136	5,490	-1,647	-23.1	-3.6
Other transportation equipment and parts	499	501	1	0.2	3,987	3,692	-295	-7.4	-0.6
Office machines and equipment	1,162	1,220	58	5.0	8,364	8,753	388	4.6	16.9
Other machinery and equipment	4,873	4,866	-7	-0.1	35,106	36,342	1,236	3.5	14.9
Other communication and related equipment	1,809	1,835	26	1.4	12,332	13,188	857	6.9	21.9
Other equipment and tools	3,064	3,031	-33	-1.1	22,774	23,154	379	1.7	11.0
Automotive products	6,241	5,836	-404	-6.5	34,397	47,029	12,632	36.7	11.2
Passenger autos and chassis	2,162	1,882	-279	-12.9	11,424	15,144	3,720	32.6	19.0
Trucks and other motor vehicles	1,458	1,374	-84	-5.7	8,150	11,833	3,683	45.2	-13.9
Motor vehicle parts	2,621	2,580	-41	-1.6	14,823	20,052	5,229	35.3	24.5
Other consumer goods	4,861	4,979	119	2.4	38,651	37,857	-794	-2.1	7.4
Apparel and footwear	924	969	45	4.9	7,782	7,059	-724	-9.3	10.5
Apparel and apparel accessories	771	799	27	3.5	6,488	5,869	-620	-9.5	10.0
Footwear	152	170	18	11.7	1,294	1,190	-104	-8.1	12.8
Miscellaneous consumer goods	3,937	4,010	74	1.9	30,869	30,798	-70	-0.2	6.6
Television, radios, phonographs	138	144	6	4.5	893	1,063	170	19.0	19.3
Printed matter	286	311	25	8.9	2,428	2,296	-131	-5.4	6.9
Watches, sporting goods and toys	502	501	-1	-0.3	4,064	3,984	-80	-2.0	-3.7
House furnishings	760	759	-1	-0.2	5,842	5,852	9	0.2	11.3
Photographic goods	219	224	5	2.1	1,724	1,655	-69	-4.0	9.6
Miscellaneous end products	2,032	2,072	40	2.0	15,918	15,948	30	0.2	6.6
Special transactions trade	446	639	193	43.3	3,220	3,455	235	7.3	64.9
Unallocated balance of payments adjustments	740	727	-13	-1.7	5,189	5,869	680	13.1	12.5

Table 6-2
Imports by commodity groupings, balance of payments basis, seasonally adjusted — Constant dollars, 2002

	July	August	Change		Year to date			August 2010/ August 2009	
	2010	2010			2009		2010		
	millions of dollars		percent		millions of dollars		percent		
Total	40,157	40,262	105	0.3	264,131	308,086	43,955	16.6	15.5
Agricultural and fishing products	2,517	2,513	-5	-0.2	18,415	19,558	1,143	6.2	4.0
Fruits and vegetables	672	699	26	3.9	5,399	5,413	13	0.2	0.2
Fresh fruits and berries	241	244	3	1.3	1,991	2,005	14	0.7	-5.0
Dried fruits, fruits and fruit preparations	117	129	11	9.8	995	893	-102	-10.2	2.5
Fresh vegetables	170	171	2	1.0	1,400	1,389	-11	-0.8	-3.7
Other vegetables and vegetable preparations	144	154	10	6.9	1,014	1,126	113	11.1	13.3
Other agricultural and fishing products	1,845	1,814	-31	-1.7	13,016	14,146	1,130	8.7	5.6
Live animals	15	17	2	11.9	125	127	1	1.1	0.2
Meat and meat preparations	178	176	-2	-1.0	1,388	1,369	-19	-1.4	2.2
Fish and marine animals	255	231	-23	-9.1	1,786	1,852	66	3.7	-8.9
Cocoa, coffee, tea and other food preparations	500	462	-37	-7.5	2,648	3,366	718	27.1	29.4
Dairy produce, eggs and honey	55	57	3	4.8	367	423	56	15.3	15.9
Corn (maize) shelled	35	24	-11	-31.2	270	307	37	13.9	-48.1
Other cereals and cereal preparations	144	148	4	3.1	1,272	1,165	-107	-8.4	-9.7
Sugar and sugar preparations	135	138	2	1.8	1,073	1,126	54	5.0	-3.4
Fodder, feed, excluding unmilled cereal	104	90	-14	-13.1	723	790	66	9.1	-10.2
Beverages	264	308	44	16.8	2,160	2,280	120	5.6	11.5
Tobacco	39	44	5	13.3	276	327	51	18.4	5.3
Crude vegetable products	121	116	-5	-4.1	920	1,003	83	9.0	22.2
Cotton	1	1	0	5.9	8	12	3	39.2	-22.2
Energy products	1,745	1,885	140	8.0	14,069	14,124	55	0.4	7.4
Crude petroleum	989	962	-27	-2.7	7,864	7,245	-619	-7.9	-9.0
Other energy products	756	923	167	22.1	6,206	6,879	673	10.9	32.3
Coal and other related products	252	436	183	72.7	2,556	3,003	448	17.5	46.2
Petroleum and coal products	503	487	-17	-3.3	3,650	3,876	226	6.2	21.9
Forestry products	290	280	-10	-3.4	1,965	2,334	368	18.7	8.5
Forestry products	290	280	-10	-3.4	1,965	2,334	368	18.7	8.5
Crude wood products	58	56	-1	-1.8	385	416	30	7.9	24.5
Wood fabricated materials	232	224	-9	-3.8	1,580	1,918	338	21.4	5.1
Industrial goods and materials	6,536	6,547	11	0.2	44,160	51,942	7,782	17.6	16.9
Metals and metal ores	1,883	1,838	-45	-2.4	11,149	14,927	3,778	33.9	28.3
Metals in ores, concentrates and scrap	390	313	-77	-19.7	2,837	2,580	-257	-9.0	-9.4
Steel bars, rods, plates, sheets	408	413	5	1.2	2,375	3,663	1,288	54.2	31.7
Other iron and steel products	282	289	7	2.6	1,693	2,077	384	22.7	50.5
Precious metals including alloys	437	449	11	2.6	1,938	3,583	1,645	84.8	63.4
Other non-ferrous metals and alloys	366	374	8	2.3	2,306	3,024	718	31.1	21.8
Chemicals and plastics	2,266	2,310	44	1.9	16,874	18,577	1,704	10.1	8.4
Organic chemicals	400	451	51	12.7	3,582	3,388	-194	-5.4	12.5
Plastic materials	906	894	-12	-1.4	6,007	7,108	1,101	18.3	10.5
Other chemicals and related products	960	965	5	0.6	7,285	8,081	797	10.9	4.8
Other industrial goods and materials	2,387	2,399	12	0.5	16,137	18,438	2,301	14.3	17.9
Crude animal products	23	23	-1	-4.0	241	187	-54	-22.4	-1.5
Wool and man-made fibres	28	27	-1	-4.3	177	219	42	23.6	16.7
Crude non-metallic minerals	57	50	-6	-11.2	431	471	40	9.3	0.5
Textile fabricated materials	277	280	3	0.9	1,820	2,097	277	15.2	17.2
Metal fabricated basic products	893	886	-7	-0.7	5,854	6,772	917	15.7	26.3
Rubber fabricated materials	101	101	1	0.8	682	802	120	17.6	12.3
Oils, fats, animal and vegetable	106	102	-4	-3.3	719	784	66	9.1	4.2
Non-metallic minerals	362	373	11	3.1	2,404	2,894	490	20.4	22.1
Other fabricated materials	541	557	16	3.0	3,808	4,211	403	10.6	10.3

Table 6-2 – continued

Imports by commodity groupings, balance of payments basis, seasonally adjusted — Constant dollars, 2002

	July	August	Change		Year to date			August 2010/ August 2009	
	2010	2010			2009	2010	Change		
	millions of dollars		percent		millions of dollars		percent		
Machinery and equipment	14,323	14,364	42	0.3	93,707	106,245	12,538	13.4	19.5
Industrial and agricultural machinery	3,168	3,195	27	0.9	20,836	23,756	2,920	14.0	24.6
Engines, turbines and electric motors	429	454	25	5.9	3,198	3,374	177	5.5	25.9
Drilling mining machinery	172	177	5	2.9	1,008	1,268	260	25.8	38.1
Excavating machinery	325	323	-2	-0.7	1,435	2,155	720	50.2	108.1
Metal working machinery	172	173	1	0.7	1,231	1,313	83	6.7	24.6
Other industrial machinery	1,565	1,588	23	1.4	10,865	11,950	1,085	10.0	15.0
Agricultural machinery including tractors	505	481	-24	-4.8	3,100	3,696	596	19.2	19.8
Aircraft and other transportation equipment	1,383	1,366	-17	-1.2	11,653	10,757	-896	-7.7	0.4
Aircraft, engines, parts	852	829	-23	-2.7	7,629	6,686	-943	-12.4	0.6
Other transportation equipment and parts	531	537	6	1.1	4,024	4,071	47	1.2	0.0
Office machines and equipment	2,712	2,803	91	3.4	16,537	19,226	2,689	16.3	23.2
Other machinery and equipment	7,059	6,999	-60	-0.9	44,681	52,506	7,825	17.5	20.3
Other communication and related equipment	3,064	3,066	1	0.0	18,293	22,237	3,944	21.6	28.2
Other equipment and tools	3,995	3,934	-62	-1.5	26,388	30,269	3,881	14.7	14.8
Automotive products	7,582	7,122	-460	-6.1	39,351	57,291	17,940	45.6	15.4
Passenger autos and chassis	2,521	2,189	-332	-13.2	13,279	17,497	4,218	31.8	19.7
Trucks and other motor vehicles	1,622	1,559	-64	-3.9	8,611	13,293	4,682	54.4	-9.1
Motor vehicle parts	3,438	3,374	-64	-1.9	17,462	26,501	9,039	51.8	28.3
Other consumer goods	6,199	6,353	154	2.5	44,880	48,844	3,964	8.8	9.6
Apparel and footwear	1,296	1,357	61	4.7	9,688	9,970	282	2.9	14.9
Apparel and apparel accessories	1,086	1,122	36	3.3	8,096	8,320	224	2.8	14.3
Footwear	209	234	25	11.8	1,591	1,650	58	3.7	17.6
Miscellaneous consumer goods	4,904	4,997	93	1.9	35,193	38,874	3,681	10.5	8.3
Television, radios, phonographs	233	240	7	3.1	1,316	1,805	489	37.1	23.1
Printed matter	352	383	31	8.8	2,845	2,841	-4	-0.1	6.7
Watches, sporting goods and toys	686	676	-9	-1.4	5,142	5,543	401	7.8	-2.0
House furnishings	959	962	3	0.3	6,621	7,485	864	13.1	14.0
Photographic goods	421	439	18	4.3	2,703	3,127	424	15.7	19.7
Miscellaneous end products	2,253	2,296	43	1.9	16,566	18,074	1,507	9.1	6.3
Special transactions trade	508	740	231	45.5	3,457	3,950	494	14.3	66.4
Unallocated balance of payments adjustments	457	458	1	0.2	4,126	3,797	-329	-8.0	14.6

Table 7-1
Imports from selected countries, customs basis, not seasonally adjusted — August

	Agricultural and fishing products	Energy products	Forestry products	Industrial goods	Machinery and equipment	Automotive products	Consumer goods	Special transactions trade	Total
millions of dollars									
United States									
2009	1,415.8	855.2	141.1	3,562.9	3,845.4	3,450.5	1,823.3	326.6	15,420.9
2010	1,445.6	960.0	156.4	4,304.6	4,160.2	3,887.3	1,986.8	583.3	17,484.2
Mexico									
2009	71.7	147.1	0.4	103.2	602.2	649.6	86.8	3.5	1,664.5
2010	77.3	48.8	0.3	153.4	795.3	691.8	96.2	3.5	1,866.7
Japan									
2009	5.2	8.7	0.1	87.1	356.7	479.5	75.0	0.2	1,012.6
2010	5.5	0.4	0.1	88.6	420.5	403.4	93.9	0.2	1,012.6
European Union									
Germany									
2009	27.1	1.0	1.2	129.4	289.6	140.9	146.1	0.4	735.8
2010	28.7	5.4	0.9	158.1	341.6	222.2	162.4	0.5	919.8
France									
2009	74.8	1.0	0.2	114.8	116.7	7.7	144.5	0.3	460.0
2010	84.1	0.5	0.3	60.0	122.3	8.4	130.4	1.2	407.2
United Kingdom									
2009	43.9	135.0	0.1	80.4	251.6	14.5	109.5	3.4	638.4
2010	44.9	316.7	0.0	108.2	234.2	33.2	116.1	1.5	854.8
Italy									
2009	54.8	0.0	1.7	74.0	117.9	16.4	101.3	2.3	368.6
2010	60.0	25.4	1.5	78.7	133.2	16.1	108.0	0.5	423.4
Other European Union									
2009	103.2	145.9	3.6	187.4	347.3	60.9	311.4	13.3	1,173.0
2010	114.8	217.0	3.7	224.1	425.4	78.0	332.5	1.2	1,396.6
Total									
2009	303.8	282.9	6.7	586.1	1,123.1	240.5	812.8	19.8	3,375.8
2010	332.5	564.9	6.4	629.2	1,256.7	357.9	849.3	4.8	4,001.8
Newly industrialized countries									
South Korea									
2009	3.7	24.6	0.0	44.2	214.0	79.8	16.5	0.1	382.8
2010	4.5	21.3	0.0	71.6	248.2	121.5	19.1	0.0	486.3
Hong Kong									
2009	2.9	0.0	0.2	1.5	11.1	0.3	14.8	0.0	30.9
2010	2.3	0.0	0.3	2.9	13.1	0.6	17.5	0.0	36.5
Taiwan									
2009	6.0	0.1	0.8	51.6	148.5	12.0	34.1	0.1	253.2
2010	7.0	0.0	0.8	85.9	215.0	14.6	36.7	0.2	360.2
Singapore									
2009	2.4	0.0	0.0	13.7	30.5	0.7	19.8	0.2	67.2
2010	3.4	0.0	0.0	13.1	40.7	0.5	18.8	0.1	76.6
Total									
2009	15.0	24.7	1.0	111.0	404.1	92.8	85.1	0.4	734.1
2010	17.2	21.3	1.1	173.5	517.0	137.1	92.1	0.4	959.6
Other countries									
2009	586.8	1,648.1	44.1	1,251.7	2,213.8	160.8	1,981.4	18.2	7,904.9
2010	679.3	1,811.3	60.0	1,700.0	2,794.9	194.7	2,270.2	26.8	9,537.3
Total									
2009	2,398.6	2,966.7	193.5	5,702.1	8,545.3	5,073.6	4,864.5	368.6	30,113.0
2010	2,558.0	3,406.8	224.3	7,049.3	9,944.7	5,672.2	5,388.5	619.1	34,862.9

Table 7-2
Imports from selected countries, customs basis, not seasonally adjusted — Year to date, January to August

	Agricultural and fishing products	Energy products	Forestry products	Industrial goods	Machinery and equipment	Automotive products	Consumer goods	Special transactions trade	Total
millions of dollars									
United States									
2009	11,587.6	7,242.5	1,200.2	29,600.9	33,772.6	22,290.2	15,276.7	2,639.1	123,609.7
2010	10,970.7	8,033.3	1,296.5	33,431.1	32,924.4	30,572.5	14,927.4	2,948.7	135,104.7
Mexico									
2009	945.4	305.6	4.3	862.9	4,366.5	3,175.3	669.4	26.7	10,356.1
2010	1,049.4	499.9	3.7	1,135.3	5,035.6	5,517.8	726.5	36.3	14,004.6
Japan									
2009	44.1	31.8	1.5	740.5	3,293.0	3,411.3	644.2	2.6	8,169.0
2010	44.4	52.1	0.7	799.4	3,197.4	3,947.5	695.7	2.6	8,739.9
European Union									
Germany									
2009	169.7	20.9	9.2	1,245.1	2,953.0	1,577.0	1,207.5	6.2	7,188.6
2010	170.8	39.7	8.8	1,292.3	2,511.3	2,226.7	1,152.9	16.0	7,418.6
France									
2009	455.2	173.4	1.7	754.1	1,351.1	68.4	1,094.8	8.7	3,907.4
2010	447.3	70.4	1.3	537.2	1,083.4	67.6	1,063.9	6.8	3,277.9
United Kingdom									
2009	260.3	1,512.9	1.0	841.1	2,354.6	216.8	894.7	24.3	6,105.7
2010	269.3	2,484.3	0.5	1,280.0	1,889.9	293.6	847.6	35.7	7,100.9
Italy									
2009	411.7	72.3	10.4	650.1	1,040.7	132.0	735.5	5.9	3,058.6
2010	397.8	134.3	8.8	627.4	954.5	155.4	719.7	2.3	3,000.3
Other European Union									
2009	734.9	1,011.6	29.1	1,848.1	2,974.6	401.3	2,747.0	36.2	9,782.8
2010	720.4	1,640.5	27.7	2,005.5	2,985.9	508.3	2,548.3	16.2	10,452.8
Total									
2009	2,031.9	2,791.1	51.3	5,338.5	10,674.0	2,395.5	6,679.5	81.3	30,043.1
2010	2,005.7	4,369.3	47.1	5,742.3	9,425.2	3,251.5	6,332.4	77.1	31,250.5
Newly industrialized countries									
South Korea									
2009	33.0	146.2	0.1	535.9	1,718.1	1,264.2	152.3	0.6	3,850.5
2010	38.7	169.7	0.1	525.5	1,534.3	1,437.1	135.1	0.7	3,841.2
Hong Kong									
2009	19.0	0.0	0.4	19.6	109.5	2.6	91.2	0.5	242.7
2010	18.1	0.1	0.5	18.2	96.7	3.1	96.5	0.3	233.5
Taiwan									
2009	44.9	0.2	6.5	484.0	1,348.1	116.3	267.2	0.8	2,268.1
2010	49.7	19.8	5.7	573.6	1,384.0	106.1	266.0	1.0	2,406.0
Singapore									
2009	19.5	70.0	0.6	245.5	340.0	3.5	155.1	1.1	835.3
2010	23.4	0.1	0.1	86.2	388.5	2.8	121.4	1.2	623.7
Total									
2009	116.4	216.5	7.5	1,285.0	3,515.7	1,386.7	665.8	3.0	7,196.6
2010	129.9	189.7	6.5	1,203.5	3,403.5	1,549.1	619.0	3.1	7,104.3
Other countries									
2009	4,750.1	11,582.1	347.8	11,382.7	17,391.4	1,133.4	14,057.9	246.4	60,891.9
2010	4,939.3	13,511.7	450.0	13,624.9	18,896.8	1,399.3	13,951.7	225.7	66,999.5
Total									
2009	19,476.6	22,169.7	1,612.6	49,210.6	73,013.3	33,792.3	37,993.4	2,999.1	240,267.6
2010	19,142.5	26,656.0	1,804.6	55,936.6	72,883.0	46,237.8	37,252.9	3,293.6	263,206.9

Table 8
Imports by country, customs basis, not seasonally adjusted

	August		January to August		Change January to August 2010/ January to August 2009
	2009	2010	2009	2010	
	millions of dollars				percent
North America					
Canada	224.3	300.4	2,084.5	2,672.8	28.2
Greenland	0.0	0.1	17.0	0.4	-97.8
Mexico	1,664.5	1,866.7	10,356.1	14,004.6	35.2
Saint Pierre and Miquelon	0.0	0.3	0.2	0.8	415.3
United States	15,420.9	17,484.2	123,609.7	135,104.7	9.3
Total	17,309.7	19,651.8	136,067.5	151,783.2	11.5
Western Europe					
Andorra	0.0	0.0	0.1	0.2	221.1
Austria	92.3	117.3	738.6	797.1	7.9
Belgium	113.1	97.1	927.1	1,035.9	11.7
Denmark	167.3	164.0	935.2	1,355.8	45.0
Faeroe Islands	0.2	0.6	1.1	3.3	208.0
Finland	64.9	106.3	556.9	608.2	9.2
France	460.0	407.2	3,907.4	3,277.9	-16.1
Germany	735.8	919.8	7,188.6	7,418.6	3.2
Gibraltar	0.0	0.0	0.0	2.2	...
Greece	9.7	13.0	92.8	94.6	1.9
Iceland	2.9	2.9	20.9	24.0	14.9
Italy	368.6	423.4	3,058.6	3,000.3	-1.9
Luxembourg	6.3	8.0	48.7	56.9	16.7
Malta	0.9	1.9	14.0	11.3	-19.2
Netherlands	145.9	194.9	1,305.0	1,186.3	-9.1
Norway	425.7	208.1	2,407.0	1,885.4	-21.7
Portugal	21.1	33.1	179.5	221.3	23.3
Republic of Ireland (Eire)	132.8	104.1	1,487.0	1,125.5	-24.3
Spain	114.7	157.0	897.9	913.7	1.8
Sweden	131.8	140.1	1,197.2	1,371.9	14.6
Switzerland	244.6	165.2	2,330.7	1,971.8	-15.4
United Kingdom	638.4	854.8	6,105.7	7,100.9	16.3
Total	3,876.9	4,118.9	33,399.9	33,463.2	0.2
Other Europe					
Albania	0.5	0.5	3.0	2.2	-25.4
Armenia	2.4	1.4	24.0	15.8	-34.5
Azerbaijan	81.9	82.6	824.6	385.8	-53.2
Belarus	5.0	27.8	22.4	30.6	36.3
Bosnia and Herzegovina	1.2	0.8	5.6	4.8	-13.5
Bulgaria	6.3	8.3	85.1	41.7	-51.0
Croatia	2.3	2.8	17.5	23.4	33.8
Czech Republic	28.0	29.7	195.0	183.1	-6.1
Estonia	1.3	2.0	14.6	13.5	-7.9
Georgia	11.7	12.1	87.5	75.8	-13.3
Hungary	41.3	29.9	247.1	234.1	-5.3
Kazakhstan	207.6	276.1	805.3	1,203.4	49.4
Kyrgyzstan	0.0	0.0	0.4	0.1	-84.3
Latvia	7.7	0.8	14.0	6.1	-56.4
Lithuania	6.7	75.5	106.9	305.3	185.6
Macedonia (Former Yugoslav Republic of Macedonia)	0.6	0.9	6.1	5.1	-15.6
Montenegro	0.0	0.0	0.2	0.3	28.2
Poland	50.1	66.7	520.8	584.5	12.2
Republic of Moldova	0.2	0.2	1.4	4.5	231.4
Romania	13.1	19.7	80.8	117.9	46.0
Russian Federation	140.4	143.9	1,039.4	1,068.4	2.8
Serbia	0.7	1.0	7.5	8.1	8.9
Slovakia	10.7	16.0	92.1	113.0	22.7
Slovenia	7.1	11.2	44.4	73.3	65.0
Tajikistan	0.0	0.0	0.0	0.0	183.1
Turkmenistan	0.0	0.2	0.2	0.3	112.3
Ukraine	19.6	9.9	68.5	52.1	-23.8
Uzbekistan	0.0	0.1	11.8	1.2	-89.5
Total	646.3	820.0	4,326.0	4,554.3	5.3

Table 8 – continued

Imports by country, customs basis, not seasonally adjusted

	August		January to August		Change
	2009	2010	2009	2010	January to August 2010/ January to August 2009
	millions of dollars				percent
Middle East					
Bahrain	0.1	0.0	3.8	2.0	-46.9
Cyprus	0.0	0.0	2.1	1.9	-12.1
Egypt	4.0	23.9	59.1	193.8	227.8
Eritrea	0.0	0.0	0.1	0.2	144.8
Ethiopia	1.5	2.3	11.7	10.6	-9.0
Iran	2.4	2.6	17.2	26.3	53.4
Iraq	123.0	119.3	840.3	1,181.8	40.6
Israel	55.7	87.9	611.8	672.4	9.9
Jordan	1.2	1.4	10.6	13.3	25.4
Kuwait	0.1	0.0	37.3	31.5	-15.4
Lebanon	1.6	1.9	10.2	10.9	7.0
Libya	0.0	3.1	0.1	16.6	...
Oman	0.7	1.1	5.0	14.6	191.3
Qatar	3.2	1.5	12.7	65.9	419.1
Saudi Arabia	142.2	151.5	1,061.5	1,351.4	27.3
Somalia	0.0	0.0	0.0	0.0	-29.7
Sudan	5.0	4.6	45.3	56.9	25.6
Syria	0.5	1.0	3.6	4.7	29.3
Turkey	44.9	58.6	433.2	436.7	0.8
United Arab Emirates	3.9	8.1	186.0	128.5	-30.9
Yemen	0.0	0.0	0.1	0.1	-39.6
Total	390.0	468.8	3,352.0	4,220.5	25.9
Other Africa					
Algeria	207.5	248.2	2,246.2	2,535.4	12.9
Angola	141.7	138.0	758.8	1,007.3	32.7
Antarctica	0.0	0.0	0.0	0.2	...
Benin	0.0	0.0	0.0	0.0	357.5
Botswana	0.0	0.0	14.8	6.9	-53.2
Bouvet Island	0.0	0.0	0.0	0.0	-99.7
Burkina Faso	0.2	4.1	1.8	20.8	...
Burundi	0.0	0.0	0.2	0.0	-77.4
Cameroon	0.3	0.5	3.3	4.0	20.9
Cape Verde	0.0	0.0	0.0	0.0	54.8
Central African Republic	0.0	0.0	0.1	0.1	7.9
Chad	0.0	0.0	0.0	0.2	669.6
Comoros	0.0	0.0	0.0	0.0	58.7
Congo	0.1	1.7	1.7	2.7	58.9
Democratic Republic of the Congo	0.0	0.0	0.5	0.6	41.6
Djibouti	0.0	0.0	0.0	0.0	-87.1
Equatorial Guinea	0.0	72.7	268.7	442.8	64.8
French Southern Territories	0.0	0.0	0.0	0.0	-100.0
Gabon	0.3	0.0	1.6	0.3	-83.0
Gambia	0.1	0.0	0.1	0.1	-31.2
Ghana	5.2	1.7	18.1	15.5	-14.1
Guinea	2.6	6.1	43.6	31.9	-26.9
Guinea-Bissau	0.0	0.0	0.0	0.0	-39.2
Ivory Coast	6.0	39.7	158.1	224.9	42.2
Kenya	1.6	1.9	11.9	10.4	-12.3
Lesotho	0.7	0.9	5.5	11.7	111.9
Liberia	1.7	1.3	13.8	30.7	122.9
Madagascar	0.9	1.3	23.2	30.2	30.1
Malawi	0.3	24.6	1.5	49.1	...
Mali	0.0	0.1	0.3	0.4	63.3
Mauritania	0.0	0.0	0.6	0.2	-67.9
Mauritius	1.1	1.2	6.8	7.1	4.1
Morocco	4.2	4.6	65.7	66.9	1.8
Mozambique	0.0	0.1	0.2	1.2	425.3
Namibia	5.2	41.5	194.0	156.6	-19.3
Niger	0.0	0.0	0.7	0.6	-11.6
Nigeria	70.9	192.1	311.3	1,110.1	256.6
Rwanda	0.0	0.0	0.3	0.1	-53.1
Saint Helena	0.0	0.0	0.0	0.0	42.2
Sao Tome and Principe	0.0	0.0	0.0	0.2	...
Senegal	0.2	0.1	0.7	0.7	-8.3

Table 8 – continued

Imports by country, customs basis, not seasonally adjusted

	August		January to August		Change
	2009	2010	2009	2010	January to August 2010/ January to August 2009
	millions of dollars				percent
Seychelles	0.0	0.0	0.5	0.2	-65.5
Sierra Leone	0.1	0.4	1.2	1.3	10.5
South Africa	69.9	76.4	421.2	467.8	11.1
Swaziland	0.1	0.1	1.1	1.0	-11.4
Togo	0.2	0.7	3.2	1.4	-55.3
Tunisia	3.7	4.8	31.0	37.9	22.3
Uganda	0.7	0.2	1.9	2.9	51.5
United Republic of Tanzania	0.2	0.2	2.6	2.3	-11.8
Western Sahara	0.0	0.0	0.0	0.0	-95.1
Zambia	0.1	0.1	0.5	0.8	71.7
Zimbabwe	0.1	0.8	1.7	3.3	93.8
Total	526.0	866.2	4,619.0	6,289.0	36.2
Other Asia					
Afghanistan	0.1	0.1	0.9	1.1	29.3
Bangladesh	77.0	96.8	590.1	542.1	-8.1
Bhutan	0.0	0.0	0.0	0.0	22.8
British Indian Ocean Territory	0.0	0.0	0.0	0.0	463.1
Brunei Darussalam	0.2	0.0	1.8	0.0	-99.1
Cambodia	26.9	36.6	194.5	216.5	11.3
China	3,500.9	4,396.0	25,943.2	27,795.2	7.1
Hong Kong	30.9	36.5	242.7	233.5	-3.8
India	143.9	190.2	1,370.1	1,326.0	-3.2
Indonesia	80.9	109.7	681.3	793.9	16.5
Japan	1,012.6	1,012.6	8,169.0	8,739.9	7.0
Laos	0.6	1.0	5.4	5.3	-2.5
Macao	1.4	0.8	19.2	6.8	-64.6
Malaysia	181.2	195.8	1,514.6	1,495.7	-1.3
Maldives	0.0	0.0	0.1	0.0	-29.6
Mongolia	18.5	11.0	77.7	131.5	69.3
Myanmar	0.0	0.0	0.1	0.0	-74.3
Nepal	1.3	1.4	8.3	9.3	11.2
North Korea	0.0	0.0	0.1	0.1	16.8
Pakistan	22.0	27.5	162.8	178.9	9.9
Philippines	61.9	83.6	457.8	573.9	25.4
Singapore	67.2	76.6	835.3	623.7	-25.3
South Korea	382.8	486.3	3,850.5	3,841.2	-0.2
Sri Lanka	9.7	11.4	77.7	79.8	2.7
Taiwan	253.2	360.2	2,268.1	2,406.0	6.1
Thailand	207.9	221.7	1,491.5	1,534.4	2.9
Timor-Leste	0.4	0.0	2.7	0.8	-71.3
Viet Nam	97.4	113.4	695.6	725.3	4.3
Total	6,178.7	7,469.2	48,661.0	51,260.7	5.3
Oceania					
American Samoa	0.0	0.0	0.2	0.2	32.9
Australia	145.2	92.8	1,063.4	1,095.6	3.0
Christmas Island	0.0	0.0	0.0	0.1	672.5
Cocos (Keeling) Islands	0.0	0.0	0.1	0.0	-87.6
Cook Islands	0.0	0.0	0.0	0.0	-56.3
Fiji	0.8	0.2	4.4	4.0	-8.2
French Polynesia	0.0	0.1	0.3	0.6	79.0
Guam	0.0	0.0	0.2	0.0	-86.8
Heard Island and McDonald Islands	0.0	0.0	0.0	0.0	843.9
Kiribati	0.0	0.0	0.1	0.0	-77.5
Nauru	0.0	0.0	0.1	0.1	-50.2
New Caledonia	0.0	0.0	0.3	0.1	-61.7
New Zealand	37.0	40.8	322.5	312.4	-3.1
Niue	0.0	0.0	0.0	0.0	239.3
Norfolk Island	0.0	0.0	0.0	0.0	-54.4
Papua New Guinea	0.2	0.1	0.9	0.8	-7.1
Pitcairn	0.0	0.0	0.0	0.0	-62.9
Samoa	0.0	0.0	0.0	0.3	...
Solomon Islands	0.0	0.0	0.1	0.1	-15.2
Tonga	0.0	0.0	0.0	0.0	-63.7

Table 8 – continued

Imports by country, customs basis, not seasonally adjusted

	August		January to August		Change
	2009	2010	2009	2010	January to August 2010/ January to August 2009
	millions of dollars				percent
United States Minor Outlying Islands	0.4	0.3	3.4	2.8	-16.2
Vanuatu	0.1	0.0	0.1	0.4	168.1
Wallis and Futuna	0.0	0.0	0.0	0.0	553.6
Total	183.8	134.4	1,396.3	1,417.6	1.5
South America					
Argentina	58.7	130.4	466.0	626.3	34.4
Bolivia	7.5	20.6	56.9	87.8	54.4
Brazil	179.3	227.2	1,594.7	2,094.7	31.4
Chile	114.3	124.1	1,106.3	1,370.5	23.9
Colombia	48.4	76.7	499.1	518.9	4.0
Ecuador	18.2	21.8	167.7	141.5	-15.6
Falkland Islands (Malvinas)	0.0	0.0	0.0	0.0	-51.4
Guyana	22.7	27.4	193.2	176.1	-8.8
Paraguay	0.7	0.6	5.4	6.3	17.4
Peru	238.3	317.1	1,763.8	2,338.5	32.6
Suriname	32.7	60.7	350.8	348.2	-0.7
Uruguay	1.8	2.0	46.6	46.6	-0.2
Venezuela	111.9	106.0	757.6	568.6	-24.9
Total	834.6	1,114.6	7,008.1	8,324.1	18.8
Central America Antilles					
Anguilla	0.0	0.0	0.2	0.2	-26.2
Antigua and Barbuda	0.0	0.0	0.3	0.2	-42.0
Aruba	0.0	0.0	53.4	0.1	-99.8
Bahamas	0.0	4.4	26.7	27.7	3.7
Barbados	0.8	0.6	5.9	5.9	0.6
Belize	0.6	0.4	5.7	4.2	-26.9
Bermuda	0.2	0.1	3.9	0.7	-83.1
British Virgin Islands	0.2	0.0	0.5	0.2	-56.7
Cayman Islands	0.0	0.0	0.5	0.3	-43.5
Costa Rica	24.5	35.7	242.7	301.7	24.3
Cuba	42.2	62.1	293.0	447.6	52.8
Dominica	0.2	0.0	0.3	0.1	-79.7
Dominican Republic	10.8	13.5	95.0	91.9	-3.4
El Salvador	4.6	4.3	52.1	64.2	23.3
Grenada	0.0	0.0	0.2	0.4	81.3
Guatemala	26.6	27.4	185.5	215.6	16.2
Haiti	3.0	1.9	16.1	17.7	9.8
Honduras	11.4	12.7	98.4	107.6	9.3
Jamaica	11.9	9.0	98.8	107.0	8.3
Montserrat	0.0	0.1	0.1	0.2	307.6
Netherlands Antilles	0.2	0.0	10.1	0.2	-98.2
Nicaragua	7.5	22.1	58.5	123.8	111.7
Panama	4.4	5.7	22.1	52.8	139.0
Saint Kitts and Nevis	0.5	0.6	4.1	4.7	14.6
Saint Lucia	0.0	0.0	0.2	0.1	-4.2
Saint Vincent and the Grenadines	0.0	0.0	0.2	0.1	-16.9
Trinidad and Tobago	17.4	18.2	162.9	319.0	95.8
Turks and Caicos Islands	0.0	0.0	0.2	0.1	-63.7
Total	167.0	219.0	1,437.7	1,894.3	31.8
All countries	30,113.0	34,862.9	240,267.6	263,206.9	9.5

**Table 9-1
Imports by province of clearance, customs basis, not seasonally adjusted — August**

	Agricultural and fishing products	Energy products	Forestry products	Industrial goods	Machinery and equipment	Automotive products	Consumer goods	Special transactions trade	Total
millions of dollars									
Newfoundland and Labrador									
2009	1.4	217.6	0.0	3.9	9.3	0.1	0.7	4.2	237.1
2010	2.8	267.1	0.0	9.9	32.1	0.0	0.4	0.0	312.4
Prince Edward Island									
2009	0.2	0.0	0.0	0.0	0.1	0.0	0.0	0.0	0.3
2010	0.6	0.0	0.0	0.0	0.1	0.0	0.0	0.0	0.7
Nova Scotia									
2009	20.0	115.3	2.2	78.5	63.8	118.9	15.5	1.8	416.1
2010	45.8	126.5	1.2	98.6	94.9	224.9	18.8	1.7	612.3
New Brunswick									
2009	68.7	628.7	8.7	78.1	76.8	20.5	26.9	2.1	910.4
2010	85.1	622.8	11.2	77.2	79.4	35.8	16.7	1.8	929.9
Quebec									
2009	389.4	931.7	47.7	985.4	1,327.0	189.6	937.4	45.1	4,853.4
2010	414.4	1,251.8	61.5	1,217.0	1,437.9	186.7	1,047.5	40.8	5,657.5
Ontario									
2009	1,280.6	550.3	71.6	3,361.4	4,868.4	4,150.7	2,997.4	276.5	17,556.9
2010	1,357.7	533.9	76.9	4,138.9	5,874.4	4,707.4	3,348.8	545.9	20,583.9
Manitoba									
2009	80.4	59.5	7.4	224.1	404.0	122.5	135.3	8.4	1,041.6
2010	76.9	53.7	6.6	254.4	458.6	142.4	145.9	5.8	1,144.3
Saskatchewan									
2009	28.2	52.3	2.2	148.9	241.8	62.7	23.0	1.4	560.6
2010	31.0	63.2	1.7	160.5	316.0	75.7	20.2	0.6	668.8
Alberta									
2009	153.0	160.2	7.8	266.7	612.3	55.9	99.1	14.3	1,369.3
2010	147.3	225.1	12.7	441.8	677.4	99.5	127.3	12.1	1,743.2
British Columbia									
2009	368.4	249.6	45.9	554.7	941.2	352.5	629.3	13.3	3,154.8
2010	387.5	229.5	52.5	651.0	967.5	199.9	662.9	10.4	3,161.2
Yukon, Northwest Territories and Nunavut									
2009	8.3	1.5	0.0	0.3	0.7	0.1	0.0	1.6	12.5
2010	9.0	33.1	0.0	0.1	6.4	0.1	0.0	0.0	48.7
Total									
2009	2,398.6	2,966.7	193.5	5,702.1	8,545.3	5,073.6	4,864.5	368.6	30,113.0
2010	2,558.0	3,406.8	224.3	7,049.3	9,944.7	5,672.2	5,388.5	619.1	34,862.9

Table 9-2
Imports by province of clearance, customs basis, not seasonally adjusted — Year to date, January to August

	Agricultural and fishing products	Energy products	Forestry products	Industrial goods	Machinery and equipment	Automotive products	Consumer goods	Special transactions trade	Total
millions of dollars									
Newfoundland and Labrador									
2009	25.3	1,406.1	0.5	132.3	101.7	0.6	2.8	4.4	1,673.5
2010	29.0	1,774.5	0.1	34.8	157.4	0.8	4.2	2.9	2,003.6
Prince Edward Island									
2009	2.2	0.0	0.0	17.7	12.8	0.1	1.7	0.1	34.6
2010	2.9	0.0	0.1	5.4	1.2	0.1	0.2	0.1	9.9
Nova Scotia									
2009	196.7	966.1	9.0	540.1	695.4	1,604.2	117.3	19.9	4,148.8
2010	268.9	1,208.0	11.6	816.7	675.7	2,277.1	114.9	18.3	5,391.2
New Brunswick									
2009	288.6	4,105.8	65.6	612.6	730.5	193.5	150.2	16.1	6,162.9
2010	335.4	5,006.4	73.3	701.2	663.2	293.7	186.1	14.9	7,274.1
Quebec									
2009	2,944.6	8,018.9	465.5	8,819.7	12,603.6	1,325.2	7,574.5	343.6	42,095.5
2010	2,887.7	10,697.9	473.1	9,915.7	11,204.4	1,421.0	7,032.5	364.0	43,996.3
Ontario									
2009	10,866.7	3,662.1	586.3	27,846.7	39,926.8	26,284.6	23,518.2	2,325.4	135,016.8
2010	10,589.0	3,222.9	664.8	32,762.5	41,799.4	38,136.5	23,585.5	2,629.4	153,389.9
Manitoba									
2009	657.4	198.6	58.4	2,251.7	3,853.4	907.4	1,123.0	64.9	9,114.9
2010	584.4	385.1	62.3	2,342.4	3,739.4	898.8	1,043.4	55.7	9,111.6
Saskatchewan									
2009	229.0	329.7	19.0	1,482.9	2,308.6	512.2	169.0	22.1	5,072.4
2010	214.3	446.6	16.3	1,480.6	2,462.8	645.6	170.2	11.1	5,447.6
Alberta									
2009	1,238.3	1,863.3	69.5	2,970.4	4,861.9	495.6	777.9	90.7	12,367.6
2010	1,241.9	1,816.1	79.8	3,122.3	4,627.3	707.4	814.4	92.3	12,501.5
British Columbia									
2009	2,985.9	1,588.9	338.8	4,534.9	7,900.4	2,468.4	4,558.7	109.5	24,485.6
2010	2,940.9	2,063.6	423.1	4,754.2	7,505.8	1,856.4	4,301.2	104.6	23,949.9
Yukon, Northwest Territories and Nunavut									
2009	41.8	30.1	0.0	1.6	18.3	0.5	0.2	2.5	95.0
2010	48.1	34.9	0.0	1.0	46.3	0.4	0.2	0.3	131.3
Total									
2009	19,476.6	22,169.7	1,612.6	49,210.6	73,013.3	33,792.3	37,993.4	2,999.1	240,267.6
2010	19,142.5	26,656.0	1,804.6	55,936.6	72,883.0	46,237.8	37,252.9	3,293.6	263,206.9

Technical notes

The Canadian international merchandise trade statistical program

Introduction

The objective of this text is to provide a general overview of the Canadian International Merchandise Trade Statistical Program, with special reference to concepts and definitions. The text is intended for the general user and simplicity is emphasized. More technical details can be obtained from the International Trade Division, Statistics Canada upon request.

Conceptual framework

1. Objectives and coverage: The primary objective of the Canadian International Merchandise Trade Statistical Program is to measure the change in the stock of material resources of Canada resulting from the movement of merchandise into or out of the country. Information on imports and exports are inputs into the System of National Accounts, particularly in the balance of payments and gross domestic product, and are used in the formulation of trade and budgetary policies. Governments, importers, exporters, manufacturers and shipping companies use international merchandise trade statistics to:

- monitor import penetration and export performance,
- monitor commodity price and volume changes,
- examine transport implications.

2. Trade statistics (customs basis / balance of payments basis): Merchandise trade statistics are reported and presented on two different bases: customs basis and balance of payment basis.

When goods are imported into or exported from Canada, declarations must be filed with customs, giving such information as description and value of the goods, origin and port of clearance of commodities and mode of transport. Most of this information is required for the purposes of customs administration. Statistics developed from administrative records of customs are commonly referred to as customs-based trade statistics.

Customs-based trade statistics are more accurate at measuring imports than they are at measuring exports. This is the case because customs are typically more vigilant with respect to goods entering the country than they are with goods leaving the country.

Customs-based export statistics may understate or incorrectly portray the destination of exports. Export statistics are understated when the proper documentation is not filed with Customs. Exports are incorrectly portrayed when the country of final destination is inaccurately reported on the customs documentation. This occurs most frequently when goods are routed through an intermediary country before continuing on to their final destination.

Statistics Canada does not have a measure of undercoverage but periodically conducts reconciliation exercises with its major trading partners, excluding the United States.

On January 1, 1990, Canada entered into a memorandum of understanding with the United States concerning the exchange of import data. As a consequence, each administration is using the other's import data to replace its own export data. Canada's international merchandise trade statistics are, therefore, no longer derived exclusively from the administrative records of the Canada Border Services Agency, but from United States Customs records as well.

Customs-based information is adjusted to conform with the National Accounts concepts and definitions. The adjustments to derive balance of payments-based trade data include adjustments related to trade definition, valuation and timing. The principal difference between the two trade concepts is that customs-based merchandise trade statistics cover the physical movement of goods as they are reflected in customs documents while balance of payments-adjusted data are intended to cover all economic transactions that involve merchandise trade between residents and non-residents. The present document describes the concepts and processes pertaining to the customs-based trade statistics only. (For further information on balance of payments-adjusted data, see the publication *Canada's Balance of International Payments*, Statistics Canada (Catalogue no. 67-001-X).

3. System of trade: Canadian trade statistics are compiled according to the general system of trade, as defined by the United Nations Statistical Office. Under this system, imports include all goods that have crossed Canada's territorial boundary, whether for immediate consumption in Canada or for storage in bonded customs warehouses. Domestic exports include goods grown, extracted or manufactured in Canada, including goods of foreign origin that have been materially transformed in Canada. Re-exports are exports of goods of foreign origin that have not been materially transformed in Canada, including foreign goods withdrawn for export from bonded customs warehouses. Total exports are the sum of domestic exports and re-exports. Thus the general trade system, in principal, presents all goods entering the country (imports) and all goods leaving the country (exports). It differs from the special system of trade in the treatment of imported goods into bonded customs warehouses. Under the 'special' system, these goods are counted only if and when they are withdrawn from customs warehouses for home consumption. They are not counted in export statistics unless they have first cleared customs.

Conceptually, under the general system, the statistical frontier coincides with the geographical boundary, while under the 'special' system, it coincides with the customs boundary.

4. Valuation: For customs purposes, imports are recorded at values established according to the provisions of the Customs Act, which, since January 1, 1985, reflects valuation methods based on the General Agreement on Tariffs and Trade (GATT) Valuation Code System. In general, the value for duty of imported goods must be equivalent to the transaction value or the price actually paid.

To determine the transaction value of imported goods, all transportation and associated costs arising in respect of the goods being appraised prior to and at the place of direct shipment to Canada, are to be added to the price of the goods. Therefore, Canadian imports are valued Free on Board (FOB), place of direct shipment to Canada. It excludes freight and insurance costs in bringing the goods to Canada from the point of direct shipment.

Countries other than the United States, exports are, in principal, valued or recorded at the values declared on export documents, which usually reflect the transaction value, i.e., actual selling price or, in the case of a non-arm's length transaction, the transfer price used for company accounting purposes. Canadian exports to overseas countries are valued at F.O.B. port of exit, including domestic freight charges to that point but net of discounts and allowances. As of January, 1990, Canadian exports to the U.S. are valued F.O.B. point of exit from Canada. Prior to 1990, they were valued F.O.B. place of lading net of freight charges, discounts and allowances.

5. Statistical period: The reference period is the calendar month and the calendar year. The closing of the statistical month for imports and Canadian exports to the United States is defined as the last calendar day of the month, based as closely as practicable on the date of clearance from customs.

The closing of the statistical month for exports, to countries other than the United States, is also defined as the last calendar day of the month. Those export documents that are received too late for incorporation in the current month are assigned to the month the transaction took place. If a monthly summary report from a high volume exporter is not received on time, the data are imputed for the current month and revised with the trade value in the following statistical month.

6. Trading partner attribution (country of origin/destination): Exports are attributed to the country, which is the last known destination of the goods at the time of export. Exports to the United States are attributed to the state of destination.

Imports are attributed to their country of origin, that is, the country in which the goods were grown, extracted or manufactured in accordance to the rules of origin administered by the Canada Border Services Agency. Imports

from the United States are attributed to the state of origin. Prior to 1988, most imports were attributed to the country of export/consignment, with the exception of imports from Central and South America.

7. Principal trading areas: The 'principal trading areas' are country groupings defined as follows:

United States: includes trade with Puerto Rico and the U.S. Virgin Islands

Japan

European Union (EU): Austria, Belgium, Bulgaria, Cyprus, Czech Republic, Denmark, Estonia, Finland, France, Germany, Greece, Hungary, Ireland, Italy, Latvia, Lithuania, Luxembourg, Malta, Netherlands, Poland, Portugal, Romania, Slovakia, Slovenia, Spain, Sweden and United Kingdom

Other Organisation for Economic Co-operation and Development (OECD): Australia, Canada, Iceland, Mexico, New Zealand, Norway, South Korea, Switzerland, and Turkey. (The EU countries, United States, and Japan are also members of OECD)

Other countries: all countries and territories other than the United States, Japan, EU and other OECD

8. Legal framework: Import and export statistics with countries other than the United States are derived from information contained in administrative records collected by the Canada Border Services Agency under the Customs Act. Copies of these documents (or information therefrom) are sent to Statistics Canada in accordance with Section 25 of the Statistics Act. It follows that the disclosure of trade statistics is governed by both the Customs Act and the Statistics Act and is subject to the provisions of Section 17(2)(a) of the latter. Disclosure of export statistics to the United States is now governed by a memorandum of understanding that provides for the exchange of detailed import statistics between Canada and the United States.

Contact information

Questions concerning details of methods not covered by these notes should be addressed to the Marketing and Client Services Section, International Trade Division, Statistics Canada, 170 Tunney's Pasture Driveway, Ottawa, Ontario, K1A 0T6.

Telephone: 1-800-294-5583 or 613-951-9647

Facsimile: 1-800-664-0055 613-951-0117

Internet: trade@statcan.gc.ca