

Catalogue no. 65-001-X

Canadian International Merchandise Trade

July 2010



Statistics
Canada

Statistique
Canada

Canada

How to obtain more information

For information about this product or the wide range of services and data available from Statistics Canada, visit our website at www.statcan.gc.ca, e-mail us at infostats@statcan.gc.ca, or telephone us, Monday to Friday from 8:30 a.m. to 4:30 p.m., at the following numbers:

Statistics Canada's National Contact Centre

Toll-free telephone (Canada and the United States):

Inquiries line	1-800-263-1136
National telecommunications device for the hearing impaired	1-800-363-7629
Fax line	1-877-287-4369

Local or international calls:

Inquiries line	1-613-951-8116
Fax line	1-613-951-0581

Depository Services Program

Inquiries line	1-800-635-7943
Fax line	1-800-565-7757

To access this product

This product, Catalogue no. 65-001-X, is available free in electronic format. To obtain a single issue, visit our website at www.statcan.gc.ca and browse by "Key resource" > "Publications."

Standards of service to the public

Statistics Canada is committed to serving its clients in a prompt, reliable and courteous manner. To this end, Statistics Canada has developed *standards of service* that its employees observe. To obtain a copy of these service standards, please contact Statistics Canada toll-free at 1-800-263-1136. The service standards are also published on www.statcan.gc.ca under "About us" > "Providing services to Canadians."

Statistics Canada
International Trade Division

Canadian International Merchandise Trade

July 2010

Published by authority of the Minister responsible for Statistics Canada

© Minister of Industry, 2010

All rights reserved. The content of this electronic publication may be reproduced, in whole or in part, and by any means, without further permission from Statistics Canada, subject to the following conditions: that it be done solely for the purposes of private study, research, criticism, review or newspaper summary, and/or for non-commercial purposes; and that Statistics Canada be fully acknowledged as follows: Source (or "Adapted from", if appropriate): Statistics Canada, year of publication, name of product, catalogue number, volume and issue numbers, reference period and page(s). Otherwise, no part of this publication may be reproduced, stored in a retrieval system or transmitted in any form, by any means—electronic, mechanical or photocopy—or for any purposes without prior written permission of Licensing Services, Client Services Division, Statistics Canada, Ottawa, Ontario, Canada K1A 0T6.

September 2010

Catalogue no. 65-001-X, vol. 64, no. 7

ISSN 1480-8781

Frequency: Monthly

Ottawa

Cette publication est également disponible en français.

Note of appreciation

Canada owes the success of its statistical system to a long-standing partnership between Statistics Canada, the citizens of Canada, its businesses, governments and other institutions. Accurate and timely statistical information could not be produced without their continued cooperation and goodwill.

User information

Symbols

The following standard symbols are used in Statistics Canada publications:

- . not available for any reference period
- .. not available for a specific reference period
- ... not applicable
- 0 true zero or a value rounded to zero
- 0^s value rounded to 0 (zero) where there is a meaningful distinction between true zero and the value that was rounded
- p preliminary
- r revised
- x suppressed to meet the confidentiality requirements of the *Statistics Act*
- E use with caution
- F too unreliable to be published

Note to users

All totals are calculated from full figures and rounded independently; consequently, totals may not equal the sum of their components.

The data is based on commodity groups (sector, subsector and major group).

Table of contents

Highlights	5
Analysis	7
Related products	12
Statistical tables	
1 Merchandise trade of Canada, balance of payments basis, seasonally adjusted	16
1-1 Current dollars	16
1-2 Constant dollars, 2002	17
1-3 Price indices (Laspeyres)	18
2 Exports by commodity groupings, balance of payments basis, seasonally adjusted	19
2-1 Current dollars	19
2-2 Constant dollars, 2002	21
3 Domestic exports to selected countries, customs basis, not seasonally adjusted	23
3-1 July	23
3-2 Year to date, January to July	24
4 Domestic exports by country, customs basis, not seasonally adjusted	25
5 Exports by province of origin, customs basis, not seasonally adjusted	29
5-1 July	29
5-2 Year to date, January to July	30
6 Imports by commodity groupings, balance of payments basis, seasonally adjusted	31
6-1 Current dollars	31
6-2 Constant dollars, 2002	33
7 Imports from selected countries, customs basis, not seasonally adjusted	35
7-1 July	35
7-2 Year to date, January to July	36
8 Imports by country, customs basis, not seasonally adjusted	37

Table of contents – continued

9	Imports by province of clearance, customs basis, not seasonally adjusted	41
9-1	July	41
9-2	Year to date, January to July	42

Data quality, concepts and methodology

	Technical notes	43
--	-----------------	----

Highlights

Canada's merchandise exports fell 0.7% in July, as volumes declined in most sectors while imports grew 2.0%. As a result, Canada's trade deficit with the world widened to \$2.7 billion in July from \$1.8 billion in June.

Exports declined from \$33.0 billion in June to \$32.8 billion in July, the fourth decrease in six months. Overall, export volumes declined 0.6%, as volumes fell in all export sectors with the exception of industrial goods and materials. Export prices edged down 0.2% during the month.

Machinery and equipment, other consumer goods and forestry products led the decrease in the value of exports. A gain in exports of industrial goods and materials moderated the decline.

Imports grew from \$34.9 billion in June to \$35.5 billion in July, the highest level since November 2008. The gain represented the fourth increase in six months. Import volumes rose 1.4% while prices increased 0.6%.

Energy products accounted for over half the growth in overall imports, followed by automotive products and machinery and equipment. In contrast, imports of industrial goods and materials fell in July.

Exports to the United States fell by 2.2% while imports rose by 2.9%. As a result, Canada's trade surplus with the United States narrowed to \$1.2 billion in July from \$2.4 billion in June. Canada's trade surplus with the United States has been declining since December 2009, as exports to the United States have fallen by 2.2% while imports have grown by 14.1% during that period.

Exports to countries other than the United States rose 3.7%, as a result of higher exports to the European Union, while imports increased 0.2%. Thus, Canada's trade deficit with countries other than the United States shrank to \$3.9 billion in July from \$4.2 billion in June.

Note to readers

Merchandise trade is one component of Canada's international balance of payments, which also includes trade in services, investment income, current transfers as well as capital and financial flows.

International merchandise trade data by country are available on both a balance of payments and a customs basis for the United States, Japan and the United Kingdom. Trade data for all other individual countries are available on a customs basis only. Balance of payments data are derived from customs data by making adjustments for characteristics such as valuation, coverage, timing and residency. These adjustments are made to conform to the concepts and definitions of the Canadian System of National Accounts.

Data in this release are on a balance of payments basis, seasonally adjusted in current dollars. Constant dollars are calculated using the Laspeyres volume formula.

Revisions

In general, merchandise trade data are revised on an ongoing basis for each month of the current year. Current year revisions are reflected in both the customs and balance of payments based data. Revisions to customs based data for the previous year are released on a quarterly basis. Revisions to balance of payments based data for the three previous years are released annually in June.

Factors influencing revisions include late receipt of import and export documentation, incorrect information on customs forms, replacement of estimates with actual figures, changes in classification of merchandise based on more current information, and changes to seasonal adjustment factors.

Revised data are available in the appropriate CANSIM tables.

Chart 1
Exports and imports, seasonally adjusted, on a balance of payments basis

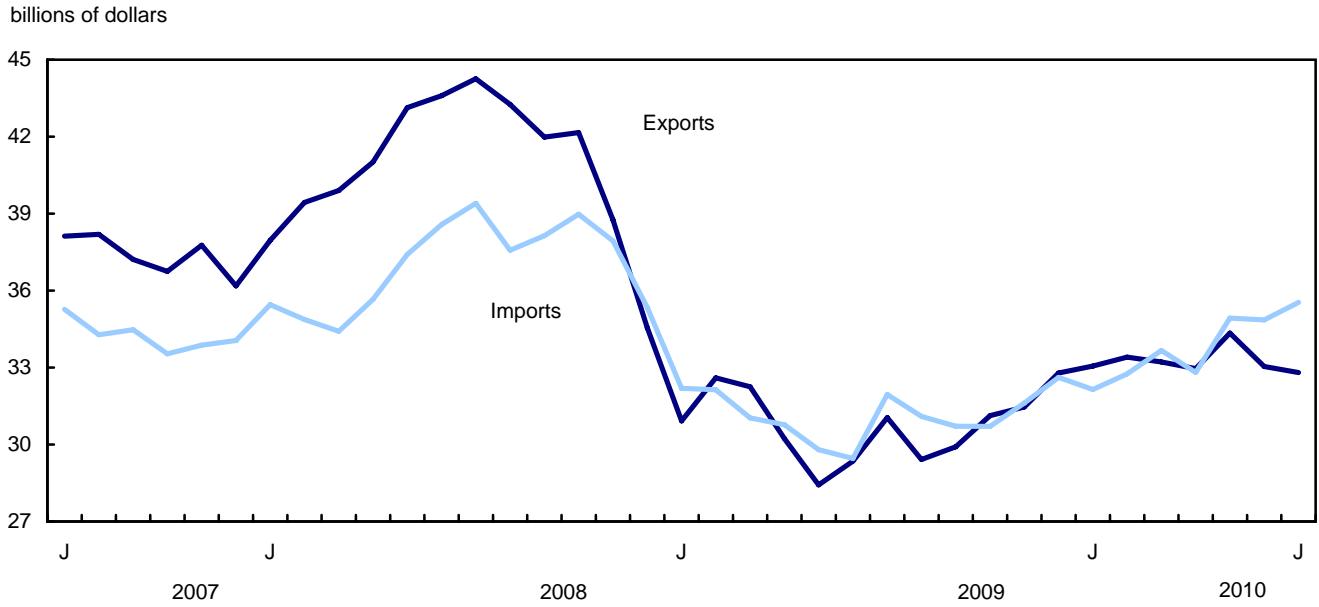
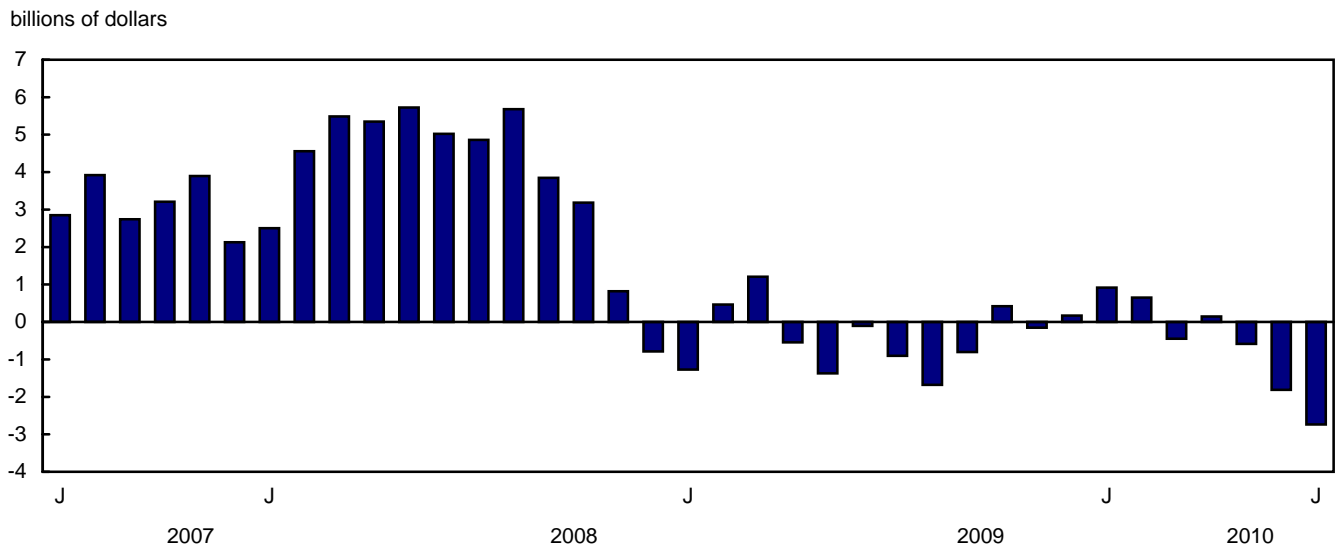


Chart 2
Trade balance, seasonally adjusted, on a balance of payments basis



Analysis

Exports decline for a second consecutive month

After three months of growth, exports of machinery and equipment declined 1.9% to \$6.4 billion in July, as volumes fell. Aircraft, engines and parts, down 9.6%, led the decrease. Exports of industrial machinery, namely gas turbines, fell 7.0%. Higher exports of other equipment and tools and other transportation equipment moderated the decline.

Exports of other consumer goods fell 7.3% to \$1.3 billion, the lowest level since June 2000. The decrease was mostly a result of falling volumes. Lower exports of medicinal and pharmaceutical products largely accounted for the decline.

Exports of forestry products declined 5.3% to \$1.8 billion, following ten consecutive months of growth. Exports of lumber fell 18.7% in July after a solid gain a month earlier, as softwood lumber's export tariffs were lifted temporarily in June. Export volumes in the forestry products sector decreased 4.0% in July.

Exports of industrial goods and materials grew 2.3% to \$7.5 billion in July, after three months of decline. The gain reflected a 4.9% volume increase. Precious metal exports (+37.2%) largely accounted for the gain in the sector, followed by other crude non-metallic minerals. Exports of metal ores fell in July, mainly copper ores and iron ores.

Crude petroleum leads the growth in imports

Energy products imports rose 11.9% to \$3.3 billion, as volumes and prices increased. Imports of crude petroleum grew 19.0%, largely the result of higher volumes. Petroleum and coal also increased, on the strength of aviation fuel and metallurgical coke. Coal and other related products, namely natural gas, declined during the month.

Imports of automotive products increased 2.9% to \$6.2 billion, as volumes grew 2.7%. Imports of passenger autos rose 9.1%, a third consecutive monthly gain.

Imports of machinery and equipment increased 1.3% to \$9.8 billion, as volumes rose for a sixth consecutive month. Widespread gains in this sector were led by a 7.3% increase in imports of other communication and related equipment. Dampening the growth in the sector were lower imports of engines, turbines and motors, which fell 31.0% after reaching a record high in June.

Following two months of increases, imports of industrial goods and materials declined 3.1% to \$7.3 billion in July. The decrease reflected a 5.0% drop in volumes while prices rose for a third straight month. Precious metals followed by organic chemicals led the decline in the sector.

Chart 1
Exports of machinery and equipment, seasonally adjusted, on a balance of payments basis

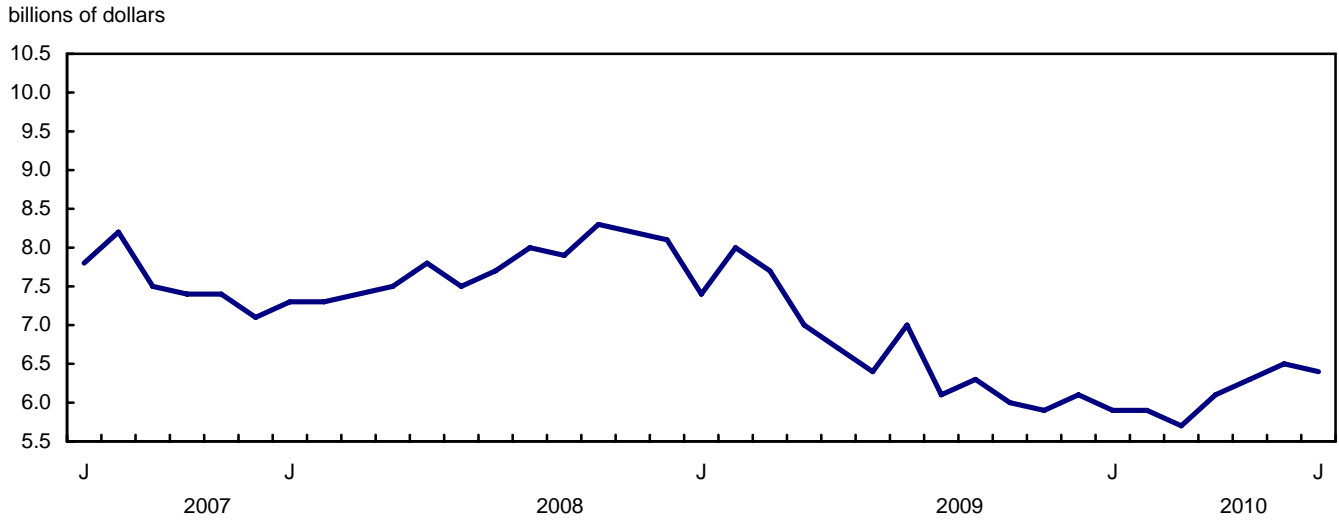


Chart 2
Exports of other consumer goods, seasonally adjusted, on a balance of payments basis

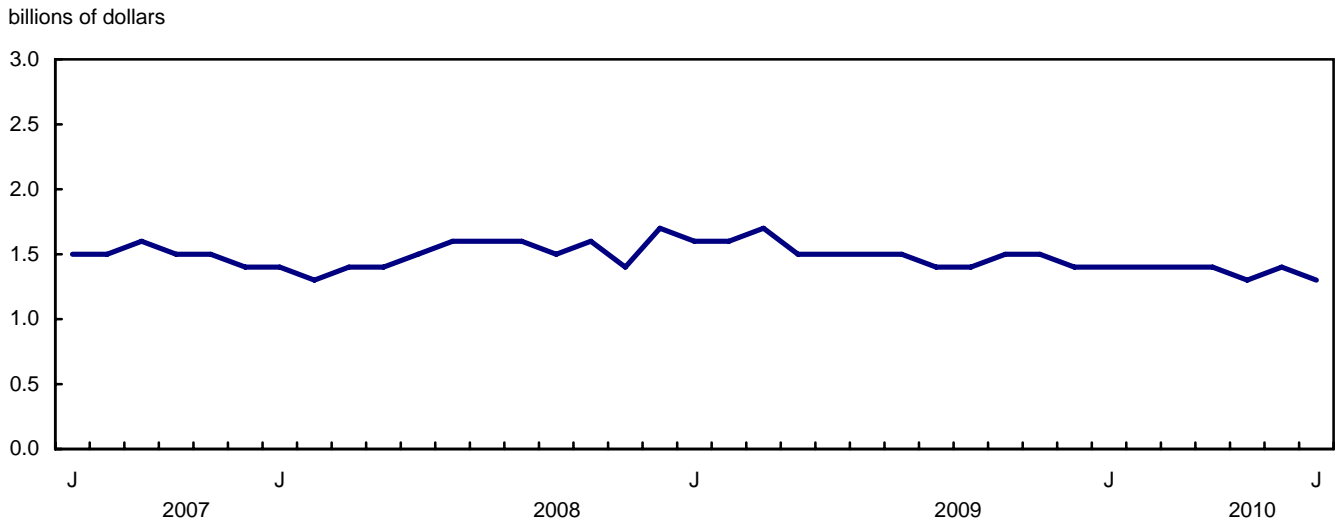


Chart 3
Imports of energy products, seasonally adjusted, on a balance of payments basis

billions of dollars

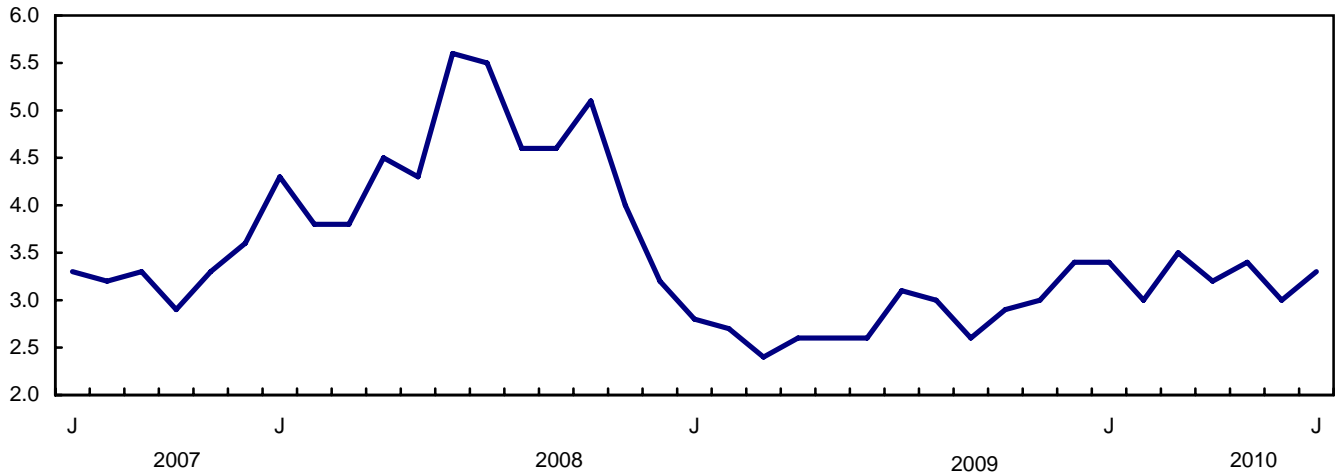
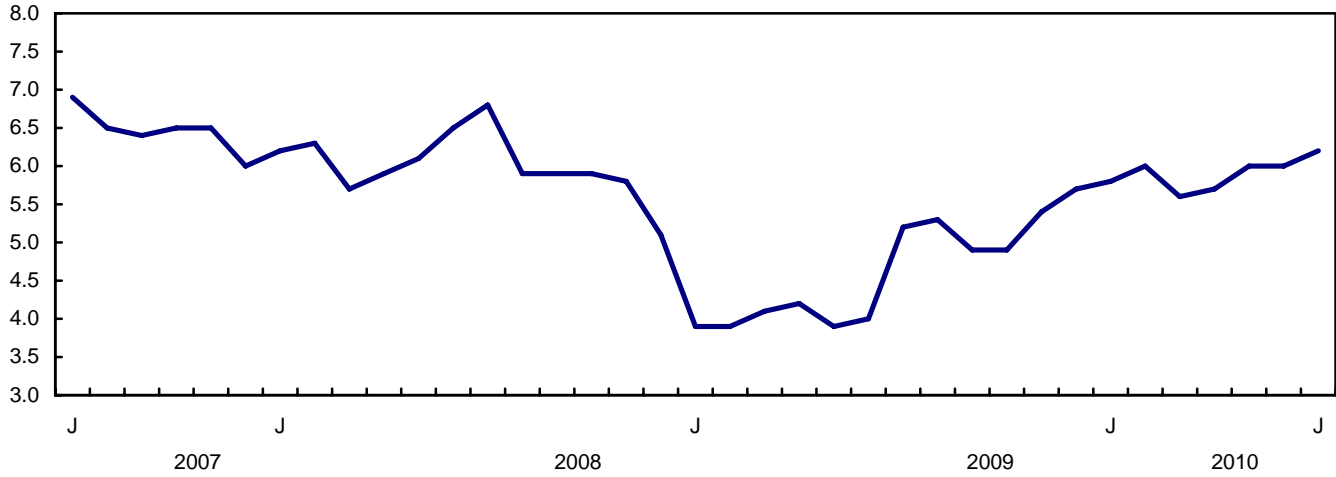


Chart 4
Imports of automotive products, seasonally adjusted, on a balance of payments basis

billions of dollars



Text table 1
Merchandise trade by principal trading area, balance of payments basis, seasonally adjusted

	June	July	Change		Year to date			July 2010/ July 2009	
	2010	2010			2009	2010	Change		
	millions of dollars		percent		millions of dollars			percent	
Export to									
United States	24,827	24,282	-545	-2.2	156,485	173,224	16,740	10.7	7.7
Japan	852	854	1	0.2	5,374	5,353	-20	-0.4	12.4
European Union ¹	2,492	2,940	448	18.0	18,690	19,475	785	4.2	13.2
Other Organisation for Economic Co-operation and Development ²	1,395	1,308	-87	-6.2	9,519	10,607	1,088	11.4	-18.7
Other countries	3,478	3,420	-58	-1.7	24,758	24,177	-581	-2.3	-3.4
Total	33,044	32,804	-240	-0.7	214,825	232,837	18,011	8.4	5.7
Imports from									
United States	22,463	23,115	653	2.9	137,241	150,693	13,451	9.8	12.6
Japan	950	792	-158	-16.6	5,430	5,755	325	6.0	4.3
European Union ¹	3,056	3,142	87	2.8	22,543	22,459	-84	-0.4	1.3
Other Organisation for Economic Co-operation and Development ²	2,283	2,376	93	4.1	14,555	16,663	2,108	14.5	0.7
Other countries	6,106	6,113	7	0.1	37,576	41,133	3,557	9.5	17.5
Total	34,858	35,539	681	2.0	217,345	236,703	19,358	8.9	11.2
Balance									
United States	2,364	1,167	-1,197	...	19,243	22,531	3,288
Japan	-98	62	159	...	-56	-402	-345
European Union ¹	-564	-203	361	...	-3,852	-2,983	869
Other Organisation for Economic Co-operation and Development ²	-888	-1,067	-179	...	-5,037	-6,057	-1,020
Other countries	-2,628	-2,693	-65	...	-12,818	-16,956	-4,138
Total	-1,813	-2,735	-921	...	-2,520	-3,866	-1,346

1. European Union includes: Austria, Belgium, Bulgaria, Cyprus, Czech Republic, Denmark, Estonia, Finland, France, Germany, Greece, Hungary, Ireland, Italy, Latvia, Lithuania, Luxembourg, Malta, Netherlands, Poland, Portugal, Romania, Slovakia, Slovenia, Spain, Sweden and United Kingdom.
2. Other Organisation for Economic Co-operation and Development includes: Australia, Canada, Iceland, Mexico, New Zealand, Norway, South Korea, Switzerland and Turkey.

Text table 2
Reconciliation of customs and balance of payments trade data, not seasonally adjusted

	2010						2009
	July	June	May	April	March	February	Annual
	millions of dollars						
Exports							
Customs basis	30,720	34,444	33,786	32,632	34,737	30,351	360,035
Balance of payments adjustments	873	-174	783	734	860	702	9,494
Valuation and residency							
Inland freight	529	553	561	532	544	501	6,214
Other valuation and residency	-793	-1,261	-1,379	-772	-709	-774	-7,775
Timing	77	38	49	-10	-23	16	-163
Coverage	1,060	496	1,552	984	1,048	959	11,218
Balance of payments basis	31,593	34,270	34,569	33,366	35,597	31,053	369,529
Imports							
Customs basis	33,187	35,346	33,981	32,622	35,111	29,865	365,180
Balance of payments adjustments	852	894	661	507	1,275	937	8,917
Valuation and residency							
Inland freight	737	772	753	725	771	646	7,728
Other valuation and residency	-1	38	31	38	124	33	182
Timing	0	0	0	0	0	0	0
Coverage	116	84	-123	-256	380	258	1,007
Balance of payments basis	34,039	36,240	34,642	33,129	36,386	30,802	374,097

Related products

Selected publications from Statistics Canada

65-208-X	International Merchandise Trade Annual Review
65-506-X	A Profile of Canadian Exporters
65F0013X	Canadian International Merchandise Trade Database
65F0019X	A Database for Analysis of International Markets
65F0020X	Data Integration - International Trade Data and Manufacturing Shipments Data

Selected CANSIM tables from Statistics Canada

228-0001	Merchandise imports and exports, by major groups and principal trading areas for all countries, monthly
228-0002	Merchandise imports and exports, by major groups and principal trading areas for all countries, quarterly
228-0003	Merchandise imports and exports, by major groups and principal trading areas for all countries, annual
228-0033	Imports, customs-based, by province of clearance, monthly
228-0034	Domestic exports, customs-based, by province of origin, monthly
228-0041	Merchandise imports and exports by sector and sub-sector, customs and balance of payments basis, for all countries, monthly
228-0042	Merchandise imports and exports by sector and sub-sector, customs and balance of payments basis, for all countries, quarterly
228-0043	Merchandise imports and exports by sector and sub-sector, customs and balance of payments basis, for all countries, annual
228-0047	Merchandise imports and exports balance of payments and customs-based price and volume indexes for all countries, monthly
228-0048	Merchandise imports and exports balance of payments and customs-based price and volume indexes for all countries, quarterly
228-0049	Merchandise imports and exports balance of payments and customs-based price and volume indexes for all countries, annual

228-0050	Merchandise imports and exports customs-based price indexes, Canada and United States trade, and Standard International Trade Classification (SITC revision 3) price indexes for all countries and United States, monthly
228-0051	Merchandise imports and exports customs-based price indexes, Canada and United States trade, and Standard International Trade Classification (SITC revision 3) price indexes for all countries and United States, quarterly
228-0052	Merchandise imports and exports customs-based price indexes, Canada and United States trade, and Standard International Trade Classification (SITC revision 3) price indexes for all countries and United States, annual
228-0053	Merchandise import and export price and volume indexes by sector and sub-sector, customs and balance of payments basis, for all countries, monthly
228-0054	Merchandise import and export price and volume indexes by sector and sub-sector, customs and balance of payments basis, for all countries, quarterly
228-0055	Merchandise import and export price and volume indexes by sector and sub-sector, customs and balance of payments basis, for all countries, annual
228-0056	Merchandise imports and exports by sector, balance of payments basis, for all countries, seasonally adjusted, Fisher formula, monthly
228-0057	Merchandise imports and exports by sector, balance of payments basis, for all countries, seasonally adjusted, Fisher formula, quarterly

Selected surveys from Statistics Canada

2201	Canadian International Merchandise Trade (Customs Basis)
2202	Canadian International Merchandise Trade (Balance of Payments Basis)
2203	International Trade Price Indexes

Selected summary tables from Statistics Canada

- *Canada: Economic and financial data*
- *Imports, exports and trade balance of goods on a balance-of-payments basis, by country or country grouping*
- *Exports of goods on a balance-of-payments basis*
- *Imports of goods on a balance-of-payments basis*

- *Merchandise trade of Canada (monthly)*
- *Economic indicators, by province and territory (monthly and quarterly)*
- *Latest statistics (monthly)*

Statistical tables

Table 1-1
Merchandise trade of Canada, balance of payments basis, seasonally adjusted — Current dollars

	Exports	Imports	Trade balance	Period to period change		
				Exports	Imports	Balance
	millions of dollars			percent		millions of dollars
2006	453,952	404,345	49,606	0.0	0.0	0
2007	463,120	415,683	47,437	2.0	2.8	-2,169
2008	489,995	443,752	46,244	5.8	6.8	-1,194
2009	369,529	374,097	-4,568	-24.6	-15.7	-50,812
2008						
First quarter	117,294	104,743	12,551	6.0	3.2	3,321
Second quarter	127,735	111,640	16,095	8.9	6.6	3,544
Third quarter	129,499	115,116	14,383	1.4	3.1	-1,712
Fourth quarter	115,468	112,252	3,215	-10.8	-2.5	-11,168
2009						
First quarter	95,769	95,366	403	-17.1	-15.0	-2,812
Second quarter	88,008	90,028	-2,019	-8.1	-5.6	-2,422
Third quarter	90,377	93,765	-3,388	2.7	4.2	-1,369
Fourth quarter	95,375	94,939	436	5.5	1.3	3,824
2010						
First quarter	99,685	98,564	1,122	4.5	3.8	685
Second quarter	100,347	102,600	-2,253	0.7	4.1	-3,375
2009						
January	30,921	32,192	-1,272	-10.5	-8.9	-483
February	32,599	32,133	466	5.4	-0.2	1,737
March	32,249	31,040	1,209	-1.1	-3.4	743
April	30,231	30,774	-543	-6.3	-0.9	-1,752
May	28,424	29,797	-1,373	-6.0	-3.2	-830
June	29,353	29,456	-104	3.3	-1.1	1,269
July	31,048	31,952	-904	5.8	8.5	-800
August	29,419	31,099	-1,680	-5.2	-2.7	-777
September	29,910	30,714	-804	1.7	-1.2	876
October	31,128	30,708	420	4.1	0.0	1,224
November	31,462	31,616	-154	1.1	3.0	-573
December	32,785	32,615	170	4.2	3.2	324
2010						
January	33,061	32,144	916	0.8	-1.4	746
February	33,406	32,755	651	1.0	1.9	-266
March	33,219	33,665	-446	-0.6	2.8	-1,096
April	32,958	32,813	145	-0.8	-2.5	591
May	34,345	34,929	-585	4.2	6.4	-730
June	33,044	34,858	-1,813	-3.8	-0.2	-1,229
July	32,804	35,539	-2,735	-0.7	2.0	-921

Note(s): Because of rounding, monthly data may not add up to quarterly data and quarterly data may not add up to annual data.

Table 1-2
Merchandise trade of Canada, balance of payments basis, seasonally adjusted — Constant dollars, 2002

	Exports	Imports	Trade balance	Period to period change	
				Exports	Imports
	millions of dollars			percent	
2006	442,729	457,196	-14,466	0.0	0.0
2007	449,015	484,005	-34,990	1.4	5.9
2008	415,119	485,902	-70,783	-7.5	0.4
2009	345,911	405,261	-59,350	-16.7	-16.6
2008					
First quarter	107,071	123,094	-16,023	-2.6	-1.2
Second quarter	106,872	125,669	-18,797	-0.2	2.1
Third quarter	104,062	123,918	-19,856	-2.6	-1.4
Fourth quarter	97,114	113,221	-16,107	-6.7	-8.6
2009					
First quarter	87,218	97,521	-10,303	-10.2	-13.9
Second quarter	83,055	96,718	-13,663	-4.8	-0.8
Third quarter	86,329	104,265	-17,935	3.9	7.8
Fourth quarter	89,308	106,757	-17,449	3.5	2.4
2010					
First quarter	91,436	110,740	-19,304	2.4	3.7
Second quarter	94,260	116,819	-22,558	3.1	5.5
2009					
January	27,994	33,229	-5,235	-9.4	-7.4
February	29,778	32,701	-2,923	6.4	-1.6
March	29,446	31,592	-2,145	-1.1	-3.4
April	28,359	31,963	-3,604	-3.7	1.2
May	27,195	32,360	-5,165	-4.1	1.2
June	27,502	32,395	-4,893	1.1	0.1
July	29,630	35,032	-5,402	7.7	8.1
August	28,012	34,860	-6,847	-5.5	-0.5
September	28,687	34,373	-5,686	2.4	-1.4
October	29,629	34,757	-5,128	3.3	1.1
November	29,376	35,625	-6,249	-0.9	2.5
December	30,304	36,375	-6,071	3.2	2.1
2010					
January	30,251	36,254	-6,003	-0.2	-0.3
February	30,392	36,787	-6,395	0.5	1.5
March	30,792	37,699	-6,906	1.3	2.5
April	31,056	37,748	-6,692	0.9	0.1
May	32,011	39,448	-7,437	3.1	4.5
June	31,194	39,623	-8,429	-2.6	0.4
July	31,018	40,169	-9,151	-0.6	1.4

Note(s): Because of rounding, monthly data may not add up to quarterly data and quarterly data may not add up to annual data.

Table 1-3
Merchandise trade of Canada, balance of payments basis, seasonally adjusted — Price indices (Laspeyres)

	2002=100			Period to period change		
	Exports	Imports	Terms of trade	Exports	Imports	Terms of trade
	price indices (Laspeyres)			percent		
2006	105.1	92.5	113.6	0.0	0.0	0.0
2007	107.1	91.4	117.1	1.9	-1.2	3.1
2008	116.3	97.5	119.3	8.6	6.6	2.0
2009	105.4	97.1	108.6	-9.4	-0.4	-9.0
2008						
First quarter	111.2	90.1	123.4	5.6	3.1	2.5
Second quarter	118.5	94.7	125.1	6.6	5.1	1.5
Third quarter	122.1	100.9	121.0	3.1	6.6	-3.5
Fourth quarter	113.7	104.1	109.2	-6.9	3.2	-10.1
2009						
First quarter	109.5	101.5	107.8	-3.7	-2.5	-1.2
Second quarter	104.6	97.9	106.8	-4.5	-3.6	-0.9
Third quarter	102.6	95.2	107.8	-1.9	-2.7	0.9
Fourth quarter	105.7	93.8	112.7	3.0	-1.5	4.5
2010						
First quarter	107.3	94.2	113.9	1.5	0.5	1.0
Second quarter	106.3	94.2	112.9	-0.9	-0.1	-0.9
2009						
January	109.0	100.4	108.5	-1.7	-2.1	0.4
February	109.1	101.4	107.6	0.1	0.9	-0.8
March	109.1	102.8	106.1	-0.1	1.4	-1.4
April	106.4	100.8	105.6	-2.4	-1.9	-0.5
May	104.0	97.0	107.2	-2.3	-3.8	1.5
June	103.5	95.9	107.9	-0.4	-1.1	0.7
July	103.5	96.3	107.5	0.0	0.4	-0.4
August	103.3	94.8	109.0	-0.2	-1.6	1.3
September	103.4	94.5	109.5	0.1	-0.3	0.4
October	104.3	93.2	111.9	0.8	-1.4	2.2
November	105.6	93.9	112.5	1.3	0.8	0.6
December	106.3	94.2	112.9	0.6	0.3	0.3
2010						
January	107.1	93.7	114.3	0.7	-0.5	1.2
February	108.2	94.9	113.9	1.1	1.3	-0.3
March	106.5	94.1	113.1	-1.6	-0.9	-0.7
April	105.6	92.9	113.7	-0.8	-1.3	0.5
May	106.9	94.8	112.7	1.2	2.1	-0.9
June	106.2	95.0	111.8	-0.6	0.1	-0.8
July	105.5	95.6	110.4	-0.6	0.6	-1.3

Note(s): Because of rounding, monthly data may not add up to quarterly data and quarterly data may not add up to annual data.

Table 2-1
Exports by commodity groupings, balance of payments basis, seasonally adjusted — Current dollars

	June	July	Change		Year to date			July 2010/ July 2009	
	2010	2010			2009		2010		
	millions of dollars		percent		millions of dollars		percent		
Total	33,044	32,804	-240	-0.7	214,825	232,837	18,011	8.4	5.7
Agricultural and fishing products	3,020	3,020	0	0.0	23,106	20,901	-2,205	-9.5	-1.3
Wheat	393	330	-63	-15.9	3,820	2,551	-1,270	-33.2	-33.5
Other agricultural and fishing products	2,627	2,690	63	2.4	19,286	18,351	-935	-4.8	4.9
Live animals	180	182	2	1.0	1,099	1,111	12	1.1	32.2
Fish and fish preparations	326	340	14	4.4	2,351	2,356	5	0.2	8.9
Barley	23	19	-4	-17.8	294	164	-131	-44.4	-0.4
Wheat flour	6	6	0	-2.3	48	46	-2	-4.1	-12.9
Other cereals unmilled	44	32	-12	-26.9	371	253	-118	-31.8	-31.1
Other cereal preparations	236	231	-5	-2.3	1,761	1,603	-157	-8.9	-7.3
Meat and meat preparations	412	395	-17	-4.1	2,639	2,734	95	3.6	12.1
Alcoholic beverages	62	58	-3	-5.6	441	436	-6	-1.3	-1.9
Other food, feed, beverages and tobacco	906	949	43	4.7	6,637	6,462	-175	-2.6	4.6
Rapeseed	264	277	13	4.9	2,281	1,854	-427	-18.7	-3.2
Other crude vegetable products	168	201	33	19.4	1,364	1,332	-32	-2.3	7.6
Energy products	6,933	6,878	-55	-0.8	44,011	53,843	9,832	22.3	3.3
Crude petroleum	3,639	3,559	-80	-2.2	21,727	29,645	7,918	36.4	-0.3
Natural gas	1,248	1,420	172	13.8	9,616	9,862	246	2.6	28.7
Other energy products	2,046	1,899	-147	-7.2	12,668	14,336	1,668	13.2	-4.3
Coal and other bituminous substances	502	476	-26	-5.2	2,696	2,879	184	6.8	19.7
Petroleum and coal products	1,382	1,300	-82	-5.9	8,599	10,207	1,608	18.7	-10.9
Electricity	162	123	-39	-24.2	1,373	1,249	-124	-9.0	-4.0
Forestry products	1,897	1,797	-100	-5.3	11,589	12,506	917	7.9	13.8
Lumber and sawmill products	713	615	-98	-13.7	3,867	4,653	786	20.3	10.4
Other crude wood products	63	53	-10	-16.2	297	385	88	29.5	19.0
Lumber	453	368	-85	-18.7	2,176	2,822	646	29.7	15.3
Other wood fabricated materials	197	194	-3	-1.5	1,394	1,446	53	3.8	0.3
Wood pulp and other wood products	536	592	56	10.5	2,627	3,554	927	35.3	64.3
Newsprint and other paper and paperboard	649	590	-59	-9.0	5,095	4,298	-796	-15.6	-10.8
Newsprint paper	336	298	-38	-11.3	2,702	2,144	-559	-20.7	-9.8
Other paper and paperboard	313	292	-21	-6.6	2,392	2,154	-238	-9.9	-11.7
Industrial goods and materials	7,365	7,534	169	2.3	45,506	54,349	8,843	19.4	16.6
Metal ores	988	771	-217	-22.0	5,891	6,529	638	10.8	-13.6
Iron ores, concentrates and scrap	371	311	-60	-16.2	2,607	2,412	-195	-7.5	-19.7
Copper ores, concentrates and scrap	182	109	-72	-39.8	851	1,174	323	38.0	-37.7
Nickel ores, concentrates and scrap	176	131	-45	-25.6	938	1,420	482	51.4	33.8
Zinc ores, concentrates and scrap	33	26	-7	-22.0	144	165	21	14.8	-24.7
Other ores, concentrates and scrap	226	194	-32	-14.3	1,351	1,357	6	0.4	-1.9
Chemicals, plastics and fertilizers	2,494	2,409	-85	-3.4	14,926	17,248	2,321	15.6	16.4
Inorganic chemicals	374	362	-12	-3.2	2,454	2,465	11	0.5	49.8
Organic chemicals	502	523	21	4.2	2,723	3,679	956	35.1	24.0
Fertilizers and fertilizer materials	417	408	-9	-2.1	2,647	3,398	752	28.4	-4.9
Synthetic rubber and plastics	854	859	5	0.5	5,492	5,859	368	6.7	14.2
Other chemical products	348	258	-90	-25.8	1,611	1,846	235	14.6	14.3

Table 2-1 – continued

Exports by commodity groupings, balance of payments basis, seasonally adjusted — Current dollars

	June	July	Change	Year to date			July 2010/ July 2009		
	2010	2010		2009		2010		Change	
	millions of dollars		percent		millions of dollars		percent		
Metals and alloys	2,591	2,862	271	10.5	15,327	20,701	5,374	35.1	29.0
Primary iron and steel	105	141	36	34.3	205	767	562	273.9	715.7
Steel bars, rods, plates, sheets	314	309	-6	-1.8	1,625	2,070	445	27.4	30.5
Other iron and steel and alloys	192	207	14	7.5	1,392	1,559	168	12.0	5.0
Aluminum including alloys	623	558	-66	-10.6	3,288	4,325	1,036	31.5	16.3
Copper and alloys	214	201	-13	-6.0	1,213	1,784	571	47.1	25.8
Nickel and alloys	147	162	15	10.0	1,199	1,003	-195	-16.3	-4.6
Precious metals and alloys	811	1,113	302	37.2	5,340	7,742	2,401	45.0	41.2
Zinc and alloys	94	84	-10	-11.1	569	821	252	44.4	-13.1
Other non-ferrous metals and alloys	90	89	-1	-0.9	496	629	133	26.8	17.8
Other industrial goods and materials	1,292	1,492	201	15.5	9,362	9,872	510	5.4	16.5
Asbestos unmanufactured	3	3	0	-9.6	39	31	-8	-19.6	-55.3
Other crude animal products	84	86	2	2.3	401	542	141	35.2	84.7
Other crude non-metallic minerals	157	315	158	100.5	1,803	2,099	296	16.4	30.5
Other crude materials, inedible	58	59	1	2.4	327	396	69	21.2	24.8
Metal fabricated basic products	349	361	11	3.2	2,461	2,419	-41	-1.7	4.7
Textile fabricated materials	179	178	-1	-0.4	1,218	1,242	24	2.0	4.4
Non-metallic mineral basic products	160	157	-3	-2.1	1,162	1,083	-79	-6.8	-1.4
Other fabricated materials	301	333	32	10.8	1,952	2,059	108	5.5	25.8
Machinery and equipment	6,504	6,378	-126	-1.9	49,968	42,805	-7,163	-14.3	-8.8
Industrial and agricultural machinery	1,595	1,489	-106	-6.7	12,009	10,193	-1,816	-15.1	-3.0
Industrial machinery	1,436	1,335	-101	-7.0	10,716	9,121	-1,595	-14.9	-1.3
Agricultural machinery includ. tractors	159	153	-6	-3.6	1,293	1,072	-221	-17.1	-16.0
Aircraft and other transportation equipment	1,531	1,457	-74	-4.8	12,003	9,895	-2,108	-17.6	-23.3
Aircraft, engines, parts	1,213	1,096	-117	-9.6	9,633	7,730	-1,903	-19.8	-30.3
Other transportation equipment	318	361	43	13.4	2,370	2,165	-204	-8.6	10.7
Other machinery and equipment	3,378	3,433	55	1.6	25,956	22,717	-3,239	-12.5	-3.6
Television, telecommunication equipment	620	628	8	1.3	5,476	4,261	-1,215	-22.2	-23.3
Office machines and equipment	353	348	-5	-1.5	2,961	2,401	-559	-18.9	-15.6
Other equipment and tools	1,532	1,588	56	3.6	11,675	10,514	-1,161	-9.9	1.2
Other end products, inedible	873	869	-4	-0.4	5,844	5,541	-304	-5.2	14.2
Automotive products	5,164	5,161	-3	-0.1	22,873	33,531	10,658	46.6	33.0
Passenger autos and chassis	3,467	3,314	-153	-4.4	12,439	22,200	9,761	78.5	38.0
Trucks and other motor vehicles	163	248	85	52.2	2,782	1,304	-1,478	-53.1	-7.9
Motor vehicle parts	1,535	1,599	65	4.2	7,652	10,027	2,375	31.0	32.1
Other consumer goods	1,376	1,275	-101	-7.3	10,843	9,579	-1,263	-11.7	-13.0
Special transactions trade	381	294	-88	-23.0	3,857	2,269	-1,588	-41.2	-42.7
Unallocated balance of payments adjustments	403	466	63	15.6	3,073	3,053	-20	-0.6	7.3

Table 2-2
Exports by commodity groupings, balance of payments basis, seasonally adjusted — Constant dollars, 2002

	June	July	Change		Year to date			July 2010/ July 2009	
	2010	2010			2009		2010		
	millions of dollars		percent		millions of dollars		percent		
Total	31,194	31,018	-176	-0.6	199,904	216,714	16,810	8.4	4.7
Agricultural and fishing products	3,138	3,128	-10	-0.3	21,582	22,029	447	2.1	4.1
Wheat	435	351	-84	-19.4	3,119	2,800	-319	-10.2	-19.8
Other agricultural and fishing products	2,703	2,777	74	2.7	18,463	19,229	767	4.2	8.1
Live animals	203	202	0	-0.2	1,215	1,271	56	4.6	27.8
Fish and fish preparations	396	400	4	1.1	2,715	2,986	271	10.0	6.5
Barley	22	17	-5	-24.1	219	158	-61	-28.0	-5.0
Wheat flour	6	6	0	-4.5	42	44	2	4.2	-8.6
Other cereals unmilled	52	36	-15	-29.6	336	312	-23	-7.0	-16.2
Other cereal preparations	211	209	-2	-1.1	1,412	1,438	26	1.8	-0.1
Meat and meat preparations	438	442	4	1.0	2,847	3,079	232	8.1	4.6
Alcoholic beverages	112	106	-6	-5.2	750	831	81	10.8	5.2
Other food, feed, beverages and tobacco	849	915	67	7.9	5,779	6,116	337	5.8	11.1
Rapeseed	257	261	4	1.4	2,026	1,756	-270	-13.3	2.4
Other crude vegetable products	158	182	24	15.5	1,121	1,239	118	10.5	17.0
Energy products	4,353	4,300	-53	-1.2	31,405	32,193	788	2.5	-6.4
Crude petroleum	1,831	1,750	-81	-4.4	13,893	13,705	-188	-1.4	-9.8
Natural gas	1,353	1,483	130	9.6	9,539	10,043	504	5.3	8.2
Other energy products	1,169	1,067	-102	-8.8	7,973	8,444	472	5.9	-16.9
Coal and other bituminous substances	160	156	-3	-2.1	726	1,115	388	53.5	6.1
Petroleum and coal products	817	775	-42	-5.1	5,722	5,870	148	2.6	-18.1
Electricity	193	136	-57	-29.6	1,524	1,460	-64	-4.2	-28.4
Forestry products	2,234	2,146	-88	-3.9	14,062	15,219	1,158	8.2	5.7
Lumber and sawmill products	883	813	-70	-8.0	5,314	5,897	583	11.0	3.0
Other crude wood products	70	66	-4	-6.3	398	498	100	25.3	-15.7
Lumber	618	536	-82	-13.3	3,351	3,884	533	15.9	9.9
Other wood fabricated materials	195	211	16	8.3	1,566	1,515	-51	-3.2	-5.6
Wood pulp and other wood products	606	658	52	8.5	3,737	4,236	499	13.4	25.7
Newsprint and other paper and paperboard	745	675	-70	-9.4	5,011	5,086	75	1.5	-6.0
Newsprint paper	396	350	-45	-11.5	2,568	2,606	38	1.5	-1.5
Other paper and paperboard	349	325	-24	-6.9	2,443	2,480	37	1.5	-10.4
Industrial goods and materials	5,168	5,424	255	4.9	35,029	37,954	2,925	8.4	9.1
Metal ores	483	419	-64	-13.3	3,372	3,281	-91	-2.7	-17.7
Iron ores, concentrates and scrap	147	143	-4	-2.7	1,013	1,114	101	10.0	-15.1
Copper ores, concentrates and scrap	68	42	-26	-37.7	420	412	-8	-1.9	-44.8
Nickel ores, concentrates and scrap	87	66	-20	-23.3	697	670	-28	-4.0	6.2
Zinc ores, concentrates and scrap	21	16	-5	-25.7	103	91	-12	-12.0	-33.3
Other ores, concentrates and scrap	161	151	-9	-5.8	1,139	994	-144	-12.7	-15.0
Chemicals, plastics and fertilizers	1,826	1,808	-18	-1.0	11,482	12,525	1,043	9.1	8.6
Inorganic chemicals	191	184	-8	-4.0	1,256	1,257	1	0.1	10.9
Organic chemicals	286	339	53	18.5	2,323	2,153	-170	-7.3	1.3
Fertilizers and fertilizer materials	180	188	8	4.4	890	1,493	603	67.8	23.5
Synthetic rubber and plastics	773	780	7	1.0	5,164	5,398	234	4.5	6.2
Other chemical products	395	316	-79	-20.0	1,849	2,224	375	20.3	14.4

Table 2-2 – continued

Exports by commodity groupings, balance of payments basis, seasonally adjusted — Constant dollars, 2002

	June	July	Change	Year to date			July 2010/ July 2009		
	2010	2010		2009		2010		Change	
	millions of dollars		percent		millions of dollars		percent		
Metals and alloys	1,735	1,807	73	4.2	11,178	13,031	1,853	16.6	11.2
Primary iron and steel	71	93	22	31.2	131	529	399	304.9	595.0
Steel bars, rods, plates, sheets	259	246	-13	-5.0	1,233	1,720	487	39.5	20.6
Other iron and steel and alloys	155	171	15	9.8	1,175	1,309	134	11.4	-4.1
Aluminum including alloys	690	618	-72	-10.5	3,982	4,509	527	13.2	7.2
Copper and alloys	74	71	-3	-4.3	641	591	-50	-7.9	6.6
Nickel and alloys	74	83	9	11.6	909	517	-393	-43.2	-25.3
Precious metals and alloys	306	425	119	38.7	2,337	3,109	773	33.1	17.2
Zinc and alloys	62	58	-4	-7.0	479	468	-11	-2.2	-21.3
Other non-ferrous metals and alloys	43	44	1	2.3	291	280	-11	-3.9	9.8
Other industrial goods and materials	1,125	1,390	265	23.6	8,997	9,117	120	1.3	18.4
Asbestos unmanufactured	3	3	0	-11.6	41	32	-9	-21.5	-57.0
Other crude animal products	80	83	3	4.0	542	561	18	3.4	21.7
Other crude non-metallic minerals	125	363	238	190.6	2,443	2,177	-266	-10.9	41.7
Other crude materials, inedible	54	54	0	0.1	325	369	45	13.8	19.3
Metal fabricated basic products	285	290	4	1.5	1,915	1,954	39	2.0	5.9
Textile fabricated materials	185	184	-1	-0.7	1,151	1,329	178	15.4	5.2
Non-metallic mineral basic products	131	128	-3	-2.4	933	900	-33	-3.5	-1.9
Other fabricated materials	261	286	25	9.4	1,646	1,794	148	9.0	30.3
Machinery and equipment	7,133	7,001	-132	-1.8	52,986	47,602	-5,384	-10.2	-9.1
Industrial and agricultural machinery	1,463	1,391	-72	-4.9	10,941	9,448	-1,493	-13.6	-0.2
Industrial machinery	1,323	1,249	-73	-5.6	9,776	8,468	-1,307	-13.4	1.5
Agricultural machinery includ. tractors	141	142	1	0.8	1,165	980	-186	-16.0	-13.2
Aircraft and other transportation equipment	1,894	1,789	-105	-5.5	13,937	12,230	-1,706	-12.2	-21.2
Aircraft, engines, parts	1,577	1,429	-147	-9.3	11,592	10,064	-1,528	-13.2	-27.0
Other transportation equipment	317	359	42	13.4	2,345	2,166	-179	-7.6	14.9
Other machinery and equipment	3,776	3,822	45	1.2	28,108	25,924	-2,184	-7.8	-5.4
Television, telecommunication equipment	778	781	3	0.4	6,344	5,393	-950	-15.0	-20.4
Office machines and equipment	883	867	-16	-1.8	6,282	5,966	-316	-5.0	-8.8
Other equipment and tools	1,448	1,481	33	2.3	10,713	9,964	-749	-7.0	1.7
Other end products, inedible	668	693	25	3.8	4,770	4,601	-169	-3.5	6.5
Automotive products	6,758	6,663	-95	-1.4	26,876	44,658	17,781	66.2	39.4
Passenger autos and chassis	4,885	4,624	-261	-5.3	15,798	32,063	16,264	103.0	45.8
Trucks and other motor vehicles	193	299	106	55.0	3,090	1,572	-1,517	-49.1	-4.1
Motor vehicle parts	1,680	1,740	59	3.5	7,989	11,023	3,034	38.0	34.0
Other consumer goods	1,319	1,231	-88	-6.7	10,397	9,183	-1,214	-11.7	-12.4
Special transactions trade	354	261	-93	-26.3	3,515	2,057	-1,457	-41.5	-44.4
Unallocated balance of payments adjustments	736	865	129	17.5	4,053	5,818	1,766	43.6	29.5

Table 3-1
Domestic exports to selected countries, customs basis, not seasonally adjusted — July

	Agricultural and fishing products	Energy products	Forestry products	Industrial goods	Machinery and equipment	Automotive products	Consumer goods	Special transactions trade	Total
millions of dollars									
United States									
2009	1,536.5	6,746.3	1,083.6	3,764.4	3,615.1	2,325.8	919.3	449.1	20,440.0
2010	1,614.4	7,214.5	1,147.3	4,259.9	3,350.1	3,135.9	706.3	241.4	21,669.8
Mexico									
2009	119.5	20.5	8.2	55.5	92.0	45.7	6.1	0.5	348.1
2010	114.7	3.5	12.3	70.4	51.9	66.1	4.4	0.3	323.6
Japan									
2009	243.6	136.6	96.4	97.9	85.8	2.9	7.3	0.8	671.4
2010	258.5	169.3	117.5	163.7	36.7	5.3	8.0	0.4	759.4
European Union									
Germany									
2009	30.5	0.1	9.9	66.5	127.4	3.6	14.6	1.1	253.7
2010	12.4	14.1	10.4	134.8	91.6	2.9	17.1	1.0	284.4
France									
2009	13.2	0.2	8.1	36.0	77.9	2.9	25.6	2.2	166.1
2010	10.7	0.2	10.4	16.8	77.8	2.1	16.8	2.3	137.1
United Kingdom									
2009	42.3	27.2	22.9	494.6	202.5	4.0	17.5	4.3	815.3
2010	28.4	26.6	18.8	871.9	132.6	3.9	15.3	6.1	1,103.6
Italy									
2009	24.9	16.0	18.4	32.0	27.8	0.7	6.1	1.6	127.4
2010	10.6	14.5	30.8	27.3	33.1	0.4	18.8	0.2	135.7
Other European Union									
2009	102.5	175.5	27.9	243.6	284.6	8.6	46.2	7.0	896.0
2010	62.6	32.6	20.4	215.5	281.5	18.2	34.6	3.7	669.2
Total									
2009	213.5	219.0	87.2	872.6	720.3	19.7	109.9	16.2	2,258.5
2010	124.8	88.1	90.8	1,266.2	616.6	27.6	102.7	13.3	2,330.0
Newly industrialized countries									
South Korea									
2009	23.0	96.6	27.5	94.9	32.6	2.9	3.0	1.4	281.9
2010	39.7	81.5	40.2	90.5	30.9	0.9	4.4	1.3	289.3
Hong Kong									
2009	26.2	0.0	8.5	46.4	72.0	1.3	3.7	0.9	159.0
2010	33.1	0.1	9.7	40.4	29.3	1.1	7.1	1.8	122.4
Taiwan									
2009	18.1	28.8	16.3	22.9	7.2	0.1	2.6	0.2	96.2
2010	14.5	20.3	17.5	38.3	14.4	0.2	2.1	0.3	107.7
Singapore									
2009	6.9	0.5	3.3	35.3	35.7	1.6	4.5	0.4	88.1
2010	5.1	0.5	0.3	14.5	28.7	0.7	3.9	0.7	54.5
Total									
2009	74.2	125.9	55.5	199.4	147.5	5.9	13.8	3.0	625.3
2010	92.5	102.3	67.6	183.7	103.3	2.9	17.6	4.2	574.0
Other countries									
2009	704.5	291.1	287.0	1,120.4	705.7	57.5	133.2	23.6	3,323.0
2010	679.0	198.4	402.4	940.9	722.8	50.5	89.9	15.0	3,098.9
Total									
2009	2,891.9	7,539.6	1,617.9	6,110.3	5,366.3	2,457.6	1,189.6	493.2	27,666.3
2010	2,883.9	7,776.1	1,837.8	6,884.8	4,881.3	3,288.3	928.8	274.6	28,755.7

Table 3-2
Domestic exports to selected countries, customs basis, not seasonally adjusted — Year to date, January to July

	Agricultural and fishing products	Energy products	Forestry products	Industrial goods	Machinery and equipment	Automotive products	Consumer goods	Special transactions trade	Total
millions of dollars									
United States									
2009	11,538.2	40,826.2	8,098.9	26,614.7	27,422.4	19,140.2	6,643.3	3,345.3	143,629.1
2010	10,716.8	51,429.8	8,095.6	31,823.6	23,364.6	29,376.5	5,657.0	1,846.6	162,310.5
Mexico									
2009	665.2	37.4	56.7	412.5	589.5	355.8	27.9	7.0	2,151.9
2010	757.1	63.5	80.4	553.8	401.5	488.2	49.0	2.7	2,396.2
Japan									
2009	1,859.7	1,157.0	610.2	685.5	410.5	21.3	89.9	4.2	4,838.5
2010	1,767.1	1,104.2	782.0	942.3	343.7	40.9	71.6	2.7	5,054.4
European Union									
Germany									
2009	114.7	149.4	72.0	317.4	1,111.9	27.5	90.6	9.3	1,892.8
2010	78.0	63.3	54.2	721.4	866.3	21.1	115.9	8.1	1,928.3
France									
2009	92.6	76.4	83.1	375.6	720.7	21.1	186.2	15.3	1,570.9
2010	72.1	18.8	80.7	260.3	526.2	21.2	130.5	10.1	1,119.8
United Kingdom									
2009	230.6	94.6	180.6	4,514.0	1,301.5	21.8	188.1	24.6	6,555.8
2010	181.6	64.8	127.3	6,115.7	1,081.4	28.0	112.1	27.9	7,738.7
Italy									
2009	253.6	60.4	161.7	155.0	300.9	5.8	40.2	6.5	984.1
2010	125.7	123.5	181.3	198.5	248.2	3.4	115.4	3.6	999.6
Other European Union									
2009	538.2	709.8	193.9	1,504.2	1,688.9	80.3	460.9	29.1	5,205.2
2010	461.6	301.2	169.2	1,868.8	1,571.8	92.0	349.9	24.6	4,839.2
Total									
2009	1,229.8	1,090.6	691.2	6,866.2	5,123.8	156.5	966.0	84.8	16,208.8
2010	919.1	571.6	612.7	9,164.8	4,293.8	165.7	823.7	74.3	16,625.6
Newly industrialized countries									
South Korea									
2009	183.2	633.2	189.3	580.2	303.4	24.3	27.2	4.8	1,945.6
2010	301.8	565.6	298.9	598.5	250.2	40.1	29.5	5.5	2,090.3
Hong Kong									
2009	214.3	0.2	57.4	316.1	221.5	5.8	35.2	5.2	855.5
2010	233.1	0.4	65.6	444.3	154.4	5.1	38.9	8.7	950.5
Taiwan									
2009	97.2	132.5	111.1	172.3	66.9	0.8	20.4	0.7	601.9
2010	85.9	93.0	147.9	233.4	79.9	1.7	26.0	0.8	668.5
Singapore									
2009	28.1	43.2	24.4	258.9	192.6	20.3	20.2	1.9	589.5
2010	35.3	4.2	11.3	105.3	180.0	11.6	21.0	2.1	370.8
Total									
2009	522.8	809.1	382.2	1,327.5	784.3	51.2	103.0	12.5	3,992.5
2010	656.1	663.1	523.6	1,381.5	664.5	58.6	115.5	17.1	4,080.0
Other countries									
2009	6,240.5	1,084.0	1,949.0	6,430.2	5,252.5	450.7	717.8	171.5	22,296.1
2010	5,054.9	1,253.7	2,699.9	7,557.8	4,744.2	398.0	920.4	105.4	22,734.5
Total									
2009	22,056.2	45,004.2	11,788.2	42,336.5	39,583.3	20,175.7	8,548.4	3,625.3	193,117.6
2010	19,871.1	55,086.0	12,794.1	51,423.9	33,812.5	30,527.9	7,637.1	2,048.9	213,201.5

Table 4
Domestic exports by country, customs basis, not seasonally adjusted

	July		January to July		Change January to July 2010/ January to July 2009
	2009	2010	2009	2010	
	millions of dollars				percent
North America					
Greenland	1.3	0.4	10.3	4.1	-59.6
Mexico	348.1	323.6	2,151.9	2,396.2	11.4
Saint Pierre and Miquelon	2.1	1.1	8.6	8.9	2.8
United States	20,440.0	21,669.8	143,629.1	162,310.5	13.0
Total	20,791.5	21,995.0	145,799.9	164,719.7	13.0
Western Europe					
Andorra	0.0	0.0	0.0	0.1	61.6
Austria	13.7	74.8	268.2	244.5	-8.8
Belgium	176.3	97.2	1,130.9	1,091.3	-3.5
Denmark	149.5	29.1	433.0	159.9	-63.1
Faeroe Islands	0.0	0.0	0.7	0.2	-74.6
Finland	40.3	36.2	189.2	215.9	14.1
France	166.1	137.1	1,570.9	1,119.8	-28.7
Germany	253.7	284.4	1,892.8	1,928.3	1.9
Gibraltar	0.0	0.3	16.8	0.3	-98.3
Greece	9.3	27.7	57.4	69.8	21.6
Iceland	2.4	2.7	59.6	89.6	50.2
Italy	127.4	135.7	984.1	999.6	1.6
Luxembourg	3.2	2.9	23.4	31.9	36.6
Malta	0.7	49.9	40.0	103.7	159.0
Netherlands	312.7	207.4	1,489.9	1,497.3	0.5
Norway	159.3	89.3	923.8	1,318.7	42.8
Portugal	8.7	5.8	91.8	157.1	71.2
Republic of Ireland (Eire)	21.5	10.7	312.1	210.3	-32.6
Spain	76.4	34.4	589.6	411.9	-30.1
Sweden	20.5	21.2	145.0	187.6	29.4
Switzerland	219.7	148.4	693.9	924.1	33.2
United Kingdom	815.3	1,103.6	6,555.8	7,738.7	18.0
Total	2,576.8	2,498.7	17,468.9	18,500.7	5.9
Other Europe					
Albania	1.7	0.9	6.5	14.9	129.5
Armenia	1.4	0.6	4.4	4.4	0.1
Azerbaijan	0.5	0.6	6.4	8.3	28.4
Belarus	0.0	0.0	0.8	1.0	21.9
Bosnia and Herzegovina	0.3	0.1	2.2	3.0	33.0
Bulgaria	21.0	0.7	42.9	58.7	36.8
Croatia	1.6	1.3	89.9	79.1	-12.0
Czech Republic	8.8	6.6	70.2	66.3	-5.5
Estonia	1.4	1.7	10.9	12.3	13.4
Georgia	0.6	0.8	3.7	6.2	68.1
Hungary	10.2	9.6	55.3	46.2	-16.4
Kazakhstan	4.3	5.4	106.3	89.6	-15.8
Kyrgyzstan	0.1	1.0	2.5	2.1	-17.6
Latvia	1.5	24.5	15.9	56.7	255.7
Lithuania	1.9	4.5	26.2	17.3	-34.1
Macedonia (Former Yugoslav Republic of Macedonia)	0.8	0.8	7.5	6.2	-17.3
Montenegro	0.1	0.1	1.2	0.8	-33.3
Poland	12.9	13.9	103.3	87.8	-15.0
Republic of Moldova	0.3	0.1	1.5	1.4	-2.3
Romania	2.5	8.0	39.8	60.0	50.7
Russian Federation	58.1	71.0	500.5	487.9	-2.5
Serbia	2.0	0.6	12.6	3.5	-72.3
Slovakia	1.9	1.5	14.1	18.3	30.0
Slovenia	0.4	0.5	49.9	29.1	-41.6
Tajikistan	0.2	0.1	1.3	4.3	225.0
Turkmenistan	0.2	0.3	4.2	1.4	-66.4
Ukraine	12.8	7.6	47.0	73.2	55.6
Uzbekistan	2.3	0.2	10.5	4.2	-59.9
Total	149.7	163.0	1,237.8	1,244.2	0.5

Table 4 – continued

Domestic exports by country, customs basis, not seasonally adjusted

	July		January to July		Change
	2009	2010	2009	2010	January to July 2010/ January to July 2009
	millions of dollars				percent
Middle East					
Bahrain	1.1	0.8	10.5	54.1	416.0
Cyprus	0.6	0.5	6.3	5.2	-18.7
Egypt	20.7	18.0	351.0	266.4	-24.1
Eritrea	0.0	0.0	0.1	1.8	...
Ethiopia	0.5	23.1	6.6	114.1	...
Iran	34.8	7.8	298.1	60.4	-79.7
Iraq	33.1	41.6	260.4	182.6	-29.9
Israel	24.1	26.9	182.7	205.3	12.4
Jordan	4.8	4.2	33.8	34.9	3.5
Kuwait	6.2	6.1	42.4	55.6	31.2
Lebanon	5.4	9.2	64.8	42.1	-34.9
Libya	10.8	14.5	175.8	88.0	-49.9
Oman	5.4	6.2	73.6	62.0	-15.7
Qatar	109.6	19.9	182.2	57.8	-68.3
Saudi Arabia	87.4	95.8	768.3	426.3	-44.5
Somalia	0.1	1.2	0.1	2.2	...
Sudan	2.8	12.8	70.2	73.2	4.3
Syria	5.2	2.4	29.8	19.0	-36.1
Turkey	33.9	27.5	418.5	462.2	10.5
United Arab Emirates	117.0	88.9	719.9	559.6	-22.3
Yemen	3.5	1.5	17.1	12.4	-27.7
Total	507.1	408.8	3,712.2	2,785.5	-25.0
Other Africa					
Algeria	20.6	16.0	220.5	194.9	-11.6
Angola	4.9	4.6	50.8	107.7	112.0
Antarctica	0.0	0.0	0.0	0.0	-29.3
Benin	0.5	0.8	4.5	6.2	38.5
Botswana	0.2	0.0	3.0	2.4	-19.2
Burkina Faso	4.9	1.7	10.7	13.1	22.6
Burundi	0.0	0.1	0.6	0.5	-17.5
Cameroon	7.0	2.2	20.5	14.8	-27.7
Cape Verde	0.1	0.2	0.9	0.7	-21.5
Central African Republic	0.0	0.0	0.6	0.1	-88.4
Chad	0.6	1.0	8.0	3.5	-56.1
Comoros	0.0	0.0	0.2	0.0	-78.0
Congo	0.9	4.6	12.4	10.2	-18.3
Democratic Republic of the Congo	1.1	0.8	8.3	7.2	-14.0
Djibouti	0.1	2.8	1.8	3.7	103.8
Equatorial Guinea	0.5	0.5	3.2	1.9	-39.1
French Southern Territories	0.1	0.0	0.2	0.0	-85.4
Gabon	1.9	1.1	18.0	10.8	-40.0
Gambia	0.0	0.0	0.4	0.4	2.6
Ghana	16.4	15.1	100.3	91.7	-8.6
Guinea	0.4	0.7	10.0	3.8	-62.0
Guinea-Bissau	0.0	0.0	0.0	0.0	7.5
Ivory Coast	1.1	1.2	15.0	7.5	-50.4
Kenya	3.6	8.8	42.6	43.5	1.9
Lesotho	0.0	0.0	0.0	0.0	30.5
Liberia	0.5	0.5	2.3	8.7	277.0
Madagascar	4.4	1.3	28.6	34.1	19.3
Malawi	0.4	0.3	2.5	2.2	-10.3
Mali	0.3	0.3	3.9	4.6	18.3
Mauritania	0.1	0.2	1.7	1.6	-6.5
Mauritius	0.3	0.5	4.1	2.3	-44.2
Morocco	12.5	3.2	241.9	77.1	-68.1
Mozambique	0.2	0.5	2.4	7.4	207.4
Namibia	0.1	0.6	1.1	7.0	537.5
Niger	0.3	0.3	1.7	1.4	-17.2
Nigeria	7.8	6.3	82.3	123.5	50.0
Rwanda	0.0	0.0	0.9	0.8	-13.1
Saint Helena	0.0	0.0	0.1	0.0	-96.4
Sao Tome and Principe	0.0	0.0	0.1	0.0	-38.2
Senegal	2.4	2.3	13.1	17.5	34.3
Seychelles	0.3	0.1	0.7	0.5	-28.3

Table 4 – continued

Domestic exports by country, customs basis, not seasonally adjusted

	July		January to July		Change
	2009	2010	2009	2010	January to July 2010/ January to July 2009
	millions of dollars				percent
Sierra Leone	0.2	0.9	2.6	6.5	148.5
South Africa	32.6	32.7	266.5	269.1	1.0
Swaziland	0.0	0.2	9.5	0.8	-91.4
Togo	2.0	1.4	12.6	7.3	-41.6
Tunisia	1.9	3.6	71.6	31.0	-56.8
Uganda	0.7	0.7	8.2	6.1	-25.9
United Republic of Tanzania	2.8	2.4	19.0	19.4	1.9
Western Sahara	0.0	0.0	0.1	0.0	-100.0
Zambia	0.3	1.6	4.3	20.1	364.5
Zimbabwe	0.0	0.7	7.0	3.8	-45.6
Total	135.4	123.0	1,321.2	1,177.3	-10.9
Other Asia					
Afghanistan	2.0	2.4	34.1	34.5	1.0
Bangladesh	6.2	37.9	436.9	353.5	-19.1
Bhutan	0.1	0.0	0.1	1.5	976.2
British Indian Ocean Territory	0.1	0.1	0.2	1.2	647.1
Brunei Darussalam	0.3	0.3	2.4	8.0	227.9
Cambodia	0.4	0.3	2.9	1.8	-36.6
China	1,045.9	1,022.2	6,884.5	6,558.2	-4.7
Hong Kong	159.0	122.4	855.5	950.5	11.1
India	184.8	155.7	967.1	1,103.6	14.1
Indonesia	68.3	71.7	585.7	563.1	-3.9
Japan	671.4	759.4	4,838.5	5,054.4	4.5
Laos	0.1	0.2	1.3	1.5	10.7
Macao	0.8	0.3	12.4	1.6	-86.9
Malaysia	43.6	68.3	314.9	456.2	44.9
Maldives	0.5	0.5	2.1	2.8	30.9
Mongolia	0.3	1.0	2.7	9.4	250.7
Myanmar	0.0	0.0	0.0	2.7	...
Nepal	0.3	0.6	2.1	1.8	-15.9
North Korea	1.8	1.3	14.5	6.9	-52.4
Pakistan	30.2	29.8	324.4	235.3	-27.5
Philippines	31.4	36.8	246.2	310.2	26.0
Singapore	88.1	54.5	589.5	370.8	-37.1
South Korea	281.9	289.3	1,945.6	2,090.3	7.4
Sri Lanka	28.7	18.8	199.6	205.9	3.2
Taiwan	96.2	107.7	601.9	668.5	11.1
Thailand	47.5	61.3	260.1	396.5	52.4
Timor-Leste	0.0	0.0	0.0	0.0	-87.6
Viet Nam	22.1	23.4	105.6	145.3	37.6
Total	2,812.0	2,866.4	19,230.9	19,536.0	1.6
Oceania					
American Samoa	0.1	0.1	0.4	0.8	89.5
Australia	159.9	115.6	905.5	1,014.6	12.1
Christmas Island	0.0	0.0	0.2	0.6	142.4
Cocos (Keeling) Islands	0.0	0.0	0.2	0.1	-42.1
Cook Islands	0.0	0.0	0.0	0.0	...
Fiji	0.0	0.3	4.0	1.6	-60.3
French Polynesia	0.9	0.4	5.3	6.1	13.5
Guam	0.2	0.2	1.1	0.7	-32.8
Heard Island and McDonald Islands	0.0	0.0	0.0	0.0	-100.0
Kiribati	0.0	0.0	0.0	0.1	...
Nauru	0.0	0.0	0.0	1.3	...
New Caledonia	0.1	2.0	2.5	9.1	260.2
New Zealand	20.0	18.3	150.5	156.8	4.2
Norfolk Island	0.0	0.0	0.3	0.0	-96.7
Papua New Guinea	4.9	2.4	16.8	10.9	-35.4
Pitcairn	0.0	0.1	0.1	0.1	-29.4
Samoa	0.1	0.0	0.3	0.3	3.4
Solomon Islands	0.0	0.0	0.1	0.0	-52.8
Tonga	0.1	0.0	0.2	3.3	...
United States Minor Outlying Islands	2.1	1.1	7.9	8.1	2.2
Vanuatu	0.2	0.1	1.4	0.9	-34.9
Wallis and Futuna	0.0	0.0	0.0	0.0	-100.0
Total	188.7	140.5	1,096.9	1,215.4	10.8

Table 4 – continued

Domestic exports by country, customs basis, not seasonally adjusted

	July		January to July		Change
	2009	2010	2009	2010	January to July 2010/ January to July 2009
	millions of dollars				percent
South America					
Argentina	7.7	11.1	91.2	123.5	35.5
Bolivia	0.5	13.5	6.0	36.3	508.7
Brazil	157.8	208.5	714.1	1,475.9	106.7
Chile	47.5	34.1	366.6	308.7	-15.8
Colombia	53.5	47.3	354.5	326.1	-8.0
Ecuador	25.9	19.3	155.1	153.6	-0.9
Falkland Islands (Malvinas)	0.0	0.0	0.0	0.1	...
Guyana	1.4	2.9	15.3	15.8	3.1
Paraguay	0.3	0.3	6.4	4.3	-32.0
Peru	51.2	39.7	245.9	268.6	9.2
Suriname	1.2	0.7	6.3	6.4	1.5
Uruguay	1.7	1.8	13.3	16.9	27.0
Venezuela	20.6	45.9	353.0	280.7	-20.5
Total	369.5	425.1	2,327.5	3,016.8	29.6
Central America Antilles					
Anguilla	0.1	0.1	1.3	0.6	-56.9
Antigua and Barbuda	1.0	0.4	7.8	10.6	35.7
Aruba	0.4	0.5	2.6	24.3	830.3
Bahamas	2.3	24.9	85.9	60.9	-29.1
Barbados	3.2	3.1	35.9	20.9	-41.7
Belize	0.3	0.3	3.9	3.0	-21.5
Bermuda	5.7	3.6	38.3	23.3	-39.0
British Virgin Islands	0.2	0.1	2.3	20.7	799.7
Cayman Islands	0.4	0.7	3.8	4.1	7.0
Costa Rica	5.7	4.0	37.1	48.8	31.4
Cuba	30.2	31.6	189.2	179.9	-4.9
Dominica	0.3	0.5	2.7	3.0	9.6
Dominican Republic	16.9	22.1	84.5	102.6	21.5
El Salvador	1.8	2.2	28.2	21.4	-24.1
Grenada	0.4	0.5	3.2	3.1	-2.7
Guatemala	4.3	4.4	47.6	49.8	4.7
Haiti	2.1	2.8	27.4	22.6	-17.4
Honduras	1.2	1.6	17.9	20.2	12.7
Jamaica	12.4	7.0	66.7	89.2	33.8
Montserrat	0.0	0.0	0.1	0.1	0.6
Netherlands Antilles	26.1	1.2	38.0	12.4	-67.4
Nicaragua	1.2	2.3	8.6	9.8	14.0
Panama	7.7	4.0	53.6	82.3	53.6
Saint Kitts and Nevis	0.6	0.4	3.6	3.3	-10.0
Saint Lucia	0.8	0.4	5.7	3.8	-32.5
Saint Vincent and the Grenadines	0.7	0.5	5.4	4.9	-9.5
Trinidad and Tobago	9.0	16.0	118.0	178.2	51.1
Turks and Caicos Islands	0.5	0.1	3.0	2.0	-32.8
Total	135.6	135.2	922.3	1,005.9	9.1
All countries	27,666.3	28,755.7	193,117.6	213,201.5	10.4

Table 5-1
Exports by province of origin, customs basis, not seasonally adjusted — July

	Agricultural and fishing products	Energy products	Forestry products	Industrial goods	Machinery and equipment	Automotive products	Consumer goods	Special transactions trade	Total
millions of dollars									
Domestic exports									
Newfoundland and Labrador									
2009	96.3	521.5	6.5	138.3	2.9	0.8	0.0	6.2	772.6
2010	119.7	332.9	8.6	97.5	4.9	0.1	0.1	2.9	566.7
Prince Edward Island									
2009	39.2	0.2	0.0	2.9	18.7	0.2	2.5	5.9	69.5
2010	46.1	0.0	0.0	2.3	15.1	0.4	4.0	2.4	70.3
Nova Scotia									
2009	101.3	61.8	53.7	35.7	90.8	6.1	6.7	6.1	362.3
2010	98.4	68.2	68.8	39.7	114.0	4.5	4.7	3.2	401.6
New Brunswick									
2009	91.3	686.9	75.5	106.6	21.9	1.9	7.8	7.1	998.9
2010	109.3	691.2	125.3	85.3	23.8	1.3	20.5	3.4	1,060.0
Quebec									
2009	347.2	224.1	508.5	1,380.1	1,912.2	141.1	285.6	116.4	4,915.2
2010	354.8	211.2	484.7	1,561.7	1,394.8	149.2	342.6	72.5	4,571.6
Ontario									
2009	637.9	216.6	189.7	2,453.2	2,490.4	2,209.0	803.1	226.8	9,226.6
2010	645.8	178.0	226.4	3,100.2	2,564.9	3,040.5	472.8	120.3	10,348.7
Manitoba									
2009	302.5	72.8	16.1	229.0	154.2	49.8	29.4	26.4	880.1
2010	287.1	66.3	14.8	179.2	162.5	33.2	26.9	21.1	791.2
Saskatchewan									
2009	514.7	682.1	18.7	434.0	64.4	3.1	0.5	4.6	1,722.0
2010	492.6	641.0	15.9	432.1	49.9	4.1	0.3	2.0	1,637.9
Alberta									
2009	529.1	4,475.6	148.9	721.0	351.8	28.1	9.9	52.3	6,316.8
2010	511.2	4,867.5	171.5	943.9	302.0	34.8	7.7	25.7	6,864.1
British Columbia									
2009	232.2	598.0	600.3	422.7	258.7	17.5	44.2	41.2	2,214.8
2010	218.9	719.9	721.8	430.6	249.0	20.0	49.2	21.2	2,430.6
Yukon, Northwest Territories and Nunavut ¹									
2009	0.2	0.0	0.0	187.0	0.3	0.1	0.0	0.0	187.5
2010	0.1	0.0	0.0	12.5	0.4	0.0	0.0	0.1	13.1
Total									
2009	2,891.9	7,539.6	1,617.9	6,110.3	5,366.3	2,457.6	1,189.6	493.2	27,666.3
2010	2,883.9	7,776.1	1,837.8	6,884.8	4,881.3	3,288.3	928.8	274.6	28,755.7
Re-exports									
2009	29.2	40.7	7.3	171.3	986.2	73.8	188.8	645.4	2,142.6
2010	37.0	5.5	7.4	193.5	860.4	87.7	179.4	592.9	1,963.8
Total exports									
2009	2,921.1	7,580.2	1,625.2	6,281.6	6,352.4	2,531.4	1,378.4	1,138.5	29,808.9
2010	2,920.8	7,781.6	1,845.2	7,078.4	5,741.7	3,376.0	1,108.2	867.6	30,719.5

1. Data for the current month do not include some exports from the Harmonized System, Chapter 71, "Natural/cultured pearls, precious stones and metals, coins, etc." for reasons relating to timing.

Table 5-2
Exports by province of origin, customs basis, not seasonally adjusted — Year to date, January to July

	Agricultural and fishing products	Energy products	Forestry products	Industrial goods	Machinery and equipment	Automotive products	Consumer goods	Special transactions trade	Total
millions of dollars									
Domestic exports									
Newfoundland and Labrador									
2009	450.1	3,165.6	123.8	992.5	38.4	1.6	0.6	32.8	4,805.4
2010	504.6	3,265.9	64.6	743.0	28.1	1.0	0.9	16.1	4,624.2
Prince Edward Island									
2009	279.5	0.3	0.7	15.2	118.6	0.9	17.1	52.9	485.2
2010	254.4	0.9	0.3	15.7	92.5	2.3	23.1	28.9	418.2
Nova Scotia									
2009	567.0	425.6	408.7	303.6	661.7	50.8	46.5	43.4	2,507.2
2010	519.3	336.1	449.3	295.3	800.9	31.1	34.0	22.2	2,488.2
New Brunswick									
2009	688.9	3,786.9	679.9	446.1	189.8	15.3	71.2	48.8	5,927.0
2010	698.3	5,044.6	761.9	670.3	172.5	14.3	144.1	24.3	7,530.2
Quebec									
2009	2,562.4	1,720.4	3,537.9	9,309.0	12,607.1	978.2	2,058.1	826.0	33,599.3
2010	2,500.1	1,747.9	3,494.3	11,311.1	10,200.2	895.1	2,455.6	525.9	33,130.1
Ontario									
2009	4,646.1	1,662.0	1,616.9	17,909.7	19,548.6	18,246.5	5,643.5	1,767.6	71,041.1
2010	4,532.9	1,501.8	1,618.1	22,742.1	17,262.1	28,865.5	4,358.5	938.8	81,819.7
Manitoba									
2009	2,428.7	413.5	172.8	1,333.7	1,277.4	407.6	296.6	207.3	6,537.6
2010	2,137.3	422.2	123.6	1,390.4	1,114.7	249.1	214.6	161.7	5,813.6
Saskatchewan									
2009	4,738.5	3,693.9	153.1	3,252.8	533.5	23.8	8.0	52.8	12,456.4
2010	3,754.4	4,607.1	123.0	3,984.0	420.2	27.0	7.3	26.1	12,949.2
Alberta									
2009	4,326.3	26,062.2	956.4	4,997.9	2,773.6	322.7	100.2	326.0	39,865.4
2010	3,696.2	33,557.2	1,220.3	6,004.5	2,003.4	288.5	72.5	164.4	47,007.0
British Columbia									
2009	1,367.1	4,073.7	4,137.9	2,622.4	1,830.8	128.0	305.6	267.2	14,732.9
2010	1,272.3	4,602.2	4,938.2	3,238.8	1,710.9	153.7	326.4	140.3	16,382.9
Yukon, Northwest Territories and Nunavut ¹									
2009	1.6	0.0	0.1	1,153.4	3.7	0.2	0.9	0.3	1,160.3
2010	1.4	0.0	0.4	1,028.6	6.9	0.3	0.2	0.4	1,038.2
Total									
2009	22,056.2	45,004.2	11,788.2	42,336.5	39,583.3	20,175.7	8,548.4	3,625.3	193,117.6
2010	19,871.1	55,086.0	12,794.1	51,423.9	33,812.5	30,527.9	7,637.1	2,048.9	213,201.5
Re-exports									
2009	297.8	278.6	46.0	1,302.0	6,912.3	563.2	1,302.4	4,813.4	15,515.7
2010	325.8	138.2	47.0	1,616.9	5,931.0	625.2	1,114.5	4,130.1	13,928.6
Total exports									
2009	22,354.0	45,282.9	11,834.2	43,638.4	46,495.6	20,738.9	9,850.7	8,438.7	208,633.4
2010	20,196.9	55,224.2	12,841.1	53,040.8	39,743.5	31,153.1	8,751.6	6,179.0	227,130.2

1. Data for the current month do not include some exports from the Harmonized System Chapter 71, "Natural/cultured pearls, precious stones and metals, coins, etc." for reasons relating to timing.

Table 6-1
Imports by commodity groupings, balance of payments basis, seasonally adjusted — Current dollars

	June	July	Change		Year to date			July 2010/ July 2009	
	2010	2010			2009	2010	Change		
	millions of dollars		percent		millions of dollars		percent		
Total	34,858	35,539	681	2.0	217,345	236,703	19,358	8.9	11.2
Agricultural and fishing products	2,388	2,444	56	2.3	17,415	16,901	-514	-3.0	0.1
Fruits and vegetables	685	685	0	0.0	4,877	4,768	-108	-2.2	-1.1
Fresh fruits and berries	240	242	2	0.8	1,706	1,723	17	1.0	0.1
Dried fruits, fruits and fruit preparations	113	115	3	2.6	920	766	-154	-16.7	-9.8
Fresh vegetables	182	179	-3	-1.7	1,252	1,280	28	2.2	-1.0
Other vegetables and vegetable preparations	151	149	-2	-1.1	999	1,000	1	0.1	4.3
Other agricultural and fishing products	1,703	1,759	56	3.3	12,539	12,133	-406	-3.2	0.6
Live animals	17	16	-1	-5.4	115	113	-2	-2.0	3.2
Meat and meat preparations	161	179	18	11.1	1,275	1,216	-59	-4.6	6.3
Fish and marine animals	160	178	18	11.2	1,232	1,122	-110	-9.0	8.7
Cocoa, coffee, tea and other food preparations	415	420	5	1.3	2,925	2,833	-92	-3.1	2.1
Dairy produce, eggs and honey	47	51	4	7.9	329	328	-1	-0.4	-11.0
Corn (maize) shelled	35	35	1	1.8	281	290	10	3.5	-11.6
Other cereals and cereal preparations	167	172	5	3.1	1,368	1,205	-162	-11.9	-6.0
Sugar and sugar preparations	139	138	-1	-1.0	969	1,018	49	5.1	-14.2
Fodder, feed, excluding unmilled cereal	120	123	3	2.5	878	813	-64	-7.3	5.9
Beverages	297	289	-8	-2.5	2,144	2,111	-33	-1.6	-0.7
Tobacco	35	33	-3	-7.2	210	232	21	10.2	-7.3
Crude vegetable products	110	124	15	13.3	809	845	36	4.4	18.8
Cotton	1	1	0	-16.0	5	8	3	51.4	71.3
Energy products	2,986	3,342	357	11.9	18,966	22,820	3,854	20.3	6.6
Crude petroleum	1,770	2,107	336	19.0	11,258	13,963	2,705	24.0	-3.1
Other energy products	1,215	1,235	20	1.7	7,708	8,857	1,149	14.9	28.6
Coal and other related products	382	299	-83	-21.8	2,863	2,887	24	0.9	2.3
Petroleum and coal products	833	937	103	12.4	4,846	5,970	1,124	23.2	40.1
Forestry products	232	235	3	1.3	1,397	1,569	172	12.3	23.5
Forestry products	232	235	3	1.3	1,397	1,569	172	12.3	23.5
Crude wood products	37	41	4	11.7	278	242	-36	-12.8	17.4
Wood fabricated materials	195	194	-1	-0.7	1,119	1,327	208	18.6	24.9
Industrial goods and materials	7,553	7,318	-236	-3.1	43,825	49,479	5,655	12.9	24.1
Metals and metal ores	2,918	2,828	-90	-3.1	13,632	18,501	4,868	35.7	58.9
Metals in ores, concentrates and scrap	570	639	70	12.2	3,198	3,940	742	23.2	44.9
Steel bars, rods, plates, sheets	585	514	-70	-12.0	2,676	3,899	1,224	45.7	46.9
Other iron and steel products	403	426	23	5.7	2,217	2,450	233	10.5	65.9
Precious metals including alloys	1,013	895	-118	-11.6	3,561	5,672	2,110	59.3	90.4
Other non-ferrous metals and alloys	348	354	6	1.7	1,980	2,539	559	28.3	35.4
Chemicals and plastics	2,520	2,369	-151	-6.0	16,255	16,799	545	3.4	6.0
Organic chemicals	627	540	-87	-13.8	3,992	4,091	99	2.5	4.7
Plastic materials	866	854	-12	-1.4	5,134	5,811	678	13.2	15.7
Other chemicals and related products	1,026	974	-52	-5.1	7,129	6,897	-232	-3.3	-0.7
Other industrial goods and materials	2,116	2,120	5	0.2	13,938	14,179	242	1.7	12.6
Crude animal products	28	21	-7	-23.5	141	154	13	9.3	16.1
Wool and man-made fibres	23	20	-3	-12.6	124	146	21	17.1	17.4
Crude non-metallic minerals	74	70	-4	-5.1	431	506	74	17.2	31.5
Textile fabricated materials	197	204	8	3.9	1,340	1,347	7	0.5	13.4
Metal fabricated basic products	821	850	29	3.6	5,446	5,506	60	1.1	19.2
Rubber fabricated materials	85	84	-1	-1.6	548	572	24	4.4	7.1
Oils, fats, animal and vegetable	94	113	18	19.3	736	688	-49	-6.6	8.7
Non-metallic minerals	321	307	-14	-4.2	1,938	2,081	143	7.4	5.7
Other fabricated materials	473	451	-22	-4.7	3,232	3,180	-52	-1.6	5.4

Table 6-1 – continued

Imports by commodity groupings, balance of payments basis, seasonally adjusted — Current dollars

	June	July	Change		Year to date			July 2010/	
	2010	2010			2009	2010	Change	July 2009	
	millions of dollars		percent		millions of dollars		percent		
Machinery and equipment	9,684	9,809	126	1.3	65,206	63,657	-1,549	-2.4	6.0
Industrial and agricultural machinery	2,626	2,589	-36	-1.4	17,097	16,702	-395	-2.3	13.0
Engines, turbines and electric motors	502	346	-156	-31.0	2,610	2,351	-260	-9.9	-15.9
Drilling mining machinery	148	155	7	4.7	919	973	54	5.9	31.4
Excavating machinery	220	254	35	15.7	1,221	1,464	243	19.9	75.7
Metal working machinery	116	134	18	15.8	973	888	-85	-8.7	6.0
Other industrial machinery	1,266	1,301	35	2.8	8,974	8,504	-470	-5.2	9.9
Agricultural machinery including tractors	374	398	24	6.4	2,401	2,523	122	5.1	29.8
Aircraft and other transportation equipment	1,263	1,217	-46	-3.7	9,918	8,031	-1,887	-19.0	-22.2
Aircraft, engines, parts	776	721	-55	-7.1	6,435	4,844	-1,590	-24.7	-27.5
Other transportation equipment and parts	487	496	9	1.8	3,484	3,187	-297	-8.5	-13.0
Office machines and equipment	1,107	1,145	38	3.4	7,320	7,487	166	2.3	11.9
Other machinery and equipment	4,688	4,858	171	3.6	30,871	31,437	566	1.8	11.0
Other communication and related equipment	1,674	1,797	122	7.3	10,826	11,321	495	4.6	15.6
Other equipment and tools	3,013	3,062	48	1.6	20,044	20,116	72	0.4	8.5
Automotive products	5,998	6,169	171	2.8	29,146	41,300	12,154	41.7	18.4
Passenger autos and chassis	1,909	2,083	174	9.1	9,842	13,280	3,438	34.9	14.3
Trucks and other motor vehicles	1,462	1,467	5	0.4	6,554	10,543	3,989	60.9	22.7
Motor vehicle parts	2,626	2,618	-8	-0.3	12,750	17,477	4,727	37.1	19.4
Other consumer goods	4,855	4,828	-27	-0.6	34,014	32,820	-1,194	-3.5	1.3
Apparel and footwear	910	912	2	0.2	6,906	6,073	-832	-12.1	-3.3
Apparel and apparel accessories	761	762	1	0.1	5,762	5,061	-701	-12.2	-3.0
Footwear	149	150	1	0.8	1,143	1,012	-131	-11.5	-4.7
Miscellaneous consumer goods	3,945	3,916	-29	-0.7	27,108	26,746	-362	-1.3	2.4
Television, radios, phonographs	131	137	6	4.3	772	915	143	18.5	16.3
Printed matter	292	285	-7	-2.4	2,137	1,978	-158	-7.4	-3.8
Watches, sporting goods and toys	567	504	-63	-11.2	3,544	3,488	-55	-1.6	1.7
House furnishings	741	755	14	1.9	5,161	5,085	-76	-1.5	2.8
Photographic goods	223	219	-4	-1.9	1,520	1,431	-89	-5.8	16.2
Miscellaneous end products	1,991	2,017	26	1.3	13,974	13,848	-127	-0.9	1.3
Special transactions trade	420	648	228	54.2	2,833	3,012	179	6.3	64.1
Unallocated balance of payments adjustments	742	746	4	0.6	4,543	5,145	602	13.2	13.2

Table 6-2
Imports by commodity groupings, balance of payments basis, seasonally adjusted — Constant dollars, 2002

	June	July	Change		Year to date			July 2010/ July 2009	
	2010	2010			2009	2010	Change		
	millions of dollars		percent		millions of dollars		percent		
Total	39,623	40,169	546	1.4	229,271	267,727	38,456	16.8	14.7
Agricultural and fishing products	2,442	2,479	37	1.5	16,000	16,927	928	5.8	4.3
Fruits and vegetables	651	635	-17	-2.5	4,702	4,599	-103	-2.2	-8.7
Fresh fruits and berries	230	223	-6	-2.8	1,733	1,711	-23	-1.3	-11.0
Dried fruits, fruits and fruit preparations	112	115	3	2.8	869	758	-111	-12.7	-15.8
Fresh vegetables	162	154	-8	-4.9	1,222	1,165	-57	-4.6	-13.2
Other vegetables and vegetable preparations	148	142	-5	-3.7	878	964	87	9.9	9.4
Other agricultural and fishing products	1,791	1,845	54	3.0	11,297	12,328	1,031	9.1	9.6
Live animals	16	15	-1	-6.3	109	109	0	0.3	-3.2
Meat and meat preparations	147	174	27	18.2	1,215	1,188	-27	-2.2	5.4
Fish and marine animals	218	263	45	20.5	1,532	1,636	104	6.8	15.6
Cocoa, coffee, tea and other food preparations	516	493	-23	-4.5	2,291	2,886	596	26.0	40.5
Dairy produce, eggs and honey	55	54	-1	-1.4	317	364	47	14.8	-9.3
Corn (maize) shelled	36	35	-1	-1.4	224	284	60	27.0	0.8
Other cereals and cereal preparations	134	144	9	6.9	1,108	1,017	-91	-8.2	-9.4
Sugar and sugar preparations	139	136	-3	-2.3	930	992	62	6.7	-15.1
Fodder, feed, excluding unmilled cereal	102	106	3	3.2	623	703	80	12.9	20.3
Beverages	272	263	-8	-3.1	1,883	1,965	81	4.3	-1.7
Tobacco	42	39	-4	-8.4	234	282	48	20.7	-7.1
Crude vegetable products	112	122	10	9.2	825	890	65	7.9	8.7
Cotton	1	1	0	-21.3	7	11	4	53.0	78.9
Energy products	1,671	1,775	104	6.2	12,314	12,262	-52	-0.4	-0.9
Crude petroleum	868	1,010	142	16.3	6,806	6,325	-481	-7.1	-6.9
Other energy products	803	765	-38	-4.7	5,508	5,937	429	7.8	8.4
Coal and other related products	343	269	-75	-21.8	2,257	2,548	290	12.9	-7.5
Petroleum and coal products	460	497	37	8.0	3,250	3,389	139	4.3	19.6
Forestry products	291	287	-4	-1.2	1,707	2,050	343	20.1	17.6
Forestry products	291	287	-4	-1.2	1,707	2,050	343	20.1	17.6
Crude wood products	54	57	3	6.0	340	358	18	5.4	28.1
Wood fabricated materials	237	230	-7	-2.9	1,367	1,692	324	23.7	15.2
Industrial goods and materials	6,786	6,445	-341	-5.0	38,562	45,246	6,684	17.3	15.6
Metals and metal ores	1,978	1,849	-128	-6.5	9,717	13,024	3,307	34.0	36.8
Metals in ores, concentrates and scrap	318	361	43	13.7	2,492	2,204	-288	-11.5	9.2
Steel bars, rods, plates, sheets	473	400	-73	-15.3	2,061	3,252	1,191	57.8	28.8
Other iron and steel products	282	290	9	3.2	1,501	1,803	301	20.1	45.1
Precious metals including alloys	551	445	-106	-19.3	1,664	3,142	1,478	88.8	98.5
Other non-ferrous metals and alloys	355	353	-2	-0.5	1,998	2,623	625	31.3	23.3
Chemicals and plastics	2,420	2,226	-195	-8.0	14,743	16,221	1,478	10.0	2.8
Organic chemicals	432	371	-61	-14.1	3,181	2,907	-274	-8.6	-10.1
Plastic materials	907	903	-5	-0.5	5,198	6,207	1,009	19.4	13.5
Other chemicals and related products	1,080	951	-129	-11.9	6,364	7,107	743	11.7	-0.6
Other industrial goods and materials	2,388	2,370	-18	-0.8	14,102	16,001	1,899	13.5	15.1
Crude animal products	29	25	-5	-16.0	218	167	-51	-23.3	-9.4
Wool and man-made fibres	29	26	-4	-12.6	154	188	35	22.6	16.3
Crude non-metallic minerals	61	57	-3	-5.7	381	419	38	9.9	26.4
Textile fabricated materials	272	273	2	0.6	1,582	1,810	228	14.4	17.6
Metal fabricated basic products	869	897	28	3.3	5,153	5,889	736	14.3	24.9
Rubber fabricated materials	104	102	-2	-2.0	592	703	110	18.7	12.0
Oils, fats, animal and vegetable	99	106	7	6.9	621	681	60	9.7	14.1
Non-metallic minerals	385	363	-22	-5.6	2,098	2,519	420	20.0	8.1
Other fabricated materials	540	521	-19	-3.5	3,303	3,626	322	9.8	5.5

Table 6-2 – continued

Imports by commodity groupings, balance of payments basis, seasonally adjusted — Constant dollars, 2002

	June	July	Change		Year to date			July 2010/ July 2009	
	2010	2010			2009	2010	Change		
	millions of dollars		percent		millions of dollars		percent		
Machinery and equipment	13,916	14,286	371	2.7	81,687	91,755	10,068	12.3	16.4
Industrial and agricultural machinery	3,197	3,162	-35	-1.1	18,271	20,536	2,265	12.4	21.2
Engines, turbines and electric motors	611	430	-181	-29.7	2,837	2,922	85	3.0	-9.7
Drilling mining machinery	164	172	9	5.3	880	1,093	213	24.2	41.4
Excavating machinery	276	320	44	15.9	1,280	1,830	550	42.9	97.5
Metal working machinery	147	172	26	17.4	1,092	1,141	49	4.5	14.3
Other industrial machinery	1,524	1,561	37	2.4	9,484	10,326	843	8.9	17.3
Agricultural machinery including tractors	475	506	31	6.5	2,698	3,224	526	19.5	38.1
Aircraft and other transportation equipment	1,464	1,397	-67	-4.6	10,292	9,438	-854	-8.3	-17.1
Aircraft, engines, parts	932	858	-73	-7.9	6,805	5,893	-912	-13.4	-21.3
Other transportation equipment and parts	532	539	7	1.3	3,487	3,546	59	1.7	-9.2
Office machines and equipment	2,504	2,673	169	6.8	14,261	16,322	2,061	14.5	25.2
Other machinery and equipment	6,750	7,054	304	4.5	38,863	45,459	6,596	17.0	20.7
Other communication and related equipment	2,824	3,048	225	8.0	15,902	19,115	3,212	20.2	26.8
Other equipment and tools	3,927	4,006	79	2.0	22,961	26,345	3,384	14.7	16.4
Automotive products	7,301	7,499	197	2.7	33,178	50,275	17,098	51.5	23.3
Passenger autos and chassis	2,210	2,424	214	9.7	11,450	15,319	3,869	33.8	14.7
Trucks and other motor vehicles	1,627	1,630	3	0.2	6,895	11,819	4,924	71.4	28.3
Motor vehicle parts	3,465	3,444	-20	-0.6	14,832	23,138	8,305	56.0	27.7
Other consumer goods	6,298	6,189	-109	-1.7	39,086	42,433	3,347	8.6	6.9
Apparel and footwear	1,282	1,283	1	0.0	8,507	8,590	83	1.0	3.3
Apparel and apparel accessories	1,078	1,075	-2	-0.2	7,115	7,186	71	1.0	3.4
Footwear	204	207	3	1.5	1,392	1,404	12	0.8	2.9
Miscellaneous consumer goods	5,016	4,906	-109	-2.2	30,579	33,843	3,264	10.7	7.8
Television, radios, phonographs	224	232	8	3.7	1,121	1,559	438	39.1	27.2
Printed matter	363	355	-8	-2.2	2,486	2,452	-33	-1.3	-3.1
Watches, sporting goods and toys	795	676	-119	-15.0	4,452	4,841	389	8.7	4.4
House furnishings	933	957	24	2.5	5,776	6,514	738	12.8	8.4
Photographic goods	439	420	-19	-4.4	2,336	2,687	351	15.0	34.0
Miscellaneous end products	2,261	2,266	5	0.2	14,407	15,789	1,381	9.6	5.0
Special transactions trade	484	738	254	52.6	3,012	3,431	419	13.9	68.2
Unallocated balance of payments adjustments	435	470	36	8.2	3,727	3,348	-379	-10.2	2.0

Table 7-1
Imports from selected countries, customs basis, not seasonally adjusted — July

	Agricultural and fishing products	Energy products	Forestry products	Industrial goods	Machinery and equipment	Automotive products	Consumer goods	Special transactions trade	Total
millions of dollars									
United States									
2009	1,493.6	881.3	135.4	3,554.1	3,894.3	2,405.9	1,891.1	337.3	14,593.1
2010	1,485.7	909.2	156.5	4,135.9	4,061.3	2,946.3	1,999.8	574.6	16,269.2
Mexico									
2009	83.6	0.0	0.7	97.4	636.0	425.4	83.6	3.8	1,330.5
2010	84.2	100.7	0.4	142.8	658.9	494.5	99.2	3.5	1,584.3
Japan									
2009	5.4	0.3	0.5	81.9	374.6	443.3	70.2	0.2	976.4
2010	5.3	7.9	0.1	85.2	431.5	418.4	87.2	0.2	1,035.9
European Union									
Germany									
2009	23.9	2.4	1.6	135.6	337.1	255.9	168.3	0.7	925.5
2010	24.5	1.5	1.5	157.5	350.4	312.1	135.7	0.8	984.0
France									
2009	66.2	24.9	0.2	132.2	239.5	6.3	154.6	0.3	624.3
2010	48.1	14.7	0.2	52.0	112.1	7.7	124.5	0.3	359.4
United Kingdom									
2009	40.9	257.4	0.1	100.3	220.9	27.0	116.2	3.3	766.0
2010	34.9	110.6	0.1	102.0	223.3	49.5	109.1	2.6	632.1
Italy									
2009	59.9	40.6	1.0	87.1	143.2	17.9	106.7	0.2	456.5
2010	50.3	35.2	1.1	83.7	124.8	18.6	90.0	0.4	404.1
Other European Union									
2009	91.5	189.1	3.4	211.7	431.2	55.5	381.4	2.1	1,366.1
2010	85.3	334.5	3.3	258.8	367.0	71.8	290.4	0.2	1,411.2
Total									
2009	282.3	514.5	6.4	666.9	1,371.9	362.5	927.1	6.6	4,138.3
2010	243.1	496.5	6.1	654.1	1,177.6	459.6	749.6	4.3	3,790.8
Newly industrialized countries									
South Korea									
2009	4.8	48.2	0.0	59.8	204.0	149.7	22.1	0.2	488.8
2010	4.2	1.4	0.0	75.6	209.4	196.7	20.9	0.1	508.2
Hong Kong									
2009	2.7	0.0	0.0	1.8	13.6	0.4	12.2	0.0	30.7
2010	2.9	0.0	0.0	1.9	14.8	0.2	16.3	0.0	36.2
Taiwan									
2009	6.4	0.0	0.7	49.5	158.1	14.7	36.8	0.1	266.3
2010	6.6	19.7	0.8	77.2	190.8	11.4	36.9	0.1	343.5
Singapore									
2009	1.4	0.0	0.0	21.6	40.6	0.7	16.5	0.1	80.9
2010	4.0	0.0	0.0	16.9	67.7	0.2	11.4	0.0	100.2
Total									
2009	15.2	48.3	0.8	132.7	416.2	165.5	87.6	0.4	866.7
2010	17.7	21.2	0.8	171.5	482.7	208.5	85.5	0.2	988.1
Other countries									
2009	607.2	2,019.0	46.0	1,290.4	2,262.9	160.9	2,103.3	22.4	8,512.2
2010	599.8	2,045.8	63.8	1,904.5	2,627.3	178.6	2,067.9	30.2	9,517.9
Total									
2009	2,487.7	3,463.5	189.8	5,823.3	8,955.9	3,963.5	5,162.9	370.8	30,417.5
2010	2,436.4	3,581.3	227.7	7,094.0	9,439.2	4,705.9	5,089.3	613.0	33,186.8

Table 7-2
Imports from selected countries, customs basis, not seasonally adjusted — Year to date, January to July

	Agricultural and fishing products	Energy products	Forestry products	Industrial goods	Machinery and equipment	Automotive products	Consumer goods	Special transactions trade	Total
millions of dollars									
United States									
2009	10,171.8	6,387.3	1,059.1	26,037.9	29,927.2	18,839.7	13,453.4	2,312.5	108,188.8
2010	9,521.2	7,018.4	1,139.5	29,084.7	28,727.6	26,685.8	12,933.0	2,565.8	117,676.1
Mexico									
2009	873.7	158.5	3.9	759.7	3,764.3	2,525.8	582.6	23.1	8,691.6
2010	969.6	451.1	3.4	981.0	4,233.9	4,821.9	629.7	31.3	12,121.9
Japan									
2009	38.9	23.0	1.3	653.3	2,936.3	2,931.8	569.2	2.4	7,156.4
2010	38.9	51.7	0.6	714.0	2,772.0	3,528.7	594.7	2.4	7,703.0
European Union									
Germany									
2009	142.5	19.9	8.0	1,115.6	2,663.5	1,436.1	1,061.3	5.8	6,452.8
2010	142.1	34.4	8.0	1,133.6	2,168.7	2,004.3	990.3	15.5	6,496.9
France									
2009	380.4	172.3	1.4	639.3	1,234.4	60.7	950.4	8.4	3,447.4
2010	363.2	70.0	1.0	475.6	958.6	59.2	933.3	5.6	2,866.5
United Kingdom									
2009	216.4	1,377.9	0.9	760.7	2,102.9	202.2	785.2	20.9	5,467.2
2010	224.3	2,171.4	0.5	1,172.1	1,652.0	260.3	731.3	34.2	6,246.1
Italy									
2009	356.9	72.3	8.7	576.1	922.8	115.5	634.2	3.5	2,690.0
2010	337.8	108.9	7.2	548.6	819.9	139.3	610.6	1.8	2,574.0
Other European Union									
2009	631.8	865.7	25.5	1,660.7	2,627.3	340.4	2,435.5	23.0	8,609.9
2010	605.4	1,422.8	24.0	1,771.7	2,560.1	430.1	2,215.5	15.0	9,044.7
Total									
2009	1,728.0	2,508.2	44.6	4,752.5	9,550.9	2,155.0	5,866.6	61.6	26,667.4
2010	1,672.9	3,807.4	40.6	5,101.6	8,159.4	2,893.2	5,481.0	72.1	27,228.1
Newly industrialized countries									
South Korea									
2009	29.3	121.6	0.1	491.8	1,504.1	1,184.4	135.8	0.5	3,467.7
2010	34.2	148.9	0.1	453.6	1,285.9	1,315.1	115.9	0.6	3,354.3
Hong Kong									
2009	16.1	0.0	0.2	18.0	98.4	2.3	76.4	0.4	211.8
2010	15.8	0.1	0.2	15.3	83.7	2.5	79.1	0.2	196.9
Taiwan									
2009	38.9	0.2	5.6	432.4	1,199.6	104.3	233.1	0.7	2,014.8
2010	42.7	19.8	4.9	487.5	1,167.2	91.5	228.9	0.8	2,043.3
Singapore									
2009	17.1	70.0	0.6	231.9	309.5	2.8	135.3	1.0	768.1
2010	20.0	0.1	0.1	73.1	347.4	2.3	102.6	1.1	546.7
Total									
2009	101.5	191.8	6.5	1,174.1	3,111.6	1,293.9	580.6	2.6	6,462.5
2010	112.7	168.9	5.3	1,029.5	2,884.1	1,411.5	526.4	2.7	6,141.2
Other countries									
2009	4,163.3	9,934.1	303.7	10,130.9	15,177.6	972.6	12,076.5	228.3	52,986.9
2010	4,259.3	11,722.9	389.9	11,918.5	16,092.6	1,200.9	11,672.6	197.8	57,454.6
Total									
2009	17,078.0	19,202.9	1,419.1	43,508.5	64,467.9	28,718.7	33,128.9	2,630.5	210,154.6
2010	16,577.2	23,220.6	1,579.4	48,829.4	62,869.7	40,542.0	31,837.4	2,872.1	228,327.8

Table 8
Imports by country, customs basis, not seasonally adjusted

	July		January to July		Change January to July 2010/ January to July 2009
	2009	2010	2009	2010	
	millions of dollars				percent
North America					
Canada	320.9	303.5	1,860.2	2,375.6	27.7
Greenland	0.0	0.0	17.0	0.2	-98.6
Mexico	1,330.5	1,584.3	8,691.6	12,121.9	39.5
Saint Pierre and Miquelon	0.0	0.1	0.2	0.5	231.4
United States	14,593.1	16,269.2	108,188.8	117,676.1	8.8
Total	16,244.6	18,157.1	118,757.9	132,174.3	11.3
Western Europe					
Andorra	0.0	0.0	0.0	0.2	326.3
Austria	83.4	94.7	646.3	677.9	4.9
Belgium	147.6	128.7	814.0	937.3	15.2
Denmark	246.1	116.5	767.8	1,191.6	55.2
Faeroe Islands	0.2	0.6	0.8	2.7	222.3
Finland	67.6	79.3	492.1	501.2	1.9
France	624.3	359.4	3,447.4	2,866.5	-16.9
Germany	925.5	984.0	6,452.8	6,496.9	0.7
Gibraltar	0.0	0.0	0.0	2.2	...
Greece	11.4	11.2	83.1	81.6	-1.8
Iceland	2.2	2.9	18.0	21.1	17.4
Italy	456.5	404.1	2,690.0	2,574.0	-4.3
Luxembourg	7.5	5.9	42.4	48.9	15.3
Malta	2.1	1.8	13.2	9.4	-28.8
Netherlands	167.3	186.9	1,159.2	990.4	-14.6
Norway	375.9	284.7	1,981.3	1,678.7	-15.3
Portugal	24.8	20.2	158.4	188.1	18.7
Republic of Ireland (Eire)	185.9	131.4	1,354.2	1,019.4	-24.7
Spain	112.6	122.0	783.2	754.6	-3.7
Sweden	138.5	229.9	1,065.4	1,231.1	15.6
Switzerland	324.7	219.1	2,086.1	1,802.6	-13.6
United Kingdom	766.0	632.1	5,467.2	6,246.1	14.2
Total	4,670.2	4,015.7	29,523.0	29,322.4	-0.7
Other Europe					
Albania	0.6	0.5	2.5	1.7	-30.2
Armenia	3.5	2.1	21.7	14.4	-33.7
Azerbaijan	122.1	230.4	742.8	303.2	-59.2
Belarus	1.2	0.4	17.5	2.8	-83.9
Bosnia and Herzegovina	0.9	0.6	4.4	4.0	-9.1
Bulgaria	19.7	6.1	78.8	33.4	-57.6
Croatia	3.3	10.8	15.2	20.6	36.1
Czech Republic	22.3	20.8	167.0	153.1	-8.3
Estonia	1.8	1.9	13.3	11.5	-13.8
Georgia	14.5	15.2	75.8	63.7	-15.9
Hungary	31.7	31.3	205.8	204.1	-0.8
Kazakhstan	242.7	29.2	597.7	927.3	55.1
Kyrgyzstan	0.0	0.0	0.4	0.1	-84.3
Latvia	0.8	1.3	6.2	5.2	-15.8
Lithuania	3.9	94.8	100.2	229.1	128.7
Macedonia (Former Yugoslav Republic of Macedonia)	0.5	0.6	5.5	4.3	-22.2
Montenegro	0.0	0.1	0.2	0.3	25.5
Poland	60.2	76.1	470.7	517.6	10.0
Republic of Moldova	0.2	0.2	1.2	4.3	266.2
Romania	12.2	26.1	67.7	98.1	44.9
Russian Federation	243.1	207.0	899.0	924.5	2.8
Serbia	1.0	1.1	6.8	7.1	5.4
Slovakia	13.5	16.8	81.4	97.0	19.2
Slovenia	4.9	7.0	37.3	62.1	66.6
Tajikistan	0.0	0.0	0.0	0.0	161.3
Turkmenistan	0.0	0.0	0.1	0.1	-24.6
Ukraine	4.8	7.1	48.9	42.2	-13.7
Uzbekistan	0.1	0.0	11.8	1.2	-90.0
Total	809.3	787.8	3,679.7	3,733.0	1.4

Table 8 – continued

Imports by country, customs basis, not seasonally adjusted

	July		January to July		Change
	2009	2010	2009	2010	January to July 2010/ January to July 2009
	millions of dollars				percent
Middle East					
Bahrain	0.3	0.4	3.7	2.0	-46.1
Cyprus	0.3	0.1	2.1	1.9	-12.2
Egypt	5.1	21.8	55.1	169.9	208.4
Eritrea	0.0	0.0	0.1	0.2	146.0
Ethiopia	1.7	1.5	10.2	8.4	-18.0
Iran	2.1	2.9	14.8	23.7	59.8
Iraq	146.4	208.6	717.3	1,062.5	48.1
Israel	75.2	82.9	556.1	584.2	5.0
Jordan	2.0	1.8	9.5	11.9	25.7
Kuwait	0.0	0.0	37.2	31.5	-15.3
Lebanon	1.4	1.3	8.6	9.1	5.5
Libya	0.0	0.0	0.1	13.5	...
Oman	0.6	0.4	4.3	13.5	215.5
Qatar	0.1	1.6	9.5	64.5	581.0
Saudi Arabia	156.3	158.4	919.3	1,213.8	32.0
Somalia	0.0	0.0	0.0	0.0	-32.2
Sudan	5.1	9.8	40.3	52.4	29.8
Syria	0.9	0.4	3.1	3.7	17.2
Turkey	56.5	63.0	388.3	377.8	-2.7
United Arab Emirates	2.8	53.2	182.1	120.5	-33.9
Yemen	0.0	0.0	0.1	0.1	-52.3
Total	456.8	608.4	2,962.0	3,764.9	27.1
Other Africa					
Algeria	346.5	328.0	2,038.7	2,287.2	12.2
Angola	95.8	181.5	617.2	869.3	40.8
Antarctica	0.0	0.0	0.0	0.2	...
Benin	0.0	0.0	0.0	0.0	357.7
Botswana	4.3	0.0	14.7	6.9	-53.3
Bouvet Island	0.0	0.0	0.0	0.0	-99.7
Burkina Faso	0.0	1.2	1.6	16.7	920.6
Burundi	0.0	0.0	0.1	0.0	-76.3
Cameroon	0.5	0.5	3.0	3.5	18.1
Cape Verde	0.0	0.0	0.0	0.0	54.6
Central African Republic	0.0	0.0	0.0	0.1	15.9
Chad	0.0	0.0	0.0	0.2	744.3
Comoros	0.0	0.0	0.0	0.0	67.7
Congo	0.8	0.3	1.6	1.0	-36.5
Democratic Republic of the Congo	0.0	0.0	0.4	0.6	52.5
Djibouti	0.0	0.0	0.0	0.0	-87.3
Equatorial Guinea	76.5	0.0	268.7	370.1	37.7
French Southern Territories	0.0	0.0	0.0	0.0	-100.0
Gabon	0.3	0.0	1.2	0.2	-81.6
Gambia	0.0	0.0	0.0	0.1	153.7
Ghana	2.7	3.0	12.9	13.9	7.5
Guinea	5.2	2.3	40.9	25.8	-37.0
Guinea-Bissau	0.0	0.0	0.0	0.0	-40.3
Ivory Coast	8.4	14.4	152.1	185.2	21.8
Kenya	1.6	1.1	10.3	8.6	-16.5
Lesotho	0.7	6.1	4.8	10.8	124.6
Liberia	0.2	10.2	12.1	29.4	143.9
Madagascar	2.2	7.5	22.3	28.9	29.7
Malawi	0.3	7.9	1.2	24.5	...
Mali	0.0	0.0	0.2	0.3	34.5
Mauritania	0.0	0.0	0.6	0.2	-68.2
Mauritius	0.9	0.7	5.7	5.9	3.2
Morocco	4.0	3.4	61.5	62.3	1.4
Mozambique	0.0	0.0	0.2	1.1	386.2
Namibia	0.0	25.2	188.8	115.1	-39.1
Niger	0.4	0.1	0.6	0.6	-11.7
Nigeria	61.6	163.8	240.4	918.0	281.9
Rwanda	0.0	0.0	0.3	0.1	-52.5
Saint Helena	0.0	0.0	0.0	0.0	1.9
Sao Tome and Principe	0.0	0.0	0.0	0.2	...
Senegal	0.1	0.1	0.6	0.6	5.9

Table 8 – continued

Imports by country, customs basis, not seasonally adjusted

	July		January to July		Change
	2009	2010	2009	2010	January to July 2010/ January to July 2009
	millions of dollars				percent
Seychelles	0.0	0.0	0.5	0.2	-67.6
Sierra Leone	0.1	0.1	1.1	0.9	-15.1
South Africa	57.2	67.7	351.4	391.5	11.4
Swaziland	0.2	0.3	1.1	0.9	-17.8
Togo	0.8	0.4	3.0	0.7	-76.8
Tunisia	5.4	4.7	27.3	33.1	21.3
Uganda	0.2	0.2	1.2	2.7	122.6
United Republic of Tanzania	0.3	0.3	2.4	2.0	-15.6
Western Sahara	0.0	0.0	0.0	0.0	-95.0
Zambia	0.1	0.1	0.4	0.7	80.2
Zimbabwe	0.2	0.2	1.6	2.5	60.4
Total	677.9	831.1	4,093.0	5,422.8	32.5
Other Asia					
Afghanistan	0.1	0.1	0.8	1.1	28.9
Bangladesh	92.9	80.4	513.1	445.3	-13.2
Bhutan	0.0	0.0	0.0	0.0	2.3
British Indian Ocean Territory	0.0	0.0	0.0	0.0	456.2
Brunei Darussalam	0.1	0.0	1.6	0.0	-99.0
Cambodia	27.3	39.1	167.6	179.8	7.3
China	3,528.9	4,202.6	22,442.4	23,387.1	4.2
Hong Kong	30.7	36.2	211.8	196.9	-7.0
India	165.1	173.1	1,226.2	1,135.3	-7.4
Indonesia	91.5	108.9	600.4	683.9	13.9
Japan	976.4	1,035.9	7,156.4	7,703.0	7.6
Laos	0.3	0.5	4.8	4.3	-10.7
Macao	1.2	1.1	17.9	6.0	-66.5
Malaysia	185.2	209.3	1,333.5	1,298.0	-2.7
Maldives	0.0	0.0	0.1	0.0	-31.2
Mongolia	0.0	47.4	59.2	120.4	103.5
Myanmar	0.0	0.0	0.0	0.0	-65.7
Nepal	1.3	1.6	7.0	7.8	12.2
North Korea	0.0	0.0	0.1	0.1	19.4
Pakistan	22.8	25.7	140.8	151.4	7.5
Philippines	59.3	73.8	395.9	490.1	23.8
Singapore	80.9	100.2	768.1	546.7	-28.8
South Korea	488.8	508.2	3,467.7	3,354.3	-3.3
Sri Lanka	10.5	10.2	68.0	68.3	0.5
Taiwan	266.3	343.5	2,014.8	2,043.3	1.4
Thailand	188.8	192.2	1,283.6	1,312.0	2.2
Timor-Leste	0.7	0.0	2.3	0.8	-66.3
Viet Nam	106.5	104.1	598.2	611.7	2.3
Total	6,325.7	7,294.1	42,482.4	43,747.7	3.0
Oceania					
American Samoa	0.0	0.0	0.2	0.2	42.0
Australia	149.1	180.2	918.1	998.4	8.7
Christmas Island	0.0	0.0	0.0	0.1	667.5
Cocos (Keeling) Islands	0.0	0.0	0.1	0.0	-89.3
Cook Islands	0.0	0.0	0.0	0.0	-35.7
Fiji	0.4	0.4	3.7	3.8	4.5
French Polynesia	0.0	0.0	0.3	0.4	43.2
Guam	0.0	0.0	0.2	0.0	-87.1
Heard Island and McDonald Islands	0.0	0.0	0.0	0.0	842.9
Kiribati	0.0	0.0	0.1	0.0	-75.4
Nauru	0.0	0.0	0.1	0.1	-50.1
New Caledonia	0.0	0.0	0.3	0.1	-57.2
New Zealand	44.3	44.3	285.5	271.5	-4.9
Niue	0.0	0.0	0.0	0.0	239.3
Norfolk Island	0.0	0.0	0.0	0.0	-54.4
Papua New Guinea	0.2	0.1	0.7	0.7	6.1
Pitcairn	0.0	0.0	0.0	0.0	-67.2
Samoa	0.0	0.1	0.0	0.3	...
Solomon Islands	0.0	0.0	0.1	0.1	-16.4
Tonga	0.0	0.0	0.0	0.0	-67.8

Table 8 – continued

Imports by country, customs basis, not seasonally adjusted

	July		January to July		Change
	2009	2010	2009	2010	January to July 2010/ January to July 2009
	millions of dollars				percent
United States Minor Outlying Islands	0.4	0.2	3.0	2.5	-14.9
Vanuatu	0.0	0.0	0.0	0.4	...
Wallis and Futuna	0.0	0.0	0.0	0.0	553.6
Total	194.5	225.2	1,212.5	1,278.8	5.5
South America					
Argentina	56.7	170.1	407.4	495.8	21.7
Bolivia	8.7	10.1	49.3	67.2	36.2
Brazil	222.1	291.7	1,415.5	1,868.7	32.0
Chile	76.5	81.5	992.0	1,246.4	25.6
Colombia	81.7	78.9	450.6	442.2	-1.9
Ecuador	18.7	17.5	149.5	119.7	-20.0
Falkland Islands (Malvinas)	0.0	0.0	0.0	0.0	-51.4
Guyana	26.6	20.1	170.5	148.7	-12.7
Paraguay	0.5	0.7	4.7	5.7	22.2
Peru	211.7	285.4	1,525.5	2,020.2	32.4
Suriname	45.6	32.8	318.1	287.5	-9.6
Uruguay	2.3	1.3	44.8	44.6	-0.5
Venezuela	115.5	56.3	645.6	462.6	-28.4
Total	866.5	1,046.5	6,173.5	7,209.2	16.8
Central America Antilles					
Anguilla	0.0	0.0	0.2	0.2	-31.8
Antigua and Barbuda	0.1	0.0	0.3	0.2	-36.6
Aruba	0.0	0.0	53.4	0.1	-99.8
Bahamas	0.0	0.0	26.7	23.3	-12.7
Barbados	0.7	0.6	5.1	5.3	3.8
Belize	0.5	0.4	5.1	3.8	-25.9
Bermuda	0.4	0.1	3.7	0.6	-84.9
British Virgin Islands	0.0	0.1	0.3	0.2	-37.9
Cayman Islands	0.0	0.0	0.5	0.3	-47.3
Costa Rica	28.4	32.6	218.2	266.0	21.9
Cuba	27.6	47.7	250.8	385.5	53.7
Dominica	0.0	0.0	0.1	0.1	-48.0
Dominican Republic	12.7	11.7	84.3	78.3	-7.1
El Salvador	5.9	5.0	47.4	59.9	26.2
Grenada	0.0	0.0	0.2	0.4	84.0
Guatemala	16.8	26.0	158.9	188.0	18.3
Haiti	1.9	2.9	13.1	15.8	20.3
Honduras	10.0	11.7	87.1	94.7	8.7
Jamaica	25.2	17.2	86.9	97.9	12.7
Montserrat	0.0	0.0	0.0	0.1	237.1
Netherlands Antilles	0.0	0.0	10.0	0.2	-98.4
Nicaragua	7.0	22.3	50.9	101.7	99.5
Panama	7.3	6.1	17.6	47.0	166.4
Saint Kitts and Nevis	0.8	0.8	3.6	4.1	14.3
Saint Lucia	0.0	0.0	0.1	0.1	8.0
Saint Vincent and the Grenadines	0.1	0.1	0.2	0.1	-16.0
Trinidad and Tobago	26.6	35.6	145.5	300.8	106.7
Turks and Caicos Islands	0.0	0.0	0.2	0.1	-63.3
Total	172.0	221.0	1,270.6	1,674.7	31.8
All countries	30,417.5	33,186.8	210,154.6	228,327.8	8.6

Table 9-1
Imports by province of clearance, customs basis, not seasonally adjusted — July

	Agricultural and fishing products	Energy products	Forestry products	Industrial goods	Machinery and equipment	Automotive products	Consumer goods	Special transactions trade	Total
millions of dollars									
Newfoundland and Labrador									
2009	2.3	280.7	0.0	2.7	4.9	0.2	0.5	0.0	291.3
2010	2.6	257.6	0.0	7.3	37.2	0.2	0.8	0.0	305.8
Prince Edward Island									
2009	0.3	0.0	0.0	0.1	12.2	0.0	1.5	0.0	14.1
2010	0.2	0.0	0.0	0.0	0.7	0.0	0.0	0.0	1.0
Nova Scotia									
2009	22.7	199.8	0.9	54.8	75.4	242.2	14.4	1.4	611.6
2010	38.3	130.6	2.2	107.5	107.7	335.1	12.9	1.8	736.0
New Brunswick									
2009	40.4	773.0	7.2	85.2	206.9	26.9	20.9	2.0	1,162.4
2010	60.2	749.5	8.6	103.8	69.3	35.0	35.8	2.4	1,064.5
Quebec									
2009	394.5	1,313.7	45.4	1,084.2	1,426.4	142.7	1,118.5	47.8	5,573.2
2010	319.5	1,317.4	58.2	1,233.3	1,333.7	161.3	958.2	38.9	5,420.4
Ontario									
2009	1,374.3	377.2	72.7	3,371.0	4,909.7	3,011.9	3,085.3	281.9	16,483.9
2010	1,348.5	570.9	84.8	4,155.0	5,453.6	3,624.1	3,174.1	541.6	18,952.6
Manitoba									
2009	86.3	33.3	6.5	225.8	435.2	99.4	136.2	9.0	1,031.6
2010	76.4	42.4	7.6	265.5	497.5	125.0	138.4	6.1	1,159.0
Saskatchewan									
2009	27.0	62.1	2.1	123.1	230.4	59.5	19.1	4.0	527.2
2010	26.3	66.8	3.4	162.9	310.2	105.3	21.5	0.2	696.5
Alberta									
2009	149.4	188.2	7.6	324.1	486.5	58.8	106.2	11.7	1,332.5
2010	153.3	162.8	9.1	416.2	691.0	94.7	101.5	11.7	1,640.4
British Columbia									
2009	377.8	209.3	47.4	552.4	1,167.7	321.8	660.4	13.1	3,349.8
2010	397.5	283.2	53.7	642.5	937.8	225.1	646.1	10.3	3,196.3
Yukon, Northwest Territories and Nunavut									
2009	12.5	26.4	0.0	0.1	0.6	0.2	0.1	0.0	39.8
2010	13.5	0.2	0.0	0.1	0.3	0.1	0.1	0.0	14.3
Total									
2009	2,487.7	3,463.5	189.8	5,823.3	8,955.9	3,963.5	5,162.9	370.8	30,417.5
2010	2,436.4	3,581.3	227.7	7,094.0	9,439.2	4,705.9	5,089.3	613.0	33,186.8

Table 9-2
Imports by province of clearance, customs basis, not seasonally adjusted — Year to date, January to July

	Agricultural and fishing products	Energy products	Forestry products	Industrial goods	Machinery and equipment	Automotive products	Consumer goods	Special transactions trade	Total
millions of dollars									
Newfoundland and Labrador									
2009	23.8	1,188.5	0.5	128.4	92.4	0.5	2.1	0.2	1,436.4
2010	26.2	1,507.4	0.1	24.8	125.3	0.7	3.8	2.9	1,691.1
Prince Edward Island									
2009	2.1	0.0	0.0	17.7	12.7	0.1	1.7	0.1	34.3
2010	2.3	0.0	0.0	5.3	1.2	0.1	0.2	0.1	9.2
Nova Scotia									
2009	176.7	850.8	6.8	461.5	631.7	1,485.3	101.8	18.0	3,732.7
2010	223.1	1,081.5	10.4	718.1	580.6	2,052.2	96.1	16.5	4,778.5
New Brunswick									
2009	219.9	3,477.1	56.8	534.5	653.7	172.9	123.4	14.0	5,252.5
2010	250.3	4,399.6	62.1	629.4	583.7	257.9	169.3	12.9	6,365.2
Quebec									
2009	2,555.2	7,087.2	417.9	7,834.2	11,276.5	1,135.5	6,637.0	298.5	37,242.0
2010	2,473.1	8,777.8	411.3	8,698.5	9,752.0	1,234.3	5,981.9	320.5	37,649.4
Ontario									
2009	9,586.1	3,111.7	514.7	24,485.3	35,058.4	22,133.9	20,520.9	2,048.9	117,459.9
2010	9,228.5	3,312.4	587.8	28,574.4	35,878.7	33,409.2	20,215.4	2,291.4	133,497.9
Manitoba									
2009	577.0	139.1	51.0	2,027.6	3,449.4	784.9	987.7	56.5	8,073.2
2010	507.5	331.4	55.7	2,087.5	3,278.7	756.3	897.1	49.0	7,963.2
Saskatchewan									
2009	200.8	277.4	16.9	1,333.9	2,066.7	449.4	146.0	20.7	4,511.9
2010	183.3	383.4	14.6	1,320.4	2,146.5	569.9	150.1	9.8	4,778.0
Alberta									
2009	1,085.3	1,703.0	61.6	2,703.7	4,249.6	439.7	678.8	76.4	10,998.3
2010	1,092.0	1,591.0	67.1	2,681.4	3,949.1	607.8	686.7	80.1	10,755.3
British Columbia									
2009	2,617.6	1,339.4	292.9	3,980.1	6,959.2	2,115.9	3,929.4	96.3	21,330.8
2010	2,551.7	1,834.2	370.3	4,088.6	6,534.1	1,653.3	3,636.5	88.5	20,757.3
Yukon, Northwest Territories and Nunavut									
2009	33.5	28.6	0.0	1.3	17.5	0.5	0.2	0.9	82.5
2010	39.1	1.7	0.0	0.9	39.9	0.3	0.2	0.3	82.5
Total									
2009	17,078.0	19,202.9	1,419.1	43,508.5	64,467.9	28,718.7	33,128.9	2,630.5	210,154.6
2010	16,577.2	23,220.6	1,579.4	48,829.4	62,869.7	40,542.0	31,837.4	2,872.1	228,327.8

Technical notes

The Canadian international merchandise trade statistical program

Introduction

The objective of this text is to provide a general overview of the Canadian International Merchandise Trade Statistical Program, with special reference to concepts and definitions. The text is intended for the general user and simplicity is emphasized. More technical details can be obtained from the International Trade Division, Statistics Canada upon request.

Conceptual framework

1. Objectives and coverage: The primary objective of the Canadian International Merchandise Trade Statistical Program is to measure the change in the stock of material resources of Canada resulting from the movement of merchandise into or out of the country. Information on imports and exports are inputs into the System of National Accounts, particularly in the balance of payments and gross domestic product, and are used in the formulation of trade and budgetary policies. Governments, importers, exporters, manufacturers and shipping companies use international merchandise trade statistics to:

- monitor import penetration and export performance,
- monitor commodity price and volume changes,
- examine transport implications.

2. Trade statistics (customs basis / balance of payments basis): Merchandise trade statistics are reported and presented on two different bases: customs basis and balance of payment basis.

When goods are imported into or exported from Canada, declarations must be filed with customs, giving such information as description and value of the goods, origin and port of clearance of commodities and mode of transport. Most of this information is required for the purposes of customs administration. Statistics developed from administrative records of customs are commonly referred to as customs-based trade statistics.

Customs-based trade statistics are more accurate at measuring imports than they are at measuring exports. This is the case because customs are typically more vigilant with respect to goods entering the country than they are with goods leaving the country.

Customs-based export statistics may understate or incorrectly portray the destination of exports. Export statistics are understated when the proper documentation is not filed with Customs. Exports are incorrectly portrayed when the country of final destination is inaccurately reported on the customs documentation. This occurs most frequently when goods are routed through an intermediary country before continuing on to their final destination.

Statistics Canada does not have a measure of undercoverage but periodically conducts reconciliation exercises with its major trading partners, excluding the United States.

On January 1, 1990, Canada entered into a memorandum of understanding with the United States concerning the exchange of import data. As a consequence, each administration is using the other's import data to replace its own export data. Canada's international merchandise trade statistics are, therefore, no longer derived exclusively from the administrative records of the Canada Border Services Agency, but from United States Customs records as well.

Customs-based information is adjusted to conform with the National Accounts concepts and definitions. The adjustments to derive balance of payments-based trade data include adjustments related to trade definition, valuation and timing. The principal difference between the two trade concepts is that customs-based merchandise trade statistics cover the physical movement of goods as they are reflected in customs documents while balance of payments-adjusted data are intended to cover all economic transactions that involve merchandise trade between residents and non-residents. The present document describes the concepts and processes pertaining to the customs-based trade statistics only. (For further information on balance of payments-adjusted data, see the publication *Canada's Balance of International Payments*, Statistics Canada (Catalogue no. 67-001-X).

3. System of trade: Canadian trade statistics are compiled according to the general system of trade, as defined by the United Nations Statistical Office. Under this system, imports include all goods that have crossed Canada's territorial boundary, whether for immediate consumption in Canada or for storage in bonded customs warehouses. Domestic exports include goods grown, extracted or manufactured in Canada, including goods of foreign origin that have been materially transformed in Canada. Re-exports are exports of goods of foreign origin that have not been materially transformed in Canada, including foreign goods withdrawn for export from bonded customs warehouses. Total exports are the sum of domestic exports and re-exports. Thus the general trade system, in principal, presents all goods entering the country (imports) and all goods leaving the country (exports). It differs from the special system of trade in the treatment of imported goods into bonded customs warehouses. Under the 'special' system, these goods are counted only if and when they are withdrawn from customs warehouses for home consumption. They are not counted in export statistics unless they have first cleared customs.

Conceptually, under the general system, the statistical frontier coincides with the geographical boundary, while under the 'special' system, it coincides with the customs boundary.

4. Valuation: For customs purposes, imports are recorded at values established according to the provisions of the Customs Act, which, since January 1, 1985, reflects valuation methods based on the General Agreement on Tariffs and Trade (GATT) Valuation Code System. In general, the value for duty of imported goods must be equivalent to the transaction value or the price actually paid.

To determine the transaction value of imported goods, all transportation and associated costs arising in respect of the goods being appraised prior to and at the place of direct shipment to Canada, are to be added to the price of the goods. Therefore, Canadian imports are valued Free on Board (FOB), place of direct shipment to Canada. It excludes freight and insurance costs in bringing the goods to Canada from the point of direct shipment.

Countries other than the United States, exports are, in principal, valued or recorded at the values declared on export documents, which usually reflect the transaction value, i.e., actual selling price or, in the case of a non-arm's length transaction, the transfer price used for company accounting purposes. Canadian exports to overseas countries are valued at F.O.B. port of exit, including domestic freight charges to that point but net of discounts and allowances. As of January, 1990, Canadian exports to the U.S. are valued F.O.B. point of exit from Canada. Prior to 1990, they were valued F.O.B. place of lading net of freight charges, discounts and allowances.

5. Statistical period: The reference period is the calendar month and the calendar year. The closing of the statistical month for imports and Canadian exports to the United States is defined as the last calendar day of the month, based as closely as practicable on the date of clearance from customs.

The closing of the statistical month for exports, to countries other than the United States, is also defined as the last calendar day of the month. Those export documents that are received too late for incorporation in the current month are assigned to the month the transaction took place. If a monthly summary report from a high volume exporter is not received on time, the data are imputed for the current month and revised with the trade value in the following statistical month.

6. Trading partner attribution (country of origin/destination): Exports are attributed to the country, which is the last known destination of the goods at the time of export. Exports to the United States are attributed to the state of destination.

Imports are attributed to their country of origin, that is, the country in which the goods were grown, extracted or manufactured in accordance to the rules of origin administered by the Canada Border Services Agency. Imports

from the United States are attributed to the state of origin. Prior to 1988, most imports were attributed to the country of export/consignment, with the exception of imports from Central and South America.

7. Principal trading areas: The 'principal trading areas' are country groupings defined as follows:

United States: includes trade with Puerto Rico and the U.S. Virgin Islands

Japan

European Union (EU): Austria, Belgium, Bulgaria, Cyprus, Czech Republic, Denmark, Estonia, Finland, France, Germany, Greece, Hungary, Ireland, Italy, Latvia, Lithuania, Luxembourg, Malta, Netherlands, Poland, Portugal, Romania, Slovakia, Slovenia, Spain, Sweden and United Kingdom

Other Organisation for Economic Co-operation and Development (OECD): Australia, Canada, Iceland, Mexico, New Zealand, Norway, South Korea, Switzerland, and Turkey. (The EU countries, United States, and Japan are also members of OECD)

Other countries: all countries and territories other than the United States, Japan, EU and other OECD

8. Legal framework: Import and export statistics with countries other than the United States are derived from information contained in administrative records collected by the Canada Border Services Agency under the Customs Act. Copies of these documents (or information therefrom) are sent to Statistics Canada in accordance with Section 25 of the Statistics Act. It follows that the disclosure of trade statistics is governed by both the Customs Act and the Statistics Act and is subject to the provisions of Section 17(2)(a) of the latter. Disclosure of export statistics to the United States is now governed by a memorandum of understanding that provides for the exchange of detailed import statistics between Canada and the United States.

Contact information

Questions concerning details of methods not covered by these notes should be addressed to the Marketing and Client Services Section, International Trade Division, Statistics Canada, 170 Tunney's Pasture Driveway, Ottawa, Ontario, K1A 0T6.

Telephone: 1-800-294-5583 or 613-951-9647

Facsimile: 1-800-664-0055 613-951-0117

Internet: trade@statcan.gc.ca