

Catalogue no. 65-001-X

Canadian International Merchandise Trade

June 2010



Statistics
Canada

Statistique
Canada

Canada

How to obtain more information

For information about this product or the wide range of services and data available from Statistics Canada, visit our website at www.statcan.gc.ca, e-mail us at infostats@statcan.gc.ca, or telephone us, Monday to Friday from 8:30 a.m. to 4:30 p.m., at the following numbers:

Statistics Canada's National Contact Centre

Toll-free telephone (Canada and the United States):

Inquiries line	1-800-263-1136
National telecommunications device for the hearing impaired	1-800-363-7629
Fax line	1-877-287-4369

Local or international calls:

Inquiries line	1-613-951-8116
Fax line	1-613-951-0581

Depository Services Program

Inquiries line	1-800-635-7943
Fax line	1-800-565-7757

To access this product

This product, Catalogue no. 65-001-X, is available free in electronic format. To obtain a single issue, visit our website at www.statcan.gc.ca and browse by "Key resource" > "Publications."

Standards of service to the public

Statistics Canada is committed to serving its clients in a prompt, reliable and courteous manner. To this end, Statistics Canada has developed *standards of service* that its employees observe. To obtain a copy of these service standards, please contact Statistics Canada toll-free at 1-800-263-1136. The service standards are also published on www.statcan.gc.ca under "About us" > "Providing services to Canadians."

Canadian International Merchandise Trade

June 2010

Published by authority of the Minister responsible for Statistics Canada

© Minister of Industry, 2010

All rights reserved. The content of this electronic publication may be reproduced, in whole or in part, and by any means, without further permission from Statistics Canada, subject to the following conditions: that it be done solely for the purposes of private study, research, criticism, review or newspaper summary, and/or for non-commercial purposes; and that Statistics Canada be fully acknowledged as follows: Source (or "Adapted from", if appropriate): Statistics Canada, year of publication, name of product, catalogue number, volume and issue numbers, reference period and page(s). Otherwise, no part of this publication may be reproduced, stored in a retrieval system or transmitted in any form, by any means—electronic, mechanical or photocopy—or for any purposes without prior written permission of Licensing Services, Client Services Division, Statistics Canada, Ottawa, Ontario, Canada K1A 0T6.

August 2010

Catalogue no. 65-001-X, vol. 64, no. 6

ISSN 1480-8781

Frequency: Monthly

Ottawa

Cette publication est également disponible en français.

Note of appreciation

Canada owes the success of its statistical system to a long-standing partnership between Statistics Canada, the citizens of Canada, its businesses, governments and other institutions. Accurate and timely statistical information could not be produced without their continued cooperation and goodwill.

User information

Symbols

The following standard symbols are used in Statistics Canada publications:

- . not available for any reference period
- .. not available for a specific reference period
- ... not applicable
- 0 true zero or a value rounded to zero
- 0^s value rounded to 0 (zero) where there is a meaningful distinction between true zero and the value that was rounded
- p preliminary
- r revised
- x suppressed to meet the confidentiality requirements of the *Statistics Act*
- E use with caution
- F too unreliable to be published

Note to users

All totals are calculated from full figures and rounded independently; consequently, totals may not equal the sum of their components.

The data is based on commodity groups (sector, subsector and major group).

Table of contents

Highlights	5
Analysis	7
Related products	11
Statistical tables	
1 Merchandise trade of Canada, balance of payments basis, seasonally adjusted	15
1-1 Current dollars	15
1-2 Constant dollars, 2002	16
1-3 Price indices (Laspeyres)	17
2 Exports by commodity groupings, balance of payments basis, seasonally adjusted	18
2-1 Current dollars	18
2-2 Constant dollars, 2002	20
3 Domestic exports to selected countries, customs basis, not seasonally adjusted	22
3-1 June	22
3-2 Year to date, January to June	23
4 Domestic exports by country, customs basis, not seasonally adjusted	24
5 Exports by province of origin, customs basis, not seasonally adjusted	28
5-1 June	28
5-2 Year to date, January to June	29
6 Imports by commodity groupings, balance of payments basis, seasonally adjusted	30
6-1 Current dollars	30
6-2 Constant dollars, 2002	32
7 Imports from selected countries, customs basis, not seasonally adjusted	34
7-1 June	34
7-2 Year to date, January to June	35
8 Imports by country, customs basis, not seasonally adjusted	36

Table of contents – continued

9	Imports by province of clearance, customs basis, not seasonally adjusted	40
9-1	June	40
9-2	Year to date, January to June	41

Data quality, concepts and methodology

	Technical notes	42
--	-----------------	----

Highlights

Canada's merchandise exports fell 2.5% in June, led by industrial goods and materials. Imports decreased 1.2%, as a result of a significant decline in energy products. Consequently, Canada's trade deficit with the world widened to \$1.1 billion in June from \$695 million in May.

Exports declined to \$33.5 billion from \$34.4 billion in May, as export prices contracted 1.2% and volumes decreased 1.3%. Export volumes had been growing for six consecutive months.

Industrial goods and materials accounted for two-thirds of the decline in the value of overall exports followed by energy products and automotive products. A gain in exports of machinery and equipment mitigated the decrease.

After a solid gain in May, imports declined to \$34.6 billion from \$35.0 billion. Lower imports of energy products were instrumental to the decrease. Excluding energy products, imports grew 0.9% in June. Higher imports of industrial goods and materials moderated the overall decline.

Import prices fell 1.2% while volumes remained unchanged, after increasing during four consecutive months.

Exports to the United States decreased 1.0%, reflecting the weakness in exports of energy products while imports rose 0.8%. As a result, Canada's trade surplus with the United States narrowed to \$3.0 billion in June from \$3.4 billion in May.

Exports to countries other than the United States fell 7.0%, largely a result of declining exports to the European Union. The fall in exports outpaced a 4.6% decrease in imports and consequently, Canada's trade deficit with countries other than the United States rose to \$4.2 billion in June from \$4.1 billion in May.

Note to readers

Merchandise trade is one component of Canada's international balance of payments, which also includes trade in services, investment income, current transfers as well as capital and financial flows.

International merchandise trade data by country are available on both a balance of payments and a customs basis for the United States, Japan and the United Kingdom. Trade data for all other individual countries are available on a customs basis only. Balance of payments data are derived from customs data by making adjustments for characteristics such as valuation, coverage, timing and residency. These adjustments are made to conform to the concepts and definitions of the Canadian System of National Accounts.

Data in this release are on a balance of payments basis, seasonally adjusted in current dollars. Constant dollars are calculated using the Laspeyres volume formula.

Revisions

In general, merchandise trade data are revised on an ongoing basis for each month of the current year. Current year revisions are reflected in both the customs and balance of payments based data. Revisions to customs based data for the previous year are released on a quarterly basis. Revisions to balance of payments based data for the three previous years are released annually in June.

Factors influencing revisions include late receipt of import and export documentation, incorrect information on customs forms, replacement of estimates with actual figures, changes in classification of merchandise based on more current information, and changes to seasonal adjustment factors.

Revised data are available in the appropriate CANSIM tables.

Chart 1
Exports and imports, seasonally adjusted, on a balance of payments basis

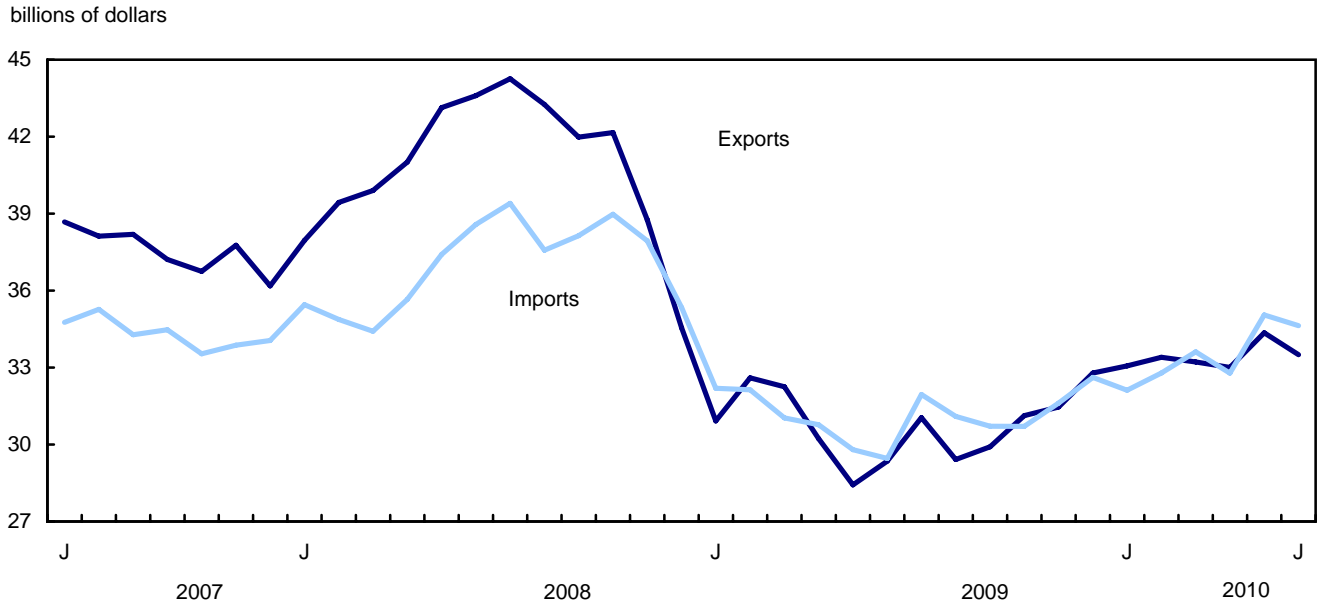
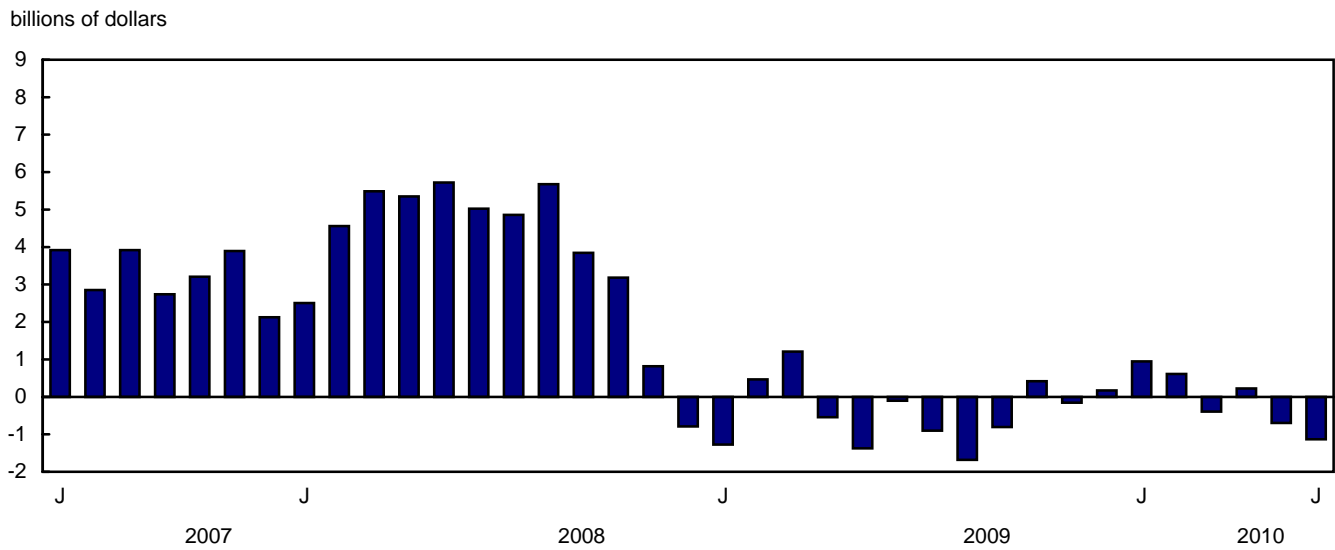


Chart 2
Trade balance, seasonally adjusted, on a balance of payments basis



Analysis

Exports of industrial goods and materials decline for a third straight month

Exports of industrial goods and materials decreased 7.1% to \$7.3 billion in June. Precious metal exports fell 24.1%, declining for a third consecutive month after reaching a record high in March. Other crude non metallic minerals and nickel ores also contributed to the decline.

Energy products exports decreased 5.5% to \$7.4 billion, as volumes fell 5.2%. This represented the fifth decline in volume over the past six months. Exports of petroleum and coal fell 15.0%, largely a result of lower exports of fuel oils. Exports of crude petroleum decreased 4.9%, as prices declined 3.8%. After increasing throughout 2009, prices of crude petroleum declined during four of the past six months.

After growing 21.9% in May, exports of automotive products declined 4.6% to \$5.2 billion, as volumes decreased 5.9%. Exports of passenger cars, which led the gain in the previous month, fell 7.1% as a result of declining volumes.

Exports of machinery and equipment grew 3.7% to \$6.5 billion, on the strength of aircraft followed by industrial machinery such as engines and turbines as well as drilling and excavating machinery. The growth in the sector resulted from a gain in volumes.

Import volumes of energy products fall

Energy products imports fell 19.3% to \$3.0 billion, reflecting a 15.0% decrease in volumes. Crude petroleum, down 26.3%, led the fall offsetting a strong gain in May. Petroleum and coal as well as coal and other related products also contributed to the decline in the sector.

Imports of industrial goods and materials grew 2.1% to \$7.5 billion, on the strength of precious metals. Imports of precious metals, such as gold, increased 20.5%.

Chart 1

Exports of industrial goods and materials, seasonally adjusted, on a balance of payments basis

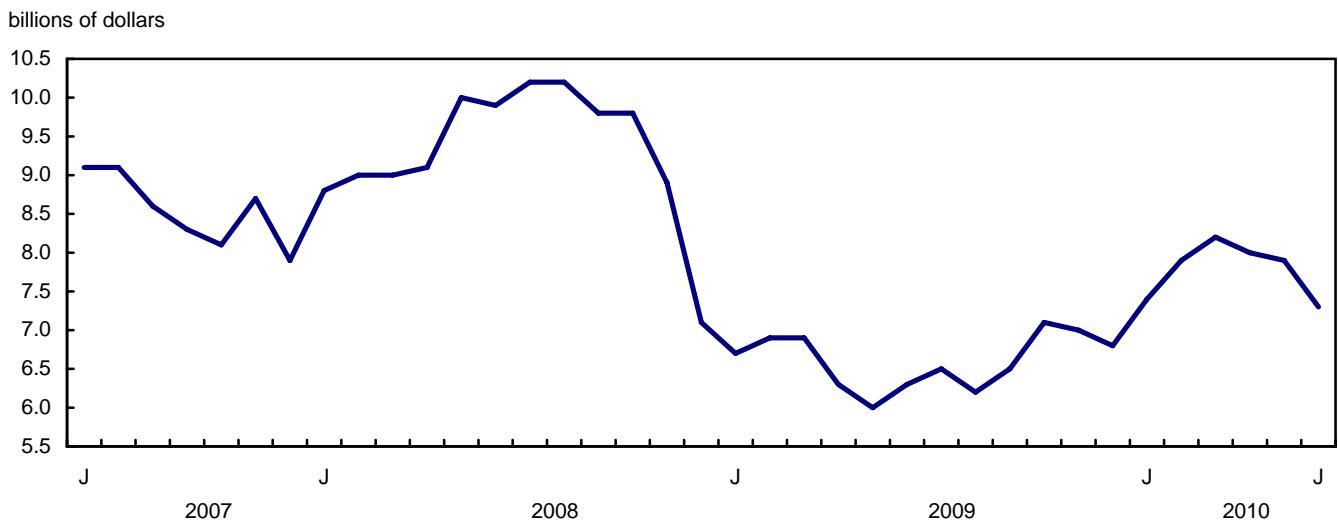


Chart 2
Exports of energy products, seasonally adjusted, on a balance of payments basis

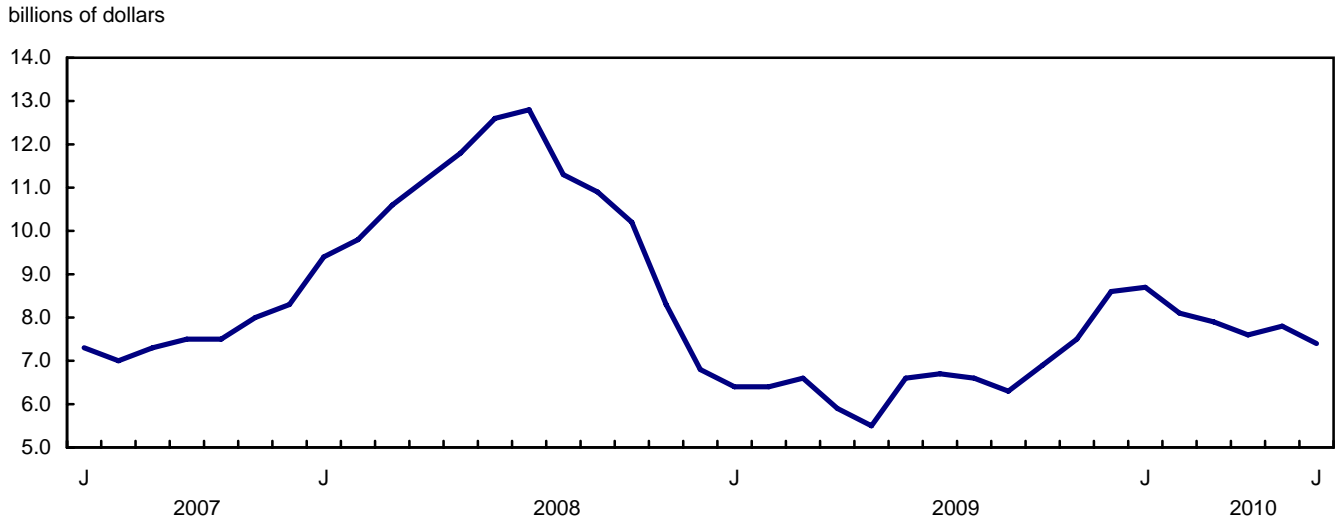


Chart 3
Imports of energy products, seasonally adjusted, on a balance of payments basis

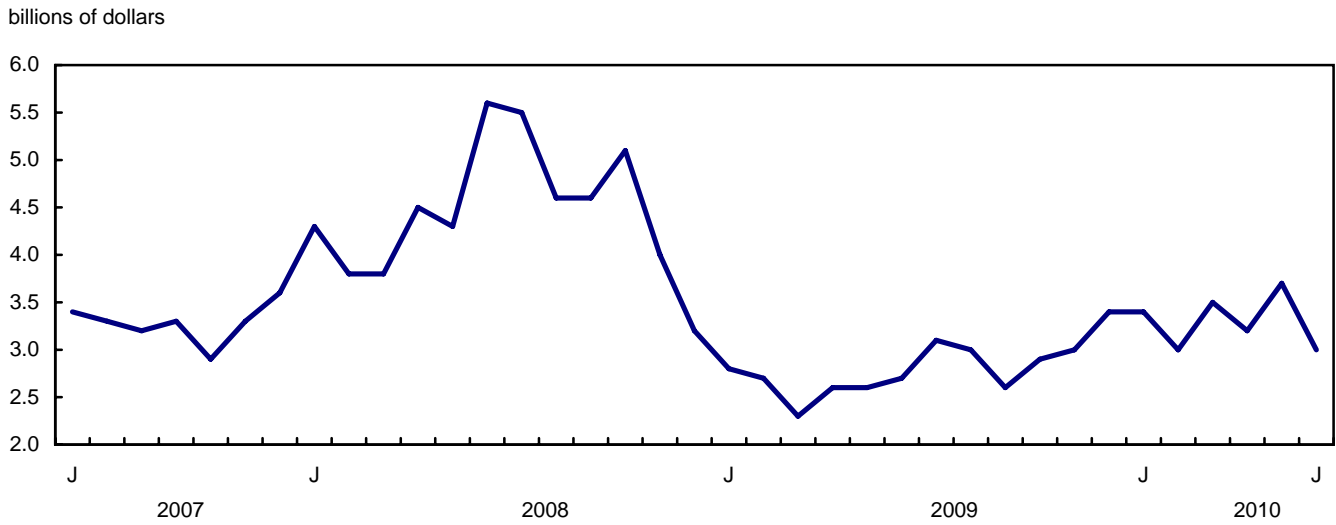
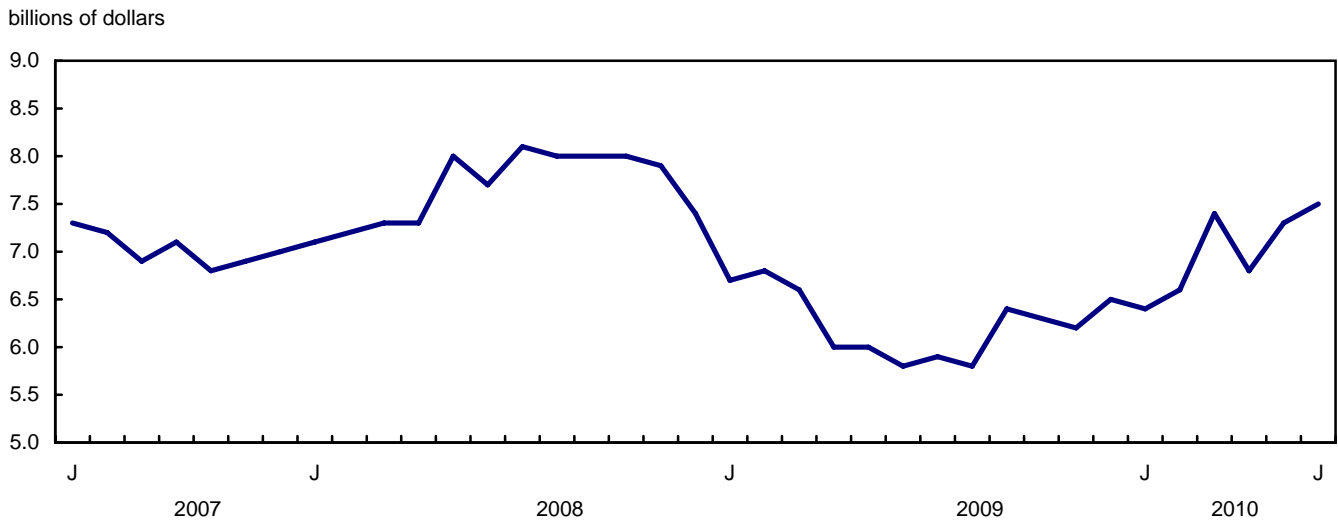


Chart 4
Imports of industrial goods and material, seasonally adjusted, on a balance of payments basis



Text table 1
Merchandise trade by principal trading area, balance of payments basis, seasonally adjusted

	May	June	Change	Year to date			June 2010/ June 2009	
	2010	2010		2009	2010	Change		
	millions of dollars		percent		millions of dollars		percent	
Export to								
United States	25,591	25,346	-245	-1.0	133,943	149,538	15,594	11.6
Japan	768	836	68	8.8	4,614	4,467	-147	-3.2
European Union ¹	3,054	2,436	-618	-20.2	16,093	16,459	367	2.3
Other Organisation for Economic Co-operation and Development ²	1,581	1,401	-180	-11.4	7,910	9,302	1,393	17.6
Other countries	3,362	3,481	119	3.5	21,218	20,775	-442	-2.1
Total	34,355	33,500	-856	-2.5	183,777	200,542	16,764	9.1
Imports from								
United States	22,142	22,313	172	0.8	116,712	127,266	10,553	9.0
Japan	836	891	55	6.5	4,671	4,912	241	5.2
European Union ¹	3,413	3,153	-259	-7.6	19,441	19,475	34	0.2
Other Organisation for Economic Co-operation and Development ²	2,415	2,222	-193	-8.0	12,196	14,082	1,886	15.5
Other countries	6,244	6,052	-193	-3.1	32,374	35,246	2,873	8.9
Total	35,050	34,631	-418	-1.2	185,393	200,980	15,587	8.4
Balance								
United States	3,449	3,033	-417	...	17,231	22,272	5,041	...
Japan	-68	-55	13	...	-57	-444	-388	...
European Union ¹	-359	-717	-358	...	-3,348	-3,016	333	...
Other Organisation for Economic Co-operation and Development ²	-835	-822	13	...	-4,286	-4,780	-493	...
Other countries	-2,883	-2,571	312	...	-11,156	-14,471	-3,315	...
Total	-695	-1,132	-437	...	-1,616	-439	1,177	...

1. European Union includes: Austria, Belgium, Bulgaria, Cyprus, Czech Republic, Denmark, Estonia, Finland, France, Germany, Greece, Hungary, Ireland, Italy, Latvia, Lithuania, Luxembourg, Malta, Netherlands, Poland, Portugal, Romania, Slovakia, Slovenia, Spain, Sweden and United Kingdom.
2. Other Organisation for Economic Co-operation and Development includes: Australia, Canada, Iceland, Mexico, New Zealand, Norway, South Korea, Switzerland and Turkey.

Text table 2
Reconciliation of customs and balance of payments trade data, not seasonally adjusted

	2010						2009
	June	May	April	March	February	January	Annual
	millions of dollars						
Exports							
Customs basis	34,434	33,566	32,618	34,732	30,351	30,459	360,035
Balance of payments adjustments	431	975	775	855	704	703	9,494
Valuation and residency							
Inland freight	550	555	531	544	500	470	6,214
Other valuation and residency	-1,084	-1,443	-743	-714	-771	-798	-7,775
Timing	111	75	3	-23	16	-47	-163
Coverage	854	1,788	984	1,048	959	1,078	11,218
Balance of payments basis	34,865	34,541	33,393	35,587	31,055	31,162	369,529
Imports							
Customs basis	35,086	33,984	32,622	35,110	29,865	28,206	365,180
Balance of payments adjustments	934	910	510	1,278	940	690	8,938
Valuation and residency							
Inland freight	774	752	725	772	647	623	7,729
Other valuation and residency	41	31	38	123	32	21	202
Timing	0	0	0	0	0	0	0
Coverage	119	127	-253	383	261	46	1,007
Balance of payments basis	36,020	34,894	33,132	36,388	30,805	28,896	374,118

Related products

Selected publications from Statistics Canada

65-208-X	International Merchandise Trade Annual Review
65-506-X	A Profile of Canadian Exporters
65F0013X	Canadian International Merchandise Trade Database
65F0019X	A Database for Analysis of International Markets
65F0020X	Data Integration - International Trade Data and Manufacturing Shipments Data

Selected CANSIM tables from Statistics Canada

228-0001	Merchandise imports and exports, by major groups and principal trading areas for all countries, monthly
228-0002	Merchandise imports and exports, by major groups and principal trading areas for all countries, quarterly
228-0003	Merchandise imports and exports, by major groups and principal trading areas for all countries, annual
228-0033	Imports, customs-based, by province of clearance, monthly
228-0034	Domestic exports, customs-based, by province of origin, monthly
228-0041	Merchandise imports and exports by sector and sub-sector, customs and balance of payments basis, for all countries, monthly
228-0042	Merchandise imports and exports by sector and sub-sector, customs and balance of payments basis, for all countries, quarterly
228-0043	Merchandise imports and exports by sector and sub-sector, customs and balance of payments basis, for all countries, annual
228-0047	Merchandise imports and exports balance of payments and customs-based price and volume indexes for all countries, monthly
228-0048	Merchandise imports and exports balance of payments and customs-based price and volume indexes for all countries, quarterly
228-0049	Merchandise imports and exports balance of payments and customs-based price and volume indexes for all countries, annual

228-0050	Merchandise imports and exports customs-based price indexes, Canada and United States trade, and Standard International Trade Classification (SITC revision 3) price indexes for all countries and United States, monthly
228-0051	Merchandise imports and exports customs-based price indexes, Canada and United States trade, and Standard International Trade Classification (SITC revision 3) price indexes for all countries and United States, quarterly
228-0052	Merchandise imports and exports customs-based price indexes, Canada and United States trade, and Standard International Trade Classification (SITC revision 3) price indexes for all countries and United States, annual
228-0053	Merchandise import and export price and volume indexes by sector and sub-sector, customs and balance of payments basis, for all countries, monthly
228-0054	Merchandise import and export price and volume indexes by sector and sub-sector, customs and balance of payments basis, for all countries, quarterly
228-0055	Merchandise import and export price and volume indexes by sector and sub-sector, customs and balance of payments basis, for all countries, annual
228-0056	Merchandise imports and exports by sector, balance of payments basis, for all countries, seasonally adjusted, Fisher formula, monthly
228-0057	Merchandise imports and exports by sector, balance of payments basis, for all countries, seasonally adjusted, Fisher formula, quarterly

Selected surveys from Statistics Canada

2201	Canadian International Merchandise Trade (Customs Basis)
2202	Canadian International Merchandise Trade (Balance of Payments Basis)
2203	International Trade Price Indexes

Selected summary tables from Statistics Canada

- *Canada: Economic and financial data*
- *Imports, exports and trade balance of goods on a balance-of-payments basis, by country or country grouping*
- *Exports of goods on a balance-of-payments basis*
- *Imports of goods on a balance-of-payments basis*

- *Merchandise trade of Canada (monthly)*
- *Economic indicators, by province and territory (monthly and quarterly)*
- *Latest statistics (monthly)*

Statistical tables

Table 1-1
Merchandise trade of Canada, balance of payments basis, seasonally adjusted — Current dollars

	Exports	Imports	Trade balance	Period to period change			
				Exports		Imports	Balance
				millions of dollars	percent	millions of dollars	
2006	453,952	404,345	49,606	0.0	0.0	0	
2007	463,120	415,683	47,437	2.0	2.8	-2,169	
2008	489,995	443,752	46,244	5.8	6.8	-1,194	
2009	369,529	374,097	-4,568	-24.6	-15.7	-50,812	
2008							
First quarter	117,294	104,743	12,551	6.0	3.2	3,321	
Second quarter	127,735	111,640	16,095	8.9	6.6	3,544	
Third quarter	129,499	115,116	14,383	1.4	3.1	-1,712	
Fourth quarter	115,468	112,252	3,215	-10.8	-2.5	-11,168	
2009							
First quarter	95,769	95,366	403	-17.1	-15.0	-2,812	
Second quarter	88,008	90,028	-2,019	-8.1	-5.6	-2,422	
Third quarter	90,377	93,765	-3,388	2.7	4.2	-1,369	
Fourth quarter	95,375	94,939	436	5.5	1.3	3,824	
2010							
First quarter	99,683	98,519	1,164	4.5	3.8	728	
Second quarter	100,858	102,461	-1,603	1.2	4.0	-2,767	
2009							
January	30,921	32,192	-1,272	-10.5	-8.9	-483	
February	32,599	32,133	466	5.4	-0.2	1,737	
March	32,249	31,040	1,209	-1.1	-3.4	743	
April	30,231	30,774	-543	-6.3	-0.9	-1,752	
May	28,424	29,797	-1,373	-6.0	-3.2	-830	
June	29,353	29,456	-104	3.3	-1.1	1,269	
July	31,048	31,952	-904	5.8	8.5	-800	
August	29,419	31,099	-1,680	-5.2	-2.7	-777	
September	29,910	30,714	-804	1.7	-1.2	876	
October	31,128	30,708	420	4.1	0.0	1,224	
November	31,462	31,616	-154	1.1	3.0	-573	
December	32,785	32,615	170	4.2	3.2	324	
2010							
January	33,063	32,118	945	0.8	-1.5	775	
February	33,401	32,790	611	1.0	2.1	-334	
March	33,219	33,612	-393	-0.5	2.5	-1,004	
April	33,003	32,780	223	-0.6	-2.5	616	
May	34,355	35,050	-695	4.1	6.9	-918	
June	33,500	34,631	-1,132	-2.5	-1.2	-437	

Note(s): Because of rounding, monthly data may not add up to quarterly data and quarterly data may not add up to annual data.

Table 1-2
Merchandise trade of Canada, balance of payments basis, seasonally adjusted — Constant dollars, 2002

	Exports	Imports	Trade balance	Period to period change	
				Exports	Imports
	millions of dollars			percent	
2006	442,729	457,196	-14,466	0.0	0.0
2007	449,015	484,005	-34,990	1.4	5.9
2008	415,119	485,902	-70,783	-7.5	0.4
2009	345,911	405,261	-59,350	-16.7	-16.6
2008					
First quarter	107,071	123,094	-16,023	-2.6	-1.2
Second quarter	106,872	125,669	-18,797	-0.2	2.1
Third quarter	104,062	123,918	-19,856	-2.6	-1.4
Fourth quarter	97,114	113,221	-16,107	-6.7	-8.6
2009					
First quarter	87,218	97,521	-10,303	-10.2	-13.9
Second quarter	83,055	96,718	-13,663	-4.8	-0.8
Third quarter	86,329	104,265	-17,935	3.9	7.8
Fourth quarter	89,308	106,757	-17,449	3.5	2.4
2010					
First quarter	91,611	110,695	-19,084	2.6	3.7
Second quarter	94,447	116,446	-21,999	3.1	5.2
2009					
January	27,994	33,229	-5,235	-9.4	-7.4
February	29,778	32,701	-2,923	6.4	-1.6
March	29,446	31,592	-2,145	-1.1	-3.4
April	28,359	31,963	-3,604	-3.7	1.2
May	27,195	32,360	-5,165	-4.1	1.2
June	27,502	32,395	-4,893	1.1	0.1
July	29,630	35,032	-5,402	7.7	8.1
August	28,012	34,860	-6,847	-5.5	-0.5
September	28,687	34,373	-5,686	2.4	-1.4
October	29,629	34,757	-5,128	3.3	1.1
November	29,376	35,625	-6,249	-0.9	2.5
December	30,304	36,375	-6,071	3.2	2.1
2010					
January	30,318	36,233	-5,915	0.0	-0.4
February	30,485	36,820	-6,335	0.6	1.6
March	30,808	37,642	-6,834	1.1	2.2
April	31,046	37,690	-6,645	0.8	0.1
May	31,909	39,378	-7,469	2.8	4.5
June	31,493	39,378	-7,885	-1.3	0.0

Note(s): Because of rounding, monthly data may not add up to quarterly data and quarterly data may not add up to annual data.

**Table 1-3
Merchandise trade of Canada, balance of payments basis, seasonally adjusted — Price indices (Laspeyres)**

	2002=100			Period to period change		
	Exports	Imports	Terms of trade	Exports	Imports	Terms of trade
	price indices (Laspeyres)			percent		
2006	105.1	92.5	113.6	0.0	0.0	0.0
2007	107.1	91.4	117.1	1.9	-1.2	3.1
2008	116.3	97.5	119.3	8.6	6.6	2.0
2009	105.4	97.1	108.6	-9.4	-0.4	-9.0
2008						
First quarter	111.2	90.1	123.4	5.6	3.1	2.5
Second quarter	118.5	94.7	125.1	6.6	5.1	1.5
Third quarter	122.1	100.9	121.0	3.1	6.6	-3.5
Fourth quarter	113.7	104.1	109.2	-6.9	3.2	-10.1
2009						
First quarter	109.5	101.5	107.8	-3.7	-2.5	-1.2
Second quarter	104.6	97.9	106.8	-4.5	-3.6	-0.9
Third quarter	102.6	95.2	107.8	-1.9	-2.7	0.9
Fourth quarter	105.7	93.8	112.7	3.0	-1.5	4.5
2010						
First quarter	107.3	94.2	113.9	1.5	0.5	1.0
Second quarter	106.7	94.2	113.3	-0.6	0.0	-0.5
2009						
January	109.0	100.4	108.5	-1.7	-2.1	0.4
February	109.1	101.4	107.6	0.1	0.9	-0.8
March	109.1	102.8	106.1	-0.1	1.4	-1.4
April	106.4	100.8	105.6	-2.4	-1.9	-0.5
May	104.0	97.0	107.2	-2.3	-3.8	1.5
June	103.5	95.9	107.9	-0.4	-1.1	0.7
July	103.5	96.3	107.5	0.0	0.4	-0.4
August	103.3	94.8	109.0	-0.2	-1.6	1.3
September	103.4	94.5	109.5	0.1	-0.3	0.4
October	104.3	93.2	111.9	0.8	-1.4	2.2
November	105.6	93.9	112.5	1.3	0.8	0.6
December	106.3	94.2	112.9	0.6	0.3	0.3
2010						
January	107.1	93.6	114.4	0.8	-0.6	1.4
February	108.2	94.9	114.0	1.0	1.4	-0.4
March	106.5	94.0	113.2	-1.6	-1.0	-0.7
April	105.6	92.8	113.7	-0.9	-1.3	0.4
May	107.1	94.9	112.9	1.5	2.2	-0.7
June	106.3	94.8	112.2	-0.8	-0.1	-0.7

Note(s): Because of rounding, monthly data may not add up to quarterly data and quarterly data may not add up to annual data.

Table 2-1
Exports by commodity groupings, balance of payments basis, seasonally adjusted — Current dollars

	May	June	Change		Year to date			June 2010/ June 2009	
	2010	2010			2009	2010	Change		
	millions of dollars		percent		millions of dollars		percent		
Total	34,355	33,500	-856	-2.5	183,777	200,542	16,764	9.1	14.1
Agricultural and fishing products	3,017	3,014	-2	-0.1	20,046	17,863	-2,183	-10.9	-10.0
Wheat	385	387	2	0.6	3,323	2,213	-1,111	-33.4	-29.5
Other agricultural and fishing products	2,631	2,627	-5	-0.2	16,723	15,650	-1,073	-6.4	-6.1
Live animals	179	184	6	3.1	962	939	-23	-2.4	32.2
Fish and fish preparations	340	325	-15	-4.3	2,038	2,010	-29	-1.4	-0.5
Barley	16	28	12	73.5	275	150	-126	-45.7	-26.9
Wheat flour	7	6	0	-7.2	40	39	-1	-2.7	-6.8
Other cereals unmilled	29	45	16	53.6	324	221	-103	-31.9	-44.5
Other cereal preparations	234	237	4	1.6	1,512	1,373	-138	-9.2	-3.5
Meat and meat preparations	433	416	-17	-4.0	2,286	2,346	60	2.6	17.7
Alcoholic beverages	65	63	-2	-2.8	382	379	-3	-0.9	-1.2
Other food, feed, beverages and tobacco	915	901	-14	-1.6	5,730	5,498	-232	-4.1	-3.7
Rapeseed	249	262	13	5.0	1,995	1,573	-421	-21.1	-37.6
Other crude vegetable products	166	161	-5	-3.3	1,177	1,123	-55	-4.6	-15.5
Energy products	7,799	7,367	-432	-5.5	37,352	47,521	10,169	27.2	12.1
Crude petroleum	4,191	3,986	-205	-4.9	18,157	26,534	8,377	46.1	8.5
Natural gas	1,315	1,323	8	0.6	8,512	8,551	39	0.5	24.9
Other energy products	2,293	2,058	-235	-10.3	10,684	12,436	1,752	16.4	12.0
Coal and other bituminous substances	492	505	13	2.7	2,298	2,407	109	4.7	41.0
Petroleum and coal products	1,654	1,405	-249	-15.0	7,140	8,913	1,772	24.8	8.0
Electricity	147	147	0	0.2	1,245	1,116	-129	-10.4	-17.4
Forestry products	1,879	1,906	28	1.5	10,010	10,754	745	7.4	24.6
Lumber and sawmill products	718	711	-7	-1.0	3,310	4,054	744	22.5	33.9
Other crude wood products	61	64	2	3.9	253	336	83	33.0	51.1
Lumber	427	450	23	5.4	1,856	2,465	609	32.8	50.5
Other wood fabricated materials	230	197	-32	-14.1	1,200	1,252	52	4.3	4.0
Wood pulp and other wood products	521	540	19	3.6	2,266	2,982	716	31.6	68.7
Newsprint and other paper and paperboard	639	655	16	2.5	4,433	3,719	-715	-16.1	-3.6
Newsprint paper	325	338	14	4.2	2,372	1,848	-524	-22.1	-3.0
Other paper and paperboard	315	316	2	0.6	2,061	1,870	-191	-9.3	-4.2
Industrial goods and materials	7,903	7,338	-566	-7.2	39,044	46,746	7,702	19.7	17.3
Metal ores	1,059	960	-99	-9.3	4,998	5,733	735	14.7	46.2
Iron ores, concentrates and scrap	335	334	-1	-0.3	2,219	2,063	-157	-7.1	14.3
Copper ores, concentrates and scrap	201	186	-15	-7.3	675	1,070	395	58.4	40.9
Nickel ores, concentrates and scrap	313	179	-134	-42.8	840	1,297	456	54.3	165.1
Zinc ores, concentrates and scrap	30	33	4	11.8	109	140	30	27.8	220.1
Other ores, concentrates and scrap	180	227	47	26.3	1,154	1,165	11	0.9	47.4
Chemicals, plastics and fertilizers	2,502	2,494	-8	-0.3	12,857	14,839	1,982	15.4	24.8
Inorganic chemicals	341	375	34	10.0	2,212	2,103	-109	-4.9	27.6
Organic chemicals	593	504	-89	-15.1	2,302	3,156	855	37.1	23.9
Fertilizers and fertilizer materials	441	416	-25	-5.7	2,218	2,996	779	35.1	25.6
Synthetic rubber and plastics	870	854	-16	-1.8	4,740	4,998	258	5.4	14.6
Other chemical products	257	346	89	34.4	1,385	1,586	200	14.5	56.2

Table 2-1 – continued

Exports by commodity groupings, balance of payments basis, seasonally adjusted — Current dollars

	May	June	Change	Year to date			June 2010/ June 2009		
	2010	2010		2009	2010	Change			
	millions of dollars		percent		millions of dollars		percent		
Metals and alloys	2,916	2,592	-324	-11.1	13,108	17,799	4,691	35.8	9.3
Primary iron and steel	120	105	-15	-12.3	188	626	438	233.4	40.8
Steel bars, rods, plates, sheets	311	315	4	1.4	1,389	1,765	376	27.1	82.8
Other iron and steel and alloys	224	192	-32	-14.4	1,195	1,352	157	13.2	9.3
Aluminum including alloys	629	629	0	0.0	2,809	3,775	967	34.4	50.2
Copper and alloys	222	215	-8	-3.4	1,053	1,592	538	51.1	40.9
Nickel and alloys	151	146	-5	-3.0	1,029	839	-190	-18.5	1.8
Precious metals and alloys	1,061	805	-256	-24.1	4,552	6,572	2,019	44.4	-25.3
Zinc and alloys	111	94	-17	-15.4	473	738	265	56.0	16.4
Other non-ferrous metals and alloys	88	91	3	3.7	420	540	120	28.6	21.6
Other industrial goods and materials	1,427	1,291	-135	-9.5	8,080	8,374	294	3.6	4.8
Asbestos unmanufactured	5	4	-1	-27.9	33	29	-3	-9.7	-23.2
Other crude animal products	63	84	21	34.2	354	457	102	28.8	67.1
Other crude non-metallic minerals	321	157	-163	-50.9	1,561	1,783	222	14.2	-29.5
Other crude materials, inedible	61	58	-3	-4.8	279	337	58	20.7	22.3
Metal fabricated basic products	354	348	-6	-1.8	2,116	2,053	-63	-3.0	12.5
Textile fabricated materials	179	179	0	0.0	1,047	1,063	16	1.5	9.0
Non-metallic mineral basic products	157	160	3	2.2	1,003	926	-78	-7.7	1.1
Other fabricated materials	287	301	14	4.8	1,686	1,726	39	2.3	9.7
Machinery and equipment	6,263	6,495	232	3.7	42,974	36,415	-6,560	-15.3	2.1
Industrial and agricultural machinery	1,525	1,625	100	6.5	10,474	8,739	-1,735	-16.6	4.6
Industrial machinery	1,357	1,464	107	7.8	9,364	7,816	-1,548	-16.5	5.9
Agricultural machinery includ. tractors	168	161	-7	-4.0	1,110	923	-187	-16.8	-6.0
Aircraft and other transportation equipment	1,383	1,539	156	11.3	10,104	8,464	-1,641	-16.2	-0.5
Aircraft, engines, parts	1,086	1,222	137	12.6	8,060	6,666	-1,395	-17.3	-0.3
Other transportation equipment	297	317	20	6.6	2,044	1,798	-246	-12.0	-1.2
Other machinery and equipment	3,355	3,331	-24	-0.7	22,396	19,212	-3,184	-14.2	2.2
Television, telecommunication equipment	573	617	44	7.6	4,657	3,628	-1,030	-22.1	-8.3
Office machines and equipment	337	354	17	5.0	2,549	2,054	-495	-19.4	1.7
Other equipment and tools	1,525	1,529	5	0.3	10,106	8,893	-1,213	-12.0	-1.7
Other end products, inedible	920	831	-89	-9.7	5,083	4,637	-447	-8.8	21.4
Automotive products	5,453	5,200	-253	-4.6	18,991	28,342	9,351	49.2	77.7
Passenger autos and chassis	3,774	3,507	-267	-7.1	10,037	18,892	8,855	88.2	93.0
Trucks and other motor vehicles	183	170	-13	-7.1	2,513	1,060	-1,453	-57.8	-20.2
Motor vehicle parts	1,495	1,522	27	1.8	6,441	8,391	1,950	30.3	70.1
Other consumer goods	1,299	1,395	96	7.4	9,377	8,333	-1,044	-11.1	-4.8
Special transactions trade	308	381	73	23.6	3,344	1,986	-1,358	-40.6	-23.3
Unallocated balance of payments adjustments	434	403	-31	-7.1	2,639	2,582	-57	-2.2	1.4

Table 2-2
Exports by commodity groupings, balance of payments basis, seasonally adjusted — Constant dollars, 2002

	May	June	Change		Year to date			June 2010/ June 2009	
	2010	2010			2009		2010		
	millions of dollars		percent		millions of dollars		percent		
Total	31,909	31,493	-416	-1.3	170,274	186,058	15,784	9.3	14.5
Agricultural and fishing products	3,165	3,149	-16	-0.5	18,577	18,910	333	1.8	-0.8
Wheat	442	434	-8	-1.8	2,682	2,450	-233	-8.7	-1.0
Other agricultural and fishing products	2,723	2,714	-8	-0.3	15,895	16,460	565	3.6	-0.7
Live animals	194	208	14	7.0	1,057	1,078	22	2.1	31.4
Fish and fish preparations	423	398	-25	-5.9	2,339	2,587	248	10.6	-2.3
Barley	13	27	14	113.5	202	146	-56	-27.7	-6.1
Wheat flour	7	6	0	-6.8	36	38	2	6.5	-0.6
Other cereals unmilled	42	53	11	25.3	292	277	-15	-5.3	-35.2
Other cereal preparations	205	211	6	3.0	1,203	1,230	27	2.2	4.0
Meat and meat preparations	459	442	-17	-3.6	2,424	2,645	220	9.1	7.7
Alcoholic beverages	120	115	-5	-4.3	650	729	79	12.2	6.2
Other food, feed, beverages and tobacco	851	840	-11	-1.3	4,955	5,176	220	4.4	2.3
Rapeseed	251	263	13	5.1	1,771	1,502	-269	-15.2	-25.9
Other crude vegetable products	159	151	-7	-4.5	966	1,052	87	9.0	-1.8
Energy products	4,794	4,547	-247	-5.2	26,809	28,092	1,283	4.8	-1.7
Crude petroleum	1,959	1,937	-21	-1.1	11,952	12,183	231	1.9	-4.3
Natural gas	1,524	1,445	-79	-5.2	8,167	8,539	372	4.6	3.3
Other energy products	1,312	1,165	-147	-11.2	6,689	7,369	680	10.2	-3.2
Coal and other bituminous substances	156	161	5	3.1	579	959	380	65.7	19.7
Petroleum and coal products	953	829	-124	-13.1	4,776	5,099	323	6.8	2.8
Electricity	202	175	-27	-13.4	1,334	1,311	-23	-1.8	-33.4
Forestry products	2,154	2,243	89	4.2	12,031	13,131	1,100	9.1	13.0
Lumber and sawmill products	818	878	59	7.3	4,525	5,103	578	12.8	13.6
Other crude wood products	72	70	-1	-2.0	320	436	117	36.5	12.8
Lumber	533	614	81	15.3	2,863	3,363	500	17.5	25.4
Other wood fabricated materials	213	193	-21	-9.7	1,342	1,303	-39	-2.9	-12.3
Wood pulp and other wood products	595	613	18	3.0	3,214	3,605	392	12.2	25.4
Newsprint and other paper and paperboard	740	753	12	1.7	4,293	4,423	130	3.0	4.1
Newsprint paper	386	399	13	3.4	2,213	2,259	46	2.1	8.4
Other paper and paperboard	354	354	-1	-0.2	2,080	2,164	84	4.0	-0.4
Industrial goods and materials	5,377	5,165	-212	-3.9	30,056	32,474	2,418	8.0	7.8
Metal ores	493	477	-16	-3.2	2,863	2,857	-6	-0.2	25.1
Iron ores, concentrates and scrap	142	136	-6	-4.3	844	959	115	13.6	-1.4
Copper ores, concentrates and scrap	72	69	-2	-3.3	343	371	28	8.1	16.2
Nickel ores, concentrates and scrap	133	88	-45	-33.5	635	607	-28	-4.5	106.7
Zinc ores, concentrates and scrap	17	21	4	26.7	80	75	-4	-5.2	214.7
Other ores, concentrates and scrap	129	162	33	25.2	961	844	-116	-12.1	20.6
Chemicals, plastics and fertilizers	1,784	1,821	37	2.1	9,818	10,711	893	9.1	11.4
Inorganic chemicals	180	192	12	6.7	1,091	1,073	-18	-1.6	15.5
Organic chemicals	323	284	-38	-11.9	1,988	1,811	-177	-8.9	-18.3
Fertilizers and fertilizer materials	197	180	-17	-8.4	737	1,306	569	77.2	54.2
Synthetic rubber and plastics	771	773	3	0.4	4,429	4,616	187	4.2	3.6
Other chemical products	315	392	77	24.5	1,573	1,905	332	21.1	51.7

Table 2-2 – continued

Exports by commodity groupings, balance of payments basis, seasonally adjusted — Constant dollars, 2002

	May	June	Change		Year to date			June 2010/ June 2009	
	2010	2010			2009	2010	Change		
	millions of dollars		percent		millions of dollars		percent		
Metals and alloys	1,822	1,742	-80	-4.4	9,553	11,218	1,665	17.4	6.6
Primary iron and steel	79	71	-8	-10.5	117	436	319	271.8	69.1
Steel bars, rods, plates, sheets	248	259	11	4.6	1,029	1,476	448	43.5	79.7
Other iron and steel and alloys	182	155	-27	-14.7	998	1,138	141	14.1	-8.4
Aluminum including alloys	656	699	44	6.7	3,405	3,904	499	14.6	37.0
Copper and alloys	70	74	5	6.7	575	523	-52	-9.1	13.4
Nickel and alloys	76	74	-2	-2.1	798	433	-365	-45.8	-30.0
Precious metals and alloys	411	304	-107	-26.0	1,974	2,661	688	34.8	-37.8
Zinc and alloys	65	62	-2	-3.4	405	410	4	1.1	-4.6
Other non-ferrous metals and alloys	37	43	6	15.5	251	236	-15	-6.0	-0.7
Other industrial goods and materials	1,278	1,125	-153	-12.0	7,822	7,688	-134	-1.7	-1.5
Asbestos unmanufactured	5	4	-1	-27.5	34	30	-4	-11.8	-22.2
Other crude animal products	61	80	19	30.3	474	479	4	0.9	10.1
Other crude non-metallic minerals	301	125	-176	-58.5	2,187	1,779	-408	-18.7	-50.2
Other crude materials, inedible	58	54	-4	-7.1	279	316	37	13.1	18.7
Metal fabricated basic products	283	284	1	0.3	1,642	1,660	19	1.1	17.7
Textile fabricated materials	193	186	-7	-3.7	976	1,144	168	17.2	14.3
Non-metallic mineral basic products	131	131	1	0.4	803	773	-30	-3.7	1.5
Other fabricated materials	246	261	16	6.4	1,427	1,508	81	5.7	11.3
Machinery and equipment	6,823	7,137	314	4.6	45,283	40,608	-4,675	-10.3	3.3
Industrial and agricultural machinery	1,405	1,490	85	6.1	9,547	8,092	-1,455	-15.2	4.8
Industrial machinery	1,255	1,348	93	7.4	8,545	7,254	-1,292	-15.1	6.4
Agricultural machinery includ. tractors	150	142	-8	-5.3	1,002	839	-163	-16.3	-8.1
Aircraft and other transportation equipment	1,707	1,905	199	11.6	11,667	10,476	-1,191	-10.2	2.8
Aircraft, engines, parts	1,415	1,589	174	12.3	9,635	8,676	-959	-10.0	3.9
Other transportation equipment	292	316	25	8.6	2,032	1,800	-231	-11.4	-2.5
Other machinery and equipment	3,711	3,741	30	0.8	24,069	22,040	-2,029	-8.4	3.1
Television, telecommunication equipment	719	774	54	7.6	5,362	4,605	-757	-14.1	-4.3
Office machines and equipment	831	887	56	6.7	5,331	5,099	-232	-4.3	11.4
Other equipment and tools	1,431	1,445	14	1.0	9,257	8,453	-804	-8.7	0.6
Other end products, inedible	730	636	-94	-12.9	4,119	3,882	-237	-5.7	7.9
Automotive products	7,228	6,806	-423	-5.8	22,095	37,951	15,856	71.8	91.9
Passenger autos and chassis	5,374	4,939	-434	-8.1	12,627	27,433	14,805	117.2	108.1
Trucks and other motor vehicles	218	202	-17	-7.7	2,777	1,275	-1,502	-54.1	-7.0
Motor vehicle parts	1,636	1,665	29	1.7	6,690	9,243	2,553	38.2	74.0
Other consumer goods	1,249	1,337	88	7.1	8,992	7,981	-1,011	-11.2	-4.9
Special transactions trade	275	354	79	28.7	3,045	1,806	-1,240	-40.7	-22.9
Unallocated balance of payments adjustments	843	754	-88	-10.5	3,385	5,106	1,720	50.8	24.3

Table 3-1
Domestic exports to selected countries, customs basis, not seasonally adjusted — June

	Agricultural and fishing products	Energy products	Forestry products	Industrial goods	Machinery and equipment	Automotive products	Consumer goods	Special transactions trade	Total
millions of dollars									
United States									
2009	1,655.6	6,431.1	1,090.7	3,693.1	3,495.5	2,644.5	949.2	434.6	20,394.3
2010	1,698.4	7,562.0	1,224.0	4,535.4	3,848.5	5,102.9	914.3	306.3	25,191.8
Mexico									
2009	100.5	0.5	8.2	48.7	116.0	52.8	4.6	0.3	331.6
2010	88.7	44.4	11.9	81.3	70.1	72.9	4.7	0.7	374.6
Japan									
2009	314.9	113.3	79.8	117.5	45.9	3.6	6.8	0.1	681.9
2010	302.0	168.8	133.0	193.4	76.3	5.3	9.1	0.1	888.0
European Union									
Germany									
2009	20.6	20.3	7.4	33.1	148.7	2.8	15.3	2.9	251.2
2010	10.8	13.2	7.6	116.2	100.5	3.2	16.7	4.1	272.4
France									
2009	20.1	0.2	13.7	46.6	97.1	3.3	23.5	3.2	207.6
2010	12.9	11.6	10.5	19.1	86.3	4.5	19.4	1.3	165.5
United Kingdom									
2009	27.4	0.3	29.1	553.4	166.8	3.3	22.7	3.3	806.4
2010	31.2	0.7	20.0	523.5	218.1	5.3	18.5	3.1	820.4
Italy									
2009	36.2	0.0	22.4	13.3	36.4	1.2	6.1	3.4	119.1
2010	21.9	27.1	24.4	23.8	37.7	0.7	23.3	0.3	159.1
Other European Union									
2009	67.4	97.3	26.0	176.7	171.4	10.4	72.1	4.9	626.2
2010	51.9	45.4	23.0	197.7	245.9	13.2	55.5	5.0	637.6
Total									
2009	171.7	118.1	98.6	823.1	620.4	21.0	139.7	17.7	2,010.4
2010	128.6	98.0	85.7	880.2	688.6	26.9	133.4	13.8	2,055.1
Newly industrialized countries									
South Korea									
2009	28.9	74.6	23.7	76.8	63.1	6.9	4.7	0.5	279.3
2010	31.0	50.0	63.7	60.4	39.4	6.1	4.0	1.1	255.6
Hong Kong									
2009	27.7	0.0	8.7	61.2	17.7	0.6	4.6	1.0	121.5
2010	36.4	0.1	10.3	78.7	21.2	0.7	5.0	0.8	153.3
Taiwan									
2009	16.1	0.1	16.2	30.9	9.5	0.1	3.6	0.1	76.5
2010	12.1	0.2	23.1	39.7	9.7	0.1	5.5	0.1	90.4
Singapore									
2009	4.6	40.7	9.6	29.5	25.5	1.7	3.5	0.2	115.3
2010	5.8	0.6	1.2	12.8	25.5	0.7	1.9	0.3	48.8
Total									
2009	77.3	115.5	58.2	198.4	115.7	9.3	16.4	1.7	592.5
2010	85.2	50.9	98.2	191.6	95.9	7.6	16.4	2.3	548.1
Other countries									
2009	976.1	157.8	253.5	814.9	806.3	82.3	79.1	30.4	3,200.5
2010	710.7	267.6	433.3	993.5	717.7	48.2	95.4	15.5	3,281.8
Total									
2009	3,296.1	6,936.3	1,589.0	5,695.7	5,199.9	2,813.6	1,195.8	484.9	27,211.4
2010	3,013.6	8,191.7	1,986.1	6,875.4	5,497.0	5,263.8	1,173.3	338.7	32,339.5

Table 3-2
Domestic exports to selected countries, customs basis, not seasonally adjusted — Year to date, January to June

	Agricultural and fishing products	Energy products	Forestry products	Industrial goods	Machinery and equipment	Automotive products	Consumer goods	Special transactions trade	Total
millions of dollars									
United States									
2009	10,001.7	34,079.9	7,015.3	22,850.2	23,807.3	16,814.4	5,724.0	2,896.2	123,189.0
2010	9,102.4	44,286.1	6,948.3	27,563.4	20,012.4	26,248.8	4,950.6	1,605.2	140,717.3
Mexico									
2009	545.7	16.9	48.5	357.0	497.5	310.0	21.8	6.5	1,803.8
2010	642.4	60.0	68.1	483.5	349.6	422.0	44.6	2.4	2,072.5
Japan									
2009	1,616.1	1,020.4	513.8	587.6	324.8	18.4	82.6	3.4	4,167.1
2010	1,507.7	934.9	664.5	778.4	307.0	35.5	63.6	2.3	4,293.8
European Union									
Germany									
2009		149.3	62.1	251.0	984.5	23.9	76.0	8.2	1,639.2
2010	84.2	49.2	43.8	576.2	773.7	18.2	98.7	7.1	1,632.4
France									
2009	79.4	76.2	75.0	339.6	642.7	18.2	160.6	13.1	1,404.8
2010	61.4	18.6	70.3	216.9	447.8	19.1	113.6	7.7	955.4
United Kingdom									
2009	188.3	67.3	157.8	4,019.4	1,099.0	17.8	170.6	20.3	5,740.5
2010	153.1	38.2	108.5	5,092.7	949.0	24.1	96.8	21.8	6,484.2
Italy									
2009	228.7	44.5	143.2	123.0	273.1	5.1	34.2	4.9	856.6
2010	115.1	109.0	150.4	171.2	214.9	3.0	96.6	3.4	863.7
Other European Union									
2009	435.7	534.3	165.9	1,260.6	1,404.3	71.8	414.7	22.1	4,309.3
2010	400.4	268.6	148.7	1,551.5	1,289.9	73.8	315.3	20.9	4,069.0
Total									
2009	1,016.3	871.6	604.0	5,993.6	4,403.6	136.7	856.0	68.6	13,950.3
2010	795.5	483.5	521.8	7,608.5	3,675.3	138.1	720.9	61.0	14,004.7
Newly industrialized countries									
South Korea									
2009	160.2	536.6	161.8	485.3	270.8	21.4	24.3	3.3	1,663.7
2010	262.0	484.2	258.7	508.0	218.9	39.2	24.9	4.2	1,800.1
Hong Kong									
2009	188.1	0.2	48.9	269.6	149.5	4.5	31.5	4.3	696.5
2010	199.8	0.4	55.9	403.9	125.0	4.1	31.8	6.9	827.9
Taiwan									
2009	79.1	103.7	94.8	149.4	59.7	0.7	17.8	0.5	505.7
2010	71.3	72.6	130.4	195.0	65.5	1.5	23.9	0.5	560.7
Singapore									
2009	21.2	42.7	21.2	223.7	156.9	18.7	15.6	1.5	501.4
2010	30.1	3.6	11.0	90.8	151.3	11.0	17.1	1.3	316.2
Total									
2009	448.5	683.1	326.7	1,128.0	636.9	45.3	89.2	9.5	3,367.3
2010	563.3	560.8	456.0	1,197.8	560.7	55.7	97.7	13.0	3,504.9
Other countries									
2009	5,536.0	792.8	1,661.9	5,309.8	4,546.7	393.2	584.6	147.9	18,973.1
2010	4,375.0	1,055.7	2,296.2	6,594.0	4,020.0	347.6	830.3	90.2	19,609.0
Total									
2009	19,164.3	37,464.7	10,170.2	36,226.2	34,217.0	17,718.1	7,358.7	3,132.1	165,451.3
2010	16,986.4	47,381.0	10,954.9	44,225.6	28,925.1	27,247.6	6,707.8	1,774.0	184,202.4

Table 4
Domestic exports by country, customs basis, not seasonally adjusted

	June		January to June		Change
	2009	2010	2009	2010	January to June 2010/ January to June 2009
	millions of dollars				percent
North America					
Greenland	1.8	0.6	8.9	3.7	-58.5
Mexico	331.6	374.6	1,803.8	2,072.5	14.9
Saint Pierre and Miquelon	1.3	1.3	6.6	7.7	17.4
United States	20,394.3	25,191.8	123,189.0	140,717.3	14.2
Total	20,729.1	25,568.3	125,008.4	142,801.2	14.2
Western Europe					
Andorra	0.0	0.0	0.0	0.1	83.6
Austria	40.0	32.4	254.5	169.7	-33.3
Belgium	117.4	114.9	954.5	892.4	-6.5
Denmark	14.3	24.5	283.5	132.0	-53.4
Faeroe Islands	0.0	0.0	0.6	0.2	-74.8
Finland	21.6	30.0	148.9	179.7	20.7
France	207.6	165.5	1,404.8	955.4	-32.0
Germany	251.2	272.4	1,639.2	1,632.4	-0.4
Gibraltar	0.0	0.0	16.8	0.0	-99.9
Greece	7.7	7.1	48.1	42.2	-12.3
Iceland	43.4	19.6	57.2	86.9	51.9
Italy	119.1	159.1	856.6	863.7	0.8
Luxembourg	3.6	3.1	20.2	29.0	43.5
Malta	1.0	0.8	39.3	53.5	35.9
Netherlands	213.3	200.7	1,177.2	1,289.7	9.6
Norway	112.2	127.0	764.5	1,229.4	60.8
Portugal	6.5	5.4	83.1	151.3	82.2
Republic of Ireland (Eire)	59.1	47.3	290.7	199.6	-31.3
Spain	57.5	56.6	513.2	377.5	-26.4
Sweden	20.8	36.1	124.5	166.7	34.0
Switzerland	37.4	29.3	474.2	775.7	63.6
United Kingdom	806.4	820.4	5,740.5	6,484.2	13.0
Total	2,139.8	2,152.3	14,892.0	15,711.2	5.5
Other Europe					
Albania	2.2	0.4	4.8	14.1	192.0
Armenia	0.8	0.7	3.0	3.8	25.5
Azerbaijan	0.6	1.2	5.9	7.6	27.3
Belarus	0.1	0.1	0.7	1.0	29.6
Bosnia and Herzegovina	0.5	0.6	1.9	2.8	47.2
Bulgaria	10.0	16.3	21.9	58.0	164.3
Croatia	77.3	1.1	88.4	77.9	-11.9
Czech Republic	7.0	9.1	61.4	59.6	-2.9
Estonia	2.1	1.4	9.5	10.6	11.4
Georgia	0.4	0.2	3.1	5.4	73.7
Hungary	9.1	7.4	45.1	36.6	-18.7
Kazakhstan	9.5	4.7	102.0	84.2	-17.5
Kyrgyzstan	1.3	0.2	2.5	1.1	-56.9
Latvia	1.7	1.7	14.4	32.2	123.8
Lithuania	5.8	1.8	24.3	12.8	-47.3
Macedonia (Former Yugoslav Republic of Macedonia)	0.8	1.3	6.8	5.5	-19.0
Montenegro	0.1	0.0	1.1	0.7	-39.6
Poland	11.3	10.0	90.4	73.9	-18.3
Republic of Moldova	0.1	0.9	1.2	1.4	14.6
Romania	9.4	4.7	37.3	52.0	39.4
Russian Federation	59.2	65.4	442.4	416.7	-5.8
Serbia	4.2	0.6	10.7	2.9	-73.2
Slovakia	5.1	1.2	12.1	16.8	38.2
Slovenia	1.2	24.3	49.5	28.6	-42.1
Tajikistan	0.1	0.0	1.1	4.2	275.4
Turkmenistan	1.8	0.1	4.0	1.1	-72.2
Ukraine	4.5	7.4	34.2	65.6	91.5
Uzbekistan	1.3	2.0	8.2	4.0	-51.7
Total	227.7	165.1	1,088.1	1,080.8	-0.7

Table 4 – continued

Domestic exports by country, customs basis, not seasonally adjusted

	June		January to June		Change
	2009	2010	2009	2010	January to June 2010/ January to June 2009
	millions of dollars				percent
Middle East					
Bahrain	2.3	4.7	9.4	44.6	374.5
Cyprus	0.7	0.8	5.7	4.7	-17.8
Egypt	116.4	64.1	330.3	248.5	-24.8
Eritrea	0.0	0.0	0.1	1.8	...
Ethiopia	0.7	3.1	6.2	91.0	...
Iran	50.2	7.8	263.3	52.9	-79.9
Iraq	5.7	39.7	227.3	141.0	-38.0
Israel	34.6	26.9	158.6	172.3	8.7
Jordan	3.9	5.3	29.0	30.7	5.9
Kuwait	6.3	3.9	36.2	49.5	37.0
Lebanon	28.5	4.7	59.3	32.9	-44.5
Libya	23.2	11.5	165.0	73.6	-55.4
Oman	9.9	10.8	68.2	55.8	-18.2
Qatar	20.4	3.9	72.6	37.9	-47.7
Saudi Arabia	96.6	34.0	680.9	330.4	-51.5
Somalia	0.1	0.0	0.1	1.0	...
Sudan	3.1	1.7	67.4	60.4	-10.4
Syria	6.2	1.9	24.5	16.7	-32.1
Turkey	60.0	63.6	384.6	434.5	13.0
United Arab Emirates	86.8	94.8	602.9	470.5	-22.0
Yemen	4.0	1.8	13.6	10.9	-20.1
Total	559.6	384.9	3,205.2	2,361.8	-26.3
Other Africa					
Algeria	28.9	30.9	199.9	178.9	-10.5
Angola	8.3	64.4	45.8	103.0	124.8
Antarctica	0.0	0.0	0.0	0.0	-8.1
Benin	0.7	1.1	4.0	5.4	35.3
Botswana	0.5	0.7	2.8	2.3	-16.0
Burkina Faso	2.9	1.4	5.8	11.4	97.2
Burundi	0.1	0.1	0.5	0.4	-28.3
Cameroon	0.6	4.2	13.5	12.6	-6.5
Cape Verde	0.2	0.1	0.8	0.5	-31.3
Central African Republic	0.2	0.0	0.6	0.0	-91.3
Chad	2.2	0.2	7.4	2.5	-65.7
Comoros	0.1	0.0	0.2	0.0	-78.0
Congo	0.3	0.6	11.6	5.6	-51.9
Democratic Republic of the Congo	0.8	1.3	7.2	6.4	-12.0
Djibouti	0.2	0.0	1.7	0.9	-48.4
Equatorial Guinea	0.5	0.1	2.6	1.4	-46.4
French Southern Territories	0.0	0.0	0.1	0.0	-88.1
Gabon	1.6	2.0	16.1	9.8	-39.4
Gambia	0.0	0.0	0.4	0.4	15.2
Ghana	18.3	15.1	83.9	76.6	-8.7
Guinea	0.5	0.4	9.6	3.1	-67.5
Guinea-Bissau	0.0	0.0	0.0	0.0	...
Ivory Coast	1.9	0.3	13.9	6.3	-54.9
Kenya	5.3	6.2	39.1	34.7	-11.3
Lesotho	0.0	0.0	0.0	0.0	134.9
Liberia	0.2	0.5	1.7	8.2	369.4
Madagascar	7.4	3.6	24.1	32.8	35.8
Malawi	0.4	0.3	2.2	1.9	-11.5
Mali	0.2	0.7	3.6	4.3	20.0
Mauritania	0.1	0.4	1.6	1.4	-11.2
Mauritius	0.7	0.3	3.8	1.8	-52.5
Morocco	7.8	5.1	229.4	73.9	-67.8
Mozambique	0.4	0.5	2.2	6.9	217.2
Namibia	0.0	2.0	1.0	6.4	551.7
Niger	0.2	0.2	1.4	1.1	-21.7
Nigeria	12.2	10.7	74.5	117.1	57.2
Rwanda	0.1	0.0	0.9	0.7	-15.4
Saint Helena	0.0	0.0	0.1	0.0	-96.4
Sao Tome and Principe	0.0	0.0	0.1	0.0	-38.2
Senegal	2.1	3.7	10.7	15.2	42.9
Seychelles	0.0	0.1	0.4	0.4	12.4

Table 4 – continued

Domestic exports by country, customs basis, not seasonally adjusted

	June		January to June		Change
	2009	2010	2009	2010	January to June 2010/ January to June 2009
	millions of dollars				percent
Sierra Leone	0.3	1.3	2.4	5.6	130.8
South Africa	35.3	45.7	233.9	236.4	1.1
Swaziland	0.1	0.2	9.5	0.6	-93.6
Togo	0.4	1.2	10.5	6.0	-43.6
Tunisia	5.3	1.7	69.7	27.3	-60.8
Uganda	2.1	0.5	7.5	5.3	-28.7
United Republic of Tanzania	2.4	2.4	16.2	16.9	4.3
Western Sahara	0.0	0.0	0.1	0.0	-100.0
Zambia	1.6	0.6	4.0	18.5	359.2
Zimbabwe	0.1	0.6	7.0	3.1	-55.8
Total	153.9	211.5	1,185.7	1,054.2	-11.1
Other Asia					
Afghanistan	8.6	2.7	32.1	32.1	-0.2
Bangladesh	49.5	23.0	430.7	315.5	-26.7
Bhutan	0.0	0.7	0.1	1.5	...
British Indian Ocean Territory	0.0	0.2	0.1	1.2	...
Brunei Darussalam	0.9	0.5	2.1	7.7	261.4
Cambodia	0.3	0.3	2.5	1.5	-39.6
China	1,015.1	990.2	5,838.5	5,533.9	-5.2
Hong Kong	121.5	153.3	696.5	827.9	18.9
India	136.7	181.3	782.3	944.6	20.7
Indonesia	115.9	106.7	517.4	491.4	-5.0
Japan	681.9	888.0	4,167.1	4,293.8	3.0
Laos	0.2	0.0	1.3	1.3	2.3
Macao	0.6	0.3	11.5	1.4	-88.1
Malaysia	49.8	72.1	271.2	387.8	43.0
Maldives	0.2	0.4	1.6	2.3	42.3
Mongolia	0.1	0.9	2.4	8.4	252.4
Myanmar	0.0	0.1	0.0	2.7	...
Nepal	0.3	0.1	1.8	1.2	-34.2
North Korea	1.5	1.1	12.7	5.5	-56.2
Pakistan	65.8	11.7	294.2	205.5	-30.2
Philippines	25.2	34.9	214.8	273.4	27.3
Singapore	115.3	48.8	501.4	316.2	-36.9
South Korea	279.3	255.6	1,663.7	1,800.1	8.2
Sri Lanka	28.9	34.3	170.9	187.1	9.5
Taiwan	76.5	90.4	505.7	560.7	10.9
Thailand	28.7	49.2	212.6	335.1	57.6
Timor-Leste	0.0	0.0	0.0	0.0	-100.0
Viet Nam	24.5	18.9	83.5	121.9	45.9
Total	2,827.1	2,965.4	16,418.9	16,661.8	1.5
Oceania					
American Samoa	0.0	0.0	0.3	0.6	118.7
Australia	110.2	203.1	745.5	898.6	20.5
Christmas Island	0.0	0.1	0.2	0.6	142.4
Cocos (Keeling) Islands	0.0	0.0	0.2	0.1	-42.2
Cook Islands	0.0	0.0	0.0	0.0	...
Fiji	0.1	0.5	4.0	1.3	-66.8
French Polynesia	0.4	0.8	4.4	5.7	29.4
Guam	0.3	0.3	0.9	0.6	-38.1
Heard Island and McDonald Islands	0.0	0.0	0.0	0.0	-100.0
Kiribati	0.0	0.0	0.0	0.1	...
Nauru	0.0	0.0	0.0	1.3	...
New Caledonia	0.6	0.2	2.4	7.1	197.0
New Zealand	14.9	32.8	130.5	138.5	6.1
Norfolk Island	0.0	0.0	0.3	0.0	-98.4
Papua New Guinea	2.0	2.3	11.9	8.5	-29.0
Pitcairn	0.0	0.0	0.1	0.0	-95.6
Samoa	0.0	0.1	0.2	0.3	71.1
Solomon Islands	0.0	0.0	0.1	0.0	-52.8
Tonga	0.1	0.0	0.1	3.3	...
United States Minor Outlying Islands	1.4	1.2	5.8	7.0	20.0
Vanuatu	0.1	0.1	1.3	0.8	-34.9
Total	130.1	241.4	908.2	1,074.3	18.3

Table 4 – continued

Domestic exports by country, customs basis, not seasonally adjusted

	June		January to June		Change
	2009	2010	2009	2010	January to June 2010/ January to June 2009
	millions of dollars				percent
South America					
Argentina	7.2	14.0	83.5	112.4	34.6
Bolivia	0.7	9.5	5.5	22.8	316.5
Brazil	114.9	262.9	556.3	1,267.8	127.9
Chile	24.8	59.9	319.1	274.7	-13.9
Colombia	55.8	42.4	300.9	278.8	-7.3
Ecuador	21.2	16.2	129.1	134.3	4.0
Falkland Islands (Malvinas)	0.0	0.0	0.0	0.1	...
Guyana	3.3	3.3	13.9	12.9	-7.1
Paraguay	0.7	0.9	6.1	4.0	-33.4
Peru	15.3	44.4	194.7	228.8	17.5
Suriname	1.4	0.5	5.1	5.7	11.9
Uruguay	0.7	2.7	11.5	15.0	30.2
Venezuela	56.4	51.0	332.4	234.2	-29.5
Total	302.4	507.7	1,958.1	2,591.6	32.4
Central America Antilles					
Anguilla	0.5	0.1	1.2	0.5	-63.3
Antigua and Barbuda	1.7	2.6	6.8	10.2	49.4
Aruba	0.3	22.4	2.2	23.9	996.2
Bahamas	19.9	2.1	83.6	36.0	-57.0
Barbados	4.0	3.8	32.7	17.8	-45.7
Belize	0.7	0.8	3.6	2.8	-22.3
Bermuda	5.6	3.8	32.6	19.7	-39.7
British Virgin Islands	0.1	0.1	2.1	20.6	883.9
Cayman Islands	0.7	0.6	3.4	3.3	-1.0
Costa Rica	8.1	12.7	31.4	44.8	42.9
Cuba	34.2	22.4	159.0	148.3	-6.7
Dominica	0.3	0.2	2.4	2.5	3.4
Dominican Republic	7.7	12.8	67.6	80.4	19.0
El Salvador	3.3	3.2	26.3	19.2	-27.0
Grenada	0.2	0.2	2.8	2.6	-6.6
Guatemala	6.1	9.1	43.3	45.5	5.0
Haiti	2.2	2.4	25.3	19.8	-21.5
Honduras	1.4	2.0	16.7	18.6	11.1
Jamaica	7.5	9.4	54.3	82.2	51.3
Montserrat	0.0	0.0	0.1	0.1	-10.8
Netherlands Antilles	2.4	1.1	11.8	11.2	-5.5
Nicaragua	0.6	1.6	7.4	7.5	1.3
Panama	5.8	4.4	45.8	78.2	70.7
Saint Kitts and Nevis	0.3	0.4	3.1	2.9	-5.4
Saint Lucia	0.9	0.7	4.9	3.4	-29.8
Saint Vincent and the Grenadines	0.9	0.7	4.8	4.4	-8.2
Trinidad and Tobago	26.0	22.9	109.0	157.4	44.4
Turks and Caicos Islands	0.1	0.2	2.5	2.0	-22.7
Total	141.5	142.8	786.7	865.6	10.0
All countries	27,211.4	32,339.5	165,451.3	184,202.4	11.3

Table 5-1
Exports by province of origin, customs basis, not seasonally adjusted — June

	Agricultural and fishing products	Energy products	Forestry products	Industrial goods	Machinery and equipment	Automotive products	Consumer goods	Special transactions trade	Total
millions of dollars									
Domestic exports									
Newfoundland and Labrador									
2009	138.9	484.9	11.0	79.6	4.3	0.2	0.0	4.8	723.8
2010	151.9	550.0	10.8	177.9	3.5	0.2	0.1	3.0	897.4
Prince Edward Island									
2009	47.2	0.1	0.2	2.3	22.4	0.3	3.0	6.8	82.4
2010	49.3	0.2	0.0	1.9	13.5	0.6	3.3	4.3	73.2
Nova Scotia									
2009	104.7	67.9	52.8	42.4	98.7	3.8	7.8	5.0	383.2
2010	91.9	47.6	76.9	36.7	122.0	5.0	5.6	3.1	388.7
New Brunswick									
2009	141.4	661.0	91.5	54.7	25.0	1.9	13.7	5.8	995.0
2010	132.8	609.6	104.2	100.4	26.2	1.8	25.9	3.9	1,004.8
Quebec									
2009	375.2	222.9	481.2	1,250.1	1,540.1	126.0	267.6	118.3	4,381.4
2010	384.7	188.0	518.4	1,572.5	1,682.2	147.8	309.9	78.6	4,882.1
Ontario									
2009	672.1	208.0	204.3	2,559.7	2,638.0	2,547.6	817.6	241.0	9,888.3
2010	696.2	214.8	232.9	3,033.7	2,758.8	5,004.1	733.2	161.9	12,835.5
Manitoba									
2009	344.0	79.7	21.7	129.6	167.9	54.0	35.2	24.5	856.6
2010	298.2	56.7	21.1	205.0	179.3	35.4	30.1	30.5	856.3
Saskatchewan									
2009	661.2	639.4	19.5	416.1	70.8	3.3	0.4	6.0	1,816.7
2010	462.9	720.8	22.7	463.2	69.2	2.3	1.0	3.9	1,746.1
Alberta									
2009	595.7	4,060.9	134.2	671.8	378.6	59.4	9.3	42.0	5,951.8
2010	542.3	5,051.5	184.8	782.4	367.1	42.1	10.0	26.2	7,006.4
British Columbia									
2009	215.0	511.6	572.6	392.0	253.8	17.1	41.1	30.7	2,034.0
2010	203.2	752.5	814.2	494.5	274.4	24.5	54.2	23.1	2,640.7
Yukon, Northwest Territories and Nunavut ¹									
2009	0.6	0.0	0.0	97.3	0.3	0.0	0.0	0.0	98.3
2010	0.1	0.0	0.1	7.3	0.7	0.0	0.0	0.0	8.2
Total									
2009	3,296.1	6,936.3	1,589.0	5,695.7	5,199.9	2,813.6	1,195.8	484.9	27,211.4
2010	3,013.6	8,191.7	1,986.1	6,875.4	5,497.0	5,263.8	1,173.3	338.7	32,339.5
Re-exports									
2009	40.6	32.4	6.2	184.0	951.1	70.2	164.9	625.9	2,075.4
2010	42.0	1.9	5.9	274.3	862.4	97.7	169.1	640.9	2,094.1
Total exports									
2009	3,336.7	6,968.7	1,595.3	5,879.7	6,151.0	2,883.8	1,360.7	1,110.8	29,286.7
2010	3,055.6	8,193.6	1,992.0	7,149.7	6,359.4	5,361.5	1,342.4	979.6	34,433.6

1. Data for the current month do not include some exports from the Harmonized System, Chapter 71, "Natural/cultured pearls, precious stones and metals, coins, etc." for reasons relating to timing.

Table 5-2
Exports by province of origin, customs basis, not seasonally adjusted — Year to date, January to June

	Agricultural and fishing products	Energy products	Forestry products	Industrial goods	Machinery and equipment	Automotive products	Consumer goods	Special transactions trade	Total
millions of dollars									
Domestic exports									
Newfoundland and Labrador									
2009	353.7	2,644.1	117.3	854.2	35.5	0.8	0.5	26.6	4,032.8
2010	385.7	2,945.6	55.9	645.5	23.2	0.9	0.8	13.2	4,070.9
Prince Edward Island									
2009	240.2	0.1	0.7	12.3	99.9	0.7	14.7	47.0	415.6
2010	208.3	0.9	0.3	13.4	77.4	2.0	19.1	26.4	347.8
Nova Scotia									
2009	465.6	363.8	354.9	267.9	570.8	44.7	39.8	37.3	2,145.0
2010	421.0	255.1	380.5	255.6	686.9	26.5	29.3	19.0	2,073.9
New Brunswick									
2009	597.6	3,100.0	604.5	339.6	167.9	13.4	63.4	41.7	4,928.1
2010	589.0	4,359.6	635.4	585.0	148.6	13.0	123.6	20.9	6,475.0
Quebec									
2009	2,215.2	1,496.3	3,029.4	7,928.9	10,695.0	837.2	1,772.5	709.6	28,684.0
2010	2,145.0	1,545.9	3,009.5	9,688.0	8,803.4	752.9	2,112.8	453.4	28,510.9
Ontario									
2009	4,008.2	1,445.4	1,427.2	15,456.5	17,058.3	16,037.5	4,840.5	1,540.8	61,814.4
2010	3,886.4	1,306.1	1,391.7	19,612.0	14,694.6	25,825.9	3,885.4	818.4	71,420.5
Manitoba									
2009	2,126.2	340.7	156.7	1,104.7	1,123.2	357.8	267.2	180.9	5,657.5
2010	1,850.2	350.6	108.8	1,211.2	951.7	215.9	187.6	140.5	5,016.5
Saskatchewan									
2009	4,223.7	3,011.8	134.4	2,818.9	469.2	20.7	7.5	48.2	10,734.4
2010	3,261.7	3,965.8	107.1	3,552.0	370.3	22.9	7.0	24.1	11,310.9
Alberta									
2009	3,797.3	21,586.6	807.5	4,276.9	2,421.8	294.6	90.3	273.7	33,548.6
2010	3,185.2	28,804.2	1,048.9	5,060.5	1,701.3	253.7	64.7	138.6	40,257.2
British Columbia									
2009	1,134.9	3,475.8	3,537.7	2,199.8	1,572.1	110.5	261.4	226.0	12,518.0
2010	1,052.5	3,847.3	4,216.3	2,801.9	1,461.3	133.7	277.3	119.1	13,909.3
Yukon, Northwest Territories and Nunavut ¹									
2009	1.5	0.0	0.1	966.5	3.4	0.2	0.9	0.3	972.8
2010	1.3	0.0	0.4	800.6	6.5	0.3	0.2	0.3	809.5
Total									
2009	19,164.3	37,464.7	10,170.2	36,226.2	34,217.0	17,718.1	7,358.7	3,132.1	165,451.3
2010	16,986.4	47,381.0	10,954.9	44,225.6	28,925.1	27,247.6	6,707.8	1,774.0	184,202.4
Re-exports									
2009	268.6	238.0	38.7	1,130.7	5,926.1	489.4	1,113.6	4,168.0	13,373.1
2010	288.7	132.7	39.6	1,423.2	5,069.3	537.3	933.1	3,533.3	11,957.4
Total exports									
2009	19,432.8	37,702.6	10,209.0	37,356.9	40,143.1	18,207.5	8,472.3	7,300.1	178,824.4
2010	17,275.1	47,513.7	10,994.5	45,648.8	33,994.5	27,785.0	7,640.9	5,307.3	196,159.7

1. Data for the current month do not include some exports from the Harmonized System Chapter 71, "Natural/cultured pearls, precious stones and metals, coins, etc." for reasons relating to timing.

Table 6-1
Imports by commodity groupings, balance of payments basis, seasonally adjusted — Current dollars

	May	June	Change		Year to date			June 2010/ June 2009	
	2010	2010			2009	2010	Change		
	millions of dollars		percent		millions of dollars		percent		
Total	35,050	34,631	-418	-1.2	185,393	200,980	15,587	8.4	17.6
Agricultural and fishing products	2,448	2,381	-67	-2.7	14,975	14,452	-523	-3.5	-5.4
Fruits and vegetables	702	682	-20	-2.8	4,184	4,083	-101	-2.4	-2.0
Fresh fruits and berries	258	236	-22	-8.4	1,465	1,482	17	1.2	-2.3
Dried fruits, fruits and fruit preparations	111	112	1	1.1	792	648	-144	-18.1	-11.0
Fresh vegetables	189	183	-7	-3.6	1,072	1,102	31	2.9	-1.0
Other vegetables and vegetable preparations	143	151	8	5.3	856	850	-5	-0.6	5.0
Other agricultural and fishing products	1,747	1,699	-47	-2.7	10,791	10,369	-422	-3.9	-6.6
Live animals	16	17	1	7.8	99	97	-2	-2.4	14.1
Meat and meat preparations	171	161	-10	-5.9	1,107	1,029	-77	-7.0	-10.4
Fish and marine animals	154	158	3	2.0	1,069	936	-132	-12.4	-6.3
Cocoa, coffee, tea and other food preparations	403	412	9	2.3	2,513	2,406	-106	-4.2	-1.0
Dairy produce, eggs and honey	50	47	-3	-6.2	272	275	3	1.1	-3.0
Corn (maize) shelled	40	34	-6	-14.5	241	256	15	6.3	-14.8
Other cereals and cereal preparations	178	167	-11	-6.3	1,184	1,032	-153	-12.9	-8.9
Sugar and sugar preparations	142	142	0	-0.3	808	891	83	10.3	5.0
Fodder, feed, excluding unmilled cereal	113	118	5	4.5	762	687	-75	-9.8	-18.6
Beverages	317	300	-18	-5.6	1,853	1,832	-21	-1.1	-7.7
Tobacco	32	35	3	9.3	175	199	24	13.7	11.9
Crude vegetable products	129	108	-21	-16.0	705	722	18	2.5	-18.8
Cotton	1	1	0	-13.4	5	7	2	50.2	48.9
Energy products	3,668	2,959	-709	-19.3	15,832	19,695	3,864	24.4	11.7
Crude petroleum	2,447	1,803	-644	-26.3	9,084	12,136	3,052	33.6	4.0
Other energy products	1,221	1,156	-65	-5.3	6,748	7,559	812	12.0	26.5
Coal and other related products	383	368	-15	-3.9	2,571	2,573	2	0.1	25.0
Petroleum and coal products	838	788	-50	-6.0	4,177	4,987	810	19.4	27.1
Forestry products	225	230	5	2.4	1,207	1,332	126	10.4	23.1
Forestry products	225	230	5	2.4	1,207	1,332	126	10.4	23.1
Crude wood products	32	35	3	10.8	243	199	-44	-18.1	19.5
Wood fabricated materials	193	195	2	1.0	964	1,133	170	17.6	23.8
Industrial goods and materials	7,337	7,490	152	2.1	37,927	42,087	4,160	11.0	28.7
Metals and metal ores	2,768	2,914	146	5.3	11,853	15,667	3,815	32.2	57.7
Metals in ores, concentrates and scrap	583	566	-17	-2.9	2,757	3,300	543	19.7	33.7
Steel bars, rods, plates, sheets	618	592	-25	-4.1	2,326	3,387	1,061	45.6	89.6
Other iron and steel products	365	396	31	8.6	1,960	2,016	55	2.8	70.1
Precious metals including alloys	839	1,012	172	20.5	3,091	4,776	1,684	54.5	65.5
Other non-ferrous metals and alloys	363	348	-15	-4.2	1,718	2,190	471	27.4	29.9
Chemicals and plastics	2,449	2,453	4	0.2	14,019	14,344	325	2.3	16.9
Organic chemicals	600	569	-31	-5.2	3,476	3,483	7	0.2	13.9
Plastic materials	889	858	-31	-3.5	4,396	4,945	550	12.5	20.5
Other chemicals and related products	960	1,027	67	6.9	6,148	5,916	-232	-3.8	15.8
Other industrial goods and materials	2,121	2,123	2	0.1	12,055	12,075	20	0.2	13.4
Crude animal products	26	29	2	9.4	123	135	12	9.9	49.7
Wool and man-made fibres	21	22	1	2.4	108	125	17	16.2	25.0
Crude non-metallic minerals	75	74	-2	-2.3	378	437	59	15.5	33.7
Textile fabricated materials	193	194	0	0.3	1,160	1,134	-26	-2.2	10.6
Metal fabricated basic products	842	813	-29	-3.4	4,733	4,648	-85	-1.8	10.1
Rubber fabricated materials	83	85	2	3.0	469	487	18	3.9	17.4
Oils, fats, animal and vegetable	95	93	-3	-2.9	633	572	-61	-9.7	-11.2
Non-metallic minerals	307	321	15	4.8	1,647	1,775	127	7.7	27.1
Other fabricated materials	478	493	15	3.1	2,804	2,763	-41	-1.5	12.6

Table 6-1 – continued

Imports by commodity groupings, balance of payments basis, seasonally adjusted — Current dollars

	May	June	Change		Year to date			June 2010/ June 2009	
	2010	2010			2009	2010	Change		
	millions of dollars		percent		millions of dollars		percent		
Machinery and equipment	9,420	9,466	46	0.5	55,950	53,506	-2,444	-4.4	9.9
Industrial and agricultural machinery	2,480	2,601	121	4.9	14,805	14,052	-754	-5.1	12.7
Engines, turbines and electric motors	354	501	147	41.4	2,198	2,003	-196	-8.9	42.1
Drilling mining machinery	145	147	2	1.5	801	818	17	2.1	21.9
Excavating machinery	226	213	-13	-5.8	1,076	1,199	123	11.5	36.2
Metal working machinery	129	116	-13	-10.4	846	752	-94	-11.1	-21.7
Other industrial machinery	1,267	1,255	-12	-0.9	7,790	7,172	-619	-7.9	5.1
Agricultural machinery including tractors	358	368	10	2.9	2,094	2,108	14	0.7	10.0
Aircraft and other transportation equipment	1,187	1,187	0	0.0	8,354	6,736	-1,618	-19.4	-3.0
Aircraft, engines, parts	703	704	1	0.1	5,440	4,061	-1,380	-25.4	-10.5
Other transportation equipment and parts	483	483	-1	-0.1	2,914	2,675	-239	-8.2	10.6
Office machines and equipment	1,208	1,096	-112	-9.2	6,297	6,321	24	0.4	8.5
Other machinery and equipment	4,546	4,582	37	0.8	26,493	26,397	-96	-0.4	12.4
Other communication and related equipment	1,601	1,601	0	0.0	9,272	9,401	129	1.4	11.3
Other equipment and tools	2,944	2,981	37	1.3	17,221	16,996	-225	-1.3	13.0
Automotive products	5,985	5,937	-47	-0.8	23,935	35,012	11,078	46.3	49.2
Passenger autos and chassis	1,813	1,874	60	3.3	8,019	11,085	3,066	38.2	24.9
Trucks and other motor vehicles	1,542	1,457	-85	-5.5	5,358	9,070	3,712	69.3	71.1
Motor vehicle parts	2,630	2,607	-23	-0.9	10,558	14,858	4,300	40.7	60.1
Other consumer goods	4,791	4,833	42	0.9	29,248	27,962	-1,286	-4.4	2.6
Apparel and footwear	904	906	2	0.2	5,963	5,160	-803	-13.5	-0.7
Apparel and apparel accessories	751	758	6	0.8	4,977	4,298	-679	-13.6	-1.3
Footwear	153	148	-5	-3.0	986	862	-124	-12.6	2.9
Miscellaneous consumer goods	3,887	3,927	41	1.0	23,285	22,802	-483	-2.1	3.4
Television, radios, phonographs	135	129	-6	-4.1	655	774	119	18.2	14.3
Printed matter	308	295	-14	-4.4	1,840	1,709	-131	-7.1	-0.1
Watches, sporting goods and toys	517	563	46	8.9	3,049	2,985	-64	-2.1	16.2
House furnishings	746	737	-9	-1.2	4,426	4,323	-103	-2.3	4.2
Photographic goods	206	222	16	7.6	1,332	1,212	-119	-9.0	4.5
Miscellaneous end products	1,975	1,981	7	0.3	11,983	11,798	-185	-1.5	-0.3
Special transactions trade	407	588	181	44.4	2,438	2,519	81	3.3	65.0
Unallocated balance of payments adjustments	768	746	-22	-2.8	3,884	4,416	532	13.7	20.1

Table 6-2
Imports by commodity groupings, balance of payments basis, seasonally adjusted — Constant dollars, 2002

	May	June	Change		Year to date			June 2010/ June 2009	
	2010	2010			2009		2010		
	millions of dollars		percent		millions of dollars		percent		
Total	39,378	39,378	0	0.0	194,239	227,141	32,902	16.9	21.6
Agricultural and fishing products	2,464	2,436	-28	-1.1	13,622	14,445	823	6.0	1.7
Fruits and vegetables	669	651	-19	-2.8	4,007	3,970	-37	-0.9	-6.3
Fresh fruits and berries	260	228	-32	-12.3	1,482	1,493	11	0.8	-10.4
Dried fruits, fruits and fruit preparations	110	111	1	0.7	732	641	-91	-12.5	-14.5
Fresh vegetables	159	163	4	2.4	1,045	1,014	-31	-3.0	-7.2
Other vegetables and vegetable preparations	139	148	9	6.3	748	822	74	9.9	10.9
Other agricultural and fishing products	1,795	1,786	-9	-0.5	9,615	10,475	860	8.9	4.9
Live animals	15	16	1	7.5	94	95	1	1.3	9.2
Meat and meat preparations	149	148	-1	-0.7	1,050	1,006	-44	-4.2	-15.7
Fish and marine animals	221	215	-6	-2.5	1,304	1,363	59	4.5	-5.7
Cocoa, coffee, tea and other food preparations	454	512	59	12.9	1,940	2,387	447	23.0	45.7
Dairy produce, eggs and honey	54	54	0	0.0	258	308	50	19.4	7.3
Corn (maize) shelled	40	36	-4	-10.7	189	250	62	32.7	6.7
Other cereals and cereal preparations	147	134	-13	-8.7	949	872	-77	-8.1	-16.0
Sugar and sugar preparations	141	142	0	0.1	770	866	97	12.5	4.8
Fodder, feed, excluding unmilled cereal	100	101	1	1.0	535	594	59	11.1	3.8
Beverages	306	274	-32	-10.5	1,616	1,711	95	5.9	-6.2
Tobacco	38	42	4	9.5	192	244	51	26.7	14.3
Crude vegetable products	128	110	-18	-13.8	713	770	57	8.0	-12.5
Cotton	2	1	0	-11.0	6	10	3	51.5	43.1
Energy products	1,904	1,619	-285	-15.0	10,523	10,533	10	0.1	-2.4
Crude petroleum	1,078	858	-220	-20.4	5,721	5,406	-315	-5.5	-12.9
Other energy products	826	761	-65	-7.9	4,802	5,127	325	6.8	13.1
Coal and other related products	355	328	-27	-7.5	1,967	2,262	295	15.0	12.0
Petroleum and coal products	471	433	-38	-8.1	2,835	2,865	30	1.1	14.0
Forestry products	281	289	8	3.0	1,463	1,761	298	20.4	16.7
Forestry products	281	289	8	3.0	1,463	1,761	298	20.4	16.7
Crude wood products	48	52	4	9.1	295	300	4	1.4	34.3
Wood fabricated materials	233	237	4	1.8	1,168	1,461	294	25.2	13.4
Industrial goods and materials	6,627	6,747	120	1.8	32,986	38,755	5,769	17.5	24.5
Metals and metal ores	1,882	1,977	95	5.1	8,365	11,172	2,808	33.6	46.4
Metals in ores, concentrates and scrap	332	317	-15	-4.6	2,161	1,842	-319	-14.8	-4.2
Steel bars, rods, plates, sheets	488	479	-9	-1.9	1,751	2,853	1,102	63.0	79.7
Other iron and steel products	252	277	25	9.7	1,301	1,506	205	15.7	54.2
Precious metals including alloys	433	551	118	27.2	1,440	2,697	1,257	87.3	90.4
Other non-ferrous metals and alloys	377	354	-23	-6.0	1,712	2,275	563	32.9	24.3
Chemicals and plastics	2,367	2,377	10	0.4	12,578	13,934	1,357	10.8	17.2
Organic chemicals	413	401	-12	-2.9	2,768	2,498	-270	-9.8	-1.7
Plastic materials	938	896	-43	-4.6	4,403	5,289	886	20.1	11.9
Other chemicals and related products	1,015	1,080	65	6.4	5,407	6,148	740	13.7	32.0
Other industrial goods and materials	2,377	2,393	16	0.7	12,043	13,649	1,605	13.3	17.1
Crude animal products	26	29	3	9.7	191	142	-49	-25.5	-9.1
Wool and man-made fibres	27	28	1	3.7	132	161	30	22.6	22.6
Crude non-metallic minerals	62	61	-1	-0.9	336	363	27	8.0	29.0
Textile fabricated materials	255	267	12	4.8	1,349	1,525	176	13.1	20.4
Metal fabricated basic products	895	860	-34	-3.9	4,435	4,983	548	12.4	17.0
Rubber fabricated materials	101	104	3	2.9	501	600	99	19.8	23.4
Oils, fats, animal and vegetable	98	97	-1	-0.6	528	574	46	8.8	5.9
Non-metallic minerals	370	385	15	4.1	1,762	2,156	394	22.3	27.3
Other fabricated materials	545	562	18	3.2	2,810	3,144	334	11.9	11.1

Table 6-2 – continued

Imports by commodity groupings, balance of payments basis, seasonally adjusted — Constant dollars, 2002

	May	June	Change		Year to date			June 2010/ June 2009	
	2010	2010			2009	2010	Change		
	millions of dollars		percent		millions of dollars		percent		
Machinery and equipment	13,624	13,604	-20	-0.1	69,414	76,969	7,556	10.9	18.8
Industrial and agricultural machinery	3,035	3,166	131	4.3	15,662	17,298	1,636	10.4	21.6
Engines, turbines and electric motors	442	610	168	37.9	2,361	2,490	129	5.5	51.9
Drilling mining machinery	163	163	1	0.3	758	920	163	21.5	33.1
Excavating machinery	285	268	-17	-6.0	1,118	1,497	379	33.9	54.2
Metal working machinery	165	146	-19	-11.4	941	966	25	2.6	-16.1
Other industrial machinery	1,525	1,511	-14	-0.9	8,153	8,728	575	7.1	13.5
Agricultural machinery including tractors	454	468	13	2.9	2,332	2,697	365	15.7	17.1
Aircraft and other transportation equipment	1,377	1,381	5	0.3	8,608	7,954	-653	-7.6	2.3
Aircraft, engines, parts	852	853	1	0.2	5,715	4,966	-749	-13.1	-4.6
Other transportation equipment and parts	525	528	3	0.6	2,893	2,989	96	3.3	15.7
Office machines and equipment	2,692	2,482	-210	-7.8	12,126	13,606	1,480	12.2	20.6
Other machinery and equipment	6,520	6,574	54	0.8	33,018	38,111	5,093	15.4	20.8
Other communication and related equipment	2,685	2,692	7	0.3	13,497	15,851	2,353	17.4	20.2
Other equipment and tools	3,835	3,882	46	1.2	19,520	22,260	2,740	14.0	21.3
Automotive products	7,281	7,230	-51	-0.7	27,098	42,623	15,525	57.3	55.5
Passenger autos and chassis	2,102	2,167	65	3.1	9,337	12,746	3,408	36.5	24.3
Trucks and other motor vehicles	1,717	1,622	-95	-5.5	5,625	10,185	4,560	81.1	78.9
Motor vehicle parts	3,462	3,441	-21	-0.6	12,136	19,693	7,557	62.3	72.2
Other consumer goods	6,197	6,269	72	1.2	33,295	36,209	2,914	8.8	9.6
Apparel and footwear	1,270	1,276	6	0.5	7,266	7,305	39	0.5	7.0
Apparel and apparel accessories	1,059	1,072	12	1.2	6,075	6,108	33	0.5	6.5
Footwear	211	204	-6	-3.0	1,191	1,196	6	0.5	10.0
Miscellaneous consumer goods	4,927	4,993	66	1.3	26,029	28,904	2,875	11.0	10.3
Television, radios, phonographs	229	221	-8	-3.4	938	1,319	381	40.6	25.2
Printed matter	375	366	-9	-2.4	2,120	2,118	-2	-0.1	0.7
Watches, sporting goods and toys	723	790	67	9.3	3,805	4,166	361	9.5	22.4
House furnishings	946	928	-19	-2.0	4,893	5,548	655	13.4	10.5
Photographic goods	399	438	39	9.8	2,022	2,267	245	12.1	26.4
Miscellaneous end products	2,255	2,249	-6	-0.2	12,250	13,485	1,235	10.1	4.4
Special transactions trade	458	677	219	47.9	2,573	2,872	299	11.6	69.9
Unallocated balance of payments adjustments	543	507	-36	-6.5	3,265	2,973	-292	-8.9	12.1

Table 7-1
Imports from selected countries, customs basis, not seasonally adjusted — June

	Agricultural and fishing products	Energy products	Forestry products	Industrial goods	Machinery and equipment	Automotive products	Consumer goods	Special transactions trade	Total
millions of dollars									
United States									
2009	1,579.2	733.1	142.5	3,543.4	4,183.8	2,776.8	1,964.6	340.2	15,263.6
2010	1,466.4	957.7	165.9	4,445.8	4,740.1	4,281.0	1,924.6	553.8	18,535.3
Mexico									
2009	124.4	45.5	0.5	140.7	515.1	315.2	95.4	3.7	1,240.5
2010	124.0	49.4	0.6	150.6	670.3	748.8	95.5	3.0	1,842.2
Japan									
2009	6.3	0.3	0.3	74.2	377.1	430.0	80.4	0.8	969.5
2010	6.3	0.6	0.1	93.6	430.0	558.6	85.1	0.6	1,174.9
European Union									
Germany									
2009	20.8	11.2	1.6	131.3	405.4	227.5	128.2	0.6	926.6
2010	21.3	2.9	1.1	165.8	309.4	328.0	159.0	8.1	995.6
France									
2009	67.0	5.5	0.2	117.3	140.9	8.2	133.3	0.2	472.5
2010	56.1	36.2	0.1	60.8	122.3	8.4	143.4	0.3	427.6
United Kingdom									
2009	36.9	168.6	0.3	79.8	333.2	29.5	109.3	6.1	763.7
2010	35.1	261.9	0.1	140.9	234.5	37.2	109.6	11.4	830.6
Italy									
2009	62.6	20.9	1.1	88.0	159.9	17.9	87.1	0.9	438.4
2010	49.9	23.9	0.8	81.8	112.8	22.6	84.2	0.7	376.7
Other European Union									
2009	103.8	182.4	3.1	203.1	391.6	47.8	341.6	2.5	1,275.8
2010	89.7	192.5	3.3	269.4	386.2	66.0	314.7	2.2	1,324.0
Total									
2009	291.1	388.7	6.1	619.5	1,431.1	330.8	799.4	10.3	3,877.0
2010	252.1	517.4	5.5	718.8	1,165.2	462.1	810.8	22.7	3,954.5
Newly industrialized countries									
South Korea									
2009	4.4	47.4	0.0	54.5	222.2	244.8	17.9	0.1	591.4
2010	4.1	13.8	0.0	63.1	187.5	165.7	16.8	0.1	451.1
Hong Kong									
2009	2.5	0.0	0.0	1.7	12.1	0.5	10.4	0.0	27.3
2010	2.4	0.0	0.0	3.1	12.5	0.5	9.5	0.0	28.1
Taiwan									
2009	6.0	0.0	0.9	52.0	160.9	14.4	32.5	0.1	266.8
2010	6.5	0.0	0.7	80.6	194.1	13.9	35.4	0.1	331.3
Singapore									
2009	2.1	18.5	0.0	15.4	38.4	0.4	11.2	0.1	86.1
2010	3.2	0.0	0.0	6.0	51.8	0.6	20.9	0.4	83.0
Total									
2009	15.1	65.9	0.9	123.7	433.7	260.1	71.9	0.3	971.6
2010	16.2	13.9	0.7	152.8	445.9	180.7	82.6	0.6	893.4
Other countries									
2009	571.6	1,579.3	38.9	1,349.0	2,057.9	147.8	1,633.1	22.6	7,400.1
2010	587.4	1,491.7	68.0	1,986.8	2,563.1	188.5	1,772.9	26.4	8,684.6
Total									
2009	2,587.7	2,812.9	189.3	5,850.5	8,998.7	4,260.8	4,644.9	377.8	29,722.5
2010	2,452.9	3,030.6	240.7	7,548.5	10,014.5	6,419.8	4,771.5	607.1	35,085.6

Table 7-2
Imports from selected countries, customs basis, not seasonally adjusted — Year to date, January to June

	Agricultural and fishing products	Energy products	Forestry products	Industrial goods	Machinery and equipment	Automotive products	Consumer goods	Special transactions trade	Total
millions of dollars									
United States									
2009	8,678.2	5,505.9	923.7	22,483.8	26,032.9	16,433.8	11,562.3	1,975.2	93,595.8
2010	8,029.3	6,080.7	982.5	24,936.8	24,535.8	23,732.5	10,930.8	2,164.2	101,392.5
Mexico									
2009	790.1	158.5	3.2	662.3	3,128.3	2,100.4	499.0	19.3	7,361.1
2010	885.2	350.4	3.0	837.8	3,562.3	4,325.4	528.7	25.7	10,518.5
Japan									
2009	33.5	22.7	0.9	571.5	2,561.7	2,488.5	499.0	2.2	6,180.0
2010	33.6	43.8	0.5	624.8	2,332.5	3,071.1	506.6	2.3	6,615.2
European Union									
Germany									
2009	118.7	17.5	6.4	980.0	2,326.4	1,180.2	893.1	5.0	5,527.3
2010	117.6	32.9	6.4	976.0	1,816.9	1,692.2	853.8	11.4	5,507.3
France									
2009	314.2	147.4	1.2	507.1	994.9	54.4	795.8	8.1	2,823.1
2010	315.2	55.3	0.8	420.4	843.4	51.5	808.9	5.4	2,500.9
United Kingdom									
2009	175.5	1,120.5	0.8	660.5	1,882.0	175.3	669.1	17.5	4,701.2
2010	189.4	2,061.0	0.4	1,069.4	1,426.3	210.6	621.7	31.6	5,610.4
Italy									
2009	297.1	31.6	7.7	489.0	779.6	97.7	527.4	3.4	2,233.5
2010	287.4	73.7	6.1	464.9	688.5	120.5	520.1	1.9	2,163.2
Other European Union									
2009	540.2	676.6	22.0	1,449.0	2,196.1	284.9	2,054.1	20.8	7,243.8
2010	520.2	1,039.8	20.9	1,445.2	2,192.5	358.3	1,924.7	14.9	7,516.6
Total									
2009	1,445.7	1,993.6	38.2	4,085.6	8,179.0	1,792.5	4,939.5	54.9	22,529.0
2010	1,429.9	3,262.7	34.7	4,375.9	6,967.6	2,433.1	4,729.3	65.1	23,298.3
Newly industrialized countries									
South Korea									
2009	24.6	73.4	0.1	431.9	1,300.1	1,034.7	113.7	0.4	2,978.9
2010	30.0	147.5	0.1	377.5	1,075.4	1,118.1	94.9	0.5	2,844.1
Hong Kong									
2009	13.5	0.0	0.2	16.2	84.8	1.9	64.2	0.4	181.1
2010	12.9	0.1	0.2	13.4	68.8	2.3	62.8	0.2	160.7
Taiwan									
2009	32.6	0.1	4.9	382.9	1,041.5	89.6	196.3	0.6	1,748.5
2010	36.1	0.1	4.1	410.2	974.3	80.1	191.7	0.7	1,697.2
Singapore									
2009	15.7	70.0	0.6	210.3	268.9	2.1	118.8	0.9	687.2
2010	16.0	0.0	0.1	56.3	274.6	2.1	91.5	1.1	441.8
Total									
2009	86.2	143.6	5.7	1,041.4	2,695.3	1,128.3	493.0	2.2	5,595.8
2010	95.0	147.7	4.5	857.4	2,393.2	1,202.6	440.9	2.5	5,143.8
Other countries									
2009	3,556.0	7,915.1	257.7	8,840.5	12,914.7	811.7	9,973.2	205.8	44,474.7
2010	3,659.0	9,682.6	326.1	10,003.8	13,448.9	1,017.8	9,596.2	167.5	47,901.9
Total									
2009	14,590.3	15,739.4	1,229.3	37,685.1	55,512.0	24,755.2	27,966.0	2,259.7	179,737.1
2010	14,134.0	19,567.9	1,351.2	41,636.5	53,240.5	35,782.6	26,732.4	2,427.3	194,872.4

Table 8
Imports by country, customs basis, not seasonally adjusted

	June		January to June		Change
	2009	2010	2009	2010	January to June 2010/ January to June 2009
	millions of dollars				percent
North America					
Canada	232.8	410.7	1,539.3	2,062.1	34.0
Greenland	0.0	0.0	17.0	0.2	-98.7
Mexico	1,240.5	1,842.2	7,361.1	10,518.5	42.9
Saint Pierre and Miquelon	0.0	0.0	0.1	0.5	261.0
United States	15,263.6	18,535.3	93,595.8	101,392.5	8.3
Total	16,736.9	20,788.3	102,513.3	113,973.8	11.2
Western Europe					
Andorra	0.0	0.0	0.0	0.1	336.4
Austria	92.6	96.4	562.9	536.7	-4.7
Belgium	139.8	135.6	666.4	780.8	17.2
Denmark	117.7	187.8	521.7	1,071.3	105.3
Faeroe Islands	0.1	0.6	0.6	2.1	229.4
Finland	73.5	79.1	424.5	421.9	-0.6
France	472.5	427.6	2,823.1	2,500.9	-11.4
Germany	926.6	995.6	5,527.3	5,507.3	-0.4
Gibraltar	0.0	0.0	0.0	2.2	...
Greece	12.7	10.6	71.7	70.4	-1.9
Iceland	2.7	3.5	15.8	18.2	15.4
Italy	438.4	376.7	2,233.5	2,163.2	-3.1
Luxembourg	6.4	4.6	34.9	42.9	22.8
Malta	1.4	1.3	11.0	7.6	-31.1
Netherlands	184.5	128.7	991.8	795.9	-19.8
Norway	233.4	120.3	1,605.4	1,395.2	-13.1
Portugal	20.0	21.2	133.6	167.8	25.6
Republic of Ireland (Eire)	185.2	145.6	1,168.3	871.4	-25.4
Spain	116.5	107.7	670.7	625.6	-6.7
Sweden	150.9	171.4	926.8	1,000.8	8.0
Switzerland	257.6	261.6	1,761.4	1,589.1	-9.8
United Kingdom	763.7	830.6	4,701.2	5,610.4	19.3
Total	4,196.4	4,106.5	24,852.8	25,181.8	1.3
Other Europe					
Albania	0.5	0.3	1.9	1.3	-35.2
Armenia	3.2	1.8	18.2	12.2	-32.7
Azerbaijan	199.4	0.0	620.6	72.8	-88.3
Belarus	0.4	0.2	16.3	2.4	-85.5
Bosnia and Herzegovina	0.5	0.8	3.5	3.3	-6.5
Bulgaria	5.6	4.2	59.1	27.4	-53.7
Croatia	1.7	2.1	11.9	9.8	-17.3
Czech Republic	21.1	27.2	144.7	132.2	-8.7
Estonia	1.4	1.1	11.6	9.6	-17.0
Georgia	8.9	10.1	61.2	48.5	-20.8
Hungary	26.0	35.8	174.2	172.6	-0.9
Kazakhstan	158.3	8.5	355.0	898.1	153.0
Kyrgyzstan	0.0	0.0	0.4	0.1	-84.8
Latvia	1.0	0.8	5.4	3.9	-28.3
Lithuania	32.3	48.9	96.3	127.5	32.4
Macedonia (Former Yugoslav Republic of Macedonia)	0.3	1.1	5.0	3.6	-27.3
Montenegro	0.0	0.0	0.2	0.1	-18.8
Poland	65.1	69.9	410.5	441.3	7.5
Republic of Moldova	0.2	3.5	1.0	4.1	314.4
Romania	7.2	25.2	55.5	71.8	29.4
Russian Federation	86.6	168.1	655.9	717.5	9.4
Serbia	1.0	0.9	5.7	6.0	5.7
Slovakia	6.8	12.5	67.9	80.2	18.1
Slovenia	8.0	8.5	32.3	55.3	71.0
Tajikistan	0.0	0.0	0.0	0.0	221.0
Turkmenistan	0.0	0.0	0.1	0.1	-29.8
Ukraine	3.5	11.1	44.1	35.1	-20.5
Uzbekistan	0.1	0.3	11.7	1.2	-90.0
Total	639.0	442.8	2,870.4	2,938.0	2.4

Table 8 – continued

Imports by country, customs basis, not seasonally adjusted

	June		January to June		Change
	2009	2010	2009	2010	January to June 2010/ January to June 2009
	millions of dollars				percent
Middle East					
Bahrain	0.1	0.4	3.4	1.6	-51.8
Cyprus	0.0	0.0	1.8	1.8	-1.8
Egypt	4.6	15.0	50.0	148.2	196.6
Eritrea	0.0	0.0	0.1	0.2	249.6
Ethiopia	2.4	1.8	8.6	6.8	-20.1
Iran	2.5	3.6	12.7	20.8	63.1
Iraq	153.4	222.3	570.9	853.9	49.6
Israel	72.4	84.3	481.0	499.7	3.9
Jordan	0.8	1.2	7.4	10.0	34.7
Kuwait	0.0	0.0	37.2	31.5	-15.4
Lebanon	1.6	1.1	7.2	7.8	8.5
Libya	0.0	2.1	0.1	13.5	...
Oman	0.8	0.7	3.7	13.1	257.0
Qatar	1.5	1.1	9.4	62.8	568.5
Saudi Arabia	139.1	154.8	763.0	1,055.4	38.3
Somalia	0.0	0.0	0.0	0.0	-38.0
Sudan	5.0	5.0	35.3	42.5	20.5
Syria	0.4	0.5	2.2	3.3	48.8
Turkey	43.6	55.8	331.8	314.6	-5.2
United Arab Emirates	2.4	4.4	179.3	67.2	-62.5
Yemen	0.0	0.0	0.1	0.0	-43.7
Total	430.8	554.3	2,505.2	3,154.8	25.9
Other Africa					
Algeria	354.5	373.3	1,692.2	1,959.2	15.8
Angola	159.1	182.9	521.4	687.7	31.9
Antarctica	0.0	0.0	0.0	0.2	...
Benin	0.0	0.0	0.0	0.0	386.4
Botswana	0.0	0.0	10.4	6.9	-34.1
Bouvet Island	0.0	0.0	0.0	0.0	-99.7
Burkina Faso	0.0	0.0	1.6	14.4	787.6
Burundi	0.0	0.0	0.1	0.0	-75.9
Cameroon	0.4	0.7	2.5	3.1	24.7
Cape Verde	0.0	0.0	0.0	0.0	13.0
Central African Republic	0.0	0.0	0.0	0.1	39.8
Chad	0.0	0.0	0.0	0.1	996.0
Comoros	0.0	0.0	0.0	0.0	179.9
Congo	0.1	0.1	0.8	0.7	-7.0
Democratic Republic of the Congo	0.1	0.1	0.4	0.6	61.6
Djibouti	0.0	0.0	0.0	0.0	-88.3
Equatorial Guinea	0.0	69.7	192.2	370.1	92.6
French Southern Territories	0.0	0.0	0.0	0.0	-100.0
Gabon	0.0	0.1	0.9	0.2	-80.1
Gambia	0.0	0.0	0.0	0.0	210.6
Ghana	0.4	2.8	10.2	10.8	6.8
Guinea	4.6	2.1	35.7	23.5	-34.1
Guinea-Bissau	0.0	0.0	0.0	0.0	-40.7
Ivory Coast	20.8	13.1	143.7	170.8	18.8
Kenya	1.1	0.7	8.6	7.4	-13.8
Lesotho	0.3	0.9	4.1	4.7	14.6
Liberia	2.9	4.7	11.9	19.2	61.5
Madagascar	7.5	5.3	20.1	21.5	6.9
Malawi	0.1	0.3	0.9	16.6	...
Mali	0.0	0.0	0.2	0.3	58.8
Mauritania	0.1	0.0	0.5	0.2	-68.3
Mauritius	0.4	1.1	4.7	5.1	8.8
Morocco	3.0	8.1	57.5	59.0	2.5
Mozambique	0.0	0.2	0.2	1.1	422.5
Namibia	11.5	0.0	188.8	89.9	-52.4
Niger	0.0	0.1	0.2	0.5	135.7
Nigeria	0.9	45.6	178.8	754.1	321.9
Rwanda	0.1	0.0	0.2	0.1	-45.8
Saint Helena	0.0	0.0	0.0	0.0	22.9
Sao Tome and Principe	0.0	0.1	0.0	0.2	...
Senegal	0.1	0.1	0.5	0.5	11.2

Table 8 – continued

Imports by country, customs basis, not seasonally adjusted

	June		January to June		Change
	2009	2010	2009	2010	January to June 2010/ January to June 2009
	millions of dollars				percent
Seychelles	0.0	0.0	0.4	0.1	-69.8
Sierra Leone	0.1	0.2	1.0	0.8	-19.3
South Africa	54.8	105.1	294.1	323.8	10.1
Swaziland	0.2	0.1	0.9	0.6	-33.7
Togo	1.8	0.1	2.2	0.3	-84.7
Tunisia	3.4	4.9	21.9	28.4	29.5
Uganda	0.1	0.5	1.0	2.5	148.9
United Republic of Tanzania	0.1	0.5	2.1	1.8	-17.7
Western Sahara	0.0	0.0	0.0	0.0	-95.0
Zambia	0.0	0.1	0.3	0.6	95.7
Zimbabwe	0.1	0.5	1.4	2.4	67.3
Total	629.2	824.2	3,415.0	4,590.5	34.4
Other Asia					
Afghanistan	0.1	0.2	0.7	1.0	39.9
Bangladesh	66.9	63.4	420.1	364.4	-13.3
Bhutan	0.0	0.0	0.0	0.0	-86.6
British Indian Ocean Territory	0.0	0.0	0.0	0.0	400.8
Brunei Darussalam	0.1	0.0	1.5	0.0	-99.2
Cambodia	22.2	26.8	140.3	140.4	0.1
China	3,007.0	3,785.1	18,913.4	19,174.2	1.4
Hong Kong	27.3	28.1	181.1	160.7	-11.3
India	153.7	166.3	1,061.1	961.6	-9.4
Indonesia	79.8	105.1	508.9	574.3	12.8
Japan	969.5	1,174.9	6,180.0	6,615.2	7.0
Laos	0.7	0.6	4.5	3.8	-15.8
Macao	1.2	0.9	16.7	4.8	-71.4
Malaysia	187.8	189.0	1,148.3	1,087.4	-5.3
Maldives	0.0	0.0	0.1	0.0	-40.5
Mongolia	0.3	16.5	59.2	73.0	23.4
Myanmar	0.0	0.0	0.0	0.0	-64.0
Nepal	0.8	1.4	5.7	6.2	9.6
North Korea	0.0	0.0	0.1	0.1	21.1
Pakistan	20.3	22.1	118.0	125.5	6.3
Philippines	51.5	71.1	336.6	416.2	23.7
Singapore	86.1	83.0	687.2	441.8	-35.7
South Korea	591.4	451.1	2,978.9	2,844.1	-4.5
Sri Lanka	8.8	10.2	57.5	58.1	0.9
Taiwan	266.8	331.3	1,748.5	1,697.2	-2.9
Thailand	176.7	192.1	1,094.8	1,119.3	2.2
Timor-Leste	0.3	0.2	1.6	0.7	-55.7
Viet Nam	84.2	103.9	491.7	507.5	3.2
Total	5,803.7	6,823.2	36,156.6	36,377.5	0.6
Oceania					
American Samoa	0.0	0.0	0.1	0.2	44.2
Australia	152.8	188.7	769.0	813.2	5.7
Christmas Island	0.0	0.0	0.0	0.1	523.6
Cocos (Keeling) Islands	0.0	0.0	0.1	0.0	-90.3
Cook Islands	0.0	0.0	0.0	0.0	-27.2
Fiji	0.7	0.4	3.3	3.5	6.2
French Polynesia	0.0	0.0	0.3	0.4	50.7
Guam	0.0	0.0	0.2	0.0	-87.9
Heard Island and McDonald Islands	0.0	0.0	0.0	0.0	881.3
Kiribati	0.0	0.0	0.1	0.0	-78.0
Nauru	0.0	0.0	0.1	0.1	-43.0
New Caledonia	0.1	0.0	0.3	0.1	-63.8
New Zealand	53.4	48.9	241.3	227.2	-5.8
Niue	0.0	0.0	0.0	0.0	535.6
Norfolk Island	0.0	0.0	0.0	0.0	-96.8
Papua New Guinea	0.1	0.1	0.5	0.7	30.6
Pitcairn	0.0	0.0	0.0	0.0	-67.1
Samoa	0.0	0.0	0.0	0.2	...
Solomon Islands	0.1	0.0	0.1	0.1	-14.8
Tonga	0.0	0.0	0.0	0.0	-71.1

Table 8 – continued

Imports by country, customs basis, not seasonally adjusted

	June		January to June		Change
	2009	2010	2009	2010	January to June 2010/ January to June 2009
	millions of dollars				percent
United States Minor Outlying Islands	0.5	0.3	2.5	2.3	-8.3
Vanuatu	0.0	0.0	0.0	0.4	...
Wallis and Futuna	0.0	0.0	0.0	0.0	717.5
Total	207.7	238.4	1,018.0	1,048.6	3.0
South America					
Argentina	64.3	88.5	350.7	325.7	-7.1
Bolivia	10.0	14.0	40.6	57.1	40.6
Brazil	202.3	281.9	1,193.4	1,574.7	32.0
Chile	144.1	150.4	915.5	1,164.9	27.2
Colombia	63.9	60.8	369.0	362.5	-1.8
Ecuador	18.5	17.7	130.8	102.1	-22.0
Falkland Islands (Malvinas)	0.0	0.0	0.0	0.0	-61.5
Guyana	23.7	17.9	143.9	128.6	-10.6
Paraguay	0.7	1.1	4.2	5.0	18.7
Peru	214.9	276.2	1,313.9	1,729.5	31.6
Suriname	48.7	52.8	272.5	254.7	-6.5
Uruguay	2.4	2.3	42.5	43.3	1.7
Venezuela	113.2	108.8	530.1	406.3	-23.4
Total	906.6	1,072.4	5,307.1	6,154.3	16.0
Central America Antilles					
Anguilla	0.0	0.0	0.2	0.1	-34.5
Antigua and Barbuda	0.0	0.0	0.2	0.1	-7.7
Aruba	0.1	0.0	53.4	0.1	-99.8
Bahamas	4.0	3.6	26.7	23.3	-12.8
Barbados	0.8	0.6	4.4	4.7	6.8
Belize	0.8	0.3	4.7	3.4	-28.1
Bermuda	0.1	0.1	3.3	0.4	-86.7
British Virgin Islands	0.0	0.0	0.3	0.1	-53.8
Cayman Islands	0.4	0.1	0.5	0.2	-53.5
Costa Rica	30.0	37.2	189.8	233.2	22.8
Cuba	39.2	64.0	223.2	337.8	51.4
Dominica	0.0	0.0	0.1	0.0	-53.8
Dominican Republic	12.3	14.5	71.6	66.6	-7.1
El Salvador	5.5	4.8	41.6	54.9	31.9
Grenada	0.0	0.0	0.2	0.4	118.7
Guatemala	36.3	27.9	142.1	161.9	13.9
Haiti	1.7	2.4	11.3	12.9	14.0
Honduras	10.9	14.1	77.0	82.9	7.6
Jamaica	3.5	10.8	61.7	80.7	30.9
Montserrat	0.0	0.0	0.0	0.1	253.7
Netherlands Antilles	0.0	0.0	10.0	0.1	-98.6
Nicaragua	8.4	13.5	44.0	79.3	80.4
Panama	5.2	5.3	10.4	40.9	293.7
Saint Kitts and Nevis	0.8	0.5	2.8	3.3	18.5
Saint Lucia	0.0	0.0	0.1	0.1	5.1
Saint Vincent and the Grenadines	0.0	0.0	0.0	0.1	59.0
Trinidad and Tobago	11.8	35.5	118.9	265.2	123.1
Turks and Caicos Islands	0.0	0.0	0.2	0.1	-64.2
Total	172.1	235.5	1,098.6	1,453.2	32.3
All countries	29,722.5	35,085.6	179,737.1	194,872.4	8.4

**Table 9-1
Imports by province of clearance, customs basis, not seasonally adjusted — June**

	Agricultural and fishing products	Energy products	Forestry products	Industrial goods	Machinery and equipment	Automotive products	Consumer goods	Special transactions trade	Total
millions of dollars									
Newfoundland and Labrador									
2009	2.4	209.8	0.0	68.1	37.8	0.1	0.1	0.0	318.3
2010	4.0	300.6	0.0	2.3	22.1	0.2	0.2	0.0	329.5
Prince Edward Island									
2009	0.1	0.0	0.0	0.1	0.0	0.0	0.0	0.0	0.2
2010	0.3	0.0	0.0	0.0	0.1	0.0	0.0	0.0	0.5
Nova Scotia									
2009	26.9	53.7	0.8	64.5	90.6	237.9	14.2	3.6	492.2
2010	27.7	141.7	2.0	99.1	71.3	330.2	16.2	1.5	689.7
New Brunswick									
2009	37.6	571.6	6.5	83.5	92.9	26.6	23.3	1.8	843.9
2010	38.6	405.8	8.6	83.5	138.2	38.9	24.9	1.9	740.5
Quebec									
2009	398.6	1,124.5	43.4	1,064.0	1,470.0	163.3	901.3	28.9	5,194.0
2010	355.6	1,276.7	58.8	1,356.5	1,484.6	190.5	848.9	55.8	5,627.4
Ontario									
2009	1,442.9	442.9	70.0	3,413.5	4,947.8	3,242.0	2,910.0	305.5	16,774.7
2010	1,388.7	332.7	92.4	4,515.2	5,568.1	5,304.7	3,061.6	521.0	20,784.4
Manitoba									
2009	84.0	24.5	8.8	235.8	482.3	119.3	143.3	8.2	1,106.2
2010	70.8	51.3	9.2	290.5	498.7	121.8	135.5	5.4	1,183.2
Saskatchewan									
2009	25.9	44.8	2.2	118.6	297.3	51.6	19.8	1.1	561.3
2010	23.8	83.1	1.4	173.9	357.8	102.6	21.5	0.2	764.2
Alberta									
2009	162.7	169.3	10.8	287.8	573.7	59.0	96.5	13.0	1,372.7
2010	155.7	178.9	11.0	387.4	643.2	97.1	106.5	12.0	1,591.8
British Columbia									
2009	396.7	171.5	46.8	514.4	1,005.4	361.0	536.4	15.7	3,048.0
2010	376.3	259.5	57.2	639.9	1,206.3	233.8	556.1	9.5	3,338.6
Yukon, Northwest Territories and Nunavut									
2009	9.8	0.2	0.0	0.3	0.8	0.0	0.0	0.0	11.1
2010	11.5	0.2	0.0	0.1	23.9	0.0	0.0	0.0	35.8
Total									
2009	2,587.7	2,812.9	189.3	5,850.5	8,998.7	4,260.8	4,644.9	377.8	29,722.5
2010	2,452.9	3,030.6	240.7	7,548.5	10,014.5	6,419.8	4,771.5	607.1	35,085.6

Table 9-2
Imports by province of clearance, customs basis, not seasonally adjusted — Year to date, January to June

	Agricultural and fishing products	Energy products	Forestry products	Industrial goods	Machinery and equipment	Automotive products	Consumer goods	Special transactions trade	Total
millions of dollars									
Newfoundland and Labrador									
2009	21.5	907.8	0.5	125.8	87.5	0.3	1.6	0.2	1,145.1
2010	23.6	1,249.8	0.1	17.5	88.0	0.6	2.9	2.8	1,385.3
Prince Edward Island									
2009	1.8	0.0	0.0	17.6	0.5	0.1	0.2	0.1	20.2
2010	2.1	0.0	0.0	5.3	0.4	0.1	0.2	0.1	8.2
Nova Scotia									
2009	154.0	651.1	5.9	406.7	556.3	1,243.1	87.4	16.7	3,121.1
2010	184.8	950.9	8.2	610.0	472.8	1,717.1	83.1	14.7	4,041.6
New Brunswick									
2009	179.5	2,704.1	49.6	449.3	446.8	146.1	102.5	12.0	4,090.0
2010	190.1	3,650.0	53.4	518.5	514.3	222.9	133.4	10.4	5,293.0
Quebec									
2009	2,160.6	5,773.6	372.5	6,750.1	9,850.1	992.9	5,518.5	250.7	31,668.9
2010	2,153.5	7,429.0	352.7	7,456.8	8,365.5	1,072.1	5,018.5	276.8	32,124.8
Ontario									
2009	8,211.8	2,734.5	442.1	21,114.4	30,148.7	19,122.0	17,435.6	1,767.0	100,976.1
2010	7,878.7	2,735.3	502.8	24,313.9	30,299.6	29,734.9	17,029.8	1,930.5	114,425.5
Manitoba									
2009	490.7	105.8	44.5	1,801.8	3,014.2	685.4	851.5	47.5	7,041.6
2010	428.6	289.7	48.1	1,823.4	2,778.5	630.4	758.1	40.6	6,797.4
Saskatchewan									
2009	173.8	215.3	14.8	1,210.8	1,836.4	390.0	126.9	16.7	3,984.6
2010	156.9	316.8	11.3	1,158.7	1,835.9	464.6	128.4	8.7	4,081.3
Alberta									
2009	935.9	1,514.8	54.1	2,379.7	3,763.1	380.9	572.6	64.7	9,665.8
2010	938.6	1,405.0	58.1	2,265.0	3,257.3	512.9	588.1	67.5	9,092.5
British Columbia									
2009	2,239.7	1,130.1	245.5	3,427.7	5,791.5	1,794.1	3,269.0	83.2	17,981.0
2010	2,151.6	1,540.0	316.5	3,466.6	5,588.7	1,426.7	2,989.7	75.0	17,554.8
Yukon, Northwest Territories and Nunavut									
2009	20.9	2.2	0.0	1.2	17.0	0.3	0.1	0.9	42.6
2010	25.5	1.5	0.0	0.8	39.4	0.3	0.2	0.3	68.0
Total									
2009	14,590.3	15,739.4	1,229.3	37,685.1	55,512.0	24,755.2	27,966.0	2,259.7	179,737.1
2010	14,134.0	19,567.9	1,351.2	41,636.5	53,240.5	35,782.6	26,732.4	2,427.3	194,872.4

Technical notes

The Canadian international merchandise trade statistical program

Introduction

The objective of this text is to provide a general overview of the Canadian International Merchandise Trade Statistical Program, with special reference to concepts and definitions. The text is intended for the general user and simplicity is emphasized. More technical details can be obtained from the International Trade Division, Statistics Canada upon request.

Conceptual framework

1. Objectives and coverage: The primary objective of the Canadian International Merchandise Trade Statistical Program is to measure the change in the stock of material resources of Canada resulting from the movement of merchandise into or out of the country. Information on imports and exports are inputs into the System of National Accounts, particularly in the balance of payments and gross domestic product, and are used in the formulation of trade and budgetary policies. Governments, importers, exporters, manufacturers and shipping companies use international merchandise trade statistics to:

- monitor import penetration and export performance,
- monitor commodity price and volume changes,
- examine transport implications.

2. Trade statistics (customs basis / balance of payments basis): Merchandise trade statistics are reported and presented on two different bases: customs basis and balance of payment basis.

When goods are imported into or exported from Canada, declarations must be filed with customs, giving such information as description and value of the goods, origin and port of clearance of commodities and mode of transport. Most of this information is required for the purposes of customs administration. Statistics developed from administrative records of customs are commonly referred to as customs-based trade statistics.

Customs-based trade statistics are more accurate at measuring imports than they are at measuring exports. This is the case because customs are typically more vigilant with respect to goods entering the country than they are with goods leaving the country.

Customs-based export statistics may understate or incorrectly portray the destination of exports. Export statistics are understated when the proper documentation is not filed with Customs. Exports are incorrectly portrayed when the country of final destination is inaccurately reported on the customs documentation. This occurs most frequently when goods are routed through an intermediary country before continuing on to their final destination.

Statistics Canada does not have a measure of undercoverage but periodically conducts reconciliation exercises with its major trading partners, excluding the United States.

On January 1, 1990, Canada entered into a memorandum of understanding with the United States concerning the exchange of import data. As a consequence, each administration is using the other's import data to replace its own export data. Canada's international merchandise trade statistics are, therefore, no longer derived exclusively from the administrative records of the Canada Border Services Agency, but from United States Customs records as well.

Customs-based information is adjusted to conform with the National Accounts concepts and definitions. The adjustments to derive balance of payments-based trade data include adjustments related to trade definition, valuation and timing. The principal difference between the two trade concepts is that customs-based merchandise trade statistics cover the physical movement of goods as they are reflected in customs documents while balance of payments-adjusted data are intended to cover all economic transactions that involve merchandise trade between residents and non-residents. The present document describes the concepts and processes pertaining to the customs-based trade statistics only. (For further information on balance of payments-adjusted data, see the publication *Canada's Balance of International Payments*, Statistics Canada (Catalogue no. 67-001-X).

3. System of trade: Canadian trade statistics are compiled according to the general system of trade, as defined by the United Nations Statistical Office. Under this system, imports include all goods that have crossed Canada's territorial boundary, whether for immediate consumption in Canada or for storage in bonded customs warehouses. Domestic exports include goods grown, extracted or manufactured in Canada, including goods of foreign origin that have been materially transformed in Canada. Re-exports are exports of goods of foreign origin that have not been materially transformed in Canada, including foreign goods withdrawn for export from bonded customs warehouses. Total exports are the sum of domestic exports and re-exports. Thus the general trade system, in principal, presents all goods entering the country (imports) and all goods leaving the country (exports). It differs from the special system of trade in the treatment of imported goods into bonded customs warehouses. Under the 'special' system, these goods are counted only if and when they are withdrawn from customs warehouses for home consumption. They are not counted in export statistics unless they have first cleared customs.

Conceptually, under the general system, the statistical frontier coincides with the geographical boundary, while under the 'special' system, it coincides with the customs boundary.

4. Valuation: For customs purposes, imports are recorded at values established according to the provisions of the Customs Act, which, since January 1, 1985, reflects valuation methods based on the General Agreement on Tariffs and Trade (GATT) Valuation Code System. In general, the value for duty of imported goods must be equivalent to the transaction value or the price actually paid.

To determine the transaction value of imported goods, all transportation and associated costs arising in respect of the goods being appraised prior to and at the place of direct shipment to Canada, are to be added to the price of the goods. Therefore, Canadian imports are valued Free on Board (FOB), place of direct shipment to Canada. It excludes freight and insurance costs in bringing the goods to Canada from the point of direct shipment.

Countries other than the United States, exports are, in principal, valued or recorded at the values declared on export documents, which usually reflect the transaction value, i.e., actual selling price or, in the case of a non-arm's length transaction, the transfer price used for company accounting purposes. Canadian exports to overseas countries are valued at F.O.B. port of exit, including domestic freight charges to that point but net of discounts and allowances. As of January, 1990, Canadian exports to the U.S. are valued F.O.B. point of exit from Canada. Prior to 1990, they were valued F.O.B. place of lading net of freight charges, discounts and allowances.

5. Statistical period: The reference period is the calendar month and the calendar year. The closing of the statistical month for imports and Canadian exports to the United States is defined as the last calendar day of the month, based as closely as practicable on the date of clearance from customs.

The closing of the statistical month for exports, to countries other than the United States, is also defined as the last calendar day of the month. Those export documents that are received too late for incorporation in the current month are assigned to the month the transaction took place. If a monthly summary report from a high volume exporter is not received on time, the data are imputed for the current month and revised with the trade value in the following statistical month.

6. Trading partner attribution (country of origin/destination): Exports are attributed to the country, which is the last known destination of the goods at the time of export. Exports to the United States are attributed to the state of destination.

Imports are attributed to their country of origin, that is, the country in which the goods were grown, extracted or manufactured in accordance to the rules of origin administered by the Canada Border Services Agency. Imports

from the United States are attributed to the state of origin. Prior to 1988, most imports were attributed to the country of export/consignment, with the exception of imports from Central and South America.

7. Principal trading areas: The 'principal trading areas' are country groupings defined as follows:

United States: includes trade with Puerto Rico and the U.S. Virgin Islands

Japan

European Union (EU): Austria, Belgium, Bulgaria, Cyprus, Czech Republic, Denmark, Estonia, Finland, France, Germany, Greece, Hungary, Ireland, Italy, Latvia, Lithuania, Luxembourg, Malta, Netherlands, Poland, Portugal, Romania, Slovakia, Slovenia, Spain, Sweden and United Kingdom

Other Organisation for Economic Co-operation and Development (OECD): Australia, Canada, Iceland, Mexico, New Zealand, Norway, South Korea, Switzerland, and Turkey. (The EU countries, United States, and Japan are also members of OECD)

Other countries: all countries and territories other than the United States, Japan, EU and other OECD

8. Legal framework: Import and export statistics with countries other than the United States are derived from information contained in administrative records collected by the Canada Border Services Agency under the Customs Act. Copies of these documents (or information therefrom) are sent to Statistics Canada in accordance with Section 25 of the Statistics Act. It follows that the disclosure of trade statistics is governed by both the Customs Act and the Statistics Act and is subject to the provisions of Section 17(2)(a) of the latter. Disclosure of export statistics to the United States is now governed by a memorandum of understanding that provides for the exchange of detailed import statistics between Canada and the United States.

Contact information

Questions concerning details of methods not covered by these notes should be addressed to the Marketing and Client Services Section, International Trade Division, Statistics Canada, 170 Tunney's Pasture Driveway, Ottawa, Ontario, K1A 0T6.

Telephone: 1-800-294-5583 or 613-951-9647

Facsimile: 1-800-664-0055 613-951-0117

Internet: *trade@statcan.gc.ca*