

Catalogue no. 65-001-X

Canadian International Merchandise Trade

May 2010



Statistics
Canada

Statistique
Canada

Canada

How to obtain more information

For information about this product or the wide range of services and data available from Statistics Canada, visit our website at www.statcan.gc.ca, e-mail us at infostats@statcan.gc.ca, or telephone us, Monday to Friday from 8:30 a.m. to 4:30 p.m., at the following numbers:

Statistics Canada's National Contact Centre

Toll-free telephone (Canada and the United States):

Inquiries line	1-800-263-1136
National telecommunications device for the hearing impaired	1-800-363-7629
Fax line	1-877-287-4369

Local or international calls:

Inquiries line	1-613-951-8116
Fax line	1-613-951-0581

Depository Services Program

Inquiries line	1-800-635-7943
Fax line	1-800-565-7757

To access this product

This product, Catalogue no. 65-001-X, is available free in electronic format. To obtain a single issue, visit our website at www.statcan.gc.ca and browse by "Key resource" > "Publications."

Standards of service to the public

Statistics Canada is committed to serving its clients in a prompt, reliable and courteous manner. To this end, Statistics Canada has developed *standards of service* that its employees observe. To obtain a copy of these service standards, please contact Statistics Canada toll-free at 1-800-263-1136. The service standards are also published on www.statcan.gc.ca under "About us" > "Providing services to Canadians."

Statistics Canada
International Trade Division

Canadian International Merchandise Trade

May 2010

Published by authority of the Minister responsible for Statistics Canada

© Minister of Industry, 2010

All rights reserved. The content of this electronic publication may be reproduced, in whole or in part, and by any means, without further permission from Statistics Canada, subject to the following conditions: that it be done solely for the purposes of private study, research, criticism, review or newspaper summary, and/or for non-commercial purposes; and that Statistics Canada be fully acknowledged as follows: Source (or "Adapted from", if appropriate): Statistics Canada, year of publication, name of product, catalogue number, volume and issue numbers, reference period and page(s). Otherwise, no part of this publication may be reproduced, stored in a retrieval system or transmitted in any form, by any means—electronic, mechanical or photocopy—or for any purposes without prior written permission of Licensing Services, Client Services Division, Statistics Canada, Ottawa, Ontario, Canada K1A 0T6.

July 2010

Catalogue no. 65-001-X, vol. 64, no. 5

ISSN 1480-8781

Frequency: Monthly

Ottawa

Cette publication est également disponible en français.

Note of appreciation

Canada owes the success of its statistical system to a long-standing partnership between Statistics Canada, the citizens of Canada, its businesses, governments and other institutions. Accurate and timely statistical information could not be produced without their continued cooperation and goodwill.

User information

Symbols

The following standard symbols are used in Statistics Canada publications:

- . not available for any reference period
- .. not available for a specific reference period
- ... not applicable
- 0 true zero or a value rounded to zero
- 0^s value rounded to 0 (zero) where there is a meaningful distinction between true zero and the value that was rounded
- p preliminary
- r revised
- x suppressed to meet the confidentiality requirements of the *Statistics Act*
- E use with caution
- F too unreliable to be published

Note to users

All totals are calculated from full figures and rounded independently; consequently, totals may not equal the sum of their components.

The data is based on commodity groups (sector, subsector and major group).

Table of contents

Highlights	5
Analysis	7
Related products	11
Statistical tables	
1 Merchandise trade of Canada, balance of payments basis, seasonally adjusted	15
1-1 Current dollars	15
1-2 Constant dollars, 2002	16
1-3 Price indices (Laspeyres)	17
2 Exports by commodity groupings, balance of payments basis, seasonally adjusted	18
2-1 Current dollars	18
2-2 Constant dollars, 2002	20
3 Domestic exports to selected countries, customs basis, not seasonally adjusted	22
3-1 May	22
3-2 Year to date, January to May	23
4 Domestic exports by country, customs basis, not seasonally adjusted	24
5 Exports by province of origin, customs basis, not seasonally adjusted	28
5-1 May	28
5-2 Year to date, January to May	29
6 Imports by commodity groupings, balance of payments basis, seasonally adjusted	30
6-1 Current dollars	30
6-2 Constant dollars, 2002	32
7 Imports from selected countries, customs basis, not seasonally adjusted	34
7-1 May	34
7-2 Year to date, January to May	35
8 Imports by country, customs basis, not seasonally adjusted	36

Table of contents – continued

9	Imports by province of clearance, customs basis, not seasonally adjusted	40
9-1	May	40
9-2	Year to date, January to May	41

Data quality, concepts and methodology

	Technical notes	42
--	-----------------	----

Highlights

Canada's merchandise exports rose 5.2% in May, led by higher volumes of automotive products while imports increased 5.7%, reflecting broad-based gains in volumes. Canada posted a trade deficit with the world of \$503 million in May, compared to a deficit of \$330 million in April.

Exports rose to \$34.5 billion in May from \$32.8 billion in April, following two months of decline. While all the export sectors experienced gains, automotive products accounted for over half the growth.

Export volumes increased 3.9% and prices grew 1.2%. Export volumes have been trending upwards since the low reached in May 2009.

Imports rose to \$35.0 billion from \$33.1 billion in April, as all import sectors, except agricultural and fishing products, grew in May. Machinery and equipment, industrial goods and materials as well as other consumer goods led the gain in imports.

Import volumes increased 4.2% while prices grew 1.4%. Import volumes, up for a fourth consecutive month, have been trending upward since March 2009.

Exports to the United States increased 5.5% while imports grew 5.8%, both on the strength of automotive products trade. Overall, Canada's trade surplus with the United States widened to \$3.6 billion in May from \$3.5 billion in April.

Exports to countries other than the United States, led by a 25.2% increase in exports to the European Union, grew 4.4% while imports rose 5.5%. As a result, Canada's trade deficit with countries other than the United States expanded to \$4.1 billion in May from \$3.8 billion in April.

Note to readers

Merchandise trade is one component of Canada's international balance of payments, which also includes trade in services, investment income, current transfers as well as capital and financial flows.

International merchandise trade data by country are available on both a balance of payments and a customs basis for the United States, Japan and the United Kingdom. Trade data for all other individual countries are available on a customs basis only. Balance of payments data are derived from customs data by making adjustments for characteristics such as valuation, coverage, timing and residency. These adjustments are made to conform to the concepts and definitions of the Canadian System of National Accounts.

Data in this release are on a balance of payments basis, seasonally adjusted in current dollars. Constant dollars are calculated using the Laspeyres volume formula.

Revisions

In general, merchandise trade data are revised on an ongoing basis for each month of the current year. Current year revisions are reflected in both the customs and balance of payments based data. Revisions to customs based data for the previous year are released on a quarterly basis. Revisions to balance of payments based data for the three previous years are released annually in June.

Factors influencing revisions include late receipt of import and export documentation, incorrect information on customs forms, replacement of estimates with actual figures, changes in classification of merchandise based on more current information, and changes to seasonal adjustment factors.

Revised data are available in the appropriate CANSIM tables.

Chart 1
Exports and imports, seasonally adjusted, on a balance of payments basis

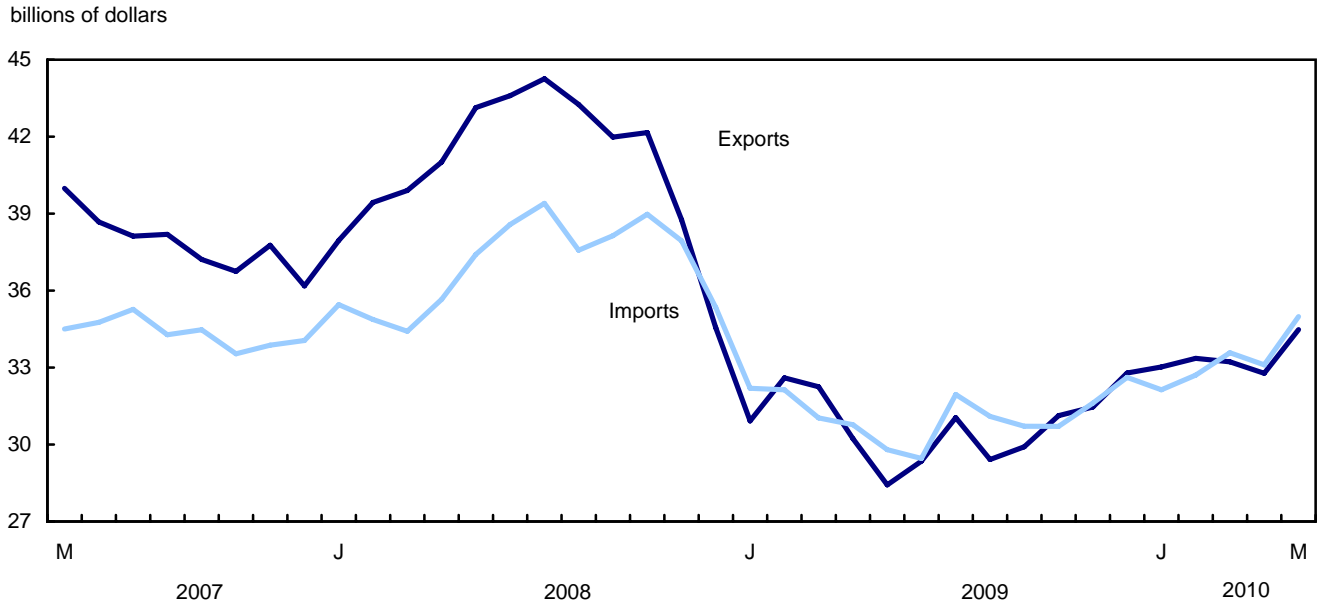
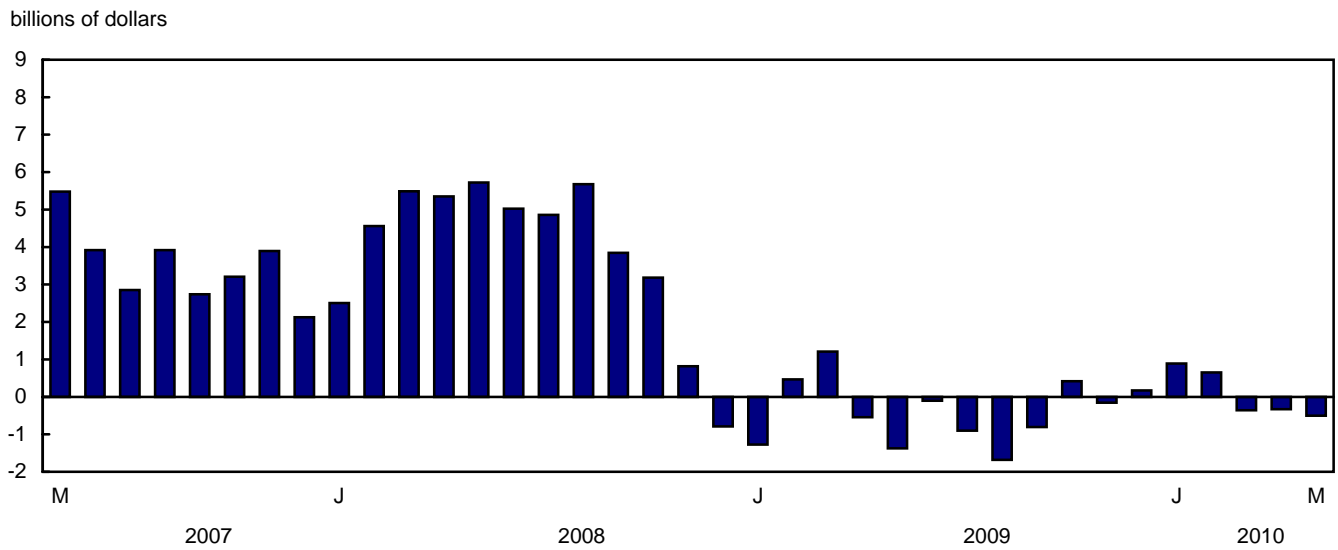


Chart 2
Trade balance, seasonally adjusted, on a balance of payments basis



Analysis

Passenger autos lead the growth in exports

Automotive products exports rose 20.8% to \$5.4 billion, as volumes grew 16.9%. Exports in this sector trended downward from December 2006 to a low of \$2.6 billion reached in January 2009. Since then, exports of automotive products have more than doubled. In May, exports of passenger autos increased 28.1% to \$3.7 billion, their highest level since December 2006. This gain reflected the popularity of some models manufactured in Canada. Exports of motor vehicle parts, up 9.6%, increased for a seventh consecutive month.

Exports of machinery and equipment grew 4.6% to \$6.3 billion, as a result of a 4.8% increase in prices while volumes declined slightly. Exports of other end products, namely gold coins, increased 25.2% and were the main factor behind the increase in the sector. Exports of industrial machinery such as drilling, excavating and mining machinery also grew in May. Mitigating the gain in the sector were lower exports of aircraft, engines and parts.

Exports of agricultural and fishing products increased 6.0% to \$3.0 billion. Higher exports of meat and meat preparations, wheat, as well as other food, feed, beverages and tobacco were the main contributors to the gain. Prices of agricultural and fishing products, which had been declining since October 2008, grew 3.4% in May.

Following three months of declines, exports of energy products increased 1.6% to \$7.7 billion, as volumes rose 8.1% while prices fell. Exports of natural gas grew 21.3%, followed by exports of petroleum and coal, up 13.4%. Moderating the gain in the sector, exports of crude petroleum fell 8.5%, a third consecutive month of decline.

Widespread increases in volumes drive the gain in imports

Machinery and equipment imports grew 6.6% to \$9.4 billion. This fourth consecutive month of increase was largely the result of volumes increasing 5.3%. Widespread gains in the sector were led by office machines and equipment, other equipment and tools as well as other industrial machinery.

Imports of office machines and equipment increased 19.8% as new electronic products became available in May. Imports of other equipment and tools grew 6.8%, reflecting gains in a wide variety of commodities such as laboratory equipment, furniture and fixtures and electrical transformers.

Imports of industrial goods and materials rose 6.8% to \$7.3 billion, as prices increased 5.4%. Over three-quarters of the gain in the sector were attributable to higher imports of metals in ores, precious metals and metal fabricated products. Imports of metals in ores grew 34.2% while precious metals increased 17.3% on the strength of gold.

Following two months of declines, imports of other consumer goods grew 9.3% to \$4.8 billion, as volumes rose 5.2%. Imports of miscellaneous end products, such as medicinal and pharmaceutical products, accounted for most of the gain.

Imports of automotive products increased 4.8% to \$5.9 billion. The gain in the sector reflected a 3.1% increase in volumes. Imports of motor vehicle parts, up 7.7%, accounted for more than two-thirds of the gain in the sector.

Chart 1
Exports of automotive products, seasonally adjusted, on a balance of payments basis

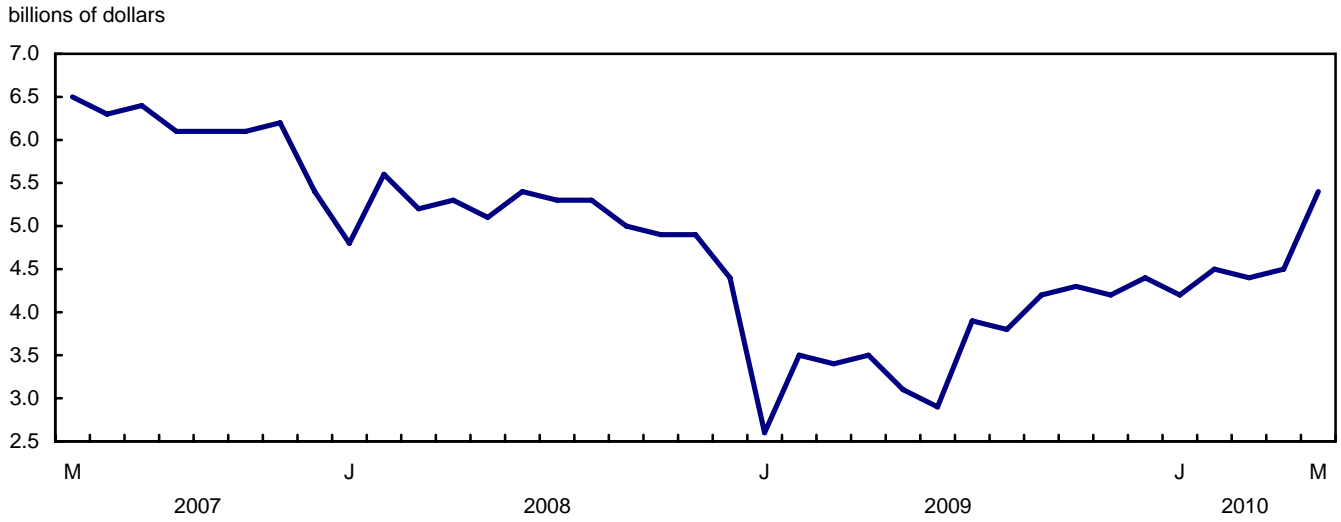


Chart 2
Exports of machinery and equipment, seasonally adjusted, on a balance of payments basis

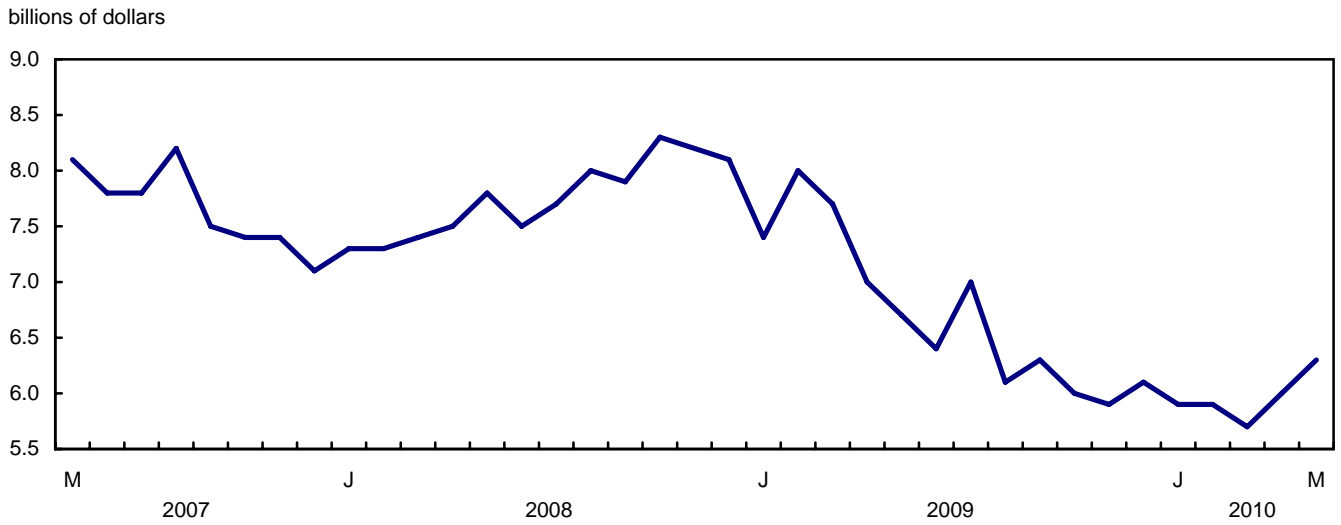


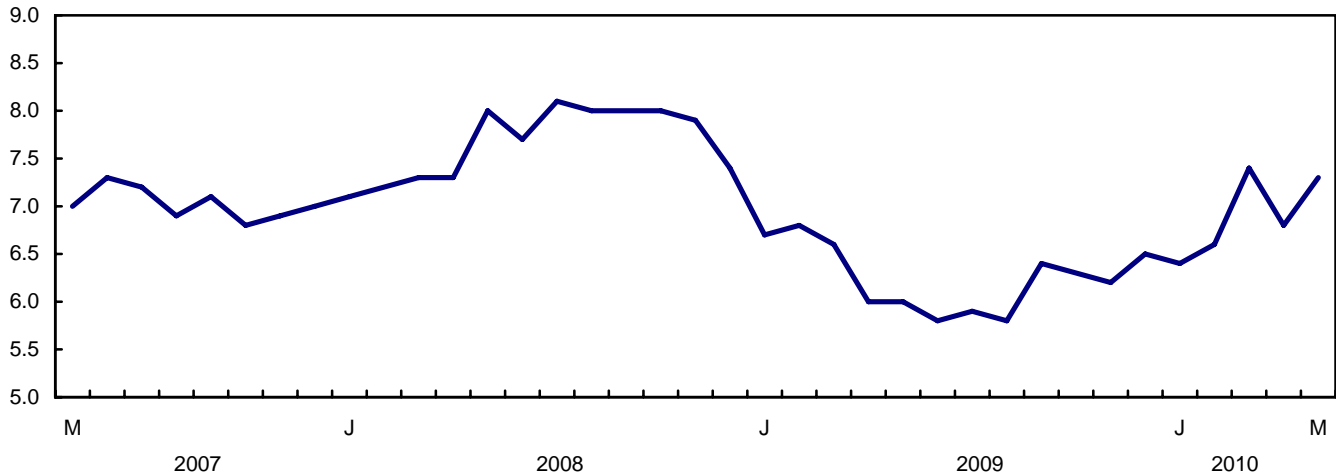
Chart 3
Imports of machinery and equipment, seasonally adjusted, on a balance of payments basis

billions of dollars



Chart 4
Imports of industrial goods and materials, seasonally adjusted, on a balance of payments basis

billions of dollars



Text table 1
Merchandise trade by principal trading area, balance of payments basis, seasonally adjusted

	April 2010	May 2010	Change	Year to date			May 2010/ May 2009		
				2009		2010			
				Change					
	millions of dollars		percent		millions of dollars		percent		
Export to									
United States	24,302	25,633	1,331	5.5	112,457	124,004	11,547	10.3	26.0
Japan	676	758	82	12.1	3,911	3,616	-295	-7.5	30.7
European Union ¹	2,467	3,088	621	25.2	13,723	14,032	309	2.3	17.7
Other Organisation for Economic Co-operation and Development ²	1,645	1,595	-50	-3.1	6,606	7,917	1,311	19.9	18.1
Other countries	3,686	3,408	-278	-7.5	17,728	17,299	-429	-2.4	-3.2
Total	32,776	34,482	1,706	5.2	154,425	166,868	12,444	8.1	21.3
Imports from									
United States	20,845	22,048	1,202	5.8	98,142	104,621	6,478	6.6	17.6
Japan	811	829	18	2.3	3,926	4,004	79	2.0	17.8
European Union ¹	3,349	3,451	101	3.0	16,167	16,853	685	4.2	10.2
Other Organisation for Economic Co-operation and Development ²	2,314	2,425	110	4.8	10,230	11,904	1,674	16.4	24.0
Other countries	5,786	6,233	447	7.7	27,472	29,131	1,659	6.0	18.6
Total	33,106	34,985	1,879	5.7	155,937	166,512	10,575	6.8	17.4
Balance									
United States	3,456	3,585	129	...	14,315	19,384	5,069
Japan	-135	-71	63	...	-15	-388	-373
European Union ¹	-882	-362	520	...	-2,445	-2,821	-376
Other Organisation for Economic Co-operation and Development ²	-669	-830	-161	...	-3,625	-3,987	-362
Other countries	-2,101	-2,826	-725	...	-9,744	-11,832	-2,089
Total	-330	-503	-173	...	-1,513	356	1,868

1. European Union includes: Austria, Belgium, Bulgaria, Cyprus, Czech Republic, Denmark, Estonia, Finland, France, Germany, Greece, Hungary, Ireland, Italy, Latvia, Lithuania, Luxembourg, Malta, Netherlands, Poland, Portugal, Romania, Slovakia, Slovenia, Spain, Sweden and United Kingdom.
2. Other Organisation for Economic Co-operation and Development includes: Australia, Canada, Iceland, Mexico, New Zealand, Norway, South Korea, Switzerland and Turkey.

Text table 2
Reconciliation of customs and balance of payments trade data, not seasonally adjusted

	2010					2009	2009
	May	April	March	February	January	December	Annual
	millions of dollars						
Exports							
Customs basis	33,778	32,538	34,721	30,348	30,454	31,091	360,030
Balance of payments adjustments	855	609	923	704	703	568	9,499
Valuation and residency							
Inland freight	571	534	552	509	480	484	6,214
Other valuation and residency	-1,357	-1,155	-646	-779	-807	-931	-8,038
Timing	182	25	-9	16	-47	17	-163
Coverage	1,459	1,205	1,026	958	1,077	998	11,486
Balance of payments basis	34,633	33,147	35,644	31,052	31,157	31,659	369,529
Imports							
Customs basis	33,915	32,584	35,072	29,864	28,207	30,847	365,159
Balance of payments adjustments	910	882	1,275	938	689	963	8,938
Valuation and residency							
Inland freight	754	725	770	646	624	647	7,728
Other valuation and residency	31	37	124	33	21	43	203
Timing	0	0	0	0	0	0	0
Coverage	125	120	381	259	44	273	1,007
Balance of payments basis	34,825	33,466	36,347	30,802	28,896	31,810	374,097

Related products

Selected publications from Statistics Canada

65-208-X	International Merchandise Trade Annual Review
65-506-X	A Profile of Canadian Exporters
65F0013X	Canadian International Merchandise Trade Database
65F0019X	A Database for Analysis of International Markets
65F0020X	Data Integration - International Trade Data and Manufacturing Shipments Data

Selected CANSIM tables from Statistics Canada

228-0001	Merchandise imports and exports, by major groups and principal trading areas for all countries, monthly
228-0002	Merchandise imports and exports, by major groups and principal trading areas for all countries, quarterly
228-0003	Merchandise imports and exports, by major groups and principal trading areas for all countries, annual
228-0033	Imports, customs-based, by province of clearance, monthly
228-0034	Domestic exports, customs-based, by province of origin, monthly
228-0041	Merchandise imports and exports by sector and sub-sector, customs and balance of payments basis, for all countries, monthly
228-0042	Merchandise imports and exports by sector and sub-sector, customs and balance of payments basis, for all countries, quarterly
228-0043	Merchandise imports and exports by sector and sub-sector, customs and balance of payments basis, for all countries, annual
228-0047	Merchandise imports and exports balance of payments and customs-based price and volume indexes for all countries, monthly
228-0048	Merchandise imports and exports balance of payments and customs-based price and volume indexes for all countries, quarterly
228-0049	Merchandise imports and exports balance of payments and customs-based price and volume indexes for all countries, annual

228-0050	Merchandise imports and exports customs-based price indexes, Canada and United States trade, and Standard International Trade Classification (SITC revision 3) price indexes for all countries and United States, monthly
228-0051	Merchandise imports and exports customs-based price indexes, Canada and United States trade, and Standard International Trade Classification (SITC revision 3) price indexes for all countries and United States, quarterly
228-0052	Merchandise imports and exports customs-based price indexes, Canada and United States trade, and Standard International Trade Classification (SITC revision 3) price indexes for all countries and United States, annual
228-0053	Merchandise import and export price and volume indexes by sector and sub-sector, customs and balance of payments basis, for all countries, monthly
228-0054	Merchandise import and export price and volume indexes by sector and sub-sector, customs and balance of payments basis, for all countries, quarterly
228-0055	Merchandise import and export price and volume indexes by sector and sub-sector, customs and balance of payments basis, for all countries, annual
228-0056	Merchandise imports and exports by sector, balance of payments basis, for all countries, seasonally adjusted, Fisher formula, monthly
228-0057	Merchandise imports and exports by sector, balance of payments basis, for all countries, seasonally adjusted, Fisher formula, quarterly

Selected surveys from Statistics Canada

2201	Canadian International Merchandise Trade (Customs Basis)
2202	Canadian International Merchandise Trade (Balance of Payments Basis)
2203	International Trade Price Indexes

Selected summary tables from Statistics Canada

- *Canada: Economic and financial data*
- *Imports, exports and trade balance of goods on a balance-of-payments basis, by country or country grouping*
- *Exports of goods on a balance-of-payments basis*
- *Imports of goods on a balance-of-payments basis*

- *Merchandise trade of Canada (monthly)*
- *Economic indicators, by province and territory (monthly and quarterly)*
- *Latest statistics (monthly)*

Statistical tables

Table 1-1
Merchandise trade of Canada, balance of payments basis, seasonally adjusted — Current dollars

	Exports	Imports	Trade balance	Period to period change		
				Exports	Imports	Balance
				millions of dollars	percent	millions of dollars
2006	453,952	404,345	49,606	0.0	0.0	0
2007	463,120	415,683	47,437	2.0	2.8	-2,169
2008	489,995	443,752	46,244	5.8	6.8	-1,194
2009	369,529	374,097	-4,568	-24.6	-15.7	-50,812
2008						
First quarter	117,294	104,743	12,551	6.0	3.2	3,321
Second quarter	127,735	111,640	16,095	8.9	6.6	3,544
Third quarter	129,499	115,116	14,383	1.4	3.1	-1,712
Fourth quarter	115,468	112,252	3,215	-10.8	-2.5	-11,168
2009						
First quarter	95,769	95,366	403	-17.1	-15.0	-2,812
Second quarter	88,008	90,028	-2,019	-8.1	-5.6	-2,422
Third quarter	90,377	93,765	-3,388	2.7	4.2	-1,369
Fourth quarter	95,375	94,939	436	5.5	1.3	3,824
2010						
First quarter	99,609	98,421	1,189	4.4	3.7	752
2009						
January	30,921	32,192	-1,272	-10.5	-8.9	-483
February	32,599	32,133	466	5.4	-0.2	1,737
March	32,249	31,040	1,209	-1.1	-3.4	743
April	30,231	30,774	-543	-6.3	-0.9	-1,752
May	28,424	29,797	-1,373	-6.0	-3.2	-830
June	29,353	29,456	-104	3.3	-1.1	1,269
July	31,048	31,952	-904	5.8	8.5	-800
August	29,419	31,099	-1,680	-5.2	-2.7	-777
September	29,910	30,714	-804	1.7	-1.2	876
October	31,128	30,708	420	4.1	0.0	1,224
November	31,462	31,616	-154	1.1	3.0	-573
December	32,785	32,615	170	4.2	3.2	324
2010						
January	33,024	32,133	891	0.7	-1.5	721
February	33,361	32,708	653	1.0	1.8	-238
March	33,224	33,580	-356	-0.4	2.7	-1,009
April	32,776	33,106	-330	-1.3	-1.4	26
May	34,482	34,985	-503	5.2	5.7	-173

Note(s): Because of rounding, monthly data may not add up to quarterly data and quarterly data may not add up to annual data.

Table 1-2
Merchandise trade of Canada, balance of payments basis, seasonally adjusted — Constant dollars, 2002

	Exports	Imports	Trade balance	Period to period change	
				Exports	Imports
	millions of dollars			percent	
2006	442,729	457,196	-14,466	0.0	0.0
2007	449,015	484,005	-34,990	1.4	5.9
2008	415,119	485,902	-70,783	-7.5	0.4
2009	345,911	405,261	-59,350	-16.7	-16.6
2008					
First quarter	107,071	123,094	-16,023	-2.6	-1.2
Second quarter	106,872	125,669	-18,797	-2.2	2.1
Third quarter	104,062	123,918	-19,856	-2.6	-1.4
Fourth quarter	97,114	113,221	-16,107	-6.7	-8.6
2009					
First quarter	87,218	97,521	-10,303	-10.2	-13.9
Second quarter	83,055	96,718	-13,663	-4.8	-0.8
Third quarter	86,329	104,265	-17,935	3.9	7.8
Fourth quarter	89,308	106,757	-17,449	3.5	2.4
2010					
First quarter	91,430	110,569	-19,139	2.4	3.6
2009					
January	27,994	33,229	-5,235	-9.4	-7.4
February	29,778	32,701	-2,923	6.4	-1.6
March	29,446	31,592	-2,145	-1.1	-3.4
April	28,359	31,963	-3,604	-3.7	1.2
May	27,195	32,360	-5,165	-4.1	1.2
June	27,502	32,395	-4,893	1.1	0.1
July	29,630	35,032	-5,402	7.7	8.1
August	28,012	34,860	-6,847	-5.5	-0.5
September	28,687	34,373	-5,686	2.4	-1.4
October	29,629	34,757	-5,128	3.3	1.1
November	29,376	35,625	-6,249	-0.9	2.5
December	30,304	36,375	-6,071	3.2	2.1
2010					
January	30,236	36,251	-6,015	-0.2	-0.3
February	30,415	36,718	-6,303	0.6	1.3
March	30,778	37,600	-6,821	1.2	2.4
April	30,812	37,774	-6,962	0.1	0.5
May	32,021	39,352	-7,331	3.9	4.2

Note(s): Because of rounding, monthly data may not add up to quarterly data and quarterly data may not add up to annual data.

Table 1-3
Merchandise trade of Canada, balance of payments basis, seasonally adjusted — Price indices (Laspeyres)

	2002=100			Period to period change		
	Exports	Imports	Terms of trade	Exports	Imports	Terms of trade
	price indices (Laspeyres)			percent		
2006	105.1	92.5	113.6	0.0	0.0	0.0
2007	107.1	91.4	117.1	1.9	-1.2	3.1
2008	116.3	97.5	119.3	8.6	6.6	2.0
2009	105.4	97.1	108.6	-9.4	-0.4	-9.0
2008						
First quarter	111.2	90.1	123.4	5.6	3.1	2.5
Second quarter	118.5	94.7	125.1	6.6	5.1	1.5
Third quarter	122.1	100.9	121.0	3.1	6.6	-3.5
Fourth quarter	113.7	104.1	109.2	-6.9	3.2	-10.1
2009						
First quarter	109.5	101.5	107.8	-3.7	-2.5	-1.2
Second quarter	104.6	97.9	106.8	-4.5	-3.6	-0.9
Third quarter	102.6	95.2	107.8	-1.9	-2.7	0.9
Fourth quarter	105.7	93.8	112.7	3.0	-1.5	4.5
2010						
First quarter	107.7	94.2	114.3	1.8	0.5	1.4
2009						
January	109.0	100.4	108.5	-1.7	-2.1	0.4
February	109.1	101.4	107.6	0.1	0.9	-0.8
March	109.1	102.8	106.1	-0.1	1.4	-1.4
April	106.4	100.8	105.6	-2.4	-1.9	-0.5
May	104.0	97.0	107.2	-2.3	-3.8	1.5
June	103.5	95.9	107.9	-0.4	-1.1	0.7
July	103.5	96.3	107.5	0.0	0.4	-0.4
August	103.3	94.8	109.0	-0.2	-1.6	1.3
September	103.4	94.5	109.5	0.1	-0.3	0.4
October	104.3	93.2	111.9	0.8	-1.4	2.2
November	105.6	93.9	112.5	1.3	0.8	0.6
December	106.3	94.2	112.9	0.6	0.3	0.3
2010						
January	107.2	93.6	114.5	0.8	-0.6	1.4
February	108.3	94.9	114.1	1.0	1.4	-0.4
March	106.5	94.0	113.3	-1.6	-0.9	-0.7
April	105.6	92.8	113.8	-0.9	-1.3	0.4
May	107.3	94.6	113.4	1.6	1.9	-0.3

Note(s): Because of rounding, monthly data may not add up to quarterly data and quarterly data may not add up to annual data.

Table 2-1
Exports by commodity groupings, balance of payments basis, seasonally adjusted — Current dollars

	April	May	Change		Year to date			May 2010/ May 2009	
	2010	2010			2009		2010		Change
	millions of dollars		percent		millions of dollars		percent		
Total	32,776	34,482	1,706	5.2	154,425	166,868	12,444	8.1	21.3
Agricultural and fishing products	2,848	3,020	172	6.0	16,698	14,843	-1,855	-11.1	-4.8
Wheat	329	385	55	16.8	2,774	1,822	-952	-34.3	-25.7
Other agricultural and fishing products	2,518	2,635	117	4.6	13,924	13,021	-904	-6.5	-0.7
Live animals	160	175	15	9.5	823	748	-75	-9.1	26.3
Fish and fish preparations	331	342	10	3.1	1,712	1,690	-22	-1.3	1.8
Barley	40	14	-26	-64.9	238	120	-117	-49.4	-59.4
Wheat flour	6	7	1	16.9	34	33	-1	-2.0	6.8
Other cereals unmilled	18	31	12	66.1	244	177	-67	-27.5	-29.3
Other cereal preparations	222	233	11	5.2	1,266	1,134	-131	-10.4	-5.8
Meat and meat preparations	372	434	62	16.7	1,933	1,929	-4	-0.2	20.4
Alcoholic beverages	64	65	0	0.6	318	316	-2	-0.7	-1.1
Other food, feed, beverages and tobacco	874	918	43	5.0	4,795	4,597	-198	-4.1	-0.8
Rapeseed	265	250	-15	-5.7	1,575	1,311	-264	-16.8	-19.8
Other crude vegetable products	166	168	2	1.1	987	965	-22	-2.2	-9.1
Energy products	7,530	7,651	121	1.6	30,782	39,884	9,102	29.6	38.4
Crude petroleum	4,398	4,026	-372	-8.5	14,484	22,337	7,853	54.2	37.5
Natural gas	1,092	1,325	233	21.3	7,453	7,198	-255	-3.4	35.6
Other energy products	2,040	2,301	261	12.8	8,846	10,350	1,504	17.0	41.7
Coal and other bituminous substances	421	488	67	15.8	1,940	1,862	-78	-4.0	41.6
Petroleum and coal products	1,457	1,652	195	13.4	5,839	7,506	1,667	28.5	48.6
Electricity	162	161	-1	-0.7	1,067	983	-85	-7.9	-4.4
Forestry products	1,800	1,888	88	4.9	8,479	8,845	365	4.3	20.1
Lumber and sawmill products	688	713	25	3.6	2,779	3,336	558	20.1	37.8
Other crude wood products	54	60	6	10.9	211	271	60	28.4	88.1
Lumber	410	422	12	3.0	1,557	2,001	444	28.5	45.2
Other wood fabricated materials	224	231	7	3.0	1,010	1,065	54	5.4	18.5
Wood pulp and other wood products	507	541	33	6.6	1,946	2,451	505	25.9	51.0
Newsprint and other paper and paperboard	604	634	30	4.9	3,754	3,057	-697	-18.6	-9.0
Newsprint paper	294	320	25	8.6	2,023	1,505	-519	-25.6	-12.3
Other paper and paperboard	310	314	4	1.5	1,731	1,552	-179	-10.3	-5.3
Industrial goods and materials	8,015	8,109	94	1.2	32,786	39,659	6,874	21.0	35.4
Metal ores	1,054	1,130	76	7.2	4,342	4,858	517	11.9	25.4
Iron ores, concentrates and scrap	333	334	1	0.2	1,928	1,737	-191	-9.9	-11.9
Copper ores, concentrates and scrap	181	261	80	44.3	543	944	400	73.7	153.2
Nickel ores, concentrates and scrap	302	321	19	6.3	773	1,131	358	46.3	52.7
Zinc ores, concentrates and scrap	12	31	19	160.4	99	107	8	8.4	153.7
Other ores, concentrates and scrap	227	184	-43	-19.0	1,000	940	-59	-5.9	-6.6
Chemicals, plastics and fertilizers	2,421	2,512	91	3.8	10,859	12,348	1,489	13.7	27.7
Inorganic chemicals	354	341	-13	-3.7	1,919	1,723	-196	-10.2	11.9
Organic chemicals	511	596	85	16.7	1,895	2,654	758	40.0	55.4
Fertilizers and fertilizer materials	467	451	-17	-3.6	1,887	2,593	706	37.4	53.9
Synthetic rubber and plastics	845	873	28	3.4	3,994	4,148	154	3.9	13.8
Other chemical products	244	252	7	3.0	1,164	1,230	66	5.7	15.0

Table 2-1 – continued

Exports by commodity groupings, balance of payments basis, seasonally adjusted — Current dollars

	April	May	Change		Year to date			May 2010/ May 2009	
	2010	2010			2009	2010	Change		
	millions of dollars		percent		millions of dollars		percent		
Metals and alloys	3,026	3,026	0	0.0	10,737	15,368	4,631	43.1	65.0
Primary iron and steel	112	120	8	7.2	113	522	408	359.8	435.7
Steel bars, rods, plates, sheets	297	305	9	3.0	1,216	1,446	230	18.9	77.0
Other iron and steel and alloys	232	225	-7	-3.1	1,020	1,159	139	13.6	24.3
Aluminum including alloys	631	639	8	1.3	2,390	3,163	773	32.3	61.4
Copper and alloys	271	224	-46	-17.1	901	1,387	486	54.0	61.4
Nickel and alloys	146	151	5	3.4	886	694	-191	-21.6	-1.0
Precious metals and alloys	1,119	1,163	44	3.9	3,474	5,904	2,430	70.0	89.8
Zinc and alloys	131	111	-20	-15.2	392	644	252	64.2	36.2
Other non-ferrous metals and alloys	88	87	0	-0.2	345	450	104	30.2	14.9
Other industrial goods and materials	1,514	1,441	-73	-4.8	6,848	7,084	236	3.4	12.1
Asbestos unmanufactured	5	5	0	0.9	28	26	-1	-5.3	-4.8
Other crude animal products	146	62	-84	-57.7	304	373	69	22.8	1.4
Other crude non-metallic minerals	357	331	-27	-7.4	1,338	1,626	288	21.5	35.8
Other crude materials, inedible	50	60	10	20.6	232	276	44	19.2	22.2
Metal fabricated basic products	338	358	19	5.7	1,807	1,710	-97	-5.4	6.1
Textile fabricated materials	175	178	3	1.8	883	882	-1	-0.1	6.3
Non-metallic mineral basic products	147	156	9	6.2	845	763	-82	-9.7	-2.2
Other fabricated materials	294	291	-4	-1.3	1,412	1,427	15	1.1	11.1
Machinery and equipment	5,990	6,265	275	4.6	36,614	29,784	-6,830	-18.7	-6.0
Industrial and agricultural machinery	1,404	1,534	131	9.3	8,920	7,105	-1,815	-20.3	-5.4
Industrial machinery	1,252	1,368	116	9.3	7,982	6,351	-1,631	-20.4	-5.4
Agricultural machinery includ. tractors	152	166	14	9.5	938	754	-184	-19.6	-4.8
Aircraft and other transportation equipment	1,441	1,379	-62	-4.3	8,558	6,853	-1,705	-19.9	-10.3
Aircraft, engines, parts	1,133	1,076	-57	-5.1	6,835	5,374	-1,461	-21.4	-11.6
Other transportation equipment	308	303	-5	-1.5	1,723	1,479	-245	-14.2	-5.2
Other machinery and equipment	3,145	3,351	206	6.5	19,136	15,826	-3,309	-17.3	-4.4
Television, telecommunication equipment	587	567	-21	-3.5	3,985	2,986	-999	-25.1	-21.7
Office machines and equipment	338	335	-3	-0.9	2,201	1,693	-508	-23.1	-17.6
Other equipment and tools	1,481	1,524	43	2.9	8,550	7,355	-1,196	-14.0	-3.7
Other end products, inedible	739	925	186	25.2	4,399	3,792	-607	-13.8	16.8
Automotive products	4,491	5,427	936	20.8	16,065	23,093	7,028	43.7	76.8
Passenger autos and chassis	2,925	3,747	822	28.1	8,219	15,342	7,123	86.7	114.4
Trucks and other motor vehicles	206	191	-16	-7.7	2,299	892	-1,407	-61.2	-42.6
Motor vehicle parts	1,360	1,490	130	9.6	5,546	6,859	1,313	23.7	50.5
Other consumer goods	1,352	1,373	20	1.5	7,911	6,934	-977	-12.3	-9.1
Special transactions trade	300	301	1	0.4	2,848	1,594	-1,253	-44.0	-42.9
Unallocated balance of payments adjustments	450	449	-2	-0.3	2,242	2,231	-11	-0.5	14.2

Table 2-2
Exports by commodity groupings, balance of payments basis, seasonally adjusted — Constant dollars, 2002

	April	May	Change		Year to date			May 2010/ May 2009	
	2010	2010			2009		2010		
	millions of dollars		percent		millions of dollars		percent		
Total	30,812	32,021	1,209	3.9	142,772	154,263	11,491	8.0	17.7
Agricultural and fishing products	3,097	3,177	80	2.6	15,404	15,783	379	2.5	6.1
Wheat	386	445	58	15.1	2,244	2,020	-223	-10.0	5.5
Other agricultural and fishing products	2,711	2,732	21	0.8	13,160	13,763	603	4.6	6.2
Live animals	176	190	14	8.2	899	863	-35	-3.9	26.1
Fish and fish preparations	439	426	-12	-2.8	1,932	2,202	270	14.0	1.7
Barley	39	12	-27	-68.9	173	119	-54	-31.5	-55.4
Wheat flour	6	7	1	16.6	30	32	2	7.8	15.5
Other cereals unmilled	24	44	20	82.2	210	226	16	7.8	8.7
Other cereal preparations	203	205	2	0.9	1,000	1,017	17	1.7	1.3
Meat and meat preparations	434	459	26	5.9	2,014	2,201	188	9.3	16.4
Alcoholic beverages	135	122	-13	-9.8	541	619	78	14.4	6.4
Other food, feed, beverages and tobacco	840	853	14	1.6	4,134	4,336	202	4.9	7.3
Rapeseed	257	253	-4	-1.6	1,416	1,242	-174	-12.3	-6.0
Other crude vegetable products	159	160	1	0.8	811	905	93	11.5	4.6
Energy products	4,404	4,759	355	8.1	22,183	23,377	1,195	5.4	17.3
Crude petroleum	1,922	1,871	-51	-2.6	9,929	10,087	159	1.6	7.4
Natural gas	1,264	1,559	296	23.4	6,768	7,085	317	4.7	30.4
Other energy products	1,219	1,329	110	9.0	5,486	6,205	719	13.1	18.5
Coal and other bituminous substances	168	155	-13	-7.8	445	781	336	75.7	58.2
Petroleum and coal products	826	952	126	15.2	3,970	4,269	299	7.5	26.3
Electricity	225	222	-3	-1.2	1,071	1,155	84	7.8	-17.8
Forestry products	2,208	2,168	-40	-1.8	10,047	10,883	836	8.3	9.4
Lumber and sawmill products	844	813	-31	-3.7	3,753	4,214	462	12.3	11.0
Other crude wood products	72	70	-2	-2.4	257	363	106	41.3	77.5
Lumber	546	527	-19	-3.5	2,373	2,730	357	15.1	11.8
Other wood fabricated materials	226	216	-10	-4.4	1,123	1,121	-2	-0.2	-2.7
Wood pulp and other wood products	625	621	-5	-0.7	2,725	3,005	281	10.3	15.5
Newsprint and other paper and paperboard	739	735	-4	-0.6	3,569	3,663	94	2.6	3.1
Newsprint paper	375	381	6	1.6	1,845	1,855	10	0.5	4.8
Other paper and paperboard	364	354	-10	-2.8	1,725	1,809	84	4.9	1.4
Industrial goods and materials	5,580	5,487	-93	-1.7	25,263	27,419	2,155	8.5	17.1
Metal ores	493	519	25	5.1	2,482	2,412	-69	-2.8	-2.5
Iron ores, concentrates and scrap	148	141	-7	-4.5	706	827	120	17.1	-8.0
Copper ores, concentrates and scrap	58	93	35	60.7	284	323	39	13.8	79.5
Nickel ores, concentrates and scrap	124	136	12	9.8	592	524	-68	-11.5	-11.6
Zinc ores, concentrates and scrap	6	17	11	191.8	73	55	-18	-24.9	105.5
Other ores, concentrates and scrap	158	131	-26	-16.7	827	684	-142	-17.2	-20.0
Chemicals, plastics and fertilizers	1,743	1,774	31	1.8	8,182	8,838	656	8.0	11.8
Inorganic chemicals	179	179	0	0.0	925	879	-46	-5.0	14.9
Organic chemicals	286	319	33	11.7	1,640	1,522	-118	-7.2	-2.9
Fertilizers and fertilizer materials	209	192	-17	-8.1	620	1,087	466	75.2	91.6
Synthetic rubber and plastics	778	774	-4	-0.5	3,683	3,849	166	4.5	3.2
Other chemical products	291	309	18	6.1	1,315	1,502	187	14.2	23.1

Table 2-2 – continued

Exports by commodity groupings, balance of payments basis, seasonally adjusted — Constant dollars, 2002

	April	May	Change		Year to date			May 2010/ May 2009	
	2010	2010			2009		2010		Change
	millions of dollars		percent		millions of dollars		percent		
Metals and alloys	1,900	1,860	-40	-2.1	7,919	9,517	1,598	20.2	33.7
Primary iron and steel	75	79	3	4.4	76	366	290	383.4	362.5
Steel bars, rods, plates, sheets	245	244	-1	-0.4	885	1,215	330	37.3	80.9
Other iron and steel and alloys	197	182	-14	-7.3	828	981	153	18.5	10.8
Aluminum including alloys	637	657	21	3.2	2,895	3,192	297	10.3	32.8
Copper and alloys	87	70	-16	-18.9	509	452	-58	-11.3	10.1
Nickel and alloys	76	75	-1	-0.8	693	358	-335	-48.3	-42.5
Precious metals and alloys	469	450	-19	-4.0	1,485	2,412	926	62.4	65.2
Zinc and alloys	76	65	-11	-14.4	340	348	8	2.4	-4.9
Other non-ferrous metals and alloys	39	37	-2	-5.1	208	194	-15	-7.0	-16.9
Other industrial goods and materials	1,443	1,334	-109	-7.5	6,681	6,651	-29	-0.4	13.4
Asbestos unmanufactured	5	6	0	5.6	29	27	-2	-8.0	-6.4
Other crude animal products	150	61	-89	-59.3	402	403	1	0.3	-29.7
Other crude non-metallic minerals	392	354	-38	-9.7	1,936	1,741	-196	-10.1	41.4
Other crude materials, inedible	47	57	10	21.7	233	258	25	10.6	4.4
Metal fabricated basic products	272	286	14	5.2	1,400	1,380	-20	-1.4	9.6
Textile fabricated materials	192	192	0	0.1	814	957	143	17.6	15.7
Non-metallic mineral basic products	123	130	7	5.7	674	637	-37	-5.5	0.3
Other fabricated materials	263	249	-14	-5.3	1,192	1,249	57	4.8	11.6
Machinery and equipment	6,829	6,817	-11	-0.2	38,377	33,294	-5,083	-13.2	-5.3
Industrial and agricultural machinery	1,306	1,413	107	8.2	8,125	6,594	-1,531	-18.8	-4.3
Industrial machinery	1,168	1,263	95	8.2	7,278	5,903	-1,375	-18.9	-4.3
Agricultural machinery includ. tractors	138	150	11	8.1	847	690	-157	-18.5	-4.1
Aircraft and other transportation equipment	1,808	1,704	-104	-5.7	9,813	8,477	-1,336	-13.6	-6.5
Aircraft, engines, parts	1,489	1,403	-86	-5.8	8,106	6,996	-1,110	-13.7	-6.5
Other transportation equipment	319	301	-18	-5.6	1,707	1,481	-226	-13.3	-6.7
Other machinery and equipment	3,714	3,700	-14	-0.4	20,439	18,224	-2,216	-10.8	-5.2
Television, telecommunication equipment	761	712	-49	-6.5	4,554	3,800	-754	-16.5	-16.8
Office machines and equipment	866	820	-46	-5.3	4,535	4,189	-346	-7.6	-9.0
Other equipment and tools	1,433	1,433	0	0.0	7,820	6,996	-824	-10.5	-1.7
Other end products, inedible	655	736	81	12.3	3,530	3,238	-292	-8.3	7.0
Automotive products	6,140	7,176	1,036	16.9	18,549	31,062	12,513	67.5	95.5
Passenger autos and chassis	4,377	5,318	941	21.5	10,254	22,415	12,161	118.6	136.9
Trucks and other motor vehicles	251	227	-24	-9.5	2,561	1,079	-1,482	-57.9	-39.0
Motor vehicle parts	1,512	1,630	119	7.8	5,734	7,568	1,834	32.0	55.0
Other consumer goods	1,299	1,316	17	1.3	7,585	6,639	-946	-12.5	-8.8
Special transactions trade	276	268	-8	-2.9	2,586	1,442	-1,144	-44.2	-45.4
Unallocated balance of payments adjustments	979	853	-126	-12.9	2,778	4,364	1,586	57.1	27.7

Table 3-1
Domestic exports to selected countries, customs basis, not seasonally adjusted — May

	Agricultural and fishing products	Energy products	Forestry products	Industrial goods	Machinery and equipment	Automotive products	Consumer goods	Special transactions trade	Total
millions of dollars									
United States									
2009	1,671.8	4,580.7	1,069.6	3,491.5	3,533.6	2,472.7	931.6	464.1	18,215.6
2010	1,727.0	7,472.0	1,251.0	4,797.4	3,355.7	4,610.9	810.0	247.3	24,271.2
Mexico									
2009	76.2	6.5	8.9	52.3	103.2	46.7	3.2	0.6	297.5
2010	90.2	0.5	10.4	71.7	53.6	68.7	4.4	1.1	300.6
Japan									
2009	268.8	106.7	82.4	86.7	32.5	2.8	13.8	0.3	594.0
2010	303.6	200.1	110.1	144.2	31.8	6.6	17.0	0.2	813.7
European Union									
Germany									
2009	12.1	37.9	13.1	33.7	173.7	3.8	11.4	0.5	286.2
2010	10.1	12.1	8.3	110.9	174.5	2.6	14.1	0.5	333.1
France									
2009	13.1	0.2	12.9	57.9	90.9	4.1	28.0	3.2	210.3
2010	10.8	6.5	13.0	38.7	74.5	4.1	20.4	1.2	169.3
United Kingdom									
2009	37.2	43.8	30.1	756.4	178.1	3.7	23.1	3.3	1,075.7
2010	31.7	19.5	19.2	740.4	225.3	3.5	15.6	3.4	1,058.6
Italy									
2009	22.8	0.0	22.9	11.9	45.6	0.8	5.2	0.3	109.5
2010	23.4	24.2	30.0	44.5	29.7	0.5	19.3	0.1	171.8
Other European Union									
2009	101.4	94.8	26.2	134.9	197.3	7.0	71.4	5.0	637.8
2010	79.1	88.4	29.0	196.2	219.7	13.9	70.8	3.9	700.8
Total									
2009	186.6	176.7	105.1	994.8	685.6	19.3	139.0	12.4	2,319.5
2010	155.1	150.6	99.5	1,130.7	723.7	24.6	140.3	9.1	2,433.6
Newly industrialized countries									
South Korea									
2009	30.9	32.5	25.6	79.5	35.4	5.9	3.3	0.8	213.8
2010	62.3	130.5	38.3	117.7	36.7	6.5	4.7	0.2	397.0
Hong Kong									
2009	26.9	0.0	7.3	51.7	14.8	0.6	4.1	0.9	106.4
2010	35.1	0.1	12.4	35.1	20.6	0.6	5.8	1.2	110.9
Taiwan									
2009	9.0	21.3	17.6	31.7	6.6	0.2	3.4	0.1	89.9
2010	9.2	20.7	25.8	41.1	9.7	0.2	2.8	0.1	109.8
Singapore									
2009	3.5	0.2	6.2	110.7	25.5	2.2	3.1	0.7	152.0
2010	3.9	0.4	2.3	24.7	24.8	1.6	2.0	0.1	59.9
Total									
2009	70.3	54.0	56.8	273.6	82.3	8.8	13.9	2.5	562.1
2010	110.6	151.7	78.9	218.7	91.8	9.0	15.3	1.6	677.6
Other countries									
2009	1,033.6	261.8	290.8	987.7	682.8	56.9	98.1	21.1	3,432.8
2010	772.7	164.0	434.1	1,145.0	625.5	59.8	103.1	17.1	3,321.3
Total									
2009	3,307.2	5,186.5	1,613.6	5,886.5	5,119.9	2,607.2	1,199.7	501.0	25,421.5
2010	3,159.2	8,139.0	1,983.9	7,507.7	4,882.2	4,779.6	1,090.0	276.4	31,818.0

Table 3-2
Domestic exports to selected countries, customs basis, not seasonally adjusted — Year to date, January to May

	Agricultural and fishing products	Energy products	Forestry products	Industrial goods	Machinery and equipment	Automotive products	Consumer goods	Special transactions trade	Total
millions of dollars									
United States									
2009	8,346.0	27,648.8	5,924.7	19,157.1	20,311.8	14,169.8	4,774.8	2,461.6	102,794.7
2010	7,404.0	37,060.6	5,724.3	23,028.0	16,163.9	21,145.9	4,036.3	1,299.0	115,862.0
Mexico									
2009	445.1	16.4	40.2	308.3	381.5	257.4	17.2	6.2	1,472.3
2010	552.9	15.6	56.2	402.2	278.5	349.1	39.9	1.7	1,696.0
Japan									
2009	1,301.7	907.1	434.0	470.1	278.8	14.8	75.8	3.3	3,485.6
2010	1,205.4	766.0	531.5	585.0	230.6	30.2	54.5	2.2	3,405.4
European Union									
Germany									
2009	63.6	129.0	54.6	217.8	835.5	21.1	60.7	5.4	1,387.6
2010	54.7	36.0	36.2	459.7	672.4	14.9	81.7	3.0	1,358.6
France									
2009	59.3	76.0	61.3	293.1	545.7	14.9	137.1	9.9	1,197.2
2010	48.5	7.0	59.8	197.7	361.0	14.6	94.2	6.4	789.3
United Kingdom									
2009	160.9	67.0	128.6	3,466.0	932.2	14.5	147.9	17.0	4,934.1
2010	121.9	37.5	88.4	4,425.5	730.2	18.8	78.2	18.6	5,519.3
Italy									
2009	192.5	44.4	120.8	109.7	236.6	3.8	28.1	1.5	737.5
2010	93.2	81.9	126.1	147.5	176.5	2.3	73.3	3.2	703.9
Other European Union									
2009	368.3	437.0	140.0	1,083.9	1,232.9	61.4	342.6	17.1	3,683.0
2010	348.4	223.2	126.2	1,264.5	1,041.0	60.6	259.6	15.8	3,339.4
Total									
2009	844.6	753.5	505.3	5,170.5	3,782.8	115.7	716.3	50.9	11,939.5
2010	666.7	385.5	436.8	6,494.9	2,981.2	111.2	587.1	47.0	11,710.5
Newly industrialized countries									
South Korea									
2009	131.4	461.9	138.1	408.5	207.7	14.5	19.5	2.9	1,384.6
2010	231.0	434.1	195.0	447.6	179.2	33.1	20.9	3.1	1,544.1
Hong Kong									
2009	160.3	0.2	40.1	208.5	131.9	3.9	26.9	3.3	575.1
2010	164.2	0.2	45.6	325.2	104.1	3.4	26.8	6.1	675.6
Taiwan									
2009	63.1	103.5	78.7	118.5	50.2	0.6	14.2	0.4	429.2
2010	59.2	72.5	107.3	155.3	55.7	1.4	18.3	0.5	470.1
Singapore									
2009	16.6	1.9	11.5	194.2	131.4	17.0	12.2	1.3	386.1
2010	24.3	3.0	9.8	78.0	125.8	10.2	15.2	1.0	267.4
Total									
2009	371.4	567.6	268.5	929.7	521.1	36.0	72.8	7.8	2,774.9
2010	478.7	509.9	357.7	1,006.1	464.8	48.1	81.3	10.7	2,957.2
Other countries									
2009	4,559.9	635.0	1,407.5	4,495.8	3,740.4	310.7	505.6	117.2	15,772.0
2010	3,660.3	788.1	1,858.4	5,642.7	3,289.7	300.4	734.3	74.4	16,348.3
Total									
2009	15,868.7	30,528.3	8,580.3	30,531.4	29,016.8	14,904.4	6,162.9	2,646.9	138,239.7
2010	13,968.0	39,525.8	8,964.9	37,158.8	23,408.9	21,984.8	5,533.4	1,435.0	151,979.4

Table 4
Domestic exports by country, customs basis, not seasonally adjusted

	May		January to May		Change January to May 2010/ January to May 2009
	2009	2010	2009	2010	
	millions of dollars				percent
North America					
Greenland	2.1	0.5	7.1	3.1	-56.3
Mexico	297.5	300.6	1,472.3	1,696.0	15.2
Saint Pierre and Miquelon	1.4	1.3	5.3	6.4	21.4
United States	18,215.6	24,271.2	102,794.7	115,862.0	12.7
Total	18,516.6	24,573.6	104,279.4	117,567.4	12.7
Western Europe					
Andorra	0.0	0.0	0.0	0.1	394.8
Austria	11.6	36.9	214.6	137.1	-36.1
Belgium	130.0	112.1	837.1	691.8	-17.4
Denmark	77.0	23.9	269.2	106.3	-60.5
Faeroe Islands	0.0	0.0	0.6	0.1	-81.6
Finland	10.7	73.9	127.2	149.6	17.6
France	210.3	169.3	1,197.2	789.3	-34.1
Germany	286.2	333.1	1,387.6	1,358.6	-2.1
Gibraltar	0.0	0.0	16.8	0.0	-99.9
Greece	6.9	6.7	40.4	35.1	-13.2
Iceland	5.4	28.2	13.9	67.3	385.9
Italy	109.5	171.8	737.5	703.9	-4.6
Luxembourg	3.1	6.9	16.6	25.9	55.9
Malta	0.6	0.8	38.4	52.9	37.9
Netherlands	195.5	216.3	964.0	1,084.0	12.5
Norway	225.3	275.0	652.2	1,102.4	69.0
Portugal	7.8	8.5	76.6	145.8	90.4
Republic of Ireland (Eire)	45.3	48.3	231.6	152.2	-34.3
Spain	73.7	53.0	455.7	321.1	-29.5
Sweden	19.8	31.1	103.7	130.6	26.0
Switzerland	61.3	68.4	436.8	746.3	70.9
United Kingdom	1,075.7	1,058.6	4,934.1	5,519.3	11.9
Total	2,555.9	2,722.7	12,751.8	13,319.9	4.5
Other Europe					
Albania	0.3	3.0	2.6	13.6	418.2
Armenia	0.3	0.4	2.2	3.1	37.4
Azerbaijan	0.5	1.9	5.4	6.3	18.3
Belarus	0.0	0.1	0.6	0.8	27.1
Bosnia and Herzegovina	0.1	0.7	1.5	2.3	54.8
Bulgaria	1.1	16.7	11.9	41.6	250.1
Croatia	2.2	1.2	11.1	76.7	593.8
Czech Republic	10.4	8.3	54.4	50.4	-7.3
Estonia	2.2	1.5	7.4	9.2	24.8
Georgia	0.8	0.4	2.7	5.2	91.6
Hungary	7.7	5.0	36.0	29.2	-19.0
Kazakhstan	6.0	7.4	92.5	79.4	-14.2
Kyrgyzstan	0.1	0.5	1.2	0.9	-27.5
Latvia	4.7	25.0	12.7	30.5	140.1
Lithuania	1.8	2.1	18.5	11.0	-40.3
Macedonia (Former Yugoslav Republic of Macedonia)	1.2	0.8	5.9	4.1	-31.4
Montenegro	0.4	0.2	1.0	0.7	-35.8
Poland	15.4	13.1	79.1	63.8	-19.4
Republic of Moldova	0.1	0.0	1.1	0.4	-60.0
Romania	9.3	7.9	27.8	47.3	69.9
Russian Federation	51.7	95.9	383.2	345.8	-9.8
Serbia	2.0	0.4	6.4	2.3	-64.3
Slovakia	1.5	1.2	7.0	15.6	121.7
Slovenia	0.9	1.1	48.3	4.3	-91.0
Tajikistan	0.2	0.0	1.0	4.2	316.6
Turkmenistan	0.4	0.2	2.1	1.0	-51.6
Ukraine	5.5	2.9	29.8	58.0	94.9
Uzbekistan	0.6	1.0	6.9	2.0	-70.7
Total	127.3	199.0	860.4	909.8	5.7

Table 4 – continued

Domestic exports by country, customs basis, not seasonally adjusted

	May		January to May		Change
	2009	2010	2009	2010	January to May 2010/ January to May 2009
	millions of dollars				percent
Middle East					
Bahrain	1.5	2.2	7.2	40.0	458.9
Cyprus	0.7	0.6	5.0	3.9	-21.8
Egypt	45.4	44.6	213.9	184.3	-13.8
Eritrea	0.0	0.1	0.0	1.7	...
Ethiopia	2.4	24.0	5.4	87.9	...
Iran	113.3	19.1	213.0	45.1	-78.8
Iraq	20.4	65.1	221.6	101.4	-54.2
Israel	24.2	30.0	124.0	135.7	9.4
Jordan	4.5	5.1	25.1	25.4	0.9
Kuwait	6.9	9.0	29.8	45.6	53.0
Lebanon	6.8	6.1	30.8	28.2	-8.3
Libya	10.9	4.5	141.8	62.1	-56.2
Oman	5.6	5.0	58.4	45.0	-23.0
Qatar	12.9	9.8	52.1	34.0	-34.8
Saudi Arabia	203.6	57.5	584.2	296.4	-49.3
Somalia	0.0	0.0	0.0	1.0	...
Sudan	11.2	18.7	64.3	58.7	-8.7
Syria	3.5	2.4	18.3	14.8	-19.4
Turkey	91.1	60.6	324.6	369.6	13.9
United Arab Emirates	51.4	59.8	516.2	375.5	-27.2
Yemen	3.5	1.4	9.6	9.1	-5.3
Total	620.0	425.5	2,645.5	1,965.6	-25.7
Other Africa					
Algeria	16.7	26.5	170.9	148.0	-13.4
Angola	8.0	6.5	37.5	38.6	2.9
Antarctica	0.0	0.0	0.0	0.0	-49.5
Benin	0.7	1.5	3.3	4.2	30.1
Botswana	0.3	0.1	2.3	1.7	-28.0
Burkina Faso	0.8	2.0	2.9	10.0	250.9
Burundi	0.1	0.1	0.5	0.3	-34.7
Cameroon	5.7	0.6	12.9	8.4	-34.5
Cape Verde	0.2	0.1	0.6	0.5	-22.7
Central African Republic	0.0	0.0	0.4	0.0	-91.5
Chad	0.2	0.9	5.2	2.3	-55.1
Comoros	0.0	0.0	0.0	0.0	-52.7
Congo	2.1	0.7	11.3	4.9	-56.4
Democratic Republic of the Congo	1.2	0.9	6.4	5.0	-21.3
Djibouti	0.2	0.2	1.5	0.9	-40.3
Equatorial Guinea	0.2	0.6	2.2	1.3	-40.1
French Southern Territories	0.0	0.0	0.0	0.0	-74.0
Gabon	1.2	2.3	14.5	7.7	-47.2
Gambia	0.0	0.1	0.4	0.4	5.2
Ghana	17.6	12.2	65.5	61.2	-6.6
Guinea	0.9	0.9	9.1	2.6	-71.0
Guinea-Bissau	0.0	0.0	0.0	0.0	...
Ivory Coast	1.2	2.8	12.0	5.9	-50.3
Kenya	7.3	5.5	33.8	28.5	-15.8
Lesotho	0.0	0.0	0.0	0.0	84.9
Liberia	0.1	4.9	1.5	7.7	403.9
Madagascar	4.8	3.6	16.8	29.3	74.8
Malawi	0.4	0.3	1.7	1.6	-5.8
Mali	1.5	1.0	3.3	3.8	14.2
Mauritania	0.3	0.5	1.5	1.0	-30.9
Mauritius	0.8	0.4	3.1	1.6	-50.2
Morocco	68.0	30.0	221.6	68.8	-69.0
Mozambique	0.3	4.0	1.8	6.4	261.7
Namibia	0.1	3.1	1.0	4.4	356.5
Niger	0.3	0.1	1.2	0.9	-27.1
Nigeria	17.4	11.2	62.3	106.3	70.5
Rwanda	0.0	0.1	0.7	0.7	-3.9
Saint Helena	0.0	0.0	0.1	0.0	-96.8
Sao Tome and Principe	0.0	0.0	0.0	0.0	8.5
Senegal	2.6	2.2	8.6	11.5	34.5
Seychelles	0.0	0.1	0.4	0.3	-8.3

Table 4 – continued

Domestic exports by country, customs basis, not seasonally adjusted

	May		January to May		Change
	2009	2010	2009	2010	January to May 2010/ January to May 2009
	millions of dollars				percent
Sierra Leone	0.3	0.4	2.1	4.3	106.0
South Africa	36.2	34.6	198.6	190.3	-4.2
Swaziland	9.0	0.1	9.3	0.4	-95.3
Togo	5.6	0.7	10.1	4.8	-52.6
Tunisia	13.9	2.2	64.4	25.6	-60.2
Uganda	0.4	1.0	5.4	4.8	-10.6
United Republic of Tanzania	1.9	3.9	13.9	14.5	4.5
Western Sahara	0.0	0.0	0.1	0.0	-100.0
Zambia	0.2	2.0	2.5	17.9	627.8
Zimbabwe	0.0	1.3	6.9	2.5	-64.0
Total	228.6	172.0	1,031.7	842.1	-18.4
Other Asia					
Afghanistan	2.6	2.8	23.4	29.4	25.4
Bangladesh	48.5	30.5	381.2	292.5	-23.3
Bhutan	0.0	0.0	0.1	0.8	...
British Indian Ocean Territory	0.0	0.2	0.0	1.0	...
Brunei Darussalam	0.3	0.4	1.2	7.2	497.5
Cambodia	0.2	0.1	2.2	1.2	-44.0
China	1,040.2	937.7	4,823.4	4,537.4	-5.9
Hong Kong	106.4	110.9	575.1	675.6	17.5
India	104.4	211.7	645.6	759.0	17.6
Indonesia	95.2	68.1	401.6	384.7	-4.2
Japan	594.0	813.7	3,485.6	3,405.4	-2.3
Laos	0.2	0.7	1.1	1.3	19.1
Macao	0.8	0.1	10.9	1.1	-90.2
Malaysia	78.3	45.1	221.4	315.4	42.4
Maldives	0.2	0.3	1.4	2.0	34.6
Mongolia	0.5	1.0	2.3	7.5	229.2
Myanmar	0.0	0.0	0.0	2.7	...
Nepal	0.3	0.5	1.5	1.1	-25.9
North Korea	1.0	0.9	11.2	4.5	-60.1
Pakistan	39.3	53.7	228.4	193.6	-15.3
Philippines	55.1	108.4	189.6	292.0	54.0
Singapore	152.0	59.9	386.1	267.4	-30.8
South Korea	213.8	397.0	1,384.6	1,544.1	11.5
Sri Lanka	25.9	21.9	142.0	152.8	7.6
Taiwan	89.9	109.8	429.2	470.1	9.5
Thailand	45.2	59.2	184.0	285.8	55.4
Timor-Leste	0.0	0.0	0.0	0.0	-100.0
Viet Nam	9.9	25.7	59.0	102.9	74.4
Total	2,704.4	3,060.1	13,592.2	13,738.4	1.1
Oceania					
American Samoa	0.1	0.1	0.3	0.6	116.9
Australia	141.6	98.4	635.3	695.0	9.4
Christmas Island	0.0	0.0	0.2	0.5	118.4
Cocos (Keeling) Islands	0.0	0.0	0.1	0.1	-34.4
Cook Islands	0.0	0.0	0.0	0.0	...
Fiji	0.9	0.0	3.9	0.9	-77.6
French Polynesia	0.7	0.4	4.0	5.0	24.7
Guam	0.1	0.0	0.7	0.3	-55.8
Heard Island and McDonald Islands	0.0	0.0	0.0	0.0	-100.0
Kiribati	0.0	0.0	0.0	0.0	...
Nauru	0.0	1.3	0.0	1.3	...
New Caledonia	0.7	0.4	1.8	6.9	284.7
New Zealand	15.9	21.7	115.7	105.6	-8.7
Norfolk Island	0.0	0.0	0.3	0.0	-98.4
Papua New Guinea	4.7	1.7	9.9	6.2	-37.6
Pitcairn	0.0	0.0	0.1	0.0	-95.2
Samoa	0.1	0.0	0.2	0.2	6.0
Solomon Islands	0.0	0.0	0.1	0.0	-48.9
Tonga	0.0	3.3	0.0	3.3	...
United States Minor Outlying Islands	0.7	0.9	4.4	5.7	31.2
Vanuatu	0.1	0.2	1.2	0.7	-40.2
Total	165.6	128.6	778.1	832.4	7.0

Table 4 – continued

Domestic exports by country, customs basis, not seasonally adjusted

	May		January to May		Change
	2009	2010	2009	2010	January to May 2010/ January to May 2009
	millions of dollars				percent
South America					
Argentina	12.0	13.6	76.3	98.3	28.8
Bolivia	2.3	1.5	4.7	13.2	179.6
Brazil	122.3	188.1	441.3	1,004.9	127.7
Chile	60.4	40.4	294.3	213.7	-27.4
Colombia	49.0	47.3	245.2	236.3	-3.6
Ecuador	13.4	43.7	108.0	118.0	9.3
Falkland Islands (Malvinas)	0.0	0.0	0.0	0.0	...
Guyana	0.7	1.0	10.6	9.6	-9.1
Paraguay	2.8	0.4	5.4	3.1	-41.8
Peru	28.0	28.2	179.4	184.4	2.8
Suriname	1.0	1.9	3.7	5.4	48.9
Uruguay	3.1	1.8	10.9	12.3	13.6
Venezuela	36.5	50.4	276.0	183.0	-33.7
Total	331.5	418.4	1,655.6	2,082.4	25.8
Central America Antilles					
Anguilla	0.0	0.1	0.7	0.3	-52.5
Antigua and Barbuda	1.9	1.6	5.1	6.7	32.4
Aruba	0.2	0.2	1.9	1.4	-26.1
Bahamas	53.8	1.9	63.7	33.9	-46.8
Barbados	3.1	2.2	28.8	13.9	-51.6
Belize	0.7	0.3	2.8	2.0	-29.7
Bermuda	6.4	3.0	27.0	15.8	-41.4
British Virgin Islands	0.1	0.2	2.0	20.5	933.5
Cayman Islands	0.5	0.3	2.7	2.8	2.5
Costa Rica	2.6	3.8	23.2	32.1	38.4
Cuba	16.0	21.1	124.8	125.4	0.5
Dominica	0.4	0.4	2.1	2.3	8.2
Dominican Republic	17.6	15.5	59.9	67.6	13.0
El Salvador	13.3	2.5	23.1	16.0	-30.5
Grenada	0.3	0.4	2.6	2.4	-8.1
Guatemala	5.6	7.3	37.2	36.4	-2.2
Haiti	5.0	2.5	23.1	17.4	-24.5
Honduras	4.1	4.1	15.4	16.6	8.4
Jamaica	11.5	18.4	46.6	72.7	56.1
Montserrat	0.0	0.0	0.1	0.1	7.7
Netherlands Antilles	1.6	1.5	9.4	10.1	7.8
Nicaragua	1.0	2.2	6.8	5.9	-13.8
Panama	5.9	4.8	40.1	74.0	84.8
Saint Kitts and Nevis	0.7	0.4	2.8	2.4	-12.7
Saint Lucia	1.1	0.5	4.0	2.7	-31.7
Saint Vincent and the Grenadines	1.4	0.5	3.9	3.7	-4.4
Trinidad and Tobago	16.4	22.2	83.0	134.3	61.8
Turks and Caicos Islands	0.3	0.3	2.4	1.7	-27.4
Total	171.7	118.2	645.0	721.3	11.8
All countries	25,421.5	31,818.0	138,239.7	151,979.4	9.9

Table 5-1
Exports by province of origin, customs basis, not seasonally adjusted — May

	Agricultural and fishing products	Energy products	Forestry products	Industrial goods	Machinery and equipment	Automotive products	Consumer goods	Special transactions trade	Total
millions of dollars									
Domestic exports									
Newfoundland and Labrador									
2009	96.3	522.7	13.3	232.9	5.9	0.4	0.3	3.9	875.7
2010	106.7	569.5	3.6	136.9	4.1	0.1	0.1	1.8	822.8
Prince Edward Island									
2009	38.7	0.0	0.1	1.8	15.1	0.1	1.4	9.2	66.4
2010	41.2	0.2	0.0	1.5	15.8	0.7	4.4	5.2	69.1
Nova Scotia									
2009	86.7	32.7	80.5	41.3	95.3	5.3	7.2	6.0	355.0
2010	92.4	50.8	59.8	42.3	123.7	5.4	5.0	3.1	382.6
New Brunswick									
2009	138.8	517.6	89.9	74.4	26.5	1.7	9.6	7.2	865.6
2010	148.9	794.8	128.4	126.6	28.3	2.6	23.7	3.5	1,256.7
Quebec									
2009	403.8	237.5	458.0	1,302.4	1,591.2	148.8	284.8	116.7	4,543.2
2010	374.9	264.1	549.2	1,680.0	1,366.4	131.4	304.8	74.4	4,745.2
Ontario									
2009	688.1	231.1	205.5	2,400.9	2,512.5	2,327.5	772.9	234.0	9,372.5
2010	723.6	224.0	242.8	3,274.2	2,570.9	4,533.5	669.4	122.6	12,360.9
Manitoba									
2009	326.3	63.8	30.3	194.1	175.5	57.9	67.4	35.4	950.7
2010	318.2	104.7	20.3	218.7	172.1	41.0	22.6	20.6	918.3
Saskatchewan									
2009	709.3	435.9	20.9	466.9	52.5	4.4	0.6	6.3	1,696.7
2010	574.4	586.0	16.6	537.6	51.7	4.1	0.7	3.4	1,774.6
Alberta									
2009	606.4	2,653.0	128.3	720.9	370.8	44.6	15.3	45.0	4,584.5
2010	576.1	4,852.4	184.2	904.2	290.5	39.6	12.1	24.2	6,883.3
British Columbia									
2009	212.5	492.1	586.8	330.3	274.4	16.6	40.0	37.3	1,990.1
2010	202.7	692.5	778.7	585.5	257.4	21.2	47.2	17.6	2,602.8
Yukon, Northwest Territories and Nunavut ¹									
2009	0.4	0.0	0.0	120.6	0.1	0.0	0.0	0.0	121.2
2010	0.1	0.0	0.3	0.1	1.2	0.0	0.0	0.0	1.8
Total									
2009	3,307.2	5,186.5	1,613.6	5,886.5	5,119.9	2,607.2	1,199.7	501.0	25,421.5
2010	3,159.2	8,139.0	1,983.9	7,507.7	4,882.2	4,779.6	1,090.0	276.4	31,818.0
Re-exports									
2009	54.9	43.3	6.6	164.7	945.2	77.0	151.5	672.1	2,115.4
2010	45.4	2.5	6.3	249.6	816.6	99.3	154.8	585.2	1,959.6
Total exports									
2009	3,362.0	5,229.8	1,620.2	6,051.2	6,065.1	2,684.3	1,351.1	1,173.1	27,537.0
2010	3,204.5	8,141.5	1,990.3	7,757.3	5,698.8	4,878.8	1,244.8	861.6	33,777.6

1. Data for the current month do not include some exports from the Harmonized System, Chapter 71, "Natural/cultured pearls, precious stones and metals, coins, etc." for reasons relating to timing.

Table 5-2
Exports by province of origin, customs basis, not seasonally adjusted — Year to date, January to May

	Agricultural and fishing products	Energy products	Forestry products	Industrial goods	Machinery and equipment	Automotive products	Consumer goods	Special transactions trade	Total
millions of dollars									
Domestic exports									
Newfoundland and Labrador									
2009	214.8	2,159.2	106.3	774.6	31.2	0.7	0.5	21.8	3,309.0
2010	233.8	2,395.5	45.2	467.6	19.7	0.8	0.7	10.2	3,173.5
Prince Edward Island									
2009	193.0	0.0	0.5	10.1	77.5	0.4	11.7	40.2	333.2
2010	159.0	0.7	0.3	11.5	63.8	1.3	15.8	22.1	274.6
Nova Scotia									
2009	360.9	295.9	302.1	225.5	472.2	40.9	32.0	32.3	1,761.7
2010	329.1	207.2	303.6	217.8	564.9	21.5	23.7	15.9	1,683.7
New Brunswick									
2009	456.2	2,439.1	512.1	285.8	143.0	11.6	49.7	35.9	3,933.2
2010	456.2	3,784.4	531.2	482.0	122.4	11.2	97.7	17.1	5,502.1
Quebec									
2009	1,840.0	1,273.4	2,548.2	6,678.8	9,154.8	711.2	1,504.9	591.4	24,302.6
2010	1,757.9	1,364.6	2,487.7	8,115.3	7,118.6	606.5	1,802.9	374.8	23,628.3
Ontario									
2009	3,336.1	1,237.4	1,222.9	12,896.8	14,420.3	13,489.8	4,022.9	1,299.5	51,925.7
2010	3,188.7	1,094.6	1,158.8	16,546.6	11,930.6	20,821.4	3,152.0	656.2	58,548.9
Manitoba									
2009	1,782.2	261.0	135.0	975.1	955.3	303.8	232.0	156.5	4,800.9
2010	1,552.0	439.0	87.7	1,006.0	761.9	180.5	157.4	110.0	4,294.4
Saskatchewan									
2009	3,562.6	2,373.8	114.9	2,402.8	398.3	17.4	7.0	42.2	8,919.0
2010	2,798.6	3,022.6	84.0	3,088.8	301.0	20.6	6.0	20.2	9,341.6
Alberta									
2009	3,201.5	17,524.4	673.3	3,605.1	2,042.8	235.2	81.1	231.7	27,595.1
2010	2,642.4	24,123.4	864.1	4,278.0	1,333.9	211.6	54.8	112.4	33,620.6
British Columbia									
2009	920.5	2,964.2	2,965.1	1,807.7	1,318.3	93.3	220.3	195.2	10,484.6
2010	849.1	3,093.7	3,401.9	2,351.5	1,186.3	109.2	222.4	95.8	11,309.9
Yukon, Northwest Territories and Nunavut ¹									
2009	0.9	0.0	0.1	869.2	3.1	0.1	0.9	0.2	874.5
2010	1.2	0.0	0.3	593.8	5.8	0.2	0.1	0.3	601.8
Total									
2009	15,868.7	30,528.3	8,580.3	30,531.4	29,016.8	14,904.4	6,162.9	2,646.9	138,239.7
2010	13,968.0	39,525.8	8,964.9	37,158.8	23,408.9	21,984.8	5,533.4	1,435.0	151,979.4
Re-exports									
2009	227.4	205.5	32.5	946.7	4,975.0	418.5	948.7	3,542.1	11,296.4
2010	246.6	130.9	33.7	1,148.6	4,204.8	438.7	763.7	2,892.3	9,859.3
Total exports									
2009	16,096.1	30,733.9	8,612.8	31,478.1	33,991.8	15,322.8	7,111.6	6,189.0	149,536.1
2010	14,214.6	39,656.6	8,998.6	38,307.4	27,613.7	22,423.5	6,297.0	4,327.3	161,838.7

1. Data for the current month do not include some exports from the Harmonized System Chapter 71, "Natural/cultured pearls, precious stones and metals, coins, etc." for reasons relating to timing.

Table 6-1
Imports by commodity groupings, balance of payments basis, seasonally adjusted — Current dollars

	April 2010	May 2010	Change		Year to date			May 2010/ May 2009	
					2009		2010		Change
					millions of dollars	percent			
Total	33,106	34,985	1,879	5.7	155,937	166,512	10,575	6.8	17.4
Agricultural and fishing products	2,451	2,448	-3	-0.1	12,459	12,078	-381	-3.1	2.3
Fruits and vegetables	674	703	29	4.4	3,488	3,404	-83	-2.4	4.7
Fresh fruits and berries	247	260	12	5.0	1,222	1,249	27	2.2	7.2
Dried fruits, fruits and fruit preparations	107	110	3	3.1	666	536	-130	-19.5	-9.5
Fresh vegetables	183	191	8	4.5	887	922	35	3.9	13.4
Other vegetables and vegetable preparations	137	142	6	4.1	712	697	-14	-2.0	2.1
Other agricultural and fishing products	1,777	1,745	-32	-1.8	8,971	8,673	-298	-3.3	1.4
Live animals	16	16	-1	-4.1	84	78	-6	-6.7	-7.4
Meat and meat preparations	180	174	-7	-3.7	926	874	-53	-5.7	-5.4
Fish and marine animals	155	153	-1	-0.8	900	777	-124	-13.7	-15.0
Cocoa, coffee, tea and other food preparations	397	400	3	0.8	2,097	1,988	-109	-5.2	-2.6
Dairy produce, eggs and honey	48	50	3	5.3	224	229	5	2.3	15.9
Corn (maize) shelled	46	40	-5	-11.7	200	222	22	11.0	44.7
Other cereals and cereal preparations	171	178	7	4.0	1,001	868	-133	-13.3	-8.4
Sugar and sugar preparations	174	142	-32	-18.4	673	751	78	11.6	18.0
Fodder, feed, excluding unmilled cereal	116	112	-5	-4.1	617	567	-50	-8.1	-10.5
Beverages	309	318	10	3.1	1,528	1,537	8	0.6	12.2
Tobacco	38	32	-6	-15.6	144	164	20	14.0	16.7
Crude vegetable products	126	128	2	1.9	572	613	41	7.1	20.6
Cotton	1	1	0	-9.9	4	6	2	52.6	85.0
Energy products	3,582	3,626	45	1.3	13,184	17,053	3,870	29.4	38.8
Crude petroleum	2,382	2,447	65	2.7	7,350	10,708	3,358	45.7	54.8
Other energy products	1,199	1,179	-20	-1.7	5,834	6,346	512	8.8	14.3
Coal and other related products	248	393	145	58.5	2,276	2,199	-77	-3.4	15.7
Petroleum and coal products	951	786	-165	-17.4	3,558	4,146	589	16.5	13.6
Forestry products	222	224	2	0.7	1,020	1,100	80	7.9	23.9
Forestry products	222	224	2	0.7	1,020	1,100	80	7.9	23.9
Crude wood products	31	31	0	1.5	213	162	-51	-23.7	-1.8
Wood fabricated materials	191	192	1	0.6	807	937	131	16.2	29.3
Industrial goods and materials	6,837	7,300	463	6.8	32,109	34,546	2,437	7.6	22.2
Metals and metal ores	2,470	2,780	310	12.6	10,005	12,774	2,769	27.7	53.2
Metals in ores, concentrates and scrap	438	588	150	34.2	2,334	2,734	401	17.2	39.1
Steel bars, rods, plates, sheets	582	625	42	7.3	2,013	2,810	797	39.6	81.7
Other iron and steel products	349	363	14	4.1	1,727	1,616	-111	-6.4	62.6
Precious metals including alloys	715	839	124	17.3	2,480	3,764	1,284	51.8	49.1
Other non-ferrous metals and alloys	385	366	-20	-5.2	1,451	1,850	399	27.5	39.3
Chemicals and plastics	2,379	2,427	48	2.0	11,921	11,861	-60	-0.5	6.3
Organic chemicals	556	599	44	7.8	2,976	2,913	-63	-2.1	0.6
Plastic materials	821	878	57	6.9	3,684	4,080	396	10.7	22.6
Other chemicals and related products	1,002	950	-52	-5.2	5,261	4,868	-393	-7.5	-2.3
Other industrial goods and materials	1,989	2,094	105	5.3	10,182	9,911	-271	-2.7	11.5
Crude animal products	24	26	2	10.5	103	105	2	1.8	43.5
Wool and man-made fibres	23	20	-3	-14.4	90	101	11	12.5	20.0
Crude non-metallic minerals	61	76	15	24.9	323	364	41	12.7	39.7
Textile fabricated materials	189	191	2	1.1	985	937	-48	-4.8	3.9
Metal fabricated basic products	757	837	80	10.6	3,995	3,830	-165	-4.1	12.9
Rubber fabricated materials	81	82	1	1.5	397	400	4	0.9	12.9
Oils, fats, animal and vegetable	94	96	2	1.7	529	480	-48	-9.2	-5.5
Non-metallic minerals	302	303	2	0.6	1,395	1,450	55	4.0	19.0
Other fabricated materials	460	463	3	0.7	2,366	2,243	-124	-5.2	6.6

Table 6-1 – continued

Imports by commodity groupings, balance of payments basis, seasonally adjusted — Current dollars

	April	May	Change		Year to date			May 2010/	
	2010	2010			2009	2010	Change	May 2009	
	millions of dollars		percent		millions of dollars		percent		
Machinery and equipment	8,799	9,378	580	6.6	47,332	43,942	-3,390	-7.2	4.8
Industrial and agricultural machinery	2,335	2,466	131	5.6	12,499	11,450	-1,048	-8.4	3.0
Engines, turbines and electric motors	283	328	44	15.7	1,846	1,482	-364	-19.7	-23.0
Drilling mining machinery	135	145	10	7.2	680	671	-9	-1.3	27.3
Excavating machinery	225	240	15	6.7	920	1,002	83	9.0	50.3
Metal working machinery	132	130	-3	-2.0	698	638	-60	-8.7	3.0
Other industrial machinery	1,194	1,268	75	6.3	6,596	5,922	-674	-10.2	4.8
Agricultural machinery including tractors	366	356	-10	-2.8	1,759	1,735	-24	-1.4	-1.3
Aircraft and other transportation equipment	1,163	1,183	20	1.7	7,130	5,503	-1,627	-22.8	-4.3
Aircraft, engines, parts	702	703	1	0.2	4,653	3,322	-1,331	-28.6	-11.8
Other transportation equipment and parts	461	480	19	4.1	2,477	2,181	-296	-12.0	9.2
Office machines and equipment	1,017	1,218	201	19.8	5,287	5,238	-49	-0.9	20.5
Other machinery and equipment	4,284	4,511	227	5.3	22,417	21,750	-666	-3.0	4.7
Other communication and related equipment	1,542	1,584	42	2.7	7,833	7,767	-66	-0.8	1.7
Other equipment and tools	2,742	2,927	185	6.8	14,583	13,983	-600	-4.1	6.4
Automotive products	5,671	5,942	271	4.8	19,954	29,002	9,047	45.3	51.2
Passenger autos and chassis	1,735	1,782	47	2.7	6,518	9,164	2,645	40.6	33.7
Trucks and other motor vehicles	1,510	1,547	37	2.4	4,507	7,636	3,129	69.4	83.9
Motor vehicle parts	2,426	2,613	187	7.7	8,929	12,202	3,273	36.7	48.8
Other consumer goods	4,356	4,760	404	9.3	24,536	23,065	-1,472	-6.0	0.4
Apparel and footwear	833	907	75	9.0	5,051	4,254	-796	-15.8	-6.0
Apparel and apparel accessories	691	755	64	9.3	4,209	3,542	-667	-15.8	-4.6
Footwear	142	152	11	7.5	842	712	-130	-15.4	-12.1
Miscellaneous consumer goods	3,523	3,853	329	9.4	19,486	18,810	-675	-3.5	2.0
Television, radios, phonographs	126	134	8	6.4	542	645	103	19.1	26.3
Printed matter	287	307	20	6.9	1,545	1,413	-132	-8.5	1.6
Watches, sporting goods and toys	450	502	52	11.6	2,564	2,404	-160	-6.2	4.0
House furnishings	705	743	38	5.4	3,719	3,584	-135	-3.6	3.0
Photographic goods	200	203	3	1.4	1,119	986	-133	-11.9	-8.5
Miscellaneous end products	1,754	1,963	209	11.9	9,996	9,778	-218	-2.2	1.0
Special transactions trade	445	536	91	20.4	2,082	2,060	-22	-1.1	46.3
Unallocated balance of payments adjustments	744	771	27	3.6	3,262	3,667	405	12.4	19.3

Table 6-2
Imports by commodity groupings, balance of payments basis, seasonally adjusted — Constant dollars, 2002

	April	May	Change		Year to date			May 2010/ May 2009	
	2010	2010			2009	2010	Change		
	millions of dollars		percent		millions of dollars		percent		
Total	37,774	39,352	1,578	4.2	161,845	187,695	25,850	16.0	21.6
Agricultural and fishing products	2,459	2,464	4	0.2	11,226	12,018	792	7.1	10.2
Fruits and vegetables	670	672	2	0.4	3,313	3,329	16	0.5	-0.1
Fresh fruits and berries	260	264	4	1.7	1,227	1,274	47	3.8	-1.4
Dried fruits, fruits and fruit preparations	107	110	4	3.3	602	529	-73	-12.1	-4.2
Fresh vegetables	169	160	-9	-5.2	869	853	-16	-1.9	-4.4
Other vegetables and vegetable preparations	135	138	3	2.4	614	673	58	9.5	12.1
Other agricultural and fishing products	1,789	1,791	2	0.1	7,913	8,689	776	9.8	14.7
Live animals	16	14	-2	-11.1	79	78	-1	-1.5	-9.6
Meat and meat preparations	168	151	-17	-10.4	875	864	-11	-1.2	-11.1
Fish and marine animals	211	219	9	4.1	1,076	1,144	69	6.4	4.0
Cocoa, coffee, tea and other food preparations	386	451	65	16.7	1,588	1,867	279	17.6	35.6
Dairy produce, eggs and honey	55	55	0	0.0	207	254	47	22.8	30.8
Corn (maize) shelled	46	40	-6	-13.9	155	215	60	38.4	74.7
Other cereals and cereal preparations	145	147	2	1.4	790	741	-49	-6.2	-7.6
Sugar and sugar preparations	175	141	-34	-19.5	635	725	90	14.2	21.2
Fodder, feed, excluding unmilled cereal	105	99	-6	-5.6	438	492	54	12.3	6.3
Beverages	293	307	15	5.0	1,323	1,441	118	8.9	23.6
Tobacco	48	38	-10	-20.5	156	202	46	29.6	21.3
Crude vegetable products	140	128	-12	-8.6	587	658	71	12.1	7.3
Cotton	2	2	0	-9.2	5	8	3	55.1	90.5
Energy products	1,782	1,886	104	5.9	8,865	9,019	154	1.7	12.3
Crude petroleum	1,022	1,058	36	3.5	4,736	4,672	-65	-1.4	15.6
Other energy products	760	829	69	9.0	4,129	4,348	219	5.3	8.4
Coal and other related products	212	370	157	74.2	1,674	1,928	254	15.2	21.3
Petroleum and coal products	548	459	-89	-16.2	2,455	2,420	-36	-1.5	-0.1
Forestry products	296	279	-17	-5.6	1,215	1,470	255	20.9	21.0
Forestry products	296	279	-17	-5.6	1,215	1,470	255	20.9	21.0
Crude wood products	48	47	-1	-2.4	257	247	-10	-3.7	17.0
Wood fabricated materials	248	233	-15	-6.2	959	1,223	264	27.6	21.9
Industrial goods and materials	6,495	6,578	83	1.3	27,564	31,942	4,378	15.9	18.8
Metals and metal ores	1,859	1,892	33	1.8	7,014	9,214	2,200	31.4	43.3
Metals in ores, concentrates and scrap	252	335	83	33.1	1,830	1,526	-304	-16.6	2.5
Steel bars, rods, plates, sheets	491	493	2	0.4	1,484	2,387	902	60.8	72.0
Other iron and steel products	258	251	-7	-2.7	1,122	1,227	105	9.4	48.8
Precious metals including alloys	446	433	-13	-2.9	1,150	2,146	995	86.5	63.2
Other non-ferrous metals and alloys	412	380	-32	-7.9	1,427	1,929	502	35.1	39.4
Chemicals and plastics	2,318	2,340	22	0.9	10,550	11,523	973	9.2	5.0
Organic chemicals	410	413	3	0.7	2,360	2,095	-264	-11.2	-15.9
Plastic materials	878	923	45	5.1	3,602	4,383	781	21.7	18.4
Other chemicals and related products	1,030	1,004	-26	-2.5	4,589	5,045	456	9.9	4.8
Other industrial goods and materials	2,317	2,346	28	1.2	10,000	11,206	1,205	12.1	17.9
Crude animal products	25	26	1	3.5	159	113	-47	-29.4	-8.8
Wool and man-made fibres	30	25	-5	-16.8	109	131	22	20.3	19.2
Crude non-metallic minerals	56	62	6	9.9	289	303	14	5.0	33.8
Textile fabricated materials	259	252	-6	-2.4	1,127	1,253	126	11.2	12.3
Metal fabricated basic products	831	889	59	7.1	3,699	4,117	418	11.3	22.3
Rubber fabricated materials	102	100	-2	-2.4	417	494	77	18.5	21.3
Oils, fats, animal and vegetable	94	97	3	3.7	436	477	41	9.4	5.5
Non-metallic minerals	370	366	-5	-1.2	1,460	1,766	307	21.0	27.5
Other fabricated materials	551	529	-22	-4.0	2,304	2,551	247	10.7	10.0

Table 6-2 – continued

Imports by commodity groupings, balance of payments basis, seasonally adjusted — Constant dollars, 2002

	April	May	Change		Year to date			May 2010/ May 2009	
	2010	2010			2009	2010	Change		
	millions of dollars		percent		millions of dollars		percent		
Machinery and equipment	12,908	13,594	686	5.3	57,960	63,265	5,305	9.2	17.4
Industrial and agricultural machinery	2,957	3,018	61	2.1	13,059	14,132	1,073	8.2	14.0
Engines, turbines and electric motors	365	410	45	12.2	1,959	1,856	-103	-5.3	-13.8
Drilling mining machinery	155	162	7	4.4	635	757	122	19.3	43.8
Excavating machinery	285	301	16	5.6	944	1,249	305	32.3	74.1
Metal working machinery	176	166	-10	-5.9	767	822	55	7.2	12.2
Other industrial machinery	1,494	1,528	33	2.2	6,821	7,225	404	5.9	15.8
Agricultural machinery including tractors	481	451	-30	-6.2	1,933	2,224	291	15.1	7.6
Aircraft and other transportation equipment	1,409	1,373	-36	-2.6	7,257	6,521	-735	-10.1	2.2
Aircraft, engines, parts	878	851	-27	-3.1	4,820	4,073	-747	-15.5	-4.5
Other transportation equipment and parts	531	521	-9	-1.8	2,436	2,448	12	0.5	15.4
Office machines and equipment	2,195	2,716	521	23.8	10,068	11,154	1,087	10.8	40.0
Other machinery and equipment	6,348	6,488	140	2.2	27,576	31,456	3,880	14.1	14.8
Other communication and related equipment	2,678	2,675	-3	-0.1	11,258	13,121	1,863	16.5	12.5
Other equipment and tools	3,670	3,813	143	3.9	16,319	18,336	2,017	12.4	16.5
Automotive products	7,007	7,225	219	3.1	22,450	35,293	12,842	57.2	59.2
Passenger autos and chassis	1,991	2,062	72	3.6	7,593	10,516	2,923	38.5	33.7
Trucks and other motor vehicles	1,713	1,721	8	0.5	4,719	8,587	3,869	82.0	91.7
Motor vehicle parts	3,303	3,442	139	4.2	10,138	16,189	6,051	59.7	64.0
Other consumer goods	5,848	6,155	307	5.2	27,576	29,861	2,284	8.3	8.3
Apparel and footwear	1,209	1,274	66	5.4	6,074	6,029	-45	-0.7	4.3
Apparel and apparel accessories	1,007	1,065	58	5.8	5,069	5,039	-30	-0.6	5.9
Footwear	202	209	8	3.8	1,005	990	-15	-1.5	-3.4
Miscellaneous consumer goods	4,640	4,881	241	5.2	21,503	23,832	2,329	10.8	9.4
Television, radios, phonographs	223	228	5	2.2	762	1,099	337	44.2	40.3
Printed matter	368	374	6	1.7	1,757	1,750	-6	-0.4	2.9
Watches, sporting goods and toys	648	703	55	8.5	3,159	3,350	191	6.1	7.2
House furnishings	939	944	4	0.4	4,053	4,618	564	13.9	12.5
Photographic goods	385	392	7	1.8	1,676	1,821	145	8.7	8.3
Miscellaneous end products	2,077	2,241	164	7.9	10,096	11,194	1,097	10.9	7.9
Special transactions trade	510	603	93	18.3	2,175	2,341	166	7.6	49.7
Unallocated balance of payments adjustments	469	567	98	20.9	2,813	2,486	-326	-11.6	20.0

Table 7-1
Imports from selected countries, customs basis, not seasonally adjusted — May

	Agricultural and fishing products	Energy products	Forestry products	Industrial goods	Machinery and equipment	Automotive products	Consumer goods	Special transactions trade	Total
millions of dollars									
United States									
2009	1,487.3	890.4	129.9	3,588.2	4,005.2	2,707.9	1,836.0	328.0	14,972.8
2010	1,457.8	1,015.1	158.0	4,503.0	4,212.9	4,208.3	1,816.7	505.0	17,876.9
Mexico									
2009	125.2	38.8	0.5	98.2	535.8	369.1	82.4	3.4	1,253.4
2010	146.2	107.3	0.7	175.2	646.1	725.2	102.8	3.4	1,906.8
Japan									
2009	4.8	21.1	0.1	65.9	419.4	310.3	79.2	0.2	901.0
2010	5.6	0.5	0.1	80.6	388.7	425.1	86.2	0.2	987.1
European Union									
Germany									
2009	18.9	2.1	1.1	136.8	362.4	233.9	130.1	0.5	885.9
2010	19.6	1.2	1.0	137.0	318.3	346.5	131.1	0.5	955.2
France									
2009	47.2	83.3	0.1	73.9	145.4	7.2	103.1	0.3	460.5
2010	55.6	0.5	0.1	62.7	165.1	8.7	124.3	2.4	419.4
United Kingdom									
2009	31.2	272.9	0.1	91.4	345.0	26.5	104.2	5.3	876.6
2010	30.1	453.3	0.1	123.0	234.9	49.2	97.7	4.8	993.1
Italy									
2009	40.6	0.0	1.1	72.6	115.7	18.4	81.7	0.2	330.2
2010	49.3	0.2	0.9	78.7	110.4	22.5	93.5	0.4	355.8
Other European Union									
2009	85.0	128.6	3.4	207.1	339.7	42.3	308.4	2.4	1,117.0
2010	83.6	57.3	3.5	262.0	418.9	68.1	325.5	0.6	1,219.4
Total									
2009	222.9	486.9	5.8	581.8	1,308.2	328.4	727.5	8.7	3,670.2
2010	238.2	512.5	5.6	663.4	1,247.6	494.9	772.0	8.8	3,943.0
Newly industrialized countries									
South Korea									
2009	4.4	0.6	0.0	82.2	259.4	224.1	20.8	0.1	591.4
2010	5.4	19.7	0.0	73.3	164.0	169.6	16.3	0.2	448.6
Hong Kong									
2009	2.0	0.0	0.1	1.9	14.3	0.6	9.3	0.0	28.3
2010	2.8	0.0	0.0	2.7	13.6	0.7	8.5	0.1	28.2
Taiwan									
2009	6.8	0.0	1.1	60.4	165.8	15.3	30.7	0.1	280.3
2010	6.7	0.0	0.6	85.3	180.8	13.3	31.1	0.1	317.9
Singapore									
2009	3.1	0.0	0.0	9.1	39.1	0.2	20.7	0.4	72.7
2010	2.3	0.0	0.0	6.6	54.1	0.3	10.6	0.0	74.0
Total									
2009	16.3	0.6	1.2	153.5	478.7	240.3	81.4	0.6	972.7
2010	17.3	19.8	0.6	167.9	412.5	183.8	66.5	0.4	868.7
Other countries									
2009	524.1	984.7	40.5	1,416.4	1,975.1	147.3	1,465.4	21.4	6,575.0
2010	577.2	1,979.2	55.9	1,656.8	2,368.3	181.3	1,496.4	16.3	8,331.5
Total									
2009	2,380.8	2,422.4	178.1	5,904.1	8,722.4	4,103.3	4,271.8	362.3	28,345.3
2010	2,442.8	3,634.4	220.9	7,247.0	9,276.2	6,218.7	4,340.7	534.1	33,914.7

Table 7-2
Imports from selected countries, customs basis, not seasonally adjusted — Year to date, January to May

	Agricultural and fishing products	Energy products	Forestry products	Industrial goods	Machinery and equipment	Automotive products	Consumer goods	Special transactions trade	Total
millions of dollars									
United States									
2009	7,097.9	4,772.6	781.2	18,940.6	21,851.4	13,656.9	9,595.1	1,634.4	78,330.1
2010	6,560.1	5,083.1	816.1	20,438.0	19,854.1	19,444.7	8,966.5	1,741.5	82,904.0
Mexico									
2009	665.6	113.0	2.6	521.6	2,612.9	1,785.2	403.6	15.6	6,120.2
2010	761.0	301.1	2.4	686.5	2,894.1	3,573.9	432.5	20.4	8,671.9
Japan									
2009	27.2	22.4	0.6	497.2	2,184.7	2,058.3	418.9	1.4	5,210.7
2010	27.3	43.1	0.5	530.8	1,899.9	2,512.1	420.7	1.7	5,436.3
European Union									
Germany									
2009	97.9	6.3	4.8	849.2	1,920.3	953.5	764.8	4.3	4,601.1
2010	96.3	29.9	5.3	808.9	1,518.9	1,364.1	694.5	3.3	4,521.3
France									
2009	247.2	141.9	1.1	389.9	854.0	46.1	662.5	8.0	2,350.7
2010	259.1	13.8	0.7	359.1	673.6	43.1	665.5	5.1	2,020.1
United Kingdom									
2009	138.7	951.8	0.6	580.6	1,548.7	145.8	559.8	11.4	3,937.5
2010	154.3	1,799.2	0.3	928.3	1,191.1	172.1	512.0	20.4	4,777.6
Italy									
2009	234.4	10.7	6.7	401.1	617.6	79.8	440.4	2.5	1,793.1
2010	237.5	49.8	5.2	383.0	575.4	97.7	435.5	1.2	1,785.4
Other European Union									
2009	436.6	494.2	19.0	1,245.2	1,806.9	237.1	1,712.0	18.4	5,969.3
2010	430.5	811.8	17.6	1,174.7	1,805.5	292.4	1,609.8	12.7	6,154.9
Total									
2009	1,154.7	1,604.9	32.1	3,466.0	6,747.4	1,462.3	4,139.6	44.5	18,651.6
2010	1,177.7	2,704.5	29.2	3,653.9	5,764.5	1,969.4	3,917.4	42.7	19,259.3
Newly industrialized countries									
South Korea									
2009	20.1	25.9	0.0	377.6	1,077.7	789.9	95.9	0.3	2,387.5
2010	25.9	105.5	0.1	314.4	887.5	933.1	78.0	0.4	2,344.9
Hong Kong									
2009	10.9	0.0	0.2	14.6	72.6	1.4	53.8	0.4	153.8
2010	10.6	0.1	0.2	10.3	56.3	1.8	53.3	0.2	132.6
Taiwan									
2009	26.6	0.1	4.0	330.9	880.3	75.2	164.0	0.5	1,481.6
2010	29.6	0.1	3.4	329.4	779.4	66.1	155.9	0.6	1,364.4
Singapore									
2009	13.6	51.5	0.6	194.8	230.5	1.7	107.6	0.8	601.1
2010	12.8	0.0	0.1	50.2	221.9	1.6	70.6	0.7	357.8
Total									
2009	71.2	77.6	4.8	918.0	2,261.2	868.2	421.2	1.9	4,624.0
2010	78.8	105.7	3.8	704.3	1,945.1	1,002.5	357.8	1.9	4,199.8
Other countries									
2009	2,985.7	6,335.8	218.8	7,492.6	10,857.0	664.3	8,337.8	182.5	37,074.5
2010	3,071.3	8,191.2	258.0	8,014.0	10,848.0	826.6	7,818.2	141.9	39,169.3
Total									
2009	12,002.9	12,926.4	1,040.1	31,836.1	46,514.6	20,495.2	23,316.2	1,880.3	150,011.7
2010	11,677.7	16,428.8	1,109.9	34,027.6	43,205.7	29,329.3	21,913.1	1,950.1	159,642.2

Table 8
Imports by country, customs basis, not seasonally adjusted

	May		January to May		Change
	2009	2010	2009	2010	January to May 2010/ January to May 2009
	millions of dollars				percent
North America					
Canada	229.1	290.3	1,306.1	1,648.7	26.2
Greenland	0.3	0.0	17.0	0.2	-98.9
Mexico	1,253.4	1,906.8	6,120.2	8,671.9	41.7
Saint Pierre and Miquelon	0.0	0.0	0.1	0.4	222.6
United States	14,972.8	17,876.9	78,330.1	82,904.0	5.8
Total	16,455.6	20,074.1	85,773.5	93,225.2	8.7
Western Europe					
Andorra	0.0	0.0	0.0	0.1	241.9
Austria	89.9	94.9	470.4	440.0	-6.4
Belgium	98.0	117.8	526.5	614.8	16.8
Denmark	96.6	145.3	404.1	883.5	118.6
Faeroe Islands	0.2	0.5	0.6	1.5	168.4
Finland	42.8	52.0	350.9	342.7	-2.4
France	460.5	419.4	2,350.7	2,020.1	-14.1
Germany	885.9	955.2	4,601.1	4,521.3	-1.7
Gibraltar	0.0	2.2	0.0	2.2	...
Greece	11.4	18.9	58.9	59.9	1.6
Iceland	3.9	3.3	13.1	14.7	12.3
Italy	330.2	355.8	1,793.1	1,785.4	-0.4
Luxembourg	5.5	6.7	28.6	38.3	34.2
Malta	1.6	1.3	9.7	6.3	-34.5
Netherlands	174.2	110.9	807.3	667.1	-17.4
Norway	162.5	240.9	1,372.0	1,275.1	-7.1
Portugal	22.0	24.1	113.5	146.6	29.1
Republic of Ireland (Eire)	171.0	110.1	983.1	725.8	-26.2
Spain	108.4	128.6	556.2	512.0	-8.0
Sweden	152.1	215.3	775.1	829.1	7.0
Switzerland	312.6	269.8	1,503.7	1,327.4	-11.7
United Kingdom	876.6	993.1	3,937.5	4,777.6	21.3
Total	4,005.9	4,266.3	20,656.0	20,991.4	1.6
Other Europe					
Albania	0.2	0.2	1.5	1.0	-34.5
Armenia	2.2	1.8	15.0	10.4	-30.4
Azerbaijan	0.0	72.7	421.2	72.8	-82.7
Belarus	0.3	0.3	15.9	2.2	-86.4
Bosnia and Herzegovina	0.7	0.5	3.0	2.5	-18.2
Bulgaria	15.2	3.6	53.6	23.2	-56.8
Croatia	2.7	1.2	10.1	7.7	-23.8
Czech Republic	21.1	18.2	123.6	105.0	-15.1
Estonia	2.4	1.5	10.2	8.5	-16.3
Georgia	11.2	8.0	52.3	38.4	-26.5
Hungary	19.7	31.2	148.2	136.5	-7.9
Kazakhstan	65.8	107.1	196.7	889.6	352.2
Kyrgyzstan	0.0	0.0	0.4	0.1	-85.1
Latvia	0.8	0.7	4.5	3.1	-31.7
Lithuania	5.7	12.7	64.0	78.7	22.8
Macedonia (Former Yugoslav Republic of Macedonia)	0.4	0.4	4.7	2.5	-46.3
Montenegro	0.0	0.1	0.2	0.1	-46.1
Poland	59.5	91.2	345.4	371.3	7.5
Republic of Moldova	0.1	0.0	0.8	0.7	-19.1
Romania	5.9	8.6	48.3	46.6	-3.5
Russian Federation	59.7	142.0	569.3	549.4	-3.5
Serbia	0.6	0.8	4.7	5.2	9.9
Slovakia	9.0	13.7	61.1	67.7	10.7
Slovenia	4.1	11.8	24.3	46.8	92.6
Tajikistan	0.0	0.0	0.0	0.0	129.6
Turkmenistan	0.0	0.0	0.1	0.1	-29.0
Ukraine	2.8	3.9	40.6	24.0	-40.9
Uzbekistan	0.0	0.0	11.6	0.9	-92.3
Total	290.1	532.5	2,231.4	2,494.6	11.8

Table 8 – continued

Imports by country, customs basis, not seasonally adjusted

	May		January to May		Change
	2009	2010	2009	2010	January to May 2010/ January to May 2009
	millions of dollars				percent
Middle East					
Bahrain	0.2	0.2	3.3	1.2	-64.4
Cyprus	0.3	0.2	1.8	1.7	-3.2
Egypt	5.1	23.0	45.4	133.2	193.7
Eritrea	0.0	0.0	0.1	0.2	242.0
Ethiopia	2.0	0.8	6.1	5.1	-17.3
Iran	1.1	3.1	10.2	17.1	67.1
Iraq	0.0	275.4	417.5	631.6	51.3
Israel	75.8	65.2	408.6	387.8	-5.1
Jordan	0.5	1.6	6.6	8.7	31.3
Kuwait	0.0	31.5	37.2	31.5	-15.4
Lebanon	1.3	1.1	5.5	6.7	20.8
Libya	0.0	2.2	0.1	11.4	...
Oman	0.9	0.5	2.8	12.4	339.2
Qatar	0.0	1.0	7.9	61.8	679.6
Saudi Arabia	160.4	176.3	624.0	900.5	44.3
Somalia	0.0	0.0	0.0	0.0	-58.5
Sudan	5.5	8.7	30.3	37.5	23.9
Syria	0.4	0.5	1.8	2.8	52.0
Turkey	36.1	67.2	288.2	258.6	-10.3
United Arab Emirates	3.0	4.1	176.8	62.8	-64.5
Yemen	0.0	0.0	0.1	0.0	-35.2
Total	292.8	662.6	2,074.4	2,572.5	24.0
Other Africa					
Algeria	280.7	259.0	1,337.7	1,535.5	14.8
Angola	0.1	81.9	362.2	504.8	39.4
Antarctica	0.0	0.0	0.0	0.2	...
Benin	0.0	0.0	0.0	0.0	430.5
Botswana	5.1	0.0	10.4	6.9	-34.1
Bouvet Island	0.0	0.0	0.0	0.0	-100.0
Burkina Faso	0.0	1.0	1.6	14.4	787.2
Burundi	0.0	0.0	0.1	0.0	-75.9
Cameroon	0.5	0.5	2.1	2.3	14.4
Cape Verde	0.0	0.0	0.0	0.0	7.4
Central African Republic	0.0	0.0	0.0	0.0	-52.4
Chad	0.0	0.1	0.0	0.1	...
Comoros	0.0	0.0	0.0	0.0	225.7
Congo	0.1	0.1	0.7	0.6	-11.9
Democratic Republic of the Congo	0.0	0.1	0.3	0.5	85.5
Djibouti	0.0	0.0	0.0	0.0	-88.3
Equatorial Guinea	51.1	157.7	192.2	300.4	56.3
French Southern Territories	0.0	0.0	0.0	0.0	-100.0
Gabon	0.1	0.0	0.9	0.1	-88.3
Gambia	0.0	0.0	0.0	0.0	208.1
Ghana	0.6	0.5	9.7	8.1	-17.0
Guinea	9.1	8.6	31.0	21.4	-31.0
Guinea-Bissau	0.0	0.0	0.0	0.0	-43.0
Ivory Coast	65.7	12.1	123.2	157.7	28.0
Kenya	1.6	1.1	7.5	6.7	-10.8
Lesotho	0.9	0.7	3.8	3.7	-2.4
Liberia	1.4	2.3	9.0	14.5	60.7
Madagascar	1.0	5.7	12.6	16.2	28.9
Malawi	0.3	0.3	0.8	16.4	...
Mali	0.0	0.1	0.2	0.3	53.6
Mauritania	0.0	0.0	0.4	0.2	-59.2
Mauritius	0.4	0.3	4.3	4.0	-6.6
Morocco	2.9	7.9	54.5	50.9	-6.6
Mozambique	0.0	0.4	0.2	0.9	417.4
Namibia	14.7	0.1	177.3	89.8	-49.3
Niger	0.1	0.1	0.2	0.4	147.4
Nigeria	33.1	242.4	177.8	708.5	298.5
Rwanda	0.0	0.0	0.2	0.1	-23.6
Saint Helena	0.0	0.0	0.0	0.0	21.1
Sao Tome and Principe	0.0	0.0	0.0	0.1	958.1
Senegal	0.1	0.1	0.3	0.5	42.5

Table 8 – continued

Imports by country, customs basis, not seasonally adjusted

	May		January to May		Change
	2009	2010	2009	2010	January to May 2010/ January to May 2009
	millions of dollars				percent
Seychelles	0.0	0.0	0.4	0.1	-68.6
Sierra Leone	0.1	0.2	0.9	0.6	-27.3
South Africa	41.1	46.5	239.3	218.7	-8.6
Swaziland	0.1	0.1	0.7	0.4	-40.7
Togo	0.0	0.0	0.4	0.3	-36.4
Tunisia	3.1	54.3	18.6	73.9	298.4
Uganda	0.3	0.4	1.0	2.0	110.8
United Republic of Tanzania	0.3	0.3	2.0	1.3	-36.9
Western Sahara	0.0	0.0	0.0	0.0	-92.4
Zambia	0.1	0.1	0.3	0.5	92.1
Zimbabwe	0.5	0.5	1.3	1.8	44.3
Total	514.9	885.4	2,786.1	3,766.3	35.2
Other Asia					
Afghanistan	0.1	0.1	0.6	0.8	25.5
Bangladesh	56.5	54.3	353.3	300.8	-14.9
Bhutan	0.0	0.0	0.0	0.0	-86.2
British Indian Ocean Territory	0.0	0.0	0.0	0.0	176.0
Brunei Darussalam	0.5	0.0	1.4	0.0	-99.3
Cambodia	14.3	13.6	118.1	113.6	-3.8
China	2,821.7	3,334.3	15,907.1	15,378.7	-3.3
Hong Kong	28.3	28.2	153.8	132.6	-13.8
India	163.7	148.2	907.5	794.9	-12.4
Indonesia	65.4	110.3	429.0	469.2	9.4
Japan	901.0	987.1	5,210.7	5,436.3	4.3
Laos	1.0	0.2	3.8	3.2	-17.5
Macao	8.7	0.8	15.4	3.9	-74.6
Malaysia	200.4	197.6	960.5	897.1	-6.6
Maldives	0.0	0.0	0.1	0.0	-44.6
Mongolia	7.6	13.1	58.9	56.5	-4.1
Myanmar	0.0	0.0	0.0	0.0	-71.2
Nepal	1.1	1.5	4.9	4.9	0.1
North Korea	0.0	0.0	0.1	0.1	24.7
Pakistan	19.2	22.4	97.7	103.3	5.8
Philippines	51.1	71.4	285.1	344.9	21.0
Singapore	72.7	74.0	601.1	357.8	-40.5
South Korea	591.4	448.6	2,387.5	2,344.9	-1.8
Sri Lanka	8.0	8.5	48.7	47.8	-1.7
Taiwan	280.3	317.9	1,481.6	1,364.4	-7.9
Thailand	172.3	180.9	918.1	926.4	0.9
Timor-Leste	0.1	0.1	1.3	0.6	-56.0
Viet Nam	81.6	83.6	407.4	403.4	-1.0
Total	5,547.0	6,096.8	30,353.7	29,486.0	-2.9
Oceania					
American Samoa	0.0	0.1	0.1	0.2	54.6
Australia	112.6	144.1	615.7	621.9	1.0
Christmas Island	0.0	0.0	0.0	0.1	458.3
Cocos (Keeling) Islands	0.1	0.0	0.1	0.0	-94.3
Cook Islands	0.0	0.0	0.0	0.0	-12.8
Fiji	0.7	0.8	2.6	3.1	17.5
French Polynesia	0.0	0.0	0.2	0.4	65.0
Guam	0.0	0.0	0.2	0.0	-86.0
Heard Island and McDonald Islands	0.0	0.0	0.0	0.0	-96.0
Kiribati	0.0	0.0	0.1	0.0	-76.0
Nauru	0.0	0.0	0.1	0.1	-37.6
New Caledonia	0.1	0.0	0.2	0.1	-55.6
New Zealand	47.2	44.9	187.8	178.3	-5.0
Niue	0.0	0.0	0.0	0.0	559.5
Norfolk Island	0.0	0.0	0.0	0.0	-96.8
Papua New Guinea	0.0	0.1	0.4	0.6	40.4
Pitcairn	0.0	0.0	0.0	0.0	39.9
Samoa	0.0	0.2	0.0	0.2	...
Solomon Islands	0.0	0.0	0.0	0.0	29.5
Tonga	0.0	0.0	0.0	0.0	-91.1

Table 8 – continued

Imports by country, customs basis, not seasonally adjusted

	May		January to May		Change
	2009	2010	2009	2010	January to May 2010/ January to May 2009
	millions of dollars				percent
United States Minor Outlying Islands	0.4	0.4	2.1	2.1	-0.9
Vanuatu	0.0	0.2	0.0	0.4	...
Wallis and Futuna	0.0	0.0	0.0	0.0	-90.4
Total	161.3	190.7	809.8	807.5	-0.3
South America					
Argentina	58.0	43.6	286.4	237.2	-17.2
Bolivia	7.7	7.1	30.7	43.1	40.7
Brazil	188.6	233.4	991.1	1,291.7	30.3
Chile	147.7	152.4	771.4	1,014.9	31.6
Colombia	76.5	57.5	304.8	301.6	-1.1
Ecuador	22.6	17.2	112.3	84.3	-24.9
Falkland Islands (Malvinas)	0.0	0.0	0.0	0.0	-53.5
Guyana	25.1	25.7	120.2	110.7	-7.9
Paraguay	0.8	1.5	3.5	3.9	10.7
Peru	229.9	273.3	1,098.9	1,453.3	32.2
Suriname	61.4	32.2	223.8	201.9	-9.8
Uruguay	2.7	5.7	40.1	40.9	2.1
Venezuela	70.3	96.5	416.9	297.6	-28.6
Total	891.2	946.2	4,400.1	5,081.1	15.5
Central America Antilles					
Anguilla	0.0	0.0	0.2	0.1	-43.7
Antigua and Barbuda	0.0	0.0	0.1	0.1	-7.6
Aruba	1.9	0.0	53.3	0.1	-99.8
Bahamas	4.6	9.7	22.7	19.6	-13.5
Barbados	0.6	0.8	3.6	4.1	14.4
Belize	0.4	0.5	3.8	3.0	-21.1
Bermuda	2.9	0.0	3.2	0.4	-88.8
British Virgin Islands	0.1	0.0	0.2	0.1	-51.0
Cayman Islands	0.0	0.0	0.1	0.1	49.8
Costa Rica	31.2	36.4	159.8	195.9	22.6
Cuba	44.2	82.6	184.0	273.9	48.9
Dominica	0.0	0.0	0.1	0.0	-50.4
Dominican Republic	11.8	10.5	59.3	52.0	-12.2
El Salvador	4.9	5.1	36.1	50.0	38.4
Grenada	0.0	0.0	0.2	0.3	109.8
Guatemala	18.1	30.6	105.8	134.0	26.7
Haiti	2.3	1.3	9.6	10.4	8.4
Honduras	12.5	14.4	66.1	68.9	4.2
Jamaica	11.2	12.2	58.1	69.9	20.3
Montserrat	0.0	0.0	0.0	0.1	250.3
Netherlands Antilles	0.0	0.0	9.9	0.1	-98.7
Nicaragua	7.2	14.6	35.6	65.8	84.8
Panama	2.1	5.5	5.2	35.6	582.1
Saint Kitts and Nevis	0.5	0.5	2.0	2.8	38.8
Saint Lucia	0.0	0.0	0.1	0.1	-3.0
Saint Vincent and the Grenadines	0.0	0.0	0.0	0.1	212.3
Trinidad and Tobago	30.1	35.0	107.1	229.7	114.5
Turks and Caicos Islands	0.0	0.0	0.2	0.1	-62.1
Total	186.6	260.0	926.5	1,217.6	31.4
All countries	28,345.3	33,914.7	150,011.7	159,642.2	6.4

**Table 9-1
Imports by province of clearance, customs basis, not seasonally adjusted — May**

	Agricultural and fishing products	Energy products	Forestry products	Industrial goods	Machinery and equipment	Automotive products	Consumer goods	Special transactions trade	Total
millions of dollars									
Newfoundland and Labrador									
2009	3.4	0.0	0.2	20.3	13.2	0.1	0.1	0.0	37.2
2010	3.7	273.3	0.0	2.8	10.5	0.1	0.5	2.5	293.4
Prince Edward Island									
2009	0.6	0.0	0.0	0.0	0.1	0.0	0.1	0.0	0.8
2010	0.4	0.0	0.0	0.0	0.1	0.0	0.1	0.0	0.5
Nova Scotia									
2009	20.3	109.1	0.8	66.5	68.4	242.3	12.4	5.9	525.7
2010	38.6	190.9	1.1	124.6	102.7	359.7	11.3	1.4	830.2
New Brunswick									
2009	33.5	482.2	5.3	94.4	83.0	33.5	23.2	1.8	757.0
2010	32.4	724.5	8.4	92.1	101.4	42.6	23.1	2.0	1,026.6
Quebec									
2009	308.8	983.2	43.8	1,124.6	1,464.9	182.1	796.3	46.3	4,950.2
2010	336.9	1,198.2	53.2	1,219.0	1,372.6	186.3	728.3	39.5	5,134.1
Ontario									
2009	1,357.9	376.0	68.4	3,377.4	4,847.6	3,189.9	2,719.5	275.1	16,211.9
2010	1,389.3	665.3	85.0	4,239.0	5,361.3	5,117.3	2,837.4	453.3	20,148.0
Manitoba									
2009	84.6	18.5	9.1	282.1	489.6	80.7	149.5	6.8	1,120.9
2010	68.5	58.5	7.2	348.5	493.3	120.2	133.8	6.3	1,236.3
Saskatchewan									
2009	30.6	37.1	2.4	166.2	352.2	53.7	21.6	2.3	666.1
2010	29.8	75.3	1.6	194.7	343.5	84.3	26.7	1.7	757.7
Alberta									
2009	160.1	197.9	7.0	272.5	499.4	61.7	90.9	9.7	1,299.3
2010	163.8	174.1	11.7	389.6	581.2	91.8	109.7	14.7	1,536.6
British Columbia									
2009	375.1	218.2	41.0	500.1	903.8	259.2	458.1	14.3	2,769.8
2010	373.4	274.1	52.6	636.4	904.7	216.4	469.7	12.7	2,940.0
Yukon, Northwest Territories and Nunavut									
2009	5.8	0.1	0.0	0.1	0.2	0.1	0.0	0.0	6.4
2010	6.0	0.1	0.0	0.2	4.9	0.0	0.1	0.0	11.2
Total									
2009	2,380.8	2,422.4	178.1	5,904.1	8,722.4	4,103.3	4,271.8	362.3	28,345.3
2010	2,442.8	3,634.4	220.9	7,247.0	9,276.2	6,218.7	4,340.7	534.1	33,914.7

Table 9-2
Imports by province of clearance, customs basis, not seasonally adjusted — Year to date, January to May

	Agricultural and fishing products	Energy products	Forestry products	Industrial goods	Machinery and equipment	Automotive products	Consumer goods	Special transactions trade	Total
millions of dollars									
Newfoundland and Labrador									
2009	19.1	698.0	0.5	57.6	49.7	0.3	1.4	0.1	826.8
2010	19.6	949.2	0.1	15.2	65.9	0.3	2.7	2.8	1,055.8
Prince Edward Island									
2009	1.7	0.0	0.0	17.6	0.4	0.1	0.2	0.1	20.0
2010	1.8	0.0	0.0	5.3	0.3	0.1	0.1	0.1	7.7
Nova Scotia									
2009	127.1	597.4	5.0	342.2	465.7	1,006.2	73.2	13.1	2,629.9
2010	157.1	809.2	6.3	511.2	401.5	1,386.9	66.8	13.2	3,352.0
New Brunswick									
2009	142.0	2,132.3	43.1	365.9	353.8	119.4	79.2	10.2	3,245.9
2010	151.5	3,244.5	44.8	434.8	376.0	183.8	108.4	8.4	4,552.2
Quebec									
2009	1,762.1	4,649.1	329.1	5,686.2	8,379.8	829.5	4,617.3	221.3	26,474.4
2010	1,796.8	6,111.4	293.5	6,094.4	6,860.2	880.7	4,167.6	220.3	26,425.0
Ontario									
2009	6,769.0	2,291.7	372.1	17,701.1	25,202.7	15,879.9	14,521.2	1,461.0	84,198.7
2010	6,489.4	2,362.3	410.3	19,751.4	24,699.4	24,400.9	13,925.5	1,546.7	93,585.9
Manitoba									
2009	406.7	81.3	35.7	1,566.4	2,532.6	566.2	707.6	38.8	5,935.4
2010	357.4	238.3	38.9	1,529.7	2,279.0	508.2	622.4	33.6	5,607.4
Saskatchewan									
2009	147.9	170.5	12.6	1,092.3	1,539.2	338.3	107.0	15.6	3,423.4
2010	133.1	233.7	9.8	984.5	1,505.5	361.9	106.9	7.7	3,343.2
Alberta									
2009	773.2	1,345.5	43.3	2,091.9	3,189.2	321.9	476.4	51.8	8,293.2
2010	783.0	1,226.1	47.0	1,877.4	2,614.0	415.8	481.3	55.2	7,499.7
British Columbia									
2009	1,843.1	958.6	198.7	2,913.9	4,785.2	1,433.1	2,732.4	67.4	14,932.4
2010	1,774.0	1,252.9	259.2	2,823.2	4,388.4	1,190.6	2,431.1	61.9	14,181.3
Yukon, Northwest Territories and Nunavut									
2009	11.1	2.0	0.0	0.9	16.2	0.3	0.1	0.9	31.5
2010	14.0	1.3	0.0	0.7	15.4	0.2	0.1	0.3	32.1
Total									
2009	12,002.9	12,926.4	1,040.1	31,836.1	46,514.6	20,495.2	23,316.2	1,880.3	150,011.7
2010	11,677.7	16,428.8	1,109.9	34,027.6	43,205.7	29,329.3	21,913.1	1,950.1	159,642.2

Technical notes

The Canadian international merchandise trade statistical program

Introduction

The objective of this text is to provide a general overview of the Canadian International Merchandise Trade Statistical Program, with special reference to concepts and definitions. The text is intended for the general user and simplicity is emphasized. More technical details can be obtained from the International Trade Division, Statistics Canada upon request.

Conceptual framework

1. Objectives and coverage: The primary objective of the Canadian International Merchandise Trade Statistical Program is to measure the change in the stock of material resources of Canada resulting from the movement of merchandise into or out of the country. Information on imports and exports are inputs into the System of National Accounts, particularly in the balance of payments and gross domestic product, and are used in the formulation of trade and budgetary policies. Governments, importers, exporters, manufacturers and shipping companies use international merchandise trade statistics to:

- monitor import penetration and export performance,
- monitor commodity price and volume changes,
- examine transport implications.

2. Trade statistics (customs basis / balance of payments basis): Merchandise trade statistics are reported and presented on two different bases: customs basis and balance of payment basis.

When goods are imported into or exported from Canada, declarations must be filed with customs, giving such information as description and value of the goods, origin and port of clearance of commodities and mode of transport. Most of this information is required for the purposes of customs administration. Statistics developed from administrative records of customs are commonly referred to as customs-based trade statistics.

Customs-based trade statistics are more accurate at measuring imports than they are at measuring exports. This is the case because customs are typically more vigilant with respect to goods entering the country than they are with goods leaving the country.

Customs-based export statistics may understate or incorrectly portray the destination of exports. Export statistics are understated when the proper documentation is not filed with Customs. Exports are incorrectly portrayed when the country of final destination is inaccurately reported on the customs documentation. This occurs most frequently when goods are routed through an intermediary country before continuing on to their final destination.

Statistics Canada does not have a measure of undercoverage but periodically conducts reconciliation exercises with its major trading partners, excluding the United States.

On January 1, 1990, Canada entered into a memorandum of understanding with the United States concerning the exchange of import data. As a consequence, each administration is using the other's import data to replace its own export data. Canada's international merchandise trade statistics are, therefore, no longer derived exclusively from the administrative records of the Canada Border Services Agency, but from United States Customs records as well.

Customs-based information is adjusted to conform with the National Accounts concepts and definitions. The adjustments to derive balance of payments-based trade data include adjustments related to trade definition, valuation and timing. The principal difference between the two trade concepts is that customs-based merchandise trade statistics cover the physical movement of goods as they are reflected in customs documents while balance of payments-adjusted data are intended to cover all economic transactions that involve merchandise trade between residents and non-residents. The present document describes the concepts and processes pertaining to the customs-based trade statistics only. (For further information on balance of payments-adjusted data, see the publication *Canada's Balance of International Payments*, Statistics Canada (Catalogue no. 67-001-X).

3. System of trade: Canadian trade statistics are compiled according to the general system of trade, as defined by the United Nations Statistical Office. Under this system, imports include all goods that have crossed Canada's territorial boundary, whether for immediate consumption in Canada or for storage in bonded customs warehouses. Domestic exports include goods grown, extracted or manufactured in Canada, including goods of foreign origin that have been materially transformed in Canada. Re-exports are exports of goods of foreign origin that have not been materially transformed in Canada, including foreign goods withdrawn for export from bonded customs warehouses. Total exports are the sum of domestic exports and re-exports. Thus the general trade system, in principal, presents all goods entering the country (imports) and all goods leaving the country (exports). It differs from the special system of trade in the treatment of imported goods into bonded customs warehouses. Under the 'special' system, these goods are counted only if and when they are withdrawn from customs warehouses for home consumption. They are not counted in export statistics unless they have first cleared customs.

Conceptually, under the general system, the statistical frontier coincides with the geographical boundary, while under the 'special' system, it coincides with the customs boundary.

4. Valuation: For customs purposes, imports are recorded at values established according to the provisions of the Customs Act, which, since January 1, 1985, reflects valuation methods based on the General Agreement on Tariffs and Trade (GATT) Valuation Code System. In general, the value for duty of imported goods must be equivalent to the transaction value or the price actually paid.

To determine the transaction value of imported goods, all transportation and associated costs arising in respect of the goods being appraised prior to and at the place of direct shipment to Canada, are to be added to the price of the goods. Therefore, Canadian imports are valued Free on Board (FOB), place of direct shipment to Canada. It excludes freight and insurance costs in bringing the goods to Canada from the point of direct shipment.

Countries other than the United States, exports are, in principal, valued or recorded at the values declared on export documents, which usually reflect the transaction value, i.e., actual selling price or, in the case of a non-arm's length transaction, the transfer price used for company accounting purposes. Canadian exports to overseas countries are valued at F.O.B. port of exit, including domestic freight charges to that point but net of discounts and allowances. As of January, 1990, Canadian exports to the U.S. are valued F.O.B. point of exit from Canada. Prior to 1990, they were valued F.O.B. place of lading net of freight charges, discounts and allowances.

5. Statistical period: The reference period is the calendar month and the calendar year. The closing of the statistical month for imports and Canadian exports to the United States is defined as the last calendar day of the month, based as closely as practicable on the date of clearance from customs.

The closing of the statistical month for exports, to countries other than the United States, is also defined as the last calendar day of the month. Those export documents that are received too late for incorporation in the current month are assigned to the month the transaction took place. If a monthly summary report from a high volume exporter is not received on time, the data are imputed for the current month and revised with the trade value in the following statistical month.

6. Trading partner attribution (country of origin/destination): Exports are attributed to the country, which is the last known destination of the goods at the time of export. Exports to the United States are attributed to the state of destination.

Imports are attributed to their country of origin, that is, the country in which the goods were grown, extracted or manufactured in accordance to the rules of origin administered by the Canada Border Services Agency. Imports

from the United States are attributed to the state of origin. Prior to 1988, most imports were attributed to the country of export/consignment, with the exception of imports from Central and South America.

7. Principal trading areas: The 'principal trading areas' are country groupings defined as follows:

United States: includes trade with Puerto Rico and the U.S. Virgin Islands

Japan

European Union (EU): Austria, Belgium, Bulgaria, Cyprus, Czech Republic, Denmark, Estonia, Finland, France, Germany, Greece, Hungary, Ireland, Italy, Latvia, Lithuania, Luxembourg, Malta, Netherlands, Poland, Portugal, Romania, Slovakia, Slovenia, Spain, Sweden and United Kingdom

Other Organisation for Economic Co-operation and Development (OECD): Australia, Canada, Iceland, Mexico, New Zealand, Norway, South Korea, Switzerland, and Turkey. (The EU countries, United States, and Japan are also members of OECD)

Other countries: all countries and territories other than the United States, Japan, EU and other OECD

8. Legal framework: Import and export statistics with countries other than the United States are derived from information contained in administrative records collected by the Canada Border Services Agency under the Customs Act. Copies of these documents (or information therefrom) are sent to Statistics Canada in accordance with Section 25 of the Statistics Act. It follows that the disclosure of trade statistics is governed by both the Customs Act and the Statistics Act and is subject to the provisions of Section 17(2)(a) of the latter. Disclosure of export statistics to the United States is now governed by a memorandum of understanding that provides for the exchange of detailed import statistics between Canada and the United States.

Contact information

Questions concerning details of methods not covered by these notes should be addressed to the Marketing and Client Services Section, International Trade Division, Statistics Canada, 170 Tunney's Pasture Driveway, Ottawa, Ontario, K1A 0T6.

Telephone: 1-800-294-5583 or 613-951-9647

Facsimile: 1-800-664-0055 613-951-0117

Internet: trade@statcan.gc.ca