

Catalogue no. 65-001-X

Canadian International Merchandise Trade

April 2010



Statistics
Canada

Statistique
Canada

Canada

How to obtain more information

For information about this product or the wide range of services and data available from Statistics Canada, visit our website at www.statcan.gc.ca, e-mail us at infostats@statcan.gc.ca, or telephone us, Monday to Friday from 8:30 a.m. to 4:30 p.m., at the following numbers:

Statistics Canada's National Contact Centre

Toll-free telephone (Canada and the United States):

Inquiries line	1-800-263-1136
National telecommunications device for the hearing impaired	1-800-363-7629
Fax line	1-877-287-4369

Local or international calls:

Inquiries line	1-613-951-8116
Fax line	1-613-951-0581

Depository Services Program

Inquiries line	1-800-635-7943
Fax line	1-800-565-7757

To access this product

This product, Catalogue no. 65-001-X, is available free in electronic format. To obtain a single issue, visit our website at www.statcan.gc.ca and browse by "Key resource" > "Publications."

Standards of service to the public

Statistics Canada is committed to serving its clients in a prompt, reliable and courteous manner. To this end, Statistics Canada has developed *standards of service* that its employees observe. To obtain a copy of these service standards, please contact Statistics Canada toll-free at 1-800-263-1136. The service standards are also published on www.statcan.gc.ca under "About us" > "Providing services to Canadians."

Statistics Canada
International Trade Division

Canadian International Merchandise Trade

April 2010

Published by authority of the Minister responsible for Statistics Canada

© Minister of Industry, 2010

All rights reserved. The content of this electronic publication may be reproduced, in whole or in part, and by any means, without further permission from Statistics Canada, subject to the following conditions: that it be done solely for the purposes of private study, research, criticism, review or newspaper summary, and/or for non-commercial purposes; and that Statistics Canada be fully acknowledged as follows: Source (or "Adapted from", if appropriate): Statistics Canada, year of publication, name of product, catalogue number, volume and issue numbers, reference period and page(s). Otherwise, no part of this publication may be reproduced, stored in a retrieval system or transmitted in any form, by any means—electronic, mechanical or photocopy—or for any purposes without prior written permission of Licensing Services, Client Services Division, Statistics Canada, Ottawa, Ontario, Canada K1A 0T6.

June 2010

Catalogue no. 65-001-X, vol. 64, no. 4

ISSN 1480-8781

Frequency: Monthly

Ottawa

Cette publication est également disponible en français.

Note of appreciation

Canada owes the success of its statistical system to a long-standing partnership between Statistics Canada, the citizens of Canada, its businesses, governments and other institutions. Accurate and timely statistical information could not be produced without their continued cooperation and goodwill.

User information

Symbols

The following standard symbols are used in Statistics Canada publications:

- . not available for any reference period
- .. not available for a specific reference period
- ... not applicable
- 0 true zero or a value rounded to zero
- 0^s value rounded to 0 (zero) where there is a meaningful distinction between true zero and the value that was rounded
- p preliminary
- r revised
- x suppressed to meet the confidentiality requirements of the *Statistics Act*
- E use with caution
- F too unreliable to be published

Note to users

All totals are calculated from full figures and rounded independently; consequently, totals may not equal the sum of their components.

The data is based on commodity groups (sector, subsector and major group).

Table of contents

Highlights	5
Analysis	7
Related products	11
Statistical tables	
1 Merchandise trade of Canada, balance of payments basis, seasonally adjusted	15
1-1 Current dollars	15
1-2 Constant dollars, 2002	16
1-3 Price indices (Laspeyres)	17
2 Exports by commodity groupings, balance of payments basis, seasonally adjusted	18
2-1 Current dollars	18
2-2 Constant dollars, 2002	20
3 Domestic exports to selected countries, customs basis, not seasonally adjusted	22
3-1 April	22
3-2 Year to date, January to April	23
4 Domestic exports by country, customs basis, not seasonally adjusted	24
5 Exports by province of origin, customs basis, not seasonally adjusted	28
5-1 April	28
5-2 Year to date, January to April	29
6 Imports by commodity groupings, balance of payments basis, seasonally adjusted	30
6-1 Current dollars	30
6-2 Constant dollars, 2002	32
7 Imports from selected countries, customs basis, not seasonally adjusted	34
7-1 April	34
7-2 Year to date, January to April	35
8 Imports by country, customs basis, not seasonally adjusted	36

Table of contents – continued

9	Imports by province of clearance, customs basis, not seasonally adjusted	40
9-1	April	40
9-2	Year to date, January to April	41

Data quality, concepts and methodology

	Technical notes	42
--	-----------------	----

Highlights

- Canada's merchandise exports declined 1.0% while imports fell 2.2% in April, as a result of lower prices. Export and import volumes rose for a third consecutive month, albeit at a slower pace than in the previous two months. Canada's trade balance with the world went from a deficit of \$236 million in March to a surplus of \$175 million in April.
- Exports decreased to \$32.9 billion from \$33.3 billion in March, the second consecutive monthly decline. Export prices fell 1.4% while volumes grew 0.4%. Industrial goods and materials, accounted for three-quarters of the decline in exports. Widespread gains in exports of machinery and equipment moderated the overall decrease.
- Following two months of growth, imports declined to \$32.8 billion from \$33.5 billion in March, as import prices fell 2.4% while volumes grew 0.2%. The decrease in overall imports in April reflected declines in industrial goods and materials and, to a lesser extent, in other consumer goods, and machinery and equipment.
- Exports to the United States rose 0.7% while imports grew 0.9%. As a result, Canada's trade surplus with the United States remained at \$3.8 billion in April.
- Exports to countries other than the United States declined 5.5%, largely the result of a 23.4% decline in exports to the European Union. Imports fell 7.0% led by decreases in precious metals from the European Union. Consequently, Canada's trade deficit with countries other than the United States narrowed to \$3.6 billion in April from \$4.0 billion in March.

Note to readers

Merchandise trade is one component of Canada's international balance of payments, which also includes trade in services, investment income, current transfers as well as capital and financial flows.

International merchandise trade data by country are available on both a balance of payments and a customs basis for the United States, Japan and the United Kingdom. Trade data for all other individual countries are available on a customs basis only. Balance of payments data are derived from customs data by making adjustments for characteristics such as valuation, coverage, timing and residency. These adjustments are made to conform to the concepts and definitions of the Canadian System of National Accounts.

Data in this release are on a balance of payments basis, seasonally adjusted in current dollars. Constant dollars are calculated using the Laspeyres volume formula.

Revisions

In general, merchandise trade data are revised on an ongoing basis for each month of the current year. Current year revisions are reflected in both the customs and balance of payments based data. Revisions to customs based data for the previous year are released on a quarterly basis. Revisions to balance of payments based data, for the four previous years, are released today.

Factors influencing revisions include late receipt of import and export documentation, incorrect information on customs forms, replacement of estimates with actual figures, changes in classification of merchandise based on more current information, and changes to seasonal adjustment factors.

Revised data are available in the appropriate CANSIM tables.

Chart 1
Exports and imports, seasonally adjusted, on a balance of payments basis

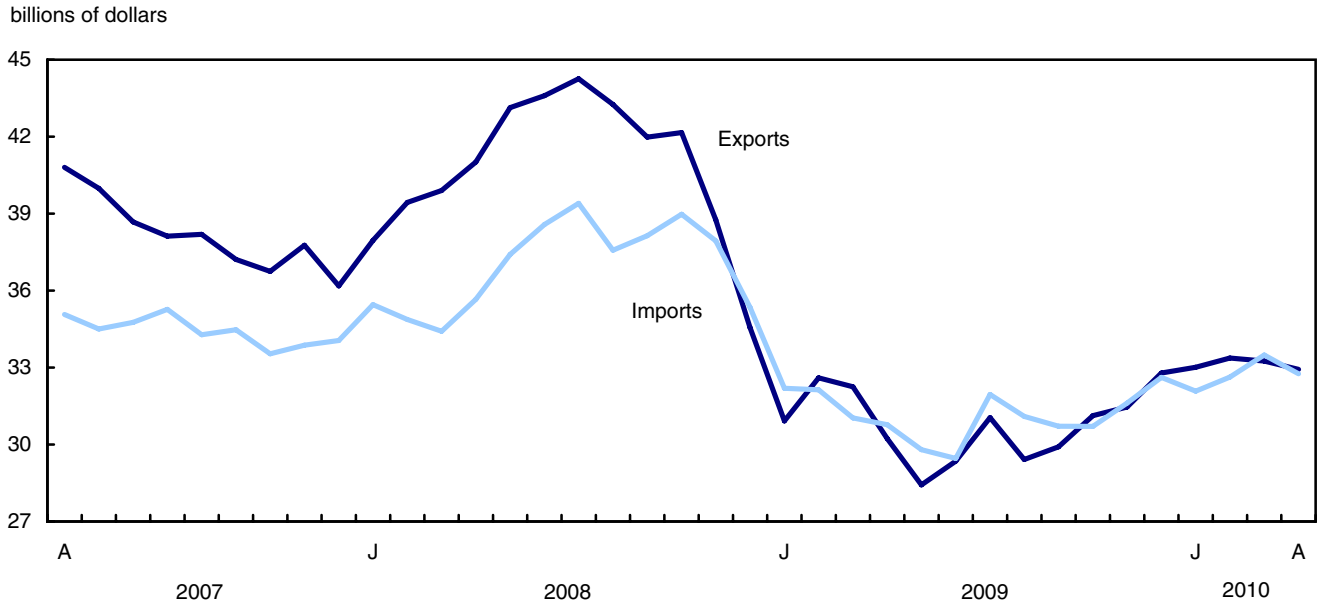
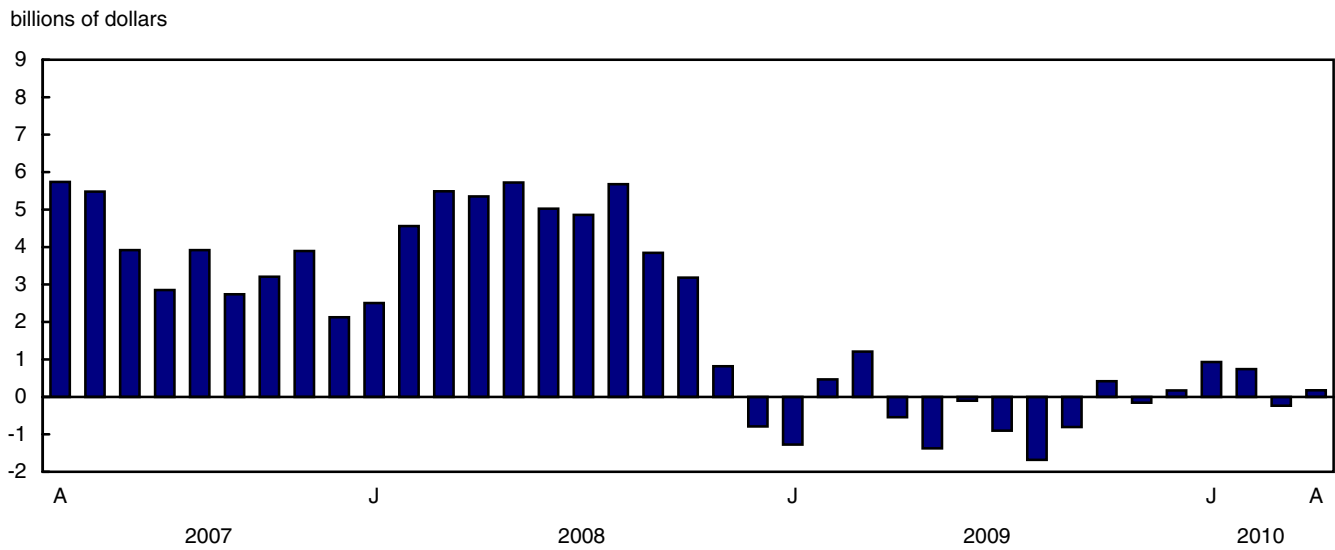


Chart 2
Trade balance, seasonally adjusted, on a balance of payments basis



Analysis

Precious metals lead the decline in exports

After three months of increases, exports of industrial goods and materials declined 3.0% to \$8.1 billion. Precious metals, which accounted for the growth in the sector in March, fell 27.4% in April. Fertilizers and fertilizer materials declined 13.7%, largely due to lower exports of potash. Higher exports of other crude animal products, namely mink fur, followed by nickel ores moderated the decline in the sector.

Exports of energy products decreased 2.6% to \$7.7 billion, as volumes fell 3.4%. This represented a fourth consecutive monthly decline in volumes. Exports of natural gas fell 20.9% reflecting lower prices and volumes. The demand for natural gas decreased as a result of the mild weather and high inventory levels. Exports of crude petroleum declined 3.1% while exports of other energy products, led by petroleum and coal products, grew in April.

Agricultural and fishing products exports decreased 5.7% to \$2.8 billion, ending six consecutive months of increases. The decline was mostly due to a 3.9% decrease in volumes. Prices of agricultural products, on a downward trend since October 2008, declined 1.9% in April. Exports of other food, feed, beverages and tobacco, namely vegetables and vegetable products, declined 5.5%. Exports of wheat fell 12.0%.

In contrast, exports of machinery and equipment grew 4.6% to \$6.0 billion as volumes rose 5.6%. Widespread gains in the sector were led by higher exports of aircrafts and other transportation equipment which accounted for over half the growth in the sector.

Industrial goods and materials largely account for the decrease in imports

Imports of industrial goods and materials fell 8.8% to \$6.7 billion in April, following a gain of 11.6% in March. Import volumes decreased 5.4% while prices declined 3.6%. Metals and metal ores as well as chemicals and plastics, which led the gain in the previous month, were the main contributors to the decline in the sector.

Precious metals, after reaching record highs in March, fell 30.8% and were the main factor behind the 13.3% decrease in imports of metals and metal ores. Imports of chemicals and plastics declined 10.0% mainly due to lower imports of organic chemicals notably active pharmaceutical ingredients.

Imports of other consumer goods fell 6.0% to \$4.3 billion, the lowest level since July 2006. Miscellaneous end products led the decrease, reflecting lower imports of medicinal and pharmaceutical products as well as medical, ophthalmic and orthodontic supplies.

After two months of growth, imports of machinery and equipment decreased 1.2% to \$8.6 billion, as prices fell 1.7%. Although decreases were widespread throughout the sector, the decline was mostly the result of a 26.9% drop in imports of engines, turbines and motors.

Chart 1
Exports of industrial goods and material, seasonally adjusted, on a balance of payments basis

billions of dollars

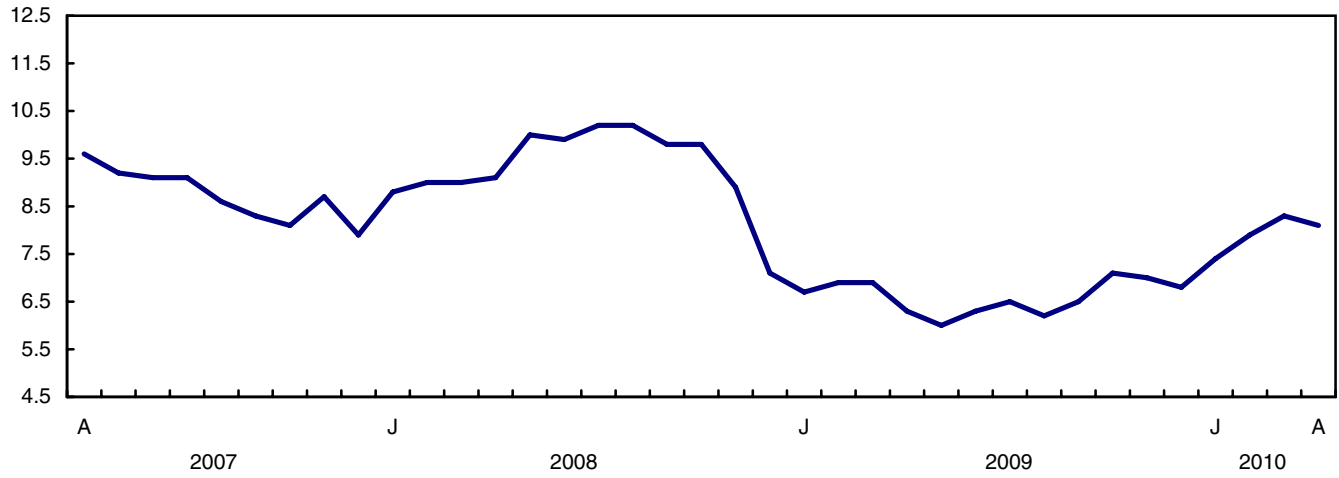


Chart 2
Exports of energy products, seasonally adjusted, on a balance of payments basis

billions of dollars

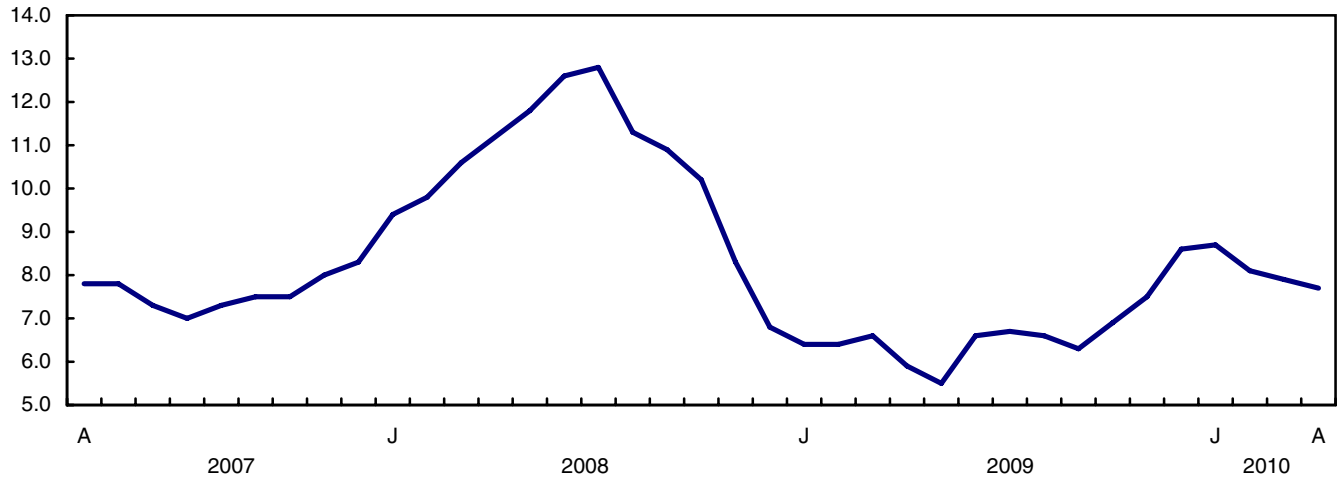


Chart 3
Imports of industrial goods and material, seasonally adjusted, on a balance of payments basis

billions of dollars

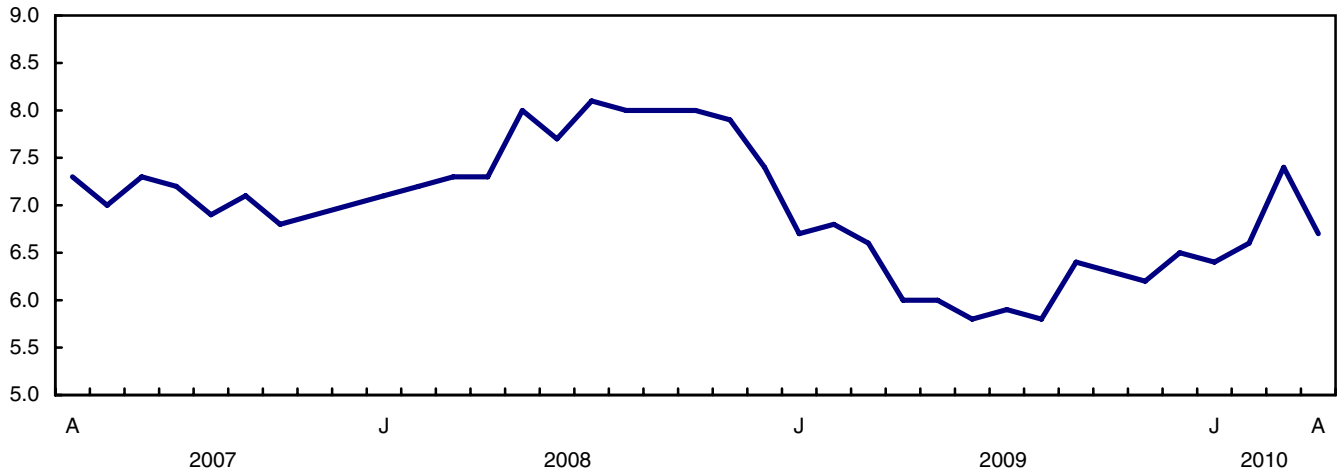
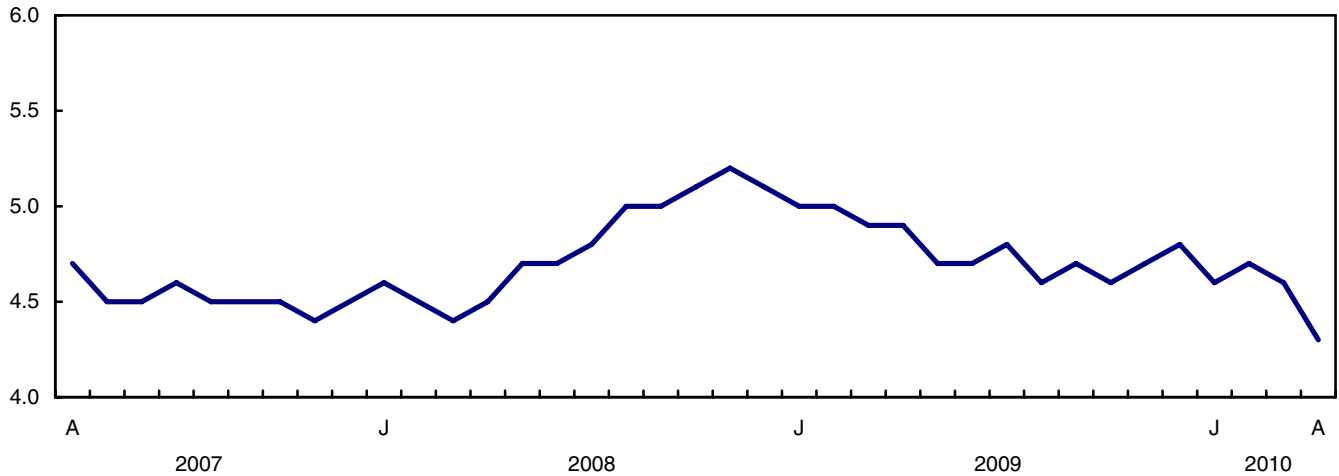


Chart 4
Imports of other consumer goods, seasonally adjusted, on a balance of payments basis

billions of dollars



Text table 1
Merchandise trade by principal trading area, balance of payments basis, seasonally adjusted

	March 2010	April 2010	Change	Year to date			April 2010/ April 2009		
				2009	2010	Change			
	millions of dollars		percent		millions of dollars		percent		
Export to									
United States	24,203	24,380	177	0.7	92,109	98,324	6,215	6.7	10.9
Japan	658	671	14	2.1	3,331	2,851	-480	-14.4	-14.3
European Union ¹	3,244	2,485	-759	-23.4	11,099	10,997	-102	-0.9	-3.1
Other Organisation for Economic Co-operation and Development ²	1,714	1,664	-49	-2.9	5,255	6,372	1,117	21.2	18.6
Other countries	3,437	3,731	294	8.6	14,206	14,028	-178	-1.3	6.6
Total	33,256	32,932	-324	-1.0	126,000	132,572	6,572	5.2	8.9
Imports from									
United States	20,390	20,575	185	0.9	79,392	82,065	2,673	3.4	5.7
Japan	800	808	9	1.1	3,222	3,179	-42	-1.3	9.8
European Union ¹	3,857	3,307	-550	-14.3	13,036	13,358	322	2.5	7.0
Other Organisation for Economic Co-operation and Development ²	2,401	2,286	-115	-4.8	8,275	9,460	1,185	14.3	9.2
Other countries	6,043	5,781	-263	-4.3	22,216	22,899	684	3.1	7.2
Total	33,492	32,757	-735	-2.2	126,140	130,962	4,822	3.8	6.4
Balance									
United States	3,814	3,805	-8	...	12,718	16,259	3,542
Japan	-142	-137	5	...	109	-328	-437
European Union ¹	-613	-822	-209	...	-1,937	-2,361	-424
Other Organisation for Economic Co-operation and Development ²	-688	-622	66	...	-3,020	-3,088	-68
Other countries	-2,606	-2,050	557	...	-8,009	-8,871	-861
Total	-236	175	411	...	-140	1,611	1,751

1. European Union includes: Austria, Belgium, Bulgaria, Cyprus, Czech Republic, Denmark, Estonia, Finland, France, Germany, Greece, Hungary, Ireland, Italy, Latvia, Lithuania, Luxembourg, Malta, Netherlands, Poland, Portugal, Romania, Slovakia, Slovenia, Spain, Sweden and United Kingdom.
2. Other Organisation for Economic Co-operation and Development includes: Australia, Canada, Iceland, Mexico, New Zealand, Norway, South Korea, Switzerland and Turkey.

Text table 2
Reconciliation of customs and balance of payments trade data, not seasonally adjusted

	2010				2009		2009
	April	March	February	January	December	November	Annual
	millions of dollars						
Exports							
Customs basis	32,582	34,703	30,339	30,441	31,091	30,542	360,030
Balance of payments adjustments	784	876	747	711	568	1,123	9,499
Valuation and residency							
Inland freight	543	553	515	487	484	480	6,214
Other valuation and residency	-1,059	-885	-784	-813	-931	-668	-8,038
Timing	110	23	27	-47	17	-17	-163
Coverage	1,190	1,185	989	1,084	998	1,328	11,486
Balance of payments basis	33,366	35,579	31,086	31,152	31,659	31,665	369,529
Imports							
Customs basis	32,310	35,067	29,866	28,187	30,847	31,307	365,159
Balance of payments adjustments	894	1,273	940	705	963	661	8,938
Valuation and residency							
Inland freight	723	770	646	624	647	660	7,728
Other valuation and residency	39	123	33	21	43	40	203
Timing	0	0	0	0	0	0	0
Coverage	132	380	261	60	273	-39	1,007
Balance of payments basis	33,204	36,340	30,806	28,892	31,810	31,968	374,097

Related products

Selected publications from Statistics Canada

65-208-X	International Merchandise Trade Annual Review
65-506-X	A Profile of Canadian Exporters
65F0013X	Canadian International Merchandise Trade Database
65F0019X	A Database for Analysis of International Markets
65F0020X	Data Integration - International Trade Data and Manufacturing Shipments Data

Selected CANSIM tables from Statistics Canada

228-0001	Merchandise imports and exports, by major groups and principal trading areas for all countries, monthly
228-0002	Merchandise imports and exports, by major groups and principal trading areas for all countries, quarterly
228-0003	Merchandise imports and exports, by major groups and principal trading areas for all countries, annual
228-0033	Imports, customs-based, by province of clearance, monthly
228-0034	Domestic exports, customs-based, by province of origin, monthly
228-0041	Merchandise imports and exports by sector and sub-sector, customs and balance of payments basis, for all countries, monthly
228-0042	Merchandise imports and exports by sector and sub-sector, customs and balance of payments basis, for all countries, quarterly
228-0043	Merchandise imports and exports by sector and sub-sector, customs and balance of payments basis, for all countries, annual
228-0047	Merchandise imports and exports balance of payments and customs-based price and volume indexes for all countries, monthly
228-0048	Merchandise imports and exports balance of payments and customs-based price and volume indexes for all countries, quarterly
228-0049	Merchandise imports and exports balance of payments and customs-based price and volume indexes for all countries, annual

228-0050	Merchandise imports and exports customs-based price indexes, Canada and United States trade, and Standard International Trade Classification (SITC revision 3) price indexes for all countries and United States, monthly
228-0051	Merchandise imports and exports customs-based price indexes, Canada and United States trade, and Standard International Trade Classification (SITC revision 3) price indexes for all countries and United States, quarterly
228-0052	Merchandise imports and exports customs-based price indexes, Canada and United States trade, and Standard International Trade Classification (SITC revision 3) price indexes for all countries and United States, annual
228-0053	Merchandise import and export price and volume indexes by sector and sub-sector, customs and balance of payments basis, for all countries, monthly
228-0054	Merchandise import and export price and volume indexes by sector and sub-sector, customs and balance of payments basis, for all countries, quarterly
228-0055	Merchandise import and export price and volume indexes by sector and sub-sector, customs and balance of payments basis, for all countries, annual
228-0056	Merchandise imports and exports by sector, balance of payments basis, for all countries, seasonally adjusted, Fisher formula, monthly
228-0057	Merchandise imports and exports by sector, balance of payments basis, for all countries, seasonally adjusted, Fisher formula, quarterly

Selected surveys from Statistics Canada

2201	Canadian International Merchandise Trade (Customs Basis)
2202	Canadian International Merchandise Trade (Balance of Payments Basis)
2203	International Trade Price Indexes

Selected summary tables from Statistics Canada

- *Canada: Economic and financial data*
- *Imports, exports and trade balance of goods on a balance-of-payments basis, by country or country grouping*
- *Exports of goods on a balance-of-payments basis*

- *Imports of goods on a balance-of-payments basis*
- *Merchandise trade of Canada (monthly)*
- *Economic indicators, by province and territory (monthly and quarterly)*
- *Latest statistics (monthly)*

Statistical tables

Table 1-1
Merchandise trade of Canada, balance of payments basis, seasonally adjusted — Current dollars

	Exports	Imports	Trade balance	Period to period change		
				Exports	Imports	Balance
				millions of dollars	percent	millions of dollars
2006	453,952	404,345	49,606	0.0	0.0	0
2007	463,120	415,683	47,437	2.0	2.8	-2,169
2008	489,995	443,752	46,244	5.8	6.8	-1,194
2009	369,529	374,097	-4,568	-24.6	-15.7	-50,812
2008						
First quarter	117,294	104,743	12,551	6.0	3.2	3,321
Second quarter	127,735	111,640	16,095	8.9	6.6	3,544
Third quarter	129,499	115,116	14,383	1.4	3.1	-1,712
Fourth quarter	115,468	112,252	3,215	-10.8	-2.5	-11,168
2009						
First quarter	95,769	95,366	403	-17.1	-15.0	-2,812
Second quarter	88,008	90,028	-2,019	-8.1	-5.6	-2,422
Third quarter	90,377	93,765	-3,388	2.7	4.2	-1,369
Fourth quarter	95,375	94,939	436	5.5	1.3	3,824
2010						
First quarter	99,640	98,205	1,436	4.5	3.4	999
2009						
January	30,921	32,192	-1,272	-10.5	-8.9	-483
February	32,599	32,133	466	5.4	-0.2	1,737
March	32,249	31,040	1,209	-1.1	-3.4	743
April	30,231	30,774	-543	-6.3	-0.9	-1,752
May	28,424	29,797	-1,373	-6.0	-3.2	-830
June	29,353	29,456	-104	3.3	-1.1	1,269
July	31,048	31,952	-904	5.8	8.5	-800
August	29,419	31,099	-1,680	-5.2	-2.7	-777
September	29,910	30,714	-804	1.7	-1.2	876
October	31,128	30,708	420	4.1	0.0	1,224
November	31,462	31,616	-154	1.1	3.0	-573
December	32,785	32,615	170	4.2	3.2	324
2010						
January	33,013	32,083	930	0.7	-1.6	760
February	33,372	32,630	741	1.1	1.7	-188
March	33,256	33,492	-236	-0.3	2.6	-977
April	32,932	32,757	175	-1.0	-2.2	411

Note(s): Because of rounding, monthly data may not add up to quarterly data and quarterly data may not add up to annual data.

Table 1-2
Merchandise trade of Canada, balance of payments basis, seasonally adjusted — Constant dollars, 2002

	Exports	Imports	Trade balance	Period to period change	
				Exports	Imports
	millions of dollars			percent	
2006	442,729	457,196	-14,466	0.0	0.0
2007	449,015	484,005	-34,990	1.4	5.9
2008	415,119	485,902	-70,783	-7.5	0.4
2009	345,911	405,261	-59,350	-16.7	-16.6
2008					
First quarter	107,071	123,094	-16,023	-2.6	-1.2
Second quarter	106,872	125,669	-18,797	-2.0	2.1
Third quarter	104,062	123,918	-19,856	-2.6	-1.4
Fourth quarter	97,114	113,221	-16,107	-6.7	-8.6
2009					
First quarter	87,218	97,521	-10,303	-10.2	-13.9
Second quarter	83,055	96,718	-13,663	-4.8	-0.8
Third quarter	86,329	104,265	-17,935	3.9	7.8
Fourth quarter	89,308	106,757	-17,449	3.5	2.4
2010					
First quarter	91,400	110,145	-18,745	2.3	3.2
2009					
January	27,994	33,229	-5,235	-9.4	-7.4
February	29,778	32,701	-2,923	6.4	-1.6
March	29,446	31,592	-2,145	-1.1	-3.4
April	28,359	31,963	-3,604	-3.7	1.2
May	27,195	32,360	-5,165	-4.1	1.2
June	27,502	32,395	-4,893	1.1	0.1
July	29,630	35,032	-5,402	7.7	8.1
August	28,012	34,860	-6,847	-5.5	-0.5
September	28,687	34,373	-5,686	2.4	-1.4
October	29,629	34,757	-5,128	3.3	1.1
November	29,376	35,625	-6,249	-0.9	2.5
December	30,304	36,375	-6,071	3.2	2.1
2010					
January	30,223	36,127	-5,904	-0.3	-0.7
February	30,420	36,592	-6,172	0.7	1.3
March	30,757	37,427	-6,670	1.1	2.3
April	30,887	37,498	-6,611	0.4	0.2

Note(s): Because of rounding, monthly data may not add up to quarterly data and quarterly data may not add up to annual data.

Table 1-3
Merchandise trade of Canada, balance of payments basis, seasonally adjusted — Price indices (Laspeyres)

	2002=100			Period to period change		
	Exports	Imports	Terms of trade	Exports	Imports	Terms of trade
	price indices (Laspeyres)			percent		
2006	105.1	92.5	113.6	0.0	0.0	0.0
2007	107.1	91.4	117.1	1.9	-1.2	3.1
2008	116.3	97.5	119.3	8.6	6.6	2.0
2009	105.4	97.1	108.6	-9.4	-0.4	-9.0
2008						
First quarter	111.2	90.1	123.4	5.6	3.1	2.5
Second quarter	118.5	94.7	125.1	6.6	5.1	1.5
Third quarter	122.1	100.9	121.0	3.1	6.6	-3.5
Fourth quarter	113.7	104.1	109.2	-6.9	3.2	-10.1
2009						
First quarter	109.5	101.5	107.8	-3.7	-2.5	-1.2
Second quarter	104.6	97.9	106.8	-4.5	-3.6	-0.9
Third quarter	102.6	95.2	107.8	-1.9	-2.7	0.9
Fourth quarter	105.7	93.8	112.7	3.0	-1.5	4.5
2010						
First quarter	107.6	94.4	114.0	1.8	0.7	1.2
2009						
January	109.0	100.4	108.5	-1.7	-2.1	0.4
February	109.1	101.4	107.6	0.1	0.9	-0.8
March	109.1	102.8	106.1	-0.1	1.4	-1.4
April	106.4	100.8	105.6	-2.4	-1.9	-0.5
May	104.0	97.0	107.2	-2.3	-3.8	1.5
June	103.5	95.9	107.9	-0.4	-1.1	0.7
July	103.5	96.3	107.5	0.0	0.4	-0.4
August	103.3	94.8	109.0	-0.2	-1.6	1.3
September	103.4	94.5	109.5	0.1	-0.3	0.4
October	104.3	93.2	111.9	0.8	-1.4	2.2
November	105.6	93.9	112.5	1.3	0.8	0.6
December	106.3	94.2	112.9	0.6	0.3	0.3
2010						
January	107.2	93.8	114.3	0.9	-0.4	1.3
February	108.4	95.0	114.1	1.1	1.3	-0.2
March	106.6	94.4	113.0	-1.6	-0.6	-1.0
April	105.9	92.3	114.8	-0.7	-2.3	1.6

Note(s): Because of rounding, monthly data may not add up to quarterly data and quarterly data may not add up to annual data.

Table 2-1
Exports by commodity groupings, balance of payments basis, seasonally adjusted — Current dollars

	March	April	Change		Year to date			April 2010/ April 2009	
	2010	2010			2009	2010	Change		
	millions of dollars		percent		millions of dollars		percent		
Total	33,256	32,932	-324	-1.0	126,000	132,572	6,572	5.2	8.9
Agricultural and fishing products	3,016	2,844	-172	-5.7	13,527	11,789	-1,738	-12.9	-17.5
Wheat	372	328	-45	-12.0	2,256	1,432	-824	-36.5	-45.1
Other agricultural and fishing products	2,644	2,517	-127	-4.8	11,271	10,357	-914	-8.1	-11.7
Live animals	144	158	14	9.8	684	565	-119	-17.4	-10.1
Fish and fish preparations	340	329	-11	-3.3	1,376	1,342	-34	-2.5	-6.1
Barley	36	40	5	12.8	203	106	-97	-47.6	-0.8
Wheat flour	7	6	-1	-16.7	27	26	-1	-4.1	-11.9
Other cereals unmilled	49	19	-30	-61.6	200	147	-53	-26.5	-54.5
Other cereal preparations	231	222	-9	-3.9	1,018	900	-118	-11.6	-12.9
Meat and meat preparations	376	372	-4	-1.1	1,573	1,481	-92	-5.9	-0.6
Alcoholic beverages	62	64	2	3.3	253	251	-2	-0.8	1.1
Other food, feed, beverages and tobacco	926	875	-50	-5.5	3,869	3,672	-197	-5.1	-7.1
Rapeseed	273	266	-6	-2.3	1,263	1,063	-201	-15.9	-35.4
Other crude vegetable products	201	166	-35	-17.5	802	803	1	0.1	-11.9
Energy products	7,893	7,691	-203	-2.6	25,253	32,442	7,189	28.5	31.1
Crude petroleum	4,621	4,478	-143	-3.1	11,556	18,472	6,917	59.9	49.9
Natural gas	1,457	1,153	-304	-20.8	6,476	5,958	-518	-8.0	-6.7
Other energy products	1,815	2,059	244	13.5	7,222	8,012	790	10.9	25.4
Coal and other bituminous substances	337	416	79	23.4	1,595	1,348	-247	-15.5	3.1
Petroleum and coal products	1,325	1,458	133	10.0	4,728	5,856	1,129	23.9	36.6
Electricity	152	185	33	21.5	899	808	-91	-10.1	8.0
Forestry products	1,756	1,791	35	2.0	6,907	6,931	24	0.3	9.3
Lumber and sawmill products	656	683	27	4.2	2,261	2,609	348	15.4	25.8
Other crude wood products	62	54	-8	-13.3	179	210	31	17.2	5.4
Lumber	388	407	19	4.8	1,266	1,570	303	23.9	38.1
Other wood fabricated materials	206	222	17	8.2	816	829	14	1.7	12.8
Wood pulp and other wood products	497	506	10	1.9	1,588	1,906	317	20.0	33.8
Newsprint and other paper and paperboard	603	601	-2	-0.3	3,057	2,416	-641	-21.0	-16.2
Newsprint paper	301	292	-8	-2.8	1,658	1,181	-477	-28.8	-22.1
Other paper and paperboard	302	309	7	2.2	1,399	1,235	-164	-11.7	-9.6
Industrial goods and materials	8,300	8,053	-247	-3.0	26,798	31,671	4,873	18.2	28.8
Metal ores	965	1,073	107	11.1	3,441	3,756	316	9.2	15.7
Iron ores, concentrates and scrap	358	341	-17	-4.7	1,548	1,411	-137	-8.9	-12.6
Copper ores, concentrates and scrap	160	185	25	15.8	440	688	248	56.3	46.0
Nickel ores, concentrates and scrap	228	306	79	34.5	563	824	261	46.3	68.6
Zinc ores, concentrates and scrap	30	12	-18	-60.0	87	77	-10	-11.6	-33.8
Other ores, concentrates and scrap	189	228	39	20.4	803	758	-46	-5.7	8.7
Chemicals, plastics and fertilizers	2,451	2,407	-44	-1.8	8,892	9,840	948	10.7	22.5
Inorganic chemicals	307	357	50	16.4	1,615	1,387	-227	-14.1	-1.9
Organic chemicals	552	512	-40	-7.2	1,512	2,058	547	36.2	37.1
Fertilizers and fertilizer materials	530	458	-72	-13.7	1,594	2,159	565	35.5	100.7
Synthetic rubber and plastics	814	836	23	2.8	3,227	3,258	31	1.0	8.4
Other chemical products	249	244	-5	-2.0	945	978	33	3.4	7.2

Table 2-1 – continued

Exports by commodity groupings, balance of payments basis, seasonally adjusted — Current dollars

	March	April	Change		Year to date			April 2010/	
	2010	2010			2009	2010	Change	April 2009	
	millions of dollars		percent		millions of dollars		percent		
Metals and alloys	3,509	3,046	-463	-13.2	8,903	12,423	3,520	39.5	49.5
Primary iron and steel	106	112	6	5.2	91	402	311	341.2	156.7
Steel bars, rods, plates, sheets	289	296	7	2.3	1,044	1,138	94	9.0	50.7
Other iron and steel and alloys	237	234	-3	-1.2	839	937	99	11.8	22.0
Aluminum including alloys	636	636	1	0.1	1,994	2,534	541	27.1	48.1
Copper and alloys	292	266	-26	-8.8	762	1,169	407	53.5	55.0
Nickel and alloys	152	146	-6	-3.9	733	544	-189	-25.8	-10.5
Precious metals and alloys	1,567	1,137	-430	-27.4	2,861	4,802	1,942	67.9	66.3
Zinc and alloys	142	131	-11	-8.0	310	533	222	71.6	72.2
Other non-ferrous metals and alloys	88	88	0	-0.2	269	363	94	34.9	8.0
Other industrial goods and materials	1,374	1,527	153	11.2	5,563	5,652	89	1.6	15.6
Asbestos unmanufactured	5	6	1	20.1	22	21	-1	-5.3	-9.8
Other crude animal products	41	152	110	266.3	243	313	70	28.7	133.3
Other crude non-metallic minerals	315	362	47	14.9	1,094	1,296	202	18.4	49.6
Other crude materials, inedible	63	50	-13	-20.7	183	214	31	16.9	8.0
Metal fabricated basic products	332	336	4	1.2	1,470	1,348	-122	-8.3	-3.4
Textile fabricated materials	173	174	1	0.8	715	701	-14	-2.0	-0.8
Non-metallic mineral basic products	146	146	0	0.1	685	604	-81	-11.9	-8.5
Other fabricated materials	300	303	3	0.9	1,151	1,157	6	0.5	8.1
Machinery and equipment	5,720	5,984	265	4.6	29,950	23,497	-6,452	-21.5	-14.1
Industrial and agricultural machinery	1,345	1,395	50	3.7	7,299	5,549	-1,750	-24.0	-17.9
Industrial machinery	1,213	1,244	32	2.6	6,535	4,966	-1,569	-24.0	-18.0
Agricultural machinery includ. tractors	133	151	18	13.4	764	583	-181	-23.7	-16.7
Aircraft and other transportation equipment	1,316	1,459	143	10.9	7,021	5,497	-1,524	-21.7	-6.8
Aircraft, engines, parts	1,031	1,148	117	11.4	5,617	4,321	-1,296	-23.1	-8.2
Other transportation equipment	285	311	26	9.0	1,403	1,176	-228	-16.2	-1.5
Other machinery and equipment	3,058	3,130	72	2.4	15,630	12,451	-3,179	-20.3	-15.5
Television, telecommunication equipment	585	592	7	1.2	3,261	2,429	-833	-25.5	-23.3
Office machines and equipment	335	340	5	1.4	1,794	1,358	-436	-24.3	-21.7
Other equipment and tools	1,451	1,473	23	1.6	6,967	5,809	-1,158	-16.6	-10.4
Other end products, inedible	687	726	38	5.6	3,607	2,855	-752	-20.8	-15.2
Automotive products	4,395	4,467	72	1.6	12,995	17,594	4,599	35.4	27.5
Passenger autos and chassis	2,906	2,912	7	0.2	6,471	11,570	5,098	78.8	56.2
Trucks and other motor vehicles	160	209	49	30.3	1,967	706	-1,262	-64.1	-58.5
Motor vehicle parts	1,329	1,346	17	1.3	4,556	5,318	762	16.7	18.6
Other consumer goods	1,375	1,352	-22	-1.6	6,401	5,556	-845	-13.2	-12.4
Special transactions trade	362	297	-64	-17.8	2,320	1,290	-1,031	-44.4	-45.0
Unallocated balance of payments adjustments	441	452	11	2.4	1,849	1,803	-46	-2.5	-4.7

Table 2-2
Exports by commodity groupings, balance of payments basis, seasonally adjusted — Constant dollars, 2002

	March	April	Change		Year to date			April 2010/	
	2010	2010			2009	2010	Change	April	2009
	millions of dollars		percent		millions of dollars		percent		
Total	30,757	30,887	130	0.4	115,577	122,287	6,710	5.8	8.9
Agricultural and fishing products	3,218	3,092	-126	-3.9	12,409	12,582	173	1.4	-3.7
Wheat	410	385	-25	-6.2	1,822	1,572	-250	-13.7	-22.6
Other agricultural and fishing products	2,808	2,707	-100	-3.6	10,587	11,010	423	4.0	-0.2
Live animals	165	173	8	4.9	748	665	-83	-11.1	-4.3
Fish and fish preparations	450	440	-11	-2.3	1,513	1,781	268	17.7	10.7
Barley	36	39	3	8.6	146	106	-39	-27.0	34.0
Wheat flour	7	6	-1	-16.4	24	25	1	5.9	-4.1
Other cereals unmilled	63	23	-40	-62.7	169	180	11	6.5	-40.1
Other cereal preparations	211	203	-8	-3.6	798	811	13	1.7	1.8
Meat and meat preparations	428	434	5	1.3	1,619	1,726	107	6.6	10.3
Alcoholic beverages	126	135	9	7.5	427	499	73	17.0	24.3
Other food, feed, beverages and tobacco	872	842	-31	-3.5	3,339	3,486	148	4.4	3.8
Rapeseed	257	253	-4	-1.7	1,147	980	-167	-14.6	-35.6
Other crude vegetable products	192	159	-33	-17.0	658	750	92	14.0	2.2
Energy products	4,629	4,473	-156	-3.4	18,124	18,635	511	2.8	6.3
Crude petroleum	2,122	1,931	-191	-9.0	8,187	8,237	50	0.6	7.0
Natural gas	1,397	1,292	-105	-7.5	5,572	5,541	-31	-0.6	-5.2
Other energy products	1,110	1,249	140	12.6	4,364	4,856	492	11.3	20.1
Coal and other bituminous substances	163	166	3	1.6	347	614	267	77.1	76.0
Petroleum and coal products	777	827	50	6.4	3,217	3,319	102	3.2	8.6
Electricity	170	256	87	51.3	801	923	123	15.3	38.6
Forestry products	2,198	2,204	6	0.3	8,064	8,693	629	7.8	10.3
Lumber and sawmill products	843	841	-2	-0.2	3,020	3,385	365	12.1	13.8
Other crude wood products	87	72	-16	-18.1	218	292	74	34.1	18.4
Lumber	532	543	10	2.0	1,902	2,191	289	15.2	19.4
Other wood fabricated materials	223	227	4	1.7	901	902	1	0.2	1.2
Wood pulp and other wood products	621	626	5	0.9	2,187	2,387	200	9.1	10.8
Newsprint and other paper and paperboard	734	737	3	0.4	2,857	2,921	64	2.2	6.2
Newsprint paper	379	373	-7	-1.8	1,481	1,470	-11	-0.8	6.4
Other paper and paperboard	355	364	9	2.7	1,375	1,451	75	5.5	6.0
Industrial goods and materials	5,686	5,601	-85	-1.5	20,577	22,014	1,438	7.0	12.3
Metal ores	490	501	11	2.2	1,950	1,906	-44	-2.3	-10.0
Iron ores, concentrates and scrap	174	152	-22	-12.9	553	689	137	24.7	7.3
Copper ores, concentrates and scrap	55	59	4	6.8	232	232	0	-0.1	1.0
Nickel ores, concentrates and scrap	104	126	22	21.0	438	394	-44	-10.2	-16.2
Zinc ores, concentrates and scrap	15	6	-9	-60.6	64	38	-27	-41.6	-49.5
Other ores, concentrates and scrap	141	158	17	12.2	662	553	-109	-16.5	-18.8
Chemicals, plastics and fertilizers	1,786	1,731	-55	-3.1	6,596	7,055	459	7.0	9.5
Inorganic chemicals	172	181	9	5.3	769	702	-67	-8.7	3.1
Organic chemicals	309	288	-22	-7.1	1,311	1,204	-107	-8.1	-16.0
Fertilizers and fertilizer materials	237	205	-32	-13.6	520	901	382	73.4	164.2
Synthetic rubber and plastics	758	767	9	1.2	2,933	3,055	123	4.2	5.0
Other chemical products	309	291	-18	-6.0	1,064	1,192	128	12.1	14.2

Table 2-2 – continued

Exports by commodity groupings, balance of payments basis, seasonally adjusted — Constant dollars, 2002

	March 2010	April 2010	Change	Year to date			April 2010/ April 2009		
				2009		Change			
				millions of dollars	percent	millions of dollars		percent	
Metals and alloys	2,120	1,906	-214	-10.1	6,527	7,686	1,159	17.8	27.9
Primary iron and steel	77	76	-1	-1.6	59	287	229	389.8	170.1
Steel bars, rods, plates, sheets	252	244	-7	-2.8	750	968	218	29.1	67.2
Other iron and steel and alloys	202	199	-3	-1.4	664	802	138	20.8	17.3
Aluminum including alloys	642	634	-8	-1.3	2,400	2,532	132	5.5	23.2
Copper and alloys	100	85	-14	-14.3	445	384	-62	-13.9	1.9
Nickel and alloys	79	76	-3	-3.6	562	286	-276	-49.2	-42.8
Precious metals and alloys	652	477	-175	-26.9	1,213	1,987	774	63.8	59.5
Zinc and alloys	79	76	-3	-3.4	272	284	12	4.6	13.4
Other non-ferrous metals and alloys	39	39	0	0.9	164	157	-7	-4.1	-20.3
Other industrial goods and materials	1,290	1,462	173	13.4	5,504	5,368	-136	-2.5	7.6
Asbestos unmanufactured	5	5	1	16.8	23	21	-2	-8.1	-15.3
Other crude animal products	54	159	105	194.6	315	347	32	10.1	79.6
Other crude non-metallic minerals	327	397	71	21.6	1,686	1,421	-265	-15.7	-3.6
Other crude materials, inedible	60	46	-14	-23.6	179	198	19	10.5	0.6
Metal fabricated basic products	272	272	0	0.0	1,139	1,096	-43	-3.8	-0.1
Textile fabricated materials	189	191	2	1.0	648	763	115	17.7	19.0
Non-metallic mineral basic products	122	122	0	-0.4	544	505	-39	-7.2	-5.8
Other fabricated materials	260	270	10	3.8	969	1,018	48	5.0	10.7
Machinery and equipment	6,478	6,841	362	5.6	31,176	26,490	-4,687	-15.0	-6.1
Industrial and agricultural machinery	1,259	1,304	45	3.5	6,649	5,171	-1,478	-22.2	-14.7
Industrial machinery	1,137	1,166	29	2.5	5,958	4,634	-1,324	-22.2	-14.7
Agricultural machinery includ. tractors	122	138	16	12.8	691	537	-154	-22.3	-15.0
Aircraft and other transportation equipment	1,645	1,831	186	11.3	7,990	6,803	-1,187	-14.9	2.1
Aircraft, engines, parts	1,358	1,508	150	11.0	6,006	5,623	-383	-6.4	1.7
Other transportation equipment	287	323	36	12.5	1,385	1,180	-205	-14.8	4.2
Other machinery and equipment	3,574	3,706	132	3.7	16,537	14,516	-2,022	-12.2	-6.4
Television, telecommunication equipment	746	765	19	2.5	3,698	3,099	-599	-16.2	-13.1
Office machines and equipment	833	868	35	4.2	3,634	3,370	-264	-7.3	-3.6
Other equipment and tools	1,394	1,429	35	2.5	6,363	5,557	-806	-12.7	-4.9
Other end products, inedible	600	644	44	7.3	2,842	2,490	-352	-12.4	-4.9
Automotive products	6,037	6,135	98	1.6	14,879	23,823	8,943	60.1	50.6
Passenger autos and chassis	4,358	4,371	13	0.3	8,009	17,072	9,063	113.2	87.3
Trucks and other motor vehicles	199	256	57	28.4	2,188	861	-1,327	-60.6	-54.5
Motor vehicle parts	1,480	1,508	29	1.9	4,682	5,889	1,207	25.8	28.0
Other consumer goods	1,313	1,299	-14	-1.1	6,143	5,317	-826	-13.4	-11.8
Special transactions trade	330	274	-56	-16.9	2,095	1,170	-925	-44.1	-45.1
Unallocated balance of payments adjustments	869	969	100	11.6	2,110	3,564	1,453	68.9	54.6

**Table 3-1
Domestic exports to selected countries, customs basis, not seasonally adjusted — April**

	Agricultural and fishing products	Energy products	Forestry products	Industrial goods	Machinery and equipment	Automotive products	Consumer goods	Special transactions trade	Total
millions of dollars									
United States									
2009	1,691.7	5,090.9	1,152.4	3,707.8	4,031.9	3,279.9	1,042.3	489.0	20,485.8
2010	1,448.4	7,289.5	1,195.0	4,891.6	3,243.5	4,312.4	809.6	259.9	23,449.8
Mexico									
2009	109.3	0.3	5.4	65.4	58.9	53.6	3.0	1.4	297.1
2010	89.0	0.9	11.0	83.7	68.3	76.6	3.8	0.1	333.3
Japan									
2009	250.0	229.6	84.0	111.9	51.6	3.6	15.5	0.6	746.8
2010	224.0	146.1	115.3	118.1	28.1	5.4	6.3	0.6	643.9
European Union									
Germany									
2009	13.0	20.1	10.1	80.6	150.7	5.5	12.6	0.6	293.2
2010	14.0	15.6	6.6	79.5	112.2	3.3	19.6	0.6	251.4
France									
2009	10.6	0.2	14.6	24.6	97.0	3.3	21.5	1.6	173.5
2010	9.4	0.2	12.0	26.7	67.7	2.6	15.5	2.9	136.9
United Kingdom									
2009	38.2	3.9	27.3	447.2	251.0	2.7	16.4	3.5	790.2
2010	17.2	0.2	15.9	465.5	119.8	4.1	10.2	5.1	638.0
Italy									
2009	98.3	5.6	26.9	20.7	37.4	0.4	6.5	0.4	196.4
2010	31.2	6.6	18.9	29.9	29.3	0.3	16.5	0.8	133.5
Other European Union									
2009	84.0	147.2	27.9	188.0	261.8	13.7	46.6	2.9	772.1
2010	73.2	52.1	24.3	273.7	202.0	12.8	47.2	1.7	687.0
Total									
2009	244.1	177.1	106.9	761.0	798.0	25.6	103.6	9.1	2,225.3
2010	144.9	74.8	77.7	875.2	531.0	23.1	109.0	11.1	1,846.8
Newly industrialized countries									
South Korea									
2009	24.4	143.3	39.0	86.1	76.3	3.7	4.6	0.9	378.4
2010	46.4	102.8	47.8	104.8	30.8	6.9	4.2	0.5	344.2
Hong Kong									
2009	26.7	0.1	9.8	37.8	17.6	0.7	4.9	0.8	98.4
2010	25.5	0.0	9.0	81.1	27.9	0.8	6.6	1.1	152.0
Taiwan									
2009	11.6	28.3	15.4	24.8	18.5	0.2	2.5	0.1	101.4
2010	12.5	28.1	22.0	39.6	11.9	0.2	6.6	0.1	121.0
Singapore									
2009	3.6	0.3	3.8	59.2	28.6	5.6	1.9	0.2	103.2
2010	6.3	0.6	2.8	15.0	28.8	0.7	3.3	0.4	57.9
Total									
2009	66.3	172.0	68.0	207.9	141.0	10.2	14.0	2.0	681.4
2010	90.6	131.6	81.6	240.4	99.4	8.6	20.7	2.1	675.1
Other countries									
2009	1,094.1	66.6	276.9	1,016.7	576.0	40.5	100.3	16.2	3,187.3
2010	697.9	307.7	375.4	1,150.9	824.4	66.5	132.2	10.7	3,565.8
Total									
2009	3,455.5	5,736.3	1,693.6	5,870.7	5,657.5	3,413.3	1,278.6	518.2	27,623.7
2010	2,694.8	7,950.5	1,856.0	7,359.9	4,794.7	4,492.6	1,081.6	284.5	30,514.8

Table 3-2
Domestic exports to selected countries, customs basis, not seasonally adjusted — Year to date, January to April

	Agricultural and fishing products	Energy products	Forestry products	Industrial goods	Machinery and equipment	Automotive products	Consumer goods	Special transactions trade	Total
millions of dollars									
United States									
2009	6,674.3	23,068.1	4,855.1	15,665.6	16,778.3	11,697.2	3,843.1	1,997.5	84,579.1
2010	5,677.0	29,847.3	4,473.3	18,230.4	12,808.2	16,535.0	3,226.3	1,051.7	91,849.3
Mexico									
2009	369.0	9.9	31.4	256.0	278.3	210.6	14.0	5.6	1,174.8
2010	462.3	15.1	45.7	330.4	224.7	280.2	35.5	0.6	1,394.6
Japan									
2009	1,032.9	800.4	351.6	383.4	246.3	12.0	62.0	3.0	2,891.6
2010	900.7	566.0	421.4	440.7	198.7	23.3	37.5	1.8	2,590.1
European Union									
Germany									
2009	51.4	91.0	41.5	184.1	661.7	17.2	49.3	4.9	1,101.3
2010	44.5	23.9	27.9	348.7	497.3	12.3	67.1	2.5	1,024.2
France									
2009	46.2	75.9	48.4	235.1	454.8	10.8	109.1	6.6	986.9
2010	37.7	0.5	46.7	159.0	286.3	10.5	73.8	5.2	619.8
United Kingdom									
2009	123.8	23.2	98.5	2,709.6	754.0	10.8	124.8	13.7	3,858.5
2010	90.2	18.0	69.3	3,528.7	504.3	15.3	62.4	15.1	4,303.3
Italy									
2009	169.7	44.4	98.0	97.9	191.1	3.1	22.9	1.1	628.1
2010	69.7	57.7	96.2	103.0	146.7	1.7	53.9	3.0	531.8
Other European Union									
2009	266.9	342.2	113.8	949.0	1,035.6	54.4	271.2	12.1	3,045.2
2010	268.9	134.8	97.2	1,005.1	820.8	46.7	188.8	11.8	2,574.1
Total									
2009	658.0	576.7	400.2	4,175.7	3,097.2	96.4	577.3	38.5	9,620.0
2010	511.1	234.9	337.3	5,144.4	2,255.4	86.5	445.9	37.6	9,053.2
Newly industrialized countries									
South Korea									
2009	100.5	429.5	112.5	329.0	172.3	8.6	16.3	2.1	1,170.8
2010	168.6	303.6	156.7	329.9	142.0	26.5	16.2	2.9	1,146.5
Hong Kong									
2009	133.5	0.1	32.8	156.8	117.1	3.3	22.8	2.4	468.7
2010	128.0	0.2	33.2	290.1	83.5	2.7	21.0	4.9	563.5
Taiwan									
2009	54.0	82.2	61.0	86.8	43.6	0.5	10.9	0.3	339.3
2010	49.8	51.7	81.5	114.2	46.0	1.2	15.5	0.3	360.1
Singapore									
2009	13.1	1.7	5.3	83.5	105.9	14.8	9.1	0.6	234.1
2010	20.4	2.7	7.4	53.3	101.2	8.7	13.2	0.9	207.7
Total									
2009	301.1	513.6	211.7	656.1	438.9	27.2	58.9	5.3	2,212.8
2010	366.7	358.1	278.8	787.4	372.6	39.1	66.0	9.1	2,277.8
Other countries									
2009	3,526.3	373.2	1,116.7	3,508.1	3,057.7	253.8	407.4	96.0	12,339.3
2010	2,881.7	624.1	1,414.1	4,494.7	2,661.3	242.3	631.1	55.1	13,004.3
Total									
2009	12,561.6	25,341.9	6,966.7	24,644.9	23,896.8	12,297.2	4,963.3	2,145.9	112,818.2
2010	10,799.6	31,645.5	6,970.8	29,428.1	18,520.9	17,206.3	4,442.3	1,155.9	120,169.4

Table 4
Domestic exports by country, customs basis, not seasonally adjusted

	April		January to April		Change
	2009	2010	2009	2010	January to April 2010/ January to April 2009
	millions of dollars				percent
North America					
Greenland	2.5	0.2	5.1	2.6	-48.5
Mexico	297.1	333.3	1,174.8	1,394.6	18.7
Saint Pierre and Miquelon	0.9	1.4	3.8	4.9	29.1
United States	20,485.8	23,449.8	84,579.1	91,849.3	8.6
Total	20,786.3	23,784.7	85,762.7	93,251.4	8.7
Western Europe					
Andorra	0.0	0.0	0.0	0.1	366.7
Austria	63.1	35.8	203.0	100.2	-50.6
Belgium	158.9	141.4	707.1	517.2	-26.9
Denmark	48.1	21.4	192.2	81.2	-57.8
Faeroe Islands	0.0	0.0	0.6	0.1	-81.1
Finland	17.7	21.1	116.5	75.8	-35.0
France	173.5	136.9	986.9	619.8	-37.2
Germany	293.2	251.4	1,101.3	1,024.2	-7.0
Gibraltar	0.0	0.0	16.8	0.0	-100.0
Greece	8.9	8.6	33.5	28.4	-15.4
Iceland	2.9	22.6	8.4	39.1	364.8
Italy	196.4	133.5	628.1	531.8	-15.3
Luxembourg	3.5	3.5	13.5	19.1	41.2
Malta	0.8	0.9	37.8	52.1	38.0
Netherlands	225.1	259.5	768.4	867.3	12.9
Norway	147.5	225.6	426.9	827.2	93.8
Portugal	43.6	25.8	68.8	137.4	99.8
Republic of Ireland (Eire)	21.2	27.0	186.3	103.9	-44.2
Spain	117.5	59.6	382.0	268.1	-29.8
Sweden	22.0	27.0	83.8	99.5	18.6
Switzerland	101.4	153.4	375.5	677.9	80.5
United Kingdom	790.2	638.0	3,858.5	4,303.3	11.5
Total	2,435.3	2,193.2	10,195.9	10,373.5	1.7
Other Europe					
Albania	0.3	6.4	2.3	10.6	361.0
Armenia	0.5	0.3	2.0	2.6	33.0
Azerbaijan	1.4	0.7	4.8	4.4	-7.8
Belarus	0.0	0.0	0.6	0.7	6.1
Bosnia and Herzegovina	0.3	0.5	1.4	1.5	10.7
Bulgaria	0.8	0.6	10.8	24.9	130.7
Croatia	1.8	22.1	8.9	75.6	752.7
Czech Republic	10.8	9.4	44.0	42.0	-4.5
Estonia	1.0	1.2	5.2	7.7	47.7
Georgia	0.4	0.5	1.9	4.8	145.6
Hungary	6.7	6.8	28.3	24.1	-14.7
Kazakhstan	11.2	6.3	86.5	72.0	-16.8
Kyrgyzstan	0.1	0.3	1.1	0.4	-66.0
Latvia	2.0	1.6	8.0	5.5	-32.0
Lithuania	1.5	3.4	16.7	8.9	-46.7
Macedonia (Former Yugoslav Republic of Macedonia)	1.0	0.5	4.8	3.2	-32.7
Montenegro	0.3	0.2	0.6	0.5	-23.2
Poland	12.8	11.7	63.7	50.6	-20.5
Republic of Moldova	0.1	0.1	1.0	0.4	-59.5
Romania	2.8	17.8	18.5	39.4	112.6
Russian Federation	78.0	74.1	331.5	245.2	-26.0
Serbia	0.6	0.7	4.4	1.9	-56.7
Slovakia	1.7	1.3	5.5	14.3	158.6
Slovenia	0.9	0.9	47.3	3.3	-93.1
Tajikistan	0.3	2.6	0.8	4.1	434.5
Turkmenistan	0.0	0.3	1.7	0.8	-51.3
Ukraine	6.0	28.5	24.3	55.1	126.8
Uzbekistan	1.8	0.2	6.3	1.0	-83.4
Total	145.1	199.1	733.1	705.8	-3.7

Table 4 – continued

Domestic exports by country, customs basis, not seasonally adjusted

	April		January to April		Change
	2009	2010	2009	2010	January to April 2010/ January to April 2009
	millions of dollars				percent
Middle East					
Bahrain	1.2	33.9	5.6	37.8	571.0
Cyprus	0.7	0.7	4.2	3.3	-22.4
Egypt	29.1	54.3	168.5	139.8	-17.0
Eritrea	0.0	0.0	0.0	1.7	...
Ethiopia	0.0	41.8	3.0	63.9	...
Iran	31.8	6.3	99.7	26.0	-73.9
Iraq	66.3	26.8	201.1	36.3	-81.9
Israel	16.6	15.1	99.8	96.7	-3.1
Jordan	5.1	3.7	20.6	20.2	-2.0
Kuwait	5.8	5.7	23.0	36.6	59.5
Lebanon	6.3	5.8	24.0	22.2	-7.6
Libya	13.9	4.5	131.0	57.6	-56.0
Oman	8.6	7.0	52.8	40.0	-24.3
Qatar	6.4	2.9	39.2	24.2	-38.3
Saudi Arabia	65.5	41.5	380.6	238.8	-37.3
Somalia	0.0	0.2	0.0	1.0	...
Sudan	23.8	3.4	53.1	40.0	-24.7
Syria	5.6	4.1	14.8	12.4	-16.5
Turkey	43.6	67.9	233.5	309.0	32.3
United Arab Emirates	166.5	63.7	464.8	315.2	-32.2
Yemen	1.8	1.5	6.1	7.7	26.2
Total	498.9	391.0	2,025.5	1,530.5	-24.4
Other Africa					
Algeria	47.6	41.6	154.2	121.6	-21.2
Angola	6.7	6.3	29.5	29.6	0.1
Antarctica	0.0	0.0	0.0	0.0	-49.5
Benin	0.2	0.6	2.6	2.8	6.7
Botswana	0.2	0.8	2.0	1.6	-22.2
Burkina Faso	0.8	2.8	2.0	8.1	298.4
Burundi	0.1	0.0	0.4	0.2	-44.4
Cameroon	0.8	4.5	7.1	7.8	9.8
Cape Verde	0.1	2.3	0.4	2.6	513.9
Central African Republic	0.0	0.0	0.4	0.0	-91.5
Chad	0.9	0.2	5.0	1.4	-71.6
Comoros	0.0	0.0	0.0	0.0	-100.0
Congo	1.3	0.8	9.2	4.2	-54.4
Democratic Republic of the Congo	1.0	1.1	5.2	4.1	-20.7
Djibouti	0.1	0.2	1.3	0.7	-44.4
Equatorial Guinea	1.2	0.1	2.0	0.7	-66.6
French Southern Territories	0.0	0.0	0.0	0.0	-75.3
Gabon	2.2	0.7	13.4	5.2	-61.4
Gambia	0.2	0.1	0.3	0.3	-17.5
Ghana	6.8	15.9	47.9	48.7	1.7
Guinea	3.7	0.5	8.2	1.7	-79.1
Guinea-Bissau	0.0	0.0	0.0	0.0	...
Ivory Coast	1.0	1.5	10.8	3.2	-70.5
Kenya	5.2	11.2	26.5	22.9	-13.3
Lesotho	0.0	0.0	0.0	0.0	269.9
Liberia	0.6	0.3	1.4	2.8	101.0
Madagascar	3.9	6.8	11.9	25.3	112.0
Malawi	0.4	0.3	1.3	1.4	4.3
Mali	0.2	1.5	1.8	2.8	50.4
Mauritania	0.3	0.2	1.2	0.5	-57.9
Mauritius	0.8	0.5	2.3	1.2	-48.2
Morocco	83.7	14.2	153.5	38.7	-74.8
Mozambique	0.3	0.4	1.5	2.4	62.0
Namibia	0.1	0.8	0.8	1.2	51.0
Niger	0.1	0.2	0.9	0.8	-12.9
Nigeria	13.8	59.5	44.9	95.1	111.6
Rwanda	0.1	0.4	0.7	0.6	-12.2
Saint Helena	0.0	0.0	0.1	0.0	-96.8
Sao Tome and Principe	0.0	0.0	0.0	0.0	-86.0
Senegal	1.1	2.1	6.0	9.3	55.3
Seychelles	0.0	0.1	0.3	0.3	-15.8

Table 4 – continued

Domestic exports by country, customs basis, not seasonally adjusted

	April		January to April		Change
	2009	2010	2009	2010	January to April 2010/ January to April 2009
	millions of dollars				percent
Sierra Leone	0.7	1.0	1.8	4.0	120.4
South Africa	50.1	45.5	162.4	155.5	-4.2
Swaziland	0.2	0.2	0.3	0.4	11.8
Togo	0.2	1.2	4.5	4.0	-10.8
Tunisia	45.3	1.9	50.5	23.3	-53.8
Uganda	0.5	1.0	5.0	3.8	-23.4
United Republic of Tanzania	1.9	3.7	12.0	10.6	-11.6
Western Sahara	0.0	0.0	0.1	0.0	-100.0
Zambia	0.4	1.7	2.3	15.9	595.9
Zimbabwe	0.0	0.0	6.9	1.1	-83.4
Total	284.9	234.8	803.1	668.6	-16.8
Other Asia					
Afghanistan	2.2	3.1	20.8	26.6	28.0
Bangladesh	65.4	27.2	332.7	262.0	-21.3
Bhutan	0.0	0.0	0.1	0.8	...
British Indian Ocean Territory	0.0	0.1	0.0	0.8	...
Brunei Darussalam	0.6	0.4	0.9	6.8	652.7
Cambodia	1.4	0.2	2.0	1.1	-45.2
China	952.6	1,052.6	3,783.2	3,599.0	-4.9
Hong Kong	98.4	152.0	468.7	563.5	20.2
India	106.0	135.8	541.2	544.6	0.6
Indonesia	89.6	115.4	306.3	316.6	3.4
Japan	746.8	643.9	2,891.6	2,590.1	-10.4
Laos	0.2	0.1	0.9	0.6	-34.5
Macau	1.1	0.1	10.0	0.9	-90.8
Malaysia	48.4	97.1	143.1	270.3	88.9
Maldives	0.4	0.8	1.3	1.7	32.6
Mongolia	0.6	1.3	1.8	6.5	258.5
Myanmar	0.0	0.0	0.0	2.7	...
Nepal	0.2	0.2	1.2	0.6	-46.4
North Korea	1.3	1.9	10.2	3.6	-65.1
Pakistan	62.8	45.5	189.1	139.7	-26.1
Philippines	21.9	86.9	134.5	183.2	36.2
Singapore	103.2	57.9	234.1	207.7	-11.3
South Korea	378.4	344.2	1,170.8	1,146.5	-2.1
Sri Lanka	26.9	8.8	116.1	131.0	12.8
Taiwan	101.4	121.0	339.3	360.1	6.1
Thailand	37.4	47.6	138.7	227.8	64.2
Timor-Leste	0.0	0.0	0.0	0.0	-100.0
Viet Nam	21.6	22.2	49.1	77.2	57.3
Total	2,868.8	2,966.2	10,887.8	10,672.1	-2.0
Oceania					
American Samoa	0.0	0.0	0.2	0.5	165.9
Australia	84.1	135.7	493.7	596.2	20.8
Christmas Island	0.2	0.0	0.2	0.5	118.4
Cocos (Keeling) Islands	0.0	0.0	0.1	0.1	-34.4
Cook Islands	0.0	0.0	0.0	0.0	...
Fiji	0.3	0.2	3.0	0.8	-72.2
French Polynesia	1.1	2.9	3.3	4.6	37.9
Guam	0.1	0.1	0.6	0.3	-50.8
Heard Island and McDonald Islands	0.0	0.0	0.0	0.0	-100.0
Kiribati	0.0	0.0	0.0	0.0	...
Nauru	0.0	0.0	0.0	0.0	-100.0
New Caledonia	0.3	2.8	1.1	6.5	484.9
New Zealand	19.0	17.1	99.8	83.9	-15.9
Norfolk Island	0.0	0.0	0.3	0.0	-98.4
Papua New Guinea	1.9	1.7	5.2	4.5	-15.1
Pitcairn	0.0	0.0	0.0	0.0	-89.9
Samoa	0.0	0.0	0.1	0.1	54.7
Solomon Islands	0.0	0.0	0.1	0.0	-48.9
United States Minor Outlying Islands	1.0	1.3	3.7	4.8	30.5
Vanuatu	0.1	0.1	1.1	0.5	-52.4
Total	108.0	162.0	612.5	703.3	14.8

Table 4 – continued

Domestic exports by country, customs basis, not seasonally adjusted

	April		January to April		Change
	2009	2010	2009	2010	January to April 2010/ January to April 2009
	millions of dollars				percent
South America					
Argentina	24.3	41.3	64.4	84.7	31.7
Bolivia	0.2	9.4	2.4	11.7	382.9
Brazil	94.8	187.8	319.0	815.9	155.8
Chile	58.9	51.3	233.9	173.3	-25.9
Colombia	49.1	49.2	196.1	187.6	-4.4
Ecuador	29.1	13.0	94.6	74.4	-21.4
Falkland Islands (Malvinas)	0.0	0.0	0.0	0.0	...
Guyana	4.0	2.7	9.9	8.6	-13.1
Paraguay	0.3	0.5	2.6	2.7	6.4
Peru	41.7	48.7	151.4	156.3	3.2
Suriname	0.8	0.7	2.7	3.5	32.0
Uruguay	1.4	4.3	7.7	10.5	36.4
Venezuela	34.6	26.9	239.5	132.5	-44.7
Total	339.4	435.7	1,324.2	1,661.8	25.5
Central America Antilles					
Anguilla	0.1	0.0	0.7	0.3	-61.3
Antigua and Barbuda	1.3	0.8	3.1	5.1	63.9
Aruba	0.4	0.3	1.7	1.3	-25.9
Bahamas	3.2	1.6	9.9	31.9	222.4
Barbados	17.4	2.8	25.6	11.7	-54.4
Belize	0.4	0.4	2.1	1.7	-21.3
Bermuda	5.9	3.8	20.7	12.8	-38.0
British Virgin Islands	0.1	0.1	1.8	20.2	...
Cayman Islands	0.6	0.5	2.2	2.3	6.8
Costa Rica	7.1	6.7	20.6	28.3	37.4
Cuba	42.2	25.8	108.8	104.3	-4.2
Dominica	0.4	0.4	1.7	1.8	8.6
Dominican Republic	10.2	10.2	42.3	51.9	22.8
El Salvador	3.1	2.7	9.8	13.6	38.5
Grenada	0.6	0.4	2.3	2.0	-12.8
Guatemala	4.0	6.6	31.6	29.0	-8.1
Haiti	10.3	2.1	18.1	14.8	-18.0
Honduras	4.6	1.8	11.2	12.6	11.9
Jamaica	11.0	8.8	35.1	54.3	54.9
Montserrat	0.0	0.0	0.1	0.1	8.7
Netherlands Antilles	2.3	1.2	7.8	8.6	10.8
Nicaragua	2.0	1.3	5.8	3.7	-36.5
Panama	6.8	47.8	34.1	69.2	103.0
Saint Kitts and Nevis	0.5	0.4	2.1	2.1	-2.6
Saint Lucia	0.6	0.4	2.9	2.3	-21.3
Saint Vincent and the Grenadines	0.7	1.0	2.5	3.2	26.4
Trinidad and Tobago	20.5	19.6	66.6	112.0	68.3
Turks and Caicos Islands	0.5	0.5	2.1	1.5	-30.6
Total	157.0	148.2	473.3	602.6	27.3
All countries	27,623.7	30,514.8	112,818.2	120,169.4	6.5

Table 5-1
Exports by province of origin, customs basis, not seasonally adjusted — April

	Agricultural and fishing products	Energy products	Forestry products	Industrial goods	Machinery and equipment	Automotive products	Consumer goods	Special transactions trade	Total
millions of dollars									
Domestic exports									
Newfoundland and Labrador									
2009	50.7	322.1	20.2	205.0	6.0	0.1	0.1	4.7	608.9
2010	32.6	595.8	12.0	65.1	5.5	0.3	0.2	2.1	713.6
Prince Edward Island									
2009	35.3	0.0	0.2	3.5	13.5	0.1	3.4	9.4	65.3
2010	28.4	0.1	0.0	3.8	11.8	0.2	1.1	4.3	49.6
Nova Scotia									
2009	63.7	30.2	41.1	49.7	91.1	7.3	6.3	5.7	295.0
2010	61.9	18.7	61.3	46.5	133.2	4.0	4.7	2.7	332.9
New Brunswick									
2009	77.7	509.6	94.0	64.3	27.0	2.4	11.9	6.7	793.7
2010	79.2	719.0	95.0	71.8	26.3	2.3	20.4	3.1	1,017.1
Quebec									
2009	369.0	287.5	513.8	1,271.9	1,851.9	163.9	282.2	118.0	4,858.5
2010	338.4	289.8	508.3	1,650.7	1,575.2	123.2	310.1	73.8	4,869.5
Ontario									
2009	684.6	215.1	218.1	2,479.8	2,751.9	3,108.1	864.2	264.2	10,586.0
2010	657.7	190.2	227.4	3,325.8	2,329.8	4,240.3	638.2	132.1	11,741.5
Manitoba									
2009	386.8	61.4	29.5	191.3	190.1	61.6	51.3	25.6	997.6
2010	290.8	103.9	18.5	215.7	156.9	35.9	50.7	20.8	893.0
Saskatchewan									
2009	885.6	577.9	23.7	373.0	68.3	4.1	1.7	9.0	1,943.4
2010	514.1	673.5	25.4	617.7	48.4	4.6	1.0	4.0	1,888.7
Alberta									
2009	707.9	3,146.6	126.4	709.2	394.1	49.9	15.4	35.3	5,184.7
2010	512.3	4,682.4	178.5	900.1	256.1	61.6	12.3	20.1	6,623.5
British Columbia									
2009	194.1	585.9	626.6	355.0	261.9	15.7	42.0	39.6	2,120.7
2010	178.7	677.2	729.7	458.9	250.1	20.2	43.0	21.5	2,379.3
Yukon, Northwest Territories and Nunavut ¹									
2009	0.0	0.0	0.0	168.0	1.8	0.0	0.2	0.1	170.1
2010	0.6	0.0	0.0	3.9	1.4	0.0	0.0	0.0	5.9
Total									
2009	3,455.5	5,736.3	1,693.6	5,870.7	5,657.5	3,413.3	1,278.6	518.2	27,623.7
2010	2,694.8	7,950.5	1,856.0	7,359.9	4,794.7	4,492.6	1,081.6	284.5	30,514.8
Re-exports									
2009	34.0	18.9	6.2	214.0	932.3	79.9	171.9	702.9	2,159.9
2010	39.2	3.1	9.8	211.6	985.9	92.1	132.0	593.3	2,066.9
Total exports									
2009	3,489.5	5,755.2	1,699.8	6,084.7	6,589.7	3,493.1	1,450.5	1,221.1	29,783.7
2010	2,734.0	7,953.6	1,865.9	7,571.5	5,780.6	4,584.7	1,213.6	877.9	32,581.7

1. Data for the current month do not include some exports from the Harmonized System, Chapter 71, "Natural/cultured pearls, precious stones and metals, coins, etc." for reasons relating to timing.

Table 5-2
Exports by province of origin, customs basis, not seasonally adjusted — Year to date, January to April

	Agricultural and fishing products	Energy products	Forestry products	Industrial goods	Machinery and equipment	Automotive products	Consumer goods	Special transactions trade	Total
millions of dollars									
Domestic exports									
Newfoundland and Labrador									
2009	118.5	1,636.5	92.9	541.7	25.3	0.3	0.2	17.9	2,433.3
2010	127.1	1,884.6	41.6	330.6	15.6	0.7	0.6	8.2	2,409.0
Prince Edward Island									
2009	154.3	0.0	0.4	8.3	62.3	0.2	10.3	31.0	266.8
2010	117.9	0.5	0.3	10.0	48.0	0.6	11.4	16.9	205.5
Nova Scotia									
2009	274.2	263.1	221.6	184.2	376.9	35.6	24.8	26.3	1,406.8
2010	236.5	97.9	243.7	174.2	441.0	16.1	18.7	12.8	1,241.0
New Brunswick									
2009	317.4	1,921.5	422.1	211.3	116.5	9.9	40.1	28.7	3,067.5
2010	307.2	3,030.8	392.9	366.2	94.0	8.6	74.0	13.6	4,287.3
Quebec									
2009	1,436.2	1,035.9	2,090.2	5,376.3	7,563.6	562.4	1,220.0	474.7	19,759.4
2010	1,380.4	1,110.5	1,938.4	6,433.5	5,752.4	476.6	1,498.0	300.4	18,890.1
Ontario									
2009	2,648.0	1,006.3	1,017.4	10,495.9	11,907.8	11,162.3	3,250.0	1,065.5	42,553.2
2010	2,462.8	882.3	916.0	13,228.0	9,356.6	16,287.8	2,482.4	531.7	46,147.7
Manitoba									
2009	1,455.9	197.2	104.7	781.0	779.8	245.9	164.6	121.1	3,850.3
2010	1,231.3	387.7	67.3	787.3	589.0	139.5	134.1	89.0	3,425.3
Saskatchewan									
2009	2,853.3	1,937.9	94.1	1,935.9	345.9	13.0	6.5	35.9	7,222.4
2010	2,223.9	2,586.5	67.4	2,551.2	249.3	16.5	5.2	16.8	7,716.8
Alberta									
2009	2,595.1	14,871.4	545.0	2,884.1	1,671.9	190.6	65.7	186.7	23,010.6
2010	2,065.1	19,252.3	679.8	3,373.5	1,042.4	171.8	42.7	88.2	26,715.8
British Columbia									
2009	708.0	2,472.0	2,378.2	1,477.5	1,043.9	76.7	180.3	158.0	8,494.5
2010	646.4	2,412.3	2,623.2	1,756.8	928.0	87.9	175.2	78.1	8,708.0
Yukon, Northwest Territories and Nunavut ¹									
2009	0.5	0.0	0.0	748.6	2.9	0.1	0.9	0.2	753.3
2010	1.1	0.0	0.0	416.7	4.6	0.2	0.1	0.3	423.0
Total									
2009	12,561.6	25,341.9	6,966.7	24,644.9	23,896.8	12,297.2	4,963.3	2,145.9	112,818.2
2010	10,799.6	31,645.5	6,970.8	29,428.1	18,520.9	17,206.3	4,442.3	1,155.9	120,169.4
Re-exports									
2009	172.5	162.2	25.9	781.9	4,029.8	341.4	797.3	2,870.0	9,181.0
2010	195.3	128.4	27.4	898.7	3,389.8	339.4	608.4	2,307.2	7,894.6
Total exports									
2009	12,734.1	25,504.1	6,992.5	25,426.9	27,926.6	12,638.6	5,760.5	5,015.9	121,999.2
2010	10,994.9	31,773.9	6,998.2	30,326.8	21,910.7	17,545.7	5,050.8	3,463.1	128,064.0

1. Data for the current month do not include some exports from the Harmonized System Chapter 71, "Natural/cultured pearls, precious stones and metals, coins, etc." for reasons relating to timing.

Table 6-1
Imports by commodity groupings, balance of payments basis, seasonally adjusted — Current dollars

	March	April	Change		Year to date			April 2010/	
	2010	2010			2009	2010	Change	April	2010/ April 2009
	millions of dollars		percent		millions of dollars		percent		
Total	33,492	32,757	-735	-2.2	126,140	130,962	4,822	3.8	6.4
Agricultural and fishing products	2,434	2,442	8	0.3	10,066	9,620	-446	-4.4	-1.6
Fruits and vegetables	693	669	-24	-3.4	2,816	2,693	-123	-4.4	-3.1
Fresh fruits and berries	253	245	-7	-2.8	980	985	4	0.5	2.3
Dried fruits, fruits and fruit preparations	106	106	0	0.2	544	424	-120	-22.0	-18.6
Fresh vegetables	200	181	-19	-9.3	719	730	11	1.6	-1.4
Other vegetables and vegetable preparations	134	136	2	1.4	573	554	-19	-3.2	0.1
Other agricultural and fishing products	1,741	1,773	32	1.8	7,250	6,927	-323	-4.5	-1.0
Live animals	17	17	0	-1.4	67	63	-4	-5.4	0.3
Meat and meat preparations	180	181	1	0.6	743	702	-41	-5.5	-0.8
Fish and marine animals	159	155	-4	-2.4	720	624	-95	-13.3	-17.8
Cocoa, coffee, tea and other food preparations	402	396	-5	-1.3	1,686	1,586	-99	-5.9	-4.4
Dairy produce, eggs and honey	46	48	2	3.6	181	179	-2	-1.2	6.1
Corn (maize) shelled	45	46	1	3.0	172	184	11	6.4	23.2
Other cereals and cereal preparations	171	170	-2	-1.0	807	688	-120	-14.8	-12.9
Sugar and sugar preparations	144	169	26	17.8	552	608	55	10.0	26.0
Fodder, feed, excluding unmilled cereal	111	119	7	6.7	493	458	-35	-7.0	-0.6
Beverages	315	308	-7	-2.2	1,244	1,216	-28	-2.3	4.2
Tobacco	32	38	6	20.5	116	132	15	13.3	30.9
Crude vegetable products	119	126	6	5.3	465	483	17	3.8	-5.6
Cotton	1	1	0	4.4	3	5	2	48.1	111.0
Energy products	3,497	3,535	38	1.1	10,571	13,424	2,853	27.0	36.9
Crude petroleum	2,169	2,380	211	9.7	5,769	8,260	2,491	43.2	43.6
Other energy products	1,327	1,155	-173	-13.0	4,802	5,164	362	7.5	24.9
Coal and other related products	494	254	-241	-48.7	1,937	1,832	-105	-5.4	-9.4
Petroleum and coal products	833	901	68	8.1	2,866	3,333	467	16.3	39.8
Forestry products	224	221	-3	-1.4	839	873	34	4.1	10.6
Forestry products	224	221	-3	-1.4	839	873	34	4.1	10.6
Crude wood products	31	30	-1	-4.4	181	129	-52	-28.7	-29.0
Wood fabricated materials	193	191	-2	-0.9	658	744	86	13.1	21.1
Industrial goods and materials	7,357	6,711	-647	-8.8	26,133	27,102	969	3.7	11.0
Metals and metal ores	2,851	2,471	-380	-13.3	8,190	10,000	1,811	22.1	41.9
Metals in ores, concentrates and scrap	540	440	-100	-18.5	1,911	2,149	238	12.5	24.1
Steel bars, rods, plates, sheets	587	582	-5	-0.9	1,669	2,186	517	31.0	47.5
Other iron and steel products	314	347	33	10.5	1,504	1,250	-254	-16.9	43.0
Precious metals including alloys	1,033	715	-318	-30.8	1,917	2,925	1,007	52.5	50.7
Other non-ferrous metals and alloys	378	387	10	2.5	1,188	1,490	302	25.4	40.7
Chemicals and plastics	2,517	2,265	-253	-10.0	9,638	9,305	-333	-3.5	-3.0
Organic chemicals	684	468	-216	-31.6	2,381	2,208	-173	-7.2	-14.7
Plastic materials	826	798	-28	-3.4	2,968	3,175	207	7.0	10.2
Other chemicals and related products	1,008	998	-9	-0.9	4,289	3,922	-368	-8.6	-5.9
Other industrial goods and materials	1,989	1,975	-14	-0.7	8,305	7,796	-509	-6.1	0.4
Crude animal products	21	23	2	8.0	85	78	-7	-8.0	-16.5
Wool and man-made fibres	20	22	2	7.9	74	80	6	8.7	25.4
Crude non-metallic minerals	80	59	-21	-26.4	269	284	15	5.7	-16.6
Textile fabricated materials	187	186	-1	-0.3	801	741	-60	-7.5	-4.2
Metal fabricated basic products	757	752	-4	-0.6	3,253	2,986	-267	-8.2	-3.2
Rubber fabricated materials	78	79	1	1.0	324	316	-8	-2.5	-2.6
Oils, fats, animal and vegetable	101	94	-7	-6.8	428	385	-43	-10.0	1.4
Non-metallic minerals	297	300	4	1.2	1,140	1,147	7	0.6	14.9
Other fabricated materials	449	460	11	2.5	1,932	1,779	-153	-7.9	3.0

Table 6-1 – continued

Imports by commodity groupings, balance of payments basis, seasonally adjusted — Current dollars

	March	April	Change		Year to date			April 2010/	
	2010	2010			2009	2010	Change	April 2009	
	millions of dollars		percent		millions of dollars		percent		
Machinery and equipment	8,736	8,635	-101	-1.2	38,380	34,276	-4,104	-10.7	-8.0
Industrial and agricultural machinery	2,427	2,304	-123	-5.1	10,104	8,927	-1,177	-11.6	0.5
Engines, turbines and electric motors	372	272	-100	-26.9	1,420	1,136	-284	-20.0	-1.6
Drilling mining machinery	153	134	-19	-12.7	567	525	-41	-7.3	-1.1
Excavating machinery	192	220	28	14.5	760	757	-3	-0.4	46.0
Metal working machinery	135	132	-3	-2.3	572	508	-64	-11.2	1.7
Other industrial machinery	1,206	1,178	-28	-2.3	5,386	4,619	-767	-14.2	-5.8
Agricultural machinery including tractors	368	368	0	-0.1	1,399	1,382	-17	-1.2	5.2
Aircraft and other transportation equipment	1,088	1,108	20	1.8	5,894	4,253	-1,640	-27.8	-30.5
Aircraft, engines, parts	663	647	-17	-2.5	3,857	2,560	-1,297	-33.6	-42.9
Other transportation equipment and parts	424	461	37	8.6	2,037	1,694	-344	-16.9	-0.1
Office machines and equipment	961	994	33	3.5	4,276	3,977	-299	-7.0	-7.3
Other machinery and equipment	4,260	4,229	-31	-0.7	18,107	17,119	-988	-5.5	-4.5
Other communication and related equipment	1,535	1,513	-22	-1.4	6,276	6,139	-137	-2.2	-3.8
Other equipment and tools	2,726	2,716	-9	-0.3	11,832	10,980	-852	-7.2	-4.9
Automotive products	5,575	5,636	61	1.1	16,025	22,967	6,943	43.3	35.2
Passenger autos and chassis	1,770	1,738	-32	-1.8	5,186	7,392	2,206	42.5	22.9
Trucks and other motor vehicles	1,485	1,526	41	2.7	3,666	6,112	2,446	66.7	98.4
Motor vehicle parts	2,320	2,372	53	2.3	7,173	9,464	2,291	31.9	19.6
Other consumer goods	4,599	4,321	-278	-6.1	19,793	18,221	-1,572	-7.9	-11.6
Apparel and footwear	829	827	-2	-0.3	4,086	3,328	-758	-18.6	-16.5
Apparel and apparel accessories	687	688	1	0.1	3,417	2,773	-644	-18.8	-17.6
Footwear	142	139	-3	-2.0	669	555	-114	-17.1	-11.0
Miscellaneous consumer goods	3,770	3,494	-276	-7.3	15,707	14,893	-815	-5.2	-10.4
Television, radios, phonographs	121	124	3	2.8	435	506	71	16.3	6.6
Printed matter	273	285	13	4.7	1,243	1,102	-141	-11.4	-7.4
Watches, sporting goods and toys	485	447	-38	-7.8	2,081	1,886	-195	-9.3	-11.7
House furnishings	702	699	-3	-0.5	2,997	2,824	-173	-5.8	-3.3
Photographic goods	185	198	13	7.0	898	780	-118	-13.1	-6.7
Miscellaneous end products	2,005	1,741	-264	-13.2	8,053	7,794	-259	-3.2	-14.4
Special transactions trade	353	507	154	43.4	1,716	1,577	-139	-8.1	32.3
Unallocated balance of payments adjustments	716	750	34	4.7	2,616	2,901	285	10.9	17.0

Table 6-2
Imports by commodity groupings, balance of payments basis, seasonally adjusted — Constant dollars, 2002

	March	April	Change		Year to date			April	2010/
	2010	2010			2009	2010	Change	April	2009
	millions of dollars		percent		millions of dollars		percent		
Total	37,427	37,498	72	0.2	129,484	147,643	18,159	14.0	17.3
Agricultural and fishing products	2,346	2,455	109	4.6	8,991	9,548	557	6.2	10.9
Fruits and vegetables	647	667	20	3.1	2,639	2,646	7	0.3	4.1
Fresh fruits and berries	260	259	-1	-0.4	959	1,002	43	4.5	14.1
Dried fruits, fruits and fruit preparations	105	106	1	0.7	487	417	-70	-14.4	-9.3
Fresh vegetables	151	168	16	10.8	702	694	-8	-1.2	-7.8
Other vegetables and vegetable preparations	130	134	4	3.2	491	533	42	8.5	16.7
Other agricultural and fishing products	1,699	1,788	89	5.2	6,352	6,902	550	8.7	13.7
Live animals	17	16	0	-2.8	63	64	1	1.7	6.8
Meat and meat preparations	183	169	-14	-7.5	705	715	10	1.4	1.1
Fish and marine animals	223	211	-11	-5.1	865	929	64	7.4	-3.1
Cocoa, coffee, tea and other food preparations	331	386	55	16.6	1,256	1,416	160	12.8	26.4
Dairy produce, eggs and honey	52	55	3	4.8	165	199	34	20.6	41.3
Corn (maize) shelled	45	47	3	6.2	132	177	45	33.9	60.8
Other cereals and cereal preparations	145	144	-2	-1.1	631	592	-39	-6.2	-6.7
Sugar and sugar preparations	134	172	38	28.4	518	584	65	12.6	35.5
Fodder, feed, excluding unmilled cereal	98	107	9	9.4	345	395	50	14.5	25.7
Beverages	294	292	-2	-0.7	1,075	1,132	57	5.3	12.5
Tobacco	39	48	9	22.5	124	163	39	31.7	53.6
Crude vegetable products	137	139	2	1.1	468	528	61	13.0	-1.1
Cotton	2	2	0	5.7	5	7	2	50.5	106.3
Energy products	1,819	1,760	-58	-3.2	7,186	7,148	-38	-0.5	8.7
Crude petroleum	933	1,023	90	9.6	3,821	3,618	-202	-5.3	6.3
Other energy products	886	737	-148	-16.7	3,365	3,530	165	4.9	12.2
Coal and other related products	400	217	-184	-45.9	1,369	1,579	210	15.3	-4.5
Petroleum and coal products	485	521	36	7.4	1,996	1,951	-45	-2.3	21.1
Forestry products	306	294	-12	-3.9	984	1,187	202	20.5	20.1
Forestry products	306	294	-12	-3.9	984	1,187	202	20.5	20.1
Crude wood products	48	46	-2	-3.5	217	198	-19	-8.8	-8.5
Wood fabricated materials	258	247	-10	-4.0	768	989	221	28.8	27.5
Industrial goods and materials	6,766	6,402	-364	-5.4	22,027	25,222	3,196	14.5	21.4
Metals and metal ores	2,070	1,860	-210	-10.2	5,693	7,317	1,623	28.5	49.8
Metals in ores, concentrates and scrap	297	253	-44	-14.7	1,503	1,185	-318	-21.1	-11.7
Steel bars, rods, plates, sheets	509	490	-18	-3.6	1,197	1,893	696	58.1	66.7
Other iron and steel products	247	256	10	3.9	953	974	21	2.2	51.4
Precious metals including alloys	619	446	-173	-27.9	885	1,712	827	93.4	110.2
Other non-ferrous metals and alloys	399	414	15	3.7	1,155	1,552	398	34.4	48.4
Chemicals and plastics	2,449	2,242	-207	-8.5	8,322	9,074	752	9.0	7.6
Organic chemicals	499	366	-134	-26.8	1,869	1,626	-243	-13.0	-17.0
Plastic materials	891	851	-40	-4.5	2,823	3,426	604	21.4	16.1
Other chemicals and related products	1,058	1,025	-33	-3.2	3,631	4,022	391	10.8	12.6
Other industrial goods and materials	2,247	2,300	53	2.4	8,011	8,831	820	10.2	18.0
Crude animal products	23	25	2	5.9	131	88	-44	-33.3	-44.3
Wool and man-made fibres	26	28	2	8.6	88	104	16	18.4	40.1
Crude non-metallic minerals	64	54	-10	-16.0	242	238	-4	-1.6	-7.8
Textile fabricated materials	248	255	6	2.5	902	994	91	10.1	14.2
Metal fabricated basic products	821	826	5	0.6	2,972	3,219	247	8.3	14.6
Rubber fabricated materials	98	100	2	2.0	335	392	57	17.0	16.5
Oils, fats, animal and vegetable	100	94	-7	-6.8	344	380	35	10.3	19.2
Non-metallic minerals	362	369	6	1.7	1,173	1,398	225	19.2	32.6
Other fabricated materials	503	550	48	9.5	1,823	2,019	196	10.7	24.9

Table 6-2 – continued

Imports by commodity groupings, balance of payments basis, seasonally adjusted — Constant dollars, 2002

	March	April	Change		Year to date			April 2010/ April 2009	
	2010	2010			2009	2010	Change		
	millions of dollars		percent		millions of dollars		percent		
Machinery and equipment	12,592	12,662	70	0.6	46,379	49,234	2,854	6.2	10.2
Industrial and agricultural machinery	3,026	2,920	-106	-3.5	10,412	11,042	630	6.1	22.3
Engines, turbines and electric motors	464	350	-114	-24.5	1,484	1,421	-64	-4.3	19.4
Drilling mining machinery	175	154	-21	-11.7	522	594	71	13.7	23.7
Excavating machinery	239	279	41	17.0	771	940	169	21.9	76.7
Metal working machinery	175	176	1	0.5	619	656	37	6.0	22.3
Other industrial machinery	1,496	1,476	-19	-1.3	5,502	5,656	155	2.8	14.9
Agricultural machinery including tractors	477	484	7	1.4	1,514	1,775	262	17.3	26.2
Aircraft and other transportation equipment	1,314	1,341	27	2.1	5,914	5,066	-848	-14.3	-17.0
Aircraft, engines, parts	827	813	-14	-1.7	3,929	3,150	-779	-19.8	-29.9
Other transportation equipment and parts	487	528	41	8.4	1,985	1,916	-69	-3.5	15.9
Office machines and equipment	2,018	2,146	128	6.4	8,128	8,349	221	2.7	4.1
Other machinery and equipment	6,235	6,255	20	0.3	21,926	24,776	2,851	13.0	15.4
Other communication and related equipment	2,612	2,621	10	0.4	8,880	10,359	1,479	16.7	17.6
Other equipment and tools	3,623	3,633	10	0.3	13,046	14,418	1,372	10.5	13.8
Automotive products	6,816	6,959	144	2.1	17,910	27,932	10,021	56.0	48.2
Passenger autos and chassis	2,027	1,992	-34	-1.7	6,050	8,458	2,408	39.8	21.2
Trucks and other motor vehicles	1,681	1,733	52	3.1	3,821	6,898	3,077	80.5	115.3
Motor vehicle parts	3,107	3,233	126	4.1	8,039	12,576	4,537	56.4	44.0
Other consumer goods	5,986	5,801	-185	-3.1	21,894	23,594	1,700	7.8	6.0
Apparel and footwear	1,190	1,201	11	0.9	4,851	4,725	-126	-2.6	1.1
Apparel and apparel accessories	990	1,002	12	1.2	4,063	3,951	-112	-2.8	0.0
Footwear	200	198	-2	-0.8	788	774	-14	-1.8	6.9
Miscellaneous consumer goods	4,796	4,600	-196	-4.1	17,043	18,869	1,826	10.7	7.4
Television, radios, phonographs	207	220	12	6.0	599	863	264	44.1	33.3
Printed matter	342	365	23	6.7	1,393	1,372	-21	-1.5	4.8
Watches, sporting goods and toys	683	643	-39	-5.7	2,503	2,629	126	5.0	1.7
House furnishings	912	931	19	2.0	3,215	3,657	442	13.8	18.1
Photographic goods	338	381	43	12.7	1,314	1,423	109	8.3	20.8
Miscellaneous end products	2,314	2,060	-254	-11.0	8,019	8,925	907	11.3	1.3
Special transactions trade	407	582	176	43.2	1,772	1,799	27	1.5	45.5
Unallocated balance of payments adjustments	391	584	193	49.4	2,340	1,980	-360	-15.4	4.7

Table 7-1
Imports from selected countries, customs basis, not seasonally adjusted — April

	Agricultural and fishing products	Energy products	Forestry products	Industrial goods	Machinery and equipment	Automotive products	Consumer goods	Special transactions trade	Total
millions of dollars									
United States									
2009	1,460.3	859.2	154.4	3,733.4	4,407.4	3,104.6	2,048.2	344.7	16,112.1
2010	1,334.9	931.3	169.0	4,129.5	3,938.2	4,037.2	1,767.8	446.4	16,754.3
Mexico									
2009	121.1	36.8	0.5	88.2	572.5	429.1	74.3	3.5	1,326.0
2010	141.8	41.8	0.5	133.6	567.0	766.3	84.2	2.9	1,738.1
Japan									
2009	4.8	0.4	0.1	120.4	416.9	437.6	82.5	0.3	1,062.9
2010	4.9	41.1	0.1	145.0	409.5	507.5	77.9	0.3	1,186.4
European Union									
Germany									
2009	21.3	1.3	1.6	183.5	326.2	229.1	176.1	0.7	939.6
2010	20.8	25.6	1.1	176.0	296.1	242.7	136.1	1.4	899.8
France									
2009	55.4	5.5	0.3	84.3	197.4	11.3	132.9	6.2	493.3
2010	55.7	0.7	0.1	47.5	123.1	7.6	110.0	0.3	344.9
United Kingdom									
2009	26.1	129.9	0.1	125.7	310.7	24.6	117.9	1.3	736.3
2010	38.2	573.6	0.1	119.3	222.0	35.9	108.2	2.6	1,099.9
Italy									
2009	43.2	0.0	1.4	79.2	133.1	19.1	87.9	0.3	364.4
2010	52.3	0.0	0.7	73.1	114.3	26.9	81.6	0.2	349.3
Other European Union									
2009	90.7	129.7	4.3	274.6	351.3	49.5	350.3	0.7	1,251.0
2010	94.9	182.4	4.1	239.7	373.5	53.0	280.1	1.3	1,229.0
Total									
2009	236.7	266.3	7.7	747.3	1,318.8	333.5	865.1	9.2	3,784.6
2010	262.0	782.3	6.1	655.6	1,129.0	366.1	716.0	5.8	3,922.9
Newly industrialized countries									
South Korea									
2009	4.0	11.5	0.0	71.9	212.6	190.7	18.6	0.1	509.4
2010	6.5	47.6	0.0	63.0	171.3	233.1	15.4	0.1	537.0
Hong Kong									
2009	2.5	0.0	0.0	3.0	10.6	0.3	11.0	0.1	27.6
2010	2.4	0.1	0.0	2.5	11.5	0.5	14.1	0.0	31.1
Taiwan									
2009	5.4	0.0	0.6	63.4	176.1	14.4	34.9	0.1	294.9
2010	8.5	0.0	0.7	60.7	160.7	13.0	30.4	0.1	274.0
Singapore									
2009	3.1	0.0	0.0	8.6	43.3	0.4	17.3	0.0	72.8
2010	2.3	0.0	0.0	6.3	48.2	0.3	12.8	0.0	69.9
Total									
2009	15.1	11.5	0.6	147.0	442.7	205.7	81.7	0.3	904.7
2010	19.6	47.7	0.8	132.5	391.7	247.0	72.6	0.2	912.1
Other countries									
2009	624.6	1,572.7	43.5	1,378.3	2,216.6	138.8	1,556.5	19.4	7,550.3
2010	641.0	1,705.4	48.4	1,627.4	2,151.5	176.0	1,398.4	47.7	7,795.9
Total									
2009	2,462.7	2,746.9	206.8	6,214.5	9,374.8	4,649.3	4,708.4	377.3	30,740.6
2010	2,404.5	3,549.6	224.9	6,823.6	8,586.9	6,100.0	4,116.9	503.4	32,309.9

Table 7-2
Imports from selected countries, customs basis, not seasonally adjusted — Year to date, January to April

	Agricultural and fishing products	Energy products	Forestry products	Industrial goods	Machinery and equipment	Automotive products	Consumer goods	Special transactions trade	Total
millions of dollars									
United States									
2009	5,610.6	3,882.3	651.3	15,352.4	17,846.2	10,949.0	7,759.1	1,306.4	63,357.3
2010	5,099.1	4,042.6	655.8	15,849.4	15,556.5	15,225.3	7,137.4	1,299.6	64,865.8
Mexico									
2009	540.4	74.3	2.1	423.4	2,077.2	1,416.1	321.2	12.2	4,866.8
2010	614.8	193.8	1.7	511.5	2,243.4	2,845.7	328.9	13.8	6,753.6
Japan									
2009	22.5	1.3	0.5	431.3	1,765.3	1,748.0	339.7	1.1	4,309.7
2010	21.7	42.6	0.4	449.7	1,505.4	2,086.7	334.4	1.5	4,442.4
European Union									
Germany									
2009	78.9	4.2	3.7	712.4	1,557.9	719.5	634.7	3.8	3,715.2
2010	76.5	28.7	4.3	671.2	1,200.0	1,017.3	563.6	2.8	3,564.4
France									
2009	200.0	58.6	0.9	315.9	708.6	39.0	559.5	7.7	1,890.1
2010	203.0	13.4	0.6	295.4	505.0	34.5	540.8	2.7	1,595.2
United Kingdom									
2009	107.5	678.9	0.5	489.2	1,203.7	119.3	455.6	6.1	3,060.9
2010	124.2	1,343.8	0.2	804.6	965.3	122.8	414.0	15.5	3,790.5
Italy									
2009	193.9	10.7	5.6	328.5	501.9	61.4	358.6	2.3	1,462.9
2010	188.3	49.6	4.3	301.9	464.6	75.1	341.8	0.7	1,426.5
Other European Union									
2009	351.6	365.6	15.5	1,038.1	1,467.1	194.8	1,403.6	16.0	4,852.3
2010	346.9	749.3	14.1	909.6	1,393.0	224.4	1,284.1	5.0	4,926.3
Total									
2009	931.9	1,118.0	26.3	2,884.2	5,439.2	1,134.0	3,412.1	35.9	14,981.4
2010	938.9	2,184.8	23.6	2,982.7	4,527.7	1,474.1	3,144.3	26.7	15,302.8
Newly industrialized countries									
South Korea									
2009	15.7	25.4	0.0	295.5	818.3	565.8	75.1	0.2	1,796.1
2010	20.5	85.8	0.1	240.4	722.9	762.6	61.6	0.3	1,894.2
Hong Kong									
2009	8.9	0.0	0.0	12.7	58.3	0.7	44.5	0.3	125.6
2010	7.8	0.1	0.2	7.7	42.5	1.1	44.8	0.1	104.2
Taiwan									
2009	19.8	0.1	2.9	270.5	714.5	59.9	133.3	0.4	1,201.3
2010	22.8	0.1	2.8	243.9	597.1	52.7	124.4	0.5	1,044.3
Singapore									
2009	10.5	51.5	0.6	185.7	191.3	1.4	86.9	0.4	528.4
2010	10.4	0.0	0.1	43.6	163.8	1.3	60.0	0.6	279.9
Total									
2009	54.8	77.0	3.6	764.4	1,782.5	627.9	339.8	1.3	3,651.4
2010	61.6	85.9	3.1	535.5	1,526.4	817.8	290.7	1.5	3,322.5
Other countries									
2009	2,461.6	5,351.1	178.3	6,076.2	8,881.8	517.0	6,872.4	161.1	30,499.5
2010	2,492.6	6,192.2	202.0	6,305.2	8,466.9	643.9	6,314.5	124.1	30,741.5
Total									
2009	9,622.1	10,504.0	862.0	25,932.0	37,792.2	16,391.9	19,044.4	1,518.0	121,666.5
2010	9,229.6	12,741.8	886.6	26,634.2	33,826.4	23,093.5	17,550.3	1,467.2	125,429.7

Table 8
Imports by country, customs basis, not seasonally adjusted

	April		January to April		Change
	2009	2010	2009	2010	January to April 2010/ January to April 2009
	millions of dollars				percent
North America					
Canada	273.6	323.1	1,077.0	1,351.5	25.5
Greenland	0.0	0.1	16.6	0.2	-98.9
Mexico	1,326.0	1,738.1	4,866.8	6,753.6	38.8
Saint Pierre and Miquelon	0.0	0.0	0.1	0.4	212.5
United States	16,112.1	16,754.3	63,357.3	64,865.8	2.4
Total	17,711.7	18,815.5	69,317.9	72,971.5	5.3
Western Europe					
Andorra	0.0	0.0	0.0	0.1	233.6
Austria	92.3	79.1	380.5	344.8	-9.4
Belgium	97.7	125.3	428.5	496.9	15.9
Denmark	68.9	166.8	307.4	737.8	140.0
Faeroe Islands	0.0	0.3	0.3	1.0	216.1
Finland	89.3	89.0	308.2	290.6	-5.7
France	493.3	344.9	1,890.1	1,595.2	-15.6
Germany	939.6	899.8	3,715.2	3,564.4	-4.1
Gibraltar	0.0	0.0	0.0	0.0	-47.8
Greece	12.7	12.5	47.6	40.8	-14.1
Iceland	2.9	2.8	9.2	11.4	23.2
Italy	364.4	349.3	1,462.9	1,426.5	-2.5
Luxembourg	6.5	12.2	23.0	31.6	37.3
Malta	1.1	1.6	8.0	5.1	-36.8
Netherlands	223.5	156.1	633.2	550.4	-13.1
Norway	428.8	240.6	1,209.5	1,033.9	-14.5
Portugal	21.5	24.8	91.5	122.8	34.2
Republic of Ireland (Eire)	200.6	151.0	812.1	615.7	-24.2
Spain	114.2	93.6	447.9	382.1	-14.7
Sweden	145.7	150.3	623.0	613.0	-1.6
Switzerland	195.6	163.5	1,191.1	1,015.8	-14.7
United Kingdom	736.3	1,099.9	3,060.9	3,790.5	23.8
Total	4,234.9	4,163.5	16,650.1	16,670.3	0.1
Other Europe					
Albania	0.5	0.2	1.3	0.8	-37.9
Armenia	3.4	1.9	12.8	8.6	-32.8
Azerbaijan	201.7	0.0	421.2	0.0	-100.0
Belarus	1.3	0.4	15.6	1.9	-88.1
Bosnia and Herzegovina	0.5	0.3	2.3	2.0	-12.1
Bulgaria	8.9	4.5	38.4	19.6	-49.1
Croatia	1.4	1.5	7.4	6.5	-12.6
Czech Republic	24.7	16.2	102.5	86.4	-15.7
Estonia	2.1	2.4	7.8	7.0	-10.1
Georgia	12.4	6.5	41.2	30.4	-26.0
Hungary	25.7	22.8	128.5	105.0	-18.3
Kazakhstan	63.3	284.8	131.0	782.5	497.5
Kyrgyzstan	0.0	0.0	0.4	0.1	-85.0
Latvia	0.9	0.7	3.7	2.3	-36.6
Lithuania	11.8	2.4	58.3	65.9	13.0
Macedonia (Former Yugoslav Republic of Macedonia)	0.4	0.4	4.3	2.1	-51.7
Montenegro	0.1	0.0	0.2	0.0	-90.5
Poland	71.4	88.6	285.9	279.7	-2.2
Republic of Moldova	0.1	0.1	0.7	0.6	-12.9
Romania	9.2	7.3	42.4	38.0	-10.3
Russian Federation	84.6	44.6	509.6	405.3	-20.5
Serbia	0.9	1.3	4.1	4.3	6.4
Slovakia	17.0	9.1	52.1	54.0	3.5
Slovenia	4.9	12.1	20.2	35.1	73.8
Tajikistan	0.0	0.0	0.0	0.0	-0.3
Turkmenistan	0.0	0.0	0.1	0.1	-23.8
Ukraine	6.0	5.3	37.8	20.0	-47.0
Uzbekistan	11.5	0.1	11.6	0.9	-92.6
Total	564.6	513.7	1,941.4	1,959.2	0.9

Table 8 – continued

Imports by country, customs basis, not seasonally adjusted

	April		January to April		Change
	2009	2010	2009	2010	January to April 2010/ January to April 2009
	millions of dollars				percent
Middle East					
Bahrain	0.3	0.2	3.1	0.9	-70.7
Cyprus	0.4	0.4	1.5	1.6	2.4
Egypt	13.3	50.2	40.3	110.2	173.5
Eritrea	0.0	0.0	0.0	0.2	719.2
Ethiopia	1.4	1.1	4.1	4.2	4.1
Iran	1.4	3.6	9.2	14.0	53.4
Iraq	68.3	144.2	417.5	356.2	-14.7
Israel	67.2	69.8	332.8	322.6	-3.1
Jordan	1.4	2.2	6.1	7.1	16.2
Kuwait	0.0	0.0	37.2	0.0	-99.9
Lebanon	1.0	2.6	4.3	5.6	31.8
Libya	0.0	4.3	0.1	9.2	...
Oman	0.3	0.1	1.9	11.9	514.4
Qatar	3.5	0.0	7.9	60.8	668.3
Saudi Arabia	119.8	201.7	463.6	707.3	52.6
Somalia	0.0	0.0	0.0	0.0	-65.2
Sudan	5.4	12.1	24.8	28.7	16.0
Syria	0.4	0.7	1.5	2.3	56.7
Turkey	40.7	59.5	252.1	191.6	-24.0
United Arab Emirates	62.0	4.8	173.8	58.8	-66.2
Yemen	0.0	0.0	0.0	0.0	-36.0
Total	386.6	557.5	1,781.7	1,893.1	6.3
Other Africa					
Algeria	362.5	268.5	1,057.0	1,276.5	20.8
Angola	52.5	97.8	362.2	422.9	16.8
Antarctica	0.0	0.0	0.0	0.2	...
Benin	0.0	0.0	0.0	0.0	-15.0
Botswana	0.3	0.0	5.4	6.9	27.5
Bouvet Island	0.0	0.0	0.0	0.0	-100.0
Burkina Faso	0.0	0.7	1.6	13.5	748.8
Burundi	0.0	0.0	0.1	0.0	-75.6
Cameroon	0.4	0.9	1.6	1.9	17.7
Cape Verde	0.0	0.0	0.0	0.0	-36.8
Central African Republic	0.0	0.0	0.0	0.0	-51.6
Chad	0.0	0.0	0.0	0.1	670.2
Comoros	0.0	0.0	0.0	0.0	67.4
Congo	0.1	0.1	0.6	0.5	-24.5
Democratic Republic of the Congo	0.0	0.1	0.3	0.5	92.7
Djibouti	0.0	0.0	0.0	0.0	853.3
Equatorial Guinea	0.0	0.0	141.2	142.8	1.1
French Southern Territories	0.0	0.0	0.0	0.0	-100.0
Gabon	0.2	0.0	0.8	0.1	-90.0
Gambia	0.0	0.0	0.0	0.0	87.5
Ghana	1.3	0.3	9.1	7.5	-17.1
Guinea	5.8	5.5	21.9	12.8	-41.5
Guinea-Bissau	0.0	0.0	0.0	0.0	359.6
Ivory Coast	26.4	87.7	57.5	145.5	153.0
Kenya	1.9	1.2	5.9	5.5	-6.0
Lesotho	0.7	1.0	2.9	3.0	2.7
Liberia	2.3	2.6	7.7	12.2	58.6
Madagascar	1.3	3.8	11.6	10.5	-9.1
Malawi	0.1	8.0	0.5	16.1	...
Mali	0.1	0.1	0.2	0.2	-0.8
Mauritania	0.0	0.0	0.4	0.2	-59.5
Mauritius	0.8	1.0	3.9	3.8	-3.7
Morocco	4.1	4.0	51.6	43.0	-16.5
Mozambique	0.0	0.3	0.2	0.6	226.8
Namibia	115.5	25.0	162.6	89.7	-44.8
Niger	0.0	0.1	0.1	0.3	220.1
Nigeria	52.6	150.8	144.7	465.7	221.7
Rwanda	0.0	0.0	0.2	0.1	-19.7
Saint Helena	0.0	0.0	0.0	0.0	361.2
Sao Tome and Principe	0.0	0.0	0.0	0.1	960.4
Senegal	0.2	0.2	0.3	0.4	41.1

Table 8 – continued

Imports by country, customs basis, not seasonally adjusted

	April		January to April		Change
	2009	2010	2009	2010	January to April 2010/ January to April 2009
	millions of dollars				percent
Seychelles	0.0	0.0	0.4	0.1	-70.5
Sierra Leone	0.2	0.1	0.8	0.5	-41.2
South Africa	53.6	46.1	198.2	172.2	-13.1
Swaziland	0.1	0.1	0.6	0.4	-40.5
Togo	0.2	0.0	0.4	0.2	-39.7
Tunisia	4.8	4.7	15.5	19.6	26.5
Uganda	0.2	0.7	0.7	1.6	135.0
United Republic of Tanzania	0.2	0.4	1.7	1.0	-40.5
Western Sahara	0.0	0.0	0.0	0.0	-82.9
Zambia	0.0	0.1	0.2	0.4	86.2
Zimbabwe	0.1	0.4	0.8	1.3	65.8
Total	688.7	712.4	2,271.3	2,880.4	26.8
Other Asia					
Afghanistan	0.0	0.3	0.5	0.7	49.4
Bangladesh	69.7	64.7	296.7	246.4	-17.0
Bhutan	0.0	0.0	0.0	0.0	-86.6
British Indian Ocean Territory	0.0	0.0	0.0	0.0	46.3
Brunei Darussalam	0.1	0.0	0.9	0.0	-99.0
Cambodia	19.7	21.2	103.8	99.9	-3.7
China	3,131.5	2,906.6	13,085.5	12,031.0	-8.1
Hong Kong	27.6	31.1	125.6	104.2	-17.0
India	181.7	155.4	743.8	646.7	-13.1
Indonesia	94.8	111.1	363.6	358.7	-1.4
Japan	1,062.9	1,186.4	4,309.7	4,442.4	3.1
Laos	0.5	0.4	2.8	2.9	3.2
Macao	1.1	1.1	6.8	3.1	-53.7
Malaysia	176.0	173.3	760.1	697.9	-8.2
Maldives	0.1	0.0	0.1	0.0	-49.1
Mongolia	13.4	13.5	51.3	43.4	-15.5
Myanmar	0.0	0.0	0.0	0.0	-57.5
Nepal	1.1	0.8	3.7	3.4	-8.9
North Korea	0.0	0.0	0.0	0.1	60.4
Pakistan	19.0	22.2	78.5	80.9	3.0
Philippines	57.6	66.5	233.9	273.3	16.8
Singapore	72.8	69.9	528.4	279.9	-47.0
South Korea	509.4	537.0	1,796.1	1,894.2	5.5
Sri Lanka	8.7	9.7	40.7	39.3	-3.6
Taiwan	294.9	274.0	1,201.3	1,044.3	-13.1
Thailand	171.6	187.2	745.7	744.8	-0.1
Timor-Leste	0.3	0.1	1.2	0.4	-63.5
Viet Nam	70.3	76.3	325.8	319.7	-1.9
Total	5,984.8	5,908.8	24,806.7	23,357.5	-5.8
Oceania					
American Samoa	0.0	0.0	0.1	0.1	12.5
Australia	97.2	141.0	503.2	475.9	-5.4
Christmas Island	0.0	0.0	0.0	0.1	456.3
Cocos (Keeling) Islands	0.0	0.0	0.0	0.0	-80.7
Cook Islands	0.0	0.0	0.0	0.0	-6.8
Fiji	0.5	0.4	1.9	2.3	19.7
French Polynesia	0.0	0.0	0.2	0.4	87.4
Guam	0.1	0.0	0.2	0.0	-84.0
Heard Island and McDonald Islands	0.0	0.0	0.0	0.0	-94.3
Kiribati	0.0	0.0	0.1	0.0	-88.9
Nauru	0.0	0.0	0.0	0.0	-31.8
New Caledonia	0.0	0.0	0.1	0.1	-30.7
New Zealand	38.2	40.5	140.6	133.5	-5.1
Niue	0.0	0.0	0.0	0.0	572.5
Norfolk Island	0.0	0.0	0.0	0.0	-96.5
Papua New Guinea	0.1	0.0	0.4	0.5	32.8
Pitcairn	0.0	0.0	0.0	0.0	987.7
Samoa	0.0	0.0	0.0	0.0	269.3
Solomon Islands	0.0	0.0	0.0	0.0	179.6
Tonga	0.0	0.0	0.0	0.0	-97.4

Table 8 – continued

Imports by country, customs basis, not seasonally adjusted

	April		January to April		Change
	2009	2010	2009	2010	January to April 2010/ January to April 2009
	millions of dollars				percent
United States Minor Outlying Islands	0.4	0.3	1.7	1.7	-0.5
Vanuatu	0.0	0.1	0.0	0.2	...
Wallis and Futuna	0.0	0.0	0.0	0.0	37.8
Total	136.5	182.5	648.5	614.8	-5.2
South America					
Argentina	61.0	63.9	228.3	193.1	-15.4
Bolivia	4.3	10.9	23.0	34.5	50.0
Brazil	172.7	301.4	802.5	1,051.0	31.0
Chile	176.9	204.5	623.7	862.5	38.3
Colombia	56.3	84.5	228.4	244.1	6.9
Ecuador	23.1	16.8	89.7	67.1	-25.2
Falkland Islands (Malvinas)	0.0	0.0	0.0	0.0	-11.7
Guyana	24.1	32.9	95.1	85.0	-10.7
Paraguay	0.6	0.5	2.8	2.4	-13.6
Peru	216.4	292.8	869.1	1,180.1	35.8
Suriname	24.4	53.2	162.4	169.7	4.5
Uruguay	1.5	6.9	37.4	35.2	-5.9
Venezuela	97.5	125.9	346.6	201.1	-42.0
Total	858.8	1,194.1	3,508.9	4,125.7	17.6
Central America Antilles					
Anguilla	0.0	0.0	0.2	0.1	-39.6
Antigua and Barbuda	0.0	0.1	0.1	0.1	-21.2
Aruba	23.9	0.0	51.5	0.1	-99.8
Bahamas	5.2	2.4	18.1	10.0	-44.9
Barbados	0.4	0.6	3.0	3.3	7.6
Belize	0.5	0.7	3.4	2.5	-26.3
Bermuda	0.1	0.1	0.3	0.3	19.4
British Virgin Islands	0.1	0.0	0.1	0.1	-26.5
Cayman Islands	0.0	0.0	0.1	0.1	47.3
Costa Rica	32.5	55.8	128.6	159.5	24.0
Cuba	23.5	45.7	139.8	191.3	36.8
Dominica	0.0	0.0	0.1	0.0	-57.9
Dominican Republic	11.5	10.3	47.5	41.6	-12.5
El Salvador	5.1	33.4	31.3	44.9	43.7
Grenada	0.0	0.1	0.1	0.3	100.7
Guatemala	28.9	22.1	87.7	103.4	17.9
Haiti	2.5	1.6	7.3	9.1	24.3
Honduras	13.7	13.1	53.6	54.3	1.3
Jamaica	2.8	18.2	46.9	57.7	23.1
Montserrat	0.0	0.0	0.0	0.1	404.3
Netherlands Antilles	5.1	0.0	9.9	0.1	-98.7
Nicaragua	6.9	18.4	28.5	51.2	79.9
Panama	0.4	8.4	3.1	30.0	880.3
Saint Kitts and Nevis	0.5	0.6	1.5	2.3	50.4
Saint Lucia	0.0	0.0	0.1	0.1	8.5
Saint Vincent and the Grenadines	0.0	0.0	0.0	0.1	480.4
Trinidad and Tobago	10.3	29.9	77.0	194.7	152.9
Turks and Caicos Islands	0.0	0.0	0.2	0.1	-61.1
Total	174.0	261.8	740.0	957.3	29.4
All countries	30,740.6	32,309.9	121,666.5	125,429.7	3.1

**Table 9-1
Imports by province of clearance, customs basis, not seasonally adjusted — April**

	Agricultural and fishing products	Energy products	Forestry products	Industrial goods	Machinery and equipment	Automotive products	Consumer goods	Special transactions trade	Total
millions of dollars									
Newfoundland and Labrador									
2009	6.1	120.9	0.3	1.9	12.5	0.1	0.1	0.0	142.0
2010	7.2	209.0	0.0	1.5	9.7	0.1	0.6	0.1	228.2
Prince Edward Island									
2009	0.7	0.0	0.0	1.6	0.0	0.0	0.1	0.0	2.4
2010	1.1	0.0	0.0	0.1	0.1	0.0	0.0	0.0	1.3
Nova Scotia									
2009	23.7	151.0	1.1	46.2	95.0	233.8	18.1	0.9	569.8
2010	28.4	159.6	0.9	133.0	104.5	239.9	13.5	1.0	680.8
New Brunswick									
2009	30.1	614.0	9.6	63.0	75.4	24.6	14.0	2.4	833.1
2010	34.6	611.8	7.2	74.8	89.5	38.8	13.8	2.3	872.8
Quebec									
2009	352.3	924.1	63.6	1,161.7	1,750.5	179.9	896.8	53.3	5,382.2
2010	398.2	1,554.8	56.1	1,230.7	1,413.8	182.5	700.6	73.8	5,610.7
Ontario									
2009	1,373.0	588.8	74.5	3,498.0	5,079.1	3,747.7	2,989.8	288.9	17,639.8
2010	1,319.2	373.3	83.3	3,915.4	4,854.9	5,105.4	2,658.1	395.3	18,704.9
Manitoba									
2009	81.8	14.4	6.3	312.8	492.1	93.4	145.2	7.7	1,153.8
2010	73.2	51.0	10.0	316.1	468.0	105.0	125.7	7.5	1,156.5
Saskatchewan									
2009	32.1	34.8	4.2	225.2	315.7	56.6	21.4	1.6	691.8
2010	27.5	58.9	2.4	213.6	297.1	83.2	17.8	0.6	701.0
Alberta									
2009	162.4	159.3	8.5	338.3	601.9	55.9	91.7	9.5	1,427.5
2010	155.0	185.3	10.8	360.4	469.7	91.3	97.6	10.5	1,380.6
British Columbia									
2009	396.0	139.5	38.7	565.6	952.2	257.0	531.1	12.9	2,892.9
2010	355.2	345.8	54.1	577.7	878.8	253.6	489.2	12.2	2,966.6
Yukon, Northwest Territories and Nunavut									
2009	4.5	0.2	0.0	0.2	0.3	0.2	0.0	0.0	5.5
2010	4.9	0.1	0.0	0.4	0.9	0.2	0.0	0.1	6.6
Total									
2009	2,462.7	2,746.9	206.8	6,214.5	9,374.8	4,649.3	4,708.4	377.3	30,740.6
2010	2,404.5	3,549.6	224.9	6,823.6	8,586.9	6,100.0	4,116.9	503.4	32,309.9

Table 9-2
Imports by province of clearance, customs basis, not seasonally adjusted — Year to date, January to April

	Agricultural and fishing products	Energy products	Forestry products	Industrial goods	Machinery and equipment	Automotive products	Consumer goods	Special transactions trade	Total
millions of dollars									
Newfoundland and Labrador									
2009	15.7	698.0	0.3	37.4	36.6	0.2	1.3	0.1	789.6
2010	15.4	675.9	0.1	12.4	55.4	0.2	2.2	0.3	761.9
Prince Edward Island									
2009	1.1	0.0	0.0	17.5	0.4	0.1	0.1	0.1	19.2
2010	1.4	0.0	0.0	5.3	0.2	0.1	0.0	0.0	7.1
Nova Scotia									
2009	106.8	488.3	4.2	275.7	397.3	763.8	60.8	7.2	2,104.2
2010	118.5	617.5	5.1	385.2	305.7	1,027.2	55.6	4.7	2,519.6
New Brunswick									
2009	108.4	1,650.1	37.8	271.5	270.8	85.9	56.0	8.4	2,488.9
2010	119.0	2,500.0	36.4	343.5	274.5	141.2	85.2	6.4	3,506.2
Quebec									
2009	1,453.3	3,665.8	285.3	4,561.6	6,914.9	647.4	3,821.0	175.0	21,524.3
2010	1,458.3	4,915.0	239.8	4,873.5	5,454.0	692.4	3,434.5	178.2	21,245.7
Ontario									
2009	5,411.1	1,915.6	303.7	14,323.7	20,355.2	12,689.9	11,801.7	1,185.9	67,986.8
2010	5,099.1	1,690.1	325.4	15,374.5	19,270.3	19,271.7	11,075.2	1,164.0	73,270.2
Manitoba									
2009	322.0	62.8	26.7	1,284.3	2,042.9	485.5	558.1	32.0	4,814.4
2010	288.8	179.7	31.7	1,180.5	1,784.3	387.4	488.0	25.5	4,365.9
Saskatchewan									
2009	117.3	133.4	10.2	926.1	1,187.0	284.6	85.5	13.4	2,757.3
2010	103.2	158.4	8.2	789.5	1,161.8	277.7	80.2	4.4	2,583.3
Alberta									
2009	613.2	1,147.6	36.2	1,819.4	2,689.7	260.2	385.4	42.1	6,993.9
2010	619.0	1,047.6	35.3	1,485.4	2,031.9	323.8	371.3	40.0	5,954.3
British Columbia									
2009	1,468.0	740.4	157.7	2,413.9	3,881.4	1,174.0	2,274.4	53.1	12,162.7
2010	1,398.9	956.5	204.7	2,183.8	3,477.6	971.5	1,958.0	43.4	11,194.5
Yukon, Northwest Territories and Nunavut									
2009	5.3	1.9	0.0	0.8	16.0	0.2	0.1	0.9	25.1
2010	8.0	1.2	0.0	0.5	10.6	0.2	0.1	0.3	20.9
Total									
2009	9,622.1	10,504.0	862.0	25,932.0	37,792.2	16,391.9	19,044.4	1,518.0	121,666.5
2010	9,229.6	12,741.8	886.6	26,634.2	33,826.4	23,093.5	17,550.3	1,467.2	125,429.7

Technical notes

The Canadian international merchandise trade statistical program

Introduction

The objective of this text is to provide a general overview of the Canadian International Merchandise Trade Statistical Program, with special reference to concepts and definitions. The text is intended for the general user and simplicity is emphasized. More technical details can be obtained from the International Trade Division, Statistics Canada upon request.

Conceptual framework

1. Objectives and coverage: The primary objective of the Canadian International Merchandise Trade Statistical Program is to measure the change in the stock of material resources of Canada resulting from the movement of merchandise into or out of the country. Information on imports and exports are inputs into the System of National Accounts, particularly in the balance of payments and gross domestic product, and are used in the formulation of trade and budgetary policies. Governments, importers, exporters, manufacturers and shipping companies use international merchandise trade statistics to:

- monitor import penetration and export performance,
- monitor commodity price and volume changes,
- examine transport implications.

2. Trade statistics (customs basis / balance of payments basis): Merchandise trade statistics are reported and presented on two different bases: customs basis and balance of payment basis.

When goods are imported into or exported from Canada, declarations must be filed with customs, giving such information as description and value of the goods, origin and port of clearance of commodities and mode of transport. Most of this information is required for the purposes of customs administration. Statistics developed from administrative records of customs are commonly referred to as customs-based trade statistics.

Customs-based trade statistics are more accurate at measuring imports than they are at measuring exports. This is the case because customs are typically more vigilant with respect to goods entering the country than they are with goods leaving the country.

Customs-based export statistics may understate or incorrectly portray the destination of exports. Export statistics are understated when the proper documentation is not filed with Customs. Exports are incorrectly portrayed when the country of final destination is inaccurately reported on the customs documentation. This occurs most frequently when goods are routed through an intermediary country before continuing on to their final destination.

Statistics Canada does not have a measure of undercoverage but periodically conducts reconciliation exercises with its major trading partners, excluding the United States.

On January 1, 1990, Canada entered into a memorandum of understanding with the United States concerning the exchange of import data. As a consequence, each administration is using the other's import data to replace its own export data. Canada's international merchandise trade statistics are, therefore, no longer derived exclusively from the administrative records of the Canada Border Services Agency, but from United States Customs records as well.

Customs-based information is adjusted to conform with the National Accounts concepts and definitions. The adjustments to derive balance of payments-based trade data include adjustments related to trade definition, valuation and timing. The principal difference between the two trade concepts is that customs-based merchandise trade statistics cover the physical movement of goods as they are reflected in customs documents while balance of payments-adjusted data are intended to cover all economic transactions that involve merchandise trade between residents and non-residents. The present document describes the concepts and processes pertaining to the customs-based trade statistics only. (For further information on balance of payments-adjusted data, see the publication *Canada's Balance of International Payments*, Statistics Canada (Catalogue no. 67-001-X).

3. System of trade: Canadian trade statistics are compiled according to the 'general' system of trade, as defined by the United Nations Statistical Office. Under this system, imports include all goods that have crossed Canada's territorial boundary, whether for immediate consumption in Canada or for storage in bonded customs warehouses. Domestic exports include goods grown, extracted or manufactured in Canada, including goods of foreign origin that have been materially transformed in Canada. Re-exports are exports of goods of foreign origin that have not been materially transformed in Canada, including foreign goods withdrawn for export from bonded customs warehouses. Total exports are the sum of domestic exports and re-exports. Thus the general trade system, in principal, presents all goods entering the country (imports) and all goods leaving the country (exports). It differs from the 'special' system of trade in the treatment of imported goods into bonded customs warehouses. Under the 'special' system, these goods are counted only if and when they are withdrawn from customs warehouses for home consumption. They are not counted in export statistics unless they have first cleared customs.

Conceptually, under the 'general' system, the statistical frontier coincides with the geographical boundary, while under the 'special' system, it coincides with the customs boundary.

4. Valuation: For customs purposes, imports are recorded at values established according to the provisions of the Customs Act, which, since January 1, 1985, reflects valuation methods based on the General Agreement on Tariffs and Trade (GATT) Valuation Code System. In general, the value for duty of imported goods must be equivalent to the transaction value or the price actually paid.

To determine the transaction value of imported goods, all transportation and associated costs arising in respect of the goods being appraised prior to and at the place of direct shipment to Canada, are to be added to the price of the goods. Therefore, Canadian imports are valued Free on Board (FOB), place of direct shipment to Canada. It excludes freight and insurance costs in bringing the goods to Canada from the point of direct shipment.

To countries other than the United States, exports are, in principal, valued or recorded at the values declared on export documents, which usually reflect the transaction value, i.e., actual selling price or, in the case of a non-arm's length transaction, the transfer price used for company accounting purposes. Canadian exports to overseas countries are valued at F.O.B. port of exit, including domestic freight charges to that point but net of discounts and allowances. As of January, 1990, Canadian exports to the U.S. are valued F.O.B. point of exit from Canada. Prior to 1990, they were valued F.O.B. place of lading net of freight charges, discounts and allowances.

5. Statistical period: The reference period is the calendar month and the calendar year. The closing of the statistical month for imports and Canadian exports to the United States is defined as the last calendar day of the month, based as closely as practicable on the date of clearance from customs.

The closing of the statistical month for exports, to countries other than the United States, is also defined as the last calendar day of the month. Those export documents that are received too late for incorporation in the current month are assigned to the month the transaction took place. If a monthly summary report from a high volume exporter is not received on time, the data are imputed for the current month and revised with the trade value in the following statistical month.

6. Trading partner attribution (country of origin/destination): Exports are attributed to the country, which is the last known destination of the goods at the time of export. Exports to the United States are attributed to the state of destination.

Imports are attributed to their country of origin, that is, the country in which the goods were grown, extracted or manufactured in accordance to the rules of origin administered by the Canada Border Services Agency. Imports from the United States are attributed to the state of origin. Prior to 1988, most imports were attributed to the country of export/consignment, with the exception of imports from Central and South America.

7. Principal trading areas: The 'principal trading areas' are country groupings defined as follows:

United States: Includes trade with Puerto Rico and the U.S. Virgin Islands

Japan

European Union (EU): Austria, Belgium, Bulgaria, Cyprus, Czech Republic, Denmark, Estonia, Finland, France, Germany, Greece, Hungary, Ireland, Italy, Latvia, Lithuania, Luxembourg, Malta, Netherlands, Poland, Portugal, Romania, Slovakia, Slovenia, Spain, Sweden and United Kingdom

Other Organisation for Economic Co-operation and Development (OECD): Australia, Canada, Iceland, Mexico, New Zealand, Norway, South Korea, Switzerland, and Turkey. (The EU countries, United States, and Japan are also members of OECD)

Other countries: All countries and territories other than the United States, Japan, EU and other OECD

8. Legal framework: Import and export statistics with countries other than the United States are derived from information contained in administrative records collected by the Canada Border Services Agency under the Customs Act. Copies of these documents (or information therefrom) are sent to Statistics Canada in accordance with Section 25 of the Statistics Act. It follows that the disclosure of trade statistics is governed by both the Customs Act and the Statistics Act and is subject to the provisions of Section 17(2)(a) of the latter. Disclosure of export statistics to the United States is now governed by a memorandum of understanding that provides for the exchange of detailed import statistics between Canada and the United States.

Contact information

Questions concerning details of methods not covered by these notes should be addressed to the Marketing and Client Services Section, International Trade Division, Statistics Canada, 170 Tunney's Pasture Driveway, Ottawa, Ontario, K1A 0T6.

Telephone: 1-800-294-5583 or 613-951-9647

Facsimile: 1-800-664-0055 613-951-0117

Internet: trade@statcan.gc.ca