

Catalogue no. 65-001-X

Canadian International Merchandise Trade

March 2010



Statistics
Canada

Statistique
Canada

Canada

How to obtain more information

For information about this product or the wide range of services and data available from Statistics Canada, visit our website at www.statcan.gc.ca, e-mail us at infostats@statcan.gc.ca, or telephone us, Monday to Friday from 8:30 a.m. to 4:30 p.m., at the following numbers:

Statistics Canada's National Contact Centre

Toll-free telephone (Canada and the United States):

Inquiries line	1-800-263-1136
National telecommunications device for the hearing impaired	1-800-363-7629
Fax line	1-877-287-4369

Local or international calls:

Inquiries line	1-613-951-8116
Fax line	1-613-951-0581

Depository Services Program

Inquiries line	1-800-635-7943
Fax line	1-800-565-7757

To access this product

This product, Catalogue no. 65-001-X, is available free in electronic format. To obtain a single issue, visit our website at www.statcan.gc.ca and browse by "Key resource" > "Publications."

Standards of service to the public

Statistics Canada is committed to serving its clients in a prompt, reliable and courteous manner. To this end, Statistics Canada has developed *standards of service* that its employees observe. To obtain a copy of these service standards, please contact Statistics Canada toll-free at 1-800-263-1136. The service standards are also published on www.statcan.gc.ca under "About us" > "Providing services to Canadians."

Statistics Canada
International Trade Division

Canadian International Merchandise Trade

March 2010

Published by authority of the Minister responsible for Statistics Canada

© Minister of Industry, 2010

All rights reserved. The content of this electronic publication may be reproduced, in whole or in part, and by any means, without further permission from Statistics Canada, subject to the following conditions: that it be done solely for the purposes of private study, research, criticism, review or newspaper summary, and/or for non-commercial purposes; and that Statistics Canada be fully acknowledged as follows: Source (or "Adapted from", if appropriate): Statistics Canada, year of publication, name of product, catalogue number, volume and issue numbers, reference period and page(s). Otherwise, no part of this publication may be reproduced, stored in a retrieval system or transmitted in any form, by any means—electronic, mechanical or photocopy—or for any purposes without prior written permission of Licensing Services, Client Services Division, Statistics Canada, Ottawa, Ontario, Canada K1A 0T6.

May 2010

Catalogue no. 65-001-X, vol. 64, no. 3

ISSN 1480-8781

Frequency: Monthly

Ottawa

Cette publication est également disponible en français.

Note of appreciation

Canada owes the success of its statistical system to a long-standing partnership between Statistics Canada, the citizens of Canada, its businesses, governments and other institutions. Accurate and timely statistical information could not be produced without their continued cooperation and goodwill.

User information

Symbols

The following standard symbols are used in Statistics Canada publications:

- . not available for any reference period
- .. not available for a specific reference period
- ... not applicable
- 0 true zero or a value rounded to zero
- 0^s value rounded to 0 (zero) where there is a meaningful distinction between true zero and the value that was rounded
- p preliminary
- r revised
- x suppressed to meet the confidentiality requirements of the *Statistics Act*
- E use with caution
- F too unreliable to be published

Note to users

All totals are calculated from full figures and rounded independently; consequently, totals may not equal the sum of their components.

The data is based on commodity groups (sector, subsector and major group).

Table of contents

Highlights	5
Analysis	7
Related products	11
Statistical tables	
1 Merchandise trade of Canada, balance of payments basis, seasonally adjusted	15
1-1 Current dollars	15
1-2 Constant dollars, 2002	16
1-3 Price indices (Laspeyres)	17
2 Exports by commodity groupings, balance of payments basis, seasonally adjusted	18
2-1 Current dollars	18
2-2 Constant dollars, 2002	20
3 Domestic exports to selected countries, customs basis, not seasonally adjusted	22
3-1 March	22
3-2 Year to date, January to March	23
4 Domestic exports by country, customs basis, not seasonally adjusted	24
5 Exports by province of origin, customs basis, not seasonally adjusted	28
5-1 March	28
5-2 Year to date, January to March	29
6 Imports by commodity groupings, balance of payments basis, seasonally adjusted	30
6-1 Current dollars	30
6-2 Constant dollars, 2002	32
7 Imports from selected countries, customs basis, not seasonally adjusted	34
7-1 March	34
7-2 Year to date, January to March	35
8 Imports by country, customs basis, not seasonally adjusted	36

Table of contents – continued

9	Imports by province of clearance, customs basis, not seasonally adjusted	40
9-1	March	40
9-2	Year to date, January to March	41

Data quality, concepts and methodology

	Technical notes	42
--	-----------------	----

Highlights

- Canada's merchandise exports declined 0.7% in March, due to falling prices for energy products while imports grew 2.0% on the strength of precious metals. Export and import volumes experienced increases during the month. Canada's trade surplus with the world narrowed to \$254 million in March from \$1.2 billion in February.
- Exports decreased to \$33.5 billion in March from \$33.8 billion in February, halting six consecutive months of increases. Export prices fell 2.6%, while volumes grew 1.9%. This was the first decline in prices in six months.
- Energy products accounted for the decline in the value of exports, as their prices fell 4.9%. Excluding energy products, overall exports increased 1.3%. Exports of machinery and equipment also declined. Moderating the overall decrease were gains in exports of industrial goods and materials as well as forestry products.
- Imports grew from \$32.6 billion in February to \$33.3 billion in March, the highest level since December 2008. This represented the fourth gain in five months. Import volumes increased 3.5%, while prices decreased 1.5%.
- On the strength of precious metals, industrial goods and materials led the growth in imports, followed by energy products. Lower imports of automotive products and other consumer goods mitigated the gain in imports.
- Exports and imports to the United States both fell in March. Exports declined 2.5%, reflecting the weakness in exports of energy products, while imports decreased 0.6%. As a result, Canada's trade surplus with the United States narrowed to \$3.8 billion in March from \$4.3 billion in February.
- Exports to countries other than the United States grew 4.2%, a third consecutive monthly gain. Exports to the European Union led the growth. Imports rose 6.5%, primarily as a result of a 19.4% increase in imports from the European Union. Consequently, Canada's trade deficit with countries other than the United States widened to \$3.6 billion in March from \$3.2 billion in February.

Note to readers

Merchandise trade is one component of Canada's international balance of payments, which also includes trade in services, investment income, current transfers as well as capital and financial flows.

International merchandise trade data by country are available on both a balance of payments and a customs basis for the United States, Japan and the United Kingdom. Trade data for all other individual countries are available on a customs basis only. Balance of payments data are derived from customs data by making adjustments for characteristics such as valuation, coverage, timing and residency. These adjustments are made to conform to the concepts and definitions of the Canadian System of National Accounts.

Data in this release are on a balance of payments basis, seasonally adjusted in current dollars. Constant dollars are calculated using the Laspeyres volume formula.

Revisions

In general, merchandise trade data are revised on an ongoing basis for each month of the current year. Current year revisions are reflected in both the customs and balance of payments based data. Revisions to customs based data for the previous year are released on a quarterly basis. Revisions to balance of payments based data for the three previous years are released annually in June.

Factors influencing revisions include late receipt of import and export documentation, incorrect information on customs forms, replacement of estimates with actual figures, changes in classification of merchandise based on more current information, and changes to seasonal adjustment factors.

Revised data are available in the appropriate CANSIM tables.

Chart 1
Exports and imports, seasonally adjusted, on a balance of payments basis

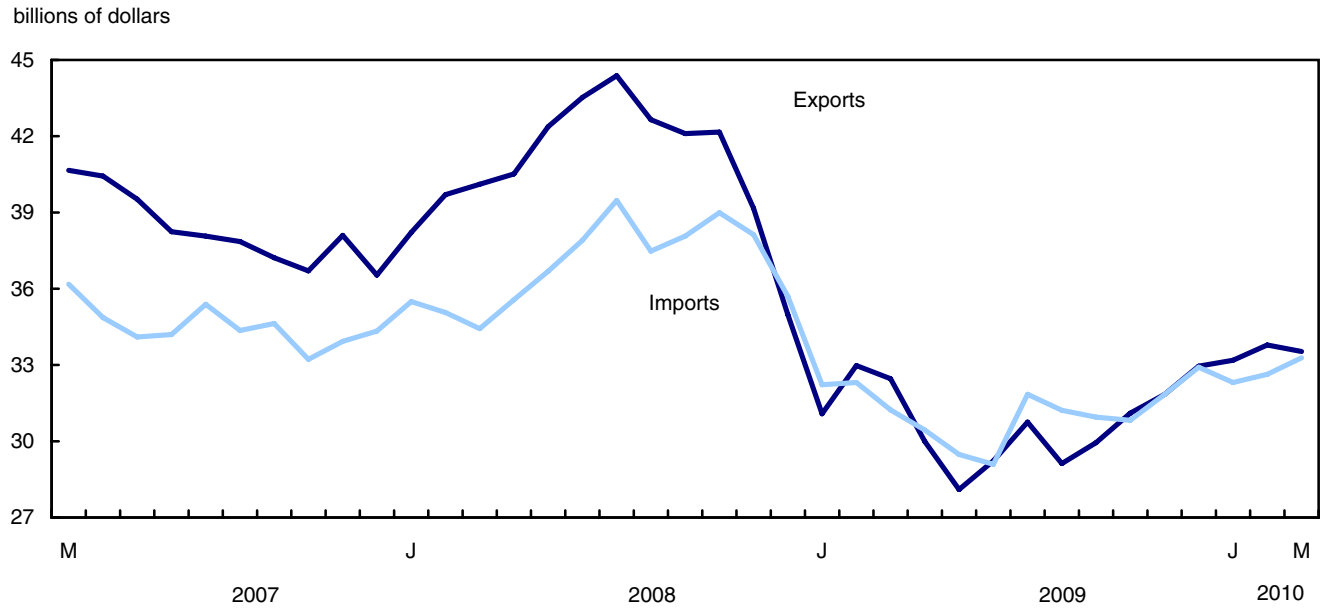
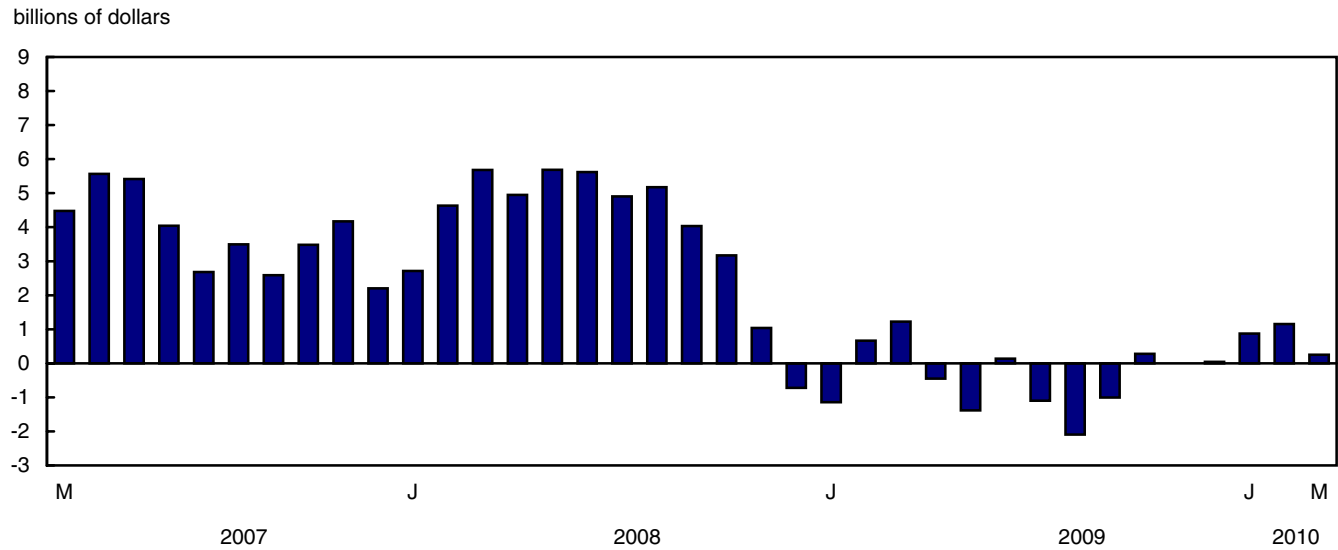


Chart 2
Trade balance, seasonally adjusted, on a balance of payments basis



Analysis

Exports of energy products decline

Following a slight decrease in February, exports of energy products fell a further 6.6% to \$8.0 billion, the largest percentage decrease since April 2009. Exports of petroleum and coal products fell 15.8%, largely the result of lower volumes. Crude petroleum and natural gas fell as a result of decreases in prices.

Exports of machinery and equipment decreased 1.9% to \$5.8 billion, due to a decline in prices. Although the declines were widespread throughout the sector, exports of telecommunication equipment, down 9.1%, were the main factor behind the decrease.

Exports of industrial goods and materials rose 4.7% to \$8.3 billion. This third consecutive monthly gain was mostly the result of volumes increasing 4.2%. Exports of precious metals grew 47.0% to reach a record high of \$1.5 billion. After gains in February, exports of fertilizers and fertilizer materials as well as copper ores fell in March.

Exports of forestry products increased 3.0% to \$1.7 billion, the seventh consecutive monthly gain, as volumes rose 4.4%. Exports of wood pulp grew 8.6% and accounted for almost three-quarters of the gain followed by other crude wood products which include items such as poles, fence posts and logs.

Precious metals account for over two-thirds of the gain in imports

Imports of industrial goods and materials rose 10.4% to \$7.3 billion, the largest percentage increase since January 1992. The gain was the result of volumes increasing 18.5% while prices fell 6.8%. Imports of metals and metal ores grew 21.2% in March, largely the result of precious metals increasing to \$1.0 billion, a record high. Chemicals and plastics rose 6.7%, mainly due to higher imports of organic chemicals, up for a fourth consecutive month.

Following two months of decline, imports of energy products increased 10.1% to \$3.2 billion. Imports of crude petroleum, up 17.7% due to higher volumes, were the main factor behind the growth in the sector.

Imports of automotive products fell 5.8% to \$5.6 billion, as volumes declined 4.5%. Imports of passenger autos fell 13.3% and accounted for over three-quarters of the decrease in the sector. Imports of trucks and motor vehicle parts also decreased in March.

Imports of other consumer goods declined 2.3% to \$4.6 billion, the lowest level since April 2008. Miscellaneous end products, which include items such as sporting goods, toys, medicinal and pharmaceutical products led the decline in the sector. Prices of miscellaneous end products have generally been decreasing since March 2009 while volumes increased during the same period.

Chart 1
Exports of energy products, seasonally adjusted, on a balance of payments basis

billions of dollars

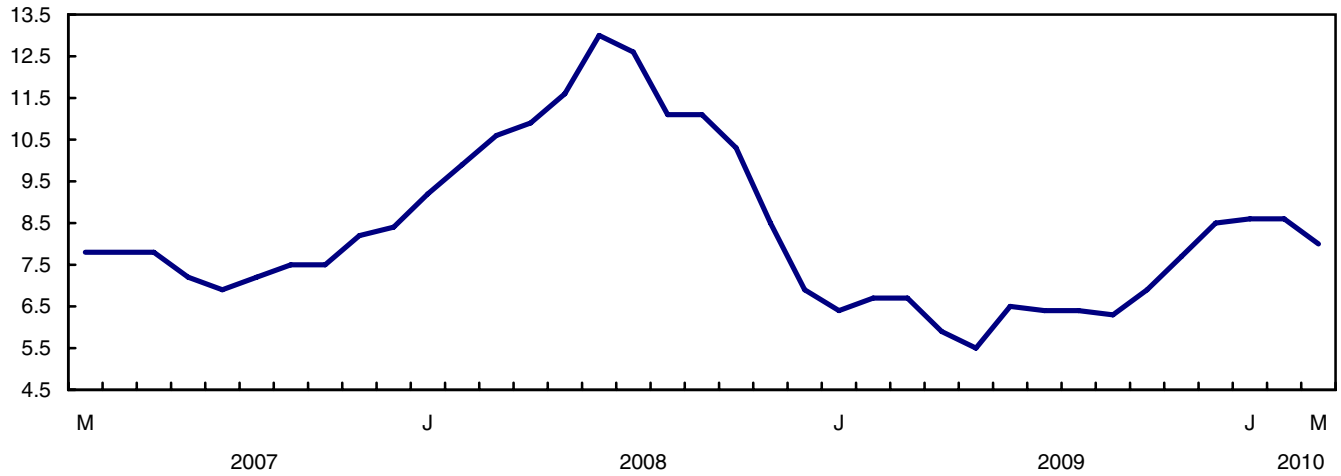


Chart 2
Exports of machinery and equipment, seasonally adjusted, on a balance of payments basis

billions of dollars

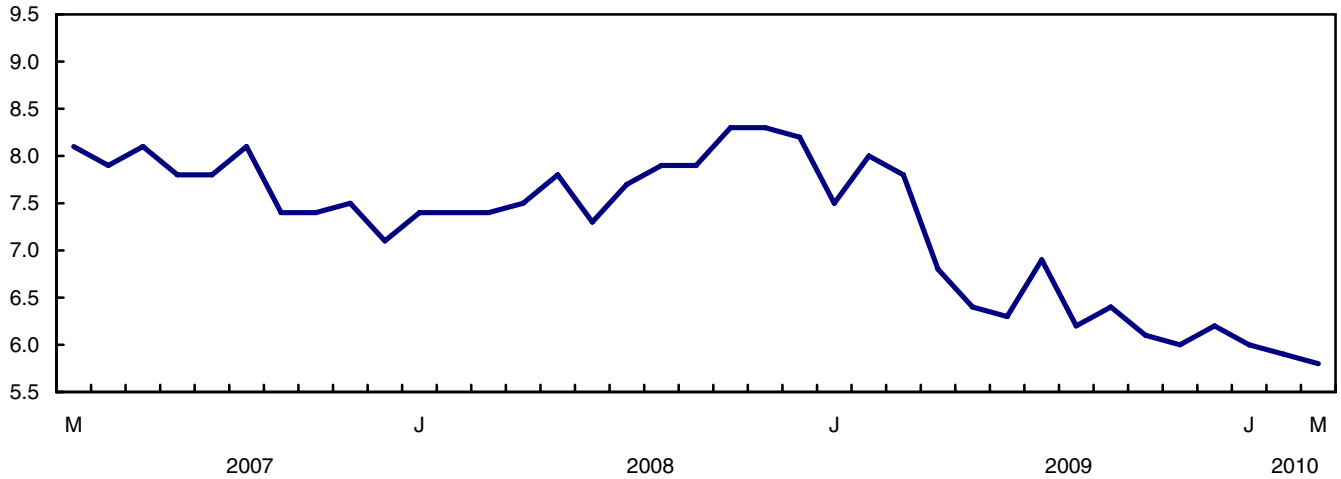


Chart 3
Imports of industrial goods and materials, seasonally adjusted, on a balance of payments basis

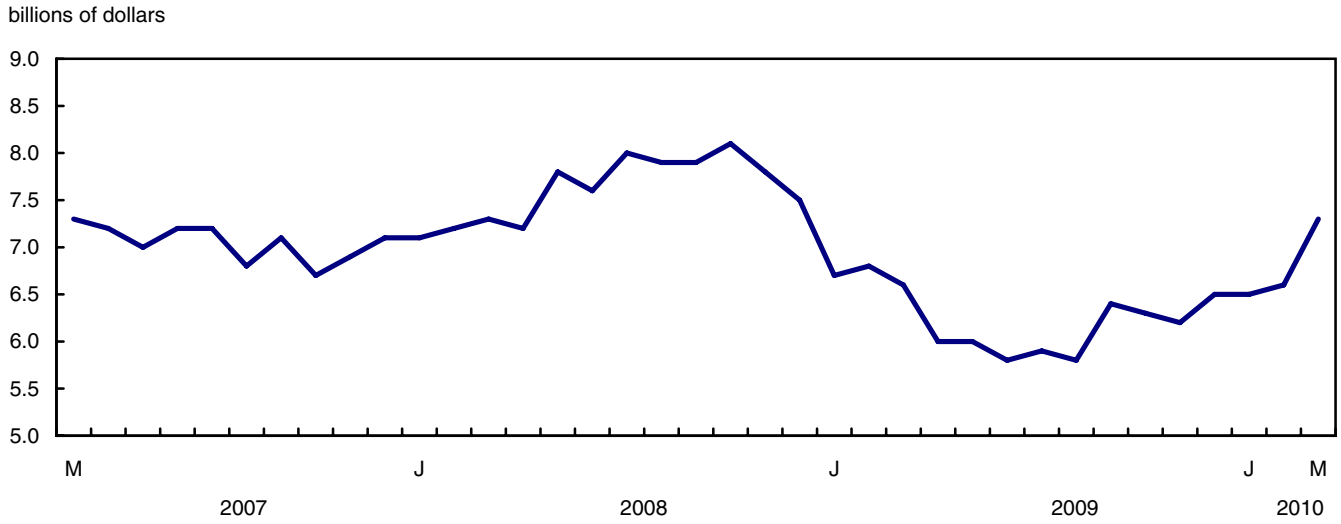
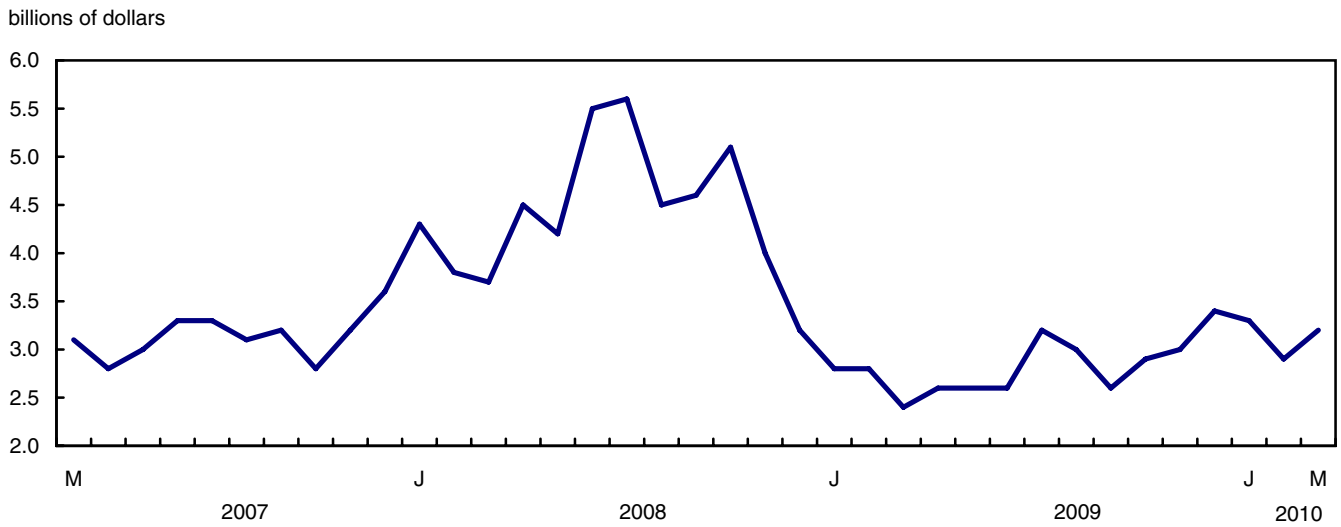


Chart 4
Imports of energy products, seasonally adjusted, on a balance of payments basis



Text table 1
Merchandise trade by principal trading area, balance of payments basis, seasonally adjusted

	February 2010	March 2010	Change	Year to date			March 2010/ March 2009		
				2009	2010	Change			
				millions of dollars	percent	millions of dollars		percent	
Export to									
United States	25,073	24,452	-621	-2.5	70,411	74,369	3,958	5.6	4.9
Japan	782	682	-99	-12.7	2,550	2,252	-298	-11.7	-20.6
European Union ¹	2,832	3,225	393	13.9	8,863	8,788	-75	-0.8	-0.2
Other Organisation for Economic Co-operation and Development ²	1,580	1,735	155	9.8	3,899	4,787	888	22.8	30.7
Other countries	3,519	3,439	-80	-2.3	10,798	10,308	-490	-4.5	-7.7
Total	33,786	33,533	-254	-0.8	96,521	100,503	3,983	4.1	3.3
Imports from									
United States	20,764	20,636	-127	-0.6	60,161	61,933	1,772	2.9	4.0
Japan	885	781	-104	-11.7	2,539	2,406	-133	-5.2	10.7
European Union ¹	3,046	3,637	591	19.4	10,005	9,716	-289	-2.9	12.7
Other Organisation for Economic Co-operation and Development ²	2,477	2,485	8	0.3	6,183	7,381	1,198	19.4	22.3
Other countries	5,460	5,740	279	5.1	16,883	16,786	-98	-0.6	5.7
Total	32,632	33,279	647	2.0	95,771	98,222	2,451	2.6	6.5
Balance									
United States	4,310	3,816	-494	...	10,250	12,436	2,186
Japan	-103	-99	4	...	12	-154	-165
European Union ¹	-214	-412	-198	...	-1,142	-928	214
Other Organisation for Economic Co-operation and Development ²	-897	-750	147	...	-2,285	-2,595	-310
Other countries	-1,941	-2,301	-360	...	-6,085	-6,478	-392
Total	1,154	254	-900	...	749	2,281	1,532

1. European Union includes: Austria, Belgium, Bulgaria, Cyprus, Czech Republic, Denmark, Estonia, Finland, France, Germany, Greece, Hungary, Ireland, Italy, Latvia, Lithuania, Luxembourg, Malta, Netherlands, Poland, Portugal, Romania, Slovakia, Slovenia, Spain, Sweden and United Kingdom.
2. Other Organisation for Economic Co-operation and Development includes: Australia, Canada, Iceland, Mexico, New Zealand, Norway, South Korea, Switzerland and Turkey.

Text table 2
Reconciliation of customs and balance of payments trade data, not seasonally adjusted

	2010			2009			2009
	March	February	January	December	November	October	Annual
	millions of dollars						
Exports							
Customs basis	34,722	30,352	30,430	31,091	30,542	31,209	360,030
Balance of payments adjustments	983	813	756	571	1,127	937	9,529
Valuation and residency							
Inland freight	554	509	488	484	480	515	6,214
Other valuation and residency	-861	-978	-836	-931	-667	-518	-8,039
Timing	110	52	-35	17	-17	-3	-163
Coverage	1,180	1,230	1,139	1,001	1,331	943	11,517
Balance of payments basis	35,705	31,165	31,186	31,662	31,669	32,146	369,559
Imports							
Customs basis	34,809	29,865	28,183	30,847	31,307	31,569	365,159
Balance of payments adjustments	1,051	817	732	987	686	953	9,219
Valuation and residency							
Inland freight	769	646	623	647	660	685	7,728
Other valuation and residency	129	32	21	43	41	54	203
Timing	0	0	0	0	0	0	0
Coverage	153	139	88	297	-15	214	1,288
Balance of payments basis	35,860	30,682	28,915	31,834	31,993	32,522	374,378

Related products

Selected publications from Statistics Canada

65-208-X	International Merchandise Trade Annual Review
65-506-X	A Profile of Canadian Exporters
65F0013X	Canadian International Merchandise Trade Database
65F0019X	A Database for Analysis of International Markets
65F0020X	Data Integration - International Trade Data and Manufacturing Shipments Data

Selected CANSIM tables from Statistics Canada

228-0001	Merchandise imports and exports, by major groups and principal trading areas for all countries, monthly
228-0002	Merchandise imports and exports, by major groups and principal trading areas for all countries, quarterly
228-0003	Merchandise imports and exports, by major groups and principal trading areas for all countries, annual
228-0033	Imports, customs-based, by province of clearance, monthly
228-0034	Domestic exports, customs-based, by province of origin, monthly
228-0041	Merchandise imports and exports by sector and sub-sector, customs and balance of payments basis, for all countries, monthly
228-0042	Merchandise imports and exports by sector and sub-sector, customs and balance of payments basis, for all countries, quarterly
228-0043	Merchandise imports and exports by sector and sub-sector, customs and balance of payments basis, for all countries, annual
228-0047	Merchandise imports and exports balance of payments and customs-based price and volume indexes for all countries, monthly
228-0048	Merchandise imports and exports balance of payments and customs-based price and volume indexes for all countries, quarterly
228-0049	Merchandise imports and exports balance of payments and customs-based price and volume indexes for all countries, annual

228-0050	Merchandise imports and exports customs-based price indexes, Canada and United States trade, and Standard International Trade Classification (SITC revision 3) price indexes for all countries and United States, monthly
228-0051	Merchandise imports and exports customs-based price indexes, Canada and United States trade, and Standard International Trade Classification (SITC revision 3) price indexes for all countries and United States, quarterly
228-0052	Merchandise imports and exports customs-based price indexes, Canada and United States trade, and Standard International Trade Classification (SITC revision 3) price indexes for all countries and United States, annual
228-0053	Merchandise import and export price and volume indexes by sector and sub-sector, customs and balance of payments basis, for all countries, monthly
228-0054	Merchandise import and export price and volume indexes by sector and sub-sector, customs and balance of payments basis, for all countries, quarterly
228-0055	Merchandise import and export price and volume indexes by sector and sub-sector, customs and balance of payments basis, for all countries, annual
228-0056	Merchandise imports and exports by sector, balance of payments basis, for all countries, seasonally adjusted, Fisher formula, monthly
228-0057	Merchandise imports and exports by sector, balance of payments basis, for all countries, seasonally adjusted, Fisher formula, quarterly

Selected surveys from Statistics Canada

2201	Canadian International Merchandise Trade (Customs Basis)
2202	Canadian International Merchandise Trade (Balance of Payments Basis)
2203	International Trade Price Indexes

Selected summary tables from Statistics Canada

- *Canada: Economic and financial data*
- *Imports, exports and trade balance of goods on a balance-of-payments basis, by country or country grouping*
- *Exports of goods on a balance-of-payments basis*

- *Imports of goods on a balance-of-payments basis*
- *Merchandise trade of Canada (monthly)*
- *Economic indicators, by province and territory (monthly and quarterly)*
- *Latest statistics (monthly)*

Statistical tables

Table 1-1
Merchandise trade of Canada, balance of payments basis, seasonally adjusted — Current dollars

	Exports	Imports	Trade balance	Period to period change		
				Exports	Imports	Balance
				millions of dollars	percent	millions of dollars
2006	453,951	404,345	49,606	0.0	0.0	0
2007	463,127	415,229	47,898	2.0	2.7	-1,708
2008	489,857	442,988	46,869	5.8	6.7	-1,029
2009	369,559	374,378	-4,818	-24.6	-15.5	-51,687
2008						
First quarter	117,996	104,991	13,005	6.0	3.5	3,152
Second quarter	126,385	110,154	16,230	7.1	4.9	3,226
Third quarter	129,144	115,028	14,116	2.2	4.4	-2,114
Fourth quarter	116,332	112,815	3,517	-9.9	-1.9	-10,599
2009						
First quarter	96,521	95,771	749	-17.0	-15.1	-2,768
Second quarter	87,318	89,012	-1,695	-9.5	-7.1	-2,444
Third quarter	89,822	94,016	-4,195	2.9	5.6	-2,500
Fourth quarter	95,899	95,577	322	6.8	1.7	4,516
2010						
First quarter	100,503	98,222	2,281	4.8	2.8	1,959
2009						
January	31,082	32,224	-1,141	-11.1	-9.7	-421
February	32,978	32,311	667	6.1	0.3	1,809
March	32,460	31,236	1,223	-1.6	-3.3	556
April	29,987	30,438	-452	-7.6	-2.6	-1,675
May	28,099	29,480	-1,381	-6.3	-3.1	-929
June	29,233	29,094	138	4.0	-1.3	1,520
July	30,751	31,848	-1,096	5.2	9.5	-1,235
August	29,124	31,219	-2,095	-5.3	-2.0	-998
September	29,946	30,950	-1,003	2.8	-0.9	1,091
October	31,104	30,825	279	3.9	-0.4	1,282
November	31,840	31,840	0	2.4	3.3	-279
December	32,956	32,913	43	3.5	3.4	43
2010						
January	33,184	32,311	873	0.7	-1.8	830
February	33,786	32,632	1,154	1.8	1.0	281
March	33,533	33,279	254	-0.8	2.0	-900

Note(s): Because of rounding, monthly data may not add up to quarterly data and quarterly data may not add up to annual data.

Table 1-2
Merchandise trade of Canada, balance of payments basis, seasonally adjusted — Constant dollars, 2002

	Exports	Imports	Trade balance	Period to period change	
				Exports	Imports
	millions of dollars			percent	
2006	443,398	456,881	-13,483	0.0	0.0
2007	449,581	483,522	-33,941	1.4	5.8
2008	415,123	485,171	-70,048	-7.7	0.3
2009	346,650	406,306	-59,655	-16.5	-16.3
2008					
First quarter	107,366	123,120	-15,754	-2.6	-1.1
Second quarter	105,949	123,992	-18,043	-1.3	0.7
Third quarter	104,458	124,141	-19,683	-1.4	0.1
Fourth quarter	97,350	113,917	-16,567	-6.8	-8.2
2009					
First quarter	88,066	97,594	-9,527	-9.5	-14.3
Second quarter	82,554	95,485	-12,931	-6.3	-2.2
Third quarter	86,365	105,267	-18,902	4.6	10.2
Fourth quarter	89,665	107,960	-18,295	3.8	2.6
2010					
First quarter	91,728	111,386	-19,658	2.3	3.2
2009					
January	28,406	33,050	-4,644	-8.7	-8.6
February	30,114	32,782	-2,667	6.0	-0.8
March	29,547	31,762	-2,216	-1.9	-3.1
April	28,162	31,536	-3,374	-4.7	-0.7
May	26,952	31,949	-4,997	-4.3	1.3
June	27,440	32,000	-4,559	1.8	0.2
July	29,520	35,145	-5,625	7.6	9.8
August	27,984	35,240	-7,256	-5.2	0.3
September	28,860	34,882	-6,021	3.1	-1.0
October	29,602	35,069	-5,468	2.6	0.5
November	29,592	36,079	-6,487	0.0	2.9
December	30,471	36,812	-6,341	3.0	2.0
2010					
January	30,389	36,451	-6,062	-0.3	-1.0
February	30,375	36,824	-6,449	0.0	1.0
March	30,963	38,111	-7,147	1.9	3.5

Note(s): Because of rounding, monthly data may not add up to quarterly data and quarterly data may not add up to annual data.

Table 1-3
Merchandise trade of Canada, balance of payments basis, seasonally adjusted — Price indices (Laspeyres)

	2002=100			Period to period change		
	Exports	Imports	Terms of trade	Exports	Imports	Terms of trade
	price indices (Laspeyres)			percent		
2006	105.1	92.7	113.3	0.0	0.0	0.0
2007	107.2	91.6	117.0	2.0	-1.2	3.2
2008	116.3	97.6	119.1	8.5	6.6	1.9
2009	105.3	97.0	108.6	-9.4	-0.6	-8.8
2008						
First quarter	111.3	90.4	123.1	5.4	2.7	2.7
Second quarter	118.5	95.2	124.5	6.4	5.2	1.2
Third quarter	121.8	101.1	120.6	2.8	6.2	-3.4
Fourth quarter	114.0	103.9	109.7	-6.4	2.8	-9.2
2009						
First quarter	109.1	101.6	107.4	-4.3	-2.2	-2.1
Second quarter	105.1	98.1	107.1	-3.7	-3.4	-0.2
Third quarter	102.8	95.0	108.2	-2.2	-3.2	1.0
Fourth quarter	105.2	93.4	112.6	2.3	-1.7	4.0
2010						
First quarter	107.6	93.8	114.7	2.3	0.5	1.8
2009						
January	108.8	100.6	108.2	-2.4	-2.1	-0.3
February	109.0	101.5	107.4	0.1	0.9	-0.8
March	109.1	102.7	106.3	0.2	1.2	-1.1
April	106.7	101.0	105.7	-2.3	-1.7	-0.6
May	104.4	97.4	107.2	-2.1	-3.5	1.4
June	104.0	96.0	108.4	-0.3	-1.5	1.1
July	103.6	96.1	107.8	-0.4	0.1	-0.5
August	103.0	94.6	108.9	-0.6	-1.5	1.0
September	103.0	94.2	109.4	0.0	-0.5	0.5
October	103.9	92.8	112.0	0.8	-1.5	2.3
November	105.2	93.6	112.4	1.3	0.8	0.4
December	106.0	93.8	113.0	0.8	0.3	0.5
2010						
January	107.7	93.4	115.3	1.6	-0.4	2.0
February	108.7	94.6	114.9	0.9	1.2	-0.3
March	106.7	93.5	114.1	-1.8	-1.1	-0.7

Note(s): Because of rounding, monthly data may not add up to quarterly data and quarterly data may not add up to annual data.

Table 2-1
Exports by commodity groupings, balance of payments basis, seasonally adjusted — Current dollars

	February	March	Change		Year to date			March 2010/ March 2009	
	2010	2010			2009		2010		
	millions of dollars		percent		millions of dollars		percent		
Total	33,786	33,533	-254	-0.8	96,521	100,503	3,983	4.1	3.3
Agricultural and fishing products	2,998	3,031	33	1.1	10,065	8,976	-1,089	-10.8	-8.9
Wheat	387	367	-20	-5.1	1,661	1,112	-549	-33.0	-27.8
Other agricultural and fishing products	2,611	2,663	53	2.0	8,404	7,864	-540	-6.4	-5.5
Live animals	145	142	-3	-2.0	509	403	-105	-20.7	-18.6
Fish and fish preparations	339	340	1	0.2	1,027	1,014	-13	-1.3	-1.4
Barley	16	36	20	122.6	162	65	-97	-59.7	-27.4
Wheat flour	7	7	0	1.6	21	20	0	-1.7	-4.0
Other cereals unmilled	39	42	3	7.4	156	121	-35	-22.4	9.9
Other cereal preparations	223	231	8	3.6	765	683	-81	-10.6	-7.8
Meat and meat preparations	359	374	15	4.1	1,190	1,101	-89	-7.5	-4.4
Alcoholic beverages	60	62	1	2.0	189	185	-4	-1.9	-2.6
Other food, feed, beverages and tobacco	957	936	-21	-2.2	2,938	2,822	-116	-3.9	-9.5
Rapeseed	250	283	34	13.5	840	803	-37	-4.4	3.3
Other crude vegetable products	215	211	-5	-2.2	608	645	38	6.2	10.4
Energy products	8,577	8,008	-570	-6.6	19,731	25,233	5,502	27.9	20.2
Crude petroleum	4,848	4,653	-195	-4.0	8,648	14,071	5,423	62.7	38.5
Natural gas	1,646	1,468	-179	-10.8	5,295	4,950	-345	-6.5	-1.9
Other energy products	2,083	1,887	-196	-9.4	5,788	6,212	424	7.3	4.4
Coal and other bituminous substances	309	338	29	9.5	1,192	934	-258	-21.6	-23.3
Petroleum and coal products	1,564	1,318	-246	-15.8	3,887	4,595	708	18.2	12.8
Electricity	210	231	21	10.1	710	683	-26	-3.7	15.6
Forestry products	1,694	1,745	51	3.0	5,258	5,095	-164	-3.1	3.2
Lumber and sawmill products	636	657	21	3.3	1,725	1,915	191	11.1	13.5
Other crude wood products	35	62	27	75.1	130	158	28	21.5	41.7
Lumber	397	393	-4	-1.0	977	1,162	185	18.9	18.1
Other wood fabricated materials	203	202	-2	-0.8	618	596	-22	-3.6	-0.1
Wood pulp and other wood products	448	486	38	8.6	1,184	1,366	182	15.4	35.9
Newsprint and other paper and paperboard	609	602	-8	-1.3	2,349	1,813	-537	-22.8	-20.3
Newsprint paper	295	301	6	2.0	1,287	891	-396	-30.8	-24.6
Other paper and paperboard	314	301	-14	-4.3	1,062	921	-141	-13.3	-15.4
Industrial goods and materials	7,897	8,265	368	4.7	20,444	23,569	3,125	15.3	20.0
Metal ores	1,022	963	-58	-5.7	2,516	2,745	230	9.1	4.0
Iron ores, concentrates and scrap	343	362	18	5.4	1,147	1,067	-80	-7.0	-7.3
Copper ores, concentrates and scrap	222	164	-58	-26.3	313	507	194	61.8	-10.6
Nickel ores, concentrates and scrap	254	225	-29	-11.5	360	548	189	52.5	182.0
Zinc ores, concentrates and scrap	7	26	19	266.5	68	60	-8	-11.4	-37.6
Other ores, concentrates and scrap	195	187	-8	-4.3	627	563	-65	-10.3	-19.1
Chemicals, plastics and fertilizers	2,514	2,453	-61	-2.4	6,874	7,369	495	7.2	11.3
Inorganic chemicals	342	310	-32	-9.3	1,230	1,027	-203	-16.5	-23.9
Organic chemicals	511	526	14	2.8	1,118	1,514	396	35.4	42.8
Fertilizers and fertilizer materials	626	556	-70	-11.1	1,345	1,681	336	25.0	42.7
Synthetic rubber and plastics	803	811	8	1.0	2,457	2,410	-47	-1.9	1.7
Other chemical products	233	250	18	7.7	725	737	12	1.7	3.3

Table 2-1 – continued

Exports by commodity groupings, balance of payments basis, seasonally adjusted — Current dollars

	February 2010	March 2010	Change	Year to date			March 2010/ March 2009		
				2009		Change			
				millions of dollars	percent				
					millions of dollars		percent		
Metals and alloys	2,977	3,505	528	17.7	6,853	9,382	2,528	36.9	48.6
Primary iron and steel	106	130	24	22.5	57	329	272	477.4	561.5
Steel bars, rods, plates, sheets	280	293	14	4.9	856	843	-13	-1.5	0.2
Other iron and steel and alloys	240	240	0	-0.1	644	707	63	9.8	21.8
Aluminum including alloys	636	625	-10	-1.6	1,569	1,895	326	20.8	28.2
Copper and alloys	328	311	-17	-5.2	590	895	305	51.7	48.7
Nickel and alloys	113	154	41	36.8	573	404	-169	-29.5	-17.7
Precious metals and alloys	1,042	1,531	489	47.0	2,136	3,625	1,489	69.7	88.0
Zinc and alloys	137	128	-8	-6.0	240	406	165	68.7	58.9
Other non-ferrous metals and alloys	97	93	-5	-4.9	187	277	90	48.4	31.4
Other industrial goods and materials	1,384	1,344	-40	-2.9	4,201	4,073	-128	-3.0	-3.9
Asbestos unmanufactured	5	5	0	-0.4	16	16	-1	-3.4	-18.8
Other crude animal products	49	46	-3	-6.0	176	163	-13	-7.4	-15.6
Other crude non-metallic minerals	311	285	-27	-8.6	821	877	56	6.8	1.7
Other crude materials, inedible	53	64	11	20.7	136	166	31	22.5	44.1
Metal fabricated basic products	341	333	-7	-2.2	1,117	1,011	-106	-9.5	-7.8
Textile fabricated materials	176	172	-4	-2.4	541	522	-19	-3.5	-7.7
Non-metallic mineral basic products	161	146	-15	-9.3	526	457	-69	-13.2	-14.2
Other fabricated materials	289	294	5	1.8	867	861	-6	-0.7	-0.9
Machinery and equipment	5,923	5,808	-115	-1.9	23,221	17,717	-5,505	-23.7	-25.1
Industrial and agricultural machinery	1,366	1,377	11	0.8	5,661	4,207	-1,454	-25.7	-25.9
Industrial machinery	1,223	1,241	18	1.5	5,080	3,775	-1,304	-25.7	-24.3
Agricultural machinery includ. tractors	143	136	-7	-5.0	581	431	-150	-25.8	-37.4
Aircraft and other transportation equipment	1,388	1,357	-32	-2.3	5,517	4,085	-1,432	-26.0	-26.6
Aircraft, engines, parts	1,103	1,077	-26	-2.4	4,446	3,230	-1,217	-27.4	-23.7
Other transportation equipment	285	280	-5	-1.9	1,071	855	-215	-20.1	-35.9
Other machinery and equipment	3,168	3,074	-94	-3.0	12,044	9,425	-2,619	-21.7	-24.0
Television, telecommunication equipment	624	568	-57	-9.1	2,530	1,839	-691	-27.3	-28.0
Office machines and equipment	343	337	-5	-1.5	1,359	1,024	-335	-24.7	-24.4
Other equipment and tools	1,470	1,482	12	0.8	5,405	4,420	-985	-18.2	-19.2
Other end products, inedible	731	688	-44	-6.0	2,750	2,143	-608	-22.1	-29.6
Automotive products	4,510	4,471	-39	-0.9	9,752	13,291	3,539	36.3	29.7
Passenger autos and chassis	3,034	3,012	-22	-0.7	4,735	8,823	4,088	86.3	64.7
Trucks and other motor vehicles	168	144	-24	-14.1	1,609	498	-1,111	-69.1	-67.6
Motor vehicle parts	1,308	1,315	7	0.5	3,408	3,971	563	16.5	12.2
Other consumer goods	1,415	1,390	-25	-1.7	4,856	4,254	-602	-12.4	-17.9
Special transactions trade	326	369	43	13.0	1,816	1,017	-799	-44.0	-36.0
Unallocated balance of payments adjustments	446	445	-1	-0.2	1,377	1,353	-25	-1.8	5.0

Table 2-2
Exports by commodity groupings, balance of payments basis, seasonally adjusted — Constant dollars, 2002

	February	March	Change		Year to date			March 2010/ March 2009	
	2010	2010			2009		2010		
	millions of dollars		percent		millions of dollars		percent		
Total	30,375	30,963	588	1.9	88,066	91,728	3,661	4.2	4.8
Agricultural and fishing products	3,154	3,206	53	1.7	9,180	9,461	281	3.1	5.0
Wheat	415	402	-12	-3.0	1,326	1,191	-135	-10.2	-6.2
Other agricultural and fishing products	2,739	2,804	65	2.4	7,854	8,270	416	5.3	6.8
Live animals	179	163	-15	-8.6	566	486	-80	-14.1	-12.8
Fish and fish preparations	453	450	-3	-0.7	1,116	1,340	225	20.1	23.2
Barley	16	36	20	121.2	117	67	-50	-42.7	4.6
Wheat flour	7	7	0	2.1	18	20	2	9.0	6.5
Other cereals unmilled	49	54	5	11.0	127	148	21	16.4	56.6
Other cereal preparations	196	211	15	7.5	599	612	13	2.2	9.3
Meat and meat preparations	415	427	11	2.7	1,217	1,284	67	5.5	7.8
Alcoholic beverages	115	124	9	7.7	317	360	42	13.3	13.6
Other food, feed, beverages and tobacco	887	866	-21	-2.4	2,536	2,625	89	3.5	-4.3
Rapeseed	224	266	42	18.6	744	730	-14	-1.9	10.0
Other crude vegetable products	198	200	2	1.2	497	598	101	20.3	31.2
Energy products	4,643	4,556	-88	-1.9	14,096	13,983	-113	-0.8	-3.3
Crude petroleum	1,961	1,955	-6	-0.3	6,381	5,840	-541	-8.5	-11.5
Natural gas	1,395	1,407	12	0.9	4,256	4,350	95	2.2	-0.2
Other energy products	1,287	1,193	-94	-7.3	3,460	3,794	334	9.7	9.4
Coal and other bituminous substances	147	163	16	10.9	253	449	197	77.8	96.6
Petroleum and coal products	902	772	-130	-14.4	2,607	2,607	-1	0.0	-5.7
Electricity	238	257	20	8.3	600	737	138	23.0	36.6
Forestry products	2,097	2,189	91	4.4	6,049	6,436	387	6.4	12.0
Lumber and sawmill products	820	846	26	3.2	2,291	2,532	242	10.6	9.4
Other crude wood products	46	87	41	90.1	160	223	63	39.5	73.7
Lumber	550	539	-11	-2.0	1,455	1,647	192	13.2	8.0
Other wood fabricated materials	224	220	-4	-1.9	676	662	-14	-2.0	-1.9
Wood pulp and other wood products	551	609	58	10.5	1,588	1,722	135	8.5	25.2
Newsprint and other paper and paperboard	727	734	7	1.0	2,171	2,182	11	0.5	5.7
Newsprint paper	361	381	20	5.5	1,134	1,102	-33	-2.9	9.3
Other paper and paperboard	366	353	-13	-3.5	1,037	1,080	43	4.2	2.0
Industrial goods and materials	5,451	5,679	227	4.2	15,529	16,406	877	5.6	8.1
Metal ores	543	488	-55	-10.1	1,404	1,446	42	3.0	-4.7
Iron ores, concentrates and scrap	176	176	0	0.2	408	536	129	31.6	30.3
Copper ores, concentrates and scrap	76	57	-20	-25.9	174	175	1	0.4	-41.2
Nickel ores, concentrates and scrap	144	103	-41	-28.5	274	286	11	4.1	57.5
Zinc ores, concentrates and scrap	4	13	10	258.3	52	30	-23	-43.5	-57.5
Other ores, concentrates and scrap	143	139	-4	-2.8	495	420	-76	-15.3	-24.3
Chemicals, plastics and fertilizers	1,732	1,781	50	2.9	4,990	5,292	303	6.1	7.4
Inorganic chemicals	159	174	15	9.7	583	523	-59	-10.2	-16.7
Organic chemicals	293	291	-2	-0.7	952	893	-59	-6.2	-9.6
Fertilizers and fertilizer materials	252	249	-3	-1.2	434	690	256	59.0	109.5
Synthetic rubber and plastics	746	756	10	1.3	2,204	2,280	77	3.5	3.1
Other chemical products	282	311	30	10.5	817	906	88	10.8	13.1

Table 2-2 – continued

Exports by commodity groupings, balance of payments basis, seasonally adjusted — Constant dollars, 2002

	February 2010	March 2010	Change	Year to date			March 2010/ March 2009		
				2009		Change			
				millions of dollars	percent	millions of dollars		percent	
Metals and alloys	1,853	2,122	269	14.5	5,043	5,791	748	14.8	24.6
Primary iron and steel	75	94	19	24.9	37	239	203	552.3	500.8
Steel bars, rods, plates, sheets	236	255	20	8.4	610	724	114	18.7	24.3
Other iron and steel and alloys	202	204	1	0.7	493	606	114	23.1	27.6
Aluminum including alloys	636	634	-1	-0.2	1,890	1,891	1	0.1	4.9
Copper and alloys	105	106	1	0.9	361	296	-65	-18.0	-10.4
Nickel and alloys	60	81	21	34.5	431	214	-218	-50.5	-46.9
Precious metals and alloys	430	636	206	47.9	898	1,494	596	66.4	91.4
Zinc and alloys	68	71	3	4.2	210	208	-2	-0.8	0.4
Other non-ferrous metals and alloys	41	41	0	-0.3	114	118	5	4.2	-6.4
Other industrial goods and materials	1,324	1,287	-37	-2.8	4,093	3,877	-216	-5.3	-6.6
Asbestos unmanufactured	5	5	0	-0.5	17	16	-1	-5.2	-21.1
Other crude animal products	58	59	0	0.8	225	193	-32	-14.1	-24.1
Other crude non-metallic minerals	360	320	-39	-10.9	1,231	986	-246	-20.0	-23.1
Other crude materials, inedible	46	63	17	36.6	132	155	23	17.8	53.6
Metal fabricated basic products	277	273	-4	-1.5	863	823	-40	-4.6	-2.6
Textile fabricated materials	188	188	-1	-0.4	489	567	78	16.0	12.4
Non-metallic mineral basic products	132	123	-9	-6.9	415	382	-33	-8.0	-8.8
Other fabricated materials	257	257	-1	-0.2	722	756	34	4.7	0.5
Machinery and equipment	6,587	6,582	-6	-0.1	24,145	19,864	-4,281	-17.7	-17.4
Industrial and agricultural machinery	1,270	1,288	18	1.4	5,174	3,912	-1,262	-24.4	-23.2
Industrial machinery	1,139	1,162	23	2.0	4,648	3,515	-1,133	-24.4	-21.5
Agricultural machinery includ. tractors	131	126	-6	-4.3	527	398	-129	-24.5	-36.1
Aircraft and other transportation equipment	1,692	1,703	11	0.7	6,274	5,040	-1,234	-19.7	-18.4
Aircraft, engines, parts	1,417	1,421	4	0.3	5,217	4,192	-1,025	-19.6	-13.4
Other transportation equipment	275	282	7	2.5	1,057	848	-209	-19.8	-36.6
Other machinery and equipment	3,625	3,591	-34	-0.9	12,697	10,912	-1,785	-14.1	-14.6
Television, telecommunication equipment	788	724	-63	-8.0	2,867	2,337	-531	-18.5	-18.0
Office machines and equipment	828	841	13	1.6	2,728	2,511	-218	-8.0	-6.0
Other equipment and tools	1,385	1,426	41	3.0	4,935	4,208	-727	-14.7	-14.8
Other end products, inedible	626	601	-25	-4.0	2,165	1,856	-310	-14.3	-20.2
Automotive products	6,000	6,166	166	2.8	11,117	17,937	6,819	61.3	56.8
Passenger autos and chassis	4,371	4,522	151	3.5	5,843	12,955	7,112	121.7	100.6
Trucks and other motor vehicles	199	179	-20	-10.2	1,785	603	-1,182	-66.2	-62.8
Motor vehicle parts	1,430	1,464	35	2.4	3,489	4,379	889	25.5	22.5
Other consumer goods	1,353	1,330	-23	-1.7	4,668	4,069	-599	-12.8	-17.9
Special transactions trade	295	337	42	14.2	1,630	918	-712	-43.7	-35.9
Unallocated balance of payments adjustments	794	920	126	15.8	1,652	2,654	1,002	60.7	72.6

Table 3-1
Domestic exports to selected countries, customs basis, not seasonally adjusted — March

	Agricultural and fishing products	Energy products	Forestry products	Industrial goods	Machinery and equipment	Automotive products	Consumer goods	Special transactions trade	Total
millions of dollars									
United States									
2009	1,787.5	5,546.5	1,257.4	4,143.8	4,538.0	3,307.4	1,070.8	507.3	22,158.6
2010	1,592.5	7,538.0	1,202.4	4,868.3	3,479.1	4,742.5	876.3	311.5	24,610.6
Mexico									
2009	93.9	8.1	6.0	70.4	94.8	51.7	4.3	3.2	332.6
2010	155.3	0.6	11.9	88.1	53.3	66.9	3.9	0.2	380.1
Japan									
2009	280.5	270.3	93.8	106.9	43.2	2.6	17.8	0.7	815.8
2010	236.9	181.1	111.2	96.8	40.2	6.1	5.6	0.4	678.4
European Union									
Germany									
2009	11.8	38.4	9.4	23.9	219.0	4.9	13.2	0.3	320.9
2010	10.8	0.2	6.5	61.5	121.8	3.7	19.1	0.9	224.4
France									
2009	12.5	14.5	13.1	93.5	152.5	3.2	32.1	0.6	321.9
2010	10.3	0.1	13.3	50.6	84.0	2.5	25.2	0.4	186.5
United Kingdom									
2009	35.9	17.9	25.8	971.4	212.8	2.6	18.6	3.0	1,288.1
2010	28.6	0.8	21.3	1,235.9	114.9	3.5	19.2	4.0	1,428.2
Italy									
2009	7.4	19.1	22.9	9.3	50.7	1.3	6.6	0.2	117.5
2010	7.5	14.3	26.4	23.2	29.7	0.7	13.6	0.2	115.6
Other European Union									
2009	61.3	36.9	31.7	256.5	229.0	12.9	95.7	2.6	726.6
2010	58.8	18.7	23.8	230.8	190.8	15.2	60.0	1.8	599.7
Total									
2009	128.9	126.8	102.9	1,354.7	864.0	24.8	166.2	6.8	2,775.1
2010	116.0	34.1	91.3	1,602.0	541.2	25.6	137.1	7.2	2,554.4
Newly industrialized countries									
South Korea									
2009	32.2	96.8	17.8	124.8	49.8	3.8	5.3	0.4	330.9
2010	48.3	53.6	43.9	70.9	29.8	6.2	4.7	0.4	257.9
Hong Kong									
2009	31.8	0.1	6.5	64.4	20.2	1.7	8.8	0.6	133.9
2010	28.7	0.0	9.6	94.4	19.4	0.7	5.8	1.3	160.0
Taiwan									
2009	14.8	30.4	19.8	24.0	10.7	0.2	4.5	0.1	104.6
2010	10.7	0.2	22.1	32.0	13.8	0.3	2.1	0.1	81.3
Singapore									
2009	4.3	0.2	1.0	9.5	32.1	6.5	2.4	0.1	56.2
2010	3.0	0.7	2.0	15.2	26.6	5.5	3.9	0.1	57.0
Total									
2009	83.1	127.4	45.2	222.8	112.7	12.2	21.0	1.2	625.7
2010	90.8	54.5	77.6	212.5	89.5	12.7	16.5	1.9	556.0
Other countries									
2009	865.4	106.3	300.8	1,018.8	904.9	104.3	116.2	21.1	3,438.0
2010	812.5	115.0	371.4	1,420.2	643.3	70.2	242.6	9.6	3,685.0
Total									
2009	3,239.3	6,185.4	1,806.2	6,917.6	6,557.8	3,503.1	1,396.1	540.4	30,145.9
2010	3,003.9	7,923.3	1,865.9	8,287.9	4,846.8	4,923.9	1,282.1	330.7	32,464.6

Table 3-2
Domestic exports to selected countries, customs basis, not seasonally adjusted — Year to date, January to March

	Agricultural and fishing products	Energy products	Forestry products	Industrial goods	Machinery and equipment	Automotive products	Consumer goods	Special transactions trade	Total
millions of dollars									
United States									
2009	4,982.5	17,977.2	3,702.7	11,957.8	12,746.3	8,417.3	2,800.9	1,508.5	64,093.2
2010	4,228.6	22,846.6	3,278.3	13,337.1	9,564.7	12,222.6	2,416.7	791.8	68,686.5
Mexico									
2009	259.7	9.6	26.0	190.6	219.5	157.1	10.9	4.2	877.6
2010	373.1	14.2	34.7	246.2	156.1	203.3	31.6	0.5	1,059.9
Japan									
2009	782.9	570.8	267.6	271.5	194.7	8.4	46.6	2.4	2,144.8
2010	676.1	419.9	306.0	322.4	170.1	17.8	31.2	1.2	1,944.7
European Union									
Germany									
2009	38.4	71.0	31.5	103.6	511.0	11.8	36.7	4.2	808.2
2010	30.5	8.3	21.3	268.7	385.6	8.8	47.5	1.9	772.5
France									
2009	35.6	75.6	33.7	210.5	357.8	7.5	87.6	5.1	813.4
2010	28.3	0.3	34.8	132.2	217.4	7.9	58.2	2.3	481.4
United Kingdom									
2009	85.6	19.3	71.2	2,262.4	503.0	8.1	108.5	10.2	3,068.3
2010	73.0	17.8	53.4	2,910.1	381.7	11.2	52.0	9.9	3,509.0
Italy									
2009	71.4	38.8	71.0	77.2	153.6	2.6	16.3	0.7	431.7
2010	38.5	51.1	77.3	72.9	117.4	1.5	37.3	2.3	398.2
Other European Union									
2009	182.9	195.0	85.9	761.0	773.8	40.8	224.6	9.3	2,273.1
2010	195.5	82.7	72.8	665.1	617.9	33.9	141.4	10.0	1,819.3
Total									
2009	413.9	399.7	293.3	3,414.7	2,299.2	70.8	473.7	29.4	7,394.7
2010	365.8	160.1	259.6	4,048.9	1,719.9	63.2	336.4	26.4	6,980.3
Newly industrialized countries									
South Korea									
2009	76.1	286.2	73.5	242.9	95.9	4.9	11.6	1.2	792.4
2010	122.1	200.8	108.9	224.7	111.1	19.6	12.1	2.4	801.7
Hong Kong									
2009	106.7	0.1	23.0	119.0	99.4	2.6	17.9	1.5	370.3
2010	102.4	0.1	24.1	209.0	55.5	2.0	14.3	3.8	411.2
Taiwan									
2009	42.4	53.9	45.7	62.0	25.1	0.3	8.3	0.2	237.9
2010	36.8	23.6	59.5	74.6	33.9	0.9	8.9	0.2	238.5
Singapore									
2009	9.5	1.4	1.5	24.3	77.4	9.2	7.1	0.4	130.9
2010	14.1	2.0	4.7	38.3	72.2	8.0	9.9	0.5	149.5
Total									
2009	234.8	341.6	143.7	448.2	297.8	17.1	45.0	3.3	1,531.5
2010	275.3	226.5	197.2	546.6	272.8	30.5	45.1	6.9	1,600.9
Other countries									
2009	2,432.2	306.7	839.7	2,491.4	2,481.7	213.3	307.1	79.9	9,152.0
2010	2,177.0	316.3	1,029.3	3,341.0	1,829.6	174.2	498.4	44.3	9,410.1
Total									
2009	9,106.1	19,605.5	5,273.0	18,774.3	18,239.4	8,883.9	3,684.6	1,627.7	85,194.5
2010	8,095.9	23,983.6	5,105.1	21,842.2	13,713.3	12,711.7	3,359.5	871.2	89,682.5

Table 4
Domestic exports by country, customs basis, not seasonally adjusted

	March		January to March		Change
	2009	2010	2009	2010	January to March 2010/January to March 2009
millions of dollars					
North America					
Greenland	0.4	0.6	2.6	2.4	-7.1
Mexico	332.6	380.1	877.6	1,059.9	20.8
Saint Pierre and Miquelon	1.1	1.3	2.9	3.6	21.8
United States	22,158.6	24,610.6	64,093.2	68,686.5	7.2
Total	22,492.6	24,992.6	64,976.4	69,752.3	7.4
Western Europe					
Andorra	0.0	0.0	0.0	0.0	105.8
Austria	13.4	15.3	139.8	64.4	-53.9
Belgium	197.4	102.5	548.1	313.6	-42.8
Denmark	49.1	27.0	144.1	59.7	-58.6
Faeroe Islands	0.1	0.1	0.6	0.1	-80.6
Finland	13.7	21.1	98.9	49.9	-49.6
France	321.9	186.5	813.4	481.4	-40.8
Germany	320.9	224.4	808.2	772.5	-4.4
Gibraltar	16.8	0.0	16.8	0.0	-100.0
Greece	8.1	9.1	24.6	19.7	-20.0
Iceland	2.0	6.2	5.5	16.5	200.5
Italy	117.5	115.6	431.7	398.2	-7.8
Luxembourg	0.6	5.4	10.0	15.5	54.6
Malta	34.8	1.8	37.0	51.2	38.5
Netherlands	143.3	198.2	543.4	607.5	11.8
Norway	59.7	224.3	279.5	601.4	115.2
Portugal	9.4	53.6	25.1	111.5	344.0
Republic of Ireland (Eire)	70.9	20.5	165.1	77.0	-53.4
Spain	84.1	66.4	264.6	208.3	-21.3
Sweden	23.6	23.9	61.8	72.4	17.2
Switzerland	89.7	279.4	274.1	524.3	91.3
United Kingdom	1,288.1	1,428.2	3,068.3	3,509.0	14.4
Total	2,865.2	3,009.3	7,760.6	7,954.1	2.5
Other Europe					
Albania	1.3	1.5	2.0	4.1	103.7
Armenia	0.8	1.1	1.5	2.3	56.2
Azerbaijan	0.9	2.2	3.5	4.0	14.6
Belarus	0.2	0.6	0.6	0.7	7.4
Bosnia and Herzegovina	0.6	0.5	1.1	1.0	-3.1
Bulgaria	7.9	1.9	10.0	24.3	143.1
Croatia	3.6	23.2	7.0	53.4	661.5
Czech Republic	13.3	12.8	33.1	32.7	-1.4
Estonia	2.1	3.7	4.3	6.5	53.0
Georgia	0.5	1.3	1.6	4.3	170.9
Hungary	6.3	6.6	21.6	17.3	-19.7
Kazakhstan	35.6	7.2	75.3	65.4	-13.1
Kyrgyzstan	0.1	0.0	1.1	0.1	-91.5
Latvia	2.1	1.9	6.0	3.9	-35.8
Lithuania	9.3	2.8	15.2	5.5	-63.8
Macedonia (Former Yugoslav Republic of Macedonia)	1.4	0.7	3.8	2.6	-31.4
Montenegro	0.2	0.2	0.4	0.3	-11.3
Poland	14.5	13.2	50.8	38.7	-23.8
Republic of Moldova	0.6	0.2	0.9	0.3	-65.6
Romania	6.8	8.4	15.7	21.6	37.6
Russian Federation	111.4	67.2	253.5	168.0	-33.7
Serbia	1.6	0.4	3.8	1.2	-69.0
Slovakia	1.5	1.6	3.8	13.1	240.5
Slovenia	12.9	0.9	46.4	2.4	-94.8
Tajikistan	0.2	0.4	0.5	1.5	187.4
Turkmenistan	0.5	0.1	1.7	0.5	-68.7
Ukraine	9.5	11.9	18.3	26.5	44.7
Uzbekistan	0.1	0.0	4.5	0.9	-80.5
Total	245.9	172.5	588.0	503.1	-14.5

Table 4 – continued

Domestic exports by country, customs basis, not seasonally adjusted

	March		January to March		Change
	2009	2010	2009	2010	January to March 2010/January to March 2009
millions of dollars					
Middle East					
Bahrain	1.4	1.4	4.4	3.9	-10.6
Cyprus	1.5	1.3	3.5	2.6	-26.5
Egypt	81.3	29.8	139.4	85.3	-38.8
Eritrea	0.0	0.4	0.0	1.6	...
Ethiopia	2.3	21.2	3.0	22.1	644.9
Iran	8.9	5.2	67.9	19.6	-71.0
Iraq	62.2	3.4	134.8	9.5	-92.9
Israel	28.5	24.0	83.2	77.7	-6.6
Jordan	4.7	4.8	15.5	16.4	6.0
Kuwait	5.6	17.3	17.2	30.9	80.0
Lebanon	7.4	5.6	17.7	16.2	-8.1
Libya	8.9	10.5	117.0	53.1	-54.6
Oman	23.0	13.6	44.2	32.7	-26.0
Qatar	19.9	3.2	32.8	21.0	-36.0
Saudi Arabia	89.0	46.7	315.1	196.6	-37.6
Somalia	0.0	0.8	0.0	0.8	...
Sudan	20.7	28.9	29.4	36.6	24.6
Syria	5.0	4.0	9.2	8.3	-10.2
Turkey	67.7	70.6	189.9	240.4	26.6
United Arab Emirates	134.0	82.7	298.3	250.8	-15.9
Yemen	1.8	1.6	4.2	6.1	44.0
Total	573.9	377.2	1,526.6	1,132.4	-25.8
Other Africa					
Algeria	14.3	31.2	106.6	79.2	-25.7
Angola	10.9	13.8	22.8	23.3	2.1
Antarctica	0.0	0.1	0.0	0.1	348.0
Benin	1.0	0.9	2.3	2.0	-14.3
Botswana	1.0	0.6	1.9	0.8	-58.0
Burkina Faso	0.5	2.0	1.2	5.3	333.8
Burundi	0.1	0.1	0.3	0.2	-30.7
Cameroon	4.5	0.7	6.4	3.3	-47.7
Cape Verde	0.2	0.1	0.3	0.3	-6.8
Central African Republic	0.4	0.0	0.4	0.0	-91.5
Chad	0.9	0.2	4.1	1.2	-69.9
Comoros	0.0	0.0	0.0	0.0	-100.0
Congo	2.5	1.2	7.9	3.4	-57.0
Democratic Republic of the Congo	0.9	1.1	4.2	3.0	-28.2
Djibouti	0.0	0.4	1.2	0.5	-52.6
Equatorial Guinea	0.2	0.3	0.8	0.6	-24.8
French Southern Territories	0.0	0.0	0.0	0.0	-63.5
Gabon	1.5	1.0	11.1	4.2	-62.6
Gambia	0.0	0.1	0.2	0.2	9.1
Ghana	17.4	5.4	41.1	32.6	-20.8
Guinea	0.7	0.5	4.5	1.2	-73.1
Ivory Coast	4.5	0.7	9.7	1.7	-82.8
Kenya	8.2	5.6	21.2	11.7	-44.7
Lesotho	0.0	0.0	0.0	0.0	0.0
Liberia	0.3	0.4	0.8	2.5	223.0
Madagascar	0.9	9.6	8.0	17.8	121.4
Malawi	0.5	0.5	0.9	1.0	10.8
Mali	0.5	0.6	1.7	1.3	-24.2
Mauritania	0.2	0.2	0.9	0.3	-66.9
Mauritius	0.7	0.4	1.5	0.7	-54.1
Morocco	49.1	16.7	69.8	24.5	-64.9
Mozambique	0.7	0.5	1.2	2.0	60.0
Namibia	0.0	0.4	0.7	0.4	-42.7
Niger	0.3	0.3	0.8	0.7	-18.4
Nigeria	4.1	14.2	31.2	35.6	14.3
Rwanda	0.5	0.0	0.6	0.2	-59.6
Saint Helena	0.0	0.0	0.0	0.0	-94.8
Sao Tome and Principe	0.0	0.0	0.0	0.0	...
Senegal	2.1	4.0	4.9	7.2	46.2
Seychelles	0.1	0.1	0.3	0.2	-40.7
Sierra Leone	0.3	1.2	1.1	2.9	172.3

Table 4 – continued

Domestic exports by country, customs basis, not seasonally adjusted

	March		January to March		Change
	2009	2010	2009	2010	January to March 2010/January to March 2009
millions of dollars					
South Africa	45.1	50.7	112.3	109.3	-2.7
Swaziland	0.0	0.1	0.1	0.1	5.5
Togo	2.6	0.4	4.3	2.8	-35.1
Tunisia	2.1	1.2	5.2	21.4	309.0
Uganda	0.4	0.8	4.5	2.8	-36.8
United Republic of Tanzania	3.1	2.4	10.1	6.8	-31.9
Western Sahara	0.1	0.0	0.1	0.0	-100.0
Zambia	0.5	0.9	1.9	14.2	636.6
Zimbabwe	0.0	0.7	6.9	1.1	-83.3
Total	184.0	172.0	518.3	430.8	-16.9
Other Asia					
Afghanistan	4.1	4.4	18.6	23.5	26.7
Bangladesh	61.2	102.6	267.3	234.6	-12.3
Bhutan	0.0	0.8	0.0	0.8	...
British Indian Ocean Territory	0.0	0.1	0.0	0.7	...
Brunei Darussalam	0.1	0.5	0.3	6.4	...
Cambodia	0.2	0.6	0.6	0.9	45.5
China	1,124.1	1,022.2	2,830.7	2,545.1	-10.1
Hong Kong	133.9	160.0	370.3	411.2	11.0
India	213.2	178.2	435.1	404.5	-7.0
Indonesia	72.8	73.2	216.7	201.2	-7.2
Japan	815.8	678.4	2,144.8	1,944.7	-9.3
Laos	0.3	0.1	0.7	0.5	-37.4
Macau	3.3	0.2	9.0	0.8	-90.9
Malaysia	28.0	71.9	94.7	173.1	82.7
Maldives	0.1	0.3	0.8	0.9	3.1
Mongolia	0.8	3.2	1.2	5.3	333.7
Myanmar	0.0	2.7	0.0	2.7	...
Nepal	0.7	0.4	1.0	0.5	-51.6
North Korea	2.8	0.3	8.9	1.7	-81.1
Pakistan	73.1	55.9	126.3	93.9	-25.7
Philippines	24.3	26.0	112.7	95.7	-15.0
Singapore	56.2	57.0	130.9	149.5	14.3
South Korea	330.9	257.9	792.4	801.7	1.2
Sri Lanka	29.8	44.3	89.2	122.2	37.1
Taiwan	104.6	81.3	237.9	238.5	0.3
Thailand	37.1	51.1	101.3	179.8	77.5
Timor-Leste	0.0	0.0	0.0	0.0	-100.0
Viet Nam	11.7	21.1	27.5	55.1	100.2
Total	3,129.3	2,894.5	8,019.0	7,695.4	-4.0
Oceania					
American Samoa	0.1	0.3	0.2	0.4	139.1
Australia	109.4	132.8	409.6	457.7	11.7
Christmas Island	0.0	0.5	0.1	0.5	850.0
Cocos (Keeling) Islands	0.1	0.0	0.1	0.1	-35.7
Cook Islands	0.0	0.0	0.0	0.0	...
Fiji	0.4	0.3	2.7	0.6	-78.5
French Polynesia	1.1	0.3	2.2	1.6	-26.7
Guam	0.2	0.1	0.5	0.2	-56.3
Heard Island and McDonald Islands	0.0	0.0	0.0	0.0	-100.0
Kiribati	0.0	0.0	0.0	0.0	...
Nauru	0.0	0.0	0.0	0.0	-100.0
New Caledonia	0.3	0.3	0.8	3.6	348.4
New Zealand	15.4	20.4	80.8	66.6	-17.5
Norfolk Island	0.0	0.0	0.3	0.0	-98.4
Papua New Guinea	2.2	1.4	3.3	2.6	-22.8
Pitcairn	0.0	0.0	0.0	0.0	-78.5
Samoa	0.0	0.0	0.1	0.1	33.3
Solomon Islands	0.0	0.0	0.1	0.0	-75.2
United States Minor Outlying Islands	1.3	0.9	2.7	3.5	31.1
Vanuatu	0.3	0.2	1.0	0.4	-62.4
Total	130.7	157.5	504.5	538.1	6.7

Table 4 – continued

Domestic exports by country, customs basis, not seasonally adjusted

	March		January to March		Change
	2009	2010	2009	2010	January to March 2010/January to March 2009
millions of dollars					
South America					
Argentina	18.0	15.2	40.0	43.4	8.5
Bolivia	0.3	1.1	2.2	2.3	2.5
Brazil	98.2	286.2	224.2	628.0	180.1
Chile	79.5	49.2	174.9	122.1	-30.2
Colombia	55.8	54.1	147.0	138.1	-6.1
Ecuador	23.7	23.5	65.5	61.2	-6.6
Falkland Islands (Malvinas)	0.0	0.0	0.0	0.0	...
Guyana	2.7	1.0	5.9	5.9	0.8
Paraguay	0.3	0.8	2.3	2.2	-1.3
Peru	48.0	36.3	109.7	106.9	-2.6
Suriname	1.0	1.2	1.9	2.8	48.6
Uruguay	2.5	2.3	6.3	6.2	-0.8
Venezuela	71.6	50.1	204.9	105.4	-48.5
Total	401.6	520.8	984.8	1,224.5	24.3
Central America Antilles					
Anguilla	0.1	0.1	0.6	0.2	-61.8
Antigua and Barbuda	0.5	0.7	1.8	4.3	135.7
Aruba	0.4	0.4	1.3	0.9	-25.6
Bahamas	1.8	2.7	6.6	30.2	355.4
Barbados	3.6	2.7	8.2	8.8	7.7
Belize	0.8	0.6	1.7	1.3	-27.1
Bermuda	6.1	3.7	14.7	8.9	-39.3
British Virgin Islands	0.3	0.2	1.8	20.1	...
Cayman Islands	0.7	0.9	1.6	1.8	14.0
Costa Rica	5.2	7.0	13.5	21.6	60.5
Cuba	26.4	34.1	66.6	78.5	17.8
Dominica	0.5	0.3	1.3	1.5	14.6
Dominican Republic	12.8	14.4	32.1	41.7	29.9
El Salvador	2.2	2.0	6.7	10.9	61.8
Grenada	0.8	0.4	1.7	1.6	-7.1
Guatemala	7.2	11.8	27.5	22.4	-18.5
Haiti	1.7	3.3	7.7	10.4	34.2
Honduras	2.6	7.5	6.6	10.7	62.3
Jamaica	9.6	18.1	24.1	45.5	88.8
Montserrat	0.0	0.0	0.1	0.0	-9.3
Netherlands Antilles	1.8	2.9	5.5	7.4	34.4
Nicaragua	0.9	1.1	3.8	2.4	-36.4
Panama	10.7	6.1	27.3	21.4	-21.6
Saint Kitts and Nevis	0.4	0.4	1.6	1.7	1.4
Saint Lucia	1.0	0.7	2.3	1.9	-17.9
Saint Vincent and the Grenadines	0.6	1.5	1.8	2.2	24.4
Trinidad and Tobago	22.7	44.3	46.1	92.4	100.4
Turks and Caicos Islands	1.1	0.2	1.7	0.9	-43.8
Total	122.6	168.1	316.3	451.7	42.8
All countries	30,145.9	32,464.6	85,194.5	89,682.5	5.3

Table 5-1
Exports by province of origin, customs basis, not seasonally adjusted — March

	Agricultural and fishing products	Energy products	Forestry products	Industrial goods	Machinery and equipment	Automotive products	Consumer goods	Special transactions trade	Total
millions of dollars									
Domestic exports									
Newfoundland and Labrador									
2009	23.4	424.4	20.4	119.1	6.1	0.0	0.0	4.3	597.7
2010	31.9	387.4	13.4	100.2	3.9	0.2	0.3	2.3	539.6
Prince Edward Island									
2009	41.5	0.0	0.2	1.7	17.8	0.0	1.8	3.4	66.4
2010	31.1	0.1	0.0	2.1	15.9	0.2	6.6	5.0	61.1
Nova Scotia									
2009	77.3	43.5	67.2	44.4	102.6	11.0	6.5	7.0	359.5
2010	66.5	23.7	68.5	46.2	113.1	5.3	4.3	3.8	331.4
New Brunswick									
2009	85.1	473.0	112.0	71.2	38.4	2.8	10.8	7.3	800.6
2010	74.4	698.4	104.3	110.9	25.1	2.1	18.5	4.0	1,037.6
Quebec									
2009	380.7	221.2	560.4	1,470.7	2,018.2	155.3	322.2	114.4	5,243.2
2010	376.6	314.4	525.1	1,739.7	1,377.3	135.4	462.6	85.7	5,016.9
Ontario									
2009	719.9	212.9	243.7	3,048.8	3,271.6	3,179.0	929.7	274.9	11,880.5
2010	691.2	223.5	243.6	3,930.0	2,528.9	4,675.1	699.2	152.3	13,143.8
Manitoba									
2009	371.2	52.9	28.6	206.5	232.5	75.6	57.6	34.0	1,059.0
2010	354.2	90.5	18.5	225.6	169.7	35.8	28.6	25.5	948.4
Saskatchewan									
2009	700.5	475.3	19.2	528.8	113.3	3.5	2.0	9.4	1,852.2
2010	607.5	694.5	16.2	718.6	70.3	3.6	1.4	5.1	2,117.3
Alberta									
2009	655.3	3,681.9	137.7	767.2	485.1	53.3	18.0	46.2	5,844.7
2010	592.6	4,889.9	178.2	896.4	287.6	41.8	12.5	25.3	6,924.4
British Columbia									
2009	184.2	600.3	616.9	443.8	271.7	22.3	47.4	39.6	2,226.2
2010	177.9	601.0	698.0	498.6	253.7	24.3	48.1	21.6	2,323.2
Yukon, Northwest Territories and Nunavut ¹									
2009	0.2	0.0	0.0	215.4	0.4	0.0	0.0	0.0	216.0
2010	0.1	0.0	0.0	19.4	1.3	0.0	0.0	0.1	20.9
Total									
2009	3,239.3	6,185.4	1,806.2	6,917.6	6,557.8	3,503.1	1,396.1	540.4	30,145.9
2010	3,003.9	7,923.3	1,865.9	8,287.9	4,846.8	4,923.9	1,282.1	330.7	32,464.6
Re-exports									
2009	41.7	70.0	6.9	198.8	1,140.4	96.3	293.2	791.0	2,638.2
2010	53.9	34.2	7.2	324.9	932.1	93.0	185.5	626.5	2,257.3
Total exports									
2009	3,280.9	6,255.4	1,813.1	7,116.3	7,698.2	3,599.4	1,689.3	1,331.4	32,784.1
2010	3,057.8	7,957.4	1,873.1	8,612.8	5,778.9	5,017.0	1,467.7	957.2	34,721.8

1. Data for the current month do not include some exports from the Harmonized System, Chapter 71, "Natural/cultured pearls, precious stones and metals, coins, etc." for reasons relating to timing.

Table 5-2
Exports by province of origin, customs basis, not seasonally adjusted — Year to date, January to March

	Agricultural and fishing products	Energy products	Forestry products	Industrial goods	Machinery and equipment	Automotive products	Consumer goods	Special transactions trade	Total
millions of dollars									
Domestic exports									
Newfoundland and Labrador									
2009	67.8	1,314.3	72.7	336.7	19.3	0.1	0.1	13.2	1,824.4
2010	94.3	1,288.8	29.7	265.5	10.1	0.4	0.4	6.1	1,695.3
Prince Edward Island									
2009	119.0	0.0	0.2	4.8	48.9	0.1	6.9	21.6	201.5
2010	89.5	0.4	0.3	6.2	36.2	0.4	10.3	12.7	155.9
Nova Scotia									
2009	210.6	233.0	180.5	134.5	285.8	28.4	18.5	20.6	1,111.8
2010	174.4	100.1	182.4	127.6	307.4	12.1	14.0	10.1	928.1
New Brunswick									
2009	239.6	1,411.9	328.1	147.0	89.5	7.5	28.2	22.0	2,273.9
2010	227.9	2,294.4	291.1	296.4	67.7	6.3	53.6	10.5	3,247.9
Quebec									
2009	1,067.2	748.4	1,576.3	4,104.4	5,711.7	398.5	937.8	356.6	14,900.9
2010	1,039.6	832.6	1,427.9	4,781.8	4,174.7	353.4	1,187.5	226.5	14,024.0
Ontario									
2009	1,963.4	791.2	799.2	8,016.1	9,155.9	8,054.2	2,385.8	801.3	31,967.2
2010	1,803.5	697.8	688.6	9,898.4	7,018.5	12,046.8	1,843.4	399.4	34,396.5
Manitoba									
2009	1,069.2	135.8	75.2	589.8	589.8	184.2	113.3	95.5	2,852.7
2010	940.2	275.7	48.9	571.7	432.0	103.6	83.5	68.2	2,523.7
Saskatchewan									
2009	1,967.7	1,360.0	70.3	1,562.9	277.5	9.0	4.7	26.9	5,279.0
2010	1,708.3	1,917.2	42.0	1,933.5	200.7	11.9	4.3	12.8	5,830.7
Alberta									
2009	1,887.2	11,724.8	418.6	2,175.0	1,277.9	140.7	50.4	151.4	17,825.9
2010	1,551.5	14,751.5	501.3	2,472.9	785.5	108.9	30.4	68.1	20,270.2
British Columbia									
2009	513.9	1,886.1	1,751.7	1,122.4	782.0	61.0	138.3	118.4	6,373.9
2010	466.2	1,825.1	1,893.0	1,292.5	677.2	67.7	132.1	56.7	6,410.4
Yukon, Northwest Territories and Nunavut ¹									
2009	0.5	0.0	0.0	580.7	1.1	0.1	0.7	0.1	583.2
2010	0.5	0.0	0.0	195.6	3.2	0.2	0.1	0.2	199.9
Total									
2009	9,106.1	19,605.5	5,273.0	18,774.3	18,239.4	8,883.9	3,684.6	1,627.7	85,194.5
2010	8,095.9	23,983.6	5,105.1	21,842.2	13,713.3	12,711.7	3,359.5	871.2	89,682.5
Re-exports									
2009	138.5	143.3	19.7	567.9	3,097.5	261.5	625.4	2,167.1	7,021.0
2010	156.1	125.3	17.6	686.5	2,398.8	247.3	476.2	1,713.8	5,821.6
Total exports									
2009	9,244.6	19,748.9	5,292.7	19,342.2	21,336.9	9,145.4	4,310.0	3,794.8	92,215.5
2010	8,252.1	24,108.9	5,122.7	22,528.7	16,112.1	12,959.0	3,835.7	2,585.0	95,504.1

1. Data for the current month do not include some exports from the Harmonized System Chapter 71, "Natural/cultured pearls, precious stones and metals, coins, etc." for reasons relating to timing.

Table 6-1
Imports by commodity groupings, balance of payments basis, seasonally adjusted — Current dollars

	February	March	Change		Year to date			March 2010/ March 2009	
	2010	2010			2009	2010	Change		
	millions of dollars		percent		millions of dollars		percent		
Total	32,632	33,279	647	2.0	95,771	98,222	2,451	2.6	6.5
Agricultural and fishing products	2,382	2,430	48	2.0	7,580	7,175	-406	-5.4	-2.3
Fruits and vegetables	680	686	6	0.9	2,127	2,022	-106	-5.0	-3.1
Fresh fruits and berries	246	254	8	3.1	740	740	-1	-0.1	3.4
Dried fruits, fruits and fruit preparations	107	107	0	0.2	415	321	-94	-22.7	-23.8
Fresh vegetables	181	194	13	7.3	538	546	8	1.5	9.8
Other vegetables and vegetable preparations	145	130	-15	-10.3	434	415	-19	-4.4	-9.8
Other agricultural and fishing products	1,702	1,744	42	2.5	5,453	5,153	-300	-5.5	-2.0
Live animals	17	16	0	-0.6	51	46	-4	-8.6	-2.6
Meat and meat preparations	176	180	4	2.5	559	522	-36	-6.5	-5.3
Fish and marine animals	155	158	2	1.4	535	468	-67	-12.6	-10.0
Cocoa, coffee, tea and other food preparations	383	406	23	6.1	1,264	1,192	-72	-5.7	-3.0
Dairy produce, eggs and honey	45	46	1	2.8	136	133	-3	-2.2	0.7
Corn (maize) shelled	49	44	-5	-9.5	135	136	1	0.7	20.0
Other cereals and cereal preparations	172	171	-1	-0.8	613	520	-93	-15.1	-16.5
Sugar and sugar preparations	143	143	0	0.3	421	433	12	2.9	3.2
Fodder, feed, excluding unmilled cereal	117	112	-5	-4.2	376	339	-37	-9.8	-2.6
Beverages	293	317	24	8.3	942	910	-32	-3.4	7.6
Tobacco	32	31	0	-0.6	87	94	7	7.5	6.5
Crude vegetable products	121	118	-3	-2.2	332	356	24	7.1	4.4
Cotton	1	1	0	-6.4	3	4	1	35.2	44.3
Energy products	2,874	3,165	292	10.1	7,953	9,362	1,408	17.7	33.9
Crude petroleum	1,625	1,912	287	17.7	4,112	5,474	1,362	33.1	39.2
Other energy products	1,249	1,253	5	0.4	3,841	3,888	47	1.2	26.6
Coal and other related products	480	464	-16	-3.3	1,618	1,524	-94	-5.8	1.8
Petroleum and coal products	769	789	21	2.7	2,223	2,364	141	6.3	47.8
Forestry products	221	224	3	1.5	639	652	13	2.0	6.8
Forestry products	221	224	3	1.5	639	652	13	2.0	6.8
Crude wood products	34	32	-2	-6.9	140	99	-41	-29.3	-34.2
Wood fabricated materials	187	193	6	3.0	500	553	54	10.8	19.0
Industrial goods and materials	6,589	7,274	686	10.4	20,095	20,360	265	1.3	10.8
Metals and metal ores	2,320	2,812	492	21.2	6,412	7,468	1,056	16.5	34.4
Metals in ores, concentrates and scrap	563	509	-54	-9.6	1,536	1,656	120	7.8	-4.8
Steel bars, rods, plates, sheets	533	580	47	8.8	1,266	1,606	340	26.8	46.8
Other iron and steel products	287	313	26	9.0	1,256	893	-363	-28.9	-7.1
Precious metals including alloys	593	1,037	444	74.9	1,443	2,215	771	53.5	95.0
Other non-ferrous metals and alloys	344	373	29	8.3	911	1,098	187	20.5	27.1
Chemicals and plastics	2,339	2,495	156	6.7	7,352	7,088	-264	-3.6	0.8
Organic chemicals	555	662	107	19.2	1,851	1,761	-90	-4.9	14.3
Plastic materials	792	808	15	2.0	2,239	2,361	123	5.5	11.8
Other chemicals and related products	992	1,026	34	3.4	3,263	2,966	-297	-9.1	-12.7
Other industrial goods and materials	1,929	1,967	38	2.0	6,331	5,805	-526	-8.3	-1.5
Crude animal products	19	20	2	9.4	58	55	-3	-5.8	12.6
Wool and man-made fibres	19	18	-1	-4.2	56	56	0	-0.4	0.5
Crude non-metallic minerals	72	78	5	7.3	197	222	25	12.7	30.4
Textile fabricated materials	186	184	-2	-1.1	606	551	-55	-9.1	-7.3
Metal fabricated basic products	744	753	10	1.3	2,474	2,235	-238	-9.6	-4.8
Rubber fabricated materials	81	77	-4	-4.6	242	237	-6	-2.3	-5.5
Oils, fats, animal and vegetable	94	104	10	10.2	333	297	-36	-10.7	-1.0
Non-metallic minerals	274	294	20	7.2	878	844	-34	-3.8	8.2
Other fabricated materials	440	439	-1	-0.3	1,487	1,308	-179	-12.1	-3.3

Table 6-1 – continued

Imports by commodity groupings, balance of payments basis, seasonally adjusted — Current dollars

	February	March	Change		Year to date			March 2010/	
	2010	2010			2009	2010	Change	March 2009	
	millions of dollars		percent		millions of dollars		percent		
Machinery and equipment	8,730	8,802	72	0.8	29,287	25,944	-3,343	-11.4	-7.9
Industrial and agricultural machinery	2,215	2,430	214	9.7	7,841	6,691	-1,150	-14.7	-2.2
Engines, turbines and electric motors	248	365	117	47.3	1,151	874	-277	-24.1	-0.8
Drilling mining machinery	131	152	21	16.0	434	393	-41	-9.4	10.9
Excavating machinery	202	182	-20	-9.9	599	520	-79	-13.1	-3.4
Metal working machinery	120	134	14	11.9	447	378	-69	-15.3	-0.2
Other industrial machinery	1,179	1,221	42	3.6	4,157	3,505	-651	-15.7	-7.2
Agricultural machinery including tractors	336	375	39	11.7	1,054	1,021	-33	-3.2	10.7
Aircraft and other transportation equipment	1,090	1,135	45	4.1	4,520	3,278	-1,242	-27.5	-21.9
Aircraft, engines, parts	677	732	56	8.2	2,957	2,074	-883	-29.9	-28.5
Other transportation equipment and parts	413	403	-10	-2.5	1,562	1,203	-359	-23.0	-6.1
Office machines and equipment	1,020	962	-58	-5.7	3,190	2,980	-210	-6.6	-9.9
Other machinery and equipment	4,405	4,275	-130	-2.9	13,737	12,995	-742	-5.4	-6.2
Other communication and related equipment	1,590	1,532	-59	-3.7	4,678	4,623	-55	-1.2	-2.1
Other equipment and tools	2,814	2,743	-71	-2.5	9,059	8,372	-687	-7.6	-8.3
Automotive products	5,971	5,623	-348	-5.8	11,934	17,386	5,452	45.7	35.8
Passenger autos and chassis	2,019	1,750	-269	-13.3	3,774	5,626	1,852	49.1	35.3
Trucks and other motor vehicles	1,574	1,522	-52	-3.3	2,913	4,614	1,700	58.4	55.9
Motor vehicle parts	2,378	2,351	-27	-1.1	5,247	7,146	1,900	36.2	25.7
Other consumer goods	4,728	4,620	-108	-2.3	14,904	14,010	-894	-6.0	-5.0
Apparel and footwear	828	841	14	1.7	3,072	2,516	-556	-18.1	-12.6
Apparel and apparel accessories	691	699	8	1.1	2,561	2,099	-462	-18.0	-12.7
Footwear	137	142	6	4.3	511	417	-94	-18.4	-11.9
Miscellaneous consumer goods	3,900	3,778	-122	-3.1	11,832	11,494	-338	-2.9	-3.1
Television, radios, phonographs	133	122	-11	-8.4	321	385	64	20.0	3.8
Printed matter	271	272	2	0.6	930	816	-113	-12.2	-12.3
Watches, sporting goods and toys	479	484	6	1.2	1,580	1,448	-132	-8.3	-6.8
House furnishings	711	712	0	0.1	2,280	2,144	-136	-6.0	-5.1
Photographic goods	199	185	-14	-7.1	682	582	-100	-14.7	-17.3
Miscellaneous end products	2,107	2,003	-104	-4.9	6,040	6,118	78	1.3	1.2
Special transactions trade	392	394	3	0.6	1,334	1,099	-235	-17.6	3.1
Unallocated balance of payments adjustments	747	747	0	0.0	2,045	2,235	190	9.3	12.2

Table 6-2
Imports by commodity groupings, balance of payments basis, seasonally adjusted — Constant dollars, 2002

	February	March	Change		Year to date			March 2010/	
	2010	2010			2009	2010	Change	March 2009	
	millions of dollars		percent		millions of dollars		percent		
Total	36,824	38,111	1,287	3.5	97,594	111,386	13,792	14.1	20.0
Agricultural and fishing products	2,362	2,339	-23	-1.0	6,774	7,081	308	4.5	4.9
Fruits and vegetables	665	639	-26	-3.9	2,000	1,972	-28	-1.4	-4.9
Fresh fruits and berries	245	260	15	6.1	732	740	8	1.1	7.9
Dried fruits, fruits and fruit preparations	103	106	4	3.5	371	314	-58	-15.5	-15.2
Fresh vegetables	183	147	-36	-19.7	522	521	-1	-0.1	-18.9
Other vegetables and vegetable preparations	135	126	-8	-6.2	374	396	22	5.9	1.3
Other agricultural and fishing products	1,697	1,700	2	0.1	4,774	5,110	336	7.0	9.1
Live animals	16	17	0	0.4	48	47	-1	-1.3	4.3
Meat and meat preparations	186	183	-3	-1.5	537	548	12	2.1	4.9
Fish and marine animals	253	222	-31	-12.3	651	716	65	9.9	5.6
Cocoa, coffee, tea and other food preparations	338	334	-4	-1.3	943	1,032	89	9.4	5.0
Dairy produce, eggs and honey	45	52	8	17.5	126	147	20	15.9	16.3
Corn (maize) shelled	46	44	-2	-4.6	103	128	25	24.5	57.5
Other cereals and cereal preparations	150	145	-5	-3.4	478	450	-27	-5.7	-9.0
Sugar and sugar preparations	126	132	7	5.2	394	404	11	2.7	-0.4
Fodder, feed, excluding unmilled cereal	97	98	1	1.1	262	288	26	9.9	29.3
Beverages	268	296	28	10.5	809	841	32	3.9	16.1
Tobacco	39	39	1	1.7	93	115	23	24.3	31.8
Crude vegetable products	132	136	4	3.0	327	388	61	18.6	20.3
Cotton	2	2	0	-16.0	4	5	1	38.8	30.9
Energy products	1,538	1,616	78	5.1	5,314	4,945	-370	-7.0	1.7
Crude petroleum	660	779	119	18.0	2,638	2,238	-400	-15.2	-7.2
Other energy products	878	838	-40	-4.6	2,677	2,707	30	1.1	11.6
Coal and other related products	411	373	-38	-9.1	1,111	1,311	200	18.0	4.8
Petroleum and coal products	468	465	-3	-0.6	1,566	1,395	-170	-10.9	17.8
Forestry products	298	306	8	2.6	740	892	152	20.6	24.3
Forestry products	298	306	8	2.6	740	892	152	20.6	24.3
Crude wood products	49	49	-1	-1.2	166	149	-17	-10.1	-14.2
Wood fabricated materials	249	257	8	3.4	573	742	169	29.5	35.8
Industrial goods and materials	6,112	7,243	1,131	18.5	16,744	19,349	2,605	15.6	32.3
Metals and metal ores	1,679	2,592	913	54.4	4,420	5,966	1,546	35.0	78.7
Metals in ores, concentrates and scrap	317	287	-30	-9.5	1,198	909	-289	-24.1	-32.6
Steel bars, rods, plates, sheets	463	501	38	8.3	896	1,403	508	56.7	73.6
Other iron and steel products	224	246	22	9.7	780	709	-71	-9.1	13.7
Precious metals including alloys	328	1,164	836	254.6	673	1,811	1,139	169.2	401.1
Other non-ferrous metals and alloys	347	394	47	13.7	874	1,134	260	29.7	37.1
Chemicals and plastics	2,281	2,430	148	6.5	6,267	6,873	605	9.7	14.5
Organic chemicals	396	484	88	22.3	1,443	1,277	-166	-11.5	8.1
Plastic materials	845	869	24	2.9	2,085	2,556	471	22.6	27.4
Other chemicals and related products	1,041	1,076	36	3.4	2,739	3,039	300	11.0	8.5
Other industrial goods and materials	2,151	2,221	70	3.3	6,057	6,510	454	7.5	16.7
Crude animal products	21	22	2	7.8	88	62	-25	-28.8	-13.5
Wool and man-made fibres	25	24	-2	-6.7	68	73	5	7.7	9.8
Crude non-metallic minerals	59	62	3	4.8	182	179	-3	-1.5	12.8
Textile fabricated materials	245	244	0	-0.2	679	735	55	8.2	11.7
Metal fabricated basic products	788	817	29	3.7	2,248	2,394	146	6.5	14.6
Rubber fabricated materials	98	97	-2	-1.6	248	291	43	17.2	15.9
Oils, fats, animal and vegetable	93	104	10	10.9	264	292	28	10.7	21.8
Non-metallic minerals	329	359	30	9.1	895	1,026	131	14.6	31.7
Other fabricated materials	492	492	0	0.0	1,385	1,457	73	5.2	15.0

Table 6-2 – continued

Imports by commodity groupings, balance of payments basis, seasonally adjusted — Constant dollars, 2002

	February	March	Change		Year to date			March 2010/ March 2009	
	2010	2010			2009	2010	Change		
	millions of dollars		percent		millions of dollars		percent		
Machinery and equipment	12,248	12,624	377	3.1	35,166	36,851	1,684	4.8	11.1
Industrial and agricultural machinery	2,677	3,029	352	13.2	8,052	8,206	153	1.9	20.6
Engines, turbines and electric motors	303	456	152	50.2	1,199	1,082	-117	-9.8	20.8
Drilling mining machinery	144	173	28	19.7	400	441	41	10.3	39.4
Excavating machinery	247	226	-21	-8.5	603	640	38	6.3	20.5
Metal working machinery	151	174	23	15.1	480	483	3	0.6	20.9
Other industrial machinery	1,410	1,515	104	7.4	4,235	4,259	23	0.5	14.8
Agricultural machinery including tractors	421	486	65	15.5	1,135	1,301	166	14.6	34.9
Aircraft and other transportation equipment	1,257	1,374	117	9.3	4,518	3,886	-631	-14.0	-4.0
Aircraft, engines, parts	802	912	110	13.7	3,001	2,532	-469	-15.6	-10.6
Other transportation equipment and parts	456	462	7	1.5	1,517	1,354	-163	-10.7	12.4
Office machines and equipment	2,071	1,977	-94	-4.6	6,036	6,110	74	1.2	-1.6
Other machinery and equipment	6,243	6,245	2	0.0	16,561	18,649	2,088	12.6	15.3
Other communication and related equipment	2,621	2,600	-21	-0.8	6,617	7,726	1,109	16.8	20.2
Other equipment and tools	3,621	3,644	23	0.6	9,944	10,923	979	9.8	12.0
Automotive products	7,349	7,019	-330	-4.5	13,481	21,528	8,047	59.7	50.5
Passenger autos and chassis	2,438	2,107	-331	-13.6	4,536	6,776	2,240	49.4	34.0
Trucks and other motor vehicles	1,822	1,761	-61	-3.3	3,084	5,336	2,252	73.0	70.6
Motor vehicle parts	3,089	3,150	62	2.0	5,861	9,416	3,555	60.7	53.1
Other consumer goods	5,939	6,015	76	1.3	16,425	17,928	1,503	9.1	13.5
Apparel and footwear	1,150	1,208	58	5.0	3,636	3,546	-89	-2.5	8.0
Apparel and apparel accessories	965	1,008	43	4.4	3,035	2,969	-66	-2.2	8.1
Footwear	186	201	15	8.0	600	577	-23	-3.8	7.8
Miscellaneous consumer goods	4,789	4,807	18	0.4	12,790	14,382	1,592	12.4	15.0
Television, radios, phonographs	221	209	-11	-5.2	438	649	212	48.3	31.5
Printed matter	328	342	13	4.1	1,039	1,007	-32	-3.1	0.3
Watches, sporting goods and toys	649	682	34	5.2	1,876	1,998	122	6.5	10.3
House furnishings	894	925	30	3.4	2,432	2,750	318	13.1	16.6
Photographic goods	351	339	-12	-3.6	999	1,042	43	4.3	2.4
Miscellaneous end products	2,346	2,310	-35	-1.5	6,006	6,936	930	15.5	19.2
Special transactions trade	445	460	15	3.4	1,371	1,259	-111	-8.1	16.0
Unallocated balance of payments adjustments	533	487	-46	-8.6	1,578	1,553	-26	-1.6	-1.1

Table 7-1
Imports from selected countries, customs basis, not seasonally adjusted — March

	Agricultural and fishing products	Energy products	Forestry products	Industrial goods	Machinery and equipment	Automotive products	Consumer goods	Special transactions trade	Total
millions of dollars									
United States									
2009	1,465.4	843.1	182.2	4,010.5	4,936.4	3,215.7	2,139.0	339.0	17,131.3
2010	1,360.7	1,089.5	183.1	4,309.3	4,556.4	4,218.1	1,960.7	408.6	18,086.4
Mexico									
2009	144.4	33.0	0.5	112.9	561.1	395.2	86.6	3.3	1,337.0
2010	177.3	50.2	0.5	129.1	631.1	795.1	91.9	2.7	1,878.0
Japan									
2009	6.3	0.4	0.1	108.9	458.5	422.1	93.8	0.3	1,090.4
2010	5.8	0.7	0.0	103.4	441.2	579.1	98.5	0.6	1,229.5
European Union									
Germany									
2009	18.9	1.4	1.1	194.4	389.8	220.7	158.4	0.4	985.1
2010	19.4	1.1	1.2	186.0	380.0	355.0	164.1	0.5	1,107.2
France									
2009	43.5	1.5	0.3	92.1	212.5	11.2	135.4	0.3	496.9
2010	54.4	0.4	0.2	54.8	170.9	6.6	162.8	0.6	450.6
United Kingdom									
2009	27.9	175.6	0.1	129.4	343.6	47.3	139.1	1.2	864.2
2010	33.8	310.8	0.0	391.8	273.3	35.3	133.8	2.4	1,181.1
Italy									
2009	53.2	0.0	0.9	87.6	133.4	17.8	98.9	1.2	393.0
2010	52.5	49.5	1.3	89.2	119.6	24.2	94.1	0.2	430.5
Other European Union									
2009	78.0	97.7	3.2	255.4	420.0	55.1	319.4	12.0	1,240.7
2010	93.1	240.0	4.4	261.3	472.2	73.4	383.8	2.3	1,530.7
Total									
2009	221.5	276.1	5.5	758.9	1,499.4	352.2	851.1	15.1	3,979.9
2010	253.2	601.8	7.2	983.1	1,416.0	494.4	938.5	6.0	4,700.2
Newly industrialized countries									
South Korea									
2009	5.1	6.0	0.0	70.8	187.0	153.3	18.4	0.1	440.7
2010	4.9	33.2	0.0	70.3	227.3	134.1	17.2	0.1	487.2
Hong Kong									
2009	2.7	0.0	0.0	2.1	19.5	0.2	11.2	0.0	35.8
2010	1.5	0.0	0.0	2.2	12.1	0.3	14.1	0.0	30.2
Taiwan									
2009	5.8	0.0	1.2	63.3	189.5	16.4	33.8	0.1	310.1
2010	4.7	0.0	0.8	65.5	156.0	14.5	33.2	0.2	274.9
Singapore									
2009	1.8	0.0	0.0	6.1	54.4	0.3	33.4	0.1	96.0
2010	3.3	0.0	0.1	9.2	49.5	0.4	19.2	0.0	81.7
Total									
2009	15.4	6.1	1.2	142.2	450.4	170.4	96.7	0.3	882.7
2010	14.4	33.3	0.9	147.1	444.9	149.3	83.8	0.3	874.0
Other countries									
2009	612.1	1,132.9	38.9	1,630.0	2,485.9	138.6	1,608.3	39.0	7,685.7
2010	660.1	1,384.3	55.8	1,837.8	2,338.8	169.9	1,579.1	14.6	8,040.4
Total									
2009	2,465.3	2,291.6	228.5	6,763.4	10,391.7	4,694.1	4,875.6	397.0	32,107.2
2010	2,471.8	3,159.8	247.6	7,509.9	9,828.4	6,405.9	4,752.6	432.9	34,808.8

Table 7-2
Imports from selected countries, customs basis, not seasonally adjusted — Year to date, January to March

	Agricultural and fishing products	Energy products	Forestry products	Industrial goods	Machinery and equipment	Automotive products	Consumer goods	Special transactions trade	Total
millions of dollars									
United States									
2009	4,150.3	3,023.1	496.9	11,619.1	13,438.7	7,844.4	5,711.0	961.8	47,245.3
2010	3,759.0	3,056.9	486.2	11,663.5	11,562.5	11,182.8	5,360.4	907.4	47,978.7
Mexico									
2009	419.3	37.5	1.5	335.3	1,504.7	987.0	246.9	8.7	3,540.8
2010	472.9	152.0	1.2	376.3	1,672.7	2,077.9	244.1	8.3	5,005.4
Japan									
2009	17.6	0.9	0.4	310.9	1,348.4	1,310.4	257.2	0.9	3,246.8
2010	16.8	1.5	0.2	304.1	1,090.2	1,577.4	256.2	1.1	3,247.6
European Union									
Germany									
2009	57.6	3.0	2.1	528.9	1,231.6	490.5	458.6	3.1	2,775.5
2010	55.6	3.1	3.2	494.5	902.9	774.6	427.0	1.4	2,662.2
France									
2009	144.6	53.0	0.7	231.6	511.2	27.7	426.6	1.5	1,396.8
2010	147.3	12.7	0.5	247.5	378.4	26.8	430.7	2.4	1,246.1
United Kingdom									
2009	81.4	549.1	0.4	363.6	893.0	94.7	337.7	4.8	2,324.6
2010	86.0	770.2	0.2	684.1	741.1	85.6	305.3	12.8	2,665.3
Italy									
2009	150.6	10.7	4.2	249.3	368.8	42.2	270.7	2.0	1,098.5
2010	136.0	49.6	3.6	228.6	348.9	48.2	259.9	0.5	1,075.3
Other European Union									
2009	260.9	235.9	11.2	763.5	1,115.8	145.3	1,053.4	15.3	3,601.4
2010	251.8	535.4	9.9	654.7	1,018.4	171.3	1,003.7	3.7	3,648.9
Total									
2009	695.1	851.7	18.6	2,136.9	4,120.4	800.5	2,547.0	26.6	11,196.8
2010	676.7	1,370.9	17.4	2,309.4	3,389.6	1,106.4	2,426.5	20.8	11,317.8
Newly industrialized countries									
South Korea									
2009	11.7	13.9	0.0	223.5	605.7	375.2	56.5	0.2	1,286.7
2010	14.1	38.2	0.0	176.4	551.4	528.9	46.1	0.2	1,355.3
Hong Kong									
2009	6.4	0.0	0.0	9.7	47.7	0.5	33.5	0.2	98.0
2010	5.3	0.0	0.2	5.2	31.0	0.6	30.7	0.1	73.0
Taiwan									
2009	14.3	0.1	2.3	207.1	538.4	45.5	98.4	0.3	906.4
2010	14.4	0.1	2.0	182.9	434.8	39.7	93.7	0.4	767.9
Singapore									
2009	7.3	51.5	0.6	177.1	148.0	1.0	69.7	0.4	455.6
2010	8.2	0.0	0.1	37.3	114.0	1.0	47.2	0.6	208.4
Total									
2009	39.7	65.5	3.0	617.4	1,339.8	422.2	258.1	1.0	2,746.7
2010	41.9	38.3	2.4	401.8	1,131.2	570.1	217.7	1.2	2,404.5
Other countries									
2009	1,837.1	3,778.4	134.8	4,697.9	6,665.3	378.2	5,315.8	141.7	22,949.2
2010	1,851.4	4,488.2	153.4	4,653.6	6,303.5	462.9	4,913.8	75.0	22,901.7
Total									
2009	7,159.4	7,757.1	655.3	19,717.4	28,417.3	11,742.6	14,336.0	1,140.7	90,925.9
2010	6,819.3	9,107.8	660.8	19,708.7	25,149.8	16,977.5	13,418.7	1,013.8	92,856.4

Table 8
Imports by country, customs basis, not seasonally adjusted

	March		January to March		Change
	2009	2010	2009	2010	January to March 2010/January to March 2009
millions of dollars					
North America					
Canada	317.5	266.8	803.4	1,025.0	27.6
Greenland	6.0	0.0	16.6	0.1	-99.4
Mexico	1,337.0	1,878.0	3,540.8	5,005.4	41.4
Saint Pierre and Miquelon	0.0	0.3	0.1	0.4	394.0
United States	17,131.3	18,086.4	47,245.3	47,978.7	1.6
Total	18,791.8	20,231.4	51,606.2	54,009.6	4.7
Western Europe					
Andorra	0.0	0.0	0.0	0.1	172.2
Austria	88.9	115.5	288.2	260.6	-9.6
Belgium	131.6	120.1	330.8	340.0	2.8
Denmark	106.1	294.7	238.5	570.6	139.2
Faeroe Islands	0.2	0.3	0.3	0.7	123.6
Finland	84.9	82.4	218.9	201.5	-8.0
France	496.9	450.6	1,396.8	1,246.1	-10.8
Germany	985.1	1,107.2	2,775.5	2,662.2	-4.1
Gibraltar	0.0	0.0	0.0	0.0	-47.8
Greece	9.4	12.1	34.9	28.4	-18.7
Iceland	2.6	2.8	6.3	8.6	35.0
Italy	393.0	430.5	1,098.5	1,075.3	-2.1
Luxembourg	3.5	5.5	16.6	19.3	16.2
Malta	2.8	1.0	6.9	3.5	-49.3
Netherlands	151.8	171.0	409.6	394.0	-3.8
Norway	255.5	193.3	780.7	793.0	1.6
Portugal	23.8	58.4	70.0	98.0	40.0
Republic of Ireland (Eire)	162.0	165.9	611.5	455.6	-25.5
Spain	123.4	135.0	333.7	288.2	-13.6
Sweden	173.7	169.6	477.3	462.2	-3.2
Switzerland	413.3	402.5	995.5	851.4	-14.5
United Kingdom	864.2	1,181.1	2,324.6	2,685.3	15.5
Total	4,472.8	5,099.7	12,415.2	12,444.3	0.2
Other Europe					
Albania	0.3	0.2	0.8	0.6	-20.1
Armenia	3.2	2.0	9.4	6.7	-28.8
Azerbaijan	57.9	0.0	219.5	0.0	-100.0
Belarus	0.4	0.5	14.3	1.5	-89.7
Bosnia and Herzegovina	0.5	0.6	1.8	1.7	-7.8
Bulgaria	5.9	5.5	29.5	15.1	-49.0
Croatia	2.2	1.8	6.0	5.0	-17.4
Czech Republic	17.6	23.1	77.8	70.1	-9.9
Estonia	1.8	1.6	5.7	4.6	-18.8
Georgia	10.1	8.3	28.8	24.0	-16.7
Hungary	41.6	34.1	102.8	81.9	-20.3
Kazakhstan	1.6	0.9	67.6	332.9	392.2
Kyrgyzstan	0.0	0.1	0.4	0.1	-86.7
Latvia	0.9	0.8	2.8	1.6	-41.8
Lithuania	3.1	21.5	46.5	63.2	35.9
Macedonia (Former Yugoslav Republic of Macedonia)	2.0	0.6	3.9	1.6	-57.9
Montenegro	0.0	0.0	0.1	0.0	-87.2
Poland	75.4	72.4	214.5	190.9	-11.0
Republic of Moldova	0.1	0.2	0.7	0.6	-11.2
Romania	10.5	10.4	33.2	30.6	-7.8
Russian Federation	227.4	256.2	425.0	525.5	23.6
Serbia	0.8	1.1	3.1	3.0	-4.4
Slovakia	15.3	17.0	35.1	44.8	27.6
Slovenia	6.1	12.1	15.3	23.0	49.9
Tajikistan	0.0	0.0	0.0	0.0	-38.9
Turkmenistan	0.0	0.0	0.1	0.0	-36.1
Ukraine	6.6	8.2	31.8	14.7	-53.9
Uzbekistan	0.0	0.0	0.1	0.7	931.3
Total	491.3	479.2	1,376.8	1,444.4	4.9

Table 8 – continued

Imports by country, customs basis, not seasonally adjusted

	March		January to March		Change
	2009	2010	2009	2010	January to March 2010/January to March 2009
millions of dollars					
Middle East					
Bahrain	0.1	0.3	2.9	0.7	-75.7
Cyprus	0.6	0.8	1.1	1.2	4.1
Egypt	7.1	29.1	27.0	60.0	122.0
Eritrea	0.0	0.1	0.0	0.2	727.5
Ethiopia	0.7	1.4	2.7	3.1	17.2
Iran	3.5	3.7	7.7	10.4	34.6
Iraq	103.8	0.1	349.2	212.0	-39.3
Israel	86.7	102.5	265.6	252.6	-4.9
Jordan	1.1	1.6	4.7	4.9	3.5
Kuwait	0.8	0.0	37.2	0.0	-100.0
Lebanon	1.2	0.9	3.3	3.1	-7.3
Libya	0.0	4.8	0.0	4.8	...
Oman	0.2	11.3	1.7	11.8	601.6
Qatar	4.3	0.2	4.4	60.8	...
Saudi Arabia	101.5	185.2	343.8	505.6	47.1
Somalia	0.0	0.0	0.0	0.0	-68.8
Sudan	7.6	7.1	19.4	16.6	-14.2
Syria	0.6	0.4	1.1	1.6	47.8
Turkey	52.3	47.1	211.4	131.9	-37.6
United Arab Emirates	105.8	3.6	111.8	54.0	-51.7
Yemen	0.0	0.0	0.0	0.0	-25.6
Total	478.0	400.1	1,395.0	1,335.2	-4.3
Other Africa					
Algeria	172.5	381.8	694.5	1,007.9	45.1
Angola	106.3	97.3	309.6	325.1	5.0
Antarctica	0.0	0.2	0.0	0.2	...
Benin	0.0	0.0	0.0	0.0	-19.5
Botswana	5.0	0.0	5.1	6.9	35.0
Bouvet Island	0.0	0.0	0.0	0.0	-100.0
Burkina Faso	1.5	4.6	1.6	12.8	706.2
Burundi	0.0	0.0	0.1	0.0	-77.6
Cameroon	0.3	0.3	1.2	1.0	-21.9
Cape Verde	0.0	0.0	0.0	0.0	-64.6
Central African Republic	0.0	0.0	0.0	0.0	-76.3
Chad	0.0	0.0	0.0	0.1	872.6
Comoros	0.0	0.0	0.0	0.0	-5.9
Congo	0.3	0.1	0.6	0.4	-26.8
Democratic Republic of the Congo	0.1	0.1	0.2	0.3	57.5
Djibouti	0.0	0.0	0.0	0.0	...
Equatorial Guinea	0.0	0.0	141.2	142.8	1.1
French Southern Territories	0.0	0.0	0.0	0.0	-100.0
Gabon	0.1	0.0	0.6	0.1	-91.4
Gambia	0.0	0.0	0.0	0.0	76.4
Ghana	1.4	1.9	7.8	7.2	-7.8
Guinea	3.3	1.7	16.1	7.3	-54.8
Guinea-Bissau	0.0	0.0	0.0	0.0	377.7
Ivory Coast	12.6	32.1	31.1	58.0	86.4
Kenya	1.1	1.8	4.0	4.4	9.0
Lesotho	1.7	0.9	2.2	2.0	-10.0
Liberia	0.2	1.7	5.4	9.6	76.9
Madagascar	1.5	4.2	10.3	6.7	-34.8
Malawi	0.2	3.9	0.4	8.1	...
Mali	0.0	0.0	0.0	0.0	-72.9
Mauritania	0.1	0.0	0.4	0.2	-59.3
Mauritius	0.8	1.0	3.2	2.8	-12.0
Morocco	11.5	9.8	47.5	39.0	-17.8
Mozambique	0.0	0.1	0.2	0.2	47.2
Namibia	0.0	58.6	47.0	64.7	37.6
Niger	0.0	0.2	0.1	0.2	155.0
Nigeria	1.6	187.3	92.2	316.2	243.1
Rwanda	0.0	0.0	0.1	0.1	-5.1
Saint Helena	0.0	0.0	0.0	0.0	347.6
Sao Tome and Principe	0.0	0.1	0.0	0.1	962.4
Senegal	0.0	0.1	0.1	0.2	73.7

Table 8 – continued

Imports by country, customs basis, not seasonally adjusted

	March		January to March		Change
	2009	2010	2009	2010	January to March 2010/January to March 2009
millions of dollars					
Seychelles	0.0	0.1	0.4	0.1	-80.5
Sierra Leone	0.3	0.2	0.5	0.4	-26.9
South Africa	57.3	43.2	144.6	124.2	-14.1
Swaziland	0.2	0.1	0.5	0.3	-37.3
Togo	0.0	0.1	0.2	0.2	6.2
Tunisia	3.5	6.1	10.7	14.9	39.6
Uganda	0.3	0.5	0.5	1.0	99.4
United Republic of Tanzania	0.5	0.1	1.4	0.6	-56.8
Western Sahara	0.0	0.0	0.0	0.0	-80.0
Zambia	0.1	0.1	0.2	0.3	78.1
Zimbabwe	0.0	0.2	0.7	0.9	20.6
Total	384.2	840.4	1,582.6	2,167.4	37.0
Other Asia					
Afghanistan	0.1	0.1	0.4	0.5	4.6
Bangladesh	86.9	72.7	227.0	188.1	-17.2
Bhutan	0.0	0.0	0.0	0.0	-89.4
British Indian Ocean Territory	0.0	0.0	0.0	0.0	38.1
Brunei Darussalam	0.3	0.0	0.8	0.0	-98.9
Cambodia	25.0	24.6	84.1	78.8	-6.4
China	3,159.8	3,166.1	9,953.9	9,109.7	-8.5
Hong Kong	35.8	30.2	98.0	73.0	-25.5
India	196.1	199.1	562.1	490.9	-12.7
Indonesia	92.2	100.2	268.8	247.1	-8.1
Japan	1,090.4	1,229.5	3,246.8	3,247.6	0.0
Laos	1.2	1.2	2.3	2.6	9.5
Macao	1.9	0.8	5.7	2.1	-63.6
Malaysia	224.9	201.9	584.1	523.6	-10.4
Maldives	0.0	0.0	0.0	0.0	783.0
Mongolia	13.4	9.8	37.9	29.9	-21.3
Myanmar	0.0	0.0	0.0	0.0	-58.3
Nepal	0.8	0.9	2.6	2.6	-0.9
North Korea	0.0	0.0	0.0	0.1	75.6
Pakistan	22.4	22.4	59.6	58.6	-1.6
Philippines	74.0	78.0	176.3	206.7	17.2
Singapore	96.0	81.7	455.6	208.4	-54.3
South Korea	440.7	487.2	1,286.7	1,355.3	5.3
Sri Lanka	11.2	10.4	32.1	29.5	-8.0
Taiwan	310.1	274.9	906.4	767.9	-15.3
Thailand	208.7	204.5	574.1	555.5	-3.2
Timor-Leste	0.2	0.2	0.9	0.4	-59.5
Viet Nam	78.4	78.2	255.5	243.2	-4.8
Total	6,170.8	6,274.4	18,821.9	17,421.8	-7.4
Oceania					
American Samoa	0.0	0.0	0.1	0.1	1.3
Australia	174.0	111.4	406.0	331.0	-18.5
Christmas Island	0.0	0.0	0.0	0.1	431.6
Cocos (Keeling) Islands	0.0	0.0	0.0	0.0	-59.1
Cook Islands	0.0	0.0	0.0	0.0	-4.9
Fiji	0.6	0.7	1.4	1.8	27.5
French Polynesia	0.1	0.3	0.2	0.4	97.9
Guam	0.0	0.0	0.0	0.0	-84.0
Heard Island and McDonald Islands	0.0	0.0	0.0	0.0	-92.0
Kiribati	0.0	0.0	0.1	0.0	-90.2
Nauru	0.0	0.0	0.0	0.0	-32.2
New Caledonia	0.0	0.0	0.1	0.1	-36.1
New Zealand	40.1	39.3	102.4	93.0	-9.2
Niue	0.0	0.0	0.0	0.0	572.5
Norfolk Island	0.0	0.0	0.0	0.0	-100.0
Papua New Guinea	0.1	0.2	0.3	0.5	68.2
Pitcairn	0.0	0.0	0.0	0.0	-36.5
Samoa	0.0	0.0	0.0	0.0	252.0
Solomon Islands	0.0	0.0	0.0	0.0	181.1
Tonga	0.0	0.0	0.0	0.0	-96.4

Table 8 – continued

Imports by country, customs basis, not seasonally adjusted

	March		January to March		Change
	2009	2010	2009	2010	January to March 2010/January to March 2009
	millions of dollars				
United States Minor Outlying Islands	0.4	0.5	1.3	1.4	2.4
Vanuatu	0.0	0.1	0.0	0.1	...
Wallis and Futuna	0.0	0.0	0.0	0.0	...
Total	215.5	152.7	512.0	428.5	-16.3
South America					
Argentina	67.2	46.8	167.3	129.2	-22.8
Bolivia	9.0	9.3	18.6	23.6	26.7
Brazil	197.2	271.0	629.9	748.9	18.9
Chile	178.3	239.4	446.8	658.0	47.3
Colombia	75.9	65.3	172.1	158.6	-7.8
Ecuador	21.7	17.4	66.6	50.2	-24.5
Falkland Islands (Malvinas)	0.0	0.0	0.0	0.0	...
Guyana	27.9	33.8	71.0	52.1	-26.7
Paraguay	0.9	0.5	2.2	1.9	-13.2
Peru	211.5	295.2	652.7	867.4	32.9
Suriname	47.6	48.6	138.1	116.5	-15.6
Uruguay	3.9	12.0	35.9	28.3	-21.1
Venezuela	70.3	63.4	249.0	75.2	-69.8
Total	911.5	1,102.7	2,650.1	2,909.9	9.8
Central America Antilles					
Anguilla	0.0	0.0	0.2	0.1	-34.3
Antigua and Barbuda	0.0	0.0	0.1	0.0	-88.3
Aruba	0.0	0.0	27.5	0.1	-99.7
Bahamas	3.4	6.2	12.9	7.5	-41.5
Barbados	0.8	0.5	2.7	2.6	-1.5
Belize	1.1	0.6	2.9	1.9	-36.7
Bermuda	0.1	0.1	0.2	0.2	22.7
British Virgin Islands	0.0	0.0	0.0	0.1	129.4
Cayman Islands	0.0	0.0	0.1	0.1	37.9
Costa Rica	38.0	37.4	96.1	103.6	7.8
Cuba	40.5	47.6	116.3	145.5	25.2
Dominica	0.0	0.0	0.1	0.0	-50.9
Dominican Republic	13.8	12.1	36.0	31.2	-13.3
El Salvador	8.1	5.4	26.2	11.5	-56.1
Grenada	0.1	0.1	0.1	0.2	32.9
Guatemala	22.0	24.0	58.8	81.3	38.2
Haiti	2.3	3.6	4.8	7.4	54.1
Honduras	16.7	16.0	39.8	41.1	3.1
Jamaica	24.9	13.6	44.1	39.5	-10.4
Montserrat	0.0	0.0	0.0	0.1	991.6
Netherlands Antilles	0.0	0.0	4.8	0.1	-97.6
Nicaragua	7.4	13.5	21.6	32.8	51.8
Panama	0.7	6.8	2.7	21.6	706.2
Saint Kitts and Nevis	0.2	0.5	1.0	1.7	69.5
Saint Lucia	0.0	0.0	0.1	0.0	-20.5
Saint Vincent and the Grenadines	0.0	0.0	0.0	0.0	-37.1
Trinidad and Tobago	10.8	39.8	66.7	164.8	147.1
Turks and Caicos Islands	0.1	0.0	0.2	0.1	-62.1
Total	191.2	228.1	566.0	695.2	22.8
All countries	32,107.2	34,808.8	90,925.9	92,856.4	2.1

**Table 9-1
Imports by province of clearance, customs basis, not seasonally adjusted — March**

	Agricultural and fishing products	Energy products	Forestry products	Industrial goods	Machinery and equipment	Automotive products	Consumer goods	Special transactions trade	Total
millions of dollars									
Newfoundland and Labrador									
2009	2.4	216.7	0.0	16.6	13.4	0.0	0.3	0.0	249.4
2010	3.7	43.6	0.0	4.6	25.9	0.0	0.5	0.0	78.4
Prince Edward Island									
2009	0.2	0.0	0.0	0.0	0.2	0.0	0.0	0.0	0.4
2010	0.1	0.0	0.0	0.0	0.1	0.0	0.0	0.0	0.2
Nova Scotia									
2009	21.5	94.6	0.9	68.2	102.8	250.2	20.1	2.5	560.9
2010	32.9	170.9	1.5	106.4	81.1	369.5	18.2	1.5	781.9
New Brunswick									
2009	25.6	395.3	9.3	69.6	79.0	26.9	18.0	3.3	627.0
2010	31.2	653.4	9.2	102.4	74.8	38.7	43.8	1.5	955.1
Quebec									
2009	358.0	771.2	79.5	1,121.6	1,858.7	177.2	918.0	47.8	5,331.9
2010	403.0	1,311.4	68.4	1,522.3	1,588.5	198.9	859.2	38.3	5,989.9
Ontario									
2009	1,409.9	316.4	78.2	3,835.2	5,648.3	3,628.0	3,046.3	306.1	18,268.4
2010	1,365.6	320.9	91.4	4,222.6	5,637.9	5,258.3	3,079.1	366.0	20,341.7
Manitoba									
2009	83.3	18.5	7.4	361.3	546.4	150.8	147.3	8.5	1,323.5
2010	74.9	49.6	9.5	351.8	512.0	110.3	131.2	5.5	1,244.7
Saskatchewan									
2009	30.6	33.4	2.2	253.0	320.6	61.8	26.3	2.2	730.2
2010	27.2	40.2	2.9	221.4	373.0	76.5	18.7	0.5	760.4
Alberta									
2009	155.9	315.6	10.3	422.4	773.7	72.6	104.7	11.3	1,866.5
2010	165.4	334.3	10.1	403.7	544.8	99.0	106.9	8.7	1,672.9
British Columbia									
2009	377.2	129.4	40.7	615.3	1,042.1	326.5	594.8	14.7	3,140.5
2010	364.8	235.1	54.6	574.7	988.4	254.7	495.0	10.8	2,978.1
Yukon, Northwest Territories and Nunavut									
2009	0.8	0.3	0.0	0.1	6.6	0.0	0.0	0.6	8.5
2010	3.1	0.3	0.0	0.1	1.9	0.0	0.1	0.1	5.6
Total									
2009	2,465.3	2,291.6	228.5	6,763.4	10,391.7	4,694.1	4,875.6	397.0	32,107.2
2010	2,471.8	3,159.8	247.6	7,509.9	9,828.4	6,405.9	4,752.6	432.9	34,808.8

Table 9-2
Imports by province of clearance, customs basis, not seasonally adjusted — Year to date, January to March

	Agricultural and fishing products	Energy products	Forestry products	Industrial goods	Machinery and equipment	Automotive products	Consumer goods	Special transactions trade	Total
millions of dollars									
Newfoundland and Labrador									
2009	9.6	577.1	0.0	35.4	24.0	0.1	1.2	0.1	647.7
2010	8.2	466.9	0.1	10.9	45.7	0.1	1.6	0.2	533.7
Prince Edward Island									
2009	0.4	0.0	0.0	16.0	0.4	0.0	0.0	0.1	16.8
2010	0.4	0.0	0.0	5.2	0.1	0.0	0.0	0.0	5.8
Nova Scotia									
2009	83.1	337.3	3.1	229.5	302.3	530.0	42.7	6.3	1,534.4
2010	90.0	457.9	4.2	252.5	201.2	787.3	42.0	3.7	1,838.8
New Brunswick									
2009	78.3	1,036.1	28.1	208.5	195.5	61.4	42.0	6.0	1,655.8
2010	84.4	1,889.6	29.2	275.6	182.7	102.3	71.0	4.0	2,638.9
Quebec									
2009	1,101.0	2,741.7	221.7	3,399.9	5,164.4	467.5	2,924.2	121.7	16,142.1
2010	1,059.7	3,328.9	183.2	3,619.8	4,005.9	508.5	2,731.6	101.1	15,538.6
Ontario									
2009	4,038.1	1,326.9	229.2	10,825.8	15,276.0	8,942.2	8,811.8	896.9	50,347.0
2010	3,779.2	1,317.6	241.8	11,391.0	14,373.4	14,154.3	8,410.9	827.6	54,495.8
Manitoba									
2009	240.2	48.4	20.4	971.5	1,550.8	392.1	413.0	24.2	3,660.6
2010	215.0	128.7	21.6	864.0	1,313.7	281.7	361.5	15.9	3,202.1
Saskatchewan									
2009	85.2	98.6	5.9	700.8	871.2	228.0	64.0	11.8	2,065.6
2010	75.6	99.5	5.8	576.4	864.5	194.4	62.2	3.7	1,882.2
Alberta									
2009	450.7	988.4	27.7	1,481.1	2,087.9	204.3	293.8	32.6	5,566.5
2010	463.9	810.8	24.6	1,125.2	1,561.8	232.3	273.5	28.9	4,521.0
British Columbia									
2009	1,072.0	600.9	119.0	1,848.3	2,929.2	917.0	1,743.3	40.2	9,269.8
2010	1,039.7	606.9	150.4	1,587.9	2,590.9	716.4	1,464.4	28.6	8,185.3
Yukon, Northwest Territories and Nunavut									
2009	0.8	1.7	0.0	0.6	15.6	0.0	0.0	0.9	19.6
2010	3.1	1.1	0.0	0.1	9.7	0.0	0.1	0.1	14.2
Total									
2009	7,159.4	7,757.1	655.3	19,717.4	28,417.3	11,742.6	14,336.0	1,140.7	90,925.9
2010	6,819.3	9,107.8	660.8	19,708.7	25,149.8	16,977.5	13,418.7	1,013.8	92,856.4

Technical notes

The Canadian international merchandise trade statistical program

I Introduction

The objective of this text is to provide a general overview of the Canadian International Merchandise Trade Statistical Program, with special reference to concepts and definitions. The text is intended for the general user and simplicity is emphasized. More technical details can be obtained from the International Trade Division, Statistics Canada upon request.

II Conceptual framework

1. Objectives and coverage: The primary objective of the Canadian International Merchandise Trade Statistical Program is to measure the change in the stock of material resources of Canada resulting from the movement of merchandise into or out of the country. Information on imports and exports are inputs into the System of National Accounts, particularly in the balance of payments and gross domestic product, and are used in the formulation of trade and budgetary policies. Governments, importers, exporters, manufacturers and shipping companies use trade statistics to:

- monitor import penetration and export performance,
- monitor commodity price and volume changes,
- examine transport implications.

2. Trade statistics (customs basis / balance of payments basis): Merchandise trade statistics are reported and presented on two different bases: customs basis and balance of payment basis.

When goods are imported into or exported from Canada, declarations must be filed with customs, giving such information as description and value of the goods, origin and port of clearance of commodities and mode of transport. Most of this information is required for the purposes of customs administration. Statistics developed from administrative records of customs are commonly referred to as customs-based trade statistics.

Customs-based trade statistics are more accurate at measuring imports than they are at measuring exports. This is the case because customs is typically more vigilant with respect to goods entering the country than they are with goods leaving the country.

Customs-based export statistics may understate or incorrectly portray the destination of exports. Export statistics are understated when the proper documentation is not filed with Customs. Exports are incorrectly portrayed when the country of final destination is inaccurately reported on the customs documentation. This occurs most frequently when goods are routed through an intermediary country before continuing on to their final destination.

Statistics Canada does not have a measure of undercoverage but periodically conducts reconciliation exercises with its major trading partners, excluding the United States.

On January 1, 1990, Canada entered into a memorandum of understanding with the United States concerning the exchange of import data. As a consequence, each administration is using the other's import data to replace its own export data. Canada's international merchandise trade statistics are, therefore, no longer derived exclusively from the administrative records of the Canada Border Services Agency, but from United States Customs records as well.

Customs-based information is adjusted to conform with the National Accounts concepts and definitions. The adjustments to derive balance of payments-based trade data include adjustments related to trade definition, valuation and timing. The principal difference between the two trade concepts is that customs-based merchandise trade statistics cover the physical movement of goods as they are reflected in customs documents, while balance of payments-adjusted data are intended to cover all economic transactions that involve merchandise trade between residents and non-residents. This section describes the concepts and processes pertaining to the customs-based trade statistics only. (For further information on balance of payments-adjusted data, see the publication *Canada's Balance of International Payments*, Statistics Canada (Catalogue no. 67-001-XPB).

3. System of trade: Canadian trade statistics are compiled according to the 'general' system of trade, as defined by the United Nations Statistical Office. Under this system, imports include all goods that have crossed Canada's territorial boundary, whether for immediate consumption in Canada or for storage in bonded customs warehouses. Domestic exports include goods grown, extracted or manufactured in Canada, including goods of foreign origin that have been materially transformed in Canada. Re-exports are exports of goods of foreign origin that have not been materially transformed in Canada, including foreign goods withdrawn for export from bonded customs warehouses. Total exports are the sum of domestic exports and re-exports. Thus the general trade system, in principal, presents all goods entering the country (imports) and all goods leaving the country (exports). It differs from the 'special' system of trade in the treatment of imported goods into bonded customs warehouses. Under the 'special' system, these goods are counted only if and when they are withdrawn from customs warehouses for home consumption. They are not counted in export statistics unless they have first cleared customs.

Conceptually, under the 'general' system, the statistical frontier coincides with the geographical boundary, while under the 'special' system, it coincides with the customs boundary.

4. Valuation: For customs purposes, imports are recorded at values established according to the provisions of the *Customs Act*, which, since January 1, 1985, reflects valuation methods based on the General Agreement on Tariffs and Trade (GATT) Valuation Code System. (GATT) Valuation Code System generally requires the value for duty of imported goods be equivalent to the transaction value or the price actually paid.

To determine the transaction value of imported goods, all transportation and associated costs arising in respect of the goods being appraised prior to and at the place of direct shipment to Canada, are to be added to the price of the goods. Therefore, Canadian imports are valued Free on Board (FOB), place of direct shipment to Canada. It excludes freight and insurance costs in bringing the goods to Canada from the point of direct shipment.

To countries other than the United States, exports are, in principal, valued or recorded at the values declared on export documents, which usually reflect the transaction value, i.e., actual selling price or, in the case of a non-arm's length transaction, the transfer price used for company accounting purposes. Canadian exports to overseas countries are valued at F.O.B. port of exit, including domestic freight charges to that point but net of discounts and allowances. As of January, 1990, Canadian exports to the U.S. are valued F.O.B. point of exit from Canada. Prior to 1990, they were valued F.O.B. place of lading net of freight charges, discounts and allowances.

5. Statistical period: The reference period is the calendar month and the calendar year. The closing of the statistical month for imports and Canadian exports to the United States is defined as the last calendar day of the month, based as closely as practicable on the date of clearance from customs.

The closing of the statistical month for exports, to countries other than the United States, is also defined as the last calendar day of the month. Those export documents that are received too late for incorporation in the current month are assigned to the month the transaction took place. If a monthly summary report from a high volume exporter is not received on time, the data are imputed for the current month and revised with the trade value in the following statistical month.

6. Trading partner attribution (country of origin/destination): Exports are attributed to the country, which is the last known destination of the goods at the time of export. Exports to the United States are attributed to the state of destination.

Imports are attributed to their country of origin, that is, the country in which the goods were grown, extracted or manufactured in accordance to the rules of origin administered by the Canada Border Services Agency. Imports from the United States are attributed to the state of origin. Prior to 1988, most imports were attributed to the country of export/consignment, with the exception of imports from Central and South America.

7. Principal trading areas: The 'principal trading areas' are country groupings defined as follows:

United States: includes trade with Puerto Rico and the U.S. Virgin Islands.

Japan:

European Union (EU): Austria, Belgium, Bulgaria, Cyprus, Czech Republic, Denmark, Estonia, Finland, France, Germany, Greece, Hungary, Ireland, Italy, Latvia, Lithuania, Luxembourg, Malta, Netherlands, Poland, Portugal, Romania, Slovakia, Slovenia, Spain, Sweden and United Kingdom.

Other Organization for Economic Co-operation and Development (OECD): Australia, Canada, Iceland, Mexico, New Zealand, Norway, South Korea, Switzerland, and Turkey. (The EU countries, United States, and Japan are also members of OECD).

Other countries: This group includes all countries and territories other than the United States, Japan, EU and other OECD.

8. Legal framework: Import and export statistics with countries other than the United States are derived from information contained in administrative records collected by the Canada Border Services Agency under the *Customs Act*. Copies of these documents (or information therefrom) are sent to Statistics Canada in accordance with Section 25 of the *Statistics Act*. It follows that the disclosure of trade statistics is governed by both the *Customs Act* and the *Statistics Act* and is subject to the provisions of Section 17(2)(a) of the latter. Disclosure of export statistics to the United States is now governed by a memorandum of understanding that provides for the exchange of detailed import statistics between Canada and the United States.

Contact information

Questions concerning details of methods not covered by these notes should be addressed to the Marketing and Client Services Section, International Trade Division, Statistics Canada, Ottawa, Ontario, K1A 0T6.

Telephone: 1-800-294-5583 or 613-951-9647

Facsimile: 1-800-664-0055 613-951-0117

Internet: trade@statcan.gc.ca