

Catalogue no. 65-001-X

# Canadian International Merchandise Trade

January 2010



Statistics  
Canada

Statistique  
Canada

Canada

## How to obtain more information

For information about this product or the wide range of services and data available from Statistics Canada, visit our website at [www.statcan.gc.ca](http://www.statcan.gc.ca), e-mail us at [infostats@statcan.gc.ca](mailto:infostats@statcan.gc.ca), or telephone us, Monday to Friday from 8:30 a.m. to 4:30 p.m., at the following numbers:

### Statistics Canada's National Contact Centre

Toll-free telephone (Canada and the United States):

Inquiries line	1-800-263-1136
National telecommunications device for the hearing impaired	1-800-363-7629
Fax line	1-877-287-4369

Local or international calls:

Inquiries line	1-613-951-8116
Fax line	1-613-951-0581

### Depository Services Program

Inquiries line	1-800-635-7943
Fax line	1-800-565-7757

## To access this product

This product, Catalogue no. 65-001-X, is available free in electronic format. To obtain a single issue, visit our website at [www.statcan.gc.ca](http://www.statcan.gc.ca) and select "Publications."

## Standards of service to the public

Statistics Canada is committed to serving its clients in a prompt, reliable and courteous manner. To this end, Statistics Canada has developed *standards of service* that its employees observe. To obtain a copy of these service standards, please contact Statistics Canada toll-free at 1-800-263-1136. The service standards are also published on [www.statcan.gc.ca](http://www.statcan.gc.ca) under "About us" > "Providing services to Canadians."

Statistics Canada  
International Trade Division

# Canadian International Merchandise Trade

January 2010

Published by authority of the Minister responsible for Statistics Canada

© Minister of Industry, 2010

All rights reserved. The content of this electronic publication may be reproduced, in whole or in part, and by any means, without further permission from Statistics Canada, subject to the following conditions: that it be done solely for the purposes of private study, research, criticism, review or newspaper summary, and/or for non-commercial purposes; and that Statistics Canada be fully acknowledged as follows: Source (or "Adapted from", if appropriate): Statistics Canada, year of publication, name of product, catalogue number, volume and issue numbers, reference period and page(s). Otherwise, no part of this publication may be reproduced, stored in a retrieval system or transmitted in any form, by any means—electronic, mechanical or photocopy—or for any purposes without prior written permission of Licensing Services, Client Services Division, Statistics Canada, Ottawa, Ontario, Canada K1A 0T6.

March 2010

Catalogue no. 65-001-X, vol. 64, no. 1

ISSN 1480-8781

Frequency: Monthly

Ottawa

Cette publication est également disponible en français.

---

#### **Note of appreciation**

*Canada owes the success of its statistical system to a long-standing partnership between Statistics Canada, the citizens of Canada, its businesses, governments and other institutions. Accurate and timely statistical information could not be produced without their continued cooperation and goodwill.*

# User information

---

## Symbols

The following standard symbols are used in Statistics Canada publications:

- . not available for any reference period
- .. not available for a specific reference period
- ... not applicable
- 0 true zero or a value rounded to zero
- 0<sup>s</sup> value rounded to 0 (zero) where there is a meaningful distinction between true zero and the value that was rounded
- p preliminary
- r revised
- x suppressed to meet the confidentiality requirements of the *Statistics Act*
- E use with caution
- F too unreliable to be published

## Note to users

All totals are calculated from full figures and rounded independently; consequently, totals may not equal the sum of their components.

The data is based on commodity groups (sector, subsector and major group).

# Table of contents

---

<b>Highlights</b>	<b>5</b>
<b>Analysis</b>	<b>8</b>
<b>Related products</b>	<b>12</b>
<b>Statistical tables</b>	
1 Merchandise trade of Canada, balance of payments basis, seasonally adjusted	16
1-1 Current dollars	16
1-2 Constant dollars, 2002	17
1-3 Price indices (Laspeyres)	18
2 Exports by commodity groupings, balance of payments basis, seasonally adjusted	19
2-1 Current dollars	19
2-2 Constant dollars, 2002	21
3 Domestic exports to selected countries, customs basis, not seasonally adjusted	23
3-1 January	23
3-2 Year to date	24
4 Domestic exports by country, customs basis, not seasonally adjusted	25
5 Exports by province of origin, customs basis, not seasonally adjusted	29
5-1 January	29
5-2 Year to date	30
6 Imports by commodity groupings, balance of payments basis, seasonally adjusted	31
6-1 Current dollars	31
6-2 Constant dollars, 2002	33
7 Imports from selected countries, customs basis, not seasonally adjusted	35
7-1 January	35
7-2 Year to date	36
8 Imports by country, customs basis, not seasonally adjusted	37

**Table of contents – continued**

9	Imports by province of clearance, customs basis, not seasonally adjusted	41
9-1	January	41
9-2	Year to date	42

**Data quality, concepts and methodology**

	Technical notes	43
--	-----------------	----

## Highlights

---

- Canada's merchandise exports grew 0.5% in January, a slower pace than in the previous four months, while imports declined 1.7%. As a result, Canada posted a trade surplus with the world of \$799 million in January compared to a surplus of \$75 million in December.
- Exports increased to \$33.0 billion from \$32.9 billion in December, as prices increased 0.8% while volumes fell 0.3%.
- Although exports have been increasing for five consecutive months, the pace of growth slowed in January as declines in automotive products and machinery and equipment nearly offset gains in industrial goods and materials, and other consumer goods.
- Following two months of increases, imports declined to \$32.2 billion from \$32.8 billion in December as a result of a 1.2% decline in volumes and a 0.6% decrease in prices. Machinery and equipment, other consumer goods and energy products led the downward movement in overall imports.
- Exports to the United States decreased 0.6% and imports declined 0.5% largely due to lower trade of automotive products which led the growth in December. As a result, Canada's trade surplus with the United States was \$4.1 billion in January, almost unchanged from \$4.2 billion in December.
- Exports to countries other than the United States grew 3.8%. Exports to member countries of the Organization for Economic Cooperation and Development and to Japan were the main factors behind the gain. In contrast, imports from countries other than the United States decreased 3.9% led by falling imports from the European Union. Consequently, Canada's trade deficit with these countries narrowed to \$3.3 billion in January from \$4.1 billion in December.

**Note to readers**

Merchandise trade is one component of Canada’s international balance of payments, which also includes trade in services, investment income, current transfers as well as capital and financial flows.

International merchandise trade data by country are available on both a balance of payments and a customs basis for the United States, Japan and the United Kingdom. Trade data for all other individual countries are available on a customs basis only. Balance of payments data are derived from customs data by making adjustments for characteristics such as valuation, coverage, timing and residency. These adjustments are made to conform to the concepts and definitions of the Canadian System of National Accounts.

Data in this release are on a balance of payments basis, seasonally adjusted in current dollars. Constant dollars are calculated using the Laspeyres volume formula.

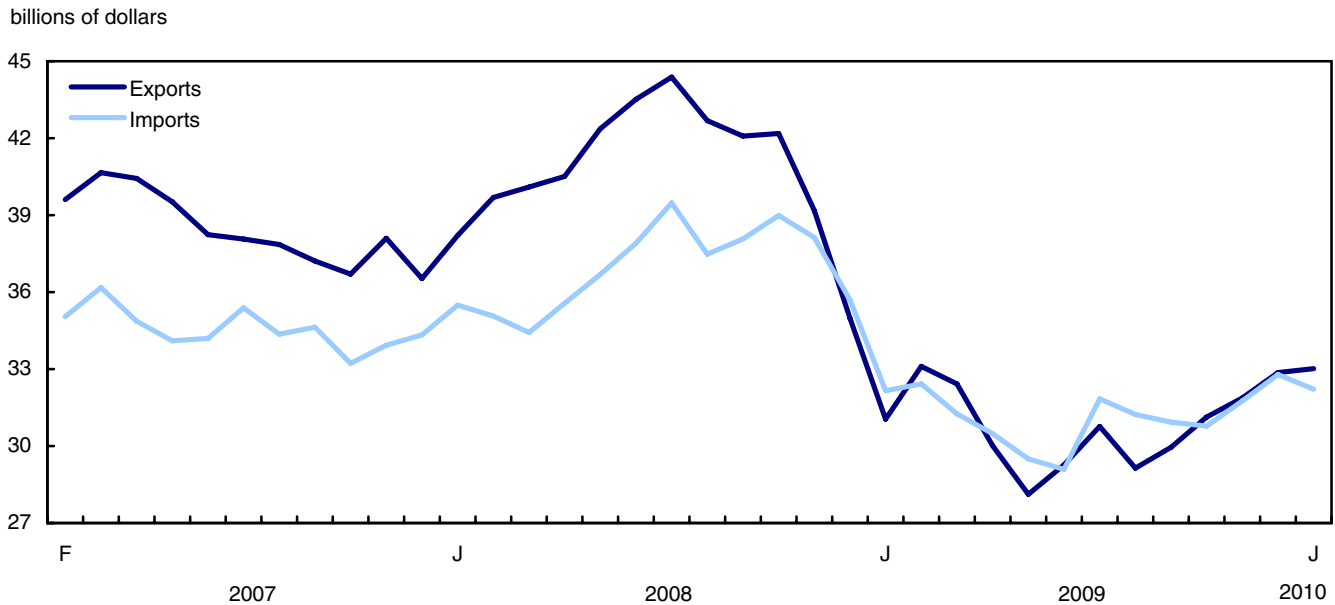
**Revisions**

In general, merchandise trade data are revised on an ongoing basis for each month of the current year. Current year revisions are reflected in both the customs and balance of payments based data. Revisions to customs based data for the previous year are released on a quarterly basis. Revisions to balance of payments based data for the three previous years are released annually in June.

Factors influencing revisions include late receipt of import and export documentation, incorrect information on customs forms, replacement of estimates with actual figures, changes in classification of merchandise based on more current information, and changes to seasonal adjustment factors.

Revised data are available in the appropriate CANSIM tables.

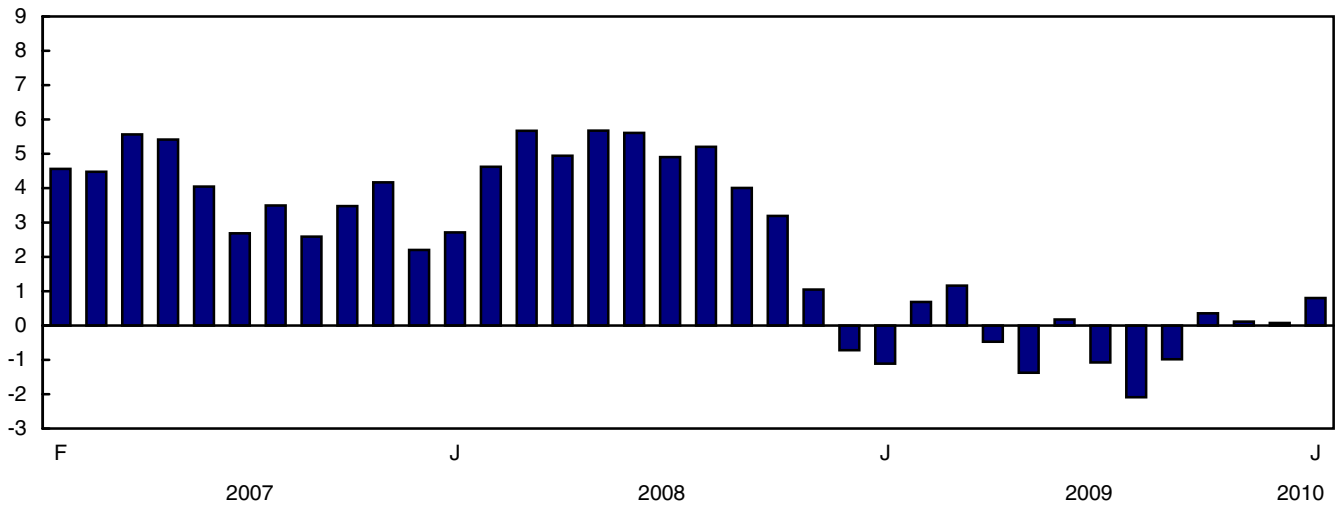
**Chart 1**  
**Exports and imports, seasonally adjusted, on a balance of payments basis**





**Chart 2**  
**Trade balance, seasonally adjusted, on a balance of payments basis**

billions of dollars



# Analysis

---

## Modest growth in exports

Exports of industrial goods and materials increased 4.8% to \$7.3 billion, halting two consecutive months of decline. Higher export volumes of metals and alloys followed by chemicals, plastics and fertilizers were the main contributors to the gain.

Metals and alloys grew 8.4% on the strength of precious metals, primarily gold, as well as aluminium and alloys. Also contributing to the growth, chemicals, plastics and fertilizers increased 8.9% largely due to higher exports of fertilizers, and synthetic rubber and plastics. In contrast, exports of metal ores, particularly iron ores and copper ores, declined 17.9% as volumes fell 25.6%.

Exports of other consumer goods increased 9.0% to \$1.5 billion, partially offsetting the decline posted in December. This sector includes items such as apparel, footwear, toys, medicinal and pharmaceutical products. The January increase was the largest percentage gain registered in this sector since December 2008.

Automotive products exports fell 4.1% to \$4.3 billion as volumes declined 4.0%. Exports of passenger autos were down 8.9% as some auto manufacturers extended plant shutdowns well into January. Exports of motor vehicle parts, up 6.9%, moderated the decrease.

Machinery and equipment exports decreased 1.5% to \$6.1 billion due to lower exports of aircraft and other transportation. Excluding aircraft and other transportation, exports of machinery and equipment would have registered a growth of 1.5%. In contrast, exports of telecommunication equipment increased after declining for two consecutive months.

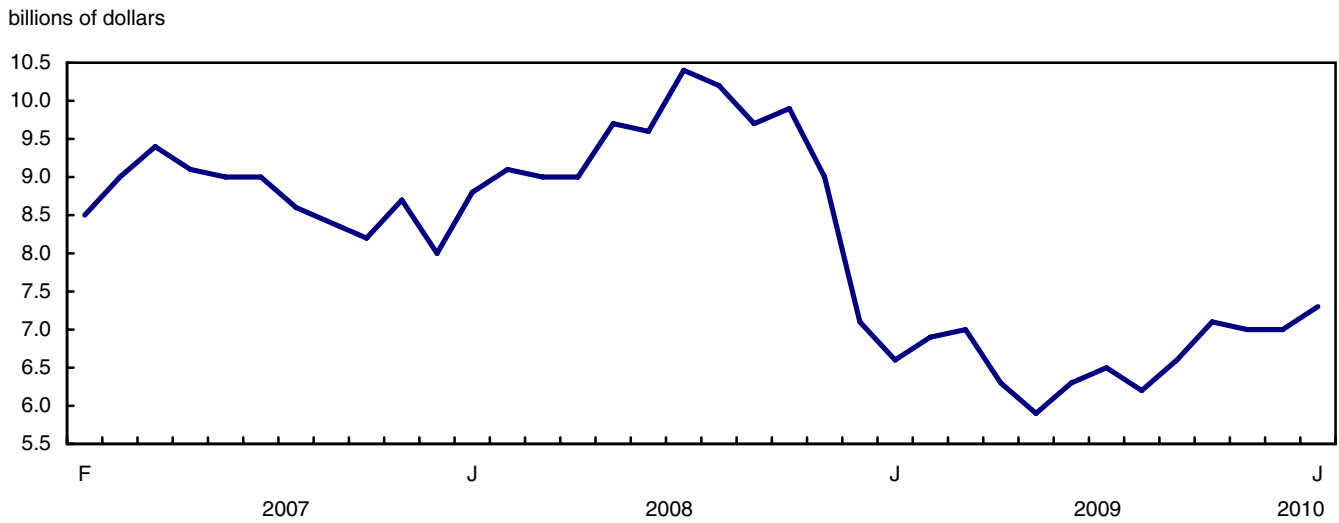
## Widespread declines in imports

Imports of machinery and equipment decreased 2.4% to \$8.4 billion. Office machines, down 6.3%, led the decrease followed by aircraft, excavating machinery and other industrial machinery. Meanwhile, other communication and related equipment increased 4.1%, mitigating the drop in the sector. The sector posted declines during five out of the past six months.

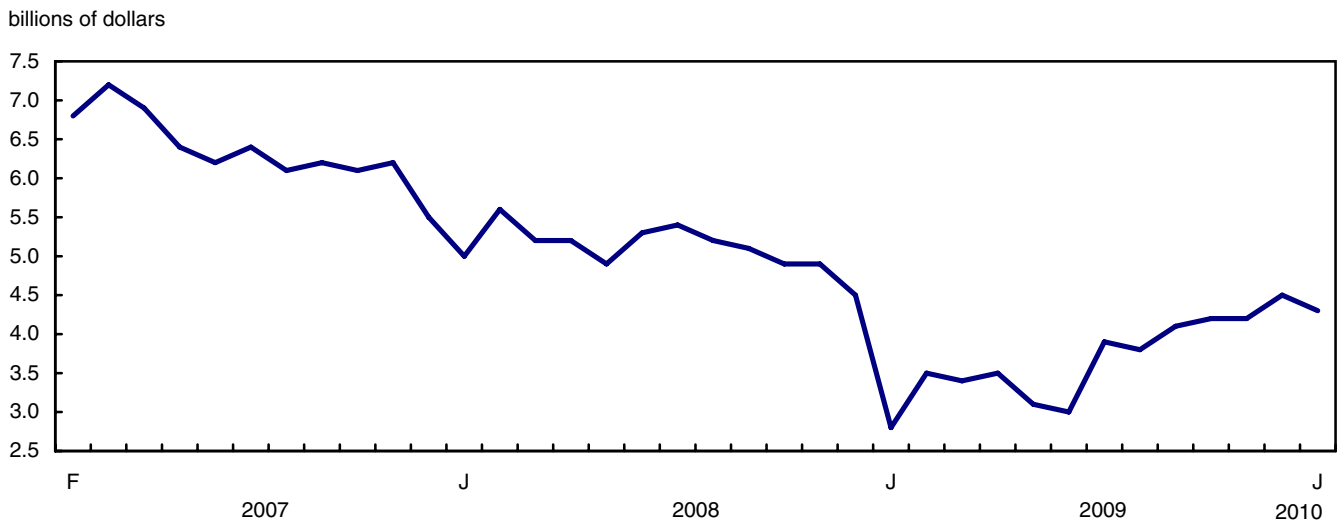
Other consumer goods imports fell 4.0% to \$4.7 billion largely due to a 3.4% decline in volumes. Widespread decreases throughout the sector were led by miscellaneous end products, such as medicinal and pharmaceutical products.

Following three months of growth, imports of energy products decreased 5.6% to \$3.3 billion. The decline was the result of volumes falling 4.9%. Imports of crude petroleum dropped 16.2% as volumes fell 21.2%, following a strong gain in December. Prices of crude petroleum, on an upward trend since January 2009, increased 6.2%. Meanwhile, imports of other energy products grew 17.8%, reflecting higher volumes of natural gas.

**Chart 1**  
**Exports of industrial goods and equipment, seasonally adjusted, on a balance of payments basis**

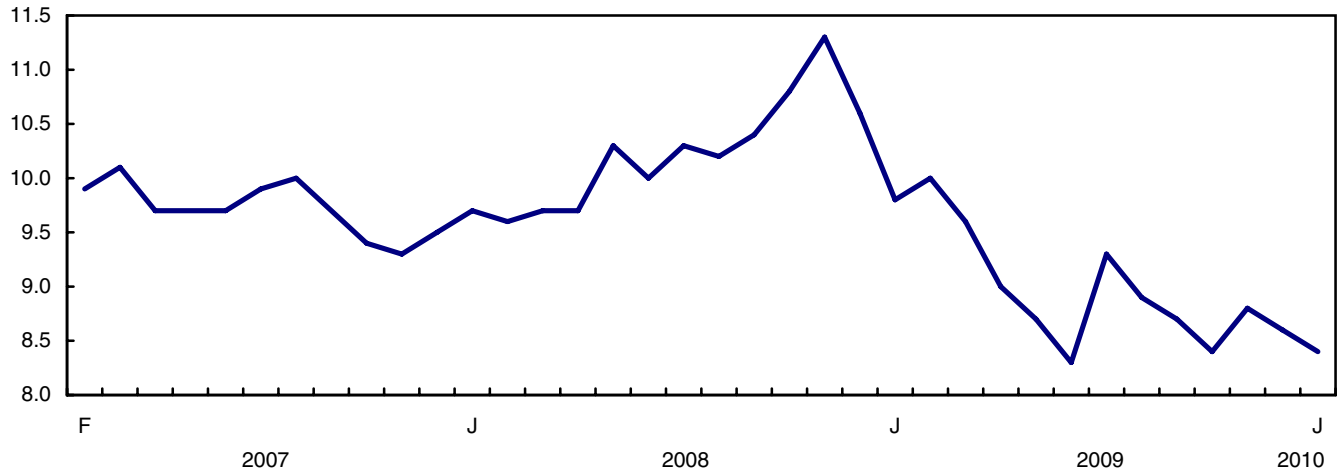


**Chart 2**  
**Exports of automotive products, seasonally adjusted, on a balance of payments basis**



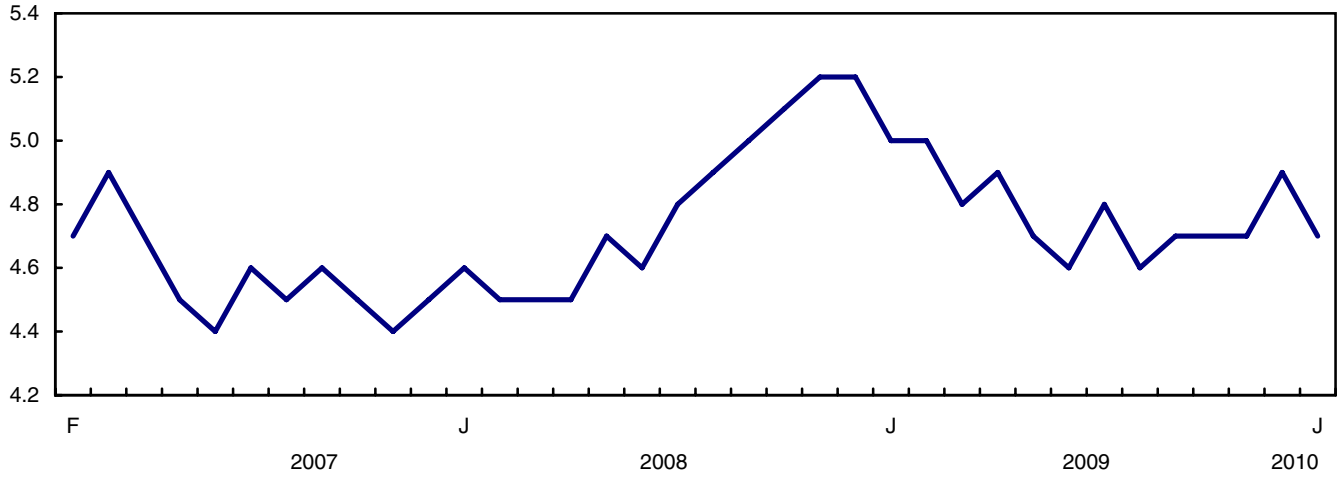
**Chart 3**  
**Imports of machinery and equipment, seasonally adjusted, on a balance of payments basis**

billions of dollars



**Chart 4**  
**Imports of other consumer goods, seasonally adjusted, on a balance of payments basis**

billions of dollars



**Text table 1**  
**Merchandise trade by principal trading area, balance of payments basis, seasonally adjusted**

	December 2009	January 2010	Change	Year to date			January 2010/ January 2009		
				2009		Change			
				2009	2010				
	millions of dollars	percent	millions of dollars	percent					
<b>Export to</b>									
United States	24,833	24,678	-155	-0.6	22,822	24,678	1,856	8.1	8.1
Japan	675	792	117	17.3	854	792	-62	-7.3	-7.3
European Union <sup>1</sup>	2,711	2,726	15	0.6	2,842	2,726	-116	-4.1	-4.1
Other Organisation for Economic Co-operation and Development <sup>2</sup>	1,327	1,467	140	10.6	1,248	1,467	219	17.6	17.6
Other countries	3,319	3,356	36	1.1	3,285	3,356	71	2.2	2.2
<b>Total</b>	<b>32,865</b>	<b>33,018</b>	<b>153</b>	<b>0.5</b>	<b>31,051</b>	<b>33,018</b>	<b>1,968</b>	<b>6.3</b>	<b>6.3</b>
<b>Imports from</b>									
United States	20,634	20,540	-93	-0.5	19,818	20,540	722	3.6	3.6
Japan	787	731	-57	-7.2	1,081	731	-350	-32.4	-32.4
European Union <sup>1</sup>	3,524	3,022	-501	-14.2	3,419	3,022	-397	-11.6	-11.6
Other Organisation for Economic Co-operation and Development <sup>2</sup>	2,458	2,393	-66	-2.7	2,151	2,393	242	11.2	11.2
Other countries	5,387	5,533	146	2.7	5,691	5,533	-158	-2.8	-2.8
<b>Total</b>	<b>32,790</b>	<b>32,219</b>	<b>-571</b>	<b>-1.7</b>	<b>32,160</b>	<b>32,219</b>	<b>58</b>	<b>0.2</b>	<b>0.2</b>
<b>Balance</b>									
United States	4,199	4,137	-62	...	3,003	4,137	1,134	...	...
Japan	-112	62	174	...	-226	62	288	...	...
European Union <sup>1</sup>	-813	-297	517	...	-577	-297	281	...	...
Other Organisation for Economic Co-operation and Development <sup>2</sup>	-1,131	-925	206	...	-903	-925	-22	...	...
Other countries	-2,067	-2,177	-110	...	-2,407	-2,177	229	...	...
<b>Total</b>	<b>75</b>	<b>800</b>	<b>725</b>	<b>...</b>	<b>-1,110</b>	<b>800</b>	<b>1,910</b>	<b>...</b>	<b>...</b>

1. European Union includes: Austria, Belgium, Bulgaria, Cyprus, Czech Republic, Denmark, Estonia, Finland, France, Germany, Greece, Hungary, Ireland, Italy, Latvia, Lithuania, Luxembourg, Malta, Netherlands, Poland, Portugal, Romania, Slovakia, Slovenia, Spain, Sweden and United Kingdom.
2. Other Organisation for Economic Co-operation and Development includes: Australia, Canada, Iceland, Mexico, New Zealand, Norway, South Korea, Switzerland and Turkey.

**Text table 2**  
**Reconciliation of customs and balance of payments trade data, not seasonally adjusted**

	2010		2009				2009
	January	December	November	October	September	August	Annual
	millions of dollars						
<b>Exports</b>							
<b>Customs basis</b>	<b>29,930</b>	<b>30,608</b>	<b>30,526</b>	<b>31,199</b>	<b>29,908</b>	<b>28,622</b>	<b>359,384</b>
<b>Balance of payments adjustments</b>	<b>1,182</b>	<b>1,103</b>	<b>1,170</b>	<b>967</b>	<b>695</b>	<b>508</b>	<b>10,324</b>
Valuation and residency							
Inland freight	473	477	480	515	507	497	6,207
Other valuation and residency	-508	-646	-652	-487	-711	-592	-7,525
Timing	72	16	-17	-3	23	-69	-164
Coverage	1,145	1,256	1,359	942	876	672	11,806
<b>Balance of payments basis</b>	<b>31,112</b>	<b>31,711</b>	<b>31,696</b>	<b>32,166</b>	<b>30,603</b>	<b>29,130</b>	<b>369,708</b>
<b>Imports</b>							
<b>Customs basis</b>	<b>28,078</b>	<b>30,767</b>	<b>31,243</b>	<b>31,546</b>	<b>31,178</b>	<b>30,134</b>	<b>365,024</b>
<b>Balance of payments adjustments</b>	<b>795</b>	<b>988</b>	<b>685</b>	<b>952</b>	<b>555</b>	<b>838</b>	<b>9,219</b>
Valuation and residency							
Inland freight	625	647	660	685	668	640	7,728
Other valuation and residency	22	44	40	53	70	-16	203
Timing	0	0	0	0	0	0	0
Coverage	148	297	-15	214	-183	214	1,288
<b>Balance of payments basis</b>	<b>28,873</b>	<b>31,755</b>	<b>31,928</b>	<b>32,498</b>	<b>31,733</b>	<b>30,972</b>	<b>374,243</b>

## Related products

---

### Selected publications from Statistics Canada

---

65-208-X	International Merchandise Trade Annual Review
65-506-X	A Profile of Canadian Exporters
65F0013X	Canadian International Merchandise Trade Database
65F0019X	A Database for Analysis of International Markets
65F0020X	Data Integration - International Trade Data and Manufacturing Shipments Data

---

### Selected CANSIM tables from Statistics Canada

---

228-0001	Merchandise imports and exports, by major groups and principal trading areas for all countries, monthly
228-0002	Merchandise imports and exports, by major groups and principal trading areas for all countries, quarterly
228-0003	Merchandise imports and exports, by major groups and principal trading areas for all countries, annual
228-0033	Imports, customs-based, by province of clearance, monthly
228-0034	Domestic exports, customs-based, by province of origin, monthly
228-0041	Merchandise imports and exports by sector and sub-sector, customs and balance of payments basis, for all countries, monthly
228-0042	Merchandise imports and exports by sector and sub-sector, customs and balance of payments basis, for all countries, quarterly
228-0043	Merchandise imports and exports by sector and sub-sector, customs and balance of payments basis, for all countries, annual
228-0047	Merchandise imports and exports balance of payments and customs-based price and volume indexes for all countries, monthly
228-0048	Merchandise imports and exports balance of payments and customs-based price and volume indexes for all countries, quarterly
228-0049	Merchandise imports and exports balance of payments and customs-based price and volume indexes for all countries, annual

228-0050	Merchandise imports and exports customs-based price indexes, Canada and United States trade, and Standard International Trade Classification (SITC revision 3) price indexes for all countries and United States, monthly
228-0051	Merchandise imports and exports customs-based price indexes, Canada and United States trade, and Standard International Trade Classification (SITC revision 3) price indexes for all countries and United States, quarterly
228-0052	Merchandise imports and exports customs-based price indexes, Canada and United States trade, and Standard International Trade Classification (SITC revision 3) price indexes for all countries and United States, annual
228-0053	Merchandise import and export price and volume indexes by sector and sub-sector, customs and balance of payments basis, for all countries, monthly
228-0054	Merchandise import and export price and volume indexes by sector and sub-sector, customs and balance of payments basis, for all countries, quarterly
228-0055	Merchandise import and export price and volume indexes by sector and sub-sector, customs and balance of payments basis, for all countries, annual
228-0056	Merchandise imports and exports by sector, balance of payments basis, for all countries, seasonally adjusted, Fisher formula, monthly
228-0057	Merchandise imports and exports by sector, balance of payments basis, for all countries, seasonally adjusted, Fisher formula, quarterly

---

### **Selected surveys from Statistics Canada**

---

2201	Canadian International Merchandise Trade (Customs Basis)
2202	Canadian International Merchandise Trade (Balance of Payments Basis)
2203	International Trade Price Indexes

---

### **Selected summary tables from Statistics Canada**

---

- *Canada: Economic and financial data*
- *Imports, exports and trade balance of goods on a balance-of-payments basis, by country or country grouping*
- *Exports of goods on a balance-of-payments basis*
- *Imports of goods on a balance-of-payments basis*

- *Merchandise trade of Canada (monthly)*
- *Economic indicators, by province and territory (monthly and quarterly)*
- *Latest statistics (monthly)*



# Statistical tables

---

---

**Table 1-1**  
**Merchandise trade of Canada, balance of payments basis, seasonally adjusted — Current dollars**

	Exports	Imports	Trade balance	Period to period change		
				Exports	Imports	Balance
				millions of dollars	percent	millions of dollars
2006	453,951	404,345	49,606	0.0	0.0	0
2007	463,127	415,229	47,898	2.0	2.7	-1,708
2008	489,857	442,988	46,869	5.8	6.7	-1,029
2009	369,708	374,243	-4,535	-24.5	-15.5	-51,404
<b>2007</b>						
First quarter	120,454	106,198	14,256	4.4	3.1	1,887
Second quarter	118,191	103,166	15,025	-1.9	-2.9	769
Third quarter	113,144	104,379	8,765	-4.3	1.2	-6,260
Fourth quarter	111,338	101,486	9,852	-1.6	-2.8	1,088
<b>2008</b>						
First quarter	117,996	104,991	13,005	6.0	3.5	3,152
Second quarter	126,385	110,154	16,230	7.1	4.9	3,226
Third quarter	129,144	115,028	14,116	2.2	4.4	-2,114
Fourth quarter	116,332	112,815	3,517	-9.9	-1.9	-10,599
<b>2009</b>						
First quarter	96,580	95,841	739	-17.0	-15.0	-2,778
Second quarter	87,403	89,076	-1,672	-9.5	-7.1	-2,412
Third quarter	89,858	94,002	-4,144	2.8	5.5	-2,472
Fourth quarter	95,867	95,324	542	6.7	1.4	4,686
<b>2009</b>						
January	31,051	32,160	-1,110	-11.2	-9.9	-389
February	33,108	32,422	686	6.6	0.8	1,796
March	32,421	31,258	1,163	-2.1	-3.6	477
April	30,012	30,484	-472	-7.4	-2.5	-1,634
May	28,120	29,497	-1,377	-6.3	-3.2	-906
June	29,271	29,095	176	4.1	-1.4	1,554
July	30,767	31,841	-1,074	5.1	9.4	-1,251
August	29,141	31,229	-2,088	-5.3	-1.9	-1,014
September	29,950	30,931	-981	2.8	-1.0	1,107
October	31,130	30,776	354	3.9	-0.5	1,335
November	31,872	31,759	113	2.4	3.2	-241
December	32,865	32,790	75	3.1	3.2	-38
<b>2010</b>						
January	33,018	32,219	800	0.5	-1.7	725

**Note(s):** Because of rounding, monthly data may not add up to quarterly data and quarterly data may not add up to annual data.

**Table 1-2**  
**Merchandise trade of Canada, balance of payments basis, seasonally adjusted — Constant dollars, 2002**

	Exports	Imports	Trade balance	Period to period change	
				Exports	Imports
	millions of dollars			percent	
2006	443,398	456,881	-13,483	0.0	0.0
2007	449,581	483,522	-33,941	1.4	5.8
2008	415,123	485,171	-70,048	-7.7	0.3
2009	345,968	407,423	-61,455	-16.7	-16.0
<b>2007</b>					
First quarter	113,771	117,511	-3,740	2.0	1.6
Second quarter	113,538	118,154	-4,615	-0.2	0.5
Third quarter	112,008	123,373	-11,366	-1.3	4.4
Fourth quarter	110,264	124,484	-14,220	-1.6	0.9
<b>2008</b>					
First quarter	107,366	123,120	-15,754	-2.6	-1.1
Second quarter	105,949	123,992	-18,043	-1.3	0.7
Third quarter	104,458	124,141	-19,683	-1.4	0.1
Fourth quarter	97,350	113,917	-16,567	-6.8	-8.2
<b>2009</b>					
First quarter	87,867	98,140	-10,273	-9.7	-13.8
Second quarter	82,527	95,884	-13,357	-6.1	-2.3
Third quarter	86,230	105,542	-19,312	4.5	10.1
Fourth quarter	89,344	107,856	-18,512	3.6	2.2
<b>2009</b>					
January	28,257	33,127	-4,870	-9.2	-8.4
February	30,119	33,104	-2,985	6.6	-0.1
March	29,491	31,909	-2,418	-2.1	-3.6
April	28,151	31,703	-3,552	-4.5	-0.6
May	26,938	32,076	-5,138	-4.3	1.2
June	27,438	32,105	-4,666	1.9	0.1
July	29,497	35,247	-5,749	7.5	9.8
August	27,939	35,364	-7,425	-5.3	0.3
September	28,794	34,932	-6,138	3.1	-1.2
October	29,518	35,090	-5,573	2.5	0.5
November	29,513	36,033	-6,519	0.0	2.7
December	30,313	36,733	-6,421	2.7	1.9
<b>2010</b>					
January	30,227	36,306	-6,079	-0.3	-1.2

**Note(s):** Because of rounding, monthly data may not add up to quarterly data and quarterly data may not add up to annual data.

**Table 1-3**  
**Merchandise trade of Canada, balance of payments basis, seasonally adjusted — Price indices (Laspeyres)**

	2002=100			Period to period change		
	Exports	Imports	Terms of trade	Exports	Imports	Terms of trade
	price indices (Laspeyres)			percent		
2006	105.1	92.7	113.3	0.0	0.0	0.0
2007	107.2	91.6	117.0	2.0	-1.2	3.2
2008	116.3	97.6	119.1	8.5	6.6	1.9
2009	105.5	96.5	109.3	-9.3	-1.2	-8.2
<b>2007</b>						
First quarter	109.5	95.2	115.0	3.1	1.9	1.2
Second quarter	112.0	92.9	120.5	2.3	-2.4	4.7
Third quarter	105.0	90.1	116.5	-6.2	-3.0	-3.2
Fourth quarter	105.6	88.0	119.9	0.5	-2.3	2.9
<b>2008</b>						
First quarter	111.3	90.4	123.1	5.4	2.7	2.7
Second quarter	118.5	95.2	124.5	6.4	5.2	1.2
Third quarter	121.8	101.1	120.6	2.8	6.2	-3.4
Fourth quarter	114.0	103.9	109.7	-6.4	2.8	-9.2
<b>2009</b>						
First quarter	109.4	100.9	108.4	-4.0	-2.9	-1.2
Second quarter	105.2	97.4	108.0	-3.8	-3.5	-0.3
Third quarter	102.9	94.5	108.9	-2.2	-3.0	0.8
Fourth quarter	105.1	93.2	112.8	2.1	-1.4	3.5
<b>2009</b>						
January	109.3	99.9	109.3	-2.0	-2.7	0.7
February	109.4	100.8	108.5	0.1	0.9	-0.8
March	109.2	102.1	107.0	-0.2	1.2	-1.4
April	106.7	100.3	106.4	-2.2	-1.7	-0.6
May	104.4	96.6	108.1	-2.2	-3.7	1.5
June	104.0	95.4	109.1	-0.3	-1.3	0.9
July	103.6	95.6	108.4	-0.4	0.2	-0.7
August	103.0	94.0	109.6	-0.5	-1.7	1.1
September	103.1	93.9	109.8	0.0	-0.1	0.1
October	104.1	92.6	112.4	1.0	-1.4	2.4
November	105.4	93.4	112.9	1.3	0.8	0.4
December	106.3	93.5	113.6	0.9	0.2	0.7
<b>2010</b>						
January	107.7	93.7	114.9	1.3	0.2	1.1

**Note(s):** Because of rounding, monthly data may not add up to quarterly data and quarterly data may not add up to annual data.

**Table 2-1**  
**Exports by commodity groupings, balance of payments basis, seasonally adjusted — Current dollars**

	December	January	Change		Year to date			January 2010/ January 2009	
	2009	2010			2009	2010	Change		
	millions of dollars		percent		millions of dollars			percent	
<b>Total</b>	<b>32,865</b>	<b>33,018</b>	<b>153</b>	<b>0.5</b>	<b>31,051</b>	<b>33,018</b>	<b>1,968</b>	<b>6.3</b>	<b>6.3</b>
<b>Agricultural and fishing products</b>	<b>2,878</b>	<b>2,959</b>	<b>81</b>	<b>2.8</b>	<b>3,311</b>	<b>2,959</b>	<b>-351</b>	<b>-10.6</b>	<b>-10.6</b>
Wheat	370	374	4	1.0	562	374	-187	-33.4	-33.4
Other agricultural and fishing products	2,508	2,585	77	3.1	2,749	2,585	-164	-6.0	-6.0
Live animals	111	113	2	1.7	163	113	-50	-30.5	-30.5
Fish and fish preparations	329	331	2	0.6	341	331	-9	-2.8	-2.8
Barley	23	14	-9	-40.9	49	14	-36	-72.5	-72.5
Wheat flour	8	6	-1	-16.1	7	6	0	-5.8	-5.8
Other cereals unmilled	26	41	15	59.4	58	41	-17	-29.0	-29.0
Other cereal preparations	211	230	19	8.9	244	230	-14	-5.8	-5.8
Meat and meat preparations	354	369	15	4.1	407	369	-38	-9.4	-9.4
Alcoholic beverages	63	64	1	1.5	61	64	3	5.2	5.2
Other food, feed, beverages and tobacco	887	920	33	3.7	939	920	-19	-2.0	-2.0
Rapeseed	236	267	31	13.1	270	267	-3	-1.1	-1.1
Other crude vegetable products	259	230	-29	-11.3	211	230	19	9.0	9.0
<b>Energy products</b>	<b>8,466</b>	<b>8,519</b>	<b>53</b>	<b>0.6</b>	<b>6,435</b>	<b>8,519</b>	<b>2,084</b>	<b>32.4</b>	<b>32.4</b>
Crude petroleum	4,992	4,550	-442	-8.9	2,552	4,550	1,998	78.3	78.3
Natural gas	1,422	1,746	325	22.8	2,023	1,746	-277	-13.7	-13.7
Other energy products	2,052	2,223	171	8.3	1,860	2,223	363	19.5	19.5
Coal and other bituminous substances	358	287	-71	-19.9	336	287	-49	-14.5	-14.5
Petroleum and coal products	1,474	1,697	223	15.1	1,236	1,697	462	37.4	37.4
Electricity	219	238	19	8.8	288	238	-50	-17.4	-17.4
<b>Forestry products</b>	<b>1,628</b>	<b>1,636</b>	<b>7</b>	<b>0.5</b>	<b>1,745</b>	<b>1,636</b>	<b>-109</b>	<b>-6.3</b>	<b>-6.3</b>
Lumber and sawmill products	595	607	12	2.1	557	607	50	9.0	9.0
Other crude wood products	50	58	9	17.3	40	58	19	46.8	46.8
Lumber	365	364	0	-0.1	315	364	49	15.6	15.6
Other wood fabricated materials	181	185	4	2.2	202	185	-18	-8.7	-8.7
Wood pulp and other wood products	430	428	-2	-0.4	416	428	12	3.0	3.0
Newsprint and other paper and paperboard	604	601	-3	-0.5	773	601	-172	-22.2	-22.2
Newsprint paper	291	294	3	1.1	442	294	-148	-33.4	-33.4
Other paper and paperboard	313	307	-6	-1.9	331	307	-24	-7.3	-7.3
<b>Industrial goods and materials</b>	<b>6,978</b>	<b>7,310</b>	<b>332</b>	<b>4.8</b>	<b>6,607</b>	<b>7,310</b>	<b>703</b>	<b>10.6</b>	<b>10.6</b>
Metal ores	903	741	-161	-17.9	729	741	12	1.7	1.7
Iron ores, concentrates and scrap	388	334	-54	-13.8	364	334	-29	-8.1	-8.1
Copper ores, concentrates and scrap	175	125	-51	-28.8	36	125	89	246.5	246.5
Nickel ores, concentrates and scrap	101	74	-27	-26.8	147	74	-73	-49.5	-49.5
Zinc ores, concentrates and scrap	10	27	17	177.2	8	27	19	232.8	232.8
Other ores, concentrates and scrap	228	181	-48	-20.9	174	181	7	3.8	3.8
Chemicals, plastics and fertilizers	2,197	2,392	196	8.9	2,368	2,392	24	1.0	1.0
Inorganic chemicals	350	386	37	10.5	416	386	-29	-7.1	-7.1
Organic chemicals	437	470	33	7.5	388	470	82	21.1	21.1
Fertilizers and fertilizer materials	422	489	67	15.9	502	489	-12	-2.5	-2.5
Synthetic rubber and plastics	731	790	58	8.0	826	790	-36	-4.4	-4.4
Other chemical products	257	257	1	0.2	237	257	20	8.6	8.6

Table 2-1 – continued

## Exports by commodity groupings, balance of payments basis, seasonally adjusted — Current dollars

	December	January	Change		Year to date			January 2010/ January 2009	
	2009	2010			2009	2010	Change		
	millions of dollars		percent		millions of dollars			percent	
<b>Metals and alloys</b>	<b>2,631</b>	<b>2,851</b>	<b>220</b>	<b>8.4</b>	<b>2,139</b>	<b>2,851</b>	<b>712</b>	<b>33.3</b>	<b>33.3</b>
Primary iron and steel	95	92	-3	-3.2	15	92	77	495.8	495.8
Steel bars, rods, plates, sheets	256	266	11	4.1	252	266	14	5.5	5.5
Other iron and steel and alloys	197	223	26	13.0	225	223	-2	-0.8	-0.8
Aluminum including alloys	556	631	75	13.4	579	631	52	8.9	8.9
Copper and alloys	241	252	10	4.3	186	252	65	35.0	35.0
Nickel and alloys	155	137	-18	-11.5	187	137	-51	-27.0	-27.0
Precious metals and alloys	923	1,025	101	11.0	553	1,025	472	85.3	85.3
Zinc and alloys	131	141	10	7.7	80	141	61	76.9	76.9
Other non-ferrous metals and alloys	77	85	8	10.1	61	85	24	39.5	39.5
<b>Other industrial goods and materials</b>	<b>1,247</b>	<b>1,325</b>	<b>78</b>	<b>6.2</b>	<b>1,370</b>	<b>1,325</b>	<b>-45</b>	<b>-3.3</b>	<b>-3.3</b>
Asbestos unmanufactured	5	6	1	30.2	5	6	2	34.0	34.0
Other crude animal products	57	70	12	21.7	59	70	11	18.7	18.7
Other crude non-metallic minerals	245	267	22	9.1	267	267	0	-0.1	-0.1
Other crude materials, inedible	51	49	-1	-2.9	45	49	4	8.9	8.9
Metal fabricated basic products	327	336	9	2.8	379	336	-43	-11.3	-11.3
Textile fabricated materials	174	175	1	0.6	174	175	1	0.4	0.4
Non-metallic mineral basic products	139	148	10	6.9	175	148	-26	-15.0	-15.0
Other fabricated materials	249	273	24	9.4	266	273	7	2.6	2.6
<b>Machinery and equipment</b>	<b>6,181</b>	<b>6,087</b>	<b>-95</b>	<b>-1.5</b>	<b>7,515</b>	<b>6,087</b>	<b>-1,428</b>	<b>-19.0</b>	<b>-19.0</b>
Industrial and agricultural machinery	1,476	1,484	8	0.5	1,980	1,484	-496	-25.1	-25.1
Industrial machinery	1,329	1,330	1	0.1	1,795	1,330	-464	-25.9	-25.9
Agricultural machinery includ. tractors	147	153	6	4.3	185	153	-32	-17.2	-17.2
Aircraft and other transportation equipment	1,565	1,401	-164	-10.5	1,645	1,401	-244	-14.8	-14.8
Aircraft, engines, parts	1,247	1,105	-142	-11.4	1,355	1,105	-249	-18.4	-18.4
Other transportation equipment	318	296	-22	-6.9	290	296	5	1.9	1.9
Other machinery and equipment	3,140	3,202	61	2.0	3,890	3,202	-688	-17.7	-17.7
Television, telecommunication equipment	520	652	131	25.2	855	652	-203	-23.7	-23.7
Office machines and equipment	358	346	-12	-3.3	458	346	-112	-24.4	-24.4
Other equipment and tools	1,482	1,473	-9	-0.6	1,728	1,473	-255	-14.8	-14.8
Other end products, inedible	780	731	-49	-6.3	850	731	-119	-14.0	-14.0
<b>Automotive products</b>	<b>4,470</b>	<b>4,286</b>	<b>-184</b>	<b>-4.1</b>	<b>2,764</b>	<b>4,286</b>	<b>1,522</b>	<b>55.1</b>	<b>55.1</b>
Passenger autos and chassis	3,013	2,744	-269	-8.9	1,265	2,744	1,479	116.9	116.9
Trucks and other motor vehicles	197	195	-3	-1.3	488	195	-294	-60.1	-60.1
Motor vehicle parts	1,260	1,347	87	6.9	1,010	1,347	337	33.3	33.3
<b>Other consumer goods</b>	<b>1,334</b>	<b>1,454</b>	<b>120</b>	<b>9.0</b>	<b>1,565</b>	<b>1,454</b>	<b>-111</b>	<b>-7.1</b>	<b>-7.1</b>
<b>Special transactions trade</b>	<b>507</b>	<b>318</b>	<b>-188</b>	<b>-37.1</b>	<b>627</b>	<b>318</b>	<b>-309</b>	<b>-49.2</b>	<b>-49.2</b>
<b>Unallocated balance of payments adjustments</b>	<b>423</b>	<b>450</b>	<b>27</b>	<b>6.3</b>	<b>482</b>	<b>450</b>	<b>-32</b>	<b>-6.7</b>	<b>-6.7</b>

**Table 2-2**  
**Exports by commodity groupings, balance of payments basis, seasonally adjusted — Constant dollars, 2002**

	December	January	Change	Year to date			January 2010/ January 2009		
	2009	2010		2009	2010	Change			
	millions of dollars		percent		millions of dollars		percent		
<b>Total</b>	<b>30,313</b>	<b>30,227</b>	<b>-86</b>	<b>-0.3</b>	<b>28,257</b>	<b>30,227</b>	<b>1,970</b>	<b>7.0</b>	<b>7.0</b>
<b>Agricultural and fishing products</b>	<b>3,012</b>	<b>3,092</b>	<b>80</b>	<b>2.6</b>	<b>3,000</b>	<b>3,092</b>	<b>92</b>	<b>3.1</b>	<b>3.1</b>
Wheat	355	386	31	8.8	423	386	-37	-8.7	-8.7
Other agricultural and fishing products	2,657	2,706	49	1.8	2,576	2,706	129	5.0	5.0
Live animals	141	140	-1	-0.9	184	140	-44	-23.8	-23.8
Fish and fish preparations	430	429	-1	-0.3	376	429	53	14.0	14.0
Barley	24	15	-9	-39.2	37	15	-23	-61.1	-61.1
Wheat flour	7	6	-1	-16.0	6	6	0	1.7	1.7
Other cereals unmilled	29	45	16	56.3	44	45	1	1.6	1.6
Other cereal preparations	186	205	19	10.2	195	205	10	5.3	5.3
Meat and meat preparations	438	443	5	1.1	418	443	24	5.8	5.8
Alcoholic beverages	117	121	4	3.5	100	121	21	20.9	20.9
Other food, feed, beverages and tobacco	844	861	18	2.1	804	861	58	7.2	7.2
Rapeseed	214	234	20	9.5	242	234	-7	-3.0	-3.0
Other crude vegetable products	228	207	-21	-9.1	171	207	36	21.2	21.2
<b>Energy products</b>	<b>4,742</b>	<b>4,756</b>	<b>14</b>	<b>0.3</b>	<b>4,570</b>	<b>4,756</b>	<b>186</b>	<b>4.1</b>	<b>4.1</b>
Crude petroleum	2,096	1,898	-198	-9.5	2,110	1,898	-212	-10.0	-10.0
Natural gas	1,300	1,554	254	19.5	1,404	1,554	150	10.7	10.7
Other energy products	1,345	1,304	-41	-3.1	1,056	1,304	248	23.5	23.5
Coal and other bituminous substances	167	139	-28	-16.9	79	139	60	75.4	75.4
Petroleum and coal products	872	927	55	6.3	762	927	165	21.7	21.7
Electricity	306	238	-68	-22.2	215	238	23	10.8	10.8
<b>Forestry products</b>	<b>2,117</b>	<b>2,125</b>	<b>8</b>	<b>0.4</b>	<b>1,981</b>	<b>2,125</b>	<b>144</b>	<b>7.3</b>	<b>7.3</b>
Lumber and sawmill products	845	849	4	0.5	721	849	128	17.8	17.8
Other crude wood products	71	86	16	22.0	55	86	31	56.5	56.5
Lumber	563	549	-15	-2.6	445	549	103	23.2	23.2
Other wood fabricated materials	211	214	3	1.5	220	214	-6	-2.7	-2.7
Wood pulp and other wood products	555	556	1	0.1	546	556	10	1.9	1.9
Newsprint and other paper and paperboard	716	719	3	0.4	714	719	5	0.7	0.7
Newsprint paper	349	358	9	2.6	393	358	-35	-8.9	-8.9
Other paper and paperboard	367	361	-6	-1.6	321	361	40	12.5	12.5
<b>Industrial goods and materials</b>	<b>5,048</b>	<b>5,170</b>	<b>121</b>	<b>2.4</b>	<b>5,101</b>	<b>5,170</b>	<b>69</b>	<b>1.4</b>	<b>1.4</b>
Metal ores	533	397	-136	-25.6	417	397	-20	-4.8	-4.8
Iron ores, concentrates and scrap	212	163	-49	-23.2	135	163	28	20.5	20.5
Copper ores, concentrates and scrap	62	43	-19	-30.9	21	43	21	101.2	101.2
Nickel ores, concentrates and scrap	55	42	-13	-23.6	114	42	-72	-63.3	-63.3
Zinc ores, concentrates and scrap	5	13	8	161.2	6	13	6	105.2	105.2
Other ores, concentrates and scrap	200	137	-63	-31.6	140	137	-4	-2.5	-2.5
Chemicals, plastics and fertilizers	1,666	1,780	114	6.8	1,667	1,780	113	6.8	6.8
Inorganic chemicals	185	198	13	7.3	191	198	7	3.8	3.8
Organic chemicals	294	309	14	4.9	328	309	-19	-5.7	-5.7
Fertilizers and fertilizer materials	164	186	22	13.3	164	186	22	13.6	13.6
Synthetic rubber and plastics	713	769	56	7.9	715	769	54	7.5	7.5
Other chemical products	309	317	8	2.7	269	317	49	18.0	18.0

Table 2-2 – continued

## Exports by commodity groupings, balance of payments basis, seasonally adjusted — Constant dollars, 2002

	December	January	Change		Year to date			January 2010/ January 2009	
	2009	2010			2009	2010	Change		
	millions of dollars		percent		millions of dollars		percent		
<b>Metals and alloys</b>	1,670	1,787	116	7.0	1,639	1,787	147	9.0	9.0
Primary iron and steel	75	72	-3	-3.9	9	72	63	684.3	684.3
Steel bars, rods, plates, sheets	220	230	10	4.7	186	230	44	23.6	23.6
Other iron and steel and alloys	178	196	18	10.2	158	196	39	24.7	24.7
Aluminium including alloys	558	613	55	9.8	673	613	-60	-8.9	-8.9
Copper and alloys	83	84	1	1.1	122	84	-38	-31.2	-31.2
Nickel and alloys	87	72	-15	-16.9	134	72	-62	-46.2	-46.2
Precious metals and alloys	368	415	47	12.8	253	415	163	64.5	64.5
Zinc and alloys	70	68	-1	-2.1	69	68	0	-0.4	-0.4
Other non-ferrous metals and alloys	32	36	4	12.9	37	36	-1	-3.6	-3.6
<b>Other industrial goods and materials</b>	1,179	1,207	27	2.3	1,378	1,207	-171	-12.4	-12.4
Asbestos unmanufactured	5	7	2	31.3	5	7	2	33.3	33.3
Other crude animal products	72	77	5	6.4	67	77	10	14.8	14.8
Other crude non-metallic minerals	268	250	-18	-6.8	460	250	-210	-45.6	-45.6
Other crude materials, inedible	53	48	-5	-9.9	45	48	3	6.5	6.5
Metal fabricated basic products	263	270	8	2.9	290	270	-19	-6.6	-6.6
Textile fabricated materials	189	191	2	1.0	157	191	34	21.4	21.4
Non-metallic mineral basic products	117	127	10	8.4	141	127	-14	-10.1	-10.1
Other fabricated materials	212	238	26	12.1	214	238	24	11.3	11.3
<b>Machinery and equipment</b>	6,852	6,820	-32	-0.5	7,887	6,820	-1,067	-13.5	-13.5
Industrial and agricultural machinery	1,370	1,367	-3	-0.2	1,834	1,367	-466	-25.4	-25.4
Industrial machinery	1,235	1,225	-11	-0.9	1,665	1,225	-440	-26.4	-26.4
Agricultural machinery includ. tractors	135	143	8	5.9	169	143	-26	-15.3	-15.3
Aircraft and other transportation equipment	1,913	1,736	-177	-9.2	1,887	1,736	-151	-8.0	-8.0
Aircraft, engines, parts	1,613	1,439	-174	-10.8	1,604	1,439	-166	-10.3	-10.3
Other transportation equipment	300	297	-2	-0.8	283	297	14	5.1	5.1
Other machinery and equipment	3,569	3,716	147	4.1	4,165	3,716	-449	-10.8	-10.8
Television, telecommunication equipment	655	830	175	26.8	977	830	-147	-15.0	-15.0
Office machines and equipment	859	851	-8	-0.9	930	851	-79	-8.5	-8.5
Other equipment and tools	1,403	1,400	-4	-0.3	1,565	1,400	-165	-10.6	-10.6
Other end products, inedible	652	636	-16	-2.5	694	636	-58	-8.4	-8.4
<b>Automotive products</b>	5,979	5,737	-241	-4.0	3,152	5,737	2,586	82.1	82.1
Passenger autos and chassis	4,357	4,015	-342	-7.8	1,575	4,015	2,440	155.0	155.0
Trucks and other motor vehicles	234	237	3	1.1	535	237	-298	-55.7	-55.7
Motor vehicle parts	1,387	1,485	98	7.1	1,042	1,485	443	42.5	42.5
<b>Other consumer goods</b>	1,274	1,390	116	9.1	1,512	1,390	-122	-8.1	-8.1
<b>Special transactions trade</b>	469	284	-185	-39.4	554	284	-270	-48.7	-48.7
<b>Unallocated balance of payments adjustments</b>	820	854	33	4.1	502	854	351	70.0	70.0



**Table 3-1**  
**Domestic exports to selected countries, customs basis, not seasonally adjusted — January**

	Agricultural and fishing products	Energy products	Forestry products	Industrial goods	Machinery and equipment	Automotive products	Consumer goods	Special transactions trade	Total
millions of dollars									
<b>United States</b>									
2009	1,587.1	6,674.6	1,220.9	4,020.5	4,031.2	2,076.8	847.3	525.5	<b>20,984.1</b>
2010	1,295.9	7,661.0	1,018.3	4,347.3	3,160.0	3,332.1	768.6	243.1	<b>21,826.3</b>
<b>Mexico</b>									
2009	88.2	0.9	13.0	55.0	55.7	47.5	3.8	0.2	<b>264.2</b>
2010	79.1	0.9	10.6	84.7	53.7	72.8	6.1	0.3	<b>308.2</b>
<b>Japan</b>									
2009	297.5	117.5	86.3	91.4	65.3	2.9	6.7	0.6	<b>668.3</b>
2010	208.7	166.5	94.1	98.1	52.6	6.1	6.3	0.2	<b>632.7</b>
<b>European Union</b>									
<b>Germany</b>									
2009	14.7	32.5	9.7	43.5	172.8	3.8	13.6	0.4	<b>291.0</b>
2010	8.7	0.0	8.9	99.6	153.9	2.0	14.6	0.2	<b>288.0</b>
<b>France</b>									
2009	10.9	61.0	7.6	25.6	94.6	2.0	28.2	1.8	<b>231.8</b>
2010	8.6	0.1	13.0	24.2	63.8	2.4	17.8	1.1	<b>131.0</b>
<b>United Kingdom</b>									
2009	25.3	0.5	17.5	655.9	195.0	2.6	18.9	2.2	<b>917.8</b>
2010	18.9	0.6	18.2	751.0	181.4	3.9	15.2	2.0	<b>991.4</b>
<b>Italy</b>									
2009	44.9	0.0	27.9	14.0	34.1	0.6	4.6	0.4	<b>126.5</b>
2010	7.3	21.7	25.5	18.8	63.3	0.4	10.4	2.0	<b>149.4</b>
<b>Other European Union</b>									
2009	65.6	78.5	27.2	245.8	302.5	14.6	56.0	3.3	<b>793.6</b>
2010	70.2	10.0	28.1	185.2	179.5	9.1	45.6	3.7	<b>531.4</b>
<b>Total</b>									
2009	161.4	172.5	89.8	984.9	799.1	23.5	121.3	8.2	<b>2,360.7</b>
2010	113.7	32.5	93.8	1,078.8	641.9	17.8	103.6	9.1	<b>2,091.2</b>
<b>Newly industrialized countries</b>									
<b>South Korea</b>									
2009	18.2	96.7	25.3	69.9	18.9	0.6	2.0	0.2	<b>231.8</b>
2010	31.7	70.8	33.0	66.2	39.2	5.7	4.4	0.5	<b>251.5</b>
<b>Hong Kong</b>									
2009	37.6	0.0	8.5	25.0	58.0	0.5	3.2	0.5	<b>133.4</b>
2010	36.3	0.0	8.0	65.9	18.3	0.6	4.2	0.7	<b>134.1</b>
<b>Taiwan</b>									
2009	15.5	0.2	14.4	19.5	6.6	0.1	2.6	0.0	<b>58.9</b>
2010	11.1	23.4	17.0	20.0	9.7	0.4	5.2	0.1	<b>86.9</b>
<b>Singapore</b>									
2009	2.6	0.9	0.4	6.4	21.4	1.3	2.5	0.2	<b>35.8</b>
2010	5.2	0.5	2.1	10.3	23.7	1.8	3.3	0.1	<b>47.0</b>
<b>Total</b>									
2009	74.0	97.8	48.6	120.8	104.9	2.6	10.3	1.0	<b>459.9</b>
2010	84.2	94.8	60.2	162.5	90.9	8.5	17.1	1.3	<b>519.4</b>
<b>Other countries</b>									
2009	717.6	52.4	256.6	703.9	737.7	43.8	94.3	16.9	<b>2,623.1</b>
2010	761.9	69.3	304.8	846.5	567.6	49.4	83.6	12.2	<b>2,695.3</b>
<b>Total</b>									
2009	<b>2,925.9</b>	<b>7,115.8</b>	<b>1,715.2</b>	<b>5,976.6</b>	<b>5,793.9</b>	<b>2,197.1</b>	<b>1,084.1</b>	<b>552.3</b>	<b>27,360.8</b>
2010	<b>2,543.5</b>	<b>8,024.9</b>	<b>1,581.9</b>	<b>6,617.8</b>	<b>4,566.8</b>	<b>3,486.7</b>	<b>985.2</b>	<b>266.3</b>	<b>28,073.1</b>

**Table 3-2**  
**Domestic exports to selected countries, customs basis, not seasonally adjusted — Year to date**

	Agricultural and fishing products	Energy products	Forestry products	Industrial goods	Machinery and equipment	Automotive products	Consumer goods	Special transactions trade	Total
millions of dollars									
<b>United States</b>									
2009	1,587.1	6,674.6	1,220.9	4,020.5	4,031.2	2,076.8	847.3	525.5	<b>20,984.1</b>
2010	1,295.9	7,661.0	1,018.3	4,347.3	3,160.0	3,332.1	768.6	243.1	<b>21,826.3</b>
<b>Mexico</b>									
2009	88.2	0.9	13.0	55.0	55.7	47.5	3.8	0.2	<b>264.2</b>
2010	79.1	0.9	10.6	84.7	53.7	72.8	6.1	0.3	<b>308.2</b>
<b>Japan</b>									
2009	297.5	117.5	86.3	91.4	65.3	2.9	6.7	0.6	<b>668.3</b>
2010	208.7	166.5	94.1	98.1	52.6	6.1	6.3	0.2	<b>632.7</b>
<b>European Union</b>									
<b>Germany</b>									
2009	14.7	32.5	9.7	43.5	172.8	3.8	13.6	0.4	<b>291.0</b>
2010	8.7	0.0	8.9	99.6	153.9	2.0	14.6	0.2	<b>288.0</b>
<b>France</b>									
2009	10.9	61.0	7.6	25.6	94.6	2.0	28.2	1.8	<b>231.8</b>
2010	8.6	0.1	13.0	24.2	63.8	2.4	17.8	1.1	<b>131.0</b>
<b>United Kingdom</b>									
2009	25.3	0.5	17.5	655.9	195.0	2.6	18.9	2.2	<b>917.8</b>
2010	18.9	0.6	18.2	751.0	181.4	3.9	15.2	2.0	<b>991.4</b>
<b>Italy</b>									
2009	44.9	0.0	27.9	14.0	34.1	0.6	4.6	0.4	<b>126.5</b>
2010	7.3	21.7	25.5	18.8	63.3	0.4	10.4	2.0	<b>149.4</b>
<b>Other European Union</b>									
2009	65.6	78.5	27.2	245.8	302.5	14.6	56.0	3.3	<b>793.6</b>
2010	70.2	10.0	28.1	185.2	179.5	9.1	45.6	3.7	<b>531.4</b>
<b>Total</b>									
2009	161.4	172.5	89.8	984.9	799.1	23.5	121.3	8.2	<b>2,360.7</b>
2010	113.7	32.5	93.8	1,078.8	641.9	17.8	103.6	9.1	<b>2,091.2</b>
<b>Newly industrialized countries</b>									
<b>South Korea</b>									
2009	18.2	96.7	25.3	69.9	18.9	0.6	2.0	0.2	<b>231.8</b>
2010	31.7	70.8	33.0	66.2	39.2	5.7	4.4	0.5	<b>251.5</b>
<b>Hong Kong</b>									
2009	37.6	0.0	8.5	25.0	58.0	0.5	3.2	0.5	<b>133.4</b>
2010	36.3	0.0	8.0	65.9	18.3	0.6	4.2	0.7	<b>134.1</b>
<b>Taiwan</b>									
2009	15.5	0.2	14.4	19.5	6.6	0.1	2.6	0.0	<b>58.9</b>
2010	11.1	23.4	17.0	20.0	9.7	0.4	5.2	0.1	<b>86.9</b>
<b>Singapore</b>									
2009	2.6	0.9	0.4	6.4	21.4	1.3	2.5	0.2	<b>35.8</b>
2010	5.2	0.5	2.1	10.3	23.7	1.8	3.3	0.1	<b>47.0</b>
<b>Total</b>									
2009	74.0	97.8	48.6	120.8	104.9	2.6	10.3	1.0	<b>459.9</b>
2010	84.2	94.8	60.2	162.5	90.9	8.5	17.1	1.3	<b>519.4</b>
<b>Other countries</b>									
2009	717.6	52.4	256.6	703.9	737.7	43.8	94.3	16.9	<b>2,623.1</b>
2010	761.9	69.3	304.8	846.5	567.6	49.4	83.6	12.2	<b>2,695.3</b>
<b>Total</b>									
2009	<b>2,925.9</b>	<b>7,115.8</b>	<b>1,715.2</b>	<b>5,976.6</b>	<b>5,793.9</b>	<b>2,197.1</b>	<b>1,084.1</b>	<b>552.3</b>	<b>27,360.8</b>
2010	<b>2,543.5</b>	<b>8,024.9</b>	<b>1,581.9</b>	<b>6,617.8</b>	<b>4,566.8</b>	<b>3,486.7</b>	<b>985.2</b>	<b>266.3</b>	<b>28,073.1</b>

**Table 4**  
**Domestic exports by country, customs basis, not seasonally adjusted**

	January		January to January		Change January to January 2010/ January to January 2009
	2009	2010	2009	2010	
millions of dollars					
<b>North America</b>					
Greenland	1.1	1.3	1.1	1.3	14.9
Mexico	264.2	308.2	264.2	308.2	16.6
Saint Pierre and Miquelon	0.9	1.0	0.9	1.0	9.5
United States	20,984.1	21,826.3	20,984.1	21,826.3	4.0
<b>Total</b>	<b>21,250.4</b>	<b>22,136.8</b>	<b>21,250.4</b>	<b>22,136.8</b>	<b>4.2</b>
<b>Western Europe</b>					
Andorra	0.0	0.0	0.0	0.0	-100.0
Austria	48.1	33.8	48.1	33.8	-29.7
Belgium	172.0	74.2	172.0	74.2	-56.8
Denmark	50.0	18.1	50.0	18.1	-63.8
Faeroe Islands	0.5	0.0	0.5	0.0	-93.8
Finland	70.1	15.7	70.1	15.7	-77.6
France	231.8	131.0	231.8	131.0	-43.5
Germany	291.0	288.0	291.0	288.0	-1.1
Gibraltar	0.0	0.0	0.0	0.0	-100.0
Greece	7.4	5.6	7.4	5.6	-24.0
Iceland	1.0	4.9	1.0	4.9	379.1
Italy	126.5	149.4	126.5	149.4	18.1
Luxembourg	3.2	3.3	3.2	3.3	2.7
Malta	0.7	0.5	0.7	0.5	-22.2
Netherlands	202.9	186.3	202.9	186.3	-8.2
Norway	141.4	123.0	141.4	123.0	-13.0
Portugal	5.7	6.0	5.7	6.0	6.3
Republic of Ireland (Eire)	42.7	40.8	42.7	40.8	-4.5
Spain	85.3	64.6	85.3	64.6	-24.3
Sweden	19.3	20.1	19.3	20.1	4.4
Switzerland	73.3	218.2	73.3	218.2	197.7
United Kingdom	917.8	991.4	917.8	991.4	8.0
<b>Total</b>	<b>2,490.7</b>	<b>2,375.1</b>	<b>2,490.7</b>	<b>2,375.1</b>	<b>-4.6</b>
<b>Other Europe</b>					
Albania	0.1	0.5	0.1	0.5	403.9
Armenia	0.4	0.4	0.4	0.4	9.0
Azerbaijan	1.7	0.6	1.7	0.6	-67.5
Belarus	0.0	0.0	0.0	0.0	29.0
Bosnia and Herzegovina	0.4	0.2	0.4	0.2	-41.8
Bulgaria	0.7	20.9	0.7	20.9	...
Croatia	1.5	1.4	1.5	1.4	-6.0
Czech Republic	10.9	8.5	10.9	8.5	-22.0
Estonia	0.8	0.8	0.8	0.8	6.4
Georgia	0.4	1.1	0.4	1.1	174.6
Hungary	8.5	4.7	8.5	4.7	-45.3
Kazakhstan	14.7	8.7	14.7	8.7	-40.5
Kyrgyzstan	0.3	0.1	0.3	0.1	-75.2
Latvia	1.8	1.1	1.8	1.1	-36.9
Lithuania	1.5	1.1	1.5	1.1	-26.9
Macedonia (Former Yugoslav Republic of Macedonia)	0.8	0.8	0.8	0.8	-0.8
Montenegro	0.1	0.0	0.1	0.0	-74.5
Poland	24.1	15.5	24.1	15.5	-35.7
Republic of Moldova	0.0	0.1	0.0	0.1	124.3
Romania	3.6	7.3	3.6	7.3	105.2
Russian Federation	67.7	44.6	67.7	44.6	-34.1
Serbia	1.5	0.4	1.5	0.4	-76.7
Slovakia	1.1	1.5	1.1	1.5	32.6
Slovenia	32.0	0.3	32.0	0.3	-98.9
Tajikistan	0.1	0.8	0.1	0.8	433.7
Turkmenistan	0.2	0.3	0.2	0.3	41.1
Ukraine	4.8	7.6	4.8	7.6	56.7
Uzbekistan	4.1	0.8	4.1	0.8	-80.7
<b>Total</b>	<b>184.0</b>	<b>130.1</b>	<b>184.0</b>	<b>130.1</b>	<b>-29.3</b>
<b>Middle East</b>					
Bahrain	1.8	1.4	1.8	1.4	-23.6

Table 4 – continued

## Domestic exports by country, customs basis, not seasonally adjusted

	January		January to January		Change
	2009	2010	2009	2010	January to January 2010/ January to January 2009
	millions of dollars				
Cyprus	1.2	0.6	1.2	0.6	-54.3
Egypt	27.2	19.8	27.2	19.8	-27.1
Eritrea	0.0	0.3	0.0	0.3	...
Ethiopia	0.5	0.4	0.5	0.4	-25.5
Iran	43.6	6.3	43.6	6.3	-85.5
Iraq	53.0	1.8	53.0	1.8	-96.5
Israel	24.8	21.1	24.8	21.1	-14.8
Jordan	2.2	6.5	2.2	6.5	193.2
Kuwait	7.9	8.5	7.9	8.5	8.0
Lebanon	5.6	5.3	5.6	5.3	-5.6
Libya	42.6	19.7	42.6	19.7	-53.8
Oman	12.0	9.6	12.0	9.6	-20.1
Qatar	6.2	3.7	6.2	3.7	-40.0
Saudi Arabia	95.7	121.9	95.7	121.9	27.4
Somalia	0.0	0.0	0.0	0.0	...
Sudan	6.5	7.1	6.5	7.1	9.1
Syria	2.5	2.0	2.5	2.0	-20.1
Turkey	33.3	42.7	33.3	42.7	28.1
United Arab Emirates	78.0	101.9	78.0	101.9	30.7
Yemen	1.5	1.2	1.5	1.2	-20.3
<b>Total</b>	<b>446.2</b>	<b>381.9</b>	<b>446.2</b>	<b>381.9</b>	<b>-14.4</b>
<b>Other Africa</b>					
Algeria	27.2	24.3	27.2	24.3	-10.8
Angola	7.1	2.5	7.1	2.5	-65.2
Antarctica	0.0	0.0	0.0	0.0	-37.3
Benin	0.7	0.4	0.7	0.4	-37.1
Botswana	0.5	0.0	0.5	0.0	-93.5
Burkina Faso	0.2	1.7	0.2	1.7	784.5
Burundi	0.1	0.0	0.1	0.0	-72.9
Cameroon	0.5	0.2	0.5	0.2	-62.7
Cape Verde	0.1	0.2	0.1	0.2	35.9
Chad	2.0	0.4	2.0	0.4	-77.5
Congo	1.1	0.5	1.1	0.5	-53.0
Democratic Republic of the Congo	1.2	1.0	1.2	1.0	-14.9
Djibouti	0.9	0.0	0.9	0.0	-99.2
Equatorial Guinea	0.2	0.2	0.2	0.2	-8.4
French Southern Territories	0.0	0.0	0.0	0.0	-86.7
Gabon	8.5	1.8	8.5	1.8	-78.5
Gambia	0.0	0.0	0.0	0.0	-5.8
Ghana	10.5	11.9	10.5	11.9	13.0
Guinea	1.0	0.3	1.0	0.3	-68.3
Ivory Coast	4.3	0.4	4.3	0.4	-91.1
Kenya	6.7	2.3	6.7	2.3	-65.7
Lesotho	0.0	0.0	0.0	0.0	0.0
Liberia	0.2	1.7	0.2	1.7	656.8
Madagascar	4.6	5.3	4.6	5.3	14.2
Malawi	0.2	0.3	0.2	0.3	33.3
Mali	0.1	0.4	0.1	0.4	201.7
Mauritania	0.3	0.1	0.3	0.1	-77.8
Mauritius	0.4	0.2	0.4	0.2	-52.7
Morocco	2.2	3.9	2.2	3.9	78.1
Mozambique	0.1	0.9	0.1	0.9	502.1
Namibia	0.7	0.1	0.7	0.1	-92.1
Niger	0.3	0.1	0.3	0.1	-65.3
Nigeria	22.3	4.0	22.3	4.0	-82.0
Rwanda	0.1	0.1	0.1	0.1	19.6
Saint Helena	0.0	0.0	0.0	0.0	-100.0
Senegal	2.2	2.0	2.2	2.0	-7.7
Seychelles	0.1	0.0	0.1	0.0	-100.0
Sierra Leone	0.2	1.1	0.2	1.1	415.9
South Africa	33.7	25.7	33.7	25.7	-23.8
Swaziland	0.1	0.1	0.1	0.1	-40.9
Togo	0.9	0.2	0.9	0.2	-78.6
Tunisia	1.6	16.3	1.6	16.3	947.4
Uganda	3.8	1.1	3.8	1.1	-69.5

Table 4 – continued

## Domestic exports by country, customs basis, not seasonally adjusted

	January		January to January		Change
	2009	2010	2009	2010	January to January 2010/ January to January 2009
millions of dollars					
United Republic of Tanzania	2.0	1.5	2.0	1.5	-25.5
Zambia	0.7	0.1	0.7	0.1	-80.3
Zimbabwe	4.6	0.5	4.6	0.5	-89.9
<b>Total</b>	<b>154.4</b>	<b>113.8</b>	<b>154.4</b>	<b>113.8</b>	<b>-26.3</b>
<b>Other Asia</b>					
Afghanistan	1.2	2.2	1.2	2.2	84.3
Bangladesh	90.9	87.7	90.9	87.7	-3.5
British Indian Ocean Territory	0.0	0.0	0.0	0.0	-100.0
Brunei Darussalam	0.1	5.5	0.1	5.5	...
Cambodia	0.2	0.1	0.2	0.1	-72.9
China	793.8	638.1	793.8	638.1	-19.6
Hong Kong	133.4	134.1	133.4	134.1	0.5
India	95.7	131.5	95.7	131.5	37.4
Indonesia	48.8	45.6	48.8	45.6	-6.6
Japan	668.3	632.7	668.3	632.7	-5.3
Laos	0.1	0.1	0.1	0.1	30.7
Macau	2.5	0.4	2.5	0.4	-83.0
Malaysia	41.3	58.6	41.3	58.6	41.8
Maldives	0.3	0.3	0.3	0.3	27.8
Mongolia	0.1	1.2	0.1	1.2	...
Nepal	0.0	0.0	0.0	0.0	17.5
North Korea	2.7	1.0	2.7	1.0	-62.7
Pakistan	10.5	28.7	10.5	28.7	174.5
Philippines	33.9	22.4	33.9	22.4	-33.9
Singapore	35.8	47.0	35.8	47.0	31.5
South Korea	231.8	251.5	231.8	251.5	8.5
Sri Lanka	28.3	50.3	28.3	50.3	77.7
Taiwan	58.9	86.9	58.9	86.9	47.4
Thailand	32.7	42.2	32.7	42.2	29.2
Viet Nam	7.1	24.1	7.1	24.1	241.9
<b>Total</b>	<b>2,318.4</b>	<b>2,292.3</b>	<b>2,318.4</b>	<b>2,292.3</b>	<b>-1.1</b>
<b>Oceania</b>					
American Samoa	0.1	0.1	0.1	0.1	-51.2
Australia	114.9	161.4	114.9	161.4	40.4
Christmas Island	0.0	0.0	0.0	0.0	22.5
Cocos (Keeling) Islands	0.0	0.0	0.0	0.0	-55.0
Fiji	0.2	0.2	0.2	0.2	-33.1
French Polynesia	0.6	0.8	0.6	0.8	41.2
Guam	0.2	0.0	0.2	0.0	-78.5
Kiribati	0.0	0.0	0.0	0.0	...
New Caledonia	0.4	1.3	0.4	1.3	255.4
New Zealand	22.5	22.7	22.5	22.7	0.8
Norfolk Island	0.3	0.0	0.3	0.0	-100.0
Papua New Guinea	0.9	0.6	0.9	0.6	-31.4
Pitcairn	0.0	0.0	0.0	0.0	-100.0
Samoa	0.0	0.0	0.0	0.0	-100.0
United States Minor Outlying Islands	0.7	1.6	0.7	1.6	126.6
Vanuatu	0.1	0.1	0.1	0.1	59.3
<b>Total</b>	<b>140.9</b>	<b>188.8</b>	<b>140.9</b>	<b>188.8</b>	<b>34.0</b>
<b>South America</b>					
Argentina	10.1	16.7	10.1	16.7	66.0
Bolivia	1.5	0.3	1.5	0.3	-79.5
Brazil	56.1	105.2	56.1	105.2	87.5
Chile	33.8	39.5	33.8	39.5	17.1
Colombia	49.2	36.2	49.2	36.2	-26.4
Ecuador	30.6	23.7	30.6	23.7	-22.5
Guyana	2.6	1.9	2.6	1.9	-27.5
Paraguay	0.4	0.6	0.4	0.6	44.7
Peru	36.2	42.2	36.2	42.2	16.6
Suriname	0.2	0.7	0.2	0.7	233.7
Uruguay	2.0	1.9	2.0	1.9	-6.1
Venezuela	66.2	40.0	66.2	40.0	-39.6
<b>Total</b>	<b>288.8</b>	<b>308.9</b>	<b>288.8</b>	<b>308.9</b>	<b>7.0</b>

Table 4 – continued

## Domestic exports by country, customs basis, not seasonally adjusted

	January		January to January		Change January to January 2010/ January to January 2009
	2009	2010	2009	2010	
millions of dollars					
<b>Central America Antilles</b>					
Anguilla	0.1	0.0	0.1	0.0	-48.2
Antigua and Barbuda	0.5	2.4	0.5	2.4	347.1
Aruba	0.2	0.3	0.2	0.3	50.8
Bahamas	2.3	25.7	2.3	25.7	999.7
Barbados	2.1	2.4	2.1	2.4	18.3
Belize	0.4	0.3	0.4	0.3	-5.0
Bermuda	3.9	2.6	3.9	2.6	-32.6
British Virgin Islands	1.4	0.1	1.4	0.1	-91.1
Cayman Islands	0.2	0.4	0.2	0.4	95.0
Costa Rica	3.3	5.6	3.3	5.6	71.4
Cuba	12.2	27.2	12.2	27.2	123.0
Dominica	0.4	0.6	0.4	0.6	63.8
Dominican Republic	11.2	12.2	11.2	12.2	9.8
El Salvador	1.9	6.0	1.9	6.0	224.0
Grenada	0.5	0.5	0.5	0.5	-4.3
Guatemala	14.7	6.2	14.7	6.2	-57.9
Haiti	3.9	6.6	3.9	6.6	70.8
Honduras	2.1	1.7	2.1	1.7	-20.0
Jamaica	6.7	12.2	6.7	12.2	81.9
Montserrat	0.0	0.0	0.0	0.0	-53.1
Netherlands Antilles	1.3	1.2	1.3	1.2	-12.4
Nicaragua	1.0	0.3	1.0	0.3	-68.8
Panama	6.1	9.0	6.1	9.0	47.7
Saint Kitts and Nevis	0.8	0.3	0.8	0.3	-68.4
Saint Lucia	0.7	0.6	0.7	0.6	-18.8
Saint Vincent and the Grenadines	0.6	0.4	0.6	0.4	-37.1
Trinidad and Tobago	8.6	20.4	8.6	20.4	135.8
Turks and Caicos Islands	0.2	0.2	0.2	0.2	0.4
<b>Total</b>	<b>87.1</b>	<b>145.4</b>	<b>87.1</b>	<b>145.4</b>	<b>66.8</b>
<b>All countries</b>	<b>27,360.8</b>	<b>28,073.1</b>	<b>27,360.8</b>	<b>28,073.1</b>	<b>2.6</b>

**Table 5-1**  
**Exports by province of origin, customs basis, not seasonally adjusted — January**

	Agricultural and fishing products	Energy products	Forestry products	Industrial goods	Machinery and equipment	Automotive products	Consumer goods	Special transactions trade	Total
millions of dollars									
<b>Domestic exports</b>									
Newfoundland and Labrador									
2009	19.0	360.8	16.9	98.7	6.7	0.0	0.0	5.3	<b>507.5</b>
2010	27.5	491.4	8.1	88.0	2.8	0.1	0.1	2.1	<b>620.1</b>
Prince Edward Island									
2009	40.7	0.0	0.0	0.9	16.3	0.1	2.9	10.5	<b>71.3</b>
2010	29.2	0.3	0.3	2.9	13.1	0.1	1.7	2.8	<b>50.3</b>
Nova Scotia									
2009	66.3	107.3	51.4	49.1	85.8	10.1	5.2	7.0	<b>382.2</b>
2010	48.1	30.5	60.3	42.8	92.3	3.2	6.2	3.2	<b>286.5</b>
New Brunswick									
2009	79.0	499.1	113.3	45.6	24.1	2.3	9.5	8.2	<b>781.1</b>
2010	82.0	850.7	100.8	88.0	21.9	2.2	17.3	3.5	<b>1,166.4</b>
Quebec									
2009	336.7	276.6	507.2	1,315.4	1,816.3	107.0	272.1	118.9	<b>4,750.3</b>
2010	337.2	289.1	442.8	1,481.3	1,506.7	106.8	329.7	63.9	<b>4,557.6</b>
Ontario									
2009	618.1	319.9	289.5	2,503.4	2,920.3	1,958.1	712.1	272.1	<b>9,593.5</b>
2010	552.1	226.1	225.2	2,994.9	2,250.5	3,282.5	545.9	121.6	<b>10,198.9</b>
Manitoba									
2009	353.5	45.9	22.7	199.4	177.3	51.0	17.7	30.7	<b>898.2</b>
2010	295.9	45.5	15.2	178.2	127.3	30.3	30.8	23.8	<b>747.0</b>
Saskatchewan									
2009	626.8	473.0	28.6	595.3	72.7	2.1	1.4	10.0	<b>1,809.8</b>
2010	557.7	690.3	15.6	579.3	69.7	5.7	1.2	4.1	<b>1,923.6</b>
Alberta									
2009	622.2	4,415.0	132.4	698.1	416.6	43.9	16.1	51.5	<b>6,395.9</b>
2010	478.9	4,773.6	157.5	787.3	265.2	34.7	8.2	23.2	<b>6,528.6</b>
British Columbia									
2009	163.6	618.3	553.2	316.6	257.3	22.5	46.4	38.0	<b>2,015.8</b>
2010	134.8	627.4	556.0	359.2	216.8	20.9	44.1	18.0	<b>1,977.3</b>
Yukon, Northwest Territories and Nunavut <sup>1</sup>									
2009	0.0	0.0	0.0	154.2	0.4	0.0	0.6	0.0	<b>155.3</b>
2010	0.2	0.0	0.0	15.9	0.5	0.1	0.0	0.1	<b>16.8</b>
<b>Total</b>									
2009	<b>2,925.9</b>	<b>7,115.8</b>	<b>1,715.2</b>	<b>5,976.6</b>	<b>5,793.9</b>	<b>2,197.1</b>	<b>1,084.1</b>	<b>552.3</b>	<b>27,360.8</b>
2010	<b>2,543.5</b>	<b>8,024.9</b>	<b>1,581.9</b>	<b>6,617.8</b>	<b>4,566.8</b>	<b>3,486.7</b>	<b>985.2</b>	<b>266.3</b>	<b>28,073.1</b>
<b>Re-exports</b>									
2009	<b>58.0</b>	<b>38.8</b>	<b>7.6</b>	<b>197.5</b>	<b>971.0</b>	<b>80.3</b>	<b>162.7</b>	<b>685.6</b>	<b>2,201.4</b>
2010	<b>58.2</b>	<b>76.3</b>	<b>5.1</b>	<b>196.8</b>	<b>754.0</b>	<b>72.5</b>	<b>156.2</b>	<b>537.8</b>	<b>1,856.9</b>
<b>Total exports</b>									
2009	<b>2,983.8</b>	<b>7,154.6</b>	<b>1,722.8</b>	<b>6,174.0</b>	<b>6,764.9</b>	<b>2,277.3</b>	<b>1,246.8</b>	<b>1,237.9</b>	<b>29,562.2</b>
2010	<b>2,601.7</b>	<b>8,101.2</b>	<b>1,586.9</b>	<b>6,814.6</b>	<b>5,320.7</b>	<b>3,559.1</b>	<b>1,141.4</b>	<b>804.1</b>	<b>29,929.9</b>

1. Data for the current month do not include some exports from the Harmonized System, Chapter 71, "Natural/cultured pearls, precious stones and metals, coins, etc." for reasons relating to timing.

**Table 5-2**  
**Exports by province of origin, customs basis, not seasonally adjusted — Year to date**

	Agricultural and fishing products	Energy products	Forestry products	Industrial goods	Machinery and equipment	Automotive products	Consumer goods	Special transactions trade	Total
millions of dollars									
<b>Domestic exports</b>									
Newfoundland and Labrador									
2009	19.0	360.8	16.9	98.7	6.7	0.0	0.0	5.3	<b>507.5</b>
2010	27.5	491.4	8.1	88.0	2.8	0.1	0.1	2.1	<b>620.1</b>
Prince Edward Island									
2009	40.7	0.0	0.0	0.9	16.3	0.1	2.9	10.5	<b>71.3</b>
2010	29.2	0.3	0.3	2.9	13.1	0.1	1.7	2.8	<b>50.3</b>
Nova Scotia									
2009	66.3	107.3	51.4	49.1	85.8	10.1	5.2	7.0	<b>382.2</b>
2010	48.1	30.5	60.3	42.8	92.3	3.2	6.2	3.2	<b>286.5</b>
New Brunswick									
2009	79.0	499.1	113.3	45.6	24.1	2.3	9.5	8.2	<b>781.1</b>
2010	82.0	850.7	100.8	88.0	21.9	2.2	17.3	3.5	<b>1,166.4</b>
Quebec									
2009	336.7	276.6	507.2	1,315.4	1,816.3	107.0	272.1	118.9	<b>4,750.3</b>
2010	337.2	289.1	442.8	1,481.3	1,506.7	106.8	329.7	63.9	<b>4,557.6</b>
Ontario									
2009	618.1	319.9	289.5	2,503.4	2,920.3	1,958.1	712.1	272.1	<b>9,593.5</b>
2010	552.1	226.1	225.2	2,994.9	2,250.5	3,282.5	545.9	121.6	<b>10,198.9</b>
Manitoba									
2009	353.5	45.9	22.7	199.4	177.3	51.0	17.7	30.7	<b>898.2</b>
2010	295.9	45.5	15.2	178.2	127.3	30.3	30.8	23.8	<b>747.0</b>
Saskatchewan									
2009	626.8	473.0	28.6	595.3	72.7	2.1	1.4	10.0	<b>1,809.8</b>
2010	557.7	690.3	15.6	579.3	69.7	5.7	1.2	4.1	<b>1,923.6</b>
Alberta									
2009	622.2	4,415.0	132.4	698.1	416.6	43.9	16.1	51.5	<b>6,395.9</b>
2010	478.9	4,773.6	157.5	787.3	265.2	34.7	8.2	23.2	<b>6,528.6</b>
British Columbia									
2009	163.6	618.3	553.2	316.6	257.3	22.5	46.4	38.0	<b>2,015.8</b>
2010	134.8	627.4	556.0	359.2	216.8	20.9	44.1	18.0	<b>1,977.3</b>
Yukon, Northwest Territories and Nunavut <sup>1</sup>									
2009	0.0	0.0	0.0	154.2	0.4	0.0	0.6	0.0	<b>155.3</b>
2010	0.2	0.0	0.0	15.9	0.5	0.1	0.0	0.1	<b>16.8</b>
<b>Total</b>									
2009	<b>2,925.9</b>	<b>7,115.8</b>	<b>1,715.2</b>	<b>5,976.6</b>	<b>5,793.9</b>	<b>2,197.1</b>	<b>1,084.1</b>	<b>552.3</b>	<b>27,360.8</b>
2010	<b>2,543.5</b>	<b>8,024.9</b>	<b>1,581.9</b>	<b>6,617.8</b>	<b>4,566.8</b>	<b>3,486.7</b>	<b>985.2</b>	<b>266.3</b>	<b>28,073.1</b>
<b>Re-exports</b>									
2009	<b>58.0</b>	<b>38.8</b>	<b>7.6</b>	<b>197.5</b>	<b>971.0</b>	<b>80.3</b>	<b>162.7</b>	<b>685.6</b>	<b>2,201.4</b>
2010	<b>58.2</b>	<b>76.3</b>	<b>5.1</b>	<b>196.8</b>	<b>754.0</b>	<b>72.5</b>	<b>156.2</b>	<b>537.8</b>	<b>1,856.9</b>
<b>Total exports</b>									
2009	<b>2,983.8</b>	<b>7,154.6</b>	<b>1,722.8</b>	<b>6,174.0</b>	<b>6,764.9</b>	<b>2,277.3</b>	<b>1,246.8</b>	<b>1,237.9</b>	<b>29,562.2</b>
2010	<b>2,601.7</b>	<b>8,101.2</b>	<b>1,586.9</b>	<b>6,814.6</b>	<b>5,320.7</b>	<b>3,559.1</b>	<b>1,141.4</b>	<b>804.1</b>	<b>29,929.9</b>

1. Data for the current month do not include some exports from the Harmonized System Chapter 71, "Natural/cultured pearls, precious stones and metals, coins, etc." for reasons relating to timing.



**Table 6-1**  
**Imports by commodity groupings, balance of payments basis, seasonally adjusted — Current dollars**

	December	January	Change		Year to date			January 2010/ January 2009	
	2009	2010			2009	2010	Change		
	millions of dollars		percent		millions of dollars		percent		
<b>Total</b>	<b>32,790</b>	<b>32,219</b>	<b>-571</b>	<b>-1.7</b>	<b>32,160</b>	<b>32,219</b>	<b>58</b>	<b>0.2</b>	<b>0.2</b>
<b>Agricultural and fishing products</b>	<b>2,393</b>	<b>2,360</b>	<b>-33</b>	<b>-1.4</b>	<b>2,564</b>	<b>2,360</b>	<b>-204</b>	<b>-8.0</b>	<b>-8.0</b>
Fruits and vegetables	676	655	-21	-3.0	708	655	-53	-7.5	-7.5
Fresh fruits and berries	241	238	-3	-1.3	248	238	-9	-3.8	-3.8
Dried fruits, fruits and fruit preparations	116	108	-8	-6.9	136	108	-29	-21.0	-21.0
Fresh vegetables	182	170	-12	-6.6	178	170	-8	-4.8	-4.8
Other vegetables and vegetable preparations	137	140	3	1.8	146	140	-7	-4.5	-4.5
Other agricultural and fishing products	1,717	1,705	-12	-0.7	1,856	1,705	-151	-8.1	-8.1
Live animals	16	13	-3	-19.3	18	13	-5	-28.4	-28.4
Meat and meat preparations	166	164	-2	-1.2	182	164	-18	-9.8	-9.8
Fish and marine animals	159	154	-4	-2.8	178	154	-24	-13.6	-13.6
Cocoa, coffee, tea and other food preparations	393	405	12	3.0	427	405	-22	-5.2	-5.2
Dairy produce, eggs and honey	50	42	-9	-17.2	44	42	-2	-5.5	-5.5
Corn (maize) shelled	43	41	-2	-4.2	50	41	-9	-17.1	-17.1
Other cereals and cereal preparations	178	180	2	0.9	200	180	-20	-10.2	-10.2
Sugar and sugar preparations	157	149	-8	-4.9	140	149	10	6.8	6.8
Fodder, feed, excluding unmilled cereal	122	111	-11	-9.0	133	111	-22	-16.6	-16.6
Beverages	292	300	8	2.7	346	300	-47	-13.4	-13.4
Tobacco	29	30	2	6.4	31	30	0	-0.4	-0.4
Crude vegetable products	112	115	3	2.7	107	115	8	7.7	7.7
Cotton	1	1	0	1.8	1	1	0	45.2	45.2
<b>Energy products</b>	<b>3,449</b>	<b>3,257</b>	<b>-192</b>	<b>-5.6</b>	<b>2,840</b>	<b>3,257</b>	<b>417</b>	<b>14.7</b>	<b>14.7</b>
Crude petroleum	2,368	1,984	-385	-16.2	1,547	1,984	436	28.2	28.2
Other energy products	1,081	1,273	192	17.8	1,293	1,273	-20	-1.5	-1.5
Coal and other related products	291	476	184	63.3	440	476	35	8.1	8.1
Petroleum and coal products	790	798	8	1.0	853	798	-55	-6.4	-6.4
<b>Forestry products</b>	<b>199</b>	<b>204</b>	<b>5</b>	<b>2.5</b>	<b>218</b>	<b>204</b>	<b>-14</b>	<b>-6.4</b>	<b>-6.4</b>
Forestry products	199	204	5	2.5	218	204	-14	-6.4	-6.4
Crude wood products	33	33	0	0.5	47	33	-14	-29.2	-29.2
Wood fabricated materials	166	171	5	2.8	171	171	0	-0.2	-0.2
<b>Industrial goods and materials</b>	<b>6,389</b>	<b>6,384</b>	<b>-5</b>	<b>-0.1</b>	<b>6,696</b>	<b>6,384</b>	<b>-312</b>	<b>-4.7</b>	<b>-4.7</b>
Metals and metal ores	2,398	2,327	-71	-3.0	2,146	2,327	181	8.5	8.5
Metals in ores, concentrates and scrap	681	595	-86	-12.6	475	595	120	25.3	25.3
Steel bars, rods, plates, sheets	407	477	70	17.2	422	477	56	13.2	13.2
Other iron and steel products	242	290	49	20.2	480	290	-190	-39.5	-39.5
Precious metals including alloys	728	584	-144	-19.8	449	584	135	30.2	30.2
Other non-ferrous metals and alloys	340	380	40	11.7	320	380	60	18.6	18.6
Chemicals and plastics	2,094	2,167	74	3.5	2,355	2,167	-187	-7.9	-7.9
Organic chemicals	477	500	23	4.8	625	500	-125	-20.0	-20.0
Plastic materials	729	741	12	1.6	751	741	-10	-1.4	-1.4
Other chemicals and related products	888	927	39	4.4	978	927	-52	-5.3	-5.3
Other industrial goods and materials	1,897	1,890	-8	-0.4	2,196	1,890	-306	-13.9	-13.9
Crude animal products	14	15	1	5.5	20	15	-5	-24.7	-24.7
Wool and man-made fibres	20	17	-3	-16.0	19	17	-2	-12.0	-12.0
Crude non-metallic minerals	61	72	11	18.4	72	72	0	-0.6	-0.6
Textile fabricated materials	182	179	-3	-1.7	202	179	-23	-11.4	-11.4
Metal fabricated basic products	735	734	-1	-0.1	853	734	-118	-13.9	-13.9
Rubber fabricated materials	82	78	-4	-4.8	82	78	-4	-4.9	-4.9
Oils, fats, animal and vegetable	98	99	1	0.7	112	99	-13	-11.5	-11.5
Non-metallic minerals	275	272	-2	-0.9	303	272	-31	-10.2	-10.2
Other fabricated materials	430	423	-6	-1.5	533	423	-110	-20.6	-20.6

Table 6-1 – continued

## Imports by commodity groupings, balance of payments basis, seasonally adjusted — Current dollars

	December	January	Change		Year to date			January 2010/ January 2009	
	2009	2010			2009	2010	Change		
	millions of dollars		percent		millions of dollars		percent		
<b>Machinery and equipment</b>	<b>8,595</b>	<b>8,387</b>	<b>-209</b>	<b>-2.4</b>	<b>9,765</b>	<b>8,387</b>	<b>-1,378</b>	<b>-14.1</b>	<b>-14.1</b>
Industrial and agricultural machinery	2,157	2,025	-131	-6.1	2,707	2,025	-681	-25.2	-25.2
Engines, turbines and electric motors	258	249	-10	-3.8	334	249	-85	-25.6	-25.6
Drilling mining machinery	118	110	-8	-6.9	159	110	-49	-30.8	-30.8
Excavating machinery	196	137	-59	-30.2	222	137	-86	-38.5	-38.5
Metal working machinery	122	123	1	0.9	160	123	-37	-23.3	-23.3
Other industrial machinery	1,164	1,105	-59	-5.0	1,481	1,105	-375	-25.3	-25.3
Agricultural machinery including tractors	298	302	3	1.1	351	302	-49	-13.9	-13.9
Aircraft and other transportation equipment	1,099	1,040	-59	-5.4	1,396	1,040	-356	-25.5	-25.5
Aircraft, engines, parts	712	652	-60	-8.4	866	652	-214	-24.7	-24.7
Other transportation equipment and parts	387	388	0	0.1	529	388	-142	-26.7	-26.7
Office machines and equipment	1,074	1,007	-68	-6.3	1,065	1,007	-59	-5.5	-5.5
Other machinery and equipment	4,265	4,315	50	1.2	4,597	4,315	-282	-6.1	-6.1
Other communication and related equipment	1,449	1,508	59	4.1	1,523	1,508	-15	-1.0	-1.0
Other equipment and tools	2,816	2,807	-9	-0.3	3,075	2,807	-267	-8.7	-8.7
<b>Automotive products</b>	<b>5,795</b>	<b>5,779</b>	<b>-17</b>	<b>-0.3</b>	<b>3,872</b>	<b>5,779</b>	<b>1,907</b>	<b>49.3</b>	<b>49.3</b>
Passenger autos and chassis	1,948	1,853	-95	-4.9	1,255	1,853	598	47.6	47.6
Trucks and other motor vehicles	1,376	1,495	118	8.6	959	1,495	536	55.8	55.8
Motor vehicle parts	2,471	2,431	-40	-1.6	1,657	2,431	774	46.7	46.7
<b>Other consumer goods</b>	<b>4,865</b>	<b>4,671</b>	<b>-194</b>	<b>-4.0</b>	<b>5,025</b>	<b>4,671</b>	<b>-354</b>	<b>-7.0</b>	<b>-7.0</b>
Apparel and footwear	893	851	-42	-4.7	1,075	851	-224	-20.8	-20.8
Apparel and apparel accessories	750	714	-36	-4.8	890	714	-176	-19.8	-19.8
Footwear	144	137	-6	-4.4	185	137	-48	-25.8	-25.8
Miscellaneous consumer goods	3,972	3,820	-152	-3.8	3,950	3,820	-130	-3.3	-3.3
Television, radios, phonographs	125	128	3	2.6	96	128	32	33.5	33.5
Printed matter	285	276	-9	-3.2	310	276	-34	-10.9	-10.9
Watches, sporting goods and toys	498	484	-14	-2.7	533	484	-49	-9.2	-9.2
House furnishings	716	721	4	0.6	754	721	-33	-4.4	-4.4
Photographic goods	198	198	0	0.2	239	198	-41	-17.1	-17.1
Miscellaneous end products	2,149	2,012	-137	-6.4	2,017	2,012	-5	-0.3	-0.3
<b>Special transactions trade</b>	<b>402</b>	<b>422</b>	<b>20</b>	<b>5.1</b>	<b>494</b>	<b>422</b>	<b>-72</b>	<b>-14.5</b>	<b>-14.5</b>
<b>Unallocated balance of payments adjustments</b>	<b>703</b>	<b>756</b>	<b>53</b>	<b>7.5</b>	<b>687</b>	<b>756</b>	<b>68</b>	<b>9.9</b>	<b>9.9</b>

**Table 6-2**  
**Imports by commodity groupings, balance of payments basis, seasonally adjusted — Constant dollars, 2002**

	December	January	Change	Year to date			January 2010/ January 2009		
	2009	2010		2009	2010	Change			
	millions of dollars		percent		millions of dollars		percent		
<b>Total</b>	<b>36,733</b>	<b>36,306</b>	<b>-428</b>	<b>-1.2</b>	<b>33,127</b>	<b>36,306</b>	<b>3,179</b>	<b>9.6</b>	<b>9.6</b>
<b>Agricultural and fishing products</b>	<b>2,406</b>	<b>2,377</b>	<b>-29</b>	<b>-1.2</b>	<b>2,288</b>	<b>2,377</b>	<b>89</b>	<b>3.9</b>	<b>3.9</b>
Fruits and vegetables	659	666	8	1.2	668	666	-2	-0.3	-0.3
Fresh fruits and berries	253	234	-20	-7.8	246	234	-13	-5.1	-5.1
Dried fruits, fruits and fruit preparations	113	106	-7	-6.5	122	106	-16	-13.2	-13.2
Fresh vegetables	164	192	28	16.9	176	192	16	9.1	9.1
Other vegetables and vegetable preparations	129	136	7	5.4	125	136	11	8.7	8.7
Other agricultural and fishing products	1,747	1,710	-37	-2.1	1,620	1,710	91	5.6	5.6
Live animals	18	13	-5	-26.3	17	13	-4	-21.6	-21.6
Meat and meat preparations	189	177	-12	-6.4	179	177	-2	-1.2	-1.2
Fish and marine animals	258	239	-19	-7.3	216	239	23	10.6	10.6
Cocoa, coffee, tea and other food preparations	344	361	17	4.9	314	361	46	14.7	14.7
Dairy produce, eggs and honey	51	49	-3	-4.9	40	49	9	21.2	21.2
Corn (maize) shelled	38	37	-2	-4.0	38	37	-1	-2.3	-2.3
Other cereals and cereal preparations	161	157	-3	-2.0	158	157	0	-0.1	-0.1
Sugar and sugar preparations	160	149	-10	-6.4	129	149	20	15.4	15.4
Fodder, feed, excluding unmilled cereal	102	93	-8	-8.2	97	93	-4	-4.0	-4.0
Beverages	270	277	7	2.7	296	277	-18	-6.2	-6.2
Tobacco	34	38	3	9.3	35	38	3	8.1	8.1
Crude vegetable products	121	118	-3	-2.2	99	118	19	19.0	19.0
Cotton	2	2	0	3.5	1	2	1	56.9	56.9
<b>Energy products</b>	<b>1,767</b>	<b>1,681</b>	<b>-86</b>	<b>-4.9</b>	<b>1,876</b>	<b>1,681</b>	<b>-195</b>	<b>-10.4</b>	<b>-10.4</b>
Crude petroleum	1,000	789	-212	-21.1	1,022	789	-233	-22.8	-22.8
Other energy products	766	892	126	16.4	854	892	38	4.4	4.4
Coal and other related products	274	432	158	57.8	282	432	150	53.4	53.4
Petroleum and coal products	492	460	-33	-6.6	572	460	-113	-19.7	-19.7
<b>Forestry products</b>	<b>276</b>	<b>283</b>	<b>8</b>	<b>2.7</b>	<b>250</b>	<b>283</b>	<b>33</b>	<b>13.3</b>	<b>13.3</b>
Forestry products	276	283	8	2.7	250	283	33	13.3	13.3
Crude wood products	48	51	3	5.7	54	51	-3	-6.0	-6.0
Wood fabricated materials	227	232	5	2.1	196	232	37	18.7	18.7
<b>Industrial goods and materials</b>	<b>5,859</b>	<b>5,879</b>	<b>20</b>	<b>0.3</b>	<b>5,593</b>	<b>5,879</b>	<b>286</b>	<b>5.1</b>	<b>5.1</b>
Metals and metal ores	1,700	1,682	-18	-1.1	1,488	1,682	194	13.0	13.0
Metals in ores, concentrates and scrap	383	310	-72	-18.9	362	310	-51	-14.2	-14.2
Steel bars, rods, plates, sheets	359	424	64	17.9	289	424	134	46.5	46.5
Other iron and steel products	196	237	41	20.9	291	237	-54	-18.6	-18.6
Precious metals including alloys	401	319	-82	-20.4	247	319	73	29.5	29.5
Other non-ferrous metals and alloys	361	391	30	8.4	299	391	92	30.9	30.9
Chemicals and plastics	2,016	2,085	69	3.4	1,995	2,085	91	4.5	4.5
Organic chemicals	368	369	1	0.2	502	369	-133	-26.5	-26.5
Plastic materials	809	816	6	0.8	699	816	116	16.6	16.6
Other chemicals and related products	839	901	62	7.3	793	901	107	13.5	13.5
Other industrial goods and materials	2,142	2,112	-31	-1.4	2,111	2,112	1	0.1	0.1
Crude animal products	21	19	-2	-11.2	31	19	-12	-39.2	-39.2
Wool and man-made fibres	26	23	-3	-13.0	23	23	0	-2.0	-2.0
Crude non-metallic minerals	49	59	10	19.9	68	59	-9	-13.7	-13.7
Textile fabricated materials	245	242	-3	-1.4	230	242	11	4.8	4.8
Metal fabricated basic products	776	785	9	1.1	780	785	5	0.6	0.6
Rubber fabricated materials	100	95	-5	-4.6	83	95	12	14.3	14.3
Oils, fats, animal and vegetable	95	94	0	-0.4	89	94	5	5.7	5.7
Non-metallic minerals	327	333	6	1.8	315	333	19	5.9	5.9
Other fabricated materials	504	463	-41	-8.2	491	463	-28	-5.8	-5.8

Table 6-2 – continued

## Imports by commodity groupings, balance of payments basis, seasonally adjusted — Constant dollars, 2002

	December 2009	January 2010	Change		Year to date			January 2010/ January 2009	
					2009	2010	Change		
	millions of dollars		percent		millions of dollars		percent		
<b>Machinery and equipment</b>	<b>12,047</b>	<b>11,947</b>	<b>-100</b>	<b>-0.8</b>	<b>11,948</b>	<b>11,947</b>	<b>-1</b>	<b>0.0</b>	<b>0.0</b>
Industrial and agricultural machinery	2,607	2,473	-134	-5.1	2,826	2,473	-352	-12.5	-12.5
Engines, turbines and electric motors	316	309	-7	-2.4	354	309	-46	-12.9	-12.9
Drilling mining machinery	130	124	-6	-4.7	149	124	-25	-17.0	-17.0
Excavating machinery	237	168	-69	-29.1	227	168	-58	-25.7	-25.7
Metal working machinery	154	157	2	1.6	175	157	-18	-10.3	-10.3
Other industrial machinery	1,396	1,333	-63	-4.5	1,538	1,333	-205	-13.4	-13.4
Agricultural machinery including tractors	373	383	10	2.7	383	383	1	0.1	0.1
Aircraft and other transportation equipment	1,279	1,240	-38	-3.0	1,436	1,240	-196	-13.6	-13.6
Aircraft, engines, parts	853	803	-50	-5.8	917	803	-114	-12.5	-12.5
Other transportation equipment and parts	426	438	12	2.8	519	438	-81	-15.7	-15.7
Office machines and equipment	2,152	2,075	-77	-3.6	2,062	2,075	12	0.6	0.6
Other machinery and equipment	6,010	6,158	148	2.5	5,624	6,158	535	9.5	9.5
Other communication and related equipment	2,399	2,512	113	4.7	2,203	2,512	310	14.1	14.1
Other equipment and tools	3,611	3,646	35	1.0	3,421	3,646	225	6.6	6.6
<b>Automotive products</b>	<b>7,207</b>	<b>7,153</b>	<b>-54</b>	<b>-0.8</b>	<b>4,390</b>	<b>7,153</b>	<b>2,763</b>	<b>62.9</b>	<b>62.9</b>
Passenger autos and chassis	2,395	2,233	-163	-6.8	1,497	2,233	735	49.1	49.1
Trucks and other motor vehicles	1,593	1,720	127	8.0	1,015	1,720	705	69.5	69.5
Motor vehicle parts	3,219	3,200	-19	-0.6	1,878	3,200	1,322	70.4	70.4
<b>Other consumer goods</b>	<b>6,198</b>	<b>5,985</b>	<b>-213</b>	<b>-3.4</b>	<b>5,605</b>	<b>5,985</b>	<b>380</b>	<b>6.8</b>	<b>6.8</b>
Apparel and footwear	1,228	1,194	-34	-2.8	1,293	1,194	-99	-7.7	-7.7
Apparel and apparel accessories	1,034	1,003	-31	-3.0	1,070	1,003	-68	-6.3	-6.3
Footwear	194	191	-3	-1.7	222	191	-31	-14.1	-14.1
Miscellaneous consumer goods	4,970	4,791	-179	-3.6	4,312	4,791	479	11.1	11.1
Television, radios, phonographs	213	216	3	1.5	132	216	84	63.9	63.9
Printed matter	350	341	-9	-2.5	353	341	-12	-3.4	-3.4
Watches, sporting goods and toys	677	666	-11	-1.6	632	666	35	5.5	5.5
House furnishings	919	931	12	1.3	813	931	118	14.5	14.5
Photographic goods	343	352	9	2.6	349	352	4	1.0	1.0
Miscellaneous end products	2,469	2,285	-184	-7.4	2,034	2,285	251	12.3	12.3
<b>Special transactions trade</b>	<b>461</b>	<b>478</b>	<b>16</b>	<b>3.6</b>	<b>507</b>	<b>478</b>	<b>-30</b>	<b>-5.8</b>	<b>-5.8</b>
<b>Unallocated balance of payments adjustments</b>	<b>512</b>	<b>523</b>	<b>11</b>	<b>2.1</b>	<b>671</b>	<b>523</b>	<b>-148</b>	<b>-22.0</b>	<b>-22.0</b>

**Table 7-1**  
**Imports from selected countries, customs basis, not seasonally adjusted — January**

	Agricultural and fishing products	Energy products	Forestry products	Industrial goods	Machinery and equipment	Automotive products	Consumer goods	Special transactions trade	Total
millions of dollars									
<b>United States</b>									
2009	1,384.4	1,029.5	153.6	3,875.6	4,047.4	1,967.6	1,744.9	288.3	<b>14,491.4</b>
2010	1,227.7	983.4	140.3	3,611.5	3,284.5	3,002.9	1,644.2	264.9	<b>14,159.4</b>
<b>Mexico</b>									
2009	148.1	0.0	0.4	120.5	456.2	231.4	80.1	2.7	<b>1,039.4</b>
2010	149.6	48.3	0.3	119.2	487.1	570.8	85.4	0.2	<b>1,460.9</b>
<b>Japan</b>									
2009	5.7	0.3	0.2	109.9	472.0	465.4	88.7	0.2	<b>1,142.5</b>
2010	5.9	0.4	0.1	89.5	295.7	371.5	78.7	0.2	<b>841.9</b>
<b>European Union</b>									
<b>Germany</b>									
2009	20.2	0.9	0.5	150.6	374.5	98.1	148.2	1.6	<b>794.7</b>
2010	16.6	1.1	0.7	143.2	240.3	167.9	130.9	0.5	<b>701.2</b>
<b>France</b>									
2009	53.4	26.9	0.3	65.4	155.1	5.9	127.3	0.3	<b>434.6</b>
2010	51.7	0.4	0.2	56.4	101.1	12.7	132.8	0.4	<b>355.8</b>
<b>United Kingdom</b>									
2009	22.9	148.9	0.3	110.2	263.1	20.1	93.3	2.1	<b>660.8</b>
2010	26.1	370.6	0.0	126.1	206.4	19.8	81.7	1.8	<b>832.7</b>
<b>Italy</b>									
2009	56.0	10.6	2.1	87.9	128.4	12.9	78.3	0.4	<b>376.7</b>
2010	45.3	0.1	1.1	69.5	125.1	9.5	73.4	0.2	<b>324.0</b>
<b>Other European Union</b>									
2009	95.6	49.6	4.8	258.6	332.0	37.4	398.1	0.6	<b>1,176.8</b>
2010	75.7	56.6	2.7	181.5	252.2	37.5	291.9	0.4	<b>898.6</b>
<b>Total</b>									
2009	248.2	236.9	8.0	672.7	1,253.1	174.4	845.3	5.0	<b>3,443.5</b>
2010	215.4	428.8	4.7	576.7	925.2	247.5	710.8	3.3	<b>3,112.3</b>
<b>Newly industrialized countries</b>									
<b>South Korea</b>									
2009	3.7	6.7	0.0	75.2	241.8	122.3	19.3	0.1	<b>469.2</b>
2010	4.9	3.7	0.0	55.0	156.3	171.1	14.0	0.0	<b>405.1</b>
<b>Hong Kong</b>									
2009	2.1	0.0	0.0	5.2	10.1	0.1	12.1	0.1	<b>29.9</b>
2010	2.0	0.0	0.1	1.6	10.4	0.1	8.8	0.0	<b>23.0</b>
<b>Taiwan</b>									
2009	4.7	0.0	0.8	86.8	189.2	13.4	33.1	0.1	<b>328.1</b>
2010	5.5	0.0	0.7	60.0	149.9	12.3	31.5	0.1	<b>260.0</b>
<b>Singapore</b>									
2009	3.6	0.0	0.4	143.0	47.6	0.3	21.6	0.0	<b>216.4</b>
2010	3.7	0.0	0.0	24.1	32.7	0.3	9.9	0.2	<b>70.9</b>
<b>Total</b>									
2009	14.1	6.7	1.2	310.3	488.7	136.1	86.2	0.3	<b>1,043.5</b>
2010	16.1	3.7	0.8	140.7	349.3	183.8	64.2	0.3	<b>759.0</b>
<b>Other countries</b>									
2009	669.4	1,499.3	55.4	1,541.1	2,203.1	121.9	1,922.4	45.0	<b>8,057.6</b>
2010	625.4	1,665.6	51.9	1,511.5	2,049.2	148.4	1,670.9	21.4	<b>7,744.4</b>
<b>Total</b>									
2009	<b>2,470.0</b>	<b>2,772.9</b>	<b>218.8</b>	<b>6,630.0</b>	<b>8,920.4</b>	<b>3,096.8</b>	<b>4,767.6</b>	<b>341.6</b>	<b>29,218.0</b>
2010	<b>2,240.3</b>	<b>3,130.2</b>	<b>198.2</b>	<b>6,049.0</b>	<b>7,391.0</b>	<b>4,524.7</b>	<b>4,254.3</b>	<b>290.4</b>	<b>28,078.1</b>

**Table 7-2**  
**Imports from selected countries, customs basis, not seasonally adjusted — Year to date**

	Agricultural and fishing products	Energy products	Forestry products	Industrial goods	Machinery and equipment	Automotive products	Consumer goods	Special transactions trade	Total
millions of dollars									
<b>United States</b>									
2009	1,384.4	1,029.5	153.6	3,875.6	4,047.4	1,967.6	1,744.9	288.3	<b>14,491.4</b>
2010	1,227.7	983.4	140.3	3,611.5	3,284.5	3,002.9	1,644.2	264.9	<b>14,159.4</b>
<b>Mexico</b>									
2009	148.1	0.0	0.4	120.5	456.2	231.4	80.1	2.7	<b>1,039.4</b>
2010	149.6	48.3	0.3	119.2	487.1	570.8	85.4	0.2	<b>1,460.9</b>
<b>Japan</b>									
2009	5.7	0.3	0.2	109.9	472.0	465.4	88.7	0.2	<b>1,142.5</b>
2010	5.9	0.4	0.1	89.5	295.7	371.5	78.7	0.2	<b>841.9</b>
<b>European Union</b>									
<b>Germany</b>									
2009	20.2	0.9	0.5	150.6	374.5	98.1	148.2	1.6	<b>794.7</b>
2010	16.6	1.1	0.7	143.2	240.3	167.9	130.9	0.5	<b>701.2</b>
<b>France</b>									
2009	53.4	26.9	0.3	65.4	155.1	5.9	127.3	0.3	<b>434.6</b>
2010	51.7	0.4	0.2	56.4	101.1	12.7	132.8	0.4	<b>355.8</b>
<b>United Kingdom</b>									
2009	22.9	148.9	0.3	110.2	263.1	20.1	93.3	2.1	<b>660.8</b>
2010	26.1	370.6	0.0	126.1	206.4	19.8	81.7	1.8	<b>832.7</b>
<b>Italy</b>									
2009	56.0	10.6	2.1	87.9	128.4	12.9	78.3	0.4	<b>376.7</b>
2010	45.3	0.1	1.1	69.5	125.1	9.5	73.4	0.2	<b>324.0</b>
<b>Other European Union</b>									
2009	95.6	49.6	4.8	258.6	332.0	37.4	398.1	0.6	<b>1,176.8</b>
2010	75.7	56.6	2.7	181.5	252.2	37.5	291.9	0.4	<b>898.6</b>
<b>Total</b>									
2009	248.2	236.9	8.0	672.7	1,253.1	174.4	845.3	5.0	<b>3,443.5</b>
2010	215.4	428.8	4.7	576.7	925.2	247.5	710.8	3.3	<b>3,112.3</b>
<b>Newly industrialized countries</b>									
<b>South Korea</b>									
2009	3.7	6.7	0.0	75.2	241.8	122.3	19.3	0.1	<b>469.2</b>
2010	4.9	3.7	0.0	55.0	156.3	171.1	14.0	0.0	<b>405.1</b>
<b>Hong Kong</b>									
2009	2.1	0.0	0.0	5.2	10.1	0.1	12.1	0.1	<b>29.9</b>
2010	2.0	0.0	0.1	1.6	10.4	0.1	8.8	0.0	<b>23.0</b>
<b>Taiwan</b>									
2009	4.7	0.0	0.8	86.8	189.2	13.4	33.1	0.1	<b>328.1</b>
2010	5.5	0.0	0.7	60.0	149.9	12.3	31.5	0.1	<b>260.0</b>
<b>Singapore</b>									
2009	3.6	0.0	0.4	143.0	47.6	0.3	21.6	0.0	<b>216.4</b>
2010	3.7	0.0	0.0	24.1	32.7	0.3	9.9	0.2	<b>70.9</b>
<b>Total</b>									
2009	14.1	6.7	1.2	310.3	488.7	136.1	86.2	0.3	<b>1,043.5</b>
2010	16.1	3.7	0.8	140.7	349.3	183.8	64.2	0.3	<b>759.0</b>
<b>Other countries</b>									
2009	669.4	1,499.3	55.4	1,541.1	2,203.1	121.9	1,922.4	45.0	<b>8,057.6</b>
2010	625.4	1,665.6	51.9	1,511.5	2,049.2	148.4	1,670.9	21.4	<b>7,744.4</b>
<b>Total</b>									
2009	<b>2,470.0</b>	<b>2,772.9</b>	<b>218.8</b>	<b>6,630.0</b>	<b>8,920.4</b>	<b>3,096.8</b>	<b>4,767.6</b>	<b>341.6</b>	<b>29,218.0</b>
2010	<b>2,240.3</b>	<b>3,130.2</b>	<b>198.2</b>	<b>6,049.0</b>	<b>7,391.0</b>	<b>4,524.7</b>	<b>4,254.3</b>	<b>290.4</b>	<b>28,078.1</b>

**Table 8**  
**Imports by country, customs basis, not seasonally adjusted**

	January		January to January		Change January to January 2010/ January to January 2009
	2009	2010	2009	2010	
millions of dollars					
<b>North America</b>					
Canada	243.5	387.2	243.5	387.2	59.0
Greenland	2.9	0.1	2.9	0.1	-97.9
Mexico	1,039.4	1,460.9	1,039.4	1,460.9	40.6
Saint Pierre and Miquelon	0.0	0.1	0.0	0.1	121.1
United States	14,491.4	14,159.4	14,491.4	14,159.4	-2.3
<b>Total</b>	<b>15,777.2</b>	<b>16,007.6</b>	<b>15,777.2</b>	<b>16,007.6</b>	<b>1.5</b>
<b>Western Europe</b>					
Andorra	0.0	0.0	0.0	0.0	96.8
Austria	104.4	64.4	104.4	64.4	-38.4
Belgium	87.5	82.5	87.5	82.5	-5.7
Denmark	71.7	110.2	71.7	110.2	53.8
Faeroe Islands	0.1	0.2	0.1	0.2	60.1
Finland	80.1	42.1	80.1	42.1	-47.5
France	434.6	355.8	434.6	355.8	-18.1
Germany	794.7	701.2	794.7	701.2	-11.8
Gibraltar	0.0	0.0	0.0	0.0	-100.0
Greece	11.7	7.3	11.7	7.3	-37.1
Iceland	1.7	2.5	1.7	2.5	48.9
Italy	376.7	324.0	376.7	324.0	-14.0
Luxembourg	9.3	8.6	9.3	8.6	-7.6
Malta	2.3	1.0	2.3	1.0	-56.3
Netherlands	121.5	89.8	121.5	89.8	-26.1
Norway	239.3	254.4	239.3	254.4	6.3
Portugal	20.3	18.7	20.3	18.7	-7.8
Republic of Ireland (Eire)	235.1	129.1	235.1	129.1	-45.1
Spain	94.5	65.1	94.5	65.1	-31.2
Sweden	141.4	137.0	141.4	137.0	-3.1
Switzerland	213.1	231.0	213.1	231.0	8.4
United Kingdom	660.8	832.7	660.8	832.7	26.0
<b>Total</b>	<b>3,700.7</b>	<b>3,457.6</b>	<b>3,700.7</b>	<b>3,457.6</b>	<b>-6.6</b>
<b>Other Europe</b>					
Albania	0.1	0.3	0.1	0.3	165.3
Armenia	2.6	2.8	2.6	2.8	7.1
Azerbaijan	106.3	0.0	106.3	0.0	-100.0
Belarus	4.3	0.5	4.3	0.5	-88.1
Bosnia and Herzegovina	0.7	0.5	0.7	0.5	-31.7
Bulgaria	17.1	5.0	17.1	5.0	-70.7
Croatia	1.9	1.6	1.9	1.6	-14.6
Czech Republic	32.9	30.1	32.9	30.1	-8.5
Estonia	2.1	1.7	2.1	1.7	-19.6
Georgia	9.5	8.3	9.5	8.3	-12.7
Hungary	37.3	21.9	37.3	21.9	-41.2
Kazakhstan	10.7	11.4	10.7	11.4	6.4
Kyrgyzstan	0.4	0.0	0.4	0.0	-99.5
Latvia	0.9	0.4	0.9	0.4	-58.3
Lithuania	18.7	2.4	18.7	2.4	-87.0
Macedonia (Former Yugoslav Republic of Macedonia)	1.2	0.5	1.2	0.5	-54.5
Montenegro	0.0	0.0	0.0	0.0	-97.7
Poland	64.6	53.2	64.6	53.2	-17.6
Republic of Moldova	0.3	0.1	0.3	0.1	-61.3
Romania	11.9	10.6	11.9	10.6	-10.4
Russian Federation	78.0	312.9	78.0	312.9	301.2
Serbia	1.5	1.2	1.5	1.2	-25.5
Slovakia	6.7	12.2	6.7	12.2	81.7
Slovenia	4.6	5.1	4.6	5.1	10.5
Tajikistan	0.0	0.0	0.0	0.0	-49.2
Turkmenistan	0.0	0.0	0.0	0.0	3.1
Ukraine	17.9	4.1	17.9	4.1	-77.4
Uzbekistan	0.0	0.3	0.0	0.3	...
<b>Total</b>	<b>432.3</b>	<b>487.1</b>	<b>432.3</b>	<b>487.1</b>	<b>12.7</b>

Table 8 – continued

## Imports by country, customs basis, not seasonally adjusted

	January		January to January		Change
	2009	2010	2009	2010	January to January 2010/ January to January 2009
millions of dollars					
<b>Middle East</b>					
Bahrain	1.6	0.2	1.6	0.2	-87.2
Cyprus	0.2	0.1	0.2	0.1	-43.2
Egypt	11.8	7.5	11.8	7.5	-36.2
Eritrea	0.0	0.0	0.0	0.0	105.1
Ethiopia	1.2	1.0	1.2	1.0	-20.1
Iran	2.4	3.1	2.4	3.1	28.4
Iraq	199.1	211.6	199.1	211.6	6.3
Israel	81.6	73.4	81.6	73.4	-10.1
Jordan	2.2	1.9	2.2	1.9	-13.4
Kuwait	0.0	0.0	0.0	0.0	442.6
Lebanon	1.4	0.9	1.4	0.9	-36.2
Libya	0.0	0.0	0.0	0.0	197.4
Oman	0.1	0.3	0.1	0.3	250.2
Qatar	0.0	31.4	0.0	31.4	...
Saudi Arabia	162.4	148.0	162.4	148.0	-8.9
Somalia	0.0	0.0	0.0	0.0	806.8
Sudan	4.8	6.9	4.8	6.9	42.5
Syria	0.3	0.8	0.3	0.8	168.5
Turkey	100.7	42.8	100.7	42.8	-57.5
United Arab Emirates	3.3	2.8	3.3	2.8	-16.9
Yemen	0.0	0.0	0.0	0.0	-56.5
<b>Total</b>	<b>573.3</b>	<b>532.6</b>	<b>573.3</b>	<b>532.6</b>	<b>-7.1</b>
<b>Other Africa</b>					
Algeria	314.1	477.9	314.1	477.9	52.1
Angola	120.8	78.9	120.8	78.9	-34.6
Antarctica	0.0	0.0	0.0	0.0	-100.0
Benin	0.0	0.0	0.0	0.0	-74.7
Botswana	0.1	6.9	0.1	6.9	...
Bouvet Island	0.0	0.0	0.0	0.0	-100.0
Burkina Faso	0.0	0.0	0.0	0.0	-99.8
Burundi	0.1	0.0	0.1	0.0	-98.3
Cameroon	0.4	0.3	0.4	0.3	-22.5
Cape Verde	0.0	0.0	0.0	0.0	20.3
Central African Republic	0.0	0.0	0.0	0.0	560.3
Chad	0.0	0.1	0.0	0.1	...
Comoros	0.0	0.0	0.0	0.0	-81.4
Congo	0.2	0.2	0.2	0.2	8.2
Democratic Republic of the Congo	0.1	0.0	0.1	0.0	-77.0
Djibouti	0.0	0.0	0.0	0.0	...
Equatorial Guinea	55.0	0.0	55.0	0.0	-100.0
Gabon	0.4	0.0	0.4	0.0	-97.3
Gambia	0.0	0.0	0.0	0.0	-84.4
Ghana	4.7	1.9	4.7	1.9	-60.7
Guinea	6.4	0.0	6.4	0.0	-99.9
Guinea-Bissau	0.0	0.0	0.0	0.0	446.3
Ivory Coast	10.8	15.4	10.8	15.4	42.1
Kenya	1.3	1.7	1.3	1.7	29.2
Lesotho	0.2	0.8	0.2	0.8	221.2
Liberia	1.4	5.5	1.4	5.5	286.9
Madagascar	4.8	0.5	4.8	0.5	-89.6
Malawi	0.2	4.1	0.2	4.1	...
Mali	0.0	0.0	0.0	0.0	-71.7
Mauritania	0.1	0.0	0.1	0.0	-97.6
Mauritius	1.5	1.0	1.5	1.0	-29.1
Morocco	24.0	12.9	24.0	12.9	-46.4
Mozambique	0.0	0.0	0.0	0.0	-83.3
Namibia	47.0	6.1	47.0	6.1	-87.0
Niger	0.0	0.0	0.0	0.0	-35.6
Nigeria	90.0	48.7	90.0	48.7	-45.9
Rwanda	0.0	0.1	0.0	0.1	199.7
Saint Helena	0.0	0.0	0.0	0.0	...
Sao Tome and Principe	0.0	0.0	0.0	0.0	-98.7
Senegal	0.0	0.1	0.0	0.1	202.3
Seychelles	0.4	0.0	0.4	0.0	-98.5



Table 8 – continued

## Imports by country, customs basis, not seasonally adjusted

	January		January to January		Change
	2009	2010	2009	2010	January to January 2010/ January to January 2009
millions of dollars					
Sierra Leone	0.0	0.0	0.0	0.0	28.9
South Africa	40.7	53.3	40.7	53.3	31.0
Swaziland	0.1	0.1	0.1	0.1	44.5
Togo	0.2	0.1	0.2	0.1	-66.5
Tunisia	2.9	4.3	2.9	4.3	47.5
Uganda	0.1	0.2	0.1	0.2	56.4
United Republic of Tanzania	0.6	0.2	0.6	0.2	-61.4
Western Sahara	0.0	0.0	0.0	0.0	81.8
Zambia	0.0	0.1	0.0	0.1	89.9
Zimbabwe	0.6	0.2	0.6	0.2	-70.7
<b>Total</b>	<b>729.4</b>	<b>721.5</b>	<b>729.4</b>	<b>721.5</b>	<b>-1.1</b>
<b>Other Asia</b>					
Afghanistan	0.2	0.2	0.2	0.2	23.5
Bangladesh	64.3	56.5	64.3	56.5	-12.2
Bhutan	0.0	0.0	0.0	0.0	-100.0
British Indian Ocean Territory	0.0	0.0	0.0	0.0	-100.0
Brunei Darussalam	0.1	0.0	0.1	0.0	-94.9
Cambodia	29.6	30.4	29.6	30.4	2.6
China	3,646.5	3,058.0	3,646.5	3,058.0	-16.1
Hong Kong	29.9	23.0	29.9	23.0	-23.0
India	181.5	146.8	181.5	146.8	-19.1
Indonesia	94.1	73.3	94.1	73.3	-22.1
Japan	1,142.5	841.9	1,142.5	841.9	-26.3
Laos	0.6	0.7	0.6	0.7	17.8
Macao	2.2	0.7	2.2	0.7	-70.2
Malaysia	181.0	160.0	181.0	160.0	-11.6
Maldives	0.0	0.0	0.0	0.0	665.1
Mongolia	13.1	11.9	13.1	11.9	-9.0
Myanmar	0.0	0.0	0.0	0.0	...
Nepal	0.9	0.8	0.9	0.8	-9.7
North Korea	0.0	0.0	0.0	0.0	552.9
Pakistan	17.6	18.8	17.6	18.8	7.0
Philippines	49.6	62.2	49.6	62.2	25.3
Singapore	216.4	70.9	216.4	70.9	-67.2
South Korea	469.2	405.1	469.2	405.1	-13.7
Sri Lanka	11.5	9.5	11.5	9.5	-17.3
Taiwan	328.1	260.0	328.1	260.0	-20.8
Thailand	181.5	182.8	181.5	182.8	0.7
Timor-Leste	0.4	0.1	0.4	0.1	-73.1
Viet Nam	100.0	86.2	100.0	86.2	-13.8
<b>Total</b>	<b>6,760.9</b>	<b>5,499.9</b>	<b>6,760.9</b>	<b>5,499.9</b>	<b>-18.7</b>
<b>Oceania</b>					
American Samoa	0.0	0.0	0.0	0.0	-13.1
Australia	136.4	106.5	136.4	106.5	-21.9
Christmas Island	0.0	0.0	0.0	0.0	250.3
Cocos (Keeling) Islands	0.0	0.0	0.0	0.0	33.1
Cook Islands	0.0	0.0	0.0	0.0	125.9
Fiji	0.5	0.5	0.5	0.5	-5.2
French Polynesia	0.1	0.0	0.1	0.0	-88.0
Guam	0.0	0.0	0.0	0.0	-91.2
Heard Island and McDonald Islands	0.0	0.0	0.0	0.0	-100.0
Kiribati	0.1	0.0	0.1	0.0	-95.3
Nauru	0.0	0.0	0.0	0.0	855.0
New Caledonia	0.1	0.0	0.1	0.0	-99.1
New Zealand	33.3	25.4	33.3	25.4	-23.8
Niue	0.0	0.0	0.0	0.0	...
Norfolk Island	0.0	0.0	0.0	0.0	-100.0
Papua New Guinea	0.1	0.0	0.1	0.0	-66.2
Pitcairn	0.0	0.0	0.0	0.0	-89.2
Samoa	0.0	0.0	0.0	0.0	...
Solomon Islands	0.0	0.0	0.0	0.0	...
Tonga	0.0	0.0	0.0	0.0	-93.4
United States Minor Outlying Islands	0.5	0.4	0.5	0.4	-9.6

Table 8 – continued

## Imports by country, customs basis, not seasonally adjusted

	January		January to January		Change
	2009	2010	2009	2010	January to January 2010/ January to January 2009
millions of dollars					
Vanuatu	0.0	0.0	0.0	0.0	-52.8
Wallis and Futuna	0.0	0.0	0.0	0.0	...
<b>Total</b>	<b>171.1</b>	<b>133.0</b>	<b>171.1</b>	<b>133.0</b>	<b>-22.3</b>
<b>South America</b>					
Argentina	59.4	39.5	59.4	39.5	-33.5
Bolivia	4.8	4.0	4.8	4.0	-17.3
Brazil	231.7	276.1	231.7	276.1	19.2
Chile	146.0	280.6	146.0	280.6	92.2
Colombia	51.3	34.0	51.3	34.0	-33.8
Ecuador	21.2	15.5	21.2	15.5	-27.1
Falkland Islands (Malvinas)	0.0	0.0	0.0	0.0	...
Guyana	20.2	17.9	20.2	17.9	-11.4
Paraguay	0.7	1.1	0.7	1.1	59.3
Peru	206.5	271.7	206.5	271.7	31.6
Suriname	37.7	29.8	37.7	29.8	-21.0
Uruguay	17.3	9.1	17.3	9.1	-47.3
Venezuela	91.7	9.6	91.7	9.6	-89.5
<b>Total</b>	<b>888.6</b>	<b>988.9</b>	<b>888.6</b>	<b>988.9</b>	<b>11.3</b>
<b>Central America Antilles</b>					
Anguilla	0.1	0.0	0.1	0.0	-45.1
Antigua and Barbuda	0.1	0.0	0.1	0.0	-81.3
Aruba	21.4	0.1	21.4	0.1	-99.6
Bahamas	0.7	0.3	0.7	0.3	-59.9
Barbados	1.5	1.5	1.5	1.5	0.7
Belize	0.8	0.3	0.8	0.3	-55.1
Bermuda	0.0	0.1	0.0	0.1	457.8
British Virgin Islands	0.0	0.1	0.0	0.1	253.5
Cayman Islands	0.0	0.1	0.0	0.1	...
Costa Rica	26.8	31.3	26.8	31.3	16.7
Cuba	29.4	38.4	29.4	38.4	30.7
Dominica	0.0	0.0	0.0	0.0	-28.2
Dominican Republic	11.4	9.2	11.4	9.2	-19.3
El Salvador	12.9	2.5	12.9	2.5	-80.8
Grenada	0.0	0.1	0.0	0.1	...
Guatemala	20.1	36.9	20.1	36.9	83.4
Haiti	1.3	2.0	1.3	2.0	57.0
Honduras	10.4	11.9	10.4	11.9	14.4
Jamaica	8.0	7.1	8.0	7.1	-10.9
Montserrat	0.0	0.0	0.0	0.0	716.5
Netherlands Antilles	0.0	0.0	0.0	0.0	2.5
Nicaragua	7.2	7.3	7.2	7.3	1.4
Panama	1.6	7.8	1.6	7.8	405.8
Saint Kitts and Nevis	0.3	0.5	0.3	0.5	32.9
Saint Lucia	0.0	0.0	0.0	0.0	-54.6
Saint Vincent and the Grenadines	0.0	0.0	0.0	0.0	-30.6
Trinidad and Tobago	30.5	92.3	30.5	92.3	202.5
Turks and Caicos Islands	0.0	0.0	0.0	0.0	-6.9
<b>Total</b>	<b>184.5</b>	<b>249.9</b>	<b>184.5</b>	<b>249.9</b>	<b>35.4</b>
<b>All countries</b>	<b>29,218.0</b>	<b>28,078.1</b>	<b>29,218.0</b>	<b>28,078.1</b>	<b>-3.9</b>

**Table 9-1  
Imports by province of clearance, customs basis, not seasonally adjusted — January**

	Agricultural and fishing products	Energy products	Forestry products	Industrial goods	Machinery and equipment	Automotive products	Consumer goods	Special transactions trade	Total
millions of dollars									
Newfoundland and Labrador									
2009	2.7	270.4	0.0	4.2	7.2	0.1	0.6	0.0	<b>285.2</b>
2010	2.1	303.0	0.0	4.9	10.9	0.0	0.3	0.0	<b>321.3</b>
Prince Edward Island									
2009	0.1	0.0	0.0	15.9	0.1	0.0	0.0	0.0	<b>16.2</b>
2010	0.1	0.0	0.0	5.2	0.0	0.0	0.0	0.0	<b>5.5</b>
Nova Scotia									
2009	32.1	162.3	1.2	60.9	80.3	86.8	10.8	1.4	<b>435.8</b>
2010	29.7	144.7	1.1	67.7	51.2	161.2	11.7	1.3	<b>468.5</b>
New Brunswick									
2009	30.5	374.6	9.6	65.8	56.2	12.4	12.2	0.2	<b>561.4</b>
2010	24.6	550.5	8.9	101.7	52.5	28.9	14.0	0.4	<b>781.5</b>
Quebec									
2009	409.5	884.9	71.8	1,246.0	1,538.4	128.4	1,014.0	21.1	<b>5,314.0</b>
2010	339.1	995.1	55.9	1,139.7	1,173.9	143.0	887.3	8.7	<b>4,742.7</b>
Ontario									
2009	1,357.8	493.6	79.5	3,489.6	4,816.6	2,343.5	2,883.9	292.4	<b>15,756.7</b>
2010	1,231.7	636.3	73.4	3,463.8	4,252.7	3,778.5	2,652.6	269.7	<b>16,358.8</b>
Manitoba									
2009	83.0	14.0	7.1	303.8	507.7	125.3	131.5	7.1	<b>1,179.4</b>
2010	71.0	33.3	5.3	241.8	392.5	78.6	109.2	1.1	<b>932.9</b>
Saskatchewan									
2009	27.3	33.2	1.5	207.4	278.8	78.6	17.3	3.3	<b>647.4</b>
2010	27.1	34.1	1.1	165.8	217.7	59.5	17.0	1.0	<b>523.3</b>
Alberta									
2009	162.7	313.7	8.5	548.6	671.1	62.2	95.0	6.1	<b>1,867.9</b>
2010	160.7	211.2	6.7	380.4	459.4	58.8	80.3	4.6	<b>1,362.0</b>
British Columbia									
2009	364.4	225.3	39.6	687.6	961.4	259.7	602.3	10.0	<b>3,150.4</b>
2010	354.2	221.5	45.8	478.0	773.9	216.0	481.8	3.5	<b>2,574.6</b>
Yukon, Northwest Territories and Nunavut									
2009	0.0	0.8	0.0	0.1	2.7	0.0	0.0	0.0	<b>3.7</b>
2010	0.0	0.4	0.0	0.0	6.4	0.0	0.0	0.0	<b>6.9</b>
<b>Total</b>									
<b>2009</b>	<b>2,470.0</b>	<b>2,772.9</b>	<b>218.8</b>	<b>6,630.0</b>	<b>8,920.4</b>	<b>3,096.8</b>	<b>4,767.6</b>	<b>341.6</b>	<b>29,218.0</b>
<b>2010</b>	<b>2,240.3</b>	<b>3,130.2</b>	<b>198.2</b>	<b>6,049.0</b>	<b>7,391.0</b>	<b>4,524.7</b>	<b>4,254.3</b>	<b>290.4</b>	<b>28,078.1</b>

**Table 9-2**  
**Imports by province of clearance, customs basis, not seasonally adjusted — Year to date**

	Agricultural and fishing products	Energy products	Forestry products	Industrial goods	Machinery and equipment	Automotive products	Consumer goods	Special transactions trade	Total
millions of dollars									
Newfoundland and Labrador									
2009	2.7	270.4	0.0	4.2	7.2	0.1	0.6	0.0	<b>285.2</b>
2010	2.1	303.0	0.0	4.9	10.9	0.0	0.3	0.0	<b>321.3</b>
Prince Edward Island									
2009	0.1	0.0	0.0	15.9	0.1	0.0	0.0	0.0	<b>16.2</b>
2010	0.1	0.0	0.0	5.2	0.0	0.0	0.0	0.0	<b>5.5</b>
Nova Scotia									
2009	32.1	162.3	1.2	60.9	80.3	86.8	10.8	1.4	<b>435.8</b>
2010	29.7	144.7	1.1	67.7	51.2	161.2	11.7	1.3	<b>468.5</b>
New Brunswick									
2009	30.5	374.6	9.6	65.8	56.2	12.4	12.2	0.2	<b>561.4</b>
2010	24.6	550.5	8.9	101.7	52.5	28.9	14.0	0.4	<b>781.5</b>
Quebec									
2009	409.5	884.9	71.8	1,246.0	1,538.4	128.4	1,014.0	21.1	<b>5,314.0</b>
2010	339.1	995.1	55.9	1,139.7	1,173.9	143.0	887.3	8.7	<b>4,742.7</b>
Ontario									
2009	1,357.8	493.6	79.5	3,489.6	4,816.6	2,343.5	2,883.9	292.4	<b>15,756.7</b>
2010	1,231.7	636.3	73.4	3,463.8	4,252.7	3,778.5	2,652.6	269.7	<b>16,358.8</b>
Manitoba									
2009	83.0	14.0	7.1	303.8	507.7	125.3	131.5	7.1	<b>1,179.4</b>
2010	71.0	33.3	5.3	241.8	392.5	78.6	109.2	1.1	<b>932.9</b>
Saskatchewan									
2009	27.3	33.2	1.5	207.4	278.8	78.6	17.3	3.3	<b>647.4</b>
2010	27.1	34.1	1.1	165.8	217.7	59.5	17.0	1.0	<b>523.3</b>
Alberta									
2009	162.7	313.7	8.5	548.6	671.1	62.2	95.0	6.1	<b>1,867.9</b>
2010	160.7	211.2	6.7	380.4	459.4	58.8	80.3	4.6	<b>1,362.0</b>
British Columbia									
2009	364.4	225.3	39.6	687.6	961.4	259.7	602.3	10.0	<b>3,150.4</b>
2010	354.2	221.5	45.8	478.0	773.9	216.0	481.8	3.5	<b>2,574.6</b>
Yukon, Northwest Territories and Nunavut									
2009	0.0	0.8	0.0	0.1	2.7	0.0	0.0	0.0	<b>3.7</b>
2010	0.0	0.4	0.0	0.0	6.4	0.0	0.0	0.0	<b>6.9</b>
<b>Total</b>									
<b>2009</b>	<b>2,470.0</b>	<b>2,772.9</b>	<b>218.8</b>	<b>6,630.0</b>	<b>8,920.4</b>	<b>3,096.8</b>	<b>4,767.6</b>	<b>341.6</b>	<b>29,218.0</b>
<b>2010</b>	<b>2,240.3</b>	<b>3,130.2</b>	<b>198.2</b>	<b>6,049.0</b>	<b>7,391.0</b>	<b>4,524.7</b>	<b>4,254.3</b>	<b>290.4</b>	<b>28,078.1</b>

# Technical notes

---

## The Canadian international merchandise trade statistical program

### I Introduction

The objective of this text is to provide a general overview of the Canadian International Merchandise Trade Statistical Program with special reference to concepts and definitions. The text is intended for the general user and simplicity is emphasized. More technical details can be obtained from the International Trade Division upon request.

### II Conceptual framework

**1. Objectives and coverage:** The primary objective of the Canadian International Merchandise Trade Statistical Program is to measure the change in the stock of material resources of the country resulting from the movement of merchandise into or out of Canada. Information on imports and exports are inputs into the System of National Accounts particularly in the Balance of Payments and Gross Domestic Product, and are used in the formulation of trade and budgetary policies. Governments, importers, exporters, manufacturers and shipping companies use trade statistics to:

- monitor import penetration and export performance;
- monitor commodity price and volume changes;
- examine transport implications.

**2. Trade statistics - Customs basis/Balance of Payments basis:** Merchandise trade statistics are reported and presented on two different bases: Customs basis and Balance of Payment basis. (B.O.P.)

When goods are imported into or exported from Canada, declarations must be filed with Customs giving such information as description and value of the goods, origin and port of clearance of commodities and the mode of transport. Most of this information is required for the purposes of Customs Administration. Statistics developed from administrative records of Customs are commonly referred to as Customs based trade statistics.

Customs based trade statistics are more accurate at measuring imports than they are at measuring exports. This is the case because Customs are typically more vigilant with respect to goods entering the country than they are with goods leaving the country.

Customs based export statistics may understate and/or incorrectly portray the destination of exports. Export statistics are understated when the proper documentation is not filed with Customs. Exports are incorrectly portrayed when the country of final destination is inaccurately reported on the customs documentation - this occurs most frequently when goods are routed through an intermediary country before continuing on to their final destination.

Statistics Canada does not have a measure of undercoverage but periodically conducts reconciliation exercises with its major trading partners, excluding the United States.

On January 1st, 1990, Canada entered into a Memorandum of Understanding (MOU) with the United States concerning the exchange of import data. As a consequence, each administration is using the other's import data to replace its own export data. Canada's international merchandise trade statistics are, therefore, no longer derived exclusively from the administrative records of Canada Border Services Agency, but from United States Customs records as well.

Customs based information is adjusted to conform with the National Accounts concepts and definitions. The adjustments to derive Balance of Payments based trade data include trade definition, valuation and timing related adjustments. The principal difference between the two trade concepts is that Customs based merchandise trade statistics cover the physical movement of goods as they are reflected on customs documents, while Balance of Payments adjusted data are intended to cover all economic transactions between residents and non-residents which involve merchandise trade. This section describes the concepts and processes pertaining to the Customs based trade statistics only. (For further information on Balance of Payments adjusted data see the publication *"Canada's Balance of International Payments" Catalogue no. 67-001-XPB*).

**3. System of trade:** Canadian trade statistics are compiled according to the "General" system of trade as defined by the United Nations Statistical Office. Under this system, imports include all goods which have crossed Canada's territorial boundary, whether for immediate consumption in Canada or stored in bonded Customs warehouses. Domestic exports include goods grown, extracted or manufactured in Canada, including goods of foreign origin which have been materially transformed in Canada. Re-exports are exports of goods of foreign origin which have not been materially transformed in Canada, including foreign goods withdrawn for export from bonded customs warehouses. Total exports are the sum of Domestic exports and Re-exports. Thus the general trade system, in principal, presents all goods entering the country (imports) and all goods leaving the country (exports). It differs from the "Special" system of trade in the treatment of imported goods into Customs bonded warehouses. Under the "Special" system, these goods are counted only if and when they are withdrawn from Customs warehouses for home consumption. They are not counted in export statistics unless they have first cleared Customs.

Conceptually, under the "General" system, the statistical frontier coincides with the geographical boundary, while under the "Special" system, it coincides with the Customs boundary.

**4. Valuation:** For Customs purposes, imports are recorded at values established according to the provisions of the Customs Act, which, since January 1st, 1985, reflects valuation methods based on the General Agreement on Tariffs and Trade (GATT) Valuation Code System. It generally requires the value for duty of imported goods be equivalent to the transaction value or the price actually paid.

To determine the transaction value of imported goods, all transportation and associated costs arising in respect of the goods being appraised prior to and at the place of direct shipment to Canada, are to be added to the price of the goods. Therefore, Canadian imports are valued F.O.B. (Free on Board), place of direct shipment to Canada. It excludes freight and insurance costs in bringing the goods to Canada from the point of direct shipment.

To countries other than the United States, exports are, in principal, valued or recorded at the values declared on export documents which usually reflect the transaction value, i.e. actual selling price, or in the case of a non-arm's length transaction, the transfer price used for company accounting purposes. Canadian exports to overseas countries are valued at F.O.B. port of exit, including domestic freight charges to that point but net of discounts and allowances. As of January, 1990, Canadian exports to the U.S. are valued F.O.B. point of exit from Canada. Prior to 1990, they were valued F.O.B. place of lading net of freight charges, discounts and allowances.

**5. Statistical period:** The reference period is the calendar month and the calendar year. The closing of the statistical month for imports and Canadian exports to the United States is defined as the last calendar day of the month, based as closely as practicable on the date of clearance from Customs.

The closing of the statistical month for exports, to countries other than the United States, is also defined as the last calendar day of the month. Those export documents which are received too late for incorporation in the current month are assigned to the month the transaction took place. If a monthly summary report from a high volume exporter is not received on time, the data are imputed for the current month and revised with the trade value in the following statistical month.

**6. Trading partner attribution (Country of origin/destination):** Exports are attributed to the country, which is the last known destination of the goods at the time of export. Exports to the United States are attributed to the state of destination.

Imports are attributed to their country of origin, that is, the country in which the goods were grown, extracted or manufactured in accordance to the rules of origin administered by Canada Border Services Agency. Imports from the United States are attributed to the state of origin. Prior to 1988, most imports were attributed to the country of export/consignment with the exception of imports from Central and South America.

**7. Principal trading areas:** The “principal trading areas” are country groupings defined as follows:

**United States:** (includes trade with Puerto Rico and the U.S. Virgin Islands).

**Japan:**

**E.U. (European Union):** Austria, Belgium, Bulgaria, Cyprus, Czech Republic, Denmark, Estonia, Finland, France, Germany, Greece, Hungary, Ireland, Italy, Latvia, Lithuania, Luxembourg, Malta, Netherlands, Poland, Portugal, Romania, Slovakia, Slovenia, Spain, Sweden and United Kingdom.

**Other O.E.C.D.:** Australia, Canada, Iceland, Mexico, New Zealand, Norway, South Korea, Switzerland, and Turkey. (The E.U. countries, United States, and Japan are also members of O.E.C.D. - the Organization for Economic Co-operation and Development).

**Other countries:** This group includes all countries and territories other than the United States, Japan, E.U. and other O.E.C.D.

**8. Legal framework:** Import and export statistics with countries other than the United States are derived from information contained on administrative records collected by the Canada Border Services Agency under the Customs Act. Copies of these documents (or information therefrom) are sent to Statistics Canada in accordance with Section 25 of the Statistics Act. It follows that the disclosure of trade statistics is governed by both the Customs Act and the Statistics Act and is subject to the provisions of Section 17.(2)(a) of the latter. Disclosure of export statistics to the United States is now governed by a Memorandum of Understanding which provides for an exchange of detailed import statistics between Canada and the United States.

Questions concerning details of methods not covered by these notes should be addressed to the Marketing and Client Services Section, International Trade Division, Statistics Canada, Ottawa, Ontario, K1A 0T6.

**Telephone:** 1-800-294-5583 or within the area code 613-951-9647

**Facsimile:** 1-800-664-0055 or within the area code 613-951-0117

**Internet:** [trade@statcan.gc.ca](mailto:trade@statcan.gc.ca)