

Catalogue no. 65-001-X

# Canadian International Merchandise Trade

December 2009



Statistics  
Canada

Statistique  
Canada

Canada

## How to obtain more information

For information about this product or the wide range of services and data available from Statistics Canada, visit our website at [www.statcan.gc.ca](http://www.statcan.gc.ca), e-mail us at [infostats@statcan.gc.ca](mailto:infostats@statcan.gc.ca), or telephone us, Monday to Friday from 8:30 a.m. to 4:30 p.m., at the following numbers:

### Statistics Canada's National Contact Centre

Toll-free telephone (Canada and the United States):

Inquiries line	1-800-263-1136
National telecommunications device for the hearing impaired	1-800-363-7629
Fax line	1-877-287-4369

Local or international calls:

Inquiries line	1-613-951-8116
Fax line	1-613-951-0581

### Depository Services Program

Inquiries line	1-800-635-7943
Fax line	1-800-565-7757

## To access this product

This product, Catalogue no. 65-001-X, is available free in electronic format. To obtain a single issue, visit our website at [www.statcan.gc.ca](http://www.statcan.gc.ca) and select "Publications."

## Standards of service to the public

Statistics Canada is committed to serving its clients in a prompt, reliable and courteous manner. To this end, Statistics Canada has developed *standards of service* that its employees observe. To obtain a copy of these service standards, please contact Statistics Canada toll-free at 1-800-263-1136. The service standards are also published on [www.statcan.gc.ca](http://www.statcan.gc.ca) under "About us" > "Providing services to Canadians."

Statistics Canada  
International Trade Division

# Canadian International Merchandise Trade

December 2009

Published by authority of the Minister responsible for Statistics Canada

© Minister of Industry, 2010

All rights reserved. The content of this electronic publication may be reproduced, in whole or in part, and by any means, without further permission from Statistics Canada, subject to the following conditions: that it be done solely for the purposes of private study, research, criticism, review or newspaper summary, and/or for non-commercial purposes; and that Statistics Canada be fully acknowledged as follows: Source (or "Adapted from", if appropriate): Statistics Canada, year of publication, name of product, catalogue number, volume and issue numbers, reference period and page(s). Otherwise, no part of this publication may be reproduced, stored in a retrieval system or transmitted in any form, by any means—electronic, mechanical or photocopy—or for any purposes without prior written permission of Licensing Services, Client Services Division, Statistics Canada, Ottawa, Ontario, Canada K1A 0T6.

February 2010

Catalogue no. 65-001-X, vol. 63, no. 12

ISSN 1480-8781

Frequency: Monthly

Ottawa

Cette publication est également disponible en français.

---

#### **Note of appreciation**

*Canada owes the success of its statistical system to a long-standing partnership between Statistics Canada, the citizens of Canada, its businesses, governments and other institutions. Accurate and timely statistical information could not be produced without their continued cooperation and goodwill.*

# User information

---

## Symbols

The following standard symbols are used in Statistics Canada publications:

- . not available for any reference period
- .. not available for a specific reference period
- ... not applicable
- 0 true zero or a value rounded to zero
- 0<sup>s</sup> value rounded to 0 (zero) where there is a meaningful distinction between true zero and the value that was rounded
- p preliminary
- r revised
- x suppressed to meet the confidentiality requirements of the *Statistics Act*
- E use with caution
- F too unreliable to be published

## Note to Users

All totals are calculated from full figures and rounded independently; consequently, totals may not equal the sum of their components.

# Table of contents

---

<b>Highlights</b>	<b>5</b>
<b>Analysis</b>	<b>8</b>
<b>Statistical tables</b>	
1 Merchandise trade of Canada, balance of payments basis, seasonally adjusted	13
1-1 Current dollars	13
1-2 Constant dollars, 2002	14
1-3 Price indices (Laspeyres)	15
2 Exports by commodity groupings, balance of payments basis, seasonally adjusted	16
2-1 Current dollars	16
2-2 Constant dollars, 2002	18
3 Domestic exports to selected countries, customs basis, not seasonally adjusted	20
3-1 December	20
3-2 Year to date, January to December	21
4 Domestic exports by country, customs basis, not seasonally adjusted	22
5 Exports by province of origin, customs basis, not seasonally adjusted	26
5-1 December	26
5-2 Year to date, January to December	27
6 Imports by commodity groupings, balance of payments basis, seasonally adjusted	28
6-1 Current dollars	28
6-2 Constant dollars, 2002	30
7 Imports from selected countries, customs basis, not seasonally adjusted	32
7-1 December	32
7-2 Year to date, January to December	33
8 Imports by country, customs basis, not seasonally adjusted	34
9 Imports by province of clearance, customs basis, not seasonally adjusted	38
9-1 December	38
9-2 Year to date, January to December	39

**Table of contents – continued**

**Data quality, concepts and methodology**

Technical notes

40

## Highlights

---

- Canada's merchandise exports and imports both advanced in December on the strength of automotive products. Exports rose 1.7% and imports increased 1.8%. As a result, Canada's trade deficit with the world widened to \$246 million in December from \$201 million in November.
- Exports grew to \$32.2 billion from \$31.7 billion in November. This fourth consecutive monthly gain was due to a 2.1% increase in volumes, while prices fell 0.4%. Automotive products were responsible for nearly two-thirds of the growth followed by machinery and equipment and energy products. Industrial goods and materials declined in December.
- Since May, with the exception of August, exports have been on the rise. However, export value for December 2009 remained 8.0% below the value of December 2008.
- Imports increased to \$32.4 billion from \$31.9 billion in November, the result of volumes rising 1.1% and prices increasing 0.7%. For the second consecutive month, automotive products led the gain, representing more than half the growth in imports in December. Industrial goods and materials and energy products also increased while machinery and equipment decreased during the month.
- The gain in imports in December represented the second consecutive monthly increase. Overall, imports remained 9.1% below the level registered in December 2008.
- Led by passenger cars, exports to the United States rose 2.9%, to \$24.1 billion, surpassing the 2.0% gain in imports. As a result, Canada's trade surplus with the United States grew to \$3.7 billion in December from \$3.4 billion in November.
- Exports to countries other than the United States fell 1.8% while imports from these countries increased 1.5%. Consequently, Canada's trade deficit with countries other than the United States widened to \$3.9 billion in December from \$3.6 billion in November.

**Note to readers**

Merchandise trade is one component of Canada’s international balance of payments, which also includes trade in services, investment income, current transfers as well as capital and financial flows.

International merchandise trade data by country are available on both a balance of payments and a customs basis for the United States, Japan and the United Kingdom. Trade data for all other individual countries are available on a customs basis only. Balance of payments data are derived from customs data by making adjustments for characteristics such as valuation, coverage, timing and residency. These adjustments are made to conform to the concepts and definitions of the Canadian System of National Accounts.

Data in this release are on a balance of payments basis, seasonally adjusted in current dollars. Constant dollars are calculated using the Laspeyres volume formula.

**Revisions**

In general, merchandise trade data are revised on an ongoing basis for each month of the current year. Current year revisions are reflected in both the customs and balance of payments based data. Revisions to customs based data for the previous year are released on a quarterly basis. Revisions to balance of payments based data for the three previous years are released annually in June.

Factors influencing revisions include late receipt of import and export documentation, incorrect information on customs forms, replacement of estimates with actual figures, changes in classification of merchandise based on more current information, and changes to seasonal adjustment factors.

Revised data are available in the appropriate CANSIM tables.

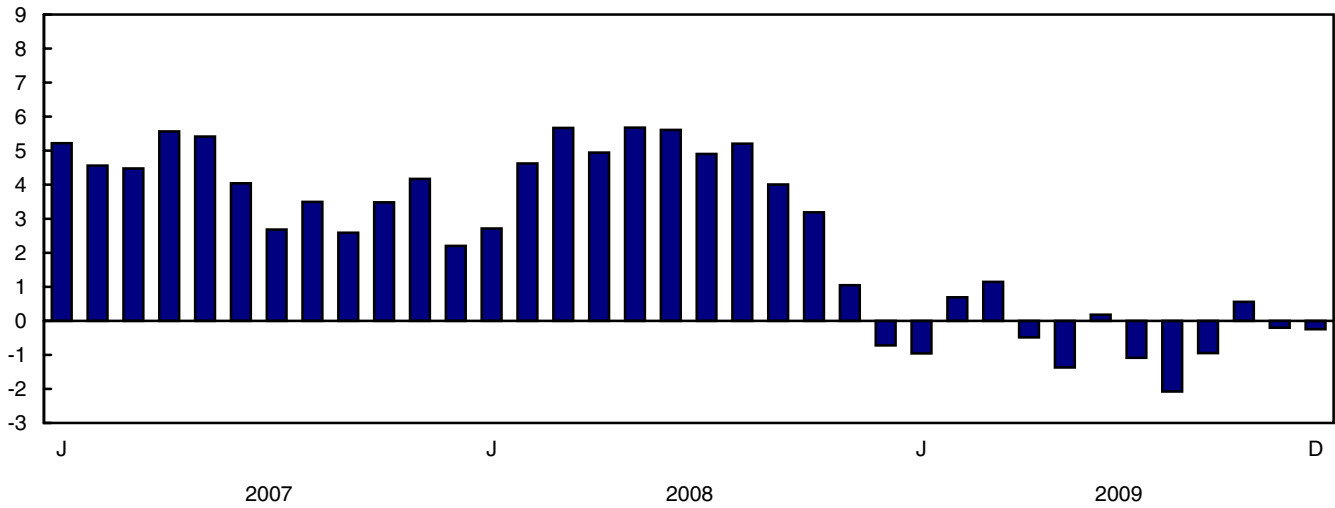
**Chart 1**  
**Exports and imports, seasonally adjusted, on a balance of payments basis**





**Chart 2**  
**Trade balance, seasonally adjusted, on a balance of payments basis**

billions of dollars



## Analysis

---

### Higher volumes of automotive products lead the gain in exports

Exports of automotive products increased 8.1% to \$4.5 billion, as volumes rose 11.3%. Exports of passenger cars increased 11.7% in order to replenish inventories of strong selling Canadian manufactured models. Exports of passenger cars have been on an upward trend since May 2009. Motor vehicle parts and trucks also posted gains in December.

Exports of machinery and equipment grew 3.4% to \$6.3 billion, due to rising volumes. Higher exports of aircraft and industrial machinery were the main factors behind the increase. Declining exports of telecommunication equipment mitigated the gain in the sector.

Energy products exports were up 1.5% to \$7.8 billion, the result of a 5.7% gain in prices as volumes fell 3.9%. Exports of natural gas grew 5.8% and have been rising since May 2009. Before this period, exports of natural gas had declined for ten consecutive months, as inventories remained high due to weak demand. Exports of petroleum and coal products increased 5.0% while exports of electricity declined 22.6%, thereby moderating the growth in this sector.

Other crude non-metallic minerals largely accounted for the decrease in exports of industrial goods and material, which fell 1.1% to \$6.8 billion. Exports of nickel ores and precious metals also decreased, while iron ores posted a gain.

### Imports rise on the strength of automotive products

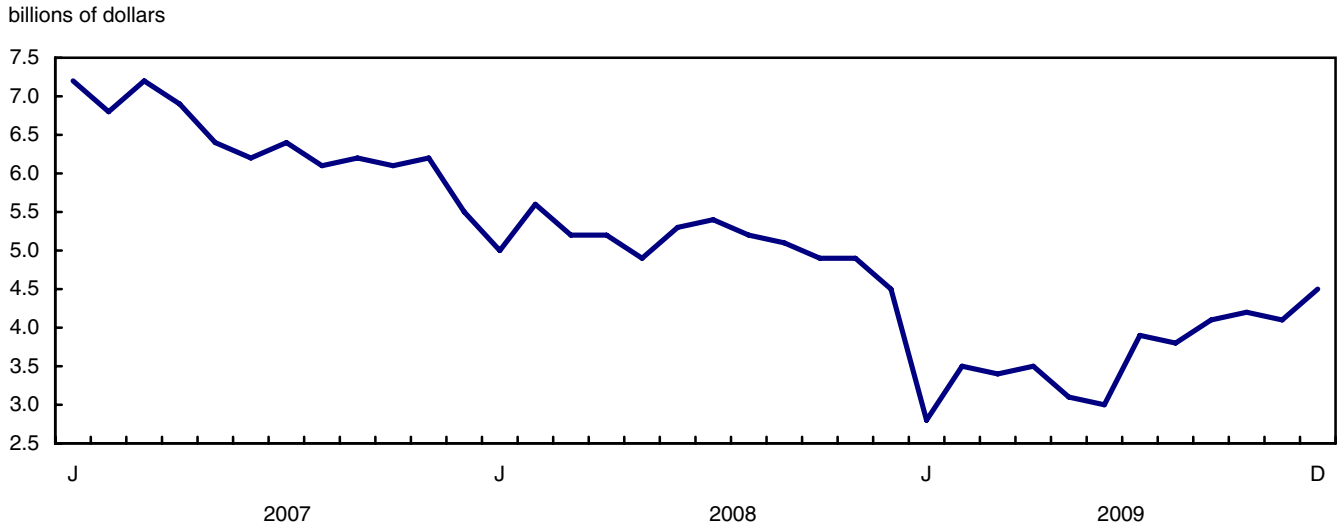
Imports of automotive products increased 6.0% to \$5.8 billion, continuing the upward trend that began in June 2009. Imports of motor vehicle parts increased 11.1%, reflecting the higher demand from the United States. Imports of passenger cars grew 3.2% led by imports of cars from overseas. Trucks and other motor vehicles also posted gains.

Imports of industrial goods and materials grew 3.0% to \$6.3 billion as volumes increased 2.0%. Imports of metals in ores, namely iron ores, grew 17.1% followed by precious metals which gained 12.9% in December.

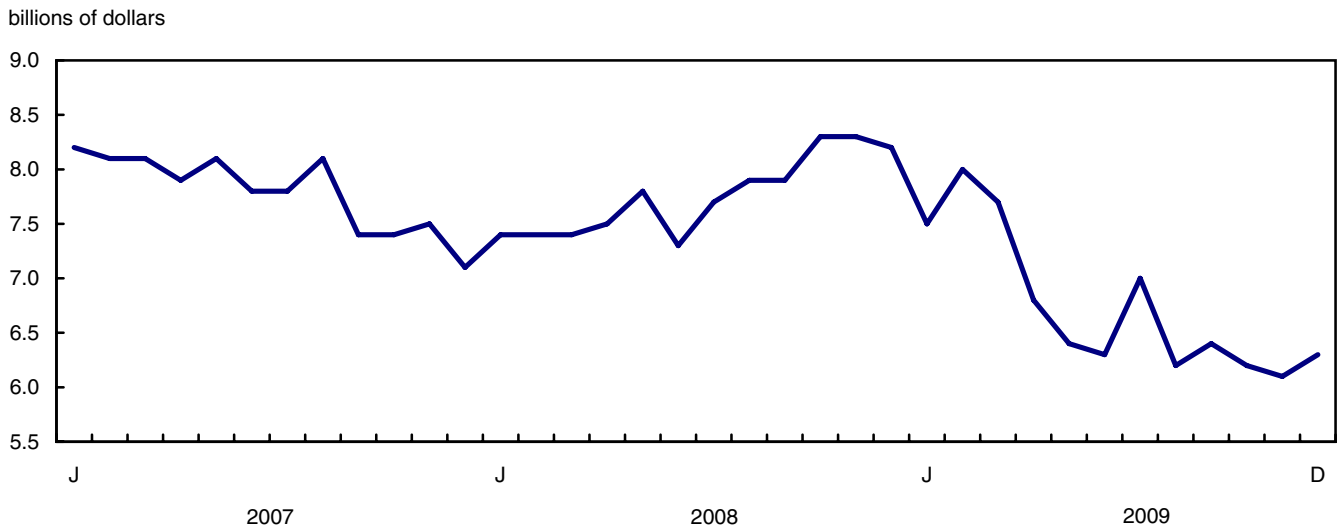
Imports of energy products grew 5.4% to \$3.3 billion as prices rose 7.2%. Imports of crude petroleum grew 17.0%, while imports of coal and other related products declined in December. The gain in imports of energy products represented the third consecutive monthly increase.

Imports of machinery and equipment fell 2.4% to \$8.6 billion as imports of aircraft and other transportation equipment declined 16.6%. Other communication equipment, such as high definition flat panel televisions, smart phones and digital cameras, were also a factor behind the decline in the sector.

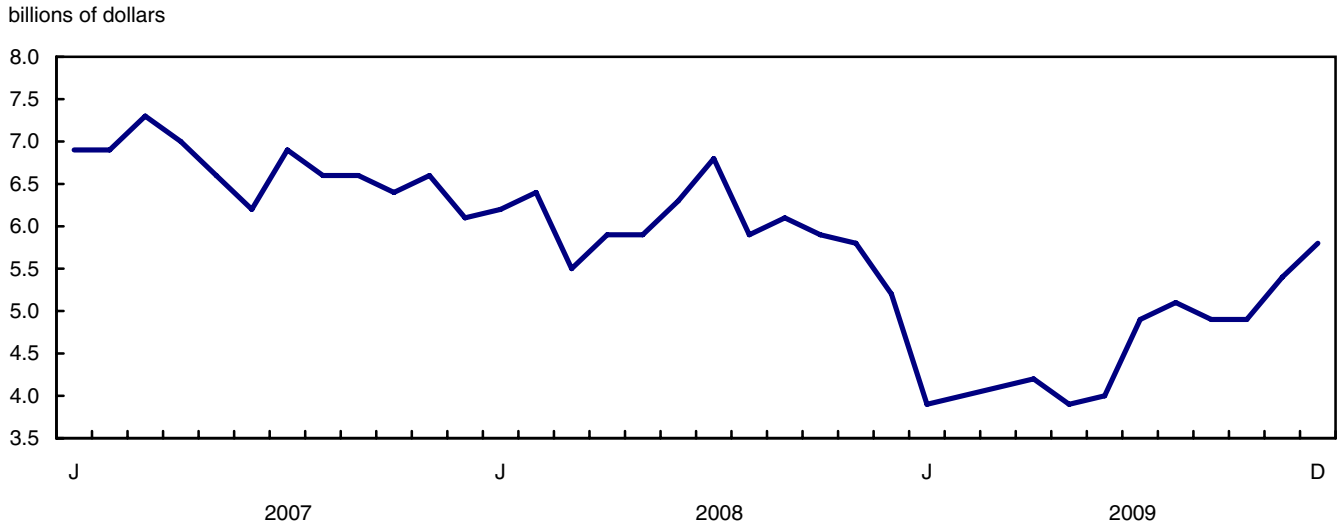
**Chart 1**  
Exports of automotive products, seasonally adjusted, on a balance of payments basis



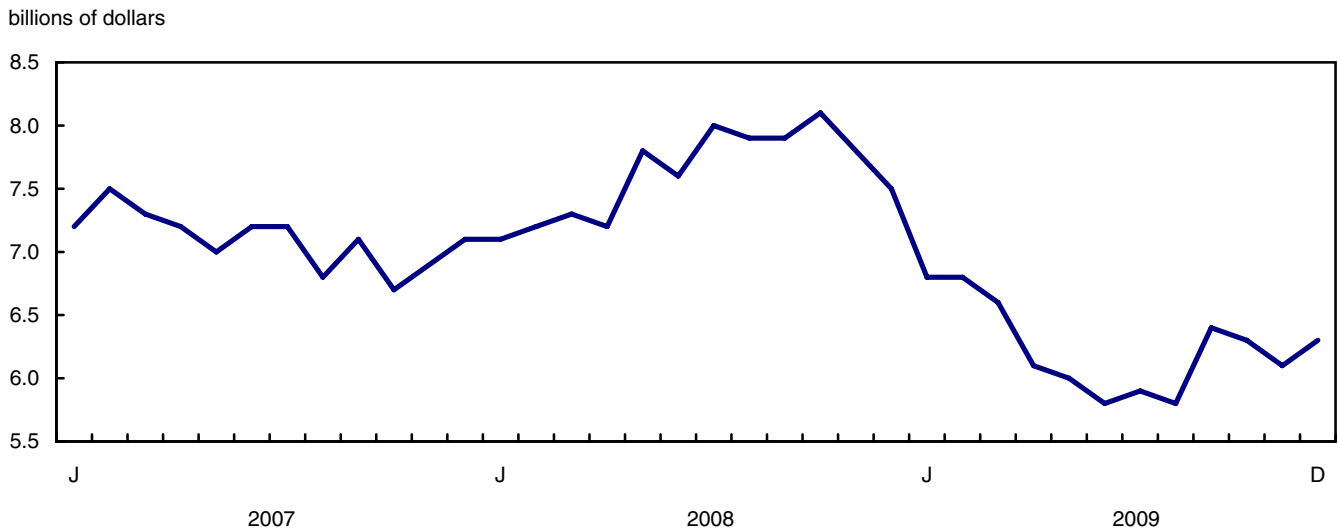
**Chart 2**  
Exports of machinery and equipment, seasonally adjusted, on a balance of payments basis



**Chart 3**  
**Imports of automotive products, seasonally adjusted, on a balance of payments basis**



**Chart 4**  
**Imports of industrial goods and materials, seasonally adjusted, on a balance of payments basis**



**Text table 1**  
**Merchandise trade by principal trading area, balance of payments basis, seasonally adjusted**

	November 2009	December 2009	Change	Year to date		Year to date change	December 2009/2008		
				2008	2009				
	millions of dollars		percent		millions of dollars		percent		
<b>Export to</b>									
United States	23,435	24,109	675	2.9	369,891	270,557	-99,334	-26.9	-6.1
Japan	713	664	-49	-6.8	11,872	8,873	-2,999	-25.3	-30.2
European Union <sup>1</sup>	2,735	2,629	-106	-3.9	39,597	32,258	-7,339	-18.5	-26.8
Other Organisation for Economic Co-operation and Development	1,474	1,335	-139	-9.4	21,079	16,728	-4,351	-20.6	7.6
Other countries	3,304	3,453	149	4.5	47,418	40,773	-6,645	-14.0	-1.9
<b>Total</b>	<b>31,660</b>	<b>32,190</b>	<b>530</b>	<b>1.7</b>	<b>489,857</b>	<b>369,189</b>	<b>-120,668</b>	<b>-24.6</b>	<b>-8.0</b>
<b>Imports from</b>									
United States	20,016	20,411	395	2.0	280,773	236,222	-44,551	-15.9	-9.0
Japan	777	784	8	1.0	11,669	9,307	-2,362	-20.2	-5.5
European Union <sup>1</sup>	3,402	3,369	-32	-1.0	46,699	38,624	-8,075	-17.3	-12.1
Other Organisation for Economic Co-operation and Development	2,299	2,349	51	2.2	27,407	25,916	-1,491	-5.4	5.5
Other countries	5,368	5,522	154	2.9	76,439	63,910	-12,530	-16.4	-13.4
<b>Total</b>	<b>31,861</b>	<b>32,436</b>	<b>575</b>	<b>1.8</b>	<b>442,988</b>	<b>373,979</b>	<b>-69,009</b>	<b>-15.6</b>	<b>-9.1</b>
<b>Balance</b>									
United States	3,418	3,698	280	...	89,118	34,335	-54,783	...	...
Japan	-64	-120	-56	...	203	-434	-637	...	...
European Union <sup>1</sup>	-666	-740	-73	...	-7,102	-6,366	736	...	...
Other Organisation for Economic Co-operation and Development	-825	-1,014	-189	...	-6,328	-9,188	-2,859	...	...
Other countries	-2,064	-2,070	-5	...	-29,022	-23,137	5,885	...	...
<b>Total</b>	<b>-201</b>	<b>-246</b>	<b>-45</b>	<b>...</b>	<b>46,869</b>	<b>-4,790</b>	<b>-51,658</b>	<b>...</b>	<b>...</b>

1. European Union includes: Austria, Belgium, Bulgaria, Cyprus, Czech Republic, Denmark, Estonia, Finland, France, Germany, Greece, Hungary, Ireland, Italy, Latvia, Lithuania, Luxembourg, Malta, Netherlands, Poland, Portugal, Romania, Slovakia, Slovenia, Spain, Sweden and United Kingdom.
2. Other Organization for Economic Co-operation and Development includes: Australia, Canada, Iceland, Mexico, New Zealand, Norway, South Korea, Switzerland and Turkey.

**Text table 2**  
**Reconciliation of customs and balance of payments trade data, not seasonally adjusted**

	2009						2008
	December	November	October	September	August	July	Annual
	millions of dollars						
<b>Exports</b>							
<b>Customs basis</b>	<b>30,672</b>	<b>29,886</b>	<b>31,186</b>	<b>29,900</b>	<b>28,621</b>	<b>29,785</b>	<b>483,579</b>
<b>Balance of payments adjustments</b>	<b>386</b>	<b>1,636</b>	<b>1,261</b>	<b>720</b>	<b>511</b>	<b>767</b>	<b>6,278</b>
Valuation and residency							
Inland freight	478	474	515	507	497	533	6,997
Other valuation and residency	-842	-376	-484	-713	-589	-788	-16,513
Timing	119	23	7	23	-69	25	-79
Coverage	631	1,515	1,223	903	672	997	15,873
<b>Balance of payments basis</b>	<b>31,058</b>	<b>31,522</b>	<b>32,447</b>	<b>30,620</b>	<b>29,132</b>	<b>30,552</b>	<b>489,857</b>
<b>Imports</b>							
<b>Customs basis</b>	<b>30,544</b>	<b>31,234</b>	<b>31,535</b>	<b>31,179</b>	<b>30,130</b>	<b>30,416</b>	<b>433,976</b>
<b>Balance of payments adjustments</b>	<b>818</b>	<b>844</b>	<b>952</b>	<b>554</b>	<b>838</b>	<b>672</b>	<b>9,012</b>
Valuation and residency							
Inland freight	642	660	685	668	640	651	8,908
Other valuation and residency	44	40	53	69	-16	-8	-1,110
Timing	0	0	0	0	0	0	0
Coverage	132	144	214	-183	214	29	1,214
<b>Balance of payments basis</b>	<b>31,362</b>	<b>32,078</b>	<b>32,487</b>	<b>31,733</b>	<b>30,968</b>	<b>31,088</b>	<b>442,988</b>

# Statistical tables

---

---

**Table 1-1**  
**Merchandise trade of Canada, balance of payments basis, seasonally adjusted — Current dollars**

	Exports	Imports	Balance	Period to period change		
				Exports	Imports	Balance
				percent	percent	percent
	millions of dollars			percent		millions of dollars
2005	450,210	387,838	62,372	0.0	0.0	0
2006	453,951	404,345	49,606	0.8	4.3	-12,767
2007	463,127	415,229	47,898	2.0	2.7	-1,708
2008	489,857	442,988	46,869	5.8	6.7	-1,029
<b>2007</b>						
First quarter	120,454	106,198	14,256	4.4	3.1	1,887
Second quarter	118,191	103,166	15,025	-1.9	-2.9	769
Third quarter	113,144	104,379	8,765	-4.3	1.2	-6,260
Fourth quarter	111,338	101,486	9,852	-1.6	-2.8	1,088
<b>2008</b>						
First quarter	117,996	104,991	13,005	6.0	3.5	3,152
Second quarter	126,385	110,154	16,230	7.1	4.9	3,226
Third quarter	129,144	115,028	14,116	2.2	4.4	-2,114
Fourth quarter	116,332	112,815	3,517	-9.9	-1.9	-10,599
<b>2009</b>						
First quarter	96,726	95,844	882	-16.9	-15.0	-2,635
Second quarter	87,411	89,086	-1,675	-9.6	-7.1	-2,557
Third quarter	89,887	93,998	-4,110	2.8	5.5	-2,435
Fourth quarter	95,165	95,051	114	5.9	1.1	4,224
<b>2008</b>						
January	38,209	35,496	2,713	4.6	3.4	512
February	39,689	35,067	4,623	3.9	-1.2	1,909
March	40,097	34,428	5,669	1.0	-1.8	1,046
April	40,507	35,564	4,943	1.0	3.3	-726
May	42,365	36,688	5,677	4.6	3.2	733
June	43,513	37,902	5,611	2.7	3.3	-66
July	44,379	39,476	4,903	2.0	4.2	-708
August	42,685	37,479	5,206	-3.8	-5.1	302
September	42,080	38,073	4,008	-1.4	1.6	-1,198
October	42,181	38,991	3,190	0.2	2.4	-818
November	39,177	38,129	1,049	-7.1	-2.2	-2,141
December	34,974	35,695	-721	-10.7	-6.4	-1,770
<b>2009</b>						
January	31,182	32,138	-955	-10.8	-10.0	-234
February	33,112	32,421	691	6.2	0.9	1,646
March	32,432	31,286	1,147	-2.1	-3.5	456
April	30,002	30,488	-486	-7.5	-2.6	-1,633
May	28,128	29,499	-1,371	-6.2	-3.2	-885
June	29,281	29,099	182	4.1	-1.4	1,553
July	30,757	31,842	-1,086	5.0	9.4	-1,268
August	29,147	31,225	-2,078	-5.2	-1.9	-992
September	29,984	30,931	-947	2.9	-0.9	1,131
October	31,314	30,754	560	4.4	-0.6	1,507
November	31,660	31,861	-201	1.1	3.6	-761
December	32,190	32,436	-246	1.7	1.8	-45

**Note(s):** Due to rounding, monthly data may not add up to quarterly data and quarterly data may not add up to annual data.

**Table 1-2**  
**Merchandise trade of Canada, balance of payments basis, seasonally adjusted — Constant dollars, 2002**

	Exports	Imports	Balance	Period to period change	
				Exports	Imports
	millions of dollars			percent	
2005	439,306	431,680	7,626	0.0	0.0
2006	443,398	456,881	-13,483	0.9	5.8
2007	449,581	483,522	-33,941	1.4	5.8
2008	415,123	485,171	-70,048	-7.7	0.3
<b>2007</b>					
First quarter	113,771	117,511	-3,740	2.0	1.6
Second quarter	113,538	118,154	-4,615	-0.2	0.5
Third quarter	112,008	123,373	-11,366	-1.3	4.4
Fourth quarter	110,264	124,484	-14,220	-1.6	0.9
<b>2008</b>					
First quarter	107,366	123,120	-15,754	-2.6	-1.1
Second quarter	105,949	123,992	-18,043	-1.3	0.7
Third quarter	104,458	124,141	-19,683	-1.4	0.1
Fourth quarter	97,350	113,917	-16,567	-6.8	-8.2
<b>2009</b>					
First quarter	87,842	98,094	-10,252	-9.8	-13.9
Second quarter	82,463	95,900	-13,437	-6.1	-2.2
Third quarter	86,390	105,588	-19,198	4.8	10.1
Fourth quarter	89,928	107,690	-17,762	4.1	2.0
<b>2008</b>					
January	35,336	41,546	-6,210	0.0	1.2
February	36,473	41,373	-4,900	3.2	-0.4
March	35,557	40,201	-4,644	-2.5	-2.8
April	35,078	40,481	-5,404	-1.3	0.7
May	35,639	41,927	-6,288	1.6	3.6
June	35,233	41,584	-6,351	-1.1	-0.8
July	35,530	43,031	-7,502	0.8	3.5
August	34,592	40,426	-5,834	-2.6	-6.1
September	34,337	40,684	-6,347	-0.7	0.6
October	33,470	39,215	-5,745	-2.5	-3.6
November	32,772	38,542	-5,770	-2.1	-1.7
December	31,108	36,160	-5,052	-5.1	-6.2
<b>2009</b>					
January	28,330	33,069	-4,740	-8.9	-8.5
February	30,060	33,098	-3,038	6.1	0.1
March	29,452	31,926	-2,474	-2.0	-3.5
April	28,109	31,709	-3,600	-4.6	-0.7
May	26,925	32,081	-5,156	-4.2	1.2
June	27,430	32,110	-4,681	1.9	0.1
July	29,515	35,275	-5,760	7.6	9.9
August	27,999	35,365	-7,366	-5.1	0.3
September	28,876	34,947	-6,071	3.1	-1.2
October	29,924	35,159	-5,235	3.6	0.6
November	29,691	36,068	-6,378	-0.8	2.6
December	30,314	36,463	-6,150	2.1	1.1

**Note(s):** Due to rounding, monthly data may not add up to quarterly data and quarterly data may not add up to annual data.



**Table 1-3**  
**Merchandise trade of Canada, balance of payments basis, seasonally adjusted — Price indices (Laspeyres)**

	2002=100			Period to period change		
	Exports	Imports	Terms of trade	Exports	Imports	Terms of trade
	millions of dollars			percent		
2005	104.6	92.2	113.4	0.0	0.0	0.0
2006	105.1	92.7	113.3	0.4	0.5	-0.1
2007	107.2	91.6	117.0	2.0	-1.2	3.2
2008	116.3	97.6	119.1	8.5	6.6	1.9
<b>2007</b>						
First quarter	109.5	95.2	115.0	3.1	1.9	1.2
Second quarter	112.0	92.9	120.5	2.3	-2.4	4.7
Third quarter	105.0	90.1	116.5	-6.2	-3.0	-3.2
Fourth quarter	105.6	88.0	119.9	0.5	-2.3	2.9
<b>2008</b>						
First quarter	111.3	90.4	123.1	5.4	2.7	2.7
Second quarter	118.5	95.2	124.5	6.4	5.2	1.2
Third quarter	121.8	101.1	120.6	2.8	6.2	-3.4
Fourth quarter	114.0	103.9	109.7	-6.4	2.8	-9.2
<b>2009</b>						
First quarter	109.5	100.9	108.5	-3.9	-2.9	-1.1
Second quarter	105.2	97.4	108.1	-3.9	-3.5	-0.4
Third quarter	102.9	94.4	108.9	-2.2	-3.0	0.8
Fourth quarter	105.2	92.9	113.2	2.2	-1.6	3.8
<b>2008</b>						
January	109.7	89.9	122.0	2.3	1.9	0.4
February	110.0	90.0	122.2	0.3	0.2	0.2
March	113.2	91.3	124.0	2.9	1.4	1.5
April	116.3	93.4	124.6	2.7	2.2	0.5
May	118.5	94.5	125.4	1.9	1.2	0.7
June	120.9	97.7	123.7	2.0	3.4	-1.3
July	123.8	99.5	124.4	2.4	1.8	0.6
August	121.6	101.8	119.4	-1.8	2.3	-4.1
September	120.0	101.9	117.8	-1.3	0.1	-1.4
October	121.6	104.8	116.1	1.3	2.8	-1.5
November	116.6	104.2	111.9	-4.1	-0.5	-3.6
December	111.5	102.7	108.5	-4.4	-1.4	-3.0
<b>2009</b>						
January	109.5	99.9	109.6	-1.8	-2.8	1.0
February	109.5	100.8	108.7	0.1	0.9	-0.9
March	109.3	102.0	107.1	-0.2	1.2	-1.5
April	106.8	100.3	106.4	-2.3	-1.7	-0.6
May	104.4	96.6	108.1	-2.2	-3.7	1.5
June	104.1	95.4	109.1	-0.3	-1.2	0.9
July	103.5	95.5	108.5	-0.5	0.1	-0.6
August	103.0	94.0	109.6	-0.5	-1.6	1.0
September	102.9	93.9	109.7	-0.0	-0.1	0.1
October	103.9	92.1	112.8	0.9	-1.9	2.8
November	104.7	93.3	112.1	0.7	1.3	-0.6
December	105.4	93.4	112.9	0.7	0.0	0.7

**Note(s):** Due to rounding, monthly data may not add up to quarterly data and quarterly data may not add up to annual data.

**Table 2-1**  
**Exports by commodity groupings, balance of payments basis, seasonally adjusted — Current dollars**

	November	December	Change	Year to date		Year to date change	December		
	2009	2009		2008	2009				2009/2008
	millions of dollars		percent		millions of dollars		percent		
<b>Total</b>	<b>31,660</b>	<b>32,190</b>	<b>530</b>	<b>1.7</b>	<b>489,857</b>	<b>369,189</b>	<b>-120,668</b>	<b>-24.6</b>	<b>-8.0</b>
<b>Agricultural and fishing products</b>	<b>2,921</b>	<b>2,866</b>	<b>-55</b>	<b>-1.9</b>	<b>40,858</b>	<b>37,271</b>	<b>-3,587</b>	<b>-8.8</b>	<b>-15.7</b>
Wheat	379	367	-12	-3.3	6,868	5,823	-1,044	-15.2	-30.8
Other agricultural and fishing products	2,542	2,500	-42	-1.7	33,990	31,447	-2,542	-7.5	-12.9
Live animals	110	110	1	0.7	2,326	1,641	-685	-29.4	-33.1
Fish and fish preparations	322	328	7	2.1	4,249	3,934	-314	-7.4	-5.4
Barley	32	23	-9	-28.3	692	444	-248	-35.9	-39.5
Wheat flour	8	8	0	2.6	100	87	-14	-13.6	21.7
Other cereals unmilled	26	24	-2	-8.1	889	508	-380	-42.8	-61.1
Other cereal preparations	229	211	-18	-7.7	2,906	2,934	29	1.0	-17.7
Meat and meat preparations	356	352	-4	-1.1	4,637	4,369	-268	-5.8	-12.5
Alcoholic beverages	62	63	1	1.8	860	740	-120	-13.9	-17.3
Other food, feed, beverages and tobacco	880	884	4	0.4	11,076	10,980	-96	-0.9	-8.4
Rapeseed	320	233	-87	-27.3	3,876	3,472	-404	-10.4	-25.0
Other crude vegetable products	198	264	65	32.9	2,379	2,337	-42	-1.8	8.4
<b>Energy products</b>	<b>7,676</b>	<b>7,793</b>	<b>117</b>	<b>1.5</b>	<b>125,792</b>	<b>79,243</b>	<b>-46,549</b>	<b>-37.0</b>	<b>13.0</b>
Crude petroleum	4,591	4,587	-4	-0.1	60,970	42,109	-18,860	-30.9	67.0
Natural gas	1,216	1,287	71	5.8	33,046	15,604	-17,442	-52.8	-39.6
Other energy products	1,869	1,919	50	2.7	31,776	21,530	-10,247	-32.2	-4.9
Coal and other bituminous substances	331	362	31	9.2	5,842	4,332	-1,510	-25.9	-32.8
Petroleum and coal products	1,330	1,397	66	5.0	22,147	14,873	-7,273	-32.8	12.3
Electricity	207	161	-47	-22.6	3,788	2,325	-1,463	-38.6	-31.9
<b>Forestry products</b>	<b>1,613</b>	<b>1,630</b>	<b>17</b>	<b>1.1</b>	<b>25,659</b>	<b>19,515</b>	<b>-6,144</b>	<b>-23.9</b>	<b>-19.0</b>
Lumber and sawmill products	589	594	5	0.9	9,169	6,770	-2,399	-26.2	-11.9
Other crude wood products	50	48	-2	-3.8	646	532	-115	-17.7	-26.4
Lumber	351	366	14	4.1	5,350	3,901	-1,449	-27.1	-6.4
Other wood fabricated materials	188	181	-7	-3.8	3,172	2,338	-835	-26.3	-17.6
Wood pulp and other wood products	417	431	15	3.5	6,398	4,590	-1,809	-28.3	1.3
Newsprint and other paper and paperboard	607	604	-3	-0.5	10,092	8,155	-1,937	-19.2	-33.6
Newsprint paper	301	290	-12	-3.9	5,447	4,186	-1,262	-23.2	-45.3
Other paper and paperboard	305	314	9	2.9	4,645	3,970	-675	-14.5	-17.3
<b>Industrial goods and materials</b>	<b>6,900</b>	<b>6,827</b>	<b>-74</b>	<b>-1.1</b>	<b>111,511</b>	<b>79,340</b>	<b>-32,171</b>	<b>-28.8</b>	<b>-4.4</b>
Metal ores	893	896	3	0.3	14,873	10,233	-4,640	-31.2	3.2
Iron ores, concentrates and scrap	339	394	56	16.5	4,802	4,469	-333	-6.9	17.6
Copper ores, concentrates and scrap	204	178	-26	-12.9	2,321	1,795	-525	-22.6	52.1
Nickel ores, concentrates and scrap	172	107	-64	-37.5	3,767	1,554	-2,213	-58.7	-27.4
Zinc ores, concentrates and scrap	11	10	-1	-7.1	359	235	-125	-34.7	21.0
Other ores, concentrates and scrap	168	207	39	23.1	3,624	2,180	-1,444	-39.9	-20.5
Chemicals, plastics and fertilizers	2,194	2,176	-17	-0.8	35,910	25,614	-10,296	-28.7	-15.3
Inorganic chemicals	313	347	34	11.0	5,497	4,077	-1,420	-25.8	-17.5
Organic chemicals	467	428	-39	-8.3	6,930	4,791	-2,139	-30.9	18.2
Fertilizers and fertilizer materials	392	406	14	3.6	7,530	4,622	-2,908	-38.6	-39.2
Synthetic rubber and plastics	765	738	-26	-3.5	12,518	9,259	-3,259	-26.0	-12.5
Other chemical products	258	258	-0	-0.1	3,435	2,865	-570	-16.6	-6.6
Metals and alloys	2,608	2,625	17	0.7	39,977	28,052	-11,925	-29.8	14.1
Primary iron and steel	82	96	14	16.8	1,279	566	-713	-55.8	84.9
Steel bars, rods, plates, sheets	249	256	7	2.8	5,098	2,875	-2,223	-43.6	-18.0

Table 2-1 – continued

## Exports by commodity groupings, balance of payments basis, seasonally adjusted — Current dollars

	November	December	Change	Year to date		Year to date change	December		
	2009	2009		2008	2009			2009/2008	
	millions of dollars		percent		millions of dollars		percent		
Other iron and steel and alloys	178	195	17	9.7	3,894	2,299	-1,595	-41.0	-25.7
Aluminum including alloys	537	544	6	1.1	9,302	5,983	-3,319	-35.7	-4.6
Copper and alloys	215	239	24	11.2	4,130	2,220	-1,910	-46.2	69.0
Nickel and alloys	133	157	24	17.8	3,693	1,905	-1,788	-48.4	-28.0
Precious metals and alloys	983	931	-52	-5.3	9,730	10,166	436	4.5	51.1
Zinc and alloys	124	130	6	4.4	1,409	1,116	-293	-20.8	88.3
Other non-ferrous metals and alloys	105	77	-28	-26.4	1,442	921	-521	-36.1	29.7
Other industrial goods and materials	1,206	1,129	-77	-6.4	20,752	15,442	-5,310	-25.6	-19.4
Asbestos unmanufactured	6	5	-0	-4.8	68	69	1	1.7	-3.2
Other crude animal products	47	59	13	26.9	843	639	-204	-24.2	-0.6
Other crude non-metallic minerals	192	95	-97	-50.6	4,920	2,761	-2,158	-43.9	-52.0
Other crude materials, inedible	52	78	26	50.6	576	637	61	10.5	93.8
Metal fabricated basic products	318	329	12	3.6	5,465	4,079	-1,385	-25.4	-23.8
Textile fabricated materials	171	175	4	2.2	2,429	2,077	-352	-14.5	-7.2
Non-metallic mineral basic products	171	140	-31	-18.2	2,402	1,930	-471	-19.6	-28.9
Other fabricated materials	250	248	-2	-1.0	4,050	3,249	-801	-19.8	-11.8
<b>Machinery and equipment</b>	<b>6,067</b>	<b>6,273</b>	<b>206</b>	<b>3.4</b>	<b>92,994</b>	<b>80,524</b>	<b>-12,470</b>	<b>-13.4</b>	<b>-23.7</b>
Industrial and agricultural machinery	1,384	1,484	100	7.2	23,443	19,234	-4,208	-18.0	-23.9
Industrial machinery	1,236	1,341	106	8.5	21,270	17,188	-4,081	-19.2	-24.2
Agricultural machinery includ. tractors	148	142	-6	-3.9	2,173	2,046	-127	-5.8	-21.3
Aircraft and other transportation equipment	1,509	1,614	106	7.0	20,340	19,603	-736	-3.6	-23.6
Aircraft, engines, parts	1,173	1,291	118	10.1	15,390	15,539	149	1.0	-26.3
Other transportation equipment	336	324	-12	-3.7	4,949	4,064	-885	-17.9	-10.5
Other machinery and equipment	3,175	3,175	0	0.0	49,212	41,687	-7,525	-15.3	-23.6
Television, telecommunication equipment	622	531	-90	-14.5	9,598	8,585	-1,013	-10.6	-29.0
Office machines and equipment	344	362	18	5.4	6,089	4,739	-1,350	-22.2	-26.3
Other equipment and tools	1,463	1,491	29	2.0	23,173	18,877	-4,296	-18.5	-24.0
Other end products, inedible	747	790	44	5.8	10,352	9,486	-866	-8.4	-17.1
<b>Automotive products</b>	<b>4,148</b>	<b>4,482</b>	<b>333</b>	<b>8.0</b>	<b>61,083</b>	<b>43,785</b>	<b>-17,297</b>	<b>-28.3</b>	<b>-1.5</b>
Passenger autos and chassis	2,731	3,050	319	11.7	34,069	26,284	-7,786	-22.9	18.6
Trucks and other motor vehicles	195	198	4	1.9	7,264	3,759	-3,505	-48.2	-62.5
Motor vehicle parts	1,223	1,233	10	0.8	19,750	13,742	-6,007	-30.4	-14.8
<b>Other consumer goods</b>	<b>1,440</b>	<b>1,374</b>	<b>-66</b>	<b>-4.6</b>	<b>18,170</b>	<b>17,942</b>	<b>-228</b>	<b>-1.3</b>	<b>-16.3</b>
<b>Special transactions trade</b>	<b>495</b>	<b>523</b>	<b>28</b>	<b>5.6</b>	<b>8,193</b>	<b>6,399</b>	<b>-1,794</b>	<b>-21.9</b>	<b>-22.4</b>
<b>Unallocated balance of payments adjustments</b>	<b>399</b>	<b>423</b>	<b>25</b>	<b>6.2</b>	<b>5,597</b>	<b>5,169</b>	<b>-428</b>	<b>-7.6</b>	<b>-5.0</b>

**Table 2-2**  
**Exports by commodity groupings, balance of payments basis, seasonally adjusted — Constant dollars, 2002**

	November	December	Change	Year to date		Year to date change	December 2009/2008		
	2009	2009		2008	2009			millions of dollars	percent
	millions of dollars		percent		millions of dollars		percent		
<b>Total</b>	<b>29,691</b>	<b>30,314</b>	<b>623</b>	<b>2.1</b>	<b>415,123</b>	<b>346,623</b>	<b>-68,500</b>	<b>-16.5</b>	<b>-2.6</b>
<b>Agricultural and fishing products</b>	<b>3,004</b>	<b>2,997</b>	<b>-7</b>	<b>-0.2</b>	<b>36,809</b>	<b>36,137</b>	<b>-672</b>	<b>-1.8</b>	<b>-2.1</b>
Wheat	362	347	-15	-4.0	4,180	4,948	768	18.4	-9.3
Other agricultural and fishing products	2,642	2,649	7	0.3	32,629	31,189	-1,440	-4.4	-1.1
Live animals	140	140	0	0.2	2,645	1,894	-751	-28.4	-23.2
Fish and fish preparations	395	427	33	8.3	4,863	4,688	-175	-3.6	2.1
Barley	34	24	-10	-28.8	464	367	-97	-20.8	6.5
Wheat flour	7	7	0	2.6	82	79	-3	-3.5	30.0
Other cereals unmilled	26	27	1	2.7	729	494	-234	-32.1	-41.5
Other cereal preparations	193	186	-7	-3.8	2,552	2,404	-149	-5.8	-6.4
Meat and meat preparations	425	435	10	2.3	5,111	4,979	-132	-2.6	4.6
Alcoholic beverages	117	117	-0	-0.3	1,383	1,299	-85	-6.1	-4.9
Other food, feed, beverages and tobacco	839	843	4	0.5	10,307	9,910	-397	-3.9	2.4
Rapeseed	286	212	-74	-25.9	2,644	3,104	460	17.4	-15.2
Other crude vegetable products	179	230	51	28.6	1,849	1,970	121	6.6	19.8
<b>Energy products</b>	<b>4,691</b>	<b>4,507</b>	<b>-184</b>	<b>-3.9</b>	<b>55,076</b>	<b>53,914</b>	<b>-1,163</b>	<b>-2.1</b>	<b>1.4</b>
Crude petroleum	2,113	1,976	-137	-6.5	23,485	23,744	259	1.1	1.9
Natural gas	1,340	1,310	-30	-2.2	17,539	16,214	-1,324	-7.6	-8.0
Other energy products	1,238	1,220	-18	-1.5	14,053	13,956	-98	-0.7	13.1
Coal and other bituminous substances	156	168	12	7.7	1,822	1,470	-352	-19.3	51.5
Petroleum and coal products	779	826	47	6.1	9,396	9,517	121	1.3	10.5
Electricity	303	226	-77	-25.6	2,836	2,969	133	4.7	2.4
<b>Forestry products</b>	<b>2,120</b>	<b>2,119</b>	<b>-1</b>	<b>-0.1</b>	<b>29,945</b>	<b>24,400</b>	<b>-5,545</b>	<b>-18.5</b>	<b>-3.4</b>
Lumber and sawmill products	835	844	9	1.0	11,602	9,421	-2,181	-18.8	1.1
Other crude wood products	61	68	7	11.8	821	716	-106	-12.9	-11.2
Lumber	552	565	12	2.2	7,345	6,037	-1,307	-17.8	5.0
Other wood fabricated materials	222	211	-11	-4.9	3,436	2,668	-768	-22.4	-4.1
Wood pulp and other wood products	562	557	-4	-0.7	7,568	6,414	-1,154	-15.2	4.0
Newsprint and other paper and paperboard	723	717	-6	-0.8	10,775	8,566	-2,209	-20.5	-12.9
Newsprint paper	363	348	-15	-4.2	5,653	4,304	-1,349	-23.9	-23.7
Other paper and paperboard	359	369	10	2.7	5,122	4,262	-861	-16.8	0.6
<b>Industrial goods and materials</b>	<b>5,035</b>	<b>4,888</b>	<b>-147</b>	<b>-2.9</b>	<b>74,559</b>	<b>59,974</b>	<b>-14,585</b>	<b>-19.6</b>	<b>-1.8</b>
Metal ores	500	508	7	1.5	7,185	5,712	-1,473	-20.5	-1.7
Iron ores, concentrates and scrap	181	215	35	19.2	2,126	1,932	-194	-9.1	86.1
Copper ores, concentrates and scrap	75	63	-12	-16.3	837	778	-59	-7.0	-15.3
Nickel ores, concentrates and scrap	101	58	-43	-42.3	1,825	1,037	-789	-43.2	-50.8
Zinc ores, concentrates and scrap	6	5	-1	-11.3	220	154	-66	-30.0	-29.7
Other ores, concentrates and scrap	138	166	28	20.2	2,177	1,811	-366	-16.8	-17.5
Chemicals, plastics and fertilizers	1,711	1,660	-51	-3.0	24,652	19,689	-4,963	-20.1	-1.7
Inorganic chemicals	159	184	25	15.4	2,647	2,111	-536	-20.3	-7.7
Organic chemicals	332	288	-43	-13.1	3,715	3,721	6	0.2	16.4
Fertilizers and fertilizer materials	152	158	6	4.1	3,262	1,646	-1,616	-49.5	-29.1
Synthetic rubber and plastics	755	720	-35	-4.7	10,964	8,849	-2,115	-19.3	-0.0
Other chemical products	313	311	-3	-0.9	4,063	3,362	-701	-17.3	3.5
Metals and alloys	1,674	1,660	-13	-0.8	24,834	19,645	-5,189	-20.9	0.8
Primary iron and steel	65	76	11	16.8	689	410	-278	-40.4	247.0
Steel bars, rods, plates, sheets	211	221	9	4.4	3,705	2,301	-1,405	-37.9	-0.9
Other iron and steel and alloys	163	176	14	8.3	2,765	1,991	-773	-28.0	9.3
Aluminum including alloys	578	544	-34	-5.8	8,221	6,934	-1,287	-15.7	-14.2
Copper and alloys	77	82	5	7.1	1,402	1,006	-396	-28.3	1.5
Nickel and alloys	74	89	15	20.5	1,670	1,316	-354	-21.2	-37.2
Precious metals and alloys	391	371	-19	-4.9	5,001	4,383	-618	-12.4	28.2
Zinc and alloys	72	70	-3	-3.8	859	823	-36	-4.2	18.0
Other non-ferrous metals and alloys	44	32	-12	-27.5	521	481	-40	-7.7	-12.8

Table 2-2 – continued

## Exports by commodity groupings, balance of payments basis, seasonally adjusted — Constant dollars, 2002

	November 2009	December 2009	Change	Year to date		Year to date change	December 2009/2008		
	millions of dollars			percent					
				2008	2009				
				millions of dollars			percent		
Other industrial goods and materials	1,151	1,060	-91	-7.9	17,888	14,928	-2,959	-16.5	-5.7
Asbestos unmanufactured	6	5	-0	-2.0	77	71	-6	-7.3	-8.9
Other crude animal products	65	75	10	16.1	890	867	-23	-2.6	5.8
Other crude non-metallic minerals	227	117	-109	-48.3	4,513	3,713	-799	-17.7	-14.4
Other crude materials, inedible	51	80	30	58.8	568	626	58	10.2	101.1
Metal fabricated basic products	257	264	8	3.0	4,398	3,227	-1,171	-26.6	-21.2
Textile fabricated materials	186	190	3	1.8	2,498	2,068	-430	-17.2	8.9
Non-metallic mineral basic products	141	117	-24	-16.9	2,030	1,571	-459	-22.6	-23.8
Other fabricated materials	220	211	-9	-4.0	2,914	2,785	-129	-4.4	1.8
<b>Machinery and equipment</b>	<b>6,677</b>	<b>6,944</b>	<b>267</b>	<b>4.0</b>	<b>104,601</b>	<b>86,727</b>	<b>-17,874</b>	<b>-17.1</b>	<b>-19.5</b>
Industrial and agricultural machinery	1,279	1,377	99	7.7	22,290	17,579	-4,712	-21.1	-22.3
Industrial machinery	1,142	1,247	105	9.2	20,176	15,729	-4,447	-22.0	-22.4
Agricultural machinery includ. tractors	136	131	-6	-4.1	2,114	1,850	-265	-12.5	-21.5
Aircraft and other transportation equipment	1,839	1,974	136	7.4	25,508	23,151	-2,357	-9.2	-19.1
Aircraft, engines, parts	1,519	1,669	150	9.9	20,439	19,194	-1,245	-6.1	-20.4
Other transportation equipment	320	305	-14	-4.4	5,069	3,957	-1,112	-21.9	-10.8
Other machinery and equipment	3,559	3,592	33	0.9	56,802	45,997	-10,805	-19.0	-18.6
Television, telecommunication equipment	779	669	-110	-14.1	11,989	10,199	-1,790	-14.9	-22.1
Office machines and equipment	816	855	39	4.7	13,578	10,466	-3,112	-22.9	-12.5
Other equipment and tools	1,372	1,412	40	2.9	22,138	17,455	-4,682	-21.2	-22.1
Other end products, inedible	592	656	64	10.8	9,097	7,876	-1,221	-13.4	-14.0
<b>Automotive products</b>	<b>5,391</b>	<b>5,998</b>	<b>607</b>	<b>11.3</b>	<b>79,841</b>	<b>53,962</b>	<b>-25,879</b>	<b>-32.4</b>	<b>14.9</b>
Passenger autos and chassis	3,820	4,404	584	15.3	49,229	35,057	-14,171	-28.8	38.5
Trucks and other motor vehicles	232	235	3	1.2	8,995	4,254	-4,741	-52.7	-57.7
Motor vehicle parts	1,339	1,358	19	1.4	21,617	14,650	-6,967	-32.2	-8.5
<b>Other consumer goods</b>	<b>1,385</b>	<b>1,311</b>	<b>-74</b>	<b>-5.3</b>	<b>17,777</b>	<b>17,216</b>	<b>-562</b>	<b>-3.2</b>	<b>-17.4</b>
<b>Special transactions trade</b>	<b>463</b>	<b>483</b>	<b>19</b>	<b>4.2</b>	<b>6,718</b>	<b>5,903</b>	<b>-815</b>	<b>-12.1</b>	<b>-16.9</b>
<b>Unallocated balance of payments adjustments</b>	<b>924</b>	<b>1,069</b>	<b>144</b>	<b>15.6</b>	<b>9,797</b>	<b>8,392</b>	<b>-1,405</b>	<b>-14.3</b>	<b>155.0</b>

**Table 3-1**  
**Domestic exports to selected countries, customs basis, not seasonally adjusted — December**

	Agricultural and fishing products	Energy products	Forestry products	Industrial goods	Machinery and equipment	Automotive products	Consumer goods	Special transactions	Total
millions of dollars									
<b>United States</b>									
2008	1,607.9	7,720.2	1,290.5	3,964.7	4,528.1	3,791.4	1,010.9	593.0	24,506.6
2009	1,257.8	7,580.0	964.0	3,735.2	3,426.6	3,976.0	857.3	468.2	22,265.1
<b>Mexico</b>									
2008	99.2	9.0	11.2	61.8	80.9	76.0	4.5	0.2	342.7
2009	92.2	20.7	14.2	61.0	51.7	65.1	9.1	1.1	315.1
<b>Japan</b>									
2008	229.0	242.8	118.9	130.5	80.7	2.6	7.2	0.3	812.2
2009	221.2	87.0	97.8	122.3	36.8	4.4	6.2	0.6	576.2
<b>European Union</b>									
Germany									
2008	18.2	0.1	13.3	125.9	183.3	3.3	10.3	4.4	358.8
2009	37.2	24.9	9.7	100.4	118.2	2.9	12.6	0.8	306.7
France									
2008	15.9	17.9	21.3	54.3	126.5	3.3	17.7	2.2	259.1
2009	14.7	0.1	11.6	43.7	79.7	4.1	20.4	1.7	175.9
United Kingdom									
2008	45.0	47.6	31.6	669.9	181.8	3.1	105.2	3.6	1,087.8
2009	28.9	4.2	17.5	605.1	113.0	5.6	12.6	2.0	788.9
Italy									
2008	41.2	41.8	29.5	27.3	36.4	1.2	9.1	0.1	186.5
2009	52.9	13.3	21.3	25.2	23.3	0.3	5.1	0.3	141.7
Other European Union									
2008	148.1	96.2	37.8	224.8	418.3	12.6	65.6	3.3	1,006.6
2009	165.7	41.7	25.0	206.2	178.9	16.6	47.4	2.9	684.4
<b>Total</b>									
2008	268.4	203.6	133.5	1,102.1	946.3	23.6	207.9	13.6	2,898.8
2009	299.4	84.2	85.1	980.7	513.1	29.4	98.1	7.7	2,097.6
<b>Newly industrialized countries</b>									
South Korea									
2008	19.9	160.9	16.7	86.5	48.5	0.9	5.1	0.5	338.8
2009	28.5	54.5	29.2	85.9	37.4	6.5	3.1	0.5	245.6
Hong Kong									
2008	45.3	0.1	13.0	51.9	24.6	0.1	5.5	0.5	141.1
2009	68.2	0.1	8.0	32.9	18.1	0.6	6.3	1.8	136.0
Taiwan									
2008	12.8	0.0	15.6	20.5	11.1	0.1	3.5	0.1	63.6
2009	13.5	14.3	27.3	37.2	10.3	0.4	2.2	0.1	105.4
Singapore									
2008	3.4	0.2	0.3	6.1	21.4	1.6	1.8	0.2	35.0
2009	5.3	0.3	2.7	11.5	24.4	4.4	1.8	0.2	50.8
<b>Total</b>									
2008	81.3	161.2	45.5	165.0	105.6	2.6	16.0	1.2	578.4
2009	115.5	69.2	67.2	167.6	90.3	11.9	13.4	2.7	537.8
<b>Other countries</b>									
2008	872.9	129.6	352.0	659.8	814.8	63.2	80.5	17.1	2,989.8
2009	717.5	209.5	321.3	823.9	844.2	60.5	127.4	19.5	3,123.8
<b>Total</b>									
2008	3,158.6	8,466.3	1,951.7	6,083.8	6,556.3	3,959.4	1,327.2	625.4	32,128.8
2009	2,703.6	8,050.7	1,549.5	5,890.6	4,962.8	4,147.3	1,111.5	499.9	28,915.7

**Table 3-2**  
**Domestic exports to selected countries, customs basis, not seasonally adjusted — Year to date, January to December**

	Agricultural and fishing products	Energy products	Forestry products	Industrial goods	Machinery and equipment	Automotive products	Consumer goods	Special transactions	Total
millions of dollars									
<b>United States</b>									
2008	20,513.8	122,132.9	17,840.4	66,397.1	53,204.3	54,783.8	10,997.5	7,423.5	353,293.4
2009	18,589.8	73,329.3	13,321.4	45,564.5	43,809.7	38,807.1	11,085.6	5,657.0	250,164.4
<b>Mexico</b>									
2008	1,524.8	164.5	182.1	1,255.3	998.3	952.4	67.7	5.8	5,151.0
2009	1,181.4	101.3	103.0	754.5	918.1	711.6	53.7	10.3	3,833.8
<b>Japan</b>									
2008	3,836.7	2,308.8	1,419.7	2,531.5	623.4	39.1	124.8	5.0	10,888.9
2009	3,135.9	1,779.0	1,081.8	1,252.1	622.1	48.0	143.4	6.6	8,068.9
<b>European Union</b>									
<b>Germany</b>									
2008	234.6	323.4	174.2	1,673.6	1,459.6	48.1	161.4	16.3	4,091.1
2009	224.1	192.0	126.5	852.3	1,784.8	41.8	157.2	16.3	3,394.9
<b>France</b>									
2008	194.3	396.2	256.3	486.9	1,260.7	49.1	326.2	20.4	2,990.1
2009	158.7	116.2	152.5	564.8	1,085.0	35.1	290.4	24.5	2,427.2
<b>United Kingdom</b>									
2008	487.7	385.4	373.9	8,662.8	2,070.7	70.3	294.0	48.1	12,393.0
2009	408.8	170.5	284.2	8,049.4	2,068.3	42.3	276.6	43.4	11,343.7
<b>Italy</b>									
2008	328.5	333.9	386.9	616.4	481.3	11.8	68.9	4.6	2,232.3
2009	458.6	138.0	271.3	245.4	474.7	8.6	68.4	7.6	1,672.6
<b>Other European Union</b>									
2008	1,391.2	1,841.8	463.0	4,705.9	3,004.8	276.7	670.5	49.8	12,403.7
2009	1,126.6	959.3	337.1	2,612.8	2,573.9	150.1	792.1	45.4	8,597.3
<b>Total</b>									
2008	2,636.3	3,280.7	1,654.4	16,145.6	8,277.1	455.9	1,521.0	139.2	34,110.2
2009	2,376.8	1,575.9	1,171.7	12,324.7	7,986.7	277.9	1,584.7	137.2	27,435.7
<b>Newly industrialized countries</b>									
<b>South Korea</b>									
2008	343.7	1,267.2	491.7	1,114.7	442.1	11.7	58.7	9.1	3,738.7
2009	322.3	998.0	344.6	1,025.2	506.9	52.6	46.6	9.2	3,305.4
<b>Hong Kong</b>									
2008	353.1	0.4	114.7	782.4	263.0	6.2	48.4	10.9	1,579.1
2009	402.3	0.4	89.9	470.3	298.9	8.5	59.4	13.1	1,342.7
<b>Taiwan</b>									
2008	156.6	251.8	320.1	601.5	140.2	1.6	33.5	2.3	1,507.8
2009	185.1	193.8	204.3	325.7	110.7	1.9	32.7	1.4	1,055.7
<b>Singapore</b>									
2008	44.2	35.4	13.8	185.4	350.1	18.0	36.1	3.5	686.4
2009	51.4	45.2	31.1	318.8	320.6	33.6	33.5	5.1	839.1
<b>Total</b>									
2008	897.5	1,554.8	940.3	2,684.0	1,195.4	37.5	176.6	25.8	7,512.0
2009	961.1	1,237.4	669.8	2,140.0	1,237.1	96.5	172.2	28.8	6,542.9
<b>Other countries</b>									
2008	10,258.8	2,010.6	4,217.4	16,192.6	9,462.6	848.7	1,227.3	200.6	44,418.6
2009	10,089.9	1,830.5	3,442.3	11,124.4	8,637.3	747.0	1,201.1	271.3	37,343.7
<b>Total</b>									
2008	39,668.1	131,452.4	26,254.6	105,206.1	73,762.0	57,117.4	14,115.7	7,799.9	455,376.2
2009	36,334.9	79,853.5	19,789.9	73,160.2	63,211.3	40,688.2	14,241.4	6,111.2	333,390.6

**Table 4**  
**Domestic exports by country, customs basis, not seasonally adjusted**

	December		January to December		Variation
	2008	2009	2008	2009	January to December to December 2009/2008
millions of dollars					
<b>North America</b>					
Greenland	0.4	1.3	15.5	14.8	-4.3
Mexico	342.7	315.1	5,151.0	3,833.8	-25.6
Saint Pierre and Miquelon	1.0	1.0	14.0	14.8	5.4
United States	24,506.6	22,265.1	353,293.4	250,164.4	-29.2
<b>Total</b>	<b>24,850.6</b>	<b>22,582.5</b>	<b>358,473.9</b>	<b>254,027.9</b>	<b>-29.1</b>
<b>Western Europe</b>					
Andorra	0.0	0.0	0.2	0.1	-46.3
Austria	101.8	34.6	459.1	375.4	-18.2
Belgium	200.5	117.7	3,323.3	1,726.6	-48.0
Denmark	53.9	30.0	397.2	597.4	50.4
Faeroe Islands	0.2	0.1	1.9	1.0	-45.0
Finland	56.9	23.4	959.6	297.1	-69.0
France	259.1	175.9	2,990.1	2,427.2	-18.8
Germany	358.8	306.7	4,091.1	3,394.9	-17.0
Gibraltar	0.0	0.1	596.7	17.2	-97.1
Greece	11.4	6.9	134.4	101.9	-24.1
Iceland	1.8	5.4	48.3	77.8	61.0
Italy	186.5	141.7	2,232.3	1,672.6	-25.1
Luxembourg	30.9	27.5	170.3	62.6	-63.2
Malta	0.6	0.9	16.7	45.8	173.5
Netherlands	205.9	230.9	3,458.8	2,556.3	-26.1
Norway	60.6	116.5	2,802.8	1,745.7	-37.7
Portugal	12.4	44.2	204.4	193.5	-5.4
Republic of Ireland (Eire)	44.5	36.2	438.6	522.9	19.2
Spain	75.9	68.4	1,080.6	1,052.0	-2.6
Sweden	52.5	25.5	529.7	346.0	-34.7
Switzerland	37.5	83.6	1,241.4	1,144.7	-7.8
United Kingdom	1,087.8	788.9	12,393.0	11,343.7	-8.5
<b>Total</b>	<b>2,839.6</b>	<b>2,265.0</b>	<b>37,570.4</b>	<b>29,702.4</b>	<b>-20.9</b>
<b>Other Europe</b>					
Albania	0.7	4.5	34.1	18.7	-45.1
Armenia	0.7	0.8	20.8	8.1	-61.2
Azerbaijan	0.8	6.0	16.2	15.8	-2.5
Belarus	0.2	0.1	4.1	1.4	-65.6
Bosnia and Herzegovina	0.2	0.5	6.0	3.1	-48.6
Bulgaria	37.3	1.3	76.1	68.4	-10.1
Croatia	2.2	1.9	65.2	99.1	52.0
Czech Republic	11.2	7.2	218.7	127.2	-41.8
Estonia	0.6	2.1	22.3	25.8	15.6
Georgia	2.8	2.9	23.0	16.9	-26.9
Hungary	17.1	4.5	136.2	84.1	-38.2
Kazakhstan	13.6	66.0	224.8	190.4	-15.3
Kyrgyzstan	0.1	0.3	6.3	3.6	-43.0
Latvia	1.8	0.5	45.8	22.8	-50.3
Lithuania	2.4	2.3	44.9	38.4	-14.4
Macedonia (Former Yugoslav Republic of Macedonia)	0.5	0.8	11.4	14.9	31.4
Montenegro	0.9	0.3	7.5	2.2	-70.5
Poland	19.5	11.3	316.6	178.3	-43.7
Republic of Moldova	0.3	0.7	10.0	2.5	-74.7
Romania	25.2	5.3	226.5	84.4	-62.7
Russian Federation	81.7	71.3	1,406.1	795.7	-43.4
Serbia	1.9	1.4	14.7	17.8	21.0
Slovakia	12.2	1.9	57.4	25.0	-56.5
Slovenia	31.0	0.6	70.5	54.2	-23.2
Tajikistan	0.4	0.8	4.6	3.5	-22.5
Turkmenistan	11.0	1.1	13.5	6.7	-50.4
Ukraine	7.3	9.3	221.0	100.0	-54.8
Uzbekistan	4.2	2.3	16.0	15.0	-6.2
<b>Total</b>	<b>288.0</b>	<b>208.0</b>	<b>3,320.2</b>	<b>2,024.0</b>	<b>-39.0</b>
<b>Middle East</b>					
Bahrain	2.1	2.5	49.6	36.6	-26.3
Cyprus	0.9	1.3	16.1	11.2	-30.3



Table 4 – continued

## Domestic exports by country, customs basis, not seasonally adjusted

	December		January to December		Variation
	2008	2009	2008	2009	January to December 2009/2008
millions of dollars					
Egypt	38.8	46.1	608.0	619.4	1.9
Eritrea	0.0	0.1	0.8	2.2	169.8
Ethiopia	1.4	2.8	69.1	10.2	-85.2
Iran	184.3	71.7	662.6	405.5	-38.8
Iraq	2.3	4.9	180.3	477.0	164.5
Israel	37.4	31.5	544.1	304.2	-44.1
Jordan	5.4	4.3	71.8	58.6	-18.5
Kuwait	10.4	16.6	145.4	93.0	-36.0
Lebanon	8.7	98.4	74.1	184.1	148.6
Libya	6.0	12.7	109.6	236.2	115.4
Oman	15.8	8.7	103.6	112.4	8.5
Qatar	6.1	4.8	78.6	207.3	163.8
Saudi Arabia	72.1	79.4	969.4	1,110.4	14.5
Somalia	1.4	0.0	4.8	2.9	-39.9
Sudan	6.1	19.7	220.5	110.3	-50.0
Syria	3.8	3.5	63.2	46.0	-27.1
Turkey	33.6	82.6	1,212.5	812.0	-33.0
United Arab Emirates	125.9	78.5	1,333.0	1,157.1	-13.2
Yemen	32.4	2.0	82.1	25.9	-68.4
<b>Total</b>	<b>595.0</b>	<b>572.0</b>	<b>6,599.3</b>	<b>6,022.7</b>	<b>-8.7</b>
<b>Other Africa</b>					
Algeria	66.2	35.2	868.0	317.8	-63.4
Angola	7.4	3.3	122.6	67.6	-44.9
Antarctica	0.0	0.0	3.3	1.3	-61.2
Benin	1.4	0.6	12.2	7.6	-37.5
Botswana	0.7	0.4	9.5	5.4	-43.7
Bouvet Island	0.0	0.0	0.0	0.0	-100.0
Burkina Faso	1.1	1.3	6.3	27.1	330.3
Burundi	0.1	0.1	1.5	1.1	-24.5
Cameroon	5.0	0.5	21.8	32.1	47.4
Cape Verde	0.1	0.1	1.0	1.4	46.2
Central African Republic	0.2	0.0	0.3	0.7	110.4
Chad	0.5	0.8	5.8	12.1	108.2
Comoros	0.0	0.0	0.5	3.1	532.4
Congo	3.4	1.5	28.9	23.4	-19.0
Democratic Republic of the Congo	0.8	1.8	21.8	16.1	-26.3
Djibouti	0.0	0.0	2.2	2.5	15.2
Equatorial Guinea	0.8	0.1	12.6	4.2	-66.6
French Southern Territories	0.0	0.0	0.1	0.3	80.3
Gabon	3.1	1.1	27.2	24.9	-8.3
Gambia	0.0	0.1	0.7	0.7	-0.5
Ghana	7.8	12.0	174.1	155.3	-10.8
Guinea	0.9	0.5	16.5	13.5	-18.1
Guinea-Bissau	0.0	0.0	0.7	0.0	-98.6
Ivory Coast	1.7	2.7	24.5	25.0	1.9
Kenya	8.6	8.5	75.4	75.3	-0.1
Lesotho	0.0	0.0	0.0	0.2	379.7
Liberia	1.9	0.1	10.5	4.0	-62.0
Madagascar	0.7	5.5	10.7	54.4	408.5
Malawi	0.6	0.3	5.6	4.2	-24.7
Mali	1.0	0.4	8.2	5.7	-30.5
Mauritania	0.2	0.1	4.4	2.3	-48.1
Mauritius	1.1	0.4	6.4	5.2	-19.4
Morocco	15.2	44.5	300.7	370.6	23.3
Mozambique	0.3	2.4	10.6	8.0	-24.8
Namibia	0.1	0.8	8.1	5.8	-28.7
Niger	0.2	0.2	3.6	3.0	-17.2
Nigeria	7.2	7.1	83.6	196.3	134.7
Rwanda	0.1	0.0	4.0	3.2	-19.2
Saint Helena	0.0	0.0	0.4	0.1	-77.3
Sao Tome and Principe	0.0	0.0	0.0	0.1	...
Senegal	0.5	0.9	27.8	33.8	21.5
Seychelles	0.1	0.1	1.7	1.1	-36.3
Sierra Leone	0.2	0.4	9.1	4.5	-50.9
South Africa	48.9	26.2	858.1	413.3	-51.8
Swaziland	0.6	0.0	6.0	11.0	82.4

Table 4 – continued

## Domestic exports by country, customs basis, not seasonally adjusted

	December		January to December		Variation
	2008	2009	2008	2009	January to December 2009/2008
millions of dollars					
Togo	2.6	1.2	18.1	18.3	1.5
Tunisia	15.2	17.8	82.0	102.6	25.1
Uganda	4.1	0.4	19.4	12.4	-36.4
United Republic of Tanzania	2.4	3.5	54.4	35.0	-35.7
Western Sahara	0.0	0.0	0.0	0.1	728.6
Zambia	1.2	0.9	23.1	9.4	-59.4
Zimbabwe	1.0	0.1	5.0	8.0	60.6
<b>Total</b>	<b>215.3</b>	<b>183.8</b>	<b>2,999.2</b>	<b>2,130.8</b>	<b>-29.0</b>
<b>Other Asia</b>					
Afghanistan	1.7	2.5	22.2	48.3	118.0
Bangladesh	24.5	32.6	286.1	624.7	118.3
Bhutan	0.0	0.0	0.0	0.2	456.7
British Indian Ocean Territory	0.0	0.8	0.9	1.2	33.7
Brunei Darussalam	0.4	0.6	2.4	4.2	74.3
Cambodia	0.2	0.2	3.0	6.8	130.4
China	709.2	828.5	10,084.2	10,932.7	8.4
Hong Kong	141.1	136.0	1,579.1	1,342.7	-15.0
India	212.7	146.3	2,324.6	2,042.2	-12.2
Indonesia	69.7	91.3	1,446.1	953.7	-34.1
Japan	812.2	576.2	10,888.9	8,068.9	-25.9
Laos	0.0	0.3	17.6	2.6	-85.0
Macau	2.6	0.3	43.1	13.9	-67.7
Malaysia	47.4	51.6	780.2	564.0	-27.7
Maldives	0.4	0.2	5.1	11.1	115.8
Mongolia	0.8	0.1	8.7	4.3	-50.5
Myanmar	0.0	0.0	0.1	0.0	-76.9
Nepal	0.0	0.8	2.9	3.9	35.8
North Korea	3.5	1.3	22.1	24.9	12.6
Pakistan	14.6	18.4	542.0	400.9	-26.0
Philippines	24.8	47.0	524.9	512.9	-2.3
Singapore	35.0	50.8	686.4	839.1	22.2
South Korea	338.8	245.6	3,738.7	3,305.4	-11.6
Sri Lanka	31.5	27.8	391.4	332.4	-15.1
Taiwan	63.6	105.4	1,507.8	1,055.7	-30.0
Thailand	53.8	49.2	660.8	511.5	-22.6
Timor-Leste	0.0	0.0	0.3	0.0	-89.4
Viet Nam	11.8	15.7	298.0	205.5	-31.0
<b>Total</b>	<b>2,600.3</b>	<b>2,429.5</b>	<b>35,867.8</b>	<b>31,813.9</b>	<b>-11.3</b>
<b>Oceania</b>					
American Samoa	0.0	0.2	0.8	1.1	31.2
Australia	117.4	163.8	1,963.3	1,635.9	-16.7
Christmas Island	0.0	0.0	0.3	0.3	1.0
Cocos (Keeling) Islands	0.0	0.0	0.7	0.2	-73.5
Cook Islands	0.0	0.0	0.9	0.5	-44.3
Fiji	0.5	0.1	3.9	5.7	45.0
French Polynesia	1.6	0.6	17.8	10.4	-41.7
Guam	0.1	0.1	2.6	1.8	-32.0
Heard Island and McDonald Islands	0.0	0.0	0.0	0.1	...
Kiribati	0.0	0.0	0.0	0.1	82.2
Nauru	0.0	0.0	0.2	0.1	-69.8
New Caledonia	3.7	2.7	29.9	12.0	-59.9
New Zealand	19.6	28.1	431.4	270.2	-37.4
Norfolk Island	0.0	0.0	0.1	0.3	352.0
Papua New Guinea	0.4	7.8	11.1	35.3	217.7
Pitcairn	0.0	0.0	0.3	0.2	-49.9
Samoa	0.0	0.0	0.4	0.4	-7.9
Solomon Islands	0.0	0.0	0.1	0.7	795.0
Tonga	0.1	0.0	0.5	0.2	-65.9
United States Minor Outlying Islands	0.8	1.8	15.8	13.2	-16.6
Vanuatu	0.1	0.1	0.6	2.0	213.1
Wallis and Futuna	0.0	0.0	0.0	0.0	-38.4
<b>Total</b>	<b>144.4</b>	<b>205.3</b>	<b>2,480.9</b>	<b>1,990.5</b>	<b>-19.8</b>

Table 4 – continued

## Domestic exports by country, customs basis, not seasonally adjusted

	December		January to December		Variation January to December 2009/2008
	2008	2009	2008	2009	
millions of dollars					
<b>South America</b>					
Argentina	15.1	11.5	236.7	156.5	-33.9
Bolivia	6.1	0.8	42.2	10.7	-74.7
Brazil	169.9	136.0	2,500.0	1,472.3	-41.1
Chile	47.1	33.0	684.0	587.6	-14.1
Colombia	29.3	40.7	647.5	578.5	-10.7
Ecuador	14.4	34.8	225.6	245.1	8.6
Falkland Islands (Malvinas)	0.0	0.0	0.1	0.0	-90.7
Guyana	0.8	2.5	20.3	27.7	36.1
Paraguay	2.7	0.5	15.5	10.6	-31.9
Peru	26.6	20.5	355.3	392.6	10.5
Suriname	0.7	0.9	9.8	11.1	13.3
Uruguay	32.9	2.8	207.9	21.1	-89.8
Venezuela	61.7	30.9	804.7	596.6	-25.9
<b>Total</b>	<b>407.3</b>	<b>314.8</b>	<b>5,749.6</b>	<b>4,110.4</b>	<b>-28.5</b>
<b>Central America Antilles</b>					
Anguilla	0.3	0.0	2.6	1.8	-29.2
Antigua and Barbuda	1.8	3.5	21.2	20.1	-5.2
Aruba	0.7	0.4	6.3	6.0	-3.7
Bahamas	48.2	1.6	226.4	146.2	-35.4
Barbados	3.7	4.1	45.4	55.4	22.2
Belize	0.8	0.6	6.6	5.5	-15.9
Bermuda	4.5	2.7	61.8	56.5	-8.6
British Virgin Islands	0.8	0.4	8.7	3.3	-62.5
Cayman Islands	0.8	0.3	14.0	6.4	-54.3
Costa Rica	6.5	8.4	102.6	78.5	-23.5
Cuba	30.4	9.7	617.0	249.1	-59.6
Dominica	0.1	0.2	5.6	4.4	-21.9
Dominican Republic	25.2	6.8	205.8	129.0	-37.3
El Salvador	3.4	6.4	47.2	49.1	4.0
Grenada	0.1	0.2	5.7	5.5	-1.9
Guatemala	14.1	23.4	147.5	108.5	-26.5
Haiti	2.1	1.6	48.6	38.6	-20.5
Honduras	6.8	4.0	80.0	31.7	-60.4
Jamaica	7.3	10.4	187.3	117.6	-37.2
Montserrat	0.0	0.0	0.4	0.3	-29.0
Netherlands Antilles	1.2	26.4	41.2	73.3	77.9
Nicaragua	1.3	1.5	25.6	17.0	-33.5
Panama	10.3	5.7	109.8	80.2	-27.0
Saint Kitts and Nevis	0.2	0.2	7.9	6.2	-21.3
Saint Lucia	1.9	0.8	12.3	10.0	-18.5
Saint Vincent and the Grenadines	0.6	0.7	7.7	11.3	46.6
Trinidad and Tobago	14.5	34.3	262.7	250.7	-4.6
Turks and Caicos Islands	0.4	0.3	7.0	5.7	-19.0
<b>Total</b>	<b>188.2</b>	<b>154.9</b>	<b>2,314.9</b>	<b>1,568.0</b>	<b>-32.3</b>
<b>All countries</b>	<b>32,128.8</b>	<b>28,915.7</b>	<b>455,376.2</b>	<b>333,390.6</b>	<b>-26.8</b>

**Table 5-1**  
**Exports by province of origin, customs basis, not seasonally adjusted — December**

	Agricultural and fishing products	Energy products	Forestry products	Industrial goods	Machinery and equipment	Automotive products	Consumer goods	Special transactions	Total
millions of dollars									
<b>Domestic exports</b>									
Newfoundland and Labrador									
2008	34.3	446.4	47.3	138.5	6.0	0.0	0.3	4.7	677.5
2009	43.9	513.7	8.7	97.9	4.0	0.6	0.3	3.5	672.6
Prince Edward Island									
2008	50.8	0.0	0.0	1.9	12.0	0.4	2.2	7.9	75.3
2009	33.8	0.3	0.0	1.0	17.7	0.1	2.4	5.3	60.7
Nova Scotia									
2008	94.2	138.2	67.5	40.2	103.8	6.7	5.9	7.5	464.1
2009	97.8	43.1	60.2	34.4	95.4	3.9	4.1	5.7	344.6
New Brunswick									
2008	101.8	357.7	92.1	96.3	26.1	1.4	11.8	8.2	695.3
2009	89.2	680.6	73.3	74.2	20.4	1.6	17.4	6.1	962.8
Quebec									
2008	416.6	166.2	599.6	1,405.9	2,331.5	190.4	397.7	141.8	5,649.6
2009	377.5	254.9	434.2	1,525.3	1,680.0	155.7	438.3	104.4	4,970.3
Ontario									
2008	743.4	325.6	281.4	2,511.5	3,064.7	3,619.3	811.4	312.2	11,669.6
2009	648.9	188.5	202.6	2,394.0	2,425.5	3,888.4	562.9	244.1	10,555.1
Manitoba									
2008	334.2	104.4	32.3	232.7	177.2	64.7	31.0	32.1	1,008.6
2009	262.4	120.1	17.2	183.4	120.9	29.9	32.7	39.6	806.2
Saskatchewan									
2008	651.3	573.2	17.6	583.0	71.0	3.2	0.7	11.5	1,911.4
2009	581.5	822.1	16.2	478.1	60.5	3.5	1.0	8.8	1,971.8
Alberta									
2008	565.4	5,467.3	155.9	698.0	463.8	52.1	23.4	53.5	7,479.3
2009	424.6	4,790.0	153.2	669.8	287.6	47.0	8.6	47.0	6,427.7
British Columbia									
2008	166.7	887.2	658.0	346.5	300.1	21.3	42.7	46.1	2,468.5
2009	143.8	637.3	584.0	429.6	248.7	16.6	43.5	35.2	2,138.7
Yukon, Northwest Territories and Nunavut <sup>1</sup>									
2008	0.0	0.0	0.0	29.5	0.2	0.0	0.0	0.0	29.7
2009	0.2	0.0	0.0	2.7	2.1	0.0	0.1	0.0	5.3
<b>Total</b>									
2008	3,158.6	8,466.3	1,951.7	6,083.8	6,556.3	3,959.4	1,327.2	625.4	32,128.8
2009	2,703.6	8,050.7	1,549.5	5,890.6	4,962.8	4,147.3	1,111.5	499.9	28,915.7
<b>Re-exports</b>									
2008	48.5	48.9	5.3	202.7	958.4	81.1	195.0	742.3	2,282.2
2009	71.1	18.4	4.3	169.0	741.6	70.6	167.9	513.9	1,756.7
<b>Total exports</b>									
2008	3,207.1	8,515.2	1,956.9	6,286.6	7,514.7	4,040.5	1,522.2	1,367.7	34,411.0
2009	2,774.7	8,069.1	1,553.8	6,059.6	5,704.4	4,217.9	1,279.4	1,013.7	30,672.4

1. Data for the most current month do not include some exports of Chapter 71 "Natural/cultured pearls, precious stones and metals, coins etc" for reasons relating to timing.

**Table 5-2**  
**Exports by province of origin, customs basis, not seasonally adjusted — Year to date, January to December**

	Agricultural and fishing products	Energy products	Forestry products	Industrial goods	Machinery and equipment	Automotive products	Consumer goods	Special transactions	Total
millions of dollars									
<b>Domestic exports</b>									
Newfoundland and Labrador									
2008	807.5	11,143.6	339.8	2,173.0	58.3	1.4	1.8	77.2	14,602.6
2009	722.8	5,679.1	168.0	1,816.1	54.5	4.1	1.2	53.7	8,499.4
Prince Edward Island									
2008	521.2	0.0	1.7	18.3	191.5	2.0	27.4	86.5	848.6
2009	487.2	1.9	0.9	21.1	208.9	1.5	33.7	77.9	833.0
Nova Scotia									
2008	1,035.2	1,580.7	916.3	581.3	1,261.3	115.1	77.1	98.7	5,665.6
2009	966.9	634.3	724.2	500.5	1,160.6	72.3	72.0	72.0	4,202.8
New Brunswick									
2008	1,250.8	8,406.6	1,252.5	1,305.7	335.3	21.0	113.9	122.4	12,808.2
2009	1,176.9	6,320.4	1,065.4	788.2	306.8	24.0	164.7	85.9	9,932.3
Quebec									
2008	4,777.7	3,921.0	7,695.9	22,659.5	22,821.0	2,208.9	3,647.8	1,587.6	69,319.4
2009	4,407.2	2,806.4	5,888.3	16,528.0	19,965.7	1,714.2	3,735.7	1,374.5	56,420.0
Ontario									
2008	8,274.0	4,533.0	3,827.3	44,111.7	36,758.5	53,218.3	9,014.5	4,098.1	163,835.4
2009	8,035.0	2,675.2	2,634.8	31,081.5	31,466.0	37,529.0	9,089.1	2,995.1	125,505.7
Manitoba									
2008	4,413.8	1,278.1	390.0	3,414.6	2,184.9	613.3	354.7	324.0	12,973.3
2009	3,864.7	936.4	258.3	2,225.3	1,971.6	581.5	442.5	383.3	10,663.6
Saskatchewan									
2008	8,649.9	11,198.3	251.2	8,354.8	851.5	44.6	20.8	130.6	29,501.7
2009	7,566.0	7,376.8	241.7	5,551.6	817.7	43.1	11.8	93.1	21,701.8
Alberta									
2008	7,584.4	79,724.4	2,066.6	13,796.9	5,492.5	588.6	229.6	689.9	110,172.9
2009	6,811.2	46,683.3	1,738.8	8,423.0	4,215.7	508.8	152.5	531.6	69,065.0
British Columbia									
2008	2,352.1	9,666.7	9,512.9	6,309.6	3,799.3	304.0	626.9	583.1	33,154.5
2009	2,294.7	6,739.7	7,069.4	4,766.2	3,037.2	209.2	537.1	443.2	25,096.6
Yukon, Northwest Territories and Nunavut <sup>1</sup>									
2008	1.5	0.0	0.4	2,480.9	7.8	0.2	1.3	1.8	2,493.8
2009	2.2	0.0	0.2	1,458.7	6.8	0.4	1.2	0.9	1,470.4
<b>Total</b>									
2008	<b>39,668.1</b>	<b>131,452.4</b>	<b>26,254.6</b>	<b>105,206.1</b>	<b>73,762.0</b>	<b>57,117.4</b>	<b>14,115.7</b>	<b>7,799.9</b>	<b>455,376.2</b>
2009	<b>36,334.9</b>	<b>79,853.5</b>	<b>19,789.9</b>	<b>73,160.2</b>	<b>63,211.3</b>	<b>40,688.2</b>	<b>14,241.4</b>	<b>6,111.2</b>	<b>333,390.6</b>
<b>Re-exports</b>									
2008	<b>510.6</b>	<b>843.6</b>	<b>81.9</b>	<b>2,789.9</b>	<b>11,334.2</b>	<b>1,403.6</b>	<b>2,245.6</b>	<b>8,993.9</b>	<b>28,203.3</b>
2009	<b>554.6</b>	<b>535.1</b>	<b>73.2</b>	<b>2,263.5</b>	<b>11,137.0</b>	<b>983.3</b>	<b>2,213.0</b>	<b>7,637.8</b>	<b>25,397.5</b>
<b>Total exports</b>									
2008	<b>40,178.7</b>	<b>132,296.0</b>	<b>26,336.5</b>	<b>107,996.0</b>	<b>85,096.2</b>	<b>58,521.0</b>	<b>16,361.3</b>	<b>16,793.8</b>	<b>483,579.4</b>
2009	<b>36,889.5</b>	<b>80,388.6</b>	<b>19,863.1</b>	<b>75,423.7</b>	<b>74,348.2</b>	<b>41,671.5</b>	<b>16,454.4</b>	<b>13,749.0</b>	<b>358,788.0</b>

1. Data for the most current month do not include some exports of Chapter 71 "Natural/cultured pearls, precious stones and metals, coins etc" for reasons relating to timing.

**Table 6-1**  
**Imports by commodity groupings, balance of payments basis, seasonally adjusted — Current dollars**

	November	December	Change	Year to date		Year to date change	December 2009/2008		
	2009	2009		2008	2009			millions of dollars	percent
<b>Total</b>	<b>31,861</b>	<b>32,436</b>	<b>575</b>	<b>1.8</b>	<b>442,988</b>	<b>373,979</b>	<b>-69,009</b>	<b>-15.6</b>	<b>-9.1</b>
<b>Agricultural and fishing products</b>	<b>2,420</b>	<b>2,394</b>	<b>-26</b>	<b>-1.1</b>	<b>28,511</b>	<b>29,337</b>	<b>826</b>	<b>2.9</b>	<b>-5.8</b>
Fruits and vegetables	683	678	-5	-0.7	7,878	8,257	379	4.8	-7.5
Fresh fruits and berries	253	242	-11	-4.5	2,764	2,927	163	5.9	-3.1
Dried fruits, fruits and fruit preparations	113	116	3	2.8	1,490	1,505	15	1.0	-15.5
Fresh vegetables	185	183	-2	-1.0	1,993	2,141	148	7.4	0.7
Other vegetables and vegetable preparations	131	136	5	3.8	1,632	1,685	53	3.3	-16.8
Other agricultural and fishing products	1,737	1,716	-21	-1.2	20,633	21,080	447	2.2	-5.0
Live animals	16	16	0	1.3	191	195	4	2.2	1.1
Meat and meat preparations	166	166	1	0.4	2,050	2,122	72	3.5	-8.2
Fish and marine animals	154	159	4	2.8	1,909	2,012	103	5.4	-6.7
Cocoa, coffee, tea and other food preparations	414	390	-24	-5.7	4,653	4,910	257	5.5	-14.0
Dairy produce, eggs and honey	53	51	-2	-4.6	635	579	-56	-8.8	-3.8
Corn (maize) shelled	40	43	3	8.6	705	499	-206	-29.2	-24.3
Other cereals and cereal preparations	178	178	-1	-0.3	2,105	2,256	151	7.2	-9.7
Sugar and sugar preparations	134	156	23	16.8	1,535	1,672	136	8.9	7.2
Fodder, feed, excluding unmilled cereal	121	123	2	1.3	1,460	1,493	33	2.3	-0.9
Beverages	296	293	-4	-1.3	3,503	3,615	112	3.2	14.1
Tobacco	35	29	-7	-19.4	377	371	-6	-1.7	10.3
Crude vegetable products	128	111	-17	-13.4	1,495	1,345	-150	-10.0	-11.0
Cotton	1	1	0	27.5	14	10	-4	-29.5	-39.3
<b>Energy products</b>	<b>3,129</b>	<b>3,299</b>	<b>170</b>	<b>5.4</b>	<b>53,072</b>	<b>33,926</b>	<b>-19,146</b>	<b>-36.1</b>	<b>2.9</b>
Crude petroleum	1,897	2,221	323	17.0	34,179	20,944	-13,235	-38.7	18.5
Other energy products	1,231	1,078	-153	-12.4	18,893	12,983	-5,911	-31.3	-19.0
Coal and other related products	476	295	-181	-37.9	6,045	4,550	-1,495	-24.7	-36.2
Petroleum and coal products	755	783	27	3.6	12,848	8,432	-4,416	-34.4	-9.9
<b>Forestry products</b>	<b>196</b>	<b>198</b>	<b>3</b>	<b>1.3</b>	<b>2,869</b>	<b>2,387</b>	<b>-483</b>	<b>-16.8</b>	<b>-7.7</b>
Forestry products	196	198	3	1.3	2,869	2,387	-483	-16.8	-7.7
Crude wood products	35	33	-2	-6.9	480	450	-30	-6.2	-24.9
Wood fabricated materials	160	165	5	3.1	2,389	1,936	-453	-18.9	-3.4
<b>Industrial goods and materials</b>	<b>6,131</b>	<b>6,312</b>	<b>180</b>	<b>2.9</b>	<b>91,574</b>	<b>74,934</b>	<b>-16,640</b>	<b>-18.2</b>	<b>-15.9</b>
Metals and metal ores	2,207	2,371	164	7.5	32,573	24,742	-7,831	-24.0	-8.4
Metals in ores, concentrates and scrap	571	669	98	17.1	8,367	6,055	-2,311	-27.6	19.9
Steel bars, rods, plates, sheets	403	401	-2	-0.4	7,514	4,685	-2,829	-37.6	-29.2
Other iron and steel products	251	240	-11	-4.3	5,429	3,493	-1,937	-35.7	-64.7
Precious metals including alloys	645	728	83	12.9	5,481	6,974	1,493	27.2	72.5
Other non-ferrous metals and alloys	338	334	-4	-1.2	5,782	3,534	-2,248	-38.9	-8.1
Chemicals and plastics	2,104	2,068	-36	-1.7	31,562	26,991	-4,571	-14.5	-21.0
Organic chemicals	444	463	18	4.1	8,058	6,367	-1,692	-21.0	-29.2
Plastic materials	735	721	-14	-1.9	10,671	8,809	-1,862	-17.4	-8.2
Other chemicals and related products	924	884	-40	-4.4	12,833	11,815	-1,017	-7.9	-25.1
Other industrial goods and materials	1,821	1,873	52	2.9	27,439	23,201	-4,238	-15.4	-18.5
Crude animal products	19	14	-5	-25.4	302	230	-73	-24.0	-23.5
Wool and man-made fibres	17	20	3	15.9	254	212	-43	-16.7	-0.2
Crude non-metallic minerals	53	58	4	7.8	1,048	731	-316	-30.2	-25.7
Textile fabricated materials	175	180	5	2.6	2,624	2,237	-387	-14.7	-18.2
Metal fabricated basic products	706	735	29	4.1	10,768	8,993	-1,775	-16.5	-19.7
Rubber fabricated materials	78	81	3	3.9	1,047	938	-109	-10.4	-6.1
Oils, fats, animal and vegetable	100	98	-2	-1.6	1,256	1,242	-14	-1.1	-12.9
Non-metallic minerals	257	274	17	6.7	3,835	3,262	-573	-14.9	-17.2
Other fabricated materials	416	414	-2	-0.6	6,304	5,355	-949	-15.1	-20.0

Table 6-1 – continued

## Imports by commodity groupings, balance of payments basis, seasonally adjusted — Current dollars

	November 2009	December 2009	Change		Year to date		Year to date change	December 2009/2008	
					2008	2009			
	millions of dollars		percent		millions of dollars		percent		
<b>Machinery and equipment</b>	<b>8,799</b>	<b>8,587</b>	<b>-212</b>	<b>-2.4</b>	<b>122,628</b>	<b>107,903</b>	<b>-14,725</b>	<b>-12.0</b>	<b>-19.1</b>
Industrial and agricultural machinery	2,134	2,161	27	1.2	34,252	27,777	-6,474	-18.9	-25.7
Engines, turbines and electric motors	262	258	-4	-1.5	4,131	3,940	-192	-4.6	-40.6
Drilling mining machinery	109	117	8	7.6	1,875	1,505	-370	-19.7	-34.8
Excavating machinery	157	192	35	22.3	3,508	2,041	-1,468	-41.8	-20.5
Metal working machinery	126	121	-5	-3.7	2,421	1,586	-834	-34.5	-31.8
Other industrial machinery	1,162	1,174	12	1.0	18,185	14,713	-3,471	-19.1	-22.4
Agricultural machinery including tractors	318	298	-21	-6.5	4,132	3,992	-139	-3.4	-17.6
Aircraft and other transportation equipment	1,336	1,114	-222	-16.6	17,544	15,723	-1,821	-10.4	-31.1
Aircraft, engines, parts	881	735	-145	-16.5	11,315	10,023	-1,291	-11.4	-37.4
Other transportation equipment and parts	455	379	-77	-16.8	6,229	5,700	-530	-8.5	-14.5
Office machines and equipment	1,057	1,065	7	0.7	14,414	12,353	-2,061	-14.3	-7.1
Other machinery and equipment	4,272	4,247	-25	-0.6	56,419	52,049	-4,369	-7.7	-14.0
Other communication and related equipment	1,506	1,441	-66	-4.4	19,620	18,287	-1,333	-6.8	-17.2
Other equipment and tools	2,766	2,806	41	1.5	36,798	33,762	-3,036	-8.3	-12.2
<b>Automotive products</b>	<b>5,423</b>	<b>5,751</b>	<b>328</b>	<b>6.0</b>	<b>71,959</b>	<b>55,273</b>	<b>-16,686</b>	<b>-23.2</b>	<b>9.6</b>
Passenger autos and chassis	1,895	1,956	61	3.2	25,974	18,742	-7,233	-27.8	7.6
Trucks and other motor vehicles	1,319	1,341	22	1.7	15,138	12,826	-2,312	-15.3	16.5
Motor vehicle parts	2,209	2,454	245	11.1	30,847	23,706	-7,141	-23.1	7.7
<b>Other consumer goods</b>	<b>4,695</b>	<b>4,855</b>	<b>160</b>	<b>3.4</b>	<b>57,522</b>	<b>57,454</b>	<b>-68</b>	<b>-0.1</b>	<b>-6.3</b>
Apparel and footwear	872	891	19	2.2	11,377	11,228	-148	-1.3	-21.9
Apparel and apparel accessories	725	746	22	3.0	9,517	9,352	-165	-1.7	-22.7
Footwear	147	145	-3	-1.8	1,860	1,877	17	0.9	-17.9
Miscellaneous consumer goods	3,823	3,964	141	3.7	46,146	46,226	80	0.2	-1.9
Television, radios, phonographs	120	122	2	1.6	1,702	1,393	-309	-18.1	-5.0
Printed matter	278	288	10	3.6	3,739	3,559	-179	-4.8	-15.5
Watches, sporting goods and toys	466	498	32	6.8	6,420	6,014	-406	-6.3	-14.1
House furnishings	700	714	14	2.0	8,692	8,661	-31	-0.4	-8.0
Photographic goods	198	203	5	2.3	2,910	2,549	-361	-12.4	-18.5
Miscellaneous end products	2,061	2,139	78	3.8	22,683	24,049	1,366	6.0	8.9
<b>Special transactions trade</b>	<b>379</b>	<b>346</b>	<b>-33</b>	<b>-8.7</b>	<b>6,001</b>	<b>4,655</b>	<b>-1,346</b>	<b>-22.4</b>	<b>-29.7</b>
<b>Unallocated balance of payments adjustments</b>	<b>688</b>	<b>694</b>	<b>6</b>	<b>0.9</b>	<b>8,852</b>	<b>8,109</b>	<b>-743</b>	<b>-8.4</b>	<b>-1.0</b>

**Table 6-2**  
**Imports by commodity groupings, balance of payments basis, seasonally adjusted — Constant dollars, 2002**

	November	December	Change	Year to date		Year to date change	December 2009/2008		
	2009	2009		2008	2009				
	millions of dollars		percent		millions of dollars		percent		
<b>Total</b>	<b>36,068</b>	<b>36,463</b>	<b>395</b>	<b>1.1</b>	<b>485,171</b>	<b>407,272</b>	<b>-77,899</b>	<b>-16.1</b>	<b>0.8</b>
<b>Agricultural and fishing products</b>	<b>2,459</b>	<b>2,405</b>	<b>-54</b>	<b>-2.2</b>	<b>28,124</b>	<b>28,061</b>	<b>-63</b>	<b>-0.2</b>	<b>6.8</b>
Fruits and vegetables	673	661	-12	-1.8	7,614	8,084	470	6.2	-5.9
Fresh fruits and berries	259	256	-4	-1.4	2,714	2,996	282	10.4	6.0
Dried fruits, fruits and fruit preparations	122	114	-8	-6.8	1,430	1,470	40	2.8	-12.7
Fresh vegetables	163	164	0	0.2	1,977	2,090	113	5.7	-17.6
Other vegetables and vegetable preparations	128	128	-1	-0.4	1,493	1,528	36	2.4	-3.0
Other agricultural and fishing products	1,786	1,745	-42	-2.3	20,510	19,977	-533	-2.6	12.6
Live animals	19	19	-1	-3.0	194	200	6	3.2	21.5
Meat and meat preparations	190	189	-1	-0.5	2,119	2,160	41	1.9	5.8
Fish and marine animals	249	258	10	4.0	2,486	2,806	320	12.9	30.0
Cocoa, coffee, tea and other food preparations	379	341	-38	-9.9	4,234	4,060	-174	-4.1	1.1
Dairy produce, eggs and honey	51	52	1	1.5	533	560	28	5.2	36.0
Corn (maize) shelled	34	38	3	10.0	503	423	-80	-16.0	-14.6
Other cereals and cereal preparations	169	160	-9	-5.3	2,050	1,930	-121	-5.9	3.1
Sugar and sugar preparations	127	159	31	24.7	1,676	1,630	-46	-2.7	17.4
Fodder, feed, excluding unmilled cereal	101	102	1	1.3	1,175	1,122	-53	-4.5	17.1
Beverages	289	271	-19	-6.5	3,436	3,240	-196	-5.7	27.8
Tobacco	43	34	-9	-20.4	497	429	-68	-13.6	19.1
Crude vegetable products	132	119	-13	-10.0	1,587	1,401	-185	-11.7	3.0
Cotton	1	2	0	24.0	20	14	-6	-29.6	-29.0
<b>Energy products</b>	<b>1,776</b>	<b>1,747</b>	<b>-29</b>	<b>-1.6</b>	<b>22,350</b>	<b>21,027</b>	<b>-1,323</b>	<b>-5.9</b>	<b>-3.2</b>
Crude petroleum	852	980	128	15.0	12,021	11,604	-416	-3.5	3.6
Other energy products	924	767	-157	-17.0	10,329	9,422	-907	-8.8	-10.7
Coal and other related products	459	279	-179	-39.1	3,625	3,902	277	7.6	-3.4
Petroleum and coal products	465	488	22	4.8	6,704	5,521	-1,183	-17.7	-14.4
<b>Forestry products</b>	<b>266</b>	<b>274</b>	<b>8</b>	<b>3.1</b>	<b>3,667</b>	<b>3,045</b>	<b>-622</b>	<b>-17.0</b>	<b>12.1</b>
Forestry products	266	274	8	3.1	3,667	3,045	-622	-17.0	12.1
Crude wood products	50	47	-3	-5.1	608	579	-29	-4.8	-6.8
Wood fabricated materials	216	226	11	5.0	3,058	2,466	-593	-19.4	17.1
<b>Industrial goods and materials</b>	<b>5,684</b>	<b>5,799</b>	<b>115</b>	<b>2.0</b>	<b>80,216</b>	<b>67,417</b>	<b>-12,799</b>	<b>-16.0</b>	<b>-3.8</b>
Metals and metal ores	1,589	1,690	100	6.3	21,510	17,766	-3,744	-17.4	3.7
Metals in ores, concentrates and scrap	345	385	40	11.5	4,743	4,343	-400	-8.4	-4.0
Steel bars, rods, plates, sheets	352	354	3	0.8	4,883	3,818	-1,065	-21.8	5.9
Other iron and steel products	201	195	-6	-3.2	3,448	2,516	-932	-27.0	-47.3
Precious metals including alloys	327	401	74	22.8	3,184	3,428	244	7.7	85.6
Other non-ferrous metals and alloys	365	354	-10	-2.8	5,252	3,662	-1,591	-30.3	15.1
Chemicals and plastics	2,060	1,992	-68	-3.3	28,221	25,191	-3,030	-10.7	-8.1
Organic chemicals	361	359	-3	-0.7	5,740	5,065	-675	-11.8	-29.8
Plastic materials	827	799	-28	-3.4	10,624	9,252	-1,372	-12.9	12.0
Other chemicals and related products	872	835	-37	-4.3	11,857	10,875	-983	-8.3	-11.6
Other industrial goods and materials	2,034	2,117	83	4.1	30,485	24,459	-6,026	-19.8	-5.1
Crude animal products	29	21	-7	-25.7	301	346	45	15.0	5.1
Wool and man-made fibres	22	25	3	15.8	315	266	-49	-15.6	15.2
Crude non-metallic minerals	46	46	1	1.3	881	636	-245	-27.8	-30.5
Textile fabricated materials	236	242	6	2.6	3,432	2,777	-655	-19.1	-2.2
Metal fabricated basic products	743	777	34	4.5	11,303	8,874	-2,429	-21.5	-6.1
Rubber fabricated materials	95	99	5	4.9	1,303	1,064	-239	-18.4	11.2
Oils, fats, animal and vegetable	94	94	0	0.3	985	1,091	106	10.8	6.9
Non-metallic minerals	313	326	13	4.2	4,567	3,689	-878	-19.2	-4.5
Other fabricated materials	457	486	29	6.3	7,398	5,716	-1,682	-22.7	-8.0



Table 6-2 – continued

## Imports by commodity groupings, balance of payments basis, seasonally adjusted — Constant dollars, 2002

	November 2009	December 2009	Change		Year to date		Year to date change	December 2009/2008	
					2008	2009			
	millions of dollars		percent		millions of dollars		percent		
<b>Machinery and equipment</b>	<b>12,209</b>	<b>12,005</b>	<b>-204</b>	<b>-1.7</b>	<b>173,220</b>	<b>141,037</b>	<b>-32,183</b>	<b>-18.6</b>	<b>-6.9</b>
Industrial and agricultural machinery	2,555	2,611	56	2.2	42,473	30,989	-11,484	-27.0	-14.3
Engines, turbines and electric motors	319	316	-3	-0.9	5,212	4,442	-770	-14.8	-33.2
Drilling mining machinery	119	129	10	8.3	2,084	1,516	-568	-27.3	-22.9
Excavating machinery	186	233	46	24.8	4,346	2,251	-2,096	-48.2	-6.3
Metal working machinery	157	153	-3	-2.2	3,089	1,856	-1,233	-39.9	-20.2
Other industrial machinery	1,378	1,408	30	2.2	22,323	16,253	-6,070	-27.2	-9.7
Agricultural machinery including tractors	396	372	-23	-5.9	5,418	4,672	-746	-13.8	-8.0
Aircraft and other transportation equipment	1,536	1,295	-241	-15.7	20,965	16,981	-3,984	-19.0	-20.6
Aircraft, engines, parts	1,045	879	-166	-15.9	13,719	11,084	-2,636	-19.2	-26.5
Other transportation equipment and parts	492	416	-75	-15.3	7,246	5,898	-1,348	-18.6	-4.7
Office machines and equipment	2,169	2,113	-56	-2.6	29,853	24,697	-5,155	-17.3	-3.1
Other machinery and equipment	5,948	5,985	37	0.6	79,929	68,369	-11,560	-14.5	-0.8
Other communication and related equipment	2,428	2,386	-41	-1.7	31,554	27,999	-3,554	-11.3	-3.0
Other equipment and tools	3,521	3,599	78	2.2	48,375	40,369	-8,006	-16.5	0.8
<b>Automotive products</b>	<b>6,791</b>	<b>7,163</b>	<b>372</b>	<b>5.5</b>	<b>88,948</b>	<b>66,184</b>	<b>-22,764</b>	<b>-25.6</b>	<b>20.0</b>
Passenger autos and chassis	2,391	2,407	16	0.7	30,212	23,043	-7,169	-23.7	10.5
Trucks and other motor vehicles	1,518	1,554	36	2.3	17,775	14,171	-3,604	-20.3	27.8
Motor vehicle parts	2,882	3,202	321	11.1	40,960	28,970	-11,990	-29.3	24.5
<b>Other consumer goods</b>	<b>5,953</b>	<b>6,188</b>	<b>234</b>	<b>3.9</b>	<b>75,656</b>	<b>68,725</b>	<b>-6,931</b>	<b>-9.2</b>	<b>6.2</b>
Apparel and footwear	1,188	1,225	37	3.1	15,936	14,387	-1,549	-9.7	-10.3
Apparel and apparel accessories	990	1,029	40	4.0	13,329	12,012	-1,318	-9.9	-10.7
Footwear	199	196	-3	-1.5	2,607	2,375	-232	-8.9	-8.1
Miscellaneous consumer goods	4,765	4,963	198	4.1	59,720	54,338	-5,382	-9.0	11.3
Television, radios, phonographs	212	209	-4	-1.7	2,716	2,171	-545	-20.1	20.5
Printed matter	340	353	13	3.9	4,944	4,234	-710	-14.4	-8.2
Watches, sporting goods and toys	628	677	49	7.8	8,938	7,766	-1,172	-13.1	-1.4
House furnishings	894	915	21	2.4	11,065	10,218	-848	-7.7	8.7
Photographic goods	349	353	3	1.0	5,101	4,152	-949	-18.6	-4.9
Miscellaneous end products	2,342	2,456	115	4.9	26,956	25,798	-1,158	-4.3	22.7
<b>Special transactions trade</b>	<b>440</b>	<b>398</b>	<b>-43</b>	<b>-9.7</b>	<b>6,614</b>	<b>5,115</b>	<b>-1,499</b>	<b>-22.7</b>	<b>-20.5</b>
<b>Unallocated balance of payments adjustments</b>	<b>490</b>	<b>485</b>	<b>-5</b>	<b>-1.0</b>	<b>6,375</b>	<b>6,661</b>	<b>285</b>	<b>4.5</b>	<b>-25.2</b>

**Table 7-1**  
**Imports from selected countries, customs basis, not seasonally adjusted — December**

	Agricultural and fishing products	Energy products	Forestry products	Industrial goods	Machinery and equipment	Automotive products	Consumer goods	Special transactions	Total
millions of dollars									
<b>United States</b>									
2008	1,412.3	1,246.5	130.4	3,612.5	4,947.4	3,183.8	1,907.4	439.7	16,880.0
2009	1,337.2	882.7	125.1	3,333.3	3,802.3	3,492.7	1,867.8	464.1	15,305.2
<b>Mexico</b>									
2008	122.6	48.9	0.5	101.8	682.6	496.0	88.9	4.0	1,545.2
2009	121.6	0.0	0.2	104.1	615.8	635.6	86.2	2.9	1,566.5
<b>Japan</b>									
2008	8.8	0.4	0.2	102.0	454.5	401.4	88.5	0.2	1,055.9
2009	7.6	0.5	0.1	87.5	331.2	540.3	88.7	0.2	1,056.1
<b>European Union</b>									
<b>Germany</b>									
2008	21.8	0.7	1.1	176.8	404.9	283.0	157.4	8.7	1,054.4
2009	20.8	1.6	1.4	148.5	269.5	268.2	131.1	3.3	844.3
<b>France</b>									
2008	48.7	24.4	0.4	196.5	200.3	3.8	107.5	61.0	642.5
2009	50.4	0.5	0.2	44.2	151.6	9.0	120.3	0.2	376.4
<b>United Kingdom</b>									
2008	35.5	472.4	0.0	102.6	355.3	24.7	111.7	10.5	1,112.8
2009	30.9	378.6	0.0	128.1	232.9	37.3	102.6	3.2	913.7
<b>Italy</b>									
2008	47.2	0.0	1.1	106.3	189.7	13.1	82.9	9.2	449.5
2009	55.2	0.1	0.6	76.4	109.5	13.1	79.9	0.8	335.7
<b>Other European Union</b>									
2008	96.1	134.5	3.4	281.5	487.6	70.5	271.3	49.8	1,394.6
2009	96.4	260.3	3.5	199.7	309.5	55.2	342.9	3.8	1,271.3
<b>Total</b>									
2008	249.4	632.0	6.0	863.7	1,637.8	395.1	730.8	139.1	4,653.9
2009	253.7	641.0	5.6	596.9	1,073.0	382.8	776.9	11.3	3,741.4
<b>Newly industrialized countries</b>									
<b>South Korea</b>									
2008	4.5	1.6	0.0	93.7	246.7	119.6	24.9	0.1	491.0
2009	6.6	9.3	0.0	64.3	206.6	171.7	16.3	0.1	474.9
<b>Hong Kong</b>									
2008	2.9	0.0	0.1	2.4	18.6	0.2	14.0	0.0	38.3
2009	2.4	0.0	0.2	1.3	10.6	0.1	10.5	0.0	25.1
<b>Taiwan</b>									
2008	6.5	0.1	0.4	72.8	220.0	13.2	34.1	0.1	347.1
2009	6.5	0.0	0.4	60.3	160.7	12.7	33.8	0.1	274.6
<b>Singapore</b>									
2008	4.8	0.0	0.2	4.0	69.7	0.2	28.0	0.3	107.4
2009	2.3	42.3	0.0	5.2	37.0	0.3	17.2	0.1	104.4
<b>Total</b>									
2008	18.8	1.7	0.7	172.9	555.1	133.2	101.0	0.5	983.8
2009	17.8	51.5	0.6	131.1	415.0	184.8	77.8	0.3	879.0
<b>Other countries</b>									
2008	682.8	1,401.4	52.2	1,948.4	2,427.5	147.0	1,807.5	115.2	8,582.0
2009	650.2	1,710.8	44.0	1,427.6	2,339.7	149.4	1,649.2	24.4	7,995.4
<b>Total</b>									
2008	<b>2,494.7</b>	<b>3,330.9</b>	<b>190.0</b>	<b>6,801.4</b>	<b>10,704.8</b>	<b>4,756.5</b>	<b>4,724.0</b>	<b>698.7</b>	<b>33,700.9</b>
2009	<b>2,388.4</b>	<b>3,286.6</b>	<b>175.7</b>	<b>5,680.6</b>	<b>8,577.1</b>	<b>5,385.7</b>	<b>4,546.6</b>	<b>503.2</b>	<b>30,543.7</b>

**Table 7-2**  
**Imports from selected countries, customs basis, not seasonally adjusted — Year to date, January to December**

	Agricultural and fishing products	Energy products	Forestry products	Industrial goods	Machinery and equipment	Automotive products	Consumer goods	Special transactions	Total
millions of dollars									
<b>United States</b>									
2008	16,595.0	16,181.0	2,061.8	56,960.0	57,879.3	50,484.9	22,693.8	4,429.3	227,285.1
2009	17,189.1	10,478.9	1,764.0	44,254.0	49,152.7	36,581.0	22,998.9	4,147.6	186,566.1
<b>Mexico</b>									
2008	1,208.9	994.4	4.7	1,405.8	7,466.1	5,711.2	1,081.0	44.5	17,916.6
2009	1,312.1	454.3	5.3	1,284.4	6,984.2	5,405.4	1,018.7	41.4	16,505.9
<b>Japan</b>									
2008	67.9	50.8	1.9	1,340.3	6,218.8	6,547.0	1,056.3	4.6	15,287.6
2009	71.9	35.4	1.9	1,092.6	4,710.8	5,435.3	989.0	3.6	12,340.4
<b>European Union</b>									
<b>Germany</b>									
2008	272.9	24.9	16.4	2,484.3	4,863.5	2,991.4	1,971.4	87.1	12,712.0
2009	271.2	32.3	13.8	1,816.1	4,126.9	2,595.0	1,792.8	10.4	10,658.5
<b>France</b>									
2008	774.6	210.8	3.7	1,071.1	1,945.3	71.0	1,589.3	384.1	6,050.0
2009	729.0	195.3	2.5	1,024.4	1,840.7	91.6	1,707.0	10.0	5,600.6
<b>United Kingdom</b>									
2008	417.6	5,543.4	2.0	1,234.2	3,416.2	532.6	1,402.5	49.7	12,598.2
2009	430.1	2,592.5	1.3	1,299.5	3,357.3	352.2	1,335.8	41.5	9,410.1
<b>Italy</b>									
2008	664.0	119.3	17.5	1,181.7	1,733.4	238.7	1,100.7	64.5	5,119.8
2009	675.7	79.4	14.1	934.1	1,468.8	185.8	1,076.3	7.2	4,441.5
<b>Other European Union</b>									
2008	1,233.7	2,555.1	51.6	3,209.0	5,309.2	1,230.5	3,894.6	197.6	17,681.4
2009	1,183.5	1,976.2	43.0	2,689.2	4,191.1	732.5	4,194.8	49.1	15,059.2
<b>Total</b>									
2008	3,363.0	8,453.4	91.2	9,180.4	17,267.6	5,064.3	9,958.5	783.0	54,161.3
2009	3,289.5	4,875.7	74.6	7,763.3	14,984.8	3,957.1	10,106.7	118.3	45,170.0
<b>Newly industrialized countries</b>									
<b>South Korea</b>									
2008	49.4	192.6	0.5	964.4	2,821.5	1,722.5	254.7	1.2	6,006.8
2009	52.4	307.1	0.2	768.9	2,645.5	1,923.5	223.0	0.8	5,921.3
<b>Hong Kong</b>									
2008	33.1	0.1	1.1	34.8	199.9	1.9	193.4	0.6	464.8
2009	29.7	0.0	1.0	26.6	158.8	4.0	142.7	0.6	363.3
<b>Taiwan</b>									
2008	59.6	74.2	9.8	880.8	2,326.6	178.6	441.4	1.3	3,972.1
2009	67.0	0.3	9.1	698.9	1,993.8	166.1	408.4	1.1	3,344.7
<b>Singapore</b>									
2008	36.6	83.3	1.2	271.7	624.3	3.0	224.4	4.3	1,248.8
2009	33.6	112.3	0.6	289.1	485.8	4.6	213.8	1.5	1,141.3
<b>Total</b>									
2008	178.7	350.2	12.5	2,151.7	5,972.3	1,906.0	1,113.8	7.4	11,692.6
2009	182.7	419.7	10.8	1,783.4	5,283.9	2,098.2	987.8	4.1	10,770.6
<b>Other countries</b>									
2008	7,096.2	26,920.0	684.9	20,107.7	28,058.5	2,247.7	21,653.3	863.0	107,631.4
2009	7,290.1	17,873.9	530.1	17,225.6	26,932.8	1,796.6	21,352.9	340.2	93,342.2
<b>Total</b>									
2008	28,510.7	52,949.8	2,857.1	91,146.1	122,862.7	71,961.1	57,556.8	6,131.7	433,976.0
2009	29,337.3	34,137.9	2,386.7	73,403.6	108,049.2	55,273.5	57,454.1	4,655.2	364,697.5

**Table 8**  
**Imports by country, customs basis, not seasonally adjusted**

	December		January to December		Variation
	2008	2009	2008	2009	January to December 2009/2008
millions of dollars					
<b>North America</b>					
Canada	304.4	335.1	3,733.6	3,320.5	-11.1
Greenland	3.3	0.1	35.1	17.4	-50.4
Mexico	1,545.2	1,566.5	17,916.6	16,505.9	-7.9
Saint Pierre and Miquelon	0.0	0.1	0.5	0.3	-35.1
United States	16,880.0	15,305.2	227,285.1	186,566.1	-17.9
<b>Total</b>	<b>18,733.0</b>	<b>17,207.0</b>	<b>248,970.8</b>	<b>206,410.2</b>	<b>-17.1</b>
<b>Western Europe</b>					
Andorra	0.0	0.0	0.2	0.1	-1.8
Austria	105.5	95.2	1,510.2	1,165.5	-22.8
Belgium	183.3	152.2	2,211.9	1,454.9	-34.2
Denmark	166.1	201.7	1,715.1	1,599.8	-6.7
Faeroe Islands	0.0	0.1	1.3	2.1	58.3
Finland	81.6	71.8	853.5	941.9	10.4
France	642.5	376.4	6,050.0	5,600.6	-7.4
Germany	1,054.4	844.3	12,712.0	10,658.5	-16.2
Gibraltar	0.0	0.0	0.1	0.0	-98.2
Greece	12.3	12.4	138.7	140.7	1.5
Iceland	2.3	2.5	34.1	32.7	-4.2
Italy	449.5	335.7	5,119.8	4,441.5	-13.2
Luxembourg	4.8	6.0	97.2	138.3	42.3
Malta	1.6	4.5	22.3	23.1	3.4
Netherlands	145.2	115.9	2,177.8	1,860.1	-14.6
Norway	327.5	438.0	6,217.7	3,569.7	-42.6
Portugal	35.8	19.1	438.1	321.5	-26.6
Republic of Ireland (Eire)	124.2	168.8	1,998.6	2,190.7	9.6
Spain	146.5	114.4	1,716.5	1,348.8	-21.4
Sweden	169.5	125.1	2,247.8	1,793.3	-20.2
Switzerland	362.7	244.0	3,148.1	3,421.6	8.7
United Kingdom	1,112.8	913.7	12,598.2	9,410.1	-25.3
<b>Total</b>	<b>5,128.3</b>	<b>4,242.1</b>	<b>61,009.2</b>	<b>50,115.5</b>	<b>-17.9</b>
<b>Other Europe</b>					
Albania	0.2	0.2	3.0	3.6	20.6
Armenia	1.7	3.2	7.0	34.1	383.8
Azerbaijan	0.0	172.4	1,166.3	1,168.8	0.2
Belarus	1.7	0.4	35.7	35.4	-0.7
Bosnia and Herzegovina	0.6	0.6	6.1	8.5	40.3
Bulgaria	6.2	5.2	116.9	119.4	2.1
Croatia	1.9	1.7	50.5	25.5	-49.5
Czech Republic	41.6	20.0	371.8	268.9	-27.7
Estonia	2.4	2.0	41.8	21.6	-48.3
Georgia	9.0	12.5	127.1	134.7	6.0
Hungary	44.4	45.9	393.5	369.4	-6.1
Kazakhstan	14.5	17.8	95.3	151.4	58.9
Kyrgyzstan	0.0	0.0	1.0	0.5	-52.0
Latvia	1.5	0.9	32.3	17.2	-46.7
Lithuania	3.2	11.8	332.9	156.9	-52.9
Macedonia (Former Yugoslav Republic of Macedonia)	0.5	0.5	8.0	8.7	8.4
Montenegro	0.2	0.0	0.9	0.3	-65.3
Poland	79.3	55.4	845.6	753.1	-10.9
Republic of Moldova	0.1	0.2	2.4	1.9	-22.4
Romania	17.3	8.4	156.2	120.9	-22.6
Russian Federation	142.2	267.1	2,084.4	3,077.0	47.6
Serbia	1.2	0.4	12.9	10.5	-19.2
Slovakia	15.7	16.7	181.6	165.6	-8.8
Slovenia	6.2	17.6	78.0	85.3	9.3
Tajikistan	0.0	0.0	0.0	0.0	-87.0
Turkmenistan	0.0	0.0	0.9	0.4	-53.2
Ukraine	14.7	9.3	197.4	94.3	-52.2
Uzbekistan	0.4	0.0	1.4	11.9	749.7
<b>Total</b>	<b>406.8</b>	<b>670.1</b>	<b>6,350.9</b>	<b>6,845.9</b>	<b>7.8</b>

Table 8 – continued

## Imports by country, customs basis, not seasonally adjusted

	December		January to December		Variation
	2008	2009	2008	2009	January to December 2009/2008
millions of dollars					
<b>Middle East</b>					
Bahrain	0.4	0.2	3.9	4.8	23.2
Cyprus	0.3	0.0	2.9	2.2	-24.0
Egypt	22.1	14.6	138.8	114.2	-17.7
Eritrea	0.0	0.0	0.0	0.1	207.9
Ethiopia	1.2	0.8	12.7	16.8	32.4
Iran	2.0	2.9	39.9	24.8	-37.9
Iraq	247.9	56.3	2,266.0	1,279.2	-43.6
Israel	105.3	95.9	1,217.8	945.7	-22.3
Jordan	1.5	1.3	15.4	16.6	8.2
Kuwait	7.6	0.0	15.3	37.3	144.4
Lebanon	1.9	1.5	16.5	15.6	-5.2
Libya	0.0	4.5	0.0	4.7	...
Oman	0.4	0.3	4.5	6.2	38.0
Qatar	0.1	35.7	1.4	53.3	...
Saudi Arabia	94.2	165.5	2,200.9	1,452.8	-34.0
Somalia	0.0	0.0	0.1	0.0	-42.5
Sudan	7.0	6.2	68.5	68.4	-0.2
Syria	0.7	0.9	56.2	5.9	-89.5
Turkey	121.3	37.0	703.1	631.6	-10.2
United Arab Emirates	2.7	2.4	330.3	195.4	-40.8
Yemen	0.0	0.0	0.2	0.2	-20.9
<b>Total</b>	<b>616.4</b>	<b>426.1</b>	<b>7,094.2</b>	<b>4,875.6</b>	<b>-31.3</b>
<b>Other Africa</b>					
Algeria	320.7	485.4	7,698.6	3,765.0	-51.1
Angola	271.3	52.9	2,768.1	1,366.2	-50.6
Antarctica	0.0	0.0	0.0	0.0	207.8
Benin	0.0	0.0	0.0	0.0	-90.9
Botswana	0.1	0.0	13.0	28.6	120.5
Bouvet Island	0.0	0.0	0.2	0.0	-96.9
Burkina Faso	0.0	3.4	0.1	13.5	...
Burundi	0.0	0.0	0.5	0.2	-52.2
Cameroon	0.3	0.3	4.5	4.5	-0.2
Cape Verde	0.0	0.1	0.0	0.1	210.3
Central African Republic	0.1	0.0	0.1	0.1	-23.3
Chad	0.0	0.0	0.2	0.2	-8.7
Comoros	0.0	0.0	0.1	0.1	36.8
Congo	0.7	0.3	2.9	2.2	-26.0
Democratic Republic of the Congo	0.1	0.0	0.8	0.6	-27.7
Djibouti	0.0	0.0	0.0	0.0	-21.6
Equatorial Guinea	0.0	0.0	81.1	347.9	328.9
French Southern Territories	0.0	0.0	0.0	0.0	-99.2
Gabon	0.2	0.1	1.3	1.8	40.7
Gambia	0.0	0.0	0.1	0.1	99.0
Ghana	2.1	1.9	34.2	27.4	-19.9
Guinea	6.9	5.3	69.7	62.7	-10.0
Guinea-Bissau	0.0	0.0	0.0	0.0	...
Ivory Coast	26.7	7.8	133.3	223.7	67.8
Kenya	1.3	1.0	15.3	17.0	11.0
Lesotho	0.6	0.9	6.6	8.8	32.0
Liberia	1.0	1.1	22.2	29.1	31.3
Madagascar	1.1	0.5	20.3	41.6	105.2
Malawi	0.1	0.1	2.6	6.7	163.2
Mali	0.0	0.0	0.4	0.3	-13.2
Mauritania	0.0	0.0	0.2	0.9	340.9
Mauritius	0.7	0.5	7.3	9.0	22.1
Morocco	27.1	25.1	146.9	138.3	-5.9
Mozambique	1.3	0.0	2.4	0.3	-87.7
Namibia	0.0	0.1	245.9	248.3	1.0
Niger	0.0	0.3	0.8	1.1	46.5
Nigeria	2.2	0.7	924.0	458.1	-50.4
Rwanda	0.1	0.0	0.5	0.3	-35.3
Saint Helena	0.0	0.0	0.1	0.0	-79.5
Sao Tome and Principe	0.0	0.0	0.1	0.0	-32.6
Senegal	0.0	0.1	1.2	1.1	-1.8
Seychelles	0.0	0.0	1.4	0.6	-55.8

Table 8 – continued

## Imports by country, customs basis, not seasonally adjusted

	December		January to December		Variation
	2008	2009	2008	2009	January to December 2009/2008
millions of dollars					
Sierra Leone	0.1	0.1	1.4	4.0	178.8
South Africa	51.2	46.4	844.8	631.9	-25.2
Swaziland	0.1	0.1	2.4	1.9	-20.9
Togo	0.7	0.1	6.8	4.4	-36.1
Tunisia	3.0	2.7	41.2	45.5	10.5
Uganda	0.3	0.4	2.4	2.5	5.1
United Republic of Tanzania	0.3	0.2	2.2	4.6	112.2
Western Sahara	0.0	0.0	0.0	0.0	-84.4
Zambia	0.0	0.1	0.6	0.8	26.8
Zimbabwe	0.1	0.3	3.9	2.8	-27.4
<b>Total</b>	<b>720.6</b>	<b>638.2</b>	<b>13,113.0</b>	<b>7,505.2</b>	<b>-42.8</b>
<b>Other Asia</b>					
Afghanistan	0.1	0.3	1.2	1.4	18.2
Bangladesh	52.0	51.2	648.8	808.2	24.6
Bhutan	0.0	0.0	0.0	0.0	-53.4
British Indian Ocean Territory	0.0	0.0	0.0	0.0	-90.3
Brunei Darussalam	0.3	0.0	2.5	1.9	-22.9
Cambodia	25.5	19.7	268.5	289.2	7.7
China	3,787.1	3,224.0	42,623.5	39,639.8	-7.0
Hong Kong	38.3	25.1	464.8	363.3	-21.8
India	195.7	140.1	2,201.8	2,002.0	-9.1
Indonesia	95.7	78.1	1,079.4	1,008.7	-6.6
Japan	1,055.9	1,056.1	15,287.6	12,340.4	-19.3
Laos	0.3	0.8	5.0	6.7	35.3
Macao	2.4	0.6	29.8	22.3	-25.2
Malaysia	265.9	189.3	2,925.6	2,313.1	-20.9
Maldives	0.1	0.0	0.3	0.1	-76.0
Mongolia	26.5	29.2	189.5	158.9	-16.1
Myanmar	0.0	0.0	0.7	0.1	-92.1
Nepal	1.3	1.0	15.5	13.3	-14.2
North Korea	0.0	0.0	0.1	0.1	32.9
Pakistan	22.9	19.9	245.6	242.5	-1.3
Philippines	68.8	70.9	822.7	735.7	-10.6
Singapore	107.4	104.4	1,248.8	1,141.3	-8.6
South Korea	491.0	474.9	6,006.8	5,921.3	-1.4
Sri Lanka	10.9	9.6	119.6	115.7	-3.2
Taiwan	347.1	274.6	3,972.1	3,344.7	-15.8
Thailand	231.8	192.7	2,473.8	2,298.0	-7.1
Timor-Leste	1.0	0.5	6.9	4.1	-41.1
Viet Nam	87.9	82.9	953.6	1,053.4	10.5
<b>Total</b>	<b>6,915.8</b>	<b>6,045.7</b>	<b>81,594.4</b>	<b>73,826.1</b>	<b>-9.5</b>
<b>Oceania</b>					
American Samoa	0.0	0.0	0.2	0.4	55.0
Australia	115.8	134.0	1,649.7	1,624.1	-1.6
Christmas Island	0.1	0.0	0.1	0.0	-65.2
Cocos (Keeling) Islands	0.0	0.0	0.0	0.1	144.1
Cook Islands	0.1	0.0	0.2	0.0	-75.7
Fiji	0.3	0.2	8.0	6.4	-20.8
French Polynesia	0.0	0.0	1.2	0.7	-38.5
Guam	0.0	0.0	0.8	0.3	-64.9
Heard Island and McDonald Islands	0.0	0.0	0.0	0.0	240.3
Kiribati	0.0	0.0	0.0	0.1	410.8
Nauru	0.0	0.0	0.1	0.1	3.9
New Caledonia	0.0	0.0	0.3	0.3	22.5
New Zealand	35.6	30.8	479.2	454.0	-5.2
Niue	0.0	0.0	0.0	0.0	-2.6
Norfolk Island	0.0	0.0	0.0	0.0	388.6
Papua New Guinea	0.3	0.2	2.0	2.0	1.8
Pitcairn	0.1	0.0	0.1	0.0	-74.3
Samoa	0.0	0.0	0.0	0.0	-90.1
Solomon Islands	0.0	0.0	0.1	0.1	-11.4
Tonga	0.0	0.0	0.1	0.0	-76.2
United States Minor Outlying Islands	0.5	0.5	5.5	5.1	-8.1
Vanuatu	0.0	0.0	0.1	0.2	185.3

Table 8 – continued

## Imports by country, customs basis, not seasonally adjusted

	December		January to December		Variation
	2008	2009	2008	2009	January to December 2009/2008
	millions of dollars				
Wallis and Futuna	0.0	0.0	0.0	0.0	...
<b>Total</b>	<b>152.9</b>	<b>165.9</b>	<b>2,147.8</b>	<b>2,094.1</b>	<b>-2.5</b>
<b>South America</b>					
Argentina	100.0	51.4	640.9	700.6	9.3
Bolivia	4.4	17.5	77.1	90.8	17.8
Brazil	218.6	229.2	2,684.6	2,575.5	-4.1
Chile	113.9	178.1	1,794.1	1,730.6	-3.5
Colombia	54.4	45.1	638.7	733.9	14.9
Ecuador	17.5	24.8	177.1	233.9	32.1
Falkland Islands (Malvinas)	0.0	0.0	0.1	0.0	-57.5
Guyana	23.2	25.4	225.1	300.3	33.4
Paraguay	1.6	0.8	17.3	9.4	-45.9
Peru	204.4	306.4	2,455.5	2,876.9	17.2
Suriname	45.8	38.5	607.1	535.4	-11.8
Uruguay	2.8	1.7	34.7	54.5	57.4
Venezuela	26.0	10.2	1,370.5	908.0	-33.7
<b>Total</b>	<b>812.7</b>	<b>929.1</b>	<b>10,722.7</b>	<b>10,749.8</b>	<b>0.3</b>
<b>Central America Antilles</b>					
Anguilla	0.0	0.0	0.2	0.3	45.8
Antigua and Barbuda	0.1	0.0	5.5	0.4	-91.8
Aruba	0.0	15.0	152.1	91.4	-40.0
Bahamas	0.4	2.5	73.5	31.0	-57.8
Barbados	0.4	0.6	8.5	8.7	1.8
Belize	0.8	0.3	10.8	7.2	-33.1
Bermuda	0.2	0.1	1.9	11.0	474.6
British Virgin Islands	0.4	0.2	13.2	0.7	-94.6
Cayman Islands	0.0	0.0	0.2	1.2	506.7
Costa Rica	30.4	31.8	376.6	357.9	-5.0
Cuba	48.4	52.1	895.2	500.4	-44.1
Dominica	0.1	0.0	0.3	0.4	15.8
Dominican Republic	14.2	13.2	129.9	147.7	13.7
El Salvador	3.7	2.9	69.4	65.1	-6.1
Grenada	0.3	0.1	0.9	0.5	-42.0
Guatemala	30.0	18.4	264.6	266.5	0.7
Haiti	1.2	1.6	19.3	21.8	12.9
Honduras	9.9	9.0	151.6	139.6	-8.0
Jamaica	51.5	8.7	327.6	164.7	-49.7
Montserrat	0.0	0.0	0.1	0.1	-50.3
Netherlands Antilles	0.1	0.0	2.7	14.6	445.6
Nicaragua	5.6	4.6	98.6	78.6	-20.3
Panama	0.8	4.7	21.2	40.7	91.7
Saint Kitts and Nevis	0.5	0.6	5.2	7.0	34.3
Saint Lucia	0.0	0.1	0.2	2.3	...
Saint Vincent and the Grenadines	0.0	0.0	0.1	0.2	60.8
Trinidad and Tobago	15.5	52.8	341.4	314.7	-7.8
Turks and Caicos Islands	0.0	0.0	1.9	0.3	-84.6
<b>Total</b>	<b>214.5</b>	<b>219.4</b>	<b>2,973.0</b>	<b>2,275.0</b>	<b>-23.5</b>
<b>All countries</b>	<b>33,700.9</b>	<b>30,543.7</b>	<b>433,976.0</b>	<b>364,697.5</b>	<b>-16.0</b>

**Table 9-1  
Imports by province of clearance, customs basis, not seasonally adjusted — December**

	Agricultural and fishing products	Energy products	Forestry products	Industrial goods	Machinery and equipment	Automotive products	Consumer goods	Special transactions	Total
millions of dollars									
Newfoundland and Labrador									
2008	2.8	253.1	0.0	4.7	72.8	0.0	0.7	1.0	335.2
2009	3.3	123.1	0.0	1.8	5.8	0.1	0.5	3.4	138.1
Prince Edward Island									
2008	0.2	0.0	0.0	0.0	0.1	0.0	0.0	0.0	0.4
2009	0.2	0.0	0.0	3.0	0.1	0.0	0.0	0.0	3.4
Nova Scotia									
2008	27.3	110.3	1.7	80.8	201.6	296.5	18.3	4.3	740.9
2009	24.2	124.7	1.5	86.4	65.8	285.6	12.6	0.9	601.8
New Brunswick									
2008	28.4	287.3	7.8	67.1	52.1	14.5	13.5	3.3	474.0
2009	31.8	773.1	7.4	76.5	62.6	27.8	13.4	1.6	994.3
Quebec									
2008	391.9	1,592.7	55.3	1,258.8	1,844.7	130.8	817.7	226.0	6,317.8
2009	412.3	1,258.8	44.1	1,039.3	1,310.0	174.1	790.4	41.6	5,070.5
Ontario									
2008	1,404.6	480.3	71.6	3,606.0	5,924.9	3,681.6	2,984.8	406.5	18,560.4
2009	1,309.7	477.0	63.9	3,312.7	4,978.6	4,445.3	2,874.8	430.0	17,892.0
Manitoba									
2008	78.6	8.0	6.1	286.4	553.5	168.3	141.4	13.7	1,256.0
2009	69.0	28.9	4.9	202.6	400.2	110.0	121.9	4.9	942.4
Saskatchewan									
2008	29.1	43.3	1.5	205.1	269.1	61.4	20.9	1.1	631.4
2009	26.9	57.3	1.3	176.9	211.5	59.8	21.4	0.5	555.5
Alberta									
2008	143.2	323.9	5.9	533.6	766.4	77.1	115.0	23.5	1,988.6
2009	143.2	249.0	8.9	289.0	645.2	53.2	96.5	8.7	1,493.7
British Columbia									
2008	388.0	231.4	40.2	758.8	1,000.5	326.2	611.6	18.7	3,375.4
2009	367.6	194.3	43.6	492.5	896.7	229.8	615.0	11.5	2,851.1
Yukon, Northwest Territories and Nunavut									
2008	0.5	0.6	0.0	0.1	19.1	0.0	0.1	0.5	20.9
2009	0.0	0.3	0.0	0.0	0.4	0.0	0.0	0.0	0.8
<b>Total</b>									
<b>2008</b>	<b>2,494.7</b>	<b>3,330.9</b>	<b>190.0</b>	<b>6,801.4</b>	<b>10,704.8</b>	<b>4,756.5</b>	<b>4,724.0</b>	<b>698.7</b>	<b>33,700.9</b>
<b>2009</b>	<b>2,388.4</b>	<b>3,286.6</b>	<b>175.7</b>	<b>5,680.6</b>	<b>8,577.1</b>	<b>5,385.7</b>	<b>4,546.6</b>	<b>503.2</b>	<b>30,543.7</b>



**Table 9-2**  
**Imports by province of clearance, customs basis, not seasonally adjusted — Year to date, January to December**

	Agricultural and fishing products	Energy products	Forestry products	Industrial goods	Machinery and equipment	Automotive products	Consumer goods	Special transactions	Total
millions of dollars									
Newfoundland and Labrador									
2008	42.1	3,875.1	0.1	94.8	181.5	1.3	15.4	13.7	4,223.9
2009	38.0	2,252.9	0.5	152.4	181.7	1.3	5.0	9.0	2,640.7
Prince Edward Island									
2008	3.4	0.0	0.1	13.2	83.3	0.1	18.3	0.4	118.8
2009	3.5	0.0	0.0	22.5	13.2	0.1	1.7	0.2	41.3
Nova Scotia									
2008	367.0	1,989.2	20.3	1,402.8	1,284.0	3,171.3	158.9	22.4	8,415.9
2009	299.7	1,519.9	14.1	862.1	1,023.1	2,734.8	173.1	29.6	6,656.3
New Brunswick									
2008	464.0	7,763.3	127.7	985.8	840.8	358.9	178.3	25.9	10,744.8
2009	479.7	6,259.7	100.7	924.0	994.9	300.7	214.4	25.3	9,299.5
Quebec									
2008	4,341.9	22,282.0	726.5	17,063.7	20,369.6	2,399.0	10,110.8	1,283.1	78,576.5
2009	4,705.4	12,825.2	665.8	13,300.4	17,962.9	2,102.1	11,047.1	535.7	63,144.6
Ontario									
2008	15,605.5	8,941.2	1,092.9	50,710.9	69,083.6	56,216.9	36,444.9	4,218.1	242,314.0
2009	16,195.0	5,450.6	873.8	42,130.0	60,375.4	43,485.6	35,852.4	3,646.7	208,009.5
Manitoba									
2008	981.0	342.9	96.0	3,820.9	6,336.4	1,898.0	1,719.1	105.2	15,299.4
2009	942.9	293.9	82.7	3,081.1	5,464.5	1,371.1	1,638.0	90.3	12,964.6
Saskatchewan									
2008	352.4	544.0	28.9	2,684.6	3,865.4	1,237.5	301.4	20.5	9,034.7
2009	344.4	587.7	25.1	2,076.4	3,163.9	759.3	259.0	25.4	7,241.3
Alberta									
2008	1,891.2	3,570.5	109.0	5,668.9	8,153.3	1,308.3	1,245.7	172.1	22,118.9
2009	1,837.1	2,516.7	100.2	4,140.0	7,175.0	747.2	1,186.1	129.6	17,831.9
British Columbia									
2008	4,406.6	3,607.7	655.6	8,698.6	12,621.2	5,368.8	7,362.9	269.1	42,990.5
2009	4,441.4	2,396.6	523.6	6,712.6	11,657.4	3,770.8	7,077.0	160.4	36,739.9
Yukon, Northwest Territories and Nunavut									
2008	55.7	34.0	0.0	2.0	43.5	1.1	1.0	1.2	138.5
2009	50.2	34.6	0.0	2.0	37.3	0.6	0.3	3.0	128.0
<b>Total</b>									
<b>2008</b>	<b>28,510.7</b>	<b>52,949.8</b>	<b>2,857.1</b>	<b>91,146.1</b>	<b>122,862.7</b>	<b>71,961.1</b>	<b>57,556.8</b>	<b>6,131.7</b>	<b>433,976.0</b>
<b>2009</b>	<b>29,337.3</b>	<b>34,137.9</b>	<b>2,386.7</b>	<b>73,403.6</b>	<b>108,049.2</b>	<b>55,273.5</b>	<b>57,454.1</b>	<b>4,655.2</b>	<b>364,697.5</b>

# Technical notes

---

## The Canadian international merchandise trade statistical program

### I Introduction

The objective of this text is to provide a general overview of the Canadian International Merchandise Trade Statistical Program with special reference to concepts and definitions. The text is intended for the general user and simplicity is emphasized. More technical details can be obtained from the International Trade Division upon request.

### II Conceptual framework

**1. Objectives and coverage:** The primary objective of the Canadian International Merchandise Trade Statistical Program is to measure the change in the stock of material resources of the country resulting from the movement of merchandise into or out of Canada. Information on imports and exports are inputs into the System of National Accounts particularly in the Balance of Payments and Gross Domestic Product, and are used in the formulation of trade and budgetary policies. Governments, importers, exporters, manufacturers and shipping companies use trade statistics to:

- monitor import penetration and export performance;
- monitor commodity price and volume changes;
- examine transport implications.

**2. Trade statistics - Customs basis/Balance of Payments basis:** Merchandise trade statistics are reported and presented on two different bases: Customs basis and Balance of Payment basis. (B.O.P.)

When goods are imported into or exported from Canada, declarations must be filed with Customs giving such information as description and value of the goods, origin and port of clearance of commodities and the mode of transport. Most of this information is required for the purposes of Customs Administration. Statistics developed from administrative records of Customs are commonly referred to as Customs based trade statistics.

Customs based trade statistics are more accurate at measuring imports than they are at measuring exports. This is the case because Customs are typically more vigilant with respect to goods entering the country than they are with goods leaving the country.

Customs based export statistics may understate and/or incorrectly portray the destination of exports. Export statistics are understated when the proper documentation is not filed with Customs. Exports are incorrectly portrayed when the country of final destination is inaccurately reported on the customs documentation - this occurs most frequently when goods are routed through an intermediary country before continuing on to their final destination.

Statistics Canada does not have a measure of undercoverage but periodically conducts reconciliation exercises with its major trading partners, excluding the United States.

On January 1st, 1990, Canada entered into a Memorandum of Understanding (MOU) with the United States concerning the exchange of import data. As a consequence, each administration is using the other's import data to replace its own export data. Canada's international merchandise trade statistics are, therefore, no longer derived exclusively from the administrative records of Canada Border Services Agency, but from United States Customs records as well.

Customs based information is adjusted to conform with the National Accounts concepts and definitions. The adjustments to derive Balance of Payments based trade data include trade definition, valuation and timing related adjustments. The principal difference between the two trade concepts is that Customs based merchandise trade statistics cover the physical movement of goods as they are reflected on customs documents, while Balance of Payments adjusted data are intended to cover all economic transactions between residents and non-residents which involve merchandise trade. This section describes the concepts and processes pertaining to the Customs based trade statistics only. (For further information on Balance of Payments adjusted data see the publication *"Canada's Balance of International Payments" Catalogue no. 67-001-XPB*).

**3. System of trade:** Canadian trade statistics are compiled according to the "General" system of trade as defined by the United Nations Statistical Office. Under this system, imports include all goods which have crossed Canada's territorial boundary, whether for immediate consumption in Canada or stored in bonded Customs warehouses. Domestic exports include goods grown, extracted or manufactured in Canada, including goods of foreign origin which have been materially transformed in Canada. Re-exports are exports of goods of foreign origin which have not been materially transformed in Canada, including foreign goods withdrawn for export from bonded customs warehouses. Total exports are the sum of Domestic exports and Re-exports. Thus the general trade system, in principal, presents all goods entering the country (imports) and all goods leaving the country (exports). It differs from the "Special" system of trade in the treatment of imported goods into Customs bonded warehouses. Under the "Special" system, these goods are counted only if and when they are withdrawn from Customs warehouses for home consumption. They are not counted in export statistics unless they have first cleared Customs.

Conceptually, under the "General" system, the statistical frontier coincides with the geographical boundary, while under the "Special" system, it coincides with the Customs boundary.

**4. Valuation:** For Customs purposes, imports are recorded at values established according to the provisions of the Customs Act, which, since January 1st, 1985, reflects valuation methods based on the General Agreement on Tariffs and Trade (GATT) Valuation Code System. It generally requires the value for duty of imported goods be equivalent to the transaction value or the price actually paid.

To determine the transaction value of imported goods, all transportation and associated costs arising in respect of the goods being appraised prior to and at the place of direct shipment to Canada, are to be added to the price of the goods. Therefore, Canadian imports are valued F.O.B. (Free on Board), place of direct shipment to Canada. It excludes freight and insurance costs in bringing the goods to Canada from the point of direct shipment.

To countries other than the United States, exports are, in principal, valued or recorded at the values declared on export documents which usually reflect the transaction value, i.e. actual selling price, or in the case of a non-arm's length transaction, the transfer price used for company accounting purposes. Canadian exports to overseas countries are valued at F.O.B. port of exit, including domestic freight charges to that point but net of discounts and allowances. As of January, 1990, Canadian exports to the U.S. are valued F.O.B. point of exit from Canada. Prior to 1990, they were valued F.O.B. place of lading net of freight charges, discounts and allowances.

**5. Statistical period:** The reference period is the calendar month and the calendar year. The closing of the statistical month for imports and Canadian exports to the United States is defined as the last calendar day of the month, based as closely as practicable on the date of clearance from Customs.

The closing of the statistical month for exports, to countries other than the United States, is also defined as the last calendar day of the month. Those export documents which are received too late for incorporation in the current month are assigned to the month the transaction took place. If a monthly summary report from a high volume exporter is not received on time, the data are imputed for the current month and revised with the trade value in the following statistical month.

**6. Trading partner attribution (Country of origin/destination):** Exports are attributed to the country, which is the last known destination of the goods at the time of export. Exports to the United States are attributed to the state of destination.

Imports are attributed to their country of origin, that is, the country in which the goods were grown, extracted or manufactured in accordance to the rules of origin administered by Canada Border Services Agency. Imports from

the United States are attributed to the state of origin. Prior to 1988, most imports were attributed to the country of export/consignment with the exception of imports from Central and South America.

**7. Principal trading areas:** The “principal trading areas” are country groupings defined as follows:

**United States:** (includes trade with Puerto Rico and the U.S. Virgin Islands).

**Japan:**

**E.U. (European Union):** Austria, Belgium, Bulgaria, Cyprus, Czech Republic, Denmark, Estonia, Finland, France, Germany, Greece, Hungary, Ireland, Italy, Latvia, Lithuania, Luxembourg, Malta, Netherlands, Poland, Portugal, Romania, Slovakia, Slovenia, Spain, Sweden and United Kingdom.

**Other O.E.C.D.:** Australia, Canada, Iceland, Mexico, New Zealand, Norway, South Korea, Switzerland, and Turkey. (The E.U. countries, United States, and Japan are also members of O.E.C.D. - the Organization for Economic Co-operation and Development).

**Other countries:** This group includes all countries and territories other than the United States, Japan, E.U. and other O.E.C.D.

**8. Legal framework:** Import and export statistics with countries other than the United States are derived from information contained on administrative records collected by the Canada Border Services Agency under the Customs Act. Copies of these documents (or information therefrom) are sent to Statistics Canada in accordance with Section 25 of the Statistics Act. It follows that the disclosure of trade statistics is governed by both the Customs Act and the Statistics Act and is subject to the provisions of Section 17.(2)(a) of the latter. Disclosure of export statistics to the United States is now governed by a Memorandum of Understanding which provides for an exchange of detailed import statistics between Canada and the United States.

Questions concerning details of methods not covered by these notes should be addressed to the Marketing and Client Services Section, International Trade Division, Statistics Canada, Ottawa, Ontario, K1A 0T6.

**Telephone:** 1-800-294-5583 or within the area code 613-951-9647

**Facsimile:** 1-800-664-0055 or within the area code 613-951-0117

**Internet:** *trade@statcan.gc.ca*