

Catalogue no. 65-001-X

Canadian International Merchandise Trade

November 2009



Statistics
Canada

Statistique
Canada

Canada

How to obtain more information

For information about this product or the wide range of services and data available from Statistics Canada, visit our website at www.statcan.gc.ca, e-mail us at infostats@statcan.gc.ca, or telephone us, Monday to Friday from 8:30 a.m. to 4:30 p.m., at the following numbers:

Statistics Canada's National Contact Centre

Toll-free telephone (Canada and the United States):

Inquiries line	1-800-263-1136
National telecommunications device for the hearing impaired	1-800-363-7629
Fax line	1-877-287-4369

Local or international calls:

Inquiries line	1-613-951-8116
Fax line	1-613-951-0581

Depository Services Program

Inquiries line	1-800-635-7943
Fax line	1-800-565-7757

To access this product

This product, Catalogue no. 65-001-X, is available free in electronic format. To obtain a single issue, visit our website at www.statcan.gc.ca and select "Publications."

Standards of service to the public

Statistics Canada is committed to serving its clients in a prompt, reliable and courteous manner. To this end, Statistics Canada has developed *standards of service* that its employees observe. To obtain a copy of these service standards, please contact Statistics Canada toll-free at 1-800-263-1136. The service standards are also published on www.statcan.gc.ca under "About us" > "Providing services to Canadians."

Statistics Canada
International Trade Division

Canadian International Merchandise Trade

November 2009

Published by authority of the Minister responsible for Statistics Canada

© Minister of Industry, 2010

All rights reserved. The content of this electronic publication may be reproduced, in whole or in part, and by any means, without further permission from Statistics Canada, subject to the following conditions: that it be done solely for the purposes of private study, research, criticism, review or newspaper summary, and/or for non-commercial purposes; and that Statistics Canada be fully acknowledged as follows: Source (or "Adapted from", if appropriate): Statistics Canada, year of publication, name of product, catalogue number, volume and issue numbers, reference period and page(s). Otherwise, no part of this publication may be reproduced, stored in a retrieval system or transmitted in any form, by any means—electronic, mechanical or photocopy—or for any purposes without prior written permission of Licensing Services, Client Services Division, Statistics Canada, Ottawa, Ontario, Canada K1A 0T6.

January 2010

Catalogue no. 65-001-X, vol. 63, no. 11

ISSN 1480-8781

Frequency: Monthly

Ottawa

Cette publication est également disponible en français.

Note of appreciation

Canada owes the success of its statistical system to a long-standing partnership between Statistics Canada, the citizens of Canada, its businesses, governments and other institutions. Accurate and timely statistical information could not be produced without their continued cooperation and goodwill.

User information

Symbols

The following standard symbols are used in Statistics Canada publications:

- . not available for any reference period
- .. not available for a specific reference period
- ... not applicable
- 0 true zero or a value rounded to zero
- 0^s value rounded to 0 (zero) where there is a meaningful distinction between true zero and the value that was rounded
- p preliminary
- r revised
- x suppressed to meet the confidentiality requirements of the *Statistics Act*
- E use with caution
- F too unreliable to be published

Note to Users

All totals are calculated from full figures and rounded independently; consequently, totals may not equal the sum of their components.

Table of contents

Highlights	5
Analysis	8
Statistical tables	
1 Merchandise trade of Canada, balance of payments basis, seasonally adjusted	13
1-1 Current dollars	13
1-2 Constant dollars, 2002	14
1-3 Price indices (Laspeyres)	15
2 Exports by commodity groupings, balance of payments basis, seasonally adjusted	16
2-1 Current dollars	16
2-2 Constant dollars, 2002	18
3 Domestic exports to selected countries, customs basis, not seasonally adjusted	20
3-1 November	20
3-2 Year to date, January to November	21
4 Domestic exports by country, customs basis, not seasonally adjusted	22
5 Exports by province of origin, customs basis, not seasonally adjusted	26
5-1 November	26
5-2 Year to date, January to November	27
6 Imports by commodity groupings, balance of payments basis, seasonally adjusted	28
6-1 Current dollars	28
6-2 Constant dollars, 2002	30
7 Imports from selected countries, customs basis, not seasonally adjusted	32
7-1 November	32
7-2 Year to date, January to November	33
8 Imports by country, customs basis, not seasonally adjusted	34
9 Imports by province of clearance, customs basis, not seasonally adjusted	38
9-1 November	38
9-2 Year to date, January to November	39

Table of contents – continued

Data quality, concepts and methodology

Technical notes

40

Highlights

- Canada's merchandise exports increased 1.1 % in November on the strength of energy products while imports rose 3.9% due to widespread gains. As a result, Canada's trade balance with the world went from a surplus of \$503 million in October to a deficit of \$344 million in November.
- Exports increased to \$31.6 billion in November, marking the fifth increase in the last six months, as prices rose 1.1% and volumes remained unchanged. Energy products were the main factor behind the gain in November. Excluding energy products, exports fell 0.3%.
- Export prices and volumes have each fallen by 16%, since the value of exports peaked in July 2008.
- Imports increased by \$1.2 billion to \$31.9 billion in November, almost offsetting declines registered during the previous three months. The rise in imports represented the third monthly gain in 2009 as volumes increased 2.7%, while prices rose 1.1%.
- After peaking in July 2008, the value of imports fell by almost 20% mostly the result of a 17% decline in volumes.
- Most import sectors posted gains, with automotive products, machinery and equipment, and energy products accounting for the bulk of November's increase. The exception was industrial goods and materials.
- Exports to the United States rose 2.0% while imports, which increased 3.8%, accounted for almost two-thirds of the gain in overall imports. As a result, Canada's trade surplus with the United States narrowed to \$3.2 billion in November from \$3.5 billion in October.
- Exports to countries other than the United States fell 1.2% while imports from these countries increased 4.0%. Consequently, Canada's trade deficit with countries other than the United States widened to \$3.6 billion in November from \$3.0 billion in October.

Note to readers

Merchandise trade is one component of Canada’s international balance of payments, which also includes trade in services, investment income, current transfers as well as capital and financial flows.

International merchandise trade data by country are available on both a balance of payments and a customs basis for the United States, Japan and the United Kingdom. Trade data for all other individual countries are available on a customs basis only. Balance of payments data are derived from customs data by making adjustments for characteristics such as valuation, coverage, timing and residency. These adjustments are made to conform to the concepts and definitions of the Canadian System of National Accounts.

Constant dollars are calculated using the Laspeyres volume formula.

As of January 21, 2010, a new version of the Canadian International Merchandise Trade database will offer Harmonized System import and export data at the 6 digit level (HS6), at no cost. The data on the new version will be the same as released today. More detailed data for imports at the HS10 level and for exports at the HS8 level will be available as custom tabulations exclusively from International Trade Division

Revisions

In general, merchandise trade data are revised on an ongoing basis for each month of the current year. Current year revisions are reflected in both the customs and balance of payments based data. Revisions to customs based data for the previous year are released on a quarterly basis. Revisions to balance of payments based data for the three previous years are released annually in June.

Factors influencing revisions include late receipt of import and export documentation, incorrect information on customs forms, replacement of estimates with actual figures, changes in classification of merchandise based on more current information, and changes to seasonal adjustment factors.

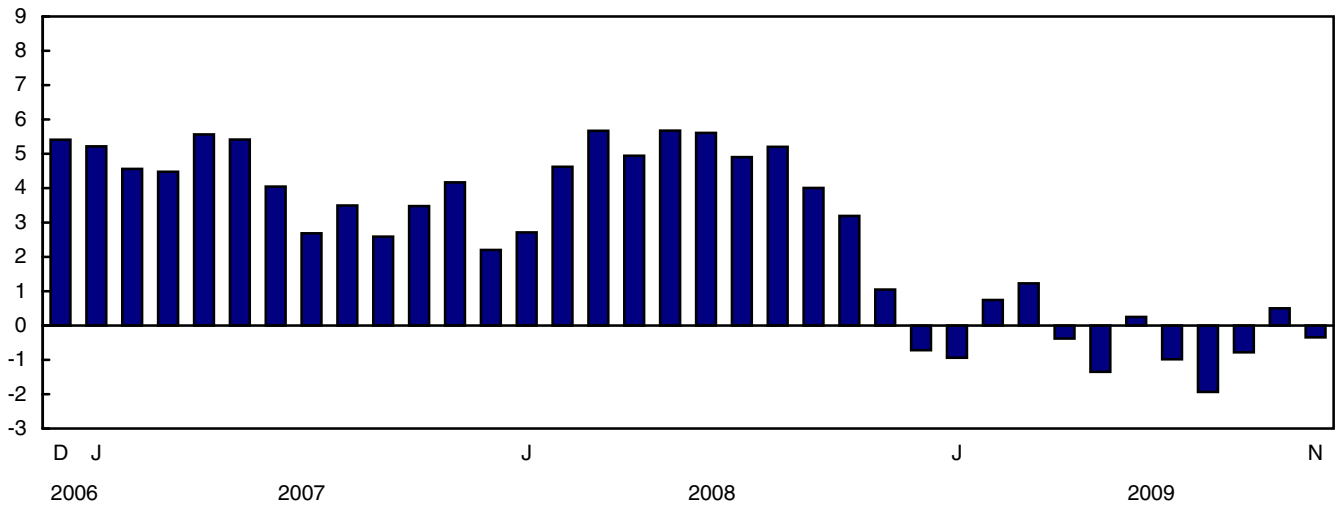
Revised data are available in the appropriate CANSIM tables.

Chart 1
Exports and imports, seasonally adjusted, on a balance of payments basis



Chart 2
Trade balance, seasonally adjusted, on a balance of payments basis

billions of dollars



Analysis

Exports grow on the strength of crude petroleum

Exports of energy products rose 6.2% to \$7.4 billion as prices increased 5.8%. Crude petroleum exports, up 7.0%, rose for a third consecutive month and reached their highest level since October 2008. This gain was due to a 4.0% rise in volumes and a 2.8% increase in prices. Prices of crude petroleum exports have generally been on an upward trend since January 2009. Exports of other energy products and natural gas also posted gains in November.

After leading the growth in exports for the last two months, exports of industrial goods and materials fell 2.5% to \$7.0 billion. The decline was mainly the result of a 2.1% reduction in volumes. Exports of precious metals declined 19.3% and was the main contributor to the decrease. Higher exports of organic chemicals moderated the decline in this sector.

Trucks lead the gain in imports

Imports of automotive products increased 9.4% to \$5.3 billion, entirely the result of increased volumes. Since falling to \$3.9 billion in January 2009, imports of automotive products have generally been trending upward. In November, imports of trucks and other motor vehicles grew 30.1%, and accounted for two-thirds of the gain in this sector. Higher imports of pick-up trucks was the main factor behind this increase. Imports of passenger autos rose 7.2% and imports of motor vehicle parts increased 1.4%.

After three consecutive months of decline, imports of machinery and equipment increased 4.3% to \$8.8 billion. This was mainly due to volumes rising 3.3%. Although the gains were widespread throughout the sector, imports of aircraft, up 22.2%, led the growth followed by office machines and equipment, up 8.7%.

Energy products imports rose 13.1% to \$3.1 billion on the strength of crude petroleum, and coal and other related products. Imports of crude petroleum increased 10.1% as prices grew 16.3%. Volumes fell 5.4% as inventories of crude petroleum remained high. Imports of coal and other related products, namely natural gas, grew in November due to rising volumes.

Imports of industrial goods and materials declined 2.9% to \$6.1 billion. Imports of precious metals, which had posted solid gains over the past three months, fell 21.4% in November but remained 73.1% above the November 2008 value. Although the price of precious metals rose 9.1% since November 2008, the gain was due to a substantive (58.0%) rise in volume. Imports of chemicals and plastics decreased 3.4% mostly due to lower imports of pharmaceutical ingredients.

Chart 1
Exports of energy products, seasonally adjusted, on a balance of payments basis

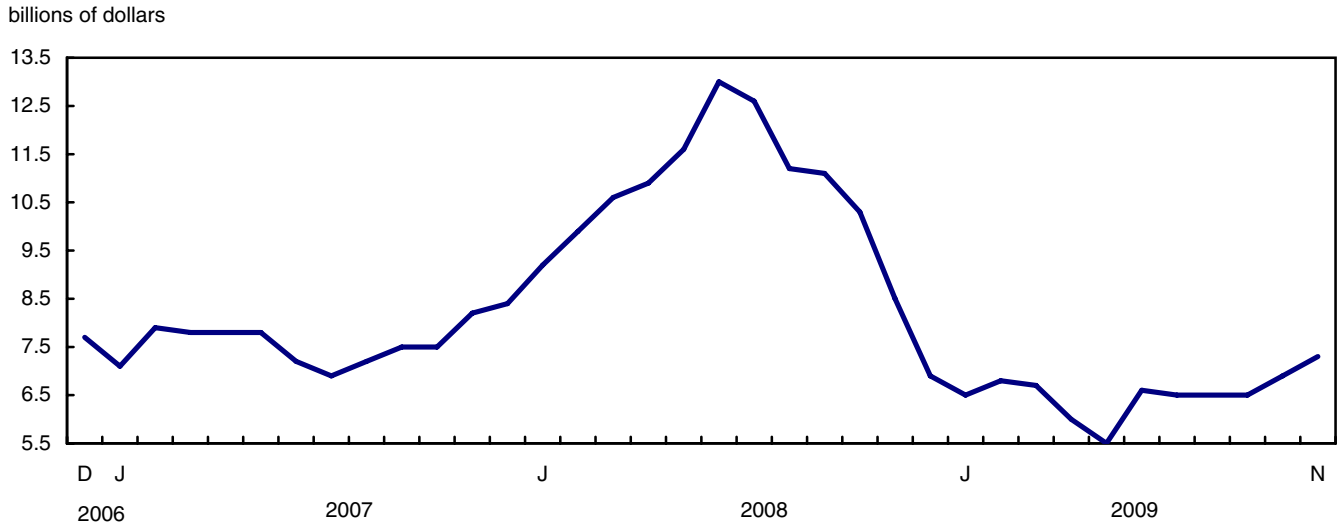


Chart 2
Exports of industrial goods and material, seasonally adjusted, on a balance of payments basis

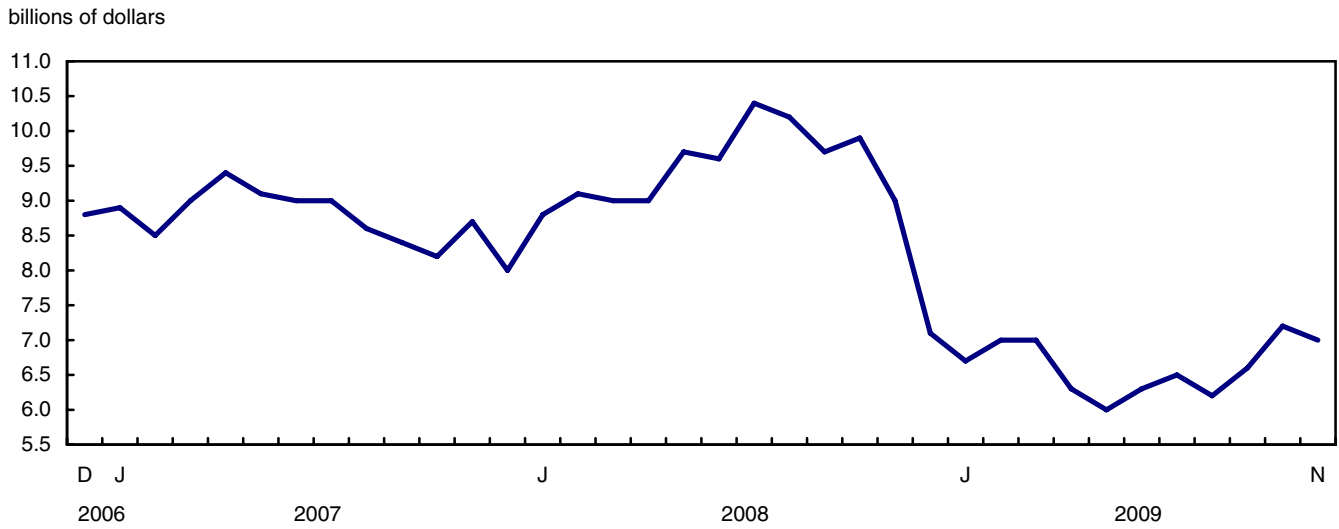


Chart 3
Imports of automotive products, seasonally adjusted, on a balance of payments basis

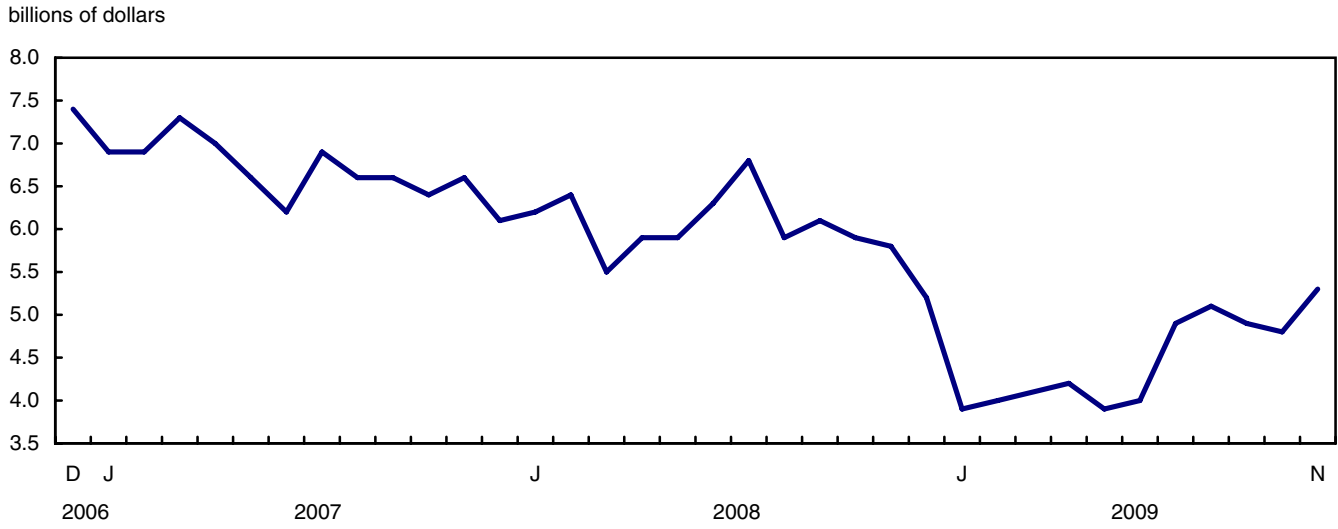
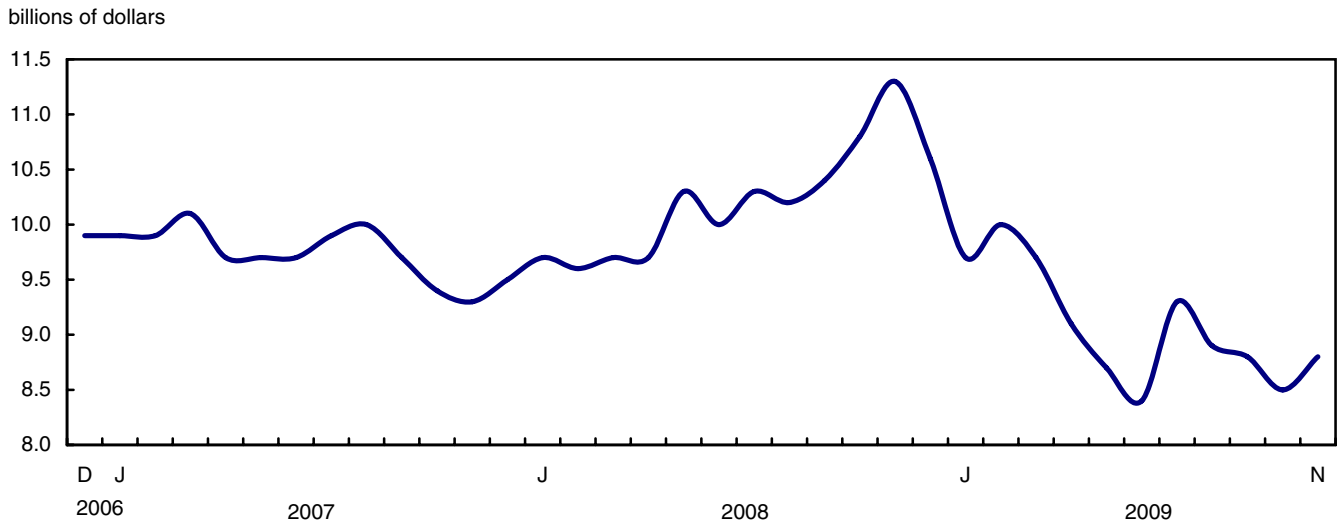


Chart 4
Imports of machinery and equipment, seasonally adjusted, on a balance of payments basis



Text table 1
Merchandise trade by principal trading area, balance of payments basis, seasonally adjusted

	October	November	Change		Year to date		Year to date	November	
	2009	2009			2008	2009	change	2009/2008	
	millions of dollars		percent		millions of dollars		percent		
Export to									
United States	22,836	23,283	448	2.0	344,220	247,726	-96,493	-28.0	-19.6
Japan	791	743	-48	-6.0	10,921	8,376	-2,545	-23.3	-34.2
European Union ¹	2,864	2,823	-41	-1.4	36,006	29,720	-6,286	-17.5	-4.7
Other Organisation for Economic Co-operation and Development	1,621	1,408	-213	-13.2	19,838	15,390	-4,447	-22.4	-32.6
Other countries	3,125	3,324	199	6.4	43,898	37,430	-6,468	-14.7	-17.5
Total	31,237	31,582	345	1.1	454,883	338,643	-116,240	-25.6	-19.4
Imports from									
United States	19,313	20,047	734	3.8	258,341	216,244	-42,097	-16.3	-17.1
Japan	757	776	19	2.5	10,839	8,617	-2,223	-20.5	-29.2
European Union ¹	3,418	3,412	-6	-0.2	42,866	35,351	-7,514	-17.5	-15.8
Other Organisation for Economic Co-operation and Development	1,960	2,283	323	16.5	25,181	23,469	-1,712	-6.8	-4.7
Other countries	5,287	5,408	122	2.3	70,066	58,949	-11,117	-15.9	-15.4
Total	30,734	31,926	1,192	3.9	407,293	342,629	-64,664	-15.9	-16.3
Balance									
United States	3,523	3,236	-287	...	85,879	31,482	-54,396
Japan	34	-32	-67	...	82	-240	-322
European Union ¹	-554	-589	-35	...	-6,860	-5,631	1,229
Other Organisation for Economic Co-operation and Development	-339	-875	-536	...	-5,343	-8,078	-2,735
Other countries	-2,161	-2,084	77	...	-26,168	-21,519	4,649
Total	503	-344	-847	...	47,590	-3,986	-51,576

1. European Union includes: Austria, Belgium, Bulgaria, Cyprus, Czech Republic, Denmark, Estonia, Finland, France, Germany, Greece, Hungary, Ireland, Italy, Latvia, Lithuania, Luxembourg, Malta, Netherlands, Poland, Portugal, Romania, Slovakia, Slovenia, Spain, Sweden and United Kingdom.
2. Other Organization for Economic Co-operation and Development includes: Australia, Canada, Iceland, Mexico, New Zealand, Norway, South Korea, Switzerland and Turkey.

Text table 2
Reconciliation of customs and balance of payments trade data, not seasonally adjusted

	2009						2008
	November	October	September	August	July	June	Annual
	millions of dollars						
Exports							
Customs basis	29,943	31,044	29,876	28,620	29,719	29,290	483,576
Balance of payments adjustments	1,295	1,039	764	519	793	1,007	6,281
Valuation and residency							
Inland freight	472	510	505	496	533	514	6,997
Other valuation and residency	-456	-587	-705	-580	-789	-70	-16,510
Timing	104	27	30	-69	25	11	-79
Coverage	1,175	1,089	934	672	1,024	552	15,873
Balance of payments basis	31,238	32,083	30,640	29,139	30,512	30,297	489,857
Imports							
Customs basis	31,319	31,531	31,189	30,130	30,421	29,720	433,485
Balance of payments adjustments	849	874	554	838	672	736	9,503
Valuation and residency							
Inland freight	665	685	668	640	651	645	8,908
Other valuation and residency	40	53	69	-16	-8	21	-619
Timing	0	0	0	0	0	0	0
Coverage	144	136	-183	214	29	70	1,214
Balance of payments basis	32,168	32,405	31,743	30,968	31,093	30,456	442,988

Statistical tables

Table 1-1
Merchandise trade of Canada, balance of payments basis, seasonally adjusted — Current dollars

	Exports	Imports	Balance	Period to period change		
				Exports	Imports	Balance
				millions of dollars	percent	millions of dollars
2005	450,210	387,838	62,372	0.0	0.0	0
2006	453,951	404,345	49,606	0.8	4.3	-12,767
2007	463,127	415,229	47,898	2.0	2.7	-1,708
2008	489,857	442,988	46,869	5.8	6.7	-1,029
2007						
First quarter	120,454	106,198	14,256	4.4	3.1	1,887
Second quarter	118,191	103,166	15,025	-1.9	-2.9	769
Third quarter	113,144	104,379	8,765	-4.3	1.2	-6,260
Fourth quarter	111,338	101,486	9,852	-1.6	-2.8	1,088
2008						
First quarter	117,996	104,991	13,005	6.0	3.5	3,152
Second quarter	126,385	110,154	16,230	7.1	4.9	3,226
Third quarter	129,144	115,028	14,116	2.2	4.4	-2,114
Fourth quarter	116,332	112,815	3,517	-9.9	-1.9	-10,599
2009						
First quarter	97,183	96,151	1,032	-16.5	-14.8	-2,486
Second quarter	88,022	89,498	-1,476	-9.4	-6.9	-2,508
Third quarter	90,619	94,320	-3,701	2.9	5.4	-2,225
2008						
January	38,209	35,496	2,713	4.6	3.4	512
February	39,689	35,067	4,623	3.9	-1.2	1,909
March	40,097	34,428	5,669	1.0	-1.8	1,046
April	40,507	35,564	4,943	1.0	3.3	-726
May	42,365	36,688	5,677	4.6	3.2	733
June	43,513	37,902	5,611	2.7	3.3	-66
July	44,379	39,476	4,903	2.0	4.2	-708
August	42,685	37,479	5,206	-3.8	-5.1	302
September	42,080	38,073	4,008	-1.4	1.6	-1,198
October	42,181	38,991	3,190	0.2	2.4	-818
November	39,177	38,129	1,049	-7.1	-2.2	-2,141
December	34,974	35,695	-721	-10.7	-6.4	-1,770
2009						
January	31,299	32,236	-937	-10.5	-9.7	-216
February	33,266	32,524	742	6.3	0.9	1,679
March	32,618	31,391	1,227	-1.9	-3.5	485
April	30,226	30,605	-379	-7.3	-2.5	-1,606
May	28,297	29,645	-1,348	-6.4	-3.1	-969
June	29,499	29,248	251	4.2	-1.3	1,599
July	30,978	31,961	-983	5.0	9.3	-1,235
August	29,395	31,331	-1,936	-5.1	-2.0	-953
September	30,246	31,027	-781	2.9	-1.0	1,155
October	31,237	30,734	503	3.3	-0.9	1,284
November	31,582	31,926	-344	1.1	3.9	-847

Note(s): Due to rounding, monthly data may not add up to quarterly data and quarterly data may not add up to annual data.

Table 1-2
Merchandise trade of Canada, balance of payments basis, seasonally adjusted — Constant dollars, 2002

	Exports	Imports	Balance	Period to period change	
				Exports	Imports
	millions of dollars			percent	
2005	439,306	431,680	7,626	0.0	0.0
2006	443,398	456,881	-13,483	0.9	5.8
2007	449,581	483,522	-33,941	1.4	5.8
2008	415,123	485,171	-70,048	-7.7	0.3
2007					
First quarter	113,771	117,511	-3,740	2.0	1.6
Second quarter	113,538	118,154	-4,615	-0.2	0.5
Third quarter	112,008	123,373	-11,366	-1.3	4.4
Fourth quarter	110,264	124,484	-14,220	-1.6	0.9
2008					
First quarter	107,366	123,120	-15,754	-2.6	-1.1
Second quarter	105,949	123,992	-18,043	-1.3	0.7
Third quarter	104,458	124,141	-19,683	-1.4	0.1
Fourth quarter	97,350	113,917	-16,567	-6.8	-8.2
2009					
First quarter	87,857	98,165	-10,308	-9.8	-13.8
Second quarter	82,742	95,911	-13,169	-5.8	-2.3
Third quarter	86,830	105,239	-18,409	4.9	9.7
2008					
January	35,336	41,546	-6,210	0.0	1.2
February	36,473	41,373	-4,900	3.2	-0.4
March	35,557	40,201	-4,644	-2.5	-2.8
April	35,078	40,481	-5,404	-1.3	0.7
May	35,639	41,927	-6,288	1.6	3.6
June	35,233	41,584	-6,351	-1.1	-0.8
July	35,530	43,031	-7,502	0.8	3.5
August	34,592	40,426	-5,834	-2.6	-6.1
September	34,337	40,684	-6,347	-0.7	0.6
October	33,470	39,215	-5,745	-2.5	-3.6
November	32,772	38,542	-5,770	-2.1	-1.7
December	31,108	36,160	-5,052	-5.1	-6.2
2009					
January	28,292	33,127	-4,836	-9.1	-8.4
February	30,105	33,110	-3,005	6.4	-0.1
March	29,460	31,927	-2,467	-2.1	-3.6
April	28,254	31,704	-3,450	-4.1	-0.7
May	26,983	32,107	-5,124	-4.5	1.3
June	27,505	32,100	-4,595	1.9	-0.0
July	29,545	35,197	-5,651	7.4	9.6
August	28,143	35,228	-7,084	-4.7	0.1
September	29,141	34,815	-5,673	3.5	-1.2
October	29,940	34,931	-4,991	2.7	0.3
November	29,941	35,888	-5,947	0.0	2.7

Note(s): Due to rounding, monthly data may not add up to quarterly data and quarterly data may not add up to annual data.

Table 1-3
Merchandise trade of Canada, balance of payments basis, seasonally adjusted — Price indices (Laspeyres)

	2002=100			Period to period change		
	Exports	Imports	Terms of trade	Exports	Imports	Terms of trade
	millions of dollars			percent		
2005	104.6	92.2	113.4	0.0	0.0	0.0
2006	105.1	92.7	113.3	0.4	0.5	-0.1
2007	107.2	91.6	117.0	2.0	-1.2	3.2
2008	116.3	97.6	119.1	8.5	6.6	1.9
2007						
First quarter	109.5	95.2	115.0	3.1	1.9	1.2
Second quarter	112.0	92.9	120.5	2.3	-2.4	4.7
Third quarter	105.0	90.1	116.5	-6.2	-3.0	-3.2
Fourth quarter	105.6	88.0	119.9	0.5	-2.3	2.9
2008						
First quarter	111.3	90.4	123.1	5.4	2.7	2.7
Second quarter	118.5	95.2	124.5	6.4	5.2	1.2
Third quarter	121.8	101.1	120.6	2.8	6.2	-3.4
Fourth quarter	114.0	103.9	109.7	-6.4	2.8	-9.2
2009						
First quarter	109.3	101.3	107.8	-4.1	-2.5	-1.7
Second quarter	105.3	97.8	107.6	-3.7	-3.5	-0.2
Third quarter	102.7	94.9	108.2	-2.4	-3.0	0.5
2008						
January	109.7	89.9	122.0	2.3	1.9	0.4
February	110.0	90.0	122.2	0.3	0.2	0.2
March	113.2	91.3	124.0	2.9	1.4	1.5
April	116.3	93.4	124.6	2.7	2.2	0.5
May	118.5	94.5	125.4	1.9	1.2	0.7
June	120.9	97.7	123.7	2.0	3.4	-1.3
July	123.8	99.5	124.4	2.4	1.8	0.6
August	121.6	101.8	119.4	-1.8	2.3	-4.1
September	120.0	101.9	117.8	-1.3	0.1	-1.4
October	121.6	104.8	116.1	1.3	2.8	-1.5
November	116.6	104.2	111.9	-4.1	-0.5	-3.6
December	111.5	102.7	108.5	-4.4	-1.4	-3.0
2009						
January	109.3	100.4	108.9	-1.9	-2.3	0.4
February	109.5	101.2	108.1	0.1	0.9	-0.7
March	109.5	102.5	106.8	0.0	1.2	-1.2
April	106.8	100.7	106.1	-2.4	-1.7	-0.7
May	104.6	96.9	107.9	-2.1	-3.8	1.7
June	104.4	95.8	109.0	-0.2	-1.2	1.0
July	103.8	95.9	108.3	-0.5	0.1	-0.7
August	103.2	94.5	109.2	-0.6	-1.4	0.8
September	103.0	94.3	109.2	-0.2	-0.2	-0.0
October	103.5	92.5	111.8	0.5	-1.9	2.4
November	104.6	93.7	111.6	1.1	1.2	-0.1

Note(s): Due to rounding, monthly data may not add up to quarterly data and quarterly data may not add up to annual data.

Table 2-1
Exports by commodity groupings, balance of payments basis, seasonally adjusted — Current dollars

	October	November	Change	Year to date		Year to date change	November 2009/2008		
	2009	2009		2008	2009				
	millions of dollars		percent		millions of dollars		percent		
Total	31,237	31,582	345	1.1	454,883	338,643	-116,240	-25.6	-19.4
Agricultural and fishing products	2,848	2,947	99	3.5	37,456	34,750	-2,706	-7.2	-18.7
Wheat	400	386	-14	-3.6	6,338	5,524	-814	-12.8	-37.8
Other agricultural and fishing products	2,448	2,561	113	4.6	31,118	29,226	-1,892	-6.1	-14.7
Live animals	97	108	12	12.3	2,161	1,532	-629	-29.1	-38.0
Fish and fish preparations	322	329	8	2.3	3,901	3,674	-227	-5.8	-8.5
Barley	27	32	5	18.0	654	421	-233	-35.7	-40.6
Wheat flour	8	8	-1	-6.8	94	79	-15	-16.0	29.3
Other cereals unmilled	28	27	-0	-0.7	827	499	-328	-39.6	-57.3
Other cereal preparations	246	231	-15	-6.0	2,649	2,749	100	3.8	-17.6
Meat and meat preparations	339	358	19	5.6	4,234	4,036	-198	-4.7	-20.0
Alcoholic beverages	61	62	2	3.1	784	683	-101	-12.8	-22.1
Other food, feed, beverages and tobacco	875	891	16	1.9	10,111	10,199	88	0.9	-7.7
Rapeseed	272	328	55	20.3	3,566	3,274	-292	-8.2	-1.2
Other crude vegetable products	174	187	12	7.0	2,136	2,079	-57	-2.7	-22.2
Energy products	6,921	7,350	429	6.2	118,898	71,905	-46,992	-39.5	-13.6
Crude petroleum	4,045	4,327	282	7.0	58,222	38,296	-19,926	-34.2	12.1
Natural gas	1,064	1,096	32	3.0	30,916	13,707	-17,209	-55.7	-52.1
Other energy products	1,812	1,927	116	6.4	29,759	19,903	-9,857	-33.1	-18.5
Coal and other bituminous substances	290	339	49	16.7	5,304	3,990	-1,314	-24.8	-47.4
Petroleum and coal products	1,276	1,332	56	4.4	20,903	13,583	-7,320	-35.0	-8.9
Electricity	245	257	11	4.7	3,552	2,330	-1,222	-34.4	-1.5
Forestry products	1,573	1,613	41	2.6	23,648	17,952	-5,696	-24.1	-24.1
Lumber and sawmill products	568	586	18	3.1	8,494	6,206	-2,288	-26.9	-24.2
Other crude wood products	45	50	4	9.6	582	484	-97	-16.7	-1.1
Lumber	335	345	10	2.9	4,960	3,544	-1,416	-28.6	-24.2
Other wood fabricated materials	187	191	4	1.9	2,953	2,178	-775	-26.2	-28.7
Wood pulp and other wood products	374	414	40	10.6	5,972	4,158	-1,814	-30.4	-9.0
Newsprint and other paper and paperboard	630	613	-17	-2.7	9,182	7,588	-1,594	-17.4	-31.6
Newsprint paper	312	307	-5	-1.6	4,918	3,916	-1,002	-20.4	-38.3
Other paper and paperboard	318	306	-12	-3.7	4,264	3,672	-592	-13.9	-23.3
Industrial goods and materials	7,168	6,988	-180	-2.5	104,373	72,844	-31,528	-30.2	-22.2
Metal ores	924	824	-100	-10.8	14,004	9,228	-4,776	-34.1	-11.4
Iron ores, concentrates and scrap	405	343	-62	-15.3	4,466	4,145	-321	-7.2	14.7
Copper ores, concentrates and scrap	221	201	-20	-9.0	2,204	1,615	-589	-26.7	24.4
Nickel ores, concentrates and scrap	88	102	14	16.4	3,619	1,252	-2,367	-65.4	-36.2
Zinc ores, concentrates and scrap	21	11	-10	-46.9	351	225	-126	-35.9	-71.3
Other ores, concentrates and scrap	190	167	-23	-12.0	3,365	1,991	-1,373	-40.8	-38.5
Chemicals, plastics and fertilizers	2,114	2,210	96	4.5	33,341	23,541	-9,800	-29.4	-34.8
Inorganic chemicals	374	317	-57	-15.2	5,076	3,763	-1,313	-25.9	-33.9
Organic chemicals	370	466	95	25.7	6,568	4,365	-2,203	-33.5	-18.2
Fertilizers and fertilizer materials	361	390	30	8.2	6,863	4,205	-2,658	-38.7	-61.7
Synthetic rubber and plastics	761	776	15	2.0	11,675	8,583	-3,091	-26.5	-23.1
Other chemical products	248	261	13	5.1	3,159	2,625	-535	-16.9	-17.0
Metals and alloys	2,870	2,655	-215	-7.5	37,676	25,738	-11,938	-31.7	-6.9
Primary iron and steel	85	83	-2	-2.2	1,227	475	-752	-61.3	85.0
Steel bars, rods, plates, sheets	252	255	4	1.5	4,786	2,657	-2,129	-44.5	-38.0
Other iron and steel and alloys	187	180	-7	-3.7	3,632	2,144	-1,488	-41.0	-41.0
Aluminum including alloys	546	540	-6	-1.1	8,732	5,456	-3,276	-37.5	-34.3
Copper and alloys	190	215	25	13.0	3,988	2,000	-1,988	-49.8	47.5
Nickel and alloys	164	135	-29	-17.5	3,476	1,778	-1,698	-48.8	-32.7
Precious metals and alloys	1,268	1,023	-245	-19.3	9,114	9,379	265	2.9	38.1
Zinc and alloys	101	125	24	23.2	1,340	1,002	-338	-25.2	55.8
Other non-ferrous metals and alloys	77	99	22	28.4	1,383	847	-536	-38.7	-0.7

Table 2-1 – continued

Exports by commodity groupings, balance of payments basis, seasonally adjusted — Current dollars

	October 2009	November 2009	Change	Year to date		Year to date change	November 2009/2008		
	millions of dollars			percent					
				2008	2009				
Other industrial goods and materials	1,260	1,299	39	3.1	19,351	14,337	-5,014	-25.9	-28.2
Asbestos unmanufactured	6	6	-1	-9.5	62	64	2	3.3	1.4
Other crude animal products	45	48	4	8.5	783	597	-186	-23.8	-18.0
Other crude non-metallic minerals	251	276	25	10.0	4,722	2,577	-2,146	-45.4	-35.8
Other crude materials, inedible	48	48	0	0.2	536	558	22	4.2	14.3
Metal fabricated basic products	319	319	-0	-0.0	5,033	3,777	-1,256	-24.9	-31.1
Textile fabricated materials	173	171	-2	-1.1	2,241	1,914	-327	-14.6	-16.3
Non-metallic mineral basic products	156	175	18	11.8	2,205	1,813	-392	-17.8	-13.9
Other fabricated materials	262	256	-6	-2.2	3,769	3,037	-732	-19.4	-36.2
Machinery and equipment	6,167	6,151	-16	-0.3	84,776	74,430	-10,346	-12.2	-26.1
Industrial and agricultural machinery	1,438	1,389	-49	-3.4	21,493	17,769	-3,724	-17.3	-33.2
Industrial machinery	1,293	1,242	-51	-4.0	19,501	15,895	-3,606	-18.5	-34.1
Agricultural machinery includ. tractors	145	147	2	1.5	1,992	1,874	-118	-5.9	-24.2
Aircraft and other transportation equipment	1,575	1,551	-24	-1.5	18,227	17,942	-284	-1.6	-13.9
Aircraft, engines, parts	1,236	1,210	-25	-2.1	13,639	14,180	541	4.0	-11.6
Other transportation equipment	339	341	2	0.5	4,587	3,762	-826	-18.0	-21.3
Other machinery and equipment	3,155	3,212	57	1.8	45,057	38,719	-6,338	-14.1	-27.8
Television, telecommunication equipment	671	653	-18	-2.6	8,850	8,183	-667	-7.5	-30.3
Office machines and equipment	353	348	-5	-1.4	5,598	4,406	-1,192	-21.3	-32.7
Other equipment and tools	1,422	1,466	43	3.1	21,210	17,439	-3,771	-17.8	-27.1
Other end products, inedible	708	744	36	5.1	9,399	8,691	-709	-7.5	-24.2
Automotive products	4,179	4,124	-56	-1.3	56,534	39,361	-17,173	-30.4	-15.8
Passenger autos and chassis	2,798	2,687	-111	-4.0	31,497	23,044	-8,453	-26.8	-2.6
Trucks and other motor vehicles	185	219	35	18.8	6,735	3,743	-2,992	-44.4	-59.7
Motor vehicle parts	1,197	1,217	20	1.7	18,302	12,573	-5,728	-31.3	-23.5
Other consumer goods	1,445	1,505	60	4.2	16,528	16,719	191	1.2	2.6
Special transactions trade	516	497	-19	-3.7	7,519	5,924	-1,595	-21.2	-30.4
Unallocated balance of payments adjustments	421	407	-14	-3.3	5,151	4,758	-394	-7.6	-24.2

Table 2-2
Exports by commodity groupings, balance of payments basis, seasonally adjusted — Constant dollars, 2002

	October	November	Change	Year to date		Year to date change	November 2009/2008		
	2009	2009		2008	2009				
	millions of dollars		percent		millions of dollars		percent		
Total	29,940	29,941	1	0.0	384,015	317,310	-66,705	-17.4	-8.6
Agricultural and fishing products	2,904	3,005	101	3.5	33,747	33,319	-429	-1.3	-3.6
Wheat	365	367	3	0.7	3,797	4,652	855	22.5	-11.6
Other agricultural and fishing products	2,539	2,637	98	3.9	29,951	28,667	-1,283	-4.3	-2.4
Live animals	123	138	15	12.6	2,462	1,751	-711	-28.9	-25.8
Fish and fish preparations	378	392	13	3.5	4,445	4,270	-174	-3.9	0.0
Barley	29	34	5	18.2	441	343	-98	-22.3	-2.1
Wheat flour	8	7	-1	-8.4	76	72	-4	-5.8	40.7
Other cereals unmilled	34	27	-8	-22.3	683	482	-201	-29.5	-38.2
Other cereal preparations	209	195	-14	-6.6	2,354	2,239	-115	-4.9	-8.1
Meat and meat preparations	434	428	-7	-1.5	4,695	4,565	-129	-2.8	-3.4
Alcoholic beverages	111	118	6	5.8	1,261	1,183	-77	-6.1	-3.3
Other food, feed, beverages and tobacco	826	845	18	2.2	9,484	9,149	-335	-3.5	1.6
Rapeseed	240	288	48	20.1	2,394	2,883	489	20.4	15.0
Other crude vegetable products	147	167	20	13.4	1,657	1,730	73	4.4	-8.9
Energy products	4,714	4,732	18	0.4	50,634	49,774	-859	-1.7	3.3
Crude petroleum	2,053	2,135	82	4.0	21,545	21,809	264	1.2	5.6
Natural gas	1,348	1,284	-64	-4.7	16,114	14,924	-1,190	-7.4	-14.0
Other energy products	1,313	1,313	-0	-0.0	12,974	13,041	67	0.5	23.4
Coal and other bituminous substances	132	162	30	22.9	1,710	1,311	-400	-23.4	31.3
Petroleum and coal products	765	778	14	1.8	8,648	8,767	119	1.4	11.1
Electricity	416	372	-44	-10.6	2,616	2,964	348	13.3	55.3
Forestry products	2,063	2,116	53	2.6	27,751	22,344	-5,408	-19.5	-8.1
Lumber and sawmill products	812	828	16	2.0	10,767	8,602	-2,165	-20.1	-11.3
Other crude wood products	61	61	-0	-0.6	745	648	-97	-13.0	20.9
Lumber	529	542	13	2.4	6,807	5,475	-1,332	-19.6	-12.1
Other wood fabricated materials	221	225	4	1.7	3,215	2,479	-737	-22.9	-15.7
Wood pulp and other wood products	513	558	44	8.6	7,032	5,857	-1,174	-16.7	1.1
Newsprint and other paper and paperboard	738	730	-8	-1.0	9,952	7,884	-2,068	-20.8	-10.7
Newsprint paper	367	370	3	0.8	5,196	3,972	-1,224	-23.6	-14.2
Other paper and paperboard	371	360	-10	-2.8	4,756	3,912	-844	-17.8	-6.9
Industrial goods and materials	5,236	5,124	-112	-2.1	69,582	55,114	-14,468	-20.8	-14.8
Metal ores	520	455	-64	-12.4	6,669	5,097	-1,572	-23.6	-14.5
Iron ores, concentrates and scrap	214	180	-34	-15.9	2,011	1,736	-274	-13.6	89.1
Copper ores, concentrates and scrap	86	73	-12	-14.4	763	714	-49	-6.4	-14.9
Nickel ores, concentrates and scrap	47	59	11	23.6	1,707	840	-867	-50.8	-53.0
Zinc ores, concentrates and scrap	11	6	-6	-50.1	213	149	-64	-29.9	-81.3
Other ores, concentrates and scrap	161	137	-24	-14.6	1,976	1,657	-319	-16.1	-29.8
Chemicals, plastics and fertilizers	1,590	1,727	138	8.7	22,962	18,119	-4,843	-21.1	-15.9
Inorganic chemicals	174	162	-12	-7.1	2,448	1,946	-502	-20.5	-29.7
Organic chemicals	234	331	98	41.7	3,467	3,429	-38	-1.1	1.2
Fertilizers and fertilizer materials	138	152	15	10.6	3,039	1,486	-1,553	-51.1	-53.9
Synthetic rubber and plastics	746	765	19	2.6	10,244	8,184	-2,060	-20.1	-6.5
Other chemical products	299	317	19	6.2	3,763	3,074	-690	-18.3	-9.0
Metals and alloys	1,863	1,697	-166	-8.9	23,188	18,110	-5,078	-21.9	-12.2
Primary iron and steel	63	62	-1	-1.2	667	332	-335	-50.2	239.9
Steel bars, rods, plates, sheets	213	217	3	1.6	3,483	2,111	-1,372	-39.4	-17.2
Other iron and steel and alloys	167	164	-3	-1.8	2,603	1,842	-762	-29.3	-8.4
Aluminum including alloys	611	585	-26	-4.3	7,587	6,361	-1,226	-16.2	-25.2
Copper and alloys	70	77	7	9.9	1,321	940	-382	-28.9	13.7
Nickel and alloys	93	72	-21	-22.5	1,529	1,229	-300	-19.6	-42.1
Precious metals and alloys	547	407	-141	-25.7	4,712	4,079	-633	-13.4	3.0
Zinc and alloys	64	73	9	13.9	800	764	-36	-4.5	13.7
Other non-ferrous metals and alloys	34	41	6	18.6	485	451	-34	-6.9	-1.2

Table 2-2 – continued

Exports by commodity groupings, balance of payments basis, seasonally adjusted — Constant dollars, 2002

	October 2009	November 2009	Change	Year to date		Year to date change	November 2009/2008		
	millions of dollars			percent					
				2008	2009				
Other industrial goods and materials	1,265	1,245	-20	-1.6	16,764	13,789	-2,974	-17.7	-16.7
Asbestos unmanufactured	7	6	-1	-12.2	71	66	-4	-6.1	-8.1
Other crude animal products	64	67	3	4.6	819	808	-11	-1.3	14.5
Other crude non-metallic minerals	340	314	-26	-7.6	4,376	3,425	-951	-21.7	-24.4
Other crude materials, inedible	46	47	1	1.5	528	546	18	3.3	12.1
Metal fabricated basic products	261	257	-4	-1.4	4,063	2,982	-1,080	-26.6	-27.9
Textile fabricated materials	183	186	3	1.8	2,324	1,889	-436	-18.7	1.2
Non-metallic mineral basic products	129	144	14	11.1	1,876	1,471	-405	-21.6	-13.9
Other fabricated materials	236	225	-11	-4.5	2,707	2,602	-104	-3.9	-15.5
Machinery and equipment	6,854	6,784	-70	-1.0	95,976	80,014	-15,963	-16.6	-22.3
Industrial and agricultural machinery	1,318	1,284	-34	-2.6	20,517	16,223	-4,294	-20.9	-31.7
Industrial machinery	1,188	1,148	-39	-3.3	18,569	14,539	-4,030	-21.7	-32.5
Agricultural machinery includ. tractors	130	135	5	4.0	1,948	1,684	-264	-13.5	-23.8
Aircraft and other transportation equipment	1,920	1,891	-30	-1.5	23,068	21,128	-1,941	-8.4	-9.2
Aircraft, engines, parts	1,599	1,568	-31	-1.9	18,341	17,467	-874	-4.8	-5.6
Other transportation equipment	322	323	1	0.5	4,727	3,661	-1,066	-22.6	-23.6
Other machinery and equipment	3,616	3,610	-6	-0.2	52,391	42,663	-9,728	-18.6	-24.3
Television, telecommunication equipment	840	819	-22	-2.6	11,131	9,687	-1,445	-13.0	-24.9
Office machines and equipment	833	826	-7	-0.9	12,602	9,662	-2,940	-23.3	-20.4
Other equipment and tools	1,325	1,374	49	3.7	20,324	16,098	-4,226	-20.8	-26.1
Other end products, inedible	618	591	-27	-4.3	8,334	7,216	-1,117	-13.4	-24.0
Automotive products	5,393	5,332	-61	-1.1	74,619	47,891	-26,728	-35.8	-4.4
Passenger autos and chassis	3,853	3,736	-117	-3.0	46,048	30,302	-15,745	-34.2	10.7
Trucks and other motor vehicles	224	262	39	17.3	8,439	4,228	-4,211	-49.9	-53.2
Motor vehicle parts	1,316	1,333	17	1.3	20,132	13,360	-6,772	-33.6	-18.8
Other consumer goods	1,387	1,446	59	4.2	16,190	16,052	-138	-0.9	1.2
Special transactions trade	492	466	-26	-5.3	6,137	5,460	-677	-11.0	-18.9
Unallocated balance of payments adjustments	896	936	40	4.5	9,378	7,341	-2,037	-21.7	108.1

**Table 3-1
Domestic exports to selected countries, customs basis, not seasonally adjusted — November**

	Agricultural and fishing products	Energy products	Forestry products	Industrial goods	Machinery and equipment	Automotive products	Consumer goods	Special transactions	Total
millions of dollars									
United States									
2008	1,825.2	8,548.1	1,502.9	5,042.0	4,501.3	4,392.5	780.7	696.2	27,288.9
2009	1,403.7	6,111.2	1,033.0	3,879.3	3,220.8	3,857.6	945.4	474.5	20,925.5
Mexico									
2008	187.1	19.0	10.9	81.5	86.8	102.1	5.5	0.2	493.1
2009	106.5	0.6	8.6	73.5	95.3	78.1	3.1	0.2	365.8
Japan									
2008	309.1	342.4	90.9	236.4	45.9	4.4	18.5	0.7	1,048.2
2009	271.3	120.4	98.0	146.5	45.5	6.5	19.4	0.5	708.1
European Union									
Germany									
2008	44.7	65.3	14.7	176.7	213.5	3.2	11.2	1.1	530.6
2009	31.0	0.1	10.4	109.5	100.6	3.2	12.2	0.8	267.8
France									
2008	14.3	52.5	15.0	47.7	113.6	3.5	40.9	1.6	289.0
2009	13.1	15.4	16.4	36.7	76.8	2.2	28.1	1.9	190.5
United Kingdom									
2008	33.2	13.6	21.2	369.2	158.6	4.2	16.7	2.3	619.0
2009	41.1	35.3	21.7	731.7	155.8	3.4	19.8	2.6	1,011.3
Italy									
2008	26.5	33.2	33.0	10.6	39.6	1.0	4.7	0.2	148.9
2009	32.4	6.9	25.3	6.1	26.1	1.0	5.7	0.1	103.5
Other European Union									
2008	265.6	96.8	35.1	349.7	238.2	22.3	47.0	3.6	1,058.2
2009	177.7	50.3	29.3	196.5	226.2	14.0	80.9	3.3	778.2
Total									
2008	384.3	261.4	119.0	953.9	763.5	34.1	120.4	8.8	2,645.6
2009	295.3	108.0	103.0	1,080.5	585.5	23.9	146.6	8.7	2,351.5
Newly industrialized countries									
South Korea									
2008	32.7	110.9	36.8	110.1	48.7	1.0	6.4	0.3	347.0
2009	20.8	37.3	34.7	74.8	31.6	7.1	2.9	0.3	209.6
Hong Kong									
2008	27.8	0.0	13.6	99.5	19.7	0.6	4.7	0.6	166.5
2009	38.0	0.0	7.7	34.8	14.0	0.6	4.5	1.8	101.5
Taiwan									
2008	10.7	43.5	18.8	38.2	10.1	0.2	2.2	0.1	123.9
2009	14.8	19.7	16.6	23.1	8.9	0.1	1.5	0.1	84.7
Singapore									
2008	3.7	0.8	1.1	7.6	29.3	1.4	5.0	0.1	49.2
2009	5.5	0.1	1.7	12.2	24.8	1.1	2.7	0.0	48.0
Total									
2008	74.9	155.2	70.3	255.4	107.9	3.3	18.3	1.1	686.6
2009	79.0	57.2	60.7	144.9	79.3	8.9	11.6	2.3	443.8
Other countries									
2008	1,012.3	84.8	324.6	1,461.6	926.2	64.1	93.4	21.6	3,988.7
2009	931.4	150.4	309.4	851.1	724.1	78.4	73.0	22.4	3,140.2
Total									
2008	3,792.8	9,410.9	2,118.7	8,031.0	6,431.7	4,600.6	1,036.9	728.6	36,151.2
2009	3,087.3	6,547.8	1,612.7	6,175.8	4,750.4	4,053.3	1,199.0	508.6	27,934.8

Table 3-2
Domestic exports to selected countries, customs basis, not seasonally adjusted — Year to date, January to November

	Agricultural and fishing products	Energy products	Forestry products	Industrial goods	Machinery and equipment	Automotive products	Consumer goods	Special transactions	Total
millions of dollars									
United States									
2008	18,905.9	114,412.7	16,550.0	62,432.4	48,676.2	50,992.5	9,986.6	6,830.5	328,786.8
2009	17,332.0	65,878.9	12,357.4	41,829.1	40,384.0	34,830.2	10,228.3	5,161.0	228,001.0
Mexico									
2008	1,425.7	155.5	170.9	1,193.5	917.4	876.0	63.2	5.6	4,808.0
2009	1,088.8	80.6	88.8	693.4	864.3	646.4	44.6	9.1	3,516.0
Japan									
2008	3,607.7	2,066.0	1,300.7	2,401.0	542.7	36.4	117.6	4.7	10,076.7
2009	2,914.6	1,692.0	984.0	1,129.8	585.2	43.7	137.2	5.8	7,492.2
European Union									
Germany									
2008	216.3	323.3	160.9	1,547.7	1,276.4	44.7	151.0	12.0	3,732.3
2009	186.9	167.0	116.8	751.9	1,666.2	38.9	143.9	14.8	3,086.3
France									
2008	178.3	378.3	235.0	432.7	1,134.2	45.8	308.5	18.2	2,731.0
2009	144.0	116.1	141.0	521.2	1,005.1	30.9	270.0	22.8	2,251.1
United Kingdom									
2008	442.7	337.8	342.3	7,992.8	1,888.9	67.2	188.8	44.5	11,305.1
2009	379.8	166.3	266.8	7,329.2	1,954.9	36.8	264.0	41.2	10,438.9
Italy									
2008	287.4	292.1	357.4	589.2	444.9	10.6	59.8	4.5	2,045.8
2009	406.3	124.7	250.1	220.1	450.0	8.3	63.3	7.3	1,530.2
Other European Union									
2008	1,243.2	1,745.6	425.2	4,481.1	2,586.5	264.0	605.0	46.5	11,397.1
2009	960.5	917.6	312.1	2,349.9	2,394.4	133.5	744.6	42.3	7,854.9
Total									
2008	2,367.9	3,077.2	1,520.9	15,043.5	7,330.8	432.4	1,313.1	125.6	31,211.4
2009	2,077.5	1,491.8	1,086.7	11,172.3	7,470.6	248.4	1,485.8	128.4	25,161.5
Newly industrialized countries									
South Korea									
2008	323.8	1,106.3	475.1	1,028.2	393.5	10.8	53.6	8.6	3,399.9
2009	293.9	943.5	315.3	939.3	468.2	46.1	43.5	8.7	3,058.5
Hong Kong									
2008	307.8	0.3	101.7	730.5	238.4	6.0	42.8	10.4	1,438.1
2009	334.0	0.3	81.9	437.3	280.9	7.9	53.1	11.3	1,206.7
Taiwan									
2008	143.8	251.8	304.5	581.0	129.2	1.5	30.0	2.2	1,444.2
2009	171.4	179.6	176.9	288.5	100.4	1.5	30.5	1.3	950.1
Singapore									
2008	40.8	35.2	13.5	179.3	328.7	16.5	34.2	3.3	651.4
2009	46.1	44.8	28.4	307.3	295.8	29.2	31.7	4.8	788.0
Total									
2008	816.3	1,393.6	894.8	2,519.0	1,089.8	34.9	160.7	24.6	6,933.6
2009	845.3	1,168.2	602.6	1,972.4	1,145.3	84.7	158.8	26.1	6,003.2
Other countries									
2008	9,383.5	1,881.1	3,865.4	15,532.8	8,647.8	785.5	1,146.8	183.5	41,426.4
2009	9,378.3	1,592.6	3,120.8	10,205.5	7,795.7	686.5	1,072.7	243.7	34,095.7
Total									
2008	36,507.1	122,986.1	24,302.9	99,122.3	67,205.7	53,157.7	12,788.5	7,174.4	423,244.8
2009	33,636.4	71,904.1	18,240.2	67,002.5	58,245.4	36,539.8	13,128.1	5,574.1	304,270.6

Table 4
Domestic exports by country, customs basis, not seasonally adjusted

	November		January to November		Variation
	2008	2009	2008	2009	January to November to November 2009/2008
millions of dollars					
North America					
Greenland	1.5	0.9	15.2	15.5	2.5
Mexico	493.1	365.8	4,808.0	3,516.0	-26.9
Saint Pierre and Miquelon	0.9	1.0	13.1	13.5	2.9
United States	27,288.9	20,925.5	328,786.8	228,001.0	-30.7
Total	27,784.4	21,293.2	333,623.0	231,546.0	-30.6
Western Europe					
Andorra	0.0	0.0	0.2	0.1	-48.1
Austria	17.6	39.2	357.3	340.8	-4.6
Belgium	370.1	82.3	3,122.8	1,554.5	-50.2
Denmark	20.4	16.7	343.3	567.4	65.3
Faeroe Islands	0.0	0.0	1.7	1.0	-42.4
Finland	42.7	24.3	902.7	273.7	-69.7
France	289.0	190.5	2,731.0	2,251.1	-17.6
Germany	530.6	267.8	3,732.3	3,086.3	-17.3
Gibraltar	0.0	0.0	596.6	17.1	-97.1
Greece	13.0	7.9	123.0	94.9	-22.8
Iceland	2.7	3.3	46.5	72.4	55.7
Italy	148.9	103.5	2,045.8	1,530.2	-25.2
Luxembourg	61.8	3.2	139.4	34.9	-75.0
Malta	0.7	0.8	16.1	44.8	178.5
Netherlands	293.0	225.8	3,252.9	2,323.6	-28.6
Norway	179.0	170.4	2,742.2	1,555.0	-43.3
Portugal	51.3	14.4	192.0	149.3	-22.3
Republic of Ireland (Eire)	21.8	53.5	394.1	486.6	23.5
Spain	58.0	196.1	1,004.6	983.5	-2.1
Sweden	20.4	54.0	477.2	320.4	-32.9
Switzerland	242.9	54.8	1,203.9	1,061.1	-11.9
United Kingdom	619.0	1,011.3	11,305.1	10,438.9	-7.7
Total	2,983.0	2,520.0	34,730.8	27,187.7	-21.7
Other Europe					
Albania	2.0	2.7	33.3	14.1	-57.5
Armenia	1.0	0.7	20.2	7.3	-63.7
Azerbaijan	1.3	0.9	15.4	9.9	-36.0
Belarus	0.3	0.4	3.9	1.3	-66.3
Bosnia and Herzegovina	0.5	0.1	5.8	2.6	-54.9
Bulgaria	14.3	10.8	38.7	67.1	73.1
Croatia	2.2	1.9	62.9	97.1	54.4
Czech Republic	14.3	10.2	207.6	120.0	-42.2
Estonia	1.7	1.9	21.7	23.6	8.7
Georgia	3.2	4.7	20.2	14.0	-30.9
Hungary	8.0	5.3	119.1	79.6	-33.2
Kazakhstan	16.9	6.9	211.2	124.4	-41.1
Kyrgyzstan	0.4	0.2	6.2	3.3	-45.9
Latvia	4.9	0.6	44.1	22.3	-49.4
Lithuania	4.4	2.6	42.5	36.1	-14.9
Macedonia (Former Yugoslav Republic of Macedonia)	0.4	1.7	10.9	14.1	29.3
Montenegro	0.7	0.2	6.6	1.9	-70.6
Poland	16.5	14.3	297.1	167.0	-43.8
Republic of Moldova	0.7	0.0	9.7	1.8	-81.2
Romania	18.3	10.3	201.3	78.3	-61.1
Russian Federation	127.8	79.6	1,324.4	724.2	-45.3
Serbia	0.7	0.6	12.8	16.4	28.1
Slovakia	3.2	1.3	45.1	23.0	-48.9
Slovenia	0.8	1.7	39.5	53.5	35.5
Tajikistan	0.2	0.5	4.2	2.7	-34.8
Turkmenistan	0.0	0.5	2.5	5.6	125.0
Ukraine	7.0	10.5	213.8	90.2	-57.8
Uzbekistan	0.0	0.0	11.8	12.6	7.5
Total	251.6	171.1	3,032.2	1,814.3	-40.2
Middle East					
Bahrain	1.3	1.9	47.5	34.1	-28.2
Cyprus	0.9	1.0	15.1	9.9	-34.5

Table 4 – continued

Domestic exports by country, customs basis, not seasonally adjusted

	November		January to November		Variation January to November 2009/2008
	2008	2009	2008	2009	
millions of dollars					
Egypt	56.5	46.7	569.2	573.3	0.7
Eritrea	0.0	0.3	0.8	2.2	164.8
Ethiopia	2.7	0.0	67.7	7.4	-89.0
Iran	113.9	12.5	478.3	333.8	-30.2
Iraq	4.3	9.3	178.0	472.2	165.3
Israel	70.7	31.2	506.7	271.7	-46.4
Jordan	4.7	5.3	66.4	54.2	-18.3
Kuwait	17.8	11.9	134.9	76.3	-43.4
Lebanon	6.4	6.3	65.4	85.7	31.1
Libya	6.4	4.7	103.6	223.5	115.7
Oman	12.0	6.1	87.8	103.9	18.4
Qatar	7.0	4.2	72.5	202.5	179.3
Saudi Arabia	78.1	103.5	897.3	1,049.3	16.9
Somalia	1.7	0.0	3.4	2.9	-14.8
Sudan	35.8	2.2	214.4	90.6	-57.7
Syria	7.3	5.0	59.4	42.5	-28.5
Turkey	78.0	81.2	1,179.0	729.2	-38.1
United Arab Emirates	72.4	104.5	1,207.1	1,067.6	-11.6
Yemen	2.1	1.2	49.7	23.9	-51.9
Total	580.0	439.0	6,004.2	5,456.8	-9.1
Other Africa					
Algeria	77.8	26.9	801.8	282.7	-64.7
Angola	7.9	4.4	115.2	64.2	-44.2
Antarctica	0.0	0.8	3.3	1.3	-61.1
Benin	0.6	0.6	10.8	7.0	-35.5
Botswana	0.5	0.7	8.8	5.0	-43.2
Bouvet Island	0.0	0.0	0.0	0.0	-100.0
Burkina Faso	0.2	6.6	5.2	25.5	391.0
Burundi	0.1	0.1	1.3	1.0	-24.1
Cameroon	1.4	6.9	16.8	31.7	88.1
Cape Verde	0.1	0.3	0.9	1.3	50.6
Central African Republic	0.0	0.0	0.1	0.7	467.4
Chad	0.3	2.2	5.3	11.3	114.4
Comoros	0.0	0.0	0.5	3.1	531.9
Congo	1.6	3.1	25.4	21.9	-13.9
Democratic Republic of the Congo	5.0	2.1	21.1	14.3	-31.9
Djibouti	0.6	0.2	2.2	2.5	15.2
Equatorial Guinea	6.7	0.3	11.9	4.1	-65.5
French Southern Territories	0.0	0.0	0.1	0.3	80.3
Gabon	1.4	1.2	24.1	23.9	-0.9
Gambia	0.0	0.1	0.7	0.6	-11.7
Ghana	7.6	9.6	166.2	143.3	-13.8
Guinea	2.2	0.8	15.7	13.0	-16.9
Guinea-Bissau	0.0	0.0	0.7	0.0	-99.0
Ivory Coast	0.4	0.4	22.8	22.3	-2.3
Kenya	9.3	5.4	66.8	66.4	-0.5
Lesotho	0.0	0.2	0.0	0.2	379.7
Liberia	0.5	1.0	8.6	3.9	-54.7
Madagascar	0.6	2.0	10.0	48.9	389.1
Malawi	0.6	0.3	5.0	3.9	-21.1
Mali	1.8	1.0	7.2	5.3	-26.7
Mauritania	0.7	0.0	4.2	2.1	-49.1
Mauritius	1.2	0.3	5.3	4.8	-11.0
Morocco	33.5	27.9	285.5	326.2	14.2
Mozambique	0.6	0.9	10.3	5.6	-45.4
Namibia	0.1	2.2	8.0	5.0	-37.0
Niger	0.6	0.2	3.4	2.7	-19.5
Nigeria	10.0	18.3	76.4	188.8	147.1
Rwanda	0.3	0.1	3.9	3.2	-17.1
Saint Helena	0.0	0.0	0.4	0.1	-77.3
Sao Tome and Principe	0.0	0.0	0.0	0.1	953.0
Senegal	3.3	0.8	27.4	32.9	20.3
Seychelles	0.3	0.1	1.6	1.0	-36.3
Sierra Leone	0.5	0.6	8.9	4.1	-54.3
South Africa	75.9	29.2	809.2	386.2	-52.3
Swaziland	0.2	1.3	5.5	10.9	100.7

Table 4 – continued

Domestic exports by country, customs basis, not seasonally adjusted

	November		January to November		Variation
	2008	2009	2008	2009	January to November 2009/2008
millions of dollars					
Togo	0.6	2.2	15.4	17.1	11.0
Tunisia	40.8	6.8	66.8	84.8	26.9
Uganda	6.4	0.6	15.3	12.0	-21.8
United Republic of Tanzania	5.6	4.0	51.9	31.5	-39.4
Western Sahara	0.0	0.0	0.0	0.1	728.6
Zambia	1.5	0.7	21.9	8.5	-61.3
Zimbabwe	0.1	0.7	3.9	7.9	101.7
Total	309.7	174.0	2,783.9	1,945.2	-30.1
Other Asia					
Afghanistan	9.1	3.1	20.4	45.8	124.3
Bangladesh	22.2	49.8	261.6	592.1	126.3
Bhutan	0.0	0.0	0.0	0.2	444.0
British Indian Ocean Territory	0.2	0.1	0.9	0.3	-60.4
Brunei Darussalam	0.1	0.1	2.0	3.6	78.6
Cambodia	0.5	0.5	2.8	6.6	139.0
China	698.2	821.4	9,372.7	10,085.7	7.6
Hong Kong	166.5	101.5	1,438.1	1,206.7	-16.1
India	311.4	243.3	2,111.9	1,891.2	-10.4
Indonesia	149.2	74.9	1,376.4	862.6	-37.3
Japan	1,048.2	708.1	10,076.7	7,492.2	-25.6
Laos	0.0	0.1	17.6	2.3	-86.8
Macau	3.0	0.4	40.5	13.6	-66.5
Malaysia	122.0	78.1	732.7	512.3	-30.1
Maldives	0.4	2.9	4.7	15.3	224.7
Mongolia	0.6	0.1	7.9	4.2	-46.8
Myanmar	0.0	0.0	0.1	0.0	-76.9
Nepal	0.1	0.2	2.9	3.2	10.2
North Korea	2.6	1.8	18.6	23.7	27.1
Pakistan	25.0	11.1	527.4	382.1	-27.6
Philippines	56.6	82.0	500.1	465.5	-6.9
Singapore	49.2	48.0	651.4	788.0	21.0
South Korea	347.0	209.6	3,399.9	3,058.5	-10.0
Sri Lanka	6.4	6.7	360.0	304.6	-15.4
Taiwan	123.9	84.7	1,444.2	950.1	-34.2
Thailand	39.4	61.0	607.0	459.8	-24.3
Timor-Leste	0.0	0.0	0.3	0.0	-89.4
Viet Nam	34.7	25.0	286.2	189.8	-33.7
Total	3,216.6	2,614.6	33,265.1	29,359.8	-11.7
Oceania					
American Samoa	0.1	0.3	0.8	0.9	15.1
Australia	216.6	155.3	1,845.9	1,471.7	-20.3
Christmas Island	0.1	0.0	0.3	0.3	1.0
Cocos (Keeling) Islands	0.0	0.0	0.7	0.2	-74.5
Cook Islands	0.0	0.0	0.9	0.5	-44.3
Fiji	1.6	0.0	3.4	5.6	65.8
French Polynesia	2.6	1.4	16.2	9.8	-39.6
Guam	0.1	0.1	2.5	1.7	-32.1
Heard Island and McDonald Islands	0.0	0.0	0.0	0.1	...
Kiribati	0.0	0.1	0.0	0.1	82.2
Nauru	0.0	0.0	0.2	0.1	-69.8
New Caledonia	10.2	0.3	26.2	9.4	-64.4
New Zealand	57.9	16.3	411.8	241.9	-41.2
Norfolk Island	0.0	0.0	0.1	0.3	352.0
Papua New Guinea	1.2	3.7	10.7	27.5	156.7
Pitcairn	0.1	0.0	0.3	0.1	-60.2
Samoa	0.0	0.1	0.4	0.4	-10.7
Solomon Islands	0.0	0.3	0.1	0.4	400.6
Tonga	0.0	0.0	0.4	0.2	-57.2
United States Minor Outlying Islands	0.9	1.0	15.0	11.4	-24.3
Vanuatu	0.2	0.1	0.5	1.9	264.5
Wallis and Futuna	0.0	0.0	0.0	0.0	-91.1
Total	291.6	179.0	2,336.5	1,784.3	-23.6

Table 4 – continued

Domestic exports by country, customs basis, not seasonally adjusted

	November		January to November		Variation January to November 2009/2008
	2008	2009	2008	2009	
millions of dollars					
South America					
Argentina	44.4	8.7	221.6	145.0	-34.6
Bolivia	14.8	1.0	36.1	9.9	-72.6
Brazil	185.1	199.9	2,330.1	1,335.2	-42.7
Chile	68.1	54.1	637.0	554.7	-12.9
Colombia	49.6	38.2	618.2	537.2	-13.1
Ecuador	14.4	9.5	211.1	209.5	-0.8
Falkland Islands (Malvinas)	0.0	0.0	0.1	0.0	-90.7
Guyana	3.6	1.0	19.5	25.1	28.6
Paraguay	0.6	0.4	12.8	10.1	-21.1
Peru	23.3	37.2	328.6	372.1	13.2
Suriname	0.7	0.5	9.1	10.2	11.6
Uruguay	33.8	1.3	175.0	18.3	-89.5
Venezuela	86.1	67.1	743.0	565.7	-23.9
Total	524.6	419.0	5,342.4	3,793.1	-29.0
Central America Antilles					
Anguilla	0.1	0.2	2.2	1.8	-19.2
Antigua and Barbuda	1.8	1.8	19.4	16.6	-14.7
Aruba	0.8	0.9	5.6	5.6	1.3
Bahamas	35.3	17.2	178.2	129.8	-27.2
Barbados	3.8	3.8	41.7	37.8	-9.5
Belize	0.4	0.3	5.8	5.0	-14.0
Bermuda	5.5	4.8	57.3	53.7	-6.2
British Virgin Islands	1.1	0.2	7.9	2.9	-63.5
Cayman Islands	1.1	0.6	13.2	6.1	-53.9
Costa Rica	6.6	6.3	96.0	70.0	-27.1
Cuba	54.2	12.7	586.6	238.4	-59.4
Dominica	0.3	0.4	5.5	4.2	-23.8
Dominican Republic	12.6	10.7	180.6	122.2	-32.3
El Salvador	1.8	1.8	43.8	42.6	-2.7
Grenada	0.7	0.7	5.5	5.3	-3.4
Guatemala	6.5	7.4	133.4	85.0	-36.3
Haiti	9.4	2.9	46.5	37.0	-20.4
Honduras	2.4	1.6	73.2	27.7	-62.2
Jamaica	9.4	7.4	180.0	107.2	-40.5
Montserrat	0.0	0.0	0.4	0.3	-27.1
Netherlands Antilles	12.9	2.0	40.1	46.9	17.0
Nicaragua	4.9	3.3	24.3	15.5	-36.1
Panama	7.4	5.7	99.6	74.5	-25.2
Saint Kitts and Nevis	0.8	0.9	7.8	6.0	-22.4
Saint Lucia	1.4	0.8	10.4	9.2	-11.4
Saint Vincent and the Grenadines	1.3	2.6	7.1	10.6	48.7
Trinidad and Tobago	26.7	26.9	248.2	216.4	-12.8
Turks and Caicos Islands	0.6	0.7	6.6	5.4	-17.8
Total	209.8	124.8	2,126.7	1,383.5	-34.9
All countries	36,151.2	27,934.8	423,244.8	304,270.6	-28.1

Table 5-1
Exports by province of origin, customs basis, not seasonally adjusted — November

	Agricultural and fishing products	Energy products	Forestry products	Industrial goods	Machinery and equipment	Automotive products	Consumer goods	Special transactions	Total
millions of dollars									
Domestic exports									
Newfoundland and Labrador									
2008	48.8	667.8	38.1	222.4	4.6	0.3	0.0	6.4	988.6
2009	55.1	404.4	4.3	154.6	2.8	0.6	0.0	4.2	625.9
Prince Edward Island									
2008	52.5	0.0	0.1	1.9	13.5	0.5	1.6	7.2	77.2
2009	44.1	0.3	0.1	2.1	17.6	0.0	2.3	4.3	70.8
Nova Scotia									
2008	67.6	90.2	97.5	47.9	123.7	9.5	5.9	8.9	451.2
2009	57.3	22.5	78.3	41.4	104.1	4.7	5.3	6.1	319.8
New Brunswick									
2008	111.7	384.0	98.2	73.1	27.2	1.6	9.9	10.6	716.3
2009	101.6	484.8	84.7	52.1	28.7	1.5	20.3	6.9	780.6
Quebec									
2008	494.4	169.2	667.5	1,620.5	1,884.6	227.4	296.3	150.9	5,510.9
2009	445.5	195.6	481.9	1,442.3	1,564.1	168.3	392.7	120.9	4,811.2
Ontario									
2008	877.2	358.9	298.5	2,989.9	3,309.5	4,234.7	631.7	386.8	13,087.2
2009	752.4	185.8	207.2	2,742.8	2,359.4	3,782.3	695.1	260.8	10,985.8
Manitoba									
2008	394.9	85.1	31.3	241.2	181.9	56.2	21.6	41.0	1,053.2
2009	312.4	96.4	13.0	172.5	133.6	37.3	24.2	28.2	817.5
Saskatchewan									
2008	846.5	834.7	14.7	1,025.9	59.4	6.3	0.6	11.6	2,799.8
2009	635.1	720.4	16.8	434.3	55.8	5.2	0.6	7.7	1,875.9
Alberta									
2008	700.9	5,929.0	187.6	1,097.6	495.3	43.7	18.7	56.8	8,529.6
2009	519.5	3,964.0	164.6	681.4	251.7	37.0	11.2	37.2	5,666.6
British Columbia									
2008	198.2	891.9	685.3	468.1	331.6	20.4	50.5	48.4	2,694.3
2009	164.2	473.7	561.8	450.3	232.3	16.3	47.2	32.2	1,978.1
Yukon, Northwest Territories and Nunavut ¹									
2008	0.0	0.0	0.0	242.4	0.5	0.0	0.0	0.0	243.0
2009	0.1	0.0	0.0	2.1	0.3	0.1	0.0	0.0	2.6
Total									
2008	3,792.8	9,410.9	2,118.7	8,031.0	6,431.7	4,600.6	1,036.9	728.6	36,151.2
2009	3,087.3	6,547.8	1,612.7	6,175.8	4,750.4	4,053.3	1,199.0	508.6	27,934.8
Re-exports									
2008	59.7	9.6	5.6	236.6	1,133.4	97.5	209.0	767.6	2,519.1
2009	33.5	73.9	6.0	189.5	913.9	80.2	186.8	524.3	2,008.1
Total exports									
2008	3,852.6	9,420.5	2,124.3	8,267.6	7,565.1	4,698.1	1,245.9	1,496.3	38,670.3
2009	3,120.8	6,621.6	1,618.7	6,365.3	5,664.3	4,133.5	1,385.8	1,032.9	29,942.9

1. Data for the most current month do not include some exports of Chapter 71 "Natural/cultured pearls, precious stones and metals, coins etc" for reasons relating to timing.

Table 5-2
Exports by province of origin, customs basis, not seasonally adjusted — Year to date, January to November

	Agricultural and fishing products	Energy products	Forestry products	Industrial goods	Machinery and equipment	Automotive products	Consumer goods	Special transactions	Total
millions of dollars									
Domestic exports									
Newfoundland and Labrador									
2008	773.2	10,697.2	292.4	2,034.5	52.3	1.4	1.5	72.6	13,925.1
2009	678.8	5,172.2	159.2	1,718.2	50.4	3.5	0.9	50.1	7,833.3
Prince Edward Island									
2008	470.4	0.0	1.6	16.4	179.5	1.6	25.2	78.6	773.3
2009	453.3	1.6	0.9	20.0	191.2	1.4	31.3	72.5	772.3
Nova Scotia									
2008	941.0	1,442.5	848.8	541.1	1,157.4	108.4	71.2	91.2	5,201.6
2009	869.1	544.7	663.9	463.2	1,055.9	68.4	67.8	66.2	3,799.3
New Brunswick									
2008	1,149.1	8,048.8	1,160.5	1,209.4	309.3	19.6	102.0	114.2	12,112.9
2009	1,087.7	5,643.3	992.1	713.9	286.4	22.4	147.3	79.9	8,973.1
Quebec									
2008	4,361.2	3,754.8	7,096.3	21,253.6	20,489.5	2,018.5	3,250.1	1,445.8	63,669.8
2009	4,028.5	2,540.8	5,454.1	14,984.0	18,280.4	1,558.5	3,296.6	1,267.6	51,410.5
Ontario									
2008	7,530.6	4,207.4	3,545.9	41,600.2	33,693.8	49,598.7	8,203.0	3,785.9	152,165.5
2009	7,386.1	2,490.2	2,432.2	28,615.0	29,056.4	33,639.0	8,526.1	2,723.0	114,868.0
Manitoba									
2008	4,079.1	1,173.7	357.7	3,181.9	2,007.7	548.7	323.6	291.9	11,964.3
2009	3,603.8	791.4	241.1	2,041.8	1,849.6	551.6	408.9	342.2	9,830.3
Saskatchewan									
2008	7,996.8	10,625.1	233.7	7,771.8	780.6	41.4	20.1	119.1	27,588.5
2009	6,987.3	6,572.4	225.5	5,070.6	757.2	39.6	10.7	84.3	19,747.8
Alberta									
2008	7,019.0	74,257.1	1,910.7	13,098.9	5,028.8	536.5	206.2	636.4	102,693.5
2009	6,389.0	42,079.3	1,585.7	7,754.6	3,930.4	462.4	143.9	484.6	62,829.7
British Columbia									
2008	2,185.4	8,779.4	8,855.0	5,986.1	3,499.2	282.8	584.3	536.9	30,709.0
2009	2,150.9	6,068.2	6,485.4	4,333.7	2,783.0	192.6	493.5	402.7	22,909.8
Yukon, Northwest Territories and Nunavut ¹									
2008	1.5	0.0	0.4	2,428.4	7.6	0.2	1.3	1.7	2,441.2
2009	2.0	0.0	0.2	1,287.3	4.6	0.4	1.1	0.9	1,296.5
Total									
2008	36,507.1	122,986.1	24,302.9	99,122.3	67,205.7	53,157.7	12,788.5	7,174.4	423,244.8
2009	33,636.4	71,904.1	18,240.2	67,002.5	58,245.4	36,539.8	13,128.1	5,574.1	304,270.6
Re-exports									
2008	462.1	794.7	76.6	2,587.2	10,375.7	1,322.5	2,050.6	8,251.6	25,921.1
2009	460.9	522.5	68.9	2,094.4	10,386.8	912.3	2,045.0	7,154.9	23,645.8
Total exports									
2008	36,969.2	123,780.7	24,379.5	101,709.5	77,581.5	54,480.2	14,839.1	15,426.1	449,165.8
2009	34,097.4	72,426.6	18,309.1	69,096.8	68,632.2	37,452.2	15,173.2	12,728.9	327,916.4

1. Data for the most current month do not include some exports of Chapter 71 "Natural/cultured pearls, precious stones and metals, coins etc" for reasons relating to timing.

Table 6-1
Imports by commodity groupings, balance of payments basis, seasonally adjusted — Current dollars

	October	November	Change	Year to date		Year to date change	November 2009/2008		
	2009	2009		2008	2009				
	millions of dollars		percent		millions of dollars		percent		
Total	30,734	31,926	1,192	3.9	407,293	342,629	-64,664	-15.9	-16.3
Agricultural and fishing products	2,378	2,429	51	2.2	25,971	27,092	1,121	4.3	-5.1
Fruits and vegetables	662	680	18	2.6	7,145	7,565	420	5.9	-4.6
Fresh fruits and berries	245	252	8	3.1	2,514	2,679	166	6.6	3.4
Dried fruits, fruits and fruit preparations	115	113	-2	-2.0	1,352	1,390	38	2.8	-18.1
Fresh vegetables	169	182	13	7.7	1,811	1,928	117	6.5	-0.5
Other vegetables and vegetable preparations	134	133	-1	-0.6	1,468	1,567	99	6.7	-10.5
Other agricultural and fishing products	1,716	1,750	34	2.0	18,826	19,527	701	3.7	-5.3
Live animals	16	16	-0	-0.6	175	179	4	2.1	-1.9
Meat and meat preparations	170	167	-2	-1.4	1,869	1,968	100	5.3	-8.6
Fish and marine animals	159	158	-1	-0.4	1,739	1,885	146	8.4	-7.2
Cocoa, coffee, tea and other food preparations	386	413	27	7.0	4,199	4,556	357	8.5	-6.1
Dairy produce, eggs and honey	47	53	6	11.9	583	526	-57	-9.7	-1.6
Corn (maize) shelled	42	39	-3	-7.1	648	452	-196	-30.2	-12.2
Other cereals and cereal preparations	172	180	9	5.0	1,908	2,098	190	10.0	-9.3
Sugar and sugar preparations	163	135	-28	-17.0	1,390	1,538	149	10.7	-7.6
Fodder, feed, excluding unmilled cereal	120	122	2	1.7	1,336	1,379	43	3.2	-4.7
Beverages	306	302	-4	-1.2	3,246	3,366	120	3.7	0.1
Tobacco	28	35	8	28.7	351	342	-9	-2.6	-1.7
Crude vegetable products	107	127	20	19.0	1,370	1,229	-141	-10.3	1.2
Cotton	1	1	-0	-12.5	12	9	-4	-28.8	-60.7
Energy products	2,784	3,148	363	13.0	49,867	30,753	-19,114	-38.3	-20.8
Crude petroleum	1,724	1,897	174	10.1	32,305	18,645	-13,660	-42.3	-16.5
Other energy products	1,061	1,250	189	17.9	17,562	12,109	-5,453	-31.1	-26.6
Coal and other related products	316	482	165	52.2	5,582	4,324	-1,259	-22.5	-29.2
Petroleum and coal products	744	769	24	3.3	11,980	7,785	-4,195	-35.0	-24.8
Forestry products	192	195	3	1.4	2,655	2,190	-464	-17.5	-20.2
Forestry products	192	195	3	1.4	2,655	2,190	-464	-17.5	-20.2
Crude wood products	32	34	1	3.9	437	405	-32	-7.3	-27.0
Wood fabricated materials	159	161	1	0.9	2,218	1,786	-432	-19.5	-18.6
Industrial goods and materials	6,320	6,137	-183	-2.9	84,070	68,873	-15,196	-18.1	-21.7
Metals and metal ores	2,293	2,217	-76	-3.3	29,985	22,585	-7,400	-24.7	-10.0
Metals in ores, concentrates and scrap	527	565	38	7.1	7,809	5,456	-2,353	-30.1	3.3
Steel bars, rods, plates, sheets	416	410	-6	-1.4	6,948	4,335	-2,613	-37.6	-30.0
Other iron and steel products	264	256	-8	-3.1	4,750	3,274	-1,476	-31.1	-52.8
Precious metals including alloys	820	645	-176	-21.4	5,059	6,246	1,187	23.5	73.1
Other non-ferrous metals and alloys	266	342	76	28.6	5,419	3,274	-2,146	-39.6	-17.9
Chemicals and plastics	2,170	2,097	-73	-3.4	28,943	24,854	-4,089	-14.1	-26.8
Organic chemicals	470	446	-25	-5.3	7,405	5,894	-1,512	-20.4	-40.0
Plastic materials	750	736	-14	-1.9	9,884	8,114	-1,770	-17.9	-22.2
Other chemicals and related products	949	915	-34	-3.6	11,653	10,846	-807	-6.9	-22.1
Other industrial goods and materials	1,857	1,823	-34	-1.8	25,142	21,434	-3,707	-14.7	-27.4
Crude animal products	21	18	-3	-13.4	284	205	-79	-27.8	-17.5
Wool and man-made fibres	17	17	-0	-2.0	234	194	-41	-17.4	-24.4
Crude non-metallic minerals	72	54	-18	-25.0	971	689	-281	-29.0	-43.1
Textile fabricated materials	180	174	-6	-3.4	2,404	2,062	-342	-14.2	-25.5
Metal fabricated basic products	700	698	-2	-0.2	9,852	8,279	-1,573	-16.0	-30.6
Rubber fabricated materials	77	78	0	0.1	961	859	-102	-10.6	-21.1
Oils, fats, animal and vegetable	92	100	8	9.2	1,144	1,152	8	0.7	-17.6
Non-metallic minerals	268	257	-11	-4.2	3,504	3,018	-486	-13.9	-28.1
Other fabricated materials	429	427	-3	-0.6	5,788	4,977	-811	-14.0	-22.9

Table 6-1 – continued

Imports by commodity groupings, balance of payments basis, seasonally adjusted — Current dollars

	October 2009	November 2009	Change	Year to date		Year to date change	November 2009/2008		
	millions of dollars			percent					
				2008	2009				
Machinery and equipment	8,451	8,816	365	4.3	112,019	99,882	-12,137	-10.8	-21.7
Industrial and agricultural machinery	2,058	2,137	80	3.9	31,344	25,751	-5,593	-17.8	-32.8
Engines, turbines and electric motors	223	268	45	20.4	3,697	3,740	43	1.2	-32.3
Drilling mining machinery	107	108	1	0.7	1,695	1,381	-314	-18.5	-47.9
Excavating machinery	155	153	-2	-1.3	3,266	1,880	-1,386	-42.4	-46.3
Metal working machinery	132	127	-5	-4.0	2,243	1,478	-765	-34.1	-34.7
Other industrial machinery	1,156	1,163	7	0.6	16,672	13,602	-3,070	-18.4	-30.8
Agricultural machinery including tractors	285	318	33	11.8	3,770	3,670	-100	-2.7	-23.4
Aircraft and other transportation equipment	1,166	1,326	161	13.8	15,926	14,702	-1,225	-7.7	-10.5
Aircraft, engines, parts	701	857	156	22.2	10,140	9,301	-839	-8.3	-6.8
Other transportation equipment and parts	465	469	5	1.0	5,787	5,401	-386	-6.7	-16.6
Office machines and equipment	970	1,055	85	8.7	13,267	11,321	-1,946	-14.7	-17.7
Other machinery and equipment	4,257	4,297	40	0.9	51,482	48,109	-3,373	-6.6	-19.2
Other communication and related equipment	1,507	1,544	37	2.5	17,880	17,106	-774	-4.3	-17.8
Other equipment and tools	2,750	2,753	3	0.1	33,602	31,003	-2,599	-7.7	-19.9
Automotive products	4,841	5,296	456	9.4	66,711	49,076	-17,636	-26.4	-8.6
Passenger autos and chassis	1,736	1,862	126	7.2	24,157	16,790	-7,367	-30.5	-3.4
Trucks and other motor vehicles	999	1,300	301	30.1	13,986	11,294	-2,692	-19.2	15.1
Motor vehicle parts	2,106	2,135	29	1.4	28,568	20,991	-7,577	-26.5	-22.0
Other consumer goods	4,694	4,696	2	0.1	52,341	52,780	439	0.8	-10.4
Apparel and footwear	841	865	24	2.8	10,235	10,307	72	0.7	-19.3
Apparel and apparel accessories	698	720	21	3.1	8,551	8,596	45	0.5	-20.0
Footwear	143	145	2	1.5	1,684	1,711	27	1.6	-15.6
Miscellaneous consumer goods	3,853	3,832	-21	-0.5	42,106	42,473	367	0.9	-8.2
Television, radios, phonographs	126	119	-7	-5.2	1,574	1,270	-304	-19.3	-23.2
Printed matter	284	280	-4	-1.5	3,398	3,297	-101	-3.0	-14.8
Watches, sporting goods and toys	479	471	-8	-1.8	5,840	5,574	-266	-4.6	-16.4
House furnishings	707	702	-5	-0.7	7,916	7,994	78	1.0	-13.9
Photographic goods	206	201	-5	-2.4	2,660	2,376	-284	-10.7	-27.6
Miscellaneous end products	2,050	2,058	8	0.4	20,718	21,962	1,244	6.0	1.3
Special transactions trade	399	514	115	28.8	5,508	4,573	-935	-17.0	10.2
Unallocated balance of payments adjustments	675	694	19	2.8	8,151	7,409	-742	-9.1	-7.7

Table 6-2
Imports by commodity groupings, balance of payments basis, seasonally adjusted — Constant dollars, 2002

	October	November	Change	Year to date		Year to date change	November 2009/2008		
	2009	2009		2008	2009				
	millions of dollars		percent		millions of dollars		percent		
Total	34,931	35,888	957	2.7	449,011	370,133	-78,878	-17.6	-6.9
Agricultural and fishing products	2,440	2,456	16	0.7	25,873	25,698	-175	-0.7	6.9
Fruits and vegetables	674	670	-4	-0.6	6,912	7,417	504	7.3	6.0
Fresh fruits and berries	246	256	10	4.2	2,473	2,731	258	10.4	10.7
Dried fruits, fruits and fruit preparations	122	122	-1	-0.5	1,300	1,359	59	4.5	-2.7
Fresh vegetables	177	163	-14	-7.7	1,778	1,914	135	7.6	3.9
Other vegetables and vegetable preparations	129	129	0	0.1	1,361	1,413	52	3.8	8.6
Other agricultural and fishing products	1,767	1,787	20	1.1	18,960	18,281	-680	-3.6	7.2
Live animals	19	19	-0	-0.4	179	180	1	0.6	22.5
Meat and meat preparations	200	192	-8	-3.9	1,941	1,984	44	2.3	2.3
Fish and marine animals	253	248	-5	-2.1	2,287	2,540	253	11.1	13.8
Cocoa, coffee, tea and other food preparations	356	376	21	5.8	3,896	3,737	-159	-4.1	7.5
Dairy produce, eggs and honey	44	50	6	14.8	495	505	11	2.2	27.7
Corn (maize) shelled	36	33	-3	-8.8	459	376	-82	-17.9	7.8
Other cereals and cereal preparations	164	170	7	4.0	1,895	1,780	-115	-6.1	1.6
Sugar and sugar preparations	160	126	-33	-20.9	1,541	1,469	-72	-4.7	-10.1
Fodder, feed, excluding unmilled cereal	103	102	-2	-1.6	1,088	1,025	-63	-5.8	13.1
Beverages	278	293	15	5.6	3,224	2,998	-227	-7.0	8.9
Tobacco	34	43	9	25.9	468	395	-73	-15.7	6.3
Crude vegetable products	119	132	13	11.2	1,471	1,279	-192	-13.1	15.9
Cotton	1	1	-0	-9.4	17	12	-5	-30.6	-53.5
Energy products	1,699	1,788	89	5.2	20,545	19,234	-1,311	-6.4	-6.3
Crude petroleum	872	825	-47	-5.4	11,075	10,340	-734	-6.6	-14.8
Other energy products	827	963	135	16.4	9,470	8,893	-577	-6.1	2.3
Coal and other related products	329	488	159	48.2	3,336	3,748	412	12.3	31.0
Petroleum and coal products	498	475	-23	-4.7	6,134	5,146	-989	-16.1	-16.5
Forestry products	260	265	5	1.8	3,422	2,777	-645	-18.9	-8.1
Forestry products	260	265	5	1.8	3,422	2,777	-645	-18.9	-8.1
Crude wood products	45	49	3	7.2	557	521	-36	-6.4	-10.5
Wood fabricated materials	215	216	1	0.6	2,865	2,255	-610	-21.3	-7.5
Industrial goods and materials	5,871	5,689	-182	-3.1	74,188	61,806	-12,382	-16.7	-7.1
Metals and metal ores	1,658	1,600	-58	-3.5	19,881	16,232	-3,649	-18.4	4.2
Metals in ores, concentrates and scrap	356	343	-13	-3.7	4,342	3,998	-344	-7.9	-4.3
Steel bars, rods, plates, sheets	357	356	-1	-0.2	4,548	3,490	-1,058	-23.3	6.1
Other iron and steel products	213	205	-7	-3.4	3,079	2,335	-743	-24.1	-30.1
Precious metals including alloys	451	327	-124	-27.5	2,968	3,031	63	2.1	58.7
Other non-ferrous metals and alloys	281	369	87	31.1	4,944	3,378	-1,567	-31.7	7.9
Chemicals and plastics	2,126	2,057	-69	-3.2	26,053	23,167	-2,885	-11.1	-6.0
Organic chemicals	381	365	-16	-4.3	5,229	4,703	-526	-10.1	-26.6
Plastic materials	830	826	-4	-0.4	9,910	8,472	-1,438	-14.5	1.9
Other chemicals and related products	915	866	-49	-5.3	10,913	9,992	-921	-8.4	-1.7
Other industrial goods and materials	2,087	2,031	-56	-2.7	28,255	22,407	-5,848	-20.7	-15.3
Crude animal products	28	26	-1	-4.3	281	286	6	2.0	42.2
Wool and man-made fibres	21	21	-0	-0.8	293	243	-50	-17.2	-13.6
Crude non-metallic minerals	62	47	-15	-23.9	814	606	-208	-25.5	-37.8
Textile fabricated materials	242	235	-7	-2.9	3,185	2,544	-641	-20.1	-10.5
Metal fabricated basic products	746	735	-11	-1.4	10,476	8,110	-2,366	-22.6	-19.4
Rubber fabricated materials	95	94	-1	-0.6	1,214	967	-247	-20.3	-6.7
Oils, fats, animal and vegetable	83	94	11	12.7	897	998	101	11.3	8.1
Non-metallic minerals	323	311	-12	-3.7	4,226	3,387	-839	-19.8	-17.5
Other fabricated materials	487	467	-20	-4.1	6,870	5,265	-1,605	-23.4	-13.3

Table 6-2 – continued

Imports by commodity groupings, balance of payments basis, seasonally adjusted — Constant dollars, 2002

	October 2009	November 2009	Change	Year to date		Year to date change	November 2009/2008		
	millions of dollars			percent					
				2008	2009				
Machinery and equipment	11,835	12,227	393	3.3	160,330	129,718	-30,612	-19.1	-13.2
Industrial and agricultural machinery	2,479	2,565	86	3.5	39,428	28,551	-10,877	-27.6	-23.6
Engines, turbines and electric motors	271	325	54	19.9	4,740	4,183	-557	-11.7	-24.9
Drilling mining machinery	117	118	1	0.6	1,917	1,379	-537	-28.0	-40.0
Excavating machinery	185	181	-4	-2.2	4,098	2,051	-2,047	-49.9	-38.4
Metal working machinery	164	158	-6	-3.8	2,897	1,713	-1,184	-40.9	-25.0
Other industrial machinery	1,380	1,384	4	0.3	20,764	14,940	-5,824	-28.0	-21.2
Agricultural machinery including tractors	361	399	38	10.5	5,013	4,284	-729	-14.5	-14.9
Aircraft and other transportation equipment	1,370	1,529	160	11.7	19,333	15,819	-3,514	-18.2	-0.1
Aircraft, engines, parts	856	1,021	166	19.4	12,524	10,249	-2,275	-18.2	4.0
Other transportation equipment and parts	514	508	-6	-1.2	6,809	5,570	-1,240	-18.2	-7.4
Office machines and equipment	2,019	2,163	144	7.1	27,671	22,636	-5,035	-18.2	-20.5
Other machinery and equipment	5,967	5,970	3	0.1	73,898	62,712	-11,186	-15.1	-7.9
Other communication and related equipment	2,446	2,465	18	0.8	29,093	25,888	-3,205	-11.0	-4.9
Other equipment and tools	3,521	3,506	-15	-0.4	44,805	36,824	-7,981	-17.8	-10.0
Automotive products	5,871	6,421	551	9.4	82,981	57,037	-25,944	-31.3	-3.4
Passenger autos and chassis	2,027	2,191	164	8.1	28,033	19,530	-8,503	-30.3	-4.7
Trucks and other motor vehicles	1,107	1,439	333	30.1	16,559	12,049	-4,510	-27.2	20.1
Motor vehicle parts	2,737	2,791	54	2.0	38,388	25,457	-12,931	-33.7	-11.3
Other consumer goods	5,980	5,944	-36	-0.6	69,831	62,685	-7,146	-10.2	-1.0
Apparel and footwear	1,156	1,180	25	2.1	14,570	13,115	-1,455	-10.0	-8.8
Apparel and apparel accessories	960	983	23	2.4	12,177	10,953	-1,223	-10.0	-9.3
Footwear	196	198	2	0.9	2,394	2,162	-232	-9.7	-6.3
Miscellaneous consumer goods	4,824	4,763	-61	-1.3	55,261	49,570	-5,691	-10.3	1.2
Television, radios, phonographs	213	207	-6	-2.7	2,542	1,936	-606	-23.8	-3.4
Printed matter	349	341	-8	-2.3	4,559	3,904	-655	-14.4	-9.4
Watches, sporting goods and toys	643	627	-16	-2.5	8,251	7,133	-1,119	-13.6	-7.5
House furnishings	911	894	-17	-1.9	10,224	9,336	-888	-8.7	0.4
Photographic goods	360	352	-8	-2.1	4,730	3,846	-884	-18.7	-20.7
Miscellaneous end products	2,347	2,342	-6	-0.3	24,954	23,415	-1,539	-6.2	11.2
Special transactions trade	462	590	128	27.8	6,114	4,982	-1,132	-18.5	23.4
Unallocated balance of payments adjustments	514	508	-6	-1.1	5,727	6,197	470	8.2	-28.1

Table 7-1
Imports from selected countries, customs basis, not seasonally adjusted — November

	Agricultural and fishing products	Energy products	Forestry products	Industrial goods	Machinery and equipment	Automotive products	Consumer goods	Special transactions	Total
millions of dollars									
United States									
2008	1,514.8	1,389.6	159.3	4,511.2	4,946.5	4,070.2	2,074.5	380.1	19,046.1
2009	1,409.2	882.6	136.8	3,493.8	3,790.2	3,739.6	1,827.7	490.9	15,770.8
Mexico									
2008	105.9	150.4	0.3	113.1	892.7	619.8	110.0	3.5	1,995.6
2009	100.4	47.5	0.3	97.4	753.7	618.3	85.6	2.8	1,705.9
Japan									
2008	8.2	0.3	0.1	164.5	519.9	494.4	111.7	0.2	1,299.3
2009	9.2	0.5	0.1	68.3	343.3	513.2	82.6	0.2	1,017.3
European Union									
Germany									
2008	25.1	1.5	1.1	200.3	418.0	228.9	153.3	0.3	1,028.5
2009	24.0	1.4	1.3	144.5	331.9	216.0	143.2	0.4	862.7
France									
2008	68.0	6.0	0.3	62.9	152.8	3.8	148.4	0.2	442.4
2009	82.2	9.0	0.2	41.9	102.3	5.8	183.5	0.3	425.3
United Kingdom									
2008	34.2	200.8	0.2	93.1	338.3	37.3	115.4	0.9	820.1
2009	38.9	263.5	0.0	113.3	253.9	34.2	115.7	6.2	825.8
Italy									
2008	69.3	0.0	1.4	99.5	140.3	14.9	89.1	0.5	415.1
2009	80.9	6.9	1.3	81.4	122.0	8.5	92.3	0.2	393.4
Other European Union									
2008	113.4	136.2	4.7	294.5	457.8	68.0	244.0	0.6	1,319.2
2009	118.3	345.7	3.6	176.3	298.8	92.1	369.4	3.1	1,407.3
Total									
2008	309.9	344.6	7.7	750.3	1,507.2	352.8	750.2	2.6	4,025.4
2009	344.3	626.5	6.4	557.4	1,108.9	356.5	904.2	10.2	3,914.5
Newly industrialized countries									
South Korea									
2008	5.0	3.7	0.0	84.2	229.7	134.3	23.3	0.1	480.3
2009	5.2	3.2	0.0	52.9	212.3	198.8	17.8	0.1	490.3
Hong Kong									
2008	3.3	0.0	0.1	4.8	17.8	0.2	16.3	0.0	42.5
2009	3.4	0.0	0.1	1.5	14.0	0.4	12.0	0.0	31.3
Taiwan									
2008	5.6	0.0	0.3	81.2	224.6	12.1	38.5	0.1	362.5
2009	5.9	0.0	0.6	51.7	168.9	11.9	35.3	0.1	274.3
Singapore									
2008	4.1	0.0	0.0	49.3	59.6	0.2	18.5	0.4	132.0
2009	4.0	0.0	0.0	17.3	32.6	0.3	15.5	0.2	69.9
Total									
2008	18.0	3.7	0.5	219.4	531.8	146.8	96.7	0.5	1,017.4
2009	18.5	3.2	0.7	123.4	427.7	211.4	80.6	0.3	865.9
Other countries									
2008	687.3	1,490.5	61.2	1,600.2	2,685.2	164.6	1,955.9	65.3	8,710.2
2009	674.8	1,445.6	44.5	1,503.4	2,514.6	151.2	1,687.7	22.9	8,044.7
Total									
2008	2,644.2	3,379.1	228.9	7,358.9	11,083.2	5,848.6	5,099.0	452.2	36,094.2
2009	2,556.5	3,006.0	188.8	5,843.7	8,938.4	5,590.4	4,668.2	527.3	31,319.3

Table 7-2
Imports from selected countries, customs basis, not seasonally adjusted — Year to date, January to November

	Agricultural and fishing products	Energy products	Forestry products	Industrial goods	Machinery and equipment	Automotive products	Consumer goods	Special transactions	Total
millions of dollars									
United States									
2008	15,182.4	14,934.3	1,931.9	53,343.2	52,929.0	47,300.6	20,783.4	3,985.8	210,390.7
2009	15,851.0	9,596.2	1,638.6	40,914.1	45,338.4	33,094.9	21,125.4	3,814.2	171,372.7
Mexico									
2008	1,086.3	945.4	4.2	1,303.7	6,783.7	5,215.1	991.8	40.5	16,370.9
2009	1,190.6	454.3	5.1	1,179.8	6,366.4	4,769.7	931.8	37.2	14,934.9
Japan									
2008	59.2	50.4	1.8	1,239.0	5,763.6	6,145.6	967.8	4.3	14,231.7
2009	64.3	34.9	1.8	1,004.1	4,378.8	4,888.5	900.3	3.3	11,276.1
European Union									
Germany									
2008	251.2	24.2	15.3	2,307.6	4,458.2	2,707.9	1,813.8	78.4	11,656.6
2009	250.5	30.7	12.4	1,666.7	3,857.2	2,326.3	1,662.2	7.1	9,813.1
France									
2008	726.0	186.4	3.3	792.3	1,745.6	67.7	1,481.9	323.2	5,326.2
2009	678.6	194.8	2.4	980.1	1,689.0	82.6	1,586.6	9.8	5,223.8
United Kingdom									
2008	382.1	5,070.4	1.9	1,131.6	3,060.6	507.7	1,290.8	39.2	11,484.3
2009	399.3	2,213.7	1.2	1,171.2	3,124.3	314.8	1,233.0	38.3	8,495.9
Italy									
2008	616.8	119.2	16.5	1,075.5	1,543.8	225.5	1,017.8	55.3	4,670.4
2009	620.5	79.3	13.4	857.7	1,360.0	172.1	996.0	6.5	4,105.6
Other European Union									
2008	1,137.6	2,419.7	48.3	2,928.1	4,856.7	1,160.0	3,623.2	146.0	16,319.6
2009	1,086.9	1,743.4	39.5	2,489.1	3,880.9	677.3	3,851.7	45.3	13,814.2
Total									
2008	3,113.7	7,819.9	85.2	8,235.1	15,664.8	4,668.8	9,227.5	642.1	49,457.1
2009	3,035.7	4,262.0	68.9	7,164.9	13,911.4	3,573.2	9,329.5	107.0	41,452.5
Newly industrialized countries									
South Korea									
2008	44.9	191.8	0.5	870.7	2,574.7	1,603.0	229.8	1.1	5,516.5
2009	45.8	297.8	0.2	704.5	2,439.3	1,751.7	206.6	0.8	5,446.6
Hong Kong									
2008	30.1	0.1	1.0	32.4	181.2	1.8	179.4	0.6	426.5
2009	27.3	0.0	0.7	25.3	148.1	3.9	132.2	0.6	338.1
Taiwan									
2008	53.1	74.1	9.4	808.1	2,106.8	165.4	407.3	1.2	3,625.3
2009	60.5	0.3	8.7	638.4	1,832.8	153.4	374.8	1.0	3,069.8
Singapore									
2008	31.8	83.3	1.0	264.4	555.1	2.7	196.4	3.9	1,138.6
2009	31.2	70.0	0.6	283.9	448.8	4.3	196.6	1.4	1,037.0
Total									
2008	159.9	349.3	11.8	1,975.5	5,417.8	1,772.9	1,012.8	6.9	10,706.9
2009	164.8	368.1	10.1	1,652.2	4,869.0	1,913.2	910.2	3.8	9,891.4
Other countries									
2008	6,413.8	25,465.6	632.6	17,815.5	25,629.8	2,101.4	19,843.6	747.9	98,650.1
2009	6,639.6	16,137.5	486.1	15,794.2	24,588.8	1,644.5	19,700.1	342.8	85,333.6
Total									
2008	26,016.3	49,564.9	2,667.4	83,912.3	112,188.9	67,204.5	52,827.1	5,427.4	399,808.9
2009	26,947.7	30,853.0	2,210.7	67,709.4	99,452.9	49,883.9	52,897.3	4,308.3	334,263.3

Table 8
Imports by country, customs basis, not seasonally adjusted

	November		January to November		Variation January to November 2009/2008
	2008	2009	2008	2009	
millions of dollars					
North America					
Canada	284.8	338.0	3,427.8	3,010.6	-12.2
Greenland	6.1	0.3	31.8	17.3	-45.6
Mexico	1,995.6	1,705.9	16,370.9	14,934.9	-8.8
Saint Pierre and Miquelon	0.0	0.0	0.5	0.2	-55.8
United States	19,046.1	15,770.8	210,390.7	171,372.7	-18.5
Total	21,332.6	17,815.1	230,221.6	189,335.7	-17.8
Western Europe					
Andorra	0.0	0.0	0.1	0.1	-31.1
Austria	116.5	107.1	1,405.3	1,069.8	-23.9
Belgium	144.8	126.3	2,028.5	1,302.5	-35.8
Denmark	169.6	244.0	1,581.4	1,398.1	-11.6
Faeroe Islands	0.1	0.2	1.3	2.0	52.2
Finland	70.9	118.1	771.9	870.1	12.7
France	442.4	425.3	5,326.2	5,223.8	-1.9
Germany	1,028.5	862.7	11,656.6	9,813.1	-15.8
Gibraltar	0.0	0.0	0.1	0.0	-98.9
Greece	14.7	13.8	126.2	128.3	1.6
Iceland	2.7	3.7	31.8	30.2	-4.9
Italy	415.1	393.4	4,670.4	4,105.6	-12.1
Luxembourg	4.5	7.2	92.4	132.2	43.1
Malta	1.9	1.3	20.7	18.6	-10.3
Netherlands	162.5	149.7	2,031.7	1,744.0	-14.2
Norway	390.5	275.4	5,889.0	3,131.6	-46.8
Portugal	23.1	27.7	402.3	302.4	-24.8
Republic of Ireland (Eire)	147.1	178.2	1,875.2	2,021.8	7.8
Spain	154.6	114.1	1,570.0	1,234.4	-21.4
Sweden	126.7	152.3	2,078.4	1,668.0	-19.7
Switzerland	264.9	305.7	2,442.9	3,177.4	30.1
United Kingdom	820.1	825.8	11,484.3	8,495.9	-26.0
Total	4,501.2	4,332.1	55,486.8	45,869.8	-17.3
Other Europe					
Albania	0.3	0.3	2.8	3.5	24.0
Armenia	0.0	3.0	5.3	30.9	480.2
Azerbaijan	0.1	84.6	1,168.2	996.4	-14.7
Belarus	1.1	0.5	34.0	35.0	2.9
Bosnia and Herzegovina	0.6	0.4	5.4	7.9	45.2
Bulgaria	11.9	6.1	110.7	114.2	3.1
Croatia	2.7	2.1	48.6	23.8	-51.0
Czech Republic	40.4	17.2	330.2	248.8	-24.6
Estonia	3.3	1.2	39.4	47.1	19.7
Georgia	10.9	9.9	118.1	122.3	3.5
Hungary	22.6	26.0	349.0	323.4	-7.3
Kazakhstan	14.3	11.1	80.8	133.5	65.2
Kyrgyzstan	0.0	0.0	1.0	0.5	-52.5
Latvia	0.8	0.8	30.9	16.4	-47.0
Lithuania	4.1	33.2	329.7	145.1	-56.0
Macedonia (Former Yugoslav Republic of Macedonia)	0.6	0.6	7.5	8.2	8.8
Montenegro	0.1	0.0	0.7	0.3	-61.6
Poland	68.6	57.1	766.3	697.7	-9.0
Republic of Moldova	0.2	0.1	2.3	1.7	-24.9
Romania	14.4	9.0	139.0	112.6	-19.0
Russian Federation	155.7	265.0	1,942.3	2,782.5	43.3
Serbia	1.4	1.0	11.7	10.1	-13.8
Slovakia	9.9	11.8	165.9	148.9	-10.2
Slovenia	6.3	5.1	71.8	67.7	-5.7
Tajikistan	0.0	0.0	0.0	0.0	-87.6
Turkmenistan	0.0	0.0	0.8	0.4	-53.6
Ukraine	24.0	9.2	182.7	84.9	-53.5
Uzbekistan	0.1	0.0	1.0	11.8	...
Total	394.2	555.3	5,946.2	6,175.5	3.9

Table 8 – continued

Imports by country, customs basis, not seasonally adjusted

	November		January to November		Variation January to November 2009/2008
	2008	2009	2008	2009	
millions of dollars					
Middle East					
Bahrain	0.2	0.3	3.5	4.6	29.9
Cyprus	0.3	0.0	2.7	2.2	-17.5
Egypt	34.2	18.7	116.7	99.6	-14.7
Eritrea	0.0	0.0	0.0	0.1	267.9
Ethiopia	1.3	1.6	11.5	16.0	38.8
Iran	1.5	1.1	37.8	21.9	-42.2
Iraq	76.0	152.1	2,016.5	1,222.8	-39.4
Israel	88.4	84.1	1,112.5	849.7	-23.6
Jordan	1.7	1.7	13.9	15.4	10.5
Kuwait	0.0	0.0	7.6	37.3	388.1
Lebanon	1.4	1.6	14.6	14.1	-3.2
Libya	0.0	0.0	0.0	0.2	...
Oman	0.7	0.6	4.1	5.9	44.4
Qatar	0.8	4.6	1.3	17.6	...
Saudi Arabia	2.2	0.6	2,060.7	1,287.2	-37.5
Somalia	0.0	0.0	0.1	0.0	-42.3
Sudan	3.8	6.7	61.5	62.1	1.0
Syria	0.6	0.2	55.5	5.0	-91.0
Turkey	106.4	54.1	581.8	594.5	2.2
United Arab Emirates	4.2	2.0	327.5	193.0	-41.1
Yemen	0.0	0.0	0.2	0.2	-13.4
Total	323.6	330.0	6,430.2	4,449.3	-30.8
Other Africa					
Algeria	336.0	378.9	7,377.9	3,279.6	-55.5
Angola	267.1	94.9	2,496.8	1,313.3	-47.4
Antarctica	0.0	0.0	0.0	0.0	210.3
Benin	0.0	0.0	0.0	0.0	-91.3
Botswana	0.7	6.8	12.9	28.6	121.8
Bouvet Island	0.2	0.0	0.2	0.0	-96.9
Burkina Faso	0.0	2.0	0.1	10.1	...
Burundi	0.0	0.1	0.5	0.2	-56.7
Cameroon	0.3	0.3	4.2	4.2	0.8
Cape Verde	0.0	0.0	0.0	0.0	-62.8
Central African Republic	0.0	0.0	0.1	0.1	19.6
Chad	0.0	0.0	0.2	0.2	-19.0
Comoros	0.0	0.1	0.0	0.1	93.5
Congo	0.2	0.0	2.3	1.9	-14.8
Democratic Republic of the Congo	0.1	0.1	0.7	0.6	-24.0
Djibouti	0.0	0.0	0.0	0.0	-21.8
Equatorial Guinea	0.0	0.0	81.1	347.9	328.9
French Southern Territories	0.0	0.0	0.0	0.0	-99.2
Gabon	0.1	0.2	1.1	1.8	61.7
Gambia	0.0	0.0	0.1	0.1	80.5
Ghana	4.2	4.6	32.1	25.5	-20.4
Guinea	8.5	3.4	62.8	57.4	-8.6
Guinea-Bissau	0.0	0.0	0.0	0.0	...
Ivory Coast	15.9	36.9	106.6	216.0	102.6
Kenya	1.5	1.7	14.0	15.9	13.5
Lesotho	0.1	0.7	6.0	7.8	29.7
Liberia	0.8	4.3	21.1	28.0	32.8
Madagascar	2.6	4.8	19.2	41.0	113.6
Malawi	0.3	3.8	2.5	6.6	167.5
Mali	0.0	0.0	0.4	0.3	-10.5
Mauritania	0.0	0.1	0.2	0.8	399.4
Mauritius	0.6	0.7	6.7	8.5	26.9
Morocco	29.7	31.7	119.8	113.2	-5.5
Mozambique	0.0	0.0	1.1	0.3	-74.6
Namibia	3.1	10.7	245.9	248.2	0.9
Niger	0.1	0.1	0.7	0.8	11.0
Nigeria	199.4	139.2	921.7	457.5	-50.4
Rwanda	0.0	0.0	0.4	0.3	-23.7
Saint Helena	0.0	0.0	0.1	0.0	-80.0
Sao Tome and Principe	0.0	0.0	0.0	0.0	-71.5
Senegal	0.1	0.2	1.1	1.1	-4.7
Seychelles	0.0	0.1	1.4	0.6	-54.4

Table 8 – continued

Imports by country, customs basis, not seasonally adjusted

	November		January to November		Variation
	2008	2009	2008	2009	January to November 2009/2008
millions of dollars					
Sierra Leone	0.4	0.0	1.4	3.9	184.9
South Africa	55.7	57.6	793.7	585.7	-26.2
Swaziland	0.3	0.1	2.3	1.8	-22.2
Togo	0.1	0.1	6.1	4.3	-30.4
Tunisia	2.5	3.8	38.2	42.8	12.1
Uganda	0.1	0.1	2.2	2.1	-1.0
United Republic of Tanzania	0.1	0.8	1.8	4.4	140.2
Western Sahara	0.0	0.0	0.0	0.0	-85.8
Zambia	0.0	0.1	0.6	0.7	14.9
Zimbabwe	0.0	0.1	3.8	2.5	-32.5
Total	931.1	789.1	12,392.5	6,867.2	-44.6
Other Asia					
Afghanistan	0.0	0.1	1.1	1.1	1.5
Bangladesh	47.9	41.1	596.8	756.9	26.8
Bhutan	0.0	0.0	0.0	0.0	-52.8
British Indian Ocean Territory	0.0	0.0	0.0	0.0	-90.3
Brunei Darussalam	0.2	0.0	2.2	1.9	-14.9
Cambodia	19.6	21.3	243.0	269.5	10.9
China	4,072.8	3,398.4	38,834.6	36,409.6	-6.2
Hong Kong	42.5	31.3	426.5	338.1	-20.7
India	179.4	135.3	2,006.2	1,861.9	-7.2
Indonesia	91.5	90.2	983.6	930.4	-5.4
Japan	1,299.3	1,017.3	14,231.7	11,276.1	-20.8
Laos	0.1	0.0	4.7	5.9	26.5
Macao	2.0	0.6	27.4	21.7	-20.9
Malaysia	245.0	189.5	2,659.1	2,123.2	-20.2
Maldives	0.0	0.0	0.2	0.1	-70.2
Mongolia	10.5	20.9	162.9	129.8	-20.4
Myanmar	0.0	0.0	0.7	0.1	-92.1
Nepal	1.1	1.3	14.2	12.2	-13.8
North Korea	0.0	0.0	0.1	0.1	35.2
Pakistan	22.7	19.3	222.8	222.6	-0.1
Philippines	66.5	61.8	753.9	664.7	-11.8
Singapore	132.0	69.9	1,138.6	1,037.0	-8.9
South Korea	480.3	490.3	5,516.5	5,446.6	-1.3
Sri Lanka	9.3	9.1	108.7	106.1	-2.4
Taiwan	362.5	274.3	3,625.3	3,069.8	-15.3
Thailand	219.4	226.2	2,242.2	2,105.4	-6.1
Timor-Leste	0.4	0.4	5.9	3.5	-40.1
Viet Nam	78.7	87.2	865.6	970.5	12.1
Total	7,383.7	6,185.7	74,674.7	67,764.9	-9.3
Oceania					
American Samoa	0.0	0.1	0.2	0.3	62.0
Australia	136.4	178.4	1,533.9	1,486.6	-3.1
Christmas Island	0.0	0.0	0.0	0.0	-55.8
Cocos (Keeling) Islands	0.0	0.0	0.0	0.1	150.4
Cook Islands	0.0	0.0	0.1	0.0	-50.2
Fiji	0.3	0.4	7.7	6.2	-19.6
French Polynesia	0.0	0.1	1.2	0.7	-40.8
Guam	0.0	0.0	0.7	0.3	-66.0
Heard Island and McDonald Islands	0.0	0.0	0.0	0.0	11.5
Kiribati	0.0	0.0	0.0	0.1	443.9
Nauru	0.0	0.0	0.1	0.1	19.4
New Caledonia	0.0	0.0	0.3	0.3	23.1
New Zealand	31.6	33.6	443.6	423.2	-4.6
Niue	0.0	0.0	0.0	0.0	-67.1
Norfolk Island	0.0	0.0	0.0	0.0	97.2
Papua New Guinea	0.1	0.4	1.7	1.8	11.0
Pitcairn	0.0	0.0	0.0	0.0	-18.4
Samoa	0.0	0.0	0.0	0.0	-90.2
Solomon Islands	0.0	0.0	0.1	0.1	-11.2
Tonga	0.0	0.0	0.1	0.0	-80.5
United States Minor Outlying Islands	0.4	0.4	5.0	4.6	-9.7
Vanuatu	0.0	0.0	0.1	0.2	273.7

Table 8 – continued

Imports by country, customs basis, not seasonally adjusted

	November		January to November		Variation January to November 2009/2008
	2008	2009	2008	2009	
	millions of dollars				
Wallis and Futuna	0.0	0.0	0.0	0.0	...
Total	168.9	213.5	1,994.9	1,924.7	-3.5
South America					
Argentina	88.2	63.8	540.1	649.1	20.2
Bolivia	12.5	7.0	72.6	73.3	1.0
Brazil	288.3	217.5	2,466.4	2,345.3	-4.9
Chile	60.3	199.6	1,680.2	1,551.6	-7.6
Colombia	64.5	49.6	584.3	688.7	17.9
Ecuador	14.4	13.8	159.6	209.1	31.0
Falkland Islands (Malvinas)	0.0	0.0	0.1	0.0	-57.5
Guyana	14.8	23.1	201.9	274.9	36.2
Paraguay	1.5	1.0	15.7	8.6	-45.2
Peru	177.2	274.6	2,251.1	2,572.4	14.3
Suriname	54.3	46.0	561.3	497.0	-11.5
Uruguay	3.3	2.7	31.9	52.9	65.8
Venezuela	73.2	2.8	1,338.1	897.8	-32.9
Total	852.4	901.4	9,903.2	9,820.8	-0.8
Central America Antilles					
Anguilla	0.0	0.0	0.2	0.3	47.8
Antigua and Barbuda	0.0	0.0	5.3	0.4	-91.7
Aruba	31.7	22.9	152.1	76.3	-49.8
Bahamas	9.2	0.9	73.1	28.5	-61.0
Barbados	0.8	0.5	8.1	8.0	-1.3
Belize	0.8	0.4	10.1	6.9	-31.3
Bermuda	0.1	0.1	1.7	10.9	532.9
British Virgin Islands	1.4	0.0	12.8	0.5	-95.9
Cayman Islands	0.0	0.1	0.2	1.2	542.7
Costa Rica	30.1	29.2	346.3	326.2	-5.8
Cuba	33.6	43.0	846.9	448.3	-47.1
Dominica	0.0	0.0	0.2	0.4	84.4
Dominican Republic	11.3	11.4	115.7	134.5	16.2
El Salvador	3.4	3.1	65.6	62.2	-5.2
Grenada	0.0	0.0	0.6	0.4	-39.0
Guatemala	14.2	15.5	234.7	248.1	5.7
Haiti	1.4	1.3	18.0	20.2	12.0
Honduras	11.5	10.1	141.8	130.5	-8.0
Jamaica	25.5	15.2	276.1	156.0	-43.5
Montserrat	0.0	0.0	0.1	0.1	-52.7
Netherlands Antilles	0.0	0.0	2.6	14.5	456.2
Nicaragua	5.4	3.1	93.0	73.9	-20.5
Panama	0.9	2.7	20.5	36.0	76.0
Saint Kitts and Nevis	0.5	1.0	4.7	6.4	35.1
Saint Lucia	0.0	0.0	0.1	2.2	...
Saint Vincent and the Grenadines	0.0	0.0	0.1	0.2	64.4
Trinidad and Tobago	24.6	36.5	325.9	261.9	-19.6
Turks and Caicos Islands	0.0	0.0	1.9	0.3	-86.1
Total	206.4	197.0	2,758.7	2,055.4	-25.5
All countries	36,094.2	31,319.3	399,808.9	334,263.3	-16.4

**Table 9-1
Imports by province of clearance, customs basis, not seasonally adjusted — November**

	Agricultural and fishing products	Energy products	Forestry products	Industrial goods	Machinery and equipment	Automotive products	Consumer goods	Special transactions	Total
millions of dollars									
Newfoundland and Labrador									
2008	3.0	145.8	0.0	7.7	6.2	0.1	0.5	0.0	163.1
2009	3.2	224.4	0.0	5.0	54.3	0.2	1.0	1.2	289.2
Prince Edward Island									
2008	0.4	0.0	0.0	0.0	0.1	0.0	0.0	0.0	0.5
2009	0.3	0.0	0.0	1.7	0.1	0.0	0.0	0.0	2.1
Nova Scotia									
2008	34.6	121.1	1.1	100.9	92.0	211.0	12.6	1.2	574.4
2009	27.0	156.8	0.8	69.7	73.6	232.5	14.3	2.7	577.4
New Brunswick									
2008	41.2	364.3	11.2	84.9	60.4	23.2	13.7	3.0	601.8
2009	44.8	513.0	8.5	85.3	58.5	27.0	15.9	4.2	757.3
Quebec									
2008	453.7	1,149.2	61.7	1,408.1	1,703.3	186.1	812.4	61.8	5,836.3
2009	516.9	1,385.2	51.2	1,092.6	1,313.3	212.1	808.8	47.0	5,427.0
Ontario									
2008	1,452.5	967.6	87.9	3,909.0	6,377.5	4,685.5	3,303.4	342.0	21,125.4
2009	1,364.4	344.5	68.6	3,452.8	5,231.1	4,503.4	3,002.4	447.0	18,414.1
Manitoba									
2008	77.6	25.2	8.7	333.0	524.2	176.9	146.1	9.5	1,301.3
2009	67.6	21.1	5.3	203.8	370.3	97.3	121.1	5.4	891.9
Saskatchewan									
2008	30.7	70.9	2.3	223.5	315.5	79.0	28.3	0.4	750.7
2009	29.1	70.6	1.2	141.8	211.4	57.3	28.5	0.5	540.4
Alberta									
2008	162.5	209.5	7.9	576.4	793.4	90.9	125.3	15.0	1,980.9
2009	144.4	136.2	7.8	281.4	620.9	67.3	102.3	8.0	1,368.2
British Columbia									
2008	385.0	325.0	48.2	715.2	1,207.2	396.0	655.9	19.3	3,751.8
2009	358.2	153.9	45.4	509.5	997.2	393.3	573.9	11.3	3,042.6
Yukon, Northwest Territories and Nunavut									
2008	2.9	0.5	0.0	0.2	3.6	0.0	0.7	0.0	8.0
2009	0.7	0.3	0.0	0.1	7.7	0.0	0.0	0.0	8.8
Total									
2008	2,644.2	3,379.1	228.9	7,358.9	11,083.2	5,848.6	5,099.0	452.2	36,094.2
2009	2,556.5	3,006.0	188.8	5,843.7	8,938.4	5,590.4	4,668.2	527.3	31,319.3

Table 9-2
Imports by province of clearance, customs basis, not seasonally adjusted — Year to date, January to November

	Agricultural and fishing products	Energy products	Forestry products	Industrial goods	Machinery and equipment	Automotive products	Consumer goods	Special transactions	Total
millions of dollars									
Newfoundland and Labrador									
2008	39.3	3,622.0	0.1	90.1	143.0	1.2	14.7	10.8	3,921.1
2009	34.6	2,129.7	0.5	150.7	175.9	1.2	4.5	5.6	2,502.6
Prince Edward Island									
2008	3.2	0.0	0.1	13.1	83.2	0.1	18.3	0.4	118.4
2009	3.3	0.0	0.0	19.5	13.0	0.1	1.7	0.2	37.9
Nova Scotia									
2008	339.7	1,878.9	18.6	1,322.0	1,082.4	2,874.5	140.6	18.1	7,674.7
2009	275.5	1,395.2	12.6	775.6	957.2	2,449.6	160.5	28.6	6,054.7
New Brunswick									
2008	435.5	7,421.1	120.0	918.7	788.4	344.3	164.8	22.6	10,215.5
2009	447.9	5,486.6	93.3	846.8	932.3	272.9	200.9	23.6	8,304.3
Quebec									
2008	3,950.1	20,689.3	671.1	15,804.3	18,525.0	2,268.4	9,292.8	1,057.1	72,258.1
2009	4,292.3	11,566.5	621.4	12,254.9	16,644.3	1,927.4	10,254.7	491.7	58,053.1
Ontario									
2008	14,200.9	8,460.9	1,021.3	46,678.1	63,152.7	52,535.5	33,455.5	3,811.8	223,316.7
2009	14,885.2	4,973.4	810.0	38,800.3	55,389.8	39,037.0	32,970.3	3,385.3	190,251.5
Manitoba									
2008	902.2	335.0	90.0	3,534.8	5,783.2	1,729.7	1,577.6	91.3	14,043.6
2009	873.7	265.0	77.8	2,877.6	5,063.3	1,260.8	1,515.9	83.4	12,017.3
Saskatchewan									
2008	323.3	500.9	27.4	2,474.1	3,597.1	1,176.2	280.5	19.5	8,398.9
2009	317.5	530.4	23.8	1,899.2	2,952.5	699.5	237.6	24.2	6,684.8
Alberta									
2008	1,748.2	3,247.2	103.1	5,137.0	7,387.2	1,231.0	1,130.3	148.6	20,132.6
2009	1,694.1	2,267.7	91.3	3,850.2	6,529.2	694.2	1,089.6	120.3	16,336.5
British Columbia									
2008	4,018.8	3,376.3	615.8	7,938.2	11,622.3	5,042.5	6,751.1	246.7	39,611.6
2009	4,073.5	2,204.3	480.0	6,232.6	10,758.5	3,540.6	6,461.3	142.5	33,893.3
Yukon, Northwest Territories and Nunavut									
2008	55.3	33.3	0.0	1.9	24.4	1.1	1.0	0.7	117.7
2009	50.2	34.2	0.0	2.0	36.8	0.6	0.3	3.0	127.2
Total									
2008	26,016.3	49,564.9	2,667.4	83,912.3	112,188.9	67,204.5	52,827.1	5,427.4	399,808.9
2009	26,947.7	30,853.0	2,210.7	67,709.4	99,452.9	49,883.9	52,897.3	4,308.3	334,263.3

Technical notes

The Canadian international merchandise trade statistical program

I Introduction

The objective of this text is to provide a general overview of the Canadian International Merchandise Trade Statistical Program with special reference to concepts and definitions. The text is intended for the general user and simplicity is emphasized. More technical details can be obtained from the International Trade Division upon request.

II Conceptual framework

1. Objectives and coverage: The primary objective of the Canadian International Merchandise Trade Statistical Program is to measure the change in the stock of material resources of the country resulting from the movement of merchandise into or out of Canada. Information on imports and exports are inputs into the System of National Accounts particularly in the Balance of Payments and Gross Domestic Product, and are used in the formulation of trade and budgetary policies. Governments, importers, exporters, manufacturers and shipping companies use trade statistics to:

- monitor import penetration and export performance;
- monitor commodity price and volume changes;
- examine transport implications.

2. Trade statistics - Customs basis/Balance of Payments basis: Merchandise trade statistics are reported and presented on two different bases: Customs basis and Balance of Payment basis. (B.O.P.)

When goods are imported into or exported from Canada, declarations must be filed with Customs giving such information as description and value of the goods, origin and port of clearance of commodities and the mode of transport. Most of this information is required for the purposes of Customs Administration. Statistics developed from administrative records of Customs are commonly referred to as Customs based trade statistics.

Customs based trade statistics are more accurate at measuring imports than they are at measuring exports. This is the case because Customs are typically more vigilant with respect to goods entering the country than they are with goods leaving the country.

Customs based export statistics may understate and/or incorrectly portray the destination of exports. Export statistics are understated when the proper documentation is not filed with Customs. Exports are incorrectly portrayed when the country of final destination is inaccurately reported on the customs documentation - this occurs most frequently when goods are routed through an intermediary country before continuing on to their final destination.

Statistics Canada does not have a measure of undercoverage but periodically conducts reconciliation exercises with its major trading partners, excluding the United States.

On January 1st, 1990, Canada entered into a Memorandum of Understanding (MOU) with the United States concerning the exchange of import data. As a consequence, each administration is using the other's import data to replace its own export data. Canada's international merchandise trade statistics are, therefore, no longer derived exclusively from the administrative records of Canada Border Services Agency, but from United States Customs records as well.

Customs based information is adjusted to conform with the National Accounts concepts and definitions. The adjustments to derive Balance of Payments based trade data include trade definition, valuation and timing related adjustments. The principal difference between the two trade concepts is that Customs based merchandise trade statistics cover the physical movement of goods as they are reflected on customs documents, while Balance of Payments adjusted data are intended to cover all economic transactions between residents and non-residents which involve merchandise trade. This section describes the concepts and processes pertaining to the Customs based trade statistics only. (For further information on Balance of Payments adjusted data see the publication *"Canada's Balance of International Payments" Catalogue no. 67-001-XPB*).

3. System of trade: Canadian trade statistics are compiled according to the "General" system of trade as defined by the United Nations Statistical Office. Under this system, imports include all goods which have crossed Canada's territorial boundary, whether for immediate consumption in Canada or stored in bonded Customs warehouses. Domestic exports include goods grown, extracted or manufactured in Canada, including goods of foreign origin which have been materially transformed in Canada. Re-exports are exports of goods of foreign origin which have not been materially transformed in Canada, including foreign goods withdrawn for export from bonded customs warehouses. Total exports are the sum of Domestic exports and Re-exports. Thus the general trade system, in principal, presents all goods entering the country (imports) and all goods leaving the country (exports). It differs from the "Special" system of trade in the treatment of imported goods into Customs bonded warehouses. Under the "Special" system, these goods are counted only if and when they are withdrawn from Customs warehouses for home consumption. They are not counted in export statistics unless they have first cleared Customs.

Conceptually, under the "General" system, the statistical frontier coincides with the geographical boundary, while under the "Special" system, it coincides with the Customs boundary.

4. Valuation: For Customs purposes, imports are recorded at values established according to the provisions of the Customs Act, which, since January 1st, 1985, reflects valuation methods based on the General Agreement on Tariffs and Trade (GATT) Valuation Code System. It generally requires the value for duty of imported goods be equivalent to the transaction value or the price actually paid.

To determine the transaction value of imported goods, all transportation and associated costs arising in respect of the goods being appraised prior to and at the place of direct shipment to Canada, are to be added to the price of the goods. Therefore, Canadian imports are valued F.O.B. (Free on Board), place of direct shipment to Canada. It excludes freight and insurance costs in bringing the goods to Canada from the point of direct shipment.

To countries other than the United States, exports are, in principal, valued or recorded at the values declared on export documents which usually reflect the transaction value, i.e. actual selling price, or in the case of a non-arm's length transaction, the transfer price used for company accounting purposes. Canadian exports to overseas countries are valued at F.O.B. port of exit, including domestic freight charges to that point but net of discounts and allowances. As of January, 1990, Canadian exports to the U.S. are valued F.O.B. point of exit from Canada. Prior to 1990, they were valued F.O.B. place of lading net of freight charges, discounts and allowances.

5. Statistical period: The reference period is the calendar month and the calendar year. The closing of the statistical month for imports and Canadian exports to the United States is defined as the last calendar day of the month, based as closely as practicable on the date of clearance from Customs.

The closing of the statistical month for exports, to countries other than the United States, is also defined as the last calendar day of the month. Those export documents which are received too late for incorporation in the current month are assigned to the month the transaction took place. If a monthly summary report from a high volume exporter is not received on time, the data are imputed for the current month and revised with the trade value in the following statistical month.

6. Trading partner attribution (Country of origin/destination): Exports are attributed to the country, which is the last known destination of the goods at the time of export. Exports to the United States are attributed to the state of destination.

Imports are attributed to their country of origin, that is, the country in which the goods were grown, extracted or manufactured in accordance to the rules of origin administered by Canada Border Services Agency. Imports from

the United States are attributed to the state of origin. Prior to 1988, most imports were attributed to the country of export/consignment with the exception of imports from Central and South America.

7. Principal trading areas: The “principal trading areas” are country groupings defined as follows:

United States: (includes trade with Puerto Rico and the U.S. Virgin Islands).

Japan:

E.U. (European Union): Austria, Belgium, Bulgaria, Cyprus, Czech Republic, Denmark, Estonia, Finland, France, Germany, Greece, Hungary, Ireland, Italy, Latvia, Lithuania, Luxembourg, Malta, Netherlands, Poland, Portugal, Romania, Slovakia, Slovenia, Spain, Sweden and United Kingdom.

Other O.E.C.D.: Australia, Canada, Iceland, Mexico, New Zealand, Norway, South Korea, Switzerland, and Turkey. (The E.U. countries, United States, and Japan are also members of O.E.C.D. - the Organization for Economic Co-operation and Development).

Other countries: This group includes all countries and territories other than the United States, Japan, E.U. and other O.E.C.D.

8. Legal framework: Import and export statistics with countries other than the United States are derived from information contained on administrative records collected by the Canada Border Services Agency under the Customs Act. Copies of these documents (or information therefrom) are sent to Statistics Canada in accordance with Section 25 of the Statistics Act. It follows that the disclosure of trade statistics is governed by both the Customs Act and the Statistics Act and is subject to the provisions of Section 17.(2)(a) of the latter. Disclosure of export statistics to the United States is now governed by a Memorandum of Understanding which provides for an exchange of detailed import statistics between Canada and the United States.

Questions concerning details of methods not covered by these notes should be addressed to the Marketing and Client Services Section, International Trade Division, Statistics Canada, Ottawa, Ontario, K1A 0T6.

Telephone: 1-800-294-5583 or within the area code 613-951-9647

Facsimile: 1-800-664-0055 or within the area code 613-951-0117

Internet: *trade@statcan.gc.ca*