

Catalogue no. 65-001-X

Canadian International Merchandise Trade

October 2009



Statistics
Canada

Statistique
Canada

Canada

How to obtain more information

For information about this product or the wide range of services and data available from Statistics Canada, visit our website at www.statcan.gc.ca, e-mail us at infostats@statcan.gc.ca, or telephone us, Monday to Friday from 8:30 a.m. to 4:30 p.m., at the following numbers:

Statistics Canada's National Contact Centre

Toll-free telephone (Canada and the United States):

Inquiries line	1-800-263-1136
National telecommunications device for the hearing impaired	1-800-363-7629
Fax line	1-877-287-4369

Local or international calls:

Inquiries line	1-613-951-8116
Fax line	1-613-951-0581

Depository Services Program

Inquiries line	1-800-635-7943
Fax line	1-800-565-7757

To access this product

This product, Catalogue no. 65-001-X, is available free in electronic format. To obtain a single issue, visit our website at www.statcan.gc.ca and select "Publications."

Standards of service to the public

Statistics Canada is committed to serving its clients in a prompt, reliable and courteous manner. To this end, Statistics Canada has developed *standards of service* that its employees observe. To obtain a copy of these service standards, please contact Statistics Canada toll-free at 1-800-263-1136. The service standards are also published on www.statcan.gc.ca under "About us" > "Providing services to Canadians."

Statistics Canada
International Trade Division

Canadian International Merchandise Trade

October 2009

Published by authority of the Minister responsible for Statistics Canada

© Minister of Industry, 2009

All rights reserved. The content of this electronic publication may be reproduced, in whole or in part, and by any means, without further permission from Statistics Canada, subject to the following conditions: that it be done solely for the purposes of private study, research, criticism, review or newspaper summary, and/or for non-commercial purposes; and that Statistics Canada be fully acknowledged as follows: Source (or "Adapted from", if appropriate): Statistics Canada, year of publication, name of product, catalogue number, volume and issue numbers, reference period and page(s). Otherwise, no part of this publication may be reproduced, stored in a retrieval system or transmitted in any form, by any means—electronic, mechanical or photocopy—or for any purposes without prior written permission of Licensing Services, Client Services Division, Statistics Canada, Ottawa, Ontario, Canada K1A 0T6.

December 2009

Catalogue no. 65-001-X, vol. 63, no. 10

ISSN 1480-8781

Frequency: Monthly

Ottawa

Cette publication est également disponible en français.

Note of appreciation

Canada owes the success of its statistical system to a long-standing partnership between Statistics Canada, the citizens of Canada, its businesses, governments and other institutions. Accurate and timely statistical information could not be produced without their continued cooperation and goodwill.

User information

Symbols

The following standard symbols are used in Statistics Canada publications:

- . not available for any reference period
- .. not available for a specific reference period
- ... not applicable
- 0 true zero or a value rounded to zero
- 0^s value rounded to 0 (zero) where there is a meaningful distinction between true zero and the value that was rounded
- p preliminary
- r revised
- x suppressed to meet the confidentiality requirements of the *Statistics Act*
- E use with caution
- F too unreliable to be published

Note to Users

All totals are calculated from full figures and rounded independently; consequently, totals may not equal the sum of their components.

Table of contents

Highlights	5
Analysis	7
Statistical tables	
1 Merchandise trade of Canada, balance of payments basis, seasonally adjusted	12
1-1 Current dollars	12
1-2 Constant dollars, 2002	13
1-3 Price indices (Laspeyres)	14
2 Exports by commodity groupings, balance of payments basis, seasonally adjusted	15
2-1 Current dollars	15
2-2 Constant dollars, 2002	17
3 Domestic exports to selected countries, customs basis, not seasonally adjusted	19
3-1 October	19
3-2 Year to date, January to October	20
4 Domestic exports by country, customs basis, not seasonally adjusted	21
5 Exports by province of origin, customs basis, not seasonally adjusted	25
5-1 October	25
5-2 Year to date, January to October	26
6 Imports by commodity groupings, balance of payments basis, seasonally adjusted	27
6-1 Current dollars	27
6-2 Constant dollars, 2002	29
7 Imports from selected countries, customs basis, not seasonally adjusted	31
7-1 October	31
7-2 Year to date, January to October	32
8 Imports by country, customs basis, not seasonally adjusted	33
9 Imports by province of clearance, customs basis, not seasonally adjusted	37
9-1 October	37
9-2 Year to date, January to October	38

Table of contents – continued

Data quality, concepts and methodology

Technical notes

39

Highlights

- Canada's merchandise exports rose 3.4% in October led by a strong gain in exports to the United States which accounted for three-quarters of the increase. Canada posted a trade surplus with the world of \$428 million, as imports decreased 0.8% in October, compared to a deficit of \$850 million in September.
- Exports increased by \$1.0 billion to \$31.1 billion as a result of a 2.6% rise in volumes and a 0.8% increase in prices. This was the second consecutive monthly increase in the value of exports and the fourth rise during the last five months.
- Industrial goods and materials led the growth, representing more than half of the increase in exports. Energy products, agricultural and fishing products, as well as automotive products also contributed to the gain. Lower exports of machinery and equipment slowed the increase.
- Imports declined to \$30.7 billion, as prices decreased 1.2% while volumes inched up 0.3%. This third consecutive monthly decrease in the value of imports was mostly due to machinery and equipment followed by industrial goods and materials. Higher imports of energy products moderated the decrease.
- Exports to the United States grew 3.6% while imports fell 3.1%. As a result, Canada's trade surplus with the United States expanded to \$3.4 billion in October from \$2.0 billion in September. The October increase in exports to the United States was the third in the last five months.
- Canada's trade deficit with countries other than the United States was \$3.0 billion in October compared to \$2.9 billion in September as exports grew 2.9% and imports rose 3.2%.

Note to readers

Merchandise trade is one component of Canada's international balance of payments, which also includes trade in services, investment income, current transfers as well as capital and financial flows.

International merchandise trade data by country are available on both a balance of payments and a customs basis for the United States, Japan and the United Kingdom. Trade data for all other individual countries are available on a customs basis only. Balance of payments data are derived from customs data by making adjustments for characteristics such as valuation, coverage, timing and residency. These adjustments are made to conform to the concepts and definitions of the Canadian System of National Accounts.

Constant dollars referred to in the text are calculated using the Laspeyres volume formula.

As of December 21, 2009, a new version of the Canadian International Merchandise Trade database will offer Harmonized System import and export data at the 6 digit level (HS6), at no cost. The data on the new version will be the same as released today. More refined data for imports at the HS10 level and for exports at the HS8 level will be available as custom tabulations exclusively from International Trade Division.

Revisions

In general, merchandise trade data are revised on an ongoing basis for each month of the current year. Current year revisions are reflected in both the customs and balance of payments based data. Revisions to customs based data for the previous year are released on a quarterly basis. Revisions to balance of payments based data for the three previous years are released annually in June.

Factors influencing revisions include late receipt of import and export documentation, incorrect information on customs forms, replacement of estimates with actual figures, changes in classification of merchandise based on more current information, and changes to seasonal adjustment factors.

Revised data are available in the appropriate CANSIM tables.

Chart 1
Trade balance, seasonally adjusted, on a balance of payments basis

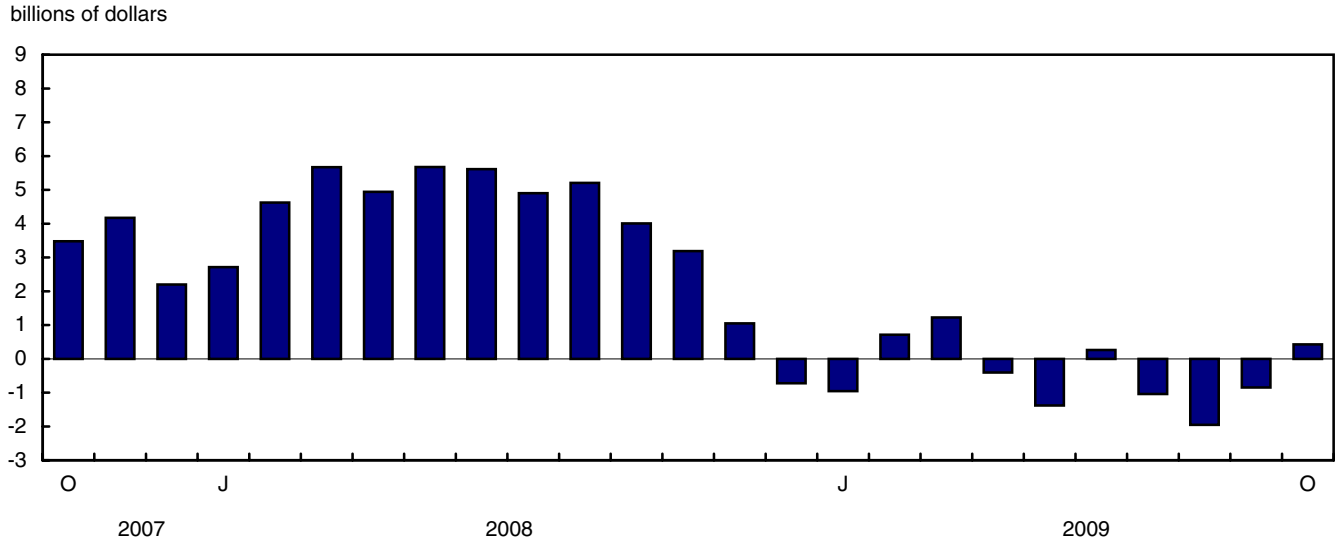


Chart 2
Exports and imports, seasonally adjusted, on a balance of payments basis



Analysis

Exports of precious metals reach a record high

Exports of industrial goods and materials increased 8.8% to \$7.2 billion on the strength of precious metals. Exports of precious metals rose 34.0% and reached a record high of \$1.3 billion. Worldwide surges in gold prices and in the demand for gold bars fuelled the rise. Exports of copper ores and of other crude non metallic minerals also posted solid gains in October. The growth in the industrial goods and material sector was largely the result of a 6.6% increase in volumes as prices grew 2.1%.

After three consecutive months of decline, exports of energy products rose 6.5% to \$6.8 billion as prices increased 4.6% and volume grew 1.8%. This was only the fourth increase in prices since July 2008 while volumes increased for a fifth straight month. Petroleum and coal products such as fuel oils followed by crude petroleum largely accounted for the gain in this sector in October.

Exports of agricultural and fishing products rose 2.9% to \$2.8 billion, mostly due to increased exports of canola, up 48.0% to \$275 million. In June, exports of canola hit a record high of \$421 million. This peak was followed by three months of decline as crops matured late this year due to a cooler than usual summer. Wheat exports, down for the fourth consecutive month, moderated the growth.

Exports of automotive products increased 1.1% to \$4.2 billion led by passenger autos which rose 4.7% due to higher demand in the United States. Since January 2009, exports of passenger autos have been on an upward trend and reached \$2.8 billion in October, the highest level since September 2008. Exports of trucks and motor vehicles parts declined 15.5% and 3.7% respectively in October.

Moderating the increase in overall exports, machinery and equipment fell 2.5% to \$6.2 billion. Exports of industrial machinery and other transportation equipment led the decline while aircraft and telecommunication equipment posted gains in October.

Machinery and equipment accounts largely for the decline in imports

For a third consecutive month, machinery and equipment imports were down, decreasing 4.4% to \$8.4 billion. Even though the declines were widespread across the sector, industrial and agricultural machinery accounted for 61% of the fall.

Imports of industrial goods and materials declined 1.5% to \$6.3 billion. The drop was mainly due to lower imports of chemical products, metal in ores and other non-ferrous metals. Curbing the decline was a 21.3% gain in imports of precious metals which grew for a third consecutive month and reached their highest level in October reflecting the high demand for gold.

In contrast, imports of energy products grew 6.3% to \$2.8 billion as volumes increased 6.6%. Imports of crude petroleum led the gain.

Chart 1
Exports of industrial goods and material, seasonally adjusted, on a balance of payments basis

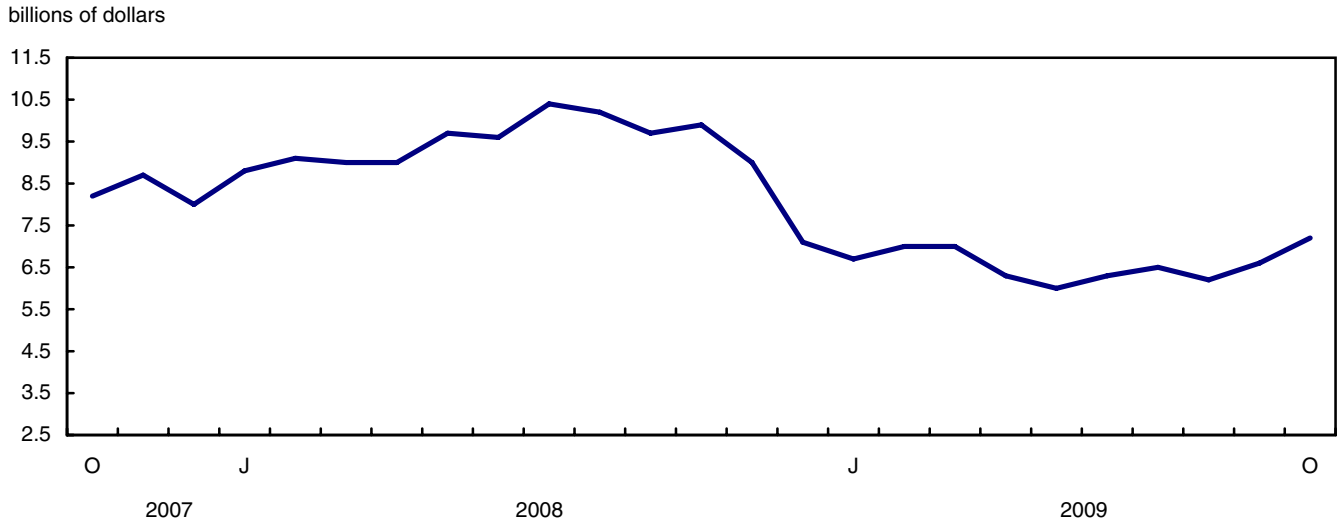


Chart 2
Exports of energy products, seasonally adjusted, on a balance of payments basis

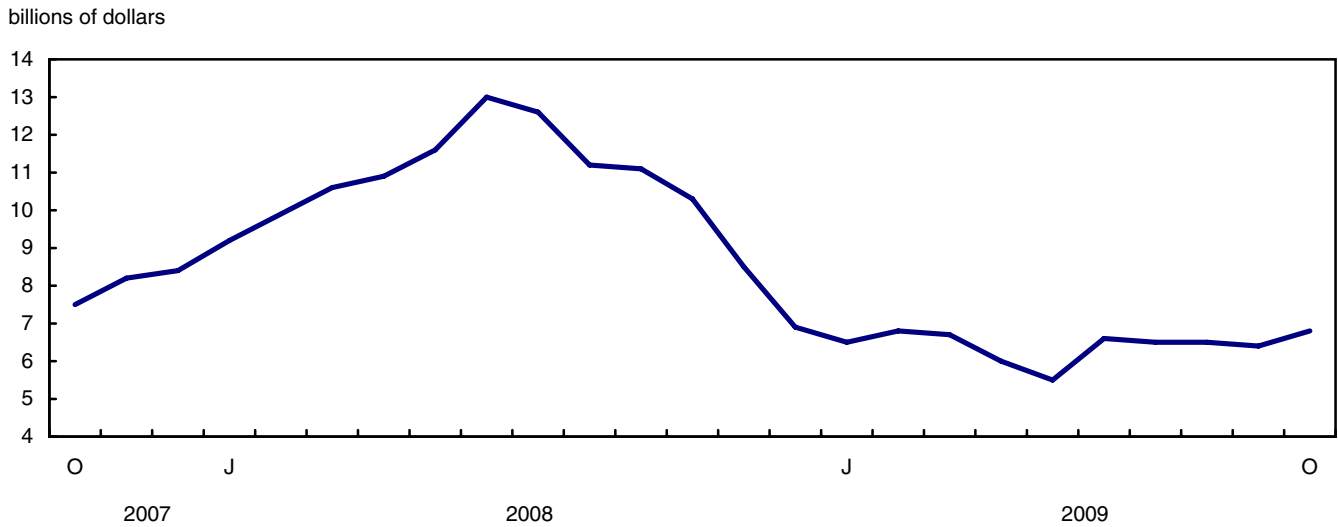


Chart 3
Imports of machinery and equipment, seasonally adjusted, on a balance of payments basis

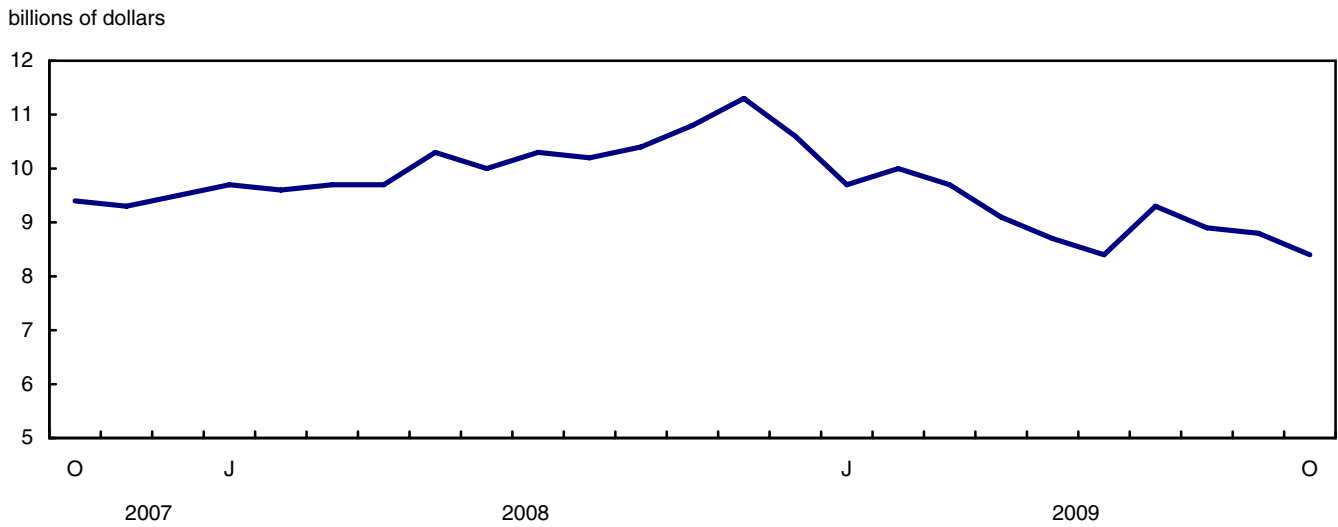
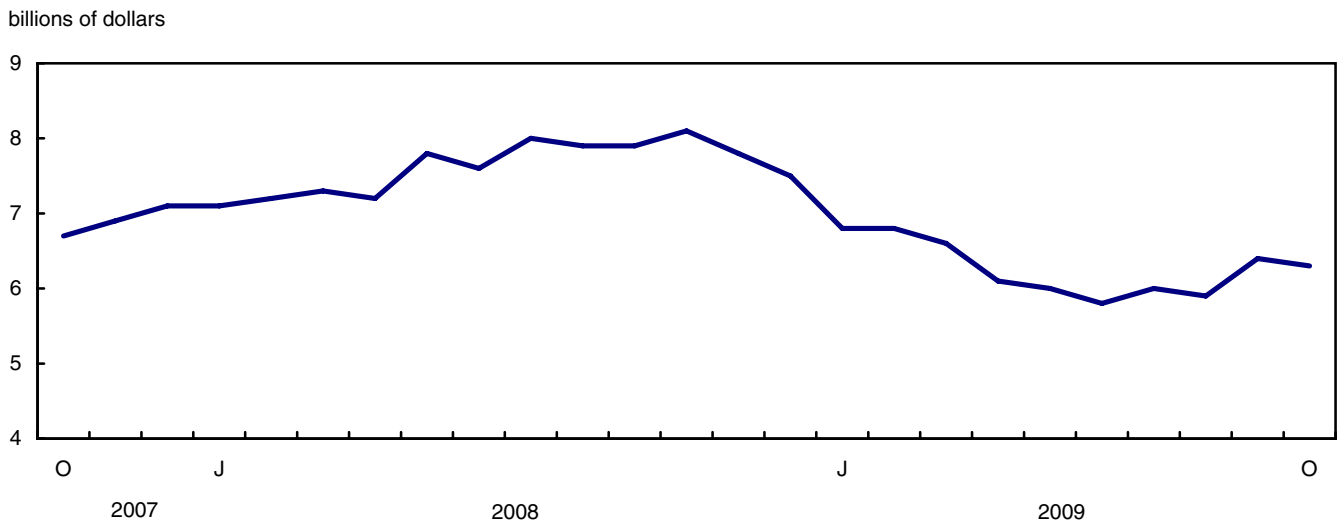


Chart 4
Imports of Industrial goods and material, seasonally adjusted, on a balance of payments basis



Text table 1
Merchandise trade by principal trading area, balance of payments basis, seasonally adjusted

	September	October	Change	Year to date		Year to date change	October 2009/2008		
	2009	2009		2008	2009				
	millions of dollars		percent		millions of dollars		percent		
Export to									
United States	21,947	22,735	788	3.6	315,253	224,168	-91,085	-28.9	-27.0
Japan	670	785	115	17.1	9,792	7,544	-2,247	-23.0	-28.8
European Union ¹	2,971	2,869	-101	-3.4	33,044	26,860	-6,184	-18.7	-25.5
Other Organisation for Economic Co-operation and Development	1,489	1,623	133	9.0	17,750	13,883	-3,867	-21.8	-13.6
Other countries	3,034	3,122	87	2.9	39,867	34,050	-5,817	-14.6	-25.5
Total	30,111	31,133	1,022	3.4	415,705	306,506	-109,200	-26.3	-26.2
Imports from									
United States	19,939	19,329	-610	-3.1	234,152	196,069	-38,083	-16.3	-22.2
Japan	744	755	11	1.5	9,743	7,824	-1,919	-19.7	-24.0
European Union ¹	3,031	3,418	387	12.8	38,812	31,914	-6,898	-17.8	-9.4
Other Organisation for Economic Co-operation and Development	1,994	1,956	-39	-1.9	22,784	21,111	-1,673	-7.3	-24.8
Other countries	5,252	5,247	-5	-0.1	63,673	53,545	-10,127	-15.9	-22.5
Total	30,961	30,705	-256	-0.8	369,164	310,464	-58,700	-15.9	-21.3
Balance									
United States	2,008	3,406	1,398	...	81,102	28,099	-53,002
Japan	-74	30	104	...	49	-280	-329
European Union ¹	-60	-549	-489	...	-5,769	-5,054	714
Other Organisation for Economic Co-operation and Development	-505	-333	172	...	-5,035	-7,228	-2,193
Other countries	-2,218	-2,126	93	...	-23,805	-19,495	4,311
Total	-849	429	1,278	...	46,541	-3,958	-50,499

1. European Union includes: Austria, Belgium, Bulgaria, Cyprus, Czech Republic, Denmark, Estonia, Finland, France, Germany, Greece, Hungary, Ireland, Italy, Latvia, Lithuania, Luxembourg, Malta, Netherlands, Poland, Portugal, Romania, Slovakia, Slovenia, Spain, Sweden and United Kingdom.
2. Other Organization for Economic Co-operation and Development includes: Australia, Canada, Iceland, Mexico, New Zealand, Norway, South Korea, Switzerland and Turkey.

Text table 2
Reconciliation of customs and balance of payments trade data, not seasonally adjusted

	2009						2008
	October	September	August	July	June	May	Annual
	millions of dollars						
Exports							
Customs basis	31,090	29,763	28,543	29,655	29,248	27,493	483,576
Balance of payments adjustments	1,005	789	531	808	990	1,246	6,281
Valuation and residency							
Inland freight	491	483	473	507	488	465	6,997
Other valuation and residency	-593	-791	-548	-744	-55	-379	-16,510
Timing	94	54	-61	25	11	-23	-79
Coverage	1,013	1,043	667	1,020	546	1,183	15,873
Balance of payments basis	32,095	30,552	29,074	30,463	30,238	28,739	489,857
Imports							
Customs basis	31,578	31,095	30,137	30,424	29,719	28,318	433,485
Balance of payments adjustments	866	656	836	672	735	1,065	9,503
Valuation and residency							
Inland freight	687	668	640	651	645	617	8,908
Other valuation and residency	54	68	-16	-8	20	69	-619
Timing	0	0	0	0	0	0	0
Coverage	125	-80	212	29	70	379	1,214
Balance of payments basis	32,444	31,751	30,973	31,096	30,454	29,383	442,988

Statistical tables

Table 1-1
Merchandise trade of Canada, balance of payments basis, seasonally adjusted — Current dollars

	Exports	Imports	Balance	Period to period change		
				Exports	Imports	Balance
				percent	percent	percent
	millions of dollars			percent		millions of dollars
2005	450,210	387,838	62,372	0.0	0.0	0
2006	453,951	404,345	49,606	0.8	4.3	-12,767
2007	463,127	415,229	47,898	2.0	2.7	-1,708
2008	489,857	442,988	46,869	5.8	6.7	-1,029
2007						
First quarter	120,454	106,198	14,256	4.4	3.1	1,887
Second quarter	118,191	103,166	15,025	-1.9	-2.9	769
Third quarter	113,144	104,379	8,765	-4.3	1.2	-6,260
Fourth quarter	111,338	101,486	9,852	-1.6	-2.8	1,088
2008						
First quarter	117,996	104,991	13,005	6.0	3.5	3,152
Second quarter	126,385	110,154	16,230	7.1	4.9	3,226
Third quarter	129,144	115,028	14,116	2.2	4.4	-2,114
Fourth quarter	116,332	112,815	3,517	-9.9	-1.9	-10,599
2009						
First quarter	97,160	96,177	983	-16.5	-14.7	-2,534
Second quarter	87,907	89,436	-1,528	-9.5	-7.0	-2,511
Third quarter	90,305	94,147	-3,842	2.7	5.3	-2,314
2008						
January	38,209	35,496	2,713	4.6	3.4	512
February	39,689	35,067	4,623	3.9	-1.2	1,909
March	40,097	34,428	5,669	1.0	-1.8	1,046
April	40,507	35,564	4,943	1.0	3.3	-726
May	42,365	36,688	5,677	4.6	3.2	733
June	43,513	37,902	5,611	2.7	3.3	-66
July	44,379	39,476	4,903	2.0	4.2	-708
August	42,685	37,479	5,206	-3.8	-5.1	302
September	42,080	38,073	4,008	-1.4	1.6	-1,198
October	42,181	38,991	3,190	0.2	2.4	-818
November	39,177	38,129	1,049	-7.1	-2.2	-2,141
December	34,974	35,695	-721	-10.7	-6.4	-1,770
2009						
January	31,299	32,255	-956	-10.5	-9.6	-235
February	33,249	32,534	715	6.2	0.9	1,671
March	32,612	31,388	1,224	-1.9	-3.5	508
April	30,193	30,600	-406	-7.4	-2.5	-1,630
May	28,250	29,632	-1,382	-6.4	-3.2	-976
June	29,464	29,204	260	4.3	-1.4	1,643
July	30,887	31,929	-1,042	4.8	9.3	-1,302
August	29,306	31,257	-1,951	-5.1	-2.1	-909
September	30,111	30,961	-849	2.7	-0.9	1,101
October	31,133	30,705	429	3.4	-0.8	1,278

Note(s): Due to rounding, monthly data may not add up to quarterly data and quarterly data may not add up to annual data.

Table 1-2
Merchandise trade of Canada, balance of payments basis, seasonally adjusted — Constant dollars, 2002

	Exports	Imports	Balance	Period to period change	
				Exports	Imports
	millions of dollars			percent	
2005	439,306	431,680	7,626	0.0	0.0
2006	443,398	456,881	-13,483	0.9	5.8
2007	449,581	483,522	-33,941	1.4	5.8
2008	415,123	485,171	-70,048	-7.7	0.3
2007					
First quarter	113,771	117,511	-3,740	2.0	1.6
Second quarter	113,538	118,154	-4,615	-0.2	0.5
Third quarter	112,008	123,373	-11,366	-1.3	4.4
Fourth quarter	110,264	124,484	-14,220	-1.6	0.9
2008					
First quarter	107,366	123,120	-15,754	-2.6	-1.1
Second quarter	105,949	123,992	-18,043	-1.3	0.7
Third quarter	104,458	124,141	-19,683	-1.4	0.1
Fourth quarter	97,350	113,917	-16,567	-6.8	-8.2
2009					
First quarter	87,770	98,162	-10,393	-9.8	-13.8
Second quarter	82,518	95,846	-13,328	-6.0	-2.4
Third quarter	86,524	105,041	-18,516	4.9	9.6
2008					
January	35,336	41,546	-6,210	0.0	1.2
February	36,473	41,373	-4,900	3.2	-0.4
March	35,557	40,201	-4,644	-2.5	-2.8
April	35,078	40,481	-5,404	-1.3	0.7
May	35,639	41,927	-6,288	1.6	3.6
June	35,233	41,584	-6,351	-1.1	-0.8
July	35,530	43,031	-7,502	0.8	3.5
August	34,592	40,426	-5,834	-2.6	-6.1
September	34,337	40,684	-6,347	-0.7	0.6
October	33,470	39,215	-5,745	-2.5	-3.6
November	32,772	38,542	-5,770	-2.1	-1.7
December	31,108	36,160	-5,052	-5.1	-6.2
2009					
January	28,267	33,125	-4,858	-9.1	-8.4
February	30,071	33,115	-3,044	6.4	-0.0
March	29,432	31,922	-2,490	-2.1	-3.6
April	28,236	31,701	-3,465	-4.1	-0.7
May	26,931	32,095	-5,164	-4.6	1.2
June	27,351	32,050	-4,699	1.6	-0.1
July	29,493	35,137	-5,644	7.8	9.6
August	28,051	35,153	-7,102	-4.9	0.0
September	28,980	34,751	-5,770	3.3	-1.1
October	29,740	34,871	-5,130	2.6	0.3

Note(s): Due to rounding, monthly data may not add up to quarterly data and quarterly data may not add up to annual data.

Table 1-3
Merchandise trade of Canada, balance of payments basis, seasonally adjusted — Price indices (Laspeyres)

	2002=100			Period to period change		
	Exports	Imports	Terms of trade	Exports	Imports	Terms of trade
	millions of dollars			percent		
2005	104.6	92.2	113.4	0.0	0.0	0.0
2006	105.1	92.7	113.3	0.4	0.5	-0.1
2007	107.2	91.6	117.0	2.0	-1.2	3.2
2008	116.3	97.6	119.1	8.5	6.6	1.9
2007						
First quarter	109.5	95.2	115.0	3.1	1.9	1.2
Second quarter	112.0	92.9	120.5	2.3	-2.4	4.7
Third quarter	105.0	90.1	116.5	-6.2	-3.0	-3.2
Fourth quarter	105.6	88.0	119.9	0.5	-2.3	2.9
2008						
First quarter	111.3	90.4	123.1	5.4	2.7	2.7
Second quarter	118.5	95.2	124.5	6.4	5.2	1.2
Third quarter	121.8	101.1	120.6	2.8	6.2	-3.4
Fourth quarter	114.0	103.9	109.7	-6.4	2.8	-9.2
2009						
First quarter	109.3	101.3	107.9	-4.1	-2.5	-1.7
Second quarter	105.3	97.8	107.7	-3.6	-3.5	-0.1
Third quarter	102.7	94.9	108.2	-2.5	-2.9	0.5
2008						
January	109.7	89.9	122.0	2.3	1.9	0.4
February	110.0	90.0	122.2	0.3	0.2	0.2
March	113.2	91.3	124.0	2.9	1.4	1.5
April	116.3	93.4	124.6	2.7	2.2	0.5
May	118.5	94.5	125.4	1.9	1.2	0.7
June	120.9	97.7	123.7	2.0	3.4	-1.3
July	123.8	99.5	124.4	2.4	1.8	0.6
August	121.6	101.8	119.4	-1.8	2.3	-4.1
September	120.0	101.9	117.8	-1.3	0.1	-1.4
October	121.6	104.8	116.1	1.3	2.8	-1.5
November	116.6	104.2	111.9	-4.1	-0.5	-3.6
December	111.5	102.7	108.5	-4.4	-1.4	-3.0
2009						
January	109.3	100.4	108.9	-1.9	-2.3	0.4
February	109.5	101.2	108.1	0.1	0.9	-0.8
March	109.5	102.5	106.8	0.0	1.2	-1.2
April	106.8	100.7	106.0	-2.4	-1.7	-0.7
May	104.7	96.9	108.0	-2.0	-3.8	1.8
June	104.5	95.8	109.1	-0.2	-1.2	1.0
July	103.8	95.9	108.2	-0.7	0.2	-0.8
August	103.1	94.5	109.1	-0.7	-1.5	0.8
September	103.0	94.3	109.2	-0.1	-0.2	0.1
October	103.4	92.6	111.7	0.4	-1.8	2.3

Note(s): Due to rounding, monthly data may not add up to quarterly data and quarterly data may not add up to annual data.

Table 2-1
Exports by commodity groupings, balance of payments basis, seasonally adjusted — Current dollars

	September	October	Change	Year to date		Year to date change	October 2009/2008		
	2009	2009		2008	2009				
	millions of dollars		percent		millions of dollars		percent		
Total	30,111	31,133	1,022	3.4	415,705	306,506	-109,200	-26.3	-26.2
Agricultural and fishing products	2,764	2,843	79	2.9	33,833	31,788	-2,045	-6.0	-21.8
Wheat	431	400	-31	-7.2	5,718	5,148	-570	-10.0	-27.5
Other agricultural and fishing products	2,333	2,443	110	4.7	28,115	26,641	-1,474	-5.2	-20.8
Live animals	104	95	-9	-8.5	1,986	1,420	-566	-28.5	-45.3
Fish and fish preparations	311	321	9	2.9	3,542	3,340	-202	-5.7	-14.2
Barley	24	27	3	11.5	600	389	-211	-35.2	-34.9
Wheat flour	8	8	-0	-2.9	88	71	-17	-19.0	-2.1
Other cereals unmilled	26	28	2	8.6	763	472	-291	-38.1	-60.5
Other cereal preparations	251	250	-1	-0.4	2,369	2,522	153	6.4	-8.5
Meat and meat preparations	344	334	-10	-2.8	3,787	3,669	-118	-3.1	-24.8
Alcoholic beverages	60	60	-1	-1.1	704	619	-84	-12.0	-28.3
Other food, feed, beverages and tobacco	855	872	17	2.0	9,146	9,301	155	1.7	-15.2
Rapeseed	186	275	89	48.0	3,234	2,950	-284	-8.8	-20.6
Other crude vegetable products	164	174	10	5.9	1,896	1,888	-8	-0.4	-28.1
Energy products	6,380	6,795	415	6.5	110,387	64,284	-46,103	-41.8	-33.9
Crude petroleum	3,784	3,981	198	5.2	54,363	33,861	-20,502	-37.7	-16.2
Natural gas	1,037	1,062	25	2.4	28,631	12,560	-16,071	-56.1	-57.2
Other energy products	1,559	1,752	192	12.3	27,393	17,863	-9,531	-34.8	-42.6
Coal and other bituminous substances	297	280	-18	-6.0	4,660	3,594	-1,066	-22.9	-63.8
Petroleum and coal products	1,070	1,273	203	18.9	19,442	12,249	-7,192	-37.0	-36.4
Electricity	191	199	8	4.0	3,292	2,019	-1,272	-38.7	-29.1
Forestry products	1,557	1,567	10	0.6	21,523	16,316	-5,207	-24.2	-31.7
Lumber and sawmill products	562	562	0	0.0	7,721	5,600	-2,121	-27.5	-30.9
Other crude wood products	41	45	4	9.8	531	434	-97	-18.3	-30.3
Lumber	327	330	3	0.9	4,505	3,183	-1,322	-29.3	-31.2
Other wood fabricated materials	194	187	-7	-3.5	2,685	1,983	-702	-26.1	-30.3
Wood pulp and other wood products	371	370	-1	-0.2	5,517	3,738	-1,780	-32.3	-28.3
Newsprint and other paper and paperboard	625	635	10	1.6	8,285	6,978	-1,307	-15.8	-34.3
Newsprint paper	300	315	15	4.9	4,419	3,611	-809	-18.3	-41.5
Other paper and paperboard	325	320	-4	-1.4	3,865	3,368	-498	-12.9	-25.4
Industrial goods and materials	6,612	7,194	582	8.8	95,393	65,846	-29,546	-31.0	-27.0
Metal ores	854	933	79	9.3	13,074	8,425	-4,649	-35.6	-28.9
Iron ores, concentrates and scrap	413	413	-0	-0.0	4,167	3,824	-343	-8.2	-9.5
Copper ores, concentrates and scrap	124	223	98	79.0	2,042	1,415	-627	-30.7	-15.2
Nickel ores, concentrates and scrap	132	89	-43	-32.6	3,459	1,150	-2,309	-66.8	-56.6
Zinc ores, concentrates and scrap	25	17	-8	-32.7	313	210	-103	-32.8	-47.9
Other ores, concentrates and scrap	160	192	32	20.2	3,093	1,826	-1,267	-41.0	-46.3
Chemicals, plastics and fertilizers	2,089	2,116	27	1.3	29,950	21,292	-8,659	-28.9	-37.6
Inorganic chemicals	331	371	40	12.1	4,597	3,453	-1,144	-24.9	-23.1
Organic chemicals	420	377	-44	-10.4	5,998	3,881	-2,117	-35.3	-40.5
Fertilizers and fertilizer materials	351	360	8	2.4	5,845	3,798	-2,047	-35.0	-58.1
Synthetic rubber and plastics	753	764	11	1.4	10,666	7,806	-2,860	-26.8	-30.3
Other chemical products	233	245	11	4.8	2,845	2,354	-491	-17.3	-23.4
Metals and alloys	2,484	2,883	399	16.1	34,826	23,103	-11,723	-33.7	-13.6
Primary iron and steel	66	90	24	35.4	1,182	395	-786	-66.5	-19.3
Steel bars, rods, plates, sheets	251	254	3	1.1	4,373	2,404	-1,970	-45.0	-45.5
Other iron and steel and alloys	182	191	9	4.7	3,327	1,965	-1,362	-40.9	-46.8
Aluminum including alloys	522	548	26	5.0	7,910	4,919	-2,991	-37.8	-36.3
Copper and alloys	196	190	-6	-3.0	3,842	1,786	-2,056	-53.5	-30.7
Nickel and alloys	128	166	38	29.6	3,275	1,654	-1,621	-49.5	-35.1
Precious metals and alloys	948	1,269	322	34.0	8,373	8,359	-14	-0.2	59.8
Zinc and alloys	107	100	-7	-6.4	1,260	876	-384	-30.5	1.7
Other non-ferrous metals and alloys	83	75	-8	-10.0	1,283	744	-539	-42.0	-35.8

Table 2-1 – continued

Exports by commodity groupings, balance of payments basis, seasonally adjusted — Current dollars

	September 2009	October 2009	Change	Year to date		Year to date change	October 2009/2008		
	millions of dollars			percent					
				2008	2009				
Other industrial goods and materials	1,186	1,262	77	6.5	17,542	13,027	-4,516	-25.7	-30.5
Asbestos unmanufactured	7	7	0	4.4	57	59	3	4.8	27.9
Other crude animal products	47	45	-2	-5.2	724	549	-175	-24.1	-30.9
Other crude non-metallic minerals	172	253	81	47.0	4,292	2,290	-2,002	-46.7	-41.2
Other crude materials, inedible	50	48	-3	-5.1	494	511	17	3.4	-5.7
Metal fabricated basic products	323	318	-4	-1.3	4,570	3,456	-1,115	-24.4	-34.1
Textile fabricated materials	169	173	4	2.5	2,036	1,740	-296	-14.5	-16.0
Non-metallic mineral basic products	154	153	-1	-0.5	2,002	1,635	-367	-18.3	-25.6
Other fabricated materials	263	265	1	0.5	3,367	2,786	-581	-17.3	-28.6
Machinery and equipment	6,364	6,204	-160	-2.5	76,449	68,315	-8,134	-10.6	-25.0
Industrial and agricultural machinery	1,544	1,456	-89	-5.7	19,414	16,402	-3,011	-15.5	-34.5
Industrial machinery	1,382	1,311	-71	-5.2	17,615	14,674	-2,941	-16.7	-35.0
Agricultural machinery includ. tractors	162	145	-17	-10.7	1,798	1,728	-71	-3.9	-29.9
Aircraft and other transportation equipment	1,615	1,613	-3	-0.2	16,425	16,436	11	0.1	-0.1
Aircraft, engines, parts	1,218	1,272	55	4.5	12,270	13,012	741	6.0	5.0
Other transportation equipment	397	340	-57	-14.4	4,155	3,425	-730	-17.6	-15.5
Other machinery and equipment	3,205	3,136	-69	-2.1	40,610	35,476	-5,134	-12.6	-29.2
Television, telecommunication equipment	635	672	37	5.9	7,912	7,525	-387	-4.9	-19.9
Office machines and equipment	360	355	-5	-1.4	5,081	4,060	-1,021	-20.1	-35.8
Other equipment and tools	1,464	1,411	-53	-3.6	19,200	15,962	-3,237	-16.9	-31.7
Other end products, inedible	746	698	-48	-6.4	8,418	7,929	-488	-5.8	-28.4
Automotive products	4,141	4,187	46	1.1	51,639	35,225	-16,414	-31.8	-14.8
Passenger autos and chassis	2,692	2,817	125	4.7	28,738	20,386	-8,351	-29.1	1.7
Trucks and other motor vehicles	219	185	-34	-15.5	6,191	3,519	-2,672	-43.2	-65.8
Motor vehicle parts	1,230	1,184	-46	-3.7	16,710	11,320	-5,390	-32.3	-26.1
Other consumer goods	1,383	1,423	40	2.9	15,062	15,173	111	0.7	-15.0
Special transactions trade	529	520	-9	-1.8	6,805	5,432	-1,373	-20.2	-34.2
Unallocated balance of payments adjustments	381	401	20	5.2	4,615	4,126	-489	-10.6	-13.3

Table 2-2
Exports by commodity groupings, balance of payments basis, seasonally adjusted — Constant dollars, 2002

	September	October	Change	Year to date		Year to date change	October 2009/2008		
	2009	2009		2008	2009				
	millions of dollars		percent		millions of dollars		percent		
Total	28,980	29,740	760	2.6	351,243	286,552	-64,691	-18.4	-11.1
Agricultural and fishing products	2,773	2,888	115	4.2	30,630	30,279	-351	-1.1	-5.5
Wheat	368	361	-7	-1.9	3,381	4,286	905	26.8	-0.6
Other agricultural and fishing products	2,405	2,527	122	5.1	27,249	25,993	-1,256	-4.6	-6.2
Live animals	128	121	-7	-5.9	2,276	1,609	-667	-29.3	-35.9
Fish and fish preparations	368	375	7	1.9	4,053	3,870	-183	-4.5	-3.5
Barley	25	29	4	14.8	407	309	-98	-24.0	15.8
Wheat flour	8	8	-0	-2.4	71	65	-7	-9.3	7.3
Other cereals unmilled	32	35	3	9.7	639	457	-183	-28.6	-28.7
Other cereal preparations	208	212	4	2.2	2,141	2,046	-95	-4.4	1.2
Meat and meat preparations	418	428	9	2.3	4,252	4,125	-127	-3.0	-1.5
Alcoholic beverages	107	110	2	2.2	1,139	1,063	-75	-6.6	-6.1
Other food, feed, beverages and tobacco	804	822	19	2.3	8,653	8,292	-361	-4.2	-4.8
Rapeseed	169	243	74	43.7	2,143	2,599	455	21.2	6.1
Other crude vegetable products	138	145	8	5.5	1,474	1,558	84	5.7	-20.6
Energy products	4,567	4,650	83	1.8	46,054	44,730	-1,324	-2.9	1.1
Crude petroleum	2,044	2,049	4	0.2	19,523	19,652	129	0.7	4.2
Natural gas	1,425	1,373	-51	-3.6	14,620	13,460	-1,160	-7.9	-3.3
Other energy products	1,098	1,228	130	11.9	11,911	11,617	-293	-2.5	1.1
Coal and other bituminous substances	138	128	-9	-6.7	1,587	1,128	-459	-28.9	-21.7
Petroleum and coal products	680	762	82	12.1	7,948	7,988	40	0.5	-10.7
Electricity	281	338	57	20.4	2,376	2,502	126	5.3	71.1
Forestry products	2,007	2,052	46	2.3	25,447	20,197	-5,250	-20.6	-15.5
Lumber and sawmill products	781	802	21	2.7	9,833	7,745	-2,088	-21.2	-14.6
Other crude wood products	52	61	9	17.0	694	586	-108	-15.6	-14.1
Lumber	506	520	14	2.9	6,190	4,909	-1,281	-20.7	-13.9
Other wood fabricated materials	223	221	-2	-1.0	2,948	2,250	-699	-23.7	-16.4
Wood pulp and other wood products	515	507	-7	-1.4	6,480	5,294	-1,186	-18.3	-12.5
Newsprint and other paper and paperboard	711	743	32	4.5	9,134	7,158	-1,976	-21.6	-18.4
Newsprint paper	341	369	28	8.2	4,765	3,605	-1,160	-24.3	-23.5
Other paper and paperboard	370	373	4	1.0	4,369	3,553	-816	-18.7	-12.6
Industrial goods and materials	4,819	5,135	316	6.6	63,568	49,781	-13,787	-21.7	-17.6
Metal ores	446	525	79	17.8	6,136	4,651	-1,485	-24.2	-20.2
Iron ores, concentrates and scrap	173	218	45	25.8	1,915	1,566	-349	-18.2	48.0
Copper ores, concentrates and scrap	49	87	37	74.9	677	641	-35	-5.2	-22.4
Nickel ores, concentrates and scrap	77	48	-29	-37.3	1,582	782	-801	-50.6	-64.1
Zinc ores, concentrates and scrap	14	9	-5	-36.4	182	141	-41	-22.5	-60.9
Other ores, concentrates and scrap	132	163	31	23.7	1,780	1,521	-259	-14.6	-32.5
Chemicals, plastics and fertilizers	1,587	1,592	5	0.3	20,909	16,363	-4,545	-21.7	-22.5
Inorganic chemicals	175	173	-2	-1.4	2,218	1,790	-429	-19.3	-20.5
Organic chemicals	268	245	-24	-8.8	3,140	3,090	-50	-1.6	-21.6
Fertilizers and fertilizer materials	132	137	5	4.1	2,710	1,328	-1,382	-51.0	-51.3
Synthetic rubber and plastics	734	743	9	1.2	9,426	7,411	-2,015	-21.4	-15.1
Other chemical products	277	294	17	6.1	3,415	2,745	-670	-19.6	-19.6
Metals and alloys	1,693	1,886	194	11.4	21,255	16,436	-4,819	-22.7	-7.1
Primary iron and steel	50	67	17	35.2	648	273	-376	-57.9	30.7
Steel bars, rods, plates, sheets	215	215	-1	-0.2	3,221	1,897	-1,325	-41.1	-26.4
Other iron and steel and alloys	157	171	13	8.3	2,425	1,679	-746	-30.8	-18.5
Aluminum including alloys	599	622	23	3.9	6,805	5,785	-1,020	-15.0	-15.9
Copper and alloys	72	70	-2	-2.4	1,254	863	-390	-31.1	-29.7
Nickel and alloys	72	96	24	32.7	1,404	1,166	-239	-17.0	-29.0
Precious metals and alloys	416	548	132	31.9	4,317	3,674	-643	-14.9	38.0
Zinc and alloys	73	64	-9	-12.4	736	691	-46	-6.2	4.1
Other non-ferrous metals and alloys	38	33	-5	-13.4	444	409	-35	-7.8	-26.0

Table 2-2 – continued

Exports by commodity groupings, balance of payments basis, seasonally adjusted — Constant dollars, 2002

	September 2009	October 2009	Change		Year to date		Year to date change	October 2009/2008	
	millions of dollars		percent		millions of dollars		percent		
					2008	2009			
Other industrial goods and materials	1,094	1,132	39	3.5	15,268	12,331	-2,938	-19.2	-24.0
Asbestos unmanufactured	7	7	0	6.6	64	61	-3	-4.8	24.1
Other crude animal products	66	65	-1	-2.2	761	745	-15	-2.0	-3.2
Other crude non-metallic minerals	169	208	38	22.6	3,960	2,895	-1,065	-26.9	-45.6
Other crude materials, inedible	47	46	-1	-1.4	487	499	12	2.5	-1.6
Metal fabricated basic products	264	259	-4	-1.6	3,706	2,722	-984	-26.5	-31.1
Textile fabricated materials	180	183	4	2.0	2,141	1,701	-440	-20.5	-4.9
Non-metallic mineral basic products	127	127	1	0.4	1,709	1,326	-383	-22.4	-24.2
Other fabricated materials	234	237	2	1.1	2,441	2,380	-60	-2.5	-6.0
Machinery and equipment	6,987	6,891	-97	-1.4	87,247	73,259	-13,988	-16.0	-21.2
Industrial and agricultural machinery	1,401	1,327	-74	-5.3	18,637	14,947	-3,690	-19.8	-34.4
Industrial machinery	1,256	1,197	-59	-4.7	16,867	13,398	-3,469	-20.6	-34.7
Agricultural machinery includ. tractors	145	130	-15	-10.5	1,770	1,549	-221	-12.5	-31.0
Aircraft and other transportation equipment	1,946	1,969	23	1.2	20,985	19,294	-1,691	-8.1	4.5
Aircraft, engines, parts	1,558	1,646	88	5.7	16,681	15,952	-730	-4.4	9.8
Other transportation equipment	388	324	-65	-16.7	4,304	3,343	-961	-22.3	-16.1
Other machinery and equipment	3,640	3,595	-46	-1.3	47,625	39,018	-8,607	-18.1	-25.6
Television, telecommunication equipment	775	841	66	8.6	10,041	8,863	-1,178	-11.7	-13.7
Office machines and equipment	846	837	-9	-1.1	11,564	8,840	-2,725	-23.6	-26.1
Other equipment and tools	1,360	1,311	-49	-3.6	18,464	14,709	-3,755	-20.3	-31.9
Other end products, inedible	659	605	-54	-8.2	7,556	6,606	-950	-12.6	-24.3
Automotive products	5,264	5,414	150	2.9	69,043	42,563	-26,480	-38.4	-5.1
Passenger autos and chassis	3,663	3,887	224	6.1	42,674	26,615	-16,059	-37.6	12.4
Trucks and other motor vehicles	263	225	-38	-14.4	7,879	3,961	-3,918	-49.7	-60.7
Motor vehicle parts	1,338	1,302	-35	-2.6	18,490	11,987	-6,503	-35.2	-22.1
Other consumer goods	1,324	1,363	39	2.9	14,762	14,558	-204	-1.4	-16.1
Special transactions trade	503	495	-8	-1.6	5,563	5,001	-562	-10.1	-17.4
Unallocated balance of payments adjustments	737	853	115	15.7	8,928	6,184	-2,745	-30.7	75.6

Table 3-1
Domestic exports to selected countries, customs basis, not seasonally adjusted — October

	Agricultural and fishing products	Energy products	Forestry products	Industrial goods	Machinery and equipment	Automotive products	Consumer goods	Special transactions	Total
millions of dollars									
United States									
2008	1,996.9	10,819.1	1,671.9	6,049.0	4,926.6	4,873.4	1,138.9	736.3	32,212.1
2009	1,481.7	6,378.7	1,064.3	3,994.0	3,338.1	4,296.6	946.8	465.7	21,966.0
Mexico									
2008	169.7	35.5	18.5	100.5	83.7	111.5	5.2	0.5	525.1
2009	165.8	6.2	8.5	70.0	50.6	80.4	4.6	1.0	387.1
Japan									
2008	355.4	209.5	145.0	213.8	62.7	3.1	12.6	0.2	1,002.1
2009	277.6	132.0	94.4	151.3	59.7	4.2	8.1	0.6	728.0
European Union									
Germany									
2008	27.4	38.9	18.1	237.3	144.9	3.5	11.0	1.1	482.3
2009	17.1	6.9	13.0	109.4	149.8	2.4	19.5	0.9	318.9
France									
2008	31.3	34.1	14.1	49.4	102.9	3.5	34.6	2.2	272.2
2009	13.2	0.1	10.9	23.5	71.7	2.7	18.8	0.9	141.8
United Kingdom									
2008	67.2	114.5	29.7	744.8	184.9	5.1	14.9	5.2	1,166.4
2009	32.4	6.0	20.7	731.4	205.1	3.6	21.6	3.3	1,024.2
Italy									
2008	44.8	35.5	40.1	17.7	41.3	1.0	5.9	0.4	186.7
2009	42.1	7.0	22.0	22.2	32.9	0.9	6.1	0.1	133.4
Other European Union									
2008	178.3	180.4	41.8	512.3	209.5	36.6	91.9	2.9	1,253.6
2009	117.4	33.7	32.2	241.3	209.6	12.9	92.2	1.7	741.0
Total									
2008	349.0	403.4	143.8	1,561.5	683.5	49.8	158.3	11.8	3,361.1
2009	222.2	53.6	98.8	1,127.8	669.2	22.5	158.3	6.9	2,359.3
Newly industrialized countries									
South Korea									
2008	25.1	164.5	21.7	66.9	52.6	1.1	6.7	0.6	339.2
2009	21.9	41.6	35.0	138.0	45.4	4.6	3.2	2.4	292.1
Hong Kong									
2008	31.4	0.0	12.8	40.4	19.2	0.5	6.2	0.9	111.6
2009	29.1	0.0	5.5	39.4	16.8	0.5	4.7	1.5	97.6
Taiwan									
2008	13.1	70.2	22.2	46.1	14.4	0.1	1.4	0.1	167.6
2009	16.1	0.1	13.8	33.5	7.5	0.2	4.6	0.1	75.8
Singapore									
2008	3.6	0.4	0.6	12.7	28.9	2.3	4.2	0.2	52.9
2009	3.8	0.3	0.5	9.5	24.1	1.1	0.8	2.6	42.8
Total									
2008	73.3	235.2	57.3	166.1	115.1	4.1	18.5	1.8	671.4
2009	70.9	42.0	54.7	220.4	93.8	6.5	13.3	6.7	508.3
Other countries									
2008	1,032.5	182.9	362.3	1,306.9	908.3	80.2	140.3	17.2	4,030.7
2009	824.1	83.9	305.3	950.6	633.1	51.2	137.9	13.8	3,000.0
Total									
2008	3,976.9	11,885.6	2,398.8	9,397.7	6,780.0	5,122.2	1,473.9	767.7	41,802.6
2009	3,042.3	6,696.5	1,626.1	6,514.1	4,844.6	4,461.3	1,269.2	494.6	28,948.8

Table 3-2
Domestic exports to selected countries, customs basis, not seasonally adjusted — Year to date, January to October

	Agricultural and fishing products	Energy products	Forestry products	Industrial goods	Machinery and equipment	Automotive products	Consumer goods	Special transactions	Total
millions of dollars									
United States									
2008	17,080.8	105,864.6	15,047.0	57,390.4	44,174.9	46,599.9	9,205.9	6,134.3	301,497.9
2009	15,928.3	59,780.5	11,324.4	37,949.8	37,163.3	30,976.0	9,283.0	4,686.5	207,091.6
Mexico									
2008	1,238.6	136.5	160.0	1,112.0	830.6	773.9	57.7	5.4	4,314.8
2009	977.8	79.0	80.2	620.3	769.0	568.3	41.4	8.9	3,145.0
Japan									
2008	3,298.6	1,723.6	1,209.8	2,164.5	496.7	32.0	99.1	4.0	9,028.5
2009	2,645.3	1,483.2	886.0	983.9	539.7	37.1	117.8	5.3	6,698.3
European Union									
Germany									
2008	171.6	258.0	146.2	1,371.0	1,062.8	41.5	139.8	10.8	3,201.8
2009	156.1	161.0	106.4	642.4	1,564.8	35.7	131.4	14.1	2,811.9
France									
2008	164.0	325.9	220.0	385.0	1,020.6	42.3	267.6	16.6	2,442.0
2009	130.8	99.6	124.6	487.1	928.3	28.7	242.0	20.9	2,062.0
United Kingdom									
2008	409.5	324.2	321.1	7,623.6	1,730.2	63.0	172.2	42.3	10,686.1
2009	339.6	128.9	245.1	6,481.6	1,798.8	33.3	244.0	38.4	9,309.8
Italy									
2008	260.9	258.9	324.3	578.6	405.3	9.6	55.1	4.3	1,897.0
2009	371.8	110.7	224.8	214.2	423.9	7.3	57.7	7.2	1,417.5
Other European Union									
2008	977.6	1,648.8	390.2	4,131.5	2,348.3	241.7	558.0	42.9	10,338.9
2009	784.2	848.7	282.8	2,144.1	2,168.0	119.4	663.7	38.9	7,049.8
Total									
2008	1,983.6	2,815.7	1,401.9	14,089.6	6,567.3	398.3	1,192.6	116.8	28,565.8
2009	1,782.5	1,348.9	983.7	9,969.3	6,883.8	224.4	1,338.8	119.5	22,650.9
Newly industrialized countries									
South Korea									
2008	291.1	995.4	438.3	918.2	344.8	9.8	47.2	8.2	3,052.9
2009	272.9	829.5	280.6	865.4	436.4	39.0	40.6	8.4	2,772.7
Hong Kong									
2008	280.1	0.3	88.2	631.0	218.7	5.4	38.1	9.8	1,271.5
2009	296.0	0.3	74.2	403.1	266.8	7.2	48.6	9.5	1,105.6
Taiwan									
2008	133.1	208.3	285.7	542.8	119.1	1.3	27.8	2.1	1,320.3
2009	156.7	148.5	160.4	265.3	91.4	1.4	29.0	1.2	854.0
Singapore									
2008	37.1	34.3	12.3	171.7	299.4	15.0	29.2	3.2	602.3
2009	40.6	44.7	26.7	295.0	271.0	28.1	29.0	4.8	739.9
Total									
2008	741.4	1,238.3	824.5	2,263.6	982.0	31.5	142.3	23.4	6,247.0
2009	766.1	1,023.0	541.9	1,828.9	1,065.7	75.7	147.2	23.8	5,472.2
Other countries									
2008	8,371.2	1,796.3	3,540.8	14,071.2	7,721.6	721.3	1,053.4	161.9	37,437.7
2009	8,390.7	1,359.0	2,811.7	9,344.2	7,099.8	608.1	999.6	220.7	30,833.8
Total									
2008	32,714.3	113,575.2	22,184.2	91,091.3	60,774.1	48,557.1	11,751.6	6,445.8	387,093.5
2009	30,490.7	65,073.5	16,627.9	60,696.5	53,521.4	32,489.6	11,928.5	5,064.8	275,892.9

Table 4
Domestic exports by country, customs basis, not seasonally adjusted

	October		January to October		Variation
	2008	2009	2008	2009	January to October 2009/2008
millions of dollars					
North America					
Greenland	0.5	0.6	13.7	14.6	7.2
Mexico	525.1	387.1	4,314.8	3,145.0	-27.1
Saint Pierre and Miquelon	1.3	1.2	12.2	12.4	1.9
United States	32,212.1	21,966.0	301,497.9	207,091.6	-31.3
Total	32,739.1	22,354.9	305,838.6	210,263.7	-31.3
Western Europe					
Andorra	0.0	0.0	0.1	0.1	-56.3
Austria	22.8	11.6	339.8	301.6	-11.2
Belgium	425.7	146.1	2,752.7	1,464.5	-46.8
Denmark	44.9	84.9	322.9	550.7	70.6
Faeroe Islands	0.1	0.3	1.6	0.9	-41.5
Finland	119.6	21.1	860.0	245.5	-71.5
France	272.2	141.8	2,442.0	2,062.0	-15.6
Germany	482.3	318.9	3,201.8	2,811.9	-12.2
Gibraltar	0.1	0.1	596.6	17.1	-97.1
Greece	19.1	8.4	110.0	87.1	-20.8
Iceland	1.9	2.3	43.9	69.1	57.5
Italy	186.7	133.4	1,897.0	1,417.5	-25.3
Luxembourg	9.5	2.3	77.6	31.7	-59.1
Malta	1.0	1.4	15.4	44.0	185.6
Netherlands	303.0	195.2	2,959.8	2,083.0	-29.6
Norway	130.9	111.3	2,563.2	1,379.9	-46.2
Portugal	11.9	13.2	140.7	135.0	-4.1
Republic of Ireland (Eire)	79.7	62.5	372.2	433.1	16.4
Spain	88.4	69.0	946.6	787.1	-16.8
Sweden	34.5	51.4	456.8	266.3	-41.7
Switzerland	141.9	161.3	961.0	1,006.8	4.8
United Kingdom	1,166.4	1,024.2	10,686.1	9,309.8	-12.9
Total	3,542.5	2,560.8	31,747.7	24,504.5	-22.8
Other Europe					
Albania	10.2	2.5	31.3	11.4	-63.4
Armenia	1.9	0.9	19.2	6.6	-65.4
Azerbaijan	1.2	1.5	14.1	8.9	-37.0
Belarus	0.1	0.0	3.6	0.9	-74.8
Bosnia and Herzegovina	0.3	0.1	5.3	2.5	-52.8
Bulgaria	2.7	4.0	24.5	56.3	130.2
Croatia	2.8	1.9	60.7	95.2	56.8
Czech Republic	11.8	21.8	193.3	109.7	-43.2
Estonia	2.6	7.5	20.0	21.7	8.2
Georgia	4.0	3.2	17.1	9.3	-45.3
Hungary	9.1	6.1	111.0	74.3	-33.1
Kazakhstan	15.3	36.8	194.3	149.9	-22.9
Kyrgyzstan	0.9	0.2	5.8	3.2	-45.4
Latvia	6.2	2.3	39.1	21.6	-44.7
Lithuania	4.9	2.3	38.1	33.5	-12.1
Macedonia (Former Yugoslav Republic of Macedonia)	1.3	2.0	10.6	12.4	17.9
Montenegro	1.0	0.2	5.9	1.8	-70.3
Poland	36.7	16.8	280.6	152.7	-45.6
Republic of Moldova	1.2	0.1	9.1	1.8	-80.1
Romania	5.8	8.6	182.9	68.0	-62.9
Russian Federation	116.9	49.1	1,196.6	643.9	-46.2
Serbia	2.2	0.6	12.1	15.8	30.6
Slovakia	1.7	3.1	41.9	21.8	-48.1
Slovenia	11.0	0.3	38.7	51.9	34.2
Tajikistan	0.5	0.5	4.0	2.2	-43.3
Turkmenistan	0.4	0.2	2.4	5.0	105.8
Ukraine	25.4	14.3	206.8	79.8	-61.4
Uzbekistan	3.1	0.5	11.7	12.6	7.2
Total	281.3	187.5	2,780.7	1,674.6	-39.8
Middle East					
Bahrain	2.4	2.4	46.2	32.2	-30.4
Cyprus	0.9	1.0	14.3	8.9	-37.4

Table 4 – continued

Domestic exports by country, customs basis, not seasonally adjusted

	October		January to October		Variation
	2008	2009	2008	2009	January to October 2009/2008
millions of dollars					
Egypt	146.2	63.6	512.7	524.3	2.3
Eritrea	0.0	0.9	0.8	1.8	127.3
Ethiopia	1.6	0.1	65.0	7.4	-88.6
Iran	102.3	6.5	364.4	321.3	-11.8
Iraq	32.3	3.7	173.7	462.9	166.4
Israel	44.9	21.3	436.0	240.4	-44.9
Jordan	5.6	5.4	61.7	48.9	-20.7
Kuwait	18.2	6.9	117.1	64.4	-45.0
Lebanon	7.3	5.3	58.9	79.4	34.7
Libya	8.6	23.3	97.3	218.8	125.0
Oman	12.9	15.9	75.8	97.9	29.1
Qatar	7.7	4.0	65.5	198.3	202.9
Saudi Arabia	68.8	69.2	819.2	905.2	10.5
Somalia	0.5	0.0	1.7	2.9	70.9
Sudan	10.2	2.3	178.6	88.4	-50.5
Syria	3.6	2.3	52.0	37.5	-28.0
Turkey	134.0	94.4	1,100.9	631.4	-42.6
United Arab Emirates	196.4	141.9	1,134.7	961.0	-15.3
Yemen	28.4	2.1	47.6	22.7	-52.4
Total	832.7	472.5	5,424.2	4,956.0	-8.6
Other Africa					
Algeria	58.5	18.5	724.0	256.5	-64.6
Angola	6.7	4.1	107.3	59.9	-44.2
Antarctica	0.5	0.1	3.3	0.5	-83.8
Benin	0.6	0.8	10.2	6.4	-37.6
Botswana	0.7	1.0	8.3	4.3	-48.4
Bouvet Island	0.0	0.0	0.0	0.0	-100.0
Burkina Faso	0.3	3.4	5.0	18.8	277.8
Burundi	0.1	0.1	1.2	0.9	-29.3
Cameroon	5.4	0.4	15.4	24.7	60.1
Cape Verde	0.0	0.0	0.8	1.0	20.5
Central African Republic	0.0	0.0	0.1	0.7	559.4
Chad	1.8	0.2	4.9	9.1	85.2
Comoros	0.0	0.0	0.5	3.1	531.9
Congo	4.3	3.1	23.8	18.8	-20.9
Democratic Republic of the Congo	1.1	1.5	16.0	12.2	-23.6
Djibouti	0.1	0.2	1.6	2.3	44.8
Equatorial Guinea	1.2	0.2	5.2	3.8	-26.0
French Southern Territories	0.0	0.0	0.1	0.2	77.5
Gabon	2.0	2.9	22.7	22.7	-0.2
Gambia	0.3	0.1	0.7	0.6	-19.5
Ghana	26.4	13.0	158.6	134.4	-15.3
Guinea	1.2	1.4	13.4	12.2	-9.1
Guinea-Bissau	0.0	0.0	0.7	0.0	-99.0
Ivory Coast	1.2	2.9	22.4	22.1	-1.4
Kenya	8.9	5.2	57.4	60.8	5.8
Lesotho	0.0	0.0	0.0	0.0	-28.3
Liberia	0.5	0.2	8.1	2.9	-64.4
Madagascar	1.6	8.7	9.4	46.9	398.5
Malawi	0.4	0.5	4.4	3.7	-15.9
Mali	0.2	0.1	5.3	4.2	-20.8
Mauritania	0.0	0.1	3.5	2.1	-39.0
Mauritius	0.4	0.2	4.2	4.5	7.8
Morocco	40.1	15.0	252.0	295.9	17.4
Mozambique	0.2	0.6	9.7	4.7	-51.1
Namibia	0.2	0.3	7.9	2.8	-64.4
Niger	0.2	0.4	2.8	2.5	-11.0
Nigeria	20.2	14.3	66.4	171.4	158.0
Rwanda	0.1	0.2	3.6	3.1	-11.8
Saint Helena	0.0	0.0	0.4	0.1	-77.3
Sao Tome and Principe	0.0	0.0	0.0	0.1	953.0
Senegal	2.4	2.9	24.1	32.3	34.0
Seychelles	0.1	0.0	1.3	0.9	-27.6
Sierra Leone	1.6	0.3	8.4	3.5	-58.1
South Africa	60.1	30.8	733.4	357.0	-51.3
Swaziland	0.3	0.0	5.2	9.6	85.0

Table 4 – continued

Domestic exports by country, customs basis, not seasonally adjusted

	October		January to October		Variation
	2008	2009	2008	2009	January to October 2009/2008
millions of dollars					
Togo	2.3	0.4	14.8	14.9	0.8
Tunisia	2.6	2.4	26.1	78.0	199.4
Uganda	1.1	0.4	8.9	11.4	28.2
United Republic of Tanzania	10.1	2.6	46.3	27.5	-40.5
Western Sahara	0.0	0.0	0.0	0.1	728.6
Zambia	2.2	0.7	20.4	7.8	-61.9
Zimbabwe	0.1	0.0	3.9	7.2	85.3
Total	268.3	140.1	2,474.2	1,771.2	-28.4
Other Asia					
Afghanistan	1.0	4.0	11.3	42.7	276.4
Bangladesh	4.3	40.0	239.5	542.1	126.4
Bhutan	0.0	0.0	0.0	0.2	444.0
British Indian Ocean Territory	0.1	0.0	0.7	0.3	-62.0
Brunei Darussalam	0.1	0.2	1.9	3.5	83.7
Cambodia	0.3	0.3	2.2	6.1	173.7
China	833.3	845.3	8,674.5	9,203.5	6.1
Hong Kong	111.6	97.6	1,271.5	1,105.6	-13.0
India	325.9	260.9	1,800.5	1,646.7	-8.5
Indonesia	67.8	52.6	1,227.1	787.9	-35.8
Japan	1,002.1	728.0	9,028.5	6,698.3	-25.8
Laos	0.2	0.2	17.5	2.2	-87.4
Macau	5.8	0.3	37.5	13.1	-65.0
Malaysia	82.6	29.0	610.8	434.3	-28.9
Maldives	0.3	4.2	4.3	12.3	184.7
Mongolia	0.4	0.3	7.3	4.1	-44.5
Myanmar	0.0	0.0	0.1	0.0	-76.9
Nepal	1.0	0.1	2.7	2.9	8.5
North Korea	1.5	3.0	16.0	21.9	36.6
Pakistan	36.8	21.5	502.4	368.7	-26.6
Philippines	83.5	49.3	443.5	385.5	-13.1
Singapore	52.9	42.8	602.3	739.9	22.8
South Korea	339.2	292.1	3,052.9	2,772.7	-9.2
Sri Lanka	39.5	42.8	353.5	293.6	-16.9
Taiwan	167.6	75.8	1,320.3	854.0	-35.3
Thailand	64.2	36.5	567.6	399.6	-29.6
Timor-Leste	0.0	0.0	0.3	0.0	-95.0
Viet Nam	11.0	15.7	251.5	164.9	-34.4
Total	3,233.5	2,642.3	30,048.5	26,506.7	-11.8
Oceania					
American Samoa	0.0	0.1	0.7	0.6	-16.2
Australia	178.0	131.1	1,629.3	1,315.6	-19.2
Christmas Island	0.0	0.0	0.2	0.3	44.1
Cocos (Keeling) Islands	0.6	0.0	0.7	0.2	-74.5
Cook Islands	0.1	0.0	0.9	0.5	-44.3
Fiji	0.1	0.2	1.8	5.6	213.2
French Polynesia	0.5	0.5	13.6	8.4	-38.6
Guam	0.2	0.1	2.4	1.6	-33.4
Heard Island and McDonald Islands	0.0	0.1	0.0	0.1	...
Kiribati	0.0	0.0	0.0	0.0	-100.0
Nauru	0.0	0.0	0.2	0.1	-69.8
New Caledonia	1.4	0.4	16.0	9.1	-43.4
New Zealand	29.0	23.4	353.9	225.6	-36.3
Norfolk Island	0.0	0.0	0.1	0.3	352.0
Papua New Guinea	1.6	0.7	9.5	23.7	149.4
Pitcairn	0.0	0.0	0.3	0.1	-51.6
Samoa	0.0	0.1	0.4	0.3	-28.1
Solomon Islands	0.0	0.0	0.0	0.1	120.5
Tonga	0.0	0.0	0.4	0.2	-57.2
United States Minor Outlying Islands	2.1	0.9	14.1	10.4	-26.6
Vanuatu	0.1	0.1	0.3	1.8	440.8
Wallis and Futuna	0.0	0.0	0.0	0.0	-91.1
Total	213.7	157.6	2,044.9	1,604.5	-21.5

Table 4 – continued

Domestic exports by country, customs basis, not seasonally adjusted

	October		January to October		Variation January to October 2009/2008
	2008	2009	2008	2009	
millions of dollars					
South America					
Argentina	18.8	11.7	177.1	136.2	-23.1
Bolivia	7.1	0.5	21.3	8.9	-58.3
Brazil	218.9	85.5	2,145.0	1,128.4	-47.4
Chile	62.1	30.4	568.9	497.1	-12.6
Colombia	53.3	38.9	568.6	499.4	-12.2
Ecuador	21.5	12.1	196.7	200.0	1.7
Falkland Islands (Malvinas)	0.0	0.0	0.1	0.0	-99.8
Guyana	1.5	3.8	16.0	24.1	50.9
Paraguay	0.8	1.9	12.3	9.7	-20.8
Peru	26.7	32.9	305.3	331.5	8.6
Suriname	1.3	0.6	8.5	9.7	14.6
Uruguay	2.9	1.4	141.1	17.0	-87.9
Venezuela	73.1	72.8	656.9	499.4	-24.0
Total	487.9	292.2	4,817.8	3,361.5	-30.2
Central America Antilles					
Anguilla	0.2	0.1	2.1	1.6	-24.5
Antigua and Barbuda	1.9	3.3	17.7	14.8	-16.4
Aruba	0.5	0.5	4.7	4.7	-0.2
Bahamas	39.4	2.4	142.9	112.6	-21.2
Barbados	4.7	3.0	38.0	33.9	-10.7
Belize	1.4	0.3	5.4	4.7	-13.3
Bermuda	5.2	3.9	51.8	48.8	-5.7
British Virgin Islands	0.3	0.2	6.8	2.7	-60.3
Cayman Islands	0.7	0.5	12.0	5.4	-54.9
Costa Rica	8.8	10.7	89.4	63.7	-28.8
Cuba	61.9	11.0	532.4	225.6	-57.6
Dominica	0.3	0.4	5.2	3.8	-26.7
Dominican Republic	6.7	11.2	168.1	111.5	-33.6
El Salvador	4.4	4.7	42.0	40.8	-2.9
Grenada	0.4	0.5	4.8	4.6	-3.4
Guatemala	7.6	15.6	126.9	77.6	-38.8
Haiti	2.8	1.8	37.0	34.1	-8.0
Honduras	2.7	3.9	70.8	26.1	-63.2
Jamaica	11.0	9.9	170.6	99.8	-41.5
Montserrat	0.1	0.0	0.3	0.2	-39.3
Netherlands Antilles	14.3	2.3	27.2	44.8	65.1
Nicaragua	1.8	2.1	19.4	12.2	-37.1
Panama	12.2	6.5	92.1	68.7	-25.4
Saint Kitts and Nevis	1.0	0.6	7.0	5.1	-26.3
Saint Lucia	0.8	0.9	9.0	8.3	-8.0
Saint Vincent and the Grenadines	0.6	0.8	5.8	7.9	35.7
Trinidad and Tobago	11.7	43.1	221.4	181.3	-18.1
Turks and Caicos Islands	0.4	0.8	6.0	4.8	-21.3
Total	203.7	140.9	1,917.0	1,250.3	-34.8
All countries	41,802.6	28,948.8	387,093.5	275,892.9	-28.7

Table 5-1
Exports by province of origin, customs basis, not seasonally adjusted — October

	Agricultural and fishing products	Energy products	Forestry products	Industrial goods	Machinery and equipment	Automotive products	Consumer goods	Special transactions	Total
millions of dollars									
Domestic exports									
Newfoundland and Labrador									
2008	58.8	1,127.5	34.8	288.0	5.6	0.1	0.0	5.5	1,520.3
2009	50.9	466.5	7.6	225.6	3.2	0.5	0.2	3.3	757.8
Prince Edward Island									
2008	49.3	0.0	0.0	1.6	21.9	0.1	2.0	8.0	82.9
2009	47.8	0.3	0.0	0.7	23.0	0.1	6.9	5.8	84.6
Nova Scotia									
2008	89.4	98.8	96.5	62.5	125.3	9.8	7.5	9.1	498.8
2009	68.2	8.1	64.5	41.6	105.6	3.1	5.2	5.9	302.1
New Brunswick									
2008	114.4	733.4	140.8	102.9	30.2	2.0	11.8	13.1	1,148.6
2009	104.8	377.9	90.8	71.8	23.0	2.1	20.3	7.9	698.7
Quebec									
2008	502.0	268.5	712.0	2,095.2	2,026.3	227.3	323.1	154.0	6,308.4
2009	371.2	194.4	486.9	1,519.8	1,611.6	147.5	288.9	114.6	4,734.9
Ontario									
2008	867.1	427.3	351.9	3,560.4	3,412.8	4,738.1	1,002.7	410.1	14,770.3
2009	695.9	229.0	207.9	2,811.7	2,348.6	4,217.2	850.3	243.3	11,603.9
Manitoba									
2008	430.5	116.2	31.3	294.8	183.6	65.1	38.8	32.4	1,192.7
2009	304.0	84.3	14.7	192.3	148.5	34.5	36.5	33.7	848.5
Saskatchewan									
2008	911.6	1,003.8	16.5	996.6	78.2	4.0	1.5	13.5	3,025.7
2009	651.5	723.1	16.1	458.4	43.9	3.5	1.2	7.9	1,905.7
Alberta									
2008	703.7	7,067.7	183.2	1,184.5	530.7	52.8	22.8	67.0	9,812.5
2009	536.5	4,151.8	160.6	716.5	286.8	32.0	12.1	35.0	5,931.4
British Columbia									
2008	250.1	1,042.4	831.8	546.4	363.2	22.9	63.5	55.0	3,175.2
2009	211.5	461.2	577.0	465.9	250.2	20.8	47.6	37.1	2,071.1
Yukon, Northwest Territories and Nunavut ¹									
2008	0.0	0.0	0.0	264.9	2.1	0.1	0.1	0.0	267.2
2009	0.1	0.0	0.0	9.8	0.1	0.0	0.0	0.0	10.1
Total									
2008	3,976.9	11,885.6	2,398.8	9,397.7	6,780.0	5,122.2	1,473.9	767.7	41,802.6
2009	3,042.3	6,696.5	1,626.1	6,514.1	4,844.6	4,461.3	1,269.2	494.6	28,948.8
Re-exports									
2008	52.6	42.7	6.4	223.3	1,050.0	113.1	228.0	956.9	2,673.1
2009	66.5	76.8	5.6	225.7	876.4	92.3	179.8	618.6	2,141.6
Total exports									
2008	4,029.4	11,928.3	2,405.2	9,621.0	7,830.0	5,235.3	1,701.9	1,724.6	44,475.7
2009	3,108.9	6,773.3	1,631.7	6,739.8	5,721.0	4,553.6	1,449.0	1,113.2	31,090.5

1. Data for the most current month do not include some exports of Chapter 71 "Natural/cultured pearls, precious stones and metals, coins etc" for reasons relating to timing.

Table 5-2
Exports by province of origin, customs basis, not seasonally adjusted — Year to date, January to October

	Agricultural and fishing products	Energy products	Forestry products	Industrial goods	Machinery and equipment	Automotive products	Consumer goods	Special transactions	Total
millions of dollars									
Domestic exports									
Newfoundland and Labrador									
2008	724.4	10,029.4	254.3	1,812.1	47.7	1.1	1.5	66.1	12,936.6
2009	621.4	4,767.8	155.0	1,557.8	47.7	2.9	0.9	45.9	7,199.3
Prince Edward Island									
2008	417.9	0.0	1.6	14.5	166.1	1.2	23.6	71.4	696.1
2009	409.2	1.3	0.8	17.9	173.6	1.4	29.0	68.3	701.5
Nova Scotia									
2008	873.4	1,352.3	751.3	493.2	1,033.8	98.8	65.3	82.3	4,750.4
2009	811.8	480.9	585.6	421.7	951.8	63.7	62.5	60.1	3,438.1
New Brunswick									
2008	1,037.3	7,664.8	1,062.2	1,136.3	282.1	18.0	92.1	103.7	11,396.6
2009	986.1	5,154.9	907.9	658.1	257.7	20.9	127.0	73.0	8,185.4
Quebec									
2008	3,866.7	3,585.6	6,428.8	19,633.1	18,604.9	1,791.0	2,953.8	1,294.9	58,158.8
2009	3,583.1	2,314.2	4,972.2	13,541.8	16,748.2	1,390.1	2,903.9	1,146.6	46,600.1
Ontario									
2008	6,653.4	3,848.5	3,247.5	38,610.3	30,384.4	45,364.0	7,571.3	3,399.1	139,078.3
2009	6,633.3	2,303.5	2,224.9	25,845.6	26,694.2	29,856.6	7,830.7	2,462.2	103,851.1
Manitoba									
2008	3,684.2	1,088.6	326.4	2,940.6	1,825.9	492.5	302.1	250.9	10,911.1
2009	3,279.5	686.2	228.2	1,869.3	1,715.5	514.3	384.5	313.4	8,990.9
Saskatchewan									
2008	7,150.3	9,790.4	219.0	6,745.9	721.1	35.1	19.4	107.5	24,788.8
2009	6,327.9	5,851.7	208.7	4,636.4	701.4	34.5	10.1	76.6	17,847.3
Alberta									
2008	6,318.0	68,328.0	1,723.1	12,001.3	4,533.5	492.8	187.5	579.6	94,163.9
2009	5,850.0	38,186.7	1,421.0	7,073.2	3,676.6	425.3	132.6	447.4	57,212.8
British Columbia									
2008	1,987.2	7,887.5	8,169.6	5,518.0	3,167.6	262.4	533.8	488.6	28,014.7
2009	1,986.5	5,326.3	5,923.5	3,883.1	2,550.3	179.6	446.2	370.5	20,666.1
Yukon, Northwest Territories and Nunavut ¹									
2008	1.4	0.0	0.4	2,186.1	7.1	0.2	1.3	1.7	2,198.1
2009	1.9	0.0	0.2	1,191.7	4.3	0.3	1.0	0.9	1,200.4
Total									
2008	32,714.3	113,575.2	22,184.2	91,091.3	60,774.1	48,557.1	11,751.6	6,445.8	387,093.5
2009	30,490.7	65,073.5	16,627.9	60,696.5	53,521.4	32,489.6	11,928.5	5,064.8	275,892.9
Re-exports									
2008	402.3	785.0	71.0	2,350.6	9,242.4	1,225.0	1,841.6	7,484.0	23,402.0
2009	427.4	473.8	62.9	1,904.7	9,472.1	830.4	1,858.1	6,630.6	21,660.0
Total exports									
2008	33,116.6	114,360.2	22,255.3	93,441.9	70,016.4	49,782.1	13,593.2	13,929.8	410,495.5
2009	30,918.1	65,547.4	16,690.8	62,601.2	62,993.5	33,320.0	13,786.6	11,695.3	297,552.9

1. Data for the most current month do not include some exports of Chapter 71 "Natural/cultured pearls, precious stones and metals, coins etc" for reasons relating to timing.

Table 6-1
Imports by commodity groupings, balance of payments basis, seasonally adjusted — Current dollars

	September	October	Change	Year to date		Year to date change	October 2009/2008		
	2009	2009		2008	2009			millions of dollars	percent
Total	30,961	30,705	-256	-0.8	369,164	310,464	-58,700	-15.9	-21.3
Agricultural and fishing products	2,352	2,374	22	0.9	23,411	24,646	1,235	5.3	-6.2
Fruits and vegetables	667	660	-8	-1.1	6,432	6,878	446	6.9	-9.2
Fresh fruits and berries	238	244	6	2.5	2,270	2,424	155	6.8	-6.1
Dried fruits, fruits and fruit preparations	120	116	-4	-3.4	1,214	1,279	65	5.3	-14.0
Fresh vegetables	171	167	-4	-2.3	1,629	1,740	111	6.8	-9.2
Other vegetables and vegetable preparations	139	134	-6	-4.0	1,320	1,435	115	8.7	-10.1
Other agricultural and fishing products	1,685	1,714	30	1.8	16,979	17,768	789	4.6	-5.0
Live animals	16	16	0	2.2	158	162	4	2.5	-2.3
Meat and meat preparations	177	170	-7	-4.0	1,686	1,802	116	6.9	-3.3
Fish and marine animals	163	161	-2	-1.3	1,569	1,730	161	10.3	6.4
Cocoa, coffee, tea and other food preparations	393	388	-5	-1.2	3,758	4,131	373	9.9	-6.9
Dairy produce, eggs and honey	51	47	-4	-7.6	529	472	-57	-10.8	-4.9
Corn (maize) shelled	42	43	1	1.6	603	414	-190	-31.5	-29.8
Other cereals and cereal preparations	185	172	-13	-6.9	1,709	1,915	206	12.1	-8.5
Sugar and sugar preparations	118	159	41	34.8	1,243	1,406	162	13.1	13.5
Fodder, feed, excluding unmilled cereal	127	120	-7	-5.2	1,208	1,258	50	4.1	-7.3
Beverages	285	306	21	7.2	2,945	3,068	123	4.2	-1.5
Tobacco	34	27	-7	-20.6	315	307	-9	-2.8	-16.0
Crude vegetable products	93	104	11	11.6	1,245	1,095	-149	-12.0	-20.4
Cotton	1	1	0	39.1	10	8	-2	-21.3	-42.3
Energy products	2,645	2,811	166	6.3	45,893	27,610	-18,283	-39.8	-45.4
Crude petroleum	1,670	1,773	103	6.2	30,034	16,796	-13,237	-44.1	-46.1
Other energy products	975	1,038	63	6.4	15,859	10,814	-5,046	-31.8	-44.2
Coal and other related products	302	308	7	2.2	4,902	3,823	-1,079	-22.0	-39.3
Petroleum and coal products	674	730	56	8.4	10,957	6,991	-3,967	-36.2	-46.1
Forestry products	203	191	-12	-6.0	2,411	1,994	-417	-17.3	-21.9
Forestry products	203	191	-12	-6.0	2,411	1,994	-417	-17.3	-21.9
Crude wood products	35	31	-4	-11.0	391	370	-21	-5.3	-31.7
Wood fabricated materials	167	159	-8	-4.9	2,020	1,624	-396	-19.6	-19.7
Industrial goods and materials	6,404	6,308	-95	-1.5	76,233	62,717	-13,516	-17.7	-21.8
Metals and metal ores	2,279	2,296	17	0.8	27,521	20,338	-7,183	-26.1	-14.8
Metals in ores, concentrates and scrap	593	523	-70	-11.8	7,262	4,880	-2,382	-32.8	-16.3
Steel bars, rods, plates, sheets	415	420	6	1.3	6,362	3,922	-2,440	-38.4	-38.3
Other iron and steel products	256	264	8	3.3	4,208	3,013	-1,194	-28.4	-50.3
Precious metals including alloys	676	820	144	21.3	4,687	5,603	916	19.5	101.4
Other non-ferrous metals and alloys	340	269	-71	-20.8	5,003	2,921	-2,082	-41.6	-40.5
Chemicals and plastics	2,244	2,165	-79	-3.5	26,079	22,774	-3,305	-12.7	-25.4
Organic chemicals	516	471	-45	-8.7	6,662	5,470	-1,192	-17.9	-32.3
Plastic materials	733	743	10	1.4	8,938	7,368	-1,570	-17.6	-25.7
Other chemicals and related products	995	950	-45	-4.5	10,479	9,936	-543	-5.2	-21.2
Other industrial goods and materials	1,880	1,847	-33	-1.8	22,632	19,605	-3,028	-13.4	-25.0
Crude animal products	19	21	1	7.8	263	188	-75	-28.5	-14.3
Wool and man-made fibres	16	16	0	1.3	212	176	-36	-17.0	-27.5
Crude non-metallic minerals	58	73	15	25.5	875	636	-239	-27.3	-37.8
Textile fabricated materials	178	179	1	0.6	2,170	1,888	-282	-13.0	-20.4
Metal fabricated basic products	730	700	-30	-4.1	8,846	7,586	-1,260	-14.2	-26.6
Rubber fabricated materials	79	77	-2	-2.2	863	781	-82	-9.5	-19.4
Oils, fats, animal and vegetable	109	91	-18	-16.5	1,022	1,051	29	2.8	-23.8
Non-metallic minerals	265	270	5	1.8	3,147	2,765	-382	-12.1	-24.3
Other fabricated materials	426	420	-6	-1.4	5,234	4,534	-700	-13.4	-23.5

Table 6-1 – continued

Imports by commodity groupings, balance of payments basis, seasonally adjusted — Current dollars

	September 2009	October 2009	Change	Year to date		Year to date change	October 2009/2008		
	millions of dollars			percent					
				2008	2009				
Machinery and equipment	8,784	8,396	-387	-4.4	100,760	90,945	-9.7	-22.2	
Industrial and agricultural machinery	2,287	2,049	-237	-10.4	28,166	23,596	-4,570	-16.2	-31.4
Engines, turbines and electric motors	295	222	-73	-24.7	3,301	3,473	172	5.2	-30.3
Drilling mining machinery	135	106	-29	-21.4	1,489	1,270	-218	-14.7	-41.9
Excavating machinery	190	155	-34	-18.1	2,982	1,727	-1,255	-42.1	-49.0
Metal working machinery	115	132	17	14.7	2,048	1,349	-700	-34.2	-34.9
Other industrial machinery	1,208	1,150	-58	-4.8	14,991	12,433	-2,558	-17.1	-28.8
Agricultural machinery including tractors	343	283	-60	-17.5	3,355	3,344	-11	-0.3	-22.4
Aircraft and other transportation equipment	1,174	1,163	-12	-1.0	14,444	13,315	-1,129	-7.8	-21.7
Aircraft, engines, parts	710	698	-12	-1.8	9,220	8,384	-836	-9.1	-23.4
Other transportation equipment and parts	464	465	1	0.2	5,224	4,931	-292	-5.6	-19.2
Office machines and equipment	991	949	-42	-4.2	11,985	10,240	-1,744	-14.6	-25.8
Other machinery and equipment	4,332	4,235	-97	-2.2	46,166	43,794	-2,372	-5.1	-16.0
Other communication and related equipment	1,522	1,499	-24	-1.5	16,002	15,549	-452	-2.8	-14.6
Other equipment and tools	2,810	2,737	-74	-2.6	30,164	28,245	-1,919	-6.4	-16.8
Automotive products	4,831	4,793	-38	-0.8	60,918	43,623	-17,296	-28.4	-19.2
Passenger autos and chassis	1,701	1,695	-6	-0.4	22,231	14,837	-7,394	-33.3	-20.8
Trucks and other motor vehicles	984	996	12	1.3	12,857	9,939	-2,918	-22.7	-17.2
Motor vehicle parts	2,146	2,102	-44	-2.0	25,831	18,847	-6,984	-27.0	-18.8
Other consumer goods	4,695	4,686	-9	-0.2	47,098	48,075	978	2.1	-7.9
Apparel and footwear	852	836	-16	-1.9	9,164	9,431	267	2.9	-18.0
Apparel and apparel accessories	703	693	-10	-1.4	7,652	7,865	213	2.8	-17.4
Footwear	149	143	-6	-4.2	1,512	1,565	54	3.6	-20.4
Miscellaneous consumer goods	3,843	3,850	7	0.2	37,934	38,645	711	1.9	-5.4
Television, radios, phonographs	130	127	-3	-2.7	1,418	1,153	-265	-18.7	-15.7
Printed matter	298	285	-13	-4.4	3,069	3,019	-50	-1.6	-15.4
Watches, sporting goods and toys	514	482	-33	-6.4	5,277	5,105	-172	-3.3	-13.4
House furnishings	711	706	-5	-0.7	7,101	7,293	192	2.7	-8.9
Photographic goods	221	208	-13	-5.9	2,382	2,182	-200	-8.4	-23.8
Miscellaneous end products	1,967	2,042	75	3.8	18,686	19,893	1,206	6.5	3.3
Special transactions trade	388	486	98	25.1	5,041	4,161	-880	-17.5	12.6
Unallocated balance of payments adjustments	660	661	0	0.1	7,398	6,692	-706	-9.5	-12.5

Table 6-2
Imports by commodity groupings, balance of payments basis, seasonally adjusted — Constant dollars, 2002

	September	October	Change	Year to date		Year to date change	October 2009/2008		
	2009	2009		2008	2009				
	millions of dollars		percent		millions of dollars		percent		
Total	34,751	34,871	120	0.3	410,469	333,919	-76,550	-18.6	-11.1
Agricultural and fishing products	2,367	2,444	77	3.3	23,575	23,242	-332	-1.4	4.1
Fruits and vegetables	680	676	-4	-0.6	6,280	6,752	472	7.5	2.1
Fresh fruits and berries	243	244	1	0.4	2,242	2,473	231	10.3	-1.8
Dried fruits, fruits and fruit preparations	121	122	1	1.1	1,175	1,239	64	5.4	-6.6
Fresh vegetables	186	180	-5	-2.9	1,622	1,755	134	8.2	15.1
Other vegetables and vegetable preparations	130	129	-1	-0.6	1,242	1,285	43	3.5	2.7
Other agricultural and fishing products	1,686	1,767	81	4.8	17,294	16,490	-804	-4.7	4.8
Live animals	18	19	1	5.2	163	161	-2	-1.4	20.6
Meat and meat preparations	192	200	8	4.4	1,753	1,793	40	2.3	12.7
Fish and marine animals	266	256	-9	-3.6	2,069	2,298	229	11.0	29.9
Cocoa, coffee, tea and other food preparations	340	357	17	5.1	3,546	3,352	-194	-5.5	-4.8
Dairy produce, eggs and honey	48	44	-4	-9.0	455	453	-2	-0.4	11.4
Corn (maize) shelled	40	37	-3	-7.3	428	344	-84	-19.6	-7.8
Other cereals and cereal preparations	169	164	-6	-3.3	1,727	1,608	-119	-6.9	-1.5
Sugar and sugar preparations	117	158	41	35.2	1,400	1,347	-53	-3.8	17.9
Fodder, feed, excluding unmilled cereal	97	103	7	6.7	998	924	-74	-7.4	6.2
Beverages	254	278	24	9.4	2,955	2,708	-247	-8.4	-0.5
Tobacco	42	34	-8	-18.5	428	352	-76	-17.8	-10.7
Crude vegetable products	103	115	12	11.8	1,357	1,140	-217	-16.0	-6.3
Cotton	1	1	0	42.3	15	11	-4	-26.0	-37.0
Energy products	1,641	1,750	109	6.6	18,636	17,460	-1,177	-6.3	-18.5
Crude petroleum	899	935	36	4.0	10,107	9,554	-553	-5.5	-19.9
Other energy products	742	815	73	9.8	8,530	7,906	-624	-7.3	-16.9
Coal and other related products	311	323	12	3.7	2,964	3,250	286	9.7	12.2
Petroleum and coal products	431	492	61	14.2	5,566	4,656	-910	-16.3	-29.0
Forestry products	269	258	-12	-4.4	3,134	2,508	-626	-20.0	-10.9
Forestry products	269	258	-12	-4.4	3,134	2,508	-626	-20.0	-10.9
Crude wood products	47	43	-4	-8.0	503	470	-33	-6.6	-25.5
Wood fabricated materials	223	214	-8	-3.6	2,631	2,038	-593	-22.5	-7.3
Industrial goods and materials	5,846	5,859	13	0.2	68,067	56,096	-11,971	-17.6	-7.7
Metals and metal ores	1,639	1,666	27	1.7	18,346	14,613	-3,733	-20.3	1.8
Metals in ores, concentrates and scrap	413	358	-54	-13.2	3,984	3,654	-330	-8.3	-5.5
Steel bars, rods, plates, sheets	355	360	5	1.3	4,213	3,132	-1,081	-25.7	-0.4
Other iron and steel products	199	212	13	6.5	2,785	2,127	-658	-23.6	-24.8
Precious metals including alloys	313	451	138	44.2	2,762	2,705	-57	-2.1	91.7
Other non-ferrous metals and alloys	359	285	-74	-20.6	4,603	2,996	-1,607	-34.9	-24.7
Chemicals and plastics	2,141	2,118	-22	-1.1	23,863	21,117	-2,746	-11.5	-7.1
Organic chemicals	399	382	-17	-4.3	4,732	4,359	-373	-7.9	-16.3
Plastic materials	784	821	37	4.7	9,099	7,627	-1,472	-16.2	-7.1
Other chemicals and related products	957	915	-42	-4.4	10,032	9,130	-902	-9.0	-2.6
Other industrial goods and materials	2,066	2,074	8	0.4	25,857	20,366	-5,492	-21.2	-14.7
Crude animal products	26	28	2	8.3	262	262	0	-0.0	20.7
Wool and man-made fibres	20	21	0	0.8	269	221	-48	-17.9	-14.6
Crude non-metallic minerals	48	62	14	28.2	738	560	-178	-24.2	-31.6
Textile fabricated materials	234	241	7	3.0	2,922	2,309	-613	-21.0	-7.7
Metal fabricated basic products	757	746	-11	-1.4	9,564	7,380	-2,184	-22.8	-15.1
Rubber fabricated materials	94	94	0	-0.0	1,113	872	-241	-21.7	-8.1
Oils, fats, animal and vegetable	98	82	-16	-16.5	810	903	93	11.5	-10.4
Non-metallic minerals	318	324	7	2.1	3,849	3,081	-767	-19.9	-14.9
Other fabricated materials	470	476	6	1.2	6,330	4,778	-1,553	-24.5	-17.7

Table 6-2 – continued

Imports by commodity groupings, balance of payments basis, seasonally adjusted — Constant dollars, 2002

	September 2009	October 2009	Change	Year to date		Year to date change	October 2009/2008		
	millions of dollars			percent				millions of dollars	
Machinery and equipment	12,051	11,737	-315	-2.6	146,238	117,289	-28,948	-19.8	-15.2
Industrial and agricultural machinery	2,687	2,469	-218	-8.1	36,070	25,960	-10,111	-28.0	-24.7
Engines, turbines and electric motors	352	271	-81	-23.0	4,307	3,858	-448	-10.4	-24.1
Drilling mining machinery	146	116	-30	-20.3	1,721	1,259	-462	-26.8	-35.5
Excavating machinery	220	186	-34	-15.6	3,804	1,866	-1,938	-50.9	-44.3
Metal working machinery	142	164	22	15.8	2,686	1,552	-1,134	-42.2	-27.6
Other industrial machinery	1,404	1,373	-31	-2.2	19,008	13,549	-5,459	-28.7	-21.6
Agricultural machinery including tractors	423	359	-64	-15.2	4,545	3,875	-669	-14.7	-16.3
Aircraft and other transportation equipment	1,356	1,364	8	0.6	17,803	14,217	-3,585	-20.1	-13.4
Aircraft, engines, parts	849	849	0	0.0	11,542	9,157	-2,385	-20.7	-15.4
Other transportation equipment and parts	507	515	8	1.5	6,261	5,061	-1,200	-19.2	-10.0
Office machines and equipment	2,042	1,969	-74	-3.6	24,952	20,406	-4,546	-18.2	-26.5
Other machinery and equipment	5,965	5,935	-30	-0.5	67,412	56,706	-10,706	-15.9	-6.0
Other communication and related equipment	2,439	2,432	-7	-0.3	26,502	23,399	-3,104	-11.7	-2.0
Other equipment and tools	3,526	3,503	-23	-0.6	40,910	33,307	-7,602	-18.6	-8.6
Automotive products	5,770	5,821	50	0.9	76,335	50,443	-25,892	-33.9	-15.5
Passenger autos and chassis	1,963	1,986	23	1.2	25,733	17,236	-8,497	-33.0	-21.8
Trucks and other motor vehicles	1,075	1,100	25	2.3	15,360	10,554	-4,806	-31.3	-15.1
Motor vehicle parts	2,732	2,734	2	0.1	35,241	22,653	-12,588	-35.7	-10.3
Other consumer goods	5,850	5,970	120	2.1	63,828	56,731	-7,098	-11.1	-0.2
Apparel and footwear	1,145	1,148	3	0.2	13,276	11,919	-1,357	-10.2	-9.9
Apparel and apparel accessories	946	953	7	0.8	11,093	9,955	-1,138	-10.3	-9.3
Footwear	200	195	-5	-2.3	2,183	1,964	-219	-10.0	-12.8
Miscellaneous consumer goods	4,705	4,822	117	2.5	50,552	44,811	-5,741	-11.4	2.5
Television, radios, phonographs	208	215	7	3.2	2,328	1,730	-598	-25.7	0.0
Printed matter	365	350	-14	-4.0	4,183	3,566	-617	-14.7	-12.4
Watches, sporting goods and toys	673	647	-26	-3.9	7,573	6,509	-1,064	-14.1	-5.6
House furnishings	886	910	24	2.7	9,334	8,446	-888	-9.5	4.0
Photographic goods	386	363	-23	-6.0	4,285	3,505	-781	-18.2	-19.0
Miscellaneous end products	2,186	2,337	151	6.9	22,849	21,057	-1,793	-7.8	12.2
Special transactions trade	439	561	122	27.8	5,636	4,509	-1,127	-20.0	30.1
Unallocated balance of payments adjustments	517	472	-45	-8.8	5,020	5,641	621	12.4	-49.8

Table 7-1
Imports from selected countries, customs basis, not seasonally adjusted — October

	Agricultural and fishing products	Energy products	Forestry products	Industrial goods	Machinery and equipment	Automotive products	Consumer goods	Special transactions	Total
millions of dollars									
United States									
2008	1,595.4	1,645.7	191.3	5,410.8	5,278.1	4,524.2	2,220.0	386.9	21,252.4
2009	1,434.3	700.0	147.9	3,937.3	3,906.7	3,513.5	2,011.4	476.7	16,127.9
Mexico									
2008	77.7	75.4	0.3	134.3	853.5	531.7	133.2	3.2	1,809.2
2009	78.4	0.0	0.2	114.8	644.5	486.5	88.4	2.4	1,415.2
Japan									
2008	6.8	0.5	0.2	102.8	576.2	629.1	108.2	0.8	1,424.6
2009	5.0	2.3	0.2	100.4	369.1	504.1	89.8	0.2	1,071.1
European Union									
Germany									
2008	33.7	1.1	1.4	234.6	445.4	257.4	166.1	0.3	1,140.0
2009	27.1	6.2	0.9	139.6	302.8	290.4	170.7	0.5	938.3
France									
2008	91.4	41.6	0.3	85.2	151.5	4.2	157.5	0.2	531.8
2009	79.0	0.7	0.2	54.0	121.9	4.2	169.4	0.4	429.9
United Kingdom									
2008	48.9	599.8	0.0	118.8	409.6	42.9	155.3	1.1	1,376.3
2009	53.4	339.9	0.1	116.1	253.6	32.0	109.1	0.8	905.0
Italy									
2008	80.4	0.1	1.3	94.1	144.9	20.7	100.4	0.5	442.3
2009	69.5	0.2	1.1	68.3	109.5	19.6	91.5	0.1	359.7
Other European Union									
2008	133.2	135.1	4.5	240.9	430.0	126.8	373.1	0.7	1,444.1
2009	121.8	123.0	3.4	240.4	291.4	99.7	405.4	0.3	1,285.3
Total									
2008	387.6	777.6	7.5	773.5	1,581.4	452.0	952.3	2.8	4,934.7
2009	350.9	469.9	5.7	618.4	1,079.2	445.8	946.1	2.2	3,918.1
Newly industrialized countries									
South Korea									
2008	3.6	25.5	0.0	88.5	308.8	151.3	25.3	0.1	603.2
2009	3.6	91.0	0.0	56.2	240.8	138.2	17.5	0.1	547.4
Hong Kong									
2008	1.9	0.0	0.1	2.2	16.0	0.1	19.8	0.0	40.2
2009	2.9	0.0	0.2	2.4	12.6	0.4	16.2	0.0	34.7
Taiwan									
2008	4.3	0.0	0.2	83.2	213.1	15.4	41.7	0.1	357.9
2009	4.7	0.0	0.8	50.6	166.4	12.9	34.3	0.1	269.8
Singapore									
2008	4.2	0.0	0.0	21.3	51.8	0.3	16.3	0.0	93.8
2009	3.6	0.0	0.0	13.7	34.1	0.2	16.9	0.0	68.6
Total									
2008	14.0	25.5	0.3	195.1	589.7	167.1	103.1	0.2	1,095.1
2009	14.9	91.1	0.9	122.9	453.9	151.6	84.9	0.2	920.5
Other countries									
2008	694.4	2,838.6	63.7	1,807.3	2,794.8	197.8	2,196.2	45.5	10,638.3
2009	659.1	1,502.5	45.5	1,471.9	2,351.3	175.2	1,899.0	20.2	8,124.6
Total									
2008	2,776.2	5,363.2	263.4	8,423.9	11,673.6	6,501.8	5,713.0	439.5	41,154.5
2009	2,542.9	2,765.8	200.5	6,365.7	8,804.7	5,276.8	5,119.7	502.0	31,577.9

Table 7-2
Imports from selected countries, customs basis, not seasonally adjusted — Year to date, January to October

	Agricultural and fishing products	Energy products	Forestry products	Industrial goods	Machinery and equipment	Automotive products	Consumer goods	Special transactions	Total
millions of dollars									
United States									
2008	13,667.7	13,544.7	1,772.6	48,832.0	47,982.5	43,230.4	18,708.9	3,605.7	191,344.6
2009	14,440.6	8,704.1	1,501.0	37,392.0	41,542.3	29,333.8	19,294.8	3,448.0	155,656.7
Mexico									
2008	980.4	795.0	4.0	1,190.6	5,891.1	4,595.4	881.8	37.1	14,375.3
2009	1,090.1	406.8	4.8	1,081.7	5,608.0	4,149.4	845.9	32.9	13,219.6
Japan									
2008	50.9	50.1	1.7	1,074.5	5,243.7	5,651.2	856.1	4.1	12,932.4
2009	55.1	34.5	1.7	936.1	4,032.4	4,372.0	817.3	2.5	10,251.7
European Union									
Germany									
2008	226.1	22.6	14.2	2,107.3	4,040.2	2,479.0	1,660.5	78.1	10,628.0
2009	226.5	29.3	11.1	1,521.3	3,524.7	2,110.0	1,518.3	6.7	8,948.0
France									
2008	658.0	180.4	3.0	729.4	1,592.7	63.9	1,333.5	323.0	4,883.8
2009	596.4	185.8	2.2	937.7	1,587.8	76.9	1,402.9	9.4	4,799.0
United Kingdom									
2008	347.9	4,869.6	1.8	1,038.4	2,722.3	470.4	1,175.4	38.3	10,664.2
2009	360.3	1,949.5	1.2	1,057.8	2,877.4	280.6	1,115.6	30.6	7,672.9
Italy									
2008	547.5	119.2	15.1	975.9	1,403.5	210.6	928.7	54.8	4,255.3
2009	539.5	72.5	12.1	776.5	1,237.4	163.7	903.5	6.2	3,711.4
Other European Union									
2008	1,024.2	2,283.5	43.5	2,633.7	4,398.9	1,092.1	3,379.2	145.3	15,000.3
2009	968.4	1,399.1	35.9	2,308.4	3,581.7	585.2	3,482.2	42.2	12,403.0
Total									
2008	2,803.8	7,475.3	77.5	7,484.7	14,157.6	4,316.0	8,477.3	639.4	45,431.7
2009	2,691.1	3,636.1	62.5	6,601.7	12,808.9	3,216.4	8,422.5	95.1	37,534.3
Newly industrialized countries									
South Korea									
2008	39.9	188.1	0.4	786.5	2,345.0	1,468.7	206.5	1.1	5,036.2
2009	40.6	294.5	0.1	651.4	2,226.1	1,552.4	188.7	0.7	4,954.6
Hong Kong									
2008	26.8	0.1	0.9	27.6	163.4	1.6	163.0	0.6	384.0
2009	24.1	0.0	0.6	23.8	134.2	3.5	120.0	0.5	306.7
Taiwan									
2008	47.4	74.1	9.0	726.8	1,882.2	153.3	368.8	1.1	3,262.7
2009	54.6	0.3	8.1	586.8	1,663.7	141.4	339.3	0.9	2,795.1
Singapore									
2008	27.7	83.3	1.0	215.2	495.4	2.6	177.9	3.6	1,006.6
2009	27.2	70.0	0.6	266.7	416.4	3.9	181.1	1.3	967.2
Total									
2008	141.9	345.6	11.3	1,756.1	4,886.0	1,626.1	916.2	6.3	9,689.5
2009	146.5	364.9	9.5	1,528.6	4,440.3	1,701.3	829.2	3.4	9,023.7
Other countries									
2008	5,726.5	23,975.1	571.4	16,215.2	22,944.6	1,936.8	17,887.7	682.6	89,939.9
2009	5,964.2	14,638.0	441.3	14,283.2	22,078.7	1,492.2	18,001.9	316.1	77,215.5
Total									
2008	23,372.2	46,185.8	2,438.5	76,553.4	101,105.6	61,355.9	47,728.1	4,975.2	363,714.7
2009	24,389.1	27,784.3	2,020.8	61,823.7	90,510.7	44,265.0	48,211.5	3,898.1	302,903.2

Table 8
Imports by country, customs basis, not seasonally adjusted

	October		January to October		Variation January to October 2009/2008
	2008	2009	2008	2009	
millions of dollars					
North America					
Canada	338.0	353.0	3,142.9	2,719.5	-13.5
Greenland	0.1	0.0	25.7	17.0	-33.8
Mexico	1,809.2	1,415.2	14,375.3	13,219.6	-8.0
Saint Pierre and Miquelon	0.0	0.0	0.5	0.2	-55.8
United States	21,252.4	16,127.9	191,344.6	155,656.7	-18.7
Total	23,399.7	17,896.2	208,889.0	171,613.0	-17.8
Western Europe					
Andorra	0.0	0.0	0.1	0.1	-28.7
Austria	143.5	124.9	1,288.8	958.1	-25.7
Belgium	209.1	109.5	1,883.7	1,176.2	-37.6
Denmark	129.0	67.7	1,411.8	1,154.0	-18.3
Faeroe Islands	0.2	0.4	1.2	1.7	47.4
Finland	73.2	94.9	700.9	751.6	7.2
France	531.8	429.9	4,883.8	4,799.0	-1.7
Germany	1,140.0	938.3	10,628.0	8,948.0	-15.8
Gibraltar	0.0	0.0	0.0	0.0	-98.0
Greece	10.5	12.4	111.6	114.4	2.6
Iceland	2.0	2.5	29.1	26.5	-9.1
Italy	442.3	359.7	4,255.3	3,711.4	-12.8
Luxembourg	5.3	48.3	87.9	125.0	42.2
Malta	1.6	1.6	18.8	17.3	-8.3
Netherlands	181.2	140.2	1,869.2	1,595.4	-14.7
Norway	620.3	323.1	5,498.6	2,857.1	-48.0
Portugal	32.9	53.3	379.2	274.8	-27.5
Republic of Ireland (Eire)	184.4	213.2	1,728.1	1,843.6	6.7
Spain	114.8	113.6	1,415.5	1,120.2	-20.9
Sweden	169.4	157.8	1,951.7	1,515.3	-22.4
Switzerland	224.5	240.9	2,178.0	2,866.8	31.6
United Kingdom	1,376.3	905.0	10,664.2	7,672.9	-28.0
Total	5,592.6	4,337.1	50,985.6	41,529.4	-18.5
Other Europe					
Albania	0.4	0.3	2.5	3.2	25.6
Armenia	1.9	2.6	5.3	27.9	428.9
Azerbaijan	111.7	0.4	1,168.2	911.8	-21.9
Belarus	0.9	6.6	32.9	34.4	4.7
Bosnia and Herzegovina	0.4	1.2	4.9	7.5	53.8
Bulgaria	6.5	5.1	98.8	108.2	9.4
Croatia	6.1	2.3	45.9	21.7	-52.6
Czech Republic	34.1	18.2	289.8	231.6	-20.1
Estonia	3.2	1.6	36.0	46.1	28.0
Georgia	9.3	11.1	107.2	112.3	4.7
Hungary	36.8	19.5	326.4	297.3	-8.9
Kazakhstan	13.0	0.1	66.5	122.4	84.1
Kyrgyzstan	0.0	0.0	1.0	0.4	-56.8
Latvia	1.1	0.6	30.1	15.5	-48.4
Lithuania	4.2	2.2	325.7	112.0	-65.6
Macedonia (Former Yugoslav Republic of Macedonia)	0.3	0.9	6.9	7.6	9.8
Montenegro	0.0	0.0	0.6	0.3	-58.0
Poland	70.7	59.4	697.7	640.5	-8.2
Republic of Moldova	0.4	0.1	2.1	1.6	-23.1
Romania	11.5	9.0	124.6	104.0	-16.5
Russian Federation	128.8	361.6	1,786.5	2,470.4	38.3
Serbia	1.0	0.7	10.3	9.1	-11.5
Slovakia	14.9	21.8	156.0	137.1	-12.1
Slovenia	6.0	10.4	65.5	62.6	-4.4
Tajikistan	0.0	0.0	0.0	0.0	-89.9
Turkmenistan	0.0	0.1	0.8	0.4	-57.7
Ukraine	22.1	3.4	158.7	75.8	-52.3
Uzbekistan	0.0	0.0	0.9	11.8	...
Total	485.4	539.4	5,552.0	5,573.6	0.4

Table 8 – continued

Imports by country, customs basis, not seasonally adjusted

	October		January to October		Variation
	2008	2009	2008	2009	January to October 2009/2008
millions of dollars					
Middle East					
Bahrain	0.2	0.3	3.4	4.3	27.2
Cyprus	0.0	0.0	2.4	2.2	-7.5
Egypt	6.3	15.6	82.5	80.9	-2.0
Eritrea	0.0	0.0	0.0	0.1	267.5
Ethiopia	1.1	0.9	10.2	14.3	40.1
Iran	7.8	1.7	36.3	20.8	-42.8
Iraq	187.1	101.3	1,940.5	1,070.7	-44.8
Israel	90.6	70.1	1,024.1	765.6	-25.2
Jordan	1.0	1.3	12.2	13.6	11.6
Kuwait	0.0	0.0	7.6	37.3	388.4
Lebanon	1.6	1.4	13.2	12.4	-5.7
Libya	0.0	0.0	0.0	0.2	...
Oman	0.8	0.2	3.4	5.3	58.7
Qatar	0.1	0.2	0.5	13.0	...
Saudi Arabia	341.2	149.0	2,058.5	1,286.6	-37.5
Somalia	0.0	0.0	0.1	0.0	-28.1
Sudan	5.3	6.8	57.7	55.4	-4.0
Syria	0.6	0.5	54.9	4.7	-91.4
Turkey	65.6	57.3	475.4	540.2	13.6
United Arab Emirates	3.6	2.7	323.3	191.0	-40.9
Yemen	0.0	0.0	0.2	0.1	-3.0
Total	713.0	409.3	6,106.6	4,119.0	-32.5
Other Africa					
Algeria	794.7	284.4	7,041.9	2,900.7	-58.8
Angola	459.0	152.1	2,229.7	1,163.1	-47.8
Antarctica	0.0	0.0	0.0	0.0	213.0
Benin	0.0	0.0	0.0	0.0	-91.5
Botswana	0.1	0.0	12.2	21.7	78.2
Bouvet Island	0.0	0.0	0.0	0.0	-15.1
Burkina Faso	0.0	3.1	0.1	8.1	...
Burundi	0.0	0.0	0.5	0.2	-69.9
Cameroon	0.4	0.4	3.9	3.9	-1.6
Cape Verde	0.0	0.0	0.0	0.0	-62.0
Central African Republic	0.0	0.0	0.1	0.1	-1.8
Chad	0.0	0.1	0.2	0.2	-26.7
Comoros	0.0	0.0	0.0	0.0	-52.4
Congo	0.1	0.1	2.1	1.9	-9.0
Democratic Republic of the Congo	0.1	0.0	0.6	0.5	-24.3
Djibouti	0.0	0.0	0.0	0.0	305.6
Equatorial Guinea	0.0	0.0	81.1	347.9	328.9
French Southern Territories	0.0	0.0	0.0	0.0	-99.2
Gabon	0.1	0.1	1.0	1.6	69.5
Gambia	0.0	0.0	0.1	0.1	81.5
Ghana	6.1	1.7	27.9	20.9	-25.1
Guinea	5.9	2.6	54.3	54.0	-0.5
Guinea-Bissau	0.0	0.0	0.0	0.0	...
Ivory Coast	18.9	12.7	90.7	179.0	97.3
Kenya	1.8	1.1	12.5	14.3	14.3
Lesotho	0.7	1.0	5.9	7.2	21.4
Liberia	0.7	5.6	20.3	23.7	16.9
Madagascar	3.8	5.1	16.6	36.2	118.2
Malawi	0.2	1.3	2.2	2.8	30.2
Mali	0.0	0.0	0.3	0.3	-9.3
Mauritania	0.0	0.1	0.2	0.8	365.3
Mauritius	1.2	0.4	6.1	7.8	29.2
Morocco	23.7	11.8	90.2	81.5	-9.6
Mozambique	0.2	0.0	1.1	0.3	-74.6
Namibia	21.0	43.3	242.8	237.5	-2.2
Niger	0.0	0.0	0.6	0.7	23.3
Nigeria	67.9	5.0	722.3	318.3	-55.9
Rwanda	0.1	0.0	0.4	0.3	-20.9
Saint Helena	0.0	0.0	0.1	0.0	-80.5
Sao Tome and Principe	0.0	0.0	0.0	0.0	-72.6
Senegal	0.3	0.0	1.0	0.8	-19.5
Seychelles	0.1	0.0	1.4	0.5	-62.9

Table 8 – continued

Imports by country, customs basis, not seasonally adjusted

	October		January to October		Variation
	2008	2009	2008	2009	January to October 2009/2008
millions of dollars					
Sierra Leone	0.0	2.5	1.0	3.8	298.5
South Africa	116.6	49.7	738.0	527.5	-28.5
Swaziland	0.3	0.1	2.1	1.7	-17.0
Togo	0.1	0.8	6.0	4.1	-31.3
Tunisia	3.7	3.8	35.8	39.0	9.0
Uganda	0.0	0.0	2.1	2.0	-1.0
United Republic of Tanzania	0.3	0.7	1.8	3.6	107.1
Western Sahara	0.0	0.0	0.0	0.0	-86.3
Zambia	0.0	0.1	0.6	0.6	10.9
Zimbabwe	0.0	0.5	3.7	2.5	-33.8
Total	1,528.3	590.5	11,461.4	6,022.0	-47.5
Other Asia					
Afghanistan	0.1	0.1	1.1	1.1	-2.2
Bangladesh	64.7	60.9	548.9	715.9	30.4
Bhutan	0.0	0.0	0.0	0.0	-52.2
British Indian Ocean Territory	0.0	0.0	0.0	0.0	-87.8
Brunei Darussalam	0.1	0.0	2.0	1.8	-7.7
Cambodia	24.3	25.4	223.4	248.2	11.1
China	4,382.4	3,533.3	34,761.8	33,003.6	-5.1
Hong Kong	40.2	34.7	384.0	306.7	-20.1
India	232.5	157.1	1,826.8	1,726.3	-5.5
Indonesia	110.2	77.3	892.2	839.9	-5.9
Japan	1,424.6	1,071.1	12,932.4	10,251.7	-20.7
Laos	0.4	0.2	4.6	5.9	28.2
Macao	2.5	1.1	25.5	21.1	-17.2
Malaysia	263.5	201.6	2,414.1	1,932.3	-20.0
Maldives	0.0	0.0	0.2	0.1	-70.6
Mongolia	16.1	17.8	152.4	108.9	-28.6
Myanmar	0.0	0.0	0.7	0.1	-92.0
Nepal	1.9	1.0	13.1	10.9	-16.2
North Korea	0.0	0.0	0.1	0.1	8.7
Pakistan	24.2	18.8	200.1	203.3	1.6
Philippines	75.9	78.0	687.4	602.6	-12.3
Singapore	93.8	68.6	1,006.6	967.2	-3.9
South Korea	603.2	547.4	5,036.2	4,954.6	-1.6
Sri Lanka	10.3	9.8	99.3	97.0	-2.3
Taiwan	357.9	269.8	3,262.7	2,795.1	-14.3
Thailand	239.0	192.6	2,022.8	1,879.0	-7.1
Timor-Leste	1.0	0.2	5.5	3.1	-42.8
Viet Nam	94.7	85.9	786.9	883.1	12.2
Total	8,063.4	6,452.8	67,291.0	61,559.7	-8.5
Oceania					
American Samoa	0.0	0.0	0.2	0.2	6.4
Australia	153.4	128.8	1,397.5	1,306.9	-6.5
Christmas Island	0.0	0.0	0.0	0.0	-7.1
Cocos (Keeling) Islands	0.0	0.0	0.0	0.1	162.1
Cook Islands	0.0	0.0	0.1	0.0	-51.1
Fiji	0.5	0.6	7.4	5.8	-21.5
French Polynesia	0.2	0.2	1.1	0.6	-46.6
Guam	0.5	0.0	0.7	0.3	-66.0
Heard Island and McDonald Islands	0.0	0.0	0.0	0.0	13.5
Kiribati	0.0	0.0	0.0	0.1	509.9
Nauru	0.1	0.0	0.1	0.1	22.5
New Caledonia	0.0	0.0	0.3	0.3	23.3
New Zealand	34.2	34.1	412.0	389.5	-5.5
Niue	0.0	0.0	0.0	0.0	-51.7
Norfolk Island	0.0	0.0	0.0	0.0	102.2
Papua New Guinea	0.2	0.2	1.5	1.4	-9.5
Pitcairn	0.0	0.0	0.0	0.0	-16.6
Samoa	0.0	0.0	0.0	0.0	-89.8
Solomon Islands	0.0	0.0	0.1	0.1	-7.7
Tonga	0.0	0.0	0.1	0.0	-80.5
United States Minor Outlying Islands	0.3	0.4	4.7	4.1	-12.4
Vanuatu	0.0	0.0	0.0	0.2	282.5

Table 8 – continued

Imports by country, customs basis, not seasonally adjusted

	October		January to October		Variation
	2008	2009	2008	2009	January to October 2009/2008
	millions of dollars				
Wallis and Futuna	0.0	0.0	0.0	0.0	...
Total	189.4	164.2	1,826.0	1,709.9	-6.4
South America					
Argentina	59.1	72.0	452.0	585.3	29.5
Bolivia	4.1	4.9	60.2	66.2	10.1
Brazil	272.2	329.6	2,178.1	2,127.9	-2.3
Chile	130.8	74.3	1,619.9	1,352.1	-16.5
Colombia	44.4	92.0	519.8	639.2	23.0
Ecuador	13.6	13.0	145.2	195.1	34.4
Falkland Islands (Malvinas)	0.0	0.0	0.1	0.0	-58.3
Guyana	25.1	28.6	187.1	251.8	34.6
Paraguay	2.0	1.4	14.2	7.7	-46.2
Peru	248.6	262.0	2,073.9	2,296.4	10.7
Suriname	65.0	52.1	507.0	451.0	-11.1
Uruguay	1.6	1.6	28.6	50.1	75.3
Venezuela	98.8	48.7	1,264.9	895.0	-29.2
Total	965.2	980.1	9,050.9	8,918.0	-1.5
Central America Antilles					
Anguilla	0.1	0.0	0.2	0.3	61.7
Antigua and Barbuda	0.1	0.0	5.3	0.4	-91.6
Aruba	0.2	0.1	120.4	53.5	-55.6
Bahamas	0.7	0.3	63.9	27.7	-56.7
Barbados	1.1	0.8	7.4	7.5	1.5
Belize	1.0	0.4	9.2	6.5	-29.0
Bermuda	0.2	0.3	1.6	11.3	592.4
British Virgin Islands	0.3	0.0	11.4	0.5	-95.4
Cayman Islands	0.0	0.0	0.2	1.0	501.3
Costa Rica	35.1	27.8	316.2	296.7	-6.2
Cuba	64.4	61.1	813.2	405.3	-50.2
Dominica	0.0	0.0	0.2	0.3	58.0
Dominican Republic	13.2	14.2	104.4	123.3	18.1
El Salvador	5.0	3.2	62.3	59.1	-5.1
Grenada	0.0	0.1	0.6	0.4	-38.5
Guatemala	17.1	23.8	220.5	232.6	5.5
Haiti	1.6	1.5	16.7	18.9	13.2
Honduras	12.4	11.8	130.3	120.2	-7.7
Jamaica	26.8	22.0	250.6	140.8	-43.8
Montserrat	0.1	0.0	0.1	0.1	-55.9
Netherlands Antilles	0.0	4.4	2.6	14.5	463.1
Nicaragua	6.9	4.6	87.6	70.9	-19.1
Panama	1.2	3.5	19.6	33.3	69.9
Saint Kitts and Nevis	0.5	0.6	4.3	5.4	26.1
Saint Lucia	0.0	0.0	0.1	2.2	...
Saint Vincent and the Grenadines	0.0	0.0	0.1	0.2	37.1
Trinidad and Tobago	29.4	27.6	301.3	225.4	-25.2
Turks and Caicos Islands	0.0	0.0	1.9	0.3	-86.0
Total	217.3	208.4	2,552.3	1,858.6	-27.2
All countries	41,154.5	31,577.9	363,714.7	302,903.2	-16.7

**Table 9-1
Imports by province of clearance, customs basis, not seasonally adjusted — October**

	Agricultural and fishing products	Energy products	Forestry products	Industrial goods	Machinery and equipment	Automotive products	Consumer goods	Special transactions	Total
millions of dollars									
Newfoundland and Labrador									
2008	3.8	281.6	0.0	4.0	3.8	0.1	0.7	0.1	294.0
2009	2.5	245.0	0.0	6.7	13.2	0.1	0.3	0.0	267.8
Prince Edward Island									
2008	0.3	0.0	0.0	0.0	0.2	0.0	0.1	0.0	0.6
2009	0.5	0.0	0.0	0.1	0.0	0.0	0.0	0.0	0.6
Nova Scotia									
2008	40.5	191.7	1.9	100.7	88.0	283.0	16.6	1.3	723.7
2009	29.1	138.5	1.6	83.1	98.6	336.2	12.1	0.4	699.6
New Brunswick									
2008	50.2	1,127.4	14.2	82.4	63.4	26.5	18.0	1.7	1,383.9
2009	53.6	488.9	7.8	80.9	70.4	30.0	18.3	1.8	751.7
Quebec									
2008	452.2	1,910.6	67.4	1,507.9	1,804.1	219.9	993.5	58.2	7,013.8
2009	478.0	1,083.7	51.9	1,200.4	1,400.0	200.0	980.7	37.6	5,432.2
Ontario									
2008	1,508.8	968.7	103.7	4,696.8	6,752.1	5,114.5	3,604.9	339.8	23,089.3
2009	1,346.4	401.6	77.9	3,794.8	5,162.3	4,067.4	3,225.5	439.5	18,515.4
Manitoba									
2008	84.3	41.6	8.6	348.4	608.6	191.5	163.6	8.2	1,455.0
2009	69.6	19.9	6.4	215.6	426.9	139.9	133.9	5.3	1,017.5
Saskatchewan									
2008	29.2	82.9	2.3	271.8	369.0	92.6	33.0	1.2	882.1
2009	28.0	65.2	1.4	137.5	206.5	74.0	19.8	0.3	532.6
Alberta									
2008	180.5	280.8	7.8	589.3	768.1	101.1	113.2	11.6	2,052.3
2009	157.7	115.3	6.1	311.1	490.3	65.0	106.2	7.7	1,259.4
British Columbia									
2008	421.5	476.4	57.4	822.1	1,213.5	472.1	769.4	17.3	4,249.8
2009	373.6	207.2	47.4	535.3	926.5	364.2	622.8	9.4	3,086.3
Yukon, Northwest Territories and Nunavut									
2008	4.9	1.3	0.0	0.5	2.7	0.4	0.0	0.1	10.0
2009	4.0	0.5	0.0	0.1	10.1	0.0	0.0	0.0	14.7
Total									
2008	2,776.2	5,363.2	263.4	8,423.9	11,673.6	6,501.8	5,713.0	439.5	41,154.5
2009	2,542.9	2,765.8	200.5	6,365.7	8,804.7	5,276.8	5,119.7	502.0	31,577.9

Table 9-2
Imports by province of clearance, customs basis, not seasonally adjusted — Year to date, January to October

	Agricultural and fishing products	Energy products	Forestry products	Industrial goods	Machinery and equipment	Automotive products	Consumer goods	Special transactions	Total
millions of dollars									
Newfoundland and Labrador									
2008	36.3	3,476.1	0.1	82.4	136.9	1.2	14.2	10.8	3,758.0
2009	31.5	1,905.3	0.5	145.7	121.6	1.0	3.5	4.4	2,213.4
Prince Edward Island									
2008	2.8	0.0	0.1	13.1	83.1	0.1	18.3	0.4	117.9
2009	3.0	0.0	0.0	17.9	13.0	0.1	1.7	0.2	35.8
Nova Scotia									
2008	305.1	1,757.9	17.5	1,221.1	990.4	2,663.4	128.0	16.9	7,100.4
2009	248.4	1,238.4	11.8	703.4	883.8	2,217.0	146.2	25.8	5,474.9
New Brunswick									
2008	394.3	7,056.8	108.8	833.8	728.0	321.2	151.1	19.6	9,613.7
2009	403.0	4,973.5	84.7	765.5	873.6	245.9	184.8	19.2	7,550.3
Quebec									
2008	3,496.4	19,540.2	609.4	14,396.2	16,821.7	2,082.4	8,480.3	995.3	66,421.8
2009	3,774.8	10,129.3	569.5	11,195.4	15,334.3	1,714.5	9,444.7	437.6	52,600.1
Ontario									
2008	12,748.4	7,493.3	933.4	42,769.1	56,775.2	47,850.0	30,152.1	3,469.8	202,191.3
2009	13,519.6	4,628.8	741.2	35,321.8	50,154.9	34,506.7	29,953.1	3,070.5	171,896.6
Manitoba									
2008	824.5	309.7	81.3	3,201.8	5,259.0	1,552.8	1,431.4	81.7	12,742.3
2009	806.1	243.8	72.4	2,672.2	4,692.4	1,162.5	1,394.6	76.2	11,120.3
Saskatchewan									
2008	292.6	430.0	25.1	2,250.7	3,281.6	1,097.1	252.2	19.1	7,648.2
2009	288.3	459.8	22.6	1,756.5	2,740.9	642.1	209.0	23.0	6,142.1
Alberta									
2008	1,585.7	3,037.7	95.3	4,560.5	6,593.8	1,140.1	1,005.0	133.6	18,151.7
2009	1,549.6	2,131.5	83.5	3,568.3	5,907.8	627.3	987.1	111.7	14,966.5
British Columbia									
2008	3,633.8	3,051.3	567.6	7,223.0	10,415.1	4,646.5	6,095.2	227.4	35,859.9
2009	3,715.4	2,039.9	434.5	5,674.9	9,759.5	3,147.4	5,886.6	128.2	30,786.5
Yukon, Northwest Territories and Nunavut									
2008	52.3	32.8	0.0	1.7	20.8	1.1	0.3	0.7	109.7
2009	49.5	33.9	0.0	1.9	29.2	0.6	0.2	1.4	116.8
Total									
2008	23,372.2	46,185.8	2,438.5	76,553.4	101,105.6	61,355.9	47,728.1	4,975.2	363,714.7
2009	24,389.1	27,784.3	2,020.8	61,823.7	90,510.7	44,265.0	48,211.5	3,898.1	302,903.2

Technical notes

The Canadian international merchandise trade statistical program

I Introduction

The objective of this text is to provide a general overview of the Canadian International Merchandise Trade Statistical Program with special reference to concepts and definitions. The text is intended for the general user and simplicity is emphasized. More technical details can be obtained from the International Trade Division upon request.

II Conceptual framework

1. Objectives and coverage: The primary objective of the Canadian International Merchandise Trade Statistical Program is to measure the change in the stock of material resources of the country resulting from the movement of merchandise into or out of Canada. Information on imports and exports are inputs into the System of National Accounts particularly in the Balance of Payments and Gross Domestic Product, and are used in the formulation of trade and budgetary policies. Governments, importers, exporters, manufacturers and shipping companies use trade statistics to:

- monitor import penetration and export performance;
- monitor commodity price and volume changes;
- examine transport implications.

2. Trade statistics - Customs basis/Balance of Payments basis: Merchandise trade statistics are reported and presented on two different bases: Customs basis and Balance of Payment basis. (B.O.P.)

When goods are imported into or exported from Canada, declarations must be filed with Customs giving such information as description and value of the goods, origin and port of clearance of commodities and the mode of transport. Most of this information is required for the purposes of Customs Administration. Statistics developed from administrative records of Customs are commonly referred to as Customs based trade statistics.

Customs based trade statistics are more accurate at measuring imports than they are at measuring exports. This is the case because Customs are typically more vigilant with respect to goods entering the country than they are with goods leaving the country.

Customs based export statistics may understate and/or incorrectly portray the destination of exports. Export statistics are understated when the proper documentation is not filed with Customs. Exports are incorrectly portrayed when the country of final destination is inaccurately reported on the customs documentation - this occurs most frequently when goods are routed through an intermediary country before continuing on to their final destination.

Statistics Canada does not have a measure of undercoverage but periodically conducts reconciliation exercises with its major trading partners, excluding the United States.

On January 1st, 1990, Canada entered into a Memorandum of Understanding (MOU) with the United States concerning the exchange of import data. As a consequence, each administration is using the other's import data to replace its own export data. Canada's international merchandise trade statistics are, therefore, no longer derived exclusively from the administrative records of Canada Border Services Agency, but from United States Customs records as well.

Customs based information is adjusted to conform with the National Accounts concepts and definitions. The adjustments to derive Balance of Payments based trade data include trade definition, valuation and timing related adjustments. The principal difference between the two trade concepts is that Customs based merchandise trade statistics cover the physical movement of goods as they are reflected on customs documents, while Balance of Payments adjusted data are intended to cover all economic transactions between residents and non-residents which involve merchandise trade. This section describes the concepts and processes pertaining to the Customs based trade statistics only. (For further information on Balance of Payments adjusted data see the publication *"Canada's Balance of International Payments" Catalogue no. 67-001-XPB*).

3. System of trade: Canadian trade statistics are compiled according to the "General" system of trade as defined by the United Nations Statistical Office. Under this system, imports include all goods which have crossed Canada's territorial boundary, whether for immediate consumption in Canada or stored in bonded Customs warehouses. Domestic exports include goods grown, extracted or manufactured in Canada, including goods of foreign origin which have been materially transformed in Canada. Re-exports are exports of goods of foreign origin which have not been materially transformed in Canada, including foreign goods withdrawn for export from bonded customs warehouses. Total exports are the sum of Domestic exports and Re-exports. Thus the general trade system, in principal, presents all goods entering the country (imports) and all goods leaving the country (exports). It differs from the "Special" system of trade in the treatment of imported goods into Customs bonded warehouses. Under the "Special" system, these goods are counted only if and when they are withdrawn from Customs warehouses for home consumption. They are not counted in export statistics unless they have first cleared Customs.

Conceptually, under the "General" system, the statistical frontier coincides with the geographical boundary, while under the "Special" system, it coincides with the Customs boundary.

4. Valuation: For Customs purposes, imports are recorded at values established according to the provisions of the Customs Act, which, since January 1st, 1985, reflects valuation methods based on the General Agreement on Tariffs and Trade (GATT) Valuation Code System. It generally requires the value for duty of imported goods be equivalent to the transaction value or the price actually paid.

To determine the transaction value of imported goods, all transportation and associated costs arising in respect of the goods being appraised prior to and at the place of direct shipment to Canada, are to be added to the price of the goods. Therefore, Canadian imports are valued F.O.B. (Free on Board), place of direct shipment to Canada. It excludes freight and insurance costs in bringing the goods to Canada from the point of direct shipment.

To countries other than the United States, exports are, in principal, valued or recorded at the values declared on export documents which usually reflect the transaction value, i.e. actual selling price, or in the case of a non-arm's length transaction, the transfer price used for company accounting purposes. Canadian exports to overseas countries are valued at F.O.B. port of exit, including domestic freight charges to that point but net of discounts and allowances. As of January, 1990, Canadian exports to the U.S. are valued F.O.B. point of exit from Canada. Prior to 1990, they were valued F.O.B. place of lading net of freight charges, discounts and allowances.

5. Statistical period: The reference period is the calendar month and the calendar year. The closing of the statistical month for imports and Canadian exports to the United States is defined as the last calendar day of the month, based as closely as practicable on the date of clearance from Customs.

The closing of the statistical month for exports, to countries other than the United States, is also defined as the last calendar day of the month. Those export documents which are received too late for incorporation in the current month are assigned to the month the transaction took place. If a monthly summary report from a high volume exporter is not received on time, the data are imputed for the current month and revised with the trade value in the following statistical month.

6. Trading partner attribution (Country of origin/destination): Exports are attributed to the country, which is the last known destination of the goods at the time of export. Exports to the United States are attributed to the state of destination.

Imports are attributed to their country of origin, that is, the country in which the goods were grown, extracted or manufactured in accordance to the rules of origin administered by Canada Border Services Agency. Imports from the United States are attributed to the state of origin. Prior to 1988, most imports were attributed to the country of export/consignment with the exception of imports from Central and South America.

7. Principal trading areas: The “principal trading areas” are country groupings defined as follows:

United States: (includes trade with Puerto Rico and the U.S. Virgin Islands).

Japan:

E.U. (European Union): Austria, Belgium, Bulgaria, Cyprus, Czech Republic, Denmark, Estonia, Finland, France, Germany, Greece, Hungary, Ireland, Italy, Latvia, Lithuania, Luxembourg, Malta, Netherlands, Poland, Portugal, Romania, Slovakia, Slovenia, Spain, Sweden and United Kingdom.

Other O.E.C.D.: Australia, Canada, Iceland, Mexico, New Zealand, Norway, South Korea, Switzerland, and Turkey. (The E.U. countries, United States, and Japan are also members of O.E.C.D. - the Organization for Economic Co-operation and Development).

Other countries: This group includes all countries and territories other than the United States, Japan, E.U. and other O.E.C.D.

8. Legal framework: Import and export statistics with countries other than the United States are derived from information contained on administrative records collected by the Canada Border Services Agency under the Customs Act. Copies of these documents (or information therefrom) are sent to Statistics Canada in accordance with Section 25 of the Statistics Act. It follows that the disclosure of trade statistics is governed by both the Customs Act and the Statistics Act and is subject to the provisions of Section 17.(2)(a) of the latter. Disclosure of export statistics to the United States is now governed by a Memorandum of Understanding which provides for an exchange of detailed import statistics between Canada and the United States.

Questions concerning details of methods not covered by these notes should be addressed to the Marketing and Client Services Section, International Trade Division, Statistics Canada, Ottawa, Ontario, K1A 0T6.

Telephone: 1-800-294-5583 or within the area code 613-951-9647

Facsimile: 1-800-664-0055 or within the area code 613-951-0117

Internet: *trade@statcan.gc.ca*