

Catalogue no. 65-001-X

Canadian International Merchandise Trade

September 2009



Statistics
Canada

Statistique
Canada

Canada

How to obtain more information

For information about this product or the wide range of services and data available from Statistics Canada, visit our website at www.statcan.gc.ca, e-mail us at infostats@statcan.gc.ca, or telephone us, Monday to Friday from 8:30 a.m. to 4:30 p.m., at the following numbers:

Statistics Canada's National Contact Centre

Toll-free telephone (Canada and the United States):

Inquiries line	1-800-263-1136
National telecommunications device for the hearing impaired	1-800-363-7629
Fax line	1-877-287-4369

Local or international calls:

Inquiries line	1-613-951-8116
Fax line	1-613-951-0581

Depository Services Program

Inquiries line	1-800-635-7943
Fax line	1-800-565-7757

To access this product

This product, Catalogue no. 65-001-X, is available free in electronic format. To obtain a single issue, visit our website at www.statcan.gc.ca and select "Publications."

Standards of service to the public

Statistics Canada is committed to serving its clients in a prompt, reliable and courteous manner. To this end, Statistics Canada has developed *standards of service* that its employees observe. To obtain a copy of these service standards, please contact Statistics Canada toll-free at 1-800-263-1136. The service standards are also published on www.statcan.gc.ca under "About us" > "Providing services to Canadians."

Statistics Canada
International Trade Division

Canadian International Merchandise Trade

September 2009

Published by authority of the Minister responsible for Statistics Canada

© Minister of Industry, 2009

All rights reserved. The content of this electronic publication may be reproduced, in whole or in part, and by any means, without further permission from Statistics Canada, subject to the following conditions: that it be done solely for the purposes of private study, research, criticism, review or newspaper summary, and/or for non-commercial purposes; and that Statistics Canada be fully acknowledged as follows: Source (or "Adapted from", if appropriate): Statistics Canada, year of publication, name of product, catalogue number, volume and issue numbers, reference period and page(s). Otherwise, no part of this publication may be reproduced, stored in a retrieval system or transmitted in any form, by any means—electronic, mechanical or photocopy—or for any purposes without prior written permission of Licensing Services, Client Services Division, Statistics Canada, Ottawa, Ontario, Canada K1A 0T6.

November 2009

Catalogue no. 65-001-X, vol. 63, no. 9

ISSN 1480-8781

Frequency: Monthly

Ottawa

Cette publication est également disponible en français.

Note of appreciation

Canada owes the success of its statistical system to a long-standing partnership between Statistics Canada, the citizens of Canada, its businesses, governments and other institutions. Accurate and timely statistical information could not be produced without their continued cooperation and goodwill.

User information

Symbols

The following standard symbols are used in Statistics Canada publications:

- . not available for any reference period
- .. not available for a specific reference period
- ... not applicable
- 0 true zero or a value rounded to zero
- 0^s value rounded to 0 (zero) where there is a meaningful distinction between true zero and the value that was rounded
- p preliminary
- r revised
- x suppressed to meet the confidentiality requirements of the *Statistics Act*
- E use with caution
- F too unreliable to be published

Note to Users

All totals are calculated from full figures and rounded independently; consequently, totals may not equal the sum of their components.

Table of contents

Highlights	5
Analysis	7
Statistical tables	
1 Merchandise trade of Canada, balance of payments basis, seasonally adjusted	12
1-1 Current dollars	12
1-2 Constant dollars, 2002	13
1-3 Price indices (Laspeyres)	14
2 Exports by commodity groupings, balance of payments basis, seasonally adjusted	15
2-1 Current dollars	15
2-2 Constant dollars, 2002	17
3 Domestic exports to selected countries, customs basis, not seasonally adjusted	19
3-1 September	19
3-2 Year to date, January to September	20
4 Domestic exports by country, customs basis, not seasonally adjusted	21
5 Exports by province of origin, customs basis, not seasonally adjusted	25
5-1 September	25
5-2 Year to date, January to September	26
6 Imports by commodity groupings, balance of payments basis, seasonally adjusted	27
6-1 Current dollars	27
6-2 Constant dollars, 2002	29
7 Imports from selected countries, customs basis, not seasonally adjusted	31
7-1 September	31
7-2 Year to date, January to September	32
8 Imports by country, customs basis, not seasonally adjusted	33
9 Imports by province of clearance, customs basis, not seasonally adjusted	37
9-1 September	37
9-2 Year to date, January to September	38

Table of contents – continued

Data quality, concepts and methodology

Technical notes

39

Highlights

- Canada's merchandise exports rose 3.5% in September, while there was little change in imports. As a result, Canada's trade deficit with the world narrowed to \$927 million from \$2.0 billion in August.
- Exports rose by \$1.0 billion to \$30.3 billion in September, as volumes increased 4.5%. Exports which have been on a downward trend since July 2008, reached a low point in May 2009. Since then, exports have increased in three of the past four months.
- Automotive products, industrial goods and materials, and machinery and equipment were the main sources of growth for exports. Energy products mitigated the gains.
- In September, imports edged down 0.1% to \$31.2 billion, as volumes fell 0.8%. However, declines in imports in both August and September did not offset a strong gain posted in July 2009.
- Declines occurred in imports of automotive products, machinery and equipment, energy products and agricultural and fishing products. These were mostly offset by a solid gain in imports of industrial goods and materials. If this sector was excluded, total imports would have declined 2.1%.
- Exports to the United States increased 0.5% while imports grew 1.7%. As a result, Canada's trade surplus with the United States shrank to \$2.1 billion in September from \$2.3 billion in August.
- Exports to countries other than the United States increased 12.4% and accounted for 88% of the increase in overall exports while imports declined 3.2%. Higher exports to the European Union were largely responsible for the increase in exports. Consequently, Canada's trade deficit with countries other than the United States narrowed to \$3.0 billion in September from \$4.3 billion in August.

Note to readers

Merchandise trade is one component of Canada's international balance of payments, which also includes trade in services, investment income, current transfers as well as capital and financial flows.

International merchandise trade data by country are available on both a balance of payments and a customs basis for the United States, Japan and the United Kingdom. Trade data for all other individual countries are available on a customs basis only. Balance of payments data are derived from customs data by making adjustments for characteristics such as valuation, coverage, timing and residency. These adjustments are made to conform to the concepts and definitions of the Canadian System of National Accounts.

Constant dollars referred to in the text are calculated using the Laspeyres volume formula.

Revisions

In general, merchandise trade data are revised on an ongoing basis for each month of the current year. Current year revisions are reflected in both the customs and balance of payments based data. Revisions to customs based data for the previous year are released on a quarterly basis. Revisions to balance of payments based data for the three previous years are released annually in June.

Factors influencing revisions include late receipt of import and export documentation, incorrect information on customs forms, replacement of estimates with actual figures, changes in classification of merchandise based on more current information, and changes to seasonal adjustment factors.

Revised data are available in the appropriate CANSIM tables.

Chart 1
Exports and imports, seasonally adjusted, on a balance of payments basis

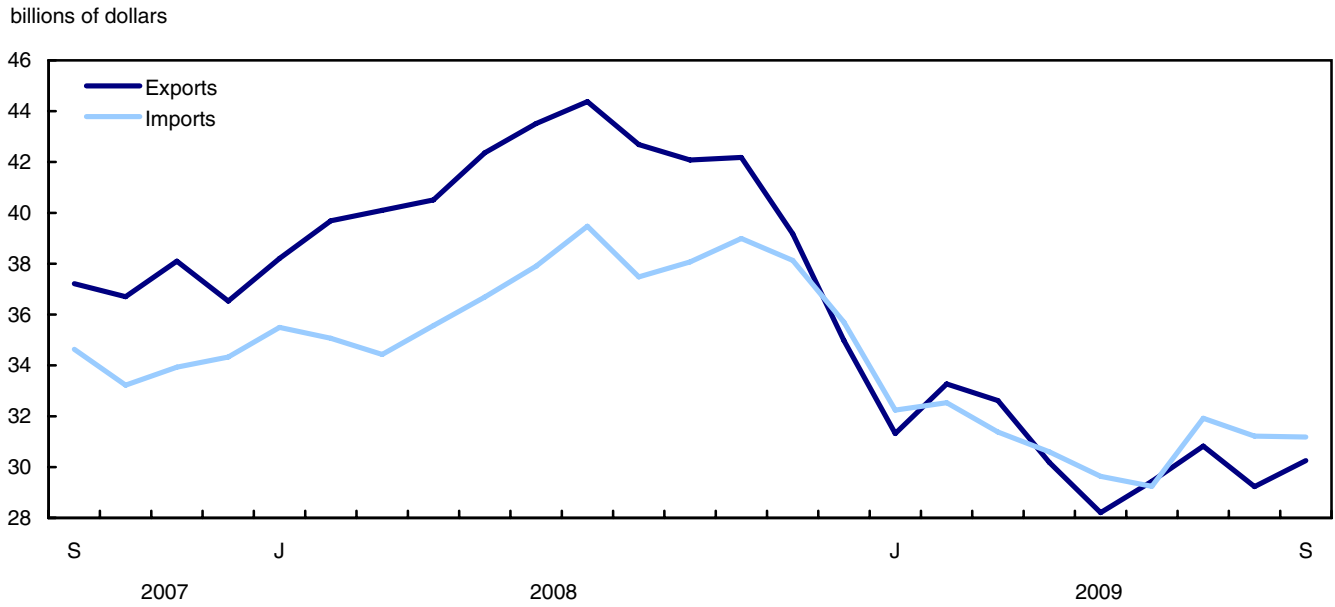
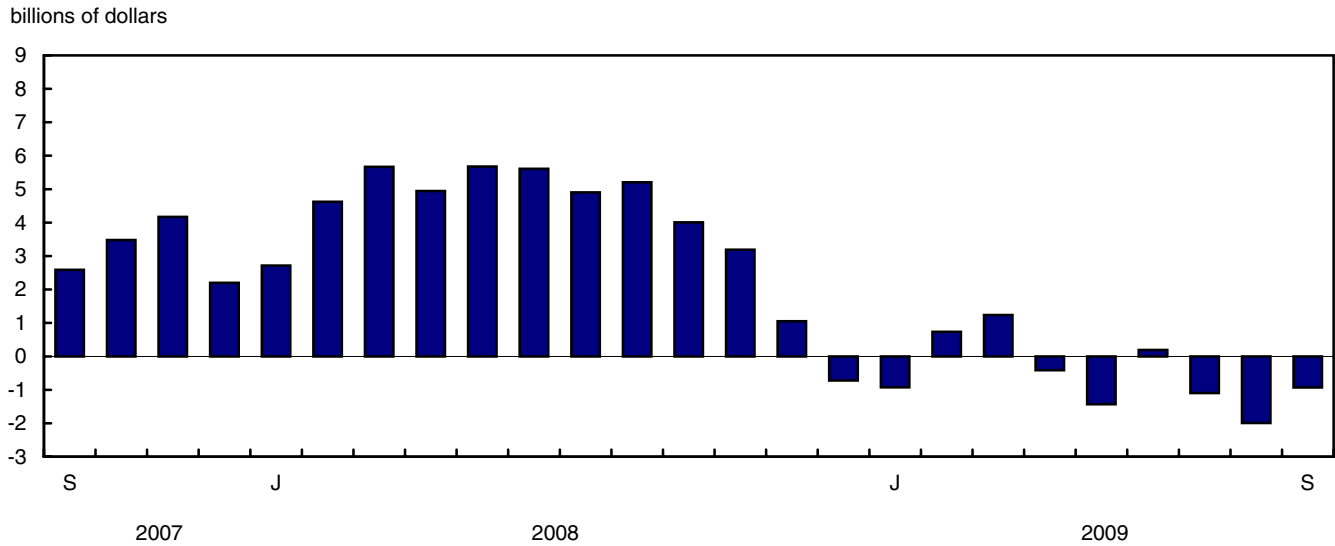


Chart 2
Trade balance, seasonally adjusted, on a balance of payments basis



Analysis

Rising volumes of automotive products lead the gain in exports

Exports of automotive products increased 15.8% to \$4.2 billion in September, as volumes rose 17.4%. Exports of passenger autos, up 18.4%, led the gain as new models were introduced, and some manufacturers resumed production after summer shutdowns. Exports of motor vehicle parts grew 8.6%, reflecting increased vehicle production in the United States in an effort to replenish inventories, which were depleted during the summer 'cash for clunker' sales. Exports of trucks and other motor vehicles also increased, following a decline in August.

Exports of industrial goods and materials grew 6.3% to \$6.6 billion, largely the result of higher exports of metals and alloys which increased 12.3%. Precious metals such as non-monetary gold posted a strong gain, halting two months of declines. Other crude non-metallic minerals also posted a solid gain. Exports of copper ores, down 42.0%, moderated the increase in this sector.

Machinery and equipment exports were up 4.5% to \$6.4 billion due to rising volumes. Aircraft and other transportation equipment, and industrial and agricultural machinery, up 8.6% and 7.4% respectively, were largely responsible for the gain in this sector.

Exports of energy products fell 2.5% to \$6.4 billion. This third consecutive monthly decrease was the result of a 2.9% decline in prices. The main contributor to the fall was a 16.4% decline in petroleum and coal products which includes light oils and diesel fuel.

Little change in imports

After three consecutive months of increases, imports of automotive products fell 4.7% to \$4.8 billion. The decline was the result of a 31.5% decrease in imports of trucks and other motor vehicles, as imports of passenger autos and motor vehicle parts increased. Imports of trucks and other motor vehicles had registered strong gains in August in order to replenish inventories and compensate for vehicles no longer produced in Canada.

Imports of machinery and equipment decreased 1.7% to \$8.8 billion. This represented a second straight month of decline, after the strong gains in July. Lower imports of aircraft and other transportation equipment were the main factor behind the decline, followed by office machines and equipment.

Lower imports of crude petroleum largely contributed to the decline in the energy product sector, which fell 4.5% to \$2.8 billion. Imports of crude petroleum decreased 6.7% due to volume reductions as inventories remained at high levels in September.

Imports of agricultural and fishing products decreased 4.7% to \$2.4 billion. Although the declines were widespread throughout the sector, lower imports of beverages accounted for over one-third of the decline.

Imports of industrial goods and materials grew 8.5% to \$6.4 billion. Metals and metal ores, up 20.9%, accounted for more than three quarters of the increase. Imports of precious metals, such as gold and silver, led the increase followed by metals in ores. Other chemicals such as inorganic chemicals, also registered gains in September.

Chart 1
Exports of automotive products, seasonally adjusted, on a balance of payments basis

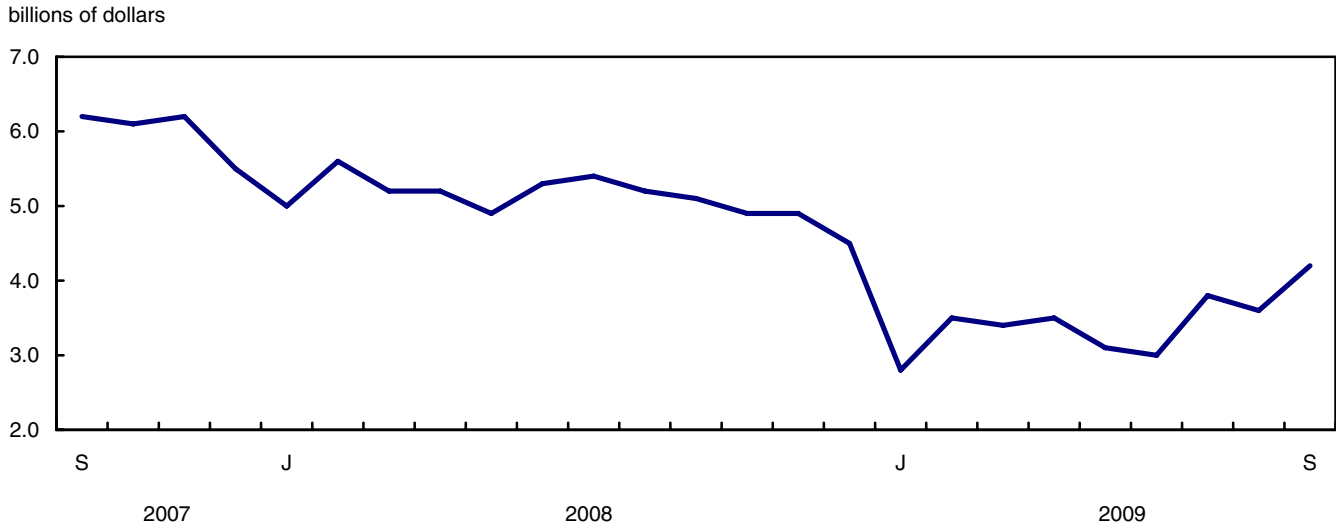


Chart 2
Exports of industrial goods and material, seasonally adjusted, on a balance of payments basis

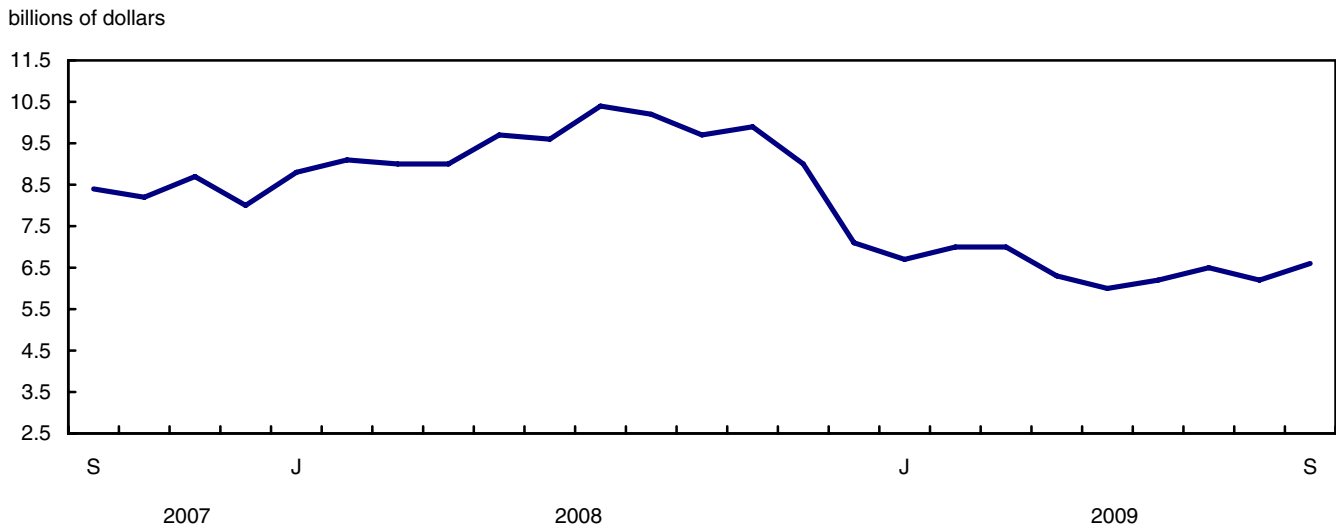


Chart 3
Imports of industrial goods and material, seasonally adjusted, on a balance of payments basis

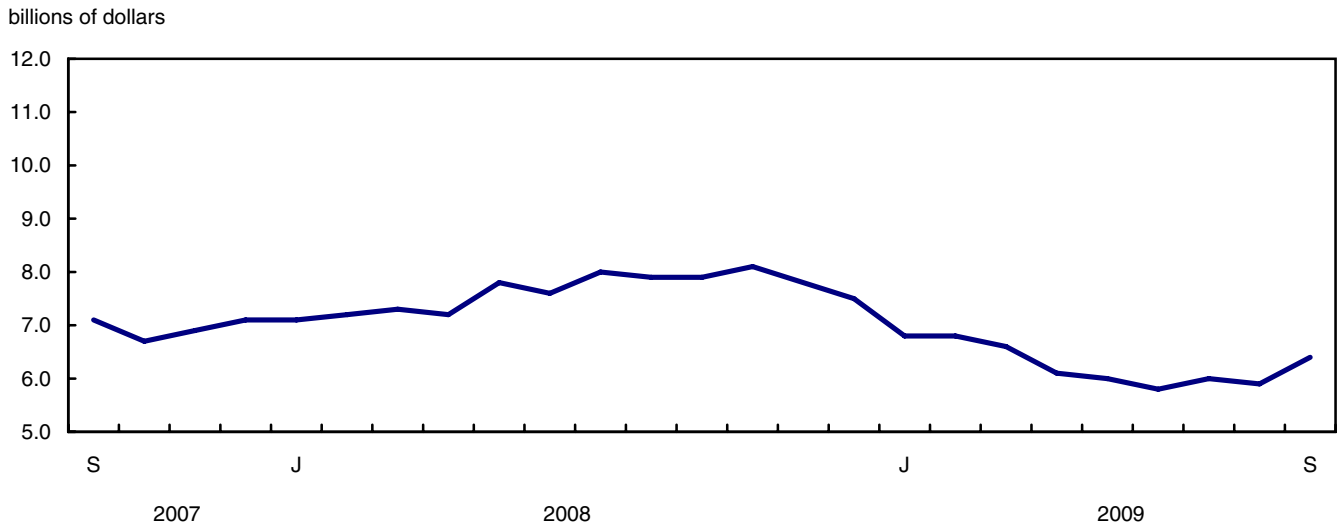
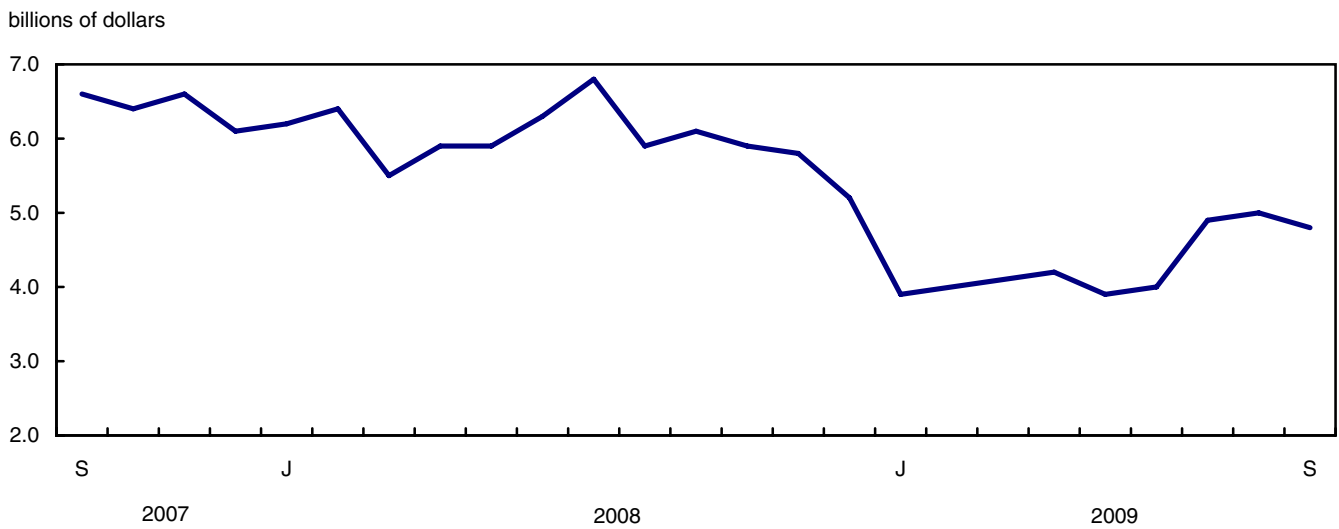


Chart 4
Imports of automotive products, seasonally adjusted, on a balance of payments basis



Text table 1
Merchandise trade by principal trading area, balance of payments basis, seasonally adjusted

	August 2009	September 2009	Change	Year to date		Year to date change	September 2009/2008		
				2008	2009				
	millions of dollars		percent		millions of dollars		percent		
Export to:									
United States	21,931	22,051	120	0.5	284,093	201,396	-82,697	-29.1	-30.2
Japan	633	666	33	5.1	8,690	6,734	-1,956	-22.5	-37.5
European Union ¹	2,210	2,964	754	34.1	29,193	23,953	-5,240	-17.9	-10.7
Other Organisation for Economic Co-operation and Development	1,311	1,513	202	15.4	15,871	12,280	-3,591	-22.6	-25.7
Other countries	3,143	3,061	-83	-2.6	35,678	30,977	-4,700	-13.2	-24.9
Total	29,229	30,254	1,025	3.5	373,525	275,341	-98,184	-26.3	-28.1
Imports from:									
United States	19,666	19,992	326	1.7	209,299	176,883	-32,416	-15.5	-16.0
Japan	844	740	-104	-12.3	8,750	7,060	-1,691	-19.3	-27.2
European Union ¹	2,967	3,000	33	1.1	35,040	28,492	-6,548	-18.7	-31.1
Other Organisation for Economic Co-operation and Development	2,534	2,123	-411	-16.2	20,185	19,352	-833	-4.1	-7.3
Other countries	5,209	5,325	116	2.2	56,900	48,169	-8,730	-15.3	-19.6
Total	31,220	31,181	-40	-0.1	330,173	279,956	-50,218	-15.2	-18.1
Balance:									
United States	2,265	2,059	-206	...	74,795	24,513	-50,281
Japan	-211	-74	136	...	-60	-325	-265
European Union ¹	-757	-36	721	...	-5,848	-4,539	1,308
Other Organisation for Economic Co-operation and Development	-1,223	-610	613	...	-4,313	-7,072	-2,759
Other countries	-2,066	-2,264	-198	...	-21,222	-17,192	4,030
Total	-1,991	-927	1,065	...	43,351	-4,615	-47,967

1. European Union includes: Austria, Belgium, Bulgaria, Cyprus, Czech Republic, Denmark, Estonia, Finland, France, Germany, Greece, Hungary, Ireland, Italy, Latvia, Lithuania, Luxembourg, Malta, Netherlands, Poland, Portugal, Romania, Slovakia, Slovenia, Spain, Sweden and United Kingdom.
2. Other Organization for Economic Co-operation and Development includes: Australia, Canada, Iceland, Mexico, New Zealand, Norway, South Korea, Switzerland and Turkey.

Text table 2
Reconciliation of customs and balance of payments trade data, not seasonally adjusted

	2009						2008
	September	August	July	June	May	April	Annual
	millions of dollars						
Exports							
Customs basis	29,922	28,434	29,645	29,241	27,484	29,726	483,576
Balance of payments adjustments	823	671	856	990	1,247	957	6,281
Valuation and residency							
Inland freight	484	471	507	488	466	509	6,997
Other valuation and residency	-868	-511	-745	-55	-379	-487	-16,510
Timing	135	-42	35	11	-23	-22	-79
Coverage	1,072	753	1,059	546	1,183	957	15,873
Balance of payments basis	30,745	29,105	30,501	30,231	28,731	30,683	489,857
Imports							
Customs basis	31,042	30,131	30,431	29,720	28,318	30,732	433,485
Balance of payments adjustments	867	753	598	733	1,065	748	9,503
Valuation and residency							
Inland freight	671	640	651	645	617	636	8,908
Other valuation and residency	-69	-16	-7	20	69	23	-619
Timing	0	0	0	0	0	0	0
Coverage	127	129	-46	68	379	89	1,214
Balance of payments basis	31,909	30,884	31,029	30,453	29,383	31,480	442,988

Statistical tables

**Table 1-1
Merchandise trade of Canada, balance of payments basis, seasonally adjusted — Current dollars**

	Exports	Imports	Balance	Period to period change		
				Exports	Imports	Balance
				percent	percent	percent
	millions of dollars			percent		millions of dollars
2005	450,210	387,838	62,372	0.0	0.0	0.0
2006	453,951	404,345	49,606	0.8	4.3	-12,767
2007	463,127	415,229	47,898	2.0	2.7	-1,708
2008	489,857	442,988	46,869	5.8	6.7	-1,029
2007						
First quarter	120,454	106,198	14,256	4.4	3.1	1,887
Second quarter	118,191	103,166	15,025	-1.9	-2.9	769
Third quarter	113,144	104,379	8,765	-4.3	1.2	-6,260
Fourth quarter	111,338	101,486	9,852	-1.6	-2.8	1,088
2008						
First quarter	117,996	104,991	13,005	6.0	3.5	3,152
Second quarter	126,385	110,154	16,230	7.1	4.9	3,226
Third quarter	129,144	115,028	14,116	2.2	4.4	-2,114
Fourth quarter	116,332	112,815	3,517	-9.9	-1.9	-10,599
2009						
First quarter	97,203	96,152	1,050	-16.4	-14.8	-2,467
Second quarter	87,830	89,483	-1,652	-9.6	-6.9	-2,703
Third quarter	90,307	94,321	-4,013	2.8	5.4	-2,361
2008						
January	38,209	35,496	2,713	4.6	3.4	512
February	39,689	35,067	4,623	3.9	-1.2	1,909
March	40,097	34,428	5,669	1.0	-1.8	1,046
April	40,507	35,564	4,943	1.0	3.3	-726
May	42,365	36,688	5,677	4.6	3.2	733
June	43,513	37,902	5,611	2.7	3.3	-66
July	44,379	39,476	4,903	2.0	4.2	-708
August	42,685	37,479	5,206	-3.8	-5.1	302
September	42,080	38,073	4,008	-1.4	1.6	-1,198
October	42,181	38,991	3,190	0.2	2.4	-818
November	39,177	38,129	1,049	-7.1	-2.2	-2,141
December	34,974	35,695	-721	-10.7	-6.4	-1,770
2009						
January	31,319	32,243	-923	-10.4	-9.7	-202
February	33,268	32,532	736	6.2	0.9	1,659
March	32,616	31,378	1,237	-2.0	-3.5	501
April	30,185	30,599	-414	-7.5	-2.5	-1,652
May	28,206	29,638	-1,432	-6.6	-3.1	-1,018
June	29,439	29,246	193	4.4	-1.3	1,625
July	30,824	31,920	-1,095	4.7	9.1	-1,289
August	29,229	31,220	-1,991	-5.2	-2.2	-896
September	30,254	31,181	-927	3.5	-0.1	1,065

Note(s): Due to rounding, monthly data may not add up to quarterly data and quarterly data may not add up to annual data.

Table 1-2
Merchandise trade of Canada, balance of payments basis, seasonally adjusted — Constant dollars, 2002

	Exports	Imports	Balance	Period to period change	
				Exports	Imports
	millions of dollars			percent	
2005	439,306	431,680	7,626	0.0	0.0
2006	443,398	456,881	-13,483	0.9	5.8
2007	449,581	483,522	-33,941	1.4	5.8
2008	415,123	485,171	-70,048	-7.7	0.3
2007					
First quarter	113,771	117,511	-3,740	2.0	1.6
Second quarter	113,538	118,154	-4,615	-0.2	0.5
Third quarter	112,008	123,373	-11,366	-1.3	4.4
Fourth quarter	110,264	124,484	-14,220	-1.6	0.9
2008					
First quarter	107,366	123,120	-15,754	-2.6	-1.1
Second quarter	105,949	123,992	-18,043	-1.3	0.7
Third quarter	104,458	124,141	-19,683	-1.4	0.1
Fourth quarter	97,350	113,917	-16,567	-6.8	-8.2
2009					
First quarter	87,878	98,147	-10,269	-9.7	-13.8
Second quarter	82,518	95,903	-13,386	-6.1	-2.3
Third quarter	86,722	105,229	-18,507	5.1	9.7
2008					
January	35,336	41,546	-6,210	0.0	1.2
February	36,473	41,373	-4,900	3.2	-0.4
March	35,557	40,201	-4,644	-2.5	-2.8
April	35,078	40,481	-5,404	-1.3	0.7
May	35,639	41,927	-6,288	1.6	3.6
June	35,233	41,584	-6,351	-1.1	-0.8
July	35,530	43,031	-7,502	0.8	3.5
August	34,592	40,426	-5,834	-2.6	-6.1
September	34,337	40,684	-6,347	-0.7	0.6
October	33,470	39,215	-5,745	-2.5	-3.6
November	32,772	38,542	-5,770	-2.1	-1.7
December	31,108	36,160	-5,052	-5.1	-6.2
2009					
January	28,287	33,112	-4,825	-9.1	-8.4
February	30,117	33,113	-2,997	6.5	0.0
March	29,474	31,922	-2,447	-2.1	-3.6
April	28,220	31,706	-3,486	-4.3	-0.7
May	26,895	32,103	-5,208	-4.7	1.3
June	27,402	32,094	-4,692	1.9	-0.0
July	29,378	35,171	-5,793	7.2	9.6
August	28,036	35,168	-7,132	-4.6	-0.0
September	29,308	34,889	-5,581	4.5	-0.8

Note(s): Due to rounding, monthly data may not add up to quarterly data and quarterly data may not add up to annual data.

Table 1-3
Merchandise trade of Canada, balance of payments basis, seasonally adjusted — Price indices (Laspeyres)

	2002=100			Period to period change		
	Exports	Imports	Terms of trade	Exports	Imports	Terms of trade
	millions of dollars			percent		
2005	104.6	92.2	113.4	0.0	0.0	0.0
2006	105.1	92.7	113.3	0.4	0.5	-0.1
2007	107.2	91.6	117.0	2.0	-1.2	3.2
2008	116.3	97.6	119.1	8.5	6.6	1.9
2007						
First quarter	109.5	95.2	115.0	3.1	1.9	1.2
Second quarter	112.0	92.9	120.5	2.3	-2.4	4.7
Third quarter	105.0	90.1	116.5	-6.2	-3.0	-3.2
Fourth quarter	105.6	88.0	119.9	0.5	-2.3	2.9
2008						
First quarter	111.3	90.4	123.1	5.4	2.7	2.7
Second quarter	118.5	95.2	124.5	6.4	5.2	1.2
Third quarter	121.8	101.1	120.6	2.8	6.2	-3.4
Fourth quarter	114.0	103.9	109.7	-6.4	2.8	-9.2
2009						
First quarter	109.3	101.3	107.9	-4.1	-2.5	-1.7
Second quarter	105.3	97.8	107.7	-3.7	-3.5	-0.2
Third quarter	102.5	95.0	108.0	-2.6	-2.9	0.3
2008						
January	109.7	89.9	122.0	2.3	1.9	0.4
February	110.0	90.0	122.2	0.3	0.2	0.2
March	113.2	91.3	124.0	2.9	1.4	1.5
April	116.3	93.4	124.6	2.7	2.2	0.5
May	118.5	94.5	125.4	1.9	1.2	0.7
June	120.9	97.7	123.7	2.0	3.4	-1.3
July	123.8	99.5	124.4	2.4	1.8	0.6
August	121.6	101.8	119.4	-1.8	2.3	-4.1
September	120.0	101.9	117.8	-1.3	0.1	-1.4
October	121.6	104.8	116.1	1.3	2.8	-1.5
November	116.6	104.2	111.9	-4.1	-0.5	-3.6
December	111.5	102.7	108.5	-4.4	-1.4	-3.0
2009						
January	109.3	100.4	108.9	-2.0	-2.3	0.3
February	109.4	101.2	108.1	0.1	0.9	-0.7
March	109.5	102.4	106.8	0.0	1.2	-1.2
April	106.8	100.7	106.0	-2.4	-1.7	-0.7
May	104.7	96.9	108.0	-2.0	-3.8	1.8
June	104.4	95.8	109.0	-0.2	-1.2	0.9
July	103.7	95.9	108.1	-0.7	0.1	-0.8
August	102.6	94.5	108.6	-1.0	-1.5	0.5
September	102.6	94.4	108.6	-0.0	-0.0	0.0

Note(s): Due to rounding, monthly data may not add up to quarterly data and quarterly data may not add up to annual data.

Table 2-1
Exports by commodity groupings, balance of payments basis, seasonally adjusted — Current dollars

	August	September	Change	Year to date		Year to date change	September 2009/2008		
	2009	2009		2008	2009			millions of dollars	percent
Total	29,229	30,254	1,025	3.5	373,525	275,341	-98,184	-26.3	-28.1
Agricultural and fishing products	2,815	2,772	-43	-1.5	30,197	28,979	-1,218	-4.0	-18.8
Wheat	436	431	-5	-1.2	5,167	4,763	-404	-7.8	-3.1
Other agricultural and fishing products	2,378	2,340	-38	-1.6	25,030	24,216	-814	-3.3	-21.2
Live animals	110	104	-6	-5.6	1,813	1,331	-482	-26.6	-48.7
Fish and fish preparations	308	312	4	1.4	3,168	3,020	-148	-4.7	-14.9
Barley	43	27	-16	-37.7	559	364	-194	-34.8	-27.8
Wheat flour	7	8	1	12.7	80	63	-17	-20.8	3.6
Other cereals unmilled	36	26	-10	-28.3	692	445	-247	-35.7	-48.5
Other cereal preparations	257	252	-5	-2.0	2,096	2,275	179	8.5	-1.5
Meat and meat preparations	347	347	0	0.1	3,343	3,343	-0	-0.0	-18.5
Alcoholic beverages	55	60	5	9.7	621	559	-62	-9.9	-15.7
Other food, feed, beverages and tobacco	834	852	17	2.1	8,117	8,416	299	3.7	-17.5
Rapeseed	220	187	-33	-15.2	2,887	2,684	-203	-7.0	-47.9
Other crude vegetable products	161	166	5	3.0	1,655	1,716	61	3.7	3.1
Energy products	6,538	6,375	-163	-2.5	100,101	57,567	-42,534	-42.5	-42.5
Crude petroleum	3,701	3,744	43	1.2	49,614	29,933	-19,680	-39.7	-34.0
Natural gas	1,031	993	-39	-3.8	26,147	11,419	-14,728	-56.3	-61.6
Other energy products	1,806	1,639	-167	-9.3	24,340	16,214	-8,126	-33.4	-41.8
Coal and other bituminous substances	341	300	-41	-12.1	3,889	3,324	-565	-14.5	-54.2
Petroleum and coal products	1,288	1,077	-211	-16.4	17,441	10,999	-6,442	-36.9	-42.0
Electricity	176	262	85	48.5	3,011	1,892	-1,119	-37.2	-14.0
Forestry products	1,533	1,560	27	1.8	19,227	14,741	-4,487	-23.3	-30.5
Lumber and sawmill products	571	562	-9	-1.6	6,908	5,032	-1,876	-27.2	-27.1
Other crude wood products	42	41	-1	-3.1	466	386	-80	-17.1	-0.4
Lumber	330	327	-3	-0.9	4,025	2,848	-1,177	-29.2	-28.9
Other wood fabricated materials	200	195	-5	-2.4	2,417	1,798	-620	-25.6	-28.0
Wood pulp and other wood products	358	372	14	3.9	5,002	3,373	-1,628	-32.6	-34.8
Newsprint and other paper and paperboard	603	625	22	3.6	7,318	6,335	-982	-13.4	-30.8
Newsprint paper	283	299	16	5.6	3,882	3,285	-596	-15.4	-39.9
Other paper and paperboard	320	326	6	1.8	3,436	3,050	-386	-11.2	-19.6
Industrial goods and materials	6,216	6,608	392	6.3	85,538	58,592	-26,946	-31.5	-32.1
Metal ores	841	851	10	1.2	11,761	7,479	-4,282	-36.4	-30.8
Iron ores, concentrates and scrap	367	411	44	12.0	3,711	3,407	-304	-8.2	-16.0
Copper ores, concentrates and scrap	217	126	-91	-42.0	1,779	1,194	-585	-32.9	-8.4
Nickel ores, concentrates and scrap	102	133	31	30.5	3,255	1,062	-2,193	-67.4	-49.6
Zinc ores, concentrates and scrap	25	25	0	0.7	281	194	-87	-30.9	67.4
Other ores, concentrates and scrap	131	157	26	19.9	2,736	1,623	-1,113	-40.7	-51.7
Chemicals, plastics and fertilizers	2,084	2,099	14	0.7	26,561	19,176	-7,385	-27.8	-35.0
Inorganic chemicals	274	335	62	22.5	4,114	3,078	-1,037	-25.2	-33.1
Organic chemicals	405	428	23	5.7	5,365	3,519	-1,846	-34.4	-26.5
Fertilizers and fertilizer materials	405	353	-52	-12.9	4,986	3,438	-1,548	-31.0	-50.5
Synthetic rubber and plastics	752	750	-3	-0.4	9,570	7,036	-2,533	-26.5	-34.0
Other chemical products	248	233	-15	-6.1	2,526	2,104	-421	-16.7	-22.2
Metals and alloys	2,192	2,462	270	12.3	31,490	20,172	-11,318	-35.9	-29.3
Primary iron and steel	20	71	51	255.7	1,070	306	-764	-71.4	-50.4
Steel bars, rods, plates, sheets	250	248	-2	-0.7	3,908	2,147	-1,762	-45.1	-46.6
Other iron and steel and alloys	168	180	11	6.8	2,968	1,766	-1,202	-40.5	-47.5
Aluminum including alloys	493	512	20	4.0	7,050	4,355	-2,695	-38.2	-37.9
Copper and alloys	183	193	9	5.1	3,567	1,593	-1,975	-55.4	-40.6
Nickel and alloys	138	128	-10	-7.3	3,019	1,483	-1,536	-50.9	-60.2
Precious metals and alloys	756	938	181	24.0	7,578	7,074	-505	-6.7	13.2
Zinc and alloys	100	108	8	8.0	1,162	776	-386	-33.2	-10.4
Other non-ferrous metals and alloys	83	84	1	1.8	1,167	672	-495	-42.4	-25.4

Table 2-1 – continued

Exports by commodity groupings, balance of payments basis, seasonally adjusted — Current dollars

	August	September	Change	Year to date		Year to date change	September 2009/2008		
	2009	2009		2008	2009				
	millions of dollars		percent		millions of dollars		percent		
Other industrial goods and materials	1,098	1,196	98	8.9	15,725	11,765	-3,960	-25.2	-33.2
Asbestos unmanufactured	6	7	1	7.9	51	52	1	2.4	-6.0
Other crude animal products	52	48	-4	-8.3	659	508	-152	-23.0	-35.3
Other crude non-metallic minerals	70	173	104	148.7	3,863	2,031	-1,832	-47.4	-62.2
Other crude materials, inedible	51	51	-0	-0.3	443	462	19	4.3	-3.3
Metal fabricated basic products	326	325	-0	-0.1	4,088	3,139	-949	-23.2	-29.7
Textile fabricated materials	168	168	-0	-0.0	1,830	1,564	-265	-14.5	-18.6
Non-metallic mineral basic products	158	155	-3	-1.9	1,796	1,483	-313	-17.4	-26.9
Other fabricated materials	266	268	1	0.6	2,996	2,526	-470	-15.7	-14.9
Machinery and equipment	6,155	6,433	278	4.5	68,181	62,212	-5,969	-8.8	-18.3
Industrial and agricultural machinery	1,466	1,574	108	7.4	17,192	14,979	-2,213	-12.9	-23.8
Industrial machinery	1,320	1,406	86	6.5	15,600	13,392	-2,209	-14.2	-23.6
Agricultural machinery includ. tractors	146	168	22	15.2	1,591	1,587	-4	-0.3	-24.8
Aircraft and other transportation equipment	1,496	1,624	129	8.6	14,811	14,837	27	0.2	-1.3
Aircraft, engines, parts	1,154	1,225	71	6.2	11,059	11,750	691	6.3	-1.3
Other transportation equipment	342	399	57	16.7	3,752	3,087	-665	-17.7	-1.5
Other machinery and equipment	3,194	3,235	41	1.3	36,178	32,396	-3,783	-10.5	-22.3
Television, telecommunication equipment	648	635	-13	-2.1	7,073	6,847	-227	-3.2	-16.6
Office machines and equipment	369	363	-6	-1.5	4,527	3,712	-815	-18.0	-28.6
Other equipment and tools	1,442	1,477	35	2.4	17,134	14,570	-2,564	-15.0	-25.8
Other end products, inedible	735	760	25	3.4	7,444	7,266	-177	-2.4	-15.8
Automotive products	3,636	4,211	575	15.8	46,724	30,868	-15,856	-33.9	-16.7
Passenger autos and chassis	2,315	2,741	426	18.4	25,968	17,424	-8,544	-32.9	-5.4
Trucks and other motor vehicles	181	231	50	27.9	5,649	3,340	-2,310	-40.9	-59.8
Motor vehicle parts	1,141	1,239	98	8.6	15,106	10,105	-5,002	-33.1	-21.8
Other consumer goods	1,419	1,384	-35	-2.5	13,388	13,741	353	2.6	-5.4
Special transactions trade	521	529	8	1.6	6,016	4,913	-1,103	-18.3	-26.7
Unallocated balance of payments adjustments	395	382	-14	-3.5	4,153	3,728	-425	-10.2	-22.2

Table 2-2
Exports by commodity groupings, balance of payments basis, seasonally adjusted — Constant dollars, 2002

	August	September	Change	Year to date		Year to date change	September 2009/2008		
	2009	2009		2008	2009			millions of dollars	percent
Total	28,036	29,308	1,272	4.5	317,773	257,117	-60,656	-19.1	-14.6
Agricultural and fishing products	2,810	2,778	-32	-1.1	27,573	27,428	-145	-0.5	-6.0
Wheat	370	364	-6	-1.6	3,018	3,933	915	30.3	33.4
Other agricultural and fishing products	2,440	2,414	-26	-1.1	24,556	23,495	-1,061	-4.3	-10.0
Live animals	133	128	-5	-4.0	2,088	1,494	-594	-28.4	-40.9
Fish and fish preparations	374	370	-4	-1.1	3,664	3,502	-162	-4.4	-10.3
Barley	37	27	-9	-25.3	382	283	-99	-25.9	29.0
Wheat flour	7	8	1	12.6	64	57	-7	-10.9	15.0
Other cereals unmilled	42	32	-10	-23.3	591	423	-168	-28.4	-11.4
Other cereal preparations	211	209	-2	-0.9	1,931	1,837	-95	-4.9	-1.5
Meat and meat preparations	427	423	-4	-1.0	3,818	3,707	-111	-2.9	-0.3
Alcoholic beverages	94	107	13	13.4	1,022	951	-71	-7.0	-2.1
Other food, feed, beverages and tobacco	782	801	19	2.4	7,790	7,456	-334	-4.3	-8.2
Rapeseed	198	171	-28	-13.9	1,914	2,371	457	23.9	-30.3
Other crude vegetable products	135	139	4	3.0	1,291	1,415	124	9.6	9.8
Energy products	4,685	4,705	19	0.4	41,453	40,434	-1,019	-2.5	3.2
Crude petroleum	2,051	2,058	7	0.4	17,557	17,688	131	0.7	-0.5
Natural gas	1,434	1,441	6	0.4	13,200	12,237	-963	-7.3	2.5
Other energy products	1,200	1,206	6	0.5	10,696	10,509	-187	-1.8	11.3
Coal and other bituminous substances	144	139	-5	-3.6	1,423	1,002	-421	-29.6	-6.8
Petroleum and coal products	798	684	-113	-14.2	7,095	7,239	145	2.0	-6.4
Electricity	259	383	124	48.1	2,179	2,267	89	4.1	87.8
Forestry products	1,989	2,007	18	0.9	23,018	18,130	-4,888	-21.2	-19.6
Lumber and sawmill products	799	781	-18	-2.2	8,893	6,934	-1,959	-22.0	-12.9
Other crude wood products	64	52	-12	-19.4	623	522	-101	-16.2	6.0
Lumber	506	505	-0	-0.0	5,586	4,381	-1,205	-21.6	-11.2
Other wood fabricated materials	229	224	-5	-2.3	2,684	2,031	-654	-24.4	-19.8
Wood pulp and other wood products	516	517	1	0.2	5,900	4,795	-1,105	-18.7	-22.3
Newsprint and other paper and paperboard	674	709	35	5.2	8,225	6,402	-1,823	-22.2	-24.1
Newsprint paper	316	338	21	6.7	4,283	3,215	-1,068	-24.9	-31.7
Other paper and paperboard	358	372	14	3.9	3,942	3,187	-755	-19.2	-15.6
Industrial goods and materials	4,627	4,813	186	4.0	57,337	44,616	-12,721	-22.2	-22.8
Metal ores	415	444	29	6.9	5,479	4,116	-1,363	-24.9	-21.7
Iron ores, concentrates and scrap	155	173	18	11.3	1,768	1,346	-422	-23.8	-1.7
Copper ores, concentrates and scrap	85	50	-35	-41.4	565	555	-10	-1.7	6.7
Nickel ores, concentrates and scrap	49	77	28	56.6	1,448	733	-715	-49.4	-47.5
Zinc ores, concentrates and scrap	15	15	-0	-0.2	159	132	-26	-16.6	52.6
Other ores, concentrates and scrap	111	130	19	16.7	1,539	1,349	-190	-12.4	-30.9
Chemicals, plastics and fertilizers	1,656	1,595	-60	-3.6	18,856	14,771	-4,086	-21.7	-24.3
Inorganic chemicals	170	176	6	3.6	2,001	1,610	-391	-19.5	-28.1
Organic chemicals	292	279	-13	-4.4	2,828	2,862	33	1.2	-2.1
Fertilizers and fertilizer materials	158	133	-25	-16.1	2,427	1,191	-1,237	-51.0	-47.2
Synthetic rubber and plastics	731	731	-0	-0.0	8,551	6,663	-1,887	-22.1	-24.6
Other chemical products	304	276	-28	-9.2	3,049	2,445	-604	-19.8	-22.6
Metals and alloys	1,556	1,676	120	7.7	19,224	14,528	-4,696	-24.4	-21.6
Primary iron and steel	15	53	37	247.4	597	207	-391	-65.4	-23.3
Steel bars, rods, plates, sheets	216	213	-3	-1.3	2,929	1,679	-1,250	-42.7	-27.1
Other iron and steel and alloys	153	155	2	1.5	2,216	1,501	-715	-32.3	-26.7
Aluminum including alloys	549	590	41	7.4	6,065	5,156	-909	-15.0	-17.2
Copper and alloys	73	71	-3	-3.6	1,154	792	-362	-31.3	-35.4
Nickel and alloys	81	71	-10	-12.4	1,269	1,067	-202	-15.9	-56.3
Precious metals and alloys	350	411	62	17.6	3,920	3,120	-800	-20.4	-8.5
Zinc and alloys	77	74	-4	-4.8	675	629	-46	-6.8	-11.7
Other non-ferrous metals and alloys	42	39	-3	-6.3	399	377	-22	-5.5	-19.5

Table 2-2 – continued

Exports by commodity groupings, balance of payments basis, seasonally adjusted — Constant dollars, 2002

	August 2009	September 2009	Change		Year to date		Year to date change	September 2009/2008	
	millions of dollars		percent		millions of dollars		percent		
Other industrial goods and materials	1,001	1,098	97	9.7	13,778	11,201	-2,577	-18.7	-22.9
Asbestos unmanufactured	6	7	1	8.5	59	54	-4	-7.4	-13.1
Other crude animal products	72	67	-5	-7.6	694	684	-9	-1.4	-11.2
Other crude non-metallic minerals	74	164	90	121.3	3,578	2,682	-896	-25.0	-48.5
Other crude materials, inedible	47	48	1	2.6	440	451	11	2.6	-8.6
Metal fabricated basic products	263	267	4	1.5	3,330	2,467	-862	-25.9	-26.4
Textile fabricated materials	176	179	3	1.5	1,948	1,515	-433	-22.2	-15.0
Non-metallic mineral basic products	132	128	-5	-3.5	1,542	1,200	-342	-22.2	-26.8
Other fabricated materials	229	238	9	3.8	2,189	2,148	-41	-1.9	7.3
Machinery and equipment	6,752	7,053	301	4.5	78,507	66,467	-12,040	-15.3	-19.9
Industrial and agricultural machinery	1,338	1,426	89	6.6	16,615	13,645	-2,970	-17.9	-26.3
Industrial machinery	1,207	1,276	69	5.7	15,032	12,222	-2,811	-18.7	-25.9
Agricultural machinery includ. tractors	130	150	20	15.0	1,582	1,423	-159	-10.0	-28.9
Aircraft and other transportation equipment	1,786	1,958	172	9.6	19,100	17,342	-1,758	-9.2	-5.4
Aircraft, engines, parts	1,468	1,568	100	6.8	15,182	14,320	-862	-5.7	-5.4
Other transportation equipment	318	390	72	22.6	3,918	3,022	-896	-22.9	-5.2
Other machinery and equipment	3,628	3,669	41	1.1	42,792	35,480	-7,312	-17.1	-23.5
Television, telecommunication equipment	790	775	-15	-1.9	9,066	8,014	-1,052	-11.6	-18.2
Office machines and equipment	851	848	-3	-0.4	10,432	8,014	-2,418	-23.2	-27.1
Other equipment and tools	1,339	1,371	33	2.4	16,539	13,418	-3,121	-18.9	-27.6
Other end products, inedible	649	675	26	4.1	6,756	6,034	-721	-10.7	-14.9
Automotive products	4,563	5,357	795	17.4	63,339	36,921	-26,419	-41.7	-17.6
Passenger autos and chassis	3,108	3,728	620	19.9	39,216	22,525	-16,691	-42.6	-9.3
Trucks and other motor vehicles	213	277	64	29.8	7,305	3,736	-3,569	-48.9	-57.5
Motor vehicle parts	1,241	1,352	111	8.9	16,818	10,659	-6,159	-36.6	-22.1
Other consumer goods	1,371	1,331	-40	-2.9	13,139	13,191	52	0.4	-7.1
Special transactions trade	483	503	20	4.2	4,965	4,506	-459	-9.2	-11.9
Unallocated balance of payments adjustments	755	760	5	0.6	8,443	5,425	-3,018	-35.7	-3.3

Table 3-1
Domestic exports to selected countries, customs basis, not seasonally adjusted — September

	Agricultural and fishing products	Energy products	Forestry products	Industrial goods	Machinery and equipment	Automotive products	Consumer goods	Special transactions	Total
millions of dollars									
United States									
2008	1,864.0	10,573.0	1,540.0	5,860.1	4,645.8	4,799.1	876.6	643.0	30,801.6
2009	1,447.9	6,118.6	1,072.4	3,718.8	3,383.5	4,182.0	891.9	466.5	21,281.5
Mexico									
2008	179.4	12.0	13.4	150.1	102.3	109.9	7.1	0.5	574.5
2009	79.5	0.5	7.8	67.6	64.0	84.6	3.7	0.7	308.5
Japan									
2008	312.5	325.2	103.0	164.4	47.2	3.3	10.4	0.5	966.4
2009	282.1	89.2	99.5	69.0	38.4	8.1	9.4	0.2	596.0
European Union									
Germany									
2008	18.0	18.3	14.0	140.7	108.8	5.1	12.7	0.9	318.6
2009	10.7	0.0	11.9	116.0	165.6	4.3	10.1	1.7	320.3
France									
2008	12.1	36.1	25.5	55.0	101.7	2.8	21.2	1.9	256.2
2009	14.0	24.1	13.0	38.5	78.8	2.8	19.6	2.1	192.8
United Kingdom									
2008	30.5	4.2	33.2	701.6	168.1	5.2	17.5	3.0	963.3
2009	42.2	3.5	17.7	839.5	122.8	3.5	18.0	7.3	1,054.6
Italy									
2008	29.4	17.4	30.0	23.8	42.2	0.7	7.1	0.4	150.9
2009	60.2	46.8	20.9	19.8	63.8	0.4	6.1	0.4	218.4
Other European Union									
2008	74.8	53.2	32.7	482.9	296.9	23.3	63.4	7.6	1,034.8
2009	55.6	50.6	28.9	198.2	143.1	12.6	47.0	3.2	539.1
Total									
2008	164.8	129.2	135.3	1,404.0	717.7	37.2	121.9	13.8	2,723.9
2009	182.8	125.0	92.4	1,212.0	574.1	23.5	100.8	14.7	2,325.1
Newly industrialized countries									
South Korea									
2008	25.7	161.2	54.3	68.4	40.9	1.0	4.7	0.8	357.0
2009	37.6	127.8	27.8	84.9	56.8	1.3	3.3	0.6	340.1
Hong Kong									
2008	27.2	0.0	13.0	102.7	17.6	0.7	2.9	0.5	164.6
2009	25.4	0.0	6.2	33.5	15.9	0.5	5.3	1.1	88.0
Taiwan									
2008	11.4	0.3	27.9	34.8	11.4	0.1	4.2	0.2	90.2
2009	22.0	24.1	18.8	31.7	10.8	0.2	2.0	0.1	109.5
Singapore									
2008	4.4	7.7	2.6	13.4	29.4	1.6	4.0	0.2	63.4
2009	4.2	0.9	1.3	13.7	27.3	3.8	2.8	0.1	54.0
Total									
2008	68.7	169.1	97.8	219.3	99.3	3.3	15.8	1.7	675.1
2009	89.3	152.7	54.1	163.8	110.8	5.7	13.4	1.9	591.7
Other countries									
2008	824.5	158.4	420.6	1,526.1	706.0	79.6	110.5	22.3	3,848.0
2009	635.9	72.5	283.2	879.1	693.9	50.0	69.9	17.4	2,701.8
Total									
2008	3,413.8	11,366.8	2,310.2	9,324.1	6,318.6	5,032.4	1,142.3	681.8	39,589.9
2009	2,717.4	6,558.4	1,609.4	6,110.2	4,864.7	4,353.9	1,089.1	501.4	27,804.6

Table 3-2
Domestic exports to selected countries, customs basis, not seasonally adjusted — Year to date, January to September

	Agricultural and fishing products	Energy products	Forestry products	Industrial goods	Machinery and equipment	Automotive products	Consumer goods	Special transactions	Total
millions of dollars									
United States									
2008	15,083.8	95,045.6	13,375.1	51,341.4	39,248.3	41,726.5	8,067.0	5,398.1	269,285.8
2009	14,446.5	53,418.5	10,260.1	33,955.8	33,825.1	26,679.4	8,336.2	4,220.8	185,142.4
Mexico									
2008	1,068.9	101.0	141.6	1,011.5	746.9	662.4	52.5	4.9	3,789.7
2009	811.9	72.8	71.5	550.3	718.0	487.9	36.9	7.9	2,757.2
Japan									
2008	2,943.3	1,514.1	1,064.9	1,950.7	434.1	29.0	86.5	3.8	8,026.3
2009	2,367.7	1,351.2	791.6	832.6	480.0	32.9	109.7	4.7	5,970.4
European Union									
Germany									
2008	144.2	219.1	128.1	1,133.7	917.9	38.0	128.8	9.7	2,719.5
2009	139.0	154.1	93.4	533.0	1,415.3	35.1	111.8	13.2	2,495.0
France									
2008	132.8	291.8	205.9	335.6	917.7	38.8	233.0	14.4	2,169.8
2009	117.6	99.5	113.7	463.6	856.3	26.0	223.1	20.0	1,919.9
United Kingdom									
2008	342.4	209.7	291.4	6,878.8	1,545.4	57.9	157.2	37.1	9,519.8
2009	307.2	122.9	224.4	5,750.1	1,593.4	29.7	222.8	35.1	8,285.5
Italy									
2008	216.1	223.4	284.2	560.9	364.0	8.6	49.2	3.8	1,710.3
2009	329.7	103.6	202.8	192.0	390.7	6.4	51.5	7.1	1,283.9
Other European Union									
2008	799.3	1,468.4	348.4	3,619.2	2,138.9	205.2	466.1	40.0	9,085.4
2009	666.6	815.0	250.7	1,901.6	1,958.0	106.4	571.5	37.1	6,306.9
Total									
2008	1,634.7	2,412.3	1,258.0	12,528.1	5,883.8	348.4	1,034.3	105.0	25,204.7
2009	1,560.1	1,295.2	884.9	8,840.3	6,213.7	203.7	1,180.7	112.5	20,291.2
Newly industrialized countries									
South Korea									
2008	266.0	830.9	416.5	851.3	292.2	8.7	40.5	7.7	2,713.7
2009	251.0	787.9	245.7	727.4	391.0	34.3	37.4	5.9	2,480.6
Hong Kong									
2008	248.6	0.2	75.3	590.6	199.5	4.9	31.9	8.9	1,159.9
2009	266.8	0.2	68.7	363.8	250.0	6.7	43.9	8.0	1,008.1
Taiwan									
2008	120.0	138.2	263.6	496.7	104.7	1.2	26.4	2.0	1,152.7
2009	140.6	148.4	146.6	231.8	83.9	1.2	24.5	1.0	778.1
Singapore									
2008	33.5	33.9	11.7	159.0	270.5	12.7	25.0	3.0	549.4
2009	36.8	44.4	26.2	285.5	246.9	27.0	28.2	2.2	697.1
Total									
2008	668.1	1,003.2	767.2	2,097.5	866.9	27.4	123.8	21.6	5,575.7
2009	695.2	981.0	487.1	1,608.5	971.8	69.2	133.9	17.1	4,963.9
Other countries									
2008	7,338.7	1,613.4	3,178.5	12,764.3	6,813.3	641.1	913.1	144.6	33,407.0
2009	7,566.3	1,275.0	2,506.2	8,393.6	6,464.7	556.9	861.5	205.2	27,829.3
Total									
2008	28,737.4	101,689.6	19,785.5	81,693.6	53,994.1	43,434.9	10,277.8	5,678.1	345,290.9
2009	27,447.7	58,393.8	15,001.4	54,181.0	48,673.5	28,030.1	10,659.3	4,568.3	246,955.1

Table 4
Domestic exports by country, customs basis, not seasonally adjusted

	September		January to September		Variation
	2008	2009	2008	2009	January to September to September 2009/2008
millions of dollars					
North America					
Greenland	1.6	0.5	13.2	14.0	6.1
Mexico	574.5	308.5	3,789.7	2,757.2	-27.2
Saint Pierre and Miquelon	1.2	1.6	10.8	11.2	3.7
United States	30,801.6	21,281.5	269,285.8	185,142.4	-31.2
Total	31,379.0	21,592.0	273,099.5	187,924.8	-31.2
Western Europe					
Andorra	0.0	0.0	0.1	0.1	0.0
Austria	16.2	15.7	316.9	289.9	-8.5
Belgium	226.3	76.6	2,327.0	1,317.5	-43.4
Denmark	26.0	16.4	277.9	465.7	67.6
Faeroe Islands	0.3	0.0	1.5	0.7	-53.3
Finland	110.3	16.3	740.4	224.3	-69.7
France	256.2	192.8	2,169.8	1,919.9	-11.5
Germany	318.6	320.3	2,719.5	2,495.0	-8.3
Gibraltar	0.0	0.1	596.5	17.0	-97.2
Greece	14.6	13.5	90.9	78.7	-13.4
Iceland	2.8	5.1	41.9	66.8	59.4
Italy	150.9	218.4	1,710.3	1,283.9	-24.9
Luxembourg	11.4	2.6	68.1	29.4	-56.8
Malta	0.6	1.4	14.4	42.6	195.8
Netherlands	270.0	221.8	2,656.9	1,887.6	-29.0
Norway	206.6	219.9	2,432.3	1,268.4	-47.9
Portugal	18.2	19.1	128.8	121.7	-5.5
Republic of Ireland (Eire)	48.6	20.4	292.5	370.6	26.7
Spain	116.9	58.2	858.2	717.8	-16.4
Sweden	97.5	24.0	422.3	214.8	-49.1
Switzerland	100.1	32.8	819.1	845.5	3.2
United Kingdom	963.3	1,054.6	9,519.8	8,285.5	-13.0
Total	2,955.6	2,529.9	28,205.2	21,943.4	-22.2
Other Europe					
Albania	2.0	1.8	21.0	9.0	-57.1
Armenia	3.5	0.8	17.3	5.7	-67.1
Azerbaijan	1.9	0.5	13.0	7.4	-43.1
Belarus	0.0	0.1	3.5	0.9	-74.3
Bosnia and Herzegovina	1.4	0.1	5.0	2.4	-52.0
Bulgaria	5.7	1.9	21.7	52.3	141.0
Croatia	1.8	2.0	57.9	93.3	61.1
Czech Republic	15.1	8.2	181.4	87.8	-51.6
Estonia	1.8	1.5	17.4	14.0	-19.5
Georgia	2.6	1.8	13.1	6.2	-52.7
Hungary	10.7	5.2	101.9	68.2	-33.1
Kazakhstan	6.5	4.1	179.0	113.0	-36.9
Kyrgyzstan	0.5	0.2	4.9	2.9	-40.8
Latvia	4.4	1.4	32.9	19.3	-41.3
Lithuania	4.3	2.2	33.1	31.2	-5.7
Macedonia (Former Yugoslav Republic of Macedonia)	1.2	1.9	9.3	10.4	11.8
Montenegro	0.7	0.2	4.9	1.5	-69.4
Poland	18.0	18.6	243.9	135.9	-44.3
Republic of Moldova	2.7	0.1	7.9	1.7	-78.5
Romania	4.6	10.9	177.2	59.3	-66.5
Russian Federation	143.3	42.5	1,079.7	594.8	-44.9
Serbia	0.8	1.1	9.9	15.2	53.5
Slovakia	11.0	2.4	40.2	18.7	-53.5
Slovenia	1.5	0.5	27.7	51.5	85.9
Tajikistan	0.5	0.2	3.5	1.8	-48.6
Turkmenistan	0.0	0.2	2.0	4.6	130.0
Ukraine	30.6	9.5	181.4	65.5	-63.9
Uzbekistan	0.9	0.8	8.6	12.0	39.5
Total	278.0	120.5	2,499.4	1,486.5	-40.5
Middle East					
Bahrain	2.1	6.6	43.8	29.7	-32.2
Cyprus	1.1	0.5	13.4	7.9	-41.0

Table 4 – continued

Domestic exports by country, customs basis, not seasonally adjusted

	September		January to September		Variation
	2008	2009	2008	2009	January to September 2009/2008
millions of dollars					
Egypt	73.1	95.9	366.5	460.6	25.7
Eritrea	0.0	0.0	0.8	1.0	25.0
Ethiopia	8.2	0.1	63.4	7.3	-88.5
Iran	56.3	7.7	262.1	314.8	20.1
Iraq	3.6	64.1	141.4	459.1	224.7
Israel	42.4	16.7	391.1	219.1	-44.0
Jordan	10.0	3.3	56.1	43.5	-22.5
Kuwait	7.7	7.3	98.9	57.6	-41.8
Lebanon	5.8	3.8	51.6	74.0	43.4
Libya	3.1	4.1	88.6	195.5	120.7
Oman	9.1	4.4	62.9	82.0	30.4
Qatar	5.0	6.9	57.8	194.2	236.0
Saudi Arabia	60.4	43.1	750.4	836.1	11.4
Somalia	0.0	2.8	1.2	2.9	141.7
Sudan	5.2	14.2	168.3	86.1	-48.8
Syria	2.1	2.6	48.5	35.2	-27.4
Turkey	126.2	68.1	967.0	536.9	-44.5
United Arab Emirates	161.9	56.5	938.3	818.9	-12.7
Yemen	0.2	1.2	19.3	20.6	6.7
Total	583.6	409.9	4,591.6	4,483.1	-2.4
Other Africa					
Algeria	4.3	9.7	665.5	238.0	-64.2
Angola	6.8	2.5	100.6	55.7	-44.6
Antarctica	0.0	0.0	2.8	0.5	-82.1
Benin	1.8	0.6	9.6	5.6	-41.7
Botswana	0.4	0.1	7.6	3.2	-57.9
Bouvet Island	0.0	0.0	0.0	0.0	0.0
Burkina Faso	0.2	1.5	4.7	15.4	227.7
Burundi	0.2	0.2	1.1	0.8	-27.3
Cameroon	0.8	3.5	10.1	24.3	140.6
Cape Verde	0.1	0.0	0.8	1.0	25.0
Central African Republic	0.0	0.0	0.1	0.6	500.0
Chad	0.4	0.3	3.2	8.8	175.0
Comoros	0.0	0.0	0.5	3.1	520.0
Congo	3.3	0.6	19.5	15.8	-19.0
Democratic Republic of the Congo	1.3	1.0	15.0	10.7	-28.7
Djibouti	0.1	0.1	1.5	2.1	40.0
Equatorial Guinea	0.6	0.3	4.0	3.7	-7.5
French Southern Territories	0.0	0.0	0.1	0.2	100.0
Gabon	3.1	0.9	20.7	19.8	-4.3
Gambia	0.1	0.0	0.4	0.5	25.0
Ghana	8.0	16.7	132.2	121.4	-8.2
Guinea	0.8	0.4	12.2	10.8	-11.5
Guinea-Bissau	0.0	0.0	0.7	0.0	0.0
Ivory Coast	3.3	1.5	21.2	19.2	-9.4
Kenya	5.0	5.5	48.6	55.6	14.4
Lesotho	0.0	0.0	0.0	0.0	0.0
Liberia	1.7	0.2	7.6	2.7	-64.5
Madagascar	0.6	0.6	7.8	38.2	389.7
Malawi	0.4	0.3	4.0	3.2	-20.0
Mali	0.1	0.1	5.1	4.2	-17.6
Mauritania	1.1	0.2	3.5	2.0	-42.9
Mauritius	1.3	0.1	3.7	4.3	16.2
Morocco	22.5	25.1	211.9	280.9	32.6
Mozambique	4.5	1.3	9.4	4.1	-56.4
Namibia	0.9	1.4	7.7	2.5	-67.5
Niger	0.1	0.4	2.6	2.2	-15.4
Nigeria	8.4	57.7	46.2	157.0	239.8
Rwanda	1.8	1.8	3.4	3.0	-11.8
Saint Helena	0.0	0.0	0.4	0.1	-75.0
Sao Tome and Principe	0.0	0.0	0.0	0.1	...
Senegal	1.1	15.3	21.7	29.4	35.5
Seychelles	0.4	0.1	1.2	0.9	-25.0
Sierra Leone	1.0	0.5	6.8	3.3	-51.5
South Africa	132.6	35.3	673.2	325.7	-51.6
Swaziland	0.1	0.1	4.9	9.6	95.9

Table 4 – continued

Domestic exports by country, customs basis, not seasonally adjusted

	September		January to September		Variation January to September 2009/2008
	2008	2009	2008	2009	
millions of dollars					
Togo	1.3	1.5	12.6	14.6	15.9
Tunisia	2.6	1.4	23.5	75.6	221.7
Uganda	1.0	1.1	7.8	11.0	41.0
United Republic of Tanzania	6.0	3.0	36.2	24.9	-31.2
Western Sahara	0.0	0.0	0.0	0.1	0.0
Zambia	2.5	0.6	18.2	7.1	-61.0
Zimbabwe	0.7	0.0	3.8	7.2	89.5
Total	233.1	193.5	2,205.9	1,630.5	-26.1
Other Asia					
Afghanistan	2.1	2.5	10.4	38.7	272.1
Bangladesh	4.5	35.4	235.1	502.1	113.6
Bhutan	0.0	0.0	0.0	0.1	0.0
British Indian Ocean Territory	0.2	0.1	0.6	0.3	-50.0
Brunei Darussalam	0.3	0.3	1.8	3.3	83.3
Cambodia	0.2	2.8	1.9	5.8	205.3
China	750.4	668.5	7,841.2	8,357.9	6.6
Hong Kong	164.6	88.0	1,159.9	1,008.1	-13.1
India	353.1	222.8	1,474.6	1,385.9	-6.0
Indonesia	150.2	30.3	1,159.3	735.3	-36.6
Japan	966.4	596.0	8,026.3	5,970.4	-25.6
Laos	0.3	0.6	17.3	2.0	-88.4
Macau	3.6	0.2	31.6	12.8	-59.5
Malaysia	37.5	49.7	528.2	405.3	-23.3
Maldives	1.9	0.1	4.0	8.1	102.5
Mongolia	0.9	0.6	6.9	3.8	-44.9
Myanmar	0.0	0.0	0.1	0.0	0.0
Nepal	0.0	0.2	1.7	2.9	70.6
North Korea	1.3	2.5	14.5	18.9	30.3
Pakistan	54.4	13.1	465.6	347.2	-25.4
Philippines	36.9	24.3	360.0	336.2	-6.6
Singapore	63.4	54.0	549.4	697.1	26.9
South Korea	357.0	340.1	2,713.7	2,480.6	-8.6
Sri Lanka	40.6	26.0	314.0	250.8	-20.1
Taiwan	90.2	109.5	1,152.7	778.1	-32.5
Thailand	50.0	59.4	503.4	363.1	-27.9
Timor-Leste	0.0	0.0	0.3	0.0	0.0
Viet Nam	10.8	31.2	240.5	149.2	-38.0
Total	3,140.7	2,358.2	26,815.0	23,864.0	-11.0
Oceania					
American Samoa	0.1	0.1	0.7	0.5	-28.6
Australia	218.2	152.0	1,451.3	1,182.3	-18.5
Christmas Island	0.0	0.0	0.1	0.3	200.0
Cocos (Keeling) Islands	0.0	0.0	0.1	0.2	100.0
Cook Islands	0.0	0.0	0.8	0.5	-37.5
Fiji	0.1	1.0	1.6	5.4	237.5
French Polynesia	2.3	1.8	13.2	7.8	-40.9
Guam	0.1	0.2	2.2	1.5	-31.8
Heard Island and McDonald Islands	0.0	0.0	0.0	0.0	...
Kiribati	0.0	0.0	0.0	0.0	0.0
Nauru	0.0	0.0	0.2	0.1	-50.0
New Caledonia	1.4	6.0	14.7	8.7	-40.8
New Zealand	55.7	30.2	324.9	202.2	-37.8
Norfolk Island	0.0	0.0	0.0	0.3	0.0
Papua New Guinea	1.8	1.8	7.9	23.0	191.1
Pitcairn	0.0	0.0	0.3	0.1	-66.7
Samoa	0.0	0.0	0.4	0.3	-25.0
Solomon Islands	0.0	0.0	0.0	0.1	0.0
Tonga	0.1	0.0	0.4	0.2	-50.0
United States Minor Outlying Islands	1.2	0.9	12.1	9.5	-21.5
Vanuatu	0.1	0.1	0.2	1.7	750.0
Wallis and Futuna	0.0	0.0	0.0	0.0	0.0
Total	281.2	194.2	1,831.2	1,444.6	-21.1

Table 4 – continued

Domestic exports by country, customs basis, not seasonally adjusted

	September		January to September		Variation January to September 2009/2008
	2008	2009	2008	2009	
millions of dollars					
South America					
Argentina	24.5	10.7	158.4	124.6	-21.3
Bolivia	2.7	0.4	14.2	8.4	-40.8
Brazil	254.1	127.8	1,926.2	1,042.9	-45.9
Chile	36.8	39.0	506.8	466.7	-7.9
Colombia	53.3	47.4	515.3	460.2	-10.7
Ecuador	10.9	26.0	175.3	188.0	7.2
Falkland Islands (Malvinas)	0.0	0.0	0.1	0.0	0.0
Guyana	5.6	1.6	14.5	20.3	40.0
Paraguay	2.3	0.9	11.5	7.8	-32.2
Peru	19.2	18.9	278.6	298.6	7.2
Suriname	1.4	1.8	7.2	9.1	26.4
Uruguay	2.4	1.1	138.2	15.6	-88.7
Venezuela	65.1	41.3	583.7	426.7	-26.9
Total	478.3	316.9	4,329.9	3,068.8	-29.1
Central America Antilles					
Anguilla	0.3	0.1	1.9	1.5	-21.1
Antigua and Barbuda	4.0	2.8	15.8	11.4	-27.8
Aruba	0.4	0.4	4.3	4.3	0.0
Bahamas	75.8	2.6	103.5	110.2	6.5
Barbados	4.0	5.4	33.2	30.9	-6.9
Belize	0.4	0.2	4.0	4.4	10.0
Bermuda	4.4	3.5	46.5	44.9	-3.4
British Virgin Islands	0.5	0.2	6.4	2.5	-60.9
Cayman Islands	0.7	0.4	11.3	4.9	-56.6
Costa Rica	10.9	8.9	80.7	53.0	-34.3
Cuba	53.0	11.4	470.5	214.7	-54.4
Dominica	0.6	0.3	4.9	3.4	-30.6
Dominican Republic	9.8	6.3	161.3	100.3	-37.8
El Salvador	8.3	6.1	37.6	36.1	-4.0
Grenada	0.5	0.5	4.3	4.1	-4.7
Guatemala	16.0	4.4	119.4	62.0	-48.1
Haiti	2.0	1.6	34.3	32.3	-5.8
Honduras	11.3	3.1	68.1	22.1	-67.5
Jamaica	8.0	11.1	159.7	89.9	-43.7
Montserrat	0.1	0.0	0.2	0.2	0.0
Netherlands Antilles	1.6	3.0	12.9	42.6	230.2
Nicaragua	3.7	1.0	17.6	10.1	-42.6
Panama	6.9	4.3	80.0	62.3	-22.1
Saint Kitts and Nevis	0.6	0.5	5.9	4.6	-22.0
Saint Lucia	1.3	0.9	8.2	7.4	-9.8
Saint Vincent and the Grenadines	0.5	1.0	5.2	7.1	36.5
Trinidad and Tobago	34.2	8.7	209.8	138.2	-34.1
Turks and Caicos Islands	0.7	0.6	5.7	4.0	-29.8
Total	260.6	89.5	1,713.2	1,109.4	-35.2
All countries	39,589.9	27,804.6	345,290.9	246,955.1	-28.5

Table 5-1
Exports by province of origin, customs basis, not seasonally adjusted — September

	Agricultural and fishing products	Energy products	Forestry products	Industrial goods	Machinery and equipment	Automotive products	Consumer goods	Special transactions	Total
millions of dollars									
Domestic exports									
Newfoundland and Labrador									
2008	66.0	1,070.7	21.8	249.1	4.7	0.0	0.0	7.1	1,419.5
2009	50.0	442.0	6.6	129.0	3.6	0.7	0.1	4.7	636.7
Prince Edward Island									
2008	41.8	0.0	0.0	2.1	15.3	0.0	1.5	7.6	68.4
2009	41.8	0.3	0.0	0.8	16.5	0.1	1.9	4.2	65.6
Nova Scotia									
2008	89.1	100.5	102.9	52.6	101.6	8.7	6.5	7.1	469.1
2009	81.9	48.5	66.9	40.8	99.5	5.9	5.7	4.9	354.1
New Brunswick									
2008	116.6	512.5	91.1	121.2	27.6	1.9	8.1	11.7	890.6
2009	104.2	350.2	73.8	53.3	24.6	2.0	19.9	7.7	635.7
Quebec									
2008	414.7	381.9	688.4	2,019.4	1,789.5	181.8	330.5	137.7	5,943.9
2009	345.5	200.8	469.4	1,399.0	1,432.6	142.6	306.0	102.2	4,398.0
Ontario									
2008	704.7	419.1	347.6	3,845.3	3,280.1	4,714.1	686.0	357.9	14,354.8
2009	667.4	219.8	198.3	2,772.5	2,486.8	4,110.2	669.3	244.7	11,369.1
Manitoba									
2008	387.5	109.3	34.5	272.2	192.5	53.7	30.3	36.2	1,116.2
2009	266.5	80.1	20.1	170.3	151.1	43.6	24.9	44.6	801.1
Saskatchewan									
2008	756.2	1,055.3	18.7	735.7	90.1	4.8	1.5	12.7	2,675.0
2009	506.6	651.8	20.1	483.7	70.8	3.7	0.5	8.6	1,745.9
Alberta									
2008	618.4	6,908.5	173.2	1,253.9	493.5	45.2	23.7	56.7	9,573.2
2009	471.1	4,111.9	151.8	678.4	347.7	28.3	10.9	46.8	5,847.0
British Columbia									
2008	218.8	809.1	831.7	510.9	323.3	22.0	54.2	46.3	2,816.2
2009	182.2	452.8	602.5	371.7	231.1	16.8	49.9	32.6	1,939.6
Yukon, Northwest Territories and Nunavut ¹									
2008	0.1	0.0	0.0	261.8	0.4	0.0	0.0	0.8	263.2
2009	0.1	0.0	0.0	10.7	0.3	0.0	0.0	0.5	11.8
Total									
2008	3,413.8	11,366.8	2,310.2	9,324.1	6,318.6	5,032.4	1,142.3	681.8	39,589.9
2009	2,717.4	6,558.4	1,609.4	6,110.2	4,864.7	4,353.9	1,089.1	501.4	27,804.6
Re-exports									
2008	45.4	170.0	5.7	214.7	901.4	118.5	202.1	766.8	2,424.7
2009	35.0	95.7	5.8	228.9	878.4	98.0	198.8	576.9	2,117.5
Total exports									
2008	3,459.2	11,536.9	2,315.9	9,538.8	7,220.0	5,150.9	1,344.4	1,448.6	42,014.6
2009	2,752.4	6,654.0	1,615.2	6,339.2	5,743.1	4,451.9	1,287.8	1,078.3	29,922.0

1. Data for the most current month do not include some exports of Chapter 71 "Natural/cultured pearls, precious stones and metals, coins etc" for reasons relating to timing.

Table 5-2
Exports by province of origin, customs basis, not seasonally adjusted — Year to date, January to September

	Agricultural and fishing products	Energy products	Forestry products	Industrial goods	Machinery and equipment	Automotive products	Consumer goods	Special transactions	Total
millions of dollars									
Domestic exports									
Newfoundland and Labrador									
2008	665.5	8,901.9	219.5	1,524.1	42.1	1.0	1.5	60.7	11,416.3
2009	570.5	4,315.9	147.4	1,332.1	44.5	2.4	0.7	42.5	6,455.8
Prince Edward Island									
2008	368.6	0.0	1.6	12.9	144.1	1.1	21.5	63.3	613.2
2009	361.4	1.0	0.8	17.2	150.5	1.4	22.1	62.5	616.9
Nova Scotia									
2008	784.0	1,253.5	654.8	430.7	908.5	89.0	57.8	73.2	4,251.6
2009	743.6	476.9	521.1	380.1	846.2	60.7	57.3	54.2	3,140.0
New Brunswick									
2008	922.9	6,931.4	921.5	1,033.4	251.8	16.0	80.4	90.6	10,248.0
2009	881.2	4,777.0	817.1	584.8	234.6	18.8	106.6	65.1	7,485.3
Quebec									
2008	3,364.8	3,317.1	5,716.8	17,537.8	16,578.6	1,563.8	2,630.6	1,140.9	51,850.4
2009	3,211.8	2,149.7	4,484.9	12,021.6	15,137.2	1,244.4	2,615.4	1,031.7	41,896.8
Ontario									
2008	5,786.3	3,421.1	2,895.6	35,049.9	26,971.5	40,625.9	6,568.6	2,989.1	124,308.1
2009	5,937.4	2,088.6	2,017.1	23,033.8	24,345.0	25,639.3	6,980.3	2,218.8	92,260.5
Manitoba									
2008	3,253.7	972.4	295.1	2,645.8	1,642.2	427.4	263.3	218.5	9,718.5
2009	2,975.5	591.8	213.3	1,677.0	1,564.2	479.8	347.8	278.3	8,127.7
Saskatchewan									
2008	6,238.7	8,786.7	202.5	5,749.3	643.0	31.1	18.0	93.9	21,763.1
2009	5,676.1	5,065.4	192.6	4,178.1	657.5	30.9	8.9	68.7	15,878.2
Alberta									
2008	5,614.3	61,260.4	1,539.8	10,816.8	4,002.8	440.0	164.7	512.7	84,351.4
2009	5,313.4	34,080.0	1,260.5	6,356.7	3,389.8	393.3	120.5	412.3	51,326.4
British Columbia									
2008	1,737.1	6,845.1	7,337.9	4,971.7	2,804.4	239.6	470.2	433.6	24,839.5
2009	1,775.1	4,847.5	5,346.6	3,447.4	2,299.7	158.8	398.6	333.4	18,607.1
Yukon, Northwest Territories and Nunavut ¹									
2008	1.4	0.0	0.4	1,921.1	5.0	0.1	1.2	1.7	1,931.0
2009	1.9	0.0	0.1	1,152.1	4.2	0.3	1.0	0.8	1,160.5
Total									
2008	28,737.4	101,689.6	19,785.5	81,693.6	53,994.1	43,434.9	10,277.8	5,678.1	345,290.9
2009	27,447.7	58,393.8	15,001.4	54,181.0	48,673.5	28,030.1	10,659.3	4,568.3	246,955.1
Re-exports									
2008	349.8	742.3	64.6	2,127.3	8,192.3	1,111.9	1,613.6	6,527.1	20,728.9
2009	360.8	397.0	57.2	1,691.0	8,595.0	738.0	1,678.3	6,012.0	19,529.5
Total exports									
2008	29,087.2	102,431.9	19,850.0	83,820.9	62,186.4	44,546.8	11,891.3	12,205.2	366,019.8
2009	27,808.6	58,790.8	15,058.7	55,872.1	57,268.5	28,768.1	12,337.6	10,580.3	266,484.6

1. Data for the most current month do not include some exports of Chapter 71 "Natural/cultured pearls, precious stones and metals, coins etc" for reasons relating to timing.

Table 6-1
Imports by commodity groupings, balance of payments basis, seasonally adjusted — Current dollars

	August	September	Change	Year to date		Year to date change	September 2009/2008		
	2009	2009		2008	2009			millions of dollars	percent
Total	31,220	31,181	-40	-0.1	330,173	279,956	-50,218	-15.2	-18.1
Agricultural and fishing products	2,466	2,350	-116	-4.7	20,881	22,293	1,412	6.8	-5.1
Fruits and vegetables	685	671	-13	-1.9	5,706	6,228	522	9.2	-0.2
Fresh fruits and berries	239	238	-1	-0.4	2,010	2,183	173	8.6	2.1
Dried fruits, fruits and fruit preparations	124	121	-4	-2.9	1,080	1,166	86	8.0	-0.8
Fresh vegetables	172	172	0	0.1	1,445	1,576	131	9.1	-2.8
Other vegetables and vegetable preparations	149	141	-9	-5.9	1,171	1,303	132	11.3	-0.0
Other agricultural and fishing products	1,782	1,678	-103	-5.8	15,175	16,064	889	5.9	-6.9
Live animals	16	16	-0	-1.0	142	146	4	2.9	-11.7
Meat and meat preparations	171	178	7	4.2	1,510	1,635	125	8.3	0.4
Fish and marine animals	162	164	2	1.5	1,418	1,578	160	11.3	1.9
Cocoa, coffee, tea and other food preparations	414	389	-25	-6.0	3,342	3,750	408	12.2	-4.7
Dairy produce, eggs and honey	51	51	-0	-0.4	480	426	-54	-11.2	-1.1
Corn (maize) shelled	50	43	-7	-13.9	542	371	-172	-31.6	-32.4
Other cereals and cereal preparations	187	187	0	0.2	1,521	1,748	227	14.9	2.6
Sugar and sugar preparations	147	117	-30	-20.2	1,103	1,239	136	12.3	-18.6
Fodder, feed, excluding unmilled cereal	135	128	-7	-5.0	1,078	1,140	62	5.7	-5.4
Beverages	322	280	-42	-13.1	2,634	2,759	125	4.7	-7.4
Tobacco	35	34	-1	-1.6	283	279	-4	-1.3	8.1
Crude vegetable products	93	91	-2	-2.2	1,114	987	-127	-11.4	-28.8
Cotton	1	1	-0	-35.1	8	7	-2	-18.5	-56.9
Energy products	2,946	2,814	-132	-4.5	40,746	24,794	-15,952	-39.1	-38.8
Crude petroleum	2,011	1,876	-134	-6.7	26,747	15,080	-11,667	-43.6	-36.6
Other energy products	935	937	2	0.2	13,999	9,714	-4,285	-30.6	-43.0
Coal and other related products	304	299	-4	-1.4	4,394	3,518	-876	-19.9	-39.2
Petroleum and coal products	632	638	6	1.0	9,604	6,196	-3,408	-35.5	-44.6
Forestry products	193	202	9	4.8	2,166	1,804	-363	-16.7	-14.6
Forestry products	193	202	9	4.8	2,166	1,804	-363	-16.7	-14.6
Crude wood products	32	35	3	8.7	345	339	-6	-1.8	-8.4
Wood fabricated materials	161	167	7	4.1	1,822	1,465	-357	-19.6	-15.8
Industrial goods and materials	5,861	6,361	500	8.5	68,169	56,364	-11,805	-17.3	-19.9
Metals and metal ores	1,902	2,300	398	20.9	24,825	18,042	-6,783	-27.3	-20.1
Metals in ores, concentrates and scrap	498	618	119	24.0	6,638	4,378	-2,260	-34.0	-15.4
Steel bars, rods, plates, sheets	340	415	75	22.0	5,681	3,492	-2,189	-38.5	-39.5
Other iron and steel products	232	253	21	9.2	3,677	2,733	-943	-25.7	-50.1
Precious metals including alloys	547	676	129	23.6	4,279	4,782	503	11.8	39.0
Other non-ferrous metals and alloys	285	338	53	18.6	4,550	2,656	-1,894	-41.6	-28.0
Chemicals and plastics	2,121	2,189	69	3.2	23,176	20,572	-2,603	-11.2	-19.5
Organic chemicals	505	492	-13	-2.6	5,966	4,999	-966	-16.2	-31.3
Plastic materials	722	722	0	0.1	7,938	6,605	-1,332	-16.8	-18.7
Other chemicals and related products	894	975	82	9.1	9,272	8,968	-304	-3.3	-12.6
Other industrial goods and materials	1,838	1,872	34	1.8	20,168	17,750	-2,419	-12.0	-20.1
Crude animal products	14	18	4	32.0	239	166	-73	-30.5	-28.3
Wool and man-made fibres	17	16	-1	-5.8	190	159	-30	-16.0	-27.7
Crude non-metallic minerals	58	56	-2	-3.6	758	560	-198	-26.2	-39.5
Textile fabricated materials	180	176	-4	-2.3	1,945	1,705	-240	-12.3	-20.5
Metal fabricated basic products	677	724	47	7.0	7,892	6,888	-1,004	-12.7	-19.9
Rubber fabricated materials	76	78	2	2.8	767	703	-64	-8.3	-12.3
Oils, fats, animal and vegetable	111	111	0	0.1	903	963	61	6.7	-15.1
Non-metallic minerals	261	263	2	0.6	2,790	2,488	-302	-10.8	-23.1
Other fabricated materials	443	428	-14	-3.2	4,685	4,117	-568	-12.1	-16.7

Table 6-1 – continued

Imports by commodity groupings, balance of payments basis, seasonally adjusted — Current dollars

	August 2009	September 2009	Change		Year to date		Year to date change	September 2009/2008	
	millions of dollars		percent		millions of dollars		percent		
Machinery and equipment	8,948	8,797	-151	-1.7	89,962	82,661	-7,301	-8.1	-15.8
Industrial and agricultural machinery	2,269	2,289	20	0.9	25,177	21,575	-3,601	-14.3	-22.4
Engines, turbines and electric motors	319	294	-25	-7.8	2,981	3,252	270	9.1	-7.2
Drilling mining machinery	117	135	18	15.2	1,305	1,165	-140	-10.7	-23.1
Excavating machinery	140	192	52	37.0	2,677	1,572	-1,105	-41.3	-34.7
Metal working machinery	115	115	-1	-0.4	1,845	1,216	-629	-34.1	-44.4
Other industrial machinery	1,247	1,212	-35	-2.8	13,377	11,299	-2,078	-15.5	-23.7
Agricultural machinery including tractors	330	341	11	3.4	2,990	3,071	80	2.7	-6.9
Aircraft and other transportation equipment	1,319	1,178	-141	-10.7	12,959	12,204	-754	-5.8	-18.1
Aircraft, engines, parts	800	711	-89	-11.2	8,310	7,732	-578	-7.0	-19.2
Other transportation equipment and parts	518	467	-52	-10.0	4,649	4,472	-177	-3.8	-16.4
Office machines and equipment	1,064	1,003	-61	-5.7	10,705	9,317	-1,389	-13.0	-16.6
Other machinery and equipment	4,296	4,327	31	0.7	41,121	39,565	-1,556	-3.8	-11.0
Other communication and related equipment	1,560	1,526	-34	-2.2	14,247	14,054	-193	-1.4	-11.1
Other equipment and tools	2,736	2,801	65	2.4	26,874	25,511	-1,363	-5.1	-10.9
Automotive products	5,043	4,806	-237	-4.7	54,986	38,802	-16,184	-29.4	-20.7
Passenger autos and chassis	1,569	1,691	123	7.8	20,090	13,118	-6,971	-34.7	-28.2
Trucks and other motor vehicles	1,424	976	-449	-31.5	11,653	8,954	-2,699	-23.2	-16.0
Motor vehicle parts	2,050	2,139	89	4.3	23,243	16,730	-6,513	-28.0	-15.8
Other consumer goods	4,675	4,696	21	0.4	42,010	43,408	1,398	3.3	-5.2
Apparel and footwear	873	856	-17	-1.9	8,145	8,611	466	5.7	-14.4
Apparel and apparel accessories	723	706	-17	-2.4	6,812	7,183	370	5.4	-15.1
Footwear	150	150	0	0.3	1,333	1,428	96	7.2	-11.1
Miscellaneous consumer goods	3,802	3,840	38	1.0	33,865	34,797	932	2.8	-2.8
Television, radios, phonographs	118	128	10	8.8	1,268	1,017	-251	-19.8	-8.8
Printed matter	294	299	5	1.9	2,731	2,739	8	0.3	0.1
Watches, sporting goods and toys	524	521	-3	-0.5	4,721	4,636	-85	-1.8	-2.5
House furnishings	684	710	26	3.8	6,325	6,582	257	4.1	-6.1
Photographic goods	208	221	13	6.2	2,110	1,973	-136	-6.5	-12.7
Miscellaneous end products	1,974	1,960	-14	-0.7	16,710	17,849	1,140	6.8	-0.4
Special transactions trade	416	492	76	18.4	4,610	3,801	-810	-17.6	-19.1
Unallocated balance of payments adjustments	673	663	-10	-1.5	6,643	6,029	-614	-9.2	-11.6

Table 6-2
Imports by commodity groupings, balance of payments basis, seasonally adjusted — Constant dollars, 2002

	August	September	Change	Year to date		Year to date change	September 2009/2008		
	2009	2009		2008	2009			millions of dollars	percent
Total	35,168	34,889	-279	-0.8	371,254	299,278	-71,975	-19.4	-14.2
Agricultural and fishing products	2,449	2,368	-82	-3.3	21,227	20,824	-403	-1.9	0.9
Fruits and vegetables	700	685	-16	-2.2	5,618	6,090	473	8.4	7.9
Fresh fruits and berries	257	245	-12	-4.8	1,993	2,233	240	12.0	10.6
Dried fruits, fruits and fruit preparations	127	122	-5	-4.2	1,044	1,120	75	7.2	3.2
Fresh vegetables	180	187	7	3.8	1,465	1,581	116	7.9	10.9
Other vegetables and vegetable preparations	136	131	-5	-3.5	1,116	1,157	41	3.7	3.8
Other agricultural and fishing products	1,749	1,683	-66	-3.8	15,609	14,733	-876	-5.6	-1.7
Live animals	16	18	1	8.8	147	141	-6	-4.0	3.1
Meat and meat preparations	177	193	17	9.4	1,575	1,596	21	1.3	6.3
Fish and marine animals	256	268	12	4.7	1,872	2,051	179	9.6	27.9
Cocoa, coffee, tea and other food preparations	360	336	-24	-6.6	3,171	2,999	-172	-5.4	-2.9
Dairy produce, eggs and honey	50	48	-1	-2.8	416	410	-6	-1.3	5.7
Corn (maize) shelled	47	41	-6	-13.2	388	308	-80	-20.5	2.9
Other cereals and cereal preparations	166	172	6	3.3	1,561	1,448	-113	-7.2	4.1
Sugar and sugar preparations	143	115	-28	-19.5	1,266	1,180	-85	-6.7	-24.1
Fodder, feed, excluding unmilled cereal	103	98	-6	-5.5	901	823	-78	-8.6	3.1
Beverages	286	250	-36	-12.5	2,676	2,428	-248	-9.3	-13.2
Tobacco	42	41	-1	-1.7	390	317	-72	-18.5	0.1
Crude vegetable products	101	101	0	0.2	1,234	1,020	-214	-17.3	-21.5
Cotton	2	1	-1	-35.7	12	9	-3	-25.5	-55.3
Energy products	1,815	1,734	-80	-4.4	16,488	15,717	-771	-4.7	-3.1
Crude petroleum	1,116	1,017	-99	-8.8	8,939	8,667	-272	-3.0	4.3
Other energy products	699	717	18	2.6	7,549	7,050	-499	-6.6	-12.0
Coal and other related products	302	308	7	2.2	2,676	2,926	250	9.3	18.0
Petroleum and coal products	397	409	12	3.0	4,873	4,124	-749	-15.4	-26.2
Forestry products	256	268	12	4.5	2,845	2,250	-595	-20.9	-11.3
Forestry products	256	268	12	4.5	2,845	2,250	-595	-20.9	-11.3
Crude wood products	43	46	3	6.8	445	425	-20	-4.4	-1.0
Wood fabricated materials	213	222	9	4.1	2,400	1,825	-576	-24.0	-13.2
Industrial goods and materials	5,612	5,800	188	3.3	61,720	50,198	-11,522	-18.7	-10.9
Metals and metal ores	1,440	1,654	213	14.8	16,709	12,946	-3,763	-22.5	-5.9
Metals in ores, concentrates and scrap	370	432	62	16.9	3,604	3,315	-290	-8.0	0.8
Steel bars, rods, plates, sheets	301	355	54	17.8	3,852	2,763	-1,089	-28.3	-3.2
Other iron and steel products	183	197	14	7.7	2,503	1,901	-602	-24.0	-30.5
Precious metals including alloys	276	313	37	13.5	2,527	2,254	-273	-10.8	23.4
Other non-ferrous metals and alloys	311	356	46	14.8	4,224	2,714	-1,510	-35.8	-15.9
Chemicals and plastics	2,124	2,091	-33	-1.5	21,584	18,973	-2,611	-12.1	-6.3
Organic chemicals	408	383	-26	-6.3	4,275	3,989	-286	-6.7	-14.6
Plastic materials	796	772	-23	-2.9	8,215	6,778	-1,438	-17.5	-9.6
Other chemicals and related products	920	936	16	1.8	9,093	8,206	-887	-9.8	0.8
Other industrial goods and materials	2,048	2,055	7	0.4	23,427	18,279	-5,148	-22.0	-18.4
Crude animal products	19	25	5	27.4	239	231	-8	-3.4	1.8
Wool and man-made fibres	23	20	-3	-12.1	244	199	-45	-18.4	-23.1
Crude non-metallic minerals	51	47	-4	-7.4	647	495	-153	-23.6	-36.7
Textile fabricated materials	240	231	-9	-3.8	2,661	2,064	-597	-22.4	-18.4
Metal fabricated basic products	696	751	55	7.9	8,686	6,632	-2,054	-23.6	-18.7
Rubber fabricated materials	91	94	3	3.1	1,010	777	-233	-23.1	-13.9
Oils, fats, animal and vegetable	100	100	0	-0.1	719	826	107	14.9	-0.2
Non-metallic minerals	311	315	4	1.1	3,467	2,750	-717	-20.7	-21.3
Other fabricated materials	517	473	-44	-8.5	5,753	4,306	-1,447	-25.2	-18.1

Table 6-2 – continued

Imports by commodity groupings, balance of payments basis, seasonally adjusted — Constant dollars, 2002

	August 2009	September 2009	Change		Year to date		Year to date change	September 2009/2008	
	millions of dollars		percent		millions of dollars		percent		
Machinery and equipment	12,345	12,075	-271	-2.2	132,392	105,694	-26,698	-20.2	-17.9
Industrial and agricultural machinery	2,656	2,689	34	1.3	32,792	23,519	-9,273	-28.3	-25.9
Engines, turbines and electric motors	374	351	-24	-6.4	3,949	3,589	-361	-9.1	-13.1
Drilling mining machinery	125	145	20	16.2	1,540	1,144	-396	-25.7	-24.8
Excavating machinery	162	223	61	37.4	3,471	1,681	-1,790	-51.6	-38.1
Metal working machinery	141	141	-0	-0.2	2,459	1,387	-1,073	-43.6	-46.0
Other industrial machinery	1,446	1,409	-38	-2.6	17,256	12,191	-5,065	-29.4	-27.0
Agricultural machinery including tractors	406	421	15	3.6	4,116	3,527	-589	-14.3	-12.9
Aircraft and other transportation equipment	1,495	1,360	-136	-9.1	16,228	12,913	-3,315	-20.4	-20.7
Aircraft, engines, parts	943	849	-94	-9.9	10,539	8,360	-2,178	-20.7	-21.6
Other transportation equipment and parts	552	510	-42	-7.6	5,689	4,553	-1,136	-20.0	-19.4
Office machines and equipment	2,313	2,069	-244	-10.6	22,274	18,489	-3,784	-17.0	-16.5
Other machinery and equipment	5,881	5,957	76	1.3	61,099	50,773	-10,326	-16.9	-13.5
Other communication and related equipment	2,453	2,445	-7	-0.3	24,022	20,970	-3,052	-12.7	-11.8
Other equipment and tools	3,429	3,511	83	2.4	37,077	29,803	-7,274	-19.6	-14.7
Automotive products	5,933	5,737	-195	-3.3	69,450	44,571	-24,879	-35.8	-23.2
Passenger autos and chassis	1,814	1,951	137	7.5	23,193	15,225	-7,968	-34.4	-28.9
Trucks and other motor vehicles	1,518	1,061	-457	-30.1	14,064	9,450	-4,614	-32.8	-23.1
Motor vehicle parts	2,600	2,725	125	4.8	32,193	19,896	-12,297	-38.2	-18.7
Other consumer goods	5,827	5,852	25	0.4	57,847	50,781	-7,067	-12.2	-9.3
Apparel and footwear	1,180	1,151	-28	-2.4	12,001	10,793	-1,208	-10.1	-17.5
Apparel and apparel accessories	980	950	-31	-3.1	10,042	9,017	-1,025	-10.2	-18.1
Footwear	199	202	2	1.1	1,959	1,776	-183	-9.4	-14.7
Miscellaneous consumer goods	4,648	4,701	53	1.1	45,846	39,988	-5,858	-12.8	-7.1
Television, radios, phonographs	187	205	18	9.7	2,113	1,501	-613	-29.0	-9.7
Printed matter	362	366	4	1.2	3,783	3,223	-561	-14.8	-7.5
Watches, sporting goods and toys	688	681	-7	-1.1	6,888	5,877	-1,010	-14.7	-6.3
House furnishings	846	884	38	4.5	8,458	7,533	-925	-10.9	-7.0
Photographic goods	373	387	14	3.8	3,837	3,140	-697	-18.2	-16.5
Miscellaneous end products	2,192	2,178	-14	-0.6	20,767	18,714	-2,053	-9.9	-5.1
Special transactions trade	472	558	86	18.2	5,204	4,089	-1,116	-21.4	-14.9
Unallocated balance of payments adjustments	458	497	39	8.5	4,081	5,155	1,075	26.3	13.0

Table 7-1
Imports from selected countries, customs basis, not seasonally adjusted — September

	Agricultural and fishing products	Energy products	Forestry products	Industrial goods	Machinery and equipment	Automotive products	Consumer goods	Special transactions	Total
millions of dollars									
United States									
2008	1,440.9	1,308.5	172.2	4,966.8	4,740.1	4,247.0	2,010.1	375.9	19,261.5
2009	1,412.2	766.2	151.0	3,796.5	3,838.7	3,528.4	2,006.4	478.6	15,978.0
Mexico									
2008	62.0	88.4	0.3	117.9	667.8	564.1	87.0	3.9	1,591.5
2009	64.2	101.1	0.3	102.6	597.5	486.4	87.2	2.2	1,441.6
Japan									
2008	5.2	0.3	0.2	101.4	496.3	656.6	82.8	0.3	1,343.0
2009	6.0	0.4	0.1	93.5	371.8	442.2	82.9	0.2	997.2
European Union									
Germany									
2008	32.2	1.4	1.2	194.5	389.0	308.4	160.4	14.8	1,101.9
2009	29.5	2.2	0.9	135.5	269.2	243.0	136.4	0.2	816.9
France									
2008	81.1	9.1	0.2	53.3	172.5	4.6	144.0	89.3	554.1
2009	62.0	6.1	0.2	128.2	112.4	4.2	138.5	0.3	451.9
United Kingdom									
2008	52.4	560.6	0.1	94.6	293.3	43.9	117.5	5.4	1,167.8
2009	46.5	98.8	0.1	100.1	257.8	31.9	112.5	7.1	654.8
Italy									
2008	51.5	0.0	1.0	59.9	123.1	15.4	84.1	13.9	349.0
2009	58.3	0.0	0.6	58.0	88.3	13.0	75.6	0.2	294.0
Other European Union									
2008	119.5	497.0	2.4	271.3	440.2	83.1	375.3	36.3	1,825.3
2009	111.2	242.1	3.5	208.2	308.7	84.2	330.1	5.0	1,292.8
Total									
2008	336.7	1,068.1	5.0	673.7	1,418.2	455.5	881.3	159.7	4,998.2
2009	307.6	349.3	5.3	630.0	1,036.3	376.1	793.0	12.7	3,510.3
Newly industrialized countries									
South Korea									
2008	4.0	130.2	0.0	94.0	293.0	93.4	24.4	0.1	639.1
2009	3.9	38.0	0.0	59.6	267.4	149.7	17.5	0.1	536.2
Hong Kong									
2008	2.3	0.0	0.1	3.8	16.6	0.1	20.7	0.0	43.6
2009	2.2	0.0	0.1	1.8	12.1	0.5	12.6	0.0	29.2
Taiwan									
2008	5.7	0.0	0.8	84.4	209.8	14.8	39.9	0.1	355.6
2009	5.0	0.0	0.9	51.6	148.9	12.1	36.6	0.1	255.3
Singapore									
2008	6.3	0.0	0.0	5.0	56.9	0.3	19.1	0.4	87.9
2009	4.0	0.0	0.0	7.4	41.9	0.3	9.1	0.1	62.8
Total									
2008	18.2	130.2	0.9	187.2	576.3	108.6	104.1	0.6	1,126.2
2009	15.1	38.0	1.0	120.3	470.2	162.6	75.8	0.3	883.5
Other countries									
2008	652.3	2,258.5	58.8	1,779.8	2,566.1	178.5	2,274.6	73.1	9,841.9
2009	555.7	1,625.4	48.1	1,427.1	2,324.4	181.2	2,040.0	29.0	8,230.9
Total									
2008	2,515.5	4,854.1	237.5	7,826.8	10,464.8	6,210.2	5,440.0	613.5	38,162.5
2009	2,361.1	2,880.4	205.8	6,170.0	8,638.9	5,177.1	5,085.4	523.1	31,041.8

Table 7-2
Imports from selected countries, customs basis, not seasonally adjusted — Year to date, January to September

	Agricultural and fishing products	Energy products	Forestry products	Industrial goods	Machinery and equipment	Automotive products	Consumer goods	Special transactions	Total
millions of dollars									
United States									
2008	12,072.2	11,899.0	1,581.3	43,421.2	42,704.5	38,706.2	16,488.9	3,218.8	170,092.1
2009	12,998.5	8,009.4	1,352.6	33,398.0	37,615.2	25,818.8	17,272.5	3,112.0	139,577.0
Mexico									
2008	902.6	719.7	3.6	1,056.3	5,037.6	4,063.7	748.6	33.8	12,566.1
2009	1,009.6	406.8	4.6	965.6	4,956.3	3,661.3	756.4	28.9	11,789.4
Japan									
2008	44.1	49.7	1.4	971.7	4,667.5	5,022.2	747.9	3.3	11,507.8
2009	50.1	32.2	1.6	835.2	3,662.8	3,854.3	727.3	2.3	9,165.7
European Union									
Germany									
2008	192.4	21.5	12.7	1,872.7	3,594.8	2,221.6	1,494.4	77.8	9,488.0
2009	199.3	23.1	10.2	1,381.4	3,221.5	1,819.7	1,347.4	6.1	8,008.7
France									
2008	566.6	138.8	2.7	644.2	1,441.3	59.7	1,176.0	322.7	4,352.0
2009	517.3	179.5	1.9	882.4	1,464.7	72.7	1,235.1	9.0	4,362.6
United Kingdom									
2008	299.1	4,269.9	1.8	919.7	2,312.7	427.5	1,020.2	37.2	9,287.9
2009	306.9	1,611.2	1.1	941.3	2,621.3	248.6	1,006.2	29.8	6,766.4
Italy									
2008	467.2	119.0	13.8	881.9	1,258.6	189.9	828.3	54.3	3,813.0
2009	470.0	72.3	11.0	708.0	1,127.2	144.2	811.8	6.0	3,350.5
Other European Union									
2008	891.0	2,148.4	39.0	2,392.8	3,968.9	965.3	3,006.1	144.7	13,556.2
2009	846.4	1,252.1	32.5	2,059.1	3,291.2	485.5	3,076.7	41.9	11,085.4
Total									
2008	2,416.2	6,697.7	70.0	6,711.3	12,576.3	3,864.0	7,525.0	636.6	40,497.0
2009	2,339.9	3,138.2	56.7	5,972.2	11,725.9	2,770.7	7,477.1	92.8	33,573.5
Newly industrialized countries									
South Korea									
2008	36.3	162.6	0.4	698.0	2,036.2	1,317.4	181.2	1.0	4,433.0
2009	36.9	184.2	0.2	594.1	1,984.7	1,413.9	171.1	0.6	4,385.9
Hong Kong									
2008	24.9	0.1	0.8	25.4	147.4	1.5	143.2	0.5	343.8
2009	21.2	0.0	0.5	21.4	121.7	3.1	103.9	0.5	272.2
Taiwan									
2008	43.1	74.1	8.8	643.7	1,669.0	137.9	327.1	1.1	2,904.8
2009	49.9	0.3	7.3	536.0	1,496.9	128.5	305.9	0.8	2,525.6
Singapore									
2008	23.5	83.3	1.0	193.9	443.6	2.3	161.7	3.6	912.8
2009	23.6	70.0	0.6	253.0	382.0	3.8	164.2	1.2	898.4
Total									
2008	127.9	320.0	11.1	1,561.0	4,296.3	1,459.0	813.1	6.1	8,594.4
2009	131.6	254.5	8.6	1,404.5	3,985.3	1,549.3	745.2	3.2	8,082.2
Other countries									
2008	5,032.1	21,136.6	507.7	14,407.9	20,149.9	1,738.9	15,691.6	637.0	79,301.7
2009	5,305.6	13,146.3	395.7	12,806.9	19,723.3	1,316.3	16,099.6	292.5	69,086.2
Total									
2008	20,596.0	40,822.6	2,175.1	68,129.5	89,432.1	54,854.1	42,015.1	4,535.7	322,560.2
2009	21,836.5	24,987.4	1,819.8	55,382.5	81,668.9	38,970.6	43,078.0	3,531.7	271,275.4

Table 8
Imports by country, customs basis, not seasonally adjusted

	September		January to September		Variation January to September 2009/2008
	2008	2009	2008	2009	
millions of dollars					
North America					
Canada	304.6	263.9	2,805.0	2,364.9	-15.7
Greenland	2.4	0.0	25.6	17.0	-33.6
Mexico	1,591.5	1,441.6	12,566.1	11,789.4	-6.2
Saint Pierre and Miquelon	0.1	0.0	0.5	0.2	-60.0
United States	19,261.5	15,978.0	170,092.1	139,577.0	-17.9
Total	21,159.9	17,683.5	185,489.2	153,748.5	-17.1
Western Europe					
Andorra	0.0	0.0	0.1	0.1	0.0
Austria	137.5	94.7	1,145.3	833.0	-27.3
Belgium	192.3	139.5	1,674.6	1,066.7	-36.3
Denmark	292.2	146.3	1,282.9	1,081.4	-15.7
Faeroe Islands	0.3	0.3	1.0	1.4	40.0
Finland	89.8	82.1	627.7	638.9	1.8
France	554.1	451.9	4,352.0	4,362.6	0.2
Germany	1,101.9	816.9	9,488.0	8,008.7	-15.6
Gibraltar	0.0	0.0	0.0	0.0	0.0
Greece	17.0	9.2	101.1	102.0	0.9
Iceland	3.7	3.0	27.1	23.9	-11.8
Italy	349.0	294.0	3,813.0	3,350.5	-12.1
Luxembourg	6.0	28.0	82.6	76.7	-7.1
Malta	4.0	1.6	17.2	15.6	-9.3
Netherlands	229.4	141.9	1,688.0	1,446.6	-14.3
Norway	430.8	124.1	4,878.2	2,542.8	-47.9
Portugal	28.6	45.3	346.4	224.7	-35.1
Republic of Ireland (Eire)	179.7	139.9	1,543.6	1,627.1	5.4
Spain	125.7	96.6	1,300.7	1,006.6	-22.6
Sweden	214.2	161.3	1,782.3	1,357.0	-23.9
Switzerland	308.2	290.2	1,953.4	2,625.3	34.4
United Kingdom	1,167.8	654.8	9,287.9	6,766.4	-27.1
Total	5,432.4	3,721.3	45,393.0	37,158.0	-18.1
Other Europe					
Albania	0.2	0.3	2.1	2.9	38.1
Armenia	0.4	1.3	3.4	25.3	644.1
Azerbaijan	124.8	87.2	1,056.5	913.4	-13.5
Belarus	1.8	5.3	32.0	27.8	-13.1
Bosnia and Herzegovina	0.6	0.7	4.5	6.3	40.0
Bulgaria	20.4	17.9	92.3	103.0	11.6
Croatia	4.8	1.9	39.8	19.4	-51.3
Czech Republic	32.5	18.6	255.7	213.4	-16.5
Estonia	2.7	29.8	32.9	44.5	35.3
Georgia	9.9	13.7	98.0	101.2	3.3
Hungary	32.4	30.5	289.6	277.6	-4.1
Kazakhstan	0.1	44.0	53.5	122.4	128.8
Kyrgyzstan	0.0	0.0	1.0	0.4	-60.0
Latvia	0.9	1.0	29.0	14.9	-48.6
Lithuania	82.2	2.9	321.5	109.8	-65.8
Macedonia (Former Yugoslav Republic of Macedonia)	1.0	0.5	6.6	6.6	0.0
Montenegro	0.1	0.0	0.6	0.2	-66.7
Poland	89.7	60.2	627.0	581.0	-7.3
Republic of Moldova	0.3	0.2	1.7	1.6	-5.9
Romania	22.4	13.8	113.1	95.2	-15.8
Russian Federation	286.3	342.5	1,657.7	2,108.8	27.2
Serbia	1.5	0.9	9.3	8.4	-9.7
Slovakia	17.6	23.2	141.1	115.3	-18.3
Slovenia	8.0	8.6	59.5	52.2	-12.3
Tajikistan	0.0	0.0	0.0	0.0	0.0
Turkmenistan	0.2	0.1	0.8	0.3	-62.5
Ukraine	44.1	4.0	136.6	72.4	-47.0
Uzbekistan	0.0	0.0	0.9	11.8	...
Total	784.9	709.3	5,066.6	5,036.0	-0.6

Table 8 – continued

Imports by country, customs basis, not seasonally adjusted

	September		January to September		Variation January to September 2009/2008
	2008	2009	2008	2009	
millions of dollars					
Middle East					
Bahrain	0.3	0.2	3.2	4.0	25.0
Cyprus	0.2	0.1	2.3	2.2	-4.3
Egypt	4.4	6.2	76.2	65.2	-14.4
Eritrea	0.0	0.0	0.0	0.1	0.0
Ethiopia	1.4	1.8	9.1	13.5	48.4
Iran	1.8	1.9	28.5	19.1	-33.0
Iraq	99.4	129.1	1,753.3	969.4	-44.7
Israel	96.6	82.9	933.5	694.7	-25.6
Jordan	1.2	1.7	11.2	12.3	9.8
Kuwait	0.0	0.0	7.6	37.3	390.8
Lebanon	1.5	0.8	11.6	11.0	-5.2
Libya	0.0	0.0	0.0	0.2	0.0
Oman	0.3	0.1	2.6	5.1	96.2
Qatar	0.0	0.2	0.5	12.9	...
Saudi Arabia	65.3	142.9	1,717.3	1,137.6	-33.8
Somalia	0.0	0.0	0.1	0.0	0.0
Sudan	5.1	3.3	52.4	48.7	-7.1
Syria	0.5	0.6	54.4	4.2	-92.3
Turkey	51.3	49.7	409.8	482.8	17.8
United Arab Emirates	4.8	2.2	319.7	188.3	-41.1
Yemen	0.0	0.0	0.1	0.1	0.0
Total	334.2	423.7	5,393.6	3,708.7	-31.2
Other Africa					
Algeria	709.3	370.0	6,247.2	2,616.3	-58.1
Angola	439.9	259.0	1,770.6	1,011.0	-42.9
Antarctica	0.0	0.0	0.0	0.0	0.0
Benin	0.0	0.0	0.0	0.0	0.0
Botswana	1.9	6.9	12.1	21.7	79.3
Bouvet Island	0.0	0.0	0.0	0.0	0.0
Burkina Faso	0.0	3.1	0.1	5.0	...
Burundi	0.0	0.0	0.5	0.2	-60.0
Cameroon	0.3	0.3	3.5	3.5	0.0
Cape Verde	0.0	0.0	0.0	0.0	0.0
Central African Republic	0.0	0.0	0.1	0.1	0.0
Chad	0.1	0.1	0.2	0.1	-50.0
Comoros	0.0	0.0	0.0	0.0	0.0
Congo	0.2	0.0	2.0	1.8	-10.0
Democratic Republic of the Congo	0.0	0.0	0.5	0.5	0.0
Djibouti	0.0	0.0	0.0	0.0	0.0
Equatorial Guinea	0.0	79.2	81.1	347.9	329.0
French Southern Territories	0.0	0.0	0.0	0.0	0.0
Gabon	0.1	0.0	0.8	1.6	100.0
Gambia	0.0	0.0	0.1	0.1	0.0
Ghana	2.5	1.2	21.8	19.2	-11.9
Guinea	5.6	7.9	48.4	51.5	6.4
Guinea-Bissau	0.0	0.0	0.0	0.0	0.0
Ivory Coast	12.1	7.9	71.9	166.4	131.4
Kenya	1.7	1.3	10.7	13.2	23.4
Lesotho	0.7	0.6	5.2	6.2	19.2
Liberia	3.4	4.3	19.6	18.1	-7.7
Madagascar	1.7	7.8	12.8	31.0	142.2
Malawi	0.2	0.1	1.9	1.6	-15.8
Mali	0.1	0.0	0.3	0.3	0.0
Mauritania	0.0	0.1	0.2	0.7	250.0
Mauritius	0.6	0.7	4.9	7.5	53.1
Morocco	3.9	4.0	66.5	69.7	4.8
Mozambique	0.0	0.0	0.9	0.2	-77.8
Namibia	0.4	0.2	221.8	194.2	-12.4
Niger	0.0	0.0	0.6	0.7	16.7
Nigeria	4.1	2.0	654.4	313.2	-52.1
Rwanda	0.0	0.0	0.3	0.3	0.0
Saint Helena	0.0	0.0	0.1	0.0	0.0
Sao Tome and Principe	0.0	0.0	0.0	0.0	0.0
Senegal	0.0	0.1	0.7	0.8	14.3
Seychelles	0.1	0.0	1.2	0.5	-58.3

Table 8 – continued

Imports by country, customs basis, not seasonally adjusted

	September		January to September		Variation
	2008	2009	2008	2009	January to September 2009/2008
millions of dollars					
Sierra Leone	0.2	0.1	0.9	1.3	44.4
South Africa	71.6	56.0	621.4	478.3	-23.0
Swaziland	0.1	0.4	1.8	1.6	-11.1
Togo	0.1	0.1	5.9	3.3	-44.1
Tunisia	4.6	4.2	32.1	35.2	9.7
Uganda	0.1	0.1	2.0	2.0	0.0
United Republic of Tanzania	0.1	0.4	1.5	2.9	93.3
Western Sahara	0.0	0.0	0.0	0.0	0.0
Zambia	0.0	0.1	0.6	0.6	0.0
Zimbabwe	0.1	0.3	3.7	2.0	-45.9
Total	1,265.8	818.8	9,933.1	5,432.2	-45.3
Other Asia					
Afghanistan	0.2	0.1	1.0	1.0	0.0
Bangladesh	61.9	64.9	484.2	654.9	35.3
Bhutan	0.0	0.0	0.0	0.0	0.0
British Indian Ocean Territory	0.0	0.0	0.0	0.0	0.0
Brunei Darussalam	0.1	0.0	1.9	1.8	-5.3
Cambodia	29.1	28.3	199.1	222.7	11.9
China	4,209.0	3,510.3	30,379.4	29,462.6	-3.0
Hong Kong	43.6	29.2	343.8	272.2	-20.8
India	205.4	197.9	1,594.3	1,568.4	-1.6
Indonesia	99.8	81.0	782.0	762.2	-2.5
Japan	1,343.0	997.2	11,507.8	9,165.7	-20.4
Laos	0.3	0.3	4.2	5.8	38.1
Macao	2.3	0.7	23.0	19.9	-13.5
Malaysia	267.0	214.6	2,150.6	1,728.7	-19.6
Maldives	0.0	0.0	0.2	0.1	-50.0
Mongolia	22.7	13.4	136.4	91.0	-33.3
Myanmar	0.0	0.0	0.7	0.1	-85.7
Nepal	1.8	1.6	11.2	9.9	-11.6
North Korea	0.0	0.0	0.1	0.1	0.0
Pakistan	21.8	21.7	175.9	184.5	4.9
Philippines	85.9	66.8	611.5	524.6	-14.2
Singapore	87.9	62.8	912.8	898.4	-1.6
South Korea	639.1	536.2	4,433.0	4,385.9	-1.1
Sri Lanka	11.2	9.5	89.0	87.2	-2.0
Taiwan	355.6	255.3	2,904.8	2,525.6	-13.1
Thailand	243.4	194.6	1,783.7	1,686.0	-5.5
Timor-Leste	0.5	0.2	4.5	2.9	-35.6
Viet Nam	110.6	101.5	692.2	797.1	15.2
Total	7,842.5	6,388.1	59,227.5	55,059.4	-7.0
Oceania					
American Samoa	0.0	0.0	0.2	0.2	0.0
Australia	149.8	116.8	1,244.1	1,176.9	-5.4
Christmas Island	0.0	0.0	0.0	0.0	0.0
Cocos (Keeling) Islands	0.0	0.0	0.0	0.1	0.0
Cook Islands	0.0	0.0	0.1	0.0	0.0
Fiji	0.7	0.8	6.9	5.2	-24.6
French Polynesia	0.1	0.1	0.9	0.4	-55.6
Guam	0.0	0.0	0.3	0.3	0.0
Heard Island and McDonald Islands	0.0	0.0	0.0	0.0	0.0
Kiribati	0.0	0.0	0.0	0.1	0.0
Nauru	0.0	0.0	0.0	0.1	0.0
New Caledonia	0.0	0.0	0.2	0.3	50.0
New Zealand	34.6	33.0	377.8	355.3	-6.0
Niue	0.0	0.0	0.0	0.0	0.0
Norfolk Island	0.0	0.0	0.0	0.0	0.0
Papua New Guinea	0.1	0.4	1.4	1.2	-14.3
Pitcairn	0.0	0.0	0.0	0.0	0.0
Samoa	0.0	0.0	0.0	0.0	0.0
Solomon Islands	0.0	0.0	0.1	0.1	0.0
Tonga	0.0	0.0	0.1	0.0	0.0
United States Minor Outlying Islands	0.4	0.4	4.4	3.7	-15.9
Vanuatu	0.0	0.1	0.0	0.2	0.0

Table 8 – continued

Imports by country, customs basis, not seasonally adjusted

	September		January to September		Variation January to September 2009/2008
	2008	2009	2008	2009	
	millions of dollars				
Wallis and Futuna	0.0	0.0	0.0	0.0	0.0
Total	185.8	151.6	1,636.7	1,544.4	-5.6
South America					
Argentina	60.8	47.3	392.9	513.3	30.6
Bolivia	10.5	4.6	56.1	61.4	9.4
Brazil	265.8	206.0	1,905.8	1,798.6	-5.6
Chile	113.5	172.4	1,489.0	1,277.8	-14.2
Colombia	31.3	48.2	475.4	547.3	15.1
Ecuador	11.4	14.5	131.6	182.2	38.4
Falkland Islands (Malvinas)	0.0	0.0	0.1	0.0	0.0
Guyana	16.1	30.1	162.0	223.3	37.8
Paraguay	1.9	0.8	12.2	6.2	-49.2
Peru	152.8	271.5	1,825.3	2,034.4	11.5
Suriname	51.7	48.1	442.0	398.9	-9.8
Uruguay	1.4	1.8	27.0	48.5	79.6
Venezuela	178.9	88.8	1,166.1	846.3	-27.4
Total	896.1	934.0	8,085.6	7,938.2	-1.8
Central America Antilles					
Anguilla	0.0	0.0	0.1	0.3	200.0
Antigua and Barbuda	0.0	0.1	5.2	0.4	-92.3
Aruba	0.0	0.0	120.3	53.4	-55.6
Bahamas	12.4	0.7	63.2	27.4	-56.6
Barbados	0.5	0.8	6.3	6.7	6.3
Belize	1.2	0.4	8.2	6.1	-25.6
Bermuda	0.2	7.2	1.5	11.1	640.0
British Virgin Islands	0.3	0.0	11.1	0.5	-95.5
Cayman Islands	0.0	0.0	0.2	1.0	400.0
Costa Rica	28.9	26.2	281.2	269.0	-4.3
Cuba	88.1	51.2	748.9	344.2	-54.0
Dominica	0.0	0.0	0.2	0.3	50.0
Dominican Republic	10.7	13.3	91.2	109.1	19.6
El Salvador	4.4	3.8	57.2	55.8	-2.4
Grenada	0.2	0.0	0.6	0.2	-66.7
Guatemala	17.5	23.3	203.4	208.8	2.7
Haiti	1.1	1.2	15.1	17.3	14.6
Honduras	13.1	10.0	117.9	108.3	-8.1
Jamaica	26.4	19.9	223.8	118.7	-47.0
Montserrat	0.0	0.0	0.1	0.1	0.0
Netherlands Antilles	0.0	0.0	2.6	10.1	288.5
Nicaragua	7.0	7.8	80.7	66.2	-18.0
Panama	0.4	7.7	18.4	29.7	61.4
Saint Kitts and Nevis	0.6	0.7	3.7	4.8	29.7
Saint Lucia	0.0	2.1	0.1	2.2	...
Saint Vincent and the Grenadines	0.0	0.0	0.1	0.2	100.0
Trinidad and Tobago	47.5	34.9	271.9	197.8	-27.3
Turks and Caicos Islands	0.2	0.0	1.9	0.3	-84.2
Total	261.0	211.3	2,334.9	1,650.1	-29.3
All countries	38,162.5	31,041.8	322,560.2	271,275.4	-15.9

**Table 9-1
Imports by province of clearance, customs basis, not seasonally adjusted — September**

	Agricultural and fishing products	Energy products	Forestry products	Industrial goods	Machinery and equipment	Automotive products	Consumer goods	Special transactions	Total
millions of dollars									
Newfoundland and Labrador									
2008	2.5	326.0	0.0	8.5	4.7	0.1	0.7	0.6	342.9
2009	3.7	254.2	0.0	6.7	6.7	0.3	0.4	0.0	272.0
Prince Edward Island									
2008	0.4	0.0	0.0	12.3	0.2	0.0	0.0	0.0	12.9
2009	0.3	0.0	0.0	0.1	0.2	0.0	0.0	0.0	0.6
Nova Scotia									
2008	36.1	168.2	1.9	132.6	110.7	311.3	13.0	1.2	774.8
2009	22.6	133.8	1.2	86.1	90.4	274.8	14.2	5.0	628.0
New Brunswick									
2008	64.4	703.4	10.8	86.6	78.7	27.4	20.7	2.0	993.9
2009	60.7	449.9	11.4	67.8	73.3	22.2	15.4	1.4	702.1
Quebec									
2008	418.5	2,348.8	58.0	1,317.3	1,690.4	211.7	963.4	220.5	7,228.6
2009	354.7	1,001.1	51.9	1,173.4	1,327.0	187.8	887.9	52.0	5,035.8
Ontario									
2008	1,329.1	557.1	90.5	4,384.2	5,993.6	4,874.3	3,355.8	343.8	20,928.3
2009	1,304.0	564.7	77.0	3,608.2	5,039.2	4,141.7	3,208.6	435.4	18,378.8
Manitoba									
2008	80.5	79.0	8.4	310.2	528.0	190.9	157.4	8.8	1,363.2
2009	76.6	25.3	7.1	204.6	411.6	113.4	138.5	5.0	982.1
Saskatchewan									
2008	31.7	71.0	2.4	239.1	348.3	89.5	26.4	1.0	809.6
2009	31.1	64.9	1.5	137.2	225.5	56.0	20.3	1.4	537.9
Alberta									
2008	163.2	299.8	8.8	469.4	662.2	85.9	111.9	18.4	1,819.7
2009	149.4	158.2	7.6	286.1	556.6	65.6	101.0	12.9	1,337.5
British Columbia									
2008	385.3	298.0	56.6	866.7	1,047.8	419.0	790.7	17.1	3,881.4
2009	354.2	224.9	48.0	599.7	907.7	315.2	699.0	9.6	3,158.4
Yukon, Northwest Territories and Nunavut									
2008	3.9	2.8	0.0	0.0	0.4	0.0	0.0	0.0	7.2
2009	3.8	3.4	0.0	0.1	0.7	0.0	0.0	0.5	8.6
Total									
2008	2,515.5	4,854.1	237.5	7,826.8	10,464.8	6,210.2	5,440.0	613.5	38,162.5
2009	2,361.1	2,880.4	205.8	6,170.0	8,638.9	5,177.1	5,085.4	523.1	31,041.8

Table 9-2
Imports by province of clearance, customs basis, not seasonally adjusted — Year to date, January to September

	Agricultural and fishing products	Energy products	Forestry products	Industrial goods	Machinery and equipment	Automotive products	Consumer goods	Special transactions	Total
millions of dollars									
Newfoundland and Labrador									
2008	32.5	3,194.6	0.1	78.4	133.1	1.1	13.5	10.7	3,464.0
2009	29.0	1,660.3	0.5	139.0	108.4	0.9	3.1	4.4	1,945.5
Prince Edward Island									
2008	2.5	0.0	0.1	13.1	83.0	0.1	18.3	0.3	117.3
2009	2.5	0.0	0.0	17.8	12.9	0.1	1.7	0.1	35.2
Nova Scotia									
2008	264.6	1,566.2	15.6	1,120.4	902.4	2,380.4	111.5	15.7	6,376.7
2009	219.3	1,099.9	10.2	623.7	785.2	1,880.8	134.1	25.4	4,778.7
New Brunswick									
2008	344.2	5,929.4	94.6	751.4	664.6	294.7	133.1	17.9	8,229.8
2009	349.3	4,493.1	76.9	680.7	803.2	215.8	166.4	17.4	6,802.8
Quebec									
2008	3,044.2	17,629.5	542.0	12,888.3	15,017.6	1,862.5	7,486.8	937.1	59,408.0
2009	3,297.4	9,020.8	517.4	9,992.1	13,925.4	1,513.7	8,462.5	397.2	47,126.5
Ontario									
2008	11,239.6	6,524.6	829.7	38,072.3	50,023.1	42,735.5	26,547.2	3,130.0	179,102.0
2009	12,170.5	4,226.5	663.2	31,458.4	44,970.3	30,425.1	26,717.9	2,777.1	153,409.0
Manitoba									
2008	740.2	268.1	72.6	2,853.4	4,650.3	1,361.3	1,267.9	73.5	11,287.3
2009	733.4	223.8	66.0	2,455.1	4,261.8	1,019.4	1,260.0	69.3	10,088.8
Saskatchewan									
2008	263.4	347.1	22.7	1,978.8	2,912.6	1,004.5	219.2	17.8	6,766.1
2009	260.2	394.6	21.2	1,618.8	2,538.2	567.8	189.2	19.8	5,609.9
Alberta									
2008	1,405.2	2,756.9	87.5	3,971.3	5,825.7	1,039.0	891.8	122.0	16,099.4
2009	1,388.0	2,021.5	77.3	3,257.1	5,415.7	563.1	880.7	103.3	13,706.6
British Columbia									
2008	3,212.3	2,574.8	510.2	6,400.9	9,201.6	4,174.4	5,325.7	210.1	31,610.0
2009	3,341.3	1,813.5	387.0	5,138.1	8,828.9	2,783.3	5,262.1	116.3	27,670.5
Yukon, Northwest Territories and Nunavut									
2008	47.4	31.5	0.0	1.2	18.1	0.7	0.3	0.5	99.7
2009	45.5	33.5	0.0	1.8	19.0	0.6	0.2	1.4	102.0
Total									
2008	20,596.0	40,822.6	2,175.1	68,129.5	89,432.1	54,854.1	42,015.1	4,535.7	322,560.2
2009	21,836.5	24,987.4	1,819.8	55,382.5	81,668.9	38,970.6	43,078.0	3,531.7	271,275.4

Technical notes

The Canadian international merchandise trade statistical program

I Introduction

The objective of this text is to provide a general overview of the Canadian International Merchandise Trade Statistical Program with special reference to concepts and definitions. The text is intended for the general user and simplicity is emphasized. More technical details can be obtained from the International Trade Division upon request.

II Conceptual framework

1. Objectives and coverage: The primary objective of the Canadian International Merchandise Trade Statistical Program is to measure the change in the stock of material resources of the country resulting from the movement of merchandise into or out of Canada. Information on imports and exports are inputs into the System of National Accounts particularly in the Balance of Payments and Gross Domestic Product, and are used in the formulation of trade and budgetary policies. Governments, importers, exporters, manufacturers and shipping companies use trade statistics to:

- monitor import penetration and export performance;
- monitor commodity price and volume changes;
- examine transport implications.

2. Trade statistics - Customs basis/Balance of Payments basis: Merchandise trade statistics are reported and presented on two different bases: Customs basis and Balance of Payment basis. (B.O.P.)

When goods are imported into or exported from Canada, declarations must be filed with Customs giving such information as description and value of the goods, origin and port of clearance of commodities and the mode of transport. Most of this information is required for the purposes of Customs Administration. Statistics developed from administrative records of Customs are commonly referred to as Customs based trade statistics.

Customs based trade statistics are more accurate at measuring imports than they are at measuring exports. This is the case because Customs are typically more vigilant with respect to goods entering the country than they are with goods leaving the country.

Customs based export statistics may understate and/or incorrectly portray the destination of exports. Export statistics are understated when the proper documentation is not filed with Customs. Exports are incorrectly portrayed when the country of final destination is inaccurately reported on the customs documentation - this occurs most frequently when goods are routed through an intermediary country before continuing on to their final destination.

Statistics Canada does not have a measure of undercoverage but periodically conducts reconciliation exercises with its major trading partners, excluding the United States.

On January 1st, 1990, Canada entered into a Memorandum of Understanding (MOU) with the United States concerning the exchange of import data. As a consequence, each administration is using the other's import data to replace its own export data. Canada's international merchandise trade statistics are, therefore, no longer derived exclusively from the administrative records of Canada Border Services Agency, but from United States Customs records as well.

Customs based information is adjusted to conform with the National Accounts concepts and definitions. The adjustments to derive Balance of Payments based trade data include trade definition, valuation and timing related adjustments. The principal difference between the two trade concepts is that Customs based merchandise trade statistics cover the physical movement of goods as they are reflected on customs documents, while Balance of Payments adjusted data are intended to cover all economic transactions between residents and non-residents which involve merchandise trade. This section describes the concepts and processes pertaining to the Customs based trade statistics only. (For further information on Balance of Payments adjusted data see the publication *"Canada's Balance of International Payments" Catalogue no. 67-001-XPB*).

3. System of trade: Canadian trade statistics are compiled according to the "General" system of trade as defined by the United Nations Statistical Office. Under this system, imports include all goods which have crossed Canada's territorial boundary, whether for immediate consumption in Canada or stored in bonded Customs warehouses. Domestic exports include goods grown, extracted or manufactured in Canada, including goods of foreign origin which have been materially transformed in Canada. Re-exports are exports of goods of foreign origin which have not been materially transformed in Canada, including foreign goods withdrawn for export from bonded customs warehouses. Total exports are the sum of Domestic exports and Re-exports. Thus the general trade system, in principal, presents all goods entering the country (imports) and all goods leaving the country (exports). It differs from the "Special" system of trade in the treatment of imported goods into Customs bonded warehouses. Under the "Special" system, these goods are counted only if and when they are withdrawn from Customs warehouses for home consumption. They are not counted in export statistics unless they have first cleared Customs.

Conceptually, under the "General" system, the statistical frontier coincides with the geographical boundary, while under the "Special" system, it coincides with the Customs boundary.

4. Valuation: For Customs purposes, imports are recorded at values established according to the provisions of the Customs Act, which, since January 1st, 1985, reflects valuation methods based on the General Agreement on Tariffs and Trade (GATT) Valuation Code System. It generally requires the value for duty of imported goods be equivalent to the transaction value or the price actually paid.

To determine the transaction value of imported goods, all transportation and associated costs arising in respect of the goods being appraised prior to and at the place of direct shipment to Canada, are to be added to the price of the goods. Therefore, Canadian imports are valued F.O.B. (Free on Board), place of direct shipment to Canada. It excludes freight and insurance costs in bringing the goods to Canada from the point of direct shipment.

To countries other than the United States, exports are, in principal, valued or recorded at the values declared on export documents which usually reflect the transaction value, i.e. actual selling price, or in the case of a non-arm's length transaction, the transfer price used for company accounting purposes. Canadian exports to overseas countries are valued at F.O.B. port of exit, including domestic freight charges to that point but net of discounts and allowances. As of January, 1990, Canadian exports to the U.S. are valued F.O.B. point of exit from Canada. Prior to 1990, they were valued F.O.B. place of lading net of freight charges, discounts and allowances.

5. Statistical period: The reference period is the calendar month and the calendar year. The closing of the statistical month for imports and Canadian exports to the United States is defined as the last calendar day of the month, based as closely as practicable on the date of clearance from Customs.

The closing of the statistical month for exports, to countries other than the United States, is also defined as the last calendar day of the month. Those export documents which are received too late for incorporation in the current month are assigned to the month the transaction took place. If a monthly summary report from a high volume exporter is not received on time, the data are imputed for the current month and revised with the trade value in the following statistical month.

6. Trading partner attribution (Country of origin/destination): Exports are attributed to the country, which is the last known destination of the goods at the time of export. Exports to the United States are attributed to the state of destination.

Imports are attributed to their country of origin, that is, the country in which the goods were grown, extracted or manufactured in accordance to the rules of origin administered by Canada Border Services Agency. Imports from the United States are attributed to the state of origin. Prior to 1988, most imports were attributed to the country of export/consignment with the exception of imports from Central and South America.

7. Principal trading areas: The “principal trading areas” are country groupings defined as follows:

United States: (includes trade with Puerto Rico and the U.S. Virgin Islands).

Japan:

E.U. (European Union): Austria, Belgium, Bulgaria, Cyprus, Czech Republic, Denmark, Estonia, Finland, France, Germany, Greece, Hungary, Ireland, Italy, Latvia, Lithuania, Luxembourg, Malta, Netherlands, Poland, Portugal, Romania, Slovakia, Slovenia, Spain, Sweden and United Kingdom.

Other O.E.C.D.: Australia, Canada, Iceland, Mexico, New Zealand, Norway, South Korea, Switzerland, and Turkey. (The E.U. countries, United States, and Japan are also members of O.E.C.D. - the Organization for Economic Co-operation and Development).

Other countries: This group includes all countries and territories other than the United States, Japan, E.U. and other O.E.C.D.

8. Legal framework: Import and export statistics with countries other than the United States are derived from information contained on administrative records collected by the Canada Border Services Agency under the Customs Act. Copies of these documents (or information therefrom) are sent to Statistics Canada in accordance with Section 25 of the Statistics Act. It follows that the disclosure of trade statistics is governed by both the Customs Act and the Statistics Act and is subject to the provisions of Section 17.(2)(a) of the latter. Disclosure of export statistics to the United States is now governed by a Memorandum of Understanding which provides for an exchange of detailed import statistics between Canada and the United States.

Questions concerning details of methods not covered by these notes should be addressed to the Marketing and Client Services Section, International Trade Division, Statistics Canada, Ottawa, Ontario, K1A 0T6.

Telephone: 1-800-294-5583 or within the area code 613-951-9647

Facsimile: 1-800-664-0055 or within the area code 613-951-0117

Internet: trade@statcan.gc.ca