

Catalogue no. 65-001-X

# Canadian International Merchandise Trade

July 2009



Statistics  
Canada

Statistique  
Canada

Canada

## How to obtain more information

For information about this product or the wide range of services and data available from Statistics Canada, visit our website at [www.statcan.gc.ca](http://www.statcan.gc.ca), e-mail us at [infostats@statcan.gc.ca](mailto:infostats@statcan.gc.ca), or telephone us, Monday to Friday from 8:30 a.m. to 4:30 p.m., at the following numbers:

### Statistics Canada's National Contact Centre

Toll-free telephone (Canada and the United States):

Inquiries line	1-800-263-1136
National telecommunications device for the hearing impaired	1-800-363-7629
Fax line	1-877-287-4369

Local or international calls:

Inquiries line	1-613-951-8116
Fax line	1-613-951-0581

### Depository Services Program

Inquiries line	1-800-635-7943
Fax line	1-800-565-7757

## To access this product

This product, Catalogue no. 65-001-X, is available free in electronic format. To obtain a single issue, visit our website at [www.statcan.gc.ca](http://www.statcan.gc.ca) and select "Publications."

## Standards of service to the public

Statistics Canada is committed to serving its clients in a prompt, reliable and courteous manner. To this end, Statistics Canada has developed *standards of service* that its employees observe. To obtain a copy of these service standards, please contact Statistics Canada toll-free at 1-800-263-1136. The service standards are also published on [www.statcan.gc.ca](http://www.statcan.gc.ca) under "About us" > "Providing services to Canadians."

Statistics Canada  
International Trade Division

# Canadian International Merchandise Trade

July 2009

Published by authority of the Minister responsible for Statistics Canada

© Minister of Industry, 2009

All rights reserved. The content of this electronic publication may be reproduced, in whole or in part, and by any means, without further permission from Statistics Canada, subject to the following conditions: that it be done solely for the purposes of private study, research, criticism, review or newspaper summary, and/or for non-commercial purposes; and that Statistics Canada be fully acknowledged as follows: Source (or "Adapted from", if appropriate): Statistics Canada, year of publication, name of product, catalogue number, volume and issue numbers, reference period and page(s). Otherwise, no part of this publication may be reproduced, stored in a retrieval system or transmitted in any form, by any means—electronic, mechanical or photocopy—or for any purposes without prior written permission of Licensing Services, Client Services Division, Statistics Canada, Ottawa, Ontario, Canada K1A 0T6.

September 2009

Catalogue no. 65-001-X, vol. 63, no. 7

ISSN 1480-8781

Frequency: Monthly

Ottawa

Cette publication est également disponible en français.

---

#### **Note of appreciation**

*Canada owes the success of its statistical system to a long standing partnership between Statistics Canada, the citizens of Canada, its businesses, governments and other institutions. Accurate and timely statistical information could not be produced without their continued cooperation and goodwill.*

# User information

---

## Symbols

The following standard symbols are used in Statistics Canada publications:

- . not available for any reference period
- .. not available for a specific reference period
- ... not applicable
- 0 true zero or a value rounded to zero
- 0<sup>s</sup> value rounded to 0 (zero) where there is a meaningful distinction between true zero and the value that was rounded
- p preliminary
- r revised
- x suppressed to meet the confidentiality requirements of the *Statistics Act*
- E use with caution
- F too unreliable to be published

## Note to Users

All totals are calculated from full figures and rounded independently; consequently, totals may not equal the sum of their components.

# Table of contents

---

<b>Highlights</b>	<b>5</b>
<b>Analysis</b>	<b>7</b>
<b>Statistical tables</b>	
1 Merchandise trade of Canada, balance of payments basis, seasonally adjusted	12
1-1 Current dollars	12
1-2 Constant dollars, 2002	13
1-3 Price indices (Laspeyres)	14
2 Exports by commodity groupings, balance of payments basis, seasonally adjusted	15
2-1 Current dollars	15
2-2 Constant dollars, 2002	17
3 Domestic exports to selected countries, customs basis, not seasonally adjusted	19
3-1 July	19
3-2 Year to date, January to July	20
4 Domestic exports by country, customs basis, not seasonally adjusted	21
5 Exports by province of origin, customs basis, not seasonally adjusted	25
5-1 July	25
5-2 Year to date, January to July	26
6 Imports by commodity groupings, balance of payments basis, seasonally adjusted	27
6-1 Current dollars	27
6-2 Constant dollars, 2002	29
7 Imports from selected countries, customs basis, not seasonally adjusted	31
7-1 July	31
7-2 Year to date, January to July	32
8 Imports by country, customs basis, not seasonally adjusted	33
9 Imports by province of clearance, customs basis, not seasonally adjusted	37
9-1 July	37
9-2 Year to date, January to July	38

**Table of contents – continued**

**Data quality, concepts and methodology**

Technical notes

39

## Highlights

---

- Merchandise imports and exports both increased in July due to broad-based growth in volumes. Imports were up 8.3% to \$31.7 billion while exports grew 3.3% to \$30.3 billion. As a result, Canada registered a trade deficit of \$1.4 billion in July compared to a trade surplus of \$37 million in June.
- The gain in imports halted four consecutive months of decline and was the result of an 8.7% rise in volumes as prices edged down 0.4%. Although the increases were widespread, machinery and equipment, automotive products and energy products were the main sources of growth.
- The second consecutive monthly increase in exports was attributable to a 5.9% increase in volumes as prices declined 2.4%. Higher exports of machinery and equipment and automotive products led the increase in overall exports. Declines in exports of energy products tempered the gain.
- The trade surplus with the United States shrank to \$1.9 billion in July from \$3.2 billion in June as the growth in imports outpaced the increase in exports. Imports from the United States rose 9.9% mainly as a result of higher imports of organic chemicals and aircraft. Exports were up 2.5% mostly due to increases in exports of aircraft.
- Imports and exports to countries other than the United States both advanced 5.7% and the trade deficit with this group of countries grew to \$3.4 billion in July from \$3.2 billion in June.

### Note to readers

Merchandise trade is one component of Canada's international balance of payments, which also includes trade in services, investment income, current transfers as well as capital and financial flows.

International merchandise trade data by country are available on both a balance of payments and a customs basis for the United States, Japan and the United Kingdom. Trade data for all other individual countries are available on a customs basis only. Balance of payments data are derived from customs data by making adjustments for characteristics such as valuation, coverage, timing and residency. These adjustments are made to conform to the concepts and definitions of the Canadian System of National Accounts.

Constant dollars referred to in the text are calculated using the Laspeyres volume formula.

### Revisions

In general, merchandise trade data are revised on an ongoing basis for each month of the current year. Current year revisions are reflected in both the customs and balance of payments based data. Revisions to customs based data for the previous year are released on a quarterly basis. Revisions to balance of payments based data for the three previous years are released annually in June.

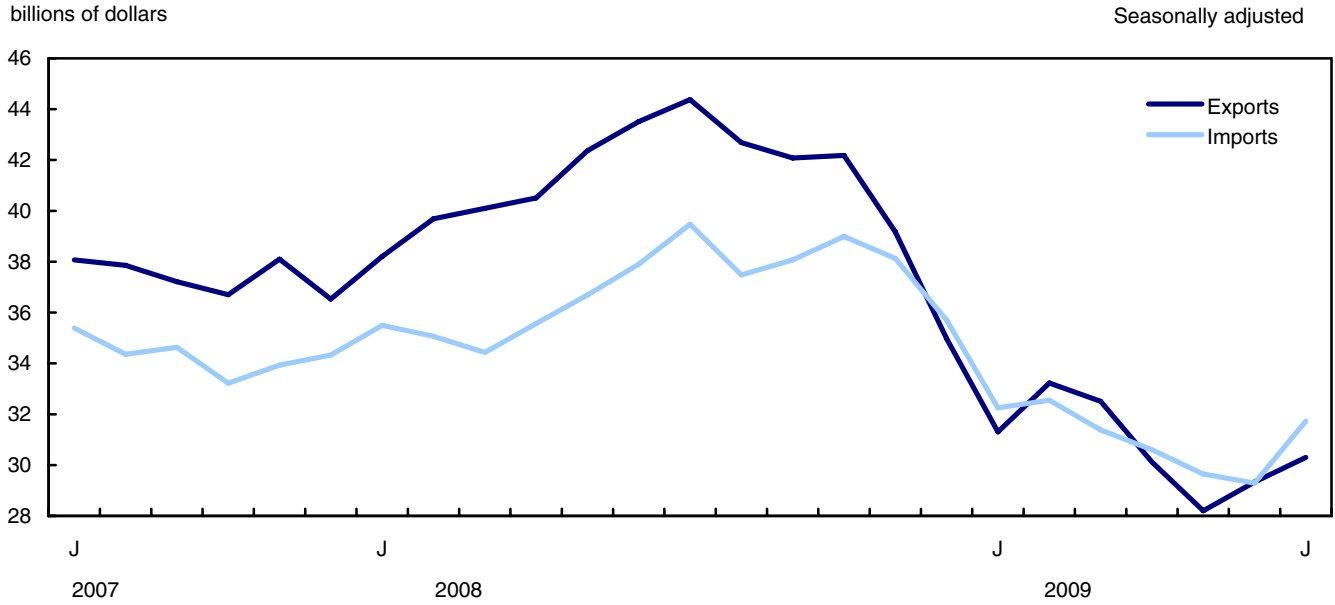
Factors influencing revisions include late receipt of import and export documentation, incorrect information on customs forms, replacement of estimates with actual figures, changes in classification of merchandise based on more current information, and changes to seasonal adjustment factors.

Revised data are available in the appropriate CANSIM tables.

Historical updates covering the period of 1988 to 2003 are released today. These updates are the result of historical inconsistencies relating to the integrity between trade data and the underlying metadata and are minimal in dollar value.

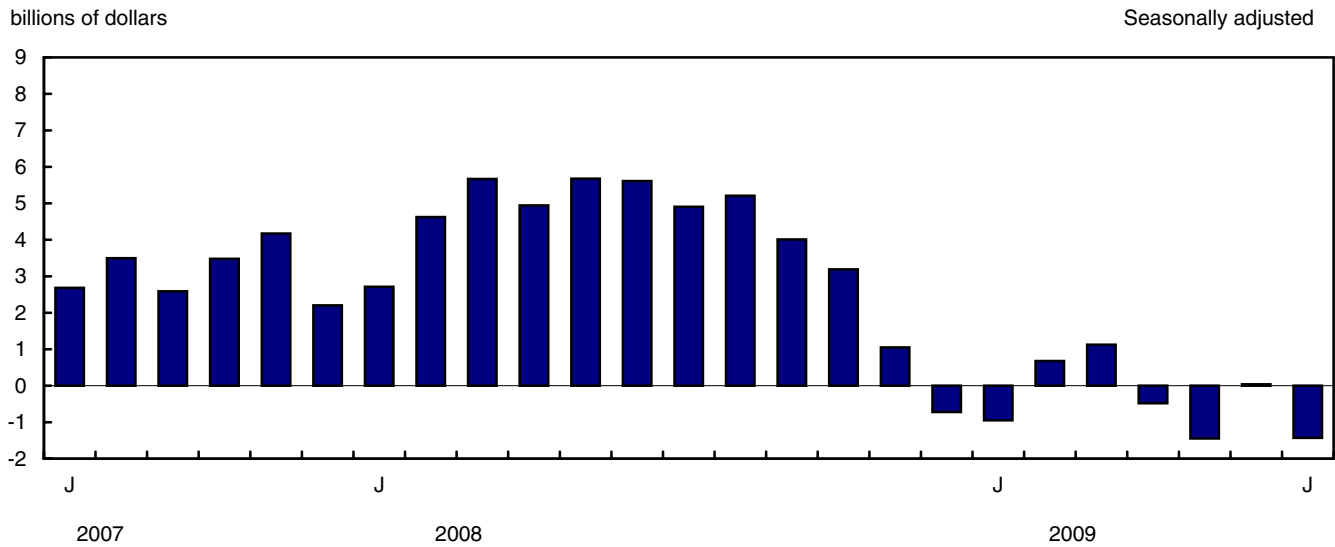
For more information, view the document entitled “CANSIM notes - Historical updates” under the definitions, data source and methods page, survey number 2201.

**Chart 1**  
**Exports and imports**



**Note(s):** On a balance of payments basis.

**Chart 2**  
**Trade balance**



**Note(s):** Note(s): On a balance of payments basis.



# Analysis

---

## Crude petroleum and aircraft lead the growth in imports

Imports of machinery and equipment climbed 10.9% to \$9.3 billion, the result of an increase in volume. Although the increases were widespread, higher imports of aircraft and other transportation equipment were responsible for almost half of the gain in this sector.

After reaching the lowest levels in more than a decade in May and June, imports of automotive products increased 18.7% to \$4.6 billion in July. Although imports increased, they remained 32.7% lower than in July 2008. All components in the automotive sector posted gains in imports.

Imports of energy products rose 18.6% to \$3.2 billion as volumes increased 14.9% and prices grew 3.2%. Imports of crude petroleum led the gain in this sector. Volumes of crude petroleum, up 24.0%, have generally been trending upward since February 2009.

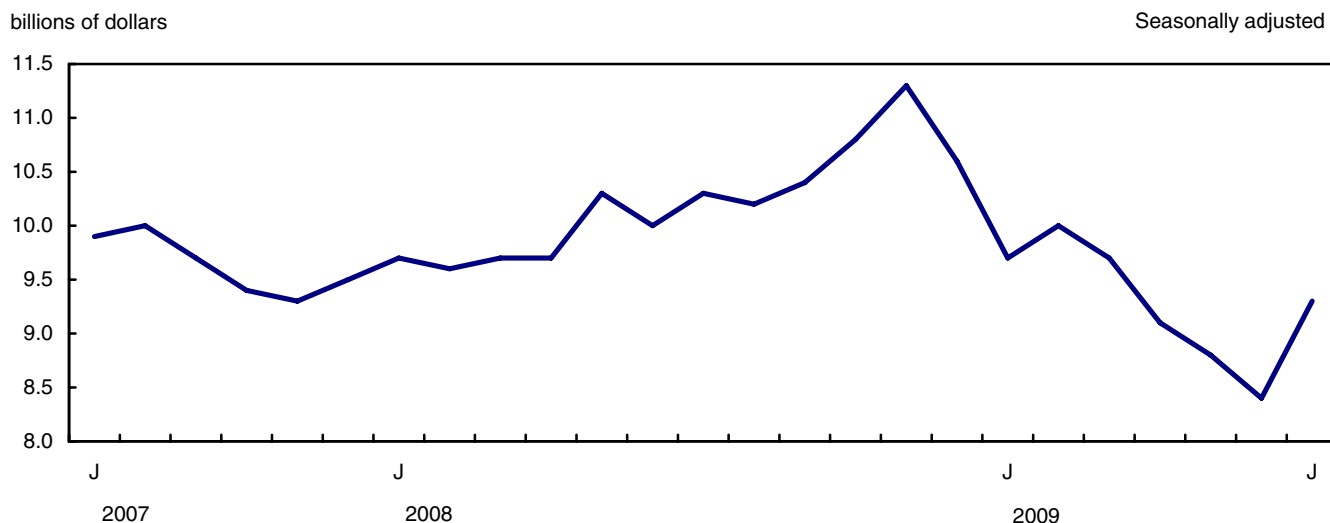
## Machinery and equipment account for almost three-quarters of the gain in exports

Exports of machinery and equipment rose 11.3% to \$7.1 billion, largely the result of higher exports of aircraft followed by telecommunication equipment. The gain was entirely due to an increase in volumes as prices declined.

Automotive sector exports rose 10.8% to \$3.2 billion. This value represented about one-third of the peak value registered in January 2000 and remained 39.5% below the July 2008 value. The gain was mainly due to increases in exports of motor vehicle parts. Exports of passenger autos and trucks also went up in July.

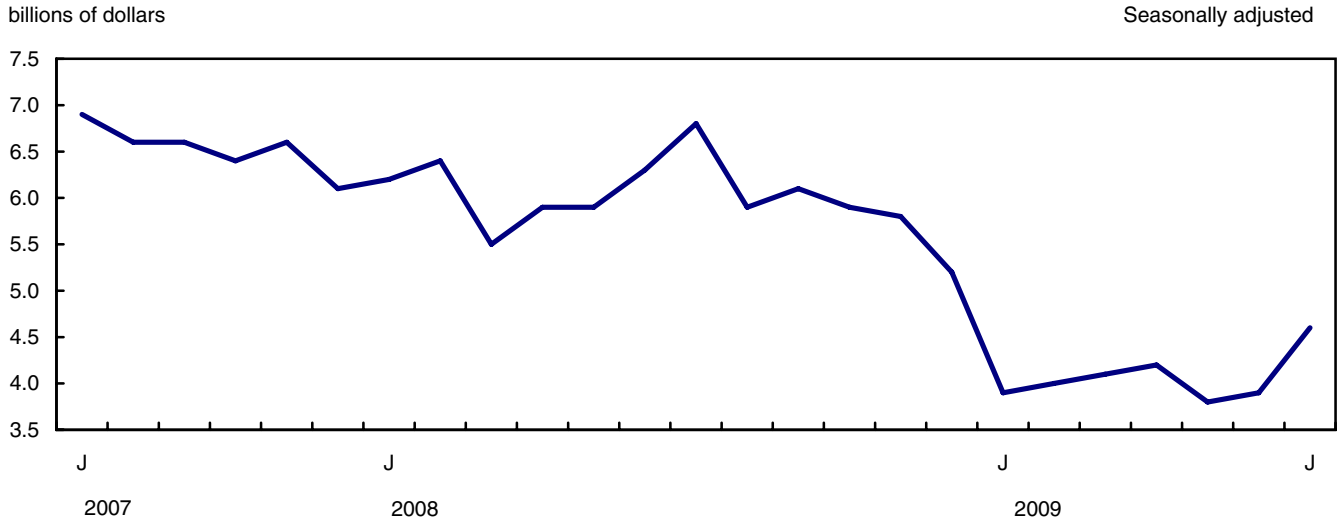
Exports of energy products declined 3.2% to \$6.4 billion, the result of prices decreasing as volumes rose. Exports of crude petroleum, down 8.9%, were largely responsible for the decline in this sector while higher exports of natural gas mitigated the decline.

**Chart 1**  
**Imports of machinery and equipment**



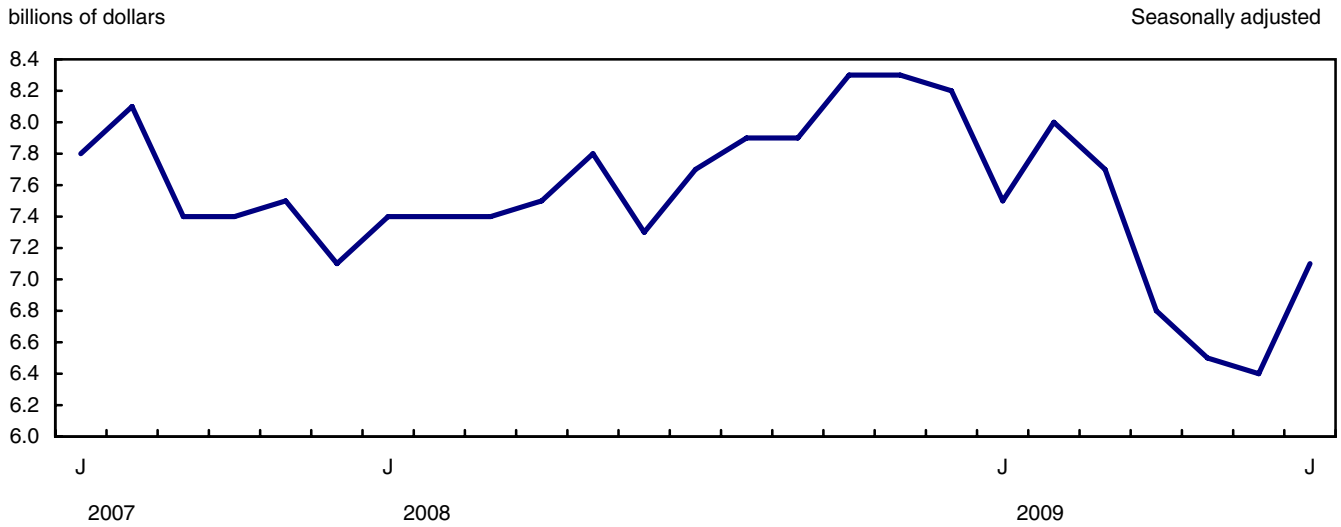
**Note(s):** On a balance of payments basis.

**Chart 2**  
**Imports of automotive products**



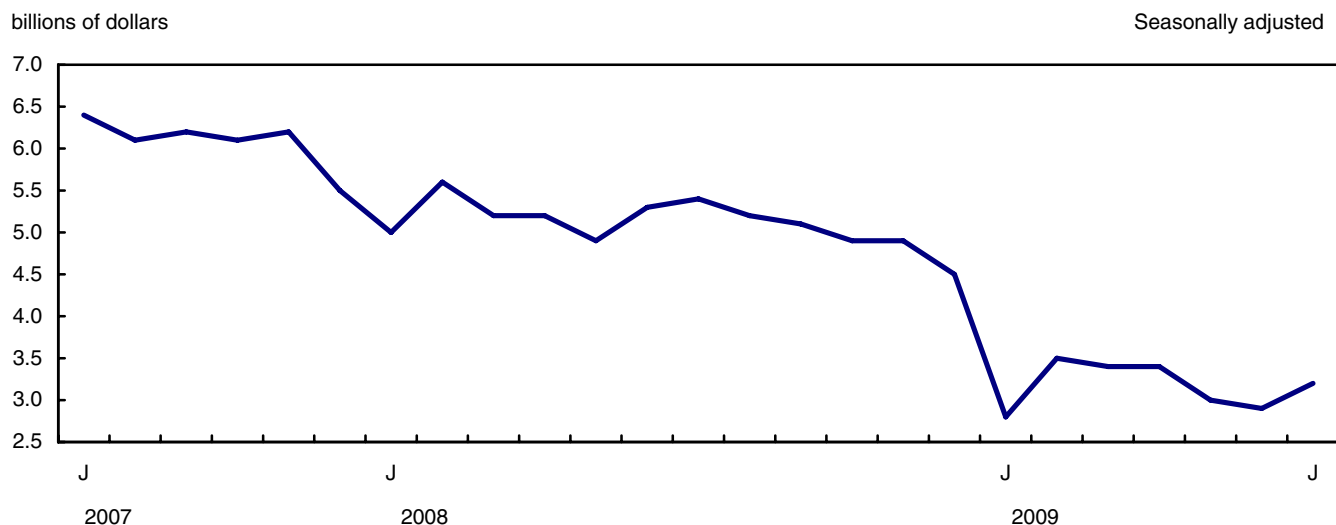
**Note(s):** On a balance of payments basis.

**Chart 3**  
**Exports of machinery and equipment**



**Note(s):** On a balance of payments basis.

**Chart 4**  
**Exports of automotive products**



**Note(s):** On a balance of payments basis.

**Text table 1**  
**Merchandise trade by principal trading area, balance of payments basis, seasonally adjusted**

	June	July	Change	Year to date		Year to date change	July	
	2009	2009		2008	2009			2009/2008
	millions of dollars		percent		millions of dollars		percent	
<b>Export to:</b>								
United States	21,603	22,137	535	2.5	220,404	156,784	-63,620	-28.9
Japan	686	764	78	11.4	6,507	5,448	-1,060	-16.3
European Union <sup>1</sup>	2,367	2,396	29	1.2	22,398	18,673	-3,725	-16.6
Other Organization for Economic Co-operation and Development <sup>2</sup>	1,262	1,552	291	23.0	12,022	9,417	-2,605	-21.7
Other countries	3,412	3,455	43	1.3	27,428	24,685	-2,743	-10.0
<b>Total</b>	<b>29,330</b>	<b>30,305</b>	<b>975</b>	<b>3.3</b>	<b>288,760</b>	<b>215,007</b>	<b>-73,753</b>	<b>-25.5</b>
<b>Imports from:</b>								
United States	18,376	20,198	1,822	9.9	161,665	136,909	-24,756	-15.3
Japan	732	770	38	5.2	6,816	5,456	-1,360	-19.9
European Union <sup>1</sup>	3,280	3,291	11	0.3	26,761	22,796	-3,965	-14.8
Other Organization for Economic Co-operation and Development <sup>2</sup>	2,127	2,209	81	3.8	15,487	14,669	-818	-5.3
Other countries	4,777	5,264	487	10.2	43,891	37,637	-6,254	-14.2
<b>Total</b>	<b>29,293</b>	<b>31,732</b>	<b>2,439</b>	<b>8.3</b>	<b>254,621</b>	<b>217,468</b>	<b>-37,153</b>	<b>-14.6</b>
<b>Balance:</b>								
United States	3,226	1,939	-1,287	...	58,739	19,875	-38,864	...
Japan	-45	-5	40	...	-309	-9	300	...
European Union <sup>1</sup>	-913	-895	18	...	-4,363	-4,123	240	...
Other Organization for Economic Co-operation and Development <sup>2</sup>	-866	-657	209	...	-3,465	-5,252	-1,787	...
Other countries	-1,364	-1,809	-444	...	-16,463	-12,952	3,512	...
<b>Total</b>	<b>38</b>	<b>-1,426</b>	<b>-1,464</b>	<b>...</b>	<b>34,138</b>	<b>-2,461</b>	<b>-36,599</b>	<b>...</b>

1. European Union includes: Austria, Belgium, Bulgaria, Cyprus, Czech Republic, Denmark, Estonia, Finland, France, Germany, Greece, Hungary, Ireland, Italy, Latvia, Lithuania, Luxembourg, Malta, Netherlands, Poland, Portugal, Romania, Slovakia, Slovenia, Spain, Sweden and United Kingdom.
2. Other Organization for Economic Co-operation and Development includes: Australia, Canada, Iceland, Mexico, New Zealand, Norway, South Korea, Switzerland and Turkey.

**Text table 2**  
**Reconciliation of customs and balance of payments trade data, not seasonally adjusted**

	2009						2008
	July	June	May	April	March	February	Annual
	millions of dollars						
<b>Exports</b>							
<b>Customs basis</b>	<b>29,286</b>	<b>28,701</b>	<b>27,455</b>	<b>29,718</b>	<b>32,738</b>	<b>29,792</b>	<b>483,630</b>
<b>Balance of payments adjustments</b>	<b>959</b>	<b>1,332</b>	<b>1,258</b>	<b>943</b>	<b>1,240</b>	<b>593</b>	<b>6,227</b>
Valuation and residency							
Inland freight	500	479	467	508	564	516	6,997
Other valuation and residency	-595	-25	-379	-487	-492	-853	-16,564
Timing	129	63	-13	-22	18	-9	-79
Coverage	925	815	1,183	944	1,150	939	15,873
<b>Balance of payments basis</b>	<b>30,245</b>	<b>30,033</b>	<b>28,713</b>	<b>30,661</b>	<b>33,978</b>	<b>30,385</b>	<b>489,857</b>
<b>Imports</b>							
<b>Customs basis</b>	<b>30,195</b>	<b>29,715</b>	<b>28,313</b>	<b>30,726</b>	<b>32,063</b>	<b>29,615</b>	<b>433,519</b>
<b>Balance of payments adjustments</b>	<b>776</b>	<b>803</b>	<b>1,064</b>	<b>748</b>	<b>844</b>	<b>549</b>	<b>9,469</b>
Valuation and residency							
Inland freight	649	645	617	636	657	602	8,908
Other valuation and residency	-6	20	69	23	-17	-38	-653
Timing	0	0	0	0	0	0	0
Coverage	133	138	378	89	204	-15	1,214
<b>Balance of payments basis</b>	<b>30,972</b>	<b>30,517</b>	<b>29,376</b>	<b>31,475</b>	<b>32,906</b>	<b>30,164</b>	<b>442,988</b>

# Statistical tables

---

---

**Table 1-1  
Merchandise trade of Canada, balance of payments basis, seasonally adjusted — Current dollars**

	Exports	Imports	Balance	Period to period change		
				Exports	Imports	Balance
				percent	percent	percent
	millions of dollars			percent		millions of dollars
2005	450,210	387,838	62,372	0.0	0.0	0.0
2006	453,951	404,345	49,606	0.8	4.3	-12,767
2007	463,127	415,229	47,898	2.0	2.7	-1,708
2008	489,857	442,988	46,869	5.8	6.7	-1,029
<b>2007</b>						
First quarter	120,454	106,198	14,256	4.4	3.1	1,887
Second quarter	118,191	103,166	15,025	-1.9	-2.9	769
Third quarter	113,144	104,379	8,765	-4.3	1.2	-6,260
Fourth quarter	111,338	101,486	9,852	-1.6	-2.8	1,088
<b>2008</b>						
First quarter	117,996	104,991	13,005	6.0	3.5	3,152
Second quarter	126,385	110,154	16,230	7.1	4.9	3,226
Third quarter	129,144	115,028	14,116	2.2	4.4	-2,114
Fourth quarter	116,332	112,815	3,517	-9.9	-1.9	-10,599
<b>2009</b>						
First quarter	97,046	96,192	854	-16.6	-14.7	-2,663
Second quarter	87,656	89,544	-1,889	-9.7	-6.9	-2,743
<b>2008</b>						
January	38,209	35,496	2,713	4.6	3.4	512
February	39,689	35,067	4,623	3.9	-1.2	1,909
March	40,097	34,428	5,669	1.0	-1.8	1,046
April	40,507	35,564	4,943	1.0	3.3	-726
May	42,365	36,688	5,677	4.6	3.2	733
June	43,513	37,902	5,611	2.7	3.3	-66
July	44,379	39,476	4,903	2.0	4.2	-708
August	42,685	37,479	5,206	-3.8	-5.1	302
September	42,080	38,073	4,008	-1.4	1.6	-1,198
October	42,181	38,991	3,190	0.2	2.4	-818
November	39,177	38,129	1,049	-7.1	-2.2	-2,141
December	34,974	35,695	-721	-10.7	-6.4	-1,770
<b>2009</b>						
January	31,306	32,255	-949	-10.5	-9.6	-228
February	33,230	32,553	677	6.1	0.9	1,626
March	32,510	31,385	1,126	-2.2	-3.6	448
April	30,125	30,605	-480	-7.3	-2.5	-1,605
May	28,201	29,647	-1,446	-6.4	-3.1	-967
June	29,330	29,293	38	4.0	-1.2	1,484
July	30,305	31,732	-1,426	3.3	8.3	-1,464

**Note(s):** Due to rounding, monthly data may not add up to quarterly data and quarterly data may not add up to annual data.

**Table 1-2**  
**Merchandise trade of Canada, balance of payments basis, seasonally adjusted — Constant dollars, 2002**

	Exports	Imports	Balance	Period to period change	
				Exports	Imports
	millions of dollars			percent	
2005	439,306	431,680	7,626	0.0	0.0
2006	443,398	456,881	-13,483	0.9	5.8
2007	449,581	483,522	-33,941	1.4	5.8
2008	415,123	485,171	-70,048	-7.7	0.3
<b>2007</b>					
First quarter	113,771	117,511	-3,740	2.0	1.6
Second quarter	113,538	118,154	-4,615	-0.2	0.5
Third quarter	112,008	123,373	-11,366	-1.3	4.4
Fourth quarter	110,264	124,484	-14,220	-1.6	0.9
<b>2008</b>					
First quarter	107,366	123,120	-15,754	-2.6	-1.1
Second quarter	105,949	123,992	-18,043	-1.3	0.7
Third quarter	104,458	124,141	-19,683	-1.4	0.1
Fourth quarter	97,350	113,917	-16,567	-6.8	-8.2
<b>2009</b>					
First quarter	87,730	98,182	-10,453	-9.9	-13.8
Second quarter	82,309	96,018	-13,709	-6.2	-2.2
<b>2008</b>					
January	35,336	41,546	-6,210	0.0	1.2
February	36,473	41,373	-4,900	3.2	-0.4
March	35,557	40,201	-4,644	-2.5	-2.8
April	35,078	40,481	-5,404	-1.3	0.7
May	35,639	41,927	-6,288	1.6	3.6
June	35,233	41,584	-6,351	-1.1	-0.8
July	35,530	43,031	-7,502	0.8	3.5
August	34,592	40,426	-5,834	-2.6	-6.1
September	34,337	40,684	-6,347	-0.7	0.6
October	33,470	39,215	-5,745	-2.5	-3.6
November	32,772	38,542	-5,770	-2.1	-1.7
December	31,108	36,160	-5,052	-5.1	-6.2
<b>2009</b>					
January	28,278	33,088	-4,810	-9.1	-8.5
February	30,078	33,152	-3,075	6.4	0.2
March	29,374	31,942	-2,568	-2.3	-3.7
April	28,150	31,730	-3,580	-4.2	-0.7
May	26,883	32,138	-5,255	-4.5	1.3
June	27,276	32,150	-4,874	1.5	0.0
July	28,882	34,957	-6,074	5.9	8.7

**Note(s):** Due to rounding, monthly data may not add up to quarterly data and quarterly data may not add up to annual data.

**Table 1-3**  
**Merchandise trade of Canada, balance of payments basis, seasonally adjusted — Price indices (Laspeyres)**

	2002=100			Period to period change		
	Exports	Imports	Terms of trade	Exports	Imports	Terms of trade
	millions of dollars			percent		
2005	104.6	92.2	113.4	0.0	0.0	0.0
2006	105.1	92.7	113.3	0.4	0.5	-0.1
2007	107.2	91.6	117.0	2.0	-1.2	3.2
2008	116.3	97.6	119.1	8.5	6.6	1.9
<b>2007</b>						
First quarter	109.5	95.2	115.0	3.1	1.9	1.2
Second quarter	112.0	92.9	120.5	2.3	-2.4	4.7
Third quarter	105.0	90.1	116.5	-6.2	-3.0	-3.2
Fourth quarter	105.6	88.0	119.9	0.5	-2.3	2.9
<b>2008</b>						
First quarter	111.3	90.4	123.1	5.4	2.7	2.7
Second quarter	118.5	95.2	124.5	6.4	5.2	1.2
Third quarter	121.8	101.1	120.6	2.8	6.2	-3.4
Fourth quarter	114.0	103.9	109.7	-6.4	2.8	-9.2
<b>2009</b>						
First quarter	109.2	101.4	107.7	-4.2	-2.4	-1.8
Second quarter	105.4	97.7	107.9	-3.5	-3.6	0.1
<b>2008</b>						
January	109.7	89.9	122.0	2.3	1.9	0.4
February	110.0	90.0	122.2	0.3	0.2	0.2
March	113.2	91.3	124.0	2.9	1.4	1.5
April	116.3	93.4	124.6	2.7	2.2	0.5
May	118.5	94.5	125.4	1.9	1.2	0.7
June	120.9	97.7	123.7	2.0	3.4	-1.3
July	123.8	99.5	124.4	2.4	1.8	0.6
August	121.6	101.8	119.4	-1.8	2.3	-4.1
September	120.0	101.9	117.8	-1.3	0.1	-1.4
October	121.6	104.8	116.1	1.3	2.8	-1.5
November	116.6	104.2	111.9	-4.1	-0.5	-3.6
December	111.5	102.7	108.5	-4.4	-1.4	-3.0
<b>2009</b>						
January	109.3	100.6	108.7	-1.9	-2.1	0.2
February	109.4	101.2	108.1	0.1	0.7	-0.6
March	109.5	102.3	107.0	0.1	1.1	-1.0
April	106.8	100.6	106.1	-2.5	-1.7	-0.8
May	104.6	96.8	108.1	-2.0	-3.8	1.8
June	104.5	95.7	109.2	-0.1	-1.2	1.1
July	103.8	95.6	108.5	-0.7	-0.0	-0.6

**Note(s):** Due to rounding, monthly data may not add up to quarterly data and quarterly data may not add up to annual data.



**Table 2-1**  
**Exports by commodity groupings, balance of payments basis, seasonally adjusted — Current dollars**

	June	July	Change	Year to date		Year to date change	July		
	2009	2009		2008	2009			2009/2008	
	millions of dollars		percent		millions of dollars		percent		
<b>Total</b>	<b>29,330</b>	<b>30,305</b>	<b>975</b>	<b>3.3</b>	<b>288,760</b>	<b>215,007</b>	<b>-73,753</b>	<b>-25.5</b>	<b>-31.7</b>
<b>Agricultural and fishing products</b>	<b>3,256</b>	<b>3,154</b>	<b>-102</b>	<b>-3.1</b>	<b>23,366</b>	<b>23,370</b>	<b>3</b>	<b>0.0</b>	<b>-5.0</b>
Wheat	561	512	-49	-8.7	4,179	3,910	-269	-6.4	-6.1
Other agricultural and fishing products	2,695	2,642	-53	-2.0	19,188	19,460	272	1.4	-4.7
Live animals	146	146	-1	-0.5	1,426	1,131	-295	-20.7	-21.2
Fish and fish preparations	340	323	-17	-5.0	2,437	2,418	-19	-0.8	-12.1
Barley	38	19	-19	-50.0	509	295	-214	-42.1	10.9
Wheat flour	7	7	0	5.6	62	48	-14	-22.8	-31.2
Other cereals unmilled	75	57	-18	-23.5	574	399	-175	-30.5	-50.8
Other cereal preparations	248	256	8	3.4	1,590	1,766	176	11.1	6.4
Meat and meat preparations	358	360	2	0.7	2,496	2,653	158	6.3	-14.0
Alcoholic beverages	62	61	-1	-1.7	480	444	-36	-7.4	-15.4
Other food, feed, beverages and tobacco	960	930	-29	-3.1	6,159	6,790	631	10.2	3.1
Rapeseed	261	282	21	8.1	2,184	2,100	-84	-3.8	11.1
Other crude vegetable products	201	200	-1	-0.5	1,272	1,415	144	11.3	5.9
<b>Energy products</b>	<b>6,579</b>	<b>6,366</b>	<b>-213</b>	<b>-3.2</b>	<b>77,853</b>	<b>44,236</b>	<b>-33,618</b>	<b>-43.2</b>	<b>-49.7</b>
Crude petroleum	3,874	3,530	-343	-8.9	38,164	22,154	-16,011	-42.0	-40.1
Natural gas	924	1,068	144	15.6	20,807	9,373	-11,434	-55.0	-70.7
Other energy products	1,781	1,768	-14	-0.8	18,882	12,709	-6,173	-32.7	-43.2
Coal and other bituminous substances	347	387	40	11.5	2,625	2,684	59	2.2	-24.9
Petroleum and coal products	1,241	1,253	12	1.0	13,851	8,584	-5,267	-38.0	-44.2
Electricity	194	128	-66	-33.9	2,406	1,442	-965	-40.1	-63.5
<b>Forestry products</b>	<b>1,559</b>	<b>1,591</b>	<b>33</b>	<b>2.1</b>	<b>14,880</b>	<b>11,647</b>	<b>-3,233</b>	<b>-21.7</b>	<b>-27.2</b>
Lumber and sawmill products	533	558	24	4.6	5,353	3,881	-1,471	-27.5	-27.7
Other crude wood products	41	45	3	8.4	360	301	-58	-16.2	-9.3
Lumber	300	318	18	5.9	3,114	2,183	-931	-29.9	-29.4
Other wood fabricated materials	191	195	3	1.7	1,879	1,397	-482	-25.7	-28.3
Wood pulp and other wood products	340	364	24	7.0	3,926	2,637	-1,289	-32.8	-34.4
Newsprint and other paper and paperboard	685	670	-16	-2.3	5,601	5,128	-472	-8.4	-22.2
Newsprint paper	355	336	-18	-5.1	2,949	2,720	-230	-7.8	-27.4
Other paper and paperboard	331	333	3	0.8	2,651	2,408	-243	-9.2	-16.1
<b>Industrial goods and materials</b>	<b>6,261</b>	<b>6,447</b>	<b>187</b>	<b>3.0</b>	<b>65,643</b>	<b>45,724</b>	<b>-19,919</b>	<b>-30.3</b>	<b>-37.8</b>
Metal ores	674	824	150	22.2	9,006	5,698	-3,308	-36.7	-52.9
Iron ores, concentrates and scrap	312	323	11	3.5	2,718	2,550	-168	-6.2	-27.9
Copper ores, concentrates and scrap	132	178	46	34.7	1,332	854	-478	-35.9	-37.6
Nickel ores, concentrates and scrap	67	123	56	82.8	2,675	822	-1,853	-69.3	-81.4
Zinc ores, concentrates and scrap	11	27	17	156.1	201	136	-65	-32.2	31.9
Other ores, concentrates and scrap	153	174	21	13.7	2,080	1,336	-745	-35.8	-47.9
Chemicals, plastics and fertilizers	1,978	2,060	82	4.2	20,164	14,981	-5,183	-25.7	-36.4
Inorganic chemicals	283	254	-29	-10.2	3,131	2,466	-665	-21.3	-48.5
Organic chemicals	397	403	6	1.5	4,172	2,683	-1,489	-35.7	-35.7
Fertilizers and fertilizer materials	326	420	94	28.9	3,557	2,674	-883	-24.8	-39.7
Synthetic rubber and plastics	750	761	11	1.4	7,351	5,541	-1,810	-24.6	-32.1
Other chemical products	222	222	0	0.0	1,953	1,618	-335	-17.2	-26.4
Metals and alloys	2,358	2,245	-113	-4.8	24,350	15,479	-8,871	-36.4	-38.3
Primary iron and steel	65	2	-63	-97.0	798	206	-593	-74.2	-98.9
Steel bars, rods, plates, sheets	176	231	54	30.7	2,964	1,631	-1,333	-45.0	-55.7
Other iron and steel and alloys	183	201	18	9.8	2,284	1,426	-858	-37.5	-41.6
Aluminum including alloys	415	481	66	15.9	5,376	3,333	-2,043	-38.0	-42.6
Copper and alloys	142	153	10	7.3	2,842	1,197	-1,645	-57.9	-63.6
Nickel and alloys	141	179	38	27.1	2,425	1,223	-1,202	-49.6	-39.3
Precious metals and alloys	1,085	829	-256	-23.6	5,798	5,399	-399	-6.9	5.4
Zinc and alloys	75	95	20	26.4	934	563	-371	-39.7	-17.4
Other non-ferrous metals and alloys	74	74	0	0.2	929	501	-428	-46.1	-43.9

Table 2-1 – continued

## Exports by commodity groupings, balance of payments basis, seasonally adjusted — Current dollars

	June	July	Change	Year to date		Year to date change		July	
	2009	2009		2008	2009	2008	2009	2009/2008	
	millions of dollars		percent		millions of dollars		percent		
Other industrial goods and materials	1,251	1,318	68	5.4	12,123	9,565	-2,558	-21.1	-24.2
Asbestos unmanufactured	5	7	3	55.0	37	39	2	5.7	25.1
Other crude animal products	54	51	-3	-6.0	523	413	-110	-21.0	-25.0
Other crude non-metallic minerals	229	245	16	7.2	2,929	1,861	-1,068	-36.5	-36.2
Other crude materials, inedible	47	62	14	30.1	336	362	25	7.5	18.8
Metal fabricated basic products	314	347	34	10.7	3,168	2,491	-677	-21.4	-27.4
Textile fabricated materials	164	169	5	2.8	1,421	1,224	-197	-13.8	-18.2
Non-metallic mineral basic products	160	161	1	0.6	1,384	1,170	-214	-15.5	-21.8
Other fabricated materials	278	276	-1	-0.5	2,325	2,006	-319	-13.7	-18.5
<b>Machinery and equipment</b>	<b>6,354</b>	<b>7,073</b>	<b>719</b>	<b>11.3</b>	<b>52,447</b>	<b>49,935</b>	<b>-2,512</b>	<b>-4.8</b>	<b>-8.6</b>
Industrial and agricultural machinery	1,511	1,562	51	3.4	13,106	11,947	-1,159	-8.8	-22.0
Industrial machinery	1,342	1,386	44	3.3	11,934	10,681	-1,253	-10.5	-23.6
Agricultural machinery includ. tractors	169	176	7	4.2	1,171	1,266	94	8.1	-5.8
Aircraft and other transportation equipment	1,571	1,914	343	21.9	11,505	11,906	401	3.5	23.3
Aircraft, engines, parts	1,248	1,592	344	27.6	8,554	9,570	1,015	11.9	37.8
Other transportation equipment	323	322	-0	-0.2	2,951	2,337	-614	-20.8	-18.9
Other machinery and equipment	3,272	3,597	325	9.9	27,836	26,081	-1,755	-6.3	-14.0
Television, telecommunication equipment	661	822	161	24.4	5,507	5,567	60	1.1	-2.4
Office machines and equipment	350	419	69	19.7	3,489	2,994	-494	-14.2	-20.3
Other equipment and tools	1,546	1,592	46	3.0	13,190	11,717	-1,474	-11.2	-19.9
Other end products, inedible	715	763	48	6.8	5,650	5,804	153	2.7	-7.9
<b>Automotive products</b>	<b>2,927</b>	<b>3,244</b>	<b>317</b>	<b>10.8</b>	<b>36,501</b>	<b>22,292</b>	<b>-14,209</b>	<b>-38.9</b>	<b>-39.5</b>
Passenger autos and chassis	1,818	1,900	82	4.5	20,141	11,829	-8,312	-41.3	-37.4
Trucks and other motor vehicles	225	286	61	27.4	4,316	2,902	-1,414	-32.8	-57.2
Motor vehicle parts	884	1,058	174	19.6	12,044	7,561	-4,483	-37.2	-36.1
<b>Other consumer goods</b>	<b>1,501</b>	<b>1,509</b>	<b>8</b>	<b>0.5</b>	<b>10,333</b>	<b>10,998</b>	<b>665</b>	<b>6.4</b>	<b>-6.5</b>
<b>Special transactions trade</b>	<b>507</b>	<b>510</b>	<b>3</b>	<b>0.6</b>	<b>4,533</b>	<b>3,851</b>	<b>-682</b>	<b>-15.0</b>	<b>-26.2</b>
<b>Unallocated balance of payments adjustments</b>	<b>386</b>	<b>410</b>	<b>24</b>	<b>6.2</b>	<b>3,203</b>	<b>2,955</b>	<b>-249</b>	<b>-7.8</b>	<b>-10.1</b>

**Table 2-2**  
**Exports by commodity groupings, balance of payments basis, seasonally adjusted — Constant dollars, 2002**

	June	July	Change	Year to date		Year to date change		July	
	2009	2009		2008	2009	2008	2009/2008		
	millions of dollars		percent		millions of dollars		percent		
<b>Total</b>	<b>27,276</b>	<b>28,882</b>	<b>1,606</b>	<b>5.9</b>	<b>248,845</b>	<b>198,920</b>	<b>-49,924</b>	<b>-20.1</b>	<b>-18.7</b>
<b>Agricultural and fishing products</b>	<b>3,076</b>	<b>3,056</b>	<b>-20</b>	<b>-0.6</b>	<b>21,657</b>	<b>21,811</b>	<b>154</b>	<b>0.7</b>	<b>2.5</b>
Wheat	443	445	2	0.5	2,424	3,222	798	32.9	39.3
Other agricultural and fishing products	2,633	2,611	-22	-0.8	19,233	18,589	-644	-3.3	-1.9
Live animals	166	168	2	1.1	1,681	1,249	-432	-25.7	-14.9
Fish and fish preparations	420	381	-39	-9.2	2,847	2,777	-70	-2.5	-9.9
Barley	28	18	-11	-37.9	354	219	-134	-38.0	66.6
Wheat flour	6	7	0	6.1	49	42	-7	-13.5	-24.8
Other cereals unmilled	77	54	-23	-30.3	503	360	-142	-28.3	-41.1
Other cereal preparations	205	215	10	4.7	1,505	1,418	-86	-5.7	-2.0
Meat and meat preparations	412	430	18	4.4	2,967	2,859	-108	-3.6	-1.3
Alcoholic beverages	104	102	-2	-2.4	807	751	-56	-7.0	-14.8
Other food, feed, beverages and tobacco	830	825	-5	-0.6	6,054	5,895	-159	-2.6	-4.0
Rapeseed	223	248	26	11.5	1,456	1,858	402	27.6	56.8
Other crude vegetable products	161	164	3	1.9	1,011	1,160	149	14.7	18.6
<b>Energy products</b>	<b>4,471</b>	<b>4,517</b>	<b>47</b>	<b>1.0</b>	<b>32,520</b>	<b>30,866</b>	<b>-1,653</b>	<b>-5.1</b>	<b>1.8</b>
Crude petroleum	2,072	1,966	-107	-5.1	13,465	13,423	-42	-0.3	3.0
Natural gas	1,213	1,405	191	15.8	10,439	9,392	-1,046	-10.0	0.3
Other energy products	1,185	1,147	-38	-3.2	8,616	8,051	-565	-6.6	1.9
Coal and other bituminous substances	130	143	13	9.8	1,104	720	-384	-34.8	9.7
Petroleum and coal products	769	814	46	5.9	5,741	5,726	-15	-0.3	2.9
Electricity	286	189	-97	-33.8	1,771	1,605	-166	-9.4	-6.8
<b>Forestry products</b>	<b>2,023</b>	<b>2,044</b>	<b>21</b>	<b>1.1</b>	<b>18,175</b>	<b>14,132</b>	<b>-4,044</b>	<b>-22.2</b>	<b>-20.3</b>
Lumber and sawmill products	775	790	15	2.0	7,075	5,338	-1,737	-24.6	-17.9
Other crude wood products	61	79	18	30.3	486	404	-81	-16.8	27.4
Lumber	491	485	-6	-1.3	4,461	3,356	-1,106	-24.8	-19.9
Other wood fabricated materials	223	226	3	1.3	2,128	1,578	-550	-25.9	-23.3
Wood pulp and other wood products	519	529	10	1.8	4,665	3,754	-911	-19.5	-19.0
Newsprint and other paper and paperboard	728	724	-3	-0.5	6,436	5,040	-1,396	-21.7	-23.6
Newsprint paper	371	358	-13	-3.6	3,349	2,578	-771	-23.0	-27.6
Other paper and paperboard	357	367	10	2.8	3,087	2,462	-624	-20.2	-19.3
<b>Industrial goods and materials</b>	<b>4,745</b>	<b>4,935</b>	<b>189</b>	<b>4.0</b>	<b>44,752</b>	<b>35,136</b>	<b>-9,616</b>	<b>-21.5</b>	<b>-24.2</b>
Metal ores	386	470	83	21.5	4,235	3,220	-1,016	-24.0	-38.1
Iron ores, concentrates and scrap	145	140	-5	-3.6	1,416	988	-428	-30.2	-14.0
Copper ores, concentrates and scrap	60	77	18	29.8	418	421	4	0.9	-11.7
Nickel ores, concentrates and scrap	43	79	36	85.1	1,139	603	-537	-47.1	-75.0
Zinc ores, concentrates and scrap	7	18	11	165.6	106	98	-9	-8.1	48.2
Other ores, concentrates and scrap	132	155	23	17.5	1,157	1,110	-47	-4.0	-13.7
Chemicals, plastics and fertilizers	1,613	1,642	29	1.8	14,709	11,482	-3,227	-21.9	-26.6
Inorganic chemicals	155	167	12	7.8	1,532	1,251	-281	-18.4	-37.8
Organic chemicals	340	315	-25	-7.4	2,254	2,283	29	1.3	3.6
Fertilizers and fertilizer materials	109	141	32	29.7	1,891	882	-1,009	-53.3	-55.9
Synthetic rubber and plastics	750	748	-3	-0.3	6,674	5,211	-1,463	-21.9	-23.6
Other chemical products	259	271	12	4.5	2,357	1,855	-502	-21.3	-25.5
Metals and alloys	1,631	1,640	9	0.5	14,922	11,282	-3,640	-24.4	-22.8
Primary iron and steel	37	2	-35	-95.8	468	132	-336	-71.8	-98.4
Steel bars, rods, plates, sheets	148	197	49	33.1	2,334	1,234	-1,100	-47.1	-40.1
Other iron and steel and alloys	176	181	5	3.0	1,803	1,201	-602	-33.4	-20.4
Aluminum including alloys	508	586	78	15.3	4,640	4,013	-626	-13.5	-15.0
Copper and alloys	62	64	2	3.9	920	639	-281	-30.5	-52.5
Nickel and alloys	104	116	11	11.0	976	926	-50	-5.1	-18.1
Precious metals and alloys	492	382	-110	-22.4	2,962	2,367	-594	-20.1	-0.8
Zinc and alloys	61	73	12	19.4	519	476	-43	-8.4	-2.1
Other non-ferrous metals and alloys	43	39	-4	-9.3	301	294	-7	-2.5	-20.9

Table 2-2 – continued

## Exports by commodity groupings, balance of payments basis, seasonally adjusted — Constant dollars, 2002

	June	July	Change	Year to date		Year to date change		July	
	2009	2009		2008	2009	2008	2009/2008		
	millions of dollars		percent		millions of dollars		percent		
Other industrial goods and materials	1,115	1,184	69	6.2	10,885	9,152	-1,734	-15.9	-15.0
Asbestos unmanufactured	5	8	3	59.8	43	41	-2	-4.4	12.8
Other crude animal products	78	75	-4	-4.5	554	559	5	0.9	7.8
Other crude non-metallic minerals	211	233	22	10.3	2,879	2,464	-415	-14.4	-17.7
Other crude materials, inedible	45	58	14	30.5	333	358	25	7.4	16.5
Metal fabricated basic products	245	277	32	12.9	2,608	1,941	-667	-25.6	-25.2
Textile fabricated materials	163	174	11	6.7	1,534	1,158	-376	-24.5	-20.7
Non-metallic mineral basic products	130	131	1	0.8	1,202	940	-262	-21.8	-23.4
Other fabricated materials	238	228	-9	-3.8	1,733	1,692	-41	-2.4	2.7
<b>Machinery and equipment</b>	<b>6,908</b>	<b>7,798</b>	<b>890</b>	<b>12.9</b>	<b>60,814</b>	<b>53,033</b>	<b>-7,782</b>	<b>-12.8</b>	<b>-12.2</b>
Industrial and agricultural machinery	1,383	1,419	36	2.6	12,769	10,890	-1,879	-14.7	-26.5
Industrial machinery	1,231	1,261	30	2.4	11,586	9,753	-1,833	-15.8	-27.9
Agricultural machinery includ. tractors	152	158	6	3.8	1,183	1,137	-46	-3.9	-12.7
Aircraft and other transportation equipment	1,886	2,294	409	21.7	14,916	13,835	-1,081	-7.2	15.2
Aircraft, engines, parts	1,560	1,986	426	27.3	11,803	11,531	-272	-2.3	23.9
Other transportation equipment	325	308	-17	-5.3	3,113	2,304	-809	-26.0	-20.8
Other machinery and equipment	3,639	4,085	446	12.3	33,130	28,308	-4,822	-14.6	-17.6
Television, telecommunication equipment	795	986	191	24.0	7,103	6,455	-648	-9.1	-9.2
Office machines and equipment	800	966	166	20.8	8,066	6,347	-1,719	-21.3	-20.8
Other equipment and tools	1,428	1,476	48	3.4	12,785	10,766	-2,019	-15.8	-22.9
Other end products, inedible	616	656	40	6.5	5,176	4,740	-435	-8.4	-10.8
<b>Automotive products</b>	<b>3,546</b>	<b>3,958</b>	<b>413</b>	<b>11.6</b>	<b>50,062</b>	<b>26,046</b>	<b>-24,015</b>	<b>-48.0</b>	<b>-44.9</b>
Passenger autos and chassis	2,373	2,491	118	5.0	30,915	14,949	-15,967	-51.6	-45.1
Trucks and other motor vehicles	227	331	104	45.8	5,674	3,209	-2,465	-43.4	-59.3
Motor vehicle parts	945	1,137	191	20.2	13,472	7,889	-5,583	-41.4	-38.0
<b>Other consumer goods</b>	<b>1,438</b>	<b>1,447</b>	<b>10</b>	<b>0.7</b>	<b>10,140</b>	<b>10,543</b>	<b>403</b>	<b>4.0</b>	<b>-8.1</b>
<b>Special transactions trade</b>	<b>468</b>	<b>464</b>	<b>-4</b>	<b>-0.9</b>	<b>3,809</b>	<b>3,506</b>	<b>-303</b>	<b>-7.9</b>	<b>-10.6</b>
<b>Unallocated balance of payments adjustments</b>	<b>602</b>	<b>662</b>	<b>60</b>	<b>10.0</b>	<b>6,916</b>	<b>3,847</b>	<b>-3,069</b>	<b>-44.4</b>	<b>-24.6</b>

**Table 3-1**  
**Domestic exports to selected countries, customs basis, not seasonally adjusted — July**

	Agricultural and fishing products	Energy products	Forestry products	Industrial goods	Machinery and equipment	Automotive products	Consumer goods	Special transactions	Total
millions of dollars									
<b>United States</b>									
2008	1,689.2	13,610.7	1,519.5	5,965.0	4,326.9	3,215.4	1,067.2	629.9	32,023.9
2009	1,535.5	6,587.4	1,083.2	3,765.6	3,568.7	2,323.6	921.5	447.1	20,232.5
<b>Mexico</b>									
2008	108.3	44.5	20.9	162.1	108.3	56.3	6.6	0.7	507.7
2009	119.5	20.5	8.1	55.4	91.8	45.8	6.1	0.5	347.8
<b>Japan</b>									
2008	279.6	130.9	111.9	187.1	57.2	3.0	9.6	0.2	779.5
2009	242.9	129.1	96.3	97.9	85.6	2.9	7.3	0.8	663.0
<b>European Union</b>									
<b>Germany</b>									
2008	15.5	61.2	15.4	242.0	77.5	4.1	16.6	1.4	433.7
2009	30.6	0.1	9.9	50.5	126.8	3.6	14.6	1.1	237.1
<b>France</b>									
2008	15.1	11.0	20.1	64.5	97.1	2.6	15.6	2.5	228.4
2009	13.2	0.2	8.1	14.6	77.9	2.9	25.6	2.2	144.7
<b>United Kingdom</b>									
2008	42.4	23.8	38.9	862.6	145.8	5.1	16.2	4.7	1,139.7
2009	42.3	27.2	22.9	379.8	202.4	4.0	17.5	4.1	700.2
<b>Italy</b>									
2008	16.9	12.7	22.9	8.1	45.0	0.8	4.2	0.7	111.3
2009	24.9	14.8	18.4	20.6	27.7	0.7	6.1	0.7	113.9
<b>Other European Union</b>									
2008	107.4	486.9	33.5	458.0	171.4	23.0	48.8	6.3	1,335.4
2009	102.5	158.2	27.9	180.6	312.3	8.5	46.2	7.0	843.2
<b>Total</b>									
2008	197.4	595.5	130.7	1,635.3	536.9	35.7	101.3	15.6	3,248.5
2009	213.5	200.5	87.2	646.0	747.2	19.7	109.8	15.1	2,039.1
<b>Newly industrialized countries</b>									
<b>South Korea</b>									
2008	27.0	91.5	48.6	117.5	30.7	1.3	4.2	1.7	322.4
2009	23.0	87.5	26.9	94.9	31.3	2.9	3.0	1.4	271.0
<b>Hong Kong</b>									
2008	24.9	0.0	8.3	44.6	26.7	0.6	3.4	1.5	110.0
2009	26.2	0.0	8.5	46.3	71.9	1.1	3.7	0.9	158.7
<b>Taiwan</b>									
2008	16.0	0.2	24.4	46.4	11.6	0.0	3.9	0.2	102.7
2009	18.1	26.6	16.3	22.9	7.2	0.1	2.6	0.2	94.0
<b>Singapore</b>									
2008	3.2	0.8	0.8	12.5	29.9	4.0	2.9	0.2	54.4
2009	6.9	0.5	6.1	35.3	35.7	1.6	4.5	0.3	90.8
<b>Total</b>									
2008	71.2	92.6	82.0	221.0	98.8	5.9	14.4	3.6	589.4
2009	74.2	114.6	57.7	199.3	146.1	5.7	13.8	2.9	614.3
<b>Other countries</b>									
2008	814.1	244.1	377.6	1,578.6	761.6	71.9	91.0	18.4	3,957.2
2009	712.5	251.8	278.5	1,069.7	694.9	57.4	133.2	19.3	3,217.2
<b>Total</b>									
2008	3,159.8	14,718.3	2,242.6	9,749.1	5,890.0	3,388.2	1,290.2	668.4	41,106.6
2009	2,898.1	7,304.0	1,611.1	5,833.8	5,334.3	2,455.2	1,191.7	485.8	27,114.0

**Table 3-2**  
**Domestic exports to selected countries, customs basis, not seasonally adjusted — Year to date, January to July**

	Agricultural and fishing products	Energy products	Forestry products	Industrial goods	Machinery and equipment	Automotive products	Consumer goods	Special transactions	Total
millions of dollars									
<b>United States</b>									
2008	11,523.6	73,298.7	10,306.2	39,599.3	30,452.7	32,240.7	6,253.3	4,100.8	207,775.4
2009	11,536.0	40,410.6	8,098.4	26,612.9	27,320.3	19,133.7	6,643.3	3,317.0	143,072.2
<b>Mexico</b>									
2008	790.4	75.2	112.0	761.3	558.3	482.2	39.9	3.8	2,823.1
2009	654.5	36.4	56.6	412.2	589.2	355.8	27.9	7.0	2,139.7
<b>Japan</b>									
2008	2,282.8	967.5	825.1	1,454.3	346.7	22.7	63.9	2.7	5,965.8
2009	1,845.8	1,104.9	610.1	685.4	410.4	21.3	89.9	4.2	4,772.0
<b>European Union</b>									
<b>Germany</b>									
2008	109.0	168.4	104.4	864.2	718.7	27.9	101.9	8.1	2,102.7
2009	114.7	145.8	72.0	301.4	1,110.0	27.5	90.6	9.3	1,871.3
<b>France</b>									
2008	105.4	255.5	161.1	243.6	729.3	32.8	197.9	9.8	1,735.2
2009	92.6	75.2	83.1	354.2	720.5	21.1	186.2	15.3	1,548.2
<b>United Kingdom</b>									
2008	280.3	170.9	228.0	5,402.6	1,226.1	43.7	119.5	30.3	7,501.4
2009	230.7	93.1	182.2	4,296.6	1,299.6	21.8	188.1	24.4	6,336.5
<b>Italy</b>									
2008	167.6	169.5	220.5	518.3	292.4	6.7	37.7	3.1	1,415.8
2009	253.6	56.8	161.7	143.6	300.6	5.8	40.2	5.6	967.9
<b>Other European Union</b>									
2008	602.5	1,096.4	279.1	2,698.2	1,637.8	160.0	361.1	27.4	6,862.5
2009	531.1	682.7	193.8	1,423.6	1,715.9	80.3	460.8	29.1	5,117.3
<b>Total</b>									
2008	1,264.8	1,860.8	993.1	9,727.0	4,604.2	271.0	818.1	78.8	19,617.7
2009	1,222.7	1,053.7	692.7	6,519.4	5,146.8	156.4	965.8	83.7	15,841.2
<b>Newly industrialized countries</b>									
<b>South Korea</b>									
2008	204.7	594.2	326.3	671.3	220.2	6.4	32.5	5.9	2,061.5
2009	183.4	579.1	188.7	580.1	301.9	24.3	27.2	4.8	1,889.5
<b>Hong Kong</b>									
2008	197.8	0.2	56.6	436.5	156.3	3.5	25.5	7.1	883.4
2009	214.1	0.2	57.1	315.9	221.4	5.5	35.2	5.2	854.6
<b>Taiwan</b>									
2008	90.1	72.4	203.3	419.9	81.4	1.1	19.5	1.5	889.2
2009	97.1	124.4	110.6	172.1	66.8	0.8	20.4	0.7	592.8
<b>Singapore</b>									
2008	23.1	25.7	7.4	126.3	210.3	10.3	18.1	2.6	423.8
2009	28.1	2.7	27.2	258.9	192.4	20.3	20.2	1.8	551.5
<b>Total</b>									
2008	515.7	692.5	593.6	1,654.0	668.3	21.3	95.6	17.0	4,257.9
2009	522.6	706.3	383.5	1,327.0	782.6	51.0	103.0	12.4	3,888.4
<b>Other countries</b>									
2008	5,707.7	1,246.1	2,417.6	9,627.7	5,349.9	487.1	703.3	105.6	25,645.0
2009	6,049.6	986.1	1,936.3	6,362.1	5,238.1	450.3	717.2	164.2	21,903.9
<b>Total</b>									
2008	22,085.1	78,140.8	15,247.6	62,823.7	41,980.6	33,525.0	7,974.7	4,308.6	266,086.0
2009	21,831.2	44,298.0	11,777.6	41,919.0	39,487.6	20,168.5	8,547.6	3,588.5	191,618.0

**Table 4**  
**Domestic exports by country, customs basis, not seasonally adjusted**

	July		January to July		Variation
	2008	2009	2008	2009	January to July to July 2009/2008
millions of dollars					
<b>North America</b>					
Greenland	0.7	1.3	9.9	12.3	24.2
Mexico	507.7	347.8	2,823.1	2,139.7	-24.2
Saint Pierre and Miquelon	1.6	2.1	8.2	8.6	4.9
United States	32,023.9	20,232.5	207,775.4	143,072.2	-31.1
<b>Total</b>	<b>32,533.9</b>	<b>20,583.7</b>	<b>210,616.6</b>	<b>145,232.8</b>	<b>-31.0</b>
<b>Western Europe</b>					
Andorra	0.0	0.0	0.1	0.0	0.0
Austria	28.9	13.6	284.4	268.2	-5.7
Belgium	263.4	122.7	1,792.7	1,052.5	-41.3
Denmark	28.1	149.6	224.6	432.9	92.7
Faeroe Islands	0.3	0.0	1.1	0.7	-36.4
Finland	104.8	40.3	470.3	187.2	-60.2
France	228.4	144.7	1,735.2	1,548.2	-10.8
Germany	433.7	237.1	2,102.7	1,871.3	-11.0
Gibraltar	117.2	0.0	588.9	16.8	-97.1
Greece	10.1	9.3	64.9	57.3	-11.7
Iceland	3.9	2.3	33.9	59.5	75.5
Italy	111.3	113.9	1,415.8	967.9	-31.6
Luxembourg	4.7	3.2	49.8	23.4	-53.0
Malta	1.7	0.7	12.0	40.0	233.3
Netherlands	482.4	292.9	2,075.2	1,463.5	-29.5
Norway	384.8	153.0	1,978.5	917.4	-53.6
Portugal	29.7	8.7	97.3	91.8	-5.7
Republic of Ireland (Eire)	24.9	21.3	221.2	311.9	41.0
Spain	159.9	76.4	622.5	589.5	-5.3
Sweden	60.4	20.5	253.3	144.9	-42.8
Switzerland	42.4	219.7	627.6	693.9	10.6
United Kingdom	1,139.7	700.2	7,501.4	6,336.5	-15.5
<b>Total</b>	<b>3,660.9</b>	<b>2,330.2</b>	<b>22,153.4</b>	<b>17,075.2</b>	<b>-22.9</b>
<b>Other Europe</b>					
Albania	1.8	1.7	15.3	6.5	-57.5
Armenia	2.3	1.4	10.6	4.4	-58.5
Azerbaijan	0.8	0.5	10.6	6.4	-39.6
Belarus	0.2	0.0	2.8	0.8	-71.4
Bosnia and Herzegovina	0.3	0.3	3.1	2.2	-29.0
Bulgaria	1.9	42.0	14.1	63.9	353.2
Croatia	22.2	1.6	53.8	89.9	67.1
Czech Republic	18.9	8.8	155.4	70.1	-54.9
Estonia	2.9	1.4	14.5	10.9	-24.8
Georgia	1.4	0.6	9.3	3.7	-60.2
Hungary	10.1	10.1	83.8	55.2	-34.1
Kazakhstan	8.2	4.3	162.8	106.3	-34.7
Kyrgyzstan	0.2	0.1	4.1	2.5	-39.0
Latvia	2.2	1.5	23.8	15.9	-33.2
Lithuania	3.9	1.9	24.8	26.2	5.6
Macedonia (Former Yugoslav Republic of Macedonia)	0.8	0.8	7.2	7.5	4.2
Montenegro	0.6	0.1	3.2	1.2	-62.5
Poland	31.4	12.8	172.3	103.0	-40.2
Republic of Moldova	0.3	0.3	3.2	1.5	-53.1
Romania	60.4	2.5	141.9	38.9	-72.6
Russian Federation	147.6	58.0	790.9	500.0	-36.8
Serbia	1.4	1.7	7.9	12.4	57.0
Slovakia	2.1	1.9	27.5	14.1	-48.7
Slovenia	1.0	0.4	25.2	49.9	98.0
Tajikistan	0.4	0.2	2.8	1.3	-53.6
Turkmenistan	0.7	0.2	1.4	4.2	200.0
Ukraine	16.3	12.8	104.0	44.3	-57.4
Uzbekistan	1.5	2.3	5.0	10.5	110.0
<b>Total</b>	<b>342.0</b>	<b>170.1</b>	<b>1,881.4</b>	<b>1,253.8</b>	<b>-33.4</b>
<b>Middle East</b>					
Bahrain	3.3	1.1	39.3	10.5	-73.3
Cyprus	1.6	0.6	11.0	6.3	-42.7

Table 4 – continued

## Domestic exports by country, customs basis, not seasonally adjusted

	July		January to July		Variation
	2008	2009	2008	2009	January to July 2009/2008
millions of dollars					
Egypt	30.1	20.7	216.3	348.6	61.2
Eritrea	0.1	0.0	0.3	0.1	-66.7
Ethiopia	1.8	0.5	37.5	6.6	-82.4
Iran	55.0	34.8	172.4	297.9	72.8
Iraq	4.3	33.1	134.9	260.4	93.0
Israel	47.0	24.1	261.5	182.7	-30.1
Jordan	4.8	4.8	38.9	33.7	-13.4
Kuwait	32.4	6.2	86.8	42.4	-51.2
Lebanon	4.9	5.4	40.7	64.7	59.0
Libya	3.3	10.8	81.5	175.8	115.7
Oman	7.6	5.4	43.9	73.6	67.7
Qatar	4.7	78.6	46.3	151.2	226.6
Saudi Arabia	43.6	87.4	592.2	749.7	26.6
Somalia	0.4	0.1	0.9	0.1	-88.9
Sudan	34.3	2.8	143.1	70.2	-50.9
Syria	6.2	5.2	42.5	29.8	-29.9
Turkey	134.5	33.9	677.4	408.4	-39.7
United Arab Emirates	103.7	116.8	664.3	708.7	6.7
Yemen	0.8	3.5	17.8	17.1	-3.9
<b>Total</b>	<b>524.4</b>	<b>475.9</b>	<b>3,349.4</b>	<b>3,638.7</b>	<b>8.6</b>
<b>Other Africa</b>					
Algeria	78.8	20.6	535.6	220.5	-58.8
Angola	6.2	4.9	89.1	50.8	-43.0
Antarctica	2.0	0.0	2.7	0.0	0.0
Benin	0.9	0.5	6.9	4.5	-34.8
Botswana	0.6	0.2	4.8	3.0	-37.5
Bouvet Island	0.0	0.0	0.0	0.0	0.0
Burkina Faso	0.5	5.1	4.1	10.9	165.9
Burundi	0.1	0.0	0.8	0.6	-25.0
Cameroon	0.4	7.0	8.6	20.5	138.4
Cape Verde	0.1	0.1	0.6	0.9	50.0
Central African Republic	0.0	0.0	0.1	0.6	500.0
Chad	0.6	0.6	2.5	8.0	220.0
Comoros	0.1	0.0	0.4	0.2	-50.0
Congo	1.7	0.9	14.4	12.4	-13.9
Democratic Republic of the Congo	2.7	1.1	12.3	8.3	-32.5
Djibouti	0.0	0.1	1.3	1.8	38.5
Equatorial Guinea	0.5	0.5	2.7	3.2	18.5
French Southern Territories	0.0	0.1	0.1	0.2	100.0
Gabon	0.4	1.9	13.7	18.0	31.4
Gambia	0.1	0.0	0.3	0.4	33.3
Ghana	24.5	16.4	111.6	100.1	-10.3
Guinea	1.3	0.4	9.0	10.0	11.1
Guinea-Bissau	0.0	0.0	0.5	0.0	0.0
Ivory Coast	4.0	1.1	16.9	15.0	-11.2
Kenya	4.3	3.4	25.1	42.5	69.3
Lesotho	0.0	0.0	0.0	0.0	0.0
Liberia	0.9	0.5	4.6	2.3	-50.0
Madagascar	0.5	4.4	6.4	28.6	346.9
Malawi	0.4	0.4	3.2	2.5	-21.9
Mali	0.6	0.3	4.7	3.9	-17.0
Mauritania	0.2	0.1	2.3	1.7	-26.1
Mauritius	0.2	0.3	2.2	4.1	86.4
Morocco	22.2	12.5	183.3	241.7	31.9
Mozambique	0.3	0.2	4.1	2.4	-41.5
Namibia	0.7	0.1	6.2	1.1	-82.3
Niger	0.3	0.3	2.2	1.7	-22.7
Nigeria	6.4	7.8	33.7	82.0	143.3
Rwanda	0.1	0.0	1.4	0.9	-35.7
Saint Helena	0.0	0.0	0.3	0.1	-66.7
Sao Tome and Principe	0.0	0.0	0.0	0.1	...
Senegal	2.6	2.4	19.7	13.1	-33.5
Seychelles	0.0	0.3	0.7	0.7	0.0
Sierra Leone	0.6	0.2	5.0	2.6	-48.0
South Africa	120.1	31.7	437.7	265.5	-39.3
Swaziland	0.5	0.0	4.8	9.5	97.9



Table 4 – continued

## Domestic exports by country, customs basis, not seasonally adjusted

	July		January to July		Variation
	2008	2009	2008	2009	January to July 2009/2008
millions of dollars					
Togo	2.7	2.0	10.8	12.6	16.7
Tunisia	4.4	1.9	18.3	71.6	291.3
Uganda	0.8	0.7	6.1	8.2	34.4
United Republic of Tanzania	4.2	2.8	24.7	19.0	-23.1
Western Sahara	0.0	0.0	0.0	0.1	...
Zambia	3.9	0.3	14.9	4.3	-71.1
Zimbabwe	0.0	0.0	2.3	7.0	204.3
<b>Total</b>	<b>302.6</b>	<b>134.6</b>	<b>1,663.8</b>	<b>1,319.5</b>	<b>-20.7</b>
<b>Other Asia</b>					
Afghanistan	1.8	2.0	7.1	34.0	378.9
Bangladesh	52.6	6.2	225.7	436.9	93.6
Bhutan	0.0	0.1	0.0	0.1	0.0
British Indian Ocean Territory	0.1	0.1	0.3	0.2	-33.3
Brunei Darussalam	0.3	0.3	0.9	2.4	166.7
Cambodia	0.4	0.4	1.6	2.9	81.3
China	804.4	996.4	6,180.3	6,643.4	7.5
Hong Kong	110.0	158.7	883.4	854.6	-3.3
India	168.3	182.4	1,012.0	961.2	-5.0
Indonesia	117.1	65.3	879.1	582.7	-33.7
Japan	779.5	663.0	5,965.8	4,772.0	-20.0
Laos	0.1	0.1	14.1	1.3	-90.8
Macau	4.0	0.8	24.2	12.4	-48.8
Malaysia	38.9	43.6	426.2	314.8	-26.1
Maldives	0.2	0.5	1.9	3.6	89.5
Mongolia	0.9	0.3	5.6	2.7	-51.8
Myanmar	0.0	0.0	0.1	0.0	0.0
Nepal	0.0	0.3	1.6	2.1	31.3
North Korea	0.9	1.8	12.9	14.5	12.4
Pakistan	11.9	30.2	333.5	300.3	-10.0
Philippines	23.4	31.4	299.6	246.1	-17.9
Singapore	54.4	90.8	423.8	551.5	30.1
South Korea	322.4	271.0	2,061.5	1,889.5	-8.3
Sri Lanka	39.2	28.7	268.2	199.6	-25.6
Taiwan	102.7	94.0	889.2	592.8	-33.3
Thailand	51.4	47.3	372.3	257.0	-31.0
Timor-Leste	0.0	0.0	0.3	0.0	0.0
Viet Nam	22.4	13.8	200.4	97.3	-51.4
<b>Total</b>	<b>2,707.2</b>	<b>2,729.4</b>	<b>20,491.7</b>	<b>18,776.0</b>	<b>-8.4</b>
<b>Oceania</b>					
American Samoa	0.2	0.1	0.5	0.4	-20.0
Australia	165.2	150.4	1,064.0	892.2	-16.1
Christmas Island	0.0	0.0	0.1	0.2	100.0
Cocos (Keeling) Islands	0.1	0.0	0.1	0.2	100.0
Cook Islands	0.0	0.0	0.8	0.0	0.0
Fiji	0.2	0.0	1.3	4.0	207.7
French Polynesia	1.1	0.9	9.3	5.3	-43.0
Guam	0.4	0.2	1.9	1.1	-42.1
Heard Island and McDonald Islands	0.0	0.0	0.0	0.0	...
Kiribati	0.0	0.0	0.0	0.0	0.0
Nauru	0.0	0.0	0.2	0.0	0.0
New Caledonia	5.7	0.1	12.2	2.5	-79.5
New Zealand	33.1	19.9	233.4	150.2	-35.6
Norfolk Island	0.0	0.0	0.0	0.3	0.0
Papua New Guinea	0.3	4.9	5.6	16.8	200.0
Pitcairn	0.0	0.0	0.3	0.1	-66.7
Samoa	0.0	0.1	0.4	0.3	-25.0
Solomon Islands	0.0	0.0	0.0	0.1	0.0
Tonga	0.0	0.1	0.3	0.2	-33.3
United States Minor Outlying Islands	1.4	2.1	9.0	7.9	-12.2
Vanuatu	0.0	0.1	0.2	1.4	600.0
Wallis and Futuna	0.0	0.0	0.0	0.0	...
<b>Total</b>	<b>207.7</b>	<b>179.1</b>	<b>1,339.4</b>	<b>1,083.3</b>	<b>-19.1</b>

Table 4 – continued

## Domestic exports by country, customs basis, not seasonally adjusted

	July		January to July		Variation
	2008	2009	2008	2009	January to July 2009/2008
millions of dollars					
<b>South America</b>					
Argentina	13.8	7.7	120.3	91.1	-24.3
Bolivia	1.8	0.5	8.8	6.0	-31.8
Brazil	308.1	165.6	1,402.9	719.3	-48.7
Chile	70.4	46.2	407.9	362.9	-11.0
Colombia	53.8	53.5	362.6	354.4	-2.3
Ecuador	33.0	25.9	154.4	154.3	-0.1
Falkland Islands (Malvinas)	0.0	0.0	0.1	0.0	0.0
Guyana	0.7	1.4	7.7	15.3	98.7
Paraguay	0.9	0.3	8.5	6.4	-24.7
Peru	45.8	51.2	242.8	245.9	1.3
Suriname	0.9	1.2	5.1	6.3	23.5
Uruguay	25.4	1.5	132.5	13.0	-90.2
Venezuela	65.4	20.7	415.5	353.0	-15.0
<b>Total</b>	<b>620.0</b>	<b>375.7</b>	<b>3,269.1</b>	<b>2,327.9</b>	<b>-28.8</b>
<b>Central America Antilles</b>					
Anguilla	0.1	0.1	1.6	1.3	-18.8
Antigua and Barbuda	0.9	1.0	8.8	7.8	-11.4
Aruba	0.4	0.4	3.2	2.6	-18.8
Bahamas	2.5	2.3	25.3	88.6	250.2
Barbados	4.4	3.2	24.7	22.3	-9.7
Belize	0.5	0.3	3.1	3.9	25.8
Bermuda	4.5	5.7	36.5	38.2	4.7
British Virgin Islands	0.9	0.2	5.7	2.3	-59.6
Cayman Islands	0.8	0.4	9.4	3.8	-59.6
Costa Rica	6.2	5.7	65.9	37.1	-43.7
Cuba	82.6	30.2	374.4	189.2	-49.5
Dominica	0.2	0.3	3.9	2.7	-30.8
Dominican Republic	10.7	16.7	146.0	84.3	-42.3
El Salvador	4.5	1.8	27.0	28.1	4.1
Grenada	0.3	0.4	3.2	3.2	0.0
Guatemala	18.0	4.3	92.4	47.6	-48.5
Haiti	12.7	2.1	30.2	27.4	-9.3
Honduras	6.9	1.1	48.5	17.8	-63.3
Jamaica	15.3	12.4	145.1	66.5	-54.2
Montserrat	0.0	0.0	0.2	0.1	-50.0
Netherlands Antilles	1.3	26.1	10.1	38.0	276.2
Nicaragua	3.6	1.2	13.1	8.6	-34.4
Panama	5.8	7.7	67.0	53.5	-20.1
Saint Kitts and Nevis	0.6	0.6	4.9	3.6	-26.5
Saint Lucia	1.0	0.8	5.8	5.7	-1.7
Saint Vincent and the Grenadines	0.6	0.7	3.9	5.4	38.5
Trinidad and Tobago	22.3	9.0	157.5	118.0	-25.1
Turks and Caicos Islands	0.4	0.5	4.2	3.0	-28.6
<b>Total</b>	<b>207.9</b>	<b>135.3</b>	<b>1,321.3</b>	<b>910.8</b>	<b>-31.1</b>
<b>All countries</b>	<b>41,106.6</b>	<b>27,114.0</b>	<b>266,086.0</b>	<b>191,618.0</b>	<b>-28.0</b>

**Table 5-1**  
**Exports by province of origin, customs basis, not seasonally adjusted — July**

	Agricultural and fishing products	Energy products	Forestry products	Industrial goods	Machinery and equipment	Automotive products	Consumer goods	Special transactions	Total
millions of dollars									
<b>Domestic exports</b>									
Newfoundland Labrador									
2008	129.2	1,337.4	18.6	355.7	5.0	0.0	0.8	9.7	1,856.5
2009	96.3	536.0	6.5	138.3	3.3	0.8	0.0	6.2	787.5
Prince Edward Island									
2008	44.9	0.0	0.2	2.2	13.9	0.0	3.3	5.6	70.1
2009	39.2	0.2	0.0	2.9	18.7	0.2	2.5	5.9	69.5
Nova Scotia									
2008	113.1	213.1	77.7	45.1	93.8	6.3	5.9	9.0	564.1
2009	101.4	34.8	53.6	35.7	90.9	6.1	6.7	6.1	335.2
New Brunswick									
2008	107.6	1,060.4	103.0	159.9	29.5	1.9	8.5	10.8	1,481.5
2009	91.4	670.8	70.0	96.7	21.9	1.9	7.8	7.1	967.4
Quebec									
2008	410.9	558.7	659.3	2,029.2	1,765.6	181.7	305.7	150.6	6,061.7
2009	347.0	215.6	508.4	1,292.5	1,879.6	141.1	287.8	116.2	4,788.1
Ontario									
2008	666.0	473.8	321.9	4,134.4	2,911.2	3,078.0	866.0	322.4	12,773.7
2009	637.0	213.8	189.7	2,445.4	2,485.3	2,206.9	803.1	224.8	9,206.0
Manitoba									
2008	318.2	152.1	34.6	309.3	185.4	38.7	30.7	27.7	1,096.7
2009	292.6	91.2	16.0	229.0	145.4	49.7	29.3	23.8	877.0
Saskatchewan									
2008	612.8	1,328.8	30.6	724.0	77.0	2.8	1.7	6.6	2,784.3
2009	544.1	905.1	18.7	433.7	64.4	3.1	0.5	4.6	1,974.2
Alberta									
2008	550.7	8,570.1	171.7	1,271.0	499.0	56.2	16.6	70.6	11,205.9
2009	517.9	4,085.3	148.8	721.2	364.9	28.1	9.9	52.3	5,928.4
British Columbia									
2008	206.0	1,024.0	824.9	540.8	308.9	22.6	51.1	55.4	3,033.6
2009	231.1	551.2	599.4	425.2	259.8	17.3	44.1	38.5	2,166.8
Yukon, Northwest Territories and Nunavut <sup>1</sup>									
2008	0.1	0.0	0.0	177.4	0.8	0.0	0.0	0.1	178.5
2009	0.2	0.0	0.0	13.4	0.3	0.1	0.0	0.0	14.0
<b>Total</b>									
2008	3,159.8	14,718.3	2,242.6	9,749.1	5,890.0	3,388.2	1,290.2	668.4	41,106.6
2009	2,898.1	7,304.0	1,611.1	5,833.8	5,334.3	2,455.2	1,191.7	485.8	27,114.0
<b>Re-exports</b>									
2008	32.2	148.5	5.9	251.9	923.4	121.3	176.8	787.2	2,447.4
2009	29.2	40.7	7.3	169.7	1,001.1	73.6	188.7	661.2	2,171.5
<b>Total exports</b>									
2008	3,192.0	14,866.8	2,248.5	10,001.1	6,813.4	3,509.6	1,467.0	1,455.6	43,553.9
2009	2,927.3	7,344.7	1,618.4	6,003.6	6,335.4	2,528.7	1,380.5	1,147.0	29,285.5

1. Data for the most current month do not include some exports of Chapter 71 "Natural/cultured pearls, precious stones and metals, coins etc" for reasons relating to timing.

**Table 5-2**  
**Exports by province of origin, customs basis, not seasonally adjusted — Year to date, January to July**

	Agricultural and fishing products	Energy products	Forestry products	Industrial goods	Machinery and equipment	Automotive products	Consumer goods	Special transactions	Total
millions of dollars									
<b>Domestic exports</b>									
Newfoundland Labrador									
2008	500.1	6,883.6	170.3	1,059.2	33.6	0.9	1.4	45.3	8,694.4
2009	450.1	3,205.5	123.8	992.5	38.3	1.6	0.6	32.8	4,845.2
Prince Edward Island									
2008	277.4	0.0	1.4	9.5	114.3	1.0	17.7	46.6	467.9
2009	279.5	0.3	0.7	15.2	118.5	0.9	17.1	52.9	485.1
Nova Scotia									
2008	591.4	1,065.8	479.6	326.6	697.2	72.0	45.5	57.3	3,335.5
2009	567.0	364.1	409.3	303.7	657.5	50.8	46.5	43.4	2,442.4
New Brunswick									
2008	702.8	5,779.3	710.8	782.4	199.4	12.1	62.1	65.6	8,314.5
2009	688.9	3,770.8	670.4	439.9	189.8	15.3	71.2	48.8	5,895.1
Quebec									
2008	2,555.7	2,537.4	4,377.9	13,405.0	13,282.4	1,225.4	1,951.7	878.2	40,213.6
2009	2,559.1	1,701.0	3,537.5	9,202.8	12,563.4	978.2	2,057.5	825.8	33,425.4
Ontario									
2008	4,427.5	2,559.1	2,213.2	27,424.7	20,738.2	31,321.9	5,189.3	2,272.0	96,146.0
2009	4,644.4	1,657.0	1,616.8	17,874.0	19,516.3	18,238.6	5,643.2	1,738.9	70,929.3
Manitoba									
2008	2,430.0	749.6	229.9	2,095.6	1,279.1	329.3	207.6	154.2	7,475.3
2009	2,292.9	431.5	172.7	1,333.8	1,262.8	407.5	297.3	204.8	6,403.3
Saskatchewan									
2008	5,089.6	6,597.0	165.1	4,267.1	490.4	23.4	14.9	69.8	16,717.3
2009	4,871.3	4,159.2	153.1	3,249.6	533.7	23.8	8.0	52.8	13,051.4
Alberta									
2008	4,248.2	46,816.6	1,187.1	8,303.8	2,997.0	341.6	122.3	390.6	64,407.2
2009	4,118.1	25,118.4	956.2	4,997.6	2,774.0	323.8	99.8	325.9	38,713.7
British Columbia									
2008	1,261.0	5,152.4	5,712.2	3,795.6	2,144.6	197.2	361.0	328.1	18,952.1
2009	1,358.4	3,890.1	4,136.9	2,650.3	1,829.5	127.8	305.5	261.9	14,560.5
Yukon, Northwest Territories and Nunavut <sup>1</sup>									
2008	1.3	0.0	0.3	1,354.3	4.3	0.1	1.1	0.8	1,362.2
2009	1.6	0.0	0.1	859.8	3.7	0.2	0.9	0.3	866.6
<b>Total</b>									
2008	22,085.1	78,140.8	15,247.6	62,823.7	41,980.6	33,525.0	7,974.7	4,308.6	266,086.0
2009	21,831.2	44,298.0	11,777.6	41,919.0	39,487.6	20,168.5	8,547.6	3,588.5	191,618.0
<b>Re-exports</b>									
2008	259.0	484.4	53.1	1,688.8	6,369.4	882.3	1,225.9	5,103.5	16,066.4
2009	297.1	278.7	46.0	1,300.1	6,926.0	561.7	1,302.4	4,849.9	15,562.0
<b>Total exports</b>									
2008	22,344.0	78,625.2	15,300.7	64,512.5	48,350.0	34,407.3	9,200.6	9,412.1	282,152.4
2009	22,128.3	44,576.6	11,823.7	43,219.1	46,413.5	20,730.2	9,850.0	8,438.4	207,180.0

1. Data for the most current month do not include some exports of Chapter 71 "Natural/cultured pearls, precious stones and metals, coins etc" for reasons relating to timing.

**Table 6-1**  
**Imports by commodity groupings, balance of payments basis, seasonally adjusted — Current dollars**

	June	July	Change	Year to date		Year to date change		July	
	2009	2009		2008	2009	2008	2009/2008		
	millions of dollars		percent		millions of dollars		percent		
<b>Total</b>	<b>29,293</b>	<b>31,732</b>	<b>2,439</b>	<b>8.3</b>	<b>254,621</b>	<b>217,468</b>	<b>-37,153</b>	<b>-14.6</b>	<b>-19.6</b>
<b>Agricultural and fishing products</b>	<b>2,545</b>	<b>2,457</b>	<b>-88</b>	<b>-3.5</b>	<b>15,946</b>	<b>17,517</b>	<b>1,571</b>	<b>9.9</b>	<b>1.8</b>
Fruits and vegetables	698	696	-3	-0.4	4,356	4,885	529	12.1	3.6
Fresh fruits and berries	245	243	-2	-0.7	1,536	1,713	177	11.5	5.5
Dried fruits, fruits and fruit preparations	126	129	3	2.4	831	924	93	11.2	-5.9
Fresh vegetables	182	177	-4	-2.4	1,095	1,234	139	12.7	4.9
Other vegetables and vegetable preparations	146	146	0	0.3	894	1,014	120	13.4	8.1
Other agricultural and fishing products	1,847	1,761	-86	-4.6	11,590	12,632	1,042	9.0	1.1
Live animals	15	15	0	1.1	109	114	5	4.5	-11.4
Meat and meat preparations	180	171	-9	-5.0	1,148	1,285	136	11.9	-6.1
Fish and marine animals	180	167	-12	-6.9	1,084	1,266	181	16.7	4.1
Cocoa, coffee, tea and other food preparations	425	426	1	0.3	2,544	2,959	415	16.3	12.4
Dairy produce, eggs and honey	48	56	8	16.0	374	323	-51	-13.6	16.6
Corn (maize) shelled	39	39	0	0.5	417	276	-141	-33.7	-13.9
Other cereals and cereal preparations	183	185	2	0.9	1,152	1,374	222	19.3	1.9
Sugar and sugar preparations	139	154	16	11.3	832	976	144	17.4	28.6
Fodder, feed, excluding unmilled cereal	146	117	-29	-19.7	811	874	64	7.8	-4.9
Beverages	330	295	-34	-10.5	2,039	2,162	123	6.0	-7.8
Tobacco	31	35	4	11.3	223	210	-13	-5.9	-9.7
Crude vegetable products	130	100	-31	-23.6	852	809	-43	-5.0	-20.6
Cotton	1	0	-0	-36.0	5	5	-1	-11.5	-50.6
<b>Energy products</b>	<b>2,720</b>	<b>3,225</b>	<b>505</b>	<b>18.6</b>	<b>31,629</b>	<b>19,188</b>	<b>-12,440</b>	<b>-39.3</b>	<b>-42.3</b>
Crude petroleum	1,803	2,284	481	26.7	20,867	11,440	-9,428	-45.2	-42.9
Other energy products	917	941	24	2.6	10,761	7,749	-3,013	-28.0	-40.8
Coal and other related products	293	270	-23	-7.9	3,406	2,863	-543	-15.9	-49.7
Petroleum and coal products	625	672	47	7.5	7,355	4,886	-2,470	-33.6	-36.3
<b>Forestry products</b>	<b>187</b>	<b>190</b>	<b>2</b>	<b>1.3</b>	<b>1,688</b>	<b>1,407</b>	<b>-282</b>	<b>-16.7</b>	<b>-23.6</b>
Forestry products	187	190	2	1.3	1,688	1,407	-282	-16.7	-23.6
Crude wood products	29	34	5	15.6	268	272	4	1.6	-17.2
Wood fabricated materials	158	156	-2	-1.4	1,421	1,135	-286	-20.1	-24.9
<b>Industrial goods and materials</b>	<b>5,799</b>	<b>5,889</b>	<b>91</b>	<b>1.6</b>	<b>52,290</b>	<b>44,064</b>	<b>-8,226</b>	<b>-15.7</b>	<b>-26.6</b>
Metals and metal ores	1,855	1,768	-87	-4.7	19,156	13,783	-5,372	-28.0	-37.0
Metals in ores, concentrates and scrap	435	442	7	1.6	5,250	3,243	-2,007	-38.2	-37.8
Steel bars, rods, plates, sheets	320	353	34	10.6	4,290	2,727	-1,562	-36.4	-49.1
Other iron and steel products	221	243	21	9.6	2,678	2,236	-443	-16.5	-53.5
Precious metals including alloys	611	468	-144	-23.5	3,374	3,557	183	5.4	11.1
Other non-ferrous metals and alloys	268	262	-6	-2.1	3,563	2,020	-1,543	-43.3	-43.0
Chemicals and plastics	2,071	2,229	158	7.6	17,654	16,265	-1,388	-7.9	-21.1
Organic chemicals	484	530	47	9.6	4,538	4,033	-505	-11.1	-28.0
Plastic materials	712	732	20	2.9	6,090	5,144	-945	-15.5	-21.6
Other chemicals and related products	875	967	91	10.4	7,026	7,087	62	0.9	-16.2
Other industrial goods and materials	1,872	1,892	19	1.0	15,480	14,015	-1,465	-9.5	-21.0
Crude animal products	18	18	0	-1.0	184	134	-50	-27.3	-20.3
Wool and man-made fibres	17	17	-1	-4.3	146	125	-21	-14.3	-30.1
Crude non-metallic minerals	56	54	-3	-4.6	575	443	-133	-23.0	-41.0
Textile fabricated materials	175	179	4	2.5	1,503	1,346	-157	-10.4	-17.8
Metal fabricated basic products	738	726	-12	-1.7	6,038	5,482	-556	-9.2	-25.0
Rubber fabricated materials	72	78	6	8.8	588	546	-42	-7.1	-11.4
Oils, fats, animal and vegetable	104	105	1	1.2	665	737	72	10.8	1.3
Non-metallic minerals	257	290	33	12.9	2,131	1,966	-165	-7.7	-13.9
Other fabricated materials	435	425	-10	-2.2	3,650	3,237	-413	-11.3	-21.8

Table 6-1 – continued

## Imports by commodity groupings, balance of payments basis, seasonally adjusted — Current dollars

	June	July	Change	Year to date		Year to date change	July		
	2009	2009		2008	2009			2009/2008	
	millions of dollars		percent		millions of dollars		percent		
<b>Machinery and equipment</b>	<b>8,432</b>	<b>9,349</b>	<b>917</b>	<b>10.9</b>	<b>69,309</b>	<b>65,072</b>	<b>-4,237</b>	<b>-6.1</b>	<b>-9.1</b>
Industrial and agricultural machinery	2,266	2,290	24	1.0	19,305	17,056	-2,249	-11.7	-23.2
Engines, turbines and electric motors	360	392	31	8.7	2,252	2,634	382	17.0	6.5
Drilling mining machinery	119	114	-5	-4.5	974	912	-62	-6.4	-27.0
Excavating machinery	163	147	-16	-9.8	2,126	1,251	-875	-41.2	-59.8
Metal working machinery	146	125	-21	-14.4	1,423	986	-437	-30.7	-39.7
Other industrial machinery	1,146	1,207	61	5.3	10,240	8,883	-1,356	-13.2	-21.8
Agricultural machinery including tractors	332	306	-26	-7.8	2,291	2,390	99	4.3	-10.7
Aircraft and other transportation equipment	1,137	1,569	432	38.0	10,168	9,807	-362	-3.6	16.3
Aircraft, engines, parts	689	1,010	321	46.7	6,604	6,327	-276	-4.2	21.2
Other transportation equipment and parts	448	559	111	24.7	3,565	3,479	-85	-2.4	8.4
Office machines and equipment	982	1,100	118	12.0	8,291	7,277	-1,015	-12.2	-12.5
Other machinery and equipment	4,047	4,390	343	8.5	31,545	30,933	-612	-1.9	-6.5
Other communication and related equipment	1,463	1,573	110	7.5	10,940	10,955	15	0.1	-2.5
Other equipment and tools	2,584	2,817	233	9.0	20,605	19,978	-626	-3.0	-8.6
<b>Automotive products</b>	<b>3,883</b>	<b>4,610</b>	<b>726</b>	<b>18.7</b>	<b>43,049</b>	<b>28,457</b>	<b>-14,592</b>	<b>-33.9</b>	<b>-32.7</b>
Passenger autos and chassis	1,490	1,799	309	20.8	15,539	9,800	-5,740	-36.9	-31.7
Trucks and other motor vehicles	798	926	128	16.0	9,369	6,259	-3,109	-33.2	-41.3
Motor vehicle parts	1,595	1,884	289	18.1	18,141	12,398	-5,743	-31.7	-28.5
<b>Other consumer goods</b>	<b>4,695</b>	<b>4,835</b>	<b>140</b>	<b>3.0</b>	<b>32,121</b>	<b>34,099</b>	<b>1,978</b>	<b>6.2</b>	<b>0.8</b>
Apparel and footwear	923	961	38	4.1	6,185	6,915	730	11.8	4.0
Apparel and apparel accessories	780	802	23	2.9	5,177	5,784	607	11.7	4.3
Footwear	143	158	15	10.8	1,008	1,131	123	12.2	2.2
Miscellaneous consumer goods	3,772	3,874	102	2.7	25,936	27,184	1,247	4.8	0.0
Television, radios, phonographs	106	116	10	9.0	984	764	-220	-22.4	-18.2
Printed matter	297	303	6	2.1	2,118	2,147	29	1.4	-3.9
Watches, sporting goods and toys	487	498	10	2.1	3,597	3,566	-31	-0.9	-7.4
House furnishings	709	742	34	4.8	4,815	5,197	382	7.9	2.8
Photographic goods	214	194	-20	-9.5	1,609	1,538	-71	-4.4	-16.2
Miscellaneous end products	1,959	2,021	62	3.2	12,812	13,972	1,159	9.0	5.0
<b>Special transactions trade</b>	<b>375</b>	<b>496</b>	<b>121</b>	<b>32.3</b>	<b>3,471</b>	<b>2,975</b>	<b>-496</b>	<b>-14.3</b>	<b>-2.7</b>
<b>Unallocated balance of payments adjustments</b>	<b>655</b>	<b>681</b>	<b>26</b>	<b>4.0</b>	<b>5,118</b>	<b>4,690</b>	<b>-428</b>	<b>-8.4</b>	<b>-9.9</b>

**Table 6-2**  
**Imports by commodity groupings, balance of payments basis, seasonally adjusted — Constant dollars, 2002**

	June	July	Change	Year to date		Year to date change		July	
	2009	2009		2008	2009	2008	2009/2008		
	millions of dollars		percent		millions of dollars		percent		
<b>Total</b>	<b>32,150</b>	<b>34,957</b>	<b>2,807</b>	<b>8.7</b>	<b>290,144</b>	<b>229,156</b>	<b>-60,987</b>	<b>-21.0</b>	<b>-18.8</b>
<b>Agricultural and fishing products</b>	<b>2,408</b>	<b>2,378</b>	<b>-30</b>	<b>-1.2</b>	<b>16,504</b>	<b>16,031</b>	<b>-473</b>	<b>-2.9</b>	<b>0.7</b>
Fruits and vegetables	692	698	6	0.8	4,339	4,708	370	8.5	9.5
Fresh fruits and berries	258	253	-5	-1.8	1,545	1,736	191	12.4	13.6
Dried fruits, fruits and fruit preparations	130	137	7	5.7	804	874	70	8.7	3.6
Fresh vegetables	169	175	5	3.1	1,124	1,208	85	7.5	11.8
Other vegetables and vegetable preparations	135	133	-2	-1.6	866	890	24	2.8	5.5
Other agricultural and fishing products	1,716	1,681	-36	-2.1	12,165	11,322	-843	-6.9	-2.6
Live animals	14	15	0	2.2	116	107	-9	-7.7	-13.3
Meat and meat preparations	175	168	-7	-4.0	1,215	1,225	10	0.9	-7.1
Fish and marine animals	237	227	-10	-4.0	1,441	1,543	102	7.1	12.4
Cocoa, coffee, tea and other food preparations	358	361	3	0.9	2,472	2,313	-159	-6.4	4.6
Dairy produce, eggs and honey	50	58	8	15.7	317	311	-6	-1.9	31.5
Corn (maize) shelled	32	34	2	6.0	310	218	-93	-29.8	19.6
Other cereals and cereal preparations	159	159	0	-0.0	1,222	1,111	-111	-9.1	-9.5
Sugar and sugar preparations	136	150	14	10.7	975	920	-55	-5.6	13.4
Fodder, feed, excluding unmilled cereal	98	89	-9	-9.4	707	619	-88	-12.4	-4.2
Beverages	295	270	-25	-8.6	2,102	1,896	-206	-9.8	-13.2
Tobacco	37	41	4	11.8	311	233	-78	-25.1	-23.2
Crude vegetable products	124	108	-16	-13.0	969	820	-149	-15.3	-23.4
Cotton	1	0	-0	-45.0	8	6	-2	-21.9	-60.0
<b>Energy products</b>	<b>1,719</b>	<b>1,975</b>	<b>256</b>	<b>14.9</b>	<b>13,083</b>	<b>12,300</b>	<b>-783</b>	<b>-6.0</b>	<b>-2.7</b>
Crude petroleum	1,038	1,287	249	24.0	7,057	6,732	-325	-4.6	6.8
Other energy products	681	688	7	1.0	6,026	5,568	-458	-7.6	-16.6
Coal and other related products	294	271	-23	-8.0	2,168	2,270	102	4.7	-3.3
Petroleum and coal products	387	417	30	7.9	3,858	3,298	-560	-14.5	-23.5
<b>Forestry products</b>	<b>249</b>	<b>244</b>	<b>-5</b>	<b>-1.9</b>	<b>2,236</b>	<b>1,723</b>	<b>-513</b>	<b>-22.9</b>	<b>-24.8</b>
Forestry products	249	244	-5	-1.9	2,236	1,723	-513	-22.9	-24.8
Crude wood products	39	43	4	9.9	350	336	-13	-3.8	-17.2
Wood fabricated materials	210	202	-9	-4.1	1,887	1,387	-500	-26.5	-26.2
<b>Industrial goods and materials</b>	<b>5,414</b>	<b>5,562</b>	<b>148</b>	<b>2.7</b>	<b>48,554</b>	<b>38,734</b>	<b>-9,820</b>	<b>-20.2</b>	<b>-20.0</b>
Metals and metal ores	1,353	1,344	-9	-0.7	13,214	9,809	-3,404	-25.8	-24.5
Metals in ores, concentrates and scrap	341	334	-6	-1.8	2,803	2,504	-299	-10.7	-13.5
Steel bars, rods, plates, sheets	271	311	40	14.8	3,099	2,094	-1,006	-32.4	-24.4
Other iron and steel products	169	190	21	12.3	1,923	1,516	-408	-21.2	-40.8
Precious metals including alloys	290	223	-66	-22.9	2,054	1,665	-390	-19.0	-17.5
Other non-ferrous metals and alloys	283	285	3	0.9	3,334	2,031	-1,303	-39.1	-26.9
Chemicals and plastics	2,020	2,154	135	6.7	16,997	14,756	-2,240	-13.2	-12.3
Organic chemicals	404	428	24	5.9	3,368	3,242	-126	-3.8	-7.8
Plastic materials	794	781	-13	-1.6	6,449	5,179	-1,270	-19.7	-17.8
Other chemicals and related products	821	945	123	15.0	7,179	6,336	-844	-11.7	-9.2
Other industrial goods and materials	2,042	2,063	22	1.1	18,344	14,168	-4,176	-22.8	-24.0
Crude animal products	27	24	-3	-9.4	188	196	9	4.6	13.1
Wool and man-made fibres	23	21	-2	-6.6	193	155	-38	-19.8	-30.0
Crude non-metallic minerals	49	46	-3	-5.6	503	392	-111	-22.0	-38.4
Textile fabricated materials	223	232	9	3.8	2,091	1,591	-501	-23.9	-22.1
Metal fabricated basic products	734	733	-1	-0.1	6,782	5,181	-1,601	-23.6	-29.2
Rubber fabricated materials	83	91	7	8.8	792	590	-201	-25.4	-21.1
Oils, fats, animal and vegetable	91	94	3	3.5	540	621	81	15.1	18.5
Non-metallic minerals	309	333	23	7.6	2,691	2,129	-562	-20.9	-19.3
Other fabricated materials	503	490	-13	-2.6	4,565	3,313	-1,252	-27.4	-24.8

Table 6-2 – continued

## Imports by commodity groupings, balance of payments basis, seasonally adjusted — Constant dollars, 2002

	June	July	Change	Year to date		Year to date change	July		
	2009	2009		2008	2009			2009/2008	
	millions of dollars		percent		millions of dollars		percent		
<b>Machinery and equipment</b>	<b>11,206</b>	<b>12,426</b>	<b>1,220</b>	<b>10.9</b>	<b>103,121</b>	<b>81,457</b>	<b>-21,665</b>	<b>-21.0</b>	<b>-18.4</b>
Industrial and agricultural machinery	2,556	2,604	48	1.9	25,538	18,215	-7,323	-28.7	-32.8
Engines, turbines and electric motors	410	452	42	10.2	3,026	2,864	-162	-5.4	-6.6
Drilling mining machinery	121	118	-3	-2.4	1,172	872	-300	-25.6	-35.5
Excavating machinery	181	161	-20	-10.9	2,791	1,308	-1,483	-53.2	-66.1
Metal working machinery	172	148	-24	-13.8	1,925	1,103	-822	-42.7	-46.0
Other industrial machinery	1,278	1,359	81	6.3	13,434	9,381	-4,053	-30.2	-31.5
Agricultural machinery including tractors	396	367	-29	-7.2	3,189	2,687	-502	-15.7	-22.7
Aircraft and other transportation equipment	1,255	1,690	435	34.6	12,892	10,161	-2,731	-21.2	0.1
Aircraft, engines, parts	786	1,108	323	41.1	8,440	6,677	-1,763	-20.9	3.5
Other transportation equipment and parts	470	582	112	23.9	4,452	3,483	-968	-21.8	-5.8
Office machines and equipment	1,996	2,290	294	14.7	17,205	14,165	-3,041	-17.7	-14.9
Other machinery and equipment	5,398	5,841	444	8.2	47,486	38,916	-8,570	-18.0	-16.3
Other communication and related equipment	2,263	2,413	150	6.6	18,683	16,051	-2,632	-14.1	-11.0
Other equipment and tools	3,135	3,429	294	9.4	28,803	22,866	-5,937	-20.6	-19.7
<b>Automotive products</b>	<b>4,527</b>	<b>5,376</b>	<b>849</b>	<b>18.8</b>	<b>54,696</b>	<b>32,372</b>	<b>-22,324</b>	<b>-40.8</b>	<b>-37.1</b>
Passenger autos and chassis	1,729	2,087	357	20.7	17,908	11,396	-6,511	-36.4	-31.5
Trucks and other motor vehicles	844	971	127	15.1	11,346	6,577	-4,769	-42.0	-47.8
Motor vehicle parts	1,954	2,318	364	18.6	25,443	14,398	-11,044	-43.4	-36.3
<b>Other consumer goods</b>	<b>5,690</b>	<b>5,864</b>	<b>174</b>	<b>3.1</b>	<b>44,895</b>	<b>39,153</b>	<b>-5,743</b>	<b>-12.8</b>	<b>-11.3</b>
Apparel and footwear	1,205	1,264	60	4.9	9,249	8,503	-746	-8.1	-7.5
Apparel and apparel accessories	1,020	1,060	40	3.9	7,746	7,126	-621	-8.0	-7.0
Footwear	185	204	20	10.7	1,503	1,377	-125	-8.3	-10.3
Miscellaneous consumer goods	4,485	4,600	114	2.5	35,646	30,650	-4,996	-14.0	-12.3
Television, radios, phonographs	163	177	14	8.4	1,657	1,099	-558	-33.7	-25.1
Printed matter	365	373	8	2.2	2,969	2,496	-473	-15.9	-15.2
Watches, sporting goods and toys	644	647	3	0.5	5,342	4,475	-867	-16.2	-17.0
House furnishings	842	891	50	5.9	6,537	5,815	-722	-11.0	-7.9
Photographic goods	348	323	-25	-7.1	2,932	2,366	-566	-19.3	-23.1
Miscellaneous end products	2,124	2,188	64	3.0	16,209	14,399	-1,811	-11.2	-8.7
<b>Special transactions trade</b>	<b>416</b>	<b>546</b>	<b>131</b>	<b>31.4</b>	<b>3,973</b>	<b>3,150</b>	<b>-823</b>	<b>-20.7</b>	<b>-1.2</b>
<b>Unallocated balance of payments adjustments</b>	<b>521</b>	<b>585</b>	<b>64</b>	<b>12.3</b>	<b>3,081</b>	<b>4,238</b>	<b>1,157</b>	<b>37.6</b>	<b>39.0</b>



**Table 7-1**  
**Imports from selected countries, customs basis, not seasonally adjusted — July**

	Agricultural and fishing products	Energy products	Forestry products	Industrial goods	Machinery and equipment	Automotive products	Consumer goods	Special transactions	Total
millions of dollars									
<b>United States</b>									
2008	1,477.4	1,556.5	175.0	4,951.6	4,583.7	3,517.9	1,914.4	374.3	18,550.8
2009	1,484.2	855.5	135.0	3,500.9	3,846.6	2,408.2	1,874.0	436.5	14,540.8
<b>Mexico</b>									
2008	84.4	84.3	0.6	103.3	571.4	351.9	81.3	4.5	1,281.6
2009	83.2	0.0	0.7	96.4	628.1	424.2	83.5	2.4	1,318.6
<b>Japan</b>									
2008	5.2	0.3	0.2	167.6	503.9	504.5	83.4	0.2	1,265.3
2009	5.4	0.3	0.5	80.6	368.1	439.1	69.7	0.2	963.8
<b>European Union</b>									
<b>Germany</b>									
2008	22.8	1.1	1.7	233.0	423.3	174.6	147.0	0.4	1,003.9
2009	23.9	2.4	1.6	134.4	334.4	255.6	168.2	0.6	921.1
<b>France</b>									
2008	84.6	56.1	0.2	71.4	151.9	9.5	147.5	1.2	522.4
2009	66.1	19.5	0.2	117.7	237.9	6.3	154.0	0.3	602.1
<b>United Kingdom</b>									
2008	36.7	806.9	0.4	83.8	264.5	51.0	121.3	4.2	1,368.9
2009	40.8	256.0	0.1	99.4	212.3	26.9	116.0	3.3	754.9
<b>Italy</b>									
2008	54.6	46.6	1.2	148.0	158.9	25.6	110.6	1.1	546.7
2009	59.8	39.5	1.0	86.9	142.8	17.7	106.0	0.1	453.9
<b>Other European Union</b>									
2008	109.3	183.0	5.0	249.2	538.4	76.9	365.3	3.5	1,530.6
2009	91.2	183.0	3.4	210.0	428.9	55.5	380.1	2.1	1,354.1
<b>Total</b>									
2008	308.2	1,093.7	8.5	785.3	1,537.1	337.5	891.8	10.5	4,972.5
2009	281.9	500.4	6.3	648.4	1,356.2	362.0	924.4	6.5	4,086.1
<b>Newly industrialized countries</b>									
<b>South Korea</b>									
2008	3.8	4.9	0.0	86.9	245.5	138.3	25.5	0.1	505.0
2009	4.8	28.4	0.0	59.6	203.2	149.3	21.9	0.2	467.3
<b>Hong Kong</b>									
2008	3.9	0.0	0.1	3.3	15.1	0.2	18.4	0.1	41.1
2009	2.7	0.0	0.0	1.8	13.6	0.4	12.2	0.0	30.7
<b>Taiwan</b>									
2008	4.6	22.6	0.5	69.2	172.9	14.6	41.5	0.1	326.0
2009	6.4	0.0	0.7	49.2	157.3	14.6	36.6	0.1	264.9
<b>Singapore</b>									
2008	2.7	0.0	0.1	6.2	44.2	0.3	22.4	0.0	76.0
2009	1.4	0.0	0.0	21.6	40.5	0.7	16.5	0.1	80.8
<b>Total</b>									
2008	15.1	27.5	0.7	165.6	477.8	153.5	107.7	0.3	948.1
2009	15.2	28.4	0.8	132.2	414.6	165.0	87.2	0.4	843.7
<b>Other countries</b>									
2008	560.9	3,193.2	61.2	1,786.1	2,324.2	202.7	2,060.6	67.6	10,256.5
2009	603.9	2,004.1	45.5	1,279.6	2,238.9	158.8	2,083.8	27.5	8,442.1
<b>Total</b>									
2008	2,451.3	5,955.5	246.2	7,959.5	9,998.1	5,067.9	5,139.2	457.3	37,274.9
2009	2,474.0	3,388.8	188.8	5,738.0	8,852.4	3,957.3	5,122.5	473.4	30,195.3

**Table 7-2**  
**Imports from selected countries, customs basis, not seasonally adjusted — Year to date, January to July**

	Agricultural and fishing products	Energy products	Forestry products	Industrial goods	Machinery and equipment	Automotive products	Consumer goods	Special transactions	Total
millions of dollars									
<b>United States</b>									
2008	9,177.6	9,099.2	1,239.0	33,280.9	33,482.6	30,327.5	12,564.9	2,451.0	131,622.8
2009	10,161.8	6,325.1	1,059.6	25,988.2	29,878.3	18,841.1	13,430.4	2,403.6	108,088.0
<b>Mexico</b>									
2008	778.8	433.7	2.8	793.8	3,785.6	3,033.6	564.6	26.2	9,419.2
2009	870.9	158.5	3.9	758.7	3,753.5	2,524.2	581.0	21.7	8,672.4
<b>Japan</b>									
2008	34.5	49.0	1.0	769.7	3,698.0	3,947.7	584.4	2.9	9,087.2
2009	38.9	23.0	1.3	653.0	2,928.7	2,927.8	569.1	1.9	7,143.7
<b>European Union</b>									
<b>Germany</b>									
2008	132.2	19.3	10.3	1,466.9	2,832.1	1,726.8	1,166.6	62.3	7,416.5
2009	142.6	19.9	8.0	1,114.6	2,659.1	1,435.6	1,064.1	5.0	6,449.0
<b>France</b>									
2008	412.5	80.9	2.0	502.5	1,084.4	49.7	883.7	232.7	3,248.3
2009	380.4	166.8	1.4	624.9	1,232.5	60.9	949.8	8.4	3,425.3
<b>United Kingdom</b>									
2008	211.7	2,930.1	1.3	724.0	1,775.6	349.0	780.4	30.5	6,802.6
2009	216.4	1,375.7	0.9	760.2	2,093.9	202.1	784.0	20.8	5,454.1
<b>Italy</b>									
2008	356.3	79.5	11.1	696.9	982.4	151.4	634.8	40.0	2,952.5
2009	356.9	73.6	8.7	575.7	920.2	114.9	634.4	3.5	2,687.9
<b>Other European Union</b>									
2008	665.9	1,530.5	33.0	1,912.5	3,042.0	820.4	2,347.6	103.0	10,454.9
2009	631.7	853.8	25.5	1,658.6	2,627.1	340.4	2,433.6	23.7	8,594.3
<b>Total</b>									
2008	1,778.6	4,640.4	57.7	5,302.8	9,716.5	3,097.3	5,813.1	468.4	30,874.8
2009	1,728.0	2,489.9	44.6	4,734.0	9,532.9	2,153.9	5,866.0	61.5	26,610.7
<b>Newly industrialized countries</b>									
<b>South Korea</b>									
2008	27.9	31.8	0.2	501.8	1,494.8	1,084.7	133.8	0.6	3,275.7
2009	29.3	101.7	0.1	489.9	1,500.5	1,184.0	137.1	0.5	3,443.1
<b>Hong Kong</b>									
2008	20.0	0.1	0.7	18.9	111.5	1.3	104.5	0.5	257.5
2009	16.1	0.0	0.2	18.0	98.4	2.3	76.6	0.4	212.0
<b>Taiwan</b>									
2008	32.4	54.6	7.1	485.0	1,279.0	110.9	242.9	0.8	2,212.8
2009	38.9	0.2	5.5	432.7	1,197.9	104.2	233.7	0.7	2,013.8
<b>Singapore</b>									
2008	14.9	2.3	1.0	169.5	343.6	1.8	121.5	3.1	657.7
2009	17.1	70.0	0.6	232.0	309.5	2.8	135.3	1.0	768.3
<b>Total</b>									
2008	95.3	88.8	9.0	1,175.1	3,229.0	1,198.7	602.8	5.0	6,403.7
2009	101.5	172.0	6.4	1,172.6	3,106.3	1,293.2	582.6	2.6	6,437.2
<b>Other countries</b>									
2008	3,824.0	17,318.5	387.8	11,143.2	15,236.9	1,367.0	11,267.2	488.0	61,032.7
2009	4,162.1	9,871.2	303.0	10,115.6	15,160.2	972.4	12,061.2	241.3	52,886.9
<b>Total</b>									
2008	15,689.3	31,629.6	1,697.3	52,465.5	69,148.8	42,971.9	31,397.1	3,441.6	248,441.1
2009	17,064.0	19,039.7	1,418.8	43,422.2	64,359.9	28,712.5	33,090.2	2,732.6	209,839.8

**Table 8**  
**Imports by country, customs basis, not seasonally adjusted**

	July		January to July		Variation
	2008	2009	2008	2009	January to July 2009/2008
millions of dollars					
<b>North America</b>					
Canada	266.2	324.2	2,203.1	1,871.5	-15.1
Greenland	8.3	0.0	19.7	17.0	-13.7
Mexico	1,281.6	1,318.6	9,419.2	8,672.4	-7.9
Saint Pierre and Miquelon	0.1	0.0	0.4	0.2	-50.0
United States	18,550.8	14,540.8	131,622.8	108,088.0	-17.9
<b>Total</b>	<b>20,107.0</b>	<b>16,183.7</b>	<b>143,265.1</b>	<b>118,649.1</b>	<b>-17.2</b>
<b>Western Europe</b>					
Andorra	0.0	0.0	0.1	0.0	0.0
Austria	108.5	83.0	906.3	645.5	-28.8
Belgium	190.3	147.3	1,366.7	813.0	-40.5
Denmark	182.8	246.0	855.3	767.8	-10.2
Faeroe Islands	0.2	0.2	0.7	0.8	14.3
Finland	59.4	67.6	463.6	493.0	6.3
France	522.4	602.1	3,248.3	3,425.3	5.4
Germany	1,003.9	921.1	7,416.5	6,449.0	-13.0
Gibraltar	0.0	0.0	0.0	0.0	0.0
Greece	10.5	11.4	75.0	83.1	10.8
Iceland	3.5	2.2	21.0	18.0	-14.3
Italy	546.7	453.9	2,952.5	2,687.9	-9.0
Luxembourg	9.3	7.4	68.8	42.4	-38.4
Malta	1.4	2.2	10.9	13.2	21.1
Netherlands	203.7	161.6	1,294.1	1,152.7	-10.9
Norway	530.0	362.2	4,282.1	1,970.5	-54.0
Portugal	46.4	24.1	286.4	157.6	-45.0
Republic of Ireland (Eire)	166.0	184.9	1,207.7	1,353.4	12.1
Spain	151.6	110.9	1,020.7	784.4	-23.2
Sweden	187.7	137.5	1,430.3	1,063.1	-25.7
Switzerland	215.2	315.7	1,470.8	2,081.8	41.5
United Kingdom	1,368.9	754.9	6,802.6	5,454.1	-19.8
<b>Total</b>	<b>5,508.3</b>	<b>4,596.3</b>	<b>35,180.5</b>	<b>29,456.8</b>	<b>-16.3</b>
<b>Other Europe</b>					
Albania	0.5	0.6	1.6	2.2	37.5
Armenia	0.8	3.5	1.6	21.7	...
Azerbaijan	434.3	122.1	804.1	744.4	-7.4
Belarus	0.8	1.2	27.3	17.5	-35.9
Bosnia and Herzegovina	0.7	0.8	3.2	4.4	37.5
Bulgaria	7.8	19.7	66.0	78.8	19.4
Croatia	4.3	3.3	27.4	15.2	-44.5
Czech Republic	28.0	22.0	193.2	166.6	-13.8
Estonia	2.1	1.8	22.3	13.3	-40.4
Georgia	16.0	14.5	78.1	75.8	-2.9
Hungary	32.8	31.4	221.6	205.5	-7.3
Kazakhstan	0.1	3.1	37.2	30.3	-18.5
Kyrgyzstan	0.3	0.0	1.0	0.4	-60.0
Latvia	0.8	0.8	27.0	6.2	-77.0
Lithuania	5.2	3.9	232.9	96.0	-58.8
Macedonia (Former Yugoslav Republic of Macedonia)	0.5	0.5	4.1	5.5	34.1
Montenegro	0.0	0.0	0.4	0.2	-50.0
Poland	103.9	60.0	478.3	470.4	-1.7
Republic of Moldova	0.2	0.2	1.0	1.2	20.0
Romania	12.7	12.0	75.6	68.1	-9.9
Russian Federation	299.6	482.6	1,186.6	1,466.4	23.6
Serbia	1.1	0.9	6.8	6.6	-2.9
Slovakia	12.3	13.5	104.6	81.5	-22.1
Slovenia	7.5	4.9	45.6	36.4	-20.2
Tajikistan	0.0	0.0	0.0	0.0	0.0
Turkmenistan	0.1	0.0	0.4	0.1	-75.0
Ukraine	15.0	4.8	81.2	48.8	-39.9
Uzbekistan	0.0	0.1	0.9	11.8	...
<b>Total</b>	<b>987.5</b>	<b>808.1</b>	<b>3,729.7</b>	<b>3,675.2</b>	<b>-1.5</b>

Table 8 – continued

## Imports by country, customs basis, not seasonally adjusted

	July		January to July		Variation
	2008	2009	2008	2009	January to July 2009/2008
millions of dollars					
<b>Middle East</b>					
Bahrain	0.7	0.3	2.5	3.7	48.0
Cyprus	0.0	0.3	2.1	2.1	0.0
Egypt	6.2	5.1	65.6	54.8	-16.5
Eritrea	0.0	0.0	0.0	0.1	0.0
Ethiopia	1.2	1.7	6.4	10.2	59.4
Iran	3.5	2.1	24.8	14.8	-40.3
Iraq	357.0	146.4	1,653.9	717.3	-56.6
Israel	206.1	72.6	758.5	553.4	-27.0
Jordan	1.9	2.0	8.0	9.5	18.8
Kuwait	0.0	0.0	7.6	37.2	389.5
Lebanon	1.1	1.4	8.3	8.6	3.6
Libya	0.0	0.0	0.0	0.1	0.0
Oman	0.3	0.6	2.0	4.3	115.0
Qatar	0.0	0.1	0.4	9.5	...
Saudi Arabia	268.1	156.3	1,614.3	871.1	-46.0
Somalia	0.0	0.0	0.0	0.0	0.0
Sudan	4.5	5.1	42.7	40.3	-5.6
Syria	0.7	0.9	53.1	3.1	-94.2
Turkey	61.1	56.1	311.1	386.7	24.3
United Arab Emirates	2.9	2.8	312.0	182.1	-41.6
Yemen	0.0	0.0	0.1	0.1	0.0
<b>Total</b>	<b>915.5</b>	<b>453.9</b>	<b>4,873.2</b>	<b>2,909.1</b>	<b>-40.3</b>
<b>Other Africa</b>					
Algeria	969.6	346.5	4,976.5	2,038.7	-59.0
Angola	129.2	95.8	956.6	610.4	-36.2
Antarctica	0.0	0.0	0.0	0.0	0.0
Benin	0.0	0.0	0.0	0.0	0.0
Botswana	1.7	4.3	5.7	14.7	157.9
Bouvet Island	0.0	0.0	0.0	0.0	0.0
Burkina Faso	0.0	0.0	0.1	1.6	...
Burundi	0.0	0.0	0.5	0.1	-80.0
Cameroon	0.2	0.5	3.0	2.9	-3.3
Cape Verde	0.0	0.0	0.0	0.0	0.0
Central African Republic	0.0	0.0	0.1	0.0	0.0
Chad	0.0	0.0	0.1	0.0	0.0
Comoros	0.0	0.0	0.0	0.0	0.0
Congo	0.1	0.8	1.6	1.6	0.0
Democratic Republic of the Congo	0.1	0.0	0.4	0.4	0.0
Djibouti	0.0	0.0	0.0	0.0	0.0
Equatorial Guinea	0.0	76.5	81.1	268.7	231.3
French Southern Territories	0.0	0.0	0.0	0.0	0.0
Gabon	0.1	0.3	0.6	1.2	100.0
Gambia	0.0	0.0	0.1	0.0	0.0
Ghana	0.5	2.7	18.6	12.9	-30.6
Guinea	7.0	5.2	35.9	40.9	13.9
Guinea-Bissau	0.0	0.0	0.0	0.0	0.0
Ivory Coast	9.1	8.4	48.4	153.0	216.1
Kenya	0.7	1.6	7.8	10.2	30.8
Lesotho	0.5	0.7	3.7	4.8	29.7
Liberia	3.0	0.2	13.5	12.1	-10.4
Madagascar	1.8	2.2	10.2	22.3	118.6
Malawi	0.3	0.3	1.5	1.2	-20.0
Mali	0.1	0.0	0.2	0.2	0.0
Mauritania	0.0	0.0	0.1	0.6	500.0
Mauritius	0.7	0.9	3.9	5.7	46.2
Morocco	3.7	3.8	58.3	61.3	5.1
Mozambique	0.1	0.0	0.8	0.2	-75.0
Namibia	31.2	0.0	213.2	188.8	-11.4
Niger	0.1	0.4	0.5	0.6	20.0
Nigeria	148.9	61.6	647.2	240.3	-62.9
Rwanda	0.0	0.0	0.2	0.3	50.0
Saint Helena	0.0	0.0	0.1	0.0	0.0
Sao Tome and Principe	0.0	0.0	0.0	0.0	0.0
Senegal	0.3	0.1	0.7	0.6	-14.3
Seychelles	0.0	0.0	1.1	0.5	-54.5

Table 8 – continued

## Imports by country, customs basis, not seasonally adjusted

	July		January to July		Variation
	2008	2009	2008	2009	January to July 2009/2008
millions of dollars					
Sierra Leone	0.1	0.1	0.7	1.1	57.1
South Africa	93.1	57.6	468.4	352.1	-24.8
Swaziland	0.2	0.2	1.4	1.0	-28.6
Togo	0.1	0.8	5.0	3.0	-40.0
Tunisia	4.3	5.3	23.9	27.3	14.2
Uganda	0.1	0.2	1.6	1.2	-25.0
United Republic of Tanzania	0.2	0.3	1.2	2.4	100.0
Western Sahara	0.0	0.0	0.0	0.0	0.0
Zambia	0.0	0.1	0.5	0.4	-20.0
Zimbabwe	1.5	0.2	3.1	1.6	-48.4
<b>Total</b>	<b>1,408.5</b>	<b>677.9</b>	<b>7,598.0</b>	<b>4,087.3</b>	<b>-46.2</b>
<b>Other Asia</b>					
Afghanistan	0.1	0.1	0.8	0.8	0.0
Bangladesh	64.6	92.1	356.3	512.2	43.8
Bhutan	0.0	0.0	0.0	0.0	0.0
British Indian Ocean Territory	0.0	0.0	0.0	0.0	0.0
Brunei Darussalam	0.2	0.1	1.4	1.6	14.3
Cambodia	31.1	27.1	141.8	167.3	18.0
China	3,842.1	3,497.2	22,220.0	22,419.6	0.9
Hong Kong	41.1	30.7	257.5	212.0	-17.7
India	185.5	163.8	1,197.9	1,225.1	2.3
Indonesia	86.6	90.4	588.9	599.2	1.7
Japan	1,265.3	963.8	9,087.2	7,143.7	-21.4
Laos	0.6	0.3	3.2	4.8	50.0
Macao	2.8	1.2	17.9	17.9	0.0
Malaysia	246.4	183.4	1,643.1	1,331.2	-19.0
Maldives	0.0	0.0	0.2	0.1	-50.0
Mongolia	14.6	0.0	100.2	59.2	-40.9
Myanmar	0.0	0.0	0.7	0.0	0.0
Nepal	1.5	1.3	8.0	7.0	-12.5
North Korea	0.0	0.0	0.1	0.1	0.0
Pakistan	20.7	22.7	131.9	140.7	6.7
Philippines	70.7	59.0	461.5	395.8	-14.2
Singapore	76.0	80.8	657.7	768.3	16.8
South Korea	505.0	467.3	3,275.7	3,443.1	5.1
Sri Lanka	11.1	10.3	68.4	67.8	-0.9
Taiwan	326.0	264.9	2,212.8	2,013.8	-9.0
Thailand	187.4	188.7	1,336.4	1,283.2	-4.0
Timor-Leste	1.0	0.7	2.2	2.3	4.5
Viet Nam	93.0	106.1	487.7	597.8	22.6
<b>Total</b>	<b>7,073.5</b>	<b>6,252.1</b>	<b>44,259.5</b>	<b>42,414.7</b>	<b>-4.2</b>
<b>Oceania</b>					
American Samoa	0.0	0.0	0.2	0.2	0.0
Australia	122.1	147.0	965.4	914.1	-5.3
Christmas Island	0.0	0.0	0.0	0.0	0.0
Cocos (Keeling) Islands	0.0	0.0	0.0	0.1	0.0
Cook Islands	0.1	0.0	0.1	0.0	0.0
Fiji	0.9	0.4	5.6	3.6	-35.7
French Polynesia	0.1	0.0	0.7	0.3	-57.1
Guam	0.0	0.0	0.2	0.2	0.0
Heard Island and McDonald Islands	0.0	0.0	0.0	0.0	0.0
Kiribati	0.0	0.0	0.0	0.1	0.0
Nauru	0.0	0.0	0.0	0.1	0.0
New Caledonia	0.0	0.0	0.1	0.3	200.0
New Zealand	45.1	44.0	308.4	285.4	-7.5
Niue	0.0	0.0	0.0	0.0	0.0
Norfolk Island	0.0	0.0	0.0	0.0	0.0
Papua New Guinea	0.2	0.2	1.2	0.7	-41.7
Pitcairn	0.0	0.0	0.0	0.0	0.0
Samoa	0.0	0.0	0.0	0.0	0.0
Solomon Islands	0.0	0.0	0.1	0.1	0.0
Tonga	0.0	0.0	0.1	0.0	0.0
United States Minor Outlying Islands	0.6	0.4	3.8	3.0	-21.1
Vanuatu	0.0	0.0	0.0	0.0	0.0

Table 8 – continued

## Imports by country, customs basis, not seasonally adjusted

	July		January to July		Variation
	2008	2009	2008	2009	January to July 2009/2008
	millions of dollars				
Wallis and Futuna	0.0	0.0	0.0	0.0	0.0
<b>Total</b>	<b>169.2</b>	<b>192.1</b>	<b>1,286.0</b>	<b>1,208.4</b>	<b>-6.0</b>
<b>South America</b>					
Argentina	47.6	56.6	276.7	407.3	47.2
Bolivia	4.6	8.6	38.6	49.2	27.5
Brazil	202.4	219.5	1,443.5	1,414.0	-2.0
Chile	69.2	75.9	1,230.5	990.3	-19.5
Colombia	64.4	80.8	386.9	449.2	16.1
Ecuador	15.3	18.6	106.7	149.3	39.9
Falkland Islands (Malvinas)	0.0	0.0	0.1	0.0	0.0
Guyana	21.7	26.6	127.3	170.5	33.9
Paraguay	1.6	0.5	9.1	4.7	-48.4
Peru	227.2	210.4	1,476.6	1,527.0	3.4
Suriname	69.9	45.6	349.7	318.1	-9.0
Uruguay	1.5	2.3	23.6	44.8	89.8
Venezuela	144.1	115.5	880.2	645.6	-26.7
<b>Total</b>	<b>869.6</b>	<b>860.8</b>	<b>6,349.6</b>	<b>6,170.0</b>	<b>-2.8</b>
<b>Central America Antilles</b>					
Anguilla	0.0	0.0	0.1	0.2	100.0
Antigua and Barbuda	0.2	0.1	5.2	0.3	-94.2
Aruba	0.0	0.0	120.3	53.4	-55.6
Bahamas	1.6	0.0	47.1	26.7	-43.3
Barbados	0.6	0.7	4.9	5.1	4.1
Belize	1.4	0.5	6.1	5.1	-16.4
Bermuda	0.2	0.4	0.9	3.7	311.1
British Virgin Islands	0.2	0.0	10.2	0.3	-97.1
Cayman Islands	0.0	0.0	0.1	0.5	400.0
Costa Rica	28.1	28.4	229.4	218.2	-4.9
Cuba	60.7	27.6	605.2	250.8	-58.6
Dominica	0.0	0.0	0.1	0.1	0.0
Dominican Republic	12.6	13.9	70.6	85.5	21.1
El Salvador	4.7	5.8	48.3	47.4	-1.9
Grenada	0.0	0.0	0.3	0.2	-33.3
Guatemala	22.3	16.7	171.3	158.9	-7.2
Haiti	1.6	1.8	11.5	13.2	14.8
Honduras	13.7	10.0	91.1	86.9	-4.6
Jamaica	40.2	25.2	174.5	86.8	-50.3
Montserrat	0.0	0.0	0.1	0.0	0.0
Netherlands Antilles	0.0	0.0	2.5	9.9	296.0
Nicaragua	14.6	6.1	65.8	50.1	-23.9
Panama	0.6	5.6	16.9	16.0	-5.3
Saint Kitts and Nevis	0.3	0.8	2.8	3.6	28.6
Saint Lucia	0.0	0.0	0.1	0.1	0.0
Saint Vincent and the Grenadines	0.0	0.1	0.1	0.2	100.0
Trinidad and Tobago	31.6	26.6	212.3	145.5	-31.5
Turks and Caicos Islands	0.3	0.0	1.5	0.2	-86.7
<b>Total</b>	<b>235.7</b>	<b>170.5</b>	<b>1,899.4</b>	<b>1,269.1</b>	<b>-33.2</b>
<b>All countries</b>	<b>37,274.9</b>	<b>30,195.3</b>	<b>248,441.1</b>	<b>209,839.8</b>	<b>-15.5</b>

**Table 9-1  
Imports by province of clearance, customs basis, not seasonally adjusted — July**

	Agricultural and fishing products	Energy products	Forestry products	Industrial goods	Machinery and equipment	Automotive products	Consumer goods	Special transactions	Total
millions of dollars									
Newfoundland Labrador									
2008	3.5	476.8	0.0	19.2	23.1	0.1	3.6	0.7	527.1
2009	2.3	280.7	0.0	2.7	4.9	0.2	0.5	0.0	291.3
Prince Edward Island									
2008	0.3	0.0	0.0	0.1	0.1	0.0	0.0	0.0	0.6
2009	0.3	0.0	0.0	0.1	12.2	0.0	1.5	0.0	14.1
Nova Scotia									
2008	33.3	38.8	2.0	127.0	85.7	194.5	13.2	4.1	498.6
2009	22.6	199.7	0.9	53.6	75.3	242.5	14.4	1.3	610.3
New Brunswick									
2008	42.2	1,214.2	11.0	83.2	123.0	32.1	15.2	2.6	1,523.5
2009	40.0	779.4	7.2	86.1	206.3	26.1	20.8	1.9	1,167.7
Quebec									
2008	370.5	2,131.9	58.7	1,450.9	1,504.2	175.3	1,007.5	62.0	6,761.0
2009	391.8	1,289.5	45.2	1,080.1	1,397.5	141.8	1,114.5	44.5	5,504.8
Ontario									
2008	1,327.8	1,330.2	95.1	4,428.1	5,595.6	3,909.0	3,123.7	348.8	20,158.4
2009	1,370.3	365.4	72.0	3,299.8	4,864.2	3,009.0	3,054.6	393.8	16,429.2
Manitoba									
2008	84.7	15.4	8.7	345.6	493.8	129.2	143.8	8.6	1,229.8
2009	82.4	32.0	6.6	225.0	432.0	98.2	135.1	7.2	1,018.6
Saskatchewan									
2008	28.8	38.2	2.5	223.8	421.2	98.8	26.0	0.8	840.1
2009	27.0	62.0	2.2	123.1	231.2	59.2	19.0	3.2	526.8
Alberta									
2008	159.7	390.4	9.2	452.1	655.5	101.5	96.4	12.3	1,877.2
2009	149.3	165.3	7.6	321.4	482.7	58.8	105.9	10.9	1,301.8
British Columbia									
2008	385.2	317.1	58.8	829.3	1,095.4	427.6	709.7	17.3	3,840.4
2009	375.5	188.3	47.1	546.1	1,145.7	321.3	656.3	10.7	3,290.9
Yukon, Northwest Territories and Nunavut									
2008	15.2	2.4	0.0	0.1	0.4	0.0	0.0	0.1	18.2
2009	12.5	26.4	0.0	0.1	0.5	0.2	0.1	0.0	39.7
<b>Total</b>									
<b>2008</b>	<b>2,451.3</b>	<b>5,955.5</b>	<b>246.2</b>	<b>7,959.5</b>	<b>9,998.1</b>	<b>5,067.9</b>	<b>5,139.2</b>	<b>457.3</b>	<b>37,274.9</b>
<b>2009</b>	<b>2,474.0</b>	<b>3,388.8</b>	<b>188.8</b>	<b>5,738.0</b>	<b>8,852.4</b>	<b>3,957.3</b>	<b>5,122.5</b>	<b>473.4</b>	<b>30,195.3</b>

**Table 9-2**  
**Imports by province of clearance, customs basis, not seasonally adjusted — Year to date, January to July**

	Agricultural and fishing products	Energy products	Forestry products	Industrial goods	Machinery and equipment	Automotive products	Consumer goods	Special transactions	Total
millions of dollars									
Newfoundland Labrador									
2008	27.3	2,614.3	0.1	51.9	104.8	0.8	12.2	5.7	2,817.1
2009	23.8	1,188.5	0.5	128.4	92.4	0.5	2.1	0.2	1,436.4
Prince Edward Island									
2008	2.0	0.0	0.1	0.8	82.7	0.1	18.2	0.2	104.1
2009	2.1	0.0	0.0	17.7	12.7	0.1	1.7	0.1	34.3
Nova Scotia									
2008	198.8	1,205.7	12.1	876.7	709.5	1,899.0	84.5	13.0	4,999.2
2009	176.7	850.5	6.8	458.0	630.9	1,486.6	104.3	18.6	3,732.4
New Brunswick									
2008	199.6	5,102.6	72.9	583.9	503.6	237.4	96.1	13.6	6,809.8
2009	219.6	3,432.8	56.8	535.1	652.5	172.2	124.1	13.9	5,206.9
Quebec									
2008	2,268.2	13,121.2	427.5	10,171.9	11,772.5	1,460.4	5,560.0	650.1	45,431.8
2009	2,552.8	7,058.0	417.6	7,828.4	11,243.7	1,135.5	6,635.3	294.4	37,165.8
Ontario									
2008	8,622.0	5,160.4	645.4	29,343.8	38,381.2	33,348.8	20,016.6	2,427.2	137,945.5
2009	9,580.1	3,063.8	514.1	24,417.1	35,014.1	22,129.3	20,482.5	2,169.3	117,370.2
Manitoba									
2008	580.0	140.3	55.2	2,225.2	3,599.9	1,001.3	952.8	56.5	8,611.3
2009	573.1	137.8	51.4	2,026.6	3,445.4	783.2	985.4	54.1	8,056.9
Saskatchewan									
2008	203.1	210.1	17.7	1,484.4	2,234.5	813.6	167.6	13.8	5,144.8
2009	200.9	277.3	17.4	1,332.9	2,071.3	448.7	145.7	15.6	4,509.9
Alberta									
2008	1,096.4	2,144.5	68.5	2,987.9	4,567.1	858.9	672.5	84.3	12,480.1
2009	1,085.5	1,680.2	61.7	2,701.2	4,243.2	441.2	680.4	75.3	10,968.7
British Columbia									
2008	2,454.9	1,917.1	397.8	4,737.9	7,178.1	3,351.0	3,816.2	176.7	24,029.6
2009	2,616.1	1,322.1	292.5	3,975.7	6,936.2	2,114.7	3,928.4	90.2	21,275.9
Yukon, Northwest Territories and Nunavut									
2008	37.1	13.5	0.0	1.0	14.8	0.7	0.2	0.4	67.7
2009	33.4	28.6	0.0	1.3	17.5	0.5	0.2	0.9	82.3
<b>Total</b>									
<b>2008</b>	<b>15,689.3</b>	<b>31,629.6</b>	<b>1,697.3</b>	<b>52,465.5</b>	<b>69,148.8</b>	<b>42,971.9</b>	<b>31,397.1</b>	<b>3,441.6</b>	<b>248,441.1</b>
<b>2009</b>	<b>17,064.0</b>	<b>19,039.7</b>	<b>1,418.8</b>	<b>43,422.2</b>	<b>64,359.9</b>	<b>28,712.5</b>	<b>33,090.2</b>	<b>2,732.6</b>	<b>209,839.8</b>



# Technical notes

---

## The Canadian international merchandise trade statistical program

### I Introduction

The objective of this text is to provide a general overview of the Canadian International Merchandise Trade Statistical Program with special reference to concepts and definitions. The text is intended for the general user and simplicity is emphasized. More technical details can be obtained from the International Trade Division upon request.

### II Conceptual framework

**1. Objectives and coverage:** The primary objective of the Canadian International Merchandise Trade Statistical Program is to measure the change in the stock of material resources of the country resulting from the movement of merchandise into or out of Canada. Information on imports and exports are inputs into the System of National Accounts particularly in the Balance of Payments and Gross Domestic Product, and are used in the formulation of trade and budgetary policies. Governments, importers, exporters, manufacturers and shipping companies use trade statistics to:

- monitor import penetration and export performance;
- monitor commodity price and volume changes;
- examine transport implications.

**2. Trade statistics - Customs basis/Balance of Payments basis:** Merchandise trade statistics are reported and presented on two different bases: Customs basis and Balance of Payment basis. (B.O.P.)

When goods are imported into or exported from Canada, declarations must be filed with Customs giving such information as description and value of the goods, origin and port of clearance of commodities and the mode of transport. Most of this information is required for the purposes of Customs Administration. Statistics developed from administrative records of Customs are commonly referred to as Customs based trade statistics.

Customs based trade statistics are more accurate at measuring imports than they are at measuring exports. This is the case because Customs are typically more vigilant with respect to goods entering the country than they are with goods leaving the country.

Customs based export statistics may understate and/or incorrectly portray the destination of exports. Export statistics are understated when the proper documentation is not filed with Customs. Exports are incorrectly portrayed when the country of final destination is inaccurately reported on the customs documentation - this occurs most frequently when goods are routed through an intermediary country before continuing on to their final destination.

Statistics Canada does not have a measure of undercoverage but periodically conducts reconciliation exercises with its major trading partners, excluding the United States.

On January 1st, 1990, Canada entered into a Memorandum of Understanding (MOU) with the United States concerning the exchange of import data. As a consequence, each administration is using the other's import data to replace its own export data. Canada's international merchandise trade statistics are, therefore, no longer derived exclusively from the administrative records of Canada Border Services Agency, but from United States Customs records as well.

Customs based information is adjusted to conform with the National Accounts concepts and definitions. The adjustments to derive Balance of Payments based trade data include trade definition, valuation and timing related adjustments. The principal difference between the two trade concepts is that Customs based merchandise trade statistics cover the physical movement of goods as they are reflected on customs documents, while Balance of Payments adjusted data are intended to cover all economic transactions between residents and non-residents which involve merchandise trade. This section describes the concepts and processes pertaining to the Customs based trade statistics only. (For further information on Balance of Payments adjusted data see the publication *"Canada's Balance of International Payments" Catalogue no. 67-001-XPB*).

**3. System of trade:** Canadian trade statistics are compiled according to the "General" system of trade as defined by the United Nations Statistical Office. Under this system, imports include all goods which have crossed Canada's territorial boundary, whether for immediate consumption in Canada or stored in bonded Customs warehouses. Domestic exports include goods grown, extracted or manufactured in Canada, including goods of foreign origin which have been materially transformed in Canada. Re-exports are exports of goods of foreign origin which have not been materially transformed in Canada, including foreign goods withdrawn for export from bonded customs warehouses. Total exports are the sum of Domestic exports and Re-exports. Thus the general trade system, in principal, presents all goods entering the country (imports) and all goods leaving the country (exports). It differs from the "Special" system of trade in the treatment of imported goods into Customs bonded warehouses. Under the "Special" system, these goods are counted only if and when they are withdrawn from Customs warehouses for home consumption. They are not counted in export statistics unless they have first cleared Customs.

Conceptually, under the "General" system, the statistical frontier coincides with the geographical boundary, while under the "Special" system, it coincides with the Customs boundary.

**4. Valuation:** For Customs purposes, imports are recorded at values established according to the provisions of the Customs Act, which, since January 1st, 1985, reflects valuation methods based on the General Agreement on Tariffs and Trade (GATT) Valuation Code System. It generally requires the value for duty of imported goods be equivalent to the transaction value or the price actually paid.

To determine the transaction value of imported goods, all transportation and associated costs arising in respect of the goods being appraised prior to and at the place of direct shipment to Canada, are to be added to the price of the goods. Therefore, Canadian imports are valued F.O.B. (Free on Board), place of direct shipment to Canada. It excludes freight and insurance costs in bringing the goods to Canada from the point of direct shipment.

To countries other than the United States, exports are, in principal, valued or recorded at the values declared on export documents which usually reflect the transaction value, i.e. actual selling price, or in the case of a non-arm's length transaction, the transfer price used for company accounting purposes. Canadian exports to overseas countries are valued at F.O.B. port of exit, including domestic freight charges to that point but net of discounts and allowances. As of January, 1990, Canadian exports to the U.S. are valued F.O.B. point of exit from Canada. Prior to 1990, they were valued F.O.B. place of lading net of freight charges, discounts and allowances.

**5. Statistical period:** The reference period is the calendar month and the calendar year. The closing of the statistical month for imports and Canadian exports to the United States is defined as the last calendar day of the month, based as closely as practicable on the date of clearance from Customs.

The closing of the statistical month for exports, to countries other than the United States, is also defined as the last calendar day of the month. Those export documents which are received too late for incorporation in the current month are assigned to the month the transaction took place. If a monthly summary report from a high volume exporter is not received on time, the data are imputed for the current month and revised with the trade value in the following statistical month.

**6. Trading partner attribution (Country of origin/destination):** Exports are attributed to the country, which is the last known destination of the goods at the time of export. Exports to the United States are attributed to the state of destination.

Imports are attributed to their country of origin, that is, the country in which the goods were grown, extracted or manufactured in accordance to the rules of origin administered by Canada Border Services Agency. Imports from

the United States are attributed to the state of origin. Prior to 1988, most imports were attributed to the country of export/consignment with the exception of imports from Central and South America.

**7. Principal trading areas:** The “principal trading areas” are country groupings defined as follows:

**United States:** (includes trade with Puerto Rico and the U.S. Virgin Islands).

**Japan:**

**E.U. (European Union):** Austria, Belgium, Bulgaria, Cyprus, Czech Republic, Denmark, Estonia, Finland, France, Germany, Greece, Hungary, Ireland, Italy, Latvia, Lithuania, Luxembourg, Malta, Netherlands, Poland, Portugal, Romania, Slovakia, Slovenia, Spain, Sweden and United Kingdom.

**Other O.E.C.D.:** Australia, Canada, Iceland, Mexico, New Zealand, Norway, South Korea, Switzerland, and Turkey. (The E.U. countries, United States, and Japan are also members of O.E.C.D. - the Organization for Economic Co-operation and Development).

**Other countries:** This group includes all countries and territories other than the United States, Japan, E.U. and other O.E.C.D.

**8. Legal framework:** Import and export statistics with countries other than the United States are derived from information contained on administrative records collected by the Canada Border Services Agency under the Customs Act. Copies of these documents (or information therefrom) are sent to Statistics Canada in accordance with Section 25 of the Statistics Act. It follows that the disclosure of trade statistics is governed by both the Customs Act and the Statistics Act and is subject to the provisions of Section 17.(2)(a) of the latter. Disclosure of export statistics to the United States is now governed by a Memorandum of Understanding which provides for an exchange of detailed import statistics between Canada and the United States.

Questions concerning details of methods not covered by these notes should be addressed to the Marketing and Client Services Section, International Trade Division, Statistics Canada, Ottawa, Ontario, K1A 0T6.

**Telephone:** 1-800-294-5583 or within the area code 613-951-9647

**Facsimile:** 1-800-664-0055 or within the area code 613-951-0117

**Internet:** *trade@statcan.gc.ca*