

Catalogue no. 65-001-X

Canadian International Merchandise Trade

June 2009



Statistics
Canada

Statistique
Canada

Canada

How to obtain more information

For information about this product or the wide range of services and data available from Statistics Canada, visit our website at www.statcan.gc.ca, e-mail us at infostats@statcan.gc.ca, or telephone us, Monday to Friday from 8:30 a.m. to 4:30 p.m., at the following numbers:

Statistics Canada's National Contact Centre

Toll-free telephone (Canada and the United States):

Inquiries line	1-800-263-1136
National telecommunications device for the hearing impaired	1-800-363-7629
Fax line	1-877-287-4369

Local or international calls:

Inquiries line	1-613-951-8116
Fax line	1-613-951-0581

Depository Services Program

Inquiries line	1-800-635-7943
Fax line	1-800-565-7757

To access this product

This product, Catalogue no. 65-001-X, is available free in electronic format. To obtain a single issue, visit our website at www.statcan.gc.ca and select "Publications."

Standards of service to the public

Statistics Canada is committed to serving its clients in a prompt, reliable and courteous manner. To this end, Statistics Canada has developed *standards of service* that its employees observe. To obtain a copy of these service standards, please contact Statistics Canada toll-free at 1-800-263-1136. The service standards are also published on www.statcan.gc.ca under "About us" > "Providing services to Canadians."

Statistics Canada
International Trade Division

Canadian International Merchandise Trade

June 2009

Published by authority of the Minister responsible for Statistics Canada

© Minister of Industry, 2009

All rights reserved. The content of this electronic publication may be reproduced, in whole or in part, and by any means, without further permission from Statistics Canada, subject to the following conditions: that it be done solely for the purposes of private study, research, criticism, review or newspaper summary, and/or for non-commercial purposes; and that Statistics Canada be fully acknowledged as follows: Source (or "Adapted from", if appropriate): Statistics Canada, year of publication, name of product, catalogue number, volume and issue numbers, reference period and page(s). Otherwise, no part of this publication may be reproduced, stored in a retrieval system or transmitted in any form, by any means—electronic, mechanical or photocopy—or for any purposes without prior written permission of Licensing Services, Client Services Division, Statistics Canada, Ottawa, Ontario, Canada K1A 0T6.

August 2009

Catalogue no. 65-001-X, vol. 63, no. 6

ISSN 1480-8781

Frequency: Monthly

Ottawa

Cette publication est également disponible en français.

Note of appreciation

Canada owes the success of its statistical system to a long standing partnership between Statistics Canada, the citizens of Canada, its businesses, governments and other institutions. Accurate and timely statistical information could not be produced without their continued cooperation and goodwill.

User information

Symbols

The following standard symbols are used in Statistics Canada publications:

- . not available for any reference period
- .. not available for a specific reference period
- ... not applicable
- 0 true zero or a value rounded to zero
- 0^s value rounded to 0 (zero) where there is a meaningful distinction between true zero and the value that was rounded
- p preliminary
- r revised
- x suppressed to meet the confidentiality requirements of the *Statistics Act*
- E use with caution
- F too unreliable to be published

Note to Users

All totals are calculated from full figures and rounded independently; consequently, totals may not equal the sum of their components.

Table of contents

Highlights	5
Analysis	7
Statistical tables	
1 Merchandise trade of Canada, balance of payments basis, seasonally adjusted	12
1-1 Current dollars	12
1-2 Constant dollars, 2002	13
1-3 Price indices (Laspeyres)	14
2 Exports by commodity groupings, balance of payments basis, seasonally adjusted	15
2-1 Current dollars	15
2-2 Constant dollars, 2002	17
3 Domestic exports to selected countries, customs basis, not seasonally adjusted	19
3-1 June	19
3-2 Year to date, January to June	20
4 Domestic exports by country, customs basis, not seasonally adjusted	21
5 Exports by province of origin, customs basis, not seasonally adjusted	25
5-1 June	25
5-2 Year to date, January to June	26
6 Imports by commodity groupings, balance of payments basis, seasonally adjusted	27
6-1 Current dollars	27
6-2 Constant dollars, 2002	29
7 Imports from selected countries, customs basis, not seasonally adjusted	31
7-1 June	31
7-2 Year to date, January to June	32
8 Imports by country, customs basis, not seasonally adjusted	33
9 Imports by province of clearance, customs basis, not seasonally adjusted	37
9-1 June	37
9-2 Year to date, January to June	38

Table of contents – continued

Data quality, concepts and methodology

Technical notes

39

Highlights

June 2009

- Canada's merchandise exports increased 2.3% to just under \$29.3 billion in June, halting three consecutive monthly declines, while imports fell 1.3% to \$29.3 billion. As a result, Canada's trade deficit with the world narrowed to \$55 million from \$1.1 billion in May.
- The increase in exports was attributable to a substantial rise in exports of energy products. If they were excluded, total exports would have declined 0.5%.
- Imports, which have been on a downward trend since October 2008, fell for the fourth consecutive month. Declines in three sectors – machinery and equipment, industrial goods and materials, and other consumer goods – offset increases in the remaining sectors: energy products, agricultural and fishing products, automotive products and forestry products.
- Export prices were up 2.2%, as the prices rose for energy products and industrial goods and materials. Import prices fell 0.8%, as all import sectors except for energy products posted reductions. Export volumes were up 0.2%, while import volumes declined 0.5%.
- Exports to the United States climbed 5.1%, largely the result of higher exports of crude petroleum, while imports fell 1.8%. This widened Canada's trade surplus with the United States to \$3.1 billion from \$1.7 billion in May.
- The trade deficit with countries other than the United States grew to \$3.1 billion from \$2.8 billion in May, as exports fell 4.5% and imports edged down 0.3%.

Note to readers

Merchandise trade is one component of Canada's international balance of payments, which also includes trade in services, investment income, current transfers as well as capital and financial flows.

International merchandise trade data by country are available on both a balance of payments and a customs basis for the United States, Japan and the United Kingdom. Trade data for all other individual countries are available on a customs basis only. Balance of payments data are derived from customs data by making adjustments for characteristics such as valuation, coverage, timing and residency. These adjustments are made to conform to the concepts and definitions of the Canadian System of National Accounts.

Constant dollars referred to in the text are calculated using the Laspeyres volume formula.

Revisions

In general, merchandise trade data are revised on an ongoing basis for each month of the current year. Current year revisions are reflected in both the customs and balance of payments based data. Revisions to customs based data for the previous year are released on a quarterly basis. Revisions to balance of payments based data for the three previous years are released annually in June.

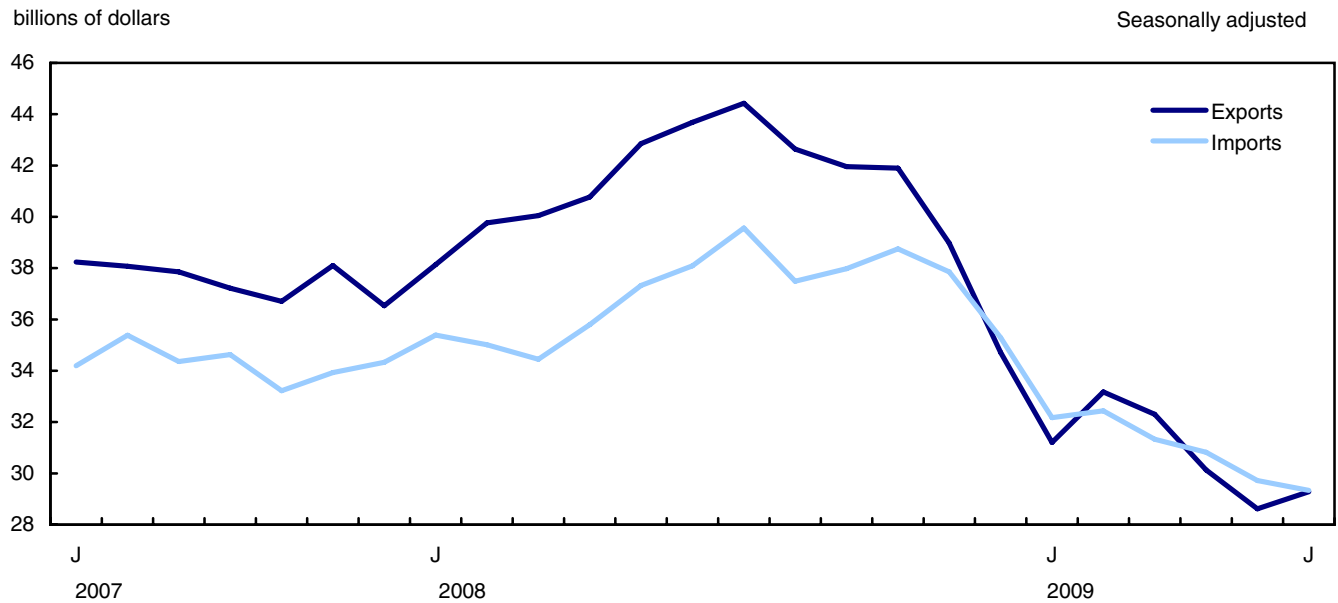
Factors influencing revisions include late receipt of import and export documentation, incorrect information on customs forms, replacement of estimates with actual figures, changes in classification of merchandise based on more current information, and changes to seasonal adjustment factors.

Revised data are available in the appropriate CANSIM tables.

Historical updates covering the period of 1988 to 2003 will be released on September 10, 2009 in conjunction with the July 2009 reference month data. These updates are the result of historical inconsistencies relating to the integrity between trade data and the underlying metadata and are minimal in dollar value.

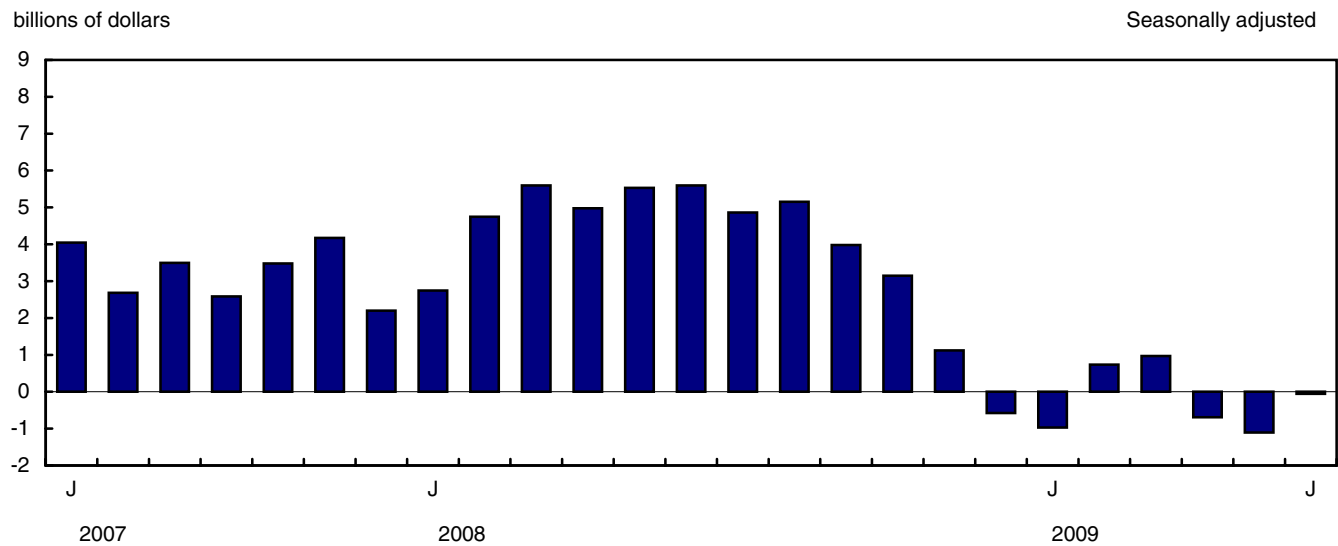
For more information, view the document entitled “CANSIM notes - Historical updates” under the definitions, data source and methods page, survey number 2201.

Chart 1
Exports and imports



Note(s): On a balance of payments basis.

Chart 2
Trade balance



Note(s): On a balance of payments basis.

Analysis

Gain in exports attributed to energy products

The main contributors to the gain in exports in June were energy products, followed by industrial goods and materials. These increases were partially offset by lower exports of machinery and equipment and automotive products.

Exports of energy products rose 14.0% to \$6.4 billion in June. The increase was the result of a 5.1% increase in prices and an 8.4% rise in volumes.

Exports of crude petroleum rose 22.3%, reflecting increased demand from the United States. Crude petroleum accounted for 87% of the gain in energy products. On the other hand, natural gas exports declined 1.2%, continuing a downward trend that started in August 2008.

Higher exports of gold were behind the growth in the industrial goods and materials sector, which increased 6.1% to \$6.3 billion. Declines in exports of metal ores, in particular nickel and iron ores, moderated the increase in this sector. The gain in the industrial goods and materials sector was mainly the result of a 4.4% increase in prices.

Exports of machinery and equipment decreased 4.1% to \$6.4 billion, the lowest level since January 1998. This was mainly the result of declines in exports of telecommunication equipment and office electronic equipment.

Exports of automotive products fell 5.6% to \$2.9 billion. This represents about one-third of the peak value registered in January 2000. Exports of trucks and motor vehicle parts declined 35.3% and 9.7% respectively, as demand continued to fall. On the other hand, exports of passenger autos increased 3.2%.

Three of seven import sectors decline

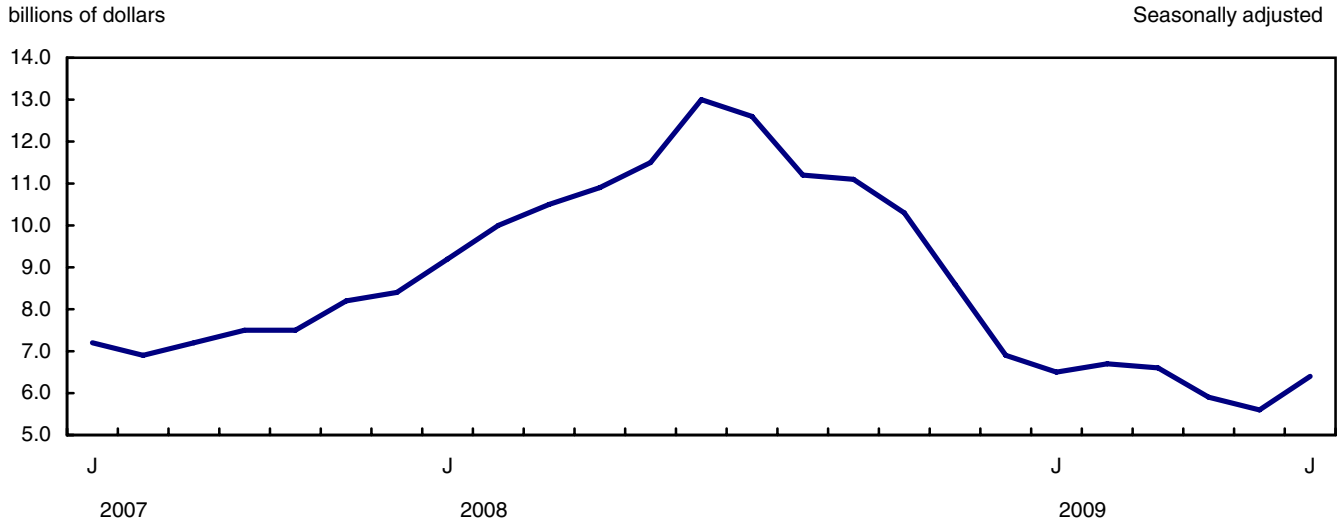
Imports of machinery and equipment fell 6.0% to \$8.5 billion as a result of widespread declines. Aircraft, engines and parts, as well as engines, turbines and motors were among the contributors to the decrease. The sector has been on a downward trend since November 2008.

Imports of industrial goods and materials decreased 4.3% to \$5.8 billion. Lower imports of chemical products were the main contributors to the decline. In contrast, precious metals, namely gold, grew 8.6%. The industrial goods and materials sector has generally been on a downward trend since October 2008.

Imports of other consumer goods were down 1.6% to \$4.7 billion mainly the result of declining imports of footwear, apparel and house furnishing.

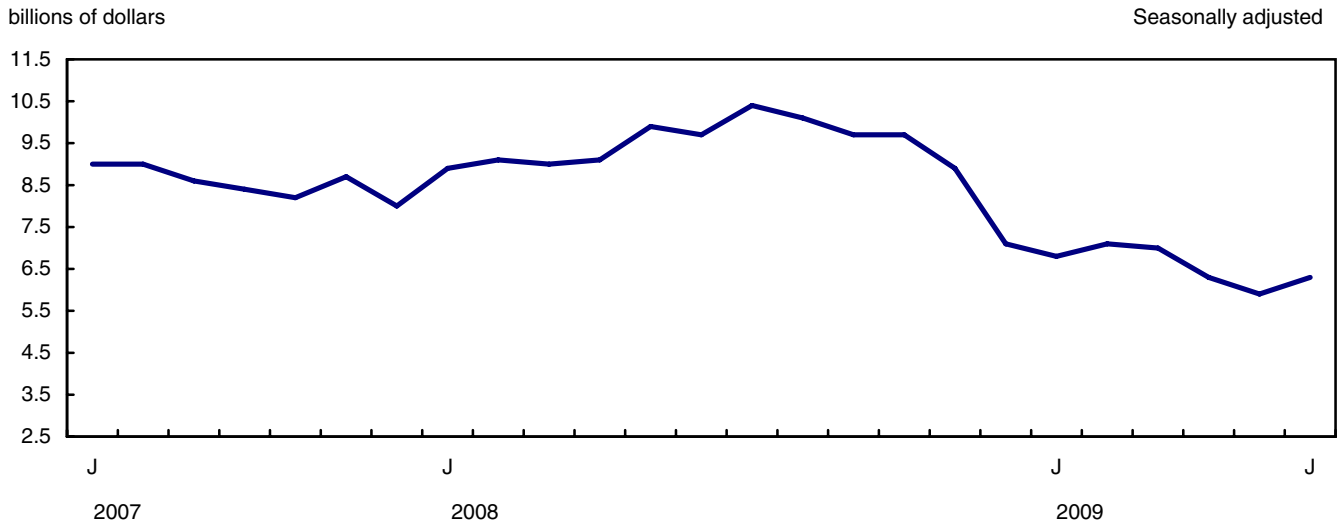
Higher imports of energy products as well as agricultural and fishing products mitigated the decline in overall imports. Imports of energy products grew 14.7% to \$2.7 billion on the strength of crude petroleum. The increase in energy products was due to volumes rising 11.2% and prices increasing 3.2%. Imports of agricultural and fishing products were up 4.6% led by higher imports of wine and beer.

Chart 1
Exports of energy products



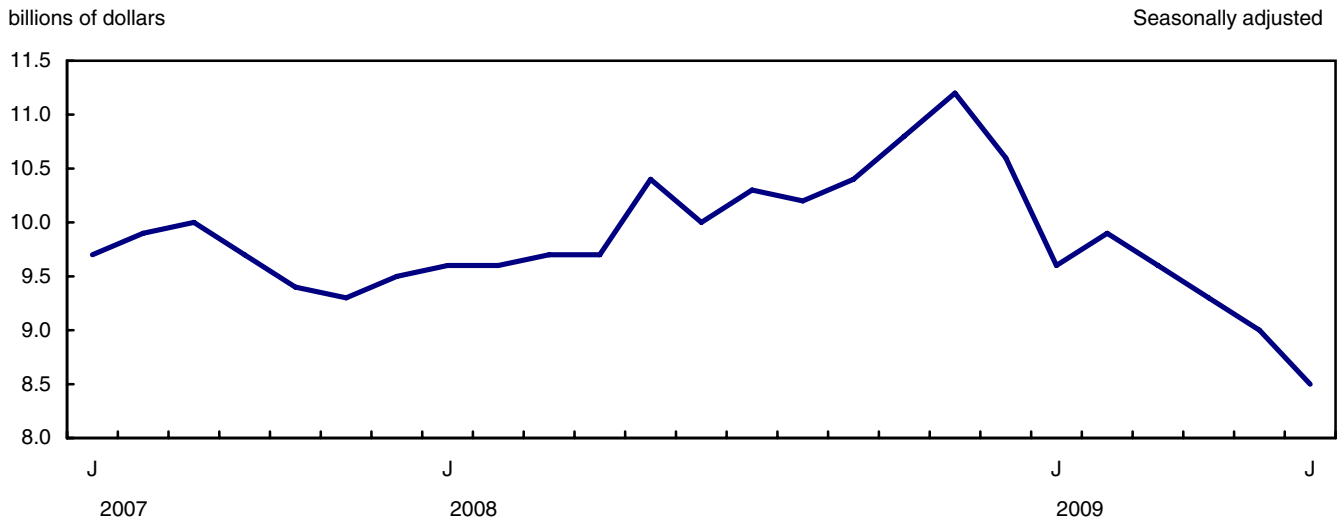
Note(s): On a balance of payments basis.

Chart 2
Exports of industrial goods and materials



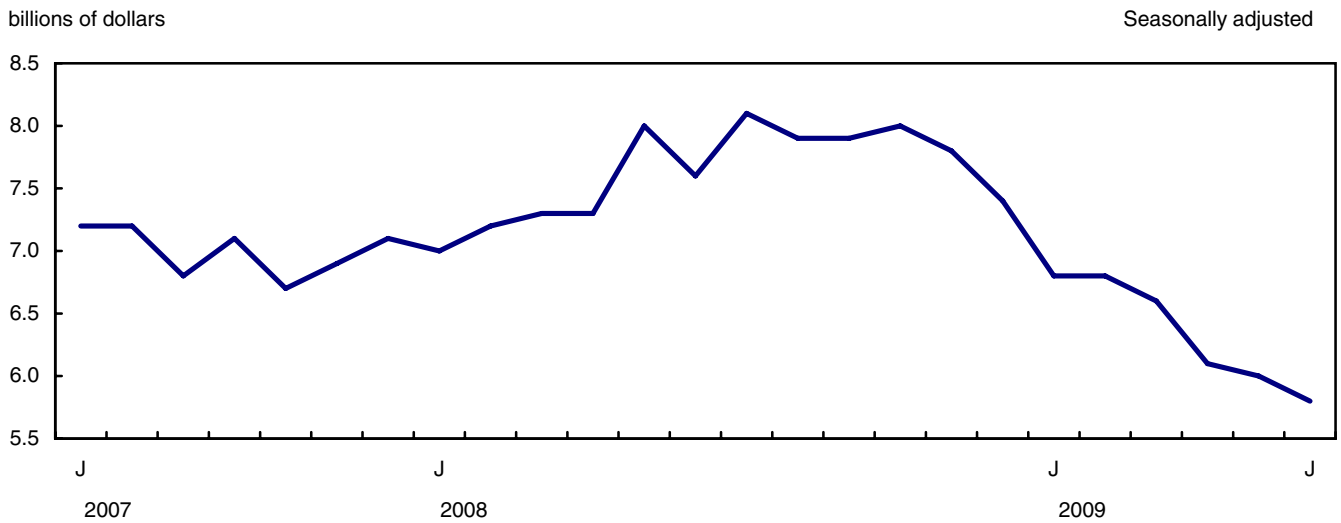
Note(s): On a balance of payments basis.

Chart 3
Imports of machinery and equipment



Note(s): On a balance of payments basis.

Chart 4
Imports of industrial goods and materials



Note(s): On a balance of payments basis.

Text table 1
Merchandise trade by principal trading area, balance of payments basis, seasonally adjusted

	May	June	Change	Year to date		Year to date change	June		
	2009	2009		2008	2009			2009/2008	
	millions of dollars		percent		millions of dollars		percent		
Export to:									
United States	20,465	21,503	1,039	5.1	186,242	134,446	-51,796	-27.8	-35.4
Japan	628	667	39	6.3	5,615	4,656	-959	-17.1	-34.6
European Union ¹	2,507	2,398	-109	-4.3	18,964	16,345	-2,619	-13.8	-25.8
Other Organization for Economic Co-operation and Development ²	1,397	1,288	-109	-7.8	10,079	7,935	-2,145	-21.3	-36.4
Other countries	3,619	3,429	-190	-5.3	23,481	21,332	-2,149	-9.2	-12.9
Total	28,616	29,285	670	2.3	244,380	184,713	-59,667	-24.4	-32.7
Imports from:									
United States	18,754	18,408	-346	-1.8	136,462	116,802	-19,660	-14.4	-21.8
Japan	713	715	3	0.4	5,821	4,687	-1,134	-19.5	-23.3
European Union ¹	3,218	3,182	-36	-1.1	22,370	19,574	-2,796	-12.5	-22.9
Other Organization for Economic Co-operation and Development ²	1,811	2,012	202	11.1	13,078	12,132	-947	-7.2	-18.2
Other countries	5,225	5,022	-203	-3.9	37,414	32,633	-4,781	-12.8	-26.7
Total	29,721	29,340	-381	-1.3	215,145	185,828	-29,318	-13.6	-22.6
Balance:									
United States	1,710	3,095	1,384	...	49,780	17,644	-32,136
Japan	-85	-48	37	...	-206	-31	175
European Union ¹	-711	-784	-73	...	-3,406	-3,229	177
Other Organization for Economic Co-operation and Development ²	-414	-725	-311	...	-2,999	-4,197	-1,198
Other countries	-1,606	-1,593	13	...	-13,934	-11,301	2,633
Total	-1,105	-55	1,050	...	29,235	-1,114	-30,349

1. European Union includes: Austria, Belgium, Bulgaria, Cyprus, Czech Republic, Denmark, Estonia, Finland, France, Germany, Greece, Hungary, Ireland, Italy, Latvia, Lithuania, Luxembourg, Malta, Netherlands, Poland, Portugal, Romania, Slovakia, Slovenia, Spain, Sweden and United Kingdom.
2. Other Organization for Economic Co-operation and Development includes: Australia, Canada, Iceland, Mexico, New Zealand, Norway, South Korea, Switzerland and Turkey.

Text table 2
Reconciliation of customs and balance of payments trade data, not seasonally adjusted

	2009						2008
	June	May	April	March	February	January	Annual
	millions of dollars						
Exports							
Customs basis	28,765	27,659	29,690	32,724	29,787	29,488	483,630
Balance of payments adjustments	1,285	1,110	781	1,120	515	99	6,227
Valuation and residency							
Inland freight	482	463	508	564	516	494	6,997
Other valuation and residency	-38	-764	-658	-614	-931	-1,236	-16,564
Timing	134	5	-13	18	-9	-76	-79
Coverage	707	1,406	944	1,152	939	917	15,873
Balance of payments basis	30,050	28,769	30,470	33,844	30,302	29,587	489,857
Imports							
Customs basis	29,564	28,311	30,711	32,059	29,615	29,210	433,519
Balance of payments adjustments	803	814	749	844	549	642	9,469
Valuation and residency							
Inland freight	645	617	636	656	602	619	8,908
Other valuation and residency	20	69	24	-16	-38	-38	-653
Timing	0	0	0	0	0	0	0
Coverage	138	128	89	204	-15	61	1,214
Balance of payments basis	30,367	29,125	31,460	32,903	30,164	29,852	442,988

Statistical tables

Table 1-1
Merchandise trade of Canada, balance of payments basis, seasonally adjusted — Current dollars

	Exports	Imports	Balance	Period to period change		
				Exports	Imports	Balance
				millions of dollars	percent	millions of dollars
2005	450,210	387,838	62,372	0.0	0.0	0
2006	453,951	404,345	49,606	0.8	4.3	-12,767
2007	463,127	415,229	47,898	2.0	2.7	-1,708
2008	489,857	442,988	46,869	5.8	6.7	-1,029
2007						
First quarter	120,454	106,198	14,256	4.4	3.1	1,887
Second quarter	118,191	103,166	15,025	-1.9	-2.9	769
Third quarter	113,144	104,379	8,765	-4.3	1.2	-6,260
Fourth quarter	111,338	101,486	9,852	-1.6	-2.8	1,088
2008						
First quarter	117,996	104,991	13,005	6.0	3.5	3,152
Second quarter	126,385	110,154	16,230	7.1	4.9	3,226
Third quarter	129,144	115,028	14,116	2.2	4.4	-2,114
Fourth quarter	116,332	112,815	3,517	-9.9	-1.9	-10,599
2009						
First quarter	96,679	95,944	735	-16.9	-15.0	-2,782
Second quarter	88,034	89,884	-1,850	-8.9	-6.3	-2,585
2008						
January	38,209	35,496	2,713	4.6	3.4	512
February	39,689	35,067	4,623	3.9	-1.2	1,909
March	40,097	34,428	5,669	1.0	-1.8	1,046
April	40,507	35,564	4,943	1.0	3.3	-726
May	42,365	36,688	5,677	4.6	3.2	733
June	43,513	37,902	5,611	2.7	3.3	-66
July	44,379	39,476	4,903	2.0	4.2	-708
August	42,685	37,479	5,206	-3.8	-5.1	302
September	42,080	38,073	4,008	-1.4	1.6	-1,198
October	42,181	38,991	3,190	0.2	2.4	-818
November	39,177	38,129	1,049	-7.1	-2.2	-2,141
December	34,974	35,695	-721	-10.7	-6.4	-1,770
2009						
January	31,205	32,175	-970	-10.8	-9.9	-249
February	33,174	32,437	737	6.3	0.8	1,707
March	32,301	31,332	969	-2.6	-3.4	232
April	30,133	30,823	-690	-6.7	-1.6	-1,659
May	28,616	29,721	-1,105	-5.0	-3.6	-415
June	29,285	29,340	-55	2.3	-1.3	1,050

Note(s): Due to rounding, monthly data may not add up to quarterly data and quarterly data may not add up to annual data.

Table 1-2
Merchandise trade of Canada, balance of payments basis, seasonally adjusted — Constant dollars, 2002

	Exports	Imports	Balance	Period to period change	
				Exports	Imports
	millions of dollars			percent	
2005	439,306	431,680	7,626	0.0	0.0
2006	443,398	456,881	-13,483	0.9	5.8
2007	449,581	483,522	-33,941	1.4	5.8
2008	415,123	485,171	-70,048	-7.7	0.3
2007					
First quarter	113,771	117,511	-3,740	2.0	1.6
Second quarter	113,538	118,154	-4,615	-0.2	0.5
Third quarter	112,008	123,373	-11,366	-1.3	4.4
Fourth quarter	110,264	124,484	-14,220	-1.6	0.9
2008					
First quarter	107,366	123,120	-15,754	-2.6	-1.1
Second quarter	105,949	123,992	-18,043	-1.3	0.7
Third quarter	104,458	124,141	-19,683	-1.4	0.1
Fourth quarter	97,350	113,917	-16,567	-6.8	-8.2
2009					
First quarter	87,296	97,933	-10,637	-10.3	-14.0
Second quarter	82,618	96,735	-14,116	-5.4	-1.2
2008					
January	35,336	41,546	-6,210	0.0	1.2
February	36,473	41,373	-4,900	3.2	-0.4
March	35,557	40,201	-4,644	-2.5	-2.8
April	35,078	40,481	-5,404	-1.3	0.7
May	35,639	41,927	-6,288	1.6	3.6
June	35,233	41,584	-6,351	-1.1	-0.8
July	35,530	43,031	-7,502	0.8	3.5
August	34,592	40,426	-5,834	-2.6	-6.1
September	34,337	40,684	-6,347	-0.7	0.6
October	33,470	39,215	-5,745	-2.5	-3.6
November	32,772	38,542	-5,770	-2.1	-1.7
December	31,108	36,160	-5,052	-5.1	-6.2
2009					
January	28,149	33,016	-4,867	-9.5	-8.7
February	30,005	33,033	-3,027	6.6	0.0
March	29,141	31,884	-2,743	-2.9	-3.5
April	28,147	31,990	-3,843	-3.4	0.3
May	27,211	32,445	-5,234	-3.3	1.4
June	27,260	32,300	-5,040	0.2	-0.4

Note(s): Due to rounding, monthly data may not add up to quarterly data and quarterly data may not add up to annual data.

Table 1-3
Merchandise trade of Canada, balance of payments basis, seasonally adjusted — Price indices (Laspeyres)

	2002=100			Period to period change		
	Exports	Imports	Terms of trade	Exports	Imports	Terms of trade
	millions of dollars			percent		
2005	104.6	92.2	113.4	0.0	0.0	0.0
2006	105.1	92.7	113.3	0.4	0.5	-0.1
2007	107.2	91.6	117.0	2.0	-1.2	3.2
2008	116.3	97.6	119.1	8.5	6.6	1.9
2007						
First quarter	109.5	95.2	115.0	3.1	1.9	1.2
Second quarter	112.0	92.9	120.5	2.3	-2.4	4.7
Third quarter	105.0	90.1	116.5	-6.2	-3.0	-3.2
Fourth quarter	105.6	88.0	119.9	0.5	-2.3	2.9
2008						
First quarter	111.3	90.4	123.1	5.4	2.7	2.7
Second quarter	118.5	95.2	124.5	6.4	5.2	1.2
Third quarter	121.8	101.1	120.6	2.8	6.2	-3.4
Fourth quarter	114.0	103.9	109.7	-6.4	2.8	-9.2
2009						
First quarter	109.2	101.4	107.7	-4.2	-2.4	-1.8
Second quarter	105.5	97.6	108.1	-3.4	-3.8	0.4
2008						
January	109.7	89.9	122.0	2.3	1.9	0.4
February	110.0	90.0	122.2	0.3	0.2	0.2
March	113.2	91.3	124.0	2.9	1.4	1.5
April	116.3	93.4	124.6	2.7	2.2	0.5
May	118.5	94.5	125.4	1.9	1.2	0.7
June	120.9	97.7	123.7	2.0	3.4	-1.3
July	123.8	99.5	124.4	2.4	1.8	0.6
August	121.6	101.8	119.4	-1.8	2.3	-4.1
September	120.0	101.9	117.8	-1.3	0.1	-1.4
October	121.6	104.8	116.1	1.3	2.8	-1.5
November	116.6	104.2	111.9	-4.1	-0.5	-3.6
December	111.5	102.7	108.5	-4.4	-1.4	-3.0
2009						
January	109.4	100.6	108.7	-1.9	-2.1	0.2
February	109.5	101.2	108.1	0.1	0.7	-0.6
March	109.5	102.5	106.9	0.0	1.2	-1.2
April	106.7	100.7	105.9	-2.6	-1.7	-0.9
May	105.0	96.7	108.6	-1.6	-4.0	2.4
June	104.6	95.5	109.6	-0.4	-1.3	0.9

Note(s): Due to rounding, monthly data may not add up to quarterly data and quarterly data may not add up to annual data.

Table 2-1
Exports by commodity groupings, balance of payments basis, seasonally adjusted — Current dollars

	May	June	Change	Year to date		Year to date change	June		
	2009	2009		2008	2009			2009/2008	
	millions of dollars		percent		millions of dollars		percent		
Total	28,616	29,285	670	2.3	244,380	184,713	-59,667	-24.4	-32.7
Agricultural and fishing products	3,241	3,264	23	0.7	20,048	20,258	210	1.0	-5.5
Wheat	531	567	36	6.9	3,633	3,410	-223	-6.1	1.0
Other agricultural and fishing products	2,710	2,696	-14	-0.5	16,415	16,847	433	2.6	-6.7
Live animals	137	147	10	7.2	1,241	986	-255	-20.5	-35.0
Fish and fish preparations	345	344	-1	-0.4	2,069	2,104	35	1.7	-9.7
Barley	35	38	3	8.0	492	276	-216	-43.9	-38.2
Wheat flour	6	7	0	6.8	51	40	-11	-21.0	-31.4
Other cereals unmilled	49	77	28	56.7	457	344	-114	-24.8	-37.0
Other cereal preparations	250	248	-1	-0.6	1,350	1,510	161	11.9	10.9
Meat and meat preparations	362	359	-3	-0.7	2,077	2,292	215	10.3	-4.3
Alcoholic beverages	65	63	-2	-3.8	407	383	-24	-5.9	-6.8
Other food, feed, beverages and tobacco	954	968	14	1.5	5,257	5,881	624	11.9	6.5
Rapeseed	313	245	-68	-21.7	1,930	1,812	-118	-6.1	-23.5
Other crude vegetable products	193	201	8	3.9	1,083	1,219	136	12.6	2.9
Energy products	5,628	6,414	787	14.0	65,205	37,754	-27,452	-42.1	-50.6
Crude petroleum	3,070	3,755	686	22.3	32,268	18,564	-13,704	-42.5	-43.0
Natural gas	927	916	-11	-1.2	17,167	8,319	-8,847	-51.5	-69.8
Other energy products	1,631	1,743	113	6.9	15,770	10,871	-4,900	-31.1	-48.1
Coal and other bituminous substances	328	350	22	6.7	2,110	2,296	186	8.8	-42.7
Petroleum and coal products	1,125	1,227	102	9.1	11,605	7,282	-4,323	-37.3	-46.4
Electricity	178	166	-12	-6.5	2,056	1,293	-763	-37.1	-63.9
Forestry products	1,573	1,567	-6	-0.4	12,692	10,054	-2,638	-20.8	-26.6
Lumber and sawmill products	518	534	15	2.9	4,581	3,315	-1,266	-27.6	-32.1
Other crude wood products	33	41	9	25.9	310	256	-55	-17.6	-18.0
Lumber	291	300	9	3.1	2,664	1,859	-804	-30.2	-34.8
Other wood fabricated materials	194	192	-3	-1.3	1,607	1,200	-407	-25.3	-30.3
Wood pulp and other wood products	355	341	-14	-3.9	3,371	2,268	-1,103	-32.7	-36.3
Newsprint and other paper and paperboard	700	693	-8	-1.1	4,740	4,470	-269	-5.7	-14.8
Newsprint paper	370	362	-8	-2.2	2,486	2,398	-88	-3.5	-16.3
Other paper and paperboard	330	331	1	0.2	2,254	2,073	-181	-8.0	-13.2
Industrial goods and materials	5,936	6,297	361	6.1	55,281	39,485	-15,796	-28.6	-34.6
Metal ores	842	675	-167	-19.9	7,258	4,856	-2,402	-33.1	-49.5
Iron ores, concentrates and scrap	387	318	-69	-17.9	2,270	2,232	-38	-1.7	-27.9
Copper ores, concentrates and scrap	104	121	17	16.8	1,047	666	-381	-36.4	-52.9
Nickel ores, concentrates and scrap	165	70	-94	-57.2	2,013	690	-1,324	-65.7	-74.7
Zinc ores, concentrates and scrap	13	11	-2	-15.9	181	110	-71	-39.2	-76.2
Other ores, concentrates and scrap	174	155	-19	-10.9	1,747	1,159	-588	-33.6	-51.0
Chemicals, plastics and fertilizers	1,991	2,001	10	0.5	16,926	13,123	-3,803	-22.5	-35.4
Inorganic chemicals	316	294	-22	-7.0	2,638	2,232	-406	-15.4	-43.2
Organic chemicals	387	399	13	3.3	3,546	2,333	-1,213	-34.2	-39.0
Fertilizers and fertilizer materials	296	330	34	11.5	2,860	2,316	-544	-19.0	-41.1
Synthetic rubber and plastics	775	753	-21	-2.8	6,231	4,845	-1,386	-22.2	-30.2
Other chemical products	218	225	6	2.9	1,651	1,396	-255	-15.4	-22.1
Metals and alloys	1,794	2,357	563	31.4	20,713	13,276	-7,437	-35.9	-32.6
Primary iron and steel	25	64	39	155.7	613	202	-411	-67.0	-46.4
Steel bars, rods, plates, sheets	175	184	9	5.2	2,444	1,435	-1,009	-41.3	-62.0
Other iron and steel and alloys	182	180	-2	-1.3	1,939	1,210	-729	-37.6	-51.6
Aluminum including alloys	412	411	-1	-0.2	4,538	2,896	-1,641	-36.2	-47.8
Copper and alloys	137	142	5	3.5	2,422	1,037	-1,385	-57.2	-60.6
Nickel and alloys	157	140	-17	-10.6	2,131	1,044	-1,087	-51.0	-59.1
Precious metals and alloys	548	1,085	537	98.1	5,012	4,557	-455	-9.1	42.0
Zinc and alloys	79	75	-4	-4.7	819	468	-351	-42.9	-39.8
Other non-ferrous metals and alloys	80	76	-4	-4.8	796	427	-369	-46.3	-45.4

Table 2-1 – continued

Exports by commodity groupings, balance of payments basis, seasonally adjusted — Current dollars

	May	June	Change	Year to date		Year to date change	June		
	2009	2009		2008	2009			2009/2008	
	millions of dollars		percent		millions of dollars		percent		
Other industrial goods and materials	1,309	1,264	-44	-3.4	10,384	8,230	-2,154	-20.7	-25.8
Asbestos unmanufactured	6	4	-1	-20.5	31	32	0	0.8	-24.6
Other crude animal products	62	55	-7	-11.0	454	366	-89	-19.5	-23.5
Other crude non-metallic minerals	260	229	-30	-11.6	2,545	1,615	-929	-36.5	-46.1
Other crude materials, inedible	52	57	5	9.3	284	299	14	5.0	7.4
Metal fabricated basic products	334	314	-20	-6.0	2,690	2,128	-561	-20.9	-30.8
Textile fabricated materials	167	165	-2	-1.0	1,214	1,052	-162	-13.4	-17.6
Non-metallic mineral basic products	158	160	2	1.0	1,179	1,006	-172	-14.6	-20.2
Other fabricated materials	270	279	9	3.3	1,986	1,732	-254	-12.8	-4.7
Machinery and equipment	6,699	6,423	-277	-4.1	44,709	42,994	-1,715	-3.8	-12.0
Industrial and agricultural machinery	1,612	1,575	-38	-2.3	11,104	10,473	-631	-5.7	-15.7
Industrial machinery	1,444	1,406	-38	-2.6	10,120	9,386	-734	-7.2	-17.1
Agricultural machinery includ. tractors	169	169	0	0.2	985	1,087	102	10.4	-2.6
Aircraft and other transportation equipment	1,544	1,559	15	1.0	9,952	9,957	4	0.0	5.5
Aircraft, engines, parts	1,223	1,233	10	0.8	7,399	7,939	539	7.3	16.6
Other transportation equipment	321	326	5	1.7	2,553	2,018	-535	-21.0	-22.5
Other machinery and equipment	3,543	3,288	-254	-7.2	23,653	22,564	-1,088	-4.6	-16.9
Television, telecommunication equipment	748	658	-90	-12.0	4,664	4,733	68	1.5	-17.0
Office machines and equipment	410	352	-58	-14.0	2,963	2,559	-404	-13.6	-29.3
Other equipment and tools	1,599	1,592	-7	-0.4	11,203	10,207	-995	-8.9	-17.6
Other end products, inedible	785	685	-100	-12.7	4,822	5,065	243	5.0	-6.3
Automotive products	3,087	2,915	-171	-5.6	31,139	19,151	-11,987	-38.5	-44.7
Passenger autos and chassis	1,724	1,779	55	3.2	17,104	10,102	-7,001	-40.9	-40.6
Trucks and other motor vehicles	366	237	-129	-35.3	3,647	2,579	-1,068	-29.3	-62.2
Motor vehicle parts	997	899	-97	-9.7	10,388	6,470	-3,918	-37.7	-45.4
Other consumer goods	1,547	1,509	-38	-2.5	8,718	9,499	780	8.9	-7.2
Special transactions trade	517	506	-11	-2.2	3,841	3,335	-507	-13.2	-24.3
Unallocated balance of payments adjustments	387	389	3	0.7	2,747	2,185	-562	-20.5	-12.8

Table 2-2
Exports by commodity groupings, balance of payments basis, seasonally adjusted — Constant dollars, 2002

	May	June	Change	Year to date		Year to date change	June		
	2009	2009		2008	2009				
	millions of dollars		percent		millions of dollars		percent		
Total	27,211	27,260	48	0.2	213,315	169,915	-43,401	-20.3	-22.6
Agricultural and fishing products	3,034	3,083	49	1.6	18,676	18,766	90	0.5	-1.7
Wheat	431	452	20	4.7	2,104	2,775	671	31.9	40.5
Other agricultural and fishing products	2,603	2,632	29	1.1	16,572	15,990	-581	-3.5	-6.5
Live animals	149	167	18	11.8	1,484	1,082	-402	-27.1	-34.1
Fish and fish preparations	427	427	-0	-0.1	2,424	2,412	-12	-0.5	-4.3
Barley	27	28	1	4.2	343	202	-141	-41.2	-31.7
Wheat flour	6	6	0	6.9	40	36	-4	-11.2	-24.5
Other cereals unmilled	46	78	32	68.2	412	310	-102	-24.7	-20.2
Other cereal preparations	204	205	1	0.4	1,286	1,203	-82	-6.4	0.8
Meat and meat preparations	396	414	18	4.4	2,531	2,428	-103	-4.1	-1.8
Alcoholic beverages	114	106	-9	-7.5	688	651	-37	-5.4	-7.4
Other food, feed, beverages and tobacco	806	832	26	3.2	5,194	5,069	-125	-2.4	-4.3
Rapeseed	266	207	-59	-22.1	1,298	1,600	303	23.3	-2.0
Other crude vegetable products	159	161	2	1.0	873	997	124	14.3	9.1
Energy products	4,010	4,348	338	8.4	28,084	26,195	-1,890	-6.7	-9.2
Crude petroleum	1,697	1,956	259	15.3	11,556	11,314	-241	-2.1	-8.2
Natural gas	1,172	1,255	83	7.1	9,038	8,041	-997	-11.0	-5.1
Other energy products	1,142	1,137	-4	-0.4	7,491	6,839	-652	-8.7	-14.7
Coal and other bituminous substances	93	132	38	40.7	973	577	-397	-40.7	-28.0
Petroleum and coal products	763	760	-3	-0.4	4,950	4,880	-70	-1.4	-8.9
Electricity	285	246	-40	-13.9	1,568	1,383	-185	-11.8	-22.2
Forestry products	1,984	2,027	43	2.2	15,612	12,079	-3,532	-22.6	-19.3
Lumber and sawmill products	734	776	41	5.6	6,112	4,535	-1,578	-25.8	-21.1
Other crude wood products	41	61	21	50.4	423	324	-100	-23.5	-4.4
Lumber	471	491	20	4.3	3,856	2,862	-994	-25.8	-20.8
Other wood fabricated materials	223	223	1	0.3	1,833	1,348	-485	-26.4	-25.4
Wood pulp and other wood products	533	518	-14	-2.7	4,012	3,217	-795	-19.8	-17.0
Newsprint and other paper and paperboard	717	733	16	2.2	5,487	4,328	-1,159	-21.1	-18.9
Newsprint paper	368	377	8	2.3	2,855	2,233	-622	-21.8	-19.7
Other paper and paperboard	349	356	7	2.1	2,632	2,094	-538	-20.4	-18.0
Industrial goods and materials	4,788	4,865	77	1.6	38,241	30,571	-7,670	-20.1	-22.8
Metal ores	481	386	-94	-19.6	3,477	2,737	-740	-21.3	-36.4
Iron ores, concentrates and scrap	157	146	-11	-6.9	1,253	849	-404	-32.3	-26.9
Copper ores, concentrates and scrap	52	55	3	5.4	330	339	9	2.9	-31.3
Nickel ores, concentrates and scrap	121	45	-76	-63.1	824	516	-308	-37.3	-66.6
Zinc ores, concentrates and scrap	9	7	-2	-21.4	94	80	-14	-15.0	-75.0
Other ores, concentrates and scrap	143	134	-8	-5.7	977	953	-24	-2.4	-20.0
Chemicals, plastics and fertilizers	1,602	1,633	31	2.0	12,473	9,980	-2,493	-20.0	-24.5
Inorganic chemicals	162	162	-1	-0.4	1,263	1,095	-169	-13.3	-28.8
Organic chemicals	331	349	17	5.2	1,950	2,021	70	3.6	-1.8
Fertilizers and fertilizer materials	102	110	9	8.5	1,571	761	-810	-51.5	-58.1
Synthetic rubber and plastics	756	751	-6	-0.7	5,695	4,519	-1,176	-20.7	-22.8
Other chemical products	250	262	12	4.7	1,993	1,585	-408	-20.5	-24.0
Metals and alloys	1,394	1,632	238	17.1	12,798	9,709	-3,089	-24.1	-22.7
Primary iron and steel	19	36	17	87.3	375	129	-246	-65.5	-40.6
Steel bars, rods, plates, sheets	137	154	17	12.3	2,005	1,063	-941	-47.0	-55.6
Other iron and steel and alloys	166	173	7	4.5	1,575	1,007	-568	-36.1	-35.4
Aluminum including alloys	515	505	-11	-2.1	3,950	3,485	-465	-11.8	-22.3
Copper and alloys	64	62	-2	-3.2	785	570	-214	-27.3	-45.0
Nickel and alloys	137	107	-30	-22.2	834	815	-19	-2.3	-30.7
Precious metals and alloys	244	492	248	101.3	2,577	1,979	-598	-23.2	22.9
Zinc and alloys	65	61	-5	-6.9	445	404	-41	-9.2	-18.4
Other non-ferrous metals and alloys	47	44	-3	-6.2	252	255	3	1.3	-6.7

Table 2-2 – continued

Exports by commodity groupings, balance of payments basis, seasonally adjusted — Constant dollars, 2002

	May	June	Change	Year to date		Year to date change	June		
	2009	2009		2008	2009			2009/2008	
	millions of dollars		percent		millions of dollars		percent		
Other industrial goods and materials	1,312	1,213	-98	-7.5	9,493	8,145	-1,349	-14.2	-14.8
Asbestos unmanufactured	6	5	-1	-19.0	36	33	-3	-8.3	-29.3
Other crude animal products	88	79	-9	-10.0	484	486	1	0.3	2.0
Other crude non-metallic minerals	379	298	-81	-21.3	2,596	2,426	-170	-6.5	-8.0
Other crude materials, inedible	58	55	-3	-4.7	283	298	14	5.1	3.6
Metal fabricated basic products	259	244	-15	-5.9	2,238	1,650	-588	-26.3	-33.3
Textile fabricated materials	165	163	-1	-0.9	1,315	981	-334	-25.4	-23.2
Non-metallic mineral basic products	128	130	2	1.5	1,030	806	-225	-21.8	-23.8
Other fabricated materials	229	239	10	4.3	1,510	1,465	-45	-3.0	12.1
Machinery and equipment	7,248	6,971	-277	-3.8	51,934	45,334	-6,599	-12.7	-16.9
Industrial and agricultural machinery	1,469	1,443	-27	-1.8	10,838	9,558	-1,280	-11.8	-19.5
Industrial machinery	1,318	1,290	-29	-2.2	9,836	8,575	-1,260	-12.8	-20.6
Agricultural machinery includ. tractors	151	153	2	1.2	1,002	982	-20	-2.0	-9.7
Aircraft and other transportation equipment	1,831	1,870	39	2.1	12,924	11,497	-1,426	-11.0	-1.1
Aircraft, engines, parts	1,509	1,541	33	2.2	10,200	9,498	-702	-6.9	5.1
Other transportation equipment	323	329	6	2.0	2,724	1,999	-724	-26.6	-22.6
Other machinery and equipment	3,947	3,658	-290	-7.3	28,172	24,279	-3,892	-13.8	-22.2
Television, telecommunication equipment	885	792	-92	-10.4	6,017	5,459	-557	-9.3	-21.9
Office machines and equipment	906	806	-100	-11.0	6,845	5,347	-1,499	-21.9	-30.3
Other equipment and tools	1,474	1,468	-6	-0.4	10,869	9,364	-1,505	-13.9	-21.2
Other end products, inedible	683	592	-91	-13.4	4,440	4,110	-331	-7.4	-11.7
Automotive products	3,674	3,527	-147	-4.0	42,876	22,206	-20,670	-48.2	-50.4
Passenger autos and chassis	2,212	2,326	114	5.2	26,377	12,658	-13,719	-52.0	-48.0
Trucks and other motor vehicles	402	240	-162	-40.4	4,861	2,828	-2,033	-41.8	-70.4
Motor vehicle parts	1,060	961	-99	-9.3	11,638	6,720	-4,918	-42.3	-47.6
Other consumer goods	1,478	1,444	-33	-2.3	8,565	9,103	538	6.3	-9.3
Special transactions trade	482	467	-15	-3.1	3,290	3,037	-253	-7.7	-12.9
Unallocated balance of payments adjustments	513	528	14	2.8	6,037	2,624	-3,413	-56.5	-38.8

Table 3-1
Domestic exports to selected countries, customs basis, not seasonally adjusted — June

	Agricultural and fishing products	Energy products	Forestry products	Industrial goods	Machinery and equipment	Automotive products	Consumer goods	Special transactions	Total
millions of dollars									
United States									
2008	1,828.3	11,194.4	1,469.0	5,851.3	4,453.9	4,914.5	983.8	616.3	31,311.5
2009	1,654.7	6,275.4	1,090.8	3,711.6	3,496.3	2,646.1	947.8	426.2	20,248.9
Mexico									
2008	152.1	12.3	12.5	125.5	108.7	67.8	10.3	0.9	489.9
2009	89.9	0.5	8.2	51.2	115.9	52.8	4.6	0.3	323.4
Japan									
2008	377.4	221.4	125.0	285.2	50.5	3.0	5.7	0.7	1,068.8
2009	300.7	104.7	79.8	103.1	45.9	3.6	6.8	0.1	644.7
European Union									
Germany									
2008	13.9	54.3	15.9	151.6	92.0	4.6	13.1	1.3	346.6
2009	20.6	19.1	7.4	33.1	148.0	2.8	15.3	2.9	249.2
France									
2008	32.3	6.4	17.7	35.8	106.5	3.4	34.1	3.2	239.6
2009	19.8	0.2	13.7	46.6	96.7	3.3	23.4	3.2	206.8
United Kingdom									
2008	38.5	43.5	36.8	649.5	133.2	6.5	18.4	6.5	933.0
2009	27.4	0.3	30.7	450.8	162.4	3.3	22.7	3.3	700.9
Italy									
2008	5.6	65.3	23.0	91.6	41.2	1.2	6.3	0.5	234.8
2009	36.2	0.0	22.4	13.3	36.2	1.2	6.1	3.4	118.8
Other European Union									
2008	77.1	278.4	43.5	380.4	239.4	19.6	84.1	5.9	1,128.4
2009	60.7	93.6	26.0	158.7	171.1	10.4	72.1	4.9	597.4
Total									
2008	167.4	447.9	136.9	1,308.9	612.4	35.4	156.1	17.4	2,882.4
2009	164.7	113.2	100.2	702.4	614.4	21.0	139.6	17.6	1,873.1
Newly industrialized countries									
South Korea									
2008	33.7	121.5	47.5	125.7	35.2	0.9	3.9	0.8	369.1
2009	28.9	65.3	23.7	76.8	62.9	6.9	4.7	0.5	269.7
Hong Kong									
2008	25.8	0.0	7.9	79.1	20.1	0.8	4.3	1.1	139.2
2009	27.7	0.0	8.4	61.1	17.6	0.6	4.6	1.0	121.1
Taiwan									
2008	14.4	22.2	35.9	58.6	18.4	0.3	2.2	0.2	152.2
2009	16.1	0.1	15.6	30.9	9.5	0.1	3.6	0.1	76.0
Singapore									
2008	3.3	0.7	0.7	20.1	27.7	0.6	2.6	1.0	56.6
2009	4.6	0.3	10.7	29.5	25.5	1.7	3.5	0.2	75.9
Total									
2008	77.2	144.3	92.0	283.5	101.4	2.5	13.0	3.2	717.1
2009	77.3	65.7	58.5	198.3	115.5	9.3	16.4	1.7	542.7
Other countries									
2008	709.6	317.3	373.2	1,446.8	720.5	81.6	84.6	24.1	3,757.6
2009	817.9	144.3	251.2	844.0	797.4	82.3	78.9	28.1	3,043.9
Total									
2008	3,311.9	12,337.6	2,208.6	9,301.3	6,047.3	5,104.7	1,253.4	662.5	40,227.3
2009	3,105.3	6,703.8	1,588.7	5,610.7	5,185.3	2,815.0	1,194.0	474.0	26,676.8

Table 3-2
Domestic exports to selected countries, customs basis, not seasonally adjusted — Year to date, January to June

	Agricultural and fishing products	Energy products	Forestry products	Industrial goods	Machinery and equipment	Automotive products	Consumer goods	Special transactions	Total
millions of dollars									
United States									
2008	9,834.4	59,688.0	8,786.7	33,634.3	26,125.8	29,025.3	5,186.1	3,470.9	175,751.6
2009	9,999.7	34,283.1	7,015.2	22,842.8	23,748.6	16,810.0	5,721.5	2,869.9	123,290.7
Mexico									
2008	682.1	30.7	91.2	599.2	450.0	425.9	33.3	3.1	2,315.3
2009	534.9	15.9	48.5	359.5	497.3	310.0	21.7	6.5	1,794.2
Japan									
2008	2,003.2	836.6	713.2	1,267.2	289.5	19.7	54.3	2.5	5,186.3
2009	1,602.3	975.7	513.7	571.7	324.5	18.1	82.6	3.4	4,092.0
European Union									
Germany									
2008	93.5	107.3	89.0	622.2	641.2	23.8	85.3	6.7	1,669.0
2009	84.1	145.7	62.0	250.5	980.2	23.8	76.0	8.2	1,630.7
France									
2008	90.3	244.5	141.1	179.1	632.1	30.2	182.3	7.3	1,506.9
2009	79.0	75.0	75.0	339.6	640.8	18.2	160.4	13.0	1,400.9
United Kingdom									
2008	237.9	147.2	189.0	4,539.9	1,080.3	38.5	103.3	25.6	6,361.7
2009	188.3	65.8	159.3	3,742.0	1,090.0	17.8	170.3	20.2	5,453.7
Italy									
2008	150.7	156.8	197.7	510.2	247.4	5.8	33.4	2.5	1,304.5
2009	228.7	42.1	143.2	123.0	270.8	5.1	34.1	4.9	852.0
Other European Union									
2008	495.1	609.5	245.5	2,240.3	1,466.4	136.9	312.3	21.1	5,527.1
2009	428.6	524.5	165.9	1,218.1	1,401.4	71.7	414.3	22.1	4,246.5
Total									
2008	1,067.4	1,265.2	862.3	8,091.7	4,067.3	235.2	716.8	63.2	16,369.2
2009	1,008.7	853.1	605.5	5,673.2	4,383.2	136.6	855.1	68.5	13,583.8
Newly industrialized countries									
South Korea									
2008	177.7	502.7	277.7	553.8	189.6	5.2	28.3	4.1	1,739.1
2009	160.3	491.5	161.8	485.2	270.6	21.4	24.3	3.3	1,618.5
Hong Kong									
2008	172.8	0.2	48.3	392.0	129.6	3.0	22.1	5.6	773.4
2009	187.9	0.2	48.6	269.6	149.4	4.4	31.4	4.3	695.8
Taiwan									
2008	74.1	72.1	178.9	373.5	69.9	1.0	15.6	1.3	786.5
2009	78.8	97.8	94.3	149.2	59.6	0.7	17.8	0.5	498.7
Singapore									
2008	19.9	24.9	6.6	113.8	180.4	6.2	15.2	2.4	369.4
2009	21.2	2.2	23.0	223.5	156.5	18.7	15.6	1.5	462.2
Total									
2008	444.5	599.9	511.5	1,433.1	569.4	15.4	81.2	13.4	3,668.5
2009	448.2	591.7	327.7	1,127.5	636.2	45.3	89.1	9.5	3,275.2
Other countries									
2008	4,893.6	1,002.0	2,040.0	8,049.1	4,588.3	415.2	612.4	87.1	21,687.7
2009	5,336.0	734.3	1,664.5	5,320.9	4,531.6	392.8	583.2	140.8	18,704.2
Total									
2008	18,925.3	63,422.5	13,005.0	53,074.5	36,090.6	30,136.8	6,684.4	3,640.2	224,979.4
2009	18,929.8	37,453.9	10,175.1	35,895.6	34,121.5	17,712.7	7,353.8	3,098.5	164,740.8

Table 4
Domestic exports by country, customs basis, not seasonally adjusted

	June		January to June		Variation
	2008	2009	2008	2009	January to June 2009/2008
millions of dollars					
North America					
Greenland	0.4	1.8	9.2	11.0	19.6
Mexico	489.9	323.4	2,315.3	1,794.2	-22.5
Saint Pierre and Miquelon	1.2	1.3	6.6	6.6	0.0
United States	31,311.5	20,248.9	175,751.6	123,290.7	-29.8
Total	31,803.0	20,575.5	178,082.7	125,102.4	-29.8
Western Europe					
Andorra	0.0	0.0	0.1	0.0	0.0
Austria	52.8	40.0	255.4	254.3	-0.4
Belgium	267.9	92.6	1,529.3	905.0	-40.8
Denmark	29.3	14.2	196.4	283.2	44.2
Faeroe Islands	0.0	0.0	0.8	0.6	-25.0
Finland	121.9	20.6	365.6	146.4	-60.0
France	239.6	206.8	1,506.9	1,400.9	-7.0
Germany	346.6	249.2	1,669.0	1,630.7	-2.3
Gibraltar	199.5	0.0	471.6	16.8	-96.4
Greece	9.1	7.7	54.8	47.7	-13.0
Iceland	3.8	43.4	30.0	57.2	90.7
Italy	234.8	118.8	1,304.5	852.0	-34.7
Luxembourg	7.6	3.6	45.1	20.2	-55.2
Malta	3.1	1.0	10.3	39.3	281.6
Netherlands	277.5	210.6	1,592.8	1,170.0	-26.5
Norway	232.8	112.2	1,593.6	764.3	-52.0
Portugal	11.4	6.4	67.6	82.9	22.6
Republic of Ireland (Eire)	61.9	59.1	196.3	290.5	48.0
Spain	123.7	57.4	462.5	513.0	10.9
Sweden	26.1	20.8	192.9	124.0	-35.7
Switzerland	116.2	37.4	585.2	474.2	-19.0
United Kingdom	933.0	700.9	6,361.7	5,453.7	-14.3
Total	3,298.7	2,002.5	18,492.5	14,527.0	-21.4
Other Europe					
Albania	4.3	2.2	13.5	4.8	-64.4
Armenia	1.4	0.8	8.3	3.0	-63.9
Azerbaijan	1.3	0.6	9.7	5.9	-39.2
Belarus	0.2	0.1	2.6	0.7	-73.1
Bosnia and Herzegovina	0.4	0.5	2.8	1.9	-32.1
Bulgaria	2.2	10.0	12.2	21.9	79.5
Croatia	2.7	77.3	31.6	88.4	179.7
Czech Republic	24.0	7.0	136.4	61.2	-55.1
Estonia	2.6	2.1	11.6	9.5	-18.1
Georgia	1.2	0.4	7.9	3.1	-60.8
Hungary	8.9	9.1	73.7	45.1	-38.8
Kazakhstan	12.9	9.2	154.6	101.7	-34.2
Kyrgyzstan	0.6	1.3	3.9	2.5	-35.9
Latvia	3.6	1.7	21.6	14.4	-33.3
Lithuania	3.4	5.8	20.9	24.3	16.3
Macedonia (Former Yugoslav Republic of Macedonia)	0.7	0.8	6.4	6.7	4.7
Montenegro	1.2	0.1	2.6	1.1	-57.7
Poland	20.3	11.3	140.9	89.9	-36.2
Republic of Moldova	0.6	0.1	2.9	1.2	-58.6
Romania	57.6	9.4	81.6	36.4	-55.4
Russian Federation	106.2	59.0	643.2	441.8	-31.3
Serbia	2.3	4.2	6.5	10.7	64.6
Slovakia	2.1	5.1	25.4	12.1	-52.4
Slovenia	9.8	1.2	24.3	49.5	103.7
Tajikistan	0.3	0.1	2.4	1.1	-54.2
Turkmenistan	0.0	1.8	0.7	4.0	471.4
Ukraine	15.5	4.5	87.7	31.0	-64.7
Uzbekistan	2.6	1.3	3.5	8.2	134.3
Total	289.0	227.1	1,539.4	1,082.2	-29.7

Table 4 – continued

Domestic exports by country, customs basis, not seasonally adjusted

	June		January to June		Variation
	2008	2009	2008	2009	January to June 2009/2008
millions of dollars					
Middle East					
Bahrain	3.0	2.3	36.0	9.4	-73.9
Cyprus	1.5	0.7	9.4	5.7	-39.4
Egypt	42.0	115.2	186.1	327.9	76.2
Eritrea	0.0	0.0	0.2	0.1	-50.0
Ethiopia	11.9	0.7	35.8	6.0	-83.2
Iran	34.1	49.7	117.4	262.7	123.8
Iraq	52.0	5.7	130.5	227.3	74.2
Israel	41.5	34.4	214.4	158.3	-26.2
Jordan	7.9	3.9	34.2	29.0	-15.2
Kuwait	8.1	6.3	54.4	36.2	-33.5
Lebanon	5.1	28.5	35.9	59.2	64.9
Libya	11.3	23.2	78.2	165.0	111.0
Oman	8.1	9.9	36.3	68.2	87.9
Qatar	6.2	20.4	41.5	72.5	74.7
Saudi Arabia	77.9	94.6	548.6	660.2	20.3
Somalia	0.5	0.1	0.5	0.1	-80.0
Sudan	3.3	3.1	108.8	67.4	-38.1
Syria	7.2	6.2	36.3	24.5	-32.5
Turkey	107.1	56.6	542.9	374.1	-31.1
United Arab Emirates	94.6	88.8	560.6	594.1	6.0
Yemen	1.5	4.0	17.0	13.6	-20.0
Total	524.7	554.4	2,825.1	3,161.5	11.9
Other Africa					
Algeria	48.4	28.9	456.8	199.9	-56.2
Angola	5.5	8.3	82.9	45.8	-44.8
Antarctica	0.0	0.0	0.8	0.0	0.0
Benin	2.1	0.7	6.1	4.0	-34.4
Botswana	1.4	0.5	4.1	2.8	-31.7
Bouvet Island	0.0	0.0	0.0	0.0	0.0
Burkina Faso	0.6	2.9	3.6	5.8	61.1
Burundi	0.1	0.1	0.7	0.5	-28.6
Cameroon	1.4	0.6	8.2	13.5	64.6
Cape Verde	0.0	0.2	0.5	0.8	60.0
Central African Republic	0.0	0.2	0.1	0.6	500.0
Chad	0.1	2.2	1.9	7.4	289.5
Comoros	0.0	0.1	0.3	0.2	-33.3
Congo	2.2	0.3	12.7	11.6	-8.7
Democratic Republic of the Congo	1.1	0.8	9.6	7.2	-25.0
Djibouti	0.0	0.2	1.3	1.7	30.8
Equatorial Guinea	0.5	0.5	2.2	2.6	18.2
French Southern Territories	0.0	0.0	0.1	0.1	0.0
Gabon	1.0	1.6	13.3	16.1	21.1
Gambia	0.0	0.0	0.2	0.4	100.0
Ghana	18.0	18.3	87.2	83.8	-3.9
Guinea	0.4	0.5	7.6	9.6	26.3
Guinea-Bissau	0.0	0.0	0.5	0.0	
Ivory Coast	2.9	1.9	12.8	13.9	8.6
Kenya	3.8	5.3	20.9	39.1	87.1
Lesotho	0.0	0.0	0.0	0.0	0.0
Liberia	0.4	0.2	3.7	1.7	-54.1
Madagascar	1.3	7.4	5.9	24.1	308.5
Malawi	0.4	0.4	2.9	2.2	-24.1
Mali	0.3	0.2	4.1	3.6	-12.2
Mauritania	0.9	0.1	2.1	1.6	-23.8
Mauritius	0.2	0.7	2.0	3.8	90.0
Morocco	12.5	8.0	161.1	229.3	42.3
Mozambique	0.4	0.4	3.9	2.2	-43.6
Namibia	0.5	0.0	5.5	1.0	-81.8
Niger	0.2	0.2	1.9	1.4	-26.3
Nigeria	3.8	12.4	27.3	74.4	172.5
Rwanda	0.1	0.1	1.3	0.9	-30.8
Saint Helena	0.1	0.0	0.3	0.1	-66.7
Sao Tome and Principe	0.0	0.0	0.0	0.1	...
Senegal	3.2	2.3	17.1	10.9	-36.3
Seychelles	0.2	0.0	0.7	0.4	-42.9

Table 4 – continued

Domestic exports by country, customs basis, not seasonally adjusted

	June		January to June		Variation
	2008	2009	2008	2009	January to June 2009/2008
	millions of dollars				
Sierra Leone	0.4	0.3	4.5	2.4	-46.7
South Africa	68.5	35.4	317.5	233.4	-26.5
Swaziland	0.5	0.1	4.3	9.5	120.9
Togo	0.3	0.4	8.1	10.5	29.6
Tunisia	2.2	5.3	13.9	69.7	401.4
Uganda	0.4	2.1	5.3	7.5	41.5
United Republic of Tanzania	3.3	2.4	20.5	16.2	-21.0
Western Sahara	0.0	0.0	0.0	0.1	...
Zambia	2.0	1.6	11.0	4.0	-63.6
Zimbabwe	0.6	0.1	2.3	7.0	204.3
Total	192.3	154.5	1,361.2	1,185.0	-12.9
Other Asia					
Afghanistan	1.1	8.4	5.3	31.8	500.0
Bangladesh	7.3	49.6	173.1	430.8	148.9
Bhutan	0.0	0.0	0.0	0.1	0.0
British Indian Ocean Territory	0.1	0.0	0.3	0.1	-66.7
Brunei Darussalam	0.1	0.9	0.6	2.1	250.0
Cambodia	0.2	0.3	1.1	2.5	127.3
China	938.3	872.4	5,376.0	5,651.3	5.1
Hong Kong	139.2	121.1	773.4	695.8	-10.0
India	159.7	151.2	843.7	795.8	-5.7
Indonesia	104.9	119.8	762.0	521.7	-31.5
Japan	1,068.8	644.7	5,186.3	4,092.0	-21.1
Laos	1.9	0.2	14.0	1.3	-90.7
Macau	2.4	0.6	20.1	11.5	-42.8
Malaysia	37.3	49.8	387.3	271.2	-30.0
Maldives	0.1	0.3	1.8	1.8	0.0
Mongolia	0.8	0.1	4.8	2.4	-50.0
Myanmar	0.1	0.0	0.1	0.0	0.0
Nepal	0.2	0.3	1.6	1.8	12.5
North Korea	3.1	1.5	12.0	12.7	5.8
Pakistan	13.9	44.0	321.6	271.1	-15.7
Philippines	26.3	25.2	276.1	213.8	-22.6
Singapore	56.6	75.9	369.4	462.2	25.1
South Korea	369.1	269.7	1,739.1	1,618.5	-6.9
Sri Lanka	6.2	29.6	229.0	171.7	-25.0
Taiwan	152.2	76.0	786.5	498.7	-36.6
Thailand	50.5	29.0	320.9	210.4	-34.4
Timor-Leste	0.3	0.0	0.3	0.0	0.0
Viet Nam	32.9	24.6	178.1	83.6	-53.1
Total	3,173.7	2,595.2	17,784.5	16,056.5	-9.7
Oceania					
American Samoa	0.1	0.0	0.3	0.3	0.0
Australia	200.4	103.7	898.7	738.5	-17.8
Christmas Island	0.0	0.0	0.1	0.2	100.0
Cocos (Keeling) Islands	0.0	0.0	0.0	0.2	0.0
Cook Islands	0.0	0.0	0.8	0.0	0.0
Fiji	0.1	0.1	1.1	4.0	263.6
French Polynesia	1.1	0.4	8.2	4.4	-46.3
Guam	0.5	0.3	1.5	0.9	-40.0
Heard Island and McDonald Islands	0.0	0.0	0.0	0.0	...
Kiribati	0.0	0.0	0.0	0.0	0.0
Nauru	0.0	0.0	0.2	0.0	0.0
New Caledonia	0.2	0.6	6.5	2.4	-63.1
New Zealand	28.2	14.8	200.3	130.1	-35.0
Norfolk Island	0.0	0.0	0.0	0.3	0.0
Papua New Guinea	1.3	2.0	5.3	11.9	124.5
Pitcairn	0.0	0.0	0.2	0.1	-50.0
Samoa	0.2	0.0	0.4	0.2	-50.0
Solomon Islands	0.0	0.0	0.0	0.1	0.0
Tonga	0.2	0.1	0.3	0.1	-66.7
United States Minor Outlying Islands	1.8	1.4	7.6	5.8	-23.7
Vanuatu	0.1	0.1	0.1	1.2	...
Total	234.1	123.6	1,131.7	900.7	-20.4

Table 4 – continued

Domestic exports by country, customs basis, not seasonally adjusted

	June		January to June		Variation
	2008	2009	2008	2009	January to June 2009/2008
millions of dollars					
South America					
Argentina	15.2	7.2	106.5	83.4	-21.7
Bolivia	1.9	0.7	7.0	5.5	-21.4
Brazil	208.4	114.4	1,094.8	553.3	-49.5
Chile	54.2	24.3	337.5	316.5	-6.2
Colombia	51.3	56.0	308.8	301.1	-2.5
Ecuador	12.5	21.5	121.4	128.7	6.0
Falkland Islands (Malvinas)	0.0	0.0	0.1	0.0	0.0
Guyana	1.6	3.3	7.0	13.9	98.6
Paraguay	0.5	0.7	7.6	6.1	-19.7
Peru	44.5	15.3	197.0	194.6	-1.2
Suriname	0.6	1.4	4.2	5.1	21.4
Uruguay	3.1	0.7	107.0	11.6	-89.2
Venezuela	104.4	56.2	350.1	332.2	-5.1
Total	498.2	301.7	2,649.1	1,951.9	-26.3
Central America Antilles					
Anguilla	0.1	0.5	1.5	1.2	-20.0
Antigua and Barbuda	2.1	1.7	7.9	6.8	-13.9
Aruba	0.4	0.3	2.8	2.2	-21.4
Bahamas	11.1	21.1	22.8	86.3	278.5
Barbados	4.7	4.0	20.3	19.1	-5.9
Belize	0.8	0.7	2.6	3.6	38.5
Bermuda	5.9	5.4	32.0	32.2	0.6
British Virgin Islands	3.5	0.1	4.8	2.1	-56.3
Cayman Islands	4.1	0.7	8.6	3.4	-60.5
Costa Rica	9.4	8.1	59.6	30.6	-48.7
Cuba	51.1	34.1	291.8	158.8	-45.6
Dominica	0.2	0.3	3.7	2.4	-35.1
Dominican Republic	25.5	7.7	135.4	67.3	-50.3
El Salvador	3.5	3.4	22.5	26.4	17.3
Grenada	0.5	0.2	2.8	2.8	0.0
Guatemala	4.4	6.1	74.4	43.3	-41.8
Haiti	2.0	2.2	17.5	25.3	44.6
Honduras	15.9	1.4	41.5	16.7	-59.8
Jamaica	19.2	7.5	129.8	54.1	-58.3
Montserrat	0.0	0.0	0.2	0.1	-50.0
Netherlands Antilles	1.5	2.4	8.8	11.8	34.1
Nicaragua	1.3	0.6	9.4	7.4	-21.3
Panama	16.1	5.8	61.2	45.8	-25.2
Saint Kitts and Nevis	1.0	0.3	4.2	3.0	-28.6
Saint Lucia	0.9	0.9	4.8	4.9	2.1
Saint Vincent and the Grenadines	0.6	0.9	3.3	4.8	45.5
Trinidad and Tobago	27.0	25.8	135.3	108.7	-19.7
Turks and Caicos Islands	0.6	0.1	3.8	2.5	-34.2
Total	213.5	142.3	1,113.4	773.6	-30.5
All countries	40,227.3	26,676.8	224,979.4	164,740.8	-26.8

Table 5-1
Exports by province of origin, customs basis, not seasonally adjusted — June

	Agricultural and fishing products	Energy products	Forestry products	Industrial goods	Machinery and equipment	Automotive products	Consumer goods	Special transactions	Total
millions of dollars									
Domestic exports									
Newfoundland Labrador									
2008	173.5	1,466.7	29.6	165.1	5.2	0.2	0.0	7.6	1,848.0
2009	138.9	474.8	11.0	79.6	4.3	0.2	0.0	4.8	713.7
Prince Edward Island									
2008	53.2	0.0	0.1	1.1	16.3	0.0	1.7	8.8	81.2
2009	47.2	0.1	0.2	2.3	22.4	0.3	3.0	6.8	82.4
Nova Scotia									
2008	100.1	152.4	57.0	46.4	104.5	8.6	8.0	8.0	484.9
2009	104.7	68.6	53.6	43.0	94.6	3.8	7.8	5.0	381.2
New Brunswick									
2008	167.5	927.8	99.4	106.0	32.5	1.8	8.5	9.3	1,352.8
2009	141.3	660.0	88.4	57.5	24.9	1.9	13.7	5.8	993.4
Quebec									
2008	402.6	443.5	644.3	1,988.8	1,844.0	161.9	264.4	130.1	5,879.6
2009	375.2	203.1	481.2	1,302.8	1,544.4	126.0	265.3	116.5	4,414.4
Ontario									
2008	668.8	510.7	325.7	3,968.2	3,038.6	4,814.8	863.1	354.1	14,543.9
2009	671.4	196.9	204.3	2,528.3	2,641.1	2,549.1	817.4	232.5	9,841.0
Manitoba									
2008	327.4	97.1	33.4	298.1	198.1	46.1	32.1	23.5	1,055.8
2009	291.2	62.7	21.7	129.6	162.4	54.0	35.9	23.9	781.3
Saskatchewan									
2008	641.4	1,066.2	24.9	628.8	82.0	3.1	0.8	9.6	2,456.8
2009	612.3	746.0	22.6	416.1	70.8	3.3	0.4	6.0	1,877.5
Alberta									
2008	570.6	6,677.2	189.2	1,309.3	415.2	44.2	20.5	61.8	9,288.0
2009	509.2	3,812.1	133.0	671.3	366.6	59.3	9.3	42.0	5,602.7
British Columbia									
2008	206.6	995.9	805.1	658.2	309.6	24.0	54.3	49.5	3,103.3
2009	213.1	479.4	572.7	380.2	253.5	17.2	41.1	30.7	1,987.9
Yukon, Northwest Territories and Nunavut ¹									
2008	0.1	0.0	0.0	131.5	1.2	0.0	0.1	0.2	133.1
2009	0.6	0.0	0.0	0.1	0.3	0.0	0.0	0.0	1.1
Total									
2008	3,311.9	12,337.6	2,208.6	9,301.3	6,047.3	5,104.7	1,253.4	662.5	40,227.3
2009	3,105.3	6,703.8	1,588.7	5,610.7	5,185.3	2,815.0	1,194.0	474.0	26,676.8
Re-exports									
2008	28.9	55.3	6.9	263.8	904.7	125.4	181.7	763.0	2,329.9
2009	40.6	32.4	6.2	184.1	954.3	70.1	164.9	635.9	2,088.5
Total exports									
2008	3,340.9	12,392.9	2,215.5	9,565.1	6,952.0	5,230.1	1,435.2	1,425.5	42,557.2
2009	3,145.9	6,736.2	1,594.9	5,794.7	6,139.6	2,885.1	1,358.9	1,110.0	28,765.3

1. Data for the most current month do not include some exports of Chapter 71 "Natural/cultured pearls, precious stones and metals, coins etc" for reasons relating to timing.

Table 5-2
Exports by province of origin, customs basis, not seasonally adjusted — Year to date, January to June

	Agricultural and fishing products	Energy products	Forestry products	Industrial goods	Machinery and equipment	Automotive products	Consumer goods	Special transactions	Total
millions of dollars									
Domestic exports									
Newfoundland Labrador									
2008	370.9	5,546.2	151.6	703.5	28.6	0.9	0.6	35.6	6,837.9
2009	353.7	2,597.1	117.3	854.2	35.0	0.8	0.5	26.6	3,985.3
Prince Edward Island									
2008	232.5	0.0	1.1	7.3	100.5	0.9	14.4	41.0	397.7
2009	240.2	0.1	0.7	12.3	98.8	0.7	14.7	47.0	414.5
Nova Scotia									
2008	478.3	852.7	401.9	281.5	603.4	65.7	39.6	48.3	2,771.4
2009	465.4	404.8	355.7	267.8	566.6	44.7	39.8	37.3	2,182.2
New Brunswick									
2008	595.2	4,718.9	607.7	622.4	170.0	10.3	53.7	54.8	6,833.0
2009	597.3	3,099.0	600.4	343.2	167.9	13.4	63.4	41.7	4,926.4
Quebec									
2008	2,144.7	1,978.7	3,718.6	11,375.7	11,516.9	1,043.7	1,645.9	727.6	34,151.9
2009	2,211.9	1,463.2	3,029.1	7,913.5	10,673.2	836.9	1,768.0	707.7	28,603.5
Ontario									
2008	3,761.4	2,085.4	1,891.3	23,290.3	17,827.0	28,243.9	4,323.3	1,949.7	83,372.3
2009	4,006.4	1,431.8	1,427.1	15,364.8	17,016.1	16,031.3	4,839.8	1,514.1	61,631.2
Manitoba									
2008	2,111.8	597.4	195.3	1,786.2	1,093.7	290.6	177.0	126.5	6,378.6
2009	2,000.0	304.6	156.7	1,104.8	1,113.2	357.8	267.9	178.7	5,483.6
Saskatchewan									
2008	4,476.8	5,268.2	134.5	3,543.1	413.4	20.6	13.2	63.2	13,933.1
2009	4,326.1	3,142.2	144.2	2,815.5	469.3	20.7	7.5	48.2	10,973.8
Alberta									
2008	3,697.5	38,246.5	1,015.4	7,032.8	2,498.0	285.4	105.7	320.0	53,201.3
2009	3,600.0	21,646.5	806.2	4,275.8	2,408.3	295.7	89.9	273.6	33,396.0
British Columbia									
2008	1,055.0	4,128.4	4,887.3	3,254.8	1,835.8	174.7	309.9	272.6	15,918.5
2009	1,127.2	3,364.5	3,537.5	2,211.6	1,569.7	110.5	261.4	223.4	12,405.9
Yukon, Northwest Territories and Nunavut ¹									
2008	1.2	0.0	0.3	1,176.9	3.5	0.1	1.1	0.7	1,183.7
2009	1.5	0.0	0.1	732.1	3.4	0.2	0.9	0.3	738.4
Total									
2008	18,925.3	63,422.5	13,005.0	53,074.5	36,090.6	30,136.8	6,684.4	3,640.2	224,979.4
2009	18,929.8	37,453.9	10,175.1	35,895.6	34,121.5	17,712.7	7,353.8	3,098.5	164,740.8
Re-exports									
2008	226.8	335.9	47.2	1,436.9	5,446.0	760.9	1,049.1	4,316.3	13,619.0
2009	267.8	238.0	38.7	1,129.2	5,909.1	488.0	1,113.4	4,188.3	13,372.4
Total exports									
2008	19,152.1	63,758.3	13,052.2	54,511.5	41,536.6	30,897.7	7,733.6	7,956.5	238,598.4
2009	19,197.5	37,691.9	10,213.8	37,024.8	40,030.6	18,200.7	8,467.2	7,286.8	178,113.2

1. Data for the most current month do not include some exports of Chapter 71 "Natural/cultured pearls, precious stones and metals, coins etc" for reasons relating to timing.

Table 6-1
Imports by commodity groupings, balance of payments basis, seasonally adjusted — Current dollars

	May	June	Change	Year to date		Year to date change		June	
	2009	2009		2008	2009	2008	2009/2008		
	millions of dollars		percent		millions of dollars		percent		
Total	29,721	29,340	-381	-1.3	215,145	185,828	-29,318	-13.6	-22.6
Agricultural and fishing products	2,431	2,542	111	4.6	13,532	15,085	1,553	11.5	9.0
Fruits and vegetables	679	702	23	3.4	3,684	4,197	513	13.9	13.7
Fresh fruits and berries	244	247	3	1.3	1,305	1,473	168	12.9	17.5
Dried fruits, fruits and fruit preparations	127	126	-2	-1.5	695	797	102	14.7	10.3
Fresh vegetables	165	183	18	11.0	925	1,059	134	14.4	12.3
Other vegetables and vegetable preparations	142	146	4	2.5	759	868	109	14.3	12.0
Other agricultural and fishing products	1,752	1,840	88	5.0	9,848	10,889	1,041	10.6	7.3
Live animals	17	15	-2	-14.3	91	99	8	8.4	-1.3
Meat and meat preparations	189	183	-6	-3.2	966	1,122	156	16.1	9.9
Fish and marine animals	187	181	-6	-3.3	924	1,102	179	19.4	16.4
Cocoa, coffee, tea and other food preparations	419	425	6	1.4	2,165	2,535	370	17.1	14.6
Dairy produce, eggs and honey	44	47	4	9.1	326	266	-60	-18.4	-12.1
Corn (maize) shelled	26	40	14	54.2	372	237	-134	-36.1	-27.9
Other cereals and cereal preparations	197	182	-16	-8.0	971	1,190	219	22.6	3.7
Sugar and sugar preparations	119	135	16	13.4	712	813	102	14.3	9.9
Fodder, feed, excluding unmilled cereal	127	147	20	16.0	688	762	75	10.8	22.4
Beverages	293	327	34	11.6	1,719	1,872	153	8.9	1.9
Tobacco	27	31	4	14.2	184	175	-9	-5.1	-3.2
Crude vegetable products	107	127	20	19.1	727	711	-16	-2.2	1.2
Cotton	1	1	0	2.4	5	4	-0	-5.5	-19.8
Energy products	2,354	2,701	347	14.8	26,038	15,672	-10,366	-39.8	-51.2
Crude petroleum	1,331	1,804	473	35.5	16,868	8,906	-7,962	-47.2	-53.7
Other energy products	1,023	898	-125	-12.3	9,170	6,766	-2,405	-26.2	-45.0
Coal and other related products	352	295	-57	-16.2	2,870	2,581	-289	-10.1	-38.8
Petroleum and coal products	671	603	-69	-10.2	6,300	4,185	-2,116	-33.6	-47.6
Forestry products	182	187	5	2.6	1,440	1,215	-226	-15.7	-22.7
Forestry products	182	187	5	2.6	1,440	1,215	-226	-15.7	-22.7
Crude wood products	30	29	-2	-5.0	227	237	10	4.3	-23.3
Wood fabricated materials	152	158	6	4.2	1,213	978	-235	-19.4	-22.6
Industrial goods and materials	6,014	5,754	-260	-4.3	44,261	38,061	-6,201	-14.0	-23.9
Metals and metal ores	1,837	1,856	19	1.0	16,347	12,000	-4,347	-26.6	-31.0
Metals in ores, concentrates and scrap	434	434	0	0.1	4,539	2,795	-1,744	-38.4	-38.4
Steel bars, rods, plates, sheets	348	318	-29	-8.5	3,595	2,356	-1,239	-34.5	-50.1
Other iron and steel products	224	224	0	-0.1	2,156	1,998	-159	-7.4	-38.7
Precious metals including alloys	563	611	48	8.6	2,953	3,089	136	4.6	29.7
Other non-ferrous metals and alloys	269	269	0	-0.1	3,103	1,761	-1,341	-43.2	-47.2
Chemicals and plastics	2,284	2,028	-256	-11.2	14,828	13,951	-877	-5.9	-22.2
Organic chemicals	614	483	-132	-21.4	3,802	3,491	-310	-8.2	-23.1
Plastic materials	717	703	-13	-1.9	5,155	4,394	-761	-14.8	-21.4
Other chemicals and related products	953	842	-111	-11.6	5,871	6,066	195	3.3	-22.3
Other industrial goods and materials	1,893	1,870	-23	-1.2	13,086	12,110	-976	-7.5	-17.5
Crude animal products	17	18	0	2.8	162	117	-46	-28.1	-37.4
Wool and man-made fibres	17	17	0	2.8	123	109	-14	-11.1	-15.5
Crude non-metallic minerals	56	56	1	1.2	484	390	-94	-19.5	-32.0
Textile fabricated materials	185	174	-11	-6.0	1,285	1,165	-120	-9.4	-18.6
Metal fabricated basic products	745	742	-3	-0.4	5,071	4,760	-311	-6.1	-15.0
Rubber fabricated materials	74	72	-2	-2.3	500	465	-35	-7.0	-14.1
Oils, fats, animal and vegetable	103	104	1	0.7	561	631	70	12.5	3.3
Non-metallic minerals	258	254	-4	-1.5	1,794	1,662	-132	-7.4	-19.2
Other fabricated materials	439	433	-6	-1.4	3,107	2,812	-295	-9.5	-21.2

Table 6-1 – continued

Imports by commodity groupings, balance of payments basis, seasonally adjusted — Current dollars

	May	June	Change	Year to date		Year to date change	June		
	2009	2009		2008	2009				
	millions of dollars		percent		millions of dollars		percent		
Machinery and equipment	9,010	8,469	-540	-6.0	59,024	55,853	-3,171	-5.4	-15.1
Industrial and agricultural machinery	2,436	2,296	-140	-5.7	16,322	14,895	-1,427	-8.7	-20.5
Engines, turbines and electric motors	443	353	-90	-20.2	1,884	2,237	353	18.8	-8.2
Drilling mining machinery	113	118	5	4.0	818	792	-26	-3.1	-17.1
Excavating machinery	167	166	-0	-0.3	1,760	1,116	-644	-36.6	-45.6
Metal working machinery	128	128	-0	-0.2	1,215	841	-375	-30.8	-38.1
Other industrial machinery	1,223	1,196	-27	-2.2	8,696	7,816	-880	-10.1	-20.7
Agricultural machinery including tractors	361	334	-27	-7.5	1,949	2,093	145	7.4	-1.7
Aircraft and other transportation equipment	1,244	1,113	-131	-10.5	8,820	8,142	-678	-7.7	-8.5
Aircraft, engines, parts	793	676	-117	-14.8	5,771	5,239	-531	-9.2	2.2
Other transportation equipment and parts	451	437	-14	-3.1	3,049	2,902	-147	-4.8	-21.3
Office machines and equipment	1,019	997	-22	-2.2	7,034	6,269	-765	-10.9	-17.2
Other machinery and equipment	4,311	4,064	-247	-5.7	26,849	26,548	-302	-1.1	-13.0
Other communication and related equipment	1,563	1,469	-94	-6.0	9,326	9,340	14	0.2	-11.2
Other equipment and tools	2,748	2,595	-154	-5.6	17,523	17,207	-316	-1.8	-14.0
Automotive products	3,894	3,899	4	0.1	36,202	24,109	-12,093	-33.4	-38.3
Passenger autos and chassis	1,329	1,473	144	10.8	12,906	8,092	-4,813	-37.3	-34.3
Trucks and other motor vehicles	821	813	-8	-1.0	7,791	5,324	-2,467	-31.7	-44.6
Motor vehicle parts	1,745	1,613	-131	-7.5	15,506	10,693	-4,813	-31.0	-38.1
Other consumer goods	4,786	4,709	-77	-1.6	27,324	29,319	1,995	7.3	1.7
Apparel and footwear	978	916	-63	-6.4	5,261	5,949	688	13.1	-0.6
Apparel and apparel accessories	804	774	-30	-3.8	4,408	4,978	570	12.9	0.6
Footwear	174	142	-32	-18.6	853	971	118	13.8	-6.8
Miscellaneous consumer goods	3,807	3,793	-14	-0.4	22,063	23,370	1,307	5.9	2.3
Television, radios, phonographs	104	102	-2	-1.8	843	643	-200	-23.7	-30.3
Printed matter	305	297	-8	-2.7	1,802	1,843	41	2.3	-1.6
Watches, sporting goods and toys	492	487	-5	-0.9	3,060	3,069	9	0.3	-5.0
House furnishings	731	710	-22	-3.0	4,094	4,448	355	8.7	1.3
Photographic goods	228	217	-11	-4.6	1,378	1,352	-26	-1.9	-5.5
Miscellaneous end products	1,947	1,980	33	1.7	10,887	12,016	1,129	10.4	8.9
Special transactions trade	383	426	44	11.5	2,961	2,519	-442	-14.9	-22.9
Unallocated balance of payments adjustments	667	652	-14	-2.2	4,362	3,996	-367	-8.4	-13.7

Table 6-2
Imports by commodity groupings, balance of payments basis, seasonally adjusted — Constant dollars, 2002

	May	June	Change	Year to date		Year to date change		June	
	2009	2009		2008	2009	2008	2009/2008		
	millions of dollars		percent		millions of dollars		percent		
Total	32,445	32,300	-145	-0.4	247,112	194,668	-52,444	-21.2	-22.3
Agricultural and fishing products	2,256	2,405	150	6.6	14,141	13,670	-471	-3.3	3.1
Fruits and vegetables	679	695	16	2.3	3,701	4,016	315	8.5	22.9
Fresh fruits and berries	270	260	-10	-3.8	1,322	1,488	166	12.5	31.3
Dried fruits, fruits and fruit preparations	120	130	10	8.3	671	737	66	9.8	13.7
Fresh vegetables	163	170	6	3.9	967	1,034	66	6.9	29.1
Other vegetables and vegetable preparations	126	135	10	7.7	740	758	17	2.3	11.2
Other agricultural and fishing products	1,576	1,710	134	8.5	10,440	9,654	-786	-7.5	-3.3
Live animals	16	14	-2	-12.9	99	93	-6	-6.0	-6.7
Meat and meat preparations	174	178	3	2.0	1,034	1,065	31	3.0	8.0
Fish and marine animals	213	238	26	12.1	1,239	1,321	82	6.7	21.1
Cocoa, coffee, tea and other food preparations	339	358	19	5.6	2,127	1,954	-173	-8.1	-0.9
Dairy produce, eggs and honey	42	50	8	18.5	273	252	-21	-7.8	8.2
Corn (maize) shelled	21	32	12	57.5	282	183	-99	-35.0	-10.4
Other cereals and cereal preparations	161	158	-3	-2.0	1,046	952	-94	-9.0	-19.7
Sugar and sugar preparations	112	132	20	18.2	842	761	-81	-9.7	-7.3
Fodder, feed, excluding unmilled cereal	94	99	4	4.3	615	534	-81	-13.1	3.4
Beverages	255	293	37	14.6	1,790	1,630	-161	-9.0	-12.6
Tobacco	31	37	5	16.6	258	192	-66	-25.5	-16.6
Crude vegetable products	117	121	4	3.5	828	711	-117	-14.1	-9.3
Cotton	1	1	0	12.5	7	6	-1	-16.1	-23.9
Energy products	1,546	1,719	173	11.2	11,053	10,193	-860	-7.8	-15.9
Crude petroleum	777	1,049	272	35.0	5,852	5,339	-513	-8.8	-13.4
Other energy products	769	670	-99	-12.9	5,200	4,854	-346	-6.7	-19.6
Coal and other related products	319	296	-23	-7.3	1,888	1,989	101	5.3	6.1
Petroleum and coal products	450	374	-76	-16.8	3,313	2,865	-447	-13.5	-32.5
Forestry products	234	248	15	6.3	1,911	1,477	-435	-22.8	-21.5
Forestry products	234	248	15	6.3	1,911	1,477	-435	-22.8	-21.5
Crude wood products	39	38	-1	-1.9	298	292	-6	-2.1	-20.7
Wood fabricated materials	195	210	15	7.9	1,613	1,185	-429	-26.6	-21.7
Industrial goods and materials	5,586	5,363	-223	-4.0	41,601	33,046	-8,555	-20.6	-21.0
Metals and metal ores	1,340	1,358	17	1.3	11,433	8,460	-2,973	-26.0	-21.9
Metals in ores, concentrates and scrap	336	343	7	2.1	2,416	2,173	-243	-10.1	-13.7
Steel bars, rods, plates, sheets	289	270	-18	-6.4	2,688	1,768	-919	-34.2	-33.6
Other iron and steel products	172	171	-1	-0.5	1,602	1,328	-274	-17.1	-28.3
Precious metals including alloys	266	290	24	9.0	1,784	1,441	-342	-19.2	27.6
Other non-ferrous metals and alloys	278	283	6	2.0	2,943	1,750	-1,194	-40.6	-39.3
Chemicals and plastics	2,238	1,972	-265	-11.9	14,541	12,502	-2,039	-14.0	-18.8
Organic chemicals	521	404	-117	-22.5	2,904	2,803	-101	-3.5	-11.5
Plastic materials	776	784	8	1.1	5,498	4,368	-1,130	-20.5	-15.9
Other chemicals and related products	941	784	-157	-16.7	6,139	5,330	-809	-13.2	-24.7
Other industrial goods and materials	2,008	2,033	26	1.3	15,627	12,084	-3,543	-22.7	-22.4
Crude animal products	27	28	1	2.1	166	176	10	5.8	4.1
Wool and man-made fibres	21	23	1	6.2	162	134	-29	-17.7	-13.5
Crude non-metallic minerals	48	49	1	2.3	429	348	-81	-18.9	-30.7
Textile fabricated materials	227	222	-5	-2.1	1,794	1,358	-436	-24.3	-24.4
Metal fabricated basic products	728	736	8	1.1	5,746	4,444	-1,302	-22.7	-22.5
Rubber fabricated materials	83	83	0	-0.4	677	497	-180	-26.5	-25.2
Oils, fats, animal and vegetable	94	90	-4	-3.9	460	526	66	14.2	19.1
Non-metallic minerals	291	302	11	3.8	2,279	1,780	-498	-21.9	-22.8
Other fabricated materials	488	500	12	2.5	3,914	2,821	-1,093	-27.9	-25.8

Table 6-2 – continued

Imports by commodity groupings, balance of payments basis, seasonally adjusted — Constant dollars, 2002

	May	June	Change	Year to date		Year to date change	June		
	2009	2009		2008	2009			2009/2008	
	millions of dollars		percent		millions of dollars		percent		
Machinery and equipment	11,644	11,259	-386	-3.3	87,888	69,264	-18,624	-21.2	-23.6
Industrial and agricultural machinery	2,690	2,589	-101	-3.8	21,663	15,748	-5,915	-27.3	-31.3
Engines, turbines and electric motors	493	402	-91	-18.5	2,543	2,413	-129	-5.1	-21.2
Drilling mining machinery	112	119	7	6.1	990	748	-241	-24.4	-28.7
Excavating machinery	182	184	3	1.5	2,316	1,159	-1,156	-49.9	-53.6
Metal working machinery	150	152	2	1.3	1,651	933	-718	-43.5	-45.3
Other industrial machinery	1,331	1,332	1	0.0	11,450	8,165	-3,285	-28.7	-31.6
Agricultural machinery including tractors	421	399	-22	-5.2	2,714	2,329	-385	-14.2	-14.8
Aircraft and other transportation equipment	1,351	1,225	-126	-9.3	11,203	8,374	-2,829	-25.3	-19.2
Aircraft, engines, parts	888	768	-120	-13.6	7,369	5,492	-1,878	-25.5	-8.7
Other transportation equipment and parts	463	457	-5	-1.1	3,834	2,883	-951	-24.8	-32.1
Office machines and equipment	1,954	2,026	71	3.7	14,516	12,055	-2,461	-17.0	-18.9
Other machinery and equipment	5,649	5,419	-230	-4.1	40,506	33,087	-7,419	-18.3	-22.1
Other communication and related equipment	2,377	2,272	-105	-4.4	15,973	13,584	-2,388	-15.0	-18.6
Other equipment and tools	3,273	3,147	-126	-3.8	24,533	19,502	-5,031	-20.5	-24.4
Automotive products	4,495	4,549	54	1.2	46,152	27,303	-18,849	-40.8	-42.5
Passenger autos and chassis	1,539	1,710	171	11.1	14,862	9,421	-5,441	-36.6	-33.9
Trucks and other motor vehicles	870	860	-10	-1.2	9,487	5,598	-3,888	-41.0	-49.3
Motor vehicle parts	2,086	1,979	-107	-5.1	21,804	12,284	-9,520	-43.7	-45.3
Other consumer goods	5,728	5,703	-25	-0.4	38,286	33,338	-4,948	-12.9	-11.2
Apparel and footwear	1,236	1,196	-41	-3.3	7,882	7,226	-656	-8.3	-12.4
Apparel and apparel accessories	1,018	1,012	-6	-0.5	6,607	6,056	-550	-8.3	-11.2
Footwear	219	184	-35	-16.1	1,275	1,169	-106	-8.3	-18.4
Miscellaneous consumer goods	4,491	4,508	16	0.4	30,404	26,112	-4,292	-14.1	-10.9
Television, radios, phonographs	158	158	0	0.2	1,421	915	-506	-35.6	-35.0
Printed matter	366	365	-1	-0.3	2,528	2,122	-407	-16.1	-13.5
Watches, sporting goods and toys	665	644	-22	-3.3	4,563	3,829	-734	-16.1	-15.3
House furnishings	852	843	-9	-1.1	5,568	4,912	-656	-11.8	-10.4
Photographic goods	369	353	-16	-4.5	2,512	2,054	-458	-18.2	-16.4
Miscellaneous end products	2,081	2,145	65	3.1	13,812	12,281	-1,531	-11.1	-5.6
Special transactions trade	418	472	54	12.9	3,421	2,649	-772	-22.6	-23.0
Unallocated balance of payments adjustments	538	580	42	7.8	2,660	3,728	1,068	40.2	38.4

Table 7-1
Imports from selected countries, customs basis, not seasonally adjusted — June

	Agricultural and fishing products	Energy products	Forestry products	Industrial goods	Machinery and equipment	Automotive products	Consumer goods	Special transactions	Total
millions of dollars									
United States									
2008	1,387.2	1,404.4	176.0	4,833.3	4,963.5	5,021.0	1,813.0	402.0	20,000.3
2009	1,578.4	732.5	142.4	3,523.0	4,125.8	2,776.6	1,956.8	414.8	15,250.3
Mexico									
2008	104.0	74.8	0.3	121.0	608.6	492.9	86.4	4.4	1,492.5
2009	124.1	45.5	0.5	139.9	508.8	313.4	94.6	2.4	1,229.2
Japan									
2008	4.7	4.3	0.2	92.2	531.0	519.4	75.4	0.3	1,227.4
2009	6.1	0.3	0.3	73.4	363.3	422.1	80.1	0.3	945.8
European Union									
Germany									
2008	20.2	1.0	1.5	195.7	531.5	221.3	185.7	13.6	1,170.4
2009	20.8	11.2	1.6	128.3	403.4	226.9	128.7	0.6	921.6
France									
2008	67.4	10.0	0.3	77.9	179.7	12.0	122.6	30.2	500.1
2009	67.1	5.5	0.2	116.7	138.5	8.2	133.1	0.2	469.4
United Kingdom									
2008	35.3	484.7	0.1	128.8	281.0	45.0	115.1	7.4	1,097.4
2009	36.9	168.9	0.3	79.4	336.4	29.4	108.9	0.6	760.8
Italy									
2008	63.3	0.0	1.6	94.8	143.3	24.3	94.8	14.5	436.5
2009	62.6	23.5	1.1	87.9	156.3	17.9	86.7	0.9	436.8
Other European Union									
2008	104.5	395.2	5.2	289.3	458.8	132.4	300.8	36.1	1,722.2
2009	103.7	176.8	3.1	202.3	388.2	47.7	340.7	2.4	1,264.9
Total									
2008	290.6	891.0	8.8	786.4	1,594.2	435.0	818.9	101.8	4,926.6
2009	291.0	385.9	6.1	614.6	1,422.8	330.2	798.2	4.7	3,853.5
Newly industrialized countries									
South Korea									
2008	3.3	1.5	0.0	75.4	232.3	179.6	19.2	0.1	511.4
2009	4.4	26.9	0.0	54.5	221.4	244.5	17.4	0.1	569.3
Hong Kong									
2008	3.3	0.0	0.1	2.7	16.7	0.2	15.7	0.0	38.9
2009	2.3	0.0	0.0	1.7	12.1	0.5	10.4	0.0	27.1
Taiwan									
2008	5.4	0.0	2.0	70.6	182.7	15.1	36.7	0.1	312.7
2009	5.9	0.0	0.9	51.9	159.2	14.4	32.4	0.1	264.8
Singapore									
2008	2.7	0.0	0.0	6.3	51.7	0.2	17.6	0.2	78.6
2009	2.1	18.5		15.4	38.2	0.4	11.2	0.1	85.9
Total									
2008	14.7	1.5	2.1	155.1	483.4	195.1	89.1	0.5	941.5
2009	14.8	45.4	0.9	123.5	431.0	259.8	71.3	0.3	947.0
Other countries									
2008	525.0	3,140.9	54.5	1,622.7	2,222.0	226.8	1,605.5	82.1	9,479.4
2009	571.5	1,581.8	38.9	1,295.3	2,048.7	145.2	1,629.7	26.5	7,337.5
Total									
2008	2,326.3	5,517.0	241.8	7,610.8	10,402.7	6,890.2	4,488.4	591.0	38,068.0
2009	2,585.9	2,791.4	189.1	5,769.8	8,900.3	4,247.3	4,630.7	448.9	29,563.5

Table 7-2
Imports from selected countries, customs basis, not seasonally adjusted — Year to date, January to June

	Agricultural and fishing products	Energy products	Forestry products	Industrial goods	Machinery and equipment	Automotive products	Consumer goods	Special transactions	Total
millions of dollars									
United States									
2008	7,700.2	7,542.8	1,064.0	28,329.3	28,898.9	26,809.6	10,650.5	2,076.7	113,072.0
2009	8,675.0	5,470.9	924.2	22,466.4	25,976.2	16,433.9	11,547.9	2,044.6	93,539.2
Mexico									
2008	694.4	349.4	2.2	690.5	3,214.3	2,681.8	483.3	21.8	8,137.6
2009	784.2	158.5	3.2	661.5	3,119.7	2,098.3	497.0	18.0	7,340.4
Japan									
2008	29.3	48.7	0.8	602.1	3,194.1	3,443.3	501.0	2.6	7,821.9
2009	33.3	22.7	0.9	571.0	2,547.2	2,468.8	499.2	1.6	6,144.8
European Union									
Germany									
2008	109.3	18.2	8.6	1,233.9	2,408.8	1,552.2	1,019.5	61.9	6,412.6
2009	118.8	17.6	6.4	977.4	2,325.6	1,179.8	895.6	4.1	5,525.4
France									
2008	327.9	24.8	1.8	431.1	932.5	40.2	736.2	231.4	2,726.0
2009	314.3	147.3	1.2	506.8	991.7	54.5	795.9	2.1	2,813.9
United Kingdom									
2008	174.9	2,123.2	0.9	640.2	1,511.1	298.0	659.1	26.2	5,433.7
2009	175.6	1,120.0	0.8	660.5	1,886.1	175.2	667.6	11.8	4,697.5
Italy									
2008	301.7	32.9	9.8	548.9	823.5	125.9	524.2	38.9	2,405.8
2009	297.0	34.2	7.7	488.8	773.8	97.2	527.8	3.4	2,229.9
Other European Union									
2008	556.6	1,347.5	28.1	1,663.3	2,503.5	743.5	1,982.3	99.4	8,924.3
2009	540.6	665.8	22.0	1,447.7	2,195.2	285.0	2,053.0	21.6	7,230.9
Total									
2008	1,470.4	3,546.7	49.3	4,517.5	8,179.4	2,759.8	4,921.3	458.0	25,902.3
2009	1,446.3	1,984.8	38.2	4,081.2	8,172.5	1,791.6	4,940.0	42.9	22,497.5
Newly industrialized countries									
South Korea									
2008	24.2	26.9	0.2	414.9	1,249.3	946.4	108.3	0.5	2,770.7
2009	24.6	52.8	0.1	430.0	1,297.2	1,034.4	115.0	0.4	2,954.4
Hong Kong									
2008	16.1	0.1	0.6	15.6	96.4	1.0	86.2	0.4	216.4
2009	13.2	0.0	0.2	16.3	84.8	1.9	64.4	0.4	181.2
Taiwan									
2008	27.8	32.0	6.7	415.7	1,106.1	96.3	201.5	0.7	1,886.8
2009	32.5	0.1	4.8	383.5	1,039.1	89.5	197.0	0.6	1,747.1
Singapore									
2008	12.2	2.3	0.8	163.3	299.4	1.4	99.2	3.1	581.7
2009	15.7	70.0	0.6	210.4	268.8	2.1	118.8	0.9	687.2
Total									
2008	80.2	61.3	8.3	1,009.5	2,751.3	1,045.3	495.1	4.8	5,455.6
2009	85.9	123.0	5.6	1,040.2	2,689.8	1,128.0	495.2	2.2	5,569.9
Other countries									
2008	3,263.1	14,125.3	326.6	9,357.1	12,912.7	1,164.3	9,206.6	420.4	50,776.2
2009	3,557.9	7,867.1	257.3	8,784.2	12,914.3	810.4	9,973.6	212.5	44,377.2
Total									
2008	13,238.0	25,674.2	1,451.2	44,506.0	59,150.6	37,904.0	26,257.9	2,984.2	211,166.2
2009	14,583.2	15,627.0	1,229.4	37,604.6	55,419.7	24,731.0	27,953.0	2,321.9	179,469.8

Table 8
Imports by country, customs basis, not seasonally adjusted

	June		January to June		Variation
	2008	2009	2008	2009	January to June 2009/2008
millions of dollars					
North America					
Canada	310.8	237.6	1,936.9	1,546.6	-20.2
Greenland	2.4	0.0	11.4	17.0	49.1
Mexico	1,492.5	1,229.2	8,137.6	7,340.4	-9.8
Saint Pierre and Miquelon	0.1	0.0	0.2	0.1	-50.0
United States	20,000.3	15,250.3	113,072.0	93,539.2	-17.3
Total	21,806.2	16,717.1	123,158.1	102,443.3	-16.8
Western Europe					
Andorra	0.0	0.0	0.1	0.0	0.0
Austria	125.4	92.1	797.8	562.5	-29.5
Belgium	209.6	139.7	1,176.4	665.6	-43.4
Denmark	136.2	117.6	672.6	521.9	-22.4
Faeroe Islands	0.2	0.1	0.5	0.6	20.0
Finland	69.4	74.4	404.2	425.4	5.2
France	500.1	469.4	2,726.0	2,813.9	3.2
Germany	1,170.4	921.6	6,412.6	5,525.4	-13.8
Gibraltar	0.0	0.0	0.0	0.0	0.0
Greece	12.7	12.7	64.5	71.7	11.2
Iceland	4.8	2.7	17.5	15.8	-9.7
Italy	436.5	436.8	2,405.8	2,229.9	-7.3
Luxembourg	7.7	6.4	59.5	35.0	-41.2
Malta	2.2	1.4	9.5	11.0	15.8
Netherlands	272.5	182.2	1,090.4	985.2	-9.6
Norway	902.6	233.5	3,752.1	1,608.3	-57.1
Portugal	68.4	20.0	240.0	133.5	-44.4
Republic of Ireland (Eire)	157.7	185.3	1,041.7	1,168.5	12.2
Spain	127.8	115.3	869.1	672.3	-22.6
Sweden	196.6	148.6	1,242.6	923.7	-25.7
Switzerland	187.1	223.4	1,255.5	1,731.4	37.9
United Kingdom	1,097.4	760.8	5,433.7	4,697.5	-13.5
Total	5,685.3	4,143.8	29,672.2	24,799.2	-16.4
Other Europe					
Albania	0.3	0.5	1.1	1.6	45.5
Armenia	0.2	3.2	0.7	18.2	...
Azerbaijan	369.5	201.4	369.7	622.2	68.3
Belarus	0.6	0.4	26.4	16.3	-38.3
Bosnia and Herzegovina	0.5	0.5	2.5	3.6	44.0
Bulgaria	17.5	5.6	58.1	59.1	1.7
Croatia	5.3	1.7	23.1	11.9	-48.5
Czech Republic	32.9	21.0	165.2	144.4	-12.6
Estonia	3.7	1.4	20.2	11.5	-43.1
Georgia	7.7	8.9	62.1	61.3	-1.3
Hungary	35.8	25.9	188.7	174.1	-7.7
Kazakhstan	0.1	11.0	37.1	27.1	-27.0
Kyrgyzstan	0.0	0.0	0.7	0.4	-42.9
Latvia	1.1	1.0	26.2	5.4	-79.4
Lithuania	167.8	28.2	227.7	92.2	-59.5
Macedonia (Former Yugoslav Republic of Macedonia)	0.3	0.3	3.7	5.0	35.1
Montenegro	0.0	0.0	0.4	0.2	-50.0
Poland	52.4	65.2	374.4	410.7	9.7
Republic of Moldova	0.1	0.2	0.8	1.0	25.0
Romania	9.9	7.2	62.9	55.9	-11.1
Russian Federation	192.0	233.9	887.0	983.8	10.9
Serbia	1.4	1.0	5.7	5.7	0.0
Slovakia	10.4	6.8	92.3	67.9	-26.4
Slovenia	4.3	7.2	38.1	31.5	-17.3
Tajikistan	0.0	0.0	0.0	0.0	0.0
Turkmenistan	0.0	0.0	0.2	0.1	-50.0
Ukraine	17.8	3.4	66.2	44.0	-33.5
Uzbekistan	0.1	0.1	0.8	11.7	...
Total	931.7	635.8	2,742.2	2,866.8	4.5

Table 8 – continued

Imports by country, customs basis, not seasonally adjusted

	June		January to June		Variation
	2008	2009	2008	2009	January to June 2009/2008
millions of dollars					
Middle East					
Bahrain	0.9	0.1	1.8	3.4	88.9
Cyprus	0.1	0.0	2.0	1.8	-10.0
Egypt	24.9	4.6	59.4	49.6	-16.5
Eritrea	0.0	0.0	0.0	0.1	0.0
Ethiopia	1.3	2.4	5.2	8.6	65.4
Iran	2.9	2.5	21.2	12.7	-40.1
Iraq	227.2	153.4	1,296.9	570.9	-56.0
Israel	103.6	72.3	552.3	480.7	-13.0
Jordan	0.9	0.8	6.1	7.5	23.0
Kuwait	0.0	0.0	7.6	37.2	389.5
Lebanon	1.2	1.6	7.2	7.2	0.0
Libya	0.0	0.0	0.0	0.1	0.0
Oman	0.1	0.8	1.7	3.7	117.6
Qatar	0.1	1.5	0.3	9.4	...
Saudi Arabia	317.3	139.1	1,346.2	714.8	-46.9
Somalia	0.0	0.0	0.0	0.0	0.0
Sudan	4.3	5.0	38.2	35.3	-7.6
Syria	49.6	0.4	52.5	2.2	-95.8
Turkey	47.7	43.5	249.9	330.5	32.3
United Arab Emirates	3.7	2.4	309.0	179.2	-42.0
Yemen	0.0	0.0	0.1	0.1	0.0
Total	785.9	430.5	3,957.7	2,455.0	-38.0
Other Africa					
Algeria	828.9	354.5	4,006.9	1,692.2	-57.8
Angola	125.9	159.1	827.4	514.6	-37.8
Antarctica	0.0	0.0	0.0	0.0	0.0
Benin	0.0	0.0	0.0	0.0	0.0
Botswana	3.9	0.0	4.1	10.4	153.7
Bouvet Island	0.0	0.0	0.0	0.0	0.0
Burkina Faso	0.0	0.0	0.1	1.6	...
Burundi	0.0	0.0	0.5	0.1	-80.0
Cameroon	0.3	0.3	2.8	2.4	-14.3
Cape Verde	0.0	0.0	0.0	0.0	0.0
Central African Republic	0.0	0.0	0.1	0.0	0.0
Chad	0.0	0.0	0.1	0.0	0.0
Comoros	0.0	0.0	0.0	0.0	0.0
Congo	0.1	0.1	1.5	0.8	-46.7
Democratic Republic of the Congo	0.0	0.1	0.3	0.4	33.3
Djibouti	0.0	0.0	0.0	0.0	0.0
Equatorial Guinea	0.0	0.0	81.1	192.2	137.0
French Southern Territories	0.0	0.0	0.0	0.0	0.0
Gabon	0.0	0.0	0.6	0.9	50.0
Gambia	0.0	0.0	0.0	0.0	0.0
Ghana	0.7	0.4	18.0	10.1	-43.9
Guinea	9.3	4.6	28.9	35.7	23.5
Guinea-Bissau	0.0	0.0	0.0	0.0	0.0
Ivory Coast	5.4	20.8	39.3	144.6	267.9
Kenya	1.6	1.1	7.0	8.6	22.9
Lesotho	0.2	0.3	3.2	4.1	28.1
Liberia	2.0	2.9	10.5	11.9	13.3
Madagascar	2.2	7.5	8.4	20.1	139.3
Malawi	0.2	0.1	1.1	0.9	-18.2
Mali	0.0	0.0	0.1	0.2	100.0
Mauritania	0.0	0.1	0.1	0.5	400.0
Mauritius	0.4	0.4	3.2	4.7	46.9
Morocco	3.6	2.9	54.5	57.4	5.3
Mozambique	0.0	0.0	0.8	0.2	-75.0
Namibia	15.3	11.5	182.0	188.8	3.7
Niger	0.1	0.0	0.4	0.2	-50.0
Nigeria	3.6	0.9	498.3	178.7	-64.1
Rwanda	0.0	0.1	0.2	0.2	0.0
Saint Helena	0.0	0.0	0.1	0.0	0.0
Sao Tome and Principe	0.0	0.0	0.0	0.0	0.0
Senegal	0.1	0.1	0.4	0.5	25.0
Seychelles	0.1	0.0	1.1	0.4	-63.6

Table 8 – continued

Imports by country, customs basis, not seasonally adjusted

	June		January to June		Variation
	2008	2009	2008	2009	January to June 2009/2008
millions of dollars					
Sierra Leone	0.1	0.1	0.6	1.0	66.7
South Africa	45.7	55.2	375.3	294.4	-21.6
Swaziland	0.2	0.2	1.3	0.9	-30.8
Togo	0.1	1.8	4.9	2.2	-55.1
Tunisia	5.3	3.3	19.6	21.8	11.2
Uganda	0.3	0.1	1.5	1.0	-33.3
United Republic of Tanzania	0.2	0.1	1.0	2.1	110.0
Western Sahara	0.0	0.0	0.0	0.0	0.0
Zambia	0.2	0.0	0.5	0.3	-40.0
Zimbabwe	1.0	0.1	1.5	1.4	-6.7
Total	1,057.2	629.3	6,189.5	3,409.0	-44.9
Other Asia					
Afghanistan	0.1	0.1	0.7	0.7	0.0
Bangladesh	57.9	66.9	291.7	420.2	44.1
Bhutan	0.0	0.0	0.0	0.0	0.0
British Indian Ocean Territory	0.0	0.0	0.0	0.0	0.0
Brunei Darussalam	0.1	0.1	1.2	1.5	25.0
Cambodia	16.8	22.1	110.7	140.3	26.7
China	3,234.2	2,978.6	18,377.9	18,896.3	2.8
Hong Kong	38.9	27.1	216.4	181.2	-16.3
India	156.9	153.3	1,012.4	1,060.9	4.8
Indonesia	102.2	79.5	502.3	508.4	1.2
Japan	1,227.4	945.8	7,821.9	6,144.8	-21.4
Laos	0.1	0.7	2.6	4.5	73.1
Macao	2.5	1.2	15.2	16.7	9.9
Malaysia	237.6	186.0	1,396.7	1,146.1	-17.9
Maldives	0.1	0.0	0.1	0.1	0.0
Mongolia	14.3	0.3	85.6	59.2	-30.8
Myanmar	0.0	0.0	0.7	0.0	0.0
Nepal	1.2	0.8	6.4	5.7	-10.9
North Korea	0.0	0.0	0.0	0.1	0.0
Pakistan	19.1	20.3	111.2	118.0	6.1
Philippines	75.3	51.6	390.9	337.1	-13.8
Singapore	78.6	85.9	581.7	687.2	18.1
South Korea	511.4	569.3	2,770.7	2,954.4	6.6
Sri Lanka	10.1	8.8	57.3	57.5	0.3
Taiwan	312.7	264.8	1,886.8	1,747.1	-7.4
Thailand	257.5	176.2	1,148.9	1,094.1	-4.8
Timor-Leste	0.2	0.3	1.2	1.6	33.3
Viet Nam	76.5	84.2	394.7	491.7	24.6
Total	6,431.5	5,724.0	37,186.1	36,075.6	-3.0
Oceania					
American Samoa	0.0	0.0	0.1	0.1	0.0
Australia	172.2	149.7	843.3	764.6	-9.3
Christmas Island	0.0	0.0	0.0	0.0	0.0
Cocos (Keeling) Islands	0.0	0.0	0.0	0.1	0.0
Cook Islands	0.0	0.0	0.0	0.0	0.0
Fiji	1.5	0.7	4.7	3.3	-29.8
French Polynesia	0.1	0.0	0.6	0.3	-50.0
Guam	0.0	0.0	0.2	0.2	0.0
Heard Island and McDonald Islands	0.0	0.0	0.0	0.0	...
Kiribati	0.0	0.0	0.0	0.1	0.0
Nauru	0.0	0.0	0.0	0.1	0.0
New Caledonia	0.0	0.1	0.1	0.3	200.0
New Zealand	48.3	53.6	263.2	241.4	-8.3
Niue	0.0	0.0	0.0	0.0	0.0
Norfolk Island	0.0	0.0	0.0	0.0	0.0
Papua New Guinea	0.1	0.1	1.0	0.5	-50.0
Pitcairn	0.0	0.0	0.0	0.0	0.0
Samoa	0.0	0.0	0.0	0.0	0.0
Solomon Islands	0.0	0.1	0.1	0.1	0.0
Tonga	0.0	0.0	0.1	0.0	0.0
United States Minor Outlying Islands	0.3	0.5	3.2	2.5	-21.9
Vanuatu	0.0	0.0	0.0	0.0	0.0
Wallis and Futuna	0.0	0.0	0.0	0.0	0.0
Total	222.6	204.8	1,116.8	1,013.8	-9.2

Table 8 – continued

Imports by country, customs basis, not seasonally adjusted

	June		January to June		Variation
	2008	2009	2008	2009	January to June 2009/2008
millions of dollars					
South America					
Argentina	48.8	64.4	229.0	350.6	53.1
Bolivia	7.6	9.9	34.0	40.6	19.4
Brazil	190.1	202.3	1,241.1	1,194.2	-3.8
Chile	163.1	143.2	1,161.3	914.4	-21.3
Colombia	62.5	64.0	322.5	368.4	14.2
Ecuador	11.8	18.5	91.4	130.7	43.0
Falkland Islands (Malvinas)	0.0	0.0	0.1	0.0	0.0
Guyana	17.9	23.7	105.6	143.9	36.3
Paraguay	1.7	0.7	7.4	4.2	-43.2
Peru	180.3	215.3	1,249.4	1,316.6	5.4
Suriname	54.0	48.7	279.8	272.5	-2.6
Uruguay	2.4	2.4	22.1	42.5	92.3
Venezuela	129.9	113.2	736.1	530.1	-28.0
Total	870.1	906.3	5,479.9	5,308.8	-3.1
Central America Antilles					
Anguilla	0.0	0.0	0.1	0.2	100.0
Antigua and Barbuda	0.1	0.0	5.0	0.2	-96.0
Aruba	0.0	0.1	120.2	53.4	-55.6
Bahamas	12.0	4.0	45.5	26.7	-41.3
Barbados	0.8	0.8	4.2	4.4	4.8
Belize	1.0	0.8	4.7	4.7	0.0
Bermuda	0.3	0.1	0.7	3.3	371.4
British Virgin Islands	1.6	0.0	10.0	0.3	-97.0
Cayman Islands	0.0	0.4	0.1	0.5	400.0
Costa Rica	28.5	30.0	201.4	189.8	-5.8
Cuba	95.7	39.2	544.6	223.2	-59.0
Dominica	0.0	0.0	0.1	0.1	0.0
Dominican Republic	10.4	12.3	58.0	71.7	23.6
El Salvador	4.3	5.4	43.6	41.6	-4.6
Grenada	0.0	0.0	0.3	0.2	-33.3
Guatemala	36.7	36.2	149.0	142.0	-4.7
Haiti	2.0	1.7	9.8	11.4	16.3
Honduras	15.2	10.9	77.4	76.8	-0.8
Jamaica	46.7	3.5	134.3	61.7	-54.1
Montserrat	0.0	0.0	0.0	0.0	0.0
Netherlands Antilles	0.0	0.0	2.5	9.9	296.0
Nicaragua	6.8	8.4	51.2	43.9	-14.3
Panama	0.7	5.2	16.3	10.4	-36.2
Saint Kitts and Nevis	0.4	0.8	2.4	2.8	16.7
Saint Lucia	0.0	0.0	0.1	0.1	0.0
Saint Vincent and the Grenadines	0.0	0.0	0.1	0.0	0.0
Trinidad and Tobago	13.9	11.8	180.8	118.9	-34.2
Turks and Caicos Islands	0.2	0.0	1.1	0.2	-81.8
Total	277.4	171.8	1,663.7	1,098.4	-34.0
All countries	38,068.0	29,563.5	211,166.2	179,469.8	-15.0

**Table 9-1
Imports by province of clearance, customs basis, not seasonally adjusted — June**

	Agricultural and fishing products	Energy products	Forestry products	Industrial goods	Machinery and equipment	Automotive products	Consumer goods	Special transactions	Total
millions of dollars									
Newfoundland and Labrador									
2008	4.2	488.7	0.0	6.9	11.1	0.0	0.8	0.9	512.8
2009	2.4	209.8	0.0	68.1	37.8	0.1	0.1	0.0	318.2
Prince Edward Island									
2008	0.1	0.0	0.0	0.0	42.6	0.0	9.8	0.0	52.5
2009	0.1	0.0	0.0	0.1	0.0	0.0	0.0	0.0	0.2
Nova Scotia									
2008	29.1	227.8	2.3	131.9	90.9	268.9	11.6	2.3	764.8
2009	26.8	53.7	0.8	64.5	90.6	237.8	14.2	3.5	492.0
New Brunswick									
2008	25.2	993.9	11.1	101.1	73.7	36.8	13.2	2.3	1,257.3
2009	37.4	573.5	6.5	84.5	92.3	26.6	23.3	1.7	845.8
Quebec									
2008	337.8	2,344.8	55.3	1,422.3	1,727.5	202.2	779.7	169.9	7,039.4
2009	398.6	1,121.6	43.0	1,056.6	1,414.1	161.5	898.2	25.4	5,119.0
Ontario									
2008	1,270.3	795.6	95.3	4,298.0	5,730.8	5,473.7	2,848.2	370.3	20,882.2
2009	1,443.0	442.6	70.0	3,342.0	4,915.5	3,230.9	2,901.4	389.1	16,734.4
Manitoba									
2008	83.9	23.5	7.9	345.3	557.7	161.7	139.7	8.4	1,328.1
2009	83.3	24.4	8.9	235.6	480.4	118.8	142.3	6.2	1,099.9
Saskatchewan									
2008	31.2	39.4	2.7	209.3	333.8	125.0	39.1	2.2	782.5
2009	26.0	44.8	2.4	118.3	297.3	51.5	19.7	0.4	560.5
Alberta									
2008	150.2	303.7	10.1	395.9	622.9	112.6	99.7	18.9	1,714.1
2009	162.7	169.3	10.8	288.1	572.6	59.4	95.9	12.3	1,371.1
British Columbia									
2008	386.2	297.4	57.1	699.9	1,210.1	509.2	546.5	15.8	3,722.4
2009	396.0	151.4	46.7	511.8	999.1	360.7	535.4	10.3	3,011.5
Yukon, Northwest Territories and Nunavut									
2008	8.1	2.0	0.0	0.0	1.7	0.0	0.0	0.0	11.9
2009	9.6	0.2	0.0	0.3	0.8	0.0	0.0	0.0	10.9
Total									
2008	2,326.3	5,517.0	241.8	7,610.8	10,402.7	6,890.2	4,488.4	591.0	38,068.0
2009	2,585.9	2,791.4	189.1	5,769.8	8,900.3	4,247.3	4,630.7	448.9	29,563.5

Table 9-2
Imports by province of clearance, customs basis, not seasonally adjusted — Year to date, January to June

	Agricultural and fishing products	Energy products	Forestry products	Industrial goods	Machinery and equipment	Automotive products	Consumer goods	Special transactions	Total
millions of dollars									
Newfoundland and Labrador									
2008	23.8	2,137.5	0.0	32.8	81.7	0.6	8.6	5.0	2,290.0
2009	21.5	907.8	0.5	125.7	87.5	0.3	1.6	0.1	1,145.0
Prince Edward Island									
2008	1.6	0.0	0.1	0.7	82.6	0.1	18.2	0.2	103.5
2009	1.8	0.0	0.0	17.6	0.5	0.1	0.2	0.1	20.2
Nova Scotia									
2008	165.5	1,166.9	10.1	749.7	623.8	1,704.6	71.3	8.8	4,500.6
2009	154.0	650.9	5.9	404.3	556.8	1,244.1	89.9	17.2	3,123.0
New Brunswick									
2008	157.4	3,888.4	61.9	500.7	380.6	205.4	81.0	11.0	5,286.3
2009	179.4	2,653.4	49.6	449.4	446.1	146.1	103.3	11.9	4,039.1
Quebec									
2008	1,897.7	10,989.3	368.9	8,721.0	10,268.3	1,285.1	4,552.5	588.0	38,670.8
2009	2,161.2	5,763.8	372.1	6,744.4	9,790.6	992.0	5,518.9	246.1	31,589.1
Ontario									
2008	7,294.2	3,830.2	550.3	24,915.6	32,785.6	29,439.8	16,892.9	2,078.4	117,787.1
2009	8,206.1	2,700.4	442.0	21,043.9	30,121.2	19,098.6	17,417.7	1,848.7	100,878.5
Manitoba									
2008	495.4	124.9	46.5	1,879.6	3,106.1	872.1	809.0	47.9	7,381.5
2009	490.3	105.7	44.8	1,801.2	3,011.2	684.7	850.0	44.8	7,032.7
Saskatchewan									
2008	174.3	171.8	15.2	1,260.5	1,813.3	714.8	141.6	13.0	4,304.7
2009	174.1	215.3	15.3	1,209.6	1,840.1	389.4	126.7	11.6	3,982.1
Alberta									
2008	936.6	1,754.1	59.3	2,535.8	3,911.6	757.4	576.1	72.0	10,603.0
2009	936.2	1,514.8	54.0	2,380.0	3,759.2	382.3	574.1	63.4	9,664.1
British Columbia									
2008	2,069.7	1,600.0	338.9	3,908.6	6,082.7	2,923.4	3,106.5	159.4	20,189.2
2009	2,238.2	1,112.7	245.4	3,427.2	5,789.4	1,793.1	3,270.5	77.1	17,953.5
Yukon, Northwest Territories and Nunavut									
2008	21.9	11.1	0.0	0.9	14.4	0.7	0.2	0.3	49.5
2009	20.7	2.2	0.0	1.2	17.0	0.3	0.1	0.9	42.4
Total									
2008	13,238.0	25,674.2	1,451.2	44,506.0	59,150.6	37,904.0	26,257.9	2,984.2	211,166.2
2009	14,583.2	15,627.0	1,229.4	37,604.6	55,419.7	24,731.0	27,953.0	2,321.9	179,469.8

Technical notes

The Canadian international merchandise trade statistical program

I Introduction

The objective of this text is to provide a general overview of the Canadian International Merchandise Trade Statistical Program with special reference to concepts and definitions. The text is intended for the general user and simplicity is emphasized. More technical details can be obtained from the International Trade Division upon request.

II Conceptual framework

1. Objectives and coverage: The primary objective of the Canadian International Merchandise Trade Statistical Program is to measure the change in the stock of material resources of the country resulting from the movement of merchandise into or out of Canada. Information on imports and exports are inputs into the System of National Accounts particularly in the Balance of Payments and Gross Domestic Product, and are used in the formulation of trade and budgetary policies. Governments, importers, exporters, manufacturers and shipping companies use trade statistics to:

- monitor import penetration and export performance;
- monitor commodity price and volume changes;
- examine transport implications.

2. Trade statistics - Customs basis/Balance of Payments basis: Merchandise trade statistics are reported and presented on two different bases: Customs basis and Balance of Payment basis. (B.O.P.)

When goods are imported into or exported from Canada, declarations must be filed with Customs giving such information as description and value of the goods, origin and port of clearance of commodities and the mode of transport. Most of this information is required for the purposes of Customs Administration. Statistics developed from administrative records of Customs are commonly referred to as Customs based trade statistics.

Customs based trade statistics are more accurate at measuring imports than they are at measuring exports. This is the case because Customs are typically more vigilant with respect to goods entering the country than they are with goods leaving the country.

Customs based export statistics may understate and/or incorrectly portray the destination of exports. Export statistics are understated when the proper documentation is not filed with Customs. Exports are incorrectly portrayed when the country of final destination is inaccurately reported on the customs documentation - this occurs most frequently when goods are routed through an intermediary country before continuing on to their final destination.

Statistics Canada does not have a measure of undercoverage but periodically conducts reconciliation exercises with its major trading partners, excluding the United States.

On January 1st, 1990, Canada entered into a Memorandum of Understanding (MOU) with the United States concerning the exchange of import data. As a consequence, each administration is using the other's import data to replace its own export data. Canada's international merchandise trade statistics are, therefore, no longer derived exclusively from the administrative records of Canada Border Services Agency, but from United States Customs records as well.

Customs based information is adjusted to conform with the National Accounts concepts and definitions. The adjustments to derive Balance of Payments based trade data include trade definition, valuation and timing related adjustments. The principal difference between the two trade concepts is that Customs based merchandise trade statistics cover the physical movement of goods as they are reflected on customs documents, while Balance of Payments adjusted data are intended to cover all economic transactions between residents and non-residents which involve merchandise trade. This section describes the concepts and processes pertaining to the Customs based trade statistics only. (For further information on Balance of Payments adjusted data see the publication *"Canada's Balance of International Payments" Catalogue no. 67-001-XPB*).

3. System of trade: Canadian trade statistics are compiled according to the "General" system of trade as defined by the United Nations Statistical Office. Under this system, imports include all goods which have crossed Canada's territorial boundary, whether for immediate consumption in Canada or stored in bonded Customs warehouses. Domestic exports include goods grown, extracted or manufactured in Canada, including goods of foreign origin which have been materially transformed in Canada. Re-exports are exports of goods of foreign origin which have not been materially transformed in Canada, including foreign goods withdrawn for export from bonded customs warehouses. Total exports are the sum of Domestic exports and Re-exports. Thus the general trade system, in principal, presents all goods entering the country (imports) and all goods leaving the country (exports). It differs from the "Special" system of trade in the treatment of imported goods into Customs bonded warehouses. Under the "Special" system, these goods are counted only if and when they are withdrawn from Customs warehouses for home consumption. They are not counted in export statistics unless they have first cleared Customs.

Conceptually, under the "General" system, the statistical frontier coincides with the geographical boundary, while under the "Special" system, it coincides with the Customs boundary.

4. Valuation: For Customs purposes, imports are recorded at values established according to the provisions of the Customs Act, which, since January 1st, 1985, reflects valuation methods based on the General Agreement on Tariffs and Trade (GATT) Valuation Code System. It generally requires the value for duty of imported goods be equivalent to the transaction value or the price actually paid.

To determine the transaction value of imported goods, all transportation and associated costs arising in respect of the goods being appraised prior to and at the place of direct shipment to Canada, are to be added to the price of the goods. Therefore, Canadian imports are valued F.O.B. (Free on Board), place of direct shipment to Canada. It excludes freight and insurance costs in bringing the goods to Canada from the point of direct shipment.

To countries other than the United States, exports are, in principal, valued or recorded at the values declared on export documents which usually reflect the transaction value, i.e. actual selling price, or in the case of a non-arm's length transaction, the transfer price used for company accounting purposes. Canadian exports to overseas countries are valued at F.O.B. port of exit, including domestic freight charges to that point but net of discounts and allowances. As of January, 1990, Canadian exports to the U.S. are valued F.O.B. point of exit from Canada. Prior to 1990, they were valued F.O.B. place of lading net of freight charges, discounts and allowances.

5. Statistical period: The reference period is the calendar month and the calendar year. The closing of the statistical month for imports and Canadian exports to the United States is defined as the last calendar day of the month, based as closely as practicable on the date of clearance from Customs.

The closing of the statistical month for exports, to countries other than the United States, is also defined as the last calendar day of the month. Those export documents which are received too late for incorporation in the current month are assigned to the month the transaction took place. If a monthly summary report from a high volume exporter is not received on time, the data are imputed for the current month and revised with the trade value in the following statistical month.

6. Trading partner attribution (Country of origin/destination): Exports are attributed to the country, which is the last known destination of the goods at the time of export. Exports to the United States are attributed to the state of destination.

Imports are attributed to their country of origin, that is, the country in which the goods were grown, extracted or manufactured in accordance to the rules of origin administered by Canada Border Services Agency. Imports from

the United States are attributed to the state of origin. Prior to 1988, most imports were attributed to the country of export/consignment with the exception of imports from Central and South America.

7. Principal trading areas: The “principal trading areas” are country groupings defined as follows:

United States: (includes trade with Puerto Rico and the U.S. Virgin Islands).

Japan:

E.U. (European Union): Austria, Belgium, Bulgaria, Cyprus, Czech Republic, Denmark, Estonia, Finland, France, Germany, Greece, Hungary, Ireland, Italy, Latvia, Lithuania, Luxembourg, Malta, Netherlands, Poland, Portugal, Romania, Slovakia, Slovenia, Spain, Sweden and United Kingdom.

Other O.E.C.D.: Australia, Canada, Iceland, Mexico, New Zealand, Norway, South Korea, Switzerland, and Turkey. (The E.U. countries, United States, and Japan are also members of O.E.C.D. - the Organization for Economic Co-operation and Development).

Other countries: This group includes all countries and territories other than the United States, Japan, E.U. and other O.E.C.D.

8. Legal framework: Import and export statistics with countries other than the United States are derived from information contained on administrative records collected by the Canada Border Services Agency under the Customs Act. Copies of these documents (or information therefrom) are sent to Statistics Canada in accordance with Section 25 of the Statistics Act. It follows that the disclosure of trade statistics is governed by both the Customs Act and the Statistics Act and is subject to the provisions of Section 17.(2)(a) of the latter. Disclosure of export statistics to the United States is now governed by a Memorandum of Understanding which provides for an exchange of detailed import statistics between Canada and the United States.

Questions concerning details of methods not covered by these notes should be addressed to the Marketing and Client Services Section, International Trade Division, Statistics Canada, Ottawa, Ontario, K1A 0T6.

Telephone: 1-800-294-5583 or within the area code 613-951-9647

Facsimile: 1-800-664-0055 or within the area code 613-951-0117

Internet: *trade@statcan.gc.ca*