

Catalogue no. 65-001-X

Canadian International Merchandise Trade

May 2009



Statistics
Canada

Statistique
Canada

Canada

How to obtain more information

For information about this product or the wide range of services and data available from Statistics Canada, visit our website at www.statcan.gc.ca, e-mail us at infostats@statcan.gc.ca, or telephone us, Monday to Friday from 8:30 a.m. to 4:30 p.m., at the following numbers:

Statistics Canada's National Contact Centre

Toll-free telephone (Canada and the United States):

Inquiries line	1-800-263-1136
National telecommunications device for the hearing impaired	1-800-363-7629
Fax line	1-877-287-4369

Local or international calls:

Inquiries line	1-613-951-8116
Fax line	1-613-951-0581

Depository Services Program

Inquiries line	1-800-635-7943
Fax line	1-800-565-7757

To access this product

This product, Catalogue no. 65-001-X, is available free in electronic format. To obtain a single issue, visit our website at www.statcan.gc.ca and select "Publications."

Standards of service to the public

Statistics Canada is committed to serving its clients in a prompt, reliable and courteous manner. To this end, Statistics Canada has developed *standards of service* that its employees observe. To obtain a copy of these service standards, please contact Statistics Canada toll-free at 1-800-263-1136. The service standards are also published on www.statcan.gc.ca under "About us" > "Providing services to Canadians."

Statistics Canada
International Trade Division

Canadian International Merchandise Trade

May 2009

Published by authority of the Minister responsible for Statistics Canada

© Minister of Industry, 2009

All rights reserved. The content of this electronic publication may be reproduced, in whole or in part, and by any means, without further permission from Statistics Canada, subject to the following conditions: that it be done solely for the purposes of private study, research, criticism, review or newspaper summary, and/or for non-commercial purposes; and that Statistics Canada be fully acknowledged as follows: Source (or "Adapted from", if appropriate): Statistics Canada, year of publication, name of product, catalogue number, volume and issue numbers, reference period and page(s). Otherwise, no part of this publication may be reproduced, stored in a retrieval system or transmitted in any form, by any means—electronic, mechanical or photocopy—or for any purposes without prior written permission of Licensing Services, Client Services Division, Statistics Canada, Ottawa, Ontario, Canada K1A 0T6.

July 2009

Catalogue no. 65-001-X, vol. 63, no. 5

ISSN 1480-8781

Frequency: Monthly

Ottawa

La version française de cette publication est disponible sur demande (n° 65-001-X au catalogue).

Note of appreciation

Canada owes the success of its statistical system to a long standing partnership between Statistics Canada, the citizens of Canada, its businesses, governments and other institutions. Accurate and timely statistical information could not be produced without their continued cooperation and goodwill.

User information

Symbols

The following standard symbols are used in Statistics Canada publications:

- . not available for any reference period
- .. not available for a specific reference period
- ... not applicable
- 0 true zero or a value rounded to zero
- 0^s value rounded to 0 (zero) where there is a meaningful distinction between true zero and the value that was rounded
- p preliminary
- r revised
- x suppressed to meet the confidentiality requirements of the *Statistics Act*
- E use with caution
- F too unreliable to be published

Note to Users

All totals are calculated from full figures and rounded independently; consequently, totals may not equal the sum of their components.

Table of contents

Highlights	5
Analysis	8
Statistical tables	
1 Merchandise trade of Canada, balance of payments basis, seasonally adjusted	13
1-1 Current dollars	13
1-2 Constant dollars, 2002	14
1-3 Price indices (Laspeyres)	15
2 Exports by commodity groupings, balance of payments basis, seasonally adjusted	16
2-1 Current dollars	16
2-2 Constant dollars, 2002	18
3 Domestic exports to selected countries, customs basis, not seasonally adjusted	20
3-1 May	20
3-2 Year to date, January to May	21
4 Domestic exports by country, customs basis, not seasonally adjusted	22
5 Exports by province of origin, customs basis, not seasonally adjusted	26
5-1 May	26
5-2 Year to date, January to May	27
6 Imports by commodity groupings, balance of payments basis, seasonally adjusted	28
6-1 Current dollars	28
6-2 Constant dollars, 2002	30
7 Imports from selected countries, customs basis, not seasonally adjusted	32
7-1 May	32
7-2 Year to date, January to May	33
8 Imports by country, customs basis, not seasonally adjusted	34

Table of contents – continued

9	Imports by province of clearance, customs basis, not seasonally adjusted	38
9-1	May	38
9-2	Year to date, January to May	39

Data quality, concepts and methodology

	Technical notes	40
--	-----------------	----

Highlights

May 2009

- Canada's merchandise exports fell 6.9% to \$28.4 billion in May as volumes declined 4.1% and prices decreased 2.9%. Imports were down 3.5% to \$29.8 billion due to a 4.9% reduction in prices while volumes rose 1.5%. As a result, Canada's trade deficit with the world widened to \$1.4 billion in May from \$389 million in April. The Canadian dollar appreciated 6.4% against the US dollar in May.
- Exports and imports declined for the third consecutive month in May and have been trending downwards since July 2008. The declines observed in March, April and May 2009 were less pronounced than those at the end of 2008 and January 2009.
- Since July 2008, export volumes decreased 23.7% and prices declined 16.2%. In comparison, import volumes decreased 24.5% while prices edged down 0.1% during the same period.
- Although the declines were widespread across all sectors in May, the continued weakness in global demand for energy products and the restructuring of the automotive industry accounted for more than half of the decrease in exports and imports.
- Exports to the United States dropped 8.1% to \$20.3 billion, largely the result of lower exports of automotive products and crude petroleum which have been impacted by the economic downturn in the United States. Imports decreased 3.3% to \$18.8 billion. Consequently, the trade surplus with the United States shrank to \$1.5 billion in May from \$2.6 billion in April.
- Canada's trade deficit with countries other than the United States narrowed to \$2.9 billion in May from \$3.0 billion in April. Exports and imports both fell by 3.7%.

Note to readers

Merchandise trade is one component of Canada's international balance of payments, which also includes trade in services, investment income, current transfers as well as capital and financial flows.

International merchandise trade data by country are available on both a balance of payments and a customs basis for the United States, Japan and the United Kingdom. Trade data for all other individual countries are available on a customs basis only. Balance of payments data are derived from customs data by making adjustments for characteristics such as valuation, coverage, timing and residency. These adjustments are made to conform to the concepts and definitions of the Canadian System of National Accounts.

Constant dollars referred to in the text are calculated using the Laspeyres volume formula.

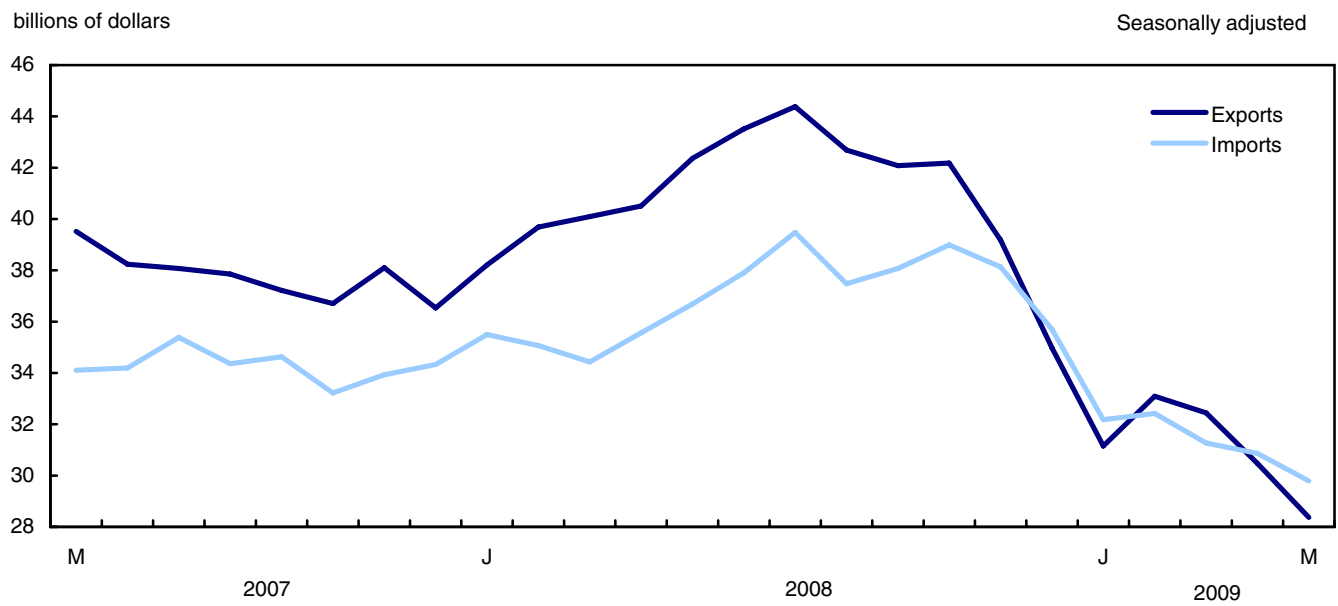
Revisions

In general, merchandise trade data are revised on an ongoing basis for each month of the current year. Current year revisions are reflected in both the customs and balance of payments based data. Revisions to customs based data for the previous year are released on a quarterly basis. Revisions to balance of payments based data for the three previous years are released annually in June.

Factors influencing revisions include late receipt of import and export documentation, incorrect information on customs forms, replacement of estimates with actual figures, changes in classification of merchandise based on more current information, and changes to seasonal adjustment factors.

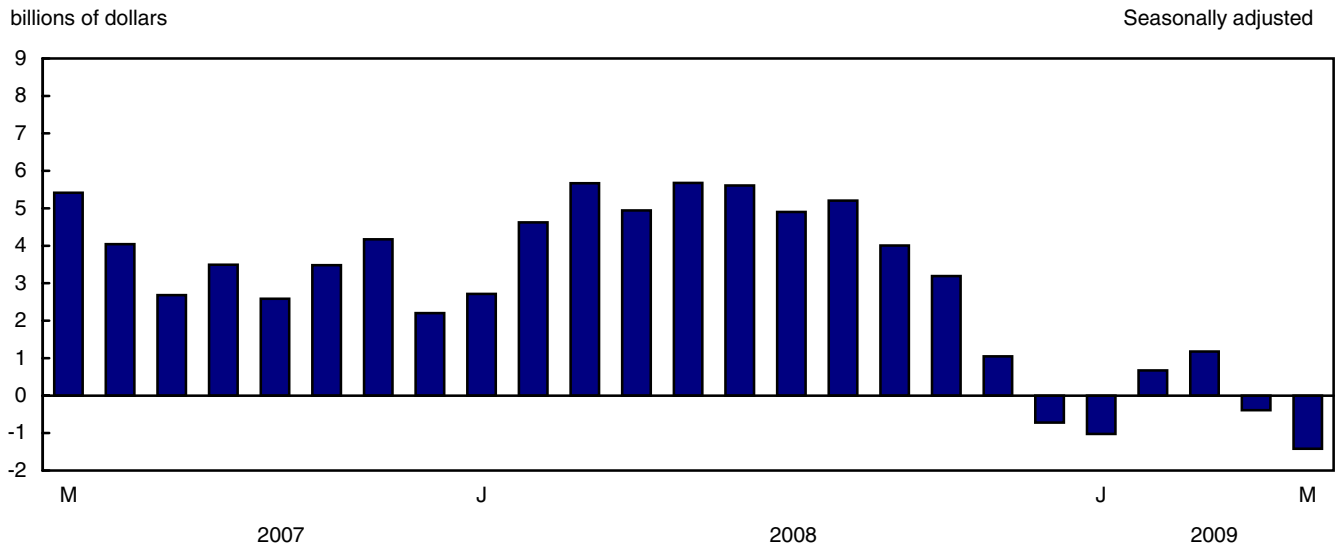
Revised data are available in the appropriate CANSIM tables.

Chart 1
Exports and imports



Note(s): On a balance of payments basis.

Chart 2
Trade balance



Note(s): On a balance of payments basis.

Analysis

Energy products and automotive products lead the decline in exports

All export sectors declined with the largest movements observed in energy products and automotive products.

Energy products fell 10.6% to \$5.4 billion mainly due to a combination of volume and price reductions, with volumes being the dominant factor. Lower exports of natural gas and crude petroleum were largely responsible for the decline as global demand for these products remained weak.

Exports of automotive products dropped 12.4% to \$3.0 billion, largely the result of volume reductions. Exports of trucks declined 33.0% as the production of some large pick-up trucks was halted in May. Exports of passenger autos and motor vehicle parts decreased 7.6% and 11.2% respectively, as a result of restructuring in the North American automotive industry.

The agricultural and fishing sector declined 8.7% to \$3.2 billion, mostly due to reduced volumes. Canola and wheat which had driven the increase in April accounted for most of the decline in May.

Exports of industrial goods and materials decreased 4.9% to \$6.0 billion, the third consecutive decline. Although the decreases were generalized, lower exports of precious metals accounted for more than half of the decline in this sector.

Imports down across the board

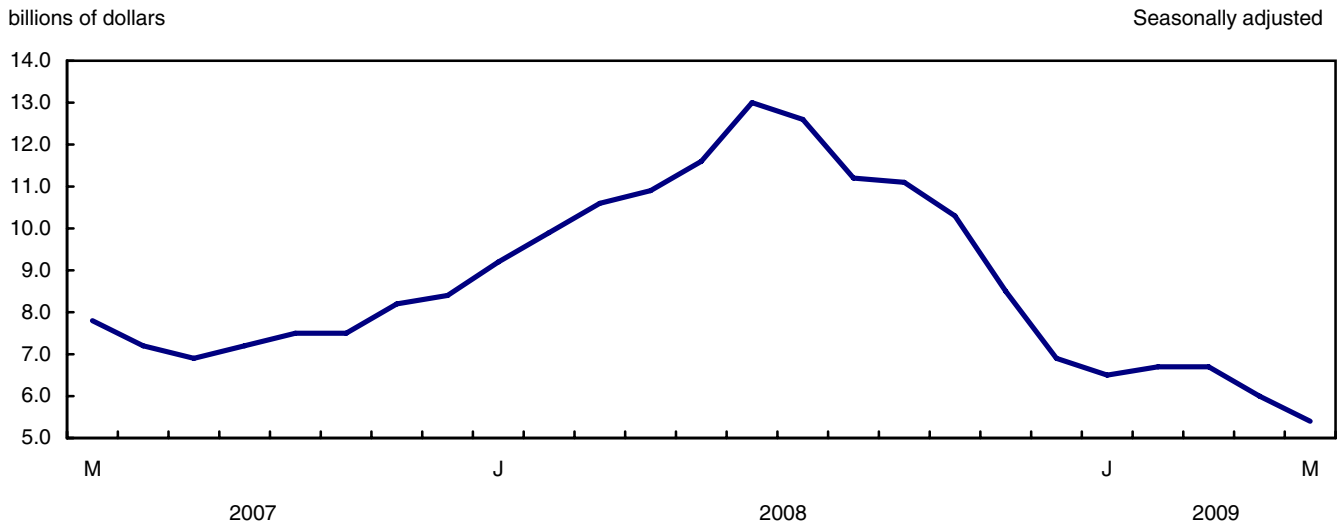
All imports sectors declined, led by the automotive products, energy products, and machinery and equipment sectors.

The modest gains observed in automotive products from January to April were completely erased by the drop in imports in May as the restructuring of the automotive industry continued. Imports of automotive products fell 7.3% to \$3.8 billion, the lowest level since March 1996. Lower imports of motor vehicle parts were the main contributor to the decrease, falling 10.6%. Passenger autos and trucks also declined.

Imports of energy products fell 10.7% to \$2.3 billion due to a combination of volume and price decreases. This decline was entirely the result of a 21.7% decrease in crude petroleum volume.

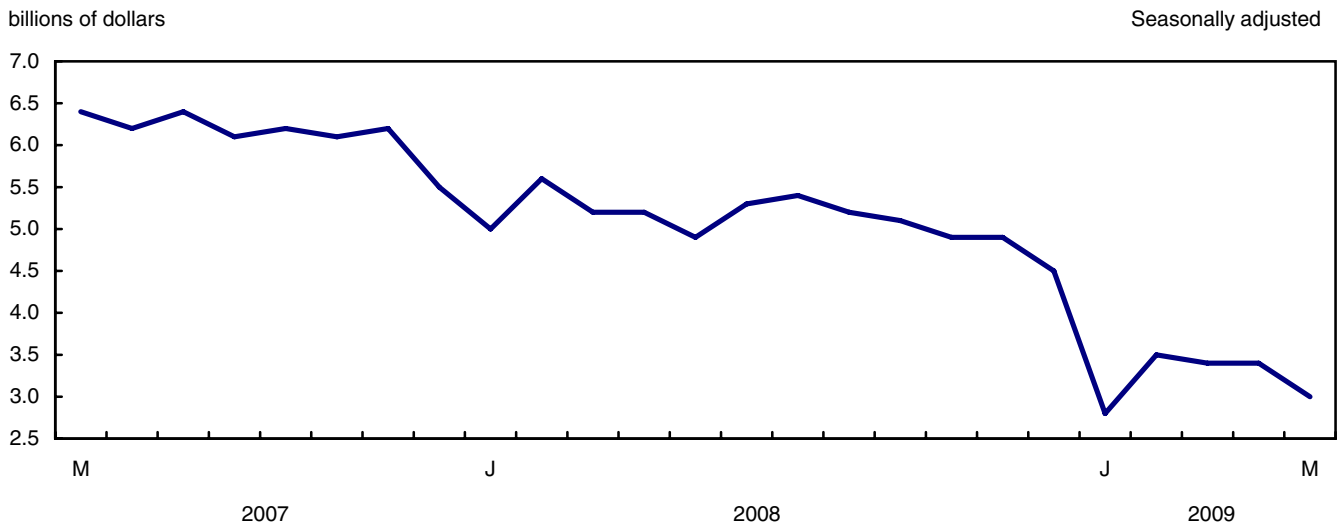
Imports of machinery and equipment slid by 2.7% to \$9.0 billion, as prices declined and volumes rose. Lower imports of aircraft accounted for more than three-quarters of the decline in this sector. Imports of engines, turbines and motors, up 54.6%, mitigated the decrease.

Chart 1
Exports of energy products



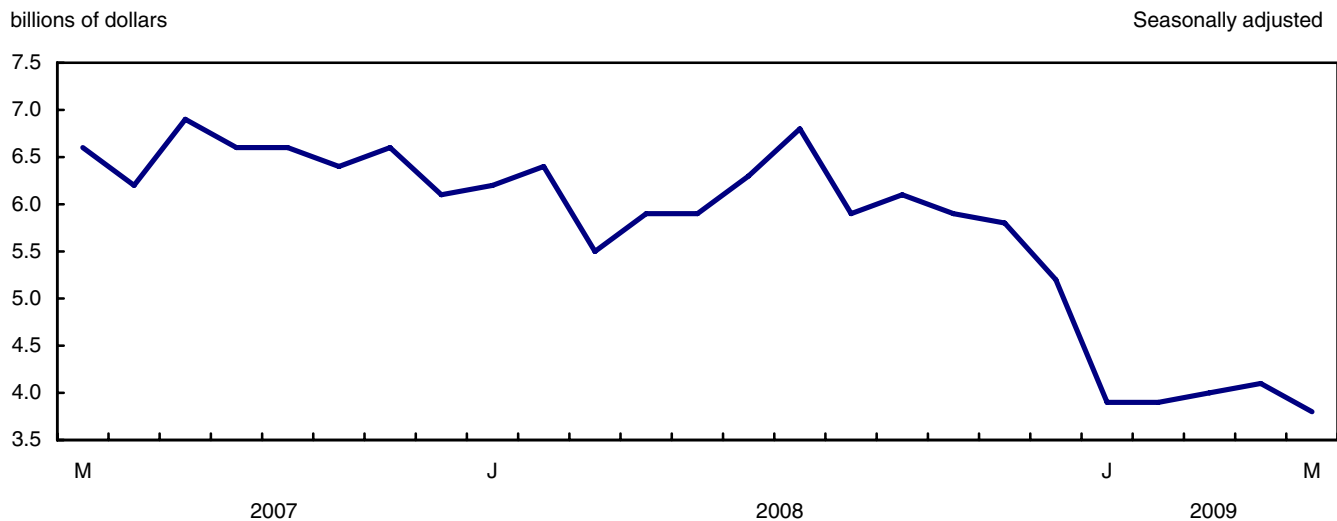
Note(s): On a balance of payments basis.

Chart 2
Exports of automotive products



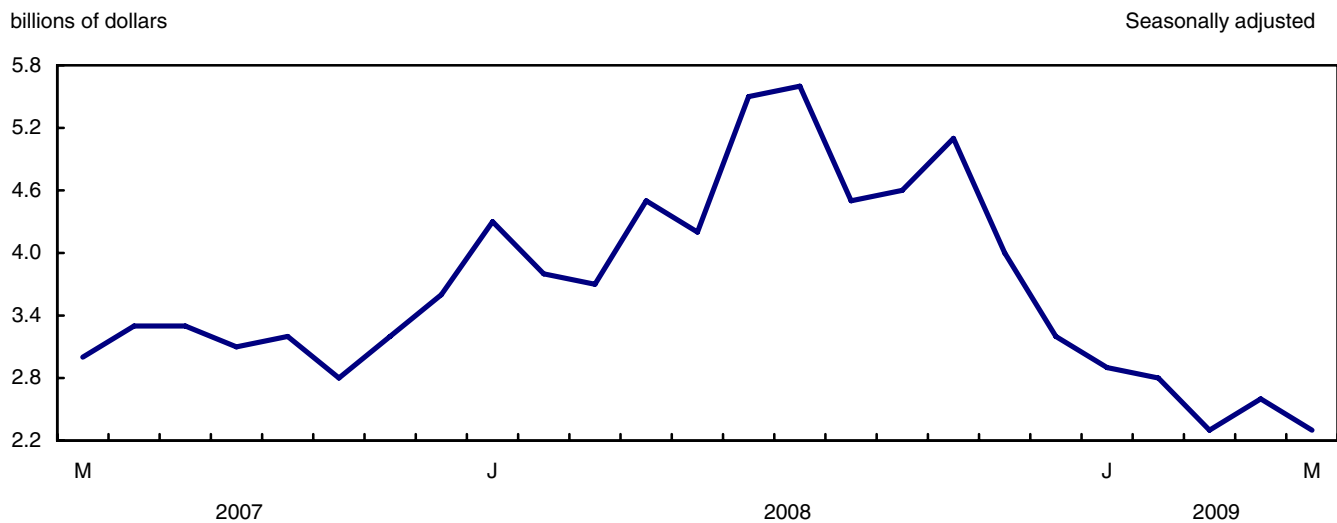
Note(s): On a balance of payments basis.

Chart 3
Imports of automotive products



Note(s): On a balance of payments basis.

Chart 4
Imports of energy products



Note(s): On a balance of payments basis.

Text table 1
Merchandise trade by principal trading area, balance of payments basis, seasonally adjusted

	April 2009	May 2009	Change	Year to date		Year to date change	May 2009/2008		
				2008	2009				
	millions of dollars		percent		millions of dollars		percent		
Export to:									
United States	22,053	20,263	-1,790	-8.1	152,943	112,892	-40,051	-26.2	-35.7
Japan	783	630	-154	-19.6	4,594	4,016	-578	-12.6	-43.5
European Union ¹	2,668	2,490	-178	-6.7	15,732	14,049	-1,683	-10.7	-25.0
Other Organization for Economic Co-operation and Development ²	1,401	1,390	-11	-0.8	8,054	6,653	-1,401	-17.4	-30.1
Other countries	3,569	3,600	30	0.9	19,544	17,929	-1,615	-8.3	-18.5
Total	30,475	28,372	-2,102	-6.9	200,867	155,540	-45,327	-22.6	-33.0
Imports from:									
United States	19,434	18,785	-649	-3.3	112,934	98,345	-14,588	-12.9	-19.6
Japan	743	710	-34	-4.5	4,888	3,971	-917	-18.8	-24.0
European Union ¹	3,327	3,215	-112	-3.4	18,244	16,512	-1,731	-9.5	-15.8
Other Organization for Economic Co-operation and Development ²	1,973	1,820	-153	-7.7	10,618	9,967	-651	-6.1	-19.9
Other countries	5,387	5,263	-125	-2.3	30,560	27,732	-2,828	-9.3	-16.5
Total	30,864	29,793	-1,072	-3.5	177,243	156,527	-20,716	-11.7	-18.8
Balance:									
United States	2,619	1,478	-1,142	...	40,009	14,546	-25,463
Japan	40	-80	-120	...	-294	45	340
European Union ¹	-658	-724	-66	...	-2,511	-2,463	48
Other Organization for Economic Co-operation and Development ²	-572	-431	142	...	-2,564	-3,313	-750
Other countries	-1,818	-1,663	155	...	-11,016	-9,802	1,213
Total	-390	-1,420	-1,030	...	23,624	-987	-24,612

1. European Union includes: Austria, Belgium, Bulgaria, Cyprus, Czech Republic, Denmark, Estonia, Finland, France, Germany, Greece, Hungary, Ireland, Italy, Latvia, Lithuania, Luxembourg, Malta, Netherlands, Poland, Portugal, Romania, Slovakia, Slovenia, Spain, Sweden and United Kingdom.
2. Other Organization for Economic Co-operation and Development includes: Australia, Canada, Iceland, Mexico, New Zealand, Norway, South Korea, Switzerland and Turkey.

Text table 2
Reconciliation of customs and balance of payments trade data, not seasonally adjusted

	2009					2008	2008
	May	April	March	February	January	December	Annual
	millions of dollars						
Exports							
Customs basis	27,692	29,755	32,679	29,760	29,481	34,410	483,568
Balance of payments adjustments	951	1,014	1,366	624	112	-689	6,289
Valuation and residency							
Inland freight	463	505	564	516	494	531	6,997
Other valuation and residency	-801	-705	-424	-858	-1,223	-2,365	-16,502
Timing	60	-1	22	-9	-76	8	-79
Coverage	1,229	1,215	1,204	975	917	1,137	15,873
Balance of payments basis	28,643	30,769	34,045	30,384	29,593	33,721	489,857
Imports							
Customs basis	28,278	30,683	31,992	29,616	29,210	33,646	433,431
Balance of payments adjustments	816	797	843	549	642	553	9,557
Valuation and residency							
Inland freight	619	636	656	602	619	650	8,908
Other valuation and residency	69	24	-17	-38	-38	-52	-565
Timing	0	0	0	0	0	0	0
Coverage	128	137	204	-15	61	-45	1,214
Balance of payments basis	29,094	31,480	32,835	30,165	29,852	34,199	442,988

Statistical tables

Table 1-1
Merchandise trade of Canada, balance of payments basis, seasonally adjusted — Current dollars

	Exports	Imports	Balance	Period to period change		
				Exports	Imports	Balance
				percent	percent	percent
	millions of dollars			percent		millions of dollars
2005	450,210	387,838	62,372	0.0	0.0	0
2006	453,951	404,345	49,606	0.8	4.3	-12,767
2007	463,127	415,229	47,898	2.0	2.7	-1,708
2008	489,857	442,988	46,869	5.8	6.7	-1,029
2007						
First quarter	120,454	106,198	14,256	4.4	3.1	1,887
Second quarter	118,191	103,166	15,025	-1.9	-2.9	769
Third quarter	113,144	104,379	8,765	-4.3	1.2	-6,260
Fourth quarter	111,338	101,486	9,852	-1.6	-2.8	1,088
2008						
First quarter	117,996	104,991	13,005	6.0	3.5	3,152
Second quarter	126,385	110,154	16,230	7.1	4.9	3,226
Third quarter	129,144	115,028	14,116	2.2	4.4	-2,114
Fourth quarter	116,332	112,815	3,517	-9.9	-1.9	-10,599
2009						
First quarter	96,693	95,871	823	-16.9	-15.0	-2,695
2008						
January	38,209	35,496	2,713	4.6	3.4	512
February	39,689	35,067	4,623	3.9	-1.2	1,909
March	40,097	34,428	5,669	1.0	-1.8	1,046
April	40,507	35,564	4,943	1.0	3.3	-726
May	42,365	36,688	5,677	4.6	3.2	733
June	43,513	37,902	5,611	2.7	3.3	-66
July	44,379	39,476	4,903	2.0	4.2	-708
August	42,685	37,479	5,206	-3.8	-5.1	302
September	42,080	38,073	4,008	-1.4	1.6	-1,198
October	42,181	38,991	3,190	0.2	2.4	-818
November	39,177	38,129	1,049	-7.1	-2.2	-2,141
December	34,974	35,695	-721	-10.7	-6.4	-1,770
2009						
January	31,156	32,180	-1,024	-10.9	-9.8	-303
February	33,092	32,421	671	6.2	0.7	1,695
March	32,445	31,269	1,176	-2.0	-3.6	505
April	30,475	30,864	-390	-6.1	-1.3	-1,566
May	28,372	29,793	-1,420	-6.9	-3.5	-1,030

Note(s): Due to rounding, monthly data may not add up to quarterly data and quarterly data may not add up to annual data.

Table 1-2
Merchandise trade of Canada, balance of payments basis, seasonally adjusted — Constant dollars, 2002

	Exports	Imports	Balance	Period to period change	
				Exports	Imports
	millions of dollars			percent	
2005	439,306	431,680	7,626	0.0	0.0
2006	443,398	456,881	-13,483	0.9	5.8
2007	449,581	483,522	-33,941	1.4	5.8
2008	415,123	485,171	-70,048	-7.7	0.3
2007					
First quarter	113,771	117,511	-3,740	2.0	1.6
Second quarter	113,538	118,154	-4,615	-0.2	0.5
Third quarter	112,008	123,373	-11,366	-1.3	4.4
Fourth quarter	110,264	124,484	-14,220	-1.6	0.9
2008					
First quarter	107,366	123,120	-15,754	-2.6	-1.1
Second quarter	105,949	123,992	-18,043	-1.3	0.7
Third quarter	104,458	124,141	-19,683	-1.4	0.1
Fourth quarter	97,350	113,917	-16,567	-6.8	-8.2
2009					
First quarter	87,319	97,815	-10,496	-10.3	-14.1
2008					
January	35,336	41,546	-6,210	0.0	1.2
February	36,473	41,373	-4,900	3.2	-0.4
March	35,557	40,201	-4,644	-2.5	-2.8
April	35,078	40,481	-5,404	-1.3	0.7
May	35,639	41,927	-6,288	1.6	3.6
June	35,233	41,584	-6,351	-1.1	-0.8
July	35,530	43,031	-7,502	0.8	3.5
August	34,592	40,426	-5,834	-2.6	-6.1
September	34,337	40,684	-6,347	-0.7	0.6
October	33,470	39,215	-5,745	-2.5	-3.6
November	32,772	38,542	-5,770	-2.1	-1.7
December	31,108	36,160	-5,052	-5.1	-6.2
2009					
January	28,140	33,016	-4,876	-9.5	-8.7
February	29,918	32,978	-3,060	6.3	-0.1
March	29,261	31,821	-2,560	-2.2	-3.5
April	28,264	32,010	-3,746	-3.4	0.6
May	27,097	32,499	-5,402	-4.1	1.5

Note(s): Due to rounding, monthly data may not add up to quarterly data and quarterly data may not add up to annual data.

Table 1-3
Merchandise trade of Canada, balance of payments basis, seasonally adjusted — Price indices (Laspeyres)

	2002=100			Period to period change		
	Exports	Imports	Terms of trade	Exports	Imports	Terms of trade
	millions of dollars			percent		
2005	104.6	92.2	113.4	0.0	0.0	0.0
2006	105.1	92.7	113.3	0.4	0.5	-0.1
2007	107.2	91.6	117.0	2.0	-1.2	3.2
2008	116.3	97.6	119.1	8.5	6.6	1.9
2007						
First quarter	109.5	95.2	115.0	3.1	1.9	1.2
Second quarter	112.0	92.9	120.5	2.3	-2.4	4.7
Third quarter	105.0	90.1	116.5	-6.2	-3.0	-3.2
Fourth quarter	105.6	88.0	119.9	0.5	-2.3	2.9
2008						
First quarter	111.3	90.4	123.1	5.4	2.7	2.7
Second quarter	118.5	95.2	124.5	6.4	5.2	1.2
Third quarter	121.8	101.1	120.6	2.8	6.2	-3.4
Fourth quarter	114.0	103.9	109.7	-6.4	2.8	-9.2
2009						
First quarter	109.5	101.5	107.8	-4.0	-2.3	-1.7
2008						
January	109.7	89.9	122.0	2.3	1.9	0.4
February	110.0	90.0	122.2	0.3	0.2	0.2
March	113.2	91.3	124.0	2.9	1.4	1.5
April	116.3	93.4	124.6	2.7	2.2	0.5
May	118.5	94.5	125.4	1.9	1.2	0.7
June	120.9	97.7	123.7	2.0	3.4	-1.3
July	123.8	99.5	124.4	2.4	1.8	0.6
August	121.6	101.8	119.4	-1.8	2.3	-4.1
September	120.0	101.9	117.8	-1.3	0.1	-1.4
October	121.6	104.8	116.1	1.3	2.8	-1.5
November	116.6	104.2	111.9	-4.1	-0.5	-3.6
December	111.5	102.7	108.5	-4.4	-1.4	-3.0
2009						
January	109.4	100.6	108.8	-1.9	-2.1	0.2
February	109.5	101.3	108.1	0.1	0.7	-0.6
March	109.7	102.5	107.0	0.1	1.1	-1.0
April	107.5	100.7	106.8	-1.9	-1.8	-0.2
May	104.8	96.8	108.3	-2.5	-3.8	1.3

Note(s): Due to rounding, monthly data may not add up to quarterly data and quarterly data may not add up to annual data.

Table 2-1
Exports by commodity groupings, balance of payments basis, seasonally adjusted — Current dollars

	April 2009	May 2009	Change		Year to date		Year to date change		May
					2008	2009			2009/2008
	millions of dollars		percent		millions of dollars		percent		
Total	30,475	28,372	-2,102	-6.9	200,867	155,540	-45,327	-22.6	-33.0
Agricultural and fishing products	3,546	3,238	-308	-8.7	16,595	17,021	426	2.6	-8.2
Wheat	630	518	-113	-17.9	3,071	2,828	-243	-7.9	-32.2
Other agricultural and fishing products	2,916	2,720	-196	-6.7	13,524	14,193	669	4.9	-1.6
Live animals	185	136	-49	-26.3	1,015	847	-168	-16.5	-33.0
Fish and fish preparations	361	347	-14	-3.8	1,688	1,767	79	4.7	3.1
Barley	45	34	-12	-25.6	431	240	-191	-44.2	-64.0
Wheat flour	7	6	-0	-3.3	41	34	-8	-18.5	-29.3
Other cereals unmilled	43	47	4	8.7	336	261	-75	-22.3	-37.8
Other cereal preparations	256	251	-4	-1.7	1,126	1,268	142	12.6	7.7
Meat and meat preparations	380	365	-15	-4.0	1,702	1,942	241	14.2	-0.9
Alcoholic beverages	65	66	1	1.6	340	322	-17	-5.1	-5.8
Other food, feed, beverages and tobacco	966	956	-9	-1.0	4,349	4,920	572	13.1	6.0
Rapeseed	410	316	-94	-23.0	1,610	1,570	-40	-2.5	8.5
Other crude vegetable products	198	195	-3	-1.6	888	1,021	134	15.1	8.3
Energy products	6,028	5,388	-640	-10.6	52,231	31,281	-20,950	-40.1	-53.7
Crude petroleum	3,095	2,792	-303	-9.8	25,684	14,497	-11,187	-43.6	-50.2
Natural gas	1,317	990	-327	-24.9	14,139	7,711	-6,428	-45.5	-67.3
Other energy products	1,615	1,606	-10	-0.6	12,409	9,074	-3,335	-26.9	-46.8
Coal and other bituminous substances	410	333	-77	-18.9	1,500	1,951	452	30.1	-42.4
Petroleum and coal products	1,020	1,093	73	7.2	9,314	5,997	-3,318	-35.6	-48.2
Electricity	185	180	-5	-2.8	1,595	1,126	-469	-29.4	-45.1
Forestry products	1,635	1,580	-55	-3.4	10,558	8,497	-2,061	-19.5	-27.4
Lumber and sawmill products	539	518	-21	-3.9	3,795	2,776	-1,020	-26.9	-34.0
Other crude wood products	50	33	-17	-34.1	260	215	-45	-17.4	-49.9
Lumber	292	291	-2	-0.6	2,203	1,554	-649	-29.5	-34.7
Other wood fabricated materials	196	194	-2	-1.1	1,332	1,007	-325	-24.4	-28.9
Wood pulp and other wood products	373	359	-14	-3.7	2,837	1,938	-898	-31.7	-39.1
Newsprint and other paper and paperboard	723	703	-20	-2.7	3,926	3,783	-143	-3.6	-12.2
Newsprint paper	380	373	-7	-1.9	2,053	2,042	-11	-0.5	-12.1
Other paper and paperboard	343	330	-13	-3.7	1,873	1,741	-132	-7.1	-12.4
Industrial goods and materials	6,264	5,960	-304	-4.9	45,645	32,956	-12,688	-27.8	-38.7
Metal ores	849	901	51	6.1	5,921	4,208	-1,713	-28.9	-33.6
Iron ores, concentrates and scrap	394	415	21	5.3	1,829	1,937	107	5.9	-16.7
Copper ores, concentrates and scrap	106	147	41	38.3	790	546	-244	-30.9	-42.6
Nickel ores, concentrates and scrap	126	162	36	28.3	1,735	624	-1,111	-64.0	-46.9
Zinc ores, concentrates and scrap	19	4	-14	-76.6	136	91	-45	-32.9	-68.0
Other ores, concentrates and scrap	204	173	-32	-15.5	1,431	1,011	-420	-29.3	-39.1
Chemicals, plastics and fertilizers	1,994	1,987	-7	-0.4	13,827	10,971	-2,855	-20.6	-32.5
Inorganic chemicals	376	318	-59	-15.6	2,120	1,953	-168	-7.9	-32.6
Organic chemicals	365	378	13	3.6	2,891	1,876	-1,016	-35.1	-34.3
Fertilizers and fertilizer materials	243	296	53	22.1	2,301	1,932	-369	-16.0	-43.8
Synthetic rubber and plastics	782	776	-6	-0.8	5,151	4,039	-1,113	-21.6	-27.8
Other chemical products	228	219	-9	-3.9	1,363	1,172	-191	-14.0	-25.9
Metals and alloys	2,074	1,789	-285	-13.7	17,218	10,827	-6,391	-37.1	-48.8
Primary iron and steel	48	21	-26	-55.0	493	133	-360	-73.1	-80.1
Steel bars, rods, plates, sheets	196	169	-28	-14.2	1,960	1,224	-736	-37.6	-62.9
Other iron and steel and alloys	197	183	-13	-6.7	1,567	1,032	-535	-34.1	-43.5
Aluminum including alloys	428	413	-14	-3.3	3,749	2,438	-1,311	-35.0	-49.2
Copper and alloys	174	135	-39	-22.5	2,062	898	-1,164	-56.4	-68.0
Nickel and alloys	171	159	-12	-6.9	1,787	908	-880	-49.2	-46.5
Precious metals and alloys	706	548	-158	-22.4	4,248	3,448	-800	-18.8	-33.8
Zinc and alloys	74	79	5	6.8	695	393	-301	-43.4	-35.7
Other non-ferrous metals and alloys	80	81	1	1.1	657	354	-304	-46.2	-34.2

Table 2-1 – continued

Exports by commodity groupings, balance of payments basis, seasonally adjusted — Current dollars

	April 2009	May 2009	Change		Year to date		Year to date change		May
					2008	2009			2009/2008
	millions of dollars		percent		millions of dollars		percent		
Other industrial goods and materials	1,348	1,284	-64	-4.7	8,679	6,950	-1,730	-19.9	-33.4
Asbestos unmanufactured	5	5	0	0.1	26	25	-1	-4.0	-20.9
Other crude animal products	66	64	-3	-4.1	382	314	-68	-17.9	-10.8
Other crude non-metallic minerals	245	265	20	8.0	2,119	1,394	-725	-34.2	-57.0
Other crude materials, inedible	55	51	-4	-6.4	231	241	10	4.2	12.7
Metal fabricated basic products	351	339	-12	-3.3	2,236	1,826	-409	-18.3	-23.1
Textile fabricated materials	175	167	-8	-4.7	1,014	887	-127	-12.5	-19.7
Non-metallic mineral basic products	161	158	-3	-1.7	979	847	-132	-13.5	-18.0
Other fabricated materials	289	234	-55	-18.9	1,693	1,416	-277	-16.4	-32.1
Machinery and equipment	7,002	6,721	-281	-4.0	37,407	36,684	-723	-1.9	-13.4
Industrial and agricultural machinery	1,704	1,622	-81	-4.8	9,236	8,936	-300	-3.2	-15.3
Industrial machinery	1,527	1,452	-75	-4.9	8,425	8,016	-408	-4.8	-16.7
Agricultural machinery includ. tractors	177	170	-6	-3.5	811	920	109	13.4	-1.7
Aircraft and other transportation equipment	1,546	1,546	-0	-0.0	8,474	8,397	-77	-0.9	-11.5
Aircraft, engines, parts	1,226	1,223	-3	-0.2	6,342	6,702	360	5.7	-6.8
Other transportation equipment	320	323	2	0.7	2,132	1,695	-437	-20.5	-25.5
Other machinery and equipment	3,752	3,553	-199	-5.3	19,697	19,351	-346	-1.8	-13.2
Television, telecommunication equipment	780	750	-30	-3.9	3,871	4,097	226	5.8	-9.0
Office machines and equipment	438	420	-18	-4.1	2,465	2,226	-239	-9.7	-17.3
Other equipment and tools	1,654	1,602	-51	-3.1	9,270	8,621	-650	-7.0	-15.2
Other end products, inedible	880	780	-100	-11.4	4,091	4,407	317	7.7	-10.7
Automotive products	3,436	3,009	-427	-12.4	25,867	16,061	-9,806	-37.9	-38.0
Passenger autos and chassis	1,815	1,678	-137	-7.6	14,106	8,021	-6,086	-43.1	-37.7
Trucks and other motor vehicles	496	332	-164	-33.0	3,020	2,442	-578	-19.1	-38.4
Motor vehicle parts	1,125	1,000	-126	-11.2	8,741	5,599	-3,142	-35.9	-38.4
Other consumer goods	1,569	1,567	-2	-0.1	7,092	8,041	949	13.4	6.2
Special transactions trade	539	517	-22	-4.1	3,173	2,831	-342	-10.8	-23.7
Unallocated balance of payments adjustments	454	391	-63	-13.9	2,300	2,167	-133	-5.8	-26.2

Table 2-2
Exports by commodity groupings, balance of payments basis, seasonally adjusted — Constant dollars, 2002

	April 2009	May 2009	Change	Year to date		Year to date change		May 2009/2008	
	millions of dollars			percent		millions of dollars			percent
					2008	2009			
Total	28,264	27,097	-1,167	-4.1	178,082	142,680	-35,403	-19.9	-24.0
Agricultural and fishing products	3,290	3,038	-253	-7.7	15,539	15,711	172	1.1	-3.5
Wheat	530	423	-107	-20.2	1,783	2,315	532	29.9	1.6
Other agricultural and fishing products	2,761	2,615	-145	-5.3	13,757	13,396	-361	-2.6	-4.2
Live animals	191	148	-43	-22.4	1,230	924	-307	-24.9	-35.3
Fish and fish preparations	408	431	23	5.7	1,977	1,991	13	0.7	11.4
Barley	32	26	-6	-18.9	301	175	-127	-42.1	-62.1
Wheat flour	6	6	0	-3.1	32	29	-3	-7.9	-22.7
Other cereals unmilled	41	43	2	4.3	314	224	-89	-28.5	-35.1
Other cereal preparations	201	206	5	2.4	1,082	1,003	-79	-7.3	-5.6
Meat and meat preparations	400	400	0	-0.0	2,110	2,024	-85	-4.0	-7.5
Alcoholic beverages	112	118	6	5.0	573	551	-22	-3.9	-7.7
Other food, feed, beverages and tobacco	819	807	-13	-1.5	4,325	4,236	-89	-2.1	-9.0
Rapeseed	386	270	-117	-30.2	1,086	1,398	312	28.7	56.9
Other crude vegetable products	164	161	-3	-1.6	725	840	115	15.9	19.0
Energy products	4,209	3,900	-309	-7.3	23,298	21,790	-1,509	-6.5	-15.4
Crude petroleum	1,858	1,609	-249	-13.4	9,425	9,299	-126	-1.3	-14.4
Natural gas	1,328	1,168	-160	-12.1	7,716	6,829	-887	-11.5	-15.7
Other energy products	1,022	1,123	101	9.9	6,158	5,661	-496	-8.1	-16.5
Coal and other bituminous substances	95	95	-1	-0.5	790	446	-344	-43.5	-62.4
Petroleum and coal products	727	740	13	1.8	4,115	4,077	-39	-0.9	-9.4
Electricity	200	289	88	44.1	1,252	1,138	-113	-9.1	4.3
Forestry products	1,990	1,989	-0	-0.0	13,100	10,058	-3,042	-23.2	-24.8
Lumber and sawmill products	733	733	1	0.1	5,129	3,749	-1,380	-26.9	-29.7
Other crude wood products	59	41	-18	-31.1	359	263	-96	-26.8	-54.4
Lumber	449	470	20	4.5	3,236	2,363	-873	-27.0	-27.1
Other wood fabricated materials	224	223	-1	-0.6	1,534	1,123	-411	-26.8	-28.1
Wood pulp and other wood products	558	541	-17	-3.0	3,387	2,716	-671	-19.8	-21.6
Newsprint and other paper and paperboard	699	715	16	2.3	4,584	3,593	-991	-21.6	-21.5
Newsprint paper	353	366	13	3.6	2,386	1,856	-530	-22.2	-23.2
Other paper and paperboard	346	349	3	0.9	2,198	1,737	-461	-21.0	-19.7
Industrial goods and materials	4,953	4,777	-176	-3.6	31,937	25,500	-6,437	-20.2	-26.6
Metal ores	492	503	11	2.2	2,869	2,358	-511	-17.8	-19.0
Iron ores, concentrates and scrap	142	168	26	18.4	1,053	712	-341	-32.4	-32.3
Copper ores, concentrates and scrap	50	73	23	46.4	250	286	36	14.3	-8.1
Nickel ores, concentrates and scrap	104	119	14	13.8	691	475	-215	-31.2	-8.4
Zinc ores, concentrates and scrap	12	3	-9	-75.3	67	68	1	1.2	-57.6
Other ores, concentrates and scrap	184	140	-43	-23.6	809	817	8	1.0	-10.3
Chemicals, plastics and fertilizers	1,593	1,602	9	0.6	10,311	8,243	-2,068	-20.1	-25.3
Inorganic chemicals	182	163	-19	-10.4	1,036	940	-96	-9.3	-24.3
Organic chemicals	335	329	-6	-1.7	1,595	1,626	31	1.9	2.0
Fertilizers and fertilizer materials	83	104	22	26.3	1,308	636	-672	-51.4	-62.3
Synthetic rubber and plastics	740	757	17	2.3	4,723	3,719	-1,004	-21.3	-22.3
Other chemical products	254	250	-5	-1.8	1,649	1,322	-327	-19.8	-29.9
Metals and alloys	1,509	1,401	-109	-7.2	10,686	8,031	-2,656	-24.9	-34.3
Primary iron and steel	31	16	-14	-46.5	315	90	-225	-71.5	-72.7
Steel bars, rods, plates, sheets	146	133	-14	-9.3	1,659	890	-769	-46.3	-61.1
Other iron and steel and alloys	173	166	-6	-3.7	1,307	836	-471	-36.1	-32.3
Aluminum including alloys	507	525	17	3.4	3,300	2,951	-349	-10.6	-23.5
Copper and alloys	85	63	-23	-26.7	673	510	-162	-24.1	-50.6
Nickel and alloys	144	140	-4	-2.9	681	720	39	5.8	14.5
Precious metals and alloys	309	245	-65	-20.9	2,177	1,477	-700	-32.1	-44.3
Zinc and alloys	65	66	1	1.3	370	343	-27	-7.3	-4.0
Other non-ferrous metals and alloys	48	47	-1	-2.1	205	213	8	3.8	14.7

Table 2-2 – continued

Exports by commodity groupings, balance of payments basis, seasonally adjusted — Constant dollars, 2002

	April 2009	May 2009	Change		Year to date		Year to date change		May
					2008	2009			2009/2008
	millions of dollars		percent		millions of dollars		percent		
Other industrial goods and materials	1,359	1,270	-88	-6.5	8,070	6,868	-1,202	-14.9	-21.3
Asbestos unmanufactured	6	5	-0	-2.3	30	26	-4	-13.5	-30.1
Other crude animal products	89	90	1	0.9	407	410	3	0.7	14.2
Other crude non-metallic minerals	392	362	-30	-7.6	2,272	2,085	-187	-8.2	-24.8
Other crude materials, inedible	55	57	2	4.3	230	242	12	5.2	19.5
Metal fabricated basic products	275	263	-13	-4.6	1,873	1,416	-457	-24.4	-27.2
Textile fabricated materials	161	166	5	3.0	1,102	819	-283	-25.6	-26.3
Non-metallic mineral basic products	130	129	-1	-0.9	860	676	-184	-21.4	-22.4
Other fabricated materials	251	199	-53	-20.9	1,297	1,194	-102	-7.9	-19.1
Machinery and equipment	7,320	7,279	-41	-0.6	43,548	38,490	-5,059	-11.6	-19.5
Industrial and agricultural machinery	1,538	1,478	-60	-3.9	9,045	8,150	-895	-9.9	-20.4
Industrial machinery	1,379	1,326	-53	-3.8	8,212	7,321	-891	-10.9	-21.1
Agricultural machinery includ. tractors	159	152	-7	-4.2	833	829	-4	-0.5	-13.7
Aircraft and other transportation equipment	1,769	1,833	64	3.6	11,032	9,626	-1,407	-12.8	-19.4
Aircraft, engines, parts	1,456	1,509	54	3.7	8,734	7,953	-781	-8.9	-16.9
Other transportation equipment	313	324	11	3.4	2,298	1,673	-625	-27.2	-29.3
Other machinery and equipment	4,013	3,967	-45	-1.1	23,470	20,713	-2,757	-11.7	-19.2
Television, telecommunication equipment	891	887	-4	-0.4	5,003	4,693	-310	-6.2	-17.3
Office machines and equipment	909	929	20	2.2	5,690	4,585	-1,105	-19.4	-22.3
Other equipment and tools	1,515	1,473	-42	-2.8	9,007	7,897	-1,110	-12.3	-19.3
Other end products, inedible	698	679	-19	-2.8	3,771	3,539	-231	-6.1	-16.8
Automotive products	3,978	3,594	-384	-9.7	35,759	18,451	-17,308	-48.4	-45.8
Passenger autos and chassis	2,255	2,161	-94	-4.2	21,906	9,958	-11,948	-54.5	-46.9
Trucks and other motor vehicles	554	370	-185	-33.3	4,051	2,705	-1,346	-33.2	-50.3
Motor vehicle parts	1,169	1,063	-106	-9.0	9,802	5,788	-4,014	-41.0	-41.5
Other consumer goods	1,500	1,500	-0	-0.0	6,973	7,717	745	10.7	3.9
Special transactions trade	494	481	-13	-2.7	2,754	2,569	-185	-6.7	-14.0
Unallocated balance of payments adjustments	530	539	9	1.7	5,175	2,395	-2,780	-53.7	-48.7

Table 3-1
Domestic exports to selected countries, customs basis, not seasonally adjusted — May

	Agricultural and fishing products	Energy products	Forestry products	Industrial goods	Machinery and equipment	Automotive products	Consumer goods	Special transactions	Total
millions of dollars									
United States									
2008	1,835.8	10,087.1	1,481.8	5,944.4	4,422.2	4,488.1	896.1	628.8	29,784.3
2009	1,671.4	5,066.2	1,069.5	3,509.8	3,525.3	2,469.6	933.2	464.0	18,709.0
Mexico									
2008	128.3	2.2	14.0	130.3	66.3	73.7	5.9	0.7	421.5
2009	75.5	5.5	8.9	52.2	103.1	46.7	3.2	0.6	295.8
Japan									
2008	376.2	232.6	142.1	317.7	50.7	3.4	11.5	0.4	1,134.6
2009	268.5	102.2	82.4	86.6	32.4	2.9	13.7	0.3	589.0
European Union									
Germany									
2008	14.3	8.8	16.7	150.7	123.4	5.6	15.1	1.0	335.6
2009	12.1	37.9	13.1	33.6	170.8	3.8	10.9	0.5	282.8
France									
2008	11.8	61.6	27.9	27.7	115.9	5.5	31.1	0.7	282.1
2009	13.0	0.2	12.9	57.9	89.6	4.1	27.9	1.0	206.5
United Kingdom									
2008	27.2	44.1	29.3	951.0	158.2	8.5	17.1	5.8	1,241.2
2009	36.8	42.4	30.1	581.6	174.6	3.7	22.8	3.0	895.0
Italy									
2008	9.2	13.9	34.2	76.6	42.5	1.0	6.9	0.3	184.5
2009	22.6	0.0	22.9	11.9	42.1	0.8	5.2	0.3	105.8
Other European Union									
2008	116.6	118.5	42.9	338.4	313.7	23.9	51.4	4.1	1,009.5
2009	100.7	93.4	26.2	110.2	196.3	6.9	71.0	2.3	606.9
Total									
2008	179.1	246.9	151.0	1,544.4	753.7	44.5	121.6	11.8	3,053.0
2009	185.2	173.9	105.1	795.1	673.4	19.3	137.8	7.2	2,097.0
Newly industrialized countries									
South Korea									
2008	24.0	189.0	53.2	109.3	39.4	0.8	5.3	0.4	421.4
2009	30.4	29.3	25.6	79.5	35.7	5.9	3.3	0.7	210.4
Hong Kong									
2008	34.3	0.1	9.7	86.7	21.8	0.4	3.3	0.4	156.6
2009	26.9	0.0	7.3	48.5	14.7	0.6	4.1	0.9	103.2
Taiwan									
2008	13.7	11.8	36.6	53.9	11.6	0.1	3.4	0.3	131.2
2009	9.1	19.7	17.6	31.5	6.6	0.2	3.4	0.1	88.1
Singapore									
2008	2.9	0.6	1.1	20.4	26.3	0.8	3.1	0.1	55.4
2009	3.5	0.2	6.9	110.7	21.4	2.2	3.1	0.2	148.1
Total									
2008	74.9	201.4	100.6	270.3	99.1	2.0	15.1	1.2	764.6
2009	69.9	49.3	57.4	270.2	78.5	8.8	13.9	1.9	549.8
Other countries									
2008	1,075.9	216.1	378.7	1,693.4	782.0	55.9	110.2	16.7	4,328.8
2009	1,015.3	249.5	291.7	947.2	677.7	56.8	96.9	17.2	3,352.3
Total									
2008	3,670.2	10,986.2	2,268.2	9,900.4	6,174.1	4,667.6	1,160.5	659.6	39,486.9
2009	3,285.7	5,646.7	1,615.0	5,661.0	5,090.4	2,604.0	1,198.8	491.2	25,592.8

Table 3-2
Domestic exports to selected countries, customs basis, not seasonally adjusted — Year to date, January to May

	Agricultural and fishing products	Energy products	Forestry products	Industrial goods	Machinery and equipment	Automotive products	Consumer goods	Special transactions	Total
millions of dollars									
United States									
2008	8,006.1	48,493.7	7,317.7	27,783.0	21,671.8	24,110.9	4,202.3	2,854.6	144,440.1
2009	8,344.9	28,261.7	5,924.4	19,131.0	20,252.3	14,163.8	4,773.7	2,443.7	103,295.6
Mexico									
2008	530.0	18.4	78.7	473.6	341.3	358.1	22.8	2.3	1,825.2
2009	444.3	15.4	40.2	308.2	381.2	257.2	17.1	6.2	1,469.9
Japan									
2008	1,625.8	615.2	588.2	982.0	239.0	16.7	48.6	1.8	4,117.4
2009	1,301.0	871.0	433.9	468.6	278.3	14.6	75.8	3.3	3,446.5
European Union									
Germany									
2008	79.6	52.9	73.1	470.6	543.5	19.2	72.2	5.5	1,316.7
2009	63.6	126.6	54.6	217.4	831.6	21.0	60.2	5.4	1,380.4
France									
2008	58.0	238.1	123.3	143.3	525.6	26.7	148.2	4.1	1,267.3
2009	59.2	74.8	61.3	293.0	543.6	14.9	136.9	7.7	1,191.5
United Kingdom									
2008	199.3	103.6	152.3	3,888.8	947.1	32.0	84.9	19.1	5,427.2
2009	160.4	65.6	128.6	3,202.4	927.3	14.5	147.6	16.7	4,663.0
Italy									
2008	145.1	91.5	174.7	418.1	206.1	4.6	27.1	1.9	1,069.1
2009	192.3	42.0	120.8	109.7	232.8	3.8	28.0	1.5	731.1
Other European Union									
2008	418.0	331.1	202.0	1,859.9	1,227.0	113.4	228.2	15.2	4,394.8
2009	367.1	430.9	139.9	1,009.4	1,231.2	61.3	342.2	14.4	3,596.4
Total									
2008	900.0	817.3	725.4	6,780.7	3,449.2	196.0	560.6	45.8	13,475.1
2009	842.6	739.9	505.3	4,831.9	3,766.5	115.6	715.0	45.7	11,562.4
Newly industrialized countries									
South Korea									
2008	144.1	381.2	230.2	428.1	154.4	4.3	24.4	3.4	1,370.1
2009	131.0	426.3	138.1	408.4	208.1	14.5	19.5	2.9	1,348.7
Hong Kong									
2008	147.0	0.2	40.4	312.9	109.5	2.2	17.7	4.4	634.3
2009	160.2	0.2	40.1	205.3	131.7	3.8	26.9	3.3	571.6
Taiwan									
2008	59.7	50.0	143.0	314.9	51.5	0.8	13.4	1.1	634.3
2009	62.8	97.7	78.7	118.3	50.1	0.6	14.2	0.4	422.8
Singapore									
2008	16.6	24.3	5.9	93.7	152.7	5.6	12.6	1.4	312.8
2009	16.6	1.9	12.3	194.1	127.0	17.0	12.2	0.7	381.8
Total									
2008	367.4	455.6	419.5	1,149.6	468.0	12.9	68.2	10.2	2,951.4
2009	370.5	526.1	269.2	926.1	517.0	35.9	72.8	7.2	2,724.8
Other countries									
2008	4,184.1	676.3	1,666.9	6,600.9	3,867.8	317.5	527.8	63.1	17,904.2
2009	4,499.9	590.1	1,412.5	4,434.3	3,732.9	310.5	503.6	108.1	15,591.8
Total									
2008	15,613.3	51,076.5	10,796.4	43,769.9	30,037.5	25,012.1	5,430.7	2,977.7	184,714.2
2009	15,803.2	31,004.1	8,585.5	30,100.1	28,928.5	14,897.6	6,158.5	2,614.2	138,091.7

Table 4
Domestic exports by country, customs basis, not seasonally adjusted

	May		January to May		Variation
	2008	2009	2008	2009	January to May 2009/2008
millions of dollars					
North America					
Greenland	0.5	2.1	8.7	9.1	4.6
Mexico	421.5	295.8	1,825.2	1,469.9	-19.5
Saint Pierre and Miquelon	1.1	1.4	5.4	5.2	-3.7
United States	29,784.3	18,709.0	144,440.1	103,295.6	-28.5
Total	30,207.4	19,008.3	146,279.4	104,779.8	-28.4
Western Europe					
Andorra	0.1	0.0	0.1	0.0	0.0
Austria	19.0	11.5	202.6	214.3	5.8
Belgium	310.7	105.6	1,261.0	762.6	-39.5
Denmark	77.1	76.0	167.2	268.2	60.4
Faeroe Islands	0.0	0.0	0.8	0.6	-25.0
Finland	26.9	10.3	242.2	125.8	-48.1
France	282.1	206.5	1,267.3	1,191.5	-6.0
Germany	335.6	282.8	1,316.7	1,380.4	4.8
Gibraltar	78.5	0.0	272.1	16.8	-93.8
Greece	11.3	6.6	45.7	39.9	-12.7
Iceland	6.0	5.4	26.2	13.8	-47.3
Italy	184.5	105.8	1,069.1	731.1	-31.6
Luxembourg	9.3	3.1	37.5	16.6	-55.7
Malta	1.1	0.6	7.1	38.4	440.8
Netherlands	307.2	193.1	1,315.3	959.0	-27.1
Norway	250.3	222.0	1,360.8	648.8	-52.3
Portugal	12.9	7.8	56.2	76.5	36.1
Republic of Ireland (Eire)	37.3	45.2	134.4	231.3	72.1
Spain	67.5	73.0	336.8	454.9	35.1
Sweden	55.1	19.5	166.8	103.2	-38.1
Switzerland	133.7	60.8	468.9	436.2	-7.0
United Kingdom	1,241.2	895.0	5,427.2	4,663.0	-14.1
Total	3,447.3	2,330.5	15,182.1	12,373.1	-18.5
Other Europe					
Albania	3.1	0.3	9.2	2.6	-71.7
Armenia	1.3	0.3	6.9	2.2	-68.1
Azerbaijan	1.0	0.5	8.5	5.4	-36.5
Belarus	0.0	0.0	2.3	0.6	-73.9
Bosnia and Herzegovina	1.5	0.1	2.3	1.5	-34.8
Bulgaria	1.7	1.1	10.0	11.9	19.0
Croatia	22.2	2.2	28.9	11.1	-61.6
Czech Republic	19.8	10.3	112.5	54.2	-51.8
Estonia	2.1	1.8	9.0	7.0	-22.2
Georgia	1.3	0.8	6.6	2.7	-59.1
Hungary	9.8	7.7	64.8	35.8	-44.8
Kazakhstan	19.0	6.0	141.7	92.5	-34.7
Kyrgyzstan	0.1	0.1	3.4	1.2	-64.7
Latvia	5.7	4.7	17.9	12.7	-29.1
Lithuania	3.4	1.8	17.5	18.4	5.1
Macedonia (Former Yugoslav Republic of Macedonia)	1.1	1.1	5.7	5.9	3.5
Montenegro	0.3	0.4	1.4	1.0	-28.6
Poland	21.6	15.0	120.7	78.6	-34.9
Republic of Moldova	0.6	0.1	2.3	1.1	-52.2
Romania	3.5	9.3	23.9	26.8	12.1
Russian Federation	84.5	51.6	537.0	382.8	-28.7
Serbia	0.8	2.0	4.1	6.4	56.1
Slovakia	2.1	1.5	23.3	7.0	-70.0
Slovenia	0.9	0.9	14.4	48.3	235.4
Tajikistan	0.5	0.2	2.1	1.0	-52.4
Turkmenistan	0.1	0.4	0.7	2.1	200.0
Ukraine	18.3	5.0	72.1	26.5	-63.2
Uzbekistan	0.1	0.6	0.9	6.9	666.7
Total	226.3	125.8	1,250.4	854.3	-31.7

Table 4 – continued

Domestic exports by country, customs basis, not seasonally adjusted

	May		January to May		Variation
	2008	2009	2008	2009	January to May 2009/2008
millions of dollars					
Middle East					
Bahrain	22.5	1.5	33.0	7.2	-78.2
Cyprus	3.6	0.7	8.0	5.0	-37.5
Egypt	21.7	44.3	144.1	212.7	47.6
Eritrea	0.0	0.0	0.2	0.0	0.0
Ethiopia	0.9	2.3	23.9	5.2	-78.2
Iran	12.7	108.9	83.2	208.5	150.6
Iraq	52.1	19.8	78.6	220.9	181.0
Israel	41.9	24.2	172.4	123.8	-28.2
Jordan	4.6	4.5	26.2	25.1	-4.2
Kuwait	12.3	6.9	46.2	29.8	-35.5
Lebanon	8.6	6.8	30.8	30.5	-1.0
Libya	7.0	10.8	66.9	141.8	112.0
Oman	6.2	5.6	28.2	58.4	107.1
Qatar	6.6	12.8	35.3	52.1	47.6
Saudi Arabia	160.8	200.9	470.7	562.9	19.6
Somalia	0.0	0.0	0.0	0.0	...
Sudan	40.2	10.8	105.5	63.9	-39.4
Syria	7.7	3.5	29.1	18.3	-37.1
Turkey	154.9	87.8	435.8	317.5	-27.1
United Arab Emirates	63.4	51.5	466.0	505.3	8.4
Yemen	1.4	3.5	15.6	9.6	-38.5
Total	629.1	607.0	2,299.8	2,598.4	13.0
Other Africa					
Algeria	163.0	16.9	408.4	171.1	-58.1
Angola	6.0	8.0	77.4	37.5	-51.6
Antarctica	0.0	0.0	0.8	0.0	0.0
Benin	0.8	0.7	4.0	3.3	-17.5
Botswana	0.7	0.3	2.8	2.3	-17.9
Bouvet Island	0.0	0.0	0.0	0.0	0.0
Burkina Faso	0.7	0.8	3.0	2.9	-3.3
Burundi	0.1	0.1	0.6	0.5	-16.7
Cameroon	0.4	5.5	6.8	12.7	86.8
Cape Verde	0.1	0.2	0.5	0.6	20.0
Central African Republic	0.0	0.0	0.1	0.4	300.0
Chad	0.6	0.2	1.8	5.2	188.9
Comoros	0.0	0.0	0.3	0.0	0.0
Congo	1.6	2.1	10.4	11.3	8.7
Democratic Republic of the Congo	1.8	1.2	8.5	6.4	-24.7
Djibouti	0.8	0.2	1.3	1.5	15.4
Equatorial Guinea	0.4	0.2	1.7	2.2	29.4
French Southern Territories	0.0	0.0	0.1	0.0	0.0
Gabon	1.4	1.1	12.3	14.5	17.9
Gambia	0.0	0.0	0.1	0.4	300.0
Ghana	7.6	17.0	69.2	64.8	-6.4
Guinea	0.7	0.8	7.2	9.1	26.4
Guinea-Bissau	0.0	0.0	0.5	0.0	0.0
Ivory Coast	1.9	1.2	9.9	12.0	21.2
Kenya	5.1	7.3	17.1	33.8	97.7
Lesotho	0.0	0.0	0.0	0.0	0.0
Liberia	0.7	0.1	3.3	1.5	-54.5
Madagascar	0.9	4.8	4.5	16.8	273.3
Malawi	0.6	0.4	2.5	1.7	-32.0
Mali	0.6	1.5	3.8	3.3	-13.2
Mauritania	0.3	0.3	1.2	1.5	25.0
Mauritius	0.3	0.8	1.8	3.1	72.2
Morocco	25.7	69.1	148.6	222.4	49.7
Mozambique	0.3	0.3	3.5	1.8	-48.6
Namibia	1.5	0.1	5.0	1.0	-80.0
Niger	0.7	0.3	1.7	1.2	-29.4
Nigeria	4.9	17.1	23.5	61.8	163.0
Rwanda	0.1	0.0	1.2	0.7	-41.7
Saint Helena	0.0	0.0	0.2	0.1	-50.0
Sao Tome and Principe	0.0	0.0	0.0	0.0	...
Senegal	0.7	2.6	13.8	8.6	-37.7
Seychelles	0.0	0.0	0.5	0.4	-20.0
Sierra Leone	1.2	0.3	4.1	2.1	-48.8

Table 4 – continued

Domestic exports by country, customs basis, not seasonally adjusted

	May		January to May		Variation
	2008	2009	2008	2009	January to May 2009/2008
millions of dollars					
South Africa	67.0	36.1	244.4	198.0	-19.0
Swaziland	0.1	8.9	3.7	9.3	151.4
Togo	0.5	5.5	7.8	10.0	28.2
Tunisia	2.4	14.0	11.7	64.5	451.3
Uganda	0.6	0.4	4.9	5.4	10.2
United Republic of Tanzania	3.6	1.9	17.1	13.8	-19.3
Western Sahara	0.0	0.0	0.0	0.1	...
Zambia	3.4	0.2	9.0	2.5	-72.2
Zimbabwe	0.0	0.0	1.7	6.9	305.9
Total	309.9	228.7	1,164.3	1,030.7	-11.5
Other Asia					
Afghanistan	0.8	2.6	4.1	23.4	470.7
Bangladesh	36.7	47.7	165.8	380.4	129.4
Bhutan	0.0	0.0	0.0	0.1	0.0
British Indian Ocean Territory	0.0	0.0	0.2	0.0	0.0
Brunei Darussalam	0.3	0.3	0.6	1.2	100.0
Cambodia	0.2	0.2	0.9	2.2	144.4
China	1,083.3	992.9	4,437.1	4,740.8	6.8
Hong Kong	156.6	103.2	634.3	571.6	-9.9
India	129.4	103.8	684.0	641.7	-6.2
Indonesia	164.3	94.2	645.6	400.8	-37.9
Japan	1,134.6	589.0	4,117.4	3,446.5	-16.3
Laos	0.0	0.2	12.1	1.1	-90.9
Macau	4.6	0.8	17.7	10.9	-38.4
Malaysia	99.0	78.1	350.0	221.2	-36.8
Maldives	0.2	0.2	1.6	1.4	-12.5
Mongolia	0.8	0.5	3.9	2.3	-41.0
Myanmar	0.0	0.0	0.0	0.0	...
Nepal	0.6	0.3	1.4	1.5	7.1
North Korea	1.4	1.0	8.9	11.2	25.8
Pakistan	33.3	37.7	307.7	226.3	-26.5
Philippines	58.0	53.6	249.8	187.1	-25.1
Singapore	55.4	148.1	312.8	381.8	22.1
South Korea	421.4	210.4	1,370.1	1,348.7	-1.6
Sri Lanka	41.4	25.0	222.9	141.1	-36.7
Taiwan	131.2	88.1	634.3	422.8	-33.3
Thailand	69.0	44.8	270.4	180.9	-33.1
Timor-Leste	0.0	0.0	0.0	0.0	...
Viet Nam	19.9	9.9	145.1	59.0	-59.3
Total	3,642.5	2,632.5	14,598.5	13,406.0	-8.2
Oceania					
American Samoa	0.1	0.1	0.2	0.3	50.0
Australia	134.8	138.1	698.4	631.6	-9.6
Christmas Island	0.1	0.0	0.1	0.2	100.0
Cocos (Keeling) Islands	0.0	0.0	0.0	0.1	...
Cook Islands	0.0	0.0	0.8	0.0	...
Fiji	0.2	0.9	1.0	3.9	290.0
French Polynesia	1.5	0.7	7.1	4.0	-43.7
Guam	0.2	0.1	1.0	0.7	-30.0
Heard Island and McDonald Islands	0.0	0.0	0.0	0.0	...
Kiribati	0.0	0.0	0.0	0.0	0.0
Nauru	0.0	0.0	0.2	0.0	0.0
New Caledonia	1.3	0.7	6.2	1.8	-71.0
New Zealand	30.9	15.8	172.1	115.3	-33.0
Norfolk Island	0.0	0.0	0.0	0.3	0.0
Papua New Guinea	0.9	4.7	4.0	9.9	147.5
Pitcairn	0.1	0.0	0.2	0.1	-50.0
Samoa	0.0	0.1	0.3	0.2	-33.3
Solomon Islands	0.0	0.0	0.0	0.1	...
Tonga	0.0	0.0	0.1	0.0	0.0
United States Minor Outlying Islands	1.6	0.7	5.9	4.4	-25.4
Vanuatu	0.0	0.0	0.1	1.0	900.0
Total	171.7	161.8	897.5	773.8	-13.8

Table 4 – continued

Domestic exports by country, customs basis, not seasonally adjusted

	May		January to May		Variation
	2008	2009	2008	2009	January to May 2009/2008
millions of dollars					
South America					
Argentina	15.3	11.7	91.4	76.0	-16.8
Bolivia	1.0	2.3	5.1	4.7	-7.8
Brazil	306.4	120.8	886.3	439.0	-50.5
Chile	52.8	58.6	274.9	291.6	6.1
Colombia	56.9	48.8	257.5	244.8	-4.9
Ecuador	19.3	13.1	108.8	106.9	-1.7
Falkland Islands (Malvinas)	0.0	0.0	0.1	0.0	
Guyana	1.2	0.7	5.4	10.6	96.3
Paraguay	3.3	2.8	7.1	5.4	-23.9
Peru	44.9	27.8	152.5	177.0	16.1
Suriname	0.9	1.0	3.6	3.7	2.8
Uruguay	50.7	3.1	104.0	10.9	-89.5
Venezuela	56.3	35.9	245.7	275.3	12.0
Total	608.9	326.6	2,142.4	1,645.8	-23.2
Central America Antilles					
Anguilla	0.3	0.0	1.4	0.7	-50.0
Antigua and Barbuda	0.9	1.9	5.8	5.1	-12.1
Aruba	0.4	0.2	2.4	1.9	-20.8
Bahamas	3.0	55.4	11.7	65.2	457.3
Barbados	2.5	3.1	15.6	15.1	-3.2
Belize	0.5	0.7	1.8	2.8	55.6
Bermuda	6.0	5.5	26.1	26.1	0.0
British Virgin Islands	0.1	0.1	1.3	2.0	53.8
Cayman Islands	0.8	0.5	4.4	2.7	-38.6
Costa Rica	18.4	2.6	50.2	22.5	-55.2
Cuba	75.4	16.1	240.7	124.7	-48.2
Dominica	0.4	0.4	3.4	2.1	-38.2
Dominican Republic	35.3	17.3	109.9	59.3	-46.0
El Salvador	2.8	13.3	19.0	22.9	20.5
Grenada	0.3	0.3	2.3	2.6	13.0
Guatemala	9.5	5.6	70.0	37.2	-46.9
Haiti	6.1	5.0	15.5	23.1	49.0
Honduras	9.3	4.1	25.6	15.4	-39.8
Jamaica	32.2	11.4	110.6	46.4	-58.0
Montserrat	0.0	0.0	0.1	0.1	0.0
Netherlands Antilles	1.3	1.6	7.3	9.4	28.8
Nicaragua	1.2	1.0	8.1	6.8	-16.0
Panama	8.8	5.9	45.1	40.0	-11.3
Saint Kitts and Nevis	1.0	0.7	3.2	2.8	-12.5
Saint Lucia	0.9	1.1	3.9	4.0	2.6
Saint Vincent and the Grenadines	0.5	1.0	2.7	3.5	29.6
Trinidad and Tobago	25.3	16.4	108.3	82.9	-23.5
Turks and Caicos Islands	0.8	0.3	3.2	2.4	-25.0
Total	243.7	171.7	899.8	629.6	-30.0
All countries	39,486.9	25,592.8	184,714.2	138,091.7	-25.2

Table 5-1
Exports by province of origin, customs basis, not seasonally adjusted — May

	Agricultural and fishing products	Energy products	Forestry products	Industrial goods	Machinery and equipment	Automotive products	Consumer goods	Special transactions	Total
millions of dollars									
Domestic exports									
Newfoundland Labrador									
2008	88.8	948.0	26.9	229.7	5.1	0.1	0.0	6.1	1,304.7
2009	95.7	477.8	13.3	232.2	5.8	0.4	0.3	3.9	829.5
Prince Edward Island									
2008	43.4	0.0	0.1	1.8	20.0	0.4	1.8	8.2	75.7
2009	38.7	0.0	0.1	1.7	14.0	0.1	1.4	9.2	65.2
Nova Scotia									
2008	89.0	190.8	71.9	53.5	105.4	11.3	5.5	9.3	536.8
2009	86.6	80.7	80.5	40.6	95.2	5.3	7.2	6.0	402.1
New Brunswick									
2008	144.5	947.7	114.4	129.3	27.6	1.4	8.6	10.9	1,384.6
2009	138.8	517.7	89.9	66.6	26.3	1.7	9.6	7.2	857.8
Quebec									
2008	379.0	350.4	622.9	2,090.6	1,924.9	180.5	269.3	131.9	5,949.4
2009	403.7	254.9	458.0	1,253.4	1,577.5	148.5	284.6	111.9	4,492.5
Ontario									
2008	675.8	338.7	319.8	4,115.8	3,071.0	4,363.5	758.0	348.8	13,991.4
2009	687.7	224.9	204.7	2,341.5	2,506.9	2,324.5	773.1	233.8	9,297.2
Manitoba									
2008	388.3	90.4	29.0	330.0	179.0	34.7	48.1	23.9	1,123.4
2009	308.0	38.7	30.3	194.0	168.6	57.9	66.8	31.4	895.8
Saskatchewan									
2008	952.0	894.6	25.4	696.9	62.0	2.4	1.1	10.0	2,644.4
2009	736.5	477.7	23.1	463.5	52.5	4.4	0.6	6.3	1,764.6
Alberta									
2008	702.4	6,380.3	176.7	1,328.7	456.5	47.4	17.9	61.5	9,171.4
2009	578.5	3,081.7	128.3	687.0	369.2	44.6	15.2	44.9	4,949.4
British Columbia									
2008	206.7	845.4	881.0	689.2	322.0	25.8	50.1	48.9	3,069.2
2009	211.1	492.5	586.8	340.7	274.2	16.6	39.9	36.4	1,998.3
Yukon, Northwest Territories and Nunavut ¹									
2008	0.3	0.0	0.0	234.9	0.7	0.1	0.0	0.1	236.0
2009	0.4	0.0	0.0	39.7	0.1	0.0	0.0	0.0	40.3
Total									
2008	3,670.2	10,986.2	2,268.2	9,900.4	6,174.1	4,667.6	1,160.5	659.6	39,486.9
2009	3,285.7	5,646.7	1,615.0	5,661.0	5,090.4	2,604.0	1,198.8	491.2	25,592.8
Re-exports									
2008	38.8	143.3	6.6	283.7	921.3	116.0	156.1	693.2	2,359.0
2009	54.4	43.3	6.6	163.2	928.6	76.7	151.1	675.4	2,099.3
Total exports									
2008	3,709.1	11,129.5	2,274.7	10,184.1	7,095.3	4,783.6	1,316.6	1,352.9	41,845.8
2009	3,340.1	5,690.0	1,621.7	5,824.2	6,018.9	2,680.7	1,349.9	1,166.6	27,692.1

1. Data for the most current month do not include some exports of Chapter 71 "Natural/cultured pearls, precious stones and metals, coins etc" for reasons relating to timing.

Table 5-2
Exports by province of origin, customs basis, not seasonally adjusted — Year to date, January to May

	Agricultural and fishing products	Energy products	Forestry products	Industrial goods	Machinery and equipment	Automotive products	Consumer goods	Special transactions	Total
millions of dollars									
Domestic exports									
Newfoundland Labrador									
2008	197.3	4,072.9	122.0	538.4	23.4	0.7	0.6	28.0	4,983.3
2009	214.3	2,141.5	106.3	773.9	30.7	0.7	0.5	21.8	3,289.6
Prince Edward Island									
2008	179.2	0.0	1.0	6.2	84.1	0.9	12.8	32.3	316.5
2009	193.0	0.0	0.5	10.0	76.3	0.4	11.7	40.2	332.1
Nova Scotia									
2008	378.2	707.0	344.8	235.1	498.9	57.1	31.6	40.3	2,293.2
2009	360.7	339.1	302.0	224.8	472.0	40.9	32.0	32.3	1,803.7
New Brunswick									
2008	427.7	3,791.1	508.4	516.4	137.4	8.4	45.2	45.5	5,480.2
2009	456.0	2,439.2	512.1	278.0	142.7	11.6	49.7	35.9	3,925.1
Quebec									
2008	1,742.1	1,535.2	3,074.3	9,385.7	9,672.8	881.8	1,381.6	597.5	28,271.1
2009	1,836.6	1,277.3	2,547.9	6,610.1	9,127.3	710.9	1,502.4	585.6	24,198.1
Ontario									
2008	3,092.6	1,574.7	1,565.6	19,320.5	14,782.7	23,409.1	3,459.9	1,595.6	68,800.7
2009	3,334.8	1,229.8	1,222.0	12,836.4	14,374.4	13,482.2	4,022.3	1,281.6	51,783.5
Manitoba									
2008	1,784.4	494.6	161.9	1,487.6	895.6	244.6	144.9	103.0	5,316.5
2009	1,705.2	200.3	135.0	975.1	946.0	303.8	231.4	151.0	4,647.7
Saskatchewan									
2008	3,835.3	4,201.5	109.6	2,914.4	331.4	17.6	12.4	53.7	11,475.8
2009	3,706.4	2,431.9	121.6	2,399.4	398.4	17.4	7.0	42.2	9,124.4
Alberta									
2008	3,126.9	31,551.3	826.2	5,723.5	2,082.8	241.2	85.2	258.2	43,895.3
2009	3,081.5	18,042.9	673.2	3,570.7	2,041.7	236.4	80.6	231.6	27,958.6
British Columbia									
2008	848.4	3,148.3	4,082.1	2,596.6	1,526.2	150.7	255.6	223.1	12,831.0
2009	914.0	2,902.1	2,964.9	1,831.4	1,315.8	93.3	220.0	191.8	10,433.3
Yukon, Northwest Territories and Nunavut ¹									
2008	1.1	0.0	0.3	1,045.4	2.3	0.1	1.0	0.5	1,050.7
2009	0.9	0.0	0.1	590.4	3.1	0.1	0.9	0.2	595.7
Total									
2008	15,613.3	51,076.5	10,796.4	43,769.9	30,037.5	25,012.1	5,430.7	2,977.7	184,714.2
2009	15,803.2	31,004.1	8,585.5	30,100.1	28,928.5	14,897.6	6,158.5	2,614.2	138,091.7
Re-exports									
2008	197.8	280.5	40.3	1,173.1	4,541.3	635.5	867.4	3,553.2	11,289.2
2009	226.8	205.6	32.5	938.6	4,953.4	417.9	948.3	3,552.3	11,275.3
Total exports									
2008	15,811.2	51,357.0	10,836.7	44,943.0	34,578.8	25,647.6	6,298.2	6,531.0	196,003.4
2009	16,030.0	31,209.7	8,618.0	31,038.7	33,881.9	15,315.6	7,106.8	6,166.5	149,367.0

1. Data for the most current month do not include some exports of Chapter 71 "Natural/cultured pearls, precious stones and metals, coins etc" for reasons relating to timing.

Table 6-1
Imports by commodity groupings, balance of payments basis, seasonally adjusted — Current dollars

	April 2009	May 2009	Change		Year to date		Year to date change		May
					2008	2009			2009/2008
	millions of dollars		percent		millions of dollars		percent		
Total	30,864	29,793	-1,072	-3.5	177,243	156,527	-20,716	-11.7	-18.8
Agricultural and fishing products	2,498	2,435	-64	-2.5	11,200	12,539	1,339	12.0	4.8
Fruits and vegetables	693	681	-12	-1.7	3,067	3,492	425	13.9	7.3
Fresh fruits and berries	243	245	2	0.7	1,095	1,228	133	12.1	4.5
Dried fruits, fruits and fruit preparations	131	128	-3	-2.4	581	673	92	15.8	8.4
Fresh vegetables	179	166	-13	-7.0	762	870	108	14.1	7.5
Other vegetables and vegetable preparations	140	142	2	1.3	628	721	93	14.8	11.2
Other agricultural and fishing products	1,805	1,754	-52	-2.9	8,133	9,047	914	11.2	3.9
Live animals	17	18	1	4.2	77	86	9	11.9	18.2
Meat and meat preparations	187	190	3	1.5	800	943	143	17.9	14.1
Fish and marine animals	190	187	-2	-1.2	769	924	155	20.2	16.9
Cocoa, coffee, tea and other food preparations	418	419	1	0.1	1,794	2,111	317	17.7	12.4
Dairy produce, eggs and honey	43	43	-0	-0.0	272	218	-54	-19.8	-14.4
Corn (maize) shelled	37	26	-11	-30.7	317	198	-119	-37.5	-60.0
Other cereals and cereal preparations	197	200	3	1.3	795	1,014	218	27.5	20.5
Sugar and sugar preparations	136	120	-16	-11.7	588	676	88	15.0	-6.8
Fodder, feed, excluding unmilled cereal	117	124	7	6.0	567	610	43	7.6	4.6
Beverages	299	292	-7	-2.5	1,398	1,539	141	10.1	2.0
Tobacco	29	27	-2	-5.4	152	144	-8	-5.5	-14.3
Crude vegetable products	134	107	-27	-19.9	601	580	-21	-3.5	-15.8
Cotton	1	1	0	4.4	4	4	-0	-3.4	-16.2
Energy products	2,629	2,348	-281	-10.7	20,506	12,937	-7,569	-36.9	-44.3
Crude petroleum	1,706	1,331	-375	-22.0	12,968	7,151	-5,817	-44.9	-52.9
Other energy products	924	1,017	94	10.1	7,538	5,786	-1,752	-23.2	-26.8
Coal and other related products	257	346	89	34.5	2,388	2,202	-186	-7.8	-12.1
Petroleum and coal products	667	671	5	0.7	5,150	3,584	-1,566	-30.4	-32.6
Forestry products	202	183	-19	-9.5	1,198	1,028	-170	-14.2	-24.7
Forestry products	202	183	-19	-9.5	1,198	1,028	-170	-14.2	-24.7
Crude wood products	41	30	-11	-27.0	189	209	20	10.6	-22.3
Wood fabricated materials	161	153	-8	-5.0	1,009	819	-190	-18.8	-25.2
Industrial goods and materials	6,095	6,004	-91	-1.5	36,701	32,395	-4,307	-11.7	-23.5
Metals and metal ores	1,788	1,844	56	3.1	13,659	10,163	-3,496	-25.6	-38.2
Metals in ores, concentrates and scrap	368	432	64	17.4	3,834	2,358	-1,476	-38.5	-40.0
Steel bars, rods, plates, sheets	407	356	-52	-12.7	2,957	2,054	-903	-30.5	-41.5
Other iron and steel products	257	222	-35	-13.6	1,792	1,778	-14	-0.8	-46.1
Precious metals including alloys	474	563	89	18.7	2,482	2,478	-4	-0.2	-10.5
Other non-ferrous metals and alloys	281	271	-10	-3.6	2,594	1,495	-1,099	-42.4	-55.8
Chemicals and plastics	2,322	2,267	-54	-2.3	12,222	11,980	-242	-2.0	-12.5
Organic chemicals	557	604	47	8.4	3,174	3,029	-145	-4.6	-5.7
Plastic materials	723	713	-10	-1.4	4,260	3,691	-569	-13.4	-20.2
Other chemicals and related products	1,041	950	-91	-8.7	4,788	5,260	472	9.9	-10.0
Other industrial goods and materials	1,985	1,893	-92	-4.6	10,820	10,252	-568	-5.3	-16.6
Crude animal products	26	18	-8	-31.7	133	99	-34	-25.7	-38.9
Wool and man-made fibres	18	17	-1	-4.1	102	92	-10	-10.2	-21.7
Crude non-metallic minerals	73	55	-18	-24.9	401	334	-68	-16.8	-33.3
Textile fabricated materials	196	183	-13	-6.6	1,071	992	-79	-7.4	-17.0
Metal fabricated basic products	785	745	-40	-5.1	4,198	4,020	-179	-4.3	-14.8
Rubber fabricated materials	79	73	-7	-8.4	416	394	-22	-5.4	-15.0
Oils, fats, animal and vegetable	93	103	10	10.5	460	527	66	14.4	5.2
Non-metallic minerals	268	263	-5	-1.9	1,479	1,417	-62	-4.2	-17.4
Other fabricated materials	448	438	-10	-2.2	2,558	2,377	-180	-7.1	-19.3

Table 6-1 – continued

Imports by commodity groupings, balance of payments basis, seasonally adjusted — Current dollars

	April 2009	May 2009	Change		Year to date		Year to date change		May
					2008	2009			2009/2008
	millions of dollars		percent		millions of dollars		percent		
Machinery and equipment	9,300	9,045	-255	-2.7	49,044	47,602	-1,442	-2.9	-11.8
Industrial and agricultural machinery	2,327	2,441	114	4.9	13,433	12,620	-814	-6.1	-10.5
Engines, turbines and electric motors	285	441	156	54.6	1,499	1,879	380	25.3	26.5
Drilling mining machinery	134	112	-21	-15.9	676	674	-2	-0.3	-19.9
Excavating machinery	160	167	6	4.0	1,454	948	-506	-34.8	-39.8
Metal working machinery	132	128	-4	-2.7	1,009	715	-293	-29.1	-37.7
Other industrial machinery	1,259	1,227	-32	-2.5	7,188	6,634	-554	-7.7	-13.9
Agricultural machinery including tractors	357	365	8	2.3	1,608	1,769	161	10.0	10.8
Aircraft and other transportation equipment	1,438	1,238	-200	-13.9	7,603	7,105	-498	-6.5	-29.2
Aircraft, engines, parts	972	778	-194	-20.0	5,109	4,621	-488	-9.5	-38.9
Other transportation equipment and parts	466	460	-6	-1.4	2,494	2,484	-10	-0.4	-3.4
Office machines and equipment	1,071	1,027	-44	-4.1	5,830	5,285	-545	-9.3	-8.2
Other machinery and equipment	4,464	4,340	-124	-2.8	22,177	22,592	414	1.9	-6.9
Other communication and related equipment	1,595	1,595	-0	-0.0	7,672	7,929	257	3.3	-5.5
Other equipment and tools	2,869	2,745	-124	-4.3	14,505	14,663	158	1.1	-7.6
Automotive products	4,146	3,844	-302	-7.3	29,887	19,821	-10,066	-33.7	-34.7
Passenger autos and chassis	1,377	1,285	-92	-6.7	10,662	6,403	-4,259	-39.9	-38.9
Trucks and other motor vehicles	828	824	-5	-0.6	6,325	4,521	-1,804	-28.5	-31.3
Motor vehicle parts	1,940	1,735	-205	-10.6	12,900	8,898	-4,002	-31.0	-32.9
Other consumer goods	4,951	4,807	-144	-2.9	22,693	24,681	1,989	8.8	3.1
Apparel and footwear	992	981	-11	-1.1	4,339	5,051	712	16.4	8.9
Apparel and apparel accessories	840	807	-33	-3.9	3,639	4,218	579	15.9	6.7
Footwear	152	174	21	14.0	700	833	133	18.9	20.8
Miscellaneous consumer goods	3,959	3,826	-133	-3.4	18,353	19,630	1,277	7.0	1.7
Television, radios, phonographs	113	105	-8	-7.4	696	542	-154	-22.1	-24.4
Printed matter	314	306	-7	-2.4	1,500	1,551	51	3.4	-0.7
Watches, sporting goods and toys	515	494	-20	-4.0	2,547	2,597	50	2.0	-5.8
House furnishings	713	735	22	3.0	3,393	3,748	355	10.5	5.0
Photographic goods	216	229	13	6.1	1,148	1,137	-10	-0.9	-0.1
Miscellaneous end products	2,089	1,957	-131	-6.3	9,069	10,054	985	10.9	5.2
Special transactions trade	374	456	82	21.9	2,408	2,167	-241	-10.0	-12.4
Unallocated balance of payments adjustments	670	672	2	0.2	3,607	3,357	-249	-6.9	-9.0

Table 6-2
Imports by commodity groupings, balance of payments basis, seasonally adjusted — Constant dollars, 2002

	April 2009	May 2009	Change		Year to date		Year to date change		May
					2008	2009			2009/2008
	millions of dollars		percent		millions of dollars		percent		
Total	32,010	32,499	489	1.5	205,528	162,324	-43,205	-21.0	-22.5
Agricultural and fishing products	2,219	2,259	40	1.8	11,808	11,259	-549	-4.6	-5.1
Fruits and vegetables	647	682	34	5.3	3,136	3,322	186	5.9	6.8
Fresh fruits and berries	234	271	37	15.9	1,124	1,231	107	9.5	13.9
Dried fruits, fruits and fruit preparations	118	121	3	2.5	557	609	52	9.3	5.8
Fresh vegetables	178	165	-13	-7.1	836	860	24	2.9	1.0
Other vegetables and vegetable preparations	118	125	7	5.8	619	622	4	0.6	1.6
Other agricultural and fishing products	1,572	1,577	6	0.4	8,672	7,937	-735	-8.5	-9.5
Live animals	16	17	1	5.3	84	80	-4	-4.5	6.6
Meat and meat preparations	171	176	5	2.6	869	891	21	2.5	4.3
Fish and marine animals	215	213	-2	-0.8	1,042	1,085	43	4.1	3.6
Cocoa, coffee, tea and other food preparations	307	338	31	10.1	1,766	1,597	-169	-9.6	-4.7
Dairy produce, eggs and honey	37	42	5	12.1	227	201	-26	-11.4	1.4
Corn (maize) shelled	29	21	-8	-28.0	246	151	-95	-38.6	-54.0
Other cereals and cereal preparations	155	163	7	4.7	850	799	-51	-6.0	-6.0
Sugar and sugar preparations	125	112	-13	-10.6	700	625	-74	-10.6	-26.7
Fodder, feed, excluding unmilled cereal	83	92	9	11.1	520	433	-87	-16.7	-11.3
Beverages	262	255	-7	-2.7	1,455	1,332	-123	-8.5	-9.7
Tobacco	31	31	0	0.5	214	156	-58	-27.3	-29.6
Crude vegetable products	139	117	-22	-15.5	695	584	-111	-16.0	-24.3
Cotton	1	1	0	-0.3	6	5	-1	-15.3	-29.3
Energy products	1,653	1,540	-112	-6.8	9,007	8,423	-584	-6.5	-14.6
Crude petroleum	997	781	-216	-21.7	4,640	4,328	-312	-6.7	-20.0
Other energy products	656	759	104	15.8	4,367	4,095	-272	-6.2	-8.3
Coal and other related products	205	308	103	50.6	1,609	1,610	2	0.1	28.4
Petroleum and coal products	451	451	0	0.0	2,758	2,485	-273	-9.9	-23.3
Forestry products	248	234	-14	-5.7	1,595	1,229	-366	-23.0	-27.7
Forestry products	248	234	-14	-5.7	1,595	1,229	-366	-23.0	-27.7
Crude wood products	51	38	-12	-24.4	250	255	5	1.9	-25.8
Wood fabricated materials	198	196	-2	-0.8	1,345	974	-371	-27.6	-28.1
Industrial goods and materials	5,313	5,571	258	4.8	34,814	27,748	-7,065	-20.3	-22.0
Metals and metal ores	1,277	1,346	69	5.4	9,695	7,112	-2,583	-26.6	-30.7
Metals in ores, concentrates and scrap	297	335	38	12.9	2,018	1,818	-200	-9.9	-8.9
Steel bars, rods, plates, sheets	302	295	-7	-2.2	2,281	1,513	-768	-33.7	-30.0
Other iron and steel products	182	171	-11	-6.2	1,363	1,158	-205	-15.1	-38.4
Precious metals including alloys	213	266	52	24.6	1,557	1,152	-405	-26.0	-10.3
Other non-ferrous metals and alloys	283	279	-4	-1.3	2,476	1,471	-1,005	-40.6	-51.7
Chemicals and plastics	2,067	2,220	152	7.4	12,111	10,573	-1,538	-12.7	-10.8
Organic chemicals	451	511	60	13.2	2,447	2,419	-28	-1.2	9.5
Plastic materials	723	772	49	6.7	4,566	3,578	-987	-21.6	-18.5
Other chemicals and related products	893	937	44	4.9	5,098	4,576	-522	-10.2	-12.9
Other industrial goods and materials	1,969	2,006	36	1.8	13,007	10,063	-2,944	-22.6	-26.1
Crude animal products	45	28	-17	-38.3	140	149	10	6.8	-6.3
Wool and man-made fibres	20	21	1	4.3	136	111	-25	-18.5	-25.5
Crude non-metallic minerals	61	47	-14	-22.6	358	301	-57	-15.9	-33.9
Textile fabricated materials	225	225	-1	-0.3	1,500	1,139	-362	-24.1	-26.8
Metal fabricated basic products	723	728	5	0.7	4,795	3,713	-1,083	-22.6	-25.9
Rubber fabricated materials	84	82	-2	-2.3	566	415	-152	-26.8	-29.4
Oils, fats, animal and vegetable	79	93	14	17.6	384	436	51	13.4	23.0
Non-metallic minerals	286	294	8	2.8	1,888	1,484	-404	-21.4	-26.4
Other fabricated materials	445	487	42	9.4	3,239	2,316	-924	-28.5	-30.6

Table 6-2 – continued

Imports by commodity groupings, balance of payments basis, seasonally adjusted — Constant dollars, 2002

	April 2009	May 2009	Change	Year to date		Year to date change		May	
					2008	2009			2009/2008
	millions of dollars		percent		millions of dollars		percent		
Machinery and equipment	11,401	11,700	299	2.6	73,147	58,259	-14,888	-20.4	-22.8
Industrial and agricultural machinery	2,428	2,695	267	11.0	17,894	13,182	-4,712	-26.3	-25.7
Engines, turbines and electric motors	308	491	183	59.3	2,032	2,014	-18	-0.9	3.7
Drilling mining machinery	123	112	-12	-9.4	822	628	-194	-23.6	-34.3
Excavating machinery	168	182	13	7.9	1,919	973	-946	-49.3	-50.5
Metal working machinery	145	150	5	3.5	1,373	783	-590	-42.9	-46.4
Other industrial machinery	1,292	1,336	44	3.4	9,503	6,842	-2,660	-28.0	-28.7
Agricultural machinery including tractors	391	425	34	8.7	2,246	1,942	-304	-13.5	-8.0
Aircraft and other transportation equipment	1,458	1,343	-115	-7.9	9,688	7,218	-2,469	-25.5	-38.9
Aircraft, engines, parts	997	871	-126	-12.6	6,528	4,774	-1,754	-26.9	-45.6
Other transportation equipment and parts	461	472	11	2.5	3,160	2,444	-716	-22.7	-21.1
Office machines and equipment	2,057	1,969	-88	-4.3	12,018	10,053	-1,964	-16.3	-13.0
Other machinery and equipment	5,458	5,693	235	4.3	33,548	27,805	-5,743	-17.1	-19.5
Other communication and related equipment	2,252	2,425	173	7.7	13,180	11,393	-1,787	-13.6	-16.3
Other equipment and tools	3,205	3,268	63	2.0	20,368	16,412	-3,956	-19.4	-21.7
Automotive products	4,664	4,441	-224	-4.8	38,247	22,312	-15,935	-41.7	-41.2
Passenger autos and chassis	1,602	1,490	-112	-7.0	12,272	7,463	-4,809	-39.2	-38.7
Trucks and other motor vehicles	865	875	10	1.2	7,790	4,749	-3,041	-39.0	-40.0
Motor vehicle parts	2,197	2,075	-121	-5.5	18,185	10,101	-8,084	-44.5	-43.4
Other consumer goods	5,525	5,752	227	4.1	31,862	27,714	-4,148	-13.0	-12.3
Apparel and footwear	1,187	1,239	53	4.4	6,517	6,049	-468	-7.2	-8.1
Apparel and apparel accessories	1,007	1,022	15	1.5	5,467	5,058	-409	-7.5	-9.8
Footwear	180	218	38	20.8	1,050	990	-60	-5.7	0.8
Miscellaneous consumer goods	4,338	4,513	174	4.0	25,345	21,665	-3,680	-14.5	-13.4
Television, radios, phonographs	158	158	-0	-0.2	1,178	760	-418	-35.5	-32.3
Printed matter	354	367	13	3.8	2,107	1,763	-344	-16.3	-15.8
Watches, sporting goods and toys	643	669	26	4.0	3,803	3,207	-596	-15.7	-15.5
House furnishings	775	856	81	10.4	4,628	4,075	-553	-11.9	-10.8
Photographic goods	318	370	53	16.6	2,090	1,707	-383	-18.3	-10.1
Miscellaneous end products	2,091	2,092	1	0.1	11,539	10,153	-1,387	-12.0	-12.0
Special transactions trade	388	498	111	28.5	2,807	2,258	-549	-19.6	-15.6
Unallocated balance of payments adjustments	599	503	-96	-16.0	2,241	3,122	881	39.3	23.0

Table 7-1
Imports from selected countries, customs basis, not seasonally adjusted — May

	Agricultural and fishing products	Energy products	Forestry products	Industrial goods	Machinery and equipment	Automotive products	Consumer goods	Special transactions	Total
millions of dollars									
United States									
2008	1,407.1	1,269.8	179.4	5,143.5	5,319.8	4,612.6	1,835.7	387.3	20,155.1
2009	1,486.0	856.7	130.2	3,552.1	3,988.3	2,708.5	1,832.0	413.1	14,966.8
Mexico									
2008	116.0	116.5	0.3	132.2	539.9	511.2	84.9	4.7	1,505.7
2009	125.1	38.8	0.5	97.7	533.1	368.9	81.7	2.2	1,248.0
Japan									
2008	4.1	12.9	0.1	112.1	476.6	506.2	73.5	0.3	1,185.9
2009	4.8	21.1	0.1	65.8	413.6	309.7	79.3	0.2	894.6
European Union									
Germany									
2008	19.8	1.1	1.3	186.6	348.0	269.4	142.2	0.5	968.9
2009	19.0	2.0	1.1	136.4	362.6	233.7	130.6	0.4	885.9
France									
2008	55.7	0.7	0.5	77.9	141.3	5.7	134.8	76.0	492.6
2009	47.2	83.3	0.1	73.9	144.9	7.2	103.5	0.3	460.4
United Kingdom									
2008	31.9	397.5	0.1	104.0	275.7	46.4	107.0	1.0	963.7
2009	31.2	272.9	0.1	91.2	345.5	26.5	104.1	5.1	876.7
Italy									
2008	48.6	32.7	1.4	94.8	131.2	24.0	84.2	0.7	417.7
2009	40.6	0.0	1.0	72.5	115.4	18.3	81.7	0.2	329.7
Other European Union									
2008	105.6	292.2	4.7	261.4	560.3	115.1	366.3	0.8	1,706.5
2009	84.9	122.6	3.4	205.1	339.2	41.9	308.3	2.4	1,108.0
Total									
2008	261.6	724.2	8.1	724.9	1,456.6	460.7	834.4	79.0	4,549.4
2009	223.0	480.7	5.8	579.1	1,307.6	327.7	728.3	8.4	3,660.7
Newly industrialized countries									
South Korea									
2008	4.3	5.2	0.0	83.0	230.0	212.2	19.2	0.1	553.8
2009	4.4	0.5	0.0	82.0	259.3	223.6	20.3	0.1	590.2
Hong Kong									
2008	2.1	0.0	0.2	2.9	17.2	0.2	14.6	0.2	37.5
2009	2.0	0.0	0.1	1.9	14.4	0.6	9.3	0.0	28.4
Taiwan									
2008	5.0	0.1	0.9	76.7	193.9	14.5	33.3	0.1	324.6
2009	6.8	0.0	1.1	60.3	165.1	15.2	30.5	0.1	279.2
Singapore									
2008	2.8	0.0	0.1	44.8	49.8	0.3	12.9	0.0	110.7
2009	3.1			9.1	38.9	0.2	20.7	0.4	72.4
Total									
2008	14.2	5.3	1.2	207.4	490.9	227.2	80.0	0.4	1,026.6
2009	16.3	0.6	1.2	153.3	477.6	239.8	80.8	0.6	970.2
Other countries									
2008	553.8	2,528.9	58.8	1,902.5	2,134.6	198.6	1,485.3	77.5	8,940.0
2009	524.4	952.4	40.3	1,412.8	1,972.1	145.3	1,464.0	25.9	6,537.2
Total									
2008	2,356.9	4,657.6	247.9	8,222.6	10,418.4	6,516.4	4,393.8	549.3	37,362.9
2009	2,379.8	2,350.2	178.2	5,861.0	8,692.3	4,099.9	4,266.1	450.5	28,277.9

Table 7-2
Imports from selected countries, customs basis, not seasonally adjusted — Year to date, January to May

	Agricultural and fishing products	Energy products	Forestry products	Industrial goods	Machinery and equipment	Automotive products	Consumer goods	Special transactions	Total
millions of dollars									
United States									
2008	6,309.1	6,140.2	893.1	23,483.3	23,932.1	21,789.3	8,834.4	1,674.6	93,056.3
2009	7,095.7	4,609.6	781.8	18,904.8	21,838.5	13,658.7	9,585.8	1,715.4	78,190.1
Mexico									
2008	590.4	274.6	1.9	569.5	2,605.0	2,187.0	396.9	17.4	6,642.7
2009	659.6	113.0	2.6	521.1	2,609.5	1,784.8	401.8	14.4	6,106.9
Japan									
2008	24.6	44.4	0.6	509.9	2,663.0	2,923.9	425.6	2.3	6,594.4
2009	27.2	22.4	0.6	498.4	2,179.9	2,046.7	419.3	1.4	5,195.9
European Union									
Germany									
2008	89.3	17.2	7.1	1,038.2	1,877.1	1,330.9	834.0	48.4	5,242.1
2009	98.1	6.4	4.9	848.5	1,921.9	952.4	766.8	3.5	4,602.5
France									
2008	260.7	14.8	1.5	353.1	752.9	28.1	613.6	201.2	2,225.9
2009	247.2	141.8	1.1	389.9	852.9	46.3	662.9	2.0	2,344.1
United Kingdom									
2008	139.7	1,638.5	0.8	511.4	1,230.4	253.0	544.0	18.8	4,336.6
2009	138.7	951.2	0.6	580.9	1,549.1	145.7	559.2	11.2	3,936.5
Italy									
2008	238.4	32.9	8.2	454.2	680.4	101.5	427.7	24.4	1,967.8
2009	234.6	10.7	6.7	400.9	617.1	79.3	440.9	2.5	1,792.7
Other European Union									
2008	452.2	948.0	22.9	1,373.7	2,045.0	611.1	1,681.5	63.3	7,197.7
2009	436.8	489.0	19.0	1,243.3	1,806.5	236.7	1,712.2	19.0	5,962.5
Total									
2008	1,180.2	2,651.4	40.5	3,730.5	6,585.9	2,324.7	4,100.8	356.2	20,970.2
2009	1,155.5	1,599.1	32.2	3,463.4	6,747.5	1,460.4	4,142.0	38.1	18,638.3
Newly industrialized countries									
South Korea									
2008	20.8	25.7	0.2	339.4	1,016.3	767.6	89.2	0.5	2,259.7
2009	20.1	25.9	0.0	375.3	1,075.8	789.5	97.4	0.3	2,384.3
Hong Kong									
2008	12.8	0.0	0.5	12.9	79.7	0.8	70.5	0.4	177.5
2009	10.9	0.0	0.2	14.6	72.8	1.4	54.0	0.4	154.2
Taiwan									
2008	22.2	32.0	4.7	345.1	923.3	80.9	164.8	0.6	1,573.6
2009	26.6	0.1	3.8	331.6	880.2	75.1	164.4	0.5	1,482.3
Singapore									
2008	9.5	2.3	0.8	157.0	247.7	1.3	81.6	2.8	503.1
2009	13.6	51.5	0.6	195.0	230.4	1.7	107.7	0.8	601.2
Total									
2008	65.3	60.0	6.2	854.3	2,267.0	850.6	406.1	4.3	4,513.8
2009	71.2	77.5	4.6	916.5	2,259.2	867.7	423.5	1.9	4,622.0
Other countries									
2008	2,738.1	10,986.0	272.4	7,740.2	10,688.7	937.5	7,596.0	338.3	41,297.2
2009	2,985.9	6,283.9	218.4	7,486.7	10,863.1	662.9	8,341.8	182.7	37,025.2
Total									
2008	10,908.0	20,156.7	1,214.7	36,887.8	48,741.7	31,013.0	21,760.0	2,393.1	173,075.0
2009	11,995.5	12,705.5	1,040.2	31,790.9	46,497.6	20,481.2	23,314.2	1,953.9	149,779.1

Table 8
Imports by country, customs basis, not seasonally adjusted

	May		January to May		Variation
	2008	2009	2008	2009	January to May 2009/2008
millions of dollars					
North America					
Canada	373.3	237.1	1,626.4	1,309.8	-19.5
Greenland	0.0	0.3	9.0	17.0	88.9
Mexico	1,505.7	1,248.0	6,642.7	6,106.9	-8.1
Saint Pierre and Miquelon	0.1	0.0	0.1	0.1	0.0
United States	20,155.1	14,966.8	93,056.3	78,190.1	-16.0
Total	22,034.2	16,452.3	101,334.5	85,623.9	-15.5
Western Europe					
Andorra	0.0	0.0	0.0	0.0	0.0
Austria	126.7	88.0	672.1	468.5	-30.3
Belgium	181.2	97.2	966.7	525.8	-45.6
Denmark	172.1	96.7	536.4	404.4	-24.6
Faeroe Islands	0.2	0.2	0.4	0.6	50.0
Finland	54.5	42.7	334.9	350.9	4.8
France	492.6	460.4	2,225.9	2,344.1	5.3
Germany	968.9	885.9	5,242.1	4,602.5	-12.2
Gibraltar	0.0	0.0	0.0	0.0	0.0
Greece	11.5	11.4	51.8	59.0	13.9
Iceland	2.8	3.9	12.7	13.1	3.1
Italy	417.7	329.7	1,967.8	1,792.7	-8.9
Luxembourg	13.0	5.5	51.8	28.6	-44.8
Malta	1.2	1.6	7.3	9.7	32.9
Netherlands	232.3	168.7	817.9	802.9	-1.8
Norway	619.8	162.4	2,849.5	1,374.8	-51.8
Portugal	64.1	22.0	171.6	113.5	-33.9
Republic of Ireland (Eire)	192.3	171.0	884.0	983.1	11.2
Spain	139.3	108.4	736.9	557.1	-24.4
Sweden	305.2	151.3	1,046.1	774.1	-26.0
Switzerland	206.7	312.3	1,068.5	1,508.4	41.2
United Kingdom	963.7	876.7	4,336.6	3,936.5	-9.2
Total	5,165.7	3,996.0	23,981.3	20,650.1	-13.9
Other Europe					
Albania	0.2	0.2	0.8	1.1	37.5
Armenia	0.1	2.2	0.6	15.0	...
Azerbaijan	0.1	0.0	0.2	420.8	...
Belarus	1.1	0.3	25.8	15.9	-38.4
Bosnia and Herzegovina	0.3	0.7	2.0	3.1	55.0
Bulgaria	5.5	15.2	40.6	53.6	32.0
Croatia	4.8	2.7	17.8	10.1	-43.3
Czech Republic	26.7	21.1	132.5	123.4	-6.9
Estonia	3.0	2.4	16.5	10.2	-38.2
Georgia	26.7	11.2	54.3	52.4	-3.5
Hungary	35.8	19.7	152.9	148.2	-3.1
Kazakhstan	36.6	0.0	37.1	16.2	-56.3
Kyrgyzstan	0.0	0.0	0.7	0.4	-42.9
Latvia	1.0	0.8	25.1	4.5	-82.1
Lithuania	45.7	5.7	59.9	63.9	6.7
Macedonia (Former Yugoslav Republic of Macedonia)	0.4	0.4	3.4	4.7	38.2
Montenegro	0.1	0.0	0.3	0.2	-33.3
Poland	63.6	59.5	322.0	345.4	7.3
Republic of Moldova	0.1	0.1	0.8	0.8	0.0
Romania	9.9	5.9	52.9	48.7	-7.9
Russian Federation	85.1	122.4	695.0	748.8	7.7
Serbia	0.7	0.6	4.3	4.7	9.3
Slovakia	13.5	9.0	81.9	61.1	-25.4
Slovenia	8.2	4.1	33.8	24.3	-28.1
Tajikistan	0.0	0.0	0.0	0.0	0.0
Turkmenistan	0.1	0.0	0.2	0.1	-50.0
Ukraine	16.6	2.8	48.4	40.6	-16.1
Uzbekistan	0.7	0.0	0.8	11.6	...
Total	386.7	287.0	1,810.7	2,229.7	23.1

Table 8 – continued

Imports by country, customs basis, not seasonally adjusted

	May		January to May		Variation
	2008	2009	2008	2009	January to May 2009/2008
millions of dollars					
Middle East					
Bahrain	0.1	0.2	0.9	3.3	266.7
Cyprus	0.0	0.3	1.9	1.8	-5.3
Egypt	4.5	5.1	34.4	45.1	31.1
Eritrea	0.0	0.0	0.0	0.1	0.0
Ethiopia	0.8	2.0	3.9	6.1	56.4
Iran	3.5	1.1	18.4	10.2	-44.6
Iraq	248.7	0.0	1,069.7	417.5	-61.0
Israel	75.9	75.5	448.7	408.4	-9.0
Jordan	0.5	0.5	5.2	6.6	26.9
Kuwait	1.3	0.0	7.6	37.2	389.5
Lebanon	1.1	1.3	5.9	5.5	-6.8
Libya	0.0	0.0	0.0	0.1	0.0
Oman	0.2	0.9	1.6	2.8	75.0
Qatar	0.1	0.0	0.3	7.9	...
Saudi Arabia	299.0	131.7	1,028.9	575.8	-44.0
Somalia	0.0	0.0	0.0	0.0	0.0
Sudan	7.2	5.5	33.7	30.2	-10.4
Syria	0.6	0.4	2.8	1.8	-35.7
Turkey	39.2	36.0	202.3	287.0	41.9
United Arab Emirates	3.5	3.0	305.3	176.8	-42.1
Yemen	0.0	0.0	0.1	0.1	0.0
Total	686.2	263.8	3,171.7	2,024.3	-36.2
Other Africa					
Algeria	853.0	280.7	3,178.1	1,337.7	-57.9
Angola	94.2	0.1	701.5	355.4	-49.3
Antarctica	0.0	0.0	0.0	0.0	0.0
Benin	0.0	0.0	0.0	0.0	0.0
Botswana	0.0	5.1	0.2	10.4	...
Bouvet Island	0.0	0.0	0.0	0.0	0.0
Burkina Faso	0.0	0.0	0.1	1.6	...
Burundi	0.3	0.0	0.5	0.1	-80.0
Cameroon	0.3	0.5	2.5	2.1	-16.0
Cape Verde	0.0	0.0	0.0	0.0	0.0
Central African Republic	0.1	0.0	0.1	0.0	0.0
Chad	0.1	0.0	0.1	0.0	0.0
Comoros	0.0	0.0	0.0	0.0	0.0
Congo	0.1	0.1	1.4	0.7	-50.0
Democratic Republic of the Congo	0.1	0.0	0.3	0.3	0.0
Djibouti	0.0	0.0	0.0	0.0	0.0
Equatorial Guinea	0.0	51.1	81.1	192.2	137.0
French Southern Territories	0.0	0.0	0.0	0.0	0.0
Gabon	0.1	0.1	0.5	0.9	80.0
Gambia	0.0	0.0	0.0	0.0	0.0
Ghana	5.1	0.6	17.4	9.7	-44.3
Guinea	2.4	9.1	19.6	31.0	58.2
Guinea-Bissau	0.0	0.0	0.0	0.0	0.0
Ivory Coast	6.8	66.1	33.9	123.8	265.2
Kenya	1.1	1.6	5.4	7.5	38.9
Lesotho	1.1	0.9	2.9	3.8	31.0
Liberia	1.7	1.4	8.5	9.0	5.9
Madagascar	1.0	1.0	6.2	12.5	101.6
Malawi	0.2	0.3	0.9	0.8	-11.1
Mali	0.0	0.0	0.1	0.2	100.0
Mauritania	0.0	0.0	0.0	0.4	0.0
Mauritius	0.7	0.4	2.8	4.3	53.6
Morocco	6.7	2.9	51.0	54.5	6.9
Mozambique	0.0	0.0	0.7	0.2	-71.4
Namibia	99.1	14.7	166.7	177.3	6.4
Niger	0.0	0.1	0.4	0.2	-50.0
Nigeria	143.5	33.0	494.7	177.8	-64.1
Rwanda	0.0	0.0	0.2	0.2	0.0
Saint Helena	0.0	0.0	0.1	0.0	0.0
Sao Tome and Principe	0.0	0.0	0.0	0.0	0.0
Senegal	0.1	0.1	0.3	0.3	0.0
Seychelles	0.3	0.0	0.9	0.4	-55.6

Table 8 – continued

Imports by country, customs basis, not seasonally adjusted

	May		January to May		Variation
	2008	2009	2008	2009	January to May 2009/2008
millions of dollars					
Sierra Leone	0.1	0.1	0.5	0.7	40.0
South Africa	71.2	40.7	329.6	238.7	-27.6
Swaziland	0.2	0.1	1.1	0.7	-36.4
Togo	0.1	0.0	4.9	0.4	-91.8
Tunisia	3.1	3.1	14.3	18.5	29.4
Uganda	0.4	0.3	1.2	1.0	-16.7
United Republic of Tanzania	0.2	0.3	0.9	2.0	122.2
Western Sahara	0.0	0.0	0.0	0.0	0.0
Zambia	0.2	0.1	0.4	0.3	-25.0
Zimbabwe	0.2	0.5	0.5	1.3	160.0
Total	1,293.6	514.8	5,132.4	2,779.0	-45.9
Other Asia					
Afghanistan	0.1	0.1	0.6	0.6	0.0
Bangladesh	41.4	56.4	233.7	353.2	51.1
Bhutan	0.0	0.0	0.0	0.0	0.0
British Indian Ocean Territory	0.0	0.0	0.0	0.0	0.0
Brunei Darussalam	0.3	0.5	1.1	1.4	27.3
Cambodia	13.5	14.2	93.9	118.1	25.8
China	3,195.4	2,812.8	15,144.0	15,908.7	5.0
Hong Kong	37.5	28.4	177.5	154.2	-13.1
India	164.4	163.7	855.5	907.4	6.1
Indonesia	83.7	65.1	400.0	428.6	7.2
Japan	1,185.9	894.6	6,594.4	5,195.9	-21.2
Laos	0.3	1.0	2.6	3.8	46.2
Macao	1.6	8.7	12.6	15.4	22.2
Malaysia	228.3	200.0	1,158.7	959.8	-17.2
Maldives	0.0	0.0	0.1	0.1	0.0
Mongolia	12.8	7.6	71.3	58.9	-17.4
Myanmar	0.0	0.0	0.7	0.0	0.0
Nepal	1.3	1.1	5.3	4.8	-9.4
North Korea	0.0	0.0	0.0	0.1	0.0
Pakistan	18.7	19.1	92.1	97.7	6.1
Philippines	60.1	51.1	315.6	285.5	-9.5
Singapore	110.7	72.4	503.1	601.2	19.5
South Korea	553.8	590.2	2,259.7	2,384.3	5.5
Sri Lanka	7.7	7.9	47.2	48.7	3.2
Taiwan	324.6	279.2	1,573.6	1,482.3	-5.8
Thailand	171.8	172.3	891.4	917.8	3.0
Timor-Leste	0.9	0.1	1.0	1.3	30.0
Viet Nam	63.0	81.5	318.2	407.5	28.1
Total	6,277.7	5,528.3	30,754.0	30,337.3	-1.4
Oceania					
American Samoa	0.0	0.0	0.1	0.1	0.0
Australia	111.9	110.2	671.1	612.3	-8.8
Christmas Island	0.0	0.0	0.0	0.0	0.0
Cocos (Keeling) Islands	0.0	0.1	0.0	0.1	0.0
Cook Islands	0.0	0.0	0.0	0.0	0.0
Fiji	1.2	0.7	3.2	2.6	-18.8
French Polynesia	0.1	0.0	0.5	0.2	-60.0
Guam	0.0	0.0	0.2	0.2	0.0
Heard Island and McDonald Islands	0.0	0.0	0.0	0.0	...
Kiribati	0.0	0.0	0.0	0.1	0.0
Nauru	0.0	0.0	0.0	0.1	0.0
New Caledonia	0.0	0.1	0.1	0.2	100.0
New Zealand	39.5	47.1	214.9	187.7	-12.7
Niue	0.0	0.0	0.0	0.0	0.0
Norfolk Island	0.0	0.0	0.0	0.0	0.0
Papua New Guinea	0.2	0.0	0.9	0.4	-55.6
Pitcairn	0.0	0.0	0.0	0.0	0.0
Samoa	0.0	0.0	0.0	0.0	0.0
Solomon Islands	0.0	0.0	0.1	0.0	0.0
Tonga	0.0	0.0	0.1	0.0	0.0
United States Minor Outlying Islands	0.3	0.4	2.9	2.1	-27.6
Vanuatu	0.0	0.0	0.0	0.0	0.0
Wallis and Futuna	0.0	0.0	0.0	0.0	0.0
Total	153.3	158.8	894.2	806.3	-9.8

Table 8 – continued

Imports by country, customs basis, not seasonally adjusted

	May		January to May		Variation
	2008	2009	2008	2009	January to May 2009/2008
millions of dollars					
South America					
Argentina	39.8	58.0	180.2	286.3	58.9
Bolivia	4.5	7.7	26.4	30.7	16.3
Brazil	213.3	188.6	1,051.2	991.7	-5.7
Chile	283.2	147.7	998.2	771.1	-22.8
Colombia	38.8	76.5	260.0	304.4	17.1
Ecuador	14.3	22.5	79.6	112.2	41.0
Falkland Islands (Malvinas)	0.1	0.0	0.1	0.0	0.0
Guyana	17.5	25.1	87.7	120.2	37.1
Paraguay	1.0	0.8	5.7	3.5	-38.6
Peru	252.2	229.3	1,069.1	1,101.0	3.0
Suriname	53.4	61.4	225.8	223.8	-0.9
Uruguay	1.9	2.7	19.7	40.1	103.6
Venezuela	169.3	70.3	606.2	416.9	-31.2
Total	1,089.3	890.5	4,609.9	4,402.0	-4.5
Central America Antilles					
Anguilla	0.0	0.0	0.0	0.2	0.0
Antigua and Barbuda	0.0	0.0	4.9	0.1	-98.0
Aruba	0.1	1.9	120.2	53.3	-55.7
Bahamas	5.9	4.6	33.5	22.7	-32.2
Barbados	1.0	0.6	3.4	3.6	5.9
Belize	1.1	0.4	3.7	3.8	2.7
Bermuda	0.1	2.9	0.4	3.2	700.0
British Virgin Islands	0.0	0.1	8.4	0.2	-97.6
Cayman Islands	0.0	0.0	0.1	0.1	0.0
Costa Rica	42.7	31.2	172.9	159.9	-7.5
Cuba	85.4	44.2	448.9	184.0	-59.0
Dominica	0.0	0.0	0.1	0.1	0.0
Dominican Republic	10.1	11.8	47.6	59.4	24.8
El Salvador	25.7	4.8	39.3	36.1	-8.1
Grenada	0.0	0.0	0.3	0.2	-33.3
Guatemala	35.7	18.1	112.3	105.7	-5.9
Haiti	1.5	2.4	7.8	9.7	24.4
Honduras	13.1	12.4	62.2	66.0	6.1
Jamaica	15.9	11.2	87.6	58.1	-33.7
Montserrat	0.0	0.0	0.0	0.0	0.0
Netherlands Antilles	0.1	0.0	2.5	9.9	296.0
Nicaragua	7.2	7.1	44.4	35.6	-19.8
Panama	0.8	2.1	15.6	5.2	-66.7
Saint Kitts and Nevis	0.5	0.5	2.0	2.0	0.0
Saint Lucia	0.0	0.0	0.1	0.1	0.0
Saint Vincent and the Grenadines	0.0	0.0	0.0	0.0	0.0
Trinidad and Tobago	28.8	30.1	166.9	107.1	-35.8
Turks and Caicos Islands	0.3	0.0	1.0	0.2	-80.0
Total	276.2	186.4	1,386.3	926.5	-33.2
All countries	37,362.9	28,277.9	173,075.0	149,779.1	-13.5

**Table 9-1
Imports by province of clearance, customs basis, not seasonally adjusted — May**

	Agricultural and fishing products	Energy products	Forestry products	Industrial goods	Machinery and equipment	Automotive products	Consumer goods	Special transactions	Total
millions of dollars									
Newfoundland Labrador									
2008	4.5	298.8	0.0	6.5	23.4	0.0	5.6	0.0	338.9
2009	3.4	0.0	0.2	20.3	13.2	0.1	0.1	0.0	37.2
Prince Edward Island									
2008	0.5	0.0	0.0	0.5	38.8	0.0	2.5	0.0	42.4
2009	0.6	0.0	0.0	0.0	0.1	0.0	0.1	0.0	0.8
Nova Scotia									
2008	28.0	162.3	1.9	118.8	206.3	280.5	11.6	1.4	810.7
2009	20.3	108.9	0.8	66.8	68.3	242.1	12.4	5.8	525.5
New Brunswick									
2008	27.6	883.9	10.5	83.9	67.3	43.3	12.0	2.0	1,130.4
2009	33.5	453.5	5.3	94.2	83.0	33.5	23.1	1.7	727.8
Quebec									
2008	354.7	1,792.5	56.6	1,836.1	1,743.9	227.8	727.5	67.1	6,806.2
2009	309.0	974.2	43.7	1,123.6	1,456.0	181.6	800.3	42.8	4,931.3
Ontario									
2008	1,303.7	920.6	99.1	4,420.2	5,841.4	5,032.5	2,884.6	366.7	20,868.8
2009	1,357.0	371.5	68.3	3,336.6	4,829.8	3,188.0	2,710.6	372.7	16,234.6
Manitoba									
2008	82.7	29.1	9.8	348.3	553.9	143.0	143.7	8.5	1,319.0
2009	84.5	18.5	9.1	282.1	487.9	80.6	149.3	5.7	1,117.7
Saskatchewan									
2008	28.8	26.4	2.9	236.5	327.4	133.6	22.8	2.1	780.6
2009	30.6	37.1	2.6	166.6	353.1	53.6	21.6	0.7	665.8
Alberta									
2008	174.4	299.3	9.3	509.3	639.6	152.0	94.1	12.5	1,890.3
2009	160.0	168.8	7.1	270.8	497.9	61.6	91.3	9.1	1,266.4
British Columbia									
2008	346.2	243.1	57.8	662.3	972.6	503.5	489.4	89.0	3,364.0
2009	375.1	217.6	41.0	499.9	902.9	258.6	457.2	12.0	2,764.4
Yukon, Northwest Territories and Nunavut									
2008	5.8	1.6	0.0	0.2	3.9	0.1	0.1	0.0	11.7
2009	5.8	0.1	0.0	0.1	0.2	0.1	0.0	0.0	6.4
Total									
2008	2,356.9	4,657.6	247.9	8,222.6	10,418.4	6,516.4	4,393.8	549.3	37,362.9
2009	2,379.8	2,350.2	178.2	5,861.0	8,692.3	4,099.9	4,266.1	450.5	28,277.9

Table 9-2
Imports by province of clearance, customs basis, not seasonally adjusted — Year to date, January to May

	Agricultural and fishing products	Energy products	Forestry products	Industrial goods	Machinery and equipment	Automotive products	Consumer goods	Special transactions	Total
millions of dollars									
Newfoundland Labrador									
2008	19.6	1,648.7	0.0	25.9	70.6	0.6	7.8	4.1	1,777.3
2009	19.1	698.0	0.5	57.6	49.7	0.3	1.5	0.1	826.8
Prince Edward Island									
2008	1.5	0.0	0.1	0.7	40.0	0.0	8.4	0.2	51.0
2009	1.7	0.0	0.0	17.6	0.4	0.1	0.2	0.1	20.0
Nova Scotia									
2008	136.4	938.5	7.7	617.7	533.0	1,435.6	59.7	6.6	3,735.2
2009	127.1	597.2	5.0	340.2	466.2	1,006.3	75.7	13.6	2,631.3
New Brunswick									
2008	132.2	2,894.3	50.8	399.7	306.8	168.6	67.8	8.8	4,028.9
2009	142.0	2,079.9	43.1	364.7	353.8	119.5	79.9	10.1	3,193.0
Quebec									
2008	1,560.2	8,644.5	313.9	7,302.5	8,540.7	1,083.0	3,767.1	418.2	31,630.1
2009	1,762.5	4,640.8	328.9	5,686.1	8,369.5	829.8	4,619.8	217.5	26,454.8
Ontario									
2008	6,023.0	3,034.7	455.2	20,615.6	27,052.0	23,965.5	14,040.7	1,708.1	96,894.9
2009	6,761.9	2,257.7	372.0	17,658.9	25,193.3	15,865.4	14,510.2	1,549.1	84,168.4
Manitoba									
2008	411.4	101.4	38.7	1,528.7	2,548.2	710.4	669.2	39.5	6,047.5
2009	406.9	81.3	35.9	1,565.3	2,530.1	565.9	707.6	37.4	5,930.2
Saskatchewan									
2008	143.1	132.5	12.5	1,051.2	1,479.9	589.8	102.5	10.9	3,522.5
2009	148.0	170.4	12.9	1,092.0	1,542.7	337.8	107.0	10.4	3,421.4
Alberta									
2008	786.4	1,450.4	49.2	2,139.8	3,289.1	644.8	476.5	52.9	8,889.1
2009	773.3	1,217.5	43.2	2,090.8	3,185.5	322.8	478.2	50.5	8,161.8
British Columbia									
2008	1,680.3	1,302.6	286.6	3,205.0	4,868.8	2,414.0	2,560.2	143.5	16,461.0
2009	1,842.0	960.7	198.6	2,916.9	4,790.1	1,433.1	2,734.2	64.3	14,939.9
Yukon, Northwest Territories and Nunavut									
2008	13.8	9.1	0.0	0.8	12.7	0.7	0.2	0.3	37.6
2009	11.1	2.0	0.0	0.9	16.2	0.3	0.1	0.9	31.5
Total									
2008	10,908.0	20,156.7	1,214.7	36,887.8	48,741.7	31,013.0	21,760.0	2,393.1	173,075.0
2009	11,995.5	12,705.5	1,040.2	31,790.9	46,497.6	20,481.2	23,314.2	1,953.9	149,779.1

Technical notes

The Canadian international merchandise trade statistical program

I Introduction

The objective of this text is to provide a general overview of the Canadian International Merchandise Trade Statistical Program with special reference to concepts and definitions. The text is intended for the general user and simplicity is emphasized. More technical details can be obtained from the International Trade Division upon request.

II Conceptual framework

1. Objectives and coverage: The primary objective of the Canadian International Merchandise Trade Statistical Program is to measure the change in the stock of material resources of the country resulting from the movement of merchandise into or out of Canada. Information on imports and exports are inputs into the System of National Accounts particularly in the Balance of Payments and Gross Domestic Product, and are used in the formulation of trade and budgetary policies. Governments, importers, exporters, manufacturers and shipping companies use trade statistics to:

- monitor import penetration and export performance;
- monitor commodity price and volume changes;
- examine transport implications.

2. Trade statistics - Customs basis/Balance of Payments basis: Merchandise trade statistics are reported and presented on two different bases: Customs basis and Balance of Payment basis. (B.O.P.)

When goods are imported into or exported from Canada, declarations must be filed with Customs giving such information as description and value of the goods, origin and port of clearance of commodities and the mode of transport. Most of this information is required for the purposes of Customs Administration. Statistics developed from administrative records of Customs are commonly referred to as Customs based trade statistics.

Customs based trade statistics are more accurate at measuring imports than they are at measuring exports. This is the case because Customs are typically more vigilant with respect to goods entering the country than they are with goods leaving the country.

Customs based export statistics may understate and/or incorrectly portray the destination of exports. Export statistics are understated when the proper documentation is not filed with Customs. Exports are incorrectly portrayed when the country of final destination is inaccurately reported on the customs documentation - this occurs most frequently when goods are routed through an intermediary country before continuing on to their final destination.

Statistics Canada does not have a measure of undercoverage but periodically conducts reconciliation exercises with its major trading partners, excluding the United States.

On January 1st, 1990, Canada entered into a Memorandum of Understanding (MOU) with the United States concerning the exchange of import data. As a consequence, each administration is using the other's import data to replace its own export data. Canada's international merchandise trade statistics are, therefore, no longer derived exclusively from the administrative records of Canada Border Services Agency, but from United States Customs records as well.

Customs based information is adjusted to conform with the National Accounts concepts and definitions. The adjustments to derive Balance of Payments based trade data include trade definition, valuation and timing related adjustments. The principal difference between the two trade concepts is that Customs based merchandise trade statistics cover the physical movement of goods as they are reflected on customs documents, while Balance of Payments adjusted data are intended to cover all economic transactions between residents and non-residents which involve merchandise trade. This section describes the concepts and processes pertaining to the Customs based trade statistics only. (For further information on Balance of Payments adjusted data see the publication *"Canada's Balance of International Payments" Catalogue no. 67-001-XPB*).

3. System of trade: Canadian trade statistics are compiled according to the "General" system of trade as defined by the United Nations Statistical Office. Under this system, imports include all goods which have crossed Canada's territorial boundary, whether for immediate consumption in Canada or stored in bonded Customs warehouses. Domestic exports include goods grown, extracted or manufactured in Canada, including goods of foreign origin which have been materially transformed in Canada. Re-exports are exports of goods of foreign origin which have not been materially transformed in Canada, including foreign goods withdrawn for export from bonded customs warehouses. Total exports are the sum of Domestic exports and Re-exports. Thus the general trade system, in principal, presents all goods entering the country (imports) and all goods leaving the country (exports). It differs from the "Special" system of trade in the treatment of imported goods into Customs bonded warehouses. Under the "Special" system, these goods are counted only if and when they are withdrawn from Customs warehouses for home consumption. They are not counted in export statistics unless they have first cleared Customs.

Conceptually, under the "General" system, the statistical frontier coincides with the geographical boundary, while under the "Special" system, it coincides with the Customs boundary.

4. Valuation: For Customs purposes, imports are recorded at values established according to the provisions of the Customs Act, which, since January 1st, 1985, reflects valuation methods based on the General Agreement on Tariffs and Trade (GATT) Valuation Code System. It generally requires the value for duty of imported goods be equivalent to the transaction value or the price actually paid.

To determine the transaction value of imported goods, all transportation and associated costs arising in respect of the goods being appraised prior to and at the place of direct shipment to Canada, are to be added to the price of the goods. Therefore, Canadian imports are valued F.O.B. (Free on Board), place of direct shipment to Canada. It excludes freight and insurance costs in bringing the goods to Canada from the point of direct shipment.

To countries other than the United States, exports are, in principal, valued or recorded at the values declared on export documents which usually reflect the transaction value, i.e. actual selling price, or in the case of a non-arm's length transaction, the transfer price used for company accounting purposes. Canadian exports to overseas countries are valued at F.O.B. port of exit, including domestic freight charges to that point but net of discounts and allowances. As of January, 1990, Canadian exports to the U.S. are valued F.O.B. point of exit from Canada. Prior to 1990, they were valued F.O.B. place of lading net of freight charges, discounts and allowances.

5. Statistical period: The reference period is the calendar month and the calendar year. The closing of the statistical month for imports and Canadian exports to the United States is defined as the last calendar day of the month, based as closely as practicable on the date of clearance from Customs.

The closing of the statistical month for exports, to countries other than the United States, is also defined as the last calendar day of the month. Those export documents which are received too late for incorporation in the current month are assigned to the month the transaction took place. If a monthly summary report from a high volume exporter is not received on time, the data are imputed for the current month and revised with the trade value in the following statistical month.

6. Trading partner attribution (Country of origin/destination): Exports are attributed to the country, which is the last known destination of the goods at the time of export. Exports to the United States are attributed to the state of destination.

Imports are attributed to their country of origin, that is, the country in which the goods were grown, extracted or manufactured in accordance to the rules of origin administered by Canada Border Services Agency. Imports from

the United States are attributed to the state of origin. Prior to 1988, most imports were attributed to the country of export/consignment with the exception of imports from Central and South America.

7. Principal trading areas: The “principal trading areas” are country groupings defined as follows:

United States: (includes trade with Puerto Rico and the U.S. Virgin Islands).

Japan:

E.U. (European Union): Austria, Belgium, Bulgaria, Cyprus, Czech Republic, Denmark, Estonia, Finland, France, Germany, Greece, Hungary, Ireland, Italy, Latvia, Lithuania, Luxembourg, Malta, Netherlands, Poland, Portugal, Romania, Slovakia, Slovenia, Spain, Sweden and United Kingdom.

Other O.E.C.D.: Australia, Canada, Iceland, Mexico, New Zealand, Norway, South Korea, Switzerland, and Turkey. (The E.U. countries, United States, and Japan are also members of O.E.C.D. - the Organization for Economic Co-operation and Development).

Other countries: This group includes all countries and territories other than the United States, Japan, E.U. and other O.E.C.D.

8. Legal framework: Import and export statistics with countries other than the United States are derived from information contained on administrative records collected by the Canada Border Services Agency under the Customs Act. Copies of these documents (or information therefrom) are sent to Statistics Canada in accordance with Section 25 of the Statistics Act. It follows that the disclosure of trade statistics is governed by both the Customs Act and the Statistics Act and is subject to the provisions of Section 17.(2)(a) of the latter. Disclosure of export statistics to the United States is now governed by a Memorandum of Understanding which provides for an exchange of detailed import statistics between Canada and the United States.

Questions concerning details of methods not covered by these notes should be addressed to the Marketing and Client Services Section, International Trade Division, Statistics Canada, Ottawa, Ontario, K1A 0T6.

Telephone: 1-800-294-5583 or within the area code 613-951-9647

Facsimile: 1-800-664-0055 or within the area code 613-951-0117

Internet: *trade@statcan.gc.ca*