

Catalogue no. 65-001-X

Canadian International Merchandise Trade

March 2009



Statistics
Canada

Statistique
Canada

Canada

How to obtain more information

For information about this product or the wide range of services and data available from Statistics Canada, visit our website at www.statcan.gc.ca, e-mail us at infostats@statcan.gc.ca, or telephone us, Monday to Friday from 8:30 a.m. to 4:30 p.m., at the following numbers:

Statistics Canada's National Contact Centre

Toll-free telephone (Canada and the United States):

Inquiries line	1-800-263-1136
National telecommunications device for the hearing impaired	1-800-363-7629
Fax line	1-877-287-4369

Local or international calls:

Inquiries line	1-613-951-8116
Fax line	1-613-951-0581

Depository Services Program

Inquiries line	1-800-635-7943
Fax line	1-800-565-7757

To access this product

This product, Catalogue no. 65-001-X, is available free in electronic format. To obtain a single issue, visit our website at www.statcan.gc.ca and select "Publications."

Standards of service to the public

Statistics Canada is committed to serving its clients in a prompt, reliable and courteous manner. To this end, Statistics Canada has developed *standards of service* that its employees observe. To obtain a copy of these service standards, please contact Statistics Canada toll-free at 1-800-263-1136. The service standards are also published on www.statcan.gc.ca under "About us" > "Providing services to Canadians."

Statistics Canada
International Trade Division

Canadian International Merchandise Trade

March 2009

Published by authority of the Minister responsible for Statistics Canada

© Minister of Industry, 2009

All rights reserved. The content of this electronic publication may be reproduced, in whole or in part, and by any means, without further permission from Statistics Canada, subject to the following conditions: that it be done solely for the purposes of private study, research, criticism, review or newspaper summary, and/or for non-commercial purposes; and that Statistics Canada be fully acknowledged as follows: Source (or "Adapted from", if appropriate): Statistics Canada, year of publication, name of product, catalogue number, volume and issue numbers, reference period and page(s). Otherwise, no part of this publication may be reproduced, stored in a retrieval system or transmitted in any form, by any means—electronic, mechanical or photocopy—or for any purposes without prior written permission of Licensing Services, Client Services Division, Statistics Canada, Ottawa, Ontario, Canada K1A 0T6.

May 2009

Catalogue no. 65-001-X, vol. 63, no. 3

ISSN 1480-8781

Frequency: Monthly

Ottawa

La version française de cette publication est disponible sur demande (n° 65-001-X au catalogue).

Note of appreciation

Canada owes the success of its statistical system to a long standing partnership between Statistics Canada, the citizens of Canada, its businesses, governments and other institutions. Accurate and timely statistical information could not be produced without their continued cooperation and goodwill.

User information

Symbols

The following standard symbols are used in Statistics Canada publications:

- . not available for any reference period
- .. not available for a specific reference period
- ... not applicable
- 0 true zero or a value rounded to zero
- 0^s value rounded to 0 (zero) where there is a meaningful distinction between true zero and the value that was rounded
- p preliminary
- r revised
- x suppressed to meet the confidentiality requirements of the *Statistics Act*
- E use with caution
- F too unreliable to be published

Note to Users

All totals are calculated from full figures and rounded independently; consequently, totals may not equal the sum of their components.

Table of contents

Highlights	5
Analysis	7
Statistical tables	
1 Merchandise trade of Canada, balance of payments basis, seasonally adjusted	12
1-1 Current dollars	12
1-2 Constant dollars, 2002	13
1-3 Price indices (Laspeyres)	14
2 Exports by commodity groupings, balance of payments basis, seasonally adjusted	15
2-1 Current dollars	15
2-2 Constant dollars, 2002	17
3 Domestic exports to selected countries, customs basis, not seasonally adjusted	19
3-1 March	19
3-2 Year to date, January to March	20
4 Domestic exports by country, customs basis, not seasonally adjusted	21
5 Exports by province of origin, customs basis, not seasonally adjusted	25
5-1 March	25
5-2 Year to date, January to March	26
6 Imports by commodity groupings, balance of payments basis, seasonally adjusted	27
6-1 Current dollars	27
6-2 Constant dollars, 2002	29
7 Imports from selected countries, customs basis, not seasonally adjusted	31
7-1 March	31
7-2 Year to date, January to March	32
8 Imports by country, customs basis, not seasonally adjusted	33
9 Imports by province of clearance, customs basis, not seasonally adjusted	37
9-1 March	37
9-2 Year to date, January to March	38

Table of contents – continued

Data quality, concepts and methodology

Technical notes

39

Highlights

March 2009

Canada's merchandise imports and exports both declined in March largely due to volume reductions. Imports decreased more than twice as fast as exports, leading to the widening of Canada's trade surplus with the world from \$262 million in February to \$1.1 billion in March.

Imports fell 4.4% to \$31.4 billion as most sectors posted decreases. Energy products registered the largest decline followed by machinery and equipment as well as industrial goods and materials. Since the peak of July 2008, imports have fallen more than \$8.0 billion mainly due to declines in the energy products and automotive products sectors.

Exports were down 1.8% to \$32.5 billion largely reflecting a decline in exports to the United States. Increased exports to the European Union moderated the decline. Overall exports have fallen \$11.8 billion since reaching their highest level in July 2008, primarily due to weaknesses in exports of energy products in the latter part of 2008.

Canada's trade surplus with the United States remained at \$3.6 billion in March, virtually unchanged from February. Exports to the United States decreased 4.1% while imports declined 4.7%.

The trade deficit with countries other than the United States narrowed to \$2.5 billion from \$3.3 billion in February as exports increased 4.5% while imports decreased 3.9%.

While both imports and exports posted gains in February and fell back in March, the March pace of decline is considerably slower than those observed in December and January.

Note to readers

Merchandise trade is one component of the current account of Canada's balance of payments, which also includes trade in services, investment income and transfers.

International merchandise trade data by country are available on both a balance of payments and a customs basis for the United States, Japan and the United Kingdom. Trade data for all other individual countries are available on a customs basis only. Balance of payments data are derived from customs data by making adjustments for characteristics such as valuation, coverage, timing and residency. These adjustments are made to conform to the concepts and definitions of the Canadian System of National Accounts.

Constant dollars referred to in the text are calculated using the Laspeyres volume formula which is current dollars divided by Paasche indexes.

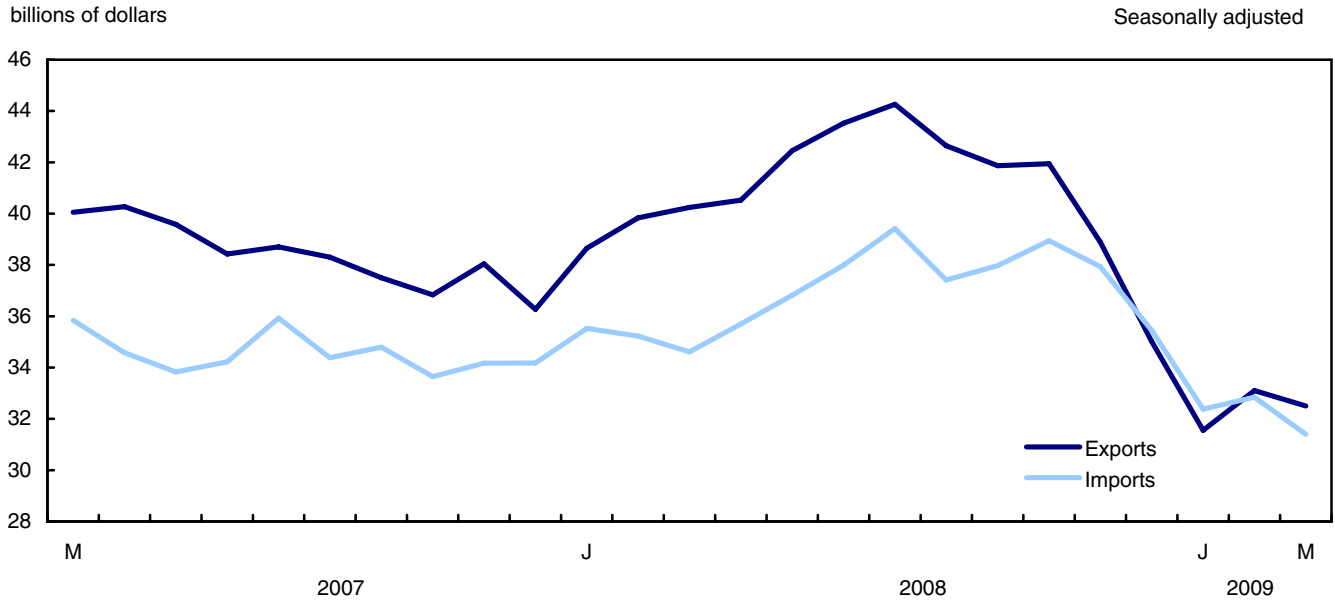
Revisions

In general, merchandise trade data are revised on an ongoing basis for each month of the current year. Current and previous year revisions are reflected in both the customs and balance of payments based data. Revisions to customs based data for the previous year are also released on a quarterly basis.

Factors influencing revisions include late receipt of import and export documentation, incorrect information on customs forms, replacement of estimates with actual figures, changes in classification of merchandise based on more current information and changes to seasonal adjustment factors.

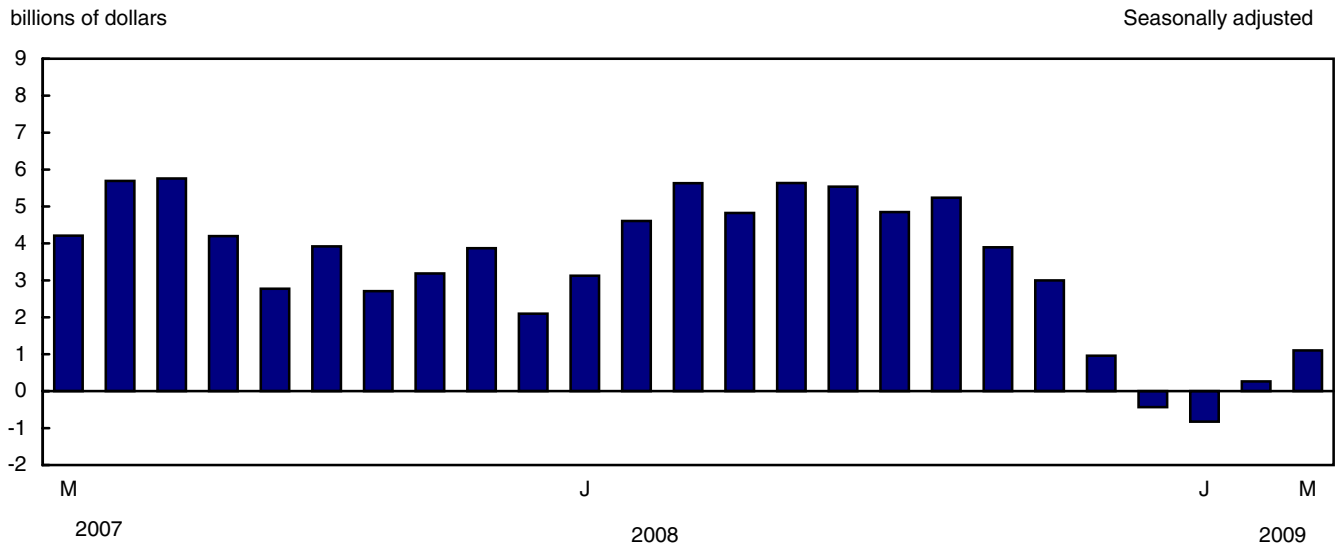
Revised data are available in the appropriate CANSIM tables.

Chart 1
Exports and imports



Note(s): On a balance of payments basis.

Chart 2
Trade balance



Note(s): On a balance of payments basis.

Analysis

Energy products lead the decline in imports

Energy products dropped 18.4% to \$2.3 billion, the lowest level since October 2004. Imports of other energy products, down 33.2%, led the decline while imports of crude petroleum decreased 2.1%. The volume of energy products declined 16.2% in March while prices decreased 2.7%.

Imports of machinery and equipment declined 4.5% to \$9.6 billion in March, following 4.0% increase in February. Aircraft and other transportation equipment as well as industrial and agricultural machinery accounted for almost three-quarters of the decline in imports.

Industrial goods and materials imports were down 4.5% to \$6.6 billion mainly due to volume reduction. Although the declines were broad based, a decline in imports of pipes and tubes for drilling was the main contributor. Volumes have generally been declining in this sector since August 2008.

General decline in exports

Machinery and equipment and automotive products accounted for almost two-thirds of the decline in exports in March followed by energy products.

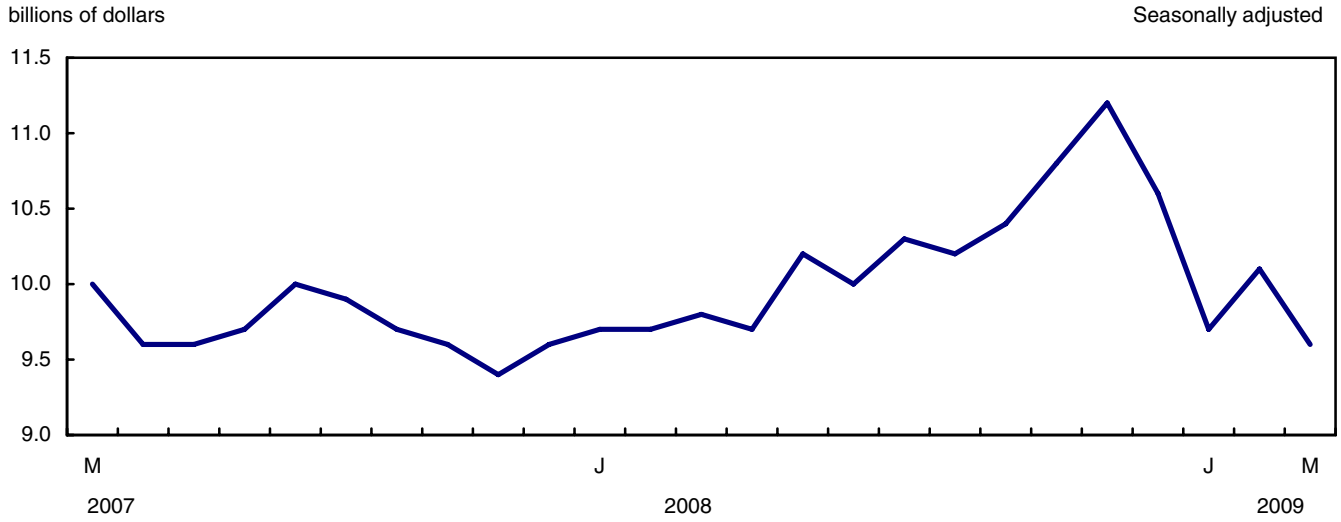
Machinery and equipment exports decreased 3.4% to \$7.7 billion as volumes declined, largely due to lower exports of aircraft and telecommunication equipment. Other transportation equipment moderated the sector's decline on the strength of locomotive exports.

Automotive product exports, trending downward since December 2006, fell 3.3% to \$3.4 billion due to decreases in exports of trucks and motor vehicle parts. Exports of passenger autos increased for the second month in a row following January's plant shutdowns. Overall, the decline in automotive products was mainly due to volume reduction.

Exports of energy products contracted 1.4% to \$6.5 billion in March due to a decline in volumes as prices increased for the first time since July 2008.

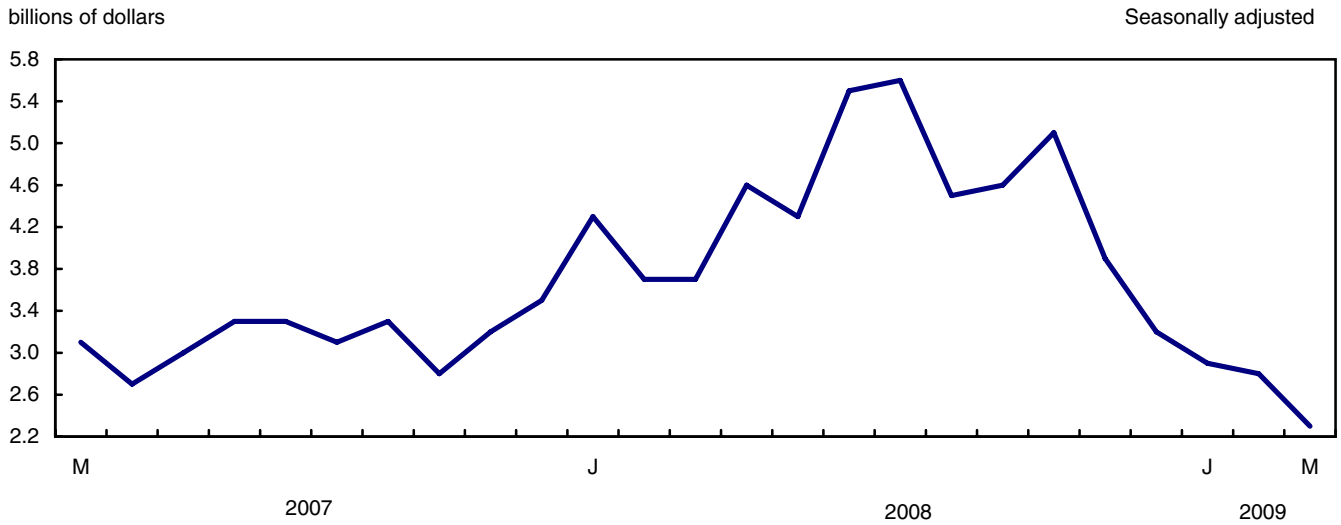
Lower exports of petroleum and coal products and natural gas were responsible for the weakness in this sector which has been on a downward trend since July 2008.

Chart 1
Imports of machinery and equipment



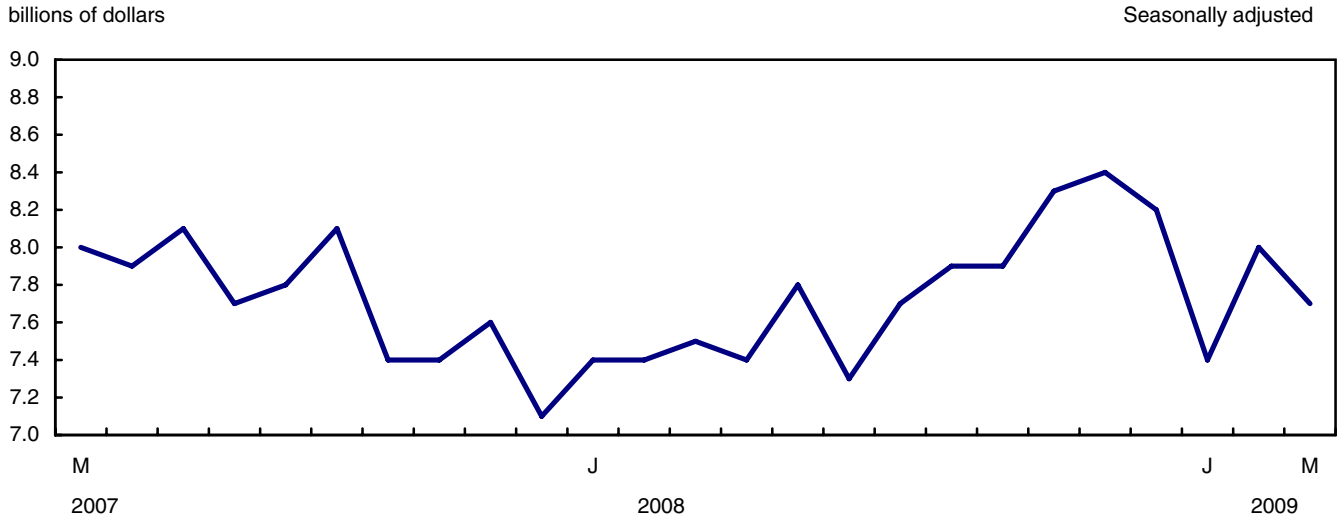
Note(s): On a balance of payments basis.

Chart 2
Imports of energy products



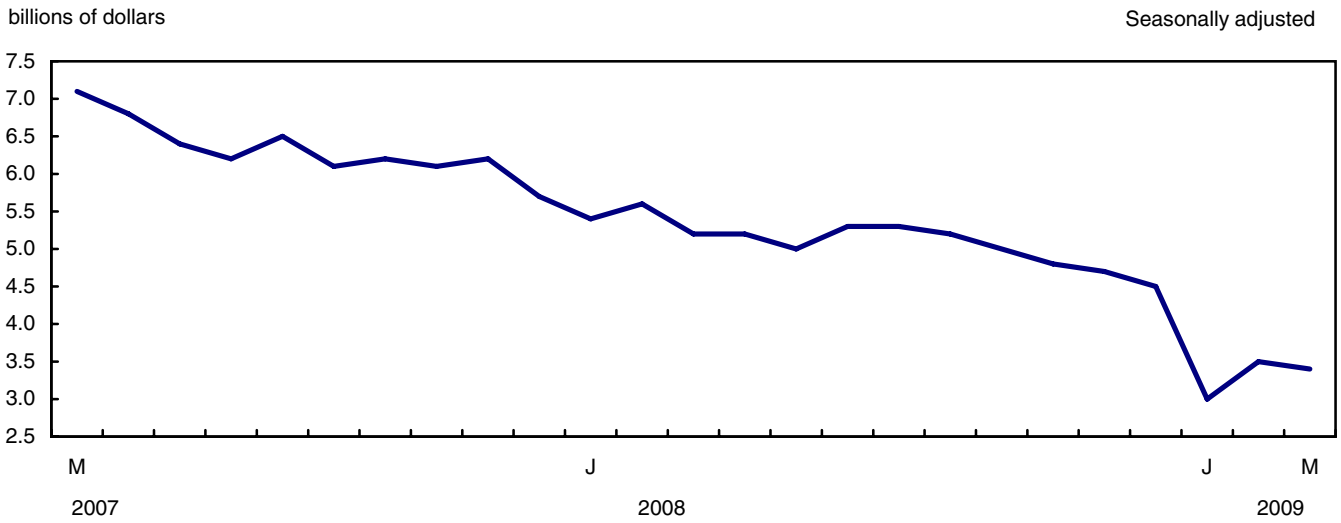
Note(s): On a balance of payments basis.

Chart 3
Exports of machinery and equipment



Note(s): On a balance of payments basis.

Chart 4
Exports of automobile products



Note(s): On a balance of payments basis.

Text table 1
Merchandise trade by principal trading area, balance of payments basis, seasonally adjusted

	February	March	Change		Year to date		Year to date change		March
	2009	2009			2008	2009			2009/2008
	millions of dollars		percent		millions of dollars		percent		
Export to:									
United States	24,314	23,315	-999	-4.1	90,896	70,890	-20,006	-22.0	-24.4
Japan	893	879	-14	-1.6	2,553	2,675	123	4.8	18.1
European Union ¹	2,849	3,289	440	15.4	9,461	9,045	-416	-4.4	4.5
Other Organization for Economic Co-operation and Development ²	1,312	1,327	15	1.1	4,575	3,886	-690	-15.1	-23.8
Other countries	3,737	3,693	-44	-1.2	11,242	10,668	-574	-5.1	-1.8
Total	33,105	32,503	-602	-1.8	118,727	97,163	-21,564	-18.2	-19.2
Imports from:									
United States	20,708	19,743	-965	-4.7	66,945	60,476	-6,470	-9.7	-10.7
Japan	758	706	-52	-6.8	2,981	2,526	-454	-15.2	-29.0
European Union ¹	3,612	3,282	-330	-9.1	10,362	10,191	-171	-1.6	-3.0
Other Organization for Economic Co-operation and Development ²	1,990	2,139	149	7.5	6,359	6,315	-44	-0.7	8.4
Other countries	5,775	5,529	-246	-4.3	18,714	17,112	-1,602	-8.6	-10.1
Total	32,843	31,398	-1,444	-4.4	105,362	96,621	-8,740	-8.3	-9.3
Balance:									
United States	3,605	3,572	-33	...	23,951	10,414	-13,536
Japan	136	174	38	...	-428	149	577
European Union ¹	-762	8	770	...	-901	-1,147	-245
Other Organization for Economic Co-operation and Development ²	-678	-813	-135	...	-1,784	-2,430	-646
Other countries	-2,038	-1,836	202	...	-7,472	-6,445	1,027
Total	263	1,105	842	...	13,365	542	-12,823

1. European Union includes: Austria, Belgium, Bulgaria, Cyprus, Czech Republic, Denmark, Estonia, Finland, France, Germany, Greece, Hungary, Ireland, Italy, Latvia, Lithuania, Luxembourg, Malta, Netherlands, Poland, Portugal, Romania, Slovakia, Slovenia, Spain, Sweden and United Kingdom.
2. Other Organization for Economic Co-operation and Development includes: Australia, Canada, Iceland, Mexico, New Zealand, Norway, South Korea, Switzerland and Turkey.

Text table 2
Reconciliation of customs and balance of payments trade data, not seasonally adjusted

	2009		2008				2008
	March	February	January	December	November	October	Annual
	millions of dollars						
Exports							
Customs basis	32,180	29,888	29,484	34,410	38,683	44,496	483,568
Balance of payments adjustments	1,674	191	107	-689	-267	-913	6,289
Valuation and residency							
Inland freight	540	483	475	531	628	653	6,997
Other valuation and residency	-404	-1,410	-1,216	-2,365	-2,618	-2,665	-16,502
Timing	229	6	-73	8	-40	-9	-79
Coverage	1,309	1,112	921	1,137	1,763	1,108	15,873
Balance of payments basis	33,854	30,079	29,591	33,721	38,416	43,583	489,857
Imports							
Customs basis	31,884	29,624	29,207	33,646	36,037	41,259	433,431
Balance of payments adjustments	771	688	642	553	1,063	471	9,557
Valuation and residency							
Inland freight	658	602	619	650	712	844	8,908
Other valuation and residency	-18	-37	-38	-52	-70	-58	-565
Timing	0	0	0	0	0	0	0
Coverage	131	123	61	-45	421	-315	1,214
Balance of payments basis	32,655	30,312	29,849	34,199	37,100	41,730	442,988

Statistical tables

Table 1-1
Merchandise trade of Canada, balance of payments basis, seasonally adjusted — Current dollars

	Exports	Imports	Balance	Period to period change		
				Exports	Imports	Balance
				percent	percent	percent
	millions of dollars			percent		millions of dollars
2005	450,150	387,804	62,346	0.0	0.0	0
2006	453,732	404,253	49,480	0.8	4.2	-12,866
2007	463,051	415,006	48,046	2.1	2.7	-1,434
2008	489,857	442,988	46,869	5.8	6.7	-1,177
2007						
First quarter	119,112	105,273	13,839	3.1	1.8	1,818
Second quarter	118,279	102,629	15,650	-0.7	-2.5	1,811
Third quarter	114,509	105,108	9,401	-3.2	2.4	-6,249
Fourth quarter	111,151	101,996	9,155	-2.9	-3.0	-246
2008						
First quarter	118,727	105,362	13,365	6.8	3.3	4,210
Second quarter	126,502	110,506	15,996	6.5	4.9	2,631
Third quarter	128,778	114,795	13,983	1.8	3.9	-2,012
Fourth quarter	115,850	112,326	3,525	-10.0	-2.2	-10,459
2009						
First quarter	97,163	96,621	542	-16.1	-14.0	-2,983
2008						
January	38,650	35,524	3,126	6.6	3.9	1,029
February	39,834	35,226	4,607	3.1	-0.8	1,482
March	40,243	34,611	5,632	1.0	-1.7	1,025
April	40,525	35,698	4,826	0.7	3.1	-806
May	42,453	36,820	5,633	4.8	3.1	807
June	43,524	37,988	5,536	2.5	3.2	-97
July	44,263	39,415	4,849	1.7	3.8	-688
August	42,648	37,410	5,238	-3.6	-5.1	390
September	41,867	37,970	3,897	-1.8	1.5	-1,342
October	41,944	38,947	2,997	0.2	2.6	-899
November	38,891	37,932	959	-7.3	-2.6	-2,039
December	35,015	35,447	-432	-10.0	-6.6	-1,390
2009						
January	31,554	32,380	-826	-9.9	-8.7	-394
February	33,105	32,843	263	4.9	1.4	1,089
March	32,503	31,398	1,105	-1.8	-4.4	842

Note(s): Due to rounding, monthly data may not add up to quarterly data and quarterly data may not add up to annual data.

Table 1-2
Merchandise trade of Canada, balance of payments basis, seasonally adjusted — Constant dollars, 2002

	Exports	Imports	Balance	Period to period change	
				Exports	Imports
	millions of dollars			percent	
2005	439,300	431,787	7,513	0.0	0.0
2006	443,301	456,702	-13,401	0.9	5.8
2007	449,825	483,340	-33,516	1.5	5.8
2008	414,985	485,380	-70,396	-7.7	0.4
2007					
First quarter	112,963	116,645	-3,682	1.0	0.4
Second quarter	113,281	117,536	-4,255	0.3	0.8
Third quarter	112,887	123,814	-10,927	-0.3	5.3
Fourth quarter	110,694	125,345	-14,651	-1.9	1.2
2008					
First quarter	108,499	123,619	-15,120	-2.0	-1.4
Second quarter	105,993	124,280	-18,288	-2.3	0.5
Third quarter	103,948	123,858	-19,910	-1.9	-0.3
Fourth quarter	96,545	113,623	-17,077	-7.1	-8.3
2009					
First quarter	87,349	98,434	-11,085	-9.5	-13.4
2008					
January	36,022	41,582	-5,560	1.8	1.6
February	36,731	41,561	-4,830	2.0	-0.1
March	35,747	40,476	-4,729	-2.7	-2.6
April	35,044	40,574	-5,530	-2.0	0.2
May	35,748	42,034	-6,286	2.0	3.6
June	35,201	41,672	-6,471	-1.5	-0.9
July	35,359	42,917	-7,558	0.4	3.0
August	34,538	40,345	-5,807	-2.3	-6.0
September	34,052	40,597	-6,545	-1.4	0.6
October	33,158	39,380	-6,222	-2.6	-3.0
November	32,363	38,355	-5,992	-2.4	-2.6
December	31,024	35,888	-4,864	-4.1	-6.4
2009					
January	28,157	33,169	-5,012	-9.2	-7.6
February	29,922	33,322	-3,400	6.3	0.5
March	29,270	31,943	-2,673	-2.2	-4.1

Note(s): Due to rounding, monthly data may not add up to quarterly data and quarterly data may not add up to annual data.

**Table 1-3
Merchandise trade of Canada, balance of payments basis, seasonally adjusted — Price indices (Laspeyres)**

	2002=100			Period to period change		
	Exports	Imports	Terms of trade	Exports	Imports	Terms of trade
	millions of dollars			percent		
2005	104.6	92.2	113.5	0.0	0.0	0.0
2006	104.6	92.8	112.8	0.0	0.7	-0.6
2007	106.9	91.5	116.8	2.2	-1.3	3.5
2008	116.3	97.6	119.1	8.8	6.7	2.2
2007						
First quarter	108.5	95.2	114.0	2.0	1.8	0.2
Second quarter	109.0	92.9	117.3	0.5	-2.4	2.9
Third quarter	105.4	90.3	116.6	-3.3	-2.7	-0.6
Fourth quarter	104.9	87.8	119.5	-0.4	-2.8	2.4
2008						
First quarter	111.3	90.5	123.0	6.1	3.1	3.0
Second quarter	118.4	95.2	124.3	6.4	5.2	1.2
Third quarter	121.9	101.1	120.6	3.0	6.1	-3.2
Fourth quarter	114.2	103.8	110.0	-6.3	2.7	-9.0
2009						
First quarter	110.0	101.7	108.2	-3.6	-2.0	-1.6
2008						
January	109.6	89.9	121.8	3.1	1.7	1.4
February	110.3	90.2	122.2	0.6	0.3	0.3
March	113.3	91.3	124.1	2.8	1.2	1.6
April	116.1	93.3	124.4	2.4	2.2	0.2
May	118.4	94.6	125.1	2.0	1.4	0.6
June	120.8	97.8	123.5	2.0	3.3	-1.3
July	123.7	99.5	124.3	2.5	1.8	0.7
August	121.6	101.9	119.4	-1.7	2.4	-4.1
September	120.0	101.8	117.9	-1.3	-0.1	-1.2
October	121.9	104.5	116.6	1.5	2.6	-1.1
November	116.8	104.2	112.1	-4.2	-0.3	-3.9
December	111.6	102.7	108.7	-4.4	-1.4	-3.0
2009						
January	110.3	100.9	109.2	-1.2	-1.7	0.5
February	109.8	101.6	108.1	-0.4	0.6	-1.0
March	109.9	102.7	107.0	0.2	1.1	-1.0

Note(s): Due to rounding, monthly data may not add up to quarterly data and quarterly data may not add up to annual data.

Table 2-1
Exports by commodity groupings, balance of payments basis, seasonally adjusted — Current dollars

	February	March	Change	Year to date		Year to date change		March	
	2009	2009		2008	2009	2008	2009/2008		
	millions of dollars		percent		millions of dollars		percent		
Total	33,105	32,503	-602	-1.8	118,727	97,163	-21,564	-18.2	-19.2
Agricultural and fishing products	3,431	3,381	-50	-1.5	9,708	10,196	488	5.0	1.5
Wheat	555	508	-47	-8.5	1,667	1,633	-34	-2.1	-27.6
Other agricultural and fishing products	2,876	2,873	-3	-0.1	8,041	8,564	523	6.5	9.2
Live animals	179	184	5	2.8	620	527	-93	-14.9	-4.1
Fish and fish preparations	351	354	3	0.7	1,015	1,055	39	3.8	4.3
Barley	63	49	-13	-21.3	257	162	-95	-37.1	-27.7
Wheat flour	7	7	1	11.7	24	21	-3	-12.2	-12.0
Other cereals unmilled	60	39	-21	-34.8	174	158	-17	-9.5	-42.5
Other cereal preparations	264	253	-11	-4.1	656	762	106	16.2	13.3
Meat and meat preparations	395	402	8	2.0	983	1,207	224	22.8	20.7
Alcoholic beverages	66	63	-3	-4.2	202	190	-12	-5.8	0.0
Other food, feed, beverages and tobacco	991	1,043	52	5.2	2,573	3,008	435	16.9	24.3
Rapeseed	286	275	-11	-3.7	994	831	-162	-16.3	-14.7
Other crude vegetable products	215	202	-13	-5.9	543	642	100	18.4	17.3
Energy products	6,578	6,487	-91	-1.4	29,767	19,562	-10,205	-34.3	-38.7
Crude petroleum	2,765	3,160	395	14.3	14,685	8,411	-6,274	-42.7	-37.6
Natural gas	1,680	1,444	-236	-14.1	8,153	5,202	-2,951	-36.2	-52.1
Other energy products	2,133	1,884	-249	-11.7	6,930	5,949	-981	-14.2	-24.5
Coal and other bituminous substances	445	467	22	4.9	626	1,270	644	102.8	100.0
Petroleum and coal products	1,437	1,157	-280	-19.5	5,385	3,863	-1,522	-28.3	-40.9
Electricity	251	260	9	3.6	919	816	-102	-11.1	-14.7
Forestry products	1,832	1,756	-76	-4.1	6,272	5,347	-925	-14.8	-13.4
Lumber and sawmill products	585	583	-2	-0.3	2,286	1,734	-552	-24.1	-19.6
Other crude wood products	45	45	0	-0.1	152	134	-19	-12.2	-5.3
Lumber	330	335	4	1.3	1,329	986	-343	-25.8	-21.2
Other wood fabricated materials	209	203	-6	-2.9	804	614	-190	-23.6	-19.7
Wood pulp and other wood products	428	400	-28	-6.5	1,670	1,270	-400	-23.9	-28.1
Newsprint and other paper and paperboard	819	773	-46	-5.6	2,317	2,343	26	1.1	3.7
Newsprint paper	437	410	-27	-6.2	1,196	1,265	70	5.8	9.1
Other paper and paperboard	382	363	-19	-5.0	1,121	1,078	-44	-3.9	-1.7
Industrial goods and materials	7,065	7,063	-2	-0.0	27,130	20,979	-6,151	-22.7	-22.3
Metal ores	839	898	59	7.1	3,522	2,441	-1,081	-30.7	-28.7
Iron ores, concentrates and scrap	384	381	-3	-0.8	1,070	1,112	43	4.0	16.5
Copper ores, concentrates and scrap	87	168	81	92.5	391	292	-99	-25.3	29.7
Nickel ores, concentrates and scrap	120	79	-41	-34.1	1,126	332	-794	-70.5	-84.6
Zinc ores, concentrates and scrap	18	41	23	127.9	87	67	-20	-22.9	113.7
Other ores, concentrates and scrap	230	230	-1	-0.3	849	638	-211	-24.8	-15.8
Chemicals, plastics and fertilizers	2,413	2,281	-132	-5.5	8,288	7,228	-1,061	-12.8	-16.8
Inorganic chemicals	438	427	-10	-2.4	1,198	1,299	101	8.4	17.0
Organic chemicals	377	385	8	2.1	1,832	1,178	-654	-35.7	-36.5
Fertilizers and fertilizer materials	488	388	-100	-20.5	1,361	1,452	91	6.7	-17.4
Synthetic rubber and plastics	859	833	-27	-3.1	3,101	2,562	-539	-17.4	-19.7
Other chemical products	250	248	-3	-1.1	797	737	-59	-7.5	-6.5
Metals and alloys	2,366	2,477	110	4.7	10,298	7,055	-3,243	-31.5	-27.0
Primary iron and steel	25	27	2	7.1	271	64	-206	-76.2	-71.4
Steel bars, rods, plates, sheets	320	308	-12	-3.8	1,148	900	-249	-21.6	-21.5
Other iron and steel and alloys	225	203	-23	-10.1	931	660	-271	-29.1	-37.2
Aluminum including alloys	531	515	-16	-3.0	2,200	1,673	-527	-24.0	-32.9
Copper and alloys	203	199	-3	-1.7	1,176	587	-589	-50.1	-51.8
Nickel and alloys	194	198	3	1.7	1,110	580	-529	-47.7	-42.2
Precious metals and alloys	731	883	152	20.8	2,622	2,164	-458	-17.5	13.4
Zinc and alloys	80	78	-2	-2.9	442	241	-202	-45.6	-45.9
Other non-ferrous metals and alloys	57	66	10	17.0	398	187	-211	-53.1	-51.4

Table 2-1 – continued

Exports by commodity groupings, balance of payments basis, seasonally adjusted — Current dollars

	February	March	Change		Year to date		Year to date change		March
	2009	2009			2008	2009			2009/2008
	millions of dollars		percent		millions of dollars		percent		
Other industrial goods and materials	1,447	1,408	-39	-2.7	5,022	4,255	-767	-15.3	-16.8
Asbestos unmanufactured	5	5	0	4.6	14	15	1	9.3	7.7
Other crude animal products	66	55	-11	-17.0	197	181	-16	-8.0	-31.2
Other crude non-metallic minerals	299	313	15	4.9	1,125	906	-220	-19.5	-8.7
Other crude materials, inedible	45	45	0	-0.1	139	135	-4	-3.1	-4.4
Metal fabricated basic products	390	366	-24	-6.2	1,346	1,142	-204	-15.2	-20.3
Textile fabricated materials	184	188	3	1.9	609	549	-60	-9.8	-5.9
Non-metallic mineral basic products	184	172	-12	-6.4	595	533	-62	-10.5	-15.2
Other fabricated materials	274	264	-10	-3.7	998	795	-202	-20.3	-26.1
Machinery and equipment	7,991	7,722	-269	-3.4	22,210	23,149	939	4.2	3.5
Industrial and agricultural machinery	1,850	1,849	-2	-0.1	5,501	5,656	155	2.8	0.4
Industrial machinery	1,672	1,643	-29	-1.7	5,033	5,088	55	1.1	-2.3
Agricultural machinery includ. tractors	179	206	27	15.1	468	568	100	21.3	29.1
Aircraft and other transportation equipment	1,973	1,860	-114	-5.8	5,023	5,393	369	7.4	9.1
Aircraft, engines, parts	1,623	1,428	-195	-12.0	3,727	4,326	599	16.1	9.9
Other transportation equipment	351	432	81	23.1	1,296	1,066	-230	-17.7	6.5
Other machinery and equipment	4,167	4,014	-153	-3.7	11,686	12,101	415	3.6	2.6
Television, telecommunication equipment	927	745	-183	-19.7	2,257	2,551	294	13.0	1.0
Office machines and equipment	459	447	-12	-2.7	1,475	1,366	-110	-7.4	-8.5
Other equipment and tools	1,846	1,842	-4	-0.2	5,584	5,418	-166	-3.0	-1.0
Other end products, inedible	935	981	46	4.9	2,370	2,767	397	16.8	18.8
Automotive products	3,528	3,411	-117	-3.3	16,307	9,913	-6,394	-39.2	-35.0
Passenger autos and chassis	1,688	1,773	84	5.0	8,959	4,898	-4,060	-45.3	-41.0
Trucks and other motor vehicles	592	458	-134	-22.6	1,911	1,529	-382	-20.0	-7.3
Motor vehicle parts	1,248	1,180	-67	-5.4	5,437	3,485	-1,952	-35.9	-32.5
Other consumer goods	1,638	1,691	53	3.2	4,177	4,922	745	17.8	16.6
Special transactions trade	605	594	-11	-1.8	1,855	1,816	-39	-2.1	-7.2
Unallocated balance of payments adjustments	437	398	-40	-9.0	1,300	1,278	-22	-1.7	-6.8

Table 2-2
Exports by commodity groupings, balance of payments basis, seasonally adjusted — Constant dollars, 2002

	February	March	Change	Year to date		Year to date change		March	
	2009	2009		2008	2009	2008	2009/2008		
	millions of dollars		percent		millions of dollars		percent		
Total	29,922	29,270	-651	-2.2	108,499	87,349	-21,150	-19.5	-18.1
Agricultural and fishing products	3,137	3,114	-24	-0.8	9,265	9,325	60	0.6	0.7
Wheat	457	439	-18	-4.0	1,008	1,335	326	32.4	8.7
Other agricultural and fishing products	2,680	2,675	-5	-0.2	8,257	7,990	-266	-3.2	-0.5
Live animals	203	197	-6	-2.8	774	586	-188	-24.3	-15.7
Fish and fish preparations	379	370	-8	-2.2	1,181	1,131	-50	-4.2	-6.8
Barley	44	35	-10	-22.1	180	116	-64	-35.3	-28.1
Wheat flour	6	6	1	11.8	18	18	0	1.7	0.6
Other cereals unmilled	48	37	-10	-21.8	170	129	-41	-24.2	-40.1
Other cereal preparations	207	195	-12	-5.7	641	598	-43	-6.7	-9.8
Meat and meat preparations	405	409	4	0.9	1,245	1,236	-9	-0.8	-4.7
Alcoholic beverages	107	110	2	2.3	335	319	-16	-4.9	3.3
Other food, feed, beverages and tobacco	853	909	56	6.5	2,558	2,596	38	1.5	8.4
Rapeseed	249	245	-4	-1.5	702	735	33	4.7	15.1
Other crude vegetable products	180	162	-18	-10.0	452	526	73	16.2	15.9
Energy products	4,626	4,532	-93	-2.0	14,118	13,483	-635	-4.5	-3.6
Crude petroleum	1,846	1,964	118	6.4	5,676	5,565	-111	-2.0	4.6
Natural gas	1,462	1,416	-45	-3.1	4,821	4,349	-472	-9.8	-10.6
Other energy products	1,318	1,152	-167	-12.6	3,621	3,569	-52	-1.4	-7.0
Coal and other bituminous substances	97	89	-8	-8.4	391	270	-121	-30.8	-38.9
Petroleum and coal products	998	815	-182	-18.3	2,526	2,598	72	2.9	-5.7
Electricity	223	247	24	10.8	705	701	-4	-0.5	8.4
Forestry products	2,130	2,028	-102	-4.8	7,857	6,165	-1,692	-21.5	-20.2
Lumber and sawmill products	793	778	-16	-2.0	3,089	2,303	-786	-25.4	-22.0
Other crude wood products	53	52	-1	-1.5	204	165	-39	-18.9	-19.8
Lumber	513	501	-12	-2.4	1,957	1,467	-490	-25.0	-21.7
Other wood fabricated materials	228	225	-3	-1.2	929	672	-257	-27.7	-23.0
Wood pulp and other wood products	576	542	-34	-5.9	2,011	1,697	-314	-15.6	-19.1
Newsprint and other paper and paperboard	760	708	-52	-6.9	2,756	2,164	-592	-21.5	-19.1
Newsprint paper	384	355	-30	-7.7	1,421	1,111	-309	-21.8	-19.3
Other paper and paperboard	376	354	-22	-6.0	1,335	1,053	-283	-21.2	-18.9
Industrial goods and materials	5,201	5,270	69	1.3	19,457	15,523	-3,934	-20.2	-17.4
Metal ores	473	508	35	7.3	1,777	1,401	-376	-21.1	-15.3
Iron ores, concentrates and scrap	135	128	-7	-4.9	663	393	-270	-40.7	-39.0
Copper ores, concentrates and scrap	52	89	36	70.0	128	162	34	26.4	124.8
Nickel ores, concentrates and scrap	84	63	-21	-25.1	451	250	-200	-44.5	-68.1
Zinc ores, concentrates and scrap	15	30	16	104.6	42	51	9	22.5	248.8
Other ores, concentrates and scrap	187	198	10	5.5	493	544	51	10.4	37.3
Chemicals, plastics and fertilizers	1,731	1,718	-13	-0.8	6,252	5,211	-1,041	-16.6	-17.7
Inorganic chemicals	197	220	22	11.2	599	617	19	3.1	6.7
Organic chemicals	315	337	23	7.3	999	1,002	3	0.3	-2.9
Fertilizers and fertilizer materials	163	119	-44	-27.0	816	469	-348	-42.6	-54.1
Synthetic rubber and plastics	778	762	-16	-2.1	2,872	2,293	-579	-20.2	-20.3
Other chemical products	278	280	2	0.8	966	831	-135	-14.0	-12.3
Metals and alloys	1,736	1,796	60	3.5	6,530	5,245	-1,285	-19.7	-14.2
Primary iron and steel	14	21	8	56.5	185	43	-143	-77.0	-65.4
Steel bars, rods, plates, sheets	224	216	-9	-3.8	1,031	640	-391	-37.9	-36.7
Other iron and steel and alloys	177	163	-14	-7.7	811	502	-309	-38.1	-40.2
Aluminum including alloys	648	648	0	0.1	1,989	2,020	32	1.6	-1.7
Copper and alloys	127	114	-13	-9.9	407	362	-45	-11.1	-15.0
Nickel and alloys	144	163	19	13.2	414	440	26	6.2	28.5
Precious metals and alloys	297	361	64	21.6	1,335	910	-425	-31.8	-5.4
Zinc and alloys	72	69	-3	-4.4	232	214	-18	-7.8	-8.7
Other non-ferrous metals and alloys	34	41	7	20.7	125	113	-12	-9.2	2.7

Table 2-2 – continued

Exports by commodity groupings, balance of payments basis, seasonally adjusted — Constant dollars, 2002

	February	March	Change		Year to date		Year to date change		March
	2009	2009			2008	2009			2009/2008
	millions of dollars		percent		millions of dollars		percent		
Other industrial goods and materials	1,260	1,248	-12	-1.0	4,898	3,666	-1,233	-25.2	-21.9
Asbestos unmanufactured	5	6	0	3.6	16	15	0	-1.1	-5.4
Other crude animal products	80	80	-1	-0.9	217	230	12	5.7	-2.0
Other crude non-metallic minerals	293	311	18	6.2	1,395	843	-552	-39.6	-27.6
Other crude materials, inedible	45	42	-3	-6.3	136	131	-5	-3.9	-8.6
Metal fabricated basic products	303	284	-19	-6.2	1,144	883	-261	-22.8	-25.5
Textile fabricated materials	168	169	1	0.5	665	496	-169	-25.4	-21.5
Non-metallic mineral basic products	141	136	-5	-3.6	532	418	-115	-21.5	-23.6
Other fabricated materials	226	221	-4	-2.0	794	650	-144	-18.1	-15.4
Machinery and equipment	8,337	7,962	-375	-4.5	26,074	24,125	-1,949	-7.5	-8.9
Industrial and agricultural machinery	1,691	1,677	-13	-0.8	5,411	5,186	-224	-4.1	-7.3
Industrial machinery	1,528	1,490	-39	-2.5	4,930	4,667	-262	-5.3	-9.4
Agricultural machinery includ. tractors	162	188	25	15.7	481	519	38	8.0	14.7
Aircraft and other transportation equipment	2,235	2,098	-137	-6.1	6,560	6,123	-438	-6.7	-6.3
Aircraft, engines, parts	1,901	1,662	-240	-12.6	5,152	5,079	-73	-1.4	-7.8
Other transportation equipment	334	437	103	30.8	1,409	1,044	-365	-25.9	-0.4
Other machinery and equipment	4,411	4,186	-225	-5.1	14,103	12,816	-1,287	-9.1	-10.8
Television, telecommunication equipment	1,066	843	-224	-21.0	2,909	2,921	13	0.4	-11.5
Office machines and equipment	916	889	-27	-3.0	3,550	2,736	-813	-22.9	-23.7
Other equipment and tools	1,701	1,689	-12	-0.7	5,459	4,967	-491	-9.0	-6.7
Other end products, inedible	728	767	39	5.3	2,186	2,190	4	0.2	0.1
Automotive products	3,991	3,862	-129	-3.2	22,786	11,240	-11,546	-50.7	-47.0
Passenger autos and chassis	2,050	2,159	108	5.3	14,090	5,983	-8,107	-57.5	-53.8
Trucks and other motor vehicles	662	496	-166	-25.1	2,584	1,681	-904	-35.0	-23.1
Motor vehicle parts	1,278	1,207	-71	-5.6	6,112	3,577	-2,535	-41.5	-38.5
Other consumer goods	1,576	1,620	44	2.8	4,117	4,737	620	15.1	13.6
Special transactions trade	540	539	-1	-0.2	1,654	1,626	-28	-1.7	-4.4
Unallocated balance of payments adjustments	384	344	-40	-10.5	3,170	1,125	-2,046	-64.5	-66.2

Table 3-1
Domestic exports to selected countries, customs basis, not seasonally adjusted — March

	Agricultural and fishing products	Energy products	Forestry products	Industrial goods	Machinery and equipment	Automotive products	Consumer goods	Special transactions	Total
millions of dollars									
United States									
2008	1,596.1	9,685.3	1,482.5	5,678.2	4,298.7	5,131.0	844.6	572.9	29,289.2
2009	1,787.0	5,412.5	1,257.4	4,125.7	4,549.8	3,297.2	1,051.3	497.5	21,978.5
Mexico									
2008	131.7	0.8	15.1	96.1	81.9	71.0	4.5	0.8	401.9
2009	93.9	8.1	5.9	69.4	94.0	51.3	4.0	3.1	329.8
Japan									
2008	319.2	103.8	103.9	132.8	48.7	3.4	11.5	0.3	723.7
2009	279.9	261.8	92.6	106.7	42.2	2.4	17.7	0.7	804.0
European Union									
Germany									
2008	26.0	4.7	16.0	100.8	129.7	3.0	15.3	1.3	296.8
2009	11.6	38.4	9.3	23.5	187.0	4.8	12.5	0.3	287.5
France									
2008	12.7	44.0	26.9	41.2	110.6	5.9	31.2	0.9	273.5
2009	12.5	14.5	13.1	93.4	151.7	3.1	31.9	0.6	320.7
United Kingdom									
2008	38.1	25.3	29.4	620.9	189.9	6.5	18.6	2.7	931.4
2009	35.7	17.9	25.8	853.0	207.4	2.3	18.3	2.6	1,162.9
Italy									
2008	19.9	45.4	33.3	96.4	46.0	0.9	5.4	0.4	247.9
2009	7.3	18.0	22.9	9.2	48.5	1.3	6.6	0.1	113.8
Other European Union									
2008	54.0	43.5	32.3	444.3	233.7	22.2	55.9	2.7	888.8
2009	61.0	19.2	31.6	176.1	224.0	12.7	94.6	2.5	621.7
Total									
2008	150.7	162.9	138.0	1,303.7	710.1	38.5	126.4	8.0	2,638.3
2009	127.9	108.0	102.7	1,155.1	818.7	24.2	163.8	6.1	2,506.6
Newly industrialized countries									
South Korea									
2008	24.0	59.6	43.8	89.1	22.6	1.1	6.5	1.0	247.6
2009	32.1	90.2	17.8	121.4	46.6	3.7	5.2	0.4	317.5
Hong Kong									
2008	28.0	0.0	9.5	101.8	24.9	0.4	4.4	0.6	169.7
2009	31.4	0.0	6.5	64.3	19.0	1.7	8.4	0.5	131.8
Taiwan									
2008	11.0	7.6	21.3	50.5	9.4	0.3	2.7	0.2	103.0
2009	14.8	28.8	19.8	21.7	10.2	0.2	4.5	0.1	100.2
Singapore									
2008	4.1	0.5	1.3	15.6	45.7	2.1	1.7	0.1	71.0
2009	4.3	0.2	1.0	9.5	31.9	6.5	2.3	0.1	55.8
Total									
2008	67.0	67.7	76.0	257.0	102.5	3.9	15.3	2.0	591.4
2009	82.5	119.3	45.2	216.8	107.7	12.1	20.5	1.2	605.3
Other countries									
2008	868.4	93.1	314.1	1,348.9	911.5	67.4	135.2	8.3	3,746.9
2009	857.6	77.3	300.0	948.6	878.8	103.1	114.8	18.7	3,298.9
Total									
2008	3,133.1	10,113.6	2,129.6	8,816.8	6,153.4	5,315.3	1,137.4	592.2	37,391.3
2009	3,228.8	5,987.0	1,803.8	6,622.4	6,491.4	3,490.4	1,372.1	527.3	29,523.2

Table 3-2
Domestic exports to selected countries, customs basis, not seasonally adjusted — Year to date, January to March

	Agricultural and fishing products	Energy products	Forestry products	Industrial goods	Machinery and equipment	Automotive products	Consumer goods	Special transactions	Total
millions of dollars									
United States									
2008	4,497.2	27,691.3	4,293.7	15,987.8	12,564.1	14,573.9	2,359.8	1,625.8	83,593.6
2009	4,981.5	18,220.5	3,702.5	11,931.9	12,705.7	8,404.5	2,778.8	1,494.7	64,220.0
Mexico									
2008	295.8	8.9	54.4	264.0	199.0	219.2	12.3	1.3	1,054.8
2009	259.6	9.6	25.9	189.5	218.5	158.8	10.6	4.1	876.6
Japan									
2008	891.9	246.9	323.9	476.2	133.2	9.6	29.6	0.9	2,112.2
2009	781.7	549.3	266.4	271.1	193.6	8.1	46.5	2.4	2,119.1
European Union									
Germany									
2008	53.9	27.4	41.6	246.9	317.8	9.8	40.5	3.6	741.4
2009	38.2	69.8	31.4	103.0	478.8	11.7	36.0	4.2	773.0
France									
2008	36.3	127.8	78.7	86.3	301.8	15.6	82.4	2.1	730.9
2009	35.6	74.4	33.7	210.3	356.6	7.5	87.4	5.1	810.6
United Kingdom									
2008	111.8	39.7	86.1	2,293.3	608.9	18.4	49.4	10.5	3,218.1
2009	85.2	19.3	71.2	2,048.3	497.2	7.8	108.1	9.8	2,846.8
Italy									
2008	66.9	67.6	110.9	252.7	125.6	2.6	15.2	1.2	642.7
2009	71.3	36.4	71.0	76.8	151.4	2.6	16.3	0.6	426.4
Other European Union									
2008	217.0	133.9	117.9	1,174.7	649.1	68.5	131.2	7.6	2,500.0
2009	182.6	173.5	85.8	593.0	767.2	40.5	223.2	9.1	2,074.9
Total									
2008	485.9	396.5	435.2	4,053.9	2,003.3	114.9	318.7	24.9	7,833.1
2009	412.8	373.5	293.1	3,031.4	2,251.1	70.1	471.0	28.7	6,931.7
Newly industrialized countries									
South Korea									
2008	85.5	162.0	129.7	263.4	89.7	2.7	14.8	2.4	750.3
2009	76.0	264.0	73.5	239.4	92.8	4.9	11.6	1.2	763.3
Hong Kong									
2008	76.8	0.1	20.7	154.2	63.4	1.3	11.0	2.9	330.3
2009	106.1	0.1	23.0	118.8	98.3	2.6	17.6	1.5	367.8
Taiwan									
2008	33.0	19.4	67.8	187.4	27.4	0.4	7.8	0.6	343.8
2009	42.2	51.1	45.6	59.6	24.6	0.3	8.3	0.2	232.0
Singapore									
2008	10.1	23.0	4.0	56.1	88.5	3.7	6.1	0.9	192.4
2009	9.5	1.4	1.5	24.3	76.9	9.2	7.1	0.4	130.2
Total									
2008	205.4	204.5	222.2	661.1	269.0	8.1	39.6	6.9	1,616.7
2009	233.8	316.6	143.6	442.1	292.5	17.0	44.5	3.2	1,493.3
Other countries									
2008	2,368.4	307.4	936.7	3,507.5	2,362.0	191.5	325.0	33.1	10,031.5
2009	2,390.5	263.6	838.6	2,346.8	2,441.2	211.9	305.3	74.7	8,872.6
Total									
2008	8,744.6	28,855.5	6,266.2	24,950.4	17,530.7	15,117.2	3,085.4	1,692.9	106,242.8
2009	9,059.8	19,733.0	5,270.1	18,212.8	18,102.6	8,870.5	3,657.1	1,607.8	84,513.9

Table 4
Domestic exports by country, customs basis, not seasonally adjusted

	March		January to March		Variation
	2008	2009	2008	2009	January to March 2009/2008
millions of dollars					
North America					
Greenland	1.7	0.4	4.9	2.6	-46.9
Mexico	401.9	329.8	1,054.8	876.6	-16.9
Saint Pierre and Miquelon	1.2	1.1	2.9	2.9	0.0
United States	29,289.2	21,978.5	83,593.6	64,220.0	-23.2
Total	29,693.9	22,309.7	84,656.2	65,102.2	-23.1
Western Europe					
Andorra	0.0	0.0	0.0	0.0	0.0
Austria	45.1	11.9	130.5	138.2	5.9
Belgium	187.5	115.8	694.0	380.0	-45.2
Denmark	17.7	48.7	70.1	143.5	104.7
Faeroe Islands	0.0	0.1	0.8	0.6	-25.0
Finland	136.1	13.4	171.4	98.6	-42.5
France	273.5	320.7	730.9	810.6	10.9
Germany	296.8	287.5	741.4	773.0	4.3
Gibraltar	57.0	16.8	147.6	16.8	-88.6
Greece	8.3	8.1	22.9	24.4	6.6
Iceland	5.7	1.9	15.5	5.5	-64.5
Italy	247.9	113.8	642.7	426.4	-33.7
Luxembourg	6.2	0.6	19.0	10.0	-47.4
Malta	1.1	34.8	3.0	37.0	...
Netherlands	277.1	142.7	757.2	538.5	-28.9
Norway	326.3	59.6	801.9	279.3	-65.2
Portugal	10.1	9.1	29.2	24.8	-15.1
Republic of Ireland (Eire)	20.9	69.6	69.8	163.5	134.2
Spain	59.5	66.3	184.2	246.4	33.8
Sweden	27.6	23.3	83.6	61.5	-26.4
Switzerland	83.8	89.1	233.8	273.4	16.9
United Kingdom	931.4	1,162.9	3,218.1	2,846.8	-11.5
Total	3,019.7	2,596.7	8,767.6	7,298.7	-16.8
Other Europe					
Albania	1.7	1.3	4.2	2.0	-52.4
Armenia	1.9	0.8	3.4	1.3	-61.8
Azerbaijan	1.1	0.9	6.3	3.4	-46.0
Belarus	1.6	0.2	2.2	0.6	-72.7
Bosnia and Herzegovina	0.1	0.6	0.5	1.0	100.0
Bulgaria	1.7	7.9	6.6	10.0	51.5
Croatia	2.5	3.6	5.1	7.0	37.3
Czech Republic	33.2	13.2	75.1	33.0	-56.1
Estonia	2.1	2.1	5.2	4.3	-17.3
Georgia	2.1	0.5	4.0	1.6	-60.0
Hungary	8.1	6.2	45.5	21.3	-53.2
Kazakhstan	30.9	32.0	108.3	71.7	-33.8
Kyrgyzstan	0.2	0.1	1.9	1.1	-42.1
Latvia	2.9	2.1	8.8	6.0	-31.8
Lithuania	3.5	9.3	11.3	15.1	33.6
Macedonia (Former Yugoslav Republic of Macedonia)	0.7	1.4	3.7	3.8	2.7
Montenegro	0.2	0.2	0.5	0.4	-20.0
Poland	25.7	14.3	71.3	50.5	-29.2
Republic of Moldova	0.4	0.6	0.6	0.9	50.0
Romania	4.7	6.7	14.9	14.7	-1.3
Russian Federation	118.8	106.3	341.5	240.7	-29.5
Serbia	1.1	1.6	2.7	3.8	40.7
Slovakia	6.8	1.5	11.2	3.8	-66.1
Slovenia	1.5	12.8	12.2	46.4	280.3
Tajikistan	0.4	0.2	1.3	0.5	-61.5
Turkmenistan	0.1	0.5	0.5	1.7	240.0
Ukraine	11.4	6.6	34.7	15.4	-55.6
Uzbekistan	0.1	0.1	0.5	4.5	800.0
Total	265.2	233.5	784.0	566.4	-27.8

Table 4 – continued

Domestic exports by country, customs basis, not seasonally adjusted

	March		January to March		Variation
	2008	2009	2008	2009	January to March 2009/2008
millions of dollars					
Middle East					
Bahrain	2.3	1.4	7.7	4.4	-42.9
Cyprus	1.4	1.5	3.0	3.5	16.7
Egypt	26.6	81.3	76.5	139.3	82.1
Eritrea	0.0	0.0	0.2	0.0	0.0
Ethiopia	2.6	2.3	9.3	3.0	-67.7
Iran	40.5	8.7	59.1	67.7	14.6
Iraq	1.4	62.2	24.4	134.8	452.5
Israel	33.1	28.1	96.8	82.7	-14.6
Jordan	4.9	4.6	14.9	15.3	2.7
Kuwait	10.6	5.6	25.4	17.2	-32.3
Lebanon	5.6	7.3	15.4	17.5	13.6
Libya	33.9	6.1	52.9	114.3	116.1
Oman	3.2	23.0	16.3	44.2	171.2
Qatar	11.3	19.8	24.1	32.8	36.1
Saudi Arabia	68.3	86.6	249.0	293.5	17.9
Somalia	0.0	0.0	0.0	0.0	...
Sudan	13.1	20.7	42.8	29.4	-31.3
Syria	4.2	4.9	17.4	9.2	-47.1
Turkey	117.0	66.9	218.7	185.4	-15.2
United Arab Emirates	89.0	133.0	321.7	286.3	-11.0
Yemen	6.1	1.8	10.7	4.2	-60.7
Total	475.1	565.8	1,286.3	1,484.5	15.4
Other Africa					
Algeria	53.2	14.2	192.6	106.5	-44.7
Angola	57.6	10.8	65.6	22.8	-65.2
Antarctica	0.6	0.0	0.8	0.0	0.0
Benin	0.7	1.0	2.4	2.3	-4.2
Botswana	0.2	1.0	1.5	1.9	26.7
Burkina Faso	0.4	0.5	1.9	1.2	-36.8
Burundi	0.1	0.1	0.4	0.3	-25.0
Cameroon	0.6	4.5	6.0	6.4	6.7
Cape Verde	0.2	0.2	0.5	0.3	-40.0
Central African Republic	0.0	0.4	0.0	0.4	0.0
Chad	0.0	0.9	0.3	4.1	...
Comoros	0.0	0.0	0.0	0.0	0.0
Congo	0.8	2.4	3.9	7.8	100.0
Democratic Republic of the Congo	2.3	0.9	5.1	4.2	-17.6
Djibouti	0.0	0.0	0.5	1.2	140.0
Equatorial Guinea	0.4	0.2	1.0	0.8	-20.0
French Southern Territories	0.0	0.0	0.0	0.0	0.0
Gabon	1.2	1.5	10.1	11.1	9.9
Gambia	0.0	0.0	0.1	0.2	100.0
Ghana	18.4	17.3	32.4	40.9	26.2
Guinea	0.7	0.7	3.6	4.5	25.0
Guinea-Bissau	0.0	0.0	0.1	0.0	0.0
Ivory Coast	2.9	4.5	5.9	9.6	62.7
Kenya	2.7	5.4	6.5	18.4	183.1
Lesotho	0.0	0.0	0.0	0.0	0.0
Liberia	0.4	0.3	1.5	0.8	-46.7
Madagascar	1.4	0.9	3.0	8.0	166.7
Malawi	0.5	0.4	1.4	0.9	-35.7
Mali	0.1	0.5	2.8	1.7	-39.3
Mauritania	0.2	0.2	0.6	0.9	50.0
Mauritius	0.8	0.5	1.2	1.4	16.7
Morocco	2.9	48.9	88.5	69.3	-21.7
Mozambique	1.0	0.7	1.9	1.2	-36.8
Namibia	0.6	0.0	2.4	0.7	-70.8
Niger	0.3	0.3	0.7	0.8	14.3
Nigeria	6.6	3.9	13.1	31.0	136.6
Rwanda	0.3	0.5	0.9	0.6	-33.3
Saint Helena	0.0	0.0	0.2	0.0	0.0
Senegal	6.5	2.1	8.4	4.9	-41.7
Seychelles	0.1	0.1	0.4	0.3	-25.0
Sierra Leone	0.9	0.3	2.1	1.1	-47.6
South Africa	35.3	43.8	135.3	110.5	-18.3

Table 4 – continued

Domestic exports by country, customs basis, not seasonally adjusted

	March		January to March		Variation
	2008	2009	2008	2009	January to March to March 2009/2008
millions of dollars					
Swaziland	0.1	0.0	0.6	0.1	-83.3
Togo	0.3	2.6	3.5	4.3	22.9
Tunisia	2.1	2.1	7.3	5.2	-28.8
Uganda	1.3	0.3	3.4	4.5	32.4
United Republic of Tanzania	3.6	3.2	9.9	10.0	1.0
Western Sahara	0.0	0.1	0.0	0.1	...
Zambia	0.7	0.5	3.5	1.9	-45.7
Zimbabwe	0.8	0.0	0.9	6.9	666.7
Total	210.0	179.0	634.6	512.0	-19.3
Other Asia					
Afghanistan	0.7	4.1	1.7	18.6	994.1
Bangladesh	77.1	60.7	111.0	266.7	140.3
Bhutan	0.0	0.0	0.0	0.0	0.0
British Indian Ocean Territory	0.1	0.0	0.2	0.0	0.0
Brunei Darussalam	0.0	0.1	0.1	0.3	200.0
Cambodia	0.2	0.2	0.5	0.6	20.0
China	782.1	1,051.1	2,450.3	2,677.2	9.3
Hong Kong	169.7	131.8	330.3	367.8	11.4
India	123.3	213.0	406.4	431.7	6.2
Indonesia	155.1	72.8	353.2	216.6	-38.7
Japan	723.7	804.0	2,112.2	2,119.1	0.3
Laos	0.2	0.3	2.0	0.7	-65.0
Macau	3.4	3.2	9.9	8.9	-10.1
Malaysia	91.9	27.3	201.1	94.0	-53.3
Maldives	0.2	0.1	1.1	0.8	-27.3
Mongolia	0.5	0.8	2.3	1.2	-47.8
Nepal	0.2	0.7	0.5	1.0	100.0
North Korea	0.9	2.8	3.4	8.9	161.8
Pakistan	152.1	71.4	245.8	124.3	-49.4
Philippines	68.6	24.2	153.4	112.4	-26.7
Singapore	71.0	55.8	192.4	130.2	-32.3
South Korea	247.6	317.5	750.3	763.3	1.7
Sri Lanka	42.0	29.8	103.6	89.1	-14.0
Taiwan	103.0	100.2	343.8	232.0	-32.5
Thailand	70.3	36.8	152.5	98.4	-35.5
Viet Nam	19.0	11.7	69.2	27.5	-60.3
Total	2,903.0	3,020.2	7,997.4	7,791.3	-2.6
Oceania					
American Samoa	0.1	0.1	0.1	0.2	100.0
Australia	126.7	105.1	422.9	403.1	-4.7
Christmas Island	0.0	0.0	0.0	0.1	0.0
Cocos (Keeling) Islands	0.0	0.1	0.0	0.1	...
Cook Islands	0.8	0.0	0.8	0.0	...
Fiji	0.1	0.4	0.7	2.6	271.4
French Polynesia	1.6	1.1	4.3	2.2	-48.8
Guam	0.3	0.2	0.6	0.5	-16.7
Heard Island and McDonald Islands	0.0	0.0	0.0	0.0	...
Nauru	0.2	0.0	0.2	0.0	0.0
New Caledonia	0.6	0.2	4.3	0.8	-81.4
New Zealand	47.2	15.4	110.0	80.6	-26.7
Norfolk Island	0.0	0.0	0.0	0.3	...
Papua New Guinea	1.2	2.2	2.5	3.3	32.0
Pitcairn	0.0	0.0	0.0	0.0	0.0
Samoa	0.0	0.0	0.0	0.1	0.0
Solomon Islands	0.0	0.0	0.0	0.1	...
Tonga	0.0	0.0	0.0	0.0	0.0
United States Minor Outlying Islands	1.3	1.4	1.7	2.7	58.8
Vanuatu	0.0	0.3	0.1	1.0	900.0
Total	180.1	126.5	548.3	497.7	-9.2
South America					
Argentina	14.7	17.5	50.3	39.3	-21.9
Bolivia	1.3	0.3	3.7	2.2	-40.5
Brazil	178.4	97.1	399.4	222.2	-44.4
Chile	50.4	52.9	151.4	146.4	-3.3

Table 4 – continued

Domestic exports by country, customs basis, not seasonally adjusted

	March		January to March		Variation
	2008	2009	2008	2009	January to March 2009/2008
	millions of dollars				
Colombia	48.5	53.6	142.1	144.8	1.9
Ecuador	29.2	23.6	70.1	64.7	-7.7
Falkland Islands (Malvinas)	0.0	0.0	0.1	0.0	
Guyana	0.8	2.6	3.2	5.8	81.3
Paraguay	0.5	0.3	1.3	2.3	76.9
Peru	29.6	47.9	90.6	107.3	18.4
Suriname	0.5	1.0	2.2	1.9	-13.6
Uruguay	47.9	2.5	51.7	6.0	-88.4
Venezuela	84.1	71.4	153.8	204.6	33.0
Total	486.0	370.7	1,119.9	947.3	-15.4
Central America Antilles					
Anguilla	0.3	0.1	0.5	0.6	20.0
Antigua and Barbuda	0.9	0.5	3.5	1.8	-48.6
Aruba	0.6	0.4	1.4	1.3	-7.1
Bahamas	2.3	1.8	6.7	6.6	-1.5
Barbados	3.5	3.4	10.2	8.0	-21.6
Belize	0.4	0.8	1.0	1.7	70.0
Bermuda	5.1	6.0	14.7	14.6	-0.7
British Virgin Islands	0.1	0.3	1.0	1.7	70.0
Cayman Islands	1.1	0.8	2.7	1.6	-40.7
Costa Rica	8.9	5.0	24.3	13.2	-45.7
Cuba	40.6	26.2	106.2	66.2	-37.7
Dominica	0.2	0.5	2.9	1.2	-58.6
Dominican Republic	20.0	12.9	43.4	31.9	-26.5
El Salvador	5.2	2.1	13.7	6.6	-51.8
Grenada	0.4	0.8	1.5	1.7	13.3
Guatemala	9.7	7.2	39.1	27.4	-29.9
Haiti	4.0	1.7	7.4	7.7	4.1
Honduras	2.5	2.6	7.5	6.6	-12.0
Jamaica	17.6	9.6	59.9	24.0	-59.9
Montserrat	0.1	0.0	0.1	0.1	0.0
Netherlands Antilles	1.3	1.8	4.4	5.4	22.7
Nicaragua	2.1	0.9	5.9	3.8	-35.6
Panama	8.6	10.5	27.3	27.0	-1.1
Saint Kitts and Nevis	0.5	0.4	1.4	1.6	14.3
Saint Lucia	0.6	0.9	2.4	2.3	-4.2
Saint Vincent and the Grenadines	0.4	0.6	1.5	1.7	13.3
Trinidad and Tobago	20.6	22.5	55.6	45.8	-17.6
Turks and Caicos Islands	0.6	1.1	2.1	1.7	-19.0
Total	158.4	121.0	448.4	313.7	-30.0
All countries	37,391.3	29,523.2	106,242.8	84,513.9	-20.5

Table 5-1
Exports by province of origin, customs basis, not seasonally adjusted — March

	Agricultural and fishing products	Energy products	Forestry products	Industrial goods	Machinery and equipment	Automotive products	Consumer goods	Special transactions	Total
millions of dollars									
Domestic exports									
Newfoundland Labrador									
2008	27.7	830.7	25.9	74.6	4.0	0.1	0.1	5.3	968.6
2009	23.3	424.4	20.4	119.1	6.0	0.0	0.0	4.3	597.5
Prince Edward Island									
2008	33.2	0.0	0.2	1.0	19.0	0.3	2.5	4.4	60.6
2009	41.2	0.0	0.2	1.7	17.7	0.0	1.8	3.4	66.1
Nova Scotia									
2008	78.8	124.7	75.9	41.2	99.5	12.2	6.3	7.8	446.4
2009	77.0	64.2	67.1	44.2	100.8	11.0	6.5	7.0	377.8
New Brunswick									
2008	70.8	796.6	87.0	106.4	30.6	2.3	8.6	8.9	1,111.2
2009	84.5	469.4	112.0	71.2	38.3	2.8	10.8	7.3	796.5
Quebec									
2008	370.8	305.6	601.5	1,888.3	1,927.5	177.2	293.8	113.2	5,677.9
2009	377.6	249.1	559.9	1,462.9	2,016.1	155.3	321.9	113.6	5,256.5
Ontario									
2008	601.5	334.8	306.7	4,037.7	3,070.3	4,985.1	722.2	324.5	14,382.8
2009	717.9	201.5	243.4	3,014.7	3,230.5	3,168.1	907.0	264.6	11,747.7
Manitoba									
2008	378.3	96.3	33.9	316.2	179.1	59.3	28.8	21.6	1,113.4
2009	358.8	75.3	28.6	206.4	216.8	75.6	57.1	32.1	1,050.6
Saskatchewan									
2008	745.6	785.1	15.9	603.8	86.0	3.2	3.8	11.9	2,255.3
2009	726.3	400.3	19.2	528.9	113.3	2.7	2.0	9.4	1,802.1
Alberta									
2008	666.2	6,266.1	166.7	1,118.7	432.2	47.5	19.2	48.2	8,764.8
2009	639.9	3,514.5	137.7	706.6	481.4	52.4	17.8	46.1	5,596.5
British Columbia									
2008	160.1	573.7	815.7	450.7	304.9	27.9	51.5	46.2	2,430.7
2009	182.0	588.3	615.3	436.6	270.0	22.3	47.2	39.5	2,201.2
Yukon, Northwest Territories and Nunavut ¹									
2008	0.2	0.0	0.3	178.0	0.4	0.0	0.8	0.0	179.6
2009	0.2	0.0	0.0	30.2	0.4	0.0	0.0	0.0	30.8
Total									
2008	3,133.1	10,113.6	2,129.6	8,816.8	6,153.4	5,315.3	1,137.4	592.2	37,391.3
2009	3,228.8	5,987.0	1,803.8	6,622.4	6,491.4	3,490.4	1,372.1	527.3	29,523.2
Re-exports									
2008	38.9	26.5	8.0	221.6	901.9	127.7	204.4	726.6	2,255.6
2009	41.3	63.5	6.7	202.2	1,125.6	95.7	292.3	829.2	2,656.7
Total exports									
2008	3,172.0	10,140.1	2,137.6	9,038.3	7,055.3	5,442.9	1,341.8	1,318.8	39,647.0
2009	3,270.0	6,050.5	1,810.6	6,824.6	7,617.0	3,586.2	1,664.4	1,356.6	32,179.9

1. Data for the most current month do not include some exports of Chapter 71 "Natural/cultured pearls, precious stones and metals, coins etc" for reasons relating to timing.

Table 5-2
Exports by province of origin, customs basis, not seasonally adjusted — Year to date, January to March

	Agricultural and fishing products	Energy products	Forestry products	Industrial goods	Machinery and equipment	Automotive products	Consumer goods	Special transactions	Total
millions of dollars									
Domestic exports									
Newfoundland Labrador									
2008	71.4	2,096.9	69.3	235.0	13.4	0.2	0.4	15.3	2,501.9
2009	68.2	1,342.6	72.7	336.7	19.0	0.1	0.1	13.2	1,852.7
Prince Edward Island									
2008	105.1	0.0	0.7	3.6	44.9	0.4	8.6	17.7	181.0
2009	118.7	0.0	0.2	4.8	48.8	0.1	6.9	21.6	201.2
Nova Scotia									
2008	221.7	344.2	205.4	136.9	290.9	33.5	19.5	22.8	1,274.9
2009	210.2	248.8	180.5	134.3	283.6	28.4	18.5	20.6	1,124.7
New Brunswick									
2008	212.0	1,972.4	291.3	276.2	82.7	5.3	26.4	25.4	2,891.6
2009	238.9	1,408.3	328.1	147.0	89.5	7.5	28.2	22.0	2,269.5
Quebec									
2008	1,021.1	886.6	1,807.0	5,288.1	5,544.7	518.9	825.4	338.0	16,229.9
2009	1,063.3	776.3	1,575.6	4,077.2	5,692.7	398.3	935.9	355.8	14,875.1
Ontario									
2008	1,756.5	909.3	906.8	11,379.8	8,713.2	14,158.7	1,918.5	911.4	40,654.1
2009	1,960.8	779.8	798.8	7,981.6	9,076.0	8,042.0	2,361.3	787.0	31,787.3
Manitoba									
2008	1,031.7	276.9	96.8	856.4	527.6	159.4	74.8	61.2	3,084.8
2009	1,025.6	211.0	75.2	589.7	561.1	184.1	112.7	93.6	2,853.1
Saskatchewan									
2008	2,091.1	2,254.8	60.0	1,546.5	205.7	12.1	10.0	31.4	6,211.7
2009	2,046.5	1,154.5	70.3	1,562.9	277.6	8.2	4.7	26.9	5,151.6
Alberta									
2008	1,779.7	18,541.5	470.7	3,213.2	1,222.2	137.1	47.3	143.2	25,554.8
2009	1,817.7	11,893.5	418.6	2,060.8	1,273.6	140.6	50.0	151.3	17,806.2
British Columbia									
2008	454.0	1,572.8	2,358.0	1,387.6	884.2	91.5	153.6	126.3	7,028.1
2009	509.4	1,918.1	1,750.0	1,121.6	779.8	61.0	138.1	115.8	6,393.8
Yukon, Northwest Territories and Nunavut ¹									
2008	0.5	0.0	0.3	627.0	1.2	0.0	0.9	0.1	630.0
2009	0.5	0.0	0.0	196.2	1.1	0.1	0.7	0.1	198.7
Total									
2008	8,744.6	28,855.5	6,266.2	24,950.4	17,530.7	15,117.2	3,085.4	1,692.9	106,242.8
2009	9,059.8	19,733.0	5,270.1	18,212.8	18,102.6	8,870.5	3,657.1	1,607.8	84,513.9
Re-exports									
2008	126.0	93.9	24.7	651.2	2,667.9	376.7	525.5	2,101.2	6,567.1
2009	138.1	136.9	19.5	571.0	3,077.8	260.2	624.1	2,211.1	7,038.5
Total exports									
2008	8,870.7	28,949.4	6,290.9	25,601.6	20,198.5	15,493.8	3,610.9	3,794.1	112,809.9
2009	9,197.9	19,869.9	5,289.6	18,783.8	21,180.4	9,130.7	4,281.2	3,818.9	91,552.5

1. Data for the most current month do not include some exports of Chapter 71 "Natural/cultured pearls, precious stones and metals, coins etc" for reasons relating to timing.

Table 6-1
Imports by commodity groupings, balance of payments basis, seasonally adjusted — Current dollars

	February	March	Change	Year to date		Year to date change	March		
	2009	2009		2008	2009			2009/2008	
	millions of dollars		percent		millions of dollars		percent		
Total	32,843	31,398	-1,444	-4.4	105,362	96,621	-8,740	-8.3	-9.3
Agricultural and fishing products	2,539	2,533	-6	-0.2	6,638	7,638	1,000	15.1	14.3
Fruits and vegetables	711	719	8	1.2	1,822	2,133	311	17.1	20.0
Fresh fruits and berries	247	254	6	2.5	642	747	105	16.4	22.9
Dried fruits, fruits and fruit preparations	140	141	2	1.2	344	417	73	21.2	24.3
Fresh vegetables	177	178	1	0.4	460	526	67	14.5	17.1
Other vegetables and vegetable preparations	147	146	0	-0.2	376	442	66	17.4	14.8
Other agricultural and fishing products	1,828	1,814	-14	-0.8	4,816	5,505	689	14.3	12.2
Live animals	16	18	1	8.3	48	51	3	7.0	5.1
Meat and meat preparations	185	197	12	6.5	470	562	92	19.5	28.4
Fish and marine animals	183	182	-1	-0.6	455	541	86	18.9	24.0
Cocoa, coffee, tea and other food preparations	421	432	11	2.6	1,061	1,288	227	21.4	18.8
Dairy produce, eggs and honey	45	44	-1	-2.6	170	132	-38	-22.4	-18.4
Corn (maize) shelled	50	35	-15	-30.3	196	136	-59	-30.3	-48.0
Other cereals and cereal preparations	211	208	-3	-1.3	465	621	155	33.3	32.9
Sugar and sugar preparations	144	139	-5	-3.3	344	427	84	24.3	27.5
Fodder, feed, excluding unmilled cereal	130	111	-19	-14.5	333	368	35	10.4	-0.1
Beverages	302	304	2	0.6	831	951	120	14.5	4.5
Tobacco	27	30	3	9.5	89	87	-2	-1.8	1.5
Crude vegetable products	113	114	1	1.0	351	337	-14	-3.9	-3.4
Cotton	1	1	0	-32.3	3	3	0	5.9	-22.1
Energy products	2,795	2,280	-515	-18.4	11,736	7,968	-3,769	-32.1	-38.2
Crude petroleum	1,330	1,302	-29	-2.1	7,255	4,179	-3,076	-42.4	-35.9
Other energy products	1,465	979	-487	-33.2	4,482	3,789	-693	-15.5	-41.0
Coal and other related products	620	433	-187	-30.1	1,460	1,537	76	5.2	-30.0
Petroleum and coal products	845	545	-300	-35.5	3,021	2,252	-769	-25.5	-47.6
Forestry products	215	214	-2	-0.8	722	651	-71	-9.9	-10.9
Forestry products	215	214	-2	-0.8	722	651	-71	-9.9	-10.9
Crude wood products	47	47	0	-0.6	113	141	28	25.0	22.5
Wood fabricated materials	169	167	-1	-0.9	609	510	-99	-16.3	-17.1
Industrial goods and materials	6,925	6,616	-309	-4.5	21,616	20,387	-1,229	-5.7	-9.5
Metals and metal ores	2,222	2,098	-124	-5.6	8,057	6,554	-1,502	-18.6	-21.6
Metals in ores, concentrates and scrap	547	536	-11	-2.0	2,353	1,569	-784	-33.3	-33.9
Steel bars, rods, plates, sheets	438	392	-47	-10.7	1,697	1,256	-441	-26.0	-30.6
Other iron and steel products	468	336	-133	-28.3	1,069	1,343	274	25.7	-9.9
Precious metals including alloys	463	528	65	14.1	1,435	1,439	4	0.3	22.3
Other non-ferrous metals and alloys	306	307	1	0.3	1,503	947	-556	-37.0	-38.4
Chemicals and plastics	2,540	2,500	-40	-1.6	7,199	7,425	227	3.1	1.1
Organic chemicals	638	581	-58	-9.0	1,924	1,853	-70	-3.7	-21.1
Plastic materials	786	756	-31	-3.9	2,518	2,303	-215	-8.5	-9.7
Other chemicals and related products	1,115	1,163	48	4.3	2,757	3,269	512	18.6	29.4
Other industrial goods and materials	2,163	2,018	-145	-6.7	6,361	6,407	47	0.7	-6.5
Crude animal products	19	18	0	-1.9	76	55	-21	-27.3	-37.6
Wool and man-made fibres	20	19	0	-2.3	60	58	-2	-3.2	-3.1
Crude non-metallic minerals	69	64	-5	-7.5	234	208	-26	-11.1	-19.9
Textile fabricated materials	211	201	-9	-4.5	642	618	-24	-3.7	-3.8
Metal fabricated basic products	845	798	-47	-5.5	2,483	2,505	22	0.9	-3.5
Rubber fabricated materials	80	82	2	2.9	246	243	-3	-1.3	6.3
Oils, fats, animal and vegetable	115	108	-6	-5.6	267	336	69	25.8	15.2
Non-metallic minerals	305	274	-31	-10.1	863	889	26	3.0	-6.0
Other fabricated materials	500	453	-48	-9.6	1,489	1,495	6	0.4	-14.7

Table 6-1 – continued

Imports by commodity groupings, balance of payments basis, seasonally adjusted — Current dollars

	February 2009	March 2009	Change	Year to date		Year to date change	March 2009/2008		
	millions of dollars			percent					
				2008	2009				
Machinery and equipment	10,095	9,642	-453	-4.5	29,112	29,442	331	1.1	-1.1
Industrial and agricultural machinery	2,657	2,517	-140	-5.3	8,003	7,883	-121	-1.5	-7.8
Engines, turbines and electric motors	427	377	-49	-11.6	817	1,143	327	40.0	31.4
Drilling mining machinery	134	130	-4	-2.8	395	426	32	8.0	-2.0
Excavating machinery	207	199	-8	-4.0	898	632	-266	-29.6	-36.6
Metal working machinery	150	144	-6	-4.2	611	455	-156	-25.5	-35.7
Other industrial machinery	1,384	1,327	-57	-4.1	4,321	4,186	-135	-3.1	-8.3
Agricultural machinery including tractors	355	340	-15	-4.3	962	1,040	78	8.1	4.6
Aircraft and other transportation equipment	1,703	1,513	-191	-11.2	4,428	4,525	97	2.2	7.9
Aircraft, engines, parts	1,088	1,094	6	0.6	2,938	2,967	29	1.0	25.8
Other transportation equipment and parts	615	418	-197	-32.0	1,490	1,558	68	4.5	-21.3
Office machines and equipment	1,068	1,050	-18	-1.7	3,562	3,197	-366	-10.3	-10.7
Other machinery and equipment	4,666	4,562	-104	-2.2	13,118	13,838	720	5.5	2.6
Other communication and related equipment	1,605	1,568	-37	-2.3	4,489	4,718	229	5.1	0.2
Other equipment and tools	3,061	2,994	-67	-2.2	8,630	9,120	491	5.7	3.9
Automotive products	4,081	4,143	62	1.5	18,521	12,177	-6,344	-34.3	-27.1
Passenger autos and chassis	1,283	1,269	-14	-1.1	6,663	3,816	-2,847	-42.7	-36.7
Trucks and other motor vehicles	993	963	-29	-3.0	3,936	2,946	-990	-25.2	-19.6
Motor vehicle parts	1,805	1,910	106	5.9	7,922	5,414	-2,507	-31.6	-23.0
Other consumer goods	5,076	4,861	-216	-4.2	13,522	14,953	1,431	10.6	8.8
Apparel and footwear	1,041	968	-72	-7.0	2,588	3,082	494	19.1	14.4
Apparel and apparel accessories	879	804	-75	-8.6	2,169	2,576	407	18.8	12.8
Footwear	161	164	3	1.9	418	506	87	20.9	22.7
Miscellaneous consumer goods	4,036	3,893	-143	-3.5	10,934	11,871	937	8.6	7.5
Television, radios, phonographs	111	116	5	4.3	417	326	-92	-22.0	-12.7
Printed matter	314	313	-2	-0.6	888	934	45	5.1	6.0
Watches, sporting goods and toys	532	534	2	0.4	1,520	1,603	84	5.5	8.8
House furnishings	784	761	-23	-3.0	2,007	2,309	301	15.0	13.5
Photographic goods	229	226	-4	-1.7	695	698	3	0.4	-2.8
Miscellaneous end products	2,065	1,944	-121	-5.9	5,406	6,001	595	11.0	8.1
Special transactions trade	439	458	19	4.4	1,338	1,405	66	5.0	-11.7
Unallocated balance of payments adjustments	677	652	-25	-3.7	2,156	2,001	-155	-7.2	-11.5

Table 6-2
Imports by commodity groupings, balance of payments basis, seasonally adjusted — Constant dollars, 2002

	February	March	Change	Year to date		Year to date change	March		
	2009	2009		2008	2009			2009/2008	
	millions of dollars		percent		millions of dollars		percent		
Total	33,322	31,943	-1,378	-4.1	123,619	98,434	-25,185	-20.4	-21.1
Agricultural and fishing products	2,259	2,255	-3	-0.1	7,117	6,795	-321	-4.5	-3.1
Fruits and vegetables	662	676	14	2.1	1,880	1,997	117	6.2	9.5
Fresh fruits and berries	243	247	4	1.8	660	730	69	10.5	19.0
Dried fruits, fruits and fruit preparations	126	126	0	-0.1	332	374	42	12.7	13.7
Fresh vegetables	165	176	11	6.8	511	512	1	0.1	2.6
Other vegetables and vegetable preparations	128	126	-2	-1.3	376	381	5	1.4	-0.2
Other agricultural and fishing products	1,596	1,579	-17	-1.1	5,237	4,798	-439	-8.4	-7.7
Live animals	15	16	2	10.3	53	48	-5	-10.0	-12.5
Meat and meat preparations	182	181	-1	-0.6	523	540	17	3.2	6.0
Fish and marine animals	224	215	-9	-4.0	648	650	2	0.3	9.1
Cocoa, coffee, tea and other food preparations	313	328	15	4.9	1,074	961	-113	-10.5	-6.5
Dairy produce, eggs and honey	40	43	3	8.6	148	122	-26	-17.5	-4.9
Corn (maize) shelled	37	25	-12	-32.6	159	101	-58	-36.4	-52.4
Other cereals and cereal preparations	162	161	-1	-0.4	502	483	-19	-3.7	-3.5
Sugar and sugar preparations	132	131	-1	-0.8	408	394	-14	-3.5	7.4
Fodder, feed, excluding unmilled cereal	90	73	-17	-18.8	313	256	-57	-18.2	-28.7
Beverages	260	263	3	1.1	878	819	-58	-6.6	-14.6
Tobacco	28	30	2	5.9	126	93	-33	-25.9	-27.2
Crude vegetable products	112	112	-1	-0.5	400	325	-75	-18.7	-15.8
Cotton	2	1	0	-26.8	4	4	0	-6.4	-26.0
Energy products	1,840	1,542	-297	-16.2	5,270	5,250	-21	-0.4	-7.7
Crude petroleum	843	794	-49	-5.9	2,655	2,629	-26	-1.0	8.3
Other energy products	997	749	-248	-24.9	2,615	2,621	6	0.2	-20.2
Coal and other related products	400	339	-61	-15.2	1,019	1,042	24	2.3	-15.5
Petroleum and coal products	597	409	-187	-31.4	1,597	1,579	-18	-1.1	-23.7
Forestry products	248	251	3	1.4	960	754	-207	-21.5	-21.3
Forestry products	248	251	3	1.4	960	754	-207	-21.5	-21.3
Crude wood products	57	55	-2	-3.2	148	168	20	13.6	9.8
Wood fabricated materials	191	196	5	2.8	812	585	-227	-27.9	-27.1
Industrial goods and materials	5,755	5,512	-243	-4.2	20,950	16,949	-4,001	-19.1	-20.1
Metals and metal ores	1,509	1,457	-52	-3.4	6,006	4,498	-1,507	-25.1	-22.8
Metals in ores, concentrates and scrap	415	423	8	1.9	1,257	1,193	-63	-5.1	1.5
Steel bars, rods, plates, sheets	312	285	-27	-8.7	1,384	891	-493	-35.6	-35.4
Other iron and steel products	290	215	-74	-25.7	861	830	-31	-3.6	-28.2
Precious metals including alloys	194	232	37	19.1	1,005	673	-332	-33.0	-8.8
Other non-ferrous metals and alloys	298	302	5	1.5	1,499	911	-588	-39.2	-36.5
Chemicals and plastics	2,184	2,137	-47	-2.2	7,235	6,334	-901	-12.5	-12.7
Organic chemicals	507	452	-55	-10.9	1,535	1,459	-76	-4.9	-20.4
Plastic materials	717	703	-14	-1.9	2,718	2,121	-596	-21.9	-22.5
Other chemicals and related products	960	982	22	2.2	2,983	2,754	-229	-7.7	1.0
Other industrial goods and materials	2,062	1,918	-144	-7.0	7,709	6,117	-1,592	-20.7	-25.3
Crude animal products	26	24	-2	-8.1	80	76	-4	-5.4	-19.8
Wool and man-made fibres	25	22	-2	-9.3	80	70	-10	-12.4	-15.3
Crude non-metallic minerals	64	60	-4	-5.9	211	194	-17	-8.1	-14.2
Textile fabricated materials	236	223	-12	-5.1	903	694	-209	-23.1	-24.3
Metal fabricated basic products	771	717	-54	-7.1	2,874	2,274	-599	-20.9	-24.6
Rubber fabricated materials	82	84	2	2.7	337	251	-86	-25.6	-19.8
Oils, fats, animal and vegetable	89	85	-4	-4.0	229	262	32	14.2	7.4
Non-metallic minerals	308	276	-32	-10.3	1,107	906	-201	-18.2	-25.8
Other fabricated materials	462	426	-36	-7.8	1,888	1,389	-499	-26.4	-33.5

Table 6-2 – continued

Imports by commodity groupings, balance of payments basis, seasonally adjusted — Constant dollars, 2002

	February 2009	March 2009	Change	Year to date		Year to date change		March 2009/2008	
	millions of dollars			percent		millions of dollars			percent
					2008	2009			
Machinery and equipment	11,997	11,442	-555	-4.6	43,656	35,346	-8,310	-19.0	-21.9
Industrial and agricultural machinery	2,718	2,549	-170	-6.2	10,691	8,100	-2,590	-24.2	-30.2
Engines, turbines and electric motors	453	393	-60	-13.2	1,107	1,211	104	9.4	-0.1
Drilling mining machinery	123	117	-5	-4.5	484	391	-93	-19.2	-27.5
Excavating machinery	207	198	-9	-4.6	1,187	635	-552	-46.5	-52.3
Metal working machinery	159	153	-6	-3.9	833	487	-346	-41.6	-50.1
Other industrial machinery	1,396	1,328	-69	-4.9	5,737	4,249	-1,488	-25.9	-30.9
Agricultural machinery including tractors	381	361	-20	-5.3	1,342	1,128	-215	-16.0	-20.8
Aircraft and other transportation equipment	1,678	1,490	-188	-11.2	5,689	4,513	-1,176	-20.7	-17.6
Aircraft, engines, parts	1,081	1,090	9	0.8	3,783	3,002	-780	-20.6	-3.5
Other transportation equipment and parts	597	400	-197	-33.0	1,907	1,511	-396	-20.8	-41.1
Office machines and equipment	1,981	1,975	-6	-0.3	7,362	6,045	-1,318	-17.9	-18.6
Other machinery and equipment	5,620	5,428	-192	-3.4	19,914	16,688	-3,225	-16.2	-19.7
Other communication and related equipment	2,272	2,169	-103	-4.5	7,744	6,671	-1,073	-13.9	-19.4
Other equipment and tools	3,348	3,259	-89	-2.7	12,170	10,017	-2,153	-17.7	-19.9
Automotive products	4,553	4,585	32	0.7	23,723	13,589	-10,134	-42.7	-37.0
Passenger autos and chassis	1,493	1,484	-9	-0.6	7,667	4,464	-3,203	-41.8	-35.4
Trucks and other motor vehicles	1,041	999	-42	-4.0	4,882	3,085	-1,797	-36.8	-32.1
Motor vehicle parts	2,018	2,101	83	4.1	11,174	6,040	-5,134	-45.9	-40.1
Other consumer goods	5,588	5,288	-300	-5.4	19,044	16,477	-2,567	-13.5	-16.0
Apparel and footwear	1,225	1,117	-108	-8.8	3,905	3,625	-280	-7.2	-12.6
Apparel and apparel accessories	1,037	929	-108	-10.4	3,277	3,035	-242	-7.4	-13.6
Footwear	188	188	-1	-0.3	627	590	-37	-6.0	-6.9
Miscellaneous consumer goods	4,363	4,171	-192	-4.4	15,139	12,852	-2,287	-15.1	-16.8
Television, radios, phonographs	152	156	5	3.0	710	445	-265	-37.4	-30.2
Printed matter	352	343	-9	-2.5	1,248	1,045	-202	-16.2	-17.5
Watches, sporting goods and toys	637	636	-1	-0.1	2,277	1,913	-363	-16.0	-13.2
House furnishings	829	800	-30	-3.6	2,743	2,457	-286	-10.4	-12.7
Photographic goods	340	332	-9	-2.6	1,269	1,028	-241	-19.0	-21.9
Miscellaneous end products	2,053	1,904	-149	-7.2	6,892	5,963	-929	-13.5	-17.3
Special transactions trade	446	473	28	6.2	1,584	1,441	-143	-9.0	-21.9
Unallocated balance of payments adjustments	638	595	-43	-6.7	1,315	1,833	518	39.4	36.2

Table 7-1
Imports from selected countries, customs basis, not seasonally adjusted — March

	Agricultural and fishing products	Energy products	Forestry products	Industrial goods	Machinery and equipment	Automotive products	Consumer goods	Special transactions	Total
millions of dollars									
United States									
2008	1,232.8	1,374.7	184.9	4,614.3	4,934.2	4,408.6	1,762.4	353.9	18,865.9
2009	1,464.8	733.3	181.9	3,967.3	4,903.6	3,210.9	2,128.9	412.9	17,003.7
Mexico									
2008	125.0	48.9	0.5	108.8	542.3	446.4	84.6	3.8	1,360.4
2009	143.0	33.0	0.5	111.2	558.7	395.0	86.1	1.9	1,329.4
Japan									
2008	5.4	0.3	0.1	101.5	570.4	692.9	94.1	0.2	1,465.1
2009	6.3	0.4	0.1	109.1	450.5	416.3	93.6	0.3	1,076.6
European Union									
Germany									
2008	17.9	1.5	1.4	212.6	466.1	233.9	172.3	20.0	1,125.6
2009	18.9	1.4	1.1	193.0	389.9	220.3	158.5	0.4	983.4
France									
2008	48.7	0.7	0.2	79.5	152.2	6.1	119.4	50.0	456.8
2009	43.5	1.5	0.3	88.8	211.4	11.3	135.1	0.3	492.1
United Kingdom									
2008	23.4	369.0	0.1	112.7	232.9	53.9	116.1	5.4	913.5
2009	27.9	175.6	0.1	135.3	340.4	47.3	138.3	1.2	866.0
Italy									
2008	46.7	0.0	1.7	98.2	123.4	21.4	95.5	10.2	397.2
2009	53.2	0.0	0.9	86.5	132.6	17.5	98.8	1.2	390.7
Other European Union									
2008	80.0	136.9	4.3	250.7	378.1	132.1	323.0	25.9	1,331.0
2009	78.0	97.7	3.1	248.0	417.6	54.9	319.6	12.7	1,231.6
Total									
2008	216.8	508.1	7.6	753.6	1,352.8	447.4	826.5	111.4	4,224.2
2009	221.5	276.1	5.5	751.6	1,491.9	351.2	850.3	15.8	3,963.9
Newly industrialized countries									
South Korea									
2008	3.9	0.4	0.0	63.2	200.4	151.7	18.0	0.1	437.7
2009	5.1	6.0	0.0	70.2	185.9	153.3	18.0	0.1	438.5
Hong Kong									
2008	2.6	0.0	0.1	3.0	13.5	0.1	12.9	0.0	32.3
2009	2.7	0.0	0.0	2.0	19.5	0.2	11.2	0.0	35.8
Taiwan									
2008	4.6	31.8	1.4	60.4	186.5	18.8	32.0	0.1	335.7
2009	5.8	0.0	1.1	62.0	188.6	16.4	33.9	0.1	307.8
Singapore									
2008	1.1	0.0	0.2	38.0	55.7	0.2	16.0	0.0	111.3
2009	1.8	0.0	0.0	6.0	53.6	0.3	33.4	0.1	95.3
Total									
2008	12.3	32.2	1.7	164.7	456.2	170.7	79.0	0.3	916.9
2009	15.4	6.1	1.1	140.2	447.6	170.3	96.5	0.3	877.5
Other countries									
2008	499.6	2,500.9	47.5	1,385.1	2,199.1	175.0	1,392.0	75.2	8,274.4
2009	611.9	1,099.0	38.9	1,622.0	2,476.3	138.1	1,607.7	38.5	7,632.3
Total									
2008	2,091.8	4,465.2	242.3	7,128.1	10,055.1	6,341.1	4,238.5	544.8	35,106.9
2009	2,463.1	2,147.9	228.0	6,701.5	10,328.6	4,681.7	4,863.1	469.7	31,883.6

Table 7-2
Imports from selected countries, customs basis, not seasonally adjusted — Year to date, January to March

	Agricultural and fishing products	Energy products	Forestry products	Industrial goods	Machinery and equipment	Automotive products	Consumer goods	Special transactions	Total
millions of dollars									
United States									
2008	3,570.6	3,507.8	531.9	13,301.4	13,710.6	12,583.9	5,143.4	906.5	53,256.0
2009	4,147.8	2,894.1	496.5	11,575.0	13,413.3	7,838.5	5,711.0	1,032.1	47,108.4
Mexico									
2008	369.5	107.2	1.2	319.4	1,516.2	1,242.1	238.3	8.7	3,802.6
2009	413.6	37.5	1.5	333.6	1,501.6	986.7	245.5	7.4	3,527.5
Japan									
2008	16.2	1.0	0.3	282.3	1,614.5	1,770.5	262.3	0.9	3,948.1
2009	17.6	0.9	0.4	312.3	1,338.7	1,304.8	257.0	0.9	3,232.7
European Union									
Germany									
2008	48.0	15.1	3.8	619.2	1,142.2	693.0	491.9	21.3	3,034.6
2009	57.8	3.1	2.1	526.7	1,233.4	490.0	459.0	2.4	2,774.5
France									
2008	145.3	9.0	0.7	209.4	455.5	13.2	363.3	57.9	1,254.3
2009	144.6	53.0	0.7	228.2	509.6	27.8	426.6	1.5	1,391.9
United Kingdom									
2008	77.8	844.7	0.3	302.3	693.1	143.4	331.0	6.5	2,399.2
2009	81.4	548.5	0.4	369.7	889.1	94.7	337.0	4.7	2,325.5
Italy									
2008	140.6	0.1	5.2	257.4	376.3	52.5	263.6	10.9	1,106.5
2009	150.6	10.7	4.2	248.0	368.1	41.7	272.1	2.0	1,097.4
Other European Union									
2008	248.6	390.8	13.3	778.9	1,018.5	355.4	1,014.1	26.7	3,846.3
2009	261.0	236.0	11.3	756.8	1,112.5	145.1	1,053.9	16.0	3,592.6
Total									
2008	660.3	1,259.7	23.4	2,167.1	3,685.6	1,257.5	2,463.8	123.3	11,640.8
2009	695.4	851.3	18.7	2,129.5	4,112.8	799.2	2,548.6	26.5	11,181.9
Newly industrialized countries									
South Korea									
2008	11.5	12.9	0.1	194.5	568.2	411.0	54.0	0.3	1,252.5
2009	11.7	13.8	0.0	220.6	603.8	375.2	58.6	0.2	1,283.8
Hong Kong									
2008	7.6	0.0	0.2	7.4	45.8	0.5	42.6	0.1	104.2
2009	6.4	0.0	0.0	9.6	47.7	0.5	33.7	0.2	98.1
Taiwan									
2008	12.5	31.9	2.8	198.5	541.0	49.8	99.9	0.3	936.9
2009	14.3	0.1	2.2	205.9	536.6	45.6	98.9	0.3	903.7
Singapore									
2008	4.6	2.3	0.5	105.5	144.2	0.7	45.3	0.1	303.2
2009	7.3	51.5	0.6	177.1	146.8	1.0	69.7	0.4	454.4
Total									
2008	36.2	47.1	3.7	505.9	1,299.2	462.0	241.8	0.8	2,596.8
2009	39.7	65.4	2.8	613.1	1,334.8	422.3	260.9	1.0	2,740.1
Other countries									
2008	1,636.4	6,681.8	162.0	4,328.0	6,440.1	524.5	4,639.4	196.9	24,609.0
2009	1,837.0	3,766.6	134.5	4,686.9	6,662.9	378.9	5,319.5	137.4	22,923.8
Total									
2008	6,289.3	11,604.6	722.5	20,904.2	28,266.1	17,840.5	12,989.1	1,237.2	99,853.5
2009	7,151.5	7,615.9	654.5	19,650.4	28,364.2	11,730.4	14,342.6	1,205.3	90,714.7

Table 8
Imports by country, customs basis, not seasonally adjusted

	March		January to March		Variation
	2008	2009	2008	2009	January to March 2009/2008
millions of dollars					
North America					
Canada	293.0	312.7	992.2	795.9	-19.8
Greenland	4.2	6.0	8.9	16.6	86.5
Mexico	1,360.4	1,329.4	3,802.6	3,527.5	-7.2
Saint Pierre and Miquelon	0.0	0.0	0.0	0.1	0.0
United States	18,865.9	17,003.7	53,256.0	47,108.4	-11.5
Total	20,523.6	18,651.8	58,059.8	51,448.5	-11.4
Western Europe					
Andorra	0.0	0.0	0.0	0.0	0.0
Austria	129.1	88.6	398.0	286.6	-28.0
Belgium	208.5	131.5	574.1	330.8	-42.4
Denmark	56.2	106.2	195.8	238.7	21.9
Faeroe Islands	0.0	0.2	0.1	0.3	200.0
Finland	54.1	84.8	174.1	219.1	25.8
France	456.8	492.1	1,254.3	1,391.9	11.0
Germany	1,125.6	983.4	3,034.6	2,774.5	-8.6
Gibraltar	0.0	0.0	0.0	0.0	0.0
Greece	9.7	9.4	26.7	34.9	30.7
Iceland	2.4	2.6	7.2	6.5	-9.7
Italy	397.2	390.7	1,106.5	1,097.4	-0.8
Luxembourg	5.0	3.5	20.0	16.6	-17.0
Malta	1.1	2.8	3.7	6.9	86.5
Netherlands	141.8	151.6	395.5	410.2	3.7
Norway	694.2	257.3	1,694.1	782.8	-53.8
Portugal	30.9	23.6	79.6	69.9	-12.2
Republic of Ireland (Eire)	158.8	155.5	552.5	605.0	9.5
Spain	157.7	122.7	378.9	333.1	-12.1
Sweden	198.8	173.2	551.3	476.8	-13.5
Switzerland	248.7	412.1	609.3	995.6	63.4
United Kingdom	913.5	866.0	2,399.2	2,325.5	-3.1
Total	4,990.1	4,458.0	13,455.4	12,402.8	-7.8
Other Europe					
Albania	0.1	0.2	0.5	0.5	0.0
Armenia	0.1	3.2	0.3	9.4	...
Azerbaijan	0.1	57.9	0.1	220.2	...
Belarus	0.6	0.4	24.1	14.0	-41.9
Bosnia and Herzegovina	0.4	0.5	1.3	1.8	38.5
Bulgaria	5.4	5.9	30.0	29.6	-1.3
Croatia	2.9	2.2	8.3	6.0	-27.7
Czech Republic	32.8	17.5	79.2	77.4	-2.3
Estonia	2.2	1.8	8.4	5.7	-32.1
Georgia	4.8	10.1	17.6	28.8	63.6
Hungary	37.0	41.5	84.9	102.7	21.0
Kazakhstan	0.1	1.6	0.3	12.6	...
Kyrgyzstan	0.7	0.0	0.7	0.4	-42.9
Latvia	1.0	0.9	23.5	2.8	-88.1
Lithuania	3.4	3.0	11.0	46.4	321.8
Macedonia (Former Yugoslav Republic of Macedonia)	0.7	2.0	2.5	3.9	56.0
Montenegro	0.1	0.0	0.2	0.1	-50.0
Poland	56.7	75.2	152.4	214.4	40.7
Republic of Moldova	0.1	0.1	0.4	0.7	75.0
Romania	11.0	10.5	33.1	33.6	1.5
Russian Federation	121.2	228.7	428.9	481.4	12.2
Serbia	1.4	0.8	2.8	3.1	10.7
Slovakia	20.8	15.3	50.7	35.1	-30.8
Slovenia	8.4	6.1	21.9	15.4	-29.7
Tajikistan	0.0	0.0	0.0	0.0	0.0
Turkmenistan	0.0	0.0	0.1	0.1	0.0
Ukraine	5.5	6.6	12.4	31.8	156.5
Uzbekistan	0.0	0.0	0.1	0.1	0.0
Total	317.4	491.9	995.7	1,377.9	38.4

Table 8 – continued

Imports by country, customs basis, not seasonally adjusted

	March		January to March		Variation
	2008	2009	2008	2009	January to March to March 2009/2008
millions of dollars					
Middle East					
Bahrain	0.1	0.1	0.6	2.9	383.3
Cyprus	0.8	0.6	1.2	1.1	-8.3
Egypt	4.9	6.8	13.2	26.7	102.3
Eritrea	0.0	0.0	0.0	0.0	0.0
Ethiopia	0.5	0.7	1.8	2.7	50.0
Iran	4.5	3.5	12.1	7.7	-36.4
Iraq	351.1	103.8	632.3	349.2	-44.8
Israel	73.5	83.6	259.0	262.5	1.4
Jordan	0.6	1.0	3.8	4.6	21.1
Kuwait	4.3	0.8	4.6	37.2	708.7
Lebanon	1.2	1.2	3.2	3.3	3.1
Libya	0.0	0.0	0.0	0.0	0.0
Oman	0.1	0.2	0.8	1.7	112.5
Qatar	0.0	4.3	0.1	4.4	...
Saudi Arabia	178.2	74.6	532.1	335.4	-37.0
Somalia	0.0	0.0	0.0	0.0	0.0
Sudan	7.3	7.6	21.3	19.3	-9.4
Syria	0.6	0.6	1.6	1.1	-31.3
Turkey	40.2	52.2	123.1	210.4	70.9
United Arab Emirates	85.3	105.8	300.0	111.7	-62.8
Yemen	0.0	0.0	0.1	0.0	0.0
Total	753.1	447.5	1,910.8	1,382.0	-27.7
Other Africa					
Algeria	531.5	172.5	1,953.3	694.5	-64.4
Angola	172.0	99.5	423.9	302.8	-28.6
Antarctica	0.0	0.0	0.0	0.0	...
Benin	0.0	0.0	0.0	0.0	0.0
Botswana	0.0	5.0	0.1	5.1	...
Bouvet Island	0.0	0.0	0.0	0.0	0.0
Burkina Faso	0.0	0.0	0.1	0.0	0.0
Burundi	0.1	0.0	0.2	0.1	-50.0
Cameroon	0.3	0.3	1.7	1.2	-29.4
Cape Verde	0.0	0.0	0.0	0.0	0.0
Central African Republic	0.0	0.0	0.0	0.0	0.0
Chad	0.0	0.0	0.1	0.0	0.0
Comoros	0.0	0.0	0.0	0.0	0.0
Congo	0.3	0.3	1.1	0.6	-45.5
Democratic Republic of the Congo	0.1	0.1	0.1	0.2	100.0
Djibouti	0.0	0.0	0.0	0.0	0.0
Equatorial Guinea	81.1	0.0	81.1	141.2	74.1
French Southern Territories	0.0	0.0	0.0	0.0	...
Gabon	0.1	0.1	0.3	0.6	100.0
Gambia	0.0	0.0	0.0	0.0	0.0
Ghana	1.2	1.4	8.0	7.8	-2.5
Guinea	4.6	3.3	11.0	16.1	46.4
Guinea-Bissau	0.0	0.0	0.0	0.0	0.0
Ivory Coast	10.8	12.6	22.4	31.2	39.3
Kenya	1.2	1.1	3.1	4.0	29.0
Lesotho	1.1	1.7	1.5	2.2	46.7
Liberia	1.0	0.2	5.0	5.4	8.0
Madagascar	1.3	1.5	4.0	9.8	145.0
Malawi	0.2	0.2	0.5	0.4	-20.0
Mali	0.0	0.0	0.1	0.0	0.0
Mauritania	0.0	0.1	0.0	0.4	0.0
Mauritius	0.6	0.8	1.4	3.2	128.6
Morocco	4.6	11.5	39.9	47.5	19.0
Mozambique	0.0	0.0	0.5	0.2	-60.0
Namibia	67.4	0.0	67.4	47.0	-30.3
Niger	0.1	0.0	0.2	0.1	-50.0
Nigeria	90.0	1.6	283.2	92.2	-67.4
Rwanda	0.0	0.0	0.0	0.1	0.0
Saint Helena	0.0	0.0	0.1	0.0	0.0
Sao Tome and Principe	0.0	0.0	0.0	0.0	0.0
Senegal	0.0	0.0	0.1	0.1	0.0
Seychelles	0.2	0.0	0.5	0.4	-20.0

Table 8 – continued

Imports by country, customs basis, not seasonally adjusted

	March		January to March		Variation
	2008	2009	2008	2009	January to March 2009/2008
millions of dollars					
Sierra Leone	0.1	0.1	0.4	0.4	0.0
South Africa	88.5	57.2	199.5	144.4	-27.6
Swaziland	0.1	0.2	0.5	0.5	0.0
Togo	2.4	0.0	3.5	0.2	-94.3
Tunisia	2.7	3.5	8.9	10.7	20.2
Uganda	0.1	0.2	0.5	0.5	0.0
United Republic of Tanzania	0.3	0.5	0.5	1.4	180.0
Western Sahara	0.0	0.0	0.0	0.0	0.0
Zambia	0.0	0.0	0.2	0.2	0.0
Zimbabwe	0.1	0.0	0.2	0.7	250.0
Total	1,064.2	375.5	3,125.3	1,573.5	-49.7
Other Asia					
Afghanistan	0.1	0.1	0.4	0.4	0.0
Bangladesh	51.7	86.8	140.9	227.0	61.1
Bhutan	0.0	0.0	0.0	0.0	0.0
British Indian Ocean Territory	0.0	0.0	0.0	0.0	0.0
Brunei Darussalam	0.2	0.3	0.6	0.8	33.3
Cambodia	22.2	25.0	64.0	84.2	31.6
China	2,779.8	3,152.9	8,908.8	9,956.0	11.8
Hong Kong	32.3	35.8	104.2	98.1	-5.9
India	167.8	195.7	505.1	562.6	11.4
Indonesia	83.8	88.9	240.0	265.4	10.6
Japan	1,465.1	1,076.6	3,948.1	3,232.7	-18.1
Laos	0.6	1.2	1.8	2.3	27.8
Macao	1.9	1.9	9.2	5.7	-38.0
Malaysia	248.2	224.6	697.8	583.2	-16.4
Maldives	0.0	0.0	0.0	0.0	0.0
Mongolia	16.7	13.4	43.5	37.9	-12.9
Myanmar	0.0	0.0	0.7	0.0	0.0
Nepal	1.1	0.8	3.1	2.6	-16.1
North Korea	0.0	0.0	0.0	0.0	0.0
Pakistan	19.3	22.4	54.2	59.6	10.0
Philippines	74.2	74.3	188.5	176.6	-6.3
Singapore	111.3	95.3	303.2	454.4	49.9
South Korea	437.7	438.5	1,252.5	1,283.8	2.5
Sri Lanka	11.0	11.1	29.7	32.0	7.7
Taiwan	335.7	307.8	936.9	903.7	-3.5
Thailand	201.6	208.6	552.9	574.8	4.0
Timor-Leste	0.0	0.2	0.1	0.9	800.0
Viet Nam	60.4	78.6	193.3	255.9	32.4
Total	6,122.7	6,141.2	18,179.5	18,800.9	3.4
Oceania					
American Samoa	0.0	0.0	0.0	0.1	0.0
Australia	135.9	173.8	432.4	405.6	-6.2
Christmas Island	0.0	0.0	0.0	0.0	0.0
Cocos (Keeling) Islands	0.0	0.0	0.0	0.0	0.0
Cook Islands	0.0	0.0	0.0	0.0	0.0
Fiji	0.6	0.6	1.4	1.4	0.0
French Polynesia	0.1	0.1	0.3	0.2	-33.3
Guam	0.0	0.0	0.2	0.0	0.0
Heard Island and McDonald Islands	0.0	0.0	0.0	0.0	...
Kiribati	0.0	0.0	0.0	0.1	0.0
Nauru	0.0	0.0	0.0	0.0	0.0
New Caledonia	0.0	0.0	0.0	0.1	0.0
New Zealand	44.0	40.1	122.3	102.4	-16.3
Niue	0.0	0.0	0.0	0.0	0.0
Norfolk Island	0.0	0.0	0.0	0.0	0.0
Papua New Guinea	0.2	0.1	0.6	0.3	-50.0
Pitcairn	0.0	0.0	0.0	0.0	0.0
Samoa	0.0	0.0	0.0	0.0	0.0
Solomon Islands	0.0	0.0	0.0	0.0	0.0
Tonga	0.0	0.0	0.0	0.0	0.0
United States Minor Outlying Islands	0.5	0.4	1.9	1.3	-31.6
Vanuatu	0.0	0.0	0.0	0.0	0.0

Table 8 – continued

Imports by country, customs basis, not seasonally adjusted

	March		January to March		Variation
	2008	2009	2008	2009	January to March to March 2009/2008
	millions of dollars				
Wallis and Futuna	0.0	0.0	0.0	0.0	0.0
Total	181.3	215.3	559.3	511.6	-8.5
South America					
Argentina	40.9	67.2	112.5	167.3	48.7
Bolivia	6.8	9.0	17.6	18.6	5.7
Brazil	167.6	197.6	628.3	629.2	0.1
Chile	156.9	178.0	567.7	446.6	-21.3
Colombia	51.5	75.8	168.1	171.5	2.0
Ecuador	14.9	21.7	49.5	66.5	34.3
Falkland Islands (Malvinas)	0.0	0.0	0.0	0.0	0.0
Guyana	22.2	27.9	54.0	71.0	31.5
Paraguay	1.7	0.9	3.4	2.2	-35.3
Peru	265.7	211.3	622.7	654.3	5.1
Suriname	45.4	47.6	132.6	138.1	4.1
Uruguay	2.2	3.9	16.5	35.9	117.6
Venezuela	145.7	70.3	350.7	249.0	-29.0
Total	921.6	911.2	2,723.7	2,650.3	-2.7
Central America Antilles					
Anguilla	0.0	0.0	0.0	0.2	0.0
Antigua and Barbuda	4.8	0.0	4.9	0.1	-98.0
Aruba	35.9	0.0	120.1	28.7	-76.1
Bahamas	1.0	3.4	2.6	12.9	396.2
Barbados	0.9	0.8	2.0	2.7	35.0
Belize	0.8	1.1	1.7	2.9	70.6
Bermuda	0.0	0.1	0.2	0.2	0.0
British Virgin Islands	0.0	0.0	7.5	0.0	0.0
Cayman Islands	0.0	0.0	0.1	0.1	0.0
Costa Rica	35.5	38.0	100.7	96.0	-4.7
Cuba	51.3	40.5	273.6	116.2	-57.5
Dominica	0.0	0.0	0.0	0.1	0.0
Dominican Republic	8.8	13.8	25.5	36.1	41.6
El Salvador	2.7	8.1	10.1	26.2	159.4
Grenada	0.2	0.1	0.2	0.1	-50.0
Guatemala	22.8	22.0	60.4	58.9	-2.5
Haiti	1.1	2.3	4.8	4.8	0.0
Honduras	13.0	16.7	36.0	39.8	10.6
Jamaica	10.5	24.9	41.9	44.1	5.3
Montserrat	0.0	0.0	0.0	0.0	0.0
Netherlands Antilles	0.0	0.0	2.4	4.8	100.0
Nicaragua	5.7	7.4	15.6	21.6	38.5
Panama	0.9	0.7	14.0	2.7	-80.7
Saint Kitts and Nevis	0.3	0.2	1.1	1.0	-9.1
Saint Lucia	0.0	0.0	0.0	0.1	0.0
Saint Vincent and the Grenadines	0.0	0.0	0.0	0.0	0.0
Trinidad and Tobago	36.4	10.8	117.8	66.7	-43.4
Turks and Caicos Islands	0.2	0.1	0.4	0.2	-50.0
Total	232.8	191.2	843.8	567.1	-32.8
All countries	35,106.9	31,883.6	99,853.5	90,714.7	-9.2

**Table 9-1
Imports by province of clearance, customs basis, not seasonally adjusted — March**

	Agricultural and fishing products	Energy products	Forestry products	Industrial goods	Machinery and equipment	Automotive products	Consumer goods	Special transactions	Total
millions of dollars									
Newfoundland Labrador									
2008	1.8	398.0	0.0	6.6	3.1	0.1	0.7	0.1	410.4
2009	2.3	216.7	0.0	16.6	13.4	0.0	0.3	0.0	249.3
Prince Edward Island									
2008	0.1	0.0	0.0	0.0	0.2	0.0	0.0	0.0	0.4
2009	0.2	0.0	0.0	0.0	0.2	0.0	0.0	0.0	0.4
Nova Scotia									
2008	34.2	256.9	1.6	94.2	83.3	270.4	13.5	1.6	755.7
2009	21.5	91.6	0.9	69.3	102.0	250.6	20.0	3.2	559.1
New Brunswick									
2008	23.0	755.8	8.8	95.3	61.3	35.2	12.4	2.3	994.0
2009	25.5	363.3	9.3	67.0	78.9	26.7	18.5	3.2	592.5
Quebec									
2008	265.0	1,594.8	69.3	1,327.8	1,736.1	226.5	715.0	180.8	6,115.2
2009	358.0	772.6	79.2	1,121.8	1,821.9	177.4	918.8	42.9	5,292.6
Ontario									
2008	1,168.4	757.7	87.7	4,070.7	5,567.3	4,921.1	2,761.1	322.6	19,656.6
2009	1,408.1	319.5	78.2	3,777.4	5,629.5	3,615.7	3,033.1	388.8	18,250.4
Manitoba									
2008	86.1	22.6	7.3	300.5	533.8	144.9	142.3	9.1	1,246.7
2009	83.1	18.5	7.4	359.5	544.6	150.8	147.2	7.9	1,319.1
Saskatchewan									
2008	30.7	30.0	2.8	210.0	313.1	113.8	20.7	2.0	723.1
2009	30.8	33.4	2.2	256.6	320.5	61.8	26.3	0.6	732.2
Alberta									
2008	151.6	339.4	9.9	375.6	671.7	128.1	96.3	12.4	1,784.9
2009	155.8	202.7	10.3	422.5	771.5	72.5	104.1	10.8	1,750.2
British Columbia									
2008	327.8	308.4	54.8	647.2	1,084.8	501.0	476.4	13.7	3,414.2
2009	377.0	129.2	40.5	610.8	1,039.3	326.0	594.8	11.8	3,129.4
Yukon, Northwest Territories and Nunavut									
2008	3.1	1.6	0.0	0.1	0.6	0.0	0.0	0.3	5.7
2009	0.8	0.3	0.0	0.1	6.6	0.0	0.0	0.6	8.4
Total									
2008	2,091.8	4,465.2	242.3	7,128.1	10,055.1	6,341.1	4,238.5	544.8	35,106.9
2009	2,463.1	2,147.9	228.0	6,701.5	10,328.6	4,681.7	4,863.1	469.7	31,883.6

Table 9-2
Imports by province of clearance, customs basis, not seasonally adjusted — Year to date, January to March

	Agricultural and fishing products	Energy products	Forestry products	Industrial goods	Machinery and equipment	Automotive products	Consumer goods	Special transactions	Total
millions of dollars									
Newfoundland Labrador									
2008	8.6	986.5	0.0	15.9	8.9	0.4	1.6	4.0	1,025.9
2009	9.5	577.1	0.0	35.4	24.0	0.1	1.2	0.1	647.6
Prince Edward Island									
2008	0.3	0.0	0.1	0.2	0.9	0.0	5.9	0.0	7.4
2009	0.4	0.0	0.0	15.9	0.4	0.0	0.0	0.0	16.8
Nova Scotia									
2008	87.8	571.7	4.2	372.6	236.1	750.0	35.5	3.8	2,061.7
2009	83.1	334.3	3.1	228.3	302.6	530.4	45.0	7.0	1,533.8
New Brunswick									
2008	79.1	1,584.6	29.8	247.2	177.7	85.1	41.4	4.6	2,249.6
2009	78.2	1,023.7	28.1	205.5	195.4	61.2	42.7	5.9	1,640.8
Quebec									
2008	888.3	5,218.9	196.6	4,053.5	5,064.8	623.4	2,338.5	283.3	18,667.3
2009	1,100.4	2,743.4	221.1	3,400.2	5,128.0	467.9	2,926.6	116.8	16,104.4
Ontario									
2008	3,460.0	1,660.7	264.0	11,788.7	15,692.6	13,850.1	8,296.3	846.5	55,859.1
2009	4,031.7	1,311.1	229.2	10,764.6	15,263.7	8,929.8	8,800.7	975.9	50,306.7
Manitoba									
2008	239.9	62.1	20.6	830.5	1,436.5	428.8	388.7	23.7	3,430.8
2009	240.2	48.4	20.4	969.4	1,548.9	392.0	413.1	23.1	3,655.6
Saskatchewan									
2008	85.0	78.9	7.5	581.5	821.8	340.6	55.8	8.3	1,979.3
2009	85.3	98.6	6.0	703.7	873.4	227.6	64.0	7.4	2,065.9
Alberta									
2008	454.6	760.4	30.5	1,212.8	1,948.8	355.4	265.7	27.2	5,055.4
2009	450.6	875.2	27.7	1,479.3	2,084.1	205.1	294.2	31.5	5,447.7
British Columbia									
2008	982.6	674.9	169.2	1,801.1	2,869.4	1,406.1	1,559.5	35.4	9,498.2
2009	1,071.4	602.5	118.9	1,847.3	2,928.0	916.2	1,755.0	36.7	9,275.9
Yukon, Northwest Territories and Nunavut									
2008	3.1	5.9	0.0	0.3	8.6	0.5	0.1	0.3	18.7
2009	0.8	1.7	0.0	0.6	15.6	0.0	0.0	0.9	19.6
Total									
2008	6,289.3	11,604.6	722.5	20,904.2	28,266.1	17,840.5	12,989.1	1,237.2	99,853.5
2009	7,151.5	7,615.9	654.5	19,650.4	28,364.2	11,730.4	14,342.6	1,205.3	90,714.7

Technical notes

The Canadian international merchandise trade statistical program

I Introduction

The objective of this text is to provide a general overview of the Canadian International Merchandise Trade Statistical Program with special reference to concepts and definitions. The text is intended for the general user and simplicity is emphasized. More technical details can be obtained from the International Trade Division upon request.

II Conceptual framework

1. Objectives and coverage: The primary objective of the Canadian International Merchandise Trade Statistical Program is to measure the change in the stock of material resources of the country resulting from the movement of merchandise into or out of Canada. Information on imports and exports are inputs into the System of National Accounts particularly in the Balance of Payments and Gross Domestic Product, and are used in the formulation of trade and budgetary policies. Governments, importers, exporters, manufacturers and shipping companies use trade statistics to:

- monitor import penetration and export performance;
- monitor commodity price and volume changes;
- examine transport implications.

2. Trade statistics - Customs basis/Balance of Payments basis: Merchandise trade statistics are reported and presented on two different bases: Customs basis and Balance of Payment basis. (B.O.P.)

When goods are imported into or exported from Canada, declarations must be filed with Customs giving such information as description and value of the goods, origin and port of clearance of commodities and the mode of transport. Most of this information is required for the purposes of Customs Administration. Statistics developed from administrative records of Customs are commonly referred to as Customs based trade statistics.

Customs based trade statistics are more accurate at measuring imports than they are at measuring exports. This is the case because Customs are typically more vigilant with respect to goods entering the country than they are with goods leaving the country.

Customs based export statistics may understate and/or incorrectly portray the destination of exports. Export statistics are understated when the proper documentation is not filed with Customs. Exports are incorrectly portrayed when the country of final destination is inaccurately reported on the customs documentation - this occurs most frequently when goods are routed through an intermediary country before continuing on to their final destination.

Statistics Canada does not have a measure of undercoverage but periodically conducts reconciliation exercises with its major trading partners, excluding the United States.

On January 1st, 1990, Canada entered into a Memorandum of Understanding (MOU) with the United States concerning the exchange of import data. As a consequence, each administration is using the other's import data to replace its own export data. Canada's international merchandise trade statistics are, therefore, no longer derived exclusively from the administrative records of Canada Border Services Agency, but from United States Customs records as well.

Customs based information is adjusted to conform with the National Accounts concepts and definitions. The adjustments to derive Balance of Payments based trade data include trade definition, valuation and timing related adjustments. The principal difference between the two trade concepts is that Customs based merchandise trade statistics cover the physical movement of goods as they are reflected on customs documents, while Balance of Payments adjusted data are intended to cover all economic transactions between residents and non-residents which involve merchandise trade. This section describes the concepts and processes pertaining to the Customs based trade statistics only. (For further information on Balance of Payments adjusted data see the publication *"Canada's Balance of International Payments" Catalogue no. 67-001-XPB*).

3. System of trade: Canadian trade statistics are compiled according to the "General" system of trade as defined by the United Nations Statistical Office. Under this system, imports include all goods which have crossed Canada's territorial boundary, whether for immediate consumption in Canada or stored in bonded Customs warehouses. Domestic exports include goods grown, extracted or manufactured in Canada, including goods of foreign origin which have been materially transformed in Canada. Re-exports are exports of goods of foreign origin which have not been materially transformed in Canada, including foreign goods withdrawn for export from bonded customs warehouses. Total exports are the sum of Domestic exports and Re-exports. Thus the general trade system, in principal, presents all goods entering the country (imports) and all goods leaving the country (exports). It differs from the "Special" system of trade in the treatment of imported goods into Customs bonded warehouses. Under the "Special" system, these goods are counted only if and when they are withdrawn from Customs warehouses for home consumption. They are not counted in export statistics unless they have first cleared Customs.

Conceptually, under the "General" system, the statistical frontier coincides with the geographical boundary, while under the "Special" system, it coincides with the Customs boundary.

4. Valuation: For Customs purposes, imports are recorded at values established according to the provisions of the Customs Act, which, since January 1st, 1985, reflects valuation methods based on the General Agreement on Tariffs and Trade (GATT) Valuation Code System. It generally requires the value for duty of imported goods be equivalent to the transaction value or the price actually paid.

To determine the transaction value of imported goods, all transportation and associated costs arising in respect of the goods being appraised prior to and at the place of direct shipment to Canada, are to be added to the price of the goods. Therefore, Canadian imports are valued F.O.B. (Free on Board), place of direct shipment to Canada. It excludes freight and insurance costs in bringing the goods to Canada from the point of direct shipment.

To countries other than the United States, exports are, in principal, valued or recorded at the values declared on export documents which usually reflect the transaction value, i.e. actual selling price, or in the case of a non-arm's length transaction, the transfer price used for company accounting purposes. Canadian exports to overseas countries are valued at F.O.B. port of exit, including domestic freight charges to that point but net of discounts and allowances. As of January, 1990, Canadian exports to the U.S. are valued F.O.B. point of exit from Canada. Prior to 1990, they were valued F.O.B. place of lading net of freight charges, discounts and allowances.

5. Statistical period: The reference period is the calendar month and the calendar year. The closing of the statistical month for imports and Canadian exports to the United States is defined as the last calendar day of the month, based as closely as practicable on the date of clearance from Customs.

The closing of the statistical month for exports, to countries other than the United States, is also defined as the last calendar day of the month. Those export documents which are received too late for incorporation in the current month are assigned to the month the transaction took place. If a monthly summary report from a high volume exporter is not received on time, the data are imputed for the current month and revised with the trade value in the following statistical month.

6. Trading partner attribution (Country of origin/destination): Exports are attributed to the country, which is the last known destination of the goods at the time of export. Exports to the United States are attributed to the state of destination.

Imports are attributed to their country of origin, that is, the country in which the goods were grown, extracted or manufactured in accordance to the rules of origin administered by Canada Border Services Agency. Imports from the United States are attributed to the state of origin. Prior to 1988, most imports were attributed to the country of export/consignment with the exception of imports from Central and South America.

7. Principal trading areas: The “principal trading areas” are country groupings defined as follows:

United States: (includes trade with Puerto Rico and the U.S. Virgin Islands).

Japan:

E.U. (European Union): Austria, Belgium, Bulgaria, Cyprus, Czech Republic, Denmark, Estonia, Finland, France, Germany, Greece, Hungary, Ireland, Italy, Latvia, Lithuania, Luxembourg, Malta, Netherlands, Poland, Portugal, Romania, Slovakia, Slovenia, Spain, Sweden and United Kingdom.

Other O.E.C.D.: Australia, Canada, Iceland, Mexico, New Zealand, Norway, South Korea, Switzerland, and Turkey. (The E.U. countries, United States, and Japan are also members of O.E.C.D. - the Organization for Economic Co-operation and Development).

Other countries: This group includes all countries and territories other than the United States, Japan, E.U. and other O.E.C.D.

8. Legal framework: Import and export statistics with countries other than the United States are derived from information contained on administrative records collected by the Canada Border Services Agency under the Customs Act. Copies of these documents (or information therefrom) are sent to Statistics Canada in accordance with Section 25 of the Statistics Act. It follows that the disclosure of trade statistics is governed by both the Customs Act and the Statistics Act and is subject to the provisions of Section 17.(2)(a) of the latter. Disclosure of export statistics to the United States is now governed by a Memorandum of Understanding which provides for an exchange of detailed import statistics between Canada and the United States.

Questions concerning details of methods not covered by these notes should be addressed to the Marketing and Client Services Section, International Trade Division, Statistics Canada, Ottawa, Ontario, K1A 0T6.

Telephone: 1-800-294-5583 or within the area code 613-951-9647

Facsimile: 1-800-664-0055 or within the area code 613-951-0117

Internet: trade@statcan.gc.ca