

Catalogue no. 65-001-X

# Canadian International Merchandise Trade

February 2009



Statistics  
Canada

Statistique  
Canada

Canada

## How to obtain more information

For information about this product or the wide range of services and data available from Statistics Canada, visit our website at [www.statcan.gc.ca](http://www.statcan.gc.ca), e-mail us at [infostats@statcan.gc.ca](mailto:infostats@statcan.gc.ca), or telephone us, Monday to Friday from 8:30 a.m. to 4:30 p.m., at the following numbers:

### Statistics Canada's National Contact Centre

Toll-free telephone (Canada and the United States):

Inquiries line	1-800-263-1136
National telecommunications device for the hearing impaired	1-800-363-7629
Fax line	1-877-287-4369

Local or international calls:

Inquiries line	1-613-951-8116
Fax line	1-613-951-0581

### Depository Services Program

Inquiries line	1-800-635-7943
Fax line	1-800-565-7757

## To access this product

This product, Catalogue no. 65-001-X, is available free in electronic format. To obtain a single issue, visit our website at [www.statcan.gc.ca](http://www.statcan.gc.ca) and select "Publications."

## Standards of service to the public

Statistics Canada is committed to serving its clients in a prompt, reliable and courteous manner. To this end, Statistics Canada has developed *standards of service* that its employees observe. To obtain a copy of these service standards, please contact Statistics Canada toll-free at 1-800-263-1136. The service standards are also published on [www.statcan.gc.ca](http://www.statcan.gc.ca) under "About us" > "Providing services to Canadians."

Statistics Canada  
International Trade Division

# Canadian International Merchandise Trade

February 2009

Published by authority of the Minister responsible for Statistics Canada

© Minister of Industry, 2009

All rights reserved. The content of this electronic publication may be reproduced, in whole or in part, and by any means, without further permission from Statistics Canada, subject to the following conditions: that it be done solely for the purposes of private study, research, criticism, review or newspaper summary, and/or for non-commercial purposes; and that Statistics Canada be fully acknowledged as follows: Source (or "Adapted from", if appropriate): Statistics Canada, year of publication, name of product, catalogue number, volume and issue numbers, reference period and page(s). Otherwise, no part of this publication may be reproduced, stored in a retrieval system or transmitted in any form, by any means—electronic, mechanical or photocopy—or for any purposes without prior written permission of Licensing Services, Client Services Division, Statistics Canada, Ottawa, Ontario, Canada K1A 0T6.

April 2009

Catalogue no. 65-001-X, vol. 63, no. 2

ISSN 1480-8781

Frequency: Monthly

Ottawa

La version française de cette publication est disponible sur demande (n° 65-001-X au catalogue).

---

#### **Note of appreciation**

*Canada owes the success of its statistical system to a long standing partnership between Statistics Canada, the citizens of Canada, its businesses, governments and other institutions. Accurate and timely statistical information could not be produced without their continued cooperation and goodwill.*

# User information

---

## Symbols

The following standard symbols are used in Statistics Canada publications:

- . not available for any reference period
- .. not available for a specific reference period
- ... not applicable
- 0 true zero or a value rounded to zero
- 0<sup>s</sup> value rounded to 0 (zero) where there is a meaningful distinction between true zero and the value that was rounded
- p preliminary
- r revised
- x suppressed to meet the confidentiality requirements of the *Statistics Act*
- E use with caution
- F too unreliable to be published

## Note to Users

All totals are calculated from full figures and rounded independently; consequently, totals may not equal the sum of their components.

# Table of contents

---

<b>Highlights</b>	<b>5</b>
<b>Analysis</b>	<b>7</b>
<b>Statistical tables</b>	
1 Merchandise trade of Canada, balance of payments basis, seasonally adjusted	12
1-1 Current dollars	12
1-2 Constant dollars, 2002	13
1-3 Price indices (Laspeyres)	14
2 Exports by commodity groupings, balance of payments basis, seasonally adjusted	15
2-1 Current dollars	15
2-2 Constant dollars, 2002	17
3 Domestic exports to selected countries, customs basis, not seasonally adjusted	19
3-1 February	19
3-2 Year to date, January to February	20
4 Domestic exports by country, customs basis, not seasonally adjusted	21
5 Exports by province of origin, customs basis, not seasonally adjusted	25
5-1 February	25
5-2 Year to date, January to February	26
6 Imports by commodity groupings, balance of payments basis, seasonally adjusted	27
6-1 Current dollars	27
6-2 Constant dollars, 2002	29
7 Imports from selected countries, customs basis, not seasonally adjusted	31
7-1 February	31
7-2 Year to date, January to February	32
8 Imports by country, customs basis, not seasonally adjusted	33
9 Imports by province of clearance, customs basis, not seasonally adjusted	37
9-1 February	37
9-2 Year to date, January to February	38

**Table of contents – continued**

**Data quality, concepts and methodology**

Technical notes

39

# Highlights

---

## February 2009

Merchandise exports and imports both advanced in February following three months of rapid decline. Exports rose 5.2% to \$33.1 billion as all sectors increased and auto makers resumed production. Meanwhile, imports increased 1.1% to \$33.0 billion led by machinery and equipment. This resulted in a small trade surplus of \$126 million, up from a deficit of \$1.2 billion in January.

After leading the decline in January, exports of machinery and equipment and automotive products accounted for almost three-quarters of the gain in exports in February. The increase in total exports was due to a 7.0% increase in volume while prices declined 1.7%.

The February gain in imports was primarily supported by machinery and equipment and automotive products while weaknesses in energy products dampened the growth. Overall, both price and volume increased, 0.9% and 0.2% respectively.

Exports to the United States increased 5.0% on the strength of automotive products and precious metals. Imports rose 3.7%, largely reflecting increases in automotive products and aircraft.

As a result, Canada's merchandise trade surplus with the United States increased to \$3.4 billion in February from \$3.0 billion in January.

The trade deficit with countries other than the United States narrowed to \$3.3 billion from \$4.2 billion in January, as exports increased 5.9% while imports decreased 3.1%. Exports to China, Italy and Australia led the gain in exports to countries other than the United States.

### Note to readers

Merchandise trade is one component of the current account of Canada's balance of payments, which also includes trade in services, investment income and transfers.

International merchandise trade data by country are available on both a balance of payments and a customs basis for the United States, Japan and the United Kingdom. Trade data for all other individual countries are available on a customs basis only. Balance of payments data are derived from customs data by making adjustments for characteristics such as valuation, coverage, timing and residency. These adjustments are made to conform to the concepts and definitions of the Canadian System of National Accounts.

Constant dollars referred to in the text are calculated using the Laspeyres volume formula which is current dollars divided by Paasche indexes.

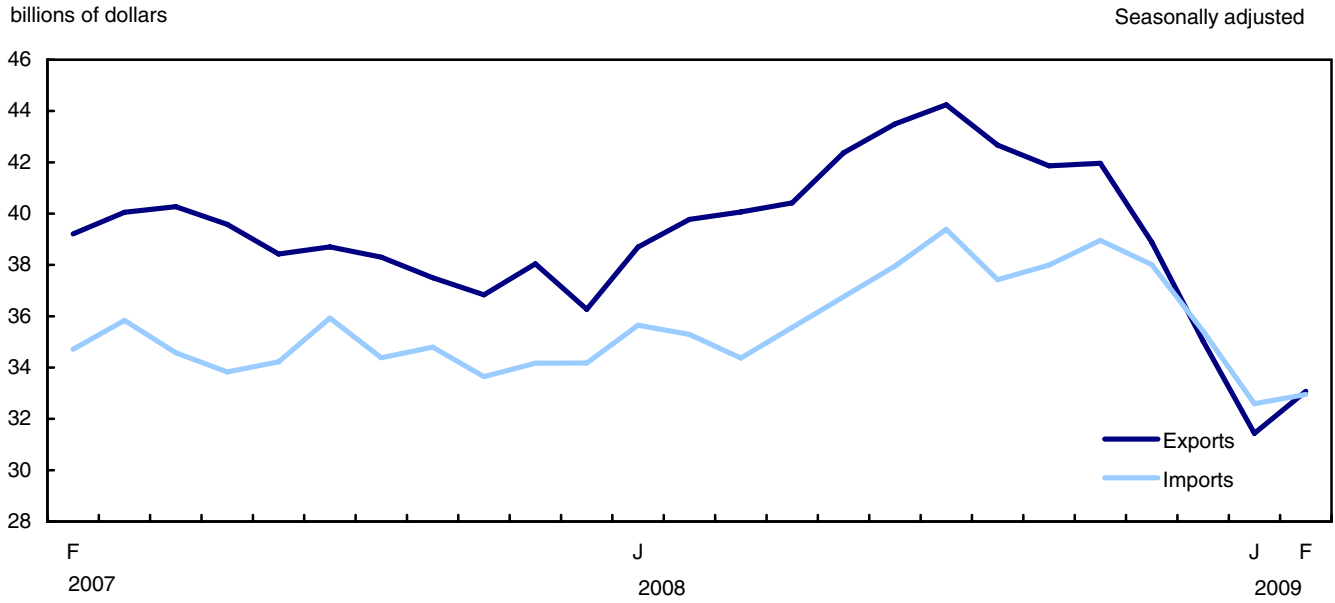
## Revisions

In general, merchandise trade data are revised on an ongoing basis for each month of the current year. Current and previous year revisions are reflected in both the customs and balance of payments based data. Revisions to customs based data for the previous year are also released on a quarterly basis.

Factors influencing revisions include late receipt of import and export documentation, incorrect information on customs forms, replacement of estimates with actual figures, changes in classification of merchandise based on more current information, and changes to seasonal adjustment factors.

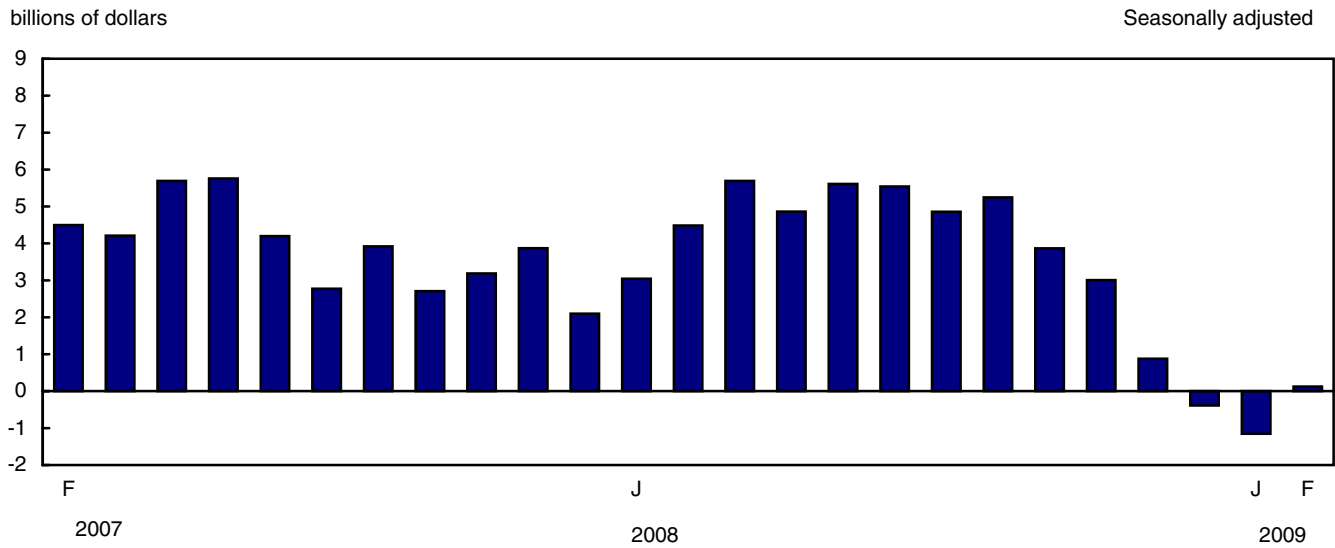
Revised data are available in the appropriate CANSIM tables.

**Chart 1**  
**Exports and imports**



**Note(s):** On a balance of payments basis.

**Chart 2**  
**Trade balance**



**Note(s):** On a balance of payments basis.



# Analysis

---

## Widespread increases in exports

Machinery and equipment which grew 8.4% to \$8.1 billion was the largest contributor to the increase in exports. The gain was mainly due to volume increases and followed two consecutive monthly declines. The growth in this sector was driven by a 27.3% surge in aircraft and other transportation equipment exports.

After falling to their lowest level in 17 years in January, exports of automotive products rose 19.8% to \$3.5 billion as Canadian car and truck production resumed at most plants in February. Exports of trucks jumped 28.2%, more than offsetting the losses sustained over the previous four months. Exports of motor vehicle parts and passenger autos also increased in February by 19.3% and 17.4% respectively. The increase in the automotive sector was largely the result of a volume gain.

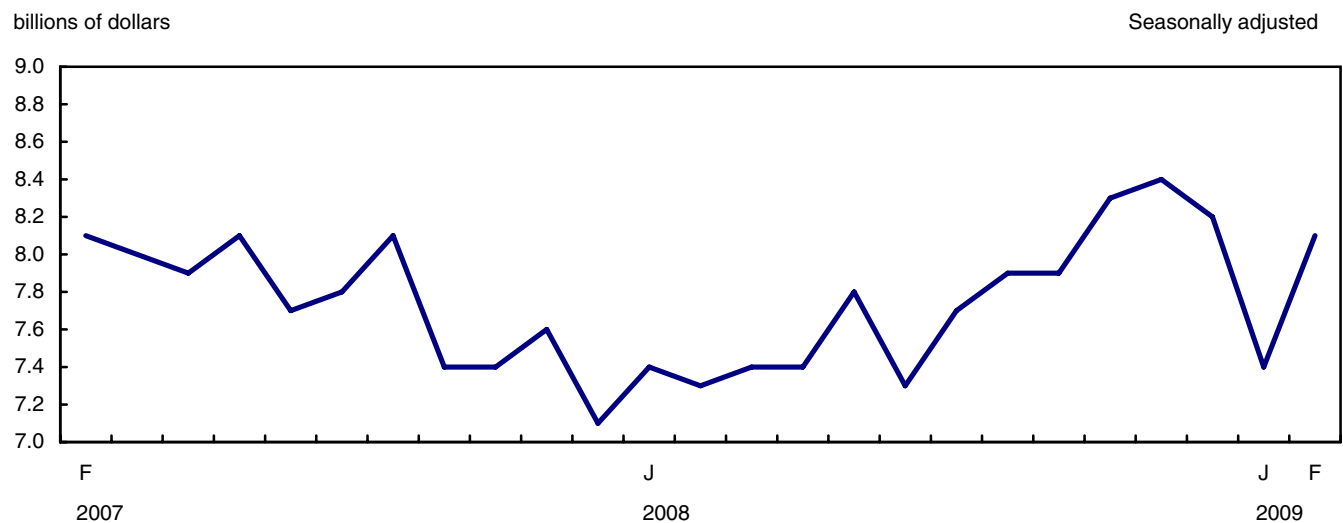
## Aircraft lead the gain in imports

Machinery and equipment led the growth in imports, rising 3.7% to \$10.1 billion. The growth was driven by a 27.9% rise in imports of aircraft and other transportation equipment. Softening the gain were industrial and agricultural machinery which continued declining for the third straight month.

Imports of automotive products were up 3.2% to \$4.1 billion as both price and volume increased. The gain was mainly attributable to imports of motor vehicle parts which increased 7.6% in February. This marked the first increase in the automotive sector in five months.

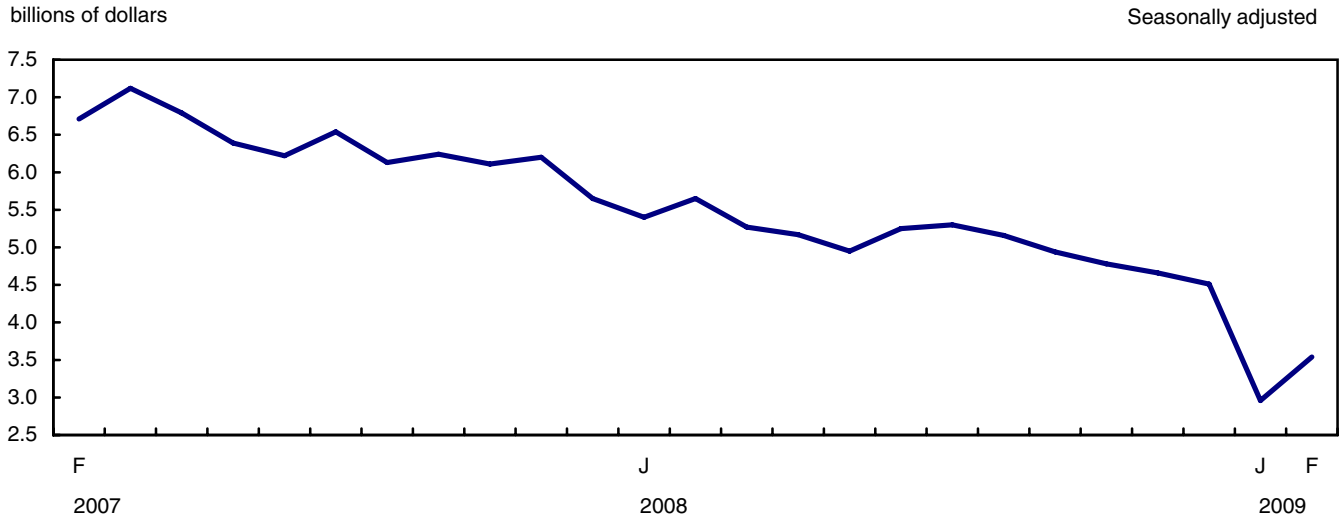
Imports of energy products contracted a further 7.8% to \$2.8 billion. This sector has been on a downward trend since July 2008 when the price of a barrel of oil reached nearly \$150 USD. The February decline was due to price and volume reductions. Crude petroleum imports, which slid 16.7% to \$1.3 billion, led the decrease.

**Chart 1**  
**Exports of machinery and equipment**



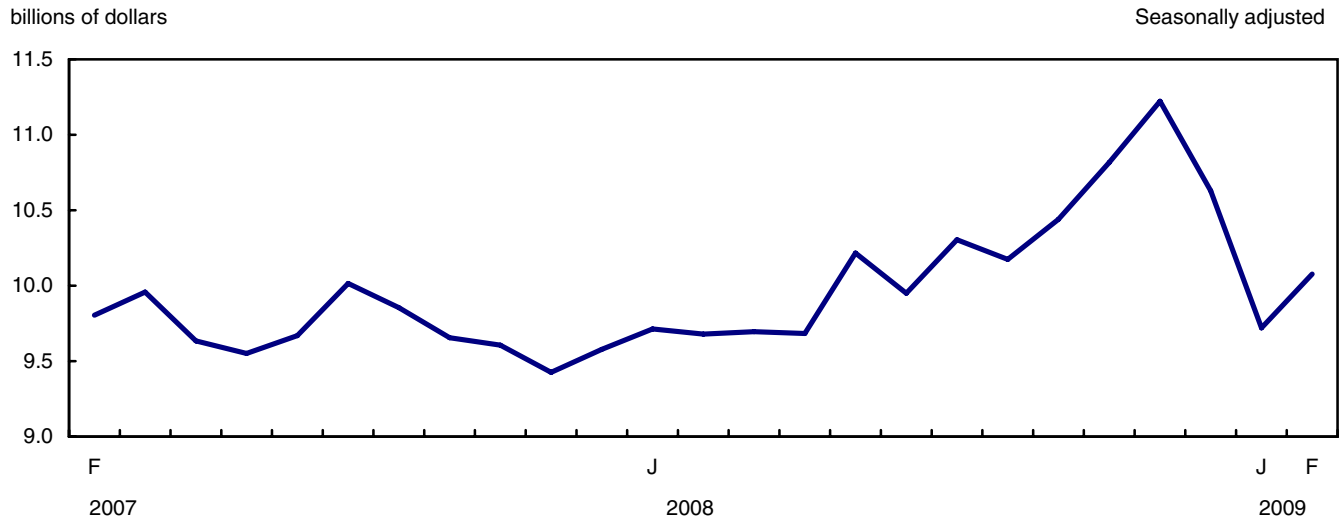
**Note(s):** On a balance of payments basis.

**Chart 2**  
**Exports of automobile products**



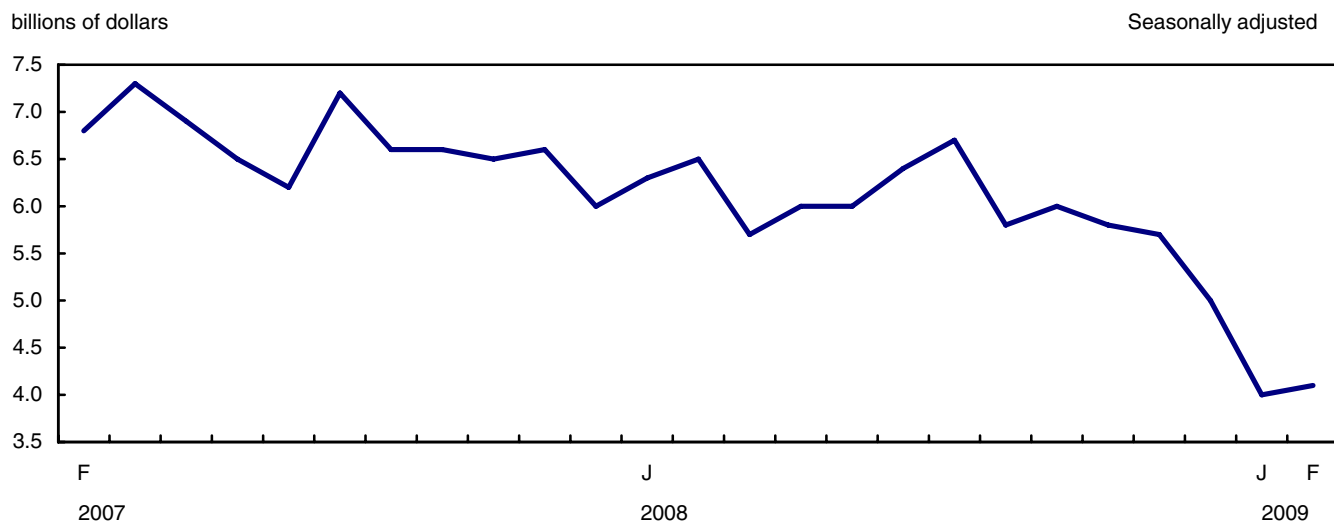
**Note(s):** On a balance of payments basis.

**Chart 3**  
**Imports of machinery and equipment**



**Note(s):** On a balance of payments basis.

**Chart 4**  
**Imports of automotive products**



**Note(s):** On a balance of payments basis.

**Text table 1**  
**Merchandise trade by principal trading area, balance of payments basis, seasonally adjusted**

	January	February	Change	Year to date		Year to date change	February		
	2009	2009		2008	2009		2009/2008		
	millions of dollars		percent		millions of dollars		percent		
<b>Export to:</b>									
United States	23,126	24,274	1,149	5.0	60,094	47,400	-12,694	-21.1	-20.7
Japan	905	908	2	0.2	1,808	1,813	5	0.3	-9.5
European Union <sup>1</sup>	2,908	2,816	-92	-3.1	6,281	5,724	-557	-8.9	-11.5
Other Organization for Economic Co-operation and Development <sup>2</sup>	1,253	1,334	81	6.5	2,832	2,587	-245	-8.7	-3.1
Other countries	3,247	3,745	497	15.3	7,459	6,992	-468	-6.3	3.5
<b>Total</b>	<b>31,439</b>	<b>33,077</b>	<b>1,638</b>	<b>5.2</b>	<b>78,475</b>	<b>64,516</b>	<b>-13,959</b>	<b>-17.8</b>	<b>-16.8</b>
<b>Imports from:</b>									
United States	20,097	20,849	752	3.7	44,933	40,946	-3,987	-8.9	-5.6
Japan	1,070	728	-342	-32.0	1,982	1,797	-185	-9.3	-27.3
European Union <sup>1</sup>	3,280	3,641	361	11.0	7,063	6,921	-142	-2.0	7.3
Other Organization for Economic Co-operation and Development <sup>2</sup>	2,221	1,907	-315	-14.2	4,322	4,128	-194	-4.5	-16.9
Other countries	5,923	5,826	-97	-1.6	12,645	11,749	-896	-7.1	-10.6
<b>Total</b>	<b>32,591</b>	<b>32,951</b>	<b>360</b>	<b>1.1</b>	<b>70,946</b>	<b>65,542</b>	<b>-5,404</b>	<b>-7.6</b>	<b>-6.6</b>
<b>Balance:</b>									
United States	3,028	3,425	396	...	15,160	6,453	-8,707	...	...
Japan	-164	180	344	...	-174	16	190	...	...
European Union <sup>1</sup>	-372	-825	-453	...	-782	-1,197	-415	...	...
Other Organization for Economic Co-operation and Development <sup>2</sup>	-968	-573	396	...	-1,490	-1,541	-51	...	...
Other countries	-2,676	-2,081	594	...	-5,186	-4,757	428	...	...
<b>Total</b>	<b>-1,152</b>	<b>125</b>	<b>1,277</b>	<b>...</b>	<b>7,528</b>	<b>-1,027</b>	<b>-8,555</b>	<b>...</b>	<b>...</b>

1. European Union includes: Austria, Belgium, Bulgaria, Cyprus, Czech Republic, Denmark, Estonia, Finland, France, Germany, Greece, Hungary, Ireland, Italy, Latvia, Lithuania, Luxembourg, Malta, Netherlands, Poland, Portugal, Romania, Slovakia, Slovenia, Spain, Sweden and United Kingdom. <sup>2</sup> Other Organization for Economic Co-operation and Development includes: Australia, Canada, Iceland, Mexico, New Zealand, Norway, South Korea, Switzerland and Turkey.

**Text table 2**  
**Reconciliation of customs and balance of payments trade data, not seasonally adjusted**

	2009		2008				2008
	February	January	December	November	October	September	Annual
millions of dollars							
<b>Exports</b>							
<b>Customs basis</b>	<b>29,994</b>	<b>29,079</b>	<b>34,380</b>	<b>38,627</b>	<b>44,425</b>	<b>41,974</b>	<b>484,369</b>
<b>Balance of payments adjustments</b>	<b>146</b>	<b>326</b>	<b>-676</b>	<b>-267</b>	<b>-880</b>	<b>263</b>	<b>5,121</b>
Valuation and residency							
Inland freight	481	471	531	627	653	629	6,994
Other valuation and residency	-1,487	-1,263	-2,351	-2,611	-2,630	-1,786	-17,554
Timing	149	37	7	-40	-9	16	-189
Coverage	1,003	1,081	1,137	1,757	1,106	1,404	15,870
<b>Balance of payments basis</b>	<b>30,140</b>	<b>29,405</b>	<b>33,704</b>	<b>38,360</b>	<b>43,545</b>	<b>42,237</b>	<b>489,490</b>
<b>Imports</b>							
<b>Customs basis</b>	<b>29,647</b>	<b>29,212</b>	<b>33,545</b>	<b>35,988</b>	<b>41,228</b>	<b>38,156</b>	<b>433,242</b>
<b>Balance of payments adjustments</b>	<b>708</b>	<b>701</b>	<b>552</b>	<b>1063</b>	<b>464</b>	<b>743</b>	<b>9,550</b>
Valuation and residency							
Inland freight	610	619	650	712	844	796	8,908
Other valuation and residency	-37	-39	-53	-70	-59	-36	-565
Timing	0	0	0	0	0	0	0
Coverage	135	121	-45	421	-321	-17	1,207
<b>Balance of payments basis</b>	<b>30,355</b>	<b>29,913</b>	<b>34,097</b>	<b>37,051</b>	<b>41,692</b>	<b>38,899</b>	<b>442,792</b>

# Statistical tables

---

---

**Table 1-1**  
**Merchandise trade of Canada, balance of payments basis, seasonally adjusted — Current dollars**

	Exports	Imports	Balance	Period to period change		
				Exports	Imports	Balance
				percent	percent	percent
	millions of dollars			percent		millions of dollars
2005	450,150	387,804	62,346	0.0	0.0	0
2006	453,732	404,253	49,480	0.8	4.2	-12,866
2007	463,051	415,006	48,046	2.1	2.7	-1,434
2008	489,490	442,792	46,698	5.7	6.7	-1,348
<b>2006</b>						
First quarter	112,971	97,885	15,086	-5.6	-1.5	-5,220
Second quarter	111,376	100,203	11,172	-1.4	2.4	-3,913
Third quarter	113,905	102,705	11,200	2.3	2.5	28
Fourth quarter	115,481	103,459	12,021	1.4	0.7	821
<b>2007</b>						
First quarter	119,112	105,273	13,839	3.1	1.8	1,818
Second quarter	118,279	102,629	15,650	-0.7	-2.5	1,811
Third quarter	114,509	105,108	9,401	-3.2	2.4	-6,249
Fourth quarter	111,151	101,996	9,155	-2.9	-3.0	-246
<b>2008</b>						
First quarter	118,537	105,317	13,221	6.6	3.3	4,065
Second quarter	126,286	110,272	16,014	6.5	4.7	2,794
Third quarter	128,781	114,813	13,968	2.0	4.1	-2,047
Fourth quarter	115,886	112,390	3,495	-10.0	-2.1	-10,472
<b>2008</b>						
January	38,697	35,653	3,044	6.7	4.3	947
February	39,778	35,293	4,484	2.8	-1.0	1,440
March	40,063	34,370	5,692	0.7	-2.6	1,208
April	40,420	35,559	4,861	0.9	3.5	-832
May	42,368	36,756	5,612	4.8	3.4	751
June	43,497	37,956	5,542	2.7	3.3	-70
July	44,245	39,389	4,856	1.7	3.8	-686
August	42,671	37,426	5,246	-3.6	-5.0	390
September	41,865	37,999	3,866	-1.9	1.5	-1,380
October	41,963	38,958	3,005	0.2	2.5	-860
November	38,890	38,013	877	-7.3	-2.4	-2,128
December	35,033	35,420	-387	-9.9	-6.8	-1,264
<b>2009</b>						
January	31,439	32,591	-1,152	-10.3	-8.0	-765
February	33,077	32,951	125	5.2	1.1	1,277

**Note(s):** Due to rounding, monthly data may not add up to quarterly data and quarterly data may not add up to annual data.

**Table 1-2**  
**Merchandise trade of Canada, balance of payments basis, seasonally adjusted — Constant dollars, 2002**

	Exports	Imports	Balance	Period to period change	
				Exports	Imports
	millions of dollars			percent	
2005	439,300	431,787	7,513	0.0	0.0
2006	443,301	456,702	-13,401	0.9	5.8
2007	449,825	483,340	-33,516	1.5	5.8
2008	414,857	485,244	-70,387	-7.8	0.4
<b>2006</b>					
First quarter	111,623	111,033	590	-1.7	-0.3
Second quarter	109,737	113,858	-4,121	-1.7	2.5
Third quarter	110,143	115,604	-5,461	0.4	1.5
Fourth quarter	111,798	116,206	-4,408	1.5	0.5
<b>2007</b>					
First quarter	112,963	116,645	-3,682	1.0	0.4
Second quarter	113,281	117,536	-4,255	0.3	0.8
Third quarter	112,887	123,814	-10,927	-0.3	5.3
Fourth quarter	110,694	125,345	-14,651	-1.9	1.2
<b>2008</b>					
First quarter	108,328	123,563	-15,235	-2.1	-1.4
Second quarter	105,915	124,078	-18,163	-2.2	0.4
Third quarter	103,978	123,885	-19,907	-1.8	-0.2
Fourth quarter	96,636	113,719	-17,083	-7.1	-8.2
<b>2008</b>					
January	35,995	41,683	-5,687	1.7	1.8
February	36,680	41,623	-4,943	1.9	-0.1
March	35,653	40,257	-4,604	-2.8	-3.3
April	35,002	40,459	-5,457	-1.8	0.5
May	35,722	41,979	-6,257	2.1	3.8
June	35,191	41,640	-6,449	-1.5	-0.8
July	35,361	42,908	-7,546	0.5	3.0
August	34,558	40,358	-5,799	-2.3	-5.9
September	34,059	40,619	-6,561	-1.4	0.6
October	33,194	39,327	-6,133	-2.5	-3.2
November	32,402	38,403	-6,001	-2.4	-2.3
December	31,041	35,989	-4,948	-4.2	-6.3
<b>2009</b>					
January	28,122	33,357	-5,235	-9.4	-7.3
February	30,087	33,424	-3,337	7.0	0.2

**Note(s):** Due to rounding, monthly data may not add up to quarterly data and quarterly data may not add up to annual data.

**Table 1-3**  
**Merchandise trade of Canada, balance of payments basis, seasonally adjusted — Price indices (Laspeyres)**

	2002=100			Period to period change		
	Exports	Imports	Terms of trade	Exports	Imports	Terms of trade
	millions of dollars			percent		
2005	104.6	92.2	113.5	0.0	0.0	0.0
2006	104.6	92.8	112.8	0.0	0.7	-0.6
2007	106.9	91.5	116.8	2.2	-1.3	3.5
2008	116.2	97.7	119	8.7	6.7	2.0
<b>2006</b>						
First quarter	102.2	91.9	111.1	-6.0	-0.2	-5.8
Second quarter	104.4	92.1	113.4	2.1	0.1	2.0
Third quarter	105.7	93.5	113.1	1.3	1.5	-0.3
Fourth quarter	106.3	93.5	113.7	0.6	0.0	0.6
<b>2007</b>						
First quarter	108.5	95.2	114	2.0	1.8	0.2
Second quarter	109	92.9	117.3	0.5	-2.4	2.9
Third quarter	105.4	90.3	116.6	-3.3	-2.7	-0.6
Fourth quarter	104.9	87.8	119.5	-0.4	-2.8	2.4
<b>2008</b>						
First quarter	110.7	90.5	122.3	5.6	3.1	2.5
Second quarter	118.2	95.2	124.2	6.8	5.2	1.6
Third quarter	121.9	101.1	120.6	3.1	6.2	-3.1
Fourth quarter	113.9	103.8	109.6	-6.6	2.7	-9.3
<b>2008</b>						
January	109.8	89.9	122.1	3.3	1.7	1.6
February	110.1	90.2	122	0.3	0.3	-0.1
March	113.1	91.3	123.9	2.7	1.2	1.6
April	116.1	93.3	124.4	2.6	2.2	0.4
May	118.4	94.6	125.1	2.0	1.4	0.6
June	120.8	97.8	123.5	2.0	3.3	-1.3
July	123.7	99.5	124.3	2.4	1.8	0.6
August	121.5	101.9	119.3	-1.7	2.4	-4.1
September	120	101.8	117.8	-1.3	0.0	-1.2
October	121.7	104.8	116.2	1.4	2.9	-1.5
November	116.6	104.2	112	-4.2	-0.6	-3.6
December	111.5	102.5	108.8	-4.4	-1.6	-2.8
<b>2009</b>						
January	110	100.8	109.1	-1.4	-1.7	0.3
February	109.3	101.5	107.7	-0.6	0.7	-1.3

**Note(s):** Due to rounding, monthly data may not add up to quarterly data and quarterly data may not add up to annual data.



**Table 2-1**  
**Exports by commodity groupings, balance of payments basis, seasonally adjusted — Current dollars**

	Janvier	February	Change	Year to date		Year to date change	February		
	2009	2009		2008	2009		2009/2008	2009/2008	
	millions of dollars		percent		millions of dollars		percent		
<b>Total</b>	<b>31,439</b>	<b>33,077</b>	<b>1,638</b>	<b>5.2</b>	<b>78,475</b>	<b>64,516</b>	<b>-13,959</b>	<b>-17.8</b>	<b>-16.8</b>
<b>Agricultural and fishing products</b>	<b>3,381</b>	<b>3,446</b>	<b>65</b>	<b>1.9</b>	<b>6,369</b>	<b>6,827</b>	<b>458</b>	<b>7.2</b>	<b>8.8</b>
Wheat	570	559	-11	-1.9	969	1,129	160	16.5	20.8
Other agricultural and fishing products	2,811	2,887	76	2.7	5,400	5,698	298	5.5	6.7
Live animals	164	175	12	7.1	424	339	-85	-20.0	-15.6
Fish and fish preparations	348	354	6	1.7	676	703	27	3.9	1.6
Barley	49	60	10	21.3	189	109	-81	-42.6	-40.2
Wheat flour	7	7	0	-4.8	15	13	-2	-12.4	-16.5
Other cereals unmilled	62	64	2	2.8	111	126	15	13.8	11.2
Other cereal preparations	246	266	20	8.1	433	511	78	18.0	21.8
Meat and meat preparations	411	399	-12	-2.8	649	810	161	24.7	20.1
Alcoholic beverages	61	66	5	8.1	139	128	-12	-8.3	0.2
Other food, feed, beverages and tobacco	967	992	26	2.7	1,723	1,959	236	13.7	17.8
Rapeseed	269	284	15	5.5	667	553	-115	-17.2	-11.0
Other crude vegetable products	228	220	-7	-3.2	373	448	75	20.1	6.8
<b>Energy products</b>	<b>6,421</b>	<b>6,458</b>	<b>38</b>	<b>0.6</b>	<b>19,273</b>	<b>12,879</b>	<b>-6,394</b>	<b>-33.2</b>	<b>-35.6</b>
Crude petroleum	2,511	2,613	102	4.1	9,652	5,123	-4,528	-46.9	-48.5
Natural gas	1,972	1,654	-318	-16.1	5,204	3,625	-1,579	-30.3	-40.5
Other energy products	1,939	2,192	254	13.1	4,417	4,131	-287	-6.5	1.1
Coal and other bituminous substances	358	455	97	27.0	393	814	421	107.2	140.1
Petroleum and coal products	1,282	1,419	138	10.7	3,423	2,701	-722	-21.1	-15.5
Electricity	298	317	19	6.3	601	616	15	2.4	5.7
<b>Forestry products</b>	<b>1,762</b>	<b>1,852</b>	<b>90</b>	<b>5.1</b>	<b>4,267</b>	<b>3,614</b>	<b>-654</b>	<b>-15.3</b>	<b>-14.7</b>
Lumber and sawmill products	563	587	24	4.4	1,560	1,150	-410	-26.3	-24.9
Other crude wood products	42	47	5	11.1	105	89	-16	-15.1	-8.8
Lumber	320	330	10	3.1	904	650	-253	-28.0	-27.3
Other wood fabricated materials	200	210	10	5.0	551	410	-141	-25.5	-24.1
Wood pulp and other wood products	448	439	-9	-2.1	1,132	886	-246	-21.7	-26.0
Newsprint and other paper and paperboard	751	826	75	10.0	1,576	1,577	2	0.1	3.8
Newsprint paper	419	443	24	5.8	824	862	39	4.7	4.3
Other paper and paperboard	332	383	51	15.2	752	715	-37	-4.9	3.2
<b>Industrial goods and materials</b>	<b>6,840</b>	<b>7,057</b>	<b>216</b>	<b>3.2</b>	<b>18,000</b>	<b>13,897</b>	<b>-4,104</b>	<b>-22.8</b>	<b>-22.2</b>
Metal ores	707	810	103	14.6	2,254	1,517	-738	-32.7	-31.3
Iron ores, concentrates and scrap	342	346	3	1.0	729	688	-41	-5.6	-13.2
Copper ores, concentrates and scrap	37	88	51	139.8	261	125	-137	-52.3	-44.3
Nickel ores, concentrates and scrap	136	126	-10	-7.1	621	262	-359	-57.8	-61.3
Zinc ores, concentrates and scrap	11	18	7	68.2	68	29	-38	-56.7	44.7
Other ores, concentrates and scrap	181	232	51	28.3	575	412	-162	-28.2	-18.2
Chemicals, plastics and fertilizers	2,527	2,418	-109	-4.3	5,541	4,945	-596	-10.8	-11.1
Inorganic chemicals	436	443	7	1.5	837	879	42	5.0	30.0
Organic chemicals	415	380	-34	-8.3	1,226	795	-431	-35.1	-37.6
Fertilizers and fertilizer materials	567	479	-88	-15.6	876	1,047	171	19.5	5.6
Synthetic rubber and plastics	869	864	-5	-0.6	2,069	1,733	-336	-16.2	-18.1
Other chemical products	240	252	12	5.1	533	492	-42	-7.8	-3.6
Metals and alloys	2,208	2,377	168	7.6	6,874	4,585	-2,288	-33.3	-33.4
Primary iron and steel	13	25	12	92.1	176	37	-139	-78.8	-73.9
Steel bars, rods, plates, sheets	273	323	50	18.3	760	596	-164	-21.6	-14.9
Other iron and steel and alloys	230	230	0	-0.1	611	460	-151	-24.7	-27.3
Aluminum including alloys	631	534	-97	-15.3	1,426	1,165	-262	-18.3	-25.9
Copper and alloys	172	206	34	19.8	746	378	-368	-49.4	-47.4
Nickel and alloys	189	196	7	3.9	768	385	-383	-49.9	-44.6
Precious metals and alloys	556	726	170	30.6	1,826	1,281	-545	-29.8	-29.4
Zinc and alloys	82	81	-1	-1.3	297	162	-135	-45.4	-44.8
Other non-ferrous metals and alloys	64	57	-7	-11.1	262	121	-141	-54.0	-58.9

Table 2-1 – continued

## Exports by commodity groupings, balance of payments basis, seasonally adjusted — Current dollars

	Janvier	February	Change	Year to date		Year to date change		February	
	2009	2009		2008	2009	2008	2009	2009/2008	
	millions of dollars		percent		millions of dollars		percent		
Other industrial goods and materials	1,398	1,452	53	3.8	3,331	2,850	-481	-14.4	-9.3
Asbestos unmanufactured	4	5	1	19.6	9	10	1	12.5	11.8
Other crude animal products	62	68	6	9.4	120	130	11	8.9	27.1
Other crude non-metallic minerals	292	297	5	1.8	781	589	-192	-24.6	-15.1
Other crude materials, inedible	45	45	0	1.1	92	90	-2	-2.7	1.4
Metal fabricated basic products	388	394	6	1.6	891	782	-109	-12.2	-11.6
Textile fabricated materials	175	184	9	5.1	408	358	-50	-12.2	-9.0
Non-metallic mineral basic products	175	186	11	6.3	393	361	-31	-7.9	-4.4
Other fabricated materials	258	273	15	5.8	639	530	-108	-17.0	-11.2
<b>Machinery and equipment</b>	<b>7,427</b>	<b>8,053</b>	<b>626</b>	<b>8.4</b>	<b>14,717</b>	<b>15,481</b>	<b>763</b>	<b>5.2</b>	<b>10.0</b>
Industrial and agricultural machinery	1,958	1,889	-69	-3.5	3,660	3,847	186	5.1	2.0
Industrial machinery	1,779	1,712	-67	-3.8	3,358	3,491	133	4.0	0.7
Agricultural machinery includ. tractors	178	177	-2	-0.9	302	355	53	17.6	16.3
Aircraft and other transportation equipment	1,559	1,984	425	27.3	3,290	3,544	253	7.7	18.8
Aircraft, engines, parts	1,276	1,649	373	29.2	2,422	2,925	503	20.8	34.9
Other transportation equipment	283	336	52	18.4	869	619	-250	-28.8	-25.0
Other machinery and equipment	3,910	4,180	269	6.9	7,766	8,090	324	4.2	10.1
Television, telecommunication equipment	889	928	39	4.4	1,525	1,817	292	19.2	25.8
Office machines and equipment	452	474	21	4.7	985	926	-59	-6.0	0.9
Other equipment and tools	1,720	1,852	131	7.6	3,719	3,572	-147	-4.0	-0.4
Other end products, inedible	849	927	78	9.2	1,538	1,776	238	15.5	26.9
<b>Automotive products</b>	<b>2,957</b>	<b>3,542</b>	<b>585</b>	<b>19.8</b>	<b>11,046</b>	<b>6,500</b>	<b>-4,546</b>	<b>-41.2</b>	<b>-37.3</b>
Passenger autos and chassis	1,433	1,682	249	17.4	5,932	3,115	-2,817	-47.5	-45.4
Trucks and other motor vehicles	470	603	133	28.2	1,417	1,073	-344	-24.3	-14.8
Motor vehicle parts	1,054	1,257	203	19.3	3,697	2,311	-1,385	-37.5	-32.4
<b>Other consumer goods</b>	<b>1,587</b>	<b>1,623</b>	<b>36</b>	<b>2.3</b>	<b>2,709</b>	<b>3,210</b>	<b>501</b>	<b>18.5</b>	<b>22.6</b>
<b>Special transactions trade</b>	<b>618</b>	<b>607</b>	<b>-11</b>	<b>-1.7</b>	<b>1,218</b>	<b>1,226</b>	<b>8</b>	<b>0.7</b>	<b>-0.8</b>
<b>Unallocated balance of payments adjustments</b>	<b>446</b>	<b>437</b>	<b>-8</b>	<b>-1.9</b>	<b>876</b>	<b>883</b>	<b>7</b>	<b>0.8</b>	<b>-1.5</b>

**Table 2-2**  
**Exports by commodity groupings, balance of payments basis, seasonally adjusted — Constant dollars, 2002**

	January	February	Change	Year to date		Year to date change	February		
	2009	2009		2008	2009				
	millions of dollars		percent		millions of dollars		percent		
<b>Total</b>	<b>28,122</b>	<b>30,087</b>	<b>1,965</b>	<b>7.0</b>	<b>72,675</b>	<b>58,209</b>	<b>-14,466</b>	<b>-19.9</b>	<b>-18.0</b>
<b>Agricultural and fishing products</b>	<b>3,060</b>	<b>3,136</b>	<b>76</b>	<b>2.5</b>	<b>6,147</b>	<b>6,196</b>	<b>48</b>	<b>0.8</b>	<b>4.8</b>
Wheat	438	456	18	4.2	605	894	288	47.6	72.2
Other agricultural and fishing products	2,622	2,680	58	2.2	5,542	5,302	-240	-4.3	-1.7
Live animals	185	199	14	7.8	534	384	-151	-28.2	-22.4
Fish and fish preparations	380	384	4	1.1	786	764	-22	-2.8	-6.1
Barley	34	42	8	24.7	132	76	-56	-42.6	-35.7
Wheat flour	6	6	0	-4.6	11	12	0	3.3	4.1
Other cereals unmilled	46	48	2	5.4	110	95	-15	-13.8	-10.6
Other cereal preparations	197	208	12	5.9	426	405	-21	-4.8	-2.3
Meat and meat preparations	422	410	-11	-2.7	816	832	17	2.0	1.0
Alcoholic beverages	101	106	5	4.6	227	207	-20	-8.9	-0.8
Other food, feed, beverages and tobacco	827	847	20	2.4	1,701	1,674	-27	-1.6	3.6
Rapeseed	240	245	5	2.3	485	485	0	0.0	10.4
Other crude vegetable products	186	184	-2	-0.9	315	370	55	17.6	8.0
<b>Energy products</b>	<b>4,354</b>	<b>4,681</b>	<b>327</b>	<b>7.5</b>	<b>9,452</b>	<b>9,035</b>	<b>-418</b>	<b>-4.4</b>	<b>-3.8</b>
Crude petroleum	1,793	1,812	19	1.1	3,849	3,605	-245	-6.4	-11.0
Natural gas	1,459	1,502	43	2.9	3,233	2,960	-273	-8.4	-9.3
Other energy products	1,102	1,367	265	24.0	2,370	2,470	100	4.2	16.4
Coal and other bituminous substances	84	100	16	18.5	245	184	-61	-25.1	-17.3
Petroleum and coal products	793	985	193	24.3	1,658	1,778	120	7.2	20.3
Electricity	225	282	57	25.3	467	508	41	8.8	20.3
<b>Forestry products</b>	<b>2,006</b>	<b>2,148</b>	<b>141</b>	<b>7.0</b>	<b>5,341</b>	<b>4,154</b>	<b>-1,187</b>	<b>-22.2</b>	<b>-21.8</b>
Lumber and sawmill products	724	792	68	9.4	2,091	1,516	-575	-27.5	-26.7
Other crude wood products	59	55	-4	-7.4	140	114	-26	-18.6	-28.4
Lumber	452	513	61	13.4	1,317	965	-352	-26.7	-24.5
Other wood fabricated materials	213	224	11	5.3	635	437	-197	-31.1	-31.0
Wood pulp and other wood products	586	589	3	0.5	1,365	1,175	-189	-13.9	-17.3
Newsprint and other paper and paperboard	696	767	71	10.2	1,886	1,463	-422	-22.4	-19.6
Newsprint paper	373	390	17	4.5	986	764	-223	-22.6	-23.4
Other paper and paperboard	323	377	54	16.8	899	700	-200	-22.2	-15.3
<b>Industrial goods and materials</b>	<b>5,038</b>	<b>5,207</b>	<b>169</b>	<b>3.4</b>	<b>13,039</b>	<b>10,245</b>	<b>-2,794</b>	<b>-21.4</b>	<b>-19.5</b>
Metal ores	423	471	48	11.3	1,171	895	-276	-23.6	-19.7
Iron ores, concentrates and scrap	128	126	-2	-1.7	445	255	-190	-42.7	-46.8
Copper ores, concentrates and scrap	21	52	31	144.5	89	74	-15	-16.9	1.2
Nickel ores, concentrates and scrap	105	89	-16	-15.1	256	194	-62	-24.3	-33.4
Zinc ores, concentrates and scrap	8	15	7	85.1	33	23	-10	-29.4	146.1
Other ores, concentrates and scrap	161	189	28	17.4	348	349	1	0.2	18.8
Chemicals, plastics and fertilizers	1,760	1,742	-18	-1.0	4,164	3,502	-662	-15.9	-17.0
Inorganic chemicals	199	198	0	-0.1	395	397	2	0.4	6.9
Organic chemicals	350	321	-28	-8.1	652	671	20	3.0	-4.3
Fertilizers and fertilizer materials	188	161	-27	-14.6	549	348	-201	-36.5	-41.7
Synthetic rubber and plastics	752	782	30	4.0	1,920	1,533	-387	-20.1	-20.5
Other chemical products	272	280	8	2.9	648	552	-96	-14.8	-12.1
Metals and alloys	1,699	1,732	33	1.9	4,410	3,431	-980	-22.2	-23.5
Primary iron and steel	8	13	6	73.5	123	21	-102	-82.9	-78.8
Steel bars, rods, plates, sheets	201	226	26	12.7	693	427	-266	-38.4	-33.8
Other iron and steel and alloys	159	179	20	12.6	541	338	-203	-37.5	-34.8
Aluminum including alloys	723	645	-78	-10.8	1,320	1,368	48	3.6	-2.7
Copper and alloys	112	129	17	14.8	266	241	-25	-9.6	-6.8
Nickel and alloys	131	138	7	5.5	279	269	-10	-3.7	2.5
Precious metals and alloys	254	295	41	16.0	945	550	-396	-41.9	-43.8
Zinc and alloys	72	73	0	0.4	157	145	-12	-7.5	-7.4
Other non-ferrous metals and alloys	39	34	-5	-12.6	85	73	-13	-14.9	-23.7

Table 2-2 – continued

## Exports by commodity groupings, balance of payments basis, seasonally adjusted — Constant dollars, 2002

	January 2009	February 2009	Change	Year to date		Year to date change		February 2009/2008	
	millions of dollars			percent		millions of dollars		percent	
				2008	2009				
Other industrial goods and materials	1,155	1,262	107	9.2	3,294	2,418	-876	-26.6	-16.9
Asbestos unmanufactured	5	6	1	24.0	10	10	0	5.0	6.5
Other crude animal products	70	80	10	14.3	135	150	15	11.2	27.9
Other crude non-metallic minerals	238	289	51	21.6	964	527	-437	-45.4	-25.1
Other crude materials, inedible	43	45	1	2.9	90	88	-1	-1.6	3.2
Metal fabricated basic products	297	307	10	3.2	765	604	-161	-21.1	-20.2
Textile fabricated materials	158	167	10	6.2	449	325	-124	-27.7	-24.9
Non-metallic mineral basic products	142	145	3	1.9	350	287	-63	-18.1	-16.7
Other fabricated materials	203	224	21	10.3	531	428	-104	-19.5	-6.9
<b>Machinery and equipment</b>	<b>7,816</b>	<b>8,418</b>	<b>602</b>	<b>7.7</b>	<b>17,297</b>	<b>16,234</b>	<b>-1,063</b>	<b>-6.1</b>	<b>-2.3</b>
Industrial and agricultural machinery	1,821	1,730	-91	-5.0	3,606	3,552	-55	-1.5	-5.3
Industrial machinery	1,657	1,569	-88	-5.3	3,296	3,227	-70	-2.1	-6.1
Agricultural machinery includ. tractors	164	161	-4	-2.2	310	325	15	4.8	2.9
Aircraft and other transportation equipment	1,789	2,251	462	25.8	4,287	4,041	-246	-5.7	2.3
Aircraft, engines, parts	1,516	1,931	415	27.4	3,342	3,448	106	3.2	12.8
Other transportation equipment	273	320	47	17.2	945	593	-352	-37.3	-34.5
Other machinery and equipment	4,205	4,436	231	5.5	9,403	8,641	-762	-8.1	-3.3
Television, telecommunication equipment	1,024	1,066	43	4.2	1,964	2,090	127	6.4	11.6
Office machines and equipment	918	940	22	2.4	2,382	1,858	-523	-22.0	-17.7
Other equipment and tools	1,571	1,709	138	8.8	3,645	3,279	-366	-10.0	-5.7
Other end products, inedible	693	721	28	4.1	1,413	1,414	1	0.1	6.2
<b>Automotive products</b>	<b>3,366</b>	<b>4,003</b>	<b>636</b>	<b>18.9</b>	<b>15,458</b>	<b>7,369</b>	<b>-8,089</b>	<b>-52.3</b>	<b>-50.1</b>
Passenger autos and chassis	1,768	2,046	278	15.7	9,347	3,813	-5,534	-59.2	-58.6
Trucks and other motor vehicles	517	679	162	31.4	1,952	1,195	-757	-38.8	-31.9
Motor vehicle parts	1,082	1,279	196	18.2	4,159	2,361	-1,798	-43.2	-38.6
<b>Other consumer goods</b>	<b>1,535</b>	<b>1,564</b>	<b>29</b>	<b>1.9</b>	<b>2,673</b>	<b>3,099</b>	<b>426</b>	<b>15.9</b>	<b>19.8</b>
<b>Special transactions trade</b>	<b>542</b>	<b>543</b>	<b>1</b>	<b>0.2</b>	<b>1,091</b>	<b>1,086</b>	<b>-6</b>	<b>-0.5</b>	<b>-1.7</b>
<b>Unallocated balance of payments   adjustments</b>	<b>405</b>	<b>388</b>	<b>-18</b>	<b>-4.4</b>	<b>2,177</b>	<b>793</b>	<b>-1,384</b>	<b>-63.6</b>	<b>-65.1</b>

**Table 3-1**  
**Domestic exports to selected countries, customs basis, not seasonally adjusted — February**

	Agricultural and fishing products	Energy products	Forestry products	Industrial goods	Machinery and equipment	Automotive products	Consumer goods	Special transactions	Total
millions of dollars									
<b>United States</b>									
2008	1,453.0	8,756.0	1,381.6	5,081.6	4,017.2	5,271.6	760.2	546.5	27,267.6
2009	1,608.2	6,149.3	1,224.5	3,790.4	4,207.7	3,037.1	882.7	472.4	21,372.4
<b>Mexico</b>									
2008	66.6	3.9	19.0	73.4	59.4	88.6	3.3	0.2	314.4
2009	77.6	0.6	7.0	65.1	68.7	58.9	2.9	0.8	281.5
<b>Japan</b>									
2008	292.8	75.5	133.4	190.2	42.2	3.1	10.2	0.2	747.6
2009	204.2	173.2	86.4	73.1	86.1	2.8	22.0	1.1	649.1
<b>European Union</b>									
<b>Germany</b>									
2008	13.2	18.2	13.3	69.1	113.2	3.5	12.5	1.6	244.6
2009	11.9	0.1	12.4	30.6	118.7	3.1	10.0	3.4	190.1
<b>France</b>									
2008	12.8	42.8	24.0	28.0	95.3	5.9	33.1	0.5	242.4
2009	12.2	0.1	13.0	82.1	110.3	2.4	27.3	2.7	250.1
<b>United Kingdom</b>									
2008	46.7	1.7	27.4	825.6	194.2	6.9	17.1	2.1	1,121.8
2009	24.4	0.9	27.9	539.5	95.0	2.9	71.0	4.8	766.4
<b>Italy</b>									
2008	19.9	8.9	34.1	115.4	36.9	0.7	4.1	0.3	220.2
2009	19.2	18.4	20.3	53.6	68.7	0.8	5.0	0.1	186.1
<b>Other European Union</b>									
2008	92.9	84.8	47.1	329.2	196.5	24.9	39.4	1.9	816.8
2009	56.4	78.4	26.9	152.2	241.5	13.3	72.7	3.3	644.8
<b>Total</b>									
2008	185.5	156.4	145.9	1,367.2	636.2	41.9	106.2	6.4	2,645.7
2009	124.0	98.0	100.6	858.1	634.2	22.4	186.0	14.2	2,037.4
<b>Newly industrialized countries</b>									
<b>South Korea</b>									
2008	32.2	41.4	46.4	80.1	27.7	0.7	4.4	0.4	233.2
2009	25.7	85.4	30.3	48.1	27.2	0.5	4.3	0.5	222.1
<b>Hong Kong</b>									
2008	24.9	0.0	7.3	36.5	18.6	0.4	3.5	0.7	91.9
2009	37.3	0.0	8.0	29.6	21.2	0.4	5.9	0.4	102.8
<b>Taiwan</b>									
2008	10.8	0.2	22.4	51.8	10.7	0.1	2.3	0.0	98.4
2009	12.0	22.1	11.4	18.5	7.8	0.0	1.2	0.0	73.0
<b>Singapore</b>									
2008	2.8	0.4	0.7	23.1	19.3	0.6	2.3	0.2	49.4
2009	2.6	0.3	0.1	8.4	23.8	1.4	2.3	0.1	38.9
<b>Total</b>									
2008	70.7	41.9	76.8	191.6	76.4	1.7	12.5	1.2	472.9
2009	77.6	107.9	49.8	104.5	80.0	2.3	13.7	1.1	436.8
<b>Other countries</b>									
2008	768.1	118.8	339.5	1,090.6	733.2	70.8	91.1	12.4	3,224.5
2009	846.2	138.1	281.4	732.3	830.1	65.0	98.6	38.9	3,030.7
<b>Total</b>									
2008	2,836.8	9,152.6	2,096.2	7,994.5	5,564.8	5,477.7	983.9	567.0	34,673.4
2009	2,937.9	6,667.1	1,749.7	5,623.5	5,906.8	3,188.6	1,205.9	528.4	27,808.0

**Table 3-2**  
**Domestic exports to selected countries, customs basis, not seasonally adjusted — Year to date, January to February**

	Agricultural and fishing products	Energy products	Forestry products	Industrial goods	Machinery and equipment	Automotive products	Consumer goods	Special transactions	Total
millions of dollars									
<b>United States</b>									
2008	2,901.1	18,167.0	2,811.2	10,309.6	8,263.3	9,443.0	1,515.2	1,052.9	54,463.2
2009	3,194.6	12,770.1	2,445.2	7,807.4	8,207.3	5,111.8	1,728.8	997.2	42,262.3
<b>Mexico</b>									
2008	165.3	8.1	39.3	167.9	117.1	148.1	7.8	0.5	654.2
2009	165.0	1.5	20.0	120.1	124.3	107.5	6.6	1.0	545.9
<b>Japan</b>									
2008	572.7	143.0	220.0	343.4	84.5	6.2	18.1	0.6	1,388.5
2009	493.4	287.4	172.8	164.5	151.4	5.7	28.8	1.7	1,305.6
<b>European Union</b>									
<b>Germany</b>									
2008	27.9	22.7	25.6	146.1	188.1	6.7	25.2	2.3	444.6
2009	26.6	31.4	22.1	74.0	291.4	6.8	23.5	3.8	479.6
<b>France</b>									
2008	23.6	83.8	51.8	45.1	191.2	9.7	51.1	1.2	457.4
2009	23.1	59.9	20.6	107.8	204.8	4.4	55.5	4.5	480.6
<b>United Kingdom</b>									
2008	73.7	14.4	56.7	1,672.4	419.0	12.0	30.9	7.8	2,286.8
2009	49.6	1.4	45.4	1,083.1	289.6	5.5	89.8	7.0	1,571.4
<b>Italy</b>									
2008	70.6	22.2	77.6	156.3	79.6	1.7	9.8	0.7	418.5
2009	41.6	18.4	48.1	67.4	102.8	1.4	9.6	0.5	289.9
<b>Other European Union</b>									
2008	163.0	90.5	85.5	730.3	415.4	46.3	75.3	4.8	1,611.2
2009	121.4	154.3	54.2	329.7	542.8	27.9	128.6	6.6	1,365.4
<b>Total</b>									
2008	358.9	233.6	297.2	2,750.2	1,293.2	76.3	192.3	16.8	5,218.4
2009	262.4	265.5	190.4	1,661.9	1,431.3	45.9	307.1	22.4	4,186.9
<b>Newly industrialized countries</b>									
<b>South Korea</b>									
2008	61.6	102.5	85.9	174.3	67.1	1.6	8.3	1.4	502.6
2009	43.9	173.8	55.6	117.9	46.1	1.1	6.3	0.7	445.4
<b>Hong Kong</b>									
2008	48.8	0.0	11.2	52.4	38.4	0.9	6.6	2.3	160.6
2009	74.7	0.0	16.5	54.5	79.2	0.9	9.1	1.0	236.0
<b>Taiwan</b>									
2008	21.8	11.8	46.5	137.0	18.1	0.1	5.0	0.4	240.7
2009	27.4	22.3	25.8	38.0	14.3	0.1	3.8	0.1	131.7
<b>Singapore</b>									
2008	6.0	22.5	2.7	40.6	42.8	1.6	4.4	0.8	121.4
2009	5.2	1.2	0.5	14.8	45.0	2.7	4.8	0.3	74.4
<b>Total</b>									
2008	138.3	136.9	146.3	404.2	166.4	4.2	24.2	4.9	1,025.4
2009	151.2	197.3	98.4	225.2	184.6	4.8	24.0	2.0	887.5
<b>Other countries</b>									
2008	1,585.8	214.3	622.6	2,158.8	1,450.5	124.1	189.8	24.9	6,370.8
2009	1,462.9	186.3	537.9	1,401.5	1,557.1	108.7	192.5	55.7	5,502.4
<b>Total</b>									
2008	5,722.1	18,902.8	4,136.5	16,134.1	11,375.2	9,801.9	1,948.0	1,100.7	69,121.2
2009	5,729.5	13,708.1	3,464.5	11,380.6	11,655.9	5,384.5	2,288.1	1,079.9	54,691.1

**Table 4**  
**Domestic exports by country, customs basis, not seasonally adjusted**

	February		January to February		Variation
	2008	2009	2008	2009	January to February 2009/2008
millions of dollars					
<b>North America</b>					
Greenland	2.1	1.1	3.2	2.2	-31.3
Mexico	314.4	281.5	654.2	545.9	-16.6
Saint Pierre and Miquelon	0.7	0.9	1.7	1.9	11.8
United States	27,267.6	21,372.4	54,463.2	42,262.3	-22.4
<b>Total</b>	<b>27,584.9</b>	<b>21,655.9</b>	<b>55,122.2</b>	<b>42,812.3</b>	<b>-22.3</b>
<b>Western Europe</b>					
Andorra	0.0	0.0	0.0	0.0	0.0
Austria	20.2	78.3	85.4	126.3	47.9
Belgium	224.4	92.1	506.5	197.5	-61.0
Denmark	26.5	45.2	52.4	94.5	80.3
Faeroe Islands	0.6	0.0	0.7	0.5	-28.6
Finland	21.7	15.1	35.3	85.1	141.1
France	242.4	250.1	457.4	480.6	5.1
Germany	244.6	190.1	444.6	479.6	7.9
Gibraltar	61.1	0.0	90.5	0.0	0.0
Greece	7.3	9.0	14.6	16.3	11.6
Iceland	6.0	2.5	9.8	3.5	-64.3
Italy	220.2	186.1	418.5	289.9	-30.7
Luxembourg	8.8	6.2	12.8	9.4	-26.6
Malta	1.3	1.5	1.8	2.2	22.2
Netherlands	286.1	195.9	480.0	395.8	-17.5
Norway	234.5	78.4	475.5	219.7	-53.8
Portugal	11.1	10.1	19.1	15.7	-17.8
Republic of Ireland (Eire)	27.1	51.4	48.8	93.9	92.4
Spain	71.7	75.2	124.7	160.3	28.5
Sweden	29.8	18.9	56.0	37.3	-33.4
Switzerland	92.0	111.1	150.0	184.4	22.9
United Kingdom	1,121.8	766.4	2,286.8	1,571.4	-31.3
<b>Total</b>	<b>2,959.1</b>	<b>2,183.4</b>	<b>5,771.5</b>	<b>4,464.0</b>	<b>-22.7</b>
<b>Other Europe</b>					
Albania	2.1	0.6	2.5	0.7	-72.0
Armenia	1.0	0.3	1.5	0.5	-66.7
Azerbaijan	2.2	0.8	5.2	2.5	-51.9
Belarus	0.4	0.4	0.6	0.4	-33.3
Bosnia and Herzegovina	0.2	0.0	0.5	0.4	-20.0
Bulgaria	2.7	1.4	4.9	2.1	-57.1
Croatia	1.6	1.9	2.7	3.4	25.9
Czech Republic	21.3	8.9	41.9	19.7	-53.0
Estonia	2.0	1.4	3.1	2.2	-29.0
Georgia	1.4	0.7	1.9	1.1	-42.1
Hungary	22.2	6.8	37.5	15.1	-59.7
Kazakhstan	27.6	25.0	77.4	39.6	-48.8
Kyrgyzstan	0.1	0.7	1.8	1.0	-44.4
Latvia	3.2	2.1	6.0	3.9	-35.0
Lithuania	5.1	4.3	7.8	5.8	-25.6
Macedonia (Former Yugoslav Republic of Macedonia)	1.2	1.5	3.0	2.3	-23.3
Montenegro	0.2	0.1	0.3	0.2	-33.3
Poland	14.4	12.0	45.6	36.1	-20.8
Republic of Moldova	0.1	0.3	0.2	0.3	50.0
Romania	5.9	5.3	10.2	8.0	-21.6
Russian Federation	120.7	69.1	222.7	134.2	-39.7
Serbia	0.9	0.7	1.6	2.2	37.5
Slovakia	2.2	1.2	4.4	2.4	-45.5
Slovenia	1.0	1.6	10.7	33.6	214.0
Tajikistan	0.5	0.2	0.9	0.3	-66.7
Turkmenistan	0.0	1.0	0.5	1.2	140.0
Ukraine	10.6	4.0	23.3	8.8	-62.2
Uzbekistan	0.1	0.3	0.4	4.4	...
<b>Total</b>	<b>251.0</b>	<b>152.5</b>	<b>518.8</b>	<b>332.5</b>	<b>-35.9</b>
<b>Middle East</b>					
Bahrain	2.5	1.2	5.4	3.0	-44.4
Cyprus	0.8	0.9	1.7	2.1	23.5

Table 4 – continued

## Domestic exports by country, customs basis, not seasonally adjusted

	February		January to February		Variation
	2008	2009	2008	2009	January to February 2009/2008
millions of dollars					
Egypt	24.7	30.8	49.9	58.0	16.2
Eritrea	0.2	0.0	0.2	0.0	
Ethiopia	2.9	0.1	6.7	0.6	-91.0
Iran	7.0	15.4	44.5	36.4	-18.2
Iraq	2.6	19.5	23.0	72.5	215.2
Israel	33.0	29.7	63.6	54.5	-14.3
Jordan	5.7	8.5	10.0	10.7	7.0
Kuwait	7.4	3.7	14.7	11.6	-21.1
Lebanon	5.1	6.7	9.9	12.3	24.2
Libya	15.0	65.5	19.0	108.1	468.9
Oman	6.5	9.0	13.1	21.0	60.3
Qatar	7.8	6.8	12.7	13.0	2.4
Saudi Arabia	68.8	130.3	180.7	206.7	14.4
Somalia	0.0	0.0	0.0	0.0	...
Sudan	2.7	2.2	29.8	8.6	-71.1
Syria	8.2	1.7	13.2	4.3	-67.4
Turkey	54.1	85.3	101.7	118.5	16.5
United Arab Emirates	116.6	86.1	232.7	153.1	-34.2
Yemen	1.9	0.9	4.6	2.4	-47.8
<b>Total</b>	<b>373.6</b>	<b>504.2</b>	<b>837.1</b>	<b>897.4</b>	<b>7.2</b>
<b>Other Africa</b>					
Algeria	82.0	65.6	139.4	92.9	-33.4
Angola	3.9	4.8	8.0	11.8	47.5
Antarctica	0.2	0.0	0.2	0.0	0.0
Benin	0.8	0.7	1.7	1.4	-17.6
Botswana	0.2	0.4	1.4	0.9	-35.7
Burkina Faso	0.6	0.5	1.6	0.7	-56.3
Burundi	0.1	0.1	0.2	0.2	0.0
Cameroon	0.4	1.3	5.4	1.9	-64.8
Cape Verde	0.1	0.0	0.2	0.1	-50.0
Central African Republic	0.0	0.0	0.0	0.0	0.0
Chad	0.0	1.2	0.3	3.2	966.7
Comoros	0.0	0.0	0.0	0.0	0.0
Congo	1.5	4.2	3.1	5.4	74.2
Democratic Republic of the Congo	1.2	1.0	2.8	2.1	-25.0
Djibouti	0.4	0.2	0.4	1.2	200.0
Equatorial Guinea	0.3	0.3	0.7	0.6	-14.3
French Southern Territories	0.0	0.0	0.0	0.0	0.0
Gabon	8.1	1.1	8.8	9.6	9.1
Gambia	0.1	0.1	0.1	0.1	0.0
Ghana	4.3	13.2	14.0	23.6	68.6
Guinea	1.5	2.9	2.9	3.8	31.0
Guinea-Bissau	0.0	0.0	0.0	0.0	0.0
Ivory Coast	1.4	0.9	2.9	5.1	75.9
Kenya	1.8	6.3	3.8	13.0	242.1
Lesotho	0.0	0.0	0.0	0.0	0.0
Liberia	0.8	0.2	1.1	0.5	-54.5
Madagascar	0.8	1.9	1.6	6.5	306.3
Malawi	0.6	0.2	0.9	0.4	-55.6
Mali	0.7	1.1	2.6	1.2	-53.8
Mauritania	0.2	0.5	0.4	0.7	75.0
Mauritius	0.3	0.5	0.4	0.9	125.0
Morocco	29.3	18.5	85.7	20.3	-76.3
Mozambique	0.3	0.4	0.9	0.6	-33.3
Namibia	0.9	0.0	1.8	0.7	-61.1
Niger	0.2	0.2	0.4	0.4	0.0
Nigeria	3.6	4.7	22.9	12.7	-44.5
Rwanda	0.5	0.1	0.5	0.1	-80.0
Saint Helena	0.0	0.0	0.2	0.0	0.0
Senegal	0.8	0.6	1.8	2.8	55.6
Seychelles	0.3	0.1	0.3	0.2	-33.3
Sierra Leone	0.8	0.5	1.1	0.7	-36.4
South Africa	58.7	33.3	100.0	66.6	-33.4
Swaziland	0.3	0.0	0.5	0.1	-80.0
Togo	0.9	0.9	3.2	1.7	-46.9
Tunisia	2.9	1.5	5.2	3.1	-40.4



Table 4 – continued

## Domestic exports by country, customs basis, not seasonally adjusted

	February		January to February		Variation
	2008	2009	2008	2009	January to February 2009/2008
millions of dollars					
Uganda	0.8	0.4	2.1	4.1	95.2
United Republic of Tanzania	4.4	4.9	6.3	6.9	9.5
Zambia	0.7	1.8	2.8	2.5	-10.7
Zimbabwe	0.1	2.3	0.1	6.9	...
<b>Total</b>	<b>218.0</b>	<b>179.4</b>	<b>441.1</b>	<b>318.2</b>	<b>-27.9</b>
<b>Other Asia</b>					
Afghanistan	0.7	13.3	1.0	14.5	...
Bangladesh	21.3	115.2	54.2	188.4	247.6
Bhutan	0.0	0.0	0.0	0.0	0.0
British Indian Ocean Territory	0.1	0.0	0.1	0.0	0.0
Brunei Darussalam	0.1	0.1	0.1	0.2	100.0
Cambodia	0.2	0.2	0.4	0.4	0.0
China	874.6	873.2	1,678.4	1,621.0	-3.4
Hong Kong	91.9	102.8	160.6	236.0	46.9
India	126.3	123.6	283.1	214.1	-24.4
Indonesia	111.8	95.1	198.1	151.4	-23.6
Japan	747.6	649.1	1,388.5	1,305.6	-6.0
Laos	1.8	0.4	1.8	0.5	-72.2
Macau	3.4	3.2	6.6	5.7	-13.6
Malaysia	63.9	25.4	109.2	66.7	-38.9
Maldives	0.8	0.5	1.0	0.8	-20.0
Mongolia	0.8	0.3	1.8	0.4	-77.8
Nepal	0.0	0.2	0.3	0.3	0.0
North Korea	1.9	3.4	2.5	6.1	144.0
Pakistan	66.7	42.7	93.8	52.9	-43.6
Philippines	49.8	54.3	84.8	88.1	3.9
Singapore	49.4	38.9	121.4	74.4	-38.7
South Korea	233.2	222.1	502.6	445.4	-11.4
Sri Lanka	33.6	31.1	61.6	59.4	-3.6
Taiwan	98.4	73.0	240.7	131.7	-45.3
Thailand	40.9	28.9	82.2	60.8	-26.0
Viet Nam	31.2	8.7	50.2	15.7	-68.7
<b>Total</b>	<b>2,650.4</b>	<b>2,505.6</b>	<b>5,125.0</b>	<b>4,740.4</b>	<b>-7.5</b>
<b>Oceania</b>					
American Samoa	0.0	0.0	0.1	0.1	0.0
Australia	155.3	183.1	296.2	296.3	0.0
Christmas Island	0.0	0.0	0.0	0.1	0.0
Cocos (Keeling) Islands	0.0	0.0	0.0	0.0	...
Fiji	0.2	2.1	0.6	2.3	283.3
French Polynesia	0.7	0.6	2.7	1.2	-55.6
Guam	0.2	0.2	0.3	0.3	0.0
Nauru	0.0	0.0	0.0	0.0	...
New Caledonia	1.1	0.2	3.7	0.6	-83.8
New Zealand	17.4	42.8	62.8	65.1	3.7
Norfolk Island	0.0	0.0	0.0	0.3	...
Papua New Guinea	1.1	0.3	1.3	1.1	-15.4
Pitcairn	0.0	0.0	0.0	0.0	0.0
Samoa	0.0	0.1	0.0	0.1	0.0
Solomon Islands	0.0	0.1	0.0	0.1	...
United States Minor Outlying Islands	0.3	0.7	0.4	1.3	225.0
Vanuatu	0.0	0.6	0.1	0.7	600.0
<b>Total</b>	<b>176.3</b>	<b>230.6</b>	<b>368.2</b>	<b>369.5</b>	<b>0.4</b>
<b>South America</b>					
Argentina	11.1	11.9	35.6	21.9	-38.5
Bolivia	1.1	0.4	2.4	1.9	-20.8
Brazil	94.1	70.0	221.0	125.1	-43.4
Chile	40.2	60.3	100.9	93.2	-7.6
Colombia	41.8	41.7	93.6	90.8	-3.0
Ecuador	25.5	11.2	51.3	31.9	-37.8
Falkland Islands (Malvinas)	0.0	0.0	0.1	0.0	...
Guyana	1.1	0.6	2.4	3.2	33.3
Paraguay	0.6	1.6	0.8	2.0	150.0
Peru	35.8	23.2	63.9	56.8	-11.1
Suriname	0.5	0.5	1.7	0.7	-58.8

Table 4 – continued

## Domestic exports by country, customs basis, not seasonally adjusted

	February		January to February		Variation January to February 2009/2008
	2008	2009	2008	2009	
millions of dollars					
Uruguay	1.3	1.7	3.8	3.4	-10.5
Venezuela	42.9	67.1	69.7	133.2	91.1
<b>Total</b>	<b>296.1</b>	<b>290.2</b>	<b>647.3</b>	<b>564.1</b>	<b>-12.9</b>
<b>Central America Antilles</b>					
Anguilla	0.2	0.4	0.3	0.5	66.7
Antigua and Barbuda	1.3	0.8	2.7	1.4	-48.1
Aruba	0.4	0.6	0.8	0.8	0.0
Bahamas	2.4	2.5	4.4	4.8	9.1
Barbados	2.8	2.5	6.7	4.6	-31.3
Belize	0.4	0.6	0.6	0.9	50.0
Bermuda	5.5	4.8	9.6	8.6	-10.4
British Virgin Islands	0.7	0.1	0.9	1.4	55.6
Cayman Islands	1.0	0.7	1.6	0.8	-50.0
Costa Rica	6.7	4.9	15.4	8.2	-46.8
Cuba	35.5	27.9	65.6	40.0	-39.0
Dominica	0.3	0.4	2.7	0.7	-74.1
Dominican Republic	17.0	7.9	23.4	19.1	-18.4
El Salvador	5.0	2.7	8.5	4.4	-48.2
Grenada	0.4	0.5	1.1	0.9	-18.2
Guatemala	17.6	5.6	29.4	20.2	-31.3
Haiti	1.7	2.1	3.4	6.0	76.5
Honduras	3.6	1.9	5.0	4.0	-20.0
Jamaica	28.8	7.8	42.3	14.5	-65.7
Montserrat	0.0	0.0	0.0	0.1	0.0
Netherlands Antilles	1.4	2.4	3.1	3.6	16.1
Nicaragua	1.0	1.8	3.8	2.9	-23.7
Panama	6.5	10.5	18.7	16.5	-11.8
Saint Kitts and Nevis	0.5	0.4	0.9	1.2	33.3
Saint Lucia	0.7	0.7	1.8	1.4	-22.2
Saint Vincent and the Grenadines	0.6	0.5	1.1	1.1	0.0
Trinidad and Tobago	21.0	14.7	35.0	23.3	-33.4
Turks and Caicos Islands	0.9	0.4	1.6	0.6	-62.5
<b>Total</b>	<b>164.0</b>	<b>106.1</b>	<b>290.1</b>	<b>192.7</b>	<b>-33.6</b>
<b>All countries</b>	<b>34,673.4</b>	<b>27,808.0</b>	<b>69,121.2</b>	<b>54,691.1</b>	<b>-20.9</b>

**Table 5-1**  
**Exports by province of origin, customs basis, not seasonally adjusted — February**

	Agricultural and fishing products	Energy products	Forestry products	Industrial goods	Machinery and equipment	Automotive products	Consumer goods	Special transactions	Total
millions of dollars									
<b>Domestic exports</b>									
Newfoundland Labrador									
2008	25.9	492.9	19.9	79.2	4.7	0.1	0.1	4.6	627.4
2009	25.9	548.3	35.5	118.8	6.4	0.1	0.1	3.6	738.7
Prince Edward Island									
2008	32.1	0.0	0.2	1.4	16.3	0.0	3.0	4.5	57.4
2009	36.8	0.0	0.0	2.2	14.8	0.0	2.3	7.6	63.8
Nova Scotia									
2008	79.1	105.9	66.5	46.3	98.5	11.4	6.1	7.5	421.3
2009	67.0	86.9	61.9	40.9	97.6	7.3	6.8	6.6	375.0
New Brunswick									
2008	68.9	585.3	102.6	77.0	27.3	1.0	9.8	8.0	879.9
2009	75.4	443.4	102.9	30.3	27.0	2.3	7.9	6.5	695.7
Quebec									
2008	337.4	277.2	598.4	1,741.9	1,680.4	178.6	268.7	121.5	5,203.9
2009	349.4	271.6	508.7	1,283.2	1,879.6	135.9	346.2	123.2	4,897.9
Ontario									
2008	567.1	291.9	291.7	3,615.9	2,773.7	5,152.1	604.5	304.7	13,601.7
2009	625.8	300.7	265.8	2,467.6	2,975.2	2,919.6	742.7	250.8	10,548.2
Manitoba									
2008	335.4	94.4	31.3	250.5	177.9	52.7	23.5	20.5	986.2
2009	333.0	50.9	23.9	184.2	182.4	57.6	38.0	30.6	900.6
Saskatchewan									
2008	671.0	753.0	23.1	429.3	62.0	4.4	3.0	9.1	1,954.8
2009	670.0	335.6	22.5	438.8	91.5	3.4	1.3	7.4	1,570.5
Alberta									
2008	569.0	6,027.3	148.3	1,054.5	430.9	44.2	15.3	45.2	8,334.6
2009	589.3	3,912.0	148.6	677.0	378.4	46.1	16.2	53.7	5,821.2
British Columbia									
2008	150.7	524.7	814.3	510.1	292.6	33.3	49.9	41.4	2,417.0
2009	165.0	717.8	579.8	363.8	253.6	16.2	44.5	38.2	2,178.9
Yukon, Northwest Territories and Nunavut <sup>1</sup>									
2008	0.2	0.0	0.0	188.4	0.4	0.0	0.1	0.0	189.1
2009	0.3	0.0	0.0	16.6	0.3	0.1	0.0	0.1	17.5
<b>Total</b>									
2008	2,836.8	9,152.6	2,096.2	7,994.5	5,564.8	5,477.7	983.9	567.0	34,673.4
2009	2,937.9	6,667.1	1,749.7	5,623.5	5,906.8	3,188.6	1,205.9	528.4	27,808.0
<b>Re-exports</b>									
2008	40.0	31.6	7.8	178.6	855.5	126.8	170.8	646.6	2,057.8
2009	38.9	34.6	5.0	171.8	984.7	84.3	169.2	697.7	2,186.3
<b>Total exports</b>									
2008	2,876.8	9,184.2	2,104.0	8,173.1	6,420.3	5,604.5	1,154.8	1,213.6	36,731.2
2009	2,976.9	6,701.7	1,754.7	5,795.3	6,891.5	3,273.0	1,375.0	1,226.2	29,994.3

1. Data for the most current month do not include some exports of Chapter 71 "Natural/cultured pearls, precious stones and metals, coins etc" for reasons relating to timing.

**Table 5-2**  
**Exports by province of origin, customs basis, not seasonally adjusted — Year to date, January to February**

	Agricultural and fishing products	Energy products	Forestry products	Industrial goods	Machinery and equipment	Automotive products	Consumer goods	Special transactions	Total
millions of dollars									
<b>Domestic exports</b>									
Newfoundland Labrador									
2008	43.7	1,266.2	43.4	160.3	9.4	0.1	0.3	9.9	1,533.4
2009	44.8	918.2	52.4	217.6	13.0	0.1	0.1	8.9	1,255.0
Prince Edward Island									
2008	71.9	0.0	0.5	2.5	25.9	0.1	6.1	13.3	120.4
2009	77.5	0.0	0.0	3.1	31.1	0.1	5.1	18.2	135.2
Nova Scotia									
2008	142.9	219.5	129.5	95.7	191.4	21.3	13.3	15.0	828.4
2009	132.5	172.7	113.4	90.0	183.1	17.4	11.9	13.7	734.6
New Brunswick									
2008	141.2	1,175.8	204.3	169.7	52.1	3.0	17.8	16.4	1,780.4
2009	154.4	942.5	216.1	81.6	51.1	4.6	17.4	14.7	1,482.4
Quebec									
2008	650.4	581.0	1,205.5	3,399.8	3,615.5	341.6	531.6	224.8	10,550.3
2009	685.6	548.2	1,015.7	2,576.7	3,689.5	242.9	617.2	241.8	9,617.7
Ontario									
2008	1,155.0	574.5	600.1	7,342.1	5,643.0	9,173.6	1,196.2	586.9	26,271.4
2009	1,242.9	620.5	555.3	4,935.2	5,865.5	4,876.8	1,454.2	522.4	20,072.9
Manitoba									
2008	669.6	180.6	62.9	540.2	348.5	100.1	46.0	39.6	1,987.6
2009	652.2	109.2	46.6	383.4	353.4	108.6	55.7	61.3	1,770.4
Saskatchewan									
2008	1,405.4	1,469.7	44.1	942.7	119.7	8.9	6.2	19.5	4,016.3
2009	1,265.0	766.4	51.1	1,034.1	164.2	5.4	2.7	17.5	3,306.4
Alberta									
2008	1,147.4	12,436.3	304.0	2,094.5	790.0	89.6	28.1	95.0	16,985.0
2009	1,147.0	8,305.1	280.9	1,354.1	794.6	89.8	32.2	105.2	12,108.9
British Columbia									
2008	294.2	999.1	1,542.3	937.4	578.8	63.6	102.2	80.1	4,597.6
2009	327.2	1,325.4	1,132.9	684.1	509.7	38.7	90.9	76.2	4,185.1
Yukon, Northwest Territories and Nunavut <sup>1</sup>									
2008	0.4	0.0	0.0	449.0	0.8	0.0	0.1	0.1	450.3
2009	0.3	0.0	0.0	20.7	0.7	0.1	0.6	0.1	22.6
<b>Total</b>									
2008	5,722.1	18,902.8	4,136.5	16,134.1	11,375.2	9,801.9	1,948.0	1,100.7	69,121.2
2009	5,729.5	13,708.1	3,464.5	11,380.6	11,655.9	5,384.5	2,288.1	1,079.9	54,691.1
<b>Re-exports</b>									
2008	87.1	67.4	16.7	429.7	1,765.9	249.0	321.1	1,374.6	4,311.5
2009	96.8	73.4	12.6	368.5	1,952.2	164.4	331.7	1,382.8	4,382.4
<b>Total exports</b>									
2008	5,809.2	18,970.2	4,153.2	16,563.7	13,141.1	10,050.9	2,269.1	2,475.3	73,432.7
2009	5,826.3	13,781.5	3,477.1	11,749.1	13,608.1	5,548.9	2,619.8	2,462.7	59,073.5

1. Data for the most current month do not include some exports of Chapter 71 "Natural/cultured pearls, precious stones and metals, coins etc" for reasons relating to timing.

**Table 6-1**  
**Imports by commodity groupings, balance of payments basis, seasonally adjusted — Current dollars**

	January	February	Change	Year to date		Year to date change	February		
	2009	2009		2008	2009				
	millions of dollars		percent		millions of dollars		percent		
<b>Total</b>	<b>32,591</b>	<b>32,951</b>	<b>360</b>	<b>1.1</b>	<b>70,946</b>	<b>65,542</b>	<b>-5,404</b>	<b>-7.6</b>	<b>-6.6</b>
<b>Agricultural and fishing products</b>	<b>2,569</b>	<b>2,537</b>	<b>-32</b>	<b>-1.2</b>	<b>4,423</b>	<b>5,105</b>	<b>682</b>	<b>15.4</b>	<b>14.4</b>
Fruits and vegetables	702	710	8	1.1	1,222	1,413	190	15.6	16.8
Fresh fruits and berries	246	247	1	0.5	435	492	58	13.3	15.2
Dried fruits, fruits and fruit preparations	136	139	4	2.7	230	275	45	19.6	20.1
Fresh vegetables	172	177	5	2.8	308	349	41	13.2	16.6
Other vegetables and vegetable preparations	149	147	-2	-1.2	249	296	47	18.7	16.7
Other agricultural and fishing products	1,866	1,826	-40	-2.1	3,201	3,693	492	15.4	13.6
Live animals	17	16	-1	-8.0	31	33	2	7.7	3.6
Meat and meat preparations	179	183	4	2.4	315	362	48	15.1	19.0
Fish and marine animals	175	180	5	2.9	306	355	49	16.1	21.5
Cocoa, coffee, tea and other food preparations	435	419	-17	-3.8	696	854	158	22.7	18.0
Dairy produce, eggs and honey	42	46	4	8.7	116	88	-28	-24.3	-23.9
Corn (maize) shelled	52	50	-1	-2.8	129	102	-27	-21.1	-23.6
Other cereals and cereal preparations	203	211	8	3.8	310	414	104	33.6	37.5
Sugar and sugar preparations	145	145	0	0.0	236	290	54	22.8	32.1
Fodder, feed, excluding unmilled cereal	132	131	-1	-0.5	228	264	36	15.8	18.2
Beverages	344	303	-41	-11.9	540	647	108	20.0	4.6
Tobacco	31	27	-4	-11.7	60	58	-2	-3.4	13.8
Crude vegetable products	109	113	4	3.6	233	223	-10	-4.1	-6.0
Cotton	1	1	0	31.0	2	2	0	22.7	24.8
<b>Energy products</b>	<b>3,002</b>	<b>2,769</b>	<b>-232</b>	<b>-7.7</b>	<b>8,131</b>	<b>5,771</b>	<b>-2,361</b>	<b>-29.0</b>	<b>-26.2</b>
Crude petroleum	1,596	1,330	-266	-16.7	5,223	2,926	-2,296	-44.0	-48.9
Other energy products	1,405	1,439	34	2.4	2,909	2,844	-64	-2.2	25.1
Coal and other related products	491	559	68	13.8	841	1,050	209	24.8	96.9
Petroleum and coal products	914	880	-34	-3.8	2,068	1,794	-273	-13.2	1.6
<b>Forestry products</b>	<b>222</b>	<b>216</b>	<b>-6</b>	<b>-2.9</b>	<b>483</b>	<b>438</b>	<b>-46</b>	<b>-9.4</b>	<b>-11.1</b>
Forestry products	222	216	-6	-2.9	483	438	-46	-9.4	-11.1
Crude wood products	48	47	-1	-1.4	75	94	20	26.1	16.7
Wood fabricated materials	175	169	-6	-3.2	409	343	-65	-16.0	-16.6
<b>Industrial goods and materials</b>	<b>6,877</b>	<b>6,947</b>	<b>70</b>	<b>1.0</b>	<b>14,358</b>	<b>13,823</b>	<b>-534</b>	<b>-3.7</b>	<b>-4.3</b>
Metals and metal ores	2,246	2,223	-23	-1.0	5,394	4,470	-925	-17.1	-19.4
Metals in ores, concentrates and scrap	484	545	62	12.7	1,539	1,029	-510	-33.1	-30.3
Steel bars, rods, plates, sheets	424	445	20	4.8	1,140	869	-271	-23.8	-25.7
Other iron and steel products	554	462	-92	-16.6	701	1,016	315	44.9	35.2
Precious metals including alloys	449	463	14	3.1	1,004	911	-93	-9.2	-9.2
Other non-ferrous metals and alloys	336	308	-27	-8.2	1,010	644	-366	-36.2	-41.6
Chemicals and plastics	2,385	2,498	113	4.7	4,747	4,883	136	2.9	4.2
Organic chemicals	628	605	-23	-3.7	1,206	1,233	27	2.2	-5.4
Plastic materials	765	789	24	3.2	1,691	1,554	-137	-8.1	-7.2
Other chemicals and related products	992	1,104	112	11.2	1,850	2,096	246	13.3	21.5
Other industrial goods and materials	2,245	2,226	-19	-0.9	4,217	4,471	254	6.0	5.8
Crude animal products	19	19	0	-0.6	47	37	-10	-20.8	-33.6
Wool and man-made fibres	20	20	0	0.0	41	39	-1	-3.6	-3.2
Crude non-metallic minerals	76	68	-8	-11.1	155	144	-11	-6.9	-12.7
Textile fabricated materials	206	211	5	2.5	434	417	-17	-3.9	1.2
Metal fabricated basic products	863	842	-21	-2.4	1,655	1,705	49	3.0	2.1
Rubber fabricated materials	82	80	-2	-2.5	170	162	-8	-4.8	-6.6
Oils, fats, animal and vegetable	114	116	2	1.7	174	229	55	31.5	32.0
Non-metallic minerals	310	308	-2	-0.8	575	618	43	7.5	5.8
Other fabricated materials	556	564	7	1.3	966	1,120	154	15.9	17.2

Table 6-1 – continued

## Imports by commodity groupings, balance of payments basis, seasonally adjusted — Current dollars

	January 2009	February 2009	Change		Year to date		Year to date change		February 2009/2008
					2008	2009			
	millions of dollars		percent		millions of dollars		percent		
<b>Machinery and equipment</b>	<b>9,721</b>	<b>10,077</b>	<b>356</b>	<b>3.7</b>	<b>19,392</b>	<b>19,798</b>	<b>405</b>	<b>2.1</b>	<b>4.1</b>
Industrial and agricultural machinery	2,719	2,653	-66	-2.4	5,283	5,372	88	1.7	1.8
Engines, turbines and electric motors	338	430	92	27.1	532	767	236	44.4	66.1
Drilling mining machinery	164	133	-30	-18.5	263	297	34	13.1	3.2
Excavating machinery	227	210	-17	-7.6	590	437	-152	-25.8	-24.2
Metal working machinery	163	152	-11	-6.5	392	315	-77	-19.6	-24.2
Other industrial machinery	1,483	1,370	-113	-7.6	2,869	2,853	-16	-0.6	-3.7
Agricultural machinery including tractors	344	358	14	4.0	638	701	63	9.9	12.6
Aircraft and other transportation equipment	1,318	1,685	368	27.9	3,024	3,003	-21	-0.7	9.5
Aircraft, engines, parts	784	1,082	298	37.9	2,066	1,867	-199	-9.6	-0.1
Other transportation equipment and parts	533	603	70	13.1	958	1,136	178	18.6	32.3
Office machines and equipment	1,079	1,070	-9	-0.8	2,389	2,149	-239	-10.0	-8.7
Other machinery and equipment	4,605	4,668	63	1.4	8,696	9,274	578	6.6	7.1
Other communication and related equipment	1,545	1,608	62	4.0	2,940	3,153	213	7.3	9.7
Other equipment and tools	3,060	3,061	1	0.0	5,756	6,121	364	6.3	5.7
<b>Automotive products</b>	<b>3,954</b>	<b>4,080</b>	<b>125</b>	<b>3.2</b>	<b>12,848</b>	<b>8,034</b>	<b>-4,814</b>	<b>-37.5</b>	<b>-37.7</b>
Passenger autos and chassis	1,265	1,256	-9	-0.7	4,656	2,520	-2,136	-45.9	-46.3
Trucks and other motor vehicles	998	1,002	5	0.5	2,761	2,000	-761	-27.6	-28.4
Motor vehicle parts	1,692	1,822	129	7.6	5,431	3,514	-1,917	-35.3	-35.2
<b>Other consumer goods</b>	<b>5,040</b>	<b>5,094</b>	<b>55</b>	<b>1.1</b>	<b>9,093</b>	<b>10,134</b>	<b>1,041</b>	<b>11.5</b>	<b>13.2</b>
Apparel and footwear	1,084	1,054	-29	-2.7	1,759	2,138	379	21.6	20.9
Apparel and apparel accessories	903	894	-9	-1.0	1,474	1,797	323	21.9	22.6
Footwear	181	161	-20	-11.1	284	341	57	20.0	12.3
Miscellaneous consumer goods	3,956	4,040	84	2.1	7,334	7,996	662	9.0	11.4
Television, radios, phonographs	99	110	11	10.6	284	209	-75	-26.4	-23.2
Printed matter	312	313	1	0.3	596	625	28	4.7	5.1
Watches, sporting goods and toys	539	533	-6	-1.2	1,031	1,072	40	3.9	2.9
House furnishings	764	787	24	3.1	1,340	1,551	211	15.8	17.9
Photographic goods	244	229	-15	-6.0	464	473	9	2.0	-0.9
Miscellaneous end products	1,998	2,068	70	3.5	3,619	4,067	448	12.4	16.9
<b>Special transactions trade</b>	<b>522</b>	<b>537</b>	<b>15</b>	<b>2.8</b>	<b>795</b>	<b>1,058</b>	<b>264</b>	<b>33.2</b>	<b>42.2</b>
<b>Unallocated balance of payments adjustments</b>	<b>686</b>	<b>695</b>	<b>10</b>	<b>1.4</b>	<b>1,423</b>	<b>1,381</b>	<b>-42</b>	<b>-3.0</b>	<b>-3.2</b>

**Table 6-2**  
**Imports by commodity groupings, balance of payments basis, seasonally adjusted — Constant dollars, 2002**

	January	February	Change	Year to date		Year to date change	February		
	2009	2009		2008	2009				2009/2008
	millions of dollars		percent		millions of dollars		percent		
<b>Total</b>	<b>33,357</b>	<b>33,424</b>	<b>67</b>	<b>0.2</b>	<b>83,306</b>	<b>66,781</b>	<b>-16,525</b>	<b>-19.8</b>	<b>-19.7</b>
<b>Agricultural and fishing products</b>	<b>2,282</b>	<b>2,255</b>	<b>-28</b>	<b>-1.2</b>	<b>4,789</b>	<b>4,537</b>	<b>-252</b>	<b>-5.3</b>	<b>-6.3</b>
Fruits and vegetables	658	661	3	0.4	1,261	1,319	58	4.6	2.9
Fresh fruits and berries	240	242	3	1.1	452	482	30	6.6	6.3
Dried fruits, fruits and fruit preparations	122	126	4	3.6	221	248	27	12.2	14.6
Fresh vegetables	169	164	-5	-3.0	338	334	-4	-1.2	-8.0
Other vegetables and vegetable preparations	127	128	1	0.8	250	255	5	2.1	2.0
Other agricultural and fishing products	1,624	1,594	-30	-1.9	3,528	3,218	-310	-8.8	-9.6
Live animals	16	15	-2	-10.3	34	31	-3	-9.0	-12.0
Meat and meat preparations	177	180	3	1.7	351	357	6	1.8	6.1
Fish and marine animals	210	220	10	4.9	447	430	-17	-3.8	2.6
Cocoa, coffee, tea and other food preparations	321	311	-10	-3.1	722	632	-90	-12.4	-15.7
Dairy produce, eggs and honey	39	41	2	4.8	103	79	-24	-23.1	-21.8
Corn (maize) shelled	39	38	-1	-1.4	107	77	-30	-28.2	-29.2
Other cereals and cereal preparations	160	162	2	1.2	336	323	-13	-3.8	-1.8
Sugar and sugar preparations	133	132	0	-0.2	288	265	-24	-8.2	-2.4
Fodder, feed, excluding unmilled cereal	97	91	-5	-5.4	216	188	-28	-12.9	-13.9
Beverages	296	261	-36	-12.1	570	557	-13	-2.2	-14.6
Tobacco	35	28	-6	-18.7	85	63	-21	-25.3	-16.3
Crude vegetable products	101	113	12	11.7	267	214	-54	-20.1	-19.8
Cotton	1	2	0	31.7	3	3	0	5.0	7.7
<b>Energy products</b>	<b>1,930</b>	<b>1,828</b>	<b>-102</b>	<b>-5.3</b>	<b>3,631</b>	<b>3,757</b>	<b>127</b>	<b>3.5</b>	<b>12.9</b>
Crude petroleum	1,020	854	-166	-16.3	1,916	1,875	-42	-2.2	-7.8
Other energy products	909	973	64	7.0	1,714	1,883	169	9.8	40.7
Coal and other related products	304	352	48	15.9	608	655	47	7.7	70.2
Petroleum and coal products	606	622	16	2.6	1,106	1,227	122	11.0	28.1
<b>Forestry products</b>	<b>255</b>	<b>248</b>	<b>-7</b>	<b>-2.6</b>	<b>643</b>	<b>503</b>	<b>-139</b>	<b>-21.7</b>	<b>-23.1</b>
Forestry products	255	248	-7	-2.6	643	503	-139	-21.7	-23.1
Crude wood products	56	57	1	2.6	98	113	15	15.4	8.1
Wood fabricated materials	199	191	-8	-4.1	544	390	-155	-28.4	-29.2
<b>Industrial goods and materials</b>	<b>5,703</b>	<b>5,758</b>	<b>55</b>	<b>1.0</b>	<b>14,091</b>	<b>11,462</b>	<b>-2,629</b>	<b>-18.7</b>	<b>-18.8</b>
Metals and metal ores	1,538	1,508	-30	-2.0	4,127	3,045	-1,082	-26.2	-27.5
Metals in ores, concentrates and scrap	352	410	58	16.4	834	762	-72	-8.6	-1.5
Steel bars, rods, plates, sheets	292	317	25	8.5	949	610	-339	-35.8	-35.5
Other iron and steel products	333	286	-47	-14.2	565	619	54	9.6	4.7
Precious metals including alloys	247	194	-53	-21.4	751	442	-309	-41.2	-45.9
Other non-ferrous metals and alloys	312	300	-12	-4.0	1,028	612	-416	-40.4	-44.1
Chemicals and plastics	2,012	2,153	141	7.0	4,807	4,165	-641	-13.3	-11.0
Organic chemicals	496	483	-13	-2.6	983	979	-3	-0.4	-8.0
Plastic materials	704	719	15	2.1	1,822	1,424	-398	-21.8	-21.5
Other chemicals and related products	812	950	139	17.1	2,002	1,762	-240	-12.0	-2.9
Other industrial goods and materials	2,153	2,098	-56	-2.6	5,157	4,251	-906	-17.6	-19.1
Crude animal products	26	26	1	2.2	50	52	2	3.3	-12.5
Wool and man-made fibres	23	25	2	6.5	54	48	-6	-11.4	-8.6
Crude non-metallic minerals	71	63	-8	-11.9	141	134	-8	-5.5	-13.3
Textile fabricated materials	236	236	0	0.0	610	471	-138	-22.7	-20.0
Metal fabricated basic products	787	768	-19	-2.4	1,923	1,556	-367	-19.1	-19.9
Rubber fabricated materials	84	82	-2	-2.4	232	167	-65	-28.1	-29.7
Oils, fats, animal and vegetable	89	88	-1	-1.4	150	176	26	17.5	11.4
Non-metallic minerals	322	310	-12	-3.8	740	632	-107	-14.5	-17.2
Other fabricated materials	515	500	-15	-2.9	1,256	1,015	-241	-19.2	-21.6

Table 6-2 – continued

## Imports by commodity groupings, balance of payments basis, seasonally adjusted — Constant dollars, 2002

	January 2009	February 2009	Change		Year to date		Year to date change		February 2009/2008
					2008	2009			
	millions of dollars		percent		millions of dollars		percent		
<b>Machinery and equipment</b>	<b>11,922</b>	<b>11,977</b>	<b>55</b>	<b>0.5</b>	<b>29,065</b>	<b>23,900</b>	<b>-5,166</b>	<b>-17.8</b>	<b>-17.6</b>
Industrial and agricultural machinery	2,845	2,715	-130	-4.6	7,053	5,560	-1,494	-21.2	-22.3
Engines, turbines and electric motors	364	456	91	25.0	717	820	103	14.3	29.7
Drilling mining machinery	153	122	-31	-20.0	324	275	-49	-15.1	-23.6
Excavating machinery	231	210	-21	-9.1	779	442	-338	-43.3	-42.9
Metal working machinery	177	162	-15	-8.5	534	338	-195	-36.6	-41.2
Other industrial machinery	1,535	1,382	-153	-10.0	3,811	2,917	-895	-23.5	-27.1
Agricultural machinery including tractors	385	383	-1	-0.3	889	768	-120	-13.5	-14.0
Aircraft and other transportation equipment	1,354	1,660	307	22.6	3,878	3,014	-864	-22.3	-16.0
Aircraft, engines, parts	831	1,074	243	29.2	2,651	1,906	-745	-28.1	-22.9
Other transportation equipment and parts	522	586	63	12.2	1,227	1,108	-119	-9.7	0.4
Office machines and equipment	2,088	1,985	-103	-4.9	4,939	4,072	-867	-17.6	-18.7
Other machinery and equipment	5,636	5,618	-18	-0.3	13,195	11,254	-1,940	-14.7	-15.3
Other communication and related equipment	2,231	2,271	40	1.8	5,080	4,502	-577	-11.4	-10.1
Other equipment and tools	3,405	3,347	-59	-1.7	8,115	6,752	-1,363	-16.8	-18.5
<b>Automotive products</b>	<b>4,450</b>	<b>4,545</b>	<b>95</b>	<b>2.1</b>	<b>16,453</b>	<b>8,995</b>	<b>-7,458</b>	<b>-45.3</b>	<b>-46.0</b>
Passenger autos and chassis	1,486	1,452	-34	-2.3	5,360	2,938	-2,422	-45.2	-46.2
Trucks and other motor vehicles	1,052	1,054	2	0.2	3,442	2,105	-1,336	-38.8	-39.1
Motor vehicle parts	1,912	2,040	127	6.7	7,652	3,952	-3,699	-48.3	-48.7
<b>Other consumer goods</b>	<b>5,629</b>	<b>5,613</b>	<b>-16</b>	<b>-0.3</b>	<b>12,805</b>	<b>11,242</b>	<b>-1,562</b>	<b>-12.2</b>	<b>-12.0</b>
Apparel and footwear	1,296	1,241	-54	-4.2	2,654	2,537	-117	-4.4	-6.0
Apparel and apparel accessories	1,081	1,054	-27	-2.5	2,228	2,135	-93	-4.2	-4.6
Footwear	215	187	-28	-12.9	426	402	-24	-5.6	-13.0
Miscellaneous consumer goods	4,333	4,372	38	0.9	10,151	8,705	-1,446	-14.2	-13.5
Television, radios, phonographs	137	150	13	9.9	484	287	-197	-40.8	-38.6
Printed matter	356	350	-5	-1.5	836	706	-130	-15.6	-16.5
Watches, sporting goods and toys	642	638	-4	-0.7	1,548	1,280	-268	-17.3	-18.5
House furnishings	828	833	5	0.6	1,832	1,661	-171	-9.3	-9.1
Photographic goods	358	340	-18	-5.1	846	698	-148	-17.5	-19.6
Miscellaneous end products	2,013	2,061	48	2.4	4,605	4,074	-531	-11.5	-9.2
<b>Special transactions trade</b>	<b>536</b>	<b>545</b>	<b>9</b>	<b>1.6</b>	<b>948</b>	<b>1,082</b>	<b>133</b>	<b>14.1</b>	<b>20.5</b>
<b>Unallocated balance of payments adjustments</b>	<b>648</b>	<b>654</b>	<b>6</b>	<b>0.9</b>	<b>881</b>	<b>1,302</b>	<b>421</b>	<b>47.8</b>	<b>62.0</b>



**Table 7-1**  
**Imports from selected countries, customs basis, not seasonally adjusted — February**

	Agricultural and fishing products	Energy products	Forestry products	Industrial goods	Machinery and equipment	Automotive products	Consumer goods	Special transactions	Total
millions of dollars									
<b>United States</b>									
2008	1,140.7	899.6	177.7	4,278.2	4,429.4	4,556.7	1,641.6	343.0	17,466.9
2009	1,299.9	1,085.7	160.8	3,781.0	4,438.6	2,671.5	1,830.3	472.8	15,740.6
<b>Mexico</b>									
2008	113.5	58.3	0.4	104.0	472.5	487.7	72.8	3.7	1,312.9
2009	124.6	4.4	0.7	101.7	484.2	360.1	79.2	1.8	1,156.8
<b>Japan</b>									
2008	5.9	0.3	0.1	90.0	516.4	641.4	75.6	0.3	1,330.0
2009	5.6	0.3	0.1	92.7	417.3	401.0	74.7	0.3	992.1
<b>European Union</b>									
<b>Germany</b>									
2008	14.5	0.9	1.3	201.7	333.5	236.9	165.5	1.0	955.2
2009	18.6	0.8	0.5	182.1	469.4	171.5	152.2	0.7	995.8
<b>France</b>									
2008	49.8	0.4	0.3	67.6	151.0	3.7	122.5	2.5	397.7
2009	47.7	24.7	0.1	73.7	141.2	10.6	163.8	0.8	462.6
<b>United Kingdom</b>									
2008	29.7	249.1	0.2	100.8	239.9	34.7	108.2	0.4	763.2
2009	30.6	224.0	0.1	124.3	284.9	27.3	105.9	1.4	798.3
<b>Italy</b>									
2008	44.9	0.1	2.0	78.4	116.7	19.1	90.4	0.3	351.9
2009	41.4	0.0	1.2	73.5	107.0	11.4	93.8	0.4	328.8
<b>Other European Union</b>									
2008	84.1	76.5	3.4	280.1	326.5	109.1	324.3	0.5	1,204.6
2009	87.3	89.4	3.3	232.4	363.1	52.8	335.7	2.4	1,166.4
<b>Total</b>									
2008	223.1	327.0	7.1	728.6	1,167.7	403.5	810.8	4.7	3,672.7
2009	225.6	338.8	5.2	686.0	1,365.5	273.5	851.4	5.7	3,751.8
<b>Newly industrialized countries</b>									
<b>South Korea</b>									
2008	3.4	3.7	0.0	67.1	169.7	141.1	18.4	0.2	403.5
2009	2.9	1.0	0.0	77.3	175.8	99.4	18.6	0.0	375.0
<b>Hong Kong</b>									
2008	1.8	0.0	0.1	1.8	15.6	0.2	13.9	0.0	33.4
2009	1.6	0.0	0.0	2.3	18.0	0.1	10.2	0.0	32.2
<b>Taiwan</b>									
2008	3.2	0.0	0.7	63.5	157.9	16.0	31.0	0.1	272.3
2009	3.8	0.0	0.4	56.7	158.5	15.8	31.5	0.1	266.8
<b>Singapore</b>									
2008	1.7	0.0	0.1	52.7	44.1	0.3	15.6	0.0	114.6
2009	1.9	51.5	0.2	28.0	45.9	0.5	14.7	0.3	143.0
<b>Total</b>									
2008	10.1	3.7	0.9	185.0	387.2	157.6	78.8	0.3	823.7
2009	10.2	52.5	0.6	164.3	398.2	115.8	75.0	0.4	817.1
<b>Other countries</b>									
2008	522.1	2,023.5	53.4	1,384.3	2,078.7	177.7	1,610.9	61.8	7,912.4
2009	555.3	1,161.7	40.4	1,488.5	1,976.1	117.7	1,785.9	62.7	7,188.2
<b>Total</b>									
2008	2,015.4	3,312.4	239.6	6,770.1	9,052.0	6,424.6	4,290.6	413.9	32,518.8
2009	2,221.3	2,643.4	207.7	6,314.3	9,079.9	3,939.6	4,696.5	543.9	29,646.6

**Table 7-2**  
**Imports from selected countries, customs basis, not seasonally adjusted — Year to date, January to February**

	Agricultural and fishing products	Energy products	Forestry products	Industrial goods	Machinery and equipment	Automotive products	Consumer goods	Special transactions	Total
millions of dollars									
<b>United States</b>									
2008	2,337.3	2,131.8	347.2	8,686.5	8,776.0	8,175.4	3,381.1	552.6	34,388.0
2009	2,682.7	2,102.8	314.4	7,658.0	8,485.3	4,638.9	3,577.8	758.2	30,218.1
<b>Mexico</b>									
2008	244.5	58.3	0.7	210.6	973.8	795.8	153.7	4.9	2,442.2
2009	270.6	4.4	1.0	222.1	940.4	591.5	159.1	4.5	2,193.7
<b>Japan</b>									
2008	10.8	0.7	0.2	180.8	1,044.0	1,077.5	168.3	0.7	2,483.0
2009	11.3	0.6	0.3	203.0	885.9	866.8	163.4	0.6	2,131.8
<b>European Union</b>									
<b>Germany</b>									
2008	30.1	13.6	2.5	406.6	676.1	459.1	319.5	1.3	1,908.9
2009	38.9	1.8	1.0	333.3	843.2	269.6	300.5	2.0	1,790.1
<b>France</b>									
2008	96.6	8.2	0.5	130.0	303.2	7.2	243.9	7.9	797.4
2009	101.1	51.6	0.4	139.1	295.9	16.5	291.4	1.1	897.1
<b>United Kingdom</b>									
2008	54.4	475.7	0.2	189.6	460.2	89.4	214.9	1.1	1,485.6
2009	53.5	372.9	0.3	234.9	547.8	47.4	198.6	3.5	1,458.9
<b>Italy</b>									
2008	93.8	0.1	3.6	159.2	252.8	31.1	168.0	0.7	709.3
2009	97.5	10.6	3.3	162.2	235.3	24.2	173.3	0.8	707.3
<b>Other European Union</b>									
2008	168.6	254.0	9.1	528.2	640.5	223.3	691.0	0.8	2,515.4
2009	183.0	138.9	8.1	491.4	694.1	90.1	733.4	3.0	2,342.1
<b>Total</b>									
2008	443.6	751.6	15.8	1,413.5	2,332.8	810.0	1,637.4	11.9	7,416.5
2009	474.0	575.8	13.1	1,360.7	2,616.3	447.9	1,697.2	10.4	7,195.5
<b>Newly industrialized countries</b>									
<b>South Korea</b>									
2008	7.6	12.6	0.1	131.2	367.8	259.4	36.1	0.2	814.9
2009	6.6	7.7	0.0	150.2	417.8	221.9	40.4	0.1	844.7
<b>Hong Kong</b>									
2008	5.0	0.0	0.2	4.4	32.3	0.3	29.7	0.1	71.9
2009	3.7	0.0	0.0	7.4	28.2	0.2	22.4	0.1	62.1
<b>Taiwan</b>									
2008	7.9	0.0	1.4	138.2	354.5	31.1	67.9	0.2	601.2
2009	8.5	0.1	1.1	143.8	347.6	29.1	64.9	0.2	595.2
<b>Singapore</b>									
2008	3.5	2.3	0.4	67.4	88.5	0.5	29.3	0.1	191.9
2009	5.5	51.5	0.6	171.0	93.0	0.7	36.3	0.3	358.9
<b>Total</b>									
2008	23.9	14.9	2.0	341.2	843.1	291.4	162.9	0.6	1,679.9
2009	24.3	59.3	1.7	472.5	886.5	252.0	164.0	0.7	1,861.0
<b>Other countries</b>									
2008	1,136.9	4,180.9	114.5	2,943.0	4,240.4	349.4	3,247.6	121.8	16,334.4
2009	1,225.2	2,670.4	95.6	3,027.9	4,182.9	240.3	3,709.6	106.3	15,258.1
<b>Total</b>									
2008	4,197.1	7,138.2	480.5	13,775.6	18,210.2	11,499.5	8,750.8	692.4	64,744.2
2009	4,688.1	5,413.3	426.2	12,944.2	17,997.2	7,037.5	9,471.1	880.7	58,858.3

**Table 8**  
**Imports by country, customs basis, not seasonally adjusted**

	February		January to February		Variation January to February 2009/2008
	2008	2009	2008	2009	
millions of dollars					
<b>North America</b>					
Canada	337.1	245.6	699.1	491.8	-29.7
Greenland	3.8	7.7	4.6	10.6	130.4
Mexico	1,312.9	1,156.8	2,442.2	2,193.7	-10.2
Saint Pierre and Miquelon	0.0	0.0	0.0	0.1	0.0
United States	17,466.9	15,740.6	34,388.0	30,218.1	-12.1
<b>Total</b>	<b>19,120.8</b>	<b>17,150.8</b>	<b>37,534.0</b>	<b>32,914.2</b>	<b>-12.3</b>
<b>Western Europe</b>					
Andorra	0.0	0.0	0.0	0.0	0.0
Austria	139.6	94.7	268.8	197.9	-26.4
Belgium	146.9	111.7	365.5	199.1	-45.5
Denmark	75.0	60.8	139.6	132.4	-5.2
Faeroe Islands	0.1	0.0	0.1	0.1	0.0
Finland	61.9	54.0	120.0	134.2	11.8
France	397.7	462.6	797.4	897.1	12.5
Germany	955.2	995.8	1,908.9	1,790.1	-6.2
Gibraltar	0.0	0.0	0.0	0.0	0.0
Greece	6.9	13.8	17.0	25.5	50.0
Iceland	1.4	2.1	4.8	3.8	-20.8
Italy	351.9	328.8	709.3	707.3	-0.3
Luxembourg	9.7	3.8	14.9	13.1	-12.1
Malta	1.1	1.7	2.6	4.1	57.7
Netherlands	139.6	136.6	253.8	258.2	1.7
Norway	466.7	286.1	999.9	519.7	-48.0
Portugal	22.6	26.0	48.8	46.2	-5.3
Republic of Ireland (Eire)	195.0	196.3	393.8	431.4	9.5
Spain	101.4	115.5	221.2	210.0	-5.1
Sweden	148.2	162.3	352.4	303.6	-13.8
Switzerland	195.0	335.0	360.7	548.1	52.0
United Kingdom	763.2	798.3	1,485.6	1,458.9	-1.8
<b>Total</b>	<b>4,179.1</b>	<b>4,185.7</b>	<b>8,465.0</b>	<b>7,880.9</b>	<b>-6.9</b>
<b>Other Europe</b>					
Albania	0.2	0.1	0.4	0.3	-25.0
Armenia	0.2	3.6	0.3	6.2	...
Azerbaijan	0.0	55.9	0.0	162.3	0.0
Belarus	1.0	9.6	23.5	13.6	-42.1
Bosnia and Herzegovina	0.5	0.6	0.9	1.3	44.4
Bulgaria	19.6	6.6	24.6	23.7	-3.7
Croatia	2.5	2.0	5.4	3.9	-27.8
Czech Republic	24.0	26.9	46.5	59.8	28.6
Estonia	2.4	1.8	6.1	3.9	-36.1
Georgia	4.2	9.2	12.7	18.7	47.2
Hungary	23.7	23.9	47.9	61.1	27.6
Kazakhstan	0.1	0.3	0.2	11.0	...
Kyrgyzstan	0.0	0.0	0.0	0.4	0.0
Latvia	0.4	1.0	22.5	1.9	-91.6
Lithuania	3.6	25.2	7.6	44.0	478.9
Macedonia (Former Yugoslav Republic of Macedonia)	0.9	0.7	1.8	1.9	5.6
Montenegro	0.0	0.1	0.1	0.1	0.0
Poland	50.2	74.5	95.7	139.2	45.5
Republic of Moldova	0.2	0.2	0.3	0.5	66.7
Romania	10.9	11.3	22.1	23.2	5.0
Russian Federation	256.5	179.2	306.8	257.2	-16.2
Serbia	0.6	0.8	1.4	2.3	64.3
Slovakia	15.0	13.1	29.9	19.8	-33.8
Slovenia	6.8	4.6	13.6	9.3	-31.6
Tajikistan	0.0	0.0	0.0	0.0	0.0
Turkmenistan	0.1	0.0	0.1	0.0	0.0
Ukraine	3.4	7.3	6.9	25.3	266.7
Uzbekistan	0.0	0.0	0.0	0.1	0.0
<b>Total</b>	<b>427.1</b>	<b>458.9</b>	<b>677.6</b>	<b>891.1</b>	<b>31.5</b>

Table 8 – continued

## Imports by country, customs basis, not seasonally adjusted

	February		January to February		Variation January to February 2009/2008
	2008	2009	2008	2009	
millions of dollars					
<b>Middle East</b>					
Bahrain	0.3	1.2	0.4	2.7	575.0
Cyprus	0.3	0.3	0.4	0.5	25.0
Egypt	4.5	8.2	8.4	19.9	136.9
Eritrea	0.0	0.0	0.0	0.0	0.0
Ethiopia	0.6	0.8	1.3	2.0	53.8
Iran	3.4	1.8	7.6	4.2	-44.7
Iraq	48.0	46.3	281.3	245.4	-12.8
Israel	109.4	97.1	185.5	178.7	-3.7
Jordan	1.3	1.4	3.2	3.6	12.5
Kuwait	0.0	36.5	0.3	36.5	...
Lebanon	1.2	0.6	2.0	2.1	5.0
Libya	0.0	0.0	0.0	0.0	0.0
Oman	0.6	1.4	0.7	1.5	114.3
Qatar	0.0	0.0	0.1	0.1	0.0
Saudi Arabia	161.3	86.8	353.9	260.8	-26.3
Somalia	0.0	0.0	0.0	0.0	0.0
Sudan	7.4	7.0	14.0	11.7	-16.4
Syria	0.7	0.3	1.1	0.5	-54.5
Turkey	41.0	57.9	82.9	158.1	90.7
United Arab Emirates	125.2	2.6	214.7	5.9	-97.3
Yemen	0.0	0.0	0.0	0.0	0.0
<b>Total</b>	<b>505.2</b>	<b>350.0</b>	<b>1,157.7</b>	<b>934.3</b>	<b>-19.3</b>
<b>Other Africa</b>					
Algeria	813.1	207.9	1,421.7	522.0	-63.3
Angola	81.7	82.6	252.0	203.3	-19.3
Antarctica	0.0	0.0	0.0	0.0	...
Benin	0.0	0.0	0.0	0.0	0.0
Botswana	0.1	0.0	0.1	0.1	0.0
Bouvet Island	0.0	0.0	0.0	0.0	...
Burkina Faso	0.1	0.0	0.1	0.0	0.0
Burundi	0.0	0.0	0.1	0.1	0.0
Cameroon	0.5	0.6	1.4	1.0	-28.6
Cape Verde	0.0	0.0	0.0	0.0	0.0
Central African Republic	0.0	0.0	0.0	0.0	0.0
Chad	0.1	0.0	0.1	0.0	0.0
Comoros	0.0	0.0	0.0	0.0	0.0
Congo	0.3	0.1	0.8	0.3	-62.5
Democratic Republic of the Congo	0.0	0.0	0.0	0.1	0.0
Djibouti	0.0	0.0	0.0	0.0	0.0
Equatorial Guinea	0.0	86.1	0.0	141.2	0.0
French Southern Territories	0.0	0.0	0.0	0.0	...
Gabon	0.0	0.2	0.2	0.6	200.0
Gambia	0.0	0.0	0.0	0.0	0.0
Ghana	4.3	1.7	6.8	6.4	-5.9
Guinea	4.2	6.4	6.4	12.8	100.0
Guinea-Bissau	0.0	0.0	0.0	0.0	0.0
Ivory Coast	4.2	7.7	11.6	18.7	61.2
Kenya	0.8	1.6	2.0	2.9	45.0
Lesotho	0.2	0.3	0.3	0.5	66.7
Liberia	1.7	3.8	4.1	5.2	26.8
Madagascar	1.2	3.6	2.8	8.4	200.0
Malawi	0.2	0.1	0.3	0.3	0.0
Mali	0.0	0.0	0.0	0.0	0.0
Mauritania	0.0	0.2	0.0	0.3	0.0
Mauritius	0.3	0.9	0.7	2.3	228.6
Morocco	17.7	12.0	35.2	36.0	2.3
Mozambique	0.1	0.2	0.5	0.2	-60.0
Namibia	0.0	0.0	0.0	47.0	0.0
Niger	0.1	0.0	0.2	0.1	-50.0
Nigeria	0.4	0.5	193.3	90.6	-53.1
Rwanda	0.0	0.1	0.0	0.1	0.0
Saint Helena	0.0	0.0	0.1	0.0	0.0
Sao Tome and Principe	0.0	0.0	0.0	0.0	0.0
Senegal	0.1	0.1	0.1	0.1	0.0
Seychelles	0.1	0.0	0.3	0.4	33.3

Table 8 – continued

## Imports by country, customs basis, not seasonally adjusted

	February		January to February		Variation
	2008	2009	2008	2009	January to February 2009/2008
millions of dollars					
Sierra Leone	0.1	0.3	0.3	0.3	0.0
South Africa	58.1	46.6	111.0	87.2	-21.4
Swaziland	0.4	0.2	0.5	0.3	-40.0
Togo	1.1	0.0	1.2	0.2	-83.3
Tunisia	3.2	4.3	6.1	7.2	18.0
Uganda	0.1	0.1	0.3	0.2	-33.3
United Republic of Tanzania	0.1	0.4	0.2	1.0	400.0
Western Sahara	0.0	0.0	0.0	0.0	0.0
Zambia	0.1	0.1	0.1	0.1	0.0
Zimbabwe	0.0	0.1	0.1	0.7	600.0
<b>Total</b>	<b>994.8</b>	<b>468.5</b>	<b>2,061.1</b>	<b>1,198.0</b>	<b>-41.9</b>
<b>Other Asia</b>					
Afghanistan	0.2	0.2	0.3	0.4	33.3
Bangladesh	40.7	75.8	89.1	140.2	57.4
Bhutan	0.0	0.0	0.0	0.0	0.0
British Indian Ocean Territory	0.0	0.0	0.0	0.0	0.0
Brunei Darussalam	0.1	0.4	0.4	0.5	25.0
Cambodia	21.6	29.5	41.8	59.2	41.6
China	2,983.9	3,149.3	6,129.0	6,797.8	10.9
Hong Kong	33.4	32.2	71.9	62.1	-13.6
India	162.0	184.4	337.3	366.8	8.7
Indonesia	77.1	82.4	156.2	176.3	12.9
Japan	1,330.0	992.1	2,483.0	2,131.8	-14.1
Laos	0.4	0.5	1.2	1.1	-8.3
Macao	3.0	1.5	7.2	3.8	-47.2
Malaysia	214.0	178.1	449.6	359.7	-20.0
Maldives	0.0	0.0	0.0	0.0	0.0
Mongolia	14.6	11.4	26.8	24.5	-8.6
Myanmar	0.1	0.0	0.6	0.0	0.0
Nepal	1.0	0.9	2.0	1.8	-10.0
North Korea	0.0	0.0	0.0	0.0	0.0
Pakistan	16.1	19.6	34.9	37.2	6.6
Philippines	56.9	52.6	114.4	102.2	-10.7
Singapore	114.6	143.0	191.9	358.9	87.0
South Korea	403.5	375.0	814.9	844.7	3.7
Sri Lanka	8.7	9.3	18.8	20.9	11.2
Taiwan	272.3	266.8	601.2	595.2	-1.0
Thailand	169.8	183.8	351.2	366.0	4.2
Timor-Leste	0.0	0.3	0.1	0.7	600.0
Viet Nam	60.2	77.1	132.9	177.3	33.4
<b>Total</b>	<b>5,984.2</b>	<b>5,866.1</b>	<b>12,056.7</b>	<b>12,629.1</b>	<b>4.7</b>
<b>Oceania</b>					
American Samoa	0.0	0.0	0.0	0.0	0.0
Australia	137.5	94.6	296.5	231.5	-21.9
Christmas Island	0.0	0.0	0.0	0.0	0.0
Cocos (Keeling) Islands	0.0	0.0	0.0	0.0	0.0
Cook Islands	0.0	0.0	0.0	0.0	0.0
Fiji	0.6	0.3	0.8	0.8	0.0
French Polynesia	0.1	0.0	0.3	0.1	-66.7
Guam	0.0	0.0	0.1	0.0	0.0
Heard Island and McDonald Islands	0.0	0.0	0.0	0.0	...
Kiribati	0.0	0.0	0.0	0.1	0.0
Nauru	0.0	0.0	0.0	0.0	0.0
New Caledonia	0.0	0.0	0.0	0.1	0.0
New Zealand	36.8	28.9	78.3	62.2	-20.6
Niue	0.0	0.0	0.0	0.0	0.0
Norfolk Island	0.0	0.0	0.0	0.0	0.0
Papua New Guinea	0.1	0.1	0.4	0.2	-50.0
Pitcairn	0.0	0.0	0.0	0.0	0.0
Samoa	0.0	0.0	0.0	0.0	0.0
Solomon Islands	0.0	0.0	0.0	0.0	0.0
Tonga	0.0	0.0	0.0	0.0	0.0
United States Minor Outlying Islands	0.5	0.4	1.5	0.9	-40.0
Vanuatu	0.0	0.0	0.0	0.0	0.0

Table 8 – continued

## Imports by country, customs basis, not seasonally adjusted

	February		January to February		Variation January to February 2009/2008
	2008	2009	2008	2009	
	millions of dollars				
Wallis and Futuna	0.0	0.0	0.0	0.0	0.0
<b>Total</b>	<b>175.7</b>	<b>124.4</b>	<b>378.0</b>	<b>296.0</b>	<b>-21.7</b>
<b>South America</b>					
Argentina	33.8	40.7	71.6	100.1	39.8
Bolivia	4.4	4.8	10.9	9.6	-11.9
Brazil	244.7	200.5	460.7	431.5	-6.3
Chile	215.3	122.5	410.9	268.5	-34.7
Colombia	65.4	44.5	117.5	95.7	-18.6
Ecuador	17.3	23.6	34.6	44.8	29.5
Falkland Islands (Malvinas)	0.0	0.0	0.0	0.0	0.0
Guyana	16.1	22.9	31.8	43.1	35.5
Paraguay	0.9	0.6	1.7	1.3	-23.5
Peru	144.7	236.5	357.0	443.0	24.1
Suriname	51.1	52.8	87.2	90.4	3.7
Uruguay	5.0	14.6	14.3	32.0	123.8
Venezuela	113.4	87.0	204.9	178.8	-12.7
<b>Total</b>	<b>912.1</b>	<b>851.0</b>	<b>1,803.0</b>	<b>1,738.9</b>	<b>-3.6</b>
<b>Central America Antilles</b>					
Anguilla	0.0	0.1	0.0	0.1	0.0
Antigua and Barbuda	0.0	0.0	0.1	0.1	0.0
Aruba	0.0	7.3	84.2	28.7	-65.9
Bahamas	0.7	8.7	1.6	9.5	493.8
Barbados	0.3	0.4	1.2	1.9	58.3
Belize	0.6	1.0	0.9	1.8	100.0
Bermuda	0.1	0.1	0.2	0.1	-50.0
British Virgin Islands	0.0	0.0	7.5	0.0	0.0
Cayman Islands	0.0	0.0	0.1	0.1	0.0
Costa Rica	34.2	31.2	65.3	58.0	-11.2
Cuba	85.4	46.4	222.3	75.8	-65.9
Dominica	0.0	0.0	0.0	0.0	0.0
Dominican Republic	9.4	10.8	16.7	22.3	33.5
El Salvador	3.8	5.2	7.4	18.1	144.6
Grenada	0.0	0.0	0.1	0.0	0.0
Guatemala	13.6	16.8	37.6	36.9	-1.9
Haiti	1.5	1.2	3.6	2.5	-30.6
Honduras	12.4	12.6	23.0	23.1	0.4
Jamaica	11.6	11.2	31.4	19.3	-38.5
Montserrat	0.0	0.0	0.0	0.0	0.0
Netherlands Antilles	0.0	4.7	2.4	4.8	100.0
Nicaragua	5.0	7.0	10.0	14.2	42.0
Panama	0.8	0.4	13.1	2.0	-84.7
Saint Kitts and Nevis	0.3	0.4	0.7	0.8	14.3
Saint Lucia	0.0	0.0	0.0	0.0	0.0
Saint Vincent and the Grenadines	0.0	0.0	0.0	0.0	0.0
Trinidad and Tobago	39.8	25.3	81.4	55.9	-31.3
Turks and Caicos Islands	0.1	0.0	0.3	0.1	-66.7
<b>Total</b>	<b>219.8</b>	<b>191.2</b>	<b>611.0</b>	<b>375.8</b>	<b>-38.5</b>
<b>All countries</b>	<b>32,518.8</b>	<b>29,646.6</b>	<b>64,744.2</b>	<b>58,858.3</b>	<b>-9.1</b>

**Table 9-1  
Imports by province of clearance, customs basis, not seasonally adjusted — February**

	Agricultural and fishing products	Energy products	Forestry products	Industrial goods	Machinery and equipment	Automotive products	Consumer goods	Special transactions	Total
millions of dollars									
Newfoundland Labrador									
2008	2.3	297.8	0.0	5.6	3.8	0.1	0.7	0.1	310.3
2009	4.5	90.0	0.0	14.6	3.5	0.0	0.3	0.0	112.9
Prince Edward Island									
2008	0.0	0.0	0.0	0.1	0.2	0.0	3.2	0.0	3.6
2009	0.0	0.0	0.0	0.0	0.1	0.0	0.0	0.0	0.2
Nova Scotia									
2008	31.1	24.9	1.4	113.4	72.9	240.3	10.7	1.4	496.1
2009	29.5	80.4	1.0	100.8	120.3	193.0	11.8	2.3	539.1
New Brunswick									
2008	27.9	355.6	10.3	79.0	51.3	24.2	11.5	2.0	561.8
2009	22.2	274.3	9.2	75.2	60.3	22.1	12.1	2.5	477.9
Quebec									
2008	295.0	1,756.9	69.0	1,352.5	1,755.0	204.1	768.8	65.5	6,266.8
2009	333.3	1,091.4	70.3	1,057.2	1,748.9	161.9	992.8	51.9	5,507.7
Ontario									
2008	1,109.0	455.1	84.8	3,779.5	5,011.7	5,082.2	2,710.7	309.3	18,542.2
2009	1,268.1	510.1	71.4	3,453.6	4,801.2	2,958.3	2,873.4	446.0	16,382.1
Manitoba									
2008	75.0	21.4	6.6	273.0	458.6	149.2	125.4	8.2	1,117.4
2009	73.9	15.9	5.9	308.2	496.5	115.9	133.9	7.8	1,158.1
Saskatchewan									
2008	25.8	24.8	2.4	168.9	258.9	100.4	15.2	2.2	598.4
2009	27.2	32.0	2.3	241.6	273.7	87.6	20.4	4.2	688.9
Alberta									
2008	140.8	164.5	10.6	415.4	581.5	116.0	84.0	11.6	1,524.5
2009	132.0	300.7	8.9	511.2	641.2	70.3	94.4	14.6	1,773.2
British Columbia									
2008	308.7	209.4	54.4	582.7	854.8	507.7	560.5	13.6	3,091.7
2009	330.4	248.2	38.8	551.5	927.9	330.4	557.5	14.2	2,998.9
Yukon, Northwest Territories and Nunavut									
2008	0.0	2.1	0.0	0.1	3.5	0.3	0.0	0.0	5.9
2009	0.0	0.5	0.0	0.4	6.3	0.0	0.0	0.3	7.5
<b>Total</b>									
<b>2008</b>	<b>2,015.4</b>	<b>3,312.4</b>	<b>239.6</b>	<b>6,770.1</b>	<b>9,052.0</b>	<b>6,424.6</b>	<b>4,290.6</b>	<b>413.9</b>	<b>32,518.8</b>
<b>2009</b>	<b>2,221.3</b>	<b>2,643.4</b>	<b>207.7</b>	<b>6,314.3</b>	<b>9,079.9</b>	<b>3,939.6</b>	<b>4,696.5</b>	<b>543.9</b>	<b>29,646.6</b>

**Table 9-2**  
**Imports by province of clearance, customs basis, not seasonally adjusted — Year to date, January to February**

	Agricultural and fishing products	Energy products	Forestry products	Industrial goods	Machinery and equipment	Automotive products	Consumer goods	Special transactions	Total
millions of dollars									
Newfoundland Labrador									
2008	6.8	588.5	0.0	9.3	5.8	0.3	0.9	4.0	615.5
2009	7.2	360.4	0.0	18.8	10.6	0.1	1.0	0.0	398.2
Prince Edward Island									
2008	0.2	0.0	0.0	0.1	0.7	0.0	5.8	0.0	7.0
2009	0.2	0.0	0.0	15.9	0.2	0.0	0.0	0.0	16.4
Nova Scotia									
2008	53.5	314.8	2.6	278.4	152.8	479.6	22.0	2.2	1,306.0
2009	61.5	242.7	2.2	159.3	200.6	279.8	25.0	3.7	974.9
New Brunswick									
2008	56.1	829.7	21.0	151.9	116.4	49.9	29.1	2.3	1,256.5
2009	52.6	660.4	18.8	141.1	116.5	34.5	24.2	2.6	1,050.7
Quebec									
2008	623.4	3,621.9	127.3	2,725.5	3,328.3	397.0	1,623.8	102.5	12,549.7
2009	742.4	1,970.3	141.9	2,304.7	3,285.7	290.6	2,006.9	73.0	10,815.4
Ontario									
2008	2,291.3	903.0	176.3	7,717.8	10,125.3	8,929.0	5,535.1	523.9	36,201.8
2009	2,623.8	995.4	150.9	6,942.0	9,618.5	5,302.0	5,760.9	736.6	32,130.0
Manitoba									
2008	153.8	39.5	13.3	529.9	902.7	283.9	246.4	14.7	2,184.1
2009	157.0	29.9	12.9	615.8	1,005.2	241.1	265.7	14.3	2,342.0
Saskatchewan									
2008	54.3	48.8	4.7	371.5	508.7	226.8	35.1	6.3	1,256.2
2009	54.6	65.1	3.8	448.1	551.9	166.7	37.6	6.1	1,333.9
Alberta									
2008	303.0	421.0	20.6	837.2	1,277.0	227.3	169.5	14.8	3,270.4
2009	294.7	614.4	17.4	1,058.2	1,311.7	132.5	190.0	20.2	3,639.1
British Columbia									
2008	654.7	366.6	114.7	1,153.7	1,784.4	905.1	1,083.1	21.7	6,084.0
2009	694.2	473.3	78.3	1,239.9	1,887.5	590.0	1,159.7	23.7	6,146.5
Yukon, Northwest Territories and Nunavut									
2008	0.0	4.3	0.0	0.2	8.0	0.5	0.0	0.0	13.0
2009	0.0	1.4	0.0	0.4	9.0	0.0	0.0	0.3	11.1
<b>Total</b>									
<b>2008</b>	<b>4,197.1</b>	<b>7,138.2</b>	<b>480.5</b>	<b>13,775.6</b>	<b>18,210.2</b>	<b>11,499.5</b>	<b>8,750.8</b>	<b>692.4</b>	<b>64,744.2</b>
<b>2009</b>	<b>4,688.1</b>	<b>5,413.3</b>	<b>426.2</b>	<b>12,944.2</b>	<b>17,997.2</b>	<b>7,037.5</b>	<b>9,471.1</b>	<b>880.7</b>	<b>58,858.3</b>



# Technical notes

---

## The Canadian international merchandise trade statistical program

### I Introduction

The objective of this text is to provide a general overview of the Canadian International Merchandise Trade Statistical Program with special reference to concepts and definitions. The text is intended for the general user and simplicity is emphasized. More technical details can be obtained from the International Trade Division upon request.

### II Conceptual framework

**1. Objectives and coverage:** The primary objective of the Canadian International Merchandise Trade Statistical Program is to measure the change in the stock of material resources of the country resulting from the movement of merchandise into or out of Canada. Information on imports and exports are inputs into the System of National Accounts particularly in the Balance of Payments and Gross Domestic Product, and are used in the formulation of trade and budgetary policies. Governments, importers, exporters, manufacturers and shipping companies use trade statistics to:

- monitor import penetration and export performance;
- monitor commodity price and volume changes;
- examine transport implications.

**2. Trade statistics - Customs basis/Balance of Payments basis:** Merchandise trade statistics are reported and presented on two different bases: Customs basis and Balance of Payment basis. (B.O.P.)

When goods are imported into or exported from Canada, declarations must be filed with Customs giving such information as description and value of the goods, origin and port of clearance of commodities and the mode of transport. Most of this information is required for the purposes of Customs Administration. Statistics developed from administrative records of Customs are commonly referred to as Customs based trade statistics.

Customs based trade statistics are more accurate at measuring imports than they are at measuring exports. This is the case because Customs are typically more vigilant with respect to goods entering the country than they are with goods leaving the country.

Customs based export statistics may understate and/or incorrectly portray the destination of exports. Export statistics are understated when the proper documentation is not filed with Customs. Exports are incorrectly portrayed when the country of final destination is inaccurately reported on the customs documentation - this occurs most frequently when goods are routed through an intermediary country before continuing on to their final destination.

Statistics Canada does not have a measure of undercoverage but periodically conducts reconciliation exercises with its major trading partners, excluding the United States.

On January 1st, 1990, Canada entered into a Memorandum of Understanding (MOU) with the United States concerning the exchange of import data. As a consequence, each administration is using the other's import data to replace its own export data. Canada's international merchandise trade statistics are, therefore, no longer derived exclusively from the administrative records of Canada Border Services Agency, but from United States Customs records as well.

Customs based information is adjusted to conform with the National Accounts concepts and definitions. The adjustments to derive Balance of Payments based trade data include trade definition, valuation and timing related adjustments. The principal difference between the two trade concepts is that Customs based merchandise trade statistics cover the physical movement of goods as they are reflected on customs documents, while Balance of Payments adjusted data are intended to cover all economic transactions between residents and non-residents which involve merchandise trade. This section describes the concepts and processes pertaining to the Customs based trade statistics only. (For further information on Balance of Payments adjusted data see the publication *"Canada's Balance of International Payments" Catalogue no. 67-001-XPB*).

**3. System of trade:** Canadian trade statistics are compiled according to the "General" system of trade as defined by the United Nations Statistical Office. Under this system, imports include all goods which have crossed Canada's territorial boundary, whether for immediate consumption in Canada or stored in bonded Customs warehouses. Domestic exports include goods grown, extracted or manufactured in Canada, including goods of foreign origin which have been materially transformed in Canada. Re-exports are exports of goods of foreign origin which have not been materially transformed in Canada, including foreign goods withdrawn for export from bonded customs warehouses. Total exports are the sum of Domestic exports and Re-exports. Thus the general trade system, in principal, presents all goods entering the country (imports) and all goods leaving the country (exports). It differs from the "Special" system of trade in the treatment of imported goods into Customs bonded warehouses. Under the "Special" system, these goods are counted only if and when they are withdrawn from Customs warehouses for home consumption. They are not counted in export statistics unless they have first cleared Customs.

Conceptually, under the "General" system, the statistical frontier coincides with the geographical boundary, while under the "Special" system, it coincides with the Customs boundary.

**4. Valuation:** For Customs purposes, imports are recorded at values established according to the provisions of the Customs Act, which, since January 1st, 1985, reflects valuation methods based on the General Agreement on Tariffs and Trade (GATT) Valuation Code System. It generally requires the value for duty of imported goods be equivalent to the transaction value or the price actually paid.

To determine the transaction value of imported goods, all transportation and associated costs arising in respect of the goods being appraised prior to and at the place of direct shipment to Canada, are to be added to the price of the goods. Therefore, Canadian imports are valued F.O.B. (Free on Board), place of direct shipment to Canada. It excludes freight and insurance costs in bringing the goods to Canada from the point of direct shipment.

To countries other than the United States, exports are, in principal, valued or recorded at the values declared on export documents which usually reflect the transaction value, i.e. actual selling price, or in the case of a non-arm's length transaction, the transfer price used for company accounting purposes. Canadian exports to overseas countries are valued at F.O.B. port of exit, including domestic freight charges to that point but net of discounts and allowances. As of January, 1990, Canadian exports to the U.S. are valued F.O.B. point of exit from Canada. Prior to 1990, they were valued F.O.B. place of lading net of freight charges, discounts and allowances.

**5. Statistical period:** The reference period is the calendar month and the calendar year. The closing of the statistical month for imports and Canadian exports to the United States is defined as the last calendar day of the month, based as closely as practicable on the date of clearance from Customs.

The closing of the statistical month for exports, to countries other than the United States, is also defined as the last calendar day of the month. Those export documents which are received too late for incorporation in the current month are assigned to the month the transaction took place. If a monthly summary report from a high volume exporter is not received on time, the data are imputed for the current month and revised with the trade value in the following statistical month.

**6. Trading partner attribution (Country of origin/destination):** Exports are attributed to the country, which is the last known destination of the goods at the time of export. Exports to the United States are attributed to the state of destination.

Imports are attributed to their country of origin, that is, the country in which the goods were grown, extracted or manufactured in accordance to the rules of origin administered by Canada Border Services Agency. Imports from

the United States are attributed to the state of origin. Prior to 1988, most imports were attributed to the country of export/consignment with the exception of imports from Central and South America.

**7. Principal trading areas:** The “principal trading areas” are country groupings defined as follows:

**United States:** (includes trade with Puerto Rico and the U.S. Virgin Islands).

**Japan:**

**E.U. (European Union):** Austria, Belgium, Bulgaria, Cyprus, Czech Republic, Denmark, Estonia, Finland, France, Germany, Greece, Hungary, Ireland, Italy, Latvia, Lithuania, Luxembourg, Malta, Netherlands, Poland, Portugal, Romania, Slovakia, Slovenia, Spain, Sweden and United Kingdom.

**Other O.E.C.D.:** Australia, Canada, Iceland, Mexico, New Zealand, Norway, South Korea, Switzerland, and Turkey. (The E.U. countries, United States, and Japan are also members of O.E.C.D. - the Organization for Economic Co-operation and Development).

**Other countries:** This group includes all countries and territories other than the United States, Japan, E.U. and other O.E.C.D.

**8. Legal framework:** Import and export statistics with countries other than the United States are derived from information contained on administrative records collected by the Canada Border Services Agency under the Customs Act. Copies of these documents (or information therefrom) are sent to Statistics Canada in accordance with Section 25 of the Statistics Act. It follows that the disclosure of trade statistics is governed by both the Customs Act and the Statistics Act and is subject to the provisions of Section 17.(2)(a) of the latter. Disclosure of export statistics to the United States is now governed by a Memorandum of Understanding which provides for an exchange of detailed import statistics between Canada and the United States.

Questions concerning details of methods not covered by these notes should be addressed to the Marketing and Client Services Section, International Trade Division, Statistics Canada, Ottawa, Ontario, K1A 0T6.

**Telephone:** 1-800-294-5583 or within the area code 613-951-9647

**Facsimile:** 1-800-664-0055 or within the area code 613-951-0117

**Internet:** *trade@statcan.gc.ca*