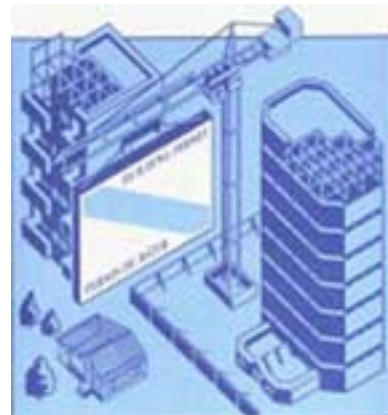


Catalogue no. 64-001-X

Building Permits

September 2008



Statistics
Canada

Statistique
Canada

Canada

How to obtain more information

For information about this product or the wide range of services and data available from Statistics Canada, visit our website at www.statcan.ca, e-mail us at infostats@statcan.ca, or telephone us, Monday to Friday from 8:30 a.m. to 4:30 p.m., at the following numbers:

Statistics Canada's National Contact Centre

Toll-free telephone (Canada and the United States):

Inquiries line	1-800-263-1136
National telecommunications device for the hearing impaired	1-800-363-7629
Fax line	1-877-287-4369

Local or international calls:

Inquiries line	1-613-951-8116
Fax line	1-613-951-0581

Depository Services Program

Inquiries line	1-800-635-7943
Fax line	1-800-565-7757

To access this product

This product, Catalogue no. 64-001-X, is available free in electronic format. To obtain a single issue, visit our website at www.statcan.ca and select "Publications" > "Free Internet publications."

Standards of service to the public

Statistics Canada is committed to serving its clients in a prompt, reliable and courteous manner. To this end, Statistics Canada has developed *standards of service* that its employees observe. To obtain a copy of these service standards, please contact Statistics Canada toll-free at 1-800-263-1136. The service standards are also published on www.statcan.ca under "About us" > "Providing services to Canadians."

Statistics Canada
Investment and capital stock division
Current investment indicators section

Building Permits

September 2008

Published by authority of the Minister responsible for Statistics Canada

© Minister of Industry, 2008

All rights reserved. The content of this electronic publication may be reproduced, in whole or in part, and by any means, without further permission from Statistics Canada, subject to the following conditions: that it be done solely for the purposes of private study, research, criticism, review or newspaper summary, and/or for non-commercial purposes; and that Statistics Canada be fully acknowledged as follows: Source (or "Adapted from", if appropriate): Statistics Canada, year of publication, name of product, catalogue number, volume and issue numbers, reference period and page(s). Otherwise, no part of this publication may be reproduced, stored in a retrieval system or transmitted in any form, by any means—electronic, mechanical or photocopy—or for any purposes without prior written permission of Licensing Services, Client Services Division, Statistics Canada, Ottawa, Ontario, Canada K1A 0T6.

November 2008

Catalogue no. 64-001-X, vol. 52, no. 9

ISSN 1480-7475

Frequency: Monthly

Ottawa

La version française de cette publication est disponible sur demande (n° 64-001-X au catalogue).

Note of appreciation

Canada owes the success of its statistical system to a long standing partnership between Statistics Canada, the citizens of Canada, its businesses, governments and other institutions. Accurate and timely statistical information could not be produced without their continued cooperation and goodwill.

User information

Symbols

The following standard symbols are used in Statistics Canada publications:

- . not available for any reference period
- .. not available for a specific reference period
- ... not applicable
- 0 true zero or a value rounded to zero
- 0^s value rounded to 0 (zero) where there is a meaningful distinction between true zero and the value that was rounded
- p preliminary
- r revised
- x suppressed to meet the confidentiality requirements of the *Statistics Act*
- E use with caution
- F too unreliable to be published

Acknowledgements

This publication was prepared under the direction of:

- D. McDowell, Director, Investment and Capital Stock Division
- M. Labonté, Chief, Current Investment Indicators Section
- N. Charron, Analyst, Current Investment Indicators Section
- D. Legault, Programmer-Analyst, Current Investment Indicators Section
- J. Gaudreault, Quality Control, Current Investment Indicators Section

Important notice

Changes in boundaries, status or names of geographical entities that occurred before January 2006, are reflected in this publication. These geographical changes may be obtained by writing to:

Statistics Canada
Investment and Capital Stock Division
Current Investment Indicators Section
Jean Talon Building, 9 D-2
170 Tunney's Pasture Driveway
Ottawa, Ontario K1A 0T6
or by telephoning: 613-951-6321

Table of contents

Highlights	5
Analysis – September 2008	6
Charts	
1. Total value of building permits	7
2. Residential value of building permits – Total	8
3. Number of dwelling units – Single and multiple	8
4. Non-residential value of building permits – Total	9
5. Commercial value of building permits	9
6. Industrial value of building permits	10
7. Institutional and governmental value of building permits	10
Related products	11
Statistical tables	
1 Total value of building permits, provinces and territories, seasonally adjusted	14
2 Non-residential value of building permits, provinces and territories, seasonally adjusted	14
3 Residential value of building permits, provinces and territories, seasonally adjusted	15
4 Number of dwelling units authorized, province and territories, seasonally adjusted at annual rate	15
5 Dwelling units, value of residential and non-residential building permits, provinces and territories, seasonally adjusted, 2008	16
6 Dwelling units, value of residential and non-residential building permits, census metropolitan areas, seasonally adjusted, 2008	18
7 Dwelling units, provinces and territories, unadjusted, 2008	22
8 Dwelling units, census metropolitan areas, unadjusted, September 2008	24
9 Dwelling units, census metropolitan areas, unadjusted, cumulative, January to September 2008	25
10 Value of residential and non-residential building permits, provinces and territories, unadjusted, 2008	26
11 Value of residential and non-residential building permits, census metropolitan areas, unadjusted, September 2008	28
12 Value of residential and non-residential building permits, census metropolitan areas, unadjusted, cumulative, January to September 2008	29
13 Value of the non-residential permits by type of building, provinces and territories, September 2008	30

Table of contents – continued

Data quality, concepts and methodology

Description – Monthly survey of building permits	31
Data source and methodology	32
Concepts and variables measured	34
Building categories	35
Geographic classification	36
Data accuracy	37
Comparability of data and related sources	38

Appendix

I Geographical abbreviations	39
------------------------------	----

Highlights

- Municipalities issued \$6.5 billion in building permits in September, up 13.4% following an 11.7% decline in August. September's increase was the result of gains in all three components of the non-residential sector.

Analysis – September 2008

Municipalities issued \$6.5 billion in building permits in September, up 13.4% following an 11.7% decline in August.

September's increase was the result of gains in all three components of the non-residential sector. The total value of building permits increased in seven provinces and two territories.

In the non-residential sector, the value of permits rose 41.7% to \$3.2 billion. This increase was generated by a substantial gain in institutional permits, and lesser increases in the industrial and commercial components. Major increases occurred in Ontario, Saskatchewan and Alberta.

Note to readers

Unless otherwise stated, this release presents seasonally adjusted data, which eases comparisons by removing the effects of seasonal variations.

The Building Permits Survey covers 2,400 municipalities representing 95% of the population. It provides an early indication of building activity. The communities representing the other 5% of the population are very small, and their levels of building activity have little impact on the total.

The value of planned construction activities shown in this release excludes engineering projects (e.g., waterworks, sewers or culverts) and land.

For the purpose of this release, the census metropolitan area of Ottawa–Gatineau (Ontario/Quebec) is divided into two areas: Gatineau part and Ottawa part.

In the residential sector, the value of permits fell for the second month in a row and the sixth time in nine months. Housing permits declined by 4.9% to \$3.3 billion, the result of lower levels of permits for multi-family dwellings in six provinces.

Non-residential sector: Institutional permits double

After two consecutive monthly declines, the value of institutional permits more than doubled (+108.8%) in September to a record \$986 million. The increase came mostly from planned medical and educational building projects in Ontario and Saskatchewan.

Construction intentions for commercial buildings rose by 11.7% to \$1.5 billion after three consecutive declines. Overall, seven provinces reported increases in commercial permits, with most of the gains occurring in Ontario, British Columbia and Quebec.

In the industrial sector, contractors took out \$679 million in permits in September, more than 50% above the average value recorded in 2008. This was a 64.4% increase, which more than offset a 16.8% decline in these permits in August. The increase came mostly from maintenance buildings in Ontario and utility buildings in Alberta.

Residential sector: Second consecutive monthly decline for multi-family dwellings

Municipalities issued \$1.2 billion in multi-family dwellings in September, down 11.6% from August and the second consecutive monthly decline.

Ontario and British Columbia accounted for most of the decline among the six provinces that reported a decrease in multi-family dwellings.

At the same time, permits for single-family dwellings fell 0.7% to \$2.1 billion, a third consecutive decline. Significant decreases occurred in Ontario and British Columbia, which more than offset increases in five provinces and the three territories.

Quebec registered the largest gain and a third increase in four months in the value of single-family dwellings.

The overall number of residential units approved fell for a second consecutive month. Municipalities approved 16,134 new dwellings in September, down 3.5% from August.

The number of multi-family dwelling units approved declined 4.7% to 8,448. The number of single-family dwelling units fell 2.1% to 7,686, a third consecutive decrease.

Permits up in most provinces

The value of building permits increased in seven provinces in September.

The most significant increase occurred in Ontario, where permits rose 17.9% to \$2.4 billion. In Saskatchewan, permits more than doubled (+115.2%) to \$334 million, while in Alberta they were up 11.9% to \$1.0 billion. The increases came mainly from the non-residential sector.

The only provinces recording declines were Newfoundland and Labrador, New Brunswick and British Columbia.

Metropolitan areas: Large increases in Edmonton and Saskatoon

Of the 34 census metropolitan areas, 19 recorded increases in the value of building permits in September.

The largest increases occurred in Edmonton, the result of gains in both residential and non-residential buildings. Saskatoon and Toronto followed closely, thanks to gains in the non-residential sector.

In contrast, Victoria recorded declines, the result of drops in residential permits. The second consecutive decline in Calgary was due mainly to a decrease in the commercial component.

Chart 1
Total value of building permits

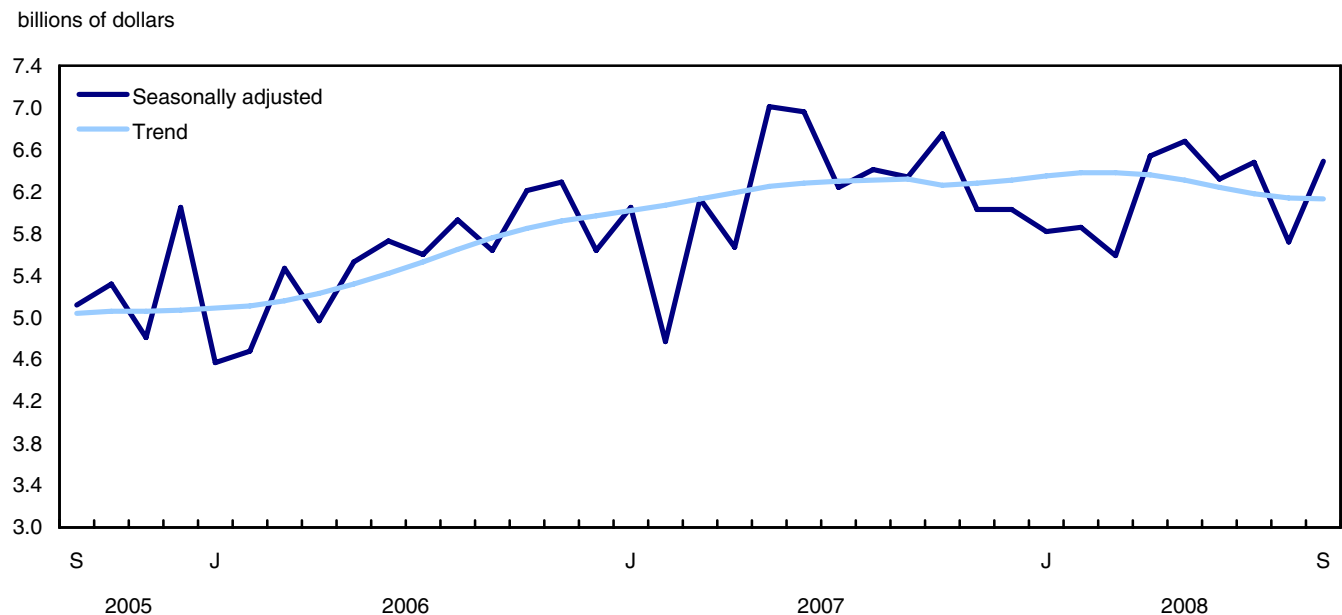


Chart 2
Residential value of building permits – Total

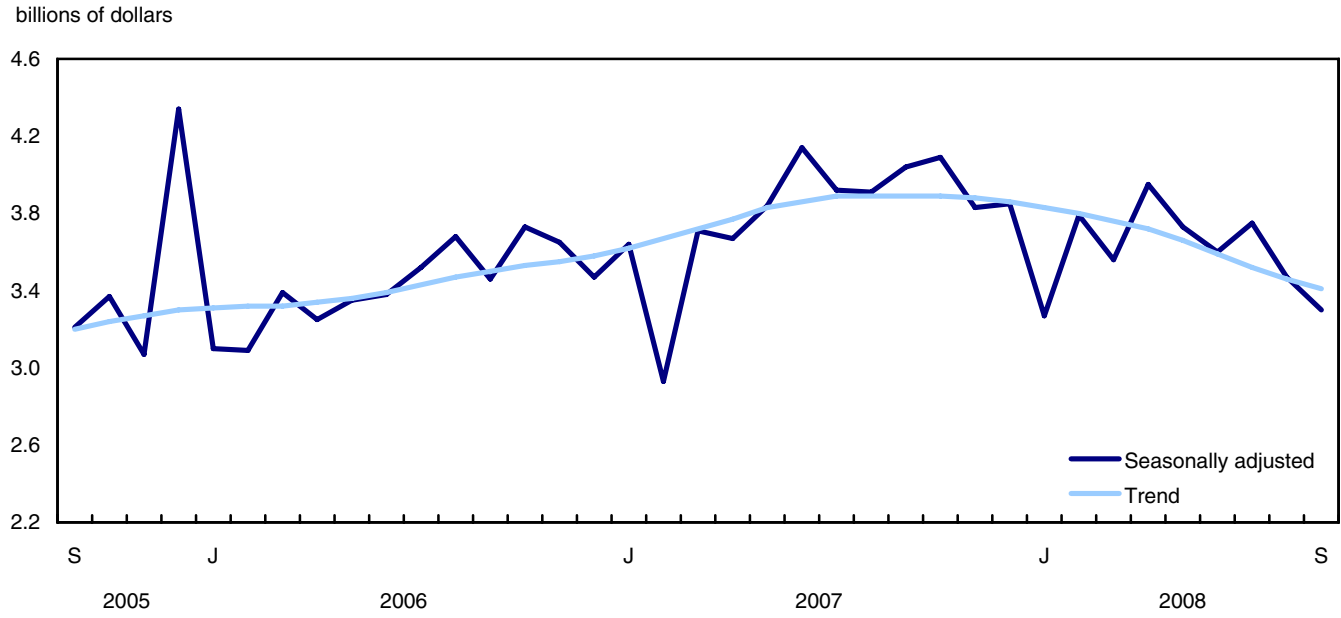


Chart 3
Number of dwelling units – Single and multiple

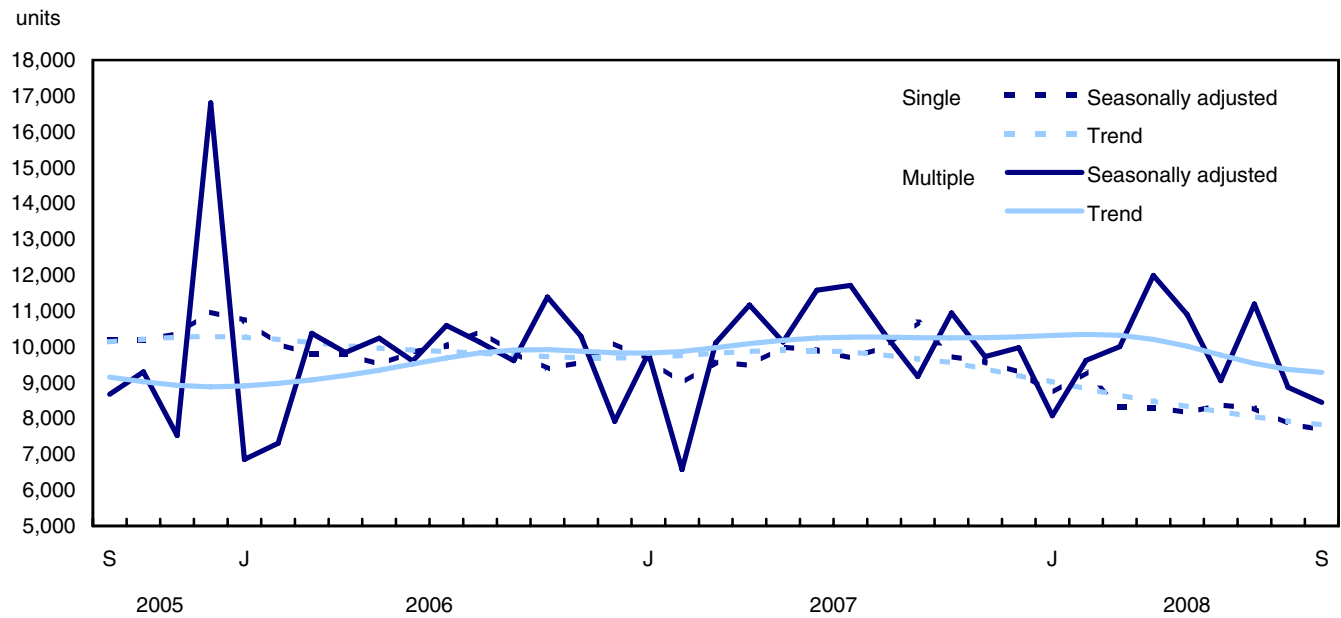


Chart 4
Non-residential value of building permits – Total

billions of dollars

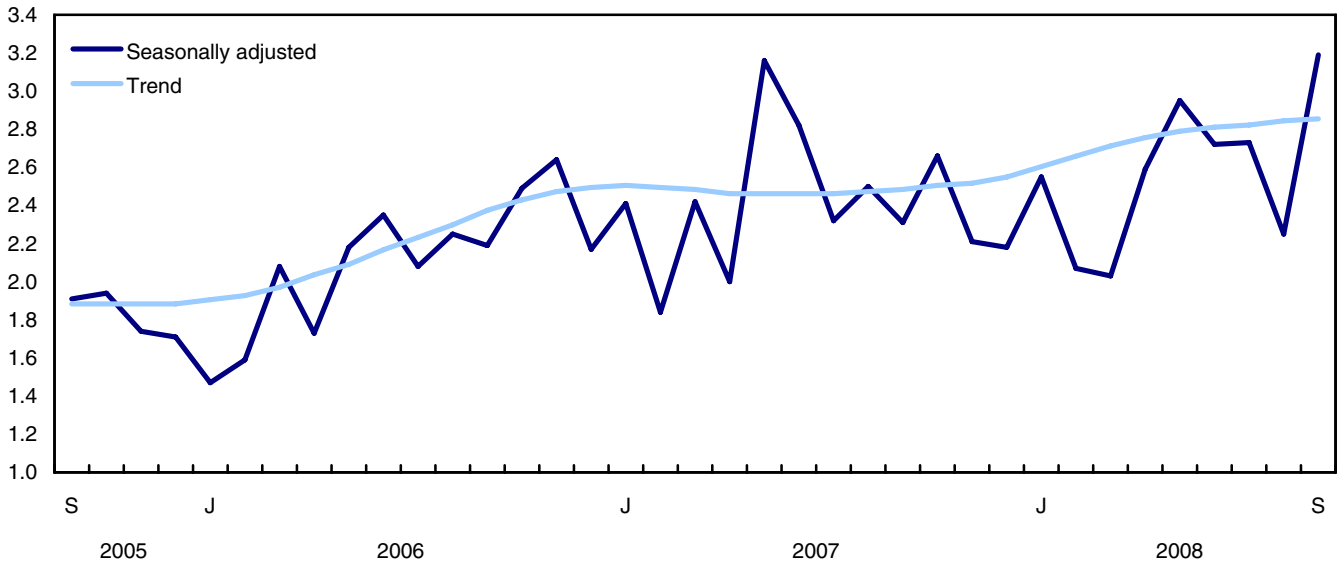


Chart 5
Commercial value of building permits

millions of dollars

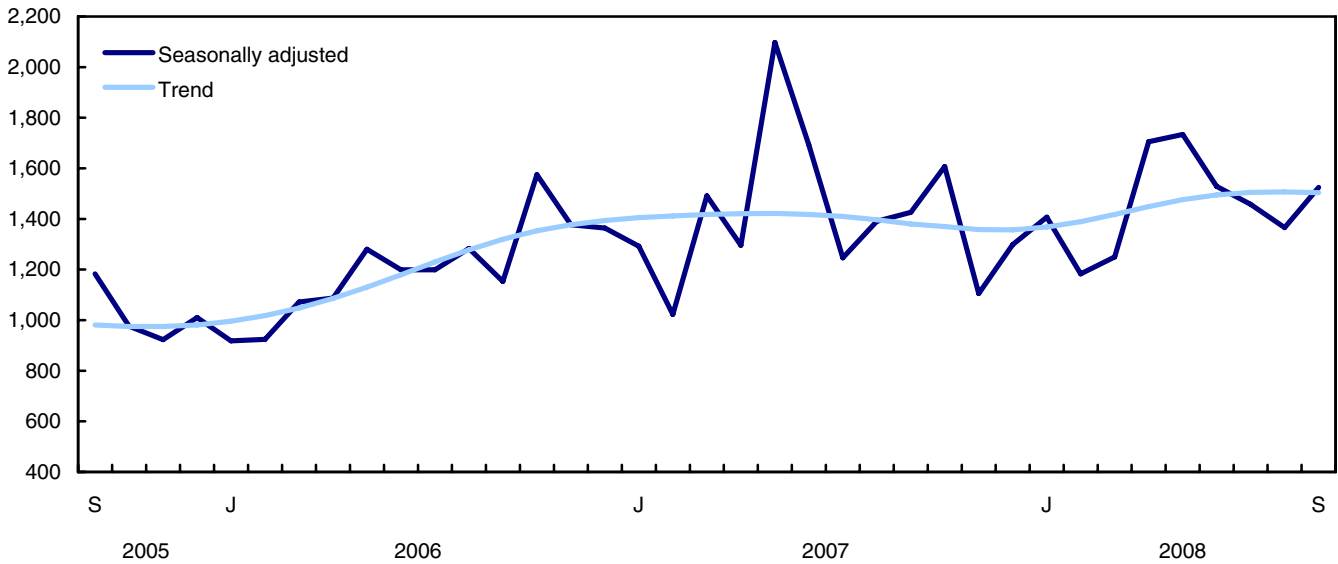


Chart 6
Industrial value of building permits

millions of dollars

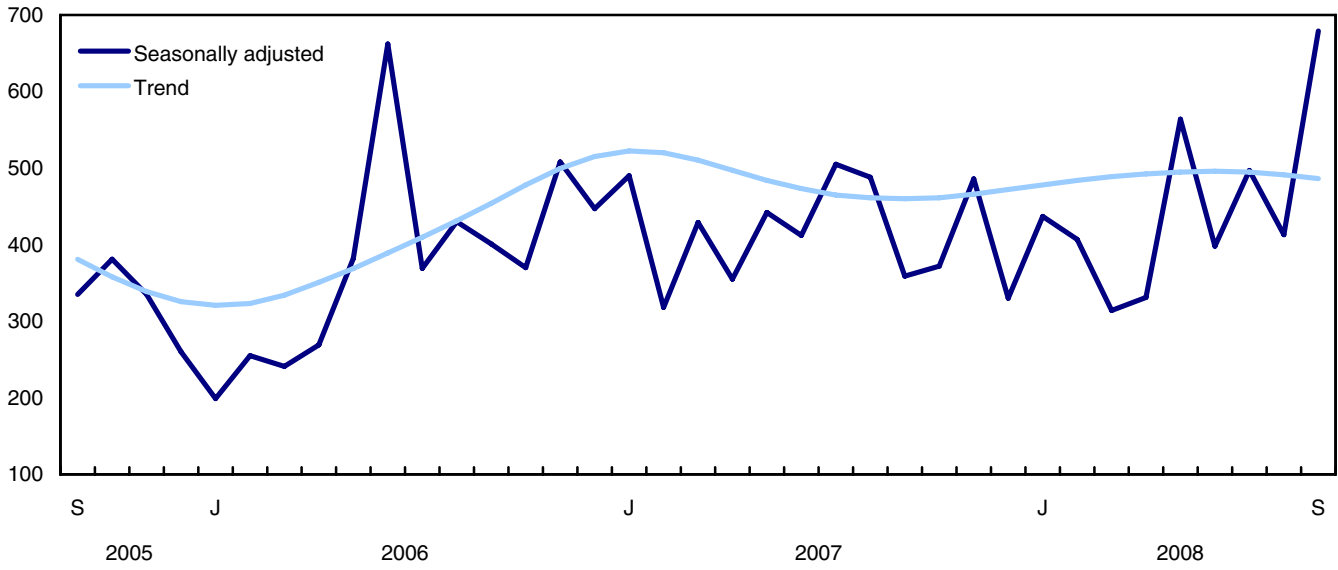
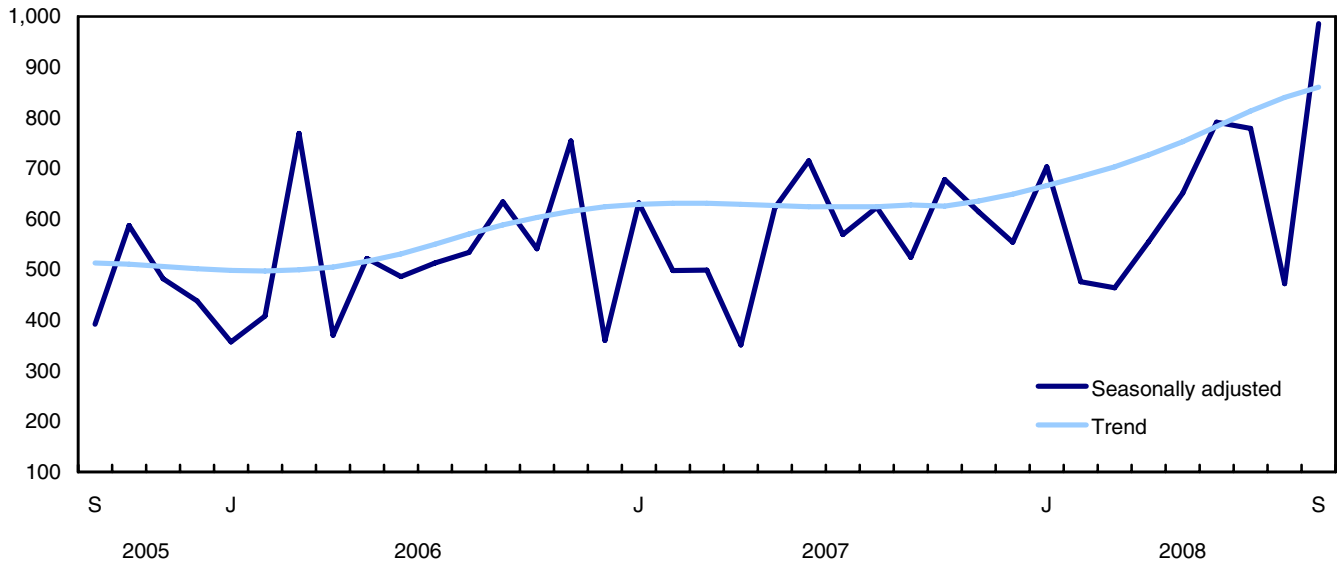


Chart 7
Institutional and governmental value of building permits

millions of dollars



Related products

Selected publications from Statistics Canada

61-205-X	Private and Public Investment in Canada, Intentions
62-202-X	Spending Patterns in Canada
64-203-X	Building Permits, Annual Summary

Selected technical and analytical products from Statistics Canada

62F0014M1996002	An Analysis of Some Construction Price Index Methodologies
-----------------	--

Selected CANSIM tables from Statistics Canada

026-0001	Building permits, residential values and number of units, by type of dwelling, monthly
026-0002	Building permits, dwelling units by type of dwelling and area, monthly
026-0003	Building permits, values by activity sector, monthly
026-0004	Building permits, values by activity sector and area, monthly
026-0005	Building permits, non-residential values by type of structure, monthly
026-0006	Building permits, by type of structure and area, seasonally adjusted, monthly
026-0007	Building permits, dwelling units by type of structure and value and by activity sector, monthly
026-0008	Building permits, values by activity sector, seasonally adjusted and unadjusted, monthly
026-0010	Building permits, residential and non-residential values by type of structure for Canada and urban centres, 10,000 and over, monthly

Selected surveys from Statistics Canada

2802	Building Permits Survey
------	-------------------------

Selected summary tables from Statistics Canada

- *Value of building permits, by province and territory (monthly)*
- *Value of building permits, by census metropolitan area (monthly)*
- *Economic indicators, by province and territory (monthly and quarterly)*
- *Value of building permits, by province and territory*
- *Value of building permits by type*

Statistical tables

Table 1
Total value of building permits, provinces and territories, seasonally adjusted

	2008 September ^p	2008 August ^r	September to August	August to July	July to June	June to May	May to April	April to March
	thousands of dollars		percentage change					
Canada	6,491,979	5,723,773	13.4	-11.7	2.6	-5.3	2.0	17.0
Newfoundland and Labrador	68,336	95,917	-28.8	18.3	14.0	20.4	-12.1	30.8
Prince Edward Island	23,002	15,941	44.3	4.4	18.6	-69.3	100.5	32.5
Nova Scotia	142,204	97,316	46.1	-19.9	-10.4	2.2	0.7	34.0
New Brunswick	111,676	130,501	-14.4	53.5	-21.8	-16.1	76.9	25.8
Quebec	1,219,582	1,157,769	5.3	-12.6	14.3	4.5	-2.4	13.3
Ontario	2,423,988	2,056,072	17.9	-11.6	3.4	-8.1	2.7	11.7
Manitoba	199,234	142,517	39.8	-28.9	63.7	-10.7	-4.5	22.9
Saskatchewan	333,862	155,172	115.2	-45.3	46.1	6.0	-19.9	55.0
Alberta	1,026,337	917,172	11.9	-18.9	-4.7	-8.0	1.6	27.8
British Columbia	919,065	942,481	-2.5	5.9	-16.3	-6.3	5.4	13.4
Yukon	5,744	7,908	-27.4	-6.1	126.9	-25.2	-3.7	12.4
Northwest Territories	5,990	2,111	183.8	-31.1	22.8	233.4	26.6	-96.7
Nunavut	12,959	2,896	347.5	-65.1	-17.1	105.2	-5.0	1,408.8

Table 2
Non-residential value of building permits, provinces and territories, seasonally adjusted

	2008 September ^p	2008 August ^r	September to August	August to July	July to June	June to May	May to April	April to March
	thousands of dollars		percentage change					
Canada	3,190,838	2,251,353	41.7	-17.7	0.6	-7.8	13.8	27.8
Newfoundland and Labrador	21,297	45,410	-53.1	203.0	-43.5	56.5	-33.3	208.5
Prince Edward Island	12,003	6,706	79.0	5.3	135.5	-92.3	1,586.8	-71.0
Nova Scotia	79,749	35,039	127.6	-25.5	-10.7	42.8	-47.9	96.8
New Brunswick	46,616	70,359	-33.7	63.1	-22.5	-18.5	261.5	-26.7
Quebec	438,748	406,882	7.8	-14.9	11.0	3.5	6.2	11.7
Ontario	1,352,212	832,185	62.5	-12.3	4.0	-15.8	23.6	17.9
Manitoba	60,879	51,962	17.2	-31.8	69.2	5.9	-20.0	123.7
Saskatchewan	249,656	55,520	349.7	-70.4	135.3	3.4	-34.2	120.8
Alberta	594,199	488,820	21.6	-25.5	-5.3	2.7	3.1	36.1
British Columbia	327,689	253,276	29.4	-5.1	-35.8	-15.8	30.4	35.1
Yukon	1,258	3,909	-67.8	58.6	232.7	-47.8	-42.7	178.5
Northwest Territories	4,917	485	913.8	26.6	-71.2	303.3	...	-100.0
Nunavut	1,615	800	101.9	-86.7	144.9	-2.9	621.1	2.9

Table 3
Residential value of building permits, provinces and territories, seasonally adjusted

	2008 September ^p	2008 August ^r	September to August	August to July	July to June	June to May	May to April	April to March
	thousands of dollars		percentage change					
Canada	3,301,141	3,472,420	-4.9	-7.3	4.0	-3.4	-5.7	10.9
Newfoundland and Labrador	47,039	50,507	-6.9	-23.6	48.2	5.9	0.9	-3.1
Prince Edward Island	10,999	9,235	19.1	3.8	-12.5	47.8	-63.5	118.8
Nova Scotia	62,455	62,277	0.3	-16.3	-10.2	-13.4	57.3	-2.2
New Brunswick	65,060	60,142	8.2	43.6	-21.1	-13.5	12.8	67.4
Quebec	780,834	750,887	4.0	-11.4	16.3	5.2	-6.9	14.1
Ontario	1,071,776	1,223,887	-12.4	-11.2	3.1	-2.1	-9.5	8.4
Manitoba	138,355	90,555	52.8	-27.2	60.6	-18.1	4.5	-2.8
Saskatchewan	84,206	99,652	-15.5	4.1	-16.2	7.9	-4.8	18.0
Alberta	432,138	428,352	0.9	-9.9	-3.7	-19.8	0.0	20.1
British Columbia	591,376	689,205	-14.2	10.6	-3.7	1.0	-8.2	4.3
Yukon	4,486	3,999	12.2	-32.9	100.5	-16.1	32.4	-27.6
Northwest Territories	1,073	1,626	-34.0	-39.3	130.4	178.2	-29.3	423.0
Nunavut	11,344	2,096	441.2	-8.6	-69.6	221.4	-50.8	...

Table 4
Number of dwelling units authorized, province and territories, seasonally adjusted at annual rate

	2008 September ^p	2008 August ^r	September to August	August to July	July to June	June to May	May to April	April to March
	units		percentage change					
Canada	193,608	200,628	-3.5	-14.2	11.8	-8.6	-6.0	10.8
Newfoundland and Labrador	3,216	3,276	-1.8	-19.7	28.3	-5.4	6.1	17.9
Prince Edward Island	828	672	23.2	9.8	-16.4	45.2	-64.7	83.1
Nova Scotia	3,732	4,536	-17.7	-5.0	-3.6	-22.7	61.3	-1.8
New Brunswick	6,792	5,844	16.2	62.3	-25.2	-5.6	-6.8	93.2
Quebec	52,836	53,172	-0.6	-18.0	46.7	-11.6	-7.7	16.4
Ontario	60,576	67,008	-9.6	-20.8	6.4	-7.5	3.6	0.7
Manitoba	8,856	5,748	54.1	-31.1	70.3	-10.7	1.8	-13.8
Saskatchewan	4,692	7,008	-33.0	16.3	-22.4	10.0	-1.3	17.1
Alberta	20,964	20,088	4.4	-11.1	-3.3	-22.8	-25.5	42.9
British Columbia	30,336	32,832	-7.6	-2.0	-4.9	2.4	-11.4	-1.8
Yukon	288	300	-4.0	-28.6	133.3	-28.6	110.0	-60.0
Northwest Territories	36	60	-40.0	-44.4	200.0	0.0	-25.0	...
Nunavut	456	84	442.9	-68.2	-8.3	242.9	-70.8	...

Table 5
Dwelling units, value of residential and non-residential building permits, provinces and territories, seasonally adjusted, 2008

	Number of dwelling units			Estimated value of construction					Total
	Singles ¹	Multiples	Total dwellings	Residential	Non-residential			Total	
					Industrial	Commercial	Institutional and governmental		
	units			thousands of dollars					
Canada									
August ^r	7,850	8,869	16,719	3,472,420	413,123	1,365,998	472,232	2,251,353	5,723,773
September ^p	7,686	8,448	16,134	3,301,141	679,271	1,525,407	986,160	3,190,838	6,491,979
Cumulative Jan. to Sept. 2008	74,979	88,162	163,141	32,425,756	4,039,289	13,156,429	5,877,895	23,073,613	55,499,369
Cumulative Jan. to Sept. 2007	87,927	90,639	178,566	33,781,396	3,797,889	12,955,468	5,033,637	21,786,994	55,568,390
Newfoundland and Labrador									
August ^r	224	49	273	50,507	704	35,704	9,002	45,410	95,917
September ^p	224	44	268	47,039	2,128	13,919	5,250	21,297	68,336
Cumulative Jan. to Sept. 2008	1,996	443	2,439	431,682	23,408	102,661	44,777	170,846	602,528
Cumulative Jan. to Sept. 2007	1,434	447	1,881	310,246	21,681	73,694	44,827	140,202	450,448
Prince Edward Island									
August ^r	34	22	56	9,235	646	1,643	4,417	6,706	15,941
September ^p	45	24	69	10,999	482	3,100	8,421	12,003	23,002
Cumulative Jan. to Sept. 2008	375	157	532	85,813	5,994	31,454	41,439	78,887	164,700
Cumulative Jan. to Sept. 2007	467	102	569	83,722	6,004	18,402	2,515	26,921	110,643
Nova Scotia									
August ^r	237	141	378	62,277	5,153	15,559	14,327	35,039	97,316
September ^p	237	74	311	62,455	5,702	33,419	40,628	79,749	142,204
Cumulative Jan. to Sept. 2008	2,427	1,067	3,494	646,126	38,436	192,544	149,841	380,821	1,026,947
Cumulative Jan. to Sept. 2007	2,272	1,765	4,037	653,395	44,159	213,367	68,260	325,786	979,181
New Brunswick									
August ^r	181	306	487	60,142	12,626	24,186	33,547	70,359	130,501
September ^p	251	315	566	65,060	26,828	17,286	2,502	46,616	111,676
Cumulative Jan. to Sept. 2008	1,966	1,491	3,457	447,571	112,992	166,417	93,643	373,052	820,623
Cumulative Jan. to Sept. 2007	1,993	1,115	3,108	420,772	100,534	169,411	42,435	312,380	733,152
Quebec									
August ^r	1,690	2,741	4,431	750,887	104,530	201,337	101,015	406,882	1,157,769
September ^p	1,800	2,603	4,403	780,834	80,923	233,694	124,131	438,748	1,219,582
Cumulative Jan. to Sept. 2008	16,015	23,221	39,236	6,580,707	680,466	2,024,720	776,501	3,481,687	10,062,394
Cumulative Jan. to Sept. 2007	17,021	21,097	38,118	6,166,500	655,809	1,877,659	964,739	3,498,207	9,664,707
Ontario									
August ^r	2,635	2,949	5,584	1,223,887	137,524	474,200	220,461	832,185	2,056,072
September ^p	2,401	2,647	5,048	1,071,776	295,167	547,253	509,792	1,352,212	2,423,988
Cumulative Jan. to Sept. 2008	25,276	30,815	56,091	11,579,111	1,548,684	4,460,221	2,855,885	8,864,790	20,443,901
Cumulative Jan. to Sept. 2007	29,473	24,073	53,546	11,260,351	1,879,241	4,310,679	2,261,960	8,451,880	19,712,231
Manitoba									
August ^r	355	124	479	90,555	5,647	43,147	3,168	51,962	142,517
September ^p	346	392	738	138,355	10,238	47,332	3,309	60,879	199,234
Cumulative Jan. to Sept. 2008	3,309	1,344	4,653	881,110	69,637	281,522	65,363	416,522	1,297,632
Cumulative Jan. to Sept. 2007	2,920	1,696	4,616	734,852	48,283	206,826	167,991	423,100	1,157,952
Saskatchewan									
August ^r	330	254	584	99,652	15,668	37,529	2,323	55,520	155,172
September ^p	307	84	391	84,206	65,525	59,246	124,885	249,656	333,862
Cumulative Jan. to Sept. 2008	3,148	1,552	4,700	869,032	248,750	358,401	277,627	884,778	1,753,810
Cumulative Jan. to Sept. 2007	2,457	1,385	3,842	612,836	71,681	401,592	98,812	572,085	1,184,921
Alberta									
August ^r	1,248	426	1,674	428,352	101,045	352,161	35,614	488,820	917,172
September ^p	1,241	506	1,747	432,138	169,285	333,165	91,749	594,199	1,026,337
Cumulative Jan. to Sept. 2008	11,474	10,247	21,721	4,876,272	1,083,048	3,531,689	982,470	5,597,207	10,473,479
Cumulative Jan. to Sept. 2007	20,135	16,844	36,979	7,034,622	710,222	3,549,918	634,302	4,894,442	11,929,064

See footnotes at the end of the table.

Table 5 – continued

Dwelling units, value of residential and non-residential building permits, provinces and territories, seasonally adjusted, 2008

	Number of dwelling units			Residential	Estimated value of construction				Total
	Singles ¹	Multiples	Total dwellings		Non-residential			Total	
					Industrial	Commercial	Institutional and governmental		
	units			thousands of dollars					
British Columbia									
August ^r	900	1,836	2,736	689,205	29,300	177,843	46,133	253,276	942,481
September ^p	814	1,714	2,528	591,376	22,640	235,653	69,396	327,689	919,065
Cumulative Jan. to Sept. 2008	8,848	17,645	26,493	5,957,466	223,243	1,969,326	578,684	2,771,253	8,728,719
Cumulative Jan. to Sept. 2007	9,577	21,878	31,455	6,407,462	244,290	2,097,970	714,757	3,057,017	9,464,479
Yukon									
August ^r	9	16	25	3,999	80	1,604	2,225	3,909	7,908
September ^p	14	10	24	4,486	323	623	312	1,258	5,744
Cumulative Jan. to Sept. 2008	107	68	175	31,900	2,981	6,553	4,473	14,007	45,907
Cumulative Jan. to Sept. 2007	115	47	162	30,447	13,524	5,731	14,421	33,676	64,123
Northwest Territories									
August ^r	5	0	5	1,626	0	485	0	485	2,111
September ^p	3	0	3	1,073	30	387	4,500	4,917	5,990
Cumulative Jan. to Sept. 2008	19	9	28	8,515	598	20,521	4,565	25,684	34,199
Cumulative Jan. to Sept. 2007	49	4	53	16,617	2,440	27,188	12,772	42,400	59,017
Nunavut									
August ^r	2	5	7	2,096	200	600	0	800	2,896
September ^p	3	35	38	11,344	0	330	1,285	1,615	12,959
Cumulative Jan. to Sept. 2008	19	103	122	30,451	1,052	10,400	2,627	14,079	44,530
Cumulative Jan. to Sept. 2007	14	186	200	49,574	21	3,031	5,846	8,898	58,472

1. Included in this category are the following types of dwellings: single-detached, mobile home and cottage.

Table 6
Dwelling units, value of residential and non-residential building permits, census metropolitan areas, seasonally adjusted, 2008

	Number of dwelling units			Estimated value of construction					Total
	Singles ¹	Multiples	Total dwellings	Residential	Non-residential			Total	
					Industrial	Commercial	Institutional and governmental		
	units			thousands of dollars					
Abbotsford, British Columbia									
August ^r	40	4	44	8,748	2,303	237	1,060	3,600	12,348
September ^p	21	4	25	5,183	311	926	0	1,237	6,420
Cumulative Jan. to Sept. 2008	290	828	1,118	162,584	16,456	99,149	29,406	145,011	307,595
Cumulative Jan. to Sept. 2007	443	417	860	143,263	18,510	48,596	2,881	69,987	213,250
Barrie, Ontario									
August ^r	38	2	40	10,154	57	20,192	6,340	26,589	36,743
September ^p	56	0	56	13,518	179	3,463	90	3,732	17,250
Cumulative Jan. to Sept. 2008	917	356	1,273	297,286	132,773	132,194	44,080	309,047	606,333
Cumulative Jan. to Sept. 2007	619	210	829	184,621	13,115	77,442	31,430	121,987	306,608
Brantford, Ontario									
August ^r	21	24	45	5,484	1,968	3,003	74	5,045	10,529
September ^p	20	17	37	5,050	25,704	1,997	233	27,934	32,984
Cumulative Jan. to Sept. 2008	228	232	460	60,479	33,915	16,699	17,528	68,142	128,621
Cumulative Jan. to Sept. 2007	418	107	525	77,090	10,763	42,460	19,651	72,874	149,964
Calgary, Alberta									
August ^r	330	48	378	112,679	13,582	169,571	19,179	202,332	315,011
September ^p	342	95	437	115,246	21,522	109,461	25,714	156,697	271,943
Cumulative Jan. to Sept. 2008	3,251	3,848	7,099	1,660,803	172,803	1,578,085	319,805	2,070,693	3,731,496
Cumulative Jan. to Sept. 2007	5,722	6,492	12,214	2,497,828	89,423	2,100,517	261,399	2,451,339	4,949,167
Edmonton, Alberta									
August ^r	222	169	391	117,242	17,755	101,552	4,150	123,457	240,699
September ^p	250	187	437	125,879	55,071	150,931	18,400	224,402	350,281
Cumulative Jan. to Sept. 2008	1,958	3,298	5,256	1,234,443	292,291	936,688	336,023	1,565,002	2,799,445
Cumulative Jan. to Sept. 2007	5,838	5,865	11,703	2,166,708	118,855	657,325	102,432	878,612	3,045,320
Greater Sudbury, Ontario									
August ^r	52	7	59	14,797	16,298	6,793	2,801	25,892	40,689
September ^p	42	4	46	14,579	8,560	7,204	244	16,008	30,587
Cumulative Jan. to Sept. 2008	394	52	446	110,965	39,933	36,759	33,702	110,394	221,359
Cumulative Jan. to Sept. 2007	429	56	485	113,778	31,470	42,129	116,341	189,940	303,718
Guelph, Ontario									
August ^r	23	93	116	13,614	2,836	10,019	6,039	18,894	32,508
September ^p	27	95	122	15,436	534	1,043	197	1,774	17,210
Cumulative Jan. to Sept. 2008	357	449	806	116,782	16,509	30,785	27,545	74,839	191,621
Cumulative Jan. to Sept. 2007	447	431	878	131,507	23,695	52,999	22,487	99,181	230,688
Halifax, Nova Scotia									
August ^r	98	59	157	27,390	981	10,321	790	12,092	39,482
September ^p	94	22	116	27,995	117	11,401	31,887	43,405	71,400
Cumulative Jan. to Sept. 2008	1,033	653	1,686	322,636	9,755	110,168	105,733	225,656	548,292
Cumulative Jan. to Sept. 2007	945	1,360	2,305	348,099	11,467	117,359	29,069	157,895	505,994
Hamilton, Ontario									
August ^r	179	285	464	80,931	722	17,027	2,078	19,827	100,758
September ^p	79	174	253	42,716	28,348	39,650	199	68,197	110,913
Cumulative Jan. to Sept. 2008	1,382	1,815	3,197	621,151	52,342	230,754	202,343	485,439	1,106,590
Cumulative Jan. to Sept. 2007	1,449	1,231	2,680	523,533	44,273	124,316	111,121	279,710	803,243
Kelowna, British Columbia									
August ^r	48	48	96	28,973	100	15,687	35	15,822	44,795
September ^p	40	12	52	20,479	612	3,192	46,075	49,879	70,358
Cumulative Jan. to Sept. 2008	561	1,271	1,832	439,619	6,334	65,623	79,203	151,160	590,779
Cumulative Jan. to Sept. 2007	805	1,216	2,021	448,330	16,745	142,381	25,692	184,818	633,148

See footnotes at the end of the table.

Table 6 – continued

Dwelling units, value of residential and non-residential building permits, census metropolitan areas, seasonally adjusted, 2008

	Number of dwelling units			Estimated value of construction					Total
	Singles ¹	Multiples	Total dwellings	Residential	Non-residential			Total	
					Industrial	Commercial	Institutional and governmental		
	units			thousands of dollars					
Kingston, Ontario									
August ^r	40	0	40	8,496	5,814	3,781	1,064	10,659	19,155
September ^p	43	41	84	11,840	3,617	724	728	5,069	16,909
Cumulative Jan. to Sept. 2008	443	82	525	92,692	14,588	41,083	115,691	171,362	264,054
Cumulative Jan. to Sept. 2007	492	210	702	107,456	5,608	34,795	61,837	102,240	209,696
Kitchener, Ontario									
August ^r	106	81	187	35,972	5,638	5,732	40,461	51,831	87,803
September ^p	164	69	233	42,709	4,275	9,842	1,738	15,855	58,564
Cumulative Jan. to Sept. 2008	998	1,041	2,039	376,155	52,323	169,311	221,272	442,906	819,061
Cumulative Jan. to Sept. 2007	873	1,297	2,170	362,665	70,913	115,649	103,058	289,620	652,285
London, Ontario									
August ^r	88	131	219	37,100	6,602	26,882	1,957	35,441	72,541
September ^p	90	185	275	45,757	4,491	16,670	9,838	30,999	76,756
Cumulative Jan. to Sept. 2008	1,055	1,689	2,744	442,799	54,482	92,389	260,533	407,404	850,203
Cumulative Jan. to Sept. 2007	1,449	941	2,390	400,113	38,360	146,290	116,166	300,816	700,929
Moncton, New Brunswick									
August ^r	31	98	129	12,786	6,208	15,394	6,067	27,669	40,455
September ^p	62	149	211	22,996	285	2,770	304	3,359	26,355
Cumulative Jan. to Sept. 2008	374	679	1,053	119,320	11,943	53,874	25,677	91,494	210,814
Cumulative Jan. to Sept. 2007	541	571	1,112	128,263	10,730	61,027	9,461	81,218	209,481
Montréal, Quebec									
August ^r	559	1,469	2,028	356,485	32,508	115,669	48,114	196,291	552,776
September ^p	611	1,128	1,739	348,425	25,161	144,941	50,932	221,034	569,459
Cumulative Jan. to Sept. 2008	5,564	12,293	17,857	3,073,965	263,331	1,064,132	288,857	1,616,320	4,690,285
Cumulative Jan. to Sept. 2007	6,470	11,382	17,852	2,918,101	314,186	1,056,042	571,585	1,941,813	4,859,914
Oshawa, Ontario									
August ^r	84	71	155	33,362	10,687	3,374	3,658	17,719	51,081
September ^p	164	44	208	49,641	964	8,350	1,367	10,681	60,322
Cumulative Jan. to Sept. 2008	1,169	586	1,755	391,058	45,431	113,293	64,693	223,417	614,475
Cumulative Jan. to Sept. 2007	1,143	353	1,496	343,655	101,827	61,618	31,076	194,521	538,176
Ottawa-Gatineau, Ontario part, Ontario/Quebec									
August ^r	269	347	616	101,539	2,367	23,746	10,496	36,609	138,148
September ^p	263	443	706	103,472	8,561	20,471	60,376	89,408	192,880
Cumulative Jan. to Sept. 2008	2,291	3,584	5,875	905,226	22,057	316,856	166,093	505,006	1,410,232
Cumulative Jan. to Sept. 2007	2,275	2,851	5,126	818,004	45,141	398,467	162,223	605,831	1,423,835
Ottawa-Gatineau, Quebec part, Ontario/Quebec									
August ^r	77	62	139	22,579	533	1,885	3,494	5,912	28,491
September ^p	92	140	232	34,418	1,044	2,517	17,092	20,653	55,071
Cumulative Jan. to Sept. 2008	721	1,241	1,962	273,488	4,240	92,894	57,269	154,403	427,891
Cumulative Jan. to Sept. 2007	804	1,784	2,588	339,187	11,970	71,954	49,304	133,228	472,415
Peterborough, Ontario									
August ^r	41	43	84	20,081	146	21,482	3,002	24,630	44,711
September ^p	19	46	65	10,457	335	387	1	723	11,180
Cumulative Jan. to Sept. 2008	231	137	368	78,514	3,446	34,646	15,558	53,650	132,164
Cumulative Jan. to Sept. 2007	267	257	524	94,655	3,912	24,831	848	29,591	124,246
Québec, Quebec									
August ^r	206	224	430	72,911	6,810	30,044	9,087	45,941	118,852
September ^p	177	380	557	89,884	10,155	25,339	25,497	60,991	150,875
Cumulative Jan. to Sept. 2008	1,710	2,963	4,673	713,803	107,773	319,479	117,355	544,607	1,258,410
Cumulative Jan. to Sept. 2007	1,803	2,842	4,645	656,812	75,716	269,123	109,141	453,980	1,110,792

See footnotes at the end of the table.

Table 6 – continued

Dwelling units, value of residential and non-residential building permits, census metropolitan areas, seasonally adjusted, 2008

	Number of dwelling units			Residential	Estimated value of construction				Total
	Singles ¹	Multiples	Total dwellings		Non-residential			Total	
					Industrial	Commercial	Institutional and governmental		
	units			thousands of dollars					
Regina, Saskatchewan									
August ^r	105	36	141	24,769	413	2,146	52	2,611	27,380
September ^p	71	4	75	16,460	5,010	8,612	368	13,990	30,450
Cumulative Jan. to Sept. 2008	738	339	1,077	197,145	27,993	59,529	51,882	139,404	336,549
Cumulative Jan. to Sept. 2007	569	260	829	131,605	17,095	147,204	17,342	181,641	313,246
Saguenay, Quebec									
August ^r	39	22	61	11,771	16,506	2,458	1,488	20,452	32,223
September ^p	46	240	286	28,864	2,155	1,817	2,445	6,417	35,281
Cumulative Jan. to Sept. 2008	340	509	849	124,065	24,728	34,250	21,438	80,416	204,481
Cumulative Jan. to Sept. 2007	335	273	608	104,813	10,549	24,094	26,256	60,899	165,712
Saint John, New Brunswick									
August ^r	46	80	126	18,064	198	4,357	139	4,694	22,758
September ^p	64	60	124	10,925	15,165	1,914	21	17,100	28,025
Cumulative Jan. to Sept. 2008	554	219	773	103,393	68,670	35,268	3,032	106,970	210,363
Cumulative Jan. to Sept. 2007	416	166	582	87,800	43,658	31,371	2,593	77,622	165,422
Saskatoon, Saskatchewan									
August ^r	91	201	292	45,252	5,959	26,632	1,527	34,118	79,370
September ^p	91	18	109	22,574	7,443	25,633	124,476	157,552	180,126
Cumulative Jan. to Sept. 2008	1,137	793	1,930	315,542	128,239	156,442	178,694	463,375	778,917
Cumulative Jan. to Sept. 2007	1,178	897	2,075	288,045	40,452	131,188	47,205	218,845	506,890
Sherbrooke, Quebec									
August ^r	69	244	313	33,553	1,571	8,350	3,975	13,896	47,449
September ^p	57	74	131	21,129	1,301	3,401	2,034	6,736	27,865
Cumulative Jan. to Sept. 2008	535	901	1,436	203,648	10,426	57,355	31,283	99,064	302,712
Cumulative Jan. to Sept. 2007	582	435	1,017	165,005	12,966	25,254	17,402	55,622	220,627
St. Catharines-Niagara, Ontario									
August ^r	83	94	177	29,037	1,368	2,969	7,698	12,035	41,072
September ^p	85	23	108	25,610	749	29,097	328	30,174	55,784
Cumulative Jan. to Sept. 2008	590	487	1,077	223,333	15,200	79,632	21,184	116,016	339,349
Cumulative Jan. to Sept. 2007	612	220	832	187,797	23,607	88,562	19,579	131,748	319,545
St. John's, Newfoundland and Labrador									
August ^r	150	35	185	34,161	704	34,473	1,250	36,427	70,588
September ^p	137	36	173	30,813	580	8,898	716	10,194	41,007
Cumulative Jan. to Sept. 2008	1,320	255	1,575	285,217	15,637	75,180	29,006	119,823	405,040
Cumulative Jan. to Sept. 2007	909	364	1,273	210,384	3,685	48,927	28,170	80,782	291,166
Thunder Bay, Ontario									
August ^r	24	2	26	4,998	225	3,353	1,254	4,832	9,830
September ^p	15	1	16	3,128	724	2,731	1,041	4,496	7,624
Cumulative Jan. to Sept. 2008	154	37	191	33,873	3,625	32,455	52,972	89,052	122,925
Cumulative Jan. to Sept. 2007	154	25	179	33,627	1,426	15,632	24,550	41,608	75,235
Toronto, Ontario									
August ^r	818	1,612	2,430	602,268	39,478	259,982	101,567	401,027	1,003,295
September ^p	612	1,092	1,704	437,222	165,654	346,512	116,732	628,898	1,066,120
Cumulative Jan. to Sept. 2008	7,874	17,866	25,740	5,534,077	661,283	2,525,994	985,163	4,172,440	9,706,517
Cumulative Jan. to Sept. 2007	11,086	13,768	24,854	5,664,101	742,780	2,512,766	957,547	4,213,093	9,877,194
Trois-Rivières, Quebec									
August ^r	15	21	36	9,203	2,419	4,805	3,126	10,350	19,553
September ^p	31	67	98	14,222	2,940	9,153	4,896	16,989	31,211
Cumulative Jan. to Sept. 2008	281	558	839	125,945	17,475	39,825	27,205	84,505	210,450
Cumulative Jan. to Sept. 2007	304	591	895	128,329	22,861	52,828	27,980	103,669	231,998

See footnotes at the end of the table.

Table 6 – continued

Dwelling units, value of residential and non-residential building permits, census metropolitan areas, seasonally adjusted, 2008

	Number of dwelling units			Residential	Estimated value of construction				Total
	Singles ¹	Multiples	Total dwellings		Non-residential			Total	
					Industrial	Commercial	Institutional and governmental		
	units			thousands of dollars					
Vancouver, British Columbia									
August ^r	336	950	1,286	328,056	3,942	117,458	30,713	152,113	480,169
September ^p	333	1,221	1,554	334,336	11,229	121,454	9,573	142,256	476,592
Cumulative Jan. to Sept. 2008	3,108	9,965	13,073	2,917,908	94,246	1,262,534	296,042	1,652,822	4,570,730
Cumulative Jan. to Sept. 2007	3,051	14,660	17,711	3,542,569	84,247	1,386,505	310,131	1,780,883	5,323,452
Victoria, British Columbia									
August ^r	83	250	333	97,861	736	22,811	3,762	27,309	125,170
September ^p	50	46	96	33,812	4,258	35,973	5,320	45,551	79,363
Cumulative Jan. to Sept. 2008	650	1,293	1,943	484,313	15,906	123,608	73,260	212,774	697,087
Cumulative Jan. to Sept. 2007	723	1,809	2,532	556,602	10,091	67,559	138,191	215,841	772,443
Windsor, Ontario									
August ^r	32	12	44	9,911	297	9,982	524	10,803	20,714
September ^p	32	12	44	9,746	799	4,772	1,192	6,763	16,509
Cumulative Jan. to Sept. 2008	270	92	362	82,920	16,357	53,248	22,887	92,492	175,412
Cumulative Jan. to Sept. 2007	340	161	501	106,274	20,396	56,369	55,718	132,483	238,757
Winnipeg, Manitoba									
August ^r	192	59	251	54,584	1,156	28,965	2,414	32,535	87,119
September ^p	188	331	519	100,256	4,590	38,419	802	43,811	144,067
Cumulative Jan. to Sept. 2008	1,724	1,031	2,755	550,651	26,771	208,791	43,316	278,878	829,529
Cumulative Jan. to Sept. 2007	1,643	1,368	3,011	461,749	8,981	143,471	93,283	245,735	707,484

1. Included in this category are the following types of dwellings: single-detached, mobile home and cottage.

Table 7
Dwelling units, provinces and territories, unadjusted, 2008

	Singles, includes mobile homes	Cottages	Doubles	Rows	Apartments	Conversions	Total dwellings
number of dwelling units							
Canada							
August ^r	8,147	57	803	1,712	6,012	423	17,154
September ^p	8,083	71	721	2,059	5,269	582	16,785
Cumulative Jan. to Sept. 2008	77,326	471	7,468	16,714	58,728	4,389	165,096
Cumulative Jan. to Sept. 2007	91,188	488	8,955	17,503	59,805	3,215	181,154
Newfoundland and Labrador							
August ^r	290	0	17	7	24	1	339
September ^p	285	2	7	14	20	3	331
Cumulative Jan. to Sept. 2008	2,073	8	53	42	287	62	2,525
Cumulative Jan. to Sept. 2007	1,527	4	50	27	333	37	1,978
Prince Edward Island							
August ^r	42	0	0	0	22	0	64
September ^p	53	3	0	20	4	0	80
Cumulative Jan. to Sept. 2008	426	15	26	30	100	1	598
Cumulative Jan. to Sept. 2007	459	25	52	7	38	5	586
Nova Scotia							
August ^r	237	18	22	16	79	26	398
September ^p	259	14	19	0	50	5	347
Cumulative Jan. to Sept. 2008	2,333	78	160	110	732	68	3,481
Cumulative Jan. to Sept. 2007	2,291	60	144	336	1,229	58	4,118
New Brunswick							
August ^r	248	2	6	9	288	3	556
September ^p	301	9	30	23	250	12	625
Cumulative Jan. to Sept. 2008	2,075	40	234	119	1,077	63	3,608
Cumulative Jan. to Sept. 2007	2,160	33	156	67	817	77	3,310
Quebec							
August ^r	1,504	24	216	75	2,336	164	4,319
September ^p	1,833	30	286	181	1,952	295	4,577
Cumulative Jan. to Sept. 2008	16,572	165	2,321	1,303	16,348	2,312	39,021
Cumulative Jan. to Sept. 2007	17,635	186	1,660	1,833	14,997	1,504	37,815
Ontario							
August ^r	2,792	7	381	1,154	1,335	107	5,776
September ^p	2,485	5	188	1,287	1,154	90	5,209
Cumulative Jan. to Sept. 2008	25,622	76	2,338	9,910	17,766	855	56,567
Cumulative Jan. to Sept. 2007	30,205	97	3,545	8,725	11,034	685	54,291
Manitoba							
August ^r	413	1	16	47	61	0	538
September ^p	372	0	3	12	377	0	764
Cumulative Jan. to Sept. 2008	3,508	15	74	154	1,102	14	4,867
Cumulative Jan. to Sept. 2007	3,165	17	60	118	1,511	7	4,878
Saskatchewan							
August ^r	377	3	6	37	210	1	634
September ^p	359	2	24	16	44	0	445
Cumulative Jan. to Sept. 2008	3,319	23	154	244	1,077	80	4,897
Cumulative Jan. to Sept. 2007	2,640	3	134	424	670	159	4,030
Alberta							
August ^r	1,319	2	99	131	190	6	1,747
September ^p	1,285	6	121	193	123	69	1,797
Cumulative Jan. to Sept. 2008	12,088	48	1,557	1,297	7,269	124	22,383
Cumulative Jan. to Sept. 2007	20,832	46	2,396	2,562	11,716	174	37,726
British Columbia							
August ^r	906	0	38	236	1,448	115	2,743
September ^p	812	0	39	313	1,254	108	2,526
Cumulative Jan. to Sept. 2008	9,139	2	527	3,491	12,830	807	26,796
Cumulative Jan. to Sept. 2007	10,046	13	732	3,388	17,271	503	31,953

Table 7 – continued

Dwelling units, provinces and territories, unadjusted, 2008

	Singles, includes mobile homes	Cottages	Doubles	Rows	Apartments	Conversions	Total dwellings
	number of dwelling units						
Yukon							
August r	12	0	2	0	14	0	28
September p	33	0	4	0	6	0	43
Cumulative Jan. to Sept. 2008	134	1	24	4	38	2	203
Cumulative Jan. to Sept. 2007	165	4	22	0	22	3	216
Northwest Territories							
August r	5	0	0	0	0	0	5
September p	3	0	0	0	0	0	3
Cumulative Jan. to Sept. 2008	18	0	0	0	9	1	28
Cumulative Jan. to Sept. 2007	49	0	0	4	0	0	53
Nunavut							
August r	2	0	0	0	5	0	7
September p	3	0	0	0	35	0	38
Cumulative Jan. to Sept. 2008	19	0	0	10	93	0	122
Cumulative Jan. to Sept. 2007	14	0	4	12	167	3	200

Table 8
Dwelling units, census metropolitan areas, unadjusted, September 2008

	Singles, includes mobile homes	Cottages	Doubles	Rows	Apartments	Conversions	Total dwellings
number of dwelling units							
Abbotsford, British Columbia	21	0	0	0	4	0	25
Barrie, Ontario	55	0	0	0	0	0	55
Brantford, Ontario	20	0	2	15	0	0	37
Calgary, Alberta	339	0	24	49	22	0	434
Edmonton, Alberta	248	0	48	79	12	48	435
Greater Sudbury, Ontario	41	0	0	0	4	0	45
Guelph, Ontario	27	0	10	25	55	5	122
Halifax, Nova Scotia	87	1	4	0	14	4	110
Hamilton, Ontario	78	0	6	165	0	3	252
Kelowna, British Columbia	40	0	0	0	10	2	52
Kingston, Ontario	42	0	0	11	30	0	83
Kitchener, Ontario	161	0	12	18	36	3	230
London, Ontario	89	0	2	17	164	2	274
Moncton, New Brunswick	69	0	28	7	107	7	218
Montréal, Quebec	612	0	78	125	816	122	1,753
Oshawa, Ontario	161	0	8	36	0	0	205
Ottawa-Gatineau, Ontario/Quebec	350	0	94	361	120	11	936
Ottawa-Gatineau, Ontario part, Ontario/Quebec	258	0	33	357	51	3	702
Ottawa-Gatineau, Quebec part, Ontario/Quebec	92	0	61	4	69	8	234
Peterborough, Ontario	19	0	0	0	46	0	65
Québec, Quebec	177	1	23	9	338	14	562
Regina, Saskatchewan	75	0	2	0	2	0	79
Saguenay, Quebec	45	1	0	0	239	4	289
Saint John, New Brunswick	69	3	0	0	56	4	132
Saskatoon, Saskatchewan	95	0	8	10	0	0	113
Sherbrooke, Quebec	57	0	0	16	50	9	132
St. Catharines-Niagara, Ontario	84	0	2	18	0	3	107
St. John's, Newfoundland and Labrador	155	0	7	10	18	1	191
Thunder Bay, Ontario	15	0	0	0	0	1	16
Toronto, Ontario	602	0	83	492	479	38	1,694
Trois-Rivières, Quebec	31	0	6	0	56	6	99
Vancouver, British Columbia	332	0	18	183	940	80	1,553
Victoria, British Columbia	50	0	4	26	13	3	96
Windsor, Ontario	31	0	0	12	0	0	43
Winnipeg, Manitoba	189	0	0	12	319	0	520

Table 9
Dwelling units, census metropolitan areas, unadjusted, cumulative, January to September 2008

	Singles, includes mobile homes	Cottages	Doubles	Rows	Apartments	Conversions	Total dwellings
number of dwelling units							
Abbotsford, British Columbia	303	0	0	95	731	2	1,131
Barrie, Ontario	971	0	8	157	187	4	1,327
Brantford, Ontario	230	0	4	85	124	19	462
Calgary, Alberta	3,496	0	556	419	2,869	4	7,344
Edmonton, Alberta	2,076	0	657	454	2,114	73	5,374
Greater Sudbury, Ontario	419	2	0	0	40	13	474
Guelph, Ontario	354	0	41	120	224	64	803
Halifax, Nova Scotia	966	6	53	83	485	33	1,626
Hamilton, Ontario	1,389	0	184	1,057	552	23	3,205
Kelowna, British Columbia	581	0	30	104	1,118	19	1,852
Kingston, Ontario	468	6	30	20	30	2	556
Kitchener, Ontario	1,013	0	91	474	446	30	2,054
London, Ontario	1,067	0	13	331	1,322	23	2,756
Moncton, New Brunswick	429	1	184	10	460	25	1,109
Montréal, Quebec	5,609	1	694	766	9,175	1,022	17,267
Oshawa, Ontario	1,204	0	98	483	4	1	1,790
Ottawa-Gatineau, Ontario/Quebec	3,054	2	554	2,410	1,740	82	7,842
Ottawa-Gatineau, Ontario part, Ontario/Quebec	2,323	1	163	2,303	1,064	57	5,911
Ottawa-Gatineau, Quebec part, Ontario/Quebec	731	1	391	107	676	25	1,931
Peterborough, Ontario	249	0	0	35	102	0	386
Québec, Quebec	1,763	6	336	136	2,130	277	4,648
Regina, Saskatchewan	735	1	24	0	296	19	1,075
Saguenay, Quebec	373	2	6	0	388	106	875
Saint John, New Brunswick	537	15	20	26	165	9	772
Saskatoon, Saskatchewan	1,150	0	69	179	506	39	1,943
Sherbrooke, Quebec	543	0	125	73	605	48	1,394
St. Catharines-Niagara, Ontario	608	0	64	250	158	15	1,095
St. John's, Newfoundland and Labrador	1,243	0	45	38	162	10	1,498
Thunder Bay, Ontario	165	2	4	0	32	2	205
Toronto, Ontario	7,788	0	1,349	3,806	12,288	426	25,657
Trois-Rivières, Quebec	292	0	95	12	356	41	796
Vancouver, British Columbia	3,242	0	180	2,159	7,081	550	13,212
Victoria, British Columbia	677	0	34	288	919	56	1,974
Windsor, Ontario	278	0	18	28	42	4	370
Winnipeg, Manitoba	1,797	1	42	142	846	1	2,829

Table 10
Value of residential and non-residential building permits, provinces and territories, unadjusted, 2008

	Value of construction				Total
	Residential	Non-residential			
		Industrial	Commercial	Institutional and governmental	
thousands of dollars					
Canada					
August ^r	3,553,393	414,162	1,408,551	478,084	5,854,190
September ^p	3,516,249	684,189	1,680,659	990,770	6,871,867
Cumulative Jan. to Sept. 2008	33,152,856	4,018,550	13,066,340	5,912,531	56,150,277
Cumulative Jan. to Sept. 2007	34,634,984	3,801,389	12,812,068	5,065,971	56,314,412
Newfoundland and Labrador					
August ^r	64,351	704	35,704	9,002	109,761
September ^p	58,468	2,128	13,919	5,250	79,765
Cumulative Jan. to Sept. 2008	447,954	23,408	102,661	44,777	618,800
Cumulative Jan. to Sept. 2007	333,283	21,681	73,694	44,827	473,485
Prince Edward Island					
August ^r	10,502	646	1,643	4,417	17,208
September ^p	12,858	482	3,100	8,421	24,861
Cumulative Jan. to Sept. 2008	95,907	5,994	31,454	41,439	174,794
Cumulative Jan. to Sept. 2007	88,094	6,004	18,402	2,515	115,015
Nova Scotia					
August ^r	67,434	5,153	15,559	14,327	102,473
September ^p	67,308	5,702	33,419	40,628	147,057
Cumulative Jan. to Sept. 2008	654,791	38,436	192,544	149,841	1,035,612
Cumulative Jan. to Sept. 2007	668,538	44,159	213,367	68,260	994,324
New Brunswick					
August ^r	69,313	12,626	24,186	33,547	139,672
September ^p	78,247	26,828	17,286	2,502	124,863
Cumulative Jan. to Sept. 2008	484,366	112,992	166,417	93,643	857,418
Cumulative Jan. to Sept. 2007	456,608	100,534	169,411	42,435	768,988
Quebec					
August ^r	713,191	104,530	195,800	106,867	1,120,388
September ^p	826,447	80,923	245,720	128,741	1,281,831
Cumulative Jan. to Sept. 2008	6,783,112	680,466	1,977,252	811,137	10,251,967
Cumulative Jan. to Sept. 2007	6,314,217	655,809	1,792,707	997,073	9,759,806
Ontario					
August ^r	1,280,262	138,563	519,524	220,461	2,158,810
September ^p	1,151,980	300,085	691,089	509,792	2,652,946
Cumulative Jan. to Sept. 2008	11,683,420	1,527,945	4,462,450	2,855,885	20,529,700
Cumulative Jan. to Sept. 2007	11,514,283	1,882,741	4,254,690	2,261,960	19,913,674
Manitoba					
August ^r	101,870	5,647	43,147	3,168	153,832
September ^p	148,471	10,238	47,332	3,309	209,350
Cumulative Jan. to Sept. 2008	924,786	69,637	281,522	65,363	1,341,308
Cumulative Jan. to Sept. 2007	779,132	48,283	206,826	167,991	1,202,232
Saskatchewan					
August ^r	111,978	15,668	37,529	2,323	167,498
September ^p	97,868	65,525	59,246	124,885	347,524
Cumulative Jan. to Sept. 2008	917,046	248,750	358,401	277,627	1,801,824
Cumulative Jan. to Sept. 2007	650,267	71,681	401,592	98,812	1,222,352
Alberta					
August ^r	431,250	101,045	354,927	35,614	922,836
September ^p	456,653	169,285	332,555	91,749	1,050,242
Cumulative Jan. to Sept. 2008	5,027,142	1,083,048	3,486,839	982,470	10,579,499
Cumulative Jan. to Sept. 2007	7,173,543	710,222	3,547,459	634,302	12,065,526
British Columbia					
August ^r	695,173	29,300	177,843	46,133	948,449
September ^p	599,149	22,640	235,653	69,396	926,838
Cumulative Jan. to Sept. 2008	6,060,307	223,243	1,969,326	578,684	8,831,560
Cumulative Jan. to Sept. 2007	6,555,782	244,290	2,097,970	714,757	9,612,799

Table 10 – continued

Value of residential and non-residential building permits, provinces and territories, unadjusted, 2008

	Value of construction				Total
	Residential	Non-residential			
		Industrial	Commercial	Institutional and governmental	
thousands of dollars					
Yukon					
August r	4,347	80	1,604	2,225	8,256
September p	6,383	323	623	312	7,641
Cumulative Jan. to Sept. 2008	35,059	2,981	6,553	4,473	49,066
Cumulative Jan. to Sept. 2007	35,046	13,524	5,731	14,421	68,722
Northwest Territories					
August r	1,626	0	485	0	2,111
September p	1,073	30	387	4,500	5,990
Cumulative Jan. to Sept. 2008	8,515	598	20,521	4,565	34,199
Cumulative Jan. to Sept. 2007	16,617	2,440	27,188	12,772	59,017
Nunavut					
August r	2,096	200	600	0	2,896
September p	11,344	0	330	1,285	12,959
Cumulative Jan. to Sept. 2008	30,451	1,052	10,400	2,627	44,530
Cumulative Jan. to Sept. 2007	49,574	21	3,031	5,846	58,472

Table 11
Value of residential and non-residential building permits, census metropolitan areas, unadjusted, September 2008

	Value of construction				Total
	Residential	Non-residential			
		Industrial	Commercial	Institutional and governmental	
	thousands of dollars				
Abbotsford, British Columbia	5,265	311	926	0	6,502
Barrie, Ontario	14,285	179	4,337	90	18,891
Brantford, Ontario	5,250	25,704	2,501	233	33,688
Calgary, Alberta	118,420	21,522	109,461	25,714	275,117
Edmonton, Alberta	129,064	55,071	150,931	18,400	353,466
Greater Sudbury, Ontario	15,368	8,560	9,021	244	33,193
Guelph, Ontario	15,829	534	1,306	197	17,866
Halifax, Nova Scotia	25,902	117	11,401	31,887	69,307
Hamilton, Ontario	43,903	28,348	49,652	199	122,102
Kelowna, British Columbia	20,785	612	3,192	46,075	70,664
Kingston, Ontario	12,297	3,617	906	728	17,548
Kitchener, Ontario	44,670	4,275	12,324	1,738	63,007
London, Ontario	47,109	4,491	20,875	9,838	82,313
Moncton, New Brunswick	25,003	285	2,770	304	28,362
Montréal, Quebec	350,985	25,161	138,672	50,932	565,750
Oshawa, Ontario	52,039	964	10,456	1,367	64,826
Ottawa-Gatineau, Ontario/Quebec	141,216	9,605	28,043	77,468	256,332
Ottawa-Gatineau, Ontario part, Ontario/Quebec	106,490	8,561	25,635	60,376	201,062
Ottawa-Gatineau, Quebec part, Ontario/Quebec	34,726	1,044	2,408	17,092	55,270
Peterborough, Ontario	10,766	335	484	1	11,586
Québec, Quebec	90,497	10,155	24,243	25,497	150,392
Regina, Saskatchewan	18,122	5,010	8,612	368	32,112
Saguenay, Quebec	28,974	2,155	1,738	2,445	35,312
Saint John, New Brunswick	12,959	15,165	1,914	21	30,059
Saskatoon, Saskatchewan	24,592	7,443	25,633	124,476	182,144
Sherbrooke, Quebec	21,366	1,301	3,254	2,034	27,955
St. Catharines-Niagara, Ontario	26,882	749	36,436	328	64,395
St. John's, Newfoundland and Labrador	35,152	580	8,898	716	45,346
Thunder Bay, Ontario	3,305	724	3,420	1,041	8,490
Toronto, Ontario	450,775	165,654	433,917	116,732	1,167,078
Trois-Rivières, Quebec	14,336	2,940	8,757	4,896	30,929
Vancouver, British Columbia	336,610	11,229	121,454	9,573	478,866
Victoria, British Columbia	34,140	4,258	35,973	5,320	79,691
Windsor, Ontario	10,185	799	5,976	1,192	18,152
Winnipeg, Manitoba	104,087	4,590	38,419	802	147,898

Table 12
Value of residential and non-residential building permits, census metropolitan areas, unadjusted, cumulative, January to September 2008

	Value of construction				Total
	Residential	Non-residential			
		Industrial	Commercial	Institutional and governmental	
thousands of dollars					
Abbotsford, British Columbia	165,584	16,456	99,149	29,406	310,595
Barrie, Ontario	313,386	132,773	136,756	44,080	626,995
Brantford, Ontario	61,212	33,915	17,574	17,528	130,229
Calgary, Alberta	1,695,830	172,803	1,578,085	319,805	3,766,523
Edmonton, Alberta	1,263,193	292,291	936,688	336,023	2,828,195
Greater Sudbury, Ontario	119,182	39,933	37,395	33,702	230,212
Guelph, Ontario	116,026	16,509	30,843	27,545	190,923
Halifax, Nova Scotia	316,099	9,755	110,168	105,733	541,755
Hamilton, Ontario	618,327	52,342	240,633	202,343	1,113,645
Kelowna, British Columbia	448,071	6,334	65,623	79,203	599,231
Kingston, Ontario	98,575	14,588	41,484	115,691	270,338
Kitchener, Ontario	382,571	52,323	167,645	221,272	823,811
London, Ontario	446,233	54,482	96,214	260,533	857,462
Moncton, New Brunswick	131,063	11,943	53,874	25,677	222,557
Montréal, Quebec	3,065,856	263,331	1,039,703	288,857	4,657,747
Oshawa, Ontario	402,931	45,431	113,559	64,693	626,614
Ottawa-Gatineau, Ontario/Quebec	1,193,685	26,297	387,933	223,362	1,831,277
Ottawa-Gatineau, Ontario part, Ontario/Quebec	912,408	22,057	293,445	166,093	1,394,003
Ottawa-Gatineau, Quebec part, Ontario/Quebec	281,277	4,240	94,488	57,269	437,274
Peterborough, Ontario	82,917	3,446	36,913	15,558	138,834
Québec, Quebec	726,452	107,773	308,216	117,355	1,259,796
Regina, Saskatchewan	198,108	27,993	59,529	51,882	337,512
Saguenay, Quebec	133,489	24,728	34,284	21,438	213,939
Saint John, New Brunswick	107,028	68,670	35,268	3,032	213,998
Saskatoon, Saskatchewan	322,855	128,239	156,442	178,694	786,230
Sherbrooke, Quebec	203,690	10,426	55,754	31,283	301,153
St. Catharines-Niagara, Ontario	228,613	15,200	84,132	21,184	349,129
St. John's, Newfoundland and Labrador	282,816	15,637	75,180	29,006	402,639
Thunder Bay, Ontario	37,058	3,625	35,076	52,972	128,731
Toronto, Ontario	5,511,478	661,283	2,531,553	985,163	9,689,477
Trois-Rivières, Quebec	125,047	17,475	39,586	27,205	209,313
Vancouver, British Columbia	2,966,819	94,246	1,262,534	296,042	4,619,641
Victoria, British Columbia	496,901	15,906	123,608	73,260	709,675
Windsor, Ontario	85,573	16,357	54,266	22,887	179,083
Winnipeg, Manitoba	562,218	26,771	208,791	43,316	841,096

Table 13
Value of the non-residential permits by type of building, provinces and territories, September 2008

	Canada	Newfoundland and Labrador	Prince Edward Island	Nova Scotia	New Brunswick	Quebec	Ontario
thousands of dollars							
Total non-residential	3,355,618	21,297	12,003	79,749	46,616	455,384	1,500,966
Industrial	684,189	2,128	482	5,702	26,828	80,923	300,085
Factories, plants	346,995	1,075	0	0	3,862	42,665	186,872
Transportation, utilities	221,063	580	0	0	21,476	13,203	56,457
Mining and agriculture	38,084	0	300	1,342	0	7,187	24,469
Minor industrial projects, new and improvements ¹	78,047	473	182	4,360	1,490	17,868	32,287
Commercial	1,680,659	13,919	3,100	33,419	17,286	245,720	691,089
Trade and services	344,009	2,170	280	7,660	1,250	78,243	136,556
Warehouses	205,355	0	0	1,381	1,285	29,903	90,723
Service stations	37,914	250	0	2,977	700	6,525	1,606
Office buildings	522,226	2,760	1,205	8,937	4,174	45,394	291,177
Recreation	252,430	4,800	1,020	2,636	0	31,270	73,676
Hotels, restaurants	140,282	0	0	5,032	5,300	16,945	32,308
Laboratories	13,710	0	0	0	0	1,300	7,773
Minor commercial projects, new and improvements ¹	164,733	3,939	595	4,796	4,577	36,140	57,270
Institutional and governmental	990,770	5,250	8,421	40,628	2,502	128,741	509,792
Schools, education	486,695	0	5,600	22,290	0	70,120	164,470
Hospitals, medical	356,608	439	0	500	800	28,097	311,525
Welfare, home	33,417	4,300	2,500	8,400	0	13,024	5,193
Churches, religion	28,030	0	0	7,800	300	0	5,159
Government buildings	54,447	0	0	1,165	275	8,525	11,831
Minor institutional and governmental projects, new and improvements ¹	31,573	511	321	473	1,127	8,975	11,614
	Manitoba	Saskatchewan	Alberta	British Columbia	Yukon	Northwest Territories	Nunavut
thousands of dollars							
Total non-residential	60,879	249,656	593,589	327,689	1,258	4,917	1,615
Industrial	10,238	65,525	169,285	22,640	323	30	0
Factories, plants	5,015	57,600	39,747	10,159	0	0	0
Transportation, utilities	2,661	5,700	116,235	4,751	0	0	0
Mining and agriculture	0	0	3,200	1,586	0	0	0
Minor industrial projects, new and improvements ¹	2,562	2,225	10,103	6,144	323	30	0
Commercial	47,332	59,246	332,555	235,653	623	387	330
Trade and services	3,499	5,876	68,849	39,369	0	257	0
Warehouses	14,700	3,485	40,447	23,431	0	0	0
Service stations	0	6,921	13,840	5,095	0	0	0
Office buildings	7,119	22,164	94,643	44,403	0	0	250
Recreation	0	2,718	44,871	91,439	0	0	0
Hotels, restaurants	16,295	13,945	41,960	8,097	400	0	0
Laboratories	0	0	4,637	0	0	0	0
Minor commercial projects, new and improvements ¹	5,719	4,137	23,308	23,819	223	130	80
Institutional and governmental	3,309	124,885	91,749	69,396	312	4,500	1,285
Schools, education	2,400	123,255	35,950	56,825	0	4,500	1,285
Hospitals, medical	0	0	8,377	6,870	0	0	0
Welfare, home	0	0	0	0	0	0	0
Churches, religion	0	0	13,321	1,450	0	0	0
Government buildings	0	1,250	30,340	1,061	0	0	0
Minor institutional and governmental projects, new and improvements ¹	909	380	3,761	3,190	312	0	0

1. Refer to projects valued at less than \$250,000 for which the breakdown by type of building is not available.

Description – Monthly survey of building permits

The following information should be used to ensure a clear understanding of the basic concepts that define the data provided in this product, of the underlying methodology of the survey, and of key aspects of the data quality. This information will provide you with a better understanding of the strengths and limitations of the data, and of how they can be effectively used and analysed. The information may be of particular importance to you when making comparisons with data from other surveys or sources of information, and in drawing conclusions regarding change over time.

Data source and methodology

The purpose of the **Monthly Survey of Building Permits** issued by Canadian municipalities is to collect data on construction intentions. The results of this survey are used by C.M.H.C. (Canada Mortgage and Housing Corporation) as a reference base for conducting a monthly survey of housing starts and completions in accordance with its mandate. The statistics on building permits are also essential for the computation of capital expenditures. Furthermore, since the issuance of a building permit is one of the first steps in the construction process, these statistics are widely used as a leading indicator of building activity.

General methodology: The Building Permits Survey covers all Canadian municipalities that issue permits. The number of Canadian municipalities currently surveyed approximately 2,400, representing all the provinces and territories. They account for 95% of the Canadian population. Participation in the survey is mandatory; the survey does not use a predetermined sample of municipalities. The communities representing the other 5% of the population are very small, and their level of building activity have little impact on the total. In practice, all urban agglomerations are represented in the survey, as well as a fair percentage of rural municipalities. With certain exceptions, the minimum coverage corresponds to the municipalities already included in the Housing Starts and Completions C.M.H.C.'s Survey. Non-responding municipalities that issue permits are urged on a regular basis to respond to the Building Permit Survey. Therefore, the number of municipalities covered is increasing continually.

The survey is usually conducted by mail, although certain municipalities choose to respond by telephone. The municipal officer responsible for issuing permits is asked to fill out a form each month describing all major construction projects.

The municipalities forward a copy of their completed report to Statistics Canada Head Office and another copy to the local office of the Canada Mortgage and Housing Corporation (C.M.H.C.). To reduce their overhead, an increasing number of respondents are producing a computerized report. Only those municipalities that are late in reporting and that are included in the above-mentioned C.M.H.C. survey are subject to follow-up by telephone.

The reports received at Statistics Canada Head Office are verified, coded and processed.

Strict quality control procedures are applied to ensure that collection, coding and data processing are as accurate as possible. Checks are also performed on totals and the magnitude of data. Reports that fail to meet the quality standards are subject to verification and are corrected as required.

Imputations are required for each characteristic for which no report has been received. These are calculated automatically, subject to certain constraints, by applying to previously used values, the month-to-month and year-to-year changes in similar values of responding municipalities and the historical pattern of the missing municipalities. No estimation is done for lack of coverage, concealment or the underevaluation of permits issued. For this reason, the sampling error cannot be computed.

The monthly statistics are not corrected for cancelled or expired permits. According to the municipal officers, the proportion of cancelled and unused permits is below 5%.

Reference period: The reference period for data collection purposes is the calendar month. Reports from municipalities which are part of a census metropolitan area or a census agglomeration must be received within 20 days following the month of reference. The other municipalities have 30 days to produce their reports. Results are released between 35 and 40 days after the end of the reference month. Annual data for the preceding calendar year are released with the data for the January survey month.

Revisions: Two types of revisions can affect the results of the Building Permits Survey:

Revisions due to the correction of coding errors

These types of revisions are done on a monthly basis only to the data pertaining to the month preceding the reference period.

Revisions due to the addition of late reports

Late reports for the month preceding the reference period are incorporated into the survey results on a continuing basis. However, reports received after the two-month deadline following the reference month are introduced only at the end of the year. As a result, the data for the last twelve months are subject to revision.

Seasonal adjustment: Seasonal changes cause predictable fluctuations in the data. The data series disseminated includes both seasonally adjusted (i.e., excludes predictable annual influences) and the unadjusted data. Seasonally adjusted data for the total number of housing units as well as for the aggregate value of building permits are obtained indirectly, i.e., by adding their seasonally adjusted components. The total number of dwelling units is obtained by summing the seasonally adjusted data for single-family and multiple-use units; the total value of building permits is obtained by summing the following elements: single-family and multiple-family dwellings, industrial, commercial and institutional. Some series contain no apparent seasonality. In these cases, unadjusted values have been tabulated and aggregated to the adjusted values of the other series. At the end of the year, the chronological series adjusted for seasonality are revised to take into account the most recent seasonal fluctuations. Generally, these revisions apply only to the last three years in the series. The revised data are introduced into the CANSIM databank.

Concepts and variables measured

The statistical data presented in this product refers to the number of dwelling units authorized and the **value of building permits**. The value of the permits reported includes the following expenditures: materials, labour, profit and overhead. The cost of land is never included in the estimated value of the permit while acquisition costs (legal fees, surveying fees and accrued interest) may be included at times.

The classification used in this publication deals strictly with structures for which a building permit was issued. Permits are generally issued for the following: construction of new buildings, alterations, additions, renovations, etc. Minor repair jobs such as painting, tiling, roofing, etc., for which no permit is required, and engineering work (such as dams, roads, pipelines, etc.), which, by definition, is not a building, are not included in the building permit series. Estimates of such work may be obtained on Cansim, tables 029-0039 to 029-0040 for the «Capital expenditures by type of asset» and tables 029-0005 to 029-0024 and 032-0001 to 032-0002 for the «Private and Public Investment in Canada Intentions» (cat. no. 61-205-X).

The description given by the municipalities as to the type of building (box #6 of Section A on the form) and the type of work involved (box #7 of Section A on the form) forms the basis for classification. The classification of buildings into major groups and subgroups is based on the following: intended use in the case of new buildings; present or intended use of buildings to which improvements are to be made; present use of the existing structure where the proposed construction is intended to provide additional facilities; principal use of the structure where the proposed construction has more than one intended use; however, where the building contains dwellings, the value of the construction is divided between residential and non-residential use.

Building categories

This publication, uses the following classification for the **value of permits issued** for construction of new buildings or for improvements: residential, industrial, commercial, institutional and government.

Residential: Includes all buildings intended for private occupancy whether on a permanent basis or not. Dwellings are divided into the following types: single-family, mobile, cottage, semi-detached, row house and apartment building.

Industrial: Includes all buildings used for manufacturing and processing; transportation, communication and other utilities, and agriculture, forestry and mining.

Commercial: Includes all buildings used to house activities related to the tertiary sector, such as stores, warehouses, garages, office buildings, theatres, hotels, funeral parlours and beauty salons.

Institutional and Government: Includes expenditures made by the community, public and government for buildings and structures like schools, universities, hospitals, clinics, churches, homes for the aged.

The **number of dwelling units** indicates the number of self contained dwelling units created. This should not be confused with the number of structures. For example, an apartment building containing six dwellings will be shown as six dwelling units. When an existing structure is converted into additional housing units, the number of units added is included. This publication uses the following classification for dwelling units:

Single-family: Refers to dwellings commonly called "**single house**". It includes single dwellings that are completely isolated on all sides, including single dwellings linked to other dwellings below ground. Included are bungalows, split levels, two-storey single-family homes built by conventional methods or prefabricated.

Mobile homes: Refers to houses designed and constructed to be transported on their own chassis and for easy moving.

Cottage: Refers to dwellings that cannot be occupied year-round or on a permanent basis because the facilities required for comfort are inadequate.

Double or Semi-detached: Refers to dwellings in which each of the two dwellings are side by side and joined by a common wall or garage, but not attached to any other building and surrounded by open space.

Row Dwellings: Refers to a row of three or more dwellings attached to each other without dwellings above or below.

Apartment Building: Includes dwellings in a variety of buildings such as duplexes, semi-detached duplexes, triplexes, row duplexes, apartments as such and dwellings adjacent to non-residential structures.

Conversion: Refers to the number of dwellings added by conversion of existing structures.

Geographic classification

Geographic entities are classified according to Standard Geographical Classification (SGC) used by Statistics Canada. Each reporting entity is assigned a twelve-digit SGC code for identification according to the following geographic levels:

Province and territory (PR): There are ten provinces and three territories.

Economic region (ER): Refers to intraprovincial regions established by the Standards Division of Statistics Canada. There are seventy-six ERs.

Census division (CD): Refers to a group of census subdivisions established by provincial law. There are two hundred and eighty-eight CDs (data on this geographic group is available on request).

Census metropolitan area (CMA): Its delineation corresponds to the 2006 Census definition. The term CMA refers to the main labour market area of an urban area (the urbanized core) of at least 100,000 population, based on the Census population figures. The thirty-three CMAs are shown in this publication. Although the 2006 Census defines the Ottawa-Gatineau area as a single CMA, the area is shown in this publication as two separate entities since it is located in two different provinces.

Census agglomeration (CA): Refers to the smaller labour market area of an urbanized core of at least 10,000 population, as defined by the 2006 Census. There are one hundred and eleven CAs in Canada. When a CA overlaps the boundaries of two provinces, it is shown partly in each province. The Lloydminster agglomeration is an exception to this rule. It is treated as if it was totally located in Alberta.

Other municipalities of at least 10,000 population: Refers to municipalities not included in census agglomerations but with populations of at least 10,000 inhabitants. The distinction is made between these municipalities and CAs in order to permit comparison between the Building Permits Survey and the Housing Starts and Completions Survey which refers to this geographical concept.

Rural area: Refers to all geographic entities not included in a CMA or CA and not identified as an urban centre by the Canada Mortgage and Housing Corporation.

Census subdivision (CSD): Refers to the general term applying to municipalities, Indian reserves, Indian settlements and unorganized territories. However, since Indian reserves and settlements do not issue building permits, they are not included in this publication.

Non-standard geographic unit: The geographic units shown in this publication do not all satisfy the above definition of census subdivision. Some provincial or municipal administrations producing monthly reports do not correspond to the official geographic entities; they are nevertheless shown in this publication under the geographic entity used by these administrations. These so-called non-standard geographic units are few in number and are mostly concentrated in the Maritime provinces.

Territorial revisions

Territorial boundaries were established according to the 2006 Census definitions. Changes in boundaries, status or name of census subdivisions between censuses are introduced in this publication on a yearly basis. Changes affecting the other geographic units (CMAs, CAs, CDs and ERs) are introduced every five years, eighteen months following the census.

Data accuracy

Since the building permit data are extracted from municipal administrative documents, two types of response errors are possible: errors attributable to the permit applicant and errors in transcription by the responding municipality. However, experience has shown that transcription errors are not very common and the increasing number of municipalities producing computerized reports tends to reduce the frequency of this type of error. Errors attributable to an understatement of the cost of construction are more probable. Since permit fees are in most cases based on the value of the construction, this leads unquestionably to under-estimation of project values.

The other source of error are the processing error and the non-response error. In 2007, more than 99% of the municipalities covered by the survey sent their monthly Building Permits reports.

Comparability of data and related sources

Comparison of data must be done with reservation considering that the methods of issuing permits and the methods of estimating building values can differ from one municipality to another. Also, comparisons involving different periods must take into account the constant increase in the number of municipalities participating in the survey.

This publication contains only part of the data produced on building permits. However, you may order unpublished tables or address special requests, to the Current Investment Indicators Section (613-951-6321 or 1-800-579-8533). The series presented here is also available on CANSIM: Tables 026-0001 to 026-0008 and 026-0010.

Appendix I

Geographical abbreviations

C	Cité / City
CC	Chartered community
CÉ	Cité
CG	Community government
CM	County (municipality)
CN	Colonie de la couronne / Crown colony
COM	Community
CT	Canton (municipalité de)
CU	Cantons unis (municipalité de)
CY	City
DM	District municipality
HAM	Hamlet
ID	Improvement district
IGD	Indian government district
IM	Island municipality
IRI	Réserve indienne / Indian reserve
LGD	Local government district
LOT	Township and royalty
M	Municipalité / Municipality
MD	Municipal district
MÉ	Municipalité
MU	Municipality
NH	Northern hamlet
NL	Nisgaa land
NO	Non organisé / Unorganized
NV	Northern village
NVL	Nisgaa village
P	Paroisse (municipalité de) / Parish
PE	Paroisse (municipalité de)
RCR	Communauté rurale / Rural community
RDA	Regional district electoral area
RG	Region
RGM	Regional municipality
RM	Rural municipality
RV	Resort village
S-É	Établissement indien / Indian settlement
SA	Special area
SC	Subdivision municipalité de comté / Subdivision of county municipality
SÉ	Établissement / Settlement
SET	Settlement
SM	Specialized municipality
SNO	Subdivision non organisée / Subdivision of unorganized
SV	Summer village
T	Town

TC	Terres réservées aux Cris
TI	Terre inuite
TK	Terres réservées aux Naskapis
TL	Teslin land
TP	Township
TV	Ville / Town
V	Ville
VC	Village cri
VK	Village naskapi
VL	Village
VN	Village nordique