



Catalogue no. 64-001-X

Building Permits

December 2007



Statistics
Canada

Statistique
Canada

Canada

How to obtain more information

For information about this product or the wide range of services and data available from Statistics Canada, visit our website at www.statcan.ca or contact us by e-mail at infostats@statcan.ca or by phone from 8:30am to 4:30pm Monday to Friday at:

Toll-free telephone (Canada and the United States):

Inquiries line **1-800-263-1136**

National telecommunications device for the hearing impaired **1-800-363-7629**

Fax line **1-877-287-4369**

Depository Services Program inquiries line **1-800-635-7943**

Depository Services Program fax line **1-800-565-7757**

Statistics Canada national contact centre: 1-613-951-8116

Fax line **1-613-951-0581**

Information to access the product

This product, catalogue no. 64-001-X, is available for free in electronic format. To obtain a single issue, visit our website at www.statcan.ca and select Publications.

Standards of service to the public

Statistics Canada is committed to serving its clients in a prompt, reliable and courteous manner. To this end, the Agency has developed *standards of service* which its employees observe in serving its clients.

To obtain a copy of these service standards, please contact Statistics Canada toll free at 1-800-263-1136. The service standards are also published on www.statcan.ca under About us > Providing services to Canadians.



Statistics Canada
Investment and capital stock division
Current investment indicators section

Building Permits

December 2007

Published by authority of the Minister responsible for Statistics Canada

© Minister of Industry, 2008

All rights reserved. The content of this electronic publication may be reproduced, in whole or in part, and by any means, without further permission from Statistics Canada, subject to the following conditions: that it be done solely for the purposes of private study, research, criticism, review or newspaper summary, and/or for non-commercial purposes; and that Statistics Canada be fully acknowledged as follows: Source (or "Adapted from", if appropriate): Statistics Canada, year of publication, name of product, catalogue number, volume and issue numbers, reference period and page(s). Otherwise, no part of this publication may be reproduced, stored in a retrieval system or transmitted in any form, by any means—electronic, mechanical or photocopy—or for any purposes without prior written permission of Licensing Services, Client Services Division, Statistics Canada, Ottawa, Ontario, Canada K1A 0T6.

February 2008

Catalogue no. 64-001-X, vol. 51, no. 12

ISSN 1480-7475

Frequency: Monthly

Ottawa

La version française de cette publication est disponible sur demande (n° 64-001-X au catalogue).

Note of appreciation

Canada owes the success of its statistical system to a long standing partnership between Statistics Canada, the citizens of Canada, its businesses, governments and other institutions. Accurate and timely statistical information could not be produced without their continued cooperation and goodwill.

User information

Symbols

The following standard symbols are used in Statistics Canada publications:

- . not available for any reference period
- .. not available for a specific reference period
- ... not applicable
- 0 true zero or a value rounded to zero
- 0^s value rounded to 0 (zero) where there is a meaningful distinction between true zero and the value that was rounded
- p preliminary
- r revised
- x suppressed to meet the confidentiality requirements of the *Statistics Act*
- E use with caution
- F too unreliable to be published

Acknowledgements

This publication was prepared under the direction of:

- D. McDowell, Director, Investment and Capital Stock Division
- M. Labonté, Chief, Current Investment Indicators Section
- É. Saint-Pierre, Unit Head, Residential Sector, Current Investment Indicators
- D. Legault, Programmer-Analyst, Current Investment Indicators Section

Important notice

Changes in boundaries, status or names of geographical entities that occurred before January 2006, are reflected in this publication. These geographical changes may be obtained by writing to:

Statistics Canada
Investment and Capital Stock Division
Current Investment Indicators Section
Jean Talon Building, 9 D-2
170 Tunney's Pasture Driveway
Ottawa, Ontario K1A 0T6
or by telephoning: 613-951-6321

Table of contents

Highlights	5
Analysis – December 2007	6
Housing: Demand shifts to multi-family dwellings	6
Non-residential sector: Strong growth in every component	7
Demand for new office space plays key role in non-residential sector	7
December: Gain in housing permits offsets decline in non-residential intentions	8
Related products	12
Statistical tables	
1 Total value of building permits, provinces and territories, seasonally adjusted	15
2 Non-residential value of building permits, provinces and territories, seasonally adjusted	15
3 Residential value of building permits, provinces and territories, seasonally adjusted	16
4 Number of dwelling units authorized, province and territories, seasonally adjusted at annual rate	16
5 Dwelling units, value of residential and non-residential building permits, provinces and territories, seasonally adjusted, 2007	17
6 Dwelling units, value of residential and non-residential building permits, census metropolitan areas, seasonally adjusted, 2007	19
7 Dwelling units, provinces and territories, unadjusted, 2007	23
8 Dwelling units, census metropolitan areas, unadjusted, December 2007	25
9 Dwelling units, census metropolitan areas, unadjusted, cumulative, January to December 2007	26
10 Value of residential and non-residential building permits, provinces and territories, unadjusted, 2007	27
11 Value of residential and non-residential building permits, census metropolitan areas, unadjusted, December 2007	29
12 Value of residential and non-residential building permits, census metropolitan areas, unadjusted, cumulative, January to December 2007	30
13 Value of the non-residential permits by type of building, provinces and territories, December 2007	31
Data quality, concepts and methodology	
Description – Monthly survey of building permits	32
Data source and methodology	33
Concepts and variables measured	35
Building categories	36
Geographic classification	37
Data accuracy	38

Table of contents – continued

Comparability of data and related sources	39
---	----

Appendix

I Geographical abbreviations	40
------------------------------	----

Charts

1. Total value of building permits	8
2. Residential value of building permits – Total	9
3. Number of dwelling units – Single and multiple	9
4. Non residential value of building permits – Total	10
5. Commercial value of building permits	10
6. Industrial value of building permits	11
7. Institutional and governmental value of building permits	11

Highlights

- The value of building permits hit another record high in 2007, thanks to strong gains spread across Canada and in both the residential and non-residential sectors. Municipalities issued \$74.3 billion worth of building permits in 2007, up 12.1% from a year earlier.

Analysis – December 2007

The value of building permits hit another record high in 2007, thanks to widespread strong gains across Canada and in both the residential and non-residential sectors.

Municipalities issued \$74.3 billion worth of building permits in 2007, up 12.1% from the previous record of \$66.3 billion in 2006.

While the gain in 2006 was largely fuelled by the tremendous demand in Western Canada, the increase in 2007 was more widespread across the country. Every province posted gains with the exception of Prince Edward Island and Nova Scotia.

In Quebec, the rate of growth accelerated from 5.2% in 2006 to 9.2% in 2007. In Ontario, the value of permits rebounded from a 3.5% decline in 2006 to a 14.7% increase in 2007, a faster rate of growth than the 12.8% gain in Alberta.

Regionally, 21 out of the 34 census metropolitan areas posted increases in their annual total value of construction projects. After recording the largest decline in 2006, Toronto rebounded significantly in 2007 to post the largest gain (in dollars) by far among metropolitan areas. Calgary came second followed by Montréal, Vancouver and Edmonton.

Intentions set new records in both the non-residential and residential sectors. In the non-residential sector, the value of permits totalled \$28.7 billion, up 13.8% from \$25.2 billion in 2006. All three components (industrial, commercial and institutional) recorded strong growth.

In the housing sector, municipalities issued \$45.6 billion worth of permits, up 11.0%. Higher construction prices for new dwellings contributed significantly to the gain, as the number of new dwellings approved increased 2.0% in 2007 to 237,875 units.

This result contrasted sharply with the situation in the United States, where the number of new privately-owned units approved fell by 25.3% in 2007.

On a monthly basis, municipalities issued \$6.1 billion worth of building permits in December, a marginal 0.4% gain from November.

Housing: Demand shifts to multi-family dwellings

The number of multi-family units approved in 2007 totalled 121,170 units, up 6.1% from 2006 and the highest level since 1977. In contrast, the number of single-family units approved declined 2.0% to 116,700 units.

The high price tag on the construction of single-family dwellings in several centres contributed to shift the demand toward multi-family dwellings.

The share of multi-family dwellings went from 48.9% in 2006 to 50.9% in 2007. It was the highest proportion since 1982 when they represented 51.5% of all units.

The value of multi-family permits increased 16.0% to \$16.7 billion, while the value of single-family permits rose 8.3% to \$28.9 billion.

The strong level of employment, the increase in the disposable income, tight apartment vacancy rates in several centres and attractive financing options continued to stimulate the housing sector in 2007.

Non-residential sector: Strong growth in every component

Commercial projects fuelled most of the increase in the non-residential sector in 2007. Construction intentions in both commercial and institutional sectors hit record highs, while industrial permits were at their highest annual total since 1989.

Municipalities issued \$16.9 billion worth of commercial permits, up 17.1% from 2006. The increase came largely from projects for office buildings, retail complexes and hotels.

In the institutional component, the value of permits rose 10.0% to \$6.9 billion. Projects for schools, hospitals and nursing homes were behind this gain.

Note to readers

This release presents seasonally adjusted monthly data, which ease comparisons by removing the effects of seasonal variations. The annual totals correspond to the sum of the unadjusted monthly figures and are preliminary.

The Building Permits Survey covers 2,380 municipalities representing 95% of the population. It provides an early indication of building activity. The communities representing the other 5% of the population are very small, and their levels of building activity have little impact on the total.

The value of planned construction activities shown in this release excludes engineering projects (for example, waterworks, sewers or culverts) and land.

For the purpose of the Building Permits release, the census metropolitan area of Ottawa–Gatineau is divided into two areas: Ottawa–Gatineau (Quebec part) and Ottawa–Gatineau (Ontario part).

The value of industrial permits increased 8.5% to \$4.9 billion, fuelled largely by projects for manufacturing buildings. However, this component has been on a downward trend since September.

Declining office vacancy rates, vigorous retail sales, strong corporate profits and the increasing demand for health care and nursing home were among factors contributing to the exceptional results in the non-residential sector.

Demand for new office space plays key role in non-residential sector

Projects for new office space played a key role in the healthy results in the non-residential sector. Without office buildings, the value of commercial permits would have increased by 10.2% instead of 17.1%.

Weak real investment in office buildings in recent years and growing employment in business, finance and administrative occupations pushed down the office vacancy rates. These low rates, in addition to the aging of the existing stock contributed to increase the demand for office space considerably.

Municipalities approved \$5.3 billion in projects for office buildings in 2007, up 35.9% from 2006. Office buildings accounted for 40.0% of the overall increase in the non-residential sector.

Between 2003 and 2007, the share of the value of office building permits in the non-residential sector rose from 8.8% to 18.4%, the highest share since 1990. The value of approved projects in 2007 was more than three times higher than the level in 2003.

In the Calgary metropolitan area, municipalities approved \$1.8 billion in projects for office buildings in 2007, a 56.6% gain from 2006. These represented 53.6% of the overall value of approved projects in Calgary's non-residential sector. The value of office building permits in 2007 was more than 14 times higher than the level approved in 2003.

In Toronto, \$1.2 billion worth of office building projects were approved, up 52.9% from 2006. This accounted for nearly one-quarter of the total value of non-residential permits issued in 2007.

December: Gain in housing permits offsets decline in non-residential intentions

The total value of building permits reached \$6.1 billion in December, a small 0.4% gain from November. A gain in housing permits more than offset the decline in non-residential construction intentions. The total value of permits peaked in May and June at \$6.9 billion and has been on a downward trend in the last part of 2007.

The value of residential permits increased 1.8% to 3.9 billion, thanks to a 10.8% surge in the value of multi-family permits. The value of single-family permits declined 3.2% to \$2.4 billion.

Municipalities approved 9,215 new single-family units, the second lowest monthly level over the last six years. The number of multi-family units approved increased 1.0% in December to 9,990 units.

The value of non-residential permits declined 2.0% in December to \$2.2 billion.

The value of commercial permits increased 16.8% to \$1.3 billion, the value of industrial permits plunged 33.2% to \$319 million, and institutional permits declined 12.0% to \$540 million.

The value of industrial permits recorded a fourth loss in five months and hit its lowest level since February, as permits for manufacturing buildings declined. Institutional permits fell for the third time in four months.

Four provinces registered gains in the total value of permits in December. Marked increases in British Columbia, Saskatchewan, Newfoundland and Labrador and, to a lesser extent, in Ontario offset declines in all other provinces.

In Saskatchewan, the value of permits in December reached a record high of \$217 million, thanks to strong construction intentions in both sectors.

In Newfoundland and Labrador, the level in December (\$104 million) was second only to the value recorded in November 2006. In Quebec, however, the monthly value of permits fell below the \$1-billion mark for the first time in 10 months.

Chart 1
Total value of building permits

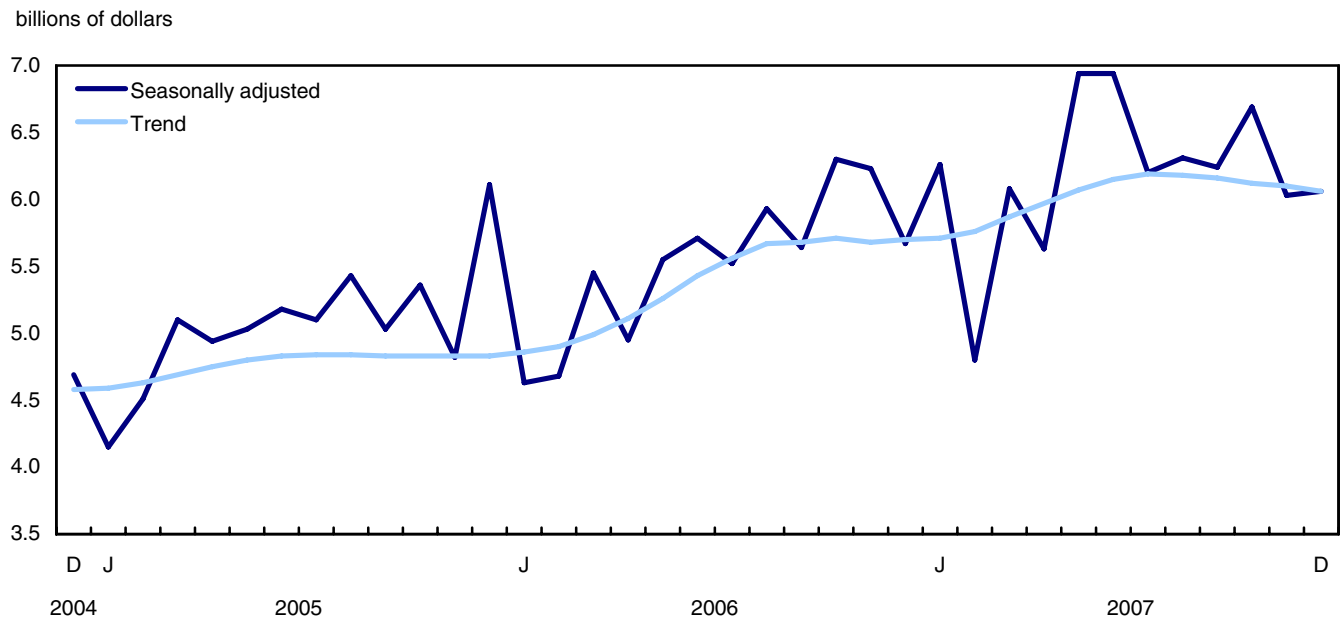


Chart 2
Residential value of building permits – Total

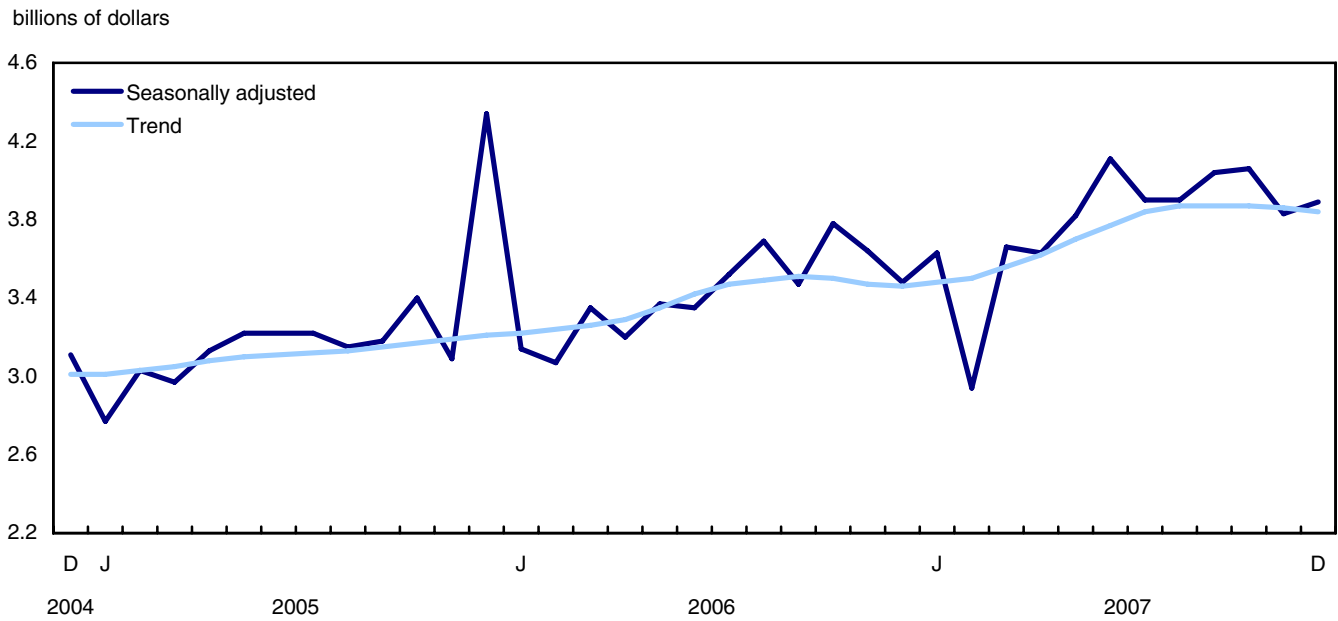


Chart 3
Number of dwelling units – Single and multiple

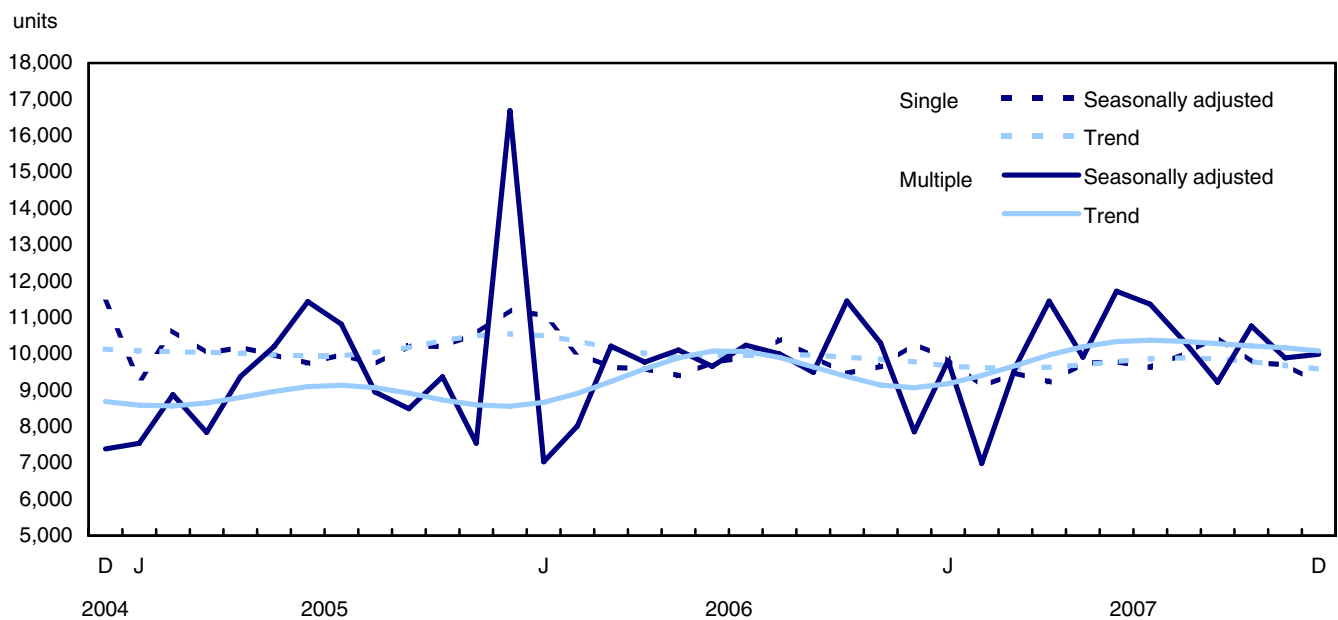


Chart 4
Non residential value of building permits – Total

billions of dollars

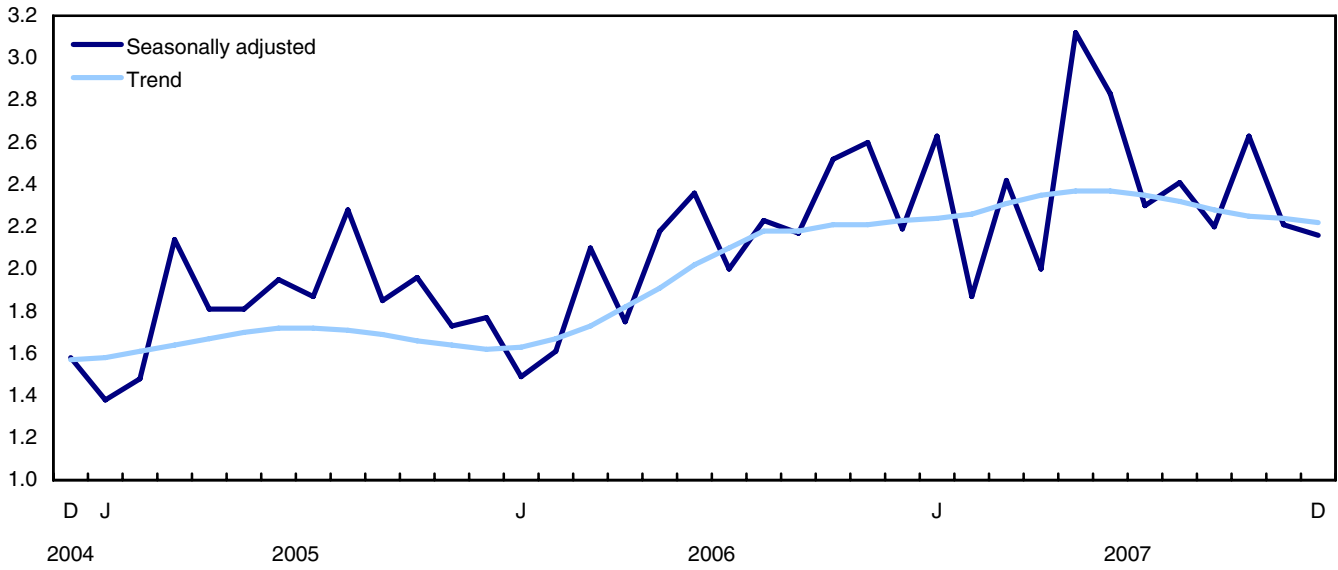


Chart 5
Commercial value of building permits

millions of dollars

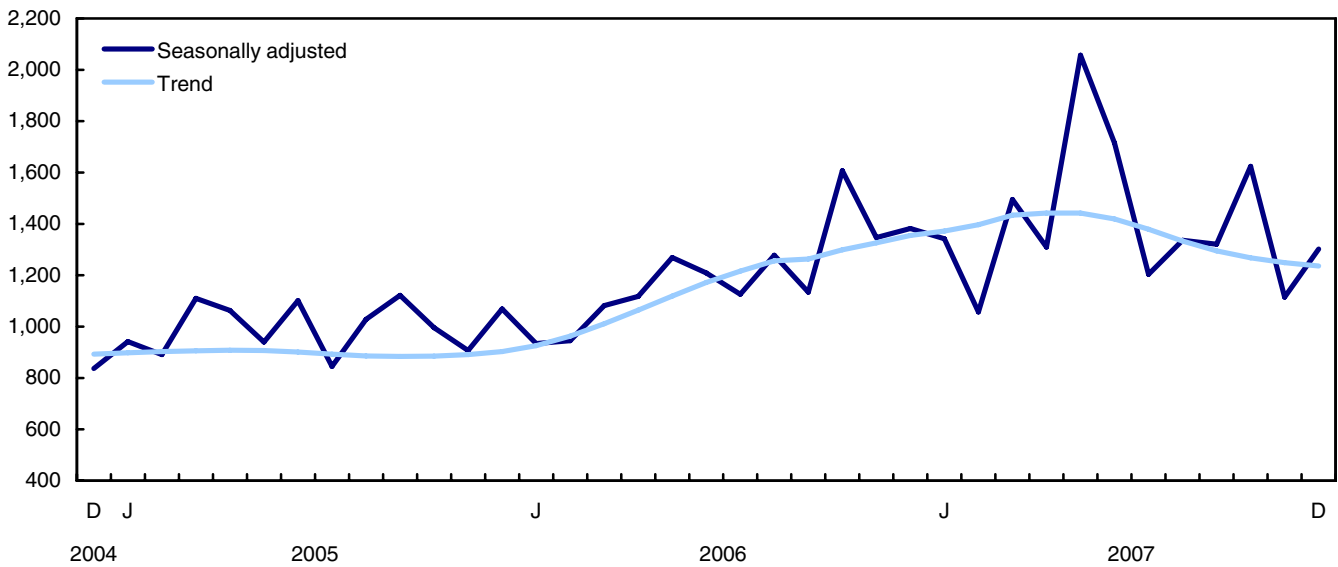


Chart 6
Industrial value of building permits

millions of dollars

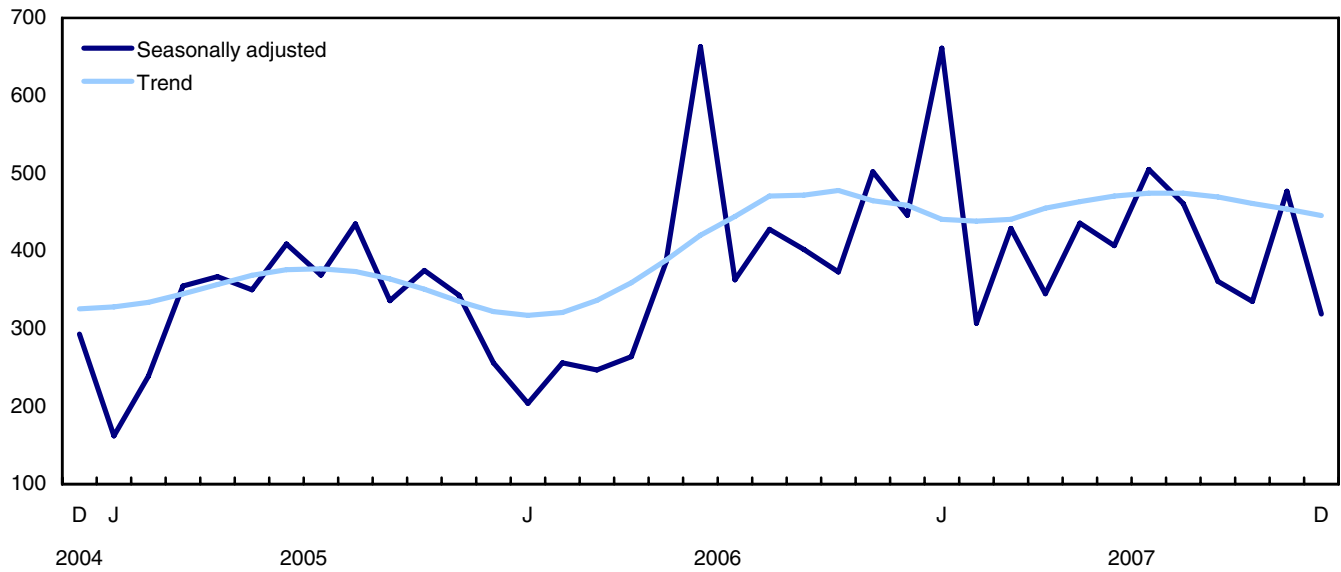
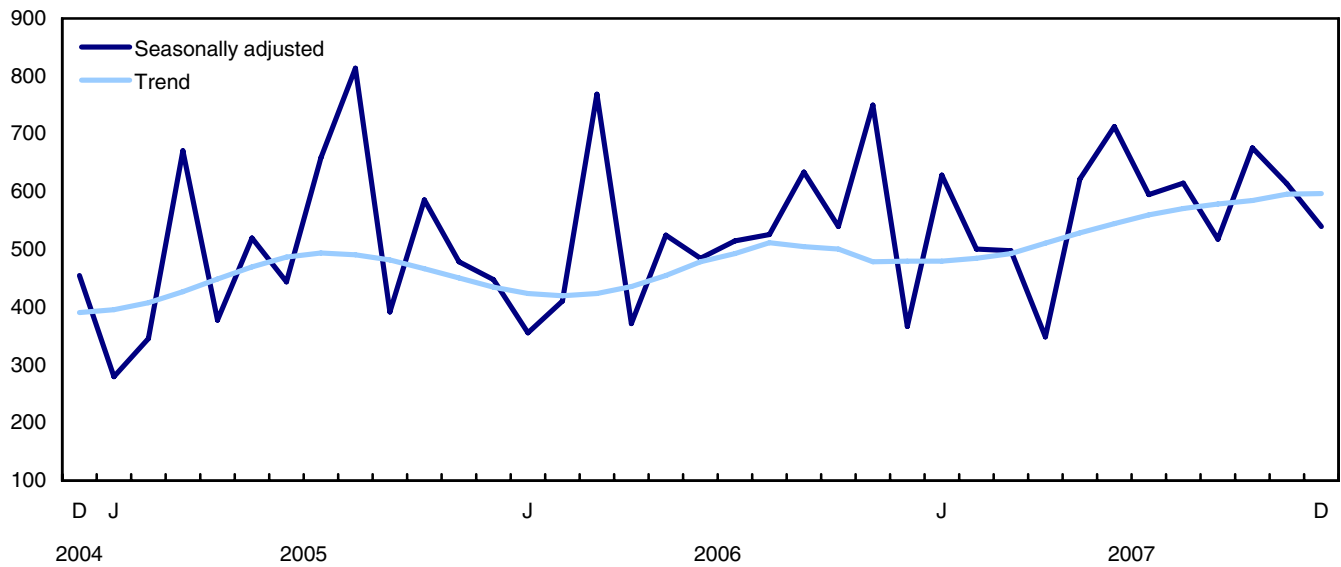


Chart 7
Institutional and governmental value of building permits

millions of dollars



Related products

Selected publications from Statistics Canada

61-205-X	Private and Public Investment in Canada, Intentions
62-202-X	Spending Patterns in Canada
64-203-X	Building Permits, Annual Summary

Selected technical and analytical products from Statistics Canada

62F0014M1996002	An Analysis of Some Construction Price Index Methodologies
-----------------	--

Selected CANSIM tables from Statistics Canada

026-0001	Building permits, residential values and number of units, by type of dwelling, monthly
026-0002	Building permits, dwelling units by type of dwelling and area, monthly
026-0003	Building permits, values by activity sector, monthly
026-0004	Building permits, values by activity sector and area, monthly
026-0005	Building permits, non-residential values by type of structure, monthly
026-0006	Building permits, by type of structure and area, seasonally adjusted, monthly
026-0007	Building permits, dwelling units by type of structure and value and by activity sector, monthly
026-0008	Building permits, values by activity sector, seasonally adjusted and unadjusted, monthly
026-0010	Building permits, residential and non-residential values by type of structure for Canada and urban centres, 10,000 and over, monthly
026-0015	Building permits, leading indicators and indexes, seasonally adjusted, monthly

Selected surveys from Statistics Canada

2802	Building Permits Survey
------	-------------------------

Selected summary tables from Statistics Canada

- *Value of building permits, by province and territory (monthly)*
- *Value of building permits, by census metropolitan area (monthly)*
- *Economic indicators, by province and territory (monthly and quarterly)*
- *Value of building permits, by province and territory*
- *Value of building permits by type*

Statistical tables

Table 1
Total value of building permits, provinces and territories, seasonally adjusted

	2007 December ^p	2007 November ^p	December to November	November to October	October to September	September to August	August to July	July to June
	thousands of dollars		percentage change					
Canada	6,055,832	6,031,799	0.4	-9.9	7.3	-1.1	1.7	-10.6
Newfoundland and Labrador	103,538	59,770	73.2	20.3	-18.5	-12.4	28.7	15.7
Prince Edward Island	13,276	15,537	-14.6	-39.0	146.8	-13.4	-12.9	14.7
Nova Scotia	74,462	114,216	-34.8	-7.3	18.0	-24.3	15.3	-4.7
New Brunswick	48,873	84,232	-42.0	-11.4	31.4	-23.8	10.8	5.7
Quebec	973,364	1,130,311	-13.9	-6.0	13.1	-7.8	-1.3	-1.3
Ontario	2,320,722	2,286,951	1.5	-5.6	-6.3	17.1	5.8	-9.8
Manitoba	97,129	110,672	-12.2	-2.5	-13.6	10.4	-1.9	-18.2
Saskatchewan	216,512	118,349	82.9	-7.9	-5.9	-25.9	34.5	-24.0
Alberta	1,102,811	1,204,347	-8.4	-13.8	12.6	-4.6	-6.2	-8.8
British Columbia	1,084,970	897,977	20.8	-20.4	38.2	-19.4	0.1	-22.5
Yukon Territory	10,245	1,847	454.7	-49.6	-56.4	42.2	-8.5	74.5
Northwest Territories	9,930	3,579	177.5	121.6	-65.5	9.4	-56.6	-33.5
Nunavut	0	4,011	-100.0	304.7	-64.2	-33.4	87.1	-67.2

Table 2
Non-residential value of building permits, provinces and territories, seasonally adjusted

	2007 December ^p	2007 November ^p	December to November	November to October	October to September	September to August	August to July	July to June
	thousands of dollars		percentage change					
Canada	2,161,054	2,205,785	-2.0	-16.3	19.8	-8.8	4.7	-18.7
Newfoundland and Labrador	66,579	20,334	227.4	95.0	-59.4	154.2	-50.1	36.7
Prince Edward Island	5,261	2,974	76.9	-79.7	424.3	1.5	-17.4	10.0
Nova Scotia	22,231	45,037	-50.6	-11.2	71.2	-21.0	-16.3	-33.8
New Brunswick	10,581	36,247	-70.8	-21.8	70.3	-35.9	44.6	20.9
Quebec	286,004	397,685	-28.1	0.2	12.7	-6.2	-12.4	-13.2
Ontario	789,910	855,518	-7.7	-14.3	-0.1	2.9	15.1	-15.1
Manitoba	27,007	21,782	24.0	-48.1	-12.4	84.3	-40.0	-35.4
Saskatchewan	120,089	50,922	135.8	26.0	-30.5	-46.5	71.5	-44.0
Alberta	474,478	484,575	-2.1	-36.1	68.3	-9.8	-8.3	0.3
British Columbia	349,585	287,395	21.6	5.4	35.7	-39.2	19.5	-44.1
Yukon Territory	832	396	110.1	-78.8	-45.3	23.7	172.0	-38.0
Northwest Territories	8,497	2,820	201.3	205.9	-37.4	-51.4	-33.0	-59.1
Nunavut	0	100	-100.0	-88.0	27,733.3	-99.8	835.3	-97.7

Table 3
Residential value of building permits, provinces and territories, seasonally adjusted

	2007 December ^p	2007 November ^p	December to November	November to October	October to September	September to August	August to July	July to June
	thousands of dollars		percentage change					
Canada	3,894,778	3,826,014	1.8	-5.7	0.5	3.7	-0.1	-5.1
Newfoundland and Labrador	36,959	39,436	-6.3	0.4	11.3	-40.7	75.9	5.9
Prince Edward Island	8,015	12,563	-36.2	15.8	44.0	-17.9	-11.4	16.3
Nova Scotia	52,231	69,179	-24.5	-4.6	-3.1	-25.5	34.3	29.4
New Brunswick	38,292	47,985	-20.2	-1.6	8.0	-14.1	-6.8	-0.8
Quebec	687,360	732,626	-6.2	-9.1	13.4	-8.5	5.1	7.3
Ontario	1,530,812	1,431,433	6.9	0.5	-10.3	28.1	-0.5	-5.9
Manitoba	70,122	88,890	-21.1	24.2	-14.3	-10.3	19.2	-4.0
Saskatchewan	96,423	67,427	43.0	-23.5	12.3	3.6	2.7	9.5
Alberta	628,333	719,772	-12.7	12.6	-19.2	-1.4	-4.8	-13.8
British Columbia	735,385	610,582	20.4	-28.6	39.1	-9.8	-7.1	-9.3
Yukon Territory	9,413	1,451	548.7	-19.4	-63.9	58.4	-42.1	163.7
Northwest Territories	1,433	759	88.8	9.5	-78.4	157.5	-76.6	41.6
Nunavut	0	3,911	-100.0	2,407.1	-94.4	-3.3	37.2	186.1

Table 4
Number of dwelling units authorized, province and territories, seasonally adjusted at annual rate

	2007 December ^p	2007 November ^p	December to November	November to October	October to September	September to August	August to July	July to June
	units		percentage change					
Canada	230,460	235,080	-2.0	-4.6	4.3	-3.3	-3.0	-2.4
Newfoundland and Labrador	2,316	2,844	-18.6	-5.6	19.0	-47.4	108.9	11.6
Prince Edward Island	648	960	-32.5	5.3	65.2	-28.1	-1.5	25.0
Nova Scotia	3,456	5,208	-33.6	9.3	-7.7	-37.9	40.7	60.3
New Brunswick	3,684	4,692	-21.5	7.4	15.9	-17.4	-9.5	-8.3
Quebec	52,188	54,540	-4.3	-6.8	13.8	-12.9	8.6	14.3
Ontario	84,768	74,736	13.4	-6.5	-1.3	13.2	-5.9	0.4
Manitoba	6,324	6,012	5.2	25.9	-23.6	-13.7	28.0	-8.0
Saskatchewan	6,912	4,632	49.2	-27.3	2.5	26.7	-12.6	4.7
Alberta	33,612	50,028	-32.8	35.7	-20.5	2.0	-7.8	-17.0
British Columbia	35,736	31,152	14.7	-33.4	44.9	-13.3	-19.2	-10.9
Yukon Territory	816	96	750.0	-27.3	-66.7	57.1	-27.6	222.2
Northwest Territories	0	0	...	-100.0	-85.7	600.0	-89.5	90.0
Nunavut	0	180	-100.0	1,400.0	-90.0	-9.1	-15.4	333.3

Table 5
Dwelling units, value of residential and non-residential building permits, provinces and territories, seasonally adjusted, 2007

	Number of dwelling units			Estimated value of construction					Total
	Singles ¹	Multiples	Total dwellings	Residential	Non-residential			Total	
					Industrial	Commercial	Institutional and governmental		
	units				thousands of dollars				
Canada									
November ^r	9,700	9,890	19,590	3,826,014	477,069	1,115,060	613,656	2,205,785	6,031,799
December ^p	9,213	9,992	19,205	3,894,778	318,675	1,302,224	540,155	2,161,054	6,055,832
Cumulative Jan. to Dec. 2007	115,986	121,121	237,107	45,399,663	5,042,432	16,877,399	6,868,603	28,788,434	74,188,097
Cumulative Jan. to Dec. 2006	119,084	114,154	233,238	41,052,759	4,532,569	14,430,943	6,249,550	25,213,062	66,265,821
Newfoundland and Labrador									
November ^r	195	42	237	39,436	1,340	8,961	10,033	20,334	59,770
December ^p	183	10	193	36,959	647	17,617	48,315	66,579	103,538
Cumulative Jan. to Dec. 2007	1,939	546	2,485	418,123	26,048	108,082	104,107	238,237	656,360
Cumulative Jan. to Dec. 2006	1,619	448	2,067	326,305	82,415	101,384	28,275	212,074	538,379
Prince Edward Island									
November ^r	60	20	80	12,563	326	1,678	970	2,974	15,537
December ^p	46	8	54	8,015	4,779	377	105	5,261	13,276
Cumulative Jan. to Dec. 2007	637	146	783	116,994	15,251	28,268	6,216	49,735	166,729
Cumulative Jan. to Dec. 2006	705	206	911	126,461	20,666	33,605	26,220	80,491	206,952
Nova Scotia									
November ^r	310	124	434	69,179	13,134	21,329	10,574	45,037	114,216
December ^p	246	42	288	52,231	888	17,146	4,197	22,231	74,462
Cumulative Jan. to Dec. 2007	3,081	2,036	5,117	828,657	71,304	287,010	85,814	444,128	1,272,785
Cumulative Jan. to Dec. 2006	3,028	2,827	5,855	862,884	84,353	293,185	51,013	428,551	1,291,435
New Brunswick									
November ^r	247	144	391	47,985	3,692	24,030	8,525	36,247	84,232
December ^p	214	93	307	38,292	1,887	5,680	3,014	10,581	48,873
Cumulative Jan. to Dec. 2007	2,612	1,483	4,095	546,211	112,021	227,745	65,594	405,360	951,571
Cumulative Jan. to Dec. 2006	2,432	1,658	4,090	493,185	56,170	209,488	174,415	440,073	933,258
Quebec									
November ^r	1,972	2,573	4,545	732,626	115,967	209,671	72,047	397,685	1,130,311
December ^p	1,911	2,438	4,349	687,360	45,708	167,958	72,338	286,004	973,364
Cumulative Jan. to Dec. 2007	22,920	28,554	51,474	8,402,684	880,995	2,433,272	1,235,627	4,549,894	12,952,578
Cumulative Jan. to Dec. 2006	22,040	27,069	49,109	7,779,495	841,541	2,204,105	1,053,192	4,098,838	11,878,333
Ontario									
November ^r	3,378	2,850	6,228	1,431,433	198,746	380,967	275,805	855,518	2,286,951
December ^p	3,122	3,942	7,064	1,530,812	167,464	422,609	199,837	789,910	2,320,722
Cumulative Jan. to Dec. 2007	38,791	34,091	72,882	15,537,410	2,540,004	5,511,892	3,132,669	11,184,565	26,721,975
Cumulative Jan. to Dec. 2006	38,423	33,997	72,420	14,293,993	1,843,893	4,814,977	2,339,312	8,998,182	23,292,175
Manitoba									
November ^r	364	137	501	88,890	4,163	13,142	4,477	21,782	110,672
December ^p	357	170	527	70,122	3,714	20,423	2,870	27,007	97,129
Cumulative Jan. to Dec. 2007	3,953	2,060	6,013	955,129	61,121	270,638	181,422	513,181	1,468,310
Cumulative Jan. to Dec. 2006	3,491	2,143	5,634	829,137	102,008	282,750	164,926	549,684	1,378,821
Saskatchewan									
November ^r	310	76	386	67,427	17,505	29,565	3,852	50,922	118,349
December ^p	361	215	576	96,423	9,970	13,756	96,363	120,089	216,512
Cumulative Jan. to Dec. 2007	3,526	1,798	5,324	868,929	101,257	452,406	206,943	760,606	1,629,535
Cumulative Jan. to Dec. 2006	2,387	954	3,341	493,430	89,681	287,937	267,547	645,165	1,138,595
Alberta									
November ^r	1,730	2,439	4,169	719,772	90,306	265,922	128,347	484,575	1,204,347
December ^p	1,589	1,212	2,801	628,333	55,134	390,378	28,966	474,478	1,102,811
Cumulative Jan. to Dec. 2007	25,394	22,174	47,568	9,017,206	891,963	4,844,540	857,050	6,593,553	15,610,759
Cumulative Jan. to Dec. 2006	30,478	20,036	50,514	8,139,671	1,050,255	3,662,179	1,023,592	5,736,026	13,875,697

See footnotes at the end of the table.

Table 5 – continued

Dwelling units, value of residential and non-residential building permits, provinces and territories, seasonally adjusted, 2007

	Number of dwelling units			Residential	Estimated value of construction				Total
	Singles ¹	Multiples	Total dwellings		Non-residential				
					Industrial	Commercial	Institutional and governmental	Total	
	units			thousands of dollars					
British Columbia									
November ^r	1,130	1,466	2,596	610,582	30,975	157,515	98,905	287,395	897,977
December ^p	1,116	1,862	2,978	735,385	27,164	238,388	84,033	349,585	1,084,970
Cumulative Jan. to Dec. 2007	12,855	27,975	40,830	8,592,408	323,804	2,664,660	959,230	3,947,694	12,540,102
Cumulative Jan. to Dec. 2006	14,196	24,639	38,835	7,620,696	358,843	2,493,683	1,068,309	3,920,835	11,541,531
Yukon Territory									
November ^r	4	4	8	1,451	65	210	121	396	1,847
December ^p	68	0	68	9,413	0	715	117	832	10,245
Cumulative Jan. to Dec. 2007	212	53	265	42,814	13,611	7,972	15,188	36,771	79,585
Cumulative Jan. to Dec. 2006	197	46	243	37,066	1,017	23,824	33,666	58,507	95,573
Northwest Territories									
November ^r	0	0	0	759	850	1,970	0	2,820	3,579
December ^p	0	0	0	1,433	1,320	7,177	0	8,497	9,930
Cumulative Jan. to Dec. 2007	51	4	55	19,373	5,032	36,918	12,897	54,847	74,220
Cumulative Jan. to Dec. 2006	63	16	79	17,406	1,429	11,014	7,823	20,266	37,672
Nunavut									
November ^r	0	15	15	3,911	0	100	0	100	4,011
December ^p	0	0	0	0	0	0	0	0	0
Cumulative Jan. to Dec. 2007	15	201	216	53,725	21	3,996	5,846	9,863	63,588
Cumulative Jan. to Dec. 2006	25	115	140	33,030	298	12,812	11,260	24,370	57,400

1. Included in this category are the following types of dwellings: single-detached, mobile home and cottage.

Table 6
Dwelling units, value of residential and non-residential building permits, census metropolitan areas, seasonally adjusted, 2007

	Number of dwelling units			Estimated value of construction					Total
	Singles ¹	Multiples	Total dwellings	Residential	Non-residential			Total	
					Industrial	Commercial	Institutional and governmental		
	units			thousands of dollars					
Abbotsford, British Columbia									
November ^r	41	84	125	21,323	133	13,462	0	13,595	34,918
December ^p	59	0	59	11,884	359	8,160	8,369	16,888	28,772
Cumulative Jan. to Dec. 2007	596	515	1,111	188,946	19,984	79,952	19,410	119,346	308,292
Cumulative Jan. to Dec. 2006	443	765	1,208	160,398	37,800	52,247	103,535	193,582	353,980
Barrie, Ontario									
November ^r	74	7	81	17,849	1,415	3,563	536	5,514	23,363
December ^p	131	154	285	63,644	43,658	1,404	158	45,220	108,864
Cumulative Jan. to Dec. 2007	871	386	1,257	279,656	58,458	81,925	33,309	173,692	453,348
Cumulative Jan. to Dec. 2006	940	368	1,308	285,324	40,142	161,360	7,619	209,121	494,445
Brantford, Ontario									
November ^r	31	22	53	7,657	3,591	1,090	2,814	7,495	15,152
December ^p	18	29	47	5,206	565	229	0	794	6,000
Cumulative Jan. to Dec. 2007	467	180	647	91,206	15,725	45,998	22,500	84,223	175,429
Cumulative Jan. to Dec. 2006	508	181	689	89,177	23,483	54,795	28,968	107,246	196,423
Calgary, Alberta									
November ^r	512	251	763	187,127	7,387	121,658	16,251	145,296	332,423
December ^p	460	661	1,121	248,791	17,167	213,783	8,405	239,355	488,146
Cumulative Jan. to Dec. 2007	7,275	7,917	15,192	3,153,888	115,888	2,911,653	300,474	3,328,015	6,481,903
Cumulative Jan. to Dec. 2006	10,053	8,732	18,785	2,987,924	148,514	1,785,539	558,220	2,492,273	5,480,197
Edmonton, Alberta									
November ^r	395	1,544	1,939	281,541	42,675	84,835	9,973	137,483	419,024
December ^p	270	159	429	125,133	16,566	62,460	1,314	80,340	205,473
Cumulative Jan. to Dec. 2007	6,923	8,120	15,043	2,743,726	190,688	872,515	115,516	1,178,719	3,922,445
Cumulative Jan. to Dec. 2006	9,318	5,231	14,549	2,435,446	171,507	745,472	188,651	1,105,630	3,541,076
Greater Sudbury, Ontario									
November ^r	59	2	61	12,297	7,414	3,160	2,057	12,631	24,928
December ^p	27	4	31	6,921	990	550	2,038	3,578	10,499
Cumulative Jan. to Dec. 2007	530	66	596	138,177	43,950	51,817	123,586	219,353	357,530
Cumulative Jan. to Dec. 2006	466	24	490	101,880	34,718	36,335	59,613	130,666	232,546
Guelph, Ontario									
November ^r	44	64	108	15,196	4,809	4,889	950	10,648	25,844
December ^p	37	3	40	8,527	3,221	1,738	0	4,959	13,486
Cumulative Jan. to Dec. 2007	557	512	1,069	169,720	38,185	61,326	32,460	131,971	301,691
Cumulative Jan. to Dec. 2006	484	437	921	140,575	19,480	92,349	59,918	171,747	312,322
Halifax, Nova Scotia									
November ^r	166	76	242	36,249	135	13,636	6,610	20,381	56,630
December ^p	79	17	96	20,063	42	6,345	1,233	7,620	27,683
Cumulative Jan. to Dec. 2007	1,291	1,515	2,806	429,906	13,781	163,849	38,626	216,256	646,162
Cumulative Jan. to Dec. 2006	1,184	2,132	3,316	462,578	38,111	190,396	10,310	238,817	701,395
Hamilton, Ontario									
November ^r	146	24	170	50,556	25,726	21,808	88,540	136,074	186,630
December ^p	159	65	224	48,115	570	9,049	2,361	11,980	60,095
Cumulative Jan. to Dec. 2007	1,886	1,391	3,277	674,052	73,319	167,531	267,348	508,198	1,182,250
Cumulative Jan. to Dec. 2006	1,768	1,533	3,301	611,268	50,334	157,009	157,180	364,523	975,791
Kelowna, British Columbia									
November ^r	95	171	266	64,524	1,528	18,585	30	20,143	84,667
December ^p	98	247	345	71,504	1,044	7,863	21,726	30,633	102,137
Cumulative Jan. to Dec. 2007	1,084	1,858	2,942	658,342	19,944	174,231	47,654	241,829	900,171
Cumulative Jan. to Dec. 2006	1,047	1,192	2,239	457,818	16,843	92,457	50,896	160,196	618,014

See footnotes at the end of the table.

Table 6 – continued

Dwelling units, value of residential and non-residential building permits, census metropolitan areas, seasonally adjusted, 2007

	Number of dwelling units			Residential	Estimated value of construction				Total
	Singles ¹	Multiples	Total dwellings		Non-residential			Total	
					Industrial	Commercial	Institutional and governmental		
	units			thousands of dollars					
Kingston, Ontario									
November ^r	44	11	55	9,459	560	4,707	350	5,617	15,076
December ^p	29	13	42	6,493	1,568	1,760	100	3,428	9,921
Cumulative Jan. to Dec. 2007	590	244	834	127,853	8,717	42,591	145,280	196,588	324,441
Cumulative Jan. to Dec. 2006	494	296	790	122,317	21,209	111,008	40,442	172,659	294,976
Kitchener, Ontario									
November ^r	149	84	233	42,358	15,215	5,463	923	21,601	63,959
December ^p	150	111	261	46,194	9,959	41,008	40,748	91,715	137,909
Cumulative Jan. to Dec. 2007	1,277	1,582	2,859	483,677	97,718	184,246	152,030	433,994	917,671
Cumulative Jan. to Dec. 2006	1,452	1,544	2,996	480,962	79,530	213,912	107,180	400,622	881,584
London, Ontario									
November ^r	171	50	221	45,676	4,269	11,651	37,762	53,682	99,358
December ^p	122	38	160	34,700	6,527	5,273	7,661	19,461	54,161
Cumulative Jan. to Dec. 2007	1,847	1,044	2,891	509,459	63,622	169,295	171,136	404,053	913,512
Cumulative Jan. to Dec. 2006	1,995	2,074	4,069	609,515	42,139	139,484	167,302	348,925	958,440
Moncton, New Brunswick									
November ^r	53	91	144	12,259	2,362	7,310	2,613	12,285	24,544
December ^p	38	40	78	8,230	479	2,608	636	3,723	11,953
Cumulative Jan. to Dec. 2007	676	790	1,466	161,365	13,769	76,753	17,467	107,989	269,354
Cumulative Jan. to Dec. 2006	635	803	1,438	151,073	14,068	54,222	44,995	113,285	264,358
Montréal, Quebec									
November ^r	830	1,608	2,438	393,437	83,561	87,164	23,854	194,579	588,016
December ^p	766	1,094	1,860	307,337	24,138	71,219	33,541	128,898	436,235
Cumulative Jan. to Dec. 2007	8,937	15,455	24,392	4,045,213	443,294	1,341,197	681,663	2,466,154	6,511,367
Cumulative Jan. to Dec. 2006	8,571	15,824	24,395	3,955,142	367,647	1,208,969	502,262	2,078,878	6,034,020
Oshawa, Ontario									
November ^r	202	118	320	65,478	578	33,155	44	33,777	99,255
December ^p	146	69	215	46,648	972	26,566	112	27,650	74,298
Cumulative Jan. to Dec. 2007	1,601	612	2,213	498,360	105,396	124,467	58,848	288,711	787,071
Cumulative Jan. to Dec. 2006	1,829	1,096	2,925	562,619	128,111	116,328	32,016	276,455	839,074
Ottawa-Gatineau, Ontario part, Ontario/Quebec									
November ^r	324	339	663	111,062	4,398	21,962	40,658	67,018	178,080
December ^p	230	198	428	67,445	236	23,421	61,135	84,792	152,237
Cumulative Jan. to Dec. 2007	3,086	3,833	6,919	1,118,003	50,928	492,422	324,639	867,989	1,985,992
Cumulative Jan. to Dec. 2006	2,455	2,766	5,221	860,420	32,706	462,777	284,959	780,442	1,640,862
Ottawa-Gatineau, Quebec part, Ontario/Quebec									
November ^r	83	86	169	25,200	2	6,119	2,933	9,054	34,254
December ^p	149	309	458	58,245	7	8,596	661	9,264	67,509
Cumulative Jan. to Dec. 2007	1,160	2,223	3,383	454,405	12,410	91,471	53,277	157,158	611,563
Cumulative Jan. to Dec. 2006	1,213	2,119	3,332	423,570	9,054	59,910	34,750	103,714	527,284
Peterborough, Ontario									
November ^r	31	17	48	8,252	360	878	15	1,253	9,505
December ^p	16	5	21	5,373	1,577	3,463	0	5,040	10,413
Cumulative Jan. to Dec. 2007	322	332	654	116,492	6,001	41,865	917	48,783	165,275
Cumulative Jan. to Dec. 2006	317	150	467	88,987	6,762	37,371	7,726	51,859	140,846
Québec, Quebec									
November ^r	157	234	391	53,802	3,875	48,909	14,463	67,247	121,049
December ^p	167	476	643	81,595	2,584	61,034	2,893	66,511	148,106
Cumulative Jan. to Dec. 2007	2,276	3,810	6,086	866,689	86,531	391,208	169,216	646,955	1,513,644
Cumulative Jan. to Dec. 2006	2,380	2,484	4,864	693,070	82,332	284,932	139,247	506,511	1,199,581

See footnotes at the end of the table.

Table 6 – continued

Dwelling units, value of residential and non-residential building permits, census metropolitan areas, seasonally adjusted, 2007

	Number of dwelling units			Estimated value of construction					
	Singles ¹	Multiples	Total dwellings	Residential	Non-residential			Total	
					Industrial	Commercial	Institutional and governmental		
	units			thousands of dollars					
Regina, Saskatchewan									
November ^r	49	0	49	11,725	880	3,812	2,754	7,446	19,171
December ^p	114	0	114	22,356	407	3,890	1,118	5,415	27,771
Cumulative Jan. to Dec. 2007	837	286	1,123	187,072	17,688	142,872	24,890	185,450	372,522
Cumulative Jan. to Dec. 2006	826	279	1,105	164,824	32,728	71,413	102,546	206,687	371,511
Saguenay, Quebec									
November ^r	20	9	29	5,728	1,833	4,161	1,188	7,182	12,910
December ^p	6	1	7	2,670	0	408	0	408	3,078
Cumulative Jan. to Dec. 2007	382	347	729	123,396	14,421	30,099	31,579	76,099	199,495
Cumulative Jan. to Dec. 2006	308	313	621	91,684	32,161	29,007	48,439	109,607	201,291
Saint John, New Brunswick									
November ^r	70	5	75	12,338	1,050	5,541	330	6,921	19,259
December ^p	68	51	119	12,956	0	2,058	36	2,094	15,050
Cumulative Jan. to Dec. 2007	629	229	858	128,506	45,129	43,684	2,251	91,064	219,570
Cumulative Jan. to Dec. 2006	476	256	732	97,144	26,734	32,781	22,138	81,653	178,797
Saskatoon, Saskatchewan									
November ^r	105	60	165	26,598	12,781	15,933	667	29,381	55,979
December ^p	112	108	220	31,879	2,387	7,172	94,585	104,144	136,023
Cumulative Jan. to Dec. 2007	1,501	1,097	2,598	370,894	57,507	168,088	143,019	368,614	739,508
Cumulative Jan. to Dec. 2006	982	520	1,502	189,027	28,682	123,569	79,525	231,776	420,803
Sherbrooke, Quebec									
November ^r	55	51	106	15,093	473	1,717	1,480	3,670	18,763
December ^p	35	14	49	8,808	590	1,374	151	2,115	10,923
Cumulative Jan. to Dec. 2007	726	581	1,307	212,830	17,399	33,719	22,510	73,628	286,458
Cumulative Jan. to Dec. 2006	613	1,057	1,670	214,153	11,593	69,716	60,599	141,908	356,061
St. Catharines-Niagara, Ontario									
November ^r	86	32	118	27,527	650	26,326	818	27,794	55,321
December ^p	69	18	87	21,471	1,566	13,854	231	15,651	37,122
Cumulative Jan. to Dec. 2007	825	357	1,182	264,688	38,446	169,041	21,244	228,731	493,419
Cumulative Jan. to Dec. 2006	909	541	1,450	305,386	50,616	94,686	64,684	209,986	515,372
St. John's, Newfoundland and Labrador									
November ^r	147	19	166	26,781	1,123	5,445	5,002	11,570	38,351
December ^p	120	10	130	25,256	35	13,581	15	13,631	38,887
Cumulative Jan. to Dec. 2007	1,229	423	1,652	278,964	5,871	73,050	34,104	113,025	391,989
Cumulative Jan. to Dec. 2006	1,060	360	1,420	221,425	72,624	70,992	15,762	159,378	380,803
Thunder Bay, Ontario									
November ^r	18	0	18	3,255	263	1,418	3,860	5,541	8,796
December ^p	1	0	1	621	100	1,821	932	2,853	3,474
Cumulative Jan. to Dec. 2007	185	25	210	39,835	1,963	20,394	29,427	51,784	91,619
Cumulative Jan. to Dec. 2006	168	78	246	43,443	6,733	26,685	23,312	56,730	100,173
Toronto, Ontario									
November ^r	1,155	1,842	2,997	753,067	69,087	199,467	57,929	326,483	1,079,550
December ^p	1,372	3,000	4,372	924,228	56,019	186,964	73,413	316,396	1,240,624
Cumulative Jan. to Dec. 2007	14,803	20,772	35,575	8,082,844	913,267	3,069,945	1,151,000	5,134,212	13,217,056
Cumulative Jan. to Dec. 2006	14,341	20,098	34,439	7,120,759	725,652	2,386,161	789,758	3,901,571	11,022,330
Trois-Rivières, Quebec									
November ^r	52	156	208	21,225	54	2,525	1,613	4,192	25,417
December ^p	44	62	106	15,497	1,908	1,555	0	3,463	18,960
Cumulative Jan. to Dec. 2007	426	831	1,257	177,376	32,067	57,955	32,846	122,868	300,244
Cumulative Jan. to Dec. 2006	389	644	1,033	136,402	38,337	79,195	20,618	138,150	274,552

See footnotes at the end of the table.

Table 6 – continued

Dwelling units, value of residential and non-residential building permits, census metropolitan areas, seasonally adjusted, 2007

	Number of dwelling units			Residential	Estimated value of construction				Total
	Singles ¹	Multiples	Total dwellings		Non-residential			Total	
					Industrial	Commercial	Institutional and governmental		
	units			thousands of dollars					
Vancouver, British Columbia									
November ^r	365	792	1,157	290,619	14,165	92,980	45,757	152,902	443,521
December ^p	358	1,152	1,510	419,437	17,139	133,413	7,509	158,061	577,498
Cumulative Jan. to Dec. 2007	4,166	18,620	22,786	4,770,629	124,205	1,732,366	394,418	2,250,989	7,021,618
Cumulative Jan. to Dec. 2006	5,297	15,801	21,098	4,242,551	172,413	1,666,544	535,874	2,374,831	6,617,382
Victoria, British Columbia									
November ^r	92	103	195	48,314	3,052	2,909	5,785	11,746	60,060
December ^p	66	25	91	24,132	1,176	6,405	1,029	8,610	32,742
Cumulative Jan. to Dec. 2007	934	2,003	2,937	665,948	14,509	85,918	145,673	246,100	912,048
Cumulative Jan. to Dec. 2006	1,020	1,605	2,625	550,787	11,892	107,231	106,440	225,563	776,350
Windsor, Ontario									
November ^r	25	26	51	9,726	1,227	5,060	12,763	19,050	28,776
December ^p	13	18	31	8,895	588	64,342	239	65,169	74,064
Cumulative Jan. to Dec. 2007	405	231	636	135,946	26,621	133,266	69,339	229,226	365,172
Cumulative Jan. to Dec. 2006	644	395	1,039	206,389	73,863	96,901	98,914	269,678	476,067
Winnipeg, Manitoba									
November ^r	189	104	293	52,514	1,327	8,901	4,090	14,318	66,832
December ^p	164	165	329	41,583	2,160	18,003	2,793	22,956	64,539
Cumulative Jan. to Dec. 2007	2,147	1,664	3,811	589,615	13,319	190,385	102,459	306,163	895,778
Cumulative Jan. to Dec. 2006	1,989	1,740	3,729	529,018	57,037	190,082	138,348	385,467	914,485

1. Included in this category are the following types of dwellings: single-detached, mobile home and cottage.

Table 7
Dwelling units, provinces and territories, unadjusted, 2007

	Singles, includes mobile homes	Cottages	Doubles	Rows	Apartments	Conversions	Total dwellings
number of dwelling units							
Canada							
November ^r	8,555	21	820	1,940	7,290	287	18,913
December ^p	5,518	10	706	1,636	7,189	393	15,452
Cumulative Jan. to Dec. 2007	116,075	562	11,406	23,248	82,467	4,115	237,873
Cumulative Jan. to Dec. 2006	118,336	669	11,002	21,665	76,513	5,048	233,233
Newfoundland and Labrador							
November ^r	145	0	0	1	36	5	187
December ^p	64	0	0	0	10	0	74
Cumulative Jan. to Dec. 2007	1,969	4	50	33	420	43	2,519
Cumulative Jan. to Dec. 2006	1,608	9	70	57	263	58	2,065
Prince Edward Island							
November ^r	50	3	4	4	11	1	73
December ^p	16	1	2	0	6	0	25
Cumulative Jan. to Dec. 2007	588	34	62	11	65	8	768
Cumulative Jan. to Dec. 2006	637	68	40	3	152	11	911
Nova Scotia							
November ^r	264	2	8	57	54	5	390
December ^p	119	4	7	22	11	2	165
Cumulative Jan. to Dec. 2007	3,017	75	165	465	1,340	68	5,130
Cumulative Jan. to Dec. 2006	2,944	77	138	106	2,493	96	5,854
New Brunswick							
November ^r	203	3	2	21	111	10	350
December ^p	72	2	16	3	69	5	167
Cumulative Jan. to Dec. 2007	2,650	44	182	103	1,107	93	4,179
Cumulative Jan. to Dec. 2006	2,362	67	327	146	1,023	164	4,089
Quebec							
November ^r	1,768	5	225	267	2,468	83	4,816
December ^p	1,052	0	254	165	1,871	90	3,432
Cumulative Jan. to Dec. 2007	22,645	209	2,349	2,487	22,234	1,773	51,697
Cumulative Jan. to Dec. 2006	21,777	236	2,340	1,413	21,101	2,242	49,109
Ontario							
November ^r	2,926	5	246	954	1,654	76	5,861
December ^p	2,015	1	211	973	2,516	237	5,953
Cumulative Jan. to Dec. 2007	39,071	106	4,319	11,529	17,199	1,074	73,298
Cumulative Jan. to Dec. 2006	38,284	122	3,990	11,356	17,203	1,463	72,418
Manitoba							
November ^r	306	0	4	32	101	0	443
December ^p	164	0	0	9	160	1	334
Cumulative Jan. to Dec. 2007	3,964	17	72	171	1,806	13	6,043
Cumulative Jan. to Dec. 2006	3,470	22	53	213	1,865	13	5,636
Saskatchewan							
November ^r	243	2	4	16	53	3	321
December ^p	202	0	4	12	199	1	418
Cumulative Jan. to Dec. 2007	3,470	6	171	479	982	169	5,277
Cumulative Jan. to Dec. 2006	2,382	4	96	270	474	115	3,341
Alberta							
November ^r	1,648	1	259	298	1,776	1	3,983
December ^p	1,119	2	130	144	931	1	2,327
Cumulative Jan. to Dec. 2007	25,521	50	3,060	3,431	15,273	179	47,514
Cumulative Jan. to Dec. 2006	30,439	35	3,103	3,282	13,466	189	50,514
British Columbia							
November ^r	998	0	64	290	1,011	103	2,466
December ^p	681	0	82	308	1,416	56	2,543
Cumulative Jan. to Dec. 2007	12,927	13	946	4,523	21,835	689	40,933
Cumulative Jan. to Dec. 2006	14,154	26	819	4,801	18,346	689	38,835

Table 7 – continued

Dwelling units, provinces and territories, unadjusted, 2007

	Singles, includes mobile homes	Cottages	Doubles	Rows	Apartments	Conversions	Total dwellings
	number of dwelling units						
Yukon Territory							
November r	4	0	4	0	0	0	8
December p	14	0	0	0	0	0	14
Cumulative Jan. to Dec. 2007	187	4	26	0	24	3	244
Cumulative Jan. to Dec. 2006	191	3	24	0	18	6	242
Northwest Territories							
November r	0	0	0	0	0	0	0
December p	0	0	0	0	0	0	0
Cumulative Jan. to Dec. 2007	51	0	0	4	0	0	55
Cumulative Jan. to Dec. 2006	63	0	0	0	16	0	79
Nunavut							
November r	0	0	0	0	15	0	15
December p	0	0	0	0	0	0	0
Cumulative Jan. to Dec. 2007	15	0	4	12	182	3	216
Cumulative Jan. to Dec. 2006	25	0	2	18	93	2	140

Table 8
Dwelling units, census metropolitan areas, unadjusted, December 2007

	Singles, includes mobile homes	Cottages	Doubles	Rows	Apartments	Conversions	Total dwellings
number of dwelling units							
Abbotsford, British Columbia	38	0	0	0	0	0	38
Barrie, Ontario	89	0	0	0	154	0	243
Brantford, Ontario	12	0	2	6	21	0	41
Calgary, Alberta	356	0	56	52	553	0	1,017
Edmonton, Alberta	209	0	36	21	102	0	368
Greater Sudbury, Ontario	18	0	0	0	4	0	22
Guelph, Ontario	25	0	0	0	0	3	28
Halifax, Nova Scotia	46	1	2	14	0	1	64
Hamilton, Ontario	108	0	4	61	0	0	173
Kelowna, British Columbia	63	0	0	33	214	0	310
Kingston, Ontario	20	0	4	5	4	0	33
Kitchener, Ontario	102	0	23	80	6	2	213
London, Ontario	83	0	10	28	0	0	121
Moncton, New Brunswick	14	0	14	0	21	5	54
Montréal, Quebec	518	0	73	65	970	42	1,668
Oshawa, Ontario	99	0	7	62	0	0	168
Ottawa-Gatineau, Ontario/Quebec	257	0	86	198	221	18	780
Ottawa-Gatineau, Ontario part, Ontario/Quebec	156	0	2	123	56	17	354
Ottawa-Gatineau, Quebec part, Ontario/Quebec	101	0	84	75	165	1	426
Peterborough, Ontario	11	0	0	5	0	0	16
Québec, Quebec	113	0	27	0	464	9	613
Regina, Saskatchewan	84	0	0	0	0	0	84
Saguenay, Quebec	4	0	0	1	0	0	5
Saint John, New Brunswick	25	0	0	3	48	0	76
Saskatoon, Saskatchewan	81	0	2	12	94	1	190
Sherbrooke, Quebec	24	0	1	0	13	1	39
St. Catharines-Niagara, Ontario	47	0	4	14	0	0	65
St. John's, Newfoundland and Labrador	56	0	0	0	10	0	66
Thunder Bay, Ontario	1	0	0	0	0	0	1
Toronto, Ontario	930	0	118	537	2,134	211	3,930
Trois-Rivières, Quebec	30	0	15	0	47	3	95
Vancouver, British Columbia	229	0	70	178	853	51	1,381
Victoria, British Columbia	42	0	0	13	10	2	67
Windsor, Ontario	9	0	7	11	0	0	27
Winnipeg, Manitoba	102	0	0	9	156	0	267

Table 9
Dwelling units, census metropolitan areas, unadjusted, cumulative, January to December 2007

	Singles, includes mobile homes	Cottages	Doubles	Rows	Apartments	Conversions	Total dwellings
	number of dwelling units						
Abbotsford, British Columbia	592	0	0	239	255	21	1,107
Barrie, Ontario	876	0	13	124	210	39	1,262
Brantford, Ontario	498	0	20	80	49	31	678
Calgary, Alberta	7,333	0	935	1,368	5,512	102	15,250
Edmonton, Alberta	7,006	0	1,513	1,078	5,521	10	15,128
Greater Sudbury, Ontario	559	1	13	0	53	0	626
Guelph, Ontario	566	0	42	230	167	73	1,078
Halifax, Nova Scotia	1,320	3	91	407	1,010	9	2,840
Hamilton, Ontario	1,892	0	105	1,013	266	7	3,283
Kelowna, British Columbia	1,093	0	10	233	1,595	20	2,951
Kingston, Ontario	615	5	20	83	137	5	865
Kitchener, Ontario	1,266	0	199	607	716	60	2,848
London, Ontario	1,857	0	51	429	554	10	2,901
Moncton, New Brunswick	699	2	123	0	633	36	1,493
Montréal, Quebec	8,847	2	796	1,194	13,116	634	24,589
Oshawa, Ontario	1,623	0	232	365	10	5	2,235
Ottawa-Gatineau, Ontario/Quebec	4,258	5	634	2,936	2,180	325	10,338
Ottawa-Gatineau, Ontario part, Ontario/Quebec	3,126	0	288	2,371	1,048	126	6,959
Ottawa-Gatineau, Quebec part, Ontario/Quebec	1,132	5	346	565	1,132	199	3,379
Peterborough, Ontario	343	0	0	120	212	0	675
Québec, Quebec	2,296	3	319	397	2,864	237	6,116
Regina, Saskatchewan	833	0	8	1	277	0	1,119
Saguenay, Quebec	404	4	24	9	289	54	784
Saint John, New Brunswick	584	15	18	37	173	1	828
Saskatoon, Saskatchewan	1,527	0	134	325	478	162	2,626
Sherbrooke, Quebec	746	0	56	26	487	18	1,333
St. Catharines-Niagara, Ontario	825	1	56	192	95	15	1,184
St. John's, Newfoundland and Labrador	1,302	0	44	33	312	34	1,725
Thunder Bay, Ontario	197	3	4	16	2	4	226
Toronto, Ontario	14,880	0	2,810	5,071	12,307	584	35,652
Trois-Rivières, Quebec	434	0	129	24	604	56	1,247
Vancouver, British Columbia	4,182	0	382	2,858	15,053	332	22,807
Victoria, British Columbia	937	1	54	306	1,489	160	2,947
Windsor, Ontario	419	0	92	106	32	2	651
Winnipeg, Manitoba	2,182	0	18	159	1,487	0	3,846

Table 10
Value of residential and non-residential building permits, provinces and territories, unadjusted, 2007

	Value of construction				Total
	Residential	Non-residential			
		Industrial	Commercial	Institutional and governmental	
thousands of dollars					
Canada					
November ^r	3,612,124	490,302	1,158,886	609,347	5,870,659
December ^p	2,893,412	309,543	1,171,112	517,976	4,892,043
Cumulative Jan. to Dec. 2007	45,565,440	4,919,122	16,903,064	6,876,632	74,264,258
Cumulative Jan. to Dec. 2006	41,052,757	4,532,569	14,430,946	6,249,550	66,265,822
Newfoundland and Labrador					
November ^r	30,773	1,340	8,961	10,033	51,107
December ^p	13,208	647	17,617	48,315	79,787
Cumulative Jan. to Dec. 2007	422,509	26,048	108,082	104,107	660,746
Cumulative Jan. to Dec. 2006	326,303	82,415	101,384	28,275	538,377
Prince Edward Island					
November ^r	11,020	326	1,678	970	13,994
December ^p	3,456	4,779	377	105	8,717
Cumulative Jan. to Dec. 2007	113,699	15,251	28,268	6,216	163,434
Cumulative Jan. to Dec. 2006	126,461	20,666	33,605	26,220	206,952
Nova Scotia					
November ^r	59,928	13,134	21,329	10,574	104,965
December ^p	29,126	888	17,146	4,197	51,357
Cumulative Jan. to Dec. 2007	842,400	71,304	287,010	85,814	1,286,528
Cumulative Jan. to Dec. 2006	862,887	84,353	293,185	51,013	1,291,438
New Brunswick					
November ^r	39,703	3,692	24,030	8,525	75,950
December ^p	14,609	1,887	5,680	3,014	25,190
Cumulative Jan. to Dec. 2007	558,957	112,021	227,745	65,594	964,317
Cumulative Jan. to Dec. 2006	493,185	56,170	209,488	174,415	933,258
Quebec					
November ^r	743,201	115,967	248,587	67,738	1,175,493
December ^p	460,796	45,708	158,467	50,159	715,130
Cumulative Jan. to Dec. 2007	8,410,755	880,995	2,440,687	1,243,656	12,976,093
Cumulative Jan. to Dec. 2006	7,779,494	841,541	2,204,105	1,053,192	11,878,332
Ontario					
November ^r	1,324,181	211,979	384,830	275,805	2,196,795
December ^p	1,177,067	158,332	358,132	199,837	1,893,368
Cumulative Jan. to Dec. 2007	15,624,099	2,416,694	5,535,185	3,132,669	26,708,647
Cumulative Jan. to Dec. 2006	14,293,993	1,843,893	4,814,978	2,339,312	23,292,176
Manitoba					
November ^r	77,820	4,163	13,142	4,477	99,602
December ^p	36,683	3,714	20,423	2,870	63,690
Cumulative Jan. to Dec. 2007	962,980	61,121	270,638	181,422	1,476,161
Cumulative Jan. to Dec. 2006	829,138	102,008	282,750	164,926	1,378,822
Saskatchewan					
November ^r	54,531	17,505	29,565	3,852	105,453
December ^p	63,789	9,970	13,756	96,363	183,878
Cumulative Jan. to Dec. 2007	859,460	101,257	452,406	206,943	1,620,066
Cumulative Jan. to Dec. 2006	493,428	89,681	287,937	267,547	1,138,593
Alberta					
November ^r	690,658	90,306	266,704	128,347	1,176,015
December ^p	480,716	55,134	370,464	28,966	935,280
Cumulative Jan. to Dec. 2007	9,044,916	891,963	4,859,324	857,050	15,653,253
Cumulative Jan. to Dec. 2006	8,139,671	1,050,255	3,662,180	1,023,592	13,875,698
British Columbia					
November ^r	574,307	30,975	157,780	98,905	861,967
December ^p	609,730	27,164	201,158	84,033	922,085
Cumulative Jan. to Dec. 2007	8,612,446	323,804	2,644,833	959,230	12,540,313
Cumulative Jan. to Dec. 2006	7,620,696	358,843	2,493,684	1,068,309	11,541,532

Table 10 – continued

Value of residential and non-residential building permits, provinces and territories, unadjusted, 2007

	Value of construction				Total
	Residential	Non-residential			
		Industrial	Commercial	Institutional and governmental	
	thousands of dollars				
Yukon Territory					
November ^r	1,332	65	210	121	1,728
December ^p	2,799	0	715	117	3,631
Cumulative Jan. to Dec. 2007	40,121	13,611	7,972	15,188	76,892
Cumulative Jan. to Dec. 2006	37,065	1,017	23,824	33,666	95,572
Northwest Territories					
November ^r	759	850	1,970	0	3,579
December ^p	1,433	1,320	7,177	0	9,930
Cumulative Jan. to Dec. 2007	19,373	5,032	36,918	12,897	74,220
Cumulative Jan. to Dec. 2006	17,406	1,429	11,014	7,823	37,672
Nunavut					
November ^r	3,911	0	100	0	4,011
December ^p	0	0	0	0	0
Cumulative Jan. to Dec. 2007	53,725	21	3,996	5,846	63,588
Cumulative Jan. to Dec. 2006	33,030	298	12,812	11,260	57,400

Table 11
Value of residential and non-residential building permits, census metropolitan areas, unadjusted, December 2007

	Value of construction				Total
	Residential	Non-residential			
		Industrial	Commercial	Institutional and governmental	
	thousands of dollars				
Abbotsford, British Columbia	7,844	359	8,160	8,369	24,732
Barrie, Ontario	53,335	43,658	1,189	158	98,340
Brantford, Ontario	4,049	565	194	0	4,808
Calgary, Alberta	212,210	17,167	213,783	8,405	451,565
Edmonton, Alberta	100,955	16,566	62,460	1,314	181,295
Greater Sudbury, Ontario	4,728	990	466	2,038	8,222
Guelph, Ontario	5,715	3,221	1,471	0	10,407
Halifax, Nova Scotia	12,261	42	6,345	1,233	19,881
Hamilton, Ontario	35,634	570	7,661	2,361	46,226
Kelowna, British Columbia	60,998	1,044	7,863	21,726	91,631
Kingston, Ontario	4,862	1,568	1,490	100	8,020
Kitchener, Ontario	35,199	9,959	34,717	40,748	120,623
London, Ontario	24,938	6,527	4,464	7,661	43,590
Moncton, New Brunswick	4,434	479	2,608	636	8,157
Montréal, Quebec	236,007	24,138	69,523	33,541	363,209
Oshawa, Ontario	33,941	972	22,491	112	57,516
Ottawa-Gatineau, Ontario/Quebec	99,376	243	28,219	61,796	189,634
Ottawa-Gatineau, Ontario part, Ontario/Quebec	51,923	236	19,828	61,135	133,122
Ottawa-Gatineau, Quebec part, Ontario/Quebec	47,453	7	8,391	661	56,512
Peterborough, Ontario	3,818	1,577	2,932	0	8,327
Québec, Quebec	69,377	2,584	59,581	2,893	134,435
Regina, Saskatchewan	16,033	407	3,890	1,118	21,448
Saguenay, Quebec	1,788	0	398	0	2,186
Saint John, New Brunswick	5,531	0	2,058	36	7,625
Saskatoon, Saskatchewan	26,913	2,387	7,172	94,585	131,057
Sherbrooke, Quebec	6,289	590	1,341	151	8,371
St. Catharines-Niagara, Ontario	15,162	1,566	11,729	231	28,688
St. John's, Newfoundland and Labrador	11,654	35	13,581	15	25,285
Thunder Bay, Ontario	415	100	1,542	932	2,989
Toronto, Ontario	777,369	56,019	158,283	73,413	1,065,084
Trois-Rivières, Quebec	12,467	1,908	1,518	0	15,893
Vancouver, British Columbia	374,450	17,139	133,413	7,509	532,511
Victoria, British Columbia	17,091	1,176	6,405	1,029	25,701
Windsor, Ontario	7,645	588	54,472	239	62,944
Winnipeg, Manitoba	28,021	2,160	18,003	2,793	50,977

Table 12

Value of residential and non-residential building permits, census metropolitan areas, unadjusted, cumulative, January to December 2007

	Value of construction				Total
	Residential	Non-residential			
		Industrial	Commercial	Institutional and governmental	
	thousands of dollars				
Abbotsford, British Columbia	187,159	19,984	79,952	19,410	306,505
Barrie, Ontario	281,348	58,458	84,412	33,309	457,527
Brantford, Ontario	96,802	15,725	45,955	22,500	180,982
Calgary, Alberta	3,157,206	115,888	2,911,653	300,474	6,485,221
Edmonton, Alberta	2,755,520	190,688	872,515	115,516	3,934,239
Greater Sudbury, Ontario	146,806	43,950	53,579	123,586	367,921
Guelph, Ontario	170,421	38,185	60,553	32,460	301,619
Halifax, Nova Scotia	438,991	13,781	163,849	38,626	655,247
Hamilton, Ontario	673,015	73,319	171,372	267,348	1,185,054
Kelowna, British Columbia	658,274	19,944	174,231	47,654	900,103
Kingston, Ontario	133,828	8,717	43,734	145,280	331,559
Kitchener, Ontario	481,683	97,718	182,460	152,030	913,891
London, Ontario	510,182	63,622	174,655	171,136	919,595
Moncton, New Brunswick	167,120	13,769	76,753	17,467	275,109
Montréal, Quebec	4,054,483	443,294	1,330,292	681,663	6,509,732
Oshawa, Ontario	503,773	105,396	123,334	58,848	791,351
Ottawa-Gatineau, Ontario/Quebec	1,581,890	63,338	560,628	377,916	2,583,772
Ottawa-Gatineau, Ontario part, Ontario/Quebec	1,127,309	50,928	468,894	324,639	1,971,770
Ottawa-Gatineau, Quebec part, Ontario/Quebec	454,581	12,410	91,734	53,277	612,002
Peterborough, Ontario	120,691	6,001	45,604	917	173,213
Québec, Quebec	862,652	86,531	400,729	169,216	1,519,128
Regina, Saskatchewan	185,568	17,688	142,872	24,890	371,018
Saguenay, Quebec	132,386	14,421	31,640	31,579	210,026
Saint John, New Brunswick	122,062	45,129	43,684	2,251	213,126
Saskatoon, Saskatchewan	372,284	57,507	168,088	143,019	740,898
Sherbrooke, Quebec	216,947	17,399	32,721	22,510	289,577
St. Catharines-Niagara, Ontario	266,775	38,446	175,485	21,244	501,950
St. John's, Newfoundland and Labrador	290,032	5,871	73,050	34,104	403,057
Thunder Bay, Ontario	42,978	1,963	20,741	29,427	95,109
Toronto, Ontario	8,111,624	913,267	3,120,921	1,151,000	13,296,812
Trois-Rivières, Quebec	174,616	32,067	59,475	32,846	299,004
Vancouver, British Columbia	4,761,050	124,205	1,732,366	394,418	7,012,039
Victoria, British Columbia	668,284	14,509	85,918	145,673	914,384
Windsor, Ontario	139,814	26,621	125,059	69,339	360,833
Winnipeg, Manitoba	594,984	13,319	190,385	102,459	901,147

Table 13
Value of the non-residential permits by type of building, provinces and territories, December 2007

	Canada	Newfoundland and Labrador	Prince Edward Island	Nova Scotia	New Brunswick	Quebec	Ontario
thousands of dollars							
Total non-residential	1,998,631	66,579	5,261	22,231	10,581	254,334	716,301
Industrial	309,543	647	4,779	888	1,887	45,708	158,332
Factories, plants	163,229	300	4,450	0	600	24,670	80,344
Transportation, utilities	90,328	0	0	0	0	13,235	53,913
Mining and agriculture	15,626	0	300	400	303	2,400	8,875
Minor industrial projects, new and improvements ¹	40,360	347	29	488	984	5,403	15,200
Commercial	1,171,112	17,617	377	17,146	5,680	158,467	358,132
Trade and services	390,351	1,000	0	1,376	2,843	67,713	41,262
Warehouses	149,131	12,760	0	1,447	0	12,925	63,028
Service stations	14,428	0	0	1,064	0	1,000	1,900
Office buildings	228,974	275	0	8,820	0	17,207	82,423
Recreation	152,724	2,019	0	0	503	12,800	97,236
Hotels, restaurants	110,425	0	0	1,129	0	20,800	27,338
Laboratories	9,976	0	0	0	0	4,600	0
Minor commercial projects, new and improvements ¹	115,103	1,563	377	3,310	2,334	21,422	44,945
Institutional and governmental	517,976	48,315	105	4,197	3,014	50,159	199,837
Schools, education	198,635	0	0	1,027	0	29,111	22,929
Hospitals, medical	136,345	0	0	1,790	2,233	12,610	101,734
Welfare, home	76,529	48,296	0	700	478	994	4,875
Churches, religion	23,144	0	0	350	0	845	7,915
Government buildings	67,083	0	0	0	0	1,891	56,652
Minor institutional and governmental projects, new and improvements ¹	16,240	19	105	330	303	4,708	5,732
thousands of dollars							
	Manitoba	Saskatchewan	Alberta	British Columbia	Yukon Territory	Northwest Territories	Nunavut
Total non-residential	27,007	120,089	454,564	312,355	832	8,497	0
Industrial	3,714	9,970	55,134	27,164	0	1,320	0
Factories, plants	353	3,589	29,134	19,789	0	0	0
Transportation, utilities	1,430	5,837	15,163	750	0	0	0
Mining and agriculture	500	0	2,328	520	0	0	0
Minor industrial projects, new and improvements ¹	1,431	544	8,509	6,105	0	1,320	0
Commercial	20,423	13,756	370,464	201,158	715	7,177	0
Trade and services	6,323	1,900	222,690	41,938	0	3,306	0
Warehouses	0	1,403	32,836	24,732	0	0	0
Service stations	420	0	5,865	3,679	500	0	0
Office buildings	3,532	7,455	55,020	53,346	0	896	0
Recreation	6,566	425	1,100	32,075	0	0	0
Hotels, restaurants	0	0	33,645	27,513	0	0	0
Laboratories	0	0	5,376	0	0	0	0
Minor commercial projects, new and improvements ¹	3,582	2,573	13,932	17,875	215	2,975	0
Institutional and governmental	2,870	96,363	28,966	84,033	117	0	0
Schools, education	600	94,523	967	49,478	0	0	0
Hospitals, medical	849	0	1,629	15,500	0	0	0
Welfare, home	861	0	17,485	2,840	0	0	0
Churches, religion	0	0	0	14,034	0	0	0
Government buildings	0	1,759	6,781	0	0	0	0
Minor institutional and governmental projects, new and improvements ¹	560	81	2,104	2,181	117	0	0

1. Refer to projects valued at less than \$250,000 for which the breakdown by type of building is not available.

Description – Monthly survey of building permits

The following information should be used to ensure a clear understanding of the basic concepts that define the data provided in this product, of the underlying methodology of the survey, and of key aspects of the data quality. This information will provide you with a better understanding of the strengths and limitations of the data, and of how they can be effectively used and analysed. The information may be of particular importance to you when making comparisons with data from other surveys or sources of information, and in drawing conclusions regarding change over time.

Data source and methodology

The purpose of the **Monthly Survey of Building Permits** issued by Canadian municipalities is to collect data on construction intentions. The results of this survey are used by C.M.H.C. (Canada Mortgage and Housing Corporation) as a reference base for conducting a monthly survey of housing starts and completions in accordance with its mandate. The statistics on building permits are also essential for the computation of capital expenditures. Furthermore, since the issuance of a building permit is one of the first steps in the construction process, these statistics are widely used as a leading indicator of building activity.

General methodology : The Building Permits Survey covers all Canadian municipalities that issue permits. The number of Canadian municipalities currently surveyed approximately 2,400, representing all the provinces and territories. They account for 95% of the Canadian population. Participation in the survey is mandatory; the survey does not use a predetermined sample of municipalities. The communities representing the other 5% of the population are very small, and their level of building activity have little impact on the total. In practice, all urban agglomerations are represented in the survey, as well as a fair percentage of rural municipalities. With certain exceptions, the minimum coverage corresponds to the municipalities already included in the Housing Starts and Completions C.M.H.C.'s Survey. Non-responding municipalities that issue permits are urged on a regular basis to respond to the Building Permit Survey. Therefore, the number of municipalities covered is increasing continually.

The survey is usually conducted by mail, although certain municipalities choose to respond by telephone. The municipal officer responsible for issuing permits is asked to fill out a form each month describing all major construction projects.

The municipalities forward a copy of their completed report to Statistics Canada Head Office and another copy to the local office of the Canada Mortgage and Housing Corporation (C.M.H.C.). To reduce their overhead, an increasing number of respondents are producing a computerized report. Only those municipalities that are late in reporting and that are included in the above-mentioned C.M.H.C. survey are subject to follow-up by telephone.

The reports received at Statistics Canada Head Office are verified, coded and processed.

Strict quality control procedures are applied to ensure that collection, coding and data processing are as accurate as possible. Checks are also performed on totals and the magnitude of data. Reports that fail to meet the quality standards are subject to verification and are corrected as required.

Imputations are required for each characteristic for which no report has been received. These are calculated automatically, subject to certain constraints, by applying to previously used values, the month-to-month and year-to-year changes in similar values of responding municipalities and the historical pattern of the missing municipalities. No estimation is done for lack of coverage, concealment or the underevaluation of permits issued. For this reason, the sampling error cannot be computed.

The monthly statistics are not corrected for cancelled or expired permits. According to the municipal officers, the proportion of cancelled and unused permits is below 5%.

Reference period : The reference period for data collection purposes is the calendar month. Reports from municipalities which are part of a census metropolitan area or a census agglomeration must be received within 20 days following the month of reference. The other municipalities have 30 days to produce their reports. Results are released between 35 and 40 days after the end of the reference month. Annual data for the preceding calendar year are released with the data for the January survey month.

Revisions : Two types of revisions can affect the results of the Building Permits Survey:

Revisions due to the correction of coding errors

These types of revisions are done on a monthly basis only to the data pertaining to the month preceding the reference period.

Revisions due to the addition of late reports

Late reports for the month preceding the reference period are incorporated into the survey results on a continuing basis. However, reports received after the two-month deadline following the reference month are introduced only at the end of the year. As a result, the data for the last twelve months are subject to revision.

Seasonal adjustment : Seasonal changes cause predictable fluctuations in the data. The data series disseminated includes both seasonally adjusted (i.e., excludes predictable annual influences) and the unadjusted data. Seasonally adjusted data for the total number of housing units as well as for the aggregate value of building permits are obtained indirectly, i.e., by adding their seasonally adjusted components. The total number of dwelling units is obtained by summing the seasonally adjusted data for single-family and multiple-use units; the total value of building permits is obtained by summing the following elements: single-family and multiple-family dwellings, industrial, commercial and institutional. Some series contain no apparent seasonality. In these cases, unadjusted values have been tabulated and aggregated to the adjusted values of the other series. At the end of the year, the chronological series adjusted for seasonality are revised to take into account the most recent seasonal fluctuations. Generally, these revisions apply only to the last three years in the series. The revised data are introduced into the CANSIM databank.

Concepts and variables measured

The statistical data presented in this product refers to the number of dwelling units authorized and the **value of building permits**. The value of the permits reported includes the following expenditures: materials, labour, profit and overhead. The cost of land is never included in the estimated value of the permit while acquisition costs (legal fees, surveying fees and accrued interest) may be included at times.

The classification used in this publication deals strictly with structures for which a building permit was issued. Permits are generally issued for the following: construction of new buildings, alterations, additions, renovations, etc. Minor repair jobs such as painting, tiling, roofing, etc., for which no permit is required, and engineering work (such as dams, roads, pipelines, etc.), which, by definition, is not a building, are not included in the building permit series. Estimates of such work may be obtained on Cansim, tables 029-0039 to 029-0040 for the «Capital expenditures by type of asset» and tables 029-0005 to 029-0024 and 032-0001 to 032-0002 for the «Private and Public Investment in Canada Intentions» (cat. no. 61-205-X).

The description given by the municipalities as to the type of building (box #6 of Section A on the form) and the type of work involved (box #7 of Section A on the form) forms the basis for classification. The classification of buildings into major groups and subgroups is based on the following: intended use in the case of new buildings; present or intended use of buildings to which improvements are to be made; present use of the existing structure where the proposed construction is intended to provide additional facilities; principal use of the structure where the proposed construction has more than one intended use; however, where the building contains dwellings, the value of the construction is divided between residential and non-residential use.

Building categories

This publication, uses the following classification for the **value of permits issued** for construction of new buildings or for improvements: residential, industrial, commercial, institutional and government.

Residential : Includes all buildings intended for private occupancy whether on a permanent basis or not. Dwellings are divided into the following types: single-family, mobile, cottage, semi-detached, row house and apartment building.

Industrial : Includes all buildings used for manufacturing and processing; transportation, communication and other utilities, and agriculture, forestry and mining.

Commercial : Includes all buildings used to house activities related to the tertiary sector, such as stores, warehouses, garages, office buildings, theatres, hotels, funeral parlours and beauty salons.

Institutional and Government : Includes expenditures made by the community, public and government for buildings and structures like schools, universities, hospitals, clinics, churches, homes for the aged.

The **number of dwelling units** indicates the number of self contained dwelling units created. This should not be confused with the number of structures. For example, an apartment building containing six dwellings will be shown as six dwelling units. When an existing structure is converted into additional housing units, the number of units added is included. This publication uses the following classification for dwelling units:

Single-family : Refers to dwellings commonly called "**single house**". It includes single dwellings that are completely isolated on all sides, including single dwellings linked to other dwellings below ground. Included are bungalows, split levels, two-storey single-family homes built by conventional methods or prefabricated.

Mobile homes : Refers to houses designed and constructed to be transported on their own chassis and for easy moving.

Cottage : Refers to dwellings that cannot be occupied year-round or on a permanent basis because the facilities required for comfort are inadequate.

Double or Semi-detached : Refers to dwellings in which each of the two dwellings are side by side and joined by a common wall or garage, but not attached to any other building and surrounded by open space.

Row Dwellings : Refers to a row of three or more dwellings attached to each other without dwellings above or below.

Apartment Building : Includes dwellings in a variety of buildings such as duplexes, semi-detached duplexes, triplexes, row duplexes, apartments as such and dwellings adjacent to non-residential structures.

Conversion : Refers to the number of dwellings added by conversion of existing structures.

Geographic classification

Geographic entities are classified according to Standard Geographical Classification (SGC) used by Statistics Canada. Each reporting entity is assigned a twelve-digit SGC code for identification according to the following geographic levels:

Province and territory (PR) : There are ten provinces and three territories.

Economic region (ER) : Refers to intraprovincial regions established by the Standards Division of Statistics Canada. There are seventy-six ERs.

Census division (CD) : Refers to a group of census subdivisions established by provincial law. There are two hundred and eighty-eight CDs (data on this geographic group is available on request).

Census metropolitan area (CMA) : Its delineation corresponds to the 2006 Census definition. The term CMA refers to the main labour market area of an urban area (the urbanized core) of at least 100,000 population, based on the Census population figures. The thirty-three CMAs are shown in this publication. Although the 2006 Census defines the Ottawa-Gatineau area as a single CMA, the area is shown in this publication as two separate entities since it is located in two different provinces.

Census agglomeration (CA) : Refers to the smaller labour market area of an urbanized core of at least 10,000 population, as defined by the 2006 Census. There are one hundred and eleven CAs in Canada. When a CA overlaps the boundaries of two provinces, it is shown partly in each province. The Lloydminster agglomeration is an exception to this rule. It is treated as if it was totally located in Alberta.

Other municipalities of at least 10,000 population : Refers to municipalities not included in census agglomerations but with populations of at least 10,000 inhabitants. The distinction is made between these municipalities and CAs in order to permit comparison between the Building Permits Survey and the Housing Starts and Completions Survey which refers to this geographical concept.

Rural area : Refers to all geographic entities not included in a CMA or CA and not identified as an urban centre by the Canada Mortgage and Housing Corporation.

Census subdivision (CSD) : Refers to the general term applying to municipalities, Indian reserves, Indian settlements and unorganized territories. However, since Indian reserves and settlements do not issue building permits, they are not included in this publication.

Non-standard geographic unit : The geographic units shown in this publication do not all satisfy the above definition of census subdivision. Some provincial or municipal administrations producing monthly reports do not correspond to the official geographic entities; they are nevertheless shown in this publication under the geographic entity used by these administrations. These so-called non-standard geographic units are few in number and are mostly concentrated in the Maritime provinces.

Territorial revisions

Territorial boundaries were established according to the 2006 Census definitions. Changes in boundaries, status or name of census subdivisions between censuses are introduced in this publication on a yearly basis. Changes affecting the other geographic units (CMAs, CAs, CDs and ERs) are introduced every five years, eighteen months following the census.

Data accuracy

Since the building permit data are extracted from municipal administrative documents, two types of response errors are possible: errors attributable to the permit applicant and errors in transcription by the responding municipality. However, experience has shown that transcription errors are not very common and the increasing number of municipalities producing computerized reports tends to reduce the frequency of this type of error. Errors attributable to an understatement of the cost of construction are more probable. Since permit fees are in most cases based on the value of the construction, this leads unquestionably to under-estimation of project values.

The other source of error are the processing error and the non-response error. In 2006, more than 99% of the municipalities covered by the survey sent their monthly Building Permits reports.

Comparability of data and related sources

Comparison of data must be done with reservation considering that the methods of issuing permits and the methods of estimating building values can differ from one municipality to another. Also, comparisons involving different periods must take into account the constant increase in the number of municipalities participating in the survey.

This publication contains only part of the data produced on building permits. However, you may order unpublished tables or address special requests, to the Current Investment Indicators Section (613-951-6321 or 1-800-579-8533). The series presented here is also available on CANSIM: Tables 026-0001 to 026-0008, 026-0010 and 026-0015.

Appendix I

Geographical abbreviations

A.R.	Agglomération de recensement
BOR	Borough
C	City
C.A.	Census Agglomeration
CC	Chartered Community
CDR	Census Division Remainder
CM	County (Municipality)
C.M.A.	Census Metropolitan Area
COM	Community
CR	County Remainder
CT	Canton
CU	Cantons-Unis
DM	District (Municipality)
HAM	Hamlet
ID	Improvement District
IGD	Indian Government District
LGD	Local Government District
LOT	Lot and Royalty
M	Municipalité
MD	Municipal District
NH	Northern Hamlet
NT	Northern Town
NV	Northern Village
N.W.T.	NorthWest Territories
P	Paroisse
PAR	Parish
PD	Planning District
PDR	Planning District Remainder
RCR	Rural County Remainder
RGM	Regional Municipality
R.M.R.	Région métropolitaine de recensement
RDR	Regional District Remainder
RM	Rural Municipality
RV	Resort Village
SA	Special Area
S-E	Indian Settlement/Établissement indien
SCM	Subdivision of County Municipality
SD	Sans désignation
SET	Settlement
SM	Specialize Municipality
SRD	Subdivision of Regional District
SUN	Subdivision of Unorganized District
SV	Summer Village

T	Town
T.N.O.	Territoires du Nord-Ouest
TP	Township
UCR	Urban County Remainder
UNO	Unorganized/Non organisé
V	Ville
VC	Village Cri
VL	Village
VN	Village Nordique