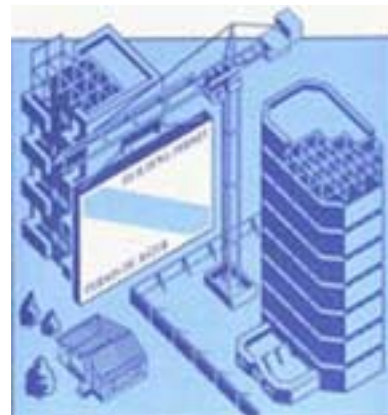




Catalogue no. 64-001-XIE

Building Permits

July 2006



Statistics
Canada

Statistique
Canada

Canada

How to obtain more information

Specific inquiries about this product and related statistics or services should be directed to: Current investment indicators section, Investment and capital stock division, Statistics Canada, Ottawa, Ontario, K1A 0T6 (telephone: (613) 951-4646).

For information on the wide range of data available from Statistics Canada, you can contact us by calling one of our toll free numbers. You can also contact us by e-mail or by visiting our website at www.statcan.ca.

National inquiries line **1 800 263-1136**

National telecommunications device for the hearing impaired **1 800 363-7629**

Depository Services Program inquiries **1 800 700-1033**

Fax line for Depository Services Program **1 800 889-9734**

E-mail inquiries infostats@statcan.ca

Website www.statcan.ca

Information to access the product

This product, Catalogue no. 64-001-XIE, is available for free in electronic format. To obtain a single issue, visit our website at www.statcan.ca and select Publications.

Standards of service to the public

Statistics Canada is committed to serving its clients in a prompt, reliable and courteous manner and in the official language of their choice. To this end, the Agency has developed *standards of service* which its employees observe in serving its clients. To obtain a copy of these service standards, please contact Statistics Canada toll free at 1 800 263-1136. The service standards are also published on www.statcan.ca under About us > Providing services to Canadians.



Statistics Canada
Investment and capital stock division
Current investment indicators section

Building Permits

July 2006

Published by authority of the Minister responsible for Statistics Canada

© Minister of Industry, 2006

All rights reserved. The content of this electronic publication may be reproduced, in whole or in part, and by any means, without further permission from Statistics Canada, subject to the following conditions: that it be done solely for the purposes of private study, research, criticism, review or newspaper summary, and/or for non-commercial purposes; and that Statistics Canada be fully acknowledged as follows: Source (or "Adapted from", if appropriate): Statistics Canada, year of publication, name of product, catalogue number, volume and issue numbers, reference period and page(s). Otherwise, no part of this publication may be reproduced, stored in a retrieval system or transmitted in any form, by any means—electronic, mechanical or photocopy—or for any purposes without prior written permission of Licensing Services, Client Services Division, Statistics Canada, Ottawa, Ontario, Canada K1A 0T6.

September 2006

Catalogue no. 64-001-XIE, Vol. 50, No. 7

ISSN 1480-7475

Frequency: Monthly

Ottawa

La version française de cette publication est disponible sur demande (n° 64-001-XIF au catalogue).

Note of appreciation

Canada owes the success of its statistical system to a long standing partnership between Statistics Canada, the citizens of Canada, its businesses, governments and other institutions. Accurate and timely statistical information could not be produced without their continued cooperation and goodwill.

User information

Symbols

The following standard symbols are used in Statistics Canada publications:

- . not available for any reference period
- .. not available for a specific reference period
- ... not applicable
- 0 true zero or a value rounded to zero
- 0^s value rounded to 0 (zero) where there is a meaningful distinction between true zero and the value that was rounded
- p preliminary
- r revised
- x suppressed to meet the confidentiality requirements of the *Statistics Act*
- E use with caution
- F too unreliable to be published

Acknowledgements

This publication was prepared under the direction of:

- D. McDowell, Director, Investment and Capital Stock Division
- M. Labonté, Chief, Current Investment Indicators Section
- É. Saint-Pierre, Unit Head, Residential Sector, Current Investment Indicators
- D. Legault, Programmer-Analyst, Current Investment Indicators Section

Important notice

Changes in boundaries, status or names of geographical entities that occurred before January 2006, are reflected in this publication. These geographical changes may be obtained by writing to:

Statistics Canada
Investment and Capital Stock Division
Current Investment Indicators Section
9 D-2, Jean Talon Building
Tunney's Pasture
Ottawa, Ontario
K1A 0T6
or by telephoning: (613) 951-4646

Table of contents

| | |
|--|-----------|
| Highlights | 5 |
| Analysis – July 2006 | 6 |
| Both single- and multi-family permits pulled up the residential sector | 6 |
| Second straight monthly decline in non-residential sector | 7 |
| Related products | 12 |
| Statistical tables | |
| 1 Total value of building permits, provinces and territories, seasonally adjusted | 15 |
| 2 Non-residential value of building permits, provinces and territories, seasonally adjusted | 15 |
| 3 Residential value of building permits, provinces and territories, seasonally adjusted | 16 |
| 4 Number of dwelling units authorized, province and territories, seasonally adjusted at annual rate | 16 |
| 5 Dwelling units, value of residential and non-residential building permits, provinces and territories, seasonally adjusted, 2006 | 17 |
| 6 Dwelling units, value of residential and non-residential building permits, census metropolitan areas, seasonally adjusted, 2006 | 19 |
| 7 Dwelling units, provinces and territories, unadjusted, 2006 | 22 |
| 8 Dwelling units, census metropolitan areas, unadjusted, July 2006 | 24 |
| 9 Dwelling units, census metropolitan areas, unadjusted, cumulative, January - July 2006 | 25 |
| 10 Value of residential and non-residential building permits, provinces and territories, unadjusted, 2006 | 26 |
| 11 Value of residential and non-residential building permits, census metropolitan areas, unadjusted, July 2006 | 28 |
| 12 Value of residential and non-residential building permits, census metropolitan areas, unadjusted, cumulative, January - July 2006 | 29 |
| 13 Value of the non-residential permits by type of building, provinces and territories, July 2006 | 30 |
| Data quality, concepts and methodology | |
| Description - Monthly survey of building permits | 31 |
| Data source and methodology | 32 |
| Concepts and variables measured | 34 |
| Building categories | 35 |
| Data accuracy | 37 |
| Comparability of data and related sources | 38 |

Table of contents – continued

Appendix

| | | |
|---|----------------------------|----|
| I | Geographical abbreviations | 39 |
|---|----------------------------|----|

Charts

| | | |
|----|--|----|
| 1. | Total value of building permits | 8 |
| 2. | Residential value of building permits - Total | 8 |
| 3. | Number of dwelling units - Single and multiple | 9 |
| 4. | Non residential value of building permits - Total | 9 |
| 5. | Commercial value of building permits | 10 |
| 6. | Industrial value of building permits | 10 |
| 7. | Institutional and governmental value of building permits | 11 |

Highlights

- The value of building permits issued by municipalities declined in July, as construction intentions for industrial buildings lost ground from June's very high level. Builders took out \$5.3 billion worth of permits, down 2.3% from June.

Analysis – July 2006

The value of building permits issued by municipalities declined in July as construction intentions for industrial buildings lost ground from June's very high level. Builders took out \$5.3 billion worth of permits, down 2.3% from June.

The value of non-residential permits amounted to \$1.9 billion, a 12.7% decline from June. The drop was solely the result of a decrease in industrial permits. In June, a burst of industrial projects in Alberta sent the value of non-residential permits over the \$2.0-billion mark for only the sixth time.

The value of construction intentions increased in both the commercial and institutional components. Despite July's drop, the value of non-residential permits has been on an upward trend since the end of 2005.

In the residential sector, the value of permits totalled \$3.4 billion, up 4.6% from June as the demand for new housing increased for both single- and multi-family dwellings.

A new record high in the value of housing permits in Alberta inflated the national figure. If Alberta had been excluded from the total, the value of housing permits would have remained virtually unchanged in July.

Note to readers

Unless otherwise stated, this release presents seasonally adjusted data, which ease comparisons by removing the effects of seasonal variations.

The Building Permits Survey covers 2,380 municipalities representing 95% of the population. It provides an early indication of building activity. The communities representing the other 5% of the population are very small, and their levels of building activity have little impact on the total.

The value of planned construction activities shown in this release excludes engineering projects (e.g., waterworks, sewers or culverts) and land.

For the purpose of this release, the census metropolitan area of Ottawa–Gatineau is divided into two areas: Ottawa–Gatineau (Quebec part) and Ottawa–Gatineau (Ontario part).

The value of residential permits, while slightly lower than the peaks reached in December 2005 and in the first quarter of 2006, remained significantly high from an historical standpoint.

Among the metropolitan areas, Calgary, Edmonton and Vancouver showed the largest advances (in dollars) for the first seven months of 2006 compared with the same period last year. The strong demand for new housing in these three centres was largely behind the gains.

Overall, 22 out of the 28 metropolitan areas showed advances on a year-to-date basis. All metropolitan areas West of Ontario posted double-digit growth.

Both single- and multi-family permits pulled up the residential sector

Builders took out \$2.2 billion worth of single-family permits, up 2.7% from June and the highest level since January when the value totalled \$2.4 billion.

The value of multi-family permits rebounded 8.5% to \$1.1 billion, cancelling out an 8.5% decline in June.

The housing sector continued to be sustained by the strong economy in Western Canada as well as by the high level of employment and solid consumer confidence.

The value of housing permits in Alberta totalled \$753 million in July, surpassing the previous record of \$744 million set last February. The gain came from increases in both single- and multi-family components. This was also the case in Quebec and Ontario, where sizeable advances were also recorded in July.

In contrast, the largest decline (in dollars) occurred in British Columbia (-9.6% to \$579 million), a third decline over the last four months. A marked decline also occurred in Nova Scotia (-33.1%) where the value of residential permits hit their lowest level since January 2005.

Since the beginning of the year, municipalities have authorized 134,840 new dwelling units, a slight 0.4% gain from the January-to-July period in 2005.

Among the approvals, 52.3% were single-family units, a slightly higher share than the proportion of 50.9% for the entire year of 2005.

Second straight monthly decline in non-residential sector

A major decrease in proposed industrial projects propelled the non-residential sector to its second consecutive monthly decline. However, July's level of \$1.9 billion was 2.4% higher than last year's monthly average.

Following June's tremendous increase, the value of permits for industrial buildings reached \$337 million in July, down 48.7% from June.

This decline came after a very high level of construction intentions in June for projects in the utility and manufacturing building categories in Alberta. All provinces showed losses, except Manitoba and Newfoundland and Labrador.

Despite the decline, the value of industrial permits has been on an upward trend since January 2006.

After a 24.6% decrease in June, the value of permits for the institutional sector advanced 8.2% to \$454 million. Higher construction intentions in the educational and medical categories contributed to this gain.

Since October 2005, the value of institutional permits has been on a declining trend. Saskatchewan showed the strongest increase in this component as the level (\$57 million) reached its highest level since August 1989. In contrast, Ontario recorded the largest drop (-33.5% to \$130 million). It was the lowest level since July 2000.

In the commercial component, permits increased 1.2% following a 12.1% drop in June. The increase mainly came from a gain in the intentions for buildings in the trade and services category, and from projects for warehouses.

The value of commercial permits has been on an upward trend since October 2005.

Several economic indicators are consistent with the upward trend in the non-residential sector. In the second quarter, corporate operating profits were just short of the historic high reported in the fourth quarter of 2005.

In addition, retail spending continued to grow at a fast rate and commercial and office vacancy rates declined in several centers.

Among the provinces, Alberta recorded the greatest decrease in the non-residential sector, from \$610 million to \$356 million. However, this level remained 3.1% higher than last year's monthly average.

Of the 28 census metropolitan areas, 16 recorded monthly declines in the value of non-residential permits. The largest decline (in dollars) occurred in Calgary, while the largest gain was in Winnipeg.

Chart 1
Total value of building permits

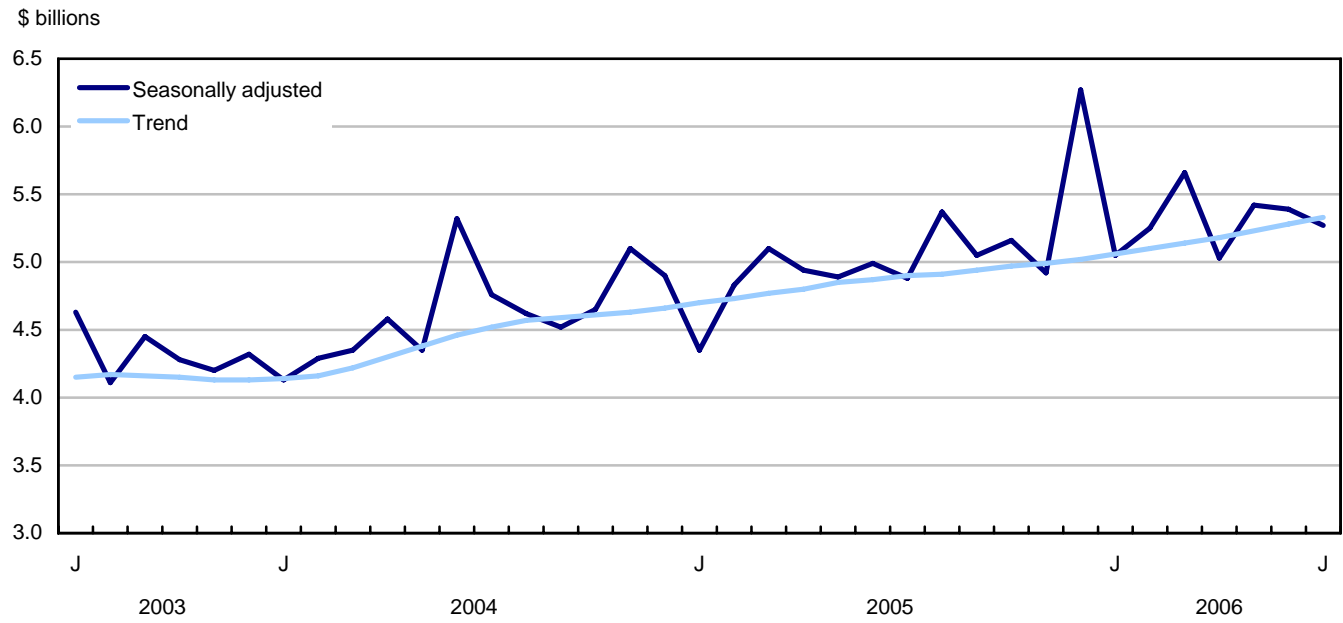


Chart 2
Residential value of building permits - Total

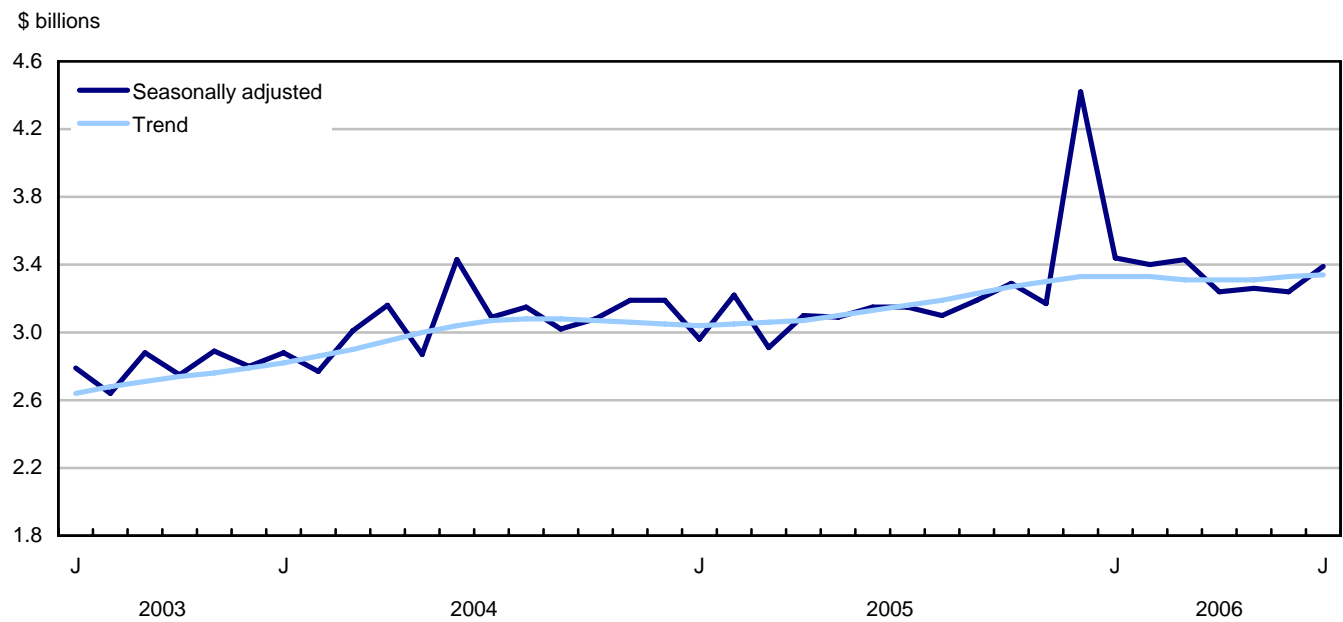


Chart 3
Number of dwelling units - Single and multiple

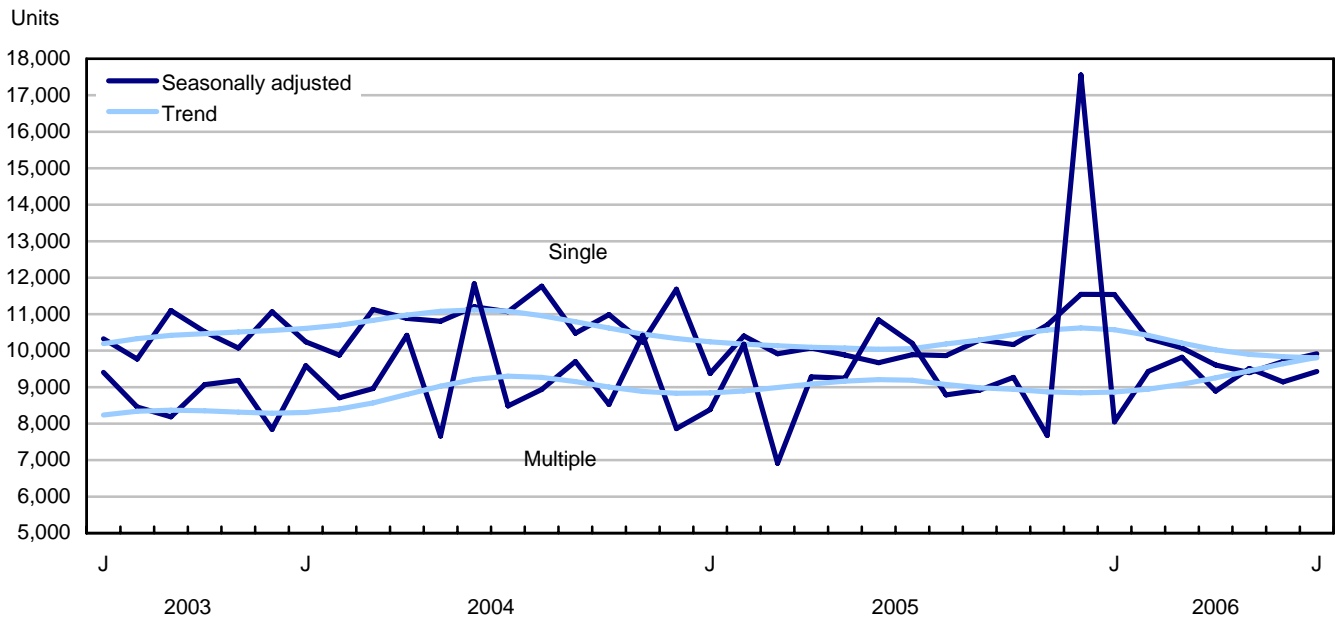


Chart 4
Non residential value of building permits - Total

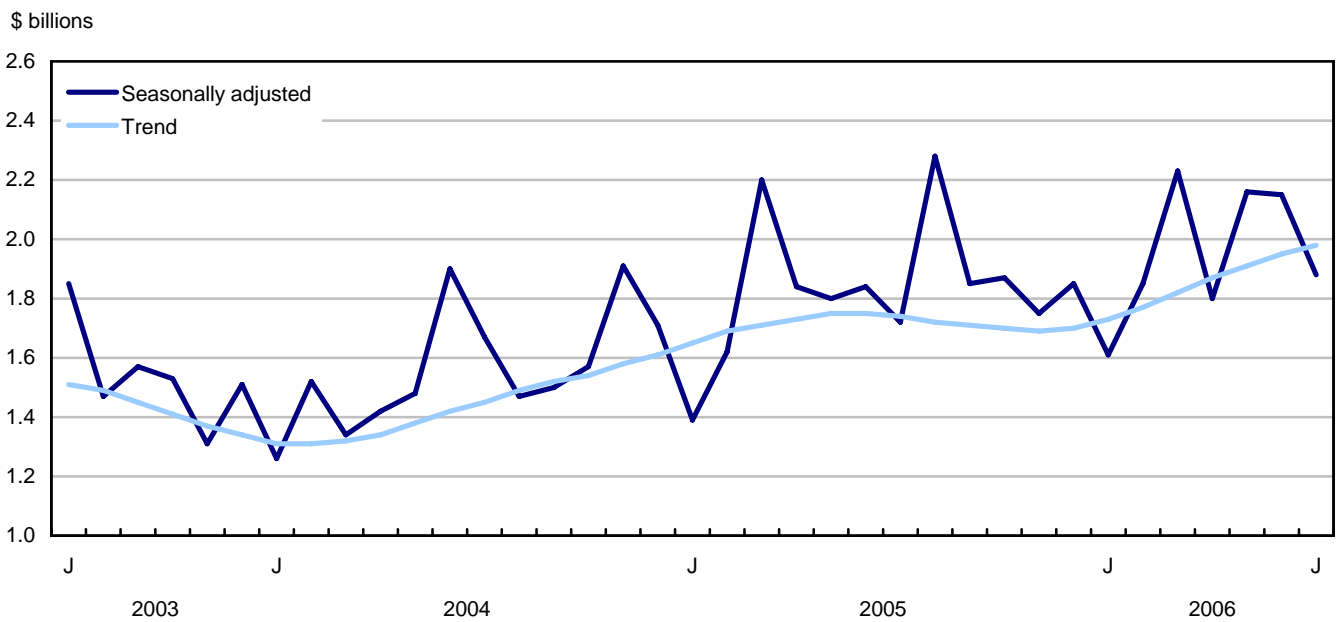


Chart 5
Commercial value of building permits

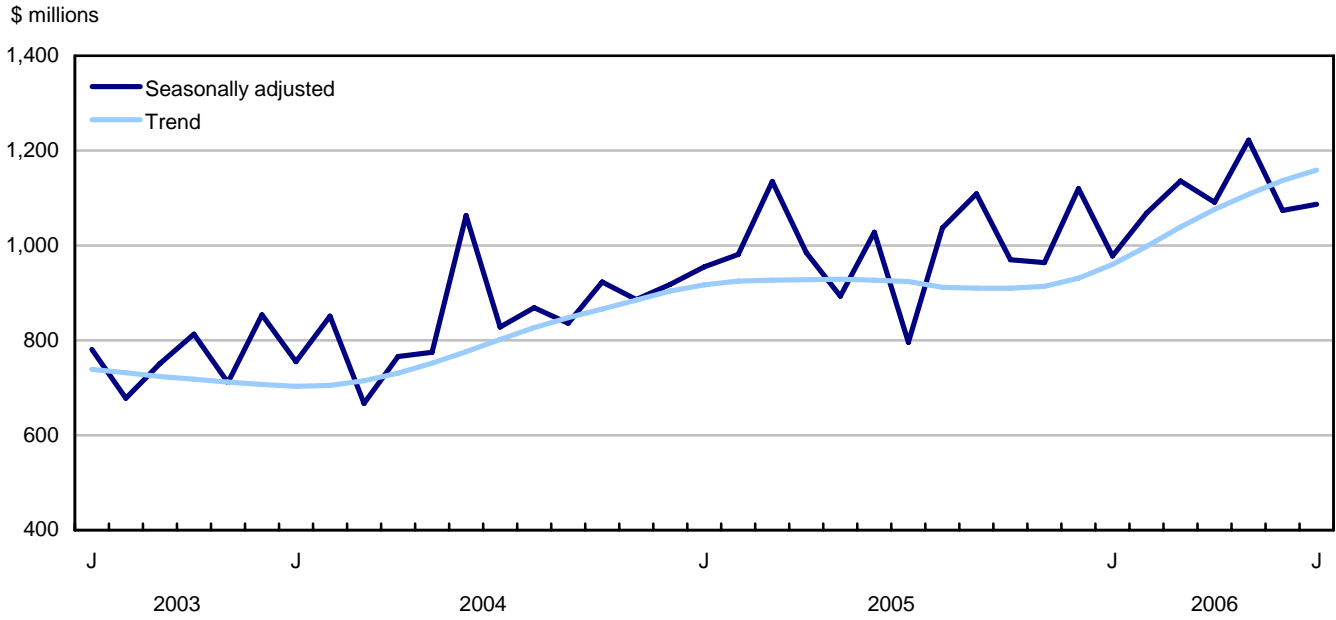


Chart 6
Industrial value of building permits

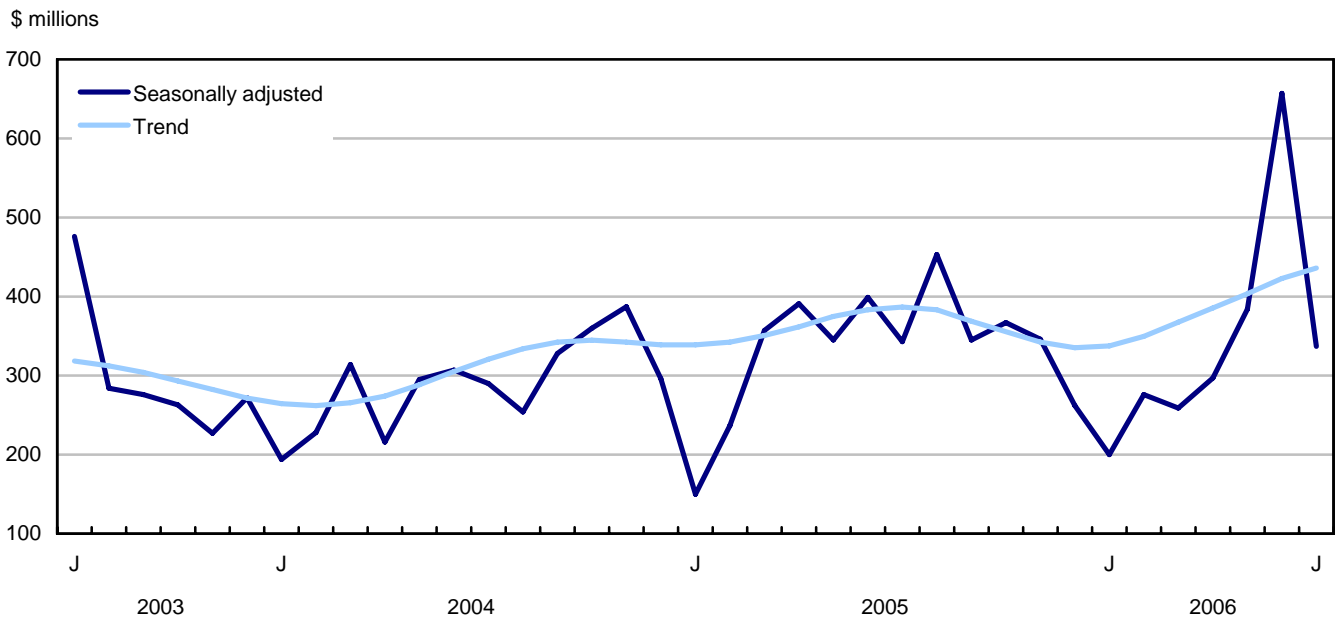
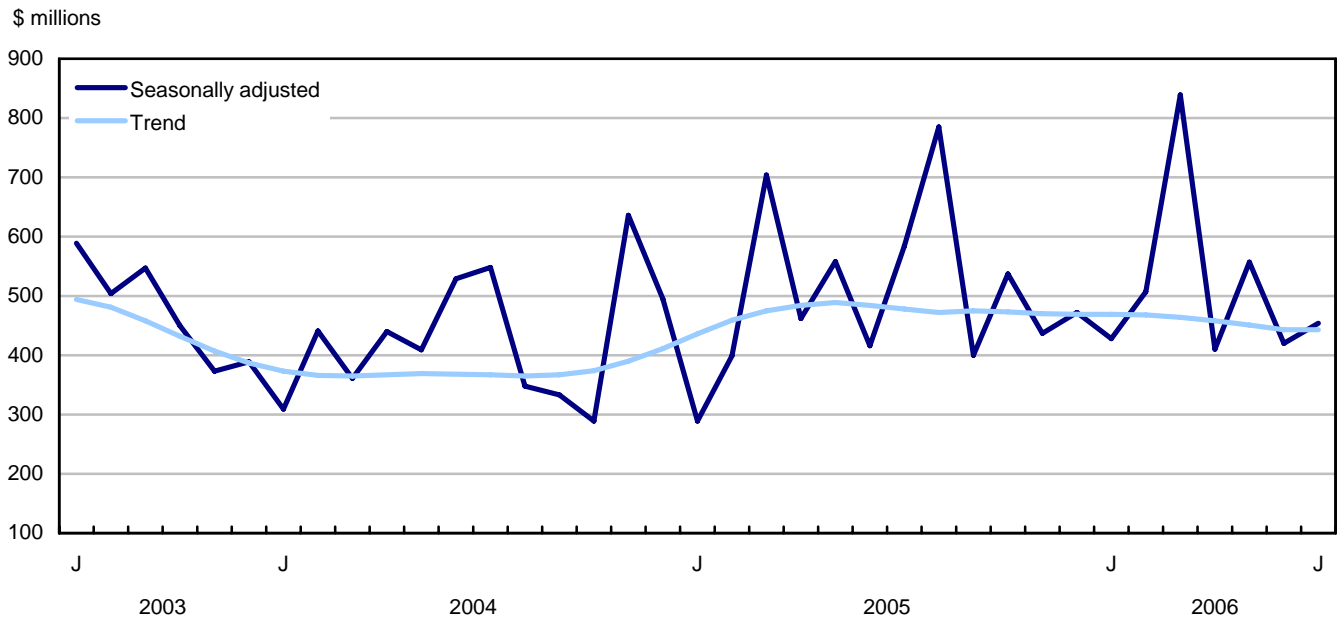


Chart 7
Institutional and governmental value of building permits



Related products

Selected publications from Statistics Canada

| | |
|----------|---|
| 61-205-X | Private and public investment in Canada, intentions |
| 62-202-X | Spending patterns in Canada |
| 64-203-X | Building permits, annual summary |

Selected technical and analytical products from Statistics Canada

| | |
|-----------------|--|
| 62F0014M1996002 | An analysis of some construction price index methodologies |
|-----------------|--|

Selected CANSIM tables from Statistics Canada

| | |
|----------|---|
| 026-0001 | Building permits, residential values and number of units, by type of dwelling |
| 026-0002 | Building permits, dwelling units by type of dwelling and area |
| 026-0003 | Building permits, values by activity sector |
| 026-0004 | Building permits, values by activity sector and area |
| 026-0005 | Building permits, non-residential values by type of structure |
| 026-0006 | Building permits, by type of structure and area, seasonally adjusted |
| 026-0007 | Building permits, dwelling units by type of structure and value and by activity sector |
| 026-0008 | Building permits, values by activity sector, seasonally adjusted and unadjusted |
| 026-0010 | Building permits, residential and non-residential values by type of structure for Canada and urban centres, 10,000 and over |
| 026-0015 | Building permits, leading indicators and indexes, seasonally adjusted |

Selected surveys from Statistics Canada

| | |
|------|-------------------------|
| 2802 | Building Permits Survey |
|------|-------------------------|

Selected tables of Canadian statistics from Statistics Canada

- *Value of building permits, by province and territory (monthly)*
- *Value of building permits, by census metropolitan area (monthly)*
- *Economic indicators, by province and territory (monthly and quarterly)*
- *Value of building permits, by province and territory*
- *Value of building permits by type*

Statistical tables

Table 1
Total value of building permits, provinces and territories, seasonally adjusted

| | 2006 | | July to June | June to May | May to April | April to March | March to February | February to January |
|---------------------------|----------------------|-------------------|--------------------|-------------------|--------------------|----------------------|-------------------------|---------------------------|
| | July ^p | June ^r | | | | | | |
| | thousands of dollars | | percentage change | | | | | |
| Canada | 5,265,730 | 5,390,880 | -2.3 | -0.5 | 7.7 | -11.1 | 7.9 | 3.9 |
| Newfoundland and Labrador | 42,886 | 37,245 | 15.1 | -13.0 | -22.7 | 112.7 | -48.4 | 25.7 |
| Prince Edward Island | 18,621 | 20,054 | -7.1 | 33.2 | -32.0 | -4.7 | 106.4 | -14.7 |
| Nova Scotia | 86,864 | 122,223 | -28.9 | -3.0 | 43.7 | -30.0 | 28.8 | 1.8 |
| New Brunswick | 75,280 | 84,903 | -11.3 | 15.8 | -4.2 | 23.4 | -2.8 | -33.8 |
| Quebec | 992,619 | 946,976 | 4.8 | -3.1 | 5.3 | 0.6 | -13.3 | 21.5 |
| Ontario | 1,755,478 | 1,818,631 | -3.5 | -9.4 | 5.8 | -0.8 | 4.5 | -11.0 |
| Manitoba | 150,574 | 103,488 | 45.5 | -11.1 | 6.4 | 10.0 | -20.4 | 9.2 |
| Saskatchewan | 135,268 | 89,058 | 51.9 | -13.6 | 15.2 | 11.8 | 7.5 | -11.7 |
| Alberta | 1,108,736 | 1,216,278 | -8.8 | 25.2 | 4.1 | -24.0 | 13.7 | 19.4 |
| British Columbia | 894,284 | 924,386 | -3.3 | -4.7 | 17.2 | -27.8 | 34.7 | 11.4 |
| Yukon Territory | 1,996 | 6,360 | -68.6 | -57.7 | 236.4 | -84.2 | 2,873.8 | -76.1 |
| Northwest Territories | 2,363 | 8,089 | -70.8 | 448.8 | -24.8 | 0.4 | 876.5 | -60.2 |
| Nunavut | 761 | 13,189 | -94.2 | 540.2 | 191.4 | -92.2 | ... | ... |

Table 2
Non-residential value of building permits, provinces and territories, seasonally adjusted

| | 2006 | | July to June | June to May | May to April | April to March | March to February | February to January |
|---------------------------|----------------------|-------------------|--------------------|-------------------|--------------------|----------------------|-------------------------|---------------------------|
| | July ^p | June ^r | | | | | | |
| | thousands of dollars | | percentage change | | | | | |
| Canada | 1,877,679 | 2,151,284 | -12.7 | -0.5 | 20.3 | -19.5 | 20.7 | 15.3 |
| Newfoundland and Labrador | 12,433 | 11,468 | 8.4 | -30.1 | -29.4 | 381.9 | -71.5 | 138.5 |
| Prince Edward Island | 9,177 | 7,005 | 31.0 | -1.3 | -42.0 | 66.6 | 1,081.7 | -86.1 |
| Nova Scotia | 40,853 | 53,475 | -23.6 | 24.1 | 77.6 | -21.3 | 25.3 | 29.1 |
| New Brunswick | 36,282 | 43,894 | -17.3 | 128.7 | -43.4 | 166.2 | -48.4 | -53.6 |
| Quebec | 330,441 | 327,866 | 0.8 | 4.2 | 3.5 | 2.2 | -21.3 | 10.5 |
| Ontario | 592,715 | 721,134 | -17.8 | -13.9 | 9.8 | -10.4 | 25.2 | 11.5 |
| Manitoba | 80,438 | 32,751 | 145.6 | -38.0 | 53.4 | -19.2 | -22.4 | 47.2 |
| Saskatchewan | 103,394 | 50,724 | 103.8 | -23.4 | 20.7 | 25.2 | 8.1 | -4.1 |
| Alberta | 355,692 | 610,032 | -41.7 | 47.7 | 32.1 | -36.5 | 46.5 | 34.1 |
| British Columbia | 315,072 | 283,876 | 11.0 | -25.4 | 62.6 | -44.2 | 42.8 | 23.1 |
| Yukon Territory | 447 | 2,816 | -84.1 | -73.9 | 2,952.4 | -98.5 | 33,276.8 | -63.1 |
| Northwest Territories | 658 | 3,994 | -83.5 | 560.2 | -24.8 | 987.8 | -63.0 | -51.3 |
| Nunavut | 77 | 2,249 | -96.6 | 56,125.0 | ... | -100.0 | ... | ... |

Table 3
Residential value of building permits, provinces and territories, seasonally adjusted

| | 2006 | | July to June | June to May | May to April | April to March | March to February | February to January |
|---------------------------|----------------------|-------------------|--------------------|-------------------|--------------------|----------------------|-------------------------|---------------------------|
| | July ^p | June ^r | | | | | | |
| | thousands of dollars | | percentage change | | | | | |
| Canada | 3,388,051 | 3,239,596 | 4.6 | -0.6 | 0.7 | -5.7 | 1.0 | -1.3 |
| Newfoundland and Labrador | 30,453 | 25,777 | 18.1 | -2.4 | -17.9 | 51.6 | -36.7 | 1.5 |
| Prince Edward Island | 9,444 | 13,049 | -27.6 | 63.8 | -19.6 | -37.6 | 49.4 | 22.0 |
| Nova Scotia | 46,011 | 68,748 | -33.1 | -17.0 | 30.8 | -32.8 | 30.0 | -5.0 |
| New Brunswick | 38,998 | 41,009 | -4.9 | -24.2 | 27.1 | -13.6 | 26.0 | -9.4 |
| Quebec | 662,178 | 619,110 | 7.0 | -6.6 | 6.2 | -0.2 | -8.9 | 28.5 |
| Ontario | 1,162,763 | 1,097,497 | 5.9 | -6.1 | 3.1 | 7.0 | -7.7 | -20.5 |
| Manitoba | 70,136 | 70,737 | -0.8 | 11.2 | -15.3 | 31.9 | -18.9 | -9.2 |
| Saskatchewan | 31,874 | 38,334 | -16.9 | 3.9 | 6.5 | -4.3 | 6.8 | -19.4 |
| Alberta | 753,044 | 606,246 | 24.2 | 8.6 | -10.1 | -15.6 | -1.1 | 13.8 |
| British Columbia | 579,212 | 640,510 | -9.6 | 8.7 | -0.7 | -18.4 | 30.5 | 6.1 |
| Yukon Territory | 1,549 | 3,544 | -56.3 | -17.2 | 3.8 | -21.5 | 495.4 | -76.7 |
| Northwest Territories | 1,705 | 4,095 | -58.4 | 371.2 | -24.8 | -38.5 | ... | -100.0 |
| Nunavut | 684 | 10,940 | -93.7 | 432.1 | 190.8 | -53.2 | ... | ... |

Table 4
Number of dwelling units authorized, province and territories, seasonally adjusted at annual rate

| | 2006 | | July to June | June to May | May to April | April to March | March to February | February to January |
|---------------------------|-------------------|-------------------|--------------------|-------------------|--------------------|----------------------|-------------------------|---------------------------|
| | July ^p | June ^r | | | | | | |
| | units | | percentage change | | | | | |
| Canada | 232,164 | 226,140 | 2.7 | -0.3 | 2.2 | -7.0 | 0.7 | 0.9 |
| Newfoundland and Labrador | 2,244 | 1,908 | 17.6 | -8.6 | -11.7 | 34.0 | -24.6 | -20.1 |
| Prince Edward Island | 720 | 1,200 | -40.0 | 78.6 | -30.0 | -15.8 | 13.1 | 10.5 |
| Nova Scotia | 3,396 | 5,868 | -42.1 | -19.8 | 39.3 | -32.5 | 41.4 | 6.0 |
| New Brunswick | 3,804 | 4,284 | -11.2 | -38.6 | 61.4 | -13.5 | 48.0 | 4.5 |
| Quebec | 47,988 | 48,168 | -0.4 | -0.9 | 6.9 | -1.5 | -13.5 | 18.6 |
| Ontario | 73,452 | 66,588 | 10.3 | -7.4 | 6.5 | -2.5 | -2.5 | -18.8 |
| Manitoba | 5,376 | 5,256 | 2.3 | 5.3 | -24.1 | 44.6 | -14.6 | -28.8 |
| Saskatchewan | 2,088 | 3,024 | -31.0 | 20.0 | -13.6 | -4.0 | 6.3 | -6.7 |
| Alberta | 57,672 | 47,916 | 20.4 | 16.0 | -18.6 | -5.5 | -8.9 | 19.9 |
| British Columbia | 35,232 | 41,088 | -14.3 | 2.6 | 13.1 | -22.3 | 36.5 | 10.6 |
| Yukon Territory | 120 | 264 | -54.5 | -12.0 | 4.2 | -41.5 | ... | -100.0 |
| Northwest Territories | 36 | 132 | -72.7 | 450.0 | -66.7 | -66.7 | ... | -100.0 |
| Nunavut | 36 | 444 | -91.9 | 236.4 | 175.0 | -33.3 | ... | ... |

Table 5
Dwelling units, value of residential and non-residential building permits, provinces and territories, seasonally adjusted, 2006

| | Number of dwelling units | | | Estimated value of construction | | | | | Total |
|----------------------------------|--------------------------|-----------|-----------------|---------------------------------|-----------------|------------|--------------------------------|------------|------------|
| | Singles ¹ | Multiples | Total dwellings | Residential | Non-residential | | | Total | |
| | | | | | Industrial | Commercial | Institutional and governmental | | |
| | units | | | thousands of dollars | | | | | |
| Canada | | | | | | | | | |
| June r | 9,702 | 9,143 | 18,845 | 3,239,596 | 657,400 | 1,074,264 | 419,620 | 2,151,284 | 5,390,880 |
| July p | 9,915 | 9,432 | 19,347 | 3,388,051 | 337,014 | 1,086,772 | 453,893 | 1,877,679 | 5,265,730 |
| Cumulative Jan. - July 2006 | 70,569 | 64,274 | 134,843 | 23,389,803 | 2,410,353 | 7,656,063 | 3,613,634 | 13,680,050 | 37,069,853 |
| Cumulative Jan. - July 2005 | 69,214 | 65,045 | 134,259 | 21,574,942 | 2,222,095 | 6,773,645 | 3,410,896 | 12,406,636 | 33,981,578 |
| Newfoundland and Labrador | | | | | | | | | |
| June r | 133 | 26 | 159 | 25,777 | 217 | 5,510 | 5,741 | 11,468 | 37,245 |
| July p | 130 | 57 | 187 | 30,453 | 287 | 5,911 | 6,235 | 12,433 | 42,886 |
| Cumulative Jan. - July 2006 | 1,018 | 285 | 1,303 | 202,627 | 9,703 | 61,899 | 20,781 | 92,383 | 295,010 |
| Cumulative Jan. - July 2005 | 1,048 | 234 | 1,282 | 184,744 | 35,374 | 61,288 | 12,232 | 108,894 | 293,638 |
| Prince Edward Island | | | | | | | | | |
| June r | 46 | 54 | 100 | 13,049 | 1,953 | 4,227 | 825 | 7,005 | 20,054 |
| July p | 44 | 16 | 60 | 9,444 | 1,395 | 4,701 | 3,081 | 9,177 | 18,621 |
| Cumulative Jan. - July 2006 | 413 | 138 | 551 | 75,609 | 6,307 | 28,492 | 13,169 | 47,968 | 123,577 |
| Cumulative Jan. - July 2005 | 413 | 113 | 526 | 73,984 | 25,130 | 23,649 | 5,749 | 54,528 | 128,512 |
| Nova Scotia | | | | | | | | | |
| June r | 246 | 243 | 489 | 68,748 | 17,719 | 34,258 | 1,498 | 53,475 | 122,223 |
| July p | 221 | 62 | 283 | 46,011 | 2,270 | 37,766 | 817 | 40,853 | 86,864 |
| Cumulative Jan. - July 2006 | 1,945 | 1,416 | 3,361 | 504,244 | 56,099 | 156,425 | 23,633 | 236,157 | 740,401 |
| Cumulative Jan. - July 2005 | 1,883 | 1,111 | 2,994 | 443,584 | 41,236 | 129,189 | 40,489 | 210,914 | 654,498 |
| New Brunswick | | | | | | | | | |
| June r | 187 | 170 | 357 | 41,009 | 7,525 | 23,220 | 13,149 | 43,894 | 84,903 |
| July p | 190 | 127 | 317 | 38,998 | 2,662 | 20,185 | 13,435 | 36,282 | 75,280 |
| Cumulative Jan. - July 2006 | 1,575 | 1,006 | 2,581 | 308,121 | 19,243 | 121,980 | 82,763 | 223,986 | 532,107 |
| Cumulative Jan. - July 2005 | 1,609 | 647 | 2,256 | 275,403 | 31,971 | 103,614 | 26,865 | 162,450 | 437,853 |
| Quebec | | | | | | | | | |
| June r | 1,738 | 2,276 | 4,014 | 619,110 | 88,187 | 170,923 | 68,756 | 327,866 | 946,976 |
| July p | 1,765 | 2,234 | 3,999 | 662,178 | 76,319 | 175,599 | 78,523 | 330,441 | 992,619 |
| Cumulative Jan. - July 2006 | 12,529 | 15,376 | 27,905 | 4,413,622 | 427,786 | 1,210,946 | 655,074 | 2,293,806 | 6,707,428 |
| Cumulative Jan. - July 2005 | 14,139 | 17,196 | 31,335 | 4,604,150 | 476,553 | 1,092,990 | 374,197 | 1,943,740 | 6,547,890 |
| Ontario | | | | | | | | | |
| June r | 3,144 | 2,405 | 5,549 | 1,097,497 | 155,126 | 371,010 | 194,998 | 721,134 | 1,818,631 |
| July p | 3,244 | 2,877 | 6,121 | 1,162,763 | 133,104 | 329,894 | 129,717 | 592,715 | 1,755,478 |
| Cumulative Jan. - July 2006 | 22,202 | 20,054 | 42,256 | 8,215,794 | 982,309 | 2,739,432 | 1,337,546 | 5,059,287 | 13,275,081 |
| Cumulative Jan. - July 2005 | 24,093 | 22,271 | 46,364 | 8,350,352 | 864,115 | 2,625,132 | 1,612,735 | 5,101,982 | 13,452,334 |
| Manitoba | | | | | | | | | |
| June r | 283 | 155 | 438 | 70,737 | 12,256 | 16,808 | 3,687 | 32,751 | 103,488 |
| July p | 275 | 173 | 448 | 70,136 | 31,267 | 29,388 | 19,783 | 80,438 | 150,574 |
| Cumulative Jan. - July 2006 | 2,069 | 1,228 | 3,297 | 483,721 | 58,596 | 184,070 | 92,698 | 335,364 | 819,085 |
| Cumulative Jan. - July 2005 | 2,000 | 369 | 2,369 | 360,943 | 30,531 | 173,849 | 73,426 | 277,806 | 638,749 |
| Saskatchewan | | | | | | | | | |
| June r | 177 | 75 | 252 | 38,334 | 16,707 | 25,442 | 8,575 | 50,724 | 89,058 |
| July p | 142 | 32 | 174 | 31,874 | 10,544 | 35,486 | 57,364 | 103,394 | 135,268 |
| Cumulative Jan. - July 2006 | 1,247 | 378 | 1,625 | 253,928 | 39,825 | 178,468 | 183,383 | 401,676 | 655,604 |
| Cumulative Jan. - July 2005 | 1,063 | 661 | 1,724 | 221,827 | 36,193 | 138,261 | 87,114 | 261,568 | 483,395 |
| Alberta | | | | | | | | | |
| June r | 2,361 | 1,632 | 3,993 | 606,246 | 305,817 | 254,386 | 49,829 | 610,032 | 1,216,278 |
| July p | 2,612 | 2,194 | 4,806 | 753,044 | 54,977 | 230,307 | 70,408 | 355,692 | 1,108,736 |
| Cumulative Jan. - July 2006 | 18,549 | 11,413 | 29,962 | 4,670,593 | 619,589 | 1,651,115 | 499,823 | 2,770,527 | 7,441,120 |
| Cumulative Jan. - July 2005 | 14,742 | 10,101 | 24,843 | 3,328,677 | 478,546 | 1,237,826 | 574,755 | 2,291,127 | 5,619,804 |

See footnotes at the end of the table.

Table 5 – continued

Dwelling units, value of residential and non-residential building permits, provinces and territories, seasonally adjusted, 2006

| | Number of dwelling units | | | Residential | Estimated value of construction | | | | Total |
|------------------------------|--------------------------|-----------|-----------------|----------------------|---------------------------------|------------|--------------------------------|-----------|-----------|
| | Singles ¹ | Multiples | Total dwellings | | Non-residential | | | Total | |
| | | | | | Industrial | Commercial | Institutional and governmental | | |
| | units | | | thousands of dollars | | | | | |
| British Columbia | | | | | | | | | |
| June r | 1,360 | 2,064 | 3,424 | 640,510 | 51,555 | 159,954 | 72,367 | 283,876 | 924,386 |
| July p | 1,278 | 1,658 | 2,936 | 579,212 | 23,907 | 217,040 | 74,125 | 315,072 | 894,284 |
| Cumulative Jan. - July 2006 | 8,837 | 12,906 | 21,743 | 4,212,442 | 189,372 | 1,294,140 | 681,021 | 2,164,533 | 6,376,975 |
| Cumulative Jan. - July 2005 | 8,008 | 12,249 | 20,257 | 3,682,189 | 193,527 | 1,154,252 | 600,606 | 1,948,385 | 5,630,574 |
| Yukon Territory | | | | | | | | | |
| June r | 19 | 3 | 22 | 3,544 | 86 | 2,535 | 195 | 2,816 | 6,360 |
| July p | 10 | 0 | 10 | 1,549 | 180 | 24 | 243 | 447 | 1,996 |
| Cumulative Jan. - July 2006 | 137 | 15 | 152 | 23,410 | 381 | 14,084 | 23,212 | 37,677 | 61,087 |
| Cumulative Jan. - July 2005 | 136 | 43 | 179 | 25,799 | 2,501 | 4,992 | 1,659 | 9,152 | 34,951 |
| Northwest Territories | | | | | | | | | |
| June r | 5 | 6 | 11 | 4,095 | 10 | 3,984 | 0 | 3,994 | 8,089 |
| July p | 3 | 0 | 3 | 1,705 | 100 | 396 | 162 | 658 | 2,363 |
| Cumulative Jan. - July 2006 | 40 | 6 | 46 | 9,795 | 895 | 5,321 | 531 | 6,747 | 16,542 |
| Cumulative Jan. - July 2005 | 76 | 50 | 126 | 21,488 | 6,415 | 28,069 | 1,065 | 35,549 | 57,037 |
| Nunavut | | | | | | | | | |
| June r | 3 | 34 | 37 | 10,940 | 242 | 2,007 | 0 | 2,249 | 13,189 |
| July p | 1 | 2 | 3 | 684 | 2 | 75 | 0 | 77 | 761 |
| Cumulative Jan. - July 2006 | 8 | 53 | 61 | 15,897 | 248 | 9,691 | 0 | 9,939 | 25,836 |
| Cumulative Jan. - July 2005 | 4 | 0 | 4 | 1,802 | 3 | 534 | 4 | 541 | 2,343 |

1. Included in this category are the following types of dwellings: single-detached, mobile home and cottage.

Table 6
Dwelling units, value of residential and non-residential building permits, census metropolitan areas, seasonally adjusted, 2006

| | Number of dwelling units | | | Estimated value of construction | | | | | Total |
|---|--------------------------|-----------|-----------------|---------------------------------|-----------------|------------|--------------------------------|-----------|-----------|
| | Singles ¹ | Multiples | Total dwellings | Residential | Non-residential | | | Total | |
| | | | | | Industrial | Commercial | Institutional and governmental | | |
| | units | | | thousands of dollars | | | | | |
| Abbotsford, British Columbia | | | | | | | | | |
| June r | 44 | 2 | 46 | 7,814 | 1,116 | 6,317 | 1,417 | 8,850 | 16,664 |
| July p | 43 | 0 | 43 | 7,381 | 240 | 49 | 695 | 984 | 8,365 |
| Cumulative Jan. - July 2006 | 262 | 441 | 703 | 80,935 | 25,582 | 25,917 | 102,739 | 154,238 | 235,173 |
| Cumulative Jan. - July 2005 | 357 | 320 | 677 | 95,751 | 23,194 | 19,355 | 55,283 | 97,832 | 193,583 |
| Calgary, Alberta | | | | | | | | | |
| June r | 721 | 570 | 1,291 | 195,369 | 44,317 | 129,534 | 24,680 | 198,531 | 393,900 |
| July p | 987 | 1,240 | 2,227 | 334,452 | 13,165 | 87,202 | 25,381 | 125,748 | 460,200 |
| Cumulative Jan. - July 2006 | 6,612 | 4,793 | 11,405 | 1,817,626 | 90,115 | 666,396 | 299,243 | 1,055,754 | 2,873,380 |
| Cumulative Jan. - July 2005 | 5,241 | 3,713 | 8,954 | 1,277,571 | 95,221 | 517,188 | 320,473 | 932,882 | 2,210,453 |
| Edmonton, Alberta | | | | | | | | | |
| June r | 777 | 470 | 1,247 | 193,620 | 29,460 | 48,036 | 5,646 | 83,142 | 276,762 |
| July p | 815 | 323 | 1,138 | 199,569 | 8,190 | 30,432 | 4,632 | 43,254 | 242,823 |
| Cumulative Jan. - July 2006 | 5,557 | 2,933 | 8,490 | 1,369,957 | 81,529 | 303,193 | 78,233 | 462,955 | 1,832,912 |
| Cumulative Jan. - July 2005 | 4,607 | 4,195 | 8,802 | 1,044,960 | 75,671 | 262,024 | 157,216 | 494,911 | 1,539,871 |
| Greater Sudbury / Grand Sudbury, Ontario | | | | | | | | | |
| June r | 59 | 0 | 59 | 11,149 | 3,140 | 1,203 | 415 | 4,758 | 15,907 |
| July p | 41 | 2 | 43 | 8,406 | 1,156 | 3,862 | 1,181 | 6,199 | 14,605 |
| Cumulative Jan. - July 2006 | 247 | 5 | 252 | 47,593 | 12,655 | 26,760 | 22,690 | 62,105 | 109,698 |
| Cumulative Jan. - July 2005 | 224 | 9 | 233 | 43,987 | 6,131 | 31,774 | 27,755 | 65,660 | 109,647 |
| Halifax, Nova Scotia | | | | | | | | | |
| June r | 105 | 159 | 264 | 34,503 | 13,133 | 23,105 | 153 | 36,391 | 70,894 |
| July p | 76 | 17 | 93 | 17,732 | 83 | 25,704 | 387 | 26,174 | 43,906 |
| Cumulative Jan. - July 2006 | 685 | 981 | 1,666 | 240,955 | 34,700 | 95,956 | 4,413 | 135,069 | 376,024 |
| Cumulative Jan. - July 2005 | 765 | 819 | 1,584 | 234,601 | 20,259 | 65,091 | 21,186 | 106,536 | 341,137 |
| Hamilton, Ontario | | | | | | | | | |
| June r | 99 | 135 | 234 | 41,565 | 1,309 | 10,014 | 7,363 | 18,686 | 60,251 |
| July p | 92 | 92 | 184 | 33,580 | 6,375 | 9,869 | 13,638 | 29,882 | 63,462 |
| Cumulative Jan. - July 2006 | 781 | 829 | 1,610 | 304,556 | 25,094 | 86,416 | 69,978 | 181,488 | 486,044 |
| Cumulative Jan. - July 2005 | 874 | 1,301 | 2,175 | 405,542 | 10,091 | 115,140 | 89,153 | 214,384 | 619,926 |
| Kingston, Ontario | | | | | | | | | |
| June r | 44 | 99 | 143 | 26,982 | 4,448 | 13,546 | 576 | 18,570 | 45,552 |
| July p | 42 | 0 | 42 | 7,398 | 773 | 7,312 | 993 | 9,078 | 16,476 |
| Cumulative Jan. - July 2006 | 286 | 165 | 451 | 73,483 | 9,998 | 37,818 | 39,732 | 87,548 | 161,031 |
| Cumulative Jan. - July 2005 | 350 | 157 | 507 | 74,834 | 3,815 | 31,958 | 8,738 | 44,511 | 119,345 |
| Kitchener, Ontario | | | | | | | | | |
| June r | 181 | 183 | 364 | 56,194 | 5,723 | 17,461 | 11,408 | 34,592 | 90,786 |
| July p | 117 | 46 | 163 | 32,442 | 5,252 | 7,882 | 1,853 | 14,987 | 47,429 |
| Cumulative Jan. - July 2006 | 1,071 | 1,103 | 2,174 | 346,877 | 35,888 | 132,258 | 76,307 | 244,453 | 591,330 |
| Cumulative Jan. - July 2005 | 1,239 | 1,156 | 2,395 | 363,166 | 34,526 | 110,957 | 68,365 | 213,848 | 577,014 |
| London, Ontario | | | | | | | | | |
| June r | 150 | 244 | 394 | 50,973 | 11,318 | 13,378 | 7,592 | 32,288 | 83,261 |
| July p | 172 | 64 | 236 | 39,601 | 2,209 | 10,471 | 2,280 | 14,960 | 54,561 |
| Cumulative Jan. - July 2006 | 1,246 | 1,187 | 2,433 | 365,176 | 20,922 | 96,292 | 63,029 | 180,243 | 545,419 |
| Cumulative Jan. - July 2005 | 1,143 | 1,041 | 2,184 | 307,939 | 36,615 | 100,288 | 46,448 | 183,351 | 491,290 |
| Montréal, Quebec | | | | | | | | | |
| June r | 606 | 1,460 | 2,066 | 307,027 | 35,956 | 103,641 | 42,498 | 182,095 | 489,122 |
| July p | 703 | 1,408 | 2,111 | 339,327 | 38,300 | 93,583 | 28,406 | 160,289 | 499,616 |
| Cumulative Jan. - July 2006 | 4,729 | 8,823 | 13,552 | 2,186,021 | 209,827 | 674,628 | 363,273 | 1,247,728 | 3,433,749 |
| Cumulative Jan. - July 2005 | 5,680 | 10,884 | 16,564 | 2,397,939 | 269,064 | 582,119 | 164,212 | 1,015,395 | 3,413,334 |

See footnotes at the end of the table.

Table 6 – continued

Dwelling units, value of residential and non-residential building permits, census metropolitan areas, seasonally adjusted, 2006

| | Number of dwelling units | | | Residential | Estimated value of construction | | | | Total |
|--|--------------------------|-----------|-----------------|----------------------|---------------------------------|------------|--------------------------------|---------|---------|
| | Singles ¹ | Multiples | Total dwellings | | Non-residential | | | Total | |
| | | | | | Industrial | Commercial | Institutional and governmental | | |
| | units | | | thousands of dollars | | | | | |
| Oshawa, Ontario | | | | | | | | | |
| June r | 137 | 123 | 260 | 43,033 | 48,020 | 7,911 | 3,522 | 59,453 | 102,486 |
| July p | 227 | 39 | 266 | 59,515 | 17,470 | 2,728 | 1,970 | 22,168 | 81,683 |
| Cumulative Jan. - July 2006 | 1,158 | 854 | 2,012 | 381,687 | 71,270 | 67,270 | 25,681 | 164,221 | 545,908 |
| Cumulative Jan. - July 2005 | 1,238 | 609 | 1,847 | 359,342 | 29,619 | 59,996 | 42,194 | 131,809 | 491,151 |
| Ottawa-Gatineau, Ontario part, Ontario/Quebec | | | | | | | | | |
| June r | 201 | 204 | 405 | 70,781 | 2,585 | 30,769 | 23,486 | 56,840 | 127,621 |
| July p | 184 | 154 | 338 | 59,130 | 466 | 41,535 | 9,976 | 51,977 | 111,107 |
| Cumulative Jan. - July 2006 | 1,325 | 1,403 | 2,728 | 463,102 | 8,694 | 266,207 | 255,453 | 530,354 | 993,456 |
| Cumulative Jan. - July 2005 | 1,433 | 1,361 | 2,794 | 500,748 | 24,987 | 173,427 | 295,294 | 493,708 | 994,456 |
| Ottawa-Gatineau, Quebec part, Ontario/Quebec | | | | | | | | | |
| June r | 105 | 100 | 205 | 29,298 | 686 | 3,993 | 3,541 | 8,220 | 37,518 |
| July p | 133 | 249 | 382 | 46,922 | 0 | 8,561 | 1,121 | 9,682 | 56,604 |
| Cumulative Jan. - July 2006 | 612 | 1,185 | 1,797 | 216,106 | 3,732 | 34,110 | 34,353 | 72,195 | 288,301 |
| Cumulative Jan. - July 2005 | 759 | 399 | 1,158 | 178,658 | 9,126 | 45,974 | 6,410 | 61,510 | 240,168 |
| Québec, Quebec | | | | | | | | | |
| June r | 165 | 263 | 428 | 65,081 | 3,568 | 12,765 | 10,130 | 26,463 | 91,544 |
| July p | 136 | 238 | 374 | 53,559 | 1,709 | 22,859 | 3,847 | 28,415 | 81,974 |
| Cumulative Jan. - July 2006 | 1,353 | 1,607 | 2,960 | 424,614 | 22,820 | 156,854 | 69,315 | 248,989 | 673,603 |
| Cumulative Jan. - July 2005 | 1,660 | 2,215 | 3,875 | 519,730 | 9,508 | 130,381 | 42,600 | 182,489 | 702,219 |
| Regina, Saskatchewan | | | | | | | | | |
| June r | 49 | 46 | 95 | 13,728 | 7,870 | 4,976 | 2,458 | 15,304 | 29,032 |
| July p | 43 | 0 | 43 | 8,058 | 0 | 6,148 | 28,308 | 34,456 | 42,514 |
| Cumulative Jan. - July 2006 | 424 | 121 | 545 | 86,882 | 10,388 | 43,720 | 56,454 | 110,562 | 197,444 |
| Cumulative Jan. - July 2005 | 327 | 248 | 575 | 66,420 | 4,540 | 44,948 | 34,689 | 84,177 | 150,597 |
| Saguenay, Quebec | | | | | | | | | |
| June r | 43 | 51 | 94 | 10,418 | 11,362 | 5,024 | 468 | 16,854 | 27,272 |
| July p | 28 | 15 | 43 | 7,890 | 473 | 155 | 6,317 | 6,945 | 14,835 |
| Cumulative Jan. - July 2006 | 184 | 206 | 390 | 56,370 | 14,796 | 11,566 | 25,028 | 51,390 | 107,760 |
| Cumulative Jan. - July 2005 | 173 | 141 | 314 | 51,635 | 17,671 | 17,243 | 6,987 | 41,901 | 93,536 |
| Saint John, New Brunswick | | | | | | | | | |
| June r | 37 | 12 | 49 | 7,248 | 557 | 1,570 | 1,016 | 3,143 | 10,391 |
| July p | 36 | 4 | 40 | 6,100 | 1,200 | 569 | 6,249 | 8,018 | 14,118 |
| Cumulative Jan. - July 2006 | 304 | 178 | 482 | 63,701 | 4,376 | 16,011 | 12,749 | 33,136 | 96,837 |
| Cumulative Jan. - July 2005 | 307 | 71 | 378 | 52,684 | 11,479 | 20,743 | 1,365 | 33,587 | 86,271 |
| Saskatoon, Saskatchewan | | | | | | | | | |
| June r | 85 | 12 | 97 | 14,255 | 1,951 | 16,292 | 4,715 | 22,958 | 37,213 |
| July p | 50 | 13 | 63 | 10,405 | 9,484 | 18,742 | 1,687 | 29,913 | 40,318 |
| Cumulative Jan. - July 2006 | 508 | 190 | 698 | 95,130 | 18,332 | 85,585 | 66,592 | 170,509 | 265,639 |
| Cumulative Jan. - July 2005 | 437 | 273 | 710 | 92,794 | 29,149 | 51,077 | 38,087 | 118,313 | 211,107 |
| Sherbrooke, Quebec | | | | | | | | | |
| June r | 43 | 28 | 71 | 11,013 | 627 | 2,187 | 717 | 3,531 | 14,544 |
| July p | 30 | 20 | 50 | 9,456 | 332 | 4,259 | 326 | 4,917 | 14,373 |
| Cumulative Jan. - July 2006 | 322 | 675 | 997 | 121,212 | 6,586 | 24,978 | 18,289 | 49,853 | 171,065 |
| Cumulative Jan. - July 2005 | 385 | 252 | 637 | 92,099 | 10,399 | 27,187 | 21,151 | 58,737 | 150,836 |
| St. Catharines-Niagara, Ontario | | | | | | | | | |
| June r | 77 | 14 | 91 | 19,695 | 4,932 | 13,181 | 5,113 | 23,226 | 42,921 |
| July p | 68 | 84 | 152 | 29,403 | 4,275 | 6,135 | 2,756 | 13,166 | 42,569 |
| Cumulative Jan. - July 2006 | 515 | 284 | 799 | 168,422 | 33,996 | 64,902 | 23,599 | 122,497 | 290,919 |
| Cumulative Jan. - July 2005 | 576 | 237 | 813 | 161,117 | 10,426 | 79,433 | 60,124 | 149,983 | 311,100 |

See footnotes at the end of the table.

Table 6 – continued

Dwelling units, value of residential and non-residential building permits, census metropolitan areas, seasonally adjusted, 2006

| | Number of dwelling units | | | Residential | Estimated value of construction | | | | Total |
|--|--------------------------|-----------|-----------------|----------------------|---------------------------------|------------|--------------------------------|-----------|-----------|
| | Singles ¹ | Multiples | Total dwellings | | Non-residential | | | Total | |
| | | | | | Industrial | Commercial | Institutional and governmental | | |
| | units | | | thousands of dollars | | | | | |
| St. John's, Newfoundland and Labrador | | | | | | | | | |
| June ^r | 90 | 22 | 112 | 17,441 | 175 | 3,971 | 4,088 | 8,234 | 25,675 |
| July ^p | 90 | 40 | 130 | 21,807 | 122 | 4,490 | 2,084 | 6,696 | 28,503 |
| Cumulative Jan. - July 2006 | 688 | 230 | 918 | 140,825 | 4,237 | 50,056 | 12,887 | 67,180 | 208,005 |
| Cumulative Jan. - July 2005 | 643 | 191 | 834 | 121,163 | 34,120 | 44,390 | 4,616 | 83,126 | 204,289 |
| Thunder Bay, Ontario | | | | | | | | | |
| June ^r | 21 | 4 | 25 | 4,443 | 0 | 4,312 | 219 | 4,531 | 8,974 |
| July ^p | 17 | 0 | 17 | 4,194 | 0 | 266 | 1,526 | 1,792 | 5,986 |
| Cumulative Jan. - July 2006 | 82 | 7 | 89 | 18,752 | 5,737 | 15,011 | 5,461 | 26,209 | 44,961 |
| Cumulative Jan. - July 2005 | 110 | 43 | 153 | 26,615 | 13,104 | 20,236 | 20,231 | 53,571 | 80,186 |
| Toronto, Ontario | | | | | | | | | |
| June ^r | 1,147 | 855 | 2,002 | 478,934 | 40,204 | 167,333 | 33,746 | 241,283 | 720,217 |
| July ^p | 1,225 | 2,039 | 3,264 | 603,058 | 64,206 | 163,848 | 53,098 | 281,152 | 884,210 |
| Cumulative Jan. - July 2006 | 7,793 | 11,847 | 19,640 | 3,976,551 | 377,316 | 1,359,732 | 344,485 | 2,081,533 | 6,058,084 |
| Cumulative Jan. - July 2005 | 7,897 | 13,989 | 21,886 | 3,941,930 | 421,988 | 1,244,134 | 574,522 | 2,240,644 | 6,182,574 |
| Trois-Rivières, Quebec | | | | | | | | | |
| June ^r | 27 | 45 | 72 | 9,999 | 202 | 3,690 | 1,381 | 5,273 | 15,272 |
| July ^p | 27 | 83 | 110 | 10,721 | 1,878 | 8,609 | 1,174 | 11,661 | 22,382 |
| Cumulative Jan. - July 2006 | 180 | 388 | 568 | 71,490 | 13,328 | 32,386 | 15,741 | 61,455 | 132,945 |
| Cumulative Jan. - July 2005 | 213 | 197 | 410 | 60,795 | 6,283 | 21,900 | 3,553 | 31,736 | 92,531 |
| Vancouver, British Columbia | | | | | | | | | |
| June ^r | 591 | 1,508 | 2,099 | 428,115 | 16,356 | 106,340 | 50,358 | 173,054 | 601,169 |
| July ^p | 560 | 695 | 1,255 | 276,326 | 15,173 | 125,158 | 21,188 | 161,519 | 437,845 |
| Cumulative Jan. - July 2006 | 3,442 | 8,167 | 11,609 | 2,258,842 | 75,761 | 778,270 | 325,599 | 1,179,630 | 3,438,472 |
| Cumulative Jan. - July 2005 | 2,764 | 7,543 | 10,307 | 1,997,793 | 69,863 | 736,437 | 288,020 | 1,094,320 | 3,092,113 |
| Victoria, British Columbia | | | | | | | | | |
| June ^r | 113 | 43 | 156 | 35,399 | 1,752 | 11,678 | 4,328 | 17,758 | 53,157 |
| July ^p | 77 | 284 | 361 | 64,974 | 675 | 16,788 | 25,987 | 43,450 | 108,424 |
| Cumulative Jan. - July 2006 | 673 | 900 | 1,573 | 322,649 | 9,881 | 80,171 | 49,933 | 139,985 | 462,634 |
| Cumulative Jan. - July 2005 | 672 | 832 | 1,504 | 274,730 | 6,818 | 76,530 | 41,419 | 124,767 | 399,497 |
| Windsor, Ontario | | | | | | | | | |
| June ^r | 70 | 18 | 88 | 16,807 | 751 | 3,582 | 12,328 | 16,661 | 33,468 |
| July ^p | 39 | 5 | 44 | 10,415 | 1,828 | 1,521 | 2,343 | 5,692 | 16,107 |
| Cumulative Jan. - July 2006 | 433 | 296 | 729 | 159,097 | 59,552 | 22,811 | 71,807 | 154,170 | 313,267 |
| Cumulative Jan. - July 2005 | 647 | 229 | 876 | 154,797 | 8,759 | 45,982 | 45,891 | 100,632 | 255,429 |
| Winnipeg, Manitoba | | | | | | | | | |
| June ^r | 174 | 103 | 277 | 43,274 | 2,542 | 12,912 | 3,656 | 19,110 | 62,384 |
| July ^p | 139 | 136 | 275 | 43,637 | 20,151 | 25,502 | 19,436 | 65,089 | 108,726 |
| Cumulative Jan. - July 2006 | 1,125 | 976 | 2,101 | 298,378 | 28,064 | 118,608 | 85,335 | 232,007 | 530,385 |
| Cumulative Jan. - July 2005 | 1,102 | 218 | 1,320 | 203,755 | 6,545 | 127,433 | 58,684 | 192,662 | 396,417 |

1. Included in this category are the following types of dwellings: single-detached, mobile home and cottage.

Table 7
Dwelling units, provinces and territories, unadjusted, 2006

| | Singles, includes mobile homes | Cottages | Doubles | Rows | Apartments | Conversions | Total dwellings |
|--------------------------------------|---|----------|---------|--------|------------|-------------|--------------------|
| number of dwelling units | | | | | | | |
| Canada | | | | | | | |
| June r | 12,420 | 101 | 988 | 2,111 | 6,377 | 394 | 22,391 |
| July p | 10,636 | 88 | 1,066 | 1,869 | 6,528 | 496 | 20,683 |
| Cumulative Jan. - July 2006 | 71,824 | 408 | 6,358 | 12,571 | 40,667 | 3,099 | 134,927 |
| Cumulative Jan. - July 2005 | 72,539 | 424 | 7,009 | 13,484 | 41,123 | 2,799 | 137,378 |
| Newfoundland and Labrador | | | | | | | |
| June r | 212 | 1 | 2 | 0 | 23 | 0 | 238 |
| July p | 171 | 1 | 6 | 35 | 26 | 1 | 240 |
| Cumulative Jan. - July 2006 | 949 | 5 | 64 | 39 | 128 | 49 | 1,234 |
| Cumulative Jan. - July 2005 | 1,036 | 11 | 26 | 5 | 173 | 9 | 1,260 |
| Prince Edward Island | | | | | | | |
| June r | 61 | 12 | 6 | 0 | 48 | 0 | 127 |
| July p | 55 | 6 | 3 | 0 | 12 | 1 | 77 |
| Cumulative Jan. - July 2006 | 345 | 33 | 29 | 0 | 103 | 6 | 516 |
| Cumulative Jan. - July 2005 | 396 | 29 | 38 | 3 | 70 | 2 | 538 |
| Nova Scotia | | | | | | | |
| June r | 347 | 10 | 24 | 9 | 206 | 7 | 603 |
| July p | 270 | 13 | 0 | 19 | 37 | 7 | 346 |
| Cumulative Jan. - July 2006 | 1,783 | 45 | 98 | 68 | 1,213 | 42 | 3,249 |
| Cumulative Jan. - July 2005 | 1,938 | 57 | 78 | 108 | 877 | 50 | 3,108 |
| New Brunswick | | | | | | | |
| June r | 296 | 6 | 32 | 10 | 119 | 9 | 472 |
| July p | 224 | 8 | 56 | 13 | 49 | 9 | 359 |
| Cumulative Jan. - July 2006 | 1,446 | 39 | 193 | 80 | 632 | 101 | 2,491 |
| Cumulative Jan. - July 2005 | 1,667 | 57 | 85 | 47 | 469 | 47 | 2,372 |
| Quebec | | | | | | | |
| June r | 2,081 | 39 | 202 | 88 | 1,915 | 233 | 4,558 |
| July p | 1,599 | 36 | 169 | 43 | 1,076 | 316 | 3,239 |
| Cumulative Jan. - July 2006 | 13,462 | 155 | 1,265 | 1,152 | 10,423 | 1,420 | 27,877 |
| Cumulative Jan. - July 2005 | 15,152 | 155 | 1,684 | 519 | 12,392 | 1,377 | 31,279 |
| Ontario | | | | | | | |
| June r | 4,277 | 16 | 286 | 810 | 1,385 | 78 | 6,852 |
| July p | 3,767 | 13 | 394 | 1,113 | 1,515 | 49 | 6,851 |
| Cumulative Jan. - July 2006 | 22,604 | 74 | 2,279 | 6,174 | 10,231 | 1,036 | 42,398 |
| Cumulative Jan. - July 2005 | 25,204 | 84 | 2,906 | 7,776 | 11,180 | 1,064 | 48,214 |
| Manitoba | | | | | | | |
| June r | 377 | 3 | 4 | 1 | 150 | 0 | 535 |
| July p | 350 | 6 | 0 | 4 | 165 | 5 | 530 |
| Cumulative Jan. - July 2006 | 2,103 | 14 | 36 | 76 | 1,109 | 8 | 3,346 |
| Cumulative Jan. - July 2005 | 2,143 | 6 | 11 | 80 | 269 | 9 | 2,518 |
| Saskatchewan | | | | | | | |
| June r | 241 | 0 | 6 | 44 | 23 | 2 | 316 |
| July p | 167 | 1 | 6 | 4 | 20 | 2 | 200 |
| Cumulative Jan. - July 2006 | 1,269 | 2 | 54 | 106 | 193 | 26 | 1,650 |
| Cumulative Jan. - July 2005 | 1,120 | 5 | 68 | 78 | 508 | 9 | 1,788 |
| Alberta | | | | | | | |
| June r | 2,833 | 6 | 325 | 382 | 1,099 | 6 | 4,651 |
| July p | 2,644 | 2 | 332 | 353 | 2,281 | 7 | 5,619 |
| Cumulative Jan. - July 2006 | 18,607 | 22 | 1,907 | 1,994 | 7,538 | 51 | 30,119 |
| Cumulative Jan. - July 2005 | 15,245 | 14 | 1,728 | 1,577 | 6,824 | 49 | 25,437 |
| British Columbia | | | | | | | |
| June r | 1,641 | 7 | 99 | 767 | 1,369 | 58 | 3,941 |
| July p | 1,370 | 1 | 100 | 285 | 1,345 | 99 | 3,200 |
| Cumulative Jan. - July 2006 | 9,112 | 17 | 429 | 2,869 | 9,043 | 356 | 21,826 |
| Cumulative Jan. - July 2005 | 8,440 | 4 | 382 | 3,273 | 8,291 | 181 | 20,571 |

Table 7 – continued

Dwelling units, provinces and territories, unadjusted, 2006

| | Singles, includes mobile homes | Cottages | Doubles | Rows | Apartments | Conversions | Total dwellings |
|------------------------------|---|----------|---------|------|------------|-------------|--------------------|
| | number of dwelling units | | | | | | |
| Yukon Territory | | | | | | | |
| June r | 40 | 1 | 2 | 0 | 0 | 1 | 44 |
| July p | 11 | 1 | 0 | 0 | 0 | 0 | 12 |
| Cumulative Jan. - July 2006 | 101 | 2 | 4 | 0 | 8 | 4 | 119 |
| Cumulative Jan. - July 2005 | 128 | 2 | 3 | 0 | 38 | 2 | 173 |
| Northwest Territories | | | | | | | |
| June r | 11 | 0 | 0 | 0 | 6 | 0 | 17 |
| July p | 7 | 0 | 0 | 0 | 0 | 0 | 7 |
| Cumulative Jan. - July 2006 | 35 | 0 | 0 | 0 | 6 | 0 | 41 |
| Cumulative Jan. - July 2005 | 66 | 0 | 0 | 18 | 32 | 0 | 116 |
| Nunavut | | | | | | | |
| June r | 3 | 0 | 0 | 0 | 34 | 0 | 37 |
| July p | 1 | 0 | 0 | 0 | 2 | 0 | 3 |
| Cumulative Jan. - July 2006 | 8 | 0 | 0 | 13 | 40 | 0 | 61 |
| Cumulative Jan. - July 2005 | 4 | 0 | 0 | 0 | 0 | 0 | 4 |

Table 8
Dwelling units, census metropolitan areas, unadjusted, July 2006

| | Singles, includes mobile homes | Cottages | Doubles | Rows | Apartments | Conversions | Total dwellings |
|--|---|----------|---------|------|------------|-------------|--------------------|
| | number of dwelling units | | | | | | |
| Abbotsford, British Columbia | 44 | 0 | 0 | 0 | 0 | 0 | 44 |
| Calgary, Alberta | 958 | 0 | 123 | 103 | 1,395 | 2 | 2,581 |
| Edmonton, Alberta | 791 | 0 | 140 | 138 | 143 | 2 | 1,214 |
| Greater Sudbury / Grand Sudbury, Ontario | 47 | 0 | 0 | 0 | 2 | 0 | 49 |
| Halifax, Nova Scotia | 96 | 0 | 0 | 15 | 2 | 1 | 114 |
| Hamilton, Ontario | 106 | 0 | 0 | 100 | 0 | 1 | 207 |
| Kingston, Ontario | 48 | 0 | 0 | 0 | 0 | 0 | 48 |
| Kitchener, Ontario | 135 | 0 | 11 | 38 | 0 | 2 | 186 |
| London, Ontario | 198 | 0 | 4 | 64 | 2 | 0 | 268 |
| Montréal, Quebec | 610 | 0 | 31 | 20 | 657 | 258 | 1,576 |
| Oshawa, Ontario | 262 | 0 | 4 | 9 | 30 | 0 | 305 |
| Ottawa-Gatineau, Ontario/Quebec | 327 | 0 | 79 | 91 | 163 | 8 | 668 |
| Ottawa-Gatineau, Ontario part, Ontario/Quebec | 212 | 0 | 24 | 91 | 50 | 5 | 382 |
| Ottawa-Gatineau, Quebec part, Ontario/Quebec | 115 | 0 | 55 | 0 | 113 | 3 | 286 |
| Québec, Quebec | 118 | 0 | 40 | 15 | 96 | 12 | 281 |
| Regina, Saskatchewan | 48 | 0 | 0 | 0 | 0 | 0 | 48 |
| Saguenay, Quebec | 22 | 2 | 0 | 3 | 0 | 7 | 34 |
| Saint John, New Brunswick | 41 | 3 | 0 | 0 | 2 | 2 | 48 |
| Saskatoon, Saskatchewan | 55 | 0 | 6 | 4 | 1 | 2 | 68 |
| Sherbrooke, Quebec | 26 | 0 | 6 | 0 | 6 | 2 | 40 |
| St. Catharines-Niagara, Ontario | 78 | 0 | 13 | 14 | 66 | 0 | 171 |
| St. John's, Newfoundland and Labrador | 106 | 1 | 0 | 35 | 16 | 0 | 158 |
| Thunder Bay, Ontario | 20 | 0 | 0 | 0 | 0 | 0 | 20 |
| Toronto, Ontario | 1,411 | 0 | 296 | 690 | 1,236 | 23 | 3,656 |
| Trois-Rivières, Quebec | 23 | 0 | 0 | 0 | 52 | 5 | 80 |
| Vancouver, British Columbia | 576 | 0 | 59 | 179 | 527 | 51 | 1,392 |
| Victoria, British Columbia | 77 | 1 | 2 | 43 | 249 | 40 | 412 |
| Windsor, Ontario | 45 | 0 | 1 | 4 | 0 | 0 | 50 |
| Winnipeg, Manitoba | 167 | 0 | 0 | 0 | 136 | 0 | 303 |

Table 9
Dwelling units, census metropolitan areas, unadjusted, cumulative, January - July 2006

| | Singles, includes mobile homes | Cottages | Doubles | Rows | Apartments | Conversions | Total dwellings |
|--|---|----------|---------|-------|------------|-------------|--------------------|
| | number of dwelling units | | | | | | |
| Abbotsford, British Columbia | 271 | 0 | 0 | 38 | 365 | 1 | 675 |
| Calgary, Alberta | 6,589 | 0 | 599 | 837 | 3,771 | 24 | 11,820 |
| Edmonton, Alberta | 5,661 | 0 | 949 | 622 | 1,424 | 17 | 8,673 |
| Greater Sudbury / Grand Sudbury, Ontario | 272 | 1 | 0 | 0 | 6 | 0 | 279 |
| Halifax, Nova Scotia | 721 | 6 | 48 | 48 | 869 | 18 | 1,710 |
| Hamilton, Ontario | 796 | 0 | 113 | 543 | 121 | 52 | 1,625 |
| Kingston, Ontario | 314 | 4 | 18 | 45 | 102 | 11 | 494 |
| Kitchener, Ontario | 1,116 | 0 | 139 | 371 | 306 | 321 | 2,253 |
| London, Ontario | 1,293 | 0 | 36 | 320 | 670 | 95 | 2,414 |
| Montréal, Quebec | 5,018 | 1 | 424 | 419 | 6,493 | 856 | 13,211 |
| Oshawa, Ontario | 1,195 | 0 | 124 | 265 | 419 | 5 | 2,008 |
| Ottawa-Gatineau, Ontario/Quebec | 2,057 | 5 | 350 | 1,082 | 872 | 70 | 4,436 |
| Ottawa-Gatineau, Ontario part, Ontario/Quebec | 1,412 | 0 | 192 | 817 | 402 | 38 | 2,861 |
| Ottawa-Gatineau, Quebec part, Ontario/Quebec | 645 | 5 | 158 | 265 | 470 | 32 | 1,575 |
| Québec, Quebec | 1,503 | 2 | 259 | 204 | 949 | 114 | 3,031 |
| Regina, Saskatchewan | 416 | 0 | 12 | 81 | 28 | 0 | 537 |
| Saguenay, Quebec | 206 | 4 | 12 | 13 | 122 | 63 | 420 |
| Saint John, New Brunswick | 267 | 11 | 4 | 26 | 107 | 41 | 456 |
| Saskatoon, Saskatchewan | 523 | 0 | 40 | 15 | 112 | 23 | 713 |
| Sherbrooke, Quebec | 345 | 2 | 28 | 0 | 521 | 14 | 910 |
| St. Catharines-Niagara, Ontario | 547 | 0 | 49 | 103 | 126 | 8 | 833 |
| St. John's, Newfoundland and Labrador | 623 | 1 | 56 | 39 | 91 | 39 | 849 |
| Thunder Bay, Ontario | 91 | 0 | 0 | 4 | 0 | 2 | 97 |
| Toronto, Ontario | 8,093 | 0 | 1,310 | 2,945 | 7,092 | 350 | 19,790 |
| Trois-Rivières, Quebec | 199 | 0 | 20 | 38 | 218 | 52 | 527 |
| Vancouver, British Columbia | 3,525 | 0 | 199 | 1,933 | 5,708 | 179 | 11,544 |
| Victoria, British Columbia | 691 | 1 | 32 | 114 | 649 | 80 | 1,567 |
| Windsor, Ontario | 454 | 0 | 25 | 67 | 175 | 4 | 725 |
| Winnipeg, Manitoba | 1,160 | 0 | 24 | 66 | 883 | 3 | 2,136 |

Table 10
Value of residential and non-residential building permits, provinces and territories, unadjusted, 2006

| | Value of construction | | | | Total |
|----------------------------------|-----------------------|-----------------|------------|--------------------------------|------------|
| | Residential | Non-residential | | | |
| | | Industrial | Commercial | Institutional and governmental | |
| thousands of dollars | | | | | |
| Canada | | | | | |
| June r | 4,048,041 | 669,488 | 1,281,136 | 494,514 | 6,493,179 |
| July p | 3,651,936 | 369,737 | 1,190,500 | 519,890 | 5,732,063 |
| Cumulative Jan. - July 2006 | 23,473,481 | 2,359,048 | 7,460,269 | 3,429,078 | 36,721,876 |
| Cumulative Jan. - July 2005 | 22,016,645 | 2,252,552 | 6,551,725 | 3,328,367 | 34,149,289 |
| Newfoundland and Labrador | | | | | |
| June r | 40,722 | 217 | 5,174 | 5,741 | 51,854 |
| July p | 38,568 | 287 | 5,925 | 6,235 | 51,015 |
| Cumulative Jan. - July 2006 | 195,182 | 9,703 | 42,151 | 20,781 | 267,817 |
| Cumulative Jan. - July 2005 | 187,682 | 35,374 | 55,307 | 12,232 | 290,595 |
| Prince Edward Island | | | | | |
| June r | 16,327 | 1,953 | 4,227 | 825 | 23,332 |
| July p | 11,696 | 1,395 | 4,701 | 3,081 | 20,873 |
| Cumulative Jan. - July 2006 | 72,766 | 6,307 | 28,492 | 13,169 | 120,734 |
| Cumulative Jan. - July 2005 | 75,196 | 25,130 | 23,649 | 5,749 | 129,724 |
| Nova Scotia | | | | | |
| June r | 89,495 | 17,719 | 34,258 | 1,498 | 142,970 |
| July p | 56,648 | 2,270 | 37,766 | 817 | 97,501 |
| Cumulative Jan. - July 2006 | 491,506 | 56,099 | 156,425 | 23,633 | 727,663 |
| Cumulative Jan. - July 2005 | 468,885 | 41,236 | 129,189 | 40,489 | 679,799 |
| New Brunswick | | | | | |
| June r | 59,460 | 7,525 | 23,220 | 13,149 | 103,354 |
| July p | 46,855 | 2,662 | 20,185 | 13,435 | 83,137 |
| Cumulative Jan. - July 2006 | 297,360 | 19,243 | 121,980 | 82,763 | 521,346 |
| Cumulative Jan. - July 2005 | 287,989 | 31,971 | 103,614 | 26,865 | 450,439 |
| Quebec | | | | | |
| June r | 725,420 | 88,187 | 190,940 | 109,536 | 1,114,083 |
| July p | 581,495 | 76,319 | 182,986 | 89,132 | 929,932 |
| Cumulative Jan. - July 2006 | 4,462,803 | 427,786 | 1,147,407 | 584,813 | 6,622,809 |
| Cumulative Jan. - July 2005 | 4,665,641 | 476,553 | 1,012,820 | 375,929 | 6,530,943 |
| Ontario | | | | | |
| June r | 1,426,738 | 167,214 | 429,002 | 229,112 | 2,252,066 |
| July p | 1,314,780 | 165,827 | 390,899 | 185,105 | 2,056,611 |
| Cumulative Jan. - July 2006 | 8,198,470 | 931,004 | 2,617,857 | 1,223,251 | 12,970,582 |
| Cumulative Jan. - July 2005 | 8,458,856 | 894,572 | 2,478,801 | 1,528,474 | 13,360,703 |
| Manitoba | | | | | |
| June r | 90,394 | 12,256 | 17,501 | 3,687 | 123,838 |
| July p | 84,440 | 31,267 | 33,898 | 19,783 | 169,388 |
| Cumulative Jan. - July 2006 | 494,264 | 58,596 | 166,152 | 92,698 | 811,710 |
| Cumulative Jan. - July 2005 | 384,288 | 30,531 | 163,899 | 73,426 | 652,144 |
| Saskatchewan | | | | | |
| June r | 47,979 | 16,707 | 31,608 | 8,575 | 104,869 |
| July p | 37,244 | 10,544 | 32,077 | 57,364 | 137,229 |
| Cumulative Jan. - July 2006 | 258,748 | 39,825 | 170,530 | 183,383 | 652,486 |
| Cumulative Jan. - July 2005 | 239,304 | 36,193 | 142,067 | 87,114 | 504,678 |
| Alberta | | | | | |
| June r | 733,732 | 305,817 | 321,710 | 49,829 | 1,411,088 |
| July p | 836,272 | 54,977 | 234,870 | 70,408 | 1,196,527 |
| Cumulative Jan. - July 2006 | 4,713,247 | 619,589 | 1,667,988 | 499,823 | 7,500,647 |
| Cumulative Jan. - July 2005 | 3,438,069 | 478,546 | 1,249,077 | 574,755 | 5,740,447 |
| British Columbia | | | | | |
| June r | 795,283 | 51,555 | 214,970 | 72,367 | 1,134,175 |
| July p | 639,389 | 23,907 | 246,698 | 74,125 | 984,119 |
| Cumulative Jan. - July 2006 | 4,243,607 | 189,372 | 1,312,191 | 681,021 | 6,426,191 |
| Cumulative Jan. - July 2005 | 3,764,034 | 193,527 | 1,159,707 | 600,606 | 5,717,874 |

Table 10 – continued

Value of residential and non-residential building permits, provinces and territories, unadjusted, 2006

| | Value of construction | | | | Total |
|------------------------------|-----------------------|-----------------|------------|--------------------------------|--------|
| | Residential | Non-residential | | | |
| | | Industrial | Commercial | Institutional and governmental | |
| | thousands of dollars | | | | |
| Yukon Territory | | | | | |
| June r | 7,456 | 86 | 2,535 | 195 | 10,272 |
| July p | 2,160 | 180 | 24 | 243 | 2,607 |
| Cumulative Jan. - July 2006 | 19,836 | 381 | 14,084 | 23,212 | 57,513 |
| Cumulative Jan. - July 2005 | 23,411 | 2,501 | 4,992 | 1,659 | 32,563 |
| Northwest Territories | | | | | |
| June r | 4,095 | 10 | 3,984 | 0 | 8,089 |
| July p | 1,705 | 100 | 396 | 162 | 2,363 |
| Cumulative Jan. - July 2006 | 9,795 | 895 | 5,321 | 531 | 16,542 |
| Cumulative Jan. - July 2005 | 21,488 | 6,415 | 28,069 | 1,065 | 57,037 |
| Nunavut | | | | | |
| June r | 10,940 | 242 | 2,007 | 0 | 13,189 |
| July p | 684 | 2 | 75 | 0 | 761 |
| Cumulative Jan. - July 2006 | 15,897 | 248 | 9,691 | 0 | 25,836 |
| Cumulative Jan. - July 2005 | 1,802 | 3 | 534 | 4 | 2,343 |

Table 11
Value of residential and non-residential building permits, census metropolitan areas, unadjusted, July 2006

| | Value of construction | | | | Total |
|---|-----------------------|-----------------|------------|--------------------------------|-----------|
| | Residential | Non-residential | | | |
| | | Industrial | Commercial | Institutional and governmental | |
| | thousands of dollars | | | | |
| Abbotsford, British Columbia | 8,049 | 240 | 50 | 695 | 9,034 |
| Calgary, Alberta | 361,201 | 13,165 | 96,436 | 25,381 | 496,183 |
| Edmonton, Alberta | 206,282 | 8,190 | 33,655 | 4,632 | 252,759 |
| Greater Sudbury / Grand Sudbury, Ontario | 9,852 | 1,439 | 4,695 | 1,564 | 17,550 |
| Halifax, Nova Scotia | 22,038 | 83 | 25,704 | 387 | 48,212 |
| Hamilton, Ontario | 37,751 | 7,938 | 11,999 | 18,058 | 75,746 |
| Kingston, Ontario | 8,716 | 962 | 8,890 | 1,315 | 19,883 |
| Kitchener, Ontario | 37,236 | 6,540 | 9,583 | 2,454 | 55,813 |
| London, Ontario | 45,256 | 2,751 | 12,730 | 3,019 | 63,756 |
| Montréal, Quebec | 276,006 | 38,300 | 99,210 | 33,051 | 446,567 |
| Oshawa, Ontario | 69,337 | 21,755 | 3,317 | 2,609 | 97,018 |
| Ottawa-Gatineau, Ontario/Quebec | 104,013 | 580 | 59,574 | 14,513 | 178,680 |
| Ottawa-Gatineau, Ontario part, Ontario/Quebec | 66,790 | 580 | 50,498 | 13,209 | 131,077 |
| Ottawa-Gatineau, Quebec part, Ontario/Quebec | 37,223 | 0 | 9,076 | 1,304 | 47,603 |
| Québec, Quebec | 43,686 | 1,709 | 24,234 | 4,476 | 74,105 |
| Regina, Saskatchewan | 8,546 | 0 | 5,238 | 28,308 | 42,092 |
| Saguenay, Quebec | 7,117 | 473 | 164 | 7,350 | 15,104 |
| Saint John, New Brunswick | 7,363 | 1,200 | 569 | 6,249 | 15,381 |
| Saskatoon, Saskatchewan | 10,934 | 9,484 | 15,967 | 1,687 | 38,072 |
| Sherbrooke, Quebec | 8,575 | 332 | 4,515 | 379 | 13,801 |
| St. Catharines-Niagara, Ontario | 32,624 | 5,323 | 7,459 | 3,649 | 49,055 |
| St. John's, Newfoundland and Labrador | 25,259 | 122 | 4,504 | 2,084 | 31,969 |
| Thunder Bay, Ontario | 4,840 | 0 | 323 | 2,020 | 7,183 |
| Toronto, Ontario | 670,400 | 79,954 | 199,205 | 70,307 | 1,019,866 |
| Trois-Rivières, Quebec | 8,717 | 1,878 | 9,127 | 1,366 | 21,088 |
| Vancouver, British Columbia | 304,199 | 15,173 | 126,619 | 21,188 | 467,179 |
| Victoria, British Columbia | 72,012 | 675 | 16,984 | 25,987 | 115,658 |
| Windsor, Ontario | 12,183 | 2,276 | 1,849 | 3,103 | 19,411 |
| Winnipeg, Manitoba | 48,604 | 20,151 | 29,382 | 19,436 | 117,573 |

Table 12

Value of residential and non-residential building permits, census metropolitan areas, unadjusted, cumulative, January - July 2006

| | Value of construction | | | | Total |
|---|-----------------------|-----------------|------------|--------------------------------|-----------|
| | Residential | Non-residential | | | |
| | | Industrial | Commercial | Institutional and governmental | |
| thousands of dollars | | | | | |
| Abbotsford, British Columbia | 80,675 | 25,582 | 30,839 | 102,739 | 239,835 |
| Calgary, Alberta | 1,839,116 | 90,115 | 719,246 | 299,243 | 2,947,720 |
| Edmonton, Alberta | 1,391,708 | 81,529 | 313,363 | 78,233 | 1,864,833 |
| Greater Sudbury / Grand Sudbury, Ontario | 52,264 | 10,930 | 25,070 | 18,774 | 107,038 |
| Halifax, Nova Scotia | 249,094 | 34,700 | 95,956 | 4,413 | 384,163 |
| Hamilton, Ontario | 299,785 | 25,628 | 77,861 | 68,555 | 471,829 |
| Kingston, Ontario | 79,925 | 9,978 | 37,706 | 32,070 | 159,679 |
| Kitchener, Ontario | 351,936 | 33,638 | 118,868 | 65,046 | 569,488 |
| London, Ontario | 362,944 | 20,315 | 87,186 | 56,904 | 527,349 |
| Montréal, Quebec | 2,148,337 | 209,827 | 657,166 | 312,962 | 3,328,292 |
| Oshawa, Ontario | 376,851 | 73,347 | 60,270 | 24,636 | 535,104 |
| Ottawa-Gatineau, Ontario/Quebec | 684,079 | 12,161 | 290,432 | 244,694 | 1,231,366 |
| Ottawa-Gatineau, Ontario part, Ontario/Quebec | 478,073 | 8,429 | 256,360 | 216,767 | 959,629 |
| Ottawa-Gatineau, Quebec part, Ontario/Quebec | 206,006 | 3,732 | 34,072 | 27,927 | 271,737 |
| Québec, Quebec | 431,685 | 22,820 | 149,005 | 63,023 | 666,533 |
| Regina, Saskatchewan | 85,332 | 10,388 | 37,026 | 56,454 | 189,200 |
| Saguenay, Quebec | 61,530 | 14,796 | 11,607 | 22,868 | 110,801 |
| Saint John, New Brunswick | 57,465 | 4,376 | 16,011 | 12,749 | 90,601 |
| Saskatoon, Saskatchewan | 96,476 | 18,332 | 81,295 | 66,592 | 262,695 |
| Sherbrooke, Quebec | 111,129 | 6,586 | 23,660 | 19,675 | 161,050 |
| St. Catharines-Niagara, Ontario | 173,845 | 33,354 | 61,780 | 22,145 | 291,124 |
| St. John's, Newfoundland and Labrador | 132,105 | 4,237 | 30,308 | 12,887 | 179,537 |
| Thunder Bay, Ontario | 20,148 | 5,629 | 14,018 | 5,539 | 45,334 |
| Toronto, Ontario | 3,970,545 | 366,512 | 1,316,100 | 324,551 | 5,977,708 |
| Trois-Rivières, Quebec | 70,215 | 13,328 | 29,614 | 9,583 | 122,740 |
| Vancouver, British Columbia | 2,289,632 | 75,761 | 807,315 | 325,599 | 3,498,307 |
| Victoria, British Columbia | 324,935 | 9,881 | 83,908 | 49,933 | 468,657 |
| Windsor, Ontario | 150,790 | 56,882 | 21,144 | 67,398 | 296,214 |
| Winnipeg, Manitoba | 304,029 | 28,064 | 109,160 | 85,335 | 526,588 |

Table 13
Value of the non-residential permits by type of building, provinces and territories, July 2006

| | Canada | Newfoundland and Labrador | Prince Edward Island | Nova Scotia | New Brunswick | Quebec | Ontario |
|--|------------------|---------------------------------|----------------------------|---------------------|--------------------|--------------------------|----------------|
| thousands of dollars | | | | | | | |
| Total non-residential | 2,080,127 | 12,447 | 9,177 | 40,853 | 36,282 | 348,437 | 741,831 |
| Industrial | 369,737 | 287 | 1,395 | 2,270 | 2,662 | 76,319 | 165,827 |
| Factories, plants | 186,688 | 0 | 900 | 315 | 1,179 | 44,701 | 88,497 |
| Transportation, utilities | 79,989 | 0 | 0 | 1,000 | 400 | 15,313 | 21,376 |
| Mining and agriculture | 44,171 | 0 | 0 | 530 | 500 | 3,427 | 28,868 |
| Minor industrial projects, new and improvements ¹ | 58,889 | 287 | 495 | 425 | 583 | 12,878 | 27,086 |
| Commercial | 1,190,500 | 5,925 | 4,701 | 37,766 | 20,185 | 182,986 | 390,899 |
| Trade and services | 391,973 | 4,084 | 3,871 | 27,186 | 13,404 | 74,416 | 120,721 |
| Warehouses | 150,257 | 250 | 0 | 2,494 | 289 | 16,280 | 36,210 |
| Service stations | 25,145 | 250 | 0 | 0 | 0 | 8,825 | 7,131 |
| Office buildings | 283,554 | 0 | 0 | 0 | 885 | 42,332 | 119,588 |
| Recreation | 83,203 | 0 | 0 | 1,400 | 1,044 | 3,360 | 31,878 |
| Hotels, restaurants | 91,807 | 0 | 0 | 1,930 | 260 | 9,460 | 11,573 |
| Laboratories | 6,075 | 0 | 0 | 0 | 0 | 500 | 1,475 |
| Minor commercial projects, new and improvements ¹ | 158,486 | 1,341 | 830 | 4,756 | 4,303 | 27,813 | 62,323 |
| Institutional and governmental | 519,890 | 6,235 | 3,081 | 817 | 13,435 | 89,132 | 185,105 |
| Schools, education | 251,178 | 1,499 | 3,051 | 0 | 7,590 | 28,041 | 80,728 |
| Hospitals, medical | 111,224 | 0 | 0 | 0 | 300 | 37,522 | 36,772 |
| Welfare, home | 46,973 | 2,950 | 0 | 0 | 0 | 344 | 12,055 |
| Churches, religion | 26,313 | 0 | 0 | 0 | 700 | 3,000 | 15,968 |
| Government buildings | 33,403 | 1,297 | 0 | 0 | 2,073 | 7,363 | 17,304 |
| Minor institutional and governmental projects, new and improvements ¹ | 50,799 | 489 | 30 | 817 | 2,772 | 12,862 | 22,278 |
| | Manitoba | Saskatchewan | Alberta | British Columbia | Yukon Territory | Northwest Territories | Nunavut |
| thousands of dollars | | | | | | | |
| Total non-residential | 84,948 | 99,985 | 360,255 | 344,730 | 447 | 658 | 77 |
| Industrial | 31,267 | 10,544 | 54,977 | 23,907 | 180 | 100 | 2 |
| Factories, plants | 5,550 | 8,698 | 34,021 | 2,827 | 0 | 0 | 0 |
| Transportation, utilities | 21,687 | 1,451 | 11,925 | 6,837 | 0 | 0 | 0 |
| Mining and agriculture | 2,503 | 0 | 250 | 8,093 | 0 | 0 | 0 |
| Minor industrial projects, new and improvements ¹ | 1,527 | 395 | 8,781 | 6,150 | 180 | 100 | 2 |
| Commercial | 33,898 | 32,077 | 234,870 | 246,698 | 24 | 396 | 75 |
| Trade and services | 4,484 | 13,204 | 41,879 | 88,467 | 0 | 257 | 0 |
| Warehouses | 1,466 | 950 | 61,024 | 31,294 | 0 | 0 | 0 |
| Service stations | 0 | 2,903 | 4,736 | 1,300 | 0 | 0 | 0 |
| Office buildings | 17,425 | 8,142 | 56,848 | 38,334 | 0 | 0 | 0 |
| Recreation | 3,800 | 3,000 | 28,889 | 9,832 | 0 | 0 | 0 |
| Hotels, restaurants | 775 | 819 | 18,290 | 48,700 | 0 | 0 | 0 |
| Laboratories | 0 | 0 | 850 | 3,250 | 0 | 0 | 0 |
| Minor commercial projects, new and improvements ¹ | 5,948 | 3,059 | 22,354 | 25,521 | 24 | 139 | 75 |
| Institutional and governmental | 19,783 | 57,364 | 70,408 | 74,125 | 243 | 162 | 0 |
| Schools, education | 17,946 | 29,343 | 43,181 | 39,799 | 0 | 0 | 0 |
| Hospitals, medical | 0 | 26,145 | 1,630 | 8,855 | 0 | 0 | 0 |
| Welfare, home | 0 | 0 | 17,224 | 14,400 | 0 | 0 | 0 |
| Churches, religion | 0 | 400 | 1,700 | 4,545 | 0 | 0 | 0 |
| Government buildings | 0 | 0 | 1,766 | 3,600 | 0 | 0 | 0 |
| Minor institutional and governmental projects, new and improvements ¹ | 1,837 | 1,476 | 4,907 | 2,926 | 243 | 162 | 0 |

1. Refer to projects valued at less than \$250,000 for which the breakdown by type of building is not available.

Description - Monthly survey of building permits

The following information should be used to ensure a clear understanding of the basic concepts that define the data provided in this product, of the underlying methodology of the survey, and of key aspects of the data quality. This information will provide you with a better understanding of the strengths and limitations of the data, and of how they can be effectively used and analysed. The information may be of particular importance to you when making comparisons with data from other surveys or sources of information, and in drawing conclusions regarding change over time.

Data source and methodology

The purpose of the **Monthly Survey of Building Permits** issued by Canadian municipalities is to collect data on construction intentions. The results of this survey are used by C.M.H.C. (Canada Mortgage and Housing Corporation) as a reference base for conducting a monthly survey of housing starts and completions in accordance with its mandate. The statistics on building permits are also essential for the computation of capital expenditures. Furthermore, since the issuance of a building permit is one of the first steps in the construction process, these statistics are widely used as a leading indicator of building activity.

General methodology : The Building Permits Survey covers all Canadian municipalities that issue permits. The number of Canadian municipalities currently surveyed exceeds 2,380, representing all the provinces and territories. They account for 95% of the Canadian population. Participation in the survey is mandatory; the survey does not use a predetermined sample of municipalities. The communities representing the other 5% of the population are very small, and their level of building activity have little impact on the total. In practice, all urban agglomerations are represented in the survey, as well as a fair percentage of rural municipalities. With certain exceptions, the minimum coverage corresponds to the municipalities already included in the Housing Starts and Completions C.M.H.C.'s Survey. Non-responding municipalities that issue permits are urged on a regular basis to respond to the Building Permit Survey. Therefore, the number of municipalities covered is increasing continually.

The survey is usually conducted by mail, although certain municipalities choose to respond by telephone. The municipal officer responsible for issuing permits is asked to fill out a form each month describing all major construction projects.

The municipalities forward a copy of their completed report to Statistics Canada Head Office and another copy to the local office of the Canada Mortgage and Housing Corporation (C.M.H.C.). To reduce their overhead, an increasing number of respondents are producing a computerized report. Only those municipalities that are late in reporting and that are included in the above-mentioned C.M.H.C. survey are subject to follow-up by telephone.

The reports received at Statistics Canada Head Office are verified, coded and processed.

Strict quality control procedures are applied to ensure that collection, coding and data processing are as accurate as possible. Checks are also performed on totals and the magnitude of data. Reports that fail to meet the quality standards are subject to verification and are corrected as required.

Imputations are required for each characteristic for which no report has been received. These are calculated automatically, subject to certain constraints, by applying to previously used values, the month-to-month and year-to-year changes in similar values of responding municipalities and the historical pattern of the missing municipalities. No estimation is done for lack of coverage, concealment or the underevaluation of permits issued. For this reason, the sampling error cannot be computed.

The monthly statistics are not corrected for cancelled or expired permits. According to the municipal officers, the proportion of cancelled and unused permits is below 5%.

Reference period : The reference period for data collection purposes is the calendar month. Reports from municipalities which are part of a census metropolitan area or a census agglomeration must be received within 20 days following the month of reference. The other municipalities have 30 days to produce their reports. Results are released between 35 and 40 days after the end of the reference month. Annual data for the preceding calendar year are released with the data for the January survey month.

Revisions : Two types of revisions can affect the results of the Building Permits Survey:

Revisions due to the correction of coding errors

These types of revisions are done on a monthly basis only to the data pertaining to the month preceding the reference period.

Revisions due to the addition of late reports

Late reports for the month preceding the reference period are incorporated into the survey results on a continuing basis. However, reports received after the two-month deadline following the reference month are introduced only at the end of the year. As a result, the data for the last twelve months are subject to revision.

Seasonal adjustment : Seasonal changes cause predictable fluctuations in the data. The data series disseminated includes both seasonally adjusted (i.e., excludes predictable annual influences) and the unadjusted data. Seasonally adjusted data for the total number of housing units as well as for the aggregate value of building permits are obtained indirectly, i.e., by adding their seasonally adjusted components. The total number of dwelling units is obtained by summing the seasonally adjusted data for single-family and multiple-use units; the total value of building permits is obtained by summing the following elements: single-family and multiple-family dwellings, industrial, commercial and institutional. Some series contain no apparent seasonality. In these cases, unadjusted values have been tabulated and aggregated to the adjusted values of the other series. At the end of the year, the chronological series adjusted for seasonality are revised to take into account the most recent seasonal fluctuations. Generally, these revisions apply only to the last three years in the series. The revised data are introduced into the CANSIM databank.

Concepts and variables measured

The statistical data presented in this product refers to the number of dwelling units authorized and the **value of building permits**. The value of the permits reported includes the following expenditures: materials, labour, profit and overhead. The cost of land is never included in the estimated value of the permit while acquisition costs (legal fees, surveying fees and accrued interest) may be included at times.

The classification used in this publication deals strictly with structures for which a building permit was issued. Permits are generally issued for the following: construction of new buildings, alterations, additions, renovations, etc. Minor repair jobs such as painting, tiling, roofing, etc., for which no permit is required, and engineering work (such as dams, roads, pipelines, etc.), which, by definition, is not a building, are not included in the building permit series. Estimates of such work may be obtained on Cansim, tables 029-0039 to 029-0040 for the «Capital expenditures by type of asset» and tables 029-0005 to 029-0024 and 032-0001 to 032-0002 for the «Private and Public Investment in Canada Intentions» (cat. no. 61-205-X).

The description given by the municipalities as to the type of building (box #6 of Section A on the form) and the type of work involved (box #7 of Section A on the form) forms the basis for classification. The classification of buildings into major groups and subgroups is based on the following: intended use in the case of new buildings; present or intended use of buildings to which improvements are to be made; present use of the existing structure where the proposed construction is intended to provide additional facilities; principal use of the structure where the proposed construction has more than one intended use; however, where the building contains dwellings, the value of the construction is divided between residential and non-residential use.

Building categories

This publication, uses the following classification for the **value of permits issued** for construction of new buildings or for improvements: residential, industrial, commercial, institutional and government.

Residential. Includes all buildings intended for private occupancy whether on a permanent basis or not. Dwellings are divided into the following types: single-family, mobile, cottage, semi-detached, row house and apartment building.

Industrial. Includes all buildings used for manufacturing and processing; transportation, communication and other utilities, and agriculture, forestry and mining.

Commercial. Includes all buildings used to house activities related to the tertiary sector, such as stores, warehouses, garages, office buildings, theatres, hotels, funeral parlours and beauty salons.

Institutional and Government . Includes expenditures made by the community, public and government for buildings and structures like schools, universities, hospitals, clinics, churches, homes for the aged.

The **number of dwelling units** indicates the number of self contained dwelling units created. This should not be confused with the number of structures. For example, an apartment building containing six dwellings will be shown as six dwelling units. When an existing structure is converted into additional housing units, the number of units added is included. This publication uses the following classification for dwelling units:

Single-family. Refers to dwellings commonly called "**single house**". It includes single dwellings that are completely isolated on all sides, including single dwellings linked to other dwellings below ground. Included are bungalows, split levels, two-storey single-family homes built by conventional methods or prefabricated.

Mobile homes . Refers to houses designed and constructed to be transported on their own chassis and for easy moving.

Cottage. Refers to dwellings that cannot be occupied year-round or on a permanent basis because the facilities required for comfort are inadequate.

Double or Semi-detached . Refers to dwellings in which each of the two dwellings are side by side and joined by a common wall or garage, but not attached to any other building and surrounded by open space.

Row Dwellings . Refers to a row of three or more dwellings attached to each other without dwellings above or below.

Apartment Building . Includes dwellings in a variety of buildings such as duplexes, semi-detached duplexes, triplexes, row duplexes, apartments as such and dwellings adjacent to non-residential structures.

Conversion. Refers to the number of dwellings added by conversion of existing structures.

Geographic classification

Geographic entities are classified according to Standard Geographical Classification (SGC) used by Statistics Canada. Each reporting entity is assigned a twelve-digit SGC code for identification according to the following geographic levels:

Province and territory (PR) : There are ten provinces and three territories.

Economic region (ER) : Refers to intraprovincial regions established by the Standards Division of Statistics Canada. There are seventy-six ERs.

Census division (CD) : Refers to a group of census subdivisions established by provincial law. There are two hundred and ninety-one CDs (data on this geographic group is available on request).

Census metropolitan area (CMA) : Its delineation corresponds to the 2001 Census definition. The term CMA refers to the main labour market area of an urban area (the urbanized core) of at least 100,000 population, based on the Census population figures. The twenty-seven CMAs are shown in this publication. Although the 2001 Census defines the Ottawa-Hull area as a single CMA, the area is shown in this publication as two separate entities since it is located in two different provinces.

Census agglomeration (CA) : Refers to the smaller labour market area of an urbanized core of at least 10,000 population, as defined by the 2001 Census. There are one hundred and eighteen CAs in Canada. When a CA overlaps the boundaries of two provinces, it is shown partly in each province. The Lloydminster agglomeration is an exception to this rule. It is treated as if it was totally located in Alberta.

Other municipalities of at least 10,000 population : Refers to municipalities not included in census agglomerations but with populations of at least 10,000 inhabitants. The distinction is made between these municipalities and CAs in order to permit comparison between the Building Permits Survey and the Housing Starts and Completions Survey which refers to this geographical concept.

Rural area : Refers to all geographic entities not included in a CMA or CA and not identified as an urban centre by the Canada Mortgage and Housing Corporation.

Census subdivision (CSD) : Refers to the general term applying to municipalities, Indian reserves, Indian settlements and unorganized territories. However, since Indian reserves and settlements do not issue building permits, they are not included in this publication.

Non-standard geographic unit : The geographic units shown in this publication do not all satisfy the above definition of census subdivision. Some provincial or municipal administrations producing monthly reports do not correspond to the official geographic entities; they are nevertheless shown in this publication under the geographic entity used by these administrations. These so-called non-standard geographic units are few in number and are mostly concentrated in the Maritime provinces.

Territorial revisions

Territorial boundaries were established according to the 2001 Census definitions. Changes in boundaries, status or name of census subdivisions between censuses are introduced in this publication on a yearly basis. Changes affecting the other geographic units (CMAs, CAs, CDs and ERs) are introduced every five years, eighteen months following the census.

Data accuracy

Since the building permit data are extracted from municipal administrative documents, two types of response errors are possible: errors attributable to the permit applicant and errors in transcription by the responding municipality. However, experience has shown that transcription errors are not very common and the increasing number of municipalities producing computerized reports tends to reduce the frequency of this type of error. Errors attributable to an understatement of the cost of construction are more probable. Since permit fees are in most cases based on the value of the construction, this leads unquestionably to under-estimation of project values.

The other source of error are the processing error and the non-response error. In 2005, more than 99% of the municipalities covered by the survey sent their monthly Building Permits reports.

Comparability of data and related sources

Comparison of data must be done with reservation considering that the methods of issuing permits and the methods of estimating building values can differ from one municipality to another. Also, comparisons involving different periods must take into account the constant increase in the number of municipalities participating in the survey.

This publication contains only part of the data produced on building permits. However, you may order unpublished tables or address special requests, to the Current Investment Indicators Section ((613) 951-4646 or 1-800-579-8533). The series presented here is also available on CANSIM: Tables 026-0001 to 026-0008, 026-0010 and 026-0015.

Appendix I

Geographical abbreviations

| | |
|--------|--|
| A.R. | Agglomération de recensement |
| BOR | Borough |
| C | City |
| C.A. | Census Agglomeration |
| CC | Chartered Community |
| CDR | Census Division Remainder |
| CM | County (Municipality) |
| C.M.A. | Census Metropolitan Area |
| COM | Community |
| CR | County Remainder |
| CT | Canton |
| CU | Cantons-Unis |
| DM | District (Municipality) |
| HAM | Hamlet |
| ID | Improvement District |
| IGD | Indian Government District |
| LGD | Local Government District |
| LOT | Lot and Royalty |
| M | Municipalité |
| MD | Municipal District |
| NH | Northern Hamlet |
| NT | Northern Town |
| NV | Northern Village |
| N.W.T. | NorthWest Territories |
| P | Paroisse |
| PAR | Parish |
| PD | Planning District |
| PDR | Planning District Remainder |
| RCR | Rural County Remainder |
| RGM | Regional Municipality |
| R.M.R. | Région métropolitaine de recensement |
| RDR | Regional District Remainder |
| RM | Rural Municipality |
| RV | Resort Village |
| SA | Special Area |
| S-E | Indian Settlement/Établissement indien |
| SCM | Subdivision of County Municipality |
| SD | Sans désignation |
| SET | Settlement |
| SM | Specialize Municipality |
| SRD | Subdivision of Regional District |
| SUN | Subdivision of Unorganized District |
| SV | Summer Village |

| | |
|--------|---------------------------|
| T | Town |
| T.N.O. | Territoires du Nord-Ouest |
| TP | Township |
| UCR | Urban County Remainder |
| UNO | Unorganized/Non organisé |
| V | Ville |
| VC | Village Cri |
| VL | Village |
| VN | Village Nordique |