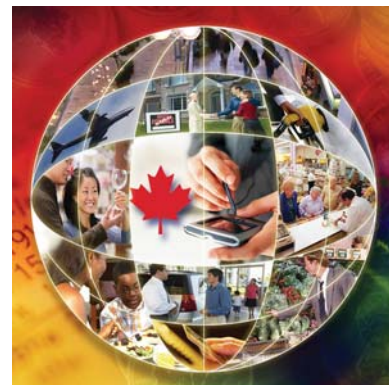


Catalogue no. 62-001-X

The Consumer Price Index

December 2015



Statistics
Canada

Statistique
Canada

Canada

How to obtain more information

For information about this product or the wide range of services and data available from Statistics Canada, visit our website, www.statcan.gc.ca.

You can also contact us by

e-mail at STATCAN.infostats-infostats.STATCAN@canada.ca

telephone, from Monday to Friday, 8:30 a.m. to 4:30 p.m., at the following toll-free numbers:

- | | |
|---|----------------|
| • Statistical Information Service | 1-800-263-1136 |
| • National telecommunications device for the hearing impaired | 1-800-363-7629 |
| • Fax line | 1-877-287-4369 |

Depository Services Program

- | | |
|------------------|----------------|
| • Inquiries line | 1-800-635-7943 |
| • Fax line | 1-800-565-7757 |

To access this product

This product, Catalogue no. 62-001-X, is available free in electronic format. To obtain a single issue, visit our website, www.statcan.gc.ca and browse by "Key resource" > "Publications."

Standards of service to the public

Statistics Canada is committed to serving its clients in a prompt, reliable and courteous manner. To this end, this agency has developed standards of service that its employees observe. To obtain a copy of these service standards, please contact Statistics Canada toll-free at 1-800-263-1136. The service standards are also published at www.statcan.gc.ca under "About us" > "The agency" > "Providing services to Canadians."

Statistics Canada
Consumer Prices Division

The Consumer Price Index

December 2015

Published by authority of the Minister responsible for Statistics Canada

© Minister of Industry, 2016

All rights reserved. Use of this publication is governed by the Statistics Canada Open License Agreement.

<http://www.statcan.gc.ca/reference/licence-eng.html>

January 2016

Catalogue no. 62-001-X, vol. 94, no. 12

ISSN 1496-2225

Frequency: Monthly

Ottawa

Cette publication est également disponible en français.

Note of appreciation

Canada owes the success of its statistical system to a long-standing partnership between Statistics Canada, the citizens of Canada, its businesses, governments and other institutions. Accurate and timely statistical information could not be produced without their continued cooperation and goodwill.

User information

Symbols

The following standard symbols are used in Statistics Canada publications:

- . not available for any reference period
- .. not available for a specific reference period
- ... not applicable
- 0 true zero or a value rounded to zero
- 0^s value rounded to 0 (zero) where there is a meaningful distinction between true zero and the value that was rounded
- P preliminary
- r revised
- X suppressed to meet the confidentiality requirements of the *Statistics Act*
- E use with caution
- F too unreliable to be published
- * significantly different from reference category ($p < 0.05$)

Note on CANSIM

Data that appears in the **The Consumer Price Index** (catalogue no. 62-001-X) are also available electronically, free of charge under the *Statistics Canada Open Licence Agreement*, in our CANSIM (Canadian Socio-Economic Information Management System) database through the Internet, under tables 326-0009, 326-0012, 326-0015, 326-0020, 326-0021, 326-0022 and 326-0031. In general, *CANSIM* provides a longer historical series. For further information on *CANSIM* call 1-800-263-1136.

This publication was prepared under the direction of:

Richard Evans	Director, Consumer Prices Division
Dragos Ifrim	Assistant Director, Consumer Prices Division, Production
Bruno Morin	Acting Chief, Consumer Prices Division, Production
Kyle de March	Analyst-Economist, Consumer Prices Division, Analysis and Dissemination Section

Cover page designed by:

Rachel Penkar	Senior Graphic Designer, Dissemination Division
----------------------	---

Note to users

The Consumer Price Index is published monthly and is not subject to revisions.

Index for the month	Release date
December 2015	January 22, 2016
January 2016	February 19, 2016
February 2016	March 18, 2016
March 2016	April 22, 2016
April 2016	May 20, 2016
May 2016	June 17, 2016
June 2016	July 22, 2016
July 2016	August 19, 2016
August 2016	September 23, 2016
September 2016	October 21, 2016
October 2016	November 18, 2016
November 2016	December 22, 2016
December 2016	January 20, 2017

Table of contents

Highlights	6
Analysis	8
Charts	
1. The 12-month change in the Consumer Price Index (CPI) and the CPI excluding gasoline	8
2. Consumer prices increase in all major components	9
3. Consumer prices rise in all provinces	10
4. Seasonally adjusted monthly Consumer Price Index	11
5. Annual average change in the all-items Consumer Price Index: 1995 to 2015	12
6. Consumer prices increase in seven of eight major components	13
7. Consumer prices rise in nine provinces	14
Related products	16
Statistical tables	
1 The Consumer Price Index, major components and special aggregates, Canada, not seasonally adjusted	20
2 The Consumer Price Index, major components and special aggregates, Canada, seasonally adjusted	20
3 The Consumer Price Index, provinces, Whitehorse, Yellowknife and Iqaluit, not seasonally adjusted	21
4 The Consumer Price Index, major components and selected sub-groups, Canada, not seasonally adjusted	22
4-1 Food	22
4-2 Shelter	23
4-3 Household operations, furnishings and equipment	23
4-4 Clothing and footwear	24
4-5 Transportation	24
4-6 Health and personal care	25
4-7 Recreation, education and reading	25
4-8 Alcoholic beverages and tobacco products	26
5 The Consumer Price Index for Canada, All-items CPI, not seasonally adjusted, historical data	27
6 The Bank of Canada's core index, not seasonally adjusted, historical data	28
7 The Consumer Price Index for Canada, major components and special aggregates, not seasonally adjusted, historical data	29

Table of contents – continued

8	Annual average percentage changes for the Consumer Price Index	30
8-1	Major components, not seasonally adjusted Canada	30
8-2	All-items, not seasonally adjusted, Canada, provinces, cities	31
9	The Consumer Price Index, major components, selected sub-groups and special aggregates, provinces, Whitehorse and Yellowknife, not seasonally adjusted	32
9-1	Newfoundland and Labrador	32
9-2	Prince Edward Island	33
9-3	Nova Scotia	34
9-4	New Brunswick	35
9-5	Quebec	36
9-6	Ontario	37
9-7	Manitoba	38
9-8	Saskatchewan	39
9-9	Alberta	40
9-10	British Columbia	41
9-11	Whitehorse (Yukon)	42
9-12	Yellowknife (Northwest Territories)	43
10	The All-items Consumer Price Index, provinces, Whitehorse, Yellowknife and Iqaluit, not seasonally adjusted, historical data	44
11	The Consumer Price Index and selected sub-groups, by city, not seasonally adjusted	46
12	The All-items Consumer Price Index by city, not seasonally adjusted, historical data	48
13	Average retail prices for gasoline and fuel oil, by city	50
14	Average retail prices, monthly, Canada	52
15	Inter-city indexes of price differentials, as of October 2014, of consumer goods and services	53

Data quality, concepts and methodology

	Explanatory notes for tables	55
	Data quality, concepts and methodology	61

Appendix

I	Concordance tables	64
---	--------------------	----

Highlights

12-month change:

- The Consumer Price Index (CPI) rose 1.6% in the 12 months to December, after increasing 1.4% in November.
- Excluding gasoline, the CPI rose 1.9% year over year in December, matching the increase in November.
- Prices were up in all eight major components on a year-over-year basis in December, with the food and shelter indexes contributing the most to the rise in the CPI. The transportation index, which includes gasoline, registered its first year-over-year increase since October 2014.
- Consumer prices rose in all provinces in the 12 months to December, with British Columbia posting the largest gain. In the Prairie provinces, consumer prices were up less on a year-over-year basis in December than in November.

Month-to-month change:

- On a seasonally adjusted monthly basis, the CPI rose 0.1% in December, after rising 0.2% in November.
- On a monthly basis and before seasonal adjustment, the CPI declined 0.5% in December, after decreasing 0.1% in November.

Bank of Canada's core index:

- The Bank of Canada's core index was up 1.9% in the 12 months to December, following a 2.0% rise in November.

Annual change:

- In 2015, the annual average increase in the CPI was 1.1%. This increase followed gains of 2.0% in 2014 and 0.9% in 2013.

Main contributors to the 12-month change in the CPI:

Main upward contributors:

- Purchase of passenger vehicles (+3.1%)
- Fresh vegetables (+13.3%)
- Homeowners' home and mortgage insurance (+8.9%)
- Fresh fruit (+13.2%)
- Electricity (+3.8%)

Main downward contributors:

- Gasoline (-4.8%)
- Natural gas (-12.9%)
- Telephone services (-2.5%)
- Mortgage interest cost (-1.3%)
- Fuel oil (-16.8%)

Main contributors to the monthly change in the CPI, not seasonally adjusted:

Main upward contributors:

- Purchase of passenger vehicles (+1.2%)
- Fresh vegetables (+6.2%)
- Fresh fruit (+3.4%)
- Homeowners' home and mortgage insurance (+1.1%)
- Telephone services (+0.5%)

Main downward contributors:

- Gasoline (-4.0%)
- Women's clothing (-6.6%)
- Men's clothing (-6.0%)
- Footwear (-4.8%)
- Air transportation (-3.8%)

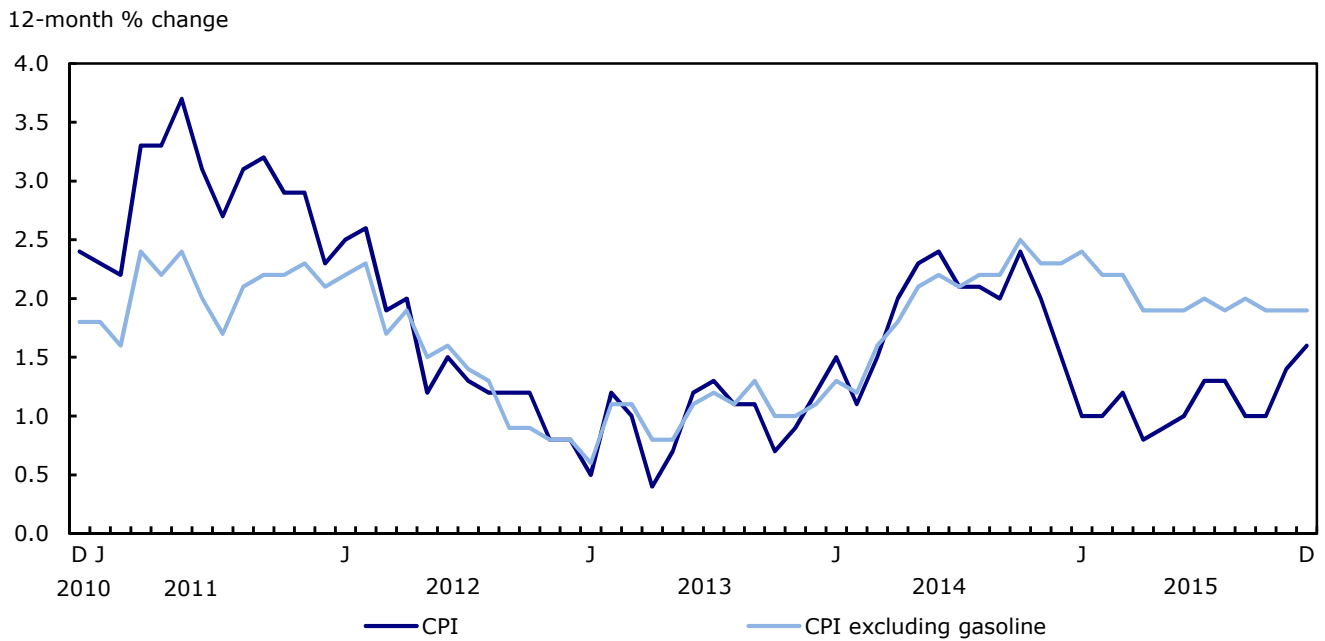
Analysis

The Consumer Price Index (CPI) rose 1.6% in the 12 months to December, after increasing 1.4% in November.

Excluding gasoline, the CPI rose 1.9% year over year in December, matching the increase in November.

Chart 1

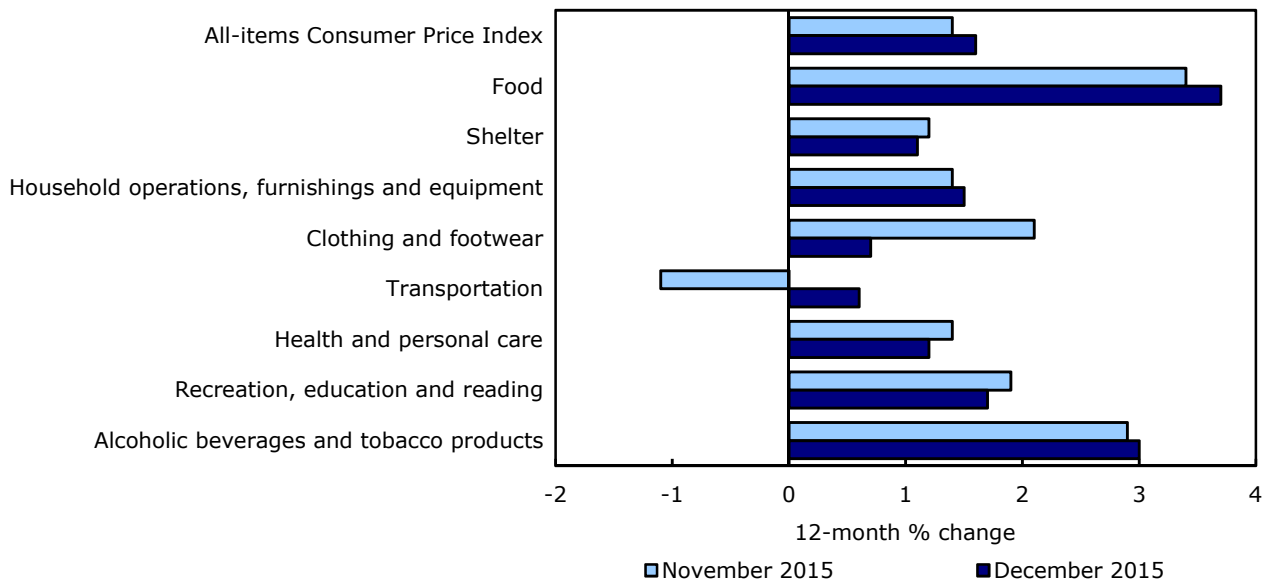
The 12-month change in the Consumer Price Index (CPI) and the CPI excluding gasoline



12-month change in the major components

Prices were up in all eight major components on a year-over-year basis in December, with the food and shelter indexes contributing the most to the rise in the CPI. The transportation index, which includes gasoline, registered its first year-over-year increase since October 2014.

Chart 2
Consumer prices increase in all major components



Consumers paid 3.7% more for food in December compared with the same month a year earlier. Prices for food purchased from stores were up 4.1% year over year in December, following a 3.7% increase the previous month. The acceleration was mainly attributable to the fresh vegetables and fresh fruit indexes, which rose more on a year-over-year basis in December than in the previous month. In contrast, the meat index increased less in the 12 months to December (+2.4%) than in November (+3.9%). Prices for food purchased from restaurants rose 2.8% year over year in December, matching the increase in November.

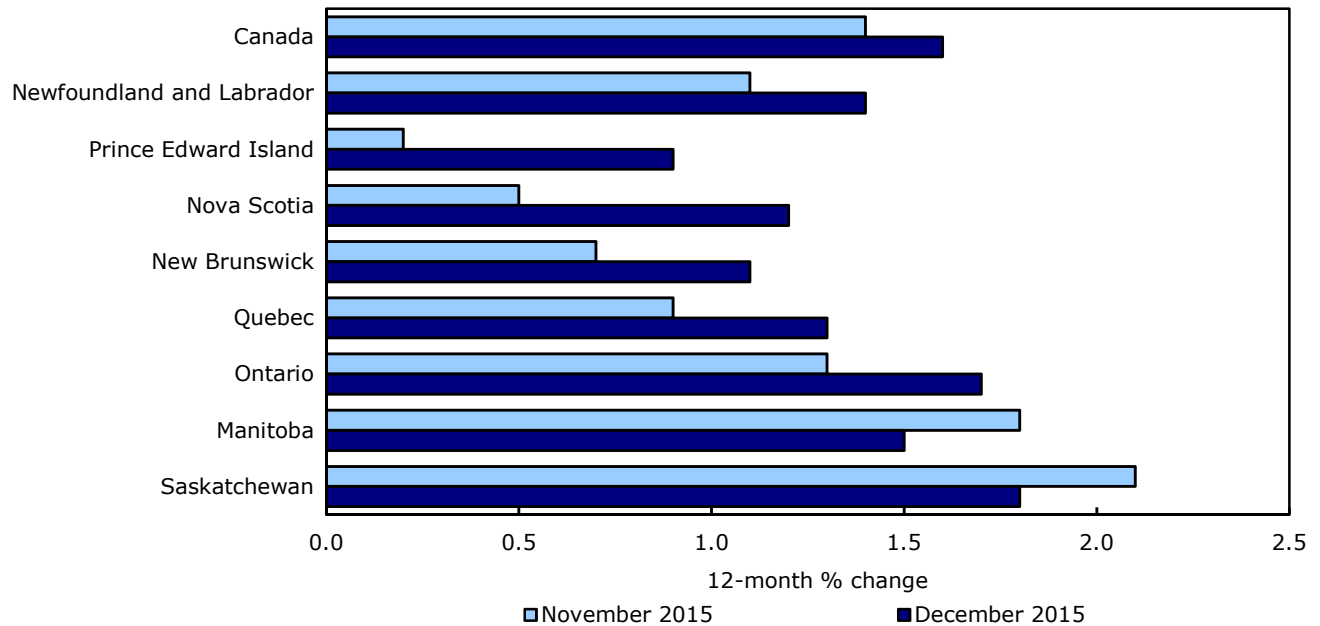
The transportation index was up 0.6% on a year-over-year basis in December, after recording 13 consecutive year-over-year declines. This turnaround was mainly attributable to the gasoline index, which registered a smaller year-over-year decrease in December (-4.8%) than in November (-10.6%). In addition, the purchase of passenger vehicles index rose 3.1% year over year in December, following a 1.9% increase the previous month.

The clothing and footwear index was up 0.7% year over year in December, after rising 2.1% in November. The men’s clothing index registered a smaller year-over-year increase in December than in November, while prices for women’s clothing declined in the 12 months to December, after increasing in November.

12-month change in the provinces

Consumer prices rose in all provinces in the 12 months to December, with British Columbia posting the largest gain. In the Prairie provinces, consumer prices were up less on a year-over-year basis in December than in November.

Chart 3
Consumer prices rise in all provinces



The CPI in British Columbia was up 1.9% year over year in December, after increasing 1.7% in November. This acceleration was led by the gasoline index, which posted its first year-over-year gain (+4.4%) since June 2014. The traveller accommodation index was also up more on a year-over-year basis in December (+9.6%) than in November (+8.4%).

In Ontario, the CPI rose 1.7% on a year-over-year basis in December, the largest gain since December 2014. Electricity prices increased 8.9% in December compared with the same month a year earlier, partly as a result of new winter electricity prices introduced in November 2015. In addition, the purchase of passenger vehicles index was up 2.8% year over year in December, after increasing 1.3% the previous month.

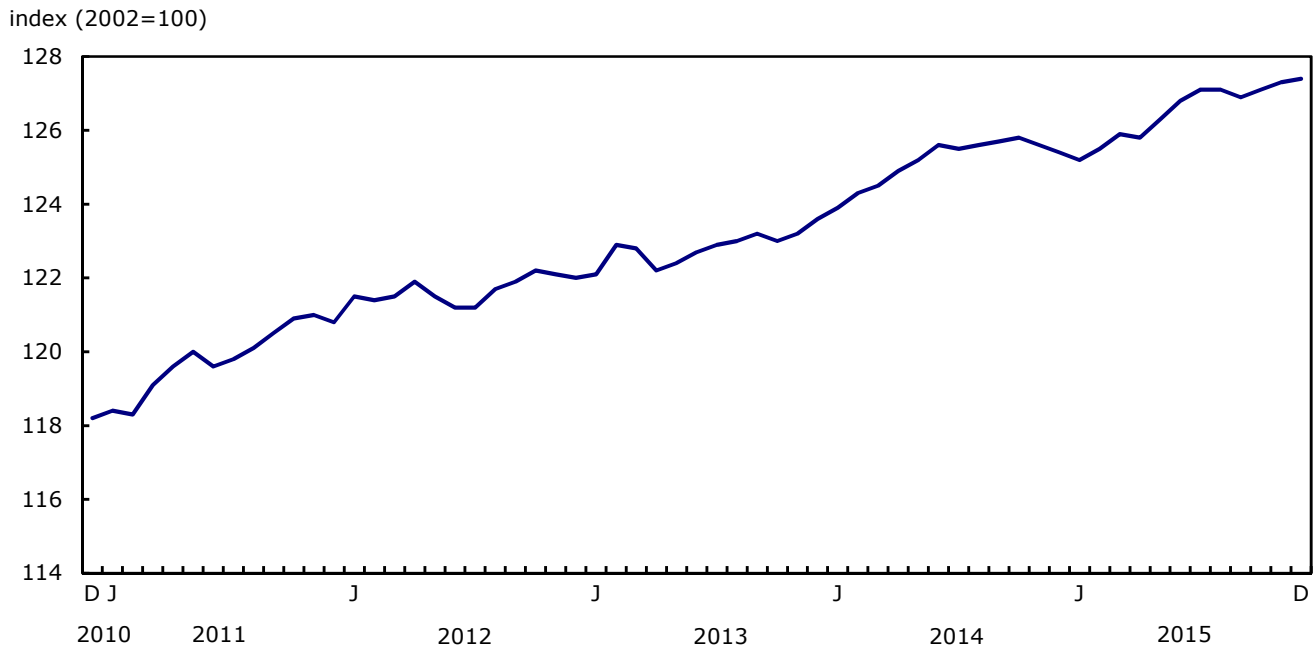
The CPI in Alberta was up 1.5% in the 12 months to December, after increasing 2.0% in November. This deceleration was mainly attributable to the natural gas index, which was down more on a year-over-year basis in December (-14.5%) than in November (-8.0%).

Seasonally adjusted monthly Consumer Price Index increases

On a seasonally adjusted monthly basis, the CPI was up 0.1% in December, after rising 0.2% in November.

Chart 4

Seasonally adjusted monthly Consumer Price Index



In December, four of the eight major components increased on a seasonally adjusted monthly basis, three decreased, while the recreation, education and reading index posted no change.

On a seasonally adjusted monthly basis, the largest increase in December was recorded in the food index (+0.6%), while the clothing and footwear index (-0.9%) posted the largest decline.

Non-seasonally adjusted monthly Consumer Price Index decreases

On a monthly basis and before seasonal adjustment, the CPI declined 0.5% in December, after decreasing 0.1% in November.

Consumer prices were down in all the provinces, with Manitoba (-1.0%) posting the largest decrease.

Bank of Canada's core index

The Bank of Canada's core index was up 1.9% in the 12 months to December, following a 2.0% rise in November.

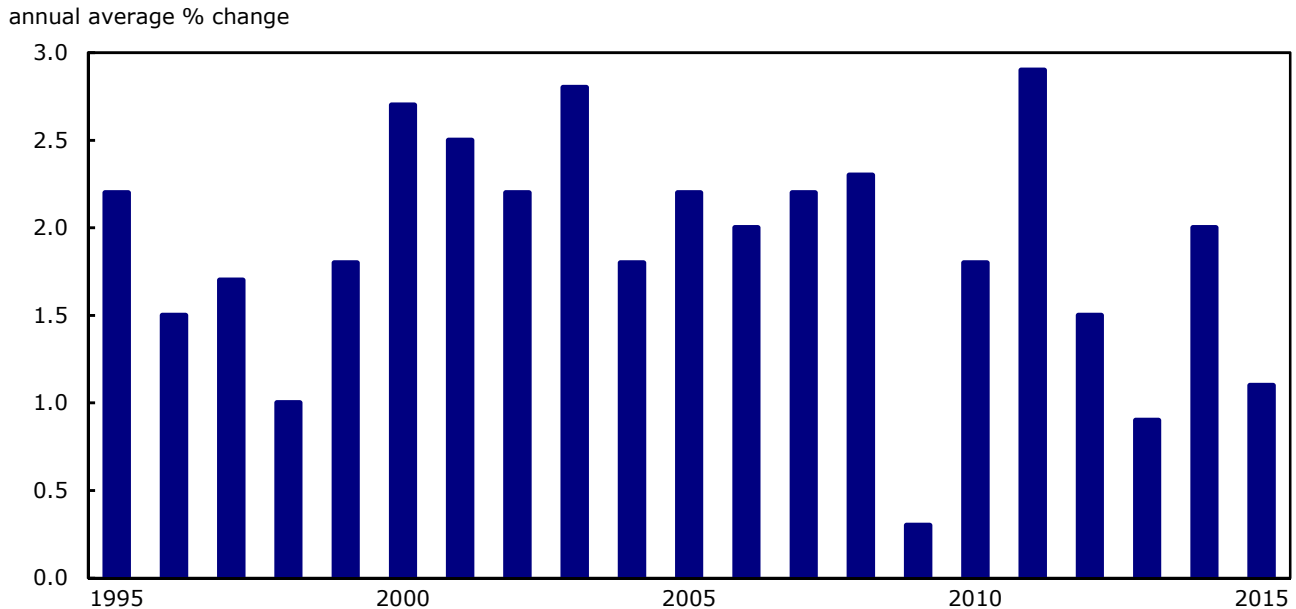
On a monthly basis and before seasonal adjustment, the core index fell 0.4% in December, after decreasing 0.3% in November.

The seasonally adjusted core index was up 0.1% on a monthly basis in December, matching the increase in November.

Annual Review of the 2015 Consumer Price Index

In 2015, the annual average increase in the CPI was 1.1%. This increase followed gains of 2.0% in 2014 and 0.9% in 2013.

Chart 5
Annual average change in the all-items Consumer Price Index: 1995 to 2015



Decreases in gasoline prices contribute to slower growth in consumer prices in 2015

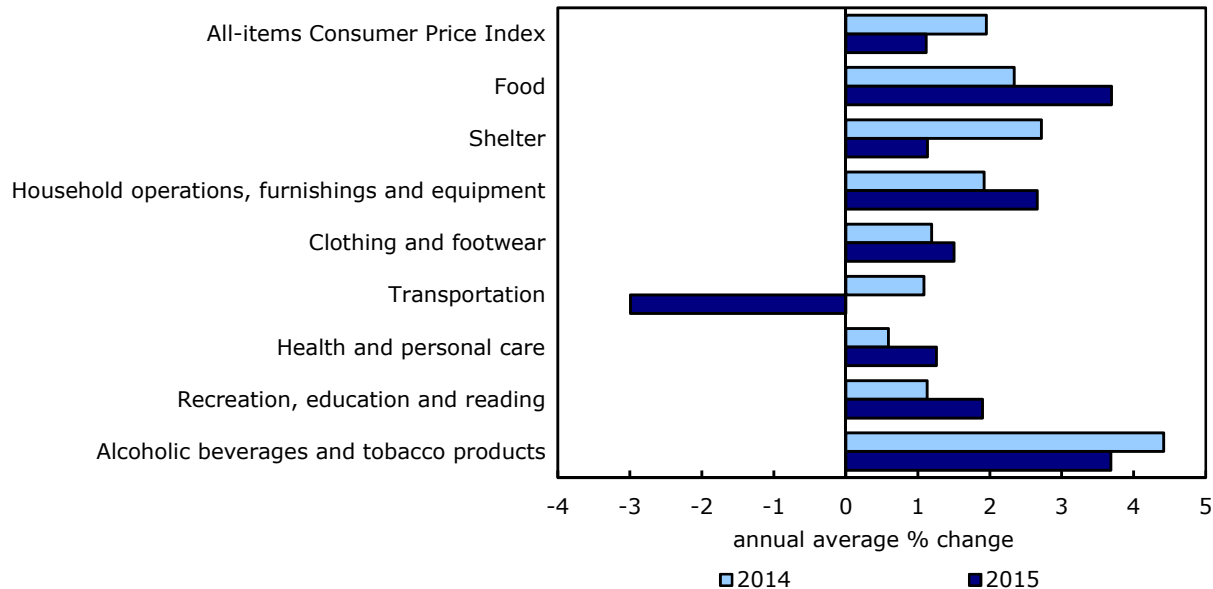
On an annual average basis, consumers paid 16.5% less for gasoline than they did the previous year, marking the largest annual average decrease in the gasoline index since 2009. The decline in the gasoline index followed price increases in 2014 (+0.2%) and 2013 (+0.6%).

Excluding gasoline, the annual average rise in the CPI was 2.0% in 2015, following a 1.9% increase the previous year.

A mixed bag of price changes among the major components in 2015

Prices were up on an annual average basis in seven of eight major components in 2015. The transportation index was the only major component to decrease in 2015.

Chart 6
Consumer prices increase in seven of eight major components



Food prices were up 3.7% on an annual average basis in 2015, after rising 2.3% in 2014. The increase in food prices was led by a rise in meat prices, which were up 7.6% in 2015. In particular, beef prices rose 15.1%, their largest increase since 2001. Additionally, consumers paid more on average for fresh vegetables (+8.1%) and fresh fruit (+6.3%) in 2015 than they did in 2014. Prices for food purchased from restaurants rose 2.7% in 2015.

The household operations, furnishings and equipment index increased 2.7% on an annual average basis in 2015, after rising 1.9% the previous year. This acceleration was led by the furniture index, which was up 3.1% in 2015, its largest increase since 1999. Additionally, prices for household appliances rose 4.0% in 2015, after decreasing 0.7% in 2014.

On an annual average basis, the shelter index was up 1.1% in 2015, after increasing 2.7% the previous year. This deceleration was mainly attributable to natural gas prices, which were down 6.4% in 2015, after rising 16.8% the previous year. Fuel oil prices decreased 19.3% in 2015, after increasing 5.1% in 2014. In contrast, homeowners' home and mortgage insurance costs were up 8.8% on an annual average basis in 2015.

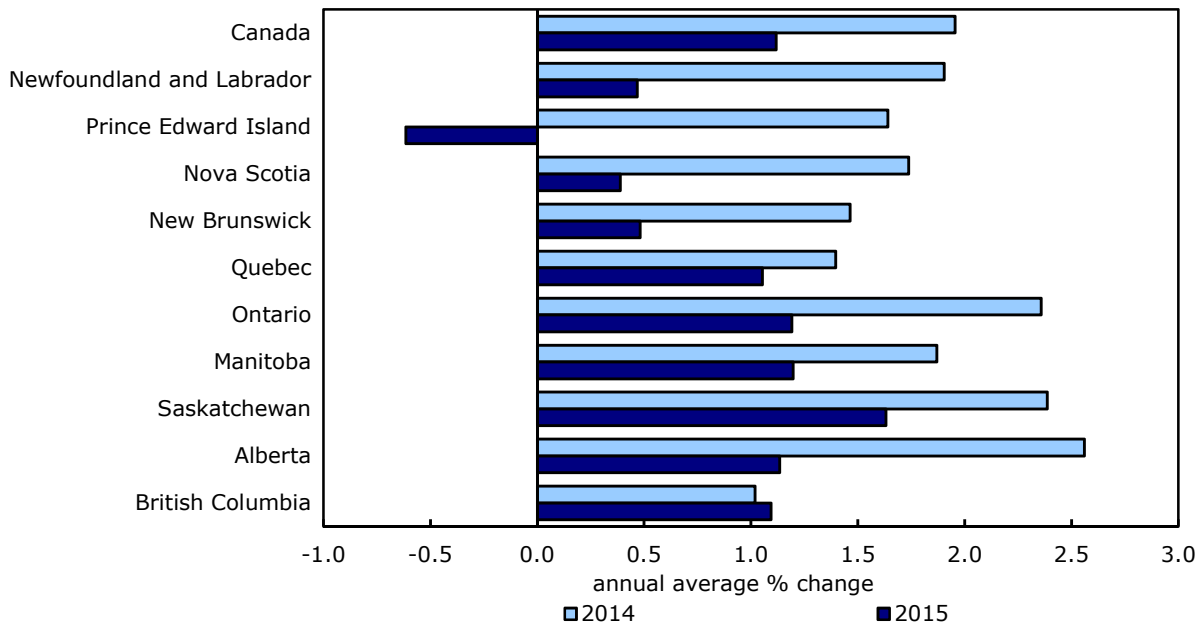
Transportation costs were down 3.0% on an annual average basis in 2015, after increasing 1.1% the previous year. The gasoline index led this decline. In contrast, consumers paid 1.6% more for the purchase of passenger vehicles in 2015, compared with 2014.

Consumer prices rise at slower rates in eight provinces

Among the provinces, eight posted smaller annual average increases in consumer prices in 2015 than in 2014. Prices in British Columbia increased more on an annual average basis in 2015 than they did the previous year, while Prince Edward Island was the lone province to register a decrease in its annual average CPI. The largest annual average gain in consumer prices was recorded in Saskatchewan (+1.6%), followed by Ontario (+1.2%) and Manitoba (+1.2%).

The gasoline index was the largest downward contributor to the annual average change in the All-items CPI in each province.

Chart 7
Consumer prices rise in nine provinces



The Bank of Canada’s core index

On an annual average basis, the Bank of Canada’s core index increased 2.2% in 2015, following a 1.8% rise in 2014.

Note to readers

A seasonally adjusted series is one from which seasonal movements have been eliminated. Users employing Consumer Price Index (CPI) data for indexation purposes are advised to use the unadjusted indexes. For more information on seasonal adjustment, see *Seasonally adjusted data – Frequently asked questions*.

The Bank of Canada's core index excludes eight of the CPI's most volatile components (fruit, fruit preparations and nuts; vegetables and vegetable preparations; mortgage interest cost; natural gas; fuel oil and other fuels; gasoline; inter-city transportation; and tobacco products and smokers' supplies) as well as the effects of changes in indirect taxes on the remaining components.

The methodology for the traveller accommodation index will be updated with the release of the January 2016 reference month CPI (to be published February 19, 2016). For more information, refer to *Changes to the traveller accommodation index of the Consumer Price Index*.

A *video* providing an overview of how the CPI reflects price changes of goods and services purchased by households in Canada is now available on Statistics Canada's website.

Annual Review

This release examines the percentage change between the annual average Consumer Price Index (CPI) in 2015 and 2014. Annual average indexes are obtained by calculating the average of the 12 monthly index values over the calendar year. Annual average percent change should not be confused with the 12-month percent change that is published every month with the release of the CPI. Unlike annual average change, 12-month change compares the monthly index level with the level from the same month a year earlier.

Related products

Selected publications from Statistics Canada

62-010-X	Consumer Prices and Price Indexes
62-557-X	Your Guide to the Consumer Price Index
62F0014M	Analytical Series - Prices Division
62-553-X	The Canadian Consumer Price Index Reference Paper

Selected technical and analytical products from Statistics Canada

62F0014M1996001	How Inflation and Income Tax Affect the Return on a Safe Investment
62F0014M2001014	Televisions: Quality Changes and Scanner Data
62F0014M2001015	Housing Depreciation in the Canadian CPI

Selected CANSIM tables from Statistics Canada

326-0009	Average retail prices for gasoline and fuel oil, by urban centre, monthly
326-0012	Average retail prices for food and other selected items, monthly
326-0015	Inter-city indexes of price differentials of consumer goods and services, annual
326-0020	Consumer Price Index, monthly
326-0021	Consumer Price Index, annual
326-0022	Consumer Price Index, seasonally adjusted, monthly
326-0031	Basket Weights of the Consumer Price Index, occasional

Selected surveys from Statistics Canada

2301	Consumer Price Index
------	----------------------

Selected summary tables from Statistics Canada

- *Consumer Price Index, by province (monthly)*
- *Consumer Price Index, by city (monthly)*
- *Consumer Price Index, food, by province (monthly)*
- *Consumer Price Index, shelter, by province (monthly)*
- *Consumer Price Index, household operations, furnishings and equipment by province (monthly)*
- *Consumer Price Index, clothing and footwear, by province (monthly)*
- *Consumer Price Index, transportation, by province (monthly)*
- *Consumer Price Index, health and personal care, by province (monthly)*
- *Consumer Price Index, recreation, education and reading, by province (monthly)*
- *Consumer Price Index, alcoholic beverages and tobacco products, by province (monthly)*
- *Canada: Economic and financial data*
- *Consumer Price Index, by province*
- *Consumer Price Index, historical summary, by province or territory*
- *Gasoline and fuel oil, average retail prices by urban centre (monthly)*
- *Food and other selected items, average retail prices (monthly)*
- *Gasoline and fuel oil, average retail prices by urban centre*
- *Food and other selected items, average retail prices*
- *Consumer Price Index, food, by province*
- *Consumer Price Index, shelter, by province*
- *Consumer Price Index, household operations, furnishings and equipment, by province*
- *Consumer Price Index, clothing and footwear, by province*
- *Consumer Price Index, transportation, by province*
- *Consumer Price Index, health and personal care, by province*
- *Consumer Price Index, recreation, education and reading, by province*
- *Consumer Price Index, alcoholic beverages and tobacco products, by province*
- *Inter-city indexes of consumer price levels*

- *Consumer Price Index, by city*
- *Consumer Price Index, historical summary*
- *Economic indicators, by province and territory (monthly and quarterly)*

For further reading

Detailed information on the methodology and concepts of the CPI is contained in ***The Canadian Consumer Price Index Reference Paper*** (Occasional), catalogue no. 62-553-X.

A brief non-technical document entitled ***Your Guide to the Consumer Price Index*** (Occasional) catalogue no. 62-557-X answers the frequently asked questions about the construction and use of the CPI.

For further information, contact the Consumer Prices Division, Statistics Canada, Ottawa, Ontario K1A 0T6 (613-951-9606), or you can also search through the Statistics Canada catalogue which lists all current products and services available from Statistics Canada.

Statistical tables

Table 1
The Consumer Price Index, major components and special aggregates, ¹ Canada, not seasonally adjusted

	CANSIM vector number	Relative importance ²	Indexes			Percentage change	
			December 2014	November 2015	December 2015	November 2015 to December 2015	December 2014 to December 2015
			2002=100			%	
All-items	(v41690973)	100.00	124.5	127.1	126.5	-0.5	1.6
Food	(v41690974)	16.41	137.4	141.6	142.5	0.6	3.7
Shelter	(v41691050)	26.80	133.0	134.4	134.5	0.1	1.1
Household operations, furnishings and equipment	(v41691067)	13.14	117.8	119.8	119.6	-0.2	1.5
Clothing and footwear	(v41691108)	6.08	91.1	96.7	91.7	-5.2	0.7
Transportation	(v41691128)	19.10	124.9	126.3	125.6	-0.6	0.6
Health and personal care	(v41691153)	4.73	119.6	121.6	121.0	-0.5	1.2
Recreation, education and reading	(v41691170)	10.89	106.1	108.8	107.9	-0.8	1.7
Alcoholic beverages and tobacco products	(v41691206)	2.86	149.1	153.8	153.5	-0.2	3.0
All-items (1992=100)	(v41713403)	.	148.2	151.3	150.6	-0.5	1.6
Special aggregates							
Goods	(v41691222)	46.68	114.6	117.3	116.3	-0.9	1.5
Durable goods	(v41691223)	12.65	85.2	87.2	87.5	0.3	2.7
Semi-durable goods	(v41691224)	7.55	93.2	97.9	93.7	-4.3	0.5
Non-durable goods	(v41691225)	26.48	137.5	139.7	139.2	-0.4	1.2
Services	(v41691230)	53.32	134.5	136.9	136.8	-0.1	1.7
All-items excluding food	(v41691232)	83.59	122.0	124.3	123.5	-0.6	1.2
All-items excluding food and energy	(v41691233)	75.80	119.3	121.9	121.3	-0.5	1.7
All-items excluding energy	(v41691238)	92.21	122.5	125.4	125.0	-0.3	2.0
All-items excluding gasoline	(v41693245)	96.16	123.4	126.1	125.7	-0.3	1.9
All-items excluding shelter, insurance and financial services	(v41693246)	69.31	119.5	122.5	121.7	-0.7	1.8
Energy	(v41691239)	7.79	148.7	146.5	143.4	-2.1	-3.6
All-items excluding alcoholic beverages, tobacco products and smokers' supplies	(v41691241)	97.14	123.7	126.2	125.6	-0.5	1.5
Bank of Canada's core index ³	(v41693242)	85.39	123.7	126.6	126.1	-0.4	1.9

Note(s): See "Data quality, concepts and methodology — Explanatory notes for tables" section.

Table 2
The Consumer Price Index, major components and special aggregates, ¹ Canada, seasonally adjusted²

	CANSIM vector number	Indexes			Percentage change	
		October 2015	November 2015	December 2015	October 2015 to November 2015	November 2015 to December 2015
		2002=100			%	
All-items	(v41690914)	127.1	127.3	127.4	0.2	0.1
Food	(v41690915)	141.9	142.0	142.9	0.1	0.6
Shelter	(v41690916)	134.3	134.4	134.5	0.1	0.1
Household operations, furnishings and equipment	(v41690917)	120.5	119.9	120.1	-0.5	0.2
Clothing and footwear	(v41690918)	95.1	95.6	94.7	0.5	-0.9
Transportation	(v41690919)	126.1	127.1	127.5	0.8	0.3
Health and personal care	(v41690920)	121.0	121.4	121.1	0.3	-0.2
Recreation, education and reading	(v41690921)	110.0	109.7	109.7	-0.3	0.0
Alcoholic beverages and tobacco products	(v41690922)	152.9	153.8	153.5	0.6	-0.2
Special aggregates						
All-items excluding food	(v41690923)	124.3	124.5	124.6	0.2	0.1
All-items excluding food and energy	(v41690924)	121.8	121.9	122.0	0.1	0.1
All-items excluding eight of the most volatile components (Bank of Canada definition)	(v41690925)	126.0	126.0	126.2	0.0	0.2
Bank of Canada's core index ³	(v41690926)	126.6	126.7	126.8	0.1	0.1

Note(s): See "Data quality, concepts and methodology — Explanatory notes for tables" section.

Table 3
The Consumer Price Index, provinces, Whitehorse, Yellowknife and Iqaluit, 1 not seasonally adjusted

	CANSIM vector number	Indexes			Percentage change	
		December 2014	November 2015	December 2015	November 2015 to December 2015	December 2014 to December 2015
		2002=100			%	
Newfoundland and Labrador	(v41691244)	126.8	129.3	128.6	-0.5	1.4
Prince Edward Island	(v41691379)	128.1	129.6	129.2	-0.3	0.9
Nova Scotia	(v41691513)	127.4	129.2	128.9	-0.2	1.2
New Brunswick	(v41691648)	124.1	125.8	125.5	-0.2	1.1
Quebec	(v41691783)	122.8	124.9	124.4	-0.4	1.3
Ontario	(v41691919)	125.4	127.9	127.5	-0.3	1.7
Manitoba	(v41692055)	124.5	127.7	126.4	-1.0	1.5
Saskatchewan	(v41692191)	128.3	131.7	130.6	-0.8	1.8
Alberta	(v41692327)	131.5	134.7	133.5	-0.9	1.5
British Columbia	(v41692462)	118.1	120.8	120.4	-0.3	1.9
Whitehorse, Yukon	(v41692598)	123.1	124.0	124.1	0.1	0.8
Yellowknife, Northwest Territories	(v41692722)	128.7	131.0	130.6	-0.3	1.5
Iqaluit, Nunavut (200212=100)	(v41713432)	117.9	121.0	120.8	-0.2	2.5

Note(s): See "Data quality, concepts and methodology — Explanatory notes for tables" section.

Table 4-1
The Consumer Price Index, major components and selected sub-groups, Canada, not seasonally adjusted — Food

	CANSIM vector number	Indexes			Percentage change	
		December 2014	November 2015	December 2015	November 2015 to December 2015	December 2014 to December 2015
		2002=100			%	
Food	(v41690974)	137.4	141.6	142.5	0.6	3.7
Food purchased from stores	(v41690975)	137.6	142.2	143.2	0.7	4.1
Meat	(v41690976)	152.7	158.1	156.4	-1.1	2.4
Fresh or frozen meat (excluding poultry)	(v41690977)	162.6	170.6	170.0	-0.4	4.6
Fresh or frozen beef	(v41690978)	172.4	183.8	182.4	-0.8	5.8
Fresh or frozen pork	(v41690979)	141.9	143.5	143.7	0.1	1.3
Fresh or frozen poultry	(v41690981)	144.7	153.2	150.4	-1.8	3.9
Fresh or frozen chicken	(v41690982)	151.3	158.3	156.8	-0.9	3.6
Processed meat	(v41690984)	144.8	145.6	143.5	-1.4	-0.9
Ham and bacon	(v41690985)	136.4	141.6	139.0	-1.8	1.9
Other processed meat	(v41690986)	151.3	151.5	149.3	-1.5	-1.3
Fish, seafood and other marine products	(v41690987)	121.9	125.6	124.1	-1.2	1.8
Fish	(v41690988)	128.4	130.5	130.8	0.2	1.9
Fresh or frozen fish (including portions and fish sticks)	(v41690989)	126.7	128.3	128.7	0.3	1.6
Canned and other preserved fish	(v41690990)	132.7	136.5	136.5	0.0	2.9
Dairy products and eggs	(v41690992)	136.0	136.8	136.7	-0.1	0.5
Dairy products	(v41690993)	134.6	135.2	135.0	-0.1	0.3
Fresh milk	(v41690994)	137.1	137.4	137.7	0.2	0.4
Butter	(v41690995)	132.2	135.9	135.2	-0.5	2.3
Cheese	(v41690996)	134.6	134.5	132.9	-1.2	-1.3
Ice cream and related products	(v41690997)	130.4	126.4	127.0	0.5	-2.6
Eggs	(v41690999)	152.1	156.3	157.1	0.5	3.3
Bakery and cereal products (excluding baby food)	(v41691000)	153.0	154.9	156.1	0.8	2.0
Bakery products	(v41691001)	162.6	163.9	164.7	0.5	1.3
Bread, rolls and buns	(v41691002)	187.3	191.5	190.5	-0.5	1.7
Cookies and crackers	(v41691003)	133.3	138.1	137.4	-0.5	3.1
Other bakery products	(v41691004)	146.8	141.9	146.1	3.0	-0.5
Cereal products (excluding baby food)	(v41691005)	136.2	139.0	140.8	1.3	3.4
Rice and rice-based mixes	(v41691006)	136.6	143.2	142.7	-0.3	4.5
Breakfast cereal and other cereal products (excluding baby food)	(v41691007)	126.1	125.9	128.7	2.2	2.1
Pasta products	(v41691008)	151.5	165.5	165.9	0.2	9.5
Flour and flour-based mixes	(v41691009)	145.6	145.4	142.8	-1.8	-1.9
Fruit, fruit preparations and nuts	(v41691010)	125.7	135.2	138.3	2.3	10.0
Fresh fruit	(v41691011)	121.6	133.1	137.6	3.4	13.2
Apples	(v41691012)	129.0	140.3	144.2	2.8	11.8
Oranges	(v41691013)	126.1	135.2	137.2	1.5	8.8
Bananas	(v41691014)	139.0	141.5	141.1	-0.3	1.5
Other fresh fruit	(v41691015)	114.1	127.4	133.3	4.6	16.8
Preserved fruit and fruit preparations	(v41691016)	126.5	130.8	131.4	0.5	3.9
Fruit juices	(v41691017)	131.2	133.2	135.1	1.4	3.0
Other preserved fruit and fruit preparations	(v41691018)	117.1	124.7	123.3	-1.1	5.3
Nuts	(v41691019)	144.1	152.3	150.9	-0.9	4.7
Vegetables and vegetable preparations	(v41691020)	126.4	133.1	139.7	5.0	10.5
Fresh vegetables	(v41691021)	123.2	131.5	139.6	6.2	13.3
Potatoes	(v41691022)	97.8	95.9	97.8	2.0	0.0
Tomatoes	(v41691023)	132.4	124.7	134.4	7.8	1.5
Lettuce	(v41691024)	128.4	143.9	156.4	8.7	21.8
Other fresh vegetables	(v41691025)	130.9	143.7	152.3	6.0	16.3
Preserved vegetables and vegetable preparations	(v41691026)	138.9	139.3	140.7	1.0	1.3
Frozen and dried vegetables	(v41691027)	140.5	143.9	141.1	-1.9	0.4
Canned vegetables and other vegetable preparations	(v41691028)	139.3	138.7	141.5	2.0	1.6
Other food products and non-alcoholic beverages	(v41691029)	129.8	133.7	133.8	0.1	3.1
Sugar and confectionery	(v41691030)	137.2	139.3	137.1	-1.6	-0.1
Edible fats and oils	(v41691033)	146.1	150.4	151.8	0.9	3.9
Coffee and tea	(v41691036)	134.7	137.0	136.9	-0.1	1.6
Condiments, spices and vinegars	(v41691039)	122.5	125.5	126.5	0.8	3.3
Other food preparations	(v41691040)	132.5	138.4	139.1	0.5	5.0
Non-alcoholic beverages	(v41691045)	118.8	121.6	122.0	0.3	2.7
Food purchased from restaurants	(v41691046)	136.9	140.3	140.7	0.3	2.8
Food purchased from table-service restaurants	(v41691047)	138.4	141.7	142.3	0.4	2.8
Food purchased from fast food and take-out restaurants	(v41691048)	133.4	137.0	137.0	0.0	2.7

Note(s): See "Data quality, concepts and methodology — Explanatory notes for tables" section.

Table 4-2
The Consumer Price Index, major components and selected sub-groups, Canada, not seasonally adjusted — Shelter

	CANSIM vector number	Indexes			Percentage change	
		December 2014	November 2015	December 2015	November 2015 to December 2015	December 2014 to December 2015
		2002=100			%	
Shelter	(v41691050)	133.0	134.4	134.5	0.1	1.1
Rented accommodation	(v41691051)	117.9	118.9	118.9	0.0	0.8
Rent	(v41691052)	117.9	118.8	118.9	0.1	0.8
Owned accommodation	(v41691055)	134.1	136.4	136.7	0.2	1.9
Mortgage interest cost ¹	(v41691056)	104.7	103.4	103.3	-0.1	-1.3
Homeowners' replacement cost	(v41691057)	153.4	155.1	155.4	0.2	1.3
Property taxes and other special charges	(v41691058)	148.3	152.7	152.7	0.0	3.0
Homeowners' home and mortgage insurance	(v41691059)	199.4	214.9	217.2	1.1	8.9
Homeowners' maintenance and repairs	(v41691060)	129.5	133.6	134.2	0.4	3.6
Water, fuel and electricity	(v41691062)	153.9	152.2	151.8	-0.3	-1.4
Electricity	(v41691063)	140.3	145.5	145.7	0.1	3.8
Water	(v41691064)	212.5	222.4	222.4	0.0	4.7
Natural gas	(v41691065)	124.4	109.2	108.4	-0.7	-12.9
Fuel oil and other fuels	(v41691066)	228.3	195.4	190.0	-2.8	-16.8

Note(s): See "Data quality, concepts and methodology — Explanatory notes for tables" section.

Table 4-3
The Consumer Price Index, major components and selected sub-groups, Canada, not seasonally adjusted — Household operations, furnishings and equipment

	CANSIM vector number	Indexes			Percentage change	
		December 2014	November 2015	December 2015	November 2015 to December 2015	December 2014 to December 2015
		2002=100			%	
Household operations, furnishings and equipment	(v41691067)	117.8	119.8	119.6	-0.2	1.5
Household operations	(v41691068)	131.9	133.3	133.4	0.1	1.1
Communications	(v41691069)	126.0	125.1	125.4	0.2	-0.5
Telephone services	(v41691070)	124.2	120.5	121.1	0.5	-2.5
Postal and other communications services	(v41691071)	194.7	195.4	195.4	0.0	0.4
Internet access services (200212=100)	(v41693216)	119.3	125.1	125.1	0.0	4.9
Child care and housekeeping services	(v41691072)	149.2	152.7	152.7	0.0	2.3
Child care services	(v41691073)	148.7	151.8	151.8	0.0	2.1
Housekeeping services	(v41691074)	150.5	155.1	155.1	0.0	3.1
Household cleaning products	(v41691075)	112.3	112.8	112.6	-0.2	0.3
Paper, plastic and aluminum foil supplies	(v41691078)	122.2	124.6	124.3	-0.2	1.7
Other household goods and services	(v41691081)	139.5	142.5	142.5	0.0	2.2
Pet food and supplies	(v41691082)	130.8	136.9	136.4	-0.4	4.3
Seeds, plants and cut flowers	(v41691083)	116.4	119.9	120.1	0.2	3.2
Other horticultural goods	(v41691084)	112.8	108.0	108.1	0.1	-4.2
Financial services (200212=100)	(v41693229)	142.1	142.8	142.8	0.0	0.5
Household furnishings and equipment	(v41691087)	93.5	96.8	95.9	-0.9	2.6
Furniture and household textiles	(v41691088)	92.6	95.9	93.9	-2.1	1.4
Furniture	(v41691089)	89.7	92.3	90.2	-2.3	0.6
Household textiles	(v41691093)	103.3	109.5	108.0	-1.4	4.5
Household equipment	(v41691097)	84.3	87.2	87.0	-0.2	3.2
Household appliances	(v41691098)	83.1	87.5	86.0	-1.7	3.5
Non-electric kitchen utensils, tableware and cookware	(v41691103)	74.0	79.4	79.2	-0.3	7.0
Services related to household furnishings and equipment	(v41691107)	173.1	180.2	180.2	0.0	4.1

Note(s): See "Data quality, concepts and methodology — Explanatory notes for tables" section.

Table 4-4
The Consumer Price Index, major components and selected sub-groups, Canada, not seasonally adjusted — Clothing and footwear

	CANSIM vector number	Indexes			Percentage change	
		December 2014	November 2015	December 2015	November 2015 to December 2015	December 2014 to December 2015
		2002=100			%	
Clothing and footwear	(v41691108)	91.1	96.7	91.7	-5.2	0.7
Clothing	(v41691109)	80.9	86.4	80.9	-6.4	0.0
Women's clothing	(v41691110)	77.4	82.3	76.9	-6.6	-0.6
Men's clothing	(v41691111)	88.9	95.3	89.6	-6.0	0.8
Children's clothing	(v41691112)	73.2	78.5	73.7	-6.1	0.7
Footwear	(v41691113)	92.2	96.5	91.9	-4.8	-0.3
Clothing accessories, watches and jewellery	(v41691118)	130.8	139.5	136.3	-2.3	4.2
Clothing material, notions and services	(v41691123)	139.6	142.8	143.2	0.3	2.6

Note(s): See "Data quality, concepts and methodology — Explanatory notes for tables" section.

Table 4-5
The Consumer Price Index, major components and selected sub-groups, Canada, not seasonally adjusted — Transportation

	CANSIM vector number	Indexes			Percentage change	
		December 2014	November 2015	December 2015	November 2015 to December 2015	December 2014 to December 2015
		2002=100			%	
Transportation	(v41691128)	124.9	126.3	125.6	-0.6	0.6
Private transportation	(v41691129)	123.8	125.0	124.7	-0.2	0.7
Purchase, leasing and rental of passenger vehicles	(v41691130)	94.0	95.7	96.9	1.3	3.1
Purchase and leasing of passenger vehicles	(v41691131)	93.9	95.6	96.8	1.3	3.1
Purchase of passenger vehicles	(v41691132)	94.7	96.4	97.6	1.2	3.1
Rental of passenger vehicles	(v41691134)	105.1	104.2	102.7	-1.4	-2.3
Operation of passenger vehicles	(v41691135)	150.7	151.4	149.1	-1.5	-1.1
Gasoline	(v41691136)	149.9	148.6	142.7	-4.0	-4.8
Passenger vehicle parts, maintenance and repairs	(v41691137)	134.2	136.5	136.5	0.0	1.7
Other passenger vehicle operating expenses	(v41691140)	160.7	162.5	162.7	0.1	1.2
Passenger vehicle insurance premiums	(v41691141)	163.9	165.0	165.1	0.1	0.7
Passenger vehicle registration fees	(v41691142)	120.7	127.2	127.2	0.0	5.4
Drivers' licences	(v41691143)	161.1	162.5	162.5	0.0	0.9
Parking fees	(v41691144)	174.9	177.0	180.0	1.7	2.9
Public transportation	(v41691146)	135.1	138.0	134.9	-2.2	-0.1
Local and commuter transportation	(v41691147)	149.1	152.8	152.8	0.0	2.5
City bus and subway transportation	(v41691148)	149.9	154.8	154.8	0.0	3.3
Taxi and other local and commuter transportation services	(v41691149)	145.2	146.1	146.1	0.0	0.6
Inter-city transportation	(v41691150)	127.4	130.0	125.4	-3.5	-1.6
Air transportation	(v41691151)	125.2	127.6	122.8	-3.8	-1.9
Rail, highway bus and other inter-city transportation	(v41691152)	130.7	135.4	135.3	-0.1	3.5

Table 4-6
The Consumer Price Index, major components and selected sub-groups, Canada, not seasonally adjusted — Health and personal care

	CANSIM vector number	Indexes			Percentage change	
		December 2014	November 2015	December 2015	November 2015 to December 2015	December 2014 to December 2015
		2002=100			%	
Health and personal care	(v41691153)	119.6	121.6	121.0	-0.5	1.2
Health care	(v41691154)	122.1	123.5	123.5	0.0	1.1
Health care goods	(v41713463)	102.8	103.2	103.2	0.0	0.4
Medicinal and pharmaceutical products	(v41691156)	99.2	99.4	99.3	-0.1	0.1
Prescribed medicines	(v41691157)	89.7	89.3	89.1	-0.2	-0.7
Non-prescribed medicines	(v41691158)	116.2	117.9	117.8	-0.1	1.4
Eye care goods	(v41713381)	112.3	113.1	113.4	0.3	1.0
Health care services	(v41713464)	152.3	155.8	155.8	0.0	2.3
Eye care services (200704=100)	(v41693244)	118.9	121.6	121.6	0.0	2.3
Dental care services	(v41691161)	148.8	152.2	152.2	0.0	2.3
Personal care	(v41691163)	117.2	119.9	118.7	-1.0	1.3
Personal care supplies and equipment	(v41691164)	105.7	107.8	105.9	-1.8	0.2
Personal care services	(v41691169)	134.5	138.2	138.2	0.0	2.8

Note(s): See "Data quality, concepts and methodology — Explanatory notes for tables" section.

Table 4-7
The Consumer Price Index, major components and selected sub-groups, Canada, not seasonally adjusted — Recreation, education and reading

	CANSIM vector number	Indexes			Percentage change	
		December 2014	November 2015	December 2015	November 2015 to December 2015	December 2014 to December 2015
		2002=100			%	
Recreation, education and reading	(v41691170)	106.1	108.8	107.9	-0.8	1.7
Recreation	(v41691171)	93.3	95.5	94.3	-1.3	1.1
Recreational equipment and services (excluding recreational vehicles)	(v41691172)	54.3	54.0	53.6	-0.7	-1.3
Purchase and operation of recreational vehicles	(v41691179)	118.3	123.6	123.0	-0.5	4.0
Home entertainment equipment, parts and services	(v41691184)	54.7	54.8	54.2	-1.1	-0.9
Travel services	(v41691190)	86.5	89.3	86.0	-3.7	-0.6
Traveller accommodation ¹	(v41691191)	78.2	83.0	80.4	-3.1	2.8
Travel tours	(v41691192)	92.4	92.4	88.4	-4.3	-4.3
Other cultural and recreational services	(v41691193)	152.5	156.7	156.7	0.0	2.8
Spectator entertainment (excluding video and audio subscription services)	(v41691194)	138.4	141.1	141.2	0.1	2.0
Video and audio subscription services	(v41691195)	167.3	173.2	173.2	0.0	3.5
Use of recreational facilities and services	(v41691196)	143.1	145.9	145.9	0.0	2.0
Education and reading	(v41691197)	149.5	154.2	154.5	0.2	3.3
Education	(v41691198)	154.8	159.4	159.5	0.1	3.0
Tuition fees	(v41691199)	162.2	166.8	166.8	0.0	2.8
Reading material (excluding textbooks)	(v41691202)	130.3	135.9	138.3	1.8	6.1
Newspapers	(v41691203)	159.6	164.0	164.0	0.0	2.8
Magazines and periodicals	(v41691204)	133.7	136.8	136.8	0.0	2.3

Note(s): See "Data quality, concepts and methodology — Explanatory notes for tables" section.

Table 4-8
The Consumer Price Index, major components and selected sub-groups, Canada, not seasonally adjusted — Alcoholic beverages and tobacco products

	CANSIM vector number	Indexes			Percentage change	
		December 2014	November 2015	December 2015	November 2015 to December 2015	December 2014 to December 2015
		2002=100			%	
Alcoholic beverages and tobacco products	(v41691206)	149.1	153.8	153.5	-0.2	3.0
Alcoholic beverages	(v41691207)	121.0	123.7	123.2	-0.4	1.8
Alcoholic beverages served in licensed establishments	(v41691208)	134.2	136.5	136.5	0.0	1.7
Beer served in licensed establishments	(v41691209)	139.8	142.1	142.1	0.0	1.6
Liquor served in licensed establishments	(v41691211)	134.2	136.9	136.9	0.0	2.0
Alcoholic beverages purchased from stores	(v41691212)	115.2	117.9	117.3	-0.5	1.8
Beer purchased from stores	(v41691213)	121.0	124.9	124.2	-0.6	2.6
Wine purchased from stores	(v41691214)	105.3	107.3	106.7	-0.6	1.3
Liquor purchased from stores	(v41691215)	115.0	116.6	116.0	-0.5	0.9
Tobacco products and smokers' supplies	(v41691216)	181.9	190.0	190.2	0.1	4.6
Cigarettes	(v41691217)	181.7	189.8	190.0	0.1	4.6

Note(s): See "Data quality, concepts and methodology — Explanatory notes for tables" section.

Table 5
The Consumer Price Index for Canada, All-items CPI, not seasonally adjusted, historical data

	Jan.	Feb.	Mar.	Apr.	May	June	July	Aug.	Sept.	Oct.	Nov.	Dec.	Annual average ¹
	2002=100												
Indexes (v41690973)													
1996	88.0	88.1	88.5	88.7	89.0	89.0	89.0	89.0	89.1	89.3	89.7	89.7	88.9
1997	89.9	90.1	90.2	90.2	90.3	90.5	90.5	90.6	90.6	90.6	90.5	90.4	90.4
1998	90.9	91.0	91.1	91.0	91.3	91.4	91.4	91.4	91.2	91.6	91.6	91.3	91.3
1999	91.5	91.6	92.0	92.5	92.7	92.9	93.1	93.3	93.6	93.7	93.6	93.7	92.9
2000	93.5	94.1	94.8	94.5	94.9	95.5	95.8	95.7	96.1	96.3	96.6	96.7	95.4
2001	96.3	96.8	97.1	97.8	98.6	98.7	98.4	98.4	98.6	98.1	97.2	97.4	97.8
2002	97.6	98.2	98.9	99.5	99.7	99.9	100.5	100.9	100.9	101.2	101.5	101.1	100.0
2003	102.0	102.8	103.1	102.4	102.5	102.5	102.6	102.9	103.1	102.8	103.1	103.2	102.8
2004	103.3	103.5	103.9	104.1	105.0	105.1	105.0	104.8	105.0	105.2	105.6	105.4	104.7
2005	105.3	105.7	106.3	106.6	106.7	106.9	107.1	107.5	108.4	107.9	107.7	107.6	107.0
2006	108.2	108.0	108.6	109.2	109.7	109.5	109.6	109.8	109.2	109.0	109.2	109.4	109.1
2007	109.4	110.2	111.1	111.6	112.1	111.9	112.0	111.7	111.9	111.6	111.9	112.0	111.5
2008	111.8	112.2	112.6	113.5	114.6	115.4	115.8	115.6	115.7	114.5	114.1	113.3	114.1
2009	113.0	113.8	114.0	113.9	114.7	115.1	114.7	114.7	114.7	114.6	115.2	114.8	114.4
2010	115.1	115.6	115.6	116.0	116.3	116.2	116.8	116.7	116.9	117.4	117.5	117.5	116.5
2011	117.8	118.1	119.4	119.8	120.6	119.8	120.0	120.3	120.6	120.8	120.9	120.2	119.9
2012	120.7	121.2	121.7	122.2	122.1	121.6	121.5	121.8	122.0	122.2	121.9	121.2	121.7
2013	121.3	122.7	122.9	122.7	123.0	123.0	123.1	123.1	123.3	123.0	123.0	122.7	122.8
2014	123.1	124.1	124.8	125.2	125.8	125.9	125.7	125.7	125.8	125.9	125.4	124.5	125.2
2015	124.3	125.4	126.3	126.2	126.9	127.2	127.3	127.3	127.1	127.2	127.1	126.5	126.6
Percentage change from the corresponding month of the previous year (v41690973)													
1996	1.6	1.3	1.5	1.4	1.5	1.5	1.3	1.5	1.5	1.8	1.9	2.2	1.5
1997	2.2	2.3	1.9	1.7	1.5	1.7	1.7	1.8	1.7	1.5	0.9	0.8	1.7
1998	1.1	1.0	1.0	0.9	1.1	1.0	1.0	0.9	0.7	1.1	1.2	1.0	1.0
1999	0.7	0.7	1.0	1.6	1.5	1.6	1.9	2.1	2.6	2.3	2.2	2.6	1.8
2000	2.2	2.7	3.0	2.2	2.4	2.8	2.9	2.6	2.7	2.8	3.2	3.2	2.7
2001	3.0	2.9	2.4	3.5	3.9	3.4	2.7	2.8	2.6	1.9	0.6	0.7	2.5
2002	1.3	1.4	1.9	1.7	1.1	1.2	2.1	2.5	2.3	3.2	4.4	3.8	2.2
2003	4.5	4.7	4.2	2.9	2.8	2.6	2.1	2.0	2.2	1.6	1.6	2.1	2.8
2004	1.3	0.7	0.8	1.7	2.4	2.5	2.3	1.8	1.8	2.3	2.4	2.1	1.8
2005	1.9	2.1	2.3	2.4	1.6	1.7	2.0	2.6	3.2	2.6	2.0	2.1	2.2
2006	2.8	2.2	2.2	2.4	2.8	2.4	2.3	2.1	0.7	1.0	1.4	1.7	2.0
2007	1.1	2.0	2.3	2.2	2.2	2.2	2.2	1.7	2.5	2.4	2.5	2.4	2.2
2008	2.2	1.8	1.4	1.7	2.2	3.1	3.4	3.5	3.4	2.6	2.0	1.2	2.3
2009	1.1	1.4	1.2	0.4	0.1	-0.3	-0.9	-0.8	-0.9	0.1	1.0	1.3	0.3
2010	1.9	1.6	1.4	1.8	1.4	1.0	1.8	1.7	1.9	2.4	2.0	2.4	1.8
2011	2.3	2.2	3.3	3.3	3.7	3.1	2.7	3.1	3.2	2.9	2.9	2.3	2.9
2012	2.5	2.6	1.9	2.0	1.2	1.5	1.3	1.2	1.2	1.2	0.8	0.8	1.5
2013	0.5	1.2	1.0	0.4	0.7	1.2	1.3	1.1	1.1	0.7	0.9	1.2	0.9
2014	1.5	1.1	1.5	2.0	2.3	2.4	2.1	2.1	2.0	2.4	2.0	1.5	2.0
2015	1.0	1.0	1.2	0.8	0.9	1.0	1.3	1.3	1.0	1.0	1.4	1.6	1.1

Note(s): See "Data quality, concepts and methodology — Explanatory notes for tables" section.

Table 6
The Bank of Canada's core index, 1 not seasonally adjusted, historical data

	Jan.	Feb.	Mar.	Apr.	May	June	July	Aug.	Sept.	Oct.	Nov.	Dec.	Annual average ²
	2002=100												
Indexes (v41693242)													
1996	89.4	89.8	89.8	89.9	90.1	90.1	90.3	90.5	90.8	90.8	91.3	91.1	90.3
1997	91.3	91.5	91.7	91.9	92.0	92.1	92.1	92.3	92.4	92.5	92.4	92.3	92.0
1998	92.6	92.9	93.0	93.0	93.2	93.2	93.3	93.4	93.4	93.7	93.7	93.5	93.2
1999	93.5	93.8	94.1	94.2	94.5	94.6	94.7	94.9	95.2	95.1	95.0	94.8	94.5
2000	94.6	95.0	95.3	95.3	95.5	95.8	95.8	96.0	96.2	96.3	96.4	96.4	95.7
2001	96.3	96.6	97.1	97.4	97.7	97.9	98.2	98.3	98.4	98.4	98.1	98.0	97.7
2002	98.1	98.8	99.2	99.6	99.8	100.0	100.2	100.7	100.9	100.9	101.2	100.7	100.0
2003	101.3	101.8	102.0	101.7	102.2	102.1	102.1	102.2	102.6	102.7	103.0	102.8	102.2
2004	102.8	103.0	103.3	103.5	103.7	103.8	104.0	103.8	104.1	104.1	104.7	104.6	103.8
2005	104.5	104.8	105.2	105.2	105.4	105.4	105.4	105.6	105.9	105.9	106.3	106.2	105.5
2006	106.2	106.6	107.0	106.9	107.5	107.2	107.5	107.7	108.3	108.4	108.6	108.4	107.5
2007	108.6	109.1	109.5	109.6	109.9	109.9	110.0	110.1	110.5	110.3	110.3	110.0	109.8
2008	110.1	110.7	110.9	111.2	111.5	111.6	111.7	112.0	112.4	112.2	113.0	112.6	111.7
2009	112.2	112.8	113.1	113.2	113.7	113.7	113.7	113.8	114.1	114.2	114.7	114.3	113.6
2010	114.4	115.2	115.0	115.3	115.7	115.6	115.5	115.6	115.8	116.3	116.3	116.0	115.6
2011	116.0	116.2	117.0	117.2	117.8	117.1	117.3	117.8	118.4	118.7	118.8	118.2	117.5
2012	118.4	118.9	119.2	119.7	119.9	119.4	119.3	119.7	119.9	120.2	120.2	119.5	119.5
2013	119.6	120.6	120.9	121.0	121.2	121.0	121.0	121.2	121.4	121.6	121.5	121.0	121.0
2014	121.3	122.1	122.5	122.7	123.3	123.2	123.1	123.7	124.0	124.4	124.1	123.7	123.2
2015	124.0	124.7	125.4	125.5	126.0	126.0	126.0	126.3	126.6	127.0	126.6	126.1	125.9
Percentage change from the corresponding month of the previous year (v41693242)													
1996	1.7	1.7	1.6	1.6	1.7	1.7	1.7	1.7	1.7	1.7	1.9	2.1	1.7
1997	2.1	1.9	2.1	2.2	2.1	2.2	2.0	2.0	1.8	1.9	1.2	1.3	1.9
1998	1.4	1.5	1.4	1.2	1.3	1.2	1.3	1.2	1.1	1.3	1.4	1.3	1.3
1999	1.0	1.0	1.2	1.3	1.4	1.5	1.5	1.6	1.9	1.5	1.4	1.4	1.4
2000	1.2	1.3	1.3	1.2	1.1	1.3	1.2	1.2	1.1	1.3	1.5	1.7	1.3
2001	1.8	1.7	1.9	2.2	2.3	2.2	2.5	2.4	2.3	2.2	1.8	1.7	2.1
2002	1.9	2.3	2.2	2.3	2.1	2.1	2.0	2.4	2.5	2.5	3.2	2.8	2.4
2003	3.3	3.0	2.8	2.1	2.4	2.1	1.9	1.5	1.7	1.8	1.8	2.1	2.2
2004	1.5	1.2	1.3	1.8	1.5	1.7	1.9	1.6	1.5	1.4	1.7	1.8	1.6
2005	1.7	1.7	1.8	1.6	1.6	1.5	1.3	1.7	1.7	1.7	1.5	1.5	1.6
2006	1.6	1.7	1.7	1.6	2.0	1.7	2.0	2.0	2.3	2.4	2.2	2.1	1.9
2007	2.3	2.3	2.3	2.5	2.2	2.5	2.3	2.2	2.0	1.8	1.6	1.5	2.1
2008	1.4	1.5	1.3	1.5	1.5	1.5	1.5	1.7	1.7	1.7	2.4	2.4	1.7
2009	1.9	1.9	2.0	1.8	2.0	1.9	1.8	1.6	1.5	1.8	1.5	1.5	1.7
2010	2.0	2.1	1.7	1.9	1.8	1.7	1.6	1.6	1.5	1.8	1.4	1.5	1.8
2011	1.4	0.9	1.7	1.6	1.8	1.3	1.6	1.9	2.2	2.1	2.1	1.9	1.6
2012	2.1	2.3	1.9	2.1	1.8	2.0	1.7	1.6	1.3	1.3	1.2	1.1	1.7
2013	1.0	1.4	1.4	1.1	1.1	1.3	1.4	1.3	1.3	1.2	1.1	1.3	1.3
2014	1.4	1.2	1.3	1.4	1.7	1.8	1.7	2.1	2.1	2.3	2.1	2.2	1.8
2015	2.2	2.1	2.4	2.3	2.2	2.3	2.4	2.1	2.1	2.1	2.0	1.9	2.2

Note(s): See "Data quality, concepts and methodology — Explanatory notes for tables" section.

Table 7
The Consumer Price Index for Canada, major components and special aggregates, not seasonally adjusted, historical data

	Major components								Special aggregates			
	Food	Shelter	Household operations, furnishings and equipment	Clothing and footwear	Transportation	Health and personal care	Recreation, education and reading	Alcoholic beverages and tobacco products	Goods ¹	Services ²	All-items excluding food and energy ³	Energy ³
CANSIM vector number	(v41690974)	(v41691050)	(v41691067)	(v41691108)	(v41691128)	(v41691153)	(v41691170)	(v41691206)	(v41691222)	(v41691230)	(v41691233)	(v41691239)
	2002=100											
Annual averages⁴												
1997	89.4	90.8	93.7	97.7	90.3	91.7	91.0	72.3	91.2	89.5	91.5	83.9
1998	90.9	91.1	95.1	98.8	89.6	93.6	93.0	74.9	91.4	91.1	92.7	80.5
1999	92.0	92.3	95.8	100.1	92.6	95.4	94.7	76.5	93.1	92.6	94.0	85.0
2000	93.3	95.6	96.7	100.3	97.2	97.0	97.0	79.0	96.0	94.8	95.5	98.8
2001	97.4	99.1	98.6	100.7	97.3	98.9	98.4	85.0	98.4	97.1	97.3	102.0
2002	100.0	100.0	100.0	100.0	100.0	100.0	100.0	100.0	100.0	100.0	100.0	100.0
2003	101.7	103.2	100.7	98.2	105.2	101.4	100.8	110.1	101.9	103.6	102.5	107.9
2004	103.8	105.8	101.2	98.0	107.7	102.8	101.1	116.0	103.4	105.9	103.9	115.2
2005	106.4	109.2	101.7	97.6	112.0	104.6	100.8	119.1	105.8	108.2	105.3	126.3
2006	108.9	113.1	102.2	95.8	115.2	105.9	100.6	121.7	107.1	111.1	106.9	132.8
2007	111.8	116.9	103.2	95.7	117.1	107.3	101.8	125.5	108.0	114.8	109.0	135.9
2008	115.7	122.0	104.6	93.8	119.5	108.8	102.2	127.5	109.4	118.7	110.3	149.3
2009	121.4	121.6	107.3	93.4	113.1	112.1	103.1	130.7	107.6	121.2	111.5	129.2
2010	123.1	123.3	108.8	91.6	118.0	115.1	104.0	133.1	109.2	123.7	112.9	137.8
2011	127.7	125.6	110.9	91.9	125.6	117.1	105.3	135.6	112.9	126.7	114.7	154.7
2012	130.8	127.1	113.0	92.0	128.1	118.7	105.9	137.6	114.0	129.3	116.2	157.3
2013	132.4	128.7	114.4	92.1	129.0	118.3	106.2	140.4	114.6	131.0	117.2	159.6
2014	135.5	132.2	116.6	93.2	130.4	119.0	107.4	146.6	116.5	133.7	119.0	165.3
2015	140.5	133.7	119.7	94.6	126.5	120.5	109.4	152.0	116.8	136.4	121.2	149.5
Monthly indexes												
2014												
January	133.0	130.5	114.7	89.2	129.2	118.3	104.7	140.9	114.2	131.9	117.3	160.2
February	134.3	130.7	115.3	91.0	130.8	118.4	106.4	142.9	115.6	132.5	118.2	162.6
March	134.4	131.4	115.7	94.0	131.7	118.1	106.5	145.3	117.0	132.5	118.6	167.2
April	134.6	132.4	115.5	95.0	132.2	118.9	106.2	145.1	117.5	132.9	118.8	171.2
May	135.7	132.6	115.8	94.5	132.7	119.2	107.8	146.2	117.9	133.6	119.1	172.7
June	136.4	132.2	116.4	92.7	133.1	119.0	108.2	146.7	117.8	133.9	119.1	173.0
July	136.5	132.6	116.3	91.8	131.5	118.9	108.9	147.1	117.1	134.2	118.9	171.9
August	135.9	132.4	117.5	92.1	130.8	119.2	109.4	148.4	116.7	134.7	119.4	168.3
September	135.5	132.5	117.6	95.6	130.0	119.3	109.6	148.5	116.9	134.8	119.7	167.4
October	135.4	132.8	118.1	96.9	129.9	118.8	108.7	149.2	116.9	134.9	120.2	163.6
November	136.9	132.8	118.2	94.7	127.7	119.9	106.8	149.4	116.2	134.5	119.8	156.5
December	137.4	133.0	117.8	91.1	124.9	119.6	106.1	149.1	114.6	134.5	119.3	148.7
2015												
January	139.1	133.1	118.0	91.1	122.4	120.0	105.6	149.9	114.0	134.7	119.5	139.5
February	139.5	133.1	118.9	93.3	124.3	120.1	107.9	150.3	115.3	135.5	120.3	145.1
March	139.5	133.3	119.4	96.4	126.6	119.5	108.7	150.7	117.0	135.6	121.0	149.8
April	139.4	133.1	119.7	96.2	126.6	120.1	107.7	151.4	116.7	135.6	121.0	148.1
May	140.8	133.2	119.7	95.0	128.0	120.7	109.9	151.9	117.6	136.2	121.3	152.4
June	141.0	133.5	120.0	93.0	129.6	120.5	110.6	152.1	118.0	136.5	121.3	157.5
July	140.9	133.8	120.1	93.0	129.2	120.6	111.2	152.2	117.9	136.8	121.3	159.2
August	140.8	133.9	120.4	94.0	127.8	120.5	111.7	152.6	117.5	137.1	121.5	156.1
September	140.3	133.9	120.5	96.7	125.4	120.7	112.3	152.9	116.8	137.4	121.9	149.3
October	140.9	134.3	120.6	97.7	125.8	120.7	110.8	152.9	117.1	137.4	122.2	146.6
November	141.6	134.4	119.8	96.7	126.3	121.6	108.8	153.8	117.3	136.9	121.9	146.5
December	142.5	134.5	119.6	91.7	125.6	121.0	107.9	153.5	116.3	136.8	121.3	143.4

Note(s): For information on the continuity of the series, see "Data quality, concepts and methodology — Data quality, concepts and methodology — Weights and Linking" at the end of this publication.

See "Data quality, concepts and methodology — Explanatory notes for tables" section.

Table 8-1
Annual average¹ percentage changes for the Consumer Price Index — Major components, not seasonally adjusted
Canada

	CANSIM vector number	Annual average	Annual average percentage change			
		2015	2012	2013	2014	2015
		2002=100	%			
All-items	(v41693271)	126.6	1.5	0.9	2.0	1.1
Food	(v41693272)	140.5	2.4	1.2	2.3	3.7
Shelter	(v41693348)	133.7	1.2	1.3	2.7	1.1
Household operations, furnishings and equipment	(v41693365)	119.7	1.9	1.2	1.9	2.7
Clothing and footwear	(v41693406)	94.6	0.1	0.1	1.2	1.5
Transportation	(v41693426)	126.5	2.0	0.7	1.1	-3.0
Health and personal care	(v41693451)	120.5	1.4	-0.3	0.6	1.3
Recreation, education and reading	(v41693468)	109.4	0.6	0.3	1.1	1.9
Alcoholic beverages and tobacco products	(v41693504)	152.0	1.5	2.0	4.4	3.7
Goods	(v41693520)	116.8	1.0	0.5	1.7	0.3
Durable goods	(v41693521)	86.8	-0.6	-0.2	0.2	1.5
Semi-durable goods	(v41693522)	96.0	0.0	0.1	1.1	1.5
Non-durable goods	(v41693523)	139.8	1.8	0.9	2.5	-0.7
Services	(v41693528)	136.4	2.1	1.3	2.1	2.0
All-items excluding food	(v41693530)	123.9	1.4	0.8	1.8	0.6
All-items excluding food and energy	(v41693531)	121.2	1.3	0.9	1.5	1.8
All-items excluding energy	(v41693536)	124.6	1.5	0.9	1.8	2.1
Energy	(v41693537)	149.5	1.7	1.5	3.6	-9.6

Note(s): See "Data quality, concepts and methodology — Explanatory notes for tables" section.

Table 8-2
Annual average¹ percentage changes for the Consumer Price Index — All-items, not seasonally adjusted, Canada, provinces, cities

	CANSIM vector number	Annual average 2015	Annual average percentage change			
			2012	2013	2014	2015
			%			
		2002=100				
Canada	(v41693271)	126.6	1.5	0.9	2.0	1.1
Newfoundland and Labrador	(v41693542)	129.0	2.1	1.7	1.9	0.5
Prince Edward Island	(v41693677)	129.3	2.0	2.0	1.6	-0.6
Nova Scotia	(v41693811)	129.3	2.0	1.2	1.7	0.4
New Brunswick	(v41693946)	125.4	1.7	0.8	1.5	0.5
Quebec	(v41694081)	124.7	2.1	0.7	1.4	1.1
Ontario	(v41694217)	127.4	1.4	1.0	2.4	1.2
Manitoba	(v41694353)	126.8	1.6	2.2	1.9	1.2
Saskatchewan	(v41694489)	130.8	1.6	1.5	2.4	1.6
Alberta	(v41694625)	133.7	1.1	1.4	2.6	1.1
British Columbia	(v41694760)	120.2	1.1	-0.1	1.0	1.1
Whitehorse, Yukon	(v41694896)	124.1	2.3	1.7	1.3	-0.2
Yellowknife, Northwest Territories	(v41695020)	130.4	2.2	1.5	1.7	1.6
Iqaluit, Nunavut (2002=100) ²	(v41713462)	120.4	1.7	1.1	1.3	1.9
St. John's, Newfoundland and Labrador	(v41695144)	128.7	2.1	1.6	1.9	0.4
Charlottetown and Summerside, Prince Edward Island	(v41695150)	128.8	1.9	2.0	1.7	-0.4
Halifax, Nova Scotia	(v41695156)	128.2	1.7	1.1	1.8	0.5
Saint John, New Brunswick	(v41695162)	125.3	1.6	0.7	1.5	0.5
Québec, Quebec	(v41695168)	124.7	2.2	0.9	1.3	1.0
Montréal, Quebec	(v41695174)	124.9	2.0	0.8	1.5	1.4
Ottawa-Gatineau, Ontario part, Ontario/Quebec	(v41695180)	126.5	1.3	1.0	2.0	1.0
Toronto, Ontario	(v41695186)	128.3	1.5	1.2	2.5	1.5
Thunder Bay, Ontario	(v41695192)	122.3	0.9	0.9	2.2	1.1
Winnipeg, Manitoba	(v41695198)	126.6	1.5	2.3	1.9	1.4
Regina, Saskatchewan	(v41695204)	131.5	1.8	1.7	2.4	1.4
Saskatoon, Saskatchewan	(v41695210)	131.0	1.5	1.0	2.3	1.9
Edmonton, Alberta	(v41695216)	133.4	1.1	1.3	2.2	1.2
Calgary, Alberta	(v41695222)	134.3	1.0	1.7	3.0	1.2
Vancouver, British Columbia	(v41695228)	121.9	1.3	0.2	1.1	1.2
Victoria, British Columbia	(v41695234)	118.6	1.0	-0.3	0.9	1.1

Note(s): See "Data quality, concepts and methodology — Explanatory notes for tables" section.

Table 9-1
The Consumer Price Index, major components, selected sub-groups and special aggregates, provinces, Whitehorse and Yellowknife, not seasonally adjusted — Newfoundland and Labrador

	CANSIM vector number	Indexes			Percentage change	
		December 2014	November 2015	December 2015	November 2015 to December 2015	December 2014 to December 2015
		2002=100			%	
All-items	(v41691244)	126.8	129.3	128.6	-0.5	1.4
Special aggregates						
All-items excluding food	(v41691368)	124.4	126.3	125.7	-0.5	1.0
All-items excluding food and energy	(v41691369)	119.5	122.0	121.7	-0.2	1.8
All-items excluding energy	(v41691374)	123.3	126.3	125.9	-0.3	2.1
All-items excluding gasoline	(v41693247)	126.3	129.2	128.7	-0.4	1.9
Energy ¹	(v41691375)	152.0	148.9	146.1	-1.9	-3.9
All-items (1992=100)	(v41713404)	148.7	151.6	150.8	-0.5	1.4
Food	(v41691245)	138.9	144.0	143.3	-0.5	3.2
Food purchased from stores	(v41691246)	137.6	143.2	142.4	-0.6	3.5
Meat	(v41691247)	147.1	155.1	149.6	-3.5	1.7
Dairy products	(v41691257)	133.4	137.1	131.6	-4.0	-1.3
Bakery and cereal products (excluding baby food)	(v41691262)	175.4	178.7	181.6	1.6	3.5
Fresh fruit	(v41691266)	126.8	134.7	137.2	1.9	8.2
Fresh vegetables	(v41691269)	104.6	105.8	112.2	6.0	7.3
Food purchased from restaurants	(v41691276)	145.0	148.2	148.3	0.1	2.3
Shelter	(v41691277)	149.4	151.4	151.3	-0.1	1.3
Rented accommodation	(v41691278)	125.6	126.9	126.9	0.0	1.0
Owned accommodation	(v41691280)	145.7	149.0	149.5	0.3	2.6
Homeowners' replacement cost	(v41691281)	185.2	185.6	185.8	0.1	0.3
Homeowners' home and mortgage insurance	(v41691283)	142.5	162.3	166.2	2.4	16.6
Homeowners' maintenance and repairs	(v41691284)	155.9	165.7	165.7	0.0	6.3
Water, fuel and electricity	(v41691285)	167.7	166.9	165.1	-1.1	-1.6
Electricity	(v41691286)	150.7	154.6	154.6	0.0	2.6
Natural gas
Fuel oil and other fuels	(v41691288)	196.6	175.1	166.0	-5.2	-15.6
Household operations, furnishings and equipment	(v41691289)	115.3	116.6	118.8	1.9	3.0
Household operations	(v41691290)	130.6	131.9	137.2	4.0	5.1
Telephone services	(v41691292)	125.1	123.1	136.7	11.0	9.3
Internet access services (200212=100)	(v41693217)	124.6	124.0	124.0	0.0	-0.5
Household furnishings and equipment	(v41691297)	91.2	92.5	89.8	-2.9	-1.5
Clothing and footwear	(v41691304)	94.0	97.0	90.2	-7.0	-4.0
Women's clothing	(v41691306)	85.1	88.8	79.7	-10.2	-6.3
Men's clothing	(v41691307)	94.7	98.5	89.6	-9.0	-5.4
Footwear	(v41691309)	94.6	94.9	91.7	-3.4	-3.1
Transportation	(v41691312)	122.0	122.8	122.2	-0.5	0.2
Private transportation	(v41691313)	121.1	121.8	121.5	-0.2	0.3
Purchase and leasing of passenger vehicles	(v41691315)	95.1	97.4	98.5	1.1	3.6
Gasoline	(v41691318)	139.5	134.5	130.8	-2.8	-6.2
Passenger vehicle insurance premiums	(v41691321)	144.0	148.0	148.1	0.1	2.8
Public transportation	(v41691323)	131.2	133.4	129.7	-2.8	-1.1
Health and personal care	(v41691328)	114.0	115.2	114.9	-0.3	0.8
Health care	(v41691329)	112.5	112.4	112.3	-0.1	-0.2
Personal care	(v41691335)	116.2	119.3	118.7	-0.5	2.2
Recreation, education and reading	(v41691338)	103.1	106.8	106.3	-0.5	3.1
Recreation	(v41691339)	100.9	104.8	104.2	-0.6	3.3
Education and reading	(v41691347)	114.5	116.7	116.9	0.2	2.1
Alcoholic beverages and tobacco products	(v41691351)	156.6	159.9	159.9	0.0	2.1
Alcoholic beverages	(v41691352)	126.1	128.4	128.4	0.0	1.8
Tobacco products and smokers' supplies	(v41691358)	183.2	187.4	187.5	0.1	2.3

Note(s): See "Data quality, concepts and methodology — Explanatory notes for tables" section.

Table 9-2

The Consumer Price Index, major components, selected sub-groups and special aggregates, provinces, Whitehorse and Yellowknife, not seasonally adjusted — Prince Edward Island

	CANSIM vector number	Indexes			Percentage change	
		December 2014	November 2015	December 2015	November 2015 to December 2015	December 2014 to December 2015
		2002=100			%	
All-items	(v41691379)	128.1	129.6	129.2	-0.3	0.9
Special aggregates						
All-items excluding food	(v41691502)	125.2	125.6	125.2	-0.3	0.0
All-items excluding food and energy	(v41691503)	117.9	119.8	119.5	-0.3	1.4
All-items excluding energy	(v41691508)	122.6	125.5	125.2	-0.2	2.1
All-items excluding gasoline	(v41693249)	126.6	128.7	128.2	-0.4	1.3
Energy ¹	(v41691509)	172.1	160.3	159.1	-0.7	-7.6
All-items (1992=100)	(v41713406)	150.7	152.5	152.0	-0.3	0.9
Food	(v41691380)	142.8	150.5	150.0	-0.3	5.0
Food purchased from stores	(v41691381)	145.5	154.1	153.4	-0.5	5.4
Meat	(v41691382)	153.9	172.8	170.6	-1.3	10.9
Dairy products	(v41691392)	147.1	148.5	145.8	-1.8	-0.9
Bakery and cereal products (excluding baby food)	(v41691397)	180.6	188.2	187.4	-0.4	3.8
Fresh fruit	(v41691401)	112.0	123.5	126.0	2.0	12.5
Fresh vegetables	(v41691404)	140.2	136.6	143.4	5.0	2.3
Food purchased from restaurants	(v41691411)	133.9	138.2	138.2	0.0	3.2
Shelter	(v41691412)	132.9	131.8	131.4	-0.3	-1.1
Rented accommodation	(v41691413)	116.0	116.4	116.4	0.0	0.3
Owned accommodation	(v41691415)	115.7	118.0	118.0	0.0	2.0
Homeowners' replacement cost	(v41691416)	120.1	120.1	120.2	0.1	0.1
Homeowners' home and mortgage insurance	(v41691418)	138.9	163.5	163.5	0.0	17.7
Homeowners' maintenance and repairs	(v41691419)	136.9	139.2	138.9	-0.2	1.5
Water, fuel and electricity	(v41691420)	186.3	174.4	172.6	-1.0	-7.4
Electricity	(v41691421)	150.1	153.6	153.6	0.0	2.3
Natural gas
Fuel oil and other fuels	(v41691423)	217.5	184.3	179.9	-2.4	-17.3
Household operations, furnishings and equipment	(v41691424)	123.3	124.5	126.5	1.6	2.6
Household operations	(v41691425)	135.2	136.3	139.3	2.2	3.0
Telephone services	(v41691427)	119.7	116.3	125.5	7.9	4.8
Internet access services (200212=100)	(v41693218)	127.0	132.4	132.4	0.0	4.3
Household furnishings and equipment	(v41691432)	98.1	99.6	99.3	-0.3	1.2
Clothing and footwear	(v41691439)	104.0	103.4	96.9	-6.3	-6.8
Women's clothing	(v41691441)	105.1	96.1	87.4	-9.1	-16.8
Men's clothing	(v41691442)	91.9	100.4	90.2	-10.2	-1.8
Footwear	(v41691444)	114.1	111.5	111.2	-0.3	-2.5
Transportation	(v41691447)	124.2	123.5	123.8	0.2	-0.3
Private transportation	(v41691448)	123.6	122.7	123.2	0.4	-0.3
Purchase and leasing of passenger vehicles	(v41691450)	92.2	93.6	94.9	1.4	2.9
Gasoline	(v41691453)	157.2	146.3	145.9	-0.3	-7.2
Passenger vehicle insurance premiums	(v41691456)	141.7	142.2	142.2	0.0	0.4
Public transportation	(v41691458)	134.8	137.1	133.5	-2.6	-1.0
Health and personal care	(v41691462)	116.1	119.4	119.1	-0.3	2.6
Health care	(v41691463)	111.2	113.9	114.7	0.7	3.1
Personal care	(v41691469)	123.4	127.8	125.3	-2.0	1.5
Recreation, education and reading	(v41691472)	109.0	110.9	110.1	-0.7	1.0
Recreation	(v41691473)	97.7	99.0	98.0	-1.0	0.3
Education and reading	(v41691481)	143.2	146.9	146.8	-0.1	2.5
Alcoholic beverages and tobacco products	(v41691485)	176.5	186.8	186.2	-0.3	5.5
Alcoholic beverages	(v41691486)	132.0	133.1	131.8	-1.0	-0.2
Tobacco products and smokers' supplies	(v41691492)	202.2	219.7	219.7	0.0	8.7

Note(s): See "Data quality, concepts and methodology — Explanatory notes for tables" section.

Table 9-3

The Consumer Price Index, major components, selected sub-groups and special aggregates, provinces, Whitehorse and Yellowknife, not seasonally adjusted — Nova Scotia

	CANSIM vector number	Indexes			Percentage change	
		December 2014	November 2015	December 2015	November 2015 to December 2015	December 2014 to December 2015
		2002=100			%	
All-items	(v41691513)	127.4	129.2	128.9	-0.2	1.2
Special aggregates						
All-items excluding food	(v41691637)	124.2	125.5	124.9	-0.5	0.6
All-items excluding food and energy	(v41691638)	118.5	121.1	120.6	-0.4	1.8
All-items excluding energy	(v41691643)	123.2	126.1	125.9	-0.2	2.2
All-items excluding gasoline	(v41693251)	126.4	128.6	128.4	-0.2	1.6
Energy ¹	(v41691644)	161.5	150.1	148.6	-1.0	-8.0
All-items (1992=100)	(v41713408)	152.6	154.7	154.4	-0.2	1.2
Food	(v41691514)	143.7	148.4	150.2	1.2	4.5
Food purchased from stores	(v41691515)	144.1	148.8	150.9	1.4	4.7
Meat	(v41691516)	150.4	159.8	156.8	-1.9	4.3
Dairy products	(v41691526)	134.4	134.0	134.2	0.1	-0.1
Bakery and cereal products (excluding baby food)	(v41691531)	175.2	180.7	182.3	0.9	4.1
Fresh fruit	(v41691535)	115.3	121.7	126.5	3.9	9.7
Fresh vegetables	(v41691538)	127.2	125.7	134.5	7.0	5.7
Food purchased from restaurants	(v41691545)	142.9	147.7	148.3	0.4	3.8
Shelter	(v41691546)	140.0	139.6	139.3	-0.2	-0.5
Rented accommodation	(v41691547)	113.3	114.5	114.6	0.1	1.1
Owned accommodation	(v41691549)	133.3	136.1	135.8	-0.2	1.9
Homeowners' replacement cost	(v41691550)	145.1	146.5	145.6	-0.6	0.3
Homeowners' home and mortgage insurance	(v41691552)	217.0	245.9	246.8	0.4	13.7
Homeowners' maintenance and repairs	(v41691553)	135.1	137.0	137.1	0.1	1.5
Water, fuel and electricity	(v41691554)	180.1	168.0	167.1	-0.5	-7.2
Electricity	(v41691555)	153.1	153.1	153.1	0.0	0.0
Natural gas	
Fuel oil and other fuels	(v41691557)	218.0	176.3	173.2	-1.8	-20.6
Household operations, furnishings and equipment	(v41691558)	117.5	119.7	121.3	1.3	3.2
Household operations	(v41691559)	134.2	135.4	137.9	1.8	2.8
Telephone services	(v41691561)	122.8	119.1	126.5	6.2	3.0
Internet access services (200212=100)	(v41693219)	125.7	132.1	132.1	0.0	5.1
Household furnishings and equipment	(v41691566)	84.6	88.8	88.8	0.0	5.0
Clothing and footwear	(v41691573)	95.5	101.2	92.6	-8.5	-3.0
Women's clothing	(v41691575)	93.5	99.9	90.9	-9.0	-2.8
Men's clothing	(v41691576)	84.0	97.3	83.8	-13.9	-0.2
Footwear	(v41691578)	94.1	91.6	85.8	-6.3	-8.8
Transportation	(v41691581)	119.8	119.9	119.9	0.0	0.1
Private transportation	(v41691582)	118.9	118.7	119.1	0.3	0.2
Purchase and leasing of passenger vehicles	(v41691584)	94.9	96.7	98.0	1.3	3.3
Gasoline	(v41691587)	142.4	133.9	131.8	-1.6	-7.4
Passenger vehicle insurance premiums	(v41691590)	117.4	118.4	118.4	0.0	0.9
Public transportation	(v41691592)	131.7	133.7	130.1	-2.7	-1.2
Health and personal care	(v41691597)	117.2	118.4	117.9	-0.4	0.6
Health care	(v41691598)	114.9	116.0	116.0	0.0	1.0
Personal care	(v41691604)	120.2	121.5	120.2	-1.1	0.0
Recreation, education and reading	(v41691607)	108.5	110.6	110.6	0.0	1.9
Recreation	(v41691608)	100.0	101.5	101.3	-0.2	1.3
Education and reading	(v41691616)	134.8	139.2	139.5	0.2	3.5
Alcoholic beverages and tobacco products	(v41691620)	178.6	182.2	182.5	0.2	2.2
Alcoholic beverages	(v41691621)	130.6	132.6	132.8	0.2	1.7
Tobacco products and smokers' supplies	(v41691627)	217.6	222.7	223.0	0.1	2.5

Note(s): See "Data quality, concepts and methodology — Explanatory notes for tables" section.

Table 9-4
The Consumer Price Index, major components, selected sub-groups and special aggregates, provinces, Whitehorse and Yellowknife, not seasonally adjusted — New Brunswick

	CANSIM vector number	Indexes			Percentage change	
		December 2014	November 2015	December 2015	November 2015 to December 2015	December 2014 to December 2015
		2002=100			%	
All-items	(v41691648)	124.1	125.8	125.5	-0.2	1.1
Special aggregates						
All-items excluding food	(v41691772)	120.3	121.2	120.9	-0.2	0.5
All-items excluding food and energy	(v41691773)	115.6	117.3	117.1	-0.2	1.3
All-items excluding energy	(v41691778)	120.8	123.3	123.0	-0.2	1.8
All-items excluding gasoline	(v41693253)	122.9	125.1	124.9	-0.2	1.6
Energy ¹	(v41691779)	148.4	142.1	141.5	-0.4	-4.6
All-items (1992=100)	(v41713410)	147.1	149.2	148.8	-0.3	1.2
Food	(v41691649)	143.2	150.1	149.7	-0.3	4.5
Food purchased from stores	(v41691650)	144.8	153.2	152.6	-0.4	5.4
Meat	(v41691651)	158.4	174.2	168.4	-3.3	6.3
Dairy products	(v41691661)	133.8	137.6	134.5	-2.3	0.5
Bakery and cereal products (excluding baby food)	(v41691666)	172.9	179.1	178.6	-0.3	3.3
Fresh fruit	(v41691670)	119.9	130.4	130.7	0.2	9.0
Fresh vegetables	(v41691673)	132.4	132.6	141.0	6.3	6.5
Food purchased from restaurants	(v41691680)	139.3	142.3	142.3	0.0	2.2
Shelter	(v41691681)	129.7	130.2	130.7	0.4	0.8
Rented accommodation	(v41691682)	113.1	113.9	113.9	0.0	0.7
Owned accommodation	(v41691684)	121.9	123.2	124.3	0.9	2.0
Homeowners' replacement cost	(v41691685)	120.3	120.8	121.0	0.2	0.6
Homeowners' home and mortgage insurance	(v41691687)	191.4	205.4	217.2	5.7	13.5
Homeowners' maintenance and repairs	(v41691688)	131.4	132.4	132.5	0.1	0.8
Water, fuel and electricity	(v41691689)	157.6	155.8	155.2	-0.4	-1.5
Electricity	(v41691690)	138.2	140.5	140.5	0.0	1.7
Natural gas
Fuel oil and other fuels	(v41691692)	218.0	184.3	178.2	-3.3	-18.3
Household operations, furnishings and equipment	(v41691693)	118.9	119.9	121.3	1.2	2.0
Household operations	(v41691694)	135.8	136.3	138.3	1.5	1.8
Telephone services	(v41691696)	133.9	129.8	136.3	5.0	1.8
Internet access services (200212=100)	(v41693220)	119.6	120.1	120.1	0.0	0.4
Household furnishings and equipment	(v41691701)	88.6	90.0	90.6	0.7	2.3
Clothing and footwear	(v41691708)	96.9	99.1	92.4	-6.8	-4.6
Women's clothing	(v41691710)	84.9	84.9	75.9	-10.6	-10.6
Men's clothing	(v41691711)	91.9	97.2	86.4	-11.1	-6.0
Footwear	(v41691713)	102.2	98.9	98.5	-0.4	-3.6
Transportation	(v41691716)	119.1	118.5	118.9	0.3	-0.2
Private transportation	(v41691717)	118.7	117.9	118.5	0.5	-0.2
Purchase and leasing of passenger vehicles	(v41691719)	91.9	93.8	95.0	1.3	3.4
Gasoline	(v41691722)	142.6	132.5	132.0	-0.4	-7.4
Passenger vehicle insurance premiums	(v41691725)	124.9	124.9	124.9	0.0	0.0
Public transportation	(v41691727)	129.9	132.9	129.2	-2.8	-0.5
Health and personal care	(v41691732)	109.9	112.7	111.5	-1.1	1.5
Health care	(v41691733)	111.4	112.5	111.7	-0.7	0.3
Personal care	(v41691739)	109.2	113.9	112.3	-1.4	2.8
Recreation, education and reading	(v41691742)	108.1	110.3	110.0	-0.3	1.8
Recreation	(v41691743)	98.4	100.4	100.1	-0.3	1.7
Education and reading	(v41691751)	145.0	148.0	147.6	-0.3	1.8
Alcoholic beverages and tobacco products	(v41691755)	167.1	168.3	168.6	0.2	0.9
Alcoholic beverages	(v41691756)	133.7	133.0	132.8	-0.2	-0.7
Tobacco products and smokers' supplies	(v41691762)	192.0	195.4	196.1	0.4	2.1

Note(s): See "Data quality, concepts and methodology — Explanatory notes for tables" section.

Table 9-5

The Consumer Price Index, major components, selected sub-groups and special aggregates, provinces, Whitehorse and Yellowknife, not seasonally adjusted — Quebec

	CANSIM vector number	Indexes			Percentage change	
		December 2014	November 2015	December 2015	November 2015 to December 2015	December 2014 to December 2015
		2002=100			%	
All-items	(v41691783)	122.8	124.9	124.4	-0.4	1.3
Special aggregates						
All-items excluding food	(v41691908)	119.1	121.0	120.3	-0.6	1.0
All-items excluding food and energy	(v41691909)	115.9	118.3	117.7	-0.5	1.6
All-items excluding energy	(v41691914)	120.6	123.1	122.7	-0.3	1.7
All-items excluding gasoline	(v41693255)	121.3	123.7	123.3	-0.3	1.6
Energy ¹	(v41691915)	144.7	140.9	139.3	-1.1	-3.7
All-items (1992=100)	(v41713412)	141.9	144.3	143.7	-0.4	1.3
Food	(v41691784)	139.4	142.1	142.7	0.4	2.4
Food purchased from stores	(v41691785)	138.6	141.2	142.0	0.6	2.5
Meat	(v41691786)	158.4	163.2	161.8	-0.9	2.1
Dairy products	(v41691796)	133.6	133.5	133.1	-0.3	-0.4
Bakery and cereal products (excluding baby food)	(v41691801)	148.9	149.5	150.2	0.5	0.9
Fresh fruit	(v41691805)	124.3	126.9	136.7	7.7	10.0
Fresh vegetables	(v41691808)	124.0	126.4	134.8	6.6	8.7
Food purchased from restaurants	(v41691815)	141.3	144.3	144.4	0.1	2.2
Shelter	(v41691816)	128.3	129.1	129.2	0.1	0.7
Rented accommodation	(v41691817)	115.8	116.9	116.9	0.0	0.9
Owned accommodation	(v41691819)	132.8	133.6	133.8	0.1	0.8
Homeowners' replacement cost	(v41691820)	151.8	151.5	152.1	0.4	0.2
Homeowners' home and mortgage insurance	(v41691822)	152.2	147.8	148.2	0.3	-2.6
Homeowners' maintenance and repairs	(v41691823)	133.0	138.8	139.4	0.4	4.8
Water, fuel and electricity	(v41691824)	133.9	133.9	133.6	-0.2	-0.2
Electricity	(v41691825)	120.2	122.9	122.9	0.0	2.2
Natural gas	(v41691827)	113.3	107.9	107.6	-0.3	-5.0
Fuel oil and other fuels	(v41691828)	232.3	195.2	191.6	-1.8	-17.5
Household operations, furnishings and equipment	(v41691829)	119.3	121.1	120.9	-0.2	1.3
Household operations	(v41691830)	132.5	133.7	133.6	-0.1	0.8
Telephone services	(v41691832)	134.0	129.1	129.1	0.0	-3.7
Internet access services (200212=100)	(v41693221)	103.9	106.9	106.9	0.0	2.9
Household furnishings and equipment	(v41691837)	97.7	101.2	100.7	-0.5	3.1
Clothing and footwear	(v41691844)	86.9	95.2	89.6	-5.9	3.1
Women's clothing	(v41691846)	70.8	80.1	73.9	-7.7	4.4
Men's clothing	(v41691847)	83.7	93.7	89.3	-4.7	6.7
Footwear	(v41691849)	96.9	100.8	94.7	-6.1	-2.3
Transportation	(v41691852)	125.7	126.0	125.9	-0.1	0.2
Private transportation	(v41691853)	124.7	124.6	124.7	0.1	0.0
Purchase and leasing of passenger vehicles	(v41691855)	95.2	96.3	97.5	1.2	2.4
Gasoline	(v41691858)	156.1	148.4	145.4	-2.0	-6.9
Passenger vehicle insurance premiums	(v41691861)	166.6	172.1	172.1	0.0	3.3
Public transportation	(v41691863)	140.9	144.9	142.2	-1.9	0.9
Health and personal care	(v41691868)	120.0	121.8	121.5	-0.2	1.3
Health care	(v41691869)	120.5	122.6	122.7	0.1	1.8
Personal care	(v41691875)	119.3	120.9	119.8	-0.9	0.4
Recreation, education and reading	(v41691878)	96.4	98.1	97.9	-0.2	1.6
Recreation	(v41691879)	86.7	88.1	87.6	-0.6	1.0
Education and reading	(v41691887)	139.4	142.6	143.9	0.9	3.2
Alcoholic beverages and tobacco products	(v41691891)	144.8	147.8	147.5	-0.2	1.9
Alcoholic beverages	(v41691892)	117.0	119.0	118.6	-0.3	1.4
Tobacco products and smokers' supplies	(v41691898)	180.5	185.3	185.3	0.0	2.7

Note(s): See "Data quality, concepts and methodology — Explanatory notes for tables" section.

Table 9-6

The Consumer Price Index, major components, selected sub-groups and special aggregates, provinces, Whitehorse and Yellowknife, not seasonally adjusted — Ontario

	CANSIM vector number	Indexes			Percentage change	
		December 2014	November 2015	December 2015	November 2015 to December 2015	December 2014 to December 2015
		2002=100			%	
All-items	(v41691919)	125.4	127.9	127.5	-0.3	1.7
Special aggregates						
All-items excluding food	(v41692044)	123.2	125.4	124.6	-0.6	1.1
All-items excluding food and energy	(v41692045)	120.8	123.4	122.7	-0.6	1.6
All-items excluding energy	(v41692050)	123.6	126.4	126.1	-0.2	2.0
All-items excluding gasoline	(v41693257)	124.4	127.1	126.7	-0.3	1.8
Energy ¹	(v41692051)	153.3	151.2	149.6	-1.1	-2.4
All-items (1992=100)	(v41713415)	150.6	153.7	153.1	-0.4	1.7
Food	(v41691920)	137.7	142.4	143.6	0.8	4.3
Food purchased from stores	(v41691921)	139.2	144.1	145.7	1.1	4.7
Meat	(v41691922)	154.1	158.3	156.4	-1.2	1.5
Dairy products	(v41691932)	133.4	133.9	133.9	0.0	0.4
Bakery and cereal products (excluding baby food)	(v41691937)	158.9	160.8	161.8	0.6	1.8
Fresh fruit	(v41691941)	118.3	132.8	137.7	3.7	16.4
Fresh vegetables	(v41691944)	122.3	131.1	140.6	7.2	15.0
Food purchased from restaurants	(v41691951)	134.4	138.3	138.8	0.4	3.3
Shelter	(v41691952)	132.9	135.3	135.5	0.1	2.0
Rented accommodation	(v41691953)	115.4	116.6	116.7	0.1	1.1
Owned accommodation	(v41691955)	134.3	137.5	137.8	0.2	2.6
Homeowners' replacement cost	(v41691956)	161.0	165.8	166.1	0.2	3.2
Homeowners' home and mortgage insurance	(v41691958)	213.4	231.8	235.2	1.5	10.2
Homeowners' maintenance and repairs	(v41691959)	129.4	133.3	134.2	0.7	3.7
Water, fuel and electricity	(v41691960)	163.5	164.4	164.4	0.0	0.6
Electricity	(v41691961)	159.0	173.2	173.2	0.0	8.9
Natural gas	(v41691963)	114.4	99.0	99.0	0.0	-13.5
Fuel oil and other fuels	(v41691964)	236.4	215.6	212.5	-1.4	-10.1
Household operations, furnishings and equipment	(v41691965)	119.5	121.7	121.1	-0.5	1.3
Household operations	(v41691966)	135.4	136.6	136.4	-0.1	0.7
Telephone services	(v41691968)	131.4	128.0	128.0	0.0	-2.6
Internet access services (200212=100)	(v41693222)	120.1	122.2	122.2	0.0	1.7
Household furnishings and equipment	(v41691973)	91.4	95.8	94.3	-1.6	3.2
Clothing and footwear	(v41691980)	90.4	94.2	89.8	-4.7	-0.7
Women's clothing	(v41691982)	78.4	80.7	76.2	-5.6	-2.8
Men's clothing	(v41691983)	91.8	95.5	89.6	-6.2	-2.4
Footwear	(v41691985)	85.9	88.7	85.1	-4.1	-0.9
Transportation	(v41691988)	126.1	126.5	126.3	-0.2	0.2
Private transportation	(v41691989)	125.0	125.1	125.2	0.1	0.2
Purchase and leasing of passenger vehicles	(v41691991)	93.7	95.1	96.3	1.3	2.8
Gasoline	(v41691994)	151.0	147.3	144.2	-2.1	-4.5
Passenger vehicle insurance premiums	(v41691997)	174.2	171.1	171.1	0.0	-1.8
Public transportation	(v41691999)	134.5	137.7	134.8	-2.1	0.2
Health and personal care	(v41692004)	121.1	122.9	122.3	-0.5	1.0
Health care	(v41692005)	123.5	124.5	124.6	0.1	0.9
Personal care	(v41692011)	119.2	121.7	120.4	-1.1	1.0
Recreation, education and reading	(v41692014)	108.6	111.5	110.2	-1.2	1.5
Recreation	(v41692015)	93.1	94.9	93.2	-1.8	0.1
Education and reading	(v41692023)	152.1	158.3	158.5	0.1	4.2
Alcoholic beverages and tobacco products	(v41692027)	151.9	155.9	155.7	-0.1	2.5
Alcoholic beverages	(v41692028)	119.0	121.6	121.2	-0.3	1.8
Tobacco products and smokers' supplies	(v41692034)	192.1	198.4	198.4	0.0	3.3

Note(s): See "Data quality, concepts and methodology — Explanatory notes for tables" section.

Table 9-7

The Consumer Price Index, major components, selected sub-groups and special aggregates, provinces, Whitehorse and Yellowknife, not seasonally adjusted — Manitoba

	CANSIM vector number	Indexes			Percentage change	
		December 2014	November 2015	December 2015	November 2015 to December 2015	December 2014 to December 2015
		2002=100			%	
All-items	(v41692055)	124.5	127.7	126.4	-1.0	1.5
Special aggregates						
All-items excluding food	(v41692180)	121.7	124.8	123.3	-1.2	1.3
All-items excluding food and energy	(v41692181)	120.2	123.2	122.4	-0.6	1.8
All-items excluding energy	(v41692186)	123.5	126.6	126.0	-0.5	2.0
All-items excluding gasoline	(v41693259)	123.6	126.6	126.0	-0.5	1.9
Energy ¹	(v41692187)	134.3	138.2	128.6	-6.9	-4.2
All-items (1992=100)	(v41713419)	153.2	157.1	155.6	-1.0	1.6
Food	(v41692056)	138.6	142.3	143.0	0.5	3.2
Food purchased from stores	(v41692057)	136.1	139.8	140.7	0.6	3.4
Meat	(v41692058)	146.8	152.4	148.9	-2.3	1.4
Dairy products	(v41692068)	136.0	138.4	137.3	-0.8	1.0
Bakery and cereal products (excluding baby food)	(v41692073)	150.7	150.3	154.1	2.5	2.3
Fresh fruit	(v41692077)	121.9	128.7	129.6	0.7	6.3
Fresh vegetables	(v41692080)	121.8	133.2	140.2	5.3	15.1
Food purchased from restaurants	(v41692087)	143.3	146.9	147.1	0.1	2.7
Shelter	(v41692088)	136.7	139.2	139.3	0.1	1.9
Rented accommodation	(v41692089)	125.7	127.3	127.4	0.1	1.4
Owned accommodation	(v41692091)	142.3	145.9	146.1	0.1	2.7
Homeowners' replacement cost	(v41692092)	179.5	183.4	183.7	0.2	2.3
Homeowners' home and mortgage insurance	(v41692094)	167.1	174.0	175.5	0.9	5.0
Homeowners' maintenance and repairs	(v41692095)	134.0	141.5	141.5	0.0	5.6
Water, fuel and electricity	(v41692096)	130.0	130.6	130.4	-0.2	0.3
Electricity	(v41692097)	135.4	140.8	140.8	0.0	4.0
Natural gas	(v41692099)	95.6	85.1	85.1	0.0	-11.0
Fuel oil and other fuels	(v41692100)	230.0	185.4	166.3	-10.3	-27.7
Household operations, furnishings and equipment	(v41692101)	116.9	119.2	119.0	-0.2	1.8
Household operations	(v41692102)	127.4	129.6	129.5	-0.1	1.6
Telephone services	(v41692104)	117.0	114.7	114.7	0.0	-2.0
Internet access services (200212=100)	(v41693223)	135.6	151.6	151.6	0.0	11.8
Household furnishings and equipment	(v41692109)	97.9	100.4	99.9	-0.5	2.0
Clothing and footwear	(v41692116)	92.6	94.9	88.2	-7.1	-4.8
Women's clothing	(v41692118)	79.8	83.5	73.7	-11.7	-7.6
Men's clothing	(v41692119)	87.6	90.1	82.6	-8.3	-5.7
Footwear	(v41692121)	92.9	94.6	93.8	-0.8	1.0
Transportation	(v41692124)	120.6	124.5	121.8	-2.2	1.0
Private transportation	(v41692125)	119.7	123.8	121.2	-2.1	1.3
Purchase and leasing of passenger vehicles	(v41692127)	98.0	100.2	101.4	1.2	3.5
Gasoline	(v41692130)	143.0	151.5	132.6	-12.5	-7.3
Passenger vehicle insurance premiums	(v41692133)	115.1	123.0	123.0	0.0	6.9
Public transportation	(v41692135)	130.2	132.4	128.9	-2.6	-1.0
Health and personal care	(v41692140)	113.4	115.3	114.0	-1.1	0.5
Health care	(v41692141)	115.2	116.3	115.2	-0.9	0.0
Personal care	(v41692147)	112.0	115.0	113.5	-1.3	1.3
Recreation, education and reading	(v41692150)	105.7	109.7	108.8	-0.8	2.9
Recreation	(v41692151)	98.3	102.5	101.2	-1.3	3.0
Education and reading	(v41692159)	134.2	137.7	138.0	0.2	2.8
Alcoholic beverages and tobacco products	(v41692163)	168.9	174.4	173.2	-0.7	2.5
Alcoholic beverages	(v41692164)	141.0	144.4	142.5	-1.3	1.1
Tobacco products and smokers' supplies	(v41692170)	194.4	201.8	201.4	-0.2	3.6

Note(s): See "Data quality, concepts and methodology — Explanatory notes for tables" section.

Table 9-8

The Consumer Price Index, major components, selected sub-groups and special aggregates, provinces, Whitehorse and Yellowknife, not seasonally adjusted — Saskatchewan

	CANSIM vector number	Indexes			Percentage change	
		December 2014	November 2015	December 2015	November 2015 to December 2015	December 2014 to December 2015
		2002=100			%	
All-items	(v41692191)	128.3	131.7	130.6	-0.8	1.8
Special aggregates						
All-items excluding food	(v41692316)	126.0	129.4	127.9	-1.2	1.5
All-items excluding food and energy	(v41692317)	124.9	128.1	127.4	-0.5	2.0
All-items excluding energy	(v41692322)	127.6	131.0	130.5	-0.4	2.3
All-items excluding gasoline	(v41693261)	127.9	131.3	130.8	-0.4	2.3
Energy ¹	(v41692323)	133.2	137.1	129.0	-5.9	-3.2
All-items (1992=100)	(v41713421)	158.7	162.9	161.6	-0.8	1.8
Food	(v41692192)	140.3	144.5	145.7	0.8	3.8
Food purchased from stores	(v41692193)	139.5	144.5	146.1	1.1	4.7
Meat	(v41692194)	155.7	158.5	158.2	-0.2	1.6
Dairy products	(v41692204)	140.7	145.4	146.8	1.0	4.3
Bakery and cereal products (excluding baby food)	(v41692209)	148.9	151.8	156.0	2.8	4.8
Fresh fruit	(v41692213)	132.5	150.2	148.2	-1.3	11.8
Fresh vegetables	(v41692216)	137.6	153.5	162.5	5.9	18.1
Food purchased from restaurants	(v41692223)	141.9	143.7	144.0	0.2	1.5
Shelter	(v41692224)	156.2	160.2	160.3	0.1	2.6
Rented accommodation	(v41692225)	141.1	142.3	142.2	-0.1	0.8
Owned accommodation	(v41692227)	165.8	170.6	170.9	0.2	3.1
Homeowners' replacement cost	(v41692228)	230.6	227.0	226.2	-0.4	-1.9
Homeowners' home and mortgage insurance	(v41692230)	221.5	270.9	277.7	2.5	25.4
Homeowners' maintenance and repairs	(v41692231)	136.0	144.4	144.0	-0.3	5.9
Water, fuel and electricity	(v41692232)	147.0	152.2	151.9	-0.2	3.3
Electricity	(v41692233)	148.1	154.9	154.9	0.0	4.6
Natural gas	(v41692235)	106.0	106.0	106.0	0.0	0.0
Fuel oil and other fuels	(v41692236)	218.0	179.0	164.9	-7.9	-24.4
Household operations, furnishings and equipment	(v41692237)	111.4	112.8	112.8	0.0	1.3
Household operations	(v41692238)	121.8	123.3	123.0	-0.2	1.0
Telephone services	(v41692240)	101.9	99.9	99.9	0.0	-2.0
Internet access services (200212=100)	(v41693224)	105.4	115.1	115.1	0.0	9.2
Household furnishings and equipment	(v41692245)	93.0	94.5	94.8	0.3	1.9
Clothing and footwear	(v41692252)	93.4	100.1	94.5	-5.6	1.2
Women's clothing	(v41692254)	80.8	90.0	82.2	-8.7	1.7
Men's clothing	(v41692255)	82.9	90.8	85.7	-5.6	3.4
Footwear	(v41692257)	101.0	103.0	97.1	-5.7	-3.9
Transportation	(v41692260)	118.0	121.1	119.0	-1.7	0.8
Private transportation	(v41692261)	117.0	120.2	118.2	-1.7	1.0
Purchase and leasing of passenger vehicles	(v41692263)	94.6	97.8	99.1	1.3	4.8
Gasoline	(v41692266)	135.5	140.8	124.1	-11.9	-8.4
Passenger vehicle insurance premiums	(v41692269)	137.5	137.9	137.9	0.0	0.3
Public transportation	(v41692271)	131.8	134.9	130.8	-3.0	-0.8
Health and personal care	(v41692276)	118.8	120.5	120.2	-0.2	1.2
Health care	(v41692277)	117.4	118.7	118.3	-0.3	0.8
Personal care	(v41692283)	120.8	123.2	123.1	-0.1	1.9
Recreation, education and reading	(v41692286)	108.6	111.2	109.4	-1.6	0.7
Recreation	(v41692287)	99.3	101.6	99.3	-2.3	0.0
Education and reading	(v41692295)	147.5	151.8	152.6	0.5	3.5
Alcoholic beverages and tobacco products	(v41692299)	160.0	163.5	163.7	0.1	2.3
Alcoholic beverages	(v41692300)	141.7	142.7	143.4	0.5	1.2
Tobacco products and smokers' supplies	(v41692306)	171.1	176.6	176.3	-0.2	3.0

Note(s): See "Data quality, concepts and methodology — Explanatory notes for tables" section.

Table 9-9
The Consumer Price Index, major components, selected sub-groups and special aggregates, provinces, Whitehorse and Yellowknife, not seasonally adjusted — Alberta

	CANSIM vector number	Indexes			Percentage change	
		December 2014	November 2015	December 2015	November 2015 to December 2015	December 2014 to December 2015
		2002=100			%	
All-items	(v41692327)	131.5	134.7	133.5	-0.9	1.5
Special aggregates						
All-items excluding food	(v41692451)	130.6	133.6	132.1	-1.1	1.1
All-items excluding food and energy	(v41692452)	128.5	132.2	131.3	-0.7	2.2
All-items excluding energy	(v41692457)	129.8	133.6	132.9	-0.5	2.4
All-items excluding gasoline	(v41693263)	131.2	134.3	133.6	-0.5	1.8
Energy ¹	(v41692458)	150.3	144.5	135.4	-6.3	-9.9
All-items (1992=100)	(v41713424)	163.3	167.3	165.8	-0.9	1.5
Food	(v41692328)	136.4	140.9	141.5	0.4	3.7
Food purchased from stores	(v41692329)	135.8	140.6	141.1	0.4	3.9
Meat	(v41692330)	152.0	156.2	155.2	-0.6	2.1
Dairy products	(v41692340)	140.8	139.7	140.8	0.8	0.0
Bakery and cereal products (excluding baby food)	(v41692345)	148.6	152.7	152.2	-0.3	2.4
Fresh fruit	(v41692349)	122.5	137.3	137.7	0.3	12.4
Fresh vegetables	(v41692352)	116.0	127.2	132.7	4.3	14.4
Food purchased from restaurants	(v41692359)	137.5	141.5	142.0	0.4	3.3
Shelter	(v41692360)	163.6	163.6	163.4	-0.1	-0.1
Rented accommodation	(v41692361)	132.9	133.5	133.4	-0.1	0.4
Owned accommodation	(v41692363)	171.6	175.5	175.6	0.1	2.3
Homeowners' replacement cost	(v41692364)	191.7	190.3	190.3	0.0	-0.7
Homeowners' home and mortgage insurance	(v41692366)	305.6	351.4	352.6	0.3	15.4
Homeowners' maintenance and repairs	(v41692367)	126.1	126.4	126.5	0.1	0.3
Water, fuel and electricity	(v41692368)	168.4	154.9	153.9	-0.6	-8.6
Electricity	(v41692369)	127.1	111.8	113.7	1.7	-10.5
Natural gas	(v41692371)	192.6	170.8	164.6	-3.6	-14.5
Fuel oil and other fuels
Household operations, furnishings and equipment	(v41692372)	116.6	119.6	118.9	-0.6	2.0
Household operations	(v41692373)	130.7	132.5	132.4	-0.1	1.3
Telephone services	(v41692375)	110.1	106.4	106.4	0.0	-3.4
Internet access services (200212=100)	(v41693225)	130.6	144.4	144.4	0.0	10.6
Household furnishings and equipment	(v41692380)	93.7	99.0	97.2	-1.8	3.7
Clothing and footwear	(v41692387)	91.5	96.8	91.8	-5.2	0.3
Women's clothing	(v41692389)	74.7	80.2	74.8	-6.7	0.1
Men's clothing	(v41692390)	87.2	91.2	86.2	-5.5	-1.1
Footwear	(v41692392)	96.1	102.6	97.4	-5.1	1.4
Transportation	(v41692395)	125.4	129.1	126.9	-1.7	1.2
Private transportation	(v41692396)	124.3	128.0	126.0	-1.6	1.4
Purchase and leasing of passenger vehicles	(v41692398)	90.6	93.3	94.4	1.2	4.2
Gasoline	(v41692401)	139.7	146.1	129.9	-11.1	-7.0
Passenger vehicle insurance premiums	(v41692404)	189.3	193.7	194.0	0.2	2.5
Public transportation	(v41692406)	135.4	138.3	134.3	-2.9	-0.8
Health and personal care	(v41692411)	128.1	131.8	131.3	-0.4	2.5
Health care	(v41692412)	138.1	140.5	140.6	0.1	1.8
Personal care	(v41692418)	118.1	123.2	122.2	-0.8	3.5
Recreation, education and reading	(v41692421)	106.7	109.3	107.8	-1.4	1.0
Recreation	(v41692422)	98.2	100.9	99.0	-1.9	0.8
Education and reading	(v41692430)	139.3	141.6	141.9	0.2	1.9
Alcoholic beverages and tobacco products	(v41692434)	145.1	157.3	157.7	0.3	8.7
Alcoholic beverages	(v41692435)	131.7	136.3	136.3	0.0	3.5
Tobacco products and smokers' supplies	(v41692441)	156.3	178.6	179.6	0.6	14.9

Note(s): See "Data quality, concepts and methodology — Explanatory notes for tables" section.

Table 9-10
The Consumer Price Index, major components, selected sub-groups and special aggregates, provinces, Whitehorse and Yellowknife, not seasonally adjusted — British Columbia

	CANSIM vector number	Indexes			Percentage change	
		December 2014	November 2015	December 2015	November 2015 to December 2015	December 2014 to December 2015
		2002=100			%	
All-items	(v41692462)	118.1	120.8	120.4	-0.3	1.9
Special aggregates						
All-items excluding food	(v41692587)	115.5	117.8	117.3	-0.4	1.6
All-items excluding food and energy	(v41692588)	112.5	114.6	114.2	-0.3	1.5
All-items excluding energy	(v41692593)	115.8	118.4	118.2	-0.2	2.1
All-items excluding gasoline	(v41693265)	116.6	119.0	118.8	-0.2	1.9
Energy ¹	(v41692594)	147.4	152.0	149.4	-1.7	1.4
All-items (1992=100)	(v41713427)	139.1	142.3	141.9	-0.3	2.0
Food	(v41692463)	131.1	136.2	137.0	0.6	4.5
Food purchased from stores	(v41692464)	130.8	137.2	138.2	0.7	5.7
Meat	(v41692465)	139.1	148.1	147.0	-0.7	5.7
Dairy products	(v41692475)	133.2	134.8	134.2	-0.4	0.8
Bakery and cereal products (excluding baby food)	(v41692480)	139.7	141.0	144.1	2.2	3.1
Fresh fruit	(v41692484)	128.9	145.4	146.0	0.4	13.3
Fresh vegetables	(v41692487)	127.5	143.0	149.1	4.3	16.9
Food purchased from restaurants	(v41692494)	130.8	133.4	133.8	0.3	2.3
Shelter	(v41692495)	114.1	114.5	114.6	0.1	0.4
Rented accommodation	(v41692496)	115.5	116.3	116.3	0.0	0.7
Owned accommodation	(v41692498)	108.1	108.5	108.6	0.1	0.5
Homeowners' replacement cost	(v41692499)	109.3	108.8	109.2	0.4	-0.1
Homeowners' home and mortgage insurance	(v41692501)	166.7	179.2	180.5	0.7	8.3
Homeowners' maintenance and repairs	(v41692502)	124.9	130.4	130.5	0.1	4.5
Water, fuel and electricity	(v41692503)	147.1	146.4	146.0	-0.3	-0.7
Electricity	(v41692504)	153.4	162.4	162.4	0.0	5.9
Natural gas	(v41692506)	113.6	98.5	98.5	0.0	-13.3
Fuel oil and other fuels	(v41692507)	233.0	208.0	190.5	-8.4	-18.2
Household operations, furnishings and equipment	(v41692508)	113.0	113.7	114.1	0.4	1.0
Household operations	(v41692509)	124.2	125.6	125.9	0.2	1.4
Telephone services	(v41692511)	110.6	106.6	106.6	0.0	-3.6
Internet access services (200212=100)	(v41693226)	130.3	145.2	145.2	0.0	11.4
Household furnishings and equipment	(v41692516)	92.9	92.1	92.6	0.5	-0.3
Clothing and footwear	(v41692523)	98.4	106.5	101.8	-4.4	3.5
Women's clothing	(v41692525)	84.2	88.9	85.2	-4.2	1.2
Men's clothing	(v41692526)	91.3	100.8	95.3	-5.5	4.4
Footwear	(v41692528)	97.1	109.1	102.9	-5.7	6.0
Transportation	(v41692531)	123.6	127.2	126.6	-0.5	2.4
Private transportation	(v41692532)	122.3	126.2	126.0	-0.2	3.0
Purchase and leasing of passenger vehicles	(v41692534)	93.3	95.1	96.3	1.3	3.2
Gasoline	(v41692537)	155.6	167.4	162.5	-2.9	4.4
Passenger vehicle insurance premiums	(v41692540)	142.0	146.3	146.3	0.0	3.0
Public transportation	(v41692542)	133.4	135.1	131.7	-2.5	-1.3
Health and personal care	(v41692547)	113.1	114.7	113.9	-0.7	0.7
Health care	(v41692548)	117.1	117.8	117.7	-0.1	0.5
Personal care	(v41692554)	108.4	111.4	109.6	-1.6	1.1
Recreation, education and reading	(v41692557)	111.8	115.3	115.1	-0.2	3.0
Recreation	(v41692558)	94.9	98.2	98.0	-0.2	3.3
Education and reading	(v41692566)	170.9	174.8	174.3	-0.3	2.0
Alcoholic beverages and tobacco products	(v41692570)	135.4	139.0	137.8	-0.9	1.8
Alcoholic beverages	(v41692571)	114.5	117.9	116.3	-1.4	1.6
Tobacco products and smokers' supplies	(v41692577)	170.2	173.9	173.8	-0.1	2.1

Note(s): See "Data quality, concepts and methodology — Explanatory notes for tables" section.

Table 9-11

The Consumer Price Index, major components, selected sub-groups and special aggregates, provinces, Whitehorse and Yellowknife, not seasonally adjusted — Whitehorse (Yukon)

	CANSIM vector number	Indexes			Percentage change	
		December 2014	November 2015	December 2015	November 2015 to December 2015	December 2014 to December 2015
		2002=100			%	
All-items	(v41692598)	123.1	124.0	124.1	0.1	0.8
Special aggregates						
All-items excluding food	(v41692711)	121.7	122.2	122.1	-0.1	0.3
All-items excluding food and energy	(v41692712)	117.4	119.5	120.3	0.7	2.5
All-items excluding energy	(v41692717)	119.9	122.1	123.0	0.7	2.6
All-items excluding gasoline	(v41693267)	122.3	123.4	124.1	0.6	1.5
Energy ¹	(v41692718)	155.5	143.2	134.3	-6.2	-13.6
All-items (1992=100)	(v41713430)	144.9	145.9	146.0	0.1	0.8
Food	(v41692599)	130.5	133.0	134.3	1.0	2.9
Food purchased from stores	(v41692600)	133.7	136.7	138.5	1.3	3.6
Meat	(v41692601)	137.9	141.7	141.6	-0.1	2.7
Dairy products	(v41692611)	137.6	138.0	135.9	-1.5	-1.2
Bakery and cereal products (excluding baby food)	(v41692616)	142.2	141.5	144.9	2.4	1.9
Fresh fruit	(v41692620)	130.0	127.6	134.0	5.0	3.1
Fresh vegetables	(v41692623)	120.8	130.4	133.1	2.1	10.2
Food purchased from restaurants	(v41692630)	123.5	124.6	124.6	0.0	0.9
Shelter	(v41692631)	145.5	143.0	146.0	2.1	0.3
Rented accommodation
Owned accommodation
Homeowners' replacement cost
Homeowners' home and mortgage insurance
Homeowners' maintenance and repairs
Water, fuel and electricity	(v41692632)	165.9	149.5	148.0	-1.0	-10.8
Electricity	(v41692633)	128.3	118.5	118.5	0.0	-7.6
Natural gas
Fuel oil and other fuels	(v41692635)	219.5	184.6	180.4	-2.3	-17.8
Household operations, furnishings and equipment	(v41692636)	105.9	105.2	106.2	1.0	0.3
Household operations	(v41692637)	116.9	113.5	113.4	-0.1	-3.0
Telephone services	(v41692639)	99.4	96.8	96.8	0.0	-2.6
Internet access services (200212=100)	(v41693227)	104.6	85.9	85.9	0.0	-17.9
Household furnishings and equipment	(v41692644)	86.4	91.0	93.9	3.2	8.7
Clothing and footwear	(v41692651)	94.8	98.7	99.1	0.4	4.5
Women's clothing	(v41692653)	76.1	81.6	81.7	0.1	7.4
Men's clothing	(v41692654)	99.5	111.2	110.3	-0.8	10.9
Footwear	(v41692656)	102.1	100.3	102.7	2.4	0.6
Transportation	(v41692659)	126.3	127.4	122.7	-3.7	-2.9
Private transportation	(v41692660)	125.6	126.4	121.7	-3.7	-3.1
Purchase and leasing of passenger vehicles	(v41692662)	99.1	102.1	102.7	0.6	3.6
Gasoline	(v41692665)	145.7	141.3	125.2	-11.4	-14.1
Passenger vehicle insurance premiums	(v41692668)	203.4	210.3	211.5	0.6	4.0
Public transportation	(v41692670)	128.1	130.2	126.0	-3.2	-1.6
Health and personal care	(v41692675)	121.1	122.8	121.4	-1.1	0.2
Health care	(v41692676)	123.5	123.8	124.4	0.5	0.7
Personal care	(v41692682)	118.1	121.2	117.7	-2.9	-0.3
Recreation, education and reading	(v41692685)	91.3	94.4	94.0	-0.4	3.0
Recreation	(v41692686)	84.3	87.5	86.9	-0.7	3.1
Education and reading	(v41692693)	129.9	132.6	132.8	0.2	2.2
Alcoholic beverages and tobacco products	(v41692695)	149.3	153.8	153.8	0.0	3.0
Alcoholic beverages	(v41692696)	123.4	124.2	124.2	0.0	0.6
Tobacco products and smokers' supplies	(v41692702)	180.1	192.1	192.1	0.0	6.7

Note(s): See "Data quality, concepts and methodology — Explanatory notes for tables" section.

Table 9-12

The Consumer Price Index, major components, selected sub-groups and special aggregates, provinces, Whitehorse and Yellowknife, not seasonally adjusted — Yellowknife (Northwest Territories)

	CANSIM vector number	Indexes			Percentage change	
		December 2014	November 2015	December 2015	November 2015 to December 2015	December 2014 to December 2015
		2002=100			%	
All-items	(v41692722)	128.7	131.0	130.6	-0.3	1.5
Special aggregates						
All-items excluding food	(v41692835)	127.8	129.5	128.7	-0.6	0.7
All-items excluding food and energy	(v41692836)	121.4	124.2	124.2	0.0	2.3
All-items excluding energy	(v41692841)	123.5	126.9	127.0	0.1	2.8
All-items excluding gasoline	(v41693269)	128.0	130.6	130.4	-0.2	1.9
Energy ¹	(v41692842)	187.2	174.6	165.4	-5.3	-11.6
All-items (1992=100)	(v41713431)	149.7	152.4	151.9	-0.3	1.5
Food						
Food purchased from stores	(v41692723)	133.1	139.6	140.8	0.9	5.8
Food purchased from stores	(v41692724)	131.6	138.6	140.2	1.2	6.5
Meat	(v41692725)	167.1	178.2	174.0	-2.4	4.1
Dairy products	(v41692735)	125.9	127.0	129.0	1.6	2.5
Bakery and cereal products (excluding baby food)	(v41692740)	128.1	140.3	139.8	-0.4	9.1
Fresh fruit	(v41692744)	120.8	134.7	134.7	0.0	11.5
Fresh vegetables	(v41692747)	158.8	161.9	169.6	4.8	6.8
Food purchased from restaurants	(v41692754)	137.1	141.5	141.5	0.0	3.2
Shelter ²						
Rented accommodation	(v41692755)	151.5	150.3	150.0	-0.2	-1.0
Owned accommodation
Homeowners' replacement cost
Homeowners' home and mortgage insurance
Homeowners' maintenance and repairs
Water, fuel and electricity	(v41692756)	203.1	190.1	182.6	-3.9	-10.1
Electricity	(v41692757)	189.4	196.8	188.0	-4.5	-0.7
Natural gas
Fuel oil and other fuels	(v41692759)	268.6	209.0	198.7	-4.9	-26.0
Household operations, furnishings and equipment						
Household operations	(v41692760)	112.4	114.9	115.1	0.2	2.4
Household operations	(v41692761)	120.9	122.0	122.6	0.5	1.4
Telephone services	(v41692763)	99.6	96.8	96.8	0.0	-2.8
Internet access services (200212=100)	(v41693228)	73.3	73.6	73.6	0.0	0.4
Household furnishings and equipment	(v41692768)	94.6	99.7	99.1	-0.6	4.8
Clothing and footwear						
Clothing and footwear	(v41692775)	98.5	103.5	102.7	-0.8	4.3
Women's clothing	(v41692777)	83.9	86.2	85.9	-0.3	2.4
Men's clothing	(v41692778)	107.8	114.4	113.1	-1.1	4.9
Footwear	(v41692780)	95.8	97.8	95.8	-2.0	0.0
Transportation						
Transportation	(v41692783)	122.0	125.2	123.4	-1.4	1.1
Private transportation	(v41692784)	121.7	125.1	123.9	-1.0	1.8
Purchase and leasing of passenger vehicles	(v41692786)	93.9	100.7	101.4	0.7	8.0
Gasoline	(v41692789)	144.5	137.7	129.0	-6.3	-10.7
Passenger vehicle insurance premiums	(v41692792)	182.7	189.1	189.1	0.0	3.5
Public transportation	(v41692794)	126.6	128.9	124.7	-3.3	-1.5
Health and personal care						
Health and personal care	(v41692799)	119.6	121.9	120.9	-0.8	1.1
Health care	(v41692800)	116.1	117.1	117.3	0.2	1.0
Personal care	(v41692806)	123.3	126.4	124.6	-1.4	1.1
Recreation, education and reading						
Recreation, education and reading	(v41692809)	99.8	102.3	101.4	-0.9	1.6
Recreation	(v41692810)	95.2	97.7	96.6	-1.1	1.5
Education and reading	(v41692817)	127.3	129.7	130.3	0.5	2.4
Alcoholic beverages and tobacco products						
Alcoholic beverages and tobacco products	(v41692819)	164.5	163.7	164.1	0.2	-0.2
Alcoholic beverages	(v41692820)	148.9	144.2	144.2	0.0	-3.2
Tobacco products and smokers' supplies	(v41692826)	181.4	187.9	189.1	0.6	4.2

Note(s): See "Data quality, concepts and methodology — Explanatory notes for tables" section.

Table 10
The All-items Consumer Price Index, provinces, Whitehorse, Yellowknife and Iqaluit, ¹ not seasonally adjusted, historical data

	Jan.	Feb.	Mar.	Apr.	May	June	July	Aug.	Sept.	Oct.	Nov.	Dec.	Annual average ²
	2002=100												
Newfoundland and Labrador (v41691244)													
2010	116.5	116.3	117.1	117.0	117.2	117.2	117.6	117.8	117.8	118.0	118.1	118.1	117.4
2011	119.0	119.7	120.9	121.5	121.5	120.9	121.6	122.0	122.3	122.1	122.9	121.9	121.4
2012	122.5	123.0	123.9	125.2	124.5	123.5	123.6	124.0	124.5	124.8	124.3	123.5	123.9
2013	123.6	125.8	125.9	125.9	125.9	126.0	126.1	126.0	126.6	126.7	127.0	126.6	126.0
2014	126.7	127.6	128.4	128.8	129.2	129.1	128.9	129.1	129.1	129.0	127.9	126.8	128.4
2015	126.2	127.5	128.9	128.3	129.6	129.9	129.8	130.0	129.6	129.7	129.3	128.6	129.0
Prince Edward Island (v41691379)													
2010	118.7	118.8	119.3	119.1	119.2	119.2	119.5	119.7	119.6	120.4	120.5	119.9	119.5
2011	120.1	121.1	122.2	123.3	123.9	123.3	123.3	123.9	123.7	123.9	124.0	123.4	123.0
2012	123.6	124.8	125.6	126.3	125.9	125.2	125.2	125.6	126.2	126.5	125.9	124.9	125.5
2013	125.2	126.7	127.1	128.6	127.9	127.9	128.1	128.6	129.0	129.0	129.2	128.6	128.0
2014	129.2	130.1	130.9	130.5	130.6	130.5	130.4	130.2	130.5	130.5	129.3	128.1	130.1
2015	126.7	128.2	129.8	128.9	129.7	130.4	130.3	130.1	129.4	129.4	129.6	129.2	129.3
Nova Scotia (v41691513)													
2010	116.9	116.9	117.7	117.9	117.8	117.3	118.6	118.7	118.8	119.3	119.6	119.4	118.2
2011	120.4	120.9	122.3	122.9	123.2	122.5	122.8	123.2	123.8	123.9	124.0	122.7	122.7
2012	123.7	124.3	125.3	126.1	125.6	124.8	124.5	125.0	125.7	125.6	125.5	124.9	125.1
2013	125.4	126.7	126.7	126.8	126.4	126.4	126.4	126.6	127.3	126.7	126.7	126.7	126.6
2014	127.4	128.4	128.9	129.1	129.5	129.2	128.9	129.0	129.5	129.4	128.6	127.4	128.8
2015	126.9	128.0	129.6	129.5	130.2	130.2	130.1	130.0	129.5	129.8	129.2	128.9	129.3
New Brunswick (v41691648)													
2010	115.4	115.6	115.8	115.8	115.7	115.7	115.9	116.0	116.0	116.1	116.7	116.6	115.9
2011	117.2	118.2	119.4	120.0	120.5	119.9	120.3	120.7	120.9	120.8	121.3	120.4	120.0
2012	121.0	121.3	122.3	123.1	122.7	121.6	121.4	121.9	122.7	122.5	122.0	121.2	122.0
2013	121.5	123.1	123.3	122.8	122.6	122.5	122.6	123.0	123.5	123.5	123.5	123.5	123.0
2014	123.4	124.4	125.1	125.0	125.3	124.9	124.8	124.9	125.2	125.5	124.9	124.1	124.8
2015	123.1	124.2	125.5	124.9	126.1	126.2	126.3	126.2	125.6	125.9	125.8	125.5	125.4
Quebec (v41691783)													
2010	114.0	114.2	114.5	114.8	114.9	114.8	114.5	114.6	114.8	115.2	115.6	115.8	114.8
2011	116.4	116.7	118.3	118.5	118.9	118.2	118.3	118.5	118.7	119.0	119.3	118.7	118.3
2012	119.7	120.4	120.8	121.3	121.1	120.6	120.5	120.9	120.9	121.3	121.1	120.5	120.8
2013	120.4	122.1	121.8	121.8	121.9	121.8	121.8	121.9	122.0	121.6	121.8	121.5	121.7
2014	121.7	122.6	122.9	123.4	123.8	123.9	123.7	123.8	123.9	124.3	123.8	122.8	123.4
2015	122.6	123.9	124.7	124.7	125.3	125.2	125.3	125.2	125.1	125.2	124.9	124.4	124.7
Ontario (v41691919)													
2010	114.5	115.1	115.3	115.7	116.2	116.0	117.0	117.0	117.1	117.8	118.0	117.9	116.5
2011	117.8	118.0	119.4	119.9	120.9	120.2	120.5	120.6	121.1	121.0	121.0	120.3	120.1
2012	120.6	121.4	122.0	122.4	122.4	121.6	121.4	121.8	122.0	122.2	121.9	121.3	121.8
2013	121.3	122.8	123.2	122.9	123.0	123.2	123.4	123.4	123.5	123.3	123.3	123.1	123.0
2014	123.3	124.6	125.1	125.9	126.5	126.9	126.5	126.5	126.7	126.8	126.3	125.4	125.9
2015	125.3	126.2	127.1	126.9	127.7	128.2	128.4	128.0	127.8	127.9	127.9	127.5	127.4
Manitoba (v41692055)													
2010	114.3	114.6	114.7	114.8	115.0	114.9	114.7	114.8	115.1	115.8	116.0	115.6	115.0
2011	116.6	117.0	117.9	118.3	119.5	118.6	118.2	118.3	119.1	119.3	119.6	118.6	118.4
2012	118.9	119.0	119.5	120.4	120.8	120.3	120.3	120.5	121.0	121.3	121.1	120.2	120.3
2013	120.3	121.6	122.3	122.6	123.0	123.6	123.9	123.8	124.0	124.0	124.0	122.7	123.0
2014	123.4	124.3	125.1	125.4	126.2	126.0	125.8	125.6	125.8	125.6	125.4	124.5	125.3
2015	124.3	125.2	126.6	126.5	126.8	127.3	127.1	127.8	127.4	128.0	127.7	126.4	126.8
Saskatchewan (v41692191)													
2010	117.5	117.7	117.9	118.5	118.6	118.6	118.5	118.8	118.9	119.7	119.9	119.4	118.7
2011	120.1	120.3	121.4	121.6	122.6	121.7	121.8	122.1	123.0	123.0	123.4	122.4	122.0
2012	122.9	122.7	123.6	124.2	124.5	124.1	123.9	124.2	124.5	124.8	124.5	123.3	123.9
2013	123.5	124.9	125.2	125.4	126.0	126.2	125.9	125.7	126.4	126.7	126.3	126.1	125.7
2014	126.4	127.8	128.7	128.9	129.2	129.0	129.0	129.1	129.2	129.9	129.0	128.3	128.7
2015	128.2	129.3	130.5	130.5	131.1	131.5	131.4	131.6	131.0	131.7	131.7	130.6	130.8

Table 10 – continued

The All-items Consumer Price Index, provinces, Whitehorse, Yellowknife and Iqaluit, ¹ not seasonally adjusted, historical data

	Jan.	Feb.	Mar.	Apr.	May	June	July	Aug.	Sept.	Oct.	Nov.	Dec.	Annual average ²
	2002=100												
Alberta (v41692327)													
2010	122.3	122.7	122.1	122.3	122.7	122.7	123.3	122.7	122.6	123.0	122.7	122.9	122.7
2011	123.5	124.2	124.5	126.0	126.1	125.3	125.7	126.3	126.0	127.2	126.6	126.5	125.7
2012	127.1	126.6	126.6	127.0	126.6	126.9	126.8	127.6	127.8	128.0	127.3	126.5	127.1
2013	126.5	127.7	128.1	128.7	129.5	129.8	129.6	129.4	129.5	129.3	129.5	129.1	128.9
2014	129.9	130.8	133.1	132.2	132.8	132.3	132.9	132.7	132.9	133.2	132.1	131.5	132.2
2015	131.0	132.0	133.0	133.1	133.6	134.5	134.6	135.0	134.6	135.1	134.7	133.5	133.7
British Columbia (v41692462)													
2010	112.2	113.2	112.6	113.2	113.6	113.4	114.6	114.5	114.5	114.8	114.9	114.6	113.8
2011	114.8	115.2	116.1	116.3	117.1	116.5	116.6	116.9	117.3	117.4	117.5	116.5	116.5
2012	116.8	117.2	117.9	118.2	118.6	118.2	117.9	118.1	118.1	118.0	117.6	117.0	117.8
2013	117.1	118.3	118.5	117.2	117.9	117.6	117.9	118.0	118.1	117.7	117.4	117.0	117.7
2014	117.1	118.0	118.6	119.0	119.7	119.8	119.6	119.6	119.5	119.0	118.8	118.1	118.9
2015	118.0	118.9	119.8	119.6	120.6	120.7	120.8	121.0	121.0	120.6	120.8	120.4	120.2
Whitehorse, Yukon (v41692598)													
2010	113.9	114.4	113.4	113.6	114.3	115.1	115.1	115.1	115.1	115.5	115.7	115.6	114.7
2011	115.9	115.9	117.0	117.3	118.4	118.6	118.7	118.6	119.0	119.1	119.4	118.8	118.1
2012	118.8	119.0	120.1	120.7	121.5	121.3	121.4	121.5	121.4	121.6	121.6	121.1	120.8
2013	120.8	121.2	121.5	121.6	122.6	124.1	124.0	124.1	124.0	123.6	123.0	123.2	122.8
2014	123.4	124.0	124.3	124.4	125.1	125.3	125.2	125.1	124.9	124.3	123.9	123.1	124.4
2015	121.8	122.1	123.0	123.5	124.4	125.1	125.4	126.0	125.6	124.5	124.0	124.1	124.1
Yellowknife, Northwest Territories (v41692722)													
2010	116.8	117.4	116.9	117.2	117.8	118.4	118.0	118.0	118.1	118.4	119.1	119.2	117.9
2011	119.3	119.2	120.5	120.9	121.6	121.6	122.0	122.0	122.3	122.6	123.4	123.4	121.6
2012	124.1	123.1	123.6	125.1	124.9	124.5	124.3	124.3	123.9	124.4	124.9	124.8	124.3
2013	125.1	125.4	125.6	126.0	126.1	126.5	126.5	126.6	126.4	126.4	126.6	126.6	126.2
2014	127.0	127.9	128.0	127.7	128.7	128.8	128.7	129.0	128.7	129.0	129.0	128.7	128.4
2015	128.1	128.4	129.4	129.8	130.6	131.4	131.3	131.6	131.2	131.6	131.0	130.6	130.4
Iqaluit, Nunavut (200212=100) (v41713432)													
2010	111.3	111.1	110.7	111.8	112.2	112.9	112.1	112.1	112.2	111.3	112.0	112.1	111.8
2011	112.5	112.3	112.6	113.2	113.5	113.3	113.3	113.4	113.6	114.3	114.5	114.2	113.4
2012	114.2	114.4	114.4	114.9	115.9	116.1	116.1	115.9	115.9	115.2	115.3	115.1	115.3
2013	115.5	115.8	115.8	116.5	117.2	117.5	117.5	117.5	117.5	116.6	116.1	116.2	116.6
2014	116.7	117.2	117.3	117.7	118.1	118.7	118.9	119.0	118.8	118.4	118.1	117.9	118.1
2015	118.2	118.9	119.1	120.0	120.4	121.0	121.2	121.3	121.7	121.1	121.0	120.8	120.4

Note(s): See "Data quality, concepts and methodology — Explanatory notes for tables" section.

Table 11
The Consumer Price Index and selected sub-groups, by city, ¹ not seasonally adjusted

	CANSIM vector number	Indexes			Percentage change	
		December 2014	November 2015	December 2015	November 2015 to December 2015	December 2014 to December 2015
		2002=100			%	
St. John's, Newfoundland and Labrador						
All-items	(v41692846)	126.6	128.9	128.4	-0.4	1.4
Shelter	(v41692847)	147.1	148.6	148.8	0.1	1.2
Rented accommodation	(v41692848)	128.8	129.8	129.7	-0.1	0.7
Owned accommodation	(v41692849)	144.2	146.9	147.5	0.4	2.3
Water, fuel and electricity	(v41692850)	169.5	167.6	167.1	-0.3	-1.4
All-items (1992=100)	(v41713405)	148.6	151.3	150.6	-0.5	1.3
Charlottetown and Summerside, Prince Edward Island						
All-items	(v41692852)	127.5	129.1	128.7	-0.3	0.9
Shelter	(v41692853)	129.7	129.0	128.6	-0.3	-0.8
Rented accommodation	(v41692854)	117.6	118.0	118.0	0.0	0.3
Owned accommodation	(v41692855)	115.3	117.5	117.5	0.0	1.9
Water, fuel and electricity	(v41692856)	184.6	173.1	171.3	-1.0	-7.2
All-items (1992=100)	(v41713407)	149.4	151.3	150.8	-0.3	0.9
Halifax, Nova Scotia						
All-items	(v41692858)	126.2	128.1	127.7	-0.3	1.2
Shelter	(v41692859)	134.6	134.8	134.6	-0.1	0.0
Rented accommodation	(v41692860)	115.2	116.5	116.7	0.2	1.3
Owned accommodation	(v41692861)	130.4	133.0	132.7	-0.2	1.8
Water, fuel and electricity	(v41692862)	176.2	165.2	164.2	-0.6	-6.8
All-items (1992=100)	(v41713409)	150.3	152.5	152.1	-0.3	1.2
Saint John, New Brunswick						
All-items	(v41692864)	123.9	125.6	125.4	-0.2	1.2
Shelter	(v41692865)	131.6	132.9	133.3	0.3	1.3
Rented accommodation	(v41692866)	117.4	118.0	118.0	0.0	0.5
Owned accommodation	(v41692867)	124.5	126.2	127.0	0.6	2.0
Water, fuel and electricity	(v41692868)	164.7	165.2	164.5	-0.4	-0.1
All-items (1992=100)	(v41713411)	146.4	148.5	148.2	-0.2	1.2
Québec, Quebec						
All-items	(v41692870)	122.9	124.9	124.4	-0.4	1.2
Shelter	(v41692871)	129.0	129.7	129.6	-0.1	0.5
Rented accommodation	(v41692872)	121.1	122.4	122.4	0.0	1.1
Owned accommodation	(v41692873)	132.5	132.9	132.8	-0.1	0.2
Water, fuel and electricity	(v41692874)	128.9	129.7	129.1	-0.5	0.2
All-items (1992=100)	(v41713413)	142.8	145.1	144.5	-0.4	1.2
Montréal, Quebec						
All-items	(v41692876)	122.9	125.1	124.7	-0.3	1.5
Shelter	(v41692877)	126.9	127.9	128.1	0.2	0.9
Rented accommodation	(v41692878)	116.9	118.1	118.1	0.0	1.0
Owned accommodation	(v41692879)	131.4	132.5	132.8	0.2	1.1
Water, fuel and electricity	(v41692880)	131.3	130.6	130.7	0.1	-0.5
All-items (1992=100)	(v41713414)	142.2	144.7	144.3	-0.3	1.5
Ottawa-Gatineau, Ontario part, Ontario/Quebec ²						
All-items	(v41692882)	124.7	126.8	126.3	-0.4	1.3
Shelter	(v41692883)	132.9	134.0	134.1	0.1	0.9
Rented accommodation	(v41692884)	115.9	116.6	116.6	0.0	0.6
Owned accommodation	(v41692885)	135.0	136.3	136.4	0.1	1.0
Water, fuel and electricity	(v41692886)	161.5	161.9	162.1	0.1	0.4
All-items (1992=100)	(v41713416)	151.9	154.4	153.9	-0.3	1.3
Toronto, Ontario						
All-items	(v41692888)	126.2	129.1	128.7	-0.3	2.0
Shelter	(v41692889)	133.4	136.1	136.3	0.1	2.2
Rented accommodation	(v41692890)	117.4	118.8	118.9	0.1	1.3
Owned accommodation	(v41692891)	135.0	138.9	139.2	0.2	3.1
Water, fuel and electricity	(v41692892)	162.8	161.7	161.7	0.0	-0.7
All-items (1992=100)	(v41713417)	152.2	155.7	155.1	-0.4	1.9

Table 11 – continued

The Consumer Price Index and selected sub-groups, by city, 1 not seasonally adjusted

	CANSIM vector number	Indexes			Percentage change	
		December 2014	November 2015	December 2015	November 2015 to December 2015	December 2014 to December 2015
		2002=100			%	
Thunder Bay, Ontario						
All-items	(v41692894)	120.3	122.9	122.5	-0.3	1.8
Shelter	(v41692895)	114.6	117.1	117.5	0.3	2.5
Rented accommodation	(v41692896)	111.1	112.0	112.1	0.1	0.9
Owned accommodation	(v41692897)	106.0	108.4	109.0	0.6	2.8
Water, fuel and electricity	(v41692898)	160.5	165.5	165.5	0.0	3.1
All-items (1992=100)	(v41713418)	143.5	146.6	146.1	-0.3	1.8
Winnipeg, Manitoba						
All-items	(v41692900)	124.3	127.4	126.2	-0.9	1.5
Shelter	(v41692901)	135.4	137.7	137.8	0.1	1.8
Rented accommodation	(v41692902)	128.0	129.8	129.9	0.1	1.5
Owned accommodation	(v41692903)	140.5	144.1	144.3	0.1	2.7
Water, fuel and electricity	(v41692904)	125.2	124.6	124.5	-0.1	-0.6
All-items (1992=100)	(v41713420)	153.2	157.1	155.5	-1.0	1.5
Regina, Saskatchewan						
All-items	(v41692906)	129.2	132.4	131.3	-0.8	1.6
Shelter	(v41692907)	158.2	160.9	161.0	0.1	1.8
Rented accommodation	(v41692908)	140.3	140.7	140.5	-0.1	0.1
Owned accommodation	(v41692909)	170.4	173.1	173.4	0.2	1.8
Water, fuel and electricity	(v41692910)	143.3	149.0	148.9	-0.1	3.9
All-items (1992=100)	(v41713422)	160.9	164.9	163.5	-0.8	1.6
Saskatoon, Saskatchewan						
All-items	(v41692912)	128.5	132.0	131.0	-0.8	1.9
Shelter	(v41692913)	154.2	158.6	158.7	0.1	2.9
Rented accommodation	(v41692914)	144.5	146.2	146.1	-0.1	1.1
Owned accommodation	(v41692915)	157.2	162.4	162.6	0.1	3.4
Water, fuel and electricity	(v41692916)	153.7	160.5	160.4	-0.1	4.4
All-items (1992=100)	(v41713423)	158.1	162.5	161.3	-0.7	2.0
Edmonton, Alberta						
All-items	(v41692918)	131.1	134.5	133.2	-1.0	1.6
Shelter	(v41692919)	162.0	162.8	162.8	0.0	0.5
Rented accommodation	(v41692920)	138.9	141.1	141.2	0.1	1.7
Owned accommodation	(v41692921)	160.7	164.1	163.9	-0.1	2.0
Water, fuel and electricity	(v41692922)	190.8	179.9	179.8	-0.1	-5.8
All-items (1992=100)	(v41713425)	159.7	163.9	162.3	-1.0	1.6
Calgary, Alberta						
All-items	(v41692924)	132.1	135.3	134.1	-0.9	1.5
Shelter	(v41692925)	163.9	164.2	164.1	-0.1	0.1
Rented accommodation	(v41692926)	127.6	129.5	129.5	0.0	1.5
Owned accommodation	(v41692927)	179.0	182.8	183.0	0.1	2.2
Water, fuel and electricity	(v41692928)	150.3	137.2	135.7	-1.1	-9.7
All-items (1992=100)	(v41713426)	166.2	170.2	168.7	-0.9	1.5
Vancouver, British Columbia						
All-items	(v41692930)	119.6	122.7	122.4	-0.2	2.3
Shelter	(v41692931)	117.6	118.6	118.8	0.2	1.0
Rented accommodation	(v41692932)	117.0	118.0	118.0	0.0	0.9
Owned accommodation	(v41692933)	114.7	116.0	116.3	0.3	1.4
Water, fuel and electricity	(v41692934)	137.1	136.1	135.9	-0.1	-0.9
All-items (1992=100)	(v41713428)	141.9	145.6	145.2	-0.3	2.3
Victoria, British Columbia						
All-items	(v41692936)	116.7	119.0	118.7	-0.3	1.7
Shelter	(v41692937)	110.5	110.1	110.1	0.0	-0.4
Rented accommodation	(v41692938)	115.3	116.2	116.4	0.2	1.0
Owned accommodation	(v41692939)	100.3	99.1	99.1	0.0	-1.2
Water, fuel and electricity	(v41692940)	175.2	176.9	176.6	-0.2	0.8
All-items (1992=100)	(v41713429)	137.0	139.8	139.4	-0.3	1.8

Note(s): See "Data quality, concepts and methodology — Explanatory notes for tables" section.

Table 12
The All-items Consumer Price Index by city, ¹ not seasonally adjusted, historical data

	Jan.	Feb.	Mar.	Apr.	May	June	July	Aug.	Sept.	Oct.	Nov.	Dec.	Annual average ²
	2002=100												
St. John's, Newfoundland and Labrador (v41692846)													
2010	116.4	116.3	117.1	117.0	117.3	117.2	117.7	117.9	117.9	118.1	118.1	118.1	117.4
2011	119.1	119.7	120.7	121.3	121.5	120.8	121.5	121.9	122.1	122.1	122.7	121.9	121.3
2012	122.4	122.9	123.7	125.0	124.4	123.3	123.4	123.8	124.3	124.6	124.1	123.4	123.8
2013	123.4	125.5	125.6	125.6	125.6	125.8	125.8	125.8	126.4	126.5	126.8	126.4	125.8
2014	126.5	127.4	128.2	128.6	129.0	128.8	128.7	128.9	128.8	128.8	127.6	126.6	128.2
2015	126.1	127.2	128.7	128.1	129.4	129.7	129.5	129.7	129.2	129.3	128.9	128.4	128.7
Charlottetown and Summerside, Prince Edward Island (v41692852)													
2010	118.3	118.4	119.0	118.8	118.9	118.9	119.3	119.4	119.4	120.1	120.2	119.5	119.2
2011	119.7	120.6	121.7	122.7	123.3	122.7	122.7	123.2	123.1	123.3	123.4	122.7	122.4
2012	122.9	124.1	124.8	125.5	125.1	124.5	124.5	124.9	125.5	125.7	125.2	124.2	124.7
2013	124.4	125.9	126.3	127.8	127.1	127.1	127.4	127.8	128.3	128.3	128.5	127.8	127.2
2014	128.4	129.2	130.0	129.6	129.7	129.6	129.6	129.6	129.7	129.8	128.6	127.5	129.3
2015	126.3	127.7	129.2	128.4	129.1	129.7	129.7	129.6	128.9	128.9	129.1	128.7	128.8
Halifax, Nova Scotia (v41692858)													
2010	116.3	116.3	117.0	117.3	117.1	116.7	118.0	118.1	118.3	118.6	118.9	118.6	117.6
2011	119.5	120.0	121.3	121.9	122.1	121.5	121.8	122.2	122.8	122.9	122.9	121.6	121.7
2012	122.4	123.0	124.0	124.8	124.2	123.5	123.3	123.8	124.5	124.4	124.3	123.7	123.8
2013	124.1	125.2	125.3	125.4	125.1	125.0	125.1	125.2	126.0	125.4	125.5	125.4	125.2
2014	126.0	127.0	127.6	127.7	128.2	127.7	127.5	127.7	128.2	128.2	127.4	126.2	127.5
2015	125.8	126.9	128.4	128.3	128.9	128.9	128.9	128.8	128.4	128.8	128.1	127.7	128.2
Saint John, New Brunswick (v41692864)													
2010	115.7	115.9	116.1	116.1	116.0	116.0	116.2	116.3	116.3	116.5	117.1	116.9	116.3
2011	117.5	118.5	119.8	120.2	120.7	120.1	120.6	120.9	121.1	121.0	121.5	120.6	120.2
2012	121.0	121.4	122.4	123.2	122.8	121.8	121.6	122.0	122.8	122.6	122.1	121.4	122.1
2013	121.5	123.1	123.4	122.8	122.6	122.5	122.6	122.9	123.5	123.5	123.4	123.4	122.9
2014	123.4	124.4	125.2	125.0	125.3	124.8	124.7	124.7	125.1	125.4	124.7	123.9	124.7
2015	123.0	124.1	125.3	124.8	125.9	126.0	126.1	125.9	125.4	125.7	125.6	125.4	125.3
Québec, Quebec (v41692870)													
2010	114.0	114.2	114.5	114.7	114.8	114.8	114.5	114.6	114.8	115.2	115.5	115.8	114.8
2011	116.3	116.6	118.2	118.4	118.8	118.1	118.2	118.5	118.7	119.0	119.3	118.7	118.2
2012	119.8	120.4	120.8	121.3	121.2	120.6	120.6	121.0	121.1	121.4	121.3	120.6	120.8
2013	120.6	122.3	122.1	122.0	122.1	122.0	122.0	122.0	122.2	121.8	121.9	121.6	121.9
2014	121.9	122.7	123.0	123.6	123.9	124.0	123.8	124.0	124.1	124.5	123.9	122.9	123.5
2015	122.7	123.9	124.8	124.8	125.3	125.2	125.3	125.2	125.1	125.2	124.9	124.4	124.7
Montréal, Quebec (v41692876)													
2010	114.0	114.2	114.5	114.8	114.9	114.8	114.5	114.5	114.8	115.3	115.6	115.8	114.8
2011	116.3	116.5	118.1	118.3	118.6	117.9	118.0	118.2	118.4	118.8	119.0	118.4	118.0
2012	119.4	120.0	120.4	120.9	120.7	120.2	120.2	120.5	120.5	120.9	120.8	120.1	120.4
2013	120.1	121.7	121.4	121.4	121.6	121.4	121.5	121.5	121.5	121.4	121.6	121.2	121.4
2014	121.5	122.3	122.6	123.2	123.5	123.6	123.5	123.7	123.8	124.1	123.8	122.9	123.2
2015	122.9	124.1	124.8	124.9	125.4	125.3	125.3	125.3	125.3	125.6	125.1	124.7	124.9
Ottawa-Gatineau, Ontario part, Ontario/Quebec (v41692882) ³													
2010	114.4	115.1	115.3	115.8	116.4	116.1	117.2	117.1	117.3	117.9	118.1	118.1	116.6
2011	117.9	118.2	119.5	120.0	121.0	120.2	120.4	120.5	121.1	121.1	121.0	120.3	120.1
2012	120.6	121.4	122.0	122.4	122.3	121.4	121.3	121.7	121.9	122.1	121.9	121.2	121.7
2013	121.3	122.7	123.1	122.8	122.9	123.0	123.3	123.2	123.3	123.1	123.0	122.8	122.9
2014	123.0	124.2	124.7	125.3	125.9	126.3	125.9	125.9	126.1	126.1	125.5	124.7	125.3
2015	124.5	125.4	126.2	126.0	126.9	127.4	127.6	127.1	126.8	126.8	126.8	126.3	126.5
Toronto, Ontario (v41692888)													
2010	114.5	115.1	115.3	115.8	116.3	116.1	117.1	117.1	117.3	117.7	117.8	117.6	116.5
2011	117.5	117.9	119.4	119.8	120.8	120.2	120.4	120.5	121.2	121.1	120.9	120.2	120.0
2012	120.7	121.5	122.0	122.4	122.4	121.7	121.6	121.8	122.1	122.3	122.0	121.4	121.8
2013	121.5	122.9	123.3	123.1	123.2	123.4	123.6	123.7	123.8	123.7	123.6	123.4	123.3
2014	123.7	125.0	125.5	126.4	127.0	127.4	126.9	126.9	127.2	127.4	126.9	126.2	126.4
2015	126.3	127.2	127.9	127.7	128.5	128.8	129.2	128.7	129.0	129.0	129.1	128.7	128.3

Table 12 – continued

The All-items Consumer Price Index by city, ¹ not seasonally adjusted, historical data

	Jan.	Feb.	Mar.	Apr.	May	June	July	Aug.	Sept.	Oct.	Nov.	Dec.	Annual average ²
	2002=100												
Thunder Bay, Ontario (v41692894)													
2010	110.9	111.5	111.7	112.2	112.5	112.3	113.4	113.3	113.4	114.0	114.2	114.1	112.8
2011	114.2	114.2	115.5	116.3	117.3	116.5	116.7	116.8	117.5	117.4	117.2	116.4	116.3
2012	116.5	117.3	117.9	118.1	118.0	117.1	116.8	117.2	117.4	117.9	117.6	116.8	117.4
2013	116.8	118.4	118.6	118.1	118.3	118.5	118.7	118.7	118.6	118.8	118.9	118.8	118.4
2014	118.9	120.0	120.4	121.1	121.7	122.1	121.7	121.6	121.6	121.6	121.2	120.3	121.0
2015	120.2	121.1	122.0	121.6	122.6	123.2	123.3	122.8	122.5	122.8	122.9	122.5	122.3
Winnipeg, Manitoba (v41692900)													
2010	114.1	114.4	114.5	114.6	114.8	114.6	114.5	114.6	114.9	115.6	115.8	115.3	114.8
2011	116.3	116.7	117.6	117.9	119.1	118.3	117.9	118.0	118.8	119.0	119.3	118.3	118.1
2012	118.6	118.7	119.2	120.0	120.4	120.0	119.9	120.2	120.6	120.9	120.8	119.9	119.9
2013	120.0	121.3	121.9	122.2	122.6	123.1	123.4	123.4	123.6	123.6	123.7	122.4	122.6
2014	123.1	123.9	124.7	124.9	125.8	125.6	125.4	125.2	125.4	125.3	125.1	124.3	124.9
2015	124.2	125.0	126.5	126.3	126.6	127.0	126.8	127.6	127.2	127.8	127.4	126.2	126.6
Regina, Saskatchewan (v41692906)													
2010	117.8	117.9	118.1	118.7	118.9	118.9	118.8	119.1	119.2	120.0	120.2	119.7	118.9
2011	120.5	120.7	121.8	121.9	123.0	122.1	122.3	122.5	123.6	123.6	123.9	123.0	122.4
2012	123.5	123.3	124.2	124.8	125.1	124.7	124.6	124.9	125.2	125.6	125.3	124.1	124.6
2013	124.4	125.8	126.3	126.5	127.0	127.2	126.9	126.7	127.4	127.7	127.4	127.2	126.7
2014	127.4	128.7	129.7	129.9	130.2	129.9	129.9	130.1	130.2	130.9	129.9	129.2	129.7
2015	128.9	130.1	131.4	131.4	131.9	132.4	132.2	132.4	131.7	132.4	132.4	131.3	131.5
Saskatoon, Saskatchewan (v41692912)													
2010	118.5	118.7	118.9	119.5	119.6	119.5	119.6	119.8	119.8	120.6	120.8	120.2	119.6
2011	120.9	121.1	122.1	122.2	123.3	122.3	122.5	122.7	123.5	123.6	123.9	122.9	122.6
2012	123.4	123.2	124.0	124.6	125.0	124.6	124.4	124.6	124.9	125.2	125.0	123.7	124.4
2013	123.8	125.0	125.3	125.4	126.0	126.1	125.9	125.7	126.4	126.6	126.2	126.0	125.7
2014	126.4	127.7	128.6	128.6	129.0	128.8	128.8	129.0	129.1	129.9	129.1	128.5	128.6
2015	128.5	129.6	130.7	130.7	131.3	131.7	131.6	131.8	131.4	132.0	132.0	131.0	131.0
Edmonton, Alberta (v41692918)													
2010	122.4	122.9	122.3	122.6	122.8	122.7	123.5	122.9	122.8	123.3	123.0	123.1	122.9
2011	123.9	124.3	124.8	126.2	126.5	125.6	125.9	126.6	126.4	127.6	126.9	126.7	126.0
2012	127.3	126.9	127.0	127.4	127.0	127.2	127.1	127.9	128.1	128.5	127.7	127.0	127.4
2013	126.8	128.0	128.3	129.0	129.7	130.0	129.5	129.4	129.5	129.2	129.3	128.9	129.0
2014	129.6	130.4	132.5	131.9	132.1	132.1	132.4	132.2	132.3	132.8	131.9	131.1	131.8
2015	130.5	131.6	132.6	132.8	133.3	134.1	134.1	134.7	134.4	134.8	134.5	133.2	133.4
Calgary, Alberta (v41692924)													
2010	122.4	122.8	122.3	122.4	122.8	122.9	123.3	122.7	122.6	122.9	122.7	122.8	122.7
2011	123.3	124.2	124.3	125.6	125.8	124.9	125.5	125.9	125.7	126.9	126.3	126.2	125.4
2012	126.7	126.3	126.3	126.7	126.2	126.5	126.4	127.2	127.5	127.5	126.9	126.0	126.7
2013	126.3	127.5	127.9	128.5	129.3	129.7	129.6	129.3	129.5	129.4	129.6	129.3	128.8
2014	130.2	131.2	133.8	132.6	133.5	132.8	133.4	133.4	133.6	133.7	132.6	132.1	132.7
2015	131.7	132.6	133.6	133.6	134.1	135.0	135.1	135.5	135.1	135.7	135.3	134.1	134.3
Vancouver, British Columbia (v41692930)													
2010	113.1	113.9	113.6	114.2	114.6	114.5	115.7	115.7	115.6	116.1	116.0	115.5	114.9
2011	115.8	116.0	117.0	117.2	118.0	117.5	117.5	117.7	118.3	118.5	118.7	117.7	117.5
2012	117.9	118.4	119.1	119.4	119.8	119.5	119.2	119.4	119.3	119.3	118.9	118.3	119.0
2013	118.5	119.8	120.0	118.5	119.3	119.0	119.3	119.5	119.6	119.3	119.0	118.5	119.2
2014	118.7	119.5	120.3	120.7	121.2	121.4	121.2	121.2	121.2	120.6	120.5	119.6	120.5
2015	119.7	120.6	121.5	121.3	122.4	122.4	122.5	122.7	122.7	122.4	122.7	122.4	121.9
Victoria, British Columbia (v41692936)													
2010	111.6	112.5	112.0	112.4	112.8	112.6	113.7	113.6	113.6	114.0	114.1	113.7	113.1
2011	114.0	114.3	115.2	115.4	116.2	115.5	115.5	115.8	116.2	116.4	116.5	115.4	115.5
2012	115.7	116.1	116.9	117.3	117.6	117.1	116.7	116.9	116.8	116.8	116.3	115.6	116.7
2013	115.8	116.9	117.1	115.8	116.5	116.2	116.4	116.5	116.5	116.2	116.0	115.6	116.3
2014	115.7	116.5	117.0	117.3	118.0	118.1	118.0	118.0	117.9	117.5	117.4	116.7	117.3
2015	116.7	117.4	118.2	118.1	119.0	119.2	119.3	119.4	119.5	119.0	119.0	118.7	118.6

Note(s): The all-items index for Whitehorse and Yellowknife are available from table 10.
See "Data quality, concepts and methodology — Explanatory notes for tables" section.

Table 13
Average retail prices for gasoline and fuel oil, by city

	St. John's, N.L.	Charlottetown and Summerside, P.E.I.	Halifax, N.S.	Saint John, N.B.	Québec, Que.	Montréal, Que.	Ottawa, Ont.	Toronto, Ont.	Thunder Bay, Ont.	Winnipeg, Man.
	cents per litre									
Regular unleaded gasoline at self service filling stations										
December 2014	105.5	104.9	105.6	105.0	110.5	115.9	97.9	103.8	112.4	92.1
January 2015	95.8	91.5	91.6	90.8	97.0	102.3	88.6	91.0	98.1	82.4
February 2015	106.8	100.2	100.1	95.5	101.4	112.0	98.2	101.4	106.3	89.7
March 2015	113.3	107.3	108.3	103.5	112.0	118.4	103.9	105.5	110.3	96.0
April 2015	109.1	105.2	108.2	105.8	111.4	117.6	103.1	105.2	106.6	93.7
May 2015	117.0	112.9	115.5	113.0	118.4	125.0	109.8	112.6	111.9	97.8
June 2015	123.2	118.7	119.7	117.3	120.3	129.9	115.6	118.1	118.8	107.8
July 2015	121.9	119.1	117.9	116.6	122.7	127.0	119.0	121.0	122.6	104.1
August 2015	113.8	113.8	110.6	109.3	115.4	119.8	110.6	113.0	129.2	108.7
September 2015	106.9	103.6	101.8	103.0	111.9	113.7	101.7	105.2	120.9	99.2
October 2015	103.2	100.2	98.3	97.6	103.7	111.8	98.2	100.8	118.6	103.6
November 2015	103.1	98.0	99.1	97.8	104.5	110.9	100.5	103.0	116.8	98.4
December 2015	98.0	97.5	96.9	97.0	102.3	109.0	96.0	100.4	108.6	86.6
Premium unleaded gasoline at self service filling stations										
December 2014	113.0	112.8	114.4	113.0	122.7	128.2	113.4	120.2	125.7	106.7
January 2015	102.4	99.2	100.4	98.7	110.0	116.0	104.2	107.7	112.7	97.9
February 2015	112.0	108.2	108.4	103.8	113.8	125.0	113.9	118.5	121.0	105.3
March 2015	119.1	115.2	117.0	111.5	124.5	131.7	120.1	122.2	124.7	111.7
April 2015	116.0	113.3	117.1	113.7	123.7	130.9	118.9	123.0	121.1	109.6
May 2015	123.7	121.0	124.1	120.7	131.5	138.5	126.4	130.0	126.4	114.7
June 2015	129.6	126.5	128.1	124.9	133.4	143.5	132.2	135.8	133.2	123.6
July 2015	128.0	127.0	126.5	124.4	135.8	141.2	135.6	138.6	137.9	120.1
August 2015	120.4	121.7	119.2	117.8	128.6	134.5	127.3	130.7	145.4	125.8
September 2015	113.1	111.4	110.4	110.7	125.2	128.0	118.6	122.4	135.5	114.1
October 2015	109.5	108.1	106.9	105.5	117.0	126.1	114.4	118.0	133.1	119.6
November 2015	109.3	105.9	107.0	105.4	118.2	124.8	117.2	120.0	131.5	113.9
December 2015	105.1	105.2	105.5	104.4	115.9	122.8	113.9	117.9	123.2	102.5
Household heating fuel										
December 2014	95.9	99.0	113.6	115.9	108.4	111.1	120.1	121.0	124.3	120.4
January 2015	78.9	90.5	103.4	102.4	99.6	106.1	112.2	115.1	106.6	104.6
February 2015	79.7	92.9	104.2	105.8	101.9	106.9	112.2	112.8	112.1	102.9
March 2015	87.8	104.2	116.5	118.3	114.9	118.4	126.5	121.8	120.2	102.6
April 2015	78.1	91.0	106.3	102.5	102.6	104.9	118.2	117.4	110.1	99.8
May 2015	85.2	87.9	102.1	103.9	99.6	101.3	114.9	114.9	105.3	93.7
June 2015	84.8	87.9	101.8	103.2	100.7	100.4	111.8	113.8	106.1	97.3
July 2015	88.3	85.3	101.8	100.7	100.7	102.8	109.2	111.2	106.9	92.6
August 2015	80.3	81.8	94.0	93.8	91.9	95.6	102.8	106.7	103.7	90.7
September 2015	80.5	74.4	89.8	92.2	91.6	90.2	90.7	106.2	105.0	92.3
October 2015	82.7	83.9	93.0	97.9	85.8	86.7	95.3	103.2	109.0	100.6
November 2015	81.7	83.9	90.4	100.2	91.9	90.1	104.1	109.7	109.0	99.7
December 2015	80.4	81.9	88.3	96.2	85.4	91.6	106.7	108.4	108.5	87.3

Table 13 – continued

Average retail prices for gasoline and fuel oil, by city

	Regina, Sask.	Saskatoon, Sask.	Edmonton, Alta.	Calgary, Alta.	Vancouver, B.C.	Victoria, B.C.	Whitehorse, Y.T.	Yellowknife, N.W.T.
	cents per litre							
Regular unleaded gasoline at self service filling stations								
December 2014	95.4	94.4	84.5	93.4	112.8	108.5	118.9	122.8
January 2015	83.4	84.9	72.4	77.9	102.9	98.9	101.4	107.0
February 2015	93.5	94.6	82.4	87.9	117.2	103.2	97.4	110.2
March 2015	96.9	99.2	90.7	93.5	124.6	120.5	105.4	113.9
April 2015	95.5	96.7	93.4	95.3	123.6	118.3	109.4	113.9
May 2015	101.5	100.4	94.4	100.2	133.0	124.6	112.3	119.4
June 2015	112.2	111.3	104.4	111.0	135.1	126.8	117.7	128.9
July 2015	109.1	109.7	103.7	109.5	135.5	128.2	118.9	133.9
August 2015	113.1	116.3	107.6	113.2	130.6	124.7	124.9	134.2
September 2015	101.9	102.5	95.4	101.0	118.2	114.1	119.9	123.3
October 2015	103.7	104.1	98.0	104.8	116.6	108.7	119.8	127.2
November 2015	101.3	99.7	89.1	99.7	124.7	116.3	114.3	119.7
December 2015	88.5	87.6	81.5	86.2	122.9	113.9	101.2	112.4
Premium unleaded gasoline at self service filling stations								
December 2014	109.6	108.9	101.7	110.2	128.2	123.6	131.2	137.4
January 2015	98.1	99.8	88.6	94.2	118.2	114.2	112.4	122.3
February 2015	108.8	110.0	100.0	106.1	132.8	117.2	109.0	124.2
March 2015	111.8	114.3	108.0	110.4	140.2	135.8	115.8	127.7
April 2015	110.4	111.7	110.7	112.3	139.4	133.7	120.2	127.7
May 2015	116.6	115.7	112.3	117.4	148.9	140.1	122.8	134.0
June 2015	127.2	126.4	121.7	128.0	150.9	142.3	128.3	144.0
July 2015	124.7	125.0	120.2	126.8	151.3	143.7	130.9	147.8
August 2015	129.1	130.8	125.9	130.9	145.8	140.7	136.3	147.3
September 2015	117.6	118.0	113.2	118.9	134.3	128.9	130.7	138.3
October 2015	119.5	119.3	115.9	122.4	133.1	125.2	130.9	142.9
November 2015	117.0	115.2	107.0	116.8	141.3	132.8	125.0	136.7
December 2015	104.1	103.4	99.3	104.1	139.5	130.4	113.6	135.0
Household heating fuel								
December 2014	118.0	117.3	.	.	117.0	134.7	126.0	127.8
January 2015	105.2	100.6	.	.	100.9	125.0	112.7	112.5
February 2015	110.9	105.0	.	.	108.7	118.7	112.4	105.7
March 2015	101.8	103.9	.	.	114.3	120.4	109.9	107.6
April 2015	94.8	90.0	.	.	111.0	118.9	108.2	103.6
May 2015	96.2	93.5	.	.	110.3	120.3	108.5	101.2
June 2015	94.6	91.6	.	.	113.5	120.8	107.5	101.9
July 2015	91.3	91.2	.	.	114.1	121.5	109.2	102.8
August 2015	93.2	90.0	.	.	102.9	121.8	106.8	100.5
September 2015	91.8	89.8	.	.	104.2	115.5	107.5	97.5
October 2015	98.6	98.2	.	.	102.5	113.1	104.7	100.3
November 2015	94.1	95.2	.	.	104.2	113.2	106.1	99.4
December 2015	91.6	87.1	.	.	93.0	109.2	103.6	94.5

Note(s): See Table A for complete list of vector numbers.

Table 14
Average retail prices, monthly, Canada

	CANSIM vector number	October 2015	November 2015	December 2015
dollars ¹				
Round steak, 1 kilogram	(v735165)	19.32	19.10	18.64
Sirloin steak, 1 kilogram	(v735176)	24.74	24.65	24.16
Prime rib roast, 1 kilogram	(v735187)	30.76	30.84	31.91
Blade roast, 1 kilogram	(v735198)	16.65	16.46	16.56
Stewing beef, 1 kilogram	(v735209)	17.27	16.98	16.73
Ground beef, regular, 1 kilogram	(v735220)	13.23	12.86	12.80
Pork chops, 1 kilogram	(v735221)	13.26	12.89	13.09
Chicken, 1 kilogram	(v735223)	7.82	7.77	7.70
Bacon, 500 grams	(v735166)	6.86	6.67	6.76
Wieners, 450 grams	(v735167)	4.25	4.35	4.32
Canned sockeye salmon, 213 grams	(v735168)	4.47	4.54	4.51
Homogenized milk, 1 litre	(v735169)	2.47	2.47	2.47
Partly skimmed milk, 1 litre	(v735170)	2.33	2.33	2.34
Butter, 454 grams	(v735171)	4.67	4.70	4.66
Processed cheese food slices, 250 grams	(v735172)	3.00	2.91	2.97
Evaporated milk, 385 millilitres	(v735173)	1.86	1.87	1.89
Eggs, 1 dozen	(v735174)	3.33	3.36	3.36
Bread, 675 grams	(v735175)	2.99	2.97	2.97
Soda crackers, 450 grams	(v735177)	2.97	2.99	3.00
Macaroni, 500 grams	(v735178)	1.62	1.61	1.62
Flour, 2.5 kilograms	(v735179)	4.92	4.86	4.79
Corn flakes, 675 grams	(v735180)	5.00	4.88	5.01
Apples, 1 kilogram	(v735181)	4.14	4.12	4.22
Bananas, 1 kilogram	(v735182)	1.69	1.68	1.67
Grapefruits, 1 kilogram	(v735183)	3.63	3.57	3.43
Oranges, 1 kilogram	(v735184)	3.55	3.57	3.61
Apple juice, canned, 1.36 litres	(v735185)	2.10	2.01	2.04
Orange juice, tetra-brick, 1 litre	(v735186)	4.06	4.10	4.15
Carrots, 1 kilogram	(v735189)	1.76	1.77	1.81
Celery, 1 kilogram	(v735190)	2.55	3.08	3.79
Mushrooms, 1 kilogram	(v735191)	8.71	8.98	8.82
Onions, 1 kilogram	(v735192)	1.91	1.91	1.90
Potatoes, 4.54 kilograms	(v735193)	5.68	5.60	5.82
French fried potatoes, frozen, 1 kilogram	(v735194)	2.72	2.67	2.68
Baked beans, canned, 398 millilitres	(v735195)	1.36	1.27	1.34
Tomatoes, canned, 796 millilitres	(v735196)	1.58	1.52	1.65
Tomato juice, canned, 1.36 litres	(v735197)	2.21	2.47	2.41
Ketchup, 1 litre	(v735199)	3.45	3.59	3.58
Sugar, white, 2 kilograms	(v735200)	2.77	2.76	2.57
Coffee, roasted, 300 grams	(v735201)	6.48	6.41	6.47
Coffee, instant, 200 grams	(v735202)	7.15	6.95	6.79
Tea (72 bags)	(v735203)	4.49	4.61	4.66
Cooking or salad oil, 1 litre	(v735204)	4.08	4.13	4.13
Soup, canned, 284 millilitres	(v735205)	1.09	1.10	1.13
Baby food, 128 millilitres	(v735206)	0.94	0.92	0.95
Peanut butter, 500 grams	(v735207)	3.69	3.71	3.78
Fruit flavoured crystals, 2.25 litres	(v735208)	1.79	1.80	1.80
Soft drinks, cola type, 2 litres	(v735210)	1.94	1.95	1.92
Soft drinks, lemon-lime type, 2 litres	(v735211)	1.86	1.83	1.87
Paper towels (2 rolls)	(v735213)	2.60	2.57	2.56
Facial tissue (200 tissues)	(v735214)	2.71	2.64	2.67
Bathroom tissue (4 rolls)	(v735215)	2.60	2.62	2.61
Shampoo, 300 millilitres	(v735216)	3.91	3.93	3.95
Deodorant, 60 grams	(v735217)	4.52	4.51	4.39
Toothpaste, 100 millilitres	(v735218)	2.54	2.55	2.55
Cigarettes (200)	(v735219)	97.05	97.55	97.54
Regular, unleaded gasoline at self-service stations, cents per litre	(v41838376)	103.9	103.7	99.1

Note(s): See "Data quality, concepts and methodology — Explanatory notes for tables" section.

Table 15
Inter-city indexes of price differentials, as of October 2014, of consumer goods and services

	Canada CPI weight ¹	St. John's, Newfoundland and Labrador	Charlottetown and Summerside, Prince Edward Island	Halifax, Nova Scotia	Saint John, New Brunswick	Montréal, Quebec
	%	combined city average=100				
All-items	100.0	97	95	100	95	94
Food	16.6	107	103	102	104	99
Food purchased from stores	.	107	106	104	106	100
Meat, poultry and fish	.	100	106	102	106	100
Dairy products and eggs	.	109	102	101	100	104
Bakery and other cereal products	.	103	107	107	105	100
Fruit and vegetables	.	121	114	109	113	99
Other food purchased from stores ²	.	103	101	102	101	98
Food purchased from restaurants	.	106	94	98	100	98
Shelter	26.3	87	79	95	76	83
Rented accommodation	.	76	66	84	60	83
Owned accommodation	.	79	67	85	64	83
Water, fuel and electricity	.	135	143	154	150	87
Household operations, furnishings and equipment	12.7	106	106	108	103	100
Household operations	.	107	107	109	104	99
Household furnishings and equipment	.	103	103	103	101	102
Clothing and footwear	5.8	101	101	103	101	102
Transportation	20.0	99	95	96	96	101
Private transportation	.	99	93	96	95	100
Purchase of passenger vehicles	.	101	101	102	100	102
Gasoline	.	104	105	104	103	107
Other private transportation	.	93	74	83	82	93
Public transportation	.	102	104	94	103	102
Health and personal care	4.9	96	101	104	100	98
Health care	.	98	101	106	101	97
Personal care	.	94	100	101	100	100
Recreation, education and reading	11.0	90	101	104	106	86
Recreation	.	103	100	101	102	100
Education and reading	.	65	103	110	112	60
Alcoholic beverages and tobacco products	2.8	113	113	115	110	95
Alcoholic beverages	.	110	109	108	107	99
Tobacco products and smokers' supplies	.	118	118	125	114	89

Table 15 – continued

Inter-city indexes of price differentials, as of October 2014, of consumer goods and services

	Canada CPI weight ¹	Ottawa, Ontario	Toronto, Ontario	Winnipeg, Manitoba	Regina, Saskatchewan	Edmonton, Alberta	Vancouver, British Columbia
	%	combined city average=100					
All-items	100.0	102	108	94	100	100	103
Food	16.6	101	101	102	101	97	101
Food purchased from stores	.	102	100	102	101	97	102
Meat, poultry and fish	.	103	100	100	102	96	100
Dairy products and eggs	.	102	101	95	95	95	98
Bakery and other cereal products	.	99	98	103	105	101	104
Fruit and vegetables	.	104	98	105	102	99	104
Other food purchased from stores ²	.	103	102	105	101	96	102
Food purchased from restaurants	.	98	104	103	100	95	100
Shelter	26.3	104	116	83	102	106	111
Rented accommodation	.	103	117	81	97	104	117
Owned accommodation	.	101	112	84	99	105	113
Water, fuel and electricity	.	115	128	81	120	115	95
Household operations, furnishings and equipment	12.7	104	106	97	93	96	103
Household operations	.	106	109	96	91	98	104
Household furnishings and equipment	.	100	100	101	98	93	100
Clothing and footwear	5.8	101	100	101	98	95	100
Transportation	20.0	97	109	96	93	94	95
Private transportation	.	96	109	95	93	94	96
Purchase of passenger vehicles	.	101	101	100	98	94	100
Gasoline	.	96	99	92	96	88	105
Other private transportation	.	89	127	91	85	100	84
Public transportation	.	106	107	99	93	93	90
Health and personal care	4.9	105	103	99	105	99	101
Health care	.	104	105	96	109	102	101
Personal care	.	105	101	102	100	96	100
Recreation, education and reading	11.0	107	110	92	107	101	102
Recreation	.	104	102	99	104	98	100
Education and reading	.	114	126	78	111	107	105
Alcoholic beverages and tobacco products	2.8	96	98	117	113	107	102
Alcoholic beverages	.	98	98	105	109	110	102
Tobacco products and smokers' supplies	.	94	98	136	120	102	102

Note(s): See "Data quality, concepts and methodology — Explanatory notes for tables" section and Table B for complete list of vector numbers.

Explanatory notes for tables

Table 1 The Consumer Price Index, major components and special aggregates, Canada, not seasonally adjusted

1. 2013 Consumer Price Index (CPI) basket weights at December 2014 prices, Canada.
2. Figures may not add to 100% due to rounding.
3. The Bank of Canada's core index excludes eight of the Consumer Price Index's most volatile components (fruit, fruit preparations and nuts; vegetables and vegetable preparations; mortgage interest cost; natural gas; fuel oil and other fuels; gasoline; inter-city transportation; and tobacco products and smokers' supplies) as well as the effects of changes in indirect taxes on the remaining components. For additional information on the core index, please consult the Bank of Canada website: www.bankofcanada.ca/rates/indicators/key-variables/inflation-control-target/.

Table 2 The Consumer Price Index, major components and special aggregates, Canada, seasonally adjusted

1. 2013 Consumer Price Index (CPI) basket weights at December 2014 prices, Canada.
2. A seasonally adjusted series is one from which seasonal movements have been eliminated. Each month, the previous month's seasonally adjusted index is subject to revision. On an annual basis, the seasonally adjusted values for the last three years are revised with the January data release. Users employing Consumer Price Index data for indexation purposes are advised to use the unadjusted indexes. For more information on the availability and uses of seasonally adjusted CPI data, please see the *Definitions, data sources and methods* section of survey 2301.
3. The Bank of Canada's core index excludes eight of the Consumer Price Index's most volatile components (fruit, fruit preparations and nuts; vegetables and vegetable preparations; mortgage interest cost; natural gas; fuel oil and other fuels; gasoline; inter-city transportation; and tobacco products and smokers' supplies) as well as the effects of changes in indirect taxes on the remaining components. For additional information on the core index, please consult the Bank of Canada website: www.bankofcanada.ca/rates/indicators/key-variables/inflation-control-target/.

Table 3 The Consumer Price Index, provinces, Whitehorse, Yellowknife and Iqaluit, not seasonally adjusted

1. Data for Iqaluit are on a December 2002=100 base (200212=100) and the Standard Geographical Classification (SGC) 2001. Previous to April 1, 1999, the town of Iqaluit formed part of the Northwest Territories. On April 1, 1999, the town of Iqaluit formed part of the newly-created territory of Nunavut.

Table 4 The Consumer Price Index, major components and selected sub-groups, Canada, not seasonally adjusted

Table 4-7

1. From April 2006, Statistics Canada changed its implementation of the price index formula used for traveller accommodation. As a result, data from April 2006 are not strictly comparable to earlier time periods.

Table 5 The Consumer Price Index for Canada, All-items CPI, not seasonally adjusted, historical data

1. The annual average index is calculated as the average of the published 12 individual monthly indexes, rounded to one decimal place. Percentage changes between the annual average indexes are calculated based on these published rounded numbers. Between May 2007 and September 2007, the annual average percentage changes in Table 5 were calculated based on annual average indexes that were not rounded. As a result, some percentage changes were different by +/- 0.1 from the official percentage change. This problem only affected the annual average column of Table 5.

Table 6 The Bank of Canada's core index, not seasonally adjusted, historical data

1. The Bank of Canada's core index excludes eight of the Consumer Price Index's most volatile components (fruit, fruit preparations and nuts; vegetables and vegetable preparations; mortgage interest cost; natural gas; fuel oil and other fuels; gasoline; inter-city transportation; and tobacco products and smokers' supplies) as well as the effects of changes in indirect taxes on the remaining components. For additional information on the core index, please consult the Bank of Canada website: www.bankofcanada.ca/rates/indicators/key-variables/inflation-control-target/.
2. The annual average index is calculated as the average of the published 12 individual monthly indexes, rounded to one decimal place. Percentage changes between the annual average indexes are calculated based on these published rounded numbers.

Table 7 The Consumer Price Index for Canada, major components and special aggregates, not seasonally adjusted, historical data

1. Goods are physical or tangible commodities usually classified according to their life span into non-durable goods, semi-durable goods and durable goods. Non-durable goods are those goods that can be used up entirely in less than a year, assuming normal usage. For example, fresh food products, disposable cameras and gasoline are non-durable goods. Semi-durable goods are those goods that may last less than 12 months or greater than 12 months depending on the purpose to which they are put. For example, clothing, footwear and household textiles are semi-durable goods. Durable goods are those goods which may be used repeatedly or continuously over more than a year, assuming normal usage. For example, cars, audio and video equipment and furniture are durable goods.
2. A service in the Consumer Price Index (CPI) is characterized by valuable work performed by an individual or organization on behalf of a consumer, for example, car tune-ups, haircuts and city public transportation. Transactions classified as a service may include the cost of goods by their nature. Examples include food in restaurant food services and materials in clothing repair services.
3. The special aggregate "energy" includes: "electricity", "natural gas", "fuel oil and other fuels", "gasoline", and "fuel, parts and accessories for recreational vehicles".
4. The annual index level is the average of the 12 individual monthly indexes.

Table 8 Annual average percentage changes for the Consumer Price Index

Table 8-1

1. The annual index level is the average of the 12 individual monthly indexes. The percentage change for a given calendar year is calculated using the annual average indexes.

Table 8-2

1. The annual index level is the average of the 12 individual monthly indexes. The percentage change for a given calendar year is calculated using the annual average indexes.
2. Data for Iqaluit are on a December 2002=100 base (200212=100) and the Standard Geographical Classification (SGC) 2001. Previous to April 1, 1999, the town of Iqaluit formed part of the Northwest Territories. On April 1, 1999, the town of Iqaluit formed part of the newly-created territory of Nunavut.

Table 9 The Consumer Price Index, major components, selected sub-groups and special aggregates, provinces, Whitehorse and Yellowknife, not seasonally adjusted**Tables 9-1, 9-2, 9-3, 9-4, 9-5, 9-6, 9-7, 9-8, 9-9, 9-10 and 9-11**

1. The special aggregate "energy" includes: "electricity", "natural gas", "fuel oil and other fuels", "gasoline", and "fuel, parts and accessories for recreational vehicles".

Table 9-12

1. The special aggregate "energy" includes: "electricity", "natural gas", "fuel oil and other fuels", "gasoline", and "fuel, parts and accessories for recreational vehicles".
2. Part of the increase first recorded in the shelter index for Yellowknife for December 2004 inadvertently reflected rent increases that actually occurred earlier. As a result, the change in the shelter index was overstated in December 2004, and was understated in the previous two years. The shelter index series for Yellowknife has been corrected from December 2002. In addition, the Yellowknife All-items Consumer Price Index (CPI) and some Yellowknife special aggregate index series have also changed. Data for Canada and all other provinces and territories were not affected.

Table 10 The All-items Consumer Price Index, provinces, Whitehorse, Yellowknife and Iqaluit, not seasonally adjusted, historical data

1. Data for Iqaluit are on a December 2002=100 base (200212=100) and the Standard Geographical Classification (SGC) 2001. Previous to April 1, 1999, the town of Iqaluit formed part of the Northwest Territories. On April 1, 1999, the town of Iqaluit formed part of the newly-created territory of Nunavut.
2. The annual index level is the average of the 12 individual monthly indexes.

Table 11 The Consumer Price Index and selected sub-groups, by city, not seasonally adjusted

1. With the introduction of the 1992 basket in January 1995, emphasis was shifted from city data to provincial data. City all-items series were continued since many users had come to rely on this service, but the method of calculation was changed. Shelter indexes are calculated for each city. This recognizes the importance of shelter in the basket, the significant and persistent differences in price movements between cities, and the availability of local data. For the other seven major components, the movement of the provincial counterpart is used except in the cases of Montréal, Toronto, and Vancouver, where a sub-provincial counterpart is used. The major components are aggregated using the city's expenditure pattern to arrive at each city's all-items index.
2. Formerly Ottawa (Ottawa-Gatineau, Ontario part), represents Ottawa only.

Table 12 The All-items Consumer Price Index by city, not seasonally adjusted, historical data

1. With the introduction of the 1992 basket in January 1995, emphasis was shifted from city data to provincial data. City all-items series were continued since many users had come to rely on this service, but the method of calculation was changed. Shelter indexes are calculated for each city. This recognizes the importance of shelter in the basket, the significant and persistent differences in price movements between cities, and the availability of local data. For the other seven major components, the movement of the provincial counterpart is used except in the cases of Montréal, Toronto, and Vancouver, where a sub-provincial counterpart is used. The major components are aggregated using the city's expenditure pattern to arrive at each city's all-items index.
2. The annual index level is the average of the 12 individual monthly indexes.
3. Formerly Ottawa (Ottawa-Gatineau, Ontario part), represents Ottawa only.

Table 14 Average retail prices, monthly, Canada

1. Prices are expressed in dollars, except for the price of gasoline which is expressed in cents per litre.

Average retail prices for food, household supplies, personal care items, cigarettes and gasoline

Table 14 shows, for the current month and the two previous months, average prices for selected food, household supplies, personal care items, cigarettes and for gasoline.

Prices for these items are collected as part of the regular monthly Consumer Price Index (CPI) survey. Prices for the selected food, household supply and personal care items are observed in food supermarkets and drug stores, while prices for cigarettes are collected in supermarkets, department stores, drug stores and tobacco shops. Prices for regular unleaded self-serve gasoline are collected at gas stations. In each geographic area defined for pricing purposes, the average prices of each product are weighted by the population of the area in question to calculate the average Canadian retail price of each product. For regular unleaded self-serve gasoline, average city prices are weighted by provincial volume supplied and cities' population to calculate the Canada average retail price.

Products that are priced can vary in quality between outlets or between geographic areas. Brands and outlets can also vary from month to month. Therefore, average prices may not necessarily be fully comparable from one month to another and should not be used as an appropriate measure of pure price change through time. A matched product and outlet sample is used for the CPI to determine the pure price movement of products through time.

Table 15 Inter-city indexes of price differentials, as of October 2014, of consumer goods and services

Purpose and Scope

Table 15 shows estimates of price differences between 11 Canadian cities in all 10 provinces, as of October 2014. These estimates are based on a selection of products (goods and services) purchased by consumers in each of the 11 cities.

These estimates should not be interpreted as a measure of differences in the cost-of-living between cities. The indexes provide price comparisons for a selection of products only, and are not meant to give an exhaustive comparison of all goods and services purchased by consumers. Additionally, the shelter price concept used for these indexes is not conducive to making cost-of-living type comparisons between cities (see below).

Methodology

In order to produce optimal Inter-city indexes, product comparisons were initially made by pairing cities that are in close geographic proximity. The resulting price level comparisons were then extended to include comparisons between all of the cities, using a chaining procedure. The following initial pairings were used:

St. John's	Halifax
Charlottetown-Summerside	Halifax
Saint John	Halifax
Halifax	Ottawa
Montréal	Toronto
Ottawa	Toronto
Toronto	Winnipeg
Regina	Winnipeg
Edmonton	Winnipeg
Vancouver	Edmonton

Reliable Inter-city price comparisons require that the selected products be very similar across cities. This ensures that the variation in index levels between cities is due to pure price differences and not to differences in the attributes of the products, such as size and/or quality.

Within each city pair, product price quotes were matched on the basis of detailed descriptions. Whenever possible, products were matched by brand, quantity and with some regard for the comparability of retail outlets from which they were selected.

Additionally, the target prices for this study are final prices and as such, include all sales taxes and levies applied to consumer products within a city. This can be an important source of variation when explaining differences in inter-city price levels.

It should be noted that price data for the Inter-city indexes is drawn from the sample of monthly price data collected for the Consumer Price Index (CPI). Given that the CPI sample is optimized to produce accurate price comparisons through time, and not across regions, the number of matched price quotes between cities can be small. It should also be noted that, especially in periods when prices are highly volatile, the timing of the product price comparison can significantly affect city-to-city price relationships.

The weights used to aggregate the different product indexes within a city are based on the combined consumption expenditures of households living in the 11 cities tracked. As such, one set of weights is used for all 11 cities. Currently, 2011 expenditures are used to derive the weights. These expenditures are expressed in October 2014 prices.

The Inter-city index for a particular city is compared to the weighted average of all 11 cities, which is equal to 100. For example, an index value of 102 for a particular city means that prices for the measured commodities are 2% higher than the weighted, combined city average.

Additional Information on Shelter

Shelter prices were absent from the Inter-city index program prior to 1999 because of methodological and conceptual issues associated with their measurement. The diverse nature of shelter means that accurate matches between cities are often difficult to make.

To account for some of these difficulties, a rental equivalence approach is used to construct the Inter-city price indexes for owned accommodation. Such an approach uses market rents as an approximation to the cost of the shelter services consumed by homeowners in each city. It is important to note that this approach may not be suitable for the needs of all users. For instance, since the rental equivalence approach does not represent an out-of-pocket expenditure, the indexes should not be used for measuring differences in the purchasing power of homeowners across cities.

Footnotes for Table 15

1. The weights shown are rounded 2011 basket weights at January 2013 prices for Canada. They are provided for illustration only; the weights actually used are combined city weights with adjustments for price changes up until October 2014.
2. Includes the following subgroups: sugar and syrup, confectionery items, margarine, other edible fat and oil items, coffee, tea, condiments, spices and vinegar, soup, infant and junior foods, pre-cooked frozen food preparations, non-alcoholic beverages and all other food preparations.

Data quality, concepts and methodology

Definition

The Consumer Price Index (CPI) is an indicator of the changes in consumer prices experienced by the target population. The CPI measures price change by comparing, through time, the cost of a fixed basket of goods and services. The CPI basket is based on the expenditures of the target population in a certain reference period. A list of baskets and reference months is available in **The Canadian Consumer Price Index Reference Paper**, catalogue no. 62-553-X. Since a basket contains goods and services of unchanging or equivalent quantity and quality, the index reflects only pure price movements.

Separate CPIs are published for Canada, the ten provinces, Whitehorse, Yellowknife and Iqaluit. Some CPI information is also available for an additional sixteen urban centres. Since the CPI is a measure of price change from one time period to another, it cannot be used to indicate differences in price levels between provinces or urban centres.

Population coverage

The population targeted by the CPI consists of families and individuals living in urban and rural private households. For practical reasons, residents of the Territories outside Whitehorse, Yellowknife and Iqaluit are not represented by the index. Prior to January 1995, the target population consisted of private households in Canadian urban centres with a population of 30,000 or more.

Time base

The CPI compares, in percentage terms, prices in any given time period to prices in the official base period which, at present, is 2002=100. The official time base was changed from 1992=100 to 2002=100 starting with the CPI for May 2007. The change is strictly an arithmetic conversion which alters the index levels but leaves the percentage changes between any two periods intact, except for differences in rounding.

Percent versus index point changes

The movements of the indexes from one month to another are expressed as percent changes rather than changes in index points. Index point changes are affected by the level of the index which, in turn, depends on the time base of the particular index. The percentage change between any two time periods can be readily calculated by dividing the index point difference between the two time periods by the index for the earlier period and multiplying the result by one hundred.

Price coverage

The prices used in the CPI calculation are final prices, inclusive of excise and other indirect taxes paid by consumers. In particular, they include the Goods and Services Tax (GST), as well as provincial retail sales taxes wherever applicable. In regions where the GST and provincial retail sales taxes have been combined, the Harmonized Sales Tax (HST) is included. It follows that the CPI can change as a result of modifications to any of these taxes.

The selection of products and the outlets from which prices are collected is judgmental, other than for rents and traveler accommodation. The number of prices required for a given good or service depends on the importance and the nature of the product. The samples are designed to represent volume selling goods and services and outlets. The principal objective of the sample design is to ensure an informative, reliable and impartial picture of consumer inflation at the national and provincial levels.

The prices of most of the goods and services surveyed for the CPI are usually collected in the first two weeks of the reference month. Food prices are collected in the first three weeks, while gasoline prices are collected in four weeks of each month. Although prices for most CPI goods and services are collected monthly, prices for products having less frequent price changes (e.g. property taxes and electricity rates) are collected at intervals longer than one month. Special pricings are carried out where there is evidence that significant price changes have occurred between scheduled pricing periods.

Weights and linking

The CPI maintains fixed quantitative proportions (weights) between goods and services during the life of a given basket. The baskets are updated periodically to take into account changes in consumer expenditure patterns. In February 2015, with the release of the January 2015 CPI, the basket reflecting the 2013 expenditure patterns replaced the 2011 basket. The continuity of the CPI series is maintained by “linking” the corresponding indexes obtained from consecutive baskets.

The CPI is calculated as a weighted average of specified goods and services price indexes. The weights are derived from Survey of Household Spending data.

When reconstructing or re-aggregating published CPI series, the changes in weights and the linking procedures must be taken into account. For a description of the methodology required to reconstruct or re-aggregate CPI series, see **The Canadian Consumer Price Index Reference Paper**, catalogue no. 62-553-X (Occasional), or contact Consumer Prices Division.

Bank of Canada’s core index

Starting with the October 2006 Consumer Price Index (CPI), Statistics Canada produces and disseminates the Bank of Canada’s core index as defined by the Bank of Canada.

The Bank of Canada’s core index excludes eight of the Consumer Price Index’s most volatile components (fruit, fruit preparations and nuts; vegetables and vegetable preparations; mortgage interest cost; natural gas; fuel oil and other fuels; gasoline; inter-city transportation; and tobacco products and smokers’ supplies) as well as the effects of changes in indirect taxes on the remaining components. For additional information on the core index, please consult the Bank of Canada website: www.bankofcanada.ca/rates/indicators/key-variables/inflation-control-target/.

Statistics Canada also calculates, on behalf of the Bank of Canada, a seasonally adjusted core index. This series is available through *CANSIM*, Statistics Canada’s official database, or by contacting us through the means mentioned on the inside cover of this publication.

Whitehorse, Yellowknife and Iqaluit indexes

The relatively small size of the housing market in these three cities makes it difficult to construct reliable price indexes for new houses. To compensate, the price movements of rental accommodation are used to approximate the price movements of new houses. The rent information itself is collected using different pricing frequencies and collection methods than in the rest of the country. Because of these problems, the indexes for Rented Accommodation and Owned Accommodation are not published for these three cities. Further, the all-items indexes published for these three cities are not strictly comparable with the same indexes for the provinces or the other sixteen cities.

Calculation of city indexes

With the introduction of the 1992 basket, emphasis was shifted from city data to provincial data. City all-items series were continued since many users had come to rely on this service, but the method of calculation was changed. Shelter indexes are calculated for each city. This recognizes the importance of Shelter in the basket, the significant and persistent differences in price movements between cities, and the availability of local data. For the other seven major components, the movement of the provincial counterpart (or, in the cases of Montréal, Toronto, and Vancouver, a sub-provincial counterpart) is used. The major components are aggregated using the city's expenditure pattern to arrive at each city's all-items index.

Seasonal adjustment

A seasonally adjusted series is one from which seasonal movements have been eliminated. Seasonal movements are defined as those which are caused by regular annual events such as variations in climate and regular institutional events such as vacations and statutory holidays. Seasonally adjusted series are calculated using Statistics Canada's X-12 ARIMA program. Time series with no detectable seasonal movements remain unchanged from the official series. The official unadjusted series for the all-items index, the Bank of Canada's core index, each of the eight major component indexes and three special aggregates (all-items excluding food, all-items excluding food and energy and all-items excluding eight of the most volatile components [Bank of Canada definition]) are seasonally adjusted independently.

Each month, the previous month's seasonally adjusted index is subject to revision. On an annual basis, the seasonally adjusted values for the last three years are revised with the January data release. Since these revisions can lead to changes in both the levels and movements of the indexes, users employing the CPI for indexation purposes are advised to use the unadjusted indexes.

Appendix I

Concordance tables

Table A
Vector numbers for the average retail prices for gasoline and fuel oil, by urban centre

	St. John's, N.L.	Charlottetown and Summerside, P.E.I.	Halifax, N.S.	Saint John, N.B.	Québec, Que.	Montréal, Que.	Ottawa, Ont.	Toronto, Ont.	Thunder Bay, Ont.	Winnipeg, Man.
Regular unleaded gasoline at self service filling stations	(v735082)	(v735092)	(v735093)	(v735094)	(v735095)	(v735096)	(v735097)	(v735098)	(v735099)	(v735083)
Premium unleaded gasoline at self service filling stations	(v735100)	(v735110)	(v735111)	(v735112)	(v735113)	(v735114)	(v735115)	(v735116)	(v735117)	(v735101)
Household heating fuel	(v735149)	(v735157)	(v735158)	(v735159)	(v735160)	(v735161)	(v735162)	(v735163)	(v735164)	(v735150)
	Regina, Sask.	Saskatoon, Sask.	Edmonton, Alta.	Calgary, Alta.	Vancouver, B.C.	Victoria, B.C.	Whitehorse, Y.T.	Yellowknife, N.W.T.		
Regular unleaded gasoline at self service filling stations	(v735084)	(v735085)	(v735086)	(v735087)	(v735088)	(v735089)	(v735090)	(v735091)		
Premium unleaded gasoline at self service filling stations	(v735102)	(v735103)	(v735104)	(v735105)	(v735106)	(v735107)	(v735108)	(v735109)		
Household heating fuel	(v735151)	(v735152)			(v735153)	(v735154)	(v735155)	(v735156)		

Table B
Vector numbers of the inter-city indexes of price differentials of consumer goods and services

	St. John's, Newfoundland and Labrador	Charlottetown and Summerside, Prince Edward Island	Halifax, Nova Scotia	Saint John, New Brunswick	Montréal, Quebec
All-items	(v15939841)	(v15939869)	(v15939897)	(v15939925)	(v15939953)
Food	(v15939842)	(v15939870)	(v15939898)	(v15939926)	(v15939954)
Food purchased from stores	(v15939843)	(v15939871)	(v15939899)	(v15939927)	(v15939955)
Meat, poultry and fish	(v15939844)	(v15939872)	(v15939900)	(v15939928)	(v15939956)
Dairy products and eggs	(v15939845)	(v15939873)	(v15939901)	(v15939929)	(v15939957)
Bakery and other cereal products	(v15939846)	(v15939874)	(v15939902)	(v15939930)	(v15939958)
Fruit and vegetables	(v15939847)	(v15939875)	(v15939903)	(v15939931)	(v15939959)
Other food purchased from stores	(v15939848)	(v15939876)	(v15939904)	(v15939932)	(v15939960)
Food purchased from restaurants	(v15939849)	(v15939877)	(v15939905)	(v15939933)	(v15939961)
Shelter	(v15939850)	(v15939878)	(v15939906)	(v15939934)	(v15939962)
Rented accommodation	(v21580949)	(v21580952)	(v21580955)	(v21580958)	(v21580961)
Owned accommodation	(v21580950)	(v21580953)	(v21580956)	(v21580959)	(v21580962)
Water, fuel and electricity	(v21580951)	(v21580954)	(v21580957)	(v21580960)	(v21580963)
Household operations, furnishings and equipment	(v15939851)	(v15939879)	(v15939907)	(v15939935)	(v15939963)
Household operations	(v15939852)	(v15939880)	(v15939908)	(v15939936)	(v15939964)
Household furnishings and equipment	(v15939853)	(v15939881)	(v15939909)	(v15939937)	(v15939965)
Clothing and footwear	(v15939854)	(v15939882)	(v15939910)	(v15939938)	(v15939966)
Transportation	(v15939855)	(v15939883)	(v15939911)	(v15939939)	(v15939967)
Private transportation	(v15939856)	(v15939884)	(v15939912)	(v15939940)	(v15939968)
Purchase of passenger vehicles	(v15939857)	(v15939885)	(v15939913)	(v15939941)	(v15939969)
Gasoline	(v15939858)	(v15939886)	(v15939914)	(v15939942)	(v15939970)
Other private transportation	(v15939859)	(v15939887)	(v15939915)	(v15939943)	(v15939971)
Public transportation	(v15939860)	(v15939888)	(v15939916)	(v15939944)	(v15939972)
Health and personal care	(v15939861)	(v15939889)	(v15939917)	(v15939945)	(v15939973)
Health care	(v15939862)	(v15939890)	(v15939918)	(v15939946)	(v15939974)
Personal care	(v43975161)	(v43975162)	(v43975163)	(v43975164)	(v43975165)
Recreation, education and reading	(v15939865)	(v15939893)	(v15939921)	(v15939949)	(v15939977)
Recreation	(v43975172)	(v43975173)	(v43975174)	(v43975175)	(v43975176)
Education and reading	(v43975183)	(v43975184)	(v43975185)	(v43975186)	(v43975187)
Alcoholic beverages and tobacco products	(v15939866)	(v15939894)	(v15939922)	(v15939950)	(v15939978)
Alcoholic beverages	(v15939867)	(v15939895)	(v15939923)	(v15939951)	(v15939979)
Tobacco products and smokers' supplies	(v15939868)	(v15939896)	(v15939924)	(v15939952)	(v15939980)

Table B – continued

Vector numbers of the inter-city indexes of price differentials of consumer goods and services

	Ottawa, Ontario	Toronto, Ontario	Winnipeg, Manitoba	Regina, Saskatchewan	Edmonton, Alberta	Vancouver, British Columbia
All-items	(v15939981)	(v15940009)	(v15940037)	(v15940065)	(v15940093)	(v15940121)
Food	(v15939982)	(v15940010)	(v15940038)	(v15940066)	(v15940094)	(v15940122)
Food purchased from stores	(v15939983)	(v15940011)	(v15940039)	(v15940067)	(v15940095)	(v15940123)
Meat, poultry and fish	(v15939984)	(v15940012)	(v15940040)	(v15940068)	(v15940096)	(v15940124)
Dairy products and eggs	(v15939985)	(v15940013)	(v15940041)	(v15940069)	(v15940097)	(v15940125)
Bakery and other cereal products	(v15939986)	(v15940014)	(v15940042)	(v15940070)	(v15940098)	(v15940126)
Fruit and vegetables	(v15939987)	(v15940015)	(v15940043)	(v15940071)	(v15940099)	(v15940127)
Other food purchased from stores	(v15939988)	(v15940016)	(v15940044)	(v15940072)	(v15940100)	(v15940128)
Food purchased from restaurants	(v15939989)	(v15940017)	(v15940045)	(v15940073)	(v15940101)	(v15940129)
Shelter	(v15939990)	(v15940018)	(v15940046)	(v15940074)	(v15940102)	(v15940130)
Rented accommodation	(v21580964)	(v21580967)	(v21580970)	(v21580973)	(v21580976)	(v21580979)
Owned accommodation	(v21580965)	(v21580968)	(v21580971)	(v21580974)	(v21580977)	(v21580980)
Water, fuel and electricity	(v21580966)	(v21580969)	(v21580972)	(v21580975)	(v21580978)	(v21580981)
Household operations, furnishings and equipment	(v15939991)	(v15940019)	(v15940047)	(v15940075)	(v15940103)	(v15940131)
Household operations	(v15939992)	(v15940020)	(v15940048)	(v15940076)	(v15940104)	(v15940132)
Household furnishings and equipment	(v15939993)	(v15940021)	(v15940049)	(v15940077)	(v15940105)	(v15940133)
Clothing and footwear	(v15939994)	(v15940022)	(v15940050)	(v15940078)	(v15940106)	(v15940134)
Transportation	(v15939995)	(v15940023)	(v15940051)	(v15940079)	(v15940107)	(v15940135)
Private transportation	(v15939996)	(v15940024)	(v15940052)	(v15940080)	(v15940108)	(v15940136)
Purchase of passenger vehicles	(v15939997)	(v15940025)	(v15940053)	(v15940081)	(v15940109)	(v15940137)
Gasoline	(v15939998)	(v15940026)	(v15940054)	(v15940082)	(v15940110)	(v15940138)
Other private transportation	(v15939999)	(v15940027)	(v15940055)	(v15940083)	(v15940111)	(v15940139)
Public transportation	(v15940000)	(v15940028)	(v15940056)	(v15940084)	(v15940112)	(v15940140)
Health and personal care	(v15940001)	(v15940029)	(v15940057)	(v15940085)	(v15940113)	(v15940141)
Health care	(v15940002)	(v15940030)	(v15940058)	(v15940086)	(v15940114)	(v15940142)
Personal care	(v43975166)	(v43975167)	(v43975168)	(v43975169)	(v43975170)	(v43975171)
Recreation, education and reading	(v15940005)	(v15940033)	(v15940061)	(v15940089)	(v15940117)	(v15940145)
Recreation	(v43975177)	(v43975178)	(v43975179)	(v43975180)	(v43975181)	(v43975182)
Education and reading	(v43975188)	(v43975189)	(v43975190)	(v43975191)	(v43975192)	(v43975193)
Alcoholic beverages and tobacco products	(v15940006)	(v15940034)	(v15940062)	(v15940090)	(v15940118)	(v15940146)
Alcoholic beverages	(v15940007)	(v15940035)	(v15940063)	(v15940091)	(v15940119)	(v15940147)
Tobacco products and smokers' supplies	(v15940008)	(v15940036)	(v15940064)	(v15940092)	(v15940120)	(v15940148)