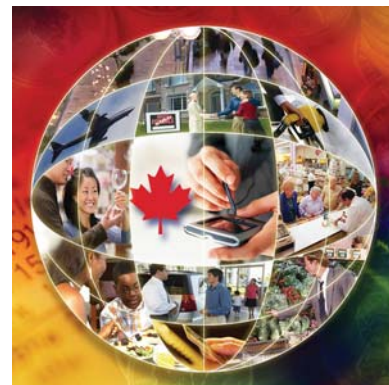


Catalogue no. 62-001-X

The Consumer Price Index

January 2014



Statistics
Canada

Statistique
Canada

Canada

How to obtain more information

For information about this product or the wide range of services and data available from Statistics Canada, visit our website, www.statcan.gc.ca.

You can also contact us by

e-mail at infostats@statcan.gc.ca

telephone, from Monday to Friday, 8:30 a.m. to 4:30 p.m., at the following toll-free numbers:

- | | |
|---|----------------|
| • Statistical Information Service | 1-800-263-1136 |
| • National telecommunications device for the hearing impaired | 1-800-363-7629 |
| • Fax line | 1-877-287-4369 |

Depository Services Program

- | | |
|------------------|----------------|
| • Inquiries line | 1-800-635-7943 |
| • Fax line | 1-800-565-7757 |

To access this product

This product, Catalogue no. 62-001-X, is available free in electronic format. To obtain a single issue, visit our website, www.statcan.gc.ca and browse by "Key resource" > "Publications."

Standards of service to the public

Statistics Canada is committed to serving its clients in a prompt, reliable and courteous manner. To this end, this agency has developed standards of service that its employees observe. To obtain a copy of these service standards, please contact Statistics Canada toll-free at 1-800-263-1136. The service standards are also published at www.statcan.gc.ca under "About us" > "The agency" > "Providing services to Canadians."

Statistics Canada
Consumer Prices Division

The Consumer Price Index

January 2014

Published by authority of the Minister responsible for Statistics Canada

© Minister of Industry, 2014

All rights reserved. Use of this publication is governed by the Statistics Canada
Open License Agreement.

<http://www.statcan.gc.ca/reference/licence-eng.html>

February 2014

Catalogue no. 62-001-X, vol. 93, no. 1

ISSN 1496-2225

Frequency: Monthly

Ottawa

Cette publication est également disponible en français.

Note of appreciation

Canada owes the success of its statistical system to a long-standing partnership between Statistics Canada, the citizens of Canada, its businesses, governments and other institutions. Accurate and timely statistical information could not be produced without their continued cooperation and goodwill.

User information

Symbols

The following standard symbols are used in Statistics Canada publications:

- . not available for any reference period
- .. not available for a specific reference period
- ... not applicable
- 0 true zero or a value rounded to zero
- 0^s value rounded to 0 (zero) where there is a meaningful distinction between true zero and the value that was rounded
- P preliminary
- r revised
- x suppressed to meet the confidentiality requirements of the *Statistics Act*
- E use with caution
- F too unreliable to be published
- * significantly different from reference category ($p < 0.05$)

Note on CANSIM

Data that appears in the **The Consumer Price Index** (catalogue no. 62-001-X) are also available electronically, free of charge under the *Statistics Canada Open Licence Agreement*, in our CANSIM (Canadian Socio-Economic Information Management System) database through the Internet, under tables 326-0009, 326-0012, 326-0015, 326-0020, 326-0021 and 326-0022. In general, *CANSIM* provides a longer historical series. For further information on *CANSIM* call 1-800-263-1136.

This publication was prepared under the direction of:

Richard Evans	Director, Consumer Prices Division
Bruno Morin	Acting Chief, Consumer Prices Division, Production
Amanda Wright	Analyst-Economist, Consumer Prices Division, Analysis and Dissemination Section

Cover page designed by:

Rachel Penkar	Senior Graphic Designer, Dissemination Division
----------------------	---

Note to users

The Consumer Price Index is published monthly and is not subject to revisions.

Index for the month	Release date
December 2013	January 24, 2014
January 2014	February 21, 2014
February 2014	March 21, 2014
March 2014	April 17, 2014
April 2014	May 23, 2014
May 2014	June 20, 2014
June 2014	July 18, 2014
July 2014	August 22, 2014
August 2014	September 19, 2014
September 2014	October 17, 2014
October 2014	November 21, 2014
November 2014	December 19, 2014
December 2014	January 23, 2015

Table of contents

Highlights	6
Analysis	8
Charts	
1. The 12-month change in the Consumer Price Index	8
2. The 12-month change in the mortgage interest cost index	9
3. Prices increase in seven of eight major components	10
4. Consumer prices accelerate in six provinces	11
5. Seasonally adjusted monthly Consumer Price Index	12
Related products	14
Statistical tables	
1 The Consumer Price Index, major components and special aggregates, Canada, not seasonally adjusted	18
2 The Consumer Price Index, major components and special aggregates, Canada, seasonally adjusted	19
3 The Consumer Price Index, provinces, Whitehorse, Yellowknife and Iqaluit, not seasonally adjusted	19
4 The Consumer Price Index, major components and selected sub-groups, Canada, not seasonally adjusted	20
4-1 Food	20
4-2 Shelter	21
4-3 Household operations, furnishings and equipment	21
4-4 Clothing and footwear	22
4-5 Transportation	22
4-6 Health and personal care	23
4-7 Recreation, education and reading	23
4-8 Alcoholic beverages and tobacco products	24
5 The Consumer Price Index for Canada, all-items CPI, not seasonally adjusted, historical data	25
6 Core Consumer Price Index (CPI) (Bank of Canada definition), not seasonally adjusted, historical data	26
7 The Consumer Price Index for Canada, major components and special aggregates, not seasonally adjusted, historical data	27

Table of contents – continued

8	Annual average percentage changes for the Consumer Price Index	28
8-1	Major components, not seasonally adjusted, Canada, 2010 to 2013	28
8-2	All-items CPI, not seasonally adjusted, Canada, provinces, urban centres, 2010 to 2013	29
9	The Consumer Price Index, major components, selected sub-groups and special aggregates, provinces, Whitehorse and Yellowknife, not seasonally adjusted	30
9-1	Newfoundland and Labrador	30
9-2	Prince Edward Island	31
9-3	Nova Scotia	32
9-4	New Brunswick	33
9-5	Quebec	34
9-6	Ontario	35
9-7	Manitoba	36
9-8	Saskatchewan	37
9-9	Alberta	38
9-10	British Columbia	39
9-11	Whitehorse (Yukon)	40
9-12	Yellowknife (Northwest Territories)	41
10	The all-items Consumer Price Index, provinces, Whitehorse, Yellowknife and Iqaluit, not seasonally adjusted, historical data	42
11	The Consumer Price Index and selected sub-groups, by urban centre, not seasonally adjusted	44
12	The all-items Consumer Price Index by urban centre, not seasonally adjusted, historical data	46
13	Average retail prices for gasoline and fuel oil, by urban centre	48
14	Average retail prices, monthly, Canada	50
15	Inter-city indexes of price differentials, as of October 2012, of consumer goods and services	51
	Explanatory notes for tables	53
	Data quality, concepts and methodology	59
 Appendix		
I	Concordance tables	62

Highlights

12-month change:

- The Consumer Price Index (CPI) rose 1.5% in the 12 months to January, following a 1.2% increase in December.
- The year-over-year increase in the CPI was led by higher shelter costs, which rose 2.1% in January. This followed a 1.9% gain in December.
- Of the eight major components, seven recorded gains in the 12 months to January. In addition to higher shelter costs, price increases for transportation and for food contributed the most to the rise in the CPI. The health and personal care index was the only component to decline on a year-over-year basis in January.
- Consumer prices rose at a faster year-over-year rate in January compared with December in six provinces. The largest acceleration was observed in Alberta, followed by Manitoba. New Brunswick was the only province to post a smaller year-over-year increase in consumer prices in January than in December. British Columbia recorded no year-over-year change in its CPI for the second consecutive month.

Month-to-month change:

- On a seasonally adjusted monthly basis, the CPI rose 0.2% in January, matching the increase in December.
- On a monthly basis and before seasonal adjustment, the CPI rose 0.3% in January, after declining 0.2% in December.

Bank of Canada's Core Index:

- The Bank of Canada's core index rose 1.4% in the 12 months to January, after increasing 1.3% in December.

Main contributors to the 12-month change in the CPI:

Main upward contributors:

- Gasoline (+4.6%)
- Electricity (+4.7%)
- Property taxes (+3.2%)
- Rent (+1.6%)
- Homeowners' home and mortgage insurance (+5.4%)

Main downward contributors:

- Prescribed medicines (-3.7%)
- Tools and other household equipment (-3.0%)
- Video equipment (-6.6%)
- Digital computing equipment and devices (-4.0%)
- Mortgage interest cost (-0.6%)

Main contributors to the monthly change in the CPI, not seasonally adjusted:

Main upward contributors:

- Purchase of passenger vehicles (+1.1%)
- Natural gas (+3.2%)
- Electricity (+1.2%)
- Water (+4.3%)
- Traveller accommodation (+2.0%)

Main downward contributors:

- Travel tours (-8.8%)
- Women's clothing (-2.1%)
- Footwear (-1.2%)
- Preserved fruit and fruit preparations (-3.6%)
- Sporting and athletic equipment (-5.7%)

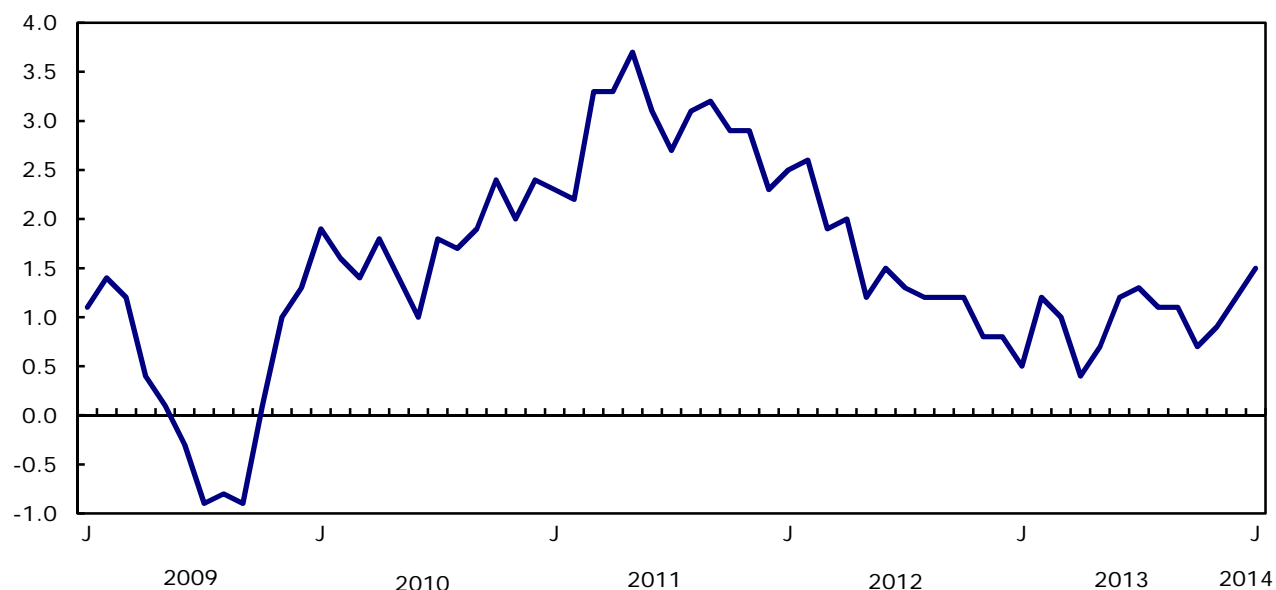
Analysis

The Consumer Price Index (CPI) rose 1.5% in the 12 months to January, following a 1.2% increase in December.

Chart 1

The 12-month change in the Consumer Price Index

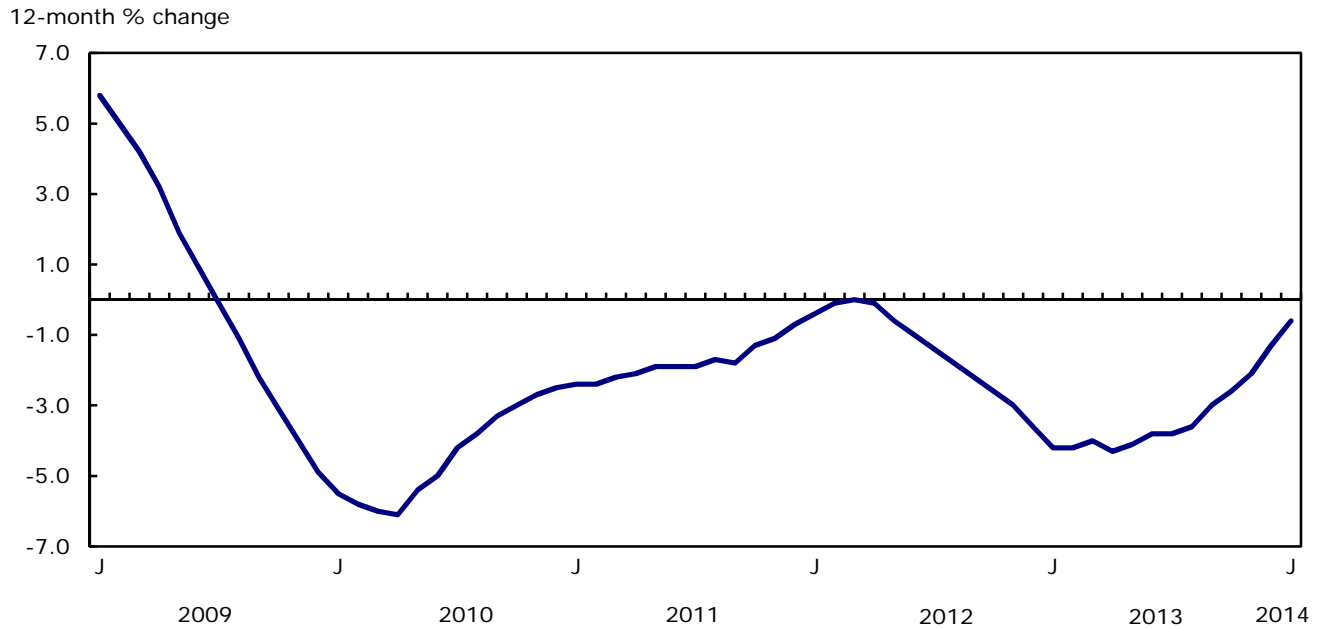
12-month % change



Shelter costs lead the rise in the CPI

The year-over-year increase in the CPI was led by higher shelter costs, which rose 2.1% in January. This followed a 1.9% gain in December. Electricity prices increased 4.7% in the 12 months to January, after rising 4.1% the previous month. Consumers also paid more for rent (+1.6%) and for homeowners' home and mortgage insurance (+5.4%) in January compared with the same month a year earlier.

The mortgage interest cost index decreased 0.6% on a year-over-year basis in January, the smallest decline recorded since May 2012. On a monthly basis, the index posted its third consecutive increase, rising 0.2%.

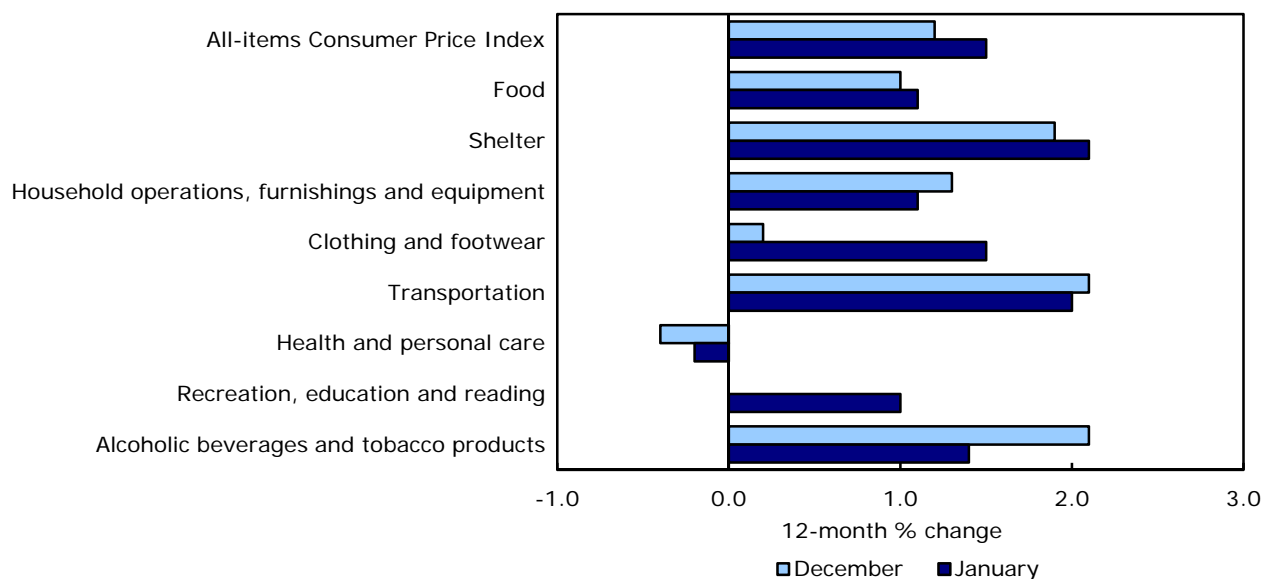
Chart 2**The 12-month change in the mortgage interest cost index**

12-month change in the major components

Of the eight major components, seven recorded gains in the 12 months to January. In addition to higher shelter costs, price increases for transportation and for food contributed the most to the rise in the CPI. The health and personal care index was the only component to decline on a year-over-year basis in January.

Chart 3

Prices increase in seven of eight major components



Transportation prices advanced 2.0% in the 12 months to January after rising 2.1% the previous month. Gasoline prices rose 4.6% in January following a 4.7% increase in December. In addition, passenger vehicle insurance premiums were 2.1% higher in January than in the same month a year earlier. Prices for the purchase of passenger vehicles posted a smaller year-over-year increase in January (+0.9%) than in December (+1.4%).

Food prices rose 1.1% in the 12 months to January. Prices for food purchased from stores increased 1.0% on a year-over-year basis after rising 0.8% the previous month. The January increase was led by higher prices for fresh vegetables, fish and seafood as well as meat. In contrast, prices for cereal products and for fruit juices declined on a year-over-year basis in January.

Prices for food purchased from restaurants increased 1.3% in January compared with the same month a year ago. In December, they rose 1.4%.

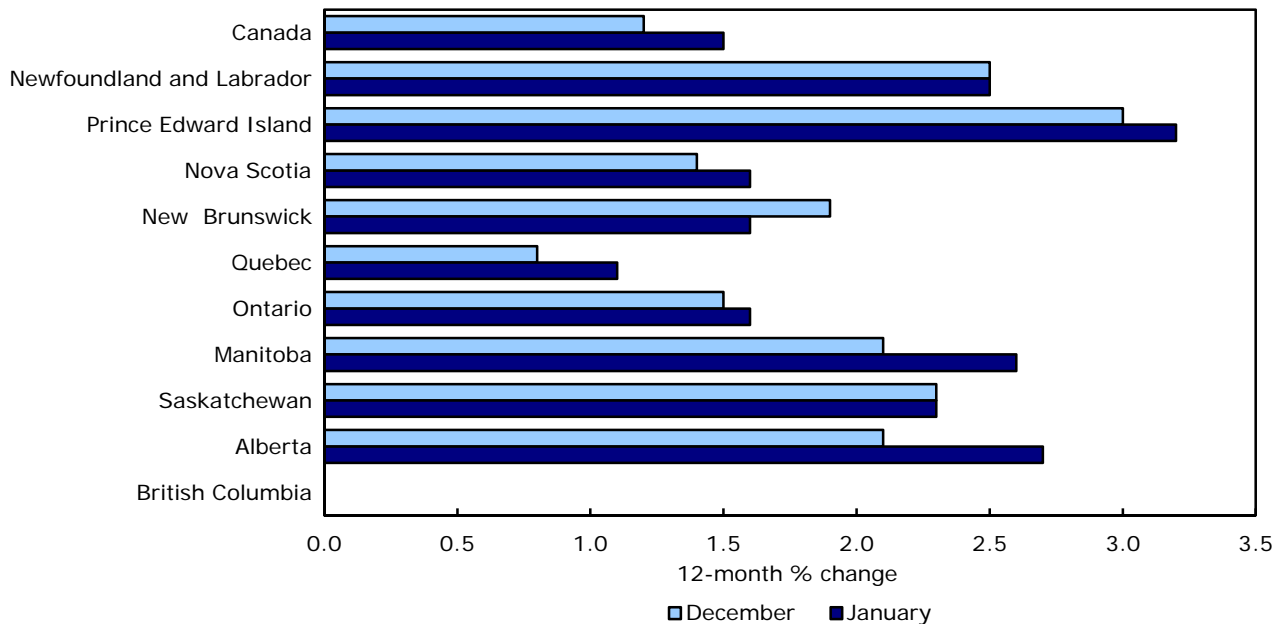
The clothing and footwear index increased 1.5% in the 12 months to January, after rising 0.2% in December. On a monthly basis, prices for clothing and footwear posted a smaller decrease this January (-0.2%) compared with the same month in 2013 (-1.5%).

12-month change in the provinces

Consumer prices rose at a faster year-over-year rate in January compared with December in six provinces. The largest acceleration was observed in Alberta, followed by Manitoba. New Brunswick was the only province to post a smaller year-over-year increase in consumer prices in January than in December. British Columbia recorded no year-over-year change in its CPI for the second consecutive month.

Chart 4

Consumer prices accelerate in six provinces



Alberta recorded a 2.7% increase in consumer prices on a year-over-year basis in January, after posting a 2.1% rise in December. Of all the provinces, Alberta recorded the largest increase in gasoline prices (+10.7%) in the 12 months to January. This followed a 4.8% gain in December. Alberta also posted a larger year-over-year increase in natural gas prices (+16.2%) compared with the national average.

Consumer prices in Manitoba advanced 2.6% in the 12 months to January, following a 2.1% gain in December. This acceleration was led by higher gasoline prices, which rose 5.7% on a year-over-year basis in January, following a 0.2% increase in December. Clothing prices in this province increased more than the national average in January.

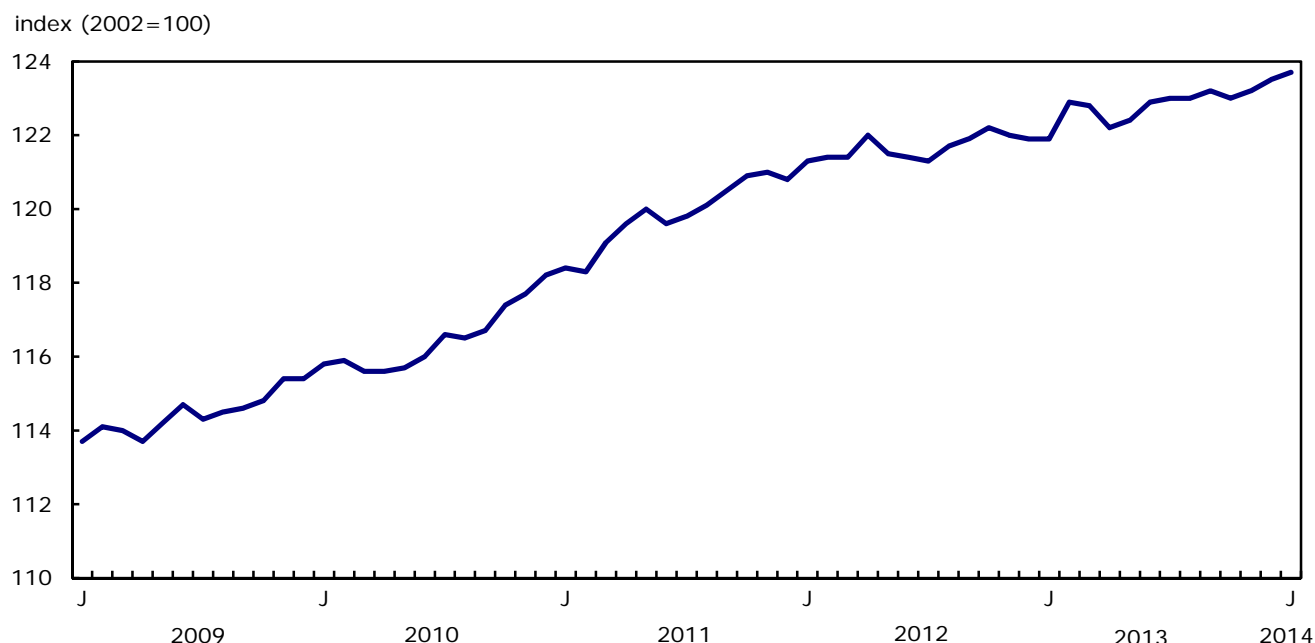
In New Brunswick, the CPI rose 1.6% on a year-over-year basis in January, following a 1.9% rise in December. This slower increase was largely attributable to a smaller gain in prices for food purchased from stores in the 12 months to January (+0.7%) than to December (+1.8%).

Seasonally adjusted monthly CPI increases

On a seasonally adjusted monthly basis, the CPI rose 0.2% in January, matching the increase in December.

Chart 5

Seasonally adjusted monthly Consumer Price Index



On a seasonally adjusted basis, four of the eight major components posted increases in January, with the largest rise occurring in the recreation, education and reading component (+0.8%).

The seasonally adjusted index for food posted no change in January. However, before seasonal adjustment food prices increased 0.4%, which indicates that the observed monthly movement in food prices was seasonal.

The indexes for transportation (-0.4%) and for alcoholic beverages and tobacco products (-0.2%) were the only ones to decline on a seasonally adjusted monthly basis.

Non-seasonally adjusted monthly CPI increases

On a monthly basis and before seasonal adjustment, the CPI rose 0.3% in January, after declining 0.2% in December.

Consumers paid 1.1% more for the purchase of passenger vehicles in January compared with December. Prices for natural gas (+3.2%), electricity (+1.2%) and water (+4.3%) also increased on a monthly basis.

In contrast, prices declined for travel tours (-8.8%), women's clothing (-2.1%) and footwear (-1.2%).

Gasoline prices declined 0.1% on a monthly basis in January, following a 1.8% rise in December. Prices for gasoline decreased in Saskatchewan (-4.2%), Alberta (-1.6%) and Ontario (-0.9%) in January. The remaining provinces posted monthly increases, with British Columbia (+1.9%) recording the largest rise.

Consumer prices advanced in nine provinces in January compared with December. The largest increases were observed in Nova Scotia, Manitoba and Alberta, all of which posted monthly gains of 0.6%. New Brunswick was the exception, recording a decline of 0.1% in January.

Bank of Canada's core index

The Bank of Canada's core index rose 1.4% in the 12 months to January, after increasing 1.3% in December.

On a month-to-month basis and before seasonal adjustment, the core index increased 0.2% in January, following a 0.4% decrease the previous month.

On a monthly basis, the seasonally adjusted core index rose 0.2%, matching the increase in December.

Note to readers

The travel tours index, which is part of the recreation, education and reading major component, underwent a *methodology update* effective with the September 2013 CPI. Therefore, until the release of the September 2014 CPI, the 12-month rate of change for this index should be interpreted with caution (because it compares periods before and after the update).

A seasonally adjusted series is one from which seasonal movements have been eliminated. Users employing Consumer Price Index data for indexation purposes are advised to use the unadjusted indexes. For more information on seasonal adjustment, see *Seasonal adjustment and identifying economic trends*.

The Bank of Canada's core index excludes eight of the Consumer Price Index's most volatile components (fruit, fruit preparations and nuts; vegetables and vegetable preparations; mortgage interest cost; natural gas; fuel oil and other fuels; gasoline; inter-city transportation; and tobacco products and smokers' supplies) as well as the effects of changes in indirect taxes on the remaining components.

Related products

Selected publications from Statistics Canada

62-010-X	Consumer Prices and Price Indexes
62-557-X	Your Guide to the Consumer Price Index
62F0014M	Analytical Series - Prices Division
62-553-X	The Consumer Price Index Reference Paper

Selected technical and analytical products from Statistics Canada

62F0014M1996001	How Inflation and Income Tax Affect the Return on a Safe Investment
62F0014M2001014	Televisions: Quality Changes and Scanner Data
62F0014M2001015	Housing Depreciation in the Canadian CPI

Selected CANSIM tables from Statistics Canada

326-0009	Average retail prices for gasoline and fuel oil, by urban centre, monthly
326-0012	Average retail prices for food and other selected items, monthly
326-0015	Inter-city indexes of price differentials of consumer goods and services, annual
326-0020	Consumer Price Index (CPI), 2011 basket, monthly
326-0021	Consumer Price Index (CPI), 2009 basket, annual
326-0022	Consumer Price Index (CPI), seasonally adjusted, 2011 basket, monthly

Selected surveys from Statistics Canada

2301	Consumer Price Index
------	----------------------

Selected summary tables from Statistics Canada

- *Consumer Price Index, by province (monthly)*
- *Consumer Price Index, by city (monthly)*
- *Consumer Price Index, food, by province (monthly)*
- *Consumer Price Index, shelter, by province (monthly)*
- *Consumer Price Index, household operations, furnishings and equipment by province (monthly)*
- *Consumer Price Index, clothing and footwear, by province (monthly)*
- *Consumer Price Index, transportation, by province (monthly)*
- *Consumer Price Index, health and personal care, by province (monthly)*
- *Consumer Price Index, recreation, education and reading, by province (monthly)*
- *Consumer Price Index, alcoholic beverages and tobacco products, by province (monthly)*
- *Canada: Economic and financial data*
- *Consumer Price Index, by province*
- *Consumer Price Index, historical summary, by province or territory*
- *Gasoline and fuel oil, average retail prices by urban centre (monthly)*
- *Food and other selected items, average retail prices (monthly)*
- *Gasoline and fuel oil, average retail prices by urban centre*
- *Food and other selected items, average retail prices*
- *Consumer Price Index, food, by province*
- *Consumer Price Index, shelter, by province*
- *Consumer Price Index, household operations, furnishings and equipment, by province*
- *Consumer Price Index, clothing and footwear, by province*
- *Consumer Price Index, transportation, by province*
- *Consumer Price Index, health and personal care, by province*
- *Consumer Price Index, recreation, education and reading, by province*
- *Consumer Price Index, alcoholic beverages and tobacco products, by province*
- *Inter-city indexes of consumer price levels*
- *Consumer Price Index, by city*

- *Consumer Price Index, historical summary*
- *Economic indicators, by province and territory (monthly and quarterly)*

For further reading

Detailed information on the methodology and concepts of the CPI is contained in ***The Consumer Price Index Reference Paper, Updating Based on 1992 Expenditures***, (Occasional), catalogue no. 62-553-X.

A brief non-technical document entitled ***Your Guide to the Consumer Price Index*** (Occasional) catalogue no. 62-557-X answers the frequently asked questions about the construction and use of the CPI.

For further information, contact the Consumer Prices Division, Statistics Canada, Ottawa, Ontario K1A 0T6 (613-951-9606), or you can also search through the Statistics Canada catalogue which lists all current products and services available from Statistics Canada.

Statistical tables

Table 1

The Consumer Price Index, major components and special aggregates, ¹ Canada, not seasonally adjusted

	CANSIM vector number	Relative importance ²	Indexes			Percentage change	
			January 2013	December 2013	January 2014	December 2013 to January 2014	January 2013 to January 2014
		%	2002=100			%	
All-items CPI	(v41690973)	100.0	121.3	122.7	123.1	0.3	1.5
Food	(v41690974)	16.6	131.6	132.5	133.0	0.4	1.1
Shelter	(v41691050)	26.3	127.8	129.9	130.5	0.5	2.1
Household operations, furnishings and equipment	(v41691067)	12.7	113.5	114.7	114.7	0.0	1.1
Clothing and footwear	(v41691108)	5.8	87.9	89.4	89.2	-0.2	1.5
Transportation	(v41691128)	20.0	126.7	128.5	129.2	0.5	2.0
Health and personal care	(v41691153)	4.9	118.5	118.1	118.3	0.2	-0.2
Recreation, education and reading	(v41691170)	11.0	103.7	105.3	104.7	-0.6	1.0
Alcoholic beverages and tobacco products	(v41691206)	2.8	138.9	141.2	140.9	-0.2	1.4
All-items CPI (1992=100)	(v41713403)	.	144.3	146.1	146.5	0.3	1.5
Special aggregates							
Goods	(v41691222)	48.2	112.9	113.8	114.2	0.4	1.2
Durable goods	(v41691223)	13.1	85.4	84.9	85.3	0.5	-0.1
Semi-durable goods	(v41691224)	7.4	90.3	91.5	91.2	-0.3	1.0
Non-durable goods	(v41691225)	27.7	135.0	136.9	137.5	0.4	1.9
Services	(v41691230)	51.8	129.6	131.7	131.9	0.2	1.8
All-items CPI excluding food	(v41691232)	83.4	119.2	120.8	121.1	0.2	1.6
All-items CPI excluding food and energy	(v41691233)	74.9	115.9	117.1	117.3	0.2	1.2
All-items CPI excluding energy	(v41691238)	91.4	118.7	119.9	120.1	0.2	1.2
All-items CPI excluding gasoline	(v41693245)	95.4	119.3	120.6	120.9	0.2	1.3
All-items CPI excluding shelter, insurance and financial services	(v41693246)	70.1	117.0	118.2	118.4	0.2	1.2
Energy	(v41691239)	8.6	152.8	158.9	160.2	0.8	4.8
All-items CPI excluding alcoholic beverages, tobacco products and smokers' supplies	(v41691241)	97.2	120.6	122.0	122.4	0.3	1.5
Core Consumer Price Index (CPI) (Bank of Canada definition) ³	(v41693242)	84.9	119.6	121.0	121.3	0.2	1.4

Note(s): See "Data quality, concepts and methodology — Explanatory notes for tables" section.

Table 2
The Consumer Price Index, major components and special aggregates, ¹ Canada, seasonally adjusted²

	CANSIM vector number	Indexes			Percentage change	
		November 2013	December 2013	January 2014	November 2013 to December 2013	December 2013 to January 2014
		2002=100			%	
All-items CPI	(v41690914)	123.2	123.5	123.7	0.2	0.2
Food	(v41690915)	132.9	132.8	132.8	-0.1	0.0
Shelter	(v41690916)	129.8	129.9	130.5	0.1	0.5
Household operations, furnishings and equipment	(v41690917)	114.7	115.0	115.0	0.3	0.0
Clothing and footwear	(v41690918)	91.7	92.2	92.5	0.5	0.3
Transportation	(v41690919)	128.8	130.3	129.8	1.2	-0.4
Health and personal care	(v41690920)	118.1	118.2	118.4	0.1	0.2
Recreation, education and reading	(v41690921)	106.5	106.3	107.1	-0.2	0.8
Alcoholic beverages and tobacco products	(v41690922)	141.1	141.2	140.9	0.1	-0.2
Special aggregates						
All-items CPI excluding food	(v41690923)	121.2	121.7	121.9	0.4	0.2
All-items CPI excluding food and energy	(v41690924)	117.3	117.6	117.8	0.3	0.2
All-items CPI excluding eight of the most volatile components (Bank of Canada definition)	(v41690925)	120.7	120.9	121.1	0.2	0.2
Core Consumer Price Index (CPI) (Bank of Canada definition) ³	(v41690926)	121.3	121.6	121.8	0.2	0.2

Note(s): See "Data quality, concepts and methodology — Explanatory notes for tables" section.

Table 3
The Consumer Price Index, provinces, Whitehorse, Yellowknife and Iqaluit, ¹ not seasonally adjusted

	CANSIM vector number	Indexes			Percentage change	
		January 2013	December 2013	January 2014	December 2013 to January 2014	January 2013 to January 2014
		2002=100			%	
Newfoundland and Labrador	(v41691244)	123.6	126.6	126.7	0.1	2.5
Prince Edward Island	(v41691379)	125.2	128.6	129.2	0.5	3.2
Nova Scotia	(v41691513)	125.4	126.7	127.4	0.6	1.6
New Brunswick	(v41691648)	121.5	123.5	123.4	-0.1	1.6
Quebec	(v41691783)	120.4	121.5	121.7	0.2	1.1
Ontario	(v41691919)	121.3	123.1	123.3	0.2	1.6
Manitoba	(v41692055)	120.3	122.7	123.4	0.6	2.6
Saskatchewan	(v41692191)	123.5	126.1	126.4	0.2	2.3
Alberta	(v41692327)	126.5	129.1	129.9	0.6	2.7
British Columbia	(v41692462)	117.1	117.0	117.1	0.1	0.0
Whitehorse, Yukon	(v41692598)	120.8	123.2	123.4	0.2	2.2
Yellowknife, Northwest Territories	(v41692722)	125.1	126.6	127.0	0.3	1.5
Iqaluit, Nunavut (2002=100)	(v41713432)	115.5	116.2	116.7	0.4	1.0

Note(s): See "Data quality, concepts and methodology — Explanatory notes for tables" section.

Table 4-1

The Consumer Price Index, major components and selected sub-groups, Canada, not seasonally adjusted — Food

	CANSIM vector number	Indexes			Percentage change	
		January 2013	December 2013	January 2014	December 2013 to January 2014	January 2013 to January 2014
		2002=100			%	
Food	(v41690974)	131.6	132.5	133.0	0.4	1.1
Food purchased from stores	(v41690975)	131.3	132.0	132.6	0.5	1.0
Meat	(v41690976)	133.2	135.0	135.1	0.1	1.4
Fresh or frozen meat (excluding poultry)	(v41690977)	131.8	136.0	136.9	0.7	3.9
Fresh or frozen beef	(v41690978)	136.0	140.7	141.6	0.6	4.1
Fresh or frozen pork	(v41690979)	118.3	122.8	123.7	0.7	4.6
Fresh or frozen poultry meat	(v41690981)	144.4	142.4	142.7	0.2	-1.2
Fresh or frozen chicken	(v41690982)	147.6	146.4	145.7	-0.5	-1.3
Processed meat	(v41690984)	126.7	127.9	127.3	-0.5	0.5
Ham and bacon	(v41690985)	110.1	116.4	118.8	2.1	7.9
Other processed meat	(v41690986)	134.4	134.6	133.3	-1.0	-0.8
Fish, seafood and other marine products	(v41690987)	110.7	116.3	120.1	3.3	8.5
Fish	(v41690988)	116.2	123.8	124.3	0.4	7.0
Fresh or frozen fish (including portions and fish sticks)	(v41690989)	112.6	120.7	121.1	0.3	7.5
Canned and other preserved fish	(v41690990)	126.5	132.1	132.9	0.6	5.1
Dairy products and eggs	(v41690992)	135.6	134.0	134.7	0.5	-0.7
Dairy products	(v41690993)	134.1	132.6	133.2	0.5	-0.7
Fresh milk	(v41690994)	138.0	136.3	136.4	0.1	-1.2
Butter	(v41690995)	129.6	128.6	128.6	0.0	-0.8
Cheese	(v41690996)	129.8	129.0	130.2	0.9	0.3
Ice cream and related products	(v41690997)	139.0	133.1	135.6	1.9	-2.4
Eggs	(v41690999)	153.9	151.3	153.2	1.3	-0.5
Bakery and cereal products (excluding infant food)	(v41691000)	151.0	151.4	150.1	-0.9	-0.6
Bakery products	(v41691001)	157.9	159.4	158.3	-0.7	0.3
Bread (including rolls and buns)	(v41691002)	182.2	183.7	183.5	-0.1	0.7
Biscuits	(v41691003)	131.2	132.7	130.7	-1.5	-0.4
Other bakery products	(v41691004)	140.9	142.6	140.9	-1.2	0.0
Cereal products (excluding infant food)	(v41691005)	138.1	136.9	135.1	-1.3	-2.2
Rice (including rice-based mixes)	(v41691006)	135.1	136.0	133.1	-2.1	-1.5
Breakfast cereal and other grain products (excluding infant food)	(v41691007)	127.6	128.5	125.9	-2.0	-1.3
Pasta products	(v41691008)	151.8	146.7	143.4	-2.2	-5.5
Flour and flour based mixes	(v41691009)	158.7	142.2	153.4	7.9	-3.3
Fruit, fruit preparations and nuts	(v41691010)	122.8	123.6	123.1	-0.4	0.2
Fresh fruit	(v41691011)	116.2	118.0	119.0	0.8	2.4
Apples	(v41691012)	130.8	131.3	128.1	-2.4	-2.1
Oranges	(v41691013)	99.7	119.5	109.5	-8.4	9.8
Bananas	(v41691014)	138.9	135.7	136.2	0.4	-1.9
Other fresh fruit	(v41691015)	110.6	109.8	113.9	3.7	3.0
Preserved fruit and fruit preparations	(v41691016)	129.6	127.8	123.2	-3.6	-4.9
Fruit juices	(v41691017)	135.2	134.2	126.4	-5.8	-6.5
Other preserved fruit and fruit preparations	(v41691018)	118.6	116.0	115.7	-0.3	-2.4
Nuts	(v41691019)	143.3	143.2	144.2	0.7	0.6
Vegetables and vegetable preparations	(v41691020)	115.7	119.1	120.7	1.3	4.3
Fresh vegetables	(v41691021)	110.6	115.2	116.9	1.5	5.7
Potatoes	(v41691022)	103.8	100.2	101.2	1.0	-2.5
Tomatoes	(v41691023)	119.4	112.1	131.0	16.9	9.7
Lettuce	(v41691024)	105.6	111.0	105.7	-4.8	0.1
Other fresh vegetables	(v41691025)	115.9	124.1	123.8	-0.2	6.8
Preserved vegetables and vegetable preparations	(v41691026)	134.8	134.1	135.5	1.0	0.5
Frozen and dried vegetables	(v41691027)	137.3	136.1	137.7	1.2	0.3
Canned vegetables and other vegetable preparations	(v41691028)	134.8	134.3	135.7	1.0	0.7
Other food products and non-alcoholic beverages	(v41691029)	129.1	128.1	129.6	1.2	0.4
Sugar and confectionery	(v41691030)	141.6	137.7	140.5	2.0	-0.8
Fats and oils	(v41691033)	146.0	145.4	147.2	1.2	0.8
Coffee and tea	(v41691036)	139.6	134.0	136.2	1.6	-2.4
Condiments, spices and vinegars	(v41691039)	121.7	120.1	119.1	-0.8	-2.1
Other food preparations	(v41691040)	129.8	128.7	129.6	0.7	-0.2
Non-alcoholic beverages	(v41691045)	115.1	118.7	122.2	2.9	6.2
Food purchased from restaurants	(v41691046)	132.1	133.6	133.8	0.1	1.3
Food purchased from table-service restaurants	(v41691047)	133.1	134.7	134.9	0.1	1.4
Food purchased from fast food and take-out restaurants	(v41691048)	129.8	130.9	131.1	0.2	1.0

Note(s): See "Data quality, concepts and methodology — Explanatory notes for tables" section.

Table 4-2

The Consumer Price Index, major components and selected sub-groups, Canada, not seasonally adjusted — Shelter

	CANSIM vector number	Indexes			Percentage change	
		January 2013	December 2013	January 2014	December 2013 to January 2014	January 2013 to January 2014
		2002=100			%	
Shelter	(v41691050)	127.8	129.9	130.5	0.5	2.1
Rented accommodation	(v41691051)	114.6	116.3	116.3	0.0	1.5
Rent	(v41691052)	114.6	116.3	116.4	0.1	1.6
Owned accommodation	(v41691055)	130.2	131.9	132.1	0.2	1.5
Mortgage interest cost ¹	(v41691056)	106.2	105.4	105.6	0.2	-0.6
Homeowners' replacement cost	(v41691057)	149.2	151.2	151.3	0.1	1.4
Property taxes (including special charges)	(v41691058)	140.6	145.1	145.1	0.0	3.2
Homeowners' home and mortgage insurance	(v41691059)	176.5	183.9	186.0	1.1	5.4
Homeowners' maintenance and repairs	(v41691060)	126.1	126.9	126.9	0.0	0.6
Water, fuel and electricity	(v41691062)	140.9	145.1	148.4	2.3	5.3
Electricity	(v41691063)	130.0	134.5	136.1	1.2	4.7
Water	(v41691064)	196.9	200.2	208.8	4.3	6.0
Natural gas	(v41691065)	104.9	106.8	110.2	3.2	5.1
Fuel oil and other fuels	(v41691066)	240.3	253.2	263.6	4.1	9.7

Note(s): See "Data quality, concepts and methodology — Explanatory notes for tables" section.

Table 4-3

The Consumer Price Index, major components and selected sub-groups, Canada, not seasonally adjusted — Household operations, furnishings and equipment

	CANSIM vector number	Indexes			Percentage change	
		January 2013	December 2013	January 2014	December 2013 to January 2014	January 2013 to January 2014
		2002=100			%	
Household operations, furnishings and equipment	(v41691067)	113.5	114.7	114.7	0.0	1.1
Household operations	(v41691068)	124.8	127.2	127.3	0.1	2.0
Communications	(v41691069)	115.8	118.2	118.3	0.1	2.2
Telephone services	(v41691070)	115.4	116.4	116.4	0.0	0.9
Postal and other communications services	(v41691071)	150.7	150.7	150.7	0.0	0.0
Internet access services and subscriptions to online content providers (excluding online newspapers and periodicals) (200212=100)	(v41693216)	107.1	114.1	114.1	0.0	6.5
Child care and housekeeping services	(v41691072)	142.7	144.7	144.7	0.0	1.4
Child care services	(v41691073)	141.5	143.7	143.7	0.0	1.6
Housekeeping services	(v41691074)	145.8	147.3	147.3	0.0	1.0
Household cleaning products	(v41691075)	110.5	111.3	110.6	-0.6	0.1
Paper, plastic and foil supplies	(v41691078)	120.8	121.2	120.7	-0.4	-0.1
Other household goods and services	(v41691081)	133.6	136.8	137.1	0.2	2.6
Pet food and supplies	(v41691082)	127.2	128.2	129.4	0.9	1.7
Seeds, plants and cut flowers	(v41691083)	110.4	111.7	111.8	0.1	1.3
Other horticultural goods	(v41691084)	108.2	106.6	106.6	0.0	-1.5
Financial services (200212=100)	(v41693229)	140.4	141.5	141.5	0.0	0.8
Household furnishings and equipment	(v41691087)	94.4	93.3	93.2	-0.1	-1.3
Furniture and household textiles	(v41691088)	93.7	93.8	93.6	-0.2	-0.1
Furniture	(v41691089)	90.9	91.1	91.1	0.0	0.2
Household textiles	(v41691093)	104.0	103.7	102.7	-1.0	-1.3
Household equipment	(v41691097)	85.9	83.6	83.6	0.0	-2.7
Household appliances	(v41691098)	83.4	81.5	81.5	0.0	-2.3
Non-electrical kitchen utensils, tableware and cookware	(v41691103)	77.5	75.8	75.8	0.0	-2.2
Services related to household furnishings and equipment	(v41691107)	162.1	166.0	166.0	0.0	2.4

Note(s): See "Data quality, concepts and methodology — Explanatory notes for tables" section.

Table 4-4

The Consumer Price Index, major components and selected sub-groups, Canada, not seasonally adjusted — Clothing and footwear

	CANSIM vector number	Indexes			Percentage change	
		January 2013	December 2013	January 2014	December 2013 to January 2014	January 2013 to January 2014
		2002=100			%	
Clothing and footwear	(v41691108)	87.9	89.4	89.2	-0.2	1.5
Clothing	(v41691109)	77.8	78.9	78.9	0.0	1.4
Women's clothing	(v41691110)	73.2	74.9	73.3	-2.1	0.1
Men's clothing	(v41691111)	87.8	87.6	88.9	1.5	1.3
Children's clothing (including infants)	(v41691112)	70.2	72.0	75.3	4.6	7.3
Footwear	(v41691113)	89.1	91.5	90.4	-1.2	1.5
Clothing accessories, watches and jewellery	(v41691118)	127.9	129.0	129.5	0.4	1.3
Clothing material, notions and services	(v41691123)	133.4	136.4	136.4	0.0	2.2

Note(s): See "Data quality, concepts and methodology — Explanatory notes for tables" section.

Table 4-5

The Consumer Price Index, major components and selected sub-groups, Canada, not seasonally adjusted — Transportation

	CANSIM vector number	Indexes			Percentage change	
		January 2013	December 2013	January 2014	December 2013 to January 2014	January 2013 to January 2014
		2002=100			%	
Transportation	(v41691128)	126.7	128.5	129.2	0.5	2.0
Private transportation	(v41691129)	126.3	128.2	128.8	0.5	2.0
Purchase, leasing and rental of passenger vehicles	(v41691130)	92.8	92.6	93.6	1.1	0.9
Purchase and leasing of passenger vehicles	(v41691131)	92.6	92.4	93.4	1.1	0.9
Purchase of passenger vehicles	(v41691132)	93.4	93.2	94.2	1.1	0.9
Rental of passenger vehicles	(v41691134)	106.6	107.8	107.8	0.0	1.1
Operation of passenger vehicles	(v41691135)	157.9	162.2	162.4	0.1	2.8
Gasoline	(v41691136)	171.6	179.7	179.5	-0.1	4.6
Passenger vehicle parts, maintenance and repairs	(v41691137)	133.2	132.9	133.1	0.2	-0.1
Other passenger vehicle operating expenses	(v41691140)	156.5	159.0	159.8	0.5	2.1
Passenger vehicle insurance premiums	(v41691141)	159.7	162.5	163.0	0.3	2.1
Passenger vehicle registration fees	(v41691142)	117.1	117.1	120.7	3.1	3.1
Drivers' licences	(v41691143)	160.1	160.1	161.1	0.6	0.6
Parking fees	(v41691144)	165.8	172.2	172.2	0.0	3.9
Public transportation	(v41691146)	130.6	131.7	132.9	0.9	1.8
Local and commuter transportation	(v41691147)	144.8	145.7	148.7	2.1	2.7
City bus and subway transportation	(v41691148)	144.6	146.0	149.6	2.5	3.5
Taxi and other local and commuter transportation services	(v41691149)	144.2	143.5	144.7	0.8	0.3
Inter-city transportation	(v41691150)	123.0	124.0	124.4	0.3	1.1
Air transportation	(v41691151)	120.0	121.9	122.3	0.3	1.9
Rail, highway bus and other inter-city transportation	(v41691152)	139.1	127.3	127.6	0.2	-8.3

Table 4-6

The Consumer Price Index, major components and selected sub-groups, Canada, not seasonally adjusted — Health and personal care

	CANSIM vector number	Indexes			Percentage change	
		January 2013	December 2013	January 2014	December 2013 to January 2014	January 2013 to January 2014
		2002=100			%	
Health and personal care	(v41691153)	118.5	118.1	118.3	0.2	-0.2
Health care	(v41691154)	120.7	120.5	120.4	-0.1	-0.2
Health care goods	(v41713463)	105.1	102.7	102.6	-0.1	-2.4
Medicinal and pharmaceutical products	(v41691156)	102.1	99.3	99.1	-0.2	-2.9
Prescribed medicines	(v41691157)	93.4	89.9	89.9	0.0	-3.7
Non-prescribed medicines	(v41691158)	117.7	116.1	115.6	-0.4	-1.8
Eye care goods	(v41713381)	111.3	111.5	111.6	0.1	0.3
Health care services	(v41713464)	142.8	147.5	147.5	0.0	3.3
Eye care services (200704=100)	(v41693244)	114.9	116.7	116.7	0.0	1.6
Dental care	(v41691161)	139.5	143.2	143.2	0.0	2.7
Personal care	(v41691163)	116.6	115.9	116.5	0.5	-0.1
Personal care supplies and equipment	(v41691164)	106.5	105.2	106.1	0.9	-0.4
Personal care services	(v41691169)	130.9	131.6	131.6	0.0	0.5

Note(s): See "Data quality, concepts and methodology — Explanatory notes for tables" section.

Table 4-7

The Consumer Price Index, major components and selected sub-groups, Canada, not seasonally adjusted — Recreation, education and reading

	CANSIM vector number	Indexes			Percentage change	
		January 2013	December 2013	January 2014	December 2013 to January 2014	January 2013 to January 2014
		2002=100			%	
Recreation, education and reading	(v41691170)	103.7	105.3	104.7	-0.6	1.0
Recreation	(v41691171)	92.7	93.7	93.0	-0.7	0.3
Recreational equipment and services (excluding recreational vehicles)	(v41691172)	55.3	54.7	54.3	-0.7	-1.8
Purchase and operation of recreational vehicles	(v41691179)	114.1	118.3	118.5	0.2	3.9
Home entertainment equipment, parts and services	(v41691184)	61.0	57.9	57.9	0.0	-5.1
Travel services	(v41691190)	85.5	87.6	85.4	-2.5	-0.1
Traveller accommodation ¹	(v41691191)	77.9	76.5	78.0	2.0	0.1
Travel tours	(v41691192)	90.2	98.5	89.8	-8.8	-0.4
Other cultural and recreational services	(v41691193)	147.1	149.4	149.5	0.1	1.6
Spectator entertainment (excluding cablevision and satellite services)	(v41691194)	133.5	136.5	136.5	0.0	2.2
Cablevision and satellite services (including pay per view television)	(v41691195)	161.6	163.7	164.2	0.3	1.6
Use of recreational facilities and services	(v41691196)	137.6	140.1	139.4	-0.5	1.3
Education and reading	(v41691197)	140.6	144.2	144.3	0.1	2.6
Education	(v41691198)	146.1	150.2	150.2	0.0	2.8
Tuition fees	(v41691199)	152.4	157.2	157.2	0.0	3.1
Reading material and other printed matter (excluding textbooks)	(v41691202)	119.7	121.2	121.4	0.2	1.4
Newspapers	(v41691203)	148.3	154.0	154.6	0.4	4.2
Magazines and periodicals	(v41691204)	129.4	128.8	129.7	0.7	0.2

Note(s): See "Data quality, concepts and methodology — Explanatory notes for tables" section.

Table 4-8

The Consumer Price Index, major components and selected sub-groups, Canada, not seasonally adjusted — Alcoholic beverages and tobacco products

	CANSIM vector number	Indexes			Percentage change	
		January 2013	December 2013	January 2014	December 2013 to January 2014	January 2013 to January 2014
		2002=100			%	
Alcoholic beverages and tobacco products	(v41691206)	138.9	141.2	140.9	-0.2	1.4
Alcoholic beverages	(v41691207)	117.8	119.4	119.1	-0.3	1.1
Alcoholic beverages served in licensed establishments	(v41691208)	128.8	132.3	132.4	0.1	2.8
Beer served in licensed establishments	(v41691209)	133.1	136.8	136.8	0.0	2.8
Liquor served in licensed establishments	(v41691211)	129.3	134.1	134.1	0.0	3.7
Alcoholic beverages purchased from stores	(v41691212)	112.7	113.7	113.2	-0.4	0.4
Beer purchased from stores	(v41691213)	115.9	117.6	115.9	-1.4	0.0
Wine purchased from stores	(v41691214)	105.8	105.7	106.4	0.7	0.6
Liquor purchased from stores	(v41691215)	113.1	114.2	114.7	0.4	1.4
Tobacco products and smokers' supplies	(v41691216)	160.2	163.3	163.3	0.0	1.9
Cigarettes	(v41691217)	160.0	163.1	163.1	0.0	1.9

Note(s): See "Data quality, concepts and methodology — Explanatory notes for tables" section.

Table 5
The Consumer Price Index for Canada, all-items CPI, not seasonally adjusted, historical data

	Jan.	Feb.	Mar.	Apr.	May	June	July	Aug.	Sept.	Oct.	Nov.	Dec.	Annual average ¹
	2002=100												
Indexes (v41690973)													
1995	86.6	87.0	87.2	87.5	87.7	87.7	87.9	87.7	87.8	87.7	88.0	87.8	87.6
1996	88.0	88.1	88.5	88.7	89.0	89.0	89.0	89.0	89.1	89.3	89.7	89.7	88.9
1997	89.9	90.1	90.2	90.2	90.3	90.5	90.5	90.6	90.6	90.6	90.5	90.4	90.4
1998	90.9	91.0	91.1	91.0	91.3	91.4	91.4	91.4	91.2	91.6	91.6	91.3	91.3
1999	91.5	91.6	92.0	92.5	92.7	92.9	93.1	93.3	93.6	93.7	93.6	93.7	92.9
2000	93.5	94.1	94.8	94.5	94.9	95.5	95.8	95.7	96.1	96.3	96.6	96.7	95.4
2001	96.3	96.8	97.1	97.8	98.6	98.7	98.4	98.4	98.6	98.1	97.2	97.4	97.8
2002	97.6	98.2	98.9	99.5	99.7	99.9	100.5	100.9	100.9	101.2	101.5	101.1	100.0
2003	102.0	102.8	103.1	102.4	102.5	102.5	102.6	102.9	103.1	102.8	103.1	103.2	102.8
2004	103.3	103.5	103.9	104.1	105.0	105.1	105.0	104.8	105.0	105.2	105.6	105.4	104.7
2005	105.3	105.7	106.3	106.6	106.7	106.9	107.1	107.5	108.4	107.9	107.7	107.6	107.0
2006	108.2	108.0	108.6	109.2	109.7	109.5	109.6	109.8	109.2	109.0	109.2	109.4	109.1
2007	109.4	110.2	111.1	111.6	112.1	111.9	112.0	111.7	111.9	111.6	111.9	112.0	111.5
2008	111.8	112.2	112.6	113.5	114.6	115.4	115.8	115.6	115.7	114.5	114.1	113.3	114.1
2009	113.0	113.8	114.0	113.9	114.7	115.1	114.7	114.7	114.7	114.6	115.2	114.8	114.4
2010	115.1	115.6	115.6	116.0	116.3	116.2	116.8	116.7	116.9	117.4	117.5	117.5	116.5
2011	117.8	118.1	119.4	119.8	120.6	119.8	120.0	120.3	120.6	120.8	120.9	120.2	119.9
2012	120.7	121.2	121.7	122.2	122.1	121.6	121.5	121.8	122.0	122.2	121.9	121.2	121.7
2013	121.3	122.7	122.9	122.7	123.0	123.0	123.1	123.1	123.3	123.0	123.0	122.7	122.8
2014	123.1
Percentage change from the corresponding month of the previous year (v41690973)													
1995	0.6	1.9	2.1	2.5	2.9	2.7	2.6	2.2	2.2	2.3	2.1	1.7	2.2
1996	1.6	1.3	1.5	1.4	1.5	1.5	1.3	1.5	1.5	1.8	1.9	2.2	1.5
1997	2.2	2.3	1.9	1.7	1.5	1.7	1.7	1.8	1.7	1.5	0.9	0.8	1.7
1998	1.1	1.0	1.0	0.9	1.1	1.0	1.0	0.9	0.7	1.1	1.2	1.0	1.0
1999	0.7	0.7	1.0	1.6	1.5	1.6	1.9	2.1	2.6	2.3	2.2	2.6	1.8
2000	2.2	2.7	3.0	2.2	2.4	2.8	2.9	2.6	2.7	2.8	3.2	3.2	2.7
2001	3.0	2.9	2.4	3.5	3.9	3.4	2.7	2.8	2.6	1.9	0.6	0.7	2.5
2002	1.3	1.4	1.9	1.7	1.1	1.2	2.1	2.5	2.3	3.2	4.4	3.8	2.2
2003	4.5	4.7	4.2	2.9	2.8	2.6	2.1	2.0	2.2	1.6	1.6	2.1	2.8
2004	1.3	0.7	0.8	1.7	2.4	2.5	2.3	1.8	1.8	2.3	2.4	2.1	1.8
2005	1.9	2.1	2.3	2.4	1.6	1.7	2.0	2.6	3.2	2.6	2.0	2.1	2.2
2006	2.8	2.2	2.2	2.4	2.8	2.4	2.3	2.1	0.7	1.0	1.4	1.7	2.0
2007	1.1	2.0	2.3	2.2	2.2	2.2	2.2	1.7	2.5	2.4	2.5	2.4	2.2
2008	2.2	1.8	1.4	1.7	2.2	3.1	3.4	3.5	3.4	2.6	2.0	1.2	2.3
2009	1.1	1.4	1.2	0.4	0.1	-0.3	-0.9	-0.8	-0.9	0.1	1.0	1.3	0.3
2010	1.9	1.6	1.4	1.8	1.4	1.0	1.8	1.7	1.9	2.4	2.0	2.4	1.8
2011	2.3	2.2	3.3	3.3	3.7	3.1	2.7	3.1	3.2	2.9	2.9	2.3	2.9
2012	2.5	2.6	1.9	2.0	1.2	1.5	1.3	1.2	1.2	1.2	0.8	0.8	1.5
2013	0.5	1.2	1.0	0.4	0.7	1.2	1.3	1.1	1.1	0.7	0.9	1.2	0.9
2014	1.5

Note(s): See "Data quality, concepts and methodology — Explanatory notes for tables" section.

Table 6
Core Consumer Price Index (CPI) (Bank of Canada definition), ¹ not seasonally adjusted, historical data

	Jan.	Feb.	Mar.	Apr.	May	June	July	Aug.	Sept.	Oct.	Nov.	Dec.	Annual average ²
	2002=100												
Indexes (v41693242)													
1995	87.9	88.3	88.4	88.5	88.6	88.6	88.8	89.0	89.3	89.3	89.6	89.2	88.8
1996	89.4	89.8	89.8	89.9	90.1	90.1	90.3	90.5	90.8	90.8	91.3	91.1	90.3
1997	91.3	91.5	91.7	91.9	92.0	92.1	92.1	92.3	92.4	92.5	92.4	92.3	92.0
1998	92.6	92.9	93.0	93.0	93.2	93.2	93.3	93.4	93.4	93.7	93.7	93.5	93.2
1999	93.5	93.8	94.1	94.2	94.5	94.6	94.7	94.9	95.2	95.1	95.0	94.8	94.5
2000	94.6	95.0	95.3	95.3	95.5	95.8	95.8	96.0	96.2	96.3	96.4	96.4	95.7
2001	96.3	96.6	97.1	97.4	97.7	97.9	98.2	98.3	98.4	98.4	98.1	98.0	97.7
2002	98.1	98.8	99.2	99.6	99.8	100.0	100.2	100.7	100.9	100.9	101.2	100.7	100.0
2003	101.3	101.8	102.0	101.7	102.2	102.1	102.1	102.2	102.6	102.7	103.0	102.8	102.2
2004	102.8	103.0	103.3	103.5	103.7	103.8	104.0	103.8	104.1	104.1	104.7	104.6	103.8
2005	104.5	104.8	105.2	105.2	105.4	105.4	105.4	105.6	105.9	105.9	106.3	106.2	105.5
2006	106.2	106.6	107.0	106.9	107.5	107.2	107.5	107.7	108.3	108.4	108.6	108.4	107.5
2007	108.6	109.1	109.5	109.6	109.9	109.9	110.0	110.1	110.5	110.3	110.3	110.0	109.8
2008	110.1	110.7	110.9	111.2	111.5	111.6	111.7	112.0	112.4	112.2	113.0	112.6	111.7
2009	112.2	112.8	113.1	113.2	113.7	113.7	113.7	113.8	114.1	114.2	114.7	114.3	113.6
2010	114.4	115.2	115.0	115.3	115.7	115.6	115.5	115.6	115.8	116.3	116.3	116.0	115.6
2011	116.0	116.2	117.0	117.2	117.8	117.1	117.3	117.8	118.4	118.7	118.8	118.2	117.5
2012	118.4	118.9	119.2	119.7	119.9	119.4	119.3	119.7	119.9	120.2	120.2	119.5	119.5
2013	119.6	120.6	120.9	121.0	121.2	121.0	121.0	121.2	121.4	121.6	121.5	121.0	121.0
2014	121.3
Percentage change from the corresponding month of the previous year (v41693242)													
1995	2.0	2.0	2.1	2.1	2.4	2.3	2.4	2.5	2.4	2.4	2.4	1.8	2.2
1996	1.7	1.7	1.6	1.6	1.7	1.7	1.7	1.7	1.7	1.7	1.9	2.1	1.7
1997	2.1	1.9	2.1	2.2	2.1	2.2	2.0	2.0	1.8	1.9	1.2	1.3	1.9
1998	1.4	1.5	1.4	1.2	1.3	1.2	1.3	1.2	1.1	1.3	1.4	1.3	1.3
1999	1.0	1.0	1.2	1.3	1.4	1.5	1.5	1.6	1.9	1.5	1.4	1.4	1.4
2000	1.2	1.3	1.3	1.2	1.1	1.3	1.2	1.2	1.1	1.3	1.5	1.7	1.3
2001	1.8	1.7	1.9	2.2	2.3	2.2	2.5	2.4	2.3	2.2	1.8	1.7	2.1
2002	1.9	2.3	2.2	2.3	2.1	2.1	2.0	2.4	2.5	2.5	3.2	2.8	2.4
2003	3.3	3.0	2.8	2.1	2.4	2.1	1.9	1.5	1.7	1.8	1.8	2.1	2.2
2004	1.5	1.2	1.3	1.8	1.5	1.7	1.9	1.6	1.5	1.4	1.7	1.8	1.6
2005	1.7	1.7	1.8	1.6	1.6	1.5	1.3	1.7	1.7	1.7	1.5	1.5	1.6
2006	1.6	1.7	1.7	1.6	2.0	1.7	2.0	2.0	2.3	2.4	2.2	2.1	1.9
2007	2.3	2.3	2.3	2.5	2.2	2.5	2.3	2.2	2.0	1.8	1.6	1.5	2.1
2008	1.4	1.5	1.3	1.5	1.5	1.5	1.5	1.7	1.7	1.7	2.4	2.4	1.7
2009	1.9	1.9	2.0	1.8	2.0	1.9	1.8	1.6	1.5	1.8	1.5	1.5	1.7
2010	2.0	2.1	1.7	1.9	1.8	1.7	1.6	1.6	1.5	1.8	1.4	1.5	1.8
2011	1.4	0.9	1.7	1.6	1.8	1.3	1.6	1.9	2.2	2.1	2.1	1.9	1.6
2012	2.1	2.3	1.9	2.1	1.8	2.0	1.7	1.6	1.3	1.3	1.2	1.1	1.7
2013	1.0	1.4	1.4	1.1	1.1	1.3	1.4	1.3	1.3	1.2	1.1	1.3	1.3
2014	1.4

Note(s): See "Data quality, concepts and methodology — Explanatory notes for tables" section.

Table 7
The Consumer Price Index for Canada, major components and special aggregates, not seasonally adjusted, historical data

	Major components								Special aggregates			
	Food	Shelter	Household operations, furnishings and equipment	Clothing and footwear	Transportation	Health and personal care	Recreation, education and reading	Alcoholic beverages and tobacco products	Goods ¹	Services ²	All-items CPI excluding food and energy ³	Energy ³
CANSIM vector number	(v41690974)	(v41691050)	(v41691067)	(v41691108)	(v41691128)	(v41691153)	(v41691170)	(v41691206)	(v41691222)	(v41691230)	(v41691233)	(v41691239)
	2002=100											
Annual averages⁴												
1995	86.9	90.4	90.6	96.7	84.3	89.6	86.7	68.7	88.4	86.7	88.8	79.6
1996	88.0	90.6	92.5	96.4	87.6	90.1	88.7	70.1	89.9	88.0	90.1	81.9
1997	89.4	90.8	93.7	97.7	90.3	91.7	91.0	72.3	91.2	89.5	91.5	83.9
1998	90.9	91.1	95.1	98.8	89.6	93.6	93.0	74.9	91.4	91.1	92.7	80.5
1999	92.0	92.3	95.8	100.1	92.6	95.4	94.7	76.5	93.1	92.6	94.0	85.0
2000	93.3	95.6	96.7	100.3	97.2	97.0	97.0	79.0	96.0	94.8	95.5	98.8
2001	97.4	99.1	98.6	100.7	97.3	98.9	98.4	85.0	98.4	97.1	97.3	102.0
2002	100.0	100.0	100.0	100.0	100.0	100.0	100.0	100.0	100.0	100.0	100.0	100.0
2003	101.7	103.2	100.7	98.2	105.2	101.4	100.8	110.1	101.9	103.6	102.5	107.9
2004	103.8	105.8	101.2	98.0	107.7	102.8	101.1	116.0	103.4	105.9	103.9	115.2
2005	106.4	109.2	101.7	97.6	112.0	104.6	100.8	119.1	105.8	108.2	105.3	126.3
2006	108.9	113.1	102.2	95.8	115.2	105.9	100.6	121.7	107.1	111.1	106.9	132.8
2007	111.8	116.9	103.2	95.7	117.1	107.3	101.8	125.5	108.0	114.8	109.0	135.9
2008	115.7	122.0	104.6	93.8	119.5	108.8	102.2	127.5	109.4	118.7	110.3	149.3
2009	121.4	121.6	107.3	93.4	113.1	112.1	103.1	130.7	107.6	121.2	111.5	129.2
2010	123.1	123.3	108.8	91.6	118.0	115.1	104.0	133.1	109.2	123.7	112.9	137.8
2011	127.7	125.6	110.9	91.9	125.6	117.1	105.3	135.6	112.9	126.7	114.7	154.7
2012	130.8	127.1	113.0	92.0	128.1	118.7	105.9	137.6	114.0	129.3	116.2	157.3
2013	132.4	128.7	114.4	92.1	129.0	118.3	106.2	140.4	114.6	131.0	117.2	159.6
Monthly indexes												
2013												
January	131.6	127.8	113.5	87.9	126.7	118.5	103.7	138.9	112.9	129.6	115.9	152.8
February	132.9	127.9	114.3	91.4	130.3	118.6	104.7	139.4	115.2	130.1	116.9	160.1
March	132.4	128.0	114.7	95.3	129.5	118.3	105.2	139.8	115.4	130.3	117.2	159.9
April	132.1	128.2	114.3	94.7	128.6	118.6	105.2	140.1	114.9	130.3	117.2	158.0
May	132.6	128.3	114.0	93.9	129.2	118.3	106.5	141.1	115.0	130.9	117.3	159.3
June	132.5	128.5	114.2	91.2	130.2	118.4	106.6	140.9	114.8	131.1	117.2	162.1
July	132.7	128.8	114.5	90.4	129.8	118.0	107.7	140.5	114.7	131.5	117.1	164.2
August	133.0	128.8	114.1	91.6	129.2	118.1	107.9	140.4	114.7	131.6	117.1	163.0
September	131.9	129.0	114.5	93.7	129.3	118.4	107.9	140.9	114.8	131.7	117.5	163.0
October	131.7	129.2	114.7	94.0	128.5	117.9	106.9	141.0	114.3	131.8	117.8	157.0
November	132.8	129.8	114.8	92.1	128.0	118.0	106.2	141.1	114.3	131.8	117.5	157.4
December	132.5	129.9	114.7	89.4	128.5	118.1	105.3	141.2	113.8	131.7	117.1	158.9
2014												
January	133.0	130.5	114.7	89.2	129.2	118.3	104.7	140.9	114.2	131.9	117.3	160.2

Note(s): For information on the continuity of the series, see "Data quality, concepts and methodology — Data quality, concepts and methodology — Weights and Linking" at the end of this publication.

See "Data quality, concepts and methodology — Explanatory notes for tables" section.

Table 8-1

Annual average¹ percentage changes for the Consumer Price Index — Major components, not seasonally adjusted, Canada, 2010 to 2013

	CANSIM vector number	Annual average	Annual average percentage change			
		2013	2010	2011	2012	2013
		2002=100	%			
All-items CPI	(v41693271)	122.8	1.8	2.9	1.5	0.9
Food	(v41693272)	132.4	1.4	3.7	2.4	1.2
Shelter	(v41693348)	128.7	1.4	1.9	1.2	1.3
Household operations, furnishings and equipment	(v41693365)	114.4	1.4	1.9	1.9	1.2
Clothing and footwear	(v41693406)	92.1	-1.9	0.3	0.1	0.1
Transportation	(v41693426)	129.0	4.3	6.4	2.0	0.7
Health and personal care	(v41693451)	118.3	2.7	1.7	1.4	-0.3
Recreation, education and reading	(v41693468)	106.2	0.9	1.3	0.6	0.3
Alcoholic beverages and tobacco products	(v41693504)	140.4	1.8	1.9	1.5	2.0
Goods	(v41693520)	114.6	1.5	3.4	1.0	0.5
Durable goods	(v41693521)	85.3	0.1	-1.1	-0.6	-0.2
Semi-durable goods	(v41693522)	93.6	-1.3	0.2	0.0	0.1
Non-durable goods	(v41693523)	137.3	2.8	6.1	1.8	0.9
Services	(v41693528)	131.0	2.1	2.4	2.1	1.3
All-items CPI excluding food	(v41693530)	120.9	1.9	2.8	1.4	0.8
All-items CPI excluding food and energy	(v41693531)	117.2	1.3	1.6	1.3	0.9
All-items CPI excluding energy	(v41693536)	119.9	1.3	1.9	1.5	0.9
Energy	(v41693537)	159.6	6.7	12.3	1.7	1.5

Note(s): See "Data quality, concepts and methodology — Explanatory notes for tables" section.

Table 8-2

Annual average¹ percentage changes for the Consumer Price Index — All-items CPI, not seasonally adjusted, Canada, provinces, urban centres, 2010 to 2013

	CANSIM vector number	Annual average 2013	Annual average percentage change			
			2010	2011	2012	2013
		2002=100	%			
Canada	(v41693271)	122.8	1.8	2.9	1.5	0.9
Newfoundland and Labrador	(v41693542)	126.0	2.4	3.4	2.1	1.7
Prince Edward Island	(v41693677)	128.0	1.9	2.9	2.0	2.0
Nova Scotia	(v41693811)	126.6	2.2	3.8	2.0	1.2
New Brunswick	(v41693946)	123.0	2.1	3.5	1.7	0.8
Quebec	(v41694081)	121.7	1.2	3.0	2.1	0.7
Ontario	(v41694217)	123.0	2.5	3.1	1.4	1.0
Manitoba	(v41694353)	123.0	0.8	3.0	1.6	2.2
Saskatchewan	(v41694489)	125.7	1.4	2.8	1.6	1.5
Alberta	(v41694625)	128.9	1.0	2.4	1.1	1.4
British Columbia	(v41694760)	117.7	1.3	2.4	1.1	-0.1
Whitehorse, Yukon	(v41694896)	122.8	0.8	3.0	2.3	1.7
Yellowknife, Northwest Territories	(v41695020)	126.2	1.7	3.1	2.2	1.5
Iqaluit, Nunavut (200212=100) ²	(v41713462)	116.6	-0.7	1.4	1.7	1.1
St. John's, Newfoundland and Labrador	(v41695144)	125.8	2.4	3.3	2.1	1.6
Charlottetown and Summerside, Prince Edward Island	(v41695150)	127.2	1.8	2.7	1.9	2.0
Halifax, Nova Scotia	(v41695156)	125.2	2.0	3.5	1.7	1.1
Saint John, New Brunswick	(v41695162)	122.9	2.3	3.4	1.6	0.7
Québec, Quebec	(v41695168)	121.9	1.4	3.0	2.2	0.9
Montréal, Quebec	(v41695174)	121.4	1.1	2.8	2.0	0.8
Ottawa-Gatineau, Ontario part, Ontario/Quebec	(v41695180)	122.9	2.6	3.0	1.3	1.0
Toronto, Ontario	(v41695186)	123.3	2.6	3.0	1.5	1.2
Thunder Bay, Ontario	(v41695192)	118.4	2.1	3.1	0.9	0.9
Winnipeg, Manitoba	(v41695198)	122.6	0.8	2.9	1.5	2.3
Regina, Saskatchewan	(v41695204)	126.7	1.5	2.9	1.8	1.7
Saskatoon, Saskatchewan	(v41695210)	125.7	1.2	2.5	1.5	1.0
Edmonton, Alberta	(v41695216)	129.0	1.1	2.5	1.1	1.3
Calgary, Alberta	(v41695222)	128.8	0.8	2.2	1.0	1.7
Vancouver, British Columbia	(v41695228)	119.2	1.8	2.3	1.3	0.2
Victoria, British Columbia	(v41695234)	116.3	1.1	2.1	1.0	-0.3

Note(s): See "Data quality, concepts and methodology — Explanatory notes for tables" section.

Table 9-1

The Consumer Price Index, major components, selected sub-groups and special aggregates, provinces, Whitehorse and Yellowknife, not seasonally adjusted — Newfoundland and Labrador

	CANSIM vector number	Indexes			Percentage change	
		January 2013	December 2013	January 2014	December 2013 to January 2014	January 2013 to January 2014
		2002=100			%	
All-items CPI	(v41691244)	123.6	126.6	126.7	0.1	2.5
Special aggregates						
All-items CPI excluding food	(v41691368)	121.6	124.7	125.0	0.2	2.8
All-items CPI excluding food and energy	(v41691369)	114.5	117.7	117.8	0.1	2.9
All-items CPI excluding energy	(v41691374)	118.1	121.2	121.2	0.0	2.6
All-items CPI excluding gasoline	(v41693247)	121.6	124.6	124.6	0.0	2.5
Energy ¹	(v41691375)	167.8	169.9	171.3	0.8	2.1
All-items CPI (1992=100)	(v41713404)	144.9	148.4	148.6	0.1	2.6
Food	(v41691245)	132.8	135.5	134.7	-0.6	1.4
Food purchased from stores	(v41691246)	131.8	134.4	133.4	-0.7	1.2
Meat	(v41691247)	127.1	130.3	130.4	0.1	2.6
Dairy products	(v41691257)	128.2	134.3	133.0	-1.0	3.7
Bakery and cereal products (excluding infant food)	(v41691262)	174.1	174.9	167.7	-4.1	-3.7
Fresh fruit	(v41691266)	116.3	120.6	123.2	2.2	5.9
Fresh vegetables	(v41691269)	98.9	103.1	101.7	-1.4	2.8
Food purchased from restaurants	(v41691276)	138.0	141.0	140.9	-0.1	2.1
Shelter	(v41691277)	146.8	149.9	149.9	0.0	2.1
Rented accommodation	(v41691278)	121.4	124.6	124.6	0.0	2.6
Owned accommodation	(v41691280)	140.2	144.7	144.2	-0.3	2.9
Homeowners' replacement cost	(v41691281)	181.2	184.8	184.8	0.0	2.0
Homeowners' home and mortgage insurance	(v41691283)	137.2	142.1	137.5	-3.2	0.2
Homeowners' maintenance and repairs	(v41691284)	148.9	154.6	154.6	0.0	3.8
Water, fuel and electricity	(v41691285)	173.0	172.9	173.8	0.5	0.5
Electricity	(v41691286)	150.7	148.0	148.0	0.0	-1.8
Natural gas	
Fuel oil and other fuels	(v41691288)	224.4	235.2	240.0	2.0	7.0
Household operations, furnishings and equipment	(v41691289)	111.1	113.1	113.3	0.2	2.0
Household operations	(v41691290)	123.8	126.1	126.1	0.0	1.9
Telephone services	(v41691292)	114.8	117.0	117.0	0.0	1.9
Internet access services and subscriptions to online content providers (excluding online newspapers and periodicals) (2002=100)	(v41693217)	117.5	120.6	120.6	0.0	2.6
Household furnishings and equipment	(v41691297)	90.8	92.6	93.1	0.5	2.5
Clothing and footwear	(v41691304)	85.7	93.3	92.9	-0.4	8.4
Women's clothing	(v41691306)	74.2	85.6	83.0	-3.0	11.9
Men's clothing	(v41691307)	88.9	90.5	98.6	9.0	10.9
Footwear	(v41691309)	86.9	91.0	89.2	-2.0	2.6
Transportation	(v41691312)	124.6	127.4	128.3	0.7	3.0
Private transportation	(v41691313)	124.4	127.2	128.2	0.8	3.1
Purchase and leasing of passenger vehicles	(v41691315)	93.3	93.9	94.8	1.0	1.6
Gasoline	(v41691318)	164.7	168.8	170.5	1.0	3.5
Passenger vehicle insurance premiums	(v41691321)	137.1	145.4	145.4	0.0	6.1
Public transportation	(v41691323)	125.1	127.5	128.1	0.5	2.4
Health and personal care	(v41691328)	113.8	112.4	113.0	0.5	-0.7
Health care	(v41691329)	112.6	110.6	110.5	-0.1	-1.9
Personal care	(v41691335)	115.5	114.9	116.5	1.4	0.9
Recreation, education and reading	(v41691338)	100.7	102.8	103.0	0.2	2.3
Recreation	(v41691339)	98.9	101.1	101.3	0.2	2.4
Education and reading	(v41691347)	109.6	111.4	111.4	0.0	1.6
Alcoholic beverages and tobacco products	(v41691351)	139.0	143.6	143.6	0.0	3.3
Alcoholic beverages	(v41691352)	121.5	123.4	123.7	0.2	1.8
Tobacco products and smokers' supplies	(v41691358)	153.8	160.8	160.5	-0.2	4.4

Note(s): See "Data quality, concepts and methodology — Explanatory notes for tables" section.

Table 9-2

The Consumer Price Index, major components, selected sub-groups and special aggregates, provinces, Whitehorse and Yellowknife, not seasonally adjusted — Prince Edward Island

	CANSIM vector number	Indexes			Percentage change	
		January 2013	December 2013	January 2014	December 2013 to January 2014	January 2013 to January 2014
		2002=100			%	
All-items CPI	(v41691379)	125.2	128.6	129.2	0.5	3.2
Special aggregates						
All-items CPI excluding food	(v41691502)	122.6	126.4	127.2	0.6	3.8
All-items CPI excluding food and energy	(v41691503)	113.7	116.3	116.8	0.4	2.7
All-items CPI excluding energy	(v41691508)	118.4	120.8	121.1	0.2	2.3
All-items CPI excluding gasoline	(v41693249)	122.5	125.4	125.9	0.4	2.8
Energy ¹	(v41691509)	183.4	197.9	201.1	1.6	9.7
All-items CPI (1992=100)	(v41713406)	147.4	151.4	152.1	0.5	3.2
Food	(v41691380)	138.4	139.4	139.0	-0.3	0.4
Food purchased from stores	(v41691381)	140.3	141.9	141.2	-0.5	0.6
Meat	(v41691382)	140.0	140.9	143.5	1.8	2.5
Dairy products	(v41691392)	139.7	140.9	141.9	0.7	1.6
Bakery and cereal products (excluding infant food)	(v41691397)	176.3	175.0	168.9	-3.5	-4.2
Fresh fruit	(v41691401)	115.5	110.2	114.9	4.3	-0.5
Fresh vegetables	(v41691404)	134.6	145.8	147.6	1.2	9.7
Food purchased from restaurants	(v41691411)	132.1	131.4	131.7	0.2	-0.3
Shelter	(v41691412)	129.9	135.6	136.2	0.4	4.8
Rented accommodation	(v41691413)	113.5	115.2	115.1	-0.1	1.4
Owned accommodation	(v41691415)	111.6	116.0	116.1	0.1	4.0
Homeowners' replacement cost	(v41691416)	111.2	123.1	123.1	0.0	10.7
Homeowners' home and mortgage insurance	(v41691418)	130.9	137.8	138.8	0.7	6.0
Homeowners' maintenance and repairs	(v41691419)	131.4	129.6	129.6	0.0	-1.4
Water, fuel and electricity	(v41691420)	186.5	200.3	203.6	1.6	9.2
Electricity	(v41691421)	132.0	146.7	146.7	0.0	11.1
Natural gas	
Fuel oil and other fuels	(v41691423)	245.2	257.9	266.0	3.1	8.5
Household operations, furnishings and equipment	(v41691424)	119.1	119.2	119.5	0.3	0.3
Household operations	(v41691425)	129.0	129.9	130.2	0.2	0.9
Telephone services	(v41691427)	112.6	112.2	112.2	0.0	-0.4
Internet access services and subscriptions to online content providers (excluding online newspapers and periodicals) (2002=100)	(v41693218)	117.0	120.1	120.1	0.0	2.6
Household furnishings and equipment	(v41691432)	99.0	97.2	97.3	0.1	-1.7
Clothing and footwear	(v41691439)	94.9	101.9	103.5	1.6	9.1
Women's clothing	(v41691441)	87.6	96.5	100.2	3.8	14.4
Men's clothing	(v41691442)	95.2	94.7	101.8	7.5	6.9
Footwear	(v41691444)	98.7	111.6	104.1	-6.7	5.5
Transportation	(v41691447)	127.5	131.3	132.6	1.0	4.0
Private transportation	(v41691448)	127.6	131.2	132.6	1.1	3.9
Purchase and leasing of passenger vehicles	(v41691450)	91.9	90.9	91.9	1.1	0.0
Gasoline	(v41691453)	178.4	192.9	195.9	1.6	9.8
Passenger vehicle insurance premiums	(v41691456)	138.6	143.0	143.0	0.0	3.2
Public transportation	(v41691458)	126.0	132.2	132.5	0.2	5.2
Health and personal care	(v41691462)	115.4	116.9	116.0	-0.8	0.5
Health care	(v41691463)	112.1	110.7	110.1	-0.5	-1.8
Personal care	(v41691469)	119.2	126.8	125.3	-1.2	5.1
Recreation, education and reading	(v41691472)	104.8	108.2	109.0	0.7	4.0
Recreation	(v41691473)	94.6	97.6	98.5	0.9	4.1
Education and reading	(v41691481)	134.2	139.0	139.0	0.0	3.6
Alcoholic beverages and tobacco products	(v41691485)	166.3	170.2	170.9	0.4	2.8
Alcoholic beverages	(v41691486)	128.4	131.1	131.9	0.6	2.7
Tobacco products and smokers' supplies	(v41691492)	185.3	190.1	190.6	0.3	2.9

Note(s): See "Data quality, concepts and methodology — Explanatory notes for tables" section.

Table 9-3

The Consumer Price Index, major components, selected sub-groups and special aggregates, provinces, Whitehorse and Yellowknife, not seasonally adjusted — Nova Scotia

	CANSIM vector number	Indexes			Percentage change	
		January 2013	December 2013	January 2014	December 2013 to January 2014	January 2013 to January 2014
		2002=100			%	
All-items CPI	(v41691513)	125.4	126.7	127.4	0.6	1.6
Special aggregates						
All-items CPI excluding food	(v41691637)	122.7	124.0	124.9	0.7	1.8
All-items CPI excluding food and energy	(v41691638)	115.7	116.7	117.1	0.3	1.2
All-items CPI excluding energy	(v41691643)	120.0	121.0	121.4	0.3	1.2
All-items CPI excluding gasoline	(v41693251)	123.1	124.3	124.9	0.5	1.5
Energy ¹	(v41691644)	173.2	177.6	182.2	2.6	5.2
All-items CPI (1992=100)	(v41713408)	150.1	151.8	152.5	0.5	1.6
Food	(v41691514)	138.3	139.9	139.5	-0.3	0.9
Food purchased from stores	(v41691515)	138.8	140.3	139.9	-0.3	0.8
Meat	(v41691516)	134.7	140.3	136.8	-2.5	1.6
Dairy products	(v41691526)	133.5	133.3	130.9	-1.8	-1.9
Bakery and cereal products (excluding infant food)	(v41691531)	169.9	169.8	168.4	-0.8	-0.9
Fresh fruit	(v41691535)	113.2	110.6	111.8	1.1	-1.2
Fresh vegetables	(v41691538)	119.8	129.0	126.4	-2.0	5.5
Food purchased from restaurants	(v41691545)	137.3	139.0	138.4	-0.4	0.8
Shelter	(v41691546)	137.0	139.2	140.6	1.0	2.6
Rented accommodation	(v41691547)	111.6	112.5	112.5	0.0	0.8
Owned accommodation	(v41691549)	130.6	132.6	132.8	0.2	1.7
Homeowners' replacement cost	(v41691550)	141.8	144.9	144.7	-0.1	2.0
Homeowners' home and mortgage insurance	(v41691552)	201.3	212.7	215.8	1.5	7.2
Homeowners' maintenance and repairs	(v41691553)	133.4	130.8	130.8	0.0	-1.9
Water, fuel and electricity	(v41691554)	174.7	179.0	185.6	3.7	6.2
Electricity	(v41691555)	147.6	147.6	151.9	2.9	2.9
Natural gas	
Fuel oil and other fuels	(v41691557)	216.4	227.8	239.5	5.1	10.7
Household operations, furnishings and equipment	(v41691558)	113.1	115.1	115.1	0.0	1.8
Household operations	(v41691559)	127.4	129.6	129.6	0.0	1.7
Telephone services	(v41691561)	113.4	115.6	115.6	0.0	1.9
Internet access services and subscriptions to online content providers (excluding online newspapers and periodicals) (2002=100)	(v41693219)	114.4	118.8	118.8	0.0	3.8
Household furnishings and equipment	(v41691566)	85.0	86.7	86.7	0.0	2.0
Clothing and footwear	(v41691573)	95.5	94.7	96.8	2.2	1.4
Women's clothing	(v41691575)	91.2	91.4	90.0	-1.5	-1.3
Men's clothing	(v41691576)	93.4	89.4	95.2	6.5	1.9
Footwear	(v41691578)	90.3	89.7	94.1	4.9	4.2
Transportation	(v41691581)	123.3	124.3	125.5	1.0	1.8
Private transportation	(v41691582)	123.3	124.1	125.2	0.9	1.5
Purchase and leasing of passenger vehicles	(v41691584)	93.6	93.5	94.6	1.2	1.1
Gasoline	(v41691587)	171.1	176.1	178.2	1.2	4.1
Passenger vehicle insurance premiums	(v41691590)	111.9	114.6	114.5	-0.1	2.3
Public transportation	(v41691592)	124.3	127.4	129.4	1.6	4.1
Health and personal care	(v41691597)	116.7	115.4	115.7	0.3	-0.9
Health care	(v41691598)	115.2	113.4	112.7	-0.6	-2.2
Personal care	(v41691604)	118.5	118.0	119.7	1.4	1.0
Recreation, education and reading	(v41691607)	106.2	107.0	106.7	-0.3	0.5
Recreation	(v41691608)	99.6	99.4	99.0	-0.4	-0.6
Education and reading	(v41691616)	126.1	130.0	130.3	0.2	3.3
Alcoholic beverages and tobacco products	(v41691620)	163.7	169.2	169.8	0.4	3.7
Alcoholic beverages	(v41691621)	127.7	129.9	130.8	0.7	2.4
Tobacco products and smokers' supplies	(v41691627)	187.9	197.3	197.3	0.0	5.0

Note(s): See "Data quality, concepts and methodology — Explanatory notes for tables" section.

Table 9-4

The Consumer Price Index, major components, selected sub-groups and special aggregates, provinces, Whitehorse and Yellowknife, not seasonally adjusted — New Brunswick

	CANSIM vector number	Indexes			Percentage change	
		January 2013	December 2013	January 2014	December 2013 to January 2014	January 2013 to January 2014
		2002=100			%	
All-items CPI	(v41691648)	121.5	123.5	123.4	-0.1	1.6
Special aggregates						
All-items CPI excluding food	(v41691772)	118.2	120.4	120.3	-0.1	1.8
All-items CPI excluding food and energy	(v41691773)	112.3	114.1	113.9	-0.2	1.4
All-items CPI excluding energy	(v41691778)	117.1	118.8	118.6	-0.2	1.3
All-items CPI excluding gasoline	(v41693253)	119.1	120.9	120.8	-0.1	1.4
Energy ¹	(v41691779)	156.7	161.8	163.1	0.8	4.1
All-items CPI (1992=100)	(v41713410)	144.0	146.4	146.4	0.0	1.7
Food						
Food purchased from stores	(v41691649)	137.7	138.8	138.7	-0.1	0.7
Food purchased from stores	(v41691650)	138.7	140.0	139.7	-0.2	0.7
Meat	(v41691651)	135.7	136.7	135.5	-0.9	-0.1
Dairy products	(v41691661)	130.6	132.5	131.7	-0.6	0.8
Bakery and cereal products (excluding infant food)	(v41691666)	173.9	172.0	166.1	-3.4	-4.5
Fresh fruit	(v41691670)	117.7	117.7	119.7	1.7	1.7
Fresh vegetables	(v41691673)	124.1	128.3	129.9	1.2	4.7
Food purchased from restaurants	(v41691680)	135.5	136.1	136.5	0.3	0.7
Shelter						
Rented accommodation	(v41691681)	125.9	128.6	129.1	0.4	2.5
Rented accommodation	(v41691682)	111.2	112.5	112.5	0.0	1.2
Owned accommodation	(v41691684)	118.4	120.9	120.9	0.0	2.1
Homeowners' replacement cost	(v41691685)	120.4	121.1	121.0	-0.1	0.5
Homeowners' home and mortgage insurance	(v41691687)	159.8	177.1	178.3	0.7	11.6
Homeowners' maintenance and repairs	(v41691688)	122.8	130.7	130.7	0.0	6.4
Water, fuel and electricity	(v41691689)	151.7	156.0	157.6	1.0	3.9
Electricity	(v41691690)	132.9	135.5	135.5	0.0	2.0
Natural gas	
Fuel oil and other fuels	(v41691692)	219.4	231.7	239.8	3.5	9.3
Household operations, furnishings and equipment						
Household operations	(v41691693)	114.7	116.2	116.3	0.1	1.4
Household operations	(v41691694)	129.5	132.7	133.0	0.2	2.7
Telephone services	(v41691696)	120.2	125.3	125.3	0.0	4.2
Internet access services and subscriptions to online content providers (excluding online newspapers and periodicals) (2002=100)	(v41693220)	113.4	116.3	116.3	0.0	2.6
Household furnishings and equipment	(v41691701)	88.1	86.3	86.2	-0.1	-2.2
Clothing and footwear						
Women's clothing	(v41691708)	91.9	96.7	94.5	-2.3	2.8
Women's clothing	(v41691710)	77.4	85.2	79.1	-7.2	2.2
Men's clothing	(v41691711)	94.3	92.0	95.7	4.0	1.5
Footwear	(v41691713)	92.3	95.8	94.0	-1.9	1.8
Transportation						
Private transportation	(v41691716)	121.9	123.3	124.2	0.7	1.9
Private transportation	(v41691717)	121.9	123.3	124.2	0.7	1.9
Purchase and leasing of passenger vehicles	(v41691719)	90.6	90.9	92.0	1.2	1.5
Gasoline	(v41691722)	164.5	170.3	171.6	0.8	4.3
Passenger vehicle insurance premiums	(v41691725)	121.8	122.8	122.7	-0.1	0.7
Public transportation	(v41691727)	124.6	126.6	126.7	0.1	1.7
Health and personal care						
Health care	(v41691732)	110.4	109.2	109.0	-0.2	-1.3
Health care	(v41691733)	112.5	110.0	109.4	-0.5	-2.8
Personal care	(v41691739)	108.7	109.4	109.8	0.4	1.0
Recreation, education and reading						
Recreation	(v41691742)	105.1	107.6	106.0	-1.5	0.9
Recreation	(v41691743)	96.7	98.8	96.9	-1.9	0.2
Education and reading	(v41691751)	136.2	139.9	139.9	0.0	2.7
Alcoholic beverages and tobacco products						
Alcoholic beverages	(v41691755)	154.1	159.8	160.7	0.6	4.3
Alcoholic beverages	(v41691756)	128.9	130.3	132.3	1.5	2.6
Tobacco products and smokers' supplies	(v41691762)	171.0	181.0	180.6	-0.2	5.6

Note(s): See "Data quality, concepts and methodology — Explanatory notes for tables" section.

Table 9-5

The Consumer Price Index, major components, selected sub-groups and special aggregates, provinces, Whitehorse and Yellowknife, not seasonally adjusted — Quebec

	CANSIM vector number	Indexes			Percentage change	
		January 2013	December 2013	January 2014	December 2013 to January 2014	January 2013 to January 2014
		2002=100			%	
All-items CPI	(v41691783)	120.4	121.5	121.7	0.2	1.1
Special aggregates						
All-items CPI excluding food	(v41691908)	117.6	118.7	118.9	0.2	1.1
All-items CPI excluding food and energy	(v41691909)	113.4	114.3	114.3	0.0	0.8
All-items CPI excluding energy	(v41691914)	117.4	118.2	118.3	0.1	0.8
All-items CPI excluding gasoline	(v41693255)	118.0	118.9	119.1	0.2	0.9
Energy ¹	(v41691915)	154.6	159.1	160.6	0.9	3.9
All-items CPI (1992=100)	(v41713412)	139.2	140.3	140.6	0.2	1.0
Food	(v41691784)	133.0	133.4	134.0	0.4	0.8
Food purchased from stores	(v41691785)	133.0	132.1	132.8	0.5	-0.2
Meat	(v41691786)	137.4	139.0	138.3	-0.5	0.7
Dairy products	(v41691796)	133.1	131.1	131.6	0.4	-1.1
Bakery and cereal products (excluding infant food)	(v41691801)	149.2	147.4	146.8	-0.4	-1.6
Fresh fruit	(v41691805)	123.2	118.5	123.9	4.6	0.6
Fresh vegetables	(v41691808)	112.5	115.8	118.7	2.5	5.5
Food purchased from restaurants	(v41691815)	132.8	136.3	136.7	0.3	2.9
Shelter	(v41691816)	125.5	127.5	127.7	0.2	1.8
Rented accommodation	(v41691817)	113.3	114.6	114.7	0.1	1.2
Owned accommodation	(v41691819)	130.3	132.4	132.4	0.0	1.6
Homeowners' replacement cost	(v41691820)	149.5	151.6	151.6	0.0	1.4
Homeowners' home and mortgage insurance	(v41691822)	153.7	156.7	156.7	0.0	2.0
Homeowners' maintenance and repairs	(v41691823)	130.5	133.7	133.8	0.1	2.5
Water, fuel and electricity	(v41691824)	129.1	132.3	133.5	0.9	3.4
Electricity	(v41691825)	114.1	116.4	116.4	0.0	2.0
Natural gas	(v41691827)	99.6	108.1	111.3	3.0	11.7
Fuel oil and other fuels	(v41691828)	253.3	264.8	279.5	5.6	10.3
Household operations, furnishings and equipment	(v41691829)	114.9	116.3	116.2	-0.1	1.1
Household operations	(v41691830)	124.6	126.8	126.7	-0.1	1.7
Telephone services	(v41691832)	121.4	124.7	124.7	0.0	2.7
Internet access services and subscriptions to online content providers (excluding online newspapers and periodicals) (2002=100)	(v41693221)	95.4	97.9	97.9	0.0	2.6
Household furnishings and equipment	(v41691837)	99.5	99.4	99.3	-0.1	-0.2
Clothing and footwear	(v41691844)	86.8	88.6	87.8	-0.9	1.2
Women's clothing	(v41691846)	69.0	72.3	70.8	-2.1	2.6
Men's clothing	(v41691847)	86.0	89.8	89.0	-0.9	3.5
Footwear	(v41691849)	97.7	97.5	94.0	-3.6	-3.8
Transportation	(v41691852)	127.7	128.6	129.7	0.9	1.6
Private transportation	(v41691853)	127.2	128.0	129.1	0.9	1.5
Purchase and leasing of passenger vehicles	(v41691855)	94.3	93.5	94.5	1.1	0.2
Gasoline	(v41691858)	179.4	185.1	187.0	1.0	4.2
Passenger vehicle insurance premiums	(v41691861)	151.0	154.4	154.6	0.1	2.4
Public transportation	(v41691863)	136.1	137.1	138.9	1.3	2.1
Health and personal care	(v41691868)	119.1	118.5	118.9	0.3	-0.2
Health care	(v41691869)	119.1	119.1	119.2	0.1	0.1
Personal care	(v41691875)	119.2	117.8	118.7	0.8	-0.4
Recreation, education and reading	(v41691878)	95.7	96.0	95.5	-0.5	-0.2
Recreation	(v41691879)	87.1	87.0	86.4	-0.7	-0.8
Education and reading	(v41691887)	133.3	135.5	135.6	0.1	1.7
Alcoholic beverages and tobacco products	(v41691891)	135.6	135.4	135.7	0.2	0.1
Alcoholic beverages	(v41691892)	114.5	113.0	113.5	0.4	-0.9
Tobacco products and smokers' supplies	(v41691898)	158.1	160.7	160.4	-0.2	1.5

Note(s): See "Data quality, concepts and methodology — Explanatory notes for tables" section.

Table 9-6

The Consumer Price Index, major components, selected sub-groups and special aggregates, provinces, Whitehorse and Yellowknife, not seasonally adjusted — Ontario

	CANSIM vector number	Indexes			Percentage change	
		January 2013	December 2013	January 2014	December 2013 to January 2014	January 2013 to January 2014
		2002=100			%	
All-items CPI	(v41691919)	121.3	123.1	123.3	0.2	1.6
Special aggregates						
All-items CPI excluding food	(v41692044)	119.5	121.4	121.5	0.1	1.7
All-items CPI excluding food and energy	(v41692045)	116.5	118.0	118.1	0.1	1.4
All-items CPI excluding energy	(v41692050)	119.0	120.5	120.7	0.2	1.4
All-items CPI excluding gasoline	(v41693257)	119.3	120.9	121.2	0.2	1.6
Energy ¹	(v41692051)	155.1	162.4	162.4	0.0	4.7
All-items CPI (1992=100)	(v41713415)	145.7	147.9	148.2	0.2	1.7
Food						
Food purchased from stores	(v41691920)	131.7	133.0	133.7	0.5	1.5
Food purchased from stores	(v41691921)	132.4	133.4	134.3	0.7	1.4
Meat	(v41691922)	133.8	137.5	137.0	-0.4	2.4
Dairy products	(v41691932)	135.2	132.1	131.9	-0.2	-2.4
Bakery and cereal products (excluding infant food)	(v41691937)	156.0	156.3	155.6	-0.4	-0.3
Fresh fruit	(v41691941)	113.6	112.7	116.6	3.5	2.6
Fresh vegetables	(v41691944)	112.7	114.3	117.7	3.0	4.4
Food purchased from restaurants	(v41691951)	130.1	132.3	132.4	0.1	1.8
Shelter						
Rented accommodation	(v41691952)	125.9	128.3	128.8	0.4	2.3
Rented accommodation	(v41691953)	112.5	114.1	114.2	0.1	1.5
Owned accommodation	(v41691955)	129.0	130.7	130.9	0.2	1.5
Homeowners' replacement cost	(v41691956)	154.5	157.0	157.2	0.1	1.7
Homeowners' home and mortgage insurance	(v41691958)	176.3	184.7	185.9	0.6	5.4
Homeowners' maintenance and repairs	(v41691959)	124.9	124.9	125.0	0.1	0.1
Water, fuel and electricity	(v41691960)	143.2	149.6	152.1	1.7	6.2
Electricity	(v41691961)	139.3	150.5	151.4	0.6	8.7
Natural gas	(v41691963)	93.6	93.6	95.0	1.5	1.5
Fuel oil and other fuels	(v41691964)	253.1	264.8	274.8	3.8	8.6
Household operations, furnishings and equipment						
Household operations	(v41691965)	114.4	115.6	115.6	0.0	1.0
Household operations	(v41691966)	126.9	130.3	130.3	0.0	2.7
Telephone services	(v41691968)	120.3	121.9	121.9	0.0	1.3
Internet access services and subscriptions to online content providers (excluding online newspapers and periodicals) (2002=100)	(v41693222)	107.3	114.7	114.7	0.0	6.9
Household furnishings and equipment	(v41691973)	92.7	89.8	89.7	-0.1	-3.2
Clothing and footwear						
Clothing and footwear	(v41691980)	83.8	85.4	85.2	-0.2	1.7
Women's clothing	(v41691982)	71.3	70.6	69.7	-1.3	-2.2
Men's clothing	(v41691983)	85.8	85.5	85.4	-0.1	-0.5
Footwear	(v41691985)	81.0	85.3	85.8	0.6	5.9
Transportation						
Transportation	(v41691988)	130.1	131.7	132.3	0.5	1.7
Private transportation	(v41691989)	130.0	131.7	132.2	0.4	1.7
Purchase and leasing of passenger vehicles	(v41691991)	92.8	92.6	93.6	1.1	0.9
Gasoline	(v41691994)	178.2	186.1	184.4	-0.9	3.5
Passenger vehicle insurance premiums	(v41691997)	178.6	179.4	180.1	0.4	0.8
Public transportation	(v41691999)	130.2	131.0	132.6	1.2	1.8
Health and personal care						
Health and personal care	(v41692004)	118.2	119.1	119.2	0.1	0.8
Health care	(v41692005)	120.0	121.4	121.3	-0.1	1.1
Personal care	(v41692011)	117.0	117.1	117.6	0.4	0.5
Recreation, education and reading						
Recreation, education and reading	(v41692014)	105.1	107.4	106.6	-0.7	1.4
Recreation	(v41692015)	92.2	93.6	92.6	-1.1	0.4
Education and reading	(v41692023)	140.5	145.7	145.7	0.0	3.7
Alcoholic beverages and tobacco products						
Alcoholic beverages and tobacco products	(v41692027)	139.7	142.9	140.8	-1.5	0.8
Alcoholic beverages	(v41692028)	113.6	118.1	115.3	-2.4	1.5
Tobacco products and smokers' supplies	(v41692034)	168.2	167.9	167.9	0.0	-0.2

Note(s): See "Data quality, concepts and methodology — Explanatory notes for tables" section.

Table 9-7

The Consumer Price Index, major components, selected sub-groups and special aggregates, provinces, Whitehorse and Yellowknife, not seasonally adjusted — Manitoba

	CANSIM vector number	Indexes			Percentage change	
		January 2013	December 2013	January 2014	December 2013 to January 2014	January 2013 to January 2014
		2002=100			%	
All-items CPI	(v41692055)	120.3	122.7	123.4	0.6	2.6
Special aggregates						
All-items CPI excluding food	(v41692180)	118.3	120.6	121.3	0.6	2.5
All-items CPI excluding food and energy	(v41692181)	116.2	118.2	118.8	0.5	2.2
All-items CPI excluding energy	(v41692186)	118.8	121.0	121.6	0.5	2.4
All-items CPI excluding gasoline	(v41693259)	118.6	120.9	121.5	0.5	2.4
Energy ¹	(v41692187)	136.4	142.6	143.9	0.9	5.5
All-items CPI (1992=100)	(v41713419)	148.0	151.0	151.9	0.6	2.6
Food	(v41692056)	130.5	133.3	134.0	0.5	2.7
Food purchased from stores	(v41692057)	128.5	130.7	131.6	0.7	2.4
Meat	(v41692058)	128.9	130.3	132.3	1.5	2.6
Dairy products	(v41692068)	131.2	131.5	133.6	1.6	1.8
Bakery and cereal products (excluding infant food)	(v41692073)	148.2	150.7	148.0	-1.8	-0.1
Fresh fruit	(v41692077)	111.7	122.6	116.9	-4.6	4.7
Fresh vegetables	(v41692080)	105.2	116.1	118.9	2.4	13.0
Food purchased from restaurants	(v41692087)	134.1	138.2	138.4	0.1	3.2
Shelter	(v41692088)	129.8	133.4	133.8	0.3	3.1
Rented accommodation	(v41692089)	121.9	123.6	123.6	0.0	1.4
Owned accommodation	(v41692091)	136.1	139.9	140.2	0.2	3.0
Homeowners' replacement cost	(v41692092)	172.8	177.9	178.2	0.2	3.1
Homeowners' home and mortgage insurance	(v41692094)	159.4	164.0	165.5	0.9	3.8
Homeowners' maintenance and repairs	(v41692095)	128.5	132.0	132.0	0.0	2.7
Water, fuel and electricity	(v41692096)	117.6	122.7	124.0	1.1	5.4
Electricity	(v41692097)	126.3	131.8	131.8	0.0	4.4
Natural gas	(v41692099)	77.5	83.2	83.2	0.0	7.4
Fuel oil and other fuels	(v41692100)	223.3	244.7	249.2	1.8	11.6
Household operations, furnishings and equipment	(v41692101)	111.9	114.3	114.2	-0.1	2.1
Household operations	(v41692102)	120.3	125.2	125.2	0.0	4.1
Telephone services	(v41692104)	109.3	114.4	114.4	0.0	4.7
Internet access services and subscriptions to online content providers (excluding online newspapers and periodicals) (2002=100)	(v41693223)	121.6	132.0	132.0	0.0	8.6
Household furnishings and equipment	(v41692109)	97.1	94.2	94.1	-0.1	-3.1
Clothing and footwear	(v41692116)	91.7	89.7	93.5	4.2	2.0
Women's clothing	(v41692118)	77.5	78.3	79.8	1.9	3.0
Men's clothing	(v41692119)	91.7	82.2	94.4	14.8	2.9
Footwear	(v41692121)	87.6	88.4	85.7	-3.1	-2.2
Transportation	(v41692124)	121.1	123.5	124.4	0.7	2.7
Private transportation	(v41692125)	120.8	123.1	124.2	0.9	2.8
Purchase and leasing of passenger vehicles	(v41692127)	95.8	97.1	98.1	1.0	2.4
Gasoline	(v41692130)	160.7	167.2	169.8	1.6	5.7
Passenger vehicle insurance premiums	(v41692133)	109.6	112.6	112.6	0.0	2.7
Public transportation	(v41692135)	124.8	127.0	127.7	0.6	2.3
Health and personal care	(v41692140)	113.1	112.3	112.0	-0.3	-1.0
Health care	(v41692141)	115.1	113.6	113.1	-0.4	-1.7
Personal care	(v41692147)	111.3	111.7	111.9	0.2	0.5
Recreation, education and reading	(v41692150)	104.0	105.9	105.7	-0.2	1.6
Recreation	(v41692151)	97.6	99.6	99.2	-0.4	1.6
Education and reading	(v41692159)	128.1	130.2	130.2	0.0	1.6
Alcoholic beverages and tobacco products	(v41692163)	149.1	161.9	162.4	0.3	8.9
Alcoholic beverages	(v41692164)	130.5	138.9	138.7	-0.1	6.3
Tobacco products and smokers' supplies	(v41692170)	165.6	182.4	183.7	0.7	10.9

Note(s): See "Data quality, concepts and methodology — Explanatory notes for tables" section.

Table 9-8

The Consumer Price Index, major components, selected sub-groups and special aggregates, provinces, Whitehorse and Yellowknife, not seasonally adjusted — Saskatchewan

	CANSIM vector number	Indexes			Percentage change	
		January 2013	December 2013	January 2014	December 2013 to January 2014	January 2013 to January 2014
		2002=100			%	
All-items CPI	(v41692191)	123.5	126.1	126.4	0.2	2.3
Special aggregates						
All-items CPI excluding food	(v41692316)	121.9	124.5	124.8	0.2	2.4
All-items CPI excluding food and energy	(v41692317)	120.4	122.4	122.8	0.3	2.0
All-items CPI excluding energy	(v41692322)	122.5	124.6	125.0	0.3	2.0
All-items CPI excluding gasoline	(v41693261)	122.5	124.5	125.2	0.6	2.2
Energy ¹	(v41692323)	132.1	140.7	139.8	-0.6	5.8
All-items CPI (1992=100)	(v41713421)	152.7	156.0	156.4	0.3	2.4
Food						
Food purchased from stores	(v41692192)	131.8	134.5	135.1	0.4	2.5
Food purchased from stores	(v41692193)	130.6	132.9	133.2	0.2	2.0
Meat	(v41692194)	132.1	133.8	135.6	1.3	2.6
Dairy products	(v41692204)	136.9	136.8	138.5	1.2	1.2
Bakery and cereal products (excluding infant food)	(v41692209)	145.4	147.4	145.0	-1.6	-0.3
Fresh fruit	(v41692213)	120.4	132.3	124.3	-6.0	3.2
Fresh vegetables	(v41692216)	114.5	124.9	129.0	3.3	12.7
Food purchased from restaurants	(v41692223)	134.5	137.8	138.9	0.8	3.3
Shelter						
Rented accommodation	(v41692224)	148.1	151.1	152.6	1.0	3.0
Rented accommodation	(v41692225)	136.0	138.3	138.4	0.1	1.8
Owned accommodation	(v41692227)	158.9	162.7	162.9	0.1	2.5
Homeowners' replacement cost	(v41692228)	222.6	229.3	229.3	0.0	3.0
Homeowners' home and mortgage insurance	(v41692230)	204.1	212.5	213.3	0.4	4.5
Homeowners' maintenance and repairs	(v41692231)	137.2	134.9	134.9	0.0	-1.7
Water, fuel and electricity	(v41692232)	133.3	135.3	140.7	4.0	5.6
Electricity	(v41692233)	140.4	140.4	148.1	5.5	5.5
Natural gas	(v41692235)	90.3	92.2	92.2	0.0	2.1
Fuel oil and other fuels	(v41692236)	195.9	233.3	237.4	1.8	21.2
Household operations, furnishings and equipment						
Household operations	(v41692237)	108.0	109.2	109.3	0.1	1.2
Household operations	(v41692238)	117.8	119.1	119.4	0.3	1.4
Telephone services	(v41692240)	101.3	100.6	100.6	0.0	-0.7
Internet access services and subscriptions to online content providers (excluding online newspapers and periodicals) (2002=100)	(v41693224)	101.3	103.7	103.7	0.0	2.4
Household furnishings and equipment	(v41692245)	90.7	91.7	91.7	0.0	1.1
Clothing and footwear						
Women's clothing	(v41692252)	93.6	92.9	94.0	1.2	0.4
Women's clothing	(v41692254)	79.6	81.8	81.4	-0.5	2.3
Men's clothing	(v41692255)	86.8	83.3	86.6	4.0	-0.2
Footwear	(v41692257)	95.0	95.8	94.8	-1.0	-0.2
Transportation						
Private transportation	(v41692260)	116.3	120.2	119.6	-0.5	2.8
Private transportation	(v41692261)	115.7	119.6	119.0	-0.5	2.9
Purchase and leasing of passenger vehicles	(v41692263)	92.6	93.1	94.0	1.0	1.5
Gasoline	(v41692266)	147.1	163.7	156.9	-4.2	6.7
Passenger vehicle insurance premiums	(v41692269)	122.9	128.5	128.5	0.0	4.6
Public transportation	(v41692271)	126.1	128.3	128.7	0.3	2.1
Health and personal care						
Health care	(v41692276)	116.2	116.4	116.9	0.4	0.6
Health care	(v41692277)	114.5	114.9	115.1	0.2	0.5
Personal care	(v41692283)	118.7	118.5	119.5	0.8	0.7
Recreation, education and reading						
Recreation	(v41692286)	104.9	107.6	107.3	-0.3	2.3
Recreation	(v41692287)	96.8	99.3	98.9	-0.4	2.2
Education and reading	(v41692295)	137.4	141.0	141.1	0.1	2.7
Alcoholic beverages and tobacco products						
Alcoholic beverages	(v41692299)	143.7	153.9	154.0	0.1	7.2
Alcoholic beverages	(v41692300)	135.0	139.2	139.5	0.2	3.3
Tobacco products and smokers' supplies	(v41692306)	147.2	162.1	162.1	0.0	10.1

Note(s): See "Data quality, concepts and methodology — Explanatory notes for tables" section.

Table 9-9

The Consumer Price Index, major components, selected sub-groups and special aggregates, provinces, Whitehorse and Yellowknife, not seasonally adjusted — Alberta

	CANSIM vector number	Indexes			Percentage change	
		January 2013	December 2013	January 2014	December 2013 to January 2014	January 2013 to January 2014
		2002=100			%	
All-items CPI	(v41692327)	126.5	129.1	129.9	0.6	2.7
Special aggregates						
All-items CPI excluding food	(v41692451)	126.0	128.8	129.5	0.5	2.8
All-items CPI excluding food and energy	(v41692452)	123.4	125.6	126.0	0.3	2.1
All-items CPI excluding energy	(v41692457)	124.5	126.5	127.1	0.5	2.1
All-items CPI excluding gasoline	(v41693263)	125.8	127.8	128.8	0.8	2.4
Energy ¹	(v41692458)	151.8	161.5	166.3	3.0	9.6
All-items CPI (1992=100)	(v41713424)	157.1	160.3	161.3	0.6	2.7
Food	(v41692328)	129.8	131.1	132.4	1.0	2.0
Food purchased from stores	(v41692329)	129.1	129.7	131.4	1.3	1.8
Meat	(v41692330)	131.1	129.3	132.3	2.3	0.9
Dairy products	(v41692340)	140.1	138.6	140.8	1.6	0.5
Bakery and cereal products (excluding infant food)	(v41692345)	145.4	147.8	146.3	-1.0	0.6
Fresh fruit	(v41692349)	115.1	122.8	118.8	-3.3	3.2
Fresh vegetables	(v41692352)	97.4	106.2	104.8	-1.3	7.6
Food purchased from restaurants	(v41692359)	131.1	134.0	134.4	0.3	2.5
Shelter	(v41692360)	154.4	158.0	160.5	1.6	4.0
Rented accommodation	(v41692361)	125.6	128.9	129.2	0.2	2.9
Owned accommodation	(v41692363)	161.3	165.7	166.5	0.5	3.2
Homeowners' replacement cost	(v41692364)	177.8	184.2	184.4	0.1	3.7
Homeowners' home and mortgage insurance	(v41692366)	243.2	261.4	271.2	3.7	11.5
Homeowners' maintenance and repairs	(v41692367)	122.6	123.9	124.0	0.1	1.1
Water, fuel and electricity	(v41692368)	160.4	161.5	173.2	7.2	8.0
Electricity	(v41692369)	135.1	128.7	138.6	7.7	2.6
Natural gas	(v41692371)	164.4	173.8	191.0	9.9	16.2
Fuel oil and other fuels
Household operations, furnishings and equipment	(v41692372)	111.4	113.3	113.5	0.2	1.9
Household operations	(v41692373)	123.1	125.9	126.2	0.2	2.5
Telephone services	(v41692375)	105.1	104.0	104.0	0.0	-1.0
Internet access services and subscriptions to online content providers (excluding online newspapers and periodicals) (2002=100)	(v41693225)	113.4	125.3	125.3	0.0	10.5
Household furnishings and equipment	(v41692380)	92.8	93.2	93.0	-0.2	0.2
Clothing and footwear	(v41692387)	90.0	92.0	90.9	-1.2	1.0
Women's clothing	(v41692389)	73.6	75.3	71.7	-4.8	-2.6
Men's clothing	(v41692390)	88.4	86.4	88.3	2.2	-0.1
Footwear	(v41692392)	90.9	97.8	95.1	-2.8	4.6
Transportation	(v41692395)	123.3	127.4	127.9	0.4	3.7
Private transportation	(v41692396)	122.6	126.9	127.3	0.3	3.8
Purchase and leasing of passenger vehicles	(v41692398)	88.5	88.6	89.5	1.0	1.1
Gasoline	(v41692401)	148.3	166.8	164.1	-1.6	10.7
Passenger vehicle insurance premiums	(v41692404)	175.7	183.8	185.5	0.9	5.6
Public transportation	(v41692406)	129.6	132.4	133.0	0.5	2.6
Health and personal care	(v41692411)	127.8	127.1	127.6	0.4	-0.2
Health care	(v41692412)	136.8	136.1	136.1	0.0	-0.5
Personal care	(v41692418)	119.2	118.5	119.5	0.8	0.3
Recreation, education and reading	(v41692421)	103.5	105.5	105.4	-0.1	1.8
Recreation	(v41692422)	95.6	97.8	97.7	-0.1	2.2
Education and reading	(v41692430)	134.3	135.0	135.1	0.1	0.6
Alcoholic beverages and tobacco products	(v41692434)	138.8	139.8	140.6	0.6	1.3
Alcoholic beverages	(v41692435)	128.9	129.9	131.0	0.8	1.6
Tobacco products and smokers' supplies	(v41692441)	145.2	146.3	146.4	0.1	0.8

Note(s): See "Data quality, concepts and methodology — Explanatory notes for tables" section.

Table 9-10

The Consumer Price Index, major components, selected sub-groups and special aggregates, provinces, Whitehorse and Yellowknife, not seasonally adjusted — British Columbia

	CANSIM vector number	Indexes			Percentage change	
		January 2013	December 2013	January 2014	December 2013 to January 2014	January 2013 to January 2014
		2002=100			%	
All-items CPI	(v41692462)	117.1	117.0	117.1	0.1	0.0
Special aggregates						
All-items CPI excluding food	(v41692587)	114.9	114.9	115.1	0.2	0.2
All-items CPI excluding food and energy	(v41692588)	111.8	111.6	111.7	0.1	-0.1
All-items CPI excluding energy	(v41692593)	114.7	114.4	114.5	0.1	-0.2
All-items CPI excluding gasoline	(v41693265)	115.2	115.0	115.1	0.1	-0.1
Energy ¹	(v41692594)	149.0	150.9	153.0	1.4	2.7
All-items CPI (1992=100)	(v41713427)	138.1	137.8	138.0	0.1	-0.1
Food	(v41692463)	128.4	127.5	127.2	-0.2	-0.9
Food purchased from stores	(v41692464)	125.6	127.0	126.5	-0.4	0.7
Meat	(v41692465)	126.4	125.6	127.0	1.1	0.5
Dairy products	(v41692475)	129.9	130.4	132.4	1.5	1.9
Bakery and cereal products (excluding infant food)	(v41692480)	137.5	140.2	137.5	-1.9	0.0
Fresh fruit	(v41692484)	117.6	129.0	122.1	-5.3	3.8
Fresh vegetables	(v41692487)	110.6	118.6	117.0	-1.3	5.8
Food purchased from restaurants	(v41692494)	133.7	128.0	127.9	-0.1	-4.3
Shelter	(v41692495)	113.6	113.2	113.5	0.3	-0.1
Rented accommodation	(v41692496)	113.1	114.1	114.2	0.1	1.0
Owned accommodation	(v41692498)	109.8	108.7	108.8	0.1	-0.9
Homeowners' replacement cost	(v41692499)	112.5	110.6	110.4	-0.2	-1.9
Homeowners' home and mortgage insurance	(v41692501)	159.8	163.4	166.9	2.1	4.4
Homeowners' maintenance and repairs	(v41692502)	123.2	123.2	123.0	-0.2	-0.2
Water, fuel and electricity	(v41692503)	136.4	137.8	139.6	1.3	2.3
Electricity	(v41692504)	140.4	141.4	141.4	0.0	0.7
Natural gas	(v41692506)	106.7	107.3	109.7	2.2	2.8
Fuel oil and other fuels	(v41692507)	237.1	253.7	254.8	0.4	7.5
Household operations, furnishings and equipment	(v41692508)	111.6	111.3	111.6	0.3	0.0
Household operations	(v41692509)	121.1	120.5	120.9	0.3	-0.2
Telephone services	(v41692511)	107.4	104.6	104.6	0.0	-2.6
Internet access services and subscriptions to online content providers (excluding online newspapers and periodicals) (2002=100)	(v41693226)	114.2	126.0	126.0	0.0	10.3
Household furnishings and equipment	(v41692516)	94.9	95.3	95.2	-0.1	0.3
Clothing and footwear	(v41692523)	97.6	97.9	98.3	0.4	0.7
Women's clothing	(v41692525)	81.9	85.4	83.2	-2.6	1.6
Men's clothing	(v41692526)	92.1	90.3	93.6	3.7	1.6
Footwear	(v41692528)	98.8	95.4	93.6	-1.9	-5.3
Transportation	(v41692531)	123.7	124.3	125.2	0.7	1.2
Private transportation	(v41692532)	122.8	123.6	124.6	0.8	1.5
Purchase and leasing of passenger vehicles	(v41692534)	91.9	91.8	92.5	0.8	0.7
Gasoline	(v41692537)	170.1	172.7	176.0	1.9	3.5
Passenger vehicle insurance premiums	(v41692540)	135.9	138.9	138.9	0.0	2.2
Public transportation	(v41692542)	130.7	130.0	130.6	0.5	-0.1
Health and personal care	(v41692547)	115.4	112.5	112.4	-0.1	-2.6
Health care	(v41692548)	119.5	116.4	116.2	-0.2	-2.8
Personal care	(v41692554)	110.7	108.0	108.1	0.1	-2.3
Recreation, education and reading	(v41692557)	110.7	111.4	110.7	-0.6	0.0
Recreation	(v41692558)	95.3	95.3	94.5	-0.8	-0.8
Education and reading	(v41692566)	163.0	166.4	166.4	0.0	2.1
Alcoholic beverages and tobacco products	(v41692570)	131.0	131.8	133.1	1.0	1.6
Alcoholic beverages	(v41692571)	116.8	117.3	119.0	1.4	1.9
Tobacco products and smokers' supplies	(v41692577)	150.7	152.3	152.6	0.2	1.3

Note(s): See "Data quality, concepts and methodology — Explanatory notes for tables" section.

Table 9-11

The Consumer Price Index, major components, selected sub-groups and special aggregates, provinces, Whitehorse and Yellowknife, not seasonally adjusted — Whitehorse (Yukon)

	CANSIM vector number	Indexes			Percentage change	
		January 2013	December 2013	January 2014	December 2013 to January 2014	January 2013 to January 2014
		2002=100			%	
All-items CPI	(v41692598)	120.8	123.2	123.4	0.2	2.2
Special aggregates						
All-items CPI excluding food	(v41692711)	120.5	122.6	122.7	0.1	1.8
All-items CPI excluding food and energy	(v41692712)	115.4	117.2	117.2	0.0	1.6
All-items CPI excluding energy	(v41692717)	116.9	119.0	119.1	0.1	1.9
All-items CPI excluding gasoline	(v41693267)	119.4	121.9	122.0	0.1	2.2
Energy ¹	(v41692718)	161.4	166.6	167.4	0.5	3.7
All-items CPI (1992=100)	(v41713430)	142.2	145.0	145.1	0.1	2.0
Food						
Food purchased from stores	(v41692599)	122.7	126.5	126.6	0.1	3.2
Food purchased from stores	(v41692600)	122.7	128.4	128.2	-0.2	4.5
Meat	(v41692601)	117.5	122.3	122.0	-0.2	3.8
Dairy products	(v41692611)	128.7	131.4	132.9	1.1	3.3
Bakery and cereal products (excluding infant food)	(v41692616)	133.0	138.0	133.1	-3.6	0.1
Fresh fruit	(v41692620)	113.7	125.4	121.3	-3.3	6.7
Fresh vegetables	(v41692623)	99.3	111.1	113.3	2.0	14.1
Food purchased from restaurants	(v41692630)	122.4	122.2	122.7	0.4	0.2
Shelter	(v41692631)	141.3	147.6	148.0	0.3	4.7
Rented accommodation
Owned accommodation
Homeowners' replacement cost
Homeowners' home and mortgage insurance
Homeowners' maintenance and repairs
Water, fuel and electricity	(v41692632)	165.3	175.5	176.9	0.8	7.0
Electricity	(v41692633)	120.9	135.4	135.4	0.0	12.0
Natural gas
Fuel oil and other fuels	(v41692635)	228.6	235.1	238.8	1.6	4.5
Household operations, furnishings and equipment	(v41692636)	104.7	106.3	106.1	-0.2	1.3
Household operations	(v41692637)	114.4	115.0	114.9	-0.1	0.4
Telephone services	(v41692639)	99.4	99.4	99.4	0.0	0.0
Internet access services and subscriptions to online content providers (excluding online newspapers and periodicals) (2002=100)	(v41693227)	106.6	104.6	104.6	0.0	-1.9
Household furnishings and equipment	(v41692644)	87.6	91.2	90.8	-0.4	3.7
Clothing and footwear	(v41692651)	94.3	96.4	96.1	-0.3	1.9
Women's clothing	(v41692653)	80.1	80.7	82.7	2.5	3.2
Men's clothing	(v41692654)	103.6	103.0	103.7	0.7	0.1
Footwear	(v41692656)	82.7	97.9	96.8	-1.1	17.0
Transportation	(v41692659)	126.0	127.2	127.5	0.2	1.2
Private transportation	(v41692660)	126.7	127.6	127.9	0.2	0.9
Purchase and leasing of passenger vehicles	(v41692662)	96.6	97.3	97.7	0.4	1.1
Gasoline	(v41692665)	158.5	158.1	158.0	-0.1	-0.3
Passenger vehicle insurance premiums	(v41692668)	191.8	203.2	203.2	0.0	5.9
Public transportation	(v41692670)	122.6	125.0	125.2	0.2	2.1
Health and personal care	(v41692675)	116.7	118.5	117.9	-0.5	1.0
Health care	(v41692676)	124.2	123.1	123.6	0.4	-0.5
Personal care	(v41692682)	108.3	113.1	111.4	-1.5	2.9
Recreation, education and reading	(v41692685)	94.9	92.8	93.1	0.3	-1.9
Recreation	(v41692686)	89.4	87.4	87.7	0.3	-1.9
Education and reading	(v41692693)	123.9	121.4	122.2	0.7	-1.4
Alcoholic beverages and tobacco products	(v41692695)	144.8	145.7	145.5	-0.1	0.5
Alcoholic beverages	(v41692696)	118.8	121.6	121.5	-0.1	2.3
Tobacco products and smokers' supplies	(v41692702)	176.4	173.7	173.4	-0.2	-1.7

Note(s): See "Data quality, concepts and methodology — Explanatory notes for tables" section.

Table 9-12

The Consumer Price Index, major components, selected sub-groups and special aggregates, provinces, Whitehorse and Yellowknife, not seasonally adjusted — Yellowknife (Northwest Territories)

	CANSIM vector number	Indexes			Percentage change	
		January 2013	December 2013	January 2014	December 2013 to January 2014	January 2013 to January 2014
		2002=100			%	
All-items CPI	(v41692722)	125.1	126.6	127.0	0.3	1.5
Special aggregates						
All-items CPI excluding food	(v41692835)	125.0	126.1	126.7	0.5	1.4
All-items CPI excluding food and energy	(v41692836)	118.9	119.6	120.0	0.3	0.9
All-items CPI excluding energy	(v41692841)	120.1	121.2	121.5	0.2	1.2
All-items CPI excluding gasoline	(v41693269)	124.0	125.5	126.0	0.4	1.6
Energy ¹	(v41692842)	180.8	188.3	190.5	1.2	5.4
All-items CPI (1992=100)	(v41713431)	145.5	147.3	147.8	0.3	1.6
Food	(v41692723)	125.2	128.8	128.3	-0.4	2.5
Food purchased from stores	(v41692724)	122.9	126.7	125.8	-0.7	2.4
Meat	(v41692725)	141.6	144.9	144.3	-0.4	1.9
Dairy products	(v41692735)	119.8	122.7	120.7	-1.6	0.8
Bakery and cereal products (excluding infant food)	(v41692740)	128.9	130.2	129.0	-0.9	0.1
Fresh fruit	(v41692744)	107.0	114.4	114.2	-0.2	6.7
Fresh vegetables	(v41692747)	123.8	139.0	136.9	-1.5	10.6
Food purchased from restaurants	(v41692754)	131.2	134.0	134.7	0.5	2.7
Shelter ²	(v41692755)	145.8	149.3	150.0	0.5	2.9
Rented accommodation
Owned accommodation
Homeowners' replacement cost
Homeowners' home and mortgage insurance
Homeowners' maintenance and repairs
Water, fuel and electricity	(v41692756)	185.2	196.9	200.4	1.8	8.2
Electricity	(v41692757)	167.5	175.5	175.5	0.0	4.8
Natural gas
Fuel oil and other fuels	(v41692759)	252.4	272.3	279.7	2.7	10.8
Household operations, furnishings and equipment	(v41692760)	110.8	110.4	110.9	0.5	0.1
Household operations	(v41692761)	119.3	119.4	120.0	0.5	0.6
Telephone services	(v41692763)	99.6	99.6	99.6	0.0	0.0
Internet access services and subscriptions to online content providers (excluding online newspapers and periodicals) (2002=100)	(v41693228)	76.5	73.3	73.3	0.0	-4.2
Household furnishings and equipment	(v41692768)	93.2	92.2	92.3	0.1	-1.0
Clothing and footwear	(v41692775)	101.1	99.7	99.5	-0.2	-1.6
Women's clothing	(v41692777)	90.1	85.5	83.9	-1.9	-6.9
Men's clothing	(v41692778)	107.3	104.1	105.2	1.1	-2.0
Footwear	(v41692780)	89.5	91.1	90.7	-0.4	1.3
Transportation	(v41692783)	119.7	119.7	121.0	1.1	1.1
Private transportation	(v41692784)	119.9	119.4	121.1	1.4	1.0
Purchase and leasing of passenger vehicles	(v41692786)	91.1	90.7	91.2	0.6	0.1
Gasoline	(v41692789)	157.9	158.4	158.3	-0.1	0.3
Passenger vehicle insurance premiums	(v41692792)	176.5	179.7	179.7	0.0	1.8
Public transportation	(v41692794)	121.6	123.6	123.9	0.2	1.9
Health and personal care	(v41692799)	116.2	119.7	119.1	-0.5	2.5
Health care	(v41692800)	117.8	116.3	115.1	-1.0	-2.3
Personal care	(v41692806)	115.9	123.2	123.2	0.0	6.3
Recreation, education and reading	(v41692809)	99.3	99.1	99.4	0.3	0.1
Recreation	(v41692810)	96.0	95.0	95.3	0.3	-0.7
Education and reading	(v41692817)	119.4	123.5	123.5	0.0	3.4
Alcoholic beverages and tobacco products	(v41692819)	156.1	159.4	159.2	-0.1	2.0
Alcoholic beverages	(v41692820)	141.7	145.7	145.4	-0.2	2.6
Tobacco products and smokers' supplies	(v41692826)	171.0	172.6	172.6	0.0	0.9

Note(s): See "Data quality, concepts and methodology — Explanatory notes for tables" section.

Table 10

The all-items Consumer Price Index, provinces, Whitehorse, Yellowknife and Iqaluit, ¹ not seasonally adjusted, historical data

	Jan.	Feb.	Mar.	Apr.	May	June	July	Aug.	Sept.	Oct.	Nov.	Dec.	Annual average ²
	2002=100												
Newfoundland and Labrador (v41691244)													
2009	112.9	113.4	113.5	114.1	115.2	115.8	115.2	115.0	115.2	114.6	115.6	115.2	114.6
2010	116.5	116.3	117.1	117.0	117.2	117.2	117.6	117.8	117.8	118.0	118.1	118.1	117.4
2011	119.0	119.7	120.9	121.5	121.5	120.9	121.6	122.0	122.3	122.1	122.9	121.9	121.4
2012	122.5	123.0	123.9	125.2	124.5	123.5	123.6	124.0	124.5	124.8	124.3	123.5	123.9
2013	123.6	125.8	125.9	125.9	125.9	126.0	126.1	126.0	126.6	126.7	127.0	126.6	126.0
2014	126.7
Prince Edward Island (v41691379)													
2009	114.1	115.7	115.6	116.4	117.6	118.5	118.4	118.3	118.6	117.7	119.1	118.1	117.3
2010	118.7	118.8	119.3	119.1	119.2	119.2	119.5	119.7	119.6	120.4	120.5	119.9	119.5
2011	120.1	121.1	122.2	123.3	123.9	123.3	123.3	123.9	123.7	123.9	124.0	123.4	123.0
2012	123.6	124.8	125.6	126.3	125.9	125.2	125.2	125.6	126.2	126.5	125.9	124.9	125.5
2013	125.2	126.7	127.1	128.6	127.9	127.9	128.1	128.6	129.0	129.0	129.2	128.6	128.0
2014	129.2
Nova Scotia (v41691513)													
2009	113.4	114.3	114.5	115.0	115.8	116.5	116.6	116.7	116.7	115.9	117.0	116.3	115.7
2010	116.9	116.9	117.7	117.9	117.8	117.3	118.6	118.7	118.8	119.3	119.6	119.4	118.2
2011	120.4	120.9	122.3	122.9	123.2	122.5	122.8	123.2	123.8	123.9	124.0	122.7	122.7
2012	123.7	124.3	125.3	126.1	125.6	124.8	124.5	125.0	125.7	125.6	125.5	124.9	125.1
2013	125.4	126.7	126.7	126.8	126.4	126.4	126.4	126.6	127.3	126.7	126.7	126.7	126.6
2014	127.4
New Brunswick (v41691648)													
2009	111.1	112.0	112.3	112.5	113.7	114.5	114.4	114.1	114.2	114.0	115.1	114.5	113.5
2010	115.4	115.6	115.8	115.8	115.7	115.7	115.9	116.0	116.0	116.1	116.7	116.6	115.9
2011	117.2	118.2	119.4	120.0	120.5	119.9	120.3	120.7	120.9	120.8	121.3	120.4	120.0
2012	121.0	121.3	122.3	123.1	122.7	121.6	121.4	121.9	122.7	122.5	122.0	121.2	122.0
2013	121.5	121.3	123.3	122.8	122.6	122.5	122.6	123.0	123.5	123.5	123.5	123.5	123.0
2014	123.4
Quebec (v41691783)													
2009	111.5	112.3	112.6	112.7	113.7	114.3	113.8	113.9	113.7	113.6	114.3	114.0	113.4
2010	114.0	114.2	114.5	114.8	114.9	114.8	114.5	114.6	114.8	115.2	115.6	115.8	114.8
2011	116.4	116.7	118.3	118.5	118.9	118.2	118.3	118.5	118.7	119.0	119.3	118.7	118.3
2012	119.7	120.4	120.8	121.3	121.1	120.6	120.5	120.9	120.9	121.3	121.1	120.5	120.8
2013	120.4	122.1	121.8	121.8	121.9	121.8	121.8	121.9	122.0	121.6	121.8	121.5	121.7
2014	121.7
Ontario (v41691919)													
2009	112.4	113.1	113.7	113.2	114.0	114.2	113.7	113.7	113.8	113.9	114.6	114.1	113.7
2010	114.5	115.1	115.3	115.7	116.2	116.0	117.0	117.0	117.1	117.8	118.0	117.9	116.5
2011	117.8	118.0	119.4	119.9	120.9	120.2	120.5	120.6	121.1	121.0	121.0	120.3	120.1
2012	120.6	121.4	122.0	122.4	122.4	121.6	121.4	121.8	122.0	122.2	121.9	121.3	121.8
2013	121.3	122.8	123.2	122.9	123.0	123.2	123.4	123.4	123.5	123.3	123.3	123.1	123.0
2014	123.3
Manitoba (v41692055)													
2009	112.4	113.1	113.0	113.7	114.4	115.1	115.0	114.5	114.5	114.4	114.7	114.2	114.1
2010	114.3	114.6	114.7	114.8	115.0	114.9	114.7	114.8	115.1	115.8	116.0	115.6	115.0
2011	116.6	117.0	117.9	118.3	119.5	118.6	118.2	118.3	119.1	119.3	119.6	118.6	118.4
2012	118.9	119.0	119.5	120.4	120.8	120.3	120.3	120.5	121.0	121.3	121.1	120.2	120.3
2013	120.3	121.6	122.3	122.6	123.0	123.6	123.9	123.8	124.0	124.0	124.0	122.7	123.0
2014	123.4
Saskatchewan (v41692191)													
2009	115.7	116.5	116.6	116.1	117.0	118.2	118.0	117.9	117.5	117.2	117.6	117.1	117.1
2010	117.5	117.7	117.9	118.5	118.6	118.6	118.5	118.8	118.9	119.7	119.9	119.4	118.7
2011	120.1	120.3	121.4	121.6	122.6	121.7	121.8	122.1	123.0	123.0	123.4	122.4	122.0
2012	122.9	122.7	123.6	124.2	124.5	124.1	123.9	124.2	124.5	124.8	124.5	123.3	123.9
2013	123.5	124.9	125.2	125.4	126.0	126.2	125.9	125.7	126.4	126.7	126.3	126.1	125.7
2014	126.4

Table 10 – continued

The all-items Consumer Price Index, provinces, Whitehorse, Yellowknife and Iqaluit, ¹ not seasonally adjusted, historical data

	Jan.	Feb.	Mar.	Apr.	May	June	July	Aug.	Sept.	Oct.	Nov.	Dec.	Annual average ²
	2002=100												
Alberta (v41692327)													
2009	120.2	121.5	120.9	120.4	121.4	122.0	121.5	122.0	121.5	121.6	122.6	121.9	121.5
2010	122.3	122.7	122.1	122.3	122.7	122.7	123.3	122.7	122.6	123.0	122.7	122.9	122.7
2011	123.5	124.2	124.5	126.0	126.1	125.3	125.7	126.3	126.0	127.2	126.6	126.5	125.7
2012	127.1	126.6	126.6	127.0	126.6	126.9	126.8	127.6	127.8	128.0	127.3	126.5	127.1
2013	126.5	127.7	128.1	128.7	129.5	129.8	129.6	129.4	129.5	129.3	129.5	129.1	128.9
2014	129.9
British Columbia (v41692462)													
2009	111.4	111.9	112.0	112.1	112.9	112.8	112.4	112.8	112.7	112.1	112.4	111.9	112.3
2010	112.2	113.2	112.6	113.2	113.6	113.4	114.6	114.5	114.5	114.8	114.9	114.6	113.8
2011	114.8	115.2	116.1	116.3	117.1	116.5	116.6	116.9	117.3	117.4	117.5	116.5	116.5
2012	116.8	117.2	117.9	118.2	118.6	118.2	117.9	118.1	118.1	118.0	117.6	117.0	117.8
2013	117.1	118.3	118.5	117.2	117.9	117.6	117.9	118.0	118.1	117.7	117.4	117.0	117.7
2014	117.1
Whitehorse, Yukon (v41692598)													
2009	113.0	113.7	113.6	113.4	114.0	114.9	114.4	114.2	113.7	113.4	113.9	113.4	113.8
2010	113.9	114.4	113.4	113.6	114.3	115.1	115.1	115.1	115.1	115.5	115.7	115.6	114.7
2011	115.9	115.9	117.0	117.3	118.4	118.6	118.7	118.6	119.0	119.1	119.4	118.8	118.1
2012	118.8	119.0	120.1	120.7	121.5	121.3	121.4	121.5	121.4	121.6	121.6	121.1	120.8
2013	120.8	121.2	121.5	121.6	122.6	124.1	124.0	124.1	124.0	123.6	123.0	123.2	122.8
2014	123.4
Yellowknife, Northwest Territories (v41692722)													
2009	114.3	114.5	114.3	115.3	116.0	116.9	116.5	116.3	116.4	116.3	116.7	116.8	115.9
2010	116.8	117.4	116.9	117.2	117.8	118.4	118.0	118.0	118.1	118.4	119.1	119.2	117.9
2011	119.3	119.2	120.5	120.9	121.6	121.6	122.0	122.0	122.3	122.6	123.4	123.4	121.6
2012	124.1	123.1	123.6	125.1	124.9	124.5	124.3	124.3	123.9	124.4	124.9	124.8	124.3
2013	125.1	125.4	125.6	126.0	126.1	126.5	126.5	126.6	126.4	126.4	126.6	126.6	126.2
2014	127.0
Iqaluit, Nunavut (200212=100) (v41713432)													
2009	111.8	111.8	112.4	113.5	113.6	113.8	113.3	114.0	113.2	111.7	111.2	111.3	112.6
2010	111.3	111.1	110.7	111.8	112.2	112.9	112.1	112.1	112.2	111.3	112.0	112.1	111.8
2011	112.5	112.3	112.6	113.2	113.5	113.3	113.3	113.4	113.6	114.3	114.5	114.2	113.4
2012	114.2	114.4	114.4	114.9	115.9	116.1	116.1	115.9	115.9	115.2	115.3	115.1	115.3
2013	115.5	115.8	115.8	116.5	117.2	117.5	117.5	117.5	117.5	116.6	116.1	116.2	116.6
2014	116.7

Note(s): See "Data quality, concepts and methodology — Explanatory notes for tables" section.

Table 11

The Consumer Price Index and selected sub-groups, by urban centre, ¹ not seasonally adjusted

	CANSIM vector number	Indexes			Percentage change	
		January 2013	December 2013	January 2014	December 2013 to January 2014	January 2013 to January 2014
		2002=100			%	
St. John's, Newfoundland and Labrador						
All-items CPI	(v41692846)	123.4	126.4	126.5	0.1	2.5
Shelter	(v41692847)	143.3	146.4	146.4	0.0	2.2
Rented accommodation	(v41692848)	124.2	127.0	127.1	0.1	2.3
Owned accommodation	(v41692849)	138.7	143.1	142.9	-0.1	3.0
Water, fuel and electricity	(v41692850)	172.4	171.4	172.2	0.5	-0.1
All-items CPI (1992=100)	(v41713405)	144.8	148.3	148.5	0.1	2.6
Charlottetown and Summerside, Prince Edward Island						
All-items CPI	(v41692852)	124.4	127.8	128.4	0.5	3.2
Shelter	(v41692853)	126.9	132.0	132.5	0.4	4.4
Rented accommodation	(v41692854)	115.0	116.9	116.7	-0.2	1.5
Owned accommodation	(v41692855)	111.5	115.6	115.8	0.2	3.9
Water, fuel and electricity	(v41692856)	185.0	198.4	201.7	1.7	9.0
All-items CPI (1992=100)	(v41713407)	145.8	149.7	150.4	0.5	3.2
Halifax, Nova Scotia						
All-items CPI	(v41692858)	124.1	125.4	126.0	0.5	1.5
Shelter	(v41692859)	131.6	133.7	134.7	0.7	2.4
Rented accommodation	(v41692860)	112.9	114.1	114.2	0.1	1.2
Owned accommodation	(v41692861)	128.1	129.9	130.1	0.2	1.6
Water, fuel and electricity	(v41692862)	169.2	173.8	180.0	3.6	6.4
All-items CPI (1992=100)	(v41713409)	147.7	149.3	150.0	0.5	1.6
Saint John, New Brunswick						
All-items CPI	(v41692864)	121.5	123.4	123.4	0.0	1.6
Shelter	(v41692865)	128.7	131.0	131.4	0.3	2.1
Rented accommodation	(v41692866)	114.8	116.3	116.2	-0.1	1.2
Owned accommodation	(v41692867)	122.4	124.5	124.5	0.0	1.7
Water, fuel and electricity	(v41692868)	158.8	162.7	164.5	1.1	3.6
All-items CPI (1992=100)	(v41713411)	143.6	145.9	145.9	0.0	1.6
Québec, Quebec						
All-items CPI	(v41692870)	120.6	121.6	121.9	0.2	1.1
Shelter	(v41692871)	126.1	128.0	128.3	0.2	1.7
Rented accommodation	(v41692872)	118.1	119.2	119.2	0.0	0.9
Owned accommodation	(v41692873)	129.9	132.0	132.1	0.1	1.7
Water, fuel and electricity	(v41692874)	125.7	128.2	129.6	1.1	3.1
All-items CPI (1992=100)	(v41713413)	140.1	141.3	141.6	0.2	1.1
Montréal, Quebec						
All-items CPI	(v41692876)	120.1	121.2	121.5	0.2	1.2
Shelter	(v41692877)	124.5	126.3	126.5	0.2	1.6
Rented accommodation	(v41692878)	114.3	115.6	115.7	0.1	1.2
Owned accommodation	(v41692879)	129.6	131.4	131.5	0.1	1.5
Water, fuel and electricity	(v41692880)	126.3	129.5	130.6	0.8	3.4
All-items CPI (1992=100)	(v41713414)	139.0	140.2	140.6	0.3	1.2
Ottawa-Gatineau, Ontario part, Ontario/Quebec ²						
All-items CPI	(v41692882)	121.3	122.8	123.0	0.2	1.4
Shelter	(v41692883)	128.6	129.9	130.4	0.4	1.4
Rented accommodation	(v41692884)	114.0	115.0	115.1	0.1	1.0
Owned accommodation	(v41692885)	133.5	133.7	133.9	0.1	0.3
Water, fuel and electricity	(v41692886)	141.4	148.0	150.2	1.5	6.2
All-items CPI (1992=100)	(v41713416)	147.8	149.7	149.8	0.1	1.4
Toronto, Ontario						
All-items CPI	(v41692888)	121.5	123.4	123.7	0.2	1.8
Shelter	(v41692889)	125.6	128.0	128.6	0.5	2.4
Rented accommodation	(v41692890)	113.8	115.8	115.9	0.1	1.8
Owned accommodation	(v41692891)	129.1	130.9	131.2	0.2	1.6
Water, fuel and electricity	(v41692892)	137.8	143.6	147.0	2.4	6.7
All-items CPI (1992=100)	(v41713417)	146.4	148.7	149.1	0.3	1.8

Table 11 – continued

The Consumer Price Index and selected sub-groups, by urban centre, ¹ not seasonally adjusted

	CANSIM vector number	Indexes			Percentage change	
		January 2013	December 2013	January 2014	December 2013 to January 2014	January 2013 to January 2014
		2002=100			%	
Thunder Bay, Ontario						
All-items CPI	(v41692894)	116.8	118.8	118.9	0.1	1.8
Shelter	(v41692895)	109.2	112.2	112.1	-0.1	2.7
Rented accommodation	(v41692896)	108.1	110.7	110.5	-0.2	2.2
Owned accommodation	(v41692897)	102.6	103.7	103.8	0.1	1.2
Water, fuel and electricity	(v41692898)	143.8	154.8	154.0	-0.5	7.1
All-items CPI (1992=100)	(v41713418)	139.3	141.7	141.8	0.1	1.8
Winnipeg, Manitoba						
All-items CPI	(v41692900)	120.0	122.4	123.1	0.6	2.6
Shelter	(v41692901)	128.5	132.0	132.4	0.3	3.0
Rented accommodation	(v41692902)	124.0	125.9	126.0	0.1	1.6
Owned accommodation	(v41692903)	134.5	138.2	138.5	0.2	3.0
Water, fuel and electricity	(v41692904)	111.9	116.8	118.4	1.4	5.8
All-items CPI (1992=100)	(v41713420)	147.9	150.9	151.7	0.5	2.6
Regina, Saskatchewan						
All-items CPI	(v41692906)	124.4	127.2	127.4	0.2	2.4
Shelter	(v41692907)	150.1	153.8	154.6	0.5	3.0
Rented accommodation	(v41692908)	135.9	138.8	139.0	0.1	2.3
Owned accommodation	(v41692909)	162.8	167.8	168.0	0.1	3.2
Water, fuel and electricity	(v41692910)	130.5	131.5	134.7	2.4	3.2
All-items CPI (1992=100)	(v41713422)	155.0	158.4	158.7	0.2	2.4
Saskatoon, Saskatchewan						
All-items CPI	(v41692912)	123.8	126.0	126.4	0.3	2.1
Shelter	(v41692913)	147.2	149.0	150.3	0.9	2.1
Rented accommodation	(v41692914)	139.8	141.5	141.6	0.1	1.3
Owned accommodation	(v41692915)	151.7	153.7	153.9	0.1	1.5
Water, fuel and electricity	(v41692916)	138.6	139.8	146.6	4.9	5.8
All-items CPI (1992=100)	(v41713423)	152.3	155.1	155.6	0.3	2.2
Edmonton, Alberta						
All-items CPI	(v41692918)	126.8	128.9	129.6	0.5	2.2
Shelter	(v41692919)	155.6	157.3	159.4	1.3	2.4
Rented accommodation	(v41692920)	131.9	134.9	135.1	0.1	2.4
Owned accommodation	(v41692921)	155.0	156.4	157.0	0.4	1.3
Water, fuel and electricity	(v41692922)	183.9	184.2	195.2	6.0	6.1
All-items CPI (1992=100)	(v41713425)	154.5	157.1	158.0	0.6	2.3
Calgary, Alberta						
All-items CPI	(v41692924)	126.3	129.3	130.2	0.7	3.1
Shelter	(v41692925)	151.3	157.0	159.6	1.7	5.5
Rented accommodation	(v41692926)	119.4	123.3	123.5	0.2	3.4
Owned accommodation	(v41692927)	163.9	171.3	172.1	0.5	5.0
Water, fuel and electricity	(v41692928)	139.9	142.6	154.7	8.5	10.6
All-items CPI (1992=100)	(v41713426)	158.9	162.7	163.7	0.6	3.0
Vancouver, British Columbia						
All-items CPI	(v41692930)	118.5	118.5	118.7	0.2	0.2
Shelter	(v41692931)	117.2	116.8	117.1	0.3	-0.1
Rented accommodation	(v41692932)	114.5	115.6	115.7	0.1	1.0
Owned accommodation	(v41692933)	116.9	115.6	115.6	0.0	-1.1
Water, fuel and electricity	(v41692934)	126.0	127.2	129.4	1.7	2.7
All-items CPI (1992=100)	(v41713428)	140.6	140.6	140.8	0.1	0.1
Victoria, British Columbia						
All-items CPI	(v41692936)	115.8	115.6	115.7	0.1	-0.1
Shelter	(v41692937)	110.1	109.7	109.9	0.2	-0.2
Rented accommodation	(v41692938)	113.5	114.2	114.2	0.0	0.6
Owned accommodation	(v41692939)	101.7	100.6	100.7	0.1	-1.0
Water, fuel and electricity	(v41692940)	161.9	164.0	166.3	1.4	2.7
All-items CPI (1992=100)	(v41713429)	136.0	135.7	135.8	0.1	-0.1

Note(s): See "Data quality, concepts and methodology — Explanatory notes for tables" section.

Table 12

The all-items Consumer Price Index by urban centre, ¹ not seasonally adjusted, historical data

	Jan.	Feb.	Mar.	Apr.	May	June	July	Aug.	Sept.	Oct.	Nov.	Dec.	Annual average ²
	2002=100												
St. John's, Newfoundland and Labrador (v41692846)													
2009	113.0	113.6	113.7	114.2	115.3	115.8	115.3	115.1	115.3	114.8	115.6	115.2	114.7
2010	116.4	116.3	117.1	117.0	117.3	117.2	117.7	117.9	117.9	118.1	118.1	118.1	117.4
2011	119.1	119.7	120.7	121.3	121.5	120.8	121.5	121.9	122.1	122.1	122.7	121.9	121.3
2012	122.4	122.9	123.7	125.0	124.4	123.3	123.4	123.8	124.3	124.6	124.1	123.4	123.8
2013	123.4	125.5	125.6	125.6	125.6	125.8	125.8	125.8	126.4	126.5	126.8	126.4	125.8
2014	126.5
Charlottetown and Summerside, Prince Edward Island (v41692852)													
2009	114.0	115.6	115.5	116.3	117.4	118.2	118.2	118.0	118.3	117.4	118.8	117.8	117.1
2010	118.3	118.4	119.0	118.8	118.9	118.9	119.3	119.4	119.4	120.1	120.2	119.5	119.2
2011	119.7	120.6	121.7	122.7	123.3	122.7	122.7	123.2	123.1	123.3	123.4	122.7	122.4
2012	122.9	124.1	124.8	125.5	125.1	124.5	124.5	124.9	125.5	125.7	125.2	124.2	124.7
2013	124.4	125.9	126.3	127.8	127.1	127.1	127.4	127.8	128.3	128.3	128.5	127.8	127.2
2014	128.4
Halifax, Nova Scotia (v41692858)													
2009	113.1	113.9	114.1	114.7	115.3	116.0	116.1	116.2	116.3	115.4	116.5	115.8	115.3
2010	116.3	116.3	117.0	117.3	117.1	116.7	118.0	118.1	118.3	118.6	118.9	118.6	117.6
2011	119.5	120.0	121.3	121.9	122.1	121.5	121.8	122.2	122.8	122.9	122.9	121.6	121.7
2012	122.4	123.0	124.0	124.8	124.2	123.5	123.3	123.8	124.5	124.4	124.3	123.7	123.8
2013	124.1	125.2	125.3	125.4	125.1	125.0	125.1	125.2	126.0	125.4	125.5	125.4	125.2
2014	126.0
Saint John, New Brunswick (v41692864)													
2009	111.4	112.1	112.5	112.7	113.9	114.6	114.5	114.2	114.3	114.4	115.4	114.8	113.7
2010	115.7	115.9	116.1	116.1	116.0	116.0	116.2	116.3	116.3	116.5	117.1	116.9	116.3
2011	117.5	118.5	119.8	120.2	120.7	120.1	120.6	120.9	121.1	121.0	121.5	120.6	120.2
2012	121.0	121.4	122.4	123.2	122.8	121.8	121.6	122.0	122.8	122.6	122.1	121.4	122.1
2013	121.5	123.1	123.4	122.8	122.6	122.5	122.6	122.9	123.5	123.5	123.5	123.4	122.9
2014	123.4
Québec, Quebec (v41692870)													
2009	111.2	112.0	112.4	112.5	113.6	114.2	113.7	113.8	113.6	113.5	114.3	114.0	113.2
2010	114.0	114.2	114.5	114.7	114.8	114.8	114.5	114.6	114.8	115.2	115.5	115.8	114.8
2011	116.3	116.6	118.2	118.4	118.8	118.1	118.2	118.5	118.7	119.0	119.3	118.7	118.2
2012	119.8	120.4	120.8	121.3	121.2	120.6	120.6	121.0	121.1	121.4	121.3	120.6	120.8
2013	120.6	122.3	122.1	122.0	122.1	122.0	122.0	122.0	122.2	121.8	121.9	121.6	121.9
2014	121.9
Montréal, Quebec (v41692876)													
2009	111.7	112.4	112.7	112.9	113.9	114.3	113.8	114.0	113.8	113.7	114.4	114.0	113.5
2010	114.0	114.2	114.5	114.8	114.9	114.8	114.5	114.5	114.8	115.3	115.6	115.8	114.8
2011	116.3	116.5	118.1	118.3	118.6	117.9	118.0	118.2	118.4	118.8	119.0	118.4	118.0
2012	119.4	120.0	120.4	120.9	120.7	120.2	120.2	120.5	120.5	120.9	120.8	120.1	120.4
2013	120.1	121.7	121.4	121.4	121.6	121.4	121.5	121.5	121.5	121.4	121.6	121.2	121.4
2014	121.5
Ottawa-Gatineau, Ontario part, Ontario/Quebec (v41692882) ³													
2009	112.3	113.0	113.6	113.1	114.0	114.2	113.8	113.8	113.9	114.1	114.6	114.1	113.7
2010	114.4	115.1	115.3	115.8	116.4	116.1	117.2	117.1	117.3	117.9	118.1	118.1	116.6
2011	117.9	118.2	119.5	120.0	121.0	120.2	120.4	120.5	121.1	121.1	121.0	120.3	120.1
2012	120.6	121.4	122.0	122.4	122.3	121.4	121.3	121.7	121.9	122.1	121.9	121.2	121.7
2013	121.3	122.7	123.1	122.8	122.9	123.0	123.3	123.2	123.3	123.1	123.0	122.8	122.9
2014	123.0
Toronto, Ontario (v41692888)													
2009	112.5	113.2	113.8	113.1	113.9	114.0	113.6	113.6	113.7	114.0	114.4	113.9	113.6
2010	114.5	115.1	115.3	115.8	116.3	116.1	117.1	117.1	117.3	117.7	117.8	117.6	116.5
2011	117.5	117.9	119.4	119.8	120.8	120.2	120.4	120.5	121.2	121.1	120.9	120.2	120.0
2012	120.7	121.5	122.0	122.4	122.4	121.7	121.6	121.8	122.1	122.3	122.0	121.4	121.8
2013	121.5	122.9	123.3	123.1	123.2	123.4	123.6	123.7	123.8	123.7	123.6	123.4	123.3
2014	123.7

Table 12 – continued

The all-items Consumer Price Index by urban centre, ¹ not seasonally adjusted, historical data

	Jan.	Feb.	Mar.	Apr.	May	June	July	Aug.	Sept.	Oct.	Nov.	Dec.	Annual average ²
2002=100													
Thunder Bay, Ontario (v41692894)													
2009	109.5	110.3	110.8	110.4	111.0	111.2	110.3	110.2	110.4	110.2	110.9	110.4	110.5
2010	110.9	111.5	111.7	112.2	112.5	112.3	113.4	113.3	113.4	114.0	114.2	114.1	112.8
2011	114.2	114.2	115.5	116.3	117.3	116.5	116.7	116.8	117.5	117.4	117.2	116.4	116.3
2012	116.5	117.3	117.9	118.1	118.0	117.1	116.8	117.2	117.4	117.9	117.6	116.8	117.4
2013	116.8	118.4	118.6	118.1	118.3	118.5	118.7	118.7	118.6	118.8	118.9	118.8	118.4
2014	118.9
Winnipeg, Manitoba (v41692900)													
2009	112.3	113.0	112.9	113.5	114.2	114.9	114.8	114.3	114.3	114.2	114.5	114.0	113.9
2010	114.1	114.4	114.5	114.6	114.8	114.6	114.5	114.6	114.9	115.6	115.8	115.3	114.8
2011	116.3	116.7	117.6	117.9	119.1	118.3	117.9	118.0	118.8	119.0	119.3	118.3	118.1
2012	118.6	118.7	119.2	120.0	120.4	120.0	119.9	120.2	120.6	120.9	120.8	119.9	119.9
2013	120.0	121.3	121.9	122.2	122.6	123.1	123.4	123.4	123.6	123.6	123.7	122.4	122.6
2014	123.1
Regina, Saskatchewan (v41692906)													
2009	115.6	116.4	116.6	116.2	117.1	118.3	118.0	118.0	117.6	117.4	117.8	117.3	117.2
2010	117.8	117.9	118.1	118.7	118.9	118.9	118.8	119.1	119.2	120.0	120.2	119.7	118.9
2011	120.5	120.7	121.8	121.9	123.0	122.1	122.3	122.5	123.6	123.6	123.9	123.0	122.4
2012	123.5	123.3	124.2	124.8	125.1	124.7	124.6	124.9	125.2	125.6	125.3	124.1	124.6
2013	124.4	125.8	126.3	126.5	127.0	127.2	126.9	126.7	127.4	127.7	127.4	127.2	126.7
2014	127.4
Saskatoon, Saskatchewan (v41692912)													
2009	116.9	117.8	117.8	117.4	118.1	119.1	119.0	118.9	118.5	118.3	118.6	118.1	118.2
2010	118.5	118.7	118.9	119.5	119.6	119.5	119.6	119.8	119.8	120.6	120.8	120.2	119.6
2011	120.9	121.1	122.1	122.2	123.3	122.3	122.5	122.7	123.5	123.6	123.9	122.9	122.6
2012	123.4	123.2	124.0	124.6	125.0	124.6	124.4	124.6	124.9	125.2	125.0	123.7	124.4
2013	123.8	125.0	125.3	125.4	126.0	126.1	125.9	125.7	126.4	126.6	126.2	126.0	125.7
2014	126.4
Edmonton, Alberta (v41692918)													
2009	120.2	121.5	120.9	120.5	121.6	122.2	121.8	122.1	121.7	121.8	122.7	122.0	121.6
2010	122.4	122.9	122.3	122.6	122.8	122.7	123.5	122.9	122.8	123.3	123.0	123.1	122.9
2011	123.9	124.3	124.8	126.2	126.5	125.6	125.9	126.6	126.4	127.6	126.9	126.7	126.0
2012	127.3	126.9	127.0	127.4	127.0	127.2	127.1	127.9	128.1	128.5	127.7	127.0	127.4
2013	126.8	128.0	128.3	129.0	129.7	130.0	129.5	129.4	129.5	129.2	129.3	128.9	129.0
2014	129.6
Calgary, Alberta (v41692924)													
2009	120.7	121.9	121.3	120.8	121.5	122.1	121.6	122.1	121.6	121.9	122.7	122.1	121.7
2010	122.4	122.8	122.3	122.4	122.8	122.9	123.3	122.7	122.6	122.9	122.7	122.8	122.7
2011	123.3	124.2	124.3	125.6	125.8	124.9	125.5	125.9	125.7	126.9	126.3	126.2	125.4
2012	126.7	126.3	126.3	126.7	126.2	126.5	126.4	127.2	127.5	127.5	126.9	126.0	126.7
2013	126.3	127.5	127.9	128.5	129.3	129.7	129.6	129.3	129.5	129.4	129.6	129.3	128.8
2014	130.2
Vancouver, British Columbia (v41692930)													
2009	112.0	112.5	112.6	112.6	113.3	113.3	112.9	113.6	113.5	112.7	113.1	112.7	112.9
2010	113.1	113.9	113.6	114.2	114.6	114.5	115.7	115.7	115.6	116.1	116.0	115.5	114.9
2011	115.8	116.0	117.0	117.2	118.0	117.5	117.5	117.7	118.3	118.5	118.7	117.7	117.5
2012	117.9	118.4	119.1	119.4	119.8	119.5	119.2	119.4	119.3	119.3	118.9	118.3	119.0
2013	118.5	119.8	120.0	118.5	119.3	119.0	119.3	119.5	119.6	119.3	119.0	118.5	119.2
2014	118.7
Victoria, British Columbia (v41692936)													
2009	111.0	111.4	111.6	111.9	112.6	112.5	112.1	112.3	112.2	111.7	111.9	111.5	111.9
2010	111.6	112.5	112.0	112.4	112.8	112.6	113.7	113.6	113.6	114.0	114.1	113.7	113.1
2011	114.0	114.3	115.2	115.4	116.2	115.5	115.5	115.8	116.2	116.4	116.5	115.4	115.5
2012	115.7	116.1	116.9	117.3	117.6	117.1	116.7	116.9	116.8	116.8	116.3	115.6	116.7
2013	115.8	116.9	117.1	115.8	116.5	116.2	116.4	116.5	116.5	116.2	116.0	115.6	116.3
2014	115.7

Note(s): The all-items index for Whitehorse and Yellowknife are available from table 10.
See "Data quality, concepts and methodology — Explanatory notes for tables" section.

Table 13
Average retail prices for gasoline and fuel oil, by urban centre

	St. John's, N.L.	Charlottetown and Summerside, P.E.I.	Halifax, N.S.	Saint John, N.B.	Québec, Que.	Montréal, Que.	Ottawa, Ont.	Toronto, Ont.	Thunder Bay, Ont.	Winnipeg, Man.
	cents per litre									
Regular unleaded gasoline at self service filling stations										
January 2013	126.8	120.1	127.3	122.3	131.4	131.0	120.1	122.5	123.1	105.1
February 2013	134.5	128.0	137.5	131.1	139.2	142.8	128.3	130.8	127.8	114.1
March 2013	131.7	128.0	135.4	131.4	138.4	138.3	127.1	130.0	133.6	123.1
April 2013	127.0	130.0	129.4	126.6	134.5	133.9	123.3	126.1	133.6	122.8
May 2013	124.1	126.6	126.3	122.7	132.6	135.9	122.4	125.4	135.4	123.5
June 2013	126.6	129.2	129.2	125.0	132.8	137.9	126.9	128.1	139.8	134.8
July 2013	130.6	133.1	133.4	128.2	138.1	142.1	130.2	131.7	138.2	131.5
August 2013	132.1	136.5	134.9	130.6	139.2	140.3	129.9	131.2	136.5	128.5
September 2013	132.9	136.2	135.0	131.4	142.2	138.9	129.8	130.7	135.3	125.5
October 2013	125.0	127.9	126.3	123.6	130.1	132.1	123.9	124.8	132.1	116.4
November 2013	126.0	128.2	126.3	122.3	131.0	133.2	123.3	124.6	130.6	111.8
December 2013	129.6	130.1	130.7	125.3	133.0	136.3	125.8	127.3	129.7	107.1
January 2014	131.5	131.9	132.3	127.6	134.8	137.4	125.2	126.6	129.7	110.1
Premium unleaded gasoline at self service filling stations										
January 2013	132.8	127.3	135.6	130.1	140.6	141.5	135.6	138.2	136.7	118.5
February 2013	140.4	135.2	145.7	138.9	146.9	153.4	143.1	145.5	141.7	127.7
March 2013	138.9	135.2	143.7	139.0	147.9	149.0	142.7	145.9	147.1	135.8
April 2013	133.3	137.9	137.5	134.0	145.0	144.8	138.6	141.8	147.0	136.4
May 2013	130.4	134.2	134.6	130.7	143.3	146.5	137.8	141.0	149.1	137.9
June 2013	133.5	137.0	137.2	132.6	143.6	148.6	142.3	144.1	153.2	147.7
July 2013	136.8	141.0	141.2	135.7	148.8	153.0	145.6	147.6	151.5	145.2
August 2013	139.0	144.4	143.9	138.1	150.1	150.9	145.3	147.4	150.3	142.3
September 2013	140.2	144.2	143.6	139.0	153.2	149.8	145.4	146.5	149.1	139.3
October 2013	131.4	135.7	135.1	131.2	141.0	143.2	139.6	140.7	145.7	130.3
November 2013	132.4	136.1	135.0	130.0	140.2	144.4	138.8	140.8	143.9	125.8
December 2013	135.9	138.0	139.4	133.3	143.4	147.3	141.5	142.7	143.7	121.6
January 2014	137.6	139.5	141.0	135.1	145.7	149.4	140.3	142.0	143.8	124.4
Household heating fuel										
January 2013	113.6	111.6	112.4	117.5	120.7	119.7	129.5	127.1	125.3	116.5
February 2013	117.7	115.8	118.7	121.8	126.0	129.1	137.4	133.5	132.2	122.3
March 2013	106.4	118.5	118.8	119.0	122.6	122.9	137.5	134.0	133.3	123.1
April 2013	102.4	111.6	115.1	116.4	118.0	119.4	129.9	132.5	129.2	119.3
May 2013	96.1	103.7	110.6	108.9	111.5	111.2	122.7	121.6	126.2	114.7
June 2013	98.8	101.6	109.5	109.1	114.5	112.3	117.5	119.7	125.5	116.5
July 2013	101.7	104.8	112.4	112.0	116.1	113.5	117.5	120.5	125.1	114.9
August 2013	104.2	107.1	112.4	115.9	117.6	113.3	113.7	121.6	125.8	113.6
September 2013	110.4	111.3	114.3	122.1	116.8	118.2	119.4	128.4	129.2	118.5
October 2013	104.6	110.3	113.6	115.5	117.2	118.8	120.9	124.2	129.8	122.9
November 2013	105.5	113.2	115.7	116.3	117.6	118.8	122.0	127.0	131.3	126.2
December 2013	109.8	117.4	118.9	124.8	124.1	125.2	132.5	132.8	136.3	129.9
January 2014	112.2	121.1	125.0	129.3	132.2	132.2	137.9	137.5	142.7	132.4

Table 13 – continued

Average retail prices for gasoline and fuel oil, by urban centre

	Regina, Sask.	Saskatoon, Sask.	Edmonton, Alta.	Calgary, Alta.	Vancouver, B.C.	Victoria, B.C.	Whitehorse, Y.T.	Yellowknife, N.W.T.
	cents per litre							
Regular unleaded gasoline at self service filling stations								
January 2013	106.5	103.8	91.6	95.9	126.0	115.0	129.8	138.9
February 2013	117.4	117.6	107.1	110.9	137.6	123.5	128.2	138.9
March 2013	120.5	120.3	110.7	113.6	141.0	123.9	128.8	138.9
April 2013	117.2	116.6	105.8	111.3	136.9	126.1	127.9	138.9
May 2013	123.7	125.2	114.0	118.9	145.7	132.3	133.4	138.9
June 2013	131.2	130.3	121.0	127.3	143.7	135.2	147.9	138.9
July 2013	126.4	128.5	115.7	118.9	147.1	138.1	140.5	138.9
August 2013	123.3	123.3	113.7	115.3	144.9	135.9	140.2	138.9
September 2013	122.7	122.7	112.6	114.0	140.3	133.4	139.9	138.9
October 2013	117.3	116.1	106.8	111.7	132.4	125.7	139.9	138.9
November 2013	115.5	113.2	103.0	108.4	128.5	119.2	131.3	138.9
December 2013	118.9	115.9	105.6	108.2	125.4	117.0	128.8	138.9
January 2014	111.9	112.4	102.7	107.2	129.8	118.2	128.7	138.9
Premium unleaded gasoline at self service filling stations								
January 2013	120.2	118.1	106.6	110.5	139.6	129.4	140.2	149.2
February 2013	131.3	130.9	122.0	125.5	151.9	138.0	136.0	149.2
March 2013	133.5	133.9	125.8	128.5	155.4	138.4	138.9	149.2
April 2013	130.8	130.2	121.2	125.9	151.5	140.6	138.9	148.7
May 2013	137.5	139.2	129.0	133.8	160.1	147.2	144.0	149.2
June 2013	144.8	144.3	136.1	142.2	158.5	149.9	157.8	149.2
July 2013	140.2	141.5	130.4	133.2	162.3	152.6	150.4	148.5
August 2013	137.3	137.7	129.2	129.3	159.9	150.3	150.8	148.7
September 2013	136.0	137.3	128.1	129.0	155.2	147.8	150.5	149.0
October 2013	131.0	130.8	122.3	126.1	147.6	140.0	150.7	149.0
November 2013	128.8	127.4	118.5	123.3	143.2	133.9	145.2	149.0
December 2013	132.2	130.2	121.2	122.5	140.4	131.7	140.3	149.2
January 2014	125.6	126.7	118.7	122.5	144.9	132.9	139.4	149.2
Household heating fuel								
January 2013	112.4	94.4	.	.	121.5	130.8	131.3	120.1
February 2013	115.2	97.3	.	.	130.2	135.3	133.4	121.5
March 2013	117.0	92.8	.	.	129.5	136.7	131.3	121.5
April 2013	114.7	90.2	.	.	127.0	136.6	129.5	119.4
May 2013	110.6	91.4	.	.	122.1	133.8	128.5	119.4
June 2013	113.2	93.5	.	.	121.8	135.9	130.6	119.4
July 2013	112.9	95.0	.	.	127.3	134.8	130.6	119.4
August 2013	113.4	97.1	.	.	125.8	133.1	131.3	119.4
September 2013	117.3	117.1	.	.	129.8	132.0	133.4	119.8
October 2013	118.6	118.2	.	.	128.0	131.3	132.7	120.2
November 2013	120.3	122.8	.	.	129.5	132.7	134.8	125.3
December 2013	123.5	128.7	.	.	130.4	134.8	135.1	129.5
January 2014	130.2	125.2	.	.	130.4	135.9	137.2	133.0

Note(s): See Table A for complete list of vector numbers.

Table 14
Average retail prices, monthly, Canada

	CANSIM vector number	November 2013	December 2013	January 2014
dollars ¹				
Round steak, 1 kilogram	(v735165)	14.77	14.57	14.59
Sirloin steak, 1 kilogram	(v735176)	18.34	18.21	18.28
Prime rib roast, 1 kilogram	(v735187)	23.76	23.80	23.61
Blade roast, 1 kilogram	(v735198)	11.99	11.98	11.97
Stewing beef, 1 kilogram	(v735209)	11.29	11.40	11.35
Ground beef, regular, 1 kilogram	(v735220)	9.46	9.57	9.77
Pork chops, 1 kilogram	(v735221)	11.08	11.04	11.10
Chicken, 1 kilogram	(v735223)	6.99	7.00	7.01
Bacon, 500 grams	(v735166)	5.38	5.35	5.48
Wieners, 450 grams	(v735167)	3.62	3.63	3.60
Canned sockeye salmon, 213 grams	(v735168)	4.38	4.44	4.50
Homogenized milk, 1 litre	(v735169)	2.44	2.43	2.43
Partly skimmed milk, 1 litre	(v735170)	2.27	2.28	2.29
Butter, 454 grams	(v735171)	4.43	4.41	4.34
Processed cheese food slices, 250 grams	(v735172)	2.82	2.82	2.76
Evaporated milk, 385 millilitres	(v735173)	1.80	1.83	1.91
Eggs, 1 dozen	(v735174)	3.30	3.25	3.28
Bread, 675 grams	(v735175)	2.90	2.85	2.83
Soda crackers, 450 grams	(v735177)	2.65	2.66	2.58
Macaroni, 500 grams	(v735178)	1.34	1.34	1.35
Flour, 2.5 kilograms	(v735179)	5.07	4.84	5.21
Corn flakes, 675 grams	(v735180)	4.98	5.03	4.81
Apples, 1 kilogram	(v735181)	3.82	3.83	3.74
Bananas, 1 kilogram	(v735182)	1.63	1.63	1.64
Grapefruits, 1 kilogram	(v735183)	3.00	2.78	2.51
Oranges, 1 kilogram	(v735184)	3.15	3.12	3.00
Apple juice, canned, 1.36 litres	(v735185)	2.03	2.10	2.01
Orange juice, tetra-brick, 1 litre	(v735186)	4.09	4.04	3.79
Carrots, 1 kilogram	(v735189)	1.67	1.65	1.61
Celery, 1 kilogram	(v735190)	2.25	2.41	2.54
Mushrooms, 1 kilogram	(v735191)	7.84	7.92	7.92
Onions, 1 kilogram	(v735192)	1.78	1.79	1.71
Potatoes, 4.54 kilograms	(v735193)	5.59	5.42	5.38
French fried potatoes, frozen, 1 kilogram	(v735194)	2.39	2.47	2.42
Baked beans, canned, 398 millilitres	(v735195)	1.20	1.24	1.16
Tomatoes, canned, 796 millilitres	(v735196)	1.46	1.47	1.50
Tomato juice, canned, 1.36 litres	(v735197)	2.39	2.37	2.41
Ketchup, 1 litre	(v735199)	3.40	3.39	3.39
Sugar, white, 2 kilograms	(v735200)	3.02	2.90	3.00
Coffee, roasted, 300 grams	(v735201)	5.79	5.75	5.79
Coffee, instant, 200 grams	(v735202)	6.44	6.06	6.33
Tea (72 bags)	(v735203)	4.44	4.37	4.44
Cooking or salad oil, 1 litre	(v735204)	4.12	4.12	4.12
Soup, canned, 284 millilitres	(v735205)	1.00	1.00	0.99
Baby food, 128 millilitres	(v735206)	0.83	0.85	0.85
Peanut butter, 500 grams	(v735207)	3.52	3.57	3.44
Fruit flavoured crystals, 2.25 litres	(v735208)	1.53	1.51	1.49
Soft drinks, cola type, 2 litres	(v735210)	1.89	1.87	1.93
Soft drinks, lemon-lime type, 2 litres	(v735211)	1.84	1.79	1.86
Paper towels (2 rolls)	(v735213)	2.60	2.57	2.54
Facial tissue (200 tissues)	(v735214)	2.33	2.38	2.38
Bathroom tissue (4 rolls)	(v735215)	2.65	2.58	2.54
Shampoo, 300 millilitres	(v735216)	3.85	3.83	3.90
Deodorant, 60 grams	(v735217)	4.37	4.29	4.38
Toothpaste, 100 millilitres	(v735218)	2.42	2.40	2.43
Cigarettes (200)	(v735219)	86.62	86.56	86.63
Regular, unleaded gasoline at self-service stations, cents per litre	(v41838376)	122.5	123.9	123.9

Note(s): See "Data quality, concepts and methodology — Explanatory notes for tables" section.

Table 15
Inter-city indexes of price differentials, as of October 2012, of consumer goods and services

	Canada CPI weight ¹	St. John's, Newfoundland and Labrador	Charlottetown and Summerside, Prince Edward Island	Halifax, Nova Scotia	Saint John, New Brunswick	Montréal, Quebec
	%	combined city average=100				
All-items	100.0	95	94	100	94	93
Food	16.0	105	102	103	103	101
Food purchased from stores	.	106	106	105	105	102
Meat, poultry and fish	.	103	106	105	106	101
Dairy products and eggs	.	104	98	101	98	103
Bakery and other cereal products	.	100	103	100	101	100
Fruit and vegetables	.	122	119	114	119	105
Other food purchased from stores ²	.	101	100	102	99	100
Food purchased from restaurants	.	103	94	99	99	98
Shelter	27.5	82	81	94	76	82
Rented accommodation	.	73	72	87	64	82
Owned accommodation	.	74	73	88	68	81
Water, fuel and electricity	.	137	136	134	136	91
Household operations, furnishings and equipment	11.6	102	102	105	99	98
Household operations	.	102	101	106	98	96
Household furnishings and equipment	.	100	103	102	100	102
Clothing and footwear	5.3	101	95	103	100	102
Transportation	20.6	100	96	99	98	100
Private transportation	.	100	95	99	96	100
Purchase of passenger vehicles	.	100	103	103	101	102
Gasoline	.	104	102	105	102	107
Other private transportation	.	97	78	87	84	88
Public transportation	.	100	105	96	109	102
Health and personal care	5.0	100	98	102	101	100
Health care	.	103	96	101	100	97
Personal care	.	98	99	103	101	103
Recreation, education and reading	11.2	88	100	100	105	83
Recreation	.	103	98	99	99	97
Education and reading	.	64	103	102	114	59
Alcoholic beverages and tobacco products	2.9	111	112	116	109	94
Alcoholic beverages	.	107	108	109	105	97
Tobacco products and smokers' supplies	.	119	119	128	116	87

Table 15 – continued

Inter-city indexes of price differentials, as of October 2012, of consumer goods and services

	Canada CPI weight ¹	Ottawa, Ontario	Toronto, Ontario	Winnipeg, Manitoba	Regina, Saskatchewan	Edmonton, Alberta	Vancouver, British Columbia
	%	combined city average=100					
All-items	100.0	102	107	93	97	99	105
Food	16.0	100	100	100	98	98	103
Food purchased from stores	.	102	99	100	99	98	101
Meat, poultry and fish	.	106	101	96	94	97	99
Dairy products and eggs	.	104	103	94	95	96	96
Bakery and other cereal products	.	99	98	105	104	105	106
Fruit and vegetables	.	101	96	101	102	96	102
Other food purchased from stores ²	.	102	100	103	101	96	102
Food purchased from restaurants	.	95	101	101	95	99	106
Shelter	27.5	105	114	82	100	102	115
Rented accommodation	.	105	115	81	97	99	120
Owned accommodation	.	103	110	83	97	98	116
Water, fuel and electricity	.	113	125	84	122	126	98
Household operations, furnishings and equipment	11.6	103	104	97	94	96	103
Household operations	.	104	105	95	92	98	105
Household furnishings and equipment	.	100	100	99	98	93	100
Clothing and footwear	5.3	101	100	100	98	95	100
Transportation	20.6	98	106	95	90	93	97
Private transportation	.	96	107	95	90	92	97
Purchase of passenger vehicles	.	100	101	100	98	94	99
Gasoline	.	97	97	96	99	88	106
Other private transportation	.	90	125	87	69	95	85
Public transportation	.	110	105	97	91	95	95
Health and personal care	5.0	103	101	99	100	103	99
Health care	.	101	102	99	103	106	100
Personal care	.	104	100	99	96	101	98
Recreation, education and reading	11.2	106	113	90	101	105	101
Recreation	.	102	105	97	97	101	99
Education and reading	.	114	125	77	109	111	103
Alcoholic beverages and tobacco products	2.9	99	98	113	108	105	103
Alcoholic beverages	.	98	98	105	106	107	103
Tobacco products and smokers' supplies	.	100	98	127	112	102	102

Note(s): See "Data quality, concepts and methodology — Explanatory notes for tables" section and Table B for complete list of vector numbers.

Explanatory notes for tables

Table 1 The Consumer Price Index, major components and special aggregates, Canada, not seasonally adjusted

1. 2011 Consumer Price Index (CPI) basket weights at January 2013 prices, Canada.
2. Figures may not add to 100% due to rounding.
3. The Bank of Canada's core index excludes eight of the Consumer Price Index's most volatile components (fruit, fruit preparations and nuts; vegetables and vegetable preparations; mortgage interest cost; natural gas; fuel oil and other fuels; gasoline; inter-city transportation; and tobacco products and smokers' supplies) as well as the effects of changes in indirect taxes on the remaining components. For additional information on core CPI, please consult the Bank of Canada website: <http://www.bankofcanada.ca/rates/indicators/key-variables/inflation-control-target/>.

Table 2 The Consumer Price Index, major components and special aggregates, Canada, seasonally adjusted

1. 2011 Consumer Price Index (CPI) basket weights at January 2013 prices, Canada.
2. A seasonally adjusted series is one from which seasonal movements have been eliminated. Each month, the previous month's seasonally adjusted index is subject to revision. On an annual basis, the seasonally adjusted values for the last three years are revised with the January data release. Users employing Consumer Price Index data for indexation purposes are advised to use the unadjusted indexes. For more information on the availability and uses of seasonally adjusted CPI data, please see the, see the *Definitions, data sources and methods* section of survey 2301.
3. The Bank of Canada's core index excludes eight of the Consumer Price Index's most volatile components (fruit, fruit preparations and nuts; vegetables and vegetable preparations; mortgage interest cost; natural gas; fuel oil and other fuels; gasoline; inter-city transportation; and tobacco products and smokers' supplies) as well as the effects of changes in indirect taxes on the remaining components. For additional information on core CPI, please consult the Bank of Canada website: <http://www.bankofcanada.ca/rates/indicators/key-variables/inflation-control-target/>.

Table 3 The Consumer Price Index, provinces, Whitehorse, Yellowknife and Iqaluit, not seasonally adjusted

1. Data for Iqaluit are on a December 2002=100 base (200212=100) and the Standard Geographical Classification (SGC) 2001. Previous to April 1, 1999, the town of Iqaluit formed part of the Northwest Territories. On April 1, 1999, the town of Iqaluit formed part of the newly-created territory of Nunavut.

Table 4 The Consumer Price Index, major components and selected sub-groups, Canada, not seasonally adjusted

Table 4-2

1. In July 2004, the 2001 basket weights introduced with the January 2003 data were adjusted; the weights for mortgage interest cost were re-evaluated.

Table 4-7

1. From April 2006, Statistics Canada changed its implementation of the price index formula used for traveller accommodation. As a result, data from April 2006 are not strictly comparable to earlier time periods.

Table 5 The Consumer Price Index for Canada, all-items CPI, not seasonally adjusted, historical data

1. The annual average index is calculated as the average of the published 12 individual monthly indexes, rounded to one decimal place. Percentage changes between the annual average indexes are calculated based on these published rounded numbers. Between May 2007 and September 2007, the annual average percentage changes in Table 5 were calculated based on annual average indexes that were not rounded. As a result, some percentage changes were different by +/- 0.1 from the official percentage change. This problem only affected the annual average column of Table 5.

Table 6 Core Consumer Price Index (CPI) (Bank of Canada definition), not seasonally adjusted, historical data

1. The Bank of Canada's core index excludes eight of the Consumer Price Index's most volatile components (fruit, fruit preparations and nuts; vegetables and vegetable preparations; mortgage interest cost; natural gas; fuel oil and other fuels; gasoline; inter-city transportation; and tobacco products and smokers' supplies) as well as the effects of changes in indirect taxes on the remaining components. For additional information on core CPI, please consult the Bank of Canada website: <http://www.bankofcanada.ca/rates/indicators/key-variables/inflation-control-target/>.
2. The annual average index is calculated as the average of the published 12 individual monthly indexes, rounded to one decimal place. Percentage changes between the annual average indexes are calculated based on these published rounded numbers.

Table 7 The Consumer Price Index for Canada, major components and special aggregates, not seasonally adjusted, historical data

1. Goods are physical or tangible commodities usually classified according to their life span into non-durable goods, semi-durable goods and durable goods. Non-durable goods are those goods that can be used up entirely in less than a year, assuming normal usage. For example, fresh food products, disposable cameras and gasoline are non-durable goods. Semi-durable goods are those goods that may last less than 12 months or greater than 12 months depending on the purpose to which they are put. For example, clothing, footwear and household textiles are semi-durable goods. Durable goods are those goods which may be used repeatedly or continuously over more than a year, assuming normal usage. For example, cars, audio and video equipment and furniture are durable goods.
2. A service in the Consumer Price Index (CPI) is characterized by valuable work performed by an individual or organization on behalf of a consumer, for example, car tune-ups, haircuts and city public transportation. Transactions classified as a service may include the cost of goods by their nature. Examples include food in restaurant food services and materials in clothing repair services.
3. The special aggregate "energy" includes: "electricity", "natural gas", "fuel oil and other fuels", "gasoline", and "fuel, parts and supplies for recreational vehicles".
4. The annual index level is the average of the 12 individual monthly indexes.

Table 8 Annual average percentage changes for the Consumer Price Index

Table 8-1

1. The annual index level is the average of the 12 individual monthly indexes. The percentage change for a given calendar year is calculated using the annual average indexes.

Table 8-2

1. The annual index level is the average of the 12 individual monthly indexes. The percentage change for a given calendar year is calculated using the annual average indexes.
2. Data for Iqaluit are on a December 2002=100 base (200212=100) and the Standard Geographical Classification (SGC) 2001. Previous to April 1, 1999, the town of Iqaluit formed part of the Northwest Territories. On April 1, 1999, the town of Iqaluit formed part of the newly-created territory of Nunavut.

Table 9 The Consumer Price Index, major components, selected sub-groups and special aggregates, provinces, Whitehorse and Yellowknife, not seasonally adjusted

Tables 9-1, 9-2, 9-3, 9-4, 9-5, 9-6, 9-7, 9-8, 9-9, 9-10 and 9-11

1. The special aggregate "energy" includes: "electricity", "natural gas", "fuel oil and other fuels", "gasoline", and "fuel, parts and supplies for recreational vehicles".

Table 9-12

1. The special aggregate "energy" includes: "electricity", "natural gas", "fuel oil and other fuels", "gasoline", and "fuel, parts and supplies for recreational vehicles".
2. Part of the increase first recorded in the shelter index for Yellowknife for December 2004 inadvertently reflected rent increases that actually occurred earlier. As a result, the change in the shelter index was overstated in December 2004, and was understated in the previous two years. The shelter index series for Yellowknife has been corrected from December 2002. In addition, the Yellowknife all-items Consumer Price Index (CPI) and some Yellowknife special aggregate index series have also changed. Data for Canada and all other provinces and territories were not affected.

Table 10 The all-items Consumer Price Index, provinces, Whitehorse, Yellowknife and Iqaluit, not seasonally adjusted, historical data

1. Data for Iqaluit are on a December 2002=100 base (200212=100) and the Standard Geographical Classification (SGC) 2001. Previous to April 1, 1999, the town of Iqaluit formed part of the Northwest Territories. On April 1, 1999, the town of Iqaluit formed part of the newly-created territory of Nunavut.
2. The annual index level is the average of the 12 individual monthly indexes.

Table 11 The Consumer Price Index and selected sub-groups, by urban centre, not seasonally adjusted

1. With the introduction of the 1992 basket in January 1995, emphasis was shifted from urban centre data to provincial data. Urban centre all-items series were continued since many users had come to rely on this service, but the method of calculation was changed. Shelter indexes are calculated for each urban centre. This recognizes the importance of shelter in the basket, the significant and persistent differences in price movements between urban centres, and the availability of local data. For the other seven major components, the movement of the provincial counterpart is used except in the cases of Montréal, Toronto, and Vancouver, where a sub-provincial counterpart is used. The major components are aggregated using the urban centre's expenditure pattern to arrive at each urban centre's all-items index.
2. Formerly Ottawa (Ottawa-Gatineau, Ontario part), represents Ottawa only.

Table 12 The all-items Consumer Price Index by urban centre, not seasonally adjusted, historical data

1. With the introduction of the 1992 basket in January 1995, emphasis was shifted from urban centre data to provincial data. Urban centre all-items series were continued since many users had come to rely on this service, but the method of calculation was changed. Shelter indexes are calculated for each urban centre. This recognizes the importance of shelter in the basket, the significant and persistent differences in price movements between urban centres, and the availability of local data. For the other seven major components, the movement of the provincial counterpart is used except in the cases of Montréal, Toronto, and Vancouver, where a sub-provincial counterpart is used. The major components are aggregated using the urban centre's expenditure pattern to arrive at each urban centre's all-items index.
2. The annual index level is the average of the 12 individual monthly indexes.
3. Formerly Ottawa (Ottawa-Gatineau, Ontario part), represents Ottawa only.

Table 14 Average retail prices, monthly, Canada

1. Prices are expressed in dollars, except for the price of gasoline which is expressed in cents per litre.

Average retail prices for food, household supplies, personal care items, cigarettes and gasoline

Table 14 shows, for the current month and the two previous months, average prices for selected food, household supplies, personal care items, cigarettes and for gasoline.

Prices for these items are collected as part of the regular monthly CPI survey. Prices for the selected food, household supply and personal care items are observed in food supermarkets, while prices for cigarettes are collected in supermarkets, department stores, drug stores and tobacco shops. Average prices for each commodity are calculated as a weighted average of the average prices in the observed urban centres using the population of these urban centres as weights.

The commodities which are priced can vary in quality between outlets or between urban centres. This is the reason why average prices are not published for each of those urban centres. Brands and outlets can also vary from month to month. Therefore, average prices may not necessarily be fully comparable from one month to another and should not be used as an appropriate measure of pure price change through time. A matched commodity and outlet sample is used for the CPI to determine the pure price movement of commodities through time.

Table 15 Inter-city indexes of price differentials, as of October 2012, of consumer goods and services

Purpose and Scope

Table 15 shows estimates of price differences between 11 Canadian cities in all 10 provinces, as of October 2012. These estimates are based on a selection of products (goods and services) purchased by consumers in each of the 11 cities.

These estimates should not be interpreted as a measure of differences in the cost-of-living between cities. The indexes provide price comparisons for a selection of products only, and are not meant to give an exhaustive comparison of all goods and services purchased by consumers. Additionally, the shelter price concept used for these indexes is not conducive to making cost-of-living type comparisons between cities (see below).

Methodology

In order to produce optimal Inter-city indexes, product comparisons were initially made by pairing cities that are in close geographic proximity. The resulting price level comparisons were then extended to include comparisons between all of the cities, using a chaining procedure. The following initial pairings were used:

St. John's	Halifax
Charlottetown-Summerside	Halifax
Saint John	Halifax
Halifax	Ottawa
Montréal	Toronto
Ottawa	Toronto
Toronto	Winnipeg
Regina	Winnipeg
Edmonton	Winnipeg
Vancouver	Edmonton

Reliable Inter-city price comparisons require that the selected products be very similar across cities. This ensures that the variation in index levels between cities is due to pure price differences and not to differences in the attributes of the products, such as size and/or quality.

Within each city pair, product price quotes were matched on the basis of detailed descriptions. Whenever possible, products were matched by brand, quantity and with some regard for the comparability of retail outlets from which they were selected.

Additionally, the target prices for this study are final prices and as such, include all sales taxes and levies applied to consumer products within a city. This can be an important source of variation when explaining differences in inter-city price levels.

It should be noted that price data for the Inter-city indexes is drawn from the sample of monthly price data collected for the Consumer Price Index (CPI). Given that the CPI sample is optimized to produce accurate price comparisons through time, and not across regions, the number of matched price quotes between cities can be small. It should also be noted that, especially in periods when prices are highly volatile, the timing of the product price comparison can significantly affect city-to-city price relationships.

The weights used for aggregating the city indexes into the all-items Inter-city index are based on the expenditures of consumers living in each of the 11 cities. The weights are currently based on 2009 consumer expenditure data.

The Inter-city index for a particular city is compared to the weighted average of all 11 cities, which is equal to 100. For example, an index value of 102 for a particular city means that prices for the measured commodities are 2% higher than the weighted, combined city average.

Additional Information on Shelter

Shelter prices were absent from the Inter-city index program prior to 1999 because of methodological and conceptual issues associated with their measurement. The diverse nature of shelter means that accurate matches between cities are often difficult to make.

To account for some of these difficulties, a rental equivalence approach is used to construct the Inter-city price indexes for owned accommodation. Such an approach uses market rents as an approximation to the cost of the shelter services consumed by homeowners in each city. It is important to note that this approach may not be suitable for the needs of all users. For instance, since the rental equivalence approach does not represent an out-of-pocket expenditure, the indexes should not be used for measuring differences in the purchasing power of homeowners across cities.

Footnotes for Table 15

1. The weights shown are rounded 2009 basket weights at April 2011 prices for Canada. They are provided for illustration only; the weights actually used are combined city weights with adjustments for price changes up until October 2012.
2. Includes the following subgroups: sugar and syrup, confectionery items, margarine, other edible fat and oil items, coffee, tea, condiments, spices and vinegar, soup, infant and junior foods, pre-cooked frozen food preparations, non-alcoholic beverages and all other food preparations.

Data quality, concepts and methodology

Definition

The Consumer Price Index (CPI) is an indicator of the changes in consumer prices experienced by the target population. The CPI measures price change by comparing, through time, the cost of a fixed basket of goods and services. This basket is based on the expenditures of the target population in a certain reference period, currently 2011. Since the basket contains goods and services of unchanging or equivalent quantity and quality, the index reflects only pure price movements.

Separate CPIs are published for Canada, the ten provinces, Whitehorse, Yellowknife and Iqaluit. Some CPI information is also available for an additional sixteen urban centres. Since the CPI is a measure of price change from one time period to another, it cannot be used to indicate differences in price levels between provinces or urban centres.

Population coverage

The population targeted by the CPI consists of families and individuals living in urban and rural private households. For practical reasons, residents of the Territories outside Whitehorse, Yellowknife and Iqaluit are not represented by the index. Prior to February 1995, the target population consisted of private households in Canadian urban centres with a population of 30,000 or more.

Time base

The CPI compares, in percentage terms, prices in any given time period to prices in the official base period which, at present, is 2002=100. The official time base was changed from 1992=100 to 2002=100 starting with the CPI for May 2007. The change is strictly an arithmetic conversion which alters the index levels but leaves the percentage changes between any two periods intact, except for differences in rounding.

Percent versus index point changes

The movements of the indexes from one month to another are expressed as percent changes rather than changes in index points. Index point changes are affected by the level of the index which, in turn, depends on the time base of the particular index. The percentage change between any two time periods can be readily calculated by dividing the index point difference between the two time periods by the index for the earlier period and multiplying the result by one hundred.

Price coverage

The prices used in the CPI calculation are final prices, inclusive of excise and other indirect taxes paid by consumers. In particular, they include the Goods and Services Tax (GST), as well as provincial retail sales taxes wherever applicable. In regions where the GST and provincial retail sales taxes have been combined, the Harmonized Sales Tax (HST) is included. It follows that the CPI can change as a result of modifications to any of these taxes.

The selection of products and the outlets from which prices are collected is judgmental, other than for rents and traveler accommodation. The number of prices required for a given good or service depends on the importance and the nature of the product. The samples are designed to represent volume selling goods and services and outlets.

The principal objective of the sample design is to ensure an informative, reliable and impartial picture of consumer inflation at the national and provincial levels.

The prices of most of the goods and services surveyed for the CPI are usually collected in the first two weeks of the reference month. Food prices are collected in the first three weeks, while gasoline prices are collected in four weeks of each month. Although prices for most CPI goods and services are collected monthly, prices for products having less frequent price changes (e.g. property taxes and electricity rates) are collected at intervals longer than one month. Special pricings are carried out where there is evidence that significant price changes have occurred between scheduled pricing periods.

Weights and linking

The CPI maintains fixed quantitative proportions (weights) between goods and services during the life of a given basket. The baskets are updated periodically to take into account changes in consumer expenditure patterns. In February 2013, the basket reflecting the 2011 expenditure patterns replaced the 2009 basket. The continuity of the CPI series is maintained by “linking” the corresponding indexes obtained from consecutive baskets.

The CPI is calculated as a weighted average of specified goods and services price indexes. The weights are derived from Survey of Household Spending data. Text table 1 compares the expenditure shares of the two most recent CPI baskets, i.e. the 2011 basket as it was reflected in the CPI in February 2013 and the 2009 basket. Because both sets of weights are expressed in January 2013 or “link month” prices, the differences reflect the shifts in the relative quantities purchased between the two baskets.

When reconstructing or re-aggregating published CPI series, the changes in weights and the linking procedures must be taken into account. For a description of the methodology required to reconstruct or re-aggregate CPI series, see **The Consumer Price Index Reference Paper** catalogue no. 62-553-X (Occasional) or contact Consumer Prices Division.

Text table 1

Comparison of the 2011 and 2009 distribution¹ of expenditures used in the Consumer Price Index, by major component, for Canada

	2011 Expenditures		2009 Expenditures
	Expressed in 2011 prices	Expressed in January 2013 prices	Expressed in January 2013 prices
	percent		
Major Components			
All-Items CPI	100.0	100.0	100.0
Food	16.4	16.6	16.4
Shelter	25.9	26.3	27.7
Household operations, furnishings and equipment	12.6	12.7	11.8
Clothing and footwear	6.2	5.8	5.0
Transportation	20.1	20.0	20.3
Health and personal care	5.0	4.9	4.9
Recreation, education and reading	11.3	11.0	10.9
Alcoholic beverages and tobacco products	2.8	2.8	3.0

1. Figures may not add to 100% due to rounding.

Bank of Canada's core index

Starting with the October 2006 Consumer Price Index (CPI), Statistics Canada produces and disseminates the Core CPI as defined by the Bank of Canada.

The Bank of Canada's core index excludes eight of the Consumer Price Index's most volatile components (fruit, fruit preparations and nuts; vegetables and vegetable preparations; mortgage interest cost; natural gas; fuel oil and other fuels; gasoline; inter-city transportation; and tobacco products and smokers' supplies) as well as the effects of changes in indirect taxes on the remaining components. For additional information on core CPI, please consult the Bank of Canada website: <http://www.bankofcanada.ca/rates/indicators/key-variables/inflation-control-target/>.

Statistics Canada also calculates, on behalf of the Bank of Canada, a seasonally adjusted Core CPI. This series is available through *CANSIM*, Statistics Canada's official database, or by contacting us through the means mentioned on the inside cover of this publication.

Whitehorse, Yellowknife and Iqaluit indexes

The relatively small size of the housing market in these three cities makes it difficult to construct reliable price indexes for new houses. To compensate, the price movements of rental accommodation are used to approximate the price movements of new houses. The rent information itself is collected using different pricing frequencies and collection methods than in the rest of the country. Because of these problems, the indexes for Rented Accommodation and Owned Accommodation are not published for these three cities. Further, the all-items indexes published for these three cities are not strictly comparable with the same indexes for the provinces or the other sixteen cities.

Calculation of urban centre indexes

With the introduction of the 1992 basket, emphasis was shifted from urban centre data to provincial data. Urban Centre all-items series were continued since many users had come to rely on this service, but the method of calculation was changed. Shelter indexes are calculated for each urban centre. This recognizes the importance of Shelter in the basket, the significant and persistent differences in price movements between urban centres, and the availability of local data. For the other seven major components, the movement of the provincial counterpart (or, in the cases of Montréal, Toronto, and Vancouver, a sub-provincial counterpart) is used. The major components are aggregated using the urban centre's expenditure pattern to arrive at each urban centre's all-items index.

Seasonal adjustment

A seasonally adjusted series is one from which seasonal movements have been eliminated. Seasonal movements are defined as those which are caused by regular annual events such as variations in climate and regular institutional events such as vacations and statutory holidays. Seasonally adjusted series are calculated using Statistics Canada's X-12 ARIMA program. Time series with no detectable seasonal movements remain unchanged from the official series. The official unadjusted series for all-items index, core consumer price index, each of the eight major component indexes and three special aggregates (all-items excluding food, all-items excluding food and energy and all-items excluding 8 of the most volatile components (Bank of Canada definition)) are seasonally adjusted independently.

Each month, the previous month's seasonally adjusted index is subject to revision. On an annual basis, the seasonally adjusted values for the last three years are revised with the January data release. Since these revisions can lead to changes in both the levels and movements of the indexes, users employing the CPI for indexation purposes are advised to use the unadjusted indexes.

Appendix I

Concordance tables

Table A

Vector numbers for the average retail prices for gasoline and fuel oil, by urban centre

	St. John's, N.L.	Charlottetown and Summerside, P.E.I.	Halifax, N.S.	Saint John, N.B.	Québec, Que.	Montréal, Que.	Ottawa, Ont.	Toronto, Ont.	Thunder Bay, Ont.	Winnipeg, Man.
Regular unleaded gasoline at self service filling stations	(v735082)	(v735092)	(v735093)	(v735094)	(v735095)	(v735096)	(v735097)	(v735098)	(v735099)	(v735083)
Premium unleaded gasoline at self service filling stations	(v735100)	(v735110)	(v735111)	(v735112)	(v735113)	(v735114)	(v735115)	(v735116)	(v735117)	(v735101)
Household heating fuel	(v735149)	(v735157)	(v735158)	(v735159)	(v735160)	(v735161)	(v735162)	(v735163)	(v735164)	(v735150)
	Regina, Sask.	Saskatoon, Sask.	Edmonton, Alta.	Calgary, Alta.	Vancouver, B.C.	Victoria, B.C.	Whitehorse, Y.T.	Yellowknife, N.W.T.		
Regular unleaded gasoline at self service filling stations	(v735084)	(v735085)	(v735086)	(v735087)	(v735088)	(v735089)	(v735090)	(v735091)		
Premium unleaded gasoline at self service filling stations	(v735102)	(v735103)	(v735104)	(v735105)	(v735106)	(v735107)	(v735108)	(v735109)		
Household heating fuel	(v735151)	(v735152)	.	.	(v735153)	(v735154)	(v735155)	(v735156)		

Table B

Vector numbers of the inter-city indexes of price differentials, as of October 2012, of consumer goods and services, not seasonally adjusted

	St. John's, Newfoundland and Labrador	Charlottetown and Summerside, Prince Edward Island	Halifax, Nova Scotia	Saint John, New Brunswick	Montréal, Quebec
All-items	(v15939841)	(v15939869)	(v15939897)	(v15939925)	(v15939953)
Food	(v15939842)	(v15939870)	(v15939898)	(v15939926)	(v15939954)
Food purchased from stores	(v15939843)	(v15939871)	(v15939899)	(v15939927)	(v15939955)
Meat, poultry and fish	(v15939844)	(v15939872)	(v15939900)	(v15939928)	(v15939956)
Dairy products and eggs	(v15939845)	(v15939873)	(v15939901)	(v15939929)	(v15939957)
Bakery and other cereal products	(v15939846)	(v15939874)	(v15939902)	(v15939930)	(v15939958)
Fruit and vegetables	(v15939847)	(v15939875)	(v15939903)	(v15939931)	(v15939959)
Other food purchased from stores	(v15939848)	(v15939876)	(v15939904)	(v15939932)	(v15939960)
Food purchased from restaurants	(v15939849)	(v15939877)	(v15939905)	(v15939933)	(v15939961)
Shelter	(v15939850)	(v15939878)	(v15939906)	(v15939934)	(v15939962)
Rented accommodation	(v21580949)	(v21580952)	(v21580955)	(v21580958)	(v21580961)
Owned accommodation	(v21580950)	(v21580953)	(v21580956)	(v21580959)	(v21580962)
Water, fuel and electricity	(v21580951)	(v21580954)	(v21580957)	(v21580960)	(v21580963)
Household operations, furnishings and equipment	(v15939851)	(v15939879)	(v15939907)	(v15939935)	(v15939963)
Household operations	(v15939852)	(v15939880)	(v15939908)	(v15939936)	(v15939964)
Household furnishings and equipment	(v15939853)	(v15939881)	(v15939909)	(v15939937)	(v15939965)
Clothing and footwear	(v15939854)	(v15939882)	(v15939910)	(v15939938)	(v15939966)
Transportation	(v15939855)	(v15939883)	(v15939911)	(v15939939)	(v15939967)
Private transportation	(v15939856)	(v15939884)	(v15939912)	(v15939940)	(v15939968)
Purchase of passenger vehicles	(v15939857)	(v15939885)	(v15939913)	(v15939941)	(v15939969)
Gasoline	(v15939858)	(v15939886)	(v15939914)	(v15939942)	(v15939970)
Other private transportation	(v15939859)	(v15939887)	(v15939915)	(v15939943)	(v15939971)
Public transportation	(v15939860)	(v15939888)	(v15939916)	(v15939944)	(v15939972)
Health and personal care	(v15939861)	(v15939889)	(v15939917)	(v15939945)	(v15939973)
Health care	(v15939862)	(v15939890)	(v15939918)	(v15939946)	(v15939974)
Personal care	(v43975161)	(v43975162)	(v43975163)	(v43975164)	(v43975165)
Recreation, education and reading	(v15939865)	(v15939893)	(v15939921)	(v15939949)	(v15939977)
Recreation	(v43975172)	(v43975173)	(v43975174)	(v43975175)	(v43975176)
Education and reading	(v43975183)	(v43975184)	(v43975185)	(v43975186)	(v43975187)
Alcoholic beverages and tobacco products	(v15939866)	(v15939894)	(v15939922)	(v15939950)	(v15939978)
Alcoholic beverages	(v15939867)	(v15939895)	(v15939923)	(v15939951)	(v15939979)
Tobacco products and smokers' supplies	(v15939868)	(v15939896)	(v15939924)	(v15939952)	(v15939980)

Table B – continued

Vector numbers of the inter-city indexes of price differentials, as of October 2012, of consumer goods and services, not seasonally adjusted

	Ottawa, Ontario	Toronto, Ontario	Winnipeg, Manitoba	Regina, Saskatchewan	Edmonton, Alberta	Vancouver, British Columbia
All-items	(v15939981)	(v15940009)	(v15940037)	(v15940065)	(v15940093)	(v15940121)
Food	(v15939982)	(v15940010)	(v15940038)	(v15940066)	(v15940094)	(v15940122)
Food purchased from stores	(v15939983)	(v15940011)	(v15940039)	(v15940067)	(v15940095)	(v15940123)
Meat, poultry and fish	(v15939984)	(v15940012)	(v15940040)	(v15940068)	(v15940096)	(v15940124)
Dairy products and eggs	(v15939985)	(v15940013)	(v15940041)	(v15940069)	(v15940097)	(v15940125)
Bakery and other cereal products	(v15939986)	(v15940014)	(v15940042)	(v15940070)	(v15940098)	(v15940126)
Fruit and vegetables	(v15939987)	(v15940015)	(v15940043)	(v15940071)	(v15940099)	(v15940127)
Other food purchased from stores	(v15939988)	(v15940016)	(v15940044)	(v15940072)	(v15940100)	(v15940128)
Food purchased from restaurants	(v15939989)	(v15940017)	(v15940045)	(v15940073)	(v15940101)	(v15940129)
Shelter	(v15939990)	(v15940018)	(v15940046)	(v15940074)	(v15940102)	(v15940130)
Rented accommodation	(v21580964)	(v21580967)	(v21580970)	(v21580973)	(v21580976)	(v21580979)
Owned accommodation	(v21580965)	(v21580968)	(v21580971)	(v21580974)	(v21580977)	(v21580980)
Water, fuel and electricity	(v21580966)	(v21580969)	(v21580972)	(v21580975)	(v21580978)	(v21580981)
Household operations, furnishings and equipment	(v15939991)	(v15940019)	(v15940047)	(v15940075)	(v15940103)	(v15940131)
Household operations	(v15939992)	(v15940020)	(v15940048)	(v15940076)	(v15940104)	(v15940132)
Household furnishings and equipment	(v15939993)	(v15940021)	(v15940049)	(v15940077)	(v15940105)	(v15940133)
Clothing and footwear	(v15939994)	(v15940022)	(v15940050)	(v15940078)	(v15940106)	(v15940134)
Transportation	(v15939995)	(v15940023)	(v15940051)	(v15940079)	(v15940107)	(v15940135)
Private transportation	(v15939996)	(v15940024)	(v15940052)	(v15940080)	(v15940108)	(v15940136)
Purchase of passenger vehicles	(v15939997)	(v15940025)	(v15940053)	(v15940081)	(v15940109)	(v15940137)
Gasoline	(v15939998)	(v15940026)	(v15940054)	(v15940082)	(v15940110)	(v15940138)
Other private transportation	(v15939999)	(v15940027)	(v15940055)	(v15940083)	(v15940111)	(v15940139)
Public transportation	(v15940000)	(v15940028)	(v15940056)	(v15940084)	(v15940112)	(v15940140)
Health and personal care	(v15940001)	(v15940029)	(v15940057)	(v15940085)	(v15940113)	(v15940141)
Health care	(v15940002)	(v15940030)	(v15940058)	(v15940086)	(v15940114)	(v15940142)
Personal care	(v43975166)	(v43975167)	(v43975168)	(v43975169)	(v43975170)	(v43975171)
Recreation, education and reading	(v15940005)	(v15940033)	(v15940061)	(v15940089)	(v15940117)	(v15940145)
Recreation	(v43975177)	(v43975178)	(v43975179)	(v43975180)	(v43975181)	(v43975182)
Education and reading	(v43975188)	(v43975189)	(v43975190)	(v43975191)	(v43975192)	(v43975193)
Alcoholic beverages and tobacco products	(v15940006)	(v15940034)	(v15940062)	(v15940090)	(v15940118)	(v15940146)
Alcoholic beverages	(v15940007)	(v15940035)	(v15940063)	(v15940091)	(v15940119)	(v15940147)
Tobacco products and smokers' supplies	(v15940008)	(v15940036)	(v15940064)	(v15940092)	(v15940120)	(v15940148)