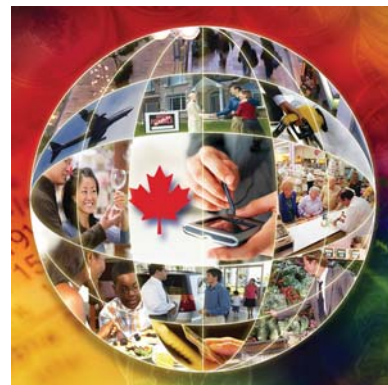


Catalogue no. 62-001-X

The Consumer Price Index

September 2009



Statistics
Canada

Statistique
Canada

Canada

How to obtain more information

Specific inquiries about this product and related statistics or services should be directed to: Client Services Unit, Prices Division, Statistics Canada, Ottawa, Ontario, K1A 0T6 (telephone: 613-951-9606; toll free: 1-866-230-2248; fax: 613-951-1539; email: prices-prix@statcan.gc.ca).

For information about this product or the wide range of services and data available from Statistics Canada, visit our website at www.statcan.gc.ca, e-mail us at infostats@statcan.gc.ca, or telephone us, Monday to Friday from 8:30 a.m. to 4:30 p.m., at the following numbers:

Statistics Canada's National Contact Centre

Toll-free telephone (Canada and the United States):

Inquiries line	1-800-263-1136
National telecommunications device for the hearing impaired	1-800-363-7629
Fax line	1-877-287-4369

Local or international calls:

Inquiries line	1-613-951-8116
Fax line	1-613-951-0581

Depository Services Program

Inquiries line	1-800-635-7943
Fax line	1-800-565-7757

Accessing and ordering information

This product, Catalogue no. 62-001-X, is available for free in electronic format. To obtain a single issue, visit our website at www.statcan.gc.ca and select "Publications."

This product, Catalogue no. 62-001-X, is also available as a standard printed publication at a price of CAN\$12.00 per issue and CAN\$111.00 for a one-year subscription.

The following additional shipping charges apply for delivery outside Canada:

United States a single issue at a price of CAN\$6.00 and annual subscription at a price of CAN\$72.00.

Other countries a single issue at a price of CAN\$10.00 and annual subscription at a price of CAN\$120.00.

All prices exclude sales taxes.

The printed version of this publication can be ordered by

- Phone (Canada and United States) **1-800-267-6677**
- Fax (Canada and United States) **1-877-287-4369**
- E-mail **infostats@statcan.gc.ca**
- Mail Statistics Canada
Finance Division
R.H. Coats Bldg., 6th Floor
100 Tunney's Pasture Driveway
Ottawa, ON K1A 0T6
- In person from authorised agents and bookstores.

When notifying us of a change in your address, please provide both old and new addresses.

Standards of service to the public

Statistics Canada is committed to serving its clients in a prompt, reliable and courteous manner. To this end, Statistics Canada has developed *standards of service* that its employees observe. To obtain a copy of these service standards, please contact Statistics Canada toll-free at 1-800-263-1136. The service standards are also published on www.statcan.gc.ca under "About us" > "Providing services to Canadians."

Statistics Canada
Consumer Prices Division

The Consumer Price Index

September 2009

Published by authority of the Minister responsible for Statistics Canada

© Minister of Industry, 2009

All rights reserved. The content of this electronic publication may be reproduced, in whole or in part, and by any means, without further permission from Statistics Canada, subject to the following conditions: that it be done solely for the purposes of private study, research, criticism, review or newspaper summary, and/or for non-commercial purposes; and that Statistics Canada be fully acknowledged as follows: Source (or "Adapted from", if appropriate): Statistics Canada, year of publication, name of product, catalogue number, volume and issue numbers, reference period and page(s). Otherwise, no part of this publication may be reproduced, stored in a retrieval system or transmitted in any form, by any means—electronic, mechanical or photocopy—or for any purposes without prior written permission of Licensing Services, Client Services Division, Statistics Canada, Ottawa, Ontario, Canada K1A 0T6.

November 2009

Catalogue no. 62-001-X, vol. 88, no. 9

ISSN 0703-9352

Catalogue no. 62-001-XIE

ISSN 1496-2225

Frequency: Monthly

Ottawa

La version française de cette publication est disponible sur demande (n° 62-001-X au catalogue).

Note of appreciation

Canada owes the success of its statistical system to a long-standing partnership between Statistics Canada, the citizens of Canada, its businesses, governments and other institutions. Accurate and timely statistical information could not be produced without their continued cooperation and goodwill.

User information

Symbols

The following standard symbols are used in Statistics Canada publications:

- . not available for any reference period
- .. not available for a specific reference period
- ... not applicable
- 0 true zero or a value rounded to zero
- 0^s value rounded to 0 (zero) where there is a meaningful distinction between true zero and the value that was rounded
- p preliminary
- r revised
- x suppressed to meet the confidentiality requirements of the *Statistics Act*
- E use with caution
- F too unreliable to be published

Note on CANSIM

Data that appears in the **The Consumer Price Index** (catalogue no. 62-001-X) are also available electronically in our CANSIM (Canadian Socio-Economic Information Management System) database through the Internet tables 326-0009, 326-0012, 326-0015, 326-0020, 326-0021 and 326-0022, at a cost of \$3.00 per series. In general, *CANSIM* provides a longer historical series. For further information on *CANSIM* call 1-800-263-1136.

This publication was prepared under the direction of:

Richard Evans	Director, Consumer Prices Division
Tarek M. Harchaoui	Assistant Director, Consumer Prices Division
Ron Morency	Chief, Consumer Prices Production Section

Cover page designed by:

Rachel Penkar	Senior Graphic Designer, Dissemination Division
----------------------	---

Note to users

The Consumer Price Index is published monthly and is not subject to revisions.

Index for the month	Release date
November 2008	December 19, 2008
December 2008	January 23, 2009
January 2009	February 20, 2009
February 2009	March 19, 2009
March 2009	April 17, 2009
April 2009	May 20, 2009
May 2009	June 18, 2009
June 2009	July 17, 2009
July 2009	August 19, 2009
August 2009	September 17, 2009
September 2009	October 16, 2009
October 2009	November 18, 2009
November 2009	December 17, 2009
December 2009	January 20, 2010

Note

Corrections have been made to the data on education in Manitoba. The following tables have been modified: 1, 3, 4-7, 7, 9-7, 10, 11 and 12.

Table of contents

Highlights	6
Briefing notes	7
Analysis	9
Charts	
1. While the 12-month change in the CPI is still negative, the CPI excluding energy remains positive	9
2. Evolution of the gasoline price index in 2008 and 2009	10
3. Transportation, shelter, and clothing and footwear continue to exert downward pressure on the CPI	11
4. Saskatchewan, the only province posting positive year-over-year change	12
Related products	14
Statistical tables	
1 The Consumer Price Index, major components and special aggregates, Canada, not seasonally adjusted	18
2 The Consumer Price Index, major components and special aggregates, Canada, seasonally adjusted	18
3 The Consumer Price Index, provinces, Whitehorse, Yellowknife and Iqaluit, not seasonally adjusted	19
4 The Consumer Price Index, major components and selected sub-groups, Canada, not seasonally adjusted	20
4-1 Food	20
4-2 Shelter	21
4-3 Household operations, furnishings and equipment	21
4-4 Clothing and footwear	22
4-5 Transportation	22
4-6 Health and personal care	23
4-7 Recreation, education and reading	23
4-8 Alcoholic beverages and tobacco products	24
5 The Consumer Price Index for Canada, all-items, not seasonally adjusted, historical data	25
6 Core consumer price index (CPI) (Bank of Canada definition), not seasonally adjusted, historical data	26
7 The Consumer Price Index for Canada, major components and special aggregates, not seasonally adjusted, historical data	27

Table of contents – continued

8	Annual average percentage changes for the Consumer Price Index	28
8-1	Major components, not seasonally adjusted, Canada, 2005 to 2008	28
8-2	All-items, not seasonally adjusted, Canada, provinces, urban centres, 2005 to 2008	29
9	The Consumer Price Index, major components, selected sub-groups and special aggregates, provinces, Whitehorse and Yellowknife, not seasonally adjusted	30
9-1	Newfoundland and Labrador	30
9-2	Prince Edward Island	31
9-3	Nova Scotia	32
9-4	New Brunswick	33
9-5	Quebec	34
9-6	Ontario	35
9-7	Manitoba	36
9-8	Saskatchewan	37
9-9	Alberta	38
9-10	British Columbia	39
9-11	Whitehorse*	40
9-12	Yellowknife*	41
10	The all-items Consumer Price Index, provinces, Whitehorse, Yellowknife and Iqaluit, not seasonally adjusted, historical data	42
11	The Consumer Price Index and selected sub-groups, by urban centre, not seasonally adjusted	44
12	The all-items Consumer Price Index by urban centre, not seasonally adjusted, historical data	46
13	Average retail prices for gasoline and fuel oil, by urban centre	48
14	Average retail prices, monthly, Canada	50
15	Inter-city indexes of retail price differentials, as of October 2008, for selected groups of consumer goods and services, not seasonally adjusted	51
Data quality, concepts and methodology		
	Data quality, concepts and methodology	53
	Explanatory notes for tables	56
Appendix		
I	Concordance tables	63

Highlights

- Consumer prices fell 0.9% in the 12 months to September 2009, following a 0.8% decrease in August. Excluding energy, the Consumer Price Index rose 1.3% on a year-over-year basis. On a seasonally adjusted monthly basis, consumer prices went up 0.1% from August to September.

Briefing notes

Highlights:

- Consumer prices fell 0.9% in the 12 months to September 2009, following the 0.8% decrease posted in August. On an unadjusted monthly basis, consumer prices remained unchanged from August to September, identical to the month-over-month change from July to August.

All-items Consumer Price Index (CPI):

- The decline in the 12-month change in the CPI in September was due primarily to a large drop in energy (-18.7%), which came mainly from the fall in prices for gasoline (-23.0%).
- 12-month declines in transportation (-7.2%), shelter (-1.8%), and clothing and footwear (-1.2%) continue to exert downward pressure on the CPI.
- Upward pressure on the 12-month change came primarily from higher food prices (+2.8%).

Main contributors to the 12-month change in the CPI:

- Main upward contributors:
 - Passenger vehicle insurance premiums (+5.1%)
 - Food purchased from restaurants (+2.8%)
 - Education (+4.3%)
 - Homeowners' maintenance and repairs (+8.0%)
- Main downward contributors:
 - Gasoline (-23.0%)
 - Natural gas (-33.0%)
 - Purchase of passenger vehicles (-5.9%)
 - Fuel oil and other fuels (-32.7%)
 - Mortgage interest cost (-2.2%)

Main contributors to the monthly change in the CPI, not seasonally adjusted:

- Main upward contributors:
- Education (+4.0%)
- Women's clothing (+6.5%)
- Telephone services (+1.6%)
- Health care (+1.1%)
- Main downward contributors:
- Purchase of passenger vehicles (-2.2%)
- Fresh vegetables (-10.8%)
- Gasoline (-1.5%)
- Traveller accommodation (-4.2%)

Annual and monthly percentage change in the most quoted indexes, not seasonally adjusted

	Annual percentage		Monthly percentage	
	Percentage change September 2009 from September 2008	Percentage change August 2009 from August 2008	Percentage change September 2009 from August 2009	Percentage change August 2009 from July 2009
	percent			
All-items	-0.9	-0.8	0.0	0.0
Core consumer price index (CPI) (Bank of Canada definition)	1.5	1.6	0.3	0.1
All-items excluding energy	1.3	1.4	0.1	-0.2
All-items excluding food and energy	0.9	0.9	0.3	0.0
Goods	-3.7	-3.3	-0.4	0.1
Services	1.8	1.7	0.2	0.0

Analysis

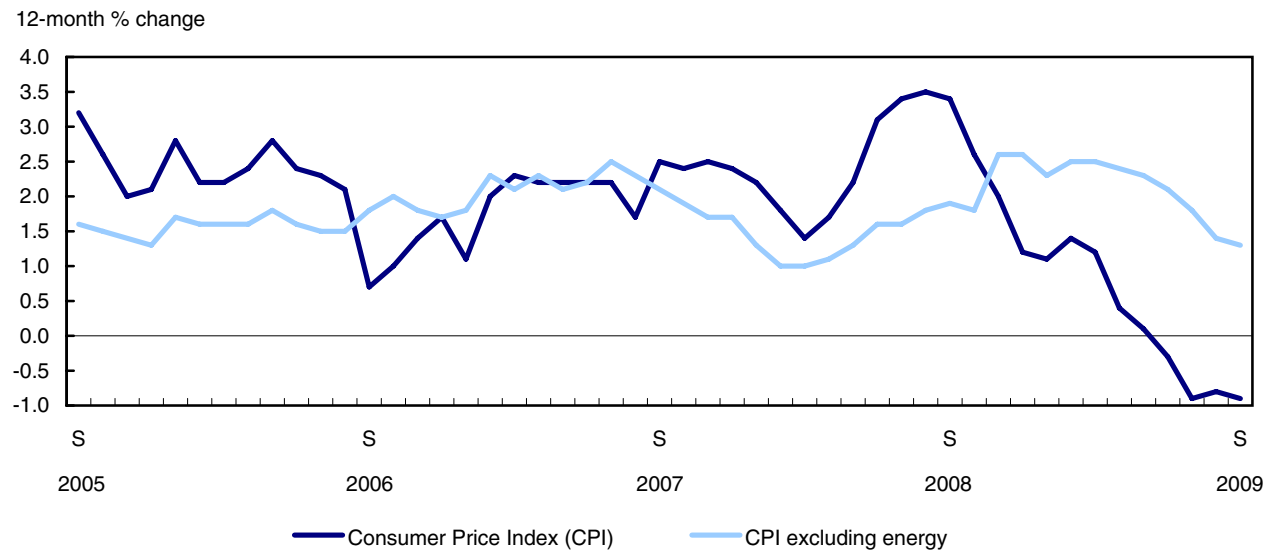
Consumer prices were 0.9% lower in September 2009 than they were in September 2008, following a 12-month decline of 0.8% in August.

The major contributor to the year-over-year decline in the Consumer Price Index (CPI) in September was energy products, as it has been for a number of months. Overall, in the 12 months to September, energy prices fell 18.7%.

Excluding energy, the CPI rose 1.3% between September 2008 and September 2009.

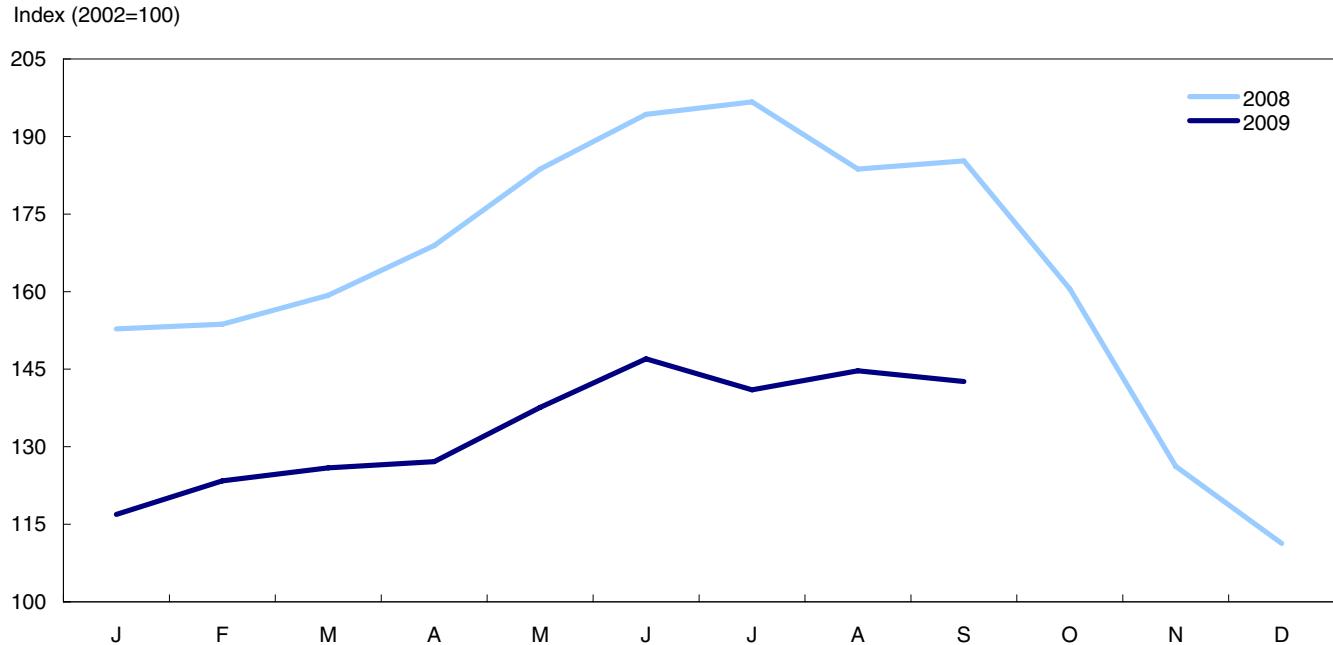
Chart 1

While the 12-month change in the CPI is still negative, the CPI excluding energy remains positive



Consumers paid 23.0% less at the pump in September than they did a year earlier, compared with a 21.2% drop in August.

Chart 2
Evolution of the gasoline price index in 2008 and 2009



Transportation costs fell 7.2% in the 12 months to September, making this component the most significant downward contributor to the drop in the CPI. This decrease was due to 12-month price declines for both gasoline and passenger vehicles.

A 1.8% drop in the shelter component also exerted downward pressure on the CPI. Prices for natural gas, fuel oil and other fuels, and mortgage interest cost were significantly lower than in September 2008.

The primary upward pressure on the CPI came from food prices, which increased 2.8% in the past 12 months. However, this was the slowest rate of growth posted since June 2008. Both food purchased from stores and from restaurants were responsible for the rise of the food component.

Among other components recording price increases were: household operations, furnishings and equipment (+2.2%), health and personal care (+3.9%), and recreation, education and reading (+1.0%).

12-month change: Transportation, shelter, and clothing and footwear continue to exert downward pressure on the CPI

Three of the eight major components in the CPI recorded decreases in the 12 months to September: transportation, shelter, and clothing and footwear.

In addition to lower prices for gasoline, consumers paid 5.9% less for purchasing passenger vehicles, following a 4.7% decrease in August. A 5.1% increase in passenger vehicle insurance premiums mitigated the overall drop in the transportation component.

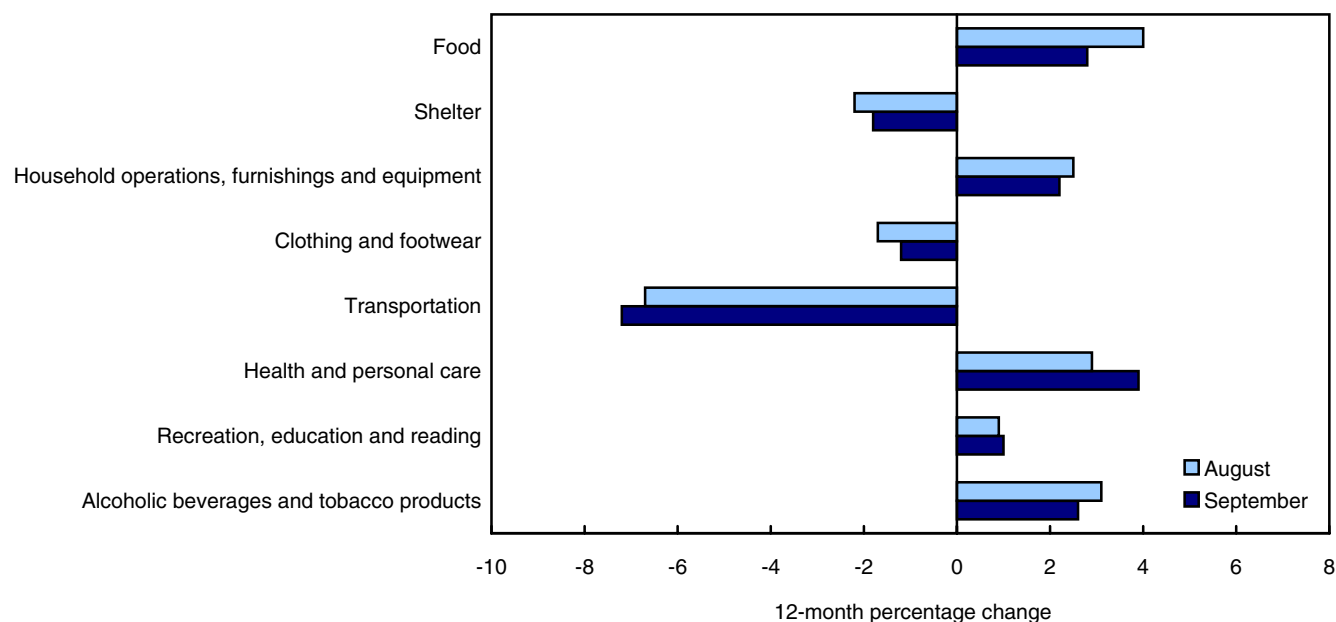
The decline in shelter costs in September was primarily the result of continuing price decreases in natural gas (-33.0%), fuel oil and other fuels (-32.7%), and homeowner’s replacement costs (-3.7%). Shelter costs were also dampened by downward pressure from mortgage interest costs.

The mortgage interest cost index, which measures the change in the interest portion of payments on outstanding mortgage debt, fell 2.2% in September, following a 1.1% decrease in August.

An 8.0% increase in homeowners' maintenance and repairs costs and a 3.2% rise in property taxes slowed the decline in the shelter index.

Chart 3

Transportation, shelter, and clothing and footwear continue to exert downward pressure on the CPI



Clothing and footwear prices fell 1.2% between September 2008 and September 2009, led by lower prices for both women's (-3.3%) and men's clothing (-1.3%).

Food costs continued to be pushed up by higher prices for food purchased from stores (+2.7%). Prices for meat went up 2.6% while prices for fish rose 8.8%.

As well, increases were recorded for dairy products and eggs (+2.5%), sugar and confectionery (+8.7%) and food purchased from restaurants (+2.8%).

On the other hand, prices for fresh fruit declined 4.5% in the past 12 months.

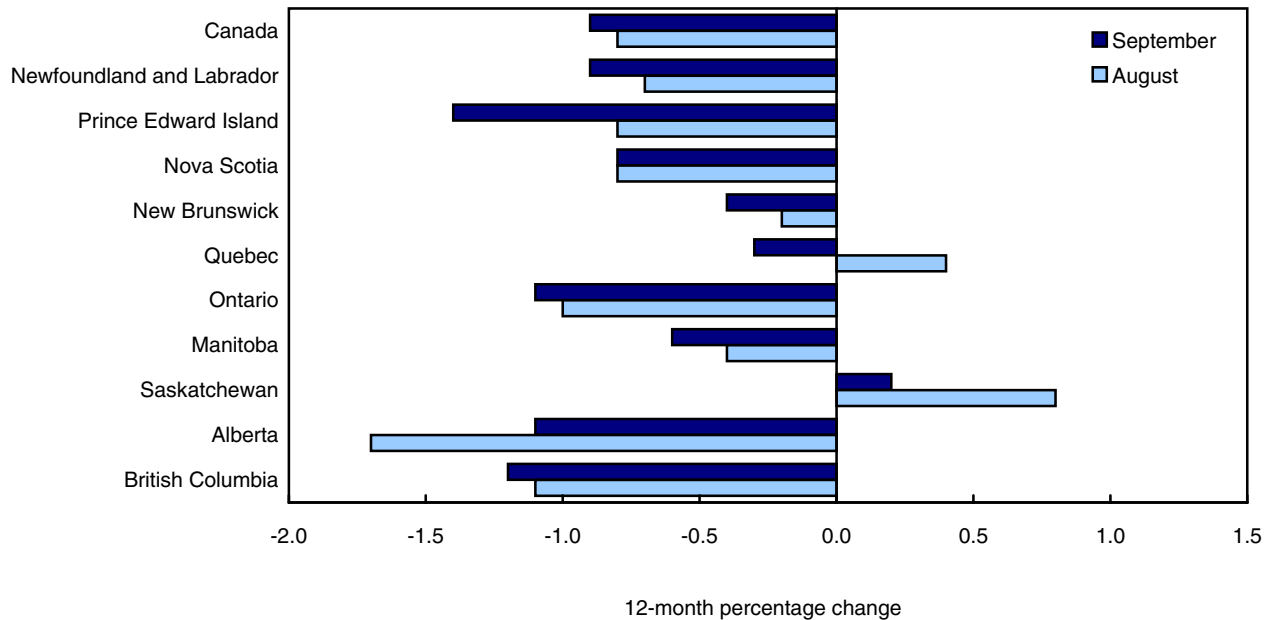
Broad-based price advances were recorded in the household operations, furnishings and equipment component. Prices rose for household goods and services, child care and domestic services, paper, plastic and foil supplies and telephone services in the 12 months to September.

In the recreation, education and reading component, the cost of cablevision and satellite services increased 6.7%. Students paid 4.1% more in tuition fees and 7.4% more for school textbooks and supplies. These increases were partly offset by declines in the prices of traveller accommodation (-5.8%) and computer equipment and supplies (-10.7%).

Provinces: Consumer prices down in nine provinces

Consumer prices declined in nine provinces between September 2008 and September 2009. The fastest declines occurred in Prince Edward Island (-1.4%), British Columbia (-1.2%), Alberta (-1.1%) and Ontario (-1.1%).

Chart 4
Saskatchewan, the only province posting positive year-over-year change



The most significant downward pressure on prices in all provinces came from lower gasoline prices, which fell by as much as 26.0% in Alberta compared with September 2008.

Factors putting upward pressure on consumer prices varied considerably from province to province, but rising food prices were common across them all.

In British Columbia, prices were down for the fourth consecutive month. The two main contributors in the decline were a 16.3% decrease in energy costs and a 14.5% drop in homeowner’s replacement costs.

In Alberta, the main factor was a 3.2% decrease in shelter costs, a much larger drop than the 1.8% national decline. This was due mainly to falling prices in natural gas, electricity, and homeowner’s replacement costs.

In Ontario, consumer prices fell 1.1%. Energy prices in Ontario declined 20.5% between September 2008 and September 2009.

The only province in which prices rose in the 12 months to September was Saskatchewan (+0.2%), where seven of the eight major components in the CPI recorded increases. The only component registering a decline was transportation (-10.3%).

No change in month-over-month seasonally unadjusted CPI

Overall, consumer prices prior to seasonal adjustment remained unchanged for the second consecutive month in September.

Upward pressure on the monthly CPI came primarily from higher prices for clothing and footwear (+3.0%) and household operations, furnishings and equipment (+0.8%).

Monthly increases in clothing and footwear were driven by women’s (+6.5%) and men’s clothing (+2.1%).

Advances in the household operations, furnishings and equipment index was mainly due to price increases in telephone services (+1.6%) in September.

On the other hand, price decreases for food (-0.9%) and transportation (-1.0%) tempered the overall rise in the monthly CPI in September.

Month-over-month downward movements in the food index came from food purchased from stores (-1.5%), mainly from a 10.8% drop in fresh vegetables and a 5.4% decline in fresh fruit.

Moreover, the monthly decline in transportation was due to falling prices for the purchase of passenger vehicles (-2.2%) and gasoline (-1.5%).

Seasonally adjusted monthly CPI increases

On a seasonally adjusted monthly basis, the CPI rose 0.1% from August to September, after rising 0.3% from July to August. The seasonally adjusted monthly CPI has gone up in four of the past five months.

12-month change in the Bank of Canada's core index

The Bank of Canada's core index advanced 1.5% over the 12 months to September, following a 1.6% rise in August. This was the slowest increase since the 1.5% increase recorded in July 2008.

On a month-to-month basis, the core index prior to seasonal adjustment increased 0.3% from August to September.

The seasonally adjusted monthly core index went up 0.1% from August to September, matching the rate of growth recorded from July to August.

Related products

Selected publications from Statistics Canada

62-010-X	Consumer Prices and Price Indexes
62-557-X	Your Guide to the Consumer Price Index
62F0014M	Analytical Series - Prices Division
62-553-X	The Consumer Price Index Reference Paper

Selected technical and analytical products from Statistics Canada

62F0014M1996001	How Inflation and Income Tax Affect the Return on a Safe Investment
62F0014M2001014	Televisions: Quality Changes and Scanner Data
62F0014M2001015	Housing Depreciation in the Canadian CPI

Selected CANSIM tables from Statistics Canada

326-0009	Average retail prices for gasoline and fuel oil, by urban centre, monthly
326-0012	Average retail prices for food and other selected items, monthly
326-0015	Inter-city indexes of retail price differentials for selected groups of consumer goods and services, annual
326-0020	Consumer price index (CPI), 2005 basket content, monthly
326-0021	Consumer price index (CPI), 2005 basket content, annual
326-0022	Consumer price index (CPI), seasonally adjusted, 2005 basket content, monthly

Selected surveys from Statistics Canada

2301	Consumer Price Index
------	----------------------

Selected summary tables from Statistics Canada

- *Consumer Price Index, by province (monthly)*
- *Consumer Price Index, by city (monthly)*
- *Consumer Price Index, food, by province (monthly)*
- *Consumer Price Index, shelter, by province (monthly)*
- *Consumer Price Index, household operations, furnishings and equipment by province (monthly)*
- *Consumer Price Index, clothing and footwear, by province (monthly)*
- *Consumer Price Index, transportation, by province (monthly)*
- *Consumer Price Index, health and personal care, by province (monthly)*
- *Consumer Price Index, recreation, education and reading, by province (monthly)*
- *Consumer Price Index, alcoholic beverages and tobacco products, by province (monthly)*
- *Canada: Economic and financial data*
- *Consumer Price Index, provinces*
- *Consumer price index, historical summary, by province or territory*
- *Gasoline and fuel oil, average retail prices by urban centre (monthly)*
- *Food and other selected items, average retail prices (monthly)*
- *Gasoline and fuel oil, average retail prices by urban centre*
- *Food and other selected items, average retail prices*
- *Consumer Price Index, food, by province*
- *Consumer Price Index, shelter, by province*
- *Consumer Price Index, household operations, furnishings and equipment, by province*
- *Consumer Price Index, clothing and footwear, by province*
- *Consumer Price Index, transportation, by province*
- *Consumer Price Index, health and personal care, by province*
- *Consumer Price Index, recreation, education and reading, by province*
- *Consumer Price Index, alcoholic beverages and tobacco products, by province*
- *Inter-city indexes of consumer price levels*
- *Consumer Price Index, by city*

- *Consumer Price Index, historical summary*
- *Selected economic indicators, Canada and United States (monthly and quarterly)*
- *Education price index, by provinces*
- *Economic indicators, by province and territory (monthly and quarterly)*

For further reading

Detailed information on the methodology and concepts of the CPI is contained in ***The Consumer Price Index Reference Paper, Updating Based on 1992 Expenditures***, (Occasional), catalogue no. 62-553-X.

Information regarding the Household Spending Survey is contained in the: ***Spending Patterns in Canada, 2005***, catalogue no. 62-202-X.

A brief non-technical document entitled ***Your Guide to the Consumer Price Index*** (Occasional) catalogue no.62-557-X answers the frequently asked questions about the construction and use of the CPI.

For further information, contact the Consumer Prices Section, Prices Division, Statistics Canada, Ottawa, Ontario K1A 0T6 (613-951-9606), or you can also search through the Statistics Canada catalogue which lists all current products and services available from Statistics Canada.

Statistical tables

Table 1
The Consumer Price Index, major components and special aggregates, ¹ Canada, not seasonally adjusted

	CANSIM vector number	Relative importance ²	Indexes			Percentage change September 2009 from	
			September 2009	August 2009	September 2008	August 2009	September 2008
2002=100							
All-items	(v41690973)	100.0	114.7	114.7	115.7	0.0	-0.9
Food	(v41690974)	17.0	120.4	121.5	117.1	-0.9	2.8
Shelter	(v41691050)	26.6	120.9	121.1	123.1	-0.2	-1.8
Household operations, furnishings and equipment	(v41691067)	11.1	107.9	107.0	105.6	0.8	2.2
Clothing and footwear	(v41691108)	5.4	94.9	92.1	96.1	3.0	-1.2
Transportation	(v41691128)	19.9	113.6	114.8	122.4	-1.0	-7.2
Health and personal care	(v41691153)	4.7	113.7	112.5	109.4	1.1	3.9
Recreation, education and reading	(v41691170)	12.2	104.9	104.4	103.9	0.5	1.0
Alcoholic beverages and tobacco products	(v41691206)	3.1	131.3	131.4	128.0	-0.1	2.6
All-items (1992=100)	(v41713403)	.	136.5	136.6	137.7	-0.1	-0.9
Special aggregates							
Goods	(v41691222)	48.8	107.4	107.8	111.5	-0.4	-3.7
Durable goods	(v41691223)	13.3	85.6	86.5	88.3	-1.0	-3.1
Semi-durable goods	(v41691224)	7.2	96.1	93.5	96.1	2.8	0.0
Non-durable goods	(v41691225)	28.2	122.6	123.6	128.7	-0.8	-4.7
Services	(v41691230)	51.2	121.9	121.6	119.8	0.2	1.8
All-items excluding food	(v41691232)	83.0	113.5	113.4	115.4	0.1	-1.6
All-items excluding food and energy	(v41691233)	73.6	111.8	111.5	110.8	0.3	0.9
All-items excluding energy	(v41691238)	90.6	113.4	113.3	112.0	0.1	1.3
All-items excluding gasoline	(v41693245)	95.1	113.6	113.6	113.0	0.0	0.5
All-items excluding shelter, insurance and financial services	(v41693246)	69.9	110.9	110.9	111.8	0.0	-0.8
Energy	(v41691239)	9.4	131.3	132.6	161.5	-1.0	-18.7
All-items excluding alcoholic beverages, tobacco products and smokers' supplies	(v41691241)	96.9	114.0	114.1	115.2	-0.1	-1.0
Core consumer price index (CPI) (Bank of Canada definition) ³	(v41693242)	82.7	114.1	113.8	112.4	0.3	1.5

Note(s): See "Data quality, concepts and methodology — Explanatory notes for tables" section.

Table 2
The Consumer Price Index, major components and special aggregates, ¹ Canada, seasonally adjusted

	CANSIM vector number	Relative importance ²	Indexes			Percentage change September 2009 from	
			September 2009	August 2009	September 2008	August 2009	September 2008
2002=100							
All-items	(v41690914)	100.0	114.4	114.3	115.4	0.1	-0.9
Food	(v41690915)	17.0	121.4	121.6	118.0	-0.2	2.9
Shelter	(v41690916)	26.6	120.9	121.1	123.1	-0.2	-1.8
Household operations, furnishings and equipment	(v41690917)	11.1	107.7	107.2	105.5	0.5	2.1
Clothing and footwear	(v41690918)	5.4	92.6	92.4	93.6	0.2	-1.1
Transportation	(v41690919)	19.9	113.6	114.8	122.4	-1.0	-7.2
Health and personal care	(v41690920)	4.7	113.6	112.5	109.4	1.0	3.8
Recreation, education and reading	(v41690921)	12.2	103.3	103.2	102.4	0.1	0.9
Alcoholic beverages and tobacco products	(v41690922)	3.1	131.3	131.4	128.0	-0.1	2.6
Special aggregates							
All-items excluding food	(v41690923)	83.0	113.5	113.4	115.4	0.1	-1.6
All-items excluding food and energy	(v41690924)	73.6	111.5	111.5	110.5	0.0	0.9
All-items excluding eight of the most volatile components (Bank of Canada definition)	(v41690925)	82.7	112.5	112.4	110.8	0.1	1.5
Core consumer price index (CPI) (Bank of Canada definition) ³	(v41690926)	82.7	113.9	113.8	112.1	0.1	1.6

Note(s): See "Data quality, concepts and methodology — Explanatory notes for tables" section.

Table 3
The Consumer Price Index, provinces, Whitehorse, Yellowknife and Iqaluit 1, not seasonally adjusted

	CANSIM vector number	Indexes			Percentage change September 2009 from	
		September 2009	August 2009	September 2008	August 2009	September 2008
		2002=100				
Newfoundland and Labrador	(v41691244)	115.2	115.0	116.2	0.2	-0.9
Prince Edward Island	(v41691379)	118.6	118.3	120.3	0.3	-1.4
Nova Scotia	(v41691513)	116.7	116.7	117.6	0.0	-0.8
New Brunswick	(v41691648)	114.2	114.1	114.7	0.1	-0.4
Quebec	(v41691783)	113.7	113.9	114.0	-0.2	-0.3
Ontario	(v41691919)	113.8	113.7	115.1	0.1	-1.1
Manitoba	(v41692055)	114.5	114.5	115.2	0.0	-0.6
Saskatchewan	(v41692191)	117.5	117.9	117.3	-0.3	0.2
Alberta	(v41692327)	121.5	122.0	122.8	-0.4	-1.1
British Columbia	(v41692462)	112.7	112.8	114.1	-0.1	-1.2
Whitehorse, Yukon	(v41692598)	113.7	114.2	114.8	-0.4	-1.0
Yellowknife, Northwest Territories	(v41692722)	116.4	116.3	117.2	0.1	-0.7
Iqaluit, Nunavut (Dec. 2002=100)	(v41713432)	113.2	114.0	111.9	-0.7	1.2

Note(s): See "Data quality, concepts and methodology — Explanatory notes for tables" section.

Table 4-1

 The Consumer Price Index, major components and selected sub-groups, Canada, not seasonally adjusted — Food ¹

	CANSIM vector number	Indexes			Percentage change September 2009 from	
		September 2009	August 2009	September 2008	August 2009	September 2008
2002=100						
All-items	(v41690973)	114.7	114.7	115.7	0.0	-0.9
Food	(v41690974)	120.4	121.5	117.1	-0.9	2.8
Food purchased from stores	(v41690975)	119.7	121.5	116.5	-1.5	2.7
Meat	(v41690976)	118.6	119.1	115.6	-0.4	2.6
Fresh or frozen meat (excluding poultry)	(v41690977)	115.4	115.8	112.4	-0.3	2.7
Fresh or frozen beef	(v41690978)	117.1	118.0	113.7	-0.8	3.0
Fresh or frozen pork	(v41690979)	107.6	106.5	105.6	1.0	1.9
Fresh or frozen poultry meat	(v41690981)	131.3	131.3	127.5	0.0	3.0
Fresh or frozen chicken	(v41690982)	134.4	134.7	129.9	-0.2	3.5
Processed meat	(v41690984)	113.3	114.4	110.7	-1.0	2.3
Ham and bacon	(v41690985)	108.1	107.5	107.3	0.6	0.7
Other processed meat	(v41690986)	116.3	118.2	112.9	-1.6	3.0
Fish, seafood and other marine products	(v41690987)	109.4	110.6	101.8	-1.1	7.5
Fish	(v41690988)	114.6	116.2	105.3	-1.4	8.8
Fresh or frozen fish (including portions and fish sticks)	(v41690989)	116.0	117.6	105.1	-1.4	10.4
Canned and other preserved fish	(v41690990)	111.5	113.0	105.8	-1.3	5.4
Dairy products and eggs	(v41690992)	128.9	128.1	125.7	0.6	2.5
Dairy products	(v41690993)	129.2	128.3	125.7	0.7	2.8
Fresh milk	(v41690994)	127.1	127.3	125.0	-0.2	1.7
Butter	(v41690995)	126.0	125.2	123.9	0.6	1.7
Cheese	(v41690996)	129.4	128.1	126.1	1.0	2.6
Ice cream and related products	(v41690997)	129.3	126.6	123.1	2.1	5.0
Eggs	(v41690999)	124.8	125.0	125.8	-0.2	-0.8
Bakery and cereal products (excluding infant food)	(v41691000)	136.9	137.6	134.6	-0.5	1.7
Bakery products	(v41691001)	142.5	142.9	138.2	-0.3	3.1
Bread, unsweetened rolls and buns	(v41691002)	157.6	158.1	154.4	-0.3	2.1
Biscuits	(v41691003)	124.1	123.9	118.8	0.2	4.5
Other bakery products	(v41691004)	132.7	133.4	127.5	-0.5	4.1
Cereal products (excluding infant food)	(v41691005)	126.8	128.2	128.2	-1.1	-1.1
Rice (including rice-based mixes)	(v41691006)	139.1	138.1	133.7	0.7	4.0
Breakfast cereal and other grain products (excluding infant food)	(v41691007)	113.8	115.9	111.8	-1.8	1.8
Pasta products	(v41691008)	145.5	147.1	153.7	-1.1	-5.3
Flour and flour based mixes	(v41691009)	138.3	137.8	149.4	0.4	-7.4
Fruit, fruit preparations and nuts	(v41691010)	109.4	113.2	110.3	-3.4	-0.8
Fresh fruit	(v41691011)	101.6	107.4	106.4	-5.4	-4.5
Apples	(v41691012)	108.7	112.7	134.2	-3.5	-19.0
Oranges	(v41691013)	103.4	112.2	110.7	-7.8	-6.6
Bananas and plantains	(v41691014)	135.4	139.9	117.8	-3.2	14.9
Other fresh fruit	(v41691015)	92.2	98.0	94.4	-5.9	-2.3
Preserved fruit and fruit preparations	(v41691016)	121.0	122.2	116.9	-1.0	3.5
Fruit juices	(v41691017)	122.0	124.0	120.8	-1.6	1.0
Other preserved fruit and fruit preparations	(v41691018)	118.5	117.7	106.7	0.7	11.1
Nuts	(v41691019)	118.4	118.3	111.2	0.1	6.5
Vegetables and vegetable preparations	(v41691020)	97.7	106.2	95.3	-8.0	2.5
Fresh vegetables	(v41691021)	89.1	99.9	89.0	-10.8	0.1
Potatoes	(v41691022)	105.6	115.9	109.6	-8.9	-3.6
Tomatoes	(v41691023)	82.8	90.1	77.5	-8.1	6.8
Lettuce	(v41691024)	73.3	70.9	76.8	3.4	-4.6
Other fresh vegetables	(v41691025)	92.3	106.6	91.9	-13.4	0.4
Preserved vegetables and vegetable preparations	(v41691026)	128.6	128.6	117.8	0.0	9.2
Frozen and dried vegetables (excluding canned)	(v41691027)	124.8	126.4	116.5	-1.3	7.1
Canned vegetables and other vegetable preparations	(v41691028)	131.2	130.1	118.7	0.8	10.5
Other food products and non-alcoholic beverages	(v41691029)	120.8	122.0	115.3	-1.0	4.8
Sugar and confectionery	(v41691030)	127.1	128.1	116.9	-0.8	8.7
Fats and oils	(v41691033)	139.9	140.2	135.7	-0.2	3.1
Coffee and tea	(v41691036)	118.4	119.9	115.4	-1.3	2.6
Condiments, spices and vinegars	(v41691039)	116.3	114.7	109.4	1.4	6.3
Other food preparations	(v41691040)	121.5	123.7	116.3	-1.8	4.5
Non-alcoholic beverages	(v41691045)	113.3	114.5	109.4	-1.0	3.6
Food purchased from restaurants	(v41691046)	121.8	121.6	118.5	0.2	2.8
Food purchased from table-service restaurants	(v41691047)	122.7	122.6	119.4	0.1	2.8
Food purchased from fast food and take-out restaurants	(v41691048)	119.8	119.3	116.4	0.4	2.9

Note(s): See "Data quality, concepts and methodology — Explanatory notes for tables" section.

Table 4-2
The Consumer Price Index, major components and selected sub-groups, Canada, not seasonally adjusted — Shelter

	CANSIM vector number	Indexes			Percentage change September 2009 from	
		September 2009	August 2009	September 2008	August 2009	September 2008
2002=100						
Shelter	(v41691050)	120.9	121.1	123.1	-0.2	-1.8
Rented accommodation	(v41691051)	109.8	109.7	108.2	0.1	1.5
Rent	(v41691052)	109.8	109.7	108.2	0.1	1.5
Owned accommodation	(v41691055)	125.2	125.4	125.1	-0.2	0.1
Mortgage interest cost ¹	(v41691056)	116.4	117.2	119.0	-0.7	-2.2
Replacement cost	(v41691057)	134.8	134.6	140.0	0.1	-3.7
Property taxes (including special charges)	(v41691058)	124.1	124.1	120.3	0.0	3.2
Homeowners' home and mortgage insurance	(v41691059)	164.9	164.2	154.8	0.4	6.5
Homeowners' maintenance and repairs	(v41691060)	117.8	117.5	109.1	0.3	8.0
Water, fuel and electricity	(v41691062)	123.7	124.2	139.5	-0.4	-11.3
Electricity ²	(v41691063)	115.8	117.1	113.2	-1.1	2.3
Water	(v41691064)	157.4	157.4	146.9	0.0	7.1
Natural gas	(v41691065)	106.0	108.0	158.3	-1.9	-33.0
Fuel oil and other fuels	(v41691066)	160.8	150.3	239.0	7.0	-32.7

Note(s): See "Data quality, concepts and methodology — Explanatory notes for tables" section.

Table 4-3
The Consumer Price Index, major components and selected sub-groups, Canada, not seasonally adjusted — Household operations, furnishings and equipment

	CANSIM vector number	Indexes			Percentage change September 2009 from	
		September 2009	August 2009	September 2008	August 2009	September 2008
2002=100						
Household operations, furnishings and equipment	(v41691067)	107.9	107.0	105.6	0.8	2.2
Household operations	(v41691068)	113.9	112.8	110.8	1.0	2.8
Communications	(v41691069)	106.1	104.8	105.0	1.2	1.0
Telephone services	(v41691070)	107.1	105.4	106.1	1.6	0.9
Internet access services	(v41693216)	94.8	94.8	93.9	0.0	1.0
Postal services and other communication services	(v41691071)	126.6	126.6	122.3	0.0	3.5
Child care and domestic services	(v41691072)	126.2	125.4	122.7	0.6	2.9
Child care	(v41691073)	124.3	123.2	121.4	0.9	2.4
Domestic services	(v41691074)	130.8	130.4	125.9	0.3	3.9
Household chemical products	(v41691075)	108.6	109.3	105.0	-0.6	3.4
Paper, plastic and foil supplies	(v41691078)	111.4	110.4	107.3	0.9	3.8
Other household goods and services	(v41691081)	121.0	119.8	115.5	1.0	4.8
Pet food and supplies	(v41691082)	116.6	115.7	105.4	0.8	10.6
Seeds, plants and cut flowers	(v41691083)	106.9	106.2	105.7	0.7	1.1
Other horticultural goods	(v41691084)	106.0	104.9	103.8	1.0	2.1
Financial services	(v41693229)	125.0	124.8	122.8	0.2	1.8
Household furnishings and equipment	(v41691087)	97.8	97.1	96.8	0.7	1.0
Furniture and household textiles	(v41691088)	99.5	97.8	99.5	1.7	0.0
Furniture	(v41691089)	97.1	95.3	97.9	1.9	-0.8
Household textiles	(v41691093)	108.0	106.6	104.9	1.3	3.0
Household equipment	(v41691097)	88.7	89.0	87.0	-0.3	2.0
Household appliances	(v41691098)	87.8	88.5	87.0	-0.8	0.9
Non-electric kitchen utensils and tableware	(v41691103)	91.0	91.0	88.5	0.0	2.8
Services related to household furnishings and equipment	(v41691107)	146.3	146.3	142.7	0.0	2.5

Note(s): See "Data quality, concepts and methodology — Explanatory notes for tables" section.

Table 4-4
The Consumer Price Index, major components and selected sub-groups, Canada, not seasonally adjusted — Clothing and footwear

	CANSIM vector number	Indexes			Percentage change September 2009 from	
		September 2009	August 2009	September 2008	August 2009	September 2008
2002=100						
Clothing and footwear	(v41691108)	94.9	92.1	96.1	3.0	-1.2
Clothing	(v41691109)	89.8	86.1	92.0	4.3	-2.4
Women's clothing	(v41691110)	89.6	84.1	92.7	6.5	-3.3
Men's clothing	(v41691111)	92.6	90.7	93.8	2.1	-1.3
Children's clothing (including infants)	(v41691112)	83.4	81.8	84.9	2.0	-1.8
Footwear	(v41691113)	94.9	93.1	95.4	1.9	-0.5
Clothing accessories and jewellery	(v41691118)	111.6	111.5	109.3	0.1	2.1
Clothing material, notions and services	(v41691123)	119.6	119.4	116.6	0.2	2.6

Note(s): See "Data quality, concepts and methodology — Explanatory notes for tables" section.

Table 4-5
The Consumer Price Index, major components and selected sub-groups, Canada, not seasonally adjusted — Transportation

	CANSIM vector number	Indexes			Percentage change September 2009 from	
		September 2009	August 2009	September 2008	August 2009	September 2008
2002=100						
Transportation	(v41691128)	113.6	114.8	122.4	-1.0	-7.2
Private transportation	(v41691129)	112.4	113.7	122.6	-1.1	-8.3
Purchase, leasing and rental of passenger vehicles	(v41691130)	84.1	86.0	89.2	-2.2	-5.7
Purchase and leasing of passenger vehicles	(v41691131)	83.8	85.7	89.1	-2.2	-5.9
Purchase of passenger vehicles	(v41691132)	84.5	86.4	89.8	-2.2	-5.9
Rental of passenger vehicles	(v41691134)	105.6	105.4	102.5	0.2	3.0
Operation of passenger vehicles	(v41691135)	139.5	140.1	154.6	-0.4	-9.8
Gasoline	(v41691136)	142.6	144.7	185.3	-1.5	-23.0
Passenger vehicle parts, maintenance and repairs	(v41691137)	125.3	125.3	121.1	0.0	3.5
Other passenger vehicle operating expenses	(v41691140)	142.9	142.2	136.6	0.5	4.6
Passenger vehicle insurance premiums ¹	(v41691141)	146.3	145.3	139.2	0.7	5.1
Passenger vehicle registration fees	(v41691142)	107.3	107.3	107.7	0.0	-0.4
Drivers' licences	(v41691143)	149.5	149.5	149.2	0.0	0.2
Parking fees	(v41691144)	142.3	142.3	134.1	0.0	6.1
Public transportation	(v41691146)	124.4	125.5	120.8	-0.9	3.0
Local and commuter transportation	(v41691147)	129.3	129.3	126.1	0.0	2.5
City bus and subway transportation	(v41691148)	126.7	126.7	124.4	0.0	1.8
Taxi and other local and commuter transportation	(v41691149)	134.7	134.7	129.5	0.0	4.0
Inter-city transportation	(v41691150)	121.6	123.2	117.8	-1.3	3.2
Air transportation	(v41691151)	120.5	123.5	115.4	-2.4	4.4
Rail, highway bus and other inter-city transportation	(v41691152)	122.9	113.9	129.4	7.9	-5.0

Note(s): See "Data quality, concepts and methodology — Explanatory notes for tables" section.

Table 4-6

The Consumer Price Index, major components and selected sub-groups, Canada, not seasonally adjusted — Health and personal care

	CANSIM vector number	Indexes			Percentage change September 2009 from	
		September 2009	August 2009	September 2008	August 2009	September 2008
2002=100						
Health and personal care	(v41691153)	113.7	112.5	109.4	1.1	3.9
Health care	(v41691154)	117.7	116.4	113.6	1.1	3.6
Health care goods	(v41713463)	108.2	107.5	105.0	0.7	3.0
Medicinal and pharmaceutical products	(v41691156)	107.2	106.7	103.0	0.5	4.1
Prescribed medicines	(v41691157)	105.3	105.0	101.2	0.3	4.1
Non-prescribed medicines	(v41691158)	110.5	109.5	106.2	0.9	4.0
Optical goods	(v41713381)	110.0	110.1	110.0	-0.1	0.0
Health care services	(v41713464)	131.0	128.7	125.5	1.8	4.4
Optical services	(v41693244)	104.9	104.9	101.9	0.0	2.9
Dental care	(v41691161)	127.6	127.4	124.5	0.2	2.5
Personal care	(v41691163)	109.9	108.9	105.4	0.9	4.3
Personal care supplies and equipment	(v41691164)	103.8	102.2	98.8	1.6	5.1
Personal care services	(v41691169)	118.4	118.4	114.7	0.0	3.2

Note(s): See "Data quality, concepts and methodology — Explanatory notes for tables" section.

Table 4-7

The Consumer Price Index, major components and selected sub-groups, Canada, not seasonally adjusted — Recreation, education and reading

	CANSIM vector number	Indexes			Percentage change September 2009 from	
		September 2009	August 2009	September 2008	August 2009	September 2008
2002=100						
Recreation, education and reading	(v41691170)	104.9	104.4	103.9	0.5	1.0
Recreation	(v41691171)	97.8	98.5	98.2	-0.7	-0.4
Recreational equipment and services (excluding recreational vehicles)	(v41691172)	64.9	64.9	68.9	0.0	-5.8
Purchase and operation of recreational vehicles	(v41691179)	115.1	115.5	111.8	-0.3	3.0
Home entertainment equipment, parts and services	(v41691184)	77.3	78.9	81.3	-2.0	-4.9
Travel services	(v41691190)	98.0	100.3	100.5	-2.3	-2.5
Traveller accommodation 1	(v41691191)	84.6	88.3	89.8	-4.2	-5.8
Travel tours	(v41691192)	112.6	112.6	110.5	0.0	1.9
Other cultural and recreational services	(v41691193)	130.3	129.0	123.8	1.0	5.3
Spectator entertainment (excluding cablevision)	(v41691194)	122.5	122.5	117.5	0.0	4.3
Cablevision and satellite services (including pay television)	(v41691195)	139.0	136.0	130.3	2.2	6.7
Use of recreational facilities and services	(v41691196)	125.0	125.0	120.4	0.0	3.8
Education and reading	(v41691197)	127.1	122.7	121.5	3.6	4.6
Education	(v41691198)	130.9	125.9	125.5	4.0	4.3
Tuition fees	(v41691199)	136.0	130.7	130.7	4.1	4.1
Reading material and other printed material (excluding textbooks)	(v41691202)	113.8	111.8	106.9	1.8	6.5
Newspapers	(v41691203)	127.6	127.6	119.3	0.0	7.0
Magazines and periodicals	(v41691204)	120.2	120.2	119.2	0.0	0.8

Note(s): See "Data quality, concepts and methodology — Explanatory notes for tables" section.

Table 4-8
The Consumer Price Index, major components and selected sub-groups, Canada, not seasonally adjusted — Alcoholic beverages and tobacco products

	CANSIM vector number	Indexes			Percentage change September 2009 from	
		September 2009	August 2009	September 2008	August 2009	September 2008
		2002=100				
Alcoholic beverages and tobacco products	(v41691206)	131.3	131.4	128.0	-0.1	2.6
Alcoholic beverages	(v41691207)	114.5	114.6	112.1	-0.1	2.1
Alcoholic beverages served in licensed establishments	(v41691208)	120.7	120.8	116.1	-0.1	4.0
Beer served in licensed establishments	(v41691209)	122.6	122.6	116.4	0.0	5.3
Liquor served in licensed establishments	(v41691211)	122.2	122.2	117.6	0.0	3.9
Alcoholic beverages purchased from stores	(v41691212)	111.4	111.6	110.2	-0.2	1.1
Beer purchased from stores	(v41691213)	115.2	115.1	112.7	0.1	2.2
Wine purchased from stores	(v41691214)	104.5	105.3	105.5	-0.8	-0.9
Liquor purchased from stores	(v41691215)	110.4	110.4	109.2	0.0	1.1
Tobacco products and smokers' supplies	(v41691216)	146.5	146.5	142.0	0.0	3.2
Cigarettes	(v41691217)	146.5	146.4	141.9	0.1	3.2

Note(s): See "Data quality, concepts and methodology — Explanatory notes for tables" section.

Table 5
The Consumer Price Index for Canada, all-items, not seasonally adjusted, historical data

	Jan.	Feb.	Mar.	Apr.	May	June	July	Aug.	Sept.	Oct.	Nov.	Dec.	Annual average ¹
	2002=100												
Indexes (v41690973)													
1990	76.7	77.2	77.5	77.5	77.9	78.2	78.5	78.6	78.8	79.5	80.0	79.9	78.4
1991	82.0	82.0	82.3	82.3	82.7	83.1	83.2	83.3	83.1	83.0	83.3	82.9	82.8
1992	83.3	83.3	83.6	83.7	83.8	84.0	84.2	84.2	84.2	84.3	84.7	84.7	84.0
1993	85.0	85.3	85.2	85.2	85.4	85.4	85.6	85.7	85.7	85.9	86.3	86.1	85.6
1994	86.1	85.4	85.4	85.4	85.2	85.4	85.7	85.8	85.9	85.7	86.2	86.3	85.7
1995	86.6	87.0	87.2	87.5	87.7	87.7	87.9	87.7	87.8	87.7	88.0	87.8	87.6
1996	88.0	88.1	88.5	88.7	89.0	89.0	89.0	89.0	89.1	89.3	89.7	89.7	88.9
1997	89.9	90.1	90.2	90.2	90.3	90.5	90.5	90.6	90.6	90.6	90.5	90.4	90.4
1998	90.9	91.0	91.1	91.0	91.3	91.4	91.4	91.4	91.2	91.6	91.6	91.3	91.3
1999	91.5	91.6	92.0	92.5	92.7	92.9	93.1	93.3	93.6	93.7	93.6	93.7	92.9
2000	93.5	94.1	94.8	94.5	94.9	95.5	95.8	95.7	96.1	96.3	96.6	96.7	95.4
2001	96.3	96.8	97.1	97.8	98.6	98.7	98.4	98.4	98.6	98.1	97.2	97.4	97.8
2002	97.6	98.2	98.9	99.5	99.7	99.9	100.5	100.9	100.9	101.2	101.5	101.1	100.0
2003	102.0	102.8	103.1	102.4	102.5	102.5	102.6	102.9	103.1	102.8	103.1	103.2	102.8
2004	103.3	103.5	103.9	104.1	105.0	105.1	105.0	104.8	105.0	105.2	105.6	105.4	104.7
2005	105.3	105.7	106.3	106.6	106.7	106.9	107.1	107.5	108.4	107.9	107.7	107.6	107.0
2006	108.2	108.0	108.6	109.2	109.7	109.5	109.6	109.8	109.2	109.0	109.2	109.4	109.1
2007	109.4	110.2	111.1	111.6	112.1	111.9	112.0	111.7	111.9	111.6	111.9	112.0	111.5
2008	111.8	112.2	112.6	113.5	114.6	115.4	115.8	115.6	115.7	114.5	114.1	113.3	114.1
2009	113.0	113.8	114.0	113.9	114.7	115.1	114.7	114.7	114.7
Percentage change from the corresponding month of the previous year (v41690973)													
1990	5.5	5.5	5.3	5.0	4.4	4.4	4.1	4.1	4.2	4.7	5.1	5.0	4.8
1991	6.9	6.2	6.2	6.2	6.2	6.3	6.0	6.0	5.5	4.4	4.1	3.8	5.6
1992	1.6	1.6	1.6	1.7	1.3	1.1	1.2	1.1	1.3	1.6	1.7	2.2	1.4
1993	2.0	2.4	1.9	1.8	1.9	1.7	1.7	1.8	1.8	1.9	1.9	1.7	1.9
1994	1.3	0.1	0.2	0.2	-0.2	0.0	0.1	0.1	0.2	-0.2	-0.1	0.2	0.1
1995	0.6	1.9	2.1	2.5	2.9	2.7	2.6	2.2	2.2	2.3	2.1	1.7	2.2
1996	1.6	1.3	1.5	1.4	1.5	1.5	1.3	1.5	1.5	1.8	1.9	2.2	1.5
1997	2.2	2.3	1.9	1.7	1.5	1.7	1.7	1.8	1.7	1.5	0.9	0.8	1.7
1998	1.1	1.0	1.0	0.9	1.1	1.0	1.0	0.9	0.7	1.1	1.2	1.0	1.0
1999	0.7	0.7	1.0	1.6	1.5	1.6	1.9	2.1	2.6	2.3	2.2	2.6	1.8
2000	2.2	2.7	3.0	2.2	2.4	2.8	2.9	2.6	2.7	2.8	3.2	3.2	2.7
2001	3.0	2.9	2.4	3.5	3.9	3.4	2.7	2.8	2.6	1.9	0.6	0.7	2.5
2002	1.3	1.4	1.9	1.7	1.1	1.2	2.1	2.5	2.3	3.2	4.4	3.8	2.2
2003	4.5	4.7	4.2	2.9	2.8	2.6	2.1	2.0	2.2	1.6	1.6	2.1	2.8
2004	1.3	0.7	0.8	1.7	2.4	2.5	2.3	1.8	1.8	2.3	2.4	2.1	1.8
2005	1.9	2.1	2.3	2.4	1.6	1.7	2.0	2.6	3.2	2.6	2.0	2.1	2.2
2006	2.8	2.2	2.2	2.4	2.8	2.4	2.3	2.1	0.7	1.0	1.4	1.7	2.0
2007	1.1	2.0	2.3	2.2	2.2	2.2	2.2	1.7	2.5	2.4	2.5	2.4	2.2
2008	2.2	1.8	1.4	1.7	2.2	3.1	3.4	3.5	3.4	2.6	2.0	1.2	2.3
2009	1.1	1.4	1.2	0.4	0.1	-0.3	-0.9	-0.8	-0.9

Note(s): See "Data quality, concepts and methodology — Explanatory notes for tables" section.

Table 6
Core consumer price index (CPI) (Bank of Canada definition), 1 not seasonally adjusted, historical data

	Jan.	Feb.	Mar.	Apr.	May	June	July	Aug.	Sept.	Oct.	Nov.	Dec.	Annual average ²
	2002=100												
Indexes (v41693242)													
1990	78.6	79.0	79.1	79.3	79.5	79.6	79.9	80.1	80.4	80.8	81.0	80.8	79.8
1991	81.4	81.7	81.7	81.7	81.8	82.0	82.0	82.3	82.4	82.5	82.8	82.5	82.1
1992	82.7	83.0	83.2	83.3	83.5	83.4	83.5	83.6	83.7	84.0	84.4	84.3	83.6
1993	84.6	84.9	84.9	84.9	84.9	84.9	85.3	85.4	85.6	85.7	86.2	86.1	85.3
1994	86.2	86.6	86.6	86.7	86.5	86.6	86.7	86.8	87.2	87.2	87.5	87.6	86.9
1995	87.9	88.3	88.4	88.5	88.6	88.6	88.8	89.0	89.3	89.3	89.6	89.2	88.8
1996	89.4	89.8	89.8	89.9	90.1	90.1	90.3	90.5	90.8	90.8	91.3	91.1	90.3
1997	91.3	91.5	91.7	91.9	92.0	92.1	92.1	92.3	92.4	92.5	92.4	92.3	92.0
1998	92.6	92.9	93.0	93.0	93.2	93.2	93.3	93.4	93.4	93.7	93.7	93.5	93.2
1999	93.5	93.8	94.1	94.2	94.5	94.6	94.7	94.9	95.2	95.1	95.0	94.8	94.5
2000	94.6	95.0	95.3	95.3	95.5	95.8	95.8	96.0	96.2	96.3	96.4	96.4	95.7
2001	96.3	96.6	97.1	97.4	97.7	97.9	98.2	98.3	98.4	98.4	98.1	98.0	97.7
2002	98.1	98.8	99.2	99.6	99.8	100.0	100.2	100.7	100.9	100.9	101.2	100.7	100.0
2003	101.3	101.8	102.0	101.7	102.2	102.1	102.1	102.2	102.6	102.7	103.0	102.8	102.2
2004	102.8	103.0	103.3	103.5	103.7	103.8	104.0	103.8	104.1	104.1	104.7	104.6	103.8
2005	104.5	104.8	105.2	105.2	105.4	105.4	105.4	105.6	105.9	105.9	106.3	106.2	105.5
2006	106.2	106.6	107.0	106.9	107.5	107.2	107.5	107.7	108.3	108.4	108.6	108.4	107.5
2007	108.6	109.1	109.5	109.6	109.9	109.9	110.0	110.1	110.5	110.3	110.3	110.0	109.8
2008	110.1	110.7	110.9	111.2	111.5	111.6	111.7	112.0	112.4	112.2	113.0	112.6	111.7
2009	112.2	112.8	113.1	113.2	113.7	113.7	113.7	113.8	114.1
Percentage change from the corresponding month of the previous year (v41693242)													
1990	3.8	3.8	3.5	3.4	3.4	3.5	3.4	3.4	3.5	3.6	3.3	3.2	3.4
1991	3.6	3.4	3.3	3.0	2.9	3.0	2.6	2.7	2.5	2.1	2.2	2.1	2.9
1992	1.6	1.6	1.8	2.0	2.1	1.7	1.8	1.6	1.6	1.8	1.9	2.2	1.8
1993	2.3	2.3	2.0	1.9	1.7	1.8	2.2	2.2	2.3	2.0	2.1	2.1	2.0
1994	1.9	2.0	2.0	2.1	1.9	2.0	1.6	1.6	1.9	1.8	1.5	1.7	1.9
1995	2.0	2.0	2.1	2.1	2.4	2.3	2.4	2.5	2.4	2.4	2.4	1.8	2.2
1996	1.7	1.7	1.6	1.6	1.7	1.7	1.7	1.7	1.7	1.7	1.9	2.1	1.7
1997	2.1	1.9	2.1	2.2	2.1	2.2	2.0	2.0	1.8	1.9	1.2	1.3	1.9
1998	1.4	1.5	1.4	1.2	1.3	1.2	1.3	1.2	1.1	1.3	1.4	1.3	1.3
1999	1.0	1.0	1.2	1.3	1.4	1.5	1.5	1.6	1.9	1.5	1.4	1.4	1.4
2000	1.2	1.3	1.3	1.2	1.1	1.3	1.2	1.2	1.1	1.3	1.5	1.7	1.3
2001	1.8	1.7	1.9	2.2	2.3	2.2	2.5	2.4	2.3	2.2	1.8	1.7	2.1
2002	1.9	2.3	2.2	2.3	2.1	2.1	2.0	2.4	2.5	2.5	3.2	2.8	2.4
2003	3.3	3.0	2.8	2.1	2.4	2.1	1.9	1.5	1.7	1.8	1.8	2.1	2.2
2004	1.5	1.2	1.3	1.8	1.5	1.7	1.9	1.6	1.5	1.4	1.7	1.8	1.6
2005	1.7	1.7	1.8	1.6	1.6	1.5	1.3	1.7	1.7	1.7	1.5	1.5	1.6
2006	1.6	1.7	1.7	1.6	2.0	1.7	2.0	2.0	2.3	2.4	2.2	2.1	1.9
2007	2.3	2.3	2.3	2.5	2.2	2.5	2.3	2.2	2.0	1.8	1.6	1.5	2.1
2008	1.4	1.5	1.3	1.5	1.5	1.5	1.5	1.7	1.7	1.7	2.4	2.4	1.7
2009	1.9	1.9	2.0	1.8	2.0	1.9	1.8	1.6	1.5

Note(s): See "Data quality, concepts and methodology — Explanatory notes for tables" section.

Table 7
The Consumer Price Index for Canada, major components and special aggregates, not seasonally adjusted, historical data

	Major components							Special aggregates				
	Food	Shelter	Household operations, furnishings and equipment	Clothing and footwear	Transportation	Health and personal care	Recreation, education and reading	Alcoholic beverages and tobacco products	Goods ¹	Services ²	All-items excluding food and energy ³	Energy ³
CANSIM vector number	(v41690974)	(v41691050)	(v41691067)	(v41691108)	(v41691128)	(v41691153)	(v41691170)	(v41691206)	(v41691222)	(v41691230)	(v41691233)	(v41691239)
	2002=100											
Annual averages⁴												
1990	79.6	82.5	84.2	86.1	71.6	79.1	73.2	65.2	81.6	74.9	78.8	73.4
1991	83.4	86.3	87.4	94.3	72.9	84.7	78.3	76.4	85.7	79.6	83.4	77.0
1992	83.1	87.9	87.9	95.1	74.4	86.6	79.2	81.0	86.4	81.4	85.1	77.2
1993	84.5	89.1	88.7	96.0	76.8	88.9	81.1	82.2	87.8	83.1	86.8	78.1
1994	84.9	89.4	88.9	96.8	80.2	89.7	83.5	68.8	86.8	84.5	86.9	78.6
1995	86.9	90.4	90.6	96.7	84.3	89.6	86.7	68.7	88.4	86.7	88.8	79.6
1996	88.0	90.6	92.5	96.4	87.6	90.1	88.7	70.1	89.9	88.0	90.1	81.9
1997	89.4	90.8	93.7	97.7	90.3	91.7	91.0	72.3	91.2	89.5	91.5	83.9
1998	90.9	91.1	95.1	98.8	89.6	93.6	93.0	74.9	91.4	91.1	92.7	80.5
1999	92.0	92.3	95.8	100.1	92.6	95.4	94.7	76.5	93.1	92.6	94.0	85.0
2000	93.3	95.6	96.7	100.3	97.2	97.0	97.0	79.0	96.0	94.8	95.5	98.8
2001	97.4	99.1	98.6	100.7	97.3	98.9	98.4	85.0	98.4	97.1	97.3	102.0
2002	100.0	100.0	100.0	100.0	100.0	100.0	100.0	100.0	100.0	100.0	100.0	100.0
2003	101.7	103.2	100.7	98.2	105.2	101.4	100.8	110.1	101.9	103.6	102.5	107.9
2004	103.8	105.8	101.2	98.0	107.7	102.8	101.1	116.0	103.4	105.9	103.9	115.2
2005	106.4	109.2	101.7	97.6	112.0	104.6	100.8	119.1	105.8	108.2	105.3	126.3
2006	108.9	113.1	102.2	95.8	115.2	105.9	100.6	121.7	107.1	111.1	106.9	132.8
2007	111.8	116.9	103.2	95.7	117.1	107.3	101.8	125.5	108.0	114.8	109.0	135.9
2008	115.7	122.0	104.6	93.8	119.5	108.8	102.2	127.5	109.4	118.7	110.3	149.3
Monthly indexes												
2008												
January	112.4	119.2	103.3	92.2	117.6	107.5	99.6	126.4	107.3	116.2	109.0	139.0
February	112.8	119.6	104.1	94.1	117.0	107.7	100.8	126.8	107.4	116.9	109.4	139.4
March	112.6	120.1	104.1	96.0	117.8	107.9	101.3	126.6	108.1	117.1	109.6	143.2
April	113.5	121.2	104.4	94.3	120.1	108.3	101.6	126.7	109.2	117.7	109.9	150.2
May	114.6	121.6	104.3	93.0	123.6	108.6	102.9	127.4	110.4	118.7	110.3	158.4
June	115.8	122.3	104.3	92.5	125.8	108.7	102.9	127.7	111.6	119.1	110.3	165.3
July	116.5	123.3	104.4	93.3	125.7	108.5	103.2	127.6	112.1	119.4	110.4	169.1
August	116.8	123.8	104.4	93.7	123.1	109.3	103.5	127.5	111.5	119.6	110.5	164.0
September	117.1	123.1	105.6	96.1	122.4	109.4	103.9	128.0	111.5	119.8	110.8	161.5
October	117.4	123.2	105.2	94.4	117.0	109.2	103.0	128.0	108.9	120.0	110.6	147.5
November	119.5	123.4	105.5	94.1	113.2	110.1	101.9	128.5	108.1	120.0	111.3	130.7
December	119.8	123.4	105.5	91.3	110.3	109.9	101.2	128.7	106.5	120.1	111.0	123.0
2009												
January	120.6	123.1	105.7	91.8	108.8	110.4	99.7	129.2	106.2	119.7	110.3	123.8
February	121.2	123.2	106.4	93.6	110.2	110.4	101.1	129.2	107.3	120.2	110.8	127.2
March	121.5	122.6	106.8	95.7	110.5	110.5	101.8	129.7	107.6	120.4	111.1	127.1
April	121.6	121.4	107.3	95.1	110.5	111.1	102.4	129.7	107.0	120.7	111.2	123.9
May	121.9	121.4	107.6	93.9	113.5	112.1	103.8	131.2	108.1	121.3	111.7	129.4
June	122.2	121.3	107.3	91.3	116.1	112.8	103.8	131.6	108.6	121.5	111.7	133.9
July	122.3	120.8	107.1	91.3	114.3	112.5	104.3	131.5	107.7	121.6	111.5	129.6
August	121.5	121.1	107.0	92.1	114.8	112.5	104.4	131.4	107.8	121.6	111.5	132.6
September	120.4	120.9	107.9	94.9	113.6	113.7	104.9	131.3	107.4	121.9	111.8	131.3

Note(s): For information on the continuity of the series, see "Data quality, concepts and methodology — Data quality, concepts and methodology — Weights and Linking" at the end of this publication.

See "Data quality, concepts and methodology — Explanatory notes for tables" section.

Table 8-1
Annual average¹ percentage changes for the Consumer Price Index — Major components, not seasonally adjusted, Canada, 2005 to 2008

	CANSIM vector number	Annual average	Annual average percentage change			
		2008	2008	2007	2006	2005
		2002=100	percent			
All-items	(v41693271)	114.1	2.3	2.2	2.0	2.2
Food	(v41693272)	115.7	3.5	2.7	2.3	2.5
Shelter	(v41693348)	122.0	4.4	3.4	3.6	3.2
Household operations, furnishings and equipment	(v41693365)	104.6	1.4	1.0	0.5	0.5
Clothing and footwear	(v41693406)	93.8	-2.0	-0.1	-1.8	-0.4
Transportation	(v41693426)	119.5	2.0	1.6	2.9	4.0
Health and personal care	(v41693451)	108.8	1.4	1.3	1.2	1.8
Recreation, education and reading	(v41693468)	102.2	0.4	1.2	-0.2	-0.3
Alcoholic beverages and tobacco products	(v41693504)	127.5	1.6	3.1	2.2	2.7
Goods	(v41693520)	109.4	1.3	0.8	1.2	2.3
Durable goods	(v41693521)	89.7	-5.3	-1.6	-0.7	-0.6
Semi-durable goods	(v41693522)	94.5	-1.6	-0.2	-1.5	-0.5
Non-durable goods	(v41693523)	124.4	5.1	2.2	2.9	4.4
Services	(v41693528)	118.7	3.4	3.3	2.7	2.2
All-items excluding food	(v41693530)	113.8	2.2	2.0	2.0	2.2
All-items excluding food and energy	(v41693531)	110.3	1.2	2.0	1.5	1.3
All-items excluding energy	(v41693536)	111.3	1.6	2.1	1.7	1.5
Energy	(v41693537)	149.3	9.9	2.3	5.1	9.6

Note(s): See "Data quality, concepts and methodology — Explanatory notes for tables" section.

Table 8-2
Annual average¹ percentage changes for the Consumer Price Index — All-items, not seasonally adjusted, Canada, provinces, urban centres, 2005 to 2008

	CANSIM vector number	Annual average 2008	Annual average percentage change			
			2008	2007	2006	2005
			percent			
Canada	(v41693271)	114.1	2.3	2.2	2.0	2.2
Newfoundland and Labrador	(v41693542)	114.3	2.9	1.5	1.8	2.7
Prince Edward Island	(v41693677)	117.5	3.4	1.8	2.3	3.1
Nova Scotia	(v41693811)	115.9	3.0	1.9	2.0	2.8
New Brunswick	(v41693946)	113.2	1.7	1.9	1.7	2.4
Quebec	(v41694081)	112.7	2.1	1.6	1.7	2.3
Ontario	(v41694217)	113.3	2.3	1.8	1.8	2.2
Manitoba	(v41694353)	113.4	2.3	2.0	2.0	2.7
Saskatchewan	(v41694489)	115.9	3.3	2.8	2.1	2.2
Alberta	(v41694625)	121.6	3.1	5.0	3.9	2.1
British Columbia	(v41694760)	112.3	2.1	1.8	1.7	2.0
Whitehorse, Yukon	(v41694896)	113.4	3.6	2.5	1.4	2.2
Yellowknife, Northwest Territories	(v41695020)	115.2	4.0	2.9	1.4	2.3
Iqaluit, Nunavut	(v41713462)	110.4	2.3	3.2	1.7	1.7
St. John's, Newfoundland and Labrador	(v41695144)	114.0	3.0	1.5	1.7	2.6
Charlottetown and Summerside, Prince Edward Island	(v41695150)	116.9	3.3	2.0	2.3	2.9
Halifax, Nova Scotia	(v41695156)	115.2	2.9	2.0	2.0	2.5
Saint John, New Brunswick	(v41695162)	113.2	1.8	1.8	1.7	2.4
Québec, Quebec	(v41695168)	112.4	2.1	1.3	1.7	2.3
Montréal, Quebec	(v41695174)	112.6	2.1	1.6	1.8	2.2
Ottawa-Gatineau, Ontario part, Ontario/Quebec	(v41695180)	113.1	2.2	1.9	1.7	2.2
Toronto, Ontario	(v41695186)	113.1	2.4	1.9	1.6	1.9
Thunder Bay, Ontario	(v41695192)	110.4	2.1	1.1	1.4	1.6
Winnipeg, Manitoba	(v41695198)	113.3	2.3	2.1	1.9	2.7
Regina, Saskatchewan	(v41695204)	115.2	3.1	2.6	2.0	2.1
Saskatoon, Saskatchewan	(v41695210)	117.1	3.9	3.4	2.2	2.3
Edmonton, Alberta	(v41695216)	121.4	3.4	4.8	3.1	2.1
Calgary, Alberta	(v41695222)	121.8	3.2	5.1	4.6	2.0
Vancouver, British Columbia	(v41695228)	112.8	2.4	2.0	1.9	1.9
Victoria, British Columbia	(v41695234)	111.8	1.8	1.2	1.5	2.2

Note(s): See "Data quality, concepts and methodology — Explanatory notes for tables" section.

Table 9-1

The Consumer Price Index, major components, selected sub-groups and special aggregates, provinces, Whitehorse and Yellowknife, not seasonally adjusted — Newfoundland and Labrador

	CANSIM vector number	Indexes			Percentage change September 2009 from	
		September 2009	August 2009	September 2008	August 2009	September 2008
		2002=100				
All-items	(v41691244)	115.2	115.0	116.2	0.2	-0.9
Special aggregates						
All-items excluding food	(v41691368)	113.9	113.4	116.2	0.4	-2.0
All-items excluding food and energy	(v41691369)	110.0	110.0	108.6	0.0	1.3
All-items excluding energy	(v41691374)	112.3	112.4	110.1	-0.1	2.0
All-items excluding gasoline	(v41693247)	114.0	113.7	113.3	0.3	0.6
Energy 1	(v41691375)	137.2	134.2	166.2	2.2	-17.4
All-items (1992=100)	(v41713404)	135.1	134.8	136.2	0.2	-0.8
Food						
Food	(v41691245)	121.4	121.9	116.3	-0.4	4.4
Food purchased from stores	(v41691246)	121.0	121.7	116.0	-0.6	4.3
Meat 2	(v41691247)	118.4	114.0	114.5	3.9	3.4
Dairy products 2	(v41691257)	127.0	127.5	123.9	-0.4	2.5
Bakery and cereal products (excluding infant food) 2	(v41691262)	142.7	145.8	140.6	-2.1	1.5
Fresh fruit 2	(v41691266)	103.6	111.8	108.7	-7.3	-4.7
Fresh vegetables 2	(v41691269)	97.4	101.5	86.9	-4.0	12.1
Food purchased from restaurants	(v41691276)	124.0	123.7	118.9	0.2	4.3
Shelter						
Shelter	(v41691277)	127.8	126.7	131.9	0.9	-3.1
Rented accommodation	(v41691278)	108.5	108.4	105.9	0.1	2.5
Owned accommodation	(v41691280)	128.6	129.0	125.5	-0.3	2.5
Replacement cost	(v41691281)	165.2	167.4	157.4	-1.3	5.0
Homeowners' home and mortgage insurance	(v41691283)	111.5	111.5	125.6	0.0	-11.2
Homeowners' maintenance and repairs	(v41691284)	127.3	127.2	112.7	0.1	13.0
Water, fuel and electricity	(v41691285)	135.6	131.0	158.1	3.5	-14.2
Electricity	(v41691286)	123.6	123.6	132.2	0.0	-6.5
Natural gas						
Fuel oil and other fuels	(v41691288)	157.4	136.4	233.2	15.4	-32.5
Household operations, furnishings and equipment						
Household operations, furnishings and equipment	(v41691289)	106.1	105.1	102.5	1.0	3.5
Household operations	(v41691290)	112.2	110.7	107.9	1.4	4.0
Telephone services	(v41691292)	101.7	101.7	105.5	0.0	-3.6
Internet access services	(v41693217)	112.8	112.8	109.0	0.0	3.5
Household furnishings and equipment	(v41691297)	95.9	95.8	93.5	0.1	2.6
Clothing and footwear						
Clothing and footwear	(v41691304)	92.9	92.5	98.1	0.4	-5.3
Women's clothing	(v41691306)	95.9	85.0	100.1	12.8	-4.2
Men's clothing	(v41691307)	87.7	99.3	95.0	-11.7	-7.7
Footwear	(v41691309)	84.9	88.8	96.9	-4.4	-12.4
Transportation						
Transportation	(v41691312)	111.6	112.4	120.9	-0.7	-7.7
Private transportation	(v41691313)	110.3	111.0	121.0	-0.6	-8.8
Purchase and leasing of passenger vehicles	(v41691315)	82.3	83.9	88.2	-1.9	-6.7
Gasoline	(v41691318)	140.3	139.4	176.8	0.6	-20.6
Passenger vehicle insurance premiums 3	(v41691321)	127.6	127.6	120.3	0.0	6.1
Public transportation	(v41691323)	122.2	124.3	117.7	-1.7	3.8
Health and personal care						
Health and personal care	(v41691328)	112.3	111.5	106.4	0.7	5.5
Health care	(v41691329)	116.9	116.4	108.8	0.4	7.4
Personal care	(v41691335)	108.3	107.3	104.5	0.9	3.6
Recreation, education and reading						
Recreation, education and reading	(v41691338)	104.3	103.7	102.6	0.6	1.7
Recreation	(v41691339)	104.3	104.0	103.1	0.3	1.2
Education and reading	(v41691347)	105.4	104.0	101.9	1.3	3.4
Alcoholic beverages and tobacco products						
Alcoholic beverages and tobacco products	(v41691351)	132.9	132.9	131.1	0.0	1.4
Alcoholic beverages	(v41691352)	117.9	118.0	115.4	-0.1	2.2
Tobacco products and smokers' supplies	(v41691358)	145.2	145.1	144.1	0.1	0.8

Note(s): See "Data quality, concepts and methodology — Explanatory notes for tables" section.

Table 9-2

The Consumer Price Index, major components, selected sub-groups and special aggregates, provinces, Whitehorse and Yellowknife, not seasonally adjusted — Prince Edward Island

	CANSIM vector number	Indexes			Percentage change September 2009 from	
		September 2009	August 2009	September 2008	August 2009	September 2008
		2002=100				
All-items	(v41691379)	118.6	118.3	120.3	0.3	-1.4
Special aggregates						
All-items excluding food	(v41691502)	117.2	116.8	120.3	0.3	-2.6
All-items excluding food and energy	(v41691503)	111.7	111.8	109.4	-0.1	2.1
All-items excluding energy	(v41691508)	114.3	114.4	111.5	-0.1	2.5
All-items excluding gasoline	(v41693249)	117.2	116.7	116.7	0.4	0.4
Energy 1	(v41691509)	154.9	150.8	195.8	2.7	-20.9
All-items (1992=100)	(v41713406)	139.6	139.2	141.5	0.3	-1.3
Food						
Food	(v41691380)	125.1	125.2	120.1	-0.1	4.2
Food purchased from stores	(v41691381)	127.2	127.6	120.7	-0.3	5.4
Meat 2	(v41691382)	121.5	119.7	114.2	1.5	6.4
Dairy products 2	(v41691392)	133.6	133.0	128.8	0.5	3.7
Bakery and cereal products (excluding infant food) 2	(v41691397)	143.5	144.7	139.7	-0.8	2.7
Fresh fruit 2	(v41691401)	103.6	111.0	105.2	-6.7	-1.5
Fresh vegetables 2	(v41691404)	121.0	124.6	120.5	-2.9	0.4
Food purchased from restaurants	(v41691411)	118.0	117.5	117.7	0.4	0.3
Shelter						
Shelter	(v41691412)	124.8	122.5	132.9	1.9	-6.1
Rented accommodation	(v41691413)	109.8	109.7	107.0	0.1	2.6
Owned accommodation	(v41691415)	114.4	114.4	114.4	0.0	0.0
Replacement cost	(v41691416)	113.7	113.7	112.5	0.0	1.1
Homeowners' home and mortgage insurance	(v41691418)	118.4	118.4	116.6	0.0	1.5
Homeowners' maintenance and repairs	(v41691419)	119.7	116.0	110.1	3.2	8.7
Water, fuel and electricity	(v41691420)	161.2	151.2	199.1	6.6	-19.0
Electricity	(v41691421)	153.1	156.1	156.3	-1.9	-2.0
Natural gas	
Fuel oil and other fuels	(v41691423)	168.6	143.6	246.7	17.4	-31.7
Household operations, furnishings and equipment						
Household operations, furnishings and equipment	(v41691424)	113.0	112.7	108.4	0.3	4.2
Household operations	(v41691425)	118.6	118.1	114.1	0.4	3.9
Telephone services	(v41691427)	101.9	101.9	105.1	0.0	-3.0
Internet access services	(v41693218)	106.3	106.3	102.7	0.0	3.5
Household furnishings and equipment	(v41691432)	101.5	101.8	96.7	-0.3	5.0
Clothing and footwear						
Clothing and footwear	(v41691439)	98.8	95.8	100.2	3.1	-1.4
Women's clothing	(v41691441)	96.1	87.6	100.7	9.7	-4.6
Men's clothing	(v41691442)	95.7	97.7	94.9	-2.0	0.8
Footwear	(v41691444)	97.1	99.8	99.1	-2.7	-2.0
Transportation						
Transportation	(v41691447)	115.5	116.9	126.4	-1.2	-8.6
Private transportation	(v41691448)	114.8	116.1	126.6	-1.1	-9.3
Purchase and leasing of passenger vehicles	(v41691450)	85.6	87.3	90.0	-1.9	-4.9
Gasoline	(v41691453)	147.7	150.0	191.4	-1.5	-22.8
Passenger vehicle insurance premiums 3	(v41691456)	132.1	131.8	123.6	0.2	6.9
Public transportation	(v41691458)	125.8	127.8	122.1	-1.6	3.0
Health and personal care						
Health and personal care	(v41691462)	114.9	115.5	107.2	-0.5	7.2
Health care	(v41691463)	116.5	116.1	107.9	0.3	8.0
Personal care	(v41691469)	113.2	115.0	106.4	-1.6	6.4
Recreation, education and reading						
Recreation, education and reading	(v41691472)	106.1	107.0	105.0	-0.8	1.0
Recreation	(v41691473)	100.1	101.9	99.8	-1.8	0.3
Education and reading	(v41691481)	122.0	119.8	118.5	1.8	3.0
Alcoholic beverages and tobacco products						
Alcoholic beverages and tobacco products	(v41691485)	149.3	149.4	141.5	-0.1	5.5
Alcoholic beverages	(v41691486)	117.3	117.5	114.6	-0.2	2.4
Tobacco products and smokers' supplies	(v41691492)	164.9	164.9	153.4	0.0	7.5

Note(s): See "Data quality, concepts and methodology — Explanatory notes for tables" section.

Table 9-3

The Consumer Price Index, major components, selected sub-groups and special aggregates, provinces, Whitehorse and Yellowknife, not seasonally adjusted — Nova Scotia

	CANSIM vector number	Indexes			Percentage change September 2009 from	
		September 2009	August 2009	September 2008	August 2009	September 2008
		2002=100				
All-items	(v41691513)	116.7	116.7	117.6	0.0	-0.8
Special aggregates						
All-items excluding food	(v41691637)	114.8	114.7	116.8	0.1	-1.7
All-items excluding food and energy	(v41691638)	111.1	111.0	109.6	0.1	1.4
All-items excluding energy	(v41691643)	113.9	113.9	111.8	0.0	1.9
All-items excluding gasoline	(v41693251)	115.7	115.5	114.7	0.2	0.9
Energy 1	(v41691644)	140.2	139.8	169.5	0.3	-17.3
All-items (1992=100)	(v41713408)	139.8	139.8	140.8	0.0	-0.7
Food	(v41691514)	125.8	126.4	121.2	-0.5	3.8
Food purchased from stores	(v41691515)	125.3	126.1	119.8	-0.6	4.6
Meat 2	(v41691516)	116.6	116.9	112.8	-0.3	3.4
Dairy products 2	(v41691526)	125.9	126.7	126.0	-0.6	-0.1
Bakery and cereal products (excluding infant food) 2	(v41691531)	142.5	142.3	138.7	0.1	2.7
Fresh fruit 2	(v41691535)	105.6	110.8	102.3	-4.7	3.2
Fresh vegetables 2	(v41691538)	110.6	118.9	104.7	-7.0	5.6
Food purchased from restaurants	(v41691545)	127.6	127.6	125.2	0.0	1.9
Shelter	(v41691546)	124.2	123.7	127.6	0.4	-2.7
Rented accommodation	(v41691547)	106.6	106.5	105.3	0.1	1.2
Owned accommodation	(v41691549)	122.4	122.8	121.4	-0.3	0.8
Replacement cost	(v41691550)	130.2	130.2	129.7	0.0	0.4
Homeowners' home and mortgage insurance	(v41691552)	148.6	148.6	139.5	0.0	6.5
Homeowners' maintenance and repairs	(v41691553)	114.2	114.5	111.0	-0.3	2.9
Water, fuel and electricity	(v41691554)	142.2	139.2	161.4	2.2	-11.9
Electricity	(v41691555)	133.1	133.1	121.8	0.0	9.3
Natural gas	
Fuel oil and other fuels	(v41691557)	151.4	142.8	225.4	6.0	-32.8
Household operations, furnishings and equipment	(v41691558)	109.1	109.0	106.0	0.1	2.9
Household operations	(v41691559)	115.0	114.6	110.7	0.3	3.9
Telephone services	(v41691561)	102.4	102.4	104.4	0.0	-1.9
Internet access services	(v41693219)	102.4	102.4	99.3	0.0	3.1
Household furnishings and equipment	(v41691566)	97.3	97.8	96.5	-0.5	0.8
Clothing and footwear	(v41691573)	95.5	87.5	97.3	9.1	-1.8
Women's clothing	(v41691575)	96.4	78.6	104.3	22.6	-7.6
Men's clothing	(v41691576)	89.6	88.7	89.3	1.0	0.3
Footwear	(v41691578)	99.2	94.3	93.4	5.2	6.2
Transportation	(v41691581)	109.8	111.5	119.0	-1.5	-7.7
Private transportation	(v41691582)	108.8	110.4	119.2	-1.4	-8.7
Purchase and leasing of passenger vehicles	(v41691584)	84.1	86.0	89.3	-2.2	-5.8
Gasoline	(v41691587)	138.1	140.6	177.5	-1.8	-22.2
Passenger vehicle insurance premiums 3	(v41691590)	112.3	112.7	105.6	-0.4	6.3
Public transportation	(v41691592)	122.9	124.8	116.9	-1.5	5.1
Health and personal care	(v41691597)	112.0	111.9	109.3	0.1	2.5
Health care	(v41691598)	115.7	115.2	111.0	0.4	4.2
Personal care	(v41691604)	108.6	108.8	107.8	-0.2	0.7
Recreation, education and reading	(v41691607)	107.3	108.5	107.3	-1.1	0.0
Recreation	(v41691608)	102.8	104.0	103.4	-1.2	-0.6
Education and reading	(v41691616)	119.1	120.0	117.3	-0.8	1.5
Alcoholic beverages and tobacco products	(v41691620)	154.2	153.9	139.7	0.2	10.4
Alcoholic beverages	(v41691621)	119.4	118.9	116.1	0.4	2.8
Tobacco products and smokers' supplies	(v41691627)	178.1	178.1	153.6	0.0	16.0

Note(s): See "Data quality, concepts and methodology — Explanatory notes for tables" section.

Table 9-4

The Consumer Price Index, major components, selected sub-groups and special aggregates, provinces, Whitehorse and Yellowknife, not seasonally adjusted — New Brunswick

	CANSIM vector number	Indexes			Percentage change September 2009 from	
		September 2009	August 2009	September 2008	August 2009	September 2008
		2002=100				
All-items	(v41691648)	114.2	114.1	114.7	0.1	-0.4
Special aggregates						
All-items excluding food	(v41691772)	112.1	111.9	113.6	0.2	-1.3
All-items excluding food and energy	(v41691773)	108.5	108.5	106.6	0.0	1.8
All-items excluding energy	(v41691778)	111.5	111.6	109.2	-0.1	2.1
All-items excluding gasoline	(v41693253)	113.1	112.9	111.4	0.2	1.5
Energy 1	(v41691779)	135.0	134.2	160.1	0.6	-15.7
All-items (1992=100)	(v41713410)	135.4	135.3	136.0	0.1	-0.4
Food	(v41691649)	124.3	124.7	119.8	-0.3	3.8
Food purchased from stores	(v41691650)	125.0	125.7	120.6	-0.6	3.6
Meat 2	(v41691651)	115.8	115.8	112.4	0.0	3.0
Dairy products 2	(v41691661)	127.3	126.1	124.4	1.0	2.3
Bakery and cereal products (excluding infant food) 2	(v41691666)	142.3	141.0	139.7	0.9	1.9
Fresh fruit 2	(v41691670)	103.2	110.1	106.6	-6.3	-3.2
Fresh vegetables 2	(v41691673)	112.5	114.9	107.7	-2.1	4.5
Food purchased from restaurants	(v41691680)	122.8	122.5	118.2	0.2	3.9
Shelter	(v41691681)	120.8	120.1	121.8	0.6	-0.8
Rented accommodation	(v41691682)	107.5	107.2	106.1	0.3	1.3
Owned accommodation	(v41691684)	116.9	117.1	115.2	-0.2	1.5
Replacement cost	(v41691685)	119.4	119.3	116.3	0.1	2.7
Homeowners' home and mortgage insurance	(v41691687)	132.5	132.3	126.2	0.2	5.0
Homeowners' maintenance and repairs	(v41691688)	122.6	121.8	115.9	0.7	5.8
Water, fuel and electricity	(v41691689)	137.4	134.5	145.9	2.2	-5.8
Electricity	(v41691690)	130.3	130.3	127.9	0.0	1.9
Natural gas						
Fuel oil and other fuels	(v41691692)	156.7	138.5	230.2	13.1	-31.9
Household operations, furnishings and equipment	(v41691693)	107.4	106.8	104.2	0.6	3.1
Household operations	(v41691694)	116.6	115.9	112.4	0.6	3.7
Telephone services	(v41691696)	104.0	104.0	107.2	0.0	-3.0
Internet access services	(v41693220)	110.5	110.5	106.0	0.0	4.2
Household furnishings and equipment	(v41691701)	90.8	90.7	89.5	0.1	1.5
Clothing and footwear	(v41691708)	97.4	94.3	96.2	3.3	1.2
Women's clothing	(v41691710)	98.0	86.8	95.1	12.9	3.0
Men's clothing	(v41691711)	91.4	92.2	95.2	-0.9	-4.0
Footwear	(v41691713)	95.6	98.9	93.0	-3.3	2.8
Transportation	(v41691716)	108.0	109.3	118.5	-1.2	-8.9
Private transportation	(v41691717)	107.3	108.5	118.5	-1.1	-9.5
Purchase and leasing of passenger vehicles	(v41691719)	80.9	82.6	86.0	-2.1	-5.9
Gasoline	(v41691722)	133.1	134.7	175.2	-1.2	-24.0
Passenger vehicle insurance premiums 3	(v41691725)	118.4	118.4	111.7	0.0	6.0
Public transportation	(v41691727)	123.1	124.7	120.6	-1.3	2.1
Health and personal care	(v41691732)	110.8	109.2	103.9	1.5	6.6
Health care	(v41691733)	116.3	114.7	107.5	1.4	8.2
Personal care	(v41691739)	105.1	103.7	100.5	1.4	4.6
Recreation, education and reading	(v41691742)	106.8	107.7	105.6	-0.8	1.1
Recreation	(v41691743)	100.3	101.7	99.4	-1.4	0.9
Education and reading	(v41691751)	127.5	126.5	125.3	0.8	1.8
Alcoholic beverages and tobacco products	(v41691755)	133.3	132.9	130.8	0.3	1.9
Alcoholic beverages	(v41691756)	120.6	120.3	118.5	0.2	1.8
Tobacco products and smokers' supplies	(v41691762)	139.6	139.2	136.8	0.3	2.0

Note(s): See "Data quality, concepts and methodology — Explanatory notes for tables" section.

Table 9-5

The Consumer Price Index, major components, selected sub-groups and special aggregates, provinces, Whitehorse and Yellowknife, not seasonally adjusted — Quebec

	CANSIM vector number	Indexes			Percentage change September 2009 from	
		September 2009	August 2009	September 2008	August 2009	September 2008
		2002=100				
All-items	(v41691783)	113.7	113.9	114.0	-0.2	-0.3
Special aggregates						
All-items excluding food	(v41691908)	111.8	111.7	113.2	0.1	-1.2
All-items excluding food and energy	(v41691909)	109.6	109.4	108.5	0.2	1.0
All-items excluding energy	(v41691914)	112.1	112.3	110.4	-0.2	1.5
All-items excluding gasoline	(v41693255)	112.5	112.6	111.2	-0.1	1.2
Energy 1	(v41691915)	130.9	131.8	155.4	-0.7	-15.8
All-items (1992=100)	(v41713412)	131.3	131.6	131.7	-0.2	-0.3
Food						
Food	(v41691784)	122.0	123.3	117.9	-1.1	3.5
Food purchased from stores	(v41691785)	122.0	124.0	117.7	-1.6	3.7
Meat 2	(v41691786)	120.3	122.4	117.5	-1.7	2.4
Dairy products 2	(v41691796)	130.5	129.4	125.5	0.9	4.0
Bakery and cereal products (excluding infant food) 2	(v41691801)	141.1	141.1	137.0	0.0	3.0
Fresh fruit 2	(v41691805)	106.3	113.8	111.8	-6.6	-4.9
Fresh vegetables 2	(v41691808)	88.9	105.7	87.3	-15.9	1.8
Food purchased from restaurants	(v41691815)	122.1	121.8	118.7	0.2	2.9
Shelter						
Shelter	(v41691816)	120.1	120.0	120.3	0.1	-0.2
Rented accommodation	(v41691817)	109.0	108.9	107.7	0.1	1.2
Owned accommodation	(v41691819)	125.6	125.6	124.3	0.0	1.0
Replacement cost	(v41691820)	139.2	138.6	136.7	0.4	1.8
Homeowners' home and mortgage insurance	(v41691822)	151.2	148.4	146.6	1.9	3.1
Homeowners' maintenance and repairs	(v41691823)	119.1	119.5	113.1	-0.3	5.3
Water, fuel and electricity	(v41691824)	119.7	119.1	127.6	0.5	-6.2
Electricity	(v41691825)	113.4	113.4	112.3	0.0	1.0
Natural gas	(v41691827)	107.2	108.4	124.4	-1.1	-13.8
Fuel oil and other fuels	(v41691828)	159.9	152.1	245.7	5.1	-34.9
Household operations, furnishings and equipment						
Household operations, furnishings and equipment	(v41691829)	109.0	107.8	105.6	1.1	3.2
Household operations	(v41691830)	114.3	112.1	110.0	2.0	3.9
Telephone services	(v41691832)	108.4	105.0	106.1	3.2	2.2
Internet access services	(v41693221)	95.6	95.6	94.0	0.0	1.7
Household furnishings and equipment	(v41691837)	100.4	100.7	98.4	-0.3	2.0
Clothing and footwear						
Clothing and footwear	(v41691844)	92.2	88.7	92.9	3.9	-0.8
Women's clothing	(v41691846)	83.2	75.1	85.3	10.8	-2.5
Men's clothing	(v41691847)	92.8	92.2	93.8	0.7	-1.1
Footwear	(v41691849)	96.7	95.5	98.6	1.3	-1.9
Transportation						
Transportation	(v41691852)	112.6	114.2	122.7	-1.4	-8.2
Private transportation	(v41691853)	111.4	113.0	122.6	-1.4	-9.1
Purchase and leasing of passenger vehicles	(v41691855)	85.7	87.6	90.3	-2.2	-5.1
Gasoline	(v41691858)	141.6	144.2	182.8	-1.8	-22.5
Passenger vehicle insurance premiums 3	(v41691861)	146.3	146.3	143.9	0.0	1.7
Public transportation	(v41691863)	129.7	131.0	125.9	-1.0	3.0
Health and personal care						
Health and personal care	(v41691868)	112.8	113.1	109.4	-0.3	3.1
Health care	(v41691869)	113.1	113.1	111.0	0.0	1.9
Personal care	(v41691875)	112.6	113.3	107.9	-0.6	4.4
Recreation, education and reading						
Recreation, education and reading	(v41691878)	97.5	97.8	96.9	-0.3	0.6
Recreation	(v41691879)	92.1	93.4	92.6	-1.4	-0.5
Education and reading	(v41691887)	119.9	115.8	114.8	3.5	4.4
Alcoholic beverages and tobacco products						
Alcoholic beverages and tobacco products	(v41691891)	127.1	127.3	123.8	-0.2	2.7
Alcoholic beverages	(v41691892)	111.5	111.9	109.2	-0.4	2.1
Tobacco products and smokers' supplies	(v41691898)	140.8	140.7	136.0	0.1	3.5

Note(s): See "Data quality, concepts and methodology — Explanatory notes for tables" section.

Table 9-6

The Consumer Price Index, major components, selected sub-groups and special aggregates, provinces, Whitehorse and Yellowknife, not seasonally adjusted — Ontario

	CANSIM vector number	Indexes			Percentage change September 2009 from	
		September 2009	August 2009	September 2008	August 2009	September 2008
		2002=100				
All-items	(v41691919)	113.8	113.7	115.1	0.1	-1.1
Special aggregates						
All-items excluding food	(v41692044)	112.6	112.3	114.6	0.3	-1.7
All-items excluding food and energy	(v41692045)	111.5	111.0	110.6	0.5	0.8
All-items excluding energy	(v41692050)	112.9	112.7	111.7	0.2	1.1
All-items excluding gasoline	(v41693257)	112.8	112.5	112.6	0.3	0.2
Energy ¹	(v41692051)	128.6	130.3	161.7	-1.3	-20.5
All-items (1992=100)	(v41713415)	136.7	136.5	138.2	0.1	-1.1
Food						
Food	(v41691920)	120.2	121.2	117.3	-0.8	2.5
Food purchased from stores	(v41691921)	119.3	120.9	116.7	-1.3	2.2
Meat ²	(v41691922)	120.9	120.1	116.7	0.7	3.6
Dairy products ²	(v41691932)	130.8	128.8	129.5	1.6	1.0
Bakery and cereal products (excluding infant food) ²	(v41691937)	136.2	137.3	135.6	-0.8	0.4
Fresh fruit ²	(v41691941)	98.7	103.2	104.4	-4.4	-5.5
Fresh vegetables ²	(v41691944)	83.0	95.5	80.9	-13.1	2.6
Food purchased from restaurants	(v41691951)	122.1	121.8	118.6	0.2	3.0
Shelter						
Shelter	(v41691952)	117.7	117.7	119.8	0.0	-1.8
Rented accommodation	(v41691953)	107.8	107.6	106.5	0.2	1.2
Owned accommodation	(v41691955)	122.1	122.3	121.0	-0.2	0.9
Replacement cost	(v41691956)	131.2	131.1	132.6	0.1	-1.1
Homeowners' home and mortgage insurance	(v41691958)	168.6	168.6	149.1	0.0	13.1
Homeowners' maintenance and repairs	(v41691959)	117.0	116.0	108.1	0.9	8.2
Water, fuel and electricity	(v41691960)	124.0	123.6	144.2	0.3	-14.0
Electricity ³	(v41691961)	120.1	120.1	111.0	0.0	8.2
Natural gas	(v41691963)	92.4	92.4	154.3	0.0	-40.1
Fuel oil and other fuels	(v41691964)	163.7	156.7	239.8	4.5	-31.7
Household operations, furnishings and equipment						
Household operations, furnishings and equipment	(v41691965)	107.9	106.3	106.1	1.5	1.7
Household operations	(v41691966)	114.7	113.3	112.1	1.2	2.3
Telephone services	(v41691968)	111.6	109.1	110.5	2.3	1.0
Internet access services	(v41693222)	91.2	91.2	91.5	0.0	-0.3
Household furnishings and equipment	(v41691973)	96.4	94.5	96.0	2.0	0.4
Clothing and footwear						
Clothing and footwear	(v41691980)	93.2	90.6	95.5	2.9	-2.4
Women's clothing	(v41691982)	88.8	85.4	93.7	4.0	-5.2
Men's clothing	(v41691983)	91.9	88.2	92.6	4.2	-0.8
Footwear	(v41691985)	91.2	89.1	91.5	2.4	-0.3
Transportation						
Transportation	(v41691988)	114.4	115.8	122.5	-1.2	-6.6
Private transportation	(v41691989)	113.3	114.7	122.9	-1.2	-7.8
Purchase and leasing of passenger vehicles	(v41691991)	83.8	85.8	89.4	-2.3	-6.3
Gasoline	(v41691994)	139.8	143.5	182.2	-2.6	-23.3
Passenger vehicle insurance premiums ⁴	(v41691997)	156.2	154.1	147.4	1.4	6.0
Public transportation	(v41691999)	122.6	124.2	119.0	-1.3	3.0
Health and personal care						
Health and personal care	(v41692004)	113.3	112.0	109.7	1.2	3.3
Health care	(v41692005)	117.8	117.1	115.8	0.6	1.7
Personal care	(v41692011)	109.7	107.7	104.6	1.9	4.9
Recreation, education and reading						
Recreation, education and reading	(v41692014)	104.6	103.5	103.6	1.1	1.0
Recreation	(v41692015)	97.1	97.5	98.0	-0.4	-0.9
Education and reading	(v41692023)	124.3	119.4	118.4	4.1	5.0
Alcoholic beverages and tobacco products						
Alcoholic beverages and tobacco products	(v41692027)	133.9	133.9	132.3	0.0	1.2
Alcoholic beverages	(v41692028)	112.6	112.6	111.3	0.0	1.2
Tobacco products and smokers' supplies	(v41692034)	155.3	155.4	153.5	-0.1	1.2

Note(s): See "Data quality, concepts and methodology — Explanatory notes for tables" section.

Table 9-7

The Consumer Price Index, major components, selected sub-groups and special aggregates, provinces, Whitehorse and Yellowknife, not seasonally adjusted — Manitoba

	CANSIM vector number	Indexes			Percentage change September 2009 from	
		September 2009	August 2009	September 2008	August 2009	September 2008
		2002=100				
All-items	(v41692055)	114.5	114.5	115.2	0.0	-0.6
Special aggregates						
All-items excluding food	(v41692180)	113.2	112.8	114.6	0.4	-1.2
All-items excluding food and energy	(v41692181)	111.0	110.6	109.5	0.4	1.4
All-items excluding energy	(v41692186)	112.9	112.9	111.1	0.0	1.6
All-items excluding gasoline	(v41693259)	113.1	113.1	111.7	0.0	1.3
Energy 1	(v41692187)	133.5	133.2	162.0	0.2	-17.6
All-items (1992=100)	(v41713419)	140.9	140.9	141.7	0.0	-0.6
Food						
Food purchased from stores	(v41692056)	121.1	122.7	118.0	-1.3	2.6
Meat 2	(v41692057)	120.1	122.2	116.4	-1.7	3.2
Dairy products 2	(v41692058)	115.6	118.6	114.3	-2.5	1.1
Bakery and cereal products (excluding infant food) 2	(v41692068)	127.0	126.8	120.3	0.2	5.6
Fresh fruit 2	(v41692073)	138.1	137.9	133.8	0.1	3.2
Fresh vegetables 2	(v41692077)	95.0	105.0	99.3	-9.5	-4.3
Food purchased from restaurants	(v41692080)	96.5	99.0	100.4	-2.5	-3.9
	(v41692087)	122.3	122.8	121.2	-0.4	0.9
Shelter						
Rented accommodation	(v41692088)	122.3	122.2	121.8	0.1	0.4
Owned accommodation	(v41692089)	113.5	113.1	110.6	0.4	2.6
Replacement cost	(v41692091)	126.2	126.2	124.3	0.0	1.5
Homeowners' home and mortgage insurance	(v41692092)	149.4	149.0	146.5	0.3	2.0
Homeowners' maintenance and repairs	(v41692094)	147.9	148.8	149.2	-0.6	-0.9
Water, fuel and electricity	(v41692095)	117.5	115.7	107.6	1.6	9.2
Electricity	(v41692096)	118.2	117.9	123.9	0.3	-4.6
Natural gas	(v41692097)	115.0	115.0	111.8	0.0	2.9
Fuel oil and other fuels	(v41692099)	111.3	111.3	132.7	0.0	-16.1
	(v41692100)	168.9	148.5	238.9	13.7	-29.3
Household operations, furnishings and equipment						
Household operations	(v41692101)	108.8	108.2	105.0	0.6	3.6
Telephone services	(v41692102)	112.8	112.1	109.3	0.6	3.2
Internet access services	(v41692104)	101.3	101.3	100.8	0.0	0.5
Household furnishings and equipment	(v41693223)	105.8	105.8	100.6	0.0	5.2
	(v41692109)	101.7	101.4	97.4	0.3	4.4
Clothing and footwear						
Women's clothing	(v41692116)	94.2	90.8	95.7	3.7	-1.6
Men's clothing	(v41692118)	89.8	78.9	90.6	13.8	-0.9
Footwear	(v41692119)	86.8	87.7	92.3	-1.0	-6.0
	(v41692121)	93.7	94.1	90.9	-0.4	3.1
Transportation						
Private transportation	(v41692124)	112.3	113.1	123.3	-0.7	-8.9
Purchase and leasing of passenger vehicles	(v41692125)	111.3	112.1	123.7	-0.7	-10.0
Gasoline	(v41692127)	86.0	87.8	91.1	-2.1	-5.6
Passenger vehicle insurance premiums 3	(v41692130)	150.1	149.8	201.4	0.2	-25.5
Public transportation	(v41692133)	110.7	110.7	109.2	0.0	1.4
	(v41692135)	123.2	123.8	119.1	-0.5	3.4
Health and personal care						
Health care	(v41692140)	112.0	111.1	107.3	0.8	4.4
Personal care	(v41692141)	116.6	116.3	112.2	0.3	3.9
	(v41692147)	107.5	105.8	102.5	1.6	4.9
Recreation, education and reading						
Recreation	(v41692150)	105.1	104.1	103.8	1.0	1.3
Education and reading	(v41692151)	101.4	101.1	101.3	0.3	0.1
	(v41692159)	118.1	114.2	112.5	3.4	5.0
Alcoholic beverages and tobacco products						
Alcoholic beverages	(v41692163)	129.3	129.1	126.2	0.2	2.5
Tobacco products and smokers' supplies	(v41692164)	117.3	116.8	115.5	0.4	1.6
	(v41692170)	138.7	138.8	134.0	-0.1	3.5

Note(s): See "Data quality, concepts and methodology — Explanatory notes for tables" section.

Table 9-8

The Consumer Price Index, major components, selected sub-groups and special aggregates, provinces, Whitehorse and Yellowknife, not seasonally adjusted — Saskatchewan

	CANSIM vector number	Indexes			Percentage change September 2009 from	
		September 2009	August 2009	September 2008	August 2009	September 2008
		2002=100				
All-items	(v41692191)	117.5	117.9	117.3	-0.3	0.2
Special aggregates						
All-items excluding food	(v41692316)	116.7	116.9	117.4	-0.2	-0.6
All-items excluding food and energy	(v41692317)	114.9	114.9	113.1	0.0	1.6
All-items excluding energy	(v41692322)	116.0	116.4	113.8	-0.3	1.9
All-items excluding gasoline	(v41693261)	116.4	116.7	114.1	-0.3	2.0
Energy 1	(v41692323)	131.1	132.0	150.1	-0.7	-12.7
All-items (1992=100)	(v41713421)	145.3	145.8	145.1	-0.3	0.1
Food						
Food purchased from stores	(v41692192)	121.1	122.8	116.6	-1.4	3.9
Meat 2	(v41692193)	118.8	121.4	115.2	-2.1	3.1
Dairy products 2	(v41692194)	113.7	116.2	113.1	-2.2	0.5
Bakery and cereal products (excluding infant food) 2	(v41692204)	128.6	127.9	121.2	0.5	6.1
Fresh fruit 2	(v41692209)	132.0	134.3	130.8	-1.7	0.9
Fresh vegetables 2	(v41692213)	102.6	115.8	108.7	-11.4	-5.6
Food purchased from restaurants	(v41692216)	104.5	112.1	107.9	-6.8	-3.2
	(v41692223)	125.8	125.5	119.4	0.2	5.4
Shelter						
Rented accommodation	(v41692224)	139.9	139.7	135.8	0.1	3.0
Owned accommodation	(v41692225)	121.0	120.4	114.1	0.5	6.0
Replacement cost	(v41692227)	151.9	151.8	148.6	0.1	2.2
Homeowners' home and mortgage insurance	(v41692228)	202.9	202.7	214.0	0.1	-5.2
Homeowners' maintenance and repairs	(v41692230)	225.8	225.9	223.5	0.0	1.0
Water, fuel and electricity	(v41692231)	128.0	126.8	112.0	0.9	14.3
Electricity	(v41692232)	127.2	126.8	123.2	0.3	3.2
Natural gas	(v41692233)	126.9	126.9	115.5	0.0	9.9
Fuel oil and other fuels	(v41692235)	109.6	109.6	114.5	0.0	-4.3
	(v41692236)	157.2	138.9	228.5	13.2	-31.2
Household operations, furnishings and equipment						
Household operations	(v41692237)	104.2	104.8	102.4	-0.6	1.8
Telephone services	(v41692238)	109.0	109.5	106.6	-0.5	2.3
Internet access services	(v41692240)	93.9	93.9	96.1	0.0	-2.3
Household furnishings and equipment	(v41693224)	98.1	98.1	96.5	0.0	1.7
	(v41692245)	95.4	96.0	94.6	-0.6	0.8
Clothing and footwear						
Women's clothing	(v41692252)	97.4	95.9	96.7	1.6	0.7
Men's clothing	(v41692254)	95.1	90.3	96.3	5.3	-1.2
Footwear	(v41692255)	86.8	88.4	88.2	-1.8	-1.6
	(v41692257)	96.0	95.4	92.7	0.6	3.6
Transportation						
Private transportation	(v41692260)	106.3	107.8	118.5	-1.4	-10.3
Purchase and leasing of passenger vehicles	(v41692261)	105.1	106.6	118.3	-1.4	-11.2
Gasoline	(v41692263)	82.0	83.8	89.4	-2.1	-8.3
Passenger vehicle insurance premiums 3	(v41692266)	141.1	143.8	188.2	-1.9	-25.0
Public transportation	(v41692269)	114.2	114.2	112.4	0.0	1.6
	(v41692271)	125.1	126.2	121.3	-0.9	3.1
Health and personal care						
Health care	(v41692276)	114.8	114.4	107.1	0.3	7.2
Personal care	(v41692277)	118.8	117.8	108.4	0.8	9.6
	(v41692283)	110.0	110.4	105.9	-0.4	3.9
Recreation, education and reading						
Recreation	(v41692286)	105.3	104.8	104.7	0.5	0.6
Education and reading	(v41692287)	100.1	100.3	100.5	-0.2	-0.4
	(v41692295)	123.4	119.6	118.5	3.2	4.1
Alcoholic beverages and tobacco products						
Alcoholic beverages	(v41692299)	132.7	132.7	129.3	0.0	2.6
Tobacco products and smokers' supplies	(v41692300)	124.1	124.1	118.8	0.0	4.5
	(v41692306)	137.1	137.1	135.7	0.0	1.0

Note(s): See "Data quality, concepts and methodology — Explanatory notes for tables" section.

Table 9-9
The Consumer Price Index, major components, selected sub-groups and special aggregates, provinces, Whitehorse and Yellowknife, not seasonally adjusted — Alberta

	CANSIM vector number	Indexes			Percentage change September 2009 from	
		September 2009	August 2009	September 2008	August 2009	September 2008
		2002=100				
All-items	(v41692327)	121.5	122.0	122.8	-0.4	-1.1
Special aggregates						
All-items excluding food	(v41692451)	122.0	122.3	124.0	-0.2	-1.6
All-items excluding food and energy	(v41692452)	120.3	119.9	118.6	0.3	1.4
All-items excluding energy	(v41692457)	120.1	120.1	118.3	0.0	1.5
All-items excluding gasoline	(v41693263)	120.6	121.1	120.2	-0.4	0.3
Energy 1	(v41692458)	136.2	143.9	179.7	-5.4	-24.2
All-items (1992=100)	(v41713424)	150.9	151.5	152.5	-0.4	-1.0
Food	(v41692328)	119.2	120.8	116.8	-1.3	2.1
Food purchased from stores	(v41692329)	118.1	120.7	116.2	-2.2	1.6
Meat 2	(v41692330)	114.1	114.2	111.8	-0.1	2.1
Dairy products 2	(v41692340)	129.4	130.5	124.1	-0.8	4.3
Bakery and cereal products (excluding infant food) 2	(v41692345)	135.3	136.1	133.6	-0.6	1.3
Fresh fruit 2	(v41692349)	100.4	106.2	104.3	-5.5	-3.7
Fresh vegetables 2	(v41692352)	89.5	95.1	97.6	-5.9	-8.3
Food purchased from restaurants	(v41692359)	121.2	120.9	117.7	0.2	3.0
Shelter	(v41692360)	145.2	147.4	150.0	-1.5	-3.2
Rented accommodation	(v41692361)	123.0	123.3	120.9	-0.2	1.7
Owned accommodation	(v41692363)	155.4	155.7	155.7	-0.2	-0.2
Replacement cost	(v41692364)	169.4	168.8	186.2	0.4	-9.0
Homeowners' home and mortgage insurance	(v41692366)	216.7	216.7	203.9	0.0	6.3
Homeowners' maintenance and repairs	(v41692367)	119.4	120.1	108.2	-0.6	10.4
Water, fuel and electricity	(v41692368)	132.1	143.4	160.4	-7.9	-17.6
Electricity	(v41692369)	106.6	118.7	122.7	-10.2	-13.1
Natural gas	(v41692371)	142.0	159.1	217.7	-10.7	-34.8
Fuel oil and other fuels
Household operations, furnishings and equipment	(v41692372)	108.4	107.7	106.4	0.6	1.9
Household operations	(v41692373)	114.1	114.3	111.6	-0.2	2.2
Telephone services	(v41692375)	103.0	103.0	101.1	0.0	1.9
Internet access services	(v41693225)	95.2	95.2	94.9	0.0	0.3
Household furnishings and equipment	(v41692380)	99.2	97.3	98.0	2.0	1.2
Clothing and footwear	(v41692387)	98.4	97.1	98.6	1.3	-0.2
Women's clothing	(v41692389)	93.2	89.0	95.1	4.7	-2.0
Men's clothing	(v41692390)	91.7	93.7	94.7	-2.1	-3.2
Footwear	(v41692392)	98.1	96.7	98.9	1.4	-0.8
Transportation	(v41692395)	115.8	117.0	124.4	-1.0	-6.9
Private transportation	(v41692396)	114.6	115.9	124.5	-1.1	-8.0
Purchase and leasing of passenger vehicles	(v41692398)	79.8	81.5	84.9	-2.1	-6.0
Gasoline	(v41692401)	144.6	146.5	195.5	-1.3	-26.0
Passenger vehicle insurance premiums 3	(v41692404)	168.4	168.4	151.1	0.0	11.4
Public transportation	(v41692406)	126.2	127.0	122.6	-0.6	2.9
Health and personal care	(v41692411)	120.1	114.7	111.8	4.7	7.4
Health care	(v41692412)	129.5	120.3	115.7	7.6	11.9
Personal care	(v41692418)	111.1	109.3	107.9	1.6	3.0
Recreation, education and reading	(v41692421)	107.4	106.7	105.8	0.7	1.5
Recreation	(v41692422)	102.4	102.6	102.0	-0.2	0.4
Education and reading	(v41692430)	125.6	121.4	119.6	3.5	5.0
Alcoholic beverages and tobacco products	(v41692434)	133.7	134.1	128.2	-0.3	4.3
Alcoholic beverages	(v41692435)	121.9	122.5	116.2	-0.5	4.9
Tobacco products and smokers' supplies	(v41692441)	142.7	142.9	137.6	-0.1	3.7

Note(s): See "Data quality, concepts and methodology — Explanatory notes for tables" section.

Table 9-10

The Consumer Price Index, major components, selected sub-groups and special aggregates, provinces, Whitehorse and Yellowknife, not seasonally adjusted — British Columbia

	CANSIM vector number	Indexes			Percentage change September 2009 from	
		September 2009	August 2009	September 2008	August 2009	September 2008
		2002=100				
All-items	(v41692462)	112.7	112.8	114.1	-0.1	-1.2
Special aggregates						
All-items excluding food	(v41692587)	111.8	111.7	114.0	0.1	-1.9
All-items excluding food and energy	(v41692588)	109.7	109.7	109.8	0.0	-0.1
All-items excluding energy	(v41692593)	111.1	111.3	110.7	-0.2	0.4
All-items excluding gasoline	(v41693265)	111.3	111.5	111.4	-0.2	-0.1
Energy 1	(v41692594)	133.8	132.2	159.9	1.2	-16.3
All-items (1992=100)	(v41713427)	132.9	133.0	134.5	-0.1	-1.2
Food	(v41692463)	117.3	118.4	114.7	-0.9	2.3
Food purchased from stores	(v41692464)	116.4	118.2	113.8	-1.5	2.3
Meat 2	(v41692465)	115.3	116.7	113.8	-1.2	1.3
Dairy products 2	(v41692475)	123.9	124.5	119.6	-0.5	3.6
Bakery and cereal products (excluding infant food) 2	(v41692480)	130.2	131.5	126.9	-1.0	2.6
Fresh fruit 2	(v41692484)	105.6	109.9	108.3	-3.9	-2.5
Fresh vegetables 2	(v41692487)	94.8	98.5	99.3	-3.8	-4.5
Food purchased from restaurants	(v41692494)	118.9	118.8	116.4	0.1	2.1
Shelter	(v41692495)	111.4	111.6	115.6	-0.2	-3.6
Rented accommodation	(v41692496)	108.2	108.1	106.5	0.1	1.6
Owned accommodation	(v41692498)	111.3	111.7	116.2	-0.4	-4.2
Replacement cost	(v41692499)	109.7	109.5	128.3	0.2	-14.5
Homeowners' home and mortgage insurance	(v41692501)	146.1	145.5	147.7	0.4	-1.1
Homeowners' maintenance and repairs	(v41692502)	115.5	116.3	106.5	-0.7	8.5
Water, fuel and electricity	(v41692503)	119.2	118.7	130.6	0.4	-8.7
Electricity	(v41692504)	114.4	114.4	113.5	0.0	0.8
Natural gas	(v41692506)	115.3	115.3	144.5	0.0	-20.2
Fuel oil and other fuels	(v41692507)	172.1	157.4	243.4	9.3	-29.3
Household operations, furnishings and equipment	(v41692508)	106.0	106.5	104.3	-0.5	1.6
Household operations	(v41692509)	111.1	111.1	108.3	0.0	2.6
Telephone services	(v41692511)	102.8	102.8	101.8	0.0	1.0
Internet access services	(v41693226)	95.2	95.2	94.0	0.0	1.3
Household furnishings and equipment	(v41692516)	96.9	98.2	96.9	-1.3	0.0
Clothing and footwear	(v41692523)	102.1	99.1	101.3	3.0	0.8
Women's clothing	(v41692525)	98.5	94.5	99.1	4.2	-0.6
Men's clothing	(v41692526)	97.7	92.4	97.2	5.7	0.5
Footwear	(v41692528)	100.3	97.1	101.0	3.3	-0.7
Transportation	(v41692531)	114.6	114.8	122.2	-0.2	-6.2
Private transportation	(v41692532)	113.4	113.8	122.5	-0.4	-7.4
Purchase and leasing of passenger vehicles	(v41692534)	84.5	86.8	89.5	-2.6	-5.6
Gasoline	(v41692537)	153.9	151.1	192.3	1.9	-20.0
Passenger vehicle insurance premiums 3	(v41692540)	128.1	128.1	125.2	0.0	2.3
Public transportation	(v41692542)	124.1	123.1	121.0	0.8	2.6
Health and personal care	(v41692547)	112.5	112.2	109.1	0.3	3.1
Health care	(v41692548)	117.5	117.3	114.5	0.2	2.6
Personal care	(v41692554)	106.5	106.2	102.8	0.3	3.6
Recreation, education and reading	(v41692557)	113.5	113.0	111.9	0.4	1.4
Recreation	(v41692558)	101.6	102.2	101.2	-0.6	0.4
Education and reading	(v41692566)	151.9	147.4	146.0	3.1	4.0
Alcoholic beverages and tobacco products	(v41692570)	124.2	124.1	121.1	0.1	2.6
Alcoholic beverages	(v41692571)	114.0	114.0	112.3	0.0	1.5
Tobacco products and smokers' supplies	(v41692577)	136.5	136.4	131.0	0.1	4.2

Note(s): See "Data quality, concepts and methodology — Explanatory notes for tables" section.

Table 9-11

The Consumer Price Index, major components, selected sub-groups and special aggregates, provinces, Whitehorse and Yellowknife, not seasonally adjusted — Whitehorse*

	CANSIM vector number	Indexes			Percentage change September 2009 from	
		September 2009	August 2009	September 2008	August 2009	September 2008
		2002=100				
All-items	(v41692598)	113.7	114.2	114.8	-0.4	-1.0
Special aggregates						
All-items excluding food	(v41692711)	113.3	113.6	115.3	-0.3	-1.7
All-items excluding food and energy	(v41692712)	111.1	111.7	109.0	-0.5	1.9
All-items excluding energy	(v41692717)	112.0	112.8	109.8	-0.7	2.0
All-items excluding gasoline	(v41693267)	113.0	113.5	112.7	-0.4	0.3
Energy 1	(v41692718)	127.9	126.1	167.4	1.4	-23.6
All-items (1992=100)	(v41713430)	133.7	134.4	135.1	-0.5	-1.0
Food						
Food	(v41692599)	115.6	117.2	113.0	-1.4	2.3
Food purchased from stores	(v41692600)	113.6	115.9	109.9	-2.0	3.4
Meat 2	(v41692601)	107.4	109.0	106.1	-1.5	1.2
Dairy products 2	(v41692611)	120.4	119.8	119.1	0.5	1.1
Bakery and cereal products (excluding infant food) 2	(v41692616)	125.2	123.7	120.5	1.2	3.9
Fresh fruit 2	(v41692620)	103.9	117.1	102.8	-11.3	1.1
Fresh vegetables 2	(v41692623)	93.8	100.1	89.6	-6.3	4.7
Food purchased from restaurants	(v41692630)	120.1	120.0	120.3	0.1	-0.2
Shelter						
Shelter	(v41692631)	127.7	127.1	129.9	0.5	-1.7
Rented accommodation
Owned accommodation
Replacement cost
Homeowners' home and mortgage insurance
Homeowners' maintenance and repairs
Water, fuel and electricity	(v41692632)	130.1	126.0	160.6	3.3	-19.0
Electricity	(v41692633)	97.9	97.9	114.4	0.0	-14.4
Natural gas
Fuel oil and other fuels	(v41692635)	168.5	155.6	239.9	8.3	-29.8
Household operations, furnishings and equipment						
Household operations, furnishings and equipment	(v41692636)	102.7	104.9	101.5	-2.1	1.2
Household operations	(v41692637)	109.8	110.1	106.1	-0.3	3.5
Telephone services	(v41692639)	99.1	99.1	99.1	0.0	0.0
Internet access services	(v41693227)	101.4	106.4	106.4	-4.7	-4.7
Household furnishings and equipment	(v41692644)	90.5	96.1	93.9	-5.8	-3.6
Clothing and footwear						
Clothing and footwear	(v41692651)	101.0	100.7	101.8	0.3	-0.8
Women's clothing	(v41692653)	96.2	95.0	97.0	1.3	-0.8
Men's clothing	(v41692654)	103.7	105.0	100.0	-1.2	3.7
Footwear	(v41692656)	99.1	97.9	105.8	1.2	-6.3
Transportation						
Transportation	(v41692659)	112.2	114.0	120.4	-1.6	-6.8
Private transportation	(v41692660)	110.0	111.7	120.8	-1.5	-8.9
Purchase and leasing of passenger vehicles	(v41692662)	85.7	87.8	90.4	-2.4	-5.2
Gasoline	(v41692665)	126.4	128.0	170.7	-1.3	-26.0
Passenger vehicle insurance premiums 3	(v41692668)	165.3	165.3	159.5	0.0	3.6
Public transportation	(v41692670)	122.2	124.2	118.1	-1.6	3.5
Health and personal care						
Health and personal care	(v41692675)	113.9	111.9	109.2	1.8	4.3
Health care	(v41692676)	118.6	118.0	113.4	0.5	4.6
Personal care	(v41692682)	108.1	104.9	104.0	3.1	3.9
Recreation, education and reading						
Recreation, education and reading	(v41692685)	97.9	97.3	96.9	0.6	1.0
Recreation	(v41692686)	94.3	94.3	93.8	0.0	0.5
Education and reading	(v41692693)	115.8	111.7	111.4	3.7	3.9
Alcoholic beverages and tobacco products						
Alcoholic beverages and tobacco products	(v41692695)	133.8	133.7	131.8	0.1	1.5
Alcoholic beverages	(v41692696)	108.4	108.3	107.7	0.1	0.6
Tobacco products and smokers' supplies	(v41692702)	163.2	163.2	159.6	0.0	2.3

Note(s): See "Data quality, concepts and methodology — Explanatory notes for tables" section.

* Yukon Territory

Table 9-12

The Consumer Price Index, major components, selected sub-groups and special aggregates, provinces, Whitehorse and Yellowknife, not seasonally adjusted — Yellowknife*

	CANSIM vector number	Indexes			Percentage change September 2009 from	
		September 2009	August 2009	September 2008	August 2009	September 2008
		2002=100				
All-items	(v41692722)	116.4	116.3	117.2	0.1	-0.7
Special aggregates						
All-items excluding food	(v41692835)	116.2	116.0	118.3	0.2	-1.8
All-items excluding food and energy	(v41692836)	112.9	113.0	110.8	-0.1	1.9
All-items excluding energy	(v41692841)	113.7	113.8	111.0	-0.1	2.4
All-items excluding gasoline	(v41693269)	115.8	115.7	115.4	0.1	0.3
Energy 1	(v41692842)	149.2	147.3	184.8	1.3	-19.3
All-items (1992=100)	(v41713431)	135.4	135.3	136.4	0.1	-0.7
Food	(v41692723)	117.0	117.6	111.7	-0.5	4.7
Food purchased from stores	(v41692724)	115.8	116.7	110.4	-0.8	4.9
Meat 2	(v41692725)	116.4	117.4	110.4	-0.9	5.4
Dairy products 2	(v41692735)	117.0	112.1	110.7	4.4	5.7
Bakery and cereal products (excluding infant food) 2	(v41692740)	119.6	121.7	112.6	-1.7	6.2
Fresh fruit 2	(v41692744)	107.4	121.5	114.1	-11.6	-5.9
Fresh vegetables 2	(v41692747)	118.8	129.1	113.4	-8.0	4.8
Food purchased from restaurants	(v41692754)	119.8	119.7	115.1	0.1	4.1
Shelter 3	(v41692755)	132.8	132.3	136.9	0.4	-3.0
Rented accommodation
Owned accommodation
Replacement cost
Homeowners' home and mortgage insurance
Homeowners' maintenance and repairs
Water, fuel and electricity	(v41692756)	151.5	148.6	179.8	2.0	-15.7
Electricity	(v41692757)	153.7	153.7	138.3	0.0	11.1
Natural gas
Fuel oil and other fuels	(v41692759)	182.9	174.4	288.1	4.9	-36.5
Household operations, furnishings and equipment	(v41692760)	106.5	107.2	105.3	-0.7	1.1
Household operations	(v41692761)	112.7	113.7	111.5	-0.9	1.1
Telephone services	(v41692763)	99.3	99.3	99.3	0.0	0.0
Internet access services	(v41693228)	73.6	81.7	81.7	-9.9	-9.9
Household furnishings and equipment	(v41692768)	93.0	93.0	91.8	0.0	1.3
Clothing and footwear	(v41692775)	92.5	90.0	95.9	2.8	-3.5
Women's clothing	(v41692777)	83.3	77.0	88.7	8.2	-6.1
Men's clothing	(v41692778)	96.5	96.9	94.0	-0.4	2.7
Footwear	(v41692780)	81.1	77.4	93.6	4.8	-13.4
Transportation	(v41692783)	106.0	107.1	113.3	-1.0	-6.4
Private transportation	(v41692784)	102.4	103.3	112.4	-0.9	-8.9
Purchase and leasing of passenger vehicles	(v41692786)	76.4	78.3	81.4	-2.4	-6.1
Gasoline	(v41692789)	134.2	134.6	169.4	-0.3	-20.8
Passenger vehicle insurance premiums 4	(v41692792)	145.1	145.1	134.1	0.0	8.2
Public transportation	(v41692794)	123.1	125.0	119.1	-1.5	3.4
Health and personal care	(v41692799)	111.8	110.9	106.8	0.8	4.7
Health care	(v41692800)	117.7	115.5	113.6	1.9	3.6
Personal care	(v41692806)	107.7	108.0	102.0	-0.3	5.6
Recreation, education and reading	(v41692809)	101.3	100.7	101.7	0.6	-0.4
Recreation	(v41692810)	98.6	98.6	99.8	0.0	-1.2
Education and reading	(v41692817)	117.1	111.2	110.6	5.3	5.9
Alcoholic beverages and tobacco products	(v41692819)	145.9	145.9	131.3	0.0	11.1
Alcoholic beverages	(v41692820)	136.0	136.0	126.7	0.0	7.3
Tobacco products and smokers' supplies	(v41692826)	155.6	155.6	135.1	0.0	15.2

Note(s): See "Data quality, concepts and methodology — Explanatory notes for tables" section.

* Northwest Territories

Table 10
The all-items Consumer Price Index, provinces, Whitehorse, Yellowknife and Iqaluit, ¹ not seasonally adjusted, historical data

	Jan.	Feb.	Mar.	Apr.	May	June	July	Aug.	Sept.	Oct.	Nov.	Dec.	Annual average ²
	2002=100												
Newfoundland and Labrador (v41691244)													
2004	103.1	103.0	103.4	103.7	104.8	105.1	105.7	105.4	105.6	105.9	106.2	105.8	104.8
2005	105.7	106.2	106.6	107.5	107.5	107.6	107.9	108.0	109.6	108.2	108.3	107.9	107.6
2006	108.4	108.4	108.7	109.6	110.6	110.4	110.5	110.9	109.7	108.9	109.1	109.3	109.5
2007	109.6	110.1	110.8	111.1	111.4	111.9	111.6	111.1	111.1	111.2	111.6	111.8	111.1
2008	111.9	112.4	112.9	113.6	114.5	115.4	116.3	115.8	116.2	115.1	114.3	113.1	114.3
2009	112.9	113.4	113.5	114.1	115.2	115.8	115.2	115.0	115.2
Prince Edward Island (v41691379)													
2004	103.5	104.0	104.7	105.3	105.6	106.2	105.9	105.8	106.4	106.7	108.2	107.4	105.8
2005	106.5	106.7	107.6	108.6	109.1	108.9	109.0	109.3	111.8	111.5	110.7	110.0	109.1
2006	110.3	110.8	110.4	112.1	112.8	112.3	112.5	112.8	111.6	110.7	111.1	111.6	111.6
2007	111.5	111.9	113.3	113.7	114.2	114.1	114.0	113.8	114.0	114.1	114.3	114.7	113.6
2008	114.2	114.6	115.8	116.7	118.9	119.5	120.0	119.3	120.3	118.6	116.9	114.7	117.5
2009	114.1	115.7	115.6	116.4	117.6	118.5	118.4	118.3	118.6
Nova Scotia (v41691513)													
2004	103.2	103.7	104.4	104.4	105.2	105.6	105.8	105.7	105.9	106.2	106.7	106.4	105.3
2005	106.1	106.4	107.1	107.6	107.8	107.7	108.1	108.8	110.4	109.8	109.1	109.3	108.2
2006	109.3	109.0	109.6	111.0	111.2	111.0	111.3	111.4	110.6	110.1	110.4	110.2	110.4
2007	110.1	111.0	111.9	112.5	113.1	113.0	113.0	112.7	112.9	112.6	113.5	113.6	112.5
2008	113.5	113.9	114.5	115.5	117.1	117.8	117.8	117.7	117.6	116.4	115.0	113.4	115.9
2009	113.4	114.3	114.5	115.0	115.8	116.5	116.6	116.7	116.7
New Brunswick (v41691648)													
2004	103.3	103.8	104.2	104.1	105.1	105.3	105.2	105.2	105.1	105.5	106.0	105.6	104.9
2005	105.6	105.9	106.8	107.1	107.0	106.9	107.5	108.0	109.2	108.4	108.2	108.3	107.4
2006	108.8	108.7	109.1	110.0	110.1	110.0	109.7	110.0	108.8	107.8	108.4	109.1	109.2
2007	109.2	109.6	110.7	111.2	111.6	112.1	112.1	111.4	112.0	111.4	111.9	111.9	111.3
2008	111.7	111.7	112.1	112.8	113.9	114.5	114.9	114.3	114.7	113.4	112.6	111.2	113.2
2009	111.1	112.0	112.3	112.5	113.7	114.5	114.4	114.1	114.2
Quebec (v41691783)													
2004	103.2	103.6	103.9	103.8	104.8	104.8	104.6	104.5	104.7	105.3	105.5	105.2	104.5
2005	105.3	105.6	106.4	106.4	106.5	106.8	107.0	107.4	108.5	107.7	107.5	107.4	106.9
2006	108.1	108.0	108.4	109.1	109.3	109.1	109.2	109.2	108.4	108.4	108.6	108.7	108.7
2007	108.8	109.6	110.4	110.6	111.1	110.7	110.6	110.1	110.5	110.5	110.8	111.1	110.4
2008	111.0	111.4	111.7	112.4	113.6	114.1	114.1	113.5	114.0	113.0	112.4	111.7	112.7
2009	111.5	112.3	112.6	112.7	113.7	114.3	113.8	113.9	113.7
Ontario (v41691919)													
2004	103.4	103.6	104.0	104.1	105.0	104.8	104.9	104.7	104.8	105.0	105.4	105.3	104.6
2005	105.1	105.8	106.4	106.5	106.6	106.8	106.9	107.5	108.2	107.7	107.5	107.6	106.9
2006	108.2	107.9	108.8	109.1	109.5	109.3	109.0	109.1	108.5	108.4	108.6	108.8	108.8
2007	108.6	109.7	110.8	111.1	111.6	111.1	111.1	110.9	111.0	110.9	111.2	111.1	110.8
2008	110.9	111.4	111.7	112.5	113.6	114.2	115.1	114.8	115.1	113.7	113.5	112.8	113.3
2009	112.4	113.1	113.7	113.2	114.0	114.2	113.7	113.7	113.8
Manitoba (v41692055)													
2004	102.0	101.9	102.4	102.7	104.1	104.4	104.3	104.3	104.1	104.5	105.2	105.5	103.8
2005	105.0	105.2	105.6	106.3	106.5	106.7	107.0	107.4	107.8	107.5	107.3	106.9	106.6
2006	107.4	107.2	107.6	108.5	109.2	109.3	109.7	109.7	108.8	108.9	109.0	108.7	108.7
2007	109.1	109.4	110.4	110.9	111.7	111.7	112.1	111.2	111.8	111.0	110.8	110.9	110.9
2008	110.8	111.2	111.8	112.7	113.5	114.4	115.0	115.0	115.2	114.3	113.8	113.0	113.4
2009	112.4	113.1	113.0	113.7	114.4	115.1	115.0	114.5	114.5
Saskatchewan (v41692191)													
2004	102.8	102.9	103.1	103.8	104.9	105.0	105.2	104.7	104.9	105.5	106.1	105.8	104.6
2005	105.6	105.8	106.4	107.1	106.5	106.8	107.1	107.4	108.0	107.5	107.4	107.3	106.9
2006	107.9	107.9	108.2	109.2	109.6	109.6	109.8	110.4	109.3	109.1	108.8	108.9	109.1
2007	109.5	109.9	111.0	111.8	112.6	113.1	113.3	113.1	113.4	113.0	113.1	112.9	112.2
2008	113.0	113.6	114.5	115.4	116.2	117.0	116.9	117.0	117.3	116.9	116.7	115.8	115.9
2009	115.7	116.5	116.6	116.1	117.0	118.2	118.0	117.9	117.5

Table 10 – continued

The all-items Consumer Price Index, provinces, Whitehorse, Yellowknife and Iqaluit, 1 not seasonally adjusted, historical data

	Jan.	Feb.	Mar.	Apr.	May	June	July	Aug.	Sept.	Oct.	Nov.	Dec.	Annual average ²
	2002=100												
Alberta (v41692327)													
2004	104.6	104.6	104.9	105.2	106.1	107.1	106.4	106.2	106.3	106.0	106.7	106.4	105.9
2005	106.1	106.2	106.9	107.6	107.4	107.8	108.7	108.7	110.0	109.7	109.6	109.0	108.1
2006	110.4	109.7	110.3	111.4	112.2	111.8	113.4	113.9	114.1	113.0	113.7	114.2	112.3
2007	114.7	115.0	116.4	117.5	117.8	118.8	119.1	119.3	119.4	118.6	119.1	118.9	117.9
2008	118.8	119.0	119.8	121.3	122.2	124.0	123.3	124.1	122.8	121.5	121.6	121.2	121.6
2009	120.2	121.5	120.9	120.4	121.4	122.0	121.5	122.0	121.5
British Columbia (v41692462)													
2004	102.5	102.9	103.2	103.9	104.7	104.9	104.7	104.7	104.8	104.8	105.0	104.8	104.2
2005	104.8	105.0	105.3	106.0	106.3	106.4	106.6	106.8	107.3	107.1	107.1	106.7	106.3
2006	106.6	106.7	107.2	107.8	108.7	108.7	108.8	109.0	108.4	108.3	108.7	108.8	108.1
2007	109.0	109.1	109.5	109.9	110.5	110.3	110.5	110.4	110.5	110.0	110.1	110.1	110.0
2008	109.9	110.3	110.8	111.8	112.8	113.6	114.2	114.0	114.1	112.8	112.3	111.4	112.3
2009	111.4	111.9	112.0	112.1	112.9	112.8	112.4	112.8	112.7
Whitehorse, Yukon (v41692598)													
2004	101.1	101.4	101.9	102.2	103.3	103.6	103.5	103.1	103.4	103.5	104.6	104.0	103.0
2005	103.1	103.3	103.9	104.4	104.9	105.3	105.4	105.7	106.8	106.8	107.1	106.3	105.3
2006	106.4	105.9	105.9	106.9	107.5	107.9	107.5	107.7	107.2	106.3	106.3	106.3	106.8
2007	107.0	107.3	108.0	108.7	109.5	109.7	110.7	110.5	110.8	110.4	110.7	110.6	109.5
2008	110.4	110.1	111.0	111.8	113.6	114.6	115.3	115.4	114.8	114.9	114.6	113.9	113.4
2009	113.0	113.7	113.6	113.4	114.0	114.9	114.4	114.2	113.7
Yellowknife, Northwest Territories (v41692722)													
2004	103.1	102.8	103.2	103.3	104.0	104.3	104.3	103.7	103.7	103.8	104.7	105.0	103.8
2005	104.6	104.8	104.9	105.2	106.1	106.4	106.4	106.3	107.0	107.5	107.8	107.8	106.2
2006	107.4	107.3	107.0	107.9	108.0	107.7	107.8	108.0	107.8	107.1	107.6	108.4	107.7
2007	108.9	109.1	109.8	110.4	111.3	111.6	111.5	111.1	111.6	111.1	110.9	111.9	110.8
2008	111.3	112.3	113.3	114.9	115.7	116.6	116.6	116.9	117.2	116.3	116.1	115.4	115.2
2009	114.3	114.5	114.3	115.3	116.0	116.9	116.5	116.3	116.4
Iqaluit, Nunavut (Dec. 2002=100) (v41713432)													
2004	100.0	99.9	100.2	100.8	101.4	101.8	101.8	101.4	101.6	101.2	101.8	102.2	101.2
2005	102.0	101.7	101.8	102.1	102.8	103.0	103.0	103.4	103.8	103.3	103.8	103.6	102.9
2006	103.5	103.7	103.7	104.5	104.8	105.1	104.8	104.4	105.0	104.2	105.2	105.7	104.6
2007	106.4	106.5	106.7	107.7	108.0	108.0	108.9	108.9	109.1	108.1	108.2	108.7	107.9
2008	108.2	108.4	108.2	109.0	109.8	110.5	111.6	112.2	111.9	111.1	111.9	112.4	110.4
2009	111.8	111.8	112.4	113.5	113.6	113.8	113.3	114.0	113.2

Note(s): See "Data quality, concepts and methodology — Explanatory notes for tables" section.

Table 11
The Consumer Price Index and selected sub-groups, by urban centre, ^{1,2} not seasonally adjusted

	CANSIM vector number	Indexes			Percentage change September 2009 from	
		September 2009	August 2009	September 2008	August 2009	September 2008
2002=100						
St. John's, Newfoundland and Labrador						
All-items	(v41692846)	115.3	115.1	115.8	0.2	-0.4
Shelter	(v41692847)	126.3	125.5	128.5	0.6	-1.7
Rented accommodation	(v41692848)	108.9	108.7	105.6	0.2	3.1
Owned accommodation	(v41692849)	128.0	128.4	124.9	-0.3	2.5
Water, fuel and electricity	(v41692850)	135.5	130.8	156.8	3.6	-13.6
All-items (1992=100)	(v41713405)	135.3	135.1	135.9	0.1	-0.4
Charlottetown and Summerside, Prince Edward Island						
All-items	(v41692852)	118.3	118.0	119.6	0.3	-1.1
Shelter	(v41692853)	122.3	120.3	129.3	1.7	-5.4
Rented accommodation	(v41692854)	110.9	110.8	107.5	0.1	3.2
Owned accommodation	(v41692855)	114.9	115.0	115.5	-0.1	-0.5
Water, fuel and electricity	(v41692856)	160.0	150.3	197.2	6.5	-18.9
All-items (1992=100)	(v41713407)	138.6	138.2	140.1	0.3	-1.1
Halifax, Nova Scotia						
All-items	(v41692858)	116.3	116.2	116.8	0.1	-0.4
Shelter	(v41692859)	121.8	121.4	123.8	0.3	-1.6
Rented accommodation	(v41692860)	107.7	107.6	106.4	0.1	1.2
Owned accommodation	(v41692861)	122.1	122.4	121.2	-0.2	0.7
Water, fuel and electricity	(v41692862)	139.1	135.6	155.8	2.6	-10.7
All-items (1992=100)	(v41713409)	138.4	138.3	139.1	0.1	-0.5
Saint John, New Brunswick						
All-items	(v41692864)	114.3	114.2	114.6	0.1	-0.3
Shelter	(v41692865)	122.3	121.7	122.3	0.5	0.0
Rented accommodation	(v41692866)	110.8	110.6	107.5	0.2	3.1
Owned accommodation	(v41692867)	119.3	119.5	117.4	-0.2	1.6
Water, fuel and electricity	(v41692868)	141.4	138.2	149.4	2.3	-5.4
All-items (1992=100)	(v41713411)	135.1	135.0	135.5	0.1	-0.3
Québec, Quebec						
All-items	(v41692870)	113.6	113.8	113.6	-0.2	0.0
Shelter	(v41692871)	120.3	120.0	118.6	0.3	1.4
Rented accommodation	(v41692872)	111.6	111.5	109.3	0.1	2.1
Owned accommodation	(v41692873)	124.9	124.6	122.1	0.2	2.3
Water, fuel and electricity	(v41692874)	118.4	117.9	123.1	0.4	-3.8
All-items (1992=100)	(v41713413)	132.0	132.2	132.0	-0.2	0.0
Montréal, Quebec						
All-items	(v41692876)	113.8	114.0	113.8	-0.2	0.0
Shelter	(v41692877)	119.5	119.4	119.8	0.1	-0.3
Rented accommodation	(v41692878)	109.7	109.6	108.6	0.1	1.0
Owned accommodation	(v41692879)	125.3	125.3	124.6	0.0	0.6
Water, fuel and electricity	(v41692880)	118.6	118.1	125.8	0.4	-5.7
All-items (1992=100)	(v41713414)	131.7	131.8	131.6	-0.1	0.1
Ottawa-Gatineau, Ontario part, Ontario/Quebec ³						
All-items	(v41692882)	113.9	113.8	115.0	0.1	-1.0
Shelter	(v41692883)	120.1	120.2	121.6	-0.1	-1.2
Rented accommodation	(v41692884)	107.5	107.3	105.7	0.2	1.7
Owned accommodation	(v41692885)	125.0	125.2	123.3	-0.2	1.4
Water, fuel and electricity	(v41692886)	129.0	128.9	149.3	0.1	-13.6
All-items (1992=100)	(v41713416)	138.8	138.6	140.1	0.1	-0.9
Toronto, Ontario						
All-items	(v41692888)	113.7	113.6	114.9	0.1	-1.0
Shelter	(v41692889)	116.3	116.3	118.8	0.0	-2.1
Rented accommodation	(v41692890)	108.5	108.2	107.1	0.3	1.3
Owned accommodation	(v41692891)	120.0	120.2	119.5	-0.2	0.4
Water, fuel and electricity	(v41692892)	119.1	119.0	144.1	0.1	-17.3
All-items (1992=100)	(v41713417)	137.0	136.9	138.5	0.1	-1.1

Table 11 – continued

The Consumer Price Index and selected sub-groups, by urban centre, ^{1,2} not seasonally adjusted

	CANSIM vector number	Indexes			Percentage change September 2009 from	
		September 2009	August 2009	September 2008	August 2009	September 2008
2002=100						
Thunder Bay, Ontario						
All-items	(v41692894)	110.4	110.2	112.2	0.2	-1.6
Shelter	(v41692895)	103.5	103.6	108.6	-0.1	-4.7
Rented accommodation	(v41692896)	103.5	103.4	103.0	0.1	0.5
Owned accommodation	(v41692897)	102.8	103.1	102.4	-0.3	0.4
Water, fuel and electricity	(v41692898)	118.5	118.2	145.3	0.3	-18.4
All-items (1992=100)	(v41713418)	131.6	131.5	133.8	0.1	-1.6
Winnipeg, Manitoba						
All-items	(v41692900)	114.3	114.3	115.0	0.0	-0.6
Shelter	(v41692901)	121.5	121.5	121.2	0.0	0.2
Rented accommodation	(v41692902)	114.8	114.4	111.6	0.3	2.9
Owned accommodation	(v41692903)	125.0	125.1	123.3	-0.1	1.4
Water, fuel and electricity	(v41692904)	116.5	116.4	124.2	0.1	-6.2
All-items (1992=100)	(v41713420)	141.0	140.9	141.8	0.1	-0.6
Regina, Saskatchewan						
All-items	(v41692906)	117.6	118.0	116.9	-0.3	0.6
Shelter	(v41692907)	138.8	138.7	132.8	0.1	4.5
Rented accommodation	(v41692908)	119.0	118.8	113.0	0.2	5.3
Owned accommodation	(v41692909)	151.7	151.7	145.2	0.0	4.5
Water, fuel and electricity	(v41692910)	122.8	122.7	118.0	0.1	4.1
All-items (1992=100)	(v41713422)	146.5	147.0	145.6	-0.3	0.6
Saskatoon, Saskatchewan						
All-items	(v41692912)	118.5	118.9	118.3	-0.3	0.2
Shelter	(v41692913)	141.3	141.1	138.3	0.1	2.2
Rented accommodation	(v41692914)	127.0	126.0	118.3	0.8	7.4
Owned accommodation	(v41692915)	148.5	148.4	148.0	0.1	0.3
Water, fuel and electricity	(v41692916)	132.5	132.5	126.8	0.0	4.5
All-items (1992=100)	(v41713423)	145.9	146.3	145.6	-0.3	0.2
Edmonton, Alberta						
All-items	(v41692918)	121.7	122.1	122.3	-0.3	-0.5
Shelter	(v41692919)	146.2	148.0	148.1	-1.2	-1.3
Rented accommodation	(v41692920)	128.4	128.4	125.1	0.0	2.6
Owned accommodation	(v41692921)	148.2	148.7	148.2	-0.3	0.0
Water, fuel and electricity	(v41692922)	155.8	165.5	173.3	-5.9	-10.1
All-items (1992=100)	(v41713425)	148.3	148.9	149.1	-0.4	-0.5
Calgary, Alberta						
All-items	(v41692924)	121.6	122.1	123.1	-0.4	-1.2
Shelter	(v41692925)	143.6	145.7	149.5	-1.4	-3.9
Rented accommodation	(v41692926)	119.3	119.5	117.5	-0.2	1.5
Owned accommodation	(v41692927)	159.3	159.4	159.8	-0.1	-0.3
Water, fuel and electricity	(v41692928)	111.6	123.7	147.0	-9.8	-24.1
All-items (1992=100)	(v41713426)	153.0	153.6	154.9	-0.4	-1.2
Vancouver, British Columbia						
All-items	(v41692930)	113.5	113.6	114.6	-0.1	-1.0
Shelter	(v41692931)	113.0	113.3	117.1	-0.3	-3.5
Rented accommodation	(v41692932)	108.6	108.5	106.8	0.1	1.7
Owned accommodation	(v41692933)	114.8	115.2	119.3	-0.3	-3.8
Water, fuel and electricity	(v41692934)	114.1	114.0	128.4	0.1	-11.1
All-items (1992=100)	(v41713428)	134.7	134.7	136.0	0.0	-1.0
Victoria, British Columbia						
All-items	(v41692936)	112.2	112.3	113.3	-0.1	-1.0
Shelter	(v41692937)	110.0	110.1	113.4	-0.1	-3.0
Rented accommodation	(v41692938)	108.9	108.6	107.3	0.3	1.5
Owned accommodation	(v41692939)	107.0	107.3	112.4	-0.3	-4.8
Water, fuel and electricity	(v41692940)	130.7	130.2	134.9	0.4	-3.1
All-items (1992=100)	(v41713429)	131.7	131.8	133.0	-0.1	-1.0

Note(s): See "Data quality, concepts and methodology — Explanatory notes for tables" section.

Table 12
The all-items Consumer Price Index by urban centre, ^{1,2} not seasonally adjusted, historical data

	Jan.	Feb.	Mar.	Apr.	May	June	July	Aug.	Sept.	Oct.	Nov.	Dec.	Annual average ³
	2002=100												
St. John's, Newfoundland and Labrador (v41692846)													
2004	103.1	102.9	103.3	103.6	104.6	104.9	105.5	105.2	105.3	105.7	105.9	105.6	104.6
2005	105.4	105.9	106.3	107.1	107.2	107.3	107.6	107.7	109.2	107.8	107.9	107.6	107.3
2006	108.0	108.0	108.2	109.2	110.1	109.9	110.0	110.4	109.3	108.5	108.7	108.8	109.1
2007	109.2	109.5	110.3	110.6	110.9	111.3	111.1	110.7	110.7	111.0	111.3	111.5	110.7
2008	111.6	112.1	112.5	113.2	114.0	114.8	115.8	115.3	115.8	114.9	114.2	113.3	114.0
2009	113.0	113.6	113.7	114.2	115.3	115.8	115.3	115.1	115.3
Charlottetown and Summerside, Prince Edward Island (v41692852)													
2004	103.2	103.8	104.4	104.9	105.2	105.7	105.5	105.5	106.0	106.2	107.6	106.9	105.4
2005	106.1	106.3	107.1	108.0	108.4	108.3	108.4	108.7	110.9	110.7	110.0	109.3	108.5
2006	109.7	110.2	109.9	111.4	112.0	111.7	111.8	112.1	111.1	110.4	110.7	111.1	111.0
2007	111.0	111.5	112.8	113.1	113.6	113.5	113.4	113.3	113.7	113.8	114.0	114.3	113.2
2008	113.8	114.2	115.3	116.2	118.3	118.8	119.2	118.6	119.6	118.2	116.6	114.5	116.9
2009	114.0	115.6	115.5	116.3	117.4	118.2	118.2	118.0	118.3
Halifax, Nova Scotia (v41692858)													
2004	103.1	103.5	104.2	104.2	105.0	105.3	105.5	105.5	105.6	105.9	106.4	106.0	105.0
2005	105.7	105.9	106.6	107.0	107.2	107.1	107.4	108.2	109.6	109.1	108.5	108.6	107.6
2006	108.6	108.3	108.9	110.2	110.5	110.3	110.5	110.7	110.0	109.7	110.0	109.7	109.8
2007	109.7	110.6	111.4	111.9	112.5	112.5	112.4	112.2	112.6	112.3	113.1	113.1	112.0
2008	112.9	113.4	113.9	114.8	116.2	116.9	116.9	116.9	116.8	115.8	114.5	113.0	115.2
2009	113.1	113.9	114.1	114.7	115.3	116.0	116.1	116.2	116.3
Saint John, New Brunswick (v41692864)													
2004	103.4	103.9	104.2	104.1	105.1	105.2	105.2	105.1	105.1	105.5	106.0	105.6	104.9
2005	105.5	105.8	106.8	107.1	107.0	106.9	107.5	108.0	109.2	108.4	108.2	108.3	107.4
2006	108.8	108.7	109.2	110.1	110.1	110.0	109.8	110.0	108.9	107.9	108.4	109.0	109.2
2007	109.2	109.6	110.6	111.2	111.4	112.1	112.1	111.4	112.0	111.4	111.9	111.9	111.2
2008	111.7	111.6	112.2	112.7	114.0	114.5	115.0	114.4	114.6	113.5	112.7	111.2	113.2
2009	111.4	112.1	112.5	112.7	113.9	114.6	114.5	114.2	114.3
Québec, Quebec (v41692870)													
2004	103.3	103.7	103.9	103.8	104.9	104.9	104.7	104.6	104.8	105.3	105.5	105.1	104.5
2005	105.3	105.6	106.4	106.3	106.5	106.9	107.0	107.4	108.5	107.7	107.5	107.4	106.9
2006	108.2	108.0	108.4	109.1	109.3	109.1	109.2	109.2	108.4	108.2	108.4	108.4	108.7
2007	108.5	109.2	110.1	110.3	110.7	110.4	110.4	109.8	110.2	110.2	110.5	110.8	110.1
2008	110.6	111.1	111.3	112.0	113.2	113.7	113.7	113.1	113.6	112.7	112.1	111.3	112.4
2009	111.2	112.0	112.4	112.5	113.6	114.2	113.7	113.8	113.6
Montréal, Quebec (v41692876)													
2004	103.1	103.5	103.7	103.7	104.6	104.6	104.4	104.4	104.7	105.3	105.3	105.1	104.4
2005	105.1	105.4	106.2	106.2	106.4	106.7	106.8	107.3	108.2	107.5	107.5	107.3	106.7
2006	107.9	107.9	108.2	108.9	109.0	108.8	108.9	108.9	108.4	108.6	108.7	108.6	108.6
2007	108.7	109.5	110.3	110.5	110.8	110.5	110.5	110.0	110.4	110.4	110.7	111.0	110.3
2008	110.8	111.3	111.5	112.2	113.4	113.8	113.9	113.3	113.8	112.9	112.4	111.8	112.6
2009	111.7	112.4	112.7	112.9	113.9	114.3	113.8	114.0	113.8
Ottawa-Gatineau, Ontario part, Ontario/Quebec (v41692882) ⁴													
2004	103.2	103.4	103.8	104.0	105.0	104.7	104.8	104.6	104.6	105.0	105.3	105.2	104.5
2005	105.0	105.7	106.4	106.4	106.5	106.6	106.8	107.5	108.3	107.7	107.5	107.6	106.8
2006	108.1	107.8	108.6	109.0	109.4	109.2	108.9	109.0	108.3	108.2	108.5	108.6	108.6
2007	108.5	109.6	110.7	111.1	111.5	111.1	111.1	110.9	110.9	110.7	110.9	110.8	110.7
2008	110.4	111.0	111.3	112.1	113.4	114.0	115.0	114.8	115.0	113.6	113.3	112.7	113.1
2009	112.3	113.0	113.6	113.1	114.0	114.2	113.8	113.8	113.9
Toronto, Ontario (v41692888)													
2004	103.9	104.1	104.3	104.3	105.1	104.9	104.9	104.7	104.9	104.9	105.2	105.1	104.7
2005	105.0	105.6	106.4	106.3	106.5	106.5	106.6	107.2	107.7	107.4	107.2	107.4	106.7
2006	107.9	107.6	108.5	108.7	109.0	108.9	108.5	108.5	108.1	108.0	108.3	108.5	108.4
2007	108.2	109.3	110.3	110.8	111.2	110.7	110.6	110.8	110.8	110.7	111.0	111.1	110.5
2008	110.7	111.3	111.5	112.2	113.3	113.8	114.9	114.7	114.9	113.7	113.5	113.0	113.1
2009	112.5	113.2	113.8	113.1	113.9	114.0	113.6	113.6	113.7

Table 12 – continued

The all-items Consumer Price Index by urban centre, ^{1,2} not seasonally adjusted, historical data

	Jan.	Feb.	Mar.	Apr.	May	June	July	Aug.	Sept.	Oct.	Nov.	Dec.	Annual average ³
	2002=100												
Thunder Bay, Ontario (v41692894)													
2004	102.5	102.7	103.0	103.4	104.2	103.9	104.0	103.7	103.8	104.1	104.4	104.2	103.7
2005	103.9	104.4	105.1	105.2	105.2	105.3	105.3	105.9	106.6	106.2	105.9	106.0	105.4
2006	106.6	106.2	107.1	107.4	107.8	107.6	107.2	107.2	106.6	106.4	106.6	106.6	106.9
2007	106.2	107.3	108.3	108.4	108.8	108.3	108.6	108.3	108.3	107.9	108.2	108.1	108.1
2008	107.9	108.4	108.7	109.7	110.7	111.2	112.1	111.9	112.2	110.9	110.8	110.1	110.4
2009	109.5	110.3	110.8	110.4	111.0	111.2	110.3	110.2	110.4
Winnipeg, Manitoba (v41692900)													
2004	102.0	101.9	102.3	102.7	104.0	104.3	104.2	104.3	104.0	104.4	105.1	105.4	103.7
2005	104.9	105.1	105.5	106.1	106.4	106.6	106.8	107.2	107.7	107.3	107.1	106.7	106.5
2006	107.2	107.0	107.5	108.3	109.0	109.1	109.5	109.5	108.6	108.9	109.0	108.6	108.5
2007	109.0	109.4	110.3	110.8	111.4	111.3	111.9	111.1	111.6	110.9	110.7	110.7	110.8
2008	110.7	111.1	111.7	112.6	113.4	114.2	114.8	114.9	115.0	114.2	113.6	112.9	113.3
2009	112.3	113.0	112.9	113.5	114.2	114.9	114.8	114.3	114.3
Regina, Saskatchewan (v41692906)													
2004	102.8	102.9	103.2	103.9	105.0	105.1	105.3	104.8	105.0	105.4	105.9	105.7	104.6
2005	105.4	105.7	106.3	106.9	106.5	106.7	107.1	107.4	107.8	107.3	107.2	107.1	106.8
2006	107.7	107.8	108.1	108.9	109.3	109.3	109.5	110.1	109.1	109.0	108.6	108.8	108.9
2007	109.3	109.7	111.0	111.5	112.0	112.3	112.5	112.2	112.7	112.3	112.4	112.2	111.7
2008	112.3	112.7	113.6	114.4	115.4	116.2	116.3	116.4	116.9	116.6	116.4	115.6	115.2
2009	115.6	116.4	116.6	116.2	117.1	118.3	118.0	118.0	117.6
Saskatoon, Saskatchewan (v41692912)													
2004	102.6	102.7	102.8	103.6	104.6	104.6	104.8	104.5	104.6	105.3	105.9	105.6	104.3
2005	105.4	105.6	106.2	106.9	106.3	106.6	106.8	107.2	107.7	107.3	107.2	107.1	106.7
2006	107.9	107.8	108.1	109.2	109.6	109.5	109.8	110.4	109.3	109.1	108.7	108.7	109.0
2007	109.5	109.9	110.7	111.9	112.4	113.5	114.1	114.1	114.4	114.1	114.3	114.0	112.7
2008	114.2	115.0	116.0	116.9	117.6	118.3	118.1	118.1	118.3	118.0	117.8	116.9	117.1
2009	116.9	117.8	117.8	117.4	118.1	119.1	119.0	118.9	118.5
Edmonton, Alberta (v41692918)													
2004	105.0	105.0	105.2	105.6	106.5	107.6	107.0	106.8	107.0	106.5	107.2	107.0	106.4
2005	106.7	106.7	107.5	108.0	107.9	108.1	109.2	109.1	110.6	110.2	110.1	109.4	108.6
2006	110.6	110.1	110.6	111.4	112.1	111.6	112.8	113.0	113.2	112.2	113.0	113.5	112.0
2007	113.9	114.2	115.7	117.0	117.1	118.6	118.8	119.1	119.1	118.3	118.8	118.6	117.4
2008	118.5	118.7	119.5	121.2	121.9	123.7	123.6	123.6	122.3	121.3	121.4	121.0	121.4
2009	120.2	121.5	120.9	120.5	121.6	122.2	121.8	122.1	121.7
Calgary, Alberta (v41692924)													
2004	104.1	104.1	104.4	104.6	105.5	106.4	105.8	105.6	105.6	105.4	106.1	105.8	105.3
2005	105.3	105.5	106.0	106.9	106.8	107.3	108.0	108.0	109.1	108.9	108.8	108.5	107.4
2006	109.9	108.9	109.5	110.9	112.0	111.7	113.6	114.4	114.7	113.5	114.2	114.7	112.3
2007	115.0	115.6	116.7	117.6	117.6	118.6	119.1	119.3	119.3	118.7	119.1	119.0	118.0
2008	118.9	119.1	120.0	121.2	122.3	123.9	123.0	124.4	123.1	121.8	122.0	121.8	121.8
2009	120.7	121.9	121.3	120.8	121.5	122.1	121.6	122.1	121.6
Vancouver, British Columbia (v41692930)													
2004	102.2	102.7	103.0	103.7	104.5	104.6	104.5	104.5	104.6	104.7	104.7	104.7	104.0
2005	104.8	104.9	105.2	105.7	106.0	106.1	106.5	106.5	106.8	106.7	106.6	106.3	106.0
2006	106.2	106.3	106.9	107.5	108.4	108.4	108.5	108.7	108.4	108.4	108.9	109.1	108.0
2007	109.0	109.3	109.6	110.0	110.6	110.5	110.7	110.6	110.7	110.4	110.4	110.5	110.2
2008	110.2	110.7	111.2	112.1	113.2	113.9	114.7	114.5	114.6	113.4	112.9	111.9	112.8
2009	112.0	112.5	112.6	112.6	113.3	113.3	112.9	113.6	113.5
Victoria, British Columbia (v41692936)													
2004	102.7	103.1	103.3	104.1	105.0	105.2	105.0	105.0	105.2	105.2	105.5	105.3	104.6
2005	105.3	105.5	105.9	106.5	106.8	106.9	107.2	107.3	108.0	107.9	107.8	107.4	106.9
2006	107.2	107.3	107.6	108.4	109.2	109.0	109.2	109.3	108.8	108.6	108.9	109.0	108.5
2007	109.1	109.3	109.7	109.9	110.2	109.9	110.1	110.0	110.1	109.5	109.6	109.7	109.8
2008	109.4	109.8	110.4	111.4	112.3	113.0	113.3	113.2	113.3	112.3	111.9	111.0	111.8
2009	111.0	111.4	111.6	111.9	112.6	112.5	112.1	112.3	112.2

Note(s): The all-items index for Whitehorse and Yellowknife are available from table 10.
See "Data quality, concepts and methodology — Explanatory notes for tables" section.

Table 13
Average retail prices for gasoline and fuel oil, by urban centre

	St. John's, N.L.	Charlottetown and Summerside, P.E.I.	Halifax, N.S.	Saint John, N.B.	Québec, Que.	Montréal, Que.	Ottawa- Gatineau, Ont./Que.	Toronto, Ont.	Thunder Bay, Ont.	Winnipeg, Man.
	cents per litre									
Regular unleaded gasoline at full service filling stations										
September 2008	142.0	133.4	135.7	130.9	134.0	134.9	124.4	125.1	137.8	135.7
October 2008	130.0	113.8	118.7	115.0	117.0	116.4	107.1	107.1	121.3	118.5
November 2008	103.7	91.2	93.1	90.4	91.1	91.8	84.0	83.9	99.8	93.6
December 2008	91.7	77.4	80.3	77.8	80.2	82.0	75.2	75.8	89.6	80.5
January 2009	87.5	78.4	80.0	76.2	84.7	86.4	77.7	80.2	86.1	80.9
February 2009	94.3	87.4	89.4	84.7	90.0	91.3	82.7	82.5	91.6	86.9
March 2009	95.0	87.0	88.8	84.5	90.2	92.0	83.3	85.5	88.2	86.3
April 2009	98.2	89.7	93.1	87.8	90.3	92.7	84.8	85.9	90.8	89.2
May 2009	103.1	95.0	99.0	93.7	97.6	101.5	92.1	95.5	99.5	93.4
June 2009	111.1	106.2	108.6	102.3	107.4	107.8	97.8	100.2	108.1	102.7
July 2009	112.9	102.0	103.8	99.7	102.2	102.6	92.4	94.8	108.2	100.9
August 2009	110.5	104.6	106.7	101.1	105.5	106.7	96.5	99.4	107.5	99.6
September 2009	112.1	103.0	105.3	100.0	102.8	105.2	94.6	96.2	106.3	100.1
Regular unleaded gasoline at self service filling stations										
September 2008	140.3	130.2	133.1	128.6	134.1	130.5	119.9	123.7	136.1	134.6
October 2008	125.0	112.0	115.1	112.9	117.2	111.0	102.2	105.9	118.8	116.9
November 2008	98.7	87.6	89.9	88.4	91.0	87.3	78.8	82.7	96.1	91.4
December 2008	86.8	73.7	77.7	75.0	79.7	79.1	69.5	74.2	86.8	79.3
January 2009	86.0	74.7	77.8	74.0	83.3	84.4	74.2	78.9	84.2	82.9
February 2009	92.4	84.4	86.5	82.2	90.2	88.7	76.8	81.6	89.2	86.4
March 2009	93.1	83.3	86.3	82.1	90.0	90.6	80.8	84.7	87.1	86.9
April 2009	95.4	86.3	89.6	85.1	90.2	89.0	80.9	85.2	88.2	89.5
May 2009	101.8	91.8	96.5	90.9	98.8	101.0	89.3	94.4	98.2	94.5
June 2009	109.0	103.0	105.3	99.9	106.5	105.3	94.4	98.8	107.4	102.9
July 2009	109.6	99.0	101.6	97.1	102.3	100.1	89.5	93.9	106.8	99.8
August 2009	108.1	101.4	103.8	98.5	105.5	104.3	93.7	98.3	106.2	99.7
September 2009	108.9	99.8	101.9	97.2	102.8	103.1	90.5	95.3	104.7	100.2
Premium unleaded gasoline at full service filling stations										
September 2008	147.6	141.0	143.1	138.0	141.0	142.9	137.6	137.2	149.0	146.3
October 2008	135.5	122.3	125.3	121.8	124.3	123.6	122.9	119.8	132.5	129.3
November 2008	109.2	98.5	101.0	97.6	98.4	101.1	102.9	96.5	109.6	104.1
December 2008	97.2	84.7	88.4	84.7	87.7	91.5	92.2	88.4	99.2	91.1
January 2009	95.0	85.5	87.5	83.1	92.3	95.4	94.1	92.6	96.5	91.4
February 2009	100.3	95.0	96.3	91.5	97.8	100.1	95.2	94.7	101.8	97.3
March 2009	101.8	94.2	96.1	91.5	97.8	100.6	93.7	97.9	98.8	96.7
April 2009	103.7	96.9	101.5	94.6	98.0	99.9	95.5	98.7	102.1	99.7
May 2009	108.9	102.3	106.4	100.3	105.2	109.2	103.7	108.2	110.5	104.0
June 2009	117.1	113.4	116.1	109.3	115.0	115.7	108.0	112.9	119.8	113.8
July 2009	118.3	109.2	112.0	106.5	109.7	110.4	103.5	108.0	119.4	111.6
August 2009	116.6	111.0	114.3	107.7	112.4	114.2	108.0	111.7	118.7	110.4
September 2009	117.1	110.3	111.6	106.6	110.4	113.8	105.8	108.9	117.7	111.0
Premium unleaded gasoline at self service filling stations										
September 2008	146.3	137.5	140.6	135.5	141.5	138.8	131.9	135.8	147.1	144.9
October 2008	131.0	118.9	122.1	119.6	124.8	119.3	114.3	117.6	129.9	127.0
November 2008	104.3	94.6	98.0	94.3	98.7	95.2	90.9	94.8	107.2	102.1
December 2008	92.8	80.4	85.8	81.5	87.3	87.3	81.4	86.5	98.5	89.5
January 2009	92.0	82.0	85.6	80.6	90.8	92.9	85.6	91.5	95.3	93.3
February 2009	98.4	91.7	93.6	88.6	97.9	97.0	88.8	93.6	100.1	96.8
March 2009	99.1	90.5	94.3	89.3	98.2	98.9	93.0	97.1	98.7	97.5
April 2009	101.4	93.6	97.6	92.2	98.0	97.2	93.1	98.0	99.5	99.8
May 2009	107.7	99.0	104.3	98.1	106.4	109.1	102.0	106.9	109.5	105.0
June 2009	115.0	110.3	113.0	107.2	114.0	113.5	106.7	111.2	118.8	113.3
July 2009	116.0	106.3	109.4	104.4	109.8	108.4	102.0	106.9	118.3	110.0
August 2009	114.3	108.7	110.9	106.0	112.9	112.4	106.0	111.2	117.7	109.9
September 2009	114.6	107.0	109.3	104.5	110.5	111.3	103.6	108.1	116.1	110.4
Household heating fuel										
September 2008	118.7	114.2	117.9	121.4	118.5	115.9	116.1	121.9	125.9	123.7
October 2008	110.8	103.2	109.1	117.3	107.4	111.2	111.6	113.7	127.7	121.9
November 2008	96.9	91.3	89.7	98.7	93.5	93.1	99.7	99.0	116.8	114.5
December 2008	84.5	76.8	83.0	84.5	85.2	83.4	88.5	87.7	99.8	95.1
January 2009	77.6	73.7	77.3	86.8	83.1	81.2	85.0	85.2	88.5	91.3
February 2009	75.6	71.5	71.8	77.4	79.3	77.3	80.8	80.2	84.3	84.6
March 2009	67.6	65.5	68.0	72.6	73.3	74.4	75.4	75.4	80.4	75.7
April 2009	71.0	68.6	74.6	78.3	77.8	75.0	80.3	80.5	81.5	79.6
May 2009	68.7	66.5	71.1	73.0	73.5	71.7	75.7	80.3	80.1	75.6
June 2009	68.7	66.5	71.1	73.0	73.5	71.7	75.7	80.3	80.0	75.6
July 2009	68.7	66.5	71.1	73.0	73.5	71.7	75.7	80.3	80.0	75.6
August 2009	68.7	66.5	71.1	73.0	73.5	71.7	75.7	80.3	80.0	75.6
September 2009	80.5	78.1	77.2	82.7	77.5	75.1	77.8	82.9	84.9	88.1

Table 13 – continued

Average retail prices for gasoline and fuel oil, by urban centre

	Regina, Sask.	Saskatoon, Sask.	Edmonton, Alta.	Calgary, Alta.	Vancouver, B.C.	Victoria, B.C.	Whitehorse, Y.T.	Yellowknife, N.W.T.
	cents per litre							
Regular unleaded gasoline at full service filling stations								
September 2008	136.1	135.1	126.2	127.6	140.8	139.7	140.9	152.7
October 2008	118.7	116.2	111.2	110.8	123.5	125.0	134.9	143.1
November 2008	92.4	92.1	86.2	86.5	99.5	99.7	109.4	118.4
December 2008	79.1	80.6	73.1	72.7	87.8	85.7	92.8	107.6
January 2009	85.4	84.8	77.0	76.9	95.3	93.7	87.3	98.9
February 2009	90.8	89.8	82.1	82.9	97.7	97.2	94.6	103.2
March 2009	91.0	90.6	83.8	83.3	102.0	97.9	98.7	104.4
April 2009	93.4	95.0	85.1	84.5	103.3	99.9	99.3	106.9
May 2009	97.7	96.3	90.6	89.4	107.4	105.7	100.3	109.9
June 2009	106.4	107.2	95.7	97.5	114.0	108.5	106.4	120.7
July 2009	102.1	101.9	92.4	93.5	111.9	107.2	108.4	123.7
August 2009	102.7	102.6	95.8	95.1	112.8	106.4	106.5	121.2
September 2009	101.1	101.1	92.9	94.5	115.4	109.1	106.2	120.2
Regular unleaded gasoline at self service filling stations								
September 2008	134.3	135.2	125.3	127.3	137.9	138.2	138.9	149.6
October 2008	118.3	116.9	107.8	110.3	119.8	123.1	130.5	134.5
November 2008	91.3	91.9	83.0	86.0	96.6	98.9	105.1	115.7
December 2008	79.1	81.3	71.0	73.0	84.3	84.4	91.0	99.0
January 2009	86.7	86.5	76.0	76.7	91.9	91.7	85.2	97.6
February 2009	89.7	91.0	80.6	83.2	95.0	96.3	90.5	101.5
March 2009	90.9	91.3	82.1	83.6	98.7	96.4	98.8	102.8
April 2009	93.9	94.0	82.3	84.7	100.0	98.5	98.5	104.5
May 2009	97.5	97.9	87.9	89.8	104.0	105.0	98.8	107.0
June 2009	107.1	106.7	93.3	98.3	110.9	107.2	105.5	118.7
July 2009	102.5	102.9	89.6	92.5	108.1	105.2	106.3	119.2
August 2009	103.9	103.3	93.0	94.8	109.4	105.7	103.0	117.4
September 2009	100.7	100.8	90.8	93.3	112.1	108.1	100.8	117.4
Premium unleaded gasoline at full service filling stations								
September 2008	146.6	145.4	137.5	138.7	152.8	152.1	146.2	159.1
October 2008	128.6	126.3	121.7	121.3	135.9	136.7	142.5	152.3
November 2008	103.1	102.5	95.7	97.4	111.7	111.7	124.2	142.4
December 2008	89.7	90.8	83.7	83.6	99.7	98.2	102.4	124.6
January 2009	96.1	95.3	87.3	87.5	107.4	106.2	96.3	113.2
February 2009	101.4	100.2	92.9	93.9	109.5	108.9	103.0	116.9
March 2009	101.5	101.6	96.1	94.4	114.8	110.6	106.5	118.4
April 2009	103.8	103.7	98.0	95.4	116.1	112.6	106.4	118.4
May 2009	108.5	106.8	103.0	101.3	120.0	118.6	106.8	121.4
June 2009	117.5	118.3	108.8	109.1	127.3	121.6	111.9	127.5
July 2009	112.7	112.9	105.9	105.4	124.7	120.4	115.3	129.7
August 2009	114.7	114.2	108.9	107.2	125.7	119.6	113.3	130.7
September 2009	112.3	112.8	106.0	106.4	128.6	122.3	112.2	129.7
Premium unleaded gasoline at self service filling stations								
September 2008	145.7	145.5	137.2	138.7	150.4	150.6	145.1	159.9
October 2008	130.0	127.6	120.1	121.4	132.7	135.7	137.2	146.2
November 2008	103.1	102.5	94.9	97.4	109.4	112.0	113.5	130.5
December 2008	90.9	91.7	82.1	83.9	97.1	97.5	98.1	112.4
January 2009	98.4	97.7	87.1	88.3	104.8	103.6	93.3	107.9
February 2009	101.0	102.5	92.6	95.1	107.9	108.2	97.4	112.9
March 2009	102.2	102.9	93.3	95.1	112.1	109.0	105.7	116.0
April 2009	105.7	105.7	94.3	96.8	113.4	111.3	106.3	116.5
May 2009	109.3	109.4	100.0	101.8	117.4	117.7	106.7	117.7
June 2009	118.4	118.4	105.4	110.3	123.8	119.9	113.4	127.7
July 2009	115.4	113.5	101.8	104.7	121.5	118.3	113.8	126.8
August 2009	115.4	114.9	105.1	106.9	122.8	119.4	112.4	128.4
September 2009	112.7	112.9	103.0	105.4	125.7	121.9	110.3	128.4
Household heating fuel								
September 2008	121.7	121.7	.	.	125.7	140.7	137.7	137.0
October 2008	121.8	117.8	.	.	118.4	132.9	136.3	126.2
November 2008	113.5	110.8	.	.	107.6	123.4	120.8	117.3
December 2008	88.5	90.5	.	.	85.3	105.5	103.8	101.0
January 2009	88.7	87.3	.	.	82.3	92.0	97.3	93.5
February 2009	80.5	80.1	.	.	79.7	90.9	97.5	89.6
March 2009	70.3	72.3	.	.	70.1	80.7	88.2	82.3
April 2009	77.5	78.8	.	.	81.8	91.1	90.3	84.0
May 2009	74.7	75.7	.	.	81.5	92.5	89.4	83.0
June 2009	74.7	75.7	.	.	81.5	92.5	89.4	83.0
July 2009	74.7	75.7	.	.	82.9	93.9	89.4	83.0
August 2009	74.7	75.7	.	.	82.9	93.9	89.4	83.0
September 2009	83.3	86.4	.	.	90.0	96.6	96.8	87.0

Note(s): See Table A for complete list of vector numbers.

Table 14
Average retail prices, monthly, Canada

	CANSIM vector number	July 2009	August 2009	September 2009
		dollars ¹		
Round steak, 1 kilogram	(v735165)	12.64	12.54	12.56
Sirloin steak, 1 kilogram	(v735176)	16.40	16.28	16.55
Prime rib roast, 1 kilogram	(v735187)	21.75	22.50	21.82
Blade roast, 1 kilogram	(v735198)	10.66	10.41	10.34
Stewing beef, 1 kilogram	(v735209)	10.36	10.20	9.83
Ground beef, regular, 1 kilogram	(v735220)	7.12	7.01	6.85
Pork chops, 1 kilogram	(v735221)	9.50	9.60	9.60
Chicken, 1 kilogram	(v735223)	6.39	6.35	6.34
Bacon, 500 grams	(v735166)	4.65	4.71	4.70
Wieners, 450 grams	(v735167)	2.89	2.94	2.92
Canned sockeye salmon, 213 grams	(v735168)	3.33	3.29	3.23
Homogenized milk, 1 litre	(v735169)	2.17	2.18	2.18
Partly skimmed milk, 1 litre	(v735170)	2.10	2.11	2.11
Butter, 454 grams	(v735171)	4.38	4.32	4.30
Processed cheese food slices, 250 grams	(v735172)	2.85	2.82	2.82
Evaporated milk, 385 millilitres	(v735173)	1.97	1.98	1.98
Eggs, 1 dozen	(v735174)	2.60	2.58	2.58
Bread, 675 grams	(v735175)	2.53	2.51	2.49
Soda crackers, 450 grams	(v735177)	2.51	2.53	2.54
Macaroni, 500 grams	(v735178)	1.45	1.44	1.45
Flour, 2.5 kilograms	(v735179)	4.83	4.69	4.72
Corn flakes, 675 grams	(v735180)	4.14	3.99	3.96
Apples, 1 kilogram	(v735181)	3.37	3.35	3.22
Bananas, 1 kilogram	(v735182)	1.67	1.66	1.60
Grapefruits, 1 kilogram	(v735183)	2.89	2.81	2.69
Oranges, 1 kilogram	(v735184)	3.08	2.96	2.76
Apple juice, canned, 1.36 litres	(v735185)	1.85	1.85	1.78
Orange juice, tetra-brick, 1 litre	(v735186)	3.75	3.69	3.62
Carrots, 1 kilogram	(v735189)	1.94	1.82	1.54
Celery, 1 kilogram	(v735190)	2.20	1.67	1.53
Mushrooms, 1 kilogram	(v735191)	7.73	8.18	8.07
Onions, 1 kilogram	(v735192)	1.83	1.89	1.60
Potatoes, 4.54 kilograms	(v735193)	5.65	5.70	5.28
French fried potatoes, frozen, 1 kilogram	(v735194)	2.15	2.23	2.20
Baked beans, canned, 398 millilitres	(v735195)	1.12	1.07	1.07
Tomatoes, canned, 796 millilitres	(v735196)	1.36	1.35	1.46
Tomato juice, canned, 1.36 litres	(v735197)	1.93	2.00	2.06
Ketchup, 1 litre	(v735199)	2.93	3.05	3.09
Sugar, white, 2 kilograms	(v735200)	2.62	2.59	2.71
Coffee, roasted, 300 grams	(v735201)	4.58	4.61	4.50
Coffee, instant, 200 grams	(v735202)	5.61	5.61	5.48
Tea (72 bags)	(v735203)	4.09	4.14	4.13
Cooking or salad oil, 1 litre	(v735204)	4.13	4.15	4.13
Soup, canned, 284 millilitres	(v735205)	1.04	1.05	1.04
Baby food, 128 millilitres	(v735206)	0.80	0.81	0.81
Peanut butter, 500 grams	(v735207)	2.91	2.92	2.88
Fruit flavoured crystals, 2.25 litres	(v735208)	1.27	1.28	1.29
Soft drinks, cola type, 2 litres	(v735210)	1.55	1.54	1.54
Soft drinks, lemon-lime type, 2 litres	(v735211)	1.55	1.59	1.55
Paper towels (2 rolls)	(v735213)	2.50	2.47	2.46
Facial tissue (200 tissues)	(v735214)	2.10	2.10	2.13
Bathroom tissue (4 rolls)	(v735215)	2.24	2.30	2.34
Shampoo, 300 millilitres	(v735216)	3.24	3.28	3.18
Deodorant, 60 grams	(v735217)	3.65	3.72	3.59
Toothpaste, 100 millilitres	(v735218)	1.73	1.66	1.83
Cigarettes (200)	(v735219)	77.25	77.13	77.15
Regular, unleaded gasoline at self-service stations, cents per litre	(v41838376)	97.4	100.5	98.8

Note(s): See "Data quality, concepts and methodology — Explanatory notes for tables" section.

Table 15
Inter-city indexes of retail price differentials, as of October 2007, for selected groups of consumer goods and services, not seasonally adjusted

	Canada CPI weight ¹	St. John's, Newfoundland and Labrador	Charlottetown and Summerside, Prince Edward Island	Halifax, Nova Scotia	Saint John, New Brunswick	Montréal, Quebec
	percent	combined city average=100				
All-items	100.0	98	94	99	96	95
Food	17.0	104	101	100	100	102
Food purchased from stores	.	105	101	101	100	101
Meat, poultry and fish	.	101	100	101	102	103
Dairy products and eggs	.	108	99	102	101	101
Bakery and other cereal products	.	100	97	97	97	101
Fruit and vegetables	.	116	107	107	106	102
Other food purchased from stores ²	.	102	101	97	96	100
Food purchased from restaurants	.	102	102	99	99	102
Shelter	26.6	89	80	92	85	88
Rented accommodation	.	82	70	86	76	83
Owned accommodation	.	85	74	87	81	87
Water, fuel and electricity	.	116	118	124	115	99
Household operations and furnishings	11.1	103	104	106	103	98
Household operations	.	105	105	109	104	96
Household furnishings	.	101	103	101	101	101
Clothing and footwear	5.4	101	96	102	101	101
Transportation	19.9	101	96	95	95	99
Private transportation	.	101	93	95	94	98
Purchase of automotive vehicles	.	101	104	101	101	101
Gasoline	.	110	103	106	100	103
Other private transportation	.	93	73	80	80	90
Public transportation	.	102	112	92	105	103
Health and personal care	4.7	101	101	103	102	101
Health care	.	98	100	103	101	99
Personal care	.	103	101	103	103	103
Recreation, education and reading	12.2	94	103	109	110	87
Recreation	.	101	99	100	99	98
Education and reading	.	80	109	125	130	66
Alcoholic beverages and tobacco products	3.1	111	105	107	99	94
Alcoholic beverages	.	105	103	104	99	100
Tobacco products and smokers' supplies	.	122	109	113	99	85

Table 15 – continued

Inter-city indexes of retail price differentials, as of October 2007, for selected groups of consumer goods and services, not seasonally adjusted

	Canada CPI weight ¹	Ottawa- Gatineau, Ontario part, Ontario/Quebec	Toronto, Ontario	Winnipeg, Manitoba	Regina, Saskatchewan	Edmonton, Alberta	Vancouver, British Columbia
	percent	combined city average=100					
All-items	100.0	102	107	94	93	98	103
Food	17.0	99	99	100	100	100	103
Food purchased from stores	.	99	98	101	101	102	105
Meat, poultry and fish	.	101	98	93	98	99	103
Dairy products and eggs	.	104	104	92	94	95	99
Bakery and other cereal products	.	92	93	109	107	109	116
Fruit and vegetables	.	96	95	105	103	104	105
Other food purchased from stores ²	.	99	98	105	103	102	106
Food purchased from restaurants	.	100	100	98	97	97	99
Shelter	26.6	106	117	84	82	98	100
Rented accommodation	.	109	124	81	73	96	104
Owned accommodation	.	104	115	84	77	94	101
Water, fuel and electricity	.	109	117	90	113	117	88
Household operations and furnishings	11.1	104	104	99	99	100	104
Household operations	.	105	106	99	100	103	106
Household furnishings	.	101	101	100	98	94	100
Clothing and footwear	5.4	102	101	100	98	96	100
Transportation	19.9	96	104	94	94	92	104
Private transportation	.	94	103	94	95	92	106
Purchase of automotive vehicles	.	102	100	100	99	94	101
Gasoline	.	97	96	101	103	96	106
Other private transportation	.	84	113	80	83	86	113
Public transportation	.	108	108	98	94	88	90
Health and personal care	4.7	102	101	98	97	100	99
Health care	.	105	102	96	96	105	98
Personal care	.	99	99	99	98	96	99
Recreation, education and reading	12.2	106	106	95	100	105	106
Recreation	.	100	102	98	94	99	104
Education and reading	.	116	115	89	111	117	111
Alcoholic beverages and tobacco products	3.1	96	100	104	105	106	109
Alcoholic beverages	.	99	99	94	98	104	105
Tobacco products and smokers' supplies	.	92	101	119	116	109	115

Note(s): See "Data quality, concepts and methodology — Explanatory notes for tables" section and Table B for complete list of vector numbers.

Data quality, concepts and methodology

Definition

The Consumer Price Index (CPI) is an indicator of the changes in consumer prices experienced by the target population. The CPI measures price change by comparing, through time, the cost of a fixed basket of commodities. This basket is based on the expenditures of the target population in a certain reference period, currently 2005. Since the basket contains commodities of unchanging or equivalent quantity and quality, the index reflects only pure price movements.

Separate CPIs are published for Canada, the ten provinces, Whitehorse, Yellowknife and Iqaluit. Some CPI information is also available for an additional sixteen urban centres. Since the CPI is a measure of price change from one time period to another, it cannot be used to indicate differences in price levels between provinces or urban centres.

Population coverage

The population targeted by the Consumer Price Index consists of families and individuals living in urban and rural private households. For practical reasons, residents of the Territories outside Whitehorse, Yellowknife and Iqaluit are not represented by the index. Prior to February 1995, the target population consisted of private households in Canadian urban centres with a population of 30,000 or more.

Time reference

The CPI compares, in percentage terms, prices in any given time period to prices in the official base period which, at present, is 2002=100. The official time base was changed from 1992=100 to 2002=100 starting with the CPI for May 2007. The change is strictly an arithmetic conversion which alters the index levels but leaves the percentage changes between any two periods intact, except for differences in rounding.

Percent versus index point changes

The movements of the indexes from one month to another are expressed as percent changes rather than changes in index points. Index point changes are affected by the level of the index which, in turn, depends on the time base of the particular index. The percentage change between any two time periods can be readily calculated by dividing the index point difference between the two time periods by the index for the earlier period and multiplying the result by one hundred.

Price coverage

The prices used in the CPI calculation are final prices, inclusive of excise and other indirect taxes paid by consumers. In particular, they include the Goods and Services Tax (GST), as well as provincial retail sales taxes wherever applicable. In regions where the GST and provincial retail sales taxes have been combined, the Harmonized Sales Tax (HST) is included. It follows that the CPI can change as a result of modifications to any of these taxes.

The selection of commodities and the outlets from which prices are collected is judgmental, other than for rents and traveler accommodation. The number of prices required for a given commodity depends on the importance and the nature of the commodity. The samples are designed to represent volume selling commodities and outlets.

The principal objective of the sample design is to ensure an informative, reliable and impartial picture of consumer inflation at the national and provincial levels.

Price collection for a given month’s index is carried out during the first three weeks of the month. Although prices for most CPI commodities are collected monthly, prices for commodities having less frequent price changes (e.g. property taxes and electricity rates) are collected at intervals longer than one month. Special pricings are carried out where there is evidence that significant price changes have occurred between scheduled pricing periods.

Weights and linking

The CPI maintains fixed quantitative proportions (weights) between commodities during the life of a given basket. The baskets are updated periodically to take into account changes in consumer expenditure patterns. In May 2007, the basket reflecting the 2005 expenditure patterns replaced the 2001 basket. The continuity of the CPI series is maintained by “linking” the corresponding indexes obtained from consecutive baskets.

The CPI is calculated as a weighted average of specified commodity price indexes. The weights are derived from Survey of Household Spending data. Text table 1 compares the expenditure shares of the two most recent CPI baskets, i.e. the 2005 basket as it was reflected in the CPI in May 2007 and the 2001 basket. Because both sets of weights are expressed in April 2007 or “link month” prices, the differences reflect the shifts in the relative quantities purchased between the two baskets.

When reconstructing or re-aggregating published CPI series, the changes in weights and the linking procedures must be taken into account. For a description of the methodology required to reconstruct or re-aggregate CPI series, see **The Consumer Price Index Reference Paper** catalogue no. 62-553-X (Occasional) or contact Prices Division.

Text table 1

Comparison of the 2005 and 2001 distribution¹ of expenditures used in the Consumer Price Index, by major component, for Canada

	2005 Expenditures		2001 Expenditures
	Expressed in 2005 prices	Expressed in April 2007 prices	Expressed in April 2007 prices
	percent		
Major Components			
All-Items	100.0	100.0	100.0
Food	16.9	17.0	17.1
Shelter	25.7	26.6	27.7
Household operations, furnishings and equipment	11.4	11.1	10.2
Clothing and footwear	5.6	5.4	5.1
Transportation	19.6	19.9	20.2
Health and personal care	4.8	4.7	4.4
Recreation, education and reading	13.0	12.2	11.2
Alcoholic beverages and tobacco products	3.1	3.1	4.2

1. Figures may not add to 100% due to rounding.

Starting with the October 2006 Consumer Price Index (CPI), Statistics Canada produces and disseminates the Core CPI as defined by the Bank of Canada.

The measure of Core CPI excludes from the all-items CPI the effect of changes in indirect taxes and eight of the most volatile components identified by the Bank of Canada: fruit, fruit preparations and nuts; vegetables and vegetable preparations; mortgage interest cost; natural gas; fuel oil and other fuels; gasoline; inter-city transportation; and tobacco products and smokers’ supplies. For additional information on Core CPI, please consult the Bank of Canada Web site. <http://www.bankofcanada.ca/en/inflation/index.htm>.

Statistics Canada also calculates, on behalf of the Bank of Canada, a seasonally adjusted Core CPI. This series is available through CANSIM, Statistics Canada’s official database, or by contacting us through the means mentioned on the inside cover of this publication.

Whitehorse, Yellowknife and Iqaluit indexes

The relatively small size of the housing market in these three cities makes it difficult to construct reliable price indexes for new houses. To compensate, the price movements of rental accommodation are used to approximate the price movements of new houses. The rent information itself is collected using different pricing frequencies and collection methods than in the rest of the country. Because of these problems, the indexes for Rented Accommodation and Owned Accommodation are not published for these three cities. Further, the all-items indexes published for these three cities are not strictly comparable with the same indexes for the provinces or the other sixteen cities.

Calculation of urban centre indexes

With the introduction of the 1992 basket, emphasis was shifted from urban centre data to provincial data. Urban Centre all-items series were continued since many users had come to rely on this service, but the method of calculation was changed. Shelter indexes are calculated for each urban centre. This recognizes the importance of Shelter in the basket, the significant and persistent differences in price movements between urban centres, and the availability of local data. For the other seven major components, the movement of the provincial counterpart (or, in the cases of Montréal, Toronto, and Vancouver, a sub-provincial counterpart) is used. The major components are aggregated using the urban centre's expenditure pattern to arrive at each urban centre's all-items index.

Seasonal adjustment

A seasonally adjusted series is one from which seasonal movements have been eliminated. Seasonal movements are defined as those which are caused by regular annual events such as variations in climate and regular institutional events such as vacations and statutory holidays. Seasonally adjusted series are calculated using Statistics Canada's X-11 ARIMA program. Time series with no detectable seasonal movements remain unchanged from the official series. The official unadjusted series for all-items index, core consumer price index, each of the eight major component indexes and three special aggregates (all-items excluding food, all-items excluding food and energy and all-items excluding 8 of the most volatile components (Bank of Canada definition)) are seasonally adjusted independently.

Each month, the previous month's seasonally adjusted index is subject to revision. On an annual basis, the seasonally adjusted values for the last three years are revised with the January data release. Since these revisions can lead to changes in both the levels and movements of the indexes, users employing the CPI for indexation purposes are advised to use the unadjusted indexes.

Explanatory notes for tables

Table 1 The Consumer Price Index, major components and special aggregates, Canada, not seasonally adjusted

and

Table 2 The Consumer Price Index, major components and special aggregates, Canada, seasonally adjusted

1. 2005 Consumer Price Index (CPI) basket weights at April 2007 prices, Canada.
2. Figures may not add to 100% due to rounding.
3. The measure of core consumer price index (CPI) excludes from the all-items CPI the effect of changes in indirect taxes and eight of the most volatile components identified by the Bank of Canada: fruit, fruit preparations and nuts; vegetables and vegetable preparations; mortgage interest cost; natural gas; fuel oil and other fuels; gasoline; inter-city transportation; and tobacco products and smokers' supplies. For additional information on core CPI, please consult the Bank of Canada Web site: <http://www.bankofcanada.ca/en/inflation/index.htm>.

Table 3 The Consumer Price Index, provinces, Whitehorse, Yellowknife and Iqaluit, not seasonally adjusted

1. Data for Iqaluit are on a December 2002=100 base (200212=100) and the Standard Geographical Classification (SGC) 2001. Previous to April 1, 1999, the town of Iqaluit formed part of the Northwest Territories. Subsequent to April 1, 1999, the town of Iqaluit formed part of the newly-created territory of Nunavut.

Table 4 The Consumer Price Index, major components and selected sub-groups, Canada, not seasonally adjusted

Table 4-1

1. Food expenditure information below the aggregate level of "food purchased from stores" was unavailable after 2001. To obtain 2005 basket weights for food categories under this aggregate, expenditures of 2001 for each food category were adjusted to reflect price movements to 2005. However data from the 2005 Survey of Household Spending were used to update the weight at the major component level of "food" compared to all other components.

Table 4-2

1. In July 2004, the 2001 basket weights introduced with the January 2003 data were adjusted; the weights for mortgage interest cost were re-evaluated.
2. Due to changes in the Ontario electricity market that became effective May 1, 2002, it was necessary to adjust the treatment of electricity prices in the consumer price index (CPI) for that province. A question and answer fact sheet that explains those changes is now available. To obtain the fact sheet on the treatment of electricity prices in Ontario, please contact Client Services Unit, Prices Division, telephone: (613) 951-9606, toll-free: 1-866-230-2248, fax: (613) 951-2848, e-mail: prices-prix@statcan.gc.ca.

Table 4-5

1. Over the previous two years, Statistics Canada has updated, by province, the model year of passenger vehicles used in the calculation of the passenger vehicle insurance premiums index over a three month period. In 2008, this quality adjustment exercise will be reflected in the month of May for all provinces.

Table 4-7

1. From April 2006, Statistics Canada changed its implementation of the price index formula used for traveller accommodation. As a result, data from April 2006 are not strictly comparable to earlier time periods.

Table 5 The Consumer Price Index for Canada, all-items, not seasonally adjusted, historical data

1. The annual average index is calculated as the average of the published 12 individual monthly indexes, rounded to one decimal place. Percentage changes between the annual average indexes are calculated based on these published rounded numbers. Between May 2007 and September 2007, the annual average percentage changes in Table 5 were calculated based on annual average indexes that were not rounded. As a result, some percentage changes were different by +/- 0.1 from the official percentage change. This problem only affected the annual average column of Table 5.

Table 6 Core consumer price index (CPI) (Bank of Canada definition), not seasonally adjusted, historical data

1. The measure of core consumer price index (CPI) excludes from the all-items CPI the effect of changes in indirect taxes and eight of the most volatile components identified by the Bank of Canada: fruit, fruit preparations and nuts; vegetables and vegetable preparations; mortgage interest cost; natural gas; fuel oil and other fuels; gasoline; inter-city transportation; and tobacco products and smokers' supplies. For additional information on core CPI, please consult the Bank of Canada Web site: <http://www.bankofcanada.ca/en/inflation/index.htm>.
2. The annual average index is calculated as the average of the published 12 individual monthly indexes, rounded to one decimal place. Percentage changes between the annual average indexes are calculated based on these published rounded numbers.

Table 7 The Consumer Price Index for Canada, major components and special aggregates, not seasonally adjusted, historical data

1. Goods are physical or tangible commodities usually classified according to their life span into non-durable goods, semi-durable goods and durable goods. Non-durable goods are those goods that can be used up entirely in less than a year, assuming normal usage. For example, fresh food products, disposable cameras and gasoline are non-durable goods. Semi-durable goods are those goods that may last less than 12 months or greater than 12 months depending on the purpose to which they are put. For example, clothing, footwear and household textiles are semi-durable goods. Durable goods are those goods which may be used repeatedly or continuously over more than a year, assuming normal usage. For example, cars, audio and video equipment and furniture are durable goods.
2. A service in the consumer price index (CPI) is characterized by valuable work performed by an individual or organization on behalf of a consumer, for example, car tune-ups, haircuts and city public transportation. Transactions classified as a service may include the cost of goods by their nature. Examples include food in restaurant food services and materials in clothing repair services.
3. The special aggregate "energy" includes: "electricity", "natural gas", "fuel oil and other fuels", "gasoline", and "fuel, parts and supplies for recreational vehicles".

4. The annual index level is the average of the 12 individual monthly indexes.

Table 8 Annual average percentage changes for the Consumer Price Index

Table 8-1 and 8-2

1. The annual index level is the average of the 12 individual monthly indexes. The percentage change for a given calendar year is calculated using the annual average indexes.

Table 9 The Consumer Price Index, major components, selected sub-groups and special aggregates, provinces, Whitehorse and Yellowknife, not seasonally adjusted

Tables 9-1, 9-2, 9-3, 9-4, 9-5, 9-7, 9-8, 9-9, 9-10 and 9-11

1. The special aggregate "energy" includes: "electricity", "natural gas", "fuel oil and other fuels", "gasoline", and "fuel, parts and supplies for recreational vehicles".
2. Food expenditure information below the aggregate level of "food purchased from stores" was unavailable after 2001. To obtain 2005 basket weights for food categories under this aggregate, expenditures of 2001 for each food category were adjusted to reflect price movements to 2005. However data from the 2005 Survey of Household Spending were used to update the weight at the major component level of "food" compared to all other components.
3. Over the previous two years, Statistics Canada has updated, by province, the model year of passenger vehicles used in the calculation of the passenger vehicle insurance premiums index over a three month period. In 2008, this quality adjustment exercise will be reflected in the month of May for all provinces.

Table 9-6

1. The special aggregate "energy" includes: "electricity", "natural gas", "fuel oil and other fuels", "gasoline", and "fuel, parts and supplies for recreational vehicles".
2. Food expenditure information below the aggregate level of "food purchased from stores" was unavailable after 2001. To obtain 2005 basket weights for food categories under this aggregate, expenditures of 2001 for each food category were adjusted to reflect price movements to 2005. However data from the 2005 Survey of Household Spending were used to update the weight at the major component level of "food" compared to all other components.
3. Due to changes in the Ontario electricity market that became effective May 1, 2002, it was necessary to adjust the treatment of electricity prices in the consumer price index (CPI) for that province. A question and answer fact sheet that explains those changes is now available. To obtain the fact sheet on the treatment of electricity prices in Ontario, please contact Client Services Unit, Prices Division, telephone: (613) 951-9606, toll-free: 1-866-230-2248, fax: (613) 951-2848, e-mail: prices-prix@statcan.gc.ca.
4. Over the previous two years, Statistics Canada has updated, by province, the model year of passenger vehicles used in the calculation of the passenger vehicle insurance premiums index over a three month period. In 2008, this quality adjustment exercise will be reflected in the month of May for all provinces.

Table 9-12

1. The special aggregate "energy" includes: "electricity", "natural gas", "fuel oil and other fuels", "gasoline", and "fuel, parts and supplies for recreational vehicles".

2. Food expenditure information below the aggregate level of "food purchased from stores" was unavailable after 2001. To obtain 2005 basket weights for food categories under this aggregate, expenditures of 2001 for each food category were adjusted to reflect price movements to 2005. However data from the 2005 Survey of Household Spending were used to update the weight at the major component level of "food" compared to all other components.
3. Part of the increase first recorded in the shelter index for Yellowknife for December 2004 inadvertently reflected rent increases that actually occurred earlier. As a result, the change in the shelter index was overstated in December 2004, and was understated in the previous two years. The shelter index series for Yellowknife has been corrected from December 2002. In addition, the Yellowknife all-items consumer price index (CPI) and some Yellowknife special aggregate index series have also changed. Data for Canada and all other provinces and territories were not affected.
4. Over the previous two years, Statistics Canada has updated, by province, the model year of passenger vehicles used in the calculation of the passenger vehicle insurance premiums index over a three month period. In 2008, this quality adjustment exercise will be reflected in the month of May for all provinces.

Table 10 The all-items Consumer Price Index, provinces, Whitehorse, Yellowknife and Iqaluit, not seasonally adjusted, historical data

1. Data for Iqaluit are on a December 2002=100 base (200212=100) and the Standard Geographical Classification (SGC) 2001. Previous to April 1, 1999, the town of Iqaluit formed part of the Northwest Territories. Subsequent to April 1, 1999, the town of Iqaluit formed part of the newly-created territory of Nunavut.
2. The annual index level is the average of the 12 individual monthly indexes.

Table 11 The Consumer Price Index and selected sub-groups, by urban centre, not seasonally adjusted

1. With the introduction of the 1992 basket in January 1995, emphasis was shifted from urban centre data to provincial data. Urban centre all-items series were continued since many users had come to rely on this service, but the method of calculation was changed. Shelter indexes are calculated for each urban centre. This recognizes the importance of shelter in the basket, the significant and persistent differences in price movements between urban centres, and the availability of local data. For the other seven major components, the movement of the provincial counterpart is used except in the cases of Montréal, Toronto, and Vancouver, where a sub-provincial counterpart is used. The major components are aggregated using the urban centre's expenditure pattern to arrive at each urban centre's all-items index.
2. Users of the urban centre indexes should note that, effective July 2007, Statistics Canada has corrected the weights of some urban centres that were in error in the Consumer Price Index 2005 basket update. The weights of St. John's, Charlottetown, Halifax, Saint John, Québec City, Montréal, Ottawa, Thunder Bay, Winnipeg, Regina, Saskatoon, Edmonton, Calgary and Victoria were adjusted, while those of Toronto, Vancouver, Whitehorse, Yellowknife and Iqaluit were not. With this correction, the July 2007 level of each urban centre index has been restored to reflect the correct movement for May 2007 and June 2007. The published urban centre indexes for May and June 2007 will remain unchanged. The calculation of urban centre indexes is separate from the calculation of the provincial and national indexes. Therefore, the correction made to the urban centre weights has no effect at all on the provincial or national indexes. Published weight documentation was also not affected.
3. Formerly Ottawa (Ottawa-Gatineau, Ontario part), represents Ottawa only.

Table 12 The all-items Consumer Price Index by urban centre, not seasonally adjusted, historical data

1. With the introduction of the 1992 basket in January 1995, emphasis was shifted from urban centre data to provincial data. Urban centre all-items series were continued since many users had come to rely on this service, but the method of calculation was changed. Shelter indexes are calculated for each urban centre. This recognizes the importance of shelter in the basket, the significant and persistent differences in price movements between urban centres, and the availability of local data. For the other seven major components, the movement of the provincial counterpart is used except in the cases of Montréal, Toronto, and Vancouver, where a sub-provincial counterpart is used. The major components are aggregated using the urban centre's expenditure pattern to arrive at each urban centre's all-items index.
2. Users of the urban centre indexes should note that, effective July 2007, Statistics Canada has corrected the weights of some urban centres that were in error in the Consumer Price Index 2005 basket update. The weights of St. John's, Charlottetown, Halifax, Saint John, Québec City, Montréal, Ottawa, Thunder Bay, Winnipeg, Regina, Saskatoon, Edmonton, Calgary and Victoria were adjusted, while those of Toronto, Vancouver, Whitehorse, Yellowknife and Iqaluit were not. With this correction, the July 2007 level of each urban centre index has been restored to reflect the correct movement for May 2007 and June 2007. The published urban centre indexes for May and June 2007 will remain unchanged. The calculation of urban centre indexes is separate from the calculation of the provincial and national indexes. Therefore, the correction made to the urban centre weights has no effect at all on the provincial or national indexes. Published weight documentation was also not affected.
3. The annual index level is the average of the 12 individual monthly indexes.
4. Formerly Ottawa (Ottawa-Gatineau, Ontario part), represents Ottawa only.

Table 14 Average retail prices, monthly, Canada

1. Prices are expressed in dollars, except for the price of gasoline which is expressed in cents per litre.

Average retail prices for food, household supplies, personal care items, cigarettes and gasoline

Table 14 shows, for the current month and the two previous months, average prices for selected food, household supplies, personal care items, cigarettes and for gasoline.

Prices for these items are collected as part of the regular monthly CPI survey. Prices for the selected food, household supply and personal care items are observed in food supermarkets, while prices for cigarettes are collected in supermarkets, department stores, drug stores and tobacco shops. Average prices for each commodity are calculated as a weighted average of the average prices in the observed urban centres using the population of these urban centres as weights.

The commodities which are priced can vary in quality between outlets or between urban centres. This is the reason why average prices are not published for each of those urban centres. Brands and outlets can also vary from month to month. Therefore, average prices may not necessarily be fully comparable from one month to another and should not be used as an appropriate measure of pure price change through time. A matched commodity and outlet sample is used for the CPI to determine the pure price movement of commodities through time.

Table 15 Inter-city indexes of retail price differentials, as of October 2007, for selected groups of consumer goods and services, not seasonally adjusted

Purpose and Scope

Table 15 shows estimates of retail price differences between 11 Canadian cities in all 10 provinces, as of October 2007. These estimates are based on a selection of commodities (goods and services) purchased by consumers in each of the 11 cities.

These estimates should not be interpreted as a measure of differences in the cost-of-living between cities. The indexes provide price comparisons for a selection of commodities only, and are not meant to give an exhaustive comparison of all goods and services purchased by consumers. Additionally, the shelter price concept used for these indexes is not conducive to making cost-of-living type comparisons between cities (see below).

Methodology

In order to produce optimal Inter-city indexes, commodity comparisons were initially made by pairing cities that are in close geographic proximity. The resulting price level comparisons were then extended to include comparisons between all of the cities, using a chaining procedure. The following initial pairings were used:

St. John's	Halifax
Charlottetown-Summerside	Halifax
Saint John	Halifax
Ottawa	Halifax
Toronto	Montreal
Ottawa	Toronto
Toronto	Winnipeg
Regina	Winnipeg
Edmonton	Winnipeg
Edmonton	Vancouver

Reliable Inter-city price comparisons require that the selected commodities be very similar across cities. This ensures that the variation in index levels between cities is due to pure price differences and not to differences in the attributes of the commodities, such as size and/or quality.

Within each city pair, commodity price quotes were matched on the basis of detailed descriptions. Whenever possible, commodities were matched by brand, quantity and with some regard for the comparability of retail outlets from which they were selected.

Additionally, the target prices for this study are final retail prices and as such, include all sales taxes and levies applied to consumer commodities within a city. This can be an important source of variation when explaining differences in inter-city price levels.

It should be noted that price data for the Inter-city indexes is drawn from the sample of monthly price data collected for the Consumer Price Index (CPI). Given that the CPI sample is optimized to produce accurate price comparisons through time, and not across regions, the number of matched price quotes between cities can be small. It should also be noted that, especially in periods when prices are highly volatile, the timing of the commodity price comparison can significantly affect city-to-city retail price relationships.

The weights used for aggregating the city indexes into the all-items Inter-city index are based on the expenditures of consumers living in each of the 11 cities. The weights are currently based on 2005 consumer expenditure data.

The all-items Inter-city index for a particular city is compared to the average of all 11 cities, which is equal to 100. For example, an index value of 102 for a particular city means that prices for the measured commodities are 2% higher than the weighted, combined city average.

Additional Information on Shelter

Shelter prices were absent from the Inter-city index program prior to 1999 because of methodological and conceptual issues associated with their measurement. The diverse nature of shelter means that accurate matches between cities are often difficult to make.

To account for some of these difficulties, a rental equivalence approach is used to construct the Inter-city price indexes for owned accommodation. Such an approach uses market rents as an approximation to the cost of the shelter services consumed by homeowners in each city. It is important to note that this approach may not be suitable for the needs of all users. For instance, since the rental equivalence approach does not represent an out-of-pocket expenditure, the indexes should not be used for measuring differences in the purchasing power of homeowners across cities.

Footnotes for Table 15

1. The weights shown are rounded 2005 basket weights at April 2007 prices for Canada. They are provided for illustration only; the weights actually used are combined city weights with adjustments for price changes up until October 2007.
2. Includes the following subgroups: sugar and syrup, confectionery items, margarine, other edible fat and oil items, coffee, tea, condiments, spices and vinegar, soup, infant and junior foods, pre-cooked frozen food preparations, non-alcoholic beverages and all other food preparations.

Appendix I

Concordance tables

Table A
Vector numbers for the average retail prices for gasoline and fuel oil, by urban centre

	St. John's, N.L.	Charlottetown and Summerside, P.E.I.	Halifax, N.S.	Saint John, N.B.	Québec, Que.	Montréal, Que.	Ottawa-Gatineau, Ontario part, Ont./Que.	Toronto, Ont.	Thunder Bay, Ont.	Winnipeg, Man.
Regular unleaded gasoline at full service filling stations	(v735046)	(v735056)	(v735057)	(v735058)	(v735059)	(v735060)	(v735061)	(v735062)	(v735063)	(v735047)
Regular unleaded gasoline at self service filling stations	(v735082)	(v735092)	(v735093)	(v735094)	(v735095)	(v735096)	(v735097)	(v735098)	(v735099)	(v735083)
Premium unleaded gasoline at full service filling stations	(v735064)	(v735074)	(v735075)	(v735076)	(v735077)	(v735078)	(v735079)	(v735080)	(v735081)	(v735065)
Premium unleaded gasoline at self service filling stations	(v735100)	(v735110)	(v735111)	(v735112)	(v735113)	(v735114)	(v735115)	(v735116)	(v735117)	(v735101)
Household heating fuel	(v735149)	(v735157)	(v735158)	(v735159)	(v735160)	(v735161)	(v735162)	(v735163)	(v735164)	(v735150)
	Regina, Sask.	Saskatoon, Sask.	Edmonton, Alta.	Calgary, Alta.	Vancouver, B.C.	Victoria, B.C.	Whitehorse, Y.T.	Yellowknife, N.W.T.		
Regular unleaded gasoline at full service filling stations	(v735048)	(v735049)	(v735050)	(v735051)	(v735052)	(v735053)	(v735054)	(v735055)		
Regular unleaded gasoline at self service filling stations	(v735084)	(v735085)	(v735086)	(v735087)	(v735088)	(v735089)	(v735090)	(v735091)		
Premium unleaded gasoline at full service filling stations	(v735066)	(v735067)	(v735068)	(v735069)	(v735070)	(v735071)	(v735072)	(v735073)		
Premium unleaded gasoline at self service filling stations	(v735102)	(v735103)	(v735104)	(v735105)	(v735106)	(v735107)	(v735108)	(v735109)		
Household heating fuel	(v735151)	(v735152)			(v735153)	(v735154)	(v735155)	(v735156)		

Table B
Vector numbers of the inter-city indexes of retail price differentials, as of October 2008, for selected groups of consumer goods and services, not seasonally adjusted

	St. John's, Newfoundland and Labrador	St. Charlottetown and Summerside, Prince Edward Island	Halifax, Nova Scotia	Saint John, New Brunswick	Montréal, Québec
All-items	(v15939841)	(v15939869)	(v15939897)	(v15939925)	(v15939953)
Food	(v15939842)	(v15939870)	(v15939898)	(v15939926)	(v15939954)
Food purchased from stores	(v15939843)	(v15939871)	(v15939899)	(v15939927)	(v15939955)
Meat, poultry and fish	(v15939844)	(v15939872)	(v15939900)	(v15939928)	(v15939956)
Dairy products and eggs	(v15939845)	(v15939873)	(v15939901)	(v15939929)	(v15939957)
Bakery and other cereal products	(v15939846)	(v15939874)	(v15939902)	(v15939930)	(v15939958)
Fruit and vegetables	(v15939847)	(v15939875)	(v15939903)	(v15939931)	(v15939959)
Other food purchased from stores	(v15939848)	(v15939876)	(v15939904)	(v15939932)	(v15939960)
Food purchased from restaurants	(v15939849)	(v15939877)	(v15939905)	(v15939933)	(v15939961)
Shelter	(v15939850)	(v15939878)	(v15939906)	(v15939934)	(v15939962)
Rented accommodation	(v21580949)	(v21580952)	(v21580955)	(v21580958)	(v21580961)
Owned accommodation	(v21580950)	(v21580953)	(v21580956)	(v21580959)	(v21580962)
Water, fuel and electricity	(v21580951)	(v21580954)	(v21580957)	(v21580960)	(v21580963)
Household operations and furnishings	(v15939851)	(v15939879)	(v15939907)	(v15939935)	(v15939963)
Household operations	(v15939852)	(v15939880)	(v15939908)	(v15939936)	(v15939964)
Household furnishings	(v15939853)	(v15939881)	(v15939909)	(v15939937)	(v15939965)
Clothing and footwear	(v15939854)	(v15939882)	(v15939910)	(v15939938)	(v15939966)
Transportation	(v15939855)	(v15939883)	(v15939911)	(v15939939)	(v15939967)
Private transportation	(v15939856)	(v15939884)	(v15939912)	(v15939940)	(v15939968)
Purchase of automotive vehicles	(v15939857)	(v15939885)	(v15939913)	(v15939941)	(v15939969)
Gasoline	(v15939858)	(v15939886)	(v15939914)	(v15939942)	(v15939970)
Other private transportation	(v15939859)	(v15939887)	(v15939915)	(v15939943)	(v15939971)
Public transportation	(v15939860)	(v15939888)	(v15939916)	(v15939944)	(v15939972)
Health and personal care	(v15939861)	(v15939889)	(v15939917)	(v15939945)	(v15939973)
Health care	(v15939862)	(v15939890)	(v15939918)	(v15939946)	(v15939974)
Personal care	(v43975161)	(v43975162)	(v43975163)	(v43975164)	(v43975165)
Recreation, education and reading	(v15939865)	(v15939893)	(v15939921)	(v15939949)	(v15939977)
Recreation	(v43975172)	(v43975173)	(v43975174)	(v43975175)	(v43975176)
Education and reading	(v43975183)	(v43975184)	(v43975185)	(v43975186)	(v43975187)
Alcoholic beverages and tobacco products	(v15939866)	(v15939894)	(v15939922)	(v15939950)	(v15939978)
Alcoholic beverages	(v15939867)	(v15939895)	(v15939923)	(v15939951)	(v15939979)
Tobacco products and smokers' supplies	(v15939868)	(v15939896)	(v15939924)	(v15939952)	(v15939980)

	Ottawa-Gatineau, Ontario part, Ontario/Quebec	Toronto, Ontario	Winnipeg, Manitoba	Regina, Saskatchewan	Edmonton, Alberta	Vancouver, British Columbia
All-items	(v15939981)	(v15940009)	(v15940037)	(v15940065)	(v15940093)	(v15940121)
Food	(v15939982)	(v15940010)	(v15940038)	(v15940066)	(v15940094)	(v15940122)
Food purchased from stores	(v15939983)	(v15940011)	(v15940039)	(v15940067)	(v15940095)	(v15940123)
Meat, poultry and fish	(v15939984)	(v15940012)	(v15940040)	(v15940068)	(v15940096)	(v15940124)
Dairy products and eggs	(v15939985)	(v15940013)	(v15940041)	(v15940069)	(v15940097)	(v15940125)
Bakery and other cereal products	(v15939986)	(v15940014)	(v15940042)	(v15940070)	(v15940098)	(v15940126)
Fruit and vegetables	(v15939987)	(v15940015)	(v15940043)	(v15940071)	(v15940099)	(v15940127)
Other food purchased from stores	(v15939988)	(v15940016)	(v15940044)	(v15940072)	(v15940100)	(v15940128)
Food purchased from restaurants	(v15939989)	(v15940017)	(v15940045)	(v15940073)	(v15940101)	(v15940129)
Shelter	(v15939990)	(v15940018)	(v15940046)	(v15940074)	(v15940102)	(v15940130)
Rented accommodation	(v21580964)	(v21580967)	(v21580970)	(v21580973)	(v21580976)	(v21580979)
Owned accommodation	(v21580965)	(v21580968)	(v21580971)	(v21580974)	(v21580977)	(v21580980)
Water, fuel and electricity	(v21580966)	(v21580969)	(v21580972)	(v21580975)	(v21580978)	(v21580981)
Household operations and furnishings	(v15939991)	(v15940019)	(v15940047)	(v15940075)	(v15940103)	(v15940131)
Household operations	(v15939992)	(v15940020)	(v15940048)	(v15940076)	(v15940104)	(v15940132)
Household furnishings	(v15939993)	(v15940021)	(v15940049)	(v15940077)	(v15940105)	(v15940133)
Clothing and footwear	(v15939994)	(v15940022)	(v15940050)	(v15940078)	(v15940106)	(v15940134)
Transportation	(v15939995)	(v15940023)	(v15940051)	(v15940079)	(v15940107)	(v15940135)
Private transportation	(v15939996)	(v15940024)	(v15940052)	(v15940080)	(v15940108)	(v15940136)
Purchase of automotive vehicles	(v15939997)	(v15940025)	(v15940053)	(v15940081)	(v15940109)	(v15940137)
Gasoline	(v15939998)	(v15940026)	(v15940054)	(v15940082)	(v15940110)	(v15940138)
Other private transportation	(v15939999)	(v15940027)	(v15940055)	(v15940083)	(v15940111)	(v15940139)
Public transportation	(v15940000)	(v15940028)	(v15940056)	(v15940084)	(v15940112)	(v15940140)
Health and personal care	(v15940001)	(v15940029)	(v15940057)	(v15940085)	(v15940113)	(v15940141)
Health care	(v15940002)	(v15940030)	(v15940058)	(v15940086)	(v15940114)	(v15940142)
Personal care	(v43975166)	(v43975167)	(v43975168)	(v43975169)	(v43975170)	(v43975171)
Recreation, education and reading	(v15940005)	(v15940033)	(v15940061)	(v15940089)	(v15940117)	(v15940145)
Recreation	(v43975177)	(v43975178)	(v43975179)	(v43975180)	(v43975181)	(v43975182)

Table B – continued

Vector numbers of the inter-city indexes of retail price differentials, as of October 2008, for selected groups of consumer goods and services, not seasonally adjusted

	Ottawa-Gatineau, Ontario part, Ontario/Quebec	Toronto, Ontario	Winnipeg, Manitoba	Regina, Saskatchewan	Edmonton, Alberta	Vancouver, British Columbia
Education and reading	(v43975188)	(v43975189)	(v43975190)	(v43975191)	(v43975192)	(v43975193)
Alcoholic beverages and tobacco products	(v15940006)	(v15940034)	(v15940062)	(v15940090)	(v15940118)	(v15940146)
Alcoholic beverages	(v15940007)	(v15940035)	(v15940063)	(v15940091)	(v15940119)	(v15940147)
Tobacco products and smokers' supplies	(v15940008)	(v15940036)	(v15940064)	(v15940092)	(v15940120)	(v15940148)