

Catalogue no. 62-001-X

The Consumer Price Index

August 2008



Statistics
Canada

Statistique
Canada

Canada

How to obtain more information

Specific inquiries about this product and related statistics or services should be directed to: Client Services Unit, Prices Division, Statistics Canada, Ottawa, Ontario, K1A 0T6 (telephone: 613-951-9606; toll free: 1-866-230-2248; fax: 613-951-1539; email: prices-prix@statcan.gc.ca).

For information about this product or the wide range of services and data available from Statistics Canada, visit our website at www.statcan.gc.ca, or telephone us, Monday to Friday from 8:30 a.m. to 4:30 p.m., at the following numbers:

Statistics Canada's National Contact Centre

Toll-free telephone (Canada and the United States):

Inquiries line	1-800-263-1136
National telecommunications device for the hearing impaired	1-800-363-7629
Fax line	1-877-287-4369

Local or international calls:

Inquiries line	1-613-951-8116
Fax line	1-613-951-0581

Depository Services Program

Inquiries line	1-800-635-7943
Fax line	1-800-565-7757

Accessing and ordering information

This product, Catalogue no. 62-001-X, is available for free in electronic format. To obtain a single issue, visit our website at www.statcan.ca and select "Publications" > "Free Internet publications."

This product, Catalogue no. 62-001-X, is also available as a standard printed publication at a price of CAN\$12.00 per issue and CAN\$111.00 for a one-year subscription.

The following additional shipping charges apply for delivery outside Canada:

United States a single issue at a price of CAN\$6.00 and annual subscription at a price of CAN\$72.00.

Other countries a single issue at a price of CAN\$10.00 and annual subscription at a price of CAN\$120.00.

All prices exclude sales taxes.

The printed version of this publication can be ordered by

- Phone (Canada and United States) **1-800-267-6677**
- Fax (Canada and United States) **1-877-287-4369**
- E-mail **infostats@statcan.ca**
- Mail Statistics Canada
Finance Division
R.H. Coats Bldg., 6th Floor
100 Tunney's Pasture Driveway
Ottawa, ON K1A 0T6
- In person from authorised agents and bookstores.

When notifying us of a change in your address, please provide both old and new addresses.

Standards of service to the public

Statistics Canada is committed to serving its clients in a prompt, reliable and courteous manner. To this end, Statistics Canada has developed *standards of service* that its employees observe. To obtain a copy of these service standards, please contact Statistics Canada toll-free at 1-800-263-1136. The service standards are also published on www.statcan.ca under "About us" > "Providing services to Canadians."

Statistics Canada

Prices Division

The Consumer Price Index

August 2008

Published by authority of the Minister responsible for Statistics Canada

© Minister of Industry, 2008

All rights reserved. The content of this electronic publication may be reproduced, in whole or in part, and by any means, without further permission from Statistics Canada, subject to the following conditions: that it be done solely for the purposes of private study, research, criticism, review or newspaper summary, and/or for non-commercial purposes; and that Statistics Canada be fully acknowledged as follows: Source (or "Adapted from", if appropriate): Statistics Canada, year of publication, name of product, catalogue number, volume and issue numbers, reference period and page(s). Otherwise, no part of this publication may be reproduced, stored in a retrieval system or transmitted in any form, by any means—electronic, mechanical or photocopy—or for any purposes without prior written permission of Licensing Services, Client Services Division, Statistics Canada, Ottawa, Ontario, Canada K1A 0T6.

September 2008

Catalogue no. 62-001-XPE, Vol. 87, No. 8

ISSN 0703-9352

Catalogue no. 62-001-XIE

ISSN 1496-2225

Frequency: Monthly

Ottawa

La version française de cette publication est disponible sur demande (n° 62-001-X au catalogue).

Note of appreciation

Canada owes the success of its statistical system to a long-standing partnership between Statistics Canada, the citizens of Canada, its businesses, governments and other institutions. Accurate and timely statistical information could not be produced without their continued cooperation and goodwill.

User information

Symbols

The following standard symbols are used in Statistics Canada publications:

- . not available for any reference period
- .. not available for a specific reference period
- ... not applicable
- 0 true zero or a value rounded to zero
- 0^s value rounded to 0 (zero) where there is a meaningful distinction between true zero and the value that was rounded
- p preliminary
- r revised
- x suppressed to meet the confidentiality requirements of the *Statistics Act*
- E use with caution
- F too unreliable to be published

Note on CANSIM

Data that appears in the **The Consumer Price Index** (catalogue no. 62-001-X) are also available electronically in our CANSIM (Canadian Socio-Economic Information Management System) database through the Internet tables 326-0009, 326-0012, 326-0015, 326-0020, 326-0021 and 326-0022, at a cost of \$3.00 per series. In general, *CANSIM* provides a longer historical series. For further information on *CANSIM* call 1-800-263-1136.

This publication was prepared under the direction of:

Richard Evans	Director, Prices Division
Tarek M. Harchaoui	Assistant Director, Consumer Price Indexes and Research
Ron Morency	Chief, Consumer Price Section

Cover page designed by:

Rachel Penkar	Senior Graphic Designer, Dissemination Division
----------------------	---

Note to users

The Consumer Price Index is published monthly and is not subject to revisions.

Index for the month	Release date
November 2007	December 18, 2007
December 2007	January 25, 2008
January 2008	February 19, 2008
February 2008	March 18, 2008
March 2008	April 17, 2008
April 2008	May 21, 2008
May 2008	June 19, 2008
June 2008	July 23, 2008
July 2008	August 21, 2008
August 2008	September 23, 2008
September 2008	October 24, 2008
October 2008	November 21, 2008
November 2008	December 19, 2008
December 2008	January 23, 2009

Table of contents

Highlights	6
Briefing notes	7
Analysis	9
Charts	
1. Out of the eight major CPI components, increases in transportation costs led the way	10
2. Prices for bakery and cereal products continue to push up prices for food	11
3. Consumer prices by province	12
4. Percentage change in the all-items index from the previous month, Canada and provinces, 2002=100, not seasonally adjusted	13
5. Drivers receive relief from falling prices for gasoline	13
Related products	15
Statistical tables	
1 The Consumer Price Index, major components and special aggregates, Canada, not seasonally adjusted	19
2 The Consumer Price Index, major components and special aggregates, Canada, seasonally adjusted	19
3 The Consumer Price Index, provinces, Whitehorse, Yellowknife and Iqaluit, not seasonally adjusted	20
4 The Consumer Price Index, major components and selected sub-groups, Canada, not seasonally adjusted	21
4-1 Food	21
4-2 Shelter	22
4-3 Household operations, furnishings and equipment	22
4-4 Clothing and footwear	23
4-5 Transportation	23
4-6 Health and personal care	24
4-7 Recreation, education and reading	24
4-8 Alcoholic beverages and tobacco products	25
5 The Consumer Price Index for Canada, all-items, not seasonally adjusted, historical data	26
6 Core consumer price index (CPI) (Bank of Canada definition), not seasonally adjusted, historical data	27
7 The Consumer Price Index for Canada, major components and special aggregates, not seasonally adjusted, historical data	28

Table of contents – continued

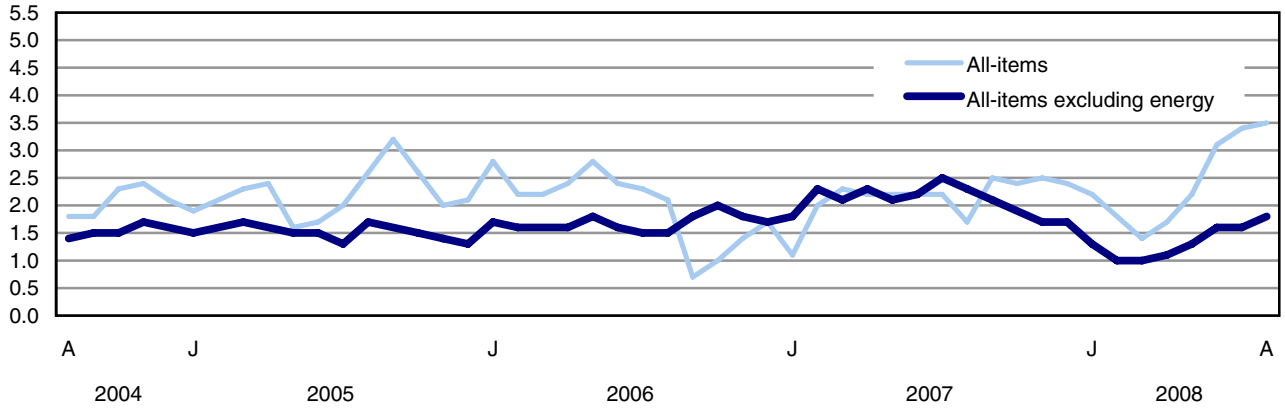
8	Annual average percentage changes for the Consumer Price Index	29
8-1	Major components, not seasonally adjusted, Canada, 2004 to 2007	29
8-2	All-items, not seasonally adjusted, Canada, provinces, urban centres, 2004 to 2007	30
9	The Consumer Price Index, major components, selected sub-groups and special aggregates, provinces, Whitehorse and Yellowknife, not seasonally adjusted	31
9-1	Newfoundland and Labrador	31
9-2	Prince Edward Island	32
9-3	Nova Scotia	33
9-4	New Brunswick	34
9-5	Quebec	35
9-6	Ontario	36
9-7	Manitoba	37
9-8	Saskatchewan	38
9-9	Alberta	39
9-10	British Columbia	40
9-11	Whitehorse*	41
9-12	Yellowknife*	42
10	The all-items Consumer Price Index, provinces, Whitehorse, Yellowknife and Iqaluit, not seasonally adjusted, historical data	43
11	The Consumer Price Index and selected sub-groups, by urban centre, not seasonally adjusted	45
12	The all-items Consumer Price Index by urban centre, not seasonally adjusted, historical data	47
13	Average retail prices for gasoline and fuel oil, by urban centre	49
14	Average retail prices, monthly, Canada	51
15	Inter-city indexes of retail price differentials, as of October 2006, for selected groups of consumer goods and services, not seasonally adjusted	52
	Data quality, concepts and methodology	54
	Explanatory notes for tables	57
Appendix		
I	Concordance tables	64

Highlights

- Consumer prices rose 3.5% from August 2007 to August 2008, largely driven by higher prices for gasoline. On a seasonally adjusted basis, consumer prices were 0.2% higher in August 2008 compared to July 2008.

Chart 1
12-month evolution of the CPI and the CPI excluding energy

12-month percentage change



Source(s): CANSIM table number 326-0020.

Briefing notes

Highlights:

Consumer prices rose 3.5% in August 2008 compared to August 2007, slightly higher than the 3.4% increase posted in the 12 months to July 2008. Consumers continued to face higher prices at the pump, which continued to be the most significant individual upward contributor on consumer prices in the 12 months to August 2008.

All-items Consumer Price Index (CPI):

- A 26.3% rise in gasoline prices in the 12 months to August 2008 was the primary cause for higher consumer prices and pushed consumer prices to their highest increase since March 2003.
- Other energy components, such as natural gas and fuel oil and other fuels, also contributed strongly to the rise in consumer prices in August 2008.
- Rising prices for energy accounted for about half of the increase in the CPI in the 12 months to August 2008.
- Helping to offset rising energy prices was a drop in prices to purchase and lease passenger vehicles.

Main contributors to the 12-month change of the CPI:

Main upward contributors:

- Gasoline (+26.3%)
- Mortgage cost (+8.1%)
- Natural gas (+31.7%)
- Fuel oil and other fuels (+49.4%)

Main downward contributors:

- Purchase and leasing of passenger vehicles (-7.3%)
- Computer equipment and supplies (-11.6%)
- Women's clothing (-3.4%)

Main contributors to the monthly change of the CPI, not seasonally adjusted:

Main upward contributors:

- Natural gas (+6.3%)
- Traveller accommodation (+3.0%)
- Meat (+1.5%)

Main downward contributors:

- Gasoline (-6.6%)
- Fresh vegetables (-9.0%)
- Women's clothing (-1.7%)

Annual and monthly percentage change in the most quoted indexes

	Annual percentage		Monthly percentage	
	Percentage change August 2008 from August 2007	Percentage change July 2008 from July 2007	Percentage change August 2008 from July 2008	Percentage change July 2008 from June 2008
	percent			
All-items	3.5	3.4	-0.2	0.3
Core consumer price index (CPI) (Bank of Canada definition)	1.7	1.5	0.3	0.1
All-items excluding energy	1.8	1.6	0.2	0.2
Goods	3.5	3.2	-0.5	0.4
Services	3.5	3.6	0.2	0.3

Analysis

Consumer prices rose 3.5% from August 2007 to August 2008, largely driven by higher prices for gasoline. On a seasonally adjusted basis, consumer prices were 0.2% higher in August 2008 compared to July 2008.

The 12-month increase in the Consumer Price Index (CPI) in August 2008 was the largest rise since the 12-month rate of growth of 4.2% recorded in March 2003.

Gasoline prices rose 26.3% in August 2008 compared to August 2007. Prices for other energy components, such as natural gas and fuel oil and other fuels, also contributed significantly to the rise in consumer prices. Overall, energy prices rose 20.2% over the 12 months to August 2008.

The increase in the energy price index accounted for about half of the overall increase in the 12-month variation of the CPI in August 2008. Excluding energy, the CPI rose 1.8% over the 12 months to August 2008, up from the 1.6% 12-month rate of growth posted for July 2008.

Driven by price increases for grain and bakery products, prices for food purchased from stores also contributed significantly to the change in the 12-month CPI in August 2008.

Partially offsetting the impact of rising gasoline prices was a drop in prices to purchase and lease passenger vehicles.

On a month-to-month basis, consumer prices prior to seasonal adjustments fell 0.2% from July 2008 to August 2008, a slowdown from the 0.3% increase recorded from June 2008 to July 2008.

The seasonally-adjusted monthly all-items CPI rose 0.2% from July 2008 to August 2008, after rising 0.3% in the previous period.

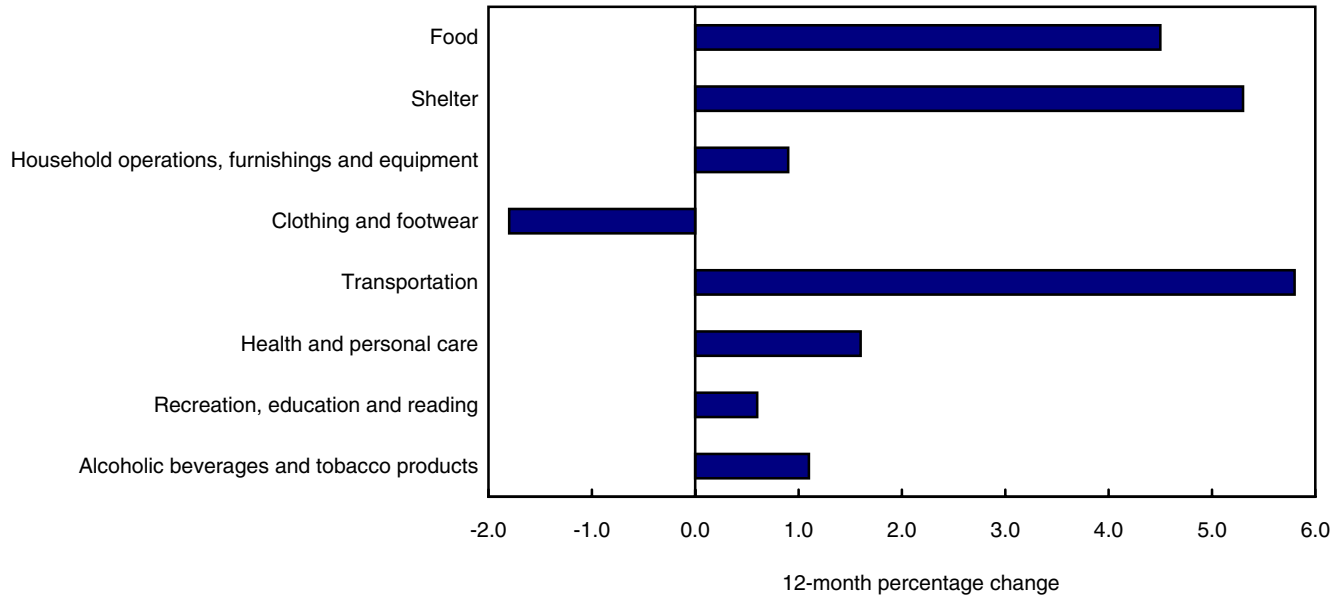
12-month change: Transportation, shelter and food continue to push up consumer prices

Of the eight major CPI components, transportation costs rose the most in the 12 months to August 2008, followed by price increases for shelter and food. The Canadian consumer faced on average a 5.8% rise in costs for transportation, largely the result of a 26.3% increase in prices for gasoline over the 12 months to August 2008.

While gasoline prices continued to exert the strongest upward pressure on consumer prices in August 2008, a 7.3% drop in prices to purchase and lease passenger vehicles over the 12 months to August 2008 helped to mitigate the rise in transportation costs.

This was the fourteenth consecutive month that prices to purchase and lease passenger vehicles declined on a 12-month basis. Consumers of new vehicles have benefited from competition between vehicle manufacturers.

Chart 1
Out of the eight major CPI components, increases in transportation costs led the way



Source(s): CANSIM table number 326-0020.

Rising mortgage costs and prices for energy associated with housing, contributed significantly to the 5.3% 12-month advance in the shelter price index in August 2008.

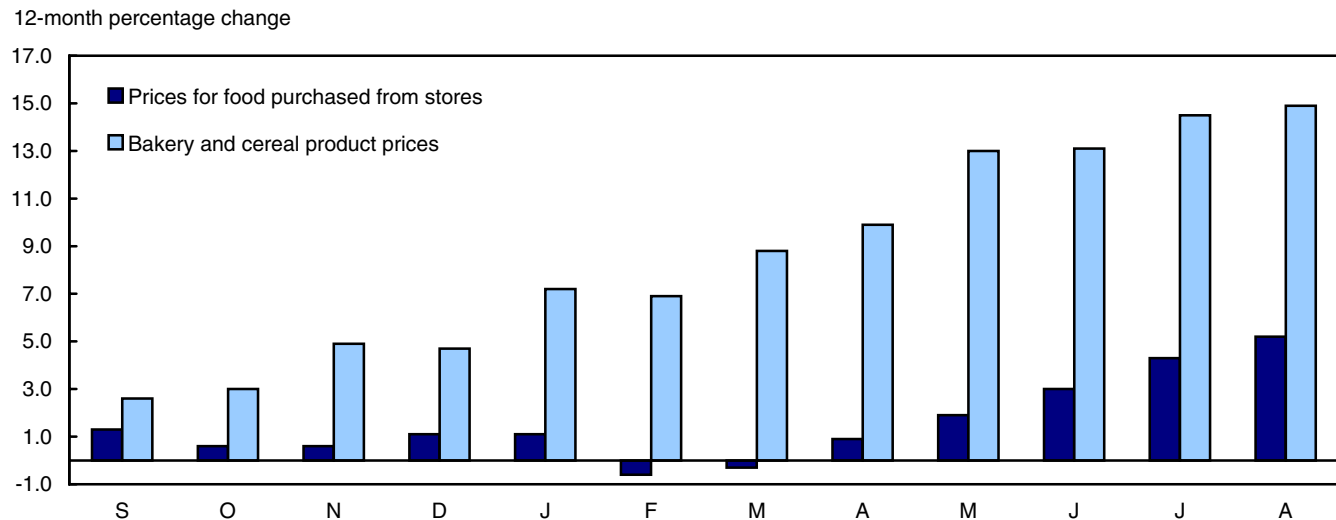
Over the 12 months to August 2008, the mortgage interest cost index slowed to a growth rate of 8.1%, down from the 8.5% 12-month rate of growth posted for July 2008. Easing new housing prices primarily accounted for the slowdown in mortgage costs.

A 12-month increase of 31.7% for natural gas prices and a 49.4% rise in prices for fuel oil and other fuels also contributed significantly to the rise in consumer prices and costs associated with shelter over the 12 months to August 2008.

After rising at a 12-month rate of 3.7% in July 2008, food prices rose 4.5% over the 12 months to August 2008 and continued to exert upward pressure on the CPI. Prices for food purchased from stores rose 5.2%, the largest 12-month rise since June 2001.

Prices for bakery and cereal products (+14.9%) continued to exert the strongest upward pressure on prices for food purchased from stores. Prices for bakery and cereal products have been trending upward since late 2007 and posted the largest increase since September 1981 in the 12 months to August 2008.

Chart 2
Prices for bakery and cereal products continue to push up prices for food



Source(s): CANSIM table number 326-0020.

Over the 12 months to August 2008, a 9.2% rise in fresh vegetable prices also pushed up prices for food, partly the result of higher transportation costs related to fuel.

In contrast to prices for food purchased from stores, prices for food purchased from restaurants advanced by a more moderate 2.7% over the 12 months to August 2008.

Continual price declines for clothing and footwear (-1.8%), due primarily to a drop in prices for women's clothing, helped to mitigate the rise in the 12-month CPI in August 2008.

A marginal 0.6% 12-month rise in the recreation, education and reading index also helped to ease the rise in consumer prices over the 12 months to August 2008. Continual price declines for electronic equipment and the purchase of recreational vehicles helped to offset rising prices for other recreation, education and reading goods and services.

Over the 12 months to August 2008, an 11.6% price decline for computer equipment and supplies was the second most significant downward contributor on the CPI behind the drop in prices to purchase and lease new passenger vehicles.

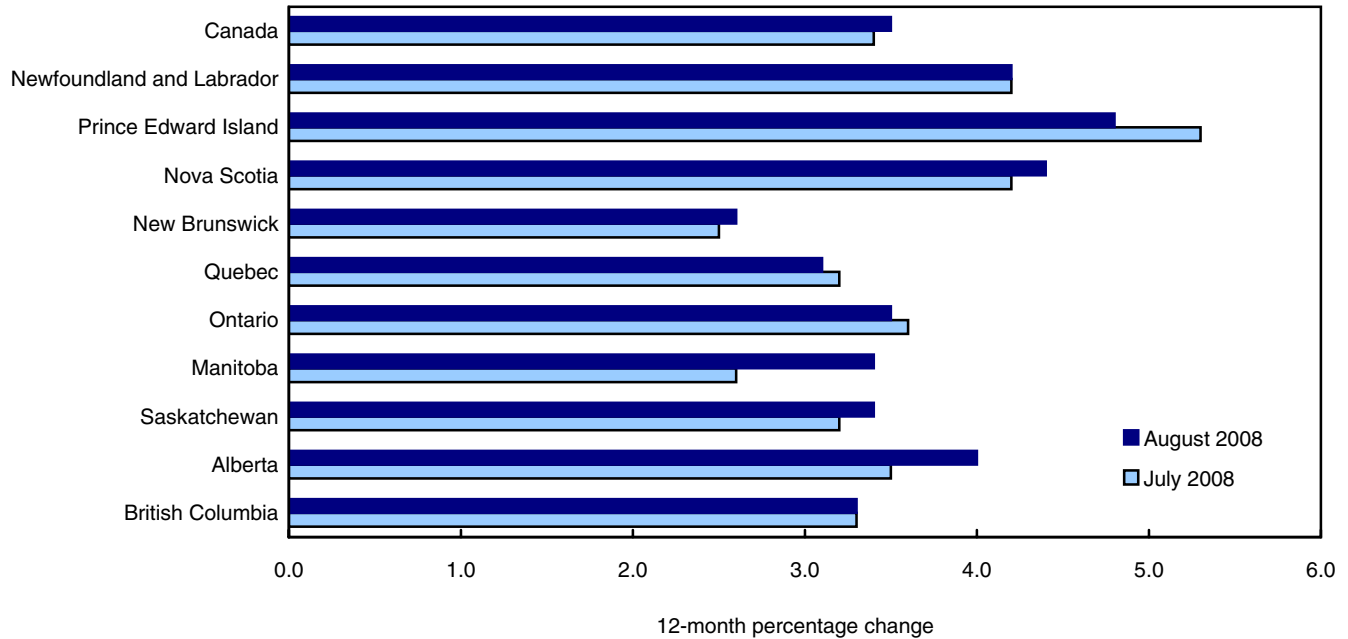
The provinces: Consumer prices in the Prairies bounce back

On the Prairies, the rate of growth in consumer prices was faster in August than it was in July, particularly in Manitoba and Alberta. Consumers in the three most eastern provinces (Newfoundland and Labrador, Prince Edward Island and Nova Scotia), however, continued to face the highest rise in consumer prices over the 12 months to August 2008.

In Manitoba, consumer prices advanced 3.4% over the 12 months to August, up from the 2.6% increase in July. After rising 3.5% over the 12 months to July 2008, consumer prices in Alberta rose 4.0% over the 12 months to August 2008.

The advance in consumer prices in Manitoba and Alberta between the 12-month variations reported in July 2008 and August 2008 was due primarily to increasing natural gas prices.

Chart 3
Consumer prices by province



Source(s): CANSIM table number 326-0020.

Higher consumer price increases in the three most eastern provinces were due primarily to strong gains in energy prices.

With the exception of Alberta, the most significant individual upward contributor on consumer prices in August 2008 came from higher prices for gasoline. The 12-month variation in the gasoline price index ranged from 30.7% in British Columbia to 21.6% in Saskatchewan.

In Alberta, it was a 73.7% 12-month rise in natural gas prices that contributed largely to rising consumer prices.

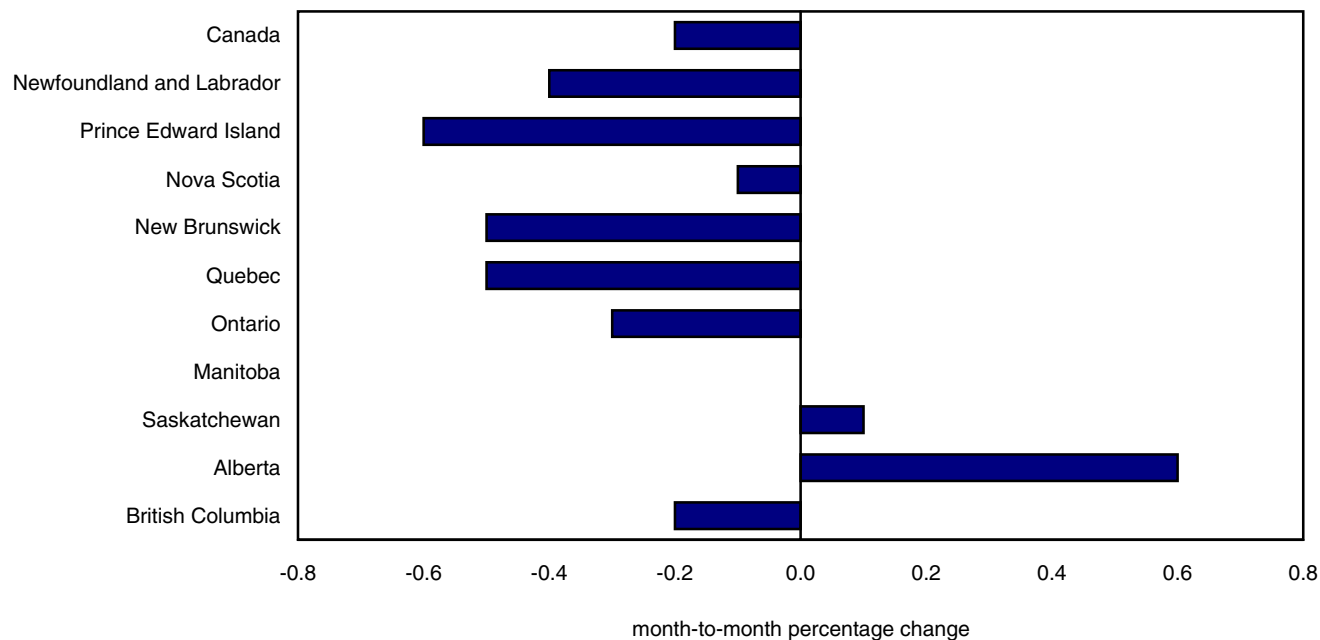
Lower prices to purchase and lease passenger vehicles were observed across the country and were the most significant individual downward contributor on the CPI for all provinces.

Month-to-month change: A drop in gasoline prices provides relief to drivers

Consumer prices fell 0.2% from July 2008 to August 2008 prior to seasonal adjustment, down from the growth of 0.3% recorded from June 2008 to July 2008. The most significant downward contributor on the monthly CPI in August 2008 was a drop in prices for gasoline.

On a month-to-month basis, gasoline prices fell 6.6% in August 2008 when compared to July 2008.

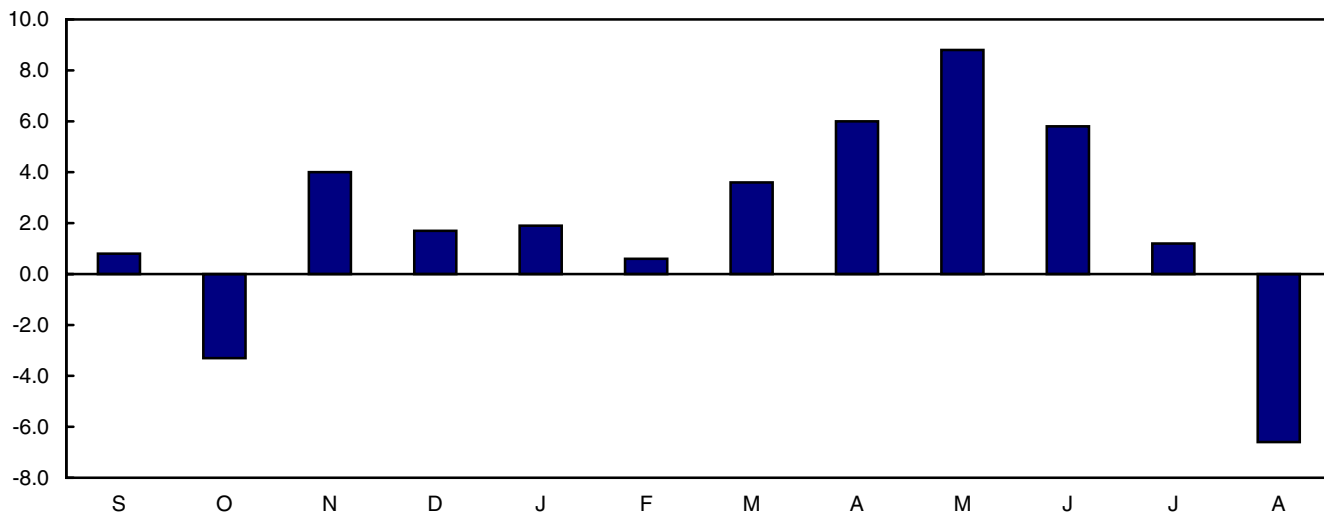
Chart 4
Percentage change in the all-items index from the previous month, Canada and provinces, 2002=100, not seasonally adjusted



Source(s): CANSIM table number 326-0020.

Chart 5
Drivers receive relief from falling prices for gasoline

month-to-month percentage change



Source(s): CANSIM table number 326-0020.

Also helping to push consumer prices down from July 2008 to August 2008 was a drop in prices for fresh vegetables (-9.0%), a price movement that is typically observed at this time of the year.

Putting upward pressure on the monthly CPI in August 2008 were increases in prices for natural gas (+6.3%), traveller accommodation (+3.0%) and meat (+1.5%).

On a seasonally adjusted basis, the CPI rose 0.2% from July 2008 to August 2008, down from the 0.3% rise posted in the previous period.

The 12-month variation of the Bank of Canada's core index makes a move

The Bank of Canada's core index¹ advanced 1.7% over the 12 months to August 2008, faster than the increases of 1.5% recorded over the four previous 12-month periods. Gasoline, mortgage costs, natural gas and fuel oil and other fuels accounted for the majority of the difference between the CPI and the Bank's core index movement.

Prior to seasonal adjustment, the Bank of Canada's core index rose 0.3% from July 2008 to August 2008, after rising 0.1% in the previous period.

The seasonally adjusted monthly core index advanced 0.3% from July 2008 to August 2008, after advancing 0.1% from June 2008 to July 2008.

1. The measure of core consumer price index (CPI) excludes from the all-items CPI the effect of changes in indirect taxes and eight of the most volatile components identified by the Bank of Canada: fruit, fruit preparations and nuts; vegetables and vegetable preparations; mortgage interest cost; natural gas; fuel oil and other fuels; gasoline; inter-city transportation; and tobacco products and smokers' supplies. For additional information on core CPI, please consult the Bank of Canada Web site: <http://www.bankofcanada.ca/en/inflation/index.htm>.

Related products

Selected publications from Statistics Canada

62-010-X	Consumer Prices and Price Indexes
62-557-X	Your Guide to the Consumer Price Index
62F0014M	Analytical Series - Prices Division
62-553-X	The Consumer Price Index Reference Paper

Selected technical and analytical products from Statistics Canada

62F0014M1996001	How Inflation and Income Tax Affect the Return on a Safe Investment
62F0014M2001014	Televisions: Quality Changes and Scanner Data
62F0014M2001015	Housing Depreciation in the Canadian CPI

Selected CANSIM tables from Statistics Canada

326-0009	Average retail prices for gasoline and fuel oil, by urban centre, monthly
326-0012	Average retail prices for food and other selected items, monthly
326-0015	Inter-city indexes of retail price differentials for selected groups of consumer goods and services, annual
326-0020	Consumer price index (CPI), 2005 basket content, monthly
326-0021	Consumer price index (CPI), 2005 basket content, annual
326-0022	Consumer price index (CPI), seasonally adjusted, 2005 basket content, monthly

Selected surveys from Statistics Canada

2301	Consumer Price Index
------	----------------------

Selected summary tables from Statistics Canada

- *Consumer Price Index, by province (monthly)*
- *Consumer Price Index, by city (monthly)*
- *Consumer Price Index, food, by province (monthly)*
- *Consumer Price Index, shelter, by province (monthly)*
- *Consumer Price Index, household operations, furnishings and equipment by province (monthly)*
- *Consumer Price Index, clothing and footwear, by province (monthly)*
- *Consumer Price Index, transportation, by province (monthly)*
- *Consumer Price Index, health and personal care, by province (monthly)*
- *Consumer Price Index, recreation, education and reading, by province (monthly)*
- *Consumer Price Index, alcoholic beverages and tobacco products, by province (monthly)*
- *Canada: Economic and financial data*
- *Consumer Price Index, provinces*
- *Consumer price index, historical summary, by province or territory*
- *Gasoline and fuel oil, average retail prices by urban centre (monthly)*
- *Food and other selected items, average retail prices (monthly)*
- *Gasoline and fuel oil, average retail prices by urban centre*
- *Food and other selected items, average retail prices*
- *Consumer Price Index, food, by province*
- *Consumer Price Index, shelter, by province*
- *Consumer Price Index, household operations, furnishings and equipment, by province*
- *Consumer Price Index, clothing and footwear, by province*
- *Consumer Price Index, transportation, by province*
- *Consumer Price Index, health and personal care, by province*
- *Consumer Price Index, recreation, education and reading, by province*
- *Consumer Price Index, alcoholic beverages and tobacco products, by province*
- *Inter-city indexes of consumer price levels*
- *Consumer Price Index, by city*

- *Consumer Price Index, historical summary*
- *Selected economic indicators, Canada and United States (monthly and quarterly)*
- *Education price index, by provinces*
- *Economic indicators, by province and territory (monthly and quarterly)*

For further reading

Detailed information on the methodology and concepts of the CPI is contained in ***The Consumer Price Index Reference Paper, Updating Based on 1992 Expenditures***, (Occasional), catalogue no. 62-553-X.

Information regarding the Household Spending Survey is contained in ***Spending Patterns in Canada, 2005***, catalogue no. 62-202-X.

A brief non-technical document entitled ***Your Guide to the Consumer Price Index*** (Occasional) catalogue no. 62-557-X answers the frequently asked questions about the construction and use of the CPI.

For further information, contact the Consumer Prices Section, Prices Division, Statistics Canada, Ottawa, Ontario K1A 0T6 (613-951-9606), or you can also search through the Statistics Canada catalogue which lists all current products and services available from Statistics Canada.

Statistical tables

Table 1
The Consumer Price Index, major components and special aggregates, ¹ Canada, not seasonally adjusted

	CANSIM vector number	Relative ² importance	Indexes			Percentage change August 2008 from	
			August 2008	July 2008	August 2007	July 2008	August 2007
2002=100							
All-items	(v41690973)	100.0	115.6	115.8	111.7	-0.2	3.5
Food	(v41690974)	17.0	116.8	116.5	111.8	0.3	4.5
Shelter	(v41691050)	26.6	123.8	123.3	117.6	0.4	5.3
Household operations, furnishings and equipment	(v41691067)	11.1	104.4	104.4	103.5	0.0	0.9
Clothing and footwear	(v41691108)	5.4	93.7	93.3	95.4	0.4	-1.8
Transportation	(v41691128)	19.9	123.1	125.7	116.3	-2.1	5.8
Health and personal care	(v41691153)	4.7	109.3	108.5	107.6	0.7	1.6
Recreation, education and reading	(v41691170)	12.2	103.5	103.2	102.9	0.3	0.6
Alcoholic beverages and tobacco products	(v41691206)	3.1	127.5	127.6	126.1	-0.1	1.1
All-items (1992=100)	(v41713403)	.	137.6	137.8	132.9	-0.1	3.5
Special aggregates							
Goods	(v41691222)	48.8	111.5	112.1	107.7	-0.5	3.5
Durable goods	(v41691223)	13.3	88.5	88.5	93.9	0.0	-5.8
Semi-durable goods	(v41691224)	7.2	94.3	94.1	95.5	0.2	-1.3
Non-durable goods	(v41691225)	28.2	129.2	130.4	118.4	-0.9	9.1
Services	(v41691230)	51.2	119.6	119.4	115.6	0.2	3.5
All-items excluding food	(v41691232)	83.0	115.4	115.7	111.7	-0.3	3.3
All-items excluding food and energy	(v41691233)	73.6	110.5	110.4	109.2	0.1	1.2
All-items excluding energy	(v41691238)	90.6	111.7	111.5	109.7	0.2	1.8
All-items excluding gasoline	(v41693245)	95.1	113.0	112.7	110.4	0.3	2.4
All-items excluding shelter, insurance and financial services	(v41693246)	69.9	111.4	111.9	108.5	-0.4	2.7
Energy	(v41691239)	9.4	164.0	169.1	136.4	-3.0	20.2
All-items excluding alcoholic beverages, tobacco products and smokers' supplies	(v41691241)	96.9	115.1	115.3	111.1	-0.2	3.6
Core consumer price index (CPI) (Bank of Canada definition) ³	(v41693242)	82.7	112.0	111.7	110.1	0.3	1.7

Note(s): See "Data quality, concepts and methodology — Explanatory notes for tables" section.

Table 2
The Consumer Price Index, major components and special aggregates, ¹ Canada, seasonally adjusted

	CANSIM vector number	Relative ² importance	Indexes			Percentage change August 2008 from	
			August 2008	July 2008	August 2007	July 2008	August 2007
2002=100							
All-items	(v41690914)	100.0	115.5	115.3	111.5	0.2	3.6
Food	(v41690915)	17.0	116.6	115.9	111.9	0.6	4.2
Shelter	(v41690916)	26.6	123.8	123.3	117.6	0.4	5.3
Household operations, furnishings and equipment	(v41690917)	11.1	104.4	104.4	103.5	0.0	0.9
Clothing and footwear	(v41690918)	5.4	93.9	94.6	95.6	-0.7	-1.8
Transportation	(v41690919)	19.9	123.1	125.7	116.3	-2.1	5.8
Health and personal care	(v41690920)	4.7	109.3	108.3	107.7	0.9	1.5
Recreation, education and reading	(v41690921)	12.2	102.6	102.3	102.1	0.3	0.5
Alcoholic beverages and tobacco products	(v41690922)	3.1	127.6	127.5	126.0	0.1	1.3
Special aggregates							
All-items excluding food	(v41690923)	83.0	115.1	115.1	111.3	0.0	3.4
All-items excluding food and energy	(v41690924)	73.6	110.6	110.4	109.4	0.2	1.1
All-items excluding eight of the most volatile components (Bank of Canada definition)	(v41690925)	82.7	110.6	110.4	109.5	0.2	1.0
Core consumer price index (CPI) (Bank of Canada definition) ³	(v41690926)	82.7	112.0	111.7	110.2	0.3	1.6

Note(s): See "Data quality, concepts and methodology — Explanatory notes for tables" section.

Table 3
The Consumer Price Index, provinces, Whitehorse, Yellowknife and Iqaluit 1, not seasonally adjusted

	CANSIM vector number	Indexes			Percentage change August 2008 from	
		August 2008	July 2008	August 2007	July 2008	August 2007
		2002=100				
Newfoundland and Labrador	(v41691244)	115.8	116.3	111.1	-0.4	4.2
Prince Edward Island	(v41691379)	119.3	120.0	113.8	-0.6	4.8
Nova Scotia	(v41691513)	117.7	117.8	112.7	-0.1	4.4
New Brunswick	(v41691648)	114.3	114.9	111.4	-0.5	2.6
Quebec	(v41691783)	113.5	114.1	110.1	-0.5	3.1
Ontario	(v41691919)	114.8	115.1	110.9	-0.3	3.5
Manitoba	(v41692055)	115.0	115.0	111.2	0.0	3.4
Saskatchewan	(v41692191)	117.0	116.9	113.1	0.1	3.4
Alberta	(v41692327)	124.1	123.3	119.3	0.6	4.0
British Columbia	(v41692462)	114.0	114.2	110.4	-0.2	3.3
Whitehorse, Yukon Territory	(v41692598)	115.4	115.3	110.5	0.1	4.4
Yellowknife, Northwest Territories	(v41692722)	116.9	116.6	111.1	0.3	5.2
Iqaluit, Nunavut (Dec. 2002=100)	(v41713432)	112.2	111.6	108.9	0.5	3.0

Note(s): See "Data quality, concepts and methodology — Explanatory notes for tables" section.

Table 4-1
The Consumer Price Index, major components and selected sub-groups, Canada, not seasonally adjusted — Food ¹

	CANSIM vector number	Indexes			Percentage change August 2008 from	
		August 2008	July 2008	August 2007	July 2008	August 2007
		2002=100				
All-items	(v41690973)	115.6	115.8	111.7	-0.2	3.5
Food	(v41690974)	116.8	116.5	111.8	0.3	4.5
Food purchased from stores	(v41690975)	116.4	116.2	110.6	0.2	5.2
Meat	(v41690976)	115.0	113.3	112.0	1.5	2.7
Fresh or frozen meat (excluding poultry)	(v41690977)	110.8	108.9	108.2	1.7	2.4
Fresh or frozen beef	(v41690978)	112.2	109.8	108.5	2.2	3.4
Fresh or frozen pork	(v41690979)	103.6	103.0	104.1	0.6	-0.5
Fresh or frozen poultry meat	(v41690981)	128.0	125.6	122.0	1.9	4.9
Fresh or frozen chicken	(v41690982)	130.7	128.2	123.9	2.0	5.5
Processed meat	(v41690984)	110.9	109.9	109.7	0.9	1.1
Ham and bacon	(v41690985)	108.1	106.0	110.4	2.0	-2.1
Other processed meat	(v41690986)	112.7	112.2	109.8	0.4	2.6
Fish, seafood and other marine products	(v41690987)	101.2	100.9	101.2	0.3	0.0
Fish	(v41690988)	105.3	104.8	104.1	0.5	1.2
Fresh or frozen fish (including portions and fish sticks)	(v41690989)	105.4	105.0	104.9	0.4	0.5
Canned and other preserved fish	(v41690990)	105.1	104.3	102.1	0.8	2.9
Dairy products and eggs	(v41690992)	124.8	124.5	120.2	0.2	3.8
Dairy products	(v41690993)	124.7	124.5	120.2	0.2	3.7
Fresh milk	(v41690994)	123.8	123.5	117.5	0.2	5.4
Butter	(v41690995)	124.5	124.3	120.7	0.2	3.1
Cheese	(v41690996)	124.8	125.6	123.4	-0.6	1.1
Ice cream and related products	(v41690997)	120.7	120.4	115.5	0.2	4.5
Eggs	(v41690999)	126.0	123.8	119.4	1.8	5.5
Bakery and cereal products (excluding infant food)	(v41691000)	135.8	135.2	118.2	0.4	14.9
Bakery products	(v41691001)	140.1	139.4	123.1	0.5	13.8
Bread, unsweetened rolls and buns	(v41691002)	157.5	158.6	133.2	-0.7	18.2
Biscuits	(v41691003)	119.9	116.6	114.3	2.8	4.9
Other bakery products	(v41691004)	128.3	126.9	113.9	1.1	12.6
Cereal products (excluding infant food)	(v41691005)	128.1	127.8	109.2	0.2	17.3
Rice (including rice-based mixes)	(v41691006)	139.2	135.2	106.9	3.0	30.2
Breakfast cereal and other grain products (excluding infant food)	(v41691007)	110.3	110.1	109.2	0.2	1.0
Pasta products	(v41691008)	153.8	153.7	110.6	0.1	39.1
Flour and flour based mixes	(v41691009)	151.1	153.1	104.9	-1.3	44.0
Fruit, fruit preparations and nuts	(v41691010)	110.5	109.1	106.8	1.3	3.5
Fresh fruit	(v41691011)	106.1	104.4	100.9	1.6	5.2
Apples	(v41691012)	122.8	114.6	109.7	7.2	11.9
Oranges	(v41691013)	115.7	109.4	115.2	5.8	0.4
Bananas and plantains	(v41691014)	121.1	121.8	105.4	-0.6	14.9
Other fresh fruit	(v41691015)	95.4	96.8	93.9	-1.4	1.6
Preserved fruit and fruit preparations	(v41691016)	117.7	116.8	116.9	0.8	0.7
Fruit juices	(v41691017)	122.5	120.9	121.9	1.3	0.5
Other preserved fruit and fruit preparations	(v41691018)	105.5	106.1	104.0	-0.6	1.4
Nuts	(v41691019)	111.5	109.9	105.9	1.5	5.3
Vegetables and vegetable preparations	(v41691020)	99.3	106.2	92.1	-6.5	7.8
Fresh vegetables	(v41691021)	94.5	103.9	86.5	-9.0	9.2
Potatoes	(v41691022)	112.7	99.9	99.2	12.8	13.6
Tomatoes	(v41691023)	92.5	95.0	76.4	-2.6	21.1
Lettuce	(v41691024)	66.7	70.3	64.1	-5.1	4.1
Other fresh vegetables	(v41691025)	98.4	116.2	92.6	-15.3	6.3
Preserved vegetables and vegetable preparations	(v41691026)	116.7	114.6	111.9	1.8	4.3
Frozen and dried vegetables (excluding canned)	(v41691027)	115.9	113.6	111.6	2.0	3.9
Canned vegetables and other vegetable preparations	(v41691028)	117.2	115.2	112.1	1.7	4.5
Other food products and non-alcoholic beverages	(v41691029)	113.2	112.0	110.2	1.1	2.7
Sugar and confectionery	(v41691030)	116.4	114.2	113.8	1.9	2.3
Fats and oils	(v41691033)	134.4	133.8	114.2	0.4	17.7
Coffee and tea	(v41691036)	114.0	112.4	111.2	1.4	2.5
Condiments, spices and vinegars	(v41691039)	108.0	105.9	104.0	2.0	3.8
Other food preparations	(v41691040)	115.1	114.0	112.4	1.0	2.4
Non-alcoholic beverages	(v41691045)	104.8	104.2	104.6	0.6	0.2
Food purchased from restaurants	(v41691046)	117.9	117.3	114.8	0.5	2.7
Food purchased from table-service restaurants	(v41691047)	118.9	118.1	115.3	0.7	3.1
Food purchased from fast food and take-out restaurants	(v41691048)	115.7	115.7	113.6	0.0	1.8

Note(s): See "Data quality, concepts and methodology — Explanatory notes for tables" section.

Table 4-2
The Consumer Price Index, major components and selected sub-groups, Canada, not seasonally adjusted — Shelter

	CANSIM vector number	Indexes			Percentage change August 2008 from	
		August 2008	July 2008	August 2007	July 2008	August 2007
2002=100						
Shelter	(v41691050)	123.8	123.3	117.6	0.4	5.3
Rented accommodation	(v41691051)	108.1	107.9	106.3	0.2	1.7
Rent	(v41691052)	108.1	107.9	106.3	0.2	1.7
Owned accommodation	(v41691055)	124.8	124.7	119.8	0.1	4.2
Mortgage interest cost ¹	(v41691056)	118.5	118.0	109.6	0.4	8.1
Replacement cost	(v41691057)	139.9	139.8	136.8	0.1	2.3
Property taxes (including special charges)	(v41691058)	120.3	120.3	115.9	0.0	3.8
Homeowners' home and mortgage insurance	(v41691059)	154.8	155.0	151.9	-0.1	1.9
Homeowners' maintenance and repairs	(v41691060)	108.4	109.0	110.2	-0.6	-1.6
Water, fuel and electricity	(v41691062)	145.4	143.0	128.4	1.7	13.2
Electricity ²	(v41691063)	114.6	115.1	115.5	-0.4	-0.8
Water	(v41691064)	146.9	146.9	134.6	0.0	9.1
Natural gas	(v41691065)	174.5	164.2	132.5	6.3	31.7
Fuel oil and other fuels	(v41691066)	252.9	252.9	169.3	0.0	49.4

Note(s): See "Data quality, concepts and methodology — Explanatory notes for tables" section.

Table 4-3
The Consumer Price Index, major components and selected sub-groups, Canada, not seasonally adjusted — Household operations, furnishings and equipment

	CANSIM vector number	Indexes			Percentage change August 2008 from	
		August 2008	July 2008	August 2007	July 2008	August 2007
2002=100						
Household operations, furnishings and equipment	(v41691067)	104.4	104.4	103.5	0.0	0.9
Household operations	(v41691068)	109.4	109.5	106.5	-0.1	2.7
Communications	(v41691069)	105.0	105.6	102.4	-0.6	2.5
Telephone services	(v41691070)	106.1	106.1	101.9	0.0	4.1
Internet access services	(v41693216)	93.9	97.2	97.9	-3.4	-4.1
Postal services and other communication services	(v41691071)	122.3	122.3	120.8	0.0	1.2
Child care and domestic services	(v41691072)	119.8	119.8	112.7	0.0	6.3
Child care	(v41691073)	118.3	118.3	111.4	0.0	6.2
Domestic services	(v41691074)	123.6	123.6	115.9	0.0	6.6
Household chemical products	(v41691075)	105.2	104.7	104.0	0.5	1.2
Paper, plastic and foil supplies	(v41691078)	106.4	105.5	106.0	0.9	0.4
Other household goods and services	(v41691081)	112.0	111.9	109.6	0.1	2.2
Pet food and supplies	(v41691082)	104.9	104.7	103.4	0.2	1.5
Seeds, plants and cut flowers	(v41691083)	104.9	104.9	104.6	0.0	0.3
Other horticultural goods	(v41691084)	102.6	102.6	97.5	0.0	5.2
Financial services	(v41693229)	115.8	115.8	113.6	0.0	1.9
Household furnishings and equipment	(v41691087)	95.8	95.5	98.2	0.3	-2.4
Furniture and household textiles	(v41691088)	97.5	97.0	100.4	0.5	-2.9
Furniture	(v41691089)	95.6	95.6	98.9	0.0	-3.3
Household textiles	(v41691093)	104.2	101.8	105.3	2.4	-1.0
Household equipment	(v41691097)	86.9	86.9	90.1	0.0	-3.6
Household appliances	(v41691098)	86.8	86.8	90.4	0.0	-4.0
Non-electric kitchen utensils and tableware	(v41691103)	88.5	88.5	90.2	0.0	-1.9
Services related to household furnishings and equipment	(v41691107)	142.7	142.7	134.3	0.0	6.3

Note(s): See "Data quality, concepts and methodology — Explanatory notes for tables" section.

Table 4-4
The Consumer Price Index, major components and selected sub-groups, Canada, not seasonally adjusted — Clothing and footwear

	CANSIM vector number	Indexes			Percentage change August 2008 from	
		August 2008	July 2008	August 2007	July 2008	August 2007
2002=100						
Clothing and footwear	(v41691108)	93.7	93.3	95.4	0.4	-1.8
Clothing	(v41691109)	88.8	89.2	91.4	-0.4	-2.8
Women's clothing	(v41691110)	88.3	89.8	91.4	-1.7	-3.4
Men's clothing	(v41691111)	91.9	91.0	93.7	1.0	-1.9
Children's clothing (including infants)	(v41691112)	82.5	82.8	85.7	-0.4	-3.7
Footwear	(v41691113)	93.8	92.0	95.4	2.0	-1.7
Clothing accessories and jewellery	(v41691118)	110.5	106.6	107.6	3.7	2.7
Clothing material, notions and services	(v41691123)	116.3	114.9	113.8	1.2	2.2

Note(s): See "Data quality, concepts and methodology — Explanatory notes for tables" section.

Table 4-5
The Consumer Price Index, major components and selected sub-groups, Canada, not seasonally adjusted — Transportation

	CANSIM vector number	Indexes			Percentage change August 2008 from	
		August 2008	July 2008	August 2007	July 2008	August 2007
2002=100						
Transportation	(v41691128)	123.1	125.7	116.3	-2.1	5.8
Private transportation	(v41691129)	122.6	125.4	116.2	-2.2	5.5
Purchase, leasing and rental of passenger vehicles	(v41691130)	90.1	90.3	97.2	-0.2	-7.3
Purchase and leasing of passenger vehicles	(v41691131)	90.0	90.1	97.1	-0.1	-7.3
Purchase of passenger vehicles	(v41691132)	90.7	90.8	97.9	-0.1	-7.4
Rental of passenger vehicles	(v41691134)	101.6	101.6	103.7	0.0	-2.0
Operation of passenger vehicles	(v41691135)	153.7	159.2	133.9	-3.5	14.8
Gasoline	(v41691136)	183.7	196.7	145.4	-6.6	26.3
Passenger vehicle parts, maintenance and repairs	(v41691137)	121.1	121.1	118.2	0.0	2.5
Other passenger vehicle operating expenses	(v41691140)	136.1	135.7	128.3	0.3	6.1
Passenger vehicle insurance premiums ¹	(v41691141)	138.7	138.2	130.2	0.4	6.5
Passenger vehicle registration fees	(v41691142)	107.7	107.7	106.4	0.0	1.2
Drivers' licences	(v41691143)	149.2	149.2	142.3	0.0	4.8
Parking fees	(v41691144)	134.1	134.1	127.4	0.0	5.3
Public transportation	(v41691146)	128.0	128.6	117.6	-0.5	8.8
Local and commuter transportation	(v41691147)	125.2	125.2	119.2	0.0	5.0
City bus and subway transportation	(v41691148)	124.3	124.3	117.8	0.0	5.5
Taxi and other local and commuter transportation	(v41691149)	126.9	126.9	121.9	0.0	4.1
Inter-city transportation	(v41691150)	129.3	130.3	116.5	-0.8	11.0
Air transportation	(v41691151)	128.4	129.9	115.1	-1.2	11.6
Rail, highway bus and other inter-city transportation	(v41691152)	129.4	126.1	121.1	2.6	6.9

Note(s): See "Data quality, concepts and methodology — Explanatory notes for tables" section.

Table 4-6

The Consumer Price Index, major components and selected sub-groups, Canada, not seasonally adjusted — Health and personal care

	CANSIM vector number	Indexes			Percentage change August 2008 from	
		August 2008	July 2008	August 2007	July 2008	August 2007
2002=100						
Health and personal care	(v41691153)	109.3	108.5	107.6	0.7	1.6
Health care	(v41691154)	113.3	112.8	111.0	0.4	2.1
Health care goods	(v41713463)	104.8	103.9	104.0	0.9	0.8
Medicinal and pharmaceutical products	(v41691156)	102.6	102.1	101.9	0.5	0.7
Prescribed medicines	(v41691157)	101.3	101.3	101.7	0.0	-0.4
Non-prescribed medicines	(v41691158)	104.8	103.6	102.0	1.2	2.7
Optical goods	(v41713381)	109.9	110.0	109.1	-0.1	0.7
Health care services	(v41713464)	125.0	125.0	120.7	0.0	3.6
Optical services	(v41693244)	101.9	101.9	99.9	0.0	2.0
Dental care	(v41691161)	124.4	124.4	119.8	0.0	3.8
Personal care	(v41691163)	105.6	104.5	104.3	1.1	1.2
Personal care supplies and equipment	(v41691164)	99.2	97.4	97.9	1.8	1.3
Personal care services	(v41691169)	114.7	114.5	113.4	0.2	1.1

Note(s): See "Data quality, concepts and methodology — Explanatory notes for tables" section.

Table 4-7

The Consumer Price Index, major components and selected sub-groups, Canada, not seasonally adjusted — Recreation, education and reading

	CANSIM vector number	Indexes			Percentage change August 2008 from	
		August 2008	July 2008	August 2007	July 2008	August 2007
2002=100						
Recreation, education and reading	(v41691170)	103.5	103.2	102.9	0.3	0.6
Recreation	(v41691171)	98.7	98.3	98.5	0.4	0.2
Recreational equipment and services (excluding recreational vehicles)	(v41691172)	69.0	69.1	72.0	-0.1	-4.2
Purchase and operation of recreational vehicles	(v41691179)	112.1	112.5	112.9	-0.4	-0.7
Home entertainment equipment, parts and services	(v41691184)	82.2	82.2	86.2	0.0	-4.6
Travel services	(v41691190)	101.6	99.9	98.8	1.7	2.8
Traveller accommodation ¹	(v41691191)	91.6	88.9	88.7	3.0	3.3
Travel tours	(v41691192)	110.5	110.5	108.0	0.0	2.3
Other cultural and recreational services	(v41691193)	123.8	123.7	119.2	0.1	3.9
Spectator entertainment (excluding cablevision)	(v41691194)	117.5	117.5	112.9	0.0	4.1
Cablevision and satellite services (including pay television)	(v41691195)	130.2	130.0	124.8	0.2	4.3
Use of recreational facilities and services	(v41691196)	120.4	120.4	117.2	0.0	2.7
Education and reading	(v41691197)	118.4	118.4	116.6	0.0	1.5
Education	(v41691198)	121.8	121.8	118.5	0.0	2.8
Tuition fees	(v41691199)	125.7	125.7	122.0	0.0	3.0
Reading material and other printed material (excluding textbooks)	(v41691202)	106.2	106.2	110.6	0.0	-4.0
Newspapers	(v41691203)	119.3	119.3	116.1	0.0	2.8
Magazines and periodicals	(v41691204)	119.2	119.2	118.2	0.0	0.8

Note(s): See "Data quality, concepts and methodology — Explanatory notes for tables" section.

Table 4-8

The Consumer Price Index, major components and selected sub-groups, Canada, not seasonally adjusted — Alcoholic beverages and tobacco products

	CANSIM vector number	Indexes			Percentage change August 2008 from	
		August 2008	July 2008	August 2007	July 2008	August 2007
		2002=100				
Alcoholic beverages and tobacco products	(v41691206)	127.5	127.6	126.1	-0.1	1.1
Alcoholic beverages	(v41691207)	111.5	111.9	110.5	-0.4	0.9
Alcoholic beverages served in licensed establishments	(v41691208)	115.9	115.7	113.6	0.2	2.0
Beer served in licensed establishments	(v41691209)	116.4	116.2	113.3	0.2	2.7
Liquor served in licensed establishments	(v41691211)	117.6	117.1	115.5	0.4	1.8
Alcoholic beverages purchased from stores	(v41691212)	109.4	109.9	108.8	-0.5	0.6
Beer purchased from stores	(v41691213)	111.2	112.7	111.8	-1.3	-0.5
Wine purchased from stores	(v41691214)	105.8	105.7	104.6	0.1	1.1
Liquor purchased from stores	(v41691215)	108.8	108.2	106.6	0.6	2.1
Tobacco products and smokers' supplies	(v41691216)	141.8	141.3	139.8	0.4	1.4
Cigarettes	(v41691217)	141.7	141.3	139.8	0.3	1.4

Note(s): See "Data quality, concepts and methodology — Explanatory notes for tables" section.

Table 5
The Consumer Price Index for Canada, all-items, not seasonally adjusted, historical data

	Jan.	Feb.	Mar.	Apr.	May	June	July	Aug.	Sept.	Oct.	Nov.	Dec.	Annual average ¹
	2002=100												
Indexes (v41690973)													
1989	72.7	73.2	73.6	73.8	74.6	74.9	75.4	75.5	75.6	75.9	76.1	76.1	74.8
1990	76.7	77.2	77.5	77.5	77.9	78.2	78.5	78.6	78.8	79.5	80.0	79.9	78.4
1991	82.0	82.0	82.3	82.3	82.7	83.1	83.2	83.3	83.1	83.0	83.3	82.9	82.8
1992	83.3	83.3	83.6	83.7	83.8	84.0	84.2	84.2	84.2	84.3	84.7	84.7	84.0
1993	85.0	85.3	85.2	85.2	85.4	85.4	85.6	85.7	85.7	85.9	86.3	86.1	85.6
1994	86.1	85.4	85.4	85.4	85.2	85.4	85.7	85.8	85.9	85.7	86.2	86.3	85.7
1995	86.6	87.0	87.2	87.5	87.7	87.7	87.9	87.7	87.8	87.7	88.0	87.8	87.6
1996	88.0	88.1	88.5	88.7	89.0	89.0	89.0	89.0	89.1	89.3	89.7	89.7	88.9
1997	89.9	90.1	90.2	90.2	90.3	90.5	90.5	90.6	90.6	90.6	90.5	90.4	90.4
1998	90.9	91.0	91.1	91.0	91.3	91.4	91.4	91.4	91.2	91.6	91.6	91.3	91.3
1999	91.5	91.6	92.0	92.5	92.7	92.9	93.1	93.3	93.6	93.7	93.6	93.7	92.9
2000	93.5	94.1	94.8	94.5	94.9	95.5	95.8	95.7	96.1	96.3	96.6	96.7	95.4
2001	96.3	96.8	97.1	97.8	98.6	98.7	98.4	98.4	98.6	98.1	97.2	97.4	97.8
2002	97.6	98.2	98.9	99.5	99.7	99.9	100.5	100.9	100.9	101.2	101.5	101.1	100.0
2003	102.0	102.8	103.1	102.4	102.5	102.5	102.6	102.9	103.1	102.8	103.1	103.2	102.8
2004	103.3	103.5	103.9	104.1	105.0	105.1	105.0	104.8	105.0	105.2	105.6	105.4	104.7
2005	105.3	105.7	106.3	106.6	106.7	106.9	107.1	107.5	108.4	107.9	107.7	107.6	107.0
2006	108.2	108.0	108.6	109.2	109.7	109.5	109.6	109.8	109.2	109.0	109.2	109.4	109.1
2007	109.4	110.2	111.1	111.6	112.1	111.9	112.0	111.7	111.9	111.6	111.9	112.0	111.5
2008	111.8	112.2	112.6	113.5	114.6	115.4	115.8	115.6
Percentage change from the corresponding month of the previous year (v41690973)													
1989	4.3	4.6	4.5	4.5	5.1	5.2	5.3	5.3	5.3	5.1	5.3	5.3	5.1
1990	5.5	5.5	5.3	5.0	4.4	4.4	4.1	4.1	4.2	4.7	5.1	5.0	4.8
1991	6.9	6.2	6.2	6.2	6.2	6.3	6.0	6.0	5.5	4.4	4.1	3.8	5.6
1992	1.6	1.6	1.6	1.7	1.3	1.1	1.2	1.1	1.3	1.6	1.7	2.2	1.4
1993	2.0	2.4	1.9	1.8	1.9	1.7	1.7	1.8	1.8	1.9	1.9	1.7	1.9
1994	1.3	0.1	0.2	0.2	-0.2	0.0	0.1	0.1	0.2	-0.2	-0.1	0.2	0.1
1995	0.6	1.9	2.1	2.5	2.9	2.7	2.6	2.2	2.2	2.3	2.1	1.7	2.2
1996	1.6	1.3	1.5	1.4	1.5	1.5	1.3	1.5	1.5	1.8	1.9	2.2	1.5
1997	2.2	2.3	1.9	1.7	1.5	1.7	1.7	1.8	1.7	1.5	0.9	0.8	1.7
1998	1.1	1.0	1.0	0.9	1.1	1.0	1.0	0.9	0.7	1.1	1.2	1.0	1.0
1999	0.7	0.7	1.0	1.6	1.5	1.6	1.9	2.1	2.6	2.3	2.2	2.6	1.8
2000	2.2	2.7	3.0	2.2	2.4	2.8	2.9	2.6	2.7	2.8	3.2	3.2	2.7
2001	3.0	2.9	2.4	3.5	3.9	3.4	2.7	2.8	2.6	1.9	0.6	0.7	2.5
2002	1.3	1.4	1.9	1.7	1.1	1.2	2.1	2.5	2.3	3.2	4.4	3.8	2.2
2003	4.5	4.7	4.2	2.9	2.8	2.6	2.1	2.0	2.2	1.6	1.6	2.1	2.8
2004	1.3	0.7	0.8	1.7	2.4	2.5	2.3	1.8	1.8	2.3	2.4	2.1	1.8
2005	1.9	2.1	2.3	2.4	1.6	1.7	2.0	2.6	3.2	2.6	2.0	2.1	2.2
2006	2.8	2.2	2.2	2.4	2.8	2.4	2.3	2.1	0.7	1.0	1.4	1.7	2.0
2007	1.1	2.0	2.3	2.2	2.2	2.2	2.2	1.7	2.5	2.4	2.5	2.4	2.2
2008	2.2	1.8	1.4	1.7	2.2	3.1	3.4	3.5

Note(s): See "Data quality, concepts and methodology — Explanatory notes for tables" section.

Table 6
Core consumer price index (CPI) (Bank of Canada definition), 1 not seasonally adjusted, historical data

	Jan.	Feb.	Mar.	Apr.	May	June	July	Aug.	Sept.	Oct.	Nov.	Dec.	Annual average ²
	2002=100												
Indexes (v41693242)													
1989	75.7	76.1	76.4	76.7	76.9	76.9	77.3	77.5	77.7	78.0	78.4	78.3	77.2
1990	78.6	79.0	79.1	79.3	79.5	79.6	79.9	80.1	80.4	80.8	81.0	80.8	79.8
1991	81.4	81.7	81.7	81.7	81.8	82.0	82.0	82.3	82.4	82.5	82.8	82.5	82.1
1992	82.7	83.0	83.2	83.3	83.5	83.4	83.5	83.6	83.7	84.0	84.4	84.3	83.6
1993	84.6	84.9	84.9	84.9	84.9	84.9	85.3	85.4	85.6	85.7	86.2	86.1	85.3
1994	86.2	86.6	86.6	86.7	86.5	86.6	86.7	86.8	87.2	87.2	87.5	87.6	86.9
1995	87.9	88.3	88.4	88.5	88.6	88.6	88.8	89.0	89.3	89.3	89.6	89.2	88.8
1996	89.4	89.8	89.8	89.9	90.1	90.1	90.3	90.5	90.8	90.8	91.3	91.1	90.3
1997	91.3	91.5	91.7	91.9	92.0	92.1	92.1	92.3	92.4	92.5	92.4	92.3	92.0
1998	92.6	92.9	93.0	93.0	93.2	93.2	93.3	93.4	93.4	93.7	93.7	93.5	93.2
1999	93.5	93.8	94.1	94.2	94.5	94.6	94.7	94.9	95.2	95.1	95.0	94.8	94.5
2000	94.6	95.0	95.3	95.3	95.5	95.8	95.8	96.0	96.2	96.3	96.4	96.4	95.7
2001	96.3	96.6	97.1	97.4	97.7	97.9	98.2	98.3	98.4	98.4	98.1	98.0	97.7
2002	98.1	98.8	99.2	99.6	99.8	100.0	100.2	100.7	100.9	100.9	101.2	100.7	100.0
2003	101.3	101.8	102.0	101.7	102.2	102.1	102.1	102.2	102.6	102.7	103.0	102.8	102.2
2004	102.8	103.0	103.3	103.5	103.7	103.8	104.0	103.8	104.1	104.1	104.7	104.6	103.8
2005	104.5	104.8	105.2	105.2	105.4	105.4	105.4	105.6	105.9	105.9	106.3	106.2	105.5
2006	106.2	106.6	107.0	106.9	107.5	107.2	107.5	107.7	108.3	108.4	108.6	108.4	107.5
2007	108.6	109.1	109.5	109.6	109.9	109.9	110.0	110.1	110.5	110.3	110.3	110.0	109.8
2008	110.1	110.7	110.9	111.2	111.5	111.6	111.7	112.0
Percentage change from the corresponding month of the previous year (v41693242)													
1989	4.6	4.7	4.5	4.6	4.6	4.3	4.6	4.2	4.2	3.9	3.8	3.7	4.3
1990	3.8	3.8	3.5	3.4	3.4	3.5	3.4	3.4	3.5	3.6	3.3	3.2	3.4
1991	3.6	3.4	3.3	3.0	2.9	3.0	2.6	2.7	2.5	2.1	2.2	2.1	2.9
1992	1.6	1.6	1.8	2.0	2.1	1.7	1.8	1.6	1.6	1.8	1.9	2.2	1.8
1993	2.3	2.3	2.0	1.9	1.7	1.8	2.2	2.2	2.3	2.0	2.1	2.1	2.0
1994	1.9	2.0	2.0	2.1	1.9	2.0	1.6	1.6	1.9	1.8	1.5	1.7	1.9
1995	2.0	2.0	2.1	2.1	2.4	2.3	2.4	2.5	2.4	2.4	2.4	1.8	2.2
1996	1.7	1.7	1.6	1.6	1.7	1.7	1.7	1.7	1.7	1.7	1.9	2.1	1.7
1997	2.1	1.9	2.1	2.2	2.1	2.2	2.0	2.0	1.8	1.9	1.2	1.3	1.9
1998	1.4	1.5	1.4	1.2	1.3	1.2	1.3	1.2	1.1	1.3	1.4	1.3	1.3
1999	1.0	1.0	1.2	1.3	1.4	1.5	1.5	1.6	1.9	1.5	1.4	1.4	1.4
2000	1.2	1.3	1.3	1.2	1.1	1.3	1.2	1.2	1.1	1.3	1.5	1.7	1.3
2001	1.8	1.7	1.9	2.2	2.3	2.2	2.5	2.4	2.3	2.2	1.8	1.7	2.1
2002	1.9	2.3	2.2	2.3	2.1	2.1	2.0	2.4	2.5	2.5	3.2	2.8	2.4
2003	3.3	3.0	2.8	2.1	2.4	2.1	1.9	1.5	1.7	1.8	1.8	2.1	2.2
2004	1.5	1.2	1.3	1.8	1.5	1.7	1.9	1.6	1.5	1.4	1.7	1.8	1.6
2005	1.7	1.7	1.8	1.6	1.6	1.5	1.3	1.7	1.7	1.7	1.5	1.5	1.6
2006	1.6	1.7	1.7	1.6	2.0	1.7	2.0	2.0	2.3	2.4	2.2	2.1	1.9
2007	2.3	2.3	2.3	2.5	2.2	2.5	2.3	2.2	2.0	1.8	1.6	1.5	2.1
2008	1.4	1.5	1.3	1.5	1.5	1.5	1.5	1.7

Note(s): See "Data quality, concepts and methodology — Explanatory notes for tables" section.

Table 7
The Consumer Price Index for Canada, major components and special aggregates, not seasonally adjusted, historical data

	Major components							Special aggregates				
	Food	Shelter	Household operations, furnishings and equipment	Clothing and footwear	Transportation	Health and personal care	Recreation, education and reading	Alcoholic beverages and tobacco products	Goods ¹	Services ²	All-items ³ excluding food and energy	Energy ³
CANSIM vector number	(v41690974)	(v41691050)	(v41691067)	(v41691108)	(v41691128)	(v41691153)	(v41691170)	(v41691206)	(v41691222)	(v41691230)	(v41691233)	(v41691239)
	2002=100											
Annual averages⁴												
1989	76.5	78.1	82.5	83.7	67.8	75.5	70.3	59.9	78.4	70.9	75.5	66.7
1990	79.6	82.5	84.2	86.1	71.6	79.1	73.2	65.2	81.6	74.9	78.8	73.4
1991	83.4	86.3	87.4	94.3	72.9	84.7	78.3	76.4	85.7	79.6	83.4	77.0
1992	83.1	87.9	87.9	95.1	74.4	86.6	79.2	81.0	86.4	81.4	85.1	77.2
1993	84.5	89.1	88.7	96.0	76.8	88.9	81.1	82.2	87.8	83.1	86.8	78.1
1994	84.9	89.4	88.9	96.8	80.2	89.7	83.5	68.8	86.8	84.5	86.9	78.6
1995	86.9	90.4	90.6	96.7	84.3	89.6	86.7	68.7	88.4	86.7	88.8	79.6
1996	88.0	90.6	92.5	96.4	87.6	90.1	88.7	70.1	89.9	88.0	90.1	81.9
1997	89.4	90.8	93.7	97.7	90.3	91.7	91.0	72.3	91.2	89.5	91.5	83.9
1998	90.9	91.1	95.1	98.8	89.6	93.6	93.0	74.9	91.4	91.1	92.7	80.5
1999	92.0	92.3	95.8	100.1	92.6	95.4	94.7	76.5	93.1	92.6	94.0	85.0
2000	93.3	95.6	96.7	100.3	97.2	97.0	97.0	79.0	96.0	94.8	95.5	98.8
2001	97.4	99.1	98.6	100.7	97.3	98.9	98.4	85.0	98.4	97.1	97.3	102.0
2002	100.0	100.0	100.0	100.0	100.0	100.0	100.0	100.0	100.0	100.0	100.0	100.0
2003	101.7	103.2	100.7	98.2	105.2	101.4	100.8	110.1	101.9	103.6	102.5	107.9
2004	103.8	105.8	101.2	98.0	107.7	102.8	101.1	116.0	103.4	105.9	103.9	115.2
2005	106.4	109.2	101.7	97.6	112.0	104.6	100.8	119.1	105.8	108.2	105.3	126.3
2006	108.9	113.1	102.2	95.8	115.2	105.9	100.6	121.7	107.1	111.1	106.9	132.8
2007	111.8	116.9	103.2	95.7	117.1	107.3	101.8	125.5	108.0	114.8	109.0	135.9
Monthly indexes												
2007												
January	110.9	114.8	102.4	94.2	113.3	106.3	99.2	124.2	106.3	112.5	107.6	125.2
February	112.6	114.9	103.0	95.4	114.2	106.5	100.2	124.2	107.4	113.0	108.0	127.1
March	112.2	115.4	103.2	97.5	117.7	106.4	100.9	124.1	108.8	113.4	108.5	135.9
April	112.2	116.2	103.3	97.7	118.6	106.8	100.9	124.5	109.2	113.9	108.7	139.1
May	112.5	116.0	103.0	96.0	120.7	107.4	102.2	125.2	109.6	114.5	109.0	142.0
June	112.6	116.8	103.0	93.1	119.2	107.9	102.5	125.7	108.9	114.8	109.0	140.1
July	112.3	117.0	103.2	94.6	118.5	107.5	103.0	126.0	108.6	115.3	109.1	139.6
August	111.8	117.6	103.5	95.4	116.3	107.6	102.9	126.1	107.7	115.6	109.2	136.4
September	110.9	117.8	103.7	97.4	116.9	107.6	103.4	126.6	107.8	115.9	109.7	136.6
October	110.7	118.7	103.4	97.1	115.2	107.5	102.7	126.3	107.1	116.1	109.6	134.5
November	111.3	118.8	103.3	96.4	116.7	108.0	102.0	126.5	107.6	116.2	109.6	136.5
December	111.7	119.2	103.5	93.7	117.5	107.7	101.2	126.2	107.4	116.5	109.4	138.2
2008												
January	112.4	119.2	103.3	92.2	117.6	107.5	99.6	126.4	107.3	116.2	109.0	139.0
February	112.8	119.6	104.1	94.1	117.0	107.7	100.8	126.8	107.4	116.9	109.4	139.4
March	112.6	120.1	104.1	96.0	117.8	107.9	101.3	126.6	108.1	117.1	109.6	143.2
April	113.5	121.2	104.4	94.3	120.1	108.3	101.6	126.7	109.2	117.7	109.9	150.2
May	114.6	121.6	104.3	93.0	123.6	108.6	102.9	127.4	110.4	118.7	110.3	158.4
June	115.8	122.3	104.3	92.5	125.8	108.7	102.9	127.7	111.6	119.1	110.3	165.3
July	116.5	123.3	104.4	93.3	125.7	108.5	103.2	127.6	112.1	119.4	110.4	169.1
August	116.8	123.8	104.4	93.7	123.1	109.3	103.5	127.5	111.5	119.6	110.5	164.0

Note(s): For information on the continuity of the series, see "Data quality, concepts and methodology — Data quality, concepts and methodology — Weights and Linking" at the end of this publication.

See "Data quality, concepts and methodology — Explanatory notes for tables" section.

Table 8-1
Annual average¹ percentage changes for the Consumer Price Index — Major components, not seasonally adjusted, Canada, 2004 to 2007

	CANSIM vector number	Annual average	Annual average percentage change			
		2007	2007	2006	2005	2004
		2002=100	percent			
All-items	(v41693271)	111.5	2.2	2.0	2.2	1.8
Food	(v41693272)	111.8	2.7	2.3	2.5	2.1
Shelter	(v41693348)	116.9	3.4	3.6	3.2	2.5
Household operations, furnishings and equipment	(v41693365)	103.2	1.0	0.5	0.5	0.5
Clothing and footwear	(v41693406)	95.7	-0.1	-1.8	-0.4	-0.2
Transportation	(v41693426)	117.1	1.6	2.9	4.0	2.4
Health and personal care	(v41693451)	107.3	1.3	1.2	1.8	1.4
Recreation, education and reading	(v41693468)	101.8	1.2	-0.2	-0.3	0.3
Alcoholic beverages and tobacco products	(v41693504)	125.5	3.1	2.2	2.7	5.4
Goods	(v41693520)	108.0	0.8	1.2	2.3	1.5
Durable goods	(v41693521)	94.7	-1.6	-0.7	-0.6	-1.7
Semi-durable goods	(v41693522)	96.0	-0.2	-1.5	-0.5	-0.4
Non-durable goods	(v41693523)	118.4	2.2	2.9	4.4	3.5
Services	(v41693528)	114.8	3.3	2.7	2.2	2.2
All-items excluding food	(v41693530)	111.4	2.0	2.0	2.2	1.7
All-items excluding food and energy	(v41693531)	109.0	2.0	1.5	1.3	1.4
All-items excluding energy	(v41693536)	109.5	2.1	1.7	1.5	1.4
Energy	(v41693537)	135.9	2.3	5.1	9.6	6.8

Note(s): See "Data quality, concepts and methodology - Explanatory notes for tables" section.

Table 8-2
Annual average¹ percentage changes for the Consumer Price Index — All-items, not seasonally adjusted, Canada, provinces, urban centres, 2004 to 2007

	CANSIM vector number	Annual average	Annual average percentage change			
		2007	2007	2006	2005	2004
		2002=100	percent			
Canada	(v41693271)	111.5	2.2	2.0	2.2	1.8
Newfoundland and Labrador	(v41693542)	111.1	1.5	1.8	2.7	1.8
Prince Edward Island	(v41693677)	113.6	1.8	2.3	3.1	2.2
Nova Scotia	(v41693811)	112.5	1.9	2.0	2.8	1.8
New Brunswick	(v41693946)	111.3	1.9	1.7	2.4	1.5
Quebec	(v41694081)	110.4	1.6	1.7	2.3	2.0
Ontario	(v41694217)	110.8	1.8	1.8	2.2	1.9
Manitoba	(v41694353)	110.9	2.0	2.0	2.7	2.0
Saskatchewan	(v41694489)	112.2	2.8	2.1	2.2	2.2
Alberta	(v41694625)	117.9	5.0	3.9	2.1	1.4
British Columbia	(v41694760)	110.0	1.8	1.7	2.0	2.0
Whitehorse, Yukon Territory	(v41694896)	109.5	2.5	1.4	2.2	1.1
Yellowknife, Northwest Territories	(v41695020)	110.8	2.9	1.4	2.3	1.5
Iqaluit, Nunavut	(v41713462)	107.9	3.2	1.7	1.7	1.0
St. John's, Newfoundland and Labrador	(v41695144)	110.7	1.5	1.7	2.6	1.8
Charlottetown and Summerside, Prince Edward Island	(v41695150)	113.2	2.0	2.3	2.9	2.1
Halifax, Nova Scotia	(v41695156)	112.0	2.0	2.0	2.5	1.7
Saint John, New Brunswick	(v41695162)	111.2	1.8	1.7	2.4	1.5
Québec, Quebec	(v41695168)	110.1	1.3	1.7	2.3	1.9
Montréal, Quebec	(v41695174)	110.3	1.6	1.8	2.2	2.0
Ottawa-Gatineau, Ontario part, Ontario/Quebec	(v41695180)	110.7	1.9	1.7	2.2	2.0
Toronto, Ontario	(v41695186)	110.5	1.9	1.6	1.9	1.7
Thunder Bay, Ontario	(v41695192)	108.1	1.1	1.4	1.6	1.4
Winnipeg, Manitoba	(v41695198)	110.8	2.1	1.9	2.7	1.9
Regina, Saskatchewan	(v41695204)	111.7	2.6	2.0	2.1	2.2
Saskatoon, Saskatchewan	(v41695210)	112.7	3.4	2.2	2.3	2.1
Edmonton, Alberta	(v41695216)	117.4	4.8	3.1	2.1	1.0
Calgary, Alberta	(v41695222)	118.0	5.1	4.6	2.0	1.7
Vancouver, British Columbia	(v41695228)	110.2	2.0	1.9	1.9	2.0
Victoria, British Columbia	(v41695234)	109.8	1.2	1.5	2.2	2.3

Note(s): See "Data quality, concepts and methodology - Explanatory notes for tables" section.

Table 9-1

The Consumer Price Index, major components, selected sub-groups and special aggregates, provinces, Whitehorse and Yellowknife, not seasonally adjusted — Newfoundland and Labrador

	CANSIM vector number	Indexes			Percentage change August 2008 from	
		August 2008	July 2008	August 2007	July 2008	August 2007
		2002=100				
All-items	(v41691244)	115.8	116.3	111.1	-0.4	4.2
Special aggregates						
All-items excluding food	(v41691368)	116.0	116.5	111.4	-0.4	4.1
All-items excluding food and energy	(v41691369)	108.3	108.0	107.0	0.3	1.2
All-items excluding energy	(v41691374)	109.7	109.6	107.5	0.1	2.0
All-items excluding gasoline	(v41693247)	113.0	113.0	109.5	0.0	3.2
Energy ¹	(v41691375)	166.6	172.6	139.2	-3.5	19.7
All-items (1992=100)	(v41713404)	135.8	136.4	130.2	-0.4	4.3
Food	(v41691245)	115.2	115.8	109.7	-0.5	5.0
Food purchased from stores	(v41691246)	114.6	115.4	109.4	-0.7	4.8
Meat ²	(v41691247)	113.4	113.5	110.1	-0.1	3.0
Dairy products ²	(v41691257)	122.2	122.5	118.7	-0.2	2.9
Bakery and cereal products (excluding infant food) ²	(v41691262)	140.2	141.7	121.1	-1.1	15.8
Fresh fruit ²	(v41691266)	109.7	106.7	104.1	2.8	5.4
Fresh vegetables ²	(v41691269)	89.8	91.4	88.8	-1.8	1.1
Food purchased from restaurants	(v41691276)	118.6	118.5	111.9	0.1	6.0
Shelter	(v41691277)	132.2	131.4	118.6	0.6	11.5
Rented accommodation	(v41691278)	105.7	105.5	104.2	0.2	1.4
Owned accommodation	(v41691280)	125.0	123.6	113.5	1.1	10.1
Replacement cost	(v41691281)	155.9	151.0	126.9	3.2	22.9
Homeowners' home and mortgage insurance	(v41691283)	125.6	125.6	123.0	0.0	2.1
Homeowners' maintenance and repairs	(v41691284)	113.0	112.3	111.3	0.6	1.5
Water, fuel and electricity	(v41691285)	160.3	160.4	136.1	-0.1	17.8
Electricity	(v41691286)	132.2	132.2	121.5	0.0	8.8
Natural gas	
Fuel oil and other fuels	(v41691288)	242.8	242.8	173.3	0.0	40.1
Household operations, furnishings and equipment	(v41691289)	101.7	101.6	100.8	0.1	0.9
Household operations	(v41691290)	106.1	106.1	104.6	0.0	1.4
Telephone services	(v41691292)	105.5	105.6	100.9	-0.1	4.6
Internet access services	(v41693217)	109.0	109.0	109.3	0.0	-0.3
Household furnishings and equipment	(v41691297)	94.1	93.9	94.1	0.2	0.0
Clothing and footwear	(v41691304)	95.9	96.9	96.1	-1.0	-0.2
Women's clothing	(v41691306)	93.9	93.3	96.4	0.6	-2.6
Men's clothing	(v41691307)	93.9	98.9	93.5	-5.1	0.4
Footwear	(v41691309)	95.4	92.0	91.5	3.7	4.3
Transportation	(v41691312)	121.7	124.7	118.2	-2.4	3.0
Private transportation	(v41691313)	120.9	124.2	118.3	-2.7	2.2
Purchase and leasing of passenger vehicles	(v41691315)	89.6	89.5	99.1	0.1	-9.6
Gasoline	(v41691318)	175.1	188.3	143.3	-7.0	22.2
Passenger vehicle insurance premiums ³	(v41691321)	117.8	117.8	122.4	0.0	-3.8
Public transportation	(v41691323)	127.0	128.1	115.3	-0.9	10.1
Health and personal care	(v41691328)	106.6	105.7	103.9	0.9	2.6
Health care	(v41691329)	108.4	107.7	105.8	0.6	2.5
Personal care	(v41691335)	105.4	104.3	102.6	1.1	2.7
Recreation, education and reading	(v41691338)	101.9	101.9	101.7	0.0	0.2
Recreation	(v41691339)	102.6	102.5	102.0	0.1	0.6
Education and reading	(v41691347)	101.0	101.0	101.7	0.0	-0.7
Alcoholic beverages and tobacco products	(v41691351)	130.6	130.4	129.5	0.2	0.8
Alcoholic beverages	(v41691352)	115.3	115.1	115.2	0.2	0.1
Tobacco products and smokers' supplies	(v41691358)	143.3	143.2	141.2	0.1	1.5

Note(s): See "Data quality, concepts and methodology — Explanatory notes for tables" section.

Table 9-2
The Consumer Price Index, major components, selected sub-groups and special aggregates, provinces, Whitehorse and Yellowknife, not seasonally adjusted — Prince Edward Island

	CANSIM vector number	Indexes			Percentage change August 2008 from	
		August 2008	July 2008	August 2007	July 2008	August 2007
		2002=100				
All-items	(v41691379)	119.3	120.0	113.8	-0.6	4.8
Special aggregates						
All-items excluding food	(v41691502)	119.3	120.2	113.6	-0.7	5.0
All-items excluding food and energy	(v41691503)	108.7	108.9	108.5	-0.2	0.2
All-items excluding energy	(v41691508)	110.7	110.8	109.8	-0.1	0.8
All-items excluding gasoline	(v41693249)	115.8	115.8	112.0	0.0	3.4
Energy ¹	(v41691509)	193.2	199.0	148.3	-2.9	30.3
All-items (1992=100)	(v41713406)	140.4	141.2	134.0	-0.6	4.8
Food	(v41691380)	119.1	118.6	114.7	0.4	3.8
Food purchased from stores	(v41691381)	120.3	119.9	114.9	0.3	4.7
Meat ²	(v41691382)	115.1	115.1	114.0	0.0	1.0
Dairy products ²	(v41691392)	124.9	124.1	121.2	0.6	3.1
Bakery and cereal products (excluding infant food) ²	(v41691397)	141.1	142.1	121.1	-0.7	16.5
Fresh fruit ²	(v41691401)	109.8	103.6	108.0	6.0	1.7
Fresh vegetables ²	(v41691404)	119.6	126.3	111.2	-5.3	7.6
Food purchased from restaurants	(v41691411)	114.9	114.4	113.3	0.4	1.4
Shelter	(v41691412)	132.2	131.8	119.2	0.3	10.9
Rented accommodation	(v41691413)	106.9	106.9	106.6	0.0	0.3
Owned accommodation	(v41691415)	114.4	114.4	111.8	0.0	2.3
Replacement cost	(v41691416)	113.2	113.2	112.1	0.0	1.0
Homeowners' home and mortgage insurance	(v41691418)	116.6	116.8	121.2	-0.2	-3.8
Homeowners' maintenance and repairs	(v41691419)	108.9	109.2	113.2	-0.3	-3.8
Water, fuel and electricity	(v41691420)	196.1	194.4	146.4	0.9	33.9
Electricity	(v41691421)	154.0	150.4	123.3	2.4	24.9
Natural gas	
Fuel oil and other fuels	(v41691423)	242.6	242.6	168.9	0.0	43.6
Household operations, furnishings and equipment	(v41691424)	107.5	107.3	105.6	0.2	1.8
Household operations	(v41691425)	113.0	112.9	110.0	0.1	2.7
Telephone services	(v41691427)	105.1	105.1	100.8	0.0	4.3
Internet access services	(v41693218)	102.7	102.7	103.7	0.0	-1.0
Household furnishings and equipment	(v41691432)	96.3	96.1	96.5	0.2	-0.2
Clothing and footwear	(v41691439)	92.1	96.6	98.9	-4.7	-6.9
Women's clothing	(v41691441)	83.8	91.3	94.7	-8.2	-11.5
Men's clothing	(v41691442)	93.7	93.6	99.1	0.1	-5.4
Footwear	(v41691444)	92.2	99.0	99.7	-6.9	-7.5
Transportation	(v41691447)	126.5	130.4	117.5	-3.0	7.7
Private transportation	(v41691448)	126.2	130.3	117.5	-3.1	7.4
Purchase and leasing of passenger vehicles	(v41691450)	90.7	91.3	98.7	-0.7	-8.1
Gasoline	(v41691453)	189.3	203.0	150.5	-6.7	25.8
Passenger vehicle insurance premiums ³	(v41691456)	123.6	123.4	118.3	0.2	4.5
Public transportation	(v41691458)	131.0	132.1	117.8	-0.8	11.2
Health and personal care	(v41691462)	106.0	105.4	104.6	0.6	1.3
Health care	(v41691463)	106.7	106.3	106.0	0.4	0.7
Personal care	(v41691469)	105.2	104.3	103.0	0.9	2.1
Recreation, education and reading	(v41691472)	105.1	104.6	106.0	0.5	-0.8
Recreation	(v41691473)	100.4	99.7	99.9	0.7	0.5
Education and reading	(v41691481)	117.2	117.2	121.9	0.0	-3.9
Alcoholic beverages and tobacco products	(v41691485)	141.5	141.1	135.8	0.3	4.2
Alcoholic beverages	(v41691486)	114.6	113.9	111.2	0.6	3.1
Tobacco products and smokers' supplies	(v41691492)	153.4	153.4	146.3	0.0	4.9

Note(s): See "Data quality, concepts and methodology — Explanatory notes for tables" section.

Table 9-3
The Consumer Price Index, major components, selected sub-groups and special aggregates, provinces, Whitehorse and Yellowknife, not seasonally adjusted — Nova Scotia

	CANSIM vector number	Indexes			Percentage change August 2008 from	
		August 2008	July 2008	August 2007	July 2008	August 2007
		2002=100				
All-items	(v41691513)	117.7	117.8	112.7	-0.1	4.4
Special aggregates						
All-items excluding food	(v41691637)	117.3	117.6	112.3	-0.3	4.5
All-items excluding food and energy	(v41691638)	110.0	109.4	108.8	0.5	1.1
All-items excluding energy	(v41691643)	111.9	111.2	109.9	0.6	1.8
All-items excluding gasoline	(v41693251)	114.9	114.4	111.3	0.4	3.2
Energy ¹	(v41691644)	170.6	177.5	136.0	-3.9	25.4
All-items (1992=100)	(v41713408)	141.0	141.1	134.9	-0.1	4.5
Food	(v41691514)	120.2	119.0	114.7	1.0	4.8
Food purchased from stores	(v41691515)	118.6	118.2	113.5	0.3	4.5
Meat ²	(v41691516)	111.8	110.3	111.5	1.4	0.3
Dairy products ²	(v41691526)	122.0	122.5	119.5	-0.4	2.1
Bakery and cereal products (excluding infant food) ²	(v41691531)	136.9	138.6	121.8	-1.2	12.4
Fresh fruit ²	(v41691535)	107.9	107.3	102.9	0.6	4.9
Fresh vegetables ²	(v41691538)	106.1	109.8	98.3	-3.4	7.9
Food purchased from restaurants	(v41691545)	124.5	121.4	118.1	2.6	5.4
Shelter	(v41691546)	128.0	127.8	117.8	0.2	8.7
Rented accommodation	(v41691547)	105.2	105.0	104.2	0.2	1.0
Owned accommodation	(v41691549)	121.1	120.8	115.6	0.2	4.8
Replacement cost	(v41691550)	129.7	129.7	122.5	0.0	5.9
Homeowners' home and mortgage insurance	(v41691552)	139.5	138.7	140.6	0.6	-0.8
Homeowners' maintenance and repairs	(v41691553)	109.7	109.8	110.5	-0.1	-0.7
Water, fuel and electricity	(v41691554)	163.9	164.1	133.2	-0.1	23.0
Electricity	(v41691555)	121.8	121.8	114.2	0.0	6.7
Natural gas	
Fuel oil and other fuels	(v41691557)	232.6	232.6	158.6	0.0	46.7
Household operations, furnishings and equipment	(v41691558)	106.5	106.2	103.7	0.3	2.7
Household operations	(v41691559)	110.2	109.9	107.7	0.3	2.3
Telephone services	(v41691561)	104.4	104.8	101.2	-0.4	3.2
Internet access services	(v41693219)	99.3	99.3	98.6	0.0	0.7
Household furnishings and equipment	(v41691566)	99.0	98.6	95.6	0.4	3.6
Clothing and footwear	(v41691573)	96.2	92.5	97.0	4.0	-0.8
Women's clothing	(v41691575)	100.3	92.2	102.6	8.8	-2.2
Men's clothing	(v41691576)	91.9	92.0	94.2	-0.1	-2.4
Footwear	(v41691578)	93.0	88.8	88.5	4.7	5.1
Transportation	(v41691581)	119.7	123.4	113.6	-3.0	5.4
Private transportation	(v41691582)	119.3	123.2	113.4	-3.2	5.2
Purchase and leasing of passenger vehicles	(v41691584)	90.2	90.9	98.1	-0.8	-8.1
Gasoline	(v41691587)	176.8	191.1	139.6	-7.5	26.6
Passenger vehicle insurance premiums ³	(v41691590)	104.6	104.6	104.9	0.0	-0.3
Public transportation	(v41691592)	125.1	126.1	116.5	-0.8	7.4
Health and personal care	(v41691597)	109.3	108.6	107.0	0.6	2.1
Health care	(v41691598)	111.0	110.4	110.3	0.5	0.6
Personal care	(v41691604)	107.9	107.1	103.9	0.7	3.8
Recreation, education and reading	(v41691607)	108.2	107.6	108.0	0.6	0.2
Recreation	(v41691608)	103.8	103.0	102.2	0.8	1.6
Education and reading	(v41691616)	119.5	119.5	123.5	0.0	-3.2
Alcoholic beverages and tobacco products	(v41691620)	140.6	140.0	137.9	0.4	2.0
Alcoholic beverages	(v41691621)	117.9	117.3	114.8	0.5	2.7
Tobacco products and smokers' supplies	(v41691627)	153.6	152.8	151.2	0.5	1.6

Note(s): See "Data quality, concepts and methodology — Explanatory notes for tables" section.

Table 9-4
The Consumer Price Index, major components, selected sub-groups and special aggregates, provinces, Whitehorse and Yellowknife, not seasonally adjusted — New Brunswick

	CANSIM vector number	Indexes			Percentage change August 2008 from		
		August 2008	July 2008	August 2007	July 2008	August 2007	
		2002=100					
All-items	(v41691648)	114.3	114.9	111.4	-0.5	2.6	
Special aggregates							
All-items excluding food	(v41691772)	113.4	114.2	110.9	-0.7	2.3	
All-items excluding food and energy	(v41691773)	106.6	106.5	106.8	0.1	-0.2	
All-items excluding energy	(v41691778)	109.0	108.8	108.1	0.2	0.8	
All-items excluding gasoline	(v41693253)	111.3	111.2	110.0	0.1	1.2	
Energy ¹	(v41691779)	158.5	165.5	138.0	-4.2	14.9	
All-items (1992=100)	(v41713410)	135.6	136.3	132.1	-0.5	2.6	
Food	(v41691649)	119.0	118.8	113.9	0.2	4.5	
Food purchased from stores	(v41691650)	119.7	119.7	113.8	0.0	5.2	
Meat ²	(v41691651)	111.5	112.2	111.7	-0.6	-0.2	
Dairy products ²	(v41691661)	121.6	121.6	118.1	0.0	3.0	
Bakery and cereal products (excluding infant food) ²	(v41691666)	139.7	140.1	123.7	-0.3	12.9	
Fresh fruit ²	(v41691670)	112.2	107.1	104.2	4.8	7.7	
Fresh vegetables ²	(v41691673)	105.6	111.9	97.1	-5.6	8.8	
Food purchased from restaurants	(v41691680)	117.4	116.9	114.4	0.4	2.6	
Shelter	(v41691681)	121.8	121.6	117.8	0.2	3.4	
Rented accommodation	(v41691682)	106.0	106.0	104.9	0.0	1.0	
Owned accommodation	(v41691684)	114.9	114.6	111.5	0.3	3.0	
Replacement cost	(v41691685)	115.5	114.0	113.3	1.3	1.9	
Homeowners' home and mortgage insurance	(v41691687)	126.2	126.4	131.2	-0.2	-3.8	
Homeowners' maintenance and repairs	(v41691688)	115.4	115.4	111.6	0.0	3.4	
Water, fuel and electricity	(v41691689)	146.5	146.5	139.4	0.0	5.1	
Electricity	(v41691690)	127.9	127.9	132.9	0.0	-3.8	
Natural gas		
Fuel oil and other fuels	(v41691692)	233.2	233.2	165.4	0.0	41.0	
Household operations, furnishings and equipment	(v41691693)	103.7	103.5	102.8	0.2	0.9	
Household operations	(v41691694)	111.9	111.8	108.3	0.1	3.3	
Telephone services	(v41691696)	107.2	107.5	102.7	-0.3	4.4	
Internet access services	(v41693220)	106.0	106.0	103.2	0.0	2.7	
Household furnishings and equipment	(v41691701)	88.8	88.5	92.8	0.3	-4.3	
Clothing and footwear	(v41691708)	94.6	93.9	96.1	0.7	-1.6	
Women's clothing	(v41691710)	91.8	90.6	96.0	1.3	-4.4	
Men's clothing	(v41691711)	92.6	93.1	95.5	-0.5	-3.0	
Footwear	(v41691713)	95.6	93.8	91.0	1.9	5.1	
Transportation	(v41691716)	118.3	122.3	113.0	-3.3	4.7	
Private transportation	(v41691717)	117.9	122.1	112.9	-3.4	4.4	
Purchase and leasing of passenger vehicles	(v41691719)	87.1	88.0	97.0	-1.0	-10.2	
Gasoline	(v41691722)	171.1	185.9	136.2	-8.0	25.6	
Passenger vehicle insurance premiums ³	(v41691725)	111.6	111.6	107.2	0.0	4.1	
Public transportation	(v41691727)	127.6	128.5	117.2	-0.7	8.9	
Health and personal care	(v41691732)	103.1	102.6	103.1	0.5	0.0	
Health care	(v41691733)	107.2	106.6	106.4	0.6	0.8	
Personal care	(v41691739)	99.0	98.7	99.9	0.3	-0.9	
Recreation, education and reading	(v41691742)	106.2	106.2	106.4	0.0	-0.2	
Recreation	(v41691743)	100.2	100.1	100.8	0.1	-0.6	
Education and reading	(v41691751)	125.2	125.2	123.3	0.0	1.5	
Alcoholic beverages and tobacco products	(v41691755)	130.0	129.8	128.9	0.2	0.9	
Alcoholic beverages	(v41691756)	118.3	117.6	116.7	0.6	1.4	
Tobacco products and smokers' supplies	(v41691762)	135.6	135.7	134.9	-0.1	0.5	

Note(s): See "Data quality, concepts and methodology — Explanatory notes for tables" section.

Table 9-5

The Consumer Price Index, major components, selected sub-groups and special aggregates, provinces, Whitehorse and Yellowknife, not seasonally adjusted — Quebec

	CANSIM vector number	Indexes			Percentage change August 2008 from	
		August 2008	July 2008	August 2007	July 2008	August 2007
		2002=100				
All-items	(v41691783)	113.5	114.1	110.1	-0.5	3.1
Special aggregates						
All-items excluding food	(v41691908)	112.6	113.5	109.6	-0.8	2.7
All-items excluding food and energy	(v41691909)	108.0	107.9	107.1	0.1	0.8
All-items excluding energy	(v41691914)	109.9	109.8	108.2	0.1	1.6
All-items excluding gasoline	(v41693255)	110.9	110.8	108.7	0.1	2.0
Energy ¹	(v41691915)	154.6	164.2	131.6	-5.8	17.5
All-items (1992=100)	(v41713412)	131.2	131.9	127.2	-0.5	3.1
Food	(v41691784)	117.6	117.4	112.5	0.2	4.5
Food purchased from stores	(v41691785)	117.9	117.8	111.8	0.1	5.5
Meat ²	(v41691786)	117.8	115.7	114.8	1.8	2.6
Dairy products ²	(v41691796)	124.6	124.5	120.1	0.1	3.7
Bakery and cereal products (excluding infant food) ²	(v41691801)	136.4	137.0	119.0	-0.4	14.6
Fresh fruit ²	(v41691805)	111.9	110.1	104.2	1.6	7.4
Fresh vegetables ²	(v41691808)	94.9	110.4	80.8	-14.0	17.5
Food purchased from restaurants	(v41691815)	117.0	116.5	114.5	0.4	2.2
Shelter	(v41691816)	120.4	120.2	115.1	0.2	4.6
Rented accommodation	(v41691817)	107.6	107.0	106.6	0.6	0.9
Owned accommodation	(v41691819)	123.8	123.5	118.1	0.2	4.8
Replacement cost	(v41691820)	135.6	135.5	130.1	0.1	4.2
Homeowners' home and mortgage insurance	(v41691822)	146.8	146.8	141.8	0.0	3.5
Homeowners' maintenance and repairs	(v41691823)	112.2	111.2	113.5	0.9	-1.1
Water, fuel and electricity	(v41691824)	130.4	130.6	118.5	-0.2	10.0
Electricity	(v41691825)	112.3	112.3	110.8	0.0	1.4
Natural gas	(v41691827)	131.4	136.9	109.7	-4.0	19.8
Fuel oil and other fuels	(v41691828)	271.8	271.8	169.5	0.0	60.4
Household operations, furnishings and equipment	(v41691829)	104.4	104.5	102.8	-0.1	1.6
Household operations	(v41691830)	108.1	108.3	104.9	-0.2	3.1
Telephone services	(v41691832)	106.1	106.1	101.0	0.0	5.0
Internet access services	(v41693221)	94.0	98.5	98.4	-4.6	-4.5
Household furnishings and equipment	(v41691837)	98.3	98.1	99.1	0.2	-0.8
Clothing and footwear	(v41691844)	89.7	89.6	93.6	0.1	-4.2
Women's clothing	(v41691846)	80.0	83.7	87.3	-4.4	-8.4
Men's clothing	(v41691847)	90.6	88.6	93.7	2.3	-3.3
Footwear	(v41691849)	98.2	94.2	96.6	4.2	1.7
Transportation	(v41691852)	122.4	126.9	116.5	-3.5	5.1
Private transportation	(v41691853)	121.9	126.7	116.1	-3.8	5.0
Purchase and leasing of passenger vehicles	(v41691855)	90.9	91.7	97.9	-0.9	-7.2
Gasoline	(v41691858)	178.6	197.4	144.5	-9.5	23.6
Passenger vehicle insurance premiums ³	(v41691861)	143.9	143.9	136.8	0.0	5.2
Public transportation	(v41691863)	129.5	130.2	122.8	-0.5	5.5
Health and personal care	(v41691868)	109.6	108.6	107.1	0.9	2.3
Health care	(v41691869)	111.1	110.7	108.8	0.4	2.1
Personal care	(v41691875)	108.1	106.5	105.4	1.5	2.6
Recreation, education and reading	(v41691878)	96.7	96.3	96.6	0.4	0.1
Recreation	(v41691879)	93.4	92.9	93.7	0.5	-0.3
Education and reading	(v41691887)	110.2	110.2	108.3	0.0	1.8
Alcoholic beverages and tobacco products	(v41691891)	123.3	123.9	122.2	-0.5	0.9
Alcoholic beverages	(v41691892)	108.6	109.6	108.3	-0.9	0.3
Tobacco products and smokers' supplies	(v41691898)	135.8	135.6	133.6	0.1	1.6

Note(s): See "Data quality, concepts and methodology — Explanatory notes for tables" section.

Table 9-6

The Consumer Price Index, major components, selected sub-groups and special aggregates, provinces, Whitehorse and Yellowknife, not seasonally adjusted — Ontario

	CANSIM vector number	Indexes			Percentage change August 2008 from	
		August 2008	July 2008	August 2007	July 2008	August 2007
		2002=100				
All-items	(v41691919)	114.8	115.1	110.9	-0.3	3.5
Special aggregates						
All-items excluding food	(v41692044)	114.4	114.7	110.6	-0.3	3.4
All-items excluding food and energy	(v41692045)	110.3	110.1	108.7	0.2	1.5
All-items excluding energy	(v41692050)	111.4	111.2	109.3	0.2	1.9
All-items excluding gasoline	(v41693257)	112.4	112.2	109.7	0.2	2.5
Energy ¹	(v41692051)	162.9	168.6	135.2	-3.4	20.5
All-items (1992=100)	(v41713415)	138.0	138.2	133.2	-0.1	3.6
Food	(v41691920)	117.1	117.0	111.9	0.1	4.6
Food purchased from stores	(v41691921)	116.6	116.7	110.5	-0.1	5.5
Meat ²	(v41691922)	116.0	115.0	113.1	0.9	2.6
Dairy products ²	(v41691932)	128.5	128.6	125.1	-0.1	2.7
Bakery and cereal products (excluding infant food) ²	(v41691937)	137.6	136.5	116.9	0.8	17.7
Fresh fruit ²	(v41691941)	103.4	103.3	96.9	0.1	6.7
Fresh vegetables ²	(v41691944)	88.6	99.6	84.5	-11.0	4.9
Food purchased from restaurants	(v41691951)	118.3	117.8	115.2	0.4	2.7
Shelter	(v41691952)	120.0	119.9	114.7	0.1	4.6
Rented accommodation	(v41691953)	106.5	106.3	105.6	0.2	0.9
Owned accommodation	(v41691955)	120.8	120.8	116.5	0.0	3.7
Replacement cost	(v41691956)	132.5	132.5	127.8	0.0	3.7
Homeowners' home and mortgage insurance	(v41691958)	149.1	149.5	145.8	-0.3	2.3
Homeowners' maintenance and repairs	(v41691959)	107.7	108.6	109.5	-0.8	-1.6
Water, fuel and electricity	(v41691960)	146.4	146.4	130.6	0.0	12.1
Electricity ³	(v41691961)	111.0	111.0	116.7	0.0	-4.9
Natural gas	(v41691963)	158.0	158.0	122.9	0.0	28.6
Fuel oil and other fuels	(v41691964)	256.8	256.8	173.4	0.0	48.1
Household operations, furnishings and equipment	(v41691965)	104.6	104.6	103.6	0.0	1.0
Household operations	(v41691966)	110.7	110.9	106.9	-0.2	3.6
Telephone services	(v41691968)	110.5	110.4	103.2	0.1	7.1
Internet access services	(v41693222)	91.5	96.0	97.5	-4.7	-6.2
Household furnishings and equipment	(v41691973)	94.3	93.9	98.0	0.4	-3.8
Clothing and footwear	(v41691980)	93.1	92.5	94.2	0.6	-1.2
Women's clothing	(v41691982)	89.5	91.4	92.3	-2.1	-3.0
Men's clothing	(v41691983)	91.3	90.5	91.9	0.9	-0.7
Footwear	(v41691985)	88.2	86.9	91.1	1.5	-3.2
Transportation	(v41691988)	123.5	125.7	116.1	-1.8	6.4
Private transportation	(v41691989)	123.1	125.4	116.0	-1.8	6.1
Purchase and leasing of passenger vehicles	(v41691991)	90.3	90.3	97.0	0.0	-6.9
Gasoline	(v41691994)	182.0	193.9	141.7	-6.1	28.4
Passenger vehicle insurance premiums ⁴	(v41691997)	146.3	145.7	135.2	0.4	8.2
Public transportation	(v41691999)	126.2	127.0	115.7	-0.6	9.1
Health and personal care	(v41692004)	109.6	108.9	107.8	0.6	1.7
Health care	(v41692005)	115.0	114.4	113.1	0.5	1.7
Personal care	(v41692011)	105.0	104.3	103.4	0.7	1.5
Recreation, education and reading	(v41692014)	103.0	102.5	101.8	0.5	1.2
Recreation	(v41692015)	98.4	97.7	97.6	0.7	0.8
Education and reading	(v41692023)	114.9	114.9	112.8	0.0	1.9
Alcoholic beverages and tobacco products	(v41692027)	131.3	131.4	130.2	-0.1	0.8
Alcoholic beverages	(v41692028)	110.1	110.6	110.4	-0.5	-0.3
Tobacco products and smokers' supplies	(v41692034)	152.9	152.4	149.5	0.3	2.3

Note(s): See "Data quality, concepts and methodology — Explanatory notes for tables" section.

Table 9-7

The Consumer Price Index, major components, selected sub-groups and special aggregates, provinces, Whitehorse and Yellowknife, not seasonally adjusted — Manitoba

	CANSIM vector number	Indexes			Percentage change August 2008 from	
		August 2008	July 2008	August 2007	July 2008	August 2007
		2002=100				
All-items	(v41692055)	115.0	115.0	111.2	0.0	3.4
Special aggregates						
All-items excluding food	(v41692180)	114.5	114.5	110.9	0.0	3.2
All-items excluding food and energy	(v41692181)	109.6	109.4	108.0	0.2	1.5
All-items excluding energy	(v41692186)	111.1	110.8	109.0	0.3	1.9
All-items excluding gasoline	(v41693259)	111.7	111.4	109.4	0.3	2.1
Energy ¹	(v41692187)	159.9	162.4	137.4	-1.5	16.4
All-items (1992=100)	(v41713419)	141.6	141.5	136.9	0.1	3.4
Food	(v41692056)	117.8	117.1	112.7	0.6	4.5
Food purchased from stores	(v41692057)	116.2	115.7	111.3	0.4	4.4
Meat ²	(v41692058)	111.7	109.0	109.9	2.5	1.6
Dairy products ²	(v41692068)	120.1	119.0	115.7	0.9	3.8
Bakery and cereal products (excluding infant food) ²	(v41692073)	137.8	134.6	123.2	2.4	11.9
Fresh fruit ²	(v41692077)	97.8	99.3	98.5	-1.5	-0.7
Fresh vegetables ²	(v41692080)	99.6	105.6	95.0	-5.7	4.8
Food purchased from restaurants	(v41692087)	120.8	119.4	115.5	1.2	4.6
Shelter	(v41692088)	121.6	121.0	115.9	0.5	4.9
Rented accommodation	(v41692089)	110.5	110.4	108.2	0.1	2.1
Owned accommodation	(v41692091)	124.1	123.8	118.0	0.2	5.2
Replacement cost	(v41692092)	146.0	145.7	136.7	0.2	6.8
Homeowners' home and mortgage insurance	(v41692094)	149.2	149.2	142.8	0.0	4.5
Homeowners' maintenance and repairs	(v41692095)	108.5	109.7	110.0	-1.1	-1.4
Water, fuel and electricity	(v41692096)	124.0	121.9	116.7	1.7	6.3
Electricity	(v41692097)	111.8	111.8	107.8	0.0	3.7
Natural gas	(v41692099)	132.7	126.2	123.8	5.2	7.2
Fuel oil and other fuels	(v41692100)	242.7	242.7	171.6	0.0	41.4
Household operations, furnishings and equipment	(v41692101)	104.6	104.6	104.2	0.0	0.4
Household operations	(v41692102)	108.4	108.7	106.5	-0.3	1.8
Telephone services	(v41692104)	100.8	101.6	99.2	-0.8	1.6
Internet access services	(v41693223)	100.6	100.6	100.1	0.0	0.5
Household furnishings and equipment	(v41692109)	97.8	97.2	100.1	0.6	-2.3
Clothing and footwear	(v41692116)	93.7	94.1	93.3	-0.4	0.4
Women's clothing	(v41692118)	84.5	85.8	84.0	-1.5	0.6
Men's clothing	(v41692119)	92.5	95.8	92.5	-3.4	0.0
Footwear	(v41692121)	91.0	89.9	93.9	1.2	-3.1
Transportation	(v41692124)	123.8	125.1	116.4	-1.0	6.4
Private transportation	(v41692125)	123.5	124.8	116.4	-1.0	6.1
Purchase and leasing of passenger vehicles	(v41692127)	92.5	91.9	99.9	0.7	-7.4
Gasoline	(v41692130)	197.0	204.7	158.1	-3.8	24.6
Passenger vehicle insurance premiums ³	(v41692133)	109.2	109.2	101.8	0.0	7.3
Public transportation	(v41692135)	127.6	128.1	116.9	-0.4	9.2
Health and personal care	(v41692140)	107.7	106.6	106.6	1.0	1.0
Health care	(v41692141)	111.6	111.0	109.7	0.5	1.7
Personal care	(v41692147)	103.8	102.2	103.6	1.6	0.2
Recreation, education and reading	(v41692150)	103.7	103.7	103.3	0.0	0.4
Recreation	(v41692151)	101.5	101.4	101.3	0.1	0.2
Education and reading	(v41692159)	111.3	111.3	110.0	0.0	1.2
Alcoholic beverages and tobacco products	(v41692163)	126.2	125.9	126.7	0.2	-0.4
Alcoholic beverages	(v41692164)	115.6	115.0	114.5	0.5	1.0
Tobacco products and smokers' supplies	(v41692170)	134.0	133.9	136.4	0.1	-1.8

Note(s): See "Data quality, concepts and methodology — Explanatory notes for tables" section.

Table 9-8
The Consumer Price Index, major components, selected sub-groups and special aggregates, provinces, Whitehorse and Yellowknife, not seasonally adjusted — Saskatchewan

	CANSIM vector number	Indexes			Percentage change August 2008 from	
		August 2008	July 2008	August 2007	July 2008	August 2007
		2002=100				
All-items	(v41692191)	117.0	116.9	113.1	0.1	3.4
Special aggregates						
All-items excluding food	(v41692316)	117.0	117.1	113.4	-0.1	3.2
All-items excluding food and energy	(v41692317)	113.0	112.8	110.6	0.2	2.2
All-items excluding energy	(v41692322)	113.8	113.3	110.8	0.4	2.7
All-items excluding gasoline	(v41693261)	114.1	113.7	111.4	0.4	2.4
Energy ¹	(v41692323)	147.4	150.9	134.9	-2.3	9.3
All-items (1992=100)	(v41713421)	144.7	144.6	139.9	0.1	3.4
Food	(v41692192)	117.1	115.9	111.7	1.0	4.8
Food purchased from stores	(v41692193)	116.3	114.5	110.0	1.6	5.7
Meat ²	(v41692194)	111.3	109.5	107.1	1.6	3.9
Dairy products ²	(v41692204)	122.0	120.9	114.6	0.9	6.5
Bakery and cereal products (excluding infant food) ²	(v41692209)	135.6	131.0	119.1	3.5	13.9
Fresh fruit ²	(v41692213)	110.1	105.9	108.4	4.0	1.6
Fresh vegetables ²	(v41692216)	113.5	115.8	104.2	-2.0	8.9
Food purchased from restaurants	(v41692223)	118.8	118.7	115.0	0.1	3.3
Shelter	(v41692224)	135.8	135.2	125.7	0.4	8.0
Rented accommodation	(v41692225)	113.3	112.5	106.8	0.7	6.1
Owned accommodation	(v41692227)	148.8	147.8	132.3	0.7	12.5
Replacement cost	(v41692228)	218.6	215.6	182.2	1.4	20.0
Homeowners' home and mortgage insurance	(v41692230)	223.5	225.1	199.6	-0.7	12.0
Homeowners' maintenance and repairs	(v41692231)	110.7	110.9	111.5	-0.2	-0.7
Water, fuel and electricity	(v41692232)	123.3	123.3	124.3	0.0	-0.8
Electricity	(v41692233)	115.5	115.5	116.6	0.0	-0.9
Natural gas	(v41692235)	114.5	114.5	122.8	0.0	-6.8
Fuel oil and other fuels	(v41692236)	231.4	231.4	167.2	0.0	38.4
Household operations, furnishings and equipment	(v41692237)	101.5	101.4	100.7	0.1	0.8
Household operations	(v41692238)	105.8	105.8	103.9	0.0	1.8
Telephone services	(v41692240)	96.1	96.5	95.2	-0.4	0.9
Internet access services	(v41693224)	96.5	96.5	96.7	0.0	-0.2
Household furnishings and equipment	(v41692245)	93.6	93.2	94.6	0.4	-1.1
Clothing and footwear	(v41692252)	94.0	95.5	96.7	-1.6	-2.8
Women's clothing	(v41692254)	88.0	94.0	94.9	-6.4	-7.3
Men's clothing	(v41692255)	87.6	88.3	90.7	-0.8	-3.4
Footwear	(v41692257)	94.3	92.1	98.3	2.4	-4.1
Transportation	(v41692260)	118.4	120.1	114.9	-1.4	3.0
Private transportation	(v41692261)	117.6	119.4	114.6	-1.5	2.6
Purchase and leasing of passenger vehicles	(v41692263)	90.8	90.8	99.7	0.0	-8.9
Gasoline	(v41692266)	181.8	189.7	149.5	-4.2	21.6
Passenger vehicle insurance premiums ³	(v41692269)	112.4	112.4	109.1	0.0	3.0
Public transportation	(v41692271)	130.9	131.7	118.9	-0.6	10.1
Health and personal care	(v41692276)	106.6	105.1	106.1	1.4	0.5
Health care	(v41692277)	108.5	107.7	108.5	0.7	0.0
Personal care	(v41692283)	104.6	102.1	103.4	2.4	1.2
Recreation, education and reading	(v41692286)	104.4	104.4	104.8	0.0	-0.4
Recreation	(v41692287)	100.4	100.4	101.0	0.0	-0.6
Education and reading	(v41692295)	117.1	117.1	116.6	0.0	0.4
Alcoholic beverages and tobacco products	(v41692299)	129.1	128.5	126.5	0.5	2.1
Alcoholic beverages	(v41692300)	118.7	118.4	114.1	0.3	4.0
Tobacco products and smokers' supplies	(v41692306)	135.3	134.4	134.7	0.7	0.4

Note(s): See "Data quality, concepts and methodology — Explanatory notes for tables" section.

Table 9-9

The Consumer Price Index, major components, selected sub-groups and special aggregates, provinces, Whitehorse and Yellowknife, not seasonally adjusted — Alberta

	CANSIM vector number	Indexes			Percentage change August 2008 from	
		August 2008	July 2008	August 2007	July 2008	August 2007
		2002=100				
All-items	(v41692327)	124.1	123.3	119.3	0.6	4.0
Special aggregates						
All-items excluding food	(v41692451)	125.6	124.9	120.8	0.6	4.0
All-items excluding food and energy	(v41692452)	118.4	118.2	116.7	0.2	1.5
All-items excluding energy	(v41692457)	118.1	117.7	115.9	0.3	1.9
All-items excluding gasoline	(v41693263)	121.7	120.5	117.9	1.0	3.2
Energy ¹	(v41692458)	201.6	194.5	161.7	3.7	24.7
All-items (1992=100)	(v41713424)	154.2	153.1	148.2	0.7	4.0
Food	(v41692328)	116.6	115.4	112.0	1.0	4.1
Food purchased from stores	(v41692329)	116.1	114.6	110.5	1.3	5.1
Meat ²	(v41692330)	110.7	107.6	108.0	2.9	2.5
Dairy products ²	(v41692340)	123.7	122.0	116.1	1.4	6.5
Bakery and cereal products (excluding infant food) ²	(v41692345)	136.4	133.8	119.7	1.9	14.0
Fresh fruit ²	(v41692349)	103.6	100.6	104.0	3.0	-0.4
Fresh vegetables ²	(v41692352)	99.6	99.7	90.4	-0.1	10.2
Food purchased from restaurants	(v41692359)	117.7	117.1	115.2	0.5	2.2
Shelter	(v41692360)	156.9	152.8	143.8	2.7	9.1
Rented accommodation	(v41692361)	120.7	120.2	113.4	0.4	6.4
Owned accommodation	(v41692363)	155.4	155.0	147.9	0.3	5.1
Replacement cost	(v41692364)	187.5	188.2	199.9	-0.4	-6.2
Homeowners' home and mortgage insurance	(v41692366)	203.9	204.3	206.8	-0.2	-1.4
Homeowners' maintenance and repairs	(v41692367)	107.2	107.2	109.9	0.0	-2.5
Water, fuel and electricity	(v41692368)	200.4	179.3	161.2	11.8	24.3
Electricity	(v41692369)	136.5	141.3	139.2	-3.4	-1.9
Natural gas	(v41692371)	340.0	249.0	195.7	36.5	73.7
Fuel oil and other fuels
Household operations, furnishings and equipment	(v41692372)	104.5	104.5	104.9	0.0	-0.4
Household operations	(v41692373)	110.1	110.0	108.5	0.1	1.5
Telephone services	(v41692375)	101.1	101.2	101.8	-0.1	-0.7
Internet access services	(v41693225)	94.9	97.2	97.9	-2.4	-3.1
Household furnishings and equipment	(v41692380)	95.6	95.8	99.0	-0.2	-3.4
Clothing and footwear	(v41692387)	98.1	97.3	99.0	0.8	-0.9
Women's clothing	(v41692389)	95.1	93.2	92.8	2.0	2.5
Men's clothing	(v41692390)	93.5	94.5	97.2	-1.1	-3.8
Footwear	(v41692392)	98.1	96.7	102.1	1.4	-3.9
Transportation	(v41692395)	125.0	126.9	119.8	-1.5	4.3
Private transportation	(v41692396)	124.2	126.2	119.8	-1.6	3.7
Purchase and leasing of passenger vehicles	(v41692398)	85.9	85.8	93.5	0.1	-8.1
Gasoline	(v41692401)	191.2	202.4	156.8	-5.5	21.9
Passenger vehicle insurance premiums ³	(v41692404)	151.0	149.4	142.0	1.1	6.3
Public transportation	(v41692406)	131.6	132.2	119.6	-0.5	10.0
Health and personal care	(v41692411)	111.2	111.2	108.9	0.0	2.1
Health care	(v41692412)	115.4	115.1	111.2	0.3	3.8
Personal care	(v41692418)	107.0	107.3	106.6	-0.3	0.4
Recreation, education and reading	(v41692421)	105.4	105.6	105.9	-0.2	-0.5
Recreation	(v41692422)	102.1	102.4	103.3	-0.3	-1.2
Education and reading	(v41692430)	117.0	117.0	114.9	0.0	1.8
Alcoholic beverages and tobacco products	(v41692434)	127.9	127.5	125.1	0.3	2.2
Alcoholic beverages	(v41692435)	115.4	115.2	111.7	0.2	3.3
Tobacco products and smokers' supplies	(v41692441)	138.1	137.4	136.7	0.5	1.0

Note(s): See "Data quality, concepts and methodology — Explanatory notes for tables" section.

Table 9-10

The Consumer Price Index, major components, selected sub-groups and special aggregates, provinces, Whitehorse and Yellowknife, not seasonally adjusted — British Columbia

	CANSIM vector number	Indexes			Percentage change August 2008 from	
		August 2008	July 2008	August 2007	July 2008	August 2007
		2002=100				
All-items	(v41692462)	114.0	114.2	110.4	-0.2	3.3
Special aggregates						
All-items excluding food	(v41692587)	114.0	114.2	110.5	-0.2	3.2
All-items excluding food and energy	(v41692588)	109.7	109.5	108.6	0.2	1.0
All-items excluding energy	(v41692593)	110.5	110.4	108.9	0.1	1.5
All-items excluding gasoline	(v41693265)	111.2	111.1	109.1	0.1	1.9
Energy ¹	(v41692594)	161.2	166.1	130.6	-3.0	23.4
All-items (1992=100)	(v41713427)	134.4	134.6	130.1	-0.1	3.3
Food	(v41692463)	114.1	113.9	109.8	0.2	3.9
Food purchased from stores	(v41692464)	113.0	112.9	108.1	0.1	4.5
Meat ²	(v41692465)	113.6	110.6	108.9	2.7	4.3
Dairy products ²	(v41692475)	118.5	118.8	113.3	-0.3	4.6
Bakery and cereal products (excluding infant food) ²	(v41692480)	128.3	128.6	115.8	-0.2	10.8
Fresh fruit ²	(v41692484)	108.1	103.6	105.2	4.3	2.8
Fresh vegetables ²	(v41692487)	100.0	104.4	92.1	-4.2	8.6
Food purchased from restaurants	(v41692494)	116.3	115.8	113.1	0.4	2.8
Shelter	(v41692495)	115.5	115.4	111.1	0.1	4.0
Rented accommodation	(v41692496)	106.4	106.3	104.2	0.1	2.1
Owned accommodation	(v41692498)	116.0	116.0	113.0	0.0	2.7
Replacement cost	(v41692499)	128.6	128.3	128.7	0.2	-0.1
Homeowners' home and mortgage insurance	(v41692501)	146.8	146.9	147.4	-0.1	-0.4
Homeowners' maintenance and repairs	(v41692502)	104.9	107.1	108.0	-2.1	-2.9
Water, fuel and electricity	(v41692503)	130.5	130.5	115.7	0.0	12.8
Electricity	(v41692504)	113.5	113.5	109.0	0.0	4.1
Natural gas	(v41692506)	144.5	144.5	119.7	0.0	20.7
Fuel oil and other fuels	(v41692507)	240.6	240.6	171.5	0.0	40.3
Household operations, furnishings and equipment	(v41692508)	103.4	103.5	103.3	-0.1	0.1
Household operations	(v41692509)	107.3	107.4	105.9	-0.1	1.3
Telephone services	(v41692511)	101.8	101.9	101.9	-0.1	-0.1
Internet access services	(v41693226)	94.0	95.8	96.5	-1.9	-2.6
Household furnishings and equipment	(v41692516)	96.3	96.2	98.2	0.1	-1.9
Clothing and footwear	(v41692523)	98.7	97.9	99.3	0.8	-0.6
Women's clothing	(v41692525)	93.4	93.8	94.6	-0.4	-1.3
Men's clothing	(v41692526)	93.6	90.3	95.7	3.7	-2.2
Footwear	(v41692528)	100.6	100.5	102.4	0.1	-1.8
Transportation	(v41692531)	124.0	125.7	115.5	-1.4	7.4
Private transportation	(v41692532)	123.3	125.3	115.4	-1.6	6.8
Purchase and leasing of passenger vehicles	(v41692534)	90.3	90.1	97.2	0.2	-7.1
Gasoline	(v41692537)	194.8	204.5	149.0	-4.7	30.7
Passenger vehicle insurance premiums ³	(v41692540)	125.2	125.2	119.0	0.0	5.2
Public transportation	(v41692542)	129.2	129.2	116.9	0.0	10.5
Health and personal care	(v41692547)	109.3	107.9	108.5	1.3	0.7
Health care	(v41692548)	114.4	113.9	111.6	0.4	2.5
Personal care	(v41692554)	103.3	100.8	105.1	2.5	-1.7
Recreation, education and reading	(v41692557)	111.8	111.9	111.0	-0.1	0.7
Recreation	(v41692558)	101.9	102.0	101.4	-0.1	0.5
Education and reading	(v41692566)	143.1	143.1	141.1	0.0	1.4
Alcoholic beverages and tobacco products	(v41692570)	121.3	121.0	119.6	0.2	1.4
Alcoholic beverages	(v41692571)	112.4	112.3	110.0	0.1	2.2
Tobacco products and smokers' supplies	(v41692577)	131.2	130.5	131.1	0.5	0.1

Note(s): See "Data quality, concepts and methodology — Explanatory notes for tables" section.

Table 9-11

The Consumer Price Index, major components, selected sub-groups and special aggregates, provinces, Whitehorse and Yellowknife, not seasonally adjusted — Whitehorse*

	CANSIM vector number	Indexes			Percentage change August 2008 from	
		August 2008	July 2008	August 2007	July 2008	August 2007
		2002=100				
All-items	(v41692598)	115.4	115.3	110.5	0.1	4.4
Special aggregates						
All-items excluding food	(v41692711)	115.8	115.8	110.8	0.0	4.5
All-items excluding food and energy	(v41692712)	109.6	109.4	106.7	0.2	2.7
All-items excluding energy	(v41692717)	110.4	110.1	107.3	0.3	2.9
All-items excluding gasoline	(v41693267)	113.2	112.9	109.1	0.3	3.8
Energy ¹	(v41692718)	167.4	169.4	143.2	-1.2	16.9
All-items (1992=100)	(v41713430)	135.8	135.6	130.0	0.1	4.5
Food	(v41692599)	113.8	113.2	109.6	0.5	3.8
Food purchased from stores	(v41692600)	111.7	111.6	106.3	0.1	5.1
Meat ²	(v41692601)	105.8	106.6	106.4	-0.8	-0.6
Dairy products ²	(v41692611)	120.3	119.4	116.6	0.8	3.2
Bakery and cereal products (excluding infant food) ²	(v41692616)	121.0	122.0	111.7	-0.8	8.3
Fresh fruit ²	(v41692620)	102.3	107.3	95.8	-4.7	6.8
Fresh vegetables ²	(v41692623)	101.4	104.6	90.8	-3.1	11.7
Food purchased from restaurants	(v41692630)	118.4	116.9	117.4	1.3	0.9
Shelter	(v41692631)	129.4	129.0	119.0	0.3	8.7
Rented accommodation
Owned accommodation
Replacement cost
Homeowners' home and mortgage insurance
Homeowners' maintenance and repairs
Water, fuel and electricity	(v41692632)	159.8	159.6	138.5	0.1	15.4
Electricity	(v41692633)	114.4	114.4	115.5	0.0	-1.0
Natural gas
Fuel oil and other fuels	(v41692635)	234.0	234.0	171.7	0.0	36.3
Household operations, furnishings and equipment	(v41692636)	102.2	102.0	100.7	0.2	1.5
Household operations	(v41692637)	107.0	106.5	104.3	0.5	2.6
Telephone services	(v41692639)	99.1	99.1	100.0	0.0	-0.9
Internet access services	(v41693227)	106.4	104.7	101.4	1.6	4.9
Household furnishings and equipment	(v41692644)	94.4	94.4	95.1	0.0	-0.7
Clothing and footwear	(v41692651)	101.1	99.6	99.6	1.5	1.5
Women's clothing	(v41692653)	97.4	90.8	97.5	7.3	-0.1
Men's clothing	(v41692654)	101.7	101.7	100.5	0.0	1.2
Footwear	(v41692656)	104.3	105.4	95.7	-1.0	9.0
Transportation	(v41692659)	123.0	124.2	118.2	-1.0	4.1
Private transportation	(v41692660)	121.6	122.8	118.7	-1.0	2.4
Purchase and leasing of passenger vehicles	(v41692662)	91.5	91.7	99.6	-0.2	-8.1
Gasoline	(v41692665)	171.8	176.7	145.8	-2.8	17.8
Passenger vehicle insurance premiums ³	(v41692668)	159.1	159.1	142.3	0.0	11.8
Public transportation	(v41692670)	129.3	130.4	115.4	-0.8	12.0
Health and personal care	(v41692675)	107.7	106.5	108.3	1.1	-0.6
Health care	(v41692676)	112.3	112.0	110.3	0.3	1.8
Personal care	(v41692682)	102.0	100.1	105.2	1.9	-3.0
Recreation, education and reading	(v41692685)	97.3	97.4	98.3	-0.1	-1.0
Recreation	(v41692686)	94.7	94.8	95.3	-0.1	-0.6
Education and reading	(v41692693)	108.6	108.6	112.1	0.0	-3.1
Alcoholic beverages and tobacco products	(v41692695)	131.8	131.8	117.8	0.0	11.9
Alcoholic beverages	(v41692696)	107.7	107.7	107.2	0.0	0.5
Tobacco products and smokers' supplies	(v41692702)	159.6	159.6	128.2	0.0	24.5

Note(s): See "Data quality, concepts and methodology — Explanatory notes for tables" section.

* Yukon Territory

Table 9-12

The Consumer Price Index, major components, selected sub-groups and special aggregates, provinces, Whitehorse and Yellowknife, not seasonally adjusted — Yellowknife*

	CANSIM vector number	Indexes			Percentage change August 2008 from	
		August 2008	July 2008	August 2007	July 2008	August 2007
		2002=100				
All-items	(v41692722)	116.9	116.6	111.1	0.3	5.2
Special aggregates						
All-items excluding food	(v41692835)	117.8	117.9	112.0	-0.1	5.2
All-items excluding food and energy	(v41692836)	111.0	110.9	108.6	0.1	2.2
All-items excluding energy	(v41692841)	111.2	110.7	108.2	0.5	2.8
All-items excluding gasoline	(v41693269)	115.2	114.8	110.1	0.3	4.6
Energy ¹	(v41692842)	179.2	181.1	145.5	-1.0	23.2
All-items (1992=100)	(v41713431)	136.0	135.7	129.2	0.2	5.3
Food	(v41692723)	112.2	110.1	106.4	1.9	5.5
Food purchased from stores	(v41692724)	111.1	108.5	104.5	2.4	6.3
Meat ²	(v41692725)	109.8	108.4	106.4	1.3	3.2
Dairy products ²	(v41692735)	111.4	109.0	109.3	2.2	1.9
Bakery and cereal products (excluding infant food) ²	(v41692740)	117.9	114.7	108.8	2.8	8.4
Fresh fruit ²	(v41692744)	112.9	105.7	106.7	6.8	5.8
Fresh vegetables ²	(v41692747)	106.8	110.8	98.9	-3.6	8.0
Food purchased from restaurants	(v41692754)	114.8	114.3	111.4	0.4	3.1
Shelter³	(v41692755)	135.1	135.0	122.3	0.1	10.5
Rented accommodation
Owned accommodation
Replacement cost
Homeowners' home and mortgage insurance
Homeowners' maintenance and repairs
Water, fuel and electricity	(v41692756)	173.6	174.4	141.0	-0.5	23.1
Electricity	(v41692757)	137.6	139.7	125.8	-1.5	9.4
Natural gas
Fuel oil and other fuels	(v41692759)	270.1	270.1	193.5	0.0	39.6
Household operations, furnishings and equipment	(v41692760)	103.4	103.2	104.3	0.2	-0.9
Household operations	(v41692761)	109.1	108.8	107.3	0.3	1.7
Telephone services	(v41692763)	99.3	99.3	100.2	0.0	-0.9
Internet access services	(v41693228)	81.7	80.5	72.2	1.5	13.2
Household furnishings and equipment	(v41692768)	90.8	90.8	97.4	0.0	-6.8
Clothing and footwear	(v41692775)	96.2	95.8	93.8	0.4	2.6
Women's clothing	(v41692777)	87.5	85.4	84.0	2.5	4.2
Men's clothing	(v41692778)	99.3	97.2	99.1	2.2	0.2
Footwear	(v41692780)	87.9	92.7	93.8	-5.2	-6.3
Transportation	(v41692783)	115.1	116.1	108.9	-0.9	5.7
Private transportation	(v41692784)	112.0	113.0	107.1	-0.9	4.6
Purchase and leasing of passenger vehicles	(v41692786)	82.5	82.9	90.2	-0.5	-8.5
Gasoline	(v41692789)	166.6	169.7	139.4	-1.8	19.5
Passenger vehicle insurance premiums ⁴	(v41692792)	133.6	133.6	129.4	0.0	3.2
Public transportation	(v41692794)	130.2	131.3	118.4	-0.8	10.0
Health and personal care	(v41692799)	106.3	106.5	103.6	-0.2	2.6
Health care	(v41692800)	111.1	110.5	106.8	0.5	4.0
Personal care	(v41692806)	103.2	103.9	101.7	-0.7	1.5
Recreation, education and reading	(v41692809)	101.7	101.9	102.7	-0.2	-1.0
Recreation	(v41692810)	100.0	100.3	101.1	-0.3	-1.1
Education and reading	(v41692817)	109.5	109.5	110.0	0.0	-0.5
Alcoholic beverages and tobacco products	(v41692819)	131.4	131.5	129.7	-0.1	1.3
Alcoholic beverages	(v41692820)	127.3	127.4	124.5	-0.1	2.2
Tobacco products and smokers' supplies	(v41692826)	134.6	134.6	134.1	0.0	0.4

Note(s): See "Data quality, concepts and methodology — Explanatory notes for tables" section.

* Northwest Territories

Table 10
The all-items Consumer Price Index, provinces, Whitehorse, Yellowknife and Iqaluit, ¹ not seasonally adjusted, historical data

	Jan.	Feb.	Mar.	Apr.	May	June	July	Aug.	Sept.	Oct.	Nov.	Dec.	Annual ² average
	2002=100												
Newfoundland and Labrador (v41691244)													
2003	102.1	102.3	103.5	103.2	103.0	102.6	103.3	103.0	103.5	102.6	103.2	102.6	102.9
2004	103.1	103.0	103.4	103.7	104.8	105.1	105.7	105.4	105.6	105.9	106.2	105.8	104.8
2005	105.7	106.2	106.6	107.5	107.5	107.6	107.9	108.0	109.6	108.2	108.3	107.9	107.6
2006	108.4	108.4	108.7	109.6	110.6	110.4	110.5	110.9	109.7	108.9	109.1	109.3	109.5
2007	109.6	110.1	110.8	111.1	111.4	111.9	111.6	111.1	111.1	111.2	111.6	111.8	111.1
2008	111.9	112.4	112.9	113.6	114.5	115.4	116.3	115.8
Prince Edward Island (v41691379)													
2003	101.9	103.1	104.1	104.6	103.6	103.2	103.4	103.2	103.8	103.7	104.1	103.6	103.5
2004	103.5	104.0	104.7	105.3	105.6	106.2	105.9	105.8	106.4	106.7	108.2	107.4	105.8
2005	106.5	106.7	107.6	108.6	109.1	108.9	109.0	109.3	111.8	111.5	110.7	110.0	109.1
2006	110.3	110.8	110.4	112.1	112.8	112.3	112.5	112.8	111.6	110.7	111.1	111.6	111.6
2007	111.5	111.9	113.3	113.7	114.2	114.1	114.0	113.8	114.0	114.1	114.3	114.7	113.6
2008	114.2	114.6	115.8	116.7	118.9	119.5	120.0	119.3
Nova Scotia (v41691513)													
2003	102.7	103.8	104.5	103.4	103.1	103.2	103.5	103.6	103.6	103.1	103.3	103.1	103.4
2004	103.2	103.7	104.4	104.4	105.2	105.6	105.8	105.7	105.9	106.2	106.7	106.4	105.3
2005	106.1	106.4	107.1	107.6	107.8	107.7	108.1	108.8	110.4	109.8	109.1	109.3	108.2
2006	109.3	109.0	109.6	111.0	111.2	111.0	111.3	111.4	110.6	110.1	110.4	110.2	110.4
2007	110.1	111.0	111.9	112.5	113.1	113.0	113.0	112.7	112.9	112.6	113.5	113.6	112.5
2008	113.5	113.9	114.5	115.5	117.1	117.8	117.8	117.7
New Brunswick (v41691648)													
2003	103.2	104.0	104.3	103.7	103.0	103.0	103.4	103.5	103.7	103.0	103.0	102.9	103.4
2004	103.3	103.8	104.2	104.1	105.1	105.3	105.2	105.2	105.1	105.5	106.0	105.6	104.9
2005	105.6	105.9	106.8	107.1	107.0	106.9	107.5	108.0	109.2	108.4	108.2	108.3	107.4
2006	108.8	108.7	109.1	110.0	110.1	110.0	109.7	110.0	108.8	107.8	108.4	109.1	109.2
2007	109.2	109.6	110.7	111.2	111.6	112.1	112.1	111.4	112.0	111.4	111.9	111.9	111.3
2008	111.7	111.7	112.1	112.8	113.9	114.5	114.9	114.3
Quebec (v41691783)													
2003	102.0	103.1	103.3	102.4	102.4	102.3	102.4	102.5	102.3	102.4	102.7	102.7	102.5
2004	103.2	103.6	103.9	103.8	104.8	104.8	104.6	104.5	104.7	105.3	105.5	105.2	104.5
2005	105.3	105.6	106.4	106.4	106.5	106.8	107.0	107.4	108.5	107.7	107.5	107.4	106.9
2006	108.1	108.0	108.4	109.1	109.3	109.1	109.2	109.2	108.4	108.4	108.6	108.7	108.7
2007	108.8	109.6	110.4	110.6	111.1	110.7	110.6	110.1	110.5	110.5	110.8	111.1	110.4
2008	111.0	111.4	111.7	112.4	113.6	114.1	114.1	113.5
Ontario (v41691919)													
2003	101.9	102.7	102.8	101.8	102.2	102.3	102.5	103.0	103.2	102.9	103.1	103.4	102.7
2004	103.4	103.6	104.0	104.1	105.0	104.8	104.9	104.7	104.8	105.0	105.4	105.3	104.6
2005	105.1	105.8	106.4	106.5	106.6	106.8	106.9	107.5	108.2	107.7	107.5	107.6	106.9
2006	108.2	107.9	108.8	109.1	109.5	109.3	109.0	109.1	108.5	108.4	108.6	108.8	108.8
2007	108.6	109.7	110.8	111.1	111.6	111.1	111.1	110.9	111.0	110.9	111.2	111.1	110.8
2008	110.9	111.4	111.7	112.5	113.6	114.2	115.1	114.8
Manitoba (v41692055)													
2003	101.5	102.0	102.2	101.9	101.7	101.5	101.5	101.8	102.3	101.7	101.8	102.0	101.8
2004	102.0	101.9	102.4	102.7	104.1	104.4	104.3	104.3	104.1	104.5	105.2	105.5	103.8
2005	105.0	105.2	105.6	106.3	106.5	106.7	107.0	107.4	107.8	107.5	107.3	106.9	106.6
2006	107.4	107.2	107.6	108.5	109.2	109.3	109.7	109.7	108.8	108.9	109.0	108.7	108.7
2007	109.1	109.4	110.4	110.9	111.7	111.7	112.1	111.2	111.8	111.0	110.8	110.9	110.9
2008	110.8	111.2	111.8	112.7	113.5	114.4	115.0	115.0
Saskatchewan (v41692191)													
2003	101.5	102.0	102.5	101.9	102.2	102.1	102.2	102.5	102.8	102.4	102.8	102.7	102.3
2004	102.8	102.9	103.1	103.8	104.9	105.0	105.2	104.7	104.9	105.5	106.1	105.8	104.6
2005	105.6	105.8	106.4	107.1	106.5	106.8	107.1	107.4	108.0	107.5	107.4	107.3	106.9
2006	107.9	107.9	108.2	109.2	109.6	109.6	109.8	110.4	109.3	109.1	108.8	108.9	109.1
2007	109.5	109.9	111.0	111.8	112.6	113.1	113.3	113.1	113.4	113.0	113.1	112.9	112.2
2008	113.0	113.6	114.5	115.4	116.2	117.0	116.9	117.0

Table 10 – continued

The all-items Consumer Price Index, provinces, Whitehorse, Yellowknife and Iqaluit, 1 not seasonally adjusted, historical data

	Jan.	Feb.	Mar.	Apr.	May	June	July	Aug.	Sept.	Oct.	Nov.	Dec.	Annual average ²
	2002=100												
Alberta (v41692327)													
2003	103.5	103.8	104.9	104.9	104.2	104.7	104.3	104.2	104.8	104.3	104.7	104.6	104.4
2004	104.6	104.6	104.9	105.2	106.1	107.1	106.4	106.2	106.3	106.0	106.7	106.4	105.9
2005	106.1	106.2	106.9	107.6	107.4	107.8	108.7	108.7	110.0	109.7	109.6	109.0	108.1
2006	110.4	109.7	110.3	111.4	112.2	111.8	113.4	113.9	114.1	113.0	113.7	114.2	112.3
2007	114.7	115.0	116.4	117.5	117.8	118.8	119.1	119.3	119.4	118.6	119.1	118.9	117.9
2008	118.8	119.0	119.8	121.3	122.2	124.0	123.3	124.1
British Columbia (v41692462)													
2003	101.0	101.5	102.3	102.1	102.1	102.0	102.2	102.6	102.9	102.4	102.5	102.6	102.2
2004	102.5	102.9	103.2	103.9	104.7	104.9	104.7	104.7	104.8	104.8	105.0	104.8	104.2
2005	104.8	105.0	105.3	106.0	106.3	106.4	106.6	106.8	107.3	107.1	107.1	106.7	106.3
2006	106.6	106.7	107.2	107.8	108.7	108.7	108.8	109.0	108.4	108.3	108.7	108.8	108.1
2007	109.0	109.1	109.5	109.9	110.5	110.3	110.5	110.4	110.5	110.0	110.1	110.1	110.0
2008	109.9	110.3	110.8	111.8	112.8	113.6	114.2	114.0
Whitehorse, Yukon Territory (v41692598)													
2003	101.7	102.5	102.6	102.2	101.8	101.9	102.4	102.3	102.2	101.6	101.0	101.1	101.9
2004	101.1	101.4	101.9	102.2	103.3	103.6	103.5	103.1	103.4	103.5	104.6	104.0	103.0
2005	103.1	103.3	103.9	104.4	104.9	105.3	105.4	105.7	106.8	106.8	107.1	106.3	105.3
2006	106.4	105.9	105.9	106.9	107.5	107.9	107.5	107.7	107.2	106.3	106.3	106.3	106.8
2007	107.0	107.3	108.0	108.7	109.5	109.7	110.7	110.5	110.8	110.4	110.7	110.6	109.5
2008	110.4	110.1	111.0	111.8	113.6	114.6	115.3	115.4
Yellowknife, Northwest Territories (v41692722)													
2003	102.2	102.5	102.7	103.0	102.7	102.5	102.2	102.0	101.8	101.3	102.0	103.2	102.3
2004	103.1	102.8	103.2	103.3	104.0	104.3	104.3	103.7	103.7	103.8	104.7	105.0	103.8
2005	104.6	104.8	104.9	105.2	106.1	106.4	106.4	106.3	107.0	107.5	107.8	107.8	106.2
2006	107.4	107.3	107.0	107.9	108.0	107.7	107.8	108.0	107.8	107.1	107.6	108.4	107.7
2007	108.9	109.1	109.8	110.4	111.3	111.6	111.5	111.1	111.6	111.1	110.9	111.9	110.8
2008	111.3	112.3	113.3	114.9	115.7	116.6	116.6	116.9
Iqaluit, Nunavut (Dec. 2002=100) (v41713432)													
2003	99.9	99.8	100.0	99.9	100.1	100.2	100.7	100.3	100.3	100.5	100.7	100.5	100.2
2004	100.0	99.9	100.2	100.8	101.4	101.8	101.8	101.4	101.6	101.2	101.8	102.2	101.2
2005	102.0	101.7	101.8	102.1	102.8	103.0	103.0	103.4	103.8	103.3	103.8	103.6	102.9
2006	103.5	103.7	103.7	104.5	104.8	105.1	104.8	104.4	105.0	104.2	105.2	105.7	104.6
2007	106.4	106.5	106.7	107.7	108.0	108.0	108.9	108.9	109.1	108.1	108.2	108.7	107.9
2008	108.2	108.4	108.2	109.0	109.8	110.5	111.6	112.2

Note(s): See "Data quality, concepts and methodology — Explanatory notes for tables" section.

Table 11
The Consumer Price Index and selected sub-groups, by urban centre, ^{1,2} not seasonally adjusted

	CANSIM vector number	Indexes			Percentage change August 2008 from	
		August 2008	July 2008	August 2007	July 2008	August 2007
2002=100						
St. John's, Newfoundland and Labrador						
All-items	(v41692846)	115.3	115.8	110.7	-0.4	4.2
Shelter	(v41692847)	128.1	127.3	116.3	0.6	10.1
Rented accommodation	(v41692848)	105.3	105.2	103.8	0.1	1.4
Owned accommodation	(v41692849)	124.4	123.1	113.0	1.1	10.1
Water, fuel and electricity	(v41692850)	157.1	157.2	135.5	-0.1	15.9
All-items (1992=100)	(v41713405)	135.3	135.9	129.9	-0.4	4.2
Charlottetown and Summerside, Prince Edward Island						
All-items	(v41692852)	118.6	119.2	113.3	-0.5	4.7
Shelter	(v41692853)	128.6	128.3	117.0	0.2	9.9
Rented accommodation	(v41692854)	107.4	107.3	107.2	0.1	0.2
Owned accommodation	(v41692855)	115.4	115.3	112.4	0.1	2.7
Water, fuel and electricity	(v41692856)	194.3	192.6	145.5	0.9	33.5
All-items (1992=100)	(v41713407)	139.0	139.7	132.8	-0.5	4.7
Halifax, Nova Scotia						
All-items	(v41692858)	116.9	116.9	112.2	0.0	4.2
Shelter	(v41692859)	123.5	123.3	115.8	0.2	6.6
Rented accommodation	(v41692860)	106.3	106.1	104.9	0.2	1.3
Owned accommodation	(v41692861)	120.9	120.6	115.4	0.2	4.8
Water, fuel and electricity	(v41692862)	155.2	155.3	131.0	-0.1	18.5
All-items (1992=100)	(v41713409)	139.1	139.1	133.5	0.0	4.2
Saint John, New Brunswick						
All-items	(v41692864)	114.4	115.0	111.4	-0.5	2.7
Shelter	(v41692865)	122.7	122.4	117.9	0.2	4.1
Rented accommodation	(v41692866)	107.1	106.9	105.1	0.2	1.9
Owned accommodation	(v41692867)	117.1	116.7	113.7	0.3	3.0
Water, fuel and electricity	(v41692868)	152.1	152.1	141.2	0.0	7.7
All-items (1992=100)	(v41713411)	135.2	135.9	131.6	-0.5	2.7
Québec, Quebec						
All-items	(v41692870)	113.1	113.7	109.8	-0.5	3.0
Shelter	(v41692871)	118.3	117.9	113.8	0.3	4.0
Rented accommodation	(v41692872)	109.1	108.3	107.6	0.7	1.4
Owned accommodation	(v41692873)	121.3	121.1	115.6	0.2	4.9
Water, fuel and electricity	(v41692874)	124.3	124.4	116.7	-0.1	6.5
All-items (1992=100)	(v41713413)	131.3	132.0	127.6	-0.5	2.9
Montréal, Quebec						
All-items	(v41692876)	113.3	113.9	110.0	-0.5	3.0
Shelter	(v41692877)	120.0	119.7	115.1	0.3	4.3
Rented accommodation	(v41692878)	108.5	108.1	107.5	0.4	0.9
Owned accommodation	(v41692879)	124.3	124.0	118.7	0.2	4.7
Water, fuel and electricity	(v41692880)	128.4	128.7	117.5	-0.2	9.3
All-items (1992=100)	(v41713414)	131.1	131.8	127.2	-0.5	3.1
Ottawa-Gatineau, Ontario part, Ontario/Quebec ³						
All-items	(v41692882)	114.8	115.0	110.9	-0.2	3.5
Shelter	(v41692883)	121.8	121.8	115.9	0.0	5.1
Rented accommodation	(v41692884)	105.6	105.5	104.5	0.1	1.1
Owned accommodation	(v41692885)	123.0	122.9	118.9	0.1	3.4
Water, fuel and electricity	(v41692886)	152.2	152.2	130.4	0.0	16.7
All-items (1992=100)	(v41713416)	139.8	140.1	135.1	-0.2	3.5
Toronto, Ontario						
All-items	(v41692888)	114.7	114.9	110.6	-0.2	3.7
Shelter	(v41692889)	119.0	118.9	113.5	0.1	4.8
Rented accommodation	(v41692890)	107.1	106.9	106.3	0.2	0.8
Owned accommodation	(v41692891)	119.3	119.2	114.9	0.1	3.8
Water, fuel and electricity	(v41692892)	147.1	147.1	127.8	0.0	15.1
All-items (1992=100)	(v41713417)	138.2	138.5	133.3	-0.2	3.7

Table 11 – continued

 The Consumer Price Index and selected sub-groups, by urban centre, ^{1,2} not seasonally adjusted

	CANSIM vector number	Indexes			Percentage change August 2008 from	
		August 2008	July 2008	August 2007	July 2008	August 2007
2002=100						
Thunder Bay, Ontario						
All-items	(v41692894)	111.9	112.1	108.3	-0.2	3.3
Shelter	(v41692895)	108.7	108.8	104.3	-0.1	4.2
Rented accommodation	(v41692896)	103.0	102.9	102.2	0.1	0.8
Owned accommodation	(v41692897)	102.5	102.7	101.1	-0.2	1.4
Water, fuel and electricity	(v41692898)	145.3	145.3	128.9	0.0	12.7
All-items (1992=100)	(v41713418)	133.4	133.7	129.2	-0.2	3.3
Winnipeg, Manitoba						
All-items	(v41692900)	114.9	114.8	111.1	0.1	3.4
Shelter	(v41692901)	121.1	120.4	115.5	0.6	4.8
Rented accommodation	(v41692902)	111.5	111.4	109.2	0.1	2.1
Owned accommodation	(v41692903)	123.0	122.8	117.0	0.2	5.1
Water, fuel and electricity	(v41692904)	124.2	121.5	116.8	2.2	6.3
All-items (1992=100)	(v41713420)	141.6	141.5	137.0	0.1	3.4
Regina, Saskatchewan						
All-items	(v41692906)	116.4	116.3	112.2	0.1	3.7
Shelter	(v41692907)	132.1	131.2	121.5	0.7	8.7
Rented accommodation	(v41692908)	112.6	111.7	106.7	0.8	5.5
Owned accommodation	(v41692909)	144.2	142.8	126.9	1.0	13.6
Water, fuel and electricity	(v41692910)	118.0	118.0	119.6	0.0	-1.3
All-items (1992=100)	(v41713422)	145.0	144.9	139.8	0.1	3.7
Saskatoon, Saskatchewan						
All-items	(v41692912)	118.1	118.1	114.1	0.0	3.5
Shelter	(v41692913)	138.8	138.2	128.5	0.4	8.0
Rented accommodation	(v41692914)	117.2	116.0	107.2	1.0	9.3
Owned accommodation	(v41692915)	149.1	148.6	134.5	0.3	10.9
Water, fuel and electricity	(v41692916)	126.8	126.8	129.3	0.0	-1.9
All-items (1992=100)	(v41713423)	145.4	145.3	140.5	0.1	3.5
Edmonton, Alberta						
All-items	(v41692918)	123.6	123.6	119.1	0.0	3.8
Shelter	(v41692919)	154.9	154.2	143.0	0.5	8.3
Rented accommodation	(v41692920)	124.7	124.0	113.7	0.6	9.7
Owned accommodation	(v41692921)	147.8	147.5	141.9	0.2	4.2
Water, fuel and electricity	(v41692922)	218.3	215.6	183.6	1.3	18.9
All-items (1992=100)	(v41713425)	150.7	150.6	145.2	0.1	3.8
Calgary, Alberta						
All-items	(v41692924)	124.4	123.0	119.3	1.1	4.3
Shelter	(v41692925)	155.5	149.6	141.7	3.9	9.7
Rented accommodation	(v41692926)	117.4	117.1	112.7	0.3	4.2
Owned accommodation	(v41692927)	159.5	159.0	150.7	0.3	5.8
Water, fuel and electricity	(v41692928)	185.3	151.4	141.6	22.4	30.9
All-items (1992=100)	(v41713426)	156.5	154.7	150.0	1.2	4.3
Vancouver, British Columbia						
All-items	(v41692930)	114.5	114.7	110.6	-0.2	3.5
Shelter	(v41692931)	117.0	117.0	112.4	0.0	4.1
Rented accommodation	(v41692932)	106.8	106.7	104.5	0.1	2.2
Owned accommodation	(v41692933)	119.1	119.2	115.8	-0.1	2.8
Water, fuel and electricity	(v41692934)	128.5	128.5	112.9	0.0	13.8
All-items (1992=100)	(v41713428)	135.8	136.1	131.3	-0.2	3.4
Victoria, British Columbia						
All-items	(v41692936)	113.2	113.3	110.0	-0.1	2.9
Shelter	(v41692937)	113.2	113.0	109.9	0.2	3.0
Rented accommodation	(v41692938)	107.2	106.8	104.9	0.4	2.2
Owned accommodation	(v41692939)	112.1	112.1	109.8	0.0	2.1
Water, fuel and electricity	(v41692940)	134.4	134.4	121.4	0.0	10.7
All-items (1992=100)	(v41713429)	132.9	133.0	129.1	-0.1	2.9

Note(s): See "Data quality, concepts and methodology — Explanatory notes for tables" section.

Table 12
The all-items Consumer Price Index by urban centre, ^{1,2} not seasonally adjusted, historical data

	Jan.	Feb.	Mar.	Apr.	May	June	July	Aug.	Sept.	Oct.	Nov.	Dec.	Annual ³ average
	2002=100												
St. John's, Newfoundland and Labrador (v41692846)													
2003	102.0	102.2	103.4	103.1	102.9	102.5	103.2	102.9	103.4	102.6	103.1	102.5	102.8
2004	103.1	102.9	103.3	103.6	104.6	104.9	105.5	105.2	105.3	105.7	105.9	105.6	104.6
2005	105.4	105.9	106.3	107.1	107.2	107.3	107.6	107.7	109.2	107.8	107.9	107.6	107.3
2006	108.0	108.0	108.2	109.2	110.1	109.9	110.0	110.4	109.3	108.5	108.7	108.8	109.1
2007	109.2	109.5	110.3	110.6	110.9	111.3	111.1	110.7	110.7	111.0	111.3	111.5	110.7
2008	111.6	112.1	112.5	113.2	114.0	114.8	115.8	115.3
Charlottetown and Summerside, Prince Edward Island (v41692852)													
2003	101.7	102.8	103.7	104.1	103.3	102.9	103.2	103.0	103.5	103.4	103.8	103.4	103.2
2004	103.2	103.8	104.4	104.9	105.2	105.7	105.5	105.5	106.0	106.2	107.6	106.9	105.4
2005	106.1	106.3	107.1	108.0	108.4	108.3	108.4	108.7	110.9	110.7	110.0	109.3	108.5
2006	109.7	110.2	109.9	111.4	112.0	111.7	111.8	112.1	111.1	110.4	110.7	111.1	111.0
2007	111.0	111.5	112.8	113.1	113.6	113.5	113.4	113.3	113.7	113.8	114.0	114.3	113.2
2008	113.8	114.2	115.3	116.2	118.3	118.8	119.2	118.6
Halifax, Nova Scotia (v41692858)													
2003	102.5	103.3	104.0	103.2	103.0	103.0	103.3	103.4	103.4	103.1	103.3	103.1	103.2
2004	103.1	103.5	104.2	104.2	105.0	105.3	105.5	105.5	105.6	105.9	106.4	106.0	105.0
2005	105.7	105.9	106.6	107.0	107.2	107.1	107.4	108.2	109.6	109.1	108.5	108.6	107.6
2006	108.6	108.3	108.9	110.2	110.5	110.3	110.5	110.7	110.0	109.7	110.0	109.7	109.8
2007	109.7	110.6	111.4	111.9	112.5	112.5	112.4	112.2	112.6	112.3	113.1	113.1	112.0
2008	112.9	113.4	113.9	114.8	116.2	116.9	116.9	116.9
Saint John, New Brunswick (v41692864)													
2003	103.1	103.8	104.1	103.5	102.9	102.9	103.3	103.4	103.6	103.3	103.2	103.1	103.4
2004	103.4	103.9	104.2	104.1	105.1	105.2	105.2	105.1	105.1	105.5	106.0	105.6	104.9
2005	105.5	105.8	106.8	107.1	107.0	106.9	107.5	108.0	109.2	108.4	108.2	108.3	107.4
2006	108.8	108.7	109.2	110.1	110.1	110.0	109.8	110.0	108.9	107.9	108.4	109.0	109.2
2007	109.2	109.6	110.6	111.2	111.4	112.1	112.1	111.4	112.0	111.4	111.9	111.9	111.2
2008	111.7	111.6	112.2	112.7	114.0	114.5	115.0	114.4
Québec, Quebec (v41692870)													
2003	101.9	103.0	103.2	102.3	102.4	102.3	102.4	102.6	102.4	102.5	102.8	102.8	102.6
2004	103.3	103.7	103.9	103.8	104.9	104.9	104.7	104.6	104.8	105.3	105.5	105.1	104.5
2005	105.3	105.6	106.4	106.3	106.5	106.9	107.0	107.4	108.5	107.7	107.5	107.4	106.9
2006	108.2	108.0	108.4	109.1	109.3	109.1	109.2	109.2	108.4	108.2	108.4	108.4	108.7
2007	108.5	109.2	110.1	110.3	110.7	110.4	110.4	109.8	110.2	110.2	110.5	110.8	110.1
2008	110.6	111.1	111.3	112.0	113.2	113.7	113.7	113.1
Montréal, Quebec (v41692876)													
2003	101.8	102.9	103.0	102.2	102.3	102.1	102.3	102.4	102.3	102.3	102.6	102.6	102.4
2004	103.1	103.5	103.7	103.7	104.6	104.6	104.4	104.4	104.7	105.3	105.3	105.1	104.4
2005	105.1	105.4	106.2	106.2	106.4	106.7	106.8	107.3	108.2	107.5	107.5	107.3	106.7
2006	107.9	107.9	108.2	108.9	109.0	108.8	108.9	108.9	108.4	108.6	108.7	108.6	108.6
2007	108.7	109.5	110.3	110.5	110.8	110.5	110.5	110.0	110.4	110.4	110.7	111.0	110.3
2008	110.8	111.3	111.5	112.2	113.4	113.8	113.9	113.3
Ottawa-Gatineau, Ontario part, Ontario/Quebec (v41692882) ⁴													
2003	101.8	102.7	102.8	101.5	102.0	102.1	102.4	102.9	103.0	102.7	103.1	103.2	102.5
2004	103.2	103.4	103.8	104.0	105.0	104.7	104.8	104.6	104.6	105.0	105.3	105.2	104.5
2005	105.0	105.7	106.4	106.4	106.5	106.6	106.8	107.5	108.3	107.7	107.5	107.6	106.8
2006	108.1	107.8	108.6	109.0	109.4	109.2	108.9	109.0	108.3	108.2	108.5	108.6	108.6
2007	108.5	109.6	110.7	111.1	111.5	111.1	111.1	110.9	110.9	110.7	110.9	110.8	110.7
2008	110.4	111.0	111.3	112.1	113.4	114.0	115.0	114.8
Toronto, Ontario (v41692888)													
2003	102.2	103.0	103.1	102.5	102.4	102.6	102.8	103.4	103.5	103.3	103.7	104.0	103.0
2004	103.9	104.1	104.3	104.3	105.1	104.9	104.9	104.7	104.9	104.9	105.2	105.1	104.7
2005	105.0	105.6	106.4	106.3	106.5	106.5	106.6	107.2	107.7	107.4	107.2	107.4	106.7
2006	107.9	107.6	108.5	108.7	109.0	108.9	108.5	108.5	108.1	108.0	108.3	108.5	108.4
2007	108.2	109.3	110.3	110.8	111.2	110.7	110.7	110.6	110.8	110.7	111.0	111.1	110.5
2008	110.7	111.3	111.5	112.2	113.3	113.8	114.9	114.7

Table 12 – continued

The all-items Consumer Price Index by urban centre, ^{1,2} not seasonally adjusted, historical data

	Jan.	Feb.	Mar.	Apr.	May	June	July	Aug.	Sept.	Oct.	Nov.	Dec.	Annual average ³
	2002=100												
Thunder Bay, Ontario (v41692894)													
2003	101.6	102.5	102.6	102.0	102.0	102.1	102.0	102.7	102.8	102.4	102.6	102.8	102.3
2004	102.5	102.7	103.0	103.4	104.2	103.9	104.0	103.7	103.8	104.1	104.4	104.2	103.7
2005	103.9	104.4	105.1	105.2	105.2	105.3	105.3	105.9	106.6	106.2	105.9	106.0	105.4
2006	106.6	106.2	107.1	107.4	107.8	107.6	107.2	107.2	106.6	106.4	106.6	106.6	106.9
2007	106.2	107.3	108.3	108.4	108.8	108.3	108.6	108.3	108.3	107.9	108.2	108.1	108.1
2008	107.9	108.4	108.7	109.7	110.7	111.2	112.1	111.9
Winnipeg, Manitoba (v41692900)													
2003	101.5	101.9	102.1	101.8	101.6	101.5	101.4	101.7	102.3	101.7	101.8	102.0	101.8
2004	102.0	101.9	102.3	102.7	104.0	104.3	104.2	104.3	104.0	104.4	105.1	105.4	103.7
2005	104.9	105.1	105.5	106.1	106.4	106.6	106.8	107.2	107.7	107.3	107.1	106.7	106.5
2006	107.2	107.0	107.5	108.3	109.0	109.1	109.5	109.5	108.6	108.9	109.0	108.6	108.5
2007	109.0	109.4	110.3	110.8	111.4	111.3	111.9	111.1	111.6	110.9	110.7	110.7	110.8
2008	110.7	111.1	111.7	112.6	113.4	114.2	114.8	114.9
Regina, Saskatchewan (v41692906)													
2003	101.5	102.0	102.4	101.9	102.2	102.1	102.3	102.6	102.9	102.4	102.9	102.7	102.3
2004	102.8	102.9	103.2	103.9	105.0	105.1	105.3	104.8	105.0	105.4	105.9	105.7	104.6
2005	105.4	105.7	106.3	106.9	106.5	106.7	107.1	107.4	107.8	107.3	107.2	107.1	106.8
2006	107.7	107.8	108.1	108.9	109.3	109.3	109.5	110.1	109.1	109.0	108.6	108.8	108.9
2007	109.3	109.7	111.0	111.5	112.0	112.3	112.5	112.2	112.7	112.3	112.4	112.2	111.7
2008	112.3	112.7	113.6	114.4	115.4	116.2	116.3	116.4
Saskatoon, Saskatchewan (v41692912)													
2003	101.4	101.9	102.3	101.8	102.1	102.0	102.1	102.4	102.6	102.3	102.6	102.5	102.2
2004	102.6	102.7	102.8	103.6	104.6	104.6	104.8	104.5	104.6	105.3	105.9	105.6	104.3
2005	105.4	105.6	106.2	106.9	106.3	106.6	106.8	107.2	107.7	107.3	107.2	107.1	106.7
2006	107.9	107.8	108.1	109.2	109.6	109.5	109.8	110.4	109.3	109.1	108.7	108.7	109.0
2007	109.5	109.9	110.7	111.9	112.4	113.5	114.1	114.1	114.4	114.1	114.3	114.0	112.7
2008	114.2	115.0	116.0	116.9	117.6	118.3	118.1	118.1
Edmonton, Alberta (v41692918)													
2003	104.5	104.9	105.7	105.6	105.0	105.6	105.4	105.1	105.7	105.1	105.5	105.3	105.3
2004	105.0	105.0	105.2	105.6	106.5	107.6	107.0	106.8	107.0	106.5	107.2	107.0	106.4
2005	106.7	106.7	107.5	108.0	107.9	108.1	109.2	109.1	110.6	110.2	110.1	109.4	108.6
2006	110.6	110.1	110.6	111.4	112.1	111.6	112.8	113.0	113.2	112.2	113.0	113.5	112.0
2007	113.9	114.2	115.7	117.0	117.1	118.6	118.8	119.1	119.1	118.3	118.8	118.6	117.4
2008	118.5	118.7	119.5	121.2	121.9	123.7	123.6	123.6
Calgary, Alberta (v41692924)													
2003	102.5	102.8	103.9	104.0	103.4	103.9	103.2	103.1	103.8	103.5	103.9	103.9	103.5
2004	104.1	104.1	104.4	104.6	105.5	106.4	105.8	105.6	105.6	105.4	106.1	105.8	105.3
2005	105.3	105.5	106.0	106.9	106.8	107.3	108.0	108.0	109.1	108.9	108.8	108.5	107.4
2006	109.9	108.9	109.5	110.9	112.0	111.7	113.6	114.4	114.7	113.5	114.2	114.7	112.3
2007	115.0	115.6	116.7	117.6	117.6	118.6	119.1	119.3	119.3	118.7	119.1	119.0	118.0
2008	118.9	119.1	120.0	121.2	122.3	123.9	123.0	124.4
Vancouver, British Columbia (v41692930)													
2003	100.9	101.4	102.2	102.0	101.9	101.8	101.9	102.4	102.7	102.2	102.3	102.5	102.0
2004	102.2	102.7	103.0	103.7	104.5	104.6	104.5	104.5	104.6	104.7	104.7	104.7	104.0
2005	104.8	104.9	105.2	105.7	106.0	106.1	106.5	106.5	106.8	106.7	106.6	106.3	106.0
2006	106.2	106.3	106.9	107.5	108.4	108.4	108.5	108.7	108.4	108.4	108.9	109.1	108.0
2007	109.0	109.3	109.6	110.0	110.6	110.5	110.7	110.6	110.7	110.4	110.4	110.5	110.2
2008	110.2	110.7	111.2	112.1	113.2	113.9	114.7	114.5
Victoria, British Columbia (v41692936)													
2003	101.1	101.5	102.3	102.1	102.1	102.0	102.3	102.6	102.9	102.5	102.6	102.8	102.2
2004	102.7	103.1	103.3	104.1	105.0	105.2	105.0	105.0	105.2	105.2	105.5	105.3	104.6
2005	105.3	105.5	105.9	106.5	106.8	106.9	107.2	107.3	108.0	107.9	107.8	107.4	106.9
2006	107.2	107.3	107.6	108.4	109.2	109.0	109.2	109.3	108.8	108.6	108.9	109.0	108.5
2007	109.1	109.3	109.7	109.9	110.2	109.9	110.1	110.0	110.1	109.5	109.6	109.7	109.8
2008	109.4	109.8	110.4	111.4	112.3	113.0	113.3	113.2

Note(s): The all-items index for Whitehorse and Yellowknife are available from table 10. See "Data quality, concepts and methodology — Explanatory notes for tables" section.

Table 13
Average retail prices for gasoline and fuel oil, by urban centre

	St. John's, N.L.	Charlottetown and Summerside, P.E.I.	Halifax, N.S.	Saint John, N.B.	Québec, Que.	Montréal, Que.	Ottawa- Gatineau, Ontario part, Ont./Que.	Toronto, Ont.	Thunder Bay, Ont.	Winnipeg, Man.
	cents per litre									
Regular unleaded gasoline at full service filling stations										
August 2007	115.2	105.0	106.2	101.5	106.8	106.4	99.0	96.9	111.3	104.7
September 2007	112.7	104.0	109.4	103.1	103.8	105.8	101.0	98.3	113.5	107.0
October 2007	112.0	102.1	105.8	100.1	103.0	105.3	98.1	96.0	103.6	100.3
November 2007	113.6	105.0	111.9	105.0	107.5	107.8	103.7	101.4	107.9	100.7
December 2007	119.0	109.0	114.0	108.3	114.1	112.6	104.8	101.9	109.4	103.3
January 2008	119.0	110.0	116.7	109.2	115.6	114.9	106.6	104.3	107.7	105.5
February 2008	117.8	109.8	114.2	107.3	115.1	116.7	107.9	104.3	109.0	107.4
March 2008	123.7	114.0	119.7	112.8	116.6	118.3	109.9	107.9	115.0	111.3
April 2008	125.0	117.0	123.0	114.8	120.3	124.8	116.7	115.2	121.8	118.9
May 2008	136.8	130.0	134.1	127.5	135.6	136.3	126.0	125.8	132.4	126.4
June 2008	144.8	139.4	142.4	135.2	144.8	144.4	133.0	133.0	139.2	133.0
July 2008	149.7	141.5	144.7	139.1	142.3	147.1	133.6	133.5	142.0	136.3
August 2008	139.1	131.5	134.4	127.8	129.6	132.2	124.2	125.6	134.3	131.1
Regular unleaded gasoline at self service filling stations										
August 2007	111.5	101.8	103.1	100.1	106.8	102.7	96.3	95.8	109.8	104.3
September 2007	109.7	102.0	106.4	100.9	103.4	103.4	97.3	97.2	111.9	106.7
October 2007	108.8	99.5	102.7	98.2	103.0	102.3	95.1	94.4	102.2	100.5
November 2007	111.0	102.8	108.5	102.8	107.5	106.1	101.5	99.9	104.6	100.9
December 2007	116.0	107.0	111.1	105.8	113.9	109.9	102.3	100.6	107.3	103.5
January 2008	116.0	107.9	113.5	106.8	115.3	113.5	104.1	102.5	105.4	106.2
February 2008	115.3	107.0	110.7	105.4	115.2	114.4	104.7	102.8	106.8	106.9
March 2008	119.8	111.1	116.2	110.5	117.0	115.3	107.1	106.1	113.1	110.9
April 2008	122.3	114.0	120.3	113.6	119.8	123.8	113.8	114.0	119.4	118.9
May 2008	134.0	127.1	131.0	125.8	135.4	136.0	123.9	124.6	130.6	126.7
June 2008	142.0	136.2	139.5	134.2	144.4	142.8	129.9	130.6	137.5	133.2
July 2008	146.8	138.0	142.2	137.2	142.5	143.5	130.2	132.0	140.3	135.6
August 2008	136.5	129.1	131.0	125.8	129.6	128.3	120.4	123.9	131.8	129.2
Premium unleaded gasoline at full service filling stations										
August 2007	121.2	110.8	112.6	109.7	113.5	113.0	113.4	108.3	121.7	114.7
September 2007	118.2	111.0	117.0	109.6	110.3	113.1	115.2	109.1	124.4	116.6
October 2007	118.0	108.1	113.7	107.3	109.8	112.6	111.2	107.0	114.7	110.5
November 2007	119.6	113.0	119.7	111.8	114.3	115.1	115.5	112.5	118.6	110.8
December 2007	125.0	117.0	121.4	115.3	120.8	118.6	115.8	113.3	119.3	113.1
January 2008	125.0	118.0	124.0	116.3	122.4	122.0	118.6	115.2	118.4	115.6
February 2008	123.3	117.0	121.3	114.3	121.1	124.1	120.1	116.3	119.4	117.7
March 2008	129.7	122.0	126.6	119.3	123.3	125.3	121.6	119.2	124.2	121.7
April 2008	130.5	124.5	129.3	122.2	126.2	132.1	128.1	126.9	132.2	129.0
May 2008	142.3	137.5	142.3	134.6	142.8	143.8	137.0	138.4	142.7	136.4
June 2008	150.7	146.2	150.1	142.7	151.1	152.2	144.5	144.0	150.2	143.3
July 2008	155.2	148.5	151.9	146.0	149.4	154.6	145.7	144.8	152.9	146.3
August 2008	145.4	139.5	141.6	135.0	136.7	139.6	136.5	137.8	145.6	141.3
Premium unleaded gasoline at self service filling stations										
August 2007	117.5	108.4	110.6	106.4	113.7	109.9	107.4	105.2	120.3	114.3
September 2007	115.4	108.7	114.5	107.4	110.4	111.4	108.2	106.4	122.6	116.1
October 2007	114.5	106.7	110.6	104.3	110.1	110.1	106.1	106.1	113.1	110.7
November 2007	117.0	110.5	116.4	109.7	114.4	114.0	112.5	111.0	115.3	110.9
December 2007	122.0	114.8	118.8	112.6	121.1	117.5	112.9	111.7	117.4	113.7
January 2008	122.0	115.0	119.7	114.2	122.4	121.2	115.3	113.9	116.0	116.1
February 2008	121.3	114.8	118.2	111.8	121.9	122.1	116.1	114.7	117.2	117.2
March 2008	126.5	119.0	123.7	117.3	124.1	122.8	118.6	117.8	124.0	121.3
April 2008	128.3	122.0	127.1	120.2	126.8	131.5	124.6	125.9	130.2	129.1
May 2008	139.6	134.7	139.7	132.5	142.3	144.8	135.4	136.5	141.3	136.7
June 2008	148.0	143.4	147.5	141.0	151.9	150.5	141.5	142.4	148.3	143.6
July 2008	152.8	145.5	150.3	144.0	149.9	150.6	141.6	143.8	151.0	146.1
August 2008	142.8	135.8	138.4	132.6	137.0	136.3	132.3	135.8	142.8	139.8
Household heating fuel										
August 2007	88.7	78.2	83.6	89.2	81.2	79.9	85.8	86.1	88.5	89.6
September 2007	84.5	77.0	83.7	89.4	80.8	79.0	86.8	87.3	90.5	90.2
October 2007	87.9	81.8	83.7	90.3	83.9	81.5	86.8	88.8	91.4	89.1
November 2007	86.6	84.5	88.2	96.5	88.5	86.7	88.6	90.9	93.2	93.7
December 2007	100.8	93.2	96.0	103.1	98.0	97.2	99.2	100.1	103.5	108.0
January 2008	99.9	93.1	99.3	104.4	103.1	100.4	102.8	102.0	103.7	104.7
February 2008	98.8	92.1	98.3	101.2	103.1	100.8	101.8	101.4	103.5	100.3
March 2008	107.4	98.4	100.7	114.4	111.0	111.0	109.9	108.3	113.4	110.1
April 2008	119.0	108.7	110.9	121.5	123.3	116.2	115.0	115.9	122.0	118.9
May 2008	119.3	112.4	116.8	129.5	126.4	128.6	127.5	125.7	125.8	125.1
June 2008	119.3	112.4	116.8	129.5	126.4	128.6	127.5	125.7	125.8	125.1
July 2008	119.3	112.4	116.8	129.5	126.4	128.6	127.5	125.7	125.8	125.1
August 2008	119.3	112.4	116.8	129.5	126.4	128.6	127.5	125.7	125.8	125.1

Table 13 – continued

Average retail prices for gasoline and fuel oil, by urban centre

	Regina, Sask.	Saskatoon, Sask.	Edmonton, Alta.	Calgary, Alta.	Vancouver, B.C.	Victoria, B.C.	Whitehorse, Y.T.	Yellowknife, N.W.T.
cents per litre								
Regular unleaded gasoline at full service filling stations								
August 2007	107.3	106.6	99.6	103.5	107.4	107.9	120.5	125.1
September 2007	109.0	108.8	103.0	104.1	108.5	108.9	120.5	125.5
October 2007	101.6	100.4	94.5	95.1	104.6	102.9	118.3	118.8
November 2007	104.4	103.2	96.8	99.7	109.5	106.2	116.0	119.5
December 2007	104.8	104.5	97.0	99.6	108.7	108.7	116.1	119.4
January 2008	107.0	107.4	101.2	102.1	108.7	109.2	116.9	119.0
February 2008	107.3	108.2	102.3	103.5	112.9	110.7	116.1	120.3
March 2008	113.2	113.7	107.3	107.9	119.3	116.9	118.4	128.6
April 2008	121.8	121.4	114.3	116.1	125.5	123.6	122.9	137.5
May 2008	130.8	128.8	123.7	123.9	135.0	134.9	136.8	142.0
June 2008	137.8	136.7	129.3	130.8	146.0	144.7	143.0	148.9
July 2008	136.5	135.3	131.3	133.1	149.1	150.9	145.1	152.9
August 2008	130.8	130.7	124.4	125.4	142.3	143.2	141.3	149.6
Regular unleaded gasoline at self service filling stations								
August 2007	107.3	106.5	98.7	101.7	105.3	106.8	118.5	123.5
September 2007	108.8	108.5	101.2	103.2	106.2	107.7	118.4	123.6
October 2007	101.3	99.5	92.4	94.4	101.8	101.8	116.1	118.8
November 2007	104.0	103.9	94.9	98.1	107.1	104.5	114.6	117.1
December 2007	104.7	104.3	95.7	98.3	105.7	107.4	115.1	116.3
January 2008	107.3	107.3	100.3	101.8	105.8	107.7	114.7	115.6
February 2008	107.8	107.4	100.5	102.1	109.9	109.4	114.6	116.8
March 2008	113.6	113.5	105.6	106.8	116.4	116.0	116.8	125.4
April 2008	122.1	121.7	112.5	115.8	122.5	122.7	121.6	132.0
May 2008	130.2	129.3	122.2	123.9	132.4	133.8	135.9	141.3
June 2008	137.2	136.9	128.9	129.6	143.1	143.5	141.4	146.4
July 2008	136.0	135.5	130.3	132.2	146.6	150.5	144.4	150.0
August 2008	130.8	130.8	122.4	124.0	140.5	142.0	140.1	147.1
Premium unleaded gasoline at full service filling stations								
August 2007	117.8	116.9	111.2	113.5	119.0	118.3	127.0	135.8
September 2007	119.4	119.0	113.7	114.0	120.0	120.1	127.0	135.9
October 2007	112.0	110.7	105.7	105.7	116.2	114.3	126.0	131.1
November 2007	114.7	113.2	107.9	109.5	120.9	117.3	125.3	130.5
December 2007	115.2	114.6	107.5	109.9	120.1	119.8	125.3	129.3
January 2008	117.4	117.6	111.3	112.9	120.0	120.3	126.9	129.0
February 2008	117.8	118.5	112.6	114.1	124.5	121.8	125.8	130.1
March 2008	123.8	124.0	118.2	118.6	130.7	127.9	127.4	138.4
April 2008	132.3	131.7	124.9	127.2	137.3	135.4	129.4	146.8
May 2008	141.4	139.0	133.9	135.3	146.8	147.0	142.0	152.5
June 2008	148.5	146.8	139.2	141.3	157.9	156.8	148.0	159.0
July 2008	147.1	145.6	142.0	143.6	161.2	163.0	150.3	162.4
August 2008	141.4	140.7	135.8	135.9	154.4	154.6	146.0	162.0
Premium unleaded gasoline at self service filling stations								
August 2007	118.2	116.9	109.5	112.7	117.2	118.1	123.6	134.8
September 2007	119.5	119.0	112.1	114.1	117.8	119.0	124.0	133.9
October 2007	112.5	110.8	103.8	105.6	113.5	113.2	121.5	130.5
November 2007	114.5	113.7	106.4	109.1	118.7	115.5	121.0	129.5
December 2007	115.3	114.7	106.5	109.3	117.3	118.7	121.3	126.9
January 2008	118.1	118.0	111.2	112.7	117.6	118.8	120.2	126.9
February 2008	119.2	118.1	110.6	113.3	121.7	120.8	120.4	127.5
March 2008	125.1	124.2	115.6	117.6	128.5	127.3	123.6	136.6
April 2008	133.5	132.3	123.7	126.8	134.7	134.0	129.0	144.1
May 2008	141.3	140.2	133.4	134.9	144.8	145.6	142.5	151.5
June 2008	148.7	147.6	140.4	140.8	155.3	155.3	148.5	158.1
July 2008	147.0	146.3	142.4	143.4	158.9	162.8	150.8	160.6
August 2008	141.5	141.3	134.8	135.3	152.7	154.3	147.7	158.5
Household heating fuel								
August 2007	86.8	89.7	.	.	90.7	97.5	98.6	94.7
September 2007	91.2	90.8	.	.	90.1	98.3	100.3	96.2
October 2007	93.9	92.6	.	.	97.6	102.8	101.4	96.2
November 2007	100.2	95.5	.	.	101.9	107.0	107.0	99.3
December 2007	110.2	100.7	.	.	102.6	111.6	117.0	113.8
January 2008	102.5	105.1	.	.	99.0	109.5	115.5	113.8
February 2008	104.2	103.7	.	.	100.3	109.5	110.3	114.0
March 2008	114.3	110.1	.	.	112.7	120.3	117.6	119.7
April 2008	120.2	112.1	.	.	119.7	128.1	127.4	127.8
May 2008	124.3	122.2	.	.	128.2	135.2	134.4	128.5
June 2008	124.3	122.2	.	.	128.2	135.2	134.4	128.5
July 2008	124.3	122.2	.	.	130.9	137.9	134.4	128.5
August 2008	124.3	122.2	.	.	130.9	137.9	134.4	128.5

Note(s): See Table A for complete list of vector numbers.

Table 14
Average retail prices, monthly, Canada

	CANSIM vector number	June 2008	July 2008	August 2008
		dollars ¹		
Round steak, 1 kilogram	(v735165)	11.82	11.86	12.22
Sirloin steak, 1 kilogram	(v735176)	15.04	15.08	15.69
Prime rib roast, 1 kilogram	(v735187)	20.54	21.36	21.83
Blade roast, 1 kilogram	(v735198)	9.15	9.38	9.51
Stewing beef, 1 kilogram	(v735209)	9.38	9.53	9.59
Ground beef, regular, 1 kilogram	(v735220)	6.19	6.13	6.23
Pork chops, 1 kilogram	(v735221)	9.19	9.18	9.38
Chicken, 1 kilogram	(v735223)	5.93	6.11	6.21
Bacon, 500 grams	(v735166)	4.41	4.44	4.55
Wieners, 450 grams	(v735167)	2.65	2.68	2.69
Canned sockeye salmon, 213 grams	(v735168)	3.25	3.29	3.25
Homogenized milk, 1 litre	(v735169)	2.09	2.07	2.08
Partly skimmed milk, 1 litre	(v735170)	1.99	1.99	2.00
Butter, 454 grams	(v735171)	4.28	4.28	4.27
Processed cheese food slices, 250 grams	(v735172)	2.83	2.81	2.82
Evaporated milk, 385 millilitres	(v735173)	1.69	1.67	1.69
Eggs, 1 dozen	(v735174)	2.53	2.59	2.64
Bread, 675 grams	(v735175)	2.45	2.49	2.45
Soda crackers, 450 grams	(v735177)	2.17	2.24	2.34
Macaroni, 500 grams	(v735178)	1.45	1.50	1.51
Flour, 2.5 kilograms	(v735179)	5.10	5.20	5.15
Corn flakes, 675 grams	(v735180)	3.81	3.94	3.91
Apples, 1 kilogram	(v735181)	3.25	3.38	3.64
Bananas, 1 kilogram	(v735182)	1.42	1.44	1.43
Grapefruits, 1 kilogram	(v735183)	2.48	2.69	2.67
Oranges, 1 kilogram	(v735184)	2.73	2.91	3.06
Apple juice, canned, 1.36 litres	(v735185)	1.88	1.88	1.89
Orange juice, tetra-brick, 1 litre	(v735186)	3.70	3.63	3.67
Carrots, 1 kilogram	(v735189)	1.80	1.87	1.76
Celery, 1 kilogram	(v735190)	3.11	2.81	1.99
Mushrooms, 1 kilogram	(v735191)	7.03	7.27	7.25
Onions, 1 kilogram	(v735192)	1.27	1.34	1.42
Potatoes, 4.54 kilograms	(v735193)	4.55	4.86	5.53
French fried potatoes, frozen, 1 kilogram	(v735194)	2.03	1.99	2.01
Baked beans, canned, 398 millilitres	(v735195)	0.93	0.90	0.91
Tomatoes, canned, 796 millilitres	(v735196)	1.30	1.29	1.30
Tomato juice, canned, 1.36 litres	(v735197)	1.63	1.58	1.62
Ketchup, 1 litre	(v735199)	2.59	2.72	2.71
Sugar, white, 2 kilograms	(v735200)	2.35	2.41	2.43
Coffee, roasted, 300 grams	(v735201)	3.78	3.88	3.98
Coffee, instant, 200 grams	(v735202)	5.17	5.17	5.30
Tea (72 bags)	(v735203)	3.91	3.90	3.88
Cooking or salad oil, 1 litre	(v735204)	3.89	4.09	4.14
Soup, canned, 284 millilitres	(v735205)	0.93	0.95	0.95
Baby food, 128 millilitres	(v735206)	0.67	0.67	0.68
Peanut butter, 500 grams	(v735207)	2.67	2.76	2.78
Fruit flavoured crystals, 2.25 litres	(v735208)	1.22	1.22	1.24
Soft drinks, cola type, 2 litres	(v735210)	1.42	1.41	1.40
Soft drinks, lemon-lime type, 2 litres	(v735211)	1.44	1.47	1.48
Paper towels (2 rolls)	(v735213)	2.32	2.34	2.40
Facial tissue (200 tissues)	(v735214)	2.03	2.03	2.02
Bathroom tissue (4 rolls)	(v735215)	2.18	2.24	2.23
Shampoo, 300 millilitres	(v735216)	3.14	3.04	3.20
Deodorant, 60 grams	(v735217)	3.42	3.59	3.64
Toothpaste, 100 millilitres	(v735218)	1.42	1.31	1.40
Cigarettes (200)	(v735219)	78.71	78.12	76.17
Regular, unleaded gasoline at self-service stations, cents per litre	(v41838376)	135.1	136.6	127.3

Note(s): See "Data quality, concepts and methodology — Explanatory notes for tables" section.

Table 15
Inter-city indexes of retail price differentials, as of October 2006, for selected groups of consumer goods and services, not seasonally adjusted

	Canada ¹ CPI weight	St. John's, N.L.	Charlottetown- Summerside, P.E.I.	Halifax, N.S.	Saint John, N.B.	Montréal, Que.
	percent	combined city average=100				
All-items	100.0	93.0	94.0	99.0	92.0	93.0
Food	16.9	101.0	98.0	100.0	96.0	98.0
Food purchased from stores	.	106.0	101.0	101.0	100.0	100.0
Meat, poultry and fish	.	104.0	99.0	101.0	99.0	101.0
Dairy products and eggs	.	110.0	100.0	104.0	101.0	98.0
Bakery and other cereal products	.	98.0	99.0	99.0	97.0	101.0
Fruit and vegetables	.	115.0	107.0	105.0	108.0	101.0
Other food purchased from stores ²	.	102.0	98.0	98.0	96.0	98.0
Food purchased from restaurants	.	91.0	92.0	96.0	86.0	95.0
Shelter	26.8	77.0	83.0	92.0	77.0	85.0
Rented accommodation	.	67.0	76.0	85.0	68.0	80.0
Owned accommodation	.	73.0	80.0	88.0	76.0	86.0
Water, fuel and electricity	.	115.0	111.0	123.0	96.0	94.0
Household operations and furnishings	10.6	102.0	103.0	106.0	101.0	96.0
Household operations	.	102.0	103.0	109.0	101.0	93.0
Household furnishings	.	101.0	103.0	101.0	101.0	101.0
Clothing and footwear	5.4	102.0	96.0	103.0	101.0	101.0
Transportation	19.8	101.0	94.0	96.0	96.0	99.0
Private transportation	.	101.0	92.0	96.0	94.0	99.0
Purchase of automotive vehicles	.	100.0	103.0	101.0	99.0	100.0
Gasoline	.	113.0	104.0	106.0	101.0	101.0
Other private transportation	.	95.0	66.0	81.0	83.0	95.0
Public transportation	.	103.0	110.0	100.0	109.0	103.0
Health and personal care	4.5	92.0	92.0	94.0	93.0	100.0
Health care	.	95.0	96.0	99.0	99.0	99.0
Personal care supplies and equipment	.	88.0	94.0	90.0	87.0	101.0
Personal care services	.	90.0	82.0	89.0	87.0	101.0
Recreation, education and reading	12.0	93.0	101.0	112.0	105.0	87.0
Alcoholic beverages and tobacco products	4.1	116.0	109.0	109.0	104.0	94.0
Alcoholic beverages	.	107.0	103.0	104.0	101.0	98.0
Tobacco products and smokers' supplies	.	123.0	114.0	113.0	107.0	90.0

Table 15 – continued

Inter-city indexes of retail price differentials, as of October 2006, for selected groups of consumer goods and services, not seasonally adjusted

	Canada ¹ CPI weight	Ottawa, Ont.	Toronto, Ont.	Winnipeg, Man.	Regina, Sask.	Edmonton, Alta.	Vancouver, B.C.
	percent	combined city average=100					
All-items	100.0	102.0	109.0	92.0	93.0	97.0	104.0
Food	16.9	98.0	100.0	100.0	97.0	103.0	107.0
Food purchased from stores	.	98.0	98.0	103.0	101.0	103.0	107.0
Meat, poultry and fish	.	102.0	100.0	97.0	98.0	99.0	103.0
Dairy products and eggs	.	104.0	102.0	92.0	92.0	97.0	103.0
Bakery and other cereal products	.	92.0	94.0	108.0	104.0	106.0	116.0
Fruit and vegetables	.	97.0	96.0	106.0	103.0	105.0	106.0
Other food purchased from stores ²	.	97.0	98.0	109.0	106.0	105.0	109.0
Food purchased from restaurants	.	97.0	104.0	93.0	88.0	104.0	106.0
Shelter	26.8	107.0	121.0	83.0	82.0	91.0	103.0
Rented accommodation	.	105.0	124.0	79.0	70.0	84.0	104.0
Owned accommodation	.	106.0	120.0	83.0	78.0	88.0	105.0
Water, fuel and electricity	.	115.0	124.0	89.0	123.0	114.0	90.0
Household operations and furnishings	10.6	103.0	104.0	97.0	100.0	99.0	103.0
Household operations	.	105.0	106.0	96.0	100.0	102.0	105.0
Household furnishings	.	101.0	101.0	100.0	100.0	94.0	100.0
Clothing and footwear	5.4	102.0	100.0	100.0	101.0	96.0	100.0
Transportation	19.8	96.0	106.0	92.0	94.0	91.0	103.0
Private transportation	.	95.0	105.0	91.0	94.0	91.0	104.0
Purchase of automotive vehicles	.	100.0	101.0	99.0	101.0	94.0	102.0
Gasoline	.	98.0	96.0	102.0	105.0	91.0	112.0
Other private transportation	.	84.0	117.0	73.0	76.0	88.0	103.0
Public transportation	.	110.0	110.0	99.0	95.0	89.0	91.0
Health and personal care	4.5	101.0	101.0	97.0	90.0	103.0	103.0
Health care	.	105.0	103.0	96.0	94.0	102.0	98.0
Personal care supplies and equipment	.	96.0	100.0	100.0	102.0	98.0	107.0
Personal care services	.	101.0	99.0	98.0	69.0	109.0	107.0
Recreation, education and reading	12.0	104.0	107.0	93.0	100.0	106.0	109.0
Alcoholic beverages and tobacco products	4.1	96.0	101.0	105.0	108.0	103.0	113.0
Alcoholic beverages	.	98.0	100.0	89.0	95.0	102.0	107.0
Tobacco products and smokers' supplies	.	93.0	101.0	120.0	120.0	104.0	118.0

Note(s): See "Data quality, concepts and methodology — Explanatory notes for tables" section and Table B for complete list of vector numbers.

Data quality, concepts and methodology

Definition

The Consumer Price Index (CPI) is an indicator of the changes in consumer prices experienced by the target population. The CPI measures price change by comparing, through time, the cost of a fixed basket of commodities. This basket is based on the expenditures of the target population in a certain reference period, currently 2005. Since the basket contains commodities of unchanging or equivalent quantity and quality, the index reflects only pure price movements.

Separate CPIs are published for Canada, the ten provinces, Whitehorse, Yellowknife and Iqaluit. Some CPI information is also available for an additional sixteen urban centres. Since the CPI is a measure of price change from one time period to another, it cannot be used to indicate differences in price levels between provinces or urban centres.

Population coverage

The population targeted by the Consumer Price Index consists of families and individuals living in urban and rural private households. For practical reasons, residents of the Territories outside Whitehorse, Yellowknife and Iqaluit are not represented by the index. Prior to February 1995, the target population consisted of private households in Canadian urban centres with a population of 30,000 or more.

Time reference

The CPI compares, in percentage terms, prices in any given time period to prices in the official base period which, at present, is 2002=100. The official time base was changed from 1992=100 to 2002=100 starting with the CPI for May 2007. The change is strictly an arithmetic conversion which alters the index levels but leaves the percentage changes between any two periods intact, except for differences in rounding.

Percent versus index point changes

The movements of the indexes from one month to another are expressed as percent changes rather than changes in index points. Index point changes are affected by the level of the index which, in turn, depends on the time base of the particular index. The percentage change between any two time periods can be readily calculated by dividing the index point difference between the two time periods by the index for the earlier period and multiplying the result by one hundred.

Price coverage

The prices used in the CPI calculation are final prices, inclusive of excise and other indirect taxes paid by consumers. In particular, they include the Goods and Services Tax (GST), as well as provincial retail sales taxes wherever applicable. In regions where the GST and provincial retail sales taxes have been combined, the Harmonized Sales Tax (HST) is included. It follows that the CPI can change as a result of modifications to any of these taxes.

The selection of commodities and the outlets from which prices are collected is judgmental, other than for rents and traveler accommodation. The number of prices required for a given commodity depends on the importance and the nature of the commodity. The samples are designed to represent volume selling commodities and outlets.

The principal objective of the sample design is to ensure an informative, reliable and impartial picture of consumer inflation at the national and provincial levels.

Price collection for a given month's index is carried out during the first three weeks of the month. Although prices for most CPI commodities are collected monthly, prices for commodities having less frequent price changes (e.g. property taxes and electricity rates) are collected at intervals longer than one month. Special pricings are carried out where there is evidence that significant price changes have occurred between scheduled pricing periods.

Weights and linking

The CPI maintains fixed quantitative proportions (weights) between commodities during the life of a given basket. The baskets are updated periodically to take into account changes in consumer expenditure patterns. In May 2007, the basket reflecting the 2005 expenditure patterns replaced the 2001 basket. The continuity of the CPI series is maintained by "linking" the corresponding indexes obtained from consecutive baskets.

The CPI is calculated as a weighted average of specified commodity price indexes. The weights are derived from Survey of Household Spending data. Text table 1 compares the expenditure shares of the two most recent CPI baskets, i.e. the 2005 basket as it was reflected in the CPI in May 2007 and the 2001 basket. Because both sets of weights are expressed in April 2007 or "link month" prices, the differences reflect the shifts in the relative quantities purchased between the two baskets.

When reconstructing or re-aggregating published CPI series, the changes in weights and the linking procedures must be taken into account. For a description of the methodology required to reconstruct or re-aggregate CPI series, see **The Consumer Price Index Reference Paper** catalogue no. 62-553-X (Occasional) or contact Prices Division.

Text table 1

Comparison of the 2005 and 2001 distribution¹ of expenditures used in the Consumer Price Index, by major component, for Canada

	2005 Expenditures		2001 Expenditures
	Expressed in 2005 prices	Expressed in April 2007 prices	Expressed in April 2007 prices
	percent		
Major Components			
All-Items	100.0	100.0	100.0
Food	16.9	17.0	17.1
Shelter	25.7	26.6	27.7
Household operations, furnishings and equipment	11.4	11.1	10.2
Clothing and footwear	5.6	5.4	5.1
Transportation	19.6	19.9	20.2
Health and personal care	4.8	4.7	4.4
Recreation, education and reading	13.0	12.2	11.2
Alcoholic beverages and tobacco products	3.1	3.1	4.2

1. Figures may not add to 100% due to rounding.

Starting with the October 2006 Consumer Price Index (CPI), Statistics Canada produces and disseminates the Core CPI as defined by the Bank of Canada.

The measure of Core CPI excludes from the all-items CPI the effect of changes in indirect taxes and eight of the most volatile components identified by the Bank of Canada: fruit, fruit preparations and nuts; vegetables and vegetable preparations; mortgage interest cost; natural gas; fuel oil and other fuels; gasoline; inter-city transportation; and tobacco products and smokers' supplies. For additional information on Core CPI, please consult the Bank of Canada Web site. <http://www.bankofcanada.ca/en/inflation/index.htm>.

Statistics Canada also calculates, on behalf of the Bank of Canada, a seasonally adjusted Core CPI. This series is available through CANSIM, Statistics Canada's official database, or by contacting us through the means mentioned on the inside cover of this publication.

Whitehorse, Yellowknife and Iqaluit indexes

The relatively small size of the housing market in these three cities makes it difficult to construct reliable price indexes for new houses. To compensate, the price movements of rental accommodation are used to approximate the price movements of new houses. The rent information itself is collected using different pricing frequencies and collection methods than in the rest of the country. Because of these problems, the indexes for Rented Accommodation and Owned Accommodation are not published for these three cities. Further, the all-items indexes published for these three cities are not strictly comparable with the same indexes for the provinces or the other sixteen cities.

Calculation of urban centre indexes

With the introduction of the 1992 basket, emphasis was shifted from urban centre data to provincial data. Urban Centre all-items series were continued since many users had come to rely on this service, but the method of calculation was changed. Shelter indexes are calculated for each urban centre. This recognizes the importance of Shelter in the basket, the significant and persistent differences in price movements between urban centres, and the availability of local data. For the other seven major components, the movement of the provincial counterpart (or, in the cases of Montréal, Toronto, and Vancouver, a sub-provincial counterpart) is used. The major components are aggregated using the urban centre's expenditure pattern to arrive at each urban centre's all-items index.

Seasonal adjustment

A seasonally adjusted series is one from which seasonal movements have been eliminated. Seasonal movements are defined as those which are caused by regular annual events such as variations in climate and regular institutional events such as vacations and statutory holidays. Seasonally adjusted series are calculated using Statistics Canada's X-11 ARIMA program. Time series with no detectable seasonal movements remain unchanged from the official series. The official unadjusted series for all-items index, core consumer price index, each of the eight major component indexes and three special aggregates (all-items excluding food, all-items excluding food and energy and all-items excluding 8 of the most volatile components (Bank of Canada definition)) are seasonally adjusted independently.

Each month, the previous month's seasonally adjusted index is subject to revision. On an annual basis, the seasonally adjusted values for the last three years are revised with the January data release. Since these revisions can lead to changes in both the levels and movements of the indexes, users employing the CPI for indexation purposes are advised to use the unadjusted indexes.

Explanatory notes for tables

Table 1 The Consumer Price Index, major components and special aggregates, Canada, not seasonally adjusted

and

Table 2 The Consumer Price Index, major components and special aggregates, Canada, seasonally adjusted

1. 2005 Consumer Price Index (CPI) basket weights at April 2007 prices, Canada.
2. Figures may not add to 100% due to rounding.
3. The measure of core consumer price index (CPI) excludes from the all-items CPI the effect of changes in indirect taxes and eight of the most volatile components identified by the Bank of Canada: fruit, fruit preparations and nuts; vegetables and vegetable preparations; mortgage interest cost; natural gas; fuel oil and other fuels; gasoline; inter-city transportation; and tobacco products and smokers' supplies. For additional information on core CPI, please consult the Bank of Canada Web site: <http://www.bankofcanada.ca/en/inflation/index.htm>.

Table 3 The Consumer Price Index, provinces, Whitehorse, Yellowknife and Iqaluit, not seasonally adjusted

1. Data for Iqaluit are on a December 2002=100 base (200212=100) and the Standard Geographical Classification (SGC) 2001. Previous to April 1, 1999, the town of Iqaluit formed part of the Northwest Territories. Subsequent to April 1, 1999, the town of Iqaluit formed part of the newly-created territory of Nunavut.

Table 4 The Consumer Price Index, major components and selected sub-groups, Canada, not seasonally adjusted

Table 4-1

1. Food expenditure information below the aggregate level of "food purchased from stores" was unavailable after 2001. To obtain 2005 basket weights for food categories under this aggregate, expenditures of 2001 for each food category were adjusted to reflect price movements to 2005. However data from the 2005 Survey of Household Spending were used to update the weight at the major component level of "food" compared to all other components.

Table 4-2

1. In July 2004, the 2001 basket weights introduced with the January 2003 data were adjusted; the weights for mortgage interest cost were re-evaluated.
2. Due to changes in the Ontario electricity market that became effective May 1, 2002, it was necessary to adjust the treatment of electricity prices in the consumer price index (CPI) for that province. A question and answer fact sheet that explains those changes is now available. To obtain the fact sheet on the treatment of electricity prices in Ontario, please contact Client Services Unit, Prices Division, telephone: (613) 951-9606, toll-free: 1-866-230-2248, fax: (613) 951-1539, e-mail: prices-prix@statcan.gc.ca.

Table 4-5

1. Over the previous two years, Statistics Canada has updated, by province, the model year of passenger vehicles used in the calculation of the passenger vehicle insurance premiums index over a three month period. In 2008, this quality adjustment exercise will be reflected in the month of May for all provinces.

Table 4-7

1. From April 2006, Statistics Canada changed its implementation of the price index formula used for traveller accommodation. As a result, data from April 2006 are not strictly comparable to earlier time periods.

Table 5 The Consumer Price Index for Canada, all-items, not seasonally adjusted, historical data

1. The annual average index is calculated as the average of the published 12 individual monthly indexes, rounded to one decimal place. Percentage changes between the annual average indexes are calculated based on these published rounded numbers. Between May 2007 and September 2007, the annual average percentage changes in Table 5 were calculated based on annual average indexes that were not rounded. As a result, some percentage changes were different by +/- 0.1 from the official percentage change. This problem only affected the annual average column of Table 5.

Table 6 Core consumer price index (CPI) (Bank of Canada definition), not seasonally adjusted, historical data

1. The measure of core consumer price index (CPI) excludes from the all-items CPI the effect of changes in indirect taxes and eight of the most volatile components identified by the Bank of Canada: fruit, fruit preparations and nuts; vegetables and vegetable preparations; mortgage interest cost; natural gas; fuel oil and other fuels; gasoline; inter-city transportation; and tobacco products and smokers' supplies. For additional information on core CPI, please consult the Bank of Canada Web site: <http://www.bankofcanada.ca/en/inflation/index.htm>.
2. The annual average index is calculated as the average of the published 12 individual monthly indexes, rounded to one decimal place. Percentage changes between the annual average indexes are calculated based on these published rounded numbers.

Table 7 The Consumer Price Index for Canada, major components and special aggregates, not seasonally adjusted, historical data

1. Goods are physical or tangible commodities usually classified according to their life span into non-durable goods, semi-durable goods and durable goods. Non-durable goods are those goods that can be used up entirely in less than a year, assuming normal usage. For example, fresh food products, disposable cameras and gasoline are non-durable goods. Semi-durable goods are those goods that may last less than 12 months or greater than 12 months depending on the purpose to which they are put. For example, clothing, footwear and household textiles are semi-durable goods. Durable goods are those goods which may be used repeatedly or continuously over more than a year, assuming normal usage. For example, cars, audio and video equipment and furniture are durable goods.
2. A service in the consumer price index (CPI) is characterized by valuable work performed by an individual or organization on behalf of a consumer, for example, car tune-ups, haircuts and city public transportation. Transactions classified as a service may include the cost of goods by their nature. Examples include food in restaurant food services and materials in clothing repair services.
3. The special aggregate "energy" includes: "electricity", "natural gas", "fuel oil and other fuels", "gasoline", and "fuel, parts and supplies for recreational vehicles".

4. The annual index level is the average of the 12 individual monthly indexes.

Table 8 Annual average percentage changes for the Consumer Price Index

Table 8-1 and 8-2

1. The annual index level is the average of the 12 individual monthly indexes. The percentage change for a given calendar year is calculated using the annual average indexes.

Table 9 The Consumer Price Index, major components, selected sub-groups and special aggregates, provinces, Whitehorse and Yellowknife, not seasonally adjusted

Tables 9-1, 9-2, 9-3, 9-4, 9-5, 9-7, 9-8, 9-9, 9-10 and 9-11

1. The special aggregate "energy" includes: "electricity", "natural gas", "fuel oil and other fuels", "gasoline", and "fuel, parts and supplies for recreational vehicles".
2. Food expenditure information below the aggregate level of "food purchased from stores" was unavailable after 2001. To obtain 2005 basket weights for food categories under this aggregate, expenditures of 2001 for each food category were adjusted to reflect price movements to 2005. However data from the 2005 Survey of Household Spending were used to update the weight at the major component level of "food" compared to all other components.
3. Over the previous two years, Statistics Canada has updated, by province, the model year of passenger vehicles used in the calculation of the passenger vehicle insurance premiums index over a three month period. In 2008, this quality adjustment exercise will be reflected in the month of May for all provinces.

Table 9-6

1. The special aggregate "energy" includes: "electricity", "natural gas", "fuel oil and other fuels", "gasoline", and "fuel, parts and supplies for recreational vehicles".
2. Food expenditure information below the aggregate level of "food purchased from stores" was unavailable after 2001. To obtain 2005 basket weights for food categories under this aggregate, expenditures of 2001 for each food category were adjusted to reflect price movements to 2005. However data from the 2005 Survey of Household Spending were used to update the weight at the major component level of "food" compared to all other components.
3. Due to changes in the Ontario electricity market that became effective May 1, 2002, it was necessary to adjust the treatment of electricity prices in the consumer price index (CPI) for that province. A question and answer fact sheet that explains those changes is now available. To obtain the fact sheet on the treatment of electricity prices in Ontario, please contact Client Services Unit, Prices Division, telephone: (613) 951-9606, toll-free: 1-866-230-2248, fax: (613) 951-1539, e-mail: prices-prix@statcan.gc.ca.
4. Over the previous two years, Statistics Canada has updated, by province, the model year of passenger vehicles used in the calculation of the passenger vehicle insurance premiums index over a three month period. In 2008, this quality adjustment exercise will be reflected in the month of May for all provinces.

Table 9-12

1. The special aggregate "energy" includes: "electricity", "natural gas", "fuel oil and other fuels", "gasoline", and "fuel, parts and supplies for recreational vehicles".

2. Food expenditure information below the aggregate level of "food purchased from stores" was unavailable after 2001. To obtain 2005 basket weights for food categories under this aggregate, expenditures of 2001 for each food category were adjusted to reflect price movements to 2005. However data from the 2005 Survey of Household Spending were used to update the weight at the major component level of "food" compared to all other components.
3. Part of the increase first recorded in the shelter index for Yellowknife for December 2004 inadvertently reflected rent increases that actually occurred earlier. As a result, the change in the shelter index was overstated in December 2004, and was understated in the previous two years. The shelter index series for Yellowknife has been corrected from December 2002. In addition, the Yellowknife all-items consumer price index (CPI) and some Yellowknife special aggregate index series have also changed. Data for Canada and all other provinces and territories were not affected.
4. Over the previous two years, Statistics Canada has updated, by province, the model year of passenger vehicles used in the calculation of the passenger vehicle insurance premiums index over a three month period. In 2008, this quality adjustment exercise will be reflected in the month of May for all provinces.

Table 10 The all-items Consumer Price Index, provinces, Whitehorse, Yellowknife and Iqaluit, not seasonally adjusted, historical data

1. Data for Iqaluit are on a December 2002=100 base (200212=100) and the Standard Geographical Classification (SGC) 2001. Previous to April 1, 1999, the town of Iqaluit formed part of the Northwest Territories. Subsequent to April 1, 1999, the town of Iqaluit formed part of the newly-created territory of Nunavut.
2. The annual index level is the average of the 12 individual monthly indexes.

Table 11 The Consumer Price Index and selected sub-groups, by urban centre, not seasonally adjusted

1. With the introduction of the 1992 basket in January 1995, emphasis was shifted from urban centre data to provincial data. Urban centre all-items series were continued since many users had come to rely on this service, but the method of calculation was changed. Shelter indexes are calculated for each urban centre. This recognizes the importance of shelter in the basket, the significant and persistent differences in price movements between urban centres, and the availability of local data. For the other seven major components, the movement of the provincial counterpart is used except in the cases of Montréal, Toronto, and Vancouver, where a sub-provincial counterpart is used. The major components are aggregated using the urban centre's expenditure pattern to arrive at each urban centre's all-items index.
2. Users of the urban centre indexes should note that, effective July 2007, Statistics Canada has corrected the weights of some urban centres that were in error in the Consumer Price Index 2005 basket update. The weights of St. John's, Charlottetown, Halifax, Saint John, Québec City, Montréal, Ottawa, Thunder Bay, Winnipeg, Regina, Saskatoon, Edmonton, Calgary and Victoria were adjusted, while those of Toronto, Vancouver, Whitehorse, Yellowknife and Iqaluit were not. With this correction, the July 2007 level of each urban centre index has been restored to reflect the correct movement for May 2007 and June 2007. The published urban centre indexes for May and June 2007 will remain unchanged. The calculation of urban centre indexes is separate from the calculation of the provincial and national indexes. Therefore, the correction made to the urban centre weights has no effect at all on the provincial or national indexes. Published weight documentation was also not affected.
3. Formerly Ottawa (Ottawa-Gatineau, Ontario part), represents Ottawa only.

Table 12 The all-items Consumer Price Index by urban centre, not seasonally adjusted, historical data

1. With the introduction of the 1992 basket in January 1995, emphasis was shifted from urban centre data to provincial data. Urban centre all-items series were continued since many users had come to rely on this service, but the method of calculation was changed. Shelter indexes are calculated for each urban centre. This recognizes the importance of shelter in the basket, the significant and persistent differences in price movements between urban centres, and the availability of local data. For the other seven major components, the movement of the provincial counterpart is used except in the cases of Montréal, Toronto, and Vancouver, where a sub-provincial counterpart is used. The major components are aggregated using the urban centre's expenditure pattern to arrive at each urban centre's all-items index.
2. Users of the urban centre indexes should note that, effective July 2007, Statistics Canada has corrected the weights of some urban centres that were in error in the Consumer Price Index 2005 basket update. The weights of St. John's, Charlottetown, Halifax, Saint John, Québec City, Montréal, Ottawa, Thunder Bay, Winnipeg, Regina, Saskatoon, Edmonton, Calgary and Victoria were adjusted, while those of Toronto, Vancouver, Whitehorse, Yellowknife and Iqaluit were not. With this correction, the July 2007 level of each urban centre index has been restored to reflect the correct movement for May 2007 and June 2007. The published urban centre indexes for May and June 2007 will remain unchanged. The calculation of urban centre indexes is separate from the calculation of the provincial and national indexes. Therefore, the correction made to the urban centre weights has no effect at all on the provincial or national indexes. Published weight documentation was also not affected.
3. The annual index level is the average of the 12 individual monthly indexes.
4. Formerly Ottawa (Ottawa-Gatineau, Ontario part), represents Ottawa only.

Table 14 Average retail prices, monthly, Canada

1. Prices are expressed in dollars, except for the price of gasoline which is expressed in cents per litre.

Average retail prices for food, household supplies, personal care items, cigarettes and gasoline

Table 14 shows, for the current month and the two previous months, average prices for selected food, household supplies, personal care items, cigarettes and for gasoline.

Prices for these items are collected as part of the regular monthly CPI survey. Prices for the selected food, household supply and personal care items are observed in food supermarkets, while prices for cigarettes are collected in supermarkets, department stores, drug stores and tobacco shops. Average prices for each commodity are calculated as a weighted average of the average prices in the observed urban centres using the population of these urban centres as weights.

The commodities which are priced can vary in quality between outlets or between urban centres. This is the reason why average prices are not published for each of those urban centres. Brands and outlets can also vary from month to month. Therefore, average prices may not necessarily be fully comparable from one month to another and should not be used as an appropriate measure of pure price change through time. A matched commodity and outlet sample is used for the CPI to determine the pure price movement of commodities through time.

Table 15 Inter-city indexes of retail price differentials, as of October 2006, for selected groups of consumer goods and services, not seasonally adjusted

Table 15 shows consumer price differentials prevailing amongst 11 Canadian cities situated in all 10 provinces for a selection of goods and services at the specified point in time.

Price data for the current inter-city retail price comparison table was drawn to a large extent from the price information collected for the production of the Consumer Price Index (CPI) for October 2006⁽³⁾. Statistics Canada collects prices as part of the regular monthly CPI survey for the purpose of measuring price change through time. The number of prices collected is sufficient for this purpose at current levels of publication. The CPI sample was not selected for the purpose of calculating average price levels and comparing them across regions. No attempt is made to ensure that the products selected for the purpose of calculating the CPI are comparable across regions. As a result, the number of price quotes that can be matched across cities can be small for some commodities.

Reliable inter-city price comparisons require that the sampled commodities be identical, or near identical, in different locations. This ensures that variations in index levels between cities are due to price differences and not to differences in product attributes.

In order to optimize comparability and to produce this table, price comparisons were initially made by pairing cities that are geographically close. This resulted in the following pairings:

St. John's	Halifax
Charlottetown-Summerside	Halifax
Saint John	Halifax
Ottawa	Halifax
Toronto	Montreal
Ottawa	Toronto
Toronto	Winnipeg
Regina	Winnipeg
Edmonton	Winnipeg
Edmonton	Vancouver

Within each city pair, price quotations were matched at the item level on the basis of detailed descriptions. Whenever possible, the items were matched by brand, quantity and with some regard for the comparability of retail outlets.

The resulting price level comparisons were then extended to include comparisons between all of the cities, using a chaining procedure.

The weights used for aggregating the various components of the city indexes to obtain the all-items index are based on the expenditure proportions of the consumers living in the 11 cities overall. The weights are currently based on 2001 consumer expenditure data and price updated to October 2006. The base, for which the index is equal to 100, is also the combined city average. Therefore, an index value of 102 means that the prices in that city are 2% higher than the combined city average.

It should be noted, especially in periods when prices are highly volatile, that the timing of price comparison and the relative rate of price change occurring in each location can significantly affect city-to-city retail price relationships. Since the retail prices used in this study are final prices faced by consumers, sales taxes and levies in effect in the various cities at the time of the price comparison can be of importance in explaining inter-city price differentials for items or groups of items that are subject to such taxes.

Shelter, as an expenditure category, was absent from the inter-city index program prior to 1999 because of methodological and conceptual issues associated with its measurement. For many products, adjusting for quality differences to ensure comparability across areas is relatively straightforward and can be done using traditional quality adjustment techniques. In the case of shelter however, its very diverse nature means that comparable matches across cities are difficult to make. Hedonic regression methods were used to adjust for quality differences among cities and produce more reliable inter-city comparisons of rental prices.

A rental equivalence approach is used to construct the inter-city price indexes for shelter services consumed by homeowners. Such an approach uses market rents as an approximation of the cost of shelter services faced by homeowners. This approach may not be suitable for the needs of all users. For instance, since the rental equivalence approach does not represent an out-of-pocket expenditure, the indexes should not be used for measuring differences in the purchasing power of homeowners across cities. Furthermore, rents used in the index are those faced by existing renters and since the industry is regulated, they may not be indicative of rental prices faced by new renters.

Footnotes for table 15

1. The weights shown are rounded 2001 basket weights at June 2004 prices for Canada. They are provided for illustration only; the weights actually used are combined city weights with adjustments for price changes up until October 2006.
2. Includes the following subgroups: sugar and syrup, confectionery items, margarine, other edible fat and oil items, coffee, tea, condiments, spices and vinegar, soup, infant and junior foods, pre-cooked frozen food preparations, non-alcoholic beverages and all other food preparations.
3. While most prices are for the specified month, the rents used are for the 12 months ending in October.

Appendix I

Concordance tables

Table A
Vector numbers for the average retail prices for gasoline and fuel oil, by urban centre

	St. John's, N.L.	Charlottetown and Summerside, P.E.I.	Halifax, N.S.	Saint John, N.B.	Québec, Que.	Montréal, Que.	Ottawa-Gatineau, Ontario part, Ont./Que.	Toronto, Ont.	Thunder Bay, Ont.	Winnipeg, Man.
Regular unleaded gasoline at full service filling stations	(v735046)	(v735056)	(v735057)	(v735058)	(v735059)	(v735060)	(v735061)	(v735062)	(v735063)	(v735047)
Regular unleaded gasoline at self service filling stations	(v735082)	(v735092)	(v735093)	(v735094)	(v735095)	(v735096)	(v735097)	(v735098)	(v735099)	(v735083)
Premium unleaded gasoline at full service filling stations	(v735064)	(v735074)	(v735075)	(v735076)	(v735077)	(v735078)	(v735079)	(v735080)	(v735081)	(v735065)
Premium unleaded gasoline at self service filling stations	(v735100)	(v735110)	(v735111)	(v735112)	(v735113)	(v735114)	(v735115)	(v735116)	(v735117)	(v735101)
Household heating fuel	(v735149)	(v735157)	(v735158)	(v735159)	(v735160)	(v735161)	(v735162)	(v735163)	(v735164)	(v735150)
	Regina, Sask.	Saskatoon, Sask.	Edmonton, Alta.	Calgary, Alta.	Vancouver, B.C.	Victoria, B.C.	Whitehorse, Y.T.	Yellowknife, N.W.T.		
Regular unleaded gasoline at full service filling stations	(v735048)	(v735049)	(v735050)	(v735051)	(v735052)	(v735053)	(v735054)	(v735055)		
Regular unleaded gasoline at self service filling stations	(v735084)	(v735085)	(v735086)	(v735087)	(v735088)	(v735089)	(v735090)	(v735091)		
Premium unleaded gasoline at full service filling stations	(v735066)	(v735067)	(v735068)	(v735069)	(v735070)	(v735071)	(v735072)	(v735073)		
Premium unleaded gasoline at self service filling stations	(v735102)	(v735103)	(v735104)	(v735105)	(v735106)	(v735107)	(v735108)	(v735109)		
Household heating fuel	(v735151)	(v735152)			(v735153)	(v735154)	(v735155)	(v735156)		

Table B
Vector numbers of the inter-city indexes of retail price differentials, as of October 2006, for selected groups of consumer goods and services, not seasonally adjusted

	St. John's, N.L.	Charlottetown-Summerside, P.E.I.	Halifax, N.S.	Saint John, N.B.	Montréal, Que.
All-items	(v15939841)	(v15939869)	(v15939897)	(v15939925)	(v15939953)
Food	(v15939842)	(v15939870)	(v15939898)	(v15939926)	(v15939954)
Food purchased from stores	(v15939843)	(v15939871)	(v15939899)	(v15939927)	(v15939955)
Meat, poultry and fish	(v15939844)	(v15939872)	(v15939900)	(v15939928)	(v15939956)
Dairy products and eggs	(v15939845)	(v15939873)	(v15939901)	(v15939929)	(v15939957)
Bakery and other cereal products	(v15939846)	(v15939874)	(v15939902)	(v15939930)	(v15939958)
Fruit and vegetables	(v15939847)	(v15939875)	(v15939903)	(v15939931)	(v15939959)
Other food purchased from stores	(v15939848)	(v15939876)	(v15939904)	(v15939932)	(v15939960)
Food purchased from restaurants	(v15939849)	(v15939877)	(v15939905)	(v15939933)	(v15939961)
Shelter	(v15939850)	(v15939878)	(v15939906)	(v15939934)	(v15939962)
Rented accommodation	(v21580949)	(v21580952)	(v21580955)	(v21580958)	(v21580961)
Owned accommodation	(v21580950)	(v21580953)	(v21580956)	(v21580959)	(v21580962)
Water, fuel and electricity	(v21580951)	(v21580954)	(v21580957)	(v21580960)	(v21580963)
Household operations and furnishings	(v15939851)	(v15939879)	(v15939907)	(v15939935)	(v15939963)
Household operations	(v15939852)	(v15939880)	(v15939908)	(v15939936)	(v15939964)
Household furnishings	(v15939853)	(v15939881)	(v15939909)	(v15939937)	(v15939965)
Clothing and footwear	(v15939854)	(v15939882)	(v15939910)	(v15939938)	(v15939966)
Transportation	(v15939855)	(v15939883)	(v15939911)	(v15939939)	(v15939967)
Private transportation	(v15939856)	(v15939884)	(v15939912)	(v15939940)	(v15939968)
Purchase of automotive vehicles	(v15939857)	(v15939885)	(v15939913)	(v15939941)	(v15939969)
Gasoline	(v15939858)	(v15939886)	(v15939914)	(v15939942)	(v15939970)
Other private transportation	(v15939859)	(v15939887)	(v15939915)	(v15939943)	(v15939971)
Public transportation	(v15939860)	(v15939888)	(v15939916)	(v15939944)	(v15939972)
Health and personal care	(v15939861)	(v15939889)	(v15939917)	(v15939945)	(v15939973)
Health care	(v15939862)	(v15939890)	(v15939918)	(v15939946)	(v15939974)
Personal care supplies and equipment	(v15939863)	(v15939891)	(v15939919)	(v15939947)	(v15939975)
Personal care services	(v15939864)	(v15939892)	(v15939920)	(v15939948)	(v15939976)
Recreation, education and reading	(v15939865)	(v15939893)	(v15939921)	(v15939949)	(v15939977)
Alcoholic beverages and tobacco products	(v15939866)	(v15939894)	(v15939922)	(v15939950)	(v15939978)
Alcoholic beverages	(v15939867)	(v15939895)	(v15939923)	(v15939951)	(v15939979)
Tobacco products and smokers' supplies	(v15939868)	(v15939896)	(v15939924)	(v15939952)	(v15939980)

	Ottawa, Ont.	Toronto, Ont.	Winnipeg, Man.	Regina, Sask.	Edmonton, Alta.	Vancouver, B.C.
All-items	(v15939981)	(v15940009)	(v15940037)	(v15940065)	(v15940093)	(v15940121)
Food	(v15939982)	(v15940010)	(v15940038)	(v15940066)	(v15940094)	(v15940122)
Food purchased from stores	(v15939983)	(v15940011)	(v15940039)	(v15940067)	(v15940095)	(v15940123)
Meat, poultry and fish	(v15939984)	(v15940012)	(v15940040)	(v15940068)	(v15940096)	(v15940124)
Dairy products and eggs	(v15939985)	(v15940013)	(v15940041)	(v15940069)	(v15940097)	(v15940125)
Bakery and other cereal products	(v15939986)	(v15940014)	(v15940042)	(v15940070)	(v15940098)	(v15940126)
Fruit and vegetables	(v15939987)	(v15940015)	(v15940043)	(v15940071)	(v15940099)	(v15940127)
Other food purchased from stores	(v15939988)	(v15940016)	(v15940044)	(v15940072)	(v15940100)	(v15940128)
Food purchased from restaurants	(v15939989)	(v15940017)	(v15940045)	(v15940073)	(v15940101)	(v15940129)
Shelter	(v15939990)	(v15940018)	(v15940046)	(v15940074)	(v15940102)	(v15940130)
Rented accommodation	(v21580964)	(v21580967)	(v21580970)	(v21580973)	(v21580976)	(v21580979)
Owned accommodation	(v21580965)	(v21580968)	(v21580971)	(v21580974)	(v21580977)	(v21580980)
Water, fuel and electricity	(v21580966)	(v21580969)	(v21580972)	(v21580975)	(v21580978)	(v21580981)
Household operations and furnishings	(v15939991)	(v15940019)	(v15940047)	(v15940075)	(v15940103)	(v15940131)
Household operations	(v15939992)	(v15940020)	(v15940048)	(v15940076)	(v15940104)	(v15940132)
Household furnishings	(v15939993)	(v15940021)	(v15940049)	(v15940077)	(v15940105)	(v15940133)
Clothing and footwear	(v15939994)	(v15940022)	(v15940050)	(v15940078)	(v15940106)	(v15940134)
Transportation	(v15939995)	(v15940023)	(v15940051)	(v15940079)	(v15940107)	(v15940135)
Private transportation	(v15939996)	(v15940024)	(v15940052)	(v15940080)	(v15940108)	(v15940136)
Purchase of automotive vehicles	(v15939997)	(v15940025)	(v15940053)	(v15940081)	(v15940109)	(v15940137)
Gasoline	(v15939998)	(v15940026)	(v15940054)	(v15940082)	(v15940110)	(v15940138)
Other private transportation	(v15939999)	(v15940027)	(v15940055)	(v15940083)	(v15940111)	(v15940139)
Public transportation	(v15940000)	(v15940028)	(v15940056)	(v15940084)	(v15940112)	(v15940140)
Health and personal care	(v15940001)	(v15940029)	(v15940057)	(v15940085)	(v15940113)	(v15940141)
Health care	(v15940002)	(v15940030)	(v15940058)	(v15940086)	(v15940114)	(v15940142)
Personal care supplies and equipment	(v15940003)	(v15940031)	(v15940059)	(v15940087)	(v15940115)	(v15940143)
Personal care services	(v15940004)	(v15940032)	(v15940060)	(v15940088)	(v15940116)	(v15940144)
Recreation, education and reading	(v15940005)	(v15940033)	(v15940061)	(v15940089)	(v15940117)	(v15940145)
Alcoholic beverages and tobacco products	(v15940006)	(v15940034)	(v15940062)	(v15940090)	(v15940118)	(v15940146)
Alcoholic beverages	(v15940007)	(v15940035)	(v15940063)	(v15940091)	(v15940119)	(v15940147)
Tobacco products and smokers' supplies	(v15940008)	(v15940036)	(v15940064)	(v15940092)	(v15940120)	(v15940148)