



Catalogue no. 62-001-XIE

The Consumer Price Index

July 2007



Statistics
Canada

Statistique
Canada

Canada

How to obtain more information

Specific inquiries about this product and related statistics or services should be directed to: Prices Division, Statistics Canada, Ottawa, Ontario, K1A 0T6 (telephone: 613-951-9606; Toll free: 1-866-230-2248; Fax: 613-951-1539; email:prices-prix@statcan.ca.).

For information about this product or the wide range of services and data available from Statistics Canada, visit our website at www.statcan.ca or contact us by e-mail at infostats@statcan.ca or by phone from 8:30am to 4:30pm Monday to Friday at:

Toll-free telephone (Canada and the United States):

Inquiries line **1-800-263-1136**

National telecommunications device for the hearing impaired **1-800-363-7629**

Fax line **1-877-287-4369**

Depository Services Program inquiries line **1-800-635-7943**

Depository Services Program fax line **1-800-565-7757**

Statistics Canada national contact centre: 1-613-951-8116

Fax line **1-613-951-0581**

Accessing and ordering information

This product, catalogue no. 62-001-XIE, is available for free in electronic format. To obtain a single issue, visit our website at www.statcan.ca and select Publications.

This product, catalogue no. 62-001-XPE, is also available as a standard printed publication at a price of CAN\$12.00 per issue and CAN\$111.00 for a one-year subscription.

The following additional shipping charges apply for delivery outside Canada:

United States a single issue at a price of CAN\$6.00 and annual subscription at a price of CAN\$72.00.

Other countries a single issue at a price of CAN\$10.00 and annual subscription at a price of CAN\$120.00.

All prices exclude sales taxes.

The printed version of this publication can be ordered by

- Phone (Canada and United States) **1-800-267-6677**
- Fax (Canada and United States) **1-877-287-4369**
- E-mail infostats@statcan.ca
- Mail Statistics Canada
Finance Division
R.H. Coats Bldg., 6th Floor
100 Tunney's Pasture Driveway
Ottawa, ON K1A 0T6
- In person from authorised agents and bookstores.

When notifying us of a change in your address, please provide both old and new addresses.

Standards of service to the public

Statistics Canada is committed to serving its clients in a prompt, reliable and courteous manner. To this end, the Agency has developed *standards of service* which its employees observe in serving its clients.

To obtain a copy of these service standards, please contact Statistics Canada toll free at 1-800-263-1136. The service standards are also published on www.statcan.ca under About us > Providing services to Canadians.



Statistics Canada

Prices Division

The Consumer Price Index

July 2007

Published by authority of the Minister responsible for Statistics Canada

© Minister of Industry, 2007

All rights reserved. The content of this electronic publication may be reproduced, in whole or in part, and by any means, without further permission from Statistics Canada, subject to the following conditions: that it be done solely for the purposes of private study, research, criticism, review or newspaper summary, and/or for non-commercial purposes; and that Statistics Canada be fully acknowledged as follows: Source (or "Adapted from", if appropriate): Statistics Canada, year of publication, name of product, catalogue number, volume and issue numbers, reference period and page(s). Otherwise, no part of this publication may be reproduced, stored in a retrieval system or transmitted in any form, by any means—electronic, mechanical or photocopy—or for any purposes without prior written permission of Licensing Services, Client Services Division, Statistics Canada, Ottawa, Ontario, Canada K1A 0T6.

July 2007

Catalogue no. 62-001-XPE, Vol. 86, No. 7

ISSN 0703-9352

Catalogue no. 62-001-XIE

ISSN 1496-2225

Frequency: Monthly

Ottawa

La version française de cette publication est disponible sur demande (n° 62-001-XPF au catalogue).

Note of appreciation

Canada owes the success of its statistical system to a long-standing partnership between Statistics Canada, the citizens of Canada, its businesses, governments and other institutions. Accurate and timely statistical information could not be produced without their continued cooperation and goodwill.

User information

Symbols

The following standard symbols are used in Statistics Canada publications:

- . not available for any reference period
- .. not available for a specific reference period
- ... not applicable
- 0 true zero or a value rounded to zero
- 0^s value rounded to 0 (zero) where there is a meaningful distinction between true zero and the value that was rounded
- P preliminary
- r revised
- x suppressed to meet the confidentiality requirements of the *Statistics Act*
- E use with caution
- F too unreliable to be published

Note on CANSIM

Most of the data published in **The Consumer Price Index** (catalogue no. 62-001-X) is also available in machine readable form through *CANSIM* (Canadian Socio-Economic Information Management System). In general, CANSIM provides a longer historical series. For further information on *CANSIM* call 613-951-8200 or write to Electronic Data Marketing Division, Statistics Canada, R.H. Coats Building, Ottawa, K1A 0T6.

Data that appears in this publication are also available electronically in our CANSIM database through the Internet tables 326-0020, 326-0021, 326-0009, 326-0012, 326-0015, at a cost of \$3.00 per series.

This publication was prepared under the direction of:

George Beelen	Director, Prices Division
Tarek M. Harchaoui	Assistant Director, Consumer Prices Indexes and Research
Ron Morency	Chief, Consumer Price Section

The feature articles are prepared under the direction of:

George Beelen	Director, Prices Division
Tarek M. Harchaoui	Assistant Director, Consumer Prices Indexes and Research

Note to users

The Consumer Price Index is published monthly and is not subject to revisions.

Index for the month	Release date
November 2006	December 19, 2006
December 2006	January 23, 2007
January 2007	February 20, 2007
February 2007	March 20, 2007
March 2007	April 19, 2007
April 2007	May 17, 2007
May 2007	June 19, 2007
June 2007	July 18, 2007
July 2007	August 21, 2007
August 2007	September 19, 2007
September 2007	October 19, 2007
October 2007	November 20, 2007
November 2007	December 18, 2007
December 2007	January 25, 2008

Table of contents

Highlights	6
Analysis	7
Twelve-month change: Owned accommodation remains major contributor for the fourth straight month	7
Owned accommodation cost slows down in Alberta	9
From June to July 2007: Moderate growth in the CPI	10
Twelve-month change: The core index slows down	10
The energy price index falls	10
The twelve-month rise in the services index accelerates as a result of owned accommodation prices	11
The seasonally-adjusted CPI remains unchanged between June and July	11
Charts	
1. Percentage change in the food index from the same month of the previous year, Canada	8
2. Evolution of the gasoline price index, Canada	9
3. Percentage change in the consumer price index (not seasonally adjusted) from the same month of the previous year, Canada, 2002=100	12
4. Percentage change in the all-items index from previous month Canada, provinces, Whitehorse, Yellowknife and Iqaluit, 2002=100	12
5. Percentage change in the all-items index same month from previous year Canada, provinces, Whitehorse, Yellowknife and Iqaluit, 2002=100	13
Related products	14
Statistical tables	
1 The Consumer Price Index and major components, Canada	18
2 The Consumer Price Index, provinces, Whitehorse, Yellowknife and Iqaluit	18
3 The Consumer Price Index and major components, selected sub-groups and special aggregates, Canada	19
3-1 Food	19
3-2 Shelter	20
3-3 Household operations, furnishings and equipment	20
3-4 Clothing and footwear	21
3-5 Transportation	21
3-6 Health and personal care	22
3-7 Recreation, education and reading	22
3-8 Alcoholic beverages and tobacco products	23

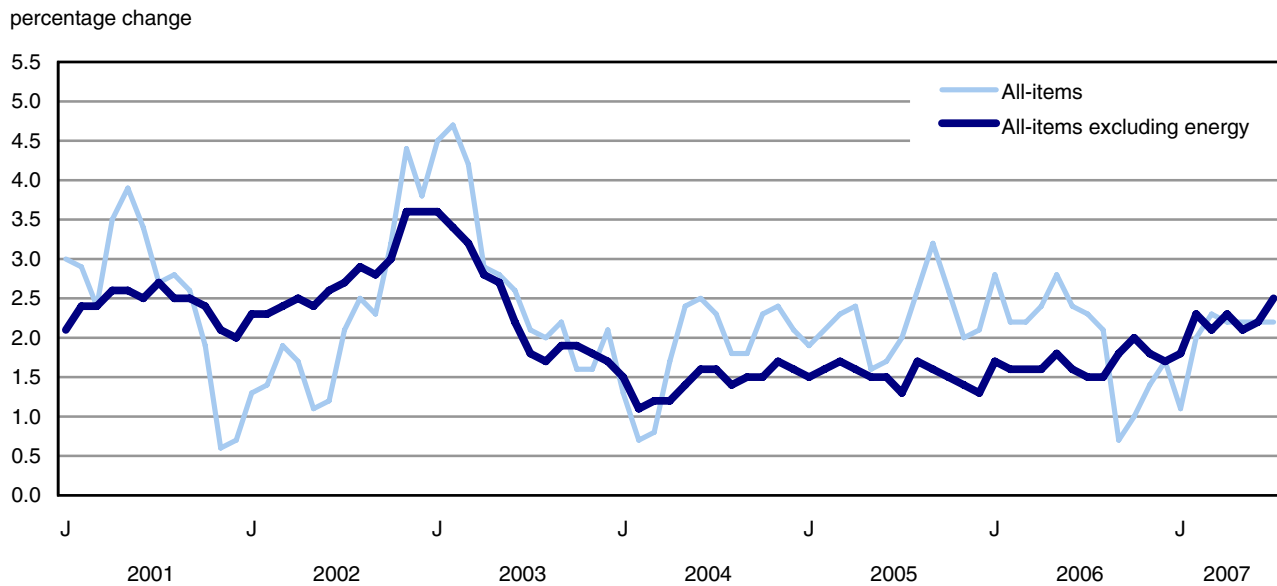
Table of contents – continued

3-9	Selected special aggregates	23
4	The Consumer Price Index for Canada, all-items, historical data	24
5	The Consumer Price Index for Canada major components and special aggregates, historical data	25
6	The Consumer Price Index major components, selected sub-groups and special aggregates, provinces, Whitehorse and Yellowknife	26
6-1	Newfoundland and Labrador	26
6-2	Prince Edward Island	27
6-3	Nova Scotia	28
6-4	New Brunswick	29
6-5	Quebec	30
6-6	Ontario	31
6-7	Manitoba	32
6-8	Saskatchewan	33
6-9	Alberta	34
6-10	British Columbia	35
6-11	Whitehorse*	36
6-12	Yellowknife*	37
7	The all-items Consumer Price Index, provinces, Whitehorse, Yellowknife and Iqaluit, historical data	38
8	The Consumer Price Index and selected sub-groups, by urban centre	40
9	The all-items Consumer Price Index by urban centre, historical data	42
10	Average retail prices for gasoline and fuel oil, by urban centre	44
11	Average retail prices, monthly, Canada	46
12	Inter-city indexes of retail price differentials, as of October 2005, for selected groups of consumer goods and services	47
	Data quality, concepts and methodology	49
	Explanatory notes for tables	52
Appendix		
I	Concordance tables	58

Highlights

- At the national level, the average change in consumer prices in July 2007 compared with July 2006 remained at 2.2% for the fourth consecutive month. At the provincial level, consumer prices in Alberta posted the largest slowdown since October 2003.

Chart 1
Percentage change in the consumer price index and major components (not seasonally adjusted) from the same month of the previous year, Canada



Source(s): CANSIM table number 326-0020.

Analysis

At the national level, the average change in consumer prices in July 2007 compared with July 2006 remained at 2.2% for the fourth straight month.

Higher costs associated with owned accommodation (+4.8%) remained the main source of upward pressure on the Consumer Price Index (CPI) for the fourth consecutive month. Higher food prices (+2.8%) also contributed to the rise in consumer prices. Conversely, the decline in prices for gasoline and for computer equipment and supplies mitigated the average rise in consumer prices.

The all-items index excluding energy rose by 2.5% in July 2007 compared with the same month of the previous year, an increase that surpassed the one observed in June (+2.2%). The shelter component exerted strong upward pressures on this index.

The Bank of Canada's core index, used to monitor the inflation control target, rose by 2.3% between July 2006 and July 2007 after posting a 2.5% increase in June. The rise in homeowners' replacement accounted for most of this increase.

Consumer prices rose by 0.1% between June and July 2007, compared to a 0.2% drop the previous month. Higher prices for a number of components, such as women's clothing, traveller accommodation, as well as rise for mortgage interest cost, were largely offset by lower prices for motor vehicle purchases and leases, natural gas and fresh vegetables.

Both the all-items index excluding energy and the core index rose by 0.1% between June and July 2007. These indexes were unchanged between May and June.

Twelve-month change: Owned accommodation remains major contributor for the fourth straight month

Consumer prices increased by 2.2% in July 2007 compared with July 2006. This is the fourth consecutive month a 2.2% rate of growth has been posted.

The rise in the Consumer Price Index (CPI) was mainly due to the increase in costs associated with owned accommodation and, to a lesser extent, food.

The combination of falling prices for gasoline, computer equipment and supplies, and natural gas partially offset the rise in consumer prices.

The dominant effect of costs for owned accommodation on the growth in consumer prices over 12 months persisted for a fourth straight month. The growth in mortgage interest cost was 6.0% between July 2006 and July 2007. An increase of such magnitude had not been observed since December 2000. While mortgage interest cost had mainly been stimulated by the growth in new house prices for the past several months, in July it was largely driven by an increase in interest rates. The change in the all-items CPI without mortgage interest cost between July 2006 and July 2007 was 1.9%.

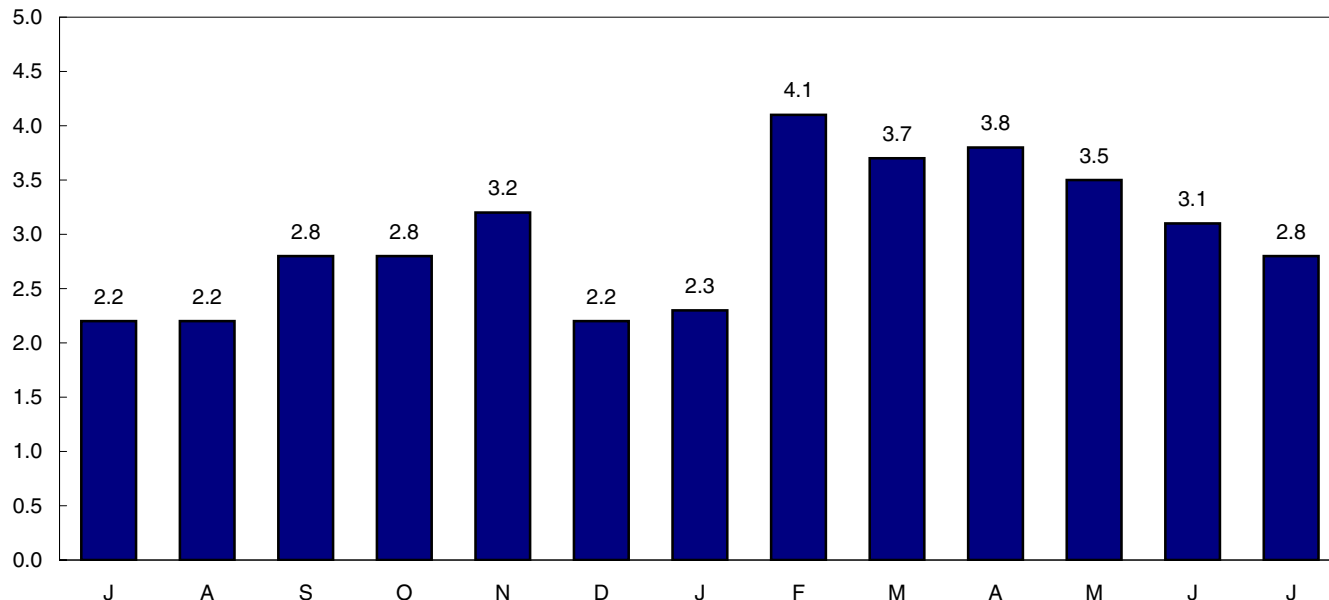
Homeowners' replacement cost was also a significant contributor to the increase in the CPI in July. This component, which represents the worn-out structural portion of housing and is estimated using new housing prices (excluding land), increased by 6.2%, while growth in this component was 6.1% the previous month. This was the second consecutive increase for this component, which had been showing signs of weakening over the previous eight months.

Again with regard to shelter, higher property taxes (3.0%) and rents (1.6%) also had a significant influence on the all-items index.

In July 2007, consumers spent 2.7% more than in July 2006 for food purchased at grocery stores. This increase came mainly from prices for meat (+4.9%), dairy products (+3.9%) and cereal products (+2.8%). Prices for restaurant meals also increased (+3.6%).

Chart 1
Percentage change in the food index from the same month of the previous year, Canada

percentage change

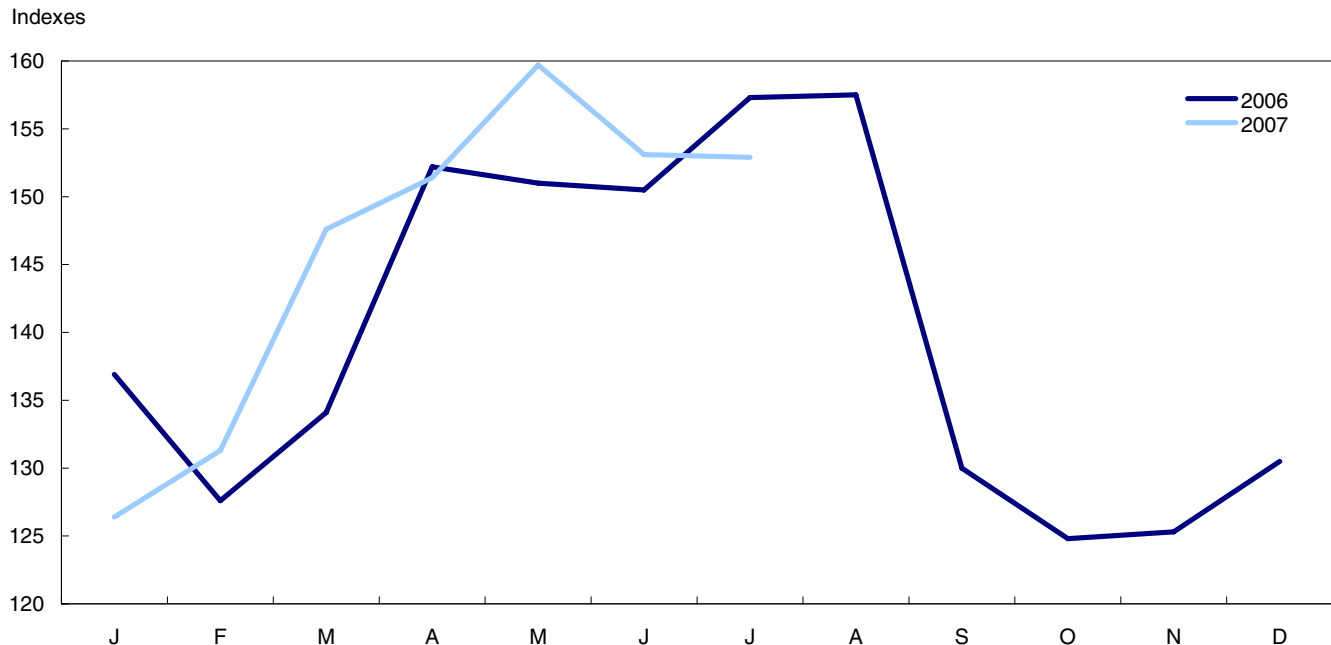


Source(s): CANSIM table number 326-0020.

In spite of these increases, Canadians were also able to take advantage of a 3.7% drop in fresh fruit prices at the grocery store in July 2007 compared with July 2006.

The 2.8% drop in gasoline prices accounted for most of the dampening effect on the rise in consumer prices. Lower gasoline prices were recorded in all provinces except for the Prairies, and Newfoundland-and-Labrador.

Chart 2
Evolution of the gasoline price index, Canada



Source(s): CANSIM table number 326-0020.

Natural gas prices were down by 3.2% in July. Prices for this component had increased by 1.9% in June after 11 months of consecutive reductions. In July, decreases were recorded in all provinces but Saskatchewan, Quebec, and British Columbia.

The downward trend in prices for electronic goods as a result of technological progress continued to moderate the increase in the CPI. Consumers enjoyed a drop in prices of 17.7% for computer equipment and supplies and of 8.6% for video equipment.

Owned accommodation cost slows down in Alberta

The increase in consumer prices was between 1% and 2% for all provinces except Alberta (+5.0%), Saskatchewan (+3.2%), Manitoba (+2.2%) and New Brunswick (+2.2%). In June, Alberta posted a 12-month increase of 6.3%. This slowdown in the growth of the CPI in Alberta was the most substantial posted in that province since October 2003. Under the influence of rising mortgage interest costs and homeowners' replacement cost, the cost of owned accommodation rose by 13.9% in Alberta, the smallest increase recorded since May 2006. The slowdown in shelter costs, compared with June, is essentially related to the slowing growth in homeowners' replacement cost. The latter increased by 17.8% in July, down from the 23.6% rise posted in June.

In Saskatchewan, the 15.2% increase in the cost of owned accommodation came mainly from the leap in homeowners' replacement cost (+37.7%), which surpassed the 31.8% climb recorded in June. The increase in average prices posted in Saskatchewan for this component was higher than that in Alberta for the second month in a row.

The smallest increases in the CPI were observed in Newfoundland and Labrador (+1.0%), Prince Edward Island (+1.3%) and Quebec (+1.3%). In these provinces, the increase in prices was largely due to mortgage interest cost.

From June to July 2007: Moderate growth in the CPI

On a monthly basis, average prices rose by 0.1% between June and July 2007 after dropping by 0.2% the previous month. The upward pressure from women's clothing, traveller accommodation and mortgage interest cost was largely offset by lower prices for motor vehicle purchases and leases, natural gas and fresh vegetables.

Women's clothing prices climbed by 4.0% in July following a 4.3% downturn in June.

Prices for traveller accommodation posted a 4.6% increase between June and July. Although this increase is lower than the one posted during the same period last year (+5.8%), it is in line with the shifts in prices regularly observed during the peak tourist season.

Mortgage interest cost rose by 0.8% in July, up from the monthly increases of 0.4% recorded over the past six months. The acceleration in July was mainly the result of the increase in mortgage interest cost. A similar increase has not been observed since August 1994.

Consumers were able to purchase and lease motor vehicles for 1.6% less than in June following a decrease of 0.3% over the preceding month. Such downward movement is common during this period of the year when discounts are offered to reduce inventories of the current year's models.

The 4.6% drop in natural gas prices also mitigated the monthly increase in the CPI. The decline observed in July is related to the price decreases posted in Alberta (-15.3%), Ontario (-3.3%) and Quebec (-1.7%).

Consumers spent 5.6% less for their fresh vegetables in July, compared with the previous month. This decrease is seasonal and reflects the arrival of local harvests in grocery stores.

Twelve-month change: The core index slows down

The core index, as defined by the Bank of Canada, rose by 2.3% in July 2007 over July 2006. This was less than the 2.5% increase reported in June. July's increase was primarily driven by homeowners' replacement cost.

On a monthly basis, the core index rose by 0.1% after remaining unchanged in June.

The core index is obtained by removing the effect of the changes in indirect taxes from the all-items CPI from which the eight most volatile components identified by the Bank of Canada have been excluded. These volatile components are fruit, fruit preparations and nuts; vegetables and vegetable preparations; mortgage interest cost; natural gas; heating oil and other fuels; gasoline; inter-city transportation; and tobacco products and smokers' supplies.

The energy price index falls

The energy price index fell by 1.7% between July 2006 and July 2007 after rising by 1.2% in June and 1.6% in May. This was the first decline in this index since January 2007, and is largely attributable to lower gasoline prices (-2.8%). The 3.2% drop in natural gas prices and the 1.6% decline in prices for heating oil and other fuels also exerted downward pressure on this index. The 1.5% growth in electricity prices and a 2.2% increase in prices for fuel, parts and supplies for recreational vehicles mitigated the drop in this index.

The energy index was down by 0.4% between June and July 2007, less than the 1.3% slide observed between May and June 2007. This decrease stemmed from the combined effect of falling prices for natural gas (-4.6%) and gasoline (-0.1%). The 1.2% growth in electricity prices helped to mitigate the effect of these changes on the increase in the energy index.

The twelve-month rise in the services index accelerates as a result of owned accommodation prices

Prices for services rose 3.7% between July 2006 and July 2007 following a 3.3% growth the previous month. This growth is largely the result of the increase in mortgage interest cost (+6.0%) and homeowners' replacement cost (+6.2%).

Prices for services rose by 0.4% between June and July 2007, up slightly from the 0.3% growth posted the previous month. This increase stemmed mainly from the upswing in mortgage interest cost. The cost of this service rose by 0.8% between June and July 2007 following a 0.4% growth the previous month.

The goods index increased by 0.5% between July 2006 and July 2007, down from the 0.9% rise observed the previous month. The rise in prices for non-durable goods (+0.9%) and semi-durable goods (+0.7%) more than offset the fall in prices for durable goods (-0.5%). The deceleration in the growth of the goods index came mainly from gasoline prices. The growth in gasoline prices advanced by 1.7% in June, a major turnaround compared to the 2.8% drop reported in July.

The upward pressure on the price index for non-durable goods came mainly from food purchased in stores. If these goods were excluded, the price index for non-durable goods and the goods index would have respectively slipped by -0.2% and -0.3%. Prices for the food component rose by 2.7% in July 2007 compared with July 2006. Meat (+4.9%) made a substantial contribution to the growth in prices for food purchased in stores. The 5.4% increase in cigarette prices also exerted a substantial upward pressure on the non-durable goods index.

The rise in prices for semi-durable goods (+0.7%) also sustained the growth in the goods index following a 1.1% drop the previous month. This reversal can mainly be explained by the fact that average prices for women's clothing rose by 1.1% in July 2007, compared with July 2006 after dropping by 2.1% the previous month.

The 0.5% decrease in prices for durable goods followed in the wake of 14 consecutive monthly decreases in this index. The 17.7% decrease in prices for computer equipment and supplies was primarily responsible for the decrease of this aggregate in July.

The goods index fell by 0.3% between June and July 2007. The combination of falling prices for non-durable goods (-0.4%) and durable goods (-0.9%) surpassed the growth in prices for semi-durable goods (+1.1%). The downturn in prices for durable goods was mainly driven by the decrease in prices for motor vehicle purchases (-1.7%). The 4.6% drop in natural gas prices during this period played a major role in the decrease in the price index for non-durable goods.

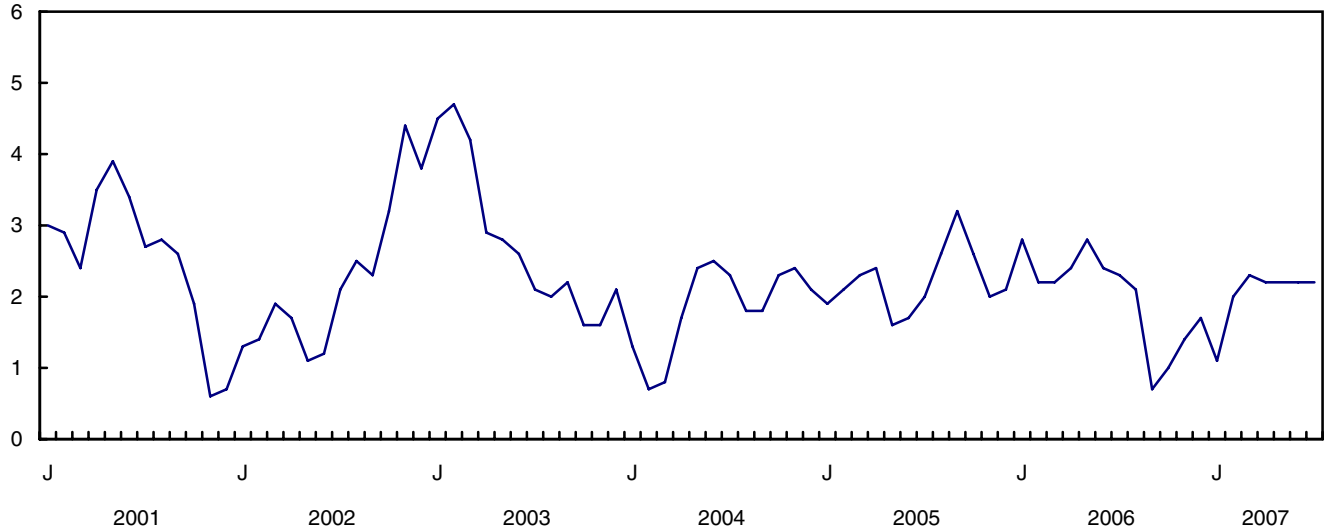
The seasonally-adjusted CPI remains unchanged between June and July

The increase in four of the eight main components of the CPI was entirely offset by the decrease in three components. The all-items index thus remained unchanged between June and July 2007. The components that exerted upward pressures were clothing and footwear (+1.8%), alcoholic beverages and tobacco products (+0.5%), shelter (+0.2%) and household operations and furnishings (+0.2%). Decreases in transportation (-0.6%), health and personal care (-0.3%) and food (-0.1%) cancelled out the upward pressure from the other components. The price index for recreation, education and reading remained unchanged during this period.

The seasonally-adjusted core index, as defined by the Bank of Canada, increased by 0.2% between June and July 2007.

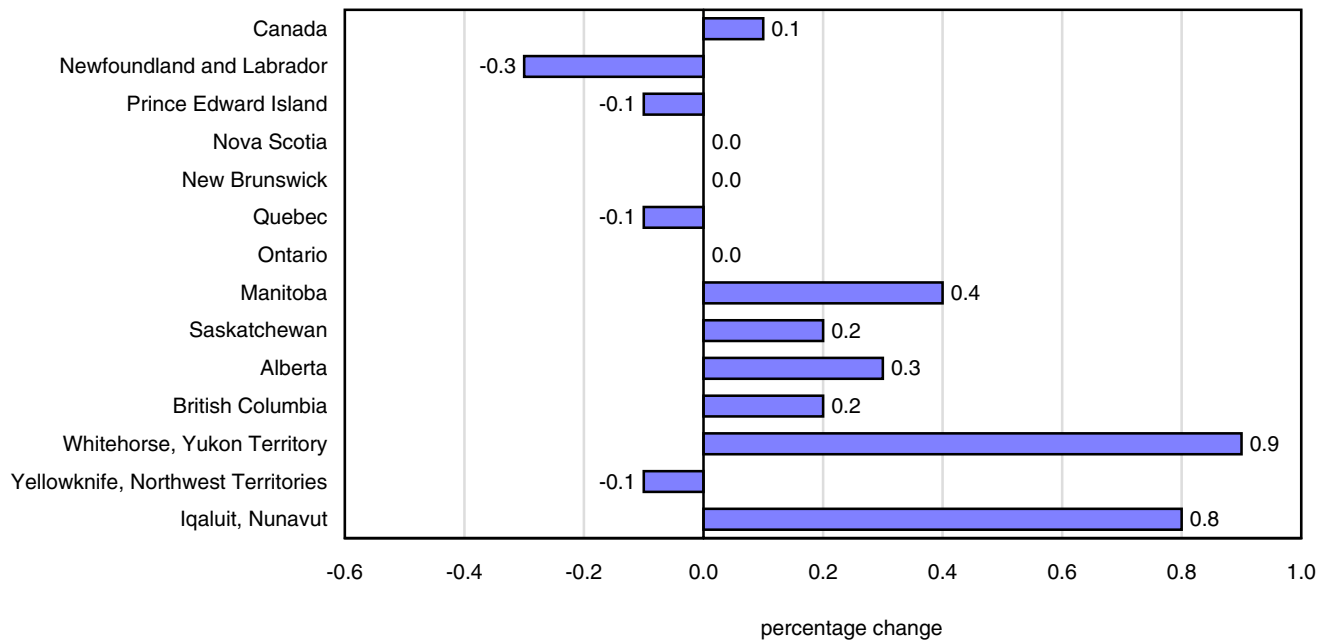
Chart 3
Percentage change in the consumer price index (not seasonally adjusted) from the same month of the previous year, Canada, 2002=100

percent change



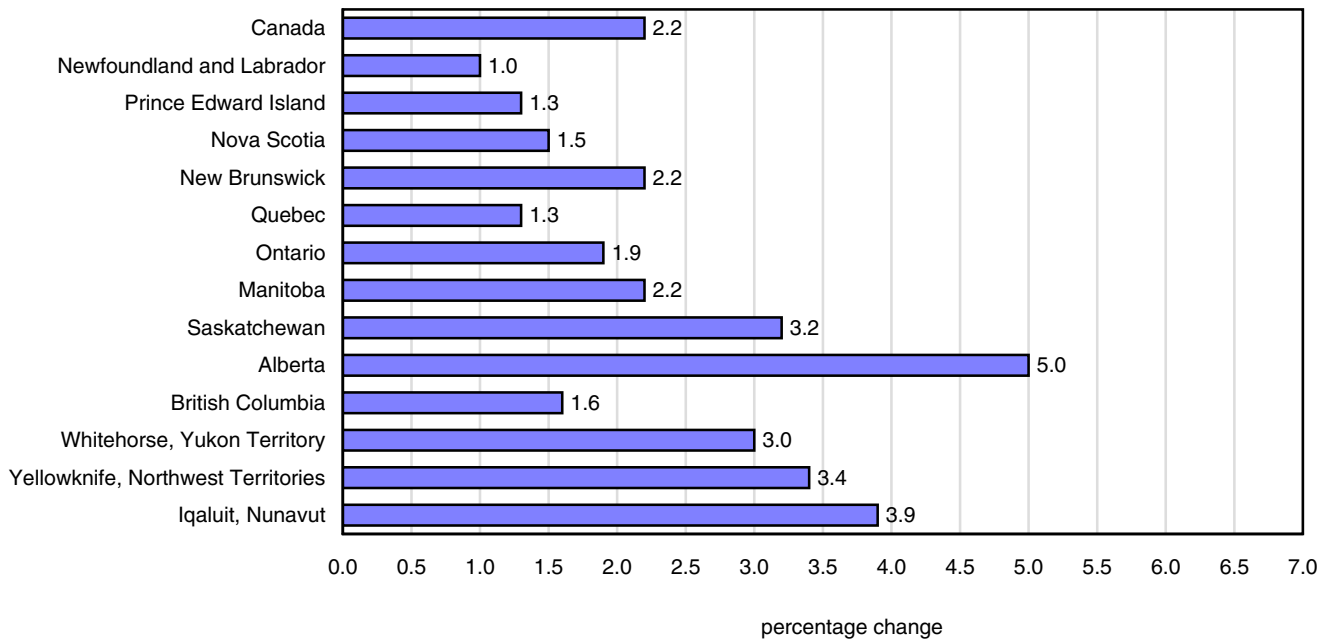
Source(s): CANSIM table number 326-0020.

Chart 4
Percentage change in the all-items index from previous month Canada, provinces, Whitehorse, Yellowknife and Iqaluit, 2002=100



Source(s): CANSIM table number 326-0020.

Chart 5
Percentage change in the all-items index same month from previous year Canada, provinces, Whitehorse, Yellowknife and Iqaluit, 2002=100



Source(s): CANSIM table number 326-0020.

Related products

Selected publications from Statistics Canada

62-010-X	Consumer Prices and Price Indexes
62-557-X	Your Guide to the Consumer Price Index
62F0014M	Analytical Series - Prices Division
62-553-X	The Consumer Price Index Reference Paper

Selected technical and analytical products from Statistics Canada

62F0014M1996001	How Inflation and Income Tax Affect the Return on a Safe Investment
62F0014M2001014	Televisions: Quality Changes and Scanner Data
62F0014M2001015	Housing Depreciation in the Canadian CPI

Selected CANSIM tables from Statistics Canada

326-0009	Average retail prices for gasoline and fuel oil, by urban centre, monthly
326-0012	Average retail prices for food and other selected items, monthly
326-0015	Inter-city indexes of retail price differentials for selected groups of consumer goods and services, annual
326-0020	Consumer price index (CPI), 2005 basket content, monthly
326-0021	Consumer price index (CPI), 2005 basket content, annual
326-0022	Consumer price index (CPI), seasonally adjusted, 2005 basket content, monthly

Selected surveys from Statistics Canada

2301	Consumer Price Index
------	----------------------

Selected summary tables from Statistics Canada

- *Consumer Price Index, by province (monthly)*
- *Consumer Price Index, by city (monthly)*
- *Consumer Price Index, food, by province (monthly)*
- *Consumer Price Index, shelter, by province (monthly)*
- *Consumer Price Index, household operations, furnishings and equipment by province (monthly)*
- *Consumer Price Index, clothing and footwear, by province (monthly)*
- *Consumer Price Index, transportation, by province (monthly)*
- *Consumer Price Index, health and personal care, by province (monthly)*
- *Consumer Price Index, recreation, education and reading, by province (monthly)*
- *Consumer Price Index, alcoholic beverages and tobacco products, by province (monthly)*
- *Canada: Economic and financial data*
- *Consumer Price Index, provinces*
- *Consumer price index, historical summary, by province or territory*
- *Gasoline and fuel oil, average retail prices by urban centre (monthly)*
- *Food and other selected items, average retail prices (monthly)*
- *Gasoline and fuel oil, average retail prices by urban centre*
- *Food and other selected items, average retail prices*
- *Consumer Price Index, food, by province*
- *Consumer Price Index, shelter, by province*
- *Consumer Price Index, household operations, furnishings and equipment, by province*
- *Consumer Price Index, clothing and footwear, by province*
- *Consumer Price Index, transportation, by province*
- *Consumer Price Index, health and personal care, by province*
- *Consumer Price Index, recreation, education and reading, by province*
- *Consumer Price Index, alcoholic beverages and tobacco products, by province*
- *Inter-city indexes of consumer price levels*
- *Consumer Price Index, by city*

- *Consumer Price Index, historical summary*
- *Selected economic indicators, Canada and United States (monthly and quarterly)*
- *Education price index, by provinces*
- *Economic indicators, by province and territory (monthly and quarterly)*

For further reading

Detailed information on the methodology and concepts of the CPI is contained in ***The Consumer Price Index Reference Paper, Updating Based on 1992 Expenditures***, (Occasional), catalogue no. 62-553-X.

Information regarding the Household Spending Survey is contained in ***Spending Patterns in Canada, 2005***, catalogue no. 62-202-X.

A brief non-technical document entitled ***Your Guide to the Consumer Price Index*** (Occasional) catalogue no. 62-557-X answers the frequently asked questions about the construction and use of the CPI.

For further information, contact the Consumer Prices Section, Prices Division, Statistics Canada, Ottawa, Ontario K1A 0T6 (613-951-9606), or you can also search through the Statistics Canada catalogue which lists all current products and services available from Statistics Canada.

Statistical tables

Table 1
The Consumer Price Index and major components, ¹ Canada

	CANSIM vector number	Relative ² importance	Indexes			Percentage change July 2007 from	
			July 2007	June 2007	July 2006	June 2007	July 2006
2002=100							
All-items	(v41690973)	100.0	112.0	111.9	109.6	0.1	2.2
Food	(v41690974)	17.0	112.3	112.6	109.2	-0.3	2.8
Shelter	(v41691050)	26.6	117.0	116.8	113.2	0.2	3.4
Household operations, furnishings and equipment	(v41691067)	11.1	103.2	103.0	101.4	0.2	1.8
Clothing and footwear	(v41691108)	5.4	94.6	93.1	93.5	1.6	1.2
Transportation	(v41691128)	19.9	118.5	119.2	118.3	-0.6	0.2
Health and personal care	(v41691153)	4.7	107.5	107.9	105.7	-0.4	1.7
Recreation, education and reading	(v41691170)	12.2	103.0	102.5	101.3	0.5	1.7
Alcoholic beverages and tobacco products	(v41691206)	3.1	126.0	125.7	121.5	0.2	3.7
All-items (1992=100)	(v41713403)	.	133.3	133.2	130.5	0.1	2.1
Special aggregates							
Goods	(v41691222)	48.8	108.6	108.9	108.1	-0.3	0.5
Services	(v41691230)	51.2	115.3	114.8	111.2	0.4	3.7
All-items excluding food and energy	(v41691233)	73.6	109.1	109.0	106.5	0.1	2.4
Energy	(v41691239)	9.4	139.6	140.1	142.0	-0.4	-1.7
All-items excluding gasoline	(v41693245)	95.1	110.4	110.3	107.8	0.1	2.4
All-items excluding shelter, insurance and financial services	(v41693246)	69.9	109.1	109.1	107.5	0.0	1.5
Core consumer price index (CPI) (Bank of Canada definition) ³	(v41693242)	82.7	110.0	109.9	107.5	0.1	2.3

Note(s): See "Data quality, concepts and methodology — Explanatory notes for tables" section.

Table 2
The Consumer Price Index, ¹ provinces, Whitehorse, Yellowknife and Iqaluit²

	CANSIM vector number	Indexes			Percentage change July 2007 from	
		July 2007	June 2007	July 2006	June 2007	July 2006
2002=100						
Newfoundland and Labrador	(v41691244)	111.6	111.9	110.5	-0.3	1.0
Prince Edward Island	(v41691379)	114.0	114.1	112.5	-0.1	1.3
Nova Scotia	(v41691513)	113.0	113.0	111.3	0.0	1.5
New Brunswick	(v41691648)	112.1	112.1	109.7	0.0	2.2
Quebec	(v41691783)	110.6	110.7	109.2	-0.1	1.3
Ontario	(v41691919)	111.1	111.1	109.0	0.0	1.9
Manitoba	(v41692055)	112.1	111.7	109.7	0.4	2.2
Saskatchewan	(v41692191)	113.3	113.1	109.8	0.2	3.2
Alberta	(v41692327)	119.1	118.8	113.4	0.3	5.0
British Columbia	(v41692462)	110.5	110.3	108.8	0.2	1.6
Whitehorse, Yukon Territory	(v41692598)	110.7	109.7	107.5	0.9	3.0
Yellowknife, Northwest Territories	(v41692722)	111.5	111.6	107.8	-0.1	3.4
Iqaluit, Nunavut (Dec. 2002=100)	(v41713432)	108.9	108.0	104.8	0.8	3.9

Note(s): See "Data quality, concepts and methodology — Explanatory notes for tables" section.

Table 3-1
The Consumer Price Index and major components, selected sub-groups and special aggregates, ¹ Canada — Food ²

	CANSIM vector number	Indexes			Percentage change July 2007 from	
		July 2007	June 2007	July 2006	June 2007	July 2006
		2002=100				
All-items	(v41690973)	112.0	111.9	109.6	0.1	2.2
Food	(v41690974)	112.3	112.6	109.2	-0.3	2.8
Food purchased from stores	(v41690975)	111.4	111.9	108.5	-0.4	2.7
Meat	(v41690976)	112.3	112.4	107.1	-0.1	4.9
Fresh or frozen meat (excluding poultry)	(v41690977)	108.9	109.8	105.3	-0.8	3.4
Fresh or frozen beef	(v41690978)	110.1	111.4	106.0	-1.2	3.9
Fresh or frozen pork	(v41690979)	102.5	102.3	99.4	0.2	3.1
Fresh or frozen poultry meat	(v41690981)	121.9	120.8	111.2	0.9	9.6
Fresh or frozen chicken	(v41690982)	123.8	123.1	112.0	0.6	10.5
Processed meat	(v41690984)	109.7	109.4	106.5	0.3	3.0
Ham and bacon	(v41690985)	110.7	110.5	106.3	0.2	4.1
Other processed meat	(v41690986)	109.8	109.4	107.1	0.4	2.5
Fish, seafood and other marine products	(v41690987)	101.0	100.8	98.6	0.2	2.4
Fish	(v41690988)	104.2	103.7	100.5	0.5	3.7
Fresh or frozen fish (including portions and fish sticks)	(v41690989)	105.0	104.5	101.5	0.5	3.4
Canned and other preserved fish	(v41690990)	102.3	101.8	98.4	0.5	4.0
Dairy products and eggs	(v41690992)	120.2	120.3	115.5	-0.1	4.1
Dairy products	(v41690993)	120.3	120.4	115.8	-0.1	3.9
Fresh milk	(v41690994)	117.3	117.3	112.1	0.0	4.6
Butter	(v41690995)	120.5	120.9	118.7	-0.3	1.5
Cheese	(v41690996)	123.5	123.1	118.6	0.3	4.1
Ice cream and related products	(v41690997)	115.7	117.6	111.8	-1.6	3.5
Eggs	(v41690999)	119.5	118.8	112.4	0.6	6.3
Bakery and cereal products (excluding infant food)	(v41691000)	118.1	117.5	114.5	0.5	3.1
Bakery products	(v41691001)	123.1	122.5	119.1	0.5	3.4
Bread, unsweetened rolls and buns	(v41691002)	133.0	132.8	126.8	0.2	4.9
Biscuits	(v41691003)	114.1	112.4	111.4	1.5	2.4
Other bakery products	(v41691004)	114.0	113.8	112.7	0.2	1.2
Cereal products (excluding infant food)	(v41691005)	109.2	108.6	106.2	0.6	2.8
Rice (including rice-based mixes)	(v41691006)	107.6	107.5	104.2	0.1	3.3
Breakfast cereal and other grain products (excluding infant food)	(v41691007)	109.1	108.9	107.2	0.2	1.8
Pasta products	(v41691008)	110.1	108.5	103.9	1.5	6.0
Flour and flour based mixes	(v41691009)	105.9	104.4	104.0	1.4	1.8
Fruit, fruit preparations and nuts	(v41691010)	107.9	108.6	106.1	-0.6	1.7
Fresh fruit	(v41691011)	102.4	103.9	106.3	-1.4	-3.7
Apples	(v41691012)	108.5	108.4	103.2	0.1	5.1
Oranges	(v41691013)	115.5	115.5	110.8	0.0	4.2
Bananas and plantains	(v41691014)	105.5	105.2	104.9	0.3	0.6
Other fresh fruit	(v41691015)	96.9	99.8	107.5	-2.9	-9.9
Preserved fruit and fruit preparations	(v41691016)	117.6	117.3	106.3	0.3	10.6
Fruit juices	(v41691017)	123.0	122.1	107.1	0.7	14.8
Other preserved fruit and fruit preparations	(v41691018)	103.7	104.9	104.2	-1.1	-0.5
Nuts	(v41691019)	105.2	103.7	102.5	1.4	2.6
Vegetables and vegetable preparations	(v41691020)	97.9	102.2	98.2	-4.2	-0.3
Fresh vegetables	(v41691021)	93.9	99.5	94.9	-5.6	-1.1
Potatoes	(v41691022)	91.5	85.3	103.7	7.3	-11.8
Tomatoes	(v41691023)	77.7	87.9	78.5	-11.6	-1.0
Lettuce	(v41691024)	62.3	74.1	70.3	-15.9	-11.4
Other fresh vegetables	(v41691025)	106.9	113.6	103.9	-5.9	2.9
Preserved vegetables and vegetable preparations	(v41691026)	112.2	111.6	110.2	0.5	1.8
Frozen and dried vegetables (excluding canned)	(v41691027)	111.3	111.0	108.6	0.3	2.5
Canned vegetables and other vegetable preparations	(v41691028)	112.8	112.1	111.3	0.6	1.3
Other food products and non-alcoholic beverages	(v41691029)	110.1	110.6	108.8	-0.5	1.2
Sugar and confectionery	(v41691030)	111.5	111.6	108.7	-0.1	2.6
Fats and oils	(v41691033)	114.3	114.1	110.4	0.2	3.5
Coffee and tea	(v41691036)	111.7	111.8	109.4	-0.1	2.1
Condiments, spices and vinegars	(v41691039)	104.5	105.2	103.5	-0.7	1.0
Other food preparations	(v41691040)	112.2	112.5	112.0	-0.3	0.2
Non-alcoholic beverages	(v41691045)	105.5	106.7	103.9	-1.1	1.5
Food purchased from restaurants	(v41691046)	114.7	114.1	110.7	0.5	3.6
Food purchased from table-service restaurants	(v41691047)	115.1	114.7	111.5	0.3	3.2
Food purchased from fast food and take-out restaurants	(v41691048)	113.6	112.6	109.0	0.9	4.2

Note(s): See "Data quality, concepts and methodology — Explanatory notes for tables" section.

Table 3-2
The Consumer Price Index and major components, selected sub-groups and special aggregates, 1 Canada — Shelter

	CANSIM vector number	Indexes			Percentage change July 2007 from	
		July 2007	June 2007	July 2006	June 2007	July 2006
2002=100						
Shelter	(v41691050)	117.0	116.8	113.2	0.2	3.4
Rented accommodation	(v41691051)	106.0	105.9	104.4	0.1	1.5
Rent	(v41691052)	106.0	105.8	104.3	0.2	1.6
Owned accommodation	(v41691055)	119.2	118.7	113.7	0.4	4.8
Mortgage interest cost ²	(v41691056)	108.8	107.9	102.6	0.8	6.0
Replacement cost	(v41691057)	136.1	135.4	128.2	0.5	6.2
Property taxes (including special charges)	(v41691058)	115.9	115.9	112.5	0.0	3.0
Homeowners' home and mortgage insurance	(v41691059)	151.2	150.3	141.3	0.6	7.0
Homeowners' maintenance and repairs	(v41691060)	110.5	110.5	110.2	0.0	0.3
Water, fuel and electricity	(v41691062)	127.3	128.0	126.8	-0.5	0.4
Electricity ³	(v41691063)	114.4	113.0	112.7	1.2	1.5
Water	(v41691064)	133.1	132.5	123.5	0.5	7.8
Natural gas	(v41691065)	131.4	137.7	135.8	-4.6	-3.2
Fuel oil and other fuels	(v41691066)	169.3	169.3	172.0	0.0	-1.6

Note(s): See "Data quality, concepts and methodology — Explanatory notes for tables" section.

Table 3-3
The Consumer Price Index and major components, selected sub-groups and special aggregates, 1 Canada — Household operations, furnishings and equipment

	CANSIM vector number	Indexes			Percentage change July 2007 from	
		July 2007	June 2007	July 2006	June 2007	July 2006
2002=100						
Household operations, furnishings and equipment	(v41691067)	103.2	103.0	101.4	0.2	1.8
Household operations	(v41691068)	106.2	106.2	104.0	0.0	2.1
Communications	(v41691069)	101.9	101.7	100.3	0.2	1.6
Telephone services	(v41691070)	101.3	101.2	99.9	0.1	1.4
Internet access services	(v41693216)	97.7	97.3	96.3	0.4	1.5
Postal services and other communication services	(v41691071)	120.8	120.8	116.5	0.0	3.7
Child care and domestic services	(v41691072)	112.7	112.6	108.3	0.1	4.1
Child care	(v41691073)	111.4	111.4	107.2	0.0	3.9
Domestic services	(v41691074)	115.9	115.8	111.2	0.1	4.2
Household chemical products	(v41691075)	104.1	104.6	103.0	-0.5	1.1
Paper, plastic and foil supplies	(v41691078)	106.1	106.3	104.6	-0.2	1.4
Other household goods and services	(v41691081)	109.5	109.3	106.9	0.2	2.4
Pet food and supplies	(v41691082)	103.1	102.6	103.8	0.5	-0.7
Seeds, plants and cut flowers	(v41691083)	104.5	104.4	106.5	0.1	-1.9
Other horticultural goods	(v41691084)	97.2	97.2	97.5	0.0	-0.3
Financial services	(v41693229)	113.6	113.6	106.4	0.0	6.8
Household furnishings and equipment	(v41691087)	97.9	97.4	96.8	0.5	1.1
Furniture and household textiles	(v41691088)	99.8	99.9	98.9	-0.1	0.9
Furniture	(v41691089)	98.9	98.8	97.7	0.1	1.2
Household textiles	(v41691093)	102.4	103.2	103.0	-0.8	-0.6
Household equipment	(v41691097)	90.1	90.0	90.3	0.1	-0.2
Household appliances	(v41691098)	90.4	90.4	91.8	0.0	-1.5
Non-electric kitchen utensils and tableware	(v41691103)	90.2	90.2	90.5	0.0	-0.3
Services related to household furnishings and equipment	(v41691107)	134.3	125.0	120.8	7.4	11.2

Note(s): See "Data quality, concepts and methodology — Explanatory notes for tables" section.

Table 3-4
The Consumer Price Index and major components, selected sub-groups and special aggregates, 1 Canada — Clothing and footwear

	CANSIM vector number	Indexes			Percentage change July 2007 from	
		July 2007	June 2007	July 2006	June 2007	July 2006
2002=100						
Clothing and footwear	(v41691108)	94.6	93.1	93.5	1.6	1.2
Clothing	(v41691109)	91.3	88.9	90.7	2.7	0.7
Women's clothing	(v41691110)	92.5	88.9	91.5	4.0	1.1
Men's clothing	(v41691111)	92.2	90.3	91.7	2.1	0.5
Children's clothing (including infants)	(v41691112)	84.7	85.2	86.3	-0.6	-1.9
Footwear	(v41691113)	94.2	95.2	94.0	-1.1	0.2
Clothing accessories and jewellery	(v41691118)	103.2	103.2	99.0	0.0	4.2
Clothing material, notions and services	(v41691123)	112.7	112.7	109.0	0.0	3.4

Note(s): See "Data quality, concepts and methodology — Explanatory notes for tables" section.

Table 3-5
The Consumer Price Index and major components, selected sub-groups and special aggregates, 1 Canada — Transportation

	CANSIM vector number	Indexes			Percentage change July 2007 from	
		July 2007	June 2007	July 2006	June 2007	July 2006
2002=100						
Transportation	(v41691128)	118.5	119.2	118.3	-0.6	0.2
Private transportation	(v41691129)	118.7	119.6	118.4	-0.8	0.3
Purchase, leasing and rental of passenger vehicles	(v41691130)	98.9	100.6	99.0	-1.7	-0.1
Purchase and leasing of passenger vehicles	(v41691131)	98.9	100.5	99.0	-1.6	-0.1
Purchase of passenger vehicles	(v41691132)	99.7	101.4	99.9	-1.7	-0.2
Rental of passenger vehicles	(v41691134)	103.7	103.7	101.1	0.0	2.6
Operation of passenger vehicles	(v41691135)	137.1	137.3	136.3	-0.1	0.6
Gasoline	(v41691136)	152.9	153.1	157.3	-0.1	-2.8
Passenger vehicle parts, maintenance and repairs	(v41691137)	118.2	118.2	112.7	0.0	4.9
Other passenger vehicle operating expenses	(v41691140)	128.3	128.6	124.1	-0.2	3.4
Passenger vehicle insurance premiums	(v41691141)	130.2	130.6	125.5	-0.3	3.7
Passenger vehicle registration fees	(v41691142)	106.4	106.4	106.4	0.0	0.0
Drivers' licences	(v41691143)	142.3	142.3	142.3	0.0	0.0
Parking fees	(v41691144)	127.4	127.4	119.7	0.0	6.4
Public transportation	(v41691146)	116.8	115.7	117.4	1.0	-0.5
Local and commuter transportation	(v41691147)	119.2	118.8	117.2	0.3	1.7
City bus and subway transportation	(v41691148)	117.8	117.3	115.6	0.4	1.9
Taxi and other local and commuter transportation	(v41691149)	121.9	121.8	120.5	0.1	1.2
Inter-city transportation	(v41691150)	115.4	113.9	117.5	1.3	-1.8
Air transportation	(v41691151)	113.8	112.2	116.9	1.4	-2.7
Rail, highway bus and other inter-city transportation	(v41691152)	121.1	120.9	118.9	0.2	1.9

Note(s): See "Data quality, concepts and methodology — Explanatory notes for tables" section.

Table 3-6

The Consumer Price Index and major components, selected sub-groups and special aggregates, ¹ Canada — Health and personal care

	CANSIM vector number	Indexes			Percentage change July 2007 from	
		July 2007	June 2007	July 2006	June 2007	July 2006
2002=100						
Health and personal care	(v41691153)	107.5	107.9	105.7	-0.4	1.7
Health care	(v41691154)	111.0	111.1	108.6	-0.1	2.2
Health care goods	(v41713463)	104.0	104.1	102.9	-0.1	1.1
Medicinal and pharmaceutical products	(v41691156)	102.6	102.4	101.4	0.2	1.2
Prescribed medicines	(v41691157)	101.7	101.6	101.6	0.1	0.1
Non-prescribed medicines	(v41691158)	104.1	103.8	101.1	0.3	3.0
Optical goods	(v41713381)	108.9	108.6	107.4	0.3	1.4
Health care services	(v41713464)	120.7	120.7	116.5	0.0	3.6
Optical services	(v41693244)	99.9	100.1	..	-0.2	..
Dental care	(v41691161)	119.8	119.8	115.7	0.0	3.5
Personal care	(v41691163)	104.3	104.8	103.0	-0.5	1.3
Personal care supplies and equipment	(v41691164)	98.3	99.3	98.8	-1.0	-0.5
Personal care services	(v41691169)	112.7	112.7	108.9	0.0	3.5

Note(s): See "Data quality, concepts and methodology — Explanatory notes for tables" section.

Table 3-7

The Consumer Price Index and major components, selected sub-groups and special aggregates, ¹ Canada — Recreation, education and reading

	CANSIM vector number	Indexes			Percentage change July 2007 from	
		July 2007	June 2007	July 2006	June 2007	July 2006
2002=100						
Recreation, education and reading	(v41691170)	103.0	102.5	101.3	0.5	1.7
Recreation	(v41691171)	98.5	97.8	97.3	0.7	1.2
Recreational equipment and services (excluding recreational vehicles)	(v41691172)	72.4	73.4	77.7	-1.4	-6.8
Purchase and operation of recreational vehicles	(v41691179)	113.5	114.0	111.1	-0.4	2.2
Home entertainment equipment, parts and services	(v41691184)	86.2	86.0	88.4	0.2	-2.5
Travel services	(v41691190)	98.3	95.9	94.8	2.5	3.7
Traveller accommodation ²	(v41691191)	88.0	84.1	87.5	4.6	0.6
Travel tours	(v41691192)	108.0	108.0	104.0	0.0	3.8
Other cultural and recreational services	(v41691193)	119.1	117.7	114.2	1.2	4.3
Spectator entertainment (excluding cablevision)	(v41691194)	112.9	112.7	112.8	0.2	0.1
Cablevision and satellite services (including pay television)	(v41691195)	124.6	121.6	116.4	2.5	7.0
Use of recreational facilities and services	(v41691196)	117.2	117.2	112.7	0.0	4.0
Education and reading	(v41691197)	116.6	116.5	113.5	0.1	2.7
Education	(v41691198)	118.5	118.5	115.1	0.0	3.0
Tuition fees	(v41691199)	122.0	122.0	118.4	0.0	3.0
Reading material and other printed material (excluding textbooks)	(v41691202)	110.6	110.5	108.7	0.1	1.7
Newspapers	(v41691203)	116.1	116.0	111.3	0.1	4.3
Magazines and periodicals	(v41691204)	118.2	117.9	116.1	0.3	1.8

Note(s): See "Data quality, concepts and methodology — Explanatory notes for tables" section.

Table 3-8
The Consumer Price Index and major components, selected sub-groups and special aggregates, ¹ Canada — Alcoholic beverages and tobacco products

	CANSIM vector number	Indexes			Percentage change July 2007 from	
		July 2007	June 2007	July 2006	June 2007	July 2006
2002=100						
Alcoholic beverages and tobacco products	(v41691206)	126.0	125.7	121.5	0.2	3.7
Alcoholic beverages	(v41691207)	110.4	110.0	108.1	0.4	2.1
Alcoholic beverages served in licensed establishments	(v41691208)	113.5	113.4	110.9	0.1	2.3
Beer served in licensed establishments	(v41691209)	113.2	113.2	111.1	0.0	1.9
Liquor served in licensed establishments	(v41691211)	115.1	115.1	111.6	0.0	3.1
Alcoholic beverages purchased from stores	(v41691212)	108.9	108.3	106.5	0.6	2.3
Beer purchased from stores	(v41691213)	112.1	111.2	109.5	0.8	2.4
Wine purchased from stores	(v41691214)	104.3	104.3	103.2	0.0	1.1
Liquor purchased from stores	(v41691215)	106.5	106.2	103.6	0.3	2.8
Tobacco products and smokers' supplies	(v41691216)	139.6	139.7	132.5	-0.1	5.4
Cigarettes	(v41691217)	139.6	139.7	132.5	-0.1	5.4

Note(s): See "Data quality, concepts and methodology — Explanatory notes for tables" section.

Table 3-9
The Consumer Price Index and major components, selected sub-groups and special aggregates, ¹ Canada — Selected special aggregates

	CANSIM vector number	Indexes			Percentage change July 2007 from	
		July 2007	June 2007	July 2006	June 2007	July 2006
2002=100						
Special aggregates						
Goods ²	(v41691222)	108.6	108.9	108.1	-0.3	0.5
Durable goods ²	(v41691223)	94.6	95.5	95.1	-0.9	-0.5
Semi-durable goods ²	(v41691224)	95.0	94.0	94.3	1.1	0.7
Non-durable goods ²	(v41691225)	119.7	120.2	118.6	-0.4	0.9
Services ³	(v41691230)	115.3	114.8	111.2	0.4	3.7
All-items excluding food	(v41691232)	111.9	111.8	109.7	0.1	2.0
All-items excluding food and energy	(v41691233)	109.1	109.0	106.5	0.1	2.4
All-items excluding energy	(v41691238)	109.7	109.6	107.0	0.1	2.5
All-items excluding gasoline	(v41693245)	110.4	110.3	107.8	0.1	2.4
All-items excluding shelter, insurance and financial services	(v41693246)	109.1	109.1	107.5	0.0	1.5
Energy ⁴	(v41691239)	139.6	140.1	142.0	-0.4	-1.7
All-items excluding alcoholic beverages, tobacco products and smokers' supplies	(v41691241)	111.4	111.3	109.1	0.1	2.1

Note(s): See "Data quality, concepts and methodology — Explanatory notes for tables" section.

Table 4
The Consumer Price Index for Canada, all-items, 1 historical data

	Jan.	Feb.	Mar.	Apr.	May	June	July	Aug.	Sept.	Oct.	Nov.	Dec.	Annual average ²
	2002=100												
Indexes (v41690973)													
1988	69.7	70.0	70.4	70.6	71.0	71.2	71.6	71.7	71.8	72.2	72.3	72.3	71.2
1989	72.7	73.2	73.6	73.8	74.6	74.9	75.4	75.5	75.6	75.9	76.1	76.1	74.8
1990	76.7	77.2	77.5	77.5	77.9	78.2	78.5	78.6	78.8	79.5	80.0	79.9	78.4
1991	82.0	82.0	82.3	82.3	82.7	83.1	83.2	83.3	83.1	83.0	83.3	82.9	82.8
1992	83.3	83.3	83.6	83.7	83.8	84.0	84.2	84.2	84.2	84.3	84.7	84.7	84.0
1993	85.0	85.3	85.2	85.2	85.4	85.4	85.6	85.7	85.7	85.9	86.3	86.1	85.6
1994	86.1	85.4	85.4	85.4	85.2	85.4	85.7	85.8	85.9	85.7	86.2	86.3	85.7
1995	86.6	87.0	87.2	87.5	87.7	87.7	87.9	87.7	87.8	87.7	88.0	87.8	87.6
1996	88.0	88.1	88.5	88.7	89.0	89.0	89.0	89.0	89.1	89.3	89.7	89.7	88.9
1997	89.9	90.1	90.2	90.2	90.3	90.5	90.5	90.6	90.6	90.6	90.5	90.4	90.4
1998	90.9	91.0	91.1	91.0	91.3	91.4	91.4	91.4	91.2	91.6	91.6	91.3	91.3
1999	91.5	91.6	92.0	92.5	92.7	92.9	93.1	93.3	93.6	93.7	93.6	93.7	92.9
2000	93.5	94.1	94.8	94.5	94.9	95.5	95.8	95.7	96.1	96.3	96.6	96.7	95.4
2001	96.3	96.8	97.1	97.8	98.6	98.7	98.4	98.4	98.6	98.1	97.2	97.4	97.8
2002	97.6	98.2	98.9	99.5	99.7	99.9	100.5	100.9	100.9	101.2	101.5	101.1	100.0
2003	102.0	102.8	103.1	102.4	102.5	102.5	102.6	102.9	103.1	102.8	103.1	103.2	102.8
2004	103.3	103.5	103.9	104.1	105.0	105.1	105.0	104.8	105.0	105.2	105.6	105.4	104.7
2005	105.3	105.7	106.3	106.6	106.7	106.9	107.1	107.5	108.4	107.9	107.7	107.6	107.0
2006	108.2	108.0	108.6	109.2	109.7	109.5	109.6	109.8	109.2	109.0	109.2	109.4	109.1
2007	109.4	110.2	111.1	111.6	112.1	111.9	112.0
Percentage change from the corresponding month of the previous year (v41690973)													
1988	4.0	4.0	4.3	4.0	4.0	3.9	3.9	3.9	4.1	4.3	4.0	3.9	4.0
1989	4.3	4.6	4.5	4.5	5.1	5.2	5.3	5.3	5.3	5.1	5.3	5.3	5.0
1990	5.5	5.5	5.3	5.0	4.4	4.4	4.1	4.1	4.2	4.7	5.1	5.0	4.8
1991	6.9	6.2	6.2	6.2	6.2	6.3	6.0	6.0	5.5	4.4	4.1	3.8	5.6
1992	1.6	1.6	1.6	1.7	1.3	1.1	1.2	1.1	1.3	1.6	1.7	2.2	1.5
1993	2.0	2.4	1.9	1.8	1.9	1.7	1.7	1.8	1.8	1.9	1.9	1.7	1.9
1994	1.3	0.1	0.2	0.2	-0.2	0.0	0.1	0.1	0.2	-0.2	-0.1	0.2	0.2
1995	0.6	1.9	2.1	2.5	2.9	2.7	2.6	2.2	2.2	2.3	2.1	1.7	2.1
1996	1.6	1.3	1.5	1.4	1.5	1.5	1.3	1.5	1.5	1.8	1.9	2.2	1.6
1997	2.2	2.3	1.9	1.7	1.5	1.7	1.7	1.8	1.7	1.5	0.9	0.8	1.6
1998	1.1	1.0	1.0	0.9	1.1	1.0	1.0	0.9	0.7	1.1	1.2	1.0	1.0
1999	0.7	0.7	1.0	1.6	1.5	1.6	1.9	2.1	2.6	2.3	2.2	2.6	1.7
2000	2.2	2.7	3.0	2.2	2.4	2.8	2.9	2.6	2.7	2.8	3.2	3.2	2.7
2001	3.0	2.9	2.4	3.5	3.9	3.4	2.7	2.8	2.6	1.9	0.6	0.7	2.5
2002	1.3	1.4	1.9	1.7	1.1	1.2	2.1	2.5	2.3	3.2	4.4	3.8	2.3
2003	4.5	4.7	4.2	2.9	2.8	2.6	2.1	2.0	2.2	1.6	1.6	2.1	2.8
2004	1.3	0.7	0.8	1.7	2.4	2.5	2.3	1.8	1.8	2.3	2.4	2.1	1.9
2005	1.9	2.1	2.3	2.4	1.6	1.7	2.0	2.6	3.2	2.6	2.0	2.1	2.2
2006	2.8	2.2	2.2	2.4	2.8	2.4	2.3	2.1	0.7	1.0	1.4	1.7	2.0
2007	1.1	2.0	2.3	2.2	2.2	2.2	2.2

Note(s): See "Data quality, concepts and methodology — Explanatory notes for tables" section.

Table 5
The Consumer Price Index for Canada major components and special aggregates, 1 historical data

	Major components								Special aggregates			
	Food	Shelter	Household operations, furnishings and equipment	Clothing and footwear	Transportation	Health and personal care	Recreation, education and reading	Alcoholic beverages and tobacco products	Goods ²	Services ³	All-items ⁴ excluding food and energy	Energy ⁴
CANSIM vector number	(v41690974)	(v41691050)	(v41691067)	(v41691108)	(v41691128)	(v41691153)	(v41691170)	(v41691206)	(v41691222)	(v41691230)	(v41691233)	(v41691239)
	2002=100											
Annual averages⁵												
1988	73.7	73.8	79.6	80.5	64.5	72.3	67.3	54.9	75.2	67.1	71.5	64.5
1989	76.5	78.1	82.5	83.7	67.8	75.5	70.3	59.9	78.4	70.9	75.5	66.7
1990	79.6	82.5	84.2	86.1	71.6	79.1	73.2	65.2	81.6	74.9	78.8	73.4
1991	83.4	86.3	87.4	94.3	72.9	84.7	78.3	76.4	85.7	79.6	83.4	77.0
1992	83.1	87.9	87.9	95.1	74.4	86.6	79.2	81.0	86.4	81.4	85.1	77.2
1993	84.5	89.1	88.7	96.0	76.8	88.9	81.1	82.2	87.8	83.1	86.8	78.1
1994	84.9	89.4	88.9	96.8	80.2	89.7	83.5	68.8	86.8	84.5	86.9	78.6
1995	86.9	90.4	90.6	96.7	84.3	89.6	86.7	68.7	88.4	86.7	88.8	79.6
1996	88.0	90.6	92.5	96.4	87.6	90.1	88.7	70.1	89.9	88.0	90.1	81.9
1997	89.4	90.8	93.7	97.7	90.3	91.7	91.0	72.3	91.2	89.5	91.5	83.9
1998	90.9	91.1	95.1	98.8	89.6	93.6	93.0	74.9	91.4	91.1	92.7	80.5
1999	92.0	92.3	95.8	100.1	92.6	95.4	94.7	76.5	93.1	92.6	94.0	85.0
2000	93.3	95.6	96.7	100.3	97.2	97.0	97.0	79.0	96.0	94.8	95.5	98.8
2001	97.4	99.1	98.6	100.7	97.3	98.9	98.4	85.0	98.4	97.1	97.3	102.0
2002	100.0	100.0	100.0	100.0	100.0	100.0	100.0	100.0	100.0	100.0	100.0	100.0
2003	101.7	103.2	100.7	98.2	105.2	101.4	100.8	110.1	101.9	103.6	102.5	107.9
2004	103.8	105.8	101.2	98.0	107.7	102.8	101.1	116.0	103.4	105.9	103.9	115.2
2005	106.4	109.2	101.7	97.6	112.0	104.6	100.8	119.1	105.8	108.2	105.3	126.3
2006	108.9	113.1	102.2	95.8	115.2	105.9	100.6	121.7	107.1	111.1	106.9	132.8
Monthly indexes												
2006												
January	108.4	111.8	102.3	94.2	114.7	105.0	99.1	120.0	107.3	109.2	105.8	132.7
February	108.2	111.7	102.5	95.5	112.7	105.4	99.7	120.5	106.4	109.5	106.1	127.1
March	108.2	111.9	102.4	98.3	114.2	105.5	100.2	121.5	107.2	109.9	106.6	130.0
April	108.1	112.2	102.3	95.8	117.9	105.9	100.2	121.9	108.1	110.3	106.6	138.9
May	108.7	113.0	102.4	96.1	117.8	106.1	101.5	121.8	108.4	111.0	107.0	139.8
June	109.2	112.8	102.1	94.1	117.3	106.1	101.3	121.8	107.9	111.1	106.7	138.4
July	109.2	113.2	101.4	93.5	118.3	105.7	101.3	121.5	108.1	111.2	106.5	142.0
August	109.2	113.5	101.7	95.4	118.0	105.5	101.2	121.8	108.1	111.4	106.8	141.7
September	108.8	114.0	102.1	98.5	112.8	106.0	101.5	122.0	106.4	111.9	107.4	128.8
October	109.2	114.1	102.2	97.7	111.7	106.1	100.9	122.2	105.6	112.2	107.5	123.8
November	110.1	114.1	102.2	97.0	112.7	106.7	100.5	122.3	106.1	112.4	107.7	123.8
December	109.9	114.6	102.2	93.5	114.1	106.3	100.1	123.2	106.1	112.6	107.6	127.1
2007												
January	110.9	114.8	102.4	94.2	113.3	106.3	99.2	124.2	106.3	112.5	107.6	125.2
February	112.6	114.9	103.0	95.4	114.2	106.5	100.2	124.2	107.4	113.0	108.0	127.1
March	112.2	115.4	103.2	97.5	117.7	106.4	100.9	124.1	108.8	113.4	108.5	135.9
April	112.2	116.2	103.3	97.7	118.6	106.8	100.9	124.5	109.2	113.9	108.7	139.1
May	112.5	116.0	103.0	96.0	120.7	107.4	102.2	125.2	109.6	114.5	109.0	142.0
June	112.6	116.8	103.0	93.1	119.2	107.9	102.5	125.7	108.9	114.8	109.0	140.1
July	112.3	117.0	103.2	94.6	118.5	107.5	103.0	126.0	108.6	115.3	109.1	139.6

Note(s): For information on the continuity of the series, see "Data quality, concepts and methodology — Data quality, concepts and methodology — Weights and Linking" at the end of this publication.

See "Data quality, concepts and methodology — Explanatory notes for tables" section.

Table 6-1
The Consumer Price Index major components, selected sub-groups and special aggregates, 1 provinces, Whitehorse and Yellowknife — Newfoundland and Labrador

	CANSIM vector number	Indexes			Percentage change July 2007 from	
		July 2007	June 2007	July 2006	June 2007	July 2006
		2002=100				
All-items	(v41691244)	111.6	111.9	110.5	-0.3	1.0
Special aggregates						
All-items excluding food	(v41691368)	111.9	112.3	111.1	-0.4	0.7
All-items excluding food and energy	(v41691369)	107.1	107.2	106.0	-0.1	1.0
All-items excluding energy	(v41691374)	107.7	107.8	106.3	-0.1	1.3
All-items excluding gasoline	(v41693247)	109.8	110.0	108.7	-0.2	1.0
Energy ²	(v41691375)	142.1	144.7	143.8	-1.8	-1.2
All-items (1992=100)	(v41713404)	130.9	131.2	129.6	-0.2	1.0
Food	(v41691245)	110.3	110.1	107.9	0.2	2.2
Food purchased from stores	(v41691246)	110.2	110.1	108.1	0.1	1.9
Meat ³	(v41691247)	110.5	108.8	111.7	1.6	-1.1
Dairy products ³	(v41691257)	119.2	118.5	114.3	0.6	4.3
Bakery and cereal products (excluding infant food) ³	(v41691262)	119.4	120.1	114.4	-0.6	4.4
Fresh fruit ³	(v41691266)	103.4	106.1	104.1	-2.5	-0.7
Fresh vegetables ³	(v41691269)	92.0	90.4	80.9	1.8	13.7
Food purchased from restaurants	(v41691276)	111.8	111.0	108.2	0.7	3.3
Shelter	(v41691277)	118.3	118.8	117.5	-0.4	0.7
Rented accommodation	(v41691278)	104.2	103.9	103.9	0.3	0.3
Owned accommodation	(v41691280)	112.8	112.6	109.3	0.2	3.2
Replacement cost	(v41691281)	125.6	125.6	119.6	0.0	5.0
Homeowners' home and mortgage insurance	(v41691283)	121.8	121.8	113.1	0.0	7.7
Homeowners' maintenance and repairs	(v41691284)	111.3	111.3	113.9	0.0	-2.3
Water, fuel and electricity	(v41691285)	136.1	138.7	140.3	-1.9	-3.0
Electricity	(v41691286)	121.5	124.9	124.8	-2.7	-2.6
Natural gas
Fuel oil and other fuels	(v41691288)	173.3	173.3	180.1	0.0	-3.8
Household operations, furnishings and equipment	(v41691289)	100.5	100.6	100.5	-0.1	0.0
Household operations	(v41691290)	104.3	104.5	102.6	-0.2	1.7
Telephone services	(v41691292)	99.5	99.5	99.7	0.0	-0.2
Internet access services	(v41693217)	109.3	109.3	106.5	0.0	2.6
Household furnishings and equipment	(v41691297)	93.8	93.7	96.7	0.1	-3.0
Clothing and footwear	(v41691304)	98.0	97.6	99.2	0.4	-1.2
Women's clothing	(v41691306)	99.3	99.3	102.8	0.0	-3.4
Men's clothing	(v41691307)	96.5	95.1	94.6	1.5	2.0
Footwear	(v41691309)	94.8	98.6	103.2	-3.9	-8.1
Transportation	(v41691312)	120.0	121.4	119.3	-1.2	0.6
Private transportation	(v41691313)	120.4	122.0	119.5	-1.3	0.8
Purchase and leasing of passenger vehicles	(v41691315)	100.2	102.3	99.5	-2.1	0.7
Gasoline	(v41691318)	149.6	152.2	148.5	-1.7	0.7
Passenger vehicle insurance premiums	(v41691321)	122.4	122.4	123.9	0.0	-1.2
Public transportation	(v41691323)	114.4	113.1	115.9	1.1	-1.3
Health and personal care	(v41691328)	103.7	104.3	103.0	-0.6	0.7
Health care	(v41691329)	105.6	106.3	104.0	-0.7	1.5
Personal care	(v41691335)	102.3	102.7	102.2	-0.4	0.1
Recreation, education and reading	(v41691338)	101.8	101.5	100.8	0.3	1.0
Recreation	(v41691339)	102.2	102.1	101.4	0.1	0.8
Education and reading	(v41691347)	101.7	100.5	99.7	1.2	2.0
Alcoholic beverages and tobacco products	(v41691351)	130.7	130.8	126.0	-0.1	3.7
Alcoholic beverages	(v41691352)	114.8	115.1	113.2	-0.3	1.4
Tobacco products and smokers' supplies	(v41691358)	144.1	143.8	136.4	0.2	5.6

Note(s): See "Data quality, concepts and methodology — Explanatory notes for tables" section.

Table 6-2
The Consumer Price Index major components, selected sub-groups and special aggregates, 1 provinces, Whitehorse and Yellowknife — Prince Edward Island

	CANSIM vector number	Indexes			Percentage change July 2007 from	
		July 2007	June 2007	July 2006	June 2007	July 2006
		2002=100				
All-items	(v41691379)	114.0	114.1	112.5	-0.1	1.3
Special aggregates						
All-items excluding food	(v41691502)	113.9	114.2	112.9	-0.3	0.9
All-items excluding food and energy	(v41691503)	108.3	108.3	106.3	0.0	1.9
All-items excluding energy	(v41691508)	109.5	109.3	107.1	0.2	2.2
All-items excluding gasoline	(v41693249)	111.8	111.7	109.6	0.1	2.0
Energy ²	(v41691509)	152.3	154.6	158.2	-1.5	-3.7
All-items (1992=100)	(v41713406)	134.2	134.3	132.4	-0.1	1.4
Food	(v41691380)	114.3	113.7	110.6	0.5	3.3
Food purchased from stores	(v41691381)	114.6	115.1	110.8	-0.4	3.4
Meat ³	(v41691382)	112.4	112.2	110.8	0.2	1.4
Dairy products ³	(v41691392)	121.3	121.5	118.1	-0.2	2.7
Bakery and cereal products (excluding infant food) ³	(v41691397)	120.2	120.8	113.7	-0.5	5.7
Fresh fruit ³	(v41691401)	102.6	109.1	102.7	-6.0	-0.1
Fresh vegetables ³	(v41691404)	112.8	109.8	108.9	2.7	3.6
Food purchased from restaurants	(v41691411)	112.6	108.9	109.8	3.4	2.6
Shelter	(v41691412)	119.2	119.1	117.6	0.1	1.4
Rented accommodation	(v41691413)	106.6	106.6	105.4	0.0	1.1
Owned accommodation	(v41691415)	111.6	111.4	108.6	0.2	2.8
Replacement cost	(v41691416)	112.1	112.1	111.1	0.0	0.9
Homeowners' home and mortgage insurance	(v41691418)	121.2	121.2	120.1	0.0	0.9
Homeowners' maintenance and repairs	(v41691419)	113.3	112.9	110.6	0.4	2.4
Water, fuel and electricity	(v41691420)	146.5	146.6	147.6	-0.1	-0.7
Electricity	(v41691421)	123.5	123.8	113.2	-0.2	9.1
Natural gas
Fuel oil and other fuels	(v41691423)	168.9	168.9	180.9	0.0	-6.6
Household operations, furnishings and equipment	(v41691424)	105.2	105.1	103.8	0.1	1.3
Household operations	(v41691425)	109.3	109.4	106.8	-0.1	2.3
Telephone services	(v41691427)	99.2	99.2	99.5	0.0	-0.3
Internet access services	(v41693218)	102.8	102.8	100.5	0.0	2.3
Household furnishings and equipment	(v41691432)	96.4	96.1	97.5	0.3	-1.1
Clothing and footwear	(v41691439)	98.2	99.2	99.1	-1.0	-0.9
Women's clothing	(v41691441)	93.4	98.7	96.9	-5.4	-3.6
Men's clothing	(v41691442)	98.1	92.4	97.8	6.2	0.3
Footwear	(v41691444)	99.2	100.9	105.8	-1.7	-6.2
Transportation	(v41691447)	120.1	121.8	120.7	-1.4	-0.5
Private transportation	(v41691448)	120.3	122.2	121.0	-1.6	-0.6
Purchase and leasing of passenger vehicles	(v41691450)	100.0	101.5	98.1	-1.5	1.9
Gasoline	(v41691453)	158.5	163.1	169.6	-2.8	-6.5
Passenger vehicle insurance premiums	(v41691456)	118.3	118.3	115.9	0.0	2.1
Public transportation	(v41691458)	116.9	115.8	117.9	0.9	-0.8
Health and personal care	(v41691462)	104.7	104.7	104.0	0.0	0.7
Health care	(v41691463)	105.6	105.8	105.0	-0.2	0.6
Personal care	(v41691469)	103.6	103.5	102.8	0.1	0.8
Recreation, education and reading	(v41691472)	105.1	104.1	102.9	1.0	2.1
Recreation	(v41691473)	98.7	97.4	97.8	1.3	0.9
Education and reading	(v41691481)	121.9	121.7	116.8	0.2	4.4
Alcoholic beverages and tobacco products	(v41691485)	135.8	135.3	131.8	0.4	3.0
Alcoholic beverages	(v41691486)	110.9	110.6	109.2	0.3	1.6
Tobacco products and smokers' supplies	(v41691492)	146.6	146.0	141.0	0.4	4.0

Note(s): See "Data quality, concepts and methodology — Explanatory notes for tables" section.

Table 6-3
The Consumer Price Index major components, selected sub-groups and special aggregates, 1 provinces, Whitehorse and Yellowknife — Nova Scotia

	CANSIM vector number	Indexes			Percentage change July 2007 from	
		July 2007	June 2007	July 2006	June 2007	July 2006
		2002=100				
All-items	(v41691513)	113.0	113.0	111.3	0.0	1.5
Special aggregates						
All-items excluding food	(v41691637)	112.7	112.6	111.2	0.1	1.3
All-items excluding food and energy	(v41691638)	108.5	108.5	105.9	0.0	2.5
All-items excluding energy	(v41691643)	109.6	109.7	107.0	-0.1	2.4
All-items excluding gasoline	(v41693251)	111.1	111.2	109.2	-0.1	1.7
Energy ²	(v41691644)	142.1	141.4	148.4	0.5	-4.2
All-items (1992=100)	(v41713408)	135.4	135.4	133.3	0.0	1.6
Food	(v41691514)	114.5	115.3	111.9	-0.7	2.3
Food purchased from stores	(v41691515)	113.8	114.8	111.4	-0.9	2.2
Meat ³	(v41691516)	108.0	110.3	110.2	-2.1	-2.0
Dairy products ³	(v41691526)	120.1	120.5	116.4	-0.3	3.2
Bakery and cereal products (excluding infant food) ³	(v41691531)	120.4	122.1	117.0	-1.4	2.9
Fresh fruit ³	(v41691535)	102.9	106.3	102.2	-3.2	0.7
Fresh vegetables ³	(v41691538)	100.1	103.4	99.5	-3.2	0.6
Food purchased from restaurants	(v41691545)	116.7	116.7	113.4	0.0	2.9
Shelter	(v41691546)	117.6	117.5	116.2	0.1	1.2
Rented accommodation	(v41691547)	104.1	104.0	103.5	0.1	0.6
Owned accommodation	(v41691549)	115.2	115.1	109.4	0.1	5.3
Replacement cost	(v41691550)	122.5	122.5	113.6	0.0	7.8
Homeowners' home and mortgage insurance	(v41691552)	140.6	140.6	131.0	0.0	7.3
Homeowners' maintenance and repairs	(v41691553)	109.2	111.1	105.6	-1.7	3.4
Water, fuel and electricity	(v41691554)	133.3	133.2	142.0	0.1	-6.1
Electricity	(v41691555)	114.2	114.2	117.4	0.0	-2.7
Natural gas	
Fuel oil and other fuels	(v41691557)	158.6	158.6	177.0	0.0	-10.4
Household operations, furnishings and equipment	(v41691558)	103.5	103.5	101.7	0.0	1.8
Household operations	(v41691559)	107.3	107.3	104.9	0.0	2.3
Telephone services	(v41691561)	100.0	100.0	99.5	0.0	0.5
Internet access services	(v41693219)	97.8	97.8	94.1	0.0	3.9
Household furnishings and equipment	(v41691566)	95.9	95.8	95.1	0.1	0.8
Clothing and footwear	(v41691573)	95.0	93.7	94.6	1.4	0.4
Women's clothing	(v41691575)	98.6	93.9	97.0	5.0	1.6
Men's clothing	(v41691576)	95.8	89.8	92.1	6.7	4.0
Footwear	(v41691578)	84.7	95.2	87.5	-11.0	-3.2
Transportation	(v41691581)	116.9	117.3	116.5	-0.3	0.3
Private transportation	(v41691582)	117.0	117.5	116.6	-0.4	0.3
Purchase and leasing of passenger vehicles	(v41691584)	99.3	101.0	99.0	-1.7	0.3
Gasoline	(v41691587)	152.1	150.8	155.1	0.9	-1.9
Passenger vehicle insurance premiums	(v41691590)	104.9	105.0	103.8	-0.1	1.1
Public transportation	(v41691592)	115.7	114.5	116.6	1.0	-0.8
Health and personal care	(v41691597)	107.0	107.1	104.8	-0.1	2.1
Health care	(v41691598)	110.1	110.0	107.9	0.1	2.0
Personal care	(v41691604)	104.1	104.4	101.9	-0.3	2.2
Recreation, education and reading	(v41691607)	107.4	106.7	105.6	0.7	1.7
Recreation	(v41691608)	101.5	100.7	100.8	0.8	0.7
Education and reading	(v41691616)	123.5	123.2	118.5	0.2	4.2
Alcoholic beverages and tobacco products	(v41691620)	137.6	137.6	129.7	0.0	6.1
Alcoholic beverages	(v41691621)	114.7	115.2	110.6	-0.4	3.7
Tobacco products and smokers' supplies	(v41691627)	150.8	150.3	140.6	0.3	7.3

Note(s): See "Data quality, concepts and methodology — Explanatory notes for tables" section.

Table 6-4

The Consumer Price Index major components, selected sub-groups and special aggregates, 1 provinces, Whitehorse and Yellowknife — New Brunswick

	CANSIM vector number	Indexes			Percentage change July 2007 from	
		July 2007	June 2007	July 2006	June 2007	July 2006
		2002=100				
All-items	(v41691648)	112.1	112.1	109.7	0.0	2.2
Special aggregates						
All-items excluding food	(v41691772)	111.7	111.8	109.6	-0.1	1.9
All-items excluding food and energy	(v41691773)	107.0	107.1	105.4	-0.1	1.5
All-items excluding energy	(v41691778)	108.4	108.4	106.4	0.0	1.9
All-items excluding gasoline	(v41693253)	110.3	110.3	107.3	0.0	2.8
Energy ²	(v41691779)	142.4	142.5	137.0	-0.1	3.9
All-items (1992=100)	(v41713410)	133.0	133.0	130.1	0.0	2.2
Food	(v41691649)	114.4	114.0	110.7	0.4	3.3
Food purchased from stores	(v41691650)	114.7	114.4	110.7	0.3	3.6
Meat ³	(v41691651)	111.6	111.7	109.4	-0.1	2.0
Dairy products ³	(v41691661)	118.7	118.4	116.4	0.3	2.0
Bakery and cereal products (excluding infant food) ³	(v41691666)	122.3	122.2	116.2	0.1	5.2
Fresh fruit ³	(v41691670)	100.4	104.7	102.3	-4.1	-1.9
Fresh vegetables ³	(v41691673)	100.6	101.5	97.7	-0.9	3.0
Food purchased from restaurants	(v41691680)	114.1	113.3	111.1	0.7	2.7
Shelter	(v41691681)	117.6	117.5	111.5	0.1	5.5
Rented accommodation	(v41691682)	104.8	104.8	104.1	0.0	0.7
Owned accommodation	(v41691684)	111.2	111.0	108.7	0.2	2.3
Replacement cost	(v41691685)	113.1	113.2	112.9	-0.1	0.2
Homeowners' home and mortgage insurance	(v41691687)	131.0	131.1	130.2	-0.1	0.6
Homeowners' maintenance and repairs	(v41691688)	111.6	111.2	109.9	0.4	1.5
Water, fuel and electricity	(v41691689)	139.5	139.5	122.2	0.0	14.2
Electricity	(v41691690)	132.9	132.9	112.7	0.0	17.9
Natural gas	
Fuel oil and other fuels	(v41691692)	165.4	165.4	156.8	0.0	5.5
Household operations, furnishings and equipment	(v41691693)	102.7	102.8	101.6	-0.1	1.1
Household operations	(v41691694)	107.9	107.8	106.0	0.1	1.8
Telephone services	(v41691696)	101.2	101.2	100.8	0.0	0.4
Internet access services	(v41693220)	103.2	103.2	100.4	0.0	2.8
Household furnishings and equipment	(v41691701)	93.1	93.4	93.4	-0.3	-0.3
Clothing and footwear	(v41691708)	96.3	96.8	94.8	-0.5	1.6
Women's clothing	(v41691710)	101.2	97.2	92.6	4.1	9.3
Men's clothing	(v41691711)	92.7	95.2	93.9	-2.6	-1.3
Footwear	(v41691713)	92.8	96.7	97.3	-4.0	-4.6
Transportation	(v41691716)	116.2	117.0	117.8	-0.7	-1.4
Private transportation	(v41691717)	116.3	117.2	117.9	-0.8	-1.4
Purchase and leasing of passenger vehicles	(v41691719)	99.3	101.1	99.5	-1.8	-0.2
Gasoline	(v41691722)	145.4	145.5	153.5	-0.1	-5.3
Passenger vehicle insurance premiums	(v41691725)	107.2	107.2	110.5	0.0	-3.0
Public transportation	(v41691727)	116.5	115.5	117.7	0.9	-1.0
Health and personal care	(v41691732)	103.4	103.2	102.9	0.2	0.5
Health care	(v41691733)	106.2	106.6	105.3	-0.4	0.9
Personal care	(v41691739)	100.9	100.1	100.6	0.8	0.3
Recreation, education and reading	(v41691742)	106.8	106.0	104.0	0.8	2.7
Recreation	(v41691743)	101.3	100.3	99.8	1.0	1.5
Education and reading	(v41691751)	123.3	123.3	116.9	0.0	5.5
Alcoholic beverages and tobacco products	(v41691755)	128.3	127.8	123.3	0.4	4.1
Alcoholic beverages	(v41691756)	116.1	116.2	110.8	-0.1	4.8
Tobacco products and smokers' supplies	(v41691762)	134.3	133.3	129.2	0.8	3.9

Note(s): See "Data quality, concepts and methodology — Explanatory notes for tables" section.

Table 6-5
The Consumer Price Index major components, selected sub-groups and special aggregates, 1 provinces, Whitehorse and Yellowknife — Quebec

	CANSIM vector number	Indexes			Percentage change July 2007 from	
		July 2007	June 2007	July 2006	June 2007	July 2006
		2002=100				
All-items	(v41691783)	110.6	110.7	109.2	-0.1	1.3
Special aggregates						
All-items excluding food	(v41691908)	109.9	109.9	108.8	0.0	1.0
All-items excluding food and energy	(v41691909)	107.1	107.2	105.6	-0.1	1.4
All-items excluding energy	(v41691914)	108.5	108.6	106.7	-0.1	1.7
All-items excluding gasoline	(v41693255)	109.0	109.1	107.2	-0.1	1.7
Energy ²	(v41691915)	134.8	134.2	137.6	0.4	-2.0
All-items (1992=100)	(v41713412)	127.8	127.9	126.2	-0.1	1.3
Food	(v41691784)	114.0	114.4	111.0	-0.3	2.7
Food purchased from stores	(v41691785)	113.9	114.6	110.3	-0.6	3.3
Meat ³	(v41691786)	116.4	116.5	109.0	-0.1	6.8
Dairy products ³	(v41691796)	120.6	120.2	116.0	0.3	4.0
Bakery and cereal products (excluding infant food) ³	(v41691801)	120.5	119.5	117.6	0.8	2.5
Fresh fruit ³	(v41691805)	106.2	103.1	109.6	3.0	-3.1
Fresh vegetables ³	(v41691808)	94.3	107.2	95.7	-12.0	-1.5
Food purchased from restaurants	(v41691815)	114.3	113.9	112.9	0.4	1.2
Shelter	(v41691816)	114.8	114.6	111.7	0.2	2.8
Rented accommodation	(v41691817)	105.8	105.8	104.6	0.0	1.1
Owned accommodation	(v41691819)	117.8	117.6	113.3	0.2	4.0
Replacement cost	(v41691820)	130.1	129.9	125.6	0.2	3.6
Homeowners' home and mortgage insurance	(v41691822)	141.8	141.6	135.9	0.1	4.3
Homeowners' maintenance and repairs	(v41691823)	113.5	114.0	110.0	-0.4	3.2
Water, fuel and electricity	(v41691824)	118.6	118.7	117.8	-0.1	0.7
Electricity	(v41691825)	110.8	110.8	109.2	0.0	1.5
Natural gas	(v41691827)	112.2	114.1	108.3	-1.7	3.6
Fuel oil and other fuels	(v41691828)	169.5	169.5	175.4	0.0	-3.4
Household operations, furnishings and equipment	(v41691829)	102.8	102.6	101.2	0.2	1.6
Household operations	(v41691830)	104.9	104.8	102.6	0.1	2.2
Telephone services	(v41691832)	100.6	100.6	98.8	0.0	1.8
Internet access services	(v41693221)	98.1	98.1	96.8	0.0	1.3
Household furnishings and equipment	(v41691837)	98.9	98.5	98.7	0.4	0.2
Clothing and footwear	(v41691844)	93.3	93.1	93.9	0.2	-0.6
Women's clothing	(v41691846)	88.6	88.4	93.7	0.2	-5.4
Men's clothing	(v41691847)	93.8	93.5	90.6	0.3	3.5
Footwear	(v41691849)	94.3	94.7	95.4	-0.4	-1.2
Transportation	(v41691852)	118.5	118.7	119.0	-0.2	-0.4
Private transportation	(v41691853)	118.2	118.6	118.9	-0.3	-0.6
Purchase and leasing of passenger vehicles	(v41691855)	99.2	100.6	99.2	-1.4	0.0
Gasoline	(v41691858)	150.8	149.5	157.4	0.9	-4.2
Passenger vehicle insurance premiums	(v41691861)	136.8	136.8	132.9	0.0	2.9
Public transportation	(v41691863)	122.2	121.4	120.2	0.7	1.7
Health and personal care	(v41691868)	107.4	107.6	106.1	-0.2	1.2
Health care	(v41691869)	109.0	109.2	107.4	-0.2	1.5
Personal care	(v41691875)	105.8	106.0	104.7	-0.2	1.1
Recreation, education and reading	(v41691878)	96.6	96.6	97.8	0.0	-1.2
Recreation	(v41691879)	93.7	93.7	95.5	0.0	-1.9
Education and reading	(v41691887)	108.3	108.2	106.9	0.1	1.3
Alcoholic beverages and tobacco products	(v41691891)	122.4	121.7	118.8	0.6	3.0
Alcoholic beverages	(v41691892)	108.5	107.6	106.9	0.8	1.5
Tobacco products and smokers' supplies	(v41691898)	133.5	133.3	127.1	0.2	5.0

Note(s): See "Data quality, concepts and methodology — Explanatory notes for tables" section.

Table 6-6
The Consumer Price Index major components, selected sub-groups and special aggregates, 1 provinces, Whitehorse and Yellowknife — Ontario

	CANSIM vector number	Indexes			Percentage change July 2007 from	
		July 2007	June 2007	July 2006	June 2007	July 2006
		2002=100				
All-items	(v41691919)	111.1	111.1	109.0	0.0	1.9
Special aggregates						
All-items excluding food	(v41692044)	110.9	110.8	109.0	0.1	1.7
All-items excluding food and energy	(v41692045)	108.7	108.4	106.1	0.3	2.5
All-items excluding energy	(v41692050)	109.3	109.1	106.6	0.2	2.5
All-items excluding gasoline	(v41693257)	109.7	109.6	107.3	0.1	2.2
Energy ²	(v41692051)	138.8	140.7	144.0	-1.4	-3.6
All-items (1992=100)	(v41713415)	133.5	133.5	130.9	0.0	2.0
Food	(v41691920)	112.2	112.5	108.9	-0.3	3.0
Food purchased from stores	(v41691921)	110.9	111.6	108.4	-0.6	2.3
Meat ³	(v41691922)	112.5	112.2	107.3	0.3	4.8
Dairy products ³	(v41691932)	124.9	125.4	119.1	-0.4	4.9
Bakery and cereal products (excluding infant food) ³	(v41691937)	116.2	116.1	113.1	0.1	2.7
Fresh fruit ³	(v41691941)	99.3	103.1	107.2	-3.7	-7.4
Fresh vegetables ³	(v41691944)	91.3	96.2	93.9	-5.1	-2.8
Food purchased from restaurants	(v41691951)	115.1	114.7	110.0	0.3	4.6
Shelter	(v41691952)	114.4	114.4	112.5	0.0	1.7
Rented accommodation	(v41691953)	105.6	105.5	104.5	0.1	1.1
Owned accommodation	(v41691955)	116.2	115.9	112.7	0.3	3.1
Replacement cost	(v41691956)	127.5	126.9	123.6	0.5	3.2
Homeowners' home and mortgage insurance	(v41691958)	145.5	144.9	141.3	0.4	3.0
Homeowners' maintenance and repairs	(v41691959)	110.1	110.6	110.9	-0.5	-0.7
Water, fuel and electricity	(v41691960)	130.2	131.6	133.3	-1.1	-2.3
Electricity ⁴	(v41691961)	116.7	116.7	121.7	0.0	-4.1
Natural gas	(v41691963)	122.9	127.1	129.9	-3.3	-5.4
Fuel oil and other fuels	(v41691964)	173.4	173.4	168.5	0.0	2.9
Household operations, furnishings and equipment	(v41691965)	103.3	102.9	100.9	0.4	2.4
Household operations	(v41691966)	106.7	106.7	104.1	0.0	2.5
Telephone services	(v41691968)	102.6	102.5	100.4	0.1	2.2
Internet access services	(v41693222)	97.3	97.1	96.6	0.2	0.7
Household furnishings and equipment	(v41691973)	97.5	96.5	95.3	1.0	2.3
Clothing and footwear	(v41691980)	92.7	90.1	90.2	2.9	2.8
Women's clothing	(v41691982)	91.9	86.7	85.6	6.0	7.4
Men's clothing	(v41691983)	89.1	85.3	89.0	4.5	0.1
Footwear	(v41691985)	90.8	90.3	90.0	0.6	0.9
Transportation	(v41691988)	118.2	119.2	117.7	-0.8	0.4
Private transportation	(v41691989)	118.5	119.7	117.9	-1.0	0.5
Purchase and leasing of passenger vehicles	(v41691991)	99.0	100.5	98.9	-1.5	0.1
Gasoline	(v41691994)	149.0	151.1	154.3	-1.4	-3.4
Passenger vehicle insurance premiums	(v41691997)	135.2	135.2	126.9	0.0	6.5
Public transportation	(v41691999)	115.0	113.8	115.7	1.1	-0.6
Health and personal care	(v41692004)	107.7	108.3	105.9	-0.6	1.7
Health care	(v41692005)	113.1	113.0	110.0	0.1	2.8
Personal care	(v41692011)	103.2	104.5	102.5	-1.2	0.7
Recreation, education and reading	(v41692014)	101.9	101.6	99.3	0.3	2.6
Recreation	(v41692015)	97.7	97.3	95.7	0.4	2.1
Education and reading	(v41692023)	112.8	112.7	108.6	0.1	3.9
Alcoholic beverages and tobacco products	(v41692027)	129.9	129.8	126.5	0.1	2.7
Alcoholic beverages	(v41692028)	110.3	110.0	108.2	0.3	1.9
Tobacco products and smokers' supplies	(v41692034)	149.0	149.3	143.9	-0.2	3.5

Note(s): See "Data quality, concepts and methodology — Explanatory notes for tables" section.

Table 6-7
The Consumer Price Index major components, selected sub-groups and special aggregates, 1 provinces, Whitehorse and Yellowknife — Manitoba

	CANSIM vector number	Indexes			Percentage change July 2007 from	
		July 2007	June 2007	July 2006	June 2007	July 2006
		2002=100				
All-items	(v41692055)	112.1	111.7	109.7	0.4	2.2
Special aggregates						
All-items excluding food	(v41692180)	111.7	111.3	109.5	0.4	2.0
All-items excluding food and energy	(v41692181)	108.3	107.9	106.0	0.4	2.2
All-items excluding energy	(v41692186)	109.3	108.9	106.8	0.4	2.3
All-items excluding gasoline	(v41693259)	109.8	109.4	107.4	0.4	2.2
Energy ²	(v41692187)	143.2	142.9	142.2	0.2	0.7
All-items (1992=100)	(v41713419)	137.9	137.4	135.0	0.4	2.1
Food	(v41692056)	113.5	113.0	110.2	0.4	3.0
Food purchased from stores	(v41692057)	112.3	112.0	109.6	0.3	2.5
Meat ³	(v41692058)	110.9	110.0	106.4	0.8	4.2
Dairy products ³	(v41692068)	115.5	116.0	112.4	-0.4	2.8
Bakery and cereal products (excluding infant food) ³	(v41692073)	122.4	122.2	119.2	0.2	2.7
Fresh fruit ³	(v41692077)	101.4	103.7	103.9	-2.2	-2.4
Fresh vegetables ³	(v41692080)	105.1	100.9	101.7	4.2	3.3
Food purchased from restaurants	(v41692087)	115.4	114.6	111.1	0.7	3.9
Shelter	(v41692088)	115.7	115.1	111.3	0.5	4.0
Rented accommodation	(v41692089)	108.2	108.1	106.2	0.1	1.9
Owned accommodation	(v41692091)	117.3	116.4	111.2	0.8	5.5
Replacement cost	(v41692092)	136.3	135.6	127.0	0.5	7.3
Homeowners' home and mortgage insurance	(v41692094)	143.9	143.1	132.8	0.6	8.4
Homeowners' maintenance and repairs	(v41692095)	109.5	109.4	110.6	0.1	-1.0
Water, fuel and electricity	(v41692096)	117.6	117.6	115.9	0.0	1.5
Electricity	(v41692097)	107.8	107.8	105.5	0.0	2.2
Natural gas	(v41692099)	126.7	126.7	131.9	0.0	-3.9
Fuel oil and other fuels	(v41692100)	171.6	171.6	165.6	0.0	3.6
Household operations, furnishings and equipment	(v41692101)	104.5	104.3	103.4	0.2	1.1
Household operations	(v41692102)	106.8	106.3	105.1	0.5	1.6
Telephone services	(v41692104)	98.9	98.9	100.2	0.0	-1.3
Internet access services	(v41693223)	100.1	98.1	96.8	2.0	3.4
Household furnishings and equipment	(v41692109)	100.2	100.4	100.1	-0.2	0.1
Clothing and footwear	(v41692116)	95.8	94.0	96.4	1.9	-0.6
Women's clothing	(v41692118)	93.0	88.4	98.0	5.2	-5.1
Men's clothing	(v41692119)	92.4	89.5	90.4	3.2	2.2
Footwear	(v41692121)	91.1	95.8	91.3	-4.9	-0.2
Transportation	(v41692124)	119.2	119.8	118.4	-0.5	0.7
Private transportation	(v41692125)	119.5	120.3	118.5	-0.7	0.8
Purchase and leasing of passenger vehicles	(v41692127)	101.5	103.3	101.1	-1.7	0.4
Gasoline	(v41692130)	168.9	168.3	167.1	0.4	1.1
Passenger vehicle insurance premiums	(v41692133)	101.8	101.8	103.7	0.0	-1.8
Public transportation	(v41692135)	116.0	114.9	117.8	1.0	-1.5
Health and personal care	(v41692140)	107.2	106.7	106.0	0.5	1.1
Health care	(v41692141)	109.6	109.3	108.5	0.3	1.0
Personal care	(v41692147)	105.0	104.2	103.7	0.8	1.3
Recreation, education and reading	(v41692150)	103.4	102.5	101.0	0.9	2.4
Recreation	(v41692151)	101.4	100.4	99.6	1.0	1.8
Education and reading	(v41692159)	110.0	110.0	106.1	0.0	3.7
Alcoholic beverages and tobacco products	(v41692163)	126.0	125.5	121.8	0.4	3.4
Alcoholic beverages	(v41692164)	113.4	112.7	109.7	0.6	3.4
Tobacco products and smokers' supplies	(v41692170)	136.1	135.8	131.1	0.2	3.8

Note(s): See "Data quality, concepts and methodology — Explanatory notes for tables" section.

Table 6-8
The Consumer Price Index major components, selected sub-groups and special aggregates, 1 provinces, Whitehorse and Yellowknife — Saskatchewan

	CANSIM vector number	Indexes			Percentage change July 2007 from	
		July 2007	June 2007	July 2006	June 2007	July 2006
		2002=100				
All-items	(v41692191)	113.3	113.1	109.8	0.2	3.2
Special aggregates						
All-items excluding food	(v41692316)	113.6	113.3	110.1	0.3	3.2
All-items excluding food and energy	(v41692317)	110.3	110.2	106.8	0.1	3.3
All-items excluding energy	(v41692322)	110.6	110.5	107.1	0.1	3.3
All-items excluding gasoline	(v41693261)	111.3	111.2	107.7	0.1	3.3
Energy ²	(v41692323)	138.6	137.3	135.1	0.9	2.6
All-items (1992=100)	(v41713421)	140.1	139.9	135.9	0.1	3.1
Food	(v41692192)	111.7	111.9	108.6	-0.2	2.9
Food purchased from stores	(v41692193)	110.1	110.5	106.9	-0.4	3.0
Meat ³	(v41692194)	108.3	106.9	105.0	1.3	3.1
Dairy products ³	(v41692204)	113.3	114.8	111.5	-1.3	1.6
Bakery and cereal products (excluding infant food) ³	(v41692209)	118.2	116.0	113.2	1.9	4.4
Fresh fruit ³	(v41692213)	112.5	117.7	110.1	-4.4	2.2
Fresh vegetables ³	(v41692216)	111.9	109.9	106.6	1.8	5.0
Food purchased from restaurants	(v41692223)	114.8	114.8	112.2	0.0	2.3
Shelter	(v41692224)	124.7	122.9	113.2	1.5	10.2
Rented accommodation	(v41692225)	106.5	106.1	104.6	0.4	1.8
Owned accommodation	(v41692227)	130.6	127.4	113.4	2.5	15.2
Replacement cost	(v41692228)	177.4	168.1	128.8	5.5	37.7
Homeowners' home and mortgage insurance	(v41692230)	194.3	184.1	137.7	5.5	41.1
Homeowners' maintenance and repairs	(v41692231)	112.6	110.9	112.5	1.5	0.1
Water, fuel and electricity	(v41692232)	124.3	124.3	118.6	0.0	4.8
Electricity	(v41692233)	116.6	116.6	111.3	0.0	4.8
Natural gas	(v41692235)	122.8	122.8	116.8	0.0	5.1
Fuel oil and other fuels	(v41692236)	167.2	167.2	162.2	0.0	3.1
Household operations, furnishings and equipment	(v41692237)	100.9	100.9	100.8	0.0	0.1
Household operations	(v41692238)	104.0	103.8	102.8	0.2	1.2
Telephone services	(v41692240)	95.2	95.2	97.1	0.0	-2.0
Internet access services	(v41693224)	96.7	95.5	96.4	1.3	0.3
Household furnishings and equipment	(v41692245)	94.8	95.2	96.9	-0.4	-2.2
Clothing and footwear	(v41692252)	96.9	94.0	97.0	3.1	-0.1
Women's clothing	(v41692254)	95.5	89.1	95.1	7.2	0.4
Men's clothing	(v41692255)	92.0	88.6	94.4	3.8	-2.5
Footwear	(v41692257)	97.2	99.3	98.4	-2.1	-1.2
Transportation	(v41692260)	116.9	119.2	118.3	-1.9	-1.2
Private transportation	(v41692261)	116.8	119.4	118.3	-2.2	-1.3
Purchase and leasing of passenger vehicles	(v41692263)	100.3	102.4	102.3	-2.1	-2.0
Gasoline	(v41692266)	158.0	155.1	156.8	1.9	0.8
Passenger vehicle insurance premiums	(v41692269)	109.1	123.8	117.5	-11.9	-7.1
Public transportation	(v41692271)	118.0	116.2	118.9	1.5	-0.8
Health and personal care	(v41692276)	106.1	106.4	103.4	-0.3	2.6
Health care	(v41692277)	108.3	108.2	105.4	0.1	2.8
Personal care	(v41692283)	103.6	104.5	100.9	-0.9	2.7
Recreation, education and reading	(v41692286)	104.8	104.0	103.7	0.8	1.1
Recreation	(v41692287)	101.0	100.1	100.1	0.9	0.9
Education and reading	(v41692295)	116.6	116.6	115.4	0.0	1.0
Alcoholic beverages and tobacco products	(v41692299)	125.7	125.4	121.7	0.2	3.3
Alcoholic beverages	(v41692300)	113.1	112.9	110.2	0.2	2.6
Tobacco products and smokers' supplies	(v41692306)	134.2	133.9	129.0	0.2	4.0

Note(s): See "Data quality, concepts and methodology — Explanatory notes for tables" section.

Table 6-9
The Consumer Price Index major components, selected sub-groups and special aggregates, 1 provinces, Whitehorse and Yellowknife — Alberta

	CANSIM vector number	Indexes			Percentage change July 2007 from	
		July 2007	June 2007	July 2006	June 2007	July 2006
		2002=100				
All-items	(v41692327)	119.1	118.8	113.4	0.3	5.0
Special aggregates						
All-items excluding food	(v41692451)	120.4	120.1	114.4	0.2	5.2
All-items excluding food and energy	(v41692452)	116.4	116.2	110.5	0.2	5.3
All-items excluding energy	(v41692457)	115.7	115.5	110.1	0.2	5.1
All-items excluding gasoline	(v41693263)	117.4	117.2	111.6	0.2	5.2
Energy ²	(v41692458)	160.8	159.2	154.3	1.0	4.2
All-items (1992=100)	(v41713424)	147.9	147.5	140.8	0.3	5.0
Food	(v41692328)	112.4	112.3	108.3	0.1	3.8
Food purchased from stores	(v41692329)	111.2	111.2	107.3	0.0	3.6
Meat ³	(v41692330)	108.9	109.5	103.1	-0.5	5.6
Dairy products ³	(v41692340)	116.8	116.7	112.4	0.1	3.9
Bakery and cereal products (excluding infant food) ³	(v41692345)	120.5	118.8	114.3	1.4	5.4
Fresh fruit ³	(v41692349)	104.6	105.7	103.1	-1.0	1.5
Fresh vegetables ³	(v41692352)	94.9	94.8	93.5	0.1	1.5
Food purchased from restaurants	(v41692359)	115.0	114.5	110.1	0.4	4.5
Shelter	(v41692360)	140.6	140.0	126.1	0.4	11.5
Rented accommodation	(v41692361)	112.9	112.2	105.7	0.6	6.8
Owned accommodation	(v41692363)	145.7	144.6	127.9	0.8	13.9
Replacement cost	(v41692364)	195.3	194.9	165.8	0.2	17.8
Homeowners' home and mortgage insurance	(v41692366)	202.1	201.7	171.4	0.2	17.9
Homeowners' maintenance and repairs	(v41692367)	110.2	109.9	108.9	0.3	1.2
Water, fuel and electricity	(v41692368)	151.8	152.8	140.5	-0.7	8.0
Electricity	(v41692369)	127.9	114.3	104.4	11.9	22.5
Natural gas	(v41692371)	184.5	217.8	203.0	-15.3	-9.1
Fuel oil and other fuels
Household operations, furnishings and equipment	(v41692372)	104.7	104.5	102.6	0.2	2.0
Household operations	(v41692373)	108.1	108.0	105.6	0.1	2.4
Telephone services	(v41692375)	101.2	101.2	100.5	0.0	0.7
Internet access services	(v41693225)	97.9	96.6	95.3	1.3	2.7
Household furnishings and equipment	(v41692380)	99.0	98.6	97.7	0.4	1.3
Clothing and footwear	(v41692387)	99.2	99.2	96.2	0.0	3.1
Women's clothing	(v41692389)	95.2	95.0	91.7	0.2	3.8
Men's clothing	(v41692390)	96.9	97.0	95.4	-0.1	1.6
Footwear	(v41692392)	102.6	102.8	99.4	-0.2	3.2
Transportation	(v41692395)	122.4	122.7	120.8	-0.2	1.3
Private transportation	(v41692396)	122.7	123.2	120.8	-0.4	1.6
Purchase and leasing of passenger vehicles	(v41692398)	95.4	97.7	96.8	-2.4	-1.4
Gasoline	(v41692401)	166.0	161.7	163.2	2.7	1.7
Passenger vehicle insurance premiums	(v41692404)	142.0	142.0	136.6	0.0	4.0
Public transportation	(v41692406)	118.7	117.7	120.1	0.8	-1.2
Health and personal care	(v41692411)	108.4	108.6	105.9	-0.2	2.4
Health care	(v41692412)	111.1	111.3	108.2	-0.2	2.7
Personal care	(v41692418)	105.7	105.9	103.7	-0.2	1.9
Recreation, education and reading	(v41692421)	105.9	104.7	104.0	1.1	1.8
Recreation	(v41692422)	103.3	101.7	100.8	1.6	2.5
Education and reading	(v41692430)	114.9	115.1	115.4	-0.2	-0.4
Alcoholic beverages and tobacco products	(v41692434)	125.7	125.8	115.9	-0.1	8.5
Alcoholic beverages	(v41692435)	112.5	112.3	108.3	0.2	3.9
Tobacco products and smokers' supplies	(v41692441)	136.8	137.3	121.4	-0.4	12.7

Note(s): See "Data quality, concepts and methodology — Explanatory notes for tables" section.

Table 6-10
The Consumer Price Index major components, selected sub-groups and special aggregates, 1 provinces, Whitehorse and Yellowknife — British Columbia

	CANSIM vector number	Indexes			Percentage change July 2007 from	
		July 2007	June 2007	July 2006	June 2007	July 2006
		2002=100				
All-items	(v41692462)	110.5	110.3	108.8	0.2	1.6
Special aggregates						
All-items excluding food	(v41692587)	110.7	110.4	109.2	0.3	1.4
All-items excluding food and energy	(v41692588)	108.5	108.2	106.6	0.3	1.8
All-items excluding energy	(v41692593)	108.7	108.5	106.6	0.2	2.0
All-items excluding gasoline	(v41693265)	109.0	108.7	107.0	0.3	1.9
Energy ²	(v41692594)	134.0	134.7	137.3	-0.5	-2.4
All-items (1992=100)	(v41713427)	130.2	130.0	128.2	0.2	1.6
Food	(v41692463)	109.7	109.7	106.9	0.0	2.6
Food purchased from stores	(v41692464)	107.8	108.6	105.9	-0.7	1.8
Meat ³	(v41692465)	109.2	110.3	105.0	-1.0	4.0
Dairy products ³	(v41692475)	112.8	113.0	110.3	-0.2	2.3
Bakery and cereal products (excluding infant food) ³	(v41692480)	115.0	114.1	111.6	0.8	3.0
Fresh fruit ³	(v41692484)	104.5	105.3	104.6	-0.8	-0.1
Fresh vegetables ³	(v41692487)	94.1	97.2	94.0	-3.2	0.1
Food purchased from restaurants	(v41692494)	113.2	112.0	108.9	1.1	3.9
Shelter	(v41692495)	110.9	110.4	108.6	0.5	2.1
Rented accommodation	(v41692496)	104.0	103.9	102.9	0.1	1.1
Owned accommodation	(v41692498)	112.7	111.9	109.4	0.7	3.0
Replacement cost	(v41692499)	128.9	127.7	124.0	0.9	4.0
Homeowners' home and mortgage insurance	(v41692501)	147.4	146.0	137.2	1.0	7.4
Homeowners' maintenance and repairs	(v41692502)	108.1	106.2	109.0	1.8	-0.8
Water, fuel and electricity	(v41692503)	115.7	115.5	115.6	0.2	0.1
Electricity	(v41692504)	109.0	108.7	109.7	0.3	-0.6
Natural gas	(v41692506)	119.7	119.7	117.0	0.0	2.3
Fuel oil and other fuels	(v41692507)	171.5	171.5	175.8	0.0	-2.4
Household operations, furnishings and equipment	(v41692508)	102.8	102.9	101.7	-0.1	1.1
Household operations	(v41692509)	105.4	105.5	104.0	-0.1	1.3
Telephone services	(v41692511)	101.3	101.3	100.0	0.0	1.3
Internet access services	(v41693226)	96.5	95.8	94.8	0.7	1.8
Household furnishings and equipment	(v41692516)	97.7	97.8	97.4	-0.1	0.3
Clothing and footwear	(v41692523)	97.9	96.5	99.4	1.5	-1.5
Women's clothing	(v41692525)	97.3	90.3	102.4	7.8	-5.0
Men's clothing	(v41692526)	92.8	93.1	97.7	-0.3	-5.0
Footwear	(v41692528)	99.0	103.1	97.5	-4.0	1.5
Transportation	(v41692531)	117.4	118.3	117.5	-0.8	-0.1
Private transportation	(v41692532)	117.7	118.8	117.5	-0.9	0.2
Purchase and leasing of passenger vehicles	(v41692534)	99.3	100.9	99.1	-1.6	0.2
Gasoline	(v41692537)	155.5	157.0	161.4	-1.0	-3.7
Passenger vehicle insurance premiums	(v41692540)	119.0	119.0	117.3	0.0	1.4
Public transportation	(v41692542)	116.0	115.0	117.7	0.9	-1.4
Health and personal care	(v41692547)	108.3	108.5	106.0	-0.2	2.2
Health care	(v41692548)	111.6	111.8	109.3	-0.2	2.1
Personal care	(v41692554)	104.5	104.7	102.2	-0.2	2.3
Recreation, education and reading	(v41692557)	110.9	109.8	108.2	1.0	2.5
Recreation	(v41692558)	101.3	99.8	98.7	1.5	2.6
Education and reading	(v41692566)	141.1	141.1	138.4	0.0	2.0
Alcoholic beverages and tobacco products	(v41692570)	119.3	119.3	115.9	0.0	2.9
Alcoholic beverages	(v41692571)	109.6	109.5	107.6	0.1	1.9
Tobacco products and smokers' supplies	(v41692577)	131.0	131.1	125.0	-0.1	4.8

Note(s): See "Data quality, concepts and methodology — Explanatory notes for tables" section.

Table 6-11

The Consumer Price Index major components, selected sub-groups and special aggregates, 1 provinces, Whitehorse and Yellowknife — Whitehorse*

	CANSIM vector number	Indexes			Percentage change July 2007 from	
		July 2007	June 2007	July 2006	June 2007	July 2006
		2002=100				
All-items	(v41692598)	110.7	109.7	107.5	0.9	3.0
Special aggregates						
All-items excluding food	(v41692711)	110.7	110.1	107.8	0.5	2.7
All-items excluding food and energy	(v41692712)	106.7	106.6	104.3	0.1	2.3
All-items excluding energy	(v41692717)	107.5	107.0	104.6	0.5	2.8
All-items excluding gasoline	(v41693267)	109.3	108.3	105.9	0.9	3.2
Energy ²	(v41692718)	143.2	136.9	135.2	4.6	5.9
All-items (1992=100)	(v41713430)	130.3	129.1	126.5	0.9	3.0
Food	(v41692599)	110.9	108.3	106.2	2.4	4.4
Food purchased from stores	(v41692600)	108.1	104.8	104.2	3.1	3.7
Meat ³	(v41692601)	108.3	104.7	103.6	3.4	4.5
Dairy products ³	(v41692611)	115.8	116.3	113.6	-0.4	1.9
Bakery and cereal products (excluding infant food) ³	(v41692616)	110.9	107.5	105.0	3.2	5.6
Fresh fruit ³	(v41692620)	99.5	100.0	103.8	-0.5	-4.1
Fresh vegetables ³	(v41692623)	98.8	94.5	89.1	4.6	10.9
Food purchased from restaurants	(v41692630)	117.4	116.7	110.7	0.6	6.1
Shelter	(v41692631)	118.6	116.2	112.5	2.1	5.4
Rented accommodation
Owned accommodation
Replacement cost
Homeowners' home and mortgage insurance
Homeowners' maintenance and repairs
Water, fuel and electricity	(v41692632)	138.5	128.4	125.9	7.9	10.0
Electricity	(v41692633)	115.5	97.2	97.2	18.8	18.8
Natural gas
Fuel oil and other fuels	(v41692635)	171.7	171.7	167.1	0.0	2.8
Household operations, furnishings and equipment	(v41692636)	100.8	100.5	99.2	0.3	1.6
Household operations	(v41692637)	104.4	104.0	102.1	0.4	2.3
Telephone services	(v41692639)	100.0	100.0	99.1	0.0	0.9
Internet access services	(v41693227)	101.4	101.4	101.4	0.0	0.0
Household furnishings and equipment	(v41692644)	95.0	94.9	94.5	0.1	0.5
Clothing and footwear	(v41692651)	99.7	99.2	99.9	0.5	-0.2
Women's clothing	(v41692653)	96.4	98.4	94.6	-2.0	1.9
Men's clothing	(v41692654)	101.3	101.2	103.0	0.1	-1.7
Footwear	(v41692656)	100.0	93.7	96.5	6.7	3.6
Transportation	(v41692659)	118.6	119.5	117.5	-0.8	0.9
Private transportation	(v41692660)	119.4	120.8	117.9	-1.2	1.3
Purchase and leasing of passenger vehicles	(v41692662)	100.9	103.4	101.6	-2.4	-0.7
Gasoline	(v41692665)	145.8	145.7	143.6	0.1	1.5
Passenger vehicle insurance premiums	(v41692668)	142.3	142.3	132.6	0.0	7.3
Public transportation	(v41692670)	114.3	112.9	116.6	1.2	-2.0
Health and personal care	(v41692675)	107.5	107.8	104.7	-0.3	2.7
Health care	(v41692676)	109.8	109.8	107.3	0.0	2.3
Personal care	(v41692682)	104.1	104.7	101.0	-0.6	3.1
Recreation, education and reading	(v41692685)	98.2	97.9	96.9	0.3	1.3
Recreation	(v41692686)	95.2	94.8	94.5	0.4	0.7
Education and reading	(v41692693)	112.1	112.1	108.0	0.0	3.8
Alcoholic beverages and tobacco products	(v41692695)	118.4	118.4	113.6	0.0	4.2
Alcoholic beverages	(v41692696)	108.4	108.4	105.5	0.0	2.7
Tobacco products and smokers' supplies	(v41692702)	128.2	128.2	120.8	0.0	6.1

Note(s): See "Data quality, concepts and methodology — Explanatory notes for tables" section.

* Yukon Territory

Table 6-12
The Consumer Price Index major components, selected sub-groups and special aggregates, 1 provinces, Whitehorse and Yellowknife — Yellowknife*

	CANSIM vector number	Indexes			Percentage change July 2007 from	
		July 2007	June 2007	July 2006	June 2007	July 2006
		2002=100				
All-items	(v41692722)	111.5	111.6	107.8	-0.1	3.4
Special aggregates						
All-items excluding food	(v41692835)	112.0	112.0	107.8	0.0	3.9
All-items excluding food and energy	(v41692836)	108.5	108.3	105.1	0.2	3.2
All-items excluding energy	(v41692841)	108.5	108.5	105.5	0.0	2.8
All-items excluding gasoline	(v41693269)	110.4	110.4	106.9	0.0	3.3
Energy ²	(v41692842)	147.4	147.8	135.4	-0.3	8.9
All-items (1992=100)	(v41713431)	129.7	129.8	125.4	-0.1	3.4
Food	(v41692723)	108.7	109.5	107.3	-0.7	1.3
Food purchased from stores	(v41692724)	107.7	108.8	106.6	-1.0	1.0
Meat ³	(v41692725)	106.0	111.0	110.0	-4.5	-3.6
Dairy products ³	(v41692735)	110.6	110.3	107.4	0.3	3.0
Bakery and cereal products (excluding infant food) ³	(v41692740)	110.0	108.3	107.1	1.6	2.7
Fresh fruit ³	(v41692744)	113.4	110.4	107.2	2.7	5.8
Fresh vegetables ³	(v41692747)	108.4	111.8	105.1	-3.0	3.1
Food purchased from restaurants	(v41692754)	111.4	110.9	109.0	0.5	2.2
Shelter ⁴	(v41692755)	121.9	121.4	114.6	0.4	6.4
Rented accommodation
Owned accommodation
Replacement cost
Homeowners' home and mortgage insurance
Homeowners' maintenance and repairs
Water, fuel and electricity	(v41692756)	141.0	141.1	128.6	-0.1	9.6
Electricity	(v41692757)	125.8	125.8	109.4	0.0	15.0
Natural gas
Fuel oil and other fuels	(v41692759)	193.5	193.5	178.8	0.0	8.2
Household operations, furnishings and equipment	(v41692760)	104.4	104.3	101.3	0.1	3.1
Household operations	(v41692761)	107.5	107.5	103.8	0.0	3.6
Telephone services	(v41692763)	100.2	100.2	99.1	0.0	1.1
Internet access services	(v41693228)	72.2	72.2	72.2	0.0	0.0
Household furnishings and equipment	(v41692768)	97.1	97.1	95.8	0.0	1.4
Clothing and footwear	(v41692775)	93.3	94.2	93.3	-1.0	0.0
Women's clothing	(v41692777)	83.5	88.3	88.1	-5.4	-5.2
Men's clothing	(v41692778)	99.0	97.1	96.8	2.0	2.3
Footwear	(v41692780)	94.1	90.8	86.7	3.6	8.5
Transportation	(v41692783)	109.9	110.6	105.4	-0.6	4.3
Private transportation	(v41692784)	108.6	109.9	102.9	-1.2	5.5
Purchase and leasing of passenger vehicles	(v41692786)	91.0	93.3	88.9	-2.5	2.4
Gasoline	(v41692789)	144.2	145.2	135.7	-0.7	6.3
Passenger vehicle insurance premiums	(v41692792)	128.2	128.2	121.8	0.0	5.3
Public transportation	(v41692794)	117.3	115.8	119.7	1.3	-2.0
Health and personal care	(v41692799)	105.0	105.1	103.6	-0.1	1.4
Health care	(v41692800)	108.2	107.8	105.8	0.4	2.3
Personal care	(v41692806)	103.2	103.7	102.1	-0.5	1.1
Recreation, education and reading	(v41692809)	102.7	102.0	101.7	0.7	1.0
Recreation	(v41692810)	101.1	100.3	100.2	0.8	0.9
Education and reading	(v41692817)	110.0	110.0	109.4	0.0	0.5
Alcoholic beverages and tobacco products	(v41692819)	129.5	129.3	126.9	0.2	2.0
Alcoholic beverages	(v41692820)	124.2	124.2	122.1	0.0	1.7
Tobacco products and smokers' supplies	(v41692826)	134.1	133.7	130.9	0.3	2.4

Note(s): See "Data quality, concepts and methodology — Explanatory notes for tables" section.

* Northwest Territories

Table 7
The all-items Consumer Price Index, ¹ provinces, Whitehorse, Yellowknife and Iqaluit, ² historical data

	Jan.	Feb.	Mar.	Apr.	May	June	July	Aug.	Sept.	Oct.	Nov.	Dec.	Annual average ³
	2002=100												
Newfoundland and Labrador (v41691244)													
2002	97.0	97.4	98.0	99.7	100.6	100.4	100.6	100.4	100.7	101.7	102.0	101.5	100.0
2003	102.1	102.3	103.5	103.2	103.0	102.6	103.3	103.0	103.5	102.6	103.2	102.6	102.9
2004	103.1	103.0	103.4	103.7	104.8	105.1	105.7	105.4	105.6	105.9	106.2	105.8	104.8
2005	105.7	106.2	106.6	107.5	107.5	107.6	107.9	108.0	109.6	108.2	108.3	107.9	107.6
2006	108.4	108.4	108.7	109.6	110.6	110.4	110.5	110.9	109.7	108.9	109.1	109.3	109.5
2007	109.6	110.1	110.8	111.1	111.4	111.9	111.6
Prince Edward Island (v41691379)													
2002	96.4	96.6	97.3	99.3	100.2	99.9	100.8	100.9	101.3	102.2	102.8	102.2	100.0
2003	101.9	103.1	104.1	104.6	103.6	103.2	103.4	103.2	103.8	103.7	104.1	103.6	103.5
2004	103.5	104.0	104.7	105.3	105.6	106.2	105.9	105.8	106.4	106.7	108.2	107.4	105.8
2005	106.5	106.7	107.6	108.6	109.1	108.9	109.0	109.3	111.8	111.5	110.7	110.0	109.1
2006	110.3	110.8	110.4	112.1	112.8	112.3	112.5	112.8	111.6	110.7	111.1	111.6	111.6
2007	111.5	111.9	113.3	113.7	114.2	114.1	114.0
Nova Scotia (v41691513)													
2002	96.7	97.2	97.8	99.2	100.2	100.3	100.8	100.8	101.2	101.9	102.2	101.6	100.0
2003	102.7	103.8	104.5	103.4	103.1	103.2	103.5	103.6	103.6	103.1	103.3	103.1	103.4
2004	103.2	103.7	104.4	104.4	105.2	105.6	105.8	105.7	105.9	106.2	106.7	106.4	105.3
2005	106.1	106.4	107.1	107.6	107.8	107.7	108.1	108.8	110.4	109.8	109.1	109.3	108.2
2006	109.3	109.0	109.6	111.0	111.2	111.0	111.3	111.4	110.6	110.1	110.4	110.2	110.4
2007	110.1	111.0	111.9	112.5	113.1	113.0	113.0
New Brunswick (v41691648)													
2002	96.7	97.0	97.6	99.2	99.8	100.0	100.8	101.1	101.3	101.7	102.5	102.4	100.0
2003	103.2	104.0	104.3	103.7	103.0	103.0	103.4	103.5	103.7	103.0	103.0	102.9	103.4
2004	103.3	103.8	104.2	104.1	105.1	105.3	105.2	105.2	105.1	105.5	106.0	105.6	104.9
2005	105.6	105.9	106.8	107.1	107.0	106.9	107.5	108.0	109.2	108.4	108.2	108.3	107.4
2006	108.8	108.7	109.1	110.0	110.1	110.0	109.7	110.0	108.8	107.8	108.4	109.1	109.2
2007	109.2	109.6	110.7	111.2	111.6	112.1	112.1
Quebec (v41691783)													
2002	98.1	98.8	99.0	99.5	99.4	99.7	100.6	100.7	100.7	101.0	101.3	101.3	100.0
2003	102.0	103.1	103.3	102.4	102.4	102.3	102.4	102.5	102.3	102.4	102.7	102.7	102.5
2004	103.2	103.6	103.9	103.8	104.8	104.8	104.6	104.5	104.7	105.3	105.5	105.2	104.5
2005	105.3	105.6	106.4	106.4	106.5	106.8	107.0	107.4	108.5	107.7	107.5	107.4	106.9
2006	108.1	108.0	108.4	109.1	109.3	109.1	109.2	109.2	108.4	108.4	108.6	108.7	108.7
2007	108.8	109.6	110.4	110.6	111.1	110.7	110.6
Ontario (v41691919)													
2002	97.7	98.4	99.5	99.5	99.5	99.8	100.5	101.3	100.9	101.1	101.4	100.4	100.0
2003	101.9	102.7	102.8	101.8	102.2	102.3	102.5	103.0	103.2	102.9	103.1	103.4	102.7
2004	103.4	103.6	104.0	104.1	105.0	104.8	104.9	104.7	104.8	105.0	105.4	105.3	104.6
2005	105.1	105.8	106.4	106.5	106.6	106.8	106.9	107.5	108.2	107.7	107.5	107.6	106.9
2006	108.2	107.9	108.8	109.1	109.5	109.3	109.0	109.1	108.5	108.4	108.6	108.8	108.8
2007	108.6	109.7	110.8	111.1	111.6	111.1	111.1
Manitoba (v41692055)													
2002	98.0	98.0	98.7	99.6	100.1	100.4	100.6	100.8	100.7	100.6	101.3	101.3	100.0
2003	101.5	102.0	102.2	101.9	101.7	101.5	101.5	101.8	102.3	101.7	101.8	102.0	101.8
2004	102.0	101.9	102.4	102.7	104.1	104.4	104.3	104.3	104.1	104.5	105.2	105.5	103.8
2005	105.0	105.2	105.6	106.3	106.5	106.7	107.0	107.4	107.8	107.5	107.3	106.9	106.6
2006	107.4	107.2	107.6	108.5	109.2	109.3	109.7	109.7	108.8	108.9	109.0	108.7	108.7
2007	109.1	109.4	110.4	110.9	111.7	111.7	112.1
Saskatchewan (v41692191)													
2002	97.8	97.7	98.5	99.8	100.0	100.2	100.4	100.6	101.0	101.1	101.5	101.4	100.0
2003	101.5	102.0	102.5	101.9	102.2	102.1	102.2	102.5	102.8	102.4	102.8	102.7	102.3
2004	102.8	102.9	103.1	103.8	104.9	105.0	105.2	104.7	104.9	105.5	106.1	105.8	104.6
2005	105.6	105.8	106.4	107.1	106.5	106.8	107.1	107.4	108.0	107.5	107.4	107.3	106.9
2006	107.9	107.9	108.2	109.2	109.6	109.6	109.8	110.4	109.3	109.1	108.8	108.9	109.1
2007	109.5	109.9	111.0	111.8	112.6	113.1	113.3

Table 7 – continued

The all-items Consumer Price Index, 1 provinces, Whitehorse, Yellowknife and Iqaluit,² historical data

	Jan.	Feb.	Mar.	Apr.	May	June	July	Aug.	Sept.	Oct.	Nov.	Dec.	Annual average ³
	2002=100												
Alberta (v41692327)													
2002	96.7	97.2	97.5	99.0	99.4	99.9	99.9	100.1	101.4	102.5	103.0	103.3	100.0
2003	103.5	103.8	104.9	104.9	104.2	104.7	104.3	104.2	104.8	104.3	104.7	104.6	104.4
2004	104.6	104.6	104.9	105.2	106.1	107.1	106.4	106.2	106.3	106.0	106.7	106.4	105.9
2005	106.1	106.2	106.9	107.6	107.4	107.8	108.7	108.7	110.0	109.7	109.6	109.0	108.1
2006	110.4	109.7	110.3	111.4	112.2	111.8	113.4	113.9	114.1	113.0	113.7	114.2	112.3
2007	114.7	115.0	116.4	117.5	117.8	118.8	119.1
British Columbia (v41692462)													
2002	97.9	98.3	98.9	99.8	100.2	100.3	100.6	100.7	100.8	100.7	100.9	100.8	100.0
2003	101.0	101.5	102.3	102.1	102.1	102.0	102.2	102.6	102.9	102.4	102.5	102.6	102.2
2004	102.5	102.9	103.2	103.9	104.7	104.9	104.7	104.7	104.8	104.8	105.0	104.8	104.2
2005	104.8	105.0	105.3	106.0	106.3	106.4	106.6	106.8	107.3	107.1	107.1	106.7	106.3
2006	106.6	106.7	107.2	107.8	108.7	108.7	108.8	109.0	108.4	108.3	108.7	108.8	108.1
2007	109.0	109.1	109.5	109.9	110.5	110.3	110.5
Whitehorse, Yukon Territory (v41692598)													
2002	97.9	97.9	98.1	99.2	99.7	100.1	101.2	101.1	100.9	101.0	101.4	101.5	100.0
2003	101.7	102.5	102.6	102.2	101.8	101.9	102.4	102.3	102.2	101.6	101.0	101.1	101.9
2004	101.1	101.4	101.9	102.2	103.3	103.6	103.5	103.1	103.4	103.5	104.6	104.0	103.0
2005	103.1	103.3	103.9	104.4	104.9	105.3	105.4	105.7	106.8	106.8	107.1	106.3	105.3
2006	106.4	105.9	105.9	106.9	107.5	107.9	107.5	107.7	107.2	106.3	106.3	106.3	106.8
2007	107.0	107.3	108.0	108.7	109.5	109.7	110.7
Yellowknife, Northwest Territories (v41692722)													
2002	97.8	98.2	98.2	98.9	99.7	99.9	100.8	100.9	101.2	101.1	101.3	102.0	100.0
2003	102.2	102.5	102.7	103.0	102.7	102.5	102.2	102.0	101.8	101.3	102.0	103.2	102.3
2004	103.1	102.8	103.2	103.3	104.0	104.3	104.3	103.7	103.7	103.8	104.7	105.0	103.8
2005	104.6	104.8	104.9	105.2	106.1	106.4	106.4	106.3	107.0	107.5	107.8	107.8	106.2
2006	107.4	107.3	107.0	107.9	108.0	107.7	107.8	108.0	107.8	107.1	107.6	108.4	107.7
2007	108.9	109.1	109.8	110.4	111.3	111.6	111.5
Iqaluit, Nunavut (Dec. 2002=100) (v41713432)													
2002	100.0	..
2003	99.9	99.8	100.0	99.9	100.1	100.2	100.7	100.3	100.3	100.5	100.7	100.5	100.2
2004	100.0	99.9	100.2	100.8	101.4	101.8	101.8	101.4	101.6	101.2	101.8	102.2	101.2
2005	102.0	101.7	101.8	102.1	102.8	103.0	103.0	103.4	103.8	103.3	103.8	103.6	102.9
2006	103.5	103.7	103.7	104.5	104.8	105.1	104.8	104.4	105.0	104.2	105.2	105.7	104.6
2007	106.4	106.5	106.7	107.7	108.0	108.0	108.9

Note(s): See "Data quality, concepts and methodology — Explanatory notes for tables" section.

Table 8
The Consumer Price Index and selected sub-groups, by urban centre 1,2,3

	CANSIM vector number	Indexes			Percentage change July 2007 from	
		July 2007	June 2007	July 2006	June 2007	July 2006
2002=100						
St. John's, Newfoundland and Labrador						
All-items	(v41692846)	111.1	111.3	110.0	-0.2	1.0
Shelter	(v41692847)	115.9	116.2	114.7	-0.3	1.0
Rented accommodation	(v41692848)	103.8	103.4	103.9	0.4	-0.1
Owned accommodation	(v41692849)	112.4	112.1	108.9	0.3	3.2
Water, fuel and electricity	(v41692850)	135.5	138.3	139.8	-2.0	-3.1
All-items (1992=100)	(v41713405)	130.4	130.6	129.1	-0.2	1.0
Charlottetown and Summerside, Prince Edward Island						
All-items	(v41692852)	113.4	113.5	111.8	-0.1	1.4
Shelter	(v41692853)	116.9	116.8	115.1	0.1	1.6
Rented accommodation	(v41692854)	107.2	107.2	105.8	0.0	1.3
Owned accommodation	(v41692855)	112.1	111.9	108.8	0.2	3.0
Water, fuel and electricity	(v41692856)	145.7	145.8	146.5	-0.1	-0.5
All-items (1992=100)	(v41713407)	132.9	133.0	131.0	-0.1	1.5
Halifax, Nova Scotia						
All-items	(v41692858)	112.4	112.5	110.5	-0.1	1.7
Shelter	(v41692859)	115.5	115.4	113.5	0.1	1.8
Rented accommodation	(v41692860)	104.8	104.6	104.1	0.2	0.7
Owned accommodation	(v41692861)	115.0	114.9	109.3	0.1	5.2
Water, fuel and electricity	(v41692862)	131.0	131.0	139.0	0.0	-5.8
All-items (1992=100)	(v41713409)	133.9	133.9	131.6	0.0	1.7
Saint John, New Brunswick						
All-items	(v41692864)	112.1	112.1	109.8	0.0	2.1
Shelter	(v41692865)	117.7	117.5	112.0	0.2	5.1
Rented accommodation	(v41692866)	105.0	104.7	104.2	0.3	0.8
Owned accommodation	(v41692867)	113.4	113.2	110.2	0.2	2.9
Water, fuel and electricity	(v41692868)	141.2	141.2	124.5	0.0	13.4
All-items (1992=100)	(v41713411)	132.5	132.5	129.7	0.0	2.2
Québec, Quebec						
All-items	(v41692870)	110.4	110.4	109.2	0.0	1.1
Shelter	(v41692871)	113.3	113.1	111.4	0.2	1.7
Rented accommodation	(v41692872)	106.8	106.5	105.6	0.3	1.1
Owned accommodation	(v41692873)	115.3	115.1	112.9	0.2	2.1
Water, fuel and electricity	(v41692874)	116.8	116.8	115.9	0.0	0.8
All-items (1992=100)	(v41713413)	128.2	128.2	126.9	0.0	1.0
Montréal, Quebec						
All-items	(v41692876)	110.5	110.5	108.9	0.0	1.5
Shelter	(v41692877)	114.8	114.6	111.4	0.2	3.1
Rented accommodation	(v41692878)	106.8	106.7	105.3	0.1	1.4
Owned accommodation	(v41692879)	118.4	118.1	113.3	0.3	4.5
Water, fuel and electricity	(v41692880)	117.6	117.8	116.6	-0.2	0.9
All-items (1992=100)	(v41713414)	127.8	127.8	126.0	0.0	1.4
Ottawa-Gatineau, Ontario part, Ontario/Quebec						
All-items	(v41692882)	111.1	111.1	108.9	0.0	2.0
Shelter	(v41692883)	115.7	116.0	113.3	-0.3	2.1
Rented accommodation	(v41692884)	104.4	104.3	103.5	0.1	0.9
Owned accommodation	(v41692885)	118.7	118.5	114.7	0.2	3.5
Water, fuel and electricity	(v41692886)	130.4	133.4	132.3	-2.2	-1.4
All-items (1992=100)	(v41713416)	135.4	135.4	132.7	0.0	2.0
Toronto, Ontario						
All-items	(v41692888)	110.7	110.7	108.5	0.0	2.0
Shelter	(v41692889)	113.3	113.4	111.4	-0.1	1.7
Rented accommodation	(v41692890)	106.2	106.1	105.0	0.1	1.1
Owned accommodation	(v41692891)	114.6	114.2	111.6	0.4	2.7
Water, fuel and electricity	(v41692892)	127.8	130.9	129.4	-2.4	-1.2
All-items (1992=100)	(v41713417)	133.4	133.4	130.8	0.0	2.0

Table 8 – continued

The Consumer Price Index and selected sub-groups, by urban centre 1,2,3

	CANSIM vector number	Indexes			Percentage change July 2007 from	
		July 2007	June 2007	July 2006	June 2007	July 2006
2002=100						
Thunder Bay, Ontario						
All-items	(v41692894)	108.6	108.3	107.2	0.3	1.3
Shelter	(v41692895)	104.3	103.6	105.2	0.7	-0.9
Rented accommodation	(v41692896)	102.1	102.1	101.4	0.0	0.7
Owned accommodation	(v41692897)	101.0	101.0	100.6	0.0	0.4
Water, fuel and electricity	(v41692898)	128.9	125.7	137.1	2.5	-6.0
All-items (1992=100)	(v41713418)	129.5	129.2	127.9	0.2	1.3
Winnipeg, Manitoba						
All-items	(v41692900)	111.9	111.3	109.5	0.5	2.2
Shelter	(v41692901)	115.3	114.7	110.6	0.5	4.2
Rented accommodation	(v41692902)	109.2	109.1	107.1	0.1	2.0
Owned accommodation	(v41692903)	116.3	115.4	109.9	0.8	5.8
Water, fuel and electricity	(v41692904)	118.1	118.1	116.5	0.0	1.4
All-items (1992=100)	(v41713420)	138.0	137.2	134.9	0.6	2.3
Regina, Saskatchewan						
All-items	(v41692906)	112.5	112.3	109.5	0.2	2.7
Shelter	(v41692907)	120.8	120.0	111.9	0.7	8.0
Rented accommodation	(v41692908)	106.5	106.0	104.2	0.5	2.2
Owned accommodation	(v41692909)	125.7	124.4	113.5	1.0	10.7
Water, fuel and electricity	(v41692910)	119.6	119.6	114.1	0.0	4.8
All-items (1992=100)	(v41713422)	140.1	140.0	136.5	0.1	2.6
Saskatoon, Saskatchewan						
All-items	(v41692912)	114.1	113.5	109.8	0.5	3.9
Shelter	(v41692913)	127.1	124.1	112.7	2.4	12.8
Rented accommodation	(v41692914)	106.8	106.2	104.7	0.6	2.0
Owned accommodation	(v41692915)	132.4	127.5	111.7	3.8	18.5
Water, fuel and electricity	(v41692916)	129.3	129.3	123.0	0.0	5.1
All-items (1992=100)	(v41713423)	140.5	139.7	135.1	0.6	4.0
Edmonton, Alberta						
All-items	(v41692918)	118.8	118.6	112.8	0.2	5.3
Shelter	(v41692919)	139.4	138.8	123.4	0.4	13.0
Rented accommodation	(v41692920)	113.0	112.4	106.3	0.5	6.3
Owned accommodation	(v41692921)	138.4	137.0	119.7	1.0	15.6
Water, fuel and electricity	(v41692922)	175.4	175.7	157.2	-0.2	11.6
All-items (1992=100)	(v41713425)	144.8	144.5	137.5	0.2	5.3
Calgary, Alberta						
All-items	(v41692924)	119.1	118.6	113.6	0.4	4.8
Shelter	(v41692925)	139.1	138.2	126.4	0.7	10.0
Rented accommodation	(v41692926)	112.5	111.8	104.7	0.6	7.4
Owned accommodation	(v41692927)	149.5	148.4	133.8	0.7	11.7
Water, fuel and electricity	(v41692928)	130.8	132.5	124.0	-1.3	5.5
All-items (1992=100)	(v41713426)	149.8	149.2	143.0	0.4	4.8
Vancouver, British Columbia						
All-items	(v41692930)	110.7	110.5	108.5	0.2	2.0
Shelter	(v41692931)	112.2	111.6	108.0	0.5	3.9
Rented accommodation	(v41692932)	104.4	104.2	103.2	0.2	1.2
Owned accommodation	(v41692933)	115.4	114.5	109.0	0.8	5.9
Water, fuel and electricity	(v41692934)	112.9	112.9	113.1	0.0	-0.2
All-items (1992=100)	(v41713428)	131.3	131.1	128.8	0.2	1.9
Victoria, British Columbia						
All-items	(v41692936)	110.1	109.9	109.2	0.2	0.8
Shelter	(v41692937)	109.9	109.5	110.4	0.4	-0.5
Rented accommodation	(v41692938)	104.7	104.7	103.4	0.0	1.3
Owned accommodation	(v41692939)	109.8	109.2	110.9	0.5	-1.0
Water, fuel and electricity	(v41692940)	121.4	121.4	122.1	0.0	-0.6
All-items (1992=100)	(v41713429)	129.3	129.0	128.2	0.2	0.9

Note(s): The indexes for Whitehorse, Yellowknife and Iqaluit are available from table 6-11.
See "Data quality, concepts and methodology — Explanatory notes for tables" section.

Table 9
The all-items Consumer Price Index by urban centre, ^{1,2,3} historical data

	Jan.	Feb.	Mar.	Apr.	May	June	July	Aug.	Sept.	Oct.	Nov.	Dec.	Annual average
	2002=100												
St. John's, Newfoundland and Labrador (v41692846)													
2002	97.1	97.5	98.1	99.7	100.6	100.3	100.5	100.4	100.7	101.7	102.0	101.5	100.0
2003	102.0	102.2	103.4	103.1	102.9	102.5	103.2	102.9	103.4	102.6	103.1	102.5	102.8
2004	103.1	102.9	103.3	103.6	104.6	104.9	105.5	105.2	105.3	105.7	105.9	105.6	104.6
2005	105.4	105.9	106.3	107.1	107.2	107.3	107.6	107.7	109.2	107.8	107.9	107.6	107.3
2006	108.0	108.0	108.2	109.2	110.1	109.9	110.0	110.4	109.3	108.5	108.7	108.8	109.1
2007	109.2	109.5	110.3	110.6	110.9	111.3	111.1
Charlottetown and Summerside, Prince Edward Island (v41692852)													
2002	96.6	96.8	97.6	99.3	100.2	99.9	100.7	100.8	101.2	102.1	102.6	102.0	100.0
2003	101.7	102.8	103.7	104.1	103.3	102.9	103.2	103.0	103.5	103.4	103.8	103.4	103.2
2004	103.2	103.8	104.4	104.9	105.2	105.7	105.5	105.5	106.0	106.2	107.6	106.9	105.4
2005	106.1	106.3	107.1	108.0	108.4	108.3	108.4	108.7	110.9	110.7	110.0	109.3	108.5
2006	109.7	110.2	109.9	111.4	112.0	111.7	111.8	112.1	111.1	110.4	110.7	111.1	111.0
2007	111.0	111.5	112.8	113.1	113.6	113.5	113.4
Halifax, Nova Scotia (v41692858)													
2002	96.9	97.4	97.9	99.3	100.3	100.3	100.9	100.8	101.1	101.7	102.1	101.4	100.0
2003	102.5	103.3	104.0	103.2	103.0	103.0	103.3	103.4	103.4	103.1	103.3	103.1	103.2
2004	103.1	103.5	104.2	104.2	105.0	105.3	105.5	105.5	105.6	105.9	106.4	106.0	105.0
2005	105.7	105.9	106.6	107.0	107.2	107.1	107.4	108.2	109.6	109.1	108.5	108.6	107.6
2006	108.6	108.3	108.9	110.2	110.5	110.3	110.5	110.7	110.0	109.7	110.0	109.7	109.8
2007	109.7	110.6	111.4	111.9	112.5	112.5	112.4
Saint John, New Brunswick (v41692864)													
2002	96.8	97.1	97.8	99.1	99.7	99.9	100.8	101.1	101.2	101.8	102.4	102.3	100.0
2003	103.1	103.8	104.1	103.5	102.9	102.9	103.3	103.4	103.6	103.3	103.2	103.1	103.4
2004	103.4	103.9	104.2	104.1	105.1	105.2	105.2	105.1	105.1	105.5	106.0	105.6	104.9
2005	105.5	105.8	106.8	107.1	107.0	106.9	107.5	108.0	109.2	108.4	108.2	108.3	107.4
2006	108.8	108.7	109.2	110.1	110.1	110.0	109.8	110.0	108.9	107.9	108.4	109.0	109.2
2007	109.2	109.6	110.6	111.2	111.4	112.1	112.1
Québec, Quebec (v41692870)													
2002	98.0	98.8	99.0	99.4	99.3	99.7	100.6	100.8	100.7	101.0	101.4	101.3	100.0
2003	101.9	103.0	103.2	102.3	102.4	102.3	102.4	102.6	102.4	102.5	102.8	102.8	102.6
2004	103.3	103.7	103.9	103.8	104.9	104.9	104.7	104.6	104.8	105.3	105.5	105.1	104.5
2005	105.3	105.6	106.4	106.3	106.5	106.9	107.0	107.4	108.5	107.7	107.5	107.4	106.9
2006	108.2	108.0	108.4	109.1	109.3	109.1	109.2	109.2	108.4	108.2	108.4	108.4	108.7
2007	108.5	109.2	110.1	110.3	110.7	110.4	110.4
Montréal, Quebec (v41692876)													
2002	98.1	98.9	99.0	99.5	99.3	99.8	100.6	100.7	100.6	101.0	101.2	101.3	100.0
2003	101.8	102.9	103.0	102.2	102.3	102.1	102.3	102.4	102.3	102.3	102.6	102.6	102.4
2004	103.1	103.5	103.7	103.7	104.6	104.6	104.4	104.4	104.7	105.3	105.3	105.1	104.4
2005	105.1	105.4	106.2	106.2	106.4	106.7	106.8	107.3	108.2	107.5	107.5	107.3	106.7
2006	107.9	107.9	108.2	108.9	109.0	108.8	108.9	108.9	108.4	108.6	108.7	108.6	108.6
2007	108.7	109.5	110.3	110.5	110.8	110.5	110.5
Ottawa-Gatineau, Ontario part, Ontario/Quebec (v41692882)													
2002	97.5	98.3	99.4	99.5	99.6	99.9	100.5	101.3	101.0	101.1	101.4	100.4	100.0
2003	101.8	102.7	102.8	101.5	102.0	102.1	102.4	102.9	103.0	102.7	103.1	103.2	102.5
2004	103.2	103.4	103.8	104.0	105.0	104.7	104.8	104.6	104.6	105.0	105.3	105.2	104.5
2005	105.0	105.7	106.4	106.4	106.5	106.6	106.8	107.5	108.3	107.7	107.5	107.6	106.8
2006	108.1	107.8	108.6	109.0	109.4	109.2	108.9	109.0	108.3	108.2	108.5	108.6	108.6
2007	108.5	109.6	110.7	111.1	111.5	111.1	111.1
Toronto, Ontario (v41692888)													
2002	97.7	98.5	99.6	99.5	99.6	100.0	100.3	100.8	100.4	101.0	101.3	101.3	100.0
2003	102.2	103.0	103.1	102.5	102.4	102.6	102.8	103.4	103.5	103.3	103.7	104.0	103.0
2004	103.9	104.1	104.3	104.3	105.1	104.9	104.9	104.7	104.9	104.9	105.2	105.1	104.7
2005	105.0	105.6	106.4	106.3	106.5	106.5	106.6	107.2	107.7	107.4	107.2	107.4	106.7
2006	107.9	107.6	108.5	108.7	109.0	108.9	108.5	108.5	108.1	108.0	108.3	108.5	108.4
2007	108.2	109.3	110.3	110.8	111.2	110.7	110.7

Table 9 – continued

The all-items Consumer Price Index by urban centre, 1,2,3 historical data

	Jan.	Feb.	Mar.	Apr.	May	June	July	Aug.	Sept.	Oct.	Nov.	Dec.	Annual average
	2002=100												
Thunder Bay, Ontario (v41692894)													
2002	97.8	98.4	99.3	99.2	99.2	99.7	100.9	101.7	101.4	101.2	101.3	100.0	100.0
2003	101.6	102.5	102.6	102.0	102.0	102.1	102.0	102.7	102.8	102.4	102.6	102.8	102.3
2004	102.5	102.7	103.0	103.4	104.2	103.9	104.0	103.7	103.8	104.1	104.4	104.2	103.7
2005	103.9	104.4	105.1	105.2	105.2	105.3	105.3	105.9	106.6	106.2	105.9	106.0	105.4
2006	106.6	106.2	107.1	107.4	107.8	107.6	107.2	107.2	106.6	106.4	106.6	106.6	106.9
2007	106.2	107.3	108.3	108.4	108.8	108.3	108.6
Winnipeg, Manitoba (v41692900)													
2002	98.0	98.0	98.7	99.5	100.1	100.5	100.7	100.8	100.7	100.5	101.2	101.2	100.0
2003	101.5	101.9	102.1	101.8	101.6	101.5	101.4	101.7	102.3	101.7	101.8	102.0	101.8
2004	102.0	101.9	102.3	102.7	104.0	104.3	104.2	104.3	104.0	104.4	105.1	105.4	103.7
2005	104.9	105.1	105.5	106.1	106.4	106.6	106.8	107.2	107.7	107.3	107.1	106.7	106.5
2006	107.2	107.0	107.5	108.3	109.0	109.1	109.5	109.5	108.6	108.9	109.0	108.6	108.5
2007	109.0	109.4	110.3	110.8	111.4	111.3	111.9
Regina, Saskatchewan (v41692906)													
2002	97.9	97.8	98.6	99.8	100.0	100.1	100.4	100.6	101.0	101.1	101.5	101.3	100.0
2003	101.5	102.0	102.4	101.9	102.2	102.1	102.3	102.6	102.9	102.4	102.9	102.7	102.3
2004	102.8	102.9	103.2	103.9	105.0	105.1	105.3	104.8	105.0	105.4	105.9	105.7	104.6
2005	105.4	105.7	106.3	106.9	106.5	106.7	107.1	107.4	107.8	107.3	107.2	107.1	106.8
2006	107.7	107.8	108.1	108.9	109.3	109.3	109.5	110.1	109.1	109.0	108.6	108.8	108.9
2007	109.3	109.7	111.0	111.5	112.0	112.3	112.5
Saskatoon, Saskatchewan (v41692912)													
2002	97.7	97.7	98.5	99.8	100.1	100.2	100.5	100.6	101.0	101.1	101.5	101.3	100.0
2003	101.4	101.9	102.3	101.8	102.1	102.0	102.1	102.4	102.6	102.3	102.6	102.5	102.2
2004	102.6	102.7	102.8	103.6	104.6	104.6	104.8	104.5	104.6	105.3	105.9	105.6	104.3
2005	105.4	105.6	106.2	106.9	106.3	106.6	106.8	107.2	107.7	107.3	107.2	107.1	106.7
2006	107.9	107.8	108.1	109.2	109.6	109.5	109.8	110.4	109.3	109.1	108.7	108.7	109.0
2007	109.5	109.9	110.7	111.9	112.4	113.5	114.1
Edmonton, Alberta (v41692918)													
2002	97.2	97.7	97.0	98.3	98.8	99.4	99.7	100.2	101.2	103.0	103.3	104.1	100.0
2003	104.5	104.9	105.7	105.6	105.0	105.6	105.4	105.1	105.7	105.1	105.5	105.3	105.3
2004	105.0	105.0	105.2	105.6	106.5	107.6	107.0	106.8	107.0	106.5	107.2	107.0	106.4
2005	106.7	106.7	107.5	108.0	107.9	108.1	109.2	109.1	110.6	110.2	110.1	109.4	108.6
2006	110.6	110.1	110.6	111.4	112.1	111.6	112.8	113.0	113.2	112.2	113.0	113.5	112.0
2007	113.9	114.2	115.7	117.0	117.1	118.6	118.8
Calgary, Alberta (v41692924)													
2002	96.2	96.8	98.0	99.7	100.1	100.4	100.2	99.8	101.6	101.9	102.7	102.5	100.0
2003	102.5	102.8	103.9	104.0	103.4	103.9	103.2	103.1	103.8	103.5	103.9	103.9	103.5
2004	104.1	104.1	104.4	104.6	105.5	106.4	105.8	105.6	105.6	105.4	106.1	105.8	105.3
2005	105.3	105.5	106.0	106.9	106.8	107.3	108.0	108.0	109.1	108.9	108.8	108.5	107.4
2006	109.9	108.9	109.5	110.9	112.0	111.7	113.6	114.4	114.7	113.5	114.2	114.7	112.3
2007	115.0	115.6	116.7	117.6	117.6	118.6	119.1
Vancouver, British Columbia (v41692930)													
2002	98.0	98.3	98.9	99.8	100.3	100.3	100.5	100.6	100.8	100.8	100.9	100.8	100.0
2003	100.9	101.4	102.2	102.0	101.9	101.8	101.9	102.4	102.7	102.2	102.3	102.5	102.0
2004	102.2	102.7	103.0	103.7	104.5	104.6	104.5	104.5	104.6	104.7	104.7	104.7	104.0
2005	104.8	104.9	105.2	105.7	106.0	106.1	106.5	106.5	106.8	106.7	106.6	106.3	106.0
2006	106.2	106.3	106.9	107.5	108.4	108.4	108.5	108.7	108.4	108.4	108.9	109.1	108.0
2007	109.0	109.3	109.6	110.0	110.6	110.5	110.7
Victoria, British Columbia (v41692936)													
2002	97.9	98.3	98.9	99.7	100.1	100.3	100.6	100.7	100.8	100.8	101.0	100.9	100.0
2003	101.1	101.5	102.3	102.1	102.1	102.0	102.3	102.6	102.9	102.5	102.6	102.8	102.2
2004	102.7	103.1	103.3	104.1	105.0	105.2	105.0	105.0	105.2	105.2	105.5	105.3	104.6
2005	105.3	105.5	105.9	106.5	106.8	106.9	107.2	107.3	108.0	107.9	107.8	107.4	106.9
2006	107.2	107.3	107.6	108.4	109.2	109.0	109.2	109.3	108.8	108.6	108.9	109.0	108.5
2007	109.1	109.3	109.7	109.9	110.2	109.9	110.1

Note(s): The all-items index for Whitehorse and Yellowknife are available from table 7.
See "Data quality, concepts and methodology — Explanatory notes for tables" section.

Table 10
Average retail prices for gasoline and fuel oil, by urban centre

	St. John's, N.L.	Charlottetown and Summerside, P.E.I.	Halifax, N.S.	Saint John, N.B.	Québec, Que.	Montréal, Que.	Ottawa- Gatineau, Ontario part, Ont./Que.	Toronto, Ont.	Thunder Bay, Ont.	Winnipeg, Man.
	cents per litre									
Regular unleaded gasoline at full service filling stations										
July 2006	119.2	118.1	117.8	115.4	116.5	115.6	109.0	106.1	114.7	110.9
August 2006	122.3	119.4	118.2	117.1	116.0	114.7	107.1	102.6	116.0	114.3
September 2006	107.8	100.1	99.4	99.9	93.3	94.4	88.8	83.5	100.0	93.3
October 2006	100.5	93.0	94.0	90.2	87.1	89.6	87.4	83.8	92.7	89.1
November 2006	100.0	93.5	92.0	89.7	88.9	93.1	87.1	84.7	93.0	87.7
December 2006	103.0	99.7	99.6	93.5	96.9	97.3	91.3	88.9	92.2	87.5
January 2007	103.5	97.5	97.6	94.1	93.5	92.4	85.3	81.6	96.7	87.8
February 2007	99.7	95.5	96.0	90.1	93.3	94.8	92.5	89.5	93.1	87.1
March 2007	113.0	108.7	110.6	103.7	108.0	108.6	102.9	102.1	103.8	97.5
April 2007	117.0	113.9	114.3	106.6	109.4	113.3	105.1	102.3	109.6	102.1
May 2007	120.0	116.0	117.0	111.0	116.8	117.1	110.1	106.7	112.7	110.8
June 2007	122.0	113.5	114.3	109.8	110.8	109.5	107.0	103.7	115.6	111.3
July 2007	119.5	110.0	116.2	108.9	113.0	109.9	104.4	101.9	115.5	111.5
Regular unleaded gasoline at self service filling stations										
July 2006	116.5	115.5	115.1	112.8	115.1	114.1	105.2	105.7	113.8	110.7
August 2006	119.8	116.6	117.2	115.5	114.9	112.7	103.2	103.3	115.4	113.5
September 2006	104.3	98.0	96.0	97.5	93.4	91.7	85.4	83.3	98.8	92.5
October 2006	98.0	89.9	92.0	87.5	87.7	88.5	83.5	83.4	91.9	88.3
November 2006	96.6	89.9	90.3	87.0	88.8	91.1	83.1	82.8	91.8	87.3
December 2006	100.5	96.6	97.1	90.6	96.9	94.3	87.7	87.5	90.8	87.1
January 2007	99.3	94.7	95.4	91.5	93.4	90.2	82.5	80.1	95.5	87.0
February 2007	97.5	92.5	93.9	88.0	94.3	93.6	89.3	89.3	92.8	88.0
March 2007	110.5	107.5	108.5	101.3	107.3	106.7	99.5	101.1	103.1	98.3
April 2007	114.5	111.3	112.2	105.0	108.4	110.1	101.8	101.1	108.0	101.8
May 2007	117.5	113.5	115.5	109.2	115.2	114.5	106.6	105.5	111.8	112.1
June 2007	118.6	110.5	111.6	107.8	110.8	105.1	103.3	102.3	113.6	111.1
July 2007	116.5	107.5	112.7	106.8	113.3	107.4	101.2	101.0	114.2	112.4
Premium unleaded gasoline at full service filling stations										
July 2006	124.7	125.5	123.8	125.3	123.4	121.9	119.2	117.3	125.1	120.6
August 2006	128.8	127.1	124.2	131.0	122.1	121.1	117.3	116.7	126.6	123.9
September 2006	114.2	106.4	106.4	107.9	100.2	101.9	99.5	95.4	110.5	103.3
October 2006	106.5	100.6	101.0	96.9	94.1	96.2	98.1	95.4	103.4	98.9
November 2006	105.5	100.5	98.6	95.0	95.8	99.4	97.9	96.1	103.6	97.4
December 2006	109.0	106.5	105.3	99.6	103.9	102.9	101.8	101.1	103.0	97.3
January 2007	109.5	104.5	103.6	98.8	100.3	98.9	96.0	92.9	107.4	97.7
February 2007	105.2	103.0	102.9	94.3	100.3	102.0	103.1	101.2	102.7	97.0
March 2007	119.0	116.9	117.4	108.0	114.9	115.1	114.4	113.6	114.4	107.3
April 2007	122.8	121.3	120.2	112.2	116.4	118.9	116.4	114.0	120.3	111.8
May 2007	125.5	123.2	123.4	117.8	123.7	123.7	121.3	117.6	123.3	120.5
June 2007	128.0	120.5	121.2	116.7	117.5	116.2	118.6	115.1	126.3	122.3
July 2007	125.5	117.4	123.9	115.8	120.4	116.7	116.6	113.2	126.4	121.2
Premium unleaded gasoline at self service filling stations										
July 2006	122.0	122.6	121.3	122.5	121.6	120.0	116.1	116.6	123.5	120.3
August 2006	125.8	124.3	123.4	127.3	121.4	119.5	114.3	114.7	124.9	123.4
September 2006	110.3	104.4	102.5	106.1	100.4	98.2	96.8	94.7	108.6	102.3
October 2006	103.8	96.5	98.7	92.7	94.4	95.3	94.7	94.5	101.8	98.6
November 2006	102.8	97.9	96.7	92.5	95.5	97.5	94.3	93.7	101.6	97.1
December 2006	106.7	104.2	102.6	97.1	103.6	101.1	98.2	98.7	101.7	97.3
January 2007	104.4	102.4	102.4	96.2	100.5	97.1	93.6	91.4	105.8	97.2
February 2007	103.4	100.5	101.9	92.3	101.2	100.3	99.8	100.1	103.2	98.1
March 2007	115.7	114.2	115.7	105.1	113.9	113.8	110.4	112.4	113.4	108.4
April 2007	119.7	119.1	118.4	110.7	115.5	116.9	112.7	112.2	118.3	111.7
May 2007	123.3	121.5	122.6	115.9	122.1	121.3	117.7	115.9	122.3	122.1
June 2007	124.5	118.4	118.9	114.6	118.0	112.6	114.0	112.2	124.2	121.3
July 2007	122.4	115.0	120.3	113.5	120.7	114.7	112.8	110.6	124.9	122.5
Household heating fuel										
July 2006	90.8	83.7	94.1	85.8	84.2	81.9	84.3	83.7	86.7	85.8
August 2006	90.8	83.7	94.1	85.8	84.2	81.9	84.3	83.7	86.7	85.8
September 2006	86.2	78.9	89.2	82.9	76.7	77.1	78.3	82.9	91.1	90.4
October 2006	76.4	68.7	80.9	74.1	69.4	71.2	77.3	77.5	76.3	78.1
November 2006	76.0	68.7	78.6	74.3	69.4	71.2	72.8	75.8	78.6	75.9
December 2006	79.8	74.5	75.5	81.4	76.6	76.2	74.9	81.1	76.6	77.1
January 2007	83.1	74.5	78.0	83.3	79.7	77.1	82.0	80.7	90.8	93.9
February 2007	80.6	74.0	79.1	83.1	79.7	80.3	84.7	83.1	86.2	85.8
March 2007	83.3	77.1	81.5	86.8	81.6	81.2	84.9	88.1	91.4	88.1
April 2007	89.9	77.1	83.6	87.0	83.1	81.0	85.6	87.8	91.4	90.8
May 2007	88.7	78.2	83.6	89.2	81.2	79.9	85.8	86.1	88.5	89.6
June 2007	88.7	78.2	83.6	89.2	81.2	79.9	85.8	86.1	88.5	89.6
July 2007	88.7	78.2	83.6	89.2	81.2	79.9	85.8	86.1	88.5	89.6

Table 10 – continued

Average retail prices for gasoline and fuel oil, by urban centre

	Regina, Sask.	Saskatoon, Sask.	Edmonton, Alta.	Calgary, Alta.	Vancouver, B.C.	Victoria, B.C.	Whitehorse, Y.T.	Yellowknife, N.W.T.
cents per litre								
Regular unleaded gasoline at full service filling stations								
July 2006	112.1	114.2	106.1	108.0	117.6	117.2	118.5	122.9
August 2006	117.6	117.0	110.4	111.4	116.6	119.7	120.6	125.9
September 2006	95.1	94.7	87.1	88.2	101.5	102.1	112.8	109.1
October 2006	91.5	89.9	79.4	83.6	99.0	99.8	101.0	104.8
November 2006	88.7	87.0	81.0	81.9	99.9	98.8	95.6	104.4
December 2006	88.7	89.6	83.4	81.7	104.0	102.3	96.6	104.6
January 2007	92.0	90.9	83.4	83.3	102.9	104.8	99.4	102.1
February 2007	91.3	92.0	86.2	85.9	102.6	99.7	96.1	103.8
March 2007	100.7	101.1	96.8	96.8	110.6	108.9	103.5	114.4
April 2007	104.3	104.8	101.3	101.0	119.3	117.6	109.5	119.8
May 2007	116.3	113.4	108.4	110.8	126.8	123.9	113.3	126.8
June 2007	111.3	111.4	104.3	106.0	113.7	113.6	120.5	130.8
July 2007	114.6	113.7	108.2	108.9	111.8	112.8	120.5	130.1
Regular unleaded gasoline at self service filling stations								
July 2006	112.4	114.3	105.8	106.0	116.0	115.2	116.3	119.3
August 2006	117.4	116.9	109.4	110.1	114.3	118.0	118.4	123.0
September 2006	95.2	94.8	86.0	86.9	99.1	100.5	112.3	105.5
October 2006	91.8	89.5	78.2	82.8	96.2	99.0	101.2	102.3
November 2006	88.8	86.9	79.3	80.8	97.7	97.5	95.0	102.0
December 2006	88.8	90.4	81.6	80.4	101.4	101.0	96.0	102.3
January 2007	91.3	90.5	82.1	82.4	100.5	103.3	99.0	100.5
February 2007	91.5	92.3	84.8	84.8	99.9	98.0	95.0	101.6
March 2007	101.2	101.0	94.7	95.6	108.7	106.9	99.3	113.9
April 2007	105.2	105.2	99.1	99.3	116.7	116.9	108.5	118.3
May 2007	116.1	116.2	109.3	110.0	125.0	122.7	112.5	126.8
June 2007	111.4	111.6	102.4	105.0	110.8	112.4	118.4	128.3
July 2007	113.5	114.9	105.6	109.0	109.8	111.4	118.6	127.1
Premium unleaded gasoline at full service filling stations								
July 2006	122.3	124.1	115.7	117.9	128.7	128.1	125.4	129.3
August 2006	127.8	127.0	120.7	121.8	127.7	130.5	128.3	132.9
September 2006	105.5	104.7	96.8	97.8	112.7	112.9	123.3	116.9
October 2006	101.9	99.6	89.5	94.0	110.1	111.2	113.9	112.6
November 2006	97.7	96.7	91.2	92.2	111.0	109.8	108.5	110.8
December 2006	98.9	99.8	93.8	92.0	115.1	113.2	108.9	111.3
January 2007	101.4	100.9	93.1	93.7	114.1	115.7	111.1	110.1
February 2007	101.6	101.7	96.3	96.1	113.6	110.3	109.1	113.0
March 2007	110.8	110.4	107.6	106.4	121.7	119.9	113.9	124.6
April 2007	114.6	114.3	111.6	111.4	130.4	128.5	117.6	128.8
May 2007	126.8	123.4	121.1	121.2	137.9	134.8	120.0	136.5
June 2007	121.7	121.6	115.7	117.3	124.6	124.8	127.0	141.6
July 2007	125.2	123.7	118.5	119.1	123.3	123.8	127.0	140.8
Premium unleaded gasoline at self service filling stations								
July 2006	122.8	124.5	116.1	116.5	127.2	126.2	121.9	129.1
August 2006	128.0	127.1	119.8	120.3	125.7	129.0	121.5	133.5
September 2006	105.9	105.2	96.4	96.5	110.5	111.5	116.1	116.8
October 2006	102.4	99.8	89.3	91.8	107.6	109.3	105.1	113.6
November 2006	100.0	97.4	89.6	91.1	109.1	108.5	101.3	113.0
December 2006	100.1	100.2	92.3	90.8	112.8	112.0	101.0	112.9
January 2007	101.8	101.1	92.8	93.1	111.9	114.3	104.4	110.9
February 2007	102.0	101.8	95.7	95.0	111.3	109.0	101.0	112.4
March 2007	111.7	110.5	105.8	105.9	120.1	117.9	105.3	125.9
April 2007	115.8	114.7	110.2	109.8	128.1	127.9	113.1	128.8
May 2007	126.6	126.1	119.5	120.6	136.4	133.7	116.8	136.8
June 2007	122.1	121.7	112.9	114.8	122.2	123.8	124.3	138.8
July 2007	124.3	125.2	115.9	119.6	121.4	122.7	123.8	138.3
Household heating fuel								
July 2006	84.0	87.9	.	.	95.5	99.3	96.0	87.5
August 2006	84.0	87.9	.	.	95.5	99.3	96.0	87.5
September 2006	86.1	89.2	.	.	96.6	102.2	100.5	91.6
October 2006	77.8	82.4	.	.	79.2	85.6	90.9	78.9
November 2006	76.2	79.3	.	.	83.1	87.1	89.0	79.5
December 2006	76.0	79.3	.	.	84.1	88.3	88.6	77.3
January 2007	92.4	93.0	.	.	94.4	99.9	102.9	96.1
February 2007	84.8	86.0	.	.	89.5	95.4	100.3	87.7
March 2007	90.6	90.5	.	.	90.2	95.5	101.1	92.8
April 2007	90.5	90.2	.	.	93.2	98.1	102.8	95.3
May 2007	86.8	89.7	.	.	90.7	97.5	98.6	94.7
June 2007	86.8	89.7	.	.	90.7	97.5	98.6	94.7
July 2007	86.8	89.7	.	.	90.7	97.5	98.6	94.7

Note(s): See Table A for complete list of vector numbers.

Table 11
Average retail prices, monthly, Canada

	CANSIM vector number	May 2007	June 2007	July 2007
dollars ¹				
Round steak, 1 kilogram	(v735165)	12.41	12.25	11.92
Sirloin steak, 1 kilogram	(v735176)	15.96	16.15	15.83
Prime rib roast, 1 kilogram	(v735187)	20.69	21.06	21.65
Blade roast, 1 kilogram	(v735198)	9.18	9.58	9.27
Stewing beef, 1 kilogram	(v735209)	9.63	9.58	9.43
Ground beef, regular, 1 kilogram	(v735220)	5.90	5.98	5.92
Pork chops, 1 kilogram	(v735221)	9.42	9.39	9.52
Chicken, 1 kilogram	(v735223)	5.70	5.67	5.72
Bacon, 500 grams	(v735166)	4.65	4.72	4.76
Wieners, 450 grams	(v735167)	2.68	2.65	2.62
Canned sockeye salmon, 213 grams	(v735168)	3.35	3.35	3.26
Homogenized milk, 1 litre	(v735169)	1.97	1.97	1.96
Partly skimmed milk, 1 litre	(v735170)	1.87	1.88	1.87
Butter, 454 grams	(v735171)	4.14	4.19	4.14
Processed cheese food slices, 250 grams	(v735172)	2.78	2.75	2.78
Evaporated milk, 385 millilitres	(v735173)	1.58	1.58	1.59
Eggs, 1 dozen	(v735174)	2.47	2.47	2.48
Bread, 675 grams	(v735175)	2.05	2.07	2.10
Soda crackers, 450 grams	(v735177)	2.10	2.17	2.19
Macaroni, 500 grams	(v735178)	1.05	1.00	1.04
Flour, 2.5 kilograms	(v735179)	3.61	3.62	3.65
Corn flakes, 675 grams	(v735180)	3.93	3.94	4.08
Apples, 1 kilogram	(v735181)	3.18	3.22	3.17
Bananas, 1 kilogram	(v735182)	1.25	1.24	1.25
Grapefruits, 1 kilogram	(v735183)	2.21	2.48	2.75
Oranges, 1 kilogram	(v735184)	2.87	3.04	3.07
Apple juice, canned, 1.36 litres	(v735185)	1.71	1.69	1.71
Orange juice, tetra-brick, 1 litre	(v735186)	3.75	3.69	3.72
Carrots, 1 kilogram	(v735189)	2.03	2.07	2.04
Celery, 1 kilogram	(v735190)	2.18	2.00	1.88
Mushrooms, 1 kilogram	(v735191)	7.36	7.25	7.08
Onions, 1 kilogram	(v735192)	2.32	2.10	2.22
Potatoes, 4.54 kilograms	(v735193)	4.29	4.47	4.68
French fried potatoes, frozen, 1 kilograms	(v735194)	2.04	2.00	1.99
Baked beans, canned, 398 millilitres	(v735195)	0.93	0.91	0.93
Tomatoes, canned, 796 millilitres	(v735196)	1.27	1.26	1.31
Tomato juice, canned, 1.36 litres	(v735197)	1.61	1.61	1.62
Ketchup, 1 litre	(v735199)	2.58	2.62	2.58
Sugar, white, 2 kilograms	(v735200)	2.33	2.33	2.35
Coffee, roasted, 300 grams	(v735201)	3.68	3.70	3.71
Coffee, instant, 200 grams	(v735202)	4.81	4.89	4.88
Tea (bags), 72	(v735203)	3.68	3.67	3.70
Cooking or salad oil, 1 litre	(v735204)	3.41	3.44	3.40
Soup, canned, 284 millilitres	(v735205)	0.87	0.91	0.90
Baby food, 128 millilitres	(v735206)	0.61	0.61	0.61
Peanut butter, 500 grams	(v735207)	2.61	2.59	2.60
Fruit flavoured crystals, 2.25 litres	(v735208)	1.22	1.23	1.23
Soft drinks, cola type, 2 litres	(v735210)	1.44	1.42	1.40
Soft drinks, lemon-lime type, 2 litres	(v735211)	1.50	1.44	1.42
Paper towels (rolls), 2	(v735213)	2.28	2.23	2.26
Facial tissue, 200	(v735214)	1.97	2.02	1.98
Bathroom tissue (rolls), 4	(v735215)	2.18	2.17	2.13
Shampoo, 300 millilitres	(v735216)	3.14	3.14	3.02
Deodorant, 60 grams	(v735217)	3.15	3.33	3.22
Toothpaste, 100 millilitres	(v735218)	1.34	1.37	1.35
Cigarettes, 200	(v735219)	77.39	77.56	78.27
Regular, unleaded gasoline at self-service stations, cents per litre	(v41838376)	111.5	106.1	106.4

Note(s): See "Data quality, concepts and methodology — Explanatory notes for tables" section.

Table 12
Inter-city indexes of retail price differentials, as of October 2005, for selected groups of consumer goods and services

	Canada ¹ CPI weight	St. John's, N.L.	Charlottetown- Summerside, P.E.I.	Halifax, N.S.	Saint John, N.B.	Montréal, Que.
	percent	combined city average=100				
All-items	100.0	95.0	94.0	98.0	93.0	93.0
Food	16.9	103.0	100.0	101.0	99.0	97.0
Food purchased from stores	.	105.0	103.0	102.0	103.0	99.0
Meat, poultry and fish	.	101.0	108.0	106.0	107.0	103.0
Dairy products and eggs	.	105.0	99.0	101.0	101.0	100.0
Bakery and other cereal products	.	102.0	102.0	100.0	103.0	99.0
Fruit and vegetables	.	115.0	106.0	106.0	109.0	96.0
Other food purchased from stores ²	.	103.0	100.0	98.0	96.0	97.0
Food purchased from restaurants	.	99.0	93.0	99.0	90.0	92.0
Shelter	26.8	81.0	78.0	88.0	77.0	86.0
Rented accommodation	.	71.0	69.0	78.0	69.0	81.0
Owned accommodation	.	78.0	73.0	84.0	74.0	86.0
Water, fuel and electricity	.	110.0	114.0	123.0	100.0	95.0
Household operations and furnishings	10.6	97.0	99.0	102.0	95.0	96.0
Household operations	.	96.0	96.0	102.0	95.0	94.0
Household furnishings	.	99.0	106.0	101.0	95.0	100.0
Clothing and footwear	5.4	97.0	96.0	101.0	99.0	101.0
Transportation	19.8	104.0	102.0	100.0	103.0	99.0
Private transportation	.	103.0	98.0	99.0	99.0	98.0
Purchase of automotive vehicles	.	101.0	104.0	103.0	100.0	101.0
Gasoline	.	116.0	114.0	106.0	106.0	103.0
Other private transportation	.	95.0	77.0	86.0	92.0	91.0
Public transportation	.	110.0	129.0	107.0	135.0	108.0
Health and personal care	4.5	92.0	91.0	92.0	95.0	103.0
Health care	.	94.0	94.0	94.0	92.0	98.0
Personal care supplies and equipment	.	95.0	98.0	97.0	99.0	98.0
Personal care services	.	85.0	74.0	84.0	94.0	117.0
Recreation, education and reading	12.0	94.0	102.0	114.0	103.0	87.0
Alcoholic beverages and tobacco products	4.1	115.0	106.0	107.0	103.0	95.0
Alcoholic beverages	.	111.0	102.0	103.0	100.0	98.0
Tobacco products and smokers' supplies	.	118.0	111.0	111.0	105.0	92.0

Table 12 – continued

Inter-city indexes of retail price differentials, as of October 2005, for selected groups of consumer goods and services

	Canada ¹ CPI weight	Ottawa, Ont.	Toronto, Ont.	Winnipeg, Man.	Regina, Sask.	Edmonton, Alta.	Vancouver, B.C.
	percent	combined city average=100					
All-items	100.0	103.0	110.0	92.0	92.0	97.0	102.0
Food	16.9	101.0	101.0	98.0	95.0	101.0	106.0
Food purchased from stores	.	103.0	99.0	99.0	98.0	101.0	106.0
Meat, poultry and fish	.	103.0	97.0	93.0	94.0	99.0	106.0
Dairy products and eggs	.	106.0	101.0	96.0	92.0	94.0	104.0
Bakery and other cereal products	.	99.0	94.0	105.0	100.0	104.0	116.0
Fruit and vegetables	.	106.0	99.0	102.0	99.0	108.0	104.0
Other food purchased from stores ²	.	100.0	102.0	103.0	102.0	98.0	103.0
Food purchased from restaurants	.	97.0	105.0	94.0	90.0	101.0	107.0
Shelter	26.8	107.0	122.0	80.0	77.0	88.0	102.0
Rented accommodation	.	106.0	125.0	75.0	68.0	82.0	101.0
Owned accommodation	.	106.0	120.0	79.0	72.0	86.0	105.0
Water, fuel and electricity	.	110.0	124.0	88.0	110.0	103.0	90.0
Household operations and furnishings	10.6	105.0	105.0	98.0	98.0	96.0	103.0
Household operations	.	108.0	108.0	97.0	97.0	97.0	103.0
Household furnishings	.	100.0	100.0	99.0	100.0	93.0	103.0
Clothing and footwear	5.4	102.0	101.0	101.0	100.0	98.0	99.0
Transportation	19.8	100.0	110.0	95.0	97.0	97.0	94.0
Private transportation	.	99.0	110.0	95.0	98.0	98.0	95.0
Purchase of automotive vehicles	.	103.0	100.0	100.0	101.0	94.0	100.0
Gasoline	.	98.0	96.0	101.0	103.0	95.0	104.0
Other private transportation	.	95.0	135.0	84.0	89.0	106.0	78.0
Public transportation	.	111.0	114.0	97.0	95.0	86.0	88.0
Health and personal care	4.5	103.0	101.0	97.0	89.0	105.0	100.0
Health care	.	108.0	106.0	93.0	93.0	104.0	98.0
Personal care supplies and equipment	.	97.0	102.0	101.0	100.0	98.0	105.0
Personal care services	.	99.0	92.0	101.0	69.0	115.0	99.0
Recreation, education and reading	12.0	104.0	108.0	96.0	101.0	115.0	105.0
Alcoholic beverages and tobacco products	4.1	96.0	99.0	103.0	107.0	105.0	112.0
Alcoholic beverages	.	100.0	102.0	84.0	98.0	100.0	108.0
Tobacco products and smokers' supplies	.	92.0	97.0	120.0	116.0	109.0	116.0

Note(s): See "Data quality, concepts and methodology — Explanatory notes for tables" section and Table B for complete list of vector numbers.

Data quality, concepts and methodology

Definition

The Consumer Price Index (CPI) is an indicator of the changes in consumer prices experienced by the target population. The CPI measures price change by comparing, through time, the cost of a fixed basket of commodities. This basket is based on the expenditures of the target population in a certain reference period, currently 2005. Since the basket contains commodities of unchanging or equivalent quantity and quality, the index reflects only pure price movements.

Separate CPIs are published for Canada, the ten provinces, Whitehorse, Yellowknife and Iqaluit. Some CPI information is also available for an additional sixteen urban centres. Since the CPI is a measure of price change from one time period to another, it cannot be used to indicate differences in price levels between provinces or urban centres.

Population coverage

The population targeted by the Consumer Price Index consists of families and individuals living in urban and rural private households. For practical reasons, residents of the Territories outside Whitehorse, Yellowknife and Iqaluit are not represented by the index. Prior to February 1995, the target population consisted of private households in Canadian urban centres with a population of 30,000 or more.

Time reference

The CPI compares, in percentage terms, prices in any given time period to prices in the official base period which, at present, is 2002=100. The official time base was changed from 1992=100 to 2002=100 starting with the CPI for May 2007. The change is strictly an arithmetic conversion which alters the index levels but leaves the percentage changes between any two periods intact, except for differences in rounding.

Percent versus index point changes

The movements of the indexes from one month to another are expressed as percent changes rather than changes in index points. Index point changes are affected by the level of the index which, in turn, depends on the time base of the particular index. The percentage change between any two time periods can be readily calculated by dividing the index point difference between the two time periods by the index for the earlier period and multiplying the result by one hundred.

Price coverage

The prices used in the CPI calculation are final prices, inclusive of excise and other indirect taxes paid by consumers. In particular, they include the Goods and Services Tax (GST), as well as provincial retail sales taxes wherever applicable. In regions where the GST and provincial retail sales taxes have been combined, the Harmonized Sales Tax (HST) is included. It follows that the CPI can change as a result of modifications to any of these taxes.

The selection of commodities and the outlets from which prices are collected is judgmental, other than for rents and traveler accommodation. The number of prices required for a given commodity depends on the importance and the nature of the commodity. The samples are designed to represent volume selling commodities and outlets.

The principal objective of the sample design is to ensure an informative, reliable and impartial picture of consumer inflation at the national and provincial levels.

Price collection for a given month's index is carried out during the first three weeks of the month. Although prices for most CPI commodities are collected monthly, prices for commodities having less frequent price changes (e.g. property taxes and electricity rates) are collected at intervals longer than one month. Special pricings are carried out where there is evidence that significant price changes have occurred between scheduled pricing periods.

Weights and linking

The CPI maintains fixed quantitative proportions (weights) between commodities during the life of a given basket. The baskets are updated periodically to take into account changes in consumer expenditure patterns. In May 2007, the basket reflecting the 2005 expenditure patterns replaced the 2001 basket. The continuity of the CPI series is maintained by "linking" the corresponding indexes obtained from consecutive baskets.

The CPI is calculated as a weighted average of specified commodity price indexes. The weights are derived from Survey of Household Spending data. Text table 1 compares the expenditure shares of the two most recent CPI baskets, i.e. the 2005 basket as it was reflected in the CPI in May 2007 and the 2001 basket. Because both sets of weights are expressed in April 2007 or "link month" prices, the differences reflect the shifts in the relative quantities purchased between the two baskets.

When reconstructing or re-aggregating published CPI series, the changes in weights and the linking procedures must be taken into account. For a description of the methodology required to reconstruct or re-aggregate CPI series, see the **Consumer Price Index Reference Paper** catalogue no. 62-553-X (Occasional) or contact Prices Division.

Text table 1

Comparison of the 2005 and 2001 distribution¹ of expenditures used in the Consumer Price Index, by major component, for Canada

	2005 Expenditures		2001 Expenditures
	Expressed in 2005 prices	Expressed in April 2007 prices	Expressed in April 2007 prices
	percent		
Major Components			
All-Items	100.0	100.0	100.0
Food	16.9	17.0	17.1
Shelter	25.7	26.6	27.7
Household operations, furnishings and equipment	11.4	11.1	10.2
Clothing and footwear	5.6	5.4	5.1
Transportation	19.6	19.9	20.2
Health and personal care	4.8	4.7	4.4
Recreation, education and reading	13.0	12.2	11.2
Alcoholic beverages and tobacco products	3.1	3.1	4.2

1. Figures may not add to 100% due to rounding.

Starting with the October 2006 Consumer Price Index (CPI), Statistics Canada produces and disseminates the Core CPI as defined by the Bank of Canada.

The measure of Core CPI excludes from the all-items CPI the effect of changes in indirect taxes and eight of the most volatile components identified by the Bank of Canada: fruit, fruit preparations and nuts; vegetables and vegetable preparations; mortgage interest cost; natural gas; fuel oil and other fuels; gasoline; inter-city transportation; and tobacco products and smokers' supplies. For additional information on Core CPI, please consult the Bank of Canada Web site. <http://www.bankofcanada.ca/en/inflation/index.htm>.

Statistics Canada also calculates, on behalf of the Bank of Canada, a seasonally adjusted Core CPI. This series is available through CANSIM, Statistics Canada's official database, or by contacting us through the means mentioned on the inside cover of this publication.

Whitehorse, Yellowknife and Iqaluit indexes

The relatively small size of the housing market in these three cities makes it difficult to construct reliable price indexes for new houses. To compensate, the price movements of rental accommodation are used to approximate the price movements of new houses. The rent information itself is collected using different pricing frequencies and collection methods than in the rest of the country. Because of these problems, the indexes for Rented Accommodation and Owned Accommodation are not published for these three cities. Further, the All-items indexes published for these three cities are not strictly comparable with the same indexes for the provinces or the other sixteen cities.

Calculation of urban centre indexes

With the introduction of the 1992 basket, emphasis was shifted from urban centre data to provincial data. Urban Centre All-items series were continued since many users had come to rely on this service, but the method of calculation was changed. Shelter indexes are calculated for each urban centre. This recognizes the importance of Shelter in the basket, the significant and persistent differences in price movements between urban centres, and the availability of local data. For the other seven major components, the movement of the provincial counterpart (or, in the cases of Montréal, Toronto, and Vancouver, a sub-provincial counterpart) is used. The major components are aggregated using the urban centre's expenditure pattern to arrive at each urban centre's All-items index.

Seasonal adjustment

A seasonally adjusted series is one from which seasonal movements have been eliminated. Seasonal movements are defined as those which are caused by regular annual events such as variations in climate and regular institutional events such as vacations and statutory holidays. Seasonally adjusted series are calculated using Statistics Canada's X-11 ARIMA program. Time series with no detectable seasonal movements remain unchanged from the official series. The official unadjusted series for All-items, **core consumer price index (CPI)**, each of the eight major component indexes and three special aggregates (all-items excluding food, all-items excluding food and energy and all-items excluding 8 of the most volatile components (Bank of Canada definition)) are seasonally adjusted independently.

Each month, the previous month's seasonally adjusted index is subject to revision. On an annual basis, the seasonally adjusted values for the last three years are revised with the January data release. Since these revisions can lead to changes in both the levels and movements of the indexes, users employing the CPI for indexation purposes are advised to use the unadjusted indexes.

Explanatory notes for tables

Table 1 The Consumer Price Index and major components, Canada

1. 2005 Consumer Price Index (CPI) basket weights at April 2007 prices, Canada.
2. Figures may not add to 100% due to rounding.
3. The measure of core consumer price index (CPI) excludes from the all-items CPI the effect of changes in indirect taxes and eight of the most volatile components identified by the Bank of Canada: fruit, fruit preparations and nuts; vegetables and vegetable preparations; mortgage interest cost; natural gas; fuel oil and other fuels; gasoline; inter-city transportation; and tobacco products and smokers' supplies. For additional information on core CPI, please consult the Bank of Canada Web site: <http://www.bankofcanada.ca/en/inflation/index.htm>.

Table 2 The Consumer Price Index, provinces, Whitehorse, Yellowknife and Iqaluit

1. Not seasonally adjusted.
2. Data for Iqaluit are on a December 2002=100 base (200212=100) and the Standard Geographical Classification (SGC) 2001. Previous to April 1, 1999, the town of Iqaluit formed part of the Northwest Territories. Subsequent to April 1, 1999, the town of Iqaluit formed part of the newly-created territory of Nunavut.

Table 3 The Consumer Price Index and major components, selected sub-groups and special aggregates, Canada

Table 3-1

1. Not seasonally adjusted.
2. Food expenditure information below the aggregate level of "food purchased from stores" was unavailable after 2001. To obtain 2005 basket weights for food categories under this aggregate, expenditures of 2001 for each food category were adjusted to reflect price movements to 2005. However data from the 2005 Survey of Household Spending were used to update the weight at the major component level of "food" compare to all other components.

Table 3-2

1. Not seasonally adjusted.
2. In July 2004, the 2001 basket weights introduced with the January 2003 data were adjusted; the weights for mortgage interest cost were re-evaluated.
3. Due to changes in the Ontario electricity market that became effective May 1, 2002, it was necessary to adjust the treatment of electricity prices in the consumer price index (CPI) for that province. A question and answer fact sheet that explains those changes is now available. To obtain the fact sheet on the treatment of electricity prices in Ontario, please contact Client Services Unit, Prices Division, telephone: (613) 951-9606, toll-free: 1-866-230-2248, fax: (613) 951-1539, e-mail: prices-prix@statcan.ca.

Tables 3-3 to 3-6 and 3-8

1. Not seasonally adjusted.

Table 3-7

1. Not seasonally adjusted.
2. From April 2006, Statistics Canada changed its implementation of the price index formula used for traveller accommodation. As a result, data from April 2006 are not strictly comparable to earlier time periods.

Table 3-9

1. Not seasonally adjusted.
2. Goods are physical or tangible commodities usually classified according to their life span into non-durable goods, semi-durable goods and durable goods. Non-durable goods are those goods that can be used up entirely in less than a year, assuming normal usage. For example, fresh food products, disposable cameras and gasoline are non-durable goods. Semi-durable goods are those goods that may last less than 12 months or greater than 12 months depending on the purpose to which they are put. For example, clothing, footwear and household textiles are semi-durable goods. Durable goods are those goods which may be used repeatedly or continuously over more than a year, assuming normal usage. For example, cars, audio and video equipment and furniture are durable goods.
3. A service in the consumer price index (CPI) is characterized by valuable work performed by an individual or organization on behalf of a consumer, for example, car tune-ups, haircuts and city public transportation. Transactions classified as a service may include the cost of goods by their nature. Examples include food in restaurant food services and materials in clothing repair services.
4. The special aggregate "energy" includes: "electricity", "natural gas", "fuel oil and other fuels", "gasoline", and "fuel, parts and supplies for recreational vehicles".

Table 4 The Consumer Price Index for Canada, all-items, historical data

1. Not seasonally adjusted.
2. The annual index level is the average of the 12 individual monthly indexes. The percentage change for a given calendar year is calculated using the annual average indexes.

Table 5 The Consumer Price Index for Canada major components and special aggregates, historical data

1. Not seasonally adjusted.
2. Goods are physical or tangible commodities usually classified according to their life span into non-durable goods, semi-durable goods and durable goods. Non-durable goods are those goods that can be used up entirely in less than a year, assuming normal usage. For example, fresh food products, disposable cameras and gasoline are non-durable goods. Semi-durable goods are those goods that may last less than 12 months or greater than 12 months depending on the purpose to which they are put. For example, clothing, footwear and household textiles are semi-durable goods. Durable goods are those goods which may be used repeatedly or continuously over more than a year, assuming normal usage. For example, cars, audio and video equipment and furniture are durable goods.
3. A service in the consumer price index (CPI) is characterized by valuable work performed by an individual or organization on behalf of a consumer, for example, car tune-ups, haircuts and city public transportation. Transactions classified as a service may include the cost of goods by their nature. Examples include food in restaurant food services and materials in clothing repair services.

4. The special aggregate "energy" includes: "electricity", "natural gas", "fuel oil and other fuels", "gasoline", and "fuel, parts and supplies for recreational vehicles".
5. The annual index level is the average of the 12 individual monthly indexes. The percentage change for a given calendar year is calculated using the annual average indexes.

Table 6 The Consumer Price Index, major components, selected sub-groups and special aggregates, provinces and territories

Tables 6-1 to 6-5 and 6-7 to 6-11

1. Not seasonally adjusted.
2. The special aggregate "energy" includes: "electricity", "natural gas", "fuel oil and other fuels", "gasoline", and "fuel, parts and supplies for recreational vehicles".
3. Food expenditure information below the aggregate level of "food purchased from stores" was unavailable after 2001. To obtain 2005 basket weights for food categories under this aggregate, expenditures of 2001 for each food category were adjusted to reflect price movements to 2005. However data from the 2005 Survey of Household Spending were used to update the weight at the major component level of "food" compare to all other components.

Table 6-6

1. Not seasonally adjusted.
2. The special aggregate "energy" includes: "electricity", "natural gas", "fuel oil and other fuels", "gasoline", and "fuel, parts and supplies for recreational vehicles".
3. Food expenditure information below the aggregate level of "food purchased from stores" was unavailable after 2001. To obtain 2005 basket weights for food categories under this aggregate, expenditures of 2001 for each food category were adjusted to reflect price movements to 2005. However data from the 2005 Survey of Household Spending were used to update the weight at the major component level of "food" compare to all other components.
4. Due to changes in the Ontario electricity market that became effective May 1, 2002, it was necessary to adjust the treatment of electricity prices in the consumer price index (CPI) for that province. A question and answer fact sheet that explains those changes is now available. To obtain the fact sheet on the treatment of electricity prices in Ontario, please contact Client Services Unit, Prices Division, telephone: (613) 951-9606, toll-free: 1-866-230-2248, fax: (613) 951-1539, e-mail: prices-prix@statcan.ca.

Table 6-12

1. Not seasonally adjusted.
2. The special aggregate "energy" includes: "electricity", "natural gas", "fuel oil and other fuels", "gasoline", and "fuel, parts and supplies for recreational vehicles".
3. Food expenditure information below the aggregate level of "food purchased from stores" was unavailable after 2001. To obtain 2005 basket weights for food categories under this aggregate, expenditures of 2001 for each food category were adjusted to reflect price movements to 2005. However data from the 2005 Survey of Household Spending were used to update the weight at the major component level of "food" compare to all other components.

- Part of the increase first recorded in the shelter index for Yellowknife for December 2004 inadvertently reflected rent increases that actually occurred earlier. As a result, the change in the shelter index was overstated in December 2004, and was understated in the previous two years. The shelter index series for Yellowknife has been corrected from December 2002. In addition, the Yellowknife all-items consumer price index (CPI) and some Yellowknife special aggregate index series have also changed. Data for Canada and all other provinces and territories were not affected.

Table 7 The all-items Consumer Price Index, provinces, Whitehorse, Yellowknife and Iqaluit, historical data

- Not seasonally adjusted.
- Data for Iqaluit are on a December 2002=100 base (200212=100) and the Standard Geographical Classification (SGC) 2001. Previous to April 1, 1999, the town of Iqaluit formed part of the Northwest Territories. Subsequent to April 1, 1999, the town of Iqaluit formed part of the newly-created territory of Nunavut.
- The annual index level is the average of the 12 individual monthly indexes. The percentage change for a given calendar year is calculated using the annual average indexes.

Table 8 The Consumer Price Index and selected sub-groups, by urban centre and

Table 9 The all-items Consumer Price Index by urban centre, historical data

- Not seasonally adjusted.
- With the introduction of the 1992 basket in January 1995, emphasis was shifted from urban centre data to provincial data. Urban centre all-items series were continued since many users had come to rely on this service, but the method of calculation was changed. Shelter indexes are calculated for each urban centre. This recognizes the importance of shelter in the basket, the significant and persistent differences in price movements between urban centres, and the availability of local data. For the other seven major components, the movement of the provincial counterpart is used except in the cases of Montréal, Toronto, and Vancouver, where a sub-provincial counterpart is used. The major components are aggregated using the urban centre's expenditure pattern to arrive at each urban centre's all-items index.
- Users of the urban centre indexes should note that, effective July 2007, Statistics Canada has corrected the weights of some urban centres that were in error in the Consumer Price Index 2005 basket update. The weights of St. John's, Charlottetown, Halifax, Saint John, Québec City, Montréal, Ottawa, Thunder Bay, Winnipeg, Regina, Saskatoon, Edmonton, Calgary and Victoria were adjusted, while those of Toronto, Vancouver, Whitehorse, Yellowknife and Iqaluit were not. With this correction, the July 2007 level of each urban centre index has been restored to reflect the correct movement for May 2007 and June 2007. The published urban centre indexes for May and June 2007 will remain unchanged. The calculation of urban centre indexes is separate from the calculation of the provincial and national indexes. Therefore, the correction made to the urban centre weights has no effect at all on the provincial or national indexes. Published weight documentation was also not affected.

Table 11 Average retail prices, monthly, Canada

- Prices are expressed in dollars, except for the price of gasoline which is expressed in cents per litre.

Average retail prices for food, household supplies, personal care items and cigarettes

Table 11 shows, for the current month and the two previous months, average prices for selected food, household supply and personal care items and for cigarettes.

Prices for these items are collected as part of the regular monthly CPI survey. Prices for the selected food, household supply and personal care items are observed in food supermarkets, while prices for cigarettes are collected in supermarkets, department stores, drug stores and tobacco shops. Average prices for each commodity are calculated as a weighted average of the average prices in the observed urban centres using the population of these urban centres as weights.

The commodities which are priced can vary in quality between outlets or between urban centres. This is the reason why average prices are not published for each of those urban centres. Brands and outlets can also vary from month to month. Therefore, average prices may not necessarily be fully comparable from one month to another and should not be used as an appropriate measure of pure price change through time. A matched commodity and outlet sample is used for the CPI to determine the pure price movement of commodities through time.

Table 12 Inter-city indexes of retail price differentials, as of October 2005, for selected groups of consumer goods and services

Table 12 shows consumer price differentials prevailing amongst 11 Canadian cities situated in all 10 provinces for a selection of commodities and services at the specified point in time.

Price data for the current inter-city retail price comparison was drawn to a large extent from the extensive volume of price information collected for the production of the Consumer Price Index (CPI) for October 2004. To obtain the October 2005 comparison, October 2004 prices for each product category were adjusted using the CPI to reflect the price movements over the year ending in October 2005.

Reliable inter-city price comparisons require that the sampled commodities be identical in different locations. This ensures that variations in index levels between cities, are due to price differences and not to differences in product attributes. In order to optimize comparability, price comparisons were initially made by pairing cities that are geographically close. This resulted in the following pairings:

St. John's	Halifax
Charlottetown-Summerside	Halifax
Saint John	Halifax
Ottawa	Halifax
Toronto	Montreal
Ottawa	Toronto
Toronto	Winnipeg
Regina	Winnipeg
Edmonton	Winnipeg
Edmonton	Vancouver

Within each city pair, price quotations were matched at the item level on the basis of identical detailed descriptions, including brand names whenever possible and also with some regard for comparability of retail outlets and merchandising practices.

Price level comparisons can be extended to include any pair of cities using a chaining procedure.

The weights used for aggregating the various components of the city indexes to obtain the all-items index are based on the expenditure proportions of the consumers living in the 11 cities overall. The weights are currently based on 1996 consumer expenditure data and price updated to October 2001. The base, for which the index is equal to 100, is also the combined city average. Therefore, an index value of 102 means that prices in that city are 2 percent higher than the combined city average.

It should be noted, especially in periods when prices are highly volatile, that the timing of price comparison and the relative rate of price change occurring in each location could significantly affect city-to-city retail price relationships. Furthermore, since the retail prices used in this study are final prices faced by consumers, they include applicable sales and excise taxes. Therefore, provincial sales tax rates in effect in the various cities at the time of price comparison can be of importance in explaining inter-city price differentials for items or groups of items that are subject to such taxes.

Shelter, as an expenditure category, was absent from the Intercity index program prior to 1999 because of methodological and conceptual issues associated with its measurement. For many products, adjusting for quality differences to ensure comparability across areas is relatively straightforward and can be done using traditional quality adjustment techniques. In the case of shelter however, its very diverse nature means that comparable matches across cities are difficult to make. Hedonic regression methods were used to adjust for quality differences among cities and produce more reliable inter-city comparisons of rental prices.

A rental equivalence approach is used to construct the inter-city price indexes for shelter services consumed by homeowners. Such an approach uses market rents as an approximation of the cost of shelter services faced by homeowners. This approach may not be suitable for the needs of all users. For instance, since the rental equivalence approach does not represent an out-of-pocket expenditure, the indexes should not be used for measuring differences in the purchasing power of homeowners across cities. Furthermore, since the observed rents used in this index are those faced by existing renters and since the industry is regulated, they may not be indicative of rental prices faced by new renters.

Footnotes for table 12

1. The weights shown are rounded 1996 basket weights at December 1997 prices for Canada. They are provided for illustration only; the weights actually used are combined city weights with adjustments for price change since October 2001.
2. Includes the following sub-groups: sugar and syrups, confectionery items, margarine, other edible fat and oil items, coffee, tea, condiments, spices and vinegar, soup, infant and junior foods, pre-cooked frozen food preparations, non-alcoholic beverages and all other food preparations.

Appendix I

Concordance tables

Table A
Vector numbers for the average retail prices for gasoline and fuel oil, by urban centre

	St. John's, N.L.	Charlottetown and Summerside, P.E.I.	Halifax, N.S.	Saint John, N.B.	Québec, Que.	Montréal, Que.	Ottawa-Gatineau, Ontario part, Ont./Que.	Toronto, Ont.	Thunder Bay, Ont.	Winnipeg, Man.
Regular unleaded gasoline at full service filling stations	(v735046)	(v735056)	(v735057)	(v735058)	(v735059)	(v735060)	(v735061)	(v735062)	(v735063)	(v735047)
Regular unleaded gasoline at self service filling stations	(v735082)	(v735092)	(v735093)	(v735094)	(v735095)	(v735096)	(v735097)	(v735098)	(v735099)	(v735083)
Premium unleaded gasoline at full service filling stations	(v735064)	(v735074)	(v735075)	(v735076)	(v735077)	(v735078)	(v735079)	(v735080)	(v735081)	(v735065)
Premium unleaded gasoline at self service filling stations	(v735100)	(v735110)	(v735111)	(v735112)	(v735113)	(v735114)	(v735115)	(v735116)	(v735117)	(v735101)
Household heating fuel	(v735149)	(v735157)	(v735158)	(v735159)	(v735160)	(v735161)	(v735162)	(v735163)	(v735164)	(v735150)
	Regina, Sask.	Saskatoon, Sask.	Edmonton, Alta.	Calgary, Alta.	Vancouver, B.C.	Victoria, B.C.	Whitehorse, Y.T.	Yellowknife, N.W.T.		
Regular unleaded gasoline at full service filling stations	(v735048)	(v735049)	(v735050)	(v735051)	(v735052)	(v735053)	(v735054)	(v735055)		
Regular unleaded gasoline at self service filling stations	(v735084)	(v735085)	(v735086)	(v735087)	(v735088)	(v735089)	(v735090)	(v735091)		
Premium unleaded gasoline at full service filling stations	(v735066)	(v735067)	(v735068)	(v735069)	(v735070)	(v735071)	(v735072)	(v735073)		
Premium unleaded gasoline at self service filling stations	(v735102)	(v735103)	(v735104)	(v735105)	(v735106)	(v735107)	(v735108)	(v735109)		
Household heating fuel	(v735151)	(v735152)			(v735153)	(v735154)	(v735155)	(v735156)		

Table B
Vector numbers of the inter-city indexes of retail price differentials, as of October 2005, for selected groups of consumer goods and services

	St. John's, N.L.	Charlottetown- Summerside, P.E.I.	Halifax, N.S.	Saint John, N.B.	Montréal, Que.
All-items	(v15939841)	(v15939869)	(v15939897)	(v15939925)	(v15939953)
Food	(v15939842)	(v15939870)	(v15939898)	(v15939926)	(v15939954)
Food purchased from stores	(v15939843)	(v15939871)	(v15939899)	(v15939927)	(v15939955)
Meat, poultry and fish	(v15939844)	(v15939872)	(v15939900)	(v15939928)	(v15939956)
Dairy products and eggs	(v15939845)	(v15939873)	(v15939901)	(v15939929)	(v15939957)
Bakery and other cereal products	(v15939846)	(v15939874)	(v15939902)	(v15939930)	(v15939958)
Fruit and vegetables	(v15939847)	(v15939875)	(v15939903)	(v15939931)	(v15939959)
Other food purchased from stores	(v15939848)	(v15939876)	(v15939904)	(v15939932)	(v15939960)
Food purchased from restaurants	(v15939849)	(v15939877)	(v15939905)	(v15939933)	(v15939961)
Shelter	(v15939850)	(v15939878)	(v15939906)	(v15939934)	(v15939962)
Rented accommodation	(v21580949)	(v21580952)	(v21580955)	(v21580958)	(v21580961)
Owned accommodation	(v21580950)	(v21580953)	(v21580956)	(v21580959)	(v21580962)
Water, fuel and electricity	(v21580951)	(v21580954)	(v21580957)	(v21580960)	(v21580963)
Household operations and furnishings	(v15939851)	(v15939879)	(v15939907)	(v15939935)	(v15939963)
Household operations	(v15939852)	(v15939880)	(v15939908)	(v15939936)	(v15939964)
Household furnishings	(v15939853)	(v15939881)	(v15939909)	(v15939937)	(v15939965)
Clothing and footwear	(v15939854)	(v15939882)	(v15939910)	(v15939938)	(v15939966)
Transportation	(v15939855)	(v15939883)	(v15939911)	(v15939939)	(v15939967)
Private transportation	(v15939856)	(v15939884)	(v15939912)	(v15939940)	(v15939968)
Purchase of automotive vehicles	(v15939857)	(v15939885)	(v15939913)	(v15939941)	(v15939969)
Gasoline	(v15939858)	(v15939886)	(v15939914)	(v15939942)	(v15939970)
Other private transportation	(v15939859)	(v15939887)	(v15939915)	(v15939943)	(v15939971)
Public transportation	(v15939860)	(v15939888)	(v15939916)	(v15939944)	(v15939972)
Health and personal care	(v15939861)	(v15939889)	(v15939917)	(v15939945)	(v15939973)
Health care	(v15939862)	(v15939890)	(v15939918)	(v15939946)	(v15939974)
Personal care supplies and equipment	(v15939863)	(v15939891)	(v15939919)	(v15939947)	(v15939975)
Personal care services	(v15939864)	(v15939892)	(v15939920)	(v15939948)	(v15939976)
Recreation, education and reading	(v15939865)	(v15939893)	(v15939921)	(v15939949)	(v15939977)
Alcoholic beverages and tobacco products	(v15939866)	(v15939894)	(v15939922)	(v15939950)	(v15939978)
Alcoholic beverages	(v15939867)	(v15939895)	(v15939923)	(v15939951)	(v15939979)
Tobacco products and smokers' supplies	(v15939868)	(v15939896)	(v15939924)	(v15939952)	(v15939980)

	Ottawa, Ont.	Toronto, Ont.	Winnipeg, Man.	Regina, Sask.	Edmonton, Alta.	Vancouver, B.C.
All-items	(v15939981)	(v15940009)	(v15940037)	(v15940065)	(v15940093)	(v15940121)
Food	(v15939982)	(v15940010)	(v15940038)	(v15940066)	(v15940094)	(v15940122)
Food purchased from stores	(v15939983)	(v15940011)	(v15940039)	(v15940067)	(v15940095)	(v15940123)
Meat, poultry and fish	(v15939984)	(v15940012)	(v15940040)	(v15940068)	(v15940096)	(v15940124)
Dairy products and eggs	(v15939985)	(v15940013)	(v15940041)	(v15940069)	(v15940097)	(v15940125)
Bakery and other cereal products	(v15939986)	(v15940014)	(v15940042)	(v15940070)	(v15940098)	(v15940126)
Fruit and vegetables	(v15939987)	(v15940015)	(v15940043)	(v15940071)	(v15940099)	(v15940127)
Other food purchased from stores	(v15939988)	(v15940016)	(v15940044)	(v15940072)	(v15940100)	(v15940128)
Food purchased from restaurants	(v15939989)	(v15940017)	(v15940045)	(v15940073)	(v15940101)	(v15940129)
Shelter	(v15939990)	(v15940018)	(v15940046)	(v15940074)	(v15940102)	(v15940130)
Rented accommodation	(v21580964)	(v21580967)	(v21580970)	(v21580973)	(v21580976)	(v21580979)
Owned accommodation	(v21580965)	(v21580968)	(v21580971)	(v21580974)	(v21580977)	(v21580980)
Water, fuel and electricity	(v21580966)	(v21580969)	(v21580972)	(v21580975)	(v21580978)	(v21580981)
Household operations and furnishings	(v15939991)	(v15940019)	(v15940047)	(v15940075)	(v15940103)	(v15940131)
Household operations	(v15939992)	(v15940020)	(v15940048)	(v15940076)	(v15940104)	(v15940132)
Household furnishings	(v15939993)	(v15940021)	(v15940049)	(v15940077)	(v15940105)	(v15940133)
Clothing and footwear	(v15939994)	(v15940022)	(v15940050)	(v15940078)	(v15940106)	(v15940134)
Transportation	(v15939995)	(v15940023)	(v15940051)	(v15940079)	(v15940107)	(v15940135)
Private transportation	(v15939996)	(v15940024)	(v15940052)	(v15940080)	(v15940108)	(v15940136)
Purchase of automotive vehicles	(v15939997)	(v15940025)	(v15940053)	(v15940081)	(v15940109)	(v15940137)
Gasoline	(v15939998)	(v15940026)	(v15940054)	(v15940082)	(v15940110)	(v15940138)
Other private transportation	(v15939999)	(v15940027)	(v15940055)	(v15940083)	(v15940111)	(v15940139)
Public transportation	(v15940000)	(v15940028)	(v15940056)	(v15940084)	(v15940112)	(v15940140)
Health and personal care	(v15940001)	(v15940029)	(v15940057)	(v15940085)	(v15940113)	(v15940141)
Health care	(v15940002)	(v15940030)	(v15940058)	(v15940086)	(v15940114)	(v15940142)
Personal care supplies and equipment	(v15940003)	(v15940031)	(v15940059)	(v15940087)	(v15940115)	(v15940143)
Personal care services	(v15940004)	(v15940032)	(v15940060)	(v15940088)	(v15940116)	(v15940144)
Recreation, education and reading	(v15940005)	(v15940033)	(v15940061)	(v15940089)	(v15940117)	(v15940145)
Alcoholic beverages and tobacco products	(v15940006)	(v15940034)	(v15940062)	(v15940090)	(v15940118)	(v15940146)
Alcoholic beverages	(v15940007)	(v15940035)	(v15940063)	(v15940091)	(v15940119)	(v15940147)
Tobacco products and smokers' supplies	(v15940008)	(v15940036)	(v15940064)	(v15940092)	(v15940120)	(v15940148)