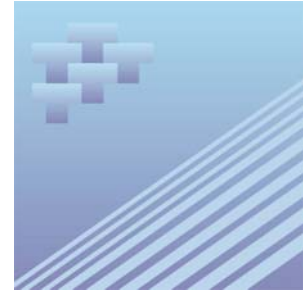




Catalogue no. 51-007-X — TP 141

# **Aircraft Movement Statistics: NAV CANADA Towers and Flight Service Stations**



March 2008



Statistics  
Canada

Statistique  
Canada

---

**Canada**

## How to obtain more information

For information about this product or the wide range of services and data available from Statistics Canada, visit our website at [www.statcan.ca](http://www.statcan.ca) or contact us by e-mail at [infostats@statcan.ca](mailto:infostats@statcan.ca) or by phone from 8:30am to 4:30pm Monday to Friday at:

### **Toll-free telephone (Canada and the United States):**

Inquiries line **1-800-263-1136**

National telecommunications device for the hearing impaired **1-800-363-7629**

Fax line **1-877-287-4369**

Depository Services Program inquiries line **1-800-635-7943**

Depository Services Program fax line **1-800-565-7757**

### **Statistics Canada national contact centre: 1-613-951-8116**

Fax line **1-613-951-0581**

## Information to access the product

This product, catalogue no. 51-007-X, is available for free in electronic format. To obtain a single issue, visit our website at [www.statcan.ca](http://www.statcan.ca) and select Publications.

## Standards of service to the public

Statistics Canada is committed to serving its clients in a prompt, reliable and courteous manner. To this end, the Agency has developed *standards of service* which its employees observe in serving its clients.

To obtain a copy of these service standards, please contact Statistics Canada toll free at 1-800-263-1136. The service standards are also published on [www.statcan.ca](http://www.statcan.ca) under About us > Providing services to Canadians.



Statistics Canada  
Transportation Division

# Aircraft Movement Statistics: NAV CANADA Towers and Flight Service Stations

March 2008

Published by authority of the Minister responsible for Statistics Canada © Minister of Industry, 2008 and the © Minister of Transport, 2008.

All rights reserved. The content of this electronic publication may be reproduced, in whole or in part, and by any means, without further permission from Statistics Canada, subject to the following conditions: that it be done solely for the purposes of private study, research, criticism, review or newspaper summary, and/or for non-commercial purposes; and that Statistics Canada be fully acknowledged as follows: Source (or "Adapted from", if appropriate): Statistics Canada, year of publication, name of product, catalogue number, volume and issue numbers, reference period and page(s). Otherwise, no part of this publication may be reproduced, stored in a retrieval system or transmitted in any form, by any means—electronic, mechanical or photocopy—or for any purposes without prior written permission of Licensing Services, Client Services Division, Statistics Canada, Ottawa, Ontario, Canada K1A 0T6.

April 2008

Catalogue no. 51-007-X — TP 141

ISSN 1911-6314

Frequency: Monthly

Ottawa

La version française de cette publication est disponible sur demande (n° 51-007-X au catalogue).

---

#### **Note of appreciation**

*Canada owes the success of its statistical system to a long standing partnership between Statistics Canada, the citizens of Canada, its businesses, governments and other institutions. Accurate and timely statistical information could not be produced without their continued cooperation and goodwill.*

# User information

---

## Symbols

The following standard symbols are used in Statistics Canada publications:

- . not available for any reference period
- .. not available for a specific reference period
- ... not applicable
- 0 true zero or a value rounded to zero
- 0<sup>s</sup> value rounded to 0 (zero) where there is a meaningful distinction between true zero and the value that was rounded
- p preliminary
- r revised
- x suppressed to meet the confidentiality requirements of the *Statistics Act*
- E use with caution
- F too unreliable to be published

## Acknowledgements

This publication was prepared by the Aviation Statistics Centre, of the Transportation Division, Statistics Canada under the general direction of **Gord Baldwin**, Director, Transportation Division and **Norah Hillary**, Chief, Aviation Statistics Centre. **Kathie Davidson**, **Rose Krakower**, **John Scolli**, **Sylvie Savard**, **Jim Charinos** and **Daniel Osabu-Kle** contributed to the preparation of this publication.

# Table of contents

---

<b>Highlights</b>	<b>5</b>
<b>Analysis</b>	<b>6</b>
<b>Related products</b>	<b>7</b>
<b>Statistical tables</b>	
1 Total aircraft movements by class of operation	10
1-1 NAV CANADA towers	10
1-2 NAV CANADA flight service stations	11
2 Total aircraft movements, civil and military	12
2-1 NAV CANADA towers	12
2-2 NAV CANADA flight service stations	13
3 Itinerant movements by type of operator	14
3-1 NAV CANADA towers	14
3-2 NAV CANADA flight service stations	15
4 Itinerant movements by I.F.R. (Instrument flight rules) and V.F.R. (Visual flight rules) and runway 88 movements	16
4-1 NAV CANADA towers	16
4-2 NAV CANADA flight service stations	17
5 Itinerant movements by type of power plant	18
5-1 NAV CANADA towers	18
5-2 NAV CANADA flight service stations	19
6 Itinerant movements by aircraft weight group	20
6-1 NAV CANADA towers	20
6-2 NAV CANADA flight service stations	21
7 Itinerant movements, domestic, transborder and international	22
7-1 NAV CANADA towers	22
7-2 NAV CANADA flight service stations	26

## Table of contents – continued

8	Total aircraft movements, peak hour and peak day	31
8-1	NAV CANADA towers	31
8-2	NAV CANADA flight service stations	32
9	Itinerant aircraft movements, peak hour and peak day	33
9-1	NAV CANADA towers	33
9-2	NAV CANADA flight service stations	34
10	Local movements, peak hour and peak day	35
10-1	NAV CANADA towers	35
10-2	NAV CANADA flight service stations	36
11	Local movements - civil, peak hour and peak day	37
11-1	NAV CANADA towers	37
11-2	NAV CANADA flight service stations	38
12	Local movements - military, peak hour and peak day	39
12-1	NAV CANADA towers	39
12-2	NAV CANADA flight service stations	40

## Data quality, concepts and methodology

Methodology	41
Data quality and limitations	43

## Appendix

I	Factors influencing the data	44
II	Glossary of terms	45

## Highlights

Aircraft take-offs and landings at Canadian airports with NAV CANADA air traffic control towers and flight service stations increased in March 2008 compared to March 2007. These 95 airports reported 501,663 movements in March 2008 compared with 484,878 movements at 95 airports in March 2007, an increase of 3.5% (+16,785 movements).

Itinerant movements (flights from one airport to another) increased by 2.9% (+9,664 movements) in March 2008 compared with the same month a year earlier.

Local movements (flights that remain in the vicinity of the airport) increased by 4.7% (+7,121 movements) in March 2008 compared with March 2007.

**Table 1**  
**Distribution of aircraft movements at NAV CANADA Towers and Flight Service Stations**

	NAV CANADA towers		NAV CANADA Flight Service Stations		Total	
	number	Change from March 2008/ March 2007 percent	number	Change from March 2008/ March 2007 percent	number	Change from March 2008/ March 2007 percent
<b>Grand total</b>	<b>399,968</b>	<b>3.1</b>	<b>101,695</b>	<b>5.1</b>	<b>501,663</b>	<b>3.5</b>
<b>Itinerant movements</b>						
Air carriers	205,146	2.3	54,599	3.2	259,745	2.5
Other commercial movements	36,885	14.3	5,115	4.2	42,000	12.9
Private movements	24,783	1.5	7,894	2.7	32,677	1.8
Government civil movements	4,341	-15.7	1,833	-2.0	6,174	-12.0
Government military movements	2,741	-21.3	735	-32.9	3,476	-24.1
Itinerant total	273,896	3.0	70,176	2.5	344,072	2.9
<b>Local movements</b>						
Civil local movements	124,875	3.5	31,411	11.6	156,286	5.0
Military local movements	1,197	-20.3	108	-6.9	1,305	-19.3
Local total	126,072	3.2	31,519	11.5	157,591	4.7

## Analysis

---

Aircraft take-offs and landings at Canadian airports with NAV CANADA air traffic control towers and flight service stations increased in March 2008 compared to March 2007. These 95 airports reported 501,663 movements in March 2008 compared with 484,878 movements at 95 airports in March 2007, an increase of 3.5% (+16,785 movements).

Itinerant movements (flights from one airport to another) increased by 2.9% (+9,664 movements) in March 2008 compared with the same month a year earlier.

Local movements (flights that remain in the vicinity of the airport) increased by 4.7% (+7,121 movements) in March 2008 compared with March 2007.

### **Airports with NAV CANADA air traffic control towers**

The 42 Canadian airports with NAV CANADA air traffic control towers reported 399,968 aircraft take-offs and landings in March, up 3.1% (388,123 movements) compared with March 2007. Year-over-year increases in aircraft movements were reported by 26 of these airports in March 2008. The variations ranged from an increase of 87.9% at Gander International, Newfoundland and Labrador to a decline of 28.5% at Chicoutimi/St-Honoré, Quebec.

Itinerant movements (flights from one airport to another) increased by 3.0% (+7,969 movements) in March compared with the same month a year earlier. Year-over-year variations in itinerant movements ranged from a 70.3% increase (+1,278 movements) at Pitt Meadows, British Columbia to a decline of 26.7% (-391 movements) at Chicoutimi/St-Honoré, Quebec.

Local movements (flights that remain in the vicinity of the airport) increased by 3.2% (+3,876 movements) in March compared with March 2007. Pitt Meadows, British Columbia recorded the largest gain in local movements, increasing by 2,916 movements (+87.5%) while Abbotsford, British Columbia reported 2,048 fewer movements (-20.3%) compared with March 2007.

### **Airports with NAV CANADA flight service stations**

The 53 Canadian airports with NAV CANADA flight service stations reported 101,695 aircraft take-offs and landings in March, up 5.1% (4,940 movements) compared with March 2007. Year-over-year increases in aircraft movements were reported by 30 of these airports in March 2008. The variations ranged from a 205.3% increase (+3,455 movements) at Fredericton International, New Brunswick to a decline of 51.3% (-686 movements) at Castlegar, British Columbia.

Itinerant movements (flights from one airport to another) increased by 2.5% (+1,695 movements) in March compared with the same month a year earlier. Year-over-year variations in itinerant movements ranged from an 84.5% increase (+1,265 movements) at Fredericton International, New Brunswick to a decline of 32.1% (-270 movements) at High Level, Alberta.

Local movements (flights that remain in the vicinity of the airport) recorded in March 2008 increased by 11.5% (+3,245 movements) compared with the same month a year earlier. Fredericton International, New Brunswick recorded the largest gain in local movements, increasing by 2,190 movements (+1,177.4%) compared with March 2007.



## Related products

---

### Selected CANSIM tables from Statistics Canada

---

401-0005	Aircraft movements by class of operation, airports with NAV CANADA towers, preliminary, monthly
401-0006	Aircraft movements by class of operation, airports with NAV CANADA towers, preliminary, annual
401-0007	Aircraft movements, by class of operation and peak hour and peak day of movements, airports with NAV CANADA towers, monthly
401-0008	Aircraft movements, by civil and military movements, airports with NAV CANADA towers, monthly
401-0009	Itinerant movements, by type of operation, airports with NAV CANADA towers, monthly
401-0010	Itinerant movements, by instrument flight rules, visual flight rules and runway 88, airports with NAV CANADA towers, monthly
401-0011	Itinerant movements, by type of power plant, airports with NAV CANADA towers, monthly
401-0012	Itinerant movements, by aircraft gross take-off weight, airports with NAV CANADA towers, monthly
401-0013	Domestic and international itinerant movements, by type of operation, airports with NAV CANADA towers, monthly
401-0014	Aircraft movements, by class of operation and peak hour and peak day of movements, airports with NAV CANADA flight service stations, monthly
401-0015	Aircraft movements, by civil and military movements, airports with NAV CANADA flight service stations, monthly
401-0016	Itinerant movements, by type of operation, airports with NAV CANADA flight service stations, monthly
401-0017	Itinerant movements, by instrument flight rules, visual flight rules and runway 88, airports with NAV CANADA flight service stations, monthly
401-0018	Itinerant movements, by type of power plant, airports with NAV CANADA flight service stations, monthly
401-0019	Itinerant movements, by aircraft gross take-off weight, airports with NAV CANADA flight service stations, monthly
401-0020	Domestic and international itinerant movements, by type of operation, airports with NAV CANADA flight service stations, monthly

---

### **Selected surveys from Statistics Canada**

---

2715	Aircraft Movement Statistics
------	------------------------------

---

### **Selected summary tables from Statistics Canada**

---

- *Aircraft movements by class of operation (monthly)*

# Statistical tables

---

---

**Table 1-1**  
**Total aircraft movements by class of operation — NAV CANADA towers**

	Total		Itinerant		Local	
	Rank of movements	Number of movements	Rank of movements	Number of movements	Rank of movements	Number of movements
Abbotsford	8	13,498	17	5,456	3	8,042
Boundary Bay	5	17,368	12	6,352	1	11,016
Calgary International	3	20,846	3	20,686	38	160
Calgary/Springbank	6	17,138	11	6,649	2	10,489
Chicoutimi/St-Honoré	36	3,194	41	1,072	21	2,122
Edmonton City Centre	22	7,566	14	6,068	26	1,498
Edmonton International	13	10,996	6	10,638	36	358
Edmonton/Villeneuve	26	6,650	39	1,539	9	5,111
Gander International	34	4,423	33	2,283	20	2,140
Halifax/Robert L Stanfield International	24	7,227	9	6,839	34	388
Hamilton	31	5,188	28	3,306	24	1,882
Kelowna	27	6,184	23	4,241	23	1,943
Kitchener/Waterloo	20	8,282	24	3,744	12	4,538
Langley	21	7,761	30	2,947	11	4,814
London	14	10,751	18	5,417	8	5,334
Moncton/Greater Moncton International	17	9,622	16	5,716	14	3,906
Montréal/Mirabel International	40	2,246	38	1,682	33	564
Montréal/Pierre Elliott Trudeau International	4	18,665	4	18,665	0	0
Montréal/St-Hubert	11	12,150	19	5,192	4	6,958
Oshawa	32	5,098	36	1,973	17	3,125
Ottawa/Macdonald-Cartier International	10	12,727	7	10,633	22	2,094
Pitt Meadows	18	9,344	29	3,096	7	6,248
Prince George	35	3,505	34	2,253	28	1,252
Québec/Jean Lesage International	16	9,814	10	6,726	18	3,088
Regina International	30	5,243	25	3,735	25	1,508
Saskatoon/John G Diefenbaker International	15	10,315	15	6,016	13	4,299
Sault Ste. Marie	28	5,766	32	2,506	16	3,260
St. John's International	37	3,122	31	2,844	37	278
St-Jean	42	1,370	42	784	32	586
Sudbury	39	2,627	35	2,249	35	378
Thunder Bay	25	7,177	20	4,781	19	2,396
Toronto/Buttonville Municipal	9	12,930	13	6,236	5	6,694
Toronto/City Centre	23	7,245	26	3,556	15	3,689
Toronto/Lester B Pearson International	1	36,222	1	36,222	0	0
Vancouver Harbour	33	4,679	21	4,679	0	0
Vancouver International	2	26,830	2	26,830	0	0
Victoria International	7	15,133	8	8,444	6	6,689
Whitehorse International	41	2,192	40	1,285	30	907
Windsor	38	2,988	37	1,722	27	1,266
Winnipeg/James Armstrong Richardson International	12	12,012	5	11,154	31	858
Winnipeg/St. Andrews	19	8,380	27	3,365	10	5,015
Yellowknife	29	5,494	22	4,315	29	1,179
<b>Total of NAV CANADA towers (42)</b>	.	<b>399,968</b>	.	<b>273,896</b>	.	<b>126,072</b>

**Table 1-2**  
**Total aircraft movements by class of operation — NAV CANADA flight service stations**

	Total		Itinerant		Local	
	Rank of movements	Number of movements	Rank of movements	Number of movements	Rank of movements	Number of movements
Brandon Municipal	30	1,444	42	740	17	704
Campbell River	7	3,368	12	1,728	7	1,640
Castlegar	49	650	49	504	31	146
Charlottetown	13	2,723	19	1,507	11	1,216
Churchill	45	776	39	776	0	0
Cranbrook	38	936	37	812	34	124
Deer Lake	24	1,777	20	1,471	22	306
Fort McMurray	2	5,346	1	4,262	13	1,084
Fort Nelson	36	1,028	33	874	29	154
Fort St John	14	2,690	9	2,048	18	642
Fredericton International	3	5,138	3	2,762	2	2,376
Grande Prairie	4	4,289	5	2,573	6	1,716
High Level	21	1,842	48	572	10	1,270
Îles-de-la-Madeleine	47	674	46	674	0	0
Inuvik/Mike Zubko	39	921	34	873	42	48
Iqaluit	27	1,637	22	1,401	26	236
Kamloops	8	3,329	6	2,293	14	1,036
Kenora	41	878	41	750	33	128
Kingston	10	2,823	16	1,623	12	1,200
Kuujuuaq	43	864	38	812	41	52
Kuujuuarapik	50	504	50	504	0	0
La Grande Rivière	34	1,174	25	1,172	46	2
La Ronge	28	1,493	21	1,419	39	74
Lethbridge	15	2,554	17	1,618	15	936
Lloydminster	37	1,019	44	683	21	336
Medicine Hat	26	1,742	27	1,112	19	630
Mont-Joli	53	333	53	305	45	28
Nanaimo	18	2,198	14	1,708	20	490
Norman Wells	32	1,298	24	1,187	35	111
North Bay	1	5,373	7	2,179	1	3,194
Ottawa/Gatineau	16	2,456	31	914	9	1,542
Peace River	35	1,150	36	844	23	306
Penticton	6	3,483	15	1,643	5	1,840
Port Hardy	42	867	40	774	37	93
Prince Albert	25	1,748	18	1,534	27	214
Prince Rupert	52	415	52	361	40	54
Rankin Inlet	40	906	32	904	47	2
Red Deer Regional	5	4,043	10	1,979	3	2,064
Rouyn-Noranda	33	1,229	28	983	24	246
Saint John	29	1,465	23	1,317	30	148
Sept-Îles	22	1,830	13	1,720	36	110
Sioux Lookout	19	2,150	8	2,104	43	46
Smithers	48	664	47	630	44	34
St Anthony	51	476	51	476	0	0
St Catharines	11	2,770	30	916	4	1,854
Terrace	31	1,408	26	1,171	25	237
Thompson	12	2,724	4	2,590	32	134
Timmins	20	2,149	11	1,973	28	176
Val-d'Or	23	1,810	29	948	16	862
Victoria Harbour	9	3,189	2	3,189	0	0
Wabush	46	684	45	682	48	2
Whitecourt	17	2,454	35	870	8	1,584
Williams Lake	44	804	43	712	38	92
<b>Total of all flight service stations (53)</b>	.	<b>101,695</b>	.	<b>70,176</b>	.	<b>31,519</b>

**Table 2-1**  
**Total aircraft movements, civil and military — NAV CANADA towers**

	Civil movements			Military movements			
	Total	Itinerant		Civil	Total	Itinerant	Military
		Commercial	Private and government				
	number						
Abbotsford	13,451	4,431	978	8,042	47	47	0
Boundary Bay	17,367	5,040	1,311	11,016	1	1	0
Calgary International	20,761	19,467	1,134	160	85	85	0
Calgary/Springbank	17,123	4,835	1,801	10,487	15	13	2
Chicoutimi/St-Honoré	3,194	1,037	35	2,122	0	0	0
Edmonton City Centre	7,483	4,227	1,776	1,480	83	65	18
Edmonton International	10,924	10,202	370	352	72	66	6
Edmonton/Villeneuve	6,646	1,281	254	5,111	4	4	0
Gander International	4,054	1,844	230	1,980	369	209	160
Halifax/Robert L. Stanfield International	6,985	6,360	321	304	242	158	84
Hamilton	5,185	2,747	556	1,882	3	3	0
Kelowna	6,158	3,566	649	1,943	26	26	0
Kitchener/Waterloo	8,248	2,981	737	4,530	34	26	8
Langley	7,753	1,921	1,018	4,814	8	8	0
London	10,744	3,803	1,607	5,334	7	7	0
Moncton/Greater Moncton International	9,612	5,407	301	3,904	10	8	2
Montréal/Mirabel International	2,157	1,239	370	548	89	73	16
Montréal/Pierre Elliott Trudeau International	18,640	17,248	1,392	0	25	25	0
Montréal/St-Hubert	12,053	4,082	1,013	6,958	97	97	0
Oshawa	5,091	1,418	548	3,125	7	7	0
Ottawa/Macdonald-Cartier International	12,452	9,554	844	2,054	275	235	40
Pitt Meadows	9,288	1,993	1,047	6,248	56	56	0
Prince George	3,504	1,982	270	1,252	1	1	0
Québec/Jean Lesage International	9,652	5,694	872	3,086	162	160	2
Regina International	4,997	2,952	575	1,470	246	208	38
Saskatoon/John G. Diefenbaker International	10,179	5,025	885	4,269	136	106	30
Sault Ste. Marie	5,762	2,321	181	3,260	4	4	0
St. John's International	2,917	2,477	174	266	205	193	12
St-Jean	1,264	439	239	586	106	106	0
Sudbury	2,621	1,943	300	378	6	6	0
Thunder Bay	7,138	4,424	320	2,394	39	37	2
Toronto/Buttonville Municipal	12,924	4,746	1,484	6,694	6	6	0
Toronto/City Centre	7,045	3,142	405	3,498	200	9	191
Toronto/Lester B. Pearson International	36,211	35,013	1,198	0	11	11	0
Vancouver Harbour	4,673	4,614	59	0	6	6	0
Vancouver International	26,800	25,790	1,010	0	30	30	0
Victoria International	14,680	7,144	1,195	6,341	453	105	348
Whitehorse International	2,188	959	322	907	4	4	0
Windsor	2,986	1,508	212	1,266	2	2	0
Winnipeg/James Armstrong Richardson International	11,333	9,975	704	654	679	475	204
Winnipeg/St. Andrews	8,366	3,023	328	5,015	14	14	0
Yellowknife	5,421	4,177	99	1,145	73	39	34
<b>Total of NAV CANADA towers (42)</b>	<b>396,030</b>	<b>242,031</b>	<b>29,124</b>	<b>124,875</b>	<b>3,938</b>	<b>2,741</b>	<b>1,197</b>

**Table 2-2**  
**Total aircraft movements, civil and military — NAV CANADA flight service stations**

	Civil movements				Military movements		
	Total	Itinerant		Civil	Total	Itinerant	Military
		Commercial	Private and government				
	number						
Brandon Municipal	1,313	484	153	676	131	103	28
Campbell River	3,351	1,145	566	1,640	17	17	0
Castlegar	650	463	41	146	0	0	0
Charlottetown	2,695	1,303	180	1,212	28	24	4
Churchill	776	760	16	0	0	0	0
Cranbrook	934	633	177	124	2	2	0
Deer Lake	1,772	1,456	10	306	5	5	0
Fort McMurray	5,337	3,837	416	1,084	9	9	0
Fort Nelson	1,028	768	106	154	0	0	0
Fort St John	2,688	1,859	187	642	2	2	0
Fredericton International	5,071	2,532	163	2,376	67	67	0
Grande Prairie	4,283	2,175	392	1,716	6	6	0
High Level	1,842	530	42	1,270	0	0	0
Îles-de-la-Madeleine	660	490	170	0	14	14	0
Inuvik/Mike Zubko	906	826	32	48	15	15	0
Iqaluit	1,583	1,250	99	234	54	52	2
Kamloops	3,292	1,703	571	1,018	37	19	18
Kenora	860	672	60	128	18	18	0
Kingston	2,805	1,278	327	1,200	18	18	0
Kuujuaq	860	764	44	52	4	4	0
Kuujuarapik	498	496	2	0	6	6	0
La Grande Rivière	1,156	1,128	26	2	18	18	0
La Ronge	1,487	1,317	96	74	6	6	0
Lethbridge	2,532	1,267	329	936	22	22	0
Lloydminster	1,011	392	283	336	8	8	0
Medicine Hat	1,714	857	239	618	28	16	12
Mont-Joli	327	267	32	28	6	6	0
Nanaimo	2,194	1,175	529	490	4	4	0
Norman Wells	1,298	1,166	21	111	0	0	0
North Bay	5,309	1,699	424	3,186	64	56	8
Ottawa/Gatineau	2,452	409	501	1,542	4	4	0
Peace River	1,148	767	75	306	2	2	0
Penticton	3,469	1,295	334	1,840	14	14	0
Port Hardy	851	639	119	93	16	16	0
Prince Albert	1,744	1,243	287	214	4	4	0
Prince Rupert	413	335	24	54	2	2	0
Rankin Inlet	906	893	11	2	0	0	0
Red Deer Regional	4,037	1,454	519	2,064	6	6	0
Rouyn-Noranda	1,229	818	165	246	0	0	0
Saint John	1,431	1,074	217	140	34	26	8
Sept-Îles	1,830	1,572	148	110	0	0	0
Sioux Lookout	2,140	2,080	24	36	10	0	10
Smithers	664	531	99	34	0	0	0
St Anthony	476	454	22	0	0	0	0
St Catharines	2,645	545	246	1,854	125	125	0
Terrace	1,383	1,122	42	219	25	7	18
Thompson	2,720	2,403	183	134	4	4	0
Timmins	2,149	1,770	203	176	0	0	0
Val-d'Or	1,808	767	179	862	2	2	0
Victoria Harbour	3,187	2,812	375	0	2	2	0
Wabush	684	654	28	2	0	0	0
Whitecourt	2,454	797	73	1,584	0	0	0
Williams Lake	800	588	120	92	4	4	0
<b>Total of all flight service stations (53)</b>	<b>100,852</b>	<b>59,714</b>	<b>9,727</b>	<b>31,411</b>	<b>843</b>	<b>735</b>	<b>108</b>

**Table 3-1**  
**Itinerant movements by type of operator — NAV CANADA towers**

	Total	Air carrier movements		Other commercial	Private	Government movements	
		Level I-III and Foreign	Level IV-VI			Civil	Military
	number						
Abbotsford	5,456	511	2,997	923	844	134	47
Boundary Bay	6,352	13	1,051	3,976	1,255	56	1
Calgary International	20,686	17,337	1,299	831	1,033	101	85
Calgary/Springbank	6,649	16	1,295	3,524	1,772	29	13
Chicoutimi/St-Honoré	1,072	5	386	646	35	0	0
Edmonton City Centre	6,068	1,581	784	1,862	1,425	351	65
Edmonton International	10,638	9,621	395	186	333	37	66
Edmonton/Villeneuve	1,539	8	395	878	249	5	4
Gander International	2,283	588	1,201	55	200	30	209
Halifax/Robert L Stanfield International	6,839	5,764	440	156	271	50	158
Hamilton	3,306	1,793	850	104	442	114	3
Kelowna	4,241	2,460	241	865	560	89	26
Kitchener/Waterloo	3,744	471	1,856	654	732	5	26
Langley	2,947	91	166	1,664	1,006	12	8
London	5,417	1,227	975	1,601	1,546	61	7
Moncton/Greater Moncton International	5,716	1,778	3,305	324	95	206	8
Montréal/Mirabel International	1,682	776	398	65	342	28	73
Montréal/Pierre Elliott Trudeau International	18,665	16,137	726	385	1,172	220	25
Montréal/St-Hubert	5,192	2,249	427	1,406	917	96	97
Oshawa	1,973	133	78	1,207	540	8	7
Ottawa/Macdonald-Cartier International	10,633	7,506	368	1,680	320	524	235
Pitt Meadows	3,096	29	896	1,068	1,028	19	56
Prince George	2,253	1,302	440	240	209	61	1
Québec/Jean Lesage International	6,726	3,569	800	1,325	462	410	160
Regina International	3,735	2,100	794	58	371	204	208
Saskatoon/John G Diefenbaker International	6,016	2,878	1,559	588	510	375	106
Sault Ste. Marie	2,506	838	170	1,313	138	43	4
St. John's International	2,844	1,804	593	80	114	60	193
St-Jean	784	132	127	180	203	36	106
Sudbury	2,249	1,347	497	99	267	33	6
Thunder Bay	4,781	2,918	634	872	235	85	37
Toronto/Buttonville Municipal	6,236	336	659	3,751	1,466	18	6
Toronto/City Centre	3,556	1,094	747	1,301	391	14	9
Toronto/Lester B Pearson International	36,222	34,390	409	214	1,161	37	11
Vancouver Harbour	4,679	4,209	146	259	59	0	6
Vancouver International	26,830	23,959	1,375	456	773	237	30
Victoria International	8,444	3,109	2,986	1,049	1,154	41	105
Whitehorse International	1,285	591	344	24	292	30	4
Windsor	1,722	507	951	50	196	16	2
Winnipeg/James Armstrong Richardson International	11,154	8,978	924	73	349	355	475
Winnipeg/St. Andrews	3,365	438	1,743	842	276	52	14
Yellowknife	4,315	3,231	895	51	40	59	39
<b>Total of NAV CANADA towers (42)</b>	<b>273,896</b>	<b>167,824</b>	<b>37,322</b>	<b>36,885</b>	<b>24,783</b>	<b>4,341</b>	<b>2,741</b>



**Table 3-2**  
**Itinerant movements by type of operator — NAV CANADA flight service stations**

	Total	Air carrier movements		Other commercial	Private	Government movements	
		Level I-III and Foreign	Level IV-VI			Civil	Military
	number						
Brandon Municipal	740	116	320	48	123	30	103
Campbell River	1,728	635	282	228	522	44	17
Castlegar	504	270	54	139	39	2	0
Charlottetown	1,507	576	241	486	71	109	24
Churchill	776	700	60	0	11	5	0
Cranbrook	812	567	47	19	173	4	2
Deer Lake	1,471	1,222	214	20	6	4	5
Fort McMurray	4,262	2,444	1,099	294	390	26	9
Fort Nelson	874	368	213	187	102	4	0
Fort St John	2,048	745	982	132	183	4	2
Fredericton International	2,762	706	1,785	41	87	76	67
Grande Prairie	2,573	1,064	1,000	111	354	38	6
High Level	572	167	358	5	34	8	0
Îles-de-la-Madeleine	674	323	151	16	2	168	14
Inuvik/Mike Zubko	873	247	579	0	6	26	15
Iqaluit	1,401	1,120	48	82	49	50	52
Kamloops	2,293	1,152	323	228	471	100	19
Kenora	750	331	302	39	52	8	18
Kingston	1,623	566	235	477	290	37	18
Kuujuuaq	812	714	50	0	12	32	4
Kuujuuarapik	504	484	12	0	0	2	6
La Grande Rivière	1,172	614	510	4	16	10	18
La Ronge	1,419	1,248	58	11	21	75	6
Lethbridge	1,618	577	108	582	320	9	22
Lloydminster	683	124	209	59	249	34	8
Medicine Hat	1,112	742	86	29	219	20	16
Mont-Joli	305	251	9	7	14	18	6
Nanaimo	1,708	488	528	159	485	44	4
Norman Wells	1,187	909	257	0	15	6	0
North Bay	2,179	549	737	413	390	34	56
Ottawa/Gatineau	914	91	169	149	410	91	4
Peace River	844	433	288	46	63	12	2
Penticton	1,643	506	708	81	323	11	14
Port Hardy	774	551	58	30	70	49	16
Prince Albert	1,534	1,098	128	17	175	112	4
Prince Rupert	361	212	89	34	8	16	2
Rankin Inlet	904	877	14	2	3	8	0
Red Deer Regional	1,979	393	866	195	499	20	6
Rouyn-Noranda	983	606	140	72	129	36	0
Saint John	1,317	758	230	86	215	2	26
Sept-Îles	1,720	1,214	333	25	84	64	0
Sioux Lookout	2,104	1,843	226	11	19	5	0
Smithers	630	427	84	20	89	10	0
St Anthony	476	326	20	108	0	22	0
St Catharines	916	3	504	38	235	11	125
Terrace	1,171	638	458	26	28	14	7
Thompson	2,590	2,050	349	4	23	160	4
Timmins	1,973	1,553	181	36	161	42	0
Val-d'Or	948	643	94	30	145	34	2
Victoria Harbour	3,189	2,757	53	2	306	69	2
Wabush	682	556	94	4	24	4	0
Whitecourt	870	40	515	242	63	10	0
Williams Lake	712	386	161	41	116	4	4
<b>Total of all flight service stations (53)</b>	<b>70,176</b>	<b>37,980</b>	<b>16,619</b>	<b>5,115</b>	<b>7,894</b>	<b>1,833</b>	<b>735</b>

Table 4-1

**Itinerant movements by I.F.R. (Instrument flight rules) and V.F.R. (Visual flight rules) and runway 88 movements  
— NAV CANADA towers**

	Itinerant movements					Runway 88 number
	Total of IFR and VFR flights <sup>1</sup>	Instrument flight rules	Percentage instrument flight rules	Visual flight rules	Percentage visual flight rules	
	number		percent	number	percent	
Abbotsford	5,456	1,398	25.6	4,058	74.3	1,502
Boundary Bay	6,352	389	6.1	5,963	93.8	416
Calgary International	20,686	19,199	92.8	1,487	7.1	698
Calgary/Springbank	6,649	349	5.2	6,300	94.7	3,489
Chicoutimi/St-Honoré	1,072	86	8.0	986	91.9	25
Edmonton City Centre	6,068	2,752	45.3	3,316	54.6	3,125
Edmonton International	10,638	10,105	94.9	533	5.0	1,170
Edmonton/Villeneuve	1,539	12	0.7	1,527	99.2	136
Gander International	2,283	1,162	50.8	1,121	49.1	54
Halifax/Robert L Stanfield International	6,839	6,262	91.5	577	8.4	324
Hamilton	3,306	2,404	72.7	902	27.2	556
Kelowna	4,241	2,722	64.1	1,519	35.8	631
Kitchener/Waterloo	3,744	895	23.9	2,849	76.0	368
Langley	2,947	6	0.2	2,941	99.7	2,458
London	5,417	1,467	27.0	3,950	72.9	283
Moncton/Greater Moncton International	5,716	2,233	39.0	3,483	60.9	44
Montréal/Mirabel International	1,682	974	57.9	708	42.0	556
Montréal/Pierre Elliott Trudeau International	18,665	17,949	96.1	716	3.8	2,201
Montréal/St-Hubert	5,192	1,216	23.4	3,976	76.5	1,466
Oshawa	1,973	74	3.7	1,899	96.2	538
Ottawa/Macdonald-Cartier International	10,633	8,194	77.0	2,439	22.9	384
Pitt Meadows	3,096	14	0.4	3,082	99.5	2,588
Prince George	2,253	1,440	63.9	813	36.0	287
Québec/Jean Lesage International	6,726	4,423	65.7	2,303	34.2	433
Regina International	3,735	2,528	67.6	1,207	32.3	116
Saskatoon/John G Diefenbaker International	6,016	3,505	58.2	2,511	41.7	184
Sault Ste. Marie	2,506	1,063	42.4	1,443	57.5	106
St. John's International	2,844	2,672	93.9	172	6.0	56
St-Jean	784	231	29.4	553	70.5	138
Sudbury	2,249	1,667	74.1	582	25.8	194
Thunder Bay	4,781	3,220	67.3	1,561	32.6	205
Toronto/Buttonville Municipal	6,236	700	11.2	5,536	88.7	401
Toronto/City Centre	3,556	1,323	37.2	2,233	62.7	1,761
Toronto/Lester B Pearson International	36,222	36,099	99.6	123	0.3	56
Vancouver Harbour	4,679	31	0.6	4,648	99.3	1,256
Vancouver International	26,830	21,416	79.8	5,414	20.1	8,988
Victoria International	8,444	3,348	39.6	5,096	60.3	7,841
Whitehorse International	1,285	486	37.8	799	62.1	230
Windsor	1,722	681	39.5	1,041	60.4	50
Winnipeg/James Armstrong Richardson International	11,154	9,463	84.8	1,691	15.1	625
Winnipeg/St. Andrews	3,365	94	2.7	3,271	97.2	104
Yellowknife	4,315	2,320	53.7	1,995	46.2	836
<b>Total of NAV CANADA towers (42)</b>	<b>273,896</b>	<b>176,572</b>	<b>64.5</b>	<b>97,324</b>	<b>35.5</b>	<b>46,879</b>

1. Total excludes runway 88 flights.

Table 4-2

## Itinerant movements by I.F.R. (Instrument flight rules) and V.F.R. (Visual flight rules) and runway 88 movements — NAV CANADA flight service stations

	Itinerant movements				Runway 88	
	Total of IFR and VFR flights <sup>1</sup>	Instrument flight rules	Percentage instrument flight rules	Visual flight rules		Percentage visual flight rules
	number		percent	number		percent
Brandon Municipal	740	169	22.8	571	77.1	21
Campbell River	1,728	514	29.7	1,214	70.2	309
Castlegar	504	273	54.1	231	45.8	53
Charlottetown	1,507	648	42.9	859	57.0	15
Churchill	776	673	86.7	103	13.2	51
Cranbrook	812	614	75.6	198	24.3	139
Deer Lake	1,471	1,356	92.1	115	7.8	26
Fort McMurray	4,262	2,289	53.7	1,973	46.2	15
Fort Nelson	874	402	45.9	472	54.0	114
Fort St John	2,048	768	37.5	1,280	62.5	113
Fredericton International	2,762	774	28.0	1,988	71.9	52
Grande Prairie	2,573	1,257	48.8	1,316	51.1	149
High Level	572	261	45.6	311	54.3	270
Îles-de-la-Madeleine	674	352	52.2	322	47.7	560
Inuvik/Mike Zubko	873	263	30.1	610	69.8	25
Iqaluit	1,401	1,069	76.3	332	23.6	0
Kamloops	2,293	1,419	61.8	874	38.1	257
Kenora	750	349	46.5	401	53.4	110
Kingston	1,623	692	42.6	931	57.3	43
Kuujuuaq	812	376	46.3	436	53.6	6
Kuujuuarapik	504	240	47.6	264	52.3	11
La Grande Rivière	1,172	577	49.2	595	50.7	171
La Ronge	1,419	700	49.3	719	50.6	250
Lethbridge	1,618	697	43.0	921	56.9	35
Lloydminster	683	247	36.1	436	63.8	18
Medicine Hat	1,112	450	40.4	662	59.5	197
Mont-Joli	305	243	79.6	62	20.3	19
Nanaimo	1,708	539	31.5	1,169	68.4	786
Norman Wells	1,187	185	15.5	1,002	84.4	14
North Bay	2,179	713	32.7	1,466	67.2	300
Ottawa/Gatineau	914	137	14.9	777	85.0	53
Peace River	844	373	44.1	471	55.8	133
Penticton	1,643	483	29.3	1,160	70.6	110
Port Hardy	774	215	27.7	559	72.2	257
Prince Albert	1,534	1,220	79.5	314	20.4	160
Prince Rupert	361	255	70.6	106	29.3	12
Rankin Inlet	904	668	73.8	236	26.1	1
Red Deer Regional	1,979	414	20.9	1,565	79.0	382
Rouyn-Noranda	983	747	75.9	236	24.0	39
Saint John	1,317	936	71.0	381	28.9	24
Sept-Îles	1,720	1,267	73.6	453	26.3	291
Sioux Lookout	2,104	1,594	75.7	510	24.2	146
Smithers	630	447	70.9	183	29.0	109
St Anthony	476	237	49.7	239	50.2	0
St Catharines	916	64	6.9	852	93.0	176
Terrace	1,171	669	57.1	502	42.8	142
Thompson	2,590	1,439	55.5	1,151	44.4	36
Timmins	1,973	1,599	81.0	374	18.9	209
Val-d'Or	948	661	69.7	287	30.2	200
Victoria Harbour	3,189	28	0.8	3,161	99.1	503
Wabush	682	577	84.6	105	15.3	121
Whitecourt	870	65	7.4	805	92.5	48
Williams Lake	712	435	61.0	277	38.9	217
<b>Total of all flight service stations (53)</b>	<b>70,176</b>	<b>33,639</b>	<b>47.9</b>	<b>36,537</b>	<b>52.1</b>	<b>7,498</b>

1. Total excludes runway 88 flights.

**Table 5-1**  
**Itinerant movements by type of power plant — NAV CANADA towers**

	Total	Jet	Turboprop	Piston	Helicopters	Gliders
	number					
Abbotsford	5,456	426	394	3,141	1,490	5
Boundary Bay	6,352	1	41	5,987	323	0
Calgary International	20,686	13,687	5,363	1,151	485	0
Calgary/Springbank	6,649	16	94	5,245	1,292	2
Chicoutimi/St-Honoré	1,072	0	34	832	204	2
Edmonton City Centre	6,068	433	2,112	2,708	815	0
Edmonton International	10,638	6,475	3,567	536	60	0
Edmonton/Villeneuve	1,539	8	22	1,063	446	0
Gander International	2,283	664	444	968	207	0
Halifax/Robert L. Stanfield International	6,839	4,285	1,779	448	327	0
Hamilton	3,306	1,456	754	1,038	58	0
Kelowna	4,241	1,473	1,266	1,176	325	1
Kitchener/Waterloo	3,744	251	460	2,760	272	1
Langley	2,947	0	82	2,406	458	1
London	5,417	403	1,177	3,682	155	0
Moncton/Greater Moncton International	5,716	1,153	821	3,706	36	0
Montréal/Mirabel International	1,682	760	319	512	91	0
Montréal/Pierre Elliott Trudeau International	18,665	13,002	4,824	545	294	0
Montréal/St-Hubert	5,192	202	660	3,931	398	1
Oshawa	1,973	0	86	1,796	91	0
Ottawa/Macdonald-Cartier International	10,633	5,978	2,340	1,969	346	0
Pitt Meadows	3,096	0	6	2,648	419	23
Prince George	2,253	503	1,019	239	490	2
Québec/Jean Lesage International	6,726	1,391	2,624	1,811	881	19
Regina International	3,735	1,567	751	1,377	39	1
Saskatoon/John G. Diefenbaker International	6,016	1,613	1,695	2,662	46	0
Sault Ste. Marie	2,506	14	1,025	1,432	34	1
St. John's International	2,844	1,158	1,395	45	246	0
St-Jean	784	10	80	628	64	2
Sudbury	2,249	63	1,582	373	231	0
Thunder Bay	4,781	829	2,581	1,124	247	0
Toronto/Buttonville Municipal	6,236	112	404	5,230	490	0
Toronto/City Centre	3,556	0	1,263	1,989	304	0
Toronto/Lester B. Pearson International	36,222	30,706	5,400	95	21	0
Vancouver Harbour	4,679	0	2,329	1,425	925	0
Vancouver International	26,830	12,711	9,914	3,144	1,060	1
Victoria International	8,444	989	2,419	4,534	502	0
Whitehorse International	1,285	301	300	545	139	0
Windsor	1,722	56	667	987	12	0
Winnipeg/James Armstrong Richardson International	11,154	5,309	4,205	1,461	179	0
Winnipeg/St. Andrews	3,365	0	301	2,892	172	0
Yellowknife	4,315	877	2,458	292	688	0
<b>Total of NAV CANADA towers (42)</b>	<b>273,896</b>	<b>108,882</b>	<b>69,057</b>	<b>80,533</b>	<b>15,362</b>	<b>62</b>

**Table 5-2**  
**Itinerant movements by type of power plant — NAV CANADA flight service stations**

	Total	Jet	Turboprop	Piston	Helicopters	Gliders
	number					
Brandon Municipal	740	19	170	477	74	0
Campbell River	1,728	31	692	559	446	0
Castlegar	504	16	276	146	66	0
Charlottetown	1,507	248	302	792	165	0
Churchill	776	4	713	9	50	0
Cranbrook	812	54	571	175	12	0
Deer Lake	1,471	242	1,125	56	48	0
Fort McMurray	4,262	930	1,585	773	974	0
Fort Nelson	874	32	391	163	288	0
Fort St John	2,048	245	589	232	982	0
Fredericton International	2,762	276	461	1,911	114	0
Grande Prairie	2,573	223	994	668	688	0
High Level	572	16	270	77	209	0
Îles-de-la-Madeleine	674	18	323	184	149	0
Inuvik/Mike Zubko	873	139	519	32	183	0
Iqaluit	1,401	359	996	12	34	0
Kamloops	2,293	83	1,247	741	222	0
Kenora	750	10	407	168	164	1
Kingston	1,623	31	661	842	89	0
Kuujuuaq	812	147	615	6	44	0
Kuujuuarapik	504	2	492	2	8	0
La Grande Rivière	1,172	12	946	182	32	0
La Ronge	1,419	4	1,033	286	96	0
Lethbridge	1,618	43	649	902	24	0
Lloydminster	683	2	229	414	38	0
Medicine Hat	1,112	17	505	531	59	0
Mont-Joli	305	12	259	30	4	0
Nanaimo	1,708	15	479	1,109	105	0
Norman Wells	1,187	148	566	314	158	1
North Bay	2,179	70	737	726	646	0
Ottawa/Gatineau	914	4	134	589	187	0
Peace River	844	14	373	197	260	0
Penticton	1,643	13	538	688	402	2
Port Hardy	774	10	469	164	131	0
Prince Albert	1,534	30	1,190	279	35	0
Prince Rupert	361	18	250	4	89	0
Rankin Inlet	904	131	757	4	12	0
Red Deer Regional	1,979	34	530	1,266	149	0
Rouyn-Noranda	983	92	731	146	14	0
Saint John	1,317	343	487	439	48	0
Sept-Îles	1,720	33	1,113	345	229	0
Sioux Lookout	2,104	0	1,792	285	27	0
Smithers	630	10	509	38	73	0
St Anthony	476	0	375	59	42	0
St Catharines	916	14	16	668	218	0
Terrace	1,171	25	680	12	454	0
Thompson	2,590	132	1,977	261	220	0
Timmins	1,973	6	1,672	235	60	0
Val-d'Or	948	116	581	142	109	0
Victoria Harbour	3,189	0	2,156	268	765	0
Wabush	682	4	560	28	90	0
Whitecourt	870	6	80	136	648	0
Williams Lake	712	18	408	187	99	0
<b>Total of all flight service stations (53)</b>	<b>70,176</b>	<b>4,501</b>	<b>36,180</b>	<b>18,959</b>	<b>10,532</b>	<b>4</b>

**Table 6-1**  
**Itinerant movements by aircraft weight group — NAV CANADA towers**

	Gross take-off weight in kilograms									
	2 000 and under	2 001 to 4 000	4 001 to 5 670	5 671 to 9 000	9 001 to 18 000	18 001 to 35 000	35 001 to 70 000	70 001 to 90 000	90 001 to 136 000	136 001 and over
	number									
Abbotsford	3,995	496	221	60	57	208	401	18	0	0
Boundary Bay	5,966	349	35	0	1	0	0	0	0	1
Calgary International	1,137	598	1,781	2,361	941	3,832	8,000	770	614	652
Calgary/Springbank	5,969	533	126	21	0	0	0	0	0	0
Chicoutimi/St-Honoré	933	76	63	0	0	0	0	0	0	0
Edmonton City Centre	2,935	594	1,658	658	187	36	0	0	0	0
Edmonton International	325	309	671	1,106	543	2,413	4,475	319	261	216
Edmonton/Villeneuve	1,435	46	58	0	0	0	0	0	0	0
Gander International	1,023	29	117	234	303	246	51	68	64	148
Halifax/Robert L. Stanfield International	240	267	425	857	816	1,490	1,976	271	253	244
Hamilton	957	273	305	309	220	173	430	4	592	43
Kelowna	1,390	104	219	666	56	764	1,023	4	15	0
Kitchener/Waterloo	2,827	218	280	78	207	30	74	29	1	0
Langley	2,782	145	16	3	1	0	0	0	0	0
London	3,756	192	247	125	729	186	171	2	9	0
Moncton/Greater Moncton International	3,585	209	384	303	163	527	298	3	242	2
Montréal/Mirabel International	481	194	72	95	54	237	127	6	264	152
Montréal/Pierre Elliott Trudeau International	620	171	701	927	2,755	5,572	4,348	1,703	109	1,759
Montréal/St-Hubert	3,724	532	660	112	131	6	4	1	22	0
Oshawa	1,756	111	86	1	19	0	0	0	0	0
Ottawa/Macdonald-Cartier International	2,003	120	1,015	317	780	2,904	2,310	641	392	151
Pitt Meadows	3,017	60	15	4	0	0	0	0	0	0
Prince George	567	215	214	618	13	438	188	0	0	0
Québec/Jean Lesage International	2,020	605	776	217	1,300	1,222	366	55	0	165
Regina International	1,098	345	364	405	39	505	812	0	150	17
Saskatoon/John G. Diefenbaker International	2,249	501	665	659	216	757	853	0	100	16
Sault Ste. Marie	1,423	114	557	51	199	162	0	0	0	0
St. John's International	43	33	331	448	787	158	722	196	76	50
St-Jean	527	105	138	12	2	0	0	0	0	0
Sudbury	419	232	1,122	111	112	238	15	0	0	0
Thunder Bay	1,128	229	2,132	264	178	515	326	9	0	0
Toronto/Buttonville Municipal	5,342	381	353	70	58	28	4	0	0	0
Toronto/City Centre	1,989	108	492	19	6	942	0	0	0	0
Toronto/Lester B. Pearson International	61	289	305	2,386	3,336	7,959	12,945	4,485	521	3,935
Vancouver Harbour	109	3,142	1,325	0	103	0	0	0	0	0
Vancouver International	908	3,911	1,101	2,876	2,625	4,990	6,280	1,105	591	2,443
Victoria International	3,993	1,072	269	453	1,261	773	560	23	40	0
Whitehorse International	622	90	121	53	4	219	176	0	0	0
Windsor	907	274	44	105	313	79	0	0	0	0
Winnipeg/James Armstrong Richardson International	1,101	575	2,913	498	849	1,466	2,580	322	746	104
Winnipeg/St. Andrews	2,723	556	82	2	2	0	0	0	0	0
Yellowknife	618	494	818	252	344	913	629	218	29	0
<b>Total of NAV CANADA towers (42)</b>	<b>78,703</b>	<b>18,897</b>	<b>23,277</b>	<b>17,736</b>	<b>19,710</b>	<b>39,988</b>	<b>50,144</b>	<b>10,252</b>	<b>5,091</b>	<b>10,098</b>

**Table 6-2**  
**Itinerant movements by aircraft weight group — NAV CANADA flight service stations**

	Gross take-off weight in kilograms									
	2 000 and under	2 001 to 4 000	4 001 to 5 670	5 671 to 9 000	9 001 to 18 000	18 001 to 35 000	35 001 to 70 000	70 001 to 90 000	90 001 to 136 000	136 001 and over
	number									
Brandon Municipal	516	27	124	21	22	12	0	18	0	0
Campbell River	907	51	78	417	248	25	2	0	0	0
Castlegar	208	6	14	60	17	199	0	0	0	0
Charlottetown	719	270	24	108	142	176	62	4	2	0
Churchill	50	9	112	82	130	375	0	16	0	2
Cranbrook	160	35	59	283	124	151	0	0	0	0
Deer Lake	91	10	114	135	887	124	105	1	4	0
Fort McMurray	1,277	469	649	585	254	607	415	2	4	0
Fort Nelson	380	101	132	159	100	2	0	0	0	0
Fort St John	983	80	434	223	106	222	0	0	0	0
Fredericton International	1,831	142	140	58	172	393	18	6	0	2
Grande Prairie	1,074	232	542	199	12	383	131	0	0	0
High Level	237	46	147	136	6	0	0	0	0	0
Îles-de-la-Madeleine	19	264	146	20	192	25	6	2	0	0
Inuvik/Mike Zubko	194	24	407	67	4	49	123	5	0	0
Iqaluit	10	6	463	128	56	401	158	56	123	0
Kamloops	739	239	122	323	277	591	2	0	0	0
Kenora	208	9	513	4	12	4	0	0	0	0
Kingston	872	46	117	495	77	4	0	12	0	0
Kuujuuaq	46	4	462	10	106	69	48	0	67	0
Kuujuuarapik	4	2	253	0	171	72	0	2	0	0
La Grande Rivière	5	412	162	12	136	415	0	30	0	0
La Ronge	187	320	374	99	263	176	0	0	0	0
Lethbridge	765	163	221	334	43	92	0	0	0	0
Lloydminster	410	63	122	86	2	0	0	0	0	0
Medicine Hat	544	44	232	254	35	2	1	0	0	0
Mont-Joli	13	19	133	20	104	16	0	0	0	0
Nanaimo	782	407	39	117	54	308	1	0	0	0
Norman Wells	361	196	444	14	4	24	144	0	0	0
North Bay	1,313	162	292	83	198	102	12	10	3	4
Ottawa/Gatineau	694	73	88	59	0	0	0	0	0	0
Peace River	237	141	392	70	4	0	0	0	0	0
Penticton	996	98	61	301	78	108	1	0	0	0
Port Hardy	117	165	258	76	146	4	8	0	0	0
Prince Albert	210	104	188	309	305	418	0	0	0	0
Prince Rupert	19	82	42	42	58	118	0	0	0	0
Rankin Inlet	16	147	260	79	128	143	129	2	0	0
Red Deer Regional	1,235	248	284	143	55	4	10	0	0	0
Rouyn-Noranda	147	15	353	10	241	153	64	0	0	0
Saint John	311	154	114	286	140	264	46	2	0	0
Sept-Îles	264	308	372	128	608	40	0	0	0	0
Sioux Lookout	202	130	1,280	492	0	0	0	0	0	0
Smithers	99	44	99	204	62	122	0	0	0	0
St Anthony	20	105	213	30	108	0	0	0	0	0
St Catharines	759	122	19	14	2	0	0	0	0	0
Terrace	451	10	60	221	247	182	0	0	0	0
Thompson	237	430	1,267	45	273	242	94	2	0	0
Timmins	207	204	908	82	464	108	0	0	0	0
Val-d'Or	232	15	225	25	298	75	2	2	72	2
Victoria Harbour	7	1,816	1,276	2	88	0	0	0	0	0
Wabush	88	34	94	18	444	4	0	0	0	0
Whitecourt	693	64	85	28	0	0	0	0	0	0
Williams Lake	229	59	26	376	18	0	4	0	0	0
<b>Total of all flight service stations (53)</b>	<b>22,375</b>	<b>8,426</b>	<b>15,035</b>	<b>7,572</b>	<b>7,721</b>	<b>7,004</b>	<b>1,586</b>	<b>172</b>	<b>275</b>	<b>10</b>

**Table 7-1**  
**Itinerant movements, domestic, transborder and international — NAV CANADA towers**

	Total	Air carrier movements		Other commercial	Private	Government movements	
		Level I-III and Foreign	Level IV-VI			Civil	Military
number							
<b>Abbotsford</b>							
Domestic	5,406	486	2,992	923	824	134	47
Transborder	40	15	5	0	20	0	0
Other international	10	10	0	0	0	0	0
<b>Total</b>	<b>5,456</b>	<b>511</b>	<b>2,997</b>	<b>923</b>	<b>844</b>	<b>134</b>	<b>47</b>
<b>Boundary Bay</b>							
Domestic	6,298	13	1,045	3,942	1,241	56	1
Transborder	54	0	6	34	14	0	0
Other international	0	0	0	0	0	0	0
<b>Total</b>	<b>6,352</b>	<b>13</b>	<b>1,051</b>	<b>3,976</b>	<b>1,255</b>	<b>56</b>	<b>1</b>
<b>Calgary International</b>							
Domestic	16,359	13,514	1,163	769	734	100	79
Transborder	3,720	3,226	136	62	293	1	2
Other international	607	597	0	0	6	0	4
<b>Total</b>	<b>20,686</b>	<b>17,337</b>	<b>1,299</b>	<b>831</b>	<b>1,033</b>	<b>101</b>	<b>85</b>
<b>Calgary/Springbank</b>							
Domestic	6,609	16	1,294	3,522	1,735	29	13
Transborder	40	0	1	2	37	0	0
Other international	0	0	0	0	0	0	0
<b>Total</b>	<b>6,649</b>	<b>16</b>	<b>1,295</b>	<b>3,524</b>	<b>1,772</b>	<b>29</b>	<b>13</b>
<b>Chicoutimi/St-Honoré</b>							
Domestic	1,071	5	385	646	35	0	0
Transborder	1	0	1	0	0	0	0
Other international	0	0	0	0	0	0	0
<b>Total</b>	<b>1,072</b>	<b>5</b>	<b>386</b>	<b>646</b>	<b>35</b>	<b>0</b>	<b>0</b>
<b>Edmonton City Centre</b>							
Domestic	6,030	1,580	771	1,862	1,401	351	65
Transborder	37	1	12	0	24	0	0
Other international	1	0	1	0	0	0	0
<b>Total</b>	<b>6,068</b>	<b>1,581</b>	<b>784</b>	<b>1,862</b>	<b>1,425</b>	<b>351</b>	<b>65</b>
<b>Edmonton International</b>							
Domestic	9,141	8,217	371	178	277	37	61
Transborder	1,205	1,116	24	6	54	0	5
Other international	292	288	0	2	2	0	0
<b>Total</b>	<b>10,638</b>	<b>9,621</b>	<b>395</b>	<b>186</b>	<b>333</b>	<b>37</b>	<b>66</b>
<b>Edmonton/Villeneuve</b>							
Domestic	1,538	8	395	878	248	5	4
Transborder	1	0	0	0	1	0	0
Other international	0	0	0	0	0	0	0
<b>Total</b>	<b>1,539</b>	<b>8</b>	<b>395</b>	<b>878</b>	<b>249</b>	<b>5</b>	<b>4</b>
<b>Gander International</b>							
Domestic	1,717	321	1,199	25	36	30	106
Transborder	253	110	1	14	82	0	46
Other international	313	157	1	16	82	0	57
<b>Total</b>	<b>2,283</b>	<b>588</b>	<b>1,201</b>	<b>55</b>	<b>200</b>	<b>30</b>	<b>209</b>
<b>Halifax/Robert L Stanfield International</b>							
Domestic	5,110	4,339	364	67	176	50	114
Transborder	1,008	863	49	6	67	0	23
Other international	721	562	27	83	28	0	21
<b>Total</b>	<b>6,839</b>	<b>5,764</b>	<b>440</b>	<b>156</b>	<b>271</b>	<b>50</b>	<b>158</b>
<b>Hamilton</b>							
Domestic	2,694	1,354	846	100	282	110	2
Transborder	558	388	4	4	157	4	1
Other international	54	51	0	0	3	0	0
<b>Total</b>	<b>3,306</b>	<b>1,793</b>	<b>850</b>	<b>104</b>	<b>442</b>	<b>114</b>	<b>3</b>



Table 7-1 – continued

## Itinerant movements, domestic, transborder and international — NAV CANADA towers

	Total	Air carrier movements		Other commercial	Private	Government movements	
		Level I-III and Foreign	Level IV-VI			Civil	Military
number							
<b>Kelowna</b>							
Domestic	3,838	2,138	230	862	496	89	23
Transborder	366	285	11	3	64	0	3
Other international	37	37	0	0	0	0	0
<b>Total</b>	<b>4,241</b>	<b>2,460</b>	<b>241</b>	<b>865</b>	<b>560</b>	<b>89</b>	<b>26</b>
<b>Kitchener/Waterloo</b>							
Domestic	3,346	241	1,812	644	618	5	26
Transborder	374	209	43	10	112	0	0
Other international	24	21	1	0	2	0	0
<b>Total</b>	<b>3,744</b>	<b>471</b>	<b>1,856</b>	<b>654</b>	<b>732</b>	<b>5</b>	<b>26</b>
<b>Langley</b>							
Domestic	2,939	91	165	1,661	1,002	12	8
Transborder	7	0	1	3	3	0	0
Other international	1	0	0	0	1	0	0
<b>Total</b>	<b>2,947</b>	<b>91</b>	<b>166</b>	<b>1,664</b>	<b>1,006</b>	<b>12</b>	<b>8</b>
<b>London</b>							
Domestic	5,015	936	968	1,593	1,452	61	5
Transborder	377	266	7	8	94	0	2
Other international	25	25	0	0	0	0	0
<b>Total</b>	<b>5,417</b>	<b>1,227</b>	<b>975</b>	<b>1,601</b>	<b>1,546</b>	<b>61</b>	<b>7</b>
<b>Moncton/Greater Moncton International</b>							
Domestic	5,579	1,651	3,304	323	87	206	8
Transborder	103	95	1	1	6	0	0
Other international	34	32	0	0	2	0	0
<b>Total</b>	<b>5,716</b>	<b>1,778</b>	<b>3,305</b>	<b>324</b>	<b>95</b>	<b>206</b>	<b>8</b>
<b>Montréal/Mirabel International</b>							
Domestic	1,498	600	398	63	336	28	73
Transborder	180	175	0	0	5	0	0
Other international	4	1	0	2	1	0	0
<b>Total</b>	<b>1,682</b>	<b>776</b>	<b>398</b>	<b>65</b>	<b>342</b>	<b>28</b>	<b>73</b>
<b>Montréal/Pierre Elliott Trudeau International</b>							
Domestic	9,997	8,179	617	285	677	220	19
Transborder	6,331	5,751	84	71	423	0	2
Other international	2,337	2,207	25	29	72	0	4
<b>Total</b>	<b>18,665</b>	<b>16,137</b>	<b>726</b>	<b>385</b>	<b>1,172</b>	<b>220</b>	<b>25</b>
<b>Montréal/St-Hubert</b>							
Domestic	5,066	2,235	427	1,401	812	94	97
Transborder	124	14	0	5	103	2	0
Other international	2	0	0	0	2	0	0
<b>Total</b>	<b>5,192</b>	<b>2,249</b>	<b>427</b>	<b>1,406</b>	<b>917</b>	<b>96</b>	<b>97</b>
<b>Oshawa</b>							
Domestic	1,960	133	76	1,205	531	8	7
Transborder	13	0	2	2	9	0	0
Other international	0	0	0	0	0	0	0
<b>Total</b>	<b>1,973</b>	<b>133</b>	<b>78</b>	<b>1,207</b>	<b>540</b>	<b>8</b>	<b>7</b>
<b>Ottawa/Macdonald-Cartier International</b>							
Domestic	8,000	5,049	345	1,667	218	506	215
Transborder	2,281	2,135	15	11	95	16	9
Other international	352	322	8	2	7	2	11
<b>Total</b>	<b>10,633</b>	<b>7,506</b>	<b>368</b>	<b>1,680</b>	<b>320</b>	<b>524</b>	<b>235</b>
<b>Pitt Meadows</b>							
Domestic	3,090	29	896	1,068	1,022	19	56
Transborder	6	0	0	0	6	0	0
Other international	0	0	0	0	0	0	0
<b>Total</b>	<b>3,096</b>	<b>29</b>	<b>896</b>	<b>1,068</b>	<b>1,028</b>	<b>19</b>	<b>56</b>

Table 7-1 – continued

## Itinerant movements, domestic, transborder and international — NAV CANADA towers

	Total	Air carrier movements		Other commercial	Private	Government movements	
		Level I-III and Foreign	Level IV-VI			Civil	Military
number							
<b>Prince George</b>							
Domestic	2,225	1,284	440	240	199	61	1
Transborder	15	6	0	0	9	0	0
Other international	13	12	0	0	1	0	0
<b>Total</b>	<b>2,253</b>	<b>1,302</b>	<b>440</b>	<b>240</b>	<b>209</b>	<b>61</b>	<b>1</b>
<b>Québec/Jean Lesage International</b>							
Domestic	6,089	3,005	800	1,319	417	410	138
Transborder	375	311	0	5	45	0	14
Other international	262	253	0	1	0	0	8
<b>Total</b>	<b>6,726</b>	<b>3,569</b>	<b>800</b>	<b>1,325</b>	<b>462</b>	<b>410</b>	<b>160</b>
<b>Regina International</b>							
Domestic	3,486	1,893	792	56	339	201	205
Transborder	175	135	2	2	30	3	3
Other international	74	72	0	0	2	0	0
<b>Total</b>	<b>3,735</b>	<b>2,100</b>	<b>794</b>	<b>58</b>	<b>371</b>	<b>204</b>	<b>208</b>
<b>Saskatoon/John G Diefenbaker International</b>							
Domestic	5,851	2,751	1,552	580	487	375	106
Transborder	112	74	7	8	23	0	0
Other international	53	53	0	0	0	0	0
<b>Total</b>	<b>6,016</b>	<b>2,878</b>	<b>1,559</b>	<b>588</b>	<b>510</b>	<b>375</b>	<b>106</b>
<b>Sault Ste. Marie</b>							
Domestic	2,488	837	169	1,312	123	43	4
Transborder	18	1	1	1	15	0	0
Other international	0	0	0	0	0	0	0
<b>Total</b>	<b>2,506</b>	<b>838</b>	<b>170</b>	<b>1,313</b>	<b>138</b>	<b>43</b>	<b>4</b>
<b>St. John's International</b>							
Domestic	2,445	1,637	591	55	56	60	46
Transborder	182	71	1	8	27	0	75
Other international	217	96	1	17	31	0	72
<b>Total</b>	<b>2,844</b>	<b>1,804</b>	<b>593</b>	<b>80</b>	<b>114</b>	<b>60</b>	<b>193</b>
<b>St-Jean</b>							
Domestic	784	132	127	180	203	36	106
Transborder	0	0	0	0	0	0	0
Other international	0	0	0	0	0	0	0
<b>Total</b>	<b>784</b>	<b>132</b>	<b>127</b>	<b>180</b>	<b>203</b>	<b>36</b>	<b>106</b>
<b>Sudbury</b>							
Domestic	2,213	1,340	495	98	241	33	6
Transborder	36	7	2	1	26	0	0
Other international	0	0	0	0	0	0	0
<b>Total</b>	<b>2,249</b>	<b>1,347</b>	<b>497</b>	<b>99</b>	<b>267</b>	<b>33</b>	<b>6</b>
<b>Thunder Bay</b>							
Domestic	4,605	2,771	630	870	212	85	37
Transborder	167	138	4	2	23	0	0
Other international	9	9	0	0	0	0	0
<b>Total</b>	<b>4,781</b>	<b>2,918</b>	<b>634</b>	<b>872</b>	<b>235</b>	<b>85</b>	<b>37</b>
<b>Toronto/Buttonville Municipal</b>							
Domestic	5,978	269	629	3,727	1,330	17	6
Transborder	258	67	30	24	136	1	0
Other international	0	0	0	0	0	0	0
<b>Total</b>	<b>6,236</b>	<b>336</b>	<b>659</b>	<b>3,751</b>	<b>1,466</b>	<b>18</b>	<b>6</b>
<b>Toronto/City Centre</b>							
Domestic	3,443	1,067	737	1,298	318	14	9
Transborder	113	27	10	3	73	0	0
Other international	0	0	0	0	0	0	0
<b>Total</b>	<b>3,556</b>	<b>1,094</b>	<b>747</b>	<b>1,301</b>	<b>391</b>	<b>14</b>	<b>9</b>

Table 7-1 – continued

## Itinerant movements, domestic, transborder and international — NAV CANADA towers

	Total	Air carrier movements		Other commercial	Private	Government movements	
		Level I-III and Foreign	Level IV-VI			Civil	Military
number							
<b>Toronto/Lester B Pearson International</b>							
Domestic	15,201	14,427	263	85	378	37	11
Transborder	15,912	14,930	129	112	741	0	0
Other international	5,109	5,033	17	17	42	0	0
<b>Total</b>	<b>36,222</b>	<b>34,390</b>	<b>409</b>	<b>214</b>	<b>1,161</b>	<b>37</b>	<b>11</b>
<b>Vancouver Harbour</b>							
Domestic	4,612	4,150	145	257	54	0	6
Transborder	67	59	1	2	5	0	0
Other international	0	0	0	0	0	0	0
<b>Total</b>	<b>4,679</b>	<b>4,209</b>	<b>146</b>	<b>259</b>	<b>59</b>	<b>0</b>	<b>6</b>
<b>Vancouver International</b>							
Domestic	19,865	17,472	1,280	399	458	232	24
Transborder	5,169	4,806	32	21	301	3	6
Other international	1,796	1,681	63	36	14	2	0
<b>Total</b>	<b>26,830</b>	<b>23,959</b>	<b>1,375</b>	<b>456</b>	<b>773</b>	<b>237</b>	<b>30</b>
<b>Victoria International</b>							
Domestic	7,724	2,701	2,927	1,013	941	41	101
Transborder	624	379	31	12	198	0	4
Other international	96	29	28	24	15	0	0
<b>Total</b>	<b>8,444</b>	<b>3,109</b>	<b>2,986</b>	<b>1,049</b>	<b>1,154</b>	<b>41</b>	<b>105</b>
<b>Whitehorse International</b>							
Domestic	1,241	579	341	23	266	29	3
Transborder	43	12	3	0	26	1	1
Other international	1	0	0	1	0	0	0
<b>Total</b>	<b>1,285</b>	<b>591</b>	<b>344</b>	<b>24</b>	<b>292</b>	<b>30</b>	<b>4</b>
<b>Windsor</b>							
Domestic	1,670	491	941	47	174	16	1
Transborder	52	16	10	3	22	0	1
Other international	0	0	0	0	0	0	0
<b>Total</b>	<b>1,722</b>	<b>507</b>	<b>951</b>	<b>50</b>	<b>196</b>	<b>16</b>	<b>2</b>
<b>Winnipeg/James Armstrong Richardson International</b>							
Domestic	9,816	7,784	899	65	258	355	455
Transborder	1,133	996	24	7	90	0	16
Other international	205	198	1	1	1	0	4
<b>Total</b>	<b>11,154</b>	<b>8,978</b>	<b>924</b>	<b>73</b>	<b>349</b>	<b>355</b>	<b>475</b>
<b>Winnipeg/St. Andrews</b>							
Domestic	3,361	438	1,743	840	274	52	14
Transborder	4	0	0	2	2	0	0
Other international	0	0	0	0	0	0	0
<b>Total</b>	<b>3,365</b>	<b>438</b>	<b>1,743</b>	<b>842</b>	<b>276</b>	<b>52</b>	<b>14</b>
<b>Yellowknife</b>							
Domestic	4,300	3,219	895	51	38	59	38
Transborder	14	12	0	0	1	0	1
Other international	1	0	0	0	1	0	0
<b>Total</b>	<b>4,315</b>	<b>3,231</b>	<b>895</b>	<b>51</b>	<b>40</b>	<b>59</b>	<b>39</b>
<b>Total of NAV CANADA towers (42)</b>							
Domestic	219,698	119,382	36,459	36,199	21,006	4,306	2,346
Transborder	41,548	36,696	690	455	3,462	31	214
Other international	12,650	11,746	173	231	315	4	181
<b>Total</b>	<b>273,896</b>	<b>167,824</b>	<b>37,322</b>	<b>36,885</b>	<b>24,783</b>	<b>4,341</b>	<b>2,741</b>

**Table 7-2**  
**Itinerant movements, domestic, transborder and international — NAV CANADA flight service stations**

	Total	Air carrier movements		Other commercial	Private	Government movements	
		Level I-III and Foreign	Level IV-VI			Civil	Military
number							
<b>Brandon Municipal</b>							
Domestic	734	116	320	48	118	30	102
Transborder	6	0	0	0	5	0	1
Other international	0	0	0	0	0	0	0
<b>Total</b>	<b>740</b>	<b>116</b>	<b>320</b>	<b>48</b>	<b>123</b>	<b>30</b>	<b>103</b>
<b>Campbell River</b>							
Domestic	1,696	632	281	228	494	44	17
Transborder	32	3	1	0	28	0	0
Other international	0	0	0	0	0	0	0
<b>Total</b>	<b>1,728</b>	<b>635</b>	<b>282</b>	<b>228</b>	<b>522</b>	<b>44</b>	<b>17</b>
<b>Castlegar</b>							
Domestic	482	266	52	134	28	2	0
Transborder	22	4	2	5	11	0	0
Other international	0	0	0	0	0	0	0
<b>Total</b>	<b>504</b>	<b>270</b>	<b>54</b>	<b>139</b>	<b>39</b>	<b>2</b>	<b>0</b>
<b>Charlottetown</b>							
Domestic	1,496	573	241	484	65	109	24
Transborder	6	0	0	0	6	0	0
Other international	5	3	0	2	0	0	0
<b>Total</b>	<b>1,507</b>	<b>576</b>	<b>241</b>	<b>486</b>	<b>71</b>	<b>109</b>	<b>24</b>
<b>Churchill</b>							
Domestic	775	699	60	0	11	5	0
Transborder	0	0	0	0	0	0	0
Other international	1	1	0	0	0	0	0
<b>Total</b>	<b>776</b>	<b>700</b>	<b>60</b>	<b>0</b>	<b>11</b>	<b>5</b>	<b>0</b>
<b>Cranbrook</b>							
Domestic	805	564	46	19	170	4	2
Transborder	7	3	1	0	3	0	0
Other international	0	0	0	0	0	0	0
<b>Total</b>	<b>812</b>	<b>567</b>	<b>47</b>	<b>19</b>	<b>173</b>	<b>4</b>	<b>2</b>
<b>Deer Lake</b>							
Domestic	1,459	1,211	214	20	5	4	5
Transborder	1	0	0	0	1	0	0
Other international	11	11	0	0	0	0	0
<b>Total</b>	<b>1,471</b>	<b>1,222</b>	<b>214</b>	<b>20</b>	<b>6</b>	<b>4</b>	<b>5</b>
<b>Fort McMurray</b>							
Domestic	4,259	2,443	1,099	294	388	26	9
Transborder	3	1	0	0	2	0	0
Other international	0	0	0	0	0	0	0
<b>Total</b>	<b>4,262</b>	<b>2,444</b>	<b>1,099</b>	<b>294</b>	<b>390</b>	<b>26</b>	<b>9</b>
<b>Fort Nelson</b>							
Domestic	874	368	213	187	102	4	0
Transborder	0	0	0	0	0	0	0
Other international	0	0	0	0	0	0	0
<b>Total</b>	<b>874</b>	<b>368</b>	<b>213</b>	<b>187</b>	<b>102</b>	<b>4</b>	<b>0</b>
<b>Fort St John</b>							
Domestic	2,048	745	982	132	183	4	2
Transborder	0	0	0	0	0	0	0
Other international	0	0	0	0	0	0	0
<b>Total</b>	<b>2,048</b>	<b>745</b>	<b>982</b>	<b>132</b>	<b>183</b>	<b>4</b>	<b>2</b>
<b>Fredericton International</b>							
Domestic	2,739	693	1,780	41	82	76	67
Transborder	11	1	5	0	5	0	0
Other international	12	12	0	0	0	0	0
<b>Total</b>	<b>2,762</b>	<b>706</b>	<b>1,785</b>	<b>41</b>	<b>87</b>	<b>76</b>	<b>67</b>

Table 7-2 – continued

## Itinerant movements, domestic, transborder and international — NAV CANADA flight service stations

	Total	Air carrier movements		Other commercial	Private	Government movements	
		Level I-III and Foreign	Level IV-VI			Civil	Military
number							
<b>Grande Prairie</b>							
Domestic	2,571	1,064	999	111	353	38	6
Transborder	2	0	1	0	1	0	0
Other international	0	0	0	0	0	0	0
<b>Total</b>	<b>2,573</b>	<b>1,064</b>	<b>1,000</b>	<b>111</b>	<b>354</b>	<b>38</b>	<b>6</b>
<b>High Level</b>							
Domestic	572	167	358	5	34	8	0
Transborder	0	0	0	0	0	0	0
Other international	0	0	0	0	0	0	0
<b>Total</b>	<b>572</b>	<b>167</b>	<b>358</b>	<b>5</b>	<b>34</b>	<b>8</b>	<b>0</b>
<b>Îles-de-la-Madeleine</b>							
Domestic	673	323	151	16	1	168	14
Transborder	1	0	0	0	1	0	0
Other international	0	0	0	0	0	0	0
<b>Total</b>	<b>674</b>	<b>323</b>	<b>151</b>	<b>16</b>	<b>2</b>	<b>168</b>	<b>14</b>
<b>Inuvik/Mike Zubko</b>							
Domestic	872	246	579	0	6	26	15
Transborder	0	0	0	0	0	0	0
Other international	1	1	0	0	0	0	0
<b>Total</b>	<b>873</b>	<b>247</b>	<b>579</b>	<b>0</b>	<b>6</b>	<b>26</b>	<b>15</b>
<b>Iqaluit</b>							
Domestic	1,306	1,075	40	76	20	50	45
Transborder	28	10	8	1	8	0	1
Other international	67	35	0	5	21	0	6
<b>Total</b>	<b>1,401</b>	<b>1,120</b>	<b>48</b>	<b>82</b>	<b>49</b>	<b>50</b>	<b>52</b>
<b>Kamloops</b>							
Domestic	2,177	1,077	323	228	434	96	19
Transborder	116	75	0	0	37	4	0
Other international	0	0	0	0	0	0	0
<b>Total</b>	<b>2,293</b>	<b>1,152</b>	<b>323</b>	<b>228</b>	<b>471</b>	<b>100</b>	<b>19</b>
<b>Kenora</b>							
Domestic	740	331	301	38	44	8	18
Transborder	10	0	1	1	8	0	0
Other international	0	0	0	0	0	0	0
<b>Total</b>	<b>750</b>	<b>331</b>	<b>302</b>	<b>39</b>	<b>52</b>	<b>8</b>	<b>18</b>
<b>Kingston</b>							
Domestic	1,593	556	235	475	272	37	18
Transborder	30	10	0	2	18	0	0
Other international	0	0	0	0	0	0	0
<b>Total</b>	<b>1,623</b>	<b>566</b>	<b>235</b>	<b>477</b>	<b>290</b>	<b>37</b>	<b>18</b>
<b>Kuujuuaq</b>							
Domestic	812	714	50	0	12	32	4
Transborder	0	0	0	0	0	0	0
Other international	0	0	0	0	0	0	0
<b>Total</b>	<b>812</b>	<b>714</b>	<b>50</b>	<b>0</b>	<b>12</b>	<b>32</b>	<b>4</b>
<b>Kuujuarapik</b>							
Domestic	504	484	12	0	0	2	6
Transborder	0	0	0	0	0	0	0
Other international	0	0	0	0	0	0	0
<b>Total</b>	<b>504</b>	<b>484</b>	<b>12</b>	<b>0</b>	<b>0</b>	<b>2</b>	<b>6</b>
<b>La Grande Rivière</b>							
Domestic	1,172	614	510	4	16	10	18
Transborder	0	0	0	0	0	0	0
Other international	0	0	0	0	0	0	0
<b>Total</b>	<b>1,172</b>	<b>614</b>	<b>510</b>	<b>4</b>	<b>16</b>	<b>10</b>	<b>18</b>
<b>La Ronge</b>							
Domestic	1,418	1,248	58	11	20	75	6
Transborder	1	0	0	0	1	0	0
Other international	0	0	0	0	0	0	0
<b>Total</b>	<b>1,419</b>	<b>1,248</b>	<b>58</b>	<b>11</b>	<b>21</b>	<b>75</b>	<b>6</b>

Table 7-2 – continued

## Itinerant movements, domestic, transborder and international — NAV CANADA flight service stations

	Total	Air carrier movements		Other commercial	Private	Government movements	
		Level I-III and Foreign	Level IV-VI			Civil	Military
number							
<b>Lethbridge</b>							
Domestic	1,540	574	105	582	253	9	17
Transborder	78	3	3	0	67	0	5
Other international	0	0	0	0	0	0	0
<b>Total</b>	<b>1,618</b>	<b>577</b>	<b>108</b>	<b>582</b>	<b>320</b>	<b>9</b>	<b>22</b>
<b>Lloydminster</b>							
Domestic	683	124	209	59	249	34	8
Transborder	0	0	0	0	0	0	0
Other international	0	0	0	0	0	0	0
<b>Total</b>	<b>683</b>	<b>124</b>	<b>209</b>	<b>59</b>	<b>249</b>	<b>34</b>	<b>8</b>
<b>Medicine Hat</b>							
Domestic	1,108	742	85	29	216	20	16
Transborder	4	0	1	0	3	0	0
Other international	0	0	0	0	0	0	0
<b>Total</b>	<b>1,112</b>	<b>742</b>	<b>86</b>	<b>29</b>	<b>219</b>	<b>20</b>	<b>16</b>
<b>Mont-Joli</b>							
Domestic	305	251	9	7	14	18	6
Transborder	0	0	0	0	0	0	0
Other international	0	0	0	0	0	0	0
<b>Total</b>	<b>305</b>	<b>251</b>	<b>9</b>	<b>7</b>	<b>14</b>	<b>18</b>	<b>6</b>
<b>Nanaimo</b>							
Domestic	1,682	487	528	159	460	44	4
Transborder	26	1	0	0	25	0	0
Other international	0	0	0	0	0	0	0
<b>Total</b>	<b>1,708</b>	<b>488</b>	<b>528</b>	<b>159</b>	<b>485</b>	<b>44</b>	<b>4</b>
<b>Norman Wells</b>							
Domestic	1,187	909	257	0	15	6	0
Transborder	0	0	0	0	0	0	0
Other international	0	0	0	0	0	0	0
<b>Total</b>	<b>1,187</b>	<b>909</b>	<b>257</b>	<b>0</b>	<b>15</b>	<b>6</b>	<b>0</b>
<b>North Bay</b>							
Domestic	2,165	543	736	413	385	34	54
Transborder	9	1	1	0	5	0	2
Other international	5	5	0	0	0	0	0
<b>Total</b>	<b>2,179</b>	<b>549</b>	<b>737</b>	<b>413</b>	<b>390</b>	<b>34</b>	<b>56</b>
<b>Ottawa/Gatineau</b>							
Domestic	911	91	169	149	407	91	4
Transborder	3	0	0	0	3	0	0
Other international	0	0	0	0	0	0	0
<b>Total</b>	<b>914</b>	<b>91</b>	<b>169</b>	<b>149</b>	<b>410</b>	<b>91</b>	<b>4</b>
<b>Peace River</b>							
Domestic	844	433	288	46	63	12	2
Transborder	0	0	0	0	0	0	0
Other international	0	0	0	0	0	0	0
<b>Total</b>	<b>844</b>	<b>433</b>	<b>288</b>	<b>46</b>	<b>63</b>	<b>12</b>	<b>2</b>
<b>Penticton</b>							
Domestic	1,628	503	708	81	311	11	14
Transborder	15	3	0	0	12	0	0
Other international	0	0	0	0	0	0	0
<b>Total</b>	<b>1,643</b>	<b>506</b>	<b>708</b>	<b>81</b>	<b>323</b>	<b>11</b>	<b>14</b>
<b>Port Hardy</b>							
Domestic	761	551	58	30	61	49	12
Transborder	13	0	0	0	9	0	4
Other international	0	0	0	0	0	0	0
<b>Total</b>	<b>774</b>	<b>551</b>	<b>58</b>	<b>30</b>	<b>70</b>	<b>49</b>	<b>16</b>

Table 7-2 – continued

## Itinerant movements, domestic, transborder and international — NAV CANADA flight service stations

	Total	Air carrier movements		Other commercial	Private	Government movements	
		Level I-III and Foreign	Level IV-VI			Civil	Military
number							
<b>Prince Albert</b>							
Domestic	1,534	1,098	128	17	175	112	4
Transborder	0	0	0	0	0	0	0
Other international	0	0	0	0	0	0	0
<b>Total</b>	<b>1,534</b>	<b>1,098</b>	<b>128</b>	<b>17</b>	<b>175</b>	<b>112</b>	<b>4</b>
<b>Prince Rupert</b>							
Domestic	357	212	89	34	4	16	2
Transborder	4	0	0	0	4	0	0
Other international	0	0	0	0	0	0	0
<b>Total</b>	<b>361</b>	<b>212</b>	<b>89</b>	<b>34</b>	<b>8</b>	<b>16</b>	<b>2</b>
<b>Rankin Inlet</b>							
Domestic	904	877	14	2	3	8	0
Transborder	0	0	0	0	0	0	0
Other international	0	0	0	0	0	0	0
<b>Total</b>	<b>904</b>	<b>877</b>	<b>14</b>	<b>2</b>	<b>3</b>	<b>8</b>	<b>0</b>
<b>Red Deer Regional</b>							
Domestic	1,972	393	863	195	495	20	6
Transborder	7	0	3	0	4	0	0
Other international	0	0	0	0	0	0	0
<b>Total</b>	<b>1,979</b>	<b>393</b>	<b>866</b>	<b>195</b>	<b>499</b>	<b>20</b>	<b>6</b>
<b>Rouyn-Noranda</b>							
Domestic	983	606	140	72	129	36	0
Transborder	0	0	0	0	0	0	0
Other international	0	0	0	0	0	0	0
<b>Total</b>	<b>983</b>	<b>606</b>	<b>140</b>	<b>72</b>	<b>129</b>	<b>36</b>	<b>0</b>
<b>Saint John</b>							
Domestic	1,219	746	230	84	131	2	26
Transborder	90	10	0	2	78	0	0
Other international	8	2	0	0	6	0	0
<b>Total</b>	<b>1,317</b>	<b>758</b>	<b>230</b>	<b>86</b>	<b>215</b>	<b>2</b>	<b>26</b>
<b>Sept-Îles</b>							
Domestic	1,715	1,212	333	25	81	64	0
Transborder	4	1	0	0	3	0	0
Other international	1	1	0	0	0	0	0
<b>Total</b>	<b>1,720</b>	<b>1,214</b>	<b>333</b>	<b>25</b>	<b>84</b>	<b>64</b>	<b>0</b>
<b>Sioux Lookout</b>							
Domestic	2,102	1,843	225	11	18	5	0
Transborder	1	0	0	0	1	0	0
Other international	1	0	1	0	0	0	0
<b>Total</b>	<b>2,104</b>	<b>1,843</b>	<b>226</b>	<b>11</b>	<b>19</b>	<b>5</b>	<b>0</b>
<b>Smithers</b>							
Domestic	629	427	84	20	88	10	0
Transborder	1	0	0	0	1	0	0
Other international	0	0	0	0	0	0	0
<b>Total</b>	<b>630</b>	<b>427</b>	<b>84</b>	<b>20</b>	<b>89</b>	<b>10</b>	<b>0</b>
<b>St Anthony</b>							
Domestic	476	326	20	108	0	22	0
Transborder	0	0	0	0	0	0	0
Other international	0	0	0	0	0	0	0
<b>Total</b>	<b>476</b>	<b>326</b>	<b>20</b>	<b>108</b>	<b>0</b>	<b>22</b>	<b>0</b>
<b>St Catharines</b>							
Domestic	895	3	496	37	224	11	124
Transborder	20	0	8	0	11	0	1
Other international	1	0	0	1	0	0	0
<b>Total</b>	<b>916</b>	<b>3</b>	<b>504</b>	<b>38</b>	<b>235</b>	<b>11</b>	<b>125</b>

Table 7-2 – continued

## Itinerant movements, domestic, transborder and international — NAV CANADA flight service stations

	Total	Air carrier movements		Other commercial	Private	Government movements	
		Level I-III and Foreign	Level IV-VI			Civil	Military
number							
<b>Terrace</b>							
Domestic	1,170	638	458	26	27	14	7
Transborder	1	0	0	0	1	0	0
Other international	0	0	0	0	0	0	0
<b>Total</b>	<b>1,171</b>	<b>638</b>	<b>458</b>	<b>26</b>	<b>28</b>	<b>14</b>	<b>7</b>
<b>Thompson</b>							
Domestic	2,589	2,050	349	4	22	160	4
Transborder	1	0	0	0	1	0	0
Other international	0	0	0	0	0	0	0
<b>Total</b>	<b>2,590</b>	<b>2,050</b>	<b>349</b>	<b>4</b>	<b>23</b>	<b>160</b>	<b>4</b>
<b>Timmins</b>							
Domestic	1,967	1,552	181	36	156	42	0
Transborder	6	1	0	0	5	0	0
Other international	0	0	0	0	0	0	0
<b>Total</b>	<b>1,973</b>	<b>1,553</b>	<b>181</b>	<b>36</b>	<b>161</b>	<b>42</b>	<b>0</b>
<b>Val-d'Or</b>							
Domestic	944	640	94	30	144	34	2
Transborder	2	1	0	0	1	0	0
Other international	2	2	0	0	0	0	0
<b>Total</b>	<b>948</b>	<b>643</b>	<b>94</b>	<b>30</b>	<b>145</b>	<b>34</b>	<b>2</b>
<b>Victoria Harbour</b>							
Domestic	2,913	2,757	53	2	30	69	2
Transborder	276	0	0	0	276	0	0
Other international	0	0	0	0	0	0	0
<b>Total</b>	<b>3,189</b>	<b>2,757</b>	<b>53</b>	<b>2</b>	<b>306</b>	<b>69</b>	<b>2</b>
<b>Wabush</b>							
Domestic	681	556	94	4	23	4	0
Transborder	1	0	0	0	1	0	0
Other international	0	0	0	0	0	0	0
<b>Total</b>	<b>682</b>	<b>556</b>	<b>94</b>	<b>4</b>	<b>24</b>	<b>4</b>	<b>0</b>
<b>Whitecourt</b>							
Domestic	870	40	515	242	63	10	0
Transborder	0	0	0	0	0	0	0
Other international	0	0	0	0	0	0	0
<b>Total</b>	<b>870</b>	<b>40</b>	<b>515</b>	<b>242</b>	<b>63</b>	<b>10</b>	<b>0</b>
<b>Williams Lake</b>							
Domestic	711	386	161	41	115	4	4
Transborder	1	0	0	0	1	0	0
Other international	0	0	0	0	0	0	0
<b>Total</b>	<b>712</b>	<b>386</b>	<b>161</b>	<b>41</b>	<b>116</b>	<b>4</b>	<b>4</b>
<b>Total of all flight service stations (53)</b>							
Domestic	69,222	37,779	16,583	5,096	7,220	1,829	715
Transborder	839	128	35	11	647	4	14
Other international	115	73	1	8	27	0	6
<b>Total</b>	<b>70,176</b>	<b>37,980</b>	<b>16,619</b>	<b>5,115</b>	<b>7,894</b>	<b>1,833</b>	<b>735</b>



**Table 8-1**  
**Total aircraft movements, peak hour and peak day — NAV CANADA towers**

	Rank of movements	Number of movements	Peak hour occurrence			Peak day occurrence	
			Day in month	Hour in day	Number of movements	Day in month	Number of movements
Abbotsford	8	13,498	6	13	121	6	846
Boundary Bay	5	17,368	12	17	122	12	803
Calgary International	3	20,846	13	9	71	13	869
Calgary/Springbank	6	17,138	5	11	112	6	937
Chicoutimi/St-Honoré	36	3,194	17	22	113	18	817
Edmonton City Centre	22	7,566	19	16	58	4	393
Edmonton International	13	10,996	13	17	46	20	470
Edmonton/Villeneuve	26	6,650	25	11	88	18	409
Gander International	34	4,423	11	11	50	11	473
Halifax/Robert L Stanfield International	24	7,227	7	15	52	7	376
Hamilton	31	5,188	21	13	65	12	358
Kelowna	27	6,184	13	16	48	12	351
Kitchener/Waterloo	20	8,282	2	13	80	29	586
Langley	21	7,761	16	15	74	22	436
London	14	10,751	27	13	105	21	785
Moncton/Greater Moncton International	17	9,622	19	1	74	19	697
Montréal/Mirabel International	40	2,246	27	14	34	11	189
Montréal/Pierre Elliott Trudeau International	4	18,665	13	18	72	10	748
Montréal/St-Hubert	11	12,150	18	12	138	18	995
Oshawa	32	5,098	29	12	58	29	432
Ottawa/Macdonald-Cartier International	10	12,727	17	17	70	17	696
Pitt Meadows	18	9,344	6	11	118	5	655
Prince George	35	3,505	31	14	67	18	316
Québec/Jean Lesage International	16	9,814	17	15	83	17	602
Regina International	30	5,243	22	11	42	18	281
Saskatoon/John G Diefenbaker International	15	10,315	9	9	71	9	479
Sault Ste. Marie	28	5,766	15	12	87	15	379
St. John's International	37	3,122	1	12	33	31	194
St-Jean	42	1,370	2	14	42	2	190
Sudbury	39	2,627	4	20	37	4	155
Thunder Bay	25	7,177	24	13	74	19	475
Toronto/Buttonville Municipal	9	12,930	24	12	107	24	824
Toronto/City Centre	23	7,245	10	13	206	29	569
Toronto/Lester B Pearson International	1	36,222	24	16	98	6	1,334
Vancouver Harbour	33	4,679	13	17	35	13	237
Vancouver International	2	26,830	4	16	78	13	987
Victoria International	7	15,133	29	13	103	24	794
Whitehorse International	41	2,192	13	10	32	7	145
Windsor	38	2,988	21	13	40	1	142
Winnipeg/James Armstrong Richardson International	12	12,012	20	11	62	20	556
Winnipeg/St. Andrews	19	8,380	26	16	100	26	546
Yellowknife	29	5,494	18	12	46	19	238

**Table 8-2**  
**Total aircraft movements, peak hour and peak day — NAV CANADA flight service stations**

	Rank of movements	Number of movements	Peak hour occurrence			Peak day occurrence	
			Day in month	Hour in day	Number of movements	Day in month	Number of movements
Brandon Municipal	30	1,444	8	16	42	31	176
Campbell River	7	3,368	13	11	50	13	233
Castlegar	49	650	19	14	36	19	87
Charlottetown	13	2,723	30	22	49	31	257
Churchill	45	776	28	18	7	14	41
Cranbrook	38	936	13	11	21	13	72
Deer Lake	24	1,777	10	14	42	10	113
Fort McMurray	2	5,346	19	16	52	19	321
Fort Nelson	36	1,028	12	15	18	7	59
Fort St John	14	2,690	5	13	41	31	161
Fredericton International	3	5,138	19	8	46	30	357
Grande Prairie	4	4,289	7	16	54	5	240
High Level	21	1,842	26	10	64	26	342
Îles-de-la-Madeleine	47	674	26	15	11	26	44
Inuvik/Mike Zubko	39	921	12	20	20	12	60
Iqaluit	27	1,637	31	11	23	31	149
Kamloops	8	3,329	15	11	67	15	187
Kenora	41	878	21	14	27	21	73
Kingston	10	2,823	26	17	49	16	256
Kuujuaq	43	864	10	15	18	28	58
Kuujuarapik	50	504	7	12	6	27	32
La Grande Rivière	34	1,174	7	10	9	27	62
La Ronge	28	1,493	13	10	19	27	83
Lethbridge	15	2,554	22	11	36	28	152
Lloydminster	37	1,019	30	16	27	2	82
Medicine Hat	26	1,742	2	17	40	26	131
Mont-Joli	53	333	18	9	11	18	32
Nanaimo	18	2,198	1	12	42	22	144
Norman Wells	32	1,298	20	11	21	10	75
North Bay	1	5,373	14	12	77	27	471
Ottawa/Gatineau	16	2,456	18	11	56	26	218
Peace River	35	1,150	31	15	44	31	110
Penticton	6	3,483	5	12	65	5	310
Port Hardy	42	867	4	15	18	4	56
Prince Albert	25	1,748	11	16	32	18	103
Prince Rupert	52	415	23	13	17	23	34
Rankin Inlet	40	906	7	13	12	7	64
Red Deer Regional	5	4,043	17	11	51	19	250
Rouyn-Noranda	33	1,229	26	17	82	26	123
Saint John	29	1,465	7	15	23	6	120
Sept-Îles	22	1,830	18	21	20	19	102
Sioux Lookout	19	2,150	26	10	15	26	118
Smithers	48	664	6	9	16	6	41
St Anthony	51	476	10	15	8	10	39
St Catharines	11	2,770	22	13	73	22	291
Terrace	31	1,408	1	13	29	1	88
Thompson	12	2,724	4	17	17	11	123
Timmins	20	2,149	27	15	30	27	161
Val-d'Or	23	1,810	12	16	64	11	144
Victoria Harbour	9	3,189	12	16	22	12	153
Wabush	46	684	18	15	7	27	35
Whitecourt	17	2,454	10	11	90	10	242
Williams Lake	44	804	15	12	18	13	54

**Table 9-1**  
**Itinerant aircraft movements, peak hour and peak day — NAV CANADA towers**

	Rank of movements	Number of movements	Peak hour occurrence			Peak day occurrence	
			Day in month	Hour in day	Number of movements	Day in month	Number of movements
Abbotsford	17	5,456	6	13	47	6	380
Boundary Bay	12	6,352	12	14	50	5	403
Calgary International	3	20,686	5	17	66	6	834
Calgary/Springbank	11	6,649	5	15	47	8	379
Chicoutimi/St-Honoré	41	1,072	17	14	25	17	181
Edmonton City Centre	14	6,068	13	15	33	19	312
Edmonton International	6	10,638	6	8	42	6	456
Edmonton/Villeneuve	39	1,539	4	11	15	18	85
Gander International	33	2,283	5	16	21	11	199
Halifax/Robert L Stanfield International	9	6,839	7	15	34	7	336
Hamilton	28	3,306	28	13	18	12	178
Kelowna	23	4,241	12	11	22	12	183
Kitchener/Waterloo	24	3,744	29	15	42	29	270
Langley	30	2,947	5	14	24	18	168
London	18	5,417	28	14	37	17	325
Moncton/Greater Moncton International	16	5,716	27	17	28	7	368
Montréal/Mirabel International	38	1,682	17	15	21	17	116
Montréal/Pierre Elliott Trudeau International	4	18,665	13	18	72	10	748
Montréal/St-Hubert	19	5,192	17	11	44	17	386
Oshawa	36	1,973	29	12	30	29	198
Ottawa/Macdonald-Cartier International	7	10,633	17	17	44	17	500
Pitt Meadows	29	3,096	22	15	33	5	217
Prince George	34	2,253	31	13	22	31	121
Québec/Jean Lesage International	10	6,726	18	15	44	18	368
Regina International	25	3,735	19	14	23	19	186
Saskatoon/John G Diefenbaker International	15	6,016	25	14	29	26	283
Sault Ste. Marie	32	2,506	17	10	20	16	130
St. John's International	31	2,844	27	17	15	20	125
St-Jean	42	784	16	11	20	30	79
Sudbury	35	2,249	17	9	17	4	105
Thunder Bay	20	4,781	24	13	28	19	231
Toronto/Buttonville Municipal	13	6,236	15	14	53	17	400
Toronto/City Centre	26	3,556	26	17	26	26	193
Toronto/Lester B Pearson International	1	36,222	24	16	98	6	1,334
Vancouver Harbour	21	4,679	13	17	35	13	237
Vancouver International	2	26,830	4	16	78	13	987
Victoria International	8	8,444	8	15	37	24	363
Whitehorse International	40	1,285	24	13	12	24	68
Windsor	37	1,722	22	17	14	26	86
Winnipeg/James Armstrong Richardson International	5	11,154	6	13	39	25	465
Winnipeg/St. Andrews	27	3,365	27	15	29	31	213
Yellowknife	22	4,315	7	16	24	19	182

**Table 9-2**  
**Itinerant aircraft movements, peak hour and peak day — NAV CANADA flight service stations**

	Rank of movements	Number of movements	Peak hour occurrence			Peak day occurrence	
			Day in month	Hour in day	Number of movements	Day in month	Number of movements
Brandon Municipal	42	740	25	11	11	31	66
Campbell River	12	1,728	4	13	22	4	104
Castlegar	49	504	12	13	10	12	38
Charlottetown	19	1,507	25	12	12	24	98
Churchill	39	776	28	18	7	14	41
Cranbrook	37	812	13	11	21	13	64
Deer Lake	20	1,471	31	18	14	31	75
Fort McMurray	1	4,262	26	9	28	19	199
Fort Nelson	33	874	4	10	10	6	58
Fort St John	9	2,048	31	18	21	31	115
Fredericton International	3	2,762	6	14	18	11	174
Grande Prairie	5	2,573	6	8	18	6	140
High Level	48	572	25	9	10	26	64
Îles-de-la-Madeleine	46	674	26	15	11	26	44
Inuvik/Mike Zubko	34	873	26	10	9	14	55
Iqaluit	22	1,401	17	14	9	31	69
Kamloops	6	2,293	26	13	20	6	110
Kenora	41	750	6	18	9	3	41
Kingston	16	1,623	16	12	25	16	120
Kuujuuaq	38	812	28	15	10	28	52
Kuujuuarapik	50	504	7	12	6	27	32
La Grande Rivière	25	1,172	7	10	9	27	62
La Ronge	21	1,419	10	17	12	20	78
Lethbridge	17	1,618	18	17	14	26	91
Lloydminster	44	683	30	16	13	9	44
Medicine Hat	27	1,112	15	14	13	7	56
Mont-Joli	53	305	12	8	6	24	24
Nanaimo	14	1,708	6	15	17	6	94
Norman Wells	24	1,187	16	14	15	14	67
North Bay	7	2,179	27	14	28	27	155
Ottawa/Gatineau	31	914	2	12	15	17	82
Peace River	36	844	11	17	15	13	53
Penticton	15	1,643	20	14	31	20	99
Port Hardy	40	774	4	11	10	27	51
Prince Albert	18	1,534	18	10	18	18	87
Prince Rupert	52	361	11	22	5	11	21
Rankin Inlet	32	904	7	13	12	7	64
Red Deer Regional	10	1,979	26	17	22	26	132
Rouyn-Noranda	28	983	4	15	9	4	59
Saint John	23	1,317	6	15	19	6	88
Sept-Îles	13	1,720	25	10	12	11	84
Sioux Lookout	8	2,104	7	8	14	5	98
Smithers	47	630	6	9	6	17	32
St Anthony	51	476	10	15	8	10	39
St Catharines	30	916	15	14	18	15	74
Terrace	26	1,171	7	9	13	31	67
Thompson	4	2,590	31	9	15	20	120
Timmins	11	1,973	20	18	13	4	99
Val-d'Or	29	948	2	12	8	13	50
Victoria Harbour	2	3,189	12	16	22	12	153
Wabush	45	682	18	15	7	27	35
Whitecourt	35	870	19	14	15	19	61
Williams Lake	43	712	12	9	7	13	42

**Table 10-1**  
**Local movements, peak hour and peak day — NAV CANADA towers**

	Rank of movements	Number of movements	Peak hour occurrence			Peak day occurrence	
			Day in month	Hour in day	Number of movements	Day in month	Number of movements
Abbotsford	3	8,042	31	13	98	18	478
Boundary Bay	1	11,016	17	16	88	21	474
Calgary International	38	160	13	9	32	13	36
Calgary/Springbank	2	10,489	14	16	92	6	584
Chicoutimi/St-Honoré	21	2,122	17	22	106	18	642
Edmonton City Centre	26	1,498	9	13	34	9	142
Edmonton International	36	358	4	14	18	4	36
Edmonton/Villeneuve	9	5,111	25	11	80	11	326
Gander International	20	2,140	28	7	42	11	274
Halifax/Robert L Stanfield International	34	388	3	14	22	19	50
Hamilton	24	1,882	21	13	48	21	184
Kelowna	23	1,943	13	16	36	12	168
Kitchener/Waterloo	12	4,538	2	13	54	29	316
Langley	11	4,814	16	15	60	22	278
London	8	5,334	27	13	74	21	484
Moncton/Greater Moncton International	14	3,906	19	1	60	19	352
Montréal/Mirabel International	33	564	13	9	29	11	92
Montréal/Pierre Elliott Trudeau International	0	0	0	0	0	0	0
Montréal/St-Hubert	4	6,958	18	12	104	18	616
Oshawa	17	3,125	24	15	44	29	234
Ottawa/Macdonald-Cartier International	22	2,094	2	16	44	17	196
Pitt Meadows	7	6,248	6	11	88	5	438
Prince George	28	1,252	31	14	60	18	218
Québec/Jean Lesage International	18	3,088	30	12	46	17	258
Regina International	25	1,508	22	11	34	18	120
Saskatoon/John G Diefenbaker International	13	4,299	9	9	54	9	262
Sault Ste. Marie	16	3,260	15	12	80	15	300
St. John's International	37	278	1	12	24	1	88
St-Jean	32	586	2	14	26	2	118
Sudbury	35	378	4	20	30	4	50
Thunder Bay	19	2,396	3	19	56	24	252
Toronto/Buttonville Municipal	5	6,694	26	11	74	24	434
Toronto/City Centre	15	3,689	10	13	191	29	376
Toronto/Lester B Pearson International	0	0	0	0	0	0	0
Vancouver Harbour	0	0	0	0	0	0	0
Vancouver International	0	0	0	0	0	0	0
Victoria International	6	6,689	29	13	70	24	431
Whitehorse International	30	907	13	10	28	7	96
Windsor	27	1,266	21	13	34	1	80
Winnipeg/James Armstrong Richardson International	31	858	19	14	30	20	94
Winnipeg/St. Andrews	10	5,015	26	16	72	19	344
Yellowknife	29	1,179	24	16	36	29	104

**Table 10-2**  
**Local movements, peak hour and peak day — NAV CANADA flight service stations**

	Rank of movements	Number of movements	Peak hour occurrence			Peak day occurrence	
			Day in month	Hour in day	Number of movements	Day in month	Number of movements
Brandon Municipal	17	704	8	16	38	31	110
Campbell River	7	1,640	13	11	38	13	148
Castlegar	31	146	19	14	32	19	56
Charlottetown	11	1,216	30	22	46	31	174
Churchill	0	0	0	0	0	0	0
Cranbrook	34	124	18	9	20	18	32
Deer Lake	22	306	10	14	36	10	60
Fort McMurray	13	1,084	19	16	38	18	124
Fort Nelson	29	154	12	15	16	7	24
Fort St John	18	642	2	11	36	5	66
Fredericton International	2	2,376	19	8	34	30	216
Grande Prairie	6	1,716	7	16	42	5	124
High Level	10	1,270	26	10	60	26	278
Îles-de-la-Madeleine	0	0	0	0	0	0	0
Inuvik/Mike Zubko	42	48	12	20	18	12	18
Iqaluit	26	236	31	11	18	31	80
Kamloops	14	1,036	15	11	56	15	112
Kenora	33	128	21	14	26	21	52
Kingston	12	1,200	26	17	42	30	162
Kuujuaq	41	52	10	15	14	10	18
Kuujuarapik	0	0	0	0	0	0	0
La Grande Rivière	46	2	4	7	2	4	2
La Ronge	39	74	13	10	10	27	16
Lethbridge	15	936	22	11	32	28	74
Lloydminster	21	336	2	19	16	2	44
Medicine Hat	19	630	2	17	36	26	80
Mont-Joli	45	28	18	9	10	18	16
Nanaimo	20	490	1	12	34	1	82
Norman Wells	35	111	20	11	18	10	21
North Bay	1	3,194	14	12	70	26	322
Ottawa/Gatineau	9	1,542	18	11	52	26	192
Peace River	23	306	31	15	40	31	70
Penticton	5	1,840	27	15	56	5	220
Port Hardy	37	93	4	15	14	5	20
Prince Albert	27	214	11	16	24	23	28
Prince Rupert	40	54	23	13	14	23	22
Rankin Inlet	47	2	13	11	2	13	2
Red Deer Regional	3	2,064	17	11	42	19	148
Rouyn-Noranda	24	246	26	17	78	26	78
Saint John	30	148	6	12	16	6	32
Sept-Îles	36	110	19	14	16	19	26
Sioux Lookout	43	46	26	21	10	26	22
Smithers	44	34	6	9	10	6	10
St Anthony	0	0	0	0	0	0	0
St Catharines	4	1,854	22	13	64	22	220
Terrace	25	237	1	13	26	1	44
Thompson	32	134	8	13	12	8	30
Timmins	28	176	27	15	24	27	82
Val-d'Or	16	862	12	16	60	11	106
Victoria Harbour	0	0	0	0	0	0	0
Wabush	48	2	22	15	2	22	2
Whitecourt	8	1,584	10	11	86	10	204
Williams Lake	38	92	12	15	14	15	18

**Table 11-1**  
**Local movements - civil, peak hour and peak day — NAV CANADA towers**

	Rank of movements	Number of movements	Peak hour occurrence			Peak day occurrence	
			Day in month	Hour in day	Number of movements	Day in month	Number of movements
Abbotsford	3	8,042	31	13	98	18	478
Boundary Bay	1	11,016	17	16	88	21	474
Calgary International	38	160	13	9	32	13	36
Calgary/Springbank	2	10,487	14	16	92	6	584
Chicoutimi/St-Honoré	20	2,122	17	22	106	18	642
Edmonton City Centre	25	1,480	9	13	34	9	142
Edmonton International	35	352	4	14	18	4	36
Edmonton/Villeneuve	9	5,111	25	11	80	11	326
Gander International	22	1,980	28	7	42	11	274
Halifax/Robert L Stanfield International	36	304	3	14	22	19	36
Hamilton	24	1,882	21	13	48	21	184
Kelowna	23	1,943	13	16	36	12	168
Kitchener/Waterloo	12	4,530	2	13	54	29	316
Langley	11	4,814	16	15	60	22	278
London	8	5,334	27	13	74	21	484
Moncton/Greater Moncton International	14	3,904	19	1	60	19	352
Montréal/Mirabel International	33	548	13	9	29	11	88
Montréal/Pierre Elliott Trudeau International	0	0	0	0	0	0	0
Montréal/St-Hubert	4	6,958	18	12	104	18	616
Oshawa	17	3,125	24	15	44	29	234
Ottawa/Macdonald-Cartier International	21	2,054	2	16	44	17	196
Pitt Meadows	7	6,248	6	11	88	5	438
Prince George	28	1,252	31	14	60	18	218
Québec/Jean Lesage International	18	3,086	30	12	46	17	258
Regina International	26	1,470	22	11	34	18	112
Saskatoon/John G Diefenbaker International	13	4,269	9	9	54	9	262
Sault Ste. Marie	16	3,260	15	12	80	15	300
St. John's International	37	266	1	12	24	1	88
St-Jean	32	586	2	14	26	2	118
Sudbury	34	378	4	20	30	4	50
Thunder Bay	19	2,394	3	19	56	24	252
Toronto/Buttonville Municipal	5	6,694	26	11	74	24	434
Toronto/City Centre	15	3,498	29	10	60	29	376
Toronto/Lester B Pearson International	0	0	0	0	0	0	0
Vancouver Harbour	0	0	0	0	0	0	0
Vancouver International	0	0	0	0	0	0	0
Victoria International	6	6,341	29	13	70	24	429
Whitehorse International	30	907	13	10	28	7	96
Windsor	27	1,266	21	13	34	1	80
Winnipeg/James Armstrong Richardson International	31	654	3	13	22	31	58
Winnipeg/St. Andrews	10	5,015	26	16	72	19	344
Yellowknife	29	1,145	24	16	36	29	104

**Table 11-2**  
**Local movements - civil, peak hour and peak day — NAV CANADA flight service stations**

	Rank of movements	Number of movements	Peak hour occurrence			Peak day occurrence	
			Day in month	Hour in day	Number of movements	Day in month	Number of movements
Brandon Municipal	17	676	8	16	38	31	110
Campbell River	7	1,640	13	11	38	13	148
Castlegar	30	146	19	14	32	19	56
Charlottetown	11	1,212	30	22	46	31	174
Churchill	0	0	0	0	0	0	0
Cranbrook	34	124	18	9	20	18	32
Deer Lake	22	306	10	14	36	10	60
Fort McMurray	13	1,084	19	16	38	18	124
Fort Nelson	29	154	12	15	16	7	24
Fort St John	18	642	2	11	36	5	66
Fredericton International	2	2,376	19	8	34	30	216
Grande Prairie	6	1,716	7	16	42	5	124
High Level	10	1,270	26	10	60	26	278
Îles-de-la-Madeleine	0	0	0	0	0	0	0
Inuvik/Mike Zubko	42	48	12	20	18	12	18
Iqaluit	25	234	31	11	18	31	80
Kamloops	14	1,018	15	11	56	15	112
Kenora	33	128	21	14	26	21	52
Kingston	12	1,200	26	17	42	30	162
Kuujuaq	41	52	10	15	14	10	18
Kuujuarapik	0	0	0	0	0	0	0
La Grande Rivière	46	2	4	7	2	4	2
La Ronge	39	74	13	10	10	27	16
Lethbridge	15	936	22	11	32	28	74
Lloydminster	21	336	2	19	16	2	44
Medicine Hat	19	618	2	17	36	26	80
Mont-Joli	45	28	18	9	10	18	16
Nanaimo	20	490	1	12	34	1	82
Norman Wells	35	111	20	11	18	10	21
North Bay	1	3,186	14	12	70	26	322
Ottawa/Gatineau	9	1,542	18	11	52	26	192
Peace River	23	306	31	15	40	31	70
Penticton	5	1,840	27	15	56	5	220
Port Hardy	37	93	4	15	14	5	20
Prince Albert	27	214	11	16	24	23	28
Prince Rupert	40	54	23	13	14	23	22
Rankin Inlet	47	2	13	11	2	13	2
Red Deer Regional	3	2,064	17	11	42	19	148
Rouyn-Noranda	24	246	26	17	78	26	78
Saint John	31	140	6	12	16	6	32
Sept-Îles	36	110	19	14	16	19	26
Sioux Lookout	43	36	26	10	8	16	12
Smithers	44	34	6	9	10	6	10
St Anthony	0	0	0	0	0	0	0
St Catharines	4	1,854	22	13	64	22	220
Terrace	26	219	1	13	26	1	44
Thompson	32	134	8	13	12	8	30
Timmins	28	176	27	15	24	27	82
Val-d'Or	16	862	12	16	60	11	106
Victoria Harbour	0	0	0	0	0	0	0
Wabush	48	2	22	15	2	22	2
Whitecourt	8	1,584	10	11	86	10	204
Williams Lake	38	92	12	15	14	15	18



**Table 12-1**  
**Local movements - military, peak hour and peak day — NAV CANADA towers**

	Rank of movements	Number of movements	Peak hour occurrence			Peak day occurrence	
			Day in month	Hour in day	Number of movements	Day in month	Number of movements
Abbotsford	0	0	0	0	0	0	0
Boundary Bay	0	0	0	0	0	0	0
Calgary International	0	0	0	0	0	0	0
Calgary/Springbank	18	2	20	12	2	20	2
Chicoutimi/St-Honoré	0	0	0	0	0	0	0
Edmonton City Centre	10	18	14	9	4	12	6
Edmonton International	14	6	8	15	4	8	4
Edmonton/Villeneuve	0	0	0	0	0	0	0
Gander International	4	160	5	11	14	26	32
Halifax/Robert L Stanfield International	5	84	4	19	10	27	16
Hamilton	0	0	0	0	0	0	0
Kelowna	0	0	0	0	0	0	0
Kitchener/Waterloo	13	8	11	13	4	11	4
Langley	0	0	0	0	0	0	0
London	0	0	0	0	0	0	0
Moncton/Greater Moncton International	15	2	14	16	2	14	2
Montréal/Mirabel International	11	16	10	10	8	10	8
Montréal/Pierre Elliott Trudeau International	0	0	0	0	0	0	0
Montréal/St-Hubert	0	0	0	0	0	0	0
Oshawa	0	0	0	0	0	0	0
Ottawa/Macdonald-Cartier International	6	40	6	16	8	6	16
Pitt Meadows	0	0	0	0	0	0	0
Prince George	0	0	0	0	0	0	0
Québec/Jean Lesage International	16	2	7	14	2	7	2
Regina International	7	38	18	15	8	26	10
Saskatoon/John G Diefenbaker International	9	30	28	17	6	17	8
Sault Ste. Marie	0	0	0	0	0	0	0
St. John's International	12	12	4	7	10	4	12
St-Jean	0	0	0	0	0	0	0
Sudbury	0	0	0	0	0	0	0
Thunder Bay	17	2	7	17	2	7	2
Toronto/Buttonville Municipal	0	0	0	0	0	0	0
Toronto/City Centre	3	191	10	13	191	10	191
Toronto/Lester B Pearson International	0	0	0	0	0	0	0
Vancouver Harbour	0	0	0	0	0	0	0
Vancouver International	0	0	0	0	0	0	0
Victoria International	1	348	17	20	20	17	68
Whitehorse International	0	0	0	0	0	0	0
Windsor	0	0	0	0	0	0	0
Winnipeg/James Armstrong Richardson International	2	204	20	11	24	20	78
Winnipeg/St. Andrews	0	0	0	0	0	0	0
Yellowknife	8	34	3	14	16	3	20

**Table 12-2**  
**Local movements - military, peak hour and peak day — NAV CANADA flight service stations**

	Rank of movements	Number of movements	Peak hour occurrence			Peak day occurrence	
			Day in month	Hour in day	Number of movements	Day in month	Number of movements
Brandon Municipal	1	28	25	12	20	25	20
Campbell River	0	0	0	0	0	0	0
Castlegar	0	0	0	0	0	0	0
Charlottetown	8	4	27	11	4	27	4
Churchill	0	0	0	0	0	0	0
Cranbrook	0	0	0	0	0	0	0
Deer Lake	0	0	0	0	0	0	0
Fort McMurray	0	0	0	0	0	0	0
Fort Nelson	0	0	0	0	0	0	0
Fort St John	0	0	0	0	0	0	0
Fredericton International	0	0	0	0	0	0	0
Grande Prairie	0	0	0	0	0	0	0
High Level	0	0	0	0	0	0	0
Îles-de-la-Madeleine	0	0	0	0	0	0	0
Inuvik/Mike Zubko	0	0	0	0	0	0	0
Iqaluit	9	2	21	13	2	21	2
Kamloops	2	18	10	11	12	10	12
Kenora	0	0	0	0	0	0	0
Kingston	0	0	0	0	0	0	0
Kuujuaq	0	0	0	0	0	0	0
Kuujuarapik	0	0	0	0	0	0	0
La Grande Rivière	0	0	0	0	0	0	0
La Ronge	0	0	0	0	0	0	0
Lethbridge	0	0	0	0	0	0	0
Lloydminster	0	0	0	0	0	0	0
Medicine Hat	4	12	17	16	8	17	8
Mont-Joli	0	0	0	0	0	0	0
Nanaimo	0	0	0	0	0	0	0
Norman Wells	0	0	0	0	0	0	0
North Bay	6	8	24	11	4	24	6
Ottawa/Gatineau	0	0	0	0	0	0	0
Peace River	0	0	0	0	0	0	0
Penticton	0	0	0	0	0	0	0
Port Hardy	0	0	0	0	0	0	0
Prince Albert	0	0	0	0	0	0	0
Prince Rupert	0	0	0	0	0	0	0
Rankin Inlet	0	0	0	0	0	0	0
Red Deer Regional	0	0	0	0	0	0	0
Rouyn-Noranda	0	0	0	0	0	0	0
Saint John	7	8	10	11	6	10	8
Sept-Îles	0	0	0	0	0	0	0
Sioux Lookout	5	10	26	21	10	26	10
Smithers	0	0	0	0	0	0	0
St Anthony	0	0	0	0	0	0	0
St Catharines	0	0	0	0	0	0	0
Terrace	3	18	31	13	18	31	18
Thompson	0	0	0	0	0	0	0
Timmins	0	0	0	0	0	0	0
Val-d'Or	0	0	0	0	0	0	0
Victoria Harbour	0	0	0	0	0	0	0
Wabush	0	0	0	0	0	0	0
Whitecourt	0	0	0	0	0	0	0
Williams Lake	0	0	0	0	0	0	0

# Methodology

---

## Survey universe

### Coverage

The survey covers all aircraft movements at Canadian airports with NAV CANADA air traffic control towers and flight service stations.

## Methodology survey

The Itinerant movement record is designed to capture:

- Aircraft identification
- Aircraft type
- The last station before landing at the reporting airport or the next station after take-off
- Arrival or departure
- Time of movement
- Runway used
- Flight rules (Instrument flight rules or Visual flight rules).

The Local aircraft movement record provides for reports of local movements by:

- Hour
- Single engine aircraft
- Multi-engine aircraft
- Jet aircraft
- Military aircraft
- Date of movement

Processing of aircraft movement statistics involves several stages. Preliminary monthly data by class of operation are released in **Preliminary aircraft movement statistics**, catalogue no. 51F0001P (TP-1496 (NAV CANADA towered airports only)). Data which follow in **Aircraft movement statistics - Monthly** report, catalogue nos. 51-007-X and 51-008-X (TP-141) may contain revisions to the originally released figures. Annual tables, which may reflect further revisions, are released in the publication, **Aircraft movement statistics - Annual** report - TP-577. In particular, data on itinerant movements by type of operation may reflect revisions as various sources of comparative information (data collected from commercial air carriers by the Aviation Statistics Centre, Statistics Canada) become available during the processing cycle. Finally, when revisions are required after the release of TP-577, they are contained in the five year historical summary of subsequent editions of TP-577. These revisions are also reflected in the CANSIM tables, both monthly and annual.

The records are completed daily, based on a twenty-four hour clock running from zero hour to 23:59. The times recorded are Coordinated Universal Time (UTC); however, published statistics are shown in local times. The records are transmitted to the Aviation Statistics Centre.

The Aviation Statistics Centre maintains a data base of parameter files of current information on all registered aircraft. The storage of this information reduces the reporting burden of the survey respondents and limits the element of human error associated with the preparation of source documents.

Other parameter files information includes registered aircraft identifications and their corresponding aircraft types, gross take-off weights, types of power plant (piston, jet or turboprop); whether the aircraft are fixed wing, helicopters or gliders. This information also provides a basis for identifying type of flights (commercial, private and government) and the geographical area in which the flights take place.

The parameter files also include airport environment information against which the airport category is checked; the reported runway is validated and the time difference between UTC and Local is assigned.

## Data quality and limitations

---

Aircraft movement statistics are accumulated from data originating with air traffic control tower units or flight service station personnel. Because staff in these positions are highly trained in factual observation and reporting, the entries in the data bank are of a high quality.

The procedures for reporting aircraft movements on the Daily air traffic records by tower units are described in the NAV CANADA Air traffic control manual of operations (TP 703) Volume 1, Para. 1023 to 1023.5. Definitions for terms used in these paragraphs can be found in the appendix II "Glossary of terms" of this report.

To maintain uniformity in the reporting of source data, ASC issues to air traffic control units an "Air traffic designators" handbook (TP 143) listing the official Transport Canada aircraft type designators and the designators of various domestic and international air carriers. This handbook and another titled "Canada flight supplement" listing various airport codes serve as references to help ensure the reporting of the proper aircraft identity and the point of origin and destination of flights.

The processing system contains editing procedures designed to identify data errors occurring during transcription or during data capture of forms. Identified errors are manually corrected by ASC editing staff.

Errors may occur if an aircraft type code which exists is reported or data captured in error for a flight. For example, the reporting or keying of B727 for a flight actually performed by a B737 may not be detected during the system editing. That the aircraft type information is recorded by highly trained air traffic control tower staff using a common handbook of official aircraft codes will minimize this problem.

Similarly, the breakdown of the data on a geographic basis by use of location codes can be subject to error. For smaller locations, alphanumeric location codes are often used and the sequence of numbers and letters determines the geographic area to which the data are assigned. In some cases, where a sequence error has been introduced into the system either at the reporting unit or at data capture, a domestic movement may be classified as transborder or vice versa. The use of common manuals of location identifiers works to minimize this occurrence.

# Appendix I

---

## Factors influencing the data

Severe winter storms struck central and eastern Canada in early March forcing numerous flight delays and cancellations.

## Appendix II

---

### Glossary of terms

#### Air carrier

Aircraft operators licensed by the Canadian Transportation Agency to transport persons, mail and/or goods by air.

**Levels I to III air carriers (Defn 2000)**– This includes every Canadian air carrier that, in each of the two calendar years immediately preceding the report year, realized annual gross revenues of \$1,000,000 or more for the air services for which the air carrier held a licence. Also includes foreign air carriers.

**Levels IV to VI air carriers (Defn 2000)**– Canadian air carriers not classified in report level I-III that, in each of the two calendar years immediately preceding the report year, realized annual gross revenues of less than \$1,000,000 for the air services for which the air carrier held a licence. Since 2000, levels IV and VI are no longer applicable.

#### Aircraft movement

A take off, a landing, or a simulated approach by an aircraft. ATC Manops amendment 8-8-83. NC-703.

#### Class of operation

Aircraft movements are classified as either “Itinerant” or “Local”.

#### Commercial

Flights by aircraft operators licensed by the Canadian Transportation Agency to perform commercial air services. Commercial operations are divided into two categories: **Air carrier** and **Other commercial**.

#### Domestic itinerant movements

Movements, at a Canadian airport, of aircraft departing to or arriving from another point in Canada.

#### FSS

Flight service station.

#### Government – Civil

Aircraft owned by federal, provincial and municipal bodies as well as foreign states, but excluding those owned by crown corporations, boards and commissions. Such aircraft are coded “3” under “Purpose” in the Canadian civil aircraft register.

#### Government – Military

Aircraft of any branch of the armed forces of any nation.

### Gross take-off weight

The maximum weight for which the aircraft is licensed to operate. For operational purposes, all weights are rounded upwards to the next 1,000 kilograms. Thus 3,200 kilograms becomes 4,000 kilograms.

### I.F.R. flight

A flight conducted in accordance with Instrument flight rules.

### International movements

Movements, at a Canadian airport, of aircraft arriving from or departing to a point outside Canada. International movements are subclassified into “transborder” (to or from a point in the United States including Alaska but excluding Hawaii), and “other international” (to or from points in countries other than Canada and the United States).

Since aircraft movements are reported on the basis of place “arrived from” or “departed to”, an arrival at Mirabel airport from London, England would appear under “other international”. If the same aircraft moved on to Toronto, both the departure at Mirabel and the arrival at Toronto would be shown as “domestic”.

### Itinerant movements

At Airports **with** control towers and/or Flight service stations: for the purpose of completing air traffic records, itinerant movements are considered as movements in which aircraft proceed to or arrive from another location; or where aircraft leave the circuit but return without landing at another airport. At Airports **without** control towers: an aircraft movement in which the aircraft arrives from or departs to a point other than the reporting airport; or a movement by an aircraft that leaves the close proximity of an airport and returns without landing at another airport.

### Local movements

At Airports **with** control towers and/or Flight service stations: for the purpose of completing air traffic records, local movements are considered as movements in which the aircraft remains in the circuit. At Airports **without** control towers: an aircraft movement in which the aircraft remains in the close proximity of the airport. Local movements are often carried out during training flights (touch-and-go), equipment tests etc.

### Other commercial

Flights performed by **Commercial** aircraft operators not included in the **Air carrier** categories. Flying schools, agricultural sprayers, water-bombers, aerial photography and survey, etc.

### Power plant

The source of propulsion. For example, piston engines, turbo-propellers and jet engines. “Helicopters”, in this report, include both piston and turboshaft-driven engines.

### Private aircraft

Aircraft used solely for private purposes, not for hire and compensation, which are classified as “Private” or “Private Restricted” in the Canadian civil aircraft register or similar registries of other countries. Owners include individuals, groups and business firms.



### **Runway 88**

Through control zone flights, i.e. flights which communicate with the tower while transiting the tower control zone to another destination without landing at the reporting airport.

Data for these runways are not included in the grand total.

### **Simulated approaches**

Movements that are either missed instrument or practice instrument approaches without landing.

### **TC**

Transport Canada

### **Tower control zone**

A controlled airspace within the proximity of an air traffic control tower, usually within a radius of less than 24 kilometres of the tower.

### **V.F.R. flight**

A flight conducted in accordance with Visual flight rules.

### **Weight group**

The classification of weight classes in groups for statistical purposes.