

Catalogue no. 23-015-X

Poultry and Egg Statistics

July to September 2010



Statistics
Canada

Statistique
Canada

Canada

How to obtain more information

For information about this product or the wide range of services and data available from Statistics Canada, visit our website at www.statcan.gc.ca, e-mail us at infostats@statcan.gc.ca, or telephone us, Monday to Friday from 8:30 a.m. to 4:30 p.m., at the following numbers:

Statistics Canada's National Contact Centre

Toll-free telephone (Canada and the United States):

Inquiries line	1-800-263-1136
National telecommunications device for the hearing impaired	1-800-363-7629
Fax line	1-877-287-4369

Local or international calls:

Inquiries line	1-613-951-8116
Fax line	1-613-951-0581

Depository Services Program

Inquiries line	1-800-635-7943
Fax line	1-800-565-7757

To access this product

This product, Catalogue no. 23-015-X, is available free in electronic format. To obtain a single issue, visit our website at www.statcan.gc.ca and browse by "Key resource" > "Publications."

Standards of service to the public

Statistics Canada is committed to serving its clients in a prompt, reliable and courteous manner. To this end, Statistics Canada has developed *standards of service* that its employees observe. To obtain a copy of these service standards, please contact Statistics Canada toll-free at 1-800-263-1136. The service standards are also published on www.statcan.gc.ca under "About us" > "The agency" > "Providing services to Canadians."

Statistics Canada
Agriculture Division
Livestock Section

Poultry and Egg Statistics

July to September 2010

Published by authority of the Minister responsible for Statistics Canada

© Minister of Industry, 2010

All rights reserved. The content of this electronic publication may be reproduced, in whole or in part, and by any means, without further permission from Statistics Canada, subject to the following conditions: that it be done solely for the purposes of private study, research, criticism, review or newspaper summary, and/or for non-commercial purposes; and that Statistics Canada be fully acknowledged as follows: Source (or "Adapted from", if appropriate): Statistics Canada, year of publication, name of product, catalogue number, volume and issue numbers, reference period and page(s). Otherwise, no part of this publication may be reproduced, stored in a retrieval system or transmitted in any form, by any means—electronic, mechanical or photocopy—or for any purposes without prior written permission of Licensing Services, Client Services Division, Statistics Canada, Ottawa, Ontario, Canada K1A 0T6.

November 2010

Catalogue no. 23-015-X, vol. 7, no. 3

ISSN 1710-3525

Frequency: Quarterly

Ottawa

Cette publication est également disponible en français.

Note of appreciation

Canada owes the success of its statistical system to a long-standing partnership between Statistics Canada, the citizens of Canada, its businesses, governments and other institutions. Accurate and timely statistical information could not be produced without their continued cooperation and goodwill.

User information

Symbols

The following standard symbols are used in Statistics Canada publications:

- . not available for any reference period
- .. not available for a specific reference period
- ... not applicable
- 0 true zero or a value rounded to zero
- 0^s value rounded to 0 (zero) where there is a meaningful distinction between true zero and the value that was rounded
- p preliminary
- r revised
- x suppressed to meet the confidentiality requirements of the *Statistics Act*
- E use with caution
- F too unreliable to be published

Table of contents

Highlights	5
Introduction	8
Related products	9
Statistical tables	
1 Production of poultry meat	11
2 Disposition of poultry meat	12
2-1 Chicken	12
2-2 Turkey	13
2-3 Total poultry	14
3 Supply and disposition of poultry meat	15
4 Production of eggs by province	17
4-1 Average number of layers	17
4-2 Eggs per 100 layers	18
4-3 in thousands of dozens	19
5 Disposition of eggs by province, quantity and value by province	20
5-1 Canada	20
5-2 Newfoundland and Labrador	21
5-3 Prince Edward Island	22
5-4 Nova Scotia	23
5-5 New Brunswick	24
5-6 Quebec	25
5-7 Ontario	26
5-8 Manitoba	27
5-9 Saskatchewan	28
5-10 Alberta	29
5-11 British Columbia	30
6 Stocks of frozen eggs and edible dried eggs, Canada	31
7 Supply and disposition of eggs	31
8 Average prices of eggs sold for consumption in Canada by month	32

Table of contents – continued

9	Report of processed eggs production, Canada	32
---	---	----

Data quality, concepts and methodology

	Poultry meat production and value	33
	Egg production and value	35
	Food Available - Poultry and Eggs	37

Appendix

I	Glossary of terms	38
---	-------------------	----

Highlights

Value of poultry products decreases

- The value of all poultry products totalled \$3.2 billion in 2009, a 0.7% decrease from 2008. Sales of poultry meat totalled \$2.4 billion in 2009. The value of egg sales decreased 2.3% from 2008 to stand at \$843.4 million.
- Canadian farmers produced 1.2 million tonnes of poultry meat in 2009. Chicken, including stewing hens, which accounts for 86% of all poultry meat produced, is down 0.4% from 2008. Turkey production stood at 167 thousand tonnes in 2009, a decrease of 7.5% from the previous year.
- The quantity of poultry available for consumption decreased 1.5% in 2009 to 13.4 kilograms per person.

Egg production increases in 2009

- Egg production was 620.3 million dozen, an increase of 0.5% from 2008. The central region produces over half of the eggs in Canada with Ontario producing 234.3 million dozen eggs and Quebec producing 107.6 million dozen.
- During the first 9 months of 2010, egg production totalled 472.5 million dozen, an increase of 2.4% from the same period in 2009.
- Eggs available for consumption stood at 12.7 dozen eggs per capita in 2009, down 0.8% from last year.

Chart 1
Value of poultry products, Canada, 2000 to 2009

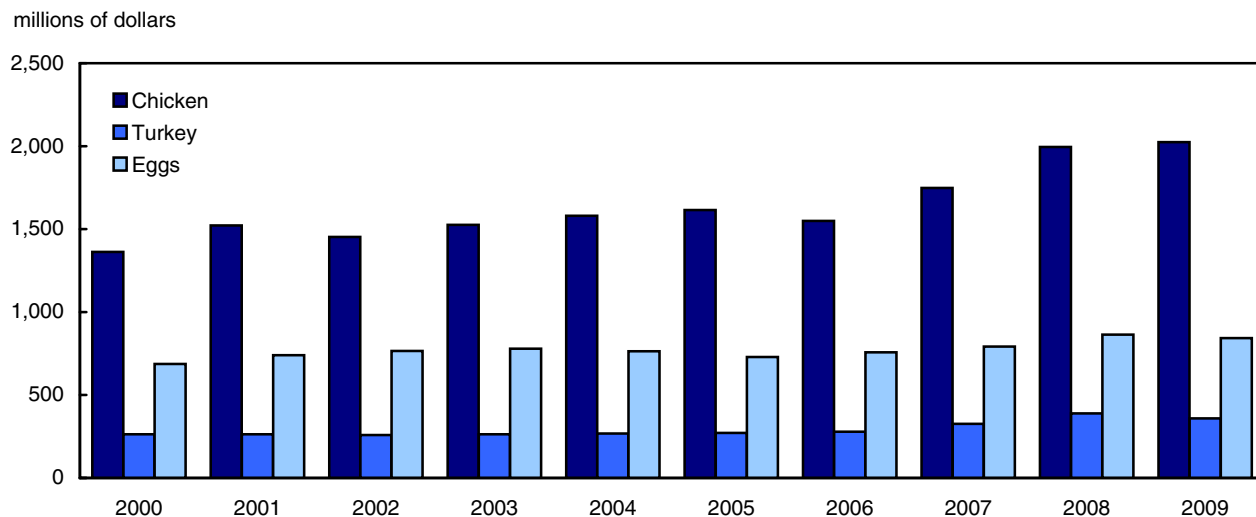


Chart 2
Poultry meat production, Canada 2000 to 2009

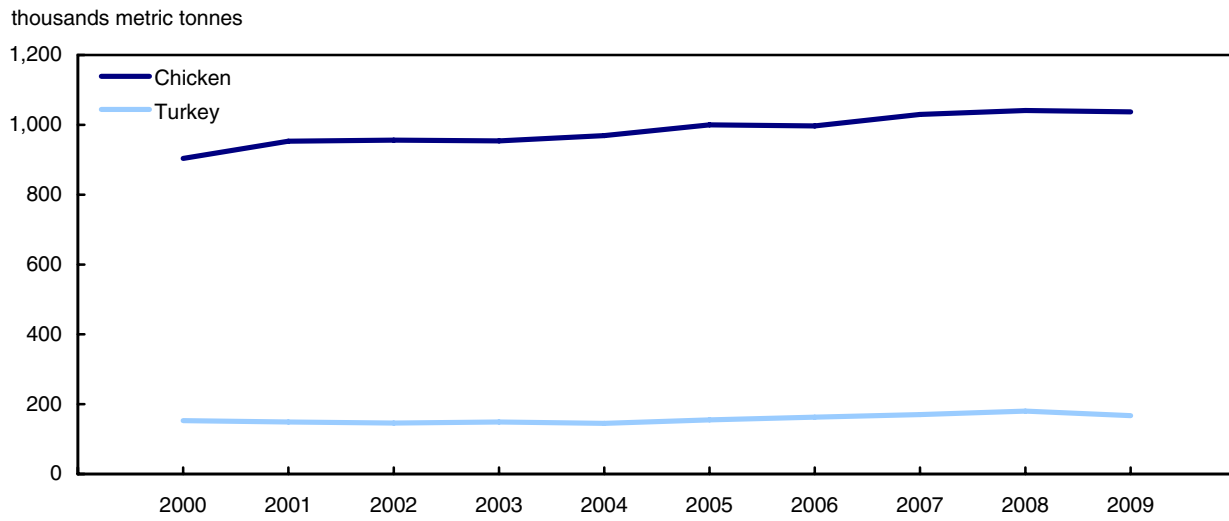


Chart 3
Quantity of meats available for consumption, Canada, 2000 to 2009

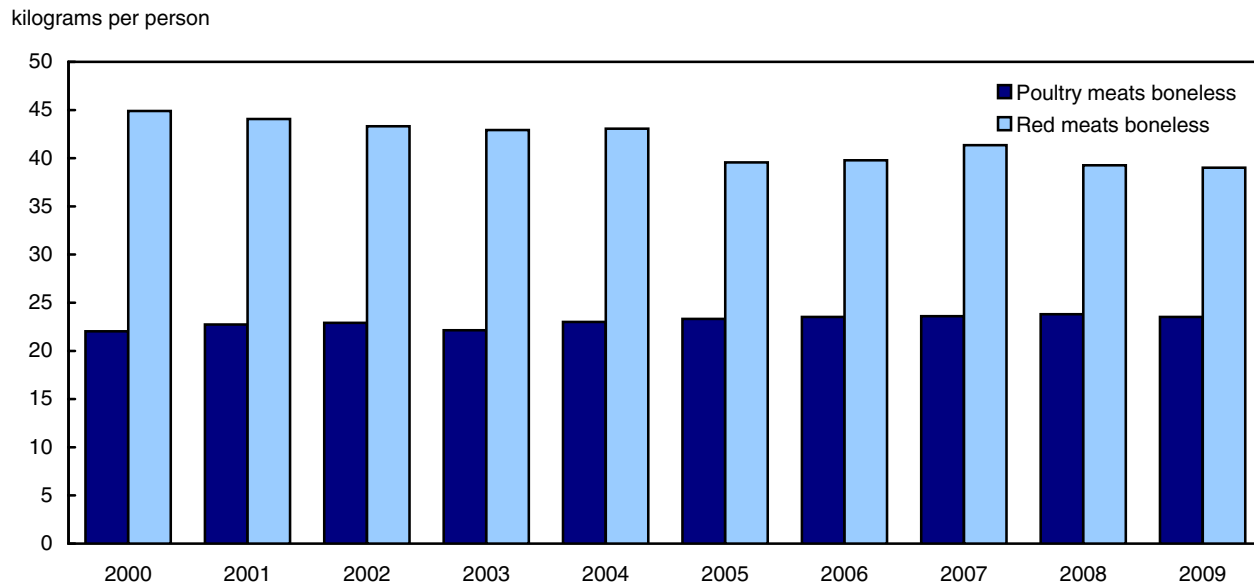


Chart 4
Production of eggs, Canada, 2000 to 2009

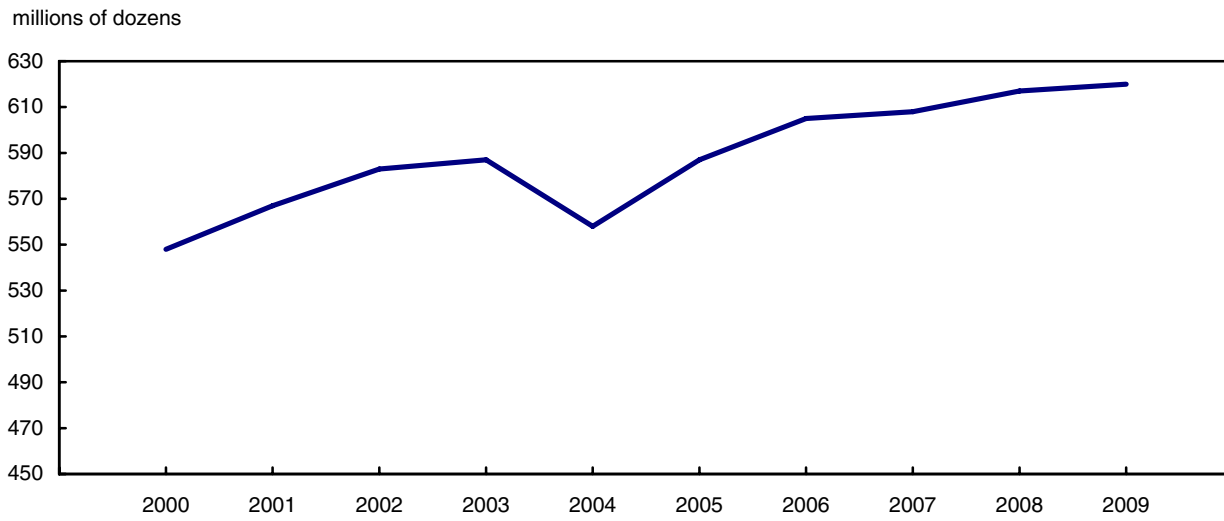
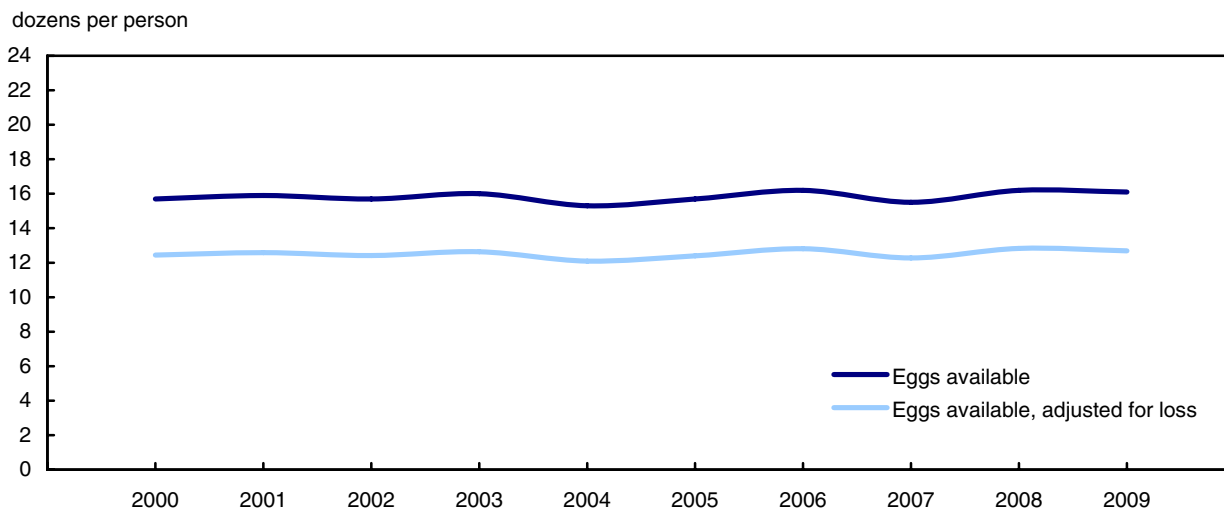


Chart 5
Quantity of eggs available for consumption, Canada, 2000 to 2009



Introduction

This publication provides data on the production, supply and disposition and value of poultry meat and eggs. Also included are data on the average price of eggs sold for table consumption, the food available and the food available, adjusted for loss of poultry meats and eggs, and the production and stocks of processed eggs.

The data presented are obtained from a variety of sources such as administrative sources and censuses. Administrative data are provided by the Canadian Egg Marketing Agency (CEMA), Agriculture and Agri-Food Canada (AAFC) and Statistics Canada. Information from Statistics Canada's Census of Agriculture and Census of Population is also used in preparing the estimates.

The data, published on a provincial basis, are used in decision making by government agencies, processors, retailers, universities, producer organizations and health institutions.

Statistics Canada has been estimating poultry meat production and value since 1951. Concepts and methods vary over time due to changes in the sector and/or the availability of data sources. Users should note the following:

- i. Production data supplied in table 7 (Supply and disposition of eggs) are compiled in May of each year and revised annually. Production and disposition data supplied in tables 4 and 5 (Disposition of eggs by province) are subject to revision throughout the year and may not compare exactly to the data in table 7 (Supply and disposition of eggs);
- ii. beginning in 1986, the quantity of eggs available for consumption is adjusted to take into consideration a loss of 1.95% of total egg production due to leakers and rejects;
- iii. also beginning in 1986, a new method is used to calculate consumption on the farm;
- iv. a negligible number of hatchery-supply eggs are sold on the table market. Since data on the amount sold are not available, it is deemed to be zero;
- v. Please note that the quantity and value of eggs sold for hatching in New Brunswick also include the quantity and value for the other Atlantic provinces.

The data series are available on CANSIM at the same time as the information appears in The Daily, Statistics Canada's official release vehicle. CANSIM, Statistics Canada's computerized database, is an information management system designed to facilitate both historical research and current analysis.

Related products

Selected publications from Statistics Canada

21-206-X	Statistics on income of farm operators
21-207-X	Statistics on income of farm families
21-208-X	Statistics on revenues and expenses of farms
23-003-X	Production of eggs

Selected CANSIM tables from Statistics Canada

003-0017	Supply and disposition of poultry meat and eggs in Canada
003-0018	Production, disposition and farm value of poultry meat
003-0019	Fowl and chicken meat production, weight and farm value
003-0020	Production and disposition of eggs
003-0021	Placement of chicks and turkey poults for production
003-0022	Production and disposition of eggs

Selected surveys from Statistics Canada

3421	Egg Producers Survey
5039	Production of Poultry and Eggs

Selected summary tables from Statistics Canada

- *Production of eggs, by province*
- *Production of poultry, by province*

Statistical tables

Table 1
Production of poultry meat

	Birds			Weight			Value		
	2007	2008	2009	2007	2008	2009	2007	2008	2009
	thousands			thousands of kilograms			thousands of dollars		
Chicken									
Canada	623,443	624,713	620,791	1,005,628	1,016,557	1,011,110	1,742,791	1,989,916	2,018,304
Newfoundland and Labrador	x	x	x	x	x	x	x	x	x
Prince Edward Island	x	x	x	x	x	x	x	x	x
Nova Scotia	22,150	21,489	21,456	34,392	34,478	33,965	61,533	69,814	70,690
New Brunswick	18,360	18,420	16,632	27,672	27,933	26,842	50,117	58,719	57,331
Quebec	164,682	166,085	166,519	270,321	276,194	277,681	465,077	536,241	548,502
Ontario	197,625	197,874	197,057	329,407	331,094	330,231	567,120	643,543	654,073
Manitoba	29,342	29,336	29,761	43,071	43,568	43,797	74,308	83,526	85,880
Saskatchewan	25,520	25,611	25,699	41,009	39,647	38,939	71,141	78,526	78,693
Alberta	54,693	54,100	53,659	88,434	89,360	89,391	152,242	172,419	176,611
British Columbia	99,183	99,859	98,401	154,315	156,975	153,326	273,456	317,919	316,262
Stewing hen									
Canada	16,937	16,119	17,499	24,499	24,684	26,122	4,873	5,255	5,211
Newfoundland and Labrador	x	x	x	x	x	x	x	x	x
Prince Edward Island	x	x	x	x	x	x	x	x	x
Nova Scotia	93	41	114	263	108	231	128	39	59
New Brunswick	216	233	323	294	469	671	91	141	185
Quebec	4,741	4,760	5,232	6,795	7,808	7,659	2,148	2,423	2,178
Ontario	8,804	7,982	8,517	11,469	10,668	11,417	1,002	1,005	1,143
Manitoba	180	165	177	478	461	507	3	4	3
Saskatchewan	140	85	97	333	238	285	28	23	27
Alberta	407	385	545	1,189	1,021	1,433	103	97	148
British Columbia	2,356	2,467	2,495	3,676	3,912	3,918	1,370	1,524	1,468
Total Chicken ¹									
Canada	640,380	640,831	638,290	1,030,127	1,041,241	1,037,232	1,747,664	1,995,171	2,023,515
Newfoundland and Labrador	x	x	x	x	x	x	x	x	x
Prince Edward Island	x	x	x	x	x	x	x	x	x
Nova Scotia	22,243	21,530	21,570	34,655	34,586	34,195	61,660	69,853	70,748
New Brunswick	18,576	18,652	16,955	27,966	28,401	27,513	50,208	58,860	57,516
Quebec	169,424	170,846	171,752	277,117	284,002	285,340	467,225	538,663	550,680
Ontario	206,429	205,856	205,573	340,877	341,761	341,649	568,122	644,548	655,215
Manitoba	29,521	29,501	29,938	43,548	44,029	44,304	74,311	83,529	85,883
Saskatchewan	25,660	25,696	25,795	41,342	39,884	39,223	71,169	78,549	78,720
Alberta	55,100	54,486	54,203	89,623	90,381	90,824	152,345	172,516	176,759
British Columbia	101,539	102,327	100,896	157,992	160,887	157,244	274,826	319,444	317,730
Turkey									
Canada	21,861	22,857	21,648	169,686	179,982	166,503	325,978	388,678	359,346
Newfoundland and Labrador	x	x	x	x	x	x	x	x	x
Prince Edward Island	x	x	x	x	x	x	x	x	x
Nova Scotia	779	921	606	3,736	4,392	3,013	7,319	9,631	6,737
New Brunswick	409	407	415	3,256	3,399	3,203	5,965	7,002	6,645
Quebec	4,476	4,689	4,814	33,488	35,548	37,084	63,069	75,765	79,313
Ontario	9,271	9,503	9,236	75,773	79,061	74,418	145,208	170,545	160,915
Manitoba	1,602	1,638	1,565	11,959	12,206	10,491	22,401	25,707	22,041
Saskatchewan	870	977	802	6,025	6,282	5,143	11,947	13,875	11,269
Alberta	1,654	1,772	1,555	14,091	16,318	15,113	28,061	36,285	28,614
British Columbia	2,793	2,946	2,649	21,316	22,734	20,097	41,926	49,773	43,723
Total poultry									
Canada	662,241	663,688	659,938	1,199,813	1,221,223	1,203,735	2,073,641	2,383,849	2,382,862
Newfoundland and Labrador	x	x	x	x	x	x	x	x	x
Prince Edward Island	x	x	x	x	x	x	x	x	x
Nova Scotia	23,022	22,451	22,177	38,391	38,978	37,208	68,980	79,483	77,485
New Brunswick	18,985	19,059	17,370	31,222	31,800	30,716	56,173	65,862	64,161
Quebec	173,900	175,534	176,566	310,605	319,549	322,424	530,293	614,428	629,993
Ontario	215,700	215,359	214,809	416,650	420,823	416,067	713,329	815,093	816,130
Manitoba	31,124	31,139	31,504	55,507	56,235	54,795	96,712	109,237	107,924
Saskatchewan	26,530	26,673	26,597	47,366	46,166	44,366	83,116	92,424	89,989
Alberta	56,753	56,257	55,758	103,714	106,699	103,837	180,405	208,801	205,373
British Columbia	104,332	105,272	103,545	179,308	183,621	177,341	316,752	369,217	361,454

1. Includes stewing hen.

Table 2-1
Disposition of poultry meat — Chicken ¹

	Birds			Weight			Value		
	2007	2008	2009	2007	2008	2009	2007	2008	2009
	thousands			thousands of kilograms			thousands of dollars		
Sold									
Canada	639,980	640,433	637,893	1,029,187	1,040,301	1,036,292	1,746,316	1,993,635	2,021,950
Newfoundland and Labrador	x	x	x	x	x	x	x	x	x
Prince Edward Island	x	x	x	x	x	x	x	x	x
Nova Scotia	22,235	21,523	21,563	34,638	34,569	34,178	61,632	69,822	70,717
New Brunswick	18,573	18,650	16,953	27,962	28,397	27,509	50,203	58,854	57,510
Quebec	169,397	170,820	171,726	277,054	283,938	285,277	467,127	538,555	550,570
Ontario	206,328	205,754	205,472	340,662	341,546	341,434	567,816	644,201	654,862
Manitoba	29,477	29,459	29,895	43,425	43,906	44,180	74,134	83,322	85,672
Saskatchewan	25,612	25,647	25,748	41,224	39,767	39,106	71,004	78,361	78,528
Alberta	54,991	54,377	54,096	89,351	90,109	90,552	151,953	172,071	176,305
British Columbia	101,482	102,268	100,838	157,874	160,769	157,127	274,668	319,261	317,544
Home consumption									
Canada	400	399	396	940	940	940	1,348	1,536	1,565
Newfoundland and Labrador	x	x	x	x	x	x	x	x	x
Prince Edward Island	x	x	x	x	x	x	x	x	x
Nova Scotia	8	7	7	17	17	17	29	31	32
New Brunswick	2	2	2	4	4	4	6	6	6
Quebec	26	25	26	63	63	63	98	109	110
Ontario	101	101	102	215	215	215	306	347	354
Manitoba	45	42	43	123	123	123	178	207	211
Saskatchewan	48	49	47	118	118	118	164	188	192
Alberta	109	109	107	272	272	272	391	445	455
British Columbia	57	59	58	117	117	117	158	183	186
Disposition ²									
Canada	640,380	640,831	638,290	1,030,127	1,041,241	1,037,232	1,747,664	1,995,171	2,023,515
Newfoundland and Labrador	x	x	x	x	x	x	x	x	x
Prince Edward Island	x	x	x	x	x	x	x	x	x
Nova Scotia	22,243	21,530	21,570	34,655	34,586	34,195	61,660	69,853	70,748
New Brunswick	18,576	18,652	16,955	27,966	28,401	27,513	50,208	58,860	57,516
Quebec	169,424	170,846	171,752	277,117	284,002	285,340	467,225	538,663	550,680
Ontario	206,429	205,856	205,573	340,877	341,761	341,649	568,122	644,548	655,215
Manitoba	29,521	29,501	29,938	43,548	44,029	44,304	74,311	83,529	85,883
Saskatchewan	25,660	25,696	25,795	41,342	39,884	39,223	71,169	78,549	78,720
Alberta	55,100	54,486	54,203	89,623	90,381	90,824	152,345	172,516	176,759
British Columbia	101,539	102,327	100,896	157,992	160,887	157,244	274,826	319,444	317,730

1. Includes stewing hen.

2. Includes sold and home consumption.

Table 2-2
Disposition of poultry meat — Turkey

	Birds			Weight			Value		
	2007	2008	2009	2007	2008	2009	2007	2008	2009
	thousands			thousands of kilograms			thousands of dollars		
Sold									
Canada	21,846	22,842	21,633	169,575	179,872	166,392	325,763	388,438	359,106
Newfoundland and Labrador	x	x	x	x	x	x	x	x	x
Prince Edward Island	x	x	x	x	x	x	x	x	x
Nova Scotia	779	921	606	3,735	4,390	3,011	7,316	9,627	6,733
New Brunswick	409	406	415	3,255	3,398	3,202	5,963	7,000	6,643
Quebec	4,475	4,688	4,814	33,482	35,542	37,078	63,057	75,752	79,299
Ontario	9,269	9,500	9,233	75,751	79,039	74,396	145,165	170,497	160,867
Manitoba	1,601	1,636	1,563	11,945	12,192	10,478	22,376	25,679	22,013
Saskatchewan	867	974	798	6,004	6,261	5,122	11,906	13,829	11,223
Alberta	1,650	1,768	1,551	14,056	16,283	12,978	27,992	36,208	28,537
British Columbia	2,792	2,944	2,648	21,306	22,724	20,087	41,907	49,752	43,702
Home consumption									
Canada	14	14	15	111	111	111	215	240	240
Newfoundland and Labrador	x	x	x	x	x	x	x	x	x
Prince Edward Island	x	x	x	x	x	x	x	x	x
Nova Scotia	0	0	0	2	2	2	3	4	4
New Brunswick	0	0	0	1	1	1	2	2	2
Quebec	1	1	1	6	6	6	11	13	13
Ontario	3	3	3	22	22	22	42	48	48
Manitoba	2	2	2	14	14	14	25	28	28
Saskatchewan	3	3	3	21	21	21	42	46	46
Alberta	4	4	4	35	35	35	69	77	77
British Columbia	1	1	1	10	10	10	19	21	21
Disposition ¹									
Canada	21,861	22,857	21,648	169,686	179,982	166,503	325,978	388,678	359,346
Newfoundland and Labrador	x	x	x	x	x	x	x	x	x
Prince Edward Island	x	x	x	x	x	x	x	x	x
Nova Scotia	779	921	606	3,736	4,392	3,013	7,319	9,631	6,737
New Brunswick	409	407	415	3,256	3,399	3,203	5,965	7,002	6,645
Quebec	4,476	4,689	4,814	33,488	35,548	37,084	63,069	75,765	79,313
Ontario	9,271	9,503	9,236	75,773	79,061	74,418	145,208	170,545	160,915
Manitoba	1,602	1,638	1,565	11,959	12,206	10,491	22,401	25,707	22,041
Saskatchewan	870	977	802	6,025	6,282	5,143	11,947	13,875	11,269
Alberta	1,654	1,772	1,555	14,091	16,318	13,013	28,061	36,285	28,614
British Columbia	2,793	2,946	2,649	21,316	22,734	20,097	41,926	49,773	43,723

1. Includes sold and home consumption.

Table 2-3
Disposition of poultry meat — Total poultry

	Birds			Weight			Value		
	2007	2008	2009	2007	2008	2009	2007	2008	2009
	thousands			thousands of kilograms			thousands of dollars		
Sold									
Canada	661,827	663,275	659,527	1,198,762	1,220,173	1,202,684	2,072,078	2,382,074	2,381,056
Newfoundland and Labrador	x	x	x	x	x	x	x	x	x
Prince Edward Island	x	x	x	x	x	x	x	x	x
Nova Scotia	23,014	22,444	22,169	38,373	38,960	37,189	68,948	79,449	77,450
New Brunswick	18,982	19,057	17,368	31,217	31,795	30,711	56,166	65,854	64,153
Quebec	173,873	175,508	176,539	310,536	319,480	322,355	530,184	614,307	629,869
Ontario	215,596	215,255	214,705	416,413	420,586	415,830	712,981	814,698	815,729
Manitoba	31,077	31,095	31,458	55,370	56,098	54,658	96,509	109,001	107,685
Saskatchewan	26,479	26,620	26,547	47,228	46,028	44,228	82,910	92,190	89,751
Alberta	56,640	56,145	55,647	103,407	106,392	103,530	179,945	208,279	204,842
British Columbia	104,274	105,212	103,486	179,181	183,494	177,214	316,574	369,012	361,246
Home consumption									
Canada	414	413	411	1,051	1,051	1,051	1,563	1,776	1,806
Newfoundland and Labrador	x	x	x	x	x	x	x	x	x
Prince Edward Island	x	x	x	x	x	x	x	x	x
Nova Scotia	8	8	7	18	18	18	32	35	35
New Brunswick	2	2	2	5	5	5	7	8	8
Quebec	27	26	27	69	69	69	110	122	123
Ontario	104	104	104	237	237	237	348	395	401
Manitoba	46	44	45	137	137	137	203	235	240
Saskatchewan	51	52	50	139	139	139	206	234	238
Alberta	113	113	112	307	307	307	460	522	531
British Columbia	58	60	59	127	127	127	177	204	207
Disposition ¹									
Canada	662,241	663,688	659,938	1,199,813	1,221,223	1,203,735	2,073,641	2,383,849	2,382,862
Newfoundland and Labrador	x	x	x	x	x	x	x	x	x
Prince Edward Island	x	x	x	x	x	x	x	x	x
Nova Scotia	23,022	22,451	22,177	38,391	38,978	37,208	68,980	79,483	77,485
New Brunswick	18,985	19,059	17,370	31,222	31,800	30,716	56,173	65,862	64,161
Quebec	173,900	175,534	176,566	310,605	319,549	322,424	530,293	614,428	629,993
Ontario	215,700	215,359	214,809	416,650	420,823	416,067	713,329	815,093	816,130
Manitoba	31,124	31,139	31,504	55,507	56,235	54,795	96,712	109,237	107,924
Saskatchewan	26,530	26,673	26,597	47,366	46,166	44,366	83,116	92,424	89,989
Alberta	56,753	56,257	55,758	103,714	106,699	103,837	180,405	208,801	205,373
British Columbia	104,332	105,272	103,545	179,308	183,621	177,341	316,752	369,217	361,454

1. Includes sold and home consumption.

Table 3
Supply and disposition of poultry meat

	2005	2006	2007	2008	2009
tonnes					
Chicken					
Production	977,415	971,877	1,005,628	1,016,557	1,011,110
Beginning stocks	33,069	38,361	28,218	36,554	37,457
Imports	132,875	151,149	169,489	171,887	173,205
Total supply	1,143,359	1,161,387	1,203,335	1,224,998	1,221,772
Exports	91,932	99,357	121,862	132,820	126,988
Ending stocks	38,361	28,218	36,554	37,457	37,372
Net supply	1,013,066	1,033,812	1,044,919	1,054,721	1,057,412
kilograms					
Food available per person, eviscerated basis	31.4	31.7	31.7	31.7	31.3
Food available per person, boneless weight	18.9	19.1	19.1	19.0	18.9
Food available per person, adjusted for loss ²	10.6	10.7	10.7	10.6	10.5
tonnes					
Stewing hen					
Production	22,690	25,509	24,499	24,684	26,122
Beginning stocks	838	1,256	946	1,445	2,411
Imports	46,450	48,386	58,267	66,387	63,975
Total supply	69,978	75,151	83,712	92,516	92,508
Exports	22,983	24,839	30,466	33,205	31,747
Ending stocks	1,256	946	1,445	2,411	1,015
Net supply	45,739	49,366	51,801	56,900	59,746
kilograms					
Food available per person, eviscerated basis	1.4	1.5	1.6	1.7	1.8
Food available per person, boneless weight	0.8	0.9	1.0	1.0	1.1
Food available per person, adjusted for loss ²	0.5	0.5	0.5	0.6	0.6
tonnes					
Total Chicken ¹					
Production	1,000,105	997,386	1,030,127	1,041,241	1,037,232
Beginning stocks	33,907	39,617	29,164	37,999	39,868
Imports	179,325	199,535	227,756	238,274	237,180
Total supply	1,213,337	1,236,538	1,287,047	1,317,514	1,314,280
Exports	114,915	124,196	152,328	166,025	158,735
Ending stocks	39,617	29,164	37,999	39,868	38,387
Net supply	1,058,805	1,083,178	1,096,720	1,111,621	1,117,158
kilograms					
Food available per person, eviscerated basis	32.8	33.3	33.3	33.4	33.1
Food available per person, boneless weight	19.8	20.0	20.0	20.1	19.9
Food available per person, adjusted for loss ²	11.0	11.2	11.2	11.2	11.1
tonnes					
Turkey					
Production	155,426	163,425	169,686	179,982	166,503
Beginning stocks	11,731	12,411	12,834	15,415	22,241
Imports	14,896	8,999	8,046	9,063	7,945
Total supply	182,053	184,835	190,566	204,460	196,689
Exports	24,521	27,165	26,493	24,804	24,849
Ending stocks	12,411	12,834	15,415	22,241	18,336
Net supply	145,121	144,836	148,658	157,415	153,504
kilograms					
Food available per person, eviscerated basis	4.5	4.5	4.5	4.7	4.6
Food available per person, boneless weight	3.6	3.5	3.6	3.7	3.6
Food available per person, adjusted for loss ²	2.2	2.2	2.3	2.4	2.3

See notes at the end of the table.

Table 3 – continued

Supply and disposition of poultry meat

	2005	2006	2007	2008	2009
	tonnes				
Total poultry meat					
Production	1,155,531	1,160,811	1,199,813	1,221,223	1,203,735
Beginning stocks	45,638	52,028	41,998	53,414	62,109
Imports	194,221	208,534	235,802	247,337	245,125
Total supply	1,395,390	1,421,373	1,477,613	1,521,974	1,510,969
Exports	139,436	151,361	178,821	190,829	183,584
Ending stocks	52,028	41,998	53,414	62,109	56,723
Net supply	1,203,926	1,228,014	1,245,378	1,269,036	1,270,662
	kilograms				
Food available per person, eviscerated basis	37.3	37.7	37.8	38.1	37.7
Food available per person, boneless weight	23.3	23.5	23.6	23.8	23.5
Food available per person, adjusted for loss ²	13.3	13.4	13.4	13.6	13.4

1. Includes stewing hen.

2. Experimental, use with caution. The data have been adjusted for retail, household, cooking and plate loss.

Table 4-1
Production of eggs by province — Average number of layers

	Jan.	Feb.	Mar.	Apr.	May	June	July	Aug.	Sept.	Oct.	Nov.	Dec.	Annual average
	thousands												
Newfoundland and Labrador													
2008	356	325	319	348	354	308	279	321	350	356	339	339	333
2009	365	342	336	367	372	367	359	357	328	302	311	338	345
2010	365	334	318	351	357	357	357	358	358
Prince Edward Island													
2008	131	129	126	125	122	125	130	130	129	129	125	125	127
2009	130	128	125	124	122	126	132	132	132	133	129	129	128
2010	133	131	129	131	133	131	131	131	131
Nova Scotia													
2008	752	750	755	747	699	664	687	733	747	747	736	736	730
2009	749	745	749	742	694	713	778	778	762	765	756	757	749
2010	770	774	783	779	775	772	775	778	778
New Brunswick													
2008	771	793	798	789	789	805	768	763	772	767	680	725	768
2009	769	777	751	779	823	799	836	822	762	745	748	786	783
2010	761	741	727	762	780	761	762	762	753
Quebec													
2008	4,959	4,858	4,785	4,706	4,727	4,742	4,754	4,834	4,850	4,842	4,837	4,996	4,824
2009	4,990	4,823	4,838	4,803	4,758	4,778	4,794	4,849	4,825	4,848	4,942	5,037	4,857
2010	4,957	4,816	4,879	4,931	4,915	4,968	4,982	4,931	4,921
Ontario													
2008	9,502	9,536	9,410	9,386	9,449	9,401	9,335	9,371	9,594	9,733	9,745	9,766	9,519
2009	9,790	9,737	9,674	9,668	9,659	9,605	9,643	9,739	9,772	9,754	9,731	9,807	9,715
2010	9,711	9,618	9,711	9,777	9,826	9,893	9,956	9,954	9,906
Manitoba													
2008	3,016	2,927	2,927	2,932	2,928	2,991	2,985	2,990	2,953	2,945	2,944	2,961	2,958
2009	3,010	3,001	2,991	2,988	2,981	2,992	2,981	2,968	2,973	2,977	2,968	2,968	2,983
2010	2,980	2,951	2,981	3,016	2,998	2,938	2,932	3,024	2,945
Saskatchewan													
2008	1,114	1,115	1,087	1,075	1,111	1,105	1,095	1,136	1,165	1,164	1,182	1,182	1,128
2009	1,213	1,195	1,118	1,142	1,187	1,197	1,203	1,188	1,154	1,163	1,214	1,220	1,183
2010	1,187	1,155	1,168	1,181	1,191	1,183	1,163	1,184	1,158
Alberta													
2008	2,273	2,265	2,277	2,334	2,362	2,349	2,346	2,360	2,364	2,329	2,316	2,289	2,322
2009	2,255	2,232	2,207	2,224	2,239	2,252	2,291	2,300	2,309	2,330	2,357	2,377	2,281
2010	2,345	2,311	2,322	2,350	2,370	2,374	2,372	2,391	2,346
British Columbia													
2008	3,190	3,195	3,200	3,246	3,290	3,309	3,292	3,223	3,207	3,198	3,163	3,197	3,226
2009	3,247	3,193	3,184	3,213	3,217	3,282	3,278	3,175	3,150	3,205	3,214	3,234	3,216
2010	3,199	3,166	3,233	3,221	3,192	3,273	3,267	3,201	3,138
Canada													
2008	26,063	25,893	25,684	25,688	25,830	25,798	25,671	25,860	26,131	26,210	26,067	26,316	25,934
2009	26,517	26,172	25,973	26,050	26,052	26,111	26,295	26,307	26,168	26,222	26,370	26,653	26,241
2010	26,408	25,997	26,251	26,499	26,537	26,650	26,697	26,714	26,434

**Table 4-2
Production of eggs by province — Eggs per 100 layers**

	Jan.	Feb.	Mar.	Apr.	May	June	July	Aug.	Sept.	Oct.	Nov.	Dec.	Annual total
	number												
Newfoundland and Labrador													
2008	2,695	2,152	2,466	2,722	2,760	2,939	3,356	2,893	2,659	2,793	2,470	2,063	31,848
2009	2,916	2,547	2,871	2,446	2,451	2,443	2,792	2,462	2,805	3,518	2,674	2,693	32,467
2010	2,687	2,625	3,148	2,655	2,608	2,295	2,937	2,808	871
Prince Edward Island													
2008	2,360	2,605	2,437	2,891	2,769	2,546	2,526	2,634	2,827	2,373	2,731	2,607	31,299
2009	2,381	2,269	2,504	2,597	2,445	2,690	2,586	2,702	2,818	2,325	2,774	2,511	30,615
2010	2,614	2,513	2,606	3,030	2,631	2,320	2,543	2,386	2,775
Nova Scotia													
2008	2,564	2,625	2,710	2,686	2,761	2,555	2,738	2,704	2,607	2,860	2,317	2,627	31,751
2009	2,614	2,485	2,777	2,726	2,903	2,634	2,346	2,561	2,525	2,787	2,467	2,808	31,493
2010	2,642	2,285	2,647	2,646	2,676	2,597	2,534	2,465	2,306
New Brunswick													
2008	1,982	1,898	2,039	2,254	2,016	1,959	2,140	2,162	2,092	2,115	2,107	2,331	25,066
2009	1,953	1,965	2,198	2,315	2,043	1,992	2,077	2,044	1,956	2,115	2,088	2,369	25,109
2010	1,976	1,955	2,174	2,177	2,205	2,162	2,225	2,213	2,241
Quebec													
2008	2,288	2,178	2,224	2,220	2,207	2,174	2,393	2,208	2,080	2,239	2,123	2,284	26,620
2009	2,233	2,080	2,305	2,217	2,247	2,220	2,276	2,259	2,108	2,281	2,161	2,204	26,592
2010	2,205	2,168	2,358	2,227	2,263	2,208	2,287	2,276	2,186
Ontario													
2008	2,417	2,155	2,515	2,465	2,421	2,577	2,353	2,674	2,385	2,597	2,347	2,579	29,485
2009	2,380	2,212	2,269	2,422	2,487	2,444	2,357	2,483	2,268	2,538	2,559	2,519	28,937
2010	2,415	2,262	2,418	2,398	2,525	2,477	2,335	2,421	2,399
Manitoba													
2008	2,854	2,626	2,696	2,616	2,732	2,793	2,832	2,785	2,667	2,680	2,519	2,739	32,550
2009	3,124	2,489	2,728	2,528	2,578	2,727	2,688	2,701	2,808	2,651	2,561	2,772	32,360
2010	3,184	2,552	2,771	2,598	2,624	2,844	2,869	2,740	2,804
Saskatchewan													
2008	2,281	2,239	2,370	2,310	2,649	2,235	2,344	2,373	2,308	2,218	2,422	2,255	27,989
2009	2,429	2,298	2,453	2,377	2,455	2,144	2,037	2,176	2,531	2,007	2,156	2,556	27,606
2010	2,280	2,429	2,519	2,268	2,344	2,390	2,293	2,460	2,304
Alberta													
2008	2,297	1,997	2,039	1,658	2,537	2,008	1,986	1,921	2,169	2,247	1,977	2,140	24,977
2009	2,110	1,994	2,201	2,140	2,244	2,079	2,048	2,137	2,042	2,058	2,022	2,122	25,191
2010	2,225	2,201	2,203	2,027	2,293	1,931	2,089	2,336	1,974
British Columbia													
2008	2,342	2,201	2,284	2,304	2,419	2,237	2,352	2,290	2,216	2,321	2,181	2,248	27,398
2009	2,448	2,187	2,335	2,302	2,396	2,286	2,332	2,286	2,208	2,371	2,220	2,306	27,681
2010	2,408	2,209	2,375	2,276	2,421	2,291	2,334	2,347	2,257
Canada													
2008	2,412	2,216	2,394	2,343	2,440	2,402	2,398	2,458	2,320	2,453	2,272	2,436	28,546
2009	2,423	2,207	2,360	2,362	2,416	2,363	2,333	2,388	2,292	2,422	2,363	2,434	28,366
2010	2,437	2,271	2,437	2,343	2,443	2,383	2,373	2,416	2,320

Table 4-3
Production of eggs by province in thousands of dozens

	Jan.	Feb.	Mar.	Apr.	May	June	July	Aug.	Sept.	Oct.	Nov.	Dec.	Annual total
	thousands												
Newfoundland and Labrador													
2008	799	582	656	790	813	753	780	773	775	828	698	582	8,830
2009	887	725	804	747	759	747	836	732	767	884	694	758	9,340
2010	817	730	834	775	776	683	874	837	260
Prince Edward Island													
2008	257	279	255	301	282	265	274	284	304	256	285	272	3,313
2009	257	242	261	269	248	282	285	297	311	258	298	270	3,276
2010	290	274	281	332	291	254	277	261	303
Nova Scotia													
2008	1,607	1,641	1,705	1,672	1,609	1,414	1,568	1,651	1,624	1,780	1,422	1,611	19,302
2009	1,565	1,542	1,734	1,685	1,679	1,566	1,522	1,660	1,603	1,778	1,554	1,771	19,657
2010	1,695	1,474	1,727	1,718	1,728	1,671	1,637	1,599	1,496
New Brunswick													
2008	1,272	1,255	1,356	1,483	1,325	1,314	1,369	1,374	1,345	1,352	1,194	1,408	16,047
2009	1,251	1,273	1,376	1,504	1,401	1,327	1,446	1,400	1,242	1,313	1,301	1,552	16,386
2010	1,253	1,208	1,317	1,383	1,434	1,370	1,413	1,405	1,407
Quebec													
2008	9,455	8,817	8,867	8,705	8,695	8,589	9,480	8,895	8,408	9,034	8,556	9,511	107,011
2009	9,284	8,362	9,292	8,875	8,910	8,840	9,094	9,128	8,477	9,216	8,900	9,253	107,631
2010	9,107	8,703	9,586	9,149	9,270	9,140	9,495	9,354	8,963
Ontario													
2008	19,138	17,128	19,719	19,279	19,066	20,192	18,301	20,884	19,065	21,061	19,063	20,992	233,886
2009	19,413	17,945	18,291	19,515	20,015	19,561	18,939	20,152	18,467	20,631	20,755	20,587	234,270
2010	19,543	18,128	19,566	19,540	20,673	20,420	19,376	20,079	19,804
Manitoba													
2008	7,173	6,406	6,576	6,392	6,665	6,961	7,044	6,941	6,564	6,577	6,179	6,759	80,237
2009	7,837	6,224	6,801	6,295	6,403	6,799	6,679	6,680	6,958	6,577	6,333	6,856	80,443
2010	7,906	6,277	6,884	6,529	6,556	6,964	7,009	6,905	6,881
Saskatchewan													
2008	2,117	2,081	2,147	2,070	2,453	2,058	2,139	2,247	2,241	2,151	2,385	2,222	26,310
2009	2,456	2,289	2,285	2,262	2,428	2,139	2,042	2,155	2,434	1,945	2,181	2,599	27,215
2010	2,256	2,338	2,452	2,232	2,326	2,356	2,222	2,427	2,224
Alberta													
2008	4,351	3,770	3,869	3,226	4,993	3,932	3,884	3,777	4,273	4,360	3,816	4,082	48,331
2009	3,965	3,709	4,049	3,966	4,187	3,902	3,910	4,097	3,929	3,997	3,972	4,204	47,884
2010	4,347	4,238	4,263	3,970	4,528	3,821	4,130	4,654	3,859
British Columbia													
2008	6,227	5,859	6,090	6,233	6,632	6,167	6,453	6,149	5,923	6,185	5,749	5,988	73,656
2009	6,623	5,819	6,197	6,164	6,423	6,252	6,369	6,049	5,795	6,332	5,947	6,214	74,184
2010	6,420	5,829	6,399	6,110	6,439	6,250	6,355	6,260	5,903
Canada													
2008	52,397	47,818	51,240	50,150	52,531	51,645	51,291	52,976	50,520	53,583	49,345	53,427	616,922
2009	53,538	48,130	51,088	51,282	52,455	51,413	51,121	52,347	49,983	52,931	51,934	54,064	620,286
2010	53,634	49,197	53,307	51,738	54,021	52,928	52,787	53,780	51,099

Table 5-1
Disposition of eggs by province, quantity and value by province — Canada

	Jan.	Feb.	Mar.	Apr.	May	June	July	Aug.	Sept.	Oct.	Nov.	Dec.	Annual total
quantity, in thousands of dozens													
Sold for consumption													
2008	46,223	41,822	44,923	44,024	46,211	45,627	45,044	46,796	44,189	47,385	43,299	47,172	542,714
2009	47,056	42,405	44,821	45,282	46,339	45,148	44,850	46,354	43,924	46,824	45,850	47,772	546,625
2010	47,801	43,522	46,846	45,662	47,710	46,652	46,641	47,731	45,277
Sold for hatching													
2008	5,037	4,945	5,201	5,029	5,179	4,894	5,129	5,030	5,229	5,036	4,967	5,096	60,774
2009	5,320	4,670	5,153	4,884	4,976	5,145	5,158	4,856	4,967	4,958	4,953	5,122	60,162
2010	4,670	4,599	5,304	4,951	5,140	5,127	4,999	4,883	4,709
Home consumption													
2008	117	117	117	117	117	117	117	117	117	117	117	117	1,404
2009	117	117	117	117	117	117	117	117	117	117	117	117	1,404
2010	117	117	117	117	117	117	117	117	117
Leakers and rejects													
2008	1,021	933	1,000	979	1,025	1,007	1,001	1,033	985	1,045	962	1,042	12,031
2009	1,044	938	997	1,000	1,023	1,003	996	1,021	975	1,032	1,014	1,054	12,095
2010	1,046	960	1,040	1,008	1,053	1,033	1,030	1,049	996
Total disposition of eggs													
2008	52,397	47,818	51,240	50,150	52,531	51,645	51,291	52,976	50,520	53,583	49,345	53,427	616,923
2009	53,538	48,130	51,088	51,282	52,455	51,413	51,121	52,347	49,983	52,931	51,934	54,064	620,286
2010	53,634	49,197	53,307	51,738	54,021	52,928	52,787	53,780	51,099
value, in thousands of dollars													
Sold for consumption													
2008	50,223	45,933	49,538	49,324	52,343	51,425	51,824	55,067	52,181	56,256	50,149	54,507	618,770
2009	52,325	46,392	48,815	49,497	50,006	48,533	48,432	50,622	47,763	51,300	50,163	52,178	596,025
2010	51,447	50,264	54,099	52,789	55,123	53,820	53,751	55,274	52,433
Sold for hatching													
2008	18,765	19,142	20,289	19,838	20,657	19,629	21,085	20,708	21,551	20,737	20,026	20,428	242,855
2009	21,374	18,853	20,964	19,892	20,313	21,064	21,336	19,830	20,442	20,286	20,293	20,889	245,535
2010	18,994	18,638	21,489	19,806	20,553	20,559	20,080	19,602	18,943
Home consumption													
2008	155	157	154	155	156	156	159	163	161	162	159	159	1,896
2009	154	152	152	152	147	147	147	148	148	148	148	148	1,795
2010	147	158	158	158	157	158	157	158	159
Total value of disposition of eggs													
2008	69,143	65,233	69,981	69,317	73,157	71,210	73,068	75,937	73,893	77,154	70,334	75,093	863,520
2009	73,853	65,397	69,932	69,541	70,466	69,744	69,915	70,601	68,354	71,734	70,604	73,216	843,355
2010	70,588	69,059	75,746	72,752	75,833	74,536	73,988	75,033	71,535

Table 5-2
Disposition of eggs by province, quantity and value by province — Newfoundland and Labrador

	Jan.	Feb.	Mar.	Apr.	May	June	July	Aug.	Sept.	Oct.	Nov.	Dec.	Annual total
quantity, in thousands of dozens													
Sold for consumption													
2008	784	571	643	775	797	738	764	758	760	812	684	571	8,656
2009	870	711	788	732	745	732	819	717	752	866	680	743	9,156
2010	800	716	818	760	760	669	857	820	254
Sold for hatching													
2008	0	0	0	0	0	0	0	0	0	0	0	0	0
2009	0	0	0	0	0	0	0	0	0	0	0	0	0
2010	0	0	0	0	0	0	0	0	0
Home consumption													
2008	0	0	0	0	0	0	0	0	0	0	0	0	2
2009	0	0	0	0	0	0	0	0	0	0	0	0	2
2010	0	0	0	0	0	0	0	0	0
Leakers and rejects													
2008	16	11	13	15	16	15	15	15	15	16	14	11	172
2009	17	14	16	15	15	15	16	14	15	17	14	15	182
2010	16	14	16	15	15	13	17	16	5
Total disposition of eggs													
2008	800	583	656	790	813	753	780	773	775	828	698	582	8,831
2009	887	725	804	747	760	747	836	732	767	884	694	758	9,340
2010	817	730	834	775	776	683	874	837	260
value, in thousands of dollars													
Sold for consumption													
2008	1,057	776	881	1,061	1,099	1,047	1,111	1,129	1,158	1,206	1,010	832	12,365
2009	1,186	963	1,076	993	1,009	998	1,133	1,007	1,071	1,224	962	1,051	12,671
2010	1,123	1,076	1,222	1,120	1,123	988	1,257	1,203	375
Sold for hatching													
2008	0	0	0	0	0	0	0	0	0	0	0	0	0
2009	0	0	0	0	0	0	0	0	0	0	0	0	0
2010	0	0	0	0	0	0	0	0	0
Home consumption													
2008	0	0	0	0	0	0	0	0	0	0	0	0	4
2009	0	0	0	0	0	0	0	0	0	0	0	0	4
2010	0	0	0	0	0	0	0	0	0
Total value of disposition of eggs													
2008	1,057	776	881	1,061	1,099	1,048	1,112	1,129	1,158	1,206	1,010	832	12,369
2009	1,186	963	1,076	993	1,009	998	1,133	1,007	1,071	1,225	962	1,051	12,675
2010	1,124	1,076	1,222	1,120	1,123	989	1,258	1,203	375

**Table 5-3
Disposition of eggs by province, quantity and value by province — Prince Edward Island**

	Jan.	Feb.	Mar.	Apr.	May	June	July	Aug.	Sept.	Oct.	Nov.	Dec.	Annual total
quantity, in thousands of dozens													
Sold for consumption													
2008	251	273	250	295	276	259	268	278	298	250	279	266	3,243
2009	252	237	255	263	243	276	279	291	304	253	292	264	3,207
2010	284	268	275	325	285	249	271	255	297
Sold for hatching													
2008	0	0	0	0	0	0	0	0	0	0	0	0	0
2009	0	0	0	0	0	0	0	0	0	0	0	0	0
2010	0	0	0	0	0	0	0	0	0
Home consumption													
2008	0	0	0	0	0	0	0	0	0	0	0	0	5
2009	0	0	0	0	0	0	0	0	0	0	0	0	5
2010	0	0	0	0	0	0	0	0	0
Leakers and rejects													
2008	5	5	5	6	6	5	5	6	6	5	6	5	65
2009	5	5	5	5	5	6	6	6	6	5	6	5	64
2010	6	5	6	7	6	5	5	5	6
Total disposition of eggs													
2008	257	279	255	301	282	265	274	284	304	256	285	272	3,313
2009	257	242	261	269	248	282	285	297	311	258	298	270	3,276
2010	290	274	281	332	291	254	277	261	303
value, in thousands of dollars													
Sold for consumption													
2008	288	321	296	348	332	314	333	353	386	319	350	332	3,970
2009	302	282	304	313	289	329	339	353	369	304	351	313	3,847
2010	333	341	350	403	348	304	337	320	375
Sold for hatching													
2008	0	0	0	0	0	0	0	0	0	0	0	0	0
2009	0	0	0	0	0	0	0	0	0	0	0	0	0
2010	0	0	0	0	0	0	0	0	0
Home consumption													
2008	1	1	1	1	1	1	1	1	1	1	1	1	8
2009	1	1	1	1	1	1	1	1	1	1	1	1	7
2010	1	1	1	1	1	1	1	1	1
Total value of disposition of eggs													
2008	288	321	296	349	333	315	333	354	386	320	351	332	3,978
2009	302	282	304	313	289	330	339	354	370	305	352	313	3,854
2010	334	341	351	404	349	305	338	321	375

Table 5-4
Disposition of eggs by province, quantity and value by province — Nova Scotia

	Jan.	Feb.	Mar.	Apr.	May	June	July	Aug.	Sept.	Oct.	Nov.	Dec.	Annual total
quantity, in thousands of dozens													
Sold for consumption													
2008	1,575	1,608	1,670	1,638	1,576	1,385	1,536	1,617	1,590	1,743	1,392	1,578	18,907
2009	1,533	1,511	1,699	1,650	1,645	1,534	1,490	1,626	1,571	1,741	1,522	1,735	19,256
2010	1,661	1,444	1,691	1,683	1,693	1,637	1,604	1,566	1,465
Sold for hatching													
2008	0	0	0	0	0	0	0	0	0	0	0	0	0
2009	0	0	0	0	0	0	0	0	0	0	0	0	0
2010	0	0	0	0	0	0	0	0	0
Home consumption													
2008	2	2	2	2	2	2	2	2	2	2	2	2	18
2009	2	2	2	2	2	2	2	2	2	2	2	2	18
2010	2	2	2	2	2	2	2	2	2
Leakers and rejects													
2008	31	32	33	33	31	28	31	32	32	35	28	31	376
2009	31	30	34	33	33	31	30	32	31	35	30	35	383
2010	33	29	34	34	34	33	32	31	29
Total disposition of eggs													
2008	1,607	1,641	1,705	1,672	1,609	1,414	1,568	1,651	1,624	1,780	1,422	1,611	19,302
2009	1,565	1,542	1,734	1,685	1,679	1,566	1,522	1,660	1,603	1,778	1,554	1,771	19,657
2010	1,695	1,474	1,727	1,718	1,728	1,671	1,637	1,599	1,496
value, in thousands of dollars													
Sold for consumption													
2008	1,928	1,967	2,044	2,005	1,991	1,751	1,979	2,122	2,112	2,329	1,821	2,062	24,109
2009	1,952	1,872	2,104	2,045	2,039	1,901	1,847	2,062	1,992	2,208	1,931	2,199	24,151
2010	2,107	1,943	2,275	2,265	2,285	2,209	2,165	2,116	1,980
Sold for hatching													
2008	0	0	0	0	0	0	0	0	0	0	0	0	0
2009	0	0	0	0	0	0	0	0	0	0	0	0	0
2010	0	0	0	0	0	0	0	0	0
Home consumption													
2008	3	3	3	3	3	3	3	3	3	3	3	3	38
2009	3	3	3	3	3	3	3	3	3	3	3	3	37
2010	3	3	3	3	3	3	3	3	3
Total value of disposition of eggs													
2008	1,931	1,970	2,047	2,008	1,994	1,754	1,982	2,125	2,115	2,332	1,824	2,066	24,147
2009	1,955	1,875	2,107	2,048	2,042	1,904	1,850	2,065	1,995	2,211	1,934	2,202	24,188
2010	2,110	1,946	2,278	2,268	2,288	2,213	2,169	2,119	1,984

**Table 5-5
Disposition of eggs by province, quantity and value by province — New Brunswick**

	Jan.	Feb.	Mar.	Apr.	May	June	July	Aug.	Sept.	Oct.	Nov.	Dec.	Annual total
quantity, in thousands of dozens													
Sold for consumption													
2008	864	844	880	1,023	852	842	885	888	897	893	853	985	10,704
2009	788	838	899	1,042	909	876	981	949	825	893	897	1,077	10,974
2010	839	812	872	931	952	932	970	964	989
Sold for hatching													
2008	383	386	449	430	446	446	457	459	421	432	317	395	5,019
2009	438	409	449	431	464	424	436	422	392	394	378	444	5,082
2010	389	371	418	424	453	410	415	413	390
Home consumption													
2008	1	1	1	1	1	1	1	1	1	1	1	1	11
2009	1	1	1	1	1	1	1	1	1	1	1	1	11
2010	1	1	1	1	1	1	1	1	1
Leakers and rejects													
2008	25	25	26	29	26	26	27	27	26	26	23	28	313
2009	24	25	27	29	27	26	28	27	24	26	25	30	320
2010	24	24	26	27	28	27	28	27	27
Total disposition of eggs													
2008	1,272	1,255	1,356	1,483	1,325	1,314	1,369	1,374	1,345	1,352	1,194	1,408	16,047
2009	1,251	1,273	1,376	1,504	1,401	1,327	1,446	1,400	1,243	1,313	1,301	1,552	16,386
2010	1,253	1,208	1,317	1,383	1,434	1,370	1,413	1,405	1,407
value, in thousands of dollars													
Sold for consumption													
2008	1,057	1,032	1,075	1,269	1,074	1,062	1,137	1,162	1,174	1,178	1,126	1,290	13,635
2009	1,018	1,065	1,142	1,323	1,137	1,101	1,233	1,213	1,055	1,140	1,145	1,375	13,946
2010	1,072	1,100	1,182	1,261	1,288	1,261	1,311	1,303	1,336
Sold for hatching													
2008	1,196	1,205	1,404	1,345	1,395	1,393	1,428	1,435	1,315	1,350	989	1,234	15,689
2009	1,369	1,277	1,404	1,349	1,451	1,326	1,364	1,319	1,225	1,232	1,182	1,388	15,885
2010	1,215	1,160	1,306	1,326	1,416	1,283	1,296	1,290	1,218
Home consumption													
2008	1	1	1	1	1	1	1	1	1	1	1	1	17
2009	1	1	1	1	1	1	1	1	1	1	1	1	17
2010	1	2	2	2	2	2	2	2	2
Total value of disposition of eggs													
2008	2,254	2,239	2,480	2,616	2,471	2,456	2,566	2,598	2,490	2,529	2,116	2,525	29,341
2009	2,388	2,344	2,548	2,673	2,589	2,428	2,598	2,533	2,281	2,373	2,328	2,764	29,848
2010	2,288	2,262	2,489	2,588	2,705	2,545	2,608	2,594	2,556

Table 5-6
Disposition of eggs by province, quantity and value by province — Quebec

	Jan.	Feb.	Mar.	Apr.	May	June	July	Aug.	Sept.	Oct.	Nov.	Dec.	Annual total
quantity, in thousands of dozens													
Sold for consumption													
2008	7,888	7,319	7,337	7,248	7,124	7,189	7,932	7,389	6,833	7,521	7,007	7,807	88,594
2009	7,711	6,969	7,762	7,445	7,401	7,280	7,552	7,606	6,980	7,672	7,360	7,630	89,368
2010	7,769	7,316	8,006	7,624	7,694	7,573	7,995	7,914	7,519
Sold for hatching													
2008	1,377	1,320	1,351	1,281	1,395	1,227	1,357	1,327	1,405	1,331	1,376	1,513	16,259
2009	1,386	1,224	1,343	1,251	1,329	1,382	1,359	1,338	1,326	1,358	1,360	1,437	16,093
2010	1,154	1,211	1,387	1,341	1,389	1,383	1,309	1,252	1,263
Home consumption													
2008	6	6	6	6	6	6	6	6	6	6	6	6	72
2009	6	6	6	6	6	6	6	6	6	6	6	6	72
2010	6	6	6	6	6	6	6	6	6
Leakers and rejects													
2008	184	172	173	170	170	167	185	173	164	176	167	185	2,086
2009	181	163	181	173	174	172	177	178	165	180	174	180	2,098
2010	178	170	187	178	181	178	185	182	175
Total disposition of eggs													
2008	9,455	8,817	8,867	8,705	8,695	8,589	9,480	8,895	8,408	9,034	8,556	9,511	107,011
2009	9,284	8,362	9,292	8,875	8,910	8,840	9,094	9,128	8,477	9,216	8,900	9,253	107,631
2010	9,107	8,703	9,586	9,149	9,270	9,140	9,495	9,354	8,963
value, in thousands of dollars													
Sold for consumption													
2008	9,264	8,624	8,643	8,741	8,663	8,742	9,876	9,415	8,703	9,636	8,718	9,713	108,738
2009	9,400	8,328	9,089	8,718	8,489	8,328	8,640	8,969	8,231	9,046	8,679	8,996	104,913
2010	9,159	9,122	9,983	9,507	9,487	9,337	9,858	9,758	9,272
Sold for hatching													
2008	4,971	5,014	5,216	4,944	5,495	4,836	5,564	5,442	5,704	5,402	5,351	5,885	63,824
2009	5,446	4,809	5,373	5,005	5,357	5,568	5,570	5,391	5,345	5,445	5,454	5,749	64,512
2010	4,615	4,758	5,450	5,218	5,404	5,395	5,103	4,920	5,015
Home consumption													
2008	8	8	8	8	8	8	8	8	8	8	8	8	96
2009	8	8	8	8	8	8	8	8	8	8	8	8	96
2010	8	8	8	8	8	8	8	8	8
Total value of disposition of eggs													
2008	14,243	13,646	13,867	13,693	14,166	13,586	15,448	14,865	14,415	15,046	14,077	15,606	172,658
2009	14,854	13,145	14,470	13,731	13,854	13,904	14,218	14,368	13,584	14,499	14,141	14,753	169,521
2010	13,782	13,888	15,441	14,733	14,899	14,740	14,969	14,686	14,295

**Table 5-7
Disposition of eggs by province, quantity and value by province — Ontario**

	Jan.	Feb.	Mar.	Apr.	May	June	July	Aug.	Sept.	Oct.	Nov.	Dec.	Annual total
quantity, in thousands of dozens													
Sold for consumption													
2008	17,223	15,247	17,695	17,390	17,203	18,343	16,441	18,927	17,075	19,103	17,127	18,998	210,772
2009	17,373	16,155	16,348	17,635	18,142	17,647	16,962	18,230	16,511	18,652	18,808	18,621	211,084
2010	17,649	16,328	17,570	17,606	18,719	18,408	17,382	18,094	17,910
Sold for hatching													
2008	1,512	1,517	1,609	1,483	1,461	1,425	1,473	1,520	1,588	1,517	1,534	1,555	18,192
2009	1,631	1,410	1,556	1,469	1,453	1,503	1,578	1,499	1,566	1,547	1,512	1,535	18,258
2010	1,483	1,417	1,584	1,523	1,521	1,584	1,586	1,563	1,478
Home consumption													
2008	30	30	30	30	30	30	30	30	30	30	30	30	360
2009	30	30	30	30	30	30	30	30	30	30	30	30	360
2010	30	30	30	30	30	30	30	30	30
Leakers and rejects													
2008	373	334	385	376	372	394	357	407	372	411	372	409	4,562
2009	379	350	357	381	390	381	369	393	360	402	405	401	4,568
2010	381	353	382	381	403	398	378	392	386
Total disposition of eggs													
2008	19,138	17,128	19,719	19,279	19,066	20,192	18,301	20,884	19,065	21,061	19,063	20,992	233,886
2009	19,413	17,945	18,291	19,515	20,015	19,561	18,939	20,152	18,467	20,631	20,755	20,587	234,270
2010	19,543	18,128	19,566	19,540	20,673	20,420	19,376	20,079	19,804
value, in thousands of dollars													
Sold for consumption													
2008	19,491	17,301	20,062	20,045	19,986	21,307	19,497	22,914	20,659	23,109	20,240	22,448	247,059
2009	19,958	18,007	18,224	19,655	20,220	19,633	18,874	20,284	18,373	20,753	20,923	20,716	235,620
2010	19,636	19,569	21,058	21,100	22,414	22,041	20,816	21,669	21,446
Sold for hatching													
2008	5,382	5,688	6,113	5,636	5,670	5,530	5,949	6,139	6,351	6,067	5,889	5,971	70,385
2009	6,312	5,570	6,144	5,833	5,769	5,968	6,374	5,951	6,215	6,126	5,986	6,048	72,296
2010	5,741	5,482	6,068	5,832	5,854	6,097	6,137	6,049	5,661
Home consumption													
2008	42	42	40	40	41	41	42	43	43	43	42	42	501
2009	41	40	40	40	40	40	40	40	40	40	40	40	481
2010	40	43	43	43	43	43	43	43	43
Total value of disposition of eggs													
2008	24,915	23,031	26,215	25,721	25,697	26,878	25,488	29,096	27,053	29,219	26,171	28,461	317,945
2009	26,311	23,617	24,408	25,528	26,029	25,641	25,288	26,275	24,628	26,919	26,949	26,804	308,397
2010	25,417	25,094	27,169	26,975	28,311	28,181	26,996	27,761	27,150

Table 5-8
Disposition of eggs by province, quantity and value by province — Manitoba

	Jan.	Feb.	Mar.	Apr.	May	June	July	Aug.	Sept.	Oct.	Nov.	Dec.	Annual total
quantity, in thousands of dozens													
Sold for consumption													
2008	6,712	5,985	6,134	5,973	6,231	6,533	6,625	6,546	6,166	6,160	5,786	6,371	75,222
2009	7,388	5,837	6,349	5,872	6,014	6,369	6,278	6,275	6,557	6,161	5,955	6,453	75,508
2010	7,468	5,890	6,428	6,124	6,141	6,542	6,608	6,500	6,465
Sold for hatching													
2008	307	282	300	280	290	278	268	246	256	275	259	242	3,283
2009	282	252	305	286	250	283	257	261	251	274	240	255	3,197
2010	270	251	308	264	273	272	250	256	268
Home consumption													
2008	14	14	14	14	14	14	14	14	14	14	14	14	168
2009	14	14	14	14	14	14	14	14	14	14	14	14	168
2010	14	14	14	14	14	14	14	14	14
Leakers and rejects													
2008	140	125	128	125	130	136	137	135	128	128	120	132	1,564
2009	153	121	133	123	125	133	130	130	136	128	124	134	1,570
2010	154	122	134	127	128	136	137	135	134
Total disposition of eggs													
2008	7,173	6,406	6,576	6,392	6,665	6,961	7,044	6,941	6,564	6,577	6,179	6,759	80,237
2009	7,837	6,224	6,801	6,295	6,403	6,799	6,679	6,680	6,958	6,577	6,333	6,856	80,443
2010	7,906	6,277	6,884	6,529	6,556	6,964	7,009	6,905	6,881
value, in thousands of dollars													
Sold for consumption													
2008	4,709	4,401	4,250	4,115	4,396	4,580	4,765	4,916	4,636	4,631	4,375	4,791	54,565
2009	5,167	4,087	4,412	4,075	4,252	4,478	4,519	4,714	4,944	4,656	4,515	4,883	54,702
2010	5,255	4,118	4,483	4,271	4,337	4,826	4,762	4,885	5,103
Sold for hatching													
2008	1,176	1,139	1,229	1,146	1,189	1,160	1,117	1,046	1,090	1,173	1,104	1,032	13,601
2009	1,202	1,075	1,274	1,197	1,047	1,184	1,090	1,109	1,065	1,166	1,021	1,083	13,513
2010	1,146	1,065	1,307	1,110	1,148	1,141	1,049	1,076	1,126
Home consumption													
2008	12	13	12	12	12	12	12	13	13	13	13	13	150
2009	12	12	12	12	12	12	12	13	13	13	13	13	149
2010	12	12	12	12	12	13	12	13	14
Total value of disposition of eggs													
2008	5,897	5,553	5,491	5,273	5,597	5,752	5,894	5,975	5,739	5,817	5,492	5,836	68,316
2009	6,381	5,174	5,698	5,284	5,311	5,674	5,621	5,836	6,022	5,835	5,549	5,979	68,364
2010	6,413	5,195	5,802	5,393	5,497	5,980	5,823	5,974	6,243

**Table 5-9
Disposition of eggs by province, quantity and value by province — Saskatchewan**

	Jan.	Feb.	Mar.	Apr.	May	June	July	Aug.	Sept.	Oct.	Nov.	Dec.	Annual total
quantity, in thousands of dozens													
Sold for consumption													
2008	1,913	1,834	1,942	1,845	2,229	1,853	1,906	1,983	1,966	1,886	2,101	1,959	23,417
2009	2,116	2,027	2,023	1,970	2,144	1,835	1,782	1,903	2,165	1,698	1,901	2,331	23,895
2010	2,009	2,104	2,163	1,966	2,040	2,112	1,978	2,147	1,980
Sold for hatching													
2008	149	192	149	171	162	151	177	206	217	209	223	206	2,211
2009	278	203	203	234	223	248	206	196	208	195	223	203	2,620
2010	189	174	227	208	227	184	187	219	187
Home consumption													
2008	14	14	14	14	14	14	14	14	14	14	14	14	168
2009	14	14	14	14	14	14	14	14	14	14	14	14	168
2010	14	14	14	14	14	14	14	14	14
Leakers and rejects													
2008	41	41	42	40	48	40	42	44	44	42	47	43	514
2009	48	45	45	44	47	42	40	42	47	38	43	51	532
2010	44	46	48	44	45	46	43	47	43
Total disposition of eggs													
2008	2,117	2,081	2,147	2,070	2,453	2,058	2,139	2,247	2,241	2,151	2,385	2,222	26,310
2009	2,456	2,289	2,285	2,262	2,428	2,139	2,042	2,155	2,434	1,945	2,181	2,599	27,215
2010	2,256	2,338	2,452	2,232	2,326	2,356	2,222	2,427	2,224
value, in thousands of dollars													
Sold for consumption													
2008	2,079	2,026	2,210	2,135	2,598	2,163	2,258	2,381	2,377	2,280	2,454	2,289	27,250
2009	2,397	2,225	2,224	2,164	2,251	1,939	1,887	2,017	2,291	1,804	2,014	2,463	25,676
2010	2,124	2,400	2,469	2,245	2,338	2,419	2,271	2,465	2,274
Sold for hatching													
2008	572	775	610	732	693	649	761	906	955	921	983	905	9,462
2009	1,222	891	893	1,031	983	1,090	908	861	916	859	981	893	11,528
2010	831	763	997	915	999	810	823	951	814
Home consumption													
2008	19	20	19	19	19	19	19	19	19	19	19	19	229
2009	19	19	19	19	17	17	17	17	17	17	17	17	212
2010	17	19	19	19	19	19	19	19	19
Total value of disposition of eggs													
2008	2,670	2,821	2,839	2,886	3,310	2,831	3,038	3,306	3,351	3,220	3,456	3,213	36,941
2009	3,638	3,135	3,136	3,214	3,251	3,046	2,812	2,895	3,224	2,680	3,012	3,373	37,416
2010	2,972	3,182	3,485	3,179	3,356	3,248	3,113	3,435	3,107

Table 5-10
Disposition of eggs by province, quantity and value by province — Alberta

	Jan.	Feb.	Mar.	Apr.	May	June	July	Aug.	Sept.	Oct.	Nov.	Dec.	Annual total
quantity, in thousands of dozens													
Sold for consumption													
2008	3,722	3,176	3,226	2,543	4,285	3,264	3,215	3,112	3,579	3,723	3,150	3,514	40,509
2009	3,362	3,138	3,466	3,382	3,593	3,291	3,254	3,508	3,296	3,405	3,315	3,578	40,588
2010	3,747	3,662	3,598	3,364	3,867	3,216	3,468	4,018	3,238
Sold for hatching													
2008	513	489	537	589	580	560	562	560	580	521	561	457	6,507
2009	495	468	473	476	481	504	549	478	525	483	549	513	5,991
2010	484	462	551	498	542	499	550	514	515
Home consumption													
2008	31	31	31	31	31	31	31	31	31	31	31	31	372
2009	31	31	31	31	31	31	31	31	31	31	31	31	372
2010	31	31	31	31	31	31	31	31	31
Leakers and rejects													
2008	85	74	75	63	97	77	76	74	83	85	74	80	943
2009	77	72	79	77	82	76	76	80	77	78	77	82	933
2010	85	83	83	77	88	75	81	91	75
Total disposition of eggs													
2008	4,351	3,770	3,869	3,226	4,993	3,932	3,884	3,777	4,273	4,360	3,816	4,082	48,331
2009	3,965	3,709	4,049	3,966	4,187	3,902	3,910	4,097	3,929	3,997	3,972	4,204	47,884
2010	4,347	4,238	4,263	3,970	4,528	3,821	4,130	4,654	3,859
value, in thousands of dollars													
Sold for consumption													
2008	4,190	3,636	3,810	3,056	5,178	3,949	3,942	3,865	4,466	4,640	3,809	4,246	48,787
2009	3,948	3,579	3,953	3,856	3,923	3,614	3,576	3,855	3,623	3,743	3,644	3,931	45,245
2010	4,114	4,333	4,259	3,981	4,555	3,791	4,088	4,735	3,818
Sold for hatching													
2008	2,063	2,048	2,250	2,508	2,469	2,395	2,404	2,449	2,532	2,277	2,453	1,995	27,843
2009	2,221	2,103	2,074	2,089	2,100	2,201	2,372	2,063	2,267	2,099	2,387	2,232	26,208
2010	2,107	2,012	2,407	2,176	2,342	2,170	2,392	2,219	2,260
Home consumption													
2008	41	41	41	41	41	41	42	43	42	42	41	41	497
2009	40	39	39	39	37	37	37	37	37	37	37	37	453
2010	37	40	40	40	40	40	40	40	40
Total value of disposition of eggs													
2008	6,294	5,725	6,101	5,605	7,688	6,385	6,388	6,357	7,040	6,959	6,303	6,282	77,127
2009	6,209	5,721	6,066	5,984	6,060	5,852	5,985	5,955	5,927	5,879	6,068	6,200	71,906
2010	6,258	6,385	6,706	6,197	6,937	6,001	6,520	6,994	6,118

**Table 5-11
Disposition of eggs by province, quantity and value by province — British Columbia**

	Jan.	Feb.	Mar.	Apr.	May	June	July	Aug.	Sept.	Oct.	Nov.	Dec.	Annual total
quantity, in thousands of dozens													
Sold for consumption													
2008	5,291	4,965	5,146	5,296	5,638	5,221	5,472	5,298	5,025	5,294	4,920	5,123	62,689
2009	5,664	4,982	5,232	5,290	5,504	5,309	5,453	5,249	4,963	5,483	5,121	5,340	63,590
2010	5,575	4,982	5,424	5,279	5,559	5,314	5,508	5,453	5,160
Sold for hatching													
2008	796	761	806	796	846	807	836	712	764	751	698	729	9,303
2009	811	705	825	735	775	802	773	663	700	707	691	734	8,921
2010	701	714	831	693	735	795	704	666	609
Home consumption													
2008	19	19	19	19	19	19	19	19	19	19	19	19	228
2009	19	19	19	19	19	19	19	19	19	19	19	19	228
2010	19	19	19	19	19	19	19	19	19
Leakers and rejects													
2008	121	114	119	122	129	120	126	120	115	121	112	117	1,436
2009	129	113	121	120	125	122	124	118	113	123	116	121	1,445
2010	125	114	125	119	126	122	124	122	115
Total disposition of eggs													
2008	6,227	5,859	6,090	6,233	6,632	6,167	6,453	6,149	5,923	6,185	5,749	5,988	73,656
2009	6,623	5,819	6,197	6,164	6,423	6,252	6,369	6,049	5,795	6,332	5,947	6,214	74,184
2010	6,420	5,829	6,399	6,110	6,439	6,250	6,355	6,260	5,903
value, in thousands of dollars													
Sold for consumption													
2008	6,161	5,849	6,268	6,549	7,026	6,510	6,927	6,811	6,511	6,928	6,247	6,504	78,291
2009	6,998	5,985	6,287	6,355	6,397	6,212	6,384	6,149	5,815	6,421	5,999	6,252	75,254
2010	6,524	6,262	6,819	6,636	6,949	6,643	6,886	6,820	6,454
Sold for hatching													
2008	3,405	3,273	3,467	3,527	3,746	3,666	3,862	3,291	3,604	3,547	3,257	3,406	42,051
2009	3,602	3,128	3,802	3,388	3,606	3,727	3,658	3,136	3,409	3,359	3,282	3,496	41,593
2010	3,339	3,398	3,954	3,229	3,390	3,663	3,280	3,097	2,849
Home consumption													
2008	28	28	29	30	30	30	30	31	30	31	30	30	357
2009	29	29	29	29	28	28	28	28	28	28	28	28	340
2010	28	30	30	30	29	29	29	29	29
Total value of disposition of eggs													
2008	9,594	9,150	9,764	10,106	10,802	10,206	10,819	10,133	10,145	10,506	9,534	9,940	120,699
2009	10,629	9,142	10,118	9,772	10,031	9,967	10,070	9,313	9,252	9,808	9,309	9,776	117,187
2010	9,891	9,690	10,803	9,895	10,368	10,335	10,195	9,946	9,332

Table 6
Stocks of frozen eggs and edible dried eggs, Canada

	Jan.	Feb.	Mar.	Apr.	May	June	July	Aug.	Sept.	Oct.	Nov.	Dec.
	tonnes											
Whole eggs, total												
2007	567	1,049	965	1,120	1,290	1,274	1,226	1,031	786	886	857	847
2008	726	833	710	670	743	790	896	1,211	1,215	891	999	819
2009	804	1,039	1,097	1,055	933	974	1,285	1,061	1,320	1,156	1,389	1,281
2010	1,382	1,611	1,715	1,467	1,255	1,133	1,140	1,162	1,094
Yolk, total												
2007	639	849	938	1,054	718	710	608	879	1,007	850	809	766
2008	795	747	769	490	442	409	433	499	458	460	436	327
2009	408	512	670	556	479	465	571	424	368	402	428	423
2010	619	779	850	890	717	585	568	594	476
Whites, total												
2007	79	120	78	90	93	121	224	144	160	126	152	145
2008	112	95	89	86	120	168	221	267	243	217	178	151
2009	98	104	97	88	117	175	184	129	176	148	94	79
2010	63	67	79	62	92	88	134	215	207
Edible dried eggs												
2007	789	795	754	724	673	667	591	585	547	553	449	583
2008	545	615	648	596	587	500	538	609	671	519	530	635
2009	581	661	788	736	660	623	618	726	629	674	739	733
2010	811	805	901	742	722	751	629	538	563
Dried, whole and mixes												
2007	172	188	243	256	209	185	208	217	126	125	147	102
2008	150	146	127	140	212	206	194	262	243	198	125	117
2009	217	256	304	150	97	256	126	135	124	165	185	163
2010	161	138	237	226	262	308	247	321	295
Dried, yolk and mixes												
2007	137	161	108	124	149	220	145	89	105	82	57	132
2008	89	99	105	133	128	72	138	146	218	174	205	232
2009	144	159	209	248	229	240	171	234	153	216	270	220
2010	219	254	326	288	220	226	169	105	111
Dried albumen												
2007	480	446	402	344	315	261	238	280	317	346	246	348
2008	306	369	417	322	246	222	207	201	209	148	199	286
2009	220	247	276	338	334	127	321	356	352	293	284	350
2010	432	413	338	228	239	218	213	112	158

Table 7
Supply and disposition of eggs

	2005	2006	2007	2008	2009
	thousands of dozens				
Production	587,137	604,607	607,853	616,922	620,286
Beginning stocks	12,230	10,830	11,087	8,825	7,703
Imports	49,603	45,173	36,499	42,926	63,632
Total supply	648,970	660,610	655,438	668,673	691,621
Exports	60,442	50,641	62,621	47,110	65,903
Used for hatching	60,261	59,278	60,399	60,774	60,162
Leakers and rejects	11,450	11,788	11,857	12,031	12,095
Ending stocks	10,830	11,087	8,825	7,703	12,047
Net supply	505,988	527,815	511,736	541,055	541,414
	dozens				
Food available per person	15.7	16.2	15.5	16.2	16.1
Food available per person, adjusted for loss ¹	12.4	12.8	12.3	12.8	12.7

1. Experimental, use with caution. The data have been adjusted for retail, household, cooking and plate loss.

Table 8
Average prices of eggs sold for consumption in Canada by month

	Jan.	Feb.	Mar.	Apr.	May	June	July	Aug.	Sept.	Oct.	Nov.	Dec.
	dollars per dozen											
2002	1.06	1.07	1.06	1.06	1.06	1.06	1.07	1.10	1.08	1.09	1.08	1.11
2003	1.08	1.09	1.08	1.09	1.09	1.09	1.10	1.10	1.10	1.10	1.10	1.09
2004	1.10	1.10	1.10	1.12	1.13	1.15	1.16	1.18	1.17	1.15	1.15	1.13
2005	1.03	1.01	1.02	1.02	1.02	1.02	1.02	1.03	1.03	1.03	1.04	1.04
2006	1.02	1.04	1.04	1.05	1.05	1.04	1.05	1.05	1.05	1.05	1.05	1.04
2007	0.98	1.03	1.05	1.05	1.06	1.06	1.07	1.09	1.08	1.09	1.10	1.09
2008	1.09	1.10	1.10	1.12	1.13	1.13	1.15	1.18	1.18	1.19	1.16	1.16
2009	1.11	1.09	1.09	1.09	1.08	1.08	1.08	1.09	1.09	1.10	1.09	1.09
2010	1.08	1.16	1.16	1.16	1.16	1.15	1.15	1.16	1.16

Note(s): Price received by producer.

Table 9
Report of processed eggs production, Canada

	Whole egg	Yolk	Albumen	Total processed egg
	kilograms			
Total break				
2007	27,695,130	5,875,001	12,827,153	46,397,284
2008	34,267,868	4,023,331	10,182,905	46,766,277
2009	30,322,556	5,667,835	13,333,701	49,324,092
Frozen eggs				
2007	2,361,746	2,302,002	570,843	5,234,591
2008	2,370,319	1,500,867	479,197	4,350,383
2009	2,570,696	1,576,639	590,743	4,738,078
Liquid eggs				
2007	22,314,995	1,478,737	7,521,176	31,314,908
2008	19,654,306	766,769	5,959,987	26,381,062
2009	22,826,311	1,074,523	7,519,162	31,419,996
Dried eggs				
2007	x	x	x	x
2008	x	x	x	x
2009	x	x	x	x

Poultry meat production and value

Concepts

Poultry meat production and value are estimated for chicken meat (including stewing hens) and turkey meat sold by producers as well as that consumed by these producers. Production is measured in both the number of birds slaughtered and the eviscerated weight of the slaughtered birds. Estimates of quantities sold consist of commercial and non-commercial slaughter and are made at the provincial level. Commercial slaughter is adjusted for inter-provincial and international movement. Commercial slaughter includes all birds that have been slaughtered in registered slaughter houses while non-commercial slaughter consists of any birds that may be slaughtered on farms. Poultry meat production is valued at the average price per kilogram (eviscerated weight basis) received by producers. Prices include any bonuses and premiums which can be attributed to specific commodities and exclude fees deducted before the producer is paid (e.g. storage, transport, and administration costs).

Home consumption is the amount of poultry meat available for consumption by producers and their immediate families. This amount is valued at market prices as it represents the income producers would have received had the product been sold.

Methods

The major administrative source of data for poultry meat production and value is Agriculture and Agri-Food Canada. Inspectors from the Canadian Food Inspection Agency (CFIA) collect quantity data while inspecting meat at processing plants as legislated under the *Meat Inspection Act*. Unless specified, these data are used as published, without further adjustment. Commercial slaughter represents all birds slaughtered in registered processing plants. The quantity and weight of all birds slaughtered in these facilities are reported to and published by AAFC.

Non-commercial slaughter is estimated based on data provided weekly to AAFC by registered hatcheries on the placement of chicks in small lots, intended to produce meat. The placement data are adjusted for death loss and birds kept for laying to arrive at an estimate of chickens that reach maturity. Estimates of both death loss and the time required for chicks to reach maturity are obtained from industry specialists. Non-commercial slaughter is further divided into home consumption and birds sold. Home consumption is calculated by multiplying quantity of food available for consumption of the given poultry meat by the human population of farms producing that kind of poultry.

The human population on farms is derived from the linkage of the Agriculture and the Population Censuses.

Two prices obtained from registered processing plants, and published by AAFC, are used to calculate the value of chicken meat production: one for chickens weighing less than 2.3 kg and another for those weighing 2.3 kg and over. Prices for the corresponding categories are weighted by the quantity produced to obtain the total value. The price for chickens weighing 2.3 kilograms and over is used in calculating the value of production for chickens slaughtered on farms (including home consumption).

Data on stewing hen production and prices are obtained from registered processing plant reports provided to AAFC. No calculation is made for stewing hens slaughtered on farms since the amount is considered negligible. Home consumption is calculated in the same manner as the chicken meat production.

Turkey meat production is based on birds slaughtered in registered slaughter houses, as reported by AAFC, and non-commercial slaughter. Non-commercial slaughter, turkeys slaughtered on farms, is estimated using data on turkey inventories from the most recent Census of Agriculture. Home consumption is calculated in the same manner as the chicken meat production.

Two prices are used to determine the value of turkey meat production: one for turkeys weighing less than 5.0 kg and another for those weighing 5.0 kg and over. Prices for the corresponding categories are multiplied by the quantity produced to obtain their value.

Data quality

Data on number of birds sold, eviscerated weight and value are obtained through administrative sources. Producers are paid for the birds which they sell through registered slaughter houses on the basis of these administrative records. Because of this process, the quality of the administrative data is deemed to be high. Registered slaughter houses account for approximately 99% of total poultry production. This implies that total production values are also good. Administrative sources are subject to non-sampling errors such as omissions, duplications and mistakes in reporting, recording and processing the data. The effects of these errors cannot be measured directly.

Although no systematic revisions are undertaken for poultry meat data, revisions that do occur reflect updates resulting from late entries and corrections due to misclassification and data entry errors. Overall, the changes between the original and revised numbers are very small (e.g. less than 1% for chicken and turkey).

Egg production and value

Concepts

Total egg production in Canada and the provinces includes all eggs sold for consumption, consumed by producers, sold for hatching, leakers and rejects. Production from registered, non-registered as well as hatchery supply flocks are included in the estimates.

The value of egg production is calculated at the provincial level using different prices for eggs produced by the three different types of flocks listed above. These prices include any bonuses and premiums which can be attributed to specific commodities and exclude fees deducted before the producer is paid (e.g. storage, transport and administration costs).

Egg production is derived using average layer numbers and their derived rates of lay. Laying hens include all layers 19 weeks and older except for layers in hatchery supply flocks where layers are 26 weeks and older. Layer numbers and average rates of lay are obtained for the three types of operations (registered flocks, non-registered flocks and hatchery supply flocks).

Methods

Registered flocks have to be registered with and provide information to provincial egg marketing boards. Layer numbers in registered flocks are supplied by the CEMA, the regulatory board for the egg producing industry. The agency, in turn, receives data from the provincial egg marketing boards. These data are used directly in the estimates without adjustments.

Non-registered flocks are those with fewer birds than the limits set by the provincial egg marketing boards. These limits vary by province and can range from 100 to 500 birds. Layer numbers for the non-registered flocks are estimated using Census data.

Hatchery supply flocks produce hatching eggs for both egg and meat type birds. Layers in hatchery supply flocks are estimated by Statistics Canada based on the number of birds (broilers) provided by Canadian Broiler Hatching Egg Marketing Agency, information on egg sets from CEMA and an average rate of lay for each type of bird.

Rates of lay, at the provincial level, for registered and non-registered flocks and hatchery supply flocks are estimated by industry specialists.

Estimates of all layers, rates of lay and egg production are prepared monthly using administrative data. Layers in registered flocks account for the bulk of the layer population and these data are available weekly from the CEMA.

Monthly estimates for non-registered flocks are made using historical seasonal patterns. Rates of lay do not fluctuate dramatically.

Shifts on rates of lay are made on the basis of monthly egg gradings collected by CEMA from registered grading stations.

The value of egg production for registered flocks is calculated using prices provided by CEMA, which regulates all prices paid to producers. Prices for the non-registered flocks are calculated based on industry information. In the case of eggs produced by the hatchery supply flock, all eggs are valued at prices paid to broiler egg producers as provided by the Canadian Broiler Hatching Egg Marketing Agency. Production estimates are simply multiplied by the prices to obtain the total value of production.

The quality of layer numbers in registered flocks is deemed to be high since the number of laying hens in these flocks is set by quota allocation and the flocks are subject to regular audits. The vast majority of layers are found in the registered flocks and thus, total layer estimates can also be considered to be of high quality. Based on the 2001 Census of Agriculture, more than 90% of all layers in each province were in registered flocks except for Saskatchewan and Alberta, where the totals were 79% and 86% respectively.

Revisions

Layer numbers in registered flocks are collected through the CEMA and are subject to minor revisions. Monthly layer estimates in non-registered flocks are revised, if necessary, after the results of the Census of Agriculture are available.

Rates of lay for both registered and non-registered flocks are assessed monthly based on administrative data published by CEMA on eggs graded at registered stations.

Food Available - Poultry and Eggs

Concepts

Statistics Canada's Agriculture Division produces data indicating the amount of food available for consumption along with estimated quantities of food available, adjusted for losses.

The amount of food available per person represents what is available for consumption on average for the total Canadian population. The estimates do not indicate total poultry and egg supplies actually consumed by an individual or specific group of individuals, since estimates are not calculated for waste or spoilage during transportation at the retail level, in households, private institutions or restaurants.

The estimated quantities of food available, adjusted for losses, represent the amount of food available per person data that have been adjusted to account for retail, household, cooking and plate loss. These data are considered experimental in nature and should be used with caution.

Methods

A residual approach is used in calculating quantities of poultry meat and eggs available for human consumption. Annual balance sheets are prepared to determine the consumption levels. Total supply is estimated by adding beginning stocks, annual production and imports. Exports and ending stocks are subtracted from total supply to estimate the net supply. Poultry meat export and import numbers are obtained from AAFC. The amount of food available per person is determined by dividing net supply by the total Canadian population at July 1 each year. Population numbers are obtained from the Demography Division of Statistics Canada. To estimate the amount of food available, adjusted for losses, factors are applied to the amount of food available per person data to account for retail, household, cooking and plate loss.

Net supply for eggs is obtained by subtracting exports, eggs used for hatching, leakers and rejects from the total supply. A revised methodology was introduced in 1986 to calculate the quantity of eggs available for consumption where 1.95% of total egg production was subtracted to account for leakers and rejects. Import and export data are supplied by the International Trade Division of Statistics Canada. Net supply is then divided by the July 1 population of Canada to obtain the quantity available per person. To estimate the amount of food available, adjusted for losses, factors are applied to the amount of food available per person data to account for retail, household, cooking and plate loss.

Appendix I

Glossary of terms

Administrative data: data that are collected by public or private agencies or organizations in the administration of programs or legislation.

Broilers: chickens that are being raised for meat production.

Egg sets: fertilized eggs in hatcheries that are to hatch into chicks, either to replace laying hens or to be raised for meat production.

Eviscerated weight: the weight of a bird that has not been de-boned but has had its head, feathers, feet and innards removed.

Food available: represents what is available for consumption on average for the total Canadian population. Net supply is divided by the July 1 Canadian population to arrive at the quantity available. The estimates do not indicate quantities actually consumed by an individual or specific group of individuals, since estimates are not calculated for waste or spoilage during transportation at the retail level, in households, private institutions or restaurants.

Food available, adjusted for losses: the estimated quantities of food available adjusted for losses represent the quantity of food available data that have been adjusted to account for retail, household, cooking and plate loss. These data are considered experimental in nature and should be used with caution.

Hatchery supply flock: consists of laying hens which produce eggs that will be hatched into chicks. These chicks will either become laying hens or be raised for meat production.

Leakers and rejects: eggs that do not meet the lowest standard grading requirements.

Stewing hens: laying hens which have completed their laying cycle and are slaughtered for meat.