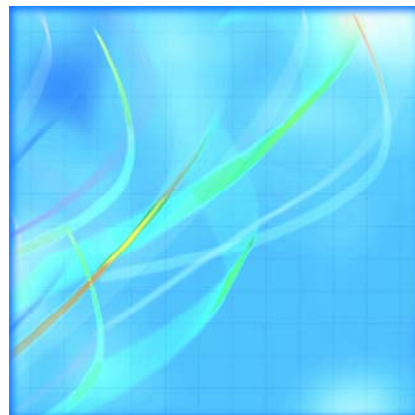


Catalogue no. 23-015-X

Poultry and Egg Statistics

January to March 2009



Statistics
Canada

Statistique
Canada

Canada

How to obtain more information

For information about this product or the wide range of services and data available from Statistics Canada, visit our website at www.statcan.gc.ca, e-mail us at infostats@statcan.gc.ca, or telephone us, Monday to Friday from 8:30 a.m. to 4:30 p.m., at the following numbers:

Statistics Canada's National Contact Centre

Toll-free telephone (Canada and the United States):

Inquiries line	1-800-263-1136
National telecommunications device for the hearing impaired	1-800-363-7629
Fax line	1-877-287-4369

Local or international calls:

Inquiries line	1-613-951-8116
Fax line	1-613-951-0581

Depository Services Program

Inquiries line	1-800-635-7943
Fax line	1-800-565-7757

To access this product

This product, Catalogue no. 23-015-X, is available free in electronic format. To obtain a single issue, visit our website at www.statcan.gc.ca and select "Publications."

Standards of service to the public

Statistics Canada is committed to serving its clients in a prompt, reliable and courteous manner. To this end, Statistics Canada has developed *standards of service* that its employees observe. To obtain a copy of these service standards, please contact Statistics Canada toll-free at 1-800-263-1136. The service standards are also published on www.statcan.gc.ca under "About us" > "Providing services to Canadians."

Statistics Canada
Agriculture Division
Livestock Section

Poultry and Egg Statistics

January to March 2009

Published by authority of the Minister responsible for Statistics Canada

© Minister of Industry, 2009

All rights reserved. The content of this electronic publication may be reproduced, in whole or in part, and by any means, without further permission from Statistics Canada, subject to the following conditions: that it be done solely for the purposes of private study, research, criticism, review or newspaper summary, and/or for non-commercial purposes; and that Statistics Canada be fully acknowledged as follows: Source (or "Adapted from", if appropriate): Statistics Canada, year of publication, name of product, catalogue number, volume and issue numbers, reference period and page(s). Otherwise, no part of this publication may be reproduced, stored in a retrieval system or transmitted in any form, by any means—electronic, mechanical or photocopy—for any purposes without prior written permission of Licensing Services, Client Services Division, Statistics Canada, Ottawa, Ontario, Canada K1A 0T6.

May 2009

Catalogue no. 23-015-X, vol. 6, no. 1

ISSN 1710-3525

Frequency: Quarterly

Ottawa

La version française de cette publication est disponible sur demande (n° 23-015-X au catalogue).

Note of appreciation

Canada owes the success of its statistical system to a long standing partnership between Statistics Canada, the citizens of Canada, its businesses, governments and other institutions. Accurate and timely statistical information could not be produced without their continued cooperation and goodwill.

User information

Symbols

The following standard symbols are used in Statistics Canada publications:

- . not available for any reference period
- .. not available for a specific reference period
- ... not applicable
- 0 true zero or a value rounded to zero
- 0^s value rounded to 0 (zero) where there is a meaningful distinction between true zero and the value that was rounded
- p preliminary
- r revised
- x suppressed to meet the confidentiality requirements of the *Statistics Act*
- E use with caution
- F too unreliable to be published

Table of contents

Highlights	5
Introduction	9
Related products	10
Statistical tables	
1 Production of poultry meat	12
2 Disposition of poultry meat	13
2-1 Chicken	13
2-2 Turkey	14
2-3 Total poultry	15
3 Supply and disposition of poultry meat	16
4 Production of eggs by province	18
4-1 Average number of layers	18
4-2 Eggs per 100 layers	19
4-3 in thousands of dozens	20
5 Disposition of eggs by province, quantity and value by province	21
5-1 Canada	21
5-2 Newfoundland and Labrador	22
5-3 Prince Edward Island	23
5-4 Nova Scotia	24
5-5 New Brunswick	25
5-6 Quebec	26
5-7 Ontario	27
5-8 Manitoba	28
5-9 Saskatchewan	29
5-10 Alberta	30
5-11 British Columbia	31
6 Stocks of frozen eggs and edible dried eggs, Canada	32
7 Supply and disposition of eggs	32
8 Average prices of eggs sold for consumption in Canada by month	33

Table of contents – continued

9 Report of processed eggs production, Canada 33

Data quality, concepts and methodology

Poultry meat production and value 34

Egg production and value 36

Food Available - Poultry and Eggs 38

Appendix

I Glossary of terms 39

Highlights

Value of poultry products increases

- The value of all poultry products totalled \$3.2 billion in 2008, a 13.1% increase from 2007. Sales of poultry meat, including turkey, showed an increase of 15.0% for a total value of \$2.4 billion. The value of egg sales increased 7.9% from 2007 to stand at \$823.0 million.
- Canadian farmers produced 1.2 million tonnes of poultry meat in 2008. Chicken, including stewing hens, accounted for 85% of all poultry meat produced, up 1.2% from 2007. Turkey production stood at 180 thousand tonnes in 2008, an increase of 6.5% from the previous year.
- The quantity of poultry available for consumption has continued to increase over recent years, reaching 13.6 kilograms per person in 2008, a slight increase of 1.5% from last year and well above the 11.7 kilograms available for consumption per person ten years ago. The introduction of varied and readily available easy-to-prepare and ready-to-eat poultry products appeals to the time conscious consumer and has contributed to poultry's on-going popularity.

Egg production increases in 2008

- Egg production was 579.9 million dozen, an increase of 0.4% from 2007. The central region produces over half of the eggs in Canada with Ontario producing 227.8 million dozen eggs and Quebec producing 100.5 million dozen.
- Annual egg consumption has stabilized in recent years and was pegged at 11.5 dozen per person in 2008, following a decrease in 2007. Generally, the recent sustained growth in eggs available for consumption can be attributed to the publicity surrounding the nutritional benefits of eggs, the increased use of eggs by the food service sector, the growing popularity of value added products and the expanded use and availability of processed egg products.

Chart 1
Value of poultry products, Canada, 1999 to 2008

millions of dollars

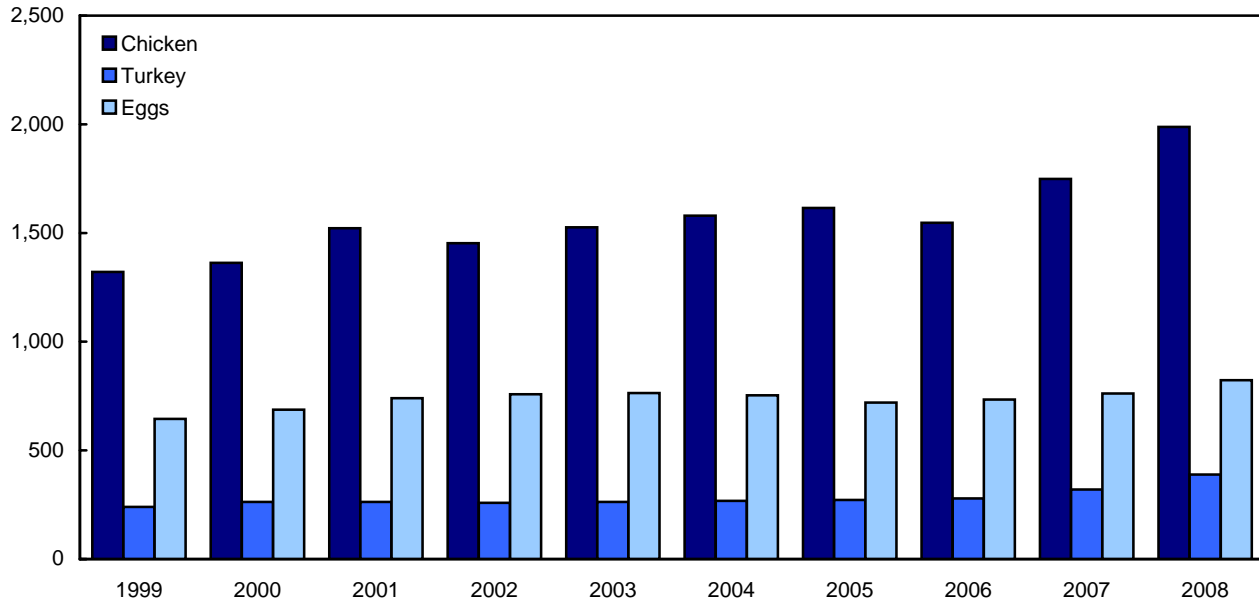


Chart 2
Poultry meat production, Canada 1999 to 2008

thousands metric tonnes

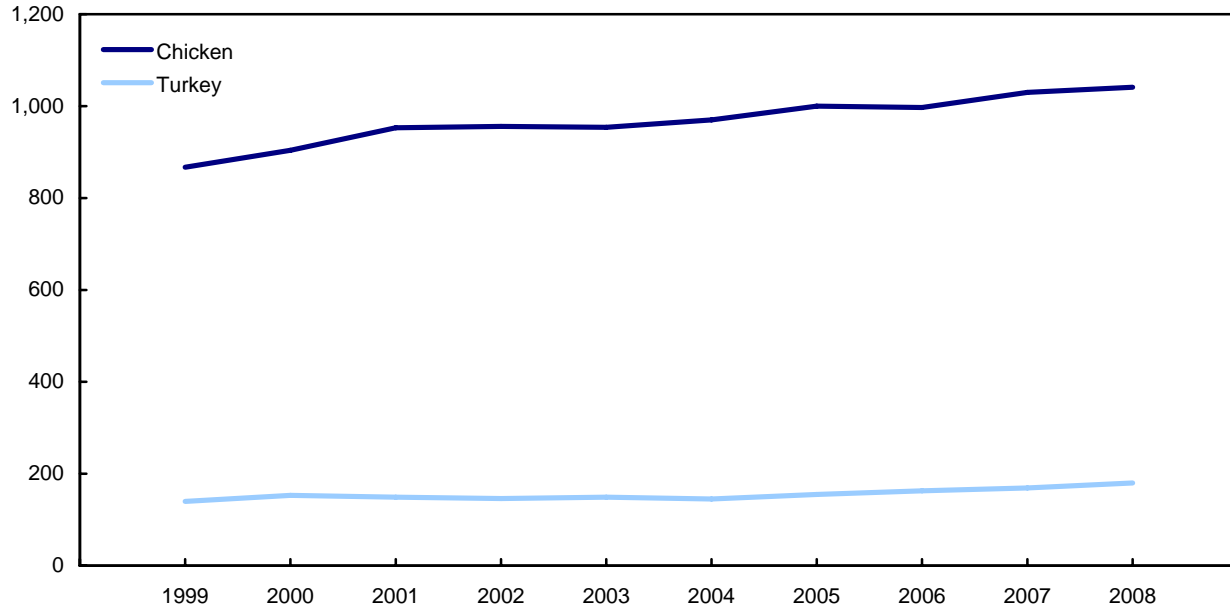


Chart 3
Quantity of meats available for consumption, Canada, 1999 to 2008

kilograms per person

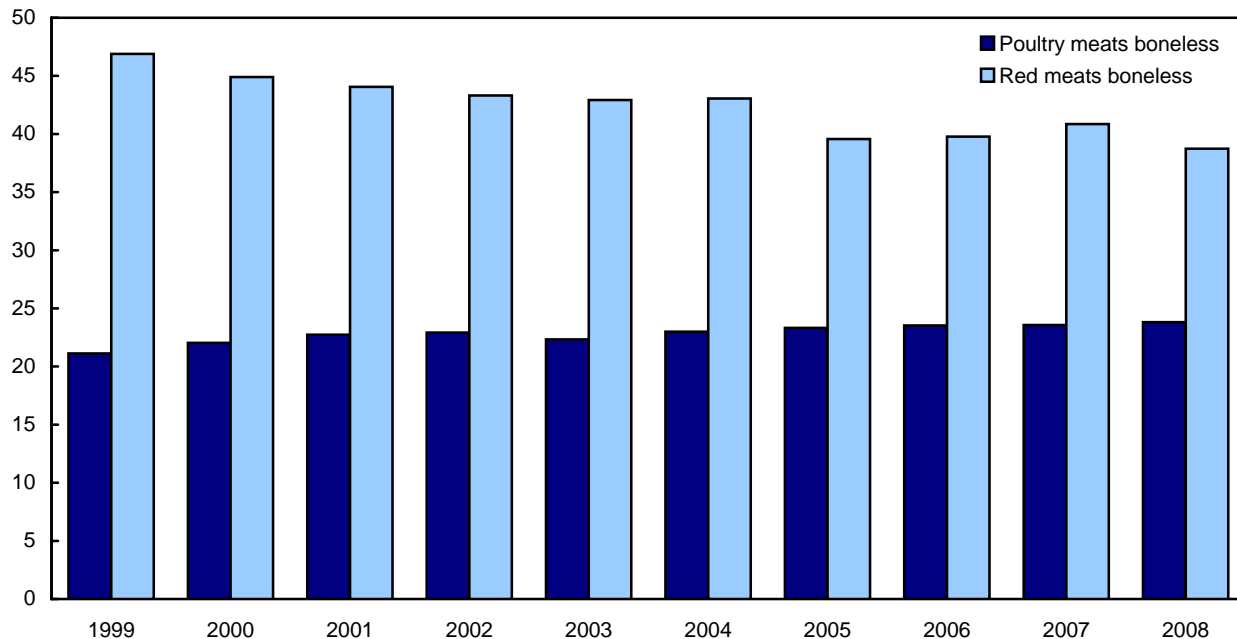


Chart 4
Production of eggs, Canada, 1999 to 2008

millions of dozens

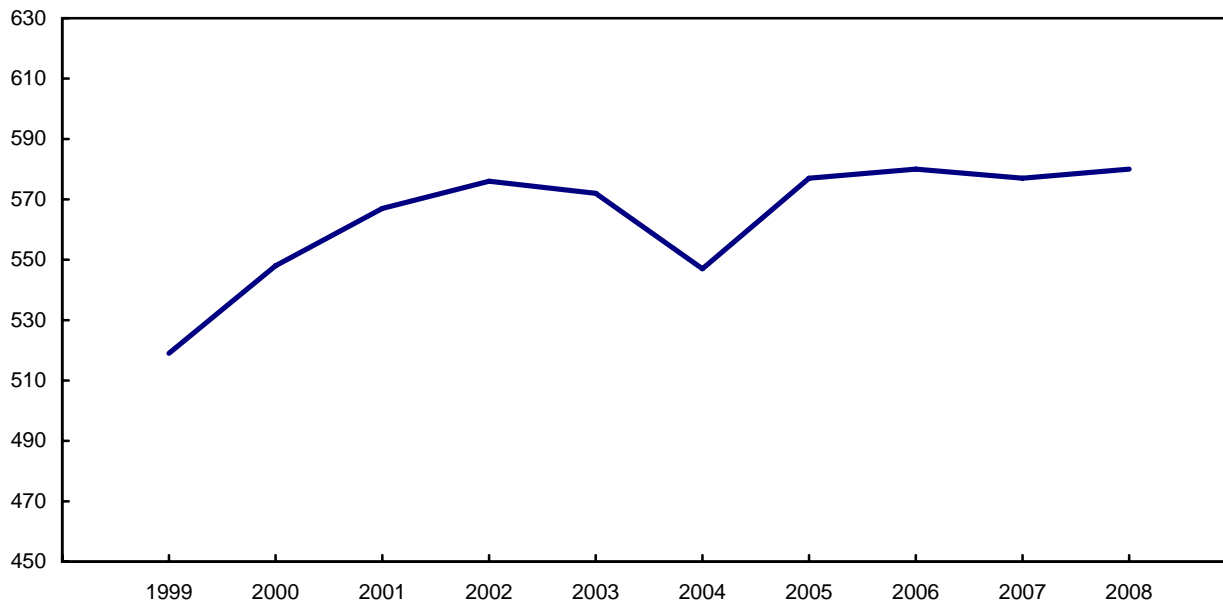
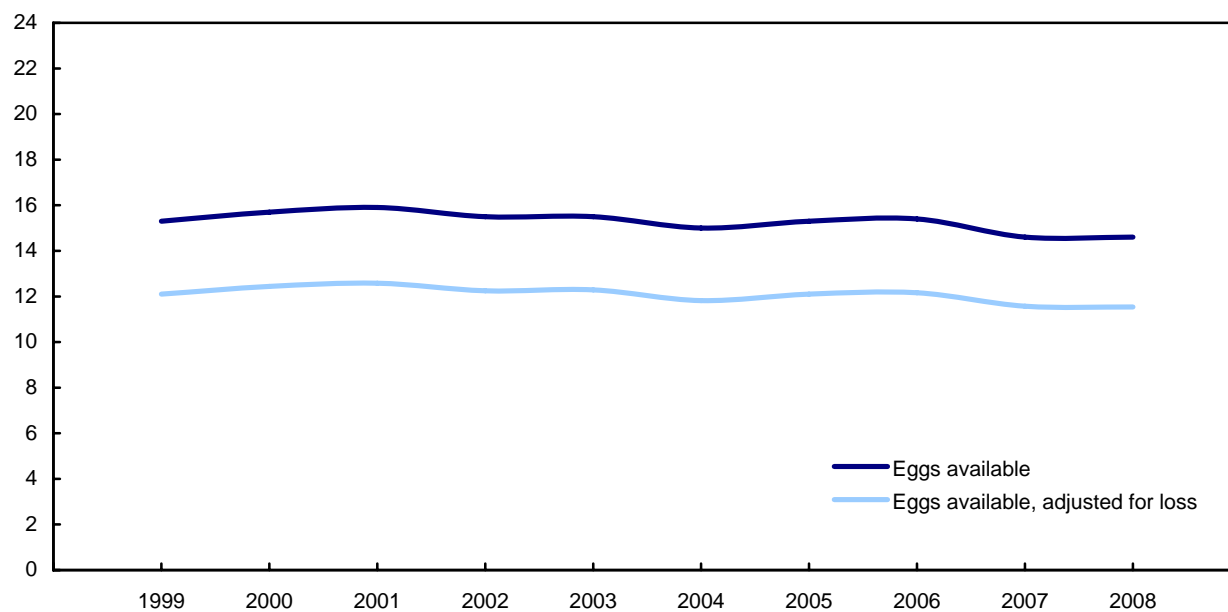


Chart 5
Quantity of eggs available for consumption, Canada, 1999 to 2008

dozens per person



Introduction

This publication provides data on the production, supply and disposition and value of poultry meat and eggs. Also included are data on the average price of eggs sold for table consumption, the food available and the food available, adjusted for loss of poultry meats and eggs, and the production and stocks of processed eggs.

The data presented are obtained from a variety of sources such as administrative sources and censuses. Administrative data are provided by the Canadian Egg Marketing Agency (CEMA), Agriculture and Agri-Food Canada (AAFC) and Statistics Canada. Information from Statistics Canada's Census of Agriculture and Census of Population is also used in preparing the estimates.

The data, published on a provincial basis, are used in decision making by government agencies, processors, retailers, universities, producer organizations and health institutions.

Statistics Canada has been estimating poultry meat production and value since 1951. Concepts and methods vary over time due to changes in the sector and/or the availability of data sources. Users should note the following:

- i. Production data supplied in table 7 (Supply and disposition of eggs) are compiled in May of each year and revised annually. Production and disposition data supplied in tables 4 and 5 (Disposition of eggs by province) are subject to revision throughout the year and may not compare exactly to the data in table 7 (Supply and disposition of eggs);
- ii. beginning in 1986, the quantity of eggs available for consumption is adjusted to take into consideration a loss of 1.95% of total egg production due to leakers and rejects;
- iii. also beginning in 1986, a new method is used to calculate consumption on the farm;
- iv. a negligible number of hatchery-supply eggs are sold on the table market. Since data on the amount sold are not available, it is deemed to be zero;
- v. Please note that the quantity and value of eggs sold for hatching in New Brunswick also include the quantity and value for the other Atlantic provinces.

The data series are available on CANSIM at the same time as the information appears in The Daily, Statistics Canada's official release vehicle. CANSIM, Statistics Canada's computerized database, is an information management system designed to facilitate both historical research and current analysis.

Related products

Selected publications from Statistics Canada

21-206-X	Statistics on income of farm operators
21-207-X	Statistics on income of farm families
21-208-X	Statistics on revenues and expenses of farms
23-003-X	Production of eggs

Selected CANSIM tables from Statistics Canada

003-0017	Supply and disposition of poultry meat and eggs in Canada
003-0018	Production, disposition and farm value of poultry meat
003-0019	Fowl and chicken meat production, weight and farm value
003-0020	Production and disposition of eggs
003-0021	Placement of chicks and turkey poults for production
003-0022	Production and disposition of eggs

Selected surveys from Statistics Canada

3421	Egg Producers Survey
5039	Production of Poultry and Eggs

Selected summary tables from Statistics Canada

- *Production of eggs, by province*
- *Production of poultry, by province*

Statistical tables

Table 1
Production of poultry meat

	Birds			Weight			Value		
	2006	2007	2008	2006	2007	2008	2006	2007	2008
	in thousands			in thousands of kilograms			in thousands of dollars		
Chicken									
Canada	604,673	623,428	624,444	971,926	1,003,776	1,016,476	1,541,213	1,740,707	1,982,787
Newfoundland and Labrador	x	x	x	x	x	x	x	x	x
Prince Edward Island	x	x	x	x	x	x	x	x	x
Nova Scotia	21,635	22,150	21,303	33,046	34,392	34,141	53,266	61,533	68,862
New Brunswick	17,404	18,360	18,263	26,362	27,672	27,708	43,104	50,117	57,371
Quebec	160,529	164,667	165,911	262,650	270,296	275,985	407,295	467,218	535,820
Ontario	192,819	197,625	198,104	320,092	327,607	331,765	494,994	564,162	642,164
Manitoba	28,794	29,342	29,336	41,913	43,071	43,569	62,974	72,964	82,140
Saskatchewan	23,813	25,520	25,612	38,395	41,008	39,650	59,481	71,147	78,386
Alberta	53,414	54,693	54,100	86,725	88,432	89,364	137,854	152,290	173,364
British Columbia	94,807	99,182	99,690	146,402	154,290	156,667	256,015	273,478	314,841
Stewing hen									
Canada	17,569	16,901	15,838	25,519	24,456	24,101	5,716	4,869	5,170
Newfoundland and Labrador	x	x	x	x	x	x	x	x	x
Prince Edward Island	x	x	x	x	x	x	x	x	x
Nova Scotia	85	93	41	240	263	108	133	128	39
New Brunswick	284	216	233	377	294	469	134	91	141
Quebec	4,393	4,721	4,907	6,608	6,795	7,583	2,280	2,148	2,369
Ontario	9,528	8,780	7,554	12,177	11,414	10,307	1,344	987	973
Manitoba	213	180	165	558	478	461	4	3	4
Saskatchewan	108	136	85	298	322	241	36	27	24
Alberta	435	401	385	1,164	1,173	1,021	133	101	97
British Columbia	2,523	2,368	2,467	4,096	3,699	3,911	1,651	1,376	1,524
Total Chicken 1									
Canada	622,242	640,329	640,281	997,445	1,028,231	1,040,578	1,546,929	1,745,576	1,987,957
Newfoundland and Labrador	x	x	x	x	x	x	x	x	x
Prince Edward Island	x	x	x	x	x	x	x	x	x
Nova Scotia	21,719	22,243	21,344	33,286	34,655	34,249	53,399	61,660	68,901
New Brunswick	17,688	18,576	18,496	26,739	27,966	28,176	43,238	50,208	57,512
Quebec	164,922	169,389	170,818	269,258	277,092	283,568	409,575	469,365	538,189
Ontario	202,347	206,404	205,658	332,269	339,021	342,072	496,338	565,150	643,137
Manitoba	29,007	29,521	29,501	42,471	43,548	44,029	62,978	72,968	82,143
Saskatchewan	23,921	25,656	25,697	38,693	41,331	39,891	59,518	71,174	78,409
Alberta	53,849	55,094	54,486	87,889	89,605	90,385	137,987	152,390	173,461
British Columbia	97,330	101,551	102,157	150,498	157,989	160,578	257,666	274,854	316,365
Turkey									
Canada	21,172	21,757	22,849	163,425	168,996	179,919	278,673	320,365	388,742
Newfoundland and Labrador	x	x	x	x	x	x	x	x	x
Prince Edward Island	x	x	x	x	x	x	x	x	x
Nova Scotia	799	779	917	3,792	3,736	4,368	6,574	7,309	9,586
New Brunswick	371	409	407	2,872	3,256	3,399	4,755	5,965	7,058
Quebec	4,557	4,460	4,693	33,023	33,385	35,571	56,190	58,573	75,792
Ontario	8,933	9,184	9,495	74,782	75,211	78,998	127,479	144,123	170,405
Manitoba	1,413	1,602	1,641	10,684	11,949	12,229	18,070	22,384	25,655
Saskatchewan	802	870	975	5,461	6,025	6,276	9,699	11,951	13,903
Alberta	1,651	1,654	1,772	13,325	14,091	16,318	23,887	28,074	36,387
British Columbia	2,640	2,793	2,945	19,445	21,302	22,717	31,948	41,905	49,859
Total poultry									
Canada	643,414	662,085	663,130	1,160,870	1,197,228	1,220,496	1,825,602	2,065,941	2,376,699
Newfoundland and Labrador	x	x	x	x	x	x	x	x	x
Prince Edward Island	x	x	x	x	x	x	x	x	x
Nova Scotia	22,519	23,022	22,261	37,077	38,391	38,617	59,973	68,969	78,487
New Brunswick	18,059	18,985	18,902	29,611	31,222	31,576	47,993	56,173	64,570
Quebec	169,479	173,849	175,511	302,281	310,477	319,139	465,765	527,938	613,981
Ontario	211,280	215,588	215,153	407,052	414,232	421,070	623,817	709,273	813,542
Manitoba	30,420	31,123	31,142	53,154	55,497	56,258	81,048	95,351	107,799
Saskatchewan	24,723	26,526	26,671	44,154	47,355	46,166	69,217	83,125	92,312
Alberta	55,500	56,748	56,257	101,214	103,696	106,703	161,874	180,464	209,848
British Columbia	99,970	104,344	105,102	169,943	179,291	183,296	289,614	316,760	366,224

1. Includes stewing hen.

Table 2-1
Disposition of poultry meat — Chicken ¹

	Birds			Weight			Value		
	2006	2007	2008	2006	2007	2008	2006	2007	2008
	in thousands			in thousands of kilograms			in thousands of dollars		
Sold									
Canada	621,853	639,927	639,883	996,518	1,027,291	1,039,637	1,545,717	1,744,342	1,986,553
Newfoundland and Labrador	x	x	x	x	x	x	x	x	x
Prince Edward Island	x	x	x	x	x	x	x	x	x
Nova Scotia	21,713	22,235	21,337	33,269	34,638	34,232	53,373	61,632	68,869
New Brunswick	17,686	18,573	18,494	26,735	27,962	28,172	43,233	50,203	57,506
Quebec	164,897	169,362	170,793	269,196	277,029	283,505	409,484	469,266	538,079
Ontario	202,248	206,303	205,557	332,057	338,806	341,857	496,058	564,844	642,790
Manitoba	28,961	29,477	29,459	42,348	43,425	43,906	62,920	72,905	82,068
Saskatchewan	23,874	25,608	25,648	38,577	41,213	39,773	59,370	71,010	78,221
Alberta	53,744	54,985	54,377	87,619	89,332	90,113	137,557	151,999	173,014
British Columbia	97,275	101,493	102,098	150,385	157,872	160,461	257,508	274,696	316,184
Home consumption									
Canada	389	402	398	927	940	940	1,212	1,234	1,404
Newfoundland and Labrador	x	x	x	x	x	x	x	x	x
Prince Edward Island	x	x	x	x	x	x	x	x	x
Nova Scotia	7	8	7	17	17	17	26	29	31
New Brunswick	2	2	2	4	4	4	5	6	6
Quebec	25	26	25	63	63	63	90	99	110
Ontario	99	101	101	213	215	215	280	306	347
Manitoba	46	45	42	122	123	123	58	63	75
Saskatchewan	47	48	49	116	118	118	148	164	188
Alberta	105	109	109	270	272	272	430	391	446
British Columbia	54	58	59	112	117	117	158	158	181
Disposition ²									
Canada	622,242	640,329	640,281	997,445	1,028,231	1,040,578	1,546,929	1,745,576	1,987,957
Newfoundland and Labrador	x	x	x	x	x	x	x	x	x
Prince Edward Island	x	x	x	x	x	x	x	x	x
Nova Scotia	21,719	22,243	21,344	33,286	34,655	34,249	53,399	61,660	68,901
New Brunswick	17,688	18,576	18,496	26,739	27,966	28,176	43,238	50,208	57,512
Quebec	164,922	169,389	170,818	269,258	277,092	283,568	409,575	469,365	538,189
Ontario	202,347	206,404	205,658	332,269	339,021	342,072	496,338	565,150	643,137
Manitoba	29,007	29,521	29,501	42,471	43,548	44,029	62,978	72,968	82,143
Saskatchewan	23,921	25,656	25,697	38,693	41,331	39,891	59,518	71,174	78,409
Alberta	53,849	55,094	54,486	87,889	89,605	90,385	137,987	152,390	173,461
British Columbia	97,330	101,551	102,157	150,498	157,989	160,578	257,666	274,854	316,365

1. Includes stewing hen.

2. Includes sold and home consumption.

Table 2-2
Disposition of poultry meat — Turkey

	Birds			Weight			Value		
	2006	2007	2008	2006	2007	2008	2006	2007	2008
	in thousands			in thousands of kilograms			in thousands of dollars		
Sold									
Canada	21,158	21,742	22,835	163,317	168,886	179,808	278,485	320,151	388,501
Newfoundland and Labrador	x	x	x	x	x	x	x	x	x
Prince Edward Island	x	x	x	x	x	x	x	x	x
Nova Scotia	799	779	917	3,790	3,735	4,367	6,571	7,306	9,583
New Brunswick	371	409	406	2,871	3,255	3,398	4,753	5,963	7,056
Quebec	4,556	4,459	4,692	33,017	33,379	35,565	56,180	58,562	75,779
Ontario	8,931	9,182	9,493	74,761	75,189	78,976	127,442	144,081	170,358
Manitoba	1,411	1,600	1,639	10,671	11,936	12,215	18,048	22,359	25,627
Saskatchewan	799	867	971	5,440	6,004	6,255	9,663	11,909	13,857
Alberta	1,647	1,650	1,768	13,291	14,056	16,283	23,826	28,005	36,310
British Columbia	2,639	2,792	2,944	19,436	21,292	22,708	31,932	41,886	49,837
Home consumption									
Canada	14	14	14	108	111	111	188	214	241
Newfoundland and Labrador	x	x	x	x	x	x	x	x	x
Prince Edward Island	x	x	x	x	x	x	x	x	x
Nova Scotia	0	0	0	2	2	2	3	3	4
New Brunswick	0	0	0	1	1	1	2	2	2
Quebec	1	1	1	6	6	6	10	11	13
Ontario	3	3	3	22	22	22	37	42	48
Manitoba	2	2	2	13	14	14	22	25	28
Saskatchewan	3	3	3	21	21	21	37	42	46
Alberta	4	4	4	34	35	35	61	69	77
British Columbia	1	1	1	10	10	10	16	19	21
Disposition ¹									
Canada	21,172	21,757	22,849	163,425	168,996	179,919	278,673	320,365	388,742
Newfoundland and Labrador	x	x	x	x	x	x	x	x	x
Prince Edward Island	x	x	x	x	x	x	x	x	x
Nova Scotia	799	779	917	3,792	3,736	4,368	6,574	7,309	9,586
New Brunswick	371	409	407	2,872	3,256	3,399	4,755	5,965	7,058
Quebec	4,557	4,460	4,693	33,023	33,385	35,571	56,190	58,573	75,792
Ontario	8,933	9,184	9,495	74,782	75,211	78,998	127,479	144,123	170,405
Manitoba	1,413	1,602	1,641	10,684	11,949	12,229	18,070	22,384	25,655
Saskatchewan	802	870	975	5,461	6,025	6,276	9,699	11,951	13,903
Alberta	1,651	1,654	1,772	13,325	14,091	16,318	23,887	28,074	36,387
British Columbia	2,640	2,793	2,945	19,445	21,302	22,717	31,948	41,905	49,859

1. Includes sold and home consumption.

Table 2-3
Disposition of poultry meat — Total poultry

	Birds			Weight			Value		
	2006	2007	2008	2006	2007	2008	2006	2007	2008
	in thousands			in thousands of kilograms			in thousands of dollars		
Sold									
Canada	643,011	661,669	662,718	1,159,835	1,196,177	1,219,446	1,824,202	2,064,493	2,375,055
Newfoundland and Labrador	x	x	x	x	x	x	x	x	x
Prince Edward Island	x	x	x	x	x	x	x	x	x
Nova Scotia	22,511	23,014	22,254	37,059	38,373	38,599	59,944	68,937	78,452
New Brunswick	18,057	18,982	18,900	29,606	31,217	31,570	47,987	56,166	64,562
Quebec	169,453	173,821	175,485	302,212	310,407	319,070	465,665	527,828	613,858
Ontario	211,179	215,485	215,050	406,818	413,995	420,833	623,500	708,924	813,148
Manitoba	30,372	31,077	31,098	53,019	55,361	56,121	80,968	95,263	107,695
Saskatchewan	24,674	26,475	26,619	44,018	47,217	46,028	69,032	82,919	92,078
Alberta	55,391	56,634	56,145	100,910	103,388	106,396	161,383	180,003	209,325
British Columbia	99,915	104,285	105,042	169,821	179,164	183,169	289,440	316,582	366,021
Home consumption									
Canada	404	416	412	1,035	1,051	1,051	1,400	1,448	1,644
Newfoundland and Labrador	x	x	x	x	x	x	x	x	x
Prince Edward Island	x	x	x	x	x	x	x	x	x
Nova Scotia	7	8	8	18	18	18	29	32	35
New Brunswick	2	2	2	5	5	5	7	7	8
Quebec	26	27	26	68	69	69	101	110	123
Ontario	102	104	103	234	237	237	317	348	394
Manitoba	48	46	44	136	137	137	80	88	103
Saskatchewan	50	51	52	137	139	139	185	206	234
Alberta	109	113	112	304	307	307	491	461	524
British Columbia	56	59	60	122	127	127	174	177	202
Disposition ¹									
Canada	643,414	662,085	663,130	1,160,870	1,197,228	1,220,496	1,825,602	2,065,941	2,376,699
Newfoundland and Labrador	x	x	x	x	x	x	x	x	x
Prince Edward Island	x	x	x	x	x	x	x	x	x
Nova Scotia	22,519	23,022	22,261	37,077	38,391	38,617	59,973	68,969	78,487
New Brunswick	18,059	18,985	18,902	29,611	31,222	31,576	47,993	56,173	64,570
Quebec	169,479	173,849	175,511	302,281	310,477	319,139	465,765	527,938	613,981
Ontario	211,280	215,588	215,153	407,052	414,232	421,070	623,817	709,273	813,542
Manitoba	30,420	31,123	31,142	53,154	55,497	56,258	81,048	95,351	107,799
Saskatchewan	24,723	26,526	26,671	44,154	47,355	46,166	69,217	83,125	92,312
Alberta	55,500	56,748	56,257	101,214	103,696	106,703	161,874	180,464	209,848
British Columbia	99,970	104,344	105,102	169,943	179,291	183,296	289,614	316,760	366,224

1. Includes sold and home consumption.

Table 3
Supply and disposition of poultry meat

	2004	2005	2006	2007	2008
tonnes					
Chicken					
Production	945,846	977,415	971,926	1,003,776	1,016,476
Beginning stocks	23,719	33,069	38,361	28,218	36,554
Imports	129,793	132,875	151,144	169,443	171,918
Total supply	1,099,358	1,143,359	1,161,431	1,201,437	1,224,948
Exports	71,651	91,932	99,357	121,850	132,820
Ending stocks	33,069	38,361	28,218	36,554	37,457
Net supply	994,638	1,013,066	1,033,856	1,043,033	1,054,671
kilograms					
Food available per person, eviscerated basis	31.1	31.4	31.7	31.7	31.7
Food available per person, boneless weight	18.8	18.9	19.1	19.1	19.1
Food available per person, adjusted for loss ²	10.4	10.5	10.6	10.6	10.6
tonnes					
Stewing hen					
Production	23,582	22,690	25,519	24,456	24,101
Beginning stocks	780	838	1,256	946	1,445
Imports	46,166	46,450	48,386	58,266	66,395
Total supply	70,528	69,978	75,161	83,668	91,941
Exports	17,913	22,983	24,839	30,463	33,205
Ending stocks	837	1,256	946	1,445	2,410
Net supply	51,778	45,739	49,376	51,760	56,326
kilograms					
Food available per person, eviscerated basis	1.6	1.4	1.5	1.6	1.7
Food available per person, boneless weight	1.0	0.8	0.9	1.0	1.0
Food available per person, adjusted for loss ²	0.5	0.5	0.5	0.5	0.6
tonnes					
Total Chicken¹					
Production	969,428	1,000,105	997,445	1,028,232	1,040,577
Beginning stocks	24,499	33,907	39,617	29,164	37,999
Imports	175,959	179,325	199,530	227,709	238,313
Total supply	1,169,886	1,213,337	1,236,592	1,285,105	1,316,889
Exports	89,564	114,915	124,196	152,313	166,025
Ending stocks	33,906	39,617	29,164	37,999	39,867
Net supply	1,046,416	1,058,805	1,083,232	1,094,793	1,110,997
kilograms					
Food available per person, eviscerated basis	32.7	32.8	33.2	33.2	33.4
Food available per person, boneless weight	19.7	19.7	20.0	20.0	20.1
Food available per person, adjusted for loss ²	11.0	11.0	11.2	11.2	11.2
tonnes					
Turkey					
Production	145,051	155,426	163,425	168,996	179,919
Beginning stocks	15,852	11,731	12,411	12,834	15,415
Imports	10,185	14,896	8,995	8,046	9,062
Total supply	171,088	182,053	184,831	189,876	204,396
Exports	26,673	24,520	27,165	26,493	24,804
Ending stocks	11,731	12,411	12,834	15,415	22,241
Net supply	132,684	145,122	144,832	147,968	157,351
kilograms					
Food available per person, eviscerated basis	4.2	4.5	4.4	4.5	4.7
Food available per person, boneless weight	3.3	3.6	3.5	3.6	3.7
Food available per person, adjusted for loss ²	2.1	2.2	2.2	2.2	2.4

See notes at the end of the table.

Table 3 – continued

Supply and disposition of poultry meat

	2004	2005	2006	2007	2008
	tonnes				
Total poultry meat					
Production	1,114,479	1,155,531	1,160,870	1,197,228	1,220,496
Beginning stocks	40,351	45,638	52,028	41,998	53,414
Imports	186,144	194,221	208,525	235,755	247,375
Total supply	1,340,974	1,395,390	1,421,423	1,474,981	1,521,285
Exports	116,237	139,435	151,361	178,806	190,829
Ending stocks	45,637	52,028	41,998	53,414	62,108
Net supply	1,179,100	1,203,927	1,228,064	1,242,761	1,268,348
	kilograms				
Food available per person, eviscerated basis	36.9	37.3	37.6	37.7	38.1
Food available per person, boneless weight	23.0	23.3	23.5	23.6	23.8
Food available per person, adjusted for loss ²	13.1	13.3	13.4	13.4	13.6

1. Includes stewing hen.

2. Experimental, use with caution. The data have been adjusted for retail, household, cooking and plate loss.

**Table 4-1
Production of eggs by province — Average number of layers**

	Jan.	Feb.	Mar.	Apr.	May	June	July	Aug.	Sept.	Oct.	Nov.	Dec.	Annual average
	in thousands												
Newfoundland and Labrador													
2007	345	363	372	331	320	350	370	368	338	339	347	342	349
2008	358	385	386	343	333	363	384	382	351	352	360	355	363
2009	365	342	336
Prince Edward Island													
2007	130	130	124	119	126	132	131	131	131	130	130	131	129
2008	130	130	124	119	126	132	131	130	131	130	130	131	129
2009	130	128	125
Nova Scotia													
2007	754	752	756	744	717	721	749	755	747	747	744	745	744
2008	751	749	753	742	715	719	747	753	744	744	741	743	742
2009	749	745	749
New Brunswick													
2007	813	803	829	799	812	803	765	786	785	732	698	631	771
2008	734	757	800	789	782	771	777	809	784	783	664	718	764
2009	758	772	754
Quebec													
2007	4,848	4,874	4,883	4,810	4,771	4,764	4,798	4,820	4,673	4,701	4,805	4,905	4,805
2008	4,931	4,864	4,818	4,853	4,875	4,755	4,766	4,799	4,815	4,862	4,856	4,996	4,849
2009	4,990	4,823	4,840
Ontario													
2007	9,450	9,433	9,435	9,551	9,589	9,383	9,260	9,309	9,338	9,294	9,406	9,542	9,415
2008	9,444	9,369	9,338	9,363	9,408	9,402	9,354	9,432	9,639	9,692	9,704	9,775	9,493
2009	9,440	9,349	9,288
Manitoba													
2007	2,951	2,933	3,031	3,035	2,998	2,983	3,009	2,989	2,962	2,949	2,939	2,981	2,980
2008	3,030	3,036	3,018	3,002	2,999	3,011	3,011	2,990	2,967	2,906	2,899	2,973	2,987
2009	2,727	2,718	2,711
Saskatchewan													
2007	1,124	1,178	1,155	1,141	1,162	1,121	1,110	1,147	1,111	1,079	1,104	1,127	1,130
2008	1,109	1,114	1,099	1,072	1,102	1,109	1,095	1,122	1,146	1,149	1,175	1,184	1,123
2009	1,193	1,174	1,106
Alberta													
2007	2,314	2,319	2,327	2,310	2,311	2,341	2,329	2,344	2,321	2,297	2,299	2,294	2,321
2008	2,298	2,286	2,288	2,315	2,344	2,350	2,353	2,366	2,370	2,319	2,284	2,273	2,321
2009	2,289	2,280	2,222
British Columbia													
2007	3,239	3,150	3,121	3,196	3,261	3,228	3,236	3,169	3,067	3,146	3,171	3,159	3,173
2008	3,207	3,200	3,186	3,222	3,270	3,309	3,291	3,216	3,200	3,188	3,153	3,197	3,220
2009	3,247	3,193	3,182
Canada													
2007	25,968	25,935	26,032	26,036	26,067	25,826	25,757	25,817	25,473	25,414	25,643	25,857	25,817
2008	25,992	25,891	25,810	25,820	25,953	25,921	25,909	25,998	26,147	26,125	25,966	26,343	25,990
2009	25,758	25,523	25,313

Table 4-2
Production of eggs by province — Eggs per 100 layers

	Jan.	Feb.	Mar.	Apr.	May	June	July	Aug.	Sept.	Oct.	Nov.	Dec.	Annual total
	in thousands												
Newfoundland and Labrador													
2007	2,538	2,419	2,549	2,577	2,595	2,529	2,602	2,580	2,537	2,562	2,528	2,566	30,576
2008	2,478	2,378	2,432	2,573	2,550	2,416	2,336	2,418	2,509	2,587	2,457	2,594	29,685
2009	2,629	2,496	2,622
Prince Edward Island													
2007	2,602	2,447	2,578	2,578	2,526	2,451	2,626	2,601	2,511	2,526	2,501	2,622	30,554
2008	2,742	2,393	2,528	2,511	2,462	2,482	2,599	2,572	2,534	2,573	2,535	2,559	30,498
2009	2,549	2,313	2,536
Nova Scotia													
2007	2,605	2,415	2,545	2,487	2,516	2,498	2,577	2,550	2,450	2,551	2,465	2,637	30,299
2008	2,522	2,419	2,573	2,579	2,550	2,528	2,526	2,564	2,446	2,578	2,498	2,573	30,357
2009	2,614	2,302	2,498
New Brunswick													
2007	2,106	1,990	2,090	2,046	2,057	1,993	2,136	2,131	2,046	2,149	2,115	2,205	25,028
2008	2,162	1,991	2,087	2,059	2,084	2,014	2,065	2,091	2,050	2,102	2,139	2,155	24,983
2009	2,065	1,922	2,030
Quebec													
2007	2,187	1,984	2,168	2,070	2,144	2,071	2,166	2,120	2,076	2,156	2,078	2,142	25,361
2008	2,123	2,003	2,109	2,032	2,110	2,021	2,121	2,089	2,045	2,086	2,042	2,096	24,882
2009	2,062	1,907	2,100
Ontario													
2007	2,491	2,245	2,462	2,359	2,447	2,374	2,457	2,454	2,372	2,466	2,390	2,464	28,983
2008	2,457	2,307	2,430	2,339	2,439	2,370	2,434	2,420	2,347	2,415	2,373	2,465	28,799
2009	2,451	2,212	2,446
Manitoba													
2007	2,581	2,383	2,550	2,319	2,370	2,323	2,380	2,378	2,321	2,368	2,301	2,399	28,675
2008	2,497	2,336	2,451	2,409	2,465	2,403	2,466	2,468	2,408	2,453	2,385	2,479	29,220
2009	2,550	2,329	2,512
Saskatchewan													
2007	1,869	1,678	1,774	1,665	1,705	1,640	1,770	1,725	1,646	1,726	1,704	1,733	20,634
2008	1,722	1,640	1,612	1,551	1,589	1,546	1,605	1,593	1,530	1,584	1,556	1,573	19,096
2009	1,606	1,389	1,488
Alberta													
2007	2,068	1,851	2,033	1,931	2,044	1,949	2,022	1,985	1,939	2,014	2,016	2,114	23,951
2008	2,161	2,018	2,131	2,055	2,100	2,042	2,101	2,087	2,026	2,075	2,067	2,148	25,002
2009	2,222	1,971	2,183
British Columbia													
2007	2,084	1,897	2,067	2,000	2,051	2,004	2,064	2,033	2,001	2,069	2,009	2,085	24,381
2008	2,109	1,967	2,069	1,991	2,069	2,001	2,062	2,036	2,012	2,050	2,002	2,095	24,463
2009	2,108	1,908	2,108
Canada													
2007	2,322	2,109	2,293	2,187	2,257	2,190	2,272	2,252	2,191	2,271	2,208	2,287	26,839
2008	2,293	2,153	2,261	2,190	2,261	2,193	2,259	2,246	2,190	2,245	2,203	2,281	26,774
2009	2,292	2,068	2,271

Table 4-3
Production of eggs by province in thousands of dozens

	Jan.	Feb.	Mar.	Apr.	May	June	July	Aug.	Sept.	Oct.	Nov.	Dec.	Annual total
	in thousands												
Newfoundland and Labrador													
2007	729	732	790	710	693	737	803	791	715	724	731	730	8,885
2008	740	764	783	736	707	731	748	769	734	759	738	766	8,975
2009	800	711	734
Prince Edward Island													
2007	283	265	266	255	266	269	287	283	274	274	271	286	3,277
2008	298	258	260	249	259	272	283	279	276	279	274	279	3,266
2009	275	247	264
Nova Scotia													
2007	1,636	1,513	1,604	1,543	1,504	1,502	1,609	1,605	1,525	1,588	1,527	1,638	18,793
2008	1,578	1,510	1,616	1,594	1,518	1,515	1,572	1,608	1,517	1,599	1,543	1,592	18,761
2009	1,632	1,429	1,560
New Brunswick													
2007	1,427	1,331	1,443	1,363	1,391	1,334	1,361	1,395	1,338	1,311	1,231	1,160	16,084
2008	1,322	1,257	1,391	1,354	1,357	1,294	1,337	1,409	1,340	1,371	1,183	1,289	15,904
2009	1,305	1,236	1,276
Quebec													
2007	8,835	8,057	8,824	8,299	8,526	8,222	8,661	8,515	8,084	8,447	8,322	8,757	101,551
2008	8,722	8,121	8,468	8,220	8,574	8,009	8,425	8,355	8,207	8,452	8,264	8,726	100,542
2009	8,576	7,664	8,469
Ontario													
2007	19,620	17,645	19,358	18,779	19,557	18,560	18,958	19,033	18,459	19,101	18,733	19,595	227,392
2008	19,340	18,014	18,907	18,253	19,123	18,568	18,976	19,022	18,851	19,501	19,191	20,082	227,828
2009	19,284	17,232	18,932
Manitoba													
2007	6,346	5,824	6,442	5,866	5,922	5,775	5,968	5,923	5,729	5,819	5,634	5,960	71,208
2008	6,306	5,911	6,165	6,026	6,160	6,030	6,187	6,150	5,955	5,941	5,762	6,142	72,734
2009	5,795	5,275	5,675
Saskatchewan													
2007	1,750	1,648	1,708	1,583	1,651	1,532	1,637	1,649	1,524	1,552	1,568	1,628	19,431
2008	1,591	1,523	1,476	1,385	1,460	1,429	1,465	1,490	1,461	1,517	1,523	1,552	17,871
2009	1,597	1,359	1,372
Alberta													
2007	3,988	3,577	3,943	3,718	3,936	3,803	3,924	3,877	3,751	3,856	3,863	4,042	46,325
2008	4,138	3,844	4,064	3,965	4,102	3,999	4,119	4,115	4,002	4,010	3,934	4,069	48,359
2009	4,239	3,746	4,041
British Columbia													
2007	5,625	4,979	5,375	5,328	5,575	5,391	5,566	5,370	5,114	5,424	5,308	5,489	64,468
2008	5,637	5,246	5,493	5,347	5,639	5,517	5,654	5,457	5,367	5,445	5,261	5,580	65,642
2009	5,703	5,078	5,591
Canada													
2007	50,239	45,570	49,752	47,444	49,020	47,126	48,774	48,441	46,512	48,095	47,188	49,283	577,415
2008	49,671	46,447	48,622	47,127	48,898	47,364	48,767	48,655	47,709	48,874	47,672	50,077	579,882
2009	49,206	43,975	47,913

Table 5-1
Disposition of eggs by province, quantity and value by province — Canada

	Jan.	Feb.	Mar.	Apr.	May	June	July	Aug.	Sept.	Oct.	Nov.	Dec.	Annual total
quantity, in thousands of dozens													
Sold for consumption													
2007	43,888	39,723	43,342	41,251	42,639	41,179	42,539	42,415	40,803	42,212	41,266	43,299	504,575
2008	43,572	40,499	42,348	41,052	42,647	41,424	42,566	42,557	41,431	42,772	41,662	43,893	506,423
2009	42,776	38,357	41,740
Sold for hatching													
2007	5,264	4,851	5,334	5,161	5,319	4,921	5,177	4,975	4,694	4,839	4,894	4,916	60,391
2008	5,034	4,947	5,202	5,034	5,179	4,895	5,130	5,030	5,230	5,032	4,967	5,096	60,776
2009	5,351	4,661	5,140
Home consumption													
2007	125	125	125	125	125	125	125	125	125	125	125	125	1,399
2008	117	117	117	117	117	117	117	117	117	117	117	117	1,399
2009	117	117	117
Leakers and rejects													
2007	962	872	952	908	938	902	934	926	891	919	903	943	11,051
2008	948	885	955	925	955	928	955	952	931	953	926	970	11,282
2009	962	840	916
Total disposition of eggs													
2007	50,239	45,570	49,752	47,444	49,021	47,126	48,774	48,441	46,512	48,095	47,188	49,283	577,415
2008	49,671	46,447	48,621	47,127	48,898	47,364	48,767	48,655	47,709	48,874	47,672	50,076	579,881
2009	49,206	43,975	47,913
value, in thousands of dollars													
Sold for consumption													
2007	43,304	40,913	45,470	43,430	45,437	44,003	45,751	46,196	44,488	46,049	45,402	47,700	538,195
2008	47,595	44,448	46,752	45,966	48,177	46,907	49,078	50,241	48,996	50,805	48,440	50,879	578,283
2009	49,820	42,267	45,566
Sold for hatching													
2007	18,784	17,402	19,608	19,003	19,659	18,305	19,314	18,370	17,367	18,010	18,216	18,312	222,541
2008	18,758	19,146	20,293	19,853	20,657	19,634	21,089	20,705	21,555	20,720	20,027	20,428	242,865
2009	21,536	18,824	20,907
Home consumption													
2007	158	164	161	161	161	162	163	168	170	170	171	168	1,834
2008	155	156	154	155	156	156	158	162	160	161	158	158	1,889
2009	157	152	152
Total value of disposition of eggs													
2007	62,246	58,479	65,239	62,594	65,258	62,470	65,227	64,734	62,025	64,229	63,789	66,179	762,569
2008	66,507	63,750	67,198	65,974	68,990	66,697	70,325	71,108	70,711	71,686	68,626	71,465	823,036
2009	71,514	61,244	66,625

Table 5-2
Disposition of eggs by province, quantity and value by province — Newfoundland and Labrador

	Jan.	Feb.	Mar.	Apr.	May	June	July	Aug.	Sept.	Oct.	Nov.	Dec.	Annual total
quantity, in thousands of dozens													
Sold for consumption													
2007	714	718	774	696	679	723	787	775	701	710	717	716	8,710
2008	726	749	767	721	693	717	734	754	720	744	724	751	8,798
2009	784	697	720
Sold for hatching													
2007	0	0	0	0	0	0	0	0	0	0	0	0	0
2008	0	0	0	0	0	0	0	0	0	0	0	0	0
2009	0	0	0
Home consumption													
2007	0	0	0	0	0	0	0	0	0	0	0	0	2
2008	0	0	0	0	0	0	0	0	0	0	0	0	2
2009	0	0	0
Leakers and rejects													
2007	14	14	15	14	14	14	16	15	14	14	14	14	173
2008	14	15	15	14	14	14	15	15	14	15	14	15	175
2009	16	14	14
Total disposition of eggs													
2007	729	732	790	710	693	737	803	791	715	724	731	730	8,885
2008	740	764	782	736	707	731	749	769	734	759	738	766	8,975
2009	800	711	734
value, in thousands of dollars													
Sold for consumption													
2007	888	919	984	927	911	828	1,071	1,055	968	980	974	973	11,476
2008	986	1,017	1,035	980	942	1,017	1,041	1,123	1,072	1,134	1,075	1,104	12,525
2009	1,102	980	1,012
Sold for hatching													
2007	0	0	0	0	0	0	0	0	0	0	0	0	0
2008	0	0	0	0	0	0	0	0	0	0	0	0	0
2009	0	0	0
Home consumption													
2007	0	0	0	0	0	0	0	0	0	0	0	0	5
2008	0	0	0	0	0	0	0	0	0	0	0	0	5
2009	0	0	0
Total value of disposition of eggs													
2007	888	920	984	927	911	828	1,072	1,055	969	980	975	973	11,481
2008	986	1,018	1,035	981	942	1,017	1,042	1,123	1,072	1,134	1,076	1,104	12,530
2009	1,103	980	1,012

Table 5-3
Disposition of eggs by province, quantity and value by province — Prince Edward Island

	Jan.	Feb.	Mar.	Apr.	May	June	July	Aug.	Sept.	Oct.	Nov.	Dec.	Annual total
quantity, in thousands of dozens													
Sold for consumption													
2007	277	259	260	250	260	264	281	277	268	268	265	280	3,209
2008	291	253	255	243	254	267	277	274	270	273	269	273	3,198
2009	269	241	259
Sold for hatching													
2007	0	0	0	0	0	0	0	0	0	0	0	0	0
2008	0	0	0	0	0	0	0	0	0	0	0	0	0
2009	0	0	0
Home consumption													
2007	0	0	0	0	0	0	0	0	0	0	0	0	4
2008	0	0	0	0	0	0	0	0	0	0	0	0	4
2009	0	0	0
Leakers and rejects													
2007	6	5	5	5	5	5	6	6	5	5	5	6	64
2008	6	5	5	5	5	5	6	5	5	5	5	5	64
2009	5	5	5
Total disposition of eggs													
2007	283	265	266	255	266	269	287	283	274	274	271	286	3,277
2008	298	258	260	249	259	272	283	279	276	279	274	279	3,266
2009	275	247	264
value, in thousands of dollars													
Sold for consumption													
2007	288	290	289	283	304	306	325	319	308	308	309	326	3,654
2008	339	295	292	286	298	323	336	347	343	354	343	343	3,897
2009	323	289	308
Sold for hatching													
2007	0	0	0	0	0	0	0	0	0	0	0	0	0
2008	0	0	0	0	0	0	0	0	0	0	0	0	0
2009	0	0	0
Home consumption													
2007	1	1	1	1	1	1	1	1	1	1	1	1	6
2008	1	1	1	1	1	1	1	1	1	1	1	1	6
2009	1	1	1
Total value of disposition of eggs													
2007	288	291	289	283	305	306	326	319	309	309	309	326	3,660
2008	339	295	293	287	298	324	337	347	343	354	343	343	3,903
2009	324	290	308

Table 5-4
Disposition of eggs by province, quantity and value by province — Nova Scotia

	Jan.	Feb.	Mar.	Apr.	May	June	July	Aug.	Sept.	Oct.	Nov.	Dec.	Annual total
quantity, in thousands of dozens													
Sold for consumption													
2007	1,621	1,500	1,589	1,529	1,490	1,488	1,594	1,591	1,511	1,573	1,514	1,623	18,622
2008	1,567	1,500	1,576	1,555	1,485	1,480	1,536	1,572	1,486	1,567	1,515	1,566	18,403
2009	1,595	1,417	1,547
Sold for hatching													
2007	0	0	0	0	0	0	0	0	0	0	0	0	0
2008	0	0	0	0	0	0	0	0	0	0	0	0	0
2009	0	0	0
Home consumption													
2007	1	1	1	1	1	1	1	1	1	1	1	1	16
2008	1	1	1	1	1	1	1	1	1	1	1	1	16
2009	2	2	2
Leakers and rejects													
2007	14	13	13	13	12	12	13	13	13	13	13	14	155
2008	10	9	38	38	32	34	34	35	30	32	26	24	341
2009	34	11	12
Total disposition of eggs													
2007	1,636	1,513	1,604	1,543	1,504	1,502	1,609	1,605	1,525	1,588	1,527	1,638	18,793
2008	1,578	1,510	1,616	1,594	1,518	1,515	1,572	1,608	1,517	1,599	1,542	1,592	18,760
2009	1,631	1,429	1,560
value, in thousands of dollars													
Sold for consumption													
2007	1,795	1,726	1,891	1,821	1,816	1,814	1,944	1,939	1,843	1,919	1,854	1,986	22,348
2008	1,920	1,836	1,929	1,903	1,819	1,870	1,941	2,062	1,949	2,080	2,024	2,047	23,380
2009	2,031	1,803	1,916
Sold for hatching													
2007	0	0	0	0	0	0	0	0	0	0	0	0	0
2008	0	0	0	0	0	0	0	0	0	0	0	0	0
2009	0	0	0
Home consumption													
2007	3	3	3	3	3	3	3	3	3	3	3	3	32
2008	3	3	3	3	3	3	3	3	3	3	3	3	34
2009	3	3	3
Total value of disposition of eggs													
2007	1,797	1,728	1,894	1,824	1,819	1,817	1,946	1,942	1,846	1,922	1,857	1,989	22,380
2008	1,922	1,838	1,932	1,906	1,822	1,873	1,944	2,065	1,952	2,083	2,027	2,050	23,414
2009	2,034	1,806	1,919

Table 5-5
Disposition of eggs by province, quantity and value by province — New Brunswick

	Jan.	Feb.	Mar.	Apr.	May	June	July	Aug.	Sept.	Oct.	Nov.	Dec.	Annual total
quantity, in thousands of dozens													
Sold for consumption													
2007	924	857	924	895	881	823	892	943	898	917	851	851	10,655
2008	913	846	913	896	884	823	854	922	893	911	843	868	10,566
2009	854	810	800
Sold for hatching													
2007	474	448	490	441	482	485	442	424	413	368	355	285	5,107
2008	383	386	449	430	446	446	457	459	421	432	317	395	5,019
2009	425	401	451
Home consumption													
2007	1	1	1	1	1	1	1	1	1	1	1	1	10
2008	1	1	1	1	1	1	1	1	1	1	1	1	10
2009	1	1	1
Leakers and rejects													
2007	28	26	28	27	27	26	27	27	26	26	24	23	314
2008	26	25	27	26	27	25	26	28	26	27	23	25	310
2009	26	24	25
Total disposition of eggs													
2007	1,427	1,331	1,443	1,363	1,391	1,334	1,362	1,395	1,338	1,311	1,231	1,160	16,086
2008	1,322	1,257	1,390	1,354	1,357	1,294	1,338	1,410	1,340	1,371	1,183	1,289	15,904
2009	1,305	1,236	1,276
value, in thousands of dollars													
Sold for consumption													
2007	1,019	984	1,088	1,053	1,070	999	1,083	1,145	1,090	1,113	1,039	1,041	12,722
2008	1,116	1,034	1,117	1,096	1,081	1,037	1,077	1,207	1,168	1,192	1,113	1,137	13,376
2009	1,103	1,045	1,016
Sold for hatching													
2007	1,483	1,399	1,532	1,378	1,506	1,515	1,383	1,326	1,291	1,150	1,111	892	15,966
2008	1,196	1,205	1,404	1,345	1,395	1,393	1,428	1,435	1,315	1,349	989	1,234	15,688
2009	1,327	1,254	1,409
Home consumption													
2007	1	1	1	1	1	1	1	1	1	1	1	1	15
2008	1	1	1	1	1	1	1	1	1	1	1	2	15
2009	1	1	1
Total value of disposition of eggs													
2007	2,503	2,384	2,622	2,432	2,577	2,515	2,467	2,472	2,382	2,264	2,151	1,934	28,703
2008	2,313	2,241	2,522	2,442	2,477	2,432	2,506	2,643	2,485	2,543	2,104	2,373	29,080
2009	2,432	2,301	2,427

Table 5-6
Disposition of eggs by province, quantity and value by province — Quebec

	Jan.	Feb.	Mar.	Apr.	May	June	July	Aug.	Sept.	Oct.	Nov.	Dec.	Annual total
quantity, in thousands of dozens													
Sold for consumption													
2007	7,289	6,631	7,309	6,853	7,003	6,841	7,089	7,033	6,689	6,966	6,844	7,184	83,730
2008	7,170	6,636	6,946	6,768	7,006	6,619	6,898	6,860	6,636	6,950	6,721	7,037	82,247
2009	7,017	6,285	6,949
Sold for hatching													
2007	1,368	1,263	1,337	1,278	1,351	1,215	1,397	1,310	1,231	1,310	1,310	1,396	15,768
2008	1,376	1,321	1,351	1,286	1,395	1,228	1,357	1,326	1,405	1,331	1,376	1,513	16,264
2009	1,386	1,224	1,349
Home consumption													
2007	6	6	6	6	6	6	6	6	6	6	6	6	72
2008	6	6	6	6	6	6	6	6	6	6	6	6	72
2009	6	6	6
Leakers and rejects													
2007	172	157	172	162	166	160	169	166	158	165	162	171	1,981
2008	170	158	165	160	167	156	164	163	160	165	161	170	1,959
2009	167	149	165
Total disposition of eggs													
2007	8,835	8,057	8,824	8,299	8,526	8,222	8,661	8,515	8,084	8,447	8,322	8,757	101,551
2008	8,722	8,121	8,468	8,220	8,574	8,009	8,425	8,355	8,207	8,452	8,264	8,726	100,542
2009	8,576	7,664	8,469
value, in thousands of dollars													
Sold for consumption													
2007	7,642	7,243	8,129	7,630	8,056	7,870	8,156	8,092	7,707	8,029	8,038	8,437	95,028
2008	8,421	7,820	8,183	8,163	8,520	8,049	8,589	8,742	8,452	8,904	8,362	8,755	100,960
2009	8,554	7,511	8,137
Sold for hatching													
2007	4,856	4,482	4,799	4,588	4,837	4,412	5,072	4,702	4,418	4,754	4,754	5,038	56,726
2008	4,968	5,019	5,216	4,963	5,495	4,838	5,564	5,438	5,704	5,405	5,351	5,885	63,846
2009	5,446	4,809	5,395
Home consumption													
2007	8	8	8	8	8	8	8	8	8	8	8	8	96
2008	8	8	8	8	8	8	8	8	8	8	8	8	96
2009	8	8	8
Total value of disposition of eggs													
2007	12,506	11,733	12,936	12,226	12,901	12,290	13,236	12,802	12,133	12,791	12,800	13,483	151,850
2008	13,397	12,847	13,407	13,134	14,023	12,895	14,161	14,188	14,164	14,317	13,721	14,648	164,902
2009	14,008	12,328	13,540

Table 5-7
Disposition of eggs by province, quantity and value by province — Ontario

	Jan.	Feb.	Mar.	Apr.	May	June	July	Aug.	Sept.	Oct.	Nov.	Dec.	Annual total
quantity, in thousands of dozens													
Sold for consumption													
2007	17,643	15,854	17,348	16,828	17,552	16,679	17,106	17,106	16,662	17,198	16,790	17,603	204,405
2008	17,424	16,119	16,898	16,385	17,259	16,751	17,103	17,100	16,865	17,576	17,253	18,105	204,838
2009	17,259	15,457	16,984
Sold for hatching													
2007	1,561	1,414	1,600	1,552	1,591	1,486	1,449	1,523	1,404	1,498	1,545	1,577	18,194
2008	1,509	1,514	1,610	1,482	1,461	1,425	1,473	1,521	1,588	1,515	1,534	1,555	18,187
2009	1,619	1,409	1,549
Home consumption													
2007	33	33	33	33	33	33	33	33	33	33	33	33	360
2008	30	30	30	30	30	30	30	30	30	30	30	30	360
2009	30	30	30
Leakers and rejects													
2007	383	344	377	366	381	362	370	371	360	372	365	382	4,433
2008	377	351	369	356	373	362	370	371	368	380	374	392	4,443
2009	376	336	369
Total disposition of eggs													
2007	19,620	17,645	19,358	18,779	19,557	18,560	18,958	19,033	18,459	19,101	18,733	19,595	227,392
2008	19,340	18,014	18,907	18,253	19,123	18,568	18,976	19,022	18,851	19,501	19,191	20,082	227,828
2009	19,284	17,232	18,932
value, in thousands of dollars													
Sold for consumption													
2007	17,787	16,696	18,930	18,363	19,311	18,518	18,994	19,320	18,826	19,430	19,000	19,919	225,140
2008	19,718	18,288	19,160	18,889	20,051	19,460	20,281	20,706	20,405	21,265	20,389	21,395	240,007
2009	21,588	17,230	18,932
Sold for hatching													
2007	5,464	4,990	5,647	5,462	5,600	5,319	5,189	5,377	4,956	5,348	5,516	5,613	64,463
2008	5,373	5,676	6,116	5,630	5,670	5,530	5,952	6,144	6,352	6,061	5,890	5,971	70,365
2009	6,266	5,565	6,117
Home consumption													
2007	45	46	44	44	44	44	44	46	47	47	47	47	492
2008	42	42	40	40	41	41	42	43	43	43	42	42	501
2009	44	40	40
Total value of disposition of eggs													
2007	23,296	21,732	24,621	23,869	24,955	23,881	24,227	24,743	23,829	24,825	24,563	25,579	290,095
2008	25,133	24,006	25,316	24,559	25,762	25,031	26,275	26,893	26,800	27,369	26,321	27,408	310,873
2009	27,898	22,835	25,089

Table 5-8
Disposition of eggs by province, quantity and value by province — Manitoba

	Jan.	Feb.	Mar.	Apr.	May	June	July	Aug.	Sept.	Oct.	Nov.	Dec.	Annual total
quantity, in thousands of dozens													
Sold for consumption													
2007	5,933	5,423	5,991	5,440	5,522	5,377	5,567	5,547	5,346	5,419	5,265	5,563	66,405
2008	5,861	5,497	5,731	5,612	5,736	5,619	5,784	5,771	5,568	5,538	5,376	5,766	67,859
2009	5,395	4,906	5,255
Sold for hatching													
2007	274	272	310	297	270	270	270	246	256	272	244	266	3,247
2008	308	285	300	282	290	279	268	245	257	273	260	242	3,288
2009	273	252	295
Home consumption													
2007	15	15	15	15	15	15	15	15	15	15	15	15	168
2008	14	14	14	14	14	14	14	14	14	14	14	14	168
2009	14	14	14
Leakers and rejects													
2007	124	114	126	114	115	113	116	115	112	113	110	116	1,388
2008	123	115	120	118	120	118	121	120	116	116	112	120	1,419
2009	113	103	111
Total disposition of eggs													
2007	6,346	5,824	6,442	5,866	5,922	5,775	5,968	5,923	5,729	5,819	5,634	5,960	71,208
2008	6,306	5,911	6,165	6,026	6,160	6,030	6,187	6,150	5,955	5,941	5,762	6,142	72,734
2009	5,795	5,275	5,675
value, in thousands of dollars													
Sold for consumption													
2007	4,107	3,818	4,192	3,797	3,877	3,774	4,015	4,156	4,019	4,063	3,993	4,202	48,027
2008	4,120	3,863	3,972	3,878	4,047	3,950	4,164	4,332	4,198	4,136	4,065	4,337	49,062
2009	3,588	3,437	3,468
Sold for hatching													
2007	997	990	1,187	1,138	1,033	1,035	1,036	942	979	1,041	936	1,019	12,333
2008	1,178	1,151	1,229	1,156	1,189	1,163	1,118	1,045	1,093	1,165	1,106	1,032	13,625
2009	1,161	1,075	1,234
Home consumption													
2007	13	13	13	13	13	13	14	15	15	15	15	15	149
2008	12	12	12	12	12	12	12	13	13	13	13	13	149
2009	12	12	12
Total value of disposition of eggs													
2007	5,117	4,821	5,392	4,948	4,923	4,822	5,065	5,113	5,013	5,119	4,944	5,236	60,509
2008	5,310	5,026	5,213	5,046	5,248	5,125	5,294	5,390	5,304	5,314	5,184	5,382	62,836
2009	4,761	4,524	4,714

Table 5-9
Disposition of eggs by province, quantity and value by province — Saskatchewan

	Jan.	Feb.	Mar.	Apr.	May	June	July	Aug.	Sept.	Oct.	Nov.	Dec.	Annual total
quantity, in thousands of dozens													
Sold for consumption													
2007	1,504	1,411	1,449	1,306	1,390	1,357	1,402	1,401	1,318	1,362	1,345	1,402	16,659
2008	1,397	1,287	1,284	1,174	1,256	1,236	1,245	1,241	1,202	1,264	1,256	1,302	15,144
2009	1,275	1,116	1,128
Sold for hatching													
2007	197	190	211	231	214	130	188	201	161	145	177	179	2,225
2008	149	192	149	170	162	151	177	206	217	209	223	206	2,210
2009	277	203	203
Home consumption													
2007	15	15	15	15	15	15	15	15	15	15	15	15	168
2008	14	14	14	14	14	14	14	14	14	14	14	14	168
2009	14	14	14
Leakers and rejects													
2007	34	32	33	31	32	30	32	32	30	30	31	32	379
2008	31	30	29	27	28	28	29	29	28	30	30	30	349
2009	31	26	27
Total disposition of eggs													
2007	1,750	1,648	1,708	1,583	1,651	1,532	1,637	1,649	1,524	1,552	1,568	1,628	19,431
2008	1,591	1,523	1,476	1,385	1,460	1,429	1,465	1,490	1,461	1,517	1,523	1,552	17,871
2009	1,597	1,359	1,372
value, in thousands of dollars													
Sold for consumption													
2007	1,493	1,480	1,520	1,374	1,464	1,443	1,493	1,508	1,424	1,468	1,456	1,531	17,674
2008	1,526	1,430	1,468	1,366	1,473	1,450	1,483	1,500	1,464	1,538	1,478	1,530	17,706
2009	1,454	1,234	1,250
Sold for hatching													
2007	719	691	808	886	821	499	720	768	618	555	676	685	8,446
2008	571	775	611	730	693	649	761	904	954	920	983	905	9,456
2009	1,219	892	891
Home consumption													
2007	19	20	19	19	19	19	19	20	20	20	20	20	218
2008	19	20	19	19	19	19	19	19	19	19	19	19	229
2009	19	19	19
Total value of disposition of eggs													
2007	2,231	2,191	2,347	2,279	2,304	1,961	2,232	2,296	2,062	2,043	2,152	2,236	26,338
2008	2,116	2,225	2,098	2,115	2,185	2,118	2,263	2,423	2,437	2,477	2,480	2,454	27,391
2009	2,692	2,145	2,160

Table 5-10
Disposition of eggs by province, quantity and value by province — Alberta

	Jan.	Feb.	Mar.	Apr.	May	June	July	Aug.	Sept.	Oct.	Nov.	Dec.	Annual total
quantity, in thousands of dozens													
Sold for consumption													
2007	3,297	2,953	3,225	3,096	3,234	3,156	3,225	3,219	3,128	3,250	3,214	3,440	38,460
2008	3,512	3,249	3,417	3,269	3,411	3,330	3,446	3,444	3,313	3,380	3,265	3,502	40,538
2009	3,565	3,174	3,459
Sold for hatching													
2007	580	521	608	516	592	540	589	549	517	498	541	490	6,588
2008	514	489	537	588	580	560	562	560	580	521	561	457	6,507
2009	560	468	472
Home consumption													
2007	33	33	33	33	33	33	33	33	33	33	33	33	372
2008	31	31	31	31	31	31	31	31	31	31	31	31	372
2009	31	31	31
Leakers and rejects													
2007	78	70	77	73	77	74	77	76	73	75	75	79	905
2008	81	75	79	77	80	78	80	80	78	78	77	79	942
2009	83	73	79
Total disposition of eggs													
2007	3,988	3,577	3,943	3,718	3,936	3,803	3,924	3,877	3,751	3,856	3,863	4,042	46,325
2008	4,138	3,844	4,064	3,965	4,102	3,999	4,119	4,115	4,002	4,010	3,934	4,069	48,359
2009	4,239	3,746	4,041
value, in thousands of dollars													
Sold for consumption													
2007	3,379	3,195	3,487	3,349	3,498	3,445	3,522	3,548	3,449	3,583	3,593	3,877	41,955
2008	3,956	3,719	4,035	3,922	4,126	4,029	4,223	4,275	4,136	4,215	3,947	4,231	48,814
2009	4,185	3,620	3,945
Sold for hatching													
2007	2,240	2,067	2,414	2,049	2,351	2,170	2,366	2,208	2,079	2,002	2,174	1,968	26,280
2008	2,064	2,049	2,250	2,505	2,469	2,395	2,404	2,449	2,533	2,275	2,451	1,995	27,839
2009	2,515	2,101	2,074
Home consumption													
2007	40	42	41	41	41	42	42	43	43	43	43	43	470
2008	41	41	41	41	41	41	42	43	42	42	41	41	497
2009	40	39	39
Total value of disposition of eggs													
2007	5,659	5,304	5,942	5,439	5,890	5,657	5,930	5,799	5,571	5,628	5,810	5,888	68,705
2008	6,061	5,809	6,326	6,468	6,636	6,465	6,669	6,767	6,711	6,532	6,439	6,267	77,150
2009	6,740	5,760	6,058

Table 5-11
Disposition of eggs by province, quantity and value by province — British Columbia

	Jan.	Feb.	Mar.	Apr.	May	June	July	Aug.	Sept.	Oct.	Nov.	Dec.	Annual total
quantity, in thousands of dozens													
Sold for consumption													
2007	4,686	4,118	4,472	4,358	4,627	4,471	4,596	4,523	4,282	4,549	4,462	4,638	53,720
2008	4,712	4,364	4,561	4,428	4,664	4,583	4,689	4,620	4,479	4,569	4,441	4,723	54,833
2009	4,762	4,255	4,641
Sold for hatching													
2007	809	744	778	846	819	795	841	722	712	749	722	724	9,261
2008	796	761	806	796	846	807	836	712	764	751	698	729	9,301
2009	811	705	822
Home consumption													
2007	20	20	20	20	20	20	20	20	20	20	20	20	228
2008	19	19	19	19	19	19	19	19	19	19	19	19	228
2009	19	19	19
Leakers and rejects													
2007	110	97	105	104	109	105	109	105	100	106	104	107	1,259
2008	110	102	107	104	110	108	110	106	105	106	103	109	1,280
2009	111	99	109
Total disposition of eggs													
2007	5,625	4,979	5,375	5,328	5,575	5,391	5,566	5,370	5,114	5,424	5,308	5,489	64,468
2008	5,637	5,246	5,493	5,347	5,639	5,517	5,654	5,457	5,367	5,445	5,261	5,580	65,642
2009	5,703	5,078	5,591
value, in thousands of dollars													
Sold for consumption													
2007	4,908	4,562	4,961	4,834	5,130	5,007	5,148	5,115	4,853	5,156	5,146	5,408	60,170
2008	5,493	5,146	5,561	5,483	5,821	5,721	5,943	5,947	5,809	5,987	5,644	6,000	68,555
2009	5,892	5,118	5,582
Sold for hatching													
2007	3,025	2,783	3,221	3,502	3,511	3,355	3,548	3,047	3,026	3,160	3,049	3,097	38,327
2008	3,408	3,271	3,467	3,524	3,746	3,666	3,862	3,290	3,604	3,545	3,257	3,406	42,046
2009	3,602	3,128	3,787
Home consumption													
2007	28	30	31	31	31	31	31	31	32	32	33	30	351
2008	28	28	29	30	30	30	30	31	30	31	30	30	357
2009	29	29	29
Total value of disposition of eggs													
2007	7,961	7,375	8,213	8,367	8,672	8,393	8,727	8,193	7,911	8,348	8,228	8,535	98,848
2008	8,929	8,445	9,057	9,037	9,597	9,417	9,835	9,268	9,443	9,563	8,931	9,436	110,958
2009	9,523	8,275	9,398

Table 6
Stocks of frozen eggs and edible dried eggs, Canada

	Jan.	Feb.	Mar.	Apr.	May	June	July	Aug.	Sept.	Oct.	Nov.	Dec.
	tonnes											
Whole eggs, total												
2007	567	1,049	965	1,120	1,290	1,274	1,226	1,031	786	886	857	847
2008	726	833	710	670	743	790	896	1,211	1,215	891	999	819
2009	804	1,039	1,097
Yolk, total												
2007	639	849	938	1,054	718	710	608	879	1,007	850	809	766
2008	795	747	769	490	442	409	433	499	458	460	436	327
2009	408	512	670
Whites, total												
2007	79	120	78	90	93	121	224	144	160	126	152	145
2008	112	95	89	86	120	168	221	267	243	217	178	151
2009	98	104	97
Edible dried eggs												
2007	789	795	754	724	673	667	591	585	547	553	449	583
2008	545	615	648	596	587	500	538	609	671	519	530	635
2009	581	661	788
Dried, whole and mixes												
2007	172	188	243	256	209	185	208	217	126	125	147	102
2008	150	146	127	140	212	206	194	262	243	198	125	117
2009	217	256	304
Dried, yolk and mixes												
2007	137	161	108	124	149	220	145	89	105	82	57	132
2008	89	99	105	133	128	72	138	146	218	174	205	232
2009	144	159	209
Dried albumen												
2007	480	446	402	344	315	261	238	280	317	346	246	348
2008	306	369	417	322	246	222	207	201	209	148	199	286
2009	220	247	276

Table 7
Supply and disposition of eggs

	2004	2005	2006	2007	2008
	in thousands of dozens				
Production	546,784	576,038	580,163	577,415	579,882
Beginning stocks	8,697	12,230	10,830	11,087	8,825
Imports	65,674	47,787	42,120	36,482	27,963
Total supply	621,155	636,056	633,113	624,983	616,669
Exports	61,697	60,445	50,641	62,621	50,143
Used for hatching	59,134	60,261	59,282	60,391	60,777
Leakers and rejects	10,390	11,033	11,083	11,051	11,282
Ending stocks	12,230	10,830	11,087	8,825	8,285
Net supply	477,704	493,487	501,020	482,096	486,183
	dozens				
Food available per person	15.0	15.3	15.4	14.6	14.6
Food available per person, adjusted for loss ¹	11.8	12.1	12.2	11.6	11.5

1. Experimental, use with caution. The data have been adjusted for retail, household, cooking and plate loss.

Table 8
Average prices of eggs sold for consumption in Canada by month

	Jan.	Feb.	Mar.	Apr.	May	June	July	Aug.	Sept.	Oct.	Nov.	Dec.
	dollars per dozen											
2001	1.04	1.04	1.06	1.06	1.06	1.06	1.06	1.07	1.06	1.07	1.08	1.08
2002	1.06	1.06	1.06	1.06	1.06	1.06	1.06	1.11	1.08	1.08	1.08	1.12
2003	1.08	1.09	1.08	1.09	1.09	1.09	1.10	1.10	1.10	1.10	1.10	1.10
2004	1.10	1.10	1.10	1.11	1.13	1.16	1.16	1.18	1.17	1.15	1.15	1.13
2005	1.03	1.01	1.01	1.02	1.02	1.02	1.02	1.04	1.03	1.03	1.04	1.04
2006	1.02	1.04	1.04	1.05	1.05	1.05	1.05	1.06	1.06	1.05	1.05	1.04
2007	0.99	1.03	1.05	1.05	1.07	1.07	1.08	1.09	1.09	1.09	1.10	1.10
2008	1.09	1.10	1.10	1.12	1.13	1.13	1.15	1.18	1.18	1.19	1.16	1.16
2009	1.16	1.10	1.09

Note(s): Price received by producer.

Table 9
Report of processed eggs production, Canada

	Whole egg	Yolk	Albumen	Total processed egg
	kilograms			
Total break				
2006	29,032,174	8,603,393	16,785,691	54,421,258
2007	27,695,130	5,875,001	12,827,153	46,397,284
2008	34,267,868	4,023,331	10,182,905	46,766,277
Frozen eggs				
2006	2,458,411	3,084,370	700,203	6,242,984
2007	2,361,746	2,302,002	570,843	5,234,591
2008	2,370,319	1,500,867	479,197	4,350,383
Liquid eggs				
2006	21,120,932	2,450,719	5,894,230	29,465,881
2007	22,314,995	1,478,737	7,521,176	31,314,908
2008	19,654,306	766,769	5,959,987	26,381,062
Dried eggs				
2006	1,066,072	1,018,012	1,899,680	3,983,764
2007	591,203	668,296	672,978	1,932,477
2008	194,300	177,060	164,214	535,574

Poultry meat production and value

Concepts

Poultry meat production and value are estimated for chicken meat (including stewing hens) and turkey meat sold by producers as well as that consumed by these producers. Production is measured in both the number of birds slaughtered and the eviscerated weight of the slaughtered birds. Estimates of quantities sold consist of commercial and non-commercial slaughter and are made at the provincial level. Commercial slaughter is adjusted for inter-provincial and international movement. Commercial slaughter includes all birds that have been slaughtered in registered slaughter houses while non-commercial slaughter consists of any birds that may be slaughtered on farms. Poultry meat production is valued at the average price per kilogram (eviscerated weight basis) received by producers. Prices include any bonuses and premiums which can be attributed to specific commodities and exclude fees deducted before the producer is paid (e.g. storage, transport, and administration costs).

Home consumption is the amount of poultry meat available for consumption by producers and their immediate families. This amount is valued at market prices as it represents the income producers would have received had the product been sold.

Methods

The major administrative source of data for poultry meat production and value is Agriculture and Agri-Food Canada. Inspectors from the Canadian Food Inspection Agency (CFIA) collect quantity data while inspecting meat at processing plants as legislated under the *Meat Inspection Act*. Unless specified, these data are used as published, without further adjustment. Commercial slaughter represents all birds slaughtered in registered processing plants. The quantity and weight of all birds slaughtered in these facilities are reported to and published by AAFC.

Non-commercial slaughter is estimated based on data provided weekly to AAFC by registered hatcheries on the placement of chicks in small lots, intended to produce meat. The placement data are adjusted for death loss and birds kept for laying to arrive at an estimate of chickens that reach maturity. Estimates of both death loss and the time required for chicks to reach maturity are obtained from industry specialists. Non-commercial slaughter is further divided into home consumption and birds sold. Home consumption is calculated by multiplying quantity of food available for consumption of the given poultry meat by the human population of farms producing that kind of poultry.

The human population on farms is derived from the linkage of the Agriculture and the Population Censuses.

Two prices obtained from registered processing plants, and published by AAFC, are used to calculate the value of chicken meat production: one for chickens weighing less than 2.3 kg and another for those weighing 2.3 kg and over. Prices for the corresponding categories are weighted by the quantity produced to obtain the total value. The price for chickens weighing 2.3 kilograms and over is used in calculating the value of production for chickens slaughtered on farms (including home consumption).

Data on stewing hen production and prices are obtained from registered processing plant reports provided to AAFC. No calculation is made for stewing hens slaughtered on farms since the amount is considered negligible. Home consumption is calculated in the same manner as the chicken meat production.

Turkey meat production is based on birds slaughtered in registered slaughter houses, as reported by AAFC, and non-commercial slaughter. Non-commercial slaughter, turkeys slaughtered on farms, is estimated using data on turkey inventories from the most recent Census of Agriculture. Home consumption is calculated in the same manner as the chicken meat production.

Two prices are used to determine the value of turkey meat production: one for turkeys weighing less than 5.0 kg and another for those weighing 5.0 kg and over. Prices for the corresponding categories are multiplied by the quantity produced to obtain their value.

Data quality

Data on number of birds sold, eviscerated weight and value are obtained through administrative sources. Producers are paid for the birds which they sell through registered slaughter houses on the basis of these administrative records. Because of this process, the quality of the administrative data is deemed to be high. Registered slaughter houses account for approximately 99% of total poultry production. This implies that total production values are also good. Administrative sources are subject to non-sampling errors such as omissions, duplications and mistakes in reporting, recording and processing the data. The effects of these errors cannot be measured directly.

Although no systematic revisions are undertaken for poultry meat data, revisions that do occur reflect updates resulting from late entries and corrections due to misclassification and data entry errors. Overall, the changes between the original and revised numbers are very small (e.g. less than 1% for chicken and turkey).

Egg production and value

Concepts

Total egg production in Canada and the provinces includes all eggs sold for consumption, consumed by producers, sold for hatching, leakers and rejects. Production from registered, non-registered as well as hatchery supply flocks are included in the estimates.

The value of egg production is calculated at the provincial level using different prices for eggs produced by the three different types of flocks listed above. These prices include any bonuses and premiums which can be attributed to specific commodities and exclude fees deducted before the producer is paid (e.g. storage, transport and administration costs).

Egg production is derived using average layer numbers and their derived rates of lay. Laying hens include all layers 19 weeks and older except for layers in hatchery supply flocks where layers are 26 weeks and older. Layer numbers and average rates of lay are obtained for the three types of operations (registered flocks, non-registered flocks and hatchery supply flocks).

Methods

Registered flocks have to be registered with and provide information to provincial egg marketing boards. Layer numbers in registered flocks are supplied by the CEMA, the regulatory board for the egg producing industry. The agency, in turn, receives data from the provincial egg marketing boards. These data are used directly in the estimates without adjustments.

Non-registered flocks are those with fewer birds than the limits set by the provincial egg marketing boards. These limits vary by province and can range from 100 to 500 birds. Layer numbers for the non-registered flocks are estimated using Census data.

Hatchery supply flocks produce hatching eggs for both egg and meat type birds. Layers in hatchery supply flocks are estimated by Statistics Canada based on the number of birds (broilers) provided by Canadian Broiler Hatching Egg Marketing Agency, information on egg sets from CEMA and an average rate of lay for each type of bird.

Rates of lay, at the provincial level, for registered and non-registered flocks and hatchery supply flocks are estimated by industry specialists.

Estimates of all layers, rates of lay and egg production are prepared monthly using administrative data. Layers in registered flocks account for the bulk of the layer population and these data are available weekly from the CEMA.

Monthly estimates for non-registered flocks are made using historical seasonal patterns. Rates of lay do not fluctuate dramatically.

Shifts on rates of lay are made on the basis of monthly egg gradings collected by CEMA from registered grading stations.

The value of egg production for registered flocks is calculated using prices provided by CEMA, which regulates all prices paid to producers. Prices for the non-registered flocks are calculated based on industry information. In the case of eggs produced by the hatchery supply flock, all eggs are valued at prices paid to broiler egg producers as provided by the Canadian Broiler Hatching Egg Marketing Agency. Production estimates are simply multiplied by the prices to obtain the total value of production.

The quality of layer numbers in registered flocks is deemed to be high since the number of laying hens in these flocks is set by quota allocation and the flocks are subject to regular audits. The vast majority of layers are found in the registered flocks and thus, total layer estimates can also be considered to be of high quality. Based on the 2001 Census of Agriculture, more than 90% of all layers in each province were in registered flocks except for Saskatchewan and Alberta, where the totals were 79% and 86% respectively.

Revisions

Layer numbers in registered flocks are collected through the CEMA and are subject to minor revisions. Monthly layer estimates in non-registered flocks are revised, if necessary, after the results of the Census of Agriculture are available.

Rates of lay for both registered and non-registered flocks are assessed monthly based on administrative data published by CEMA on eggs graded at registered stations.

Food Available - Poultry and Eggs

Concepts

Statistics Canada's Agriculture Division produces data indicating the amount of food available for consumption along with estimated quantities of food available, adjusted for losses.

The amount of food available per person represents what is available for consumption on average for the total Canadian population. The estimates do not indicate total poultry and egg supplies actually consumed by an individual or specific group of individuals, since estimates are not calculated for waste or spoilage during transportation at the retail level, in households, private institutions or restaurants.

The estimated quantities of food available, adjusted for losses, represent the amount of food available per person data that have been adjusted to account for retail, household, cooking and plate loss. These data are considered experimental in nature and should be used with caution.

Methods

A residual approach is used in calculating quantities of poultry meat and eggs available for human consumption. Annual balance sheets are prepared to determine the consumption levels. Total supply is estimated by adding beginning stocks, annual production and imports. Exports and ending stocks are subtracted from total supply to estimate the net supply. Poultry meat export and import numbers are obtained from AAFC. The amount of food available per person is determined by dividing net supply by the total Canadian population at July 1 each year. Population numbers are obtained from the Demography Division of Statistics Canada. To estimate the amount of food available, adjusted for losses, factors are applied to the amount of food available per person data to account for retail, household, cooking and plate loss.

Net supply for eggs is obtained by subtracting exports, eggs used for hatching, leakers and rejects from the total supply. A revised methodology was introduced in 1986 to calculate the quantity of eggs available for consumption where 1.95% of total egg production was subtracted to account for leakers and rejects. Import and export data are supplied by the International Trade Division of Statistics Canada. Net supply is then divided by the July 1 population of Canada to obtain the quantity available per person. To estimate the amount of food available, adjusted for losses, factors are applied to the amount of food available per person data to account for retail, household, cooking and plate loss.

Appendix I

Glossary of terms

Administrative Data: data that are collected by public or private agencies or organizations in the administration of programs or legislation.

Broilers: chickens that are being raised for meat production.

Egg Sets: fertilized eggs in hatcheries that are to hatch into chicks, either to replace laying hens or to be raised for meat production.

Eviscerated Weight: the weight of a bird that has not been de-boned but has had its head, feathers, feet and innards removed.

Food available: represents what is available for consumption on average for the total Canadian population. Net supply is divided by the July 1 Canadian population to arrive at the quantity available. The estimates do not indicate quantities actually consumed by an individual or specific group of individuals, since estimates are not calculated for waste or spoilage during transportation at the retail level, in households, private institutions or restaurants.

Food available, adjusted for losses: the estimated quantities of food available adjusted for losses represent the quantity of food available data that have been adjusted to account for retail, household, cooking and plate loss. These data are considered experimental in nature and should be used with caution.

Hatchery Supply Flock: consists of laying hens which produce eggs that will be hatched into chicks. These chicks will either become laying hens or be raised for meat production.

Leakers and rejects: eggs that do not meet the lowest standard grading requirements.

Stewing hens: laying hens which have completed their laying cycle and are slaughtered for meat.