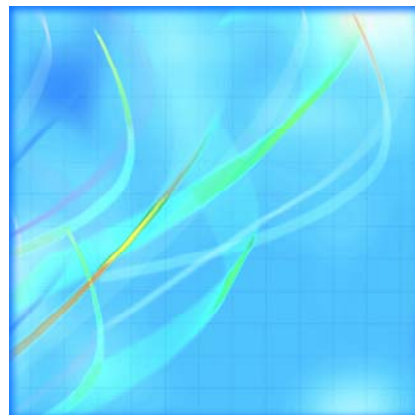


Catalogue no. 23-015-X

Poultry and Egg Statistics

October to December 2008



Statistics
Canada

Statistique
Canada

Canada

How to obtain more information

For information about this product or the wide range of services and data available from Statistics Canada, visit our website at www.statcan.gc.ca, e-mail us at infostats@statcan.gc.ca, or telephone us, Monday to Friday from 8:30 a.m. to 4:30 p.m., at the following numbers:

Statistics Canada's National Contact Centre

Toll-free telephone (Canada and the United States):

Inquiries line	1-800-263-1136
National telecommunications device for the hearing impaired	1-800-363-7629
Fax line	1-877-287-4369

Local or international calls:

Inquiries line	1-613-951-8116
Fax line	1-613-951-0581

Depository Services Program

Inquiries line	1-800-635-7943
Fax line	1-800-565-7757

To access this product

This product, Catalogue no. 23-015-X, is available free in electronic format. To obtain a single issue, visit our website at www.statcan.gc.ca and select "Publications" > "Free Internet publications."

Standards of service to the public

Statistics Canada is committed to serving its clients in a prompt, reliable and courteous manner. To this end, Statistics Canada has developed *standards of service* that its employees observe. To obtain a copy of these service standards, please contact Statistics Canada toll-free at 1-800-263-1136. The service standards are also published on www.statcan.gc.ca under "About us" > "Providing services to Canadians."

Statistics Canada
Agriculture Division
Livestock Section

Poultry and Egg Statistics

October to December 2008

Published by authority of the Minister responsible for Statistics Canada

© Minister of Industry, 2009

All rights reserved. The content of this electronic publication may be reproduced, in whole or in part, and by any means, without further permission from Statistics Canada, subject to the following conditions: that it be done solely for the purposes of private study, research, criticism, review or newspaper summary, and/or for non-commercial purposes; and that Statistics Canada be fully acknowledged as follows: Source (or "Adapted from", if appropriate): Statistics Canada, year of publication, name of product, catalogue number, volume and issue numbers, reference period and page(s). Otherwise, no part of this publication may be reproduced, stored in a retrieval system or transmitted in any form, by any means—electronic, mechanical or photocopy—or for any purposes without prior written permission of Licensing Services, Client Services Division, Statistics Canada, Ottawa, Ontario, Canada K1A 0T6.

March 2009

Catalogue no. 23-015-X, vol. 5, no. 4

ISSN 1710-3525

Frequency: Quarterly

Ottawa

La version française de cette publication est disponible sur demande (n° 23-015-X au catalogue).

Note of appreciation

Canada owes the success of its statistical system to a long standing partnership between Statistics Canada, the citizens of Canada, its businesses, governments and other institutions. Accurate and timely statistical information could not be produced without their continued cooperation and goodwill.

User information

Symbols

The following standard symbols are used in Statistics Canada publications:

- . not available for any reference period
- .. not available for a specific reference period
- ... not applicable
- 0 true zero or a value rounded to zero
- 0^s value rounded to 0 (zero) where there is a meaningful distinction between true zero and the value that was rounded
- p preliminary
- r revised
- x suppressed to meet the confidentiality requirements of the *Statistics Act*
- E use with caution
- F too unreliable to be published

Table of contents

Highlights	5
Introduction	9
Related products	10
Statistical tables	
1 Production of poultry meat	12
2 Disposition of poultry meat	13
2-1 Chicken	13
2-2 Turkey	14
2-3 Total poultry	15
3 Supply and disposition of poultry meat	16
4 Production of eggs by province	18
4-1 Average number of layers	18
4-2 Eggs per 100 layers	19
4-3 in thousands of dozens	20
5 Disposition of eggs by province, quantity and value by province	21
5-1 Canada	21
5-2 Newfoundland and Labrador	22
5-3 Prince Edward Island	23
5-4 Nova Scotia	24
5-5 New Brunswick	25
5-6 Quebec	26
5-7 Ontario	27
5-8 Manitoba	28
5-9 Saskatchewan	29
5-10 Alberta	30
5-11 British Columbia	31
6 Stocks of frozen eggs and edible dried eggs, Canada	32
7 Supply and disposition of eggs	32
8 Average prices of eggs sold for consumption in Canada by month	33

Table of contents – continued

9 Report of processed eggs production, Canada 33

Data quality, concepts and methodology

Poultry meat production and value 34
Egg production and value 36
Food Available - Poultry and Eggs 38

Appendix

I Glossary of terms 39

Highlights

Value of poultry products increases

- The value of poultry products totalled \$2.8 billion in 2007, a 10.6% increase from 2006. Sales of poultry meat, including turkey, showed an increase of 13.3% with a total value of \$2.1 billion. The value of egg sales increased 3.9% from 2006 to stand at \$762.5 million.
- Canadian farmers produced 1.2 million tonnes of poultry meat in 2007, virtually unchanged from 2006. Chicken, including stewing hens, accounts for 86% of all poultry meat produced. It increased 3.3% from year-ago levels. Turkey production stood at 169 thousand tonnes in 2007, an increase of 3.4% from 2006.
- The quantity of poultry available for consumption has continued to increase over recent years, reaching 13.4 kilograms per person in 2007, a slight increase of 0.3% from last year and well above the 11.7 kilograms available for consumption per person ten years ago. The introduction of varied and readily available easy-to-prepare and ready-to-eat poultry products appeals to the time conscious consumer and has contributed to poultry's on-going popularity.

Egg production increases in 2008

- Year end figures for egg production in 2008 reached 579.9 million dozen, an increase of 0.4% from 2007.
- The value of those eggs was \$823.0 million, an increase of 7.9% from 2007.
- In December 2008, production was up 1.6%, compared to December of last year.
- The annual quantity of eggs available for consumption has declined following 2 years of increases and was pegged at 11.5 dozen per person in 2007, 4.7% less than 2006. However, the recent sustained growth in eggs available for consumption can be attributed to the publicity surrounding the nutritional benefits of eggs, the increased use of eggs by the food service sector, the growing popularity of value added products and the expanded use and availability of processed egg products.

Chart 1
Value of poultry products, Canada, 1998 to 2007

millions of dollars

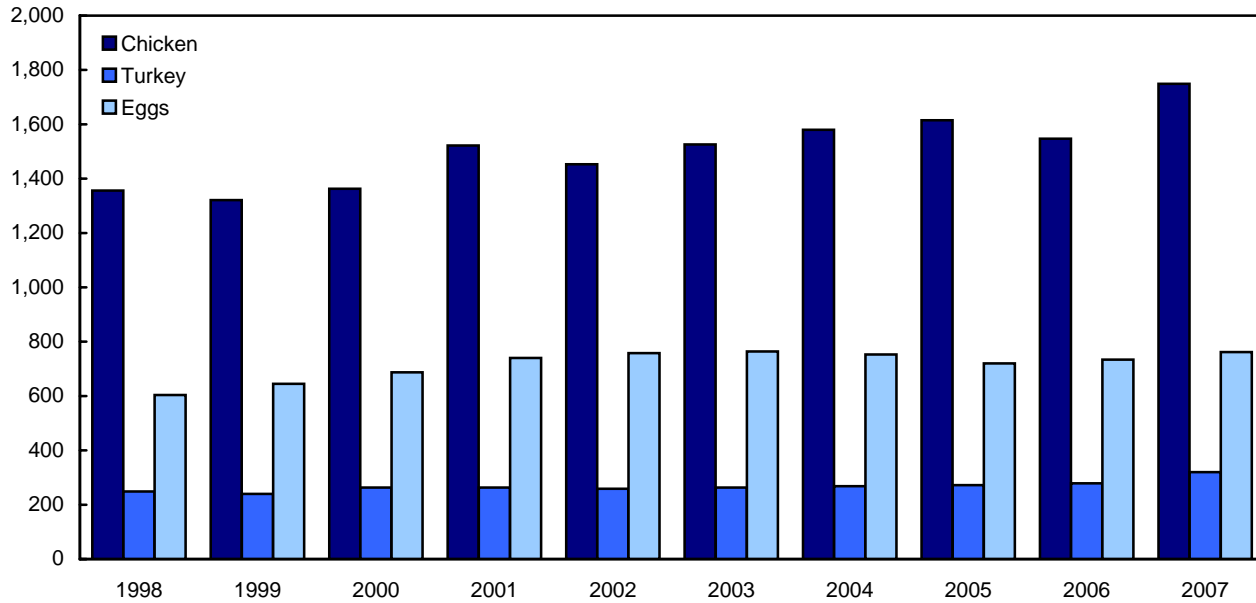


Chart 2
Poultry meat production, Canada 1998 to 2007

thousands metric tonnes

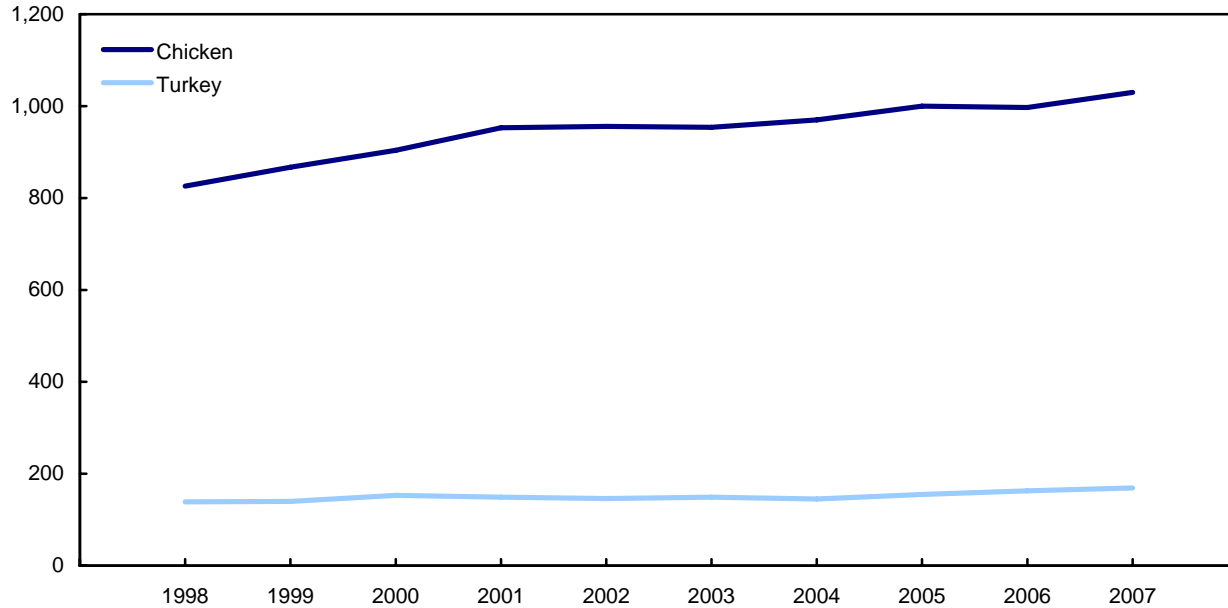


Chart 3
Quantity of meats available for consumption, Canada, 1998 to 2007

kilograms per person

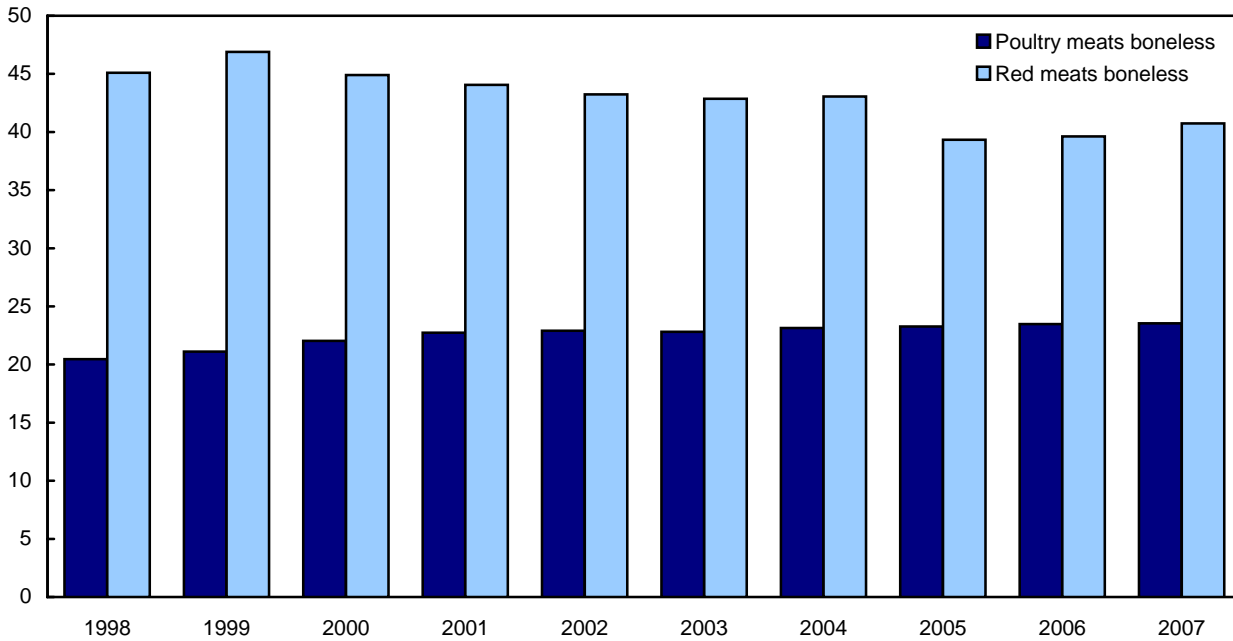


Chart 4
Production of eggs, Canada, 1999 to 2008

millions of dozens

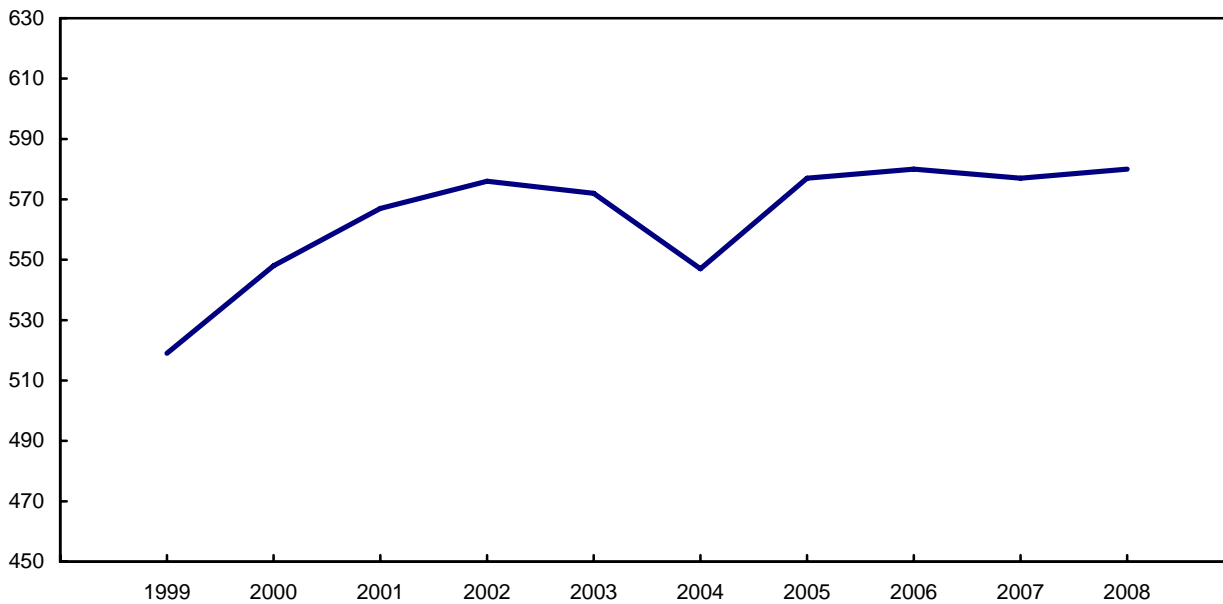
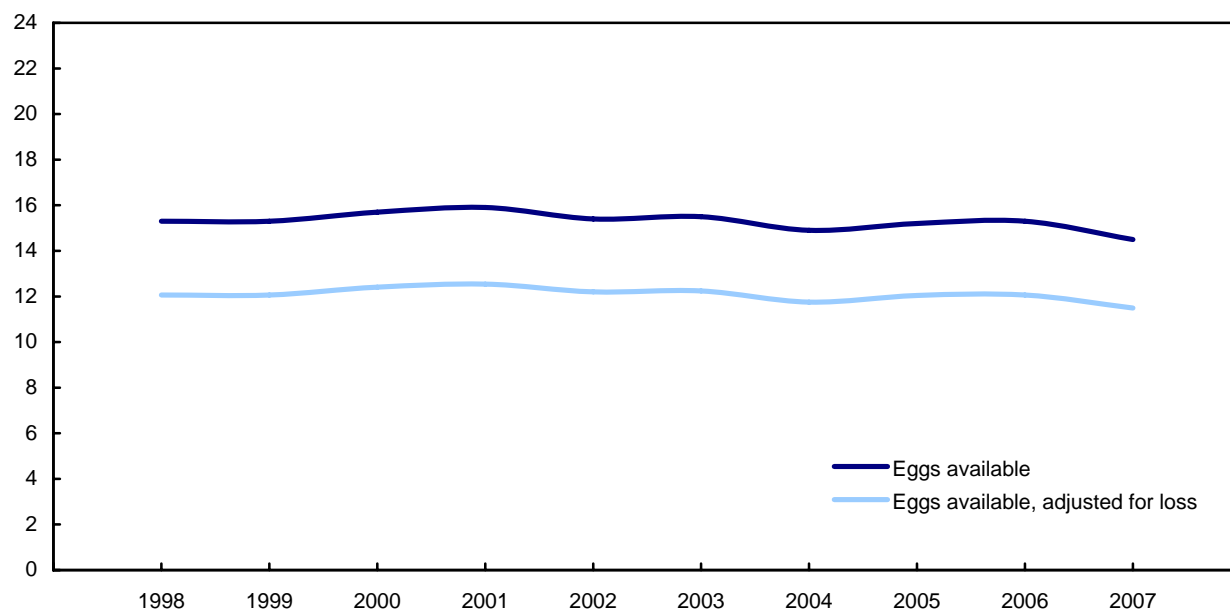


Chart 5
Quantity of eggs available for consumption, Canada, 1998 to 2007

dozens per person



Introduction

This publication provides data on the production, supply and disposition and value of poultry meat and eggs. Also included are data on the average price of eggs sold for table consumption, the food available and the food available, adjusted for loss of poultry meats and eggs, and the production and stocks of processed eggs.

The data presented are obtained from a variety of sources such as administrative sources and censuses. Administrative data are provided by the Canadian Egg Marketing Agency (CEMA), Agriculture and Agri-Food Canada (AAFC) and Statistics Canada. Information from Statistics Canada's Census of Agriculture and Census of Population is also used in preparing the estimates.

The data, published on a provincial basis, are used in decision making by government agencies, processors, retailers, universities, producer organizations and health institutions.

Statistics Canada has been estimating poultry meat production and value since 1951. Concepts and methods vary over time due to changes in the sector and/or the availability of data sources. Users should note the following:

- i. Production data supplied in table 7 (Supply and disposition of eggs) are compiled in May of each year and revised annually. Production and disposition data supplied in tables 4 and 5 (Disposition of eggs by province) are subject to revision throughout the year and may not compare exactly to the data in table 7 (Supply and disposition of eggs);
- ii. beginning in 1986, the quantity of eggs available for consumption is adjusted to take into consideration a loss of 1.95% of total egg production due to leakers and rejects;
- iii. also beginning in 1986, a new method is used to calculate consumption on the farm;
- iv. a negligible number of hatchery-supply eggs are sold on the table market. Since data on the amount sold are not available, it is deemed to be zero;
- v. Please note that the quantity and value of eggs sold for hatching in New Brunswick also include the quantity and value for the other Atlantic provinces.

The data series are available on CANSIM at the same time as the information appears in The Daily, Statistics Canada's official release vehicle. CANSIM, Statistics Canada's computerized database, is an information management system designed to facilitate both historical research and current analysis.

Related products

Selected publications from Statistics Canada

21-206-X	Statistics on income of farm operators
21-207-X	Statistics on income of farm families
21-208-X	Statistics on revenues and expenses of farms
23-003-X	Production of eggs

Selected CANSIM tables from Statistics Canada

003-0017	Supply and disposition of poultry meat and eggs in Canada
003-0018	Production, disposition and farm value of poultry meat
003-0019	Fowl and chicken meat production, weight and farm value
003-0020	Production and disposition of eggs
003-0021	Placement of chicks and turkey poults for production
003-0022	Production and disposition of eggs

Selected surveys from Statistics Canada

3421	Egg Producers Survey
5039	Production of Poultry and Eggs

Selected summary tables from Statistics Canada

- *Production of eggs, by province*
- *Production of poultry, by province*

Statistical tables

Table 1
Production of poultry meat

	Birds			Weight			Value		
	2005	2006	2007	2005	2006	2007	2005	2006	2007
	in thousands			in thousands of kilograms			in thousands of dollars		
Chicken									
Canada	611,162	604,680	623,435	977,350	971,941	1,005,597	1,610,444	1,541,549	1,743,787
Newfoundland and Labrador	x	x	x	x	x	x	x	x	x
Prince Edward Island	x	x	x	x	x	x	x	x	x
Nova Scotia	21,969	21,635	22,262	33,392	33,046	34,574	55,821	53,266	61,862
New Brunswick	17,321	17,404	18,236	26,726	26,362	27,472	45,669	43,104	49,752
Quebec	158,376	160,519	165,088	262,618	262,621	271,329	424,907	407,247	469,014
Ontario	196,461	192,818	197,205	323,905	320,103	328,377	525,358	495,016	565,423
Manitoba	28,931	29,352	29,343	41,203	42,718	43,074	66,703	64,235	72,966
Saskatchewan	21,850	22,587	25,521	31,325	36,409	41,012	49,213	56,431	71,153
Alberta	53,013	53,417	54,696	86,880	86,732	88,442	141,893	137,866	152,306
British Columbia	101,453	95,491	99,183	154,440	147,608	154,292	272,179	258,154	273,480
Stewing hen									
Canada	15,089	17,581	16,907	22,722	25,541	24,467	4,764	5,720	4,875
Newfoundland and Labrador	x	x	x	x	x	x	x	x	x
Prince Edward Island	x	x	x	x	x	x	x	x	x
Nova Scotia	79	85	93	224	240	263	128	133	128
New Brunswick	155	284	216	280	377	295	89	134	91
Quebec	4,266	4,394	4,727	6,527	6,609	6,812	2,162	2,281	2,154
Ontario	8,742	9,532	8,776	12,030	12,183	11,402	1,317	1,345	986
Manitoba	194	214	180	528	560	479	4	4	4
Saskatchewan	147	110	137	351	301	324	38	36	27
Alberta	272	437	402	614	1,169	1,175	63	133	101
British Columbia	1,233	2,525	2,370	2,167	4,101	3,701	962	1,653	1,377
Total Chicken¹									
Canada	626,251	622,261	640,342	1,000,072	997,482	1,030,063	1,615,208	1,547,270	1,748,663
Newfoundland and Labrador	x	x	x	x	x	x	x	x	x
Prince Edward Island	x	x	x	x	x	x	x	x	x
Nova Scotia	22,048	21,720	22,355	33,615	33,286	34,837	55,949	53,400	61,990
New Brunswick	17,476	17,688	18,452	27,006	26,739	27,766	45,758	43,238	49,844
Quebec	162,642	164,913	169,815	269,144	269,231	278,141	427,070	409,527	471,167
Ontario	205,203	202,349	205,981	335,935	332,286	339,779	526,675	496,361	566,409
Manitoba	29,125	29,566	29,523	41,731	43,278	43,552	66,707	64,239	72,970
Saskatchewan	21,996	22,696	25,658	31,677	36,710	41,336	49,251	56,467	71,180
Alberta	53,285	53,854	55,098	87,494	87,901	89,617	141,955	138,000	152,407
British Columbia	102,686	98,016	101,553	156,607	151,709	157,993	273,141	259,807	274,858
Turkey									
Canada	20,492	21,172	21,756	155,421	163,422	168,991	271,695	278,668	320,407
Newfoundland and Labrador	x	x	x	x	x	x	x	x	x
Prince Edward Island	x	x	x	x	x	x	x	x	x
Nova Scotia	731	789	779	3,544	3,745	3,736	6,069	6,493	7,309
New Brunswick	362	365	406	2,700	2,820	3,222	4,504	4,669	5,898
Quebec	4,343	4,567	4,412	31,554	33,069	33,153	55,004	56,269	58,168
Ontario	8,500	8,939	9,231	69,675	74,833	75,456	121,749	127,565	144,601
Manitoba	1,432	1,413	1,589	10,575	10,683	11,873	18,088	18,070	22,241
Saskatchewan	674	802	886	4,632	5,460	6,112	8,449	9,698	12,123
Alberta	1,757	1,651	1,651	13,118	13,324	14,077	24,034	23,886	28,046
British Columbia	2,688	2,640	2,797	19,583	19,445	21,320	33,726	31,947	41,939
Total poultry									
Canada	646,743	643,432	662,098	1,155,493	1,160,904	1,199,054	1,886,903	1,825,937	2,069,070
Newfoundland and Labrador	x	x	x	x	x	x	x	x	x
Prince Edward Island	x	x	x	x	x	x	x	x	x
Nova Scotia	22,779	22,508	23,134	37,159	37,031	38,573	62,018	59,893	69,298
New Brunswick	17,838	18,053	18,858	29,706	29,559	30,988	50,263	47,908	55,741
Quebec	166,985	169,480	174,226	300,698	302,299	311,294	482,074	465,796	529,335
Ontario	213,702	211,289	215,213	405,611	407,119	415,235	648,424	623,925	711,010
Manitoba	30,557	30,978	31,112	52,306	53,962	55,425	84,795	82,309	95,211
Saskatchewan	22,670	23,499	26,544	36,308	42,170	47,448	57,700	66,165	83,303
Alberta	55,042	55,505	56,749	100,612	101,225	103,694	165,989	161,885	180,453
British Columbia	105,374	100,656	104,350	176,190	171,154	179,313	306,867	291,754	316,797

1. Includes stewing hen.

Table 2-1
Disposition of poultry meat — Chicken ¹

	Birds			Weight			Value		
	2005	2006	2007	2005	2006	2007	2005	2006	2007
	in thousands			in thousands of kilograms			in thousands of dollars		
Sold									
Canada	625,851	621,868	639,945	999,146	996,555	1,029,137	1,614,019	1,546,086	1,747,465
Newfoundland and Labrador	x	x	x	x	x	x	x	x	x
Prince Edward Island	x	x	x	x	x	x	x	x	x
Nova Scotia	22,042	21,713	22,347	33,599	33,270	34,820	55,923	53,374	61,962
New Brunswick	17,474	17,686	18,450	27,001	26,735	27,762	45,753	43,233	49,838
Quebec	162,617	164,888	169,789	269,082	269,169	278,079	426,980	409,439	471,071
Ontario	205,103	202,248	205,880	335,723	332,073	339,566	526,389	496,089	566,112
Manitoba	29,082	29,520	29,479	41,610	43,157	43,431	66,534	64,183	72,909
Saskatchewan	21,949	22,650	25,610	31,561	36,594	41,220	49,248	56,323	71,021
Alberta	53,167	53,750	54,991	87,226	87,633	89,349	141,529	137,583	152,027
British Columbia	102,632	97,959	101,494	156,491	151,592	157,876	272,978	259,647	274,703
Home consumption									
Canada	400	393	398	927	927	927	1,189	1,183	1,198
Newfoundland and Labrador	x	x	x	x	x	x	x	x	x
Prince Edward Island	x	x	x	x	x	x	x	x	x
Nova Scotia	6	7	8	16	16	16	26	25	28
New Brunswick	2	2	2	4	4	4	5	5	6
Quebec	25	25	26	62	62	62	90	88	96
Ontario	100	101	101	212	212	212	286	272	297
Manitoba	43	46	44	121	121	121	172	56	61
Saskatchewan	48	47	48	116	116	116	3	144	159
Alberta	118	104	107	268	268	268	427	417	379
British Columbia	54	57	58	117	117	117	163	160	155
Disposition ²									
Canada	626,251	622,261	640,342	1,000,072	997,482	1,030,063	1,615,208	1,547,270	1,748,663
Newfoundland and Labrador	x	x	x	x	x	x	x	x	x
Prince Edward Island	x	x	x	x	x	x	x	x	x
Nova Scotia	22,048	21,720	22,355	33,615	33,286	34,837	55,949	53,400	61,990
New Brunswick	17,476	17,688	18,452	27,006	26,739	27,766	45,758	43,238	49,844
Quebec	162,642	164,913	169,815	269,144	269,231	278,141	427,070	409,527	471,167
Ontario	205,203	202,349	205,981	335,935	332,286	339,779	526,675	496,361	566,409
Manitoba	29,125	29,566	29,523	41,731	43,278	43,552	66,707	64,239	72,970
Saskatchewan	21,996	22,696	25,658	31,677	36,710	41,336	49,251	56,467	71,180
Alberta	53,285	53,854	55,098	87,494	87,901	89,617	141,955	138,000	152,407
British Columbia	102,686	98,016	101,553	156,607	151,709	157,993	273,141	259,807	274,858

1. Includes stewing hen.

2. Includes sold and home consumption.

Table 2-2
Disposition of poultry meat — Turkey

	Birds			Weight			Value		
	2005	2006	2007	2005	2006	2007	2005	2006	2007
	in thousands			in thousands of kilograms			in thousands of dollars		
Sold									
Canada	20,478	21,158	21,742	155,315	163,317	168,885	271,506	278,484	320,203
Newfoundland and Labrador	x	x	x	x	x	x	x	x	x
Prince Edward Island	x	x	x	x	x	x	x	x	x
Nova Scotia	731	788	779	3,542	3,744	3,735	6,066	6,491	7,306
New Brunswick	362	365	406	2,699	2,819	3,221	4,503	4,668	5,896
Quebec	4,342	4,566	4,411	31,548	33,063	33,148	54,994	56,259	58,158
Ontario	8,497	8,937	9,229	69,654	74,812	75,435	121,712	127,529	144,561
Manitoba	1,431	1,411	1,587	10,562	10,671	11,860	18,066	18,048	22,217
Saskatchewan	671	799	883	4,612	5,440	6,092	8,412	9,663	12,083
Alberta	1,752	1,647	1,647	13,085	13,291	14,044	23,973	23,826	27,980
British Columbia	2,687	2,639	2,796	19,574	19,436	21,311	33,710	31,932	41,921
Home consumption									
Canada	14	14	14	106	106	106	189	184	205
Newfoundland and Labrador	x	x	x	x	x	x	x	x	x
Prince Edward Island	x	x	x	x	x	x	x	x	x
Nova Scotia	0	0	0	2	2	2	3	3	3
New Brunswick	0	0	0	1	1	1	2	2	2
Quebec	1	1	1	6	6	6	10	10	10
Ontario	3	3	3	21	21	21	37	36	40
Manitoba	2	2	2	13	13	13	22	22	24
Saskatchewan	3	3	3	20	20	20	37	36	40
Alberta	5	4	4	33	33	33	61	60	66
British Columbia	1	1	1	9	9	9	16	15	18
Disposition ¹									
Canada	20,492	21,172	21,756	155,421	163,422	168,991	271,695	278,668	320,407
Newfoundland and Labrador	x	x	x	x	x	x	x	x	x
Prince Edward Island	x	x	x	x	x	x	x	x	x
Nova Scotia	731	789	779	3,544	3,745	3,736	6,069	6,493	7,309
New Brunswick	362	365	406	2,700	2,820	3,222	4,504	4,669	5,898
Quebec	4,343	4,567	4,412	31,554	33,069	33,153	55,004	56,269	58,168
Ontario	8,500	8,939	9,231	69,675	74,833	75,456	121,749	127,565	144,601
Manitoba	1,432	1,413	1,589	10,575	10,683	11,873	18,088	18,070	22,241
Saskatchewan	674	802	886	4,632	5,460	6,112	8,449	9,698	12,123
Alberta	1,757	1,651	1,651	13,118	13,324	14,077	24,034	23,886	28,046
British Columbia	2,688	2,640	2,797	19,583	19,445	21,320	33,726	31,947	41,939

1. Includes sold and home consumption.

Table 2-3
Disposition of poultry meat — Total poultry

	Birds			Weight			Value		
	2005	2006	2007	2005	2006	2007	2005	2006	2007
	in thousands			in thousands of kilograms			in thousands of dollars		
Sold									
Canada	646,329	643,026	661,687	1,154,461	1,159,872	1,198,022	1,885,525	1,824,570	2,067,667
Newfoundland and Labrador	x	x	x	x	x	x	x	x	x
Prince Edward Island	x	x	x	x	x	x	x	x	x
Nova Scotia	22,773	22,501	23,126	37,141	37,013	38,555	61,988	59,865	69,268
New Brunswick	17,836	18,051	18,856	29,701	29,554	30,982	50,256	47,901	55,734
Quebec	166,959	169,454	174,200	300,630	302,232	311,226	481,974	465,698	529,229
Ontario	213,600	211,185	215,109	405,377	406,886	415,002	648,101	623,617	710,672
Manitoba	30,512	30,931	31,066	52,172	53,828	55,291	84,601	82,231	95,126
Saskatchewan	22,620	23,449	26,493	36,172	42,034	47,312	57,660	65,986	83,104
Alberta	54,919	55,397	56,638	100,311	100,924	103,393	165,502	161,409	180,007
British Columbia	105,319	100,598	104,290	176,064	171,027	179,187	306,688	291,579	316,624
Home consumption									
Canada	414	407	411	1,032	1,032	1,032	1,377	1,367	1,403
Newfoundland and Labrador	x	x	x	x	x	x	x	x	x
Prince Edward Island	x	x	x	x	x	x	x	x	x
Nova Scotia	7	7	8	18	18	18	29	28	31
New Brunswick	2	2	2	5	5	5	7	7	7
Quebec	26	26	27	68	68	68	100	98	106
Ontario	102	104	104	233	233	233	323	308	337
Manitoba	45	48	46	134	134	134	195	78	85
Saskatchewan	51	50	51	136	136	136	40	179	199
Alberta	122	108	111	301	301	301	488	477	445
British Columbia	56	58	59	126	126	126	179	175	173
Disposition ¹									
Canada	646,743	643,432	662,098	1,155,493	1,160,904	1,199,054	1,886,903	1,825,937	2,069,070
Newfoundland and Labrador	x	x	x	x	x	x	x	x	x
Prince Edward Island	x	x	x	x	x	x	x	x	x
Nova Scotia	22,779	22,508	23,134	37,159	37,031	38,573	62,018	59,893	69,298
New Brunswick	17,838	18,053	18,858	29,706	29,559	30,988	50,263	47,908	55,741
Quebec	166,985	169,480	174,226	300,698	302,299	311,294	482,074	465,796	529,335
Ontario	213,702	211,289	215,213	405,611	407,119	415,235	648,424	623,925	711,010
Manitoba	30,557	30,978	31,112	52,306	53,962	55,425	84,795	82,309	95,211
Saskatchewan	22,670	23,499	26,544	36,308	42,170	47,448	57,700	66,165	83,303
Alberta	55,042	55,505	56,749	100,612	101,225	103,694	165,989	161,885	180,453
British Columbia	105,374	100,656	104,350	176,190	171,154	179,313	306,867	291,754	316,797

1. Includes sold and home consumption.

Table 3
Supply and disposition of poultry meat

	2003	2004	2005	2006	2007
tonnes					
Chicken					
Production	929,749	946,186	977,350	971,941	1,005,597
Beginning stocks	28,947	23,719	33,069	38,361	28,218
Imports	109,921	129,796	132,875	151,136	168,358
Total supply	1,068,617	1,099,701	1,143,294	1,161,438	1,202,173
Exports	71,110	72,260	91,932	99,357	121,850
Ending stocks	23,719	33,069	38,361	28,218	36,554
Net supply	973,788	994,372	1,013,001	1,033,863	1,043,769
kilograms					
Food available per person, eviscerated basis	30.7	31.1	31.4	31.7	31.7
Food available per person, boneless weight	18.5	18.7	18.9	19.1	19.0
Food available per person, adjusted for loss ²	10.3	10.4	10.5	10.6	10.6
tonnes					
Stewing hen					
Production	24,617	23,603	22,722	25,541	24,466
Beginning stocks	1,942	780	837	1,256	946
Imports	37,584	46,166	46,450	48,386	58,266
Total supply	64,143	70,549	70,009	75,183	83,678
Exports	17,778	18,065	22,983	24,839	30,463
Ending stocks	780	837	1,256	946	1,445
Net supply	45,585	51,647	45,770	49,398	51,770
kilograms					
Food available per person, eviscerated basis	1.4	1.6	1.4	1.5	1.6
Food available per person, boneless weight	0.9	1.0	0.8	0.9	1.0
Food available per person, adjusted for loss ²	0.5	0.5	0.5	0.5	0.5
tonnes					
Total Chicken¹					
Production	954,366	969,789	1,000,072	997,482	1,030,063
Beginning stocks	30,889	24,499	33,906	39,617	29,164
Imports	147,505	175,962	179,325	199,522	226,624
Total supply	1,132,760	1,170,250	1,213,303	1,236,621	1,285,851
Exports	88,888	90,325	114,915	124,196	152,313
Ending stocks	24,499	33,906	39,617	29,164	37,999
Net supply	1,019,373	1,046,019	1,058,771	1,083,261	1,095,539
kilograms					
Food available per person, eviscerated basis	32.2	32.7	32.8	33.2	33.2
Food available per person, boneless weight	19.4	19.7	19.7	20.0	20.0
Food available per person, adjusted for loss ²	10.8	11.0	11.0	11.2	11.2
tonnes					
Turkey					
Production	148,911	145,107	155,421	163,422	168,991
Beginning stocks	13,956	15,852	11,731	12,411	12,834
Imports	7,871	10,185	14,896	8,995	8,034
Total supply	170,738	171,144	182,048	184,828	189,859
Exports	16,913	19,219	24,521	27,165	26,493
Ending stocks	15,852	11,731	12,411	12,834	15,415
Net supply	137,973	140,194	145,116	144,829	147,951
kilograms					
Food available per person, eviscerated basis	4.4	4.4	4.5	4.4	4.5
Food available per person, boneless weight	3.4	3.5	3.6	3.5	3.5
Food available per person, adjusted for loss ²	2.2	2.2	2.2	2.2	2.2

See footnotes at the end of the table.

Table 3 – continued

Supply and disposition of poultry meat

	2003	2004	2005	2006	2007
	tonnes				
Total poultry meat					
Production	1,103,277	1,114,896	1,155,493	1,160,904	1,199,054
Beginning stocks	44,845	40,351	45,637	52,028	41,998
Imports	155,376	186,147	194,221	208,517	234,658
Total supply	1,303,498	1,341,394	1,395,351	1,421,449	1,475,710
Exports	105,801	109,544	139,436	151,361	178,806
Ending stocks	40,351	45,637	52,028	41,998	53,414
Net supply	1,157,346	1,186,213	1,203,887	1,228,090	1,243,490
	kilograms				
Food available per person, eviscerated basis	36.5	37.1	37.3	37.6	37.7
Food available per person, boneless weight	22.8	23.1	23.3	23.5	23.5
Food available per person, adjusted for loss ²	13.0	13.2	13.2	13.4	13.4

1. Includes stewing hen.

2. Experimental, use with caution. The data have been adjusted for retail, household, cooking and plate loss.

Table 4-1
Production of eggs by province — Average number of layers

	Jan.	Feb.	Mar.	Apr.	May	June	July	Aug.	Sept.	Oct.	Nov.	Dec.	Annual average
	in thousands												
Newfoundland and Labrador													
2006	347	342	344	339	329	338	348	338	339	351	340	342	341
2007	345	363	372	331	320	350	370	368	338	339	347	342	349
2008	358	385	386	343	333	363	384	382	351	352	360	355	363
Prince Edward Island													
2006	126	126	130	130	130	129	129	129	134	136	132	131	130
2007	130	130	124	119	126	132	131	131	131	130	130	131	129
2008	130	130	124	119	126	132	131	130	131	130	130	131	129
Nova Scotia													
2006	756	753	758	743	740	755	753	758	744	718	735	762	748
2007	754	752	756	744	717	721	749	755	747	747	744	745	744
2008	751	749	753	742	715	719	747	753	744	744	741	743	742
New Brunswick													
2006	717	744	770	790	737	754	749	736	738	742	780	743	750
2007	813	803	829	799	812	803	765	786	785	732	698	631	771
2008	734	757	800	789	782	771	777	809	784	783	664	718	764
Quebec													
2006	4,833	4,761	4,852	4,869	4,926	4,855	4,712	4,713	4,738	4,742	4,698	4,749	4,787
2007	4,848	4,874	4,883	4,810	4,771	4,764	4,798	4,820	4,673	4,701	4,805	4,905	4,804
2008	4,931	4,864	4,818	4,853	4,875	4,755	4,766	4,799	4,815	4,862	4,856	4,996	4,849
Ontario													
2006	9,333	9,371	9,518	9,620	9,688	9,638	9,571	9,496	9,389	9,344	9,420	9,514	9,492
2007	9,450	9,433	9,435	9,551	9,589	9,383	9,260	9,309	9,338	9,294	9,406	9,542	9,416
2008	9,444	9,369	9,338	9,363	9,408	9,402	9,354	9,432	9,639	9,692	9,704	9,775	9,493
Manitoba													
2006	3,029	3,016	2,948	2,951	3,034	3,038	3,038	3,027	2,988	2,994	3,028	3,037	3,011
2007	2,951	2,933	3,031	3,035	2,998	2,983	3,009	2,989	2,962	2,949	2,939	2,981	2,980
2008	3,030	3,036	3,018	3,002	2,999	3,011	3,011	2,990	2,967	2,906	2,899	2,973	2,987
Saskatchewan													
2006	1,189	1,182	1,153	1,156	1,141	1,128	1,126	1,128	1,071	1,075	1,162	1,128	1,137
2007	1,124	1,178	1,155	1,141	1,162	1,121	1,110	1,147	1,111	1,079	1,104	1,127	1,130
2008	1,109	1,114	1,099	1,072	1,102	1,109	1,095	1,122	1,146	1,149	1,175	1,184	1,123
Alberta													
2006	2,338	2,292	2,258	2,284	2,236	2,217	2,281	2,335	2,345	2,342	2,354	2,316	2,300
2007	2,314	2,319	2,327	2,310	2,311	2,341	2,329	2,344	2,321	2,297	2,299	2,294	2,317
2008	2,298	2,286	2,288	2,315	2,344	2,350	2,353	2,366	2,370	2,319	2,284	2,273	2,321
British Columbia													
2006	3,263	3,155	3,125	3,215	3,253	3,202	3,134	3,156	3,147	3,120	3,127	3,138	3,170
2007	3,239	3,150	3,121	3,196	3,261	3,228	3,236	3,169	3,067	3,146	3,171	3,159	3,179
2008	3,207	3,200	3,186	3,222	3,270	3,309	3,291	3,216	3,200	3,188	3,153	3,197	3,220
Canada													
2006	25,932	25,742	25,855	26,097	26,213	26,054	25,841	25,817	25,633	25,563	25,776	25,860	25,866
2007	25,968	25,935	26,032	26,036	26,067	25,826	25,757	25,817	25,473	25,414	25,643	25,857	25,819
2008	25,992	25,891	25,810	25,820	25,953	25,921	25,909	25,998	26,147	26,125	25,966	26,343	25,990

Table 4-2
Production of eggs by province — Eggs per 100 layers

	Jan.	Feb.	Mar.	Apr.	May	June	July	Aug.	Sept.	Oct.	Nov.	Dec.	Annual total
	in thousands												
Newfoundland and Labrador													
2006	2,432	2,222	2,273	2,466	2,475	2,497	2,437	2,528	2,494	2,323	2,467	2,534	29,140
2007	2,538	2,419	2,549	2,577	2,595	2,529	2,602	2,580	2,537	2,562	2,528	2,566	30,576
2008	2,478	2,378	2,432	2,573	2,550	2,416	2,336	2,418	2,509	2,587	2,457	2,594	29,685
Prince Edward Island													
2006	2,341	2,219	2,330	2,322	2,355	2,399	2,436	2,370	2,260	2,363	2,333	2,354	28,075
2007	2,602	2,447	2,578	2,578	2,526	2,451	2,626	2,601	2,511	2,526	2,501	2,622	30,554
2008	2,742	2,393	2,528	2,511	2,462	2,482	2,599	2,572	2,534	2,573	2,535	2,559	30,498
Nova Scotia													
2006	2,493	2,260	2,403	2,427	2,462	2,443	2,438	2,532	2,497	2,456	2,399	2,421	29,233
2007	2,605	2,415	2,545	2,487	2,516	2,498	2,577	2,550	2,450	2,551	2,465	2,637	30,299
2008	2,522	2,419	2,573	2,579	2,550	2,528	2,526	2,564	2,446	2,578	2,498	2,573	30,357
New Brunswick													
2006	2,064	1,935	2,038	1,981	2,056	2,015	2,051	2,076	2,018	2,037	2,015	2,106	24,385
2007	2,106	1,990	2,090	2,046	2,057	1,993	2,136	2,131	2,046	2,149	2,115	2,205	25,028
2008	2,162	1,991	2,087	2,059	2,084	2,014	2,065	2,091	2,050	2,102	2,139	2,155	24,983
Quebec													
2006	2,203	2,025	2,197	2,078	2,172	2,080	2,166	2,176	2,120	2,184	2,138	2,198	25,741
2007	2,187	1,984	2,168	2,070	2,144	2,071	2,166	2,120	2,076	2,156	2,078	2,142	25,366
2008	2,123	2,003	2,109	2,032	2,110	2,021	2,121	2,089	2,045	2,086	2,042	2,096	24,882
Ontario													
2006	2,446	2,228	2,422	2,325	2,418	2,330	2,432	2,400	2,348	2,425	2,384	2,488	28,646
2007	2,491	2,245	2,462	2,359	2,447	2,374	2,457	2,454	2,372	2,466	2,390	2,464	28,980
2008	2,457	2,307	2,430	2,339	2,439	2,370	2,434	2,420	2,347	2,415	2,373	2,465	28,799
Manitoba													
2006	2,549	2,350	2,550	2,469	2,521	2,454	2,517	2,517	2,455	2,505	2,438	2,529	29,849
2007	2,581	2,383	2,550	2,319	2,370	2,323	2,380	2,378	2,321	2,368	2,301	2,399	28,675
2008	2,497	2,336	2,451	2,409	2,465	2,403	2,466	2,468	2,408	2,453	2,385	2,479	29,220
Saskatchewan													
2006	2,047	1,873	1,936	1,811	1,838	1,783	1,860	1,855	1,789	1,897	1,814	1,838	22,344
2007	1,869	1,678	1,774	1,665	1,705	1,640	1,770	1,725	1,646	1,726	1,704	1,733	20,634
2008	1,722	1,640	1,612	1,551	1,589	1,546	1,605	1,593	1,530	1,584	1,556	1,573	19,096
Alberta													
2006	2,043	1,844	2,033	1,965	2,032	1,950	2,016	1,995	1,924	1,998	1,950	2,026	23,773
2007	2,068	1,851	2,033	1,931	2,044	1,949	2,022	1,985	1,939	2,014	2,016	2,114	23,968
2008	2,161	2,018	2,131	2,055	2,100	2,042	2,101	2,087	2,026	2,075	2,067	2,148	25,002
British Columbia													
2006	2,095	1,897	2,088	1,999	2,077	2,016	2,070	2,061	1,988	2,059	2,021	2,071	24,439
2007	2,084	1,897	2,067	2,000	2,051	2,004	2,064	2,033	2,001	2,069	2,009	2,085	24,363
2008	2,109	1,967	2,069	1,991	2,069	2,001	2,062	2,036	2,012	2,050	2,002	2,095	24,463
Canada													
2006	2,304	2,106	2,284	2,195	2,275	2,200	2,277	2,267	2,208	2,272	2,226	2,306	26,921
2007	2,322	2,109	2,293	2,187	2,257	2,190	2,272	2,252	2,191	2,271	2,208	2,287	26,838
2008	2,293	2,153	2,261	2,190	2,261	2,193	2,259	2,246	2,190	2,245	2,203	2,281	26,774

Table 4-3
Production of eggs by province in thousands of dozens

	Jan.	Feb.	Mar.	Apr.	May	June	July	Aug.	Sept.	Oct.	Nov.	Dec.	Annual total
	in thousands												
Newfoundland and Labrador													
2006	703	633	651	697	678	704	707	713	704	679	700	723	8,290
2007	729	732	790	710	693	737	803	791	715	724	731	730	8,885
2008	740	764	783	736	707	731	748	769	734	759	738	766	8,975
Prince Edward Island													
2006	247	234	251	252	254	258	262	254	253	268	256	257	3,046
2007	283	265	266	255	266	269	287	283	274	274	271	286	3,277
2008	298	258	260	249	259	272	283	279	276	279	274	279	3,266
Nova Scotia													
2006	1,571	1,417	1,517	1,502	1,519	1,537	1,530	1,600	1,548	1,469	1,469	1,537	18,214
2007	1,636	1,513	1,604	1,543	1,504	1,502	1,609	1,605	1,525	1,588	1,527	1,638	18,793
2008	1,578	1,510	1,616	1,594	1,518	1,515	1,572	1,608	1,517	1,599	1,543	1,592	18,761
New Brunswick													
2006	1,233	1,200	1,308	1,304	1,262	1,265	1,280	1,274	1,241	1,259	1,310	1,304	15,241
2007	1,427	1,331	1,443	1,363	1,391	1,334	1,361	1,395	1,338	1,311	1,231	1,160	16,084
2008	1,322	1,257	1,391	1,354	1,357	1,294	1,337	1,409	1,340	1,371	1,183	1,289	15,904
Quebec													
2006	8,874	8,035	8,885	8,433	8,917	8,414	8,506	8,547	8,371	8,632	8,372	8,700	102,684
2007	8,835	8,057	8,824	8,299	8,526	8,222	8,661	8,515	8,084	8,447	8,322	8,757	101,547
2008	8,722	8,121	8,468	8,220	8,574	8,009	8,425	8,355	8,207	8,452	8,264	8,726	100,542
Ontario													
2006	19,025	17,397	19,207	18,640	19,525	18,714	19,398	18,993	18,368	18,885	18,714	19,725	226,590
2007	19,620	17,645	19,358	18,779	19,557	18,560	18,958	19,033	18,459	19,101	18,733	19,595	227,397
2008	19,340	18,014	18,907	18,253	19,123	18,568	18,976	19,022	18,851	19,501	19,191	20,082	227,828
Manitoba													
2006	6,433	5,906	6,264	6,073	6,373	6,212	6,372	6,348	6,112	6,250	6,153	6,401	74,897
2007	6,346	5,824	6,442	5,866	5,922	5,775	5,968	5,923	5,729	5,819	5,634	5,960	71,208
2008	6,306	5,911	6,165	6,026	6,160	6,030	6,187	6,150	5,955	5,941	5,762	6,142	72,734
Saskatchewan													
2006	2,028	1,845	1,861	1,745	1,748	1,676	1,745	1,744	1,597	1,699	1,757	1,728	21,171
2007	1,750	1,648	1,708	1,583	1,651	1,532	1,637	1,649	1,524	1,552	1,568	1,628	19,431
2008	1,591	1,523	1,476	1,385	1,460	1,429	1,465	1,490	1,461	1,517	1,523	1,552	17,871
Alberta													
2006	3,980	3,521	3,825	3,740	3,786	3,603	3,833	3,883	3,760	3,899	3,826	3,910	45,565
2007	3,988	3,577	3,943	3,718	3,936	3,803	3,924	3,877	3,751	3,856	3,863	4,042	46,278
2008	4,138	3,844	4,064	3,965	4,102	3,999	4,119	4,115	4,002	4,010	3,934	4,069	48,359
British Columbia													
2006	5,696	4,988	5,437	5,355	5,630	5,380	5,405	5,420	5,214	5,352	5,267	5,417	64,561
2007	5,625	4,979	5,375	5,328	5,575	5,391	5,566	5,370	5,114	5,424	5,308	5,489	64,543
2008	5,637	5,246	5,493	5,347	5,639	5,517	5,654	5,457	5,367	5,445	5,261	5,580	65,642
Canada													
2006	49,790	45,176	49,205	47,739	49,691	47,764	49,037	48,774	47,166	48,390	47,823	49,702	580,258
2007	50,239	45,570	49,752	47,444	49,020	47,126	48,774	48,441	46,512	48,095	47,188	49,283	577,443
2008	49,671	46,447	48,622	47,127	48,898	47,364	48,767	48,655	47,709	48,874	47,672	50,077	579,882

Table 5-1
Disposition of eggs by province, quantity and value by province — Canada

	Jan.	Feb.	Mar.	Apr.	May	June	July	Aug.	Sept.	Oct.	Nov.	Dec.	Annual total
quantity, in thousands of dozens													
Sold for consumption													
2006	43,776	39,487	42,936	41,681	43,252	41,847	42,928	42,830	41,383	42,580	41,857	43,839	508,395
2007	43,888	39,723	43,342	41,251	42,639	41,179	42,539	42,415	40,803	42,212	41,266	43,299	504,555
2008	43,572	40,499	42,348	41,052	42,647	41,424	42,566	42,557	41,431	42,772	41,662	43,893	506,423
Sold for hatching													
2006	4,934	4,701	5,202	5,024	5,364	4,881	5,049	4,888	4,760	4,763	4,928	4,788	59,282
2007	5,264	4,851	5,334	5,161	5,319	4,921	5,177	4,975	4,694	4,839	4,894	4,916	60,344
2008	5,034	4,947	5,202	5,034	5,179	4,895	5,130	5,030	5,230	5,032	4,967	5,096	60,777
Home consumption													
2006	125	125	125	125	125	125	125	125	125	125	125	125	1,495
2007	125	125	125	125	125	125	125	125	125	125	125	125	1,495
2008	117	117	117	117	117	117	117	117	117	117	117	117	1,399
Leakers and rejects													
2006	954	864	942	910	950	912	936	931	899	924	914	951	11,085
2007	962	872	952	908	938	902	934	926	891	919	903	943	11,051
2008	948	885	955	925	955	928	955	952	931	953	926	970	11,282
Total disposition of eggs													
2006	49,789	45,176	49,205	47,739	49,691	47,764	49,037	48,774	47,166	48,390	47,823	49,702	580,257
2007	50,239	45,570	49,752	47,444	49,021	47,126	48,774	48,441	46,512	48,095	47,188	49,283	577,444
2008	49,671	46,447	48,621	47,127	48,898	47,364	48,767	48,655	47,709	48,874	47,672	50,076	579,881
value, in thousands of dollars													
Sold for consumption													
2006	44,546	41,014	44,784	43,632	45,302	43,842	45,070	45,172	43,677	44,584	43,865	45,812	531,299
2007	43,304	40,913	45,470	43,430	45,437	44,003	45,751	46,196	44,488	46,049	45,402	47,700	538,144
2008	47,595	44,448	46,752	45,966	48,177	46,907	49,078	50,241	48,996	50,805	48,440	50,879	578,283
Sold for hatching													
2006	16,508	15,853	17,510	16,952	18,091	16,502	16,966	16,451	16,071	16,089	16,924	16,434	200,350
2007	18,784	17,402	19,608	19,003	19,659	18,305	19,314	18,370	17,367	18,010	18,216	18,312	222,350
2008	18,758	19,146	20,293	19,853	20,657	19,634	21,089	20,705	21,555	20,720	20,027	20,428	242,865
Home consumption													
2006	162	163	162	163	163	163	163	166	169	166	166	165	1,969
2007	158	164	161	161	161	162	163	168	170	170	171	168	1,975
2008	155	156	154	155	156	156	158	162	160	161	158	158	1,889
Total value of disposition of eggs													
2006	61,216	57,030	62,456	60,747	63,555	60,506	62,199	61,789	59,916	60,839	60,955	62,411	733,618
2007	62,246	58,479	65,239	62,594	65,258	62,470	65,227	64,734	62,025	64,229	63,789	66,179	762,468
2008	66,507	63,750	67,198	65,974	68,990	66,697	70,325	71,108	70,711	71,686	68,626	71,465	823,036

Table 5-2
Disposition of eggs by province, quantity and value by province — Newfoundland and Labrador

	Jan.	Feb.	Mar.	Apr.	May	June	July	Aug.	Sept.	Oct.	Nov.	Dec.	Annual total
quantity, in thousands of dozens													
Sold for consumption													
2006	689	620	638	684	664	690	693	698	690	665	686	709	8,126
2007	714	718	774	696	679	723	787	775	701	710	717	716	8,710
2008	726	749	767	721	693	717	734	754	720	744	724	751	8,798
Sold for hatching													
2006	0	0	0	0	0	0	0	0	0	0	0	0	0
2007	0	0	0	0	0	0	0	0	0	0	0	0	0
2008	0	0	0	0	0	0	0	0	0	0	0	0	0
Home consumption													
2006	0	0	0	0	0	0	0	0	0	0	0	0	2
2007	0	0	0	0	0	0	0	0	0	0	0	0	2
2008	0	0	0	0	0	0	0	0	0	0	0	0	2
Leakers and rejects													
2006	14	12	13	14	13	14	14	14	14	13	14	14	162
2007	14	14	15	14	14	14	16	15	14	14	14	14	173
2008	14	15	15	14	14	14	15	15	14	15	14	15	175
Total disposition of eggs													
2006	703	633	651	697	677	704	707	713	704	679	700	723	8,290
2007	729	732	790	710	693	737	803	791	715	724	731	730	8,885
2008	740	764	782	736	707	731	749	769	734	759	738	766	8,975
value, in thousands of dollars													
Sold for consumption													
2006	935	863	888	951	924	953	950	958	937	897	924	934	11,113
2007	888	919	984	927	911	828	1,071	1,055	968	980	974	973	11,476
2008	986	1,017	1,035	980	942	1,017	1,041	1,123	1,072	1,134	1,075	1,104	12,525
Sold for hatching													
2006	0	0	0	0	0	0	0	0	0	0	0	0	0
2007	0	0	0	0	0	0	0	0	0	0	0	0	0
2008	0	0	0	0	0	0	0	0	0	0	0	0	0
Home consumption													
2006	0	0	0	0	0	0	0	0	0	0	0	0	5
2007	0	0	0	0	0	0	0	0	0	0	0	0	5
2008	0	0	0	0	0	0	0	0	0	0	0	0	5
Total value of disposition of eggs													
2006	936	863	888	951	924	953	951	958	938	897	925	934	11,118
2007	888	920	984	927	911	828	1,072	1,055	969	980	975	973	11,481
2008	986	1,018	1,035	981	942	1,017	1,042	1,123	1,072	1,134	1,076	1,104	12,530

Table 5-3
Disposition of eggs by province, quantity and value by province — Prince Edward Island

	Jan.	Feb.	Mar.	Apr.	May	June	July	Aug.	Sept.	Oct.	Nov.	Dec.	Annual total
quantity, in thousands of dozens													
Sold for consumption													
2006	241	229	246	246	249	253	256	249	248	262	251	252	2,983
2007	277	259	260	250	260	264	281	277	268	268	265	280	3,209
2008	291	253	255	243	254	267	277	274	270	273	269	273	3,198
Sold for hatching													
2006	0	0	0	0	0	0	0	0	0	0	0	0	0
2007	0	0	0	0	0	0	0	0	0	0	0	0	0
2008	0	0	0	0	0	0	0	0	0	0	0	0	0
Home consumption													
2006	0	0	0	0	0	0	0	0	0	0	0	0	4
2007	0	0	0	0	0	0	0	0	0	0	0	0	4
2008	0	0	0	0	0	0	0	0	0	0	0	0	4
Leakers and rejects													
2006	5	5	5	5	5	5	5	5	5	5	5	5	59
2007	6	5	5	5	5	5	6	6	5	5	5	6	64
2008	6	5	5	5	5	5	6	5	5	5	5	5	64
Total disposition of eggs													
2006	246	234	251	251	254	258	262	254	253	267	257	257	3,046
2007	283	265	266	255	266	269	287	283	274	274	271	286	3,277
2008	298	258	260	249	259	272	283	279	276	279	274	279	3,266
value, in thousands of dollars													
Sold for consumption													
2006	277	267	287	287	293	297	299	291	287	300	288	279	3,450
2007	288	290	289	283	304	306	325	319	308	308	309	326	3,654
2008	339	295	292	286	298	323	336	347	343	354	343	343	3,897
Sold for hatching													
2006	0	0	0	0	0	0	0	0	0	0	0	0	0
2007	0	0	0	0	0	0	0	0	0	0	0	0	0
2008	0	0	0	0	0	0	0	0	0	0	0	0	0
Home consumption													
2006	1	1	1	1	1	1	1	1	1	1	1	1	6
2007	1	1	1	1	1	1	1	1	1	1	1	1	6
2008	1	1	1	1	1	1	1	1	1	1	1	1	6
Total value of disposition of eggs													
2006	277	267	288	288	293	298	300	291	287	301	288	280	3,456
2007	288	291	289	283	305	306	326	319	309	309	309	326	3,660
2008	339	295	293	287	298	324	337	347	343	354	343	343	3,903

Table 5-4
Disposition of eggs by province, quantity and value by province — Nova Scotia

	Jan.	Feb.	Mar.	Apr.	May	June	July	Aug.	Sept.	Oct.	Nov.	Dec.	Annual total
quantity, in thousands of dozens													
Sold for consumption													
2006	1,556	1,405	1,504	1,491	1,507	1,526	1,518	1,588	1,536	1,458	1,458	1,526	18,072
2007	1,621	1,500	1,589	1,529	1,490	1,488	1,594	1,591	1,511	1,573	1,514	1,623	18,622
2008	1,567	1,500	1,576	1,555	1,485	1,480	1,536	1,572	1,486	1,567	1,515	1,566	18,403
Sold for hatching													
2006	0	0	0	0	0	0	0	0	0	0	0	0	0
2007	0	0	0	0	0	0	0	0	0	0	0	0	0
2008	0	0	0	0	0	0	0	0	0	0	0	0	0
Home consumption													
2006	1	1	1	1	1	1	1	1	1	1	1	1	16
2007	1	1	1	1	1	1	1	1	1	1	1	1	16
2008	1	1	1	1	1	1	1	1	1	1	1	1	16
Leakers and rejects													
2006	14	11	12	10	10	10	10	11	10	10	10	10	126
2007	14	13	13	13	12	12	13	13	13	13	13	14	155
2008	10	9	38	38	32	34	34	35	30	32	26	24	341
Total disposition of eggs													
2006	1,571	1,417	1,517	1,502	1,518	1,537	1,530	1,600	1,548	1,469	1,469	1,537	18,214
2007	1,636	1,513	1,604	1,543	1,504	1,502	1,609	1,605	1,525	1,588	1,527	1,638	18,793
2008	1,578	1,510	1,616	1,594	1,518	1,515	1,572	1,608	1,517	1,599	1,542	1,592	18,760
value, in thousands of dollars													
Sold for consumption													
2006	1,858	1,698	1,817	1,801	1,828	1,851	1,842	1,928	1,861	1,765	1,766	1,817	21,829
2007	1,795	1,726	1,891	1,821	1,816	1,814	1,944	1,939	1,843	1,919	1,854	1,986	22,348
2008	1,920	1,836	1,929	1,903	1,819	1,870	1,941	2,062	1,949	2,080	2,024	2,047	23,380
Sold for hatching													
2006	0	0	0	0	0	0	0	0	0	0	0	0	0
2007	0	0	0	0	0	0	0	0	0	0	0	0	0
2008	0	0	0	0	0	0	0	0	0	0	0	0	0
Home consumption													
2006	3	3	3	3	3	3	3	3	3	3	3	3	32
2007	3	3	3	3	3	3	3	3	3	3	3	3	32
2008	3	3	3	3	3	3	3	3	3	3	3	3	34
Total value of disposition of eggs													
2006	1,861	1,700	1,819	1,804	1,830	1,853	1,844	1,930	1,863	1,768	1,768	1,820	21,862
2007	1,797	1,728	1,894	1,824	1,819	1,817	1,946	1,942	1,846	1,922	1,857	1,989	22,380
2008	1,922	1,838	1,932	1,906	1,822	1,873	1,944	2,065	1,952	2,083	2,027	2,050	23,414

Table 5-5
Disposition of eggs by province, quantity and value by province — New Brunswick

	Jan.	Feb.	Mar.	Apr.	May	June	July	Aug.	Sept.	Oct.	Nov.	Dec.	Annual total
quantity, in thousands of dozens													
Sold for consumption													
2006	852	812	876	856	845	823	824	839	822	850	890	913	10,202
2007	924	857	924	895	881	823	892	943	898	917	851	851	10,655
2008	913	846	913	896	884	823	854	922	893	911	843	868	10,566
Sold for hatching													
2006	357	364	406	422	391	417	430	409	394	384	394	364	4,732
2007	474	448	490	441	482	485	442	424	413	368	355	285	5,107
2008	383	386	449	430	446	446	457	459	421	432	317	395	5,019
Home consumption													
2006	1	1	1	1	1	1	1	1	1	1	1	1	10
2007	1	1	1	1	1	1	1	1	1	1	1	1	10
2008	1	1	1	1	1	1	1	1	1	1	1	1	10
Leakers and rejects													
2006	24	23	26	25	25	25	25	25	24	25	26	25	297
2007	28	26	28	27	27	26	27	27	26	26	24	23	314
2008	26	25	27	26	27	25	26	28	26	27	23	25	310
Total disposition of eggs													
2006	1,233	1,200	1,308	1,304	1,262	1,266	1,280	1,274	1,241	1,259	1,311	1,304	15,241
2007	1,427	1,331	1,443	1,363	1,391	1,334	1,362	1,395	1,338	1,311	1,231	1,160	16,086
2008	1,322	1,257	1,390	1,354	1,357	1,294	1,338	1,410	1,340	1,371	1,183	1,289	15,904
value, in thousands of dollars													
Sold for consumption													
2006	987	959	1,034	1,011	1,004	978	978	996	976	1,009	1,057	1,067	12,057
2007	1,019	984	1,088	1,053	1,070	999	1,083	1,145	1,090	1,113	1,039	1,041	12,722
2008	1,116	1,034	1,117	1,096	1,081	1,037	1,077	1,207	1,168	1,192	1,113	1,137	13,376
Sold for hatching													
2006	1,115	1,137	1,268	1,318	1,224	1,304	1,345	1,280	1,232	1,200	1,231	1,139	14,792
2007	1,483	1,399	1,532	1,378	1,506	1,515	1,383	1,326	1,291	1,150	1,111	892	15,966
2008	1,196	1,205	1,404	1,345	1,395	1,393	1,428	1,435	1,315	1,349	989	1,234	15,688
Home consumption													
2006	1	1	1	1	1	1	1	1	1	1	1	1	14
2007	1	1	1	1	1	1	1	1	1	1	1	1	15
2008	1	1	1	1	1	1	1	1	1	1	1	2	15
Total value of disposition of eggs													
2006	2,103	2,098	2,303	2,330	2,229	2,283	2,325	2,277	2,209	2,210	2,289	2,207	26,863
2007	2,503	2,384	2,622	2,432	2,577	2,515	2,467	2,472	2,382	2,264	2,151	1,934	28,703
2008	2,313	2,241	2,522	2,442	2,477	2,432	2,506	2,643	2,485	2,543	2,104	2,373	29,080

Table 5-6
Disposition of eggs by province, quantity and value by province — Quebec

	Jan.	Feb.	Mar.	Apr.	May	June	July	Aug.	Sept.	Oct.	Nov.	Dec.	Annual total
quantity, in thousands of dozens													
Sold for consumption													
2006	7,409	6,608	7,258	6,926	7,272	6,929	7,063	7,091	6,917	7,259	6,994	7,249	84,975
2007	7,289	6,631	7,309	6,853	7,003	6,841	7,089	7,033	6,689	6,966	6,844	7,184	83,731
2008	7,170	6,636	6,946	6,768	7,006	6,619	6,898	6,860	6,636	6,950	6,721	7,037	82,247
Sold for hatching													
2006	1,286	1,264	1,448	1,337	1,465	1,315	1,271	1,283	1,285	1,199	1,209	1,275	15,635
2007	1,368	1,263	1,337	1,278	1,351	1,215	1,397	1,310	1,231	1,310	1,310	1,396	15,764
2008	1,376	1,321	1,351	1,286	1,395	1,228	1,357	1,326	1,405	1,331	1,376	1,513	16,264
Home consumption													
2006	6	6	6	6	6	6	6	6	6	6	6	6	72
2007	6	6	6	6	6	6	6	6	6	6	6	6	72
2008	6	6	6	6	6	6	6	6	6	6	6	6	72
Leakers and rejects													
2006	173	157	173	164	174	164	166	167	163	168	163	170	2,002
2007	172	157	172	162	166	160	169	166	158	165	162	171	1,980
2008	170	158	165	160	167	156	164	163	160	165	161	170	1,959
Total disposition of eggs													
2006	8,874	8,035	8,885	8,433	8,917	8,414	8,506	8,547	8,371	8,632	8,372	8,700	102,684
2007	8,835	8,057	8,824	8,299	8,526	8,222	8,661	8,515	8,084	8,447	8,322	8,757	101,547
2008	8,722	8,121	8,468	8,220	8,574	8,009	8,425	8,355	8,207	8,452	8,264	8,726	100,542
value, in thousands of dollars													
Sold for consumption													
2006	7,874	7,206	7,914	7,623	8,004	7,627	7,775	7,792	7,598	7,977	7,684	7,964	93,038
2007	7,642	7,243	8,129	7,630	8,056	7,870	8,156	8,092	7,707	8,029	8,038	8,437	95,029
2008	8,421	7,820	8,183	8,163	8,520	8,049	8,589	8,742	8,452	8,904	8,362	8,755	100,960
Sold for hatching													
2006	4,129	4,144	4,749	4,384	4,863	4,366	4,194	4,233	4,278	3,992	4,110	4,336	51,778
2007	4,856	4,482	4,799	4,588	4,837	4,412	5,072	4,702	4,418	4,754	4,754	5,038	56,712
2008	4,968	5,019	5,216	4,963	5,495	4,838	5,564	5,438	5,704	5,405	5,351	5,885	63,846
Home consumption													
2006	8	8	8	8	8	8	8	8	8	8	8	8	96
2007	8	8	8	8	8	8	8	8	8	8	8	8	96
2008	8	8	8	8	8	8	8	8	8	8	8	8	96
Total value of disposition of eggs													
2006	12,011	11,358	12,671	12,015	12,875	12,001	11,977	12,033	11,884	11,977	11,802	12,308	144,912
2007	12,506	11,733	12,936	12,226	12,901	12,290	13,236	12,802	12,133	12,791	12,800	13,483	151,837
2008	13,397	12,847	13,407	13,134	14,023	12,895	14,161	14,188	14,164	14,317	13,721	14,648	164,902

Table 5-7
Disposition of eggs by province, quantity and value by province — Ontario

	Jan.	Feb.	Mar.	Apr.	May	June	July	Aug.	Sept.	Oct.	Nov.	Dec.	Annual total
quantity, in thousands of dozens													
Sold for consumption													
2006	17,212	15,583	17,203	16,745	17,418	16,890	17,392	17,154	16,553	17,005	16,776	17,843	203,774
2007	17,643	15,854	17,348	16,828	17,552	16,679	17,106	17,106	16,662	17,198	16,790	17,603	204,369
2008	17,424	16,119	16,898	16,385	17,259	16,751	17,103	17,100	16,865	17,576	17,253	18,105	204,838
Sold for hatching													
2006	1,409	1,442	1,596	1,499	1,693	1,426	1,595	1,436	1,424	1,479	1,540	1,464	18,002
2007	1,561	1,414	1,600	1,552	1,591	1,486	1,449	1,523	1,404	1,498	1,545	1,577	18,199
2008	1,509	1,514	1,610	1,482	1,461	1,425	1,473	1,521	1,588	1,515	1,534	1,555	18,187
Home consumption													
2006	33	33	33	33	33	33	33	33	33	33	33	33	396
2007	33	33	33	33	33	33	33	33	33	33	33	33	396
2008	30	30	30	30	30	30	30	30	30	30	30	30	360
Leakers and rejects													
2006	371	339	375	363	381	365	378	370	358	368	365	385	4,418
2007	383	344	377	366	381	362	370	371	360	372	365	382	4,433
2008	377	351	369	356	373	362	370	371	368	380	374	392	4,443
Total disposition of eggs													
2006	19,025	17,397	19,207	18,640	19,525	18,714	19,398	18,993	18,368	18,885	18,714	19,725	226,590
2007	19,620	17,645	19,358	18,779	19,557	18,560	18,958	19,033	18,459	19,101	18,733	19,595	227,397
2008	19,340	18,014	18,907	18,253	19,123	18,568	18,976	19,022	18,851	19,501	19,191	20,082	227,828
value, in thousands of dollars													
Sold for consumption													
2006	17,501	16,278	17,956	17,628	18,338	17,782	18,311	18,098	17,474	17,950	17,704	18,828	213,848
2007	17,787	16,696	18,930	18,363	19,311	18,518	18,994	19,320	18,826	19,430	19,000	19,919	225,094
2008	19,718	18,288	19,160	18,889	20,051	19,460	20,281	20,706	20,405	21,265	20,389	21,395	240,007
Sold for hatching													
2006	4,649	4,759	5,252	4,931	5,536	4,664	5,185	4,666	4,655	4,835	5,158	4,903	59,193
2007	5,464	4,990	5,647	5,462	5,600	5,319	5,189	5,377	4,956	5,348	5,516	5,613	64,481
2008	5,373	5,676	6,116	5,630	5,670	5,530	5,952	6,144	6,352	6,061	5,890	5,971	70,365
Home consumption													
2006	46	47	44	44	44	44	44	44	46	46	46	46	541
2007	45	46	44	44	44	44	44	46	47	47	47	47	545
2008	42	42	40	40	41	41	42	43	43	43	42	42	501
Total value of disposition of eggs													
2006	22,196	21,084	23,252	22,603	23,918	22,490	23,540	22,808	22,175	22,831	22,908	23,777	273,582
2007	23,296	21,732	24,621	23,869	24,955	23,881	24,227	24,743	23,829	24,825	24,563	25,579	290,120
2008	25,133	24,006	25,316	24,559	25,762	25,031	26,275	26,893	26,800	27,369	26,321	27,408	310,873

Table 5-8
Disposition of eggs by province, quantity and value by province — Manitoba

	Jan.	Feb.	Mar.	Apr.	May	June	July	Aug.	Sept.	Oct.	Nov.	Dec.	Annual total
quantity, in thousands of dozens													
Sold for consumption													
2006	6,014	5,529	5,855	5,664	5,941	5,793	5,953	5,950	5,710	5,834	5,736	6,000	69,979
2007	5,933	5,423	5,991	5,440	5,522	5,377	5,567	5,547	5,346	5,419	5,265	5,563	66,393
2008	5,861	5,497	5,731	5,612	5,736	5,619	5,784	5,771	5,568	5,538	5,376	5,766	67,859
Sold for hatching													
2006	279	247	272	276	293	283	280	259	268	279	282	261	3,279
2007	274	272	310	297	270	270	270	246	256	272	244	266	3,247
2008	308	285	300	282	290	279	268	245	257	273	260	242	3,288
Home consumption													
2006	15	15	15	15	15	15	15	15	15	15	15	15	180
2007	15	15	15	15	15	15	15	15	15	15	15	15	180
2008	14	14	14	14	14	14	14	14	14	14	14	14	168
Leakers and rejects													
2006	125	115	122	118	124	121	124	124	119	122	120	125	1,459
2007	124	114	126	114	115	113	116	115	112	113	110	116	1,388
2008	123	115	120	118	120	118	121	120	116	116	112	120	1,419
Total disposition of eggs													
2006	6,433	5,906	6,264	6,073	6,373	6,212	6,372	6,348	6,112	6,250	6,153	6,401	74,897
2007	6,346	5,824	6,442	5,866	5,922	5,775	5,968	5,923	5,729	5,819	5,634	5,960	71,208
2008	6,306	5,911	6,165	6,026	6,160	6,030	6,187	6,150	5,955	5,941	5,762	6,142	72,734
value, in thousands of dollars													
Sold for consumption													
2006	4,453	4,122	4,524	4,191	4,437	4,343	4,559	4,713	4,526	4,644	4,606	4,797	53,915
2007	4,107	3,818	4,192	3,797	3,877	3,774	4,015	4,156	4,019	4,063	3,993	4,202	48,013
2008	4,120	3,863	3,972	3,878	4,047	3,950	4,164	4,332	4,198	4,136	4,065	4,337	49,062
Sold for hatching													
2006	1,017	899	990	1,003	1,068	1,029	1,020	943	975	1,015	1,026	950	11,935
2007	997	990	1,187	1,138	1,033	1,035	1,036	942	979	1,041	936	1,019	12,333
2008	1,178	1,151	1,229	1,156	1,189	1,163	1,118	1,045	1,093	1,165	1,106	1,032	13,625
Home consumption													
2006	14	14	14	14	14	14	14	15	15	15	15	15	173
2007	13	13	13	13	13	13	14	15	15	15	15	15	167
2008	12	12	12	12	12	12	12	13	13	13	13	13	149
Total value of disposition of eggs													
2006	5,484	5,035	5,528	5,208	5,519	5,386	5,593	5,671	5,516	5,674	5,647	5,762	66,023
2007	5,117	4,821	5,392	4,948	4,923	4,822	5,065	5,113	5,013	5,119	4,944	5,236	60,513
2008	5,310	5,026	5,213	5,046	5,248	5,125	5,294	5,390	5,304	5,314	5,184	5,382	62,836

Table 5-9
Disposition of eggs by province, quantity and value by province — Saskatchewan

	Jan.	Feb.	Mar.	Apr.	May	June	July	Aug.	Sept.	Oct.	Nov.	Dec.	Annual total
quantity, in thousands of dozens													
Sold for consumption													
2006	1,758	1,592	1,626	1,476	1,489	1,450	1,522	1,529	1,424	1,472	1,502	1,504	18,344
2007	1,504	1,411	1,449	1,306	1,390	1,357	1,402	1,401	1,318	1,362	1,345	1,402	16,647
2008	1,397	1,287	1,284	1,174	1,256	1,236	1,245	1,241	1,202	1,264	1,256	1,302	15,144
Sold for hatching													
2006	215	202	184	220	210	178	174	166	127	179	206	175	2,234
2007	197	190	211	231	214	130	188	201	161	145	177	179	2,225
2008	149	192	149	170	162	151	177	206	217	209	223	206	2,210
Home consumption													
2006	15	15	15	15	15	15	15	15	15	15	15	15	180
2007	15	15	15	15	15	15	15	15	15	15	15	15	180
2008	14	14	14	14	14	14	14	14	14	14	14	14	168
Leakers and rejects													
2006	40	36	36	34	34	33	34	34	31	33	34	34	413
2007	34	32	33	31	32	30	32	32	30	30	31	32	379
2008	31	30	29	27	28	28	29	29	28	30	30	30	349
Total disposition of eggs													
2006	2,028	1,845	1,861	1,745	1,748	1,676	1,745	1,744	1,597	1,699	1,757	1,728	21,171
2007	1,750	1,648	1,708	1,583	1,651	1,532	1,637	1,649	1,524	1,552	1,568	1,628	19,431
2008	1,591	1,523	1,476	1,385	1,460	1,429	1,465	1,490	1,461	1,517	1,523	1,552	17,871
value, in thousands of dollars													
Sold for consumption													
2006	1,820	1,676	1,715	1,576	1,593	1,551	1,630	1,658	1,549	1,541	1,568	1,570	19,447
2007	1,493	1,480	1,520	1,374	1,464	1,443	1,493	1,508	1,424	1,468	1,456	1,531	17,654
2008	1,526	1,430	1,468	1,366	1,473	1,450	1,483	1,500	1,464	1,538	1,478	1,530	17,706
Sold for hatching													
2006	784	734	668	801	763	647	634	603	461	653	749	635	8,132
2007	719	691	808	886	821	499	720	768	618	555	676	685	8,446
2008	571	775	611	730	693	649	761	904	954	920	983	905	9,456
Home consumption													
2006	19	19	19	19	19	19	19	20	20	20	20	20	233
2007	19	20	19	19	19	19	19	20	20	20	20	20	234
2008	19	20	19	19	19	19	19	19	19	19	19	19	229
Total value of disposition of eggs													
2006	2,623	2,429	2,402	2,396	2,375	2,217	2,283	2,281	2,030	2,214	2,337	2,225	27,812
2007	2,231	2,191	2,347	2,279	2,304	1,961	2,232	2,296	2,062	2,043	2,152	2,236	26,334
2008	2,116	2,225	2,098	2,115	2,185	2,118	2,263	2,423	2,437	2,477	2,480	2,454	27,391

Table 5-10
Disposition of eggs by province, quantity and value by province — Alberta

	Jan.	Feb.	Mar.	Apr.	May	June	July	Aug.	Sept.	Oct.	Nov.	Dec.	Annual total
quantity, in thousands of dozens													
Sold for consumption													
2006	3,316	2,953	3,220	3,148	3,156	2,994	3,188	3,212	3,116	3,245	3,171	3,293	38,012
2007	3,297	2,953	3,225	3,096	3,234	3,156	3,225	3,219	3,128	3,250	3,214	3,440	38,437
2008	3,512	3,249	3,417	3,269	3,411	3,330	3,446	3,444	3,313	3,380	3,265	3,502	40,538
Sold for hatching													
2006	553	466	497	486	523	506	537	562	538	545	547	508	6,267
2007	580	521	608	516	592	540	589	549	517	498	541	490	6,541
2008	514	489	537	588	580	560	562	560	580	521	561	457	6,507
Home consumption													
2006	33	33	33	33	33	33	33	33	33	33	33	33	396
2007	33	33	33	33	33	33	33	33	33	33	33	33	396
2008	31	31	31	31	31	31	31	31	31	31	31	31	372
Leakers and rejects													
2006	78	69	75	73	74	70	75	76	73	76	75	76	890
2007	78	70	77	73	77	74	77	76	73	75	75	79	904
2008	81	75	79	77	80	78	80	80	78	78	77	79	942
Total disposition of eggs													
2006	3,980	3,521	3,825	3,740	3,786	3,603	3,833	3,883	3,760	3,899	3,826	3,910	45,565
2007	3,988	3,577	3,943	3,718	3,936	3,803	3,924	3,877	3,751	3,856	3,863	4,042	46,278
2008	4,138	3,844	4,064	3,965	4,102	3,999	4,119	4,115	4,002	4,010	3,934	4,069	48,359
value, in thousands of dollars													
Sold for consumption													
2006	3,517	3,185	3,474	3,425	3,436	3,260	3,500	3,559	3,454	3,473	3,392	3,521	41,196
2007	3,379	3,195	3,487	3,349	3,498	3,445	3,522	3,548	3,449	3,583	3,593	3,877	41,925
2008	3,956	3,719	4,035	3,922	4,126	4,029	4,223	4,275	4,136	4,215	3,947	4,231	48,814
Sold for hatching													
2006	1,973	1,665	1,773	1,733	1,868	1,837	1,948	2,040	1,953	1,978	2,029	1,885	22,682
2007	2,240	2,067	2,414	2,049	2,351	2,170	2,366	2,208	2,079	2,002	2,174	1,968	26,088
2008	2,064	2,049	2,250	2,505	2,469	2,395	2,404	2,449	2,533	2,275	2,451	1,995	27,839
Home consumption													
2006	41	41	41	42	42	42	42	43	43	41	41	41	500
2007	40	42	41	41	41	42	42	43	43	43	43	43	504
2008	41	41	41	41	41	41	42	43	42	42	41	41	497
Total value of disposition of eggs													
2006	5,531	4,891	5,288	5,200	5,346	5,139	5,490	5,642	5,450	5,492	5,462	5,447	64,378
2007	5,659	5,304	5,942	5,439	5,890	5,657	5,930	5,799	5,571	5,628	5,810	5,888	68,517
2008	6,061	5,809	6,326	6,468	6,636	6,465	6,669	6,767	6,711	6,532	6,439	6,267	77,150

Table 5-11
Disposition of eggs by province, quantity and value by province — British Columbia

	Jan.	Feb.	Mar.	Apr.	May	June	July	Aug.	Sept.	Oct.	Nov.	Dec.	Annual total
quantity, in thousands of dozens													
Sold for consumption													
2006	4,729	4,155	4,510	4,445	4,711	4,499	4,519	4,520	4,367	4,530	4,393	4,550	53,928
2007	4,686	4,118	4,472	4,358	4,627	4,471	4,596	4,523	4,282	4,549	4,462	4,638	53,782
2008	4,712	4,364	4,561	4,428	4,664	4,583	4,689	4,620	4,479	4,569	4,441	4,723	54,833
Sold for hatching													
2006	836	716	801	786	789	756	761	774	725	698	751	741	9,134
2007	809	744	778	846	819	795	841	722	712	749	722	724	9,260
2008	796	761	806	796	846	807	836	712	764	751	698	729	9,301
Home consumption													
2006	20	20	20	20	20	20	20	20	20	20	20	20	240
2007	20	20	20	20	20	20	20	20	20	20	20	20	240
2008	19	19	19	19	19	19	19	19	19	19	19	19	228
Leakers and rejects													
2006	111	97	106	104	110	105	105	106	102	104	103	106	1,259
2007	110	97	105	104	109	105	109	105	100	106	104	107	1,261
2008	110	102	107	104	110	108	110	106	105	106	103	109	1,280
Total disposition of eggs													
2006	5,696	4,988	5,437	5,355	5,630	5,380	5,405	5,420	5,214	5,352	5,267	5,417	64,561
2007	5,625	4,979	5,375	5,328	5,575	5,391	5,566	5,370	5,114	5,424	5,308	5,489	64,543
2008	5,637	5,246	5,493	5,347	5,639	5,517	5,654	5,457	5,367	5,445	5,261	5,580	65,642
value, in thousands of dollars													
Sold for consumption													
2006	5,324	4,761	5,176	5,139	5,446	5,200	5,226	5,180	5,015	5,028	4,876	5,035	61,406
2007	4,908	4,562	4,961	4,834	5,130	5,007	5,148	5,115	4,853	5,156	5,146	5,408	60,228
2008	5,493	5,146	5,561	5,483	5,821	5,721	5,943	5,947	5,809	5,987	5,644	6,000	68,555
Sold for hatching													
2006	2,841	2,515	2,810	2,782	2,769	2,655	2,640	2,686	2,517	2,416	2,621	2,586	31,838
2007	3,025	2,783	3,221	3,502	3,511	3,355	3,548	3,047	3,026	3,160	3,049	3,097	38,324
2008	3,408	3,271	3,467	3,524	3,746	3,666	3,862	3,290	3,604	3,545	3,257	3,406	42,046
Home consumption													
2006	29	29	31	31	31	31	31	31	32	31	31	30	368
2007	28	30	31	31	31	31	31	31	32	32	33	30	371
2008	28	28	29	30	30	30	30	31	30	31	30	30	357
Total value of disposition of eggs													
2006	8,194	7,305	8,017	7,952	8,246	7,886	7,897	7,897	7,564	7,475	7,528	7,651	93,612
2007	7,961	7,375	8,213	8,367	8,672	8,393	8,727	8,193	7,911	8,348	8,228	8,535	98,923
2008	8,929	8,445	9,057	9,037	9,597	9,417	9,835	9,268	9,443	9,563	8,931	9,436	110,958

Table 6
Stocks of frozen eggs and edible dried eggs, Canada

	Jan.	Feb.	Mar.	Apr.	May	June	July	Aug.	Sept.	Oct.	Nov.	Dec.
	tonnes											
Whole eggs, total												
2006	549	948	1,250	1,151	1,178	1,302	1,088	1,176	1,165	1,008	832	661
2007	567	1,049	965	1,120	1,290	1,274	1,226	1,031	786	886	857	847
2008	726	833	710	670	743	790	896	1,211	1,215	891	999	819
Yolk, total												
2006	710	717	956	1,121	924	813	860	797	877	896	781	738
2007	639	849	938	1,054	718	710	608	879	1,007	850	809	766
2008	795	747	769	490	442	409	433	499	458	460	436	327
Whites, total												
2006	75	97	97	126	128	141	101	134	126	98	108	125
2007	79	120	78	90	93	121	224	144	160	126	152	145
2008	112	95	89	86	120	168	221	267	243	217	178	151
Edible dried eggs												
2006	862	986	1,042	1,009	804	913	994	1,131	1,090	1,214	1,164	1,029
2007	789	795	754	724	673	667	591	585	547	553	449	583
2008	545	615	648	596	587	500	538	609	671	519	530	635
Dried, whole and mixes												
2006	262	227	223	206	194	195	227	231	173	169	231	199
2007	172	188	243	256	209	185	208	217	126	125	147	102
2008	150	146	127	140	212	206	194	262	243	198	125	117
Dried, yolk and mixes												
2006	207	311	301	261	217	234	243	238	139	152	145	143
2007	137	161	108	124	149	220	145	89	105	82	57	132
2008	89	99	105	133	128	72	138	146	218	174	205	232
Dried albumen												
2006	392	448	518	541	393	485	524	662	778	893	788	686
2007	480	446	402	344	315	261	238	280	317	346	246	348
2008	306	369	417	322	246	222	207	201	209	148	199	286

Table 7
Supply and disposition of eggs

	2003	2004	2005	2006	2007
	in thousands of dozens				
Production	572,497	546,820	577,217	580,258	577,443
Beginning stocks	10,737	8,697	12,230	10,830	11,087
Imports	44,304	63,373	45,296	39,093	33,472
Total supply	627,538	618,890	634,743	630,181	622,002
Exports	55,915	61,697	60,442	50,642	62,621
Used for hatching	61,614	59,134	60,277	59,304	60,362
Leakers and rejects	10,948	10,374	11,063	11,108	11,004
Ending stocks	8,697	12,230	10,830	11,087	8,825
Net supply	490,364	475,455	492,131	498,040	479,190
	dozens				
Food available per person	15.5	14.9	15.2	15.3	14.5
Food available per person, adjusted for loss ¹	12.2	11.8	12.0	12.1	11.5

1. Experimental, use with caution. The data have been adjusted for retail, household, cooking and plate loss.

Table 8
Average prices of eggs sold for consumption in Canada by month

	Jan.	Feb.	Mar.	Apr.	May	June	July	Aug.	Sept.	Oct.	Nov.	Dec.
	dollars per dozen											
2000	0.99	0.99	0.99	0.99	1.00	1.00	0.98	1.02	1.03	1.03	1.04	1.04
2001	1.04	1.04	1.06	1.06	1.06	1.06	1.06	1.07	1.06	1.07	1.08	1.08
2002	1.06	1.06	1.06	1.06	1.06	1.06	1.06	1.11	1.08	1.08	1.08	1.12
2003	1.08	1.09	1.08	1.09	1.09	1.09	1.10	1.10	1.10	1.10	1.10	1.10
2004	1.10	1.10	1.10	1.11	1.13	1.16	1.16	1.18	1.17	1.15	1.15	1.13
2005	1.03	1.01	1.01	1.02	1.02	1.02	1.02	1.04	1.03	1.03	1.04	1.04
2006	1.02	1.04	1.04	1.05	1.05	1.05	1.05	1.06	1.06	1.05	1.05	1.04
2007	0.99	1.03	1.05	1.05	1.07	1.07	1.08	1.09	1.09	1.09	1.10	1.10
2008	1.09	1.10	1.10	1.12	1.13	1.13	1.15	1.18	1.18	1.19	1.16	1.16

Note(s): Price received by producer.

Table 9
Report of processed eggs production, Canada

	Whole egg	Yolk	Albumen	Total processed egg
	kilograms			
Total break				
2006	29,032,174	8,603,393	16,785,691	54,421,258
2007	27,695,130	5,875,001	12,827,153	46,397,284
2008	34,267,868	4,023,331	10,182,905	46,766,277
Frozen eggs				
2006	2,458,411	3,084,370	700,203	6,242,984
2007	2,361,746	2,302,002	570,843	5,234,591
2008	2,370,319	1,500,867	479,197	4,350,383
Liquid eggs				
2006	21,120,932	2,450,719	5,894,230	29,465,881
2007	22,314,995	1,478,737	7,521,176	31,314,908
2008	19,654,306	766,769	5,959,987	26,381,062
Dried eggs				
2006	1,066,072	1,018,012	1,899,680	3,983,764
2007	591,203	668,296	672,978	1,932,477
2008	194,300	177,060	164,214	535,574

Poultry meat production and value

Concepts

Poultry meat production and value are estimated for chicken meat (including stewing hens) and turkey meat sold by producers as well as that consumed by these producers. Production is measured in both the number of birds slaughtered and the eviscerated weight of the slaughtered birds. Estimates of quantities sold consist of commercial and non-commercial slaughter and are made at the provincial level. Commercial slaughter is adjusted for inter-provincial and international movement. Commercial slaughter includes all birds that have been slaughtered in registered slaughter houses while non-commercial slaughter consists of any birds that may be slaughtered on farms. Poultry meat production is valued at the average price per kilogram (eviscerated weight basis) received by producers. Prices include any bonuses and premiums which can be attributed to specific commodities and exclude fees deducted before the producer is paid (e.g. storage, transport, and administration costs).

Home consumption is the amount of poultry meat available for consumption by producers and their immediate families. This amount is valued at market prices as it represents the income producers would have received had the product been sold.

Methods

The major administrative source of data for poultry meat production and value is Agriculture and Agri-Food Canada. Inspectors from the Canadian Food Inspection Agency (CFIA) collect quantity data while inspecting meat at processing plants as legislated under the *Meat Inspection Act*. Unless specified, these data are used as published, without further adjustment. Commercial slaughter represents all birds slaughtered in registered processing plants. The quantity and weight of all birds slaughtered in these facilities are reported to and published by AAFC.

Non-commercial slaughter is estimated based on data provided weekly to AAFC by registered hatcheries on the placement of chicks in small lots, intended to produce meat. The placement data are adjusted for death loss and birds kept for laying to arrive at an estimate of chickens that reach maturity. Estimates of both death loss and the time required for chicks to reach maturity are obtained from industry specialists. Non-commercial slaughter is further divided into home consumption and birds sold. Home consumption is calculated by multiplying quantity of food available for consumption of the given poultry meat by the human population of farms producing that kind of poultry.

The human population on farms is derived from the linkage of the Agriculture and the Population Censuses.

Two prices obtained from registered processing plants, and published by AAFC, are used to calculate the value of chicken meat production: one for chickens weighing less than 2.3 kg and another for those weighing 2.3 kg and over. Prices for the corresponding categories are weighted by the quantity produced to obtain the total value. The price for chickens weighing 2.3 kilograms and over is used in calculating the value of production for chickens slaughtered on farms (including home consumption).

Data on stewing hen production and prices are obtained from registered processing plant reports provided to AAFC. No calculation is made for stewing hens slaughtered on farms since the amount is considered negligible. Home consumption is calculated in the same manner as the chicken meat production.

Turkey meat production is based on birds slaughtered in registered slaughter houses, as reported by AAFC, and non-commercial slaughter. Non-commercial slaughter, turkeys slaughtered on farms, is estimated using data on turkey inventories from the most recent Census of Agriculture. Home consumption is calculated in the same manner as the chicken meat production.

Two prices are used to determine the value of turkey meat production: one for turkeys weighing less than 5.0 kg and another for those weighing 5.0 kg and over. Prices for the corresponding categories are multiplied by the quantity produced to obtain their value.

Data quality

Data on number of birds sold, eviscerated weight and value are obtained through administrative sources. Producers are paid for the birds which they sell through registered slaughter houses on the basis of these administrative records. Because of this process, the quality of the administrative data is deemed to be high. Registered slaughter houses account for approximately 99% of total poultry production. This implies that total production values are also good. Administrative sources are subject to non-sampling errors such as omissions, duplications and mistakes in reporting, recording and processing the data. The effects of these errors cannot be measured directly.

Although no systematic revisions are undertaken for poultry meat data, revisions that do occur reflect updates resulting from late entries and corrections due to misclassification and data entry errors. Overall, the changes between the original and revised numbers are very small (e.g. less than 1% for chicken and turkey).

Egg production and value

Concepts

Total egg production in Canada and the provinces includes all eggs sold for consumption, consumed by producers, sold for hatching, leakers and rejects. Production from registered, non-registered as well as hatchery supply flocks are included in the estimates.

The value of egg production is calculated at the provincial level using different prices for eggs produced by the three different types of flocks listed above. These prices include any bonuses and premiums which can be attributed to specific commodities and exclude fees deducted before the producer is paid (e.g. storage, transport and administration costs).

Egg production is derived using average layer numbers and their derived rates of lay. Laying hens include all layers 19 weeks and older except for layers in hatchery supply flocks where layers are 26 weeks and older. Layer numbers and average rates of lay are obtained for the three types of operations (registered flocks, non-registered flocks and hatchery supply flocks).

Methods

Registered flocks have to be registered with and provide information to provincial egg marketing boards. Layer numbers in registered flocks are supplied by the CEMA, the regulatory board for the egg producing industry. The agency, in turn, receives data from the provincial egg marketing boards. These data are used directly in the estimates without adjustments.

Non-registered flocks are those with fewer birds than the limits set by the provincial egg marketing boards. These limits vary by province and can range from 100 to 500 birds. Layer numbers for the non-registered flocks are estimated using Census data.

Hatchery supply flocks produce hatching eggs for both egg and meat type birds. Layers in hatchery supply flocks are estimated by Statistics Canada based on the number of birds (broilers) provided by Canadian Broiler Hatching Egg Marketing Agency, information on egg sets from CEMA and an average rate of lay for each type of bird.

Rates of lay, at the provincial level, for registered and non-registered flocks and hatchery supply flocks are estimated by industry specialists.

Estimates of all layers, rates of lay and egg production are prepared monthly using administrative data. Layers in registered flocks account for the bulk of the layer population and these data are available weekly from the CEMA.

Monthly estimates for non-registered flocks are made using historical seasonal patterns. Rates of lay do not fluctuate dramatically.

Shifts on rates of lay are made on the basis of monthly egg gradings collected by CEMA from registered grading stations.

The value of egg production for registered flocks is calculated using prices provided by CEMA, which regulates all prices paid to producers. Prices for the non-registered flocks are calculated based on industry information. In the case of eggs produced by the hatchery supply flock, all eggs are valued at prices paid to broiler egg producers as provided by the Canadian Broiler Hatching Egg Marketing Agency. Production estimates are simply multiplied by the prices to obtain the total value of production.

The quality of layer numbers in registered flocks is deemed to be high since the number of laying hens in these flocks is set by quota allocation and the flocks are subject to regular audits. The vast majority of layers are found in the registered flocks and thus, total layer estimates can also be considered to be of high quality. Based on the 2001 Census of Agriculture, more than 90% of all layers in each province were in registered flocks except for Saskatchewan and Alberta, where the totals were 79% and 86% respectively.

Revisions

Layer numbers in registered flocks are collected through the CEMA and are subject to minor revisions. Monthly layer estimates in non-registered flocks are revised, if necessary, after the results of the Census of Agriculture are available.

Rates of lay for both registered and non-registered flocks are assessed monthly based on administrative data published by CEMA on eggs graded at registered stations.

Food Available - Poultry and Eggs

Concepts

Statistics Canada's Agriculture Division produces data indicating the amount of food available for consumption along with estimated quantities of food available, adjusted for losses.

The amount of food available per person represents what is available for consumption on average for the total Canadian population. The estimates do not indicate total poultry and egg supplies actually consumed by an individual or specific group of individuals, since estimates are not calculated for waste or spoilage during transportation at the retail level, in households, private institutions or restaurants.

The estimated quantities of food available, adjusted for losses, represent the amount of food available per person data that have been adjusted to account for retail, household, cooking and plate loss. These data are considered experimental in nature and should be used with caution.

Methods

A residual approach is used in calculating quantities of poultry meat and eggs available for human consumption. Annual balance sheets are prepared to determine the consumption levels. Total supply is estimated by adding beginning stocks, annual production and imports. Exports and ending stocks are subtracted from total supply to estimate the net supply. Poultry meat export and import numbers are obtained from AAFC. The amount of food available per person is determined by dividing net supply by the total Canadian population at July 1 each year. Population numbers are obtained from the Demography Division of Statistics Canada. To estimate the amount of food available, adjusted for losses, factors are applied to the amount of food available per person data to account for retail, household, cooking and plate loss.

Net supply for eggs is obtained by subtracting exports, eggs used for hatching, leakers and rejects from the total supply. A revised methodology was introduced in 1986 to calculate the quantity of eggs available for consumption where 1.95% of total egg production was subtracted to account for leakers and rejects. Import and export data are supplied by the International Trade Division of Statistics Canada. Net supply is then divided by the July 1 population of Canada to obtain the quantity available per person. To estimate the amount of food available, adjusted for losses, factors are applied to the amount of food available per person data to account for retail, household, cooking and plate loss.

Appendix I

Glossary of terms

Administrative Data: data that are collected by public or private agencies or organizations in the administration of programs or legislation.

Broilers: chickens that are being raised for meat production.

Egg Sets: fertilized eggs in hatcheries that are to hatch into chicks, either to replace laying hens or to be raised for meat production.

Eviscerated Weight: the weight of a bird that has not been de-boned but has had its head, feathers, feet and innards removed.

Food available: represents what is available for consumption on average for the total Canadian population. Net supply is divided by the July 1 Canadian population to arrive at the quantity available. The estimates do not indicate quantities actually consumed by an individual or specific group of individuals, since estimates are not calculated for waste or spoilage during transportation at the retail level, in households, private institutions or restaurants.

Food available, adjusted for losses: the estimated quantities of food available adjusted for losses represent the quantity of food available data that have been adjusted to account for retail, household, cooking and plate loss. These data are considered experimental in nature and should be used with caution.

Hatchery Supply Flock: consists of laying hens which produce eggs that will be hatched into chicks. These chicks will either become laying hens or be raised for meat production.

Leakers and rejects: eggs that do not meet the lowest standard grading requirements.

Stewing hens: laying hens which have completed their laying cycle and are slaughtered for meat.