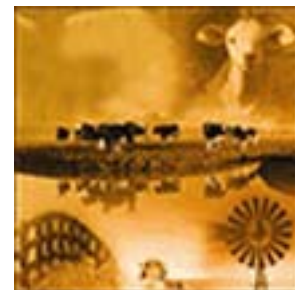


Catalogue no. 23-010-X

Hog Statistics

Fourth quarter 2010



Statistics
Canada

Statistique
Canada

Canada

How to obtain more information

For information about this product or the wide range of services and data available from Statistics Canada, visit our website at www.statcan.gc.ca, e-mail us at infostats@statcan.gc.ca, or telephone us, Monday to Friday from 8:30 a.m. to 4:30 p.m., at the following numbers:

Statistics Canada's National Contact Centre

Toll-free telephone (Canada and the United States):

Inquiries line	1-800-263-1136
National telecommunications device for the hearing impaired	1-800-363-7629
Fax line	1-877-287-4369

Local or international calls:

Inquiries line	1-613-951-8116
Fax line	1-613-951-0581

Depository Services Program

Inquiries line	1-800-635-7943
Fax line	1-800-565-7757

To access this product

This product, Catalogue no. 23-010-X, is available free in electronic format. To obtain a single issue, visit our website at www.statcan.gc.ca and browse by "Key resource" > "Publications."

Standards of service to the public

Statistics Canada is committed to serving its clients in a prompt, reliable and courteous manner. To this end, Statistics Canada has developed *standards of service* that its employees observe. To obtain a copy of these service standards, please contact Statistics Canada toll-free at 1-800-263-1136. The service standards are also published on www.statcan.gc.ca under "About us" > "The agency" > "Providing services to Canadians."

Hog Statistics

Fourth quarter 2010

Published by authority of the Minister responsible for Statistics Canada

© Minister of Industry, 2011

All rights reserved. The content of this electronic publication may be reproduced, in whole or in part, and by any means, without further permission from Statistics Canada, subject to the following conditions: that it be done solely for the purposes of private study, research, criticism, review or newspaper summary, and/or for non-commercial purposes; and that Statistics Canada be fully acknowledged as follows: Source (or "Adapted from", if appropriate): Statistics Canada, year of publication, name of product, catalogue number, volume and issue numbers, reference period and page(s). Otherwise, no part of this publication may be reproduced, stored in a retrieval system or transmitted in any form, by any means—electronic, mechanical or photocopy—or for any purposes without prior written permission of Licensing Services, Client Services Division, Statistics Canada, Ottawa, Ontario, Canada K1A 0T6.

February 2011

Catalogue no. 23-010-X, vol. 10, no. 1

ISSN 1705-1207

Frequency: Quarterly

Ottawa

Cette publication est également disponible en français.

Note of appreciation

Canada owes the success of its statistical system to a long-standing partnership between Statistics Canada, the citizens of Canada, its businesses, governments and other institutions. Accurate and timely statistical information could not be produced without their continued cooperation and goodwill.

User information

Symbols

The following standard symbols are used in Statistics Canada publications:

- . not available for any reference period
- .. not available for a specific reference period
- ... not applicable
- 0 true zero or a value rounded to zero
- 0^s value rounded to 0 (zero) where there is a meaningful distinction between true zero and the value that was rounded
- p preliminary
- r revised
- x suppressed to meet the confidentiality requirements of the *Statistics Act*
- E use with caution
- F too unreliable to be published

This publication was prepared under the direction of:

Bill Parsons, Chief, Livestock Section

Robert Plourde, Unit Head, Livestock Section

Donald Cutts, Statistical Officer, Livestock Section

Table of contents

Highlights	5
Analysis	6
Related products	9
Statistical tables	
1 Hogs on farms	12
1-1 Canada	12
1-2 Eastern provinces	13
1-3 Newfoundland and Labrador	14
1-4 Prince Edward Island	15
1-5 Nova Scotia	16
1-6 New Brunswick	17
1-7 Quebec	18
1-8 Ontario	19
1-9 Western provinces	20
1-10 Manitoba	21
1-11 Saskatchewan	22
1-12 Alberta	23
1-13 British Columbia	24
2 Sows farrowed, pigs born and farrowing intentions	25
2-1 Eastern provinces	25
2-2 Western provinces	29
3 Hogs, supply and disposition	33
3-1 Eastern provinces	33
3-2 Western provinces	41
4 Hogs, number of farms reporting	49
4-1 Eastern provinces	49
4-2 Western provinces	50

Table of contents – continued

5	Hogs, average number of hogs per farm reporting	51
5-1	Eastern provinces	51
5-2	Western provinces	52
6	Prices, weighted average	53
6-1	Ontario	53
6-2	Manitoba	54
7	Hogs and pigs inventory number by class and quarter	55
7-1	United States and Canada	55
7-2	United States	56
7-3	Canada	57

Data quality, concepts and methodology

Concepts and methodology	58
--------------------------	----

Charts

1.	Sow inventory at January 1, 2001 to 2011	7
2.	Hog exports and slaughter, annual, 2000 to 2010	7
3.	Grains and hog slaughter prices index (1997=100), monthly, January 2005 to October 2010	8

Highlights

- Hog inventories at January 1, 2011 were reported at 11.9 million head, up slightly (0.6%) from January 1, 2010.
- There were 1.3 million sows and gilts reported at January 1, 2011, down 1.1% from one year earlier and down 5.5% from the same date two years ago. Sow inventories in 2010 have not been at this level since 1999, which was the start of a five year industry wide expansion.
- Hog exports were reported at 5.7 million head in 2010, continuing the declining trend that has been seen since peaking in 2007. Exports in 2010 were down 10.1% from 2009.
- Domestic hog slaughter totalled 21.3 million head in 2010, down 2.4% from 2009. Hog slaughter in the fourth quarter 2010 is down 2.4% from the same quarter in 2009.

Analysis

Hog Inventories

January 1, 2011

Hog inventories were still declining on a year over year basis in early 2010 but inventories appear to have reached some stability in the recent quarter. Hog inventories at January 1, 2011 were reported at 11.9 million head, up slightly (0.6%) from January 1, 2010. Although a very small increase, this is the first time since April 1, 2006 that there has been any increase on a year over year comparison.

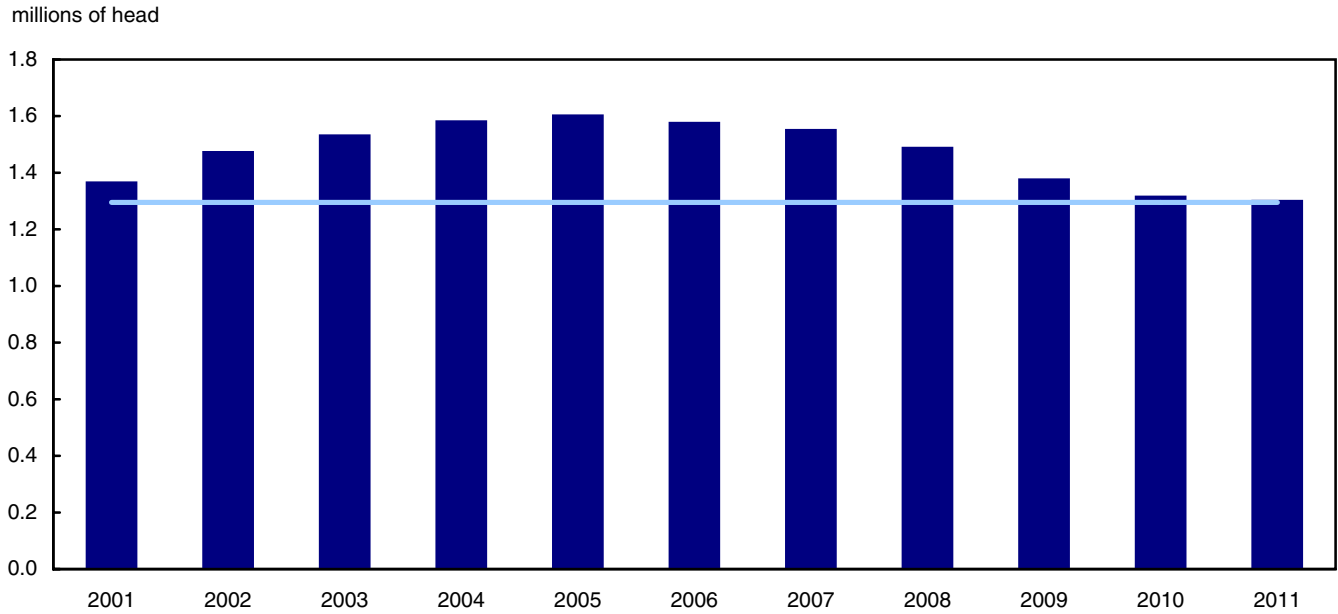
Text table 1
Hog inventories

Hogs					
	January 1 2010	October 1 2010 ^r	January 1 2011	October 2010 to January 2011	January 2010 to January 2011
	thousands of head			percentage change	
Canada	11,835.0	11,885.0	11,910.0	0.2	0.6
East	6,920.0	6,917.0	6,930.0	0.2	0.1
Atlantic	129.2	132.0	134.5	1.9	4.1
Quebec	3,920.0	3,935.0	3,900.0	-0.9	-0.5
Ontario	2,870.8	2,850.0	2,895.5	1.6	0.9
West	4,915.0	4,968.0	4,980.0	0.2	1.3
Manitoba	2,530.0	2,620.0	2,620.0	0.0	3.6
Saskatchewan	780.0	770.0	790.0	2.6	1.3
Alberta	1,505.0	1,500.0	1,490.0	-0.7	-1.0
British Columbia	100.0	78.0	80.0	2.6	-20.0

^r revised

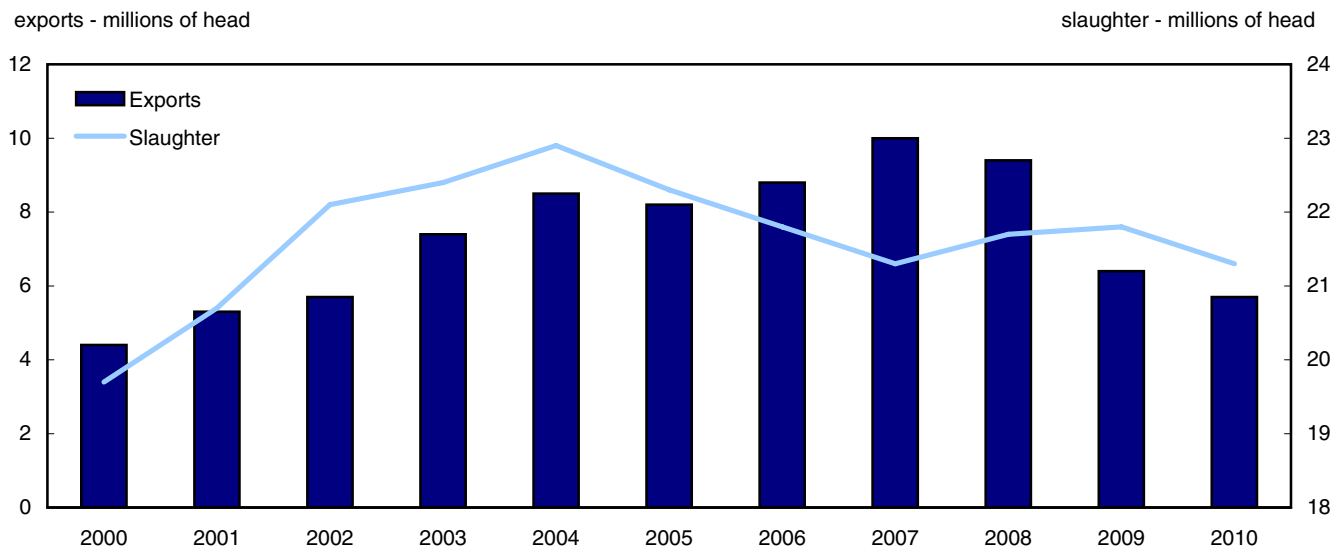
The breeding herd continued to decline in 2010 with no signs of rebuilding in the near future. There were 1.3 million sows and gilts reported at January 1, 2011, down 1.1% from one year earlier and down 5.5% from the same date two years ago. Sow inventories in 2010 have not been at this level since 1999, which was the start of a five year industry wide expansion. Sows expected to farrow in the first quarter 2011 are down 1.4% from the same period in 2010 while sows expected to farrow in the second quarter are up 0.7%.

Chart 1
Sow inventory at January 1, 2001 to 2011



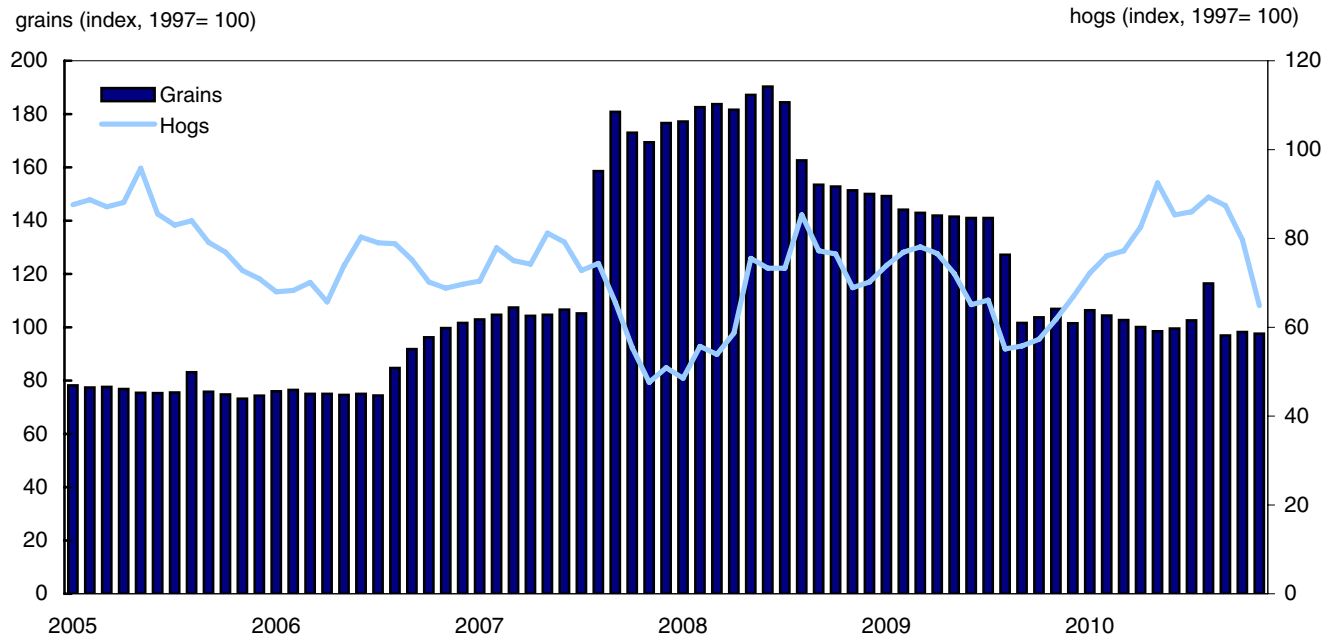
Domestic hog slaughter totalled 21.3 million head in 2010, down 2.4% from 2009. Hog slaughter in the fourth quarter 2010 is down 2.4% from the same quarter in 2009. Hog exports were reported at 5.7 million head in 2010, continuing the declining trend that has been seen since peaking in 2007. Exports in 2010 were down 10.1% from 2009, down 38.8% from 2008, and down 42.9% from the peak in 2007. The Country of Origin Labelling regulation was introduced in the US in the fall of 2008.

Chart 2
Hog exports and slaughter, annual, 2000 to 2010



Hog slaughter prices strengthened in the later half of 2010. The farm product price index for hogs indicates that hog prices in the second half of 2010 reached levels not seen since 2005. The profitability of hog producers is directly affected by grain prices. As grain prices increase, hog producer margins decrease. Overall grain prices in 2010 were much lower than the previous year and the record prices reached in 2008.

Chart 3
Grains and hog slaughter prices index (1997=100), monthly, January 2005 to October 2010



Related products

Selected publications from Statistics Canada

21-206-X	Statistics on Income of Farm Operators
21-207-X	Statistics on Income of Farm Families
21-208-X	Statistics on Revenues and Expenses of Farms
23-009-X	Stocks of Frozen and Chilled Meats
23-501-X	Livestock Feed Requirements Study
21-020-X	Food Statistics

Selected CANSIM tables from Statistics Canada

002-0005	Farm operating expenses and depreciation charges, annual
003-0004	Number of hogs on farms at end of quarter, quarterly
003-0016	Shorn wool statistics, annual
003-0026	Cattle and calves, farm and meat production, annual
003-0028	Hogs, sheep and lambs, farm and meat production, annual
003-0030	Number of calves born, semi-annual
003-0031	Number of sheep and lambs on farms, annual
003-0032	Number of cattle, by class and farm type, annual
003-0035	Quantity of meats available and output of meats and offal, annual
003-0036	Animals slaughtered, supply and disappearance in Canada, annual
003-0037	Meat production, supply and disposition in Canada, annual
003-0081	Stocks of frozen and chilled meats, domestic and imported, in cold storage, quarterly
003-0082	Stocks of frozen and chilled imported meats, quarterly
003-0083	Cattle statistics, supply and demand of cattle, annual
003-0084	Cattle prices, steers, monthly

003-0085	Cattle and calves, number by class and calf crop, United States, annual
003-0086	Cattle, weighted average prices, steers, annual
003-0087	Hogs statistics, sows farrowed, pigs born and sows bred to farrow, quarterly
003-0088	Hogs statistics, supply and disposition of hogs, quarterly
003-0089	Hogs statistics, number of farms reporting and average number of hogs per farm, quarterly
003-0090	Hogs statistics, prices, monthly
003-0091	Hogs statistics, weighted average prices, annual
003-0092	Hogs and pigs statistics, inventory number by class and quarter, United States and Canada, quarterly
003-0093	Hogs and pigs statistics, inventory number by class and quarter, United States, quarterly

Selected surveys from Statistics Canada

3423	Stocks Survey - Frozen and Chilled Meats
3437	Farm Cash Receipts
3460	Livestock Survey

Selected summary tables from Statistics Canada

- *Cattle inventories, by province*
- *Pig inventories, by province (quarterly)*
- *Sheep inventories, by province*

Statistical tables

**Table 1-1
Hogs on farms — Canada**

	Total hogs	Breeding stock	Boars, 6 months and over	Sows and bred gilts	All other hogs	Under 20 kg	20 to 60 kg	Over 60 kg
thousands of head								
At January 1								
2003	14,745.0	1,568.5	41.8	1,526.7	13,176.5	4,368.9	4,454.1	4,353.5
2004	14,725.0	1,615.3	39.2	1,576.1	13,109.7	4,544.5	4,370.5	4,194.7
2005	14,810.0	1,633.6	36.5	1,597.1	13,176.4	4,487.0	4,412.8	4,276.6
2006	15,110.0	1,605.3	34.7	1,570.6	13,504.7	4,475.8	4,623.0	4,405.9
2007	14,907.0	1,579.1	33.3	1,545.8	13,327.9	4,545.1	4,531.7	4,251.1
2008	13,810.0	1,512.2	29.7	1,482.5	12,297.8	4,471.9	3,962.0	3,863.9
2009	12,180.0	1,395.0	23.8	1,371.2	10,785.0	3,688.6	3,618.8	3,477.6
2010	11,835.0	1,332.0	21.6	1,310.4	10,503.0	3,598.5	3,604.6	3,299.9
2011	11,910.0	1,313.6	18.2	1,295.4	10,596.4	3,613.0	3,429.1	3,554.3
At April 1								
2003	14,655.0	1,587.0	40.4	1,546.6	13,068.0	4,398.8	4,460.2	4,209.0
2004	14,675.0	1,623.2	38.7	1,584.5	13,051.8	4,435.6	4,514.3	4,101.9
2005	14,960.0	1,628.3	36.3	1,592.0	13,331.7	4,569.2	4,546.3	4,216.2
2006	15,030.0	1,596.4	34.3	1,562.1	13,433.6	4,532.4	4,616.6	4,284.6
2007	14,729.0	1,570.7	32.9	1,537.8	13,158.3	4,750.4	4,152.0	4,255.9
2008	13,000.0	1,474.5	28.5	1,446.0	11,525.5	4,272.8	3,646.0	3,606.7
2009	11,885.0	1,384.6	23.5	1,361.1	10,500.4	3,755.3	3,459.8	3,285.3
2010	11,650.0	1,313.8	19.9	1,293.9	10,336.2	3,504.5	3,428.4	3,403.3
At July 1								
2003	14,720.0	1,590.2	40.3	1,549.9	13,129.8	4,527.8	4,405.0	4,197.0
2004	14,980.0	1,627.0	38.0	1,589.0	13,353.0	4,615.9	4,488.7	4,248.4
2005	15,195.0	1,623.9	35.7	1,588.2	13,571.1	4,661.4	4,620.6	4,289.1
2006	15,065.0	1,586.5	34.1	1,552.4	13,478.5	4,566.9	4,641.5	4,270.1
2007	14,690.0	1,564.8	32.4	1,532.4	13,125.2	4,748.7	4,163.7	4,212.8
2008	12,980.0	1,446.0	27.3	1,418.7	11,534.0	4,214.3	3,651.0	3,668.7
2009	12,065.0	1,373.3	23.3	1,350.0	10,691.7	3,687.6	3,570.7	3,433.4
2010	11,800.0	1,315.4	20.1	1,295.3	10,484.6	3,634.2	3,405.4	3,445.0
At October 1								
2003	14,710.0	1,598.6	39.9	1,558.7	13,111.4	4,480.1	4,353.5	4,277.8
2004	14,845.0	1,628.1	37.1	1,591.0	13,216.9	4,462.5	4,465.8	4,288.6
2005	15,205.0	1,619.2	35.3	1,583.9	13,585.8	4,538.0	4,716.6	4,331.2
2006	14,900.0	1,582.2	33.6	1,548.6	13,317.8	4,480.1	4,522.8	4,314.9
2007	14,360.0	1,543.5	31.7	1,511.8	12,816.5	4,660.5	4,167.8	3,988.2
2008	12,745.0	1,417.3	26.1	1,391.2	11,327.7	3,902.6	3,684.8	3,740.3
2009	11,955.0	1,349.7	22.1	1,327.6	10,605.3	3,757.2	3,426.1	3,422.0
2010	11,885.0	1,307.4	19.7	1,287.7	10,577.6	3,724.5	3,330.9	3,522.2
percentage change from previous year								
At January 1								
2003	2.6	3.7	-5.9	4.0	2.4	3.1	2.6	1.6
2004	-0.1	3.0	-6.2	3.2	-0.5	4.0	-1.9	-3.6
2005	0.6	1.1	-6.9	1.3	0.5	-1.3	1.0	2.0
2006	2.0	-1.7	-4.9	-1.7	2.5	-0.2	4.8	3.0
2007	-1.3	-1.6	-4.0	-1.6	-1.3	1.5	-2.0	-3.5
2008	-7.4	-4.2	-10.8	-4.1	-7.7	-1.6	-12.6	-9.1
2009	-11.8	-7.8	-19.9	-7.5	-12.3	-17.5	-8.7	-10.0
2010	-2.8	-4.5	-9.2	-4.4	-2.6	-2.4	-0.4	-5.1
2011	0.6	-1.4	-15.7	-1.1	0.9	0.4	-4.9	7.7
At April 1								
2003	1.5	3.9	-8.4	4.2	1.2	3.2	0.1	0.3
2004	0.1	2.3	-4.2	2.5	-0.1	0.8	1.2	-2.5
2005	1.9	0.3	-6.2	0.5	2.1	3.0	0.7	2.8
2006	0.5	-2.0	-5.5	-1.9	0.8	-0.8	1.5	1.6
2007	-2.0	-1.6	-4.1	-1.6	-2.0	4.8	-10.1	-0.7
2008	-11.7	-6.1	-13.4	-6.0	-12.4	-10.1	-12.2	-15.3
2009	-8.6	-6.1	-17.5	-5.9	-8.9	-12.1	-5.1	-8.9
2010	-2.0	-5.1	-15.3	-4.9	-1.6	-6.7	-0.9	3.6
At July 1								
2003	0.0	2.7	-7.1	3.0	-0.3	1.9	-3.5	1.0
2004	1.8	2.3	-5.7	2.5	1.7	1.9	1.9	1.2
2005	1.4	-0.2	-6.1	-0.1	1.6	1.0	2.9	1.0
2006	-0.9	-2.3	-4.5	-2.3	-0.7	-2.0	0.5	-0.4
2007	-2.5	-1.4	-5.0	-1.3	-2.6	4.0	-10.3	-1.3
2008	-11.6	-7.6	-15.7	-7.4	-12.1	-11.3	-12.3	-12.9
2009	-7.0	-5.0	-14.7	-4.8	-7.3	-12.5	-2.2	-6.4
2010	-2.2	-4.2	-13.7	-4.1	-1.9	-1.4	-4.6	0.3
At October 1								
2003	-1.9	3.1	-5.9	3.3	-2.4	0.2	-4.5	-3.0
2004	0.9	1.8	-7.0	2.1	0.8	-0.4	2.6	0.3
2005	2.4	-0.5	-4.9	-0.4	2.8	1.7	5.6	1.0
2006	-2.0	-2.3	-4.8	-2.2	-2.0	-1.3	-4.1	-0.4
2007	-3.6	-2.4	-5.7	-2.4	-3.8	4.0	-7.8	-7.6
2008	-11.2	-8.2	-17.7	-8.0	-11.6	-16.3	-11.6	-6.2
2009	-6.2	-4.8	-15.3	-4.6	-6.4	-3.7	-7.0	-8.5
2010	-0.6	-3.1	-10.9	-3.0	-0.3	-0.9	-2.8	2.9

Table 1-2
Hogs on farms — Eastern provinces

	Total hogs	Breeding stock	Boars, 6 months and over	Sows and bred gilts	All other hogs	Under 20 kg	20 to 60 kg	Over 60 kg
thousands of head								
At January 1								
2003	8,390.2	867.7	21.0	846.7	7,522.5	2,501.0	2,529.2	2,492.3
2004	8,397.0	895.7	19.1	876.6	7,501.3	2,596.2	2,471.3	2,433.8
2005	8,404.0	900.0	17.7	882.3	7,504.0	2,525.3	2,511.9	2,466.8
2006	8,619.0	880.4	16.8	863.6	7,738.6	2,570.1	2,608.2	2,560.3
2007	8,422.0	857.8	16.1	841.7	7,564.2	2,576.3	2,679.6	2,308.3
2008	7,898.0	826.2	14.2	812.0	7,071.8	2,508.5	2,373.9	2,189.4
2009	7,165.0	771.0	11.3	759.7	6,394.0	2,207.1	2,186.9	2,000.0
2010	6,920.0	748.3	10.2	738.1	6,171.7	2,073.9	2,202.3	1,895.5
2011	6,930.0	741.5	8.5	733.0	6,188.5	2,115.6	2,024.4	2,048.5
At April 1								
2003	8,438.0	884.7	20.0	864.7	7,553.3	2,539.3	2,626.6	2,387.4
2004	8,377.0	902.0	19.0	883.0	7,475.0	2,534.2	2,606.0	2,334.8
2005	8,516.0	898.1	17.6	880.5	7,617.9	2,561.8	2,632.1	2,424.0
2006	8,544.0	874.4	16.6	857.8	7,669.6	2,579.4	2,671.4	2,418.8
2007	8,319.0	852.4	15.9	836.5	7,466.6	2,653.3	2,411.6	2,401.7
2008	7,517.0	797.6	13.4	784.2	6,719.4	2,445.1	2,191.0	2,083.3
2009	6,995.0	766.0	11.2	754.8	6,229.0	2,291.9	2,081.8	1,855.3
2010	6,764.0	730.4	9.5	720.9	6,033.6	1,984.6	2,090.8	1,958.2
At July 1								
2003	8,430.0	881.1	19.8	861.3	7,548.9	2,519.1	2,594.0	2,435.8
2004	8,555.0	899.0	18.3	880.7	7,656.0	2,569.0	2,635.1	2,451.9
2005	8,716.0	893.7	17.3	876.4	7,822.3	2,578.9	2,742.4	2,501.0
2006	8,505.0	863.3	16.4	846.9	7,641.7	2,565.9	2,634.1	2,441.7
2007	8,306.0	848.5	15.5	833.0	7,457.5	2,678.1	2,428.7	2,350.7
2008	7,499.0	789.9	12.7	777.2	6,709.1	2,430.7	2,196.2	2,082.2
2009	7,083.0	765.8	11.4	754.4	6,317.2	2,287.8	2,063.8	1,965.6
2010	6,860.0	734.7	9.8	724.9	6,125.3	2,143.5	2,003.1	1,978.7
At October 1								
2003	8,467.0	885.5	19.4	866.1	7,581.5	2,482.5	2,567.5	2,531.5
2004	8,485.0	897.8	18.0	879.8	7,587.2	2,478.3	2,592.2	2,516.7
2005	8,732.0	892.9	17.0	875.9	7,839.1	2,569.3	2,692.6	2,577.2
2006	8,407.0	861.7	16.3	845.4	7,545.3	2,550.4	2,636.0	2,358.9
2007	8,168.0	835.9	15.1	820.8	7,332.1	2,611.0	2,480.6	2,240.5
2008	7,410.0	777.2	12.1	765.1	6,632.8	2,283.4	2,154.5	2,194.9
2009	7,053.0	758.4	10.6	747.8	6,294.6	2,271.3	2,020.5	2,002.8
2010	6,917.0	732.3	9.7	722.6	6,184.7	2,187.4	1,933.5	2,063.8

**Table 1-3
Hogs on farms — Newfoundland and Labrador**

	Total hogs	Breeding stock	Boars, 6 months and over	Sows and bred gilts	All other hogs	Under 20 kg	20 to 60 kg	Over 60 kg
thousands of head								
At January 1								
2003	2.5	0.3	0.0	0.3	2.2	0.9	0.8	0.5
2004	2.3	0.3	0.0	0.3	2.0	0.7	0.7	0.6
2005	2.1	0.3	0.0	0.3	1.8	0.6	0.6	0.6
2006	1.8	0.3	0.0	0.3	1.5	0.5	0.5	0.5
2007	1.9	0.3	0.0	0.3	1.6	0.5	0.6	0.5
2008	1.4	0.2	0.0	0.2	1.2	0.5	0.4	0.3
2009	1.6	0.2	0.0	0.2	1.4	0.5	0.5	0.4
2010	1.7	0.2	0.0	0.2	1.5	0.5	0.8	0.2
2011	x	x	x	x	x	x	x	x
At April 1								
2003	2.7	0.3	0.0	0.3	2.4	0.9	0.9	0.6
2004	2.7	0.3	0.0	0.3	2.4	0.9	0.9	0.6
2005	2.5	0.3	0.0	0.3	2.2	0.8	0.7	0.7
2006	2.0	0.3	0.0	0.3	1.7	0.6	0.6	0.5
2007	1.9	0.3	0.0	0.3	1.6	0.6	0.5	0.5
2008	1.5	0.2	0.0	0.2	1.3	0.5	0.4	0.4
2009	1.5	0.2	0.0	0.2	1.3	0.5	0.4	0.4
2010	1.7	0.2	0.0	0.2	1.5	0.5	0.8	0.2
At July 1								
2003	2.5	0.3	0.0	0.3	2.2	0.7	1.0	0.5
2004	2.6	0.3	0.0	0.3	2.3	0.9	0.9	0.5
2005	2.6	0.3	0.0	0.3	2.3	0.8	0.8	0.7
2006	2.0	0.3	0.0	0.3	1.7	0.6	0.6	0.5
2007	1.7	0.2	0.0	0.2	1.5	0.6	0.5	0.4
2008	1.5	0.2	0.0	0.2	1.3	0.5	0.4	0.4
2009	1.8	0.2	0.0	0.2	1.6	0.6	0.6	0.4
2010	1.6	0.2	0.0	0.2	1.4	0.5	0.6	0.3
At October 1								
2003	2.6	0.3	0.0	0.3	2.3	0.8	0.8	0.7
2004	2.5	0.3	0.0	0.3	2.2	0.8	0.8	0.6
2005	2.2	0.3	0.0	0.3	1.9	0.7	0.6	0.6
2006	2.0	0.3	0.0	0.3	1.7	0.6	0.6	0.5
2007	1.7	0.2	0.0	0.2	1.5	0.5	0.5	0.5
2008	1.7	0.2	0.0	0.2	1.5	0.5	0.5	0.5
2009	1.8	0.2	0.0	0.2	1.6	0.5	0.6	0.5
2010	1.7	0.2	0.0	0.2	1.5	0.5	0.6	0.4

**Table 1-4
Hogs on farms — Prince Edward Island**

	Total hogs	Breeding stock	Boars, 6 months and over	Sows and bred gilts	All other hogs	Under 20 kg	20 to 60 kg	Over 60 kg
thousands of head								
At January 1								
2003	130.0	13.5	0.5	13.0	116.5	31.5	46.0	39.0
2004	132.0	12.7	0.4	12.3	119.3	35.0	44.0	40.3
2005	127.0	12.7	0.4	12.3	114.3	33.4	43.0	37.9
2006	123.0	11.7	0.4	11.3	111.3	36.0	37.9	37.4
2007	123.5	11.5	0.3	11.2	112.0	36.2	38.1	37.7
2008	95.3	8.3	0.3	8.0	87.0	27.5	30.5	29.0
2009	51.3	4.8	0.1	4.7	46.5	15.0	15.5	16.0
2010	47.1	4.1	0.1	4.0	43.0	14.5	13.0	15.5
2011	42.5	4.3	0.1	4.2	38.2	13.5	12.7	12.0
At April 1								
2003	127.0	13.0	0.5	12.5	114.0	31.0	45.0	38.0
2004	130.0	12.5	0.4	12.1	117.5	34.0	43.4	40.1
2005	126.0	12.5	0.4	12.1	113.5	34.0	40.9	38.6
2006	123.5	11.7	0.4	11.3	111.8	36.2	37.6	38.0
2007	118.0	11.0	0.4	10.6	107.0	32.8	38.0	36.2
2008	77.9	6.7	0.2	6.5	71.2	24.0	23.7	23.5
2009	47.8	4.7	0.2	4.5	43.1	13.6	14.5	15.0
2010	45.2	3.9	0.1	3.8	41.3	14.0	14.0	13.3
At July 1								
2003	127.0	12.7	0.4	12.3	114.3	33.0	42.0	39.3
2004	128.0	12.6	0.4	12.2	115.4	33.5	42.4	39.5
2005	125.0	12.0	0.4	11.6	113.0	34.5	40.5	38.0
2006	123.0	11.6	0.4	11.2	111.4	36.0	37.5	37.9
2007	111.0	10.4	0.4	10.0	100.6	30.1	34.7	35.8
2008	62.7	6.4	0.1	6.3	56.3	20.2	18.5	17.6
2009	48.8	4.8	0.2	4.6	44.0	15.0	13.0	16.0
2010	44.5	4.2	0.2	4.0	40.3	13.5	15.7	11.1
At October 1								
2003	130.0	12.7	0.4	12.3	117.3	35.0	43.8	38.5
2004	129.0	12.6	0.4	12.2	116.4	34.5	42.9	39.0
2005	125.0	11.8	0.4	11.4	113.2	36.5	39.0	37.7
2006	123.5	11.6	0.4	11.2	111.9	36.5	37.7	37.7
2007	106.9	9.8	0.3	9.5	97.1	30.0	34.0	33.1
2008	56.3	6.1	0.1	6.0	50.2	18.6	16.5	15.1
2009	47.9	4.5	0.2	4.3	43.4	14.5	12.9	16.0
2010	45.2	4.2	0.2	4.0	41.0	14.0	15.0	12.0

**Table 1-5
Hogs on farms — Nova Scotia**

	Total hogs	Breeding stock	Boars, 6 months and over	Sows and bred gilts	All other hogs	Under 20 kg	20 to 60 kg	Over 60 kg
thousands of head								
At January 1								
2003	119.0	10.2	0.5	9.7	108.8	38.0	37.8	33.0
2004	108.0	9.4	0.4	9.0	98.6	31.3	36.0	31.3
2005	101.0	9.1	0.4	8.7	91.9	28.8	33.5	29.6
2006	102.0	8.0	0.3	7.7	94.0	30.5	31.5	32.0
2007	93.0	7.3	0.3	7.0	85.7	26.5	29.5	29.7
2008	68.0	7.2	0.2	7.0	60.8	21.2	19.7	19.9
2009	28.3	7.0	0.2	6.8	21.3	11.0	5.5	4.8
2010	12.2	4.6	0.1	4.5	7.6	4.5	2.1	1.0
2011	x	x	x	x	x	x	x	x
At April 1								
2003	118.0	10.1	0.5	9.6	107.9	37.5	37.5	32.9
2004	107.0	9.4	0.4	9.0	97.6	31.5	35.0	31.1
2005	102.0	9.1	0.4	8.7	92.9	29.1	33.8	30.0
2006	97.0	7.8	0.3	7.5	89.2	27.6	30.5	31.1
2007	90.0	7.2	0.3	6.9	82.8	25.0	28.8	29.0
2008	52.3	7.8	0.3	7.5	44.5	19.0	10.1	15.4
2009	25.3	5.7	0.2	5.5	19.6	9.1	5.5	5.0
2010	13.5	4.8	0.1	4.7	8.7	6.2	1.7	0.8
At July 1								
2003	113.0	10.0	0.5	9.5	103.0	33.0	36.0	34.0
2004	102.0	9.0	0.3	8.7	93.0	30.0	32.0	31.0
2005	102.0	8.3	0.3	8.0	93.7	30.3	32.4	31.0
2006	93.0	7.3	0.3	7.0	85.7	27.0	29.5	29.2
2007	87.5	7.1	0.3	6.8	80.4	24.0	28.4	28.0
2008	37.7	8.0	0.3	7.7	29.7	15.6	7.0	7.1
2009	16.4	4.1	0.1	4.0	12.3	4.5	2.2	5.6
2010	15.0	5.2	0.1	5.1	9.8	7.9	1.1	0.8
At October 1								
2003	110.0	9.9	0.4	9.5	100.1	32.0	36.1	32.0
2004	100.0	9.0	0.4	8.6	91.0	29.5	32.0	29.5
2005	100.5	8.3	0.3	8.0	92.2	29.0	31.7	31.5
2006	93.0	7.3	0.3	7.0	85.7	26.5	29.5	29.7
2007	78.9	6.9	0.3	6.6	72.0	23.3	23.7	25.0
2008	29.7	7.7	0.3	7.4	22.0	11.5	5.5	5.0
2009	14.4	4.4	0.1	4.3	10.0	5.0	2.5	2.5
2010	15.0	5.0	0.1	4.9	10.0	7.0	1.5	1.5

Table 1-6
Hogs on farms — New Brunswick

	Total hogs	Breeding stock	Boars, 6 months and over	Sows and bred gilts	All other hogs	Under 20 kg	20 to 60 kg	Over 60 kg
thousands of head								
At January 1								
2003	122.0	11.9	0.4	11.5	110.1	39.1	36.5	34.5
2004	124.0	12.3	0.3	12.0	111.7	41.0	36.9	33.8
2005	115.0	11.6	0.3	11.3	103.4	37.7	33.8	31.9
2006	104.0	12.4	0.2	12.2	91.6	35.0	28.5	28.1
2007	105.5	12.8	0.3	12.5	92.7	34.5	31.2	27.0
2008	91.3	13.3	0.3	13.0	78.0	31.0	27.0	20.0
2009	79.3	13.1	0.1	13.0	66.2	32.2	17.0	17.0
2010	68.2	9.6	0.1	9.5	58.6	25.0	18.2	15.4
2011	75.0	10.1	0.1	10.0	64.9	28.0	19.5	17.4
At April 1								
2003	121.0	11.9	0.4	11.5	109.1	40.0	36.0	33.1
2004	125.0	11.8	0.3	11.5	113.2	42.0	37.0	34.2
2005	111.0	11.7	0.3	11.4	99.3	36.5	32.0	30.8
2006	104.2	12.3	0.2	12.1	91.9	34.0	29.5	28.4
2007	104.0	12.9	0.2	12.7	91.1	33.0	32.3	25.8
2008	90.2	13.2	0.2	13.0	77.0	35.0	25.0	17.0
2009	75.1	13.1	0.1	13.0	62.0	30.0	16.0	16.0
2010	68.6	9.4	0.1	9.3	59.2	26.0	17.2	16.0
At July 1								
2003	123.0	12.0	0.3	11.7	111.0	41.0	36.0	34.0
2004	123.0	11.6	0.3	11.3	111.4	41.4	36.0	34.0
2005	107.0	12.5	0.3	12.2	94.5	38.0	29.5	27.0
2006	107.4	12.5	0.2	12.3	94.9	35.0	30.5	29.4
2007	99.0	13.8	0.3	13.5	85.2	31.0	33.1	21.1
2008	85.1	13.1	0.1	13.0	72.0	35.4	20.4	16.2
2009	81.2	12.9	0.1	12.8	68.3	35.3	18.0	15.0
2010	69.3	9.6	0.1	9.5	59.7	27.0	16.9	15.8
At October 1								
2003	125.0	12.2	0.3	11.9	112.8	42.0	37.0	33.8
2004	119.0	11.6	0.3	11.3	107.4	39.2	35.0	33.2
2005	105.5	12.5	0.2	12.3	93.0	35.0	30.0	28.0
2006	107.5	12.6	0.3	12.3	94.9	35.0	31.0	28.9
2007	99.3	13.8	0.3	13.5	85.5	30.5	32.5	22.5
2008	81.0	13.1	0.1	13.0	67.9	33.0	17.5	17.4
2009	75.1	11.1	0.1	11.0	64.0	30.0	18.5	15.5
2010	70.1	9.6	0.1	9.5	60.5	28.0	17.0	15.5

**Table 1-7
Hogs on farms — Quebec**

	Total hogs	Breeding stock	Boars, 6 months and over	Sows and bred gilts	All other hogs	Under 20 kg	20 to 60 kg	Over 60 kg
thousands of head								
At January 1								
2003	4,280.2	420.4	6.9	413.5	3,859.8	1,280.2	1,291.3	1,288.3
2004	4,250.0	423.7	6.5	417.2	3,826.3	1,313.3	1,280.5	1,232.5
2005	4,280.0	422.8	6.3	416.5	3,857.2	1,302.9	1,285.2	1,269.1
2006	4,337.0	414.4	6.3	408.1	3,922.6	1,283.2	1,339.6	1,299.8
2007	4,174.0	403.2	6.2	397.0	3,770.8	1,290.4	1,300.8	1,179.6
2008	3,990.0	394.3	5.3	389.0	3,595.7	1,242.0	1,175.0	1,178.7
2009	3,900.0	386.2	4.2	382.0	3,513.8	1,144.3	1,183.1	1,186.4
2010	3,920.0	381.8	3.4	378.4	3,538.2	1,102.1	1,294.4	1,141.7
2011	3,900.0	371.7	2.7	369.0	3,528.3	1,126.2	1,150.8	1,251.3
At April 1								
2003	4,280.1	423.0	6.5	416.5	3,857.1	1,277.3	1,263.2	1,316.6
2004	4,220.0	423.2	6.4	416.8	3,796.8	1,240.1	1,268.8	1,287.9
2005	4,265.0	423.6	6.3	417.3	3,841.4	1,289.2	1,241.6	1,310.6
2006	4,260.0	412.3	6.3	406.0	3,847.7	1,269.8	1,271.2	1,306.7
2007	4,155.0	402.7	6.2	396.5	3,752.3	1,304.8	1,197.0	1,250.5
2008	3,940.0	390.2	5.2	385.0	3,549.8	1,290.3	1,162.6	1,096.9
2009	3,870.0	383.3	4.2	379.1	3,486.7	1,263.4	1,180.4	1,042.9
2010	3,900.0	382.2	3.4	378.8	3,517.8	1,097.8	1,219.3	1,200.7
At July 1								
2003	4,350.0	419.0	6.6	412.4	3,931.0	1,233.6	1,395.0	1,302.4
2004	4,350.0	422.8	6.3	416.5	3,927.2	1,286.9	1,332.3	1,308.0
2005	4,384.0	420.6	6.3	414.3	3,963.4	1,245.9	1,405.8	1,311.7
2006	4,250.0	405.3	6.3	399.0	3,844.7	1,223.2	1,346.8	1,274.7
2007	4,120.0	399.7	5.7	394.0	3,720.3	1,347.3	1,169.2	1,203.8
2008	4,075.0	390.0	5.0	385.0	3,685.0	1,325.5	1,201.7	1,157.8
2009	3,870.0	386.2	4.2	382.0	3,483.8	1,224.7	1,159.7	1,099.4
2010	3,925.0	374.5	3.4	371.1	3,550.5	1,203.2	1,139.2	1,208.1
At October 1								
2003	4,335.0	418.8	6.6	412.2	3,916.2	1,274.8	1,268.3	1,373.1
2004	4,341.0	422.8	6.3	416.5	3,918.2	1,259.0	1,278.9	1,380.3
2005	4,385.0	418.1	6.3	411.8	3,966.9	1,284.0	1,307.8	1,375.1
2006	4,170.0	404.2	6.2	398.0	3,765.8	1,256.1	1,282.1	1,227.6
2007	4,050.0	396.6	5.6	391.0	3,653.4	1,311.7	1,215.6	1,126.1
2008	4,035.0	385.7	4.7	381.0	3,649.3	1,212.6	1,134.3	1,302.4
2009	3,900.0	382.6	3.6	379.0	3,517.4	1,200.9	1,142.2	1,174.3
2010	3,935.0	374.3	3.3	371.0	3,560.7	1,184.7	1,115.4	1,260.6

Table 1-8
Hogs on farms — Ontario

	Total hogs	Breeding stock	Boars, 6 months and over	Sows and bred gilts	All other hogs	Under 20 kg	20 to 60 kg	Over 60 kg
thousands of head								
At January 1								
2003	3,736.5	411.4	12.7	398.7	3,325.1	1,111.3	1,116.8	1,097.0
2004	3,780.7	437.3	11.5	425.8	3,343.4	1,174.9	1,073.2	1,095.3
2005	3,778.9	443.5	10.3	433.2	3,335.4	1,121.9	1,115.8	1,097.7
2006	3,951.2	433.6	9.6	424.0	3,517.6	1,184.9	1,170.2	1,162.5
2007	3,924.1	422.7	9.0	413.7	3,501.4	1,188.2	1,279.4	1,033.8
2008	3,652.0	402.9	8.1	394.8	3,249.1	1,186.3	1,121.3	941.5
2009	3,104.5	359.7	6.7	353.0	2,744.8	1,004.1	965.3	775.4
2010	2,870.8	348.0	6.5	341.5	2,522.8	927.3	873.8	721.7
2011	2,895.5	350.0	5.5	344.5	2,545.5	938.9	840.1	766.5
At April 1								
2003	3,789.2	426.4	12.1	414.3	3,362.8	1,152.6	1,244.0	966.2
2004	3,792.3	444.8	11.5	433.3	3,347.5	1,185.7	1,220.9	940.9
2005	3,909.5	440.9	10.2	430.7	3,468.6	1,172.2	1,283.1	1,013.3
2006	3,957.3	430.0	9.4	420.6	3,527.3	1,211.2	1,302.0	1,014.1
2007	3,850.1	418.3	8.8	409.5	3,431.8	1,257.1	1,115.0	1,059.7
2008	3,355.1	379.5	7.5	372.0	2,975.6	1,076.3	969.2	930.1
2009	2,975.3	359.0	6.5	352.5	2,616.3	975.3	865.0	776.0
2010	2,735.0	329.9	5.8	324.1	2,405.1	840.1	837.8	727.2
At July 1								
2003	3,714.5	427.1	12.0	415.1	3,287.4	1,177.8	1,084.0	1,025.6
2004	3,849.4	442.7	11.0	431.7	3,406.7	1,176.3	1,191.5	1,038.9
2005	3,995.4	440.0	10.0	430.0	3,555.4	1,229.4	1,233.4	1,092.6
2006	3,929.6	426.3	9.2	417.1	3,503.3	1,244.1	1,189.2	1,070.0
2007	3,886.8	417.3	8.8	408.5	3,469.5	1,245.1	1,162.8	1,061.6
2008	3,237.0	372.2	7.2	365.0	2,864.8	1,033.5	948.2	883.1
2009	3,064.8	357.6	6.8	350.8	2,707.2	1,007.7	870.3	829.2
2010	2,804.6	341.0	6.0	335.0	2,463.6	891.4	829.6	742.6
At October 1								
2003	3,764.4	431.6	11.7	419.9	3,332.8	1,097.9	1,181.5	1,053.4
2004	3,793.5	441.5	10.6	430.9	3,352.0	1,115.3	1,202.6	1,034.1
2005	4,013.8	441.9	9.8	432.1	3,571.9	1,184.1	1,283.5	1,104.3
2006	3,911.0	425.7	9.1	416.6	3,485.3	1,195.7	1,255.1	1,034.5
2007	3,831.2	408.6	8.6	400.0	3,422.6	1,215.0	1,174.3	1,033.3
2008	3,206.3	364.4	6.9	357.5	2,841.9	1,007.2	980.2	854.5
2009	3,013.8	355.6	6.6	349.0	2,658.2	1,020.4	843.8	794.0
2010	2,850.0	339.0	6.0	333.0	2,511.0	953.2	784.0	773.8

Table 1-9
Hogs on farms — Western provinces

	Total hogs	Breeding stock	Boars, 6 months and over	Sows and bred gilts	All other hogs	Under 20 kg	20 to 60 kg	Over 60 kg
thousands of head								
At January 1								
2003	6,354.8	700.8	20.8	680.0	5,654.0	1,867.9	1,924.9	1,861.2
2004	6,328.0	719.6	20.1	699.5	5,608.4	1,948.3	1,899.2	1,760.9
2005	6,406.0	733.6	18.8	714.8	5,672.4	1,961.7	1,900.9	1,809.8
2006	6,491.0	724.9	17.9	707.0	5,766.1	1,905.7	2,014.8	1,845.6
2007	6,485.0	721.3	17.2	704.1	5,763.7	1,968.8	1,852.1	1,942.8
2008	5,912.0	686.0	15.5	670.5	5,226.0	1,963.4	1,588.1	1,674.5
2009	5,015.0	624.0	12.5	611.5	4,391.0	1,481.5	1,431.9	1,477.6
2010	4,915.0	583.7	11.4	572.3	4,331.3	1,524.6	1,402.3	1,404.4
2011	4,980.0	572.1	9.7	562.4	4,407.9	1,497.4	1,404.7	1,505.8
At April 1								
2003	6,217.0	702.3	20.4	681.9	5,514.7	1,859.5	1,833.6	1,821.6
2004	6,298.0	721.2	19.7	701.5	5,576.8	1,901.4	1,908.3	1,767.1
2005	6,444.0	730.2	18.7	711.5	5,713.8	2,007.4	1,914.2	1,792.2
2006	6,486.0	722.0	17.7	704.3	5,764.0	1,953.0	1,945.2	1,865.8
2007	6,410.0	718.3	17.0	701.3	5,691.7	2,097.1	1,740.4	1,854.2
2008	5,483.0	676.9	15.1	661.8	4,806.1	1,827.7	1,455.0	1,523.4
2009	4,890.0	618.6	12.3	606.3	4,271.4	1,463.4	1,378.0	1,430.0
2010	4,886.0	583.4	10.4	573.0	4,302.6	1,519.9	1,337.6	1,445.1
At July 1								
2003	6,290.0	709.1	20.5	688.6	5,580.9	2,008.7	1,811.0	1,761.2
2004	6,425.0	728.0	19.7	708.3	5,697.0	2,046.9	1,853.6	1,796.5
2005	6,479.0	730.2	18.4	711.8	5,748.8	2,082.5	1,878.2	1,788.1
2006	6,560.0	723.2	17.7	705.5	5,836.8	2,001.0	2,007.4	1,828.4
2007	6,384.0	716.3	16.9	699.4	5,667.7	2,070.6	1,735.0	1,862.1
2008	5,481.0	656.1	14.6	641.5	4,824.9	1,783.6	1,454.8	1,586.5
2009	4,982.0	607.5	11.9	595.6	4,374.5	1,399.8	1,506.9	1,467.8
2010	4,940.0	580.7	10.3	570.4	4,359.3	1,490.7	1,402.3	1,466.3
At October 1								
2003	6,243.0	713.1	20.5	692.6	5,529.9	1,997.6	1,786.0	1,746.3
2004	6,360.0	730.3	19.1	711.2	5,629.7	1,984.2	1,873.6	1,771.9
2005	6,473.0	726.3	18.3	708.0	5,746.7	1,968.7	2,024.0	1,754.0
2006	6,493.0	720.5	17.3	703.2	5,772.5	1,929.7	1,886.8	1,956.0
2007	6,192.0	707.6	16.6	691.0	5,484.4	2,049.5	1,687.2	1,747.7
2008	5,335.0	640.1	14.0	626.1	4,694.9	1,619.2	1,530.3	1,545.4
2009	4,902.0	591.3	11.5	579.8	4,310.7	1,485.9	1,405.6	1,419.2
2010	4,968.0	575.1	10.0	565.1	4,392.9	1,537.1	1,397.4	1,458.4

Table 1-10
Hogs on farms — Manitoba

	Total hogs	Breeding stock	Boars, 6 months and over	Sows and bred gilts	All other hogs	Under 20 kg	20 to 60 kg	Over 60 kg
thousands of head								
At January 1								
2003	2,825.0	339.8	7.5	332.3	2,485.2	868.2	818.4	798.6
2004	2,852.0	357.7	6.7	351.0	2,494.3	924.7	830.7	738.9
2005	2,870.0	373.6	5.6	368.0	2,496.4	962.4	800.2	733.8
2006	2,940.0	373.2	5.2	368.0	2,566.8	916.3	871.8	778.7
2007	2,960.0	373.8	4.8	369.0	2,586.2	988.9	798.9	798.4
2008	2,810.0	362.2	4.2	358.0	2,447.8	1,083.2	684.0	680.6
2009	2,499.0	337.6	3.6	334.0	2,161.4	859.4	661.2	640.8
2010	2,530.0	326.0	3.4	322.6	2,204.0	864.2	686.4	653.4
2011	2,620.0	321.1	2.5	318.6	2,298.9	866.9	729.0	703.0
At April 1								
2003	2,750.0	341.8	7.0	334.8	2,408.2	908.8	764.4	735.0
2004	2,840.0	362.3	6.3	356.0	2,477.7	940.5	827.7	709.5
2005	2,910.0	373.3	5.6	367.7	2,536.7	1,030.8	822.6	683.3
2006	2,920.0	371.6	5.1	366.5	2,548.4	938.1	852.9	757.4
2007	2,920.0	372.7	4.7	368.0	2,547.3	1,110.8	716.7	719.8
2008	2,660.0	359.1	4.1	355.0	2,300.9	1,052.2	642.2	606.5
2009	2,477.0	336.5	3.6	332.9	2,140.5	822.3	691.4	626.8
2010	2,550.0	328.5	2.9	325.6	2,221.5	845.2	649.7	726.6
At July 1								
2003	2,850.0	348.3	7.0	341.3	2,501.7	913.3	855.9	732.5
2004	2,890.0	368.3	6.3	362.0	2,521.7	937.0	822.2	762.5
2005	2,940.0	371.0	5.4	365.6	2,569.0	980.6	837.1	751.3
2006	2,980.0	373.0	5.0	368.0	2,607.0	930.2	905.1	771.7
2007	2,965.0	375.2	4.7	370.5	2,589.8	1,130.3	710.7	748.8
2008	2,720.0	343.9	3.9	340.0	2,376.1	1,046.4	669.0	660.7
2009	2,530.0	334.0	3.5	330.5	2,196.0	745.5	766.2	684.3
2010	2,605.0	327.9	2.9	325.0	2,277.1	841.0	700.8	735.3
At October 1								
2003	2,820.0	353.3	7.0	346.3	2,466.7	904.5	770.7	791.5
2004	2,859.0	370.8	5.8	365.0	2,488.2	957.5	796.4	734.3
2005	2,910.0	371.6	5.4	366.2	2,538.4	881.2	941.9	715.3
2006	2,950.0	372.4	4.9	367.5	2,577.6	949.0	829.7	798.9
2007	2,910.0	370.6	4.6	366.0	2,539.4	1,132.5	703.0	703.9
2008	2,670.0	341.1	4.1	337.0	2,328.9	981.5	717.6	629.8
2009	2,490.0	329.0	3.4	325.6	2,161.0	849.2	691.1	620.7
2010	2,620.0	324.3	2.8	321.5	2,295.7	879.8	740.3	675.6

Table 1-11
Hogs on farms — Saskatchewan

	Total hogs	Breeding stock	Boars, 6 months and over	Sows and bred gilts	All other hogs	Under 20 kg	20 to 60 kg	Over 60 kg
thousands of head								
At January 1								
2003	1,230.0	126.7	5.1	121.6	1,103.3	334.8	417.2	351.3
2004	1,265.0	128.6	5.2	123.4	1,136.4	341.9	433.1	361.4
2005	1,342.0	134.2	5.2	129.0	1,207.8	356.0	454.2	397.6
2006	1,375.0	133.8	5.0	128.8	1,241.2	373.7	474.0	393.5
2007	1,349.0	135.8	4.8	131.0	1,213.2	328.7	380.0	504.5
2008	1,180.0	127.5	4.4	123.1	1,052.5	312.0	307.2	433.3
2009	810.0	102.2	3.2	99.0	707.8	146.4	230.9	330.5
2010	780.0	89.2	2.8	86.4	690.8	186.1	218.6	286.1
2011	790.0	90.5	2.7	87.8	699.5	209.3	210.5	279.7
At April 1								
2003	1,211.0	128.2	5.2	123.0	1,082.8	288.4	391.3	403.1
2004	1,275.0	130.8	5.3	125.5	1,144.2	315.5	409.8	418.9
2005	1,358.0	134.1	5.1	129.0	1,223.9	334.5	435.0	454.4
2006	1,380.0	134.4	4.9	129.5	1,245.6	349.8	439.0	456.8
2007	1,340.0	135.3	4.8	130.5	1,204.7	319.0	387.2	498.5
2008	1,002.0	125.4	4.3	121.1	876.6	213.6	271.4	391.6
2009	760.0	99.6	3.0	96.6	660.4	150.2	204.1	306.1
2010	750.0	89.8	2.6	87.2	660.2	175.9	207.0	277.3
At July 1								
2003	1,250.0	129.4	5.2	124.2	1,120.6	404.5	327.3	388.8
2004	1,350.0	134.1	5.3	128.8	1,215.9	438.8	363.9	413.2
2005	1,395.0	136.3	5.1	131.2	1,258.7	441.8	378.4	438.5
2006	1,389.0	135.8	4.9	130.9	1,253.2	412.5	390.0	450.7
2007	1,320.0	133.0	4.7	128.3	1,187.0	319.4	376.7	490.9
2008	971.0	123.8	4.2	119.6	847.2	192.1	259.6	395.5
2009	810.0	96.0	3.0	93.0	714.0	176.6	233.2	304.2
2010	755.0	90.1	2.6	87.5	664.9	199.5	198.2	267.2
At October 1								
2003	1,245.0	127.6	5.3	122.3	1,117.4	396.1	374.3	347.0
2004	1,335.0	132.5	5.2	127.3	1,202.5	402.1	410.1	390.3
2005	1,404.0	133.9	5.0	128.9	1,270.1	450.6	419.9	399.6
2006	1,374.0	134.2	4.8	129.4	1,239.8	320.0	397.5	522.3
2007	1,265.0	132.3	4.7	127.6	1,132.7	318.1	364.1	450.5
2008	900.0	112.8	3.8	109.0	787.2	161.4	251.4	374.4
2009	790.0	90.8	2.8	88.0	699.2	166.2	226.7	306.3
2010	770.0	90.1	2.6	87.5	679.9	199.9	210.8	269.2

Table 1-12
Hogs on farms — Alberta

	Total hogs	Breeding stock	Boars, 6 months and over	Sows and bred gilts	All other hogs	Under 20 kg	20 to 60 kg	Over 60 kg
thousands of head								
At January 1								
2003	2,139.8	215.5	7.5	208.0	1,924.3	619.5	644.3	660.5
2004	2,050.0	212.3	7.4	204.9	1,837.7	637.3	589.1	611.3
2005	2,045.0	206.1	7.3	198.8	1,838.9	603.0	605.0	630.9
2006	2,036.0	199.2	7.1	192.1	1,836.8	576.6	629.9	630.3
2007	2,045.0	193.4	7.0	186.4	1,851.6	607.5	641.0	630.1
2008	1,800.0	178.4	6.4	172.0	1,621.6	529.8	559.2	532.6
2009	1,590.0	167.3	5.3	162.0	1,422.7	437.8	512.8	472.1
2010	1,505.0	156.3	4.9	151.4	1,348.7	435.4	472.5	440.8
2011	1,490.0	150.9	4.3	146.6	1,339.1	397.4	443.0	498.7
At April 1								
2003	2,100.0	213.5	7.5	206.0	1,886.5	614.4	636.3	635.8
2004	2,030.0	208.4	7.4	201.0	1,821.6	600.9	627.9	592.8
2005	2,025.0	202.7	7.3	195.4	1,822.3	597.7	615.7	608.9
2006	2,050.0	197.1	7.1	190.0	1,852.9	625.2	617.5	610.2
2007	2,020.0	191.9	6.9	185.0	1,828.1	611.3	607.2	609.6
2008	1,700.0	175.0	6.2	168.8	1,525.0	520.0	504.1	500.9
2009	1,540.0	165.2	5.2	160.0	1,374.8	454.6	454.9	465.3
2010	1,490.0	154.3	4.6	149.7	1,335.7	463.3	454.5	417.9
At July 1								
2003	2,030.0	211.0	7.5	203.5	1,819.0	636.5	585.6	596.9
2004	2,030.0	205.3	7.3	198.0	1,824.7	622.7	623.3	578.7
2005	2,000.0	204.0	7.2	196.8	1,796.0	615.1	621.9	559.0
2006	2,056.0	195.1	7.1	188.0	1,860.9	614.4	676.4	570.1
2007	1,970.0	189.5	6.9	182.6	1,780.5	582.2	615.2	583.1
2008	1,670.0	171.0	6.0	165.0	1,499.0	504.8	488.8	505.4
2009	1,530.0	161.5	5.0	156.5	1,368.5	441.9	476.5	450.1
2010	1,495.0	153.1	4.6	148.5	1,341.9	426.4	476.5	439.0
At October 1								
2003	2,020.0	212.4	7.4	205.0	1,807.6	653.4	592.8	561.4
2004	2,010.0	206.4	7.3	199.1	1,803.6	581.5	620.3	601.8
2005	2,020.0	202.5	7.2	195.3	1,817.5	598.9	620.0	598.6
2006	2,035.0	195.5	7.0	188.5	1,839.5	602.9	629.5	607.1
2007	1,890.0	186.6	6.8	179.8	1,703.4	557.2	588.0	558.2
2008	1,650.0	169.6	5.6	164.0	1,480.4	438.5	528.7	513.2
2009	1,515.0	157.4	4.9	152.5	1,357.6	436.3	455.2	466.1
2010	1,500.0	151.3	4.4	146.9	1,348.7	433.9	424.9	489.9

Table 1-13
Hogs on farms — British Columbia

	Total hogs	Breeding stock	Boars, 6 months and over	Sows and bred gilts	All other hogs	Under 20 kg	20 to 60 kg	Over 60 kg
thousands of head								
At January 1								
2003	160.0	18.8	0.7	18.1	141.2	45.4	45.0	50.8
2004	161.0	21.0	0.8	20.2	140.0	44.4	46.3	49.3
2005	149.0	19.7	0.7	19.0	129.3	40.3	41.5	47.5
2006	140.0	18.7	0.6	18.1	121.3	39.1	39.1	43.1
2007	131.0	18.3	0.6	17.7	112.7	43.7	32.2	36.8
2008	122.0	17.9	0.5	17.4	104.1	38.4	37.7	28.0
2009	116.0	16.9	0.4	16.5	99.1	37.9	27.0	34.2
2010	100.0	12.2	0.3	11.9	87.8	38.9	24.8	24.1
2011	80.0	9.6	0.2	9.4	70.4	23.8	22.2	24.4
At April 1								
2003	156.0	18.8	0.7	18.1	137.2	47.9	41.6	47.7
2004	153.0	19.7	0.7	19.0	133.3	44.5	42.9	45.9
2005	151.0	20.1	0.7	19.4	130.9	44.4	40.9	45.6
2006	136.0	18.9	0.6	18.3	117.1	39.9	35.8	41.4
2007	130.0	18.4	0.6	17.8	111.6	56.0	29.3	26.3
2008	121.0	17.4	0.5	16.9	103.6	41.9	37.3	24.4
2009	113.0	17.3	0.5	16.8	95.7	36.3	27.6	31.8
2010	96.0	10.8	0.3	10.5	85.2	35.5	26.4	23.3
At July 1								
2003	160.0	20.4	0.8	19.6	139.6	54.4	42.2	43.0
2004	155.0	20.3	0.8	19.5	134.7	48.4	44.2	42.1
2005	144.0	18.9	0.7	18.2	125.1	45.0	40.8	39.3
2006	135.0	19.3	0.7	18.6	115.7	43.9	35.9	35.9
2007	129.0	18.6	0.6	18.0	110.4	38.7	32.4	39.3
2008	120.0	17.4	0.5	16.9	102.6	40.3	37.4	24.9
2009	112.0	16.0	0.4	15.6	96.0	35.8	31.0	29.2
2010	85.0	9.6	0.2	9.4	75.4	23.8	26.8	24.8
At October 1								
2003	158.0	19.8	0.8	19.0	138.2	43.6	48.2	46.4
2004	156.0	20.6	0.8	19.8	135.4	43.1	46.8	45.5
2005	139.0	18.3	0.7	17.6	120.7	38.0	42.2	40.5
2006	134.0	18.4	0.6	17.8	115.6	57.8	30.1	27.7
2007	127.0	18.1	0.5	17.6	108.9	41.7	32.1	35.1
2008	115.0	16.6	0.5	16.1	98.4	37.8	32.6	28.0
2009	107.0	14.1	0.4	13.7	92.9	34.2	32.6	26.1
2010	78.0	9.4	0.2	9.2	68.6	23.5	21.4	23.7

Table 2-1
Sows farrowed, pigs born and farrowing intentions — Eastern provinces

	Newfoundland and Labrador	Prince Edward Island	Nova Scotia	New Brunswick	Quebec	Ontario	Eastern provinces	Canada
January to March 2004								
Sows farrowed								
Thousands of head	0.2	6.6	5.4	5.5	211.2	248.8	477.7	873.0
Percentage change from previous year	0.0	8.2	-3.6	-6.8	1.1	5.9	3.5	8.2
Pigs born								
Thousands of head	1.8	67.7	55.1	56.6	2,219.1	2,583.3	4,983.6	9,104.3
Percentage change from previous year	28.6	9.5	-2.5	-5.2	1.1	6.6	3.9	9.2
April to June 2004								
Sows farrowed								
Thousands of head	0.1	6.3	4.8	5.4	213.8	238.7	469.1	861.3
Percentage change from previous year	0.0	1.6	-9.4	-14.3	8.5	5.8	6.5	7.1
Pigs born								
Thousands of head	1.1	63.6	49.0	54.8	2,238.9	2,478.3	4,885.7	8,983.1
Percentage change from previous year	10.0	0.0	-8.4	-15.4	7.9	6.2	6.4	7.7
July to September 2004								
Sows farrowed								
Thousands of head	0.1	6.5	4.9	5.6	210.9	237.6	465.6	851.8
Percentage change from previous year	0.0	0.0	-7.5	-11.1	3.5	1.6	2.2	2.5
Pigs born								
Thousands of head	1.1	66.6	50.9	56.9	2,206.0	2,468.2	4,849.7	8,905.4
Percentage change from previous year	-8.3	-0.3	-6.3	-10.8	2.8	2.0	2.1	3.3
October to December 2004								
Sows farrowed								
Thousands of head	0.1	6.5	5.0	5.5	215.5	245.4	478.0	896.5
Percentage change from previous year	0.0	-3.0	-2.0	-11.3	2.5	-0.1	0.8	2.8
Pigs born								
Thousands of head	1.0	67.0	52.1	56.2	2,252.3	2,550.3	4,978.9	9,394.8
Percentage change from previous year	0.0	-3.0	0.0	-11.8	1.7	0.1	0.6	3.4
January to March 2005								
Sows farrowed								
Thousands of head	0.2	6.4	4.6	5.6	215.6	231.1	463.5	874.1
Percentage change from previous year	0.0	-3.0	-14.8	1.8	2.1	-7.1	-3.0	0.1
Pigs born								
Thousands of head	1.6	65.1	47.3	58.4	2,256.2	2,409.1	4,837.7	9,189.4
Percentage change from previous year	-11.1	-3.8	-14.2	3.2	1.7	-6.7	-2.9	0.9
April to June 2005								
Sows farrowed								
Thousands of head	0.1	6.1	4.4	5.9	212.9	222.0	451.4	852.5
Percentage change from previous year	0.0	-3.2	-8.3	9.3	-0.4	-7.0	-3.8	-1.0
Pigs born								
Thousands of head	1.4	61.6	45.3	60.9	2,230.7	2,316.6	4,716.5	8,983.4
Percentage change from previous year	27.3	-3.1	-7.6	11.1	-0.4	-6.5	-3.5	0.0
July to September 2005								
Sows farrowed								
Thousands of head	0.1	6.2	4.6	6.0	209.0	219.7	445.6	855.5
Percentage change from previous year	0.0	-4.6	-6.1	7.1	-0.9	-7.5	-4.3	0.4
Pigs born								
Thousands of head	0.7	64.0	47.3	62.9	2,186.9	2,292.1	4,653.9	9,033.6
Percentage change from previous year	-36.4	-3.9	-7.1	10.5	-0.9	-7.1	-4.0	1.4
October to December 2005								
Sows farrowed								
Thousands of head	0.1	5.8	4.6	5.9	203.9	218.6	438.9	852.7
Percentage change from previous year	0.0	-10.8	-8.0	7.3	-5.4	-10.9	-8.2	-4.9
Pigs born								
Thousands of head	1.0	58.3	48.0	61.0	2,132.3	2,279.2	4,579.8	9,024.8
Percentage change from previous year	0.0	-13.0	-7.9	8.5	-5.3	-10.6	-8.0	-3.9

Table 2-1 – continued

Sows farrowed, pigs born and farrowing intentions — Eastern provinces

	Newfoundland and Labrador	Prince Edward Island	Nova Scotia	New Brunswick	Quebec	Ontario	Eastern provinces	Canada
January to March 2006								
Sows farrowed								
Thousands of head	0.2	5.9	4.3	6.1	202.2	223.1	441.8	856.1
Percentage change from previous year	0.0	-7.8	-6.5	8.9	-6.2	-3.5	-4.7	-2.1
Pigs born								
Thousands of head	1.5	60.3	44.6	63.1	2,116.8	2,332.6	4,618.9	9,075.5
Percentage change from previous year	-6.2	-7.4	-5.7	8.0	-6.2	-3.2	-4.5	-1.2
April to June 2006								
Sows farrowed								
Thousands of head	0.1	5.6	4.0	6.1	188.4	195.1	399.3	812.0
Percentage change from previous year	0.0	-8.2	-9.1	3.4	-11.5	-12.1	-11.5	-4.8
Pigs born								
Thousands of head	1.2	57.2	41.0	63.1	1,976.2	2,041.3	4,180.0	8,637.1
Percentage change from previous year	-14.3	-7.1	-9.5	3.6	-11.4	-11.9	-11.4	-3.9
July to September 2006								
Sows farrowed								
Thousands of head	0.1	5.9	4.0	6.1	188.4	204.6	409.1	815.9
Percentage change from previous year	0.0	-4.8	-13.0	1.7	-9.9	-6.9	-8.2	-4.6
Pigs born								
Thousands of head	1.2	61.4	41.5	64.7	1,971.1	2,140.8	4,280.7	8,695.2
Percentage change from previous year	71.4	-4.1	-12.3	2.9	-9.9	-6.6	-8.0	-3.7
October to December 2006								
Sows farrowed								
Thousands of head	0.1	5.9	4.0	5.9	200.1	218.0	434.0	845.7
Percentage change from previous year	0.0	1.7	-13.0	0.0	-1.9	-0.3	-1.1	-0.8
Pigs born								
Thousands of head	1.2	61.4	41.5	61.0	2,094.1	2,279.8	4,539.0	9,025.6
Percentage change from previous year	20.0	5.3	-13.5	0.0	-1.8	0.0	-0.9	0.0
January to March 2007								
Sows farrowed								
Thousands of head	0.1	5.3	3.8	6.1	197.4	203.1	415.8	824.7
Percentage change from previous year	-50.0	-10.2	-11.6	0.0	-2.4	-9.0	-5.9	-3.7
Pigs born								
Thousands of head	1.1	55.8	39.5	63.8	2,067.9	2,129.0	4,357.1	8,819.7
Percentage change from previous year	-26.7	-7.5	-11.4	1.1	-2.3	-8.7	-5.7	-2.8
April to June 2007								
Sows farrowed								
Thousands of head	0.1	4.8	4.1	6.0	187.3	195.0	397.3	809.5
Percentage change from previous year	0.0	-14.3	2.5	-1.6	-0.6	-0.1	-0.5	-0.3
Pigs born								
Thousands of head	1.1	49.5	42.2	62.7	1,963.8	2,045.1	4,164.4	8,678.0
Percentage change from previous year	-8.3	-13.5	2.9	-0.6	-0.6	0.2	-0.4	0.5
July to September 2007								
Sows farrowed								
Thousands of head	0.1	4.4	3.7	6.1	191.5	194.0	399.8	794.4
Percentage change from previous year	0.0	-25.4	-7.5	0.0	1.6	-5.2	-2.3	-2.6
Pigs born								
Thousands of head	1.2	47.5	38.5	63.2	2,003.9	2,033.2	4,187.5	8,511.6
Percentage change from previous year	0.0	-22.6	-7.2	-2.3	1.7	-5.0	-2.2	-2.1
October to December 2007								
Sows farrowed								
Thousands of head	0.1	4.2	3.5	5.9	195.2	211.1	420.0	828.8
Percentage change from previous year	0.0	-28.8	-12.5	0.0	-2.4	-3.2	-3.2	-2.0
Pigs born								
Thousands of head	1.0	44.0	36.8	62.0	2,043.5	2,209.5	4,396.8	8,882.3
Percentage change from previous year	-16.7	-28.3	-11.3	1.6	-2.4	-3.1	-3.1	-1.6

Table 2-1 – continued

Sows farrowed, pigs born and farrowing intentions — Eastern provinces

	Newfoundland and Labrador	Prince Edward Island	Nova Scotia	New Brunswick	Quebec	Ontario	Eastern provinces	Canada
January to March 2008								
Sows farrowed								
Thousands of head	0.1	3.2	3.3	5.6	196.3	195.9	404.4	805.4
Percentage change from previous year	0.0	-39.6	-13.2	-8.2	-0.6	-3.5	-2.7	-2.3
Pigs born								
Thousands of head	1.1	34.0	34.2	59.0	2,060.8	2,050.6	4,239.7	8,658.2
Percentage change from previous year	0.0	-39.1	-13.4	-7.5	-0.3	-3.7	-2.7	-1.8
April to June 2008								
Sows farrowed								
Thousands of head	0.1	2.9	4.0	6.2	202.4	190.0	405.6	792.2
Percentage change from previous year	0.0	-39.6	-2.4	3.3	8.1	-2.6	2.1	-2.1
Pigs born								
Thousands of head	1.1	30.0	40.0	65.0	2,116.4	2,002.1	4,254.6	8,518.4
Percentage change from previous year	0.0	-39.4	-5.2	3.7	7.8	-2.1	2.2	-1.8
July to September 2008								
Sows farrowed								
Thousands of head	0.1	3.0	4.2	6.3	193.6	196.3	403.5	771.6
Percentage change from previous year	0.0	-31.8	13.5	3.3	1.1	1.2	0.9	-2.9
Pigs born								
Thousands of head	1.2	30.5	43.0	65.0	2,023.2	2,062.0	4,224.9	8,297.1
Percentage change from previous year	0.0	-35.8	11.7	2.8	1.0	1.4	0.9	-2.5
October to December 2008								
Sows farrowed								
Thousands of head	0.1	2.4	3.6	6.4	201.0	206.0	419.5	786.1
Percentage change from previous year	0.0	-42.9	2.9	8.5	3.0	-2.4	-0.1	-5.2
Pigs born								
Thousands of head	1.1	24.9	36.0	67.5	2,107.9	2,163.0	4,400.4	8,454.7
Percentage change from previous year	10.0	-43.4	-2.2	8.9	3.2	-2.1	0.1	-4.8
January to March 2009								
Sows farrowed								
Thousands of head	0.1	2.0	3.4	6.3	207.8	182.0	401.6	754.7
Percentage change from previous year	0.0	-37.5	3.0	12.5	5.9	-7.1	-0.7	-6.3
Pigs born								
Thousands of head	1.1	21.0	35.0	68.0	2,177.7	1,918.0	4,220.8	8,146.2
Percentage change from previous year	0.0	-38.2	2.3	15.3	5.7	-6.5	-0.4	-5.9
April to June 2009								
Sows farrowed								
Thousands of head	0.1	2.3	2.1	6.2	190.5	185.6	386.8	736.7
Percentage change from previous year	0.0	-20.7	-47.5	0.0	-5.9	-2.3	-4.6	-7.0
Pigs born								
Thousands of head	1.4	24.0	22.5	65.0	2,002.8	1,950.2	4,065.9	7,964.3
Percentage change from previous year	27.3	-20.0	-43.8	0.0	-5.4	-2.6	-4.4	-6.5
July to September 2009								
Sows farrowed								
Thousands of head	0.1	2.2	2.1	5.5	202.7	186.9	399.5	735.5
Percentage change from previous year	0.0	-26.7	-50.0	-12.7	4.7	-4.8	-1.0	-4.7
Pigs born								
Thousands of head	1.3	22.8	22.0	60.0	2,128.0	1,962.3	4,196.4	7,956.7
Percentage change from previous year	8.3	-25.2	-48.8	-7.7	5.2	-4.8	-0.7	-4.1
October to December 2009								
Sows farrowed								
Thousands of head	0.1	2.3	2.3	5.2	206.2	171.4	387.5	723.5
Percentage change from previous year	0.0	-4.2	-36.1	-18.8	2.6	-16.8	-7.6	-8.0
Pigs born								
Thousands of head	1.3	25.0	24.0	56.0	2,163.9	1,804.6	4,074.8	7,836.1
Percentage change from previous year	18.2	0.4	-33.3	-17.0	2.7	-16.6	-7.4	-7.3

Table 2-1 – continued

Sows farrowed, pigs born and farrowing intentions — Eastern provinces

	Newfoundland and Labrador	Prince Edward Island	Nova Scotia	New Brunswick	Quebec	Ontario	Eastern provinces	Canada
January to March 2010								
Sows farrowed								
Thousands of head	0.1	2.3	2.4	5.0	204.2	174.3	388.3	728.0
Percentage change from previous year	0.0	15.0	-29.4	-20.6	-1.7	-4.2	-3.3	-3.5
Pigs born								
Thousands of head	1.3	26.1	26.0	53.5	2,138.5	1,835.7	4,081.1	7,887.3
Percentage change from previous year	18.2	24.3	-25.7	-21.3	-1.8	-4.3	-3.3	-3.2
April to June 2010								
Sows farrowed								
Thousands of head	0.1	2.3	2.6	5.2	191.4	173.6	375.2	704.1
Percentage change from previous year	0.0	0.0	23.8	-16.1	0.5	-6.5	-3.0	-4.4
Pigs born								
Thousands of head	1.1	26.6	28.0	55.9	2,013.8	1,825.2	3,950.6	7,634.6
Percentage change from previous year	-21.4	10.8	24.4	-14.0	0.5	-6.4	-2.8	-4.1
July to September 2010								
Sows farrowed								
Thousands of head	0.1	2.3	2.5	5.4	197.4	172.9	380.6	711.6
Percentage change from previous year	0.0	4.5	19.0	-1.8	-2.6	-7.5	-4.7	-3.2
Pigs born								
Thousands of head	1.3	25.5	27.0	59.5	2,064.8	1,826.6	4,004.7	7,710.8
Percentage change from previous year	0.0	11.8	22.7	-0.8	-3.0	-6.9	-4.6	-3.1
October to December 2010								
Sows farrowed								
Thousands of head	x	2.1	x	5.2	203.6	173.3	386.9	713.3
Percentage change from previous year	x	-8.7	x	0.0	-1.3	1.1	-0.2	-1.4
Pigs born								
Thousands of head	x	24.0	x	57.0	2,128.5	1,844.2	4,083.3	7,736.8
Percentage change from previous year	x	-4.0	x	1.8	-1.6	2.2	0.2	-1.3
Farrowing intentions								
January to March 2011								
Thousands of head	x	2.2	x	5.2	198.0	177.8	386.1	717.5
Percentage change from previous year	x	-4.3	x	4.0	-3.0	2.0	-0.6	-1.4
April to June 2011								
Thousands of head	x	2.1	x	5.2	191.0	177.3	378.4	708.9
Percentage change from previous year	x	-8.7	x	0.0	-0.2	2.1	0.9	0.7

Table 2-2
Sows farrowed, pigs born and farrowing intentions — Western provinces

	Manitoba	Saskat- chewan	Alberta	British Columbia	Western provinces	Canada
January to March 2004						
Sows farrowed						
Thousands of head	212.9	72.7	100.7	9.0	395.3	873.0
Percentage change from previous year	21.2	17.4	2.9	-7.2	14.5	8.2
Pigs born						
Thousands of head	2,264.6	740.6	1,025.8	89.7	4,120.7	9,104.3
Percentage change from previous year	24.1	18.7	3.0	-7.2	16.4	9.2
April to June 2004						
Sows farrowed						
Thousands of head	204.1	74.0	104.1	10.0	392.2	861.3
Percentage change from previous year	5.1	9.8	13.2	-2.0	7.8	7.1
Pigs born						
Thousands of head	2,177.3	752.1	1,067.2	100.8	4,097.4	8,983.1
Percentage change from previous year	6.9	10.6	14.2	-1.4	9.2	7.7
July to September 2004						
Sows farrowed						
Thousands of head	211.9	62.9	101.8	9.6	386.2	851.8
Percentage change from previous year	4.3	-2.3	4.0	0.0	3.0	2.5
Pigs born						
Thousands of head	2,269.1	644.8	1,044.8	97.0	4,055.7	8,905.4
Percentage change from previous year	6.2	-1.0	5.6	0.9	4.7	3.3
October to December 2004						
Sows farrowed						
Thousands of head	224.6	72.8	111.9	9.2	418.5	896.5
Percentage change from previous year	6.2	3.6	5.6	-11.5	5.1	2.8
Pigs born						
Thousands of head	2,419.9	748.7	1,155.1	92.2	4,415.9	9,394.8
Percentage change from previous year	8.0	4.8	7.0	-11.2	6.7	3.4
January to March 2005						
Sows farrowed						
Thousands of head	226.0	71.3	103.4	9.9	410.6	874.1
Percentage change from previous year	6.2	-1.9	2.7	10.0	3.9	0.1
Pigs born						
Thousands of head	2,448.8	732.1	1,071.5	99.3	4,351.7	9,189.4
Percentage change from previous year	8.1	-1.1	4.5	10.7	5.6	0.9
April to June 2005						
Sows farrowed						
Thousands of head	215.4	72.0	104.4	9.3	401.1	852.5
Percentage change from previous year	5.5	-2.7	0.3	-7.0	2.3	-1.0
Pigs born						
Thousands of head	2,350.6	738.0	1,083.6	94.7	4,266.9	8,983.4
Percentage change from previous year	8.0	-1.9	1.5	-6.1	4.1	0.0
July to September 2005						
Sows farrowed						
Thousands of head	222.4	70.5	107.9	9.1	409.9	855.5
Percentage change from previous year	5.0	12.1	6.0	-5.2	6.1	0.4
Pigs born						
Thousands of head	2,438.8	726.5	1,121.5	92.9	4,379.7	9,033.6
Percentage change from previous year	7.5	12.7	7.3	-4.2	8.0	1.4
October to December 2005						
Sows farrowed						
Thousands of head	229.3	66.7	108.2	9.6	413.8	852.7
Percentage change from previous year	2.1	-8.4	-3.3	4.3	-1.1	-4.9
Pigs born						
Thousands of head	2,527.9	689.6	1,130.4	97.1	4,445.0	9,024.8
Percentage change from previous year	4.5	-7.9	-2.1	5.3	0.7	-3.9

Table 2-2 – continued

Sows farrowed, pigs born and farrowing intentions — Western provinces

	Manitoba	Saskatchewan	Alberta	British Columbia	Western provinces	Canada
January to March 2006						
Sows farrowed						
Thousands of head	222.9	72.8	109.8	8.8	414.3	856.1
Percentage change from previous year	-1.4	2.1	6.2	-11.1	0.9	-2.1
Pigs born						
Thousands of head	2,463.4	751.8	1,152.2	89.2	4,456.6	9,075.5
Percentage change from previous year	0.6	2.7	7.5	-10.2	2.4	-1.2
April to June 2006						
Sows farrowed						
Thousands of head	223.5	71.8	107.8	9.6	412.7	812.0
Percentage change from previous year	3.8	-0.3	3.3	3.2	2.9	-4.8
Pigs born						
Thousands of head	2,487.0	739.7	1,132.4	98.0	4,457.1	8,637.1
Percentage change from previous year	5.8	0.2	4.5	3.5	4.5	-3.9
July to September 2006						
Sows farrowed						
Thousands of head	221.1	72.2	104.5	9.0	406.8	815.9
Percentage change from previous year	-0.6	2.4	-3.2	-1.1	-0.8	-4.6
Pigs born						
Thousands of head	2,469.3	748.7	1,104.3	92.2	4,414.5	8,695.2
Percentage change from previous year	1.3	3.1	-1.5	-0.8	0.8	-3.7
October to December 2006						
Sows farrowed						
Thousands of head	225.7	71.7	105.0	9.3	411.7	845.7
Percentage change from previous year	-1.6	7.5	-3.0	-3.1	-0.5	-0.8
Pigs born						
Thousands of head	2,533.7	746.0	1,112.4	94.5	4,486.6	9,025.6
Percentage change from previous year	0.2	8.2	-1.6	-2.7	0.9	0.0
January to March 2007						
Sows farrowed						
Thousands of head	223.0	75.3	101.4	9.2	408.9	824.7
Percentage change from previous year	0.0	3.4	-7.7	4.5	-1.3	-3.7
Pigs born						
Thousands of head	2,509.8	781.3	1,077.7	93.8	4,462.6	8,819.7
Percentage change from previous year	1.9	3.9	-6.5	5.2	0.1	-2.8
April to June 2007						
Sows farrowed						
Thousands of head	230.2	74.3	98.4	9.3	412.2	809.5
Percentage change from previous year	3.0	3.5	-8.7	-3.1	-0.1	-0.3
Pigs born						
Thousands of head	2,600.3	770.8	1,047.1	95.4	4,513.6	8,678.0
Percentage change from previous year	4.6	4.2	-7.5	-2.7	1.3	0.5
July to September 2007						
Sows farrowed						
Thousands of head	221.0	71.7	92.4	9.5	394.6	794.4
Percentage change from previous year	0.0	-0.7	-11.6	5.6	-3.0	-2.6
Pigs born						
Thousands of head	2,497.0	746.7	982.7	97.7	4,324.1	8,511.6
Percentage change from previous year	1.1	-0.3	-11.0	6.0	-2.0	-2.1
October to December 2007						
Sows farrowed						
Thousands of head	228.5	76.4	94.6	9.3	408.8	828.8
Percentage change from previous year	1.2	6.6	-9.9	0.0	-0.7	-2.0
Pigs born						
Thousands of head	2,585.0	795.6	1,010.0	94.9	4,485.5	8,882.3
Percentage change from previous year	2.0	6.6	-9.2	0.4	0.0	-1.6

Table 2-2 – continued

Sows farrowed, pigs born and farrowing intentions — Western provinces

	Manitoba	Saskatchewan	Alberta	British Columbia	Western provinces	Canada
January to March 2008						
Sows farrowed						
Thousands of head	227.6	72.2	92.0	9.2	401.0	805.4
Percentage change from previous year	2.1	-4.1	-9.3	0.0	-1.9	-2.3
Pigs born						
Thousands of head	2,576.3	760.7	987.0	94.5	4,418.5	8,658.2
Percentage change from previous year	2.6	-2.6	-8.4	0.7	-1.0	-1.8
April to June 2008						
Sows farrowed						
Thousands of head	210.0	76.0	91.2	9.4	386.6	792.2
Percentage change from previous year	-8.8	2.3	-7.3	1.1	-6.2	-2.1
Pigs born						
Thousands of head	2,379.4	809.1	978.6	96.7	4,263.8	8,518.4
Percentage change from previous year	-8.5	5.0	-6.5	1.4	-5.5	-1.8
July to September 2008						
Sows farrowed						
Thousands of head	205.8	66.4	87.2	8.7	368.1	771.6
Percentage change from previous year	-6.9	-7.4	-5.6	-8.4	-6.7	-2.9
Pigs born						
Thousands of head	2,335.5	712.4	934.8	89.5	4,072.2	8,297.1
Percentage change from previous year	-6.5	-4.6	-4.9	-8.4	-5.8	-2.5
October to December 2008						
Sows farrowed						
Thousands of head	206.7	60.6	90.0	9.3	366.6	786.1
Percentage change from previous year	-9.5	-20.7	-4.9	0.0	-10.3	-5.2
Pigs born						
Thousands of head	2,350.7	649.4	958.5	95.7	4,054.3	8,454.7
Percentage change from previous year	-9.1	-18.4	-5.1	0.8	-9.6	-4.8
January to March 2009						
Sows farrowed						
Thousands of head	208.3	52.8	84.0	8.0	353.1	754.7
Percentage change from previous year	-8.5	-26.9	-8.7	-13.0	-11.9	-6.3
Pigs born						
Thousands of head	2,375.0	568.2	899.8	82.4	3,925.4	8,146.2
Percentage change from previous year	-7.8	-25.3	-8.8	-12.8	-11.2	-5.9
April to June 2009						
Sows farrowed						
Thousands of head	206.0	57.3	78.9	7.7	349.9	736.7
Percentage change from previous year	-1.9	-24.6	-13.5	-18.1	-9.5	-7.0
Pigs born						
Thousands of head	2,346.5	626.3	846.0	79.6	3,898.4	7,964.3
Percentage change from previous year	-1.4	-22.6	-13.5	-17.7	-8.6	-6.5
July to September 2009						
Sows farrowed						
Thousands of head	201.4	49.0	77.7	7.9	336.0	735.5
Percentage change from previous year	-2.1	-26.2	-10.9	-9.2	-8.7	-4.7
Pigs born						
Thousands of head	2,310.8	535.6	832.4	81.5	3,760.3	7,956.7
Percentage change from previous year	-1.1	-24.8	-11.0	-8.9	-7.7	-4.1
October to December 2009						
Sows farrowed						
Thousands of head	199.6	48.8	80.3	7.3	336.0	723.5
Percentage change from previous year	-3.4	-19.5	-10.8	-21.5	-8.3	-8.0
Pigs born						
Thousands of head	2,294.5	532.9	858.8	75.1	3,761.3	7,836.1
Percentage change from previous year	-2.4	-17.9	-10.4	-21.5	-7.2	-7.3

Table 2-2 – continued

Sows farrowed, pigs born and farrowing intentions — Western provinces

	Manitoba	Saskatchewan	Alberta	British Columbia	Western provinces	Canada
January to March 2010						
Sows farrowed						
Thousands of head	200.3	51.3	81.4	6.7	339.7	728.0
Percentage change from previous year	-3.8	-2.8	-3.1	-16.2	-3.8	-3.5
Pigs born						
Thousands of head	2,312.5	557.4	867.1	69.2	3,806.2	7,887.3
Percentage change from previous year	-2.6	-1.9	-3.6	-16.0	-3.0	-3.2
April to June 2010						
Sows farrowed						
Thousands of head	190.5	51.4	81.1	5.9	328.9	704.1
Percentage change from previous year	-7.5	-10.3	2.8	-23.4	-6.0	-4.4
Pigs born						
Thousands of head	2,196.5	562.3	864.5	60.7	3,684.0	7,634.6
Percentage change from previous year	-6.4	-10.2	2.2	-23.7	-5.5	-4.1
July to September 2010						
Sows farrowed						
Thousands of head	195.6	51.8	77.9	5.7	331.0	711.6
Percentage change from previous year	-2.9	5.7	0.3	-27.8	-1.5	-3.2
Pigs born						
Thousands of head	2,246.6	564.3	836.6	58.6	3,706.1	7,710.8
Percentage change from previous year	-2.8	5.4	0.5	-28.1	-1.4	-3.1
October to December 2010						
Sows farrowed						
Thousands of head	190.2	55.0	75.3	5.9	326.4	713.3
Percentage change from previous year	-4.7	12.7	-6.2	-19.2	-2.9	-1.4
Pigs born						
Thousands of head	2,186.2	597.5	809.2	60.6	3,653.5	7,736.8
Percentage change from previous year	-4.7	12.1	-5.8	-19.3	-2.9	-1.3
Farrowing intentions						
January to March 2011						
Thousands of head	194.3	55.6	75.6	5.9	331.4	717.5
Percentage change from previous year	-3.0	8.4	-7.1	-11.9	-2.4	-1.4
April to June 2011						
Thousands of head	195.9	55.0	73.8	5.8	330.5	708.9
Percentage change from previous year	2.8	7.0	-9.0	-1.7	0.5	0.7

Table 3-1
Hogs, supply and disposition — Eastern provinces

	Newfoundland and Labrador	Prince Edward Island	Nova Scotia	New Brunswick	Quebec	Ontario	Eastern provinces	Canada
thousands of head								
January to March 2003								
Beginning inventory	2.5	130.0	119.0	122.0	4,280.2	3,736.5	8,390.2	14,745.0
Pig crop ¹	1.2	54.5	50.5	54.5	1,995.4	2,194.7	4,350.8	7,620.5
Interprovincial imports	0.0	0.0	3.0	0.0	20.6	14.3	37.9	48.7
International imports	0.0	0.0	0.0	0.0	0.0	0.4	0.4	1.0
Total supply	3.7	184.5	172.5	176.5	6,296.2	5,945.9	12,779.3	22,415.2
Interprovincial exports	0.0	0.0	0.0	7.5	1.0	15.6	24.1	48.7
International exports ²	0.0	0.0	0.0	0.0	13.3	635.1	648.4	1,502.9
Deaths and condemnations	0.0	3.0	2.7	2.4	101.2	104.4	213.7	383.6
Other disposition ³	1.0	54.5	51.8	45.6	1,900.6	1,401.6	3,455.1	5,825.0
Output	1.0	57.5	54.5	55.5	2,016.1	2,156.7	4,341.3	7,760.2
Ending inventory	2.7	127.0	118.0	121.0	4,280.1	3,789.2	8,438.0	14,655.0
Total disposition	3.7	184.5	172.5	176.5	6,296.2	5,945.9	12,779.3	22,415.2
April to June 2003								
Beginning inventory	2.7	127.0	118.0	121.0	4,280.1	3,789.2	8,438.0	14,655.0
Pig crop ¹	0.8	56.2	47.7	59.5	1,883.0	2,103.9	4,151.1	7,631.8
Interprovincial imports	0.0	0.0	3.0	0.0	22.0	15.3	40.3	56.3
International imports	0.0	0.0	0.0	0.0	0.0	0.0	0.0	1.0
Total supply	3.5	183.2	168.7	180.5	6,185.1	5,908.4	12,629.4	22,344.1
Interprovincial exports	0.0	0.0	0.0	8.5	1.0	16.0	25.5	56.3
International exports ²	0.0	0.8	0.0	0.3	16.2	704.5	721.8	1,679.0
Deaths and condemnations	0.0	2.9	2.8	2.5	92.1	105.9	206.2	375.6
Other disposition ³	1.0	52.5	52.9	46.2	1,725.8	1,367.5	3,245.9	5,513.2
Output	1.0	56.2	55.7	57.5	1,835.1	2,193.9	4,199.4	7,624.1
Ending inventory	2.5	127.0	113.0	123.0	4,350.0	3,714.5	8,430.0	14,720.0
Total disposition	3.5	183.2	168.7	180.5	6,185.1	5,908.4	12,629.4	22,344.1
July to September 2003								
Beginning inventory	2.5	127.0	113.0	123.0	4,350.0	3,714.5	8,430.0	14,720.0
Pig crop ¹	1.1	59.1	48.7	58.5	1,949.3	2,187.0	4,303.7	7,874.5
Interprovincial imports	0.0	0.0	3.0	0.0	22.0	14.0	39.0	58.7
International imports	0.0	0.0	0.0	0.0	0.0	0.1	0.1	1.7
Total supply	3.6	186.1	164.7	181.5	6,321.3	5,915.6	12,772.8	22,654.9
Interprovincial exports	0.0	0.0	0.0	10.0	1.0	15.5	26.5	58.7
International exports ²	0.0	0.4	0.0	0.1	12.4	727.2	740.1	2,097.9
Deaths and condemnations	0.0	2.9	2.7	2.4	99.7	103.8	211.5	389.6
Other disposition ³	1.0	52.8	52.0	44.0	1,873.2	1,304.7	3,327.7	5,398.7
Output	1.0	56.1	54.7	56.5	1,986.3	2,151.2	4,305.8	7,944.9
Ending inventory	2.6	130.0	110.0	125.0	4,335.0	3,764.4	8,467.0	14,710.0
Total disposition	3.6	186.1	164.7	181.5	6,321.3	5,915.6	12,772.8	22,654.9
October to December 2003								
Beginning inventory	2.6	130.0	110.0	125.0	4,335.0	3,764.4	8,467.0	14,710.0
Pig crop ¹	0.9	61.5	46.5	57.5	2,016.6	2,296.0	4,479.0	8,294.0
Interprovincial imports	0.0	0.0	3.4	0.0	21.0	10.1	34.5	56.1
International imports	0.0	0.0	0.0	0.0	0.0	0.1	0.1	0.6
Total supply	3.5	191.5	159.9	182.5	6,372.6	6,070.6	12,980.6	23,060.7
Interprovincial exports	0.0	0.0	0.0	9.5	1.3	20.1	30.9	56.1
International exports ²	0.0	0.2	0.0	0.0	5.5	855.6	861.3	2,162.8
Deaths and condemnations	0.1	3.1	2.6	2.5	106.5	110.0	224.8	409.3
Other disposition ³	1.1	56.2	49.3	46.5	2,009.3	1,304.2	3,466.6	5,707.5
Output	1.2	59.5	51.9	58.5	2,122.6	2,289.9	4,583.6	8,335.7
Ending inventory	2.3	132.0	108.0	124.0	4,250.0	3,780.7	8,397.0	14,725.0
Total disposition	3.5	191.5	159.9	182.5	6,372.6	6,070.6	12,980.6	23,060.7

See notes at the end of the table.

Table 3-1 – continued

Hogs, supply and disposition — Eastern provinces

	Newfoundland and Labrador	Prince Edward Island	Nova Scotia	New Brunswick	Quebec	Ontario	Eastern provinces	Canada
thousands of head								
January to March 2004								
Beginning inventory	2.3	132.0	108.0	124.0	4,250.0	3,780.7	8,397.0	14,725.0
Pig crop ¹	1.6	59.8	49.1	51.1	2,023.9	2,330.7	4,516.2	8,321.1
Interprovincial imports	0.0	0.0	3.0	0.0	20.6	10.8	34.4	55.2
International imports	0.0	0.0	0.0	0.0	0.1	0.0	0.1	1.6
Total supply	3.9	191.8	160.1	175.1	6,294.6	6,122.2	12,947.7	23,102.9
Interprovincial exports	0.0	0.0	0.0	6.5	1.0	15.6	23.1	55.2
International exports ²	0.0	0.0	0.0	0.2	3.3	875.1	878.6	2,209.4
Deaths and condemnations	0.1	3.2	2.7	2.2	121.1	112.2	241.5	431.0
Other disposition ³	1.1	58.6	50.4	41.2	1,949.2	1,327.0	3,427.5	5,732.3
Output	1.2	61.8	53.1	50.1	2,074.6	2,329.9	4,570.7	8,427.9
Ending inventory	2.7	130.0	107.0	125.0	4,220.0	3,792.3	8,377.0	14,675.0
Total disposition	3.9	191.8	160.1	175.1	6,294.6	6,122.2	12,947.7	23,102.9
April to June 2004								
Beginning inventory	2.7	130.0	107.0	125.0	4,220.0	3,792.3	8,377.0	14,675.0
Pig crop ¹	0.9	56.6	43.2	49.4	2,044.9	2,229.9	4,424.9	8,214.6
Interprovincial imports	0.0	0.0	4.0	0.0	28.6	11.3	43.9	63.9
International imports	0.0	0.0	0.0	0.0	0.0	0.2	0.2	1.0
Total supply	3.6	186.6	154.2	174.4	6,293.5	6,033.7	12,846.0	22,954.5
Interprovincial exports	0.0	0.0	0.0	7.9	1.0	16.0	24.9	63.9
International exports ²	0.0	1.2	0.0	0.5	1.4	771.1	774.2	2,033.6
Deaths and condemnations	0.0	3.0	2.6	2.2	132.2	105.3	245.3	425.9
Other disposition ³	1.0	54.4	49.6	40.8	1,808.9	1,291.9	3,246.6	5,451.1
Output	1.0	58.6	52.2	51.4	1,943.5	2,184.3	4,291.0	7,974.5
Ending inventory	2.6	128.0	102.0	123.0	4,350.0	3,849.4	8,555.0	14,980.0
Total disposition	3.6	186.6	154.2	174.4	6,293.5	6,033.7	12,846.0	22,954.5
July to September 2004								
Beginning inventory	2.6	128.0	102.0	123.0	4,350.0	3,849.4	8,555.0	14,980.0
Pig crop ¹	1.1	60.1	45.0	51.3	2,014.8	2,225.0	4,397.3	8,136.5
Interprovincial imports	0.0	0.0	4.0	0.0	32.2	11.0	47.2	71.4
International imports	0.0	0.0	0.0	0.0	0.0	0.1	0.1	0.5
Total supply	3.7	188.1	151.0	174.3	6,397.0	6,085.5	12,999.6	23,188.4
Interprovincial exports	0.0	0.0	0.0	12.5	1.0	15.5	29.0	71.4
International exports ²	0.0	0.3	0.0	0.3	5.2	806.2	812.0	2,187.4
Deaths and condemnations	0.1	3.0	2.6	2.2	140.0	110.5	258.4	445.8
Other disposition ³	1.1	55.8	48.4	40.3	1,909.8	1,359.8	3,415.2	5,638.8
Output	1.2	59.1	51.0	55.3	2,056.0	2,292.0	4,514.6	8,343.4
Ending inventory	2.5	129.0	100.0	119.0	4,341.0	3,793.5	8,485.0	14,845.0
Total disposition	3.7	188.1	151.0	174.3	6,397.0	6,085.5	12,999.6	23,188.4
October to December 2004								
Beginning inventory	2.5	129.0	100.0	119.0	4,341.0	3,793.5	8,485.0	14,845.0
Pig crop ¹	0.9	60.0	46.1	50.7	2,054.5	2,296.8	4,509.0	8,570.1
Interprovincial imports	0.0	0.0	10.1	0.0	28.4	8.6	47.1	72.0
International imports	0.0	0.0	0.0	0.0	0.0	0.0	0.0	0.2
Total supply	3.4	189.0	156.2	169.7	6,423.9	6,098.9	13,041.1	23,487.3
Interprovincial exports	0.0	0.3	0.0	10.1	1.3	21.1	32.8	72.0
International exports ²	0.0	0.0	0.0	0.1	10.8	688.0	698.9	2,080.7
Deaths and condemnations	0.1	3.2	2.8	2.3	145.9	121.9	276.2	474.6
Other disposition ³	1.2	58.5	52.4	42.2	1,985.9	1,489.0	3,629.2	6,050.0
Output	1.3	62.0	55.2	54.7	2,143.9	2,320.0	4,637.1	8,677.3
Ending inventory	2.1	127.0	101.0	115.0	4,280.0	3,778.9	8,404.0	14,810.0
Total disposition	3.4	189.0	156.2	169.7	6,423.9	6,098.9	13,041.1	23,487.3

See notes at the end of the table.

Table 3-1 – continued

Hogs, supply and disposition — Eastern provinces

	Newfoundland and Labrador	Prince Edward Island	Nova Scotia	New Brunswick	Quebec	Ontario	Eastern provinces	Canada
thousands of head								
January to March 2005								
Beginning inventory	2.1	127.0	101.0	115.0	4,280.0	3,778.9	8,404.0	14,810.0
Pig crop ¹	1.4	57.4	41.8	52.8	2,062.2	2,166.2	4,381.8	8,396.8
Interprovincial imports	0.0	0.0	6.5	0.0	30.0	10.8	47.3	79.2
International imports	0.0	0.0	0.0	0.0	0.0	0.0	0.0	0.1
Total supply	3.5	184.4	149.3	167.8	6,372.2	5,955.9	12,833.1	23,286.1
Interprovincial exports	0.0	0.2	0.0	15.0	1.0	16.3	32.5	79.2
International exports ²	0.0	0.0	0.0	0.0	16.9	484.8	501.7	1,895.7
Deaths and condemnations	0.0	3.0	2.4	2.1	162.7	141.5	311.7	508.0
Other disposition ³	1.0	55.2	44.9	39.7	1,926.6	1,403.8	3,471.2	5,843.2
Output	1.0	58.4	47.3	56.8	2,107.2	2,046.4	4,317.1	8,326.1
Ending inventory	2.5	126.0	102.0	111.0	4,265.0	3,909.5	8,516.0	14,960.0
Total disposition	3.5	184.4	149.3	167.8	6,372.2	5,955.9	12,833.1	23,286.1
April to June 2005								
Beginning inventory	2.5	126.0	102.0	111.0	4,265.0	3,909.5	8,516.0	14,960.0
Pig crop ¹	1.3	54.3	40.0	55.0	2,036.6	2,078.9	4,266.1	8,197.4
Interprovincial imports	0.0	0.0	8.5	0.0	31.2	11.3	51.0	83.0
International imports	0.0	0.0	0.0	0.0	0.0	0.0	0.0	0.3
Total supply	3.8	180.3	150.5	166.0	6,332.8	5,999.7	12,833.1	23,240.7
Interprovincial exports	0.0	0.2	0.0	18.0	1.0	16.0	35.2	83.0
International exports ²	0.0	0.0	0.0	0.6	15.7	519.4	535.7	1,952.4
Deaths and condemnations	0.1	2.9	2.5	2.1	203.7	178.7	390.0	582.1
Other disposition ³	1.1	52.2	46.0	38.3	1,728.4	1,290.2	3,156.2	5,428.2
Output	1.2	55.3	48.5	59.0	1,948.8	2,004.3	4,117.1	8,045.7
Ending inventory	2.6	125.0	102.0	107.0	4,384.0	3,995.4	8,716.0	15,195.0
Total disposition	3.8	180.3	150.5	166.0	6,332.8	5,999.7	12,833.1	23,240.7
July to September 2005								
Beginning inventory	2.6	125.0	102.0	107.0	4,384.0	3,995.4	8,716.0	15,195.0
Pig crop ¹	0.6	56.6	41.8	56.9	1,993.5	2,060.0	4,209.4	8,224.6
Interprovincial imports	0.0	0.0	7.0	0.0	33.0	11.0	51.0	85.2
International imports	0.0	0.0	0.0	0.0	0.0	0.0	0.0	0.3
Total supply	3.2	181.6	150.8	163.9	6,410.5	6,066.4	12,976.4	23,505.1
Interprovincial exports	0.0	0.1	0.0	19.0	1.0	15.5	35.6	85.2
International exports ²	0.0	6.9	0.1	0.0	34.0	555.8	596.8	2,169.3
Deaths and condemnations	0.0	2.8	2.5	2.0	190.5	167.6	365.4	563.2
Other disposition ³	1.0	46.8	47.7	37.4	1,800.0	1,313.7	3,246.6	5,482.4
Output	1.0	56.6	50.3	58.4	2,025.5	2,052.6	4,244.4	8,300.1
Ending inventory	2.2	125.0	100.5	105.5	4,385.0	4,013.8	8,732.0	15,205.0
Total disposition	3.2	181.6	150.8	163.9	6,410.5	6,066.4	12,976.4	23,505.1
October to December 2005								
Beginning inventory	2.2	125.0	100.5	105.5	4,385.0	4,013.8	8,732.0	15,205.0
Pig crop ¹	0.9	51.9	42.9	55.1	1,945.4	2,046.4	4,142.6	8,200.9
Interprovincial imports	0.0	0.0	7.9	0.0	28.2	10.9	47.0	83.5
International imports	0.0	0.0	0.0	0.0	0.0	0.0	0.0	0.1
Total supply	3.1	176.9	151.3	160.6	6,358.6	6,071.1	12,921.6	23,489.5
Interprovincial exports	0.0	0.2	0.0	17.0	1.4	22.2	40.8	83.5
International exports ²	0.0	4.2	0.0	2.0	31.7	584.5	622.4	2,197.6
Deaths and condemnations	0.1	2.7	2.5	2.0	174.3	151.5	333.1	532.3
Other disposition ³	1.2	46.8	46.8	35.6	1,814.2	1,361.7	3,306.3	5,566.1
Output	1.3	53.9	49.3	56.6	2,021.6	2,119.9	4,302.6	8,379.5
Ending inventory	1.8	123.0	102.0	104.0	4,337.0	3,951.2	8,619.0	15,110.0
Total disposition	3.1	176.9	151.3	160.6	6,358.6	6,071.1	12,921.6	23,489.5

See notes at the end of the table.

Table 3-1 – continued

Hogs, supply and disposition — Eastern provinces

	Newfoundland and Labrador	Prince Edward Island	Nova Scotia	New Brunswick	Quebec	Ontario	Eastern provinces	Canada
thousands of head								
January to March 2006								
Beginning inventory	1.8	123.0	102.0	104.0	4,337.0	3,951.2	8,619.0	15,110.0
Pig crop ¹	1.5	53.8	39.9	57.0	1,934.0	2,095.7	4,181.9	8,256.7
Interprovincial imports	0.0	0.0	7.4	0.0	27.9	10.1	45.4	80.4
International imports	0.0	0.0	0.0	0.0	0.0	0.1	0.1	0.1
Total supply	3.3	176.8	149.3	161.0	6,298.9	6,057.1	12,846.4	23,447.2
Interprovincial exports	0.0	0.2	0.0	15.0	1.0	17.2	33.4	80.4
International exports ²	0.0	0.1	0.1	5.9	12.2	592.1	610.4	2,136.5
Deaths and condemnations	0.1	2.8	2.6	2.1	163.7	144.5	315.8	516.8
Other disposition ³	1.2	50.2	49.6	33.8	1,862.0	1,346.0	3,342.8	5,683.5
Output	1.3	53.3	52.3	56.8	2,038.9	2,099.8	4,302.4	8,417.2
Ending inventory	2.0	123.5	97.0	104.2	4,260.0	3,957.3	8,544.0	15,030.0
Total disposition	3.3	176.8	149.3	161.0	6,298.9	6,057.1	12,846.4	23,447.2
April to June 2006								
Beginning inventory	2.0	123.5	97.0	104.2	4,260.0	3,957.3	8,544.0	15,030.0
Pig crop ¹	1.2	50.5	36.2	58.2	1,807.7	1,826.2	3,780.0	7,875.0
Interprovincial imports	0.0	0.0	7.7	0.0	18.6	11.7	38.0	69.2
International imports	0.0	0.0	0.0	0.0	0.0	0.0	0.0	0.1
Total supply	3.2	174.0	140.9	162.4	6,086.3	5,795.2	12,362.0	22,974.3
Interprovincial exports	0.0	0.2	0.0	14.8	1.0	13.6	29.6	69.2
International exports ²	0.0	0.0	0.0	5.7	14.2	520.6	540.5	2,090.0
Deaths and condemnations	0.1	2.6	4.8	2.1	154.6	136.4	300.6	498.7
Other disposition ³	1.1	48.2	43.1	32.4	1,666.5	1,195.0	2,986.3	5,251.4
Output	1.2	51.0	47.9	55.0	1,836.3	1,865.6	3,857.0	7,909.3
Ending inventory	2.0	123.0	93.0	107.4	4,250.0	3,929.6	8,505.0	15,065.0
Total disposition	3.2	174.0	140.9	162.4	6,086.3	5,795.2	12,362.0	22,974.3
July to September 2006								
Beginning inventory	2.0	123.0	93.0	107.4	4,250.0	3,929.6	8,505.0	15,065.0
Pig crop ¹	1.2	53.8	36.7	58.0	1,804.3	1,921.2	3,875.2	7,930.0
Interprovincial imports	0.0	0.0	8.2	0.0	22.0	10.3	40.5	71.7
International imports	0.0	0.0	0.0	0.0	0.0	0.2	0.2	0.3
Total supply	3.2	176.8	137.9	165.4	6,076.3	5,861.3	12,420.9	23,067.0
Interprovincial exports	0.0	0.1	0.0	14.8	1.0	12.7	28.6	71.7
International exports ²	0.0	0.0	0.1	8.0	11.0	543.5	562.6	2,205.6
Deaths and condemnations	0.1	2.8	2.3	2.2	133.0	117.7	258.1	460.8
Other disposition ³	1.1	50.4	42.5	32.9	1,761.3	1,276.4	3,164.6	5,428.9
Output	1.2	53.3	44.9	57.9	1,906.3	1,950.3	4,013.9	8,167.0
Ending inventory	2.0	123.5	93.0	107.5	4,170.0	3,911.0	8,407.0	14,900.0
Total disposition	3.2	176.8	137.9	165.4	6,076.3	5,861.3	12,420.9	23,067.0
October to December 2006								
Beginning inventory	2.0	123.5	93.0	107.5	4,170.0	3,911.0	8,407.0	14,900.0
Pig crop ¹	1.2	53.8	36.7	54.6	1,916.2	2,042.7	4,105.2	8,215.8
Interprovincial imports	0.0	0.0	8.6	0.0	19.3	10.5	38.4	74.9
International imports	0.0	0.0	0.0	0.0	0.0	0.0	0.0	0.1
Total supply	3.2	177.3	138.3	162.1	6,105.5	5,964.2	12,550.6	23,190.8
Interprovincial exports	0.0	0.1	0.0	14.0	1.4	17.7	33.2	74.9
International exports ²	0.0	0.0	0.0	4.8	16.4	573.7	594.9	2,344.9
Deaths and condemnations	0.1	2.8	2.3	2.2	114.2	114.8	236.4	438.8
Other disposition ³	1.2	50.9	43.0	35.6	1,799.5	1,333.9	3,264.1	5,425.2
Output	1.3	53.8	45.3	56.6	1,931.5	2,040.1	4,128.6	8,283.8
Ending inventory	1.9	123.5	93.0	105.5	4,174.0	3,924.1	8,422.0	14,907.0
Total disposition	3.2	177.3	138.3	162.1	6,105.5	5,964.2	12,550.6	23,190.8

See notes at the end of the table.

Table 3-1 – continued

Hogs, supply and disposition — Eastern provinces

	Newfoundland and Labrador	Prince Edward Island	Nova Scotia	New Brunswick	Quebec	Ontario	Eastern provinces	Canada
thousands of head								
January to March 2007								
Beginning inventory	1.9	123.5	93.0	105.5	4,174.0	3,924.1	8,422.0	14,907.0
Pig crop ¹	1.0	44.1	36.0	58.1	1,892.0	1,908.9	3,940.1	8,036.0
Interprovincial imports	0.0	0.0	6.0	0.0	25.7	10.1	41.8	74.9
International imports	0.0	0.0	0.0	0.0	0.1	0.2	0.3	0.4
Total supply	2.9	167.6	135.0	163.6	6,091.8	5,843.3	12,404.2	23,018.3
Interprovincial exports	0.0	0.2	0.0	12.9	1.0	15.2	29.3	74.9
International exports ²	0.0	0.0	1.1	13.0	16.0	543.9	574.0	2,303.8
Deaths and condemnations	0.0	2.5	2.3	2.4	100.7	101.3	209.2	414.0
Other disposition ³	1.0	46.9	41.6	31.3	1,819.1	1,332.8	3,272.7	5,496.6
Output	1.0	49.6	45.0	59.6	1,936.8	1,993.2	4,085.2	8,289.3
Ending inventory	1.9	118.0	90.0	104.0	4,155.0	3,850.1	8,319.0	14,729.0
Total disposition	2.9	167.6	135.0	163.6	6,091.8	5,843.3	12,404.2	23,018.3
April to June 2007								
Beginning inventory	1.9	118.0	90.0	104.0	4,155.0	3,850.1	8,319.0	14,729.0
Pig crop ¹	1.0	42.0	39.2	56.0	1,794.3	1,820.9	3,753.4	7,902.5
Interprovincial imports	0.0	0.0	3.4	0.0	23.4	11.4	38.2	68.4
International imports	0.0	0.0	0.0	0.0	0.1	0.1	0.2	0.3
Total supply	2.9	160.0	132.6	160.0	5,972.8	5,682.5	12,110.8	22,700.2
Interprovincial exports	0.0	0.2	0.0	7.5	1.0	16.4	25.1	68.4
International exports ²	0.0	0.0	6.1	18.1	15.6	437.0	476.8	2,375.2
Deaths and condemnations	0.1	2.5	2.2	2.7	94.0	92.3	193.8	398.0
Other disposition ³	1.1	46.3	36.8	32.7	1,742.2	1,250.0	3,109.1	5,168.6
Output	1.2	49.0	45.1	61.0	1,852.8	1,795.7	3,804.8	8,010.2
Ending inventory	1.7	111.0	87.5	99.0	4,120.0	3,886.8	8,306.0	14,690.0
Total disposition	2.9	160.0	132.6	160.0	5,972.8	5,682.5	12,110.8	22,700.2
July to September 2007								
Beginning inventory	1.7	111.0	87.5	99.0	4,120.0	3,886.8	8,306.0	14,690.0
Pig crop ¹	1.2	39.5	35.7	57.7	1,836.2	1,816.3	3,786.6	7,766.3
Interprovincial imports	0.0	0.0	1.2	0.0	25.0	11.3	37.5	69.6
International imports	0.0	0.0	0.0	0.0	0.2	0.3	0.5	0.7
Total supply	2.9	150.5	124.4	156.7	5,981.4	5,714.7	12,130.6	22,526.6
Interprovincial exports	0.0	0.1	0.0	14.8	1.0	11.7	27.6	69.6
International exports ²	0.0	0.0	10.7	15.1	13.2	496.6	535.6	2,475.2
Deaths and condemnations	0.1	2.2	2.2	2.1	96.9	91.4	194.9	398.9
Other disposition ³	1.1	41.3	32.6	25.4	1,820.3	1,283.8	3,204.5	5,222.9
Output	1.2	43.6	45.5	57.4	1,931.4	1,883.5	3,962.6	8,166.6
Ending inventory	1.7	106.9	78.9	99.3	4,050.0	3,831.2	8,168.0	14,360.0
Total disposition	2.9	150.5	124.4	156.7	5,981.4	5,714.7	12,130.6	22,526.6
October to December 2007								
Beginning inventory	1.7	106.9	78.9	99.3	4,050.0	3,831.2	8,168.0	14,360.0
Pig crop ¹	0.9	38.4	33.3	56.5	1,871.4	1,978.2	3,978.7	8,130.6
Interprovincial imports	0.0	0.0	1.0	0.0	47.5	10.4	58.9	94.1
International imports	0.0	0.0	0.0	0.0	0.0	0.0	0.0	0.2
Total supply	2.6	145.3	113.2	155.8	5,968.9	5,819.8	12,205.6	22,584.9
Interprovincial exports	0.0	0.1	0.0	14.7	1.4	37.1	53.3	94.1
International exports ²	0.0	0.0	14.2	17.6	22.3	633.9	688.0	2,877.4
Deaths and condemnations	0.1	2.5	2.2	2.4	99.2	103.8	210.2	422.4
Other disposition ³	1.1	47.4	28.8	29.8	1,856.0	1,393.0	3,356.1	5,381.0
Output	1.2	50.0	45.2	64.5	1,978.9	2,167.8	4,307.6	8,774.9
Ending inventory	1.4	95.3	68.0	91.3	3,990.0	3,652.0	7,898.0	13,810.0
Total disposition	2.6	145.3	113.2	155.8	5,968.9	5,819.8	12,205.6	22,584.9

See notes at the end of the table.

Table 3-1 – continued

Hogs, supply and disposition — Eastern provinces

	Newfoundland and Labrador	Prince Edward Island	Nova Scotia	New Brunswick	Quebec	Ontario	Eastern provinces	Canada
thousands of head								
January to March 2008								
Beginning inventory	1.4	95.3	68.0	91.3	3,990.0	3,652.0	7,898.0	13,810.0
Pig crop ¹	1.1	28.3	31.9	53.1	1,882.3	1,861.1	3,857.8	7,952.2
Interprovincial imports	0.0	0.0	0.5	0.0	111.2	10.1	121.8	156.0
International imports	0.0	0.0	0.0	0.0	0.0	0.3	0.3	0.5
Total supply	2.5	123.6	100.4	144.4	5,983.5	5,523.5	11,877.9	21,918.7
Interprovincial exports	0.0	1.3	0.0	12.0	1.0	95.1	109.4	156.0
International exports ²	0.0	0.0	24.0	19.4	23.3	586.6	653.3	2,916.2
Deaths and condemnations	0.0	2.3	2.3	2.1	102.6	101.1	210.4	424.2
Other disposition ³	1.0	42.1	21.8	20.7	1,916.6	1,385.6	3,387.8	5,422.3
Output	1.0	45.7	48.1	54.2	2,043.5	2,168.4	4,360.9	8,918.7
Ending inventory	1.5	77.9	52.3	90.2	3,940.0	3,355.1	7,517.0	13,000.0
Total disposition	2.5	123.6	100.4	144.4	5,983.5	5,523.5	11,877.9	21,918.7
April to June 2008								
Beginning inventory	1.5	77.9	52.3	90.2	3,940.0	3,355.1	7,517.0	13,000.0
Pig crop ¹	1.0	25.9	39.5	59.7	1,952.3	1,783.3	3,861.7	7,802.3
Interprovincial imports	0.0	0.0	0.5	0.0	147.2	10.1	157.8	201.1
International imports	0.0	0.0	0.0	0.0	0.1	0.3	0.4	0.6
Total supply	2.5	103.8	92.3	149.9	6,039.6	5,148.8	11,536.9	21,004.0
Interprovincial exports	0.0	4.1	0.0	19.9	1.0	120.6	145.6	201.1
International exports ²	0.0	0.2	35.0	22.7	8.5	393.9	460.3	2,151.3
Deaths and condemnations	0.0	1.9	2.6	2.2	98.6	87.8	193.1	428.3
Other disposition ³	1.0	34.9	17.0	20.0	1,856.5	1,309.5	3,238.9	5,243.3
Output	1.0	41.1	54.6	64.8	1,964.6	1,911.8	4,037.9	8,024.0
Ending inventory	1.5	62.7	37.7	85.1	4,075.0	3,237.0	7,499.0	12,980.0
Total disposition	2.5	103.8	92.3	149.9	6,039.6	5,148.8	11,536.9	21,004.0
July to September 2008								
Beginning inventory	1.5	62.7	37.7	85.1	4,075.0	3,237.0	7,499.0	12,980.0
Pig crop ¹	1.2	27.5	41.1	60.0	1,859.7	1,856.8	3,846.3	7,579.9
Interprovincial imports	0.0	0.0	0.0	0.0	143.6	11.3	154.9	196.0
International imports	0.0	0.0	0.0	0.0	0.1	0.2	0.3	0.8
Total supply	2.7	90.2	78.8	145.1	6,078.4	5,105.3	11,500.5	20,756.7
Interprovincial exports	0.0	0.1	0.0	19.8	1.0	127.8	148.7	196.0
International exports ²	0.0	0.2	37.5	19.7	8.4	405.0	470.8	2,203.8
Deaths and condemnations	0.0	1.8	2.3	2.2	102.6	86.7	195.6	401.4
Other disposition ³	1.0	31.8	9.3	22.4	1,931.4	1,279.5	3,275.4	5,210.5
Output	1.0	33.9	49.1	64.1	2,043.4	1,899.0	4,090.5	8,011.7
Ending inventory	1.7	56.3	29.7	81.0	4,035.0	3,206.3	7,410.0	12,745.0
Total disposition	2.7	90.2	78.8	145.1	6,078.4	5,105.3	11,500.5	20,756.7
October to December 2008								
Beginning inventory	1.7	56.3	29.7	81.0	4,035.0	3,206.3	7,410.0	12,745.0
Pig crop ¹	1.1	23.2	34.8	62.7	1,935.7	1,953.2	4,010.7	7,750.0
Interprovincial imports	0.0	0.0	0.0	0.0	149.7	10.4	160.1	210.3
International imports	0.0	0.0	0.0	0.0	0.1	0.0	0.1	0.7
Total supply	2.8	79.5	64.5	143.7	6,120.5	5,169.9	11,580.9	20,706.0
Interprovincial exports	0.0	0.1	0.0	20.0	1.4	136.3	157.8	210.3
International exports ²	0.0	0.7	25.9	22.2	11.5	410.5	470.8	2,085.9
Deaths and condemnations	0.1	1.4	1.7	2.2	103.2	94.5	203.1	399.6
Other disposition ³	1.1	26.0	8.6	20.0	2,104.4	1,424.1	3,584.2	5,830.2
Output	1.2	28.2	36.2	64.4	2,220.5	2,065.4	4,415.9	8,526.0
Ending inventory	1.6	51.3	28.3	79.3	3,900.0	3,104.5	7,165.0	12,180.0
Total disposition	2.8	79.5	64.5	143.7	6,120.5	5,169.9	11,580.9	20,706.0

See notes at the end of the table.

Table 3-1 – continued

Hogs, supply and disposition — Eastern provinces

	Newfoundland and Labrador	Prince Edward Island	Nova Scotia	New Brunswick	Quebec	Ontario	Eastern provinces	Canada
thousands of head								
January to March 2009								
Beginning inventory	1.6	51.3	28.3	79.3	3,900.0	3,104.5	7,165.0	12,180.0
Pig crop ¹	1.1	19.4	33.4	63.3	2,022.1	1,719.9	3,859.2	7,472.3
Interprovincial imports	0.0	0.0	0.0	0.0	120.4	10.1	130.5	189.7
International imports	0.0	0.0	0.0	0.0	0.1	0.4	0.5	0.9
Total supply	2.7	70.7	61.7	142.6	6,042.6	4,834.9	11,155.2	19,842.9
Interprovincial exports	0.0	0.0	18.0	14.4	1.0	85.1	118.5	189.7
International exports ²	0.0	0.0	8.0	28.2	10.9	331.2	378.3	1,761.4
Deaths and condemnations	0.1	1.2	0.9	2.6	106.4	87.1	198.3	378.8
Other disposition ³	1.1	21.7	9.5	22.3	2,054.3	1,356.2	3,465.1	5,628.0
Output	1.2	22.9	36.4	67.5	2,172.6	1,859.6	4,160.2	7,957.9
Ending inventory	1.5	47.8	25.3	75.1	3,870.0	2,975.3	6,995.0	11,885.0
Total disposition	2.7	70.7	61.7	142.6	6,042.6	4,834.9	11,155.2	19,842.9
April to June 2009								
Beginning inventory	1.5	47.8	25.3	75.1	3,870.0	2,975.3	6,995.0	11,885.0
Pig crop ¹	1.3	22.4	20.2	60.7	1,844.6	1,758.1	3,707.3	7,322.3
Interprovincial imports	0.0	0.0	0.0	0.0	115.6	10.1	125.7	190.3
International imports	0.0	0.0	0.0	0.0	0.0	0.0	0.0	0.5
Total supply	2.8	70.2	45.5	135.8	5,830.2	4,743.5	10,828.0	19,398.1
Interprovincial exports	0.0	0.0	22.5	17.2	1.0	70.2	110.9	190.3
International exports ²	0.0	0.1	0.0	20.2	11.7	281.8	313.8	1,617.7
Deaths and condemnations	0.0	1.1	0.3	1.8	98.4	79.0	180.6	354.7
Other disposition ³	1.0	20.2	6.3	15.4	1,849.1	1,247.7	3,139.7	5,170.4
Output	1.0	21.4	29.1	54.6	1,960.2	1,678.7	3,745.0	7,333.1
Ending inventory	1.8	48.8	16.4	81.2	3,870.0	3,064.8	7,083.0	12,065.0
Total disposition	2.8	70.2	45.5	135.8	5,830.2	4,743.5	10,828.0	19,398.1
July to September 2009								
Beginning inventory	1.8	48.8	16.4	81.2	3,870.0	3,064.8	7,083.0	12,065.0
Pig crop ¹	1.2	20.8	20.7	54.5	1,963.3	1,768.3	3,828.8	7,307.4
Interprovincial imports	0.0	0.0	0.0	0.0	118.6	11.3	129.9	198.5
International imports	0.0	0.0	0.0	0.0	0.1	0.2	0.3	1.0
Total supply	3.0	69.6	37.1	135.7	5,952.0	4,844.6	11,042.0	19,571.9
Interprovincial exports	0.0	0.0	18.5	17.8	1.0	85.4	122.7	198.5
International exports ²	0.0	0.6	0.0	22.9	11.4	299.4	334.3	1,521.1
Deaths and condemnations	0.1	1.1	0.2	2.1	103.0	85.7	192.2	368.2
Other disposition ³	1.1	20.0	4.0	17.8	1,936.6	1,360.3	3,339.8	5,529.1
Output	1.2	21.7	22.7	60.6	2,052.0	1,830.8	3,989.0	7,616.9
Ending inventory	1.8	47.9	14.4	75.1	3,900.0	3,013.8	7,053.0	11,955.0
Total disposition	3.0	69.6	37.1	135.7	5,952.0	4,844.6	11,042.0	19,571.9
October to December 2009								
Beginning inventory	1.8	47.9	14.4	75.1	3,900.0	3,013.8	7,053.0	11,955.0
Pig crop ¹	1.2	23.0	22.3	50.2	1,991.6	1,623.6	3,711.9	7,195.4
Interprovincial imports	0.0	0.0	0.0	0.0	110.0	10.4	120.4	167.7
International imports	0.0	0.0	0.0	0.0	0.1	0.5	0.6	0.9
Total supply	3.0	70.9	36.7	125.3	6,001.7	4,648.3	10,885.9	19,319.0
Interprovincial exports	0.0	0.0	21.5	13.0	1.4	74.3	110.2	167.7
International exports ²	0.0	1.0	0.0	21.1	16.4	315.8	354.3	1,475.6
Deaths and condemnations	0.1	1.2	0.1	2.2	104.4	83.6	191.6	361.7
Other disposition ³	1.2	21.6	2.9	20.8	1,959.5	1,303.8	3,309.8	5,479.0
Output	1.3	23.8	24.5	57.1	2,081.7	1,777.5	3,965.9	7,484.0
Ending inventory	1.7	47.1	12.2	68.2	3,920.0	2,870.8	6,920.0	11,835.0
Total disposition	3.0	70.9	36.7	125.3	6,001.7	4,648.3	10,885.9	19,319.0

See notes at the end of the table.

Table 3-1 – continued

Hogs, supply and disposition — Eastern provinces

	Newfoundland and Labrador	Prince Edward Island	Nova Scotia	New Brunswick	Quebec	Ontario	Eastern provinces	Canada
thousands of head								
January to March 2010								
Beginning inventory	1.7	47.1	12.2	68.2	3,920.0	2,870.8	6,920.0	11,835.0
Pig crop ¹	1.2	24.6	24.9	52.1	1,988.5	1,659.1	3,750.4	7,250.0
Interprovincial imports	0.0	0.0	0.0	0.0	139.8	10.2	150.0	185.9
International imports	0.0	0.0	0.0	0.0	0.1	0.5	0.6	0.9
Total supply	2.9	71.7	37.1	120.3	6,048.4	4,540.6	10,821.0	19,271.8
Interprovincial exports	0.0	0.0	21.3	20.0	1.0	102.1	144.4	185.9
International exports ²	0.0	0.0	0.0	15.5	17.4	309.2	342.1	1,447.7
Deaths and condemnations	0.1	1.3	0.1	1.6	107.8	83.7	194.6	366.1
Other disposition ³	1.1	25.2	2.2	14.6	2,022.2	1,310.6	3,375.9	5,622.1
Output	1.2	26.5	23.6	51.7	2,148.4	1,805.6	4,057.0	7,621.8
Ending inventory	1.7	45.2	13.5	68.6	3,900.0	2,735.0	6,764.0	11,650.0
Total disposition	2.9	71.7	37.1	120.3	6,048.4	4,540.6	10,821.0	19,271.8
April to June 2010								
Beginning inventory	1.7	45.2	13.5	68.6	3,900.0	2,735.0	6,764.0	11,650.0
Pig crop ¹	0.9	24.7	26.2	53.3	1,860.8	1,673.4	3,639.3	7,025.6
Interprovincial imports	0.0	0.0	0.0	0.0	103.6	14.5	118.1	160.8
International imports	0.0	0.0	0.0	0.0	0.1	0.1	0.2	0.5
Total supply	2.6	69.9	39.7	121.9	5,864.5	4,423.0	10,521.6	18,836.9
Interprovincial exports	0.0	0.0	22.0	19.0	1.0	73.3	115.3	160.8
International exports ²	0.0	1.6	0.0	15.0	13.8	346.6	377.0	1,410.2
Deaths and condemnations	0.0	1.3	0.1	1.7	97.3	75.6	176.0	341.9
Other disposition ³	1.0	22.5	2.6	16.9	1,827.4	1,122.9	2,993.3	5,124.0
Output	1.0	25.4	24.7	52.6	1,939.5	1,618.4	3,661.6	7,036.9
Ending inventory	1.6	44.5	15.0	69.3	3,925.0	2,804.6	6,860.0	11,800.0
Total disposition	2.6	69.9	39.7	121.9	5,864.5	4,423.0	10,521.6	18,836.9
July to September 2010								
Beginning inventory	1.6	44.5	15.0	69.3	3,925.0	2,804.6	6,860.0	11,800.0
Pig crop ¹	1.3	24.1	25.5	56.3	1,906.7	1,667.5	3,681.4	7,113.3
Interprovincial imports	0.0	0.0	0.0	0.0	92.4	12.6	105.0	146.5
International imports	0.0	0.0	0.0	0.0	0.1	0.4	0.5	1.0
Total supply	2.9	68.6	40.5	125.6	5,924.2	4,485.1	10,646.9	19,060.8
Interprovincial exports	0.0	0.0	23.0	15.3	1.0	68.2	107.5	146.5
International exports ²	0.0	0.7	0.0	20.4	13.6	353.9	388.6	1,483.2
Deaths and condemnations	0.1	1.2	0.1	2.0	99.8	76.7	179.9	348.9
Other disposition ³	1.1	21.5	2.4	17.8	1,874.8	1,136.3	3,053.9	5,197.2
Output	1.2	23.4	25.5	55.5	1,989.2	1,635.1	3,729.9	7,175.8
Ending inventory	1.7	45.2	15.0	70.1	3,935.0	2,850.0	6,917.0	11,885.0
Total disposition	2.9	68.6	40.5	125.6	5,924.2	4,485.1	10,646.9	19,060.8
October to December 2010								
Beginning inventory	x	45.2	x	70.1	3,935.0	2,850.0	6,917.0	11,885.0
Pig crop ¹	x	22.3	x	52.0	1,996.7	1,644.2	3,741.5	7,114.2
Interprovincial imports	x	0.0	x	0.0	79.3	10.9	90.2	133.5
International imports	x	0.0	x	0.0	0.0	0.0	0.0	0.4
Total supply	x	67.5	x	122.1	6,011.0	4,505.1	10,748.7	19,133.1
Interprovincial exports	x	0.0	x	18.2	1.4	47.8	89.5	133.5
International exports ²	x	0.8	x	12.7	11.0	313.0	337.5	1,390.0
Deaths and condemnations	x	1.3	x	1.4	105.9	76.6	185.4	350.8
Other disposition ³	x	22.9	x	14.8	1,992.7	1,172.2	3,206.3	5,348.8
Output	x	25.0	x	47.1	2,111.0	1,609.6	3,818.7	7,223.1
Ending inventory	x	42.5	x	75.0	3,900.0	2,895.5	6,930.0	11,910.0
Total disposition	x	67.5	x	122.1	6,011.0	4,505.1	10,748.7	19,133.1

1. Number of pigs born during the quarter that were either on hand at the end of the quarter or had been sold.

2. Export numbers from International Trade Division of Statistics Canada have been adjusted using secondary information to more accurately reflect province of origin. Canadian export totals remain unchanged.

3. Other disposition principally represents slaughter on a province of origin basis and may include hogs destined for export; varies by province.

Table 3-2
Hogs, supply and disposition — Western provinces

	Manitoba	Saskatchewan	Alberta	British Columbia	Western provinces	Canada
thousands of head						
January to March 2003						
Beginning inventory	2,825.0	1,230.0	2,139.8	160.0	6,354.8	14,745.0
Pig crop ¹	1,722.7	562.2	897.3	87.5	3,269.7	7,620.5
Interprovincial imports	6.1	0.0	4.7	0.0	10.8	48.7
International imports	0.3	0.0	0.3	0.0	0.6	1.0
Total supply	4,554.1	1,792.2	3,042.1	247.5	9,635.9	22,415.2
Interprovincial exports	14.0	0.9	5.0	4.7	24.6	48.7
International exports ²	710.2	37.1	95.3	11.9	854.5	1,502.9
Deaths and condemnations	89.3	28.5	47.7	4.4	169.9	383.6
Other disposition ³	990.6	514.7	794.1	70.5	2,369.9	5,825.0
Output	1,804.1	581.2	942.1	91.5	3,418.9	7,760.2
Ending inventory	2,750.0	1,211.0	2,100.0	156.0	6,217.0	14,655.0
Total disposition	4,554.1	1,792.2	3,042.1	247.5	9,635.9	22,415.2
April to June 2003						
Beginning inventory	2,750.0	1,211.0	2,100.0	156.0	6,217.0	14,655.0
Pig crop ¹	1,930.0	615.7	842.7	92.3	3,480.7	7,631.8
Interprovincial imports	11.2	0.0	4.8	0.0	16.0	56.3
International imports	0.6	0.0	0.4	0.0	1.0	1.0
Total supply	4,691.8	1,826.7	2,947.9	248.3	9,714.7	22,344.1
Interprovincial exports	15.0	6.0	5.0	4.8	30.8	56.3
International exports ²	803.8	40.7	97.4	15.3	957.2	1,679.0
Deaths and condemnations	90.7	28.0	46.5	4.2	169.4	375.6
Other disposition ³	932.3	502.0	769.0	64.0	2,267.3	5,513.2
Output	1,841.8	576.7	917.9	88.3	3,424.7	7,624.1
Ending inventory	2,850.0	1,250.0	2,030.0	160.0	6,290.0	14,720.0
Total disposition	4,691.8	1,826.7	2,947.9	248.3	9,714.7	22,344.1
July to September 2003						
Beginning inventory	2,850.0	1,250.0	2,030.0	160.0	6,290.0	14,720.0
Pig crop ¹	1,997.1	595.4	891.8	86.5	3,570.8	7,874.5
Interprovincial imports	15.2	0.0	4.5	0.0	19.7	58.7
International imports	1.0	0.0	0.6	0.0	1.6	1.7
Total supply	4,863.3	1,845.4	2,926.9	246.5	9,882.1	22,654.9
Interprovincial exports	12.7	10.0	5.0	4.5	32.2	58.7
International exports ²	1,165.2	68.2	109.8	14.6	1,357.8	2,097.9
Deaths and condemnations	99.2	28.9	45.8	4.2	178.1	389.6
Other disposition ³	766.2	493.3	746.3	65.2	2,071.0	5,398.7
Output	2,043.3	600.4	906.9	88.5	3,639.1	7,944.9
Ending inventory	2,820.0	1,245.0	2,020.0	158.0	6,243.0	14,710.0
Total disposition	4,863.3	1,845.4	2,926.9	246.5	9,882.1	22,654.9
October to December 2003						
Beginning inventory	2,820.0	1,245.0	2,020.0	158.0	6,243.0	14,710.0
Pig crop ¹	2,097.0	648.5	976.2	93.3	3,815.0	8,294.0
Interprovincial imports	17.1	0.0	4.5	0.0	21.6	56.1
International imports	0.3	0.2	0.0	0.0	0.5	0.6
Total supply	4,934.4	1,893.7	3,000.7	251.3	10,080.1	23,060.7
Interprovincial exports	4.0	12.0	5.0	4.2	25.2	56.1
International exports ²	1,105.6	56.4	122.8	16.7	1,301.5	2,162.8
Deaths and condemnations	102.0	30.2	48.0	4.3	184.5	409.3
Other disposition ³	870.8	530.1	774.9	65.1	2,240.9	5,707.5
Output	2,082.4	628.7	950.7	90.3	3,752.1	8,335.7
Ending inventory	2,852.0	1,265.0	2,050.0	161.0	6,328.0	14,725.0
Total disposition	4,934.4	1,893.7	3,000.7	251.3	10,080.1	23,060.7

See notes at the end of the table.

Table 3-2 – continued

Hogs, supply and disposition — Western provinces

	Manitoba	Saskatchewan	Alberta	British Columbia	Western provinces	Canada
thousands of head						
January to March 2004						
Beginning inventory	2,852.0	1,265.0	2,050.0	161.0	6,328.0	14,725.0
Pig crop ¹	2,122.6	671.5	930.0	80.8	3,804.9	8,321.1
Interprovincial imports	16.1	0.0	4.7	0.0	20.8	55.2
International imports	0.2	0.6	0.7	0.0	1.5	1.6
Total supply	4,990.9	1,937.1	2,985.4	241.8	10,155.2	23,102.9
Interprovincial exports	12.4	10.0	5.0	4.7	32.1	55.2
International exports ²	1,132.1	62.0	122.4	14.3	1,330.8	2,209.4
Deaths and condemnations	105.0	32.0	48.3	4.2	189.5	431.0
Other disposition ³	901.4	558.1	779.7	65.6	2,304.8	5,732.3
Output	2,150.9	662.1	955.4	88.8	3,857.2	8,427.9
Ending inventory	2,840.0	1,275.0	2,030.0	153.0	6,298.0	14,675.0
Total disposition	4,990.9	1,937.1	2,985.4	241.8	10,155.2	23,102.9
April to June 2004						
Beginning inventory	2,840.0	1,275.0	2,030.0	153.0	6,298.0	14,675.0
Pig crop ¹	2,047.1	685.2	966.9	90.5	3,789.7	8,214.6
Interprovincial imports	11.2	0.0	8.8	0.0	20.0	63.9
International imports	0.5	0.3	0.0	0.0	0.8	1.0
Total supply	4,898.8	1,960.5	3,005.7	243.5	10,108.5	22,954.5
Interprovincial exports	19.0	6.0	5.0	9.0	39.0	63.9
International exports ²	1,078.0	53.3	116.4	11.7	1,259.4	2,033.6
Deaths and condemnations	97.6	29.7	49.3	4.0	180.6	425.9
Other disposition ³	814.2	521.5	805.0	63.8	2,204.5	5,451.1
Output	2,008.8	610.5	975.7	88.5	3,683.5	7,974.5
Ending inventory	2,890.0	1,350.0	2,030.0	155.0	6,425.0	14,980.0
Total disposition	4,898.8	1,960.5	3,005.7	243.5	10,108.5	22,954.5
July to September 2004						
Beginning inventory	2,890.0	1,350.0	2,030.0	155.0	6,425.0	14,980.0
Pig crop ¹	2,120.0	585.7	946.3	87.2	3,739.2	8,136.5
Interprovincial imports	14.7	0.0	9.5	0.0	24.2	71.4
International imports	0.0	0.4	0.0	0.0	0.4	0.5
Total supply	5,024.7	1,936.1	2,985.8	242.2	10,188.8	23,188.4
Interprovincial exports	17.7	10.0	5.0	9.7	42.4	71.4
International exports ²	1,176.9	44.5	145.5	8.5	1,375.4	2,187.4
Deaths and condemnations	105.3	29.0	49.2	3.9	187.4	445.8
Other disposition ³	865.8	517.6	776.1	64.1	2,223.6	5,638.8
Output	2,165.7	601.1	975.8	86.2	3,828.8	8,343.4
Ending inventory	2,859.0	1,335.0	2,010.0	156.0	6,360.0	14,845.0
Total disposition	5,024.7	1,936.1	2,985.8	242.2	10,188.8	23,188.4
October to December 2004						
Beginning inventory	2,859.0	1,335.0	2,010.0	156.0	6,360.0	14,845.0
Pig crop ¹	2,254.8	673.3	1,049.5	83.5	4,061.1	8,570.1
Interprovincial imports	17.1	0.0	7.8	0.0	24.9	72.0
International imports	0.1	0.1	0.0	0.0	0.2	0.2
Total supply	5,131.0	2,008.4	3,067.3	239.5	10,446.2	23,487.3
Interprovincial exports	13.3	12.0	5.0	8.9	39.2	72.0
International exports ²	1,158.3	64.3	153.3	5.9	1,381.8	2,080.7
Deaths and condemnations	110.6	32.1	51.5	4.2	198.4	474.6
Other disposition ³	978.8	558.0	812.5	71.5	2,420.8	6,050.0
Output	2,261.0	666.4	1,022.3	90.5	4,040.2	8,677.3
Ending inventory	2,870.0	1,342.0	2,045.0	149.0	6,406.0	14,810.0
Total disposition	5,131.0	2,008.4	3,067.3	239.5	10,446.2	23,487.3

See notes at the end of the table.

Table 3-2 – continued

Hogs, supply and disposition — Western provinces

	Manitoba	Saskatchewan	Alberta	British Columbia	Western provinces	Canada
	thousands of head					
January to March 2005						
Beginning inventory	2,870.0	1,342.0	2,045.0	149.0	6,406.0	14,810.0
Pig crop ¹	2,287.0	666.4	972.6	89.0	4,015.0	8,396.8
Interprovincial imports	12.1	0.0	19.8	0.0	31.9	79.2
International imports	0.0	0.0	0.1	0.0	0.1	0.1
Total supply	5,169.1	2,008.4	3,037.5	238.0	10,453.0	23,286.1
Interprovincial exports	14.5	10.0	5.0	17.2	46.7	79.2
International exports ²	1,183.8	63.9	140.9	5.4	1,394.0	1,895.7
Deaths and condemnations	110.3	31.4	51.1	3.5	196.3	508.0
Other disposition ³	950.5	545.1	815.5	60.9	2,372.0	5,843.2
Output	2,259.1	650.4	1,012.5	87.0	4,009.0	8,326.1
Ending inventory	2,910.0	1,358.0	2,025.0	151.0	6,444.0	14,960.0
Total disposition	5,169.1	2,008.4	3,037.5	238.0	10,453.0	23,286.1
April to June 2005						
Beginning inventory	2,910.0	1,358.0	2,025.0	151.0	6,444.0	14,960.0
Pig crop ¹	2,198.1	669.4	979.2	84.6	3,931.3	8,197.4
Interprovincial imports	11.2	0.0	20.8	0.0	32.0	83.0
International imports	0.2	0.0	0.1	0.0	0.3	0.3
Total supply	5,119.5	2,027.4	3,025.1	235.6	10,407.6	23,240.7
Interprovincial exports	19.0	6.0	5.0	17.8	47.8	83.0
International exports ²	1,194.3	52.9	159.9	9.6	1,416.7	1,952.4
Deaths and condemnations	105.9	30.8	51.7	3.7	192.1	582.1
Other disposition ³	860.3	542.7	808.5	60.5	2,272.0	5,428.2
Output	2,179.5	632.4	1,025.1	91.6	3,928.6	8,045.7
Ending inventory	2,940.0	1,395.0	2,000.0	144.0	6,479.0	15,195.0
Total disposition	5,119.5	2,027.4	3,025.1	235.6	10,407.6	23,240.7
July to September 2005						
Beginning inventory	2,940.0	1,395.0	2,000.0	144.0	6,479.0	15,195.0
Pig crop ¹	2,255.2	660.2	1,016.7	83.1	4,015.2	8,224.6
Interprovincial imports	14.7	0.0	19.5	0.0	34.2	85.2
International imports	0.0	0.0	0.3	0.0	0.3	0.3
Total supply	5,209.9	2,055.2	3,036.5	227.1	10,528.7	23,505.1
Interprovincial exports	17.7	10.9	5.0	16.0	49.6	85.2
International exports ²	1,315.9	80.4	169.1	7.1	1,572.5	2,169.3
Deaths and condemnations	111.6	31.3	51.2	3.7	197.8	563.2
Other disposition ³	854.7	528.6	791.2	61.3	2,235.8	5,482.4
Output	2,299.9	651.2	1,016.5	88.1	4,055.7	8,300.1
Ending inventory	2,910.0	1,404.0	2,020.0	139.0	6,473.0	15,205.0
Total disposition	5,209.9	2,055.2	3,036.5	227.1	10,528.7	23,505.1
October to December 2005						
Beginning inventory	2,910.0	1,404.0	2,020.0	139.0	6,473.0	15,205.0
Pig crop ¹	2,325.5	620.6	1,024.8	87.4	4,058.3	8,200.9
Interprovincial imports	17.1	0.0	19.4	0.0	36.5	83.5
International imports	0.1	0.0	0.0	0.0	0.1	0.1
Total supply	5,252.7	2,024.6	3,064.2	226.4	10,567.9	23,489.5
Interprovincial exports	13.3	9.0	5.0	15.4	42.7	83.5
International exports ²	1,320.4	87.1	157.9	9.8	1,575.2	2,197.6
Deaths and condemnations	112.4	31.4	51.8	3.6	199.2	532.3
Other disposition ³	866.6	522.1	813.5	57.6	2,259.8	5,566.1
Output	2,312.7	649.6	1,028.2	86.4	4,076.9	8,379.5
Ending inventory	2,940.0	1,375.0	2,036.0	140.0	6,491.0	15,110.0
Total disposition	5,252.7	2,024.6	3,064.2	226.4	10,567.9	23,489.5

See notes at the end of the table.

Table 3-2 – continued

Hogs, supply and disposition — Western provinces

	Manitoba	Saskatchewan	Alberta	British Columbia	Western provinces	Canada
thousands of head						
January to March 2006						
Beginning inventory	2,940.0	1,375.0	2,036.0	140.0	6,491.0	15,110.0
Pig crop ¹	2,269.6	684.2	1,041.8	79.2	4,074.8	8,256.7
Interprovincial imports	15.1	0.0	19.9	0.0	35.0	80.4
International imports	0.0	0.0	0.0	0.0	0.0	0.1
Total supply	5,224.7	2,059.2	3,097.7	219.2	10,600.8	23,447.2
Interprovincial exports	12.6	11.0	5.0	18.4	47.0	80.4
International exports ²	1,295.8	87.2	137.2	5.9	1,526.1	2,136.5
Deaths and condemnations	112.1	32.7	52.9	3.3	201.0	516.8
Other disposition ³	884.2	548.3	852.6	55.6	2,340.7	5,683.5
Output	2,304.7	679.2	1,047.7	83.2	4,114.8	8,417.2
Ending inventory	2,920.0	1,380.0	2,050.0	136.0	6,486.0	15,030.0
Total disposition	5,224.7	2,059.2	3,097.7	219.2	10,600.8	23,447.2
April to June 2006						
Beginning inventory	2,920.0	1,380.0	2,050.0	136.0	6,486.0	15,030.0
Pig crop ¹	2,311.4	673.3	1,022.9	87.4	4,095.0	7,875.0
Interprovincial imports	14.2	0.0	17.0	0.0	31.2	69.2
International imports	0.0	0.0	0.1	0.0	0.1	0.1
Total supply	5,245.6	2,053.3	3,090.0	223.4	10,612.3	22,974.3
Interprovincial exports	14.6	7.0	5.0	13.0	39.6	69.2
International exports ²	1,313.5	86.0	139.1	10.9	1,549.5	2,090.0
Deaths and condemnations	109.9	32.1	52.3	3.8	198.1	498.7
Other disposition ³	827.6	539.2	837.6	60.7	2,265.1	5,251.4
Output	2,265.6	664.3	1,034.0	88.4	4,052.3	7,909.3
Ending inventory	2,980.0	1,389.0	2,056.0	135.0	6,560.0	15,065.0
Total disposition	5,245.6	2,053.3	3,090.0	223.4	10,612.3	22,974.3
July to September 2006						
Beginning inventory	2,980.0	1,389.0	2,056.0	135.0	6,560.0	15,065.0
Pig crop ¹	2,295.7	681.0	995.9	82.2	4,054.8	7,930.0
Interprovincial imports	15.5	0.0	15.7	0.0	31.2	71.7
International imports	0.0	0.0	0.1	0.0	0.1	0.3
Total supply	5,291.2	2,070.0	3,067.7	217.2	10,646.1	23,067.0
Interprovincial exports	11.2	10.2	5.0	16.7	43.1	71.7
International exports ²	1,366.4	121.8	147.7	7.1	1,643.0	2,205.6
Deaths and condemnations	113.7	33.5	52.1	3.4	202.7	460.8
Other disposition ³	849.9	530.5	827.9	56.0	2,264.3	5,428.9
Output	2,341.2	696.0	1,032.7	83.2	4,153.1	8,167.0
Ending inventory	2,950.0	1,374.0	2,035.0	134.0	6,493.0	14,900.0
Total disposition	5,291.2	2,070.0	3,067.7	217.2	10,646.1	23,067.0
October to December 2006						
Beginning inventory	2,950.0	1,374.0	2,035.0	134.0	6,493.0	14,900.0
Pig crop ¹	2,347.6	672.7	1,005.6	84.7	4,110.6	8,215.8
Interprovincial imports	17.1	0.0	19.4	0.0	36.5	74.9
International imports	0.1	0.0	0.0	0.0	0.1	0.1
Total supply	5,314.8	2,046.7	3,060.0	218.7	10,640.2	23,190.8
Interprovincial exports	12.3	9.0	5.0	15.4	41.7	74.9
International exports ²	1,426.1	159.6	155.5	8.8	1,750.0	2,344.9
Deaths and condemnations	114.0	33.5	51.2	3.7	202.4	438.8
Other disposition ³	802.4	495.6	803.3	59.8	2,161.1	5,425.2
Output	2,354.8	697.7	1,015.0	87.7	4,155.2	8,283.8
Ending inventory	2,960.0	1,349.0	2,045.0	131.0	6,485.0	14,907.0
Total disposition	5,314.8	2,046.7	3,060.0	218.7	10,640.2	23,190.8

See notes at the end of the table.

Table 3-2 – continued

Hogs, supply and disposition — Western provinces

	Manitoba	Saskatchewan	Alberta	British Columbia	Western provinces	Canada
thousands of head						
January to March 2007						
Beginning inventory	2,960.0	1,349.0	2,045.0	131.0	6,485.0	14,907.0
Pig crop ¹	2,327.4	709.1	973.7	85.7	4,095.9	8,036.0
Interprovincial imports	14.6	0.0	18.5	0.0	33.1	74.9
International imports	0.1	0.0	0.0	0.0	0.1	0.4
Total supply	5,302.1	2,058.1	3,037.2	216.7	10,614.1	23,018.3
Interprovincial exports	12.6	10.7	5.0	17.3	45.6	74.9
International exports ²	1,410.9	170.3	142.7	5.9	1,729.8	2,303.8
Deaths and condemnations	115.5	34.4	51.4	3.5	204.8	414.0
Other disposition ³	843.1	502.7	818.1	60.0	2,223.9	5,496.6
Output	2,382.1	718.1	1,017.2	86.7	4,204.1	8,289.3
Ending inventory	2,920.0	1,340.0	2,020.0	130.0	6,410.0	14,729.0
Total disposition	5,302.1	2,058.1	3,037.2	216.7	10,614.1	23,018.3
April to June 2007						
Beginning inventory	2,920.0	1,340.0	2,020.0	130.0	6,410.0	14,729.0
Pig crop ¹	2,419.0	701.7	943.1	85.3	4,149.1	7,902.5
Interprovincial imports	13.2	0.0	17.0	0.0	30.2	68.4
International imports	0.1	0.0	0.0	0.0	0.1	0.3
Total supply	5,352.3	2,041.7	2,980.1	215.3	10,589.4	22,700.2
Interprovincial exports	15.6	10.3	5.0	12.4	43.3	68.4
International exports ²	1,526.5	214.9	149.2	7.8	1,898.4	2,375.2
Deaths and condemnations	115.0	34.5	51.0	3.7	204.2	398.0
Other disposition ³	730.2	462.0	804.9	62.4	2,059.5	5,168.6
Output	2,387.3	721.7	1,010.1	86.3	4,205.4	8,010.2
Ending inventory	2,965.0	1,320.0	1,970.0	129.0	6,384.0	14,690.0
Total disposition	5,352.3	2,041.7	2,980.1	215.3	10,589.4	22,700.2
July to September 2007						
Beginning inventory	2,965.0	1,320.0	1,970.0	129.0	6,384.0	14,690.0
Pig crop ¹	2,327.2	676.9	888.8	86.8	3,979.7	7,766.3
Interprovincial imports	15.5	0.0	16.6	0.0	32.1	69.6
International imports	0.2	0.0	0.0	0.0	0.2	0.7
Total supply	5,307.9	1,996.9	2,875.4	215.8	10,396.0	22,526.6
Interprovincial exports	11.2	9.1	5.0	16.7	42.0	69.6
International exports ²	1,546.3	242.3	147.2	3.8	1,939.6	2,475.2
Deaths and condemnations	115.7	34.9	49.7	3.7	204.0	398.9
Other disposition ³	724.7	445.6	783.5	64.6	2,018.4	5,222.9
Output	2,397.9	731.9	985.4	88.8	4,204.0	8,166.6
Ending inventory	2,910.0	1,265.0	1,890.0	127.0	6,192.0	14,360.0
Total disposition	5,307.9	1,996.9	2,875.4	215.8	10,396.0	22,526.6
October to December 2007						
Beginning inventory	2,910.0	1,265.0	1,890.0	127.0	6,192.0	14,360.0
Pig crop ¹	2,418.8	735.2	913.8	84.1	4,151.9	8,130.6
Interprovincial imports	19.0	0.0	16.2	0.0	35.2	94.1
International imports	0.1	0.0	0.1	0.0	0.2	0.2
Total supply	5,347.9	2,000.2	2,820.1	211.1	10,379.3	22,584.9
Interprovincial exports	10.6	9.4	5.0	15.8	40.8	94.1
International exports ²	1,662.6	357.2	163.8	5.8	2,189.4	2,877.4
Deaths and condemnations	122.3	39.0	47.2	3.7	212.2	422.4
Other disposition ³	742.4	414.6	804.1	63.8	2,024.9	5,381.0
Output	2,537.9	820.2	1,020.1	89.1	4,467.3	8,774.9
Ending inventory	2,810.0	1,180.0	1,800.0	122.0	5,912.0	13,810.0
Total disposition	5,347.9	2,000.2	2,820.1	211.1	10,379.3	22,584.9

See notes at the end of the table.

Table 3-2 – continued

Hogs, supply and disposition — Western provinces

	Manitoba	Saskatchewan	Alberta	British Columbia	Western provinces	Canada
thousands of head						
January to March 2008						
Beginning inventory	2,810.0	1,180.0	1,800.0	122.0	5,912.0	13,810.0
Pig crop ¹	2,421.1	699.1	890.8	83.4	4,094.4	7,952.2
Interprovincial imports	18.6	0.0	15.6	0.0	34.2	156.0
International imports	0.1	0.0	0.1	0.0	0.2	0.5
Total supply	5,249.8	1,879.1	2,706.5	205.4	10,040.8	21,918.7
Interprovincial exports	12.6	11.7	5.0	17.3	46.6	156.0
International exports ²	1,749.4	347.0	163.4	3.1	2,262.9	2,916.2
Deaths and condemnations	124.4	41.7	44.3	3.4	213.8	424.2
Other disposition ³	703.4	476.7	793.8	60.6	2,034.5	5,422.3
Output	2,589.8	877.1	1,006.5	84.4	4,557.8	8,918.7
Ending inventory	2,660.0	1,002.0	1,700.0	121.0	5,483.0	13,000.0
Total disposition	5,249.8	1,879.1	2,706.5	205.4	10,040.8	21,918.7
April to June 2008						
Beginning inventory	2,660.0	1,002.0	1,700.0	121.0	5,483.0	13,000.0
Pig crop ¹	2,236.7	738.3	880.0	85.6	3,940.6	7,802.3
Interprovincial imports	18.6	5.0	19.7	0.0	43.3	201.1
International imports	0.2	0.0	0.0	0.0	0.2	0.6
Total supply	4,915.5	1,745.3	2,599.7	206.6	9,467.1	21,004.0
Interprovincial exports	17.6	18.9	5.0	14.0	55.5	201.1
International exports ²	1,259.1	285.4	140.2	6.3	1,691.0	2,151.3
Deaths and condemnations	152.2	36.4	42.9	3.7	235.2	428.3
Other disposition ³	766.6	433.6	741.6	62.6	2,004.4	5,243.3
Output	2,195.5	774.3	929.7	86.6	3,986.1	8,024.0
Ending inventory	2,720.0	971.0	1,670.0	120.0	5,481.0	12,980.0
Total disposition	4,915.5	1,745.3	2,599.7	206.6	9,467.1	21,004.0
July to September 2008						
Beginning inventory	2,720.0	971.0	1,670.0	120.0	5,481.0	12,980.0
Pig crop ¹	2,161.4	648.9	843.5	79.8	3,733.6	7,579.9
Interprovincial imports	15.5	9.0	16.6	0.0	41.1	196.0
International imports	0.4	0.0	0.1	0.0	0.5	0.8
Total supply	4,897.3	1,628.9	2,530.2	199.8	9,256.2	20,756.7
Interprovincial exports	20.2	9.1	5.0	13.0	47.3	196.0
International exports ²	1,319.4	270.1	140.0	3.5	1,733.0	2,203.8
Deaths and condemnations	125.7	34.8	41.7	3.6	205.8	401.4
Other disposition ³	762.0	414.9	693.5	64.7	1,935.1	5,210.5
Output	2,227.3	728.9	880.2	84.8	3,921.2	8,011.7
Ending inventory	2,670.0	900.0	1,650.0	115.0	5,335.0	12,745.0
Total disposition	4,897.3	1,628.9	2,530.2	199.8	9,256.2	20,756.7
October to December 2008						
Beginning inventory	2,670.0	900.0	1,650.0	115.0	5,335.0	12,745.0
Pig crop ¹	2,178.8	597.6	877.6	85.3	3,739.3	7,750.0
Interprovincial imports	19.0	15.0	16.2	0.0	50.2	210.3
International imports	0.3	0.1	0.1	0.1	0.6	0.7
Total supply	4,868.1	1,512.7	2,543.9	200.4	9,125.1	20,706.0
Interprovincial exports	25.6	9.4	5.0	12.5	52.5	210.3
International exports ²	1,173.1	269.8	167.9	4.3	1,615.1	2,085.9
Deaths and condemnations	117.3	33.4	42.2	3.6	196.5	399.6
Other disposition ³	1,053.1	390.1	738.8	64.0	2,246.0	5,830.2
Output	2,369.1	702.7	953.9	84.4	4,110.1	8,526.0
Ending inventory	2,499.0	810.0	1,590.0	116.0	5,015.0	12,180.0
Total disposition	4,868.1	1,512.7	2,543.9	200.4	9,125.1	20,706.0

See notes at the end of the table.

Table 3-2 – continued

Hogs, supply and disposition — Western provinces

	Manitoba	Saskatchewan	Alberta	British Columbia	Western provinces	Canada
thousands of head						
January to March 2009						
Beginning inventory	2,499.0	810.0	1,590.0	116.0	5,015.0	12,180.0
Pig crop ¹	2,217.0	516.4	805.8	73.9	3,613.1	7,472.3
Interprovincial imports	18.6	25.0	15.6	0.0	59.2	189.7
International imports	0.1	0.3	0.0	0.0	0.4	0.9
Total supply	4,734.7	1,351.7	2,411.4	189.9	8,687.7	19,842.9
Interprovincial exports	37.6	11.7	5.0	16.9	71.2	189.7
International exports ²	1,059.6	179.7	142.0	1.8	1,383.1	1,761.4
Deaths and condemnations	109.8	28.0	39.6	3.1	180.5	378.8
Other disposition ³	1,050.7	372.3	684.8	55.1	2,162.9	5,628.0
Output	2,257.7	591.7	871.4	76.9	3,797.7	7,957.9
Ending inventory	2,477.0	760.0	1,540.0	113.0	4,890.0	11,885.0
Total disposition	4,734.7	1,351.7	2,411.4	189.9	8,687.7	19,842.9
April to June 2009						
Beginning inventory	2,477.0	760.0	1,540.0	113.0	4,890.0	11,885.0
Pig crop ¹	2,204.4	576.6	763.1	70.9	3,615.0	7,322.3
Interprovincial imports	23.6	29.4	11.6	0.0	64.6	190.3
International imports	0.4	0.0	0.1	0.0	0.5	0.5
Total supply	4,705.4	1,366.0	2,314.8	183.9	8,570.1	19,398.1
Interprovincial exports	38.0	23.9	5.0	12.5	79.4	190.3
International exports ²	985.0	183.3	131.9	3.7	1,303.9	1,617.7
Deaths and condemnations	105.8	25.7	39.5	3.1	174.1	354.7
Other disposition ³	1,046.6	323.1	608.4	52.6	2,030.7	5,170.4
Output	2,175.4	556.0	784.8	71.9	3,588.1	7,333.1
Ending inventory	2,530.0	810.0	1,530.0	112.0	4,982.0	12,065.0
Total disposition	4,705.4	1,366.0	2,314.8	183.9	8,570.1	19,398.1
July to September 2009						
Beginning inventory	2,530.0	810.0	1,530.0	112.0	4,982.0	12,065.0
Pig crop ¹	2,162.6	478.8	764.0	73.2	3,478.6	7,307.4
Interprovincial imports	27.0	30.0	11.6	0.0	68.6	198.5
International imports	0.1	0.0	0.6	0.0	0.7	1.0
Total supply	4,719.7	1,318.8	2,306.2	185.2	8,529.9	19,571.9
Interprovincial exports	36.8	25.0	5.0	9.0	75.8	198.5
International exports ²	974.0	75.0	135.3	2.5	1,186.8	1,521.1
Deaths and condemnations	108.8	24.6	39.1	3.5	176.0	368.2
Other disposition ³	1,110.1	404.2	611.8	63.2	2,189.3	5,529.1
Output	2,229.7	528.8	791.2	78.2	3,627.9	7,616.9
Ending inventory	2,490.0	790.0	1,515.0	107.0	4,902.0	11,955.0
Total disposition	4,719.7	1,318.8	2,306.2	185.2	8,529.9	19,571.9
October to December 2009						
Beginning inventory	2,490.0	790.0	1,515.0	107.0	4,902.0	11,955.0
Pig crop ¹	2,145.2	479.2	791.7	67.4	3,483.5	7,195.4
Interprovincial imports	23.0	15.0	9.3	0.0	47.3	167.7
International imports	0.3	0.0	0.0	0.0	0.3	0.9
Total supply	4,658.5	1,284.2	2,316.0	174.4	8,433.1	19,319.0
Interprovincial exports	37.0	9.4	5.0	6.1	57.5	167.7
International exports ²	941.6	48.6	127.7	3.4	1,121.3	1,475.6
Deaths and condemnations	103.7	24.3	38.6	3.5	170.1	361.7
Other disposition ³	1,046.2	421.9	639.7	61.4	2,169.2	5,479.0
Output	2,128.5	504.2	811.0	74.4	3,518.1	7,484.0
Ending inventory	2,530.0	780.0	1,505.0	100.0	4,915.0	11,835.0
Total disposition	4,658.5	1,284.2	2,316.0	174.4	8,433.1	19,319.0

See notes at the end of the table.

Table 3-2 – continued

Hogs, supply and disposition — Western provinces

	Manitoba	Saskatchewan	Alberta	British Columbia	Western provinces	Canada
thousands of head						
January to March 2010						
Beginning inventory	2,530.0	780.0	1,505.0	100.0	4,915.0	11,835.0
Pig crop ¹	2,117.8	510.2	809.2	62.4	3,499.6	7,250.0
Interprovincial imports	15.8	10.0	10.1	0.0	35.9	185.9
International imports	0.3	0.0	0.0	0.0	0.3	0.9
Total supply	4,663.9	1,300.2	2,324.3	162.4	8,450.8	19,271.8
Interprovincial exports	23.4	9.0	5.0	4.1	41.5	185.9
International exports ²	899.1	62.6	142.3	1.6	1,105.6	1,447.7
Deaths and condemnations	103.9	26.5	37.9	3.2	171.5	366.1
Other disposition ³	1,087.5	452.1	649.1	57.5	2,246.2	5,622.1
Output	2,113.9	550.2	834.3	66.4	3,564.8	7,621.8
Ending inventory	2,550.0	750.0	1,490.0	96.0	4,886.0	11,650.0
Total disposition	4,663.9	1,300.2	2,324.3	162.4	8,450.8	19,271.8
April to June 2010						
Beginning inventory	2,550.0	750.0	1,490.0	96.0	4,886.0	11,650.0
Pig crop ¹	2,011.1	521.6	799.3	54.3	3,386.3	7,025.6
Interprovincial imports	15.7	16.5	10.5	0.0	42.7	160.8
International imports	0.3	0.0	0.0	0.0	0.3	0.5
Total supply	4,577.1	1,288.1	2,299.8	150.3	8,315.3	18,836.9
Interprovincial exports	21.0	15.0	5.0	4.5	45.5	160.8
International exports ²	837.1	57.4	134.1	4.6	1,033.2	1,410.2
Deaths and condemnations	97.0	25.3	40.5	3.1	165.9	341.9
Other disposition ³	1,017.0	435.4	625.2	53.1	2,130.7	5,124.0
Output	1,972.1	533.1	804.8	65.3	3,375.3	7,036.9
Ending inventory	2,605.0	755.0	1,495.0	85.0	4,940.0	11,800.0
Total disposition	4,577.1	1,288.1	2,299.8	150.3	8,315.3	18,836.9
July to September 2010						
Beginning inventory	2,605.0	755.0	1,495.0	85.0	4,940.0	11,800.0
Pig crop ¹	2,080.2	525.5	773.9	52.3	3,431.9	7,113.3
Interprovincial imports	15.5	16.0	10.0	0.0	41.5	146.5
International imports	0.1	0.0	0.4	0.0	0.5	1.0
Total supply	4,700.8	1,296.5	2,279.3	137.3	8,413.9	19,060.8
Interprovincial exports	19.0	13.0	5.0	2.0	39.0	146.5
International exports ²	890.7	70.0	133.3	0.6	1,094.6	1,483.2
Deaths and condemnations	102.5	25.1	38.4	3.0	169.0	348.9
Other disposition ³	1,068.6	418.4	602.6	53.7	2,143.3	5,197.2
Output	2,080.8	526.5	779.3	59.3	3,445.9	7,175.8
Ending inventory	2,620.0	770.0	1,500.0	78.0	4,968.0	11,885.0
Total disposition	4,700.8	1,296.5	2,279.3	137.3	8,413.9	19,060.8
October to December 2010						
Beginning inventory	2,620.0	770.0	1,500.0	78.0	4,968.0	11,885.0
Pig crop ¹	2,014.1	558.0	745.8	54.8	3,372.7	7,114.2
Interprovincial imports	17.0	16.0	10.3	0.0	43.3	133.5
International imports	0.3	0.0	0.1	0.0	0.4	0.4
Total supply	4,651.4	1,344.0	2,256.2	132.8	8,384.4	19,133.1
Interprovincial exports	24.0	10.9	5.0	4.1	44.0	133.5
International exports ²	850.0	70.0	130.0	2.5	1,052.5	1,390.0
Deaths and condemnations	99.9	26.6	36.4	2.5	165.4	350.8
Other disposition ³	1,057.5	446.5	594.8	43.7	2,142.5	5,348.8
Output	2,031.4	554.0	766.2	52.8	3,404.4	7,223.1
Ending inventory	2,620.0	790.0	1,490.0	80.0	4,980.0	11,910.0
Total disposition	4,651.4	1,344.0	2,256.2	132.8	8,384.4	19,133.1

1. Number of pigs born during the quarter that were either on hand at the end of the quarter or had been sold.

2. Export numbers from International Trade Division of Statistics Canada have been adjusted using secondary information to more accurately reflect province of origin. Canadian export totals remain unchanged.

3. Other disposition principally represents slaughter on a province of origin basis and may include hogs destined for export; varies by province.

Table 4-1
Hogs, number of farms reporting — Eastern provinces

	Newfoundland and Labrador	Prince Edward Island	Nova Scotia	New Brunswick	Quebec	Ontario	Eastern provinces	Canada
	number							
2004								
January 1st	25	175	175	160	2,640	4,300	7,475	13,375
April 1st	25	170	175	160	2,620	4,290	7,440	13,175
July 1st	25	165	170	160	2,620	4,290	7,430	13,025
October 1st	25	165	170	150	2,590	4,250	7,350	12,795
2005								
January 1st	25	160	170	150	2,570	4,220	7,295	12,615
April 1st	25	160	170	140	2,550	4,190	7,235	12,470
July 1st	25	155	165	140	2,530	4,170	7,185	12,270
October 1st	25	155	165	130	2,510	4,150	7,135	12,095
2006								
January 1st	25	150	165	130	2,490	4,120	7,080	11,860
April 1st	25	150	165	125	2,470	4,090	7,025	11,665
July 1st	25	145	160	125	2,450	4,050	6,955	11,465
October 1st	25	145	160	120	2,430	4,010	6,890	11,290
2007								
January 1st	25	145	160	120	2,400	3,970	6,820	11,120
April 1st	25	140	155	115	2,370	3,930	6,735	10,935
July 1st	25	130	145	115	2,340	3,890	6,645	10,755
October 1st	25	120	140	110	2,300	3,720	6,415	10,325
2008								
January 1st	20	110	125	110	2,250	3,500	6,115	9,815
April 1st	20	90	105	105	2,170	3,220	5,710	9,150
July 1st	20	80	95	100	2,170	3,050	5,515	8,845
October 1st	20	70	95	95	2,140	2,950	5,370	8,530
2009								
January 1st	20	60	90	90	2,060	2,900	5,220	8,220
April 1st	20	55	85	80	2,050	2,800	5,090	8,040
July 1st	20	50	75	80	2,020	2,750	4,995	7,890
October 1st	20	45	60	75	1,980	2,650	4,830	7,670
2010								
January 1st	20	40	60	75	1,890	2,550	4,635	7,400
April 1st	20	40	60	70	1,870	2,450	4,510	7,200
July 1st	15	50	70	60	1,865	2,410	4,470	7,110
October 1st	15	50	75	55	1,860	2,380	4,435	7,040
2011								
January 1st	x	45	x	50	1,840	2,380	4,395	6,985

Table 4-2
Hogs, number of farms reporting — Western provinces

	Manitoba	Saskat- chewan	Alberta	British Columbia	Western provinces	Canada
	number					
2004						
January 1st	1,440	1,410	2,140	910	5,900	13,375
April 1st	1,400	1,360	2,085	890	5,735	13,175
July 1st	1,380	1,300	2,025	890	5,595	13,025
October 1st	1,350	1,260	1,965	870	5,445	12,795
2005						
January 1st	1,330	1,210	1,910	870	5,320	12,615
April 1st	1,310	1,180	1,875	870	5,235	12,470
July 1st	1,290	1,130	1,825	840	5,085	12,270
October 1st	1,260	1,080	1,780	840	4,960	12,095
2006						
January 1st	1,230	1,020	1,710	820	4,780	11,860
April 1st	1,200	970	1,650	820	4,640	11,665
July 1st	1,180	930	1,600	800	4,510	11,465
October 1st	1,150	900	1,550	800	4,400	11,290
2007						
January 1st	1,140	870	1,500	790	4,300	11,120
April 1st	1,110	840	1,460	790	4,200	10,935
July 1st	1,100	830	1,400	780	4,110	10,755
October 1st	1,050	750	1,340	770	3,910	10,325
2008						
January 1st	1,000	700	1,260	740	3,700	9,815
April 1st	930	600	1,170	740	3,440	9,150
July 1st	910	570	1,120	730	3,330	8,845
October 1st	880	500	1,080	700	3,160	8,530
2009						
January 1st	830	450	1,020	700	3,000	8,220
April 1st	830	440	990	690	2,950	8,040
July 1st	830	430	950	685	2,895	7,890
October 1st	800	420	940	680	2,840	7,670
2010						
January 1st	790	410	890	675	2,765	7,400
April 1st	780	390	850	670	2,690	7,200
July 1st	760	385	830	665	2,640	7,110
October 1st	745	380	820	660	2,605	7,040
2011						
January 1st	745	380	810	655	2,590	6,985

Table 5-1
Hogs, average number of hogs per farm reporting — Eastern provinces

	Newfoundland and Labrador	Prince Edward Island	Nova Scotia	New Brunswick	Quebec	Ontario	Eastern provinces	Canada
	number							
2004								
January 1st	85	754	617	775	1,610	879	1,123	1,101
April 1st	100	765	611	781	1,611	884	1,126	1,114
July 1st	96	776	600	769	1,660	897	1,151	1,150
October 1st	93	782	588	793	1,676	893	1,154	1,160
2005								
January 1st	84	794	594	767	1,665	895	1,152	1,174
April 1st	100	788	600	793	1,673	933	1,177	1,200
July 1st	104	806	618	764	1,733	958	1,213	1,238
October 1st	88	806	609	812	1,747	967	1,224	1,257
2006								
January 1st	72	820	618	800	1,742	959	1,217	1,274
April 1st	80	823	588	834	1,725	968	1,216	1,288
July 1st	80	848	581	859	1,735	970	1,223	1,314
October 1st	80	852	581	896	1,716	975	1,220	1,320
2007								
January 1st	76	852	581	879	1,739	988	1,235	1,341
April 1st	76	843	581	904	1,753	980	1,235	1,347
July 1st	68	854	603	861	1,761	999	1,250	1,366
October 1st	68	891	564	903	1,761	1,030	1,273	1,391
2008								
January 1st	70	866	544	830	1,773	1,043	1,292	1,407
April 1st	75	866	498	859	1,816	1,042	1,316	1,421
July 1st	75	784	397	851	1,878	1,061	1,360	1,467
October 1st	85	804	313	853	1,886	1,087	1,380	1,494
2009								
January 1st	80	855	314	881	1,893	1,071	1,373	1,482
April 1st	75	869	298	939	1,888	1,063	1,374	1,478
July 1st	90	976	219	1,015	1,916	1,114	1,418	1,529
October 1st	90	1,064	240	1,001	1,970	1,137	1,460	1,559
2010								
January 1st	85	1,178	203	909	2,074	1,126	1,493	1,599
April 1st	85	1,130	225	980	2,086	1,116	1,500	1,618
July 1st	107	890	214	1,155	2,105	1,164	1,535	1,660
October 1st	113	904	200	1,275	2,116	1,197	1,560	1,688
2011								
January 1st	x	944	x	1,500	2,120	1,217	1,577	1,705

Table 5-2
Hogs, average number of hogs per farm reporting — Western provinces

	Manitoba	Saskat- chewan	Alberta	British Columbia	Western provinces	Canada
	number					
2004						
January 1st	1,981	897	958	177	1,073	1,101
April 1st	2,029	938	974	172	1,098	1,114
July 1st	2,094	1,038	1,002	174	1,148	1,150
October 1st	2,118	1,060	1,023	179	1,168	1,160
2005						
January 1st	2,158	1,109	1,071	171	1,204	1,174
April 1st	2,221	1,151	1,080	174	1,231	1,200
July 1st	2,279	1,235	1,096	171	1,274	1,238
October 1st	2,310	1,300	1,135	165	1,305	1,257
2006						
January 1st	2,390	1,348	1,191	171	1,358	1,274
April 1st	2,433	1,423	1,242	166	1,398	1,288
July 1st	2,525	1,494	1,285	169	1,455	1,314
October 1st	2,565	1,527	1,313	168	1,476	1,320
2007						
January 1st	2,596	1,551	1,363	166	1,508	1,341
April 1st	2,631	1,595	1,384	165	1,526	1,347
July 1st	2,695	1,590	1,407	165	1,553	1,366
October 1st	2,771	1,687	1,410	165	1,584	1,391
2008						
January 1st	2,810	1,686	1,429	165	1,598	1,407
April 1st	2,860	1,670	1,453	164	1,594	1,421
July 1st	2,989	1,704	1,491	164	1,646	1,467
October 1st	3,034	1,800	1,528	164	1,688	1,494
2009						
January 1st	3,011	1,800	1,559	166	1,672	1,482
April 1st	2,984	1,727	1,556	164	1,658	1,478
July 1st	3,048	1,884	1,611	164	1,721	1,529
October 1st	3,113	1,881	1,612	157	1,726	1,559
2010						
January 1st	3,203	1,902	1,691	148	1,778	1,599
April 1st	3,269	1,923	1,753	143	1,816	1,618
July 1st	3,428	1,961	1,801	128	1,871	1,660
October 1st	3,517	2,026	1,829	118	1,907	1,688
2011						
January 1st	3,517	2,079	1,840	122	1,923	1,705

Table 6-1
Prices, weighted average — Ontario

	Jan.	Feb.	Mar.	Apr.	May	June	July	Aug.	Sept.	Oct.	Nov.	Dec.	Annual
	dollars per hundred weight												
1983	83.71	85.92	78.07	72.19	71.91	69.33	67.06	70.27	68.29	61.72	59.36	64.47	70.75
1984	67.65	65.75	67.05	70.91	72.86	75.50	81.85	81.53	76.15	69.62	72.18	73.20	72.65
1985	72.64	73.79	69.25	59.82	61.64	67.99	71.34	67.63	65.34	68.84	71.29	72.39	68.51
1986	70.61	71.17	67.09	64.23	70.58	82.10	93.35	99.97	96.43	87.82	90.54	84.87	81.37
1987	73.21	74.21	70.26	74.43	85.41	93.30	93.03	93.62	87.77	78.52	66.41	68.04	79.61
1988	63.09	65.18	63.78	62.91	68.27	72.94	64.91	61.96	62.51	57.92	56.38	57.06	63.05
1989	56.25	58.97	54.88	54.43	59.87	65.77	69.85	70.76	64.41	67.59	67.13	64.86	62.60
1990	57.61	63.05	67.13	69.85	80.29	87.54	84.37	81.19	74.84	74.84	72.12	67.59	73.03
1991	68.04	72.12	69.40	68.49	72.12	76.66	71.21	70.31	61.69	59.42	53.52	52.62	65.77
1992	49.44	54.88	55.79	55.79	59.87	65.32	63.50	60.78	61.69	62.14	63.50	64.41	59.87
1993	62.14	64.86	65.77	66.68	68.49	72.12	70.31	73.94	75.75	73.03	68.95	65.77	68.95
1994	68.49	76.20	72.57	71.67	71.67	73.03	71.20	72.12	60.78	53.07	51.26	53.52	65.77
1995	62.14	67.13	62.60	58.97	60.33	69.40	76.66	77.11	78.93	72.12	65.77	71.21	68.49
1996	69.85	73.48	79.83	80.29	90.26	91.63	92.53	97.07	89.81	88.90	83.46	87.54	85.73
1997	84.82	85.28	80.29	89.36	95.71	95.26	97.07	92.53	82.55	77.11	73.94	68.49	84.82
1998	57.61	58.97	57.61	59.87	73.48	75.29	66.68	63.05	50.80	50.80	30.84	22.68	54.88
1999	39.46	48.08	47.63	49.90	62.60	58.97	55.34	62.59	56.70	56.70	56.25	60.78	54.43
2000	60.78	68.04	71.21	79.83	83.91	81.19	83.01	77.56	72.12	71.67	64.86	67.59	73.48
2001	62.60	68.49	82.10	84.37	88.45	92.99	92.53	91.17	79.40	72.57	66.68	61.69	78.47
2002	68.04	75.75	70.76	60.78	60.78	63.96	71.67	67.59	49.44	55.79	52.62	56.70	62.60
2003	55.79	63.05	61.69	61.23	65.22	73.48	70.31	64.86	60.33	56.24	49.44	50.80	60.78
2004	52.16	64.86	71.67	71.21	85.73	88.90	84.82	80.29	74.39	70.76	63.96	66.68	72.57
2005	71.56	72.46	70.53	69.69	77.02	69.35	66.90	68.85	66.41	64.02	59.42	57.71	67.66
2006	54.33	53.38	56.34	52.44	59.94	65.99	66.19	65.13	64.37	59.72	57.96	57.39	59.47
2007	57.44	62.48	60.57	60.44	66.10	68.27	61.39	62.51	54.91	46.70	40.30	42.52	56.51
2008	40.12	45.78	44.90	47.74	62.80	62.97	63.16	73.18	66.58	63.47	55.74	54.87	56.35
2009	56.10	58.75	59.55	58.49	56.20	52.72	53.02	45.16	44.96	44.08	47.05	52.10	52.37
2010	56.99	58.12	59.15	63.73	73.20	68.49	68.19	71.49	71.33	62.35	54.53	62.27	64.24

Table 6-2
Prices, weighted average — Manitoba

	Jan.	Feb.	Mar.	Apr.	May	June	July	Aug.	Sept.	Oct.	Nov.	Dec.	Annual
	dollars per hundred weight												
1983	79.54	83.14	75.20	68.37	69.03	66.67	64.62	67.80	68.31	61.60	57.17	62.37	68.49
1984	65.81	65.52	64.75	68.48	70.22	72.41	77.87	77.84	73.20	67.17	70.24	71.67	70.10
1985	69.79	71.64	67.94	59.31	60.52	64.97	68.44	63.13	64.26	68.02	66.87	70.01	66.25
1986	67.91	69.55	65.14	63.28	69.31	77.93	92.31	98.75	98.67	90.68	92.72	86.41	81.10
1987	76.20	77.52	71.63	72.80	83.73	90.58	92.21	90.81	83.87	75.48	63.48	63.91	78.18
1988	61.36	64.54	61.09	60.27	65.26	68.71	62.68	60.27	57.87	54.85	53.38	53.58	60.19
1989	54.43	55.34	51.71	50.35	54.89	61.24	63.96	65.32	60.78	63.50	62.14	61.24	58.97
1990	57.61	63.50	64.41	67.59	78.47	83.46	81.19	77.56	71.21	74.39	67.59	65.32	71.22
1991	63.96	68.49	66.22	65.77	70.31	71.67	67.58	66.68	58.51	57.15	49.89	48.99	62.60
1992	46.27	53.07	52.62	53.52	58.06	62.14	60.78	58.06	58.51	60.33	59.42	62.60	57.15
1993	60.33	61.69	65.32	66.68	69.40	72.57	69.40	74.39	76.20	72.57	64.86	62.14	68.04
1994	67.13	74.84	70.76	68.95	68.95	68.95	68.04	68.49	57.15	49.90	45.81	51.26	63.05
1995	61.23	64.41	61.26	56.70	57.15	67.13	75.30	77.11	76.20	70.76	60.33	66.68	66.22
1996	64.86	71.21	75.30	77.56	88.00	88.45	90.72	97.98	86.64	87.09	80.29	85.28	82.10
1997	81.65	81.19	76.66	83.91	90.72	90.26	93.89	88.45	80.73	74.39	72.57	68.95	81.19
1998	57.15	57.61	55.79	56.70	70.31	70.76	60.33	57.15	50.35	47.63	30.84	25.85	53.07
1999	45.81	51.71	47.63	0.00	0.00	58.51	55.34	64.41	59.87	59.87	58.97	63.05	56.70
2000	62.60	73.48	73.94	85.73	87.54	83.91	83.91	76.20	71.67	73.03	63.96	68.04	75.30
2001	63.96	67.13	79.83	83.01	88.45	90.26	90.26	88.90	82.10	74.39	67.13	62.60	78.02
2002	69.40	73.94	69.85	62.60	62.60	65.32	70.76	68.49	52.16	59.42	55.79	58.06	63.96
2003	60.33	63.96	63.05	62.14	69.40	73.48	72.12	70.31	65.77	62.60	57.15	57.15	64.86
2004	56.25	65.77	71.21	72.12	84.82	87.09	85.28	83.91	77.11	76.66	71.67	74.84	75.75
2005	72.89	71.96	69.84	70.94	78.23	70.45	68.99	69.98	66.88	63.98	59.21	58.29	68.47
2006	54.83	55.62	57.38	54.64	63.24	69.03	66.78	68.00	64.58	61.58	59.40	59.04	61.18
2007	58.55	64.83	61.52	62.67	68.64	65.63	62.75	63.92	56.10	48.35	41.00	44.27	58.18
2008	41.70	48.02	45.56	51.40	65.36	62.51	63.42	73.47	63.68	61.56	55.07	54.98	57.23
2009	59.28	60.43	61.34	60.93	59.34	57.76	57.25	47.20	47.80	46.29	48.55	54.33	55.04
2010	57.53	57.57	59.61	64.68	71.20	66.80	67.13	69.86	68.84	59.48	53.54	57.69	62.83

Table 7-1
Hogs and pigs inventory number by class and quarter — United States and Canada ¹

	2009	2010	2010 as percentage of 2009
	thousands of head		percent
March inventory ²			
All hogs and pigs	77,704	75,218	97
Kept for breeding	7,377	7,074	96
Market	70,328	68,144	97
Under 23 kg	23,824	22,530	95
23 to 53 kg	19,107	18,649	98
54 to 80 kg	14,473	14,083	97
Over 81 kg	12,925	12,883	100
Sows farrowed	3,766	3,600	96
Pig crop	36,024	34,847	97
June inventory ³			
All hogs and pigs	78,874	76,450	97
Kept for breeding	7,341	7,103	97
Market	71,534	69,347	97
Under 23 kg	23,510	23,244	99
23 to 53 kg	20,605	19,541	95
54 to 80 kg	14,420	13,817	96
Over 81 kg	12,999	12,746	98
Sows farrowed	3,755	3,633	97
Pig crop	36,334	35,756	98
September inventory ⁴			
All hogs and pigs	78,671	77,196	98
Kept for breeding	7,225	7,077	98
Market	71,447	70,119	98
Under 23 kg	23,772	23,512	99
23 to 53 kg	19,803	19,392	98
54 to 80 kg	14,468	14,479	100
Over 81 kg	13,405	12,737	95
Sows farrowed	3,695	3,619	98
Pig crop	36,025	35,625	99
December inventory ⁵			
All hogs and pigs	76,722	76,235	99
Kept for breeding	7,182	7,092	99
Market	69,540	69,143	99
Under 23 kg	22,575	22,637	100
23 to 53 kg	19,575	19,038	97
54 to 80 kg	14,059	14,006	100
Over 81 kg	13,332	13,462	101
Sows farrowed	3,639	3,560	98
Pig crop	35,455	35,265	99

1. Figures may not add up to totals because of rounding.
2. United States March 1 and Canadian April 1 inventory items.
3. United States June 1 and Canadian July 1 inventory items.
4. United States September 1 and Canadian October 1 inventory items.
5. United States December 1 and Canadian January 1 (of the following year) inventory items.

Table 7-2
Hogs and pigs inventory number by class and quarter — United States 1,2

	2009	2010	2010 as percentage of 2009
	thousands of head		percent
March 1 inventory			
All hogs and pigs	65,819	63,568	97
Kept for breeding	5,992	5,760	96
Market	59,828	57,808	97
Under 23 kg	19,809	18,767	95
23 to 53 kg	16,426	15,993	97
54 to 80 kg	12,732	12,307	97
Over 81 kg	10,862	10,742	99
Sows farrowed	3,011	2,872	95
Pig crop	28,552	27,597	97
June 1 inventory			
All hogs and pigs	66,809	64,650	97
Kept for breeding	5,968	5,788	97
Market	60,842	58,862	97
Under 23 kg	19,554	19,354	99
23 to 53 kg	17,838	16,902	95
54 to 80 kg	12,604	12,029	95
Over 81 kg	10,847	10,578	98
Sows farrowed	3,018	2,929	97
Pig crop	29,012	28,730	99
September 1 inventory			
All hogs and pigs	66,716	65,311	98
Kept for breeding	5,875	5,770	98
Market	60,842	59,541	98
Under 23 kg	19,758	19,538	99
23 to 53 kg	17,148	16,810	98
54 to 80 kg	12,684	12,674	100
Over 81 kg	11,253	10,520	93
Sows farrowed	2,959	2,907	98
Pig crop	28,718	28,512	99
December 1 inventory			
All hogs and pigs	64,887	64,325	99
Kept for breeding	5,850	5,778	99
Market	59,037	58,547	99
Under 23 kg	18,705	18,564	99
23 to 53 kg	16,782	16,519	98
54 to 80 kg	12,299	12,208	99
Over 81 kg	11,252	11,256	100
Sows farrowed	2,915	2,847	98
Pig crop	28,260	28,151	100

1. Figures may not add up to totals because of rounding.
2. Data includes boars.

Table 7-3
Hogs and pigs inventory number by class and quarter — Canada 1,2

	2009	2010	2011	2011 as percentage of 2010
	thousands of head			percent
January 1 inventory				
All hogs and pigs	12,180	11,835	11,910	101
Kept for breeding	1,395	1,332	1,314	99
Market	10,785	10,503	10,596	101
Under 23 kg	3,960	3,870	4,073	105
23 to 53 kg	2,805	2,793	2,519	90
54 to 80 kg	1,830	1,760	1,798	102
Over 81 kg	2,191	2,080	2,206	106
Sows farrowed (October to December)	786	724	713	99
Pig crop (October to December)	7,750	7,195	7,114	99
April 1 inventory				
All hogs and pigs	11,885	11,650
Kept for breeding	1,385	1,314
Market	10,500	10,336
Under 23 kg	4,015	3,763
23 to 53 kg	2,681	2,656
54 to 80 kg	1,741	1,776
Over 81 kg	2,063	2,141
Sows farrowed (January to March)	755	728
Pig crop (January to March)	7,472	7,250
July 1 inventory				
All hogs and pigs	12,065	11,800
Kept for breeding	1,373	1,315
Market	10,692	10,485
Under 23 kg	3,956	3,890
23 to 53 kg	2,767	2,639
54 to 80 kg	1,816	1,788
Over 81 kg	2,152	2,168
Sows farrowed (April to June)	737	704
Pig crop (April to June)	7,322	7,026
October 1 inventory				
All hogs and pigs	11,955	11,885
Kept for breeding	1,350	1,307
Market	10,605	10,578
Under 23 kg	4,014	3,974
23 to 53 kg	2,655	2,582
54 to 80 kg	1,784	1,805
Over 81 kg	2,152	2,217
Sows farrowed (July to September)	736	712
Pig crop (July to September)	7,307	7,113

1. Figures may not add up to totals because of rounding.
2. Data includes boars.

Concepts and methodology

Livestock statistics

Concepts

Inventory levels of the various types of livestock intended for sale in Canada are measured at specific times throughout the year. Surveyed operations are requested to include all animals located on the farming operation, regardless of ownership. They are also asked to include animals owned but pastured on a community pasture, grazing co-op or public land. Producers are asked to exclude animals owned but kept on a farm, ranch or feedlot operated by someone else. Inventory levels are estimated for cattle, calves, pigs, sheep and lambs. Estimates are also produced for certain categories of animals on the basis of age, sex, weight and/or purpose i.e. breeding or slaughter.

Current information on livestock inventories and related statistics such as supply and disposition enable those active in the agricultural sector to observe and assess changes in the industry, measure performance and keep the agricultural community and general public informed of developments. The primary data users are federal and provincial governments, producer boards, farmers and farm organizations, private business, academic research institutions and students. Livestock data assists governments in formulating agricultural policies and developing programs. Farming organizations use statistics in developing recommendations for producers and governments. Farmers make increasing use of prices, production, and marketing statistics in planning their operations. In addition, these livestock statistics are used in the calculation of farm incomes and in the Canadian System of National Accounts for indicators such as gross domestic product.

Methods

To produce livestock estimates, there are actually 6 different survey occasions. All of the survey occasions collect data primarily using Computer Assisted Telephone Interviews (CATI) although there are special procedures in place for the very large or complex operations.

Two of the occasions are the January Livestock Survey and the July Livestock Survey. These are large-scale general livestock surveys collecting data on cattle, hogs and sheep, referring to inventories at the 1st of the month. The probability samples include about 10,260 operations at January 1, and about 16,260 operations at July 1. These surveys collect data during a three-week period in the western provinces, Ontario and Quebec. Regardless of when operators respond, they are asked to report inventories as of January 1 or July 1. The livestock survey results are released, following processing and analysis, approximately seven weeks after the reference date.

Hog inventories are the focus of two other survey occasions collecting estimates of pig numbers at April 1 and October 1. This survey was initiated in 1998 as estimates from 1978 to 1997 were based solely on analytical tools. For the hog surveys, a sub-sample of the prior livestock survey is used. The probability samples are approximately 2,100 operations and 2,500 operations, respectively, at April 1 and October 1 and, similar to the livestock surveys, these CATI surveys cover the western provinces, Ontario and Quebec. Producers are requested to report their inventories as of the reference date, although the data are collected during a 7-day period near or before that date. The hog survey results are normally released three to four weeks after the reference date.

The June and November Atlantic Surveys are used to produce estimates for that region. These surveys are multi-purpose collecting data, primarily inventories, on livestock including cattle, hogs and sheep in addition to collecting data related to the area, yield and production of the principal field crops. The probability samples are about 1,000 operations in June and 1,100 operations in November. The results are released at the same time as the livestock results. For reference points where surveys do not exist for the Atlantic region, analytical tools are used to produce the estimates.

The total inventories are now distributed to a specific farm type, on the basis of survey results and sector level balance sheets. The two major categories are dairy and beef. The beef sector is then broken down to beef cattle on cow/calf and mixed beef and dairy operations; beef cattle on feeder, stocker/finish operations; and, beef cattle on feeding operations, which include feedlots.

Canadian exports to the United States are obtained from U.S. import custom documents and are officially released by the International Trade Division of Statistics Canada. These data try to register the province of origin of the commodity, but when unknown, will reflect the province of entry into the United States. Information from secondary sources is used by Agriculture Division of Statistics Canada to better estimate the province in which the commodity was raised/grown. Administrative data from the provinces are used to adjust the export numbers by province to better reflect provincial production. Though this methodology will result in different exports by province, the Canadian export totals will equal those released by International Trade Division. At release, some export data are unavailable. The missing data are imputed based on historical and auxiliary data sourced from the United States Animal and Plant Health Inspection Service. The imputed data are replaced with actual International Trade data when it becomes available.

To summarize, the livestock statistics are survey-based estimates. The survey relies on a list frame that is established every five years by the Census of Agriculture and updated to include new entrants, particularly large hog operations. The probability sample surveys are conducted by telephone. The survey results are analysed and corrected before the data are used to analyse the industry and fine-tune the estimates. The survey data are reviewed in a board environment before the commodity analyst works with the data primarily using supply-disposition analysis. The results of the industry analysis are reviewed by the board before being sent to the individual provinces. Once the data are finalised they are released to the public and published. The principal data released include inventories and summarized supply-disposition tables. The data also flow, via farm income estimates, to the Canadian System of National Accounts. In addition the data are used in the calculation of net farm income projections, produced by Agriculture and Agri-Food Canada in co-operation with Statistics Canada and the provinces.