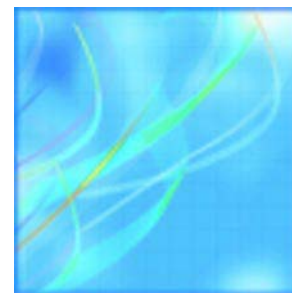


## Technical paper

**Environment Accounts and Statistics Analytical and  
Technical Paper Series**

# **Using a Trend-cycle Approach to Estimate Changes in Southern Canada's Water Yield from 1971 to 2004**



by Robert Bemrose, Peter Meszaros, Benoit Quenneville,  
Mark Henry, Laura Kemp, and François Souldard

Environment Accounts and Statistics Division

Telephone: (613) 951-0297



Statistics  
Canada

Statistique  
Canada

Canada

## How to obtain more information

For information about this product or the wide range of services and data available from Statistics Canada, visit our website at [www.statcan.gc.ca](http://www.statcan.gc.ca), e-mail us at [infostats@statcan.gc.ca](mailto:infostats@statcan.gc.ca), or telephone us, Monday to Friday from 8:30 a.m. to 4:30 p.m., at the following numbers:

### Statistics Canada's National Contact Centre

Toll-free telephone (Canada and the United States):

Inquiries line	1-800-263-1136
National telecommunications device for the hearing impaired	1-800-363-7629
Fax line	1-877-287-4369

Local or international calls:

Inquiries line	1-613-951-8116
Fax line	1-613-951-0581

### Depository Services Program

Inquiries line	1-800-635-7943
Fax line	1-800-565-7757

## To access this product

This product, Catalogue no. 16-001-M, is available free in electronic format. To obtain a single issue, visit our website at [www.statcan.gc.ca](http://www.statcan.gc.ca) and browse by "Key resource" > "Publications."

## Standards of service to the public

Statistics Canada is committed to serving its clients in a prompt, reliable and courteous manner. To this end, Statistics Canada has developed *standards of service* that its employees observe. To obtain a copy of these service standards, please contact Statistics Canada toll-free at 1-800-263-1136. The service standards are also published on [www.statcan.gc.ca](http://www.statcan.gc.ca) under "About us" > "Providing services to Canadians."

Statistics Canada  
Environment Accounts and Statistics Division  
Business Survey Methods Division

# Using a Trend-cycle Approach to Estimate Changes in Southern Canada's Water Yield from 1971 to 2004

Published by authority of the Minister responsible for Statistics Canada

© Minister of Industry, 2010

All rights reserved. The content of this electronic publication may be reproduced, in whole or in part, and by any means, without further permission from Statistics Canada, subject to the following conditions: that it be done solely for the purposes of private study, research, criticism, review or newspaper summary, and/or for non-commercial purposes; and that Statistics Canada be fully acknowledged as follows: Source (or "Adapted from", if appropriate): Statistics Canada, year of publication, name of product, catalogue number, volume and issue numbers, reference period and page(s). Otherwise, no part of this publication may be reproduced, stored in a retrieval system or transmitted in any form, by any means—electronic, mechanical or photocopy—or for any purposes without prior written permission of Licensing Services, Client Services Division, Statistics Canada, Ottawa, Ontario, Canada K1A 0T6.

September 2010

Catalogue no. 16-001-M, no. 14

ISSN 1917-9693

ISBN 978-1-100-16009-2

Frequency: Occasional

Ottawa

Cette publication est également disponible en français.

---

#### **Note of appreciation**

*Canada owes the success of its statistical system to a long-standing partnership between Statistics Canada, the citizens of Canada, its businesses, governments and other institutions. Accurate and timely statistical information could not be produced without their continued cooperation and goodwill.*

---

## ***User information***

### **Symbols**

The following standard symbols are used in Statistics Canada publications:

- . not available for any reference period
- .. not available for a specific reference period
- ... not applicable
- 0 true zero or a value rounded to zero
- 0<sup>s</sup> value rounded to 0 (zero) where there is a meaningful distinction between true zero and the value that was rounded
- p preliminary
- r revised
- x suppressed to meet the confidentiality requirements of the *Statistics Act*
- E use with caution
- F too unreliable to be published

---

## ***Acknowledgements***

The authors would like to thank Dr. Estela Bee Dagum (Business Survey Methods Division, Time Series Research Analysis Centre) for providing valuable guidance through the steps in our analysis, and Dr. Soheil Rastan (Environment Accounts and Statistics Division) for helping us during the early stages of the project. We would also like to thank Heather Dewar (Environment Accounts and Statistics Division), and Martine Constance Bernard (National Accounts and Analytical Studies) for editing the paper.

The research presented in this paper is a result of combined efforts between two divisions at Statistics Canada.

### **Environment Account and Statistics Division, Research and Development Section**

Robert Bemrose

Mark Henry

Laura Kemp

François Soulard

### **Business Survey Methods Division, Time Series Research Centre**

Peter Meszaros

Benoit Quenneville

---

---

## ***Table of contents***

### **Using a Trend-cycle Approach to Estimate Changes in Southern Canada's Water Yield from 1971 to 2004**

1	Introduction	5
2	Data and methods	5
3	Results	13
4	Conclusion	14

	<b>Bibliography</b>	<b>15</b>
--	---------------------	-----------

---

---

# Using a Trend-cycle Approach to Estimate Changes in Southern Canada's Water Yield from 1971 to 2004

by Robert Bemrose, Peter Meszaros, Benoit Quenneville, Mark Henry, Laura Kemp, and François Soulard

## 1 Introduction

Understanding how the amount of water yield<sup>1</sup> has changed in Canada is an integral part of Statistics Canada's Water Accounts. The framework for these accounts, the Canadian System of Environmental and Resource Accounts (CSERA), establishes an outline for estimates of stocks and flows of water moving within and between the natural environment and society. The framework offers an integrated view of water and its use by society through the compilation of environmental data that are consistent over space and time, national in coverage and compatible with economic accounts. An important part of the water accounting program is the measurement and analysis of these stocks and flows as they change over time. This is in keeping with one of Statistics Canada's objectives: the identification, measurement and tracking of trends in order to facilitate public debate and decision-making. This paper describes the trend estimation methodology used in the 2010 issue of *Human Activity and the Environment: Freshwater supply and demand in Canada* (Statistics Canada, 2010).

The search for trends in hydrometeorological data has become a regular undertaking given the ever-increasing need to understand how the magnitudes of present and historical components of the hydrological cycle evolve over time. Numerous studies have been conducted which use nonparametric rank-based techniques to determine the magnitude and significance of a trend found between time and streamflow. The Mann-Kendall test (Salmi et al., 2002), one of the main methods used for trend estimation, provides a global robust estimate of the slope of the underlying trend in the series of annual water yield estimates. In this paper we present a methodology to complement this global estimate where the time series is deconstructed into several components separating the underlying trend-cycle from the irregularities in the series. To achieve this objective we first estimate a trend plus the cyclical component for the series of water yield estimates. We then describe the global trend over the span of the series by fitting a linear model to the trend-cycle estimate. To demonstrate this methodology, we used a water yield series from 1971 to 2004 for Southern Canada.

## 2 Data and methods

The water yield data consist of spatial estimates of average monthly unregulated flow (km<sup>3</sup>) summarized annually across Canada from 1971 to 2004. These water yield estimates were produced by means of a geostatistical approach that in short involved kriging regionalized unregulated flow per unit area (km<sup>3</sup>/km<sup>2</sup>). After interpolation the km<sup>3</sup>/km<sup>2</sup> estimates were converted back into km<sup>3</sup> for the desired accounting units. The unregulated flow data were obtained from the Water Survey of Canada's hydrometric database HYDAT (Environment Canada, 2007). A detailed description of the methodology used to derive the water yield estimates can be found in Bemrose et al. (2009). Given the paucity of data, especially in the North, this study evaluated the changes in water yield for

---

1. The water yield is the amount of freshwater derived from unregulated streamflow (m<sup>3</sup>/s) measurements for a given geographic area over a defined period of time. The freshwater streamflow is generated from a combination of baseflow, interflow, and overland flow originating from groundwater, precipitation and/or snowpack. The flow rate encompasses the hydrologic processes (for example, interception, infiltration, and evapotranspiration) and the state of water storage (for example, lakes, aquifers, snowpack, and soil moisture) within a drainage basin (Mosley and McKerchar, 1993); it is influenced by climatic and physiographic variables such as temperature and topography (Bemrose et al., 2009).

the area of 2,598,632 km<sup>2</sup> below the North-line<sup>2</sup> (Map 1). The series of annual estimates of water yield below the North-line can be seen in Chart 1.

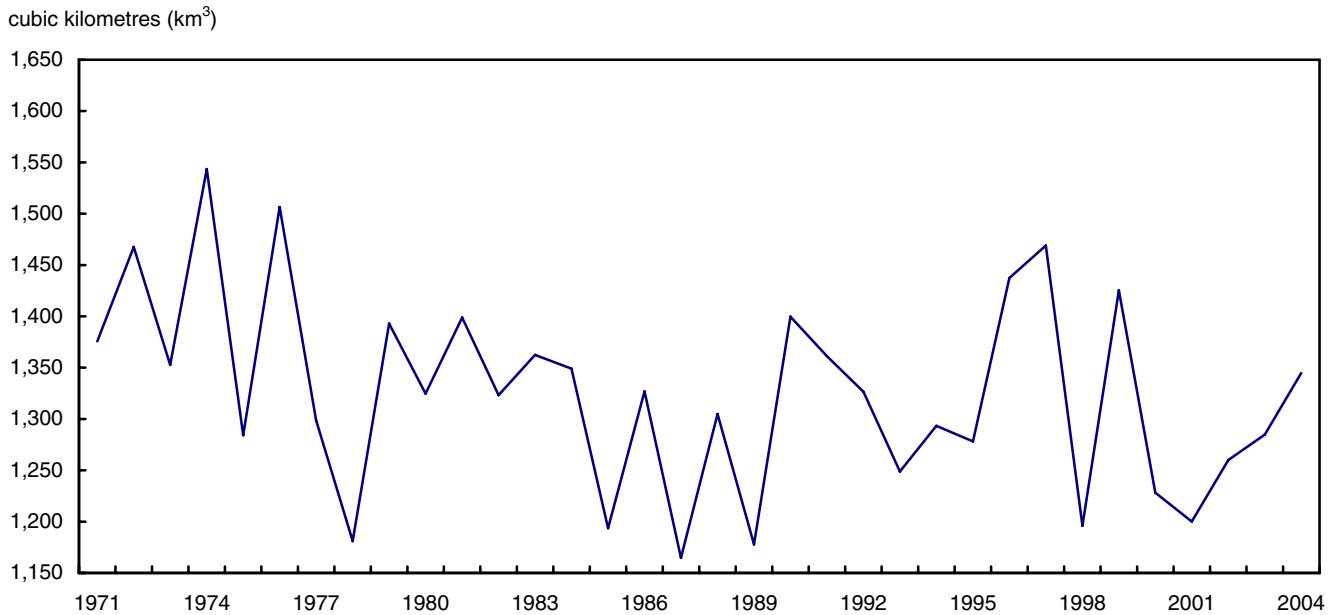
**Map 1**  
**Statistics Canada's North-line in relation to the Canadian landmass**



**Note(s):** The North-line is a statistical area classification of the North based on 16 social, biotic, economic and climatic variables that delineates the North from the South in Canada.

**Source(s):** McNiven C., and H. Puderer, 2000, "Delineation of Canada's North: An Examination of the North-South Relationship in Canada," *Geography Working Paper Series*, Statistics Canada Catalogue no. 92F0138MIE.

**Chart 1**  
**Average annual water yield for Southern Canada, 1971 to 2004**



**Source(s):** Statistics Canada, Environment Accounts and Statistics Division and Business Survey Methods Division, 2010, special tabulation.

2. The North-line is based on a statistical area classification of the north by Statistics Canada reflecting a combination of 16 social, biotic, economic and climatic characteristics that delineate north from south in Canada (McNiven and Puderer, 2000).



A time series often consists of four components: the trend component which represents the systematic long-term movement over the span of the series; the cycle which describes the smooth movement around the trend; the seasonal component which consists of intra-year fluctuations, either monthly or quarterly; and the irregular (noise) component which is the residual not accounted for by the other components (Ladiray and Quenneville, 2001). Since the input series of water yield consisted of annual values, the seasonal component is not a component in the series. Consequently, the values were influenced only by the long-term trend, the quasi-cyclical fluctuations (the long-term trend and the quasi-cyclical fluctuations together are referred to as the signal), and the irregular component (that is, the difference or ratio between the signal and the observations).

To estimate the signal, we used a nonparametric approach, whereby the series  $\{X_t, t=1, 2, \dots, N\}$  was smoothed by a moving average of coefficients as follows:

$$\begin{aligned} \hat{X}_t &= \sum_{k=-p}^{+f} \theta_k X_{t+k} \\ (1) \quad &= \theta_{-p} X_{t-p} + \dots + \theta_0 X_t + \dots + \theta_f X_{t+f} \end{aligned}$$

where  $\theta_k, k=-p, \dots, f$  are the weights and  $\theta_0$  is the central weight for the moving averages from  $p$  the “past” and  $f$  “future” observations (Dagum, 1985; Ladiray and Quenneville, 2001). The resulting smoothed series is termed the trend-cycle because it consists of the long-term trend and cyclical fluctuations. The number of terms in the moving average is  $p+f+1$ . When  $p \neq f$  the filter is asymmetric; when  $p=f$ , and  $\theta_{-k} = \theta_k, k=1, \dots, p$  the filter is symmetric.

In this study, we used the Henderson (1916) filter to estimate the trend-cycle wherever there were enough observations to satisfy the  $p$  and  $f$  requirements. The Henderson filter reproduces local polynomials up to order 3. With a 17-term Henderson filter we estimated the trend-cycle locally using 8 observations in the past and 8 observations in the future. To derive the 17 weights for the filter using Equation (2), we substituted 8 for  $n$  and the values were obtained for each  $k$  from -8 to 8 (Dagum et al., 1996; Ladiray and Quenneville, 2001). The symmetric weights for the 17-term Henderson filter can be seen in Figure 1.

$$(2) \quad \theta_k = \frac{315 \left[ (n-1)^2 - k^2 \right] \left[ n^2 - k^2 \right] \left[ (n+1)^2 - k^2 \right] \left[ 3n^2 - 16 - 11k^2 \right]}{8n(n^2 - 1)(4n^2 - 1)(4n^2 - 9)(4n^2 - 25)}$$

Given the end-point problem with the Henderson symmetric filter, we used an asymmetric approach developed by Musgrave (1964) to determine the  $M$  coefficients  $\{v_1, \dots, v_M\}$  using the symmetric  $N$  coefficients  $\{w_1, \dots, w_N\}$  wherever  $p \neq f$ . Using the formula presented in Doherty (2001) and Findley et al. (1998) we calculated the Musgrave weights as follows:

$$(3) \quad v_j = w_j + \frac{1}{M} \sum_{i=M+1}^N w_i + \frac{\left( j - \frac{M+1}{2} \right) R}{1 + \frac{M(M-1)(M+1)}{12} R} \sum_{i=M+1}^N \left( i - \frac{M+1}{2} \right) w_i$$

where  $R$  was set to 4.5 for the 17-term Henderson filter. For a more detailed description of the Henderson filter and the associated Musgrave filter, see Ladiray and Quenneville (2001). The surrogate asymmetric coefficients used for the 17-term Henderson filter are presented in Figure 1. The coefficients for each  $k$  from -8 to 8 sum to 1 for the Henderson filter when symmetric and asymmetric.

Figure 1

**Coefficients for the symmetric and asymmetric 17-term Henderson filter**

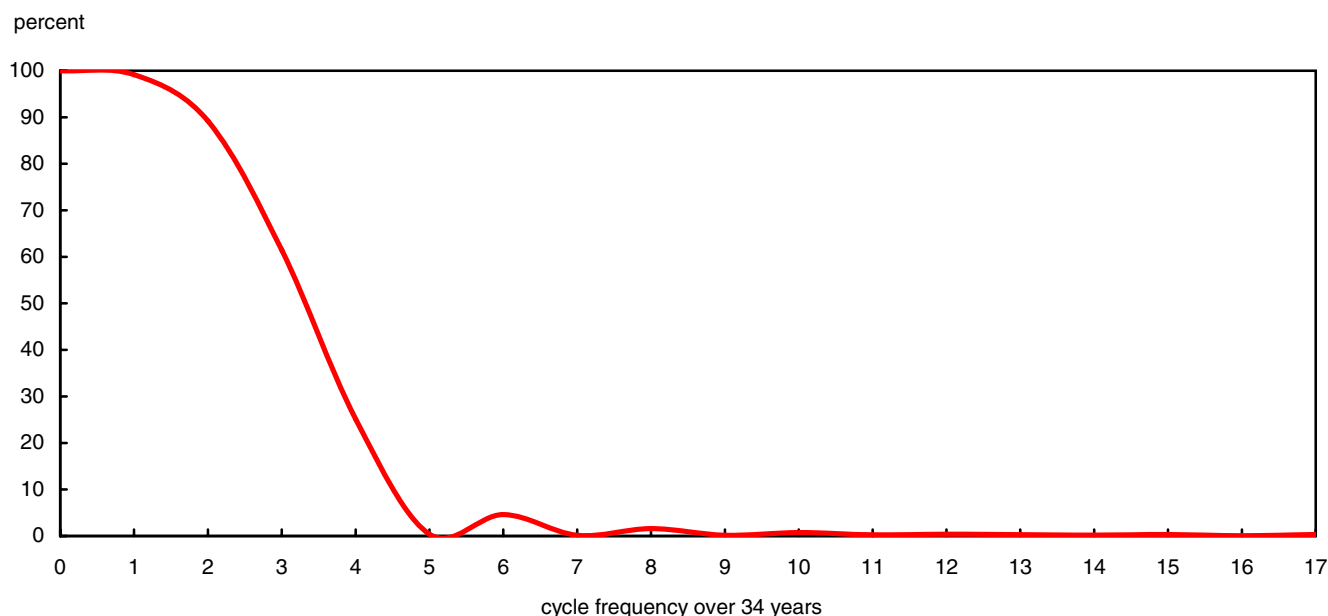
<i>k</i>	<i>H8_8</i>	<i>H8_7</i>	<i>H8_6</i>	<i>H8_5</i>	<i>H8_4</i>	<i>H8_3</i>	<i>H8_2</i>	<i>H8_1</i>	<i>H8_0</i>
-8	-0.00996	-0.00880	-0.00601	-0.00257	-0.00096	-0.00464	-0.01734	-0.04226	-0.08104
-7	-0.02037	-0.01945	-0.01727	-0.01466	-0.01347	-0.01608	-0.02468	-0.04041	-0.06242
-6	-0.01864	-0.01795	-0.01639	-0.01460	-0.01383	-0.01539	-0.01987	-0.02641	-0.03166
-5	0.00247	0.00291	0.00386	0.00483	0.00518	0.00469	0.00431	0.00697	0.01848
-4	0.04209	0.04230	0.04263	0.04278	0.04271	0.04328	0.04701	0.05886	0.08714
-3	0.09229	0.09227	0.09198	0.09131	0.09081	0.09244	0.10028	0.12133	0.16637
-2	0.14111	0.14085	0.13994	0.13845	0.13753	0.14023	0.15218	0.18241	0.24422
-1	0.17639	0.17589	0.17437	0.17205	0.17072	0.17447	0.19053	0.22996	0.30853
0	0.18923	0.18849	0.18636	0.18322	0.18146	0.18628	0.20644	0.25507	0.35040
1	0.17639	0.17541	0.17266	0.16871	0.16653	0.17240	0.19668	0.25449	0
2	0.14111	0.13989	0.13653	0.13175	0.12915	0.13609	0.16447	0	0
3	0.09229	0.09084	0.08686	0.08126	0.07824	0.08623	0	0	0
4	0.04209	0.04040	0.03580	0.02939	0.02594	0	0	0	0
5	0.00247	0.00054	-0.00468	-0.01191	0	0	0	0	0
6	-0.01864	-0.02081	-0.02664	0	0	0	0	0	0
7	-0.02037	-0.02278	0	0	0	0	0	0	0
8	-0.00996	0	0	0	0	0	0	0	0

**Note(s):** For the asymmetric coefficients  $R = 4.5$ . The notation  $H_{p-f}$  indicates that the moving average has order  $p + f + 1$  with  $p$  points in the past and  $f$  points in the future.

**Source(s):** Statistics Canada, Environment Accounts and Statistics Division, and Business Survey Methods Division, 2010, special tabulation.

The 17-term filter was selected for this series and for those presented in the Statistics (2010) publication on the basis of its gain function displayed in Chart 2.

**Chart 2**  
**Gain function for 17-term symmetric Henderson filter**

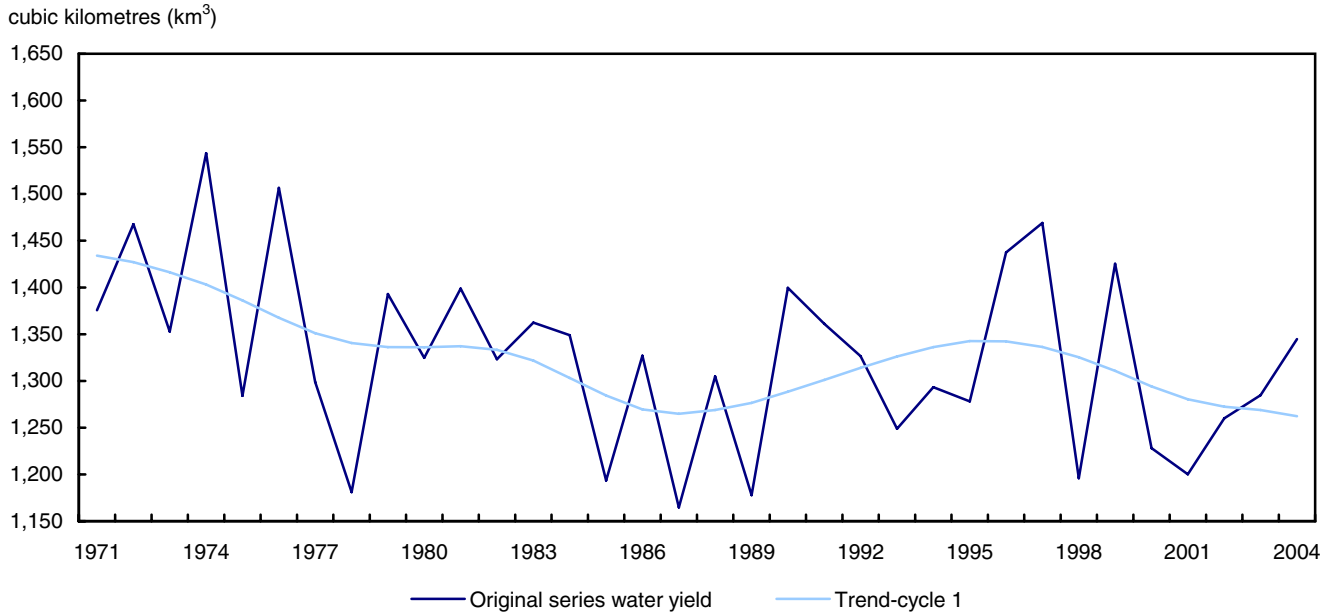


**Source(s):** Statistics Canada, Environment Accounts and Statistics Division and Business Survey Methods Division, 2010, special tabulation.

The gain function shows the frequencies eliminated or preserved by the moving average (Ladiray and Quenneville, 2001). From Chart 2, it can be seen that the filter preserves 99% of the strength of cycles that repeat once every 34 years and 89% of those that repeat twice over 34 years; this is followed by a further decrease until all cycles that repeat more than five times are eliminated. For details on how the gain function is calculated, see Dagum et al. (1996) or Ladiray and Quenneville (2001).

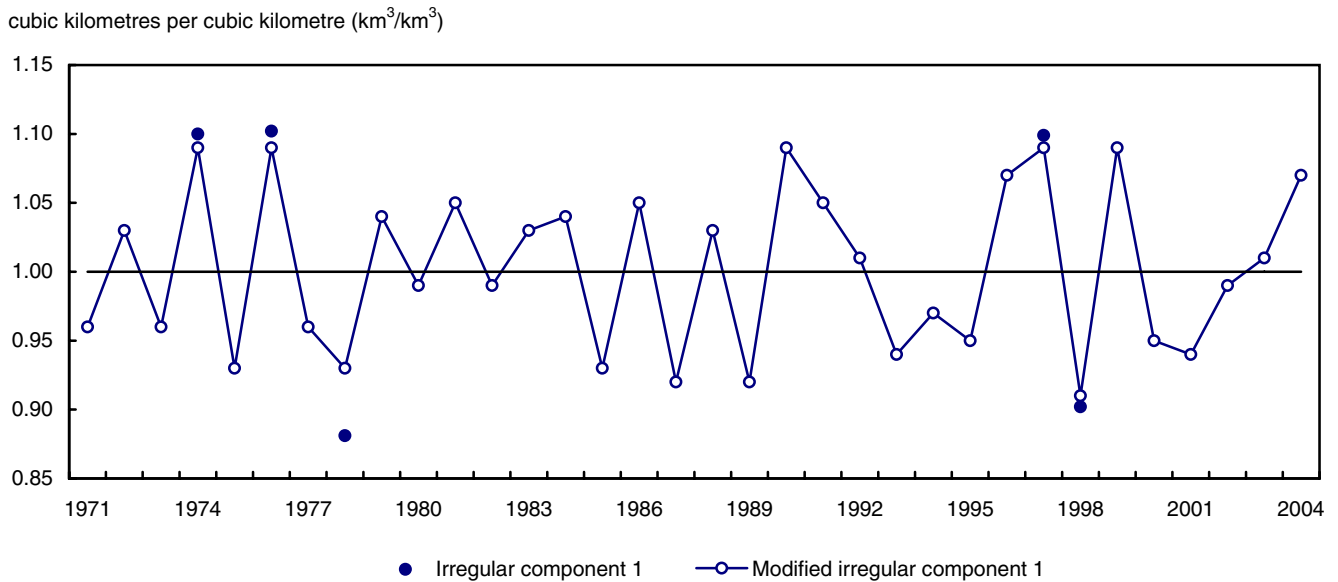
The Henderson filter is available in seasonal adjustment software such as the U.S. Bureau of Census X11 (Shiskin et al., 1967) and its variants including the X11-ARIMA (Dagum, 1988) and X12-ARIMA (Findley et al., 1998). We implemented the latter X12-ARIMA in this study using the trend option. The software works through an iterative process where in the first stage it evaluates the trend-cycle for the original series (Chart 3) and determines the adjustment factors for the extreme values in the irregular component (Chart 4). In the second stage of processing the original series is modified for the extreme values, and the trend-cycle is recalculated (Chart 5); again, adjustment factors are determined for the extreme values in the irregular component (Chart 6). In the final stage of the processing chain, the original series is further modified for the extreme values and the final trend-cycle is recalculated (Chart 7). An overlay of the trend-cycles estimated through each stage of processing can be seen in Chart 8.

**Chart 3**  
**Original series of water yield and the first trend-cycle estimate**



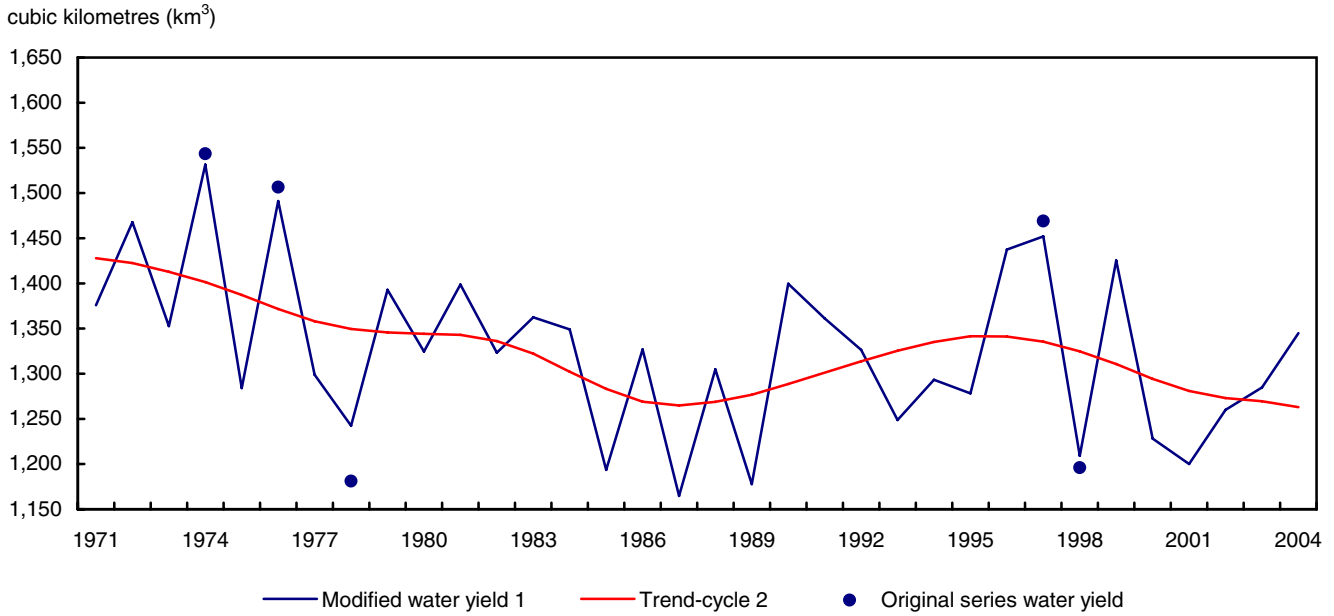
**Source(s):** Statistics Canada, Environment Accounts and Statistics Division, and Business Survey Methods Division, 2010, special tabulation.

**Chart 4**  
**Irregular component modified for extreme values of water yield**



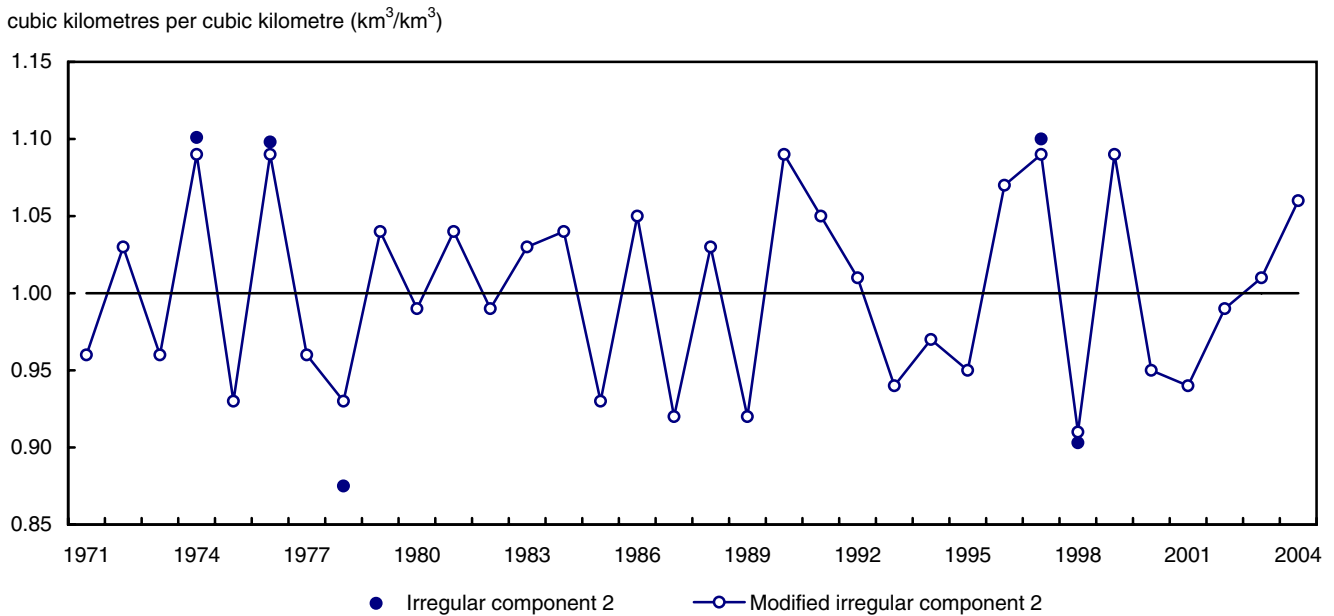
**Source(s):** Statistics Canada, Environment Accounts and Statistics Division and Business Survey Methods Division, 2010, special tabulation.

**Chart 5**  
**Modified water yield and the second trend-cycle estimate compared to the original series of water yield**



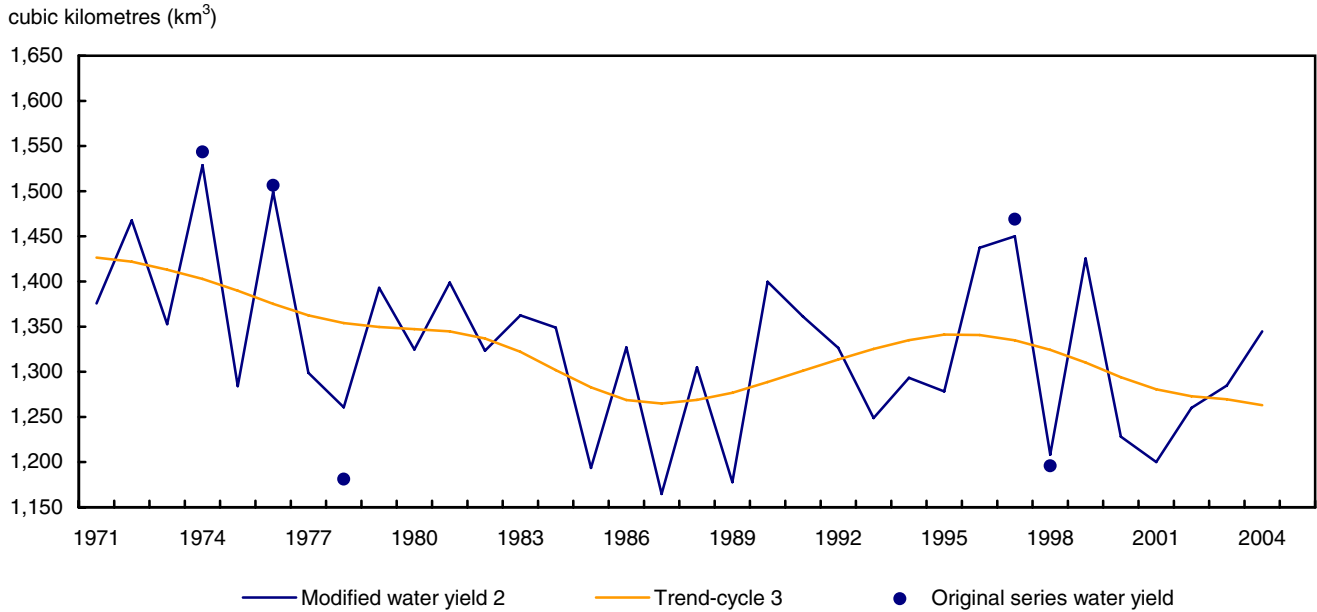
Source(s): Statistics Canada, Environment Accounts and Statistics Division and Business Survey Methods Division, 2010, special tabulation.

**Chart 6**  
**Second adjustment of the irregular component modified for extreme values of water yield**



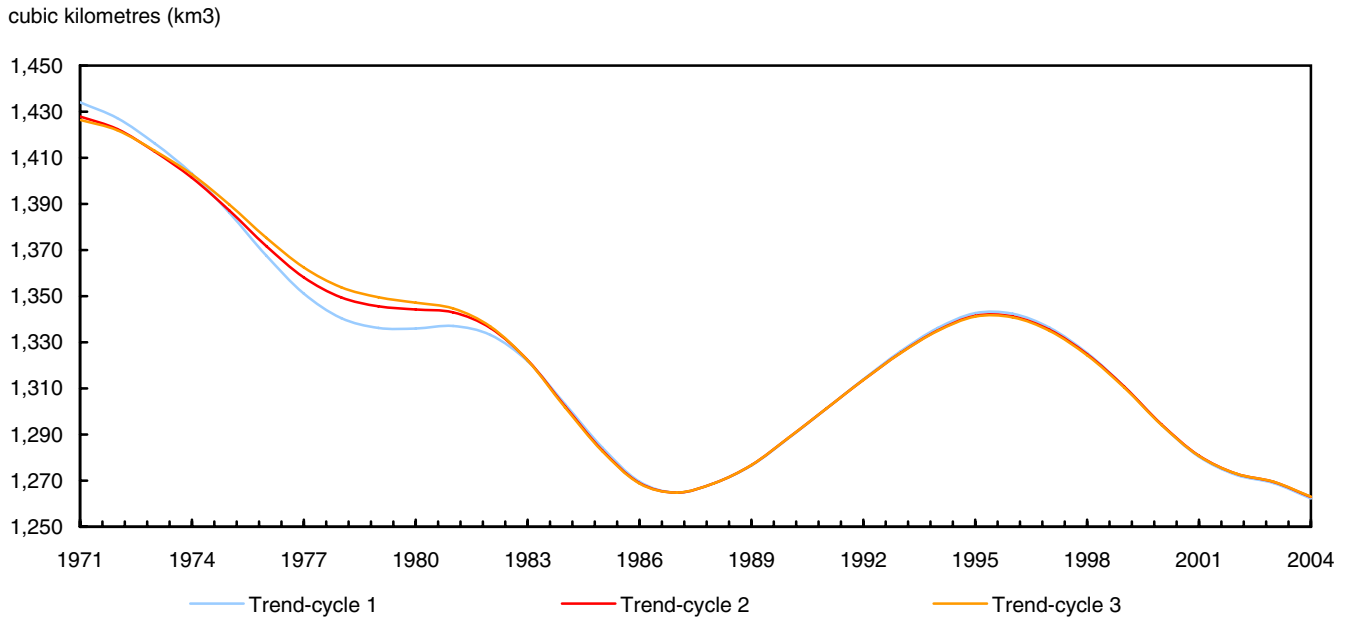
Source(s): Statistics Canada, Environment Accounts and Statistics Division, and Business Survey Methods Division, 2010, special tabulation.

**Chart 7**  
**Second modified water yield and the final trend-cycle estimate compared to the original series of water yield**



Source(s): Statistics Canada, Environment Accounts and Statistics Division, and Business Survey Methods Division, 2010, special tabulation.

**Chart 8**  
**Comparison of the first, second, and final trend-cycle estimates**



Source(s): Statistics Canada, Environment Accounts and Statistics Division, and Business Survey Methods Division, 2010, special tabulation.

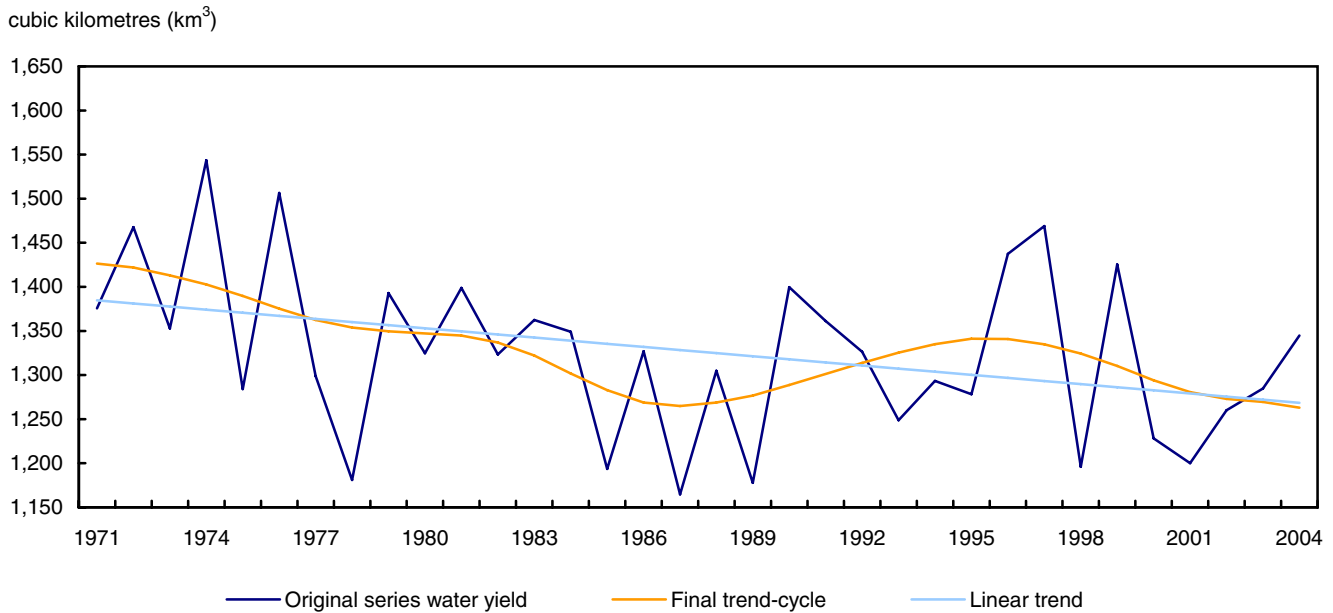
Local estimation of the trend-cycle and local down-weighting of extreme values is illustrated in charts 6 and 7. Although the low water yield for 1978 is comparable to the levels observed in 1985, 1987, 1989, 1998, 2000, and 2001, it is considered atypical in comparison to its local neighbours. After producing the local trend-cycle for

the series, we fitted a linear trend to the trend-cycle using the minimum least squares method to describe the global trend over the span of the series.<sup>3</sup>

### 3 Results

Chart 9 displays the trend-cycle produced using the iterative process along with the linear fit to the trend-cycle, which describes the global trend. The intercept is estimated at 1,388 km<sup>3</sup>, and the slope is -3.52 km<sup>3</sup>/yr.

**Chart 9**  
Original water yield series, the final trend-cycle estimate, and the linear trend line



**Source(s):** Statistics Canada, Environment Accounts and Statistics Division, and Business Survey Methods Division, 2010, special tabulation.

The trend-cycle locally decreased from 1971 to 1987, increased until 1995, and then decreased again until 2004. Nineteen seventy-eight was the first year identified with an atypical water yield, but similar values have been observed in years since.

3. Higher order polynomials could be fit. Adding higher orders to the global polynomial will increase the coefficient of determination which eventually will lead to a perfect fit to the trend-cycle.

## 4 Conclusion

Water yield for the area below the North-line has globally decreased at a rate of 3.52 km<sup>3</sup>/yr from 1971 to 2004. Given that this is an aggregation of observations over a large and varied geographic area it is important to recognize that some regions may actually have had increasing water yields over the last 34 years, while the area as a whole experienced a decrease.

It is difficult to compare these results to those of other studies, given that most other studies focus on detecting changes that occur at localized areas over differing record lengths. However, some studies have made conclusions regarding the general trend for regions on the basis of an aggregation of clustered observations over fairly similar time periods. Zhang et al. (2001) found that annual average streamflow was for the most part decreasing across southern Canada from 1967-1996. This finding is similar to that presented in Rivard et al. (2009), who evaluated trends in groundwater recharge. They found that groundwater recharge has generally decreased for all observations below 55° latitude especially for Atlantic Canada from 1970 to 1997.



---

---

## Bibliography

- Bemrose R., L. Kemp, M. Henry, and F. Souldard, 2009, "The Water Yield for Canada as a Thirty-Year Average (1971 to 2000): Concepts, Methodology and Initial Results". *Environment Accounts and Statistics Analytical and Technical Paper Series*, Statistics Canada, Catalogue no. 16-001-M2009007.
- Dagum E.B., N. Chhab, and K. Chiu, 1996, Derivation and Analysis of the X11ARIMA and Census X11 Linear Filters. *Journal of Official Statistics*, vol. 12, no. 4, pp 329-347.
- Dagum E.B., 1985, Moving Averages. *Encyclopaedia of Statistical Sciences* (S. Kotz, and N. Johnson editors), John Wiley and Sons, vol. 5, pp. 630-634.
- Dagum E.B., 1988, The X11ARIMA Seasonal Adjustment Method-Foundations and Users Manual, Time Series Research and Analysis Centre, Statistics Canada.
- Doherty M., 2001, *The Surrogate Henderson Filters in X-11*. Australian and New Zealand Journal of Statistics, vol. 43, no. 4, pp. 901-999.
- Environment Canada, 2007, National Data Archive, Hydrometric Database (HYDAT), [http://www.wsc.ec.gc.ca/hydat/H2O/index\\_e.cfm?cname=main\\_e.cfm](http://www.wsc.ec.gc.ca/hydat/H2O/index_e.cfm?cname=main_e.cfm) (accessed January 7, 2009).
- Findley D., B. Monsell, W. Bell, M. Otto, and B. Chen, 1998, "New Capabilities and Methods of the X12ARIMA Seasonal Adjustment Program." *Journal of Business Economic Statistics*, vol. 16, pp. 127-152.
- Henderson R., 1916, "Note on Graduation by Adjusted Average." *Transactions of the Actuarial Society of America*, vol. 17, pp. 43-48.
- McNiven C., and H. Puderer, 2000, "Delineation of Canada's North: An Examination of the North-South Relationship in Canada", *Geography working Paper*, Statistics Canada, Catalogue no. 92F0138M2000003.
- Mosley P.M., and A.I. McKerchar, 1993, Streamflow. In D.R. Maidment (Ed.), *Handbook of Hydrology* (p. 8.1), McGraw-Hill, Inc.
- Musgrave J., 1964, "A Set of End Weights to End all End Weights." *Working Paper*, U.S. Census Bureau, Washington.
- Ladiray D., and B. Quenneville, 2001, Seasonal Adjustment with the X-11 Method. Lecture Notes in Statistics, New York: Springer-Verlag, p. 225.
- Rivard C., H. Vigneault, A.R. Piggott, M. Larocque, and F. Anctil, 2009, "Groundwater Recharge Trends in Canada". *Canadian Journal of Earth Sciences*, vol. 46, pp. 841-854.
- Salmi T., A. Määttä, P. Anttila, T. Ruoho-Airola, and T. Amnell, 2002, "Detecting Trends of Annual Values of Atmospheric Pollutants by the Mann-Kendall Test and Sen's Slope Estimates – The Excel Template Application MAKESENS." *Publication on Air Quality, Finnish Meteorological Institute*, no. 31.
- Shiskin J., A.H. Young, and J.C. Musgrave, 1967, "The X-11 Variant of Census Method II Seasonal Adjustment", *Technical Paper No. 15*, U.S. Census Bureau.
- Statistics Canada, 2010, "Freshwater supply and demand in Canada", *Human Activity and the Environment*, Catalogue no. 16-201-X.
- Zhang X., K.D. Harvey, W.D. Hogg, and T.R. Yuzyk, 2001, "Trends in Canadian Streamflow". *Water Resource Research*, vol. 37, no. 4, pp. 987-998.