



# Use of child care services

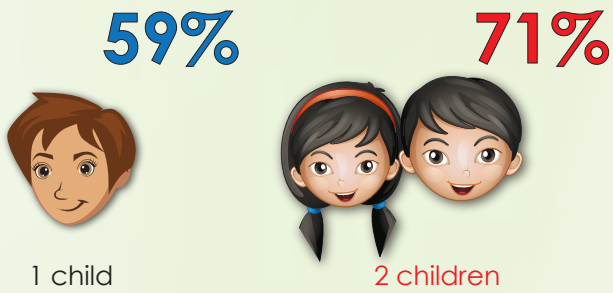
in Canada and

# mothers' employment

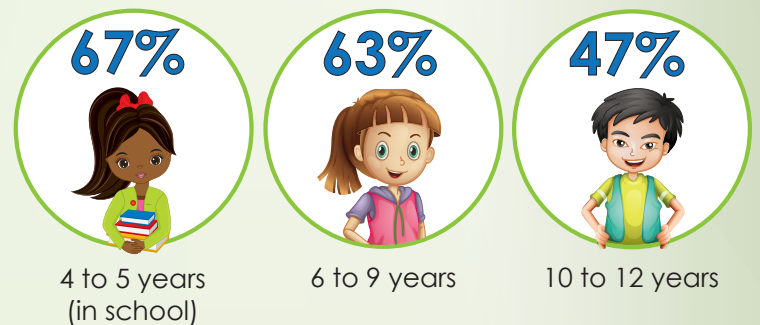
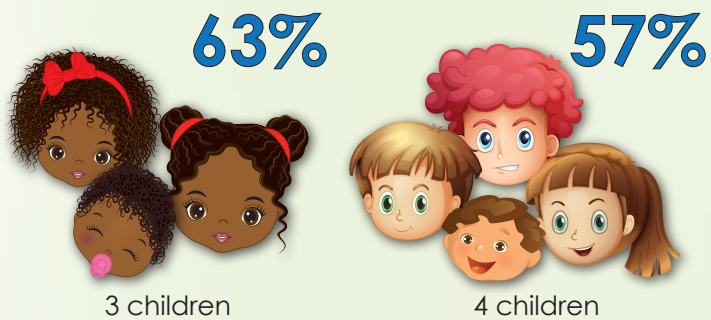
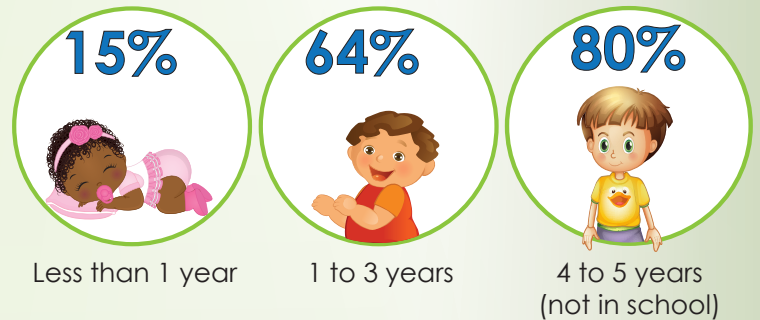


In 2017, approximately two-thirds of parents reported using child care for at least one child aged 12 or younger.

Use of child care was highest among parents with two children

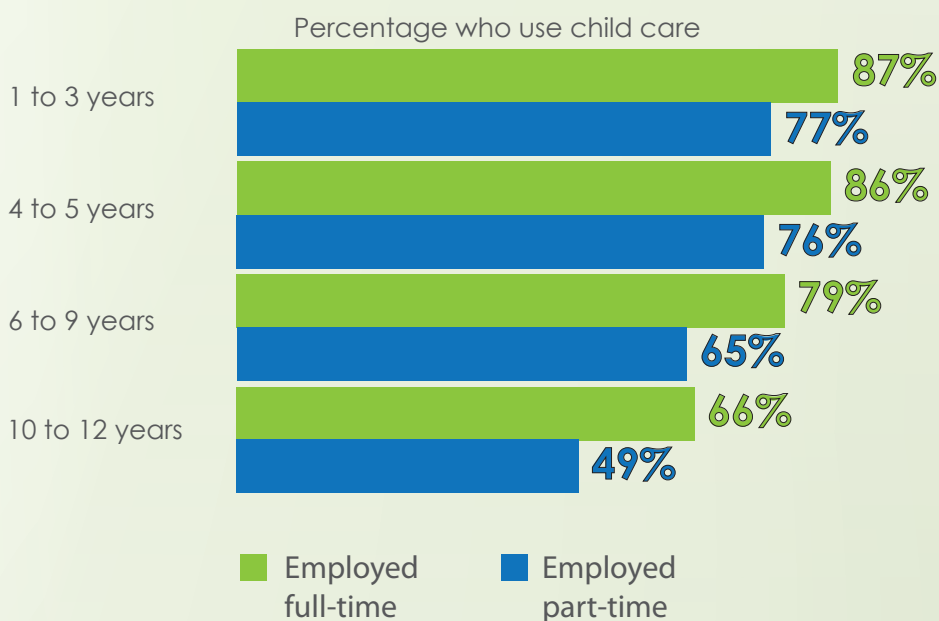


Reported use of child care was highest among parents whose youngest child was 4 to 5 years of age and not in school



Child care use was lower among mothers who were unemployed (30%) or on leave (48%) than among employed mothers (74%).

A higher proportion of full-time working mothers used child care than part-time working mothers



Mothers who had a regular schedule<sup>1</sup> were more likely to use child care

76%

Regular schedule

VS.

68%

Irregular schedule



1. The usual work schedule of mothers was classified as regular (regular daytime schedule or shift; regular evening shift; or regular night shift) or irregular (rotating shift; split shift; irregular schedule; or on call).

Sources: Zhang, S., R. Garner, L. Heideringer and L. Findlay. 2021. "Parents' use of child care services and differences in use by mothers' employment status." *Insights on Canadian Society*. July. Statistics Canada Catalogue no. 75-006-X; Statistics Canada, General Social Survey, 2017.

Catalogue number: 11-627-M  
ISBN: 978-0-660-39126-7

© Her Majesty the Queen in Right of Canada, as represented by the Minister of Industry, 2021