

Changes in prices of goods and services affect how governments, businesses, and individuals spend and earn money, providing an indicator of the state of the economy. For 2009 as a whole, consumer prices as measured by the Consumer Price Index (CPI) rose 0.3%, a significantly smaller rise than the 2.3% increase in 2008 and the smallest since 1994, when prices notched up 0.1%.

## Energy prices drop

Falling energy prices were the main reason for the small increase in the CPI in 2009. Overall, energy prices were 13.5% lower in 2009. Gasoline prices fell 17.5% in 2009, while prices for natural gas and for fuel oil and other fuels dropped 20.1% and 29.9%, respectively.

This followed a steady rise in the price of energy from 2002 to 2008. Consumers paid 9.9% more for energy products in

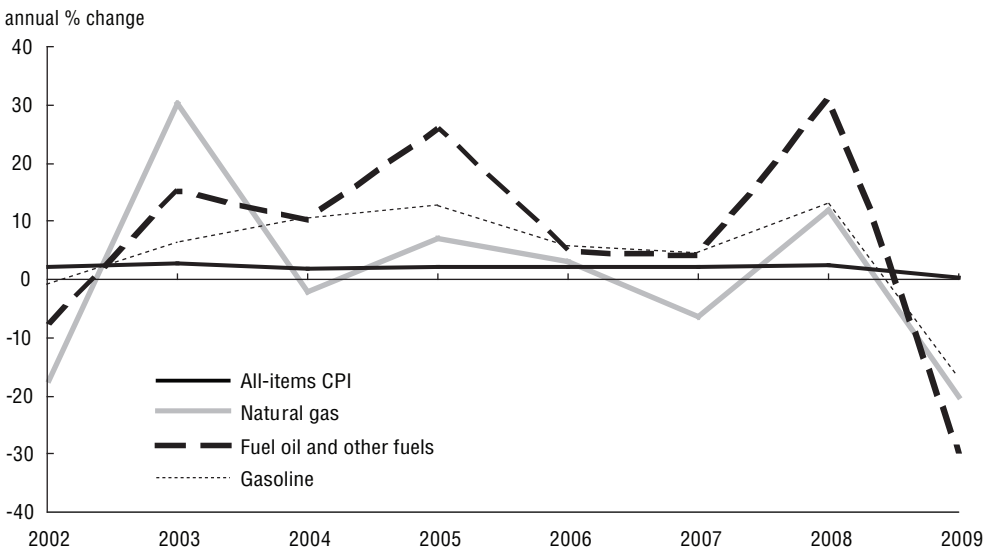
2008 than in 2007, which was substantially more than the 2.3% increase that occurred from 2006 to 2007. The increase in energy prices in 2008 was the largest since 2000, when they rose 16.2%. In 2008, higher gasoline prices were largely responsible for the rising energy costs for consumers.

In 2009, consumers' transportation costs (including costs for buying, renting, and leasing vehicles; operational and maintenance costs; public transportation costs; and gasoline) decreased 5.4%, largely as a result of falling gas prices.

## Food prices increase

The pace of food price increases quickened in 2009, with a 4.9% increase, compared with a 3.5% increase in 2008. Food purchased from stores was 5.5% more expensive in 2009, while food purchased from restaurants was 3.5% more costly.

**Chart 25.1**  
Change in Consumer Price Index and selected energy indexes



Source: Statistics Canada, CANSIM table 326-0021.

Computer equipment and supplies were considerably less expensive in 2009 with a 10.5% decrease from 2008 prices, while prices for home entertainment equipment, parts and services fell 4.4%.

### Shelter costs edge lower

Shelter costs edged lower by 0.3% in 2009. Decreases in shelter costs were tempered by increases in property taxes (3.4%) and in the costs to maintain and repair homes (5.8%).

In addition, the cost of household operations, furnishings, and equipment rose 2.6%. These costs include communications services, child care and domestic services, and supplies of plastic, paper and foil. Prices for furniture and household textiles rose slightly.

The Bank of Canada's core index is a variant of the consumer price index. It excludes eight of its most volatile components: fruit, vegetables, gasoline, fuel oil, natural gas, mortgage interest, intercity transportation and tobacco products. It also excludes the effect of

**Table 25.a**  
Intercity price index, goods and services, 2004 and 2008

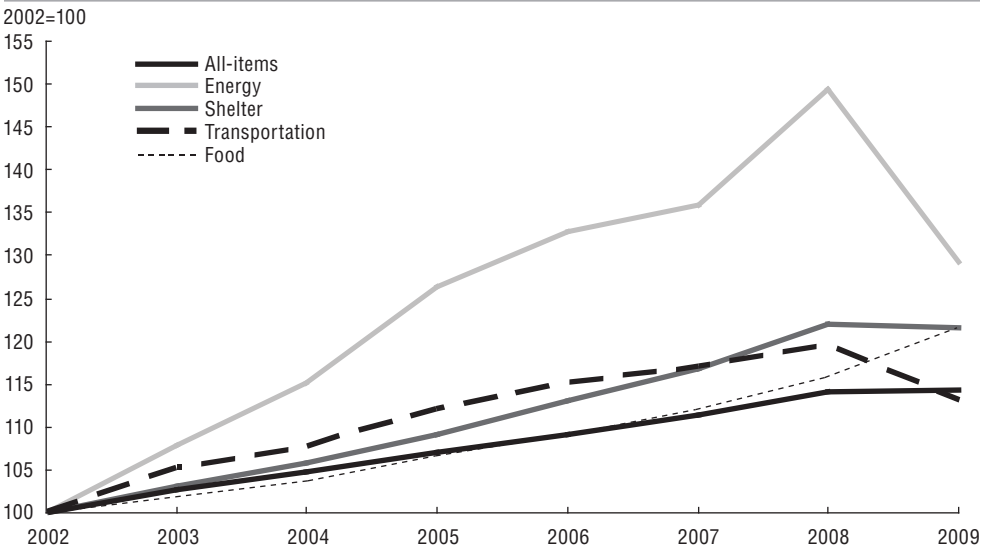
	2004	2008
	combined city average=100	
St. John's	95	97
Charlottetown and Summerside	93	95
Halifax	98	99
Saint John	93	95
Montréal	93	95
Ottawa-Gatineau	103	103
Toronto	110	107
Winnipeg	92	94
Regina	92	95
Edmonton	97	101
Vancouver	102	101

**Note:** This table shows consumer price differentials prevailing amongst 11 Canadian cities situated in all 10 provinces for a selection of commodities and services at the specified point in time.

**Source:** Statistics Canada, CANSIM table 326-0015.

changes in indirect taxes on the remaining components. With these components factored out, the core index increased 1.7% in 2009, the same annual increase it showed in 2008. The consumer price index, which includes the eight volatile components, increased 0.3% over the same period.

**Chart 25.2**  
Consumer price indexes, selected



**Source:** Statistics Canada, CANSIM table 326-0021.

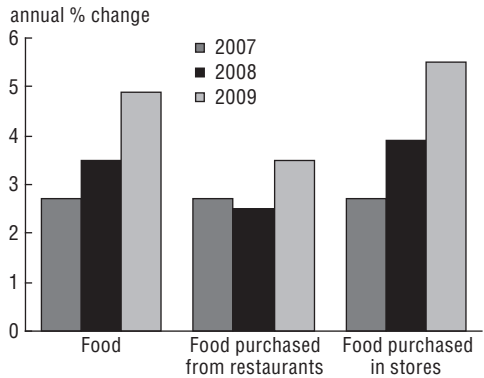
## Consumer food prices increase

In 2009, Canadian consumers faced a 4.9% increase in the price of food. This was the greatest gain since a 5.0% rise in 1986, and followed a period of steady gains from 2002 to 2007.

Consumer food prices increased primarily because of the rise in prices for food purchased from stores (5.5%), which have increased annually since 1992. Rising food prices can affect consumer confidence. They also have a great impact on people in lower income brackets, for whom food is a larger share of total expenditures.

In the past decade, the average price for food staples has risen. From 1999 to 2009, the average price of a loaf of bread has increased from \$1.31 to \$2.50, a dozen

**Chart 25.3**  
Food indexes



Source: Statistics Canada, CANSIM table 326-0021.

eggs from \$1.77 to \$2.61, 454 grams of butter from \$3.01 to \$4.35, a litre of partly skimmed milk from \$1.41 to \$2.11 and 1 kg of ground beef from \$3.90 to \$7.02.

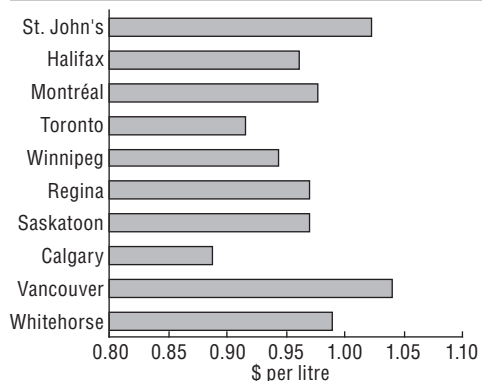
## Rising car prices, cheaper gas

Car buyers paid an average of \$25,664 for passenger vehicles in 2009 and an average of \$700 (2.8%) more for a car than they did in 2008.

Canadians bought almost 150,000 fewer passenger vehicles from all countries of manufacture in 2009, a 16.4% decrease in the units sold from 2008. Sales of passenger vehicles totalled \$19.2 billion in 2009, down 14.1% from \$22.3 billion in sales in 2008.

The average price for a new vehicle dropped 1.5% in 2008, the largest annual drop since 1999. Reasons for the drop included retailer and manufacturer incentives. As well, the sustained strength of the Canadian dollar relative to the U.S. dollar prompted Canadian auto dealers to reduce the gap between Canadian and U.S. auto prices.

**Chart 25.4**  
Gasoline prices, selected centres, 2009



Note: Average price of regular unleaded gasoline at self-service filling stations.

Source: Statistics Canada, CANSIM table 326-0009.

While car prices went up, fuel costs declined. Although gas prices fluctuated, the cost of a litre of regular gasoline at self-service stations averaged 93.9 cents in 2009, a 17.8% drop from an average of 114.2 cents in 2008.

Table 25.1 Consumer Price Index, 1990 to 2009

	1990	1991	1992	1993	1994	1995	1996
	2002=100						
<b>All-items</b>	<b>78.4</b>	<b>82.8</b>	<b>84.0</b>	<b>85.6</b>	<b>85.7</b>	<b>87.6</b>	<b>88.9</b>
Food	79.6	83.4	83.1	84.5	84.9	86.9	88.0
Shelter	82.5	86.3	87.9	89.1	89.4	90.4	90.6
Household operations, furnishings and equipment	84.2	87.4	87.9	88.7	88.9	90.6	92.5
Clothing and footwear	86.1	94.3	95.1	96.0	96.8	96.7	96.4
Transportation	71.6	72.9	74.4	76.8	80.2	84.3	87.6
Health and personal care	79.1	84.7	86.6	88.9	89.7	89.6	90.1
Recreation, education and reading	73.2	78.3	79.2	81.1	83.5	86.7	88.7
Alcoholic beverages and tobacco products	65.2	76.4	81.0	82.2	68.8	68.7	70.1
Core Consumer Price Index <sup>1</sup>	79.8	82.1	83.6	85.3	86.9	88.8	90.3
<b>Special aggregates</b>							
All-items excluding food	78.1	82.6	84.2	85.7	85.9	87.7	89.1
All-items excluding shelter	76.9	81.4	82.5	84.2	84.3	86.5	88.4
All-items excluding energy	78.9	83.4	84.7	86.3	86.4	88.4	89.7
All-items excluding gasoline	..	..	..	..	..	..	..
Shelter <sup>2</sup>	82.2	86.0	87.5	88.7	89.1	90.4	90.6
Goods	81.6	85.7	86.4	87.8	86.8	88.4	89.9
Services	74.9	79.6	81.4	83.1	84.5	86.7	88.0
	annual % change						
<b>All-items</b>	<b>4.8</b>	<b>5.6</b>	<b>1.4</b>	<b>1.9</b>	<b>0.1</b>	<b>2.2</b>	<b>1.5</b>
Food	4.1	4.8	-0.4	1.7	0.5	2.4	1.3
Shelter	5.6	4.6	1.9	1.4	0.3	1.1	0.2
Household operations, furnishings and equipment	2.1	3.8	0.6	0.9	0.2	1.9	2.1
Clothing and footwear	2.9	9.5	0.8	0.9	0.8	-0.1	-0.3
Transportation	5.6	1.8	2.1	3.2	4.4	5.1	3.9
Health and personal care	4.8	7.1	2.2	2.7	0.9	-0.1	0.6
Recreation, education and reading	4.1	7.0	1.1	2.4	3.0	3.8	2.3
Alcoholic beverages and tobacco products	8.8	17.2	6.0	1.5	-16.3	-0.1	2.0
Core Consumer Price Index <sup>1</sup>	3.4	2.9	1.8	2.0	1.9	2.2	1.7
<b>Special aggregates</b>							
All-items excluding food	5.0	5.8	1.9	1.8	0.2	2.1	1.6
All-items excluding shelter	4.5	5.9	1.4	2.1	0.1	2.6	2.2
All-items excluding energy	4.4	5.7	1.6	1.9	0.1	2.3	1.5
All-items excluding gasoline	..	..	..	..	..	..	..
Shelter <sup>2</sup>	5.5	4.6	1.7	1.4	0.5	1.5	0.2
Goods	4.1	5.0	0.8	1.6	-1.1	1.8	1.7
Services	5.6	6.3	2.3	2.1	1.7	2.6	1.5

**Note:** Annual average indexes are obtained by averaging the indexes for the 12 months of the calendar year.

1. Bank of Canada definition.

2. 1986 definition.

**Source:** Statistics Canada, CANSIM table 326-0021.

1997	1998	1999	2000	2001	2002	2003	2004	2005	2006	2007	2008	2009
2002=100												
90.4	91.3	92.9	95.4	97.8	100.0	102.8	104.7	107.0	109.1	111.5	114.1	114.4
89.4	90.9	92.0	93.3	97.4	100.0	101.7	103.8	106.4	108.9	111.8	115.7	121.4
90.8	91.1	92.3	95.6	99.1	100.0	103.2	105.8	109.2	113.1	116.9	122.0	121.6
93.7	95.1	95.8	96.7	98.6	100.0	100.7	101.2	101.7	102.2	103.2	104.6	107.3
97.7	98.8	100.1	100.3	100.7	100.0	98.2	98.0	97.6	95.8	95.7	93.8	93.4
90.3	89.6	92.6	97.2	97.3	100.0	105.2	107.7	112.0	115.2	117.1	119.5	113.1
91.7	93.6	95.4	97.0	98.9	100.0	101.4	102.8	104.6	105.9	107.3	108.8	112.1
91.0	93.0	94.7	97.0	98.4	100.0	100.8	101.1	100.8	100.6	101.8	102.2	103.1
72.3	74.9	76.5	79.0	85.0	100.0	110.1	116.0	119.1	121.7	125.5	127.5	130.7
92.0	93.2	94.5	95.7	97.7	100.0	102.2	103.8	105.5	107.5	109.8	111.7	113.6
90.6	91.3	93.0	95.8	97.9	100.0	103.0	104.8	107.1	109.2	111.4	113.8	113.0
90.2	91.3	93.0	95.3	97.3	100.0	102.5	104.1	106.1	107.6	109.4	111.2	111.7
91.0	92.3	93.6	95.0	97.3	100.0	102.4	103.8	105.4	107.2	109.5	111.3	113.2
..	91.9	93.2	95.0	97.6	100.0	102.6	104.2	106.0	107.9	110.1	112.1	113.6
90.8	91.3	92.7	96.1	99.4	100.0	102.7	105.0	108.1	111.8	115.7	120.6	120.2
91.2	91.4	93.1	96.0	98.4	100.0	101.9	103.4	105.8	107.1	108.0	109.4	107.6
89.5	91.1	92.6	94.8	97.1	100.0	103.6	105.9	108.2	111.1	114.8	118.7	121.2
annual % change												
1.7	1.0	1.8	2.7	2.5	2.2	2.8	1.8	2.2	2.0	2.2	2.3	0.3
1.6	1.7	1.2	1.4	4.4	2.7	1.7	2.1	2.5	2.3	2.7	3.5	4.9
0.2	0.3	1.3	3.6	3.7	0.9	3.2	2.5	3.2	3.6	3.4	4.4	-0.3
1.3	1.5	0.7	0.9	2.0	1.4	0.7	0.5	0.5	0.5	1.0	1.4	2.6
1.3	1.1	1.3	0.2	0.4	-0.7	-1.8	-0.2	-0.4	-1.8	-0.1	-2.0	-0.4
3.1	-0.8	3.3	5.0	0.1	2.8	5.2	2.4	4.0	2.9	1.6	2.0	-5.4
1.8	2.1	1.9	1.7	2.0	1.1	1.4	1.4	1.8	1.2	1.3	1.4	3.0
2.6	2.2	1.8	2.4	1.4	1.6	0.8	0.3	-0.3	-0.2	1.2	0.4	0.9
3.1	3.6	2.1	3.3	7.6	17.6	10.1	5.4	2.7	2.2	3.1	1.6	2.5
1.9	1.3	1.4	1.3	2.1	2.4	2.2	1.6	1.6	1.9	2.1	1.7	1.7
1.7	0.8	1.9	3.0	2.2	2.1	3.0	1.7	2.2	2.0	2.0	2.2	-0.7
2.0	1.2	1.9	2.5	2.1	2.8	2.5	1.6	1.9	1.4	1.7	1.6	0.4
1.4	1.4	1.4	1.5	2.4	2.8	2.4	1.4	1.5	1.7	2.1	1.6	1.7
..	..	1.4	1.9	2.7	2.5	2.6	1.6	1.7	1.8	2.0	1.8	1.3
0.2	0.6	1.5	3.7	3.4	0.6	2.7	2.2	3.0	3.4	3.5	4.2	-0.3
1.4	0.2	1.9	3.1	2.5	1.6	1.9	1.5	2.3	1.2	0.8	1.3	-1.6
1.7	1.8	1.6	2.4	2.4	3.0	3.6	2.2	2.2	2.7	3.3	3.4	2.1

Table 25.2 Consumer Price Index, all-items, by province and territory, 2004 to 2009

	2004	2005	2006	2007	2008	2009
	2002=100					
<b>Canada</b>	<b>104.7</b>	<b>107.0</b>	<b>109.1</b>	<b>111.5</b>	<b>114.1</b>	<b>114.4</b>
Newfoundland and Labrador	104.8	107.6	109.5	111.1	114.3	114.6
Prince Edward Island	105.8	109.1	111.6	113.6	117.5	117.3
Nova Scotia	105.3	108.2	110.4	112.5	115.9	115.7
New Brunswick	104.9	107.4	109.2	111.3	113.2	113.5
Quebec	104.5	106.9	108.7	110.4	112.7	113.4
Ontario	104.6	106.9	108.8	110.8	113.3	113.7
Manitoba	103.8	106.6	108.7	110.9	113.4	114.1
Saskatchewan	104.6	106.9	109.1	112.2	115.9	117.1
Alberta	105.9	108.1	112.3	117.9	121.6	121.5
British Columbia	104.2	106.3	108.1	110.0	112.3	112.3
Yukon	103.0	105.3	106.8	109.5	113.4	113.8
Northwest Territories	103.8	106.2	107.7	110.8	115.2	115.9
Nunavut	101.2	102.9	104.6	107.9	110.4	112.6
	annual % change					
<b>Canada</b>	<b>1.8</b>	<b>2.2</b>	<b>2.0</b>	<b>2.2</b>	<b>2.3</b>	<b>0.3</b>
Newfoundland and Labrador	1.8	2.7	1.8	1.5	2.9	0.3
Prince Edward Island	2.2	3.1	2.3	1.8	3.4	-0.2
Nova Scotia	1.8	2.8	2.0	1.9	3.0	-0.2
New Brunswick	1.5	2.4	1.7	1.9	1.7	0.3
Quebec	2.0	2.3	1.7	1.6	2.1	0.6
Ontario	1.9	2.2	1.8	1.8	2.3	0.4
Manitoba	2.0	2.7	2.0	2.0	2.3	0.6
Saskatchewan	2.2	2.2	2.1	2.8	3.3	1.0
Alberta	1.4	2.1	3.9	5.0	3.1	-0.1
British Columbia	2.0	2.0	1.7	1.8	2.1	0.0
Yukon	1.1	2.2	1.4	2.5	3.6	0.4
Northwest Territories	1.5	2.3	1.4	2.9	4.0	0.6
Nunavut	1.0	1.7	1.7	3.2	2.3	2.0

**Note:** Annual average indexes are obtained by averaging the indexes for the 12 months of the calendar year.

**Source:** Statistics Canada, CANSIM table 326-0021.

**Table 25.3 Consumer Price Index, food, 2003 to 2009**

	2003	2004	2005	2006	2007	2008	2009
	2002=100						
<b>All-items</b>	<b>102.8</b>	<b>104.7</b>	<b>107.0</b>	<b>109.1</b>	<b>111.5</b>	<b>114.1</b>	<b>114.4</b>
Food	101.7	103.8	106.4	108.9	111.8	115.7	121.4
Food purchased from stores	101.4	103.2	105.6	108.0	110.9	115.2	121.5
Meat	101.8	106.2	108.2	107.9	111.1	113.4	118.4
Fresh or frozen meat (excluding poultry)	100.9	105.0	106.9	105.8	107.9	109.9	115.5
Fresh or frozen poultry meat	104.8	112.2	113.0	113.4	120.9	125.1	130.3
Processed meat	100.7	103.2	106.4	106.7	108.1	109.2	113.4
Fish, seafood and other marine products	99.7	99.1	99.1	98.0	100.1	101.2	108.6
Fish	99.5	99.4	100.4	100.3	103.0	105.3	114.3
Seafood and other marine products	100.2	98.3	95.8	92.0	92.7	90.8	93.7
Dairy products and eggs	103.1	105.7	111.0	115.5	119.8	124.5	128.9
Dairy products	102.9	105.5	111.1	115.7	119.9	124.6	129.1
Eggs	104.9	107.7	109.1	111.9	118.4	123.3	125.4
Bakery and other cereal products (excluding infant food)	104.3	107.0	109.8	113.6	118.1	132.4	137.9
Bakery products	105.8	109.3	113.1	118.2	123.6	137.5	143.4
Cereal products (excluding infant food)	101.6	102.8	103.9	105.3	108.4	123.4	127.9
Fruit, fruit preparations and nuts	98.2	99.3	98.8	101.3	105.7	107.4	113.1
Fresh fruit	96.5	97.9	96.2	98.4	99.6	101.2	107.6
Preserved fruit and fruit preparations	100.9	101.3	102.6	105.9	116.2	117.4	121.4
Nuts	99.4	101.6	103.0	103.5	104.9	109.8	118.7
Vegetables and vegetable preparations	94.3	92.1	93.6	98.4	98.6	100.6	110.2
Fresh vegetables	92.1	88.9	89.9	95.3	95.2	96.5	105.8
Preserved vegetables and vegetable preparations	101.8	103.4	106.8	109.2	111.0	115.3	126.2
Other food products and non-alcoholic beverages	103.3	104.4	107.0	108.9	110.1	112.8	120.5
Sugar and confectionery	106.0	107.5	107.8	112.1	112.9	115.6	124.2
Fats and oils	103.8	106.9	108.6	110.3	114.2	129.7	140.6
Coffee and tea	100.8	102.7	106.1	109.8	110.3	112.4	118.1
Condiments, spices and vinegars	100.6	100.8	103.0	103.8	104.9	107.4	113.9
Other food preparations	104.7	106.5	109.0	111.1	111.1	114.3	121.1
Non-alcoholic beverages	99.4	99.2	103.4	103.8	106.4	106.5	115.2
Food purchased from restaurants	102.5	105.2	108.2	111.1	114.1	117.0	121.1

**Note:** Annual average indexes are obtained by averaging the indexes for the 12 months of the calendar year.

**Source:** Statistics Canada, CANSIM table 326-0021.

Table 25.4 Farm Product Price Index, 2002 to 2008

	2002	2003	2004	2005	2006	2007	2008
	1997=100						
<b>Canada</b>	<b>106.1</b>	<b>101.3</b>	<b>99.4</b>	<b>97.1</b>	<b>97.3</b>	<b>108.6</b>	<b>121.1</b>
Total crops	109.3	105.1	100.6	88.8	92.6	117.6	142.8
Grains	111.0	105.9	94.1	76.5	84.2	133.3	162.2
Oilseeds	94.1	92.7	95.2	74.5	72.2	97.5	133.5
Specialty crops	124.5	113.4	102.5	84.6	80.2	120.7	185.8
Fruit	103.4	103.7	108.7	116.9	124.5	124.5	128.0
Vegetables excluding potatoes	115.5	116.0	116.8	116.6	117.9	114.1	118.2
Potatoes	166.8	135.4	119.4	125.9	148.6	135.0	152.1
Total livestock and animal products	103.4	98.1	98.3	104.0	101.3	101.5	103.6
Cattle and calves	117.5	98.3	87.6	103.5	102.8	99.3	99.0
Hogs	76.0	74.3	89.7	82.9	72.3	68.3	67.7
Poultry	91.9	95.7	97.9	96.4	93.1	102.0	114.8
Eggs	100.6	102.0	105.6	96.4	98.9	100.9	107.9
Dairy	112.2	119.1	119.9	128.0	130.3	137.2	139.9
<b>Eastern Canada</b>	<b>103.6</b>	<b>101.5</b>	<b>103.1</b>	<b>103.1</b>	<b>103.9</b>	<b>108.4</b>	<b>115.8</b>
Total crops	105.6	102.3	100.9	96.0	101.0	108.8	122.5
Grains	89.4	85.9	82.3	65.8	71.9	98.5	117.6
Oilseeds	80.9	89.9	95.2	75.1	66.2	84.4	114.8
Specialty crops	111.9	108.3	127.3	116.2	103.6	131.5	170.0
Fruit	109.3	107.6	112.8	122.0	132.7	131.7	128.0
Vegetables excluding potatoes	112.1	111.7	110.5	112.9	117.6	115.8	121.0
Potatoes	185.9	137.0	115.2	127.3	163.5	138.8	160.5
Total livestock and animal products	102.1	100.7	104.4	107.5	105.6	108.0	111.2
Cattle and calves	127.0	102.1	88.7	106.9	112.3	109.6	111.6
Hogs	74.2	72.5	88.2	80.3	68.8	65.9	65.0
Poultry	92.4	96.2	98.4	95.4	91.5	101.4	114.2
Eggs	101.8	102.2	106.6	96.7	99.6	103.9	110.9
Dairy	112.0	119.5	122.0	130.9	133.7	139.9	141.8
<b>Western Canada</b>	<b>108.1</b>	<b>101.2</b>	<b>96.1</b>	<b>93.9</b>	<b>93.7</b>	<b>110.6</b>	<b>127.6</b>
Total crops	111.7	106.9	99.8	83.3	86.3	121.9	154.2
Grains	115.6	110.1	96.1	78.4	86.5	142.3	173.9
Oilseeds	98.7	93.8	95.4	74.4	74.3	102.1	139.9
Specialty crops	124.6	113.2	100.7	82.2	78.3	119.8	187.2
Fruit	92.4	96.6	100.0	111.8	114.1	116.0	131.7
Vegetables excluding potatoes	124.9	128.0	128.9	111.5	104.0	95.5	96.1
Potatoes	136.2	130.8	122.8	122.8	130.1	128.8	140.6
Total livestock and animal products	105.0	95.6	92.5	106.0	102.4	100.4	101.4
Cattle and calves	114.3	96.9	87.2	110.8	108.2	104.2	103.1
Hogs	78.7	77.1	91.5	88.5	78.8	73.4	73.1
Poultry	90.7	94.6	96.7	98.2	96.2	102.8	115.7
Eggs	98.6	101.6	103.7	96.0	97.4	95.0	102.0
Dairy	113.0	117.9	113.3	118.9	119.4	128.8	133.6

Source: Statistics Canada, CANSIM table 002-0022.



Table 25.5 Farm Input Price Index, 2001 to 2007

	2001	2002	2003	2004	2005	2006	2007
	1992=100						
<b>Canada</b>	<b>129.5</b>	<b>128.5</b>	<b>132.8</b>	<b>129.6</b>	<b>134.9</b>	<b>139.3</b>	<b>149.7</b>
Building and fencing	120.0	122.8	122.4	137.7	136.3	137.7	138.7
Machinery and motor vehicles	143.7	143.5	157.0	155.3	163.6	168.7	171.8
Crop production	137.6	135.7	154.7	151.1	156.1	161.9	183.2
Animal production	135.1	132.3	128.2	114.4	124.2	126.5	143.6
Supplies and services	121.1	120.7	127.5	126.9	129.8	131.1	130.8
Hired farm labour	125.4	128.2	129.0	135.4	137.7	142.7	149.7
Property taxes	112.6	118.9	126.4	129.5	132.5	129.9	134.7
Interest	90.5	84.9	83.9	80.7	81.3	90.1	98.2
Farm rent	113.8	121.8	131.9	135.8	129.3	132.1	144.5
<b>Eastern Canada</b>	<b>126.6</b>	<b>126.2</b>	<b>129.0</b>	<b>127.5</b>	<b>131.3</b>	<b>135.7</b>	<b>145.3</b>
Building and fencing	121.9	124.3	124.2	136.2	138.6	141.4	144.2
Machinery and motor vehicles	144.4	145.9	159.3	156.4	163.6	167.7	170.4
Crop production	130.1	128.3	137.0	139.8	148.0	154.8	163.2
Animal production	129.3	128.0	125.4	117.6	120.4	122.9	143.6
Supplies and services	123.4	121.8	129.8	129.1	132.9	135.3	134.0
Hired farm labour	127.2	130.4	128.9	135.2	137.8	140.6	146.3
Property taxes	79.7	84.8	90.0	93.8	97.4	101.9	105.6
Interest	92.6	86.7	85.8	83.2	84.2	93.9	102.2
Farm rent	85.2	93.5	97.8	101.4	102.4	106.4	111.4
<b>Western Canada</b>	<b>132.9</b>	<b>130.9</b>	<b>137.5</b>	<b>131.6</b>	<b>138.9</b>	<b>143.5</b>	<b>154.5</b>
Building and fencing	118.5	121.6	120.9	138.8	134.2	134.6	133.1
Machinery and motor vehicles	143.3	140.7	154.4	154.3	164.1	170.7	174.0
Crop production	142.7	140.6	167.1	158.4	161.0	165.9	195.7
Animal production	141.0	136.6	131.0	111.4	127.4	129.4	143.2
Supplies and services	118.6	119.6	125.0	124.4	126.5	126.6	127.4
Hired farm labour	123.8	126.0	129.9	136.5	138.3	146.4	155.2
Property taxes	121.4	127.9	136.0	138.7	141.3	135.9	140.9
Interest	89.2	83.7	82.7	79.1	79.4	87.7	95.5
Farm rent	128.0	135.6	148.9	152.8	141.9	143.9	159.5

Source: Statistics Canada, CANSIM table 328-0014.

Table 25.6 Industrial Product Price Index, 1990 to 2009

	1990	1991	1992	1993	1994	1995	1996
	1997=100						
<b>All industrial products</b>	<b>84.2</b>	<b>83.3</b>	<b>83.8</b>	<b>86.8</b>	<b>92.0</b>	<b>98.9</b>	<b>99.3</b>
Intermediate goods	85.1	82.6	82.2	85.1	91.8	101.1	100.1
First-stage intermediate goods	90.5	81.8	79.5	76.2	92.1	118.5	100.1
Second-stage intermediate goods	83.2	82.5	82.6	86.5	91.7	98.3	100.1
Finished goods	82.9	84.4	86.1	89.4	92.5	95.4	98.0
Finished foods and feeds	87.1	88.9	89.8	91.4	93.7	95.9	98.2
Capital equipment	80.6	82.0	84.8	89.1	92.7	96.0	98.0
All other finished goods	82.1	83.4	85.0	88.6	91.8	95.0	97.9
<b>Aggregation, by commodities</b>							
Meat, fish and dairy products	82.0	82.8	83.7	88.3	90.3	92.5	97.0
Fruits, vegetables, feeds and other food products	86.6	86.3	87.4	88.6	93.0	95.8	99.6
Beverages	86.5	89.5	90.8	92.2	92.8	94.9	97.4
Tobacco and tobacco products	66.2	73.4	78.9	84.1	86.9	89.6	93.4
Rubber, leather and plastic fabricated products	89.3	89.0	88.1	87.7	91.4	100.2	99.4
Textile products	91.4	91.4	91.2	92.3	94.1	97.8	99.2
Knitted products and clothing	91.1	92.2	92.6	92.8	94.2	96.7	99.0
Lumber and other wood products	65.5	64.4	69.8	87.1	97.8	94.0	99.3
Furniture and fixtures	87.4	88.4	87.9	89.8	92.1	98.3	99.3
Pulp and paper products	91.9	83.0	79.7	77.3	85.8	119.5	105.7
Printing and publishing	74.8	77.4	79.1	82.9	87.7	98.6	99.4
Primary metal products	88.6	81.2	79.0	78.2	92.4	105.4	97.9
Metal fabricated products	84.0	83.9	83.7	85.6	89.1	96.4	98.5
Machinery and equipment	87.4	88.7	90.0	92.8	95.6	97.6	99.2
Motor vehicles and other transport equipment	76.7	78.2	82.3	87.8	92.2	94.9	97.5
Electrical and communications products	94.0	93.6	94.4	97.0	99.8	102.2	101.1
Non-metallic mineral products	91.5	90.8	90.3	91.0	94.5	98.9	100.1
Petroleum and coal products	97.3	94.0	86.7	85.8	85.6	90.4	100.5
Chemicals and chemical products	85.4	86.5	85.3	87.0	93.2	101.8	99.8
Miscellaneous manufactured products	85.1	86.6	86.9	90.0	95.8	98.7	100.0
Miscellaneous non-manufactured products	95.0	84.5	83.2	91.3	102.9	120.3	111.1

**Note:** Annual average indexes are obtained by averaging the indexes for the 12 months of the calendar year.

**Source:** Statistics Canada, CANSIM tables 329-0039, 329-0040, 329-0041, 329-0042, 329-0044, 329-0045, 329-0046 and 329-0048.

1997	1998	1999	2000	2001	2002	2003	2004	2005	2006	2007	2008	2009
1997=100												
<b>100.0</b>	<b>100.4</b>	<b>102.2</b>	<b>106.5</b>	<b>107.6</b>	<b>107.6</b>	<b>106.2</b>	<b>109.5</b>	<b>111.2</b>	<b>113.8</b>	<b>115.6</b>	<b>120.6</b>	<b>116.5</b>
100.0	98.4	99.9	105.3	105.0	104.2	103.8	109.9	112.8	117.5	120.5	126.7	119.4
100.0	93.8	96.5	111.9	104.5	101.8	105.6	118.0	123.1	141.9	157.3	149.4	125.8
100.0	99.0	100.4	104.3	105.1	104.6	103.5	108.7	111.2	113.8	115.0	123.3	118.4
100.0	103.4	105.6	108.3	111.3	112.6	109.7	108.9	108.7	108.2	108.1	111.4	112.1
100.0	100.9	102.2	104.3	106.4	108.0	110.3	112.0	112.1	113.5	115.6	118.3	120.8
100.0	104.9	106.6	107.3	110.7	112.6	107.1	104.5	102.5	100.2	98.3	99.2	103.5
100.0	103.5	106.4	110.7	113.8	114.7	111.1	110.3	111.0	110.7	110.8	115.8	113.5
100.0	98.7	100.4	104.6	107.7	107.2	108.5	109.7	107.1	107.2	110.0	111.5	113.0
100.0	97.9	95.6	95.6	98.2	101.6	103.6	104.9	102.8	104.6	109.4	118.0	117.8
100.0	102.4	105.6	109.0	111.4	114.6	117.7	120.4	121.3	122.5	125.0	126.8	129.9
100.0	103.8	109.4	114.2	127.4	139.5	162.7	169.3	176.3	190.4	213.0	220.7	223.6
100.0	99.8	100.2	105.2	106.1	105.0	106.2	108.1	114.3	118.4	116.4	119.0	120.8
100.0	101.2	99.6	99.1	100.5	100.4	99.4	98.9	99.9	100.3	99.8	101.1	102.2
100.0	101.6	102.2	102.8	103.2	103.8	104.1	104.5	104.3	104.7	104.7	104.8	104.9
100.0	95.9	105.1	95.9	94.6	94.0	90.3	101.1	92.5	87.2	84.2	82.4	81.8
100.0	101.1	102.3	104.8	106.3	107.5	109.2	111.8	115.1	118.3	120.0	122.9	124.6
100.0	103.5	101.7	115.2	115.0	106.0	102.8	104.1	103.5	105.0	104.0	108.7	108.9
100.0	103.5	105.8	109.2	111.8	114.1	113.0	114.0	115.3	115.4	116.6	120.4	124.7
100.0	96.0	95.2	100.6	94.4	96.3	96.2	113.4	116.5	138.6	145.9	141.7	127.4
100.0	102.6	103.0	104.7	104.9	106.5	107.2	117.0	121.5	123.1	124.4	133.0	132.4
100.0	102.3	103.7	104.8	105.9	106.9	105.9	106.0	107.3	107.0	105.7	107.1	111.0
100.0	107.1	108.5	109.0	113.5	115.1	106.3	101.2	96.5	92.4	89.3	89.9	94.8
100.0	100.1	100.2	98.5	99.4	101.3	95.8	94.7	93.7	93.7	92.1	91.8	95.0
100.0	100.2	102.0	105.2	107.4	108.7	109.7	111.6	114.9	119.7	122.8	125.5	128.9
100.0	82.3	96.1	140.3	133.7	125.5	138.4	161.8	199.9	218.1	230.4	289.5	208.6
100.0	96.9	98.6	104.8	107.4	107.3	110.4	113.8	121.0	122.9	126.5	139.0	131.7
100.0	101.4	103.0	104.3	105.5	107.5	107.2	109.6	110.7	112.9	113.9	120.2	124.4
100.0	90.3	90.3	86.4	86.6	90.8	95.8	125.1	163.7	248.1	443.2	320.2	253.1

Table 25.7 New Housing Price Index, by region, 2003 to 2009

	2003	2004	2005	2006	2007	2008	2009
	1997=100						
<b>Canada</b>	<b>116.7</b>	<b>123.2</b>	<b>129.4</b>	<b>142.0</b>	<b>153.0</b>	<b>158.2</b>	<b>154.6</b>
Atlantic Region	112.5	115.9	120.5	124.9	129.6	141.8	149.1
Quebec	126.2	134.2	140.8	147.0	153.2	160.8	165.9
Ontario	120.0	126.7	132.6	137.5	141.1	146.1	146.1
Prairie Region	127.3	134.0	143.2	192.5	235.6	241.5	222.7
British Columbia	96.3	101.4	106.3	113.2	120.5	123.0	115.0
	annual % change						
<b>Canada</b>	<b>4.9</b>	<b>5.6</b>	<b>5.0</b>	<b>9.7</b>	<b>7.7</b>	<b>3.4</b>	<b>-2.3</b>
Atlantic Region	3.5	3.0	4.0	3.7	3.8	9.4	5.1
Quebec	7.6	6.3	4.9	4.4	4.2	5.0	3.2
Ontario	4.4	5.6	4.7	3.7	2.6	3.5	0.0
Prairie Region	5.2	5.3	6.9	34.4	22.4	2.5	-7.8
British Columbia	3.7	5.3	4.8	6.5	6.4	2.1	-6.5

**Note:** Annual average indexes are obtained by averaging the indexes for the 12 months of the calendar year.

**Source:** Statistics Canada, CANSIM table 327-0005.

Table 25.8 Raw Materials Price Index, 2003 to 2009

	2003	2004	2005	2006	2007	2008	2009
	1997=100						
<b>All raw materials</b>	<b>114.8</b>	<b>128.3</b>	<b>145.3</b>	<b>161.7</b>	<b>174.1</b>	<b>196.3</b>	<b>152.2</b>
Mineral fuels	165.6	193.9	244.7	258.7	264.5	345.1	228.2
Vegetable products	92.2	88.8	80.3	84.8	102.4	129.7	110.2
Animals and animal products	100.3	101.4	104.6	104.3	106.6	108.6	110.0
Wood	82.2	83.0	75.1	77.8	84.6	81.6	76.7
Ferrous materials	95.9	125.0	125.0	125.7	134.5	162.4	131.2
Non-ferrous metals	82.0	104.8	119.7	195.7	241.7	187.3	162.5
Non-metallic minerals	116.4	122.6	133.9	141.1	148.5	168.8	175.6
All raw materials excluding mineral fuels	91.4	97.9	99.3	116.8	132.3	127.6	117.1

**Note:** Annual average indexes are obtained by averaging the indexes for the 12 months of the calendar year.

**Source:** Statistics Canada, CANSIM table 330-0006.

**Table 25.9 Machinery and Equipment Price Index, domestic and imported, by industry, 2004 to 2009**

	2004	2005	2006	2007	2008	2009
	1997=100					
<b>Total machinery and equipment</b>	<b>96.8</b>	<b>93.9</b>	<b>90.6</b>	<b>88.3</b>	<b>90.1</b>	<b>96.0</b>
Crop and animal production	105.9	103.6	99.6	98.0	100.6	109.1
Forestry and logging	104.7	103.0	100.3	97.6	99.3	107.1
Fishing, hunting and trapping	107.5	106.4	105.6	106.3	109.4	114.9
Support activities for agriculture and forestry	104.0	101.6	97.5	95.8	98.2	106.2
Mines, quarries and oil wells	104.4	103.0	101.9	101.0	105.8	114.9
Utilities	98.5	95.6	93.8	93.2	98.0	107.0
Construction	101.6	98.9	96.0	94.0	96.2	104.6
All manufacturing	101.2	98.8	96.2	94.4	96.8	103.2
Trade	94.0	91.7	88.4	86.1	87.6	92.0
Transportation (excluding pipeline transportation)	106.6	105.1	103.0	101.4	103.2	109.6
Pipeline transportation	104.6	103.2	101.3	100.6	103.5	112.1
Warehousing and storage	104.6	103.9	101.9	100.6	104.5	112.3
Finance, insurance and real estate	93.8	90.0	84.9	81.4	82.3	87.3
Private education services	85.6	81.6	77.6	73.9	75.1	80.1
Education services (excluding private), health care and social assistance	93.4	90.1	86.4	83.6	85.0	90.1
Other services (excluding public administration)	87.2	83.5	79.9	77.0	77.9	81.7
Public administration	90.2	86.7	83.5	81.4	82.8	87.9
	annual % change					
<b>Total machinery and equipment</b>	<b>-4.0</b>	<b>-3.0</b>	<b>-3.5</b>	<b>-2.5</b>	<b>2.0</b>	<b>6.5</b>
Crop and animal production	-2.8	-2.2	-3.9	-1.6	2.7	8.4
Forestry and logging	-2.9	-1.6	-2.6	-2.7	1.7	7.9
Fishing, hunting and trapping	3.2	-1.0	-0.8	0.7	2.9	5.0
Support activities for agriculture and forestry	-2.6	-2.3	-4.0	-1.7	2.5	8.1
Mines, quarries and oil wells	-2.4	-1.3	-1.1	-0.9	4.8	8.6
Utilities	-4.9	-2.9	-1.9	-0.6	5.2	9.2
Construction	-3.8	-2.7	-2.9	-2.1	2.3	8.7
All manufacturing	-3.6	-2.4	-2.6	-1.9	2.5	6.6
Trade	-2.8	-2.4	-3.6	-2.6	1.7	5.0
Transportation (excluding pipeline transportation)	-2.0	-1.4	-2.0	-1.6	1.8	6.2
Pipeline transportation	-3.7	-1.3	-1.8	-0.7	2.9	8.3
Warehousing and storage	-1.3	-0.7	-1.9	-1.3	3.9	7.5
Finance, insurance and real estate	-4.1	-4.1	-5.7	-4.1	1.1	6.1
Private education services	-5.6	-4.7	-4.9	-4.8	1.6	6.7
Education services (excluding private), health care and social assistance	-4.3	-3.5	-4.1	-3.2	1.7	6.0
Other services (excluding public administration)	-6.5	-4.2	-4.3	-3.6	1.2	4.9
Public administration	-4.9	-3.9	-3.7	-2.5	1.7	6.2

**Note:** Annual average indexes are obtained by averaging the indexes for the 12 months of the calendar year.

**Source:** Statistics Canada, CANSIM table 327-0042.

Table 25.10 Intercity price index, by selected goods and services, 2004 and 2008

	St. John's		Charlottetown and Summerside		Halifax		Saint John	
	2004	2008	2004	2008	2004	2008	2004	2008
	combined city average=100							
<b>All-items</b>	<b>95</b>	<b>97</b>	<b>93</b>	<b>95</b>	<b>98</b>	<b>99</b>	<b>93</b>	<b>95</b>
Food	104	105	101	102	101	101	98	100
Food purchased from stores	106	105	103	103	102	102	103	101
Meat, poultry and fish	106	106	109	103	109	107	109	102
Dairy products and eggs	107	103	98	92	101	94	101	93
Bakery and other cereal products	102	105	102	99	99	99	101	100
Fruit and vegetables	112	114	105	106	105	107	107	108
Other food purchased from stores	104	97	101	110	96	99	95	103
Food purchased from restaurants	98	104	94	102	100	101	89	98
Shelter	81	86	77	82	88	90	76	79
Rented accommodation	71	82	69	69	78	86	69	76
Owned accommodation	79	82	72	73	84	86	73	73
Water, fuel and electricity	109	111	115	136	121	115	98	108
Household operations and furnishings	98	103	98	104	102	106	98	103
Household operations	96	104	96	104	102	109	96	104
Household furnishings	101	101	103	103	101	101	101	101
Clothing and footwear	102	102	96	96	101	102	100	100
Transportation	104	102	99	97	100	97	103	98
Private transportation	103	102	95	95	99	98	99	97
Purchase of automotive vehicles	101	99	103	105	103	101	99	98
Gasoline	115	112	104	102	106	105	106	101
Other private transportation	98	99	78	78	89	89	93	93
Public transportation	110	100	129	110	105	90	134	104
Health and personal care	92	100	90	99	93	101	95	100
Health care	94	96	95	97	94	99	93	97
Personal care	..	103	..	101	..	103	..	103
Personal care supplies and equipment	94	..	98	..	95	..	98	..
Personal care services	86	..	72	..	86	..	95	..
Recreation, education and reading	96	93	102	104	112	107	103	108
Recreation	..	103	..	102	..	97	..	99
Education and reading	..	76	..	108	..	126	..	123
Alcoholic beverages and tobacco products	114	112	106	108	107	110	103	102
Alcoholic beverages	108	104	101	102	100	106	98	100
Tobacco products and smokers' supplies	119	125	111	118	112	116	107	104

**Notes:** This table shows consumer price differentials prevailing amongst 11 Canadian cities situated in all 10 provinces for a selection of commodities and services at the specified point in time.

The method used to establish the comparisons for shelter may not be suitable for the needs of all users.

**Source:** Statistics Canada, CANSIM table 326-0015.

Montréal		Ottawa-Gatineau, Ontario part		Toronto		Winnipeg		Regina		Edmonton		Vancouver	
2004	2008	2004	2008	2004	2008	2004	2008	2004	2008	2004	2008	2004	2008
combined city average=100													
93	95	103	103	110	107	92	94	92	95	97	101	102	101
97	101	101	100	100	99	98	100	97	101	100	100	107	106
100	101	103	100	98	98	99	101	101	102	100	102	106	108
103	99	103	100	98	99	93	95	96	97	99	103	105	110
101	95	105	108	100	109	96	95	93	94	92	101	107	110
99	102	98	95	94	93	104	109	105	111	105	108	117	114
98	106	104	96	98	92	102	106	103	109	105	106	103	105
97	101	105	103	101	100	102	102	106	101	98	96	103	101
92	103	97	101	105	99	94	97	90	98	101	95	107	101
86	88	106	105	122	116	79	85	77	85	87	104	102	100
81	82	107	108	125	123	75	82	67	76	82	103	102	104
86	86	105	103	121	114	79	84	72	81	85	100	105	101
95	107	109	108	122	113	89	91	119	113	105	123	91	88
96	97	105	104	105	105	98	99	98	99	95	99	102	103
94	96	107	106	107	108	97	99	98	100	96	102	104	105
101	101	101	101	101	101	100	100	100	98	94	94	100	100
101	101	101	102	100	101	100	100	100	98	95	96	101	100
99	100	100	98	111	106	94	97	97	95	97	94	94	96
98	100	99	96	111	106	93	97	97	95	98	95	95	97
99	102	103	102	100	100	100	100	101	97	94	93	101	101
106	102	96	95	96	96	94	103	101	104	94	97	104	108
90	95	95	90	136	121	84	88	89	85	107	95	79	83
108	102	110	110	113	110	98	97	98	94	87	85	88	91
102	99	103	101	102	98	97	96	89	94	104	98	100	97
99	95	108	102	105	97	93	92	93	91	103	100	97	95
..	103	..	99	..	99	..	99	..	98	..	96	..	99
98	..	97	..	102	..	100	..	98	..	97	..	106	..
113	..	99	..	95	..	101	..	70	..	116	..	97	..
87	86	104	108	109	108	95	96	100	104	114	106	104	105
..	98	..	103	..	101	..	102	..	102	..	99	..	103
..	64	..	117	..	121	..	84	..	110	..	117	..	110
94	95	96	95	99	97	104	103	108	110	106	111	113	108
97	100	101	97	103	98	85	93	97	103	100	106	107	107
92	87	92	93	96	96	120	118	118	122	111	119	117	109

Table 25.11 Composite Leading Index, March 2004 to March 2010

	March 2004	March 2005	March 2006	March 2007	March 2008	March 2009	March 2010
<b>Composite leading indicator (1992=100)</b>	<b>191.1</b>	<b>202.4</b>	<b>213.2</b>	<b>224.1</b>	<b>227.8</b>	<b>215.8</b>	<b>235.2</b>
Housing index (1992=100) <sup>1</sup>	136.5	138.1	150.1	144.9	141.6	97.8	138.1
Business and personal services employment (thousands)	2,627	2,612	2,687	2,820	2,894	2,917	2,950
Stock Price Index, Toronto Stock Exchange 300 (1975=1,000)	8,395	9,352	11,568	12,981	13,522	8,759	11,591
M1 money supply (\$ millions, 1992) <sup>2</sup>	119,791	134,113	144,772	162,504	171,369	189,656	213,033
U.S. Conference Board leading indicator (1992=100)	119.3	124.6	127.4	126.9	124.5	119.7	130.2
<b>Manufacturing</b>							
Average work week (hours)	38.7	38.2	38.0	38.4	38.0	36.5	36.5
New orders, durables (\$ millions, 1992)	22,307	25,165	26,946	27,275	27,312	19,504	22,183
Shipments to inventory ratio of finished goods	1.81	1.86	1.87	1.84	1.78	1.58	1.85
<b>Retail trade</b>							
Furniture and appliance sales (\$ millions, 1992)	2,009	2,185	2,460	2,633	2,838	2,850	2,989
Other durable goods sales (\$ millions, 1992)	7,463	7,831	8,280	8,950	9,676	9,200	9,984
<b>Unsmoothed composite (1992=100)</b>	<b>194.8</b>	<b>204.3</b>	<b>215.7</b>	<b>225.7</b>	<b>227.6</b>	<b>210.2</b>	<b>239.2</b>

1. Composite index of housing starts (units) and house sales (Multiple Listing Service).

2. Deflated by the Consumer Price Index for all items.

Source: Statistics Canada, CANSIM table 377-0003.