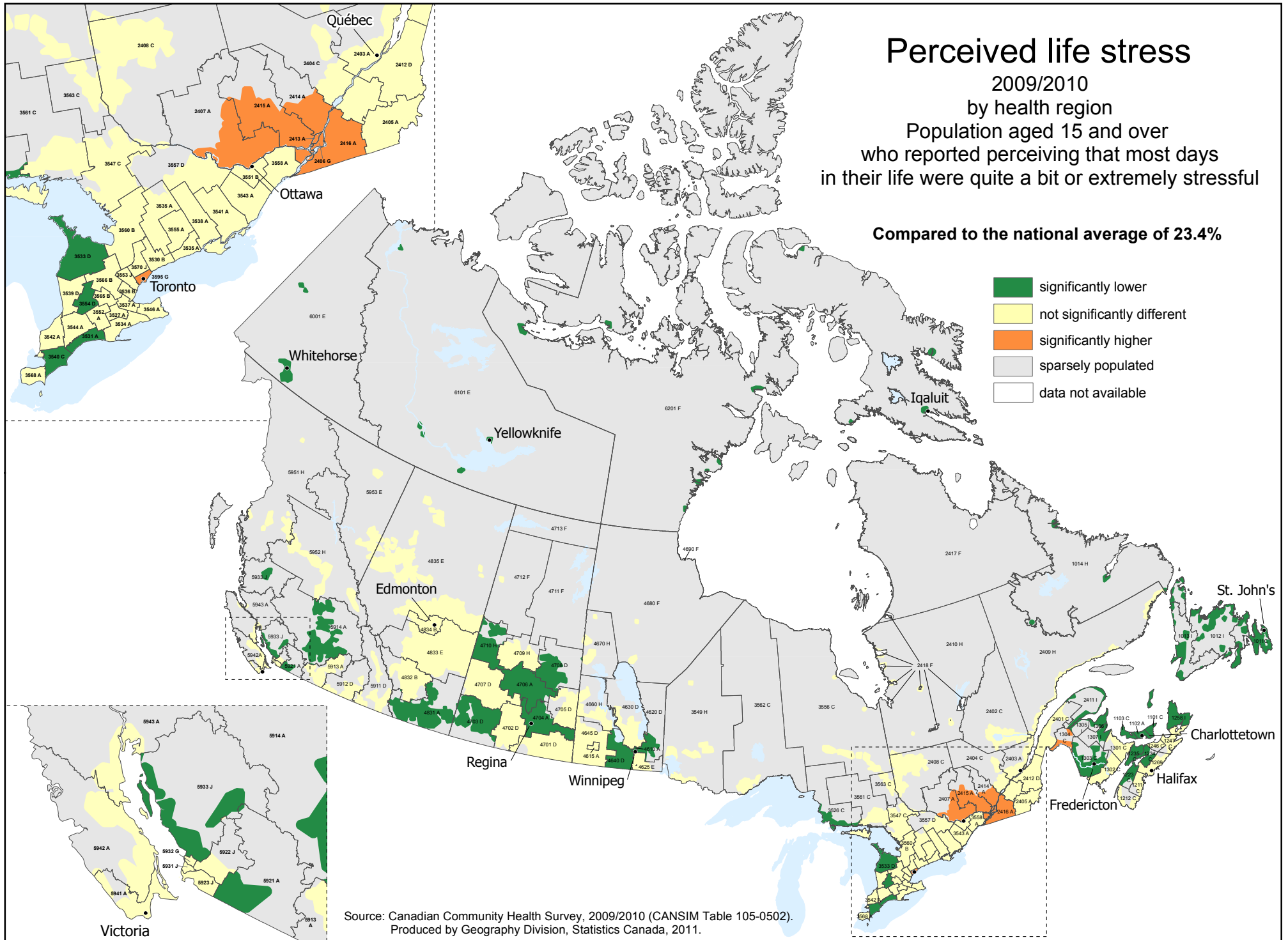


# Perceived life stress

2009/2010  
by health region  
Population aged 15 and over  
who reported perceiving that most days  
in their life were quite a bit or extremely stressful

Compared to the national average of 23.4%

- significantly lower
- not significantly different
- significantly higher
- sparsely populated
- data not available



Source: Canadian Community Health Survey, 2009/2010 (CANSIM Table 105-0502).  
Produced by Geography Division, Statistics Canada, 2011.