

Catalogue no. 81-595-M — No. 095

ISSN: 1711-831X

ISBN: 978-1-100-19482-0

## Research Paper

**Culture, Tourism and the Centre for Education Statistics**

# Summary Public School Indicators for Canada, the Provinces and Territories, 2005/2006 to 2009/2010



by Riley Brockington

Tourism and Centre for Education Statistics Division  
Main Building, Room 2001, Ottawa, K1A 0T6

Telephone: 1-800-307-3382 Fax: 1-613-951-9040



Statistics  
Canada

Statistique  
Canada

Canada

### **How to obtain more information**

For information about this product or the wide range of services and data available from Statistics Canada, visit our website at [www.statcan.gc.ca](http://www.statcan.gc.ca), e-mail us at [infostats@statcan.gc.ca](mailto:infostats@statcan.gc.ca), or telephone us, Monday to Friday from 8:30 a.m. to 4:30 p.m., at the following numbers:

#### **Statistics Canada's National Contact Centre**

Toll-free telephone (Canada and United States):

Inquiries line	1-800-263-1136
National telecommunications device for the hearing impaired	1-800-363-7629
Fax line	1-877-287-4369

Local or international calls:

Inquiries line	1-613-951-8116
Fax line	1-613-951-0581

#### **Depository Services Program**

Inquiries line	1-800-635-7943
Fax line	1-800-565-7757

### **To access this product**

This product, Catalogue no. 81-595-M, is available for free in electronic format. To obtain a single issue, visit our website at [www.statcan.gc.ca](http://www.statcan.gc.ca) and browse by "Key resource" > "Publications."

### **Standards of service to the public**

Statistics Canada is committed to serving its clients in a prompt, reliable and courteous manner. To this end, Statistics Canada has developed standards of service that its employees observe. To obtain a copy of these service standards, please contact Statistics Canada toll-free at 1-800-263-1136. The service standards are also published on [www.statcan.gc.ca](http://www.statcan.gc.ca) under "About us" > "The agency" > "Providing services to Canadians."

**Culture, Tourism and the Centre for Education Statistics  
Research papers**

# **Summary Public School Indicators for Canada, the Provinces and Territories, 2005/2006 to 2009/2010**

**Riley Brockington**  
Statistics Canada

Published by authority of the Minister responsible for Statistics Canada

© Minister of Industry, 2011

All rights reserved. The content of this electronic publication may be reproduced, in whole or in part, and by any means, without further permission from Statistics Canada, subject to the following conditions: that it be done solely for the purposes of private study, research, criticism, review or newspaper summary, and/or for non-commercial purposes; and that Statistics Canada be fully acknowledged as follows: Source (or "Adapted from", if appropriate): Statistics Canada, year of publication, name of product, catalogue number, volume and issue numbers, reference period and page(s). Otherwise, no part of this publication may be reproduced, stored in a retrieval system or transmitted in any form, by any means—electronic, mechanical or photocopy—or for any purposes without prior written permission of Licensing Services, Client Services Division, Statistics Canada, Ottawa, Ontario, Canada K1A 0T6.

November 2011

Catalogue no. 81-595-M No. 095

Frequency: Occasional

ISSN 1711-831X

ISBN 978-1-100-19482-0

Ottawa

Cette publication est disponible en français (n° 81-595-M N° 095 au catalogue)

Statistics Canada

## Acknowledgements

The Centre for Education Statistics Division at Statistics Canada sincerely appreciates the continued support and collaboration from the Departments/Ministries of Education from each province and territory and their employees who work diligently to collect and compile data for the Elementary-Secondary Education Survey (ESES) in a timely and thorough fashion.

Statistics Canada maintains a close relationship with the Canadian Education Statistics Council, particularly the Strategic Management Committee (SMC) and seeks their on-going advice and guidance on the survey.

The Centre for Education Statistics Division also appreciates the efforts of Jonathan Ellison, Chief of the Institutional Surveys Section, for his guidance and oversight, Elaine Tremblay for her technical assistance with the data tables and charts, Danielle Baum and Rosemarie Andrews for the production of PDF and HTML dissemination tables and Isabelle Menard, Acting Manager, Dissemination Unit.

## Note of appreciation

Canada owes the success of its statistical system to a long-standing partnership between Statistics Canada, the citizens of Canada, its businesses, governments and other institutions. Accurate and timely statistical information could not be produced without their continued cooperation and goodwill.

## Table of contents

<b>Acknowledgements</b>	<b>4</b>	
<b>Note to readers</b>	<b>8</b>	
<b>Appendix 1 Tables</b>		
Table A.1.1	Headcount enrolments in public elementary and secondary schools, Canada, provinces and territories, 2005/2006 to 2009/2010	9
Table A.1.2	Percentage change for Headcount enrolments in public elementary and secondary schools, Canada, provinces and territories, 2005/2006 to 2009/2010	9
Table A.2.1	Full-time equivalent enrolments in public elementary and secondary schools, Canada, provinces and territories, 2005/2006 to 2009/2010	10
Table A.2.2	Percentage change of full-time equivalent enrolments in public elementary and secondary schools, Canada, provinces and territories, 2005/2006 to 2009/2010	10
Table A.3	Enrolments in public elementary and secondary schools as a percentage of total population, Canada, provinces and territories, 2005/2006 to 2009/2010	11
Table A.4.1	Regular second language program enrolments in public and private elementary and secondary schools, Canada, provinces and territories, 2005/2006 to 2009/2010	12
Table A.4.2	Percentage change of regular second language program enrolments in public elementary and secondary schools, Canada, provinces and territories, 2005/2006 to 2009/2010	13
Table A.5.1	Second language immersion program enrolments in public elementary and secondary schools, Canada, provinces and territories, 2005/2006 to 2009/2010	14
Table A.5.2	Percentage change of second language immersion program enrolments in public elementary and secondary schools, Canada, provinces and territories, 2005/2006 to 2009/2010	15
Table A.6.1	Minority language program enrolments in public elementary and secondary schools, Canada, provinces and territories, 2005/2006 to 2009/2010	16
Table A.6.2	Percentage change of minority language program enrolments in public elementary and secondary schools, Canada, provinces and territories, 2005/2006 to 2009/2010	16
Table A.7	Headcount enrolments in public school aboriginal language programs, Canada, provinces and territories, 2005/2006 to 2009/2010	17

## Table of contents

Table A.8	Headcount enrolments (public schools) in Special Needs Education, Canada, provinces and territories, 2005/2006 to 2009/2010	18
Table A.9	Headcount enrolments (public schools) in the special needs program, as a percentage of total enrolment, 2005/2006 to 2009/2010	19
Table A.10.1	Number of graduates in public schools, Canada, provinces and territories, 2005/2006 to 2009/2010	20
Table A.10.2	Percentage change in the number of graduates, public schools, Canada, provinces and territories, 2005/2006 to 2009/2010	21
Table A.11	Graduation rate for public schools, Canada, provinces and territories, 2005/2006 to 2009/2010	22
Table A.12.1	Educators headcount in public elementary and secondary schools, Canada, provinces and territories, 2005/2006 to 2009/2010	23
Table A.12.2	Percentage change of educators (headcount) in public elementary and secondary schools, Canada, provinces and territories, 2005/2006 to 2009/2010	24
Table A.13.1	Full-time equivalent educators in public elementary and secondary schools, Canada, provinces and territories, 2005/2006 to 2009/2010	25
Table A.13.2	Percentage change in full-time equivalent educators in public elementary and secondary schools, Canada, provinces and territories, 2005/2006 to 2009/2010	26
Table A.14	Student-educator ratio in public elementary and secondary schools, Canada, provinces and territories, 2005/2006 to 2009/2010	27
Table A.15	Average remuneration per educator in public elementary and secondary schools, Canada, provinces and territories, 2005/2006 to 2009/2010 (in current dollars)	28
Table A.16	Educator remuneration in public elementary and secondary schools, Canada, provinces and territories, 2005/2006 to 2009/2010 (in millions of current dollars)	29
Table A.17	Operating expenditures in public elementary and secondary schools, Canada, provinces and territories, 2005/2006 to 2009/2010 (in millions of current dollars)	30
Table A.18	Capital expenditures in public elementary and secondary schools, Canada, provinces and territories, 2005/2006 to 2009/2010 (in millions of current dollars)	31
Table A.19	Total expenditures in public elementary and secondary schools, Canada, provinces and territories, 2005/2006 to 2009/2010 (in millions of current dollars)	32
Table A.20.1	Total expenditures per student in public elementary and secondary schools, Canada, provinces and territories, 2005/2006 to 2009/2010 (in current dollars)	33
Table A.20.2	Total expenditures per student in public elementary and secondary schools, Canada, provinces and territories, 2005/2006 to 2009/2010 (in 2002 constant dollars)	34
Table A.21	Educator remuneration per student in public elementary and secondary schools, Canada, provinces and territories, 2005/2006 to 2009/2010 (in current dollars)	35

## Table of contents

Table A.22	Operating expenditures per student in public elementary and secondary schools, Canada, provinces and territories, 2005/2006 to 2009/2010 (in current dollars)	36
Table A.23	Annual capital expenditures per student in public elementary and secondary schools, Canada, provinces and territories, 2005/2006 to 2009/2010 (in current dollars)	37
Table A.24	Educator remuneration as a percentage of total expenditures in public elementary and secondary schools, Canada, provinces and territories, 2005/2006 to 2009/2010	38
Table A.25	Educator remuneration as a percentage of operating expenditures in public elementary and secondary schools, Canada, provinces and territories, 2005/2006 to 2009/2010	39
Table A.26.1	Total expenditures in public elementary and secondary schools per capita, Canada, provinces and territories, 2005/2006 to 2009/2010 (in current dollars)	40
Table A.26.2	Total expenditures in public elementary and secondary schools per capita, Canada, provinces and territories, 2005/2006 to 2009/2010 (in 2002 constant dollars)	41
Table A.27	Total population estimates, Canada, provinces and territories, July 1 <sup>st</sup> , 2006 to 2010	42
Table A.28	School age population estimates (5 to 17 years), Canada, provinces and territories, July 1 <sup>st</sup> , 2006 to 2010	43
Table A.29	Average earnings for full-time, full-year workers with a Bachelor degree, Canada, provinces and territories, 2005/2006 to 2009/2010 (in millions of current dollars)	44
Table A.30	Consumer price index, Canada, provinces and territories, 2005/2006 to 2009/2010	45
Table A.31	Consumer price index, Canada, provinces and territories, 2005/2006 to 2009/2010	46
Table A.32	Total expenditures in public elementary and secondary schools as a percentage of GDP, Canada, provinces and territories, 2005/2006 to 2009/2010	47
Table A.33	Gross domestic product, Canada, provinces and territories, 2005/2006 to 2009/2010 (in millions of current dollars)	48
Table A.34	Gross domestic product per capita, Canada, provinces and territories, 2005/2006 to 2009/2010 (in current dollars)	49
<b>Appendix 2 Definitions</b>		<b>50</b>
<b>Cumulative index</b>		<b>54</b>

## Note to readers

1. The number of graduates is at the end of the school year, while population estimates are as of July 1 of the corresponding school year. Late graduates are included in the calculations. The graduation rate should not be used to infer a dropout rate. The four programs that comprise the graduate pool are: regular programs for youth, adult upgrading programs (GED), vocational programs for youth and vocational programs for adults. Due to the small population in the three territories, changes in the number of graduates may yield high percentage changes from year to year.
2. The graduation rate used by the Elementary Secondary Education Survey (ESES) is aligned with the Organization for Economic Cooperation and Development (OECD) requirements in order to ensure that Canadian graduation rate data can be compared with other nations. It is calculated by dividing the number of graduates by the average of the 17 and 18 year old population:  
  
$$\text{Graduation rate} = \frac{\text{Graduates (High school graduates (youth and adults) and Vocational program graduates (youth and adults))}}{\text{Average number of the 17 and 18 year-old population}}$$
  
  
Due to differences in reporting, comparing graduation rate data between jurisdictions should be done with caution.
3. The term “educator” refers to teachers, school administrators and pedagogical support.
4. Note that the student-educator ratio is not the same as the student-teacher ratio. The student-educator ratio includes personnel listed in Note 3.
5. Data Table 29 (Total expenditures in public elementary and secondary schools as a percentage of total expenditures by provincial and local governments) and Data Table 35 (Total expenditures by provincial and local governments) have been discontinued until 2014 when this data is expected to be produced again.
6. All data, including financial data, are subject to revision.



# Appendix 1: Tables

**Table A.1.1**

**Headcount enrolments in public elementary and secondary schools, Canada, provinces and territories, 2005/2006 to 2009/2010**

	Canada	N.L.	P.E.I.	N.S.	N.B.	Que.	Ont.	Man.	Sask.	Alta.	B.C.	Y.T.	N.W.T.	Nvt.
	number													
<b>2005/2006</b>														
Public	5,213,462	76,806	21,948	142,304	114,820	1,215,927	2,118,544	182,371	175,588	551,740	589,379	5,335	9,571	9,129
<b>2006/2007</b>														
Public	5,169,601	74,345	21,365	138,661	112,013	1,204,612	2,103,464	180,043	172,109	560,563	578,797	5,232	9,332	9,065
<b>2007/2008</b>														
Public	5,116,762	72,109	20,813	135,303	110,288	1,188,888	2,087,588	179,320	168,622	559,118	571,415	5,227	9,048	9,023
<b>2008/2009</b>														
Public	5,089,640	70,641	20,324	133,134	108,407	1,187,589	2,070,736	177,962	167,553	564,051	566,048	5,153	8,762	9,280
<b>2009/2010</b>														
Public	5,077,021	69,665	19,955	130,550	106,394	1,189,790	2,061,390	177,500	168,194	567,979	562,902	5,100	8,564	9,038

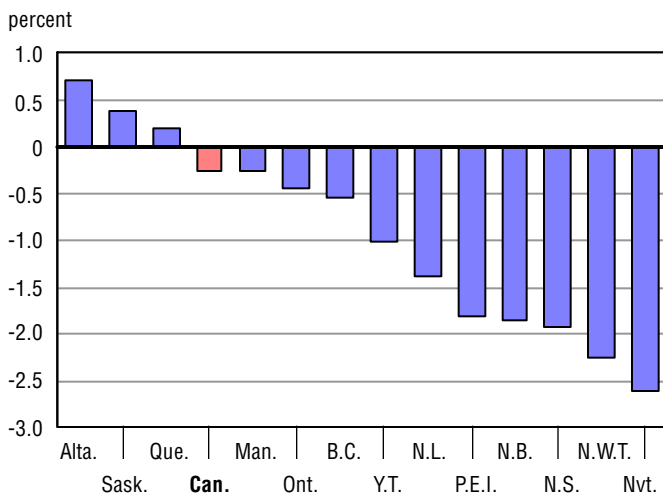
**Table A.1.2**

**Percentage change for Headcount enrolments in public elementary and secondary schools, Canada, provinces and territories, 2005/2006 to 2009/2010**

	Canada	N.L.	P.E.I.	N.S.	N.B.	Que.	Ont.	Man.	Sask.	Alta.	B.C.	Y.T.	N.W.T.	Nvt.
	percent													
<b>2005/2006</b>														
Public	-0.8	-3.4	-2.0	-2.1	-2.0	-1.4	-0.3	-1.1	-1.7	0.1	-1.1	-2.3	-0.4	-2.4
<b>2006/2007</b>														
Public	-0.8	-3.2	-2.7	-2.6	-2.4	-0.9	-0.7	-1.3	-2.0	1.6	-1.8	-1.9	-2.5	-0.7
<b>2007/2008</b>														
Public	-1.0	-3.0	-2.6	-2.4	-1.5	-1.3	-0.8	-0.4	-2.0	-0.3	-1.3	-0.1	-3.0	-0.5
<b>2008/2009</b>														
Public	-0.5	-2.0	-2.3	-1.6	-1.7	-0.1	-0.8	-0.8	-0.6	0.9	-0.9	-1.4	-3.2	2.8
<b>2009/2010</b>														
Public	-0.2	-1.4	-1.8	-1.9	-1.9	0.2	-0.5	-0.3	0.4	0.7	-0.6	-1.0	-2.3	-2.6

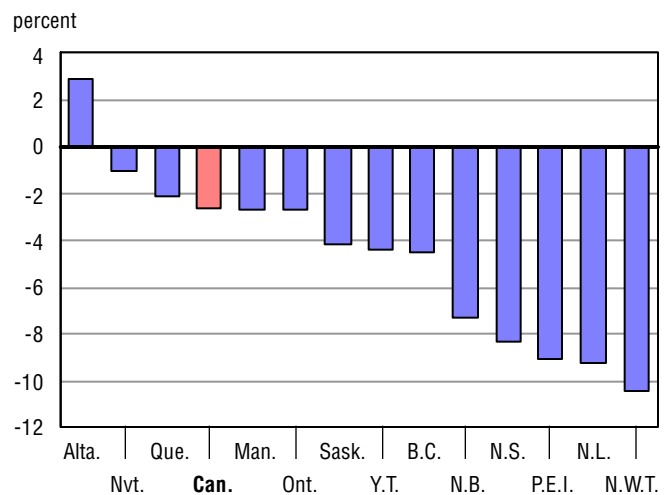
**Chart A.1.1**

**Percentage change between 2008/2009 and 2009/2010**



**Chart A.1.2**

**Percentage change between 2005/2006 and 2009/2010**



**Table A.2.1**

**Full-time equivalent enrolments in public elementary and secondary schools, Canada, provinces and territories, 2005/2006 to 2009/2010**

	Canada	N.L.	P.E.I.	N.S.	N.B.	Que.	Ont.	Man.	Sask.	Alta.	B.C.	Y.T.	N.W.T.	Nvt.
	number													
<b>2005/2006</b>														
Public	4,887,480	74,328	21,948	142,304	114,820	1,051,190	2,006,732	176,350	169,302	532,876	574,427	5,335	9,090	8,779
<b>2006/2007</b>														
Public	4,839,276	71,945	21,365	138,661	112,013	1,036,467	1,991,161	174,107	165,590	540,880	563,936	5,232	9,198	8,723
<b>2007/2008</b>														
Public	4,783,407	69,733	20,813	135,303	110,288	1,016,687	1,976,773	173,392	162,182	538,611	556,777	5,227	8,928	8,694
<b>2008/2009</b>														
Public	4,735,943	68,255	20,324	133,134	108,407	997,978	1,958,840	172,045	160,362	542,581	551,320	5,153	8,628	8,917
<b>2009/2010</b>														
Public	4,711,093	67,297	19,955	130,550	106,394	990,132	1,948,463	171,518	160,613	545,819	548,153	5,100	8,407	8,694

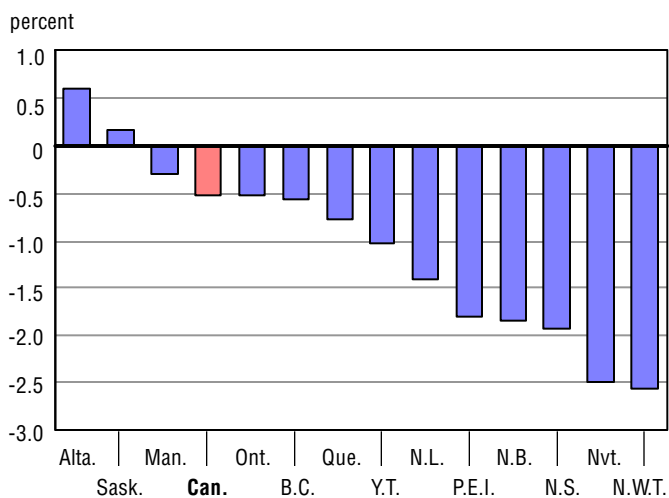
**Table A.2.2**

**Percentage change of full-time equivalent enrolments in public elementary and secondary schools, Canada, provinces and territories, 2005/2006 to 2009/2010**

	Canada	N.L.	P.E.I.	N.S.	N.B.	Que.	Ont.	Man.	Sask.	Alta.	B.C.	Y.T.	N.W.T.	Nvt.
	percent													
<b>2005/2006</b>														
Public	-0.8	-3.3	-2.0	-2.1	-2.0	-1.3	-0.3	-1.1	-1.8	0.2	-1.1	1.2	-1.4	-2.5
<b>2006/2007</b>														
Public	-1.0	-3.2	-2.7	-2.6	-2.4	-1.4	-0.8	-1.3	-2.2	1.5	-1.8	-1.9	1.2	-0.6
<b>2007/2008</b>														
Public	-1.2	-3.1	-2.6	-2.4	-1.5	-1.9	-0.7	-0.4	-2.1	-0.4	-1.3	-0.1	-2.9	-0.3
<b>2008/2009</b>														
Public	-1.0	-2.1	-2.3	-1.6	-1.7	-1.8	-0.9	-0.8	-1.1	0.7	-1.0	-1.4	-3.4	2.6
<b>2009/2010</b>														
Public	-0.5	-1.4	-1.8	-1.9	-1.9	-0.8	-0.5	-0.3	0.2	0.6	-0.6	-1.0	-2.6	-2.5

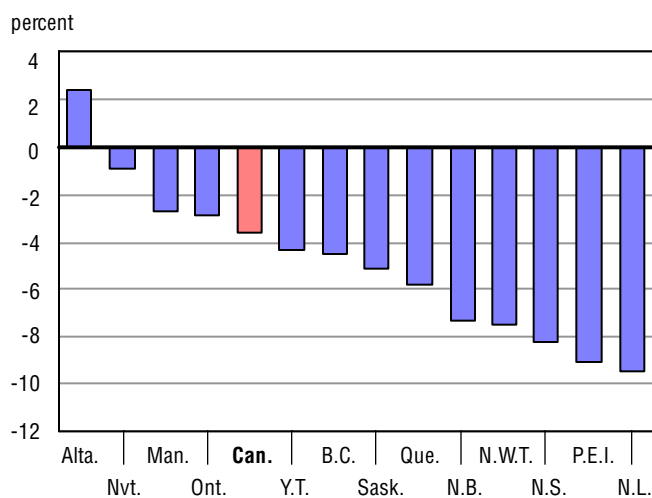
**Chart A.2.1**

**Percentage change between 2008/2009 and 2009/2010**



**Chart A.2.2**

**Percentage change between 2005/2006 and 2009/2010**



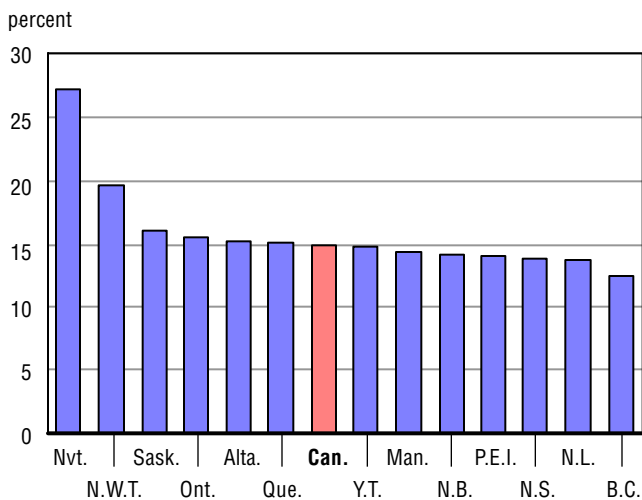
**Table A.3**

**Enrolments in public elementary and secondary schools as a percentage of total population, Canada, provinces and territories, 2005/2006 to 2009/2010**

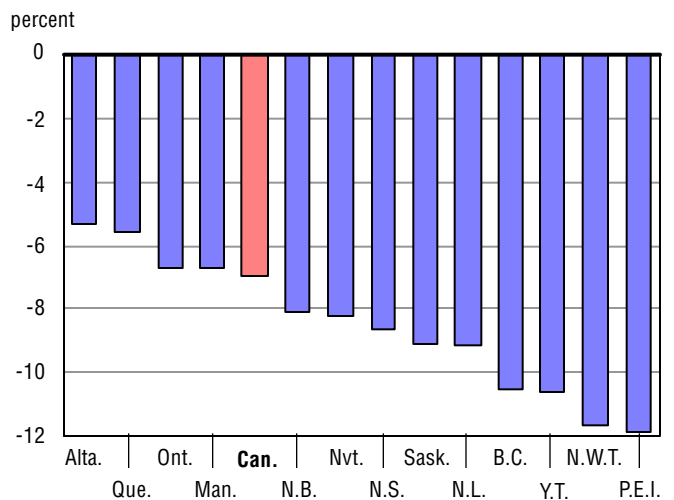
	Canada	N.L.	P.E.I.	N.S.	N.B.	Que.	Ont.	Man.	Sask.	Alta.	B.C.	Y.T.	N.W.T.	Nvt.
2005/2006	16.0	15.1	15.9	15.2	15.4	15.9	16.7	15.4	17.7	16.1	13.9	16.5	22.2	29.6
Percentage change	-1.8	-2.6	-1.9	-2.1	-1.7	-2.0	-1.3	-1.6	-1.6	-2.8	-2.2	-3.4	0.1	-3.9
2006/2007	15.7	14.7	15.5	14.8	15.0	15.7	16.4	15.1	17.2	16.0	13.4	16.1	21.4	29.0
Percentage change	-1.9	-2.5	-2.8	-2.3	-2.4	-1.7	-1.7	-2.1	-2.8	-1.0	-3.3	-2.8	-3.3	-2.2
2007/2008	15.4	14.2	14.9	14.4	14.8	15.3	16.1	14.9	16.6	15.6	13.0	15.8	20.7	28.6
Percentage change	-2.2	-3.0	-3.5	-2.5	-1.7	-2.1	-1.8	-1.4	-3.3	-2.4	-2.9	-1.7	-3.4	-1.5
2008/2009	15.1	13.9	14.4	14.2	14.5	15.2	15.8	14.6	16.3	15.4	12.7	15.3	20.1	28.8
Percentage change	-1.7	-2.4	-3.4	-1.9	-2.0	-1.1	-1.8	-1.9	-2.1	-1.3	-2.6	-3.0	-3.1	0.9
2009/2010	14.9	13.7	14.0	13.9	14.2	15.0	15.6	14.4	16.1	15.3	12.4	14.8	19.6	27.2
Percentage change	-1.4	-1.7	-2.6	-2.3	-2.2	-0.8	-1.5	-1.5	-1.2	-0.7	-2.1	-3.5	-2.5	-5.6

**Note:** Table A.3 = Table A.1.1 (Enrolments) divided by Table A.30 (Total population estimates).

**Chart A.3.1**  
Enrolments as a percentage of total population, 2009/2010



**Chart A.3.2**  
Percentage change between 2005/2006 and 2009/2010



**Table A.4.1**

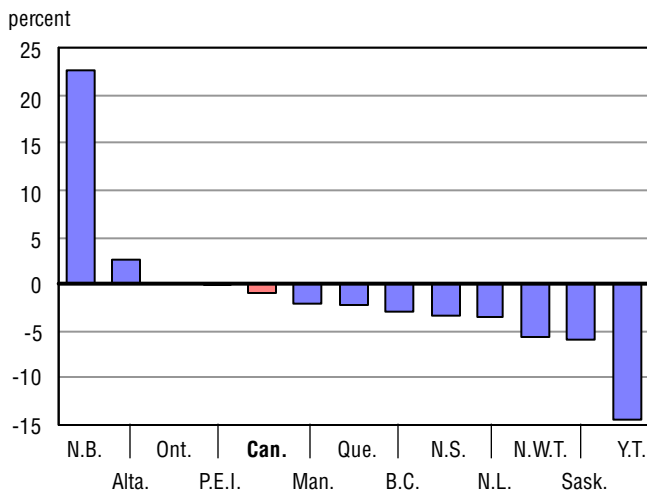
**Regular second language program enrolments in public elementary and secondary schools, Canada, provinces and territories, 2005/2006 to 2009/2010<sup>1</sup>**

	Canada	N.L.	P.E.I.	N.S.	N.B. <sup>2</sup>	Que. <sup>3</sup>	Ont.	Man.	Sask.	Alta.	B.C.	Y.T.	N.W.T.	Nvt.
	number													
<b>2005/2006</b>														
Public	2,101,138	40,451	9,460	61,001	44,686	641,883	841,033	69,693	54,237	118,646	215,826	2,254	1,968	.
<b>2006/2007</b>														
Public	2,200,114	37,417	8,867	58,251	43,437	759,121	822,917	67,591	56,158	131,542	210,400	2,154	2,259	.
<b>2007/2008</b>														
Public	2,167,886	36,367	8,445	55,863	39,652	739,232	817,890	65,534	55,745	137,696	207,225	2,091	2,146	.
<b>2008/2009</b>														
Public	2,106,235	34,593	7,980	53,541	24,185	720,260	803,471	65,593	51,327	142,001	199,208	2,124	1,952	.
<b>2009/2010</b>														
Public	2,084,726	33,335	7,966	51,742	29,679	703,022	803,923	64,257	48,258	145,501	193,382	1,818	1,843	.

. not available for any reference period

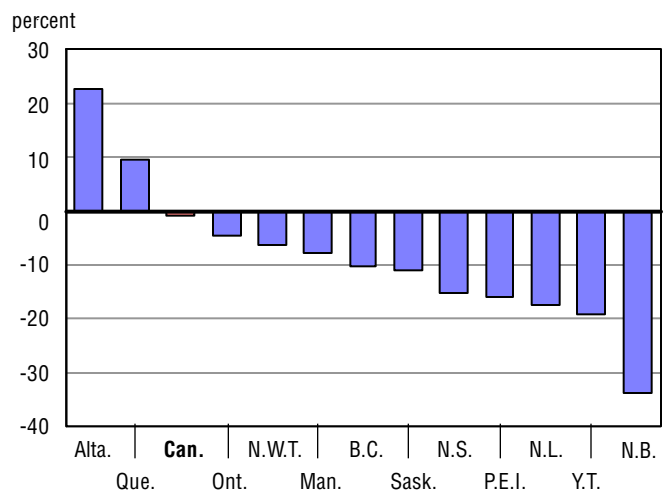
1. All jurisdictions, 2005/2006 to 2009/2010. (Public School) Data are available for English second language programs for Québec. Data are available for French second language programs for the other provinces.
2. As of 2008/2009, several changes were implemented to the French as a Second Language (FSL) program. One of the entry points for French Immersion in the public system was changed from Grade 1 to Grade 3. A new methodology was introduced to replace Core French, and this new program began at Grade 4 instead of Grade 1 with a significant concentration of FSL instruction at Grade 5.
3. 2005/2006 data are for students in grades 3 to 11. Data for 2006/2007 to 2009/2010 includes students from grades 1 to 11.

**Chart A.4.1**  
Percentage change between 2008/2009 and 2009/2010



**Note:** Nunavut is excluded, data unavailable for entire period.

**Chart A.4.2**  
Percentage change between 2005/2006 and 2009/2010



**Note:** Nunavut is excluded, data unavailable for entire period.

**Table A.4.2****Percentage change of regular second language program enrolments in public elementary and secondary schools, Canada, provinces and territories, 2005/2006 to 2009/2010<sup>1</sup>**

	Canada	N.L.	P.E.I.	N.S.	N.B. <sup>2</sup>	Que. <sup>3</sup>	Ont.	Man.	Sask.	Alta.	B.C.	Y.T.	N.W.T.	Nvt.
	percent													
<b>2005/2006</b>														
Public	-1.4	-3.5	-4.9	-4.7	-0.7	-0.9	-1.4	0.1	-9.3	6.4	-3.2	-7.6	-18.1	...
<b>2006/2007</b>														
Public	4.7	-7.5	-6.3	-4.5	-2.8	18.3	-2.2	-3.0	3.5	10.9	-2.5	-4.4	14.8	...
<b>2007/2008</b>														
Public	-1.5	-2.8	-4.8	-4.1	-8.7	-2.6	-0.6	-3.0	-0.7	4.7	-1.5	-2.9	-5.0	...
<b>2008/2009</b>														
Public	-2.8	-4.9	-5.5	-4.2	-39.0	-2.6	-1.8	0.1	-7.9	3.1	-3.9	1.6	-9.0	...
<b>2009/2010</b>														
Public	-1.0	-3.6	-0.2	-3.4	22.7	-2.4	0.1	-2.0	-6.0	2.5	-2.9	-14.4	-5.6	...

... not applicable

1. All jurisdictions, 2005/2006 to 2009/2010. (Public School) Data are available for English second language programs for Québec. Data are available for French second language programs for the other provinces.
2. As of 2008/2009, several changes were implemented to the French as a Second Language (FSL) program. One of the entry points for French Immersion in the public system was changed from Grade 1 to Grade 3. A new methodology was introduced to replace Core French, and this new program began at Grade 4 instead of Grade 1 with a significant concentration of FSL instruction at Grade 5.
3. 2005/2006 data are for students in grades 3 to 11. Data for 2006/2007 to 2009/2010 includes students from grades 1 to 11.

**Table A.5.1**

**Second language immersion program enrolments in public elementary and secondary schools, Canada, provinces and territories, 2005/2006 to 2009/2010**

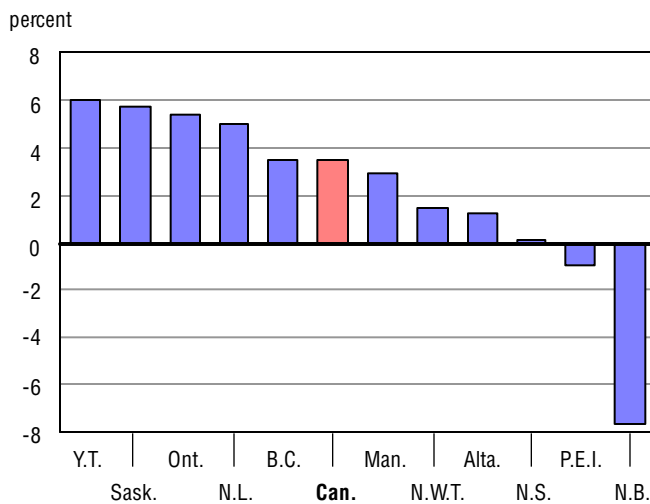
	Canada	N.L.	P.E.I.	N.S.	N.B. <sup>1</sup>	Que. <sup>2</sup>	Ont. <sup>3</sup>	Man.	Sask.	Alta.	B.C.	Y.T.	N.W.T.	Nvt. <sup>2</sup>
	number													
<b>2005/2006</b>														
Public	295,197	6,823	4,164	14,341	21,526	...	152,723	17,604	8,472	30,452	38,002	444	646	.
<b>2006/2007</b>														
Public	304,293	7,222	4,108	14,625	21,285	...	158,405	17,871	8,858	31,317	39,509	463	630	.
<b>2007/2008</b>														
Public	311,055	7,501	4,246	14,683	20,719	...	162,321	18,214	9,114	32,060	40,996	540	661	.
<b>2008/2009</b>														
Public	317,582	8,008	4,237	15,055	18,658	...	167,215	18,563	9,346	32,797	42,471	568	664	.
<b>2009/2010</b>														
Public	328,626	8,408	4,197	15,069	17,232	...	176,291	19,103	9,886	33,205	43,959	602	674	.

. not available for any reference period

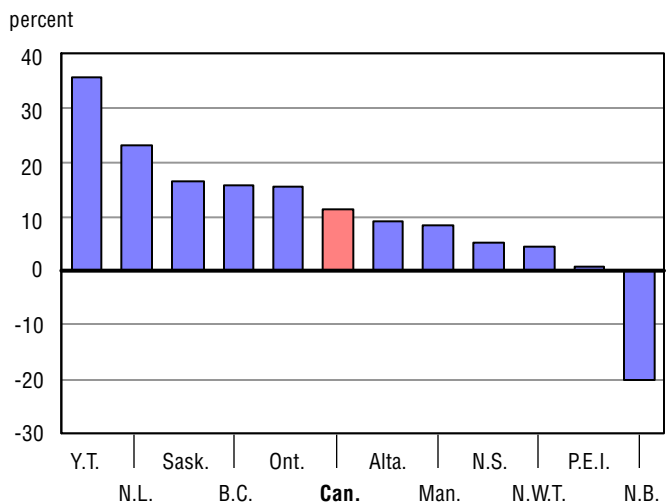
... not applicable

- As of 2008/2009, several changes were implemented to the French as a Second Language (FSL) program. One of the entry points for French Immersion in the public system was changed from Grade 1 to Grade 3. A new methodology was introduced to replace Core French, and this new program began at Grade 4 instead of Grade 1 with a significant concentration of FSL instruction at Grade 5.
- There is no Second Language Immersion Program in Quebec or Nunavut.
- Ontario: 2005/2006 to 2009/2010. Includes French Immersion and Extended French programs.

**Chart A.5.1**  
Percentage change between 2008/2009 and 2009/2010



**Chart A.5.2**  
Percentage change between 2005/2006 and 2009/2010



**Table A.5.2****Percentage change of second language immersion program enrolments in public elementary and secondary schools, Canada, provinces and territories, 2005/2006 to 2009/2010**

	Canada	N.L.	P.E.I.	N.S.	N.B. <sup>1</sup>	Que. <sup>2</sup>	Ont. <sup>3</sup>	Man.	Sask.	Alta.	B.C.	Y.T.	N.W.T.	Nvt. <sup>2</sup>
	percent													
<b>2005/2006</b>														
Public	2.2	5.3	6.1	1.1	-1.6	...	1.5	1.0	-2.1	3.5	7.0	8.3	3.9	...
<b>2006/2007</b>														
Public	3.1	5.8	-1.3	2.0	-1.1	...	3.7	1.5	4.6	2.8	4.0	4.3	-2.5	...
<b>2007/2008</b>														
Public	2.2	3.9	3.4	0.4	-2.7	...	2.5	1.9	2.9	2.4	3.8	16.6	4.9	...
<b>2008/2009</b>														
Public	2.1	6.8	-0.2	2.5	-9.9	...	3.0	1.9	2.5	2.3	3.6	5.2	0.5	...
<b>2009/2010</b>														
Public	3.5	5.0	-0.9	0.1	-7.6	...	5.4	2.9	5.8	1.2	3.5	6.0	1.5	...

... not applicable

1. As of 2008/2009, several changes were implemented to the French as a Second Language (FSL) program. One of the entry points for French Immersion in the public system was changed from Grade 1 to Grade 3. A new methodology was introduced to replace Core French, and this new program began at Grade 4 instead of Grade 1 with a significant concentration of FSL instruction at Grade 5.
2. There is no Second Language Immersion Program in Quebec or Nunavut.
3. Ontario: 2005/2006 to 2009/2010. Includes French Immersion and Extended French programs.

**Table A.6.1**

**Minority language program enrolments in public elementary and secondary schools, Canada, provinces and territories, 2005/2006 to 2009/2010<sup>1</sup>**

	Canada	N.L.	P.E.I.	N.S.	N.B.	Que.	Ont.	Man.	Sask.	Alta.	B.C.	Y.T.	N.W.T.	Nvt.
	number													
<b>2005/2006</b>														
Public	249,390	203	697	4,153	33,460	106,361	90,075	5,250	1,124	4,138	3,632	110	143	44
<b>2006/2007</b>														
Public	247,130	222	705	4,124	32,353	104,129	90,217	5,338	1,132	4,737	3,816	146	163	48
<b>2007/2008</b>														
Public	245,272	251	694	4,256	31,725	101,283	91,071	5,378	1,118	5,161	3,964	141	181	49
<b>2008/2009</b>														
Public	243,465	269	712	4,358	31,119	98,813	91,830	5,323	1,162	5,254	4,221	158	193	53
<b>2009/2010</b>														
Public	240,621	255	715	4,446	30,420	95,004	92,976	5,223	1,236	5,565	4,368	170	192	51

1. (Public School) data are for English minority language programs for Québec. Data are for French minority language programs for the other provinces.

**Table A.6.2**

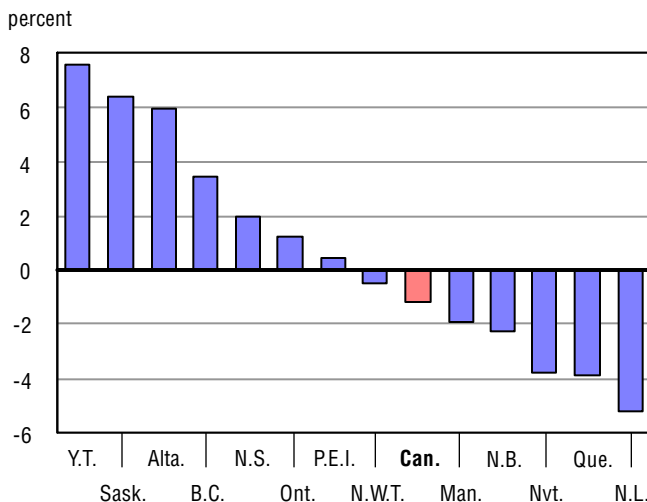
**Percentage change of minority language program enrolments in public elementary and secondary schools, Canada, provinces and territories, 2005/2006 to 2009/2010<sup>1</sup>**

	Canada	N.L.	P.E.I.	N.S.	N.B.	Que.	Ont.	Man.	Sask.	Alta.	B.C.	Y.T.	N.W.T.	Nvt.
	percent													
<b>2005/2006</b>														
Public	-0.5	5.2	3.6	0.8	-2.5	-1.3	0.3	0.8	6.6	6.9	5.1	-5.2	4.4	-6.4
<b>2006/2007</b>														
Public	-0.9	9.4	1.1	-0.7	-3.3	-2.1	0.2	1.7	0.7	14.5	5.1	32.7	14.0	9.1
<b>2007/2008</b>														
Public	-0.8	13.1	-1.6	3.2	-1.9	-2.7	0.9	0.7	-1.2	9.0	3.9	-3.4	11.0	2.1
<b>2008/2009</b>														
Public	-0.7	7.2	2.6	2.4	-1.9	-2.4	0.8	-1.0	3.9	1.8	6.5	12.1	6.6	8.2
<b>2009/2010</b>														
Public	-1.2	-5.2	0.4	2.0	-2.2	-3.9	1.2	-1.9	6.4	5.9	3.5	7.6	-0.5	-3.8

1. (Public School) data are for English minority language programs for Québec. Data are for French minority language programs for the other provinces.

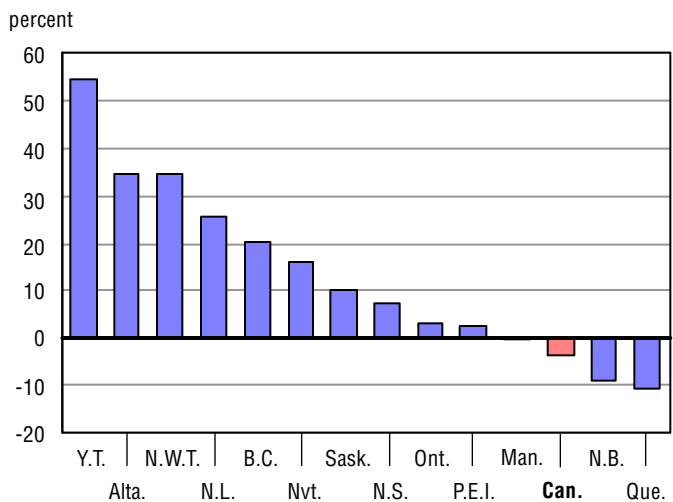
**Chart A.6.1**

**Percentage change between 2008/2009 and 2009/2010**



**Chart A.6.2**

**Percentage change between 2005/2006 and 2009/2010**





**Table A.7**
**Headcount enrolments (public schools) in aboriginal language programs, Canada, provinces and territories, 2005/2006 to 2009/2010**

	Canada <sup>1</sup>	N.L.	P.E.I.	N.S.	N.B.	Que.	Ont. <sup>2</sup>	Man.	Sask.	Alta.	B.C.	Y.T.	N.W.T.	Nvt.
2005/2006	48,484	1,110	...	...	101	1,974	4,003	1,131	6,914	.	29,202	...	4,049 <sup>°</sup>	.
Percentage change	0.5	-4.1	...	...	27.8	-1.7	-0.2	6.8	-3.3	...	1.8	...	-1.1	...
2006/2007	47,823	1,044	...	...	130	1,969	3,972	969	6,447	.	29,259	...	4,033 <sup>°</sup>	.
Percentage change	-1.4	-5.9	...	...	28.7	-0.3	-0.8	-14.3	-6.8	.	0.2	...	-0.4	.
2007/2008	47,174	668	...	...	146	2,049	3,644	991	6,259	.	29,482	...	3,935 <sup>°</sup>	.
Percentage change	-1.4	-36.0	...	...	12.3	4.1	-8.3	2.3	-2.9	.	0.8	...	-2.4	.
2008/2009	47,977	608	...	...	194	1,842	4,922	1,103	6,164	.	29,477	...	3,667	.
Percentage change	1.7	-9.0	...	...	32.9	-10.1	35.1	11.3	-1.5	.	0.0	...	-6.8	.
2009/2010	46,275	555	...	...	200	2,059	5,154	1,231	5,511	.	28,488	...	3,077	.
Percentage change	-3.5	-8.7	...	...	3.1	11.8	4.7	11.6	-10.6	.	-3.4	...	-16.1	.

. not available for any reference period

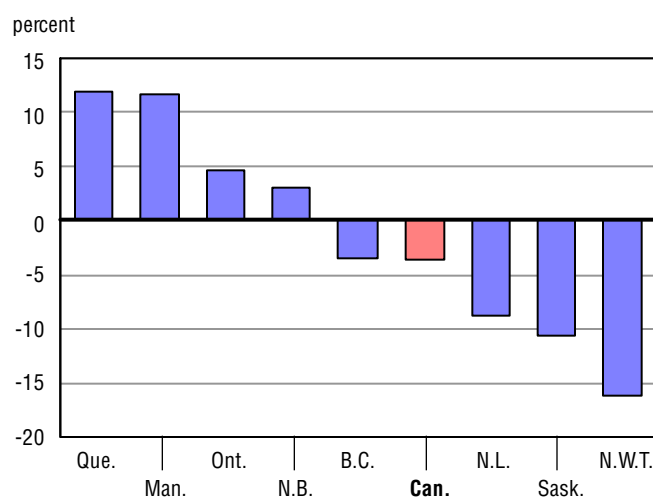
... not applicable

<sup>°</sup> estimate

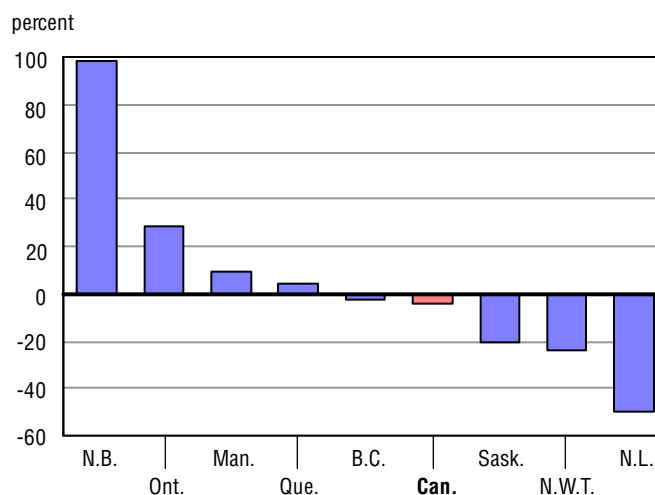
0 true zero or a value rounded to zero

1. The Canada total does not include data from Alberta and Nunavut.

2. Ontario: Due to a change in data collection methods in 2008/2009, data for previous years are not strictly comparable.

**Chart A.7.1**  
**Percentage change between 2008/2009 and 2009/2010**


**Note:** Nunavut and Alberta are excluded, data unavailable for entire period.

**Chart A.7.2**  
**Percentage change between 2005/2006 and 2009/2010**


**Note:** Nunavut and Alberta are excluded, data unavailable for entire period.

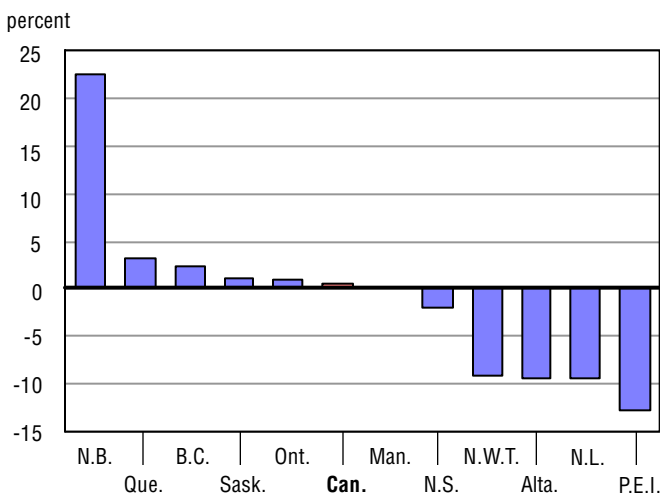
**Table A.8**

**Headcount enrolments (public schools) in Special Needs Education, Canada, provinces and territories, 2005/2006 to 2009/2010**

	Canada <sup>1</sup>	N.L.	P.E.I.	N.S.	N.B.	Que.	Ont.	Man.	Sask.	Alta.	B.C.	Y.T.	N.W.T.	Nvt.
2005/2006	<b>565,471</b>	12,146	5,021	20,776 <sup>e</sup>	16,764 <sup>e</sup>	152,741	191,929	4,384	42,983	67,733	49,156	.	1,838 <sup>e</sup>	.
Percentage change	<b>1.4</b>	2.7	-4.1	-2.1	-2.0	3.2	0.9	11.6	4.8	-1.3	1.5	.	0.0	.
2006/2007	<b>561,391</b>	11,708	5,501	20,245 <sup>e</sup>	16,354 <sup>e</sup>	150,201	190,874	4,756	44,067 <sup>e</sup>	68,201	48,138	.	1,346	.
Percentage change	<b>-0.7</b>	-3.6	9.6	-2.6	-2.4	-1.7	-0.5	8.5	2.5	0.7	-2.1	.	-26.8	.
2007/2008	<b>565,775</b>	12,407	5,909	19,754 <sup>e</sup>	16,102 <sup>e</sup>	149,917	192,044	5,644	45,517	68,713	47,781	.	1,987	.
Percentage change	<b>0.8</b>	6.0	7.4	-2.4	-1.5	-0.2	0.6	18.7	3.3	0.8	-0.7	.	47.6	.
2008/2009	<b>583,644</b>	11,692	7,056	19,438 <sup>e</sup>	15,827 <sup>e</sup>	161,081	192,930	5,642	46,879	72,075	48,843	.	2,181	.
Percentage change	<b>3.2</b>	-5.8	19.4	-1.6	-1.7	7.4	0.5	0.0	3.0	4.9	2.2	.	9.8	.
2009/2010	<b>586,503</b>	10,601	6,162	19,060 <sup>e</sup>	19,393	166,205	194,674	5,647	47,429	65,365	49,986	.	1,981	.
Percentage change	<b>0.5</b>	-9.3	-12.7	-1.9	22.5	3.2	0.9	0.1	1.2	-9.3	2.3	.	-9.2	.

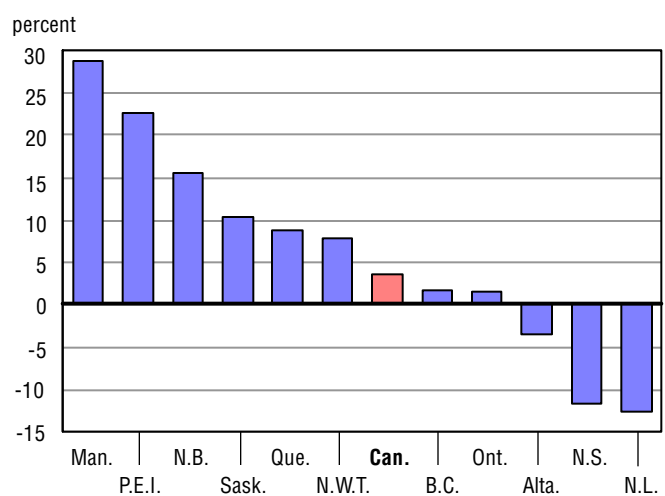
- . not available for any reference period
- <sup>e</sup> estimate
- 0 true zero or a value rounded to zero
- 1. The Canada total does not include data from the Yukon or Nunavut.

**Chart A.8.1**  
Percentage change between 2008/2009 and 2009/2010



**Note:** Nunavut and Yukon are excluded, data unavailable for entire period.

**Chart A.8.2**  
Percentage change between 2005/2006 and 2009/2010



**Note:** Nunavut and Yukon are excluded, data unavailable for entire period.

**Table A.9**

**Headcount enrolments (public schools) in the special needs program, as a percentage of total enrolment, 2005/2006 to 2009/2010**

	Canada	N.L.	P.E.I.	N.S.	N.B.	Que.	Ont.	Man.	Sask.	Alta.	B.C.	Y.T.	N.W.T.	Nvt.
2005/2006	10.8	15.8	22.9	14.6 <sup>e</sup>	14.6 <sup>e</sup>	12.6	9.1	2.4	24.5	12.3	8.3	.	19.2 <sup>e</sup>	.
Percentage change	2.2	6.3	-2.2	0.0	0.0	4.6	1.1	12.8	6.6	-1.4	2.6	.	0.4	.
2006/2007	10.9	15.7	25.7	14.6 <sup>e</sup>	14.6 <sup>e</sup>	12.5	9.1	2.6	25.6 <sup>e</sup>	12.2	8.3	.	14.4	.
Percentage change	0.1	-0.4	12.5	0.0	0.0	-0.7	0.2	9.9	4.6	-0.9	-0.3	.	-24.9	.
2007/2008	11.1	17.2	28.4	14.6 <sup>e</sup>	14.6 <sup>e</sup>	12.6	9.2	3.1	27.0	12.3	8.4	.	22.0	.
Percentage change	1.8	9.3	10.3	0.0	0.0	1.1	1.4	19.1	5.4	1.0	0.5	.	52.3	.
2008/2009	11.5	16.6	34.7	14.6 <sup>e</sup>	14.6 <sup>e</sup>	13.6	9.3	3.2	28.0	12.8	8.6	.	24.9	.
Percentage change	3.7	-3.8	22.3	0.0	0.0	7.6	1.3	0.7	3.6	4.0	3.2	.	13.3	.
2009/2010	11.0	15.2	30.9	14.6 <sup>e</sup>	18.2	14.0	9.4	3.2	28.2	11.5	8.9	.	23.1	.
Percentage change	-4.1	-8.1	-11.1	0.0	24.8	3.0	1.4	0.3	0.8	-9.9	2.9	.	-7.1	.

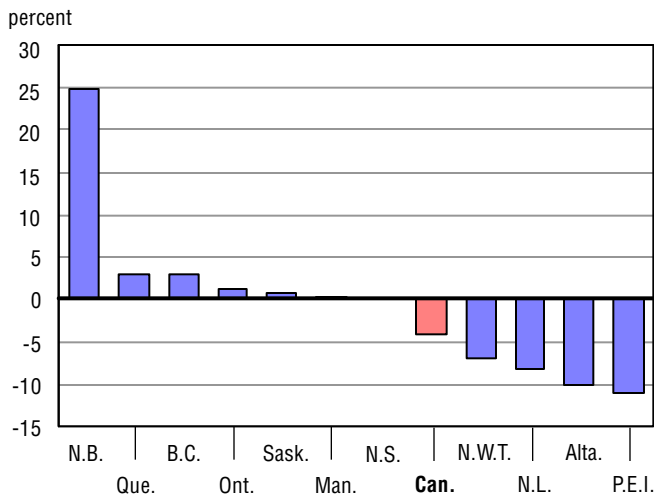
. not available for any reference period

<sup>e</sup> estimate

0 true zero or a value rounded to zero

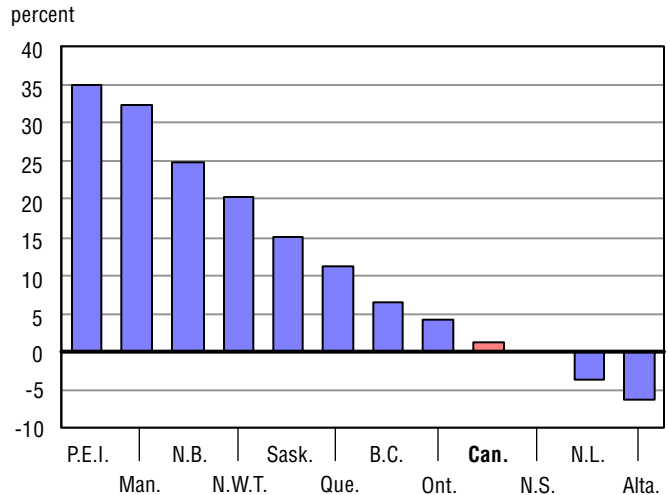
**Note:** Table A.9 = Table A.8 (Enrolment in Special Needs Education) divided by Table A.1.1 (Headcount enrolments).

**Chart A.9.1**  
Percentage change between 2008/2009 and 2009/2010



**Note:** Northwest Territories and Yukon are excluded, data unavailable for entire period.

**Chart A.9.2**  
Percentage change between 2005/2006 and 2009/2010



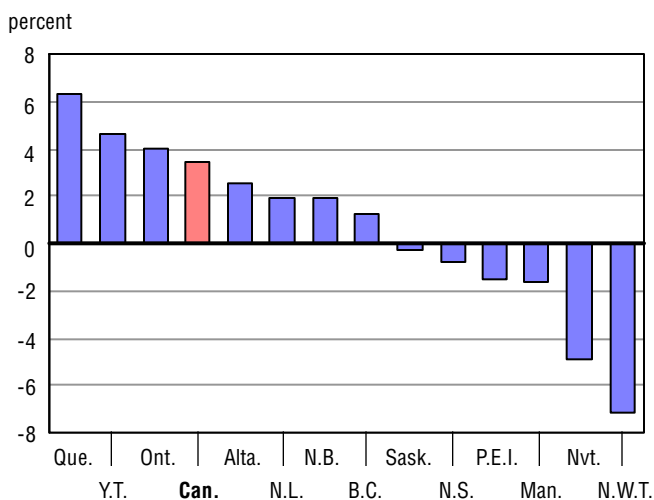
**Note:** Northwest Territories and Yukon are excluded, data unavailable for entire period.

**Table A.10.1**  
**Number of graduates in public schools, Canada, provinces and territories, 2005/2006 to 2009/2010**

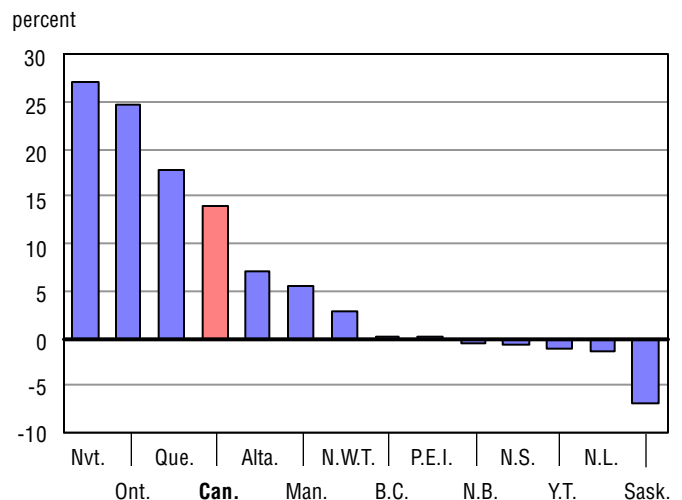
	Canada	N.L.	P.E.I.	N.S.	N.B.	Que.	Ont.	Man. <sup>1</sup>	Sask.	Alta.	B.C. <sup>2</sup>	Y.T.	N.W.T.	Nvt.
	number													
<b>2005/2006</b>														
Public	308,585	5,276	1,736	10,298	8,299	66,971	118,099	11,183	12,486	32,287	41,030	321	414	185
<b>2006/2007</b>														
Public	318,555	5,465	1,746	10,440	7,977	69,683	126,048	11,523	12,106	33,115	39,530	316	407	199
<b>2007/2008</b>														
Public	328,861	5,411	1,771	10,570	8,030	73,118	131,283	11,882	11,974	33,344	40,469	347	451	211
<b>2008/2009</b>														
Public	339,973	5,106	1,764	10,296	8,095	74,140	141,572	11,995	11,660	33,722	40,614	303	459	247
<b>2009/2010</b>														
Public	351,692	5,201	1,738	10,217	8,251	78,821	147,332	11,805	11,630	34,587	41,132	317	426	235

1. Historical revisions have been made to this table to exclude students who graduated from Adult Learning Centres registered under the *Adult Learning Centres Act*, effective July 2001. This has the effect of understating the number of graduates and the associated graduation rate for Manitoba as compared to other provinces and jurisdictions and should not be considered directly comparable.
2. The number of graduates in the final year is understated by 2 - 3% because some schools have not submitted course information before the data collection cutoff for this report.

**Chart A.10.1**  
**Percentage change between 2008/2009 and 2009/2010**



**Chart A.10.2**  
**Percentage change between 2005/2006 and 2009/2010**



**Table A.10.2****Percentage change in the number of graduates, public schools, Canada, provinces and territories, 2005/2006 to 2009/2010**

	Canada	N.L.	P.E.I.	N.S.	N.B.	Que.	Ont.	Man. <sup>1</sup>	Sask.	Alta.	B.C. <sup>2</sup>	Y.T.	N.W.T.	Nvt.
	percent													
<b>2005/2006</b>														
Public	-1.1	-4.4	2.4	-1.0	1.2	2.8	-5.4	-0.1	2.2	1.4	2.8	1.6	5.3	3.9
<b>2006/2007</b>														
Public	3.2	3.6	0.6	1.4	-3.9	4.0	6.7	3.0	-3.0	2.6	-3.7	-1.6	-1.7	7.6
<b>2007/2008</b>														
Public	3.2	-1.0	1.4	1.2	0.7	4.9	4.2	3.1	-1.1	0.7	2.4	9.8	10.8	6.0
<b>2008/2009</b>														
Public	3.4	-5.6	-0.4	-2.6	0.8	1.4	7.8	1.0	-2.6	1.1	0.4	-12.7	1.8	17.1
<b>2009/2010</b>														
Public	3.4	1.9	-1.5	-0.8	1.9	6.3	4.1	-1.6	-0.3	2.6	1.3	4.6	-7.2	-4.9

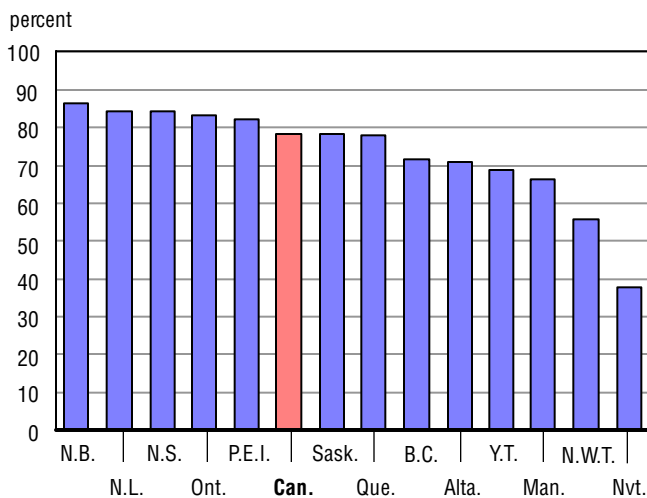
1. Historical revisions have been made to this table to exclude students who graduated from Adult Learning Centres registered under the *Adult Learning Centres Act*, effective July 2001. This has the effect of understating the number of graduates and the associated graduation rate for Manitoba as compared to other provinces and jurisdictions and should not be considered directly comparable.
2. The number of graduates in the final year is understated by 2 - 3% because some schools have not submitted course information before the data collection cutoff for this report.

**Table A.11**  
**Graduation rate<sup>1,2</sup>, Canada, provinces and territories, 2005/2006 to 2009/2010**

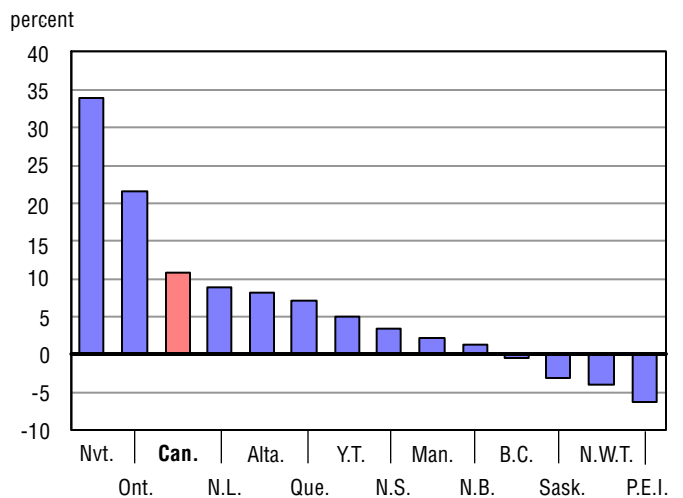
	Canada	N.L.	P.E.I.	N.S.	N.B.	Que.	Ont.	Man. <sup>3</sup>	Sask.	Alta.	B.C. <sup>4</sup>	Y.T.	N.W.T.	Nvt.
2005/2006	70.7	77.5	87.8	81.4	85.4	72.7	68.5	65.1	80.7	65.4	72.2	65.8	57.9	28.5
Percentage change	-4.3	-3.6	1.1	-2.2	0.2	-1.2	-7.6	-2.0	0.2	-1.0	-5.3	1.0	7.3	-2.5
2006/2007	70.3	78.7	85.1	80.7	81.0	70.9	70.6	64.4	76.2	65.1	67.7	67.7	55.5	29.8
Percentage change	-0.6	1.6	-3.1	-0.8	-5.2	-2.5	3.2	-1.0	-5.5	-0.5	-6.2	2.9	-4.2	4.7
2007/2008	71.4	78.5	84.3	81.7	80.6	71.1	72.6	65.2	75.7	65.8	69.2	72.0	58.0	31.7
Percentage change	1.6	-0.3	-0.9	1.3	-0.4	0.3	2.8	1.2	-0.7	1.0	2.1	6.3	4.4	6.5
2008/2009	74.5	78.6	82.1	82.0	82.7	71.8	79.0	66.2	76.3	67.8	70.1	62.7	58.2	38.8
Percentage change	4.3	0.1	-2.6	0.3	2.6	1.0	8.8	1.5	0.8	3.0	1.4	-12.9	0.4	22.2
2009/2010	78.3	84.5	82.3	84.2	86.5	77.9	83.2	66.4	78.2	70.8	71.8	69.1	55.7	38.1
Percentage change	5.2	7.5	0.2	2.7	4.6	8.5	5.3	0.2	2.5	4.5	2.4	10.1	-4.3	-1.7

1. The number of graduates is as of the end of a school year while the population estimates are as of July 1 of the corresponding school year.
2. Data are not comparable between jurisdictions.
3. Historical revisions have been made to this table to exclude students who graduated from Adult Learning Centres registered under the *Adult Learning Centres Act*, effective July 2001. This has the effect of understating the number of graduates and the associated graduation rate for Manitoba as compared to other provinces and jurisdictions and should not be considered directly comparable.
4. The graduation rate in the final year is slightly understated because some schools have not submitted course information before the data collection cutoff for this report.

**Chart A.11.1**  
**Graduation rate, 2009/2010**



**Chart A.11.2**  
**Percentage change between 2005/2006 and 2009/2010**



**Table A.12.1**

**Educators headcount in public elementary and secondary schools, Canada, provinces and territories, 2005/2006 to 2009/2010<sup>1</sup>**

	Canada	N.L.	P.E.I. <sup>2</sup>	N.S.	N.B.	Que.	Ont.	Man.	Sask. <sup>2,3</sup>	Alta. <sup>3</sup>	B.C.	Y.T.	N.W.T.	Nvt.
	number													
<b>2005/2006</b>														
Public	362,674	7,319	1,541	9,708	7,510	93,272	137,889	14,210	12,170	40,293	36,886	496	668 <sup>e</sup>	712
<b>2006/2007</b>														
Public	378,621	7,402	1,547	9,919	7,629	96,130	149,713	14,248	12,445	40,556	37,149	510	671 <sup>e</sup>	702
<b>2007/2008</b>														
Public	384,316	7,485	1,581	9,973	7,899	96,221	154,963	14,347	12,251	40,542	37,118	517	715 <sup>e</sup>	704
<b>2008/2009</b>														
Public	388,808	7,542	1,638	10,064	8,077	96,098	157,303	14,321	12,406	42,515	36,921	550	720 <sup>e</sup>	653
<b>2009/2010</b>														
Public	393,494	7,722	1,646	10,174 <sup>p</sup>	7,998	96,928	158,173	14,333	12,597	45,624	36,372	570	706	651

<sup>e</sup> estimate

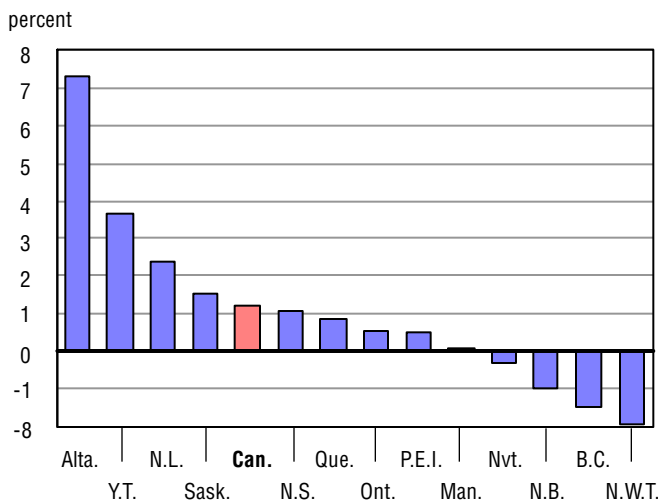
<sup>p</sup> preliminary

1. Care should be taken with cross jurisdictional comparison. The proportion of educators (comprising a mix of teachers, administrators and pedagogical support) and their respective remuneration, differs in each jurisdiction.

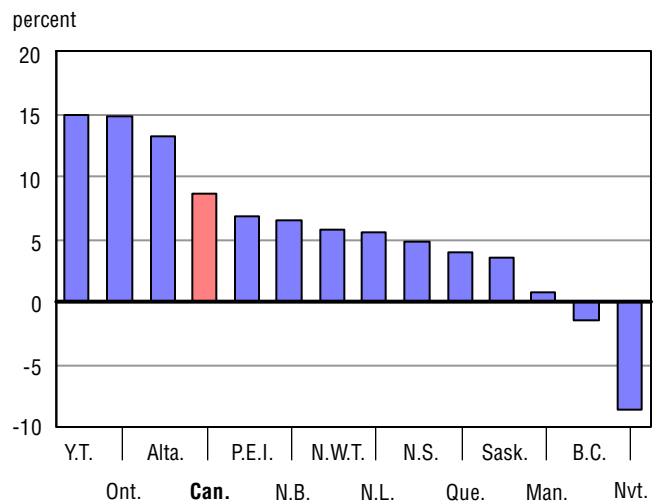
2. Educational Assistants are not included.

3. All educators in Lloydminster are included in Saskatchewan's counts and none of them are captured in the counts for Alberta.

**Chart A.12.1**  
Percentage change between 2008/2009 and 2009/2010



**Chart A.12.2**  
Percentage change between 2005/2006 and 2009/2010



**Table A.12.2****Percentage change of educators (headcount) in public elementary and secondary schools, Canada, provinces and territories, 2005/2006 to 2009/2010<sup>1</sup>**

	Canada	N.L.	P.E.I. <sup>2</sup>	N.S.	N.B.	Que.	Ont.	Man.	Sask. <sup>2,3</sup>	Alta. <sup>3</sup>	B.C.	Y.T.	N.W.T.	Nvt.
	percent													
<b>2005/2006</b>														
Public	1.8	5.4	-2.9	1.3	0.0	0.1	3.9	-0.5	-0.7	2.3	1.5	0.6	-1.2 <sup>e</sup>	14.5
<b>2006/2007</b>														
Public	4.4	1.1	0.4	2.2	1.6	3.1	8.6	0.3	2.3	0.7	0.7	2.8	0.4 <sup>e</sup>	-1.4
<b>2007/2008</b>														
Public	1.5	1.1	2.2	0.5	3.5	0.1	3.5	0.7	-1.6	0.0	-0.1	1.4	6.6 <sup>e</sup>	0.3
<b>2008/2009</b>														
Public	1.2	0.8	3.6	0.9	2.3	-0.1	1.5	-0.2	1.3	4.9	-0.5	6.4	0.7 <sup>e</sup>	-7.2
<b>2009/2010</b>														
Public	1.2	2.4	0.5	1.1 <sup>e</sup>	-1.0	0.9	0.6	0.1	1.5	7.3	-1.5	3.6	-1.9	-0.3

<sup>e</sup> estimate<sup>e</sup> preliminary

0 true zero or a value rounded to zero

1. Care should be taken with cross jurisdictional comparison. The proportion of educators (comprising a mix of teachers, administrators and pedagogical support) and their respective remuneration, differs in each jurisdiction.

2. Educational Assistants are not included.

3. All educators in Lloydminster are included in Saskatchewan's counts and none of them are captured in the counts for Alberta.



**Table A.13.1**

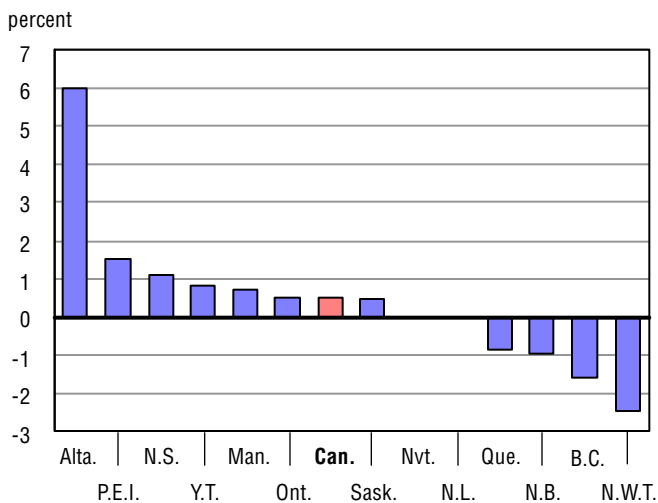
**Full-time equivalent educators in public elementary and secondary schools, Canada, provinces and territories, 2005/2006 to 2009/2010<sup>1</sup>**

	Canada	N.L.	P.E.I. <sup>2</sup>	N.S.	N.B.	Que.	Ont.	Man.	Sask. <sup>2,3</sup>	Alta. <sup>3</sup>	B.C.	Y.T.	N.W.T.	Nvt.
	number													
<b>2005/2006</b>														
Public	321,711	5,556	1,422	9,394	7,385	74,830	132,106	12,278	11,518	31,813	33,701	470	599	638
<b>2006/2007</b>														
Public	329,754	5,515	1,436	9,616	7,510	76,839	137,375	12,264	11,419	32,109	33,966	476	601	629
<b>2007/2008</b>														
Public	333,000	5,579	1,456	9,662	7,778	76,949	141,125	12,337	11,266	31,303	33,801	471	641	631
<b>2008/2009</b>														
Public	335,931	5,661	1,506	9,757	7,959	76,850	142,298	12,405	11,356	32,797	33,585	474	644	639
<b>2009/2010</b>														
Public	337,615	5,659	1,529	9,863 <sup>p</sup>	7,881	76,182	143,042	12,492	11,408	34,759	33,054	478	628	639

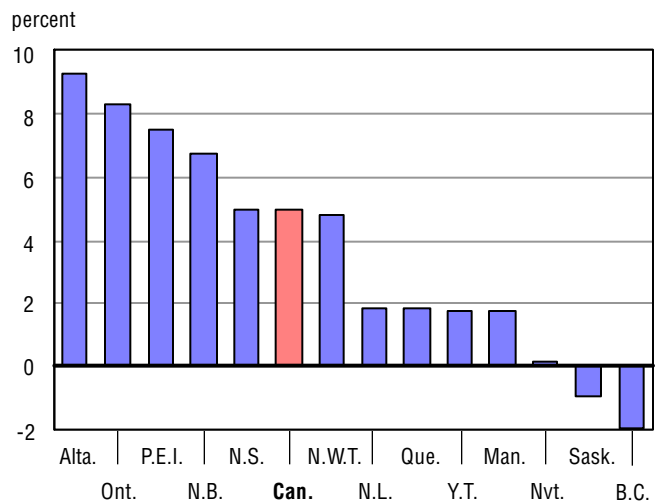
<sup>p</sup> preliminary

1. Care should be taken with cross jurisdictional comparison. The proportion of educators (comprising a mix of teachers, administrators and pedagogical support) and their respective remuneration, differs in each jurisdiction.
2. Educational Assistants are not included.
3. All educators in Lloydminster are included in Saskatchewan's counts and none of them are captured in the counts for Alberta.

**Chart A.13.1**  
Percentage change between 2008/2009 and 2009/2010



**Chart A.13.2**  
Percentage change between 2005/2006 and 2009/2010



**Table A.13.2**

**Percentage change in full-time equivalent educators in public elementary and secondary schools, Canada, provinces and territories, 2005/2006 to 2009/2010<sup>1</sup>**

	Canada	N.L.	P.E.I. <sup>2</sup>	N.S.	N.B.	Que.	Ont.	Man.	Sask. <sup>2,3</sup>	Alta. <sup>3</sup>	B.C.	Y.T.	N.W.T.	Nvt.
	percent													
<b>2005/2006</b>														
Public	1.3	-2.6	-2.0	1.4	0.2	-0.5	2.6	0.3	-0.6	1.8	1.7	2.1	-1.1	14.5
<b>2006/2007</b>														
Public	2.5	-0.7	1.0	2.4	1.7	2.7	4.0	-0.1	-0.9	0.9	0.8	1.4	0.3	-1.4
<b>2007/2008</b>														
Public	1.0	1.2	1.4	0.5	3.6	0.1	2.7	0.6	-1.3	-2.5	-0.5	-1.0	6.6	0.3
<b>2008/2009</b>														
Public	0.9	1.5	3.4	1.0	2.3	-0.1	0.8	0.6	0.8	4.8	-0.6	0.6	0.5	1.3
<b>2009/2010</b>														
Public	0.5	0.0	1.5	1.1 <sup>p</sup>	-1.0	-0.9	0.5	0.7	0.5	6.0	-1.6	0.8	-2.5	0.0

<sup>p</sup> preliminary

0 true zero or a value rounded to zero

1. Care should be taken with cross jurisdictional comparison. The proportion of educators (comprising a mix of teachers, administrators and pedagogical support) and their respective remuneration, differs in each jurisdiction.

2. Educational Assistants are not included.

3. All educators in Lloydminster are included in Saskatchewan's counts and none of them are captured in the counts for Alberta.

**Table A.14**
**Student-educator ratio in public elementary and secondary schools, Canada, provinces and territories, 2005/2006 to 2009/2010<sup>1</sup>**

	Canada	N.L.	P.E.I. <sup>2</sup>	N.S.	N.B.	Que.	Ont.	Man.	Sask. <sup>2</sup>	Alta.	B.C.	Y.T.	N.W.T.	Nvt.
2005/2006	15.2	13.4	15.4	15.1	15.5	14.0	15.2	14.4	14.7	16.8	17.0	11.4	15.2	13.8
Percentage change	-2.1	-0.8	0.0	-3.4	-2.2	-0.8	-2.8	-1.3	-1.2	-1.6	-2.8	-0.9	-0.3	-14.9
2006/2007	14.7	13.0	14.9	14.4	14.9	13.5	14.5	14.2	14.5	16.8	16.6	11.0	15.3	13.9
Percentage change	-3.4	-2.5	-3.6	-4.8	-4.1	-4.0	-4.6	-1.2	-1.3	0.6	-2.6	-3.3	0.9	0.8
2007/2008	14.4	12.5	14.3	14.0	14.2	13.2	14.0	14.1	14.4	17.2	16.5	11.1	13.9	13.8
Percentage change	-2.1	-4.2	-3.9	-2.9	-4.9	-2.0	-3.4	-1.0	-0.7	2.1	-0.8	1.0	-9.0	-0.7
2008/2009	14.1	12.1	13.5	13.6	13.6	13.0	13.8	13.9	14.1	16.5	16.4	10.9	13.4	14.0
Percentage change	-1.9	-3.5	-5.6	-2.6	-3.9	-1.7	-1.7	-1.3	-1.9	-3.8	-0.3	-2.0	-3.8	1.3
2009/2010	14.0	11.9	13.1	13.2 <sup>e</sup>	13.5	13.0	13.6	13.7	14.1	15.7	16.6	10.7	13.4	13.6
Percentage change	-1.0	-1.4	-3.3	-3.0	-0.9	0.1	-1.0	-1.0	-0.3	-5.1	1.0	-1.9	-0.1	-2.5

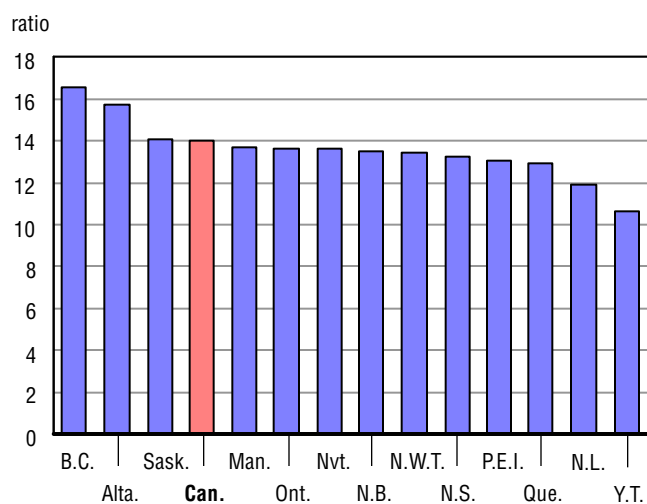
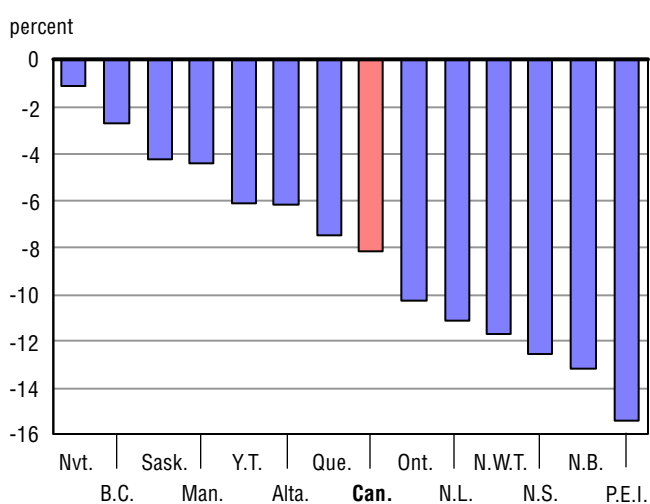
<sup>e</sup> estimate

0 true zero or a value rounded to zero

1. Care should be taken with cross jurisdictional comparison. The proportion of educators (comprising a mix of teachers, administrators and pedagogical support) and their respective remuneration, differs in each jurisdiction.

2. Educational Assistants are not included.

**Note:** Table A.14 = Table A.2.1 (Full-time equivalent enrolments) divided by Table A.13.1 (Full-time equivalent educators).

**Chart A.14.1**  
**Student-educator ratio, 2009/2010**

**Chart A.14.2**  
**Percentage change between 2005/2006 and 2009/2010**


**Table A.15**

**Average remuneration per educator in public elementary and secondary schools, Canada, provinces and territories, 2005/2006 to 2009/2010 (in current dollars)<sup>1</sup>**

	Canada	N.L.	P.E.I. <sup>4</sup>	N.S.	N.B.	Que.	Ont.	Man.	Sask. <sup>2,3,4</sup>	Alta. <sup>2</sup>	B.C.	Y.T.	N.W.T.	Nvt.
2005/2006	<b>65,606</b>	59,350	59,923	63,510	56,890	55,251	70,523	65,804	60,773	70,667	68,989	81,546	80,818	87,192
Percentage change	<b>2.3</b>	0.0	2.4	-5.8	5.4	3.0	2.1	3.8	1.7	1.7	3.3	4.6	6.7	-9.4
2006/2007	<b>66,817</b>	60,773	63,999	61,345	57,806	56,051	71,350	68,161	63,285	73,345	71,013	81,870	84,986	91,697
Percentage change	<b>1.8</b>	2.4	6.8	-3.4	1.6	1.4	1.2	3.6	4.1	3.8	2.9	0.4	5.2	5.2
2007/2008	<b>69,123</b>	62,567	65,419	63,907	59,485	58,526	72,473	70,543	67,243	80,393	72,818	88,943	88,657	91,757
Percentage change	<b>3.5</b>	3.0	2.2	4.2	2.9	4.4	1.6	3.5	6.3	9.6	2.5	8.6	4.3	0.1
2008/2009	<b>71,602</b>	67,722	67,952	66,539	63,437	60,273	75,294	73,052	69,978	80,376	76,317	90,869	95,025	98,839
Percentage change	<b>3.6</b>	8.2	3.9	4.1	6.6	3.0	3.9	3.6	4.1	0.0	4.8	2.2	7.2	7.7
2009/2010	<b>73,776</b>	70,508	69,411	67,698	66,047	61,630	77,886	75,723	73,474	81,153	78,728	93,013	99,677	100,164
Percentage change	<b>3.0</b>	4.1	2.1	1.7	4.1	2.3	3.4	3.7	5.0	1.0	3.2	2.4	4.9	1.3

0 true zero or a value rounded to zero

1. Care should be taken with cross jurisdictional comparison. The proportion of educators (comprising a mix of teachers, administrators and pedagogical support) and their respective remuneration, differs in each jurisdiction.

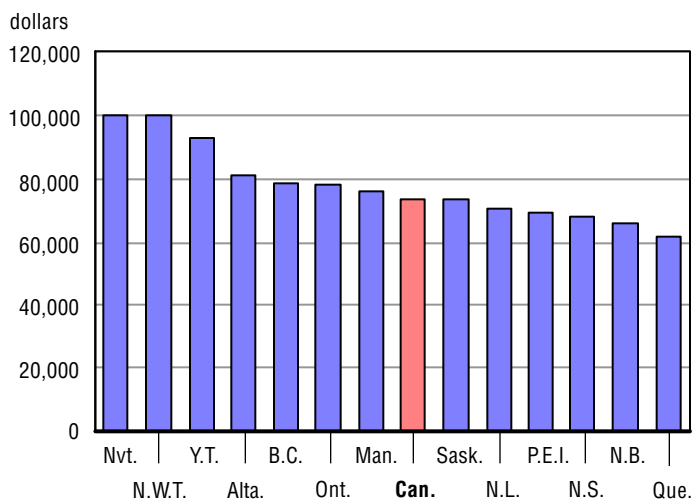
2. The number of educators working in Lloydminster includes educators from Alberta. The corresponding remuneration for these Alberta educators is excluded.

3. For 2005/2006, figure has been adjusted to reflect the change in school year reporting period.

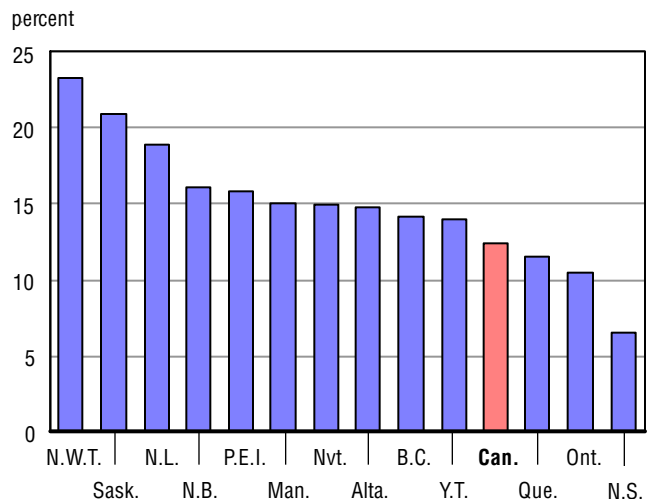
4. Educational Assistants are not included.

**Note:** Table A.15 = Table A.16 (Educator remuneration) divided by Table A.13.1 (Full-time equivalent educators).

**Chart A.15.1**  
Average remuneration per educator, 2009/2010



**Chart A.15.2**  
Percentage change between 2005/2006 and 2009/2010



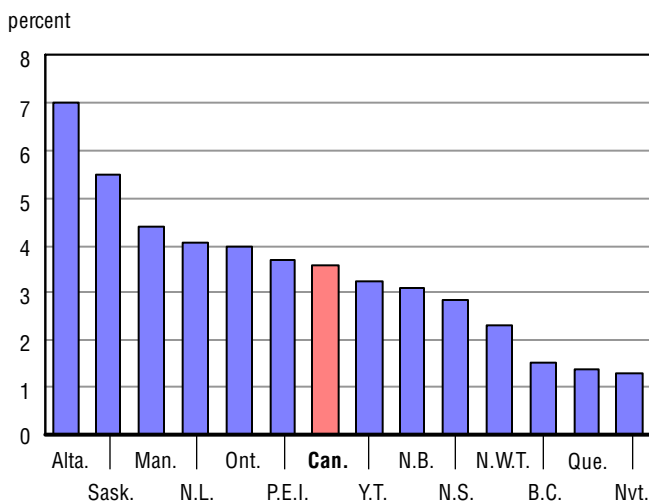
**Table A.16**

**Educator remuneration in public elementary and secondary schools, Canada, provinces and territories, 2005/2006 to 2009/2010 (in millions of current dollars)<sup>1,2</sup>**

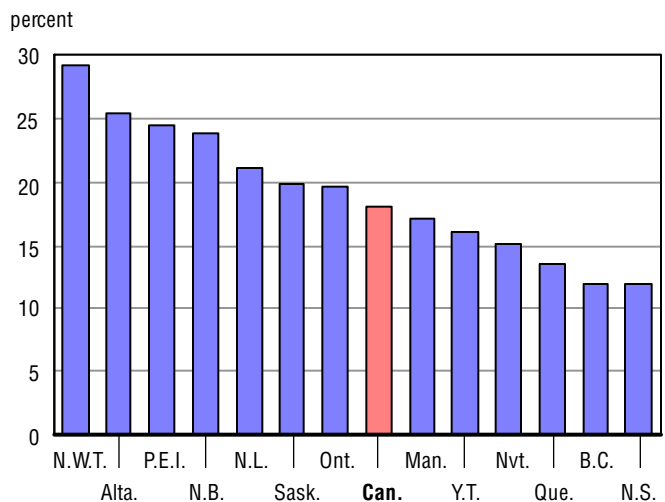
	Canada	N.L.	P.E.I.	N.S.	N.B.	Que.	Ont.	Man. <sup>3</sup>	Sask. <sup>4,5</sup>	Alta.	B.C.	Y.T.	N.W.T.	Nvt.
2005/2006	21,106.0	329.7	85.2	596.6	420.2	4,134.4	9,316.5	807.9	700.0	2,248.1	2,325.0	38.3	48.4	55.6
Percentage change	3.7	-2.6	0.4	-4.5	5.6	2.5	4.7	4.1	1.1	3.5	5.0	6.8	5.5	3.7
2006/2007	22,033.0	335.2	91.9	589.9	434.1	4,306.9	9,801.8	835.9	722.7	2,355.0	2,412.0	39.0	51.1	57.7
Percentage change	4.4	1.6	7.9	-1.1	3.3	4.2	5.2	3.5	3.2	4.8	3.7	1.8	5.5	3.7
2007/2008	23,018.1	349.1	95.2	617.5	462.7	4,503.5	10,227.7	870.3	757.6	2,516.6	2,461.3	41.9	56.8	57.9
Percentage change	4.5	4.2	3.6	4.7	6.6	4.6	4.3	4.1	4.8	6.9	2.0	7.5	11.2	0.4
2008/2009	24,053.5	383.4	102.3	649.2	504.9	4,632.0	10,714.1	906.2	794.7	2,636.1	2,563.1	43.1	61.2	63.2
Percentage change	4.5	9.8	7.4	5.1	9.1	2.9	4.8	4.1	4.9	4.7	4.1	2.8	7.7	9.1
2009/2010	24,907.8	399.0	106.1	667.7	520.5	4,695.1	11,141.0	946.0	838.2	2,820.8	2,602.3	44.5	62.6	64.0
Percentage change	3.6	4.1	3.7	2.9	3.1	1.4	4.0	4.4	5.5	7.0	1.5	3.2	2.3	1.3

1. Educator remuneration includes educators' salaries, wages and allowances, but excludes fringe benefits and teachers' superannuation pension funds.
2. Care should be taken with cross jurisdictional comparison. The proportion of educators (comprising a mix of teachers, administrators and pedagogical support) and their respective remuneration, differs in each jurisdiction.
3. Data exclude adult upgrading programs.
4. For 2005/2006, figure has been adjusted to reflect the change in school year reporting period.
5. Educational Assistants are not included.

**Chart A.16.1**  
Percentage change between 2008/2009 and 2009/2010



**Chart A.16.2**  
Percentage change between 2005/2006 and 2009/2010



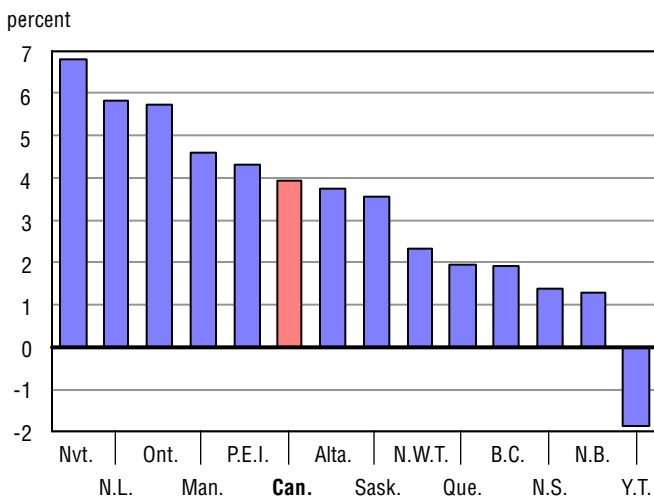
**Table A.17**

**Operating expenditures<sup>1</sup> in public elementary and secondary schools, Canada, provinces and territories, 2005/2006 to 2009/2010 (in millions of current dollars)**

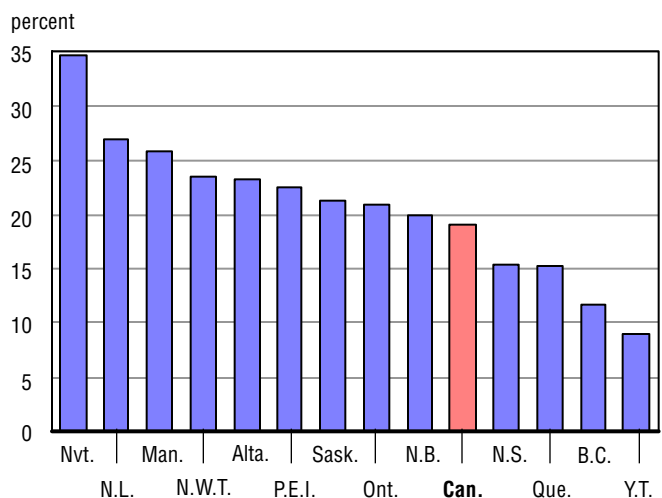
	Canada	N.L.	P.E.I.	N.S.	N.B.	Que.	Ont.	Man. <sup>2</sup>	Sask. <sup>3</sup>	Alta.	B.C.	Y.T.	N.W.T.	Nvt.
2005/2006	43,043.8	621.6	166.5	1,189.4	908.4	8,762.5	17,628.5	1,651.5	1,511.2	5,159.9	5,134.5	84.2	123.7	101.9
Percentage change	5.7	1.9	1.8	9.0	5.1	3.2	5.9	4.6	2.3	9.0	7.7	9.9	3.1	4.6
2006/2007	44,768.0	640.1	173.5	1,217.8	945.9	9,441.8	18,263.4	1,728.5	1,559.6	5,240.8	5,220.7	88.8	131.3	115.8
Percentage change	4.0	3.0	4.2	2.4	4.1	7.8	3.6	4.7	3.2	1.6	1.7	5.5	6.1	13.6
2007/2008	46,468.0	690.7	185.5	1,276.9	998.6	9,639.6	18,959.2	1,795.9	1,648.4	5,457.7	5,455.7	95.3	143.3	121.1
Percentage change	3.8	7.9	6.9	4.9	5.6	2.1	3.8	3.9	5.7	4.1	4.5	7.3	9.1	4.6
2008/2009	49,317.9	745.9	195.7	1,353.1	1,075.9	9,905.7	20,148.3	1,987.1	1,770.4	6,134.9	5,629.5	93.4	149.2	128.6
Percentage change	6.1	8.0	5.5	6.0	7.7	2.8	6.3	10.6	7.4	12.4	3.2	-2.0	4.1	6.2
2009/2010	51,257.1	789.4	204.0	1,371.7	1,089.7	10,100.1	21,306.2	2,078.7	1,833.3	6,363.9	5,738.3	91.7	152.7	137.3
Percentage change	3.9	5.8	4.3	1.4	1.3	2.0	5.7	4.6	3.5	3.7	1.9	-1.8	2.3	6.8

1. Operating expenditures include educators salaries, wages and allowances, fringe benefits, teachers' pension funds and other operating expenditures. Please note that the type of pension systems may affect the comparability of the expenditures.
2. Data exclude adult upgrading programs.
3. From 2005/2006 to 2009/2010, figure has been adjusted to reflect the change in school year reporting period.

**Chart A.17.1**  
Percentage change between 2008/2009 and 2009/2010



**Chart A.17.2**  
Percentage change between 2005/2006 and 2009/2010



**Table A.18**

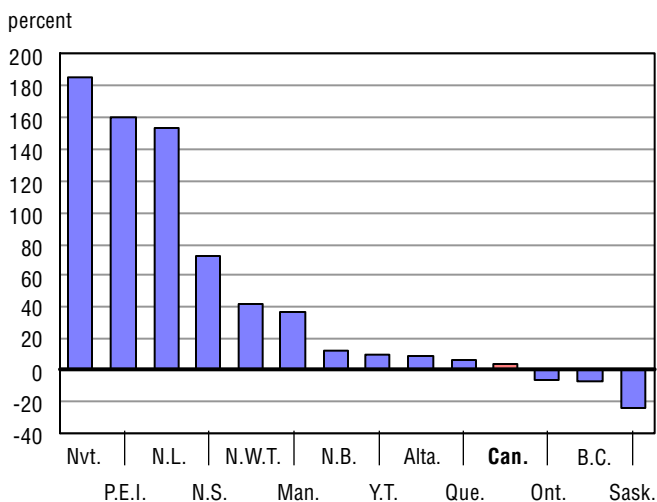
**Capital expenditures in public elementary and secondary schools, Canada, provinces and territories, 2005/2006 to 2009/2010 (in millions of current dollars)<sup>1</sup>**

	Canada	N.L.	P.E.I.	N.S.	N.B.	Que.	Ont.	Man. <sup>2</sup>	Sask.	Alta.	B.C.	Y.T.	N.W.T.	Nvt.
2005/2006	3,423.7	22.1	1.5	64.1	49.4	545.0	2,000.3	80.8	88.6	281.9	253.5	11.2	9.4	15.9
Percentage change	11.3	108.2	-72.0	4.8	-16.3	12.3	11.2	37.3	5.4	5.6	22.5	63.2	-22.0	-20.7
2006/2007	3,818.0	22.4	10.1	83.6	59.7	701.2	2,031.6	106.3	114.8	293.2	347.9	15.9	18.6	12.7
Percentage change	11.5	1.2	555.2	30.4	21.0	28.7	1.6	31.5	29.6	4.0	37.3	41.1	97.3	-19.7
2007/2008	3,586.2	27.4	4.7	74.0	39.0	767.7	1,670.1	69.0	74.2	483.4	333.9	7.7	20.6	14.6
Percentage change	-6.1	22.1	-54.0	-11.4	-34.8	9.5	-17.8	-35.1	-35.4	64.9	-4.0	-51.6	10.5	14.9
2008/2009	4,340.5	32.2	11.9	68.5	51.8	859.4	1,881.4	88.9	103.7	767.1	414.3	4.4	43.8	13.0
Percentage change	21.0	17.9	154.9	-7.5	33.1	11.9	12.6	28.9	39.8	58.7	24.1	-42.1	113.2	-11.4
2009/2010	4,503.6	81.7	30.8	118.0	58.6	917.5	1,768.3	121.1	79.4	838.1 <sup>p</sup>	386.2	4.9	62.2	36.9
Percentage change	3.8	153.3	159.5	72.3	13.1	6.8	-6.0	36.3	-23.5	9.2	-6.8	9.7	41.9	184.6

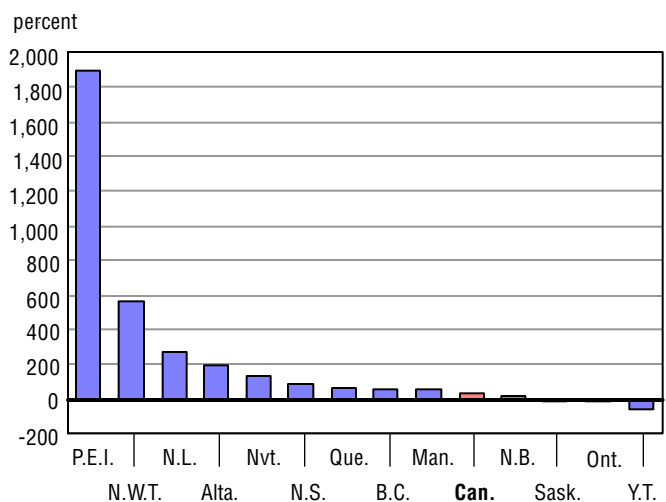
<sup>p</sup> preliminary

1. Capital Expenditures include school construction, major renovations and the acquisition of new furniture, equipment and vehicles.
2. Data exclude adult upgrading programs.

**Chart A.18.1**  
Percentage change between 2008/2009 and 2009/2010



**Chart A.18.2**  
Percentage change between 2005/2006 and 2009/2010



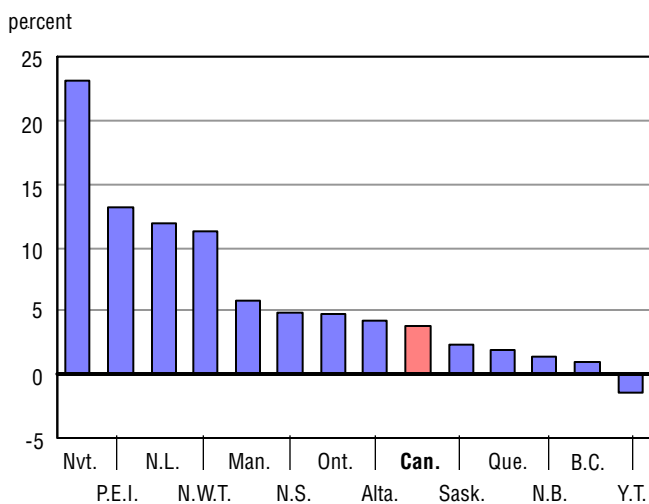
**Table A.19**

**Total expenditures<sup>1</sup> in public elementary and secondary schools, Canada, provinces and territories, 2005/2006 to 2009/2010 (in millions of current dollars)**

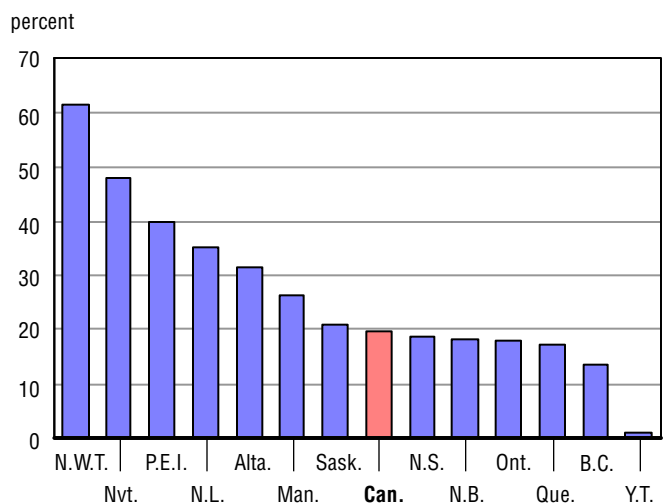
	Canada	N.L.	P.E.I.	N.S.	N.B.	Que.	Ont.	Man. <sup>2</sup>	Sask. <sup>3</sup>	Alta.	B.C.	Y.T.	N.W.T.	Nvt.
2005/2006	47,648.1	644.2	168.0	1,257.2	1,050.6	9,639.3	19,992.4	1,770.4	1,586.3	5,485.0	5,708.3	95.4	133.1	117.8
Percentage change	5.9	3.7	-0.6	8.7	3.4	3.4	6.4	5.6	1.2	8.6	7.7	14.3	0.8	0.3
2006/2007	49,860.1	662.8	183.6	1,304.7	1,093.2	10,480.3	20,694.8	1,885.8	1,702.5	5,569.1	5,900.2	104.7	149.9	128.5
Percentage change	4.6	2.9	9.3	3.8	4.1	8.7	3.5	6.5	7.3	1.5	3.4	9.7	12.6	9.1
2007/2008	51,362.1	718.3	190.2	1,354.0	1,121.4	10,776.6	21,065.8	1,906.6	1,714.6	5,970.9	6,141.1	103.0	163.9	135.7
Percentage change	3.0	8.4	3.6	3.8	2.6	2.8	1.8	1.1	0.7	7.2	4.1	-1.6	9.3	5.6
2008/2009	54,958.3	778.4	207.5	1,423.5	1,223.4	11,079.2	22,486.8	2,112.3	1,872.8	6,926.2	6,415.9	97.9	193.1	141.5
Percentage change	7.0	8.4	9.1	5.1	9.1	2.8	6.7	10.8	9.2	16.0	4.5	-5.0	17.8	4.3
2009/2010	57,030.2	871.2	234.8	1,493.0	1,241.7	11,291.8	23,558.8	2,235.0	1,918.1	7,221.2	6,478.9	96.6	214.9	174.2
Percentage change	3.8	11.9	13.2	4.9	1.5	1.9	4.8	5.8	2.4	4.3	1.0	-1.3	11.3	23.1

1. Total expenditures include: operating expenditures, annual capital expenditures and interest on debt services.
2. Data exclude adult upgrading programs.
3. From 2005/2006 to 2009/2010, figure has been adjusted to reflect the change in school year reporting period.

**Chart A.19.1**  
Percentage change between 2008/2009 and 2009/2010



**Chart A.19.2**  
Percentage change between 2005/2006 and 2009/2010





**Table A.20.1**

**Total expenditures per student in public elementary and secondary schools, Canada, provinces and territories, 2005/2006 to 2009/2010 (in current dollars)<sup>1</sup>**

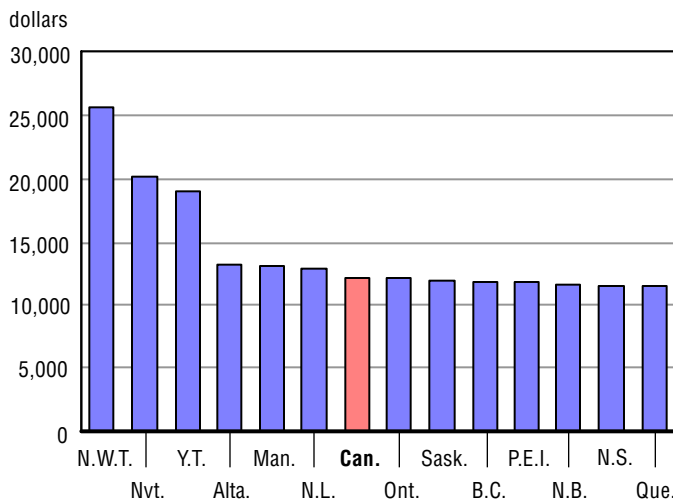
	Canada	N.L.	P.E.I.	N.S.	N.B.	Que.	Ont.	Man.	Sask.	Alta.	B.C.	Y.T.	N.W.T.	Nvt.
2005/2006	9,749	8,667	7,655	8,835	9,150	9,170	9,963	10,039	9,370	10,293	9,937	17,881	14,647	13,418
Percentage change	6.7	7.3	1.4	11.1	5.5	4.7	6.7	6.7	3.1	8.5	9.0	12.9	2.3	2.9
2006/2007	10,303	9,213	8,594	9,409	9,760	10,112	10,393	10,831	10,282	10,296	10,462	20,009	16,297	14,735
Percentage change	5.7	6.3	12.3	6.5	6.7	10.3	4.3	7.9	9.7	0.0	5.3	11.9	11.3	9.8
2007/2008	10,738	10,301	9,137	10,007	10,168	10,600	10,657	10,996	10,572	11,086	11,030	19,706	18,352	15,610
Percentage change	4.2	11.8	6.3	6.4	4.2	4.8	2.5	1.5	2.8	7.7	5.4	-1.5	12.6	5.9
2008/2009	11,605	11,404	10,210	10,692	11,285	11,102	11,480	12,278	11,678	12,765	11,637	18,992	22,377	15,875
Percentage change	8.1	10.7	11.7	6.8	11.0	4.7	7.7	11.7	10.5	15.1	5.5	-3.6	21.9	1.7
2009/2010	12,106	12,946	11,768	11,436	11,671	11,404	12,091	13,030	11,943	13,230	11,820	18,935	25,562	20,041
Percentage change	4.3	13.5	15.3	7.0	3.4	2.7	5.3	6.1	2.3	3.6	1.6	-0.3	14.2	26.2

0 true zero or a value rounded to zero

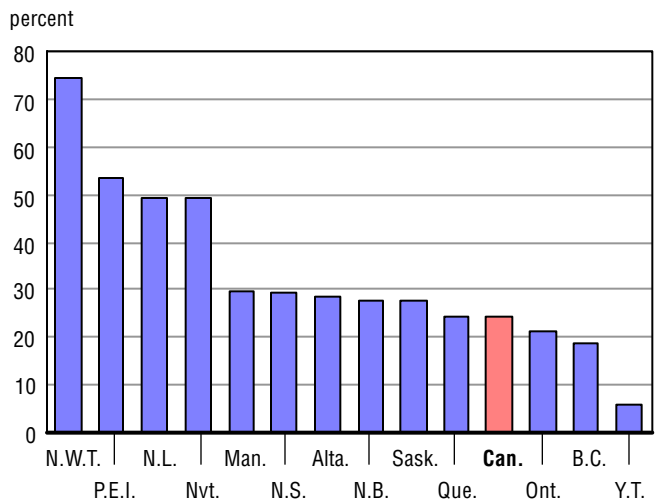
1. Comparisons between jurisdictions should be made with care.

**Note:** Table A.20.1 = Table A.19 (Total expenditures) divided by Table A.2.1 (Full-time equivalent enrolment).

**Chart A.20.1.1**  
Total expenditures per student, 2009/2010  
(in current dollars)



**Chart A.20.1.2**  
Percentage change between 2005/2006 and  
2009/2010



**Table A.20.2**

**Total expenditures per student in public elementary and secondary schools, Canada, provinces and territories, 2005/2006 to 2009/2010 (in 2002 constant dollars)<sup>1</sup>**

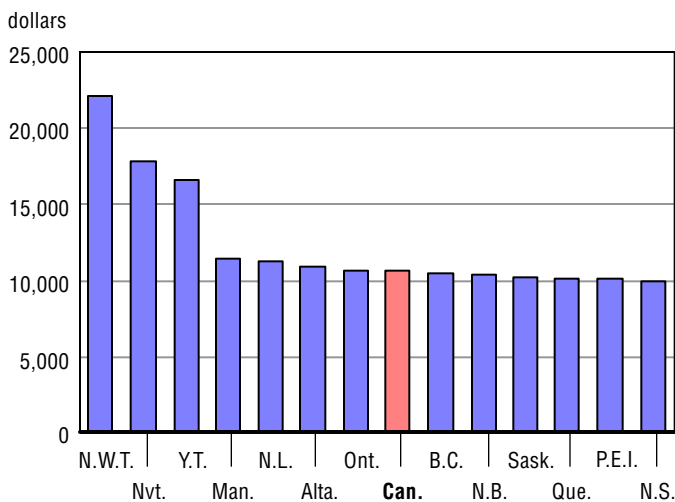
	Canada	N.L.	P.E.I.	N.S.	N.B.	Que.	Ont.	Man.	Sask.	Alta.	B.C.	Y.T.	N.W.T.	Nvt.
2005/2006	9,111	8,055	7,017	8,165	8,520	8,578	9,320	9,418	8,765	9,522	9,348	16,981	13,792	13,040
Percentage change	4.4	4.5	-1.6	8.1	3.0	2.4	4.4	3.9	0.8	6.3	6.8	10.4	0.0	1.2
2006/2007	9,444	8,413	7,701	8,523	8,937	9,302	9,553	9,964	9,424	9,169	9,678	18,735	15,132	14,087
Percentage change	3.6	4.5	9.8	4.4	4.9	8.4	2.5	5.8	7.5	-3.7	3.5	10.3	9.7	8.0
2007/2008	9,630	9,272	8,043	8,896	9,135	9,601	9,618	9,915	9,423	9,403	10,027	17,996	16,564	14,467
Percentage change	2.0	10.2	4.4	4.4	2.2	3.2	0.7	-0.5	0.0	2.6	3.6	-3.9	9.5	2.7
2008/2009	10,170	9,977	8,690	9,225	9,969	9,851	10,132	10,827	10,076	10,498	10,363	16,748	19,425	14,379
Percentage change	5.6	7.6	8.0	3.7	9.1	2.6	5.3	9.2	6.9	11.6	3.3	-6.9	17.3	-0.6
2009/2010	10,582	11,297	10,032	9,884	10,283	10,057	10,634	11,420	10,199	10,889	10,525	16,639	22,056	17,798
Percentage change	4.0	13.2	15.5	7.1	3.1	2.1	5.0	5.5	1.2	3.7	1.6	-0.6	13.5	23.8

0 true zero or a value rounded to zero

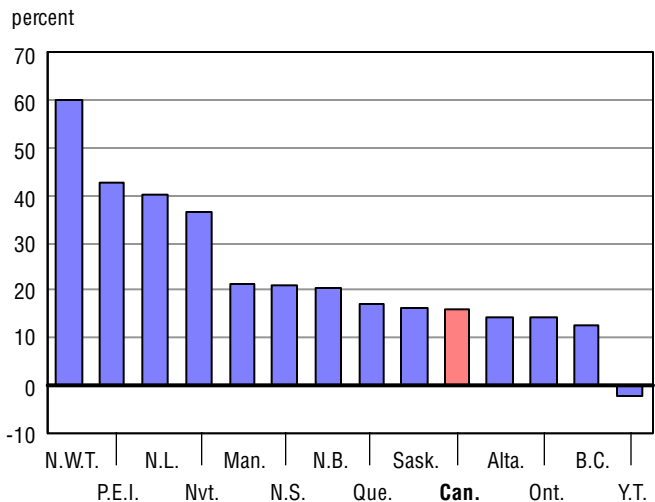
1. Comparisons between jurisdictions should be made with care.

**Note:** Table A.20.2 = Table A.19 (Total expenditures) divided by Table A.2.1 (Full-time equivalent enrolment) divided by Table A.30 (Consumer Price Index).

**Chart A.20.2.1**  
Total expenditures per student, 2009/2010  
(in 2002 constant dollars)



**Chart A.20.2.2**  
Percentage change between 2005/2006 and  
2009/2010



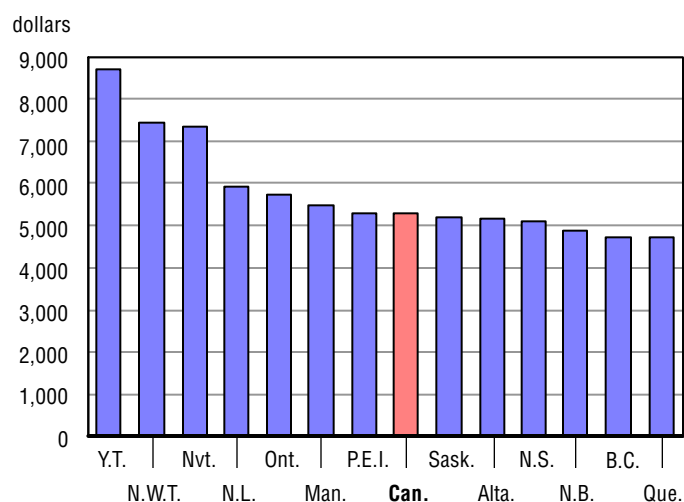
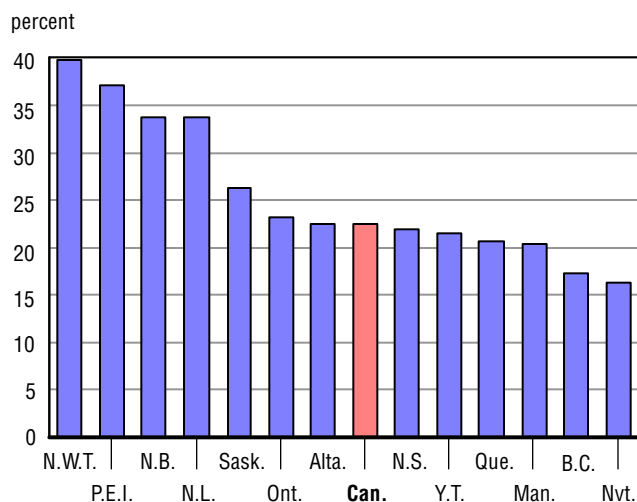
**Table A.21**
**Educator remuneration per student in public elementary and secondary schools, Canada, provinces and territories, 2005/2006 to 2009/2010 (in current dollars)<sup>1</sup>**

	Canada	N.L.	P.E.I.	N.S.	N.B.	Que.	Ont.	Man.	Sask. <sup>2</sup>	Alta.	B.C.	Y.T.	N.W.T.	Nvt.
2005/2006	4,318	4,436	3,882	4,193	3,659	3,933	4,643	4,581	4,135	4,219	4,047	7,179	5,326	6,337
Percentage change	4.5	0.8	2.4	-2.4	7.7	3.9	5.0	5.2	2.9	3.4	6.2	5.5	7.0	6.4
2006/2007	4,553	4,659	4,302	4,254	3,876	4,155	4,923	4,801	4,364	4,354	4,277	7,452	5,552	6,612
Percentage change	5.4	5.0	10.8	1.5	5.9	5.7	6.0	4.8	5.6	3.2	5.7	3.8	4.2	4.3
2007/2008	4,812	5,006	4,576	4,564	4,195	4,430	5,174	5,019	4,671	4,672	4,421	8,018	6,362	6,660
Percentage change	5.7	7.5	6.4	7.3	8.2	6.6	5.1	4.5	7.0	7.3	3.4	7.6	14.6	0.7
2008/2009	5,079	5,617	5,035	4,876	4,658	4,641	5,470	5,267	4,955	4,858	4,649	8,359	7,089	7,083
Percentage change	5.5	12.2	10.0	6.9	11.0	4.8	5.7	4.9	6.1	4.0	5.2	4.2	11.4	6.4
2009/2010	5,287	5,929	5,318	5,115	4,893	4,742	5,718	5,515	5,219	5,168	4,747	8,718	7,441	7,360
Percentage change	4.1	5.6	5.6	4.9	5.0	2.2	4.5	4.7	5.3	6.4	2.1	4.3	5.0	3.9

1. Due to differences in methodology, comparisons between jurisdictions should be made with care.

2. From 2005/2006 to 2009/2010, figure has been adjusted to reflect the change in school year reporting period.

**Note:** Table A.21 = Table A.16 (Educator remuneration) divided by Table A.2.1 (Full-time equivalent enrolment).

**Chart A.21.1**  
**Educator remuneration per student, 2009/2010**  
**(in current dollars)**

**Chart A.21.2**  
**Percentage change between 2005/2006 and 2009/2010**


**Table A.22**

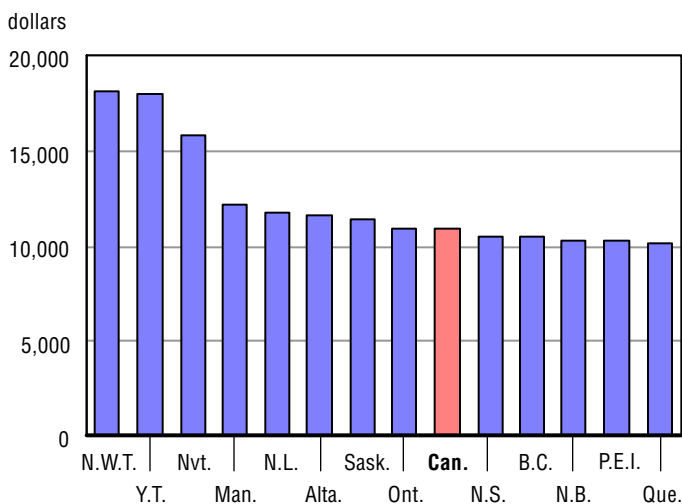
**Operating expenditures per student in public elementary and secondary schools, Canada, provinces and territories, 2005/2006 to 2009/2010 (in current dollars)**

	Canada	N.L.	P.E.I.	N.S.	N.B.	Que.	Ont.	Man.	Sask. <sup>1</sup>	Alta.	B.C.	Y.T.	N.W.T.	Nvt.
2005/2006	8,807	8,363	7,585	8,358	7,912	8,336	8,785	9,365	8,926	9,683	8,938	15,774	13,609	11,610
Percentage change	6.5	5.5	3.9	11.4	7.2	4.5	6.1	5.7	4.2	8.9	8.9	8.6	4.6	7.3
2006/2007	9,251	8,897	8,121	8,782	8,444	9,110	9,172	9,928	9,419	9,689	9,258	16,977	14,274	13,273
Percentage change	5.0	6.4	7.1	5.1	6.7	9.3	4.4	6.0	5.5	0.1	3.6	7.6	4.9	14.3
2007/2008	9,714	9,905	8,913	9,437	9,055	9,481	9,591	10,358	10,164	10,133	9,799	18,238	16,050	13,926
Percentage change	5.0	11.3	9.8	7.5	7.2	4.1	4.6	4.3	7.9	4.6	5.8	7.4	12.4	4.9
2008/2009	10,414	10,928	9,627	10,164	9,925	9,926	10,286	11,550	11,040	11,307	10,211	18,130	17,298	14,420
Percentage change	7.2	10.3	8.0	7.7	9.6	4.7	7.2	11.5	8.6	11.6	4.2	-0.6	7.8	3.6
2009/2010	10,880	11,730	10,225	10,507	10,243	10,201	10,935	12,120	11,414	11,659	10,468	17,980	18,164	15,794
Percentage change	4.5	7.3	6.2	3.4	3.2	2.8	6.3	4.9	3.4	3.1	2.5	-0.8	5.0	9.5

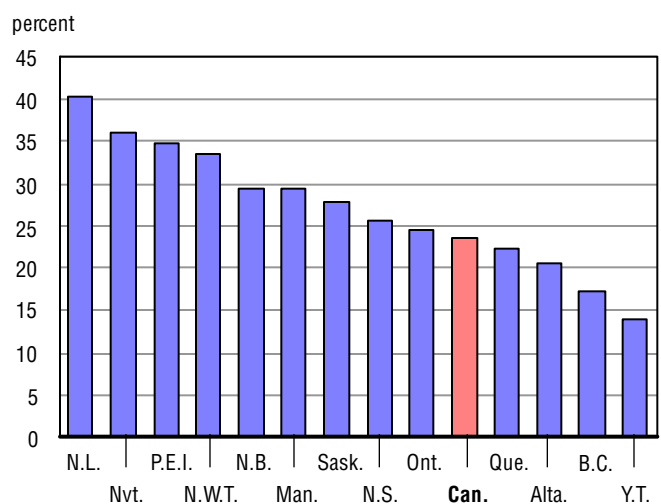
1. From 2005/2006 to 2009/2010, figure has been adjusted to reflect the change in school year reporting period.

**Note:** Table A.22 = Table A.17 (Operating expenditures) divided by Table A.2.1 (Full-time equivalent enrolment).

**Chart A.22.1**  
Operating expenditures per student, 2009/2010  
(in current dollars)



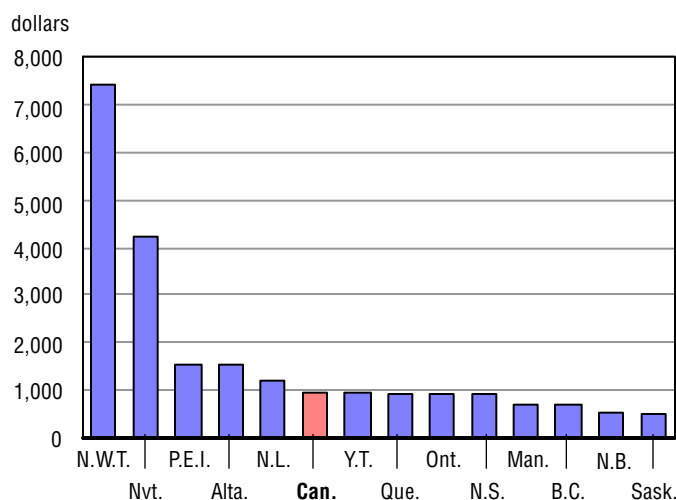
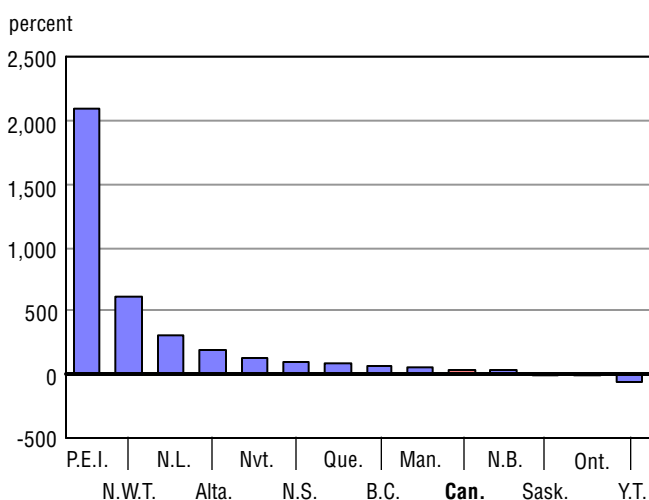
**Chart A.22.2**  
Percentage change between 2005/2006 and 2009/2010



**Table A.23**
**Annual capital expenditures per student in public elementary and secondary schools, Canada, provinces and territories, 2005/2006 to 2009/2010 (in current dollars)**

	Canada	N.L.	P.E.I.	N.S.	N.B.	Que.	Ont.	Man.	Sask.	Alta.	B.C.	Y.T.	N.W.T.	Nvt.
2005/2006	701	298	70	450	430	518	997	458	523	529	441	2,108	1,037	1,808
Percentage change	12.2	115.4	-71.5	7.1	-14.6	13.8	11.5	38.8	7.4	5.5	23.9	61.2	-20.8	-18.6
2006/2007	789	311	473	603	533	677	1,020	610	693	542	617	3,033	2,023	1,461
Percentage change	12.6	4.6	573.1	33.9	24.0	30.5	2.4	33.2	32.5	2.5	39.8	43.9	95.0	-19.2
2007/2008	750	392	224	547	353	755	845	398	457	898	600	1,468	2,302	1,685
Percentage change	-5.0	26.0	-52.7	-9.2	-33.8	11.6	-17.2	-34.8	-34.1	65.6	-2.8	-51.6	13.8	15.3
2008/2009	917	472	584	514	478	861	960	517	647	1,414	751	862	5,079	1,455
Percentage change	22.2	20.5	161.0	-6.0	35.4	14.0	13.7	29.9	41.4	57.5	25.3	-41.3	120.6	-13.6
2009/2010	956	1,214	1,543	904	551	927	908	706	494	1,535	705	955	7,398	4,246
Percentage change	4.3	156.9	164.3	75.7	15.2	7.6	-5.5	36.7	-23.6	8.6	-6.2	10.8	45.7	191.9

**Note:** Table A.23 = Table A.18 (Capital expenditures) divided by Table A.2.1 (Full-time equivalent enrolment).

**Chart A.23.1**  
**Annual capital expenditures per student, 2009/2010**  
**(in current dollars)**

**Chart A.23.2**  
**Percentage change between 2005/2006 and 2009/2010**


**Table A.24**

**Educator remuneration as a percentage of total expenditures in public elementary and secondary schools, Canada, provinces and territories, 2005/2006 to 2009/2010**

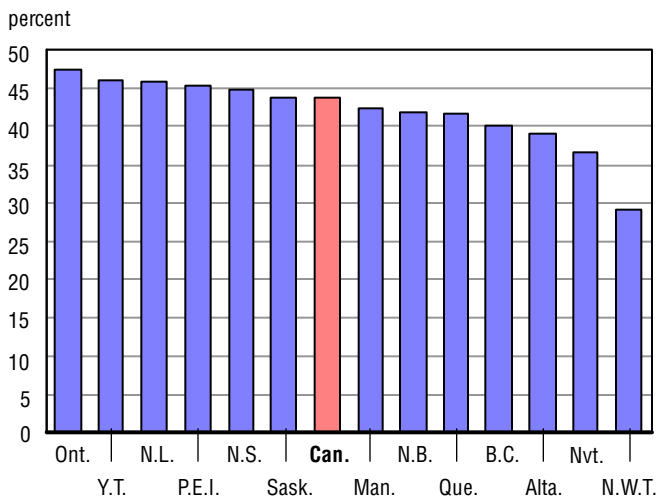
	Canada	N.L.	P.E.I.	N.S.	N.B.	Que.	Ont.	Man.	Sask. <sup>1</sup>	Alta.	B.C.	Y.T.	N.W.T.	Nvt.
2005/2006	44.3	51.2	50.7	47.5	40.0	42.9	46.6	45.6	44.1	41.0	40.7	40.2	36.4	47.2
Percentage change	-2.1	-6.1	1.0	-12.2	2.2	-0.8	-1.5	-1.4	-0.1	-4.7	-2.5	-6.5	4.6	3.4
2006/2007	44.2	50.6	50.1	45.2	39.7	41.1	47.4	44.3	42.4	42.3	40.9	37.2	34.1	44.9
Percentage change	-0.2	-1.2	-1.3	-4.7	-0.7	-4.2	1.6	-2.9	-3.8	3.2	0.4	-7.2	-6.3	-5.0
2007/2008	44.8	48.6	50.1	45.6	41.3	41.8	48.6	45.6	44.2	42.1	40.1	40.7	34.7	42.7
Percentage change	1.4	-3.9	0.1	0.9	3.9	1.7	2.5	3.0	4.1	-0.3	-2.0	9.3	1.7	-4.9
2008/2009	43.8	49.3	49.3	45.6	41.3	41.8	47.6	42.9	42.4	38.1	39.9	44.0	31.7	44.6
Percentage change	-2.3	1.3	-1.5	0.0	0.0	0.0	-1.9	-6.0	-4.0	-9.7	-0.3	8.2	-8.6	4.6
2009/2010	43.7	45.8	45.2	44.7	41.9	41.6	47.3	42.3	43.7	39.1	40.2	46.0	29.1	36.7
Percentage change	-0.2	-7.0	-8.4	-1.9	1.6	-0.5	-0.7	-1.3	3.0	2.6	0.5	4.6	-8.1	-17.7

0 true zero or a value rounded to zero

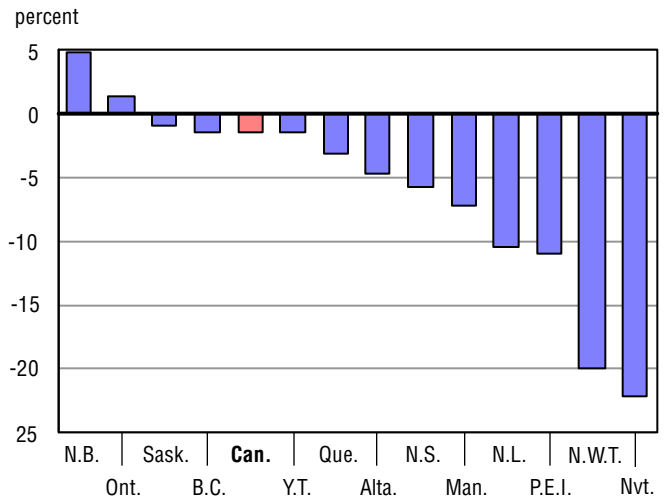
1. From 2005/2006 to 2009/2010, figure has been adjusted to reflect the change in school year reporting period.

**Note:** Table A.24 = Table A.16 (Educator remuneration) divided by Table A.19 (Total expenditures).

**Chart A.24.1**  
Educator remuneration as a percentage of total expenditures, 2009/2010



**Chart A.24.2**  
Percentage change between 2005/2006 and 2009/2010



**Table A.25**

**Educator remuneration as a percentage of operating expenditures in public elementary and secondary schools, Canada, provinces and territories, 2005/2006 to 2009/2010**

	Canada	N.L.	P.E.I.	N.S.	N.B.	Que.	Ont.	Man.	Sask. <sup>1</sup>	Alta.	B.C.	Y.T.	N.W.T.	Nvt.
2005/2006	49.0	53.0	51.2	50.2	46.3	47.2	52.8	48.9	46.3	43.6	45.3	45.5	39.1	54.6
Percentage change	-1.9	-4.4	-1.4	-12.4	0.5	-0.6	-1.0	-0.5	-1.2	-5.0	-2.4	-2.8	2.3	-0.8
2006/2007	49.2	52.4	53.0	48.4	45.9	45.6	53.7	48.4	46.3	44.9	46.2	43.9	38.9	49.8
Percentage change	0.4	-1.3	3.5	-3.4	-0.8	-3.3	1.6	-1.1	0.0	3.1	2.0	-3.6	-0.6	-8.7
2007/2008	49.5	50.5	51.3	48.4	46.3	46.7	53.9	48.5	46.0	46.1	45.1	44.0	39.6	47.8
Percentage change	0.6	-3.5	-3.1	-0.2	0.9	2.4	0.5	0.2	-0.8	2.6	-2.3	0.2	1.9	-4.0
2008/2009	48.8	51.4	52.3	48.0	46.9	46.8	53.2	45.6	44.9	43.0	45.5	46.1	41.0	49.1
Percentage change	-1.5	1.7	1.9	-0.8	1.3	0.1	-1.4	-5.9	-2.3	-6.8	0.9	4.9	3.4	2.7
2009/2010	48.6	50.5	52.0	48.7	47.8	46.5	52.3	45.5	45.7	44.3	45.3	48.5	41.0	46.6
Percentage change	-0.4	-1.7	-0.6	1.5	1.8	-0.6	-1.7	-0.2	1.9	3.2	-0.4	5.2	0.0	-5.1

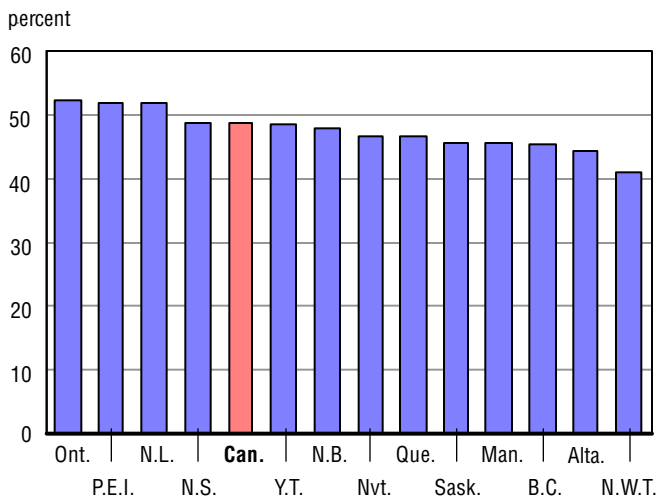
0 true zero or a value rounded to zero

1. From 2005/2006 to 2009/2010, figure has been adjusted to reflect the change in school year reporting period.

**Note:** Table A.25 = Table A.16 (Educator remuneration) divided by Table A.17 (Operating expenditures).

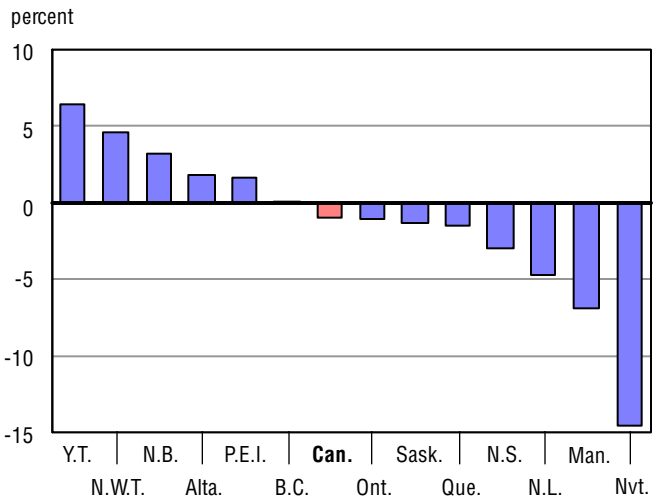
**Chart A.25.1**

**Educator remuneration as a percentage of operating expenditures, 2009/2010**



**Chart A.25.2**

**Percentage change between 2005/2006 and 2009/2010**



**Table A.26.1**

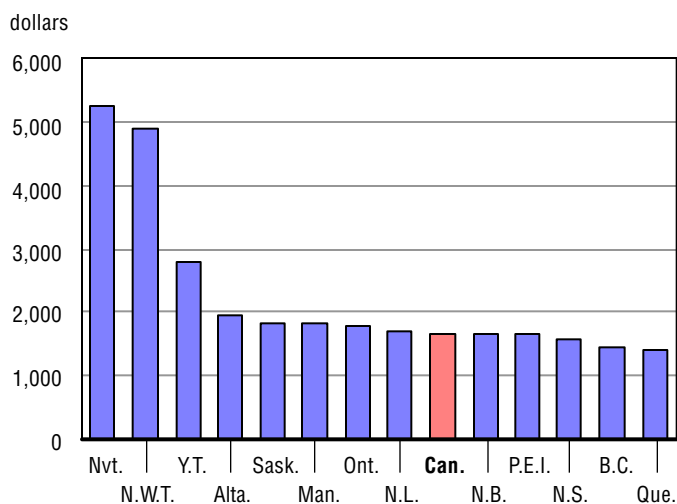
**Total expenditures in public elementary and secondary schools per capita, Canada, provinces and territories, 2005/2006 to 2009/2010 (in current dollars)**

	Canada	N.L.	P.E.I.	N.S.	N.B.	Que.	Ont.	Man.	Sask. <sup>1</sup>	Alta.	B.C.	Y.T.	N.W.T.	Nvt.
2005/2006	1,463	1,262	1,218	1,340	1,409	1,263	1,579	1,495	1,599	1,603	1,345	2,956	3,082	3,825
Percentage change	4.8	4.5	-0.5	8.7	3.7	2.7	5.2	5.1	1.3	5.5	6.6	12.9	1.3	-1.2
2006/2007	1,514	1,309	1,329	1,394	1,466	1,363	1,618	1,580	1,702	1,585	1,369	3,214	3,442	4,110
Percentage change	3.5	3.7	9.1	4.0	4.1	7.9	2.5	5.7	6.5	-1.1	1.8	8.8	11.7	7.5
2007/2008	1,542	1,419	1,363	1,445	1,501	1,390	1,629	1,582	1,691	1,663	1,401	3,110	3,750	4,295
Percentage change	1.8	8.4	2.5	3.7	2.4	2.0	0.7	0.1	-0.6	4.9	2.3	-3.2	8.9	4.5
2008/2009	1,630	1,532	1,471	1,516	1,633	1,415	1,721	1,732	1,820	1,887	1,438	2,908	4,421	4,397
Percentage change	5.7	7.9	7.9	4.9	8.7	1.8	5.7	9.5	7.6	13.5	2.7	-6.5	17.9	2.4
2009/2010	1,672	1,709	1,651	1,584	1,652	1,428	1,783	1,809	1,834	1,941	1,430	2,797	4,911	5,245
Percentage change	2.6	11.6	12.2	4.5	1.2	0.9	3.6	4.4	0.8	2.9	-0.6	-3.8	11.1	19.3

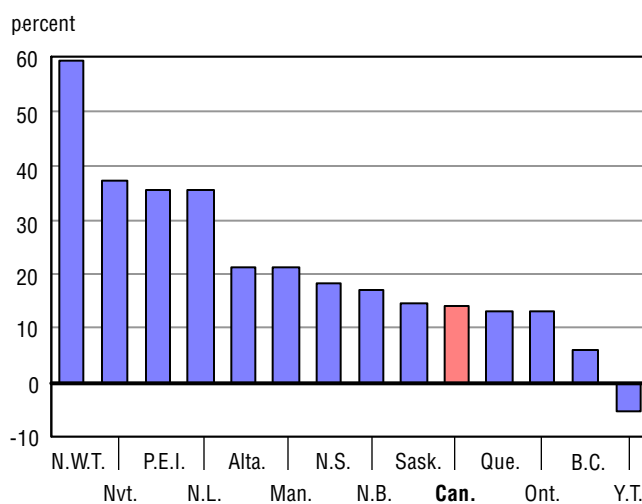
1. From 2005/2006 to 2009/2010, figure has been adjusted to reflect the change in school year reporting period.

**Note:** Table A.26.1 = Table A.19 (Total expenditures) divided by Table A.27 (Total population estimates).

**Chart A.26.1.1**  
Total expenditures per capita, 2009/2010 (in current dollars)



**Chart A.26.1.2**  
Percentage change between 2005/2006 and 2009/2010





**Table A.26.2**

**Total expenditures in public elementary and secondary schools per capita, Canada, provinces and territories, 2005/2006 to 2009/2010 (in 2002 constant dollars)**

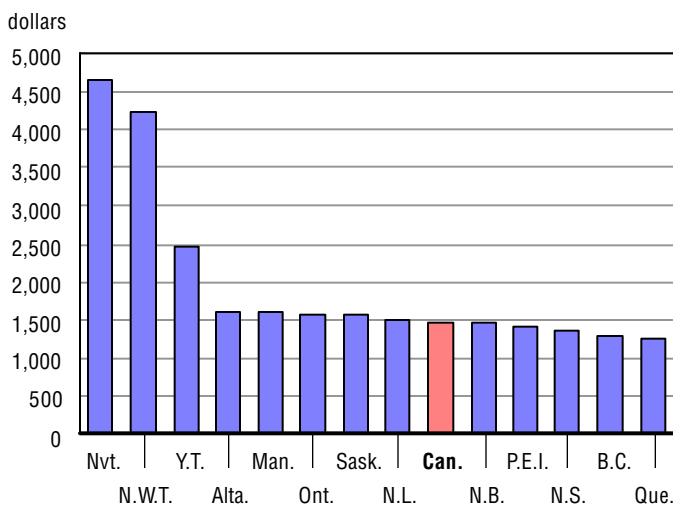
	Canada	N.L.	P.E.I.	N.S.	N.B.	Que.	Ont.	Man.	Sask. <sup>1</sup>	Alta.	B.C.	Y.T.	N.W.T.	Nvt.
2005/2006	1,367	1,173	1,117	1,239	1,312	1,182	1,477	1,403	1,496	1,483	1,265	2,807	2,902	3,717
Percentage change	2.5	1.8	-3.5	5.8	1.3	0.4	3.0	2.3	-0.9	3.3	4.4	10.5	-1.0	-2.8
2006/2007	1,388	1,195	1,191	1,263	1,343	1,254	1,487	1,454	1,560	1,412	1,266	3,010	3,196	3,929
Percentage change	1.5	1.9	6.7	1.9	2.4	6.1	0.7	3.6	4.3	-4.8	0.1	7.2	10.1	5.7
2007/2008	1,383	1,277	1,200	1,285	1,349	1,259	1,470	1,426	1,507	1,410	1,273	2,840	3,384	3,981
Percentage change	-0.4	6.9	0.7	1.7	0.5	0.4	-1.1	-1.9	-3.4	-0.1	0.6	-5.6	5.9	1.3
2008/2009	1,428	1,340	1,252	1,308	1,442	1,256	1,519	1,527	1,570	1,552	1,281	2,565	3,837	3,983
Percentage change	3.3	4.9	4.3	1.8	6.9	-0.3	3.3	7.1	4.2	10.0	0.6	-9.7	13.4	0.0
2009/2010	1,462	1,491	1,407	1,369	1,455	1,259	1,568	1,586	1,567	1,597	1,273	2,458	4,237	4,658
Percentage change	2.3	11.3	12.4	4.7	0.9	0.3	3.2	3.8	-0.2	2.9	-0.6	-4.2	10.4	17.0

0 true zero or a value rounded to zero

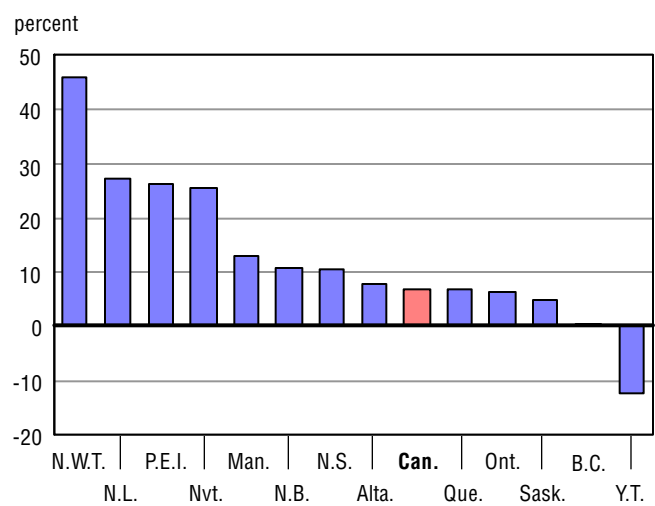
1. From 2005/2006 to 2009/2010, figure has been adjusted to reflect the change in school year reporting period.

**Note:** Table A.26.2 = Table A.19 (Total expenditures) divided by Table A.27 (Total population estimates) divided by Table A.30 (Consumer Price Index).

**Chart A.26.2.1**  
Total expenditures per capita, 2009/2010 (in 2002 constant dollars)



**Chart A.26.2.2**  
Percentage change between 2005/2006 and 2009/2010



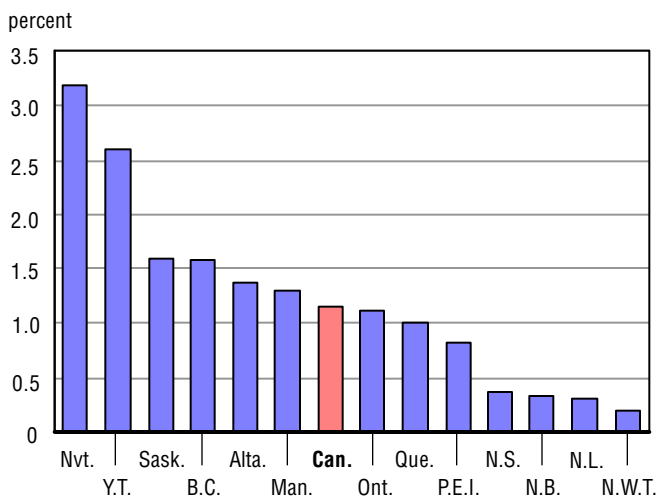
**Table A.27**  
**Total population estimates, Canada, provinces and territories, July 1<sup>st</sup>, 2006 to 2010**

	Canada	N.L.	P.E.I.	N.S.	N.B.	Que.	Ont.	Man.	Sask.	Alta.	B.C.	Y.T.	N.W.T.	Nvt.
2006	<b>32,576,074</b>	510,313	137,920	938,010	745,674	7,631,552	12,665,346	1,184,031	992,122	3,421,253	4,243,580	32,276	43,198	30,799
Percentage change	<b>1.0</b>	-0.8	-0.1	0.0	-0.3	0.7	1.1	0.5	-0.1	3.0	1.1	1.2	-0.5	1.6
2007	<b>32,929,733</b>	506,379	138,161	935,794	745,515	7,687,423	12,792,937	1,193,558	1,000,257	3,512,691	4,309,632	32,569	43,545	31,272
Percentage change	<b>1.1</b>	-0.8	0.2	-0.2	0.0	0.7	1.0	0.8	0.8	2.7	1.6	0.9	0.8	1.5
2008	<b>33,315,976</b>	506,193	139,545	936,737	746,902	7,751,332	12,932,297	1,205,517	1,013,792	3,591,391	4,383,860	33,116	43,699	31,595
Percentage change	<b>1.2</b>	0.0	1.0	0.1	0.2	0.8	1.1	1.0	1.4	2.2	1.7	1.7	0.4	1.0
2009	<b>33,720,184</b>	508,143	141,097	939,124	749,324	7,828,357	13,064,900	1,219,562	1,029,124	3,670,742	4,460,292	33,652	43,673	32,194
Percentage change	<b>1.2</b>	0.4	1.1	0.3	0.3	1.0	1.0	1.2	1.5	2.2	1.7	1.6	-0.1	1.9
2010	<b>34,108,752</b>	509,739	142,266	942,506	751,755	7,907,375	13,210,667	1,235,412	1,045,622	3,720,946	4,530,960	34,525	43,759	33,220
Percentage change	<b>1.2</b>	0.3	0.8	0.4	0.3	1.0	1.1	1.3	1.6	1.4	1.6	2.6	0.2	3.2

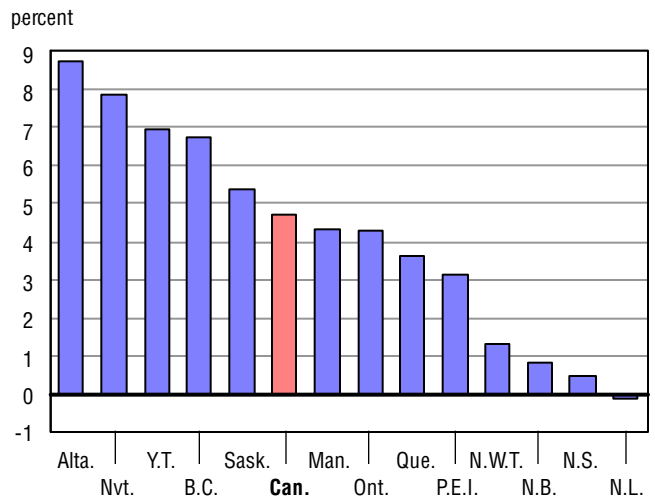
0 true zero or a value rounded to zero

**Source:** CANSIM, Statistics Canada, Table 051-0001 Demography Division: Estimates of Population by Age and Sex for Canada, Provinces and Territories.

**Chart A.27.1**  
**Percentage change between 2009 and 2010**



**Chart A.27.2**  
**Percentage change between 2006 and 2010**



**Table A.28**

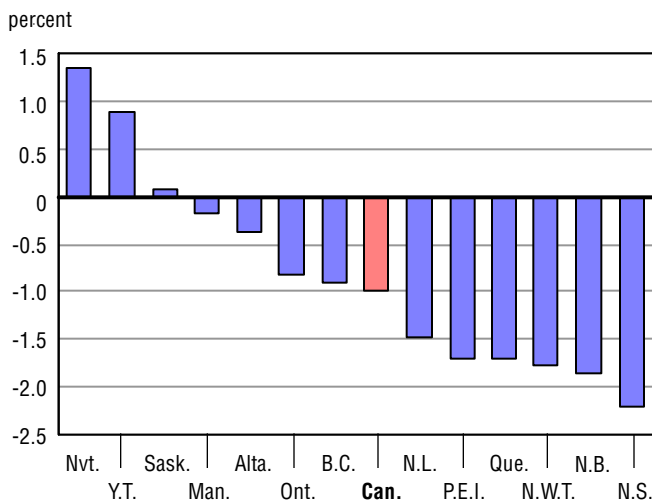
**School age population estimates (5 to 17 years), Canada, provinces and territories, July 1<sup>st</sup>, 2006 to 2010**

	Canada	N.L.	P.E.I.	N.S.	N.B.	Que.	Ont.	Man.	Sask.	Alta.	B.C.	Y.T.	N.W.T.	Nvt.
2006	5,262,385	75,797	23,250	143,551	113,541	1,170,989	2,088,306	211,742	178,343	583,311	650,444	5,490	8,949	8,672
Percentage change	-0.6	-2.9	-1.6	-2.0	-2.0	-0.5	-0.7	-0.6	-1.9	0.7	-0.6	-2.3	-2.8	-0.6
2007	5,207,528	73,854	22,819	140,066	111,405	1,156,238	2,067,909	210,516	176,062	580,968	644,807	5,398	8,818	8,668
Percentage change	-1.0	-2.6	-1.9	-2.4	-1.9	-1.3	-1.0	-0.6	-1.3	-0.4	-0.9	-1.7	-1.5	0.0
2008	5,140,772	71,987	22,561	136,141	109,146	1,135,313	2,044,335	208,742	174,083	577,789	638,085	5,361	8,576	8,653
Percentage change	-1.3	-2.5	-1.1	-2.8	-2.0	-1.8	-1.1	-0.8	-1.1	-0.5	-1.0	-0.7	-2.7	-0.2
2009	5,084,138	70,710	22,301	132,659	107,015	1,114,517	2,024,356	207,807	173,105	577,011	632,302	5,302	8,340	8,713
Percentage change	-1.1	-1.8	-1.2	-2.6	-2.0	-1.8	-1.0	-0.4	-0.6	-0.1	-0.9	-1.1	-2.8	0.7
2010	5,034,038	69,666	21,923	129,743	105,039	1,095,495	2,007,608	207,449	173,246	574,945	626,552	5,349	8,192	8,831
Percentage change	-1.0	-1.5	-1.7	-2.2	-1.8	-1.7	-0.8	-0.2	0.1	-0.4	-0.9	0.9	-1.8	1.4

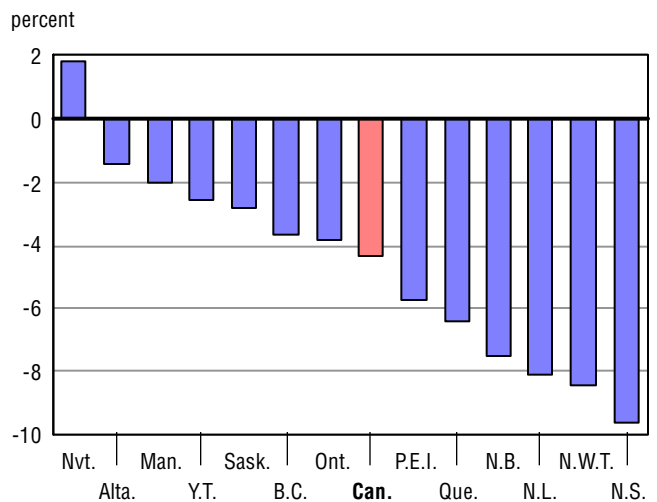
0 true zero or a value rounded to zero

**Source:** CANSIM, Statistics Canada, Table 051-0001: Estimates of Population by Age and Sex for Canada, Provinces and Territories.

**Chart A.28.1**  
Percentage change between 2009 and 2010



**Chart A.28.2**  
Percentage change between 2006 and 2010



**Table A.29**

**Average earnings for full-time, full-year workers with a Bachelor degree, Canada, provinces and territories, 2005/2006 to 2009/2010<sup>1</sup>**

	Canada	N.L.	P.E.I.	N.S.	N.B.	Que.	Ont.	Man.	Sask.	Alta.	B.C.	Y.T.	N.W.T.	Nvt.
2005/2006	<b>59,059</b>	59,309	43,832	50,472	54,948	54,563	62,787	52,623	54,535	63,638	56,293	.	.	.
Percentage change	<b>4.9</b>	6.6	6.2	9.2	4.0	2.6	4.9	5.6	12.8	9.1	2.0	.	.	.
2006/2007	<b>62,116</b>	62,430	46,358	51,841	58,197	56,652	66,357	53,492	58,164	68,752	57,999	.	.	.
Percentage change	<b>5.2</b>	5.3	5.8	2.7	5.9	3.8	5.7	1.7	6.7	8.0	3.0	.	.	.
2007/2008	<b>64,072</b>	60,614	49,335	53,746	58,870	57,649	67,078	57,569	63,687	74,275	61,412	.	.	.
Percentage change	<b>3.1</b>	-2.9	6.4	3.7	1.2	1.8	1.1	7.6	9.5	8.0	5.9	.	.	.
2008/2009	<b>65,126</b>	58,973	52,125	55,236	56,755	56,948	68,863	60,940	67,889	80,796	58,299	.	.	.
Percentage change	<b>1.6</b>	-2.7	5.7	2.8	-3.6	-1.2	2.7	5.9	6.6	8.8	-5.1	.	.	.
2009/2010	<b>65,636</b>	58,806	52,499	54,134	56,108	55,841	71,622	59,365	67,875	83,936	53,907	.	.	.
Percentage change	<b>0.8</b>	-0.3	0.7	-2.0	-1.1	-1.9	4.0	-2.6	0.0	3.9	-7.5	.	.	.

. not available for any reference period

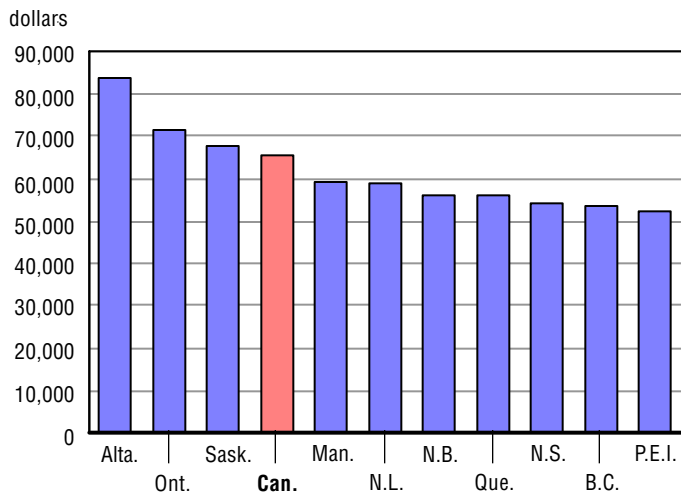
0 true zero or a value rounded to zero

1. Data for 2010 is not yet available.

**Source:** Statistics Canada, Survey of Labour and Income Dynamics.

**Chart A.29.1**

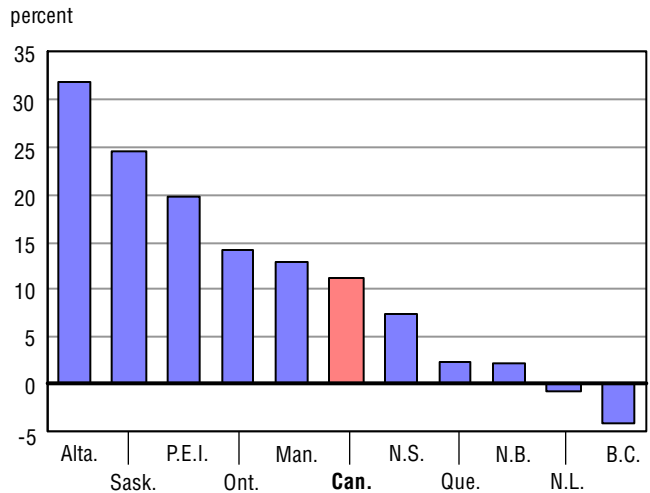
**Average earnings of full-time, full-year workers with a Bachelor degree, 2009/2010**



**Note:** Yukon, Northwest Territories, Nunavut are excluded, data unavailable for entire period.

**Chart A.29.2**

**Percentage change between 2005/2006 and 2009/2010**



**Note:** Yukon, Northwest Territories, Nunavut are excluded, data unavailable for entire period.

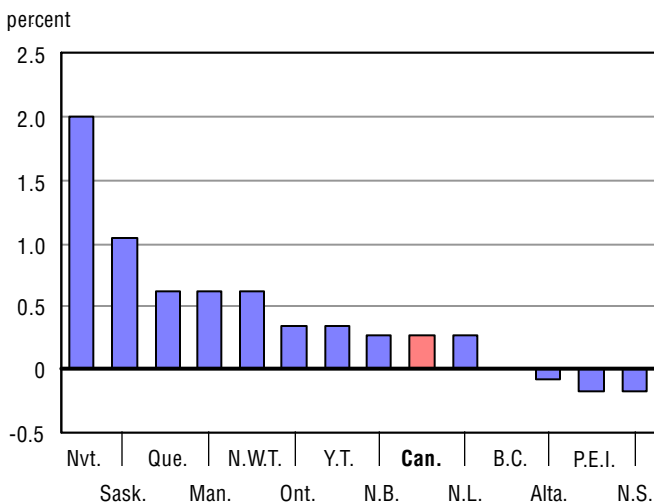
**Table A.30**  
**Consumer price index, Canada, provinces and territories, 2005/2006 to 2009/2010**

	Canada	N.L.	P.E.I.	N.S.	N.B.	Que.	Ont.	Man.	Sask.	Alta.	B.C.	Y.T.	N.W.T.	Nvt.
2005/2006	<b>1.070</b>	1.076	1.091	1.082	1.074	1.069	1.069	1.066	1.069	1.081	1.063	1.053	1.062	1.029
Percentage change	<b>2.2</b>	2.7	3.1	2.8	2.4	2.3	2.2	2.7	2.2	2.1	2.0	2.2	2.3	1.7
2006/2007	<b>1.091</b>	1.095	1.116	1.104	1.092	1.087	1.088	1.087	1.091	1.123	1.081	1.068	1.077	1.046
Percentage change	<b>2.0</b>	1.8	2.3	2.0	1.7	1.7	1.8	2.0	2.1	3.9	1.7	1.4	1.4	1.7
2007/2008	<b>1.115</b>	1.111	1.136	1.125	1.113	1.104	1.108	1.109	1.122	1.179	1.100	1.095	1.108	1.079
Percentage change	<b>2.2</b>	1.5	1.8	1.9	1.9	1.6	1.8	2.0	2.8	5.0	1.8	2.5	2.9	3.2
2008/2009	<b>1.141</b>	1.143	1.175	1.159	1.132	1.127	1.133	1.134	1.159	1.216	1.123	1.134	1.152	1.104
Percentage change	<b>2.3</b>	2.9	3.4	3.0	1.7	2.1	2.3	2.3	3.3	3.1	2.1	3.6	4.0	2.3
2009/2010	<b>1.144</b>	1.146	1.173	1.157	1.135	1.134	1.137	1.141	1.171	1.215	1.123	1.138	1.159	1.126
Percentage change	<b>0.3</b>	0.3	-0.2	-0.2	0.3	0.6	0.4	0.6	1.0	-0.1	0.0	0.4	0.6	2.0

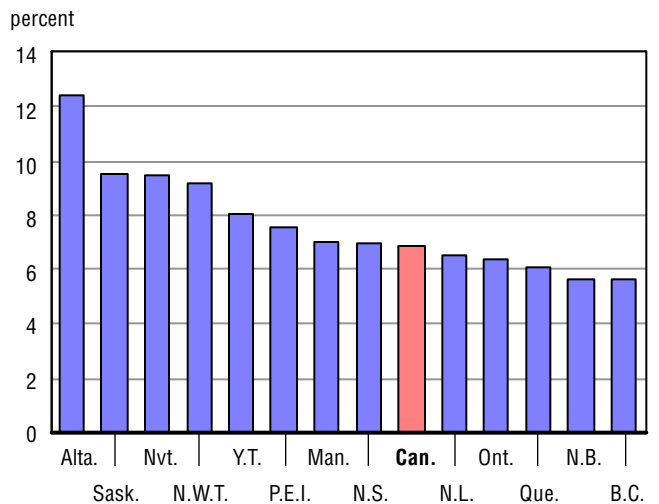
0 true zero or a value rounded to zero

**Source:** CANSIM, Statistics Canada, Table 326-0002: Consumer price index, 2005 basket content; All-items (Index, 2002=100).

**Chart A.30.1**  
**Percentage change between 2008/2009 and 2009/2010**



**Chart A.30.2**  
**Percentage change between 2005/2006 and 2009/2010**



**Table A.31**

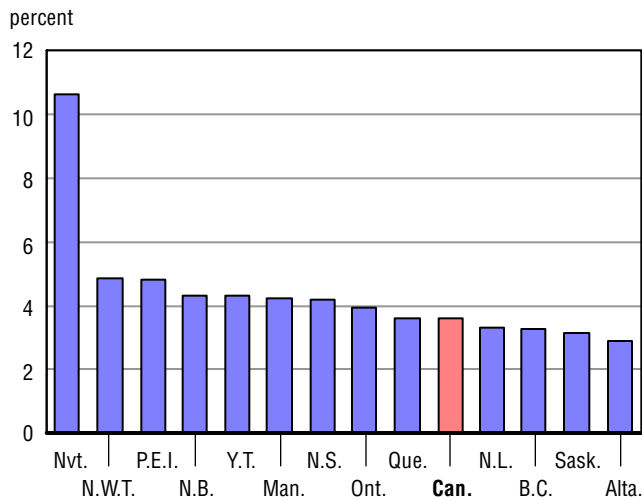
**Total expenditures in public elementary and secondary schools as a percentage of GDP, Canada, provinces and territories, 2005/2006 to 2009/2010**

	Canada	N.L.	P.E.I.	N.S.	N.B.	Que.	Ont.	Man.	Sask.	Alta.	B.C.	Y.T.	N.W.T.	Nvt.
2005/2006	3.4	2.7	4.0	4.0	4.2	3.5	3.6	4.1	3.5	2.4	3.2	6.1	3.1	10.0
Percentage change	-0.1	-10.7	-4.5	5.6	-1.1	-0.3	2.1	-1.0	-4.3	-3.0	0.2	5.5	1.3	-6.1
2006/2007	3.3	2.4	4.1	4.0	4.1	3.6	3.6	4.0	3.5	2.3	3.2	6.1	3.4	10.0
Percentage change	-0.8	-10.7	3.8	0.8	-0.5	4.2	-0.7	-1.7	-0.3	-5.9	-2.8	-0.3	8.4	0.4
2007/2008	3.3	2.4	4.1	4.0	4.1	3.6	3.6	3.8	2.9	2.2	3.1	5.4	3.4	9.3
Percentage change	-2.0	-0.1	-0.6	-0.6	-0.5	-0.9	-0.5	-5.3	-16.6	-2.6	-0.5	-11.7	1.1	-6.7
2008/2009	3.5	2.8	4.4	4.1	4.4	3.6	3.8	4.1	3.0	2.6	3.3	4.7	4.3	9.2
Percentage change	7.0	17.1	6.4	2.5	7.4	1.3	7.0	8.0	2.9	19.3	4.5	-12.3	24.7	-1.8
2009/2010	3.6	3.3	4.8	4.2	4.3	3.6	3.9	4.2	3.2	2.9	3.3	4.3	4.9	10.6
Percentage change	3.1	17.4	9.4	2.2	-2.0	-0.5	2.5	3.1	4.2	9.5	0.0	-8.0	15.2	16.0

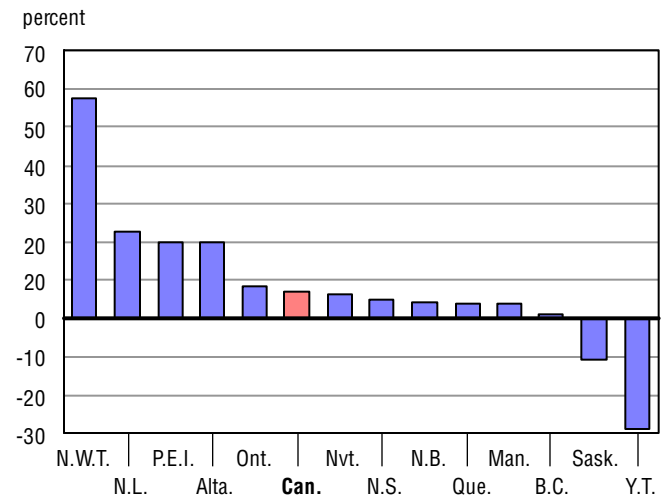
0 true zero or a value rounded to zero

**Note:** Table A.31 = Table A.19 (Total expenditures) divided by Table A.33 (Gross Domestic Product).

**Chart A.31.1**  
Total expenditures as a percentage of GDP, 2009/2010



**Chart A.31.2**  
Percentage change between 2005/2006 and 2009/2010



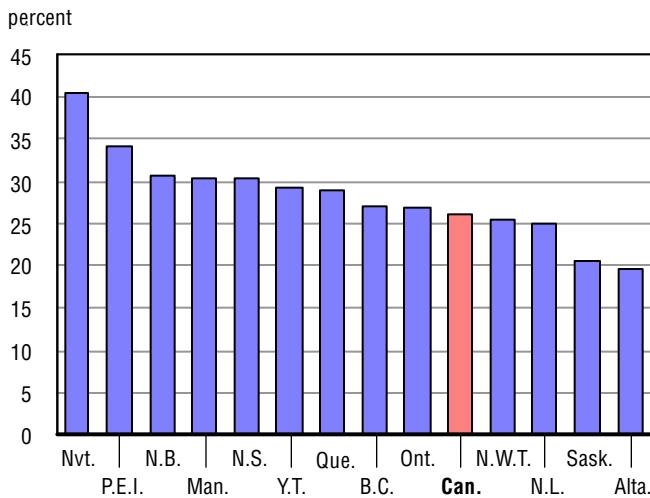
**Table A.32**

**Total expenditures per student in public elementary and secondary schools as a percentage of GDP per capita, Canada, provinces and territories, 2005/2006 to 2009/2010**

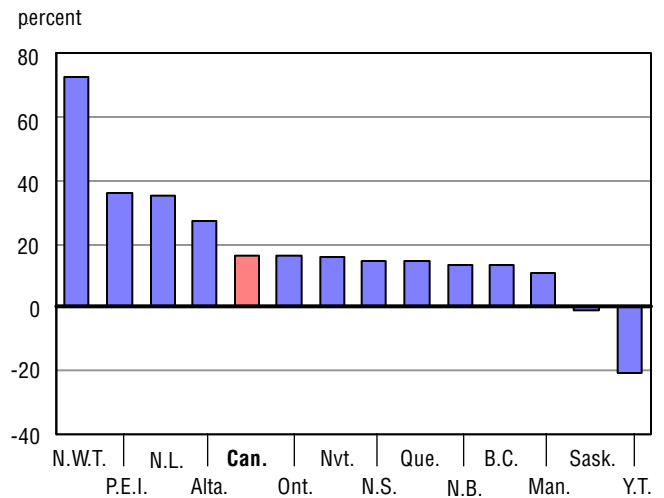
	Canada	N.L.	P.E.I.	N.S.	N.B.	Que.	Ont.	Man.	Sask.	Alta.	B.C.	Y.T.	N.W.T.	Nvt.
2005/2006	22.5	18.4	25.1	26.4	27.0	25.2	23.0	27.4	20.7	15.4	24.0	36.9	14.8	35.0
Percentage change	1.7	-8.3	-2.7	7.9	0.6	1.7	3.4	0.6	-2.6	-0.3	2.4	5.5	2.3	-2.2
2006/2007	22.8	16.9	26.8	27.2	27.5	26.9	23.2	27.5	21.3	14.6	24.1	37.8	16.0	35.9
Percentage change	1.2	-8.4	6.8	3.2	1.9	6.5	1.1	0.4	2.8	-4.8	0.5	2.6	8.0	2.6
2007/2008	22.8	17.4	27.6	27.8	27.8	27.4	23.5	26.4	18.4	14.6	24.7	34.0	16.7	33.9
Percentage change	0.3	3.0	3.1	1.9	1.2	1.8	1.3	-4.0	-13.7	0.0	2.5	-10.1	4.5	-5.4
2008/2009	25.0	20.9	30.4	29.0	30.5	28.5	25.7	29.0	19.4	17.7	26.5	30.7	21.5	33.1
Percentage change	9.4	20.1	10.2	4.4	9.6	4.2	9.0	10.1	5.7	21.0	7.4	-9.6	29.0	-2.5
2009/2010	26.2	24.9	34.2	30.3	30.6	28.9	26.8	30.4	20.5	19.5	27.1	29.3	25.5	40.6
Percentage change	4.8	19.5	12.4	4.6	0.2	1.3	4.2	4.8	5.7	10.3	2.2	-4.7	18.5	22.7

**Note:** Table A.32 = Table A.20.1 (Total expenditures per student) divided by Table A.34 (Gross Domestic Product).

**Chart A.32.1**  
Total expenditures per student as a percentage of GDP per capita, 2009/2010



**Chart A.32.2**  
Percentage change between 2005/2006 and 2009/2010



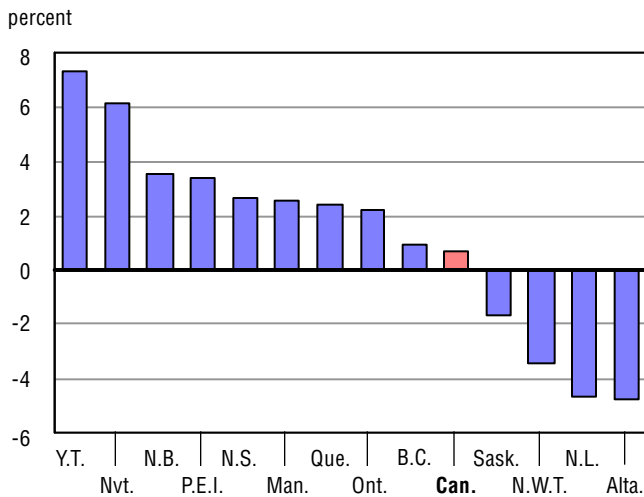
**Table A.33**

**Gross domestic product, Canada, provinces and territories, 2005/2006 to 2009/2010  
(in millions of current dollars)**

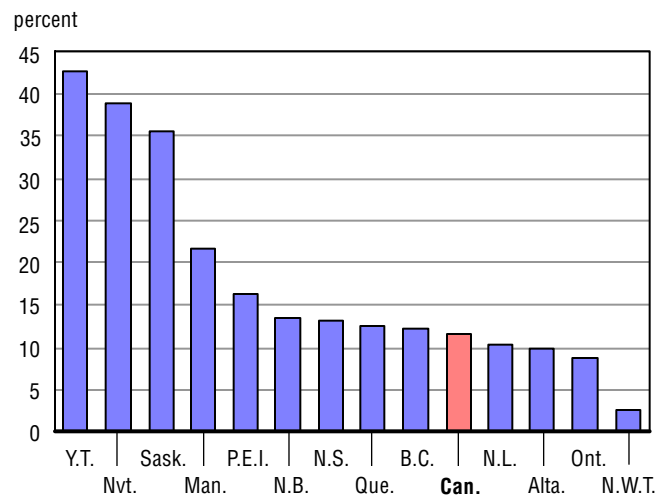
	Canada	N.L.	P.E.I.	N.S.	N.B.	Que.	Ont.	Man.	Sask.	Alta.	B.C.	Y.T.	N.W.T.	Nvt.
2005/2006	<b>1,412,125</b>	24,012	4,206	31,422	25,282	277,277	548,980	43,427	44,800	229,348	175,958	1,566	4,275	1,182
Percentage change	<b>6.0</b>	16.1	4.1	2.9	4.5	3.7	4.2	6.7	5.7	12.0	7.5	8.3	-0.4	6.9
2006/2007	<b>1,489,997</b>	27,657	4,429	32,338	26,446	289,217	572,261	47,047	48,234	247,337	187,184	1,723	4,440	1,285
Percentage change	<b>5.5</b>	15.2	5.3	2.9	4.6	4.3	4.2	8.3	7.7	7.8	6.4	10.1	3.9	8.7
2007/2008	<b>1,566,504</b>	30,017	4,615	33,775	27,272	300,204	585,501	50,248	58,256	272,244	195,779	1,919	4,802	1,454
Percentage change	<b>5.1</b>	8.5	4.2	4.4	3.1	3.8	2.3	6.8	20.8	10.1	4.6	11.4	8.1	13.2
2008/2009	<b>1,566,202</b>	27,774	4,733	34,647	27,710	304,670	584,345	51,547	61,822	264,699	195,652	2,080	4,536	1,545
Percentage change	<b>0.0</b>	-7.5	2.5	2.6	1.6	1.5	-0.2	2.6	6.1	-2.8	-0.1	8.4	-5.5	6.3
2008/2009	<b>1,576,797</b>	26,477	4,894	35,563	28,684	312,105	597,065	52,888	60,776	252,117	197,505	2,232	4,382	1,640
Percentage change	<b>0.7</b>	-4.7	3.4	2.6	3.5	2.4	2.2	2.6	-1.7	-4.8	0.9	7.3	-3.4	6.1

**Source:** CANSIM, Statistics Canada, Table: 384-0013 (converted to school (July-June) year): Gross Domestic Product.

**Chart A.33.1**  
Percentage change between 2008/2009 and 2009/2010



**Chart A.33.2**  
Percentage change between 2005/2006 and 2009/2010





**Table A.34**

**Gross domestic product per capita, Canada, provinces and territories, 2005/2006 to 2009/2010  
(in current dollars)**

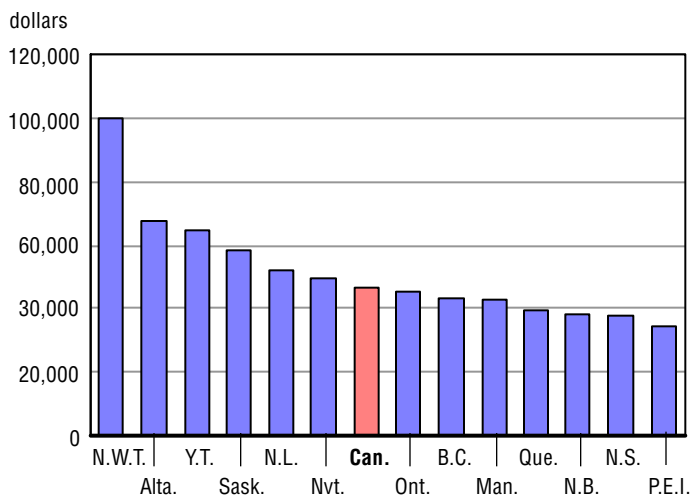
	Canada	N.L.	P.E.I.	N.S.	N.B.	Que.	Ont.	Man.	Sask.	Alta.	B.C.	Y.T.	N.W.T.	Nvt.
2005/2006	<b>43,349</b>	47,053	30,492	33,498	33,904	36,333	43,345	36,677	45,156	67,036	41,464	48,504	98,951	38,362
Percentage change	<b>4.9</b>	17.0	4.2	2.9	4.8	3.0	3.1	6.1	5.8	8.8	6.3	7.1	0.0	5.2
2006/2007	<b>45,248</b>	54,616	32,057	34,556	35,473	37,622	44,733	39,417	48,221	70,412	43,434	52,903	101,963	41,075
Percentage change	<b>4.4</b>	16.1	5.1	3.2	4.6	3.5	3.2	7.5	6.8	5.0	4.7	9.1	3.0	7.1
2007/2008	<b>47,020</b>	59,300	33,072	36,056	36,513	38,729	45,274	41,681	57,463	75,804	44,659	57,948	109,877	46,020
Percentage change	<b>3.9</b>	8.6	3.2	4.3	2.9	2.9	1.2	5.7	19.2	7.7	2.8	9.5	7.8	12.0
2008/2009	<b>46,447</b>	54,657	33,541	36,892	36,979	38,919	44,726	42,266	60,072	72,110	43,865	61,809	103,863	47,990
Percentage change	<b>-1.2</b>	-7.8	1.4	2.3	1.3	0.5	-1.2	1.4	4.5	-4.9	-1.8	6.7	-5.5	4.3
2009/2010	<b>46,229</b>	51,942	34,400	37,732	38,156	39,470	45,196	42,810	58,124	67,756	43,590	64,649	100,128	49,368
Percentage change	<b>-0.5</b>	-5.0	2.6	2.3	3.2	1.4	1.0	1.3	-3.2	-6.0	-0.6	4.6	-3.6	2.9

0 true zero or a value rounded to zero

**Note:** Table A.34 = Table A.33 (Gross Domestic Product) divided by Table A.30 (Total population estimates).

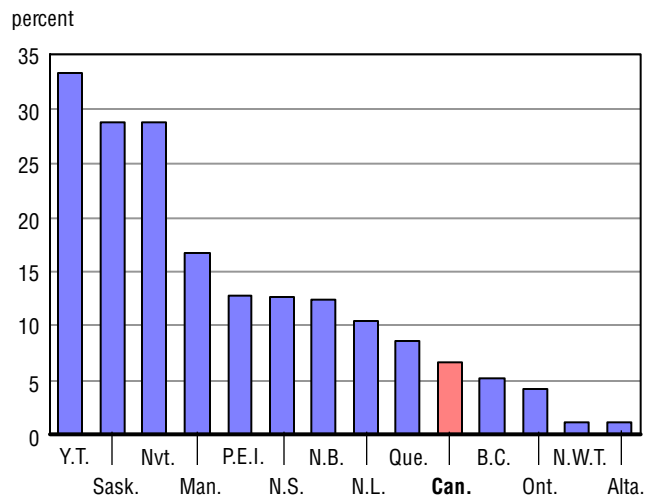
**Chart A.34.1**

**Gross domestic product per capita, 2009/2010**



**Chart A.34.2**

**Percentage change between 2005/2006 and 2009/2010**



## Appendix 2

### Definitions

#### Enrolments

Number of students enrolled in public schools operated by school boards or the province in September (or as close as possible thereafter) of the school year. It includes all students in publicly funded schools (graded and ungraded), provincial reformatory or custodial schools, and other students recognized and funded by a province or territory. It excludes correspondence or distance education enrolments, private school students, independent school students or students in schools financed by federal departments (e.g. the Department of National Defense and Aboriginal Affairs and Northern Development Canada (AANDC)).

Includes other non-standard enrolment including students receiving educational services (if recognized by the province) and for schools and/or school districts that receive funding in a unique manner. They may be non-graduates who are taking only a few courses required to complete graduation. For example, a student who is enrolled in only 25% of a 'regular' course load and for whom the school or school district receives only 25% of the usual funding. This category may not apply to some provinces or territories.

#### Headcount enrolment

Defined as the number of students enrolled in September (or as close as possible thereafter) of the school year.

#### Full Time Equivalent (FTE) enrolment

Defined as the number of full-time students enrolled in September (or as close as possible thereafter) of the school year, plus the sum of part-time students according to the time fraction spent in the classroom and for which students are funded. For example, junior kindergarten and kindergarten students taking a half-time program and where a half-time program is being funded, the FTE enrolment would be the headcount enrolment divided by two, which is 0.5. If a student is only taking a quarter of the usual course load and is funded on that basis, the FTE enrolment would be the headcount enrolment divided by four, which is 0.25.

## Minority and Second Language Programs

### Regular Second Language Programs

Enrolments in programs where French is taught to Anglophone students or English is taught to Francophone students as a “subject” in the regular course offerings. One or more additional subjects can also be taught in the student’s second official language but second language instruction must total less than 25% of all instruction time.

### Second Language Immersion Programs

Enrolments in programs where French is the language of instruction for Anglophone students or English is the language of instruction for Francophone students. Instruction time in the student’s second official language is more than 25% of all instruction time.

### Minority Language Programs

Enrolments in programs for students from the official language linguistic minority in the relevant province or territory (French outside Québec, English in Québec). These programs allow children in the linguistic minority to pursue their education in their first official language.

## Graduates

Graduates of general training programs offered to similarly aged young students. Includes first time graduates only.

Includes graduates in General Education Development (GED), Adult Basic Education (ABE) and other equivalency programs. Excludes any graduates of upgrading programs offered at the postsecondary level.

Includes graduates in all professional and technical training programs. Excludes any graduates of vocational programs offered at the postsecondary level.

## Graduation rate

The number of graduates is as of the end of a school year while the population estimates are as of July 1 of the corresponding school year. The graduation rate should not be used to infer a dropout rate.

The graduation rate is calculated by dividing the number of graduates with the average of the 17 and 18 year-old population:

Graduation Rate = Total number of secondary graduates / [(17 year old population + 18 year-old population)/2]

## Educators

Includes all employees in the public school system (either school-based or school district-based) who belong to one of the three following categories: teachers, school administrators and pedagogical support.

It includes all educators in regular public schools, provincial reformatory or custodial schools, and other students recognized and funded by a province or territory. It excludes correspondence or distance programs, private schools, or independent schools financed by federal departments (e.g. the Department of National Defense and Aboriginal Affairs and Northern Development Canada (AANDC)).

Please note that all teachers in regular programs for youth, adult upgrading programs and vocational programs for youth and adults are also included. Any programs offered at the postsecondary level are excluded.

## Teachers

This category includes personnel involved in direct student instruction in a group or one-on-one basis. Chairpersons of departments who spend the majority of their time teaching are also reported in this category. Personnel temporarily not at work (e.g. for reasons of illness or injury, maternity or parental leave, holiday or vacation) are also included.

### Includes:

- Classroom teachers
- Special education teachers
- Specialists (music, physical education)
- Other teachers who work with students as a whole class in a classroom, in small groups in a resource room, or one-on-one inside or outside a regular classroom

### Excludes:

- Teacher aides, student teachers
- Other personnel who do not get paid for their employment.

## School Administrators

This category covers professional teaching personnel who provide services to students to support their instruction program. It includes educational assistants, paid teacher's aides, guidance counsellors and librarians.

### Excludes:

- Higher level management
- Receptionists, secretaries, clerks and other staff who support the administrative activities of the school

## **Pedagogical support**

This category covers professional teaching personnel who provide services to students to support their instruction program. It includes educational assistants, paid teacher's aides, guidance counsellors and librarians.

Excludes:

- Health and social support which should be reported under 'other than educators'

## **Headcount educator**

Defined as the number of educators on September the 30th (or as close as possible thereafter) of the school year who are responsible for providing services to the headcount enrolment students.

## **Full Time Equivalent (FTE) educator**

Defined as the number of full-time educators on September the 30th (or as close as possible thereafter) of the school year, plus the sum of part-time educators according to their percentage of a full-time employment allocation (determined by the province or territory). For example, if a normal full-time work allocation is ten months per year, an educator who works for six months of the year would be counted as 0.6 of a Full Time Equivalent (FTE) or an employee who works part time for ten months at 60% of full time would be 0.6 of an FTE.

# Culture, Tourism and the Centre for Education Statistics

## Research Papers

### Cumulative index

Statistics Canada's **Division of Culture, Tourism and the Centre for Education Statistics** develops surveys, provides statistics and conducts research and analysis relevant to current issues in its three areas of responsibility.

The **Culture Statistics Program** creates and disseminates timely and comprehensive information on the culture sector in Canada. The program manages a dozen regular census surveys and databanks to produce data that support policy decision and program management requirements. Issues include the economic impact of culture, the consumption of culture goods and services, government, personal and corporate spending on culture, the culture labour market, and international trade of culture goods and services. Analysis is also published in *Focus on Culture* (87-004-XIE, free, <http://www.statcan.ca/bsolc/english/bsolc?catno=87-004-X>).

The **Tourism Statistics Program** provides information on domestic and international tourism. The program covers the Canadian Travel Survey and the International Travel Survey. Together, these surveys shed light on the volume and characteristics of trips and travellers to, from and within Canada.

The **Centre for Education Statistics** develops and delivers a comprehensive program of pan-Canadian education statistics and analysis in order to support policy decisions and program management, and to ensure that accurate and relevant information concerning education is available to the Canadian public and to other educational stakeholders. The Centre conducts fifteen institutional and over ten household education surveys. Analysis is also published in *Education Matters* (81-004-XIE, free, <http://www.statcan.ca/bsolc/english/bsolc?catno=81-004-X>), and in the *Analytical Studies Branch research paper series* (11F0019MIE, free, <http://www.statcan.ca/bsolc/english/bsolc?catno=11F0019M>).

---

**Following is a cumulative index of Culture, Tourism and the Centre for Education Statistics research papers published to date**


---

**Research papers**

- 81-595-M no. 001 Understanding the rural-urban reading gap
- 81-595-M no. 002 Canadian education and training services abroad: the role of contracts funded by international financial institution
- 81-595-M No. 003 Finding their way: a profile of young Canadian graduates
- 81-595-M No. 004 Learning, earning and leaving – The relationship between working while in high school and dropping out
- 81-595-M No. 005 Linking provincial student assessments with national and international assessments
- 81-595-M No. 006 Who goes to post-secondary education and when: Pathways chosen by 20 year-olds
- 81-595-M No. 007 Access, persistence and financing: First results from the Postsecondary Education Participation Survey (PEPS)
- 81-595-M No. 008 The labour market impacts of adult education and training in Canada
- 81-595-M No. 009 Issues in the design of Canada’s Adult Education and Training Survey
- 81-595-M No. 010 Planning and preparation: First results from the Survey of Approaches to Educational Planning (SAEP) 2002
- 81-595-M No. 011 A new understanding of postsecondary education in Canada: A discussion paper
- 81-595-M No. 012 Variation in literacy skills among Canadian provinces: Findings from the OECD PISA
- 81-595-M No. 013 Salaries and salary scales of full-time teaching staff at Canadian universities, 2001-2002: final report
- 81-595-M No. 014 In and out of high school: First results from the second cycle of the Youth in Transition Survey, 2002
- 81-595-M No. 015 Working and Training: First Results of the 2003 Adult Education and Training Survey
- 81-595-M No. 016 Class of 2000: Profile of Postsecondary Graduates and Student Debt
- 81-595-M No. 017 Connectivity and ICT integration in Canadian elementary and secondary schools: First results from the Information and Communications Technologies in Schools Survey, 2003-2004
- 81-595-M No. 018 Education and Labour Market Pathways of Young Canadians Between age 20 and 22: an Overview
- 81-595-M No. 019 Salaries and salary scales of full-time teaching staff at Canadian universities, 2003-2004
- 81-595-M No. 020 Culture Goods Trade Estimates: Methodology and Technical Notes
- 81-595-M No. 021 Canadian Framework for Culture Statistics
- 81-595-M No. 022 Summary public school indicators for the provinces and territories, 1996-1997 to 2002-2003
- 81-595-M No. 023 Economic Contribution of Culture in Canada
- 81-595-M No. 024 Economic Contributions of the Culture Sector in Ontario
- 81-595-M No. 025 Economic Contribution of the Culture Sector in Canada – A Provincial Perspective

**Following is a cumulative index of Culture, Tourism and the Centre for Education Statistics research papers published to date**

**Research papers**

- 81-595-M No. 026 Who pursues postsecondary education, who leaves and why: Results from the Youth in Transition Survey
- 81-595-M No. 027 Salaries and salary scales of full-time teaching staff at Canadian universities, 2002-2003: final report
- 81-595-M No. 028 Canadian School Libraries and Teacher-Librarians: Results from the 2003/04 Information and Communications Technologies in Schools Survey
- 81-595-M No. 029 Manitoba Postsecondary Graduates from the Class of 2000: How Did They Fare?
- 81-595-M No. 030 Salaries and Salary Scales of Full-time teaching Staff at Canadian Universities, 2004-2005: Preliminary Report
- 81-595-M No. 031 Salaries and salary scales of full-time teaching staff at Canadian universities, 2003-2004: final report
- 81-595-M No. 032 Survey of Earned Doctorates: A Profile of Doctoral Degree Recipients
- 81-595-M No. 033 The Education Services Industry in Canada
- 81-595-M No. 034 Connectivity and ICT Integration in First Nations Schools: Results from the Information and Communications Technologies in Schools Survey, 2003/04
- 81-595-M No. 035 Registered Apprentices: A Class Ten Years Later
- 81-595-M No. 036 Participation in Postsecondary Education: Evidence from the Survey of Labour Income Dynamics
- 81-595-M No. 037 Economic Contribution of the Culture sector to Canada's Provinces
- 81-595-M No. 038 Profile of Selected Culture Industries in Ontario
- 81-595-M No. 039 Factors Affecting the Repayment of Student Loans
- 81-595-M No. 040 Culture Goods Trade Data User Guide
- 81-595-M No. 041 Health Human Resources and Education: Outlining Information Needs
- 81-595-M No. 042 How Students Fund Their Postsecondary Education: Findings from the Postsecondary Education Participation Survey
- 81-595-M No. 043 Educational Outcomes at Age 19 Associated with Reading Ability at Age 15
- 81-595-M No. 044 Summary Public School Indicators for the Provinces and Territories, 1997-1998 to 2003-2004
- 81-595-M No. 045 Follow-up on Education and Labour Market Pathways of Young Canadians Aged 18 to 20 – Results from YITS Cycle 3
- 81-595-M No. 046 Salaries and Salary Scales of Full-time Teaching Staff at Canadian Universities, 2005/2006: Preliminary Report
- 81-595-M No. 047 Canada Student Loans Repayment Assistance: Who Does and Does Not Use Interest Relief?
- 81-595-M No. 048 Salaries and Salary Scales of Full-time Teaching Staff at Canadian Universities, 2004/2005: Final Report
- 81-595-M No. 049 Educating Health Workers: A Statistical Portrait



---

**Following is a cumulative index of Culture, Tourism and the Centre for Education Statistics research papers published to date**

---

**Research papers**

- 81-595-M No. 050 Summary Public School Indicators for the Provinces and Territories, 1997-1998 to 2003-2004
- 81-595-M No. 051 Culture Employment in a North American Context
- 81-595-M No. 052 Salaries and Salary Scales of Full-time Teaching Staff at Canadian Universities, 2006/2007: Preliminary Report
- 81-595-M No. 053 Towards a Geography of Culture: Culture Occupations Across the Canadian Urban-Rural Divide
- 81-595-M No. 054 Education-to-Labour Market Pathways of Canadian Youth: Findings from the Youth in Transition Survey
- 81-595-M No. 055 High School Dropouts Returning to School
- 81-595-M No. 056 Trade in Culture Services A Handbook of Concepts and Methods
- 81-595-M No. 057 Educational Outcomes at Age 19 by Gender and Parental Income: A First Look at Provincial differences
- 81-595-M No. 058 Postsecondary Enrolment Trends to 2031: Three Scenarios
- 81-595-M No. 059 Participation in Postsecondary Education: Graduates, Continuers and Drop Outs, Results from YITS Cycle 4
- 81-595-M No. 060 Sport Participation in Canada, 2005
- 81-595-M No. 061 Salaries and Salary Scales of Full-time Teaching Staff at Canadian Universities, 2005/2006: Final Report
- 81-595-M No. 062 Salaries and Salary Scales of Full-time Teaching Staff at Canadian Universities, 2007/2008: Preliminary Report
- 81-595-M No. 063 Registered Apprentices: The Cohort of 1993, a Decade Later, Comparisons with the 1992 Cohort
- 81-595-M No. 064 Creative Input: The Role of Culture Occupations in the Economy During the 1990s
- 81-595-M No. 065 Doctoral Graduates in Canada: Findings from the Survey of Earned Doctorates, 2004/2005
- 81-595-M No. 066 Understanding Culture Consumption in Canada
- 81-595-M No. 067 Summary Public School Indicators for the Provinces and Territories, 1999/2000 to 2005/2006
- 81-595-M No. 068 Educating Health Workers: Provincial Results
- 81-595-M No. 069 Doctorate Education in Canada: Findings from the Survey of Earned Doctorates, 2005/2006
- 81-595-M No. 070 Postsecondary Education – Participation and Dropping Out: Differences Across University, College and Other Types of Postsecondary Institutions
- 81-595-M No. 071 Statistics Canada’s Definition and Classification of Postsecondary and Adult Education Providers in Canada
- 81-595-M No. 072 Moving Through, Moving On: Persistence in Postsecondary Education in Atlantic Canada, Evidence from the PSIS
- 81-595-M No. 073 Salaries and Salary Scales of Full-time Teaching Staff at Canadian Universities, 2006/2007: Final Report

**Following is a cumulative index of Culture, Tourism and the Centre for Education Statistics research papers published to date**

**Research papers**

- 81-595-M No. 074 Graduating in Canada: Profile, Labour Market Outcomes and Student Debt of the Class of 2005
- 81-595-M No. 075 Education and Labour Market Transitions in Young Adulthood
- 81-595-M No. 076 Salaries and Salary Scales of Full-time Teaching Staff at Canadian Universities, 2008/2009: Preliminary Report
- 81-595-M No. 077 Developing a Culture Satellite Account for Canada
- 81-595-M No. 078 Summary Public School Indicators for the Provinces and Territories, 2000/2001 to 2006/2007
- 81-595-M No. 079 Lifelong Learning Among Canadians Aged 18 to 64 Years: First Results from the 2008 Access and Support to Education and Training Survey
- 81-595-M No. 080 Registered Apprentices: The Cohorts of 1994 and 1995, One Decade Later
- 81-595-M No. 081 The High Education / Low Income Paradox: College and University Graduates with Low Earnings, Ontario, 2006
- 81-595-M No. 082 Salaries and Salary Scales of Full-time Teaching Staff at Canadian Universities, 2007/2008: Final Report
- 81-595-M No. 083 Summary Public School Indicators for Canada, the Provinces and Territories, 2001/2002 to 2007/2008
- 81-595-M No. 084 Characteristics and Labour Market Outcomes of Internationally-educated Immigrants: Results from the 2006 Census
- 81-595-M No. 085 Salaries and Salary Scales of Full-time Teaching Staff at Canadian Universities, 2008/2009: Final Report
- 81-595-M No. 086 Salaries and Salary Scales of Full-time Teaching Staff at Canadian Universities, 2009/2010: Preliminary Report
- 81-595-M No. 087 Labour Market Experiences of Youth After Leaving School: Exploring the Effect of Educational Pathways Over Time
- 81-595-M No. 088 Summary Public School Indicators for the Provinces and Territories, 2002/2003 to 2008/2009
- 81-595-M No. 089 Expectations and Labour Market Outcomes of Doctoral Graduates from Canadian Universities
- 81-595-M No. 090 Delaying Post-secondary Education: Who Delays and for How Long?
- 81-595-M No. 091 Salaries and Salary Scales of Full-time Teaching Staff at Canadian Universities, 2010/2011: Preliminary Report
- 81-595-M No. 092 A Profile of Minority-Language Students and Schools in Canada: Results from the Programme for International Student Assessment (PISA), 2009
- 81-595-M No. 093 Location of Study and the Labour Market Success of Immigrants to Canada
- 81-595-M No. 094 Integration of internationally-educated immigrants into the Canadian labour market: Determinants of success
- 81-595-M No. 095 Summary Public and Private School Indicators for Canada, the Provinces and Territories, 2005/2006 to 2009/2010