

Catalogue no. 71-001-X
ISSN 1492-5478

Labour Force Information

February 11 to 17, 2018



Release date: March 9, 2018



Statistics
Canada

Statistique
Canada

Canada

How to obtain more information

For information about this product or the wide range of services and data available from Statistics Canada, visit our website, www.statcan.gc.ca.

You can also contact us by

email at STATCAN.infostats-infostats.STATCAN@canada.ca

telephone, from Monday to Friday, 8:30 a.m. to 4:30 p.m., at the following numbers:

- | | |
|---------------------------------------------------------------|----------------|
| • Statistical Information Service | 1-800-263-1136 |
| • National telecommunications device for the hearing impaired | 1-800-363-7629 |
| • Fax line | 1-514-283-9350 |

Depository Services Program

- | | |
|------------------|----------------|
| • Inquiries line | 1-800-635-7943 |
| • Fax line | 1-800-565-7757 |

Standards of service to the public

Statistics Canada is committed to serving its clients in a prompt, reliable and courteous manner. To this end, Statistics Canada has developed standards of service that its employees observe. To obtain a copy of these service standards, please contact Statistics Canada toll-free at 1-800-263-1136. The service standards are also published on www.statcan.gc.ca under “Contact us” > “Standards of service to the public.”

Note of appreciation

Canada owes the success of its statistical system to a long-standing partnership between Statistics Canada, the citizens of Canada, its businesses, governments and other institutions. Accurate and timely statistical information could not be produced without their continued co-operation and goodwill.

Standard table symbols

The following symbols are used in Statistics Canada publications:

- . not available for any reference period
- .. not available for a specific reference period
- ... not applicable
- 0 true zero or a value rounded to zero
- 0^s value rounded to 0 (zero) where there is a meaningful distinction between true zero and the value that was rounded
- ^P preliminary
- ^r revised
- X suppressed to meet the confidentiality requirements of the *Statistics Act*
- ^E use with caution
- F too unreliable to be published
- * significantly different from reference category ($p < 0.05$)

Published by authority of the Minister responsible for Statistics Canada

© Minister of Industry, 2018

All rights reserved. Use of this publication is governed by the Statistics Canada [Open Licence Agreement](#).

An HTML version is also available.

Cette publication est aussi disponible en français.

Publication information

Special requests (\$)

Custom tabulations can be arranged on an ad hoc or regular basis. This service enables you to specify tables and time series to meet your own requirements. The cost varies according to the request. For more information, contact us toll-free at 1-866-873-8788 or e-mail us at statcan.labour-travail.statcan@canada.ca.

Schedule of LFS releases

Release date

- February 9, 2018
- March 9, 2018
- April 6, 2018
- May 11, 2018
- June 8, 2018
- July 6, 2018
- August 10, 2018
- September 7, 2018
- October 5, 2018
- November 2, 2018
- December 7, 2018
- January 4, 2019

Reference period

- January 14 to 20, 2018
- February 11 to 17, 2018
- March 11 to 17, 2018
- April 15 to 21, 2018
- May 13 to 19, 2018
- June 10 to 16, 2018
- July 15 to 21, 2018
- August 12 to 18, 2018
- September 9 to 15, 2018
- October 7 to 13, 2018
- November 4 to 10, 2018
- December 2 to 8, 2018

Table of contents

The Daily release	6
Highlights	6
Charts	7
Chart 1 Employment indexes, Canada, seasonally adjusted	7
Chart 2 Unemployment, employment, and participation rates, Canada, seasonally adjusted	8
Chart 3 Employment indexes by industry, Canada, seasonally adjusted	9
Chart 4 Employment indexes by industry, Canada, seasonally adjusted	10
Chart 5 Employment indexes by industry, Canada, seasonally adjusted	11
Chart 6 Employment indexes by province, Canada, seasonally adjusted	12
Chart 7 Employment indexes by province, Canada, seasonally adjusted	13
Chart 8 Unemployment rate by province, February 2018	14
Statistical tables	15
Table 1 Labour force characteristics by age and sex, Canada, seasonally adjusted	15
Table 2 Employment by class of worker and industry, Canada, seasonally adjusted	17
Table 3 Labour force characteristics by province, seasonally adjusted	18
Table 4-1 Selected labour force characteristics (seasonally adjusted) — Newfoundland and Labrador	20
Table 4-2 Selected labour force characteristics (seasonally adjusted) — Prince Edward Island	21
Table 4-3 Selected labour force characteristics (seasonally adjusted) — Nova Scotia	22
Table 4-4 Selected labour force characteristics (seasonally adjusted) — New Brunswick	23
Table 4-5 Selected labour force characteristics (seasonally adjusted) — Quebec	24
Table 4-6 Selected labour force characteristics (seasonally adjusted) — Ontario	25
Table 4-7 Selected labour force characteristics (seasonally adjusted) — Manitoba	26
Table 4-8 Selected labour force characteristics (seasonally adjusted) — Saskatchewan	27
Table 4-9 Selected labour force characteristics (seasonally adjusted) — Alberta	28
Table 4-10 Selected labour force characteristics (seasonally adjusted) — British Columbia	29

Table 5-1 Labour force characteristics by census metropolitan area (seasonally adjusted) – three-month moving average.....	30
Table 5-2 Labour force characteristics by census metropolitan area (seasonally adjusted) – Monthly	35
Table 6-1 Labour force characteristics – by province and economic region, unadjusted for seasonality, three-month moving average ending in February 2017 and February 2018.....	36
Table 6-2 Labour force characteristics – by territory (seasonally adjusted) - three-month moving average.....	40
Table 7 Average usual hours and wages of employees by selected characteristics, Canada, unadjusted for seasonality	41
Table 8 Regional unemployment rates used by the Employment Insurance program, seasonally adjusted, three-month moving average	43
Data quality	45
Related products	47

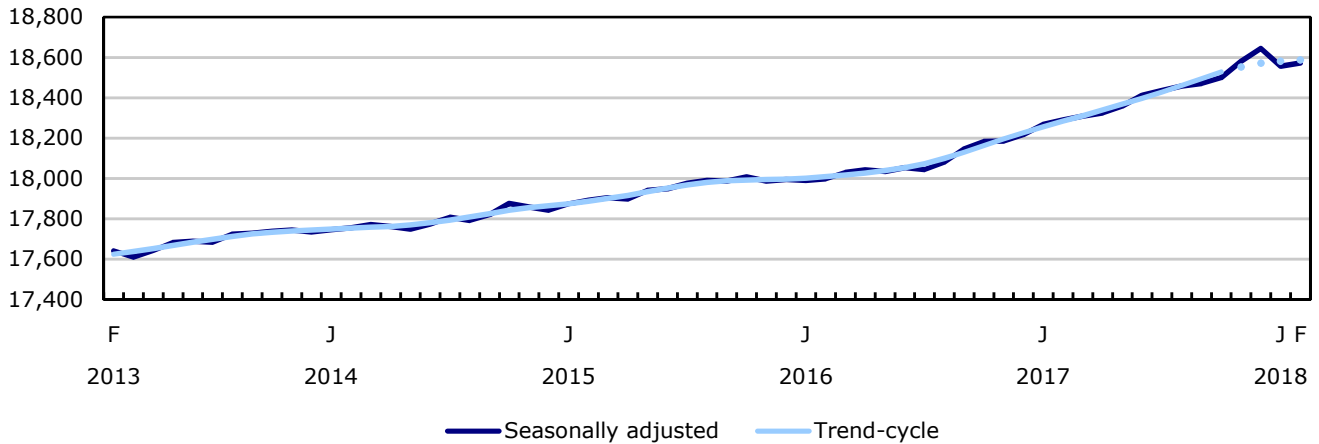
Labour Force Information

Highlights

Figure 1
Employment and unemployment rate, Canada, seasonally adjusted

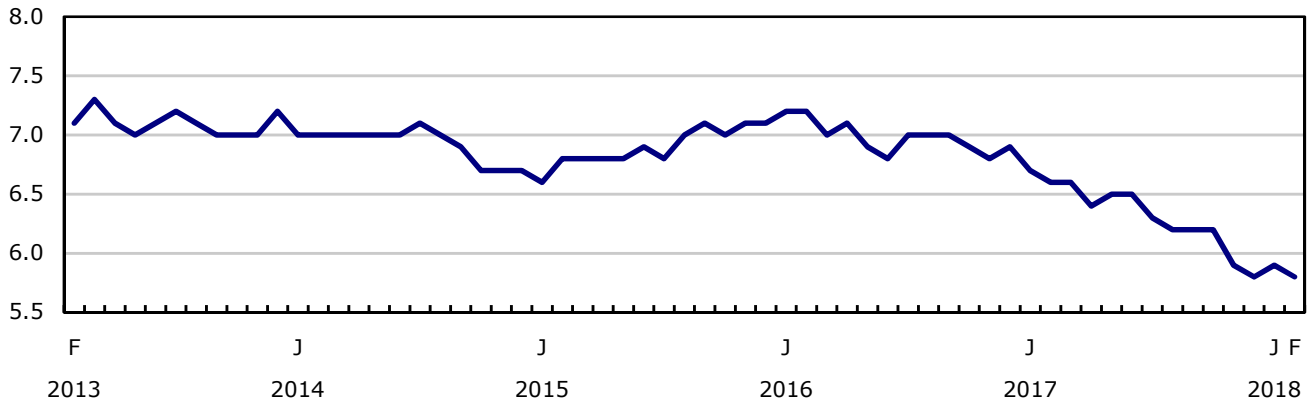
Employment

thousands



Unemployment rate

percent



The Daily release

Please note that the analytical text and charts previously found in this publication continue to be available in *The Daily* (<http://www.statcan.gc.ca/daily-quotidien/180309/dq180309a-eng.htm>).

Labour Market Indicators

www.statcan.gc.ca/pub/71-607-x/71-607-x2017001-eng.htm

Charts

Chart 1
Employment indexes, Canada, seasonally adjusted

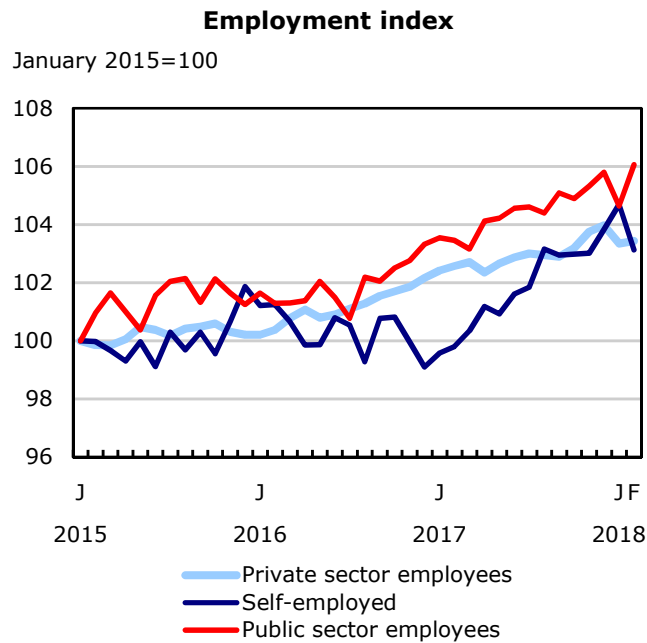
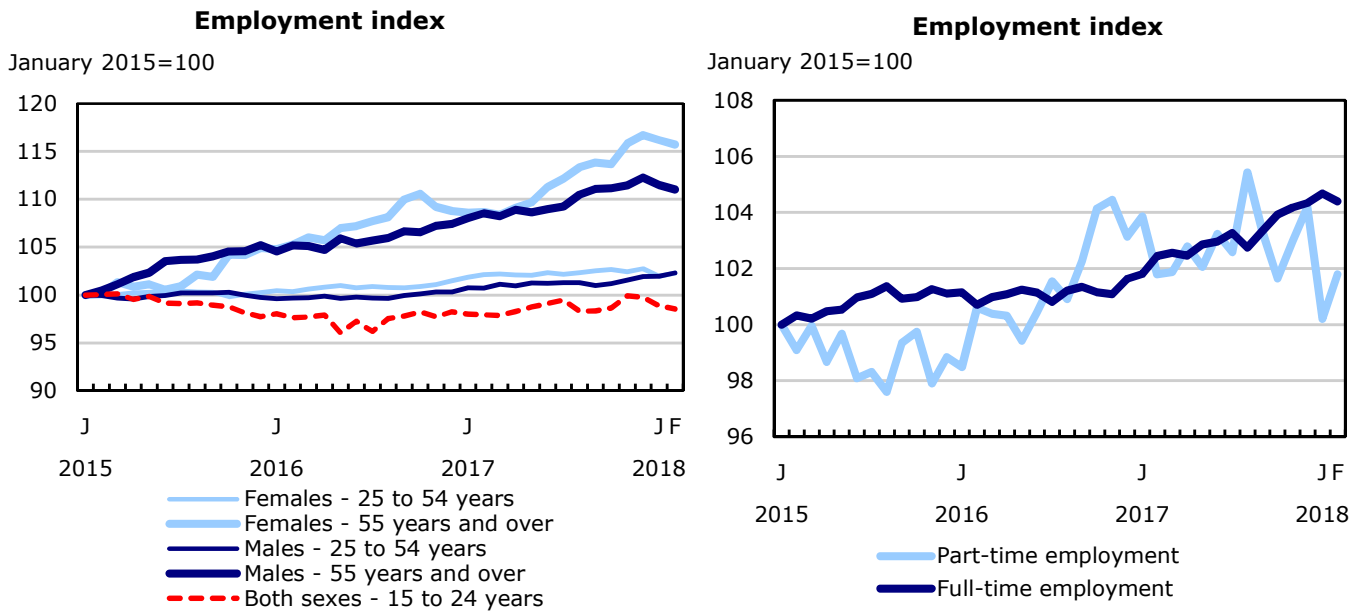


Chart 2
Unemployment, employment, and participation rates, Canada, seasonally adjusted

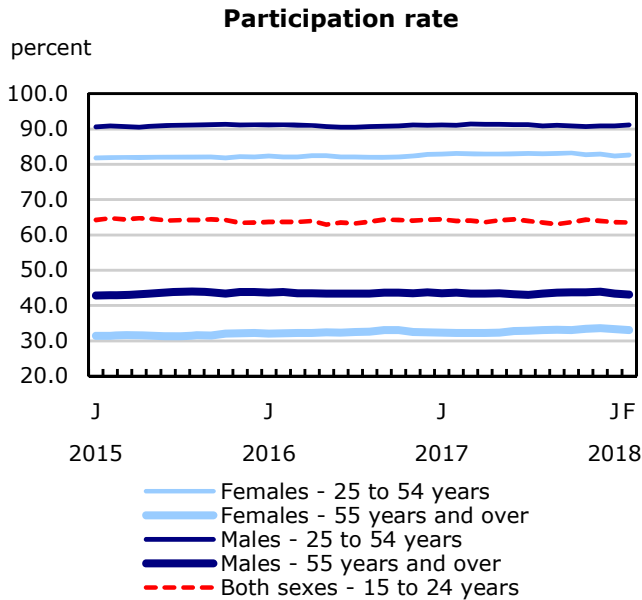
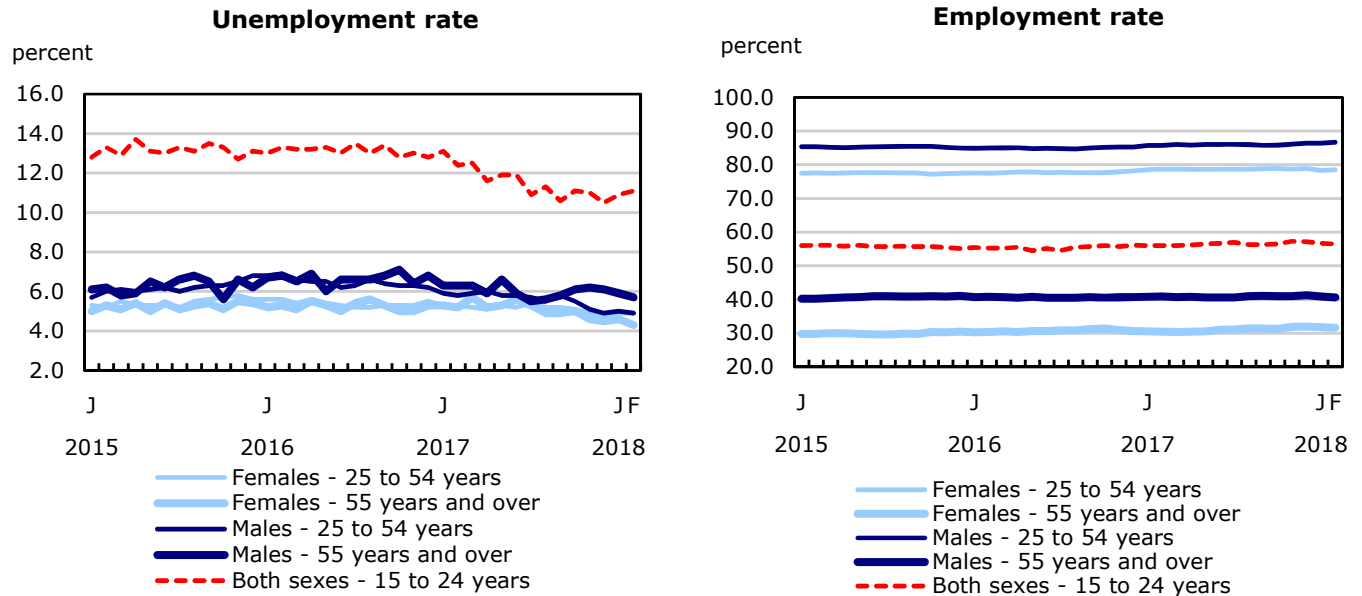


Chart 3
Employment indexes by industry, Canada, seasonally adjusted

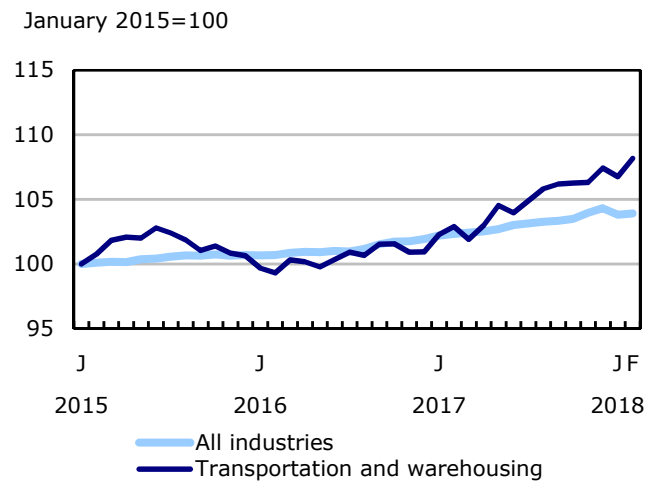
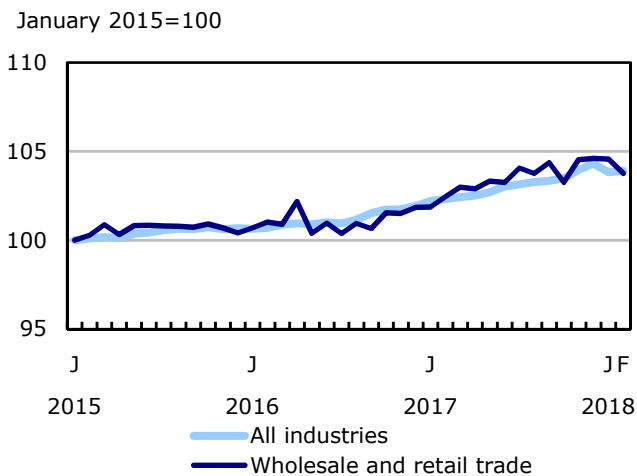
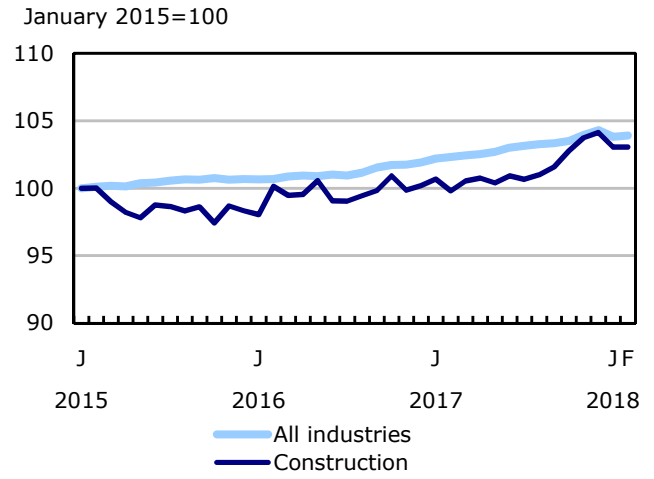
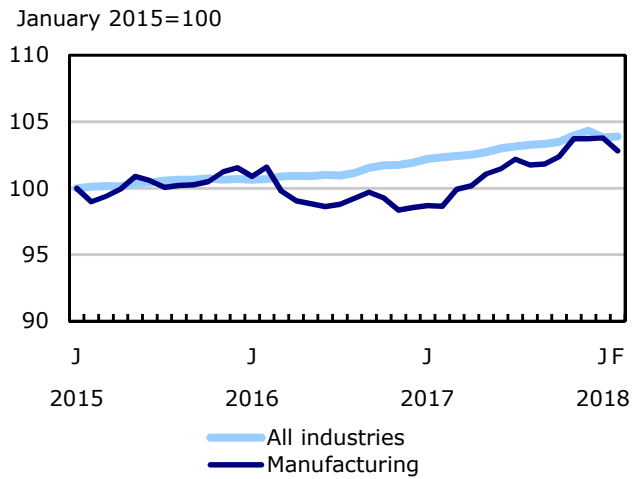
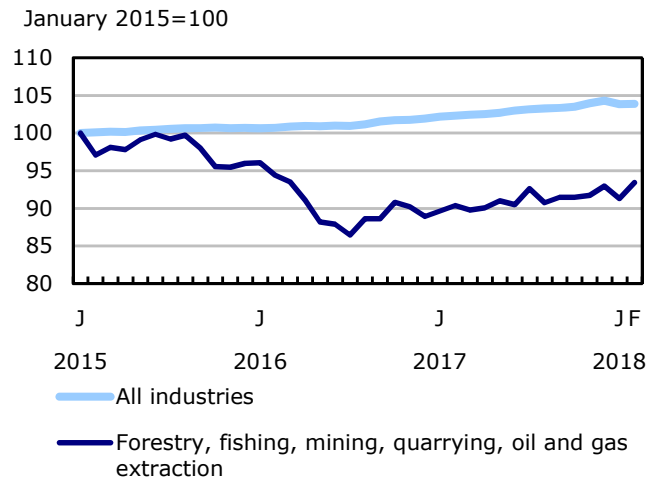
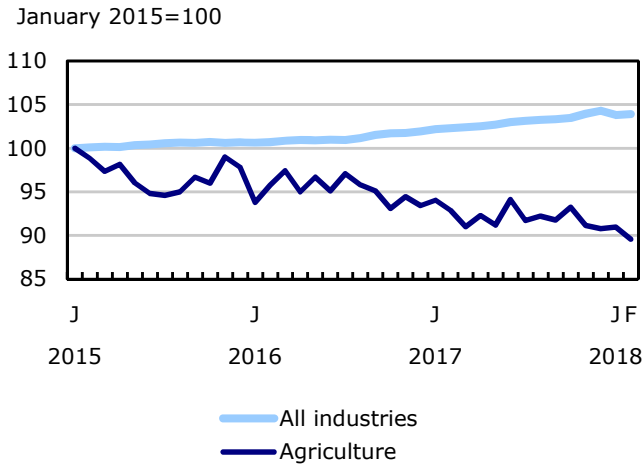


Chart 4
Employment indexes by industry, Canada, seasonally adjusted

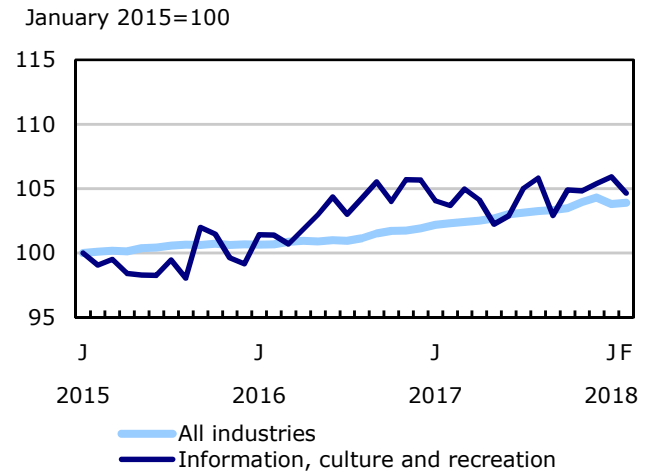
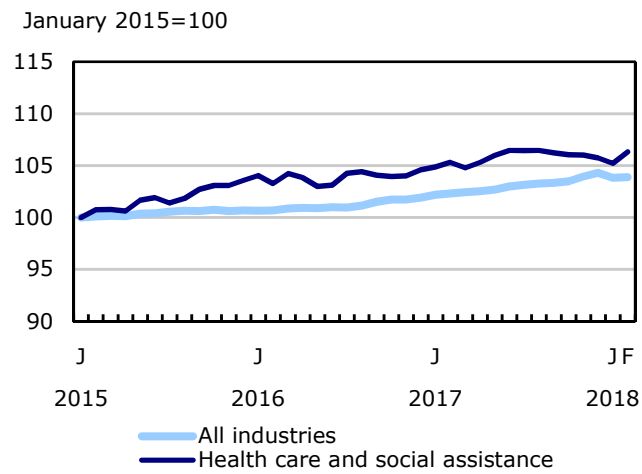
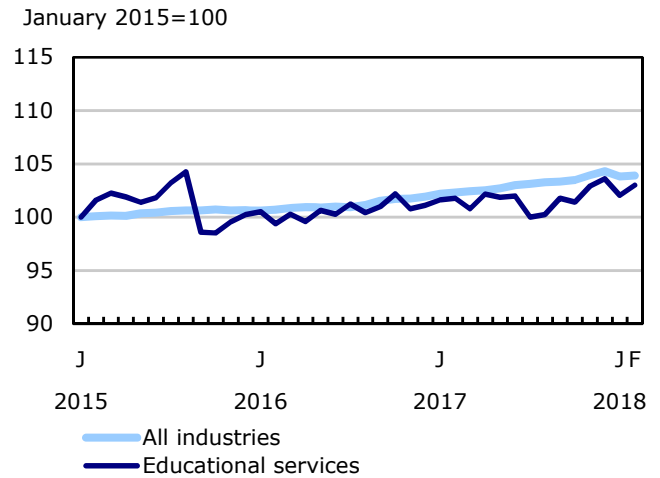
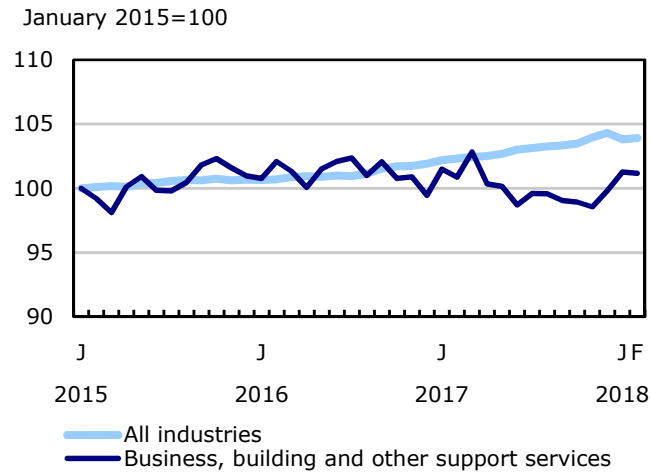
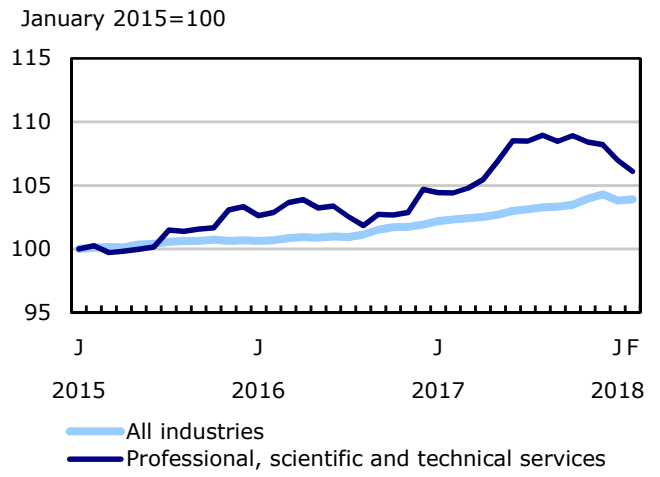
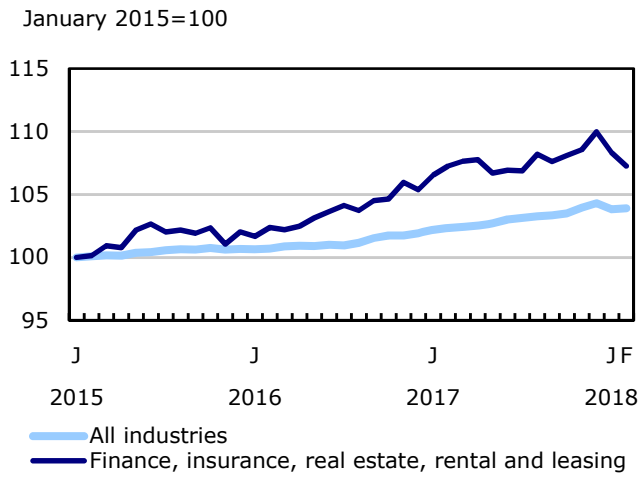


Chart 5
Employment indexes by industry, Canada, seasonally adjusted

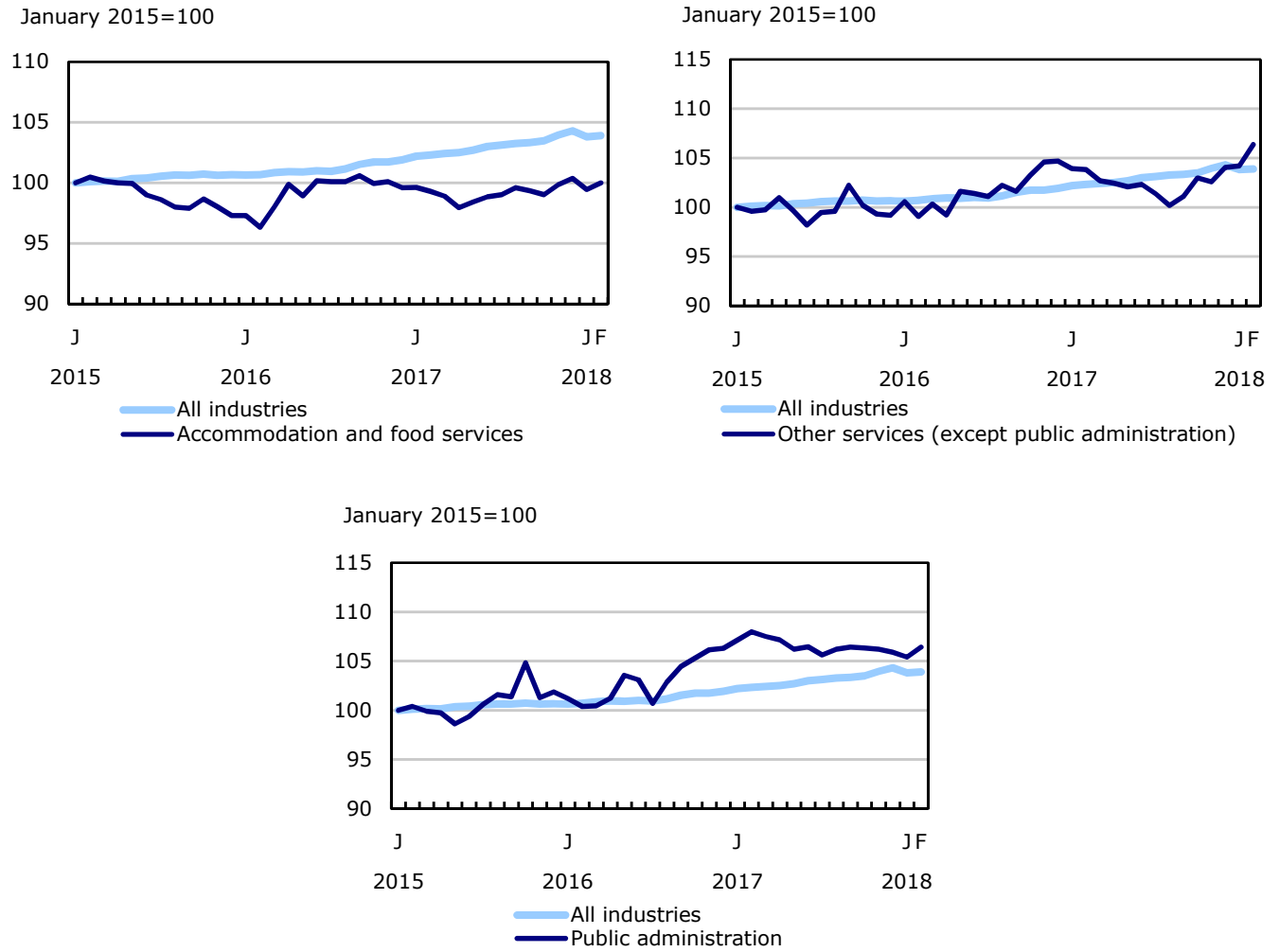


Chart 6
Employment indexes by province, Canada, seasonally adjusted

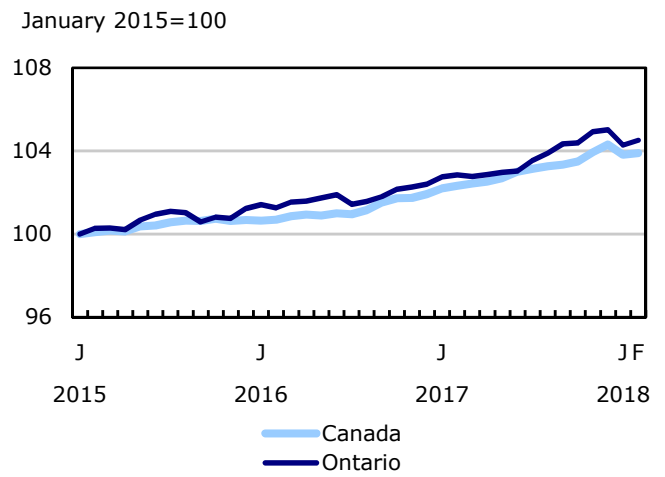
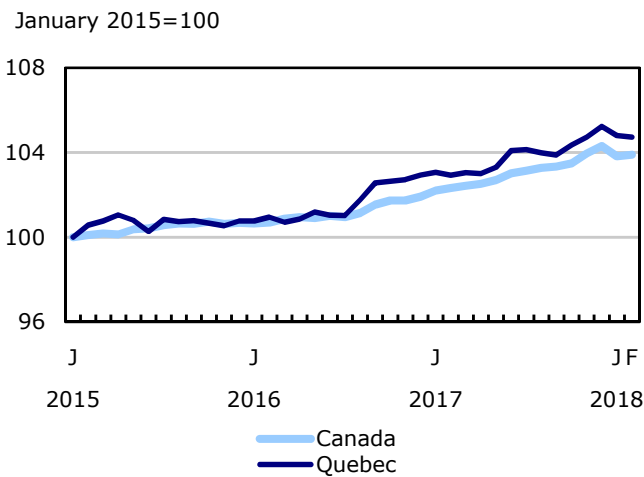
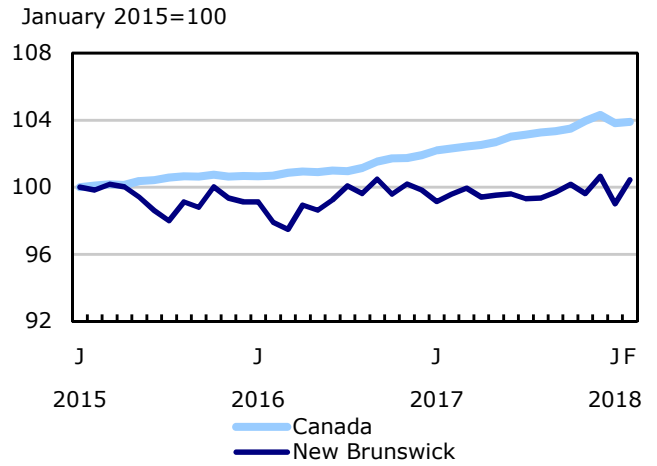
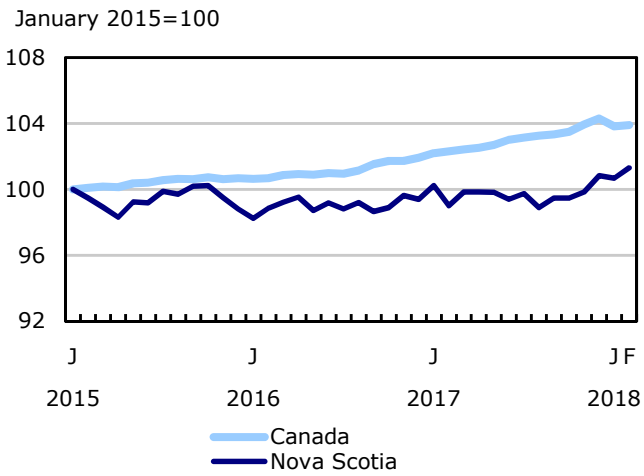
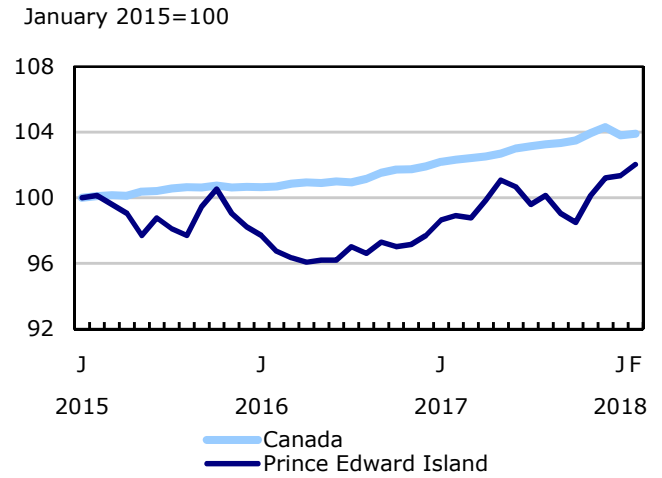
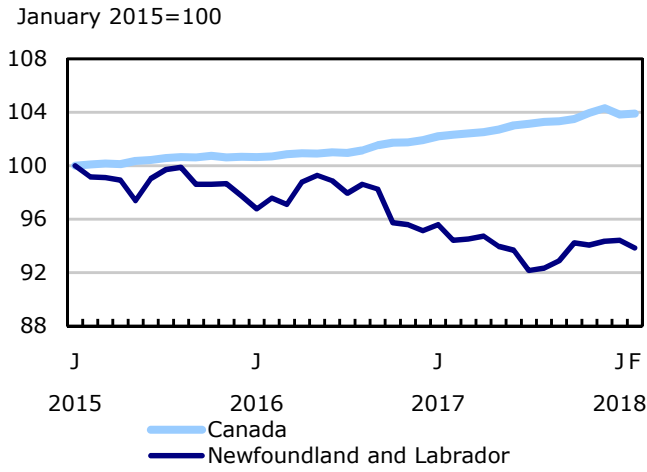


Chart 7
Employment indexes by province, Canada, seasonally adjusted

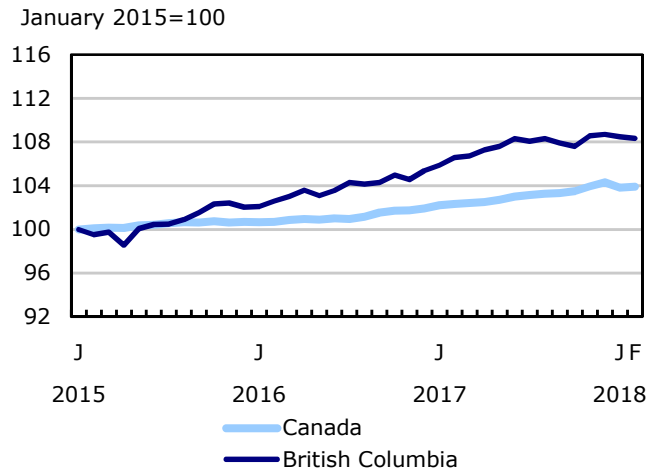
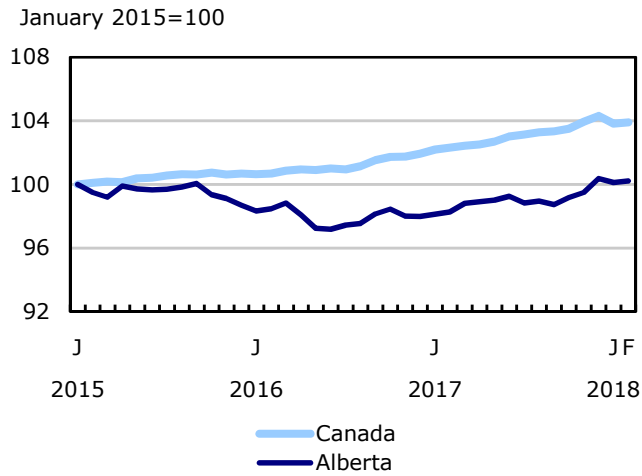
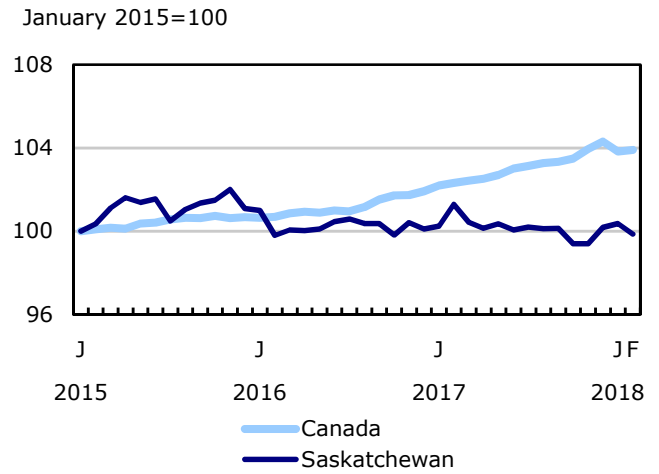
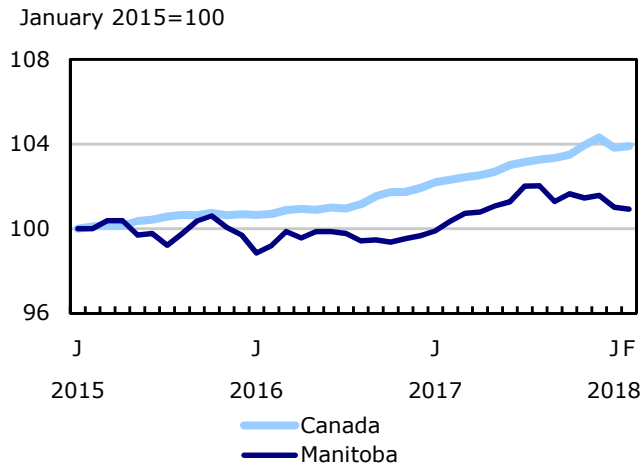
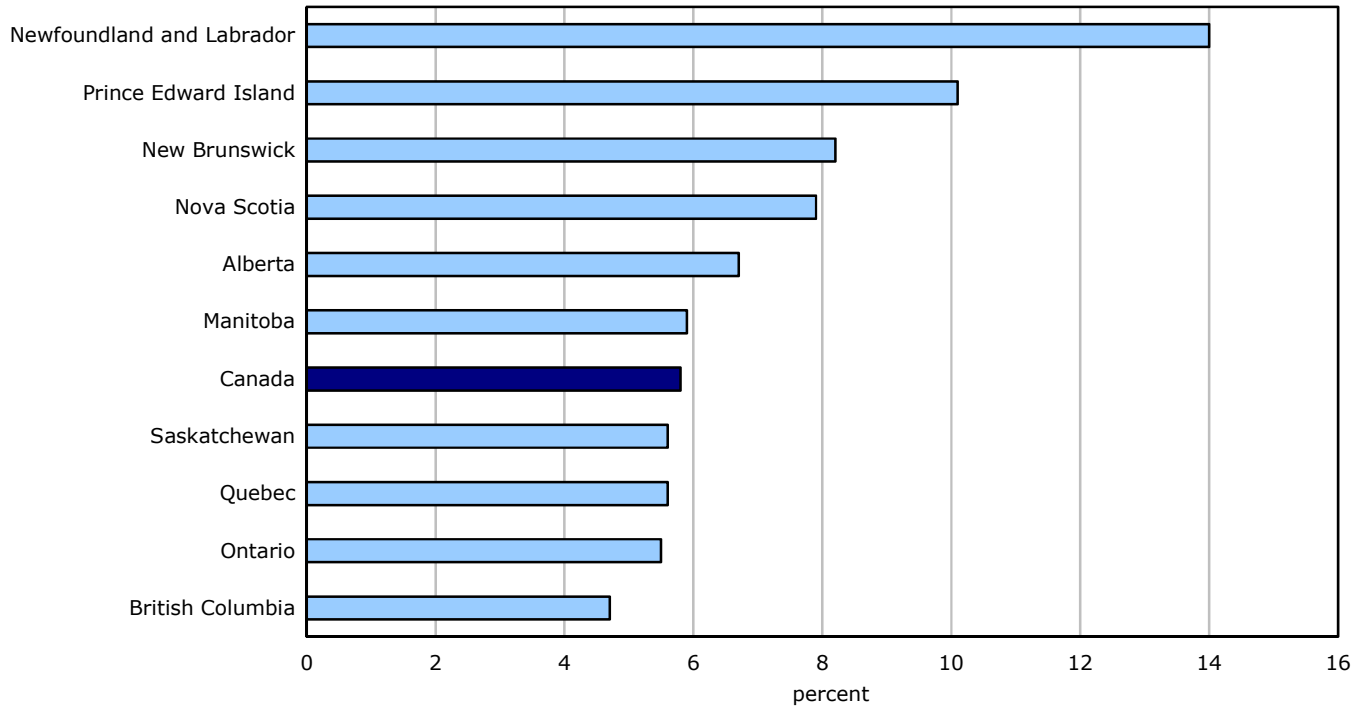


Chart 8
Unemployment rate by province, February 2018



Source: CANSIM table 282-0087.

Statistical tables

Table 1
Labour force characteristics by age and sex, Canada, seasonally adjusted

	January 2018	February 2018	S.E. ¹	Change from			Percent change from		
				last month	last December	twelve months ago	last month	last December	twelve months ago
				in thousands (except rates)			percent		
15 years and over, both sexes									
Population	30,094.5	30,121.8	...	27.3	62.9	357.5	0.1	0.2	1.2
Labour force	19,710.5	19,716.8	29.6	6.3	-67.4	140.4	0.0	-0.3	0.7
Employment	18,557.1	18,572.5	29.5	15.4	-72.6	282.5	0.1	-0.4	1.5
Full-time employment	15,123.7	15,084.4	41.0	-39.3	9.7	282.9	-0.3	0.1	1.9
Part-time employment	3,433.4	3,488.1	37.7	54.7	-82.3	-0.4	1.6	-2.3	0.0
Unemployment	1,153.4	1,144.3	25.3	-9.1	5.2	-142.1	-0.8	0.5	-11.0
Participation rate	65.5	65.5	0.1	0.0	-0.3	-0.3
Unemployment rate	5.9	5.8	0.1	-0.1	0.0	-0.8
Employment rate	61.7	61.7	0.1	0.0	-0.3	0.3
15 to 24 years, both sexes									
Population	4,345.9	4,345.8	...	-0.1	-0.3	-12.6	0.0	0.0	-0.3
Labour force	2,764.2	2,761.0	17.4	-3.2	-15.9	-24.1	-0.1	-0.6	-0.9
Employment	2,464.0	2,455.1	16.7	-8.9	-30.4	14.6	-0.4	-1.2	0.6
Full-time employment	1,289.4	1,264.1	19.8	-25.3	-0.6	24.5	-2.0	0.0	2.0
Part-time employment	1,174.6	1,191.0	20.7	16.4	-29.7	-9.9	1.4	-2.4	-0.8
Unemployment	300.1	305.9	14.3	5.8	14.4	-38.7	1.9	4.9	-11.2
Participation rate	63.6	63.5	0.4	-0.1	-0.4	-0.4
Unemployment rate	10.9	11.1	0.5	0.2	0.6	-1.3
Employment rate	56.7	56.5	0.4	-0.2	-0.7	0.5
25 years and over, men									
Population	12,597.1	12,611.0	...	13.9	31.2	184.1	0.1	0.2	1.5
Labour force	8,945.9	8,946.3	15.8	0.4	-12.6	76.4	0.0	-0.1	0.9
Employment	8,478.9	8,491.7	16.7	12.8	-0.2	147.1	0.2	0.0	1.8
Full-time employment	7,809.5	7,827.9	23.2	18.4	55.9	218.6	0.2	0.7	2.9
Part-time employment	669.4	663.9	19.2	-5.5	-56.0	-71.3	-0.8	-7.8	-9.7
Unemployment	467.0	454.6	14.6	-12.4	-12.4	-70.7	-2.7	-2.7	-13.5
Participation rate	71.0	70.9	0.1	-0.1	-0.3	-0.5
Unemployment rate	5.2	5.1	0.2	-0.1	-0.1	-0.8
Employment rate	67.3	67.3	0.1	0.0	-0.2	0.2
25 years and over, women									
Population	13,151.6	13,165.0	...	13.4	32.0	186.0	0.1	0.2	1.4
Labour force	8,000.4	8,009.4	16.8	9.0	-38.9	88.1	0.1	-0.5	1.1
Employment	7,614.1	7,625.7	16.6	11.6	-42.0	120.8	0.2	-0.5	1.6
Full-time employment	6,024.7	5,992.4	26.7	-32.3	-45.5	39.8	-0.5	-0.8	0.7
Part-time employment	1,589.3	1,633.2	25.1	43.9	3.4	80.9	2.8	0.2	5.2
Unemployment	386.3	383.8	13.9	-2.5	3.2	-32.6	-0.6	0.8	-7.8
Participation rate	60.8	60.8	0.1	0.0	-0.5	-0.2
Unemployment rate	4.8	4.8	0.2	0.0	0.1	-0.5
Employment rate	57.9	57.9	0.1	0.0	-0.5	0.1
25 to 54 years, both sexes									
Population	14,694.1	14,701.1	...	7.0	12.1	60.7	0.0	0.1	0.4
Labour force	12,726.9	12,766.5	22.3	39.6	5.1	29.1	0.3	0.0	0.2
Employment	12,099.1	12,140.2	23.8	41.1	-1.7	108.7	0.3	0.0	0.9
Unemployment	627.8	626.2	18.6	-1.6	6.7	-79.7	-0.3	1.1	-11.3
Participation rate	86.6	86.8	0.2	0.2	-0.1	-0.2
Unemployment rate	4.9	4.9	0.1	0.0	0.0	-0.6
Employment rate	82.3	82.6	0.2	0.3	-0.1	0.4
25 to 54 years, men									
Population	7,314.3	7,318.1	...	3.8	5.9	31.2	0.1	0.1	0.4
Labour force	6,651.3	6,667.8	14.1	16.5	22.8	39.6	0.2	0.3	0.6
Employment	6,320.7	6,342.7	16.0	22.0	24.2	99.0	0.3	0.4	1.6
Unemployment	330.6	325.1	13.1	-5.5	-1.4	-59.5	-1.7	-0.4	-15.5
Participation rate	90.9	91.1	0.2	0.2	0.2	0.1
Unemployment rate	5.0	4.9	0.2	-0.1	0.0	-0.9
Employment rate	86.4	86.7	0.2	0.3	0.3	1.0

Table 1
Labour force characteristics by age and sex, Canada, seasonally adjusted

	January 2018	February 2018	S.E. ¹	Change from			Percent change from		
				last month	last December	twelve months ago	last month	last December	twelve months ago
				in thousands (except rates)			percent		
25 to 54 years, women									
Population	7,379.8	7,383.0	...	3.2	6.2	29.5	0.0	0.1	0.4
Labour force	6,075.6	6,098.7	16.6	23.1	-17.7	-10.5	0.4	-0.3	-0.2
Employment	5,778.4	5,797.6	16.8	19.2	-25.9	9.8	0.3	-0.4	0.2
Unemployment	297.2	301.1	12.7	3.9	8.1	-20.3	1.3	2.8	-6.3
Participation rate	82.3	82.6	0.2	0.3	-0.3	-0.5
Unemployment rate	4.9	4.9	0.2	0.0	0.1	-0.4
Employment rate	78.3	78.5	0.2	0.2	-0.4	-0.2
55 years and over, both sexes									
Population	11,054.5	11,074.8	...	20.3	51.0	309.3	0.2	0.5	2.9
Labour force	4,219.4	4,189.3	18.9	-30.1	-56.6	135.5	-0.7	-1.3	3.3
Employment	3,993.9	3,977.1	18.9	-16.8	-40.6	159.1	-0.4	-1.0	4.2
Unemployment	225.5	212.2	10.2	-13.3	-16.0	-23.6	-5.9	-7.0	-10.0
Participation rate	38.2	37.8	0.2	-0.4	-0.7	0.1
Unemployment rate	5.3	5.1	0.2	-0.2	-0.3	-0.7
Employment rate	36.1	35.9	0.2	-0.2	-0.5	0.4
55 years and over, men									
Population	5,282.7	5,292.8	...	10.1	25.2	152.8	0.2	0.5	3.0
Labour force	2,294.6	2,278.6	12.7	-16.0	-35.4	36.9	-0.7	-1.5	1.6
Employment	2,158.2	2,149.0	12.9	-9.2	-24.4	48.1	-0.4	-1.1	2.3
Unemployment	136.4	129.5	7.7	-6.9	-11.0	-11.3	-5.1	-7.8	-8.0
Participation rate	43.4	43.1	0.2	-0.3	-0.8	-0.5
Unemployment rate	5.9	5.7	0.3	-0.2	-0.4	-0.6
Employment rate	40.9	40.6	0.2	-0.3	-0.7	-0.3
55 years and over, women									
Population	5,771.7	5,782.0	...	10.3	25.8	156.5	0.2	0.4	2.8
Labour force	1,924.8	1,910.7	13.0	-14.1	-21.2	98.5	-0.7	-1.1	5.4
Employment	1,835.7	1,828.1	12.9	-7.6	-16.1	111.0	-0.4	-0.9	6.5
Unemployment	89.1	82.7	6.6	-6.4	-5.0	-12.4	-7.2	-5.7	-13.0
Participation rate	33.3	33.0	0.2	-0.3	-0.6	0.8
Unemployment rate	4.6	4.3	0.3	-0.3	-0.2	-0.9
Employment rate	31.8	31.6	0.2	-0.2	-0.4	1.1

1. Average standard error of change in two consecutive months (see "Sampling Errors" in the **Data Quality** section for further explanations).

Note: Related CANSIM table 282-0087. The sum of individual categories may not always add to the total due to rounding.

Table 2
Employment by class of worker and industry, Canada, seasonally adjusted

	January 2018	February 2018	S.E. ¹	Change from			Percent change from		
				last month	last December	twelve months ago	last month	last December	twelve months ago
	in thousands			percent					
Class of worker									
Employees	15,668.0	15,726.8	35.7	58.8	-53.2	190.9	0.4	-0.3	1.2
Self-employed ²	2,889.0	2,845.7	25.3	-43.3	-19.4	91.6	-1.5	-0.7	3.3
Public/private sector employees									
Public sector employees	3,717.8	3,768.1	20.4	50.3	9.1	92.4	1.4	0.2	2.5
Private sector employees	11,950.3	11,958.7	36.2	8.4	-62.3	98.6	0.1	-0.5	0.8
Industry	18,557.1	18,572.5	29.5	15.4	-72.6	282.5	0.1	-0.4	1.5
Goods-producing sector	3,943.1	3,932.7	16.5	-10.4	-26.6	114.6	-0.3	-0.7	3.0
Agriculture	276.5	272.2	5.4	-4.3	-3.7	-10.1	-1.6	-1.3	-3.6
Forestry, fishing, mining, quarrying, oil and gas extraction ³	331.0	338.6	5.0	7.6	1.7	11.0	2.3	0.5	3.4
Utilities	131.6	134.3	2.3	2.7	6.0	-2.6	2.1	4.7	-1.9
Construction	1,433.9	1,433.9	11.1	0.0	-14.9	45.3	0.0	-1.0	3.3
Manufacturing	1,770.2	1,753.7	10.9	-16.5	-15.7	71.1	-0.9	-0.9	4.2
Services-producing sector	14,613.9	14,639.8	28.1	25.9	-46.0	167.9	0.2	-0.3	1.2
Wholesale and retail trade	2,839.9	2,817.9	15.1	-22.0	-22.8	35.8	-0.8	-0.8	1.3
Transportation and warehousing	964.9	977.5	8.4	12.6	6.7	47.8	1.3	0.7	5.1
Finance, insurance, real estate, rental and leasing	1,177.6	1,166.0	8.9	-11.6	-29.6	0.0	-1.0	-2.5	0.0
Professional, scientific and technical services	1,446.8	1,434.9	11.1	-11.9	-28.6	22.8	-0.8	-2.0	1.6
Business, building and other support services	767.1	766.3	10.2	-0.8	10.2	2.4	-0.1	1.3	0.3
Educational services	1,287.6	1,299.8	10.6	12.2	-7.4	15.5	0.9	-0.6	1.2
Health care and social assistance	2,370.3	2,394.8	10.9	24.5	13.3	22.4	1.0	0.6	0.9
Information, culture and recreation	800.3	790.7	10.5	-9.6	-5.7	7.3	-1.2	-0.7	0.9
Accommodation and food services	1,215.4	1,222.3	11.7	6.9	-4.4	8.7	0.6	-0.4	0.7
Other services (except public administration)	795.0	811.6	8.4	16.6	17.8	19.4	2.1	2.2	2.4
Public administration	949.0	958.0	7.1	9.0	4.6	-14.1	0.9	0.5	-1.5

1. Average standard error of change in two consecutive months (see "Sampling Errors" in the **Data Quality** section for further explanations).

2. Includes both incorporated and unincorporated working owners, self-employed persons who do not have a business and persons working in a family business without pay.

3. Also referred to as "Natural resources".

Note: Related CANSIM tables 282-0088 and 282-0089. The sum of individual categories may not always add to the total due to rounding.

Table 3
Labour force characteristics by province, seasonally adjusted

	January 2018	February 2018	S.E. ¹	Change from			Percent change from		
				last month	last December	twelve months ago	last month	last December	twelve months ago
				in thousands (except rates)			percent		
Newfoundland and Labrador									
Population	444.9	444.7	...	-0.2	-0.4	-0.7	0.0	-0.1	-0.2
Labour force	262.1	260.3	2.0	-1.8	-3.7	-3.1	-0.7	-1.4	-1.2
Employment	225.3	223.9	2.0	-1.4	-1.2	-1.4	-0.6	-0.5	-0.6
Full-time employment	191.3	190.1	2.5	-1.2	-0.9	0.2	-0.6	-0.5	0.1
Part-time employment	34.0	33.8	1.9	-0.2	-0.4	-1.6	-0.6	-1.2	-4.5
Unemployment	36.8	36.4	2.0	-0.4	-2.5	-1.7	-1.1	-6.4	-4.5
Participation rate	58.9	58.5	0.4	-0.4	-0.8	-0.6
Unemployment rate	14.0	14.0	0.7	0.0	-0.7	-0.5
Employment rate	50.6	50.3	0.5	-0.3	-0.3	-0.3
Prince Edward Island									
Population	124.5	124.7	...	0.2	0.3	1.9	0.2	0.2	1.5
Labour force	83.8	83.8	0.6	0.0	1.1	2.7	0.0	1.3	3.3
Employment	74.9	75.4	0.6	0.5	0.6	2.3	0.7	0.8	3.1
Full-time employment	62.2	62.8	0.8	0.6	-0.5	0.7	1.0	-0.8	1.1
Part-time employment	12.7	12.6	0.7	-0.1	1.2	1.6	-0.8	10.5	14.5
Unemployment	8.9	8.5	0.6	-0.4	0.5	0.5	-4.5	6.3	6.3
Participation rate	67.3	67.2	0.5	-0.1	0.7	1.2
Unemployment rate	10.6	10.1	0.7	-0.5	0.4	0.2
Employment rate	60.2	60.5	0.5	0.3	0.4	1.0
Nova Scotia									
Population	795.8	796.2	...	0.4	0.9	5.7	0.1	0.1	0.7
Labour force	494.0	495.3	2.7	1.3	1.5	10.1	0.3	0.3	2.1
Employment	453.5	456.3	2.7	2.8	2.1	10.3	0.6	0.5	2.3
Full-time employment	370.6	375.5	3.6	4.9	6.2	13.9	1.3	1.7	3.8
Part-time employment	82.8	80.8	3.3	-2.0	-4.1	-3.6	-2.4	-4.8	-4.3
Unemployment	40.5	39.0	2.5	-1.5	-0.6	-0.2	-3.7	-1.5	-0.5
Participation rate	62.1	62.2	0.3	0.1	0.1	0.8
Unemployment rate	8.2	7.9	0.5	-0.3	-0.1	-0.2
Employment rate	57.0	57.3	0.3	0.3	0.2	0.9
New Brunswick									
Population	626.0	626.1	...	0.1	0.4	2.1	0.0	0.1	0.3
Labour force	385.6	387.7	2.2	2.1	1.1	1.2	0.5	0.3	0.3
Employment	350.7	355.8	2.2	5.1	-0.7	3.1	1.5	-0.2	0.9
Full-time employment	301.3	305.2	2.8	3.9	0.3	2.8	1.3	0.1	0.9
Part-time employment	49.4	50.6	2.3	1.2	-0.9	0.4	2.4	-1.7	0.8
Unemployment	34.9	31.9	1.9	-3.0	1.8	-1.9	-8.6	6.0	-5.6
Participation rate	61.6	61.9	0.3	0.3	0.1	0.0
Unemployment rate	9.1	8.2	0.5	-0.9	0.4	-0.5
Employment rate	56.0	56.8	0.4	0.8	-0.2	0.3
Quebec									
Population	6,958.2	6,960.3	...	2.1	6.8	48.2	0.0	0.1	0.7
Labour force	4,508.6	4,517.5	15.2	8.9	7.4	40.6	0.2	0.2	0.9
Employment	4,266.5	4,263.6	15.5	-2.9	-20.3	73.8	-0.1	-0.5	1.8
Full-time employment	3,489.6	3,486.4	20.6	-3.2	10.5	108.4	-0.1	0.3	3.2
Part-time employment	776.9	777.1	19.2	0.2	-31.0	-34.7	0.0	-3.8	-4.3
Unemployment	242.1	253.9	12.9	11.8	27.8	-33.2	4.9	12.3	-11.6
Participation rate	64.8	64.9	0.2	0.1	0.0	0.1
Unemployment rate	5.4	5.6	0.3	0.2	0.6	-0.8
Employment rate	61.3	61.3	0.2	0.0	-0.3	0.7
Ontario									
Population	11,793.7	11,809.7	...	16.0	37.8	194.5	0.1	0.3	1.7
Labour force	7,593.5	7,603.1	20.1	9.6	-45.2	58.2	0.1	-0.6	0.8
Employment	7,172.9	7,188.6	19.6	15.7	-35.2	113.7	0.2	-0.5	1.6
Full-time employment	5,859.9	5,857.4	27.5	-2.5	6.0	110.1	0.0	0.1	1.9
Part-time employment	1,313.1	1,331.2	25.7	18.1	-41.2	3.6	1.4	-3.0	0.3
Unemployment	420.6	414.5	16.8	-6.1	-10.0	-55.4	-1.5	-2.4	-11.8
Participation rate	64.4	64.4	0.2	0.0	-0.6	-0.6
Unemployment rate	5.5	5.5	0.2	0.0	-0.1	-0.7
Employment rate	60.8	60.9	0.2	0.1	-0.5	0.0

Table 3
Labour force characteristics by province, seasonally adjusted

	January 2018	February 2018	S.E. ¹	Change from			Percent change from		
				last month	last December	twelve months ago	last month	last December	twelve months ago
				in thousands (except rates)			percent		
Manitoba									
Population	1,019.5	1,020.4	...	0.9	1.5	13.0	0.1	0.1	1.3
Labour force	680.4	682.2	2.6	1.8	-2.3	4.7	0.3	-0.3	0.7
Employment	642.7	642.2	2.6	-0.5	-4.1	3.7	-0.1	-0.6	0.6
Full-time employment	512.3	512.5	3.6	0.2	-7.5	-5.8	0.0	-1.4	-1.1
Part-time employment	130.4	129.7	3.3	-0.7	3.4	9.6	-0.5	2.7	8.0
Unemployment	37.8	40.1	2.1	2.3	1.9	1.0	6.1	5.0	2.6
Participation rate	66.7	66.9	0.3	0.2	-0.3	-0.4
Unemployment rate	5.6	5.9	0.3	0.3	0.3	0.1
Employment rate	63.0	62.9	0.3	-0.1	-0.5	-0.5
Saskatchewan									
Population	880.9	881.6	...	0.7	1.7	8.2	0.1	0.2	0.9
Labour force	602.3	600.1	2.5	-2.2	-8.0	-10.6	-0.4	-1.3	-1.7
Employment	569.4	566.5	2.5	-2.9	-1.8	-8.2	-0.5	-0.3	-1.4
Full-time employment	468.5	465.3	3.4	-3.2	3.0	-4.9	-0.7	0.6	-1.0
Part-time employment	100.9	101.2	3.2	0.3	-4.8	-3.3	0.3	-4.5	-3.2
Unemployment	32.8	33.6	2.1	0.8	-6.2	-2.4	2.4	-15.6	-6.7
Participation rate	68.4	68.1	0.3	-0.3	-1.0	-1.8
Unemployment rate	5.4	5.6	0.3	0.2	-0.9	-0.3
Employment rate	64.6	64.3	0.3	-0.3	-0.3	-1.5
Alberta									
Population	3,447.3	3,450.5	...	3.2	6.8	36.3	0.1	0.2	1.1
Labour force	2,489.2	2,482.1	9.8	-7.1	-12.1	6.5	-0.3	-0.5	0.3
Employment	2,314.5	2,316.8	10.1	2.3	-3.6	45.0	0.1	-0.2	2.0
Full-time employment	1,917.3	1,906.8	13.9	-10.5	17.0	62.7	-0.5	0.9	3.4
Part-time employment	397.2	410.0	12.9	12.8	-20.6	-17.7	3.2	-4.8	-4.1
Unemployment	174.8	165.3	9.0	-9.5	-8.5	-38.5	-5.4	-4.9	-18.9
Participation rate	72.2	71.9	0.3	-0.3	-0.5	-0.6
Unemployment rate	7.0	6.7	0.4	-0.3	-0.3	-1.5
Employment rate	67.1	67.1	0.3	0.0	-0.3	0.6
British Columbia									
Population	4,003.7	4,007.6	...	3.9	6.9	48.2	0.1	0.2	1.2
Labour force	2,610.9	2,604.7	10.4	-6.2	-7.3	30.0	-0.2	-0.3	1.2
Employment	2,486.8	2,483.4	10.4	-3.4	-8.5	40.2	-0.1	-0.3	1.6
Full-time employment	1,950.8	1,922.3	15.7	-28.5	-24.4	-5.2	-1.5	-1.3	-0.3
Part-time employment	535.9	561.1	14.6	25.2	16.0	45.4	4.7	2.9	8.8
Unemployment	124.1	121.2	8.2	-2.9	1.0	-10.2	-2.3	0.8	-7.8
Participation rate	65.2	65.0	0.3	-0.2	-0.3	0.0
Unemployment rate	4.8	4.7	0.3	-0.1	0.1	-0.4
Employment rate	62.1	62.0	0.3	-0.1	-0.3	0.3

1. Average standard error of change in two consecutive months (see "Sampling Errors" in the Data Quality section for further explanations).

Note: Related CANSIM table 282-0087. The sum of individual categories may not always add to the total due to rounding.

Table 4-1
Selected labour force characteristics (seasonally adjusted) — Newfoundland and Labrador

	January 2018	February 2018	S.E. ¹	Change from			Percent change from		
				last month	last December	twelve months ago	last month	last December	twelve months ago
				in thousands (except rates)			percent		
Both sexes, 15 years and over									
Population	444.9	444.7	...	-0.2	-0.4	-0.7	0.0	-0.1	-0.2
Labour force	262.1	260.3	2.0	-1.8	-3.7	-3.1	-0.7	-1.4	-1.2
Employment	225.3	223.9	2.0	-1.4	-1.2	-1.4	-0.6	-0.5	-0.6
Full-time employment	191.3	190.1	2.5	-1.2	-0.9	0.2	-0.6	-0.5	0.1
Unemployment	36.8	36.4	2.0	-0.4	-2.5	-1.7	-1.1	-6.4	-4.5
Participation rate	58.9	58.5	0.4	-0.4	-0.8	-0.6
Unemployment rate	14.0	14.0	0.7	0.0	-0.7	-0.5
Employment rate	50.6	50.3	0.5	-0.3	-0.3	-0.3
Both sexes, 15 to 24 years									
Population	54.4	54.4	...	0.0	0.0	-0.6	0.0	0.0	-1.1
Labour force	32.4	32.4	0.9	0.0	-0.6	-0.9	0.0	-1.8	-2.7
Employment	26.9	27.3	0.8	0.4	0.1	0.1	1.5	0.4	0.4
Unemployment	5.5	5.1	0.9	-0.4	-0.7	-1.0	-7.3	-12.1	-16.4
Participation rate	59.6	59.6	1.7	0.0	-1.1	-0.9
Unemployment rate	17.0	15.7	2.3	-1.3	-1.9	-2.6
Employment rate	49.4	50.2	1.6	0.8	0.2	0.7
Men, 25 years and over									
Population	190.2	190.1	...	-0.1	-0.1	-0.1	-0.1	-0.1	-0.1
Labour force	118.9	117.8	1.3	-1.1	-1.0	-1.9	-0.9	-0.8	-1.6
Employment	99.0	98.0	1.4	-1.0	0.7	-0.4	-1.0	0.7	-0.4
Unemployment	19.9	19.9	1.4	0.0	-1.6	-1.4	0.0	-7.4	-6.6
Participation rate	62.5	62.0	0.7	-0.5	-0.5	-0.9
Unemployment rate	16.7	16.9	1.1	0.2	-1.2	-0.9
Employment rate	52.1	51.6	0.7	-0.5	0.4	-0.1
Women, 25 years and over									
Population	200.3	200.3	...	0.0	-0.1	0.2	0.0	0.0	0.1
Labour force	110.8	110.1	1.1	-0.7	-2.1	-0.4	-0.6	-1.9	-0.4
Employment	99.3	98.7	1.1	-0.6	-1.9	-1.0	-0.6	-1.9	-1.0
Unemployment	11.4	11.4	1.0	0.0	-0.2	0.6	0.0	-1.7	5.6
Participation rate	55.3	55.0	0.5	-0.3	-1.0	-0.2
Unemployment rate	10.3	10.4	0.9	0.1	0.1	0.6
Employment rate	49.6	49.3	0.5	-0.3	-0.9	-0.5
Industry									
Goods-producing sector	225.3	223.9	2.0	-1.4	-1.2	-1.4	-0.6	-0.5	-0.6
Agriculture	2.6	1.4	0.4	-1.2	-1.3	-0.7	-46.2	-48.1	-33.3
Forestry, fishing, mining, quarrying, oil and gas extraction ²	10.6	11.2	0.8	0.6	-0.8	-0.9	5.7	-6.7	-7.4
Utilities	3.3	3.2	0.2	-0.1	-0.2	0.4	-3.0	-5.9	14.3
Construction	22.1	23.2	1.0	1.1	3.1	2.2	5.0	15.4	10.5
Manufacturing	10.7	9.0	0.7	-1.7	-1.2	0.4	-15.9	-11.8	4.7
Services-producing sector	175.9	175.9	1.7	0.0	-0.8	-2.8	0.0	-0.5	-1.6
Wholesale and retail trade	38.2	37.8	0.9	-0.4	-1.0	-3.2	-1.0	-2.6	-7.8
Transportation and warehousing	12.0	12.3	0.5	0.3	0.0	1.4	2.5	0.0	12.8
Finance, insurance, real estate, rental and leasing	6.9	6.6	0.4	-0.3	-0.3	0.0	-4.3	-4.3	0.0
Professional, scientific and technical services	8.4	8.7	0.5	0.3	0.2	-1.9	3.6	2.4	-17.9
Business, building and other support services	6.7	6.7	0.5	0.0	0.3	0.2	0.0	4.7	3.1
Educational services	15.6	15.5	0.6	-0.1	-0.2	1.3	-0.6	-1.3	9.2
Health care and social assistance	38.1	39.0	0.7	0.9	0.9	-0.4	2.4	2.4	-1.0
Information, culture and recreation	6.2	6.3	0.5	0.1	-0.4	-0.9	1.6	-6.0	-12.5
Accommodation and food services	15.6	15.4	0.7	-0.2	-0.4	1.7	-1.3	-2.5	12.4
Other services (except public administration)	12.3	12.1	0.5	-0.2	0.8	-0.5	-1.6	7.1	-4.0
Public administration	15.9	15.5	0.5	-0.4	-0.9	-0.3	-2.5	-5.5	-1.9

1. Average standard error of change in two consecutive months (see "Sampling Errors" in the **Data Quality** section for further explanations).

2. Also referred to as "Natural resources".

Note: Related CANSIM tables 282-0087 and 282-0088. The sum of individual categories may not always add to the total due to rounding.

Table 4-2
Selected labour force characteristics (seasonally adjusted) — Prince Edward Island

	January 2018	February 2018	S.E. ¹	Change from			Percent change from		
				last month	last December	twelve months ago	last month	last December	twelve months ago
				in thousands (except rates)			percent		
Both sexes, 15 years and over									
Population	124.5	124.7	...	0.2	0.3	1.9	0.2	0.2	1.5
Labour force	83.8	83.8	0.6	0.0	1.1	2.7	0.0	1.3	3.3
Employment	74.9	75.4	0.6	0.5	0.6	2.3	0.7	0.8	3.1
Full-time employment	62.2	62.8	0.8	0.6	-0.5	0.7	1.0	-0.8	1.1
Unemployment	8.9	8.5	0.6	-0.4	0.5	0.5	-4.5	6.3	6.3
Participation rate	67.3	67.2	0.5	-0.1	0.7	1.2
Unemployment rate	10.6	10.1	0.7	-0.5	0.4	0.2
Employment rate	60.2	60.5	0.5	0.3	0.4	1.0
Both sexes, 15 to 24 years									
Population	17.8	17.8	...	0.0	0.0	0.1	0.0	0.0	0.6
Labour force	12.2	12.0	0.3	-0.2	0.2	-0.7	-1.6	1.7	-5.5
Employment	10.4	10.5	0.3	0.1	0.4	-0.1	1.0	4.0	-0.9
Unemployment	1.9	1.5	0.3	-0.4	-0.2	-0.6	-21.1	-11.8	-28.6
Participation rate	68.5	67.4	1.9	-1.1	1.1	-4.4
Unemployment rate	15.6	12.5	2.3	-3.1	-1.9	-4.0
Employment rate	58.4	59.0	1.9	0.6	2.3	-0.9
Men, 25 years and over									
Population	51.3	51.4	...	0.1	0.2	1.0	0.2	0.4	2.0
Labour force	37.2	37.3	0.3	0.1	0.8	1.9	0.3	2.2	5.4
Employment	33.5	33.5	0.4	0.0	0.5	2.0	0.0	1.5	6.3
Unemployment	3.7	3.8	0.4	0.1	0.3	-0.1	2.7	8.6	-2.6
Participation rate	72.5	72.6	0.7	0.1	1.3	2.4
Unemployment rate	9.9	10.2	1.0	0.3	0.6	-0.8
Employment rate	65.3	65.2	0.8	-0.1	0.7	2.7
Women, 25 years and over									
Population	55.4	55.5	...	0.1	0.1	0.8	0.2	0.2	1.5
Labour force	34.4	34.6	0.3	0.2	0.1	1.6	0.6	0.3	4.8
Employment	31.0	31.4	0.4	0.4	-0.3	0.4	1.3	-0.9	1.3
Unemployment	3.3	3.2	0.3	-0.1	0.4	1.2	-3.0	14.3	60.0
Participation rate	62.1	62.3	0.6	0.2	0.0	2.0
Unemployment rate	9.6	9.2	0.9	-0.4	1.1	3.1
Employment rate	56.0	56.6	0.7	0.6	-0.6	-0.1
Industry									
Goods-producing sector	74.9	75.4	0.6	0.5	0.6	2.3	0.7	0.8	3.1
Goods-producing sector	19.2	18.9	0.5	-0.3	-0.1	1.9	-1.6	-0.5	11.2
Agriculture	3.7	3.6	0.3	-0.1	-0.1	0.5	-2.7	-2.7	16.1
Forestry, fishing, mining, quarrying, oil and gas extraction ²	2.7	2.6	0.3	-0.1	0.0	0.1	-3.7	0.0	4.0
Utilities	x	0.2	0.0	x	x	0.0	x	x	0.0
Construction	6.1	5.8	0.2	-0.3	-0.2	0.7	-4.9	-3.3	13.7
Manufacturing	6.5	6.8	0.3	0.3	0.3	0.7	4.6	4.6	11.5
Services-producing sector									
Services-producing sector	55.6	56.4	0.6	0.8	0.6	0.3	1.4	1.1	0.5
Wholesale and retail trade	11.1	11.6	0.3	0.5	0.5	1.1	4.5	4.5	10.5
Transportation and warehousing	2.3	2.1	0.2	-0.2	-0.4	-0.8	-8.7	-16.0	-27.6
Finance, insurance, real estate, rental and leasing	2.8	2.9	0.1	0.1	0.1	0.4	3.6	3.6	16.0
Professional, scientific and technical services	3.6	3.5	0.2	-0.1	0.1	0.0	-2.8	2.9	0.0
Business, building and other support services	1.5	1.8	0.2	0.3	0.1	-0.3	20.0	5.9	-14.3
Educational services	5.4	5.3	0.2	-0.1	-0.3	-0.1	-1.9	-5.4	-1.9
Health care and social assistance	10.7	11.0	0.2	0.3	0.1	0.6	2.8	0.9	5.8
Information, culture and recreation	2.7	3.0	0.2	0.3	0.4	0.3	11.1	15.4	11.1
Accommodation and food services	5.4	5.4	0.3	0.0	0.2	-0.5	0.0	3.8	-8.5
Other services (except public administration)	3.3	3.2	0.2	-0.1	-0.1	-0.1	-3.0	-3.0	-3.0
Public administration	6.9	6.8	0.2	-0.1	-0.1	-0.2	-1.4	-1.4	-2.9

1. Average standard error of change in two consecutive months (see "Sampling Errors" in the **Data Quality** section for further explanations).

2. Also referred to as "Natural resources".

Note: Related CANSIM tables 282-0087 and 282-0088. The sum of individual categories may not always add to the total due to rounding.

Table 4-3
Selected labour force characteristics (seasonally adjusted) — Nova Scotia

	January 2018	February 2018	S.E. ¹	Change from			Percent change from		
				last month	last December	twelve months ago	last month	last December	twelve months ago
				in thousands (except rates)			percent		
Both sexes, 15 years and over									
Population	795.8	796.2	...	0.4	0.9	5.7	0.1	0.1	0.7
Labour force	494.0	495.3	2.7	1.3	1.5	10.1	0.3	0.3	2.1
Employment	453.5	456.3	2.7	2.8	2.1	10.3	0.6	0.5	2.3
Full-time employment	370.6	375.5	3.6	4.9	6.2	13.9	1.3	1.7	3.8
Unemployment	40.5	39.0	2.5	-1.5	-0.6	-0.2	-3.7	-1.5	-0.5
Participation rate	62.1	62.2	0.3	0.1	0.1	0.8
Unemployment rate	8.2	7.9	0.5	-0.3	-0.1	-0.2
Employment rate	57.0	57.3	0.3	0.3	0.2	0.9
Both sexes, 15 to 24 years									
Population	108.2	108.2	...	0.0	-0.1	-0.7	0.0	-0.1	-0.6
Labour force	69.7	69.9	1.5	0.2	1.7	3.0	0.3	2.5	4.5
Employment	57.0	56.8	1.5	-0.2	0.2	-0.4	-0.4	0.4	-0.7
Unemployment	12.7	13.1	1.4	0.4	1.5	3.4	3.1	12.9	35.1
Participation rate	64.4	64.6	1.4	0.2	1.6	3.2
Unemployment rate	18.2	18.7	1.9	0.5	1.7	4.2
Employment rate	52.7	52.5	1.4	-0.2	0.2	0.0
Men, 25 years and over									
Population	330.1	330.4	...	0.3	0.6	3.7	0.1	0.2	1.1
Labour force	218.5	219.3	1.6	0.8	0.2	6.6	0.4	0.1	3.1
Employment	200.6	203.3	1.7	2.7	1.5	9.9	1.3	0.7	5.1
Unemployment	18.0	15.9	1.6	-2.1	-1.4	-3.5	-11.7	-8.1	-18.0
Participation rate	66.2	66.4	0.5	0.2	0.0	1.3
Unemployment rate	8.2	7.3	0.7	-0.9	-0.6	-1.8
Employment rate	60.8	61.5	0.5	0.7	0.3	2.3
Women, 25 years and over									
Population	357.4	357.6	...	0.2	0.4	2.7	0.1	0.1	0.8
Labour force	205.8	206.2	1.4	0.4	-0.2	0.7	0.2	-0.1	0.3
Employment	195.9	196.2	1.4	0.3	0.4	0.8	0.2	0.2	0.4
Unemployment	9.9	10.0	1.1	0.1	-0.6	-0.1	1.0	-5.7	-1.0
Participation rate	57.6	57.7	0.4	0.1	-0.1	-0.2
Unemployment rate	4.8	4.8	0.5	0.0	-0.3	-0.1
Employment rate	54.8	54.9	0.4	0.1	0.1	-0.2
Industry	453.5	456.3	2.7	2.8	2.1	10.3	0.6	0.5	2.3
Goods-producing sector									
Agriculture	5.1	5.0	0.6	-0.1	-0.3	0.5	-2.0	-5.7	11.1
Forestry, fishing, mining, quarrying, oil and gas extraction ²	10.9	9.5	0.8	-1.4	-0.5	-2.0	-12.8	-5.0	-17.4
Utilities	3.9	3.9	0.2	0.0	0.1	-0.1	0.0	2.6	-2.5
Construction	32.5	34.7	1.1	2.2	1.6	2.2	6.8	4.8	6.8
Manufacturing	31.6	31.3	0.9	-0.3	0.4	3.7	-0.9	1.3	13.4
Services-producing sector									
Wholesale and retail trade	76.2	77.9	1.3	1.7	2.9	2.3	2.2	3.9	3.0
Transportation and warehousing	19.1	19.8	0.8	0.7	-0.8	1.0	3.7	-3.9	5.3
Finance, insurance, real estate, rental and leasing	23.8	22.3	0.7	-1.5	-0.8	-0.2	-6.3	-3.5	-0.9
Professional, scientific and technical services	27.2	26.7	0.9	-0.5	-1.9	-2.6	-1.8	-6.6	-8.9
Business, building and other support services	17.7	18.3	0.8	0.6	0.3	0.7	3.4	1.7	4.0
Educational services	37.7	38.0	1.0	0.3	0.2	4.3	0.8	0.5	12.8
Health care and social assistance	69.5	69.1	1.1	-0.4	0.0	-5.4	-0.6	0.0	-7.2
Information, culture and recreation	17.3	17.4	0.8	0.1	-0.7	2.8	0.6	-3.9	19.2
Accommodation and food services	32.5	33.5	1.1	1.0	1.3	2.3	3.1	4.0	7.4
Other services (except public administration)	18.3	19.1	0.8	0.8	0.4	0.5	4.4	2.1	2.7
Public administration	30.2	29.8	0.7	-0.4	-0.2	0.4	-1.3	-0.7	1.4

1. Average standard error of change in two consecutive months (see "Sampling Errors" in the **Data Quality** section for further explanations).

2. Also referred to as "Natural resources".

Note: Related CANSIM tables 282-0087 and 282-0088. The sum of individual categories may not always add to the total due to rounding.

Table 4-4
Selected labour force characteristics (seasonally adjusted) — New Brunswick

	January 2018	February 2018	S.E. ¹	Change from			Percent change from		
				last month	last December	twelve months ago	last month	last December	twelve months ago
	in thousands (except rates)						percent		
Both sexes, 15 years and over									
Population	626.0	626.1	...	0.1	0.4	2.1	0.0	0.1	0.3
Labour force	385.6	387.7	2.2	2.1	1.1	1.2	0.5	0.3	0.3
Employment	350.7	355.8	2.2	5.1	-0.7	3.1	1.5	-0.2	0.9
Full-time employment	301.3	305.2	2.8	3.9	0.3	2.8	1.3	0.1	0.9
Unemployment	34.9	31.9	1.9	-3.0	1.8	-1.9	-8.6	6.0	-5.6
Participation rate	61.6	61.9	0.3	0.3	0.1	0.0
Unemployment rate	9.1	8.2	0.5	-0.9	0.4	-0.5
Employment rate	56.0	56.8	0.4	0.8	-0.2	0.3
Both sexes, 15 to 24 years									
Population	81.3	81.2	...	-0.1	-0.2	-1.1	-0.1	-0.2	-1.3
Labour force	53.5	54.1	1.2	0.6	1.7	1.9	1.1	3.2	3.6
Employment	44.3	46.1	1.1	1.8	0.1	1.8	4.1	0.2	4.1
Unemployment	9.3	8.0	1.0	-1.3	1.6	0.1	-14.0	25.0	1.3
Participation rate	65.8	66.6	1.4	0.8	2.2	3.2
Unemployment rate	17.4	14.8	1.8	-2.6	2.6	-0.3
Employment rate	54.5	56.8	1.4	2.3	0.3	3.0
Men, 25 years and over									
Population	263.6	263.7	...	0.1	0.3	1.5	0.0	0.1	0.6
Labour force	170.7	172.1	1.3	1.4	-0.4	-2.4	0.8	-0.2	-1.4
Employment	155.4	157.1	1.4	1.7	-1.3	-0.3	1.1	-0.8	-0.2
Unemployment	15.4	14.9	1.2	-0.5	0.7	-2.2	-3.2	4.9	-12.9
Participation rate	64.8	65.3	0.5	0.5	-0.2	-1.3
Unemployment rate	9.0	8.7	0.7	-0.3	0.5	-1.1
Employment rate	59.0	59.6	0.5	0.6	-0.5	-0.4
Women, 25 years and over									
Population	281.0	281.1	...	0.1	0.2	1.5	0.0	0.1	0.5
Labour force	161.4	161.5	1.2	0.1	-0.1	1.7	0.1	-0.1	1.1
Employment	151.1	152.6	1.2	1.5	0.5	1.6	1.0	0.3	1.1
Unemployment	10.3	9.0	1.0	-1.3	-0.6	0.2	-12.6	-6.3	2.3
Participation rate	57.4	57.5	0.4	0.1	0.0	0.3
Unemployment rate	6.4	5.6	0.6	-0.8	-0.3	0.1
Employment rate	53.8	54.3	0.4	0.5	0.2	0.3
Industry	350.7	355.8	2.2	5.1	-0.7	3.1	1.5	-0.2	0.9
Goods-producing sector									
Agriculture	5.1	5.0	0.5	-0.1	0.4	-0.7	-2.0	8.7	-12.3
Forestry, fishing, mining, quarrying, oil and gas extraction ²	8.2	8.0	0.6	-0.2	-0.3	-1.0	-2.4	-3.6	-11.1
Utilities	2.9	3.1	0.2	0.2	0.2	-0.9	6.9	6.9	-22.5
Construction	24.6	24.6	0.9	0.0	-0.8	0.9	0.0	-3.1	3.8
Manufacturing	31.8	33.4	0.8	1.6	0.1	3.5	5.0	0.3	11.7
Services-producing sector									
Wholesale and retail trade	55.2	55.0	1.0	-0.2	-2.1	-2.1	-0.4	-3.7	-3.7
Transportation and warehousing	17.3	18.1	0.6	0.8	-0.5	1.2	4.6	-2.7	7.1
Finance, insurance, real estate, rental and leasing	15.8	15.8	0.5	0.0	-0.3	-2.2	0.0	-1.9	-12.2
Professional, scientific and technical services	14.8	16.8	0.6	2.0	2.2	0.8	13.5	15.1	5.0
Business, building and other support services	16.1	15.7	0.7	-0.4	-1.6	0.7	-2.5	-9.2	4.7
Educational services	25.9	26.3	0.7	0.4	0.3	0.2	1.5	1.2	0.8
Health care and social assistance	61.3	61.0	0.9	-0.3	1.0	4.4	-0.5	1.7	7.8
Information, culture and recreation	10.3	10.9	0.7	0.6	0.2	-0.8	5.8	1.9	-6.8
Accommodation and food services	23.9	24.3	0.8	0.4	-0.7	0.9	1.7	-2.8	3.8
Other services (except public administration)	14.6	15.0	0.6	0.4	0.1	-0.4	2.7	0.7	-2.6
Public administration	22.9	22.8	0.6	-0.1	1.0	-1.4	-0.4	4.6	-5.8

1. Average standard error of change in two consecutive months (see "Sampling Errors" in the **Data Quality** section for further explanations).

2. Also referred to as "Natural resources".

Note: Related CANSIM tables 282-0087 and 282-0088. The sum of individual categories may not always add to the total due to rounding.

Table 4-5
Selected labour force characteristics (seasonally adjusted) — Quebec

	January 2018	February 2018	S.E. ¹	Change from			Percent change from		
				last month	last December	twelve months ago	last month	last December	twelve months ago
				in thousands (except rates)			percent		
Both sexes, 15 years and over									
Population	6,958.2	6,960.3	...	2.1	6.8	48.2	0.0	0.1	0.7
Labour force	4,508.6	4,517.5	15.2	8.9	7.4	40.6	0.2	0.2	0.9
Employment	4,266.5	4,263.6	15.5	-2.9	-20.3	73.8	-0.1	-0.5	1.8
Full-time employment	3,489.6	3,486.4	20.6	-3.2	10.5	108.4	-0.1	0.3	3.2
Unemployment	242.1	253.9	12.9	11.8	27.8	-33.2	4.9	12.3	-11.6
Participation rate	64.8	64.9	0.2	0.1	0.0	0.1
Unemployment rate	5.4	5.6	0.3	0.2	0.6	-0.8
Employment rate	61.3	61.3	0.2	0.0	-0.3	0.7
Both sexes, 15 to 24 years									
Population	906.1	904.8	...	-1.3	-2.8	-17.0	-0.1	-0.3	-1.8
Labour force	611.5	612.0	8.4	0.5	12.0	-6.0	0.1	2.0	-1.0
Employment	555.5	556.3	8.3	0.8	3.9	4.4	0.1	0.7	0.8
Unemployment	56.0	55.7	6.8	-0.3	8.1	-10.5	-0.5	17.0	-15.9
Participation rate	67.5	67.6	0.9	0.1	1.5	0.6
Unemployment rate	9.2	9.1	1.1	-0.1	1.2	-1.6
Employment rate	61.3	61.5	0.9	0.2	0.6	1.6
Men, 25 years and over									
Population	2,986.1	2,987.9	...	1.8	5.1	33.2	0.1	0.2	1.1
Labour force	2,069.1	2,076.2	8.2	7.1	2.9	32.9	0.3	0.1	1.6
Employment	1,966.0	1,969.1	9.0	3.1	-8.9	49.6	0.2	-0.4	2.6
Unemployment	103.0	107.2	7.8	4.2	11.8	-16.5	4.1	12.4	-13.3
Participation rate	69.3	69.5	0.3	0.2	0.0	0.3
Unemployment rate	5.0	5.2	0.4	0.2	0.6	-0.9
Employment rate	65.8	65.9	0.3	0.1	-0.4	0.9
Women, 25 years and over									
Population	3,066.0	3,067.7	...	1.7	4.7	32.0	0.1	0.2	1.1
Labour force	1,828.1	1,829.3	8.7	1.2	-7.5	13.7	0.1	-0.4	0.8
Employment	1,745.0	1,738.2	8.4	-6.8	-15.4	19.8	-0.4	-0.9	1.2
Unemployment	83.1	91.1	7.2	8.0	7.9	-6.1	9.6	9.5	-6.3
Participation rate	59.6	59.6	0.3	0.0	-0.4	-0.2
Unemployment rate	4.5	5.0	0.4	0.5	0.5	-0.4
Employment rate	56.9	56.7	0.3	-0.2	-0.6	0.1
Industry	4,266.5	4,263.6	15.5	-2.9	-20.3	73.8	-0.1	-0.5	1.8
Goods-producing sector									
Goods-producing sector	860.3	859.4	8.9	-0.9	-19.8	17.8	-0.1	-2.3	2.1
Agriculture	58.0	52.5	3.0	-5.5	-2.7	-3.5	-9.5	-4.9	-6.3
Forestry, fishing, mining, quarrying, oil and gas extraction ²	35.0	39.4	2.2	4.4	1.3	4.4	12.6	3.4	12.6
Utilities	22.4	23.2	1.0	0.8	0.3	-2.8	3.6	1.3	-10.8
Construction	243.7	245.7	5.5	2.0	-9.4	4.2	0.8	-3.7	1.7
Manufacturing	501.3	498.6	6.3	-2.7	-9.3	15.6	-0.5	-1.8	3.2
Services-producing sector									
Services-producing sector	3,406.2	3,404.1	14.7	-2.1	-0.7	55.9	-0.1	0.0	1.7
Wholesale and retail trade	668.9	665.1	8.1	-3.8	9.7	-16.8	-0.6	1.5	-2.5
Transportation and warehousing	220.7	218.3	4.1	-2.4	-1.2	19.2	-1.1	-0.5	9.6
Finance, insurance, real estate, rental and leasing	235.8	236.5	4.2	0.7	-10.0	10.3	0.3	-4.1	4.6
Professional, scientific and technical services	333.3	321.3	5.7	-12.0	-9.7	7.6	-3.6	-2.9	2.4
Business, building and other support services	192.8	187.8	5.6	-5.0	-3.3	2.6	-2.6	-1.7	1.4
Educational services	293.7	294.1	5.4	0.4	-4.9	4.1	0.1	-1.6	1.4
Health care and social assistance	580.2	586.3	5.8	6.1	3.2	16.1	1.1	0.5	2.8
Information, culture and recreation	188.0	182.8	5.8	-5.2	2.3	3.7	-2.8	1.3	2.1
Accommodation and food services	266.9	271.8	5.8	4.9	-3.9	-4.6	1.8	-1.4	-1.7
Other services (except public administration)	178.1	186.4	4.0	8.3	7.6	13.7	4.7	4.3	7.9
Public administration	247.7	253.7	4.0	6.0	9.6	0.1	2.4	3.9	0.0

1. Average standard error of change in two consecutive months (see "Sampling Errors" in the **Data Quality** section for further explanations).

2. Also referred to as "Natural resources".

Note: Related CANSIM tables 282-0087 and 282-0088. The sum of individual categories may not always add to the total due to rounding.

Table 4-6
Selected labour force characteristics (seasonally adjusted) — Ontario

	January 2018	February 2018	S.E. ¹	Change from			Percent change from		
				last month	last December	twelve months ago	last month	last December	twelve months ago
				in thousands (except rates)			percent		
Both sexes, 15 years and over									
Population	11,793.7	11,809.7	...	16.0	37.8	194.5	0.1	0.3	1.7
Labour force	7,593.5	7,603.1	20.1	9.6	-45.2	58.2	0.1	-0.6	0.8
Employment	7,172.9	7,188.6	19.6	15.7	-35.2	113.7	0.2	-0.5	1.6
Full-time employment	5,859.9	5,857.4	27.5	-2.5	6.0	110.1	0.0	0.1	1.9
Unemployment	420.6	414.5	16.8	-6.1	-10.0	-55.4	-1.5	-2.4	-11.8
Participation rate	64.4	64.4	0.2	0.0	-0.6	-0.6
Unemployment rate	5.5	5.5	0.2	0.0	-0.1	-0.7
Employment rate	60.8	60.9	0.2	0.1	-0.5	0.0
Both sexes, 15 to 24 years									
Population	1,792.0	1,793.6	...	1.6	3.9	11.8	0.1	0.2	0.7
Labour force	1,078.9	1,083.9	12.6	5.0	-19.8	0.7	0.5	-1.8	0.1
Employment	955.5	955.8	11.5	0.3	-25.5	23.4	0.0	-2.6	2.5
Unemployment	123.5	128.1	10.0	4.6	5.7	-22.8	3.7	4.7	-15.1
Participation rate	60.2	60.4	0.7	0.2	-1.3	-0.4
Unemployment rate	11.4	11.8	0.9	0.4	0.7	-2.1
Employment rate	53.3	53.3	0.6	0.0	-1.5	1.0
Men, 25 years and over									
Population	4,831.8	4,839.2	...	7.4	17.0	92.9	0.2	0.4	2.0
Labour force	3,382.3	3,383.5	10.2	1.2	-10.7	8.0	0.0	-0.3	0.2
Employment	3,232.2	3,237.3	10.6	5.1	5.2	25.5	0.2	0.2	0.8
Unemployment	150.1	146.2	9.2	-3.9	-15.9	-17.5	-2.6	-9.8	-10.7
Participation rate	70.0	69.9	0.2	-0.1	-0.5	-1.2
Unemployment rate	4.4	4.3	0.3	-0.1	-0.5	-0.5
Employment rate	66.9	66.9	0.2	0.0	-0.1	-0.8
Women, 25 years and over									
Population	5,170.0	5,176.9	...	6.9	16.9	89.8	0.1	0.3	1.8
Labour force	3,132.3	3,135.8	11.5	3.5	-14.6	49.7	0.1	-0.5	1.6
Employment	2,985.3	2,995.5	11.3	10.2	-14.8	64.8	0.3	-0.5	2.2
Unemployment	147.0	140.3	9.4	-6.7	0.3	-15.0	-4.6	0.2	-9.7
Participation rate	60.6	60.6	0.2	0.0	-0.5	-0.1
Unemployment rate	4.7	4.5	0.3	-0.2	0.1	-0.5
Employment rate	57.7	57.9	0.2	0.2	-0.4	0.3
Industry									
Goods-producing sector	7,172.9	7,188.6	19.6	15.7	-35.2	113.7	0.2	-0.5	1.6
Goods-producing sector	1,457.3	1,456.1	10.3	-1.2	-8.0	45.3	-0.1	-0.5	3.2
Agriculture	63.7	66.9	2.7	3.2	-0.7	-4.0	5.0	-1.0	-5.6
Forestry, fishing, mining, quarrying, oil and gas extraction ²	32.7	33.0	1.6	0.3	-1.0	-3.1	0.9	-2.9	-8.6
Utilities	49.4	52.2	1.5	2.8	5.0	2.1	5.7	10.6	4.2
Construction	519.1	523.5	7.0	4.4	-4.1	23.0	0.8	-0.8	4.6
Manufacturing	792.4	780.5	7.3	-11.9	-7.3	27.2	-1.5	-0.9	3.6
Services-producing sector									
Services-producing sector	5,715.7	5,732.5	19.0	16.8	-27.2	68.3	0.3	-0.5	1.2
Wholesale and retail trade	1,087.7	1,075.8	9.9	-11.9	-27.4	36.2	-1.1	-2.5	3.5
Transportation and warehousing	348.2	366.3	5.5	18.1	12.2	37.9	5.2	3.4	11.5
Finance, insurance, real estate, rental and leasing	562.7	552.9	6.5	-9.8	-9.2	-18.5	-1.7	-1.6	-3.2
Professional, scientific and technical services	625.8	623.3	7.5	-2.5	-15.8	19.2	-0.4	-2.5	3.2
Business, building and other support services	313.3	315.0	6.9	1.7	9.0	-3.7	0.5	2.9	-1.2
Educational services	500.7	506.3	7.3	5.6	-2.5	7.5	1.1	-0.5	1.5
Health care and social assistance	843.9	848.7	7.0	4.8	-4.9	-22.6	0.6	-0.6	-2.6
Information, culture and recreation	325.4	325.8	6.8	0.4	1.3	10.3	0.1	0.4	3.3
Accommodation and food services	463.8	468.9	8.1	5.1	7.3	9.9	1.1	1.6	2.2
Other services (except public administration)	284.9	288.6	5.3	3.7	6.6	4.5	1.3	2.3	1.6
Public administration	359.2	360.9	4.6	1.7	-3.9	-12.4	0.5	-1.1	-3.3

1. Average standard error of change in two consecutive months (see "Sampling Errors" in the **Data Quality** section for further explanations).

2. Also referred to as "Natural resources".

Note: Related CANSIM tables 282-0087 and 282-0088. The sum of individual categories may not always add to the total due to rounding.

Table 4-7
Selected labour force characteristics (seasonally adjusted) — Manitoba

	January 2018	February 2018	S.E. ¹	Change from			Percent change from		
				last month	last December	twelve months ago	last month	last December	twelve months ago
				in thousands (except rates)			percent		
Both sexes, 15 years and over									
Population	1,019.5	1,020.4	...	0.9	1.5	13.0	0.1	0.1	1.3
Labour force	680.4	682.2	2.6	1.8	-2.3	4.7	0.3	-0.3	0.7
Employment	642.7	642.2	2.6	-0.5	-4.1	3.7	-0.1	-0.6	0.6
Full-time employment	512.3	512.5	3.6	0.2	-7.5	-5.8	0.0	-1.4	-1.1
Unemployment	37.8	40.1	2.1	2.3	1.9	1.0	6.1	5.0	2.6
Participation rate	66.7	66.9	0.3	0.2	-0.3	-0.4
Unemployment rate	5.6	5.9	0.3	0.3	0.3	0.1
Employment rate	63.0	62.9	0.3	-0.1	-0.5	-0.5
Both sexes, 15 to 24 years									
Population	165.4	165.5	...	0.1	0.0	1.6	0.1	0.0	1.0
Labour force	108.5	109.6	1.5	1.1	-0.2	0.8	1.0	-0.2	0.7
Employment	95.8	96.3	1.4	0.5	-0.9	1.5	0.5	-0.9	1.6
Unemployment	12.7	13.2	1.3	0.5	0.6	-0.8	3.9	4.8	-5.7
Participation rate	65.6	66.2	0.9	0.6	-0.1	-0.2
Unemployment rate	11.7	12.0	1.1	0.3	0.5	-0.9
Employment rate	57.9	58.2	0.9	0.3	-0.5	0.4
Men, 25 years and over									
Population	419.0	419.5	...	0.5	0.8	5.9	0.1	0.2	1.4
Labour force	305.3	306.3	1.3	1.0	1.9	2.9	0.3	0.6	1.0
Employment	290.7	290.7	1.4	0.0	0.5	0.9	0.0	0.2	0.3
Unemployment	14.6	15.5	1.2	0.9	1.3	1.9	6.2	9.2	14.0
Participation rate	72.9	73.0	0.3	0.1	0.3	-0.4
Unemployment rate	4.8	5.1	0.4	0.3	0.4	0.6
Employment rate	69.4	69.3	0.3	-0.1	0.0	-0.8
Women, 25 years and over									
Population	435.1	435.4	...	0.3	0.7	5.5	0.1	0.2	1.3
Labour force	266.6	266.4	1.5	-0.2	-3.8	1.1	-0.1	-1.4	0.4
Employment	256.1	255.1	1.5	-1.0	-3.7	1.3	-0.4	-1.4	0.5
Unemployment	10.5	11.3	1.1	0.8	-0.1	-0.2	7.6	-0.9	-1.7
Participation rate	61.3	61.2	0.3	-0.1	-1.0	-0.5
Unemployment rate	3.9	4.2	0.4	0.3	0.0	-0.1
Employment rate	58.9	58.6	0.3	-0.3	-0.9	-0.4
Industry	642.7	642.2	2.6	-0.5	-4.1	3.7	-0.1	-0.6	0.6
Goods-producing sector									
Agriculture	25.7	26.3	0.8	0.6	0.4	3.3	2.3	1.5	14.3
Forestry, fishing, mining, quarrying, oil and gas extraction ²	6.5	6.7	0.4	0.2	0.5	-0.8	3.1	8.1	-10.7
Utilities	8.1	7.7	0.2	-0.4	-0.5	-1.7	-4.9	-6.1	-18.1
Construction	49.1	48.0	1.0	-1.1	1.4	-0.9	-2.2	3.0	-1.8
Manufacturing	61.1	60.5	0.9	-0.6	-2.1	-4.0	-1.0	-3.4	-6.2
Services-producing sector									
Wholesale and retail trade	89.4	90.6	1.2	1.2	-0.7	2.3	1.3	-0.8	2.6
Transportation and warehousing	37.5	36.3	0.8	-1.2	0.5	-1.3	-3.2	1.4	-3.5
Finance, insurance, real estate, rental and leasing	36.4	36.6	0.7	0.2	-0.1	-1.4	0.5	-0.3	-3.7
Professional, scientific and technical services	28.5	28.8	0.6	0.3	-0.1	0.6	1.1	-0.3	2.1
Business, building and other support services	20.4	19.1	0.7	-1.3	-1.2	1.5	-6.4	-5.9	8.5
Educational services	51.0	50.6	1.0	-0.4	-0.5	0.6	-0.8	-1.0	1.2
Health care and social assistance	102.0	103.3	1.1	1.3	-1.9	2.4	1.3	-1.8	2.4
Information, culture and recreation	22.7	21.9	0.9	-0.8	-0.8	-1.9	-3.5	-3.5	-8.0
Accommodation and food services	43.8	44.6	1.0	0.8	0.0	4.2	1.8	0.0	10.4
Other services (except public administration)	29.2	29.6	0.7	0.4	0.3	2.3	1.4	1.0	8.4
Public administration	31.2	31.8	0.7	0.6	1.0	-1.2	1.9	3.2	-3.6

1. Average standard error of change in two consecutive months (see "Sampling Errors" in the **Data Quality** section for further explanations).

2. Also referred to as "Natural resources".

Note: Related CANSIM tables 282-0087 and 282-0088. The sum of individual categories may not always add to the total due to rounding.

Table 4-8
Selected labour force characteristics (seasonally adjusted) — Saskatchewan

	January 2018	February 2018	S.E. ¹	Change from			Percent change from		
				last month	last December	twelve months ago	last month	last December	twelve months ago
				in thousands (except rates)			percent		
Both sexes, 15 years and over									
Population	880.9	881.6	...	0.7	1.7	8.2	0.1	0.2	0.9
Labour force	602.3	600.1	2.5	-2.2	-8.0	-10.6	-0.4	-1.3	-1.7
Employment	569.4	566.5	2.5	-2.9	-1.8	-8.2	-0.5	-0.3	-1.4
Full-time employment	468.5	465.3	3.4	-3.2	3.0	-4.9	-0.7	0.6	-1.0
Unemployment	32.8	33.6	2.1	0.8	-6.2	-2.4	2.4	-15.6	-6.7
Participation rate	68.4	68.1	0.3	-0.3	-1.0	-1.8
Unemployment rate	5.4	5.6	0.3	0.2	-0.9	-0.3
Employment rate	64.6	64.3	0.3	-0.3	-0.3	-1.5
Both sexes, 15 to 24 years									
Population	133.1	133.1	...	0.0	-0.2	-0.8	0.0	-0.2	-0.6
Labour force	83.1	81.4	1.4	-1.7	-6.2	-6.2	-2.0	-7.1	-7.1
Employment	73.9	72.9	1.3	-1.0	-1.4	-5.9	-1.4	-1.9	-7.5
Unemployment	9.2	8.6	1.2	-0.6	-4.7	-0.1	-6.5	-35.3	-1.1
Participation rate	62.4	61.2	1.0	-1.2	-4.5	-4.2
Unemployment rate	11.1	10.6	1.3	-0.5	-4.6	0.7
Employment rate	55.5	54.8	1.0	-0.7	-0.9	-4.0
Men, 25 years and over									
Population	374.3	374.7	...	0.4	1.0	4.5	0.1	0.3	1.2
Labour force	283.7	283.0	1.3	-0.7	-0.5	-2.0	-0.2	-0.2	-0.7
Employment	268.4	267.6	1.5	-0.8	0.7	-1.1	-0.3	0.3	-0.4
Unemployment	15.2	15.4	1.3	0.2	-1.2	-0.9	1.3	-7.2	-5.5
Participation rate	75.8	75.5	0.4	-0.3	-0.4	-1.5
Unemployment rate	5.4	5.4	0.4	0.0	-0.5	-0.3
Employment rate	71.7	71.4	0.4	-0.3	0.0	-1.2
Women, 25 years and over									
Population	373.5	373.8	...	0.3	0.8	4.5	0.1	0.2	1.2
Labour force	235.5	235.7	1.5	0.2	-1.3	-2.5	0.1	-0.5	-1.0
Employment	227.0	226.1	1.4	-0.9	-1.0	-1.1	-0.4	-0.4	-0.5
Unemployment	8.5	9.7	1.1	1.2	-0.2	-1.3	14.1	-2.0	-11.8
Participation rate	63.1	63.1	0.4	0.0	-0.4	-1.4
Unemployment rate	3.6	4.1	0.4	0.5	-0.1	-0.5
Employment rate	60.8	60.5	0.4	-0.3	-0.4	-1.0
Industry									
Goods-producing sector	569.4	566.5	2.5	-2.9	-1.8	-8.2	-0.5	-0.3	-1.4
Goods-producing sector	143.7	142.5	1.7	-1.2	-2.2	-6.9	-0.8	-1.5	-4.6
Agriculture	35.4	35.0	1.0	-0.4	-0.8	-4.0	-1.1	-2.2	-10.3
Forestry, fishing, mining, quarrying, oil and gas extraction ²	24.7	24.4	0.7	-0.3	0.3	0.8	-1.2	1.2	3.4
Utilities	6.8	6.9	0.3	0.1	-0.1	-0.1	1.5	-1.4	-1.4
Construction	49.5	48.2	1.1	-1.3	-1.8	-2.9	-2.6	-3.6	-5.7
Manufacturing	27.4	27.9	0.7	0.5	0.0	-0.8	1.8	0.0	-2.8
Services-producing sector	425.7	424.1	2.3	-1.6	0.5	-1.3	-0.4	0.1	-0.3
Wholesale and retail trade	91.4	90.5	1.3	-0.9	0.1	-2.3	-1.0	0.1	-2.5
Transportation and warehousing	30.0	30.0	0.8	0.0	1.0	1.7	0.0	3.4	6.0
Finance, insurance, real estate, rental and leasing	27.2	27.4	0.6	0.2	0.5	0.5	0.7	1.9	1.9
Professional, scientific and technical services	27.8	27.1	0.8	-0.7	-0.9	-4.5	-2.5	-3.2	-14.2
Business, building and other support services	14.8	15.7	0.6	0.9	1.5	2.6	6.1	10.6	19.8
Educational services	41.5	42.3	1.0	0.8	0.4	-1.0	1.9	1.0	-2.3
Health care and social assistance	76.8	77.0	1.0	0.2	-1.1	-0.9	0.3	-1.4	-1.2
Information, culture and recreation	21.2	19.8	0.8	-1.4	-1.2	-1.3	-6.6	-5.7	-6.2
Accommodation and food services	37.8	37.0	0.9	-0.8	0.0	0.1	-2.1	0.0	0.3
Other services (except public administration)	25.9	25.4	0.7	-0.5	-0.2	1.8	-1.9	-0.8	7.6
Public administration	31.4	31.7	0.6	0.3	0.3	1.9	1.0	1.0	6.4

1. Average standard error of change in two consecutive months (see "Sampling Errors" in the **Data Quality** section for further explanations).

2. Also referred to as "Natural resources".

Note: Related CANSIM tables 282-0087 and 282-0088. The sum of individual categories may not always add to the total due to rounding.

Table 4-9
Selected labour force characteristics (seasonally adjusted) — Alberta

	January 2018	February 2018	S.E. ¹	Change from			Percent change from		
				last month	last December	twelve months ago	last month	last December	twelve months ago
				in thousands (except rates)			percent		
Both sexes, 15 years and over									
Population	3,447.3	3,450.5	...	3.2	6.8	36.3	0.1	0.2	1.1
Labour force	2,489.2	2,482.1	9.8	-7.1	-12.1	6.5	-0.3	-0.5	0.3
Employment	2,314.5	2,316.8	10.1	2.3	-3.6	45.0	0.1	-0.2	2.0
Full-time employment	1,917.3	1,906.8	13.9	-10.5	17.0	62.7	-0.5	0.9	3.4
Unemployment	174.8	165.3	9.0	-9.5	-8.5	-38.5	-5.4	-4.9	-18.9
Participation rate	72.2	71.9	0.3	-0.3	-0.5	-0.6
Unemployment rate	7.0	6.7	0.4	-0.3	-0.3	-1.5
Employment rate	67.1	67.1	0.3	0.0	-0.3	0.6
Both sexes, 15 to 24 years									
Population	506.9	506.6	...	-0.3	-1.0	-4.6	-0.1	-0.2	-0.9
Labour force	332.4	326.9	5.4	-5.5	-1.8	-17.3	-1.7	-0.5	-5.0
Employment	289.7	284.0	5.3	-5.7	-1.4	-14.1	-2.0	-0.5	-4.7
Unemployment	42.7	42.9	4.6	0.2	-0.5	-3.2	0.5	-1.2	-6.9
Participation rate	65.6	64.5	1.1	-1.1	-0.3	-2.8
Unemployment rate	12.8	13.1	1.3	0.3	-0.1	-0.3
Employment rate	57.2	56.1	1.0	-1.1	-0.1	-2.2
Men, 25 years and over									
Population	1,480.6	1,482.1	...	1.5	3.0	16.6	0.1	0.2	1.1
Labour force	1,191.6	1,185.8	5.3	-5.8	-2.9	9.5	-0.5	-0.2	0.8
Employment	1,117.3	1,118.4	5.9	1.1	0.3	35.8	0.1	0.0	3.3
Unemployment	74.3	67.4	5.5	-6.9	-3.2	-26.2	-9.3	-4.5	-28.0
Participation rate	80.5	80.0	0.4	-0.5	-0.4	-0.3
Unemployment rate	6.2	5.7	0.5	-0.5	-0.2	-2.3
Employment rate	75.5	75.5	0.4	0.0	-0.1	1.6
Women, 25 years and over									
Population	1,459.8	1,461.9	...	2.1	5.0	24.4	0.1	0.3	1.7
Labour force	965.3	969.4	5.6	4.1	-7.4	14.3	0.4	-0.8	1.5
Employment	907.4	914.4	5.7	7.0	-2.5	23.4	0.8	-0.3	2.6
Unemployment	57.8	55.0	4.9	-2.8	-4.9	-9.1	-4.8	-8.2	-14.2
Participation rate	66.1	66.3	0.4	0.2	-0.7	-0.1
Unemployment rate	6.0	5.7	0.5	-0.3	-0.4	-1.0
Employment rate	62.2	62.5	0.4	0.3	-0.4	0.5
Industry	2,314.5	2,316.8	10.1	2.3	-3.6	45.0	0.1	-0.2	2.0
Goods-producing sector									
Agriculture	592.8	590.2	6.3	-2.6	-5.5	27.3	-0.4	-0.9	4.8
Forestry, fishing, mining, quarrying, oil and gas extraction ²	50.6	49.7	2.1	-0.9	-1.7	-0.4	-1.8	-3.3	-0.8
Utilities	152.2	153.0	3.1	0.8	0.8	10.9	0.5	0.5	7.7
Construction	21.1	21.1	1.0	0.0	1.2	0.8	0.0	6.0	3.9
Manufacturing	239.7	238.0	4.7	-1.7	-7.9	-2.5	-0.7	-3.2	-1.0
Services-producing sector									
Wholesale and retail trade	129.2	128.4	2.9	-0.8	2.1	18.5	-0.6	1.7	16.8
Transportation and warehousing	1,721.7	1,726.6	9.6	4.9	1.9	17.7	0.3	0.1	1.0
Finance, insurance, real estate, rental and leasing	335.1	336.2	5.0	1.1	-6.8	5.2	0.3	-2.0	1.6
Professional, scientific and technical services	145.2	143.5	3.3	-1.7	-0.1	3.1	-1.2	-0.1	2.2
Business, building and other support services	109.7	110.1	2.7	0.4	-3.1	5.5	0.4	-2.7	5.3
Educational services	179.0	176.6	3.8	-2.4	-0.2	-5.1	-1.3	-0.1	-2.8
Health care and social assistance	84.7	85.2	2.9	0.5	4.6	8.2	0.6	5.7	10.6
Information, culture and recreation	154.4	161.1	3.7	6.7	4.4	4.6	4.3	2.8	2.9
Accommodation and food services	268.9	274.9	3.8	6.0	8.7	-0.2	2.2	3.3	-0.1
Other services (except public administration)	75.3	72.6	2.9	-2.7	-1.8	-3.4	-3.6	-2.4	-4.5
Public administration	150.3	149.2	3.7	-1.1	0.9	3.5	-0.7	0.6	2.4
Public administration	115.0	111.9	3.4	-3.1	-2.9	-8.3	-2.7	-2.5	-6.9
Public administration	104.0	105.4	2.3	1.4	-1.7	4.7	1.3	-1.6	4.7

1. Average standard error of change in two consecutive months (see "Sampling Errors" in the **Data Quality** section for further explanations).

2. Also referred to as "Natural resources".

Note: Related CANSIM tables 282-0087 and 282-0088. The sum of individual categories may not always add to the total due to rounding.

Table 4-10
Selected labour force characteristics (seasonally adjusted) — British Columbia

	January 2018	February 2018	S.E. ¹	Change from			Percent change from		
				last month	last December	twelve months ago	last month	last December	twelve months ago
				in thousands (except rates)			percent		
Both sexes, 15 years and over									
Population	4,003.7	4,007.6	...	3.9	6.9	48.2	0.1	0.2	1.2
Labour force	2,610.9	2,604.7	10.4	-6.2	-7.3	30.0	-0.2	-0.3	1.2
Employment	2,486.8	2,483.4	10.4	-3.4	-8.5	40.2	-0.1	-0.3	1.6
Full-time employment	1,950.8	1,922.3	15.7	-28.5	-24.4	-5.2	-1.5	-1.3	-0.3
Unemployment	124.1	121.2	8.2	-2.9	1.0	-10.2	-2.3	0.8	-7.8
Participation rate	65.2	65.0	0.3	-0.2	-0.3	0.0
Unemployment rate	4.8	4.7	0.3	-0.1	0.1	-0.4
Employment rate	62.1	62.0	0.3	-0.1	-0.3	0.3
Both sexes, 15 to 24 years									
Population	580.6	580.7	...	0.1	0.1	-1.3	0.0	0.0	-0.2
Labour force	382.0	379.0	5.9	-3.0	-2.7	0.8	-0.8	-0.7	0.2
Employment	355.1	349.1	6.0	-6.0	-6.0	3.9	-1.7	-1.7	1.1
Unemployment	26.9	29.9	4.9	3.0	3.2	-3.1	11.2	12.0	-9.4
Participation rate	65.8	65.3	1.0	-0.5	-0.4	0.3
Unemployment rate	7.0	7.9	1.2	0.9	0.9	-0.8
Employment rate	61.2	60.1	1.0	-1.1	-1.1	0.8
Men, 25 years and over									
Population	1,670.1	1,672.0	...	1.9	3.4	24.7	0.1	0.2	1.5
Labour force	1,168.6	1,165.1	5.7	-3.5	-2.7	20.9	-0.3	-0.2	1.8
Employment	1,115.8	1,116.7	6.0	0.9	0.6	25.3	0.1	0.1	2.3
Unemployment	52.8	48.4	4.7	-4.4	-3.3	-4.4	-8.3	-6.4	-8.3
Participation rate	70.0	69.7	0.3	-0.3	-0.3	0.2
Unemployment rate	4.5	4.2	0.4	-0.3	-0.2	-0.4
Employment rate	66.8	66.8	0.4	0.0	-0.1	0.5
Women, 25 years and over									
Population	1,753.0	1,754.8	...	1.8	3.4	24.6	0.1	0.2	1.4
Labour force	1,060.3	1,060.5	5.9	0.2	-2.0	8.2	0.0	-0.2	0.8
Employment	1,015.8	1,017.5	5.7	1.7	-3.3	10.9	0.2	-0.3	1.1
Unemployment	44.4	43.0	4.6	-1.4	1.2	-2.6	-3.2	2.9	-5.7
Participation rate	60.5	60.4	0.3	-0.1	-0.3	-0.4
Unemployment rate	4.2	4.1	0.4	-0.1	0.2	-0.2
Employment rate	57.9	58.0	0.3	0.1	-0.3	-0.2
Industry									
Goods-producing sector	2,486.8	2,483.4	10.4	-3.4	-8.5	40.2	-0.1	-0.3	1.6
Agriculture	512.7	507.4	5.9	-5.3	8.6	23.2	-1.0	1.7	4.8
Forestry, fishing, mining, quarrying, oil and gas extraction ²	27.4	27.1	2.2	-0.3	3.3	-1.6	-1.1	13.9	-5.6
Utilities	47.8	50.2	2.3	2.4	-0.1	1.8	5.0	-0.2	3.7
Construction	14.1	13.0	0.7	-1.1	0.0	-0.1	-7.8	0.0	-0.8
Manufacturing	245.0	240.6	4.2	-4.4	3.4	16.0	-1.8	1.4	7.1
Services-producing sector	178.3	176.6	3.6	-1.7	2.2	7.1	-1.0	1.3	4.2
Wholesale and retail trade	1,974.1	1,976.0	10.1	1.9	-17.1	17.0	0.1	-0.9	0.9
Transportation and warehousing	389.0	379.5	5.6	-9.5	2.7	13.7	-2.4	0.7	3.7
Finance, insurance, real estate, rental and leasing	131.5	129.8	3.1	-1.7	-5.4	-16.0	-1.3	-4.0	-11.0
Professional, scientific and technical services	153.5	152.4	3.3	-1.1	-7.3	3.7	-0.7	-4.6	2.5
Business, building and other support services	198.9	201.3	4.0	2.4	-3.9	8.7	1.2	-1.9	4.5
Educational services	97.4	100.5	3.6	3.1	0.2	-8.9	3.2	0.2	-8.1
Health care and social assistance	163.3	161.9	3.8	-1.4	-5.8	-4.8	-0.9	-3.5	-2.9
Information, culture and recreation	318.9	322.2	4.3	3.3	2.7	28.5	1.0	0.8	9.7
Accommodation and food services	130.0	130.0	4.2	0.0	-2.9	-1.2	0.0	-2.2	-0.9
Other services (except public administration)	176.3	175.2	4.3	-1.1	-5.4	-8.1	-0.6	-3.0	-4.4
Public administration	114.9	122.1	3.5	7.2	7.5	6.8	6.3	6.5	5.9
Public administration	100.4	101.3	2.2	0.9	0.9	-5.3	0.9	0.9	-5.0

1. Average standard error of change in two consecutive months (see "Sampling Errors" in the **Data Quality** section for further explanations).

2. Also referred to as "Natural resources".

Note: Related CANSIM tables 282-0087 and 282-0088. The sum of individual categories may not always add to the total due to rounding.

Table 5-1
Labour force characteristics by census metropolitan area (seasonally adjusted) — three-month moving average

	January 2018	February 2018	S.E. ¹	Change from			Percent change from		
				last month	last December	twelve months ago	last month	last December	twelve months ago
				in thousands (except rates)			percent		
St. John's, Newfoundland and Labrador									
Population	185.0	185.1	...	0.1	0.2	2.0	0.1	0.1	1.1
Labour force	119.8	118.5	0.9	-1.3	-1.8	-5.8	-1.1	-1.5	-4.7
Employment	109.7	108.5	0.9	-1.2	-1.5	-4.6	-1.1	-1.4	-4.1
Unemployment	10.1	10.1	0.5	0.0	-0.2	-1.1	0.0	-1.9	-9.8
Participation rate	64.8	64.0	0.5	-0.8	-1.1	-3.9
Unemployment rate	8.4	8.5	0.4	0.1	-0.1	-0.5
Employment rate	59.3	58.6	0.5	-0.7	-0.9	-3.2
Halifax, Nova Scotia									
Population	362.1	362.6	...	0.5	1.0	5.9	0.1	0.3	1.7
Labour force	243.1	245.5	1.3	2.4	3.8	5.9	1.0	1.6	2.5
Employment	226.4	229.8	1.3	3.4	4.9	5.2	1.5	2.2	2.3
Unemployment	16.6	15.7	0.8	-0.9	-1.1	0.7	-5.4	-6.5	4.7
Participation rate	67.1	67.7	0.4	0.6	0.9	0.5
Unemployment rate	6.8	6.4	0.3	-0.4	-0.6	0.1
Employment rate	62.5	63.4	0.4	0.9	1.2	0.4
Moncton, New Brunswick									
Population	128.1	128.2	...	0.1	0.3	1.6	0.1	0.2	1.3
Labour force	85.8	86.3	0.8	0.5	0.8	5.2	0.6	0.9	6.4
Employment	80.6	81.6	0.8	1.0	1.0	7.1	1.2	1.2	9.5
Unemployment	5.2	4.6	0.4	-0.6	-0.3	-2.0	-11.5	-6.1	-30.3
Participation rate	67.0	67.3	0.6	0.3	0.5	3.2
Unemployment rate	6.1	5.3	0.5	-0.8	-0.4	-2.8
Employment rate	62.9	63.7	0.6	0.8	0.7	4.9
Saint John, New Brunswick									
Population	105.7	105.8	...	0.1	0.1	0.4	0.1	0.1	0.4
Labour force	66.7	65.6	0.8	-1.1	-2.5	-7.0	-1.6	-3.7	-9.6
Employment	62.4	61.3	0.8	-1.1	-2.7	-5.8	-1.8	-4.2	-8.6
Unemployment	4.3	4.3	0.4	0.0	0.2	-1.2	0.0	4.9	-21.8
Participation rate	63.1	62.0	0.7	-1.1	-2.4	-6.9
Unemployment rate	6.4	6.6	0.5	0.2	0.6	-1.0
Employment rate	59.0	57.9	0.7	-1.1	-2.6	-5.8
Saguenay, Quebec									
Population	134.7	134.6	...	-0.1	-0.1	-0.2	-0.1	-0.1	-0.1
Labour force	79.4	79.5	0.9	0.1	0.7	-0.5	0.1	0.9	-0.6
Employment	74.5	74.9	0.9	0.4	0.8	0.4	0.5	1.1	0.5
Unemployment	4.9	4.6	0.4	-0.3	-0.1	-0.8	-6.1	-2.1	-14.8
Participation rate	58.9	59.1	0.7	0.2	0.6	-0.2
Unemployment rate	6.2	5.8	0.4	-0.4	-0.2	-1.0
Employment rate	55.3	55.6	0.7	0.3	0.6	0.3
Québec, Quebec									
Population	681.9	682.1	...	0.2	0.5	4.0	0.0	0.1	0.6
Labour force	467.8	468.4	3.2	0.6	2.8	1.5	0.1	0.6	0.3
Employment	452.2	453.6	3.2	1.4	6.1	7.0	0.3	1.4	1.6
Unemployment	15.6	14.8	1.4	-0.8	-3.3	-5.5	-5.1	-18.2	-27.1
Participation rate	68.6	68.7	0.5	0.1	0.4	-0.2
Unemployment rate	3.3	3.2	0.3	-0.1	-0.7	-1.1
Employment rate	66.3	66.5	0.5	0.2	0.8	0.6
Sherbrooke, Quebec									
Population	183.9	184.1	...	0.2	0.3	1.6	0.1	0.2	0.9
Labour force	116.3	116.1	1.1	-0.2	0.4	4.3	-0.2	0.3	3.8
Employment	109.7	109.4	1.1	-0.3	0.6	3.6	-0.3	0.6	3.4
Unemployment	6.7	6.7	0.4	0.0	-0.2	0.7	0.0	-2.9	11.7
Participation rate	63.2	63.1	0.6	-0.1	0.2	1.8
Unemployment rate	5.8	5.8	0.4	0.0	-0.2	0.4
Employment rate	59.7	59.4	0.6	-0.3	0.2	1.4

Table 5-1
Labour force characteristics by census metropolitan area (seasonally adjusted) — three-month moving average

	January 2018	February 2018	S.E. ¹	Change from			Percent change from		
				last month	last December	twelve months ago	last month	last December	twelve months ago
	in thousands (except rates)						percent		
Trois-Rivières, Quebec									
Population	134.1	134.1	...	0.0	0.1	0.6	0.0	0.1	0.4
Labour force	78.6	78.4	0.9	-0.2	-0.7	-1.8	-0.3	-0.9	-2.2
Employment	75.2	74.6	0.9	-0.6	-1.1	-0.2	-0.8	-1.5	-0.3
Unemployment	3.3	3.9	0.3	0.6	0.5	-1.5	18.2	14.7	-27.8
Participation rate	58.6	58.5	0.6	-0.1	-0.5	-1.6
Unemployment rate	4.2	5.0	0.4	0.8	0.7	-1.7
Employment rate	56.1	55.6	0.7	-0.5	-0.9	-0.4
Montréal, Quebec									
Population	3,436.5	3,439.3	...	2.8	5.7	34.2	0.1	0.2	1.0
Labour force	2,319.9	2,330.1	8.3	10.2	17.3	49.4	0.4	0.7	2.2
Employment	2,184.2	2,190.3	8.7	6.1	17.1	64.6	0.3	0.8	3.0
Unemployment	135.7	139.8	5.0	4.1	0.2	-15.1	3.0	0.1	-9.7
Participation rate	67.5	67.7	0.2	0.2	0.3	0.7
Unemployment rate	5.8	6.0	0.2	0.2	0.0	-0.8
Employment rate	63.6	63.7	0.3	0.1	0.4	1.3
Ottawa-Gatineau, Ontario/Quebec									
Population	1,135.4	1,137.1	...	1.7	3.5	18.7	0.1	0.3	1.7
Labour force	772.4	773.9	4.6	1.5	4.6	6.8	0.2	0.6	0.9
Employment	731.8	734.3	4.7	2.5	7.2	8.2	0.3	1.0	1.1
Unemployment	40.5	39.5	2.0	-1.0	-2.7	-1.5	-2.5	-6.4	-3.7
Participation rate	68.0	68.1	0.4	0.1	0.2	-0.5
Unemployment rate	5.2	5.1	0.3	-0.1	-0.4	-0.2
Employment rate	64.5	64.6	0.4	0.1	0.5	-0.3
Ottawa-Gatineau, Quebec part, Ontario/Quebec									
Population	276.7	276.9	...	0.2	0.3	2.0	0.1	0.1	0.7
Labour force	189.0	190.9	1.4	1.9	2.6	4.4	1.0	1.4	2.4
Employment	179.9	182.3	1.4	2.4	3.4	6.3	1.3	1.9	3.6
Unemployment	9.1	8.6	0.6	-0.5	-0.8	-1.9	-5.5	-8.5	-18.1
Participation rate	68.3	68.9	0.5	0.6	0.8	1.1
Unemployment rate	4.8	4.5	0.3	-0.3	-0.5	-1.1
Employment rate	65.0	65.8	0.5	0.8	1.1	1.8
Ottawa-Gatineau, Ontario part, Ontario/Quebec									
Population	858.6	860.2	...	1.6	3.2	16.6	0.2	0.4	2.0
Labour force	583.4	583.0	4.4	-0.4	2.0	2.4	-0.1	0.3	0.4
Employment	551.9	552.0	4.5	0.1	3.8	1.9	0.0	0.7	0.3
Unemployment	31.4	31.0	1.9	-0.4	-1.7	0.5	-1.3	-5.2	1.6
Participation rate	67.9	67.8	0.5	-0.1	0.0	-1.0
Unemployment rate	5.4	5.3	0.3	-0.1	-0.3	0.0
Employment rate	64.3	64.2	0.5	-0.1	0.2	-1.0
Kingston, Ontario									
Population	142.2	142.4	...	0.2	0.4	2.1	0.1	0.3	1.5
Labour force	93.4	92.4	0.7	-1.0	-1.8	2.3	-1.1	-1.9	2.6
Employment	88.2	87.4	0.7	-0.8	-1.6	2.8	-0.9	-1.8	3.3
Unemployment	5.2	5.0	0.3	-0.2	-0.2	-0.6	-3.8	-3.8	-10.7
Participation rate	65.7	64.9	0.5	-0.8	-1.4	0.7
Unemployment rate	5.6	5.4	0.3	-0.2	-0.1	-0.8
Employment rate	62.0	61.4	0.5	-0.6	-1.3	1.1
Peterborough, Ontario									
Population	105.3	105.4	...	0.1	0.1	0.7	0.1	0.1	0.7
Labour force	65.3	65.1	1.4	-0.2	-0.9	-0.9	-0.3	-1.4	-1.4
Employment	62.3	61.9	1.4	-0.4	-1.0	-0.7	-0.6	-1.6	-1.1
Unemployment	3.0	3.2	0.6	0.2	0.0	-0.1	6.7	0.0	-3.0
Participation rate	62.0	61.8	1.3	-0.2	-0.9	-1.2
Unemployment rate	4.6	4.9	0.8	0.3	0.1	-0.1
Employment rate	59.2	58.7	1.3	-0.5	-1.0	-1.1

Table 5-1
Labour force characteristics by census metropolitan area (seasonally adjusted) — three-month moving average

	January 2018	February 2018	S.E. ¹	Change from			Percent change from		
				last month	last December	twelve months ago	last month	last December	twelve months ago
	in thousands (except rates)						percent		
Oshawa, Ontario									
Population	335.4	335.9	...	0.5	1.0	5.9	0.1	0.3	1.8
Labour force	219.3	219.9	1.8	0.6	-1.2	-4.9	0.3	-0.5	-2.2
Employment	207.9	209.2	1.9	1.3	0.2	-2.6	0.6	0.1	-1.2
Unemployment	11.4	10.6	0.8	-0.8	-1.6	-2.4	-7.0	-13.1	-18.5
Participation rate	65.4	65.5	0.6	0.1	-0.5	-2.6
Unemployment rate	5.2	4.8	0.4	-0.4	-0.7	-1.0
Employment rate	62.0	62.3	0.6	0.3	-0.1	-1.9
Toronto, Ontario									
Population	5,351.0	5,361.7	...	10.7	21.4	114.3	0.2	0.4	2.2
Labour force	3,574.0	3,570.7	10.4	-3.3	-0.8	91.2	-0.1	0.0	2.6
Employment	3,363.1	3,363.7	10.4	0.6	7.3	128.9	0.0	0.2	4.0
Unemployment	211.0	207.0	6.1	-4.0	-8.1	-37.7	-1.9	-3.8	-15.4
Participation rate	66.8	66.6	0.2	-0.2	-0.3	0.3
Unemployment rate	5.9	5.8	0.2	-0.1	-0.2	-1.2
Employment rate	62.8	62.7	0.2	-0.1	-0.2	1.1
Hamilton, Ontario									
Population	663.2	664.1	...	0.9	1.7	9.5	0.1	0.3	1.5
Labour force	445.3	442.4	3.3	-2.9	-3.2	18.3	-0.7	-0.7	4.3
Employment	424.2	419.0	3.4	-5.2	-6.1	19.3	-1.2	-1.4	4.8
Unemployment	21.1	23.4	1.5	2.3	3.0	-1.0	10.9	14.7	-4.1
Participation rate	67.1	66.6	0.5	-0.5	-0.7	1.8
Unemployment rate	4.7	5.3	0.3	0.6	0.7	-0.5
Employment rate	64.0	63.1	0.5	-0.9	-1.1	2.0
St. Catharines-Niagara, Ontario									
Population	349.8	350.2	...	0.4	0.7	3.8	0.1	0.2	1.1
Labour force	211.9	211.9	2.1	0.0	1.5	-0.3	0.0	0.7	-0.1
Employment	199.5	200.9	2.1	1.4	4.7	2.5	0.7	2.4	1.3
Unemployment	12.4	11.0	0.9	-1.4	-3.2	-2.8	-11.3	-22.5	-20.3
Participation rate	60.6	60.5	0.6	-0.1	0.3	-0.8
Unemployment rate	5.9	5.2	0.4	-0.7	-1.5	-1.3
Employment rate	57.0	57.4	0.6	0.4	1.3	0.1
Kitchener-Cambridge-Waterloo, Ontario									
Population	435.1	435.8	...	0.7	1.3	6.8	0.2	0.3	1.6
Labour force	296.5	294.3	2.4	-2.2	-4.8	-3.0	-0.7	-1.6	-1.0
Employment	281.5	278.8	2.5	-2.7	-4.2	-1.5	-1.0	-1.5	-0.5
Unemployment	15.1	15.6	1.0	0.5	-0.5	-1.3	3.3	-3.1	-7.7
Participation rate	68.1	67.5	0.5	-0.6	-1.3	-1.8
Unemployment rate	5.1	5.3	0.3	0.2	-0.1	-0.4
Employment rate	64.7	64.0	0.6	-0.7	-1.1	-1.3
Brantford, Ontario									
Population	115.4	115.6	...	0.2	0.3	1.7	0.2	0.3	1.5
Labour force	78.8	78.1	0.9	-0.7	-0.4	0.7	-0.9	-0.5	0.9
Employment	75.0	74.1	1.0	-0.9	-0.7	0.0	-1.2	-0.9	0.0
Unemployment	3.7	4.0	0.4	0.3	0.3	0.7	8.1	8.1	21.2
Participation rate	68.3	67.6	0.8	-0.7	-0.5	-0.4
Unemployment rate	4.7	5.1	0.5	0.4	0.4	0.8
Employment rate	65.0	64.1	0.9	-0.9	-0.8	-1.0
Guelph, Ontario									
Population	133.8	134.1	...	0.3	0.5	2.6	0.2	0.4	2.0
Labour force	95.2	93.7	1.1	-1.5	-3.6	-1.0	-1.6	-3.7	-1.1
Employment	89.8	88.7	1.2	-1.1	-2.6	-0.6	-1.2	-2.8	-0.7
Unemployment	5.4	5.0	0.5	-0.4	-1.0	-0.4	-7.4	-16.7	-7.4
Participation rate	71.2	69.9	0.9	-1.3	-2.9	-2.1
Unemployment rate	5.7	5.3	0.5	-0.4	-0.9	-0.4
Employment rate	67.1	66.1	0.9	-1.0	-2.2	-1.8

Table 5-1
Labour force characteristics by census metropolitan area (seasonally adjusted) — three-month moving average

	January 2018	February 2018	S.E. ¹	Change from			Percent change from		
				last month	last December	twelve months ago	last month	last December	twelve months ago
				in thousands (except rates)			percent		
London, Ontario									
Population	434.8	435.4	...	0.6	1.2	6.6	0.1	0.3	1.5
Labour force	261.4	263.8	2.5	2.4	3.3	2.7	0.9	1.3	1.0
Employment	244.3	246.2	2.5	1.9	1.8	1.2	0.8	0.7	0.5
Unemployment	17.1	17.6	1.0	0.5	1.4	1.5	2.9	8.6	9.3
Participation rate	60.1	60.6	0.6	0.5	0.6	-0.3
Unemployment rate	6.5	6.7	0.4	0.2	0.5	0.5
Employment rate	56.2	56.5	0.6	0.3	0.2	-0.6
Windsor, Ontario									
Population	287.4	287.8	...	0.4	0.8	4.3	0.1	0.3	1.5
Labour force	175.6	173.9	1.8	-1.7	-0.5	3.8	-1.0	-0.3	2.2
Employment	167.6	165.5	1.8	-2.1	1.6	4.3	-1.3	1.0	2.7
Unemployment	8.0	8.5	0.8	0.5	-2.0	-0.4	6.3	-19.0	-4.5
Participation rate	61.1	60.4	0.6	-0.7	-0.4	0.4
Unemployment rate	4.6	4.9	0.4	0.3	-1.1	-0.3
Employment rate	58.3	57.5	0.6	-0.8	0.4	0.6
Barrie, Ontario									
Population	174.4	174.7	...	0.3	0.6	3.0	0.2	0.3	1.7
Labour force	119.8	118.5	1.5	-1.3	-3.7	2.4	-1.1	-3.0	2.1
Employment	114.1	110.3	1.8	-3.8	-7.8	2.5	-3.3	-6.6	2.3
Unemployment	5.7	8.2	0.9	2.5	4.1	-0.1	43.9	100.0	-1.2
Participation rate	68.7	67.8	0.9	-0.9	-2.4	0.2
Unemployment rate	4.8	6.9	0.7	2.1	3.5	-0.2
Employment rate	65.4	63.1	1.0	-2.3	-4.7	0.3
Greater Sudbury, Ontario									
Population	140.6	140.7	...	0.1	0.1	0.4	0.1	0.1	0.3
Labour force	85.9	85.3	0.8	-0.6	-1.5	-3.2	-0.7	-1.7	-3.6
Employment	80.2	79.6	0.9	-0.6	-1.3	-2.1	-0.7	-1.6	-2.6
Unemployment	5.8	5.7	0.4	-0.1	-0.2	-1.1	-1.7	-3.4	-16.2
Participation rate	61.1	60.6	0.6	-0.5	-1.1	-2.5
Unemployment rate	6.8	6.7	0.4	-0.1	-0.1	-1.0
Employment rate	57.0	56.6	0.6	-0.4	-0.9	-1.6
Thunder Bay, Ontario									
Population	104.9	104.8	...	-0.1	0.0	0.0	-0.1	0.0	0.0
Labour force	65.0	65.5	0.6	0.5	0.4	1.7	0.8	0.6	2.7
Employment	61.2	61.7	0.6	0.5	0.7	1.7	0.8	1.1	2.8
Unemployment	3.8	3.8	0.2	0.0	-0.2	0.0	0.0	-5.0	0.0
Participation rate	62.0	62.5	0.6	0.5	0.4	1.6
Unemployment rate	5.8	5.8	0.4	0.0	-0.3	-0.2
Employment rate	58.3	58.9	0.6	0.6	0.7	1.6
Winnipeg, Manitoba									
Population	679.8	680.6	...	0.8	1.6	11.7	0.1	0.2	1.7
Labour force	459.4	458.8	1.3	-0.6	-1.4	2.2	-0.1	-0.3	0.5
Employment	433.1	431.2	1.4	-1.9	-3.0	4.3	-0.4	-0.7	1.0
Unemployment	26.3	27.6	0.8	1.3	1.6	-2.1	4.9	6.2	-7.1
Participation rate	67.6	67.4	0.2	-0.2	-0.4	-0.9
Unemployment rate	5.7	6.0	0.2	0.3	0.4	-0.5
Employment rate	63.7	63.4	0.2	-0.3	-0.5	-0.4
Regina, Saskatchewan									
Population	206.5	206.7	...	0.2	0.5	3.5	0.1	0.2	1.7
Labour force	148.7	148.6	0.8	-0.1	0.4	0.4	-0.1	0.3	0.3
Employment	142.1	141.3	0.9	-0.8	-0.1	0.7	-0.6	-0.1	0.5
Unemployment	6.6	7.3	0.4	0.7	0.5	-0.3	10.6	7.4	-3.9
Participation rate	72.0	71.9	0.4	-0.1	0.0	-1.0
Unemployment rate	4.4	4.9	0.3	0.5	0.3	-0.2
Employment rate	68.8	68.4	0.4	-0.4	-0.2	-0.8

Table 5-1
Labour force characteristics by census metropolitan area (seasonally adjusted) — three-month moving average

	January 2018	February 2018	S.E. ¹	Change from			Percent change from		
				last month	last December	twelve months ago	last month	last December	twelve months ago
				in thousands (except rates)			percent		
Saskatoon, Saskatchewan									
Population	266.1	266.6	...	0.5	1.0	6.2	0.2	0.4	2.4
Labour force	183.2	183.4	1.1	0.2	-0.9	0.4	0.1	-0.5	0.2
Employment	169.7	170.8	1.1	1.1	0.7	0.9	0.6	0.4	0.5
Unemployment	13.5	12.6	0.6	-0.9	-1.5	-0.6	-6.7	-10.6	-4.5
Participation rate	68.8	68.8	0.4	0.0	-0.6	-1.5
Unemployment rate	7.4	6.9	0.3	-0.5	-0.8	-0.3
Employment rate	63.8	64.1	0.4	0.3	0.1	-1.1
Calgary, Alberta									
Population	1,230.7	1,232.5	...	1.8	3.4	19.7	0.1	0.3	1.6
Labour force	910.4	916.9	4.1	6.5	15.5	12.6	0.7	1.7	1.4
Employment	840.9	844.5	4.2	3.6	10.4	25.0	0.4	1.2	3.1
Unemployment	69.5	72.4	2.8	2.9	5.1	-12.4	4.2	7.6	-14.6
Participation rate	74.0	74.4	0.3	0.4	1.1	-0.2
Unemployment rate	7.6	7.9	0.3	0.3	0.4	-1.5
Employment rate	68.3	68.5	0.3	0.2	0.6	0.9
Edmonton, Alberta									
Population	1,147.4	1,149.1	...	1.7	3.3	19.5	0.1	0.3	1.7
Labour force	828.6	820.8	3.9	-7.8	-13.2	-0.3	-0.9	-1.6	0.0
Employment	769.1	764.0	4.2	-5.1	-9.7	12.2	-0.7	-1.3	1.6
Unemployment	59.4	56.8	2.5	-2.6	-3.5	-12.5	-4.4	-5.8	-18.0
Participation rate	72.2	71.4	0.3	-0.8	-1.4	-1.3
Unemployment rate	7.2	6.9	0.3	-0.3	-0.3	-1.5
Employment rate	67.0	66.5	0.4	-0.5	-1.0	-0.1
Kelowna, British Columbia									
Population	160.9	161.1	...	0.2	0.5	3.6	0.1	0.3	2.3
Labour force	107.3	106.7	1.3	-0.6	-1.4	4.0	-0.6	-1.3	3.9
Employment	100.2	100.5	1.3	0.3	-1.0	4.6	0.3	-1.0	4.8
Unemployment	7.0	6.2	0.6	-0.8	-0.5	-0.6	-11.4	-7.5	-8.8
Participation rate	66.7	66.2	0.8	-0.5	-1.1	1.0
Unemployment rate	6.5	5.8	0.6	-0.7	-0.4	-0.8
Employment rate	62.3	62.4	0.8	0.1	-0.8	1.5
Abbotsford-Mission, British Columbia									
Population	151.3	151.6	...	0.3	0.5	2.9	0.2	0.3	2.0
Labour force	97.8	99.1	0.9	1.3	1.4	0.0	1.3	1.4	0.0
Employment	93.5	95.0	0.9	1.5	2.0	2.0	1.6	2.2	2.2
Unemployment	4.3	4.1	0.4	-0.2	-0.6	-1.9	-4.7	-12.8	-31.7
Participation rate	64.6	65.4	0.6	0.8	0.7	-1.2
Unemployment rate	4.4	4.1	0.4	-0.3	-0.7	-2.0
Employment rate	61.8	62.7	0.6	0.9	1.2	0.2
Vancouver, British Columbia									
Population	2,208.6	2,210.9	...	2.3	4.4	29.6	0.1	0.2	1.4
Labour force	1,498.7	1,499.3	5.9	0.6	14.0	64.8	0.0	0.9	4.5
Employment	1,437.2	1,440.2	6.0	3.0	15.6	73.1	0.2	1.1	5.3
Unemployment	61.5	59.2	2.9	-2.3	-1.5	-8.2	-3.7	-2.5	-12.2
Participation rate	67.9	67.8	0.3	-0.1	0.5	2.0
Unemployment rate	4.1	3.9	0.2	-0.2	-0.2	-0.8
Employment rate	65.1	65.1	0.3	0.0	0.5	2.4
Victoria, British Columbia									
Population	312.6	312.9	...	0.3	0.5	3.9	0.1	0.2	1.3
Labour force	200.6	201.3	1.7	0.7	1.3	4.0	0.3	0.7	2.0
Employment	192.7	192.3	1.7	-0.4	-0.7	3.4	-0.2	-0.4	1.8
Unemployment	7.9	8.9	0.6	1.0	1.9	0.5	12.7	27.1	6.0
Participation rate	64.2	64.3	0.6	0.1	0.3	0.4
Unemployment rate	3.9	4.4	0.3	0.5	0.9	0.1
Employment rate	61.6	61.5	0.6	-0.1	-0.3	0.4

1. Average standard error of change in two consecutive months (see "Sampling Errors" in the **Data Quality** section for further explanations).

Note: Estimates in this table are based on 2011 Census boundaries. Related CANSIM table 282-0135. The sum of individual categories may not always add to the total due to rounding.

Table 5-2
Labour force characteristics by census metropolitan area (seasonally adjusted) — Monthly

	January 2018	February 2018	S.E. ¹	Change from			Percent change from		
				last month	last December	twelve months ago	last month	last December	twelve months ago
				in thousands (except rates)			percent		
Montréal, Quebec									
Population	3,439.8	3,442.0	...	2.2	5.8	34.2	0.1	0.2	1.0
Labour force	2,339.7	2,337.2	16.7	-2.5	24.0	64.1	-0.1	1.0	2.8
Employment	2,197.9	2,186.9	17.0	-11.0	0.8	70.7	-0.5	0.0	3.3
Unemployment	141.8	150.4	11.6	8.6	23.2	-6.5	6.1	18.2	-4.1
Participation rate	68.0	67.9	0.5	-0.1	0.6	1.2
Unemployment rate	6.1	6.4	0.5	0.3	0.9	-0.5
Employment rate	63.9	63.5	0.5	-0.4	-0.1	1.4
Toronto, Ontario									
Population	5,363.1	5,372.6	...	9.5	23.1	117.2	0.2	0.4	2.2
Labour force	3,555.6	3,559.3	21.5	3.7	-38.0	58.4	0.1	-1.1	1.7
Employment	3,352.9	3,359.3	21.2	6.4	-19.6	100.0	0.2	-0.6	3.1
Unemployment	202.7	200.1	14.3	-2.6	-18.3	-41.5	-1.3	-8.4	-17.2
Participation rate	66.3	66.2	0.4	-0.1	-1.0	-0.4
Unemployment rate	5.7	5.6	0.4	-0.1	-0.5	-1.3
Employment rate	62.5	62.5	0.4	0.0	-0.7	0.5
Vancouver, British Columbia									
Population	2,210.9	2,213.3	...	2.4	4.8	29.7	0.1	0.2	1.4
Labour force	1,508.5	1,495.0	11.9	-13.5	0.5	55.0	-0.9	0.0	3.8
Employment	1,447.1	1,436.7	11.7	-10.4	-0.1	59.8	-0.7	0.0	4.3
Unemployment	61.4	58.3	7.1	-3.1	0.5	-4.8	-5.0	0.9	-7.6
Participation rate	68.2	67.5	0.5	-0.7	-0.2	1.6
Unemployment rate	4.1	3.9	0.5	-0.2	0.0	-0.5
Employment rate	65.5	64.9	0.5	-0.6	-0.2	1.8

1. Average standard error of change in two consecutive months (see "Sampling Errors" in the **Data Quality** section for further explanations).

Note: Estimates in this table are based on 2011 Census boundaries. Related CANSIM table 282-0136. The sum of individual categories may not always add to the total due to rounding.

Table 6-1
Labour force characteristics — by province and economic region,¹ unadjusted for seasonality, three-month moving average ending in February 2017 and February 2018

	Population	Labour force ²	Employment	Unemployment	Participation rate	Unemployment rate	Employment rate
	in thousands				percent		
Canada							
2017	29,741.4	19,354.9	18,027.3	1,327.6	65.1	6.9	60.6
2018	30,091.7	19,505.6	18,355.1	1,150.5	64.8	5.9	61.0
Newfoundland and Labrador							
2017	445.2	259.4	217.3	42.1	58.3	16.2	48.8
2018	444.9	256.6	215.3	41.2	57.7	16.1	48.4
Avalon Peninsula [1010]							
2017	236.4	151.1	132.9	18.2	63.9	12.0	56.2
2018	237.8	144.1	125.2	19.0	60.6	13.2	52.6
South Coast-Burin Peninsula and Notre Dame-Central Bonavista Bay [1020, 1040]							
2017	121.8	60.2	45.7	14.4	49.4	23.9	37.5
2018	120.9	64.6	49.9	14.6	53.4	22.6	41.3
West Coast-Northern Peninsula-Labrador [1030]							
2017	86.9	48.2	38.7	9.5	55.5	19.7	44.5
2018	86.2	47.9	40.2	7.6	55.6	15.9	46.6
Prince Edward Island							
2017	122.6	78.4	69.3	9.2	63.9	11.7	56.5
2018	124.5	81.2	71.6	9.6	65.2	11.8	57.5
Nova Scotia							
2017	790.3	478.4	437.7	40.7	60.5	8.5	55.4
2018	795.7	485.0	444.5	40.6	61.0	8.4	55.9
Cape Breton [1210]							
2017	105.4	54.8	46.3	8.5	52.0	15.5	43.9
2018	104.9	54.8	46.5	8.3	52.2	15.1	44.3
North Shore [1220]							
2017	127.9	75.9	69.4	6.5	59.3	8.6	54.3
2018	127.6	73.2	66.6	6.6	57.4	9.0	52.2
Annapolis Valley [1230]							
2017	102.7	57.6	52.9	4.7	56.1	8.2	51.5
2018	103.1	62.0	56.4	5.6	60.1	9.0	54.7
Southern [1240]							
2017	97.6	52.5	46.8	5.7	53.8	10.9	48.0
2018	97.5	51.4	47.1	4.3	52.7	8.4	48.3
Halifax [1250]							
2017	356.7	237.6	222.3	15.3	66.6	6.4	62.3
2018	362.6	243.7	227.9	15.8	67.2	6.5	62.9
New Brunswick							
2017	624.0	378.2	342.2	36.0	60.6	9.5	54.8
2018	625.9	377.4	343.8	33.5	60.3	8.9	54.9
Campbellton-Miramichi [1310]							
2017	128.0	67.1	56.2	11.0	52.4	16.4	43.9
2018	127.6	66.9	57.4	9.5	52.4	14.2	45.0
Moncton-Richibucto [1320]							
2017	179.4	110.9	100.4	10.5	61.8	9.5	56.0
2018	180.8	116.9	108.4	8.5	64.7	7.3	60.0
Saint John-St. Stephen [1330]							
2017	141.8	91.3	84.1	7.1	64.4	7.8	59.3
2018	142.0	83.9	77.7	6.2	59.1	7.4	54.7
Fredericton-Oromocto [1340]							
2017	111.5	71.6	67.0	4.5	64.2	6.3	60.1
2018	112.5	70.7	64.4	6.3	62.8	8.9	57.2
Edmundston-Woodstock [1350]							
2017	63.3	37.5	34.5	2.9	59.2	7.7	54.5
2018	63.0	39.0	36.0	3.0	61.9	7.7	57.1
Quebec							
2017	6,909.3	4,429.4	4,126.3	303.1	64.1	6.8	59.7
2018	6,957.3	4,458.1	4,205.3	252.8	64.1	5.7	60.4

Table 6-1**Labour force characteristics — by province and economic region,¹ unadjusted for seasonality, three-month moving average ending in February 2017 and February 2018**

	Population	Labour force ²	Employment	Unemployment	Participation rate	Unemployment rate	Employment rate
	in thousands				percent		
Gaspésie-Îles-de-la-Madeleine [2410]							
2017	76.9	41.3	35.4	6.0	53.7	14.5	46.0
2018	76.5	39.1	33.5	5.6	51.1	14.3	43.8
Bas-Saint-Laurent [2415]							
2017	168.7	91.7	82.3	9.4	54.4	10.3	48.8
2018	168.3	91.0	85.9	5.1	54.1	5.6	51.0
Capitale-Nationale [2420]							
2017	623.8	428.9	406.3	22.6	68.8	5.3	65.1
2018	626.8	424.9	408.6	16.3	67.8	3.8	65.2
Chaudière-Appalaches [2425]							
2017	350.2	220.6	209.2	11.4	63.0	5.2	59.7
2018	351.9	227.9	221.2	6.8	64.8	3.0	62.9
Estrie [2430]							
2017	271.7	160.5	152.0	8.5	59.1	5.3	55.9
2018	273.4	159.7	150.9	8.7	58.4	5.4	55.2
Centre-du-Québec [2433]							
2017	201.4	128.3	119.0	9.3	63.7	7.2	59.1
2018	202.6	117.7	111.9	5.8	58.1	4.9	55.2
Montérégie [2435]							
2017	1,264.0	821.2	773.6	47.6	65.0	5.8	61.2
2018	1,273.8	853.9	813.9	40.0	67.0	4.7	63.9
Montréal [2440]							
2017	1,689.0	1,109.8	1,019.8	90.0	65.7	8.1	60.4
2018	1,705.9	1,114.1	1,035.0	79.1	65.3	7.1	60.7
Laval [2445]							
2017	356.7	230.1	210.3	19.7	64.5	8.6	59.0
2018	360.4	249.3	233.6	15.7	69.2	6.3	64.8
Lanaudière [2450]							
2017	416.2	258.3	239.6	18.7	62.1	7.2	57.6
2018	419.4	278.6	260.6	18.0	66.4	6.5	62.1
Laurentides [2455]							
2017	501.1	332.5	316.0	16.5	66.4	5.0	63.1
2018	507.6	303.9	284.7	19.1	59.9	6.3	56.1
Outaouais [2460]							
2017	321.3	208.9	196.5	12.4	65.0	5.9	61.2
2018	323.6	210.7	200.6	10.1	65.1	4.8	62.0
Abitibi-Témiscamingue [2465]							
2017	120.5	79.1	74.0	5.1	65.6	6.4	61.4
2018	120.3	79.1	75.4	3.7	65.8	4.7	62.7
Mauricie [2470]							
2017	225.2	122.2	112.7	9.5	54.3	7.8	50.0
2018	225.5	114.3	106.3	8.0	50.7	7.0	47.1
Saguenay-Lac-Saint-Jean [2475]							
2017	231.1	137.6	125.4	12.1	59.5	8.8	54.3
2018	230.7	135.3	127.8	7.5	58.6	5.5	55.4
Côte-Nord and Nord-du-Québec [2480, 2490]							
2017	91.5	58.3	54.1	4.3	63.7	7.4	59.1
2018	90.8	58.6	55.3	3.3	64.5	5.6	60.9
Ontario							
2017	11,603.7	7,456.9	6,996.0	460.9	64.3	6.2	60.3
2018	11,791.8	7,530.5	7,125.8	404.6	63.9	5.4	60.4
Ottawa [3510]							
2017	1,114.8	739.4	702.2	37.2	66.3	5.0	63.0
2018	1,131.6	740.1	701.8	38.3	65.4	5.2	62.0
Kingston-Pembroke [3515]							
2017	379.2	230.1	219.8	10.3	60.7	4.5	58.0
2018	382.0	210.2	201.8	8.5	55.0	4.0	52.8
Muskoka-Kawartha [3520]							
2017	329.3	196.8	185.8	11.0	59.8	5.6	56.4
2018	332.3	184.5	173.2	11.3	55.5	6.1	52.1

Table 6-1
Labour force characteristics — by province and economic region,¹ unadjusted for seasonality, three-month moving average ending in February 2017 and February 2018

	Population	Labour force ²	Employment	Unemployment	Participation rate	Unemployment rate	Employment rate
	in thousands				percent		
Toronto [3530]							
2017	5,499.3	3,605.0	3,361.3	243.6	65.6	6.8	61.1
2018	5,615.2	3,696.7	3,495.4	201.3	65.8	5.4	62.2
Kitchener-Waterloo-Barrie [3540]							
2017	1,100.8	737.8	696.5	41.3	67.0	5.6	63.3
2018	1,121.0	729.4	692.6	36.8	65.1	5.0	61.8
Hamilton-Niagara Peninsula [3550]							
2017	1,218.1	771.7	726.2	45.5	63.4	5.9	59.6
2018	1,235.2	790.3	748.2	42.1	64.0	5.3	60.6
London [3560]							
2017	561.2	345.1	327.9	17.1	61.5	5.0	58.4
2018	569.1	344.1	322.8	21.3	60.5	6.2	56.7
Windsor-Sarnia [3570]							
2017	526.6	310.8	291.7	19.1	59.0	6.1	55.4
2018	530.7	313.6	298.5	15.1	59.1	4.8	56.2
Stratford-Bruce Peninsula [3580]							
2017	246.3	158.8	148.7	10.0	64.5	6.3	60.4
2018	247.4	162.5	155.1	7.3	65.7	4.5	62.7
Northeast [3590]							
2017	455.8	255.7	236.5	19.2	56.1	7.5	51.9
2018	455.3	253.3	236.4	16.9	55.6	6.7	51.9
Northwest [3595]							
2017	172.3	105.8	99.3	6.5	61.4	6.1	57.6
2018	171.9	105.9	100.1	5.8	61.6	5.5	58.2
Manitoba							
2017	1,006.0	669.1	628.9	40.2	66.5	6.0	62.5
2018	1,019.6	675.0	635.7	39.3	66.2	5.8	62.3
Southeast [4610]							
2017	92.0	62.5	59.4	3.1	67.9	5.0	64.6
2018	93.8	63.0	59.5	3.5	67.2	5.6	63.4
South Central and North Central [4620, 4640]							
2017	85.9	55.0	53.4	1.7	64.0	3.1	62.2
2018	86.9	57.5	55.5	2.0	66.2	3.5	63.9
Southwest [4630]							
2017	88.8	55.3	52.4	2.9	62.3	5.2	59.0
2018	89.7	57.4	54.8	2.6	64.0	4.5	61.1
Winnipeg [4650]							
2017	608.1	409.5	381.6	27.9	67.3	6.8	62.8
2018	618.7	412.9	385.8	27.2	66.7	6.6	62.4
Interlake [4660]							
2017	75.7	49.0	46.3	2.7	64.7	5.5	61.2
2018	76.1	46.7	44.6	2.1	61.4	4.5	58.6
Parklands and North [4670, 4680]							
2017	55.5	37.7	35.8	1.9	67.9	5.0	64.5
2018	54.5	37.4	35.5	1.9	68.6	5.1	65.1
Saskatchewan							
2017	872.9	601.4	561.7	39.7	68.9	6.6	64.3
2018	880.8	595.5	559.4	36.1	67.6	6.1	63.5
Regina-Moose Mountain [4710]							
2017	267.8	193.0	182.7	10.3	72.1	5.3	68.2
2018	270.9	192.3	182.1	10.3	71.0	5.4	67.2
Swift Current-Moose Jaw [4720]							
2017	81.8	54.4	52.7	1.8	66.5	3.3	64.4
2018	81.3	52.3	50.0	2.2	64.3	4.2	61.5
Saskatoon-Biggar [4730]							
2017	302.5	208.0	193.2	14.8	68.8	7.1	63.9
2018	308.4	207.4	193.5	13.9	67.3	6.7	62.7
Yorkton-Melville [4740]							
2017	61.4	40.5	37.9	2.6	66.0	6.4	61.7
2018	60.6	37.8	34.8	3.0	62.4	7.9	57.4

Table 6-1
Labour force characteristics — by province and economic region,¹ unadjusted for seasonality, three-month moving average ending in February 2017 and February 2018

	Population	Labour force ²	Employment	Unemployment	Participation rate	Unemployment rate	Employment rate
	in thousands				percent		
Prince Albert and Northern [4750, 4760]							
2017	159.4	105.5	95.3	10.2	66.2	9.7	59.8
2018	159.6	105.6	99.0	6.7	66.2	6.3	62.0
Alberta							
2017	3,411.7	2,460.1	2,248.8	211.3	72.1	8.6	65.9
2018	3,447.2	2,464.9	2,297.4	167.5	71.5	6.8	66.6
Lethbridge-Medicine Hat [4810]							
2017	229.6	155.2	144.9	10.3	67.6	6.6	63.1
2018	229.9	153.5	143.0	10.6	66.8	6.9	62.2
Camrose-Drumheller [4820]							
2017	160.6	108.3	97.8	10.5	67.4	9.7	60.9
2018	159.4	106.1	101.8	4.3	66.6	4.1	63.9
Calgary [4830]							
2017	1,298.5	956.8	870.1	86.7	73.7	9.1	67.0
2018	1,318.7	968.5	894.1	74.4	73.4	7.7	67.8
Banff-Jasper-Rocky Mountain House and Athabasca-Grande Prairie-Peace River [4840, 4870]							
2017	276.0	195.9	180.9	15.0	71.0	7.7	65.5
2018	275.1	197.4	187.0	10.4	71.8	5.3	68.0
Red Deer [4850]							
2017	172.7	122.2	111.2	11.0	70.8	9.0	64.4
2018	173.6	122.3	115.5	6.7	70.4	5.5	66.5
Edmonton [4860]							
2017	1,156.0	832.4	762.8	69.6	72.0	8.4	66.0
2018	1,174.2	828.3	772.5	55.8	70.5	6.7	65.8
Wood Buffalo-Cold Lake [4880]							
2017	118.3	89.2	81.1	8.1	75.4	9.1	68.6
2018	116.2	88.8	83.4	5.3	76.4	6.0	71.8
British Columbia							
2017	3,956.0	2,543.5	2,399.1	144.4	64.3	5.7	60.6
2018	4,004.0	2,581.5	2,456.2	125.3	64.5	4.9	61.3
Vancouver Island and Coast [5910]							
2017	665.3	402.1	379.0	23.1	60.4	5.7	57.0
2018	672.6	404.1	380.6	23.5	60.1	5.8	56.6
Lower Mainland-Southwest [5920]							
2017	2,477.5	1,610.8	1,534.0	76.8	65.0	4.8	61.9
2018	2,512.9	1,670.2	1,604.1	66.2	66.5	4.0	63.8
Thompson-Okanagan [5930]							
2017	439.2	274.1	250.6	23.5	62.4	8.6	57.1
2018	444.2	264.5	244.6	19.9	59.5	7.5	55.1
Kootenay [5940]							
2017	122.6	80.5	75.1	5.4	65.7	6.7	61.3
2018	123.1	70.2	65.4	4.7	57.0	6.7	53.1
Cariboo [5950]							
2017	127.9	88.0	79.5	8.5	68.8	9.7	62.2
2018	127.9	85.9	79.7	6.3	67.2	7.3	62.3
North Coast and Nechako [5960, 5970]							
2017	67.1	43.4	40.2	3.2	64.7	7.4	59.9
2018	66.7	46.8	43.9	2.9	70.2	6.2	65.8
Northeast [5980]							
2017	56.5	44.6	40.7	3.9	78.9	8.7	72.0
2018	56.4	39.8	38.0	1.8	70.6	4.5	67.4

1. For geographic descriptions of economic regions, refer to the Guide to the Labour Force Survey (71-543-G).

2. The labour force is composed of those members of the civilian non-institutional population 15 years of age and over who, during the reference week, were employed or unemployed.

Notes: Estimates in this table are based on 2011 Census boundaries. Related CANSIM table 282-0122. As a result of the wildfire affecting northern Alberta, LFS data for the census agglomeration of Wood Buffalo were not collected from May to July 2016. Data collection resumed in August 2016. Estimates for the economic region of Wood Buffalo–Cold Lake are not available for June, July, August, and September 2016.

Table 6-2
Labour force characteristics — by territory (seasonally adjusted) - three-month moving average

	January 2018	February 2018	S.E. ¹	Change from			Percent change from		
				last month	last December	twelve months ago	last month	last December	twelve months ago
				in thousands (except rates)			percent		
Yukon²									
Population	29.1	29.1	...	0.0	0.1	0.6	0.0	0.3	2.1
Labour force	21.8	21.8	0.2	0.0	-0.1	-0.1	0.0	-0.5	-0.5
Employment	21.1	21.2	0.2	0.1	0.1	0.3	0.5	0.5	1.4
Unemployment	0.6	0.6	0.1	0.0	-0.2	-0.4	0.0	-25.0	-40.0
Participation rate	74.9	74.9	0.7	0.0	-0.6	-1.9
Unemployment rate	2.8	2.8	0.5	0.0	-0.9	-1.8
Employment rate	72.5	72.9	0.8	0.4	0.1	-0.4
Northwest Territories³									
Population	32.4	32.4	...	0.0	0.0	0.1	0.0	0.0	0.3
Labour force	22.9	22.8	0.3	-0.1	0.2	0.0	-0.4	0.9	0.0
Employment	20.9	20.9	0.2	0.0	-0.1	-0.2	0.0	-0.5	-0.9
Unemployment	2.0	1.9	0.2	-0.1	0.3	0.3	-5.0	18.8	18.8
Participation rate	70.7	70.4	0.8	-0.3	0.6	-0.2
Unemployment rate	8.7	8.3	0.7	-0.4	1.2	1.3
Employment rate	64.5	64.5	0.7	0.0	-0.3	-0.8
Nunavut⁴									
Population	24.6	24.6	...	0.0	0.0	0.4	0.0	0.0	1.7
Labour force	15.5	15.3	0.2	-0.2	-0.2	-0.2	-1.3	-1.3	-1.3
Employment	13.3	13.1	0.2	-0.2	-0.5	0.0	-1.5	-3.7	0.0
Unemployment	2.1	2.2	0.2	0.1	0.3	-0.2	4.8	15.8	-8.3
Participation rate	63.0	62.2	0.8	-0.8	-1.1	-1.8
Unemployment rate	13.8	14.3	0.9	0.5	2.2	-1.1
Employment rate	54.3	53.3	0.8	-1.0	-2.3	-0.9

1. Average standard error of change in two consecutive months (see "Sampling Errors" in the **Data Quality** section for further explanations).

2. Since 1992, the Labour force survey (LFS) has been conducted in the Yukon, using an alternative methodology that accommodates some of the operational difficulties inherent to remote locales. These estimates are not included in the national totals. In 1995, the LFS in the Yukon underwent a sample redesign. One result of the redesign was that the covered population increased from 85% to 92%, which is reflected by the sharp increase in the three month moving averages estimates of January, February and March of 1995 for all the level estimates. Users are therefore warned to be cautious when comparing estimates before January 1995 to estimates for January 1995 and forward.

3. Since 2001, the Labour force survey (LFS) has been administered in the Northwest Territories, using an alternative methodology that accommodates some of the operational difficulties inherent to remote locales. These estimates are not included in national totals.

4. Since 2004, the Labour force survey (LFS) has been administered in Nunavut, using an alternative methodology that accommodates some of the operational difficulties inherent to remote locales. These estimates are 3-month moving averages and are not included in national totals. From January 2004 to December 2007, estimates represent about 70% of all Nunavut residents aged 15 and over. Starting in January 2008, coverage was extended to 92%, so that by March 2008, the 3-month moving average is completely based on the extended coverage. Because of the large difference in coverage, users are recommended not to compare estimates prior to January 2008 with data afterwards. The January and February 2008 3-month moving average estimates are based on a mix of both coverages, since the extended coverage was introduced in January 2008. Estimates from January 2004 to December 2007 are based on the 10 largest communities in Nunavut: Iqaluit, Rankin Inlet, Cambridge Bay, Kugluktuk, Baker Lake, Arviat, Pond Inlet, Cape Dorset, Pangnirtung, Igloolik. Estimates from March 2008 to present cover the above communities as well as: Taloyoak, Gjoa Haven, Kugaaruk, Coral Harbour, Repulse Bay, Qikiqtarjuaq, Arctic Bay, Hall Beach, Clyde River.

Note: Related CANSIM table 282-0100.

Table 7
Average usual hours and wages of employees by selected characteristics, Canada, unadjusted for seasonality

	Employees			Full-time			Part-time			
	Average weekly hours	Average weekly wages	Average hourly wages	Average weekly hours	Average weekly wages	Average weekly hours	Average weekly wages			
	Number	Number	Number	Number	Number	Number	Number			
	thousands	current dollars		thousands	current dollars	thousands	current dollars			
February 2018										
15 years and over	15,454.2	34.9	977.86	26.92	12,533.1	39.1	1,129.22	2,921.1	16.8	328.44
15 to 24 years	2,205.8	25.1	423.38	15.77	983.5	38.6	702.80	1,222.3	14.2	198.54
25 years and over	13,248.3	36.6	1,070.18	28.78	11,549.5	39.2	1,165.53	1,698.8	18.7	421.89
Males	7,759.4	37.3	1,110.68	28.91	6,781.9	40.3	1,228.62	977.5	16.1	292.40
Females	7,694.7	32.5	843.92	24.92	5,751.2	37.7	1,012.00	1,943.5	17.2	346.56
Union coverage										
Union coverage	4,665.3	35.5	1,094.36	30.32	3,961.9	38.4	1,202.72	703.4	19.1	484.02
No union coverage	10,788.9	34.7	927.48	25.46	8,571.2	39.5	1,095.25	2,217.7	16.1	279.09
Job permanency										
Permanent employees	13,597.2	35.9	1,021.31	27.56	11,534.8	39.2	1,141.41	2,062.4	17.8	349.63
Temporary employees	1,857.0	27.6	659.68	22.27	998.3	38.8	988.39	858.7	14.5	277.54
Occupation										
Management occupations	1,063.9	39.4	1,740.73	44.22	1,038.7	39.9	1,767.84	25.1	19.8	621.01
Business, finance and administration occupations	2,723.0	35.2	948.85	26.45	2,329.3	38.2	1,044.56	393.7	17.5	382.62
Natural and applied sciences and related occupations	1,351.7	38.5	1,411.59	36.67	1,312.4	39.1	1,438.48	39.3	17.5	513.67
Health occupations	1,178.8	33.9	1,014.17	29.71	902.3	38.2	1,149.54	276.5	20.2	572.39
Occupations in education, law and social, community and government services	1,840.4	33.2	1,105.08	32.36	1,453.6	37.6	1,278.89	386.8	16.6	451.90
Occupations in art, culture, recreation and sport	310.1	27.7	712.27	23.58	183.4	38.5	1,037.33	126.7	12.1	241.50
Sales and service occupations	3,931.1	30.1	556.33	17.37	2,457.8	38.4	748.94	1,473.3	16.4	235.02
Trades, transport and equipment operators and related occupations	2,031.6	39.9	1,065.96	26.33	1,888.9	41.6	1,120.48	142.8	18.1	344.55
Natural resources, agriculture and related production occupations	218.7	41.5	1,151.54	26.45	191.1	45.6	1,287.22	27.6	13.1	210.59
Occupations in manufacturing and utilities	804.8	39.2	886.70	22.38	775.5	40.0	909.86	29.3	16.7	274.20
February 2017										
15 years and over	15,260.8	34.8	947.17	26.11	12,307.6	39.1	1,099.79	2,953.2	16.8	311.13
15 to 24 years	2,203.8	25.0	405.68	15.06	975.2	38.4	677.93	1,228.5	14.4	189.57
25 years and over	13,057.0	36.5	1,038.57	27.97	11,332.4	39.2	1,136.10	1,724.7	18.5	397.72
Males	7,609.3	37.0	1,069.33	27.93	6,598.8	40.2	1,189.75	1,010.6	16.1	283.04
Females	7,651.5	32.6	825.69	24.29	5,708.9	37.8	995.81	1,942.6	17.1	325.74
Union coverage										
Union coverage	4,665.2	35.4	1,074.57	29.79	3,954.4	38.5	1,185.73	710.8	18.6	456.13
No union coverage	10,595.6	34.5	891.08	24.49	8,353.2	39.4	1,059.11	2,242.4	16.2	265.17
Job permanency										
Permanent employees	13,433.1	35.7	988.44	26.73	11,299.6	39.1	1,112.95	2,133.6	17.8	329.01
Temporary employees	1,827.6	27.9	643.88	21.52	1,008.0	39.1	952.27	819.6	14.1	264.59
Occupation										
Management occupations	1,037.3	39.3	1,643.50	41.93	1,004.1	40.0	1,677.72	33.1	17.7	606.66
Business, finance and administration occupations	2,625.2	35.3	935.92	25.98	2,262.9	38.2	1,028.53	362.3	17.3	357.43
Natural and applied sciences and related occupations	1,210.2	38.1	1,371.52	35.90	1,156.3	39.1	1,411.60	54.0	17.0	512.97
Health occupations	1,126.9	33.8	1,005.74	29.41	868.5	38.0	1,144.96	258.4	19.7	537.76
Occupations in education, law and social, community and government services	1,848.1	33.1	1,091.88	32.01	1,450.2	37.7	1,273.94	398.0	16.3	428.52
Occupations in art, culture, recreation and sport	360.9	28.4	726.69	22.99	226.0	38.7	1,042.86	134.9	11.2	197.01

Table 7
Average usual hours and wages of employees by selected characteristics, Canada, unadjusted for seasonality

	Employees			Full-time			Part-time			
	Number	Average weekly hours	Average weekly wages	Average hourly wages	Number	Average weekly hours	Average weekly wages	Number	Average weekly hours	Average weekly wages
	thousands		current dollars		thousands		current dollars	thousands		current dollars
Sales and service occupations	3,978.3	30.3	539.80	16.71	2,490.4	38.4	727.07	1,487.9	16.7	226.34
Trades, transport and equipment operators and related occupations	2,057.7	39.6	1,031.98	25.67	1,898.1	41.4	1,091.44	159.7	17.6	325.13
Natural resources, agriculture and related production occupations	226.8	41.7	1,145.24	26.19	204.0	44.9	1,248.30	22.8	13.2	224.41
Occupations in manufacturing and utilities	789.3	38.9	872.52	22.08	747.1	40.2	906.12	42.1	17.1	277.07

Note: Related CANSIM table 282-0167.

Table 8
Regional unemployment rates used by the Employment Insurance program,¹ seasonally adjusted, three-month moving average

Region	Effective from March 11, 2018 to April 7, 2018 percent
Newfoundland and Labrador	
01. St. John's, Newfoundland and Labrador	8.1
02. Newfoundland and Labrador ²	19.1
Prince Edward Island³	
03. Charlottetown, Prince Edward Island	6.5
04. Prince Edward Island ⁴	13.7
Nova Scotia	
05. Eastern Nova Scotia	14.3
06. Western Nova Scotia	8.4
07. Halifax, Nova Scotia	6.5
New Brunswick	
08. Fredericton-Moncton-Saint John, New Brunswick	6.7
09. Madawaska-Charlotte, New Brunswick	8.5
10. Restigouche-Albert, New Brunswick	11.9
Quebec	
11. Gaspésie-Îles-de-la-Madeleine, Quebec	12.9
12. Quebec, Quebec	3.3
13. Trois-Rivières, Quebec	4.8
14. South Central Quebec	2.7
15. Sherbrooke, Quebec	6.0
16. Montérégie, Quebec	5.3
17. Montreal, Quebec	6.1
18. Central Quebec	6.0
19. North Western Quebec	6.9
20. Lower Saint Lawrence and North Shore, Quebec	5.3
21. Hull, Quebec	4.6
22. Chicoutimi-Jonquière, Quebec	6.0
Ontario	
23. Ottawa, Ontario	5.4
24. Eastern Ontario	6.8
25. Kingston, Ontario	5.4
26. Central Ontario	5.6
27. Oshawa, Ontario	5.0
28. Toronto, Ontario	5.9
29. Hamilton, Ontario	5.5
30. St. Catharines, Ontario	5.2
31. London, Ontario	6.6
32. Niagara, Ontario	7.5
33. Windsor, Ontario	5.9
34. Kitchener, Ontario	5.0
35. Huron, Ontario	4.5
36. South Central Ontario	5.2
37. Sudbury, Ontario	6.5
38. Thunder Bay, Ontario	5.4
39. Northern Ontario	11.2
Manitoba	
40. Winnipeg, Manitoba	6.0
41. Southern Manitoba	6.5
42. Northern Manitoba	33.8
Saskatchewan	
43. Regina, Saskatchewan	5.0
44. Saskatoon, Saskatchewan	6.9
45. Southern Saskatchewan	8.5
46. Northern Saskatchewan	17.7
Alberta	
47. Calgary, Alberta	7.9
48. Edmonton, Alberta	7.0
49. Northern Alberta	11.3
50. Southern Alberta	6.5

Table 8
Regional unemployment rates used by the Employment Insurance program,¹ seasonally adjusted, three-month moving average

Region	Effective from March 11, 2018 to April 7, 2018
	percent
British Columbia	
51. Southern Interior British Columbia	8.0
52. Abbotsford, British Columbia	4.1
53. Vancouver, British Columbia	4.0
54. Victoria, British Columbia	5.3
55. Southern Coastal British Columbia	6.8
56. Northern British Columbia	10.0
Territories^{3,5}	
57. Whitehorse, Yukon ⁶	3.1
58. Yukon	6.5
59. Yellowknife, Northwest Territories	3.2
60. Northwest Territories ⁷	13.3
61. Iqaluit, Nunavut	7.8
62. Nunavut ⁸	17.9

1. The boundaries of these regions are determined by Employment and Social Development Canada (ESDC). For geographic descriptions and maps of employment insurance regions, see the ESDC website: <http://srv129.services.gc.ca/eiregions/en/geocont.aspx>.

2. This region excludes St. John's.

3. Prince Edward Island as well as the territories are each comprised of two regions effective October 12, 2014.

4. This region excludes Charlottetown.

5. The monthly regional unemployment rates for EI purposes in the territories are subject to the greater of a seasonally adjusted 3-month-moving average or 12-month-moving average.

6. This region excludes Whitehorse.

7. This region excludes Yellowknife.

8. This region excludes Iqaluit.

Note: Related CANSIM table 282-0168. All regions are based on the 1996 Census boundaries, with the exception of those in Prince Edward Island and in the territories, which respect the 2011 Census boundaries.

Data quality

Definitions and explanations

The **labour force** is composed of those members of the civilian non-institutional population 15 years of age and over who, during the reference week, were employed or unemployed.

Employed persons are those who, during the reference week:

- (a) did any work at all at a job or business;
- (b) had a job but were not at work.

A person is considered to be **full-time** if his/her usual hours at the main job or only job are 30 or more hours per week. When the number of hours worked at the main job or only job is usually less than 30 hours per week then he/she is considered to be **part-time**.

Unemployed persons are those who, during the reference week:

- (a) were without work, had looked for work in the past four weeks ending with the reference period and were available for work;
- (b) were on temporary layoff due to business conditions, with an expectation of recall, and were available for work;
- (c) were without work, but had a job to start within four weeks from the reference period and were available for work.

Persons in the civilian non-institutional population 15 years of age and over who, during the reference week, were neither employed nor unemployed are classified as **not in the labour force**.

The **unemployment rate** represents the number of unemployed persons expressed as a percentage of the labour force (employed and unemployed). The unemployment rate for a particular group (for example, age, sex, or marital status) is the number unemployed in that group expressed as a percentage of the labour force for that group.

The **participation rate** represents the total labour force expressed as a percentage of the population aged 15 years and over. The participation rate for a particular group (for example, women aged 25 years and over) is the labour force in that group expressed as a percentage of the population for that group.

The **employment rate** represents the number of employed persons expressed as a percentage of the population aged 15 years and over. The employment rate for a particular group (for example, age, sex, marital status, or province) is the number employed in that group expressed as a percentage of the population for that group.

The **part-time rate** represents the number of persons employed part-time expressed as a percentage of the employed. The part-time rate for a particular group (for example, age or sex) is the number of persons employed part-time in that group expressed as a percentage of the employed for that group.

All geographic regions are based on the 2011 Census boundaries.

Seasonal adjustment

Fluctuations in economic time series are caused by seasonal, cyclical and irregular movements. A seasonally adjusted series is one from which seasonal movements have been eliminated. Seasonal movements are defined as those which are caused by regular annual events such as climate, holidays, vacation periods and cycles related to crops, production and retail sales associated with Christmas and Easter. It should be noted that the seasonally adjusted series contain irregular as well as longer-term cyclical fluctuations.

The seasonally adjusted series are revised each year to take into account current data and to generate new forecast factors for the next twelve months. The data are therefore subject to slight revisions in future issues of this publication.

For more information on seasonal adjustment, see *Seasonally adjusted data – Frequently asked questions*.

Sampling variability of estimates

Estimates in this publication are based on the Labour Force Survey, a monthly survey of approximately 56,000 households across Canada. Because the entire population is not surveyed, the estimates are subject to sampling error. While the published estimate is the best available indicator of the real value, changes in the level of any estimates between two months can be the result of a true change, or sampling variability. The sampling error can be estimated by calculating the standard error for the published estimate or statistic. These standard errors have been included in the publication tables in order to assist users in interpreting the data. They are based on 12-month averages and are updated twice a year, in February and August.

Interpretation based on standard error

Approximately two-thirds (68%) of the time, a change greater than the sampling error indicates a real change. The larger the change compared to the standard error, the better the chance that we are observing a real change, as opposed to a change due to sampling variability. At the 95% confidence level, the change in the estimate must be greater than twice the standard error in order to ensure that change is real.

Movements in estimates that are smaller than the standard error are less likely to reflect a real change and more likely to be due to sampling variability. While the above is true for monthly movements, one can have more confidence in a series of consecutive movements in the same direction, even though some of the monthly movements may be smaller than the standard error.

Interpretation based on confidence intervals

Confidence intervals provide another way of looking at the variability inherent in estimates of sample surveys. To illustrate how to calculate the confidence interval, let us say that one month the published estimate for total employment rose by 16,000 to reach 18,000,000. The associated standard error for the movement estimate is 29,500. The standard error used to interpret the movement estimate indicates that:

- There are approximately two chances in three (68%) that the real value of the movement between the two months falls within the range -13,500 to +45,500 (16,000 + or - one standard error).
- There are approximately nine chances in ten (90%) that the real value of the movement between the two months falls within the range -31,200 to +63,200 (16,000 + or - 1.6 times the standard error).
- There are approximately nineteen chances in twenty (95%) that the real value of the movement between the two months falls within the range -43,000 to +75,000 (16,000 + or - two standard errors).

For more detailed explanations on the sampling variability of estimates, and in particular for information on how to assess the variability of level estimates, consult the Data quality section of the *Guide to the Labour Force Survey* (71-543-G).

Documentation

For more detailed information about the Labour Force Survey, see the following documents:

- Overview of the Labour Force Survey (LFS) 3701
- *Guide to the Labour Force Survey* (71-543-G)
- *Methodology of the Canadian Labour Force Survey* (71-526-X)
- *LFS geographical maps*

Related products

Publications

71-526-X	Methodology of the Canadian Labour Force Survey
71-543-G	Guide to the Labour Force Survey
71-587-X	Aboriginal Peoples Living Off-reserve in Western Canada: Estimates from the Labour Force Survey
71-588-X	The Aboriginal Labour Force Analysis Series
71-606-X	The Immigrant Labour Force Analysis Series
71F0031X	Improvements to the Labour Force Survey (LFS)
71M0001X	Labour Force Survey Microdata File
75-004-M	Labour Statistics: Research Papers
75-005-M	Labour Statistics: Technical Papers

CANSIM tables

279-0029	Labour Force Survey estimates (LFS), work absence statistics of full-time employees by province, census metropolitan area (CMA) and sex, annual
279-0030	Labour Force Survey estimates (LFS), work absence statistics of full-time employees by sex and North American Industry Classification System (NAICS), annual
279-0032	Labour Force Survey estimates (LFS), work absence statistics of full-time employees by sex and age group, annual
279-0033	Labour Force Survey estimates (LFS), work absence statistics of full-time employees by sex and presence of children, annual
279-0034	Labour Force Survey estimates (LFS), work absence statistics of full-time employees by sex and job tenure, annual
279-0035	Labour Force Survey estimates (LFS), work absence statistics of full-time employees by sex and public and private sector, annual
279-0036	Labour Force Survey estimates (LFS), work absence statistics of full-time employees by sex and educational attainment, annual
279-0037	Labour Force Survey estimates (LFS), work absence statistics of full-time employees by sex and establishment size, annual
279-0038	Labour Force Survey estimates (LFS), work absence statistics of full-time employees by sex and job permanency, annual
279-0039	Labour Force Survey estimates (LFS), work absence statistics of full-time employees by sex and union coverage, annual
279-0040	Labour Force Survey estimates (LFS), work absence statistics of full-time employees by sex and National Occupational Classification (NOC), annual
282-0001	Labour Force Survey estimates (LFS), by sex and detailed age group, unadjusted for seasonality, monthly
282-0002	Labour Force Survey estimates (LFS), by sex and detailed age group, annual
282-0003	Labour Force Survey estimates (LFS), by educational attainment, sex and age group, unadjusted for seasonality, monthly
282-0004	Labour Force Survey estimates (LFS), by educational attainment, sex and age group, annual
282-0005	Labour Force Survey estimates (LFS), by full- and part-time students during school months, sex and age group, unadjusted for seasonality, monthly
282-0006	Labour Force Survey estimates (LFS), by students during summer months, sex and age group, unadjusted for seasonality, monthly
282-0007	Labour Force Survey estimates (LFS), by North American Industry Classification System (NAICS), sex and age group, unadjusted for seasonality, monthly
282-0008	Labour Force Survey estimates (LFS), by North American Industry Classification System (NAICS), sex and age group, annual
282-0011	Labour Force Survey estimates (LFS), employment by class of worker, North American Industry Classification System (NAICS) and sex, unadjusted for seasonality, monthly
282-0012	Labour Force Survey estimates (LFS), employment by class of worker, North American Industry Classification System (NAICS) and sex, annual
282-0013	Labour Force Survey estimates (LFS), part-time employment by reason for part-time work, sex and age group, unadjusted for seasonality, monthly
282-0014	Labour Force Survey estimates (LFS), part-time employment by reason for part-time work, sex and age group, annual
282-0015	Labour Force Survey estimates (LFS), by usual hours worked, main or all jobs, sex and age group, unadjusted for seasonality, monthly
282-0016	Labour Force Survey estimates (LFS), by usual hours worked, main or all jobs, sex and age group, annual
282-0017	Labour Force Survey estimates (LFS), by actual hours worked, main or all jobs, sex and age group, unadjusted for seasonality, monthly
282-0018	Labour Force Survey estimates (LFS), by actual hours worked, main or all jobs, sex and age group, annual
282-0019	Labour Force Survey estimates (LFS), by usual hours worked, class of worker, North American Industry Classification System (NAICS) and sex, unadjusted for seasonality, monthly
282-0020	Labour Force Survey estimates (LFS), by usual hours worked, class of worker, North American Industry Classification System (NAICS) and sex, annual
282-0021	Labour Force Survey estimates (LFS), by actual hours worked, class of worker, North American Industry Classification System (NAICS) and sex, unadjusted for seasonality, monthly
282-0022	Labour Force Survey estimates (LFS), by actual hours worked, class of worker, North American Industry Classification System (NAICS) and sex, annual
282-0027	Labour Force Survey estimates (LFS), by total and average usual and actual hours worked, main or all jobs, type of work, sex and age group, unadjusted for seasonality, monthly
282-0028	Labour Force Survey estimates (LFS), by total and average usual and actual hours worked, main or all jobs, type of work, sex and age group, annual
282-0031	Labour Force Survey estimates (LFS), multiple jobholders by North American Industry Classification System (NAICS), sex and age group, annual
282-0032	Labour Force Survey estimates (LFS), multiple jobholders by North American Industry Classification System (NAICS), sex and age group, unadjusted for seasonality, monthly

CANSIM tables

282-0035	Labour Force Survey estimates (LFS), multiple jobholders by usual hours worked at main and all jobs, unadjusted for seasonality, monthly
282-0036	Labour Force Survey estimates (LFS), multiple jobholders by usual hours worked at main and all jobs, annual
282-0037	Labour Force Survey estimates (LFS), job tenure by type of work, sex and age group, unadjusted for seasonality, monthly
282-0038	Labour Force Survey estimates (LFS), job tenure by type of work, sex and age group, annual
282-0041	Labour Force Survey estimates (LFS), job tenure by North American Industry Classification System (NAICS) and sex, unadjusted for seasonality, monthly
282-0042	Labour Force Survey estimates (LFS), job tenure by North American Industry Classification System (NAICS) and sex, annual
282-0047	Labour Force Survey estimates (LFS), duration of unemployment by sex and age group, unadjusted for seasonality, monthly
282-0048	Labour Force Survey estimates (LFS), duration of unemployment by sex and age group, annual
282-0049	Labour Force Survey estimates (LFS), unemployment by type of work sought and search method, sex and age group, unadjusted for seasonality, monthly
282-0050	Labour Force Survey estimates (LFS), unemployment by type of work sought and search method, sex and age group, annual
282-0051	Labour Force Survey estimates (LFS), retirement age by class of worker and sex, annual
282-0071	Labour Force Survey estimates (LFS), wages of employees by type of work, North American Industry Classification System (NAICS), sex and age group, unadjusted for seasonality, monthly
282-0072	Labour Force Survey estimates (LFS), wages of employees by type of work, North American Industry Classification System (NAICS), sex and age group, annual
282-0073	Labour Force Survey estimates (LFS), wages of employees by job permanency, union coverage, sex and age group, unadjusted for seasonality, monthly
282-0074	Labour Force Survey estimates (LFS), wages of employees by job permanency, union coverage, sex and age group, annual
282-0075	Labour Force Survey estimates (LFS), employees by establishment size, North American Industry Classification System (NAICS), sex and age group, unadjusted for seasonality, monthly
282-0076	Labour Force Survey estimates (LFS), employees by establishment size, North American Industry Classification System (NAICS), sex and age group, annual
282-0077	Labour Force Survey estimates (LFS), employees by union coverage, North American Industry Classification System (NAICS), sex and age group, unadjusted for seasonality, monthly
282-0078	Labour Force Survey estimates (LFS), employees by union coverage, North American Industry Classification System (NAICS), sex and age group, annual
282-0079	Labour Force Survey estimates (LFS), employees by job permanency, North American Industry Classification System (NAICS), sex and age group, unadjusted for seasonality, monthly
282-0080	Labour Force Survey estimates (LFS), employees by job permanency, North American Industry Classification System (NAICS), sex and age group, annual
282-0083	Labour Force Survey estimates (LFS), employees working overtime (weekly) by North American Industry Classification System (NAICS), sex and age group, unadjusted for seasonality, monthly
282-0084	Labour Force Survey estimates (LFS), employees working overtime (weekly) by North American Industry Classification System (NAICS), sex and age group, annual
282-0085	Labour Force Survey estimates (LFS), supplementary unemployment rates by sex and age group, unadjusted for seasonality, monthly
282-0086	Labour Force Survey estimates (LFS), supplementary unemployment rates by sex and age group, annual
282-0087	Labour Force Survey estimates (LFS), by sex and age group, seasonally adjusted and unadjusted, monthly
282-0088	Labour Force Survey estimates (LFS), employment by North American Industry Classification System (NAICS), seasonally adjusted and unadjusted, monthly
282-0089	Labour Force Survey estimates (LFS), employment by class of worker and sex, seasonally adjusted and unadjusted, monthly
282-0092	Labour Force Survey estimates (LFS), actual hours worked at main job by North American Industry Classification System (NAICS), seasonally adjusted, monthly
282-0094	Labour Force Survey estimates (LFS), by North American Industry Classification System (NAICS), Canada, seasonally adjusted, monthly
282-0095	Labour Force Survey estimates (LFS), by full- and part-time students during school months, sex and age group, annual
282-0100	Labour Force Survey estimates (LFS), by territories, sex and age group, three-month moving average, seasonally adjusted and unadjusted, monthly
282-0101	Labour Force Survey estimates (LFS), by immigrant status, age group, Canada, regions, provinces and Montreal, Toronto, Vancouver census metropolitan areas, three-month moving average, unadjusted for seasonality, monthly
282-0102	Labour Force Survey estimates (LFS), by immigrant status, age group, Canada, regions, provinces and Montreal, Toronto, Vancouver census metropolitan areas, annual
282-0103	Labour Force Survey estimates (LFS), by immigrant status, sex and detailed age group, Canada, three-month moving average, unadjusted for seasonality, monthly
282-0104	Labour Force Survey estimates (LFS), by immigrant status, sex and detailed age group, Canada, annual
282-0105	Labour Force Survey estimates (LFS), by immigrant status, educational attainment, sex and age group, Canada, three-month moving average, unadjusted for seasonality, monthly
282-0106	Labour Force Survey estimates (LFS), by immigrant status, educational attainment, sex and age group, Canada, annual
282-0107	Labour Force Survey estimates (LFS), by immigrant status, country of birth, sex and age group, Canada, three-month moving average, unadjusted for seasonality, monthly
282-0108	Labour Force Survey estimates (LFS), by immigrant status, country of birth, sex and age group, Canada, annual
282-0122	Labour Force Survey estimates (LFS), by provinces and economic regions based on 2011 Census boundaries, three-month moving average, unadjusted for seasonality, monthly

CANSIM tables

282-0123	Labour Force Survey estimates (LFS), by provinces, territories and economic regions based on 2011 Census boundaries, annual
282-0124	Labour Force Survey estimates (LFS), employment by economic region based on 2011 Census boundaries and North American Industry Classification System (NAICS), three-month moving average, unadjusted for seasonality, monthly
282-0125	Labour Force Survey estimates (LFS), employment by economic region based on 2011 Census boundaries and North American Industry Classification System (NAICS), annual
282-0128	Labour Force Survey estimates (LFS), by census metropolitan area based on 2011 Census boundaries, sex and age group, three-month moving average, unadjusted for seasonality, monthly
282-0129	Labour Force Survey estimates (LFS), by census metropolitan area based on 2011 Census boundaries, sex and age group, annual
282-0130	Labour Force Survey estimates (LFS), employment by census metropolitan area based on 2011 Census boundaries and North American Industry Classification System (NAICS), three-month moving average, unadjusted for seasonality, monthly
282-0131	Labour Force Survey estimates (LFS), employment by census metropolitan area based on 2011 Census boundaries and North American Industry Classification System (NAICS), annual
282-0134	Labour Force Survey estimates (LFS), by selected census agglomerations based on 2011 Census boundaries, annual
282-0135	Labour Force Survey estimates (LFS), by census metropolitan area based on 2011 Census boundaries, three-month moving average, seasonally adjusted and unadjusted, monthly
282-0136	Labour Force Survey estimates (LFS), by Montréal, Toronto and Vancouver census metropolitan areas based on 2011 Census boundaries, seasonally adjusted and unadjusted, monthly
282-0137	Labour Force Survey estimates (LFS), by population centres and rural areas based on 2011 Census boundaries, sex and age group, unadjusted for seasonality, monthly
282-0138	Labour Force Survey estimates (LFS), by population centres and rural areas based on 2011 Census boundaries, sex and age group, annual
282-0139	Labour Force Survey estimates (LFS), employment by population centres and rural areas based on 2011 Census boundaries, class of worker and North American Industry Classification System (NAICS), unadjusted for seasonality, monthly
282-0140	Labour Force Survey estimates (LFS), employment by population centres and rural areas based on 2011 Census boundaries, class of worker and North American Industry Classification System (NAICS), annual
282-0141	Labour Force Survey estimates (LFS), by National Occupational Classification (NOC) and sex, unadjusted for seasonality, monthly
282-0142	Labour Force Survey estimates (LFS), by National Occupational Classification (NOC) and sex, annual
282-0143	Labour Force Survey estimates (LFS), by usual hours worked, National Occupational Classification (NOC) and sex, unadjusted for seasonality, monthly
282-0144	Labour Force Survey estimates (LFS), by usual hours worked, National Occupational Classification (NOC) and sex, annual
282-0145	Labour Force Survey estimates (LFS), by actual hours worked, National Occupational Classification (NOC) and sex, unadjusted for seasonality, monthly
282-0146	Labour Force Survey estimates (LFS), by actual hours worked, National Occupational Classification (NOC) and sex, annual
282-0147	Labour Force Survey estimates (LFS), multiple jobholders by National Occupational Classification (NOC), sex and age group, unadjusted for seasonality, monthly
282-0148	Labour Force Survey estimates (LFS), multiple jobholders by National Occupational Classification (NOC), sex and age group, annual
282-0149	Labour Force Survey estimates (LFS), job tenure by National Occupational Classification (NOC) and sex, unadjusted for seasonality, monthly
282-0150	Labour Force Survey estimates (LFS), job tenure by National Occupational Classification (NOC) and sex, annual
282-0151	Labour Force Survey estimates (LFS), wages of employees by type of work, National Occupational Classification (NOC), sex, and age group, unadjusted for seasonality, monthly
282-0152	Labour Force Survey estimates (LFS), wages of employees by type of work, National Occupational Classification (NOC), sex, and age group, annual
282-0153	Labour Force Survey estimates (LFS), employees working overtime (weekly) by National Occupational Classification (NOC), sex and age group, unadjusted for seasonality, monthly
282-0154	Labour Force Survey estimates (LFS), employees working overtime (weekly) by National Occupational Classification (NOC), sex and age group, annual
282-0155	Labour Force Survey estimates (LFS), employment by National Occupational Classification (NOC), seasonally adjusted, monthly
282-0156	Labour Force Survey estimates (LFS), employment by economic region based on 2011 Census boundaries and National Occupational Classification (NOC), three-month moving average, unadjusted for seasonality, monthly
282-0157	Labour Force Survey estimates (LFS), employment by economic region based on 2011 Census boundaries and National Occupational Classification (NOC), annual
282-0158	Labour Force Survey estimates (LFS), employment by census metropolitan area based on 2011 Census boundaries and National Occupational Classification (NOC), three-month moving average, unadjusted for seasonality, monthly
282-0159	Labour Force Survey estimates (LFS), employment by census metropolitan area based on 2011 Census boundaries and National Occupational Classification (NOC), annual
282-0160	Labour Force Survey estimates (LFS), weekly wage distributions of employees by type of work, National Occupational Classification (NOC) and sex, unadjusted for seasonality, monthly
282-0161	Labour Force Survey estimates (LFS), weekly wage distributions of employees by type of work, National Occupational Classification (NOC) and sex, annual
282-0162	Labour Force Survey estimates (LFS), hourly wage distribution of employees by type of work, National Occupational Classification (NOC) and sex, unadjusted for seasonality, monthly
282-0163	Labour Force Survey estimates (LFS), hourly wage distribution of employees by type of work, National Occupational Classification (NOC) and sex, annual
282-0164	Labour Force Survey estimates (LFS), employees by union status and National Occupational Classification (NOC), Canada, annual

CANSIM tables

282-0165	Labour Force Survey estimates (LFS), employment by Aboriginal group, National Occupational Classification (NOC), sex and age group, annual
282-0166	Labour Force Survey estimates (LFS), employment by Aboriginal group, National Occupational Classification (NOC) and age group, Canada, selected provinces and regions, annual
282-0167	Labour Force Survey estimates (LFS), average usual hours and wages of employees by age group, sex, union coverage, job permanency, and National Occupational Classification (NOC), unadjusted for seasonality, monthly
282-0168	Labour Force Survey estimates (LFS), regional unemployment rates used by the Employment Insurance Program, three-month moving average, seasonally adjusted, monthly
282-0200	Labour Force Survey estimates (LFS), weekly wage distributions of employees by type of work, North American Industry Classification System (NAICS), and sex, unadjusted for seasonality, monthly
282-0201	Labour Force Survey estimates (LFS), weekly wage distributions of employees by type of work, North American Industry Classification System (NAICS), and sex, annual
282-0204	Labour Force Survey estimates (LFS), hourly wage distributions of employees by type of work, North American Industry Classification System (NAICS), and sex, unadjusted for seasonality, monthly
282-0205	Labour Force Survey estimates (LFS), hourly wage distributions of employees by type of work, North American Industry Classification System (NAICS), and sex, annual
282-0208	Labour Force Survey estimates (LFS), by educational degree, sex and age group, unadjusted for seasonality, monthly
282-0209	Labour Force Survey estimates (LFS), by educational degree, sex and age group, annual
282-0210	Labour Force Survey estimates (LFS), by family type and family age composition, unadjusted for seasonality, monthly
282-0211	Labour Force Survey estimates (LFS), by family type and family age composition, annual
282-0212	Labour Force Survey estimates (LFS), hours lost by employees by reason of absence, full and part week and sex, unadjusted for seasonality, monthly
282-0213	Labour Force Survey estimates (LFS), hours lost by employees by reason of absence, full and part week and sex, annual
282-0214	Labour Force Survey estimates (LFS), activity prior to unemployment by sex and age group, unadjusted for seasonality, monthly
282-0215	Labour Force Survey estimates (LFS), activity prior to unemployment, by sex and age group, annual
282-0216	Labour Force Survey estimates (LFS), reason for leaving job during previous year by sex and age group, unadjusted for seasonality, monthly
282-0217	Labour Force Survey estimates (LFS), reason for leaving job during previous year by sex and age group, annual
282-0218	Labour Force Survey estimates (LFS), reason for not looking for work, by sex and age group, unadjusted for seasonality, monthly
282-0219	Labour Force Survey estimates (LFS), reason for not looking for work, by sex and age group, annual
282-0220	Labour Force Survey estimates (LFS), employees by union status, sex and age group, Canada and provinces, annual
282-0221	Labour Force Survey estimates (LFS), employees by union status, sex, age group and education level, Canada, annual
282-0223	Labour Force Survey estimates (LFS), employees by union status, North American Industry Classification System (NAICS) and sex, Canada, annual
282-0224	Labour Force Survey estimates (LFS), employees by union status, establishment size, job tenure, type of work and job permanency, Canada, annual
282-0225	Labour Force Survey estimates (LFS), average weekly earnings, average hourly wage rate and average usual weekly hours by union status and type of work, Canada and provinces, annual
282-0226	Labour Force Survey estimates (LFS), by Aboriginal group, sex and age group, Canada, selected provinces and regions, annual
282-0227	Labour Force Survey estimates (LFS), by detailed Aboriginal group, sex and age group, Canada and selected regions, annual
282-0228	Labour Force Survey estimates (LFS), by Aboriginal group, educational attainment and age group, Canada and selected regions, annual
282-0229	Labour Force Survey estimates (LFS), employment by Aboriginal group, North American Industry Classification System (NAICS), sex and age group, annual
282-0230	Labour Force Survey estimates (LFS), employment by Aboriginal group, North American Industry Classification System (NAICS) and age group, Canada and selected regions, annual
282-0233	Labour Force Survey estimates (LFS), average hourly and weekly wages and average usual weekly hours by Aboriginal group and age group, Canada, selected provinces and regions, annual

Survey

3701	Labour Force Survey
------	---------------------

Summary tables

Average hourly wages of employees by selected characteristics and occupation, unadjusted data, by province (monthly)

Days lost per worker by industry and sex

People employed, by educational attainment

Reasons for part-time work by sex and age group

Self-employment, historical summary

Employment by age, sex, type of work, class of worker and province (monthly)

Actual hours worked per week by industry, seasonally adjusted (monthly)

Labour force characteristics, unadjusted, by territory (3 month moving average)

Employment by industry and sex

Full-time and part-time employment by sex and age group

Labour force characteristics by age and sex

Labour force characteristics by immigrant status of population aged 25 to 54, and by educational attainment

Labour force characteristics by immigrant status, by detailed age group

Labour force characteristics by immigrant status of population aged 25 to 54, by country of birth

Days lost per worker due to illness or disability, by sex, by province

Employment by industry

Labour force characteristics, seasonally adjusted, by province (monthly)

Labour force characteristics, unadjusted, by province (monthly)

Labour force, employment and unemployment, levels and rates, by province

Economic indicators, by province and territory (monthly and quarterly)

Days lost per worker by reason, by provinces

Labour force characteristics, seasonally adjusted, by census metropolitan area (3 month moving average)

Labour force characteristics, unadjusted, by economic region (3 month moving average)

Distribution of employed people, by industry, by province

Employment by major industry group, seasonally adjusted, by province (monthly)

Labour force characteristics

Labour force characteristics, unadjusted, by census metropolitan area (3 month moving average)

Labour force characteristics, population 15 years and older, by census metropolitan area

Labour force characteristics, population 15 years and older, by economic region, by province

Canada: Economic and financial data

Labour force characteristics by sex and age group

Labour force characteristics by immigrant status of population aged 25 to 54, by province

Latest statistics (monthly)
