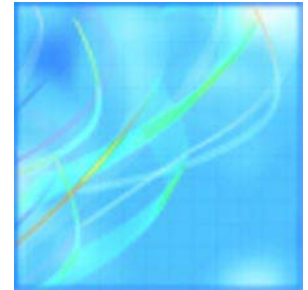




Catalogue no. 51-203-X

# Air Carrier Traffic at Canadian Airports

2006



Statistics  
Canada

Statistique  
Canada

Canada

## How to obtain more information

For further information, please contact the Aviation Statistics Centre (telephone: 1-866-500-8400; [aviationstatistics@statcan.ca](mailto:aviationstatistics@statcan.ca)). For information about this product or the wide range of services and data available from Statistics Canada, visit our website at [www.statcan.ca](http://www.statcan.ca) or contact us by e-mail at [infostats@statcan.ca](mailto:infostats@statcan.ca) or by phone from 8:30am to 4:30pm Monday to Friday at:

### **Toll-free telephone (Canada and the United States):**

Inquiries line **1-800-263-1136**

National telecommunications device for the hearing impaired **1-800-363-7629**

Fax line **1-877-287-4369**

Depository Services Program inquiries line **1-800-635-7943**

Depository Services Program fax line **1-800-565-7757**

**Statistics Canada national contact centre: 1-613-951-8116**

Fax line **1-613-951-0581**

## Information to access the product

This product, catalogue no. 51-203-X, is available for free in electronic format. To obtain a single issue, visit our website at [www.statcan.ca](http://www.statcan.ca) and select Publications.

## Standards of service to the public

Statistics Canada is committed to serving its clients in a prompt, reliable and courteous manner. To this end, the Agency has developed *standards of service* which its employees observe in serving its clients.

To obtain a copy of these service standards, please contact Statistics Canada toll free at 1-800-263-1136. The service standards are also published on [www.statcan.ca](http://www.statcan.ca) under About us > Providing services to Canadians.



Statistics Canada  
Transportation Division

# Air Carrier Traffic at Canadian Airports

2006

Published by authority of the Minister responsible for Statistics Canada

© Minister of Industry, 2008

All rights reserved. The content of this electronic publication may be reproduced, in whole or in part, and by any means, without further permission from Statistics Canada, subject to the following conditions: that it be done solely for the purposes of private study, research, criticism, review or newspaper summary, and/or for non-commercial purposes; and that Statistics Canada be fully acknowledged as follows: Source (or "Adapted from", if appropriate): Statistics Canada, year of publication, name of product, catalogue number, volume and issue numbers, reference period and page(s). Otherwise, no part of this publication may be reproduced, stored in a retrieval system or transmitted in any form, by any means—electronic, mechanical or photocopy—or for any purposes without prior written permission of Licensing Services, Client Services Division, Statistics Canada, Ottawa, Ontario, Canada K1A 0T6.

January 2008

Catalogue no. 51-203-X

ISSN 1480-7505

Frequency: Annual

Ottawa

La version française de cette publication est disponible sur demande (n° 51-203-X au catalogue).

---

#### **Note of appreciation**

*Canada owes the success of its statistical system to a long standing partnership between Statistics Canada, the citizens of Canada, its businesses, governments and other institutions. Accurate and timely statistical information could not be produced without their continued cooperation and goodwill.*

# User information

---

## Symbols

The following standard symbols are used in Statistics Canada publications:

- . not available for any reference period
- .. not available for a specific reference period
- ... not applicable
- 0 true zero or a value rounded to zero
- 0<sup>s</sup> value rounded to 0 (zero) where there is a meaningful distinction between true zero and the value that was rounded
- p preliminary
- r revised
- x suppressed to meet the confidentiality requirements of the *Statistics Act*
- E use with caution
- F too unreliable to be published

## Acknowledgements

This publication was prepared by the Aviation Statistics Centre, of the Transportation Division, Statistics Canada under the general direction of Gord Baldwin, Director, Transportation Division and Norah Hillary, Chief, Aviation Statistics Centre. This publication is a product of the Airline Traffic and Economic Analysis Unit of which Kathie Davidson is the Unit Head.

In particular, this publication resulted from the efforts of the following people:

- Candace Brookbank, Martine Beaulieu Fortin, Rolf Hakka, Odile Lefebvre, Julie Lepage, Dorinda McNamee, Diane Perrier, and Linda Wolfe.

# Table of contents

---

<b>Highlights</b>	<b>4</b>
<b>Introduction</b>	<b>5</b>
<b>Statistical tables</b>	
1 Passengers enplaned and deplaned on selected services	7
1-1 Top 50 airports	7
1-2 Top 50 airports by sector	8
1-3 By sector, by province and territory	9
2 Tonnes of cargo loaded and unloaded on major scheduled services and major charter services	10
2-1 For the top 50 airports	10
2-2 By sector	11
2-3 By type of service, by province and territory	12
3 Top 50 airports according to arriving and departing flights for scheduled services and major charter services	13
<b>Data quality, concepts and methodology</b>	
Services offered by carriers - 2006	14
Methodology	22
Data quality and limitations	24
<b>Appendix</b>	
I Glossary	25

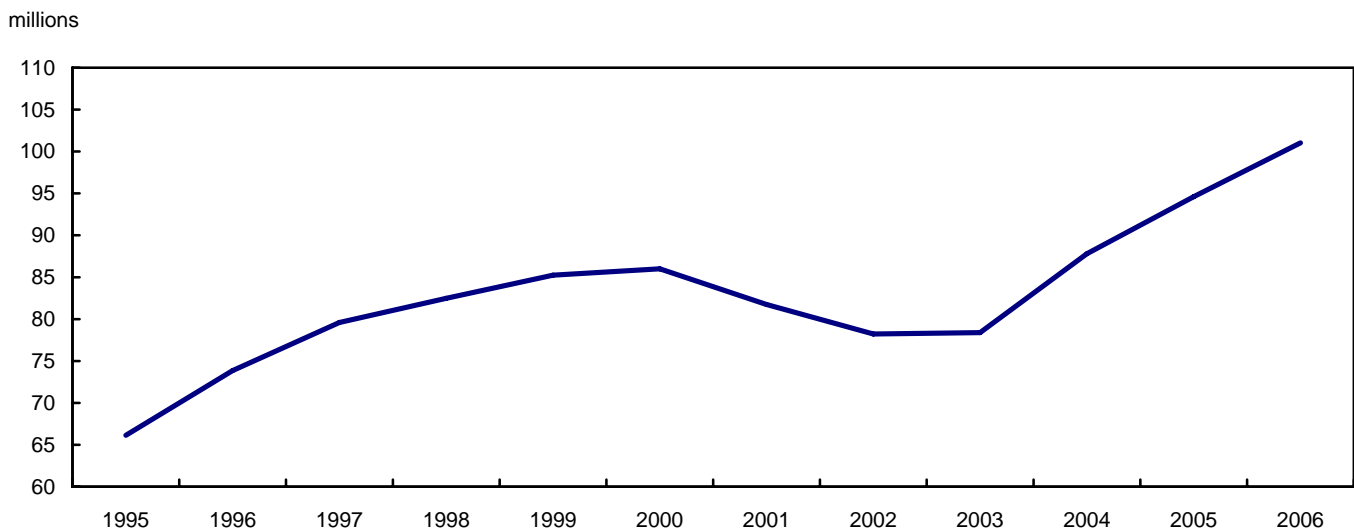
# Highlights

- In 2006, air traffic at Canadian airports continued an upward trend begun in 2003; the total enplaned/deplaned passenger numbers surpassed the 100 million mark for the first time. The number of passengers (101.0 million) increased by 6.8% compared to 2005 (94.6 million).
- Of the top 50 airports based on passengers enplaned and deplaned, Grande Prairie (+43.8 %), Fort McMurray (+38.2 %) and Hamilton (+35.5 %) recorded the strongest percentage gains in 2006 over 2005. Goose Bay (-11.4%) and Yellowknife (-10.8%) showed the largest percentage declines in 2006 compared to 2005.
- Domestic (+8.6%), transborder (+4.9%) and other international (+2.6%) sectors all showed growth over 2005.

**Text table 1**  
**Enplaned plus deplaned passengers and cargo data**

	Annual 2005	Annual 2006 <sup>P</sup>	Change 2006/2005
	number		percent
<b>Enplaned and Deplaned Passengers</b>			
Domestic Segments	58,290,423	63,307,834	8.6
Transborder Segments	19,860,851	20,843,675	4.9
Other International Segments	16,453,731	16,873,864	2.6
<b>Total</b>	<b>94,605,005</b>	<b>101,025,373</b>	<b>6.8</b>
<b>Loaded/Unloaded Cargo (tonnes)</b>	<b>716,106.3</b>	<b>786,437.1</b>	<b>9.8</b>

**Chart 1**  
**Total enplaned/deplaned passengers**



## Introduction

---

In 1968, Statistics Canada published its first **Airport Activity Statistics** publication. Over the next 20 years, changes occurring in the industry and regulations prompted changes in the survey methodology and publication format. On January 1<sup>st</sup> 1988 the National Transportation Act, 1987, came into effect. Changes in the statistical reporting requirements for air carriers prompted a review of the content and presentation of the **Air Carrier Traffic at Canadian Airports** publication (catalogue 51-005).

In response to these changes, a new format was introduced for this publication beginning with the first quarter 1989 issue. The publication now displays **preliminary** data for the current reference year and **revised data** for the previous year.

The redesigned **Air Carrier Traffic at Canadian Airports** publication continues most of the past series and in addition, incorporates data on regional and local scheduled services to complement the data previously published on Canadian and foreign carriers' major scheduled services and major charter services. This will provide a comprehensive overview of the air traffic activity at Canadian airports.

It should be noted that, prior to the changes in the statistical reporting requirements, this publication provided data on both revenue and non-revenue passengers. However, carriers are now required to report only revenue passengers, and, as such, all references to passengers in this publication refer to revenue passengers.

Beginning in 1995, this publication was only produced annually with the new catalogue number 51-203. However, the content and format remained essentially unchanged from the quarterly publication.

Starting in 2003, the content of this publication has been reduced significantly. More specifically, most tables providing data by type of services (major scheduled services, regional/local scheduled services and major charter services) were eliminated. This change is due to the concerns expressed by carriers in the current context of increased commercial sensitivity of aviation data. In addition, table 1-1 is now showing the top 50 airports, compared to the top 100 airports previously published. Some of the data that used to be available in these tables may still be obtained by contacting the Aviation Statistics Centre, Transportation Division.

### Note to Users

It is important to note that the cargo data presented in Section 2 do not represent the total cargo loaded and unloaded in Canada. Comprehensive cargo data are not collected for the following reasons:

- i. the regional and local scheduled carriers do not file cargo data on their airport activity survey and,
- ii. the major charter survey does not collect data on domestic courier cargo or domestic entity cargo flights.

# Statistical tables

---

---



**Table 1-1**  
**Passengers enplaned and deplaned on selected services — Top 50 airports**

Airport	Enplaned	Deplaned	Total		Change
			2005	2006	
			number	percent	
Abbotsford, British Columbia	250,323	247,634	385,509	497,957	29.2
Calgary International, Alberta	5,548,424	5,609,819	9,833,784	11,158,243	13.5
Castlegar, British Columbia	x	x	x	x	x
Charlottetown, Prince Edward Island	114,310	113,042	183,455	227,352	23.9
Comox, British Columbia	111,993	109,634	203,643	221,627	8.8
Cranbrook, British Columbia	44,622	44,430	76,916	89,052	15.8
Deer Lake, Newfoundland and Labrador	112,683	113,766	221,921	226,449	2.0
Edmonton International, Alberta	2,641,422	2,646,426	4,259,903	5,287,848	24.1
Fort McMurray, Alberta	210,789	208,649	303,588	419,438	38.2
Fort St John, British Columbia	61,377	63,936	126,911	125,313	-1.3
Fredericton, New Brunswick	114,245	113,805	180,640	228,050	26.2
Gander International, Newfoundland and Labrador	35,459	35,117	65,386	70,576	7.9
Goose Bay, Newfoundland and Labrador	44,532	50,154	106,896	94,686	-11.4
Grande Prairie, Alberta	166,293	163,716	229,448	330,009	43.8
Halifax International, Nova Scotia	1,648,653	1,641,788	3,005,313	3,290,441	9.5
Hamilton, Ontario	301,884	297,724	442,470	599,608	35.5
Iqaluit, Nunavut	55,449	55,063	109,317	110,512	1.1
Kamloops, British Columbia	x	x	145,939	x	x
Kelowna, British Columbia	634,439	630,504	1,056,651	1,264,943	19.7
Kingston, Ontario	x	x	x	x	x
London, Ontario	198,425	198,991	366,241	397,416	8.5
Moncton/Greater Moncton International, New Brunswick	270,608	263,394	517,390	534,002	3.2
Montréal/Pierre Elliott Trudeau International, Quebec	5,674,153	5,695,901	10,813,781	11,370,054	5.1
Nanaimo, British Columbia	x	x	x	x	x
Nanaimo/Harbour, British Columbia	76,713	59,447	119,051	136,160	14.4
Ottawa/Macdonald-Cartier International, Ontario	1,766,040	1,774,490	3,548,293	3,540,530	-0.2
Prince George, British Columbia	185,581	185,040	365,382	370,621	1.4
Québec/Jean Lesage International, Quebec	405,151	399,944	793,735	805,095	1.4
Regina International, Saskatchewan	456,608	457,678	819,390	914,286	11.6
Saint John, New Brunswick	x	x	166,351	x	x
Saskatoon/John G Diefenbaker International, Saskatchewan	506,733	502,729	884,965	1,009,462	14.1
Sault Ste Marie, Ontario	x	x	x	x	x
Sept-Îles, Quebec	48,583	57,490	96,524	106,073	9.9
Sioux Lookout, Ontario	50,069	51,991	84,900	102,060	20.2
St John's International, Newfoundland and Labrador	583,399	573,600	1,098,084	1,156,999	5.4
Sudbury, Ontario	x	x	156,436	x	x
Sydney, Nova Scotia	x	x	x	x	x
Terrace, British Columbia	52,012	51,922	101,645	103,934	2.3
Thompson, Manitoba	x	x	99,180	x	x
Thunder Bay, Ontario	309,613	308,807	553,495	618,420	11.7
Timmins, Ontario	58,914	57,932	108,564	116,846	7.6
Toronto/Lester B Pearson International, Ontario	14,670,447	14,797,112	28,592,055	29,467,559	3.1
Vancouver Harbour, British Columbia	187,443	176,446	338,485	363,889	7.5
Vancouver International, British Columbia	8,089,851	8,110,406	15,694,619	16,200,257	3.2
Victoria Harbour, British Columbia	140,833	153,947	288,223	294,780	2.3
Victoria International, British Columbia	669,879	673,883	1,280,945	1,343,762	4.9
Whitehorse International, Yukon Territory	81,751	70,014	129,356	151,765	17.3
Windsor, Ontario	x	x	154,083	x	x
Winnipeg/James Armstrong Richardson International, Manitoba	1,790,785	1,799,379	3,235,684	3,590,164	11.0
Yellowknife, Northwest Territories	142,541	138,991	315,638	281,532	-10.8
<b>Subtotal</b>	<b>49,128,570</b>	<b>49,319,037</b>	<b>92,108,467</b>	<b>98,447,607</b>	<b>6.9</b>
Others	1,272,343	1,305,423	2,496,538	2,577,766	3.3
<b>Total Canada</b>	<b>50,400,913</b>	<b>50,624,460</b>	<b>94,605,005</b>	<b>101,025,373</b>	<b>6.8</b>

**Table 1-2**  
**Passengers enplaned and deplaned on selected services — Top 50 airports by sector**

Airport	Domestic		Change	Transborder		Change	Other International		Change	Total
	2005	2006		2005	2006		2005	2006		
	number		percent	number	percent	number	percent	number		
Abbotsford, British Columbia	380,247	492,591	29.5	0	125	...	5,262	5,241	-0.4	497,957
Calgary International, Alberta	7,137,297	8,180,974	14.6	1,885,977	2,114,505	12.1	810,510	862,764	6.4	11,158,243
Castlegar, British Columbia	x	x	x	x	x	x	x	x	x	x
Charlottetown, Prince Edward Island	177,978	220,028	23.6	5,477	7,324	33.7	0	0	...	227,352
Comox, British Columbia	200,199	218,875	9.3	7	0	-100.0	3,437	2,752	-19.9	221,627
Cranbrook, British Columbia	76,904	89,048	15.8	12	4	-66.7	0	0	...	89,052
Deer Lake, Newfoundland and Labrador	221,921	223,316	0.6	0	3	...	0	3,130	...	226,449
Edmonton International, Alberta	3,658,868	4,456,194	21.8	483,113	683,028	41.4	117,922	148,626	26.0	5,287,848
Fort McMurray, Alberta	303,588	419,438	38.2	0	0	...	0	0	...	419,438
Fort St John, British Columbia	126,907	125,313	-1.3	4	0	-100.0	0	0	...	125,313
Fredericton, New Brunswick	180,581	209,477	16.0	1	16,302	...	58	2,271	...	228,050
Gander International, Newfoundland and Labrador	58,712	65,003	10.7	1,678	700	-58.3	4,996	4,873	-2.5	70,576
Goose Bay, Newfoundland and Labrador	104,208	92,766	-11.0	196	512	161.2	2,492	1,408	-43.5	94,686
Grande Prairie, Alberta	229,446	330,009	43.8	2	0	-100.0	0	0	...	330,009
Halifax International, Nova Scotia	2,572,941	2,780,505	8.1	247,028	291,337	17.9	185,344	218,599	17.9	3,290,441
Hamilton, Ontario	402,921	576,394	43.1	13,393	7,394	-44.8	26,156	15,820	-39.5	599,608
Iqaluit, Nunavut	109,220	109,999	0.7	0	0	...	97	513	428.9	110,512
Kamloops, British Columbia	139,973	x	x	5,966	x	x	0	x	x	x
Kelowna, British Columbia	965,547	1,168,726	21.0	83,164	83,734	0.7	7,940	12,483	57.2	1,264,943
Kingston, Ontario	x	x	x	x	x	x	x	x	x	x
London, Ontario	307,649	348,821	13.4	48,462	46,202	-4.7	10,130	2,393	-76.4	397,416
Moncton/Greater Moncton International, New Brunswick	502,073	505,726	0.7	934	15,838	...	14,383	12,438	-13.5	534,002
Montréal/Pierre Elliott Trudeau International, Quebec	4,459,264	4,698,090	5.4	2,885,823	2,974,588	3.1	3,468,694	3,697,376	6.6	11,370,054
Nanaimo, British Columbia	x	x	x	x	x	x	x	x	x	x
Nanaimo/Harbour, British Columbia	119,051	136,160	14.4	0	0	...	0	0	...	136,160
Ottawa/Macdonald-Cartier International, Ontario	2,701,091	2,690,455	-0.4	613,621	610,095	-0.6	233,581	239,980	2.7	3,540,530
Prince George, British Columbia	365,178	367,865	0.7	0	0	...	204	2,756	...	370,621
Québec/Jean Lesage International, Quebec	562,206	560,823	-0.2	118,560	131,457	10.9	112,969	112,815	-0.1	805,095
Regina International, Saskatchewan	732,799	811,035	10.7	58,108	80,644	38.8	28,483	22,607	-20.6	914,286
Saint John, New Brunswick	166,338	x	x	13	x	x	0	x	x	x
Saskatoon/John G Diefenbaker International, Saskatchewan	786,159	901,353	14.7	80,600	83,342	3.4	18,206	24,767	36.0	1,009,462
Sault Ste Marie, Ontario	x	x	x	x	x	x	x	x	x	x
Sept-Îles, Quebec	96,524	106,062	9.9	0	11	...	0	0	...	106,073
Sioux Lookout, Ontario	84,900	102,060	20.2	0	0	...	0	0	...	102,060
St John's International, Newfoundland and Labrador	1,015,314	1,082,283	6.6	17,134	25,311	47.7	65,636	49,405	-24.7	1,156,999
Sudbury, Ontario	156,436	x	x	0	x	x	0	x	x	x
Sydney, Nova Scotia	x	x	x	x	x	x	x	x	x	x
Terrace, British Columbia	101,645	103,934	2.3	0	0	...	0	0	...	103,934
Thompson, Manitoba	99,114	x	x	32	x	x	34	x	x	x
Thunder Bay, Ontario	517,854	593,967	14.7	23,585	21,513	-8.8	12,056	2,940	-75.6	618,420
Timmins, Ontario	108,564	116,846	7.6	0	0	...	0	0	...	116,846
Toronto/Lester B Pearson International, Ontario	12,334,989	12,944,230	4.9	8,752,328	8,879,487	1.5	7,504,738	7,643,842	1.9	29,467,559
Vancouver Harbour, British Columbia	338,485	363,889	7.5	0	0	...	0	0	...	363,889
Vancouver International, British Columbia	8,097,086	8,444,314	4.3	3,901,255	4,114,737	5.5	3,696,278	3,641,206	-1.5	16,200,257
Victoria Harbour, British Columbia	264,427	271,793	2.8	23,796	22,987	-3.4	0	0	...	294,780
Victoria International, British Columbia	1,143,167	1,199,925	5.0	131,959	131,713	-0.2	5,819	12,124	108.4	1,343,762
Whitehorse International Yukon Territory	119,406	143,207	19.9	3,609	3,966	9.9	6,341	4,592	-27.6	151,765
Windsor, Ontario	139,465	x	x	544	x	x	14,074	x	x	x
Winnipeg/James Armstrong Richardson International, Manitoba	2,707,007	3,039,997	12.3	432,947	448,422	3.6	95,730	101,745	6.3	3,590,164
Yellowknife Northwest Territories	315,638	281,305	-10.9	0	227	...	0	0	...	281,532
<b>Subtotal</b>	<b>55,836,675</b>	<b>60,787,501</b>	<b>8.9</b>	<b>19,819,893</b>	<b>20,802,972</b>	<b>5.0</b>	<b>16,451,899</b>	<b>16,857,134</b>	<b>2.5</b>	<b>98,447,607</b>
Others	2,453,748	2,520,333	2.7	40,958	40,703	-0.6	1,832	16,730	813.2	2,577,766
<b>Total Canada</b>	<b>58,290,423</b>	<b>63,307,834</b>	<b>8.6</b>	<b>19,860,851</b>	<b>20,843,675</b>	<b>4.9</b>	<b>16,453,731</b>	<b>16,873,864</b>	<b>2.6</b>	<b>101,025,373</b>

**Table 1-3**  
**Passengers enplaned and deplaned on selected services — By sector, by province and territory**

Province or Territory	Domestic			Transborder			Other International			Total
	2005	2006	Change	2005	2006	Change	2005	2006	Change	2006
	number		percent	number		percent	number		percent	number
Newfoundland and Labrador	1,516,813	1,586,775	4.6	19,056	26,572	39.4	73,216	59,095	-19.3	1,672,442
Prince Edward Island	177,978	220,028	23.6	5,477	7,324	33.7	0	0	...	227,352
Nova Scotia	2,657,302	2,880,834	8.4	247,032	291,445	18.0	185,673	218,939	17.9	3,391,218
New Brunswick	849,003	915,415	7.8	953	32,930	...	14,441	14,822	2.6	963,167
Quebec	5,692,218	5,965,839	4.8	3,005,272	3,108,142	3.4	3,581,839	3,810,966	6.4	12,884,947
Ontario	17,310,405	18,247,316	5.4	9,478,213	9,591,634	1.2	7,801,701	7,926,703	1.6	35,765,653
Manitoba	3,051,452	3,367,061	10.3	432,983	448,426	3.6	95,764	102,551	7.1	3,918,038
Saskatchewan	1,563,163	1,781,062	13.9	139,668	163,986	17.4	46,689	47,374	1.5	1,992,422
Alberta	11,536,407	13,562,755	17.6	2,369,177	2,797,554	18.1	928,888	1,011,747	8.9	17,372,056
British Columbia	12,964,594	13,853,130	6.9	4,157,713	4,370,001	5.1	3,719,082	3,676,562	-1.1	21,899,693
Northwest Territories	551,147	477,977	-13.3	717	885	23.4	0	0	...	478,862
Yukon Territory	130,580	152,888	17.1	4,590	4,776	4.1	6,341	4,592	-27.6	162,256
Nunavut	289,361	296,754	2.6	0	0	...	97	513	428.9	297,267
<b>Total Canada</b>	<b>58,290,423</b>	<b>63,307,834</b>	<b>8.6</b>	<b>19,860,851</b>	<b>20,843,675</b>	<b>4.9</b>	<b>16,453,731</b>	<b>16,873,864</b>	<b>2.6</b>	<b>101,025,373</b>

**Table 2-1**  
**Tonnes of cargo loaded and unloaded on major scheduled services and major charter services — For the top 50 airports**

Airport	Loaded	Unloaded	Total		Change
			2005	2006	
	tonnes				percent
Abbotsford, British Columbia	x	x	60.3	x	x
Berens River, Manitoba	x	x	x	x	x
Calgary International, Alberta	27,350.4	30,973.1	56,447.7	58,323.5	3.3
Charlottetown, Prince Edward Island	x	x	610.8	x	x
Cold Lake, Alberta	x	x	x	x	x
Edmonton International, Alberta	2,430.4	4,207.8	4,648.0	6,638.3	42.8
Fort Chipewyan, Alberta	x	x	271.1	x	x
Fort McMurray, Alberta	409.4	182.3	291.9	591.6	102.7
Gamèti/Rae Lakes, Northwest Territories	x	x	x	x	x
Gander International, Newfoundland and Labrador	1,165.9	1,247.4	4,323.7	2,413.3	-44.2
Gods Lake Narrows, Manitoba	x	x	7.3	x	x
Gods River, Manitoba	x	x	2.1	x	x
Halifax International, Nova Scotia	15,521.8	4,951.3	13,706.8	20,473.1	49.4
Hamilton, Ontario	6,656.0	5,816.3	12,303.2	12,472.2	1.4
Ile-aux-Grues, Quebec	x	x	x	x	x
Island Lake, Manitoba	x	x	x	x	x
Kelowna, British Columbia	x	x	149.2	x	x
La Ronge, Saskatchewan	x	x	x	x	x
Lac Brochet, Manitoba	x	x	x	x	x
London, Ontario	84.8	62.6	370.2	147.4	-60.2
Lutsel'k'e, Northwest Territories	x	x	x	x	x
Moncton/Greater Moncton International, New Brunswick	702.9	939.4	1,015.0	1,642.3	61.8
Montmagny, Quebec	x	x	x	x	x
Montréal/Mirabel International, Quebec	19,085.0	22,895.0	41,241.2	41,980.1	1.8
Montréal/Pierre Elliott Trudeau International, Quebec	31,797.9	45,062.4	77,199.1	76,860.3	-0.4
Ottawa/Macdonald-Cartier International, Ontario	4,329.6	4,000.5	7,909.6	8,330.1	5.3
Oxford House, Manitoba	x	x	19.8	x	x
Prince Albert, Saskatchewan	x	x	x	x	x
Prince George, British Columbia	x	x	98.2	x	x
Québec/Jean Lesage International, Quebec	1,446.1	1,436.6	3,073.4	2,882.7	-6.2
Rankin Inlet, Nunavut	x	x	x	x	x
Red Sucker Lake, Manitoba	x	x	x	x	x
Regina International, Saskatchewan	x	x	434.2	x	x
Saskatoon/John G Diefenbaker International, Saskatchewan	400.1	643.5	533.0	1,043.6	95.8
Shamattawa, Manitoba	x	x	x	x	x
Sioux Lookout, Ontario	x	x	38.5	x	x
St John's International, Newfoundland and Labrador	1,025.2	2,078.2	3,107.3	3,103.3	-0.1
St Theresa Point, Manitoba	x	x	x	x	x
Stephenville, Newfoundland and Labrador	x	x	x	x	x
Stony Rapids, Saskatchewan	x	x	x	x	x
Thompson, Manitoba	x	x	48.7	x	x
Thunder Bay, Ontario	501.9	851.2	909.2	1,353.1	48.8
Toronto/Lester B Pearson International, Ontario	161,215.1	205,514.2	322,707.3	366,729.3	13.6
Trenton, Ontario	x	x	824.4	x	x
Vancouver International, British Columbia	76,186.5	73,807.2	147,996.2	149,993.7	1.3
Victoria International, British Columbia	x	x	2,513.1	x	x
Windsor, Ontario	22.5	208.2	241.5	230.7	-4.5
Winnipeg/James Armstrong Richardson International, Manitoba	7,981.7	8,105.6	11,584.8	16,087.3	38.9
Winnipeg/St Andrews, Manitoba	x	x	78.6	x	x
Yellowknife, Northwest Territories	x	x	364.4	x	x
<b>Subtotal</b>	<b>363,568.1</b>	<b>420,594.8</b>	<b>715,311.0</b>	<b>784,162.8</b>	<b>9.6</b>
Others	639.9	1,634.5	795.3	2,274.3	186.0
<b>Total Canada</b>	<b>364,208.0</b>	<b>422,229.3</b>	<b>716,106.3</b>	<b>786,437.1</b>	<b>9.8</b>

**Table 2-2**  
**Tonnes of cargo loaded and unloaded on major scheduled services and major charter services — By sector**

Airport	Loaded			Unloaded			Total
	Domestic	Transborder	Other International	Domestic	Transborder	Other International	
	tonnes						
Abbotsford, British Columbia	x	x	x	x	x	x	x
Berens River, Manitoba	x	x	x	x	x	x	x
Calgary International, Alberta	3,629.8	13,201.5	10,519.1	7,620.5	17,037.0	6,315.6	58,323.5
Charlottetown, Prince Edward Island	x	x	x	x	x	x	x
Cold Lake, Alberta	x	x	x	x	x	x	x
Edmonton International, Alberta	1,543.6	163.7	723.1	3,792.6	175.9	239.3	6,638.3
Fort Chipewyan, Alberta	x	x	x	x	x	x	x
Fort McMurray, Alberta	409.4	0.0	0.0	166.5	15.8	0.0	591.6
Gamëti/Rae Lakes, Northwest Territories	x	x	x	x	x	x	x
Gander International, Newfoundland and Labrador	0.5	253.4	912.0	0.5	587.5	659.4	2,413.3
Gods Lake Narrows, Manitoba	x	x	x	x	x	x	x
Gods River, Manitoba	x	x	x	x	x	x	x
Halifax International, Nova Scotia	6,669.3	760.7	8,091.8	3,526.7	867.2	557.5	20,473.1
Hamilton, Ontario	2,529.4	4,120.7	5.8	1,324.7	4,484.9	6.7	12,472.2
Ile-aux-Grues, Quebec	x	x	x	x	x	x	x
Island Lake, Manitoba	x	x	x	x	x	x	x
Kelowna, British Columbia	x	x	x	x	x	x	x
La Ronge, Saskatchewan	x	x	x	x	x	x	x
Lac Brochet, Manitoba	x	x	x	x	x	x	x
London, Ontario	7.7	74.1	3.0	3.9	45.8	12.9	147.4
Lutsel'k'e, Northwest Territories	x	x	x	x	x	x	x
Moncton/Greater Moncton International, New Brunswick	621.6	76.0	5.4	857.4	82.0	0.0	1,642.3
Montmagny, Quebec	x	x	x	x	x	x	x
Montréal/Mirabel International, Quebec	1,269.9	17,747.3	67.9	1,176.4	21,573.7	144.9	41,980.1
Montréal/Pierre Elliott Trudeau International, Quebec	5,179.2	3,348.4	23,270.4	12,003.1	3,857.8	29,201.5	76,860.3
Ottawa/Macdonald-Cartier International, Ontario	1,108.0	2,525.6	696.0	1,194.8	2,225.0	580.6	8,330.1
Oxford House, Manitoba	x	x	x	x	x	x	x
Prince Albert, Saskatchewan	x	x	x	x	x	x	x
Prince George, British Columbia	x	x	x	x	x	x	x
Québec/Jean Lesage International, Quebec	975.4	470.7	0.0	975.3	461.3	0.0	2,882.7
Rankin Inlet, Nunavut	x	x	x	x	x	x	x
Red Sucker Lake, Manitoba	x	x	x	x	x	x	x
Regina International, Saskatchewan	x	x	x	x	x	x	x
Saskatoon/John G Diefenbaker International, Saskatchewan	400.1	0.0	0.0	643.3	0.2	0.0	1,043.6
Shamattawa, Manitoba	x	x	x	x	x	x	x
Sioux Lookout, Ontario	x	x	x	x	x	x	x
St John's International, Newfoundland and Labrador	590.7	164.2	270.2	1,404.6	203.4	470.1	3,103.3
St Theresa Point, Manitoba	x	x	x	x	x	x	x
Stephenville, Newfoundland and Labrador	x	x	x	x	x	x	x
Stony Rapids, Saskatchewan	x	x	x	x	x	x	x
Thompson, Manitoba	x	x	x	x	x	x	x
Thunder Bay, Ontario	501.9	0.0	0.0	851.2	0.0	0.0	1,353.1
Toronto/Lester B Pearson International, Ontario	29,821.2	55,916.7	75,477.1	27,296.2	79,991.8	98,226.3	366,729.3
Trenton, Ontario	x	x	x	x	x	x	x
Vancouver International, British Columbia	25,911.7	17,470.3	32,804.5	14,653.8	25,423.8	33,729.6	149,993.7
Victoria International, British Columbia	x	x	x	x	x	x	x
Windsor, Ontario	4.9	16.0	1.6	0.9	202.5	4.9	230.7
Winnipeg/James Armstrong Richardson International, Manitoba	5,369.1	2,610.1	2.5	3,558.0	4,545.6	2.0	16,087.3
Winnipeg/St Andrews, Manitoba	x	x	x	x	x	x	x
Yellowknife, Northwest Territories	x	x	x	x	x	x	x
<b>Subtotal</b>	<b>91,199.1</b>	<b>118,920.4</b>	<b>153,448.5</b>	<b>88,547.5</b>	<b>161,808.1</b>	<b>170,239.2</b>	<b>784,162.8</b>
Others	545.4	80.4	14.1	1,497.3	62.8	74.3	2,274.3
<b>Total Canada</b>	<b>91,744.5</b>	<b>119,000.8</b>	<b>153,462.6</b>	<b>90,044.8</b>	<b>161,870.9</b>	<b>170,313.5</b>	<b>786,437.1</b>

Table 2-3

**Tonnes of cargo loaded and unloaded on major scheduled services and major charter services — By type of service, by province and territory**

Province or Territory	Airports	Major scheduled services	Major charter services	Total		Change
				2005	2006	
	number		tonnes			percent
Newfoundland and Labrador	5	3,048.0	2,698.1	7,599.2	5,746.0	-24.4
Prince Edward Island	1	x	x	610.8	x	x
Nova Scotia	2	x	x	13,708.3	x	x
New Brunswick	3	1,717.5	0.6	1,066.0	1,718.1	61.2
Quebec	9	117,404.8	4,937.3	121,527.8	122,342.1	0.7
Ontario	36	344,228.2	46,247.4	345,534.4	390,475.6	13.0
Manitoba	28	21,212.7	0.0	11,762.5	21,212.7	80.3
Saskatchewan	11	2,692.8	0.0	976.6	2,692.8	175.7
Alberta	12	56,059.0	10,243.6	61,693.7	66,302.6	7.5
British Columbia	14	153,240.2	252.7	150,879.1	153,492.9	1.7
Northwest Territories	7	1,010.0	10.3	723.9	1,020.3	40.9
Yukon Territory	2	2.8	17.5	24.2	20.3	-16.2
Nunavut	9	136.6	21.3	0.0	157.9	...
<b>Total Canada</b>	<b>139</b>	<b>718,157.2</b>	<b>68,279.9</b>	<b>716,106.3</b>	<b>786,437.1</b>	<b>9.8</b>

**Table 3**  
**Top 50 airports according to arriving and departing flights for scheduled services and major charter services**

Airport	Passengers flights			Cargo flights			Total		
	2005	2006	Change	2005	2006	Change	2005	2006	Change
	number	percent		number	percent		number	percent	
Abbotsford, British Columbia	5,422	7,671	41.5	0	2	...	5,422	7,673	41.5
Calgary International, Alberta	140,780	149,661	6.3	2,342	2,701	15.3	143,122	152,362	6.5
Campbell River, British Columbia	7,327	5,971	-18.5	0	0	...	7,327	5,971	-18.5
Charlottetown, Prince Edward Island	5,166	5,590	8.2	373	479	28.4	5,539	6,069	9.6
Churchill, Manitoba	4,923	5,661	15.0	0	46	...	4,923	5,707	15.9
Comox, British Columbia	9,704	8,869	-8.6	0	0	...	9,704	8,869	-8.6
Deer Lake, Newfoundland and Labrador	11,125	10,870	-2.3	0	0	...	11,125	10,870	-2.3
Edmonton International, Alberta	69,521	82,223	18.3	15	94	526.7	69,536	82,317	18.4
Fort Hope, Ontario	11,973	12,591	5.2	5	26	420.0	11,978	12,617	5.3
Fort McMurray, Alberta	9,891	13,257	34.0	223	638	186.1	10,114	13,895	37.4
Fort St John, British Columbia	6,838	6,548	-4.2	0	0	...	6,838	6,548	-4.2
Fredericton, New Brunswick	6,734	7,277	8.1	0	0	...	6,734	7,277	8.1
Goose Bay, Newfoundland and Labrador	8,790	8,709	-0.9	5	4	-20.0	8,795	8,713	-0.9
Grande Prairie, Alberta	9,622	12,918	34.3	0	12	...	9,622	12,930	34.4
Halifax International, Nova Scotia	50,462	52,494	4.0	70	238	240.0	50,532	52,732	4.4
Hamilton, Ontario	6,006	8,381	39.5	932	900	-3.4	6,938	9,281	33.8
Inuvik/Mike Zubko, Northwest Territories	5,542	5,904	6.5	0	0	...	5,542	5,904	6.5
Iqaluit, Nunavut	7,182	6,426	-10.5	0	2	...	7,182	6,428	-10.5
Kelowna, British Columbia	19,896	20,061	0.8	1	1	0.0	19,897	20,062	0.8
Lansdowne House, Ontario	7,019	7,430	5.9	9	5	-44.4	7,028	7,435	5.8
London, Ontario	11,450	11,894	3.9	102	50	-51.0	11,552	11,944	3.4
Moncton/Greater Moncton International, New Brunswick	10,880	11,390	4.7	408	572	40.2	11,288	11,962	6.0
Montréal/Pierre Elliott Trudeau International, Quebec	151,460	156,304	3.2	750	1,031	37.5	152,210	157,335	3.4
Nakina, Ontario	14,932	15,058	0.8	0	0	...	14,932	15,058	0.8
Nanaimo/Harbour, British Columbia	17,692	18,738	5.9	0	0	...	17,692	18,738	5.9
Ottawa/Macdonald-Cartier International, Ontario	63,349	62,387	-1.5	517	554	7.2	63,866	62,941	-1.4
Prince George, British Columbia	10,002	7,701	-23.0	0	1	...	10,002	7,702	-23.0
Québec/Jean Lesage International, Quebec	30,163	31,514	4.5	976	854	-12.5	31,139	32,368	3.9
Rankin Inlet, Nunavut	5,891	7,123	20.9	0	69	...	5,891	7,192	22.1
Red Lake, Ontario	6,718	6,547	-2.5	1	28	2,700.0	6,719	6,575	-2.1
Regina International, Saskatchewan	15,775	17,742	12.5	0	11	...	15,775	17,753	12.5
Saint John, New Brunswick	7,225	7,035	-2.6	1	1	0.0	7,226	7,036	-2.6
Saskatoon/John G Diefenbaker International, Saskatchewan	17,770	20,035	12.7	2	143	7,050.0	17,772	20,178	13.5
Sault Ste Marie, Ontario	6,983	7,147	2.3	0	0	...	6,983	7,147	2.3
Sept-Îles, Quebec	9,064	10,065	11.0	0	0	...	9,064	10,065	11.0
Sioux Lookout, Ontario	15,492	18,011	16.3	2	51	2,450.0	15,494	18,062	16.6
St John's International, Newfoundland and Labrador	21,304	21,262	-0.2	7	54	671.4	21,311	21,316	0.0
Sudbury, Ontario	9,810	10,568	7.7	0	0	...	9,810	10,568	7.7
Thompson, Manitoba	14,942	11,379	-23.8	15	380	2,433.3	14,957	11,759	-21.4
Thunder Bay, Thunder Bay	24,352	27,229	11.8	393	516	31.3	24,745	27,745	12.1
Timmins, Ontario	7,558	6,971	-7.8	0	0	...	7,558	6,971	-7.8
Toronto/Lester B Pearson International, Ontario	353,388	360,709	2.1	4,727	4,997	5.7	358,115	365,706	2.1
Vancouver Harbour, British Columbia	40,098	40,774	1.7	0	0	...	40,098	40,774	1.7
Vancouver International, British Columbia	221,927	220,063	-0.8	3,217	3,611	12.2	225,144	223,674	-0.7
Victoria Harbour, British Columbia	35,242	35,982	2.1	0	0	...	35,242	35,982	2.1
Victoria International, British Columbia	30,995	30,726	-0.9	1,343	1,407	4.8	32,338	32,133	-0.6
Wabush, Newfoundland and Labrador	4,173	5,444	30.5	0	0	...	4,173	5,444	30.5
Webequie, Ontario	5,477	6,125	11.8	8	14	75.0	5,485	6,139	11.9
Winnipeg/James Armstrong Richardson International, Manitoba	73,566	71,231	-3.2	1,602	2,323	45.0	75,168	73,554	-2.1
Yellowknife, Northwest Territories	16,384	17,204	5.0	69	25	-63.8	16,453	17,229	4.7
<b>Subtotal</b>	<b>1,657,985</b>	<b>1,712,870</b>	<b>3.3</b>	<b>18,115</b>	<b>21,840</b>	<b>20.6</b>	<b>1,676,100</b>	<b>1,734,710</b>	<b>3.5</b>
Others	371,880	388,257	4.4	3,844	6,707	74.5	375,724	394,964	5.1
<b>Total Canada</b>	<b>2,029,865</b>	<b>2,101,127</b>	<b>3.5</b>	<b>21,959</b>	<b>28,547</b>	<b>30.0</b>	<b>2,051,824</b>	<b>2,129,674</b>	<b>3.8</b>

## Services offered by carriers - 2006

---

### Scheduled Services

**Name**

Aeropro

Aerosvit Airlines

Air Canada

Air China

Air Creebec (1994) Inc.

Air France

Air Georgian Limited

Air India

Air Inuit (1985) Ltd.

Air Jamaica

Air Mikisew Ltd.

Air Norterra Inc./Canadian North

Air North Charter Training Ltd.

Air Pacific

Air Satellite Inc.

Air St-Pierre

Air Tahoma Inc.

Air Tindi Ltd.

Air Transat A.T. Inc.

Air Wisconsin

Airspeed Aviation Inc.

Aklak Air

Alaska Airlines



Alitalia  
America West Airlines Inc.  
American Airlines  
American Eagle  
Amigo Airways Corp.  
Asiana Airlines  
Atlantic Southeast Airlines  
Austrian Airlines  
Aviation Starlink Inc.  
Baxter Aviation Ltd.  
Bearskin Airlines  
Beaver Air Services Limited Partnership  
Blue Water Aviation Services Ltd.  
Bradley Air Services Limited/First Air  
British Airways  
Buffalo Airways Ltd.  
Calm Air International Ltd.  
Canjet Airlines  
Cargojet Airways Ltd.  
Cargolux Airlines International  
Caribbean Airlines  
Cathay Pacific Airways  
Central Mountain Air Ltd.  
Chautauqua Airlines  
China Airlines  
China Eastern Airlines  
Comair  
Condor Flugdienst GMBH  
Continental Airlines

Corilair Charters Limited  
Corpac Canada Ltd.  
Corse Air Intl.  
Craig Air  
Cubana Airlines  
Czech Airlines  
Delta Air Lines  
Egyptair  
El Al Israel Airlines  
Empire Airlines  
Etihad Airways  
EVA Airways Corporation  
Exploits Valley Air Services Ltd.  
Express Jet Airlines dba CO Express  
Fedex - Federal Express  
Finnair  
Griffing Flying Service  
Harbour Air Ltd.  
Hawkair Aviation Services Ltd.  
Helijet International Inc.  
Horizon Air  
Integra Air Inc.  
Japan Airlines  
Jazz Air Inc.  
K D Air Corporation  
Keewatin Air Ltd.  
Kenmore Air  
Kenn Borek Air Ltd.  
Keystone Air Services Ltd.

KLM-Royal Dutch Airlines  
Korean Air  
Labrador Airways Limited  
LACSA  
LOT-Polish Airlines  
LTU-Lufttransport Unternehmen  
Lufthansa German Airlines  
Malev-Hungarian Airlines  
Martinair Holland  
Max Aviation Inc.  
Mesa Airlines  
Mesaba Aviation  
Mexicana de Aviacion  
Midwest Express Airlines  
Mission Air  
Montmagny Air Service Inc.  
Morningstar Air Express Inc.  
Nakina Outpost Camps & Air Service Ltd.  
North American Charters 2000  
Northern Thunderbird Air Inc./NT Air  
Northway Aviation Ltd.  
Northwest Airlines  
Northwest Airlink  
Northwestern Air Lease  
North-Wright Airways Ltd.  
Olympic Airways  
Orca Airways Ltd.  
Pacific Coastal Airlines Limited  
Pakistan International

Pascan Aviation Inc.  
Peace Air Limited  
Perimeter Aviation Ltd.  
Philippine Airlines Inc.  
Porter Airlines  
Provincial Airlines  
PSA Airlines Inc.  
Qantas Airways  
Quikair Inc.  
Royal Air Maroc  
Singapore Airlines  
Sky West Airlines  
Skyway Airlines  
Swanberg Air Inc.  
Swiss International Air Lines Ltd.  
Thomas Cook Airlines (UK) Ltd.  
Tofino Air Lines Ltd.  
Transaero  
Transwest Air  
United Airlines  
UPS - United Parcel Service  
US Air Express  
US Airways Inc.  
Vancouver Island Air Ltd.  
Wasaya Airways Limited Partnership  
West Coast Air Ltd.  
West Jet  
West Wind Aviation Inc.  
Zoom Airlines Incorporated

## Major Charter Services

**Name**

ACASS Canada Ltd.

ACM Aviation

Aeromexico

Air Canada

Air Foyle

Air St-Pierre

Air Transat A.T. Inc.

Airborne Inc.

Alaska Airlines

American Airlines

Ameristar Air Cargo Inc.

ATA Airlines Inc.

Bradley Air Services Limited/First Air

Canjet Airlines

Capital Cargo International Airlines

Cargolux Airlines International

Centaero Aviation Ltd.

Continental Airlines

Corsair International

DB Aviation

Delta Air Lines

Executive Flight Inc.

Express Net Airlines LLC

Fedex - Federal Express

Flight Options (Johnson City, NY)

Fox Aviation

Gemini Air Cargo

Gulf & Carribean Air Cargo

HMY Airways Inc.

Independent Flight Leasing

Jazz Air Inc.

Jet Solutions LLC.

K. Services

Kalitta Air LLC.

Key Air Inc.

London Air Services Limited

Lufthansa German Airlines

Lynden Air Cargo LLC

Martinair Holland

Miami Air International

Midwest Express Airlines

Monarch Airlines (UK)

Mountain Air Cargo

Mytravel Airways

New World Aviation Inc.

New World Jet Aviation Corp.

Nolinor Aviation Inc.

North American Airlines

Pace Airlines Inc.

Pentastar Aviation

Pinnacle Air Group

Porter Airlines Inc.

Sata Internacional

Sky King Ltd.

Skycharter Ltd.

Skyservice Airlines Inc.

Sunwing

Taughannock Aviation

Thomas Cook Airlines (UK) Ltd.

Tulsa Beechcraft Inc

USA Jet Airlines Inc.

Vega Airlines

Volga Dnepr

Voyageur Airways Ltd.

West Jet

Zoom Airlines Incorporated

# Methodology

---

## Survey universe

### Coverage

The airport activity data presented in this publication were collected via three surveys conducted by the Aviation Statistics Centre of Statistics Canada as well as administrative data provided by Transport Canada.

### Daily Airport Activities Survey

This survey covers the scheduled domestic and international services operated by the Level I Canadian air carriers. Data concerning other Canadian carriers and foreign carriers operating scheduled international services into and out of Canada using aircraft with a maximum take-off weight on wheels greater than 30,000 kg are also included. The survey data are filed on a census basis and are reported in the traffic flow format.

### System Passenger Origin and Destination Survey

This survey covers the scheduled services operated within, into or out of Canada by regional and local Canadian air carriers and the scheduled services operated into or out of Canada by foreign air carriers using aircraft with maximum take-off weight on wheels less than 30,000 kg.

The survey data are collected on a census basis via two forms. The first form collects data on a system origin and destination basis, (that is, the passengers' origin and destination on the reporting carrier's system) from Canadian carriers assigned to Reporting Levels II, III, IV and V. Foreign air carriers operating unit toll international scheduled services using fixed wing aircraft having a maximum take-off weight on wheels not greater than 30,000 kg also report this form. The Aviation Statistics Centre converts the data into the enplaned and deplaned format.

The second form is reported by Canadian Level II carriers operating scheduled services that in the past two years enplaned more than 300,000 revenue passengers. The data are reported in the enplaned and deplaned format, by site.

### Charter On-Flight Origin and Destination Survey

This survey covers the charter services operated by Canadian air carriers within Canada or by Canadian or foreign air carriers between Canada and foreign countries other than the United States using aircraft having a maximum take-off weight on wheels greater than 15,900 kg. Likewise, all commercial charter services operated between Canada and the United States using aircraft with maximum take-off weight on wheels greater than 8,200 kg are also reported.

Data are reported on a census basis and are reported in the on-flight origin and destination format. That is, the passengers are reported according to their own origin and destination and not necessarily according to the routing of the flight.

### Survey methodology

Survey data are reported using two methods. Most carriers with a high volume of traffic at Canadian airports report their information on a computer listing or tape. The remaining carriers report their data on questionnaires.



For most of the American and other foreign carriers, the data are reported by representatives of the carriers who are located at the Canadian airports at which they are operating. Carriers reporting on computer tapes compile the required data at their head offices.

Upon receipt of the participating carriers' data, in whatever form, the Aviation Statistics Centre (ASC) applies its own edit programs to the data. These programs conduct quality checks to determine the quality and legitimacy of the information contained within flight records. Aviation Statistics Centre personnel then correct invalid entries.

## Data quality and limitations

---

The air carriers must file their data in accordance with the reporting procedures prepared by the Aviation Statistics Centre. The quality of the data may be affected by non-sampling errors such as coverage error, response error or coding error.

Users of the airport activity data should be aware of the following limitations:

- In order to publish timely data, the Aviation Statistics Centre estimates data that are not received from the participating carriers in time for the publication. The Aviation Statistics Centre makes every effort to collect the delinquent reports and to include these data in the database. When the actual data are received prior to the release of the publication, the actual data are included in the publication and the subsequent year's publication. For this reason, the data for the current reference period are considered **preliminary**.
- From time to time, participating carriers refile or update previous data submissions which the Aviation Statistics Centre incorporates into its databases. When these data are received prior to the publication, the revisions will be reflected in the data and in the subsequent year's publication.
- Passenger flights which carry cargo on them are classified as passenger flights for the purpose of this publication. The cargo carried on these passenger flights is defined as belly-hold cargo. The belly-hold cargo data are included with the pure cargo data in the cargo tables presented in Section 2.
- Cargo data are not collected for the smaller scheduled services.
- Charter data are not collected on the smaller charter operations.
- The data presented in this publication are broken down into three categories, domestic, transborder and other international. The data are assigned to the categories for each flight segment according to the next stop (for departures) and the last stop (for arrivals) of the aircraft. For example, consider a flight with a routing of Vancouver-Edmonton-Amsterdam. The departure of the flight from Vancouver would be considered domestic, as would the arrival at Edmonton. The departure of the flight from Edmonton for Amsterdam would be considered as other international since the next stop of the aircraft is a foreign point.
- Effective January 1, 1988, data for non-revenue passengers and mail are no longer collected for the major scheduled services.

# Appendix I

---

## Glossary

**Arriving:** Traffic (flights, passengers and cargo) which lands at an airport in Canada.

**Cargo:** All freight, air express and excess baggage for which any tariff charge is assessed. Air cargo does not include mail and provisions, or passenger baggage for which no charge is assessed.

**Charter transportation:** The transportation of passengers and/or goods by aircraft where a person other than the air carrier operating the aircraft, or its agent, contracts for a block of seats or a portion of cargo capacity for that person's own use or for resale, in whole or in units, to members of the public. The entire capacity of the aircraft is disposed of in this manner.

### Classification in reporting levels - 2000

- **Level I.** This includes every Canadian air carrier not classified in report level VI that, in each of the two calendar years immediately preceding the report year, transported at least 1,000,000 revenue passengers or at least 200,000 tonnes of revenue goods.
- **Level II.** This includes every Canadian air carrier not classified in report level VI that, in each of the two calendar years immediately preceding the report year, transported 100,000 revenue passengers or more, but fewer than 1,000,000 revenue passengers, or 30 000 tonnes of revenue goods or more but less than 200 000 tonnes of revenue goods.
- **Level III.** This includes every Canadian air carrier not classified in report level VI that, in each of the two calendar years immediately preceding the report year, realized annual gross revenues of \$1,000,000 or more for the air services for which the air carrier held a licence.
- **Level IV.** Not applicable.
- **Level V.** This includes every Canadian air carrier not classified in report level I, II, III or VI that, in each of the two calendar years immediately preceding the report year, realized annual gross revenues of less than \$1,000,000 for the air services for which the air carrier held a licence.
- **Level VI.** Every Canadian air carrier that, in the report year, operated the air service for which the air carrier holds a licence for the sole purpose of serving the needs of a lodge operation.

**Departing:** Traffic (flights, passengers and cargo) which takes off from an airport in Canada.

**Deplaned:** Traffic (passengers and cargo) which lands and disembarks at an airport in Canada.

**Domestic:** Traffic travelling between two airports in Canada.

**Enplaned:** Traffic (passengers and cargo) which embarks and takes off from an airport in Canada.

**MCTOW:** The maximum certificated take-off weight for aircraft as shown in the aircraft flight manual referred to in the aircraft's Certificate of Airworthiness issued by the competent Canadian or foreign authority.

**Other international:** Traffic between an airport in a foreign country (excluding the United States) and an airport in Canada.

**Revenue passengers:** A person receiving air transportation from an air carrier for which remuneration is received by the air carrier. Air carrier employees or others receiving air transportation against whom token service charges

are levied are not considered as revenue passengers. Infants for whom a token fare is charged are not counted as passengers.

**Transborder:** Traffic between an airport in the United States (including Alaska, Hawaii and Puerto Rico) and an airport in Canada.