

Employment Insurance, November 2024

Released at 8:30 a.m. Eastern time in *The Daily*, Thursday, January 23, 2025

In November, 482,000 (-0.9%; -4,200) Canadians received regular Employment Insurance (EI) benefits, little changed from October and down from the recent 495,000 peak recorded in August (-13,000).

On a year-over-year basis, the number of regular EI beneficiaries was up by 15,000 (+3.2%) in November. Data from the Labour Force Survey indicate that compared with November 2023, the unemployment rate was up 1.0 percentage points and the number of unemployed people who had been laid off increased to 556,000 (+16.8%; +80,000) (not seasonally adjusted).

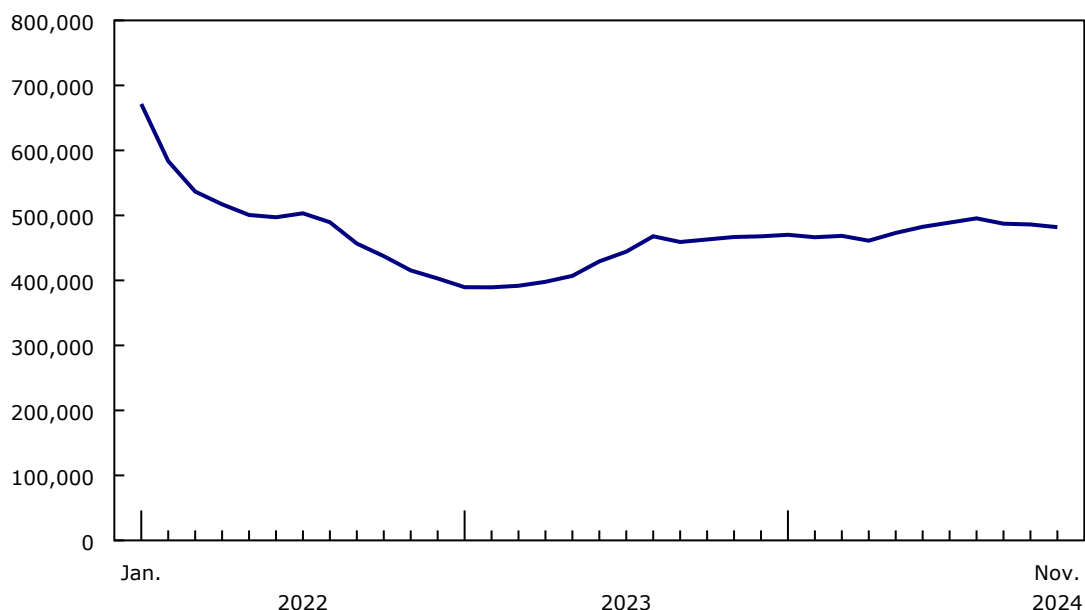
In general, variations in the number of EI beneficiaries can reflect changes in the circumstances of different groups, including those becoming beneficiaries, those going back to work, those exhausting their regular benefits, and those no longer receiving benefits for other reasons.

To be eligible for regular EI benefits, one must have contributed to the EI program, have a valid job separation (for example, were laid off or quit for just cause), and have accumulated enough insurable hours.

Chart 1

Number of regular Employment Insurance beneficiaries little changed in November

number of regular Employment Insurance beneficiaries



Source(s): Employment Insurance Statistics (2604), table 14-10-0011-01.

The number of regular Employment Insurance recipients down for youth and core-aged men

In November, the number of EI recipients receiving regular benefits fell among youth aged 15 to 24 (-2.3%; -1,100), largely among young men, and fell slightly among core-aged (25 to 54 years) men (-1.0%; -2,000). It was little changed for the other major demographic groups.



Statistics Canada
Statistique Canada

Canada

Compared with a year earlier, more men and women aged 55 and older (+6.3%; +7,700), core-aged women (+4.2%; +4,600) and young men (+3.3%; +1,000) received regular EI benefits in November.

Fewer regular Employment Insurance recipients in six provinces in November, led by Quebec and Alberta

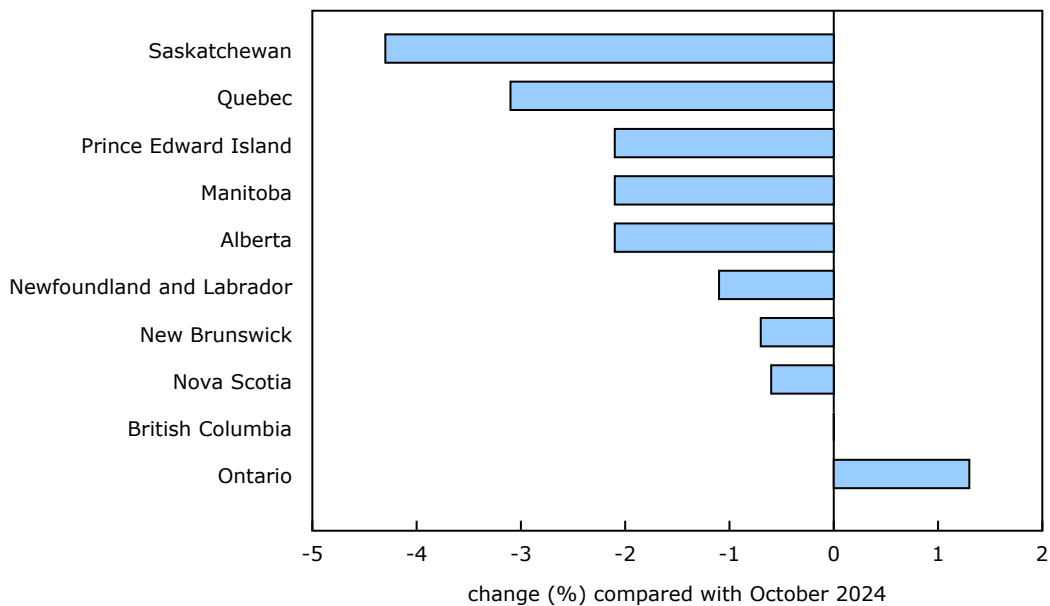
In November, the number of regular EI recipients decreased in Quebec (-3,500; -3.1%), Alberta (-1,200; -2.1%), Saskatchewan (-600; -4.3%), Manitoba (-400; -2.1%), Newfoundland and Labrador (-300; -1.1%) and Prince Edward Island (-200; -2.1%).

The decline in Quebec was especially among core-aged (-2,100; -3.1%) recipients. Despite the decrease in November, there were 2,200 (+2.1%) more recipients receiving regular EI benefits in the province compared with 12 months earlier.

In Alberta, the decline in November was mainly among men (-1,000; -2.9%). Compared with November 2023, the number of recipients in Alberta receiving regular EI benefits was up slightly (+700; +1.3%).

Ontario (+1.3%; +2,000) was the lone province with more recipients receiving regular EI benefits in November. On a year-over-year basis, the number of people receiving regular benefits in Ontario was up by 11.0% (+16,000), the largest increase among all provinces.

Chart 2
Fewer regular Employment Insurance recipients in several provinces in November, while Ontario posts an increase



Source(s): Employment Insurance Statistics (2604), table 14-10-0011-01.

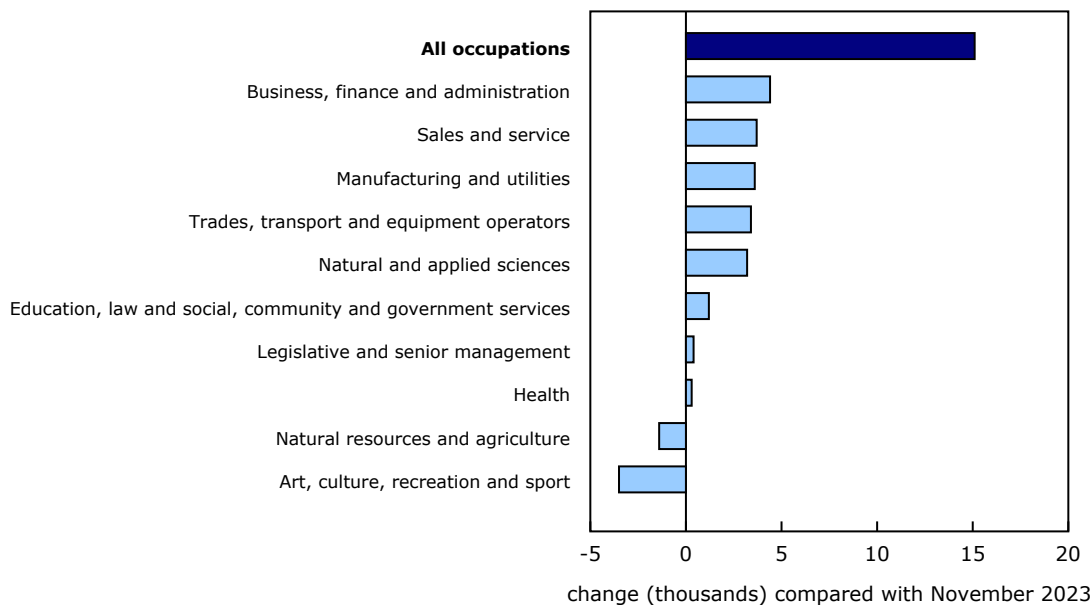
The number of regular Employment Insurance beneficiaries up in several major occupational groups

In November, the largest year-over-year increase in the number of regular EI recipients was recorded among those who last worked in business, finance and administration occupations (+4,400; +7.9%), followed by sales and service occupations (+3,700; +4.9%).

Over the same period, there were also increases in the number of regular EI recipients who last worked in manufacturing and utilities (+3,600; +10.1%), and in trades, transport and equipment operators and related occupations (+3,400; +2.1%)—both mostly in Ontario. There were also notable increases in natural and applied sciences and related occupations (+3,200; +10.2%), and occupations in education, law and social, community and government services (+1,200; +2.5%).

On the other hand, year-over-year declines were recorded in November among regular EI recipients who last worked in art, culture, recreation and sport (-3,500; -21.2%) and in natural resources, agriculture and related production occupations (-1,400; -4.5%).

Chart 3
Largest 12-month increase in November in regular Employment Insurance recipients among those who last worked in business, finance and administration occupations, while fewer last worked in art, culture, recreation and sport



Source(s): Employment Insurance Statistics (2604), table 14-10-0456-01.

Sustainable Development Goals

On January 1, 2016, the world officially began implementing the [2030 Agenda for Sustainable Development](#)—the United Nations' transformative plan of action that addresses urgent global challenges over the following 15 years. The plan is based on 17 specific sustainable development goals.

Employment Insurance statistics are an example of how Statistics Canada supports reporting on global sustainable development goals. This release will be used to help measure the following goal:



Did you know we have a mobile app?

Download our mobile app and get timely access to data at your fingertips! The [StatsCAN](#) app is available for free on the [App Store](#) and on [Google Play](#).

Note to readers

Concepts and methodology

Employment Insurance (EI) statistics are produced from administrative data sources provided by Service Canada and Employment and Social Development Canada. These statistics may, from time to time, be affected by changes to the Employment Insurance Act or administrative procedures.

EI statistics indicate the number of people who received EI benefits and should not be confused with Labour Force Survey (LFS) data, which provide estimates of the total number of unemployed people. There is always a certain proportion of unemployed people who do not qualify for benefits. Some unemployed people have not contributed to the program because they have not worked in the past 12 months or their employment was not insured. Other unemployed people have contributed to the program, but do not meet the eligibility criteria, such as workers who left their jobs voluntarily or those who did not accumulate enough hours of work to receive benefits.

All data in this release are seasonally adjusted, unless otherwise specified. To model the effects of the COVID-19 pandemic, values for all series from March 2020 to December 2022 have been treated with a combination of level shifts and outliers to determine a seasonal pattern for seasonal adjustment. For more information on seasonal adjustment, see [Seasonally adjusted data – Frequently asked questions](#).

The number of regular EI beneficiaries for the current month and the previous month is subject to revision.

*The **number of beneficiaries** is all people who received regular EI benefits from November 10 to 16, 2024. This period coincides with the reference week of the LFS.*

*A **census metropolitan area (CMA)** and a **census agglomeration (CA)** are formed by one or more adjacent municipalities centred on a population centre. A CMA must have a total population of at least 100,000. A CA must have a population of at least 10,000. See [Standard Geographical Classification \(SGC\) 2021](#) for more information.*

Next release

Data on EI for December 2024 will be released on February 20, 2025.

Table 1
Beneficiaries receiving regular income benefits,¹ by province and territory, sex and age group –
Seasonally adjusted

	November 2023	October 2024 ^P	November 2024 ^P	October to November 2024	November 2023 to November 2024	October to November 2024	November 2023 to November 2024
	number			change		% change	
Canada							
Both sexes	466,770	486,070	481,860	-4,210	15,090	-0.9	3.2
15 to 24 years	43,330	45,480	44,420	-1,060	1,090	-2.3	2.5
25 to 54 years	300,390	308,950	306,680	-2,270	6,290	-0.7	2.1
55 years and over	123,050	131,640	130,770	-870	7,720	-0.7	6.3
Men	297,350	308,280	304,870	-3,410	7,520	-1.1	2.5
15 to 24 years	31,130	33,070	32,170	-900	1,040	-2.7	3.3
25 to 54 years	189,310	192,930	190,950	-1,980	1,640	-1.0	0.9
55 years and over	76,910	82,270	81,750	-520	4,840	-0.6	6.3
Women	169,430	177,790	176,990	-800	7,560	-0.4	4.5
15 to 24 years	12,200	12,410	12,250	-160	50	-1.3	0.4
25 to 54 years	111,080	116,020	115,720	-300	4,640	-0.3	4.2
55 years and over	46,140	49,360	49,020	-340	2,880	-0.7	6.2
Newfoundland and Labrador							
Both sexes	29,470	29,190	28,880	-310	-590	-1.1	-2.0
15 to 24 years	2,550	2,470	2,470	0	-80	0.0	-3.1
25 to 54 years	14,920	14,470	14,310	-160	-610	-1.1	-4.1
55 years and over	12,000	12,260	12,100	-160	100	-1.3	0.8
Men	18,030	18,120	17,960	-160	-70	-0.9	-0.4
Women	11,440	11,080	10,920	-160	-520	-1.4	-4.5
Prince Edward Island							
Both sexes	7,150	7,300	7,150	-150	0	-2.1	0.0
15 to 24 years	1,270	1,250	1,230	-20	-40	-1.6	-3.1
25 to 54 years	3,560	3,560	3,460	-100	-100	-2.8	-2.8
55 years and over	2,320	2,500	2,450	-50	130	-2.0	5.6
Men	4,400	4,560	4,400	-160	0	-3.5	0.0
Women	2,740	2,740	2,750	10	10	0.4	0.4
Nova Scotia							
Both sexes	21,810	22,410	22,280	-130	470	-0.6	2.2
15 to 24 years	2,120	2,120	2,080	-40	-40	-1.9	-1.9
25 to 54 years	12,880	13,110	12,940	-170	60	-1.3	0.5
55 years and over	6,810	7,170	7,260	90	450	1.3	6.6
Men	14,220	14,740	14,650	-90	430	-0.6	3.0
Women	7,590	7,670	7,630	-40	40	-0.5	0.5
New Brunswick							
Both sexes	24,180	26,050	25,860	-190	1,680	-0.7	6.9
15 to 24 years	1,980	2,230	2,240	10	260	0.4	13.1
25 to 54 years	13,360	14,230	14,110	-120	750	-0.8	5.6
55 years and over	8,830	9,590	9,510	-80	680	-0.8	7.7
Men	16,190	17,090	16,980	-110	790	-0.6	4.9
Women	7,990	8,960	8,880	-80	890	-0.9	11.1
Quebec							
Both sexes	103,980	109,660	106,210	-3,450	2,230	-3.1	2.1
15 to 24 years	7,470	8,110	7,600	-510	130	-6.3	1.7
25 to 54 years	64,970	67,410	65,310	-2,100	340	-3.1	0.5
55 years and over	31,550	34,150	33,290	-860	1,740	-2.5	5.5
Men	68,560	71,870	69,200	-2,670	640	-3.7	0.9
Women	35,430	37,790	37,000	-790	1,570	-2.1	4.4
Ontario							
Both sexes	143,190	156,920	158,940	2,020	15,750	1.3	11.0
15 to 24 years	13,370	14,620	14,720	100	1,350	0.7	10.1
25 to 54 years	98,160	106,260	107,740	1,480	9,580	1.4	9.8
55 years and over	31,660	36,040	36,490	450	4,830	1.2	15.3
Men	87,340	96,400	97,960	1,560	10,620	1.6	12.2
Women	55,850	60,530	60,980	450	5,130	0.7	9.2

Table 1 - continued

Beneficiaries receiving regular income benefits,¹ by province and territory, sex and age group – Seasonally adjusted

	November 2023	October 2024 ^P	November 2024 ^P	October to November 2024	November 2023 to November 2024	October to November 2024	November 2023 to November 2024
Manitoba							
Both sexes	17,020	16,310	15,960	-350	-1,060	-2.1	-6.2
15 to 24 years	2,400	2,270	2,130	-140	-270	-6.2	-11.3
25 to 54 years	10,990	10,440	10,220	-220	-770	-2.1	-7.0
55 years and over	3,630	3,610	3,610	0	-20	0.0	-0.6
Men	11,370	10,530	10,190	-340	-1,180	-3.2	-10.4
Women	5,660	5,780	5,770	-10	110	-0.2	1.9
Saskatchewan							
Both sexes	14,300	14,270	13,660	-610	-640	-4.3	-4.5
15 to 24 years	1,810	1,880	1,780	-100	-30	-5.3	-1.7
25 to 54 years	9,100	8,960	8,610	-350	-490	-3.9	-5.4
55 years and over	3,390	3,430	3,280	-150	-110	-4.4	-3.2
Men	9,570	9,460	8,960	-500	-610	-5.3	-6.4
Women	4,720	4,800	4,700	-100	-20	-2.1	-0.4
Alberta							
Both sexes	52,290	54,130	52,980	-1,150	690	-2.1	1.3
15 to 24 years	5,550	6,040	5,740	-300	190	-5.0	3.4
25 to 54 years	36,060	36,840	36,150	-690	90	-1.9	0.2
55 years and over	10,680	11,250	11,100	-150	420	-1.3	3.9
Men	34,740	35,090	34,070	-1,020	-670	-2.9	-1.9
Women	17,550	19,040	18,910	-130	1,360	-0.7	7.7
British Columbia							
Both sexes	51,630	47,500	47,490	-10	-4,140	-0.0	-8.0
15 to 24 years	4,650	4,270	4,200	-70	-450	-1.6	-9.7
25 to 54 years	35,150	32,060	32,110	50	-3,040	0.2	-8.6
55 years and over	11,820	11,170	11,180	10	-640	0.1	-5.4
Men	31,800	28,980	28,970	-10	-2,830	-0.0	-8.9
Women	19,830	18,510	18,520	10	-1,310	0.1	-6.6
Yukon							
Both sexes	590	560	550	-10	-40	-1.8	-6.8
15 to 24 years	50	50	50	0	0	0.0	0.0
25 to 54 years	380	360	350	-10	-30	-2.8	-7.9
55 years and over	160	140	150	10	-10	7.1	-6.3
Men	400	360	350	-10	-50	-2.8	-12.5
Women	190	190	190	0	0	0.0	0.0
Northwest Territories							
Both sexes	590	530	510	-20	-80	-3.8	-13.6
15 to 24 years	50	50	50	0	0	0.0	0.0
25 to 54 years	410	350	330	-20	-80	-5.7	-19.5
55 years and over	130	130	130	0	0	0.0	0.0
Men	390	370	360	-10	-30	-2.7	-7.7
Women	200	160	150	-10	-50	-6.3	-25.0
Nunavut							
Both sexes	410	380	390	10	-20	2.6	-4.9
15 to 24 years	40	30	30	0	-10	0.0	-25.0
25 to 54 years	310	300	290	-10	-20	-3.3	-6.5
55 years and over	60	50	60	10	0	20.0	0.0
Men	260	240	250	10	-10	4.2	-3.8
Women	150	140	140	0	-10	0.0	-6.7

^P preliminary

1. Includes people who receive regular income benefits, whether or not they participate in one of three employment benefit programs, namely the Skills Development Program, the Job Creation Partnerships Program and the Self-employment Program.

Source(s): Table 14-10-0011-01.

Table 2
Initial and renewal claims received, by province and territory – Seasonally adjusted

	November 2023	October 2024 ^P	November 2024 ^P	October to November 2024	November 2023 to November 2024	October to November 2024	November 2023 to November 2024
	number			change		% change	
Canada	262,650	261,980	259,710	-2,270	-2,940	-0.9	-1.1
Newfoundland and Labrador	8,450	8,120	8,540	420	90	5.2	1.1
Prince Edward Island	2,550	2,550	2,460	-90	-90	-3.5	-3.5
Nova Scotia	9,120	8,800	8,900	100	-220	1.1	-2.4
New Brunswick	9,800	9,760	9,520	-240	-280	-2.5	-2.9
Quebec	68,260	66,840	67,340	500	-920	0.7	-1.3
Ontario	88,230	88,850	88,180	-670	-50	-0.8	-0.1
Manitoba	9,800	9,490	9,130	-360	-670	-3.8	-6.8
Saskatchewan	7,040	7,210	6,890	-320	-150	-4.4	-2.1
Alberta	28,550	29,320	28,140	-1,180	-410	-4.0	-1.4
British Columbia	29,900	30,070	29,720	-350	-180	-1.2	-0.6
Yukon	270	280	250	-30	-20	-10.7	-7.4
Northwest Territories	290	300	260	-40	-30	-13.3	-10.3
Nunavut	190	200	210	10	20	5.0	10.5

^P preliminary

Source(s): Table [14-10-0005-01](#).

Table 3
Beneficiaries receiving regular income benefits,¹ by census metropolitan area² – Seasonally adjusted

	November 2023	October 2024 ^P	November 2024 ^P	October to November 2024	November 2023 to November 2024	October to November 2024	November 2023 to November 2024
	number		change		% change		
Newfoundland and Labrador							
Census metropolitan areas	4,070	4,110	4,200	90	130	2.2	3.2
St. John's	4,070	4,110	4,200	90	130	2.2	3.2
Census agglomerations	3,070	2,920	2,910	-10	-160	-0.3	-5.2
Outside census metropolitan areas and census agglomerations	22,330	22,160	21,770	-390	-560	-1.8	-2.5
Prince Edward Island							
Census agglomerations	2,650	2,730	2,670	-60	20	-2.2	0.8
Outside census metropolitan areas and census agglomerations	4,500	4,570	4,480	-90	-20	-2.0	-0.4
Nova Scotia							
Census metropolitan areas	4,990	5,200	5,220	20	230	0.4	4.6
Halifax	4,990	5,200	5,220	20	230	0.4	4.6
Census agglomerations	6,600	6,680	6,670	-10	70	-0.1	1.1
Outside census metropolitan areas and census agglomerations	10,220	10,520	10,390	-130	170	-1.2	1.7
New Brunswick							
Census metropolitan areas	5,650	6,260	6,280	20	630	0.3	11.2
Moncton	2,210	2,500	2,550	50	340	2.0	15.4
Saint John	2,050	2,190	2,200	10	150	0.5	7.3
Fredericton	1,400	1,570	1,520	-50	120	-3.2	8.6
Census agglomerations	3,180	3,420	3,400	-20	220	-0.6	6.9
Outside census metropolitan areas and census agglomerations	15,340	16,380	16,180	-200	840	-1.2	5.5
Quebec							
Census metropolitan areas	60,850	64,860	62,800	-2,060	1,950	-3.2	3.2
Saguenay	2,350	2,310	2,240	-70	-110	-3.0	-4.7
Québec	7,160	7,460	7,250	-210	90	-2.8	1.3
Sherbrooke	2,430	2,610	2,530	-80	100	-3.1	4.1
Trois-Rivières	1,960	2,130	2,080	-50	120	-2.3	6.1
Drummondville	1,490	1,560	1,550	-10	60	-0.6	4.0
Montréal	42,520	45,580	43,990	-1,590	1,470	-3.5	3.5
Ottawa–Gatineau (Quebec part)	2,940	3,220	3,160	-60	220	-1.9	7.5
Census agglomerations	11,380	12,030	11,600	-430	220	-3.6	1.9
Outside census metropolitan areas and census agglomerations	31,750	32,770	31,800	-970	50	-3.0	0.2
Ontario							
Census metropolitan areas	112,130	125,630	127,580	1,950	15,450	1.6	13.8
Ottawa–Gatineau (Ontario part)	8,810	9,280	9,390	110	580	1.2	6.6
Kingston	1,430	1,610	1,590	-20	160	-1.2	11.2
Belleville–Quinte West	990	1,170	1,180	10	190	0.9	19.2
Peterborough	1,230	1,320	1,370	50	140	3.8	11.4
Oshawa	4,170	4,700	4,970	270	800	5.7	19.2
Toronto	57,670	65,420	66,750	1,330	9,080	2.0	15.7
Hamilton	6,840	8,390	8,610	220	1,770	2.6	25.9
St. Catharines–Niagara	5,000	5,870	5,950	80	950	1.4	19.0
Kitchener–Cambridge–Waterloo	5,730	6,480	6,600	120	870	1.9	15.2
Brantford	1,800	2,040	2,120	80	320	3.9	17.8
Guelph	1,480	1,700	1,720	20	240	1.2	16.2
London	5,560	6,230	6,110	-120	550	-1.9	9.9
Windsor	5,620	5,010	4,790	-220	-830	-4.4	-14.8
Barrie	2,410	2,670	2,710	40	300	1.5	12.4
Greater Sudbury	2,050	2,330	2,350	20	300	0.9	14.6
Thunder Bay	1,350	1,400	1,360	-40	10	-2.9	0.7
Census agglomerations	13,320	13,280	13,330	50	10	0.4	0.1
Outside census metropolitan areas and census agglomerations	17,750	18,020	18,030	10	280	0.1	1.6
Manitoba							
Census metropolitan areas	8,540	8,500	8,440	-60	-100	-0.7	-1.2
Winnipeg	8,540	8,500	8,440	-60	-100	-0.7	-1.2

Table 3 - continued
Beneficiaries receiving regular income benefits,¹ by census metropolitan area² – Seasonally adjusted

	November 2023	October 2024 ^P	November 2024 ^P	October to November 2024	November 2023 to November 2024	October to November 2024	November 2023 to November 2024
Census agglomerations	1,480	1,440	1,340	-100	-140	-6.9	-9.5
Outside census metropolitan areas and census agglomerations	7,000	6,380	6,180	-200	-820	-3.1	-11.7
Saskatchewan							
Census metropolitan areas	5,180	5,310	5,150	-160	-30	-3.0	-0.6
Regina	2,150	2,300	2,180	-120	30	-5.2	1.4
Saskatoon	3,030	3,010	2,970	-40	-60	-1.3	-2.0
Census agglomerations	2,370	2,490	2,440	-50	70	-2.0	3.0
Outside census metropolitan areas and census agglomerations	6,750	6,460	6,080	-380	-670	-5.9	-9.9
Alberta							
Census metropolitan areas	37,490	38,790	38,180	-610	690	-1.6	1.8
Lethbridge	1,030	1,080	1,060	-20	30	-1.9	2.9
Calgary	16,430	16,560	16,150	-410	-280	-2.5	-1.7
Red Deer	1,250	1,210	1,220	10	-30	0.8	-2.4
Edmonton	18,780	19,940	19,760	-180	980	-0.9	5.2
Census agglomerations	5,450	5,770	5,640	-130	190	-2.3	3.5
Outside census metropolitan areas and census agglomerations	9,350	9,570	9,160	-410	-190	-4.3	-2.0
British Columbia							
Census metropolitan areas	35,140	31,240	31,520	280	-3,620	0.9	-10.3
Kelowna	2,450	2,280	2,260	-20	-190	-0.9	-7.8
Kamloops	1,300	1,240	1,260	20	-40	1.6	-3.1
Chilliwack	1,060	1,110	1,100	-10	40	-0.9	3.8
Abbotsford–Mission	2,010	1,990	1,970	-20	-40	-1.0	-2.0
Vancouver	24,790	21,130	21,500	370	-3,290	1.8	-13.3
Victoria	2,530	2,500	2,490	-10	-40	-0.4	-1.6
Nanaimo	1,000	990	940	-50	-60	-5.1	-6.0
Census agglomerations	8,410	8,450	8,360	-90	-50	-1.1	-0.6
Outside census metropolitan areas and census agglomerations	8,070	7,820	7,610	-210	-460	-2.7	-5.7

^P preliminary

1. Includes people who receive regular income benefits, whether or not they participate in one of three employment benefit programs, namely the Skills Development Program, the Job Creation Partnerships Program and the Self-employment Program.

2. Standard Geographical Classification 2021.

Source(s): Table 14-10-0454-01.

Table 4
Beneficiaries receiving regular income benefits,¹ by occupation,² Canada – Seasonally adjusted

	November 2023	October 2024 ^P	November 2024 ^P	October to November 2024	November 2023 to November 2024	October to November 2024	November 2023 to November 2024
	number			change		% change	
All occupations	466,770	486,070	481,860	-4,210	15,090	-0.9	3.2
Legislative and senior management occupations	2,960	3,340	3,330	-10	370	-0.3	12.5
Legislative and senior managers	2,960	3,340	3,330	-10	370	-0.3	12.5
Business, finance and administration occupations	55,300	59,870	59,670	-200	4,370	-0.3	7.9
Specialized middle management occupations in administrative services, financial and business services and communication (except broadcasting)	6,440	7,450	7,360	-90	920	-1.2	14.3
Professional occupations in finance and business	8,080	9,370	9,370	0	1,290	0.0	16.0
Administrative and financial supervisors and specialized administrative occupations	7,690	8,180	8,190	10	500	0.1	6.5
Administrative occupations and transportation logistics occupations	17,040	18,070	17,940	-130	900	-0.7	5.3
Administrative and financial support and supply chain logistics occupations	16,040	16,810	16,810	0	770	0.0	4.8
Natural and applied sciences and related occupations	31,370	34,920	34,560	-360	3,190	-1.0	10.2
Specialized middle management occupations in engineering, architecture, science and information systems	1,420	1,800	1,800	0	380	0.0	26.8
Professional occupations in natural and applied sciences	12,430	14,610	14,460	-150	2,030	-1.0	16.3
Technical occupations related to natural and applied sciences	17,520	18,510	18,300	-210	780	-1.1	4.5
Health occupations	7,130	7,430	7,380	-50	250	-0.7	3.5
Specialized middle management occupations in health care	170	180	180	0	10	0.0	5.9
Professional occupations in health	1,380	1,370	1,390	20	10	1.5	0.7
Technical occupations in health	1,590	1,670	1,650	-20	60	-1.2	3.8
Assisting occupations in support of health services	3,990	4,200	4,160	-40	170	-1.0	4.3
Occupations in education, law and social, community and government services	48,580	50,410	49,810	-600	1,230	-1.2	2.5
Managers in public administration, in education and social and community services and in public protection services	1,510	x	x	x	x	x	x
Professional occupations in law, education, social, community and government services	17,680	17,590	17,410	-180	-270	-1.0	-1.5
Front-line public protection services and paraprofessional occupations in legal, social, community, education services	10,380	11,260	11,100	-160	720	-1.4	6.9
Assisting occupations in education and in legal and public protection	12,480	13,000	12,980	-20	500	-0.2	4.0
Care providers and legal and public protection support occupations	x	x	x	x	x	x	x
Student monitors, crossing guards and related occupations	x	x	x	x	x	x	x
Occupations in art, culture, recreation and sport	16,250	12,260	12,800	540	-3,450	4.4	-21.2
Specialized middle management occupations in art, culture, recreation and sport	530	x	x	x	x	x	x
Professional occupations in art and culture	2,520	2,190	2,190	0	-330	0.0	-13.1
Technical occupations in art, culture and sport	8,260	5,990	6,090	100	-2,170	1.7	-26.3
Occupations in art, culture and sport	4,320	2,880	3,350	470	-970	16.3	-22.5
Support occupations in sport	620	610	590	-20	-30	-3.3	-4.8
Support occupations in art and culture	10	x	x	x	x	x	x
Sales and service occupations	75,250	80,330	78,910	-1,420	3,660	-1.8	4.9
Middle management occupations in retail and wholesale trade and customer services	10,380	11,480	11,260	-220	880	-1.9	8.5
Retail sales and service supervisors and specialized occupations in sales and services	7,880	8,950	8,770	-180	890	-2.0	11.3
Occupations in sales and services	9,440	10,130	9,970	-160	530	-1.6	5.6
Sales and service representatives and other customer and personal services occupations	22,330	23,440	23,190	-250	860	-1.1	3.9
Sales and service support occupations	25,220	26,330	25,710	-620	490	-2.4	1.9

Table 4 - continued

Beneficiaries receiving regular income benefits,¹ by occupation,² Canada – Seasonally adjusted

	November 2023	October 2024 ^P	November 2024 ^P	October to November 2024	November 2023 to November 2024	October to November 2024	November 2023 to November 2024
Trades, transport and equipment operators and related occupations	161,940	167,340	165,300	-2,040	3,360	-1.2	2.1
Middle management occupations in trades and transportation	4,660	5,110	5,160	50	500	1.0	10.7
Technical trades and transportation officers and controllers	56,760	62,330	61,700	-630	4,940	-1.0	8.7
General trades	47,660	47,770	47,620	-150	-40	-0.3	-0.1
Mail and message distribution, other transport equipment operators and related maintenance workers	5,480	5,640	5,710	70	230	1.2	4.2

Table 4
Beneficiaries receiving regular income benefits,¹ by occupation,² Canada – Seasonally adjusted

	November 2023	October 2024 ^P	November 2024 ^P	October to November 2024	November 2023 to November 2024	October to November 2024	November 2023 to November 2024
Helpers and labourers and other transport drivers, operators and labourers	47,380	46,480	45,100	-1,380	-2,280	-3.0	-4.8
Natural resources, agriculture and related production occupations	30,450	29,800	29,070	-730	-1,380	-2.4	-4.5
Middle management occupations in production and agriculture	1,060	1,020	1,010	-10	-50	-1.0	-4.7
Supervisors in natural resources, agriculture and related production	2,440	2,380	2,260	-120	-180	-5.0	-7.4
Occupations in natural resources and related production	4,950	4,990	4,880	-110	-70	-2.2	-1.4
Workers in natural resources, agriculture and related production	5,690	5,510	5,310	-200	-380	-3.6	-6.7
Harvesting, landscaping and natural resources labourers	16,320	15,910	15,620	-290	-700	-1.8	-4.3
Occupations in manufacturing and utilities	35,890	38,620	39,500	880	3,610	2.3	10.1
Middle management occupations in manufacturing and utilities	1,060	1,160	1,190	30	130	2.6	12.3
Processing, manufacturing and utilities supervisors and utilities operators and controllers	2,100	2,140	2,150	10	50	0.5	2.4
Central control and process operators and aircraft assembly assemblers and inspectors	570	570	620	50	50	8.8	8.8
Machine operators, assemblers and inspectors in processing, manufacturing and printing	15,970	18,790	19,190	400	3,220	2.1	20.2
Labourers in processing, manufacturing and utilities	16,190	15,960	16,340	380	150	2.4	0.9

^P preliminary

^x suppressed to meet the confidentiality requirements of the *Statistics Act*

1. Includes people who receive regular income benefits, whether or not they participate in one of three employment benefit programs, namely the Skills Development Program, the Job Creation Partnerships Program and the Self-employment Program.

2. National Occupational Classification 2021.

Source(s): Table 14-10-0456-01.

Available tables: [14-10-0004-01](#) to [14-10-0011-01](#) , [14-10-0323-01](#), [14-10-0343-01](#), [14-10-0344-01](#), [14-10-0346-01](#) and [14-10-0453-01](#) to [14-10-0456-01](#) .

Definitions, data sources and methods: survey number [2604](#).

More information about the concepts and use of Employment Insurance statistics is available in the *Guide to Employment Insurance Statistics* ([73-506-G](#)).

For more information, or to enquire about the concepts, methods or data quality of this release, contact us (toll-free 1-800-263-1136; 514-283-8300; infostats@statcan.gc.ca) or Media Relations (statcan.mediahotline-ligneinfomedias.statcan@statcan.gc.ca).