

Employment Insurance, October 2024

Released at 8:30 a.m. Eastern time in *The Daily*, Wednesday, December 18, 2024

The number of Canadians receiving regular Employment Insurance (EI) benefits was little changed in October (+0.1%; +600), following a decline in September. The number of EI recipients had been trending up from April to August 2024.

On a year-over-year basis, the number of regular EI beneficiaries was up by 22,000 (+4.7%) in October.

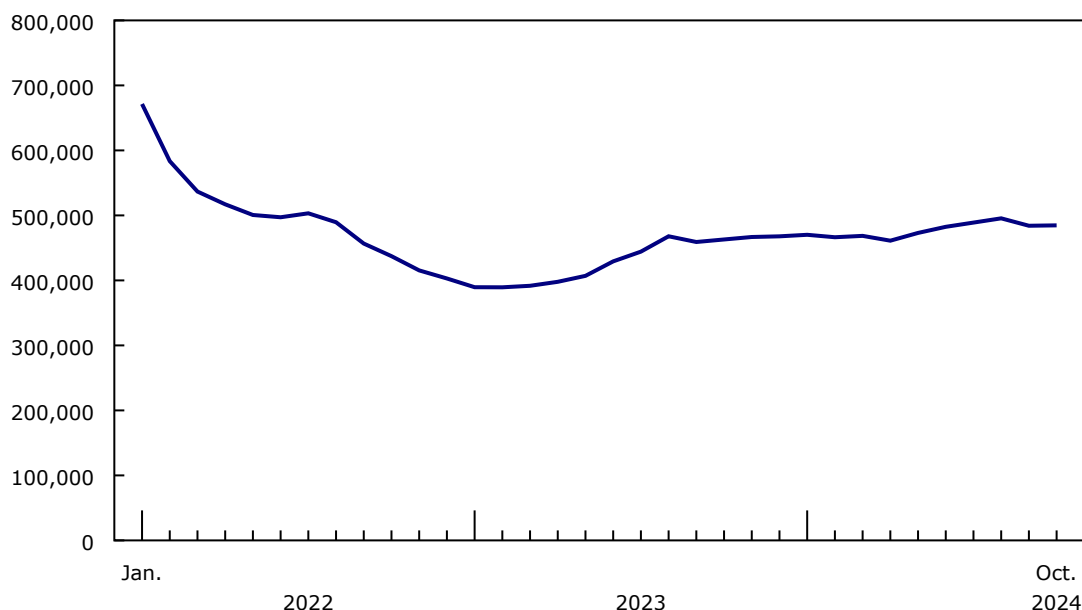
Data from the Labour Force Survey show that in October, employment was little changed (+15,000; +0.1%) and the unemployment rate remained at 6.5%. Compared with October 2023, the unemployment rate was up 0.8 percentage points and the number of unemployed people who had been laid off increased to 477,000 (+8.4%; +37,000) (not seasonally adjusted).

In general, variations in the number of EI beneficiaries can reflect changes in the circumstances of different groups, including those becoming beneficiaries, those going back to work, those exhausting their regular benefits, and those no longer receiving benefits for other reasons.

Chart 1

Number of regular Employment Insurance beneficiaries holds steady in October

number of regular Employment Insurance beneficiaries



Source(s): Employment Insurance Statistics (2604), table 14-10-0011-01.

The number of regular Employment Insurance recipients is down for young women, while little changed among men and women in the other major age groups

The number of EI recipients receiving regular benefits edged down (-1.1%; -100) among young women (15 to 24 years) in October and was essentially unchanged among young men. There was little change in October among core-aged (25 to 54 years) beneficiaries as well as recipients aged 55 and older.



More regular Employment Insurance recipients in six provinces in October

New Brunswick (+2.4%; +600) recorded the largest proportional increase in the number of regular EI recipients in October, following a decline the previous month. Compared with October 2023, the number of New Brunswickers receiving regular benefits was up 7.8% (+1,900).

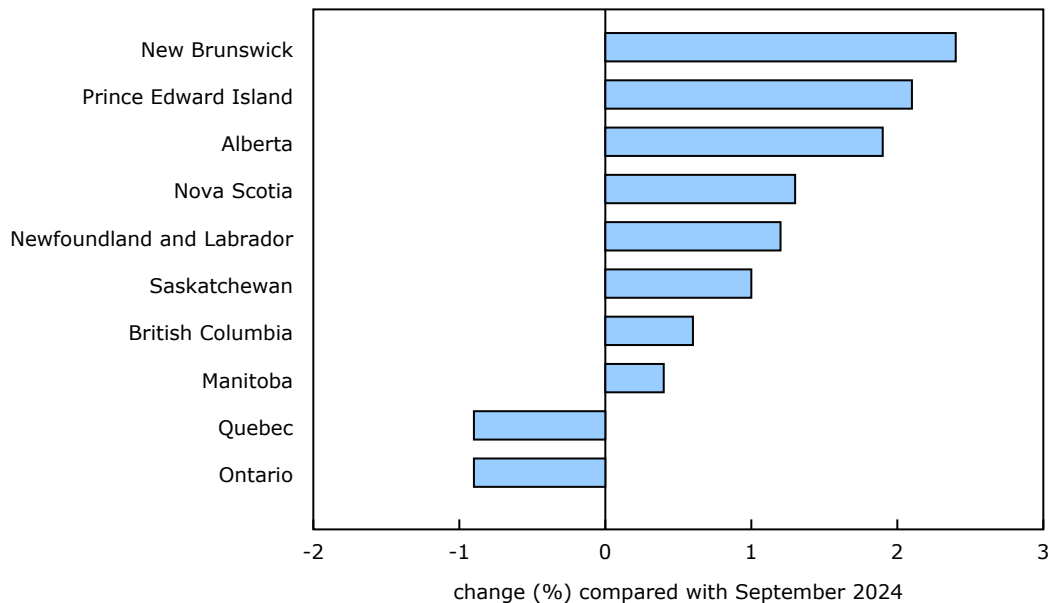
Prince Edward Island (+2.1%; +200) saw more regular EI recipients in October 2024, offsetting nearly all the decline observed in September. In the 12 months to October, the number of regular EI recipients in the province increased 5.2% (+400).

Alberta (+1.9%; +1,000) also saw an increase in regular EI recipients in October, mostly among core-aged men. Compared with October 2023, the number of recipients receiving regular EI benefits in the province was up 8.7% (+4,400).

The number of regular EI beneficiaries increased at a slower pace in Nova Scotia (+1.3%; +300), Newfoundland and Labrador (+1.2%; +400) and Saskatchewan (+1.0%; +100) in October 2024, while it edged down in Quebec (-0.9%; -1,000) and Ontario (-0.9%; -1,400). There was little change in Manitoba and British Columbia.

Chart 2

New Brunswick had the largest proportional increase in regular Employment Insurance recipients in October, followed by Prince Edward Island and Alberta



Source(s): Employment Insurance Statistics (2604), table 14-10-0011-01.

The number of regular Employment Insurance beneficiaries down mostly in manufacturing and utilities in October

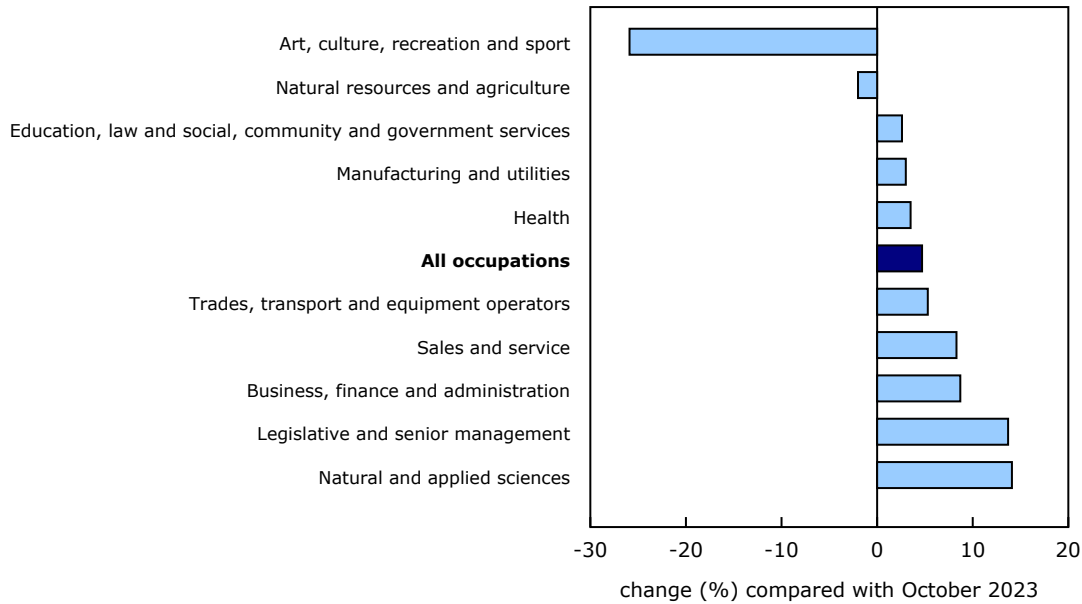
In October, the number of regular EI beneficiaries decreased mainly among those who last worked in manufacturing and utilities (-6.5%; -2,600), with the largest decline among machine operators, assemblers and inspectors in processing, manufacturing and printing. Ontario accounted for most of the decline.

There was little change in most other major occupational groups in October, except for trades, transport and equipment operators and related occupations (+1.2%; +2,000) and natural resources, agriculture and related production occupations where the number of regular EI recipients edged up by 300 (+ 1.1%).

In the 12 months to October, the number of recipients receiving regular EI benefits increased among those who last worked in most broad occupational groups, with the largest proportional increase in natural and applied sciences and related occupations (+14.1% +4,300).

In contrast, compared with October 2023, the number of recipients receiving regular EI benefits fell the most in art, culture, recreation and sport occupations (-25.9%; -4,100).

Chart 3
Largest 12-month decrease in regular Employment Insurance beneficiaries among those who last worked in art, culture, recreation and sport, while the largest increase was in natural and applied sciences and related occupations



Source(s): Employment Insurance Statistics (2604), table 14-10-0456-01.

Sustainable Development Goals

On January 1, 2016, the world officially began implementing the [2030 Agenda for Sustainable Development](#)—the United Nations' transformative plan of action that addresses urgent global challenges over the following 15 years. The plan is based on 17 specific sustainable development goals.

Employment Insurance statistics are an example of how Statistics Canada supports reporting on global sustainable development goals. This release will be used to help measure the following goal:



Did you know we have a mobile app?

Download our mobile app and get timely access to data at your fingertips! The [StatsCAN](#) app is available for free on the [App Store](#) and on [Google Play](#).

Note to readers

Concepts and methodology

Employment Insurance (EI) statistics are produced from administrative data sources provided by Service Canada and Employment and Social Development Canada. These statistics may, from time to time, be affected by changes to the Employment Insurance Act or administrative procedures.

EI statistics indicate the number of people who received EI benefits and should not be confused with Labour Force Survey (LFS) data, which provide estimates of the total number of unemployed people. There is always a certain proportion of unemployed people who do not qualify for benefits. Some unemployed people have not contributed to the program because they have not worked in the past 12 months or their employment was not insured. Other unemployed people have contributed to the program, but do not meet the eligibility criteria, such as workers who left their jobs voluntarily or those who did not accumulate enough hours of work to receive benefits.

All data in this release are seasonally adjusted, unless otherwise specified. To model the effects of the COVID-19 pandemic, values for all series from March 2020 to December 2022 have been treated with a combination of level shifts and outliers to determine a seasonal pattern for seasonal adjustment. For more information on seasonal adjustment, see [Seasonally adjusted data – Frequently asked questions](#).

The number of regular EI beneficiaries for the current month and the previous month is subject to revision.

The **number of beneficiaries** is all people who received regular EI benefits from October 13 to 19, 2024. This period coincides with the reference week of the LFS.

A **census metropolitan area (CMA)** and a **census agglomeration (CA)** are formed by one or more adjacent municipalities centred on a population centre. A CMA must have a total population of at least 100,000. A CA must have a population of at least 10,000. See [Standard Geographical Classification \(SGC\) 2021](#) for more information.

Next release

Data on EI for November 2024 will be released on January 23, 2025.

Table 1
Beneficiaries receiving regular income benefits,¹ by province and territory, sex and age group –
Seasonally adjusted

	October 2023	September 2024 ^P	October 2024 ^P	September to October 2024	October 2023 to October 2024	September to October 2024	October 2023 to October 2024
	number			change		% change	
Canada							
Both sexes	462,960	484,070	484,680	610	21,720	0.1	4.7
15 to 24 years	43,320	45,680	45,550	-130	2,230	-0.3	5.1
25 to 54 years	296,890	306,990	307,750	760	10,860	0.2	3.7
55 years and over	122,750	131,400	131,380	-20	8,630	-0.0	7.0
Men	292,860	306,780	307,950	1,170	15,090	0.4	5.2
15 to 24 years	31,200	33,190	33,210	20	2,010	0.1	6.4
25 to 54 years	185,270	191,510	192,570	1,060	7,300	0.6	3.9
55 years and over	76,380	82,080	82,170	90	5,790	0.1	7.6
Women	170,100	177,280	176,730	-550	6,630	-0.3	3.9
15 to 24 years	12,120	12,480	12,340	-140	220	-1.1	1.8
25 to 54 years	111,620	115,480	115,180	-300	3,560	-0.3	3.2
55 years and over	46,360	49,330	49,200	-130	2,840	-0.3	6.1
Newfoundland and Labrador							
Both sexes	29,470	28,960	29,310	350	-160	1.2	-0.5
15 to 24 years	2,550	2,400	2,480	80	-70	3.3	-2.7
25 to 54 years	14,910	14,290	14,480	190	-430	1.3	-2.9
55 years and over	12,010	12,260	12,350	90	340	0.7	2.8
Men	18,070	18,010	18,210	200	140	1.1	0.8
Women	11,390	10,950	11,100	150	-290	1.4	-2.5
Prince Edward Island							
Both sexes	6,960	7,170	7,320	150	360	2.1	5.2
15 to 24 years	1,240	1,270	1,260	-10	20	-0.8	1.6
25 to 54 years	3,430	3,450	3,560	110	130	3.2	3.8
55 years and over	2,290	2,450	2,500	50	210	2.0	9.2
Men	4,230	4,440	4,600	160	370	3.6	8.7
Women	2,730	2,730	2,720	-10	-10	-0.4	-0.4
Nova Scotia							
Both sexes	21,730	22,050	22,340	290	610	1.3	2.8
15 to 24 years	2,140	2,140	2,130	-10	-10	-0.5	-0.5
25 to 54 years	12,850	12,830	13,090	260	240	2.0	1.9
55 years and over	6,740	7,070	7,120	50	380	0.7	5.6
Men	14,200	14,410	14,710	300	510	2.1	3.6
Women	7,530	7,650	7,640	-10	110	-0.1	1.5
New Brunswick							
Both sexes	24,130	25,410	26,010	600	1,880	2.4	7.8
15 to 24 years	1,980	2,230	2,220	-10	240	-0.4	12.1
25 to 54 years	13,340	13,810	14,210	400	870	2.9	6.5
55 years and over	8,810	9,370	9,590	220	780	2.3	8.9
Men	16,160	16,560	17,090	530	930	3.2	5.8
Women	7,970	8,850	8,920	70	950	0.8	11.9
Quebec							
Both sexes	106,100	111,100	110,130	-970	4,030	-0.9	3.8
15 to 24 years	7,780	8,330	8,200	-130	420	-1.6	5.4
25 to 54 years	66,070	68,220	67,550	-670	1,480	-1.0	2.2
55 years and over	32,250	34,550	34,380	-170	2,130	-0.5	6.6
Men	69,870	73,110	72,320	-790	2,450	-1.1	3.5
Women	36,240	37,990	37,820	-170	1,580	-0.4	4.4
Ontario							
Both sexes	140,640	155,700	154,330	-1,370	13,690	-0.9	9.7
15 to 24 years	13,140	14,660	14,400	-260	1,260	-1.8	9.6
25 to 54 years	96,070	105,380	104,550	-830	8,480	-0.8	8.8
55 years and over	31,430	35,660	35,390	-270	3,960	-0.8	12.6
Men	84,840	95,620	94,850	-770	10,010	-0.8	11.8
Women	55,800	60,080	59,480	-600	3,680	-1.0	6.6

Table 1 - continued

Beneficiaries receiving regular income benefits,¹ by province and territory, sex and age group – Seasonally adjusted

	October 2023	September 2024 ^P	October 2024 ^P	September to October 2024	October 2023 to October 2024	September to October 2024	October 2023 to October 2024
Manitoba							
Both sexes	16,430	16,420	16,480	60	50	0.4	0.3
15 to 24 years	2,400	2,350	2,330	-20	-70	-0.9	-2.9
25 to 54 years	10,620	10,510	10,530	20	-90	0.2	-0.8
55 years and over	3,410	3,560	3,620	60	210	1.7	6.2
Men	10,710	10,650	10,700	50	-10	0.5	-0.1
Women	5,720	5,770	5,780	10	60	0.2	1.0
Saskatchewan							
Both sexes	14,140	14,420	14,560	140	420	1.0	3.0
15 to 24 years	1,800	1,860	1,900	40	100	2.2	5.6
25 to 54 years	9,010	9,050	9,160	110	150	1.2	1.7
55 years and over	3,330	3,520	3,490	-30	160	-0.9	4.8
Men	9,480	9,600	9,730	130	250	1.4	2.6
Women	4,660	4,820	4,830	10	170	0.2	3.6
Alberta							
Both sexes	50,090	53,460	54,450	990	4,360	1.9	8.7
15 to 24 years	5,510	5,950	6,090	140	580	2.4	10.5
25 to 54 years	34,530	36,240	37,100	860	2,570	2.4	7.4
55 years and over	10,050	11,280	11,250	-30	1,200	-0.3	11.9
Men	32,740	34,400	35,370	970	2,630	2.8	8.0
Women	17,350	19,060	19,080	20	1,730	0.1	10.0
British Columbia							
Both sexes	51,540	47,190	47,450	260	-4,090	0.6	-7.9
15 to 24 years	4,640	4,310	4,320	10	-320	0.2	-6.9
25 to 54 years	34,830	31,630	31,910	280	-2,920	0.9	-8.4
55 years and over	12,070	11,250	11,220	-30	-850	-0.3	-7.0
Men	31,440	28,630	28,960	330	-2,480	1.2	-7.9
Women	20,100	18,560	18,490	-70	-1,610	-0.4	-8.0
Yukon							
Both sexes	580	570	560	-10	-20	-1.8	-3.4
15 to 24 years	60	50	50	0	-10	0.0	-16.7
25 to 54 years	380	380	360	-20	-20	-5.3	-5.3
55 years and over	150	140	140	0	-10	0.0	-6.7
Men	400	370	370	0	-30	0.0	-7.5
Women	180	200	190	-10	10	-5.0	5.6
Northwest Territories							
Both sexes	580	520	530	10	-50	1.9	-8.6
15 to 24 years	40	40	60	20	20	50.0	50.0
25 to 54 years	420	370	350	-20	-70	-5.4	-16.7
55 years and over	120	120	120	0	0	0.0	0.0
Men	380	370	380	10	0	2.7	0.0
Women	200	150	160	10	-40	6.7	-20.0
Nunavut							
Both sexes	420	370	380	10	-40	2.7	-9.5
15 to 24 years	40	30	30	0	-10	0.0	-25.0
25 to 54 years	320	290	290	0	-30	0.0	-9.4
55 years and over	60	40	50	10	-10	25.0	-16.7
Men	260	230	240	10	-20	4.3	-7.7
Women	160	130	140	10	-20	7.7	-12.5

^P preliminary

1. Includes people who receive regular income benefits, whether or not they participate in one of three employment benefit programs, namely the Skills Development Program, the Job Creation Partnerships Program and the Self-employment Program.

Source(s): Table 14-10-0011-01.

Table 2
Initial and renewal claims received, by province and territory – Seasonally adjusted

	October 2023	September 2024 ^P	October 2024 ^P	September to October 2024	October 2023 to October 2024	September to October 2024	October 2023 to October 2024
	number			change		% change	
Canada	255,050	256,700	262,500	5,800	7,450	2.3	2.9
Newfoundland and Labrador	8,470	8,110	8,070	-40	-400	-0.5	-4.7
Prince Edward Island	2,520	2,460	2,570	110	50	4.5	2.0
Nova Scotia	9,060	8,640	8,810	170	-250	2.0	-2.8
New Brunswick	9,820	8,850	9,770	920	-50	10.4	-0.5
Quebec	62,510	66,300	66,980	680	4,470	1.0	7.2
Ontario	87,570	86,350	88,940	2,590	1,370	3.0	1.6
Manitoba	9,300	9,140	9,530	390	230	4.3	2.5
Saskatchewan	7,210	6,950	7,270	320	60	4.6	0.8
Alberta	28,350	29,350	29,470	120	1,120	0.4	4.0
British Columbia	29,360	29,560	30,120	560	760	1.9	2.6
Yukon	250	300	280	-20	30	-6.7	12.0
Northwest Territories	260	230	300	70	40	30.4	15.4
Nunavut	210	190	200	10	-10	5.3	-4.8

^P preliminary

Source(s): Table [14-10-0005-01](#).

Table 3
Beneficiaries receiving regular income benefits,¹ by census metropolitan area² – Seasonally adjusted

	October 2023	September 2024 ^P	October 2024 ^P	September to October 2024	October 2023 to October 2024	September to October 2024	October 2023 to October 2024
	number		change		% change		
Newfoundland and Labrador							
Census metropolitan areas	4,060	4,110	4,090	-20	30	-0.5	0.7
St. John's	4,060	4,110	4,090	-20	30	-0.5	0.7
Census agglomerations	3,040	2,930	2,930	0	-110	0.0	-3.6
Outside census metropolitan areas and census agglomerations	22,360	21,920	22,300	380	-60	1.7	-0.3
Prince Edward Island							
Census agglomerations	2,540	2,710	2,730	20	190	0.7	7.5
Outside census metropolitan areas and census agglomerations	4,420	4,460	4,590	130	170	2.9	3.8
Nova Scotia							
Census metropolitan areas	4,990	5,100	5,190	90	200	1.8	4.0
Halifax	4,990	5,100	5,190	90	200	1.8	4.0
Census agglomerations	6,530	6,640	6,670	30	140	0.5	2.1
Outside census metropolitan areas and census agglomerations	10,220	10,300	10,480	180	260	1.7	2.5
New Brunswick							
Census metropolitan areas	5,900	6,310	6,270	-40	370	-0.6	6.3
Moncton	2,260	2,520	2,490	-30	230	-1.2	10.2
Saint John	2,210	2,190	2,190	0	-20	0.0	-0.9
Fredericton	1,430	1,600	1,580	-20	150	-1.3	10.5
Census agglomerations	3,270	3,340	3,420	80	150	2.4	4.6
Outside census metropolitan areas and census agglomerations	14,960	15,760	16,330	570	1,370	3.6	9.2
Quebec							
Census metropolitan areas	62,030	65,530	65,170	-360	3,140	-0.5	5.1
Saguenay	2,340	2,320	2,310	-10	-30	-0.4	-1.3
Québec	7,240	7,470	7,500	30	260	0.4	3.6
Sherbrooke	2,480	2,690	2,650	-40	170	-1.5	6.9
Trois-Rivières	2,030	2,130	2,110	-20	80	-0.9	3.9
Drummondville	1,460	1,590	1,550	-40	90	-2.5	6.2
Montréal	43,440	46,080	45,820	-260	2,380	-0.6	5.5
Ottawa–Gatineau (Quebec part)	3,040	3,240	3,220	-20	180	-0.6	5.9
Census agglomerations	11,640	12,280	12,090	-190	450	-1.5	3.9
Outside census metropolitan areas and census agglomerations	32,430	33,280	32,870	-410	440	-1.2	1.4
Ontario							
Census metropolitan areas	111,100	124,630	123,460	-1,170	12,360	-0.9	11.1
Ottawa–Gatineau (Ontario part)	8,620	9,140	9,170	30	550	0.3	6.4
Kingston	1,380	1,540	1,600	60	220	3.9	15.9
Belleville–Quinte West	970	1,150	1,160	10	190	0.9	19.6
Peterborough	1,220	1,380	1,300	-80	80	-5.8	6.6
Oshawa	4,030	4,830	4,640	-190	610	-3.9	15.1
Toronto	55,060	65,060	64,060	-1,000	9,000	-1.5	16.3
Hamilton	6,690	8,220	8,230	10	1,540	0.1	23.0
St. Catharines–Niagara	4,860	5,900	5,800	-100	940	-1.7	19.3
Kitchener–Cambridge–Waterloo	5,530	6,250	6,370	120	840	1.9	15.2
Brantford	1,720	1,950	1,980	30	260	1.5	15.1
Guelph	1,310	1,710	1,680	-30	370	-1.8	28.2
London	5,230	5,930	6,140	210	910	3.5	17.4
Windsor	8,770	5,210	5,000	-210	-3,770	-4.0	-43.0
Barrie	2,330	2,670	2,630	-40	300	-1.5	12.9
Greater Sudbury	2,050	2,280	2,300	20	250	0.9	12.2
Thunder Bay	1,320	1,400	1,400	0	80	0.0	6.1
Census agglomerations	12,370	13,040	13,080	40	710	0.3	5.7
Outside census metropolitan areas and census agglomerations	17,170	18,030	17,790	-240	620	-1.3	3.6
Manitoba							
Census metropolitan areas	8,270	8,550	8,550	0	280	0.0	3.4
Winnipeg	8,270	8,550	8,550	0	280	0.0	3.4
Census agglomerations	1,400	1,440	1,470	30	70	2.1	5.0

Table 3 - continued
Beneficiaries receiving regular income benefits,¹ by census metropolitan area² – Seasonally adjusted

	October 2023	September 2024 ^P	October 2024 ^P	September to October 2024	October 2023 to October 2024	September to October 2024	October 2023 to October 2024
Outside census metropolitan areas and census agglomerations	6,750	6,430	6,460	30	-290	0.5	-4.3
Saskatchewan							
Census metropolitan areas	4,960	5,340	5,410	70	450	1.3	9.1
Regina	2,120	2,270	2,370	100	250	4.4	11.8
Saskatoon	2,840	3,070	3,030	-40	190	-1.3	6.7
Census agglomerations	2,420	2,540	2,520	-20	100	-0.8	4.1
Outside census metropolitan areas and census agglomerations	6,760	6,550	6,630	80	-130	1.2	-1.9
Alberta							
Census metropolitan areas	35,990	38,130	38,920	790	2,930	2.1	8.1
Lethbridge	1,010	1,060	1,080	20	70	1.9	6.9
Calgary	16,090	16,650	16,660	10	570	0.1	3.5
Red Deer	1,180	1,170	1,190	20	10	1.7	0.8
Edmonton	17,700	19,250	20,000	750	2,300	3.9	13.0
Census agglomerations	5,210	5,740	5,800	60	590	1.0	11.3
Outside census metropolitan areas and census agglomerations	8,890	9,590	9,730	140	840	1.5	9.4
British Columbia							
Census metropolitan areas	35,190	30,870	31,020	150	-4,170	0.5	-11.8
Kelowna	2,410	2,370	2,290	-80	-120	-3.4	-5.0
Kamloops	1,290	1,230	1,240	10	-50	0.8	-3.9
Chilliwack	1,030	1,080	1,110	30	80	2.8	7.8
Abbotsford–Mission	2,030	1,950	2,000	50	-30	2.6	-1.5
Vancouver	24,980	20,820	20,840	20	-4,140	0.1	-16.6
Victoria	2,440	2,470	2,520	50	80	2.0	3.3
Nanaimo	1,000	960	1,020	60	20	6.3	2.0
Census agglomerations	8,340	8,470	8,510	40	170	0.5	2.0
Outside census metropolitan areas and census agglomerations	8,010	7,850	7,920	70	-90	0.9	-1.1

^P preliminary

1. Includes people who receive regular income benefits, whether or not they participate in one of three employment benefit programs, namely the Skills Development Program, the Job Creation Partnerships Program and the Self-employment Program.

2. Standard Geographical Classification 2021.

Source(s): Table 14-10-0454-01.

Table 4
Beneficiaries receiving regular income benefits,¹ by occupation,² Canada – Seasonally adjusted

	October 2023	September 2024 ^P	October 2024 ^P	September to October 2024	October 2023 to October 2024	September to October 2024	October 2023 to October 2024
	number			change		% change	
All occupations	462,960	484,070	484,680	610	21,720	0.1	4.7
Legislative and senior management occupations	2,910	3,270	3,310	40	400	1.2	13.7
Legislative and senior managers	2,910	3,270	3,310	40	400	1.2	13.7
Business, finance and administration occupations	54,790	59,250	59,560	310	4,770	0.5	8.7
Specialized middle management occupations in administrative services, financial and business services and communication (except broadcasting)	6,400	7,380	7,470	90	1,070	1.2	16.7
Professional occupations in finance and business	7,990	9,340	9,330	-10	1,340	-0.1	16.8
Administrative and financial supervisors and specialized administrative occupations	7,570	8,020	8,130	110	560	1.4	7.4
Administrative occupations and transportation logistics occupations	17,120	17,870	18,010	140	890	0.8	5.2
Administrative and financial support and supply chain logistics occupations	15,710	16,640	16,630	-10	920	-0.1	5.9
Natural and applied sciences and related occupations	30,480	34,540	34,770	230	4,290	0.7	14.1

Table 4 - continued

Beneficiaries receiving regular income benefits,¹ by occupation,² Canada – Seasonally adjusted

	October 2023	September 2024 ^P	October 2024 ^P	September to October 2024	October 2023 to October 2024	September to October 2024	October 2023 to October 2024
Specialized middle management occupations in engineering, architecture, science and information systems	1,360	1,810	1,790	-20	430	-1.1	31.6
Professional occupations in natural and applied sciences	11,980	14,580	14,580	0	2,600	0.0	21.7
Technical occupations related to natural and applied sciences	17,140	18,160	18,400	240	1,260	1.3	7.4
Health occupations	7,130	7,360	7,380	20	250	0.3	3.5
Specialized middle management occupations in health care	160	180	180	0	20	0.0	12.5
Professional occupations in health	1,380	1,320	1,350	30	-30	2.3	-2.2
Technical occupations in health	1,560	1,710	1,660	-50	100	-2.9	6.4
Assisting occupations in support of health services	4,030	4,140	4,190	50	160	1.2	4.0
Occupations in education, law and social, community and government services	49,080	49,950	50,340	390	1,260	0.8	2.6
Managers in public administration, in education and social and community services and in public protection services	1,500	x	x	x	x	x	x
Professional occupations in law, education, social, community and government services	17,690	17,300	17,500	200	-190	1.2	-1.1
Front-line public protection services and paraprofessional occupations in legal, social, community, education services	10,500	11,100	11,250	150	750	1.4	7.1
Assisting occupations in education and in legal and public protection	12,710	12,840	12,970	130	260	1.0	2.0
Care providers and legal and public protection support occupations	x	x	x	x	x	x	x
Student monitors, crossing guards and related occupations	x	x	x	x	x	x	x
Occupations in art, culture, recreation and sport	15,970	11,770	11,830	60	-4,140	0.5	-25.9
Specialized middle management occupations in art, culture, recreation and sport	520	540	x	x	x	x	x
Professional occupations in art and culture	2,420	1,950	2,000	50	-420	2.6	-17.4
Technical occupations in art, culture and sport	8,090	5,980	6,050	70	-2,040	1.2	-25.2
Occupations in art, culture and sport	4,330	2,700	2,670	-30	-1,660	-1.1	-38.3
Support occupations in sport	600	600	580	-20	-20	-3.3	-3.3
Support occupations in art and culture	10	10	x	x	x	x	x
Sales and service occupations	74,310	80,650	80,470	-180	6,160	-0.2	8.3
Middle management occupations in retail and wholesale trade and customer services	10,310	11,540	11,550	10	1,240	0.1	12.0
Retail sales and service supervisors and specialized occupations in sales and services	7,760	8,920	9,030	110	1,270	1.2	16.4
Occupations in sales and services	9,320	10,160	10,140	-20	820	-0.2	8.8
Sales and service representatives and other customer and personal services occupations	22,050	23,540	23,290	-250	1,240	-1.1	5.6
Sales and service support occupations	24,870	26,480	26,460	-20	1,590	-0.1	6.4
Trades, transport and equipment operators and related occupations	158,810	165,160	167,160	2,000	8,350	1.2	5.3
Middle management occupations in trades and transportation	4,610	5,010	5,040	30	430	0.6	9.3
Technical trades and transportation officers and controllers	56,090	61,260	62,380	1,120	6,290	1.8	11.2
General trades	46,470	46,720	47,400	680	930	1.5	2.0
Mail and message distribution, other transport equipment operators and related maintenance workers	5,410	5,550	5,590	40	180	0.7	3.3

Table 4 - continued

Beneficiaries receiving regular income benefits,¹ by occupation,² Canada – Seasonally adjusted

	October 2023	September 2024 ^P	October 2024 ^P	September to October 2024	October 2023 to October 2024	September to October 2024	October 2023 to October 2024
Helpers and labourers and other transport drivers, operators and labourers	46,240	46,620	46,760	140	520	0.3	1.1
Natural resources, agriculture and related production occupations	30,780	29,830	30,150	320	-630	1.1	-2.0
Middle management occupations in production and agriculture	1,070	1,010	1,030	20	-40	2.0	-3.7
Supervisors in natural resources, agriculture and related production	2,300	2,370	2,410	40	110	1.7	4.8
Occupations in natural resources and related production	5,000	4,850	5,050	200	50	4.1	1.0
Workers in natural resources, agriculture and related production	5,920	5,590	5,620	30	-300	0.5	-5.1
Harvesting, landscaping and natural resources labourers	16,480	16,000	16,050	50	-430	0.3	-2.6
Occupations in manufacturing and utilities	36,820	40,560	37,930	-2,630	1,110	-6.5	3.0
Middle management occupations in manufacturing and utilities	1,080	1,160	1,130	-30	50	-2.6	4.6
Processing, manufacturing and utilities supervisors and utilities operators and controllers	2,050	2,150	2,110	-40	60	-1.9	2.9
Central control and process operators and aircraft assembly assemblers and inspectors	580	560	540	-20	-40	-3.6	-6.9
Machine operators, assemblers and inspectors in processing, manufacturing and printing	16,880	20,600	18,570	-2,030	1,690	-9.9	10.0
Labourers in processing, manufacturing and utilities	16,230	16,090	15,570	-520	-660	-3.2	-4.1

^P preliminary

^x suppressed to meet the confidentiality requirements of the *Statistics Act*

1. Includes people who receive regular income benefits, whether or not they participate in one of three employment benefit programs, namely the Skills Development Program, the Job Creation Partnerships Program and the Self-employment Program.

2. National Occupational Classification 2021.

Source(s): Table 14-10-0456-01.

Available tables: [14-10-0004-01](#) to [14-10-0011-01](#) , [14-10-0323-01](#), [14-10-0343-01](#), [14-10-0344-01](#), [14-10-0346-01](#) and [14-10-0453-01](#) to [14-10-0456-01](#) .

Definitions, data sources and methods: survey number [2604](#).

More information about the concepts and use of Employment Insurance statistics is available in the *Guide to Employment Insurance Statistics* ([73-506-G](#)).

For more information, or to enquire about the concepts, methods or data quality of this release, contact us (toll-free 1-800-263-1136; 514-283-8300; infostats@statcan.gc.ca) or Media Relations (statcan.mediahotline-ligneinfomedias.statcan@statcan.gc.ca).