

Labour Force Survey: Revisions, 2021 to 2023

Released at 8:30 a.m. Eastern time in *The Daily*, Monday, January 29, 2024

As is the standard practice, the Labour Force Survey seasonally-adjusted estimates for the previous three years have been revised using the latest seasonal factors.

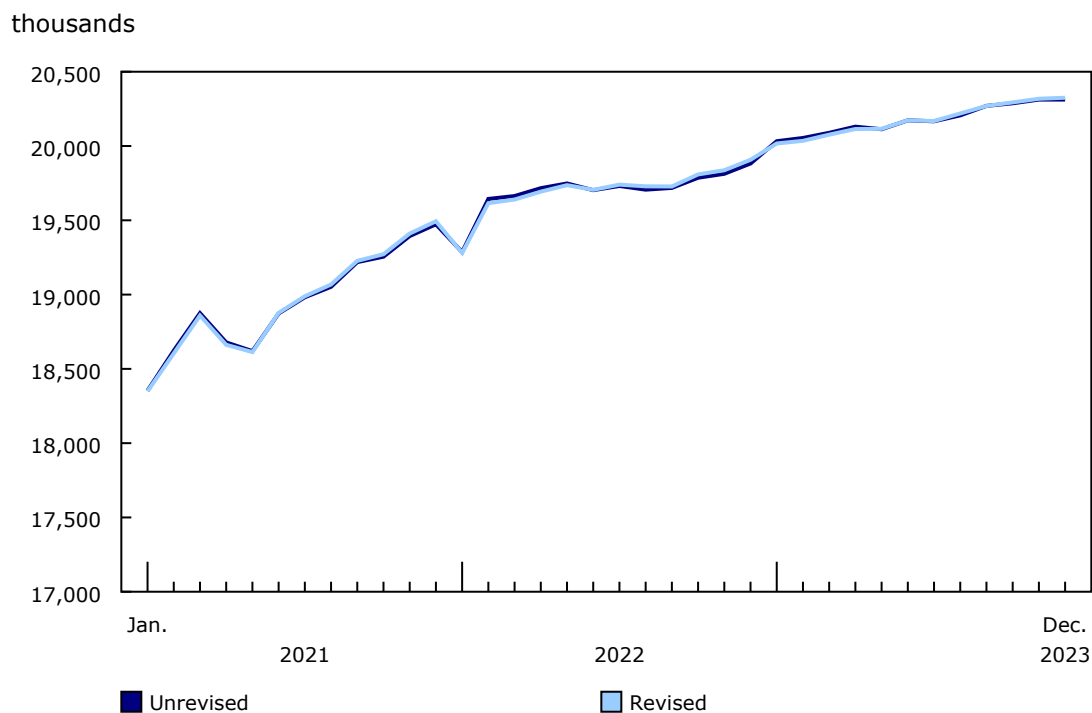
Part of this revision was to review seasonal adjustment methods introduced to account for shocks to the labour market during the early phases of the COVID-19 pandemic. The review indicated that seasonal patterns in the most recent two years (2022 and 2023) are returning to pre-pandemic patterns and therefore these seasonal adjustment parameters were revised accordingly.

Labour Force Survey seasonal adjustment revision has minimal impact on labour market trends

Monthly employment estimates at the Canada level were virtually unchanged, with no significant differences observed between the revised and unrevised estimates. The unemployment rate changed by a maximum of 0.1 percentage points over the revision period and the revised national unemployment rate in December 2023 was unchanged at 5.8%.

Chart 1

Employment: Comparison of revised and unrevised levels, seasonally adjusted, January 2021 to December 2023



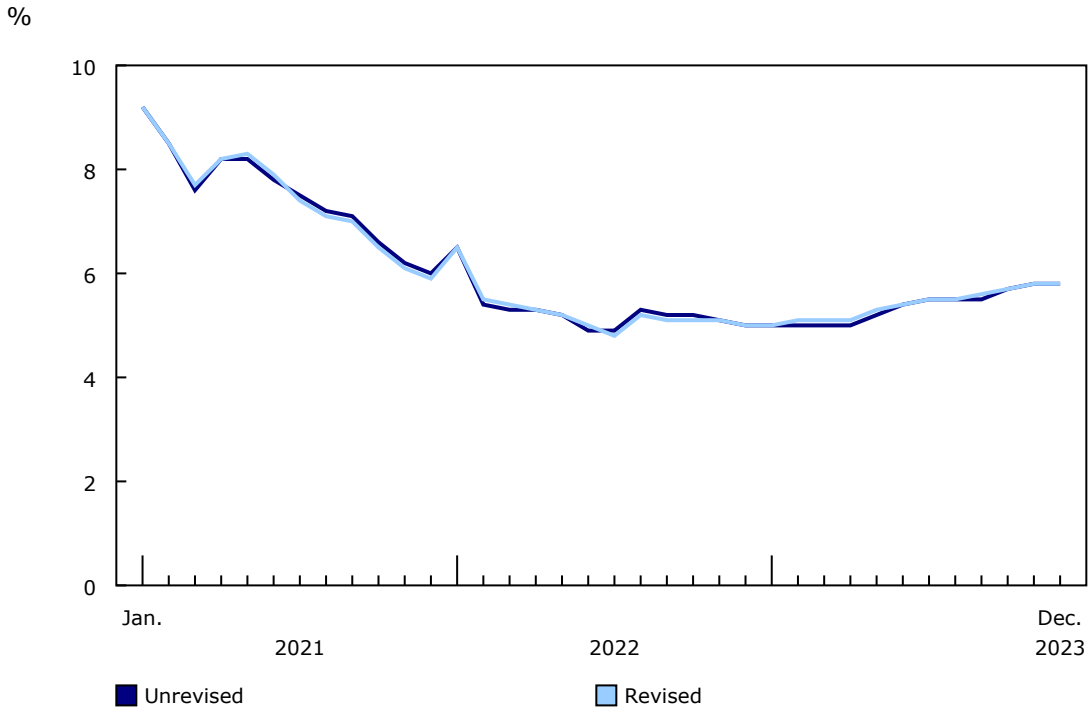
Source(s): Labour Force Survey (3701).



Statistics Canada
Statistique Canada

Canada

Chart 2
Unemployment rate: Comparison of revised and unrevised levels, seasonally adjusted, January 2021 to December 2023



Source(s): Labour Force Survey (3701).

Did you know we have a mobile app?

Get timely access to data right at your fingertips by downloading the [StatsCAN app](#), available for free on the [App Store](#) and on [Google Play](#).

Note to readers

Seasonal adjustment

For more information on seasonal adjustment, see [Seasonally adjusted data – Frequently asked questions](#).

Next release

The next release of the Labour Force Survey will be on February 9, 2024. January 2024 data will reflect labour market conditions during the week of January 14 to 20, 2024.

Available tables: [14-10-0287-01](#) to [14-10-0289-01](#) , [14-10-0291-01](#), [14-10-0292-01](#), [14-10-0310-01](#), [14-10-0342-01](#), [14-10-0355-01](#), [14-10-0380-01](#) and [14-10-0383-01](#).

Definitions, data sources and methods: survey number [3701](#).

For more information, or to enquire about the concepts, methods or data quality of this release, contact us (toll-free 1-800-263-1136; 514-283-8300; infostats@statcan.gc.ca) or Media Relations (statcan.mediahotline-ligneinfomedias.statcan@statcan.gc.ca).