

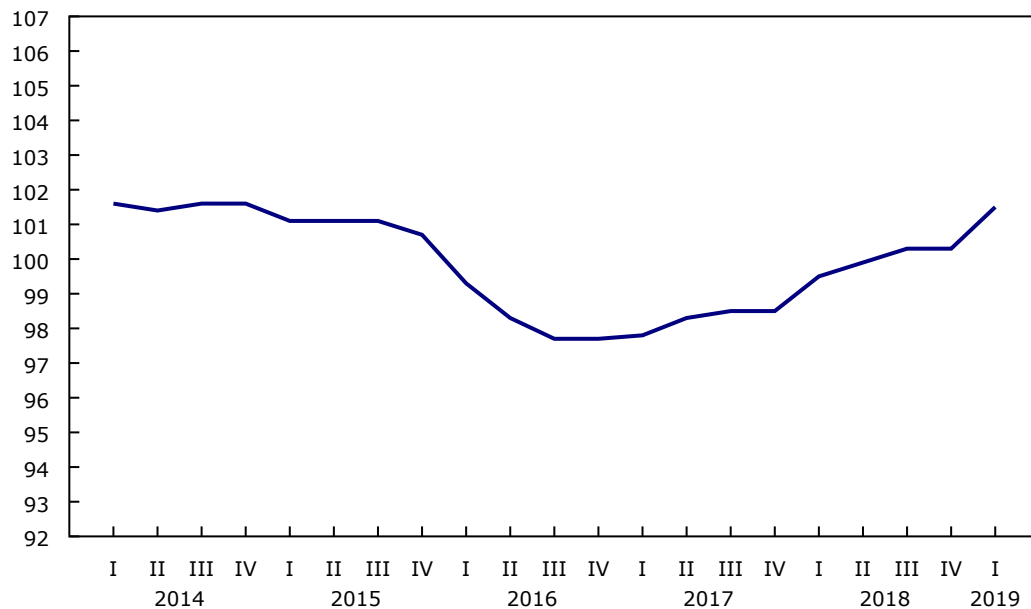
Architectural, Engineering and Related Services Price Index, first quarter 2019

Released at 8:30 a.m. Eastern time in *The Daily*, Friday, June 7, 2019

The Architectural, Engineering and Related Services Price Index (AESPI) increased 1.2% in the first quarter, following no change in the previous quarter. Higher prices were observed in all regions, with respondents citing rising input costs due to salary changes as a reason for the increases.

Chart 1
Architectural, Engineering and Related Services Price Index

Index (2018=100)



Source(s): Table 18-10-0164-01.

Prices for engineering services up in all regions

Prices for engineering services, the largest component of the AESPI, rose 1.2% in the first quarter, after remaining unchanged in the previous quarter. British Columbia and territories (+1.7%) and Quebec (+1.5%) led the increases in this quarter. Salary changes, changes in market demand, and a more robust competitive environment were reported as the main reasons for higher prices.

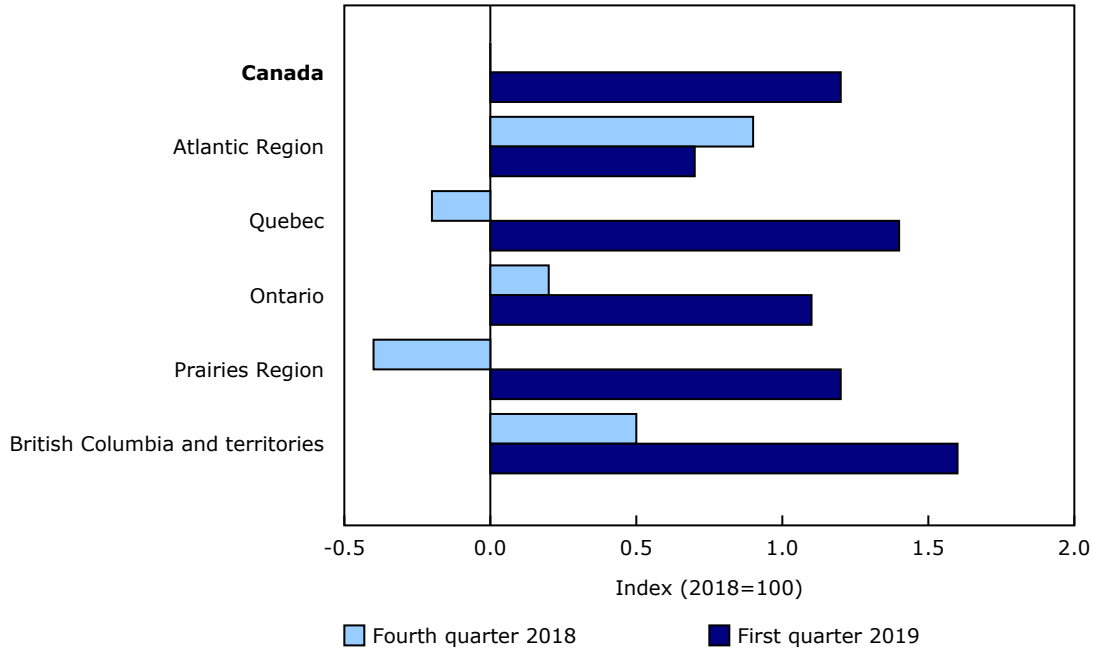
Higher prices for architectural and landscape architectural services

During the first quarter, prices for architectural and landscape architectural services rose 0.5% in Canada, following a 0.3% increase in the previous quarter. Increases were observed in three of the five regions, led by Ontario (+0.8%). Prices in Quebec and the Atlantic Region remained unchanged this quarter.

Ontario and Prairies lead increases in prices for surveying and mapping services

At the national level, prices for surveying and mapping services increased 1.1% in the first quarter, after declining by 0.2% in the previous quarter. Ontario reported the largest increase (+1.3%), followed by the Prairie Region (+1.2%). In comparison, there was no change in prices in Quebec.

Chart 2
Architectural, Engineering and Related Services Price Index, percent change by region



Source(s): Table 18-10-0164-02.

Year-over-year change

Year over year, the AESPI rose 2.0% as a result of higher prices for engineering services (+2.0%), architectural and landscape architectural services (+1.8%) and surveying and mapping services (+1.2%).

Note to readers

The Architectural, Engineering and Related Services Price Index (AESPI) is a quarterly series that measures changes over time in the prices of architectural, engineering and surveying and mapping services.

With the release of first quarter 2019 data, the base year of the AESPI has been updated to 2018=100. In addition, the geographical coverage of the AESPI has been expanded to include regional level indexes. Index aggregations are available by service for Canada and the geographic regions.

The historical continuity of the AESPI has been maintained, wherever possible, by linking the current AESPI in table 18-10-0164-01 with comparable historical index series published in archived data table 18-10-0045-01.

The indexes are not seasonally adjusted.

Products

A video entitled "[Producer Price Indexes](#)" is available on the Statistics Canada Training Institute webpage. It provides an introduction to Statistics Canada's Producer Price Indexes: what they are, how they are made and what they are used for.

A Historical Timeline of Canadian Producer Price Statistics

The publication "[A Historical Timeline of Canadian Producer Price Statistics](#)," which is part of the Prices Analytical Series (62F0014M), was created to showcase the key milestones in the history of Canadian producer price statistics. This historical timeline contains answers to questions such as: Who collected Canada's first statistics? What do Canadian producer price indexes measure?

Infographic: Producer Price Indexes at a Glance

The infographic "[Producer Price Indexes at a Glance](#)," which is part of Statistics Canada — Infographics (11-627-M), demonstrates how producer price indexes for goods and services are calculated and why they are important for the Canadian economy.

Table 1
Architectural, Engineering and Related Services Price Index – Not seasonally adjusted

	Relative importance ¹	First quarter 2018	Fourth quarter 2018 ^f	First quarter 2019 ^p	Fourth quarter 2018 to first quarter 2019	First quarter 2018 to first quarter 2019
	%	(2018=100)			% change	
Architectural, Engineering and Related Services Price Index²	100.00	99.5	100.3	101.5	1.2	2.0
Architectural and landscape architectural services ³	6.05	99.3	100.6	101.1	0.5	1.8
Engineering services	90.23	99.5	100.3	101.5	1.2	2.0
Surveying and mapping services ⁴	3.71	99.9	100.0	101.1	1.1	1.2

^r revised

^p preliminary

1. The relative importance is calculated by dividing the weight of each industry group by the sum of weights. This weight corresponds to the aggregate revenue of establishments at the time of sample selection.

2. This aggregation includes the North American Industry Classification System (NAICS) codes 54131, 54132, 54133, 54136 and 54137, and excludes codes 54134, 54135 and 54138.

3. This aggregation combines NAICS codes 54131 and 54132.

4. This aggregation combines NAICS codes 54136 and 54137.

Source(s): Table 18-10-0164-01.

Table 2
Architectural and Landscape Architectural Services Price Index per region – Not seasonally adjusted

	Relative importance ¹	First quarter 2018	Fourth quarter 2018 ^r	First quarter 2019 ^p	Fourth quarter 2018 to first quarter 2019	First quarter 2018 to first quarter 2019
	%	(2018=100)			% change	
Canada	100.00	99.3	100.6	101.1	0.5	1.8
Atlantic Region	3.00	100.1	100.0	100.0	0.0	-0.1
Quebec	8.24	99.0	100.8	100.8	0.0	1.8
Ontario	49.91	99.5	100.4	101.2	0.8	1.7
Prairies Region	23.89	99.3	100.2	100.5	0.3	1.2
British Columbia and territories	14.95	98.7	101.7	102.1	0.4	3.4

^r revised

^p preliminary

1. The relative importance is calculated by dividing the weight of each industry group by the sum of weights. This weight corresponds to the aggregate revenue of establishments at the time of sample selection.

Source(s): Table 18-10-0164-01.

Table 3
Engineering Services Price Index per region – Not seasonally adjusted

	Relative importance ¹	First quarter 2018	Fourth quarter 2018 ^r	First quarter 2019 ^p	Fourth quarter 2018 to first quarter 2019	First quarter 2018 to first quarter 2019
	%	(2018=100)			% change	
Canada	100.00	99.5	100.3	101.5	1.2	2.0
Atlantic Region	4.01	100.0	100.5	101.3	0.8	1.3
Quebec	12.00	99.4	100.2	101.7	1.5	2.3
Ontario	20.31	99.3	100.5	101.7	1.2	2.4
Prairies Region	52.69	99.5	100.2	101.3	1.1	1.8
British Columbia and territories	10.99	99.8	100.3	102.0	1.7	2.2

^r revised

^p preliminary

1. The relative importance is calculated by dividing the weight of each industry group by the sum of weights. This weight corresponds to the aggregate revenue of establishments at the time of sample selection.

Source(s): Table 18-10-0164-01.

Table 4
Surveying and Mapping Services Price Index per region – Not seasonally adjusted

	Relative importance ¹	First quarter 2018	Fourth quarter 2018 ^r	First quarter 2019 ^p	Fourth quarter 2018 to first quarter 2019	First quarter 2018 to first quarter 2019
	%	(2018=100)			% change	
Canada	100.00	99.9	100.0	101.1	1.1	1.2
Atlantic Region	5.98	99.4	101.7	102.0	0.3	2.6
Quebec	2.75	99.9	100.2	100.2	0.0	0.3
Ontario	13.73	99.6	99.8	101.1	1.3	1.5
Prairies Region	72.50	100.0	99.9	101.1	1.2	1.1
British Columbia and territories	5.04	99.9	100.2	101.1	0.9	1.2

^r revised

^p preliminary

1. The relative importance is calculated by dividing the weight of each industry group by the sum of weights. This weight corresponds to the aggregate revenue of establishments at the time of sample selection.

Source(s): Table 18-10-0164-01.

Available tables: table [18-10-0164-01](#).

Definitions, data sources and methods: survey number [5196](#).

For more information, or to enquire about the concepts, methods or data quality of this release, contact us (toll-free 1-800-263-1136; 514-283-8300; STATCAN.infostats-infostats.STATCAN@canada.ca) or Media Relations (613-951-4636; STATCAN.mediahotline-ligneinfomedias.STATCAN@canada.ca).