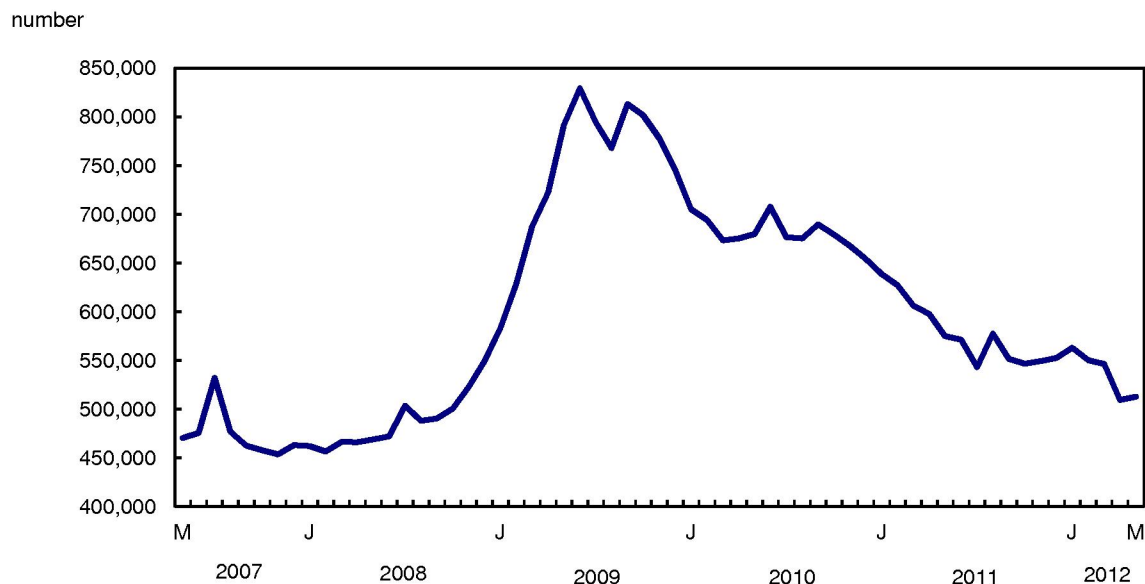


Employment Insurance, May 2012

Released at 8:30 a.m. Eastern time in *The Daily*, Thursday, July 19, 2012

The number of people receiving regular Employment Insurance (EI) benefits totalled 512,600 in May, virtually unchanged from April. This followed three months of consecutive declines. The number of beneficiaries decreased slightly in Alberta, while it edged up in New Brunswick.

Chart 1
Employment Insurance beneficiaries unchanged in May



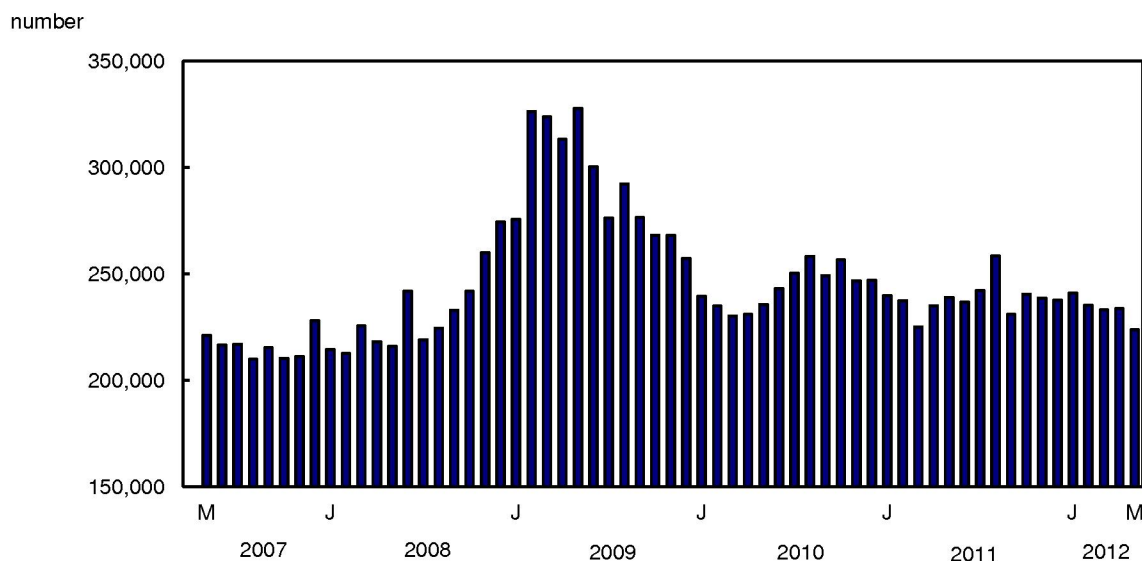
Claims decrease in May

To receive EI benefits, individuals must first submit a claim. The number of claims provides an indication of the number of people who could become beneficiaries.

In May, the number of initial and renewal claims fell 4.2% to 223,800. Claims fell in every province, with the largest percentage declines in Saskatchewan (-11.0%), New Brunswick (-8.3%) and Manitoba (-6.6%).



Chart 2
Number of claims down in May



Little or no change in most provinces

There was little or no change in beneficiaries in most provinces in May.

In Alberta, the number of people receiving regular EI benefits decreased 2.3% to 24,000, continuing a downward trend that began in January 2012.

In Ontario, the number of beneficiaries edged down 0.9% to 148,200 in May, following a substantial decline in April.

There were small increases in New Brunswick (+2.1%) and Prince Edward Island (+1.5%). In Quebec, the number of beneficiaries edged up 0.5%, following three consecutive monthly declines.

Year-over-year declines in most large urban centres

Large urban centres are those with a population of 10,000 or more. EI data at the sub-provincial level are not seasonally adjusted and are therefore compared on a year-over-year basis.

Between May 2011 and May 2012, the number of people receiving regular EI benefits fell 13.6% to 468,100. Declines occurred in 124 of 143 large centres.

In Newfoundland and Labrador, the number of beneficiaries declined in four of five large centres. The largest decrease occurred in St. John's, where the number fell 19.4% to 3,400.

In Prince Edward Island, the number of beneficiaries fell 23.5% to 1,800 in Charlottetown, while it was little changed in Summerside.

In Nova Scotia, four of five large centres had fewer beneficiaries in the 12 months to May. The largest percentage declines occurred in Truro, Kentville and Halifax. In Halifax, beneficiaries fell 13.6% to 4,600.

The number of beneficiaries fell in four of the six large centres in New Brunswick. In Fredericton, it declined 10.2% to 1,200, the third monthly drop in a row. In Saint John, the number decreased 4.6% to 2,300.

In Quebec, year-over-year declines occurred in 28 of the 33 large centres in May. The largest percentage decreases occurred in Rouyn-Noranda, Val-d'Or, Rivière-du-Loup and Amos. The number of beneficiaries in the census metropolitan area of Québec fell 12.0%. In Montréal, it declined 11.5% to 46,300.

Of the 41 large centres in Ontario, 37 had fewer beneficiaries in the 12 months to May. The largest percentage decreases occurred in Stratford, Woodstock, Chatham-Kent, Collingwood and Windsor. In Toronto, there were 19.2% fewer people receiving EI benefits in May. The rate of decline in the number of beneficiaries in Toronto has been around 20% since June 2010.

In Manitoba, the number of beneficiaries fell in three of the four large centres. In Winnipeg, it was down 4.8% to 5,000.

In Saskatchewan, all eight large centres continued to post year-over-year declines, the largest occurring in Regina, where the number of beneficiaries fell 18.8% to 780.

In Alberta, all 12 large centres had fewer beneficiaries in the 12 months to May. The largest percentage declines occurred in Lethbridge, Grand Prairie and Edmonton. In Edmonton, the number of people receiving EI benefits dropped 37.8% to 6,300, and in Calgary, it fell 34.2% to 6,700. Other large centres with year-over-year declines of 30% or more were Cold Lake, Red Deer and Medicine Hat.

In British Columbia, the number of beneficiaries decreased in 22 of the 25 large centres, with the largest declines in Squamish, Penticton and Vernon. In Vancouver, 21,100 people received benefits in May, down 19.7% from 12 months earlier. In Victoria, the number was down 19.0% to 2,600.

Demographic groups

EI data by sex and age are not seasonally adjusted and are therefore compared on a year-over-year basis.

In May, 288,500 men received regular benefits, down 14.2% from May 2011. The number of beneficiaries fell at a similar rate for men under 25 (-14.6%) and for men aged 25 to 54 (-14.7%). Among men aged 55 and over, the number fell 12.3%.

In May, 179,500 women received regular benefits, down 12.7% from 12 months earlier. Among women, the number of beneficiaries decreased 14.5% for those under 25, and 13.3% for those aged 25 to 54. The number of beneficiaries among women aged 55 and over fell 10.1%.

Note to readers

The change in the number of regular Employment Insurance (EI) beneficiaries reflects various situations, including people becoming beneficiaries, people going back to work, and people exhausting their regular benefits.

All data in this release are seasonally adjusted unless otherwise specified.

EI statistics are produced from administrative data sources provided by Service Canada and Human Resources and Skills Development Canada. These statistics may, from time to time, be affected by changes to the Employment Insurance Act or administrative procedures. The number of regular beneficiaries and the number of claims received for April and May are preliminary. In this release, large urban centres correspond to those with a population of 10,000 or more.

The number of beneficiaries is a measure of all people who received EI benefits from May 13 to 19. This period coincides with the reference week of the Labour Force Survey (LFS).

EI statistics indicate the number of people who received EI benefits, and should not be confused with data coming from the LFS, which provides information on the total number of unemployed people.

There is always a certain proportion of unemployed people who do not qualify for benefits. Some unemployed people have not contributed to the program because they have not worked in the past 12 months or their employment is not insured. Other unemployed people have contributed to the program but do not meet the eligibility criteria, such as workers who left their job voluntarily or those who did not accumulate enough hours of work to receive benefits.

Table 1
Employment Insurance: Statistics by province and territory – Seasonally adjusted

	April 2012 ^P	May 2012 ^P	April to May 2012	May 2011 to May 2012	April to May 2012	May 2011 to May 2012
	number		change in number		% change	
Beneficiaries receiving regular benefits						
Canada	509,260	512,620	3,360	-62,140	0.7	-10.8
Newfoundland and Labrador	33,690	33,630	-60	-840	-0.2	-2.4
Prince Edward Island	8,220	8,340	120	-680	1.5	-7.5
Nova Scotia	30,020	30,000	-20	-1,990	-0.1	-6.2
New Brunswick	32,000	32,680	680	-1,510	2.1	-4.4
Quebec	151,890	152,610	720	-15,730	0.5	-9.3
Ontario	149,480	148,190	-1,290	-26,240	-0.9	-15.0
Manitoba	12,600	12,650	50	-240	0.4	-1.9
Saskatchewan	9,240	9,260	20	-1,220	0.2	-11.6
Alberta	24,600	24,040	-560	-10,450	-2.3	-30.3
British Columbia	56,110	55,950	-160	-9,140	-0.3	-14.0
Yukon	960	970	10	60	1.0	6.6
Northwest Territories	840	850	10	-70	1.2	-7.6
Nunavut	450	480	30	-50	6.7	-9.4
Initial and renewal claims received						
Canada	233,670	223,760	-9,910	-15,230	-4.2	-6.4
Newfoundland and Labrador	9,630	9,400	-230	-2,570	-2.4	-21.5
Prince Edward Island	2,730	2,660	-70	140	-2.6	5.6
Nova Scotia	10,570	10,120	-450	-210	-4.3	-2.0
New Brunswick	10,800	9,900	-900	-540	-8.3	-5.2
Quebec	68,830	67,460	-1,370	-2,080	-2.0	-3.0
Ontario	73,530	69,510	-4,020	-2,780	-5.5	-3.8
Manitoba	7,710	7,200	-510	-750	-6.6	-9.4
Saskatchewan	5,980	5,320	-660	-1,950	-11.0	-26.8
Alberta	16,840	15,770	-1,070	-2,360	-6.4	-13.0
British Columbia	27,210	26,680	-530	-1,340	-1.9	-4.8
Yukon	320	360	40	10	12.5	2.9
Northwest Territories	310	290	-20	-40	-6.5	-12.1
Nunavut	230	230	0	30	0.0	15.0

^P preliminary

Note(s): The number of beneficiaries receiving regular benefits excludes claimants receiving training, job creation and self-employment benefits as well as other employment and support measures benefits.

Table 2
Beneficiaries receiving regular benefits by age group, sex and province and territory – Not seasonally adjusted

	May 2011	May 2012 ^P	May 2011 to May 2012	May 2011 to May 2012
	number		change in number	% change
Canada				
Both sexes	541,750	468,050	-73,700	-13.6
Under 25 years	53,920	46,080	-7,840	-14.5
25 to 54 years	371,340	318,800	-52,540	-14.1
55 years and over	116,490	103,160	-13,330	-11.4
Men	336,150	288,540	-47,610	-14.2
Under 25 years	38,430	32,830	-5,600	-14.6
25 to 54 years	224,370	191,350	-33,020	-14.7
55 years and over	73,340	64,350	-8,990	-12.3
Women	205,610	179,510	-26,100	-12.7
Under 25 years	15,490	13,250	-2,240	-14.5
25 to 54 years	146,970	127,450	-19,520	-13.3
55 years and over	43,150	38,810	-4,340	-10.1
Newfoundland and Labrador				
Both sexes	33,590	31,940	-1,650	-4.9
Under 25 years	3,390	2,980	-410	-12.1
25 to 54 years	21,370	19,880	-1,490	-7.0
55 years and over	8,820	9,070	250	2.8
Men	20,280	18,650	-1,630	-8.0
Women	13,310	13,290	-20	-0.2
Prince Edward Island				
Both sexes	7,400	6,950	-450	-6.1
Under 25 years	900	860	-40	-4.4
25 to 54 years	4,600	4,260	-340	-7.4
55 years and over	1,910	1,830	-80	-4.2
Men	4,320	4,010	-310	-7.2
Women	3,080	2,940	-140	-4.5
Nova Scotia				
Both sexes	28,580	26,440	-2,140	-7.5
Under 25 years	3,420	3,040	-380	-11.1
25 to 54 years	18,780	17,280	-1,500	-8.0
55 years and over	6,390	6,130	-260	-4.1
Men	17,540	16,170	-1,370	-7.8
Women	11,040	10,270	-770	-7.0
New Brunswick				
Both sexes	32,070	30,700	-1,370	-4.3
Under 25 years	3,190	2,970	-220	-6.9
25 to 54 years	20,930	19,870	-1,060	-5.1
55 years and over	7,960	7,860	-100	-1.3
Men	21,620	20,100	-1,520	-7.0
Women	10,440	10,600	160	1.5
Quebec				
Both sexes	151,120	134,270	-16,850	-11.2
Under 25 years	15,250	13,780	-1,470	-9.6
25 to 54 years	101,120	89,060	-12,060	-11.9
55 years and over	34,750	31,420	-3,330	-9.6
Men	97,000	85,470	-11,530	-11.9
Women	54,130	48,800	-5,330	-9.8
Ontario				
Both sexes	166,310	139,000	-27,310	-16.4
Under 25 years	15,340	12,800	-2,540	-16.6
25 to 54 years	119,000	99,960	-19,040	-16.0
55 years and over	31,970	26,240	-5,730	-17.9
Men	99,670	83,010	-16,660	-16.7
Women	66,650	56,000	-10,650	-16.0

Table 2 - continued
Beneficiaries receiving regular benefits by age group, sex and province and territory – Not seasonally adjusted

	May 2011	May 2012 ^P	May 2011 to May 2012	May 2011 to May 2012
Manitoba				
Both sexes	11,410	10,790	-620	-5.4
Under 25 years	1,340	1,260	-80	-6.0
25 to 54 years	7,970	7,560	-410	-5.1
55 years and over	2,100	1,970	-130	-6.2
Men	7,430	7,180	-250	-3.4
Women	3,980	3,610	-370	-9.3
Saskatchewan				
Both sexes	8,960	7,830	-1,130	-12.6
Under 25 years	1,010	840	-170	-16.8
25 to 54 years	6,200	5,320	-880	-14.2
55 years and over	1,760	1,670	-90	-5.1
Men	5,810	5,170	-640	-11.0
Women	3,160	2,670	-490	-15.5
Alberta				
Both sexes	34,420	22,800	-11,620	-33.8
Under 25 years	3,270	2,050	-1,220	-37.3
25 to 54 years	24,400	16,310	-8,090	-33.2
55 years and over	6,750	4,440	-2,310	-34.2
Men	21,200	13,790	-7,410	-35.0
Women	13,220	9,010	-4,210	-31.8
British Columbia				
Both sexes	65,340	54,920	-10,420	-15.9
Under 25 years	6,580	5,280	-1,300	-19.8
25 to 54 years	45,090	37,510	-7,580	-16.8
55 years and over	13,670	12,130	-1,540	-11.3
Men	39,620	33,380	-6,240	-15.7
Women	25,720	21,540	-4,180	-16.3
Yukon				
Both sexes	850	910	60	7.1
Under 25 years	80	90	10	12.5
25 to 54 years	580	610	30	5.2
55 years and over	200	210	10	5.0
Men	520	590	70	13.5
Women	330	330	0	0.0
Northwest Territories				
Both sexes	980	900	-80	-8.2
Under 25 years	90	80	-10	-11.1
25 to 54 years	750	690	-60	-8.0
55 years and over	140	130	-10	-7.1
Men	640	620	-20	-3.1
Women	340	280	-60	-17.6
Nunavut				
Both sexes	560	520	-40	-7.1
Under 25 years	70	50	-20	-28.6
25 to 54 years	440	430	-10	-2.3
55 years and over	50	40	-10	-20.0
Men	430	370	-60	-14.0
Women	130	140	10	7.7

^P preliminary

Note(s): The number of beneficiaries receiving regular benefits excludes claimants receiving training, job creation and self-employment benefits as well as other employment and support measures benefits.

Table 3
Beneficiaries receiving regular benefits by census metropolitan area¹ – Not seasonally adjusted

	May 2011	May 2012 ^P	May 2011 to May 2012	May 2011 to May 2012
	number		change in number	% change
Newfoundland and Labrador				
St. John's	4,230	3,410	-820	-19.4
Nova Scotia				
Halifax	5,300	4,580	-720	-13.6
New Brunswick				
Saint John	2,370	2,260	-110	-4.6
Quebec				
Saguenay	3,580	3,060	-520	-14.5
Québec	7,320	6,440	-880	-12.0
Sherbrooke	2,270	2,080	-190	-8.4
Trois-Rivières	3,210	2,940	-270	-8.4
Montréal	52,270	46,280	-5,990	-11.5
Ottawa–Gatineau, Gatineau part	2,940	2,720	-220	-7.5
Ontario				
Ottawa–Gatineau, Ottawa part	6,330	5,670	-660	-10.4
Kingston	1,370	1,320	-50	-3.6
Oshawa	4,520	3,690	-830	-18.4
Toronto	65,980	53,330	-12,650	-19.2
Hamilton	7,780	5,950	-1,830	-23.5
St. Catharines–Niagara	6,090	5,290	-800	-13.1
Kitchener–Cambridge–Waterloo	5,580	4,500	-1,080	-19.4
London	5,760	5,490	-270	-4.7
Windsor	5,560	3,920	-1,640	-29.5
Greater Sudbury	2,180	1,920	-260	-11.9
Thunder Bay	1,360	1,340	-20	-1.5
Manitoba				
Winnipeg	5,210	4,960	-250	-4.8
Saskatchewan				
Regina	960	780	-180	-18.8
Saskatoon	1,490	1,400	-90	-6.0
Alberta				
Calgary	10,220	6,720	-3,500	-34.2
Edmonton	10,090	6,280	-3,810	-37.8
British Columbia				
Abbotsford–Mission	2,990	2,790	-200	-6.7
Vancouver	26,270	21,100	-5,170	-19.7
Victoria	3,150	2,550	-600	-19.0

^P preliminary

1. Go online to view the census subdivisions that comprise the census metropolitan areas.

Note(s): The number of beneficiaries receiving regular benefits excludes claimants receiving training, job creation and self-employment benefits as well as other employment and support measures benefits.

Available without charge in CANSIM: tables 276-0001 to 276-0004, 276-0006, 276-0009 and 276-0011.

Definitions, data sources and methods: survey number 2604.

[Data tables](#) are also now available online. From the *Key resource* module of our website under *Summary tables*, choose *Subject*, then *Labour*.

Data on Employment Insurance for June will be released on August 23.

For more information, contact Statistics Canada's National Contact Centre (toll-free 1-800-263-1136; 613-951-8116; infostats@statcan.gc.ca).

To enquire about the concepts, methods or data quality of this release, contact Vincent Ferrao (613-951-4750; vincent.ferrao@statcan.gc.ca), Labour Statistics Division.