

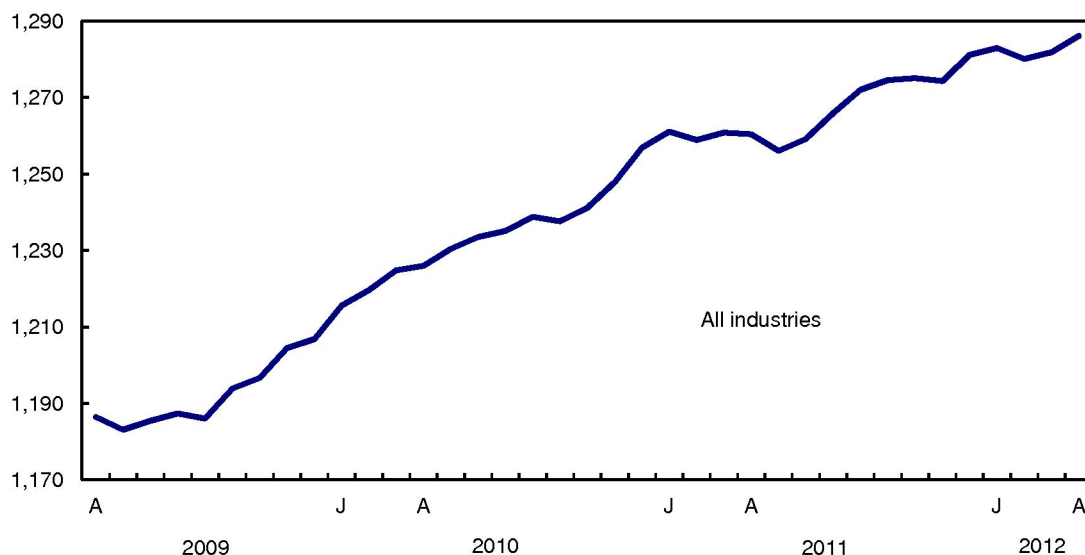
# Gross domestic product by industry, April 2012

Released at 8:30 a.m. Eastern time in *The Daily*, Friday, June 29, 2012

Real gross domestic product grew 0.3% in April, after edging up 0.1% in March. Most of the April increase was attributable to mining and oil and gas extraction and, to a lesser extent, wholesale trade. Transportation services as well as the agriculture, forestry, fishing and hunting sector increased. Retail trade, manufacturing, accommodation and food services and the public sector (education, health, and public administration combined) declined.

**Chart 1**  
**Real gross domestic product increases in April**

billions of chained (2002) dollars



## Mining and oil and gas extraction rises

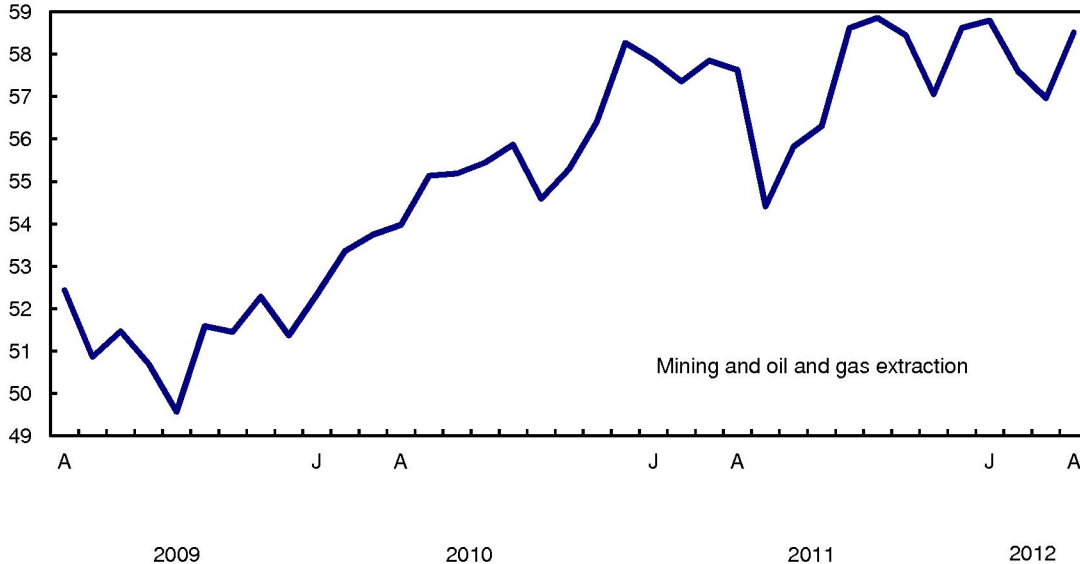
Mining and oil and gas extraction rose 2.7% in April after declining 2.0% in February and 1.1% in March. Oil and gas extraction advanced 2.4% in April as crude petroleum production rebounded from maintenance and production difficulties in February and March. Natural gas production was down slightly in April, and storage levels declined for the first time in a year. Support activities for mining and oil and gas extraction increased 5.1% as drilling and rigging services advanced.

Mining excluding oil and gas extraction grew 3.1% in April with increased output at copper, nickel, lead and zinc mines as well as potash mines.



## Chart 2 Mining and oil and gas extraction rises in April

gross domestic product in billions of chained (2002) dollars



### Wholesale trade increases while retail trade is down

Wholesale trade was up 1.2% in April, a fifth consecutive monthly increase. There was notable growth in the wholesaling of agricultural supplies and building materials. In contrast, the wholesaling of farm products and food, beverage and tobacco products declined.

Retail trade fell 0.8% in April after increasing 0.5% in March. Output decreased at clothing and clothing accessories stores, new car dealers as well as general merchandise stores (which include department stores). Conversely, retailing activity at health and personal care stores and gasoline stations was up.

### Manufacturing declines

Manufacturing declined 0.3% in April. Durable goods production decreased 0.5% as a result of lower output of fabricated metal products and non-metallic mineral products, which outweighed gains in primary metals and machinery manufacturing. The manufacturing of non-durable goods was unchanged in April, as increased production of petroleum and coal products and chemical products was offset by declines in textiles, clothing and food products.

### Transportation and warehousing services increase

Transportation and warehousing services rose 0.7%, as trucking and rail transportation benefited from the strength in mining and wholesale trade.

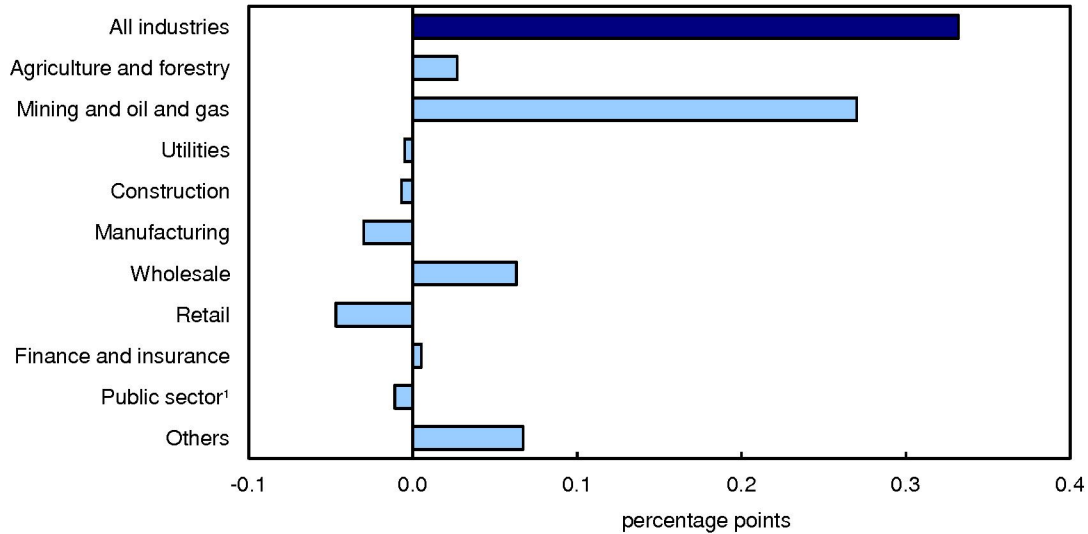
### Construction edges down

Construction edged down 0.1% in April as declines in residential construction and repair works outweighed gains in non-residential building and engineering construction. In contrast, the output of real estate agents and brokers (+1.2%) was up for a third consecutive month as activity in the home resale market continued to increase.

## Other industries

There were increases in the agriculture, forestry, fishing and hunting sector in April. The public sector edged down 0.1%, primarily as a result of declines in public administration. Accommodation and food services as well as the arts, entertainment and recreation sector also decreased in April.

**Chart 3**  
**Main industrial sectors' contribution to the percent change in gross domestic product, April 2012**



1. Education, health and public administration.

### Note to readers

The monthly gross domestic product (GDP) by industry data at basic prices are chained volume estimates with 2002 as the reference year. This means that the data for each industry and each aggregate are obtained from a chained volume index multiplied by the industry's value added in 2002. For the 1997 to 2008 period, the monthly data are benchmarked to annually chained Fisher volume indexes of GDP obtained from the constant-price input-output tables.

For the period starting with January 2009, the data are derived by chaining a fixed-weight Laspeyres volume index to the prior period. The fixed weights are 2008 industry prices.

This approach makes the monthly GDP by industry data more comparable with the expenditure-based GDP data, chained quarterly.

### Revisions

With this release of monthly GDP by industry, revisions have been made back to January 2011. For more information about monthly GDP by industry, see the [National economic accounts](#) module on our website.

**Table 1**  
**Monthly gross domestic product by industry at basic prices in chained (2002) dollars –**  
**Seasonally adjusted**

	November 2011 <sup>r</sup>	December 2011 <sup>r</sup>	January 2012 <sup>r</sup>	February 2012 <sup>r</sup>	March 2012 <sup>r</sup>	April 2012 <sup>p</sup>	April 2012	April 2011 to April 2012
	month-to-month % change						millions of dollars <sup>1</sup>	% change
<b>All industries</b>	<b>-0.1</b>	<b>0.5</b>	<b>0.1</b>	<b>-0.2</b>	<b>0.1</b>	<b>0.3</b>	<b>1,286,027</b>	<b>2.0</b>
<b>Goods-producing industries</b>	<b>-0.5</b>	<b>1.2</b>	<b>0.1</b>	<b>-1.0</b>	<b>0.1</b>	<b>0.8</b>	<b>371,317</b>	<b>2.1</b>
Agriculture, forestry, fishing and hunting	0.6	1.0	-0.4	-0.5	0.6	1.5	30,027	3.3
Mining and oil and gas extraction	-2.4	2.7	0.3	-2.0	-1.1	2.7	58,517	1.5
Utilities	-0.7	-1.3	1.4	-2.1	-0.9	-0.2	32,850	-4.1
Construction	0.2	0.3	0.2	0.8	0.6	-0.1	78,503	3.9
Manufacturing	0.7	1.1	-0.3	-1.2	1.1	-0.3	165,238	2.6
<b>Services-producing industries</b>	<b>0.2</b>	<b>0.2</b>	<b>0.2</b>	<b>0.2</b>	<b>0.1</b>	<b>0.1</b>	<b>919,585</b>	<b>2.0</b>
Wholesale trade	-0.3	1.0	0.4	1.5	0.2	1.2	73,708	5.8
Retail trade	0.7	0.1	-0.1	-0.4	0.5	-0.8	78,144	2.4
Transportation and warehousing	0.5	0.1	0.1	-0.6	0.1	0.7	60,445	1.4
Information and cultural industries	-0.0	-0.1	0.2	0.1	0.1	0.0	46,043	0.1
Finance, insurance and real estate	0.0	0.3	0.2	0.3	0.2	0.2	269,232	2.6
Professional, scientific and technical services	0.4	0.2	0.4	0.2	0.4	0.2	63,156	3.3
Administrative and waste management services	0.2	0.1	0.4	0.1	0.2	0.3	31,136	1.3
Education services	0.1	0.2	0.2	-0.0	-0.8	0.0	62,971	-0.3
Health care and social assistance	0.2	0.2	0.2	0.1	0.1	0.0	85,716	1.9
Arts, entertainment and recreation	0.0	0.0	-0.6	-0.4	1.0	-1.0	11,284	1.7
Accommodation and food services	0.9	-0.2	0.4	-0.1	1.2	-0.6	27,883	2.0
Other services (except public administration)	0.1	0.0	0.0	0.1	0.1	-0.0	33,389	1.3
Public administration	-0.2	-0.2	-0.1	-0.1	-0.2	-0.2	75,915	-0.1
<b>Other aggregations</b>	<b>-0.8</b>	<b>1.6</b>	<b>0.1</b>	<b>-1.7</b>	<b>-0.1</b>	<b>1.0</b>	<b>263,276</b>	<b>1.4</b>
Industrial production								
Non-durable manufacturing industries	0.3	0.4	-0.1	-1.3	0.9	-0.0	64,284	-0.8
Durable manufacturing industries	0.9	1.6	-0.5	-1.1	1.3	-0.5	101,381	5.2
Business sector industries	-0.1	0.6	0.2	-0.3	0.2	0.4	1,070,368	2.4
Non-business sector industries	0.1	0.1	0.0	-0.0	-0.3	-0.1	215,865	0.5
Information and communication technologies industries	0.2	0.0	0.2	-0.4	0.0	0.1	61,767	0.5
Energy sector	-2.4	2.0	0.6	-1.3	-1.9	1.8	88,478	1.0

<sup>r</sup> revised

<sup>p</sup> preliminary

1. At annual rates.

---

**Available without charge in CANSIM: table 379-0027.**

**Definitions, data sources and methods: survey number 1301.**

The April 2012 issue of *Gross Domestic Product by Industry*, Vol. 26, no. 4 (15-001-X, free), is now available from the *Key resource* module of our website under *Publications*.

Data on gross domestic product by industry for May will be released on July 31.

For more information, or to order data, contact Statistics Canada's National Contact Centre (toll-free 1-800-263-1136; 613-951-8116; [infostats@statcan.gc.ca](mailto:infostats@statcan.gc.ca)).

To enquire about the concepts, methods or data quality of this release, contact Allan Tomas (613-951-9277), Industry Accounts Division.